

1984

Industrial Resources: Meade County - Brandenburg

Kentucky Library Research Collections
Western Kentucky University, spcol@wku.edu

Follow this and additional works at: https://digitalcommons.wku.edu/meade_cty

 Part of the [Business Administration, Management, and Operations Commons](#), [Growth and Development Commons](#), and the [Infrastructure Commons](#)

Recommended Citation

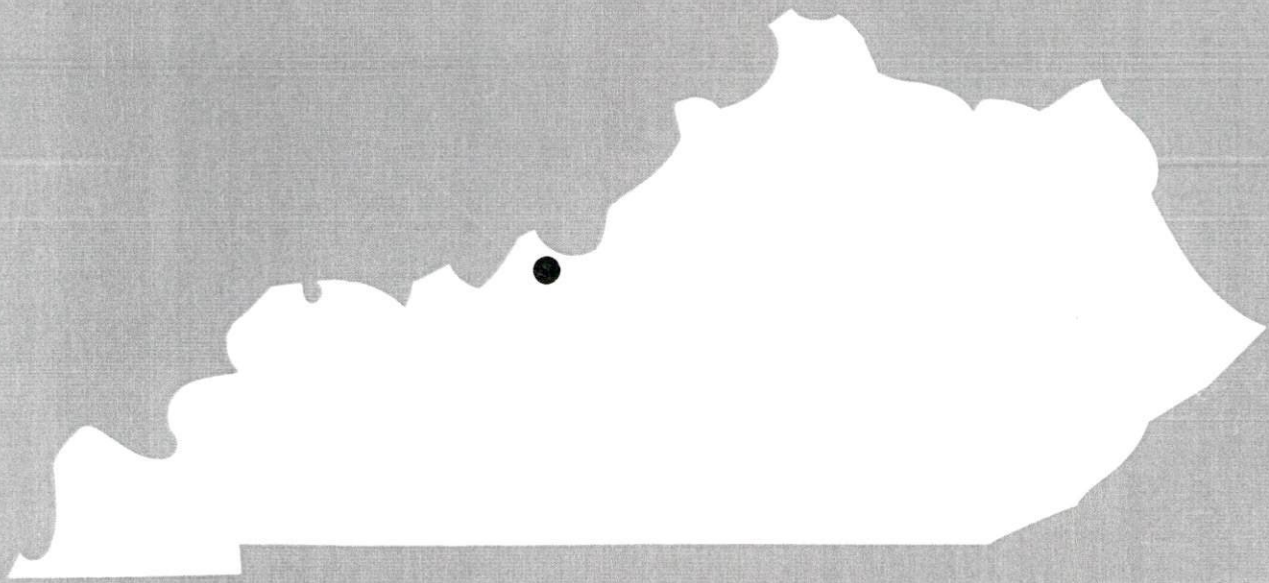
Kentucky Library Research Collections, "Industrial Resources: Meade County - Brandenburg" (1984). *Meade County*. Paper 7.
https://digitalcommons.wku.edu/meade_cty/7

This Report is brought to you for free and open access by TopSCHOLAR®. It has been accepted for inclusion in Meade County by an authorized administrator of TopSCHOLAR®. For more information, please contact topscholar@wku.edu.

1984

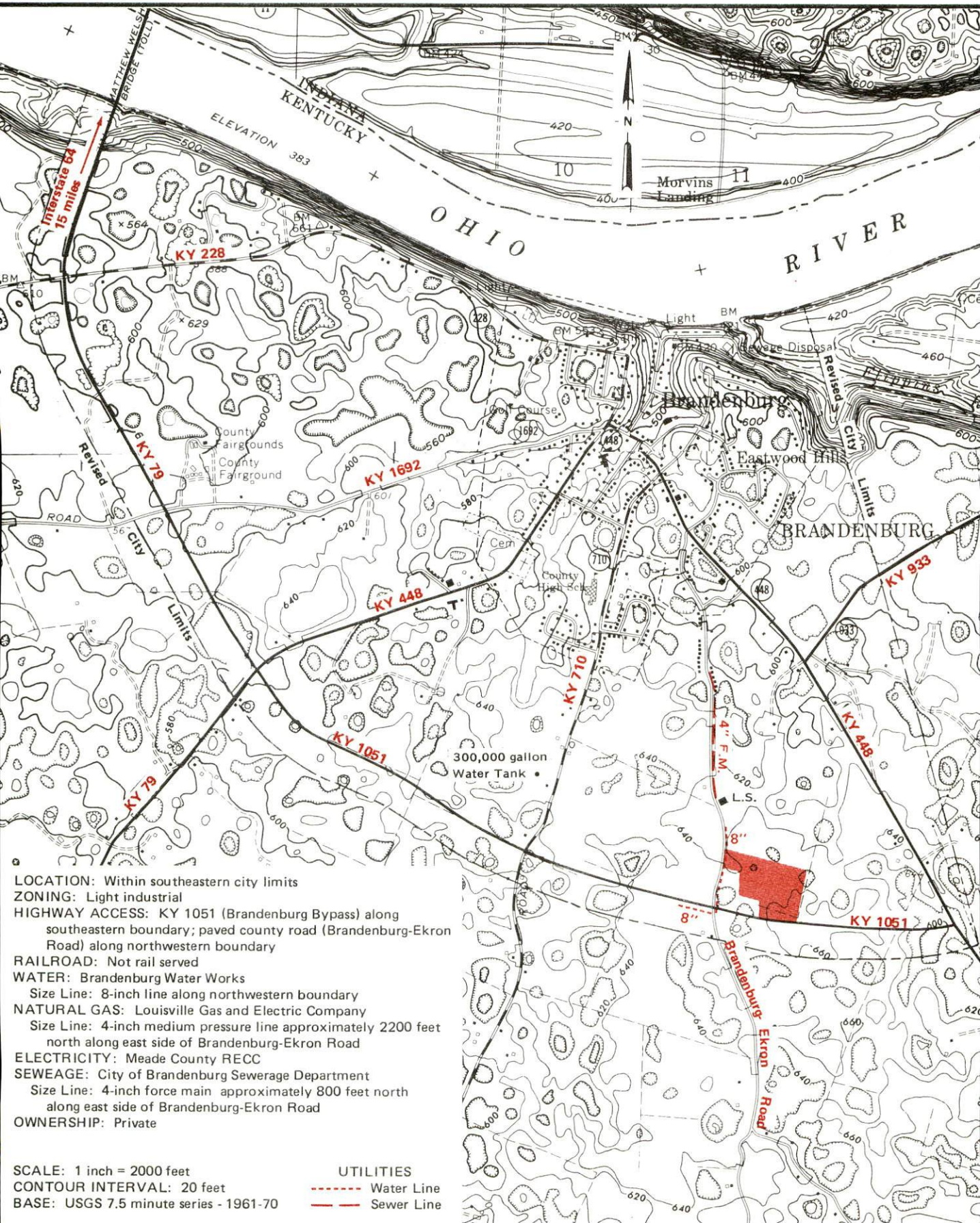
A comprehensive
report on

Brandenburg, Ky.



BRANDENBURG, KENTUCKY --- Site 184 --- 20 Acres

For more information contact the Department of Economic Development, Office of Business Development, Industrial Development Division, Capital Plaza Tower, Frankfort, Kentucky 40601 (502-564-7140).



LOCATION: Within southeastern city limits
ZONING: Light industrial
HIGHWAY ACCESS: KY 1051 (Brandsburg Bypass) along southeastern boundary; paved county road (Brandsburg-Ekron Road) along northwestern boundary
RAILROAD: Not rail served
WATER: Brandsburg Water Works
 Size Line: 8-inch line along northwestern boundary
NATURAL GAS: Louisville Gas and Electric Company
 Size Line: 4-inch medium pressure line approximately 2200 feet north along east side of Brandsburg-Ekron Road
ELECTRICITY: Meade County RECC
SEWAGE: City of Brandsburg Sewerage Department
 Size Line: 4-inch force main approximately 800 feet north along east side of Brandsburg-Ekron Road
OWNERSHIP: Private

SCALE: 1 inch = 2000 feet
CONTOUR INTERVAL: 20 feet
BASE: USGS 7.5 minute series - 1961-70

UTILITIES
 - - - - - Water Line
 - - - - - Sewer Line

A COMPREHENSIVE REPORT ON
BRANDENBURG, KENTUCKY

Prepared by
The Kentucky Department of Economic Development
Division of Research and Planning
in cooperation with
The Meade County Area Chamber of Commerce

1984

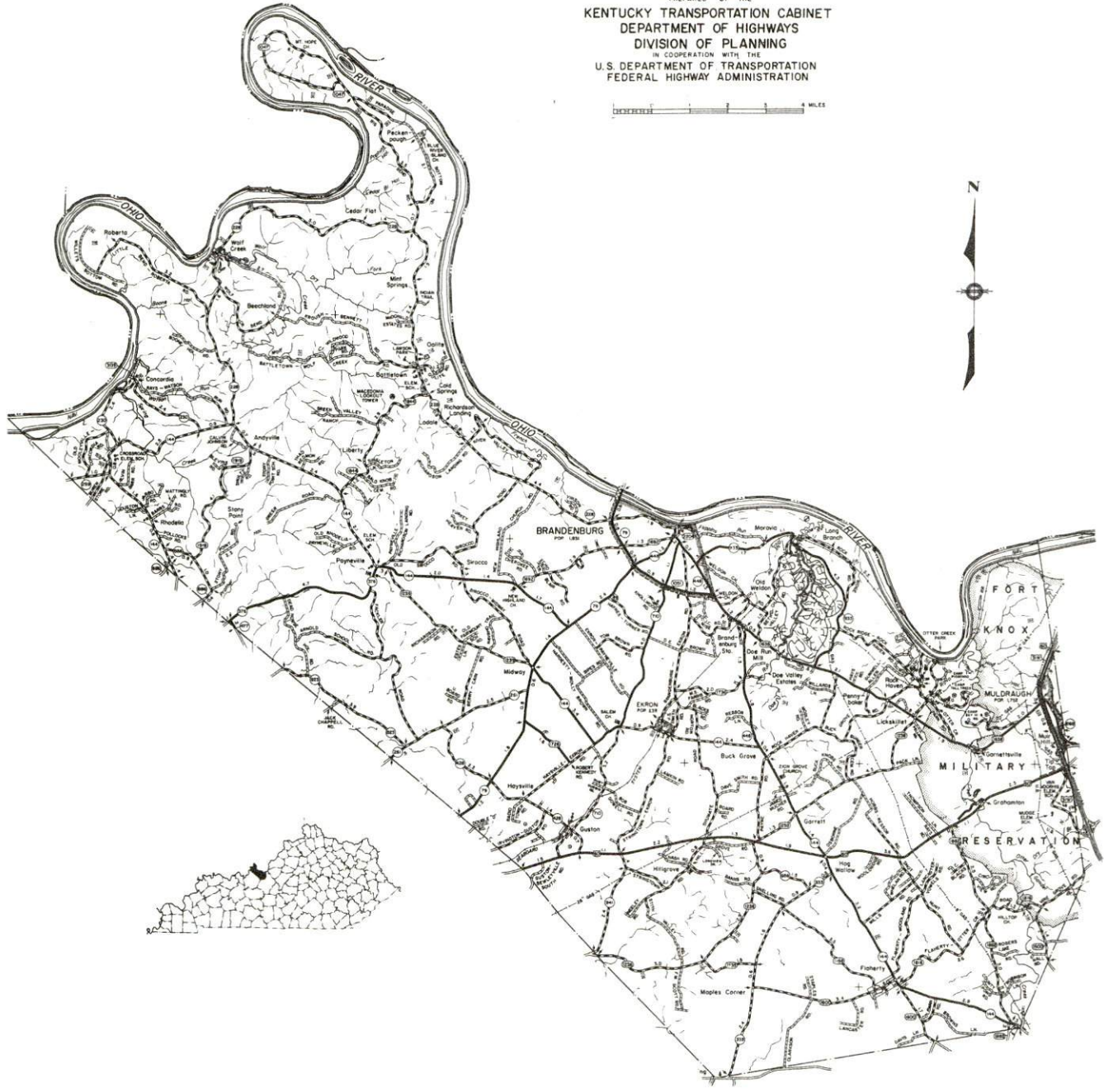
TABLE OF CONTENTS

<u>Chapter</u>	<u>Page</u>
INDUSTRIAL SITES	i
BRANDENBURG, KENTUCKY - A RESOURCE PROFILE	1
THE LABOR MARKET AREA	3
Population	3
Labor Force Characteristics of Residents, 1982	3
Selected Components of Nonagricultural Employment, by Place of Work, 1982	4
Brandenburg Manufacturing Firms, Their Products and Employment	4
Labor Organizations in Manufacturing Firms	5
Industrial Services	5
Estimated Male Labor Supply	6
Estimated Female Labor Supply	6
Average Weekly Wages By Industry, by Place of Work, 1982	7
Per Capita Personal Income	9
TRANSPORTATION	10
Rail	10
Highways	10
Truck Service	11
Air	12
Bus	13
Rental Services	13
Water	13
POWER AND FUEL	14
Electricity	14
Natural Gas	14
Other Fuels	15
WATER AND SEWERAGE	16
Public Water Supply	16
Raw Water	17
Sewerage	17
CLIMATE	18

<u>Chapter</u>	<u>Page</u>
LOCAL GOVERNMENT	19
City	19
County	19
Assessed Value of Property, 1983	19
Property Taxes	19
Combined State and Local Rates Per \$100 Valuation, 1983	20
Utilities Gross Receipts Tax for Schools	20
Planning and Zoning	20
Safety	21
Police	21
Fire	21
Rescue Service	21
Refuse Collection and Disposal	21
EDUCATION	22
Public Schools	22
Nonpublic Schools	22
Area Colleges and Universities	23
Vocational Schools	24
HEALTH	26
Local Medical Personnel	26
Hospitals	26
Other Medical Facilities	27
Ambulance Service	27
Public Health	27
OTHER LOCAL FACILITIES	28
Communications	28
Library Services	28
Religious Institutions	29
Financial Institutions	29
Hotels and Motels	29
Clubs and Organizations	29
RECREATION	30
COMMUNITY IMPROVEMENTS	32

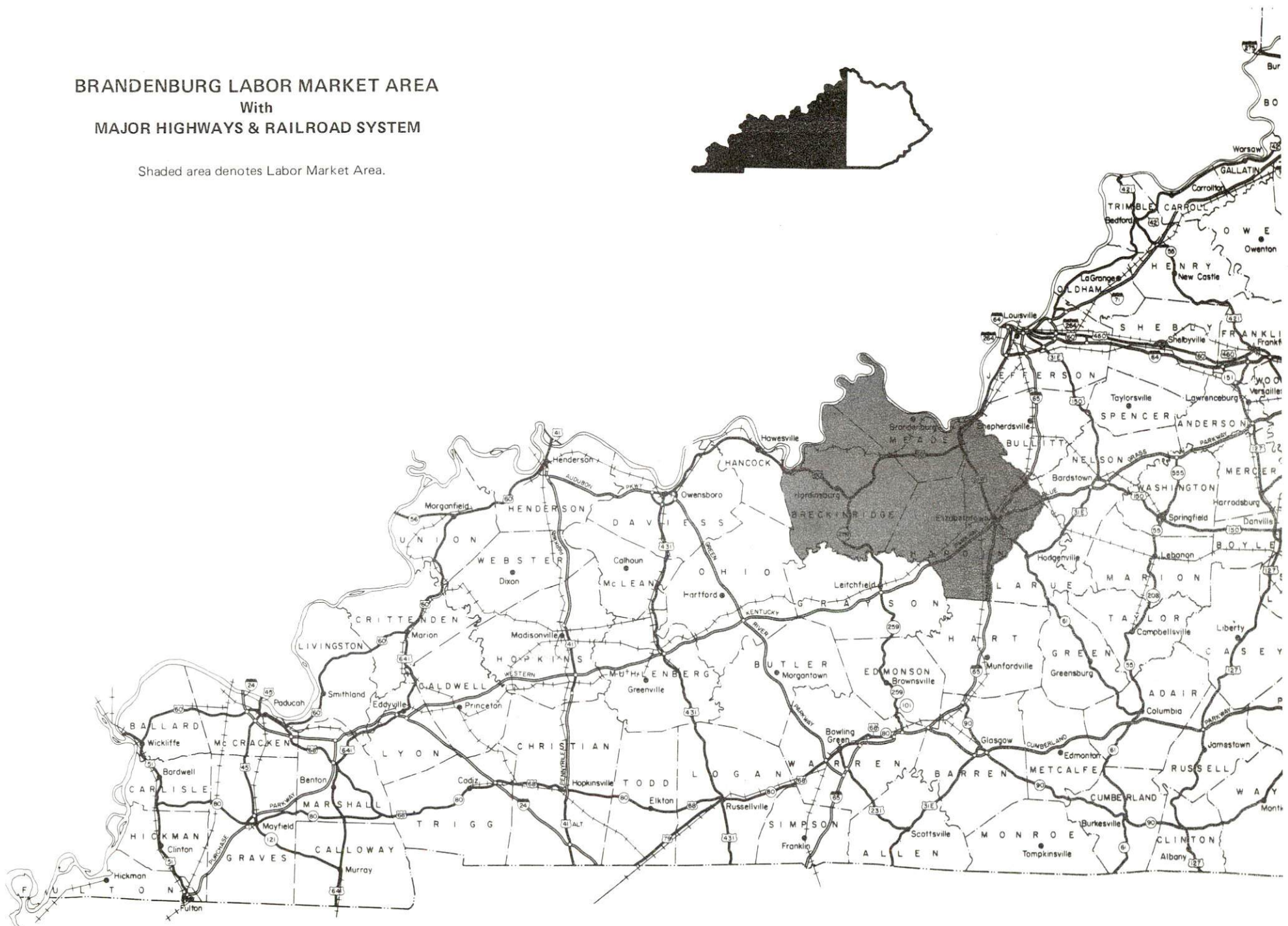
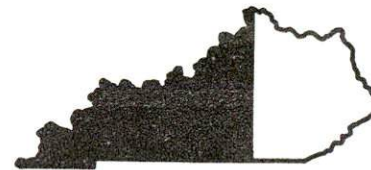
1984 EDITION
GENERAL HIGHWAY MAP
MEADE COUNTY
KENTUCKY

PREPARED BY THE
KENTUCKY TRANSPORTATION CABINET
DEPARTMENT OF HIGHWAYS
DIVISION OF PLANNING
IN COOPERATION WITH THE
U.S. DEPARTMENT OF TRANSPORTATION
FEDERAL HIGHWAY ADMINISTRATION



BRANDENBURG LABOR MARKET AREA With MAJOR HIGHWAYS & RAILROAD SYSTEM

Shaded area denotes Labor Market Area.



BRANDENBURG, KENTUCKY - A RESOURCE PROFILE

Brandenburg, the county seat of Meade County, is situated on the south bank of the Ohio River in north central Kentucky. Brandenburg had a 1980 population of 1,831. Brandenburg is located 46 miles southwest of Louisville, Kentucky; 147 miles southwest of Cincinnati, Ohio; and 165 miles north of Nashville, Tennessee.

Meade County covers a land area of 307 square miles. The Ohio River forms the entire northern boundary of the county. Meade County had a 1980 population of 22,854.

The Economic Framework

The total number of Meade County residents employed in 1982 averaged 6,000 with nonagricultural jobs accounting for 5,740 workers. Manufacturing employers reported 660 workers; wholesale and retail trade 425; state and local government 430; and 120 persons employed in service occupations. Manufacturing employment is greatest in the chemical and allied product industry.

Per capita personal income in Meade County in 1981 was \$5,330. Between 1977 and 1981, per capita income increased by 36 percent.

The Brandenburg labor market area includes Meade County and the adjoining Kentucky counties of Breckinridge and Hardin, plus Harrison County in Indiana. The total number of residents in the Kentucky portion of the labor market area employed in 1981 averaged 37,400 with nonagricultural jobs accounting for 35,220 workers. Manufacturing employers in the area reported 4,760 workers; wholesale and retail trade 6,070; state and local government 3,080; and 2,995 persons employed in service occupations.

Resources for Growth

1. Labor Supply - There is a current labor supply of 8,970 men and 8,750 women available for industrial jobs in the Kentucky portion of the labor market area. In addition, from 1983 through 1987, 4,940 young men and 4,725 young women in the same area will become 18 years of age and potentially available for industrial jobs.

2. Transportation - Main line railroad services are provided to Brandenburg by Seaboard System Railroad. Principle highways directly serving Meade County are Kentucky Routes 79 and 448 and U.S. 60. Interstate 64 is 19 miles north of Brandenburg. Access to Interstate 65 and two of Kentucky's multilane parkways is 34 miles southeast of Brandenburg. Nine common carriers of general commodities have authority to provide interstate and intrastate service to Brandenburg. The nearest commercial airline service is available at Standiford Field in Louisville, Kentucky, 45 miles northeast of Brandenburg. The Ohio River forms the northern boundary of Meade County. Three privately-owned commercial docks operate in Brandenburg.

3. Power and Fuel - Brandenburg and Meade County are provided with electric power by Louisville Gas and Electric Company and Meade County RECC. Meade County RECC is supplied by Big Rivers Electric Corporation. Natural gas service is provided by Louisville Gas and Electric Company which is supplied with natural gas by Texas Gas Resources Corporation. Two distributors of distillate fuel oil and one distributor of propane serve Brandenburg.

4. Education - The Meade County School System provides primary and secondary education to 3,600 students.

Six colleges and universities are located within 46 miles of Brandenburg. In addition, six universities operate extension campuses at Fort Knox Military Reservation, 19 miles southeast of Brandenburg.

The Elizabethtown State Vocational-Technical School, 34 miles southeast of Brandenburg, offers training in 13 courses, with 9 courses to be added to the curriculum in August 1984. The Meade County Area Vocational Education Center in Brandenburg offers training in 10 courses.

THE LABOR MARKET AREA

The Brandenburg Labor Market Area includes Meade County and the adjoining Kentucky counties of Breckinridge and Hardin. The northern boundary of Meade County is formed by the Ohio River, which is the Kentucky-Indiana state line. The Brandenburg Labor Market Area also encompasses the adjoining Indiana county of Harrison.

POPULATION			
Area	1980	1970	Percent Nonwhite
Brandenburg	1,831	1,637	3.4
Labor Market Area	128,632	112,006	N/A
Meade County	22,854	18,796	9.0
Breckinridge County	16,861	14,789	3.8
Hardin County	88,917	78,421	14.7

Note: The 1980 counts of population by race are provisional.

Sources: U.S. Department of Commerce, Bureau of the Census, 1980 Census of Population and Housing, March 1981; 1980 Census of Population, Number of Inhabitants. Population Research Unit, Urban Studies Center, University of Louisville, Kentucky Demographics: The 1980 Census of Kentucky, Characteristics of Population, Households, Housing, January 1982.

LABOR FORCE CHARACTERISTICS OF RESIDENTS, 1982		
	Meade County	Labor Market Area*
Civilian Labor Force	6,647	41,269
Employment	6,004	37,396
Agricultural	267	2,175
Nonagricultural	5,737	35,221
Unemployment	643	3,873
Rate of Unemployment (%)	9.7	9.4

* Meade County and the two adjoining Kentucky counties.

Source: Kentucky Cabinet for Human Resources, Kentucky Labor Force Estimates, Annual Averages, 1982.

SELECTED COMPONENTS OF NONAGRICULTURAL EMPLOYMENT,
BY PLACE OF WORK, 1982

	<u>Meade County</u>	<u>Labor Market Area*</u>
All Industries (total)	2,040	20,042
Manufacturing	656	4,759
Wholesale & Retail Trade	425	6,071
Services	122	2,995
State/Local Government	427	3,079
Contract Construction	47	832

* Meade County and the two adjoining Kentucky counties.

Note: Excludes domestic workers, railway workers, certain nonprofit corporations, majority of federal government workers, and self-employed workers.

Source: Kentucky Cabinet for Human Resources, Average Monthly Workers Covered by Kentucky Unemployment Insurance Law, 1982.

BRANDENBURG MANUFACTURING FIRMS,
THEIR PRODUCTS AND EMPLOYMENT

<u>Firm</u> (Establishment date)	<u>Product</u>	<u>Employment</u>			<u>Labor Unions</u>
		<u>Total</u>	<u>Male</u>	<u>Female</u>	
Meade County Messenger (1892)	Newspaper	11	1	10	
Meade County Ready Mix, Inc. (1959)	Ready mixed concrete, concrete specialty items	5	4	1	
Midway Meat Processing, Inc. (1961)	Meat processing, slaughtering, hides	20	10	10	
Olin Corporation (1952)	Glycol ethers and other industrial chemicals	490	426	64	Electrical Workers, IBEW; Firemen & Oilers; Guards; Plumbers*

* See Labor Organizations below.

Sources: Kentucky Department of Economic Development, 1984 Kentucky Directory of Manufacturers; Division of Research and Planning.

LABOR ORGANIZATIONS IN MANUFACTURING FIRMS

<u>Union</u>	<u>Representing workers at:</u>
International Brotherhood of Electrical Workers, AFL-CIO	Olin Corporation
International Brotherhood of Firemen and Oilers, AFL-CIO	Olin Corporation
International Guards Union of America	Olin Corporation
United Association of Journeymen and Apprentices of the Plumbing and Pipe Fitting Industry of the United States and Canada, AFL-CIO	Olin Corporation

INDUSTRIAL SERVICES

<u>Types of Services</u>	<u>Location</u>	<u>Mileage from Brandenburg</u>
Custom Plastics Producers	Fairdale	40
	Louisville	46
Electric Motor Repair	Elizabethtown	34
	Louisville	46
Grinding, Precision & Tool	Louisville	46
Heat Treating Facilities	Louisville	46
Industrial Equipment & Supplies	Louisville	46
Industrial Gases	Elizabethtown	34
	Louisville	46
Industrial Waste Removal	Elizabethtown	34
	Louisville	46
Machine Shops, Tool & Die	Elizabethtown	34
	Louisville	46
Metal Finishers	Elizabethtown	34
	Louisville	46
Metal Service Centers	Louisville	46
Millwrights	Elizabethtown	34
	Louisville	46

Sources: Kentucky Department of Economic Development, Kentucky Directory of Selected Industrial Services, 1983; Division of Research and Planning.

ESTIMATED MALE LABOR SUPPLY
BRANDENBURG LABOR MARKET AREA

Area	Current			Not in Labor Force	Future
	Total	Unemployed	Under- employed		Becoming 18 years of age 1984 thru 1988
Labor Market					
Area*	8,967	1,984	5,696	1,287	4,943
Meade	1,003	306	331	366	1,018
Breckinridge	815	488	268	59	713
Hardin	7,149	1,190	5,097	862	3,212

* Additional workers may be drawn from other nearby counties.

Note: Unemployed - persons unemployed and actively seeking work;
Underemployed - persons employed but working only 14 to 26 weeks per year;
Not in Labor Force - represents the number of persons who would enter the labor force if suitable employment were available (based on the assumption that persons in Kentucky would like to participate in the labor force in the same proportion that they do nationally).

Sources: Kentucky Cabinet for Human Resources, Kentucky Labor Supply Estimates by Area Development District and County, 1982. Kentucky Department of Economic Development, Future Labor Supply Becoming 18 Years of Age, 1984 thru 1988.

ESTIMATED FEMALE LABOR SUPPLY
BRANDENBURG LABOR MARKET AREA

Area	Current			Not in Labor Force	Future
	Total	Unemployed	Under- employed		Becoming 18 years of age 1984 thru 1988
Labor Market					
Area*	8,754	1,889	2,539	4,326	4,725
Meade	2,241	337	490	1,414	910
Breckinridge	1,331	320	267	744	720
Hardin	5,182	1,232	1,782	2,168	3,095

* Additional workers may be drawn from other nearby counties.

Note: Unemployed - persons unemployed and actively seeking work;
Underemployed - persons employed but working only 14 to 26 weeks per year;
Not in Labor Force - represents the number of persons who would enter the labor force if suitable employment were available (based on the assumption that persons in Kentucky would like to participate in the labor force in the same proportion that they do nationally).

Sources: Kentucky Cabinet for Human Resources, Kentucky Labor Supply Estimates by Area Development District and County, 1982. Kentucky Department of Economic Development, Future Labor Supply Becoming 18 Years of Age, 1984 thru 1988.

AVERAGE WEEKLY WAGES BY INDUSTRY,
BY PLACE OF WORK, 1982

	Meade County	Breckinridge County	Hardin County
All Industries	\$ 315.37	\$ 220.18	\$ 249.04
Mining & Quarrying	*	188.61	*
Contract Construction	187.60	200.80	289.20
Manufacturing	*	226.15	324.66
Transportation, Communications & Public Utilities	380.50	371.27	298.75
Wholesale & Retail Trade	150.22	177.40	182.15
Finance, Insurance & Real Estate	202.02	270.90	247.84
Services	151.05	171.00	226.02
State/Local Government	258.04	246.30	270.23
Other	*	*	191.24

* Not disclosed.

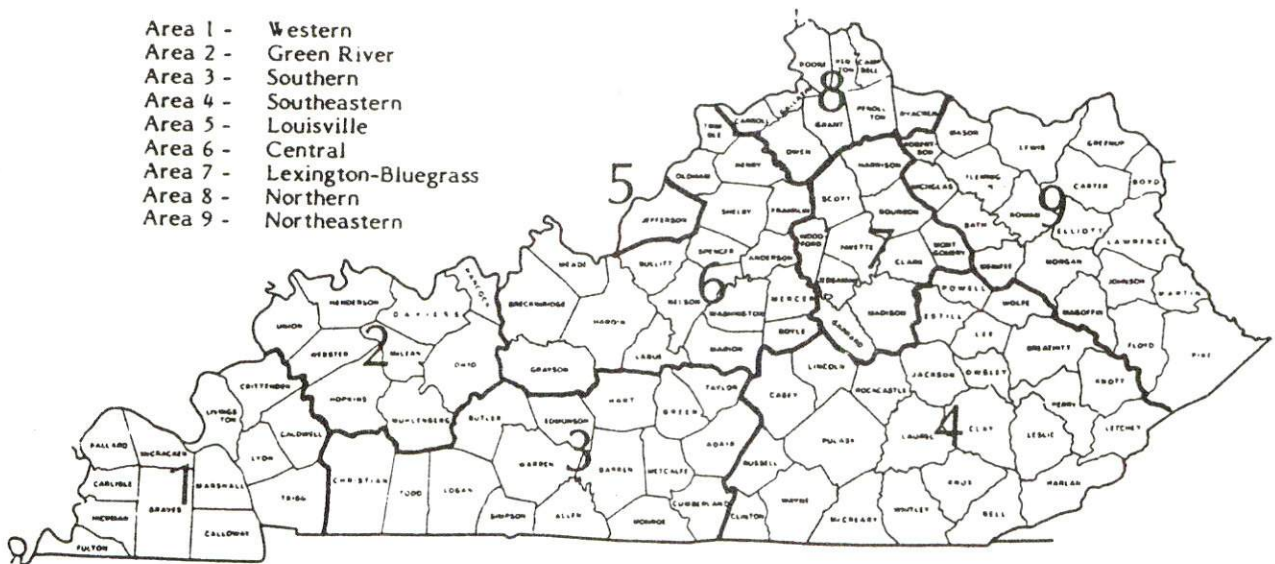
Note: Excludes domestic workers, railway workers, certain nonprofit corporations, majority of federal government workers, and self-employed workers.

Source: Kentucky Cabinet for Human Resources, Average Weekly Wages of Workers Covered by Kentucky Unemployment Insurance Law, 1982.

Occupational wage rates for specific industries are usually not available to most government agencies, and wage data furnished to state employment agencies by individual industrial employers are protected from disclosure by federal law. The most reliable up-to-date wage information can be obtained by direct contact with local employers.

Associated Industries of Kentucky, a voluntary organization of Kentucky businesses, regularly collects occupational wage rates and fringe benefits data from participating member firms. Data are compiled for over 127 clearly defined office, production, and service occupations. Tabulations are published for nine geographical areas of Kentucky, as shown on the map below. It should be noted that the data may be weighted by the preponderance of firms in the larger cities and may be somewhat higher than the rates paid in the smaller communities. Data from these tabulations are available, upon request, from the Kentucky Department of Economic Development, Frankfort, Kentucky 40601.

- Area 1 - Western
- Area 2 - Green River
- Area 3 - Southern
- Area 4 - Southeastern
- Area 5 - Louisville
- Area 6 - Central
- Area 7 - Lexington-Bluegrass
- Area 8 - Northern
- Area 9 - Northeastern



Associated Industries of Kentucky Area Wage Surveys

PER CAPITA PERSONAL INCOME

<u>Area</u>	<u>1977</u>	<u>1981</u>	<u>Percent Change</u>
Meade County	\$ 3,920	\$ 5,330	36.0
Labor Market Area Range*	\$3,920 - 5,395	\$ 5,330 - 7,234	N/A
Kentucky	5,797	8,416	45.2
U. S.	6,984	10,495	50.3

* Includes Meade County and the two adjoining Kentucky counties.

Source: U. S. Bureau of Economic Analysis, Kentucky Economic Information System, May 1983.

TRANSPORTATION

Rail

Line serving **Brandenburg** - Seaboard System Railroad

Services - Main line; one northbound and one southbound freight make daily stops; one northbound and one southbound through freights daily; switch engine; team track space for eight cars; nearest piggyback facilities are located in Louisville, 46 miles northeast

For details on routing, schedules, rates, and services, contact:

Manager of Industrial Development
Seaboard System Railroad
P.O. Box 32290
Louisville, Kentucky 40232
(502) 587-5228

Highways

The principle highways which directly serve the city of Brandenburg are Kentucky Routes 79 and 448. The major highway serving Meade County is U.S. 60. Access to U.S. 60 is 11 miles southwest of the city via Kentucky 79 or 10 miles southeast of Brandenburg via Kentucky 448. All three highways are "AAA" rated (80,000-pound gross load limit) trucking highways.

Interstate 64, a major east-west highway, is located 19 miles north of Brandenburg via Indiana State Route 135. Access to Interstate 65 and two of Kentucky's multilane parkways, the Blue Grass Parkway and Western Kentucky Parkway, is 34 miles southeast of Brandenburg in Elizabethtown, Kentucky.

Truck Service

<u>Company</u>	<u>Home Office</u>
Black Motor Lines*	Hardinsburg, Kentucky 40143
Expressway, Inc.*	1105 St. Louis Louisville, Kentucky 40210
IML Freight, Inc.*	P.O. Box 30277 Salt Lake City, Utah 84130
Leoni Motor Express, Inc.*	Chicago Heights, Illinois 60411
Majors Transit, Inc.*	P.O. Box 9 Caneyville, Kentucky 42721
Overnite Transportation Company*	P.O. Box 1216 Richmond, Virginia 23209
Robbins Truck Line, Inc.*	P.O. Box 429 Hardinsburg, Kentucky 40143
Smith's Transfer Corporation*	P.O. Box 1000 Staunton, Virginia 24401
Yellow Freight System*	P.O. Box 7270 Overland Park, Kansas 66207

Liquid Transporters, Inc., a carrier of special commodities, is constructing a terminal in Brandenburg. The approximately \$500,000 facility is scheduled for completion during the summer of 1984. Upon completion the terminal will employ approximately 40 people.

* Interstate and intrastate service.

Source: American Motor Carrier Directory, Spring 1984.

Other Freight Services

Emery
Federal Express
KATO Express, Inc. (air
cargo service)
Purolator Courier
United Parcel Service

Nearest Office or Shipping Center

Louisville, 46 miles northeast
Louisville, 46 miles northeast

Elizabethtown, 34 miles southeast
Louisville, 46 miles northeast
Louisville, 46 miles northeast

HIGHWAY MILES AND TRUCK TRANSIT TIME IN DAYS FROM
BRANDENBURG, KENTUCKY, TO SELECTED MARKET CENTERS

City	Highway Miles	Delivery Time TL	City	Highway Miles	Delivery Time TL
Atlanta, Ga.	407	1	Los Angeles, Ca.	2,100	4
Baltimore, Md.	644	2	Louisville, Ky.	46	1
Birmingham, Ala.	361	1	Nashville, Tenn.	165	1
Chicago, Ill.	338	1	New Orleans, La.	682	2
Cincinnati, Ohio	147	1	New York, N. Y.	794	-
Cleveland, Ohio	391	1	Pittsburgh, Pa.	434	1
Detroit, Mich.	406	1	St. Louis, Mo.	255	1
Knoxville, Tenn.	291	1			

Note: Mileage computations are via the best interstate or primary highways, not necessarily the most direct route of travel.

Sources: Rand McNally Road Atlas, 1979. Official Kentucky Mileage Map, 1980.
Delivery time - Overnite Transportation Company, P.O. Box 1216, Richmond, Virginia 23209.

Air

Nearest Small Craft Airport*

Breckinridge County Airport
 Location: 1 mile east of Hardinsburg;
 28 miles southwest of Brandenburg
 Runways: 1 paved
 Length: 3,500 feet
 Traffic
 Control: Wind sock
 Lighting: Sunrise to sunset
 Services: Tie-downs

Elizabethtown Airport
 Location: 4 miles west of Elizabethtown;
 38 miles southeast of Brandenburg
 Runways: 1 paved
 Length: 5,000 feet
 Traffic
 Control: Unicom, wind sock
 Lighting: Runway and beacon, VASI
 Services: 100 octane, jet-A fuel, charter, major
 A & P repairs, hangar, and tie down

Air Freight
 Service: Chartered air freight service must be
 arranged

(Cont'd)

* A privately owned airstrip is located approximately 7 miles west of Brandenburg. The turf runway is 2,250 feet in length.

Nearest Scheduled Commercial Airline Service

Location: Standiford Field
5 miles southeast of center of Louisville, Kentucky;
45 miles northeast of Brandenburg

Runways: 3 paved
Length: 10,000 feet; 7,250 feet; 5,000 feet

Traffic Control: Control tower

Lighting: Runways, obstructions, beacon and approach and touch-down lights, center line on one runway

Services: Delta, Eastern, Ozark, Piedmont, TWA, United, USAir, Wright Airways, Allegheny Commuter, Comair, Florida Express; fuel - 100 and jet-A; tie-downs; major A & P repairs; major Avionics repairs; APU, charter, oxygen, U.S. Customs; taxi, car rentals, limousine, courtesy car, public transit; weather information; restaurant, snack bar

Air Freight Service: Air freight terminal

Bus - Greyhound Bus Lines

Rental Services - Truck and trailer rentals are available in the city of Muldraugh, in eastern Meade County, 17 miles from Brandenburg.

Water

The Ohio River forms the northern boundary of Meade County. A nine-foot navigational channel is maintained on the Ohio River. Three privately-owned commercial docks are located in Brandenburg.

POWER AND FUEL

Electricity

Company serving portions of **Brandenburg and Meade County** - Louisville Gas and Electric Company

Source of power - Louisville Gas and Electric Company

Total generating capacity - 4,207,300 KW

For industrial rates contact:

Louisville Gas and Electric Company

P.O. Box 32010

Louisville, Kentucky 40232

(502) 566-4246

Company serving parts of **Brandenburg and Meade County** - Meade County Rural Electric Cooperative Corporation

Source of power - Big Rivers Electric Corporation

Total generating capacity - 1,184,000 KW*

For industrial rates contact:

Meade County RECC

P.O. Box 367

Brandenburg, Kentucky 40108

(502) 422-2162

Natural Gas

Company serving **Brandenburg** - Louisville Gas and Electric Company

Source of supply - Texas Gas Resources Corporation

Size of transmission mains - 12-inch (supplier); 4-inch (distributor)

Distribution mains - 4 and 2 inches

Distribution pressure - 30 psi

Btu content - 1,025 per cubic foot

Specific gravity - .60

For rates and supplies contact:

Louisville Gas and Electric Company

Gas Market Services

P.O. Box 32010

Louisville, Kentucky 40232

(502) 566-4488

* Big Rivers Electric Corporation's total generating capacity will be increased when the new 440,000 KW D.B. Wilson generating plant in Ohio County is put into operation in mid-1984.

Other Fuels

Propane (Within 11 miles)

Biddle's Bottled Gas Company
Route 2
Brandenburg, Kentucky 40108

Irvington Gas Company
Center and 1st Avenue
Irvington, Kentucky 40146

Fuel oils

Distillate fuel oil -

Shacklette Oil Company
364 Broadway
Brandenburg, Kentucky 40108

Ray West Oil Company
Route 2
Brandenburg, Kentucky 40108

Residual fuel oil - Arrangements must be made with the refinery.

Low sulphur content coal - Available in Kentucky.

WATER AND SEWERAGE

Public Water Supply

Company serving **Brandenburg** - Brandenburg Water Works
P.O. Box 305
Brandenburg, Kentucky 40108
(502) 422-4981

Source - Two deep wells (500 gallons per minute capacity each)
Treatment plant capacity - 600,000 gallons per day
Average daily consumption - 275,000 gallons
Peak daily consumption - 472,000 gallons
Type treatment - Filtration, coagulation, chlorination, sedimentation
Storage capacity - 300,000 gallons
Size lines - 2, 4, 6 and 8 inches
Average pressure - 65 psi
Average temperature - 60 degrees F.

MONTHLY WATER RATES

Inside city limits

First	2,000 gallons	\$ 6.75 Minimum
Next	3,000 gallons	1.80 per M gallons
Next	5,000 gallons	1.65 per M gallons
Next	10,000 gallons	1.45 per M gallons
Next	15,000 gallons	1.20 per M gallons
Over	35,000 gallons	1.00 per M gallons

Outside city limits

First	2,000 gallons	\$ 7.45 Minimum
Next	3,000 gallons	1.98 per M gallons
Next	5,000 gallons	1.80 per M gallons
Next	10,000 gallons	1.60 per M gallons
Next	15,000 gallons	1.32 per M gallons
Over	35,000 gallons	1.10 per M gallons

Tap-on charge:

Inside city - \$100 plus labor and materials
Outside city - \$600 plus labor and materials

The construction of the Meade County Water District is in the planning stage. Tentative plans include the installation of approximately 20 miles of water lines in southeast Meade County, a pump station and a 100,000 to 150,000 gallon storage tank. The new water district will purchase treated water from the city of Brandenburg and will serve an estimated 350 to 400 users. Construction of the approximately \$1.2 million project is scheduled to begin in 1985.

Raw Water

Surface water sources - Ohio River

Average discharge - Ohio River at Louisville, Kentucky - 115,800 cfs (54 years-USGS)

Expected ground water yield - 500 to 1,000 gpm along the Ohio River; 50 to 500 gpm in central and eastern portion of the county; 5 to 50 gpm in southern and central section of the county; 5 gpm or less in remainder of Meade County

Sewerage

Company serving **Brandenburg** - Brandenburg Waste Water Treatment Plant
P.O. Box 305
Brandenburg, Kentucky 40108
(502) 422-4981

Design capacity - 300,000 gallons per day

Average daily flow - 140,000 gallons

Type of treatment - Primary and secondary

Treatment processes - Clarifier, RBC, secondary clarifier, aerobic digester and drying beds

Treated effluent discharged into - Ohio River

Size of sanitary mains - 6, 8, 10 and 12 inches

Size of storm mains - 24 to 48 inches

Monthly rates - 100 percent of monthly water bill plus a surcharge for excessive strength sewage as follows:

B.O.D. - \$0.14 per pound in excess of 250 mg/l

Suspended solids - \$0.14 in excess of 250 mg/l

Tap-on charge: \$150 plus labor and material

CLIMATE

Meade County

Temperature

Normal (30-year record)	55.60 degrees
Average annual 1982	56.00 degrees
Record highest, July 1954 (35-year record)	105.00 degrees
Record lowest, January 1963 (35-year record)	-20.00 degrees
Normal heating degree days (30-year record) (Heating degree day totals are the sums of negative departures of average daily temperatures from 65 degrees F.)	4,640

Precipitation

Normal (30-year record)	43.11 inches
Mean annual snowfall (36-year record)	17.70 inches
Total precipitation 1982	45.38 inches
Mean number days precipitation (.01 inch or more) (35-year record)	124
Mean number days thunderstorms (35-year record)	45

Prevailing Winds (15-year record)

South

Relative Humidity (22-year record)

1 a.m.	76 percent
7 a.m.	81 percent
1 p.m.	59 percent
7 p.m.	61 percent

Source: U.S. Department of Commerce, Environmental Science Services Administration, Climatological Data, 1982. Station of record: Louisville, Kentucky.

LOCAL GOVERNMENT

City

Structure - Mayor - 4-year term; 6 council members - 2-year terms

Budget 1983-84 - General Fund \$ 295,194

Water and Sewer Fund 290,580

Fees and licenses - Annual business license of \$20 for all types of businesses.

Unloading license - \$20 per year

County

Structure - County Judge/Executive - 4-year term; 6 magistrates - 4-year terms

Budget 1983-84 - General Fund \$461,499; Road Fund \$390,146

Assessed Value of Property, 1983*

<u>Classes of Property</u>	Brandenburg	Meade County
Real Estate	\$21,262,061	\$168,011,547
Tangibles	6,104,746	49,575,890

Property Taxes

All property in Kentucky is assessed at 100 percent of fair cash value.

Land and buildings are taxed by the state and may be taxed by local jurisdictions. The state rate is \$0.221 per \$100 of assessed valuation.

Manufacturing machinery, raw materials inventories, pollution control equipment, and goods in the process of manufacture are not subject to local taxation. The state rate is \$0.15 per \$100.

Other tangible personal property owned by manufacturers (automobiles, trucks, finished goods, office furniture, office equipment) is taxed by the state at \$0.45 per \$100 and may be taxed by local jurisdictions.

Intangible personal property located in Kentucky (money in hand, shares of stock, notes, bonds, accounts receivable, and other credits) is taxed by the state at \$0.25 per \$100, and is not subject to local taxation.

Property stored in public warehouses in a transit status is not subject to local taxation. The state rate is only \$0.015 per \$100.

Private leaseholds in industrial facilities owned by cities or counties and financed by industrial revenue bonds are subject to a state tax of \$0.015 per \$100 of value (essentially the lessee's equity, adjusted for appreciation or depreciation). Local taxation is not permitted.

* Excludes Homestead Exemptions.

Combined State and Local Rates Per \$100 Valuation, 1983*
(100% assessment)

	<u>Site Inside City of Brandenburg</u>	<u>Site Inside Unincorporated Meade County</u>
1. Land and buildings	\$0.9888	\$0.6598
2. Mfg. machinery, raw materials, goods in process, pollution control equipment	0.1500	0.1500
3. Finished goods, office equipment, vehicles, other tangibles	1.2701	0.9411
4. Intangibles (accounts receivable, notes, bonds, etc.)	0.2500	0.2500
5. Property stored in public warehouses in a transit status	0.0150	0.0150
6. Leaseholds in industrial revenue bond financed plants	0.0150	0.0150

Utilities Gross Receipts Tax for Schools

A 3 percent tax is levied on utilities receipts for schools in Meade County. Tax is paid by all consumers of utilities as an add-on to the utilities bills. Exempted are receipts from utilities services that are resold and the receipts from the sale of energy or energy producing fuels that exceed 3 percent of the cost of production in manufacturing, processing, mining or refining.

Planning and Zoning

City agency - Brandenburg Planning and Zoning Commission
 Zoning enforced - Within city limits
 Subdivision regulations enforced - Within city and two miles beyond corporate limits
 Local codes enforced - Building
 Mandatory state codes enforced - Kentucky Plumbing Code, National Electric Code, Kentucky Boiler Regulations and Standards, Kentucky Building Code (modeled after BOCA code)

* Kentucky Department of Economic Development.

Safety

Police	Brandenburg	Meade County
Total staff	2 full-time 1 part-time	5
Radio-patrol cars	2	3 cars 1 boat

Fire

Insurance Services Office, Public Protection Classification	7	*
Volunteers	25	

Rescue Service

Rescue service in Meade County is provided through the combined resources of all police, fire and emergency services in Meade County.

Refuse Collection and Disposal

The city of Brandenburg contracts with a private hauler for the collection and disposal of refuse. The collection frequency and fee charged is based on the type of service as follows:

<u>Type service</u>	<u>Collection frequency</u>	<u>Fee charged</u>
Residential	Twice weekly	\$5 per month
Small business	Once weekly	\$5 per month
Regular business	Twice weekly	\$9 per month
Large business	Twice weekly	\$35 per month

Refuse collection in Meade County is provided by several private haulers.

* Eight volunteer fire departments serve Meade County outside the city of Brandenburg. The fire districts and their fire ratings are: Meade County-9, Ekron-9, Muldraugh-7, Flaherty-9, Payneville-10, Rhodelia-10, Wolf Creek-10 and Battletown-10.

EDUCATION

Public Schools

Meade County

Total Enrollment (Spring 1984)	3,600
Elementary	1,840
Middle School	610
High School	1,150
Student-Teacher Ratio	20-1
Elementary	20-1
Middle School	20-1
High School	19-1
Percent High School Graduates to College (1983)	31.9
Expenditures Per Pupil (1982-83)	\$ 1,607.97
Bonded Indebtedness (June 30, 1983)	\$2,845,000

Nonpublic Schools

St. John the Apostle Elementary

Total Enrollment*	137
Student-Teacher Ratio	23-1

* Grades 1 to 6.

Area Colleges and Universities

<u>Name</u>	<u>Location (Miles Distant)</u>	<u>Enrollment (Fall, 1983)</u>	<u>Highest Degree Conferred</u>
Fort Knox Extension Campuses	Fort Knox, Kentucky (19)	*	*
Elizabethtown Community College	Elizabethtown, Kentucky (34)	2,259	Associate
Indiana University, Southeast	New Albany, Indiana (40)	4,640	Masters
University of Louisville	Louisville, Kentucky (46)	19,750	Doctorate, M.D., D.M.D., J.D.
Bellarmino College	Louisville, Kentucky (46)	2,809	Masters
Spalding University	Louisville, Kentucky (46)	1,115	Masters, Specialist
Jefferson Community College	Louisville, Kentucky (46)	7,076	Associate

* Six universities operate extension campuses at Fort Knox Military Reservation, 19 miles southeast of Brandenburg. These extension campuses confer various graduate and undergraduate degrees and are open to the public. In the spring of 1983 the total enrollment of the extension campuses was approximately 1,360. The extension campuses are operated by: Eastern Kentucky University, University of Kentucky, University of Louisville, Western Kentucky University, Embry Riddle Aeronautical University and University of Southern California.

Vocational Schools

Both the state vocational-technical schools and the area vocational education centers are operated by the Kentucky Department of Education. The state vocational-technical schools enroll persons full time who are at least 16 years of age and not in school. These students attend classes for six hours each day. The area vocational education centers are designed to accommodate high school students who are at least 15 years of age. These students attend vocational school for three hours each day. The state vocational-technical schools and the area education centers offer evening courses to enable working adults to upgrade current job skills.

Nearest State School

Location	Elizabethtown State Vocational- Technical School
Miles Distant	Elizabethtown, Kentucky
Curriculum	34 Business and Office Accounting Management* Clerical Secretarial Word Processing* Consumer and Home Economics Commercial Foods Retail Store Worker* Industrial Education Agricultural Mechanics* Air Conditioning Appliance Repair Auto Mechanics Carpentry Diesel Mechanics* Drafting (with CAD/CAM) Electronics* General Industry Worker* Industrial Electricity Industrial Maintenance Machine Shop Masonry* Plumbing* Radio and T.V. Repair Welding

(Cont'd)

* Tentatively scheduled to begin August 1984.

Nearest Area Education Center

Location	Meade County Area Vocational Education Center
Curriculum	Brandenburg Child Care Service Training Emergency Medical Technician Training Health Services* Industrial Education Air Conditioning and Heating Auto Mechanics Carpentry Industrial Electricity Industrial Electronics Welding Marketing and Distributive Education

Arrangements can be made to provide training in the specific production skills required by an industrial plant. Instruction may be conducted either in the vocational school or in the industrial plant, depending upon the desired arrangement and the availability of special equipment.

* In cooperation with the Harrison County Hospital in Corydon, Indiana.

HEALTH

Local Medical Personnel (Meade County)

Physicians - 8
Dentists - 3

Hospitals

<u>General Hospital</u>	<u>Location</u>	<u>Beds</u>
Hardin Memorial Hospital	Elizabethtown, 34 miles southeast of Brandenburg	206*
Breckinridge Memorial Hospital	Hardinsburg, 29 miles southwest of Brandenburg	45

Hardin Memorial Hospital

General hospital facilities - Four operating rooms, fracture room, cysto room, X-ray, nuclear medicine, ultrasound, CAT scan, intensive care, automated laboratory, pharmacy, emergency room, eye surgery, pediatrics, respiratory therapy, delivery room, nursery, blood bank, physical therapy, social services, psychiatric services, EKG, and EEG

Medical staff - 62 physicians and dentists, 226 registered nurses, and 28 graduate licensed practical nurses

Breckinridge Memorial Hospital

General hospital facilities - Operating room, postoperative recovery room, delivery room, pharmacy with registered pharmacist (full-time), diagnostic radiology facility, nuclear medicine, laboratory, cardiology services, blood bank, intensive care unit (mixed), respiratory therapy department, premature nursery, physical therapy services, emergency department, hospital auxiliary, volunteer services department, patient education

Medical staff - 7 physicians, 12 registered nurses (full-time), 6 registered nurses (part-time), 5 licensed practical nurses (full-time), and various licensed or certified laboratory, radiology, pharmacy, anesthesiology and respiratory therapy personnel

* Construction under way at Hardin Memorial Hospital will increase bed capacity to 300 by 1986.

Other Medical Facilities

The Meade County Medical Center opened in February 1984. The facility is located in a new 13,000-square-foot, two-story building in Brandenburg. The medical professionals located at the center include: a general physician, a dentist, an optometrist, a chiropractor, a radiologist (part-time), two laboratory technicians and two X-ray technicians. Services at the center include: a 3-bed emergency room, laboratory, X-ray facilities, and facilities for minor out-patient surgery.

Ambulance Service

Name - Meade County Emergency Medical Service
Staff - Six emergency medical technicians
Service - 24-hour, county-wide
Equipment - Two fully equipped ambulances

Public Health

Facility - Meade County Health Department
Staff - Four registered nurses (full-time), one registered nurse (part-time), one environmentalist, three clerks (full-time), two clerks (part-time), two home health aides, and two preventacare aides

OTHER LOCAL FACILITIES

Communications

Telephone -	Brandenburg Telephone Company
Telegraph - Services -	Western Union Toll-free number, 1-800-325-5100
Postal - Class - Mail received - Mail dispatched -	U.S. Post Office First Once daily Once daily
Newspapers - Weekly and circulation - Other papers received from -	Meade County Messenger The Pioneer Approximately 5,000 4,200 Louisville, Elizabethtown, and Hardinsburg, Kentucky; Corydon, Indiana
Radio - Stations received from -	WMMG-FM Louisville, Hardinsburg, Elizabethtown, Radcliff and Fort Knox, Kentucky; Corydon Indiana
Television - Cable service Reception from -	Louisville, Kentucky; Nashville, Tennessee; Chicago, Illinois; Atlanta, Georgia
Kentucky Educational Television -	Louisville, Kentucky - WKMJ Channel 68 Elizabethtown, Kentucky - WKZT Channel 23

Library Services

Public library - Meade County Public Library
Size collection - 45,000 volumes
Circulation, 1982-83 - 60,000
Services - Educational films, story hour, Look and Learn Program, newspapers,
art, recordings, record player, bookmobile, filmstrip and projectors,
photocopy, community room, branch library at Muldraugh, reader-printer,
microforms

Religious Institutions

Meade County

Number of churches - 27
Denominations - Assembly of God
Baptist
Catholic
Christian
Church of Christ
Episcopal
Holiness
Latter Day Saints
Nazarene
Presbyterian
United Methodist

Nearest Synagogues - Louisville, Kentucky, 46 miles northeast of Brandenburg
Congregations - Adath Israel Brith Sholom (reform)
Adath Jeshurum (conservative)
Anshei Sfard (orthodox)
Keneseth Israel (orthodox)
Sholom (reform)

Financial Institutions

<u>Banks*</u>	<u>Assets</u>	<u>Deposits</u>	<u>Statement Date</u>
Farmers Deposit Bank, Inc.	\$ 42,425,859.08	\$ 37,283,187.72	12/31/83

Hotels and Motels

Meade County

Total number - 5
Total rooms - 83

Clubs and Organizations

Brandenburg Civic Women's Club
Brandenburg Women's Club
Christian Oriented Drug Action Program
Daughters of the American Revolution (DAR)
Jaycees
Lions Club
Meade County Homemakers
Rotary Club

* Plans have been made for the establishment of a new bank in Brandenburg.

RECREATION

Local

Local recreation facilities in Brandenburg include a country club with an 18-hole golf course and the Meade-Olin Park which includes a swimming pool, tennis courts, ball fields, basketball courts, picnic areas, a shelter area and a playground. Flippin Run Park and Concordia Park each have boat ramps and picnic areas, plus soccer fields at Flippin Run.

Otter Creek Park, located in eastern Meade County, is a 3,000-acre woodland on the Ohio River. Facilities at the park include a newly built restaurant; a new 24-unit lodge, scheduled to open during the summer of 1984; cottages; 165 campsites; horseback riding; swimming; hiking trails; fishing; boat ramp; tennis, basketball and volleyball courts; ball fields; playgrounds and picnic pavilions.

Historic Doe Run Inn, in Brandenburg, was built in 1821 and offers excellent dining and exceptional scenic beauty.

Area (Within 60 miles)

Noteworthy for its spaciousness, **Rough River Dam State Resort Park** at Falls of Rough is 41 miles southwest of Brandenburg. The 377-acre park on Rough River Lake has a 40-room lodge with a dining room, a coffee shop, a gift shop, and a meeting room. Cottages and camping sites are also available. Recreational facilities include a launching ramp, a dock with open and covered slips, fishing and pleasure boat rentals, a 9-hole, 3-par golf course, a swimming pool, a sand beach with a bathhouse complex, tennis courts, an archery range, hiking trails, picnic and playground areas, and planned recreation. Cruise boat excursions on Rough River Lake are available on the "Lady of the Lake" in season.

Louisville, 46 miles northeast of Brandenburg, provides a wide variety of recreational opportunities. The most noted recreational event in Louisville is the Kentucky Derby at Churchill Downs. The "Run for the Roses" is the oldest continuously held horse race in the United States. Other attractions include: Kentucky Center for the Arts, Macauley Theatre, Actors Theatre of Louisville, Louisville Children's Theatre, the Louisville Bach Society, the Louisville Orchestra, the Louisville Ballet, the Kentucky Opera Association, several museums, the Louisville Zoological Gardens, University of Louisville sporting events, rock concerts, and the "Belle of Louisville" sternwheeler.

Abraham Lincoln Birthplace National Historic Site, located 49 miles southeast of Brandenburg near Hodgenville, features the log cabin which was the birthplace of Abraham Lincoln, enclosed within a granite memorial shrine. The grounds include 116 acres of the original Thomas Lincoln farm and a visitors' center with audiovisual programs and exhibits on the Lincoln family.

Bernheim Forest Arboretum and Nature Center, located 49 miles southeast of Brandenburg, is a privately endowed 10,000-acre forest and wildlife refuge. The area contains over 1,400 labeled varieties of plants, trees and shrubs; ornamental gardens; a museum; nature trails and waterfowl ponds.

E. P. "Tom" Sawyer State Park, 58 miles northeast of Brandenburg, is located near Louisville. Recreational facilities include an outdoor Olympic-size pool, a bathhouse, 12 lighted tennis courts, a picnic area, an archery range, and soccer fields. Planned recreation and a playground are offered year-round. Indoor facilities are available for basketball, volleyball, exercise classes, dance classes and various other events.

My Old Kentucky Home State Park, 60 miles southeast of Brandenburg in Bardstown, portrays an image of the South's gentle and leisurely home life before the Civil War. The restored Georgian Colonial mansion is where composer Stephen Foster visited and where he was inspired to write "My Old Kentucky Home." One of the nation's most successful outdoor dramas, "The Stephen Foster Story", is presented in the park's amphitheatre during the summer months. The park also offers a 40-site campground, a gift shop, a 9-hole golf course and pro shop, a picnic area, and planned recreation.

COMMUNITY IMPROVEMENTS

Recent

An industrial site has been identified for promotion in south Brandenburg. The 20-acre site is located within Brandenburg city limits on Kentucky Route 79.

The Meade County Medical Center opened in February 1984. The facility is located in a new 13,000-square-foot, two-story building in Brandenburg. The medical professionals located at the center include: a general physician, a dentist, an optometrist, a chiropractor, a part-time radiologist, two laboratory technicians and two X-ray technicians. Services at the center include: a 3-bed emergency room, laboratory, X-ray facilities, and facilities for minor out-patient surgery.

Under Way

Liquid Transporters, Inc., a carrier of special commodities, is constructing a terminal in Brandenburg. The approximately \$500,000 facility is scheduled for completion during the summer of 1984. Upon completion the terminal will employ approximately 40 people.

A downtown revitalization project is under way for the Main Street area of Brandenburg. The project is to include the restoration of several old buildings and the establishment of specialty shops.

Planned

The construction of the Meade County Water District is in the planning stage. Tentative plans include the installation of approximately 20 miles of water lines in southeast Meade County, a pump station and a 100,000 to 150,000 gallon storage tank. The new water district will purchase treated water from the city of Brandenburg and will serve an estimated 350 to 400 users. Construction of the approximately \$1.2 million project is scheduled to begin in 1985.