

1990

# Industrial Resources: Menifee County - Frenchburg

Kentucky Library Research Collections  
Western Kentucky University, [spcol@wku.edu](mailto:spcol@wku.edu)

Follow this and additional works at: [https://digitalcommons.wku.edu/menifee\\_cty](https://digitalcommons.wku.edu/menifee_cty)



Part of the [Business Administration, Management, and Operations Commons](#), [Growth and Development Commons](#), and the [Infrastructure Commons](#)

---

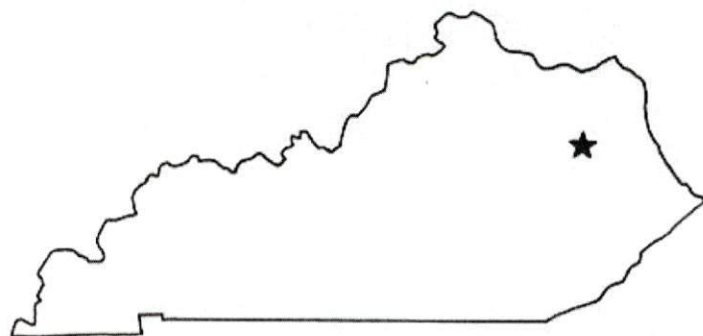
## Recommended Citation

Kentucky Library Research Collections, "Industrial Resources: Menifee County - Frenchburg" (1990). *Menifee County*. Paper 5.  
[https://digitalcommons.wku.edu/menifee\\_cty/5](https://digitalcommons.wku.edu/menifee_cty/5)

This Report is brought to you for free and open access by TopSCHOLAR®. It has been accepted for inclusion in Menifee County by an authorized administrator of TopSCHOLAR®. For more information, please contact [topscholar@wku.edu](mailto:topscholar@wku.edu).

# *Resources for Economic Development*

## Frenchburg



**KENTUCKY**  
*Open for Business*

---

RESOURCES FOR ECONOMIC DEVELOPMENT  
FRENCHBURG, KENTUCKY

Prepared by  
The Kentucky Cabinet for Economic Development  
Division of Research and Planning  
in cooperation with  
The City of Frenchburg

1990

## TABLE OF CONTENTS

<u>Chapter</u>	<u>Page</u>
FRENCHBURG, KENTUCKY - A RESOURCE PROFILE .....	1
THE LABOR MARKET STATISTICS .....	2
Labor Market Area Map .....	2
Population .....	3
Population Projections .....	3
Estimated Labor Supply .....	3
Labor Force Characteristics of Residents, 1989.....	4
Selected Components of Nonagricultural Employment, by Place of Work, 1988 .....	5
Per Capita Personal Income.....	6
Average Placement Wages .....	7
Average Weekly Wages of Workers Covered by Unemployment Insurance F.Y. 1987-88 - Bar Chart .....	8
Average Weekly Wages by Industry, by Place of Work, 1988 .....	9
EXISTING INDUSTRY .....	10
Frenchburg Manufacturing Firms, Their Products and Employment .....	10
Labor Organizations in Manufacturing Firms .....	10
Selected Industrial Services .....	11
TRANSPORTATION .....	12
Highways .....	12
Truck Service .....	12
Rail .....	12
Selected Market Location Map .....	13
Air .....	14
UTILITIES .....	15
Electricity .....	15
Natural Gas .....	15
Public Water Supply .....	16
Sewerage .....	16
CLIMATE .....	17

<u>Chapter</u>	<u>Page</u>
LOCAL GOVERNMENT .....	18
Structure .....	18
Planning and Zoning .....	18
Local Fees and Licenses .....	18
State and Local Property Taxes .....	19
Combined State and Local Rates Per \$100 Valuation, 1989 .....	19
EDUCATION .....	20
Public Schools .....	20
Area Colleges and Universities .....	20
Vocational Training .....	21
OTHER LOCAL FACILITIES .....	22
Local Medical Personnel .....	22
Hospitals .....	22
Other Medical Facilities and Services .....	22
Banks and Savings & Loan Associations .....	22
Newspapers .....	22
Telephone Service .....	22
RECREATION .....	23
COMMUNITY IMPROVEMENTS .....	24

GENERAL HIGHWAY MAP  
**MENIFEE COUNTY**  
**KENTUCKY**

PREPARED BY THE  
KENTUCKY TRANSPORTATION CABINET  
DEPARTMENT OF HIGHWAYS  
DIVISION OF PLANNING  
IN COOPERATION WITH THE  
U.S. DEPARTMENT OF TRANSPORTATION  
FEDERAL HIGHWAY ADMINISTRATION



## FRENCHBURG, KENTUCKY - A RESOURCE PROFILE

Frenchburg, the county seat of Menifee County, is located at the western edge of the Eastern Kentucky Coal Field. Frenchburg is located 58 miles southeast of Lexington, Kentucky; 131 miles southeast of Louisville, Kentucky; 136 miles southeast of Cincinnati, Ohio; and 229 miles northeast of Knoxville, Tennessee. Frenchburg had an estimated population of 600 in 1988.

Menifee County, with a land area of 203 square miles, is located in the northeastern portion of the Daniel Boone National Forest. The picturesque valley of the Red River forms part of the southern boundary of Menifee County. In 1988, Menifee County had an estimated population of 5,300.

**The Economic Framework** - The total number of Menifee County residents employed in 1989 averaged 2,340. In 1988, manufacturing firms in the county reported 39 employees; wholesale and retail trade provided 107 jobs; 43 people were employed in service occupations; and state and local government accounted for 189 employees.

**Labor Supply** - There is a current estimated labor supply of 14,793 persons available for industrial jobs in the labor market area. In addition, from 1990 through 1994, 6,824 young persons in the area will become 18 years of age and potentially available for industrial jobs.

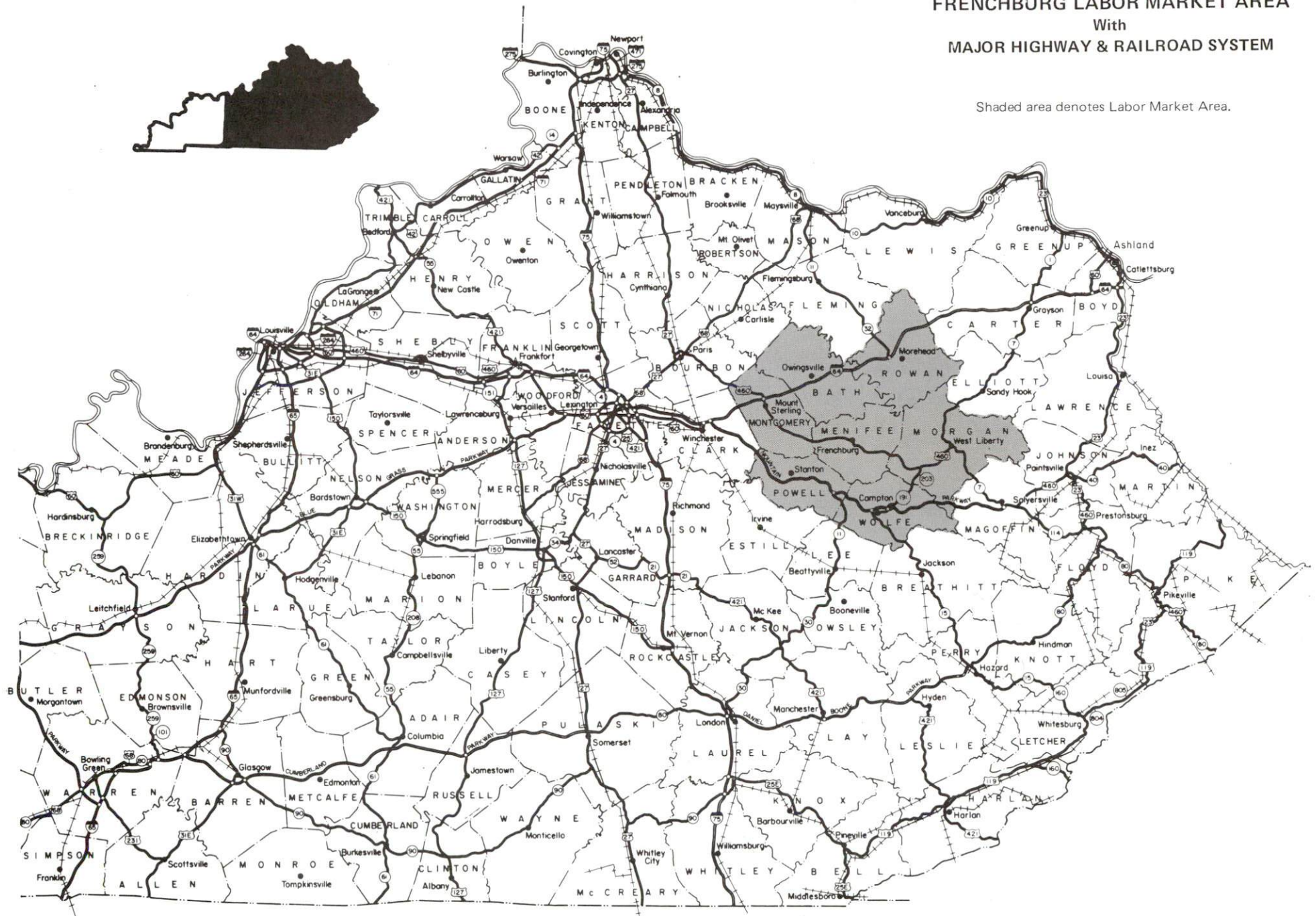
**Transportation** - Frenchburg is served directly by U.S. 460 and Kentucky 36, both "AAA"-rated trucking highways. Access to Interstate 64 is 17 miles northwest of Frenchburg and the Mountain Parkway is 21 miles south of the city. Six common carriers have the authority to serve Frenchburg. The nearest commercial airport, Bluegrass Airport in the Lexington vicinity, is located 62 miles northwest of Frenchburg. The Mt. Sterling-Montgomery County Airport and the Powell County Airport are located within 29 miles of the city. CSX Transportation provides main line rail service 38 miles west of Frenchburg at Winchester, Kentucky.

**Power and Fuel** - Frenchburg and a major portion of Menifee County receive electric power from Clark Rural Electric Cooperative Corporation and Licking Valley Rural Electric Cooperative Corporation. Delta Natural Gas Company provides natural gas service to Frenchburg.

**Education** - Primary and secondary education is provided to Frenchburg and Menifee County by the Menifee County School System. Seven institutions of higher learning are located within 64 miles of the city. Vocational training facilities are available at Morehead and Mt. Sterling, both within 26 miles of Frenchburg.

# FRENCHBURG LABOR MARKET AREA With MAJOR HIGHWAY & RAILROAD SYSTEM

Shaded area denotes Labor Market Area.



## LABOR MARKET STATISTICS

The Frenchburg Labor Market Area includes Menifee County and the adjoining Kentucky counties of Bath, Montgomery, Morgan, Powell, Rowan and Wolfe.

POPULATION			
	<u>1988*</u>	<u>1980</u>	<u>1970</u>
Labor Market Area	85,600	84,139	69,051
Frenchburg	600	550	467
Menifee County	5,300	5,117	4,050

\* Population estimates.

Sources: U.S. Department of Commerce, Bureau of the Census, August 1989; November 1989.

POPULATION PROJECTIONS				
	<u>1995</u>	<u>2000</u>	<u>2010</u>	<u>2020</u>
Labor Market Area	90,328	92,332	95,053	95,902
Menifee County	5,656	5,821	6,061	6,186

Source: University of Louisville, Urban Studies Center, State Data Center.

ESTIMATED LABOR SUPPLY					
	Current			Not in Labor Force	Future Becoming 18 years of age 1990 thru 1994
	<u>Total</u>	<u>Unemployed</u>	<u>Employed Part-Time</u>		
Labor Market					
Area*	14,793	4,487	4,727	5,579	6,824
Menifee	878	339	332	207	421
County					

\* Additional workers may be drawn from other nearby counties.

Note: Unemployed - persons unemployed and actively seeking work; Employed Part-Time - persons employed but working only 14 to 26 weeks per year; Not in Labor Force - represents the number of persons who would enter the labor force if suitable employment were available (based on the assumption that persons in Kentucky would like to participate in the labor force in the same proportion that they do nationally).

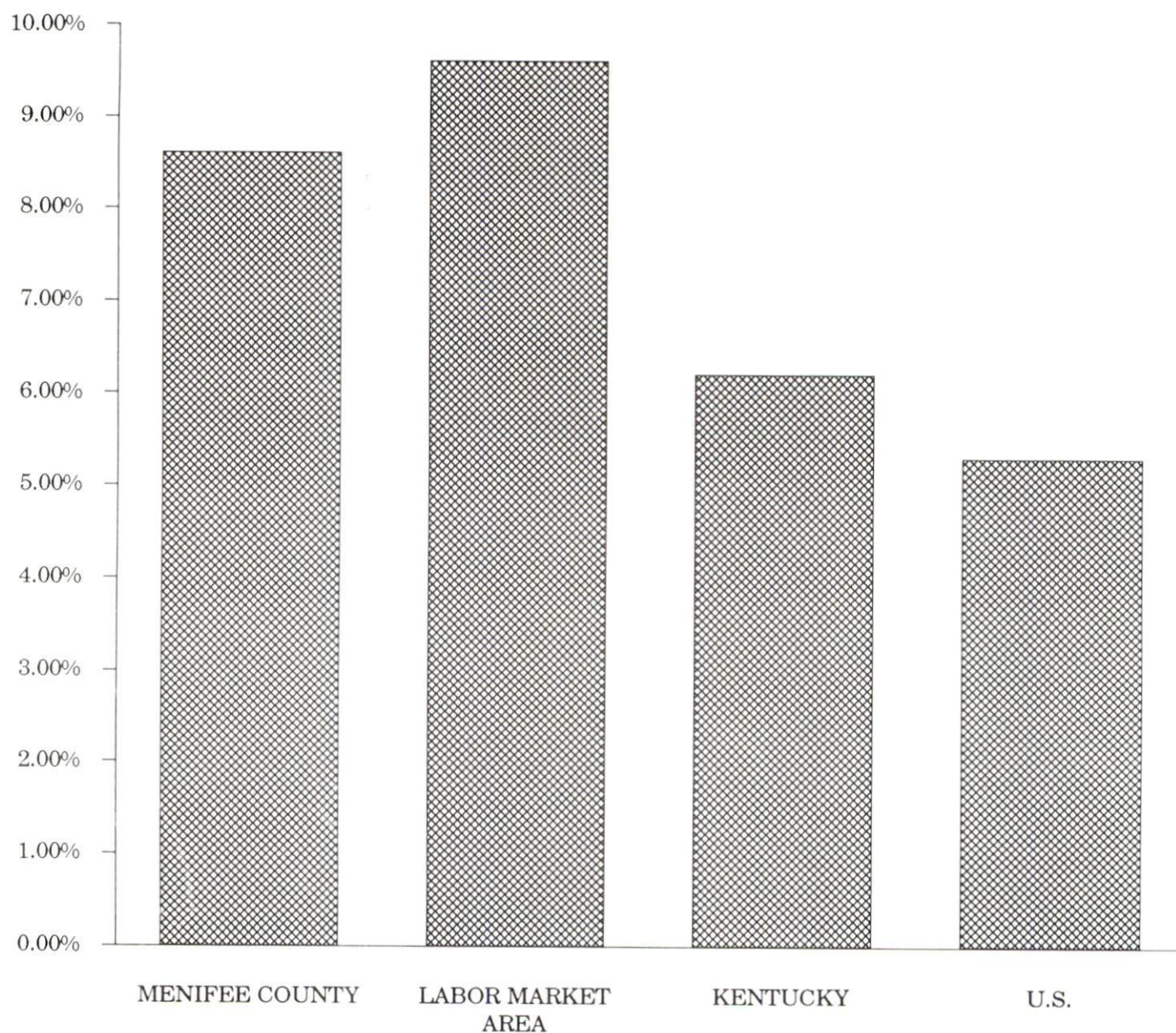
Sources: Kentucky Cabinet for Human Resources, Kentucky Labor Supply Estimates by County, 1988. Kentucky Cabinet for Economic Development, Future Labor Supply Becoming 18 Years of Age, 1990 thru 1994.

# LABOR FORCE CHARACTERISTICS OF RESIDENTS, 1989

	Menifee County	Labor Market Area
Civilian Labor Force	2,560	35,562
Employment	2,340	32,155
Unemployment	220	3,407
Rate of Unemployment (%)	8.6	9.6

Source: Kentucky Cabinet for Human Resources, Kentucky Labor Force Estimates, Annual Averages, 1989.

## UNEMPLOYMENT RATES 1989



SELECTED COMPONENTS OF NONAGRICULTURAL EMPLOYMENT  
BY PLACE OF WORK, 1988

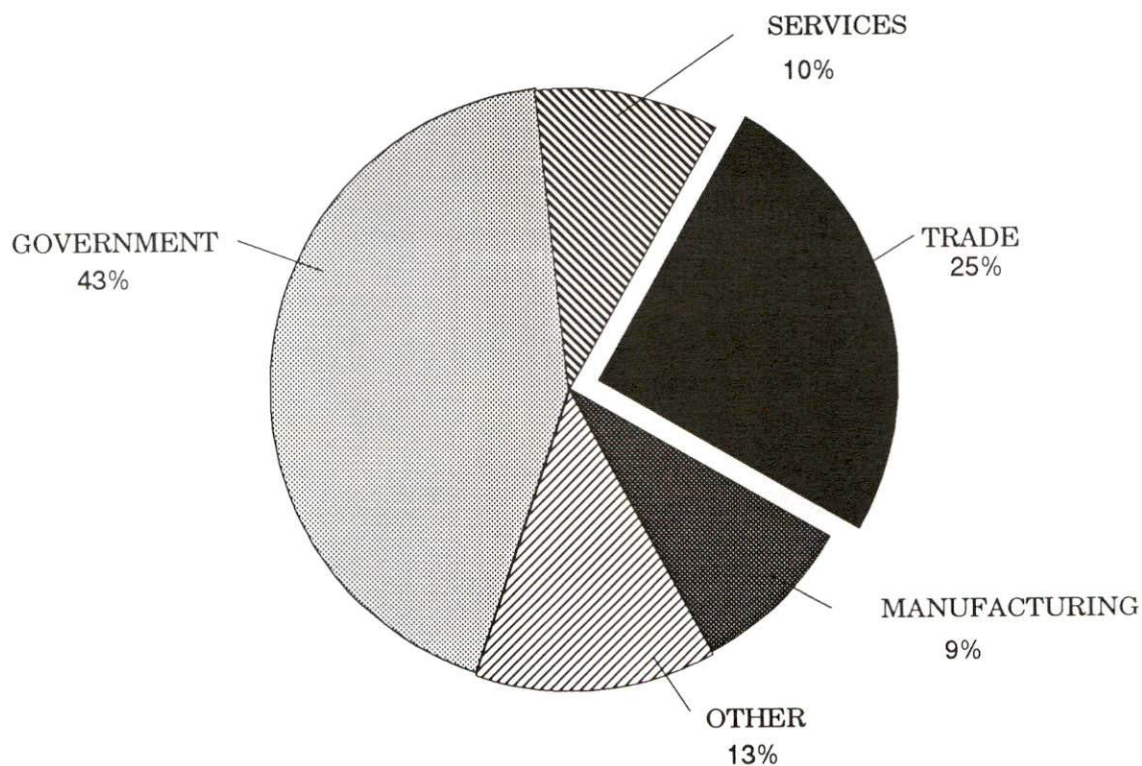
	Menifee County	Labor Market Area
All Industries (total)	435	18,963
Manufacturing	39	4,183
Wholesale & Retail Trade	107	5,220
Services	43	2,639
State/Local Government	189	4,598
Contract Construction	*	827

\* Not disclosed.

Note: Excludes domestic workers, railway workers, certain nonprofit corporations, majority of federal government workers, and self-employed workers.

Source: Kentucky Cabinet for Human Resources, Average Monthly Workers Covered by Kentucky Unemployment Insurance Law, 1988.

MENIFEE COUNTY

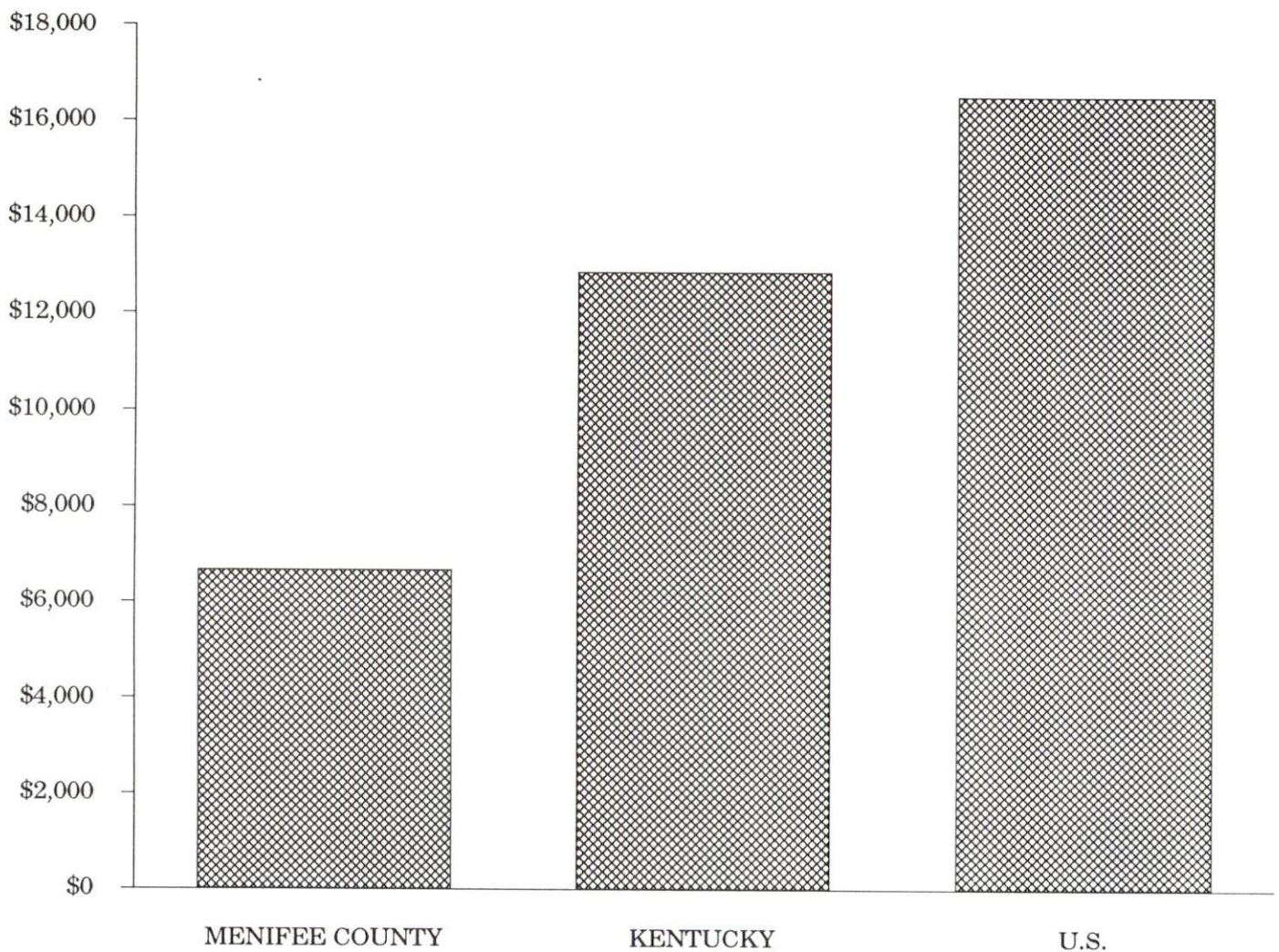


# PER CAPITA PERSONAL INCOME

Area	1984	1988	Percent Change
Menifee County	\$5,508	\$6,671	21.1
Labor Market Area Range	\$5,508 - \$9,006	\$6,671 - \$10,758	-
Kentucky	\$10,411	\$12,830	23.2
U.S.	\$13,116	\$16,490	25.7

**Sources:** U.S. Bureau of Economic Analysis, Kentucky Economic Information System, April 1990.

## PER CAPITA PERSONAL INCOME 1988



## AVERAGE PLACEMENT WAGES

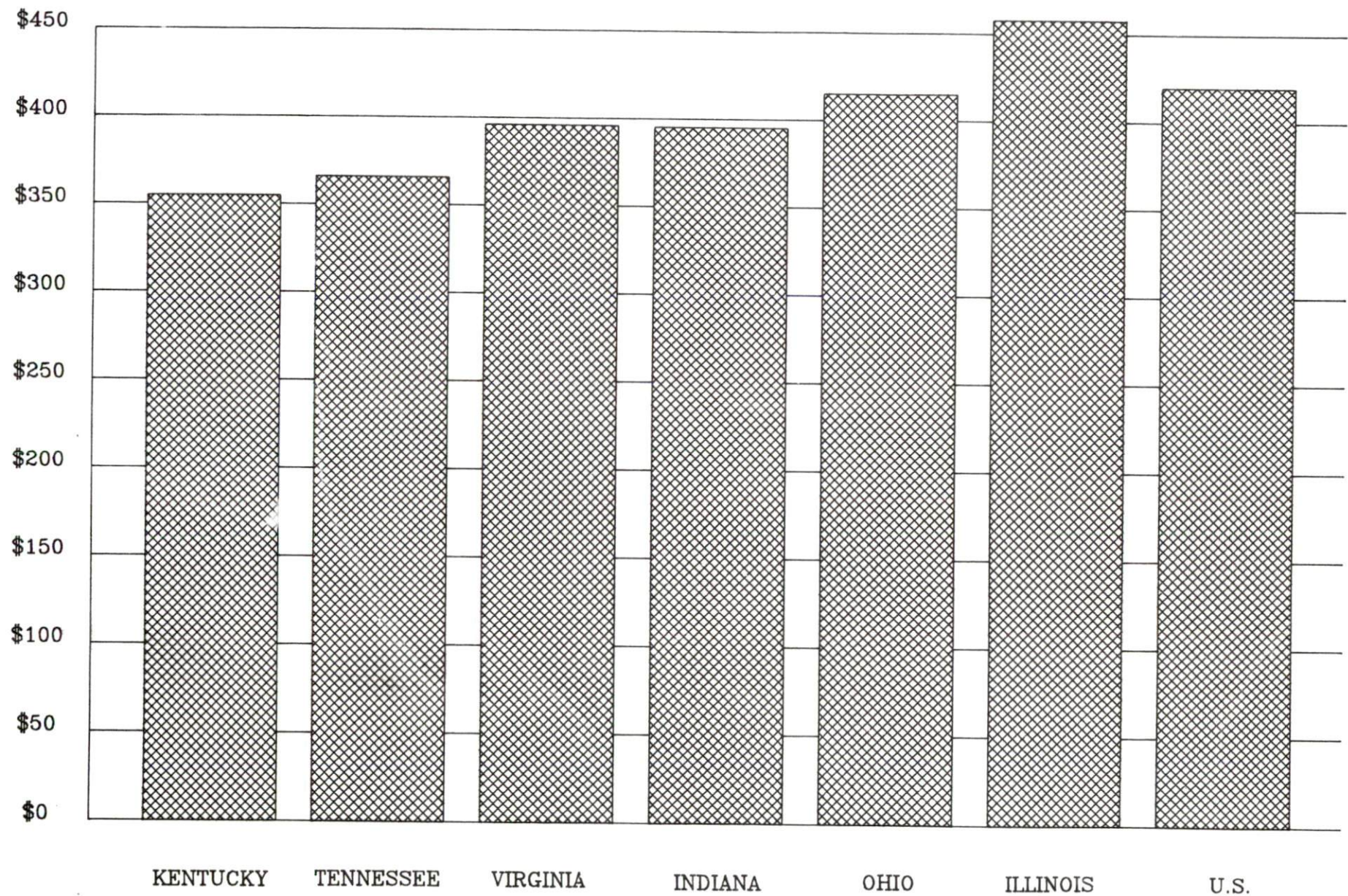
Menifee County is served by the Morehead local office of the Kentucky Department for Employment Services. The focus of the following data is on job placements made by the Morehead local office and may therefore be used as an indicator of the wages which employers in the area pay new employees. During the twelve months which ended on June 30, 1989, the local employment office filled 1,917 job openings in various occupational categories. The average hourly wage for selected occupational categories were:

<u>OCCUPATIONAL CATEGORY</u>	<u>NUMBER OF PLACEMENTS</u>	<u>AVERAGE WAGE(\$)</u>
All Occupations	1,917	3.69
Clerical	451	3.42
Sales	75	3.69
Services (excluding domestic)	620	3.40
Agricultural, Fishery, Forestry, etc.	20	3.79
Processing	7	3.82
Machine Trades	49	3.54
Bench Work	486	4.14
Structural	73	4.59
Motor Freight/ Transportation	15	3.91
Packaging and Materials Handling	86	3.70
Other	1	6.00

The Morehead local office also serves Bath, Montgomery, Morgan, and Rowan Counties. The above occupational categories are taken from the Dictionary of Occupational Titles published by the U.S. Department of Labor.

Source: Kentucky Cabinet for Human Resources, Department for Employment Services.

AVERAGE WEEKLY WAGES OF WORKERS COVERED BY  
UNEMPLOYMENT INSURANCE - 1988



AVERAGE WEEKLY WAGES BY INDUSTRY  
BY PLACE OF WORK, 1988

	Menifee County	Kentucky (State- Wide)	Tennessee	Virginia
All Industries	\$239.92	\$352.31	\$363.12	\$392.56
Mining & Quarrying	*	603.27	495.85	596.88
Contract Construction	*	380.71	394.27	422.27
Manufacturing	177.83	464.92	416.73	452.60
Transportation, Communications & Public Utilities	*	468.17	485.13	554.17
Wholesale & Retail Trade	211.09	238.88	N/A	N/A
Finance, Insurance & Real Estate	168.94	401.17	269.27	466.23
Services	169.37	298.98	343.48	391.67
State/Local Government	296.45	377.81	403.21	457.00
	<u>Indiana</u>	<u>Ohio</u>	<u>Illinois</u>	<u>U. S.</u>
All Industries	\$392.63	\$411.08	\$454.10	\$416.33
Mining & Quarrying	635.77	579.73	674.62	660.40
Contract Construction	449.87	465.46	584.10	469.85
Manufacturing	532.06	569.98	555.83	517.62
Transportation, Communications & Public Utilities	502.69	519.17	584.83	542.33
Wholesale & Retail Trade	N/A	N/A	N/A	N/A
Finance, Insurance & Real Estate	406.58	444.33	579.88	532.52
Services	317.98	348.48	402.38	384.31
State/Local Government	395.31	428.10	453.12	442.71

\* Not disclosed.

N/A Not Available.

Note: The average weekly wage for each category includes the salaries and wages of all persons working for that type business. For example, the manufacturing category includes both production workers and administrative personnel. Excludes domestic workers, railway workers, certain nonprofit corporations, majority of federal government workers, and self-employed workers.

Source: Kentucky Cabinet for Human Resources, Average Weekly Wages of Workers Covered by Kentucky Unemployment Insurance Law, 1988. U.S. Department of Labor, Bureau of Labor Statistics, Average Annual Pay by State and Industry, August 29, 1989.

## EXISTING INDUSTRY

### FRENCHBURG MANUFACTURING FIRMS, THEIR PRODUCTS AND EMPLOYMENT

<u>Firm</u> <u>(Establishment date)</u>	<u>Product</u>	<u>1989</u> <u>Average Employment</u>
Barton Foods (1962)	Jellies, preserves, relishes, molasses	6
Boneal, Inc. (1980)	Machine shop, plastisol coating of metals, electro mechanical sub-assemblies	13
King Bag and Manufacturing Company (1990)	Bags and tarpaulins	45*
Lawson, Crain & Landrum, Inc. (1978)	Fabricated building panels, wood trusses, sheet metal products	10
Richards Industries, Inc., Jordan-Hex Valve Division (1986)	Pressure control valves	15

\* Opened June, 1990.

Sources: Kentucky Cabinet for Economic Development, Division of Research and Planning.

### LABOR ORGANIZATIONS IN MANUFACTURING FIRMS

There are currently no labor organizations representing workers at manufacturing firms in Menifee County.

# SELECTED INDUSTRIAL SERVICES

<u>Types of Services</u>	<u>Location</u>	<u>Mileage from Frenchburg</u>
Custom Data Processing	Lexington, Kentucky	58
	Richmond, Kentucky	59
Custom Plastics Producers	Lexington, Kentucky	58
Electric Motor Repair	Morehead, Kentucky	26
Grinding, Precision & Tool	Winchester, Kentucky	38
Heat Treating Facilities	Lexington, Kentucky	58
	Richmond, Kentucky	59
Industrial Equipment & Supplies	Mt. Sterling, Kentucky	22
Industrial Gases	Lexington, Kentucky	58
Industrial Waste Removal	Lexington, Kentucky	58
	Richmond, Kentucky	59
Machine Shops, Tool & Die	Mt. Sterling, Kentucky	22
Metal Castings	Cynthiana, Kentucky	63
Metal Finishers	Lexington, Kentucky	58
	Richmond, Kentucky	59
Metal Service Centers	Morehead, Kentucky	26
Millwrights	Stanton, Kentucky	30
Public Warehouse Facilities	Paris, Kentucky	48

Sources: Kentucky Cabinet for Economic Development, Kentucky Directory of Selected Industrial Services, 1987; Division of Research and Planning.

## TRANSPORTATION

### Highways

Principal highways serving Frenchburg are U.S. 460 and Kentucky 36. Each is a "AAA"-rated (80,000-pound gross load limit) trucking highway. Interstate 64, a major east-west corridor, is accessible from Frenchburg 17 miles northwest of the city via Kentucky 36 and 24 miles northwest via U.S. 460. Interstate 64 intersects with Interstate 75, a principal north-south highway, 52 miles northwest of Frenchburg near Lexington. The Mountain Parkway, a multilane east-west highway which traverses eastern Kentucky, is located 21 miles south of Frenchburg. In addition, Frenchburg is served by Kentucky highways 713 and 1274.

HIGHWAY MILES FROM FRENCHBURG, KENTUCKY,  
TO SELECTED MARKET CENTERS

City	Highway Miles	City	Highway Miles
Atlanta, GA	422	Los Angeles, CA	2,217
Baltimore, MD	505	Louisville, KY	131
Birmingham, AL	454	Nashville, TN	270
Chicago, IL	401	New Orleans, LA	788
Cincinnati, OH	136	New York, NY	694
Cleveland, OH	359	Pittsburgh, PA	334
Detroit, MI	394	St. Louis, MO	389
Knoxville, TN	229		

Note: Mileage computations are via the best interstate or primary highways, not necessarily the most direct route of travel.

Sources: Rand McNally Deluxe Motor Carriers' Road Atlas, 1989. Official Kentucky Mileage Map, 1980.

### Truck Service

Frenchburg is currently served by six common carrier trucking companies that provide interstate and/or intrastate service.

Source: American Motor Carrier Directory, Spring 1990.

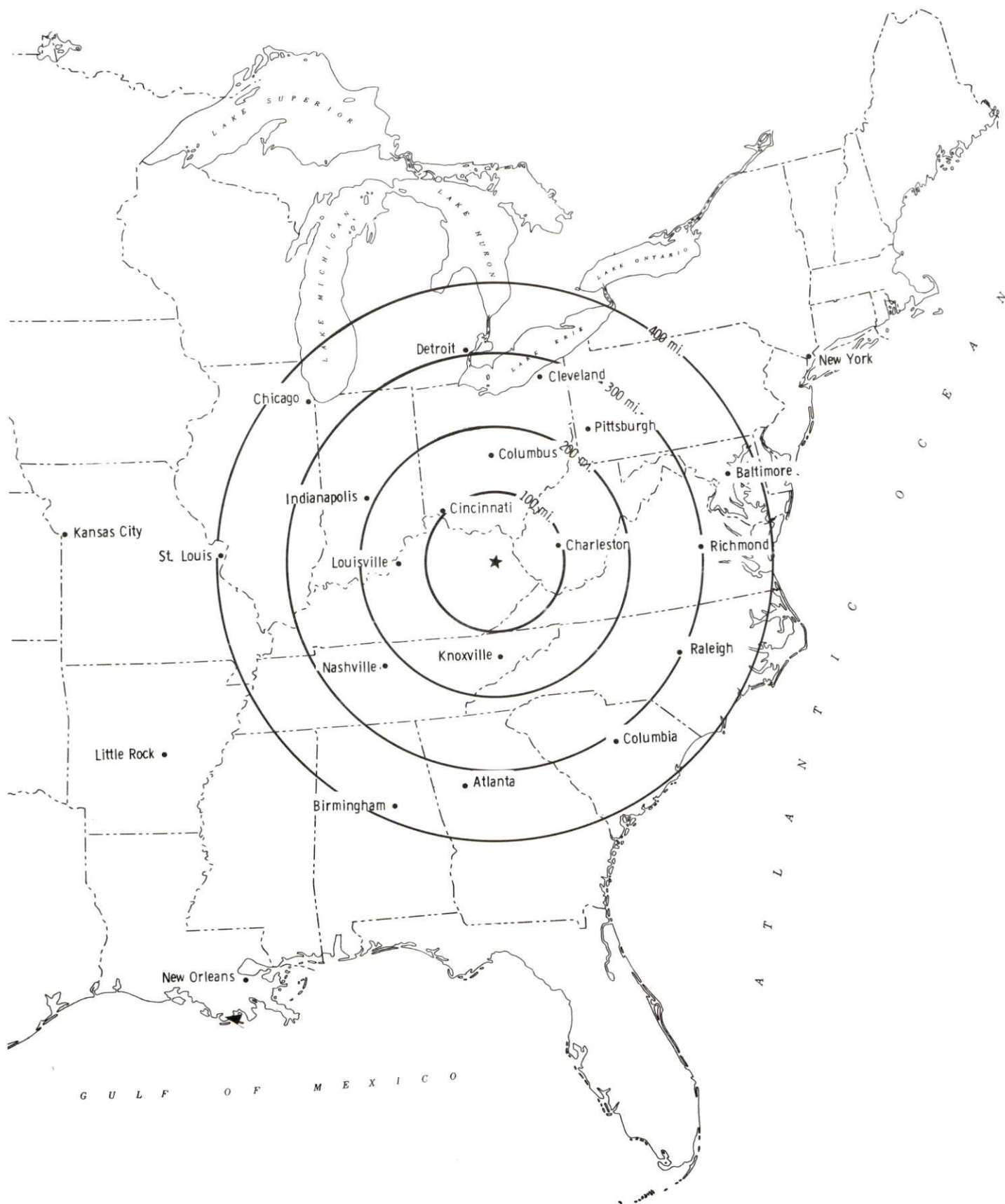
### Rail

Frenchburg is not served directly by rail, however CSX Transportation provides main line service 38 miles west of the city at Winchester, Kentucky. The Southern Railway System maintains piggyback facilities in Georgetown, Kentucky; 71 miles west of Frenchburg.

For details on routing, schedules, rates, and services contact:

Manager  
Industrial Development  
CSX Transportation  
9420 Bunsen Parkway  
Suite 212  
Louisville, Kentucky 40220  
(502) 499-3025

# Selected Market Centers



## Air

### Nearest Small Craft Airports

Location: Mt. Sterling-Montgomery County Airport  
2 miles west of Mt. Sterling;  
24 miles northwest of Frenchburg

Runways: 1 paved

Length: 4,000 feet

Traffic

Control: Wind sock, tetrahedron and unicom

Lighting: Sunset to sunrise, rotating beacon,  
VASI and REIL

Services: Jet-A fuel, 100LL fuel, charter,  
flight instruction, tie down,  
hangar, major and minor A & P  
repairs

Air Freight  
Service: Chartered air freight services must  
be arranged

and

Location: Powell County Airport  
1 mile east of Stanton;  
29 miles southwest of Frenchburg

Runways: 1 paved

Length: 3,000 feet

Traffic

Control: Wind sock, unicom

Lighting: Runway lights, sunset to sunrise

Services: 100LL fuel, tie downs

Air Freight  
Service: Chartered air freight services must  
be arranged

### Nearest Scheduled Commercial Airline Service

Location: Bluegrass Airport  
4 miles west of Lexington, Kentucky;  
62 miles west of Frenchburg

Air Service: Delta, USAir, TWA, United Express, JetStream, Air  
Kentucky, American Eagle, ComAir

Daily Arrivals  
& Departures: 116

## UTILITIES

### Electricity

Company serving **Frenchburg** and a major portion of **Menifee County** -  
Clark Rural Electric Cooperative Corporation  
Source of power - East Kentucky Power Cooperative  
For industrial rates contact:

Industrial Development Division  
East Kentucky Power Cooperative  
P. O. Box 707  
Winchester, Kentucky 40391  
(606) 744-4812

and/or

Clark Rural Electric Cooperative  
Corporation  
P.O. Box 748  
Winchester, Kentucky 40391  
(606) 744-4251

Company serving the southeastern portion of **Menifee County** - **Licking**  
Valley Rural Electric Cooperative Corporation  
Source of power - East Kentucky Power Cooperative  
For industrial rates contact:

Industrial Development Division  
East Kentucky Power Cooperative  
P. O. Box 707  
Winchester, Kentucky 40391  
(606) 744-4812

and/or

Licking Valley Rural Electric  
Cooperative Corporation  
P.O. Drawer 605  
West Liberty, Kentucky 41472  
(606) 743-3179

### Natural Gas

Company serving **Frenchburg** - Delta Natural Gas Company  
Source of supply - Columbia Gas Transmission  
For rates and supplies contact:

Manager of Marketing and  
Public Relations  
Delta Natural Gas Company  
3617 Lexington Road  
Winchester, Kentucky 40391  
(606) 744-6171

## Public Water Supply

Company serving Frenchburg - Frenchburg Water and Sewer System  
P.O. Box 113  
Frenchburg, Kentucky 40322  
(606) 768-3457

Source - Bath County Water District

Amount of treated water that can be purchased - 175,000 gallons per day

Average daily consumption - 150,000 gallons

Peak daily consumption - 220,000 gallons

Storage capacity - 300,000 gallons

Water pressure - 55 psi to 180 psi

The Frenchburg Water and Sewer System plans to build a new 100,000 gallon elevated storage tank and lay twelve miles of new water lines in the summer of 1990.

## Sewerage

Company serving Frenchburg - Frenchburg Water and Sewer System  
P.O. Box 113  
Frenchburg, Kentucky 40322  
(606) 768-3457

Design capacity - 150,000 gallons per day

Average daily flow - At capacity

Type of treatment - Primary

Treated effluent discharged into - Beaver Creek

New air lines, a dechlorination process, and new troughs were recently installed at the sewer treatment plant.

The Frenchburg Water and Sewer System plans to renovate the lift station, install new pumps, replace the grinder and bar screen, and rehabilitate the existing lines in the summer of 1990. These improvements will decrease the average daily flow by reducing the surface water inflow.

## CLIMATE

### Menifee County

#### Temperature

Normal (30-year record)	54.90 degrees
Average annual 1988	54.90 degrees
Record highest, July 1988 (44-year record)	103.00 degrees
Record lowest, January 1963 (44-year record)	-21.00 degrees
Normal heating degree days (30-year record)	4,818
(Heating degree day totals are the sums of negative departures of average daily temperatures from 65 degrees F.)	

#### Precipitation

Normal (30-year record)	45.68 inches
Mean annual snowfall (44-year record)	16.20 inches
Total precipitation 1988	38.90 inches
Mean number days precipitation (.01 inch or more) (44-year record)	129.50
Mean number days thunderstorms (44-year record)	45.30

#### Prevailing winds (through 1963)

South

#### Relative Humidity (25-year record, except 1 a.m. - 24-year record)

1 a.m.	77 percent
7 a.m.	81 percent
1 p.m.	60 percent
7 p.m.	64 percent

Source: U.S. Department of Commerce, Environmental Science Services Administration, Climatological Data, 1988. Station of record: Lexington, Kentucky.

## LOCAL GOVERNMENT

### Structure

Frenchburg is served by a mayor and four commissioners. The mayor serves a four year term and the commissioners serve two year terms. Menifee County is served by a county judge/executive and five magistrates, each serving four year terms.

### Planning and Zoning

There is no planning and zoning commission currently in Frenchburg or Menifee County.

Mandatory state codes enforced - Kentucky Plumbing Code, National Electric Code, Kentucky Boiler Regulations and Standards, Kentucky Building Code (modeled after BOCA code)

### Local Fees and Licenses

Business license \$20 annually; parking and unloading license \$20 annually; transient license \$10 annually.

## State and Local Property Taxes

All property in Kentucky, except items exempted by the state constitution, is taxed by the state. Property which also may be taxed by local jurisdictions includes land and buildings, finished goods inventories, automobiles, trucks, office furniture and office equipment. Local taxing jurisdictions in Kentucky include counties, cities, and school districts.

All property in Kentucky is assessed at 100 percent of fair cash value.

### COMBINED STATE AND LOCAL RATES PER \$100 VALUATION, 1989

	<u>City of Frenchburg</u>	<u>Unincorporated Menifee County</u>
Land and Buildings	\$0.8228	\$0.7628
Manufacturing		
Machinery	0.1500	0.1500
Pollution Control		
Equipment	0.1500	0.1500
Inventories		
Raw Materials	0.0010	0.0010
Goods in Process	0.0010	0.0010
Finished Goods	0.5684	0.5684
Automobiles & Trucks	0.7952	0.7952
Other Tangible		
Personal Property	1.0174	1.0174
Intangibles (Accounts		
receivable*, money		
in hand, stock,		
notes, bonds)	0.2500	0.2500
Goods Stored in Public		
Warehouses in Transit		
Status	0.0010	0.0010
Private Leaseholds in		
Industrial Revenue		
Bond Financed		
Facilities	0.0150	0.0150

\* Accounts receivable are taxed at 85 percent of face value, for an effective rate of \$0.2125 per \$100 valuation.

## EDUCATION

### Public Schools

#### Menifee County

Total Enrollment (Fall, 1989)	997
Pupil-Teacher Ratio (1988-89)	17-1
Percent High School Graduates to College (1988-89)	56.1
Expenditures Per Pupil (1988-89)	\$2,445.77

### Area Colleges and Universities

<u>Name</u>	<u>Location (Miles distant)</u>	<u>Enrollment (Fall, 1989)</u>
Morehead State University	Morehead, Kentucky (26)	7,962
Lees College	Jackson, Kentucky (53)	363
Lexington Community College	Lexington, Kentucky (58)	3,928
Transylvania University	Lexington, Kentucky (58)	1,076
University of Kentucky	Lexington, Kentucky (58)	22,957
Eastern Kentucky University	Richmond, Kentucky (59)	14,268
Maysville Community College	Maysville, Kentucky (61)	1,060

## Vocational Training

Vocational training is available at both the state vocational-technical schools and the area vocational education centers. The state vocational-technical schools are post-secondary institutions. The area vocational education centers are designed to supplement the curriculum of high school students. Both the state vocational-technical schools and the area vocational education centers offer evening courses to enable working adults to upgrade current job skills.

Arrangements can be made to provide training in the specific production skills required by an industrial plant. Instruction may be conducted either in the vocational school or in the industrial plant, depending upon the desired arrangement and the availability of special equipment.

### Bluegrass State Skills Corporation

The Bluegrass State Skills Corporation, an independent public corporation created and funded by the Kentucky General Assembly, provides programs of skills training to meet the needs of business and industry from entry level to advanced training, and from upgrading present employees to retraining experienced workers.

The Bluegrass State Skills Corporation is the primary source for skills training assistance for a new or existing company. The Corporation works in partnership with other employment and job training resources and programs, as well as Kentucky's economic development activities, to package a program customized to meet the specific needs of a company.

<u>Vocational School</u>	<u>Location (Miles distant)</u>	<u>Cumulative Enrollment 1988-1989</u>
Rowan State Vocational-Technical School	Morehead, Kentucky (26)	518
Montgomery County Area Vocational Education Center	Mt. Sterling, Kentucky (22)	415

## OTHER LOCAL FACILITIES

### Local Medical Personnel

Physicians - 2 (commute)

Dentists - 2 (commute)

### Hospitals

<u>General Hospital</u>	<u>Location</u>	<u>Beds</u>
Mary Chiles Hospital, Inc.	Mt. Sterling, 22 miles northeast	104
St. Claire Medical Center	Morehead, 26 miles northeast	159

Mary Chiles Hospital, Inc.

Medical staff - 25 physicians, 55 registered nurses, 25 licensed practical nurses

St. Claire Medical Center

Medical staff - 44 physicians, 84 registered nurses, 42 licensed practical nurses

### Other Medical Facilities and Services

Menifee Medical Center

Menifee County Health Center

Mountain Ambulance Service

### Banks and Savings and Loan Associations

Montgomery & Traders Bank and Trust Company

### Newspapers

Menifee County News (weekly)

### Telephone Service

Mountain Rural Telephone Cooperative Corporation, Inc.

## RECREATION

### Local

The Menifee County Recreation Park was recently completed. The facility includes a softball-baseball field, basketball and volleyball courts, a swimming pool, a bathhouse, picnic tables, grills and a playground area.

Several tourist attractions are located near Frenchburg. **Red River Gorge**, part of the Daniel Boone National Forest and considered one of Kentucky's most prominent features, is a boulder-strewn area of rugged forests, streams, cliffs, overlooks, arches, rare plants and animal life. Picnic and campsites are available in the Koomer Ridge Recreation Area. Pioneer Weapons Area features a 7,480-acre preserve where hunters are limited to primitive weapon use only.

**Cave Run Lake**, constructed by the U.S. Army Corps of Engineers, is located in Menifee County within the 640,000-acre Daniel Boone National Forest. The lake area offers everything for the camper, the boatsman, the hunter, the fisherman, and "the lover of leisure."

Menifee County is located within the northeastern portion of the **Daniel Boone National Forest**, which covers 640,000 acres of timberland in eastern Kentucky. It encompasses much of Kentucky's great beauty and provides a vacation paradise. There are scenic hiking trails, rivers and streams stocked with a variety of fish, hunting preserves, camping sites, and numerous other natural and historical attractions.

### Area (Within 60 miles)

Natural Bridge State Resort Park  
Fort Boonesborough State Park  
Carter Caves State Resort Park  
White Hall State Shrine  
The Kentucky Horse Park

## COMMUNITY IMPROVEMENTS

### Recent

King Bag and Manufacturing Company opened a plant June, 1990 employing 45 and manufacturing bags and tarpaulins.

Seventeen miles of road improvements were completed in 1988 and 1989, costing \$50,000.

New air lines, a dechlorination process, and new troughs were recently installed at the Frenchburg Sewerage Treatment Plant.

### Under Way

A bridge two miles east of Frenchburg on U.S. Highway 460 is currently under construction. The project is expected to be completed Summer, 1990, costing \$300,000.

### Planned

Future Menifee County school building projects include the construction of a physical education facility at Menifee Elementary School and the construction of a school bus maintenance garage near the Board of Education office.

The Frenchburg Water and Sewer System has a \$750,000 project planned for the summer of 1990. Water system improvements include a new 100,000 gallon elevated storage tank and twelve miles of new water lines. Sewer system improvements include renovation of the lift station, installing new pumps, replacing the existing grinder and bar screen, and rehabilitation of existing lines. These sewer improvements will decrease the average daily flow by reducing the surface water inflow.