

1975

Industrial Resources: Nelson County - Bardstown, Bloomfield and New Haven

Kentucky Library Research Collections
Western Kentucky University, spcol@wku.edu

Follow this and additional works at: https://digitalcommons.wku.edu/nelson_cty



Part of the [Business Administration, Management, and Operations Commons](#), [Growth and Development Commons](#), and the [Infrastructure Commons](#)

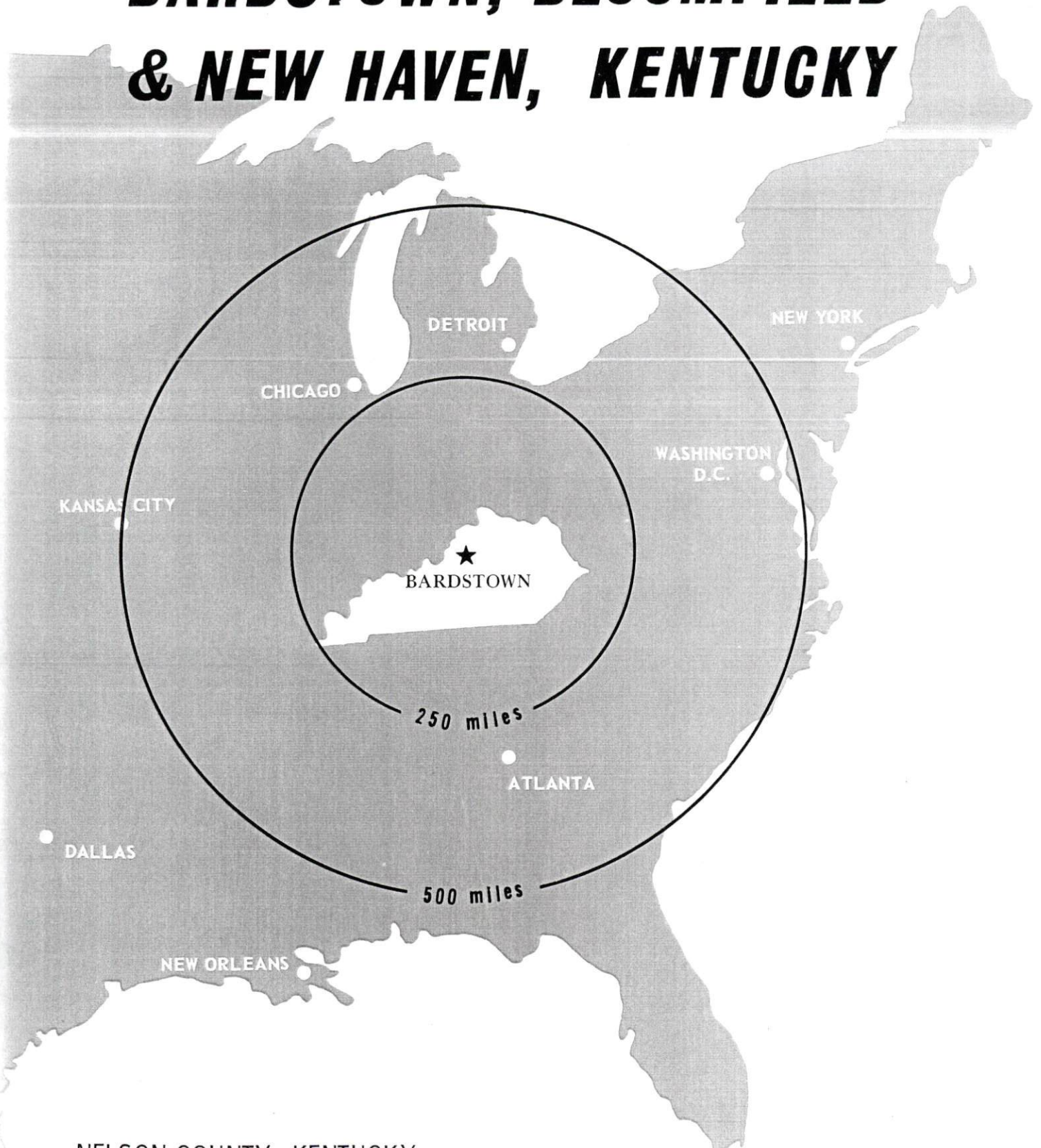
Recommended Citation

Kentucky Library Research Collections, "Industrial Resources: Nelson County - Bardstown, Bloomfield and New Haven" (1975).
Nelson County. Paper 10.
https://digitalcommons.wku.edu/nelson_cty/10

This Report is brought to you for free and open access by TopSCHOLAR®. It has been accepted for inclusion in Nelson County by an authorized administrator of TopSCHOLAR®. For more information, please contact topscholar@wku.edu.

INDUSTRIAL RESOURCES

BARDSTOWN, BLOOMFIELD & NEW HAVEN, KENTUCKY



NELSON COUNTY, KENTUCKY

BARDSTOWN, KENTUCKY --- Index to Industrial Sites --- 1975

For detailed data on individual sites, contact Mr. E. C. Janes, 113 East Flaget, Bardstown, Kentucky 40004, or the Kentucky Department of Commerce, Capital Plaza Tower, Frankfort, Kentucky 40601.

LEGEND

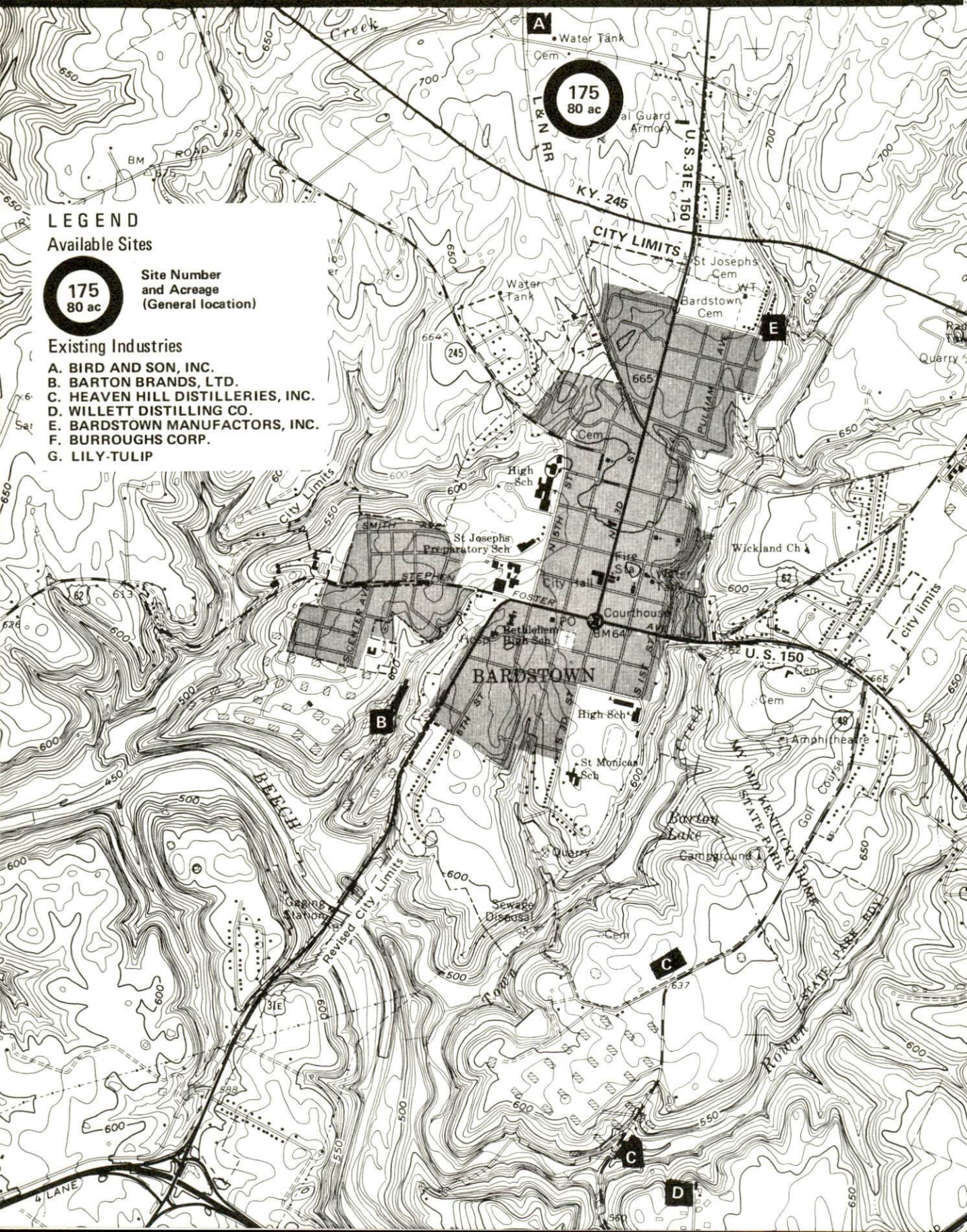
Available Sites

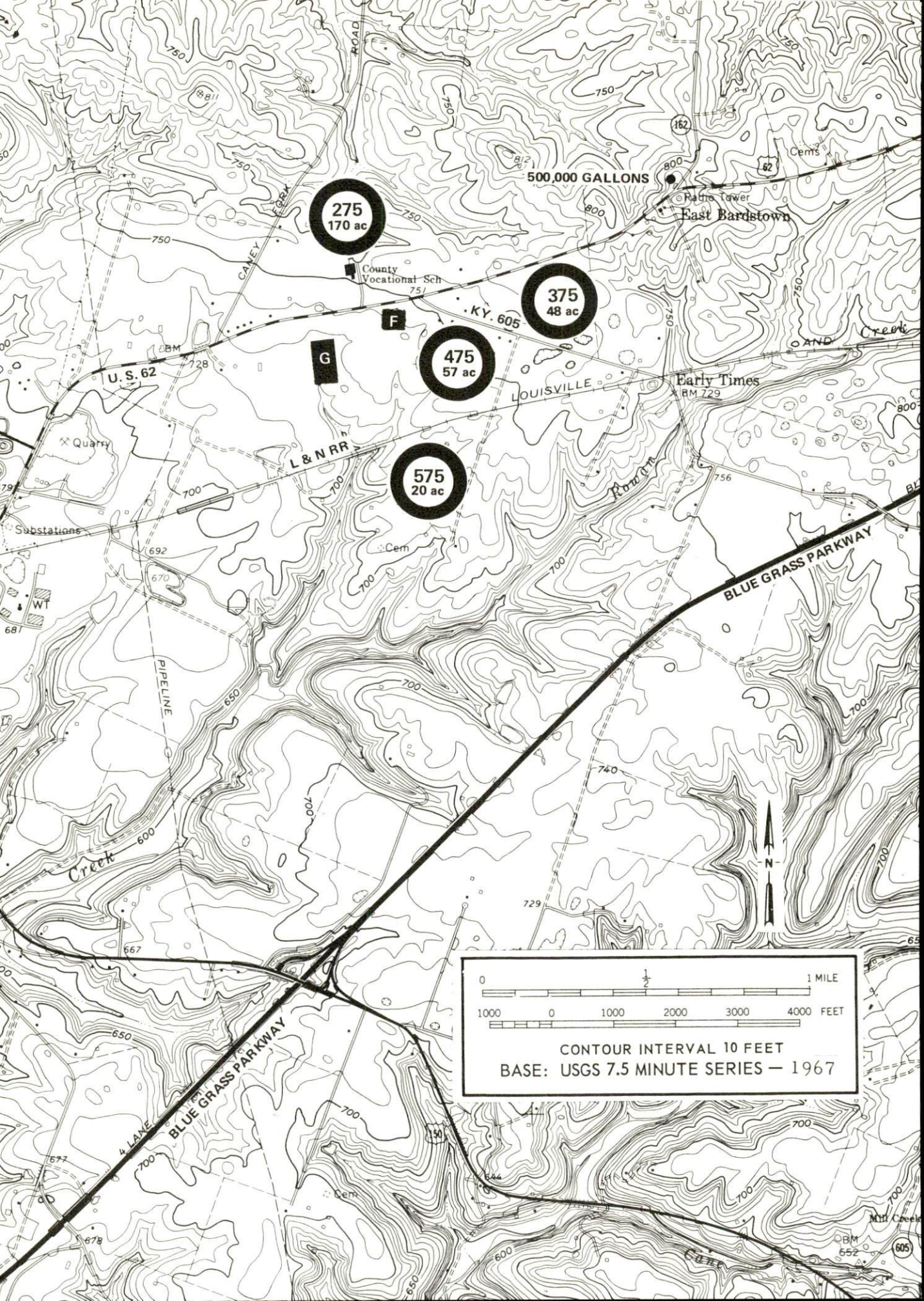


Site Number
and Acreage
(General location)

Existing Industries

- A. BIRD AND SON, INC.
- B. BARTON BRANDS, LTD.
- C. HEAVEN HILL DISTILLERIES, INC.
- D. WILLETT DISTILLING CO.
- E. BARDSTOWN MANUFACTURERS, INC.
- F. BURROUGHS CORP.
- G. LILY-TULIP





275
170 ac

500,000 GALLONS

375
48 ac

475
57 ac

575
20 ac

East Bardstown

Early Times

LOUISVILLE

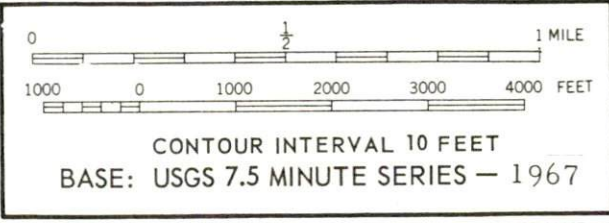
BLUE GRASS PARKWAY

U.S. 62

L & N RR

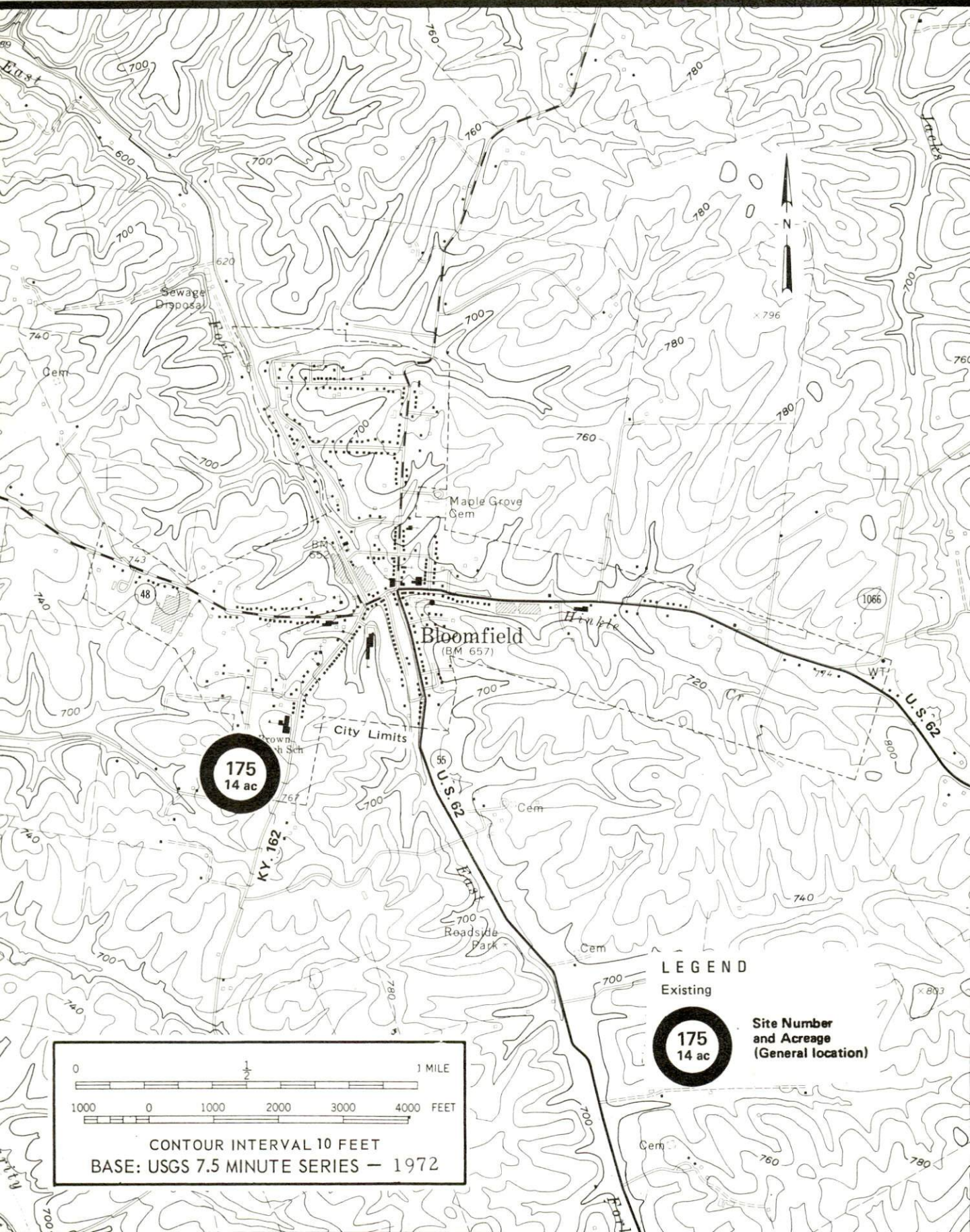
PIPELINE

4 LANE
BLUE GRASS PARKWAY



BLOOMFIELD, KENTUCKY --- Index to Industrial Sites --- 1975

For detailed data on individual sites, contact Mr. Walter McCubbin, Box 205, Bloomfield, Kentucky 40008,
or the Kentucky Department of Commerce, Capital Plaza Tower, Frankfort, Kentucky 40601.



INDUSTRIAL RESOURCES

BARDSTOWN, BLOOMFIELD, AND NEW HAVEN, KENTUCKY

Prepared by

The Kentucky Department of Commerce

in cooperation with

The Bardstown Chamber of Commerce

The Bloomfield-East Nelson County Industrial Development Board

and

The City of New Haven

1975

Production Supervisor

Patsy Wallace

Research

Terry Patterson

Clerical

Mildred Keefer

Graphics

N. C. Montague

Frank Ferrante

Tony Cecconi

Cartography

Site Development Section

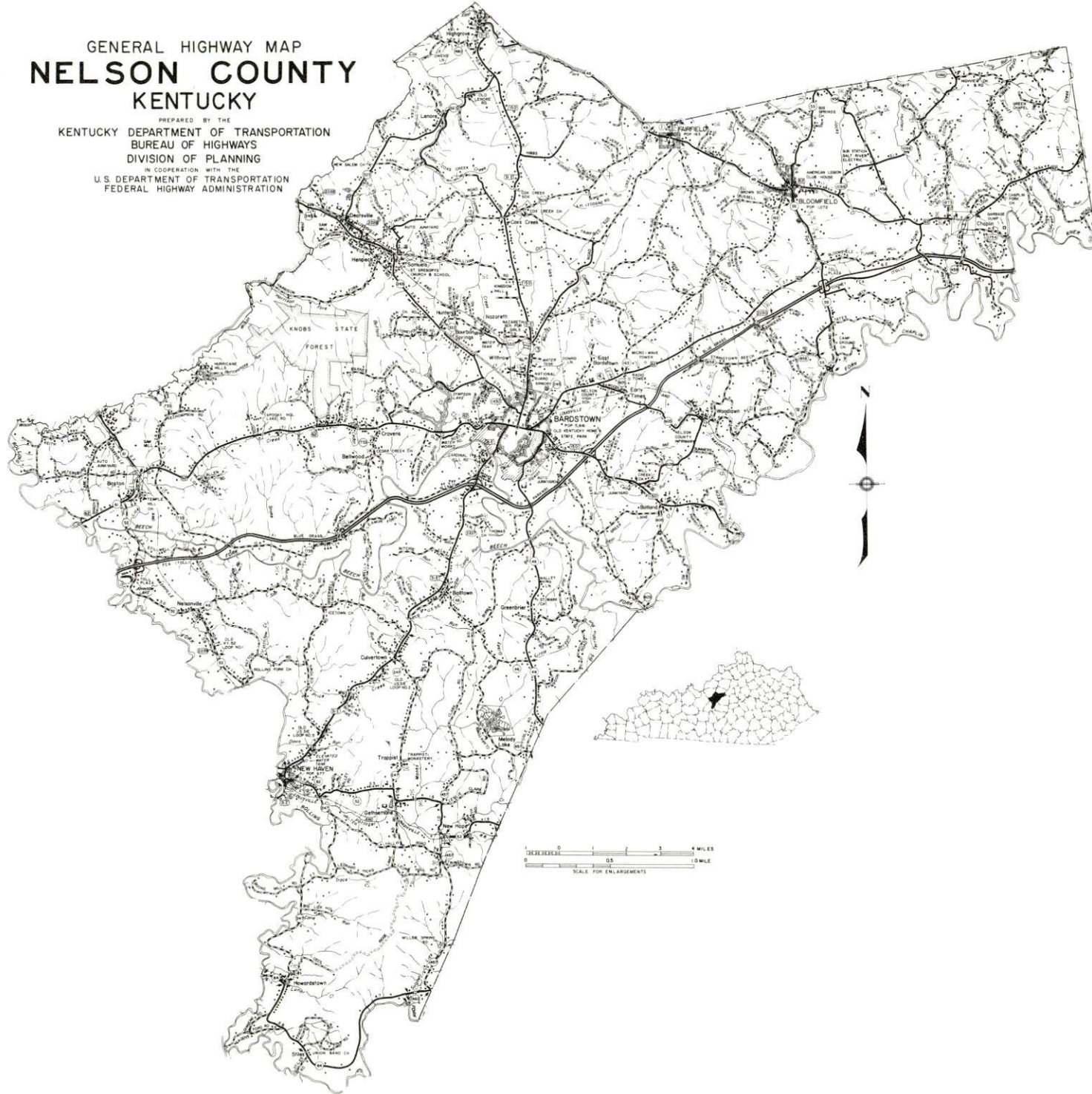
TABLE OF CONTENTS

<u>Chapter</u>	<u>Page</u>
INDUSTRIAL SITES	i
BARDSTOWN, BLOOMFIELD, AND NEW HAVEN, KENTUCKY - A RESOURCE PROFILE.	1
THE LABOR MARKET.	6
Population Trends	6
General Employment Characteristics, 1973	6
Manufacturing Employment Trends by Industry.	7
Nelson County Manufacturing Firms, Their Products and Employment	8
Labor Organizations	9
Estimated Male Labor Supply	10
Estimated Female Labor Supply	10
Wages	11
Per Capita Personal Income.	12
TRANSPORTATION	13
Rail.	13
Truck Service	14
Air	15
Bus	16
Taxi	16
Rental Services	16
POWER AND FUEL	17
Electricity.	17
Natural Gas	18
Other Fuels	19
WATER AND SEWERAGE	20
Water.	20
Sewerage	22
LOCAL GOVERNMENT	23
City.	23

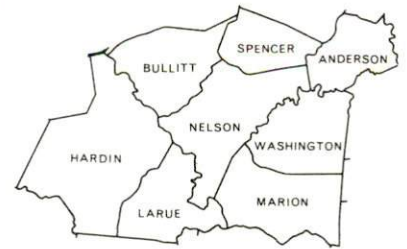
<u>Chapter</u>	<u>Page</u>
County	23
Assessed Value of Property, 1974.	23
Property Taxes	24
Local Property Tax Rate Per \$100 of Assessed Valuation, 1974	24
Planning and Zoning	24
Safety	26
Police	26
Fire	26
Sanitation.	26
EDUCATION.	27
Public Schools	27
Nonpublic Schools	27
Vocational Schools.	30
Colleges and Universities.	30
HEALTH	31
Hospitals	31
Ambulance Service	31
Nursing Homes	31
Public Health	31
OTHER LOCAL FACILITIES	33
Communications.	33
Library Services	34
Day Care Center	34
Religious Institutions	34
Financial Institutions	35
Hotels and Motels	35
Clubs and Organizations	36
RECREATION	37
Local	37
Area	39
AGRICULTURE - NATURAL RESOURCES - CLIMATE.	40
Agriculture.	40
Natural Resources.	40
Climate	41
HISTORY	42

GENERAL HIGHWAY MAP
NELSON COUNTY
KENTUCKY

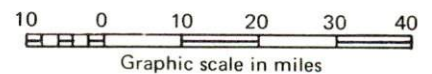
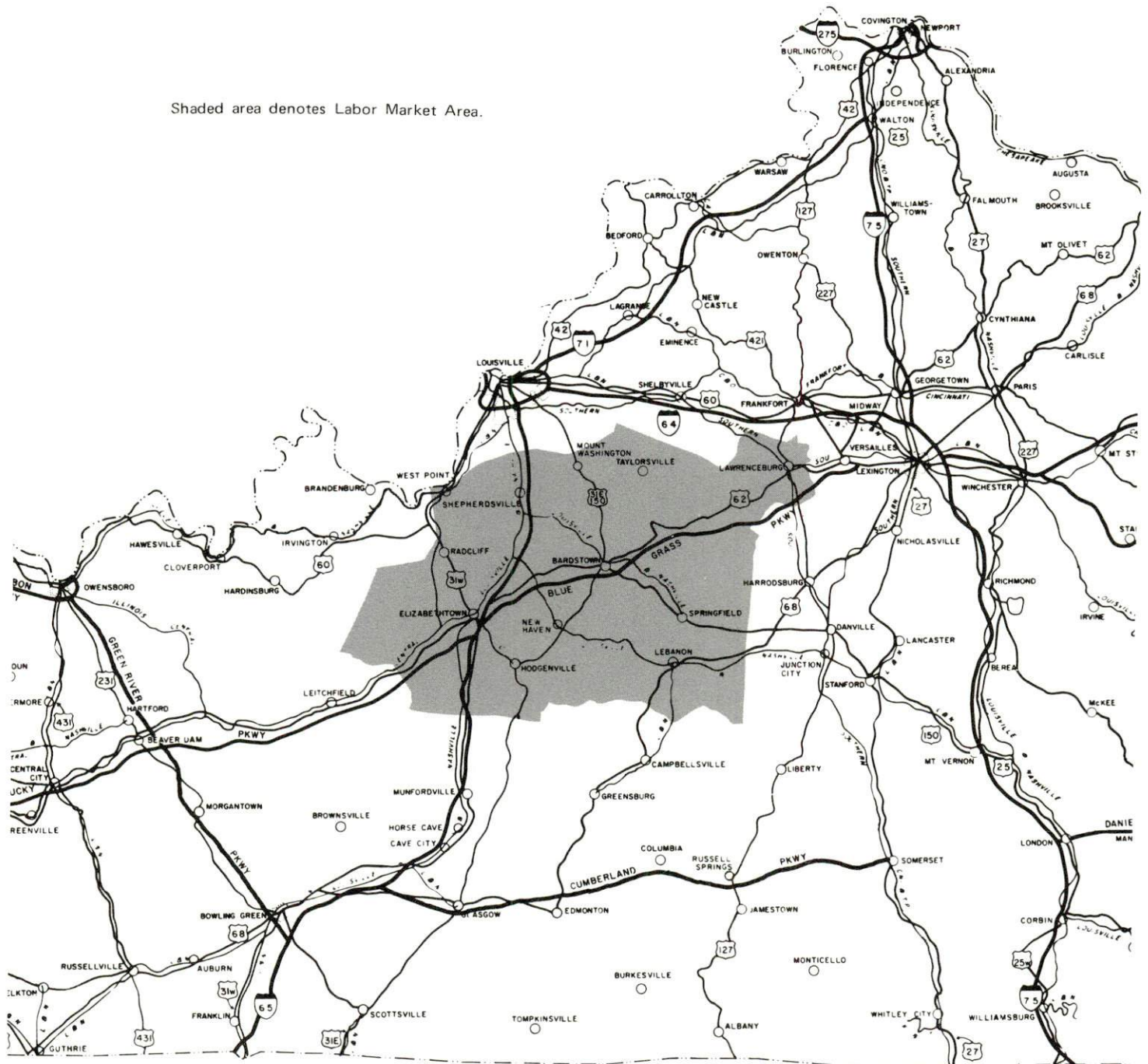
PREPARED BY THE
KENTUCKY DEPARTMENT OF TRANSPORTATION
BUREAU OF HIGHWAYS
DIVISION OF PLANNING
IN COOPERATION WITH THE
U.S. DEPARTMENT OF TRANSPORTATION
FEDERAL HIGHWAY ADMINISTRATION



BARDSTOWN, BLOOMFIELD & NEW HAVEN LABOR MARKET AREA



Shaded area denotes Labor Market Area.



BARDSTOWN, BLOOMFIELD, AND NEW HAVEN, KENTUCKY - A RESOURCE PROFILE

Bardstown, the largest city in Nelson County, had a 1970 population of 5,816. Southern antebellum customs, which were once a lively part of Bardstown, are reflected in several well-preserved historic structures; yet the community, with its many reminders of generations past, welcomes the progress brought by new industry, modern education facilities, and expanded housing opportunities. Bardstown is 33 miles from Louisville, Kentucky; 134 miles from Cincinnati, Ohio; and 162 miles from Nashville, Tennessee.

Bloomfield, situated in the northeastern part of Nelson County, is 15 miles from Bardstown. In 1970, Bloomfield had a population of 1,072. New Haven situated in the southwestern portion of the county, is 14 miles from Bardstown. In 1970, New Haven had a population of 977.

Nelson County, the fourth county established in Kentucky, covers a land area of 437 square miles. Located in Kentucky's beautiful Bluegrass Region, the county early became the home of several distilleries. Today the production of bourbon whiskey is still a principal industry in the county. In 1970, Nelson County had a population of 23,477.

The Economic Framework

Total employment in Nelson County averaged 8,020 in 1973, with agriculture providing 1,220 of these jobs, manufacturing 1,700, trade and services 1,510, and government 940. Since 1964 manufacturing employment has increased by 50 percent. Major manufactured products are whiskey, paper cups and plates, plastic cups and containers, and ladies' suits.

Per capita personal income in the county in 1973 was \$3,524 or \$526 below the Kentucky average. Between 1969 and 1973, per capita personal income in the county increased by 39.4 percent.

The Bardstown, Bloomfield, and New Haven labor market area includes Nelson County and the seven adjacent counties. In 1973, total employment in the labor market area averaged 52,980, with 44,840 employed in nonagricultural jobs. Manufacturing furnished 8,540 jobs. Area manufacturing employment has increased by 104 percent or 4,367 new jobs since 1964.

Resources for Growth

1. There is a current estimated labor supply of 6,250 men and 9,880 women available for industrial jobs in the labor market area. In addition, 9,590 young men and 9,270 young women will become 18 years of age before 1981 and potentially available for work.

2. The Louisville & Nashville Railroad serves Bardstown and New Haven with a variety of services. The Blue Grass Parkway, with interchanges at Bardstown and Bloomfield, and Interstate 65, only 23 miles away via the Blue Grass Parkway, are major links to the industrial south, midwest and east. The relocation of Kentucky 245 provides easy access to northbound Interstate 65. The nearest commercial airport is located at Louisville, only 33 miles from Bardstown. Samuels Field, 2 miles west of Bardstown, can accommodate small aircraft.

3. Electric power in Bardstown is provided by the Bardstown Municipal Light and Water Company, in Bloomfield and New Haven by the Kentucky Utilities Company, and in the remaining portions of Nelson County by the Salt River RECC. The Louisville Gas and Electric Company provides natural gas service to Bardstown. Bloomfield and New Haven do not have natural gas service. However, six distributors of propane and butane, and six distributors of distillate fuel oil are located in the Nelson County area. Low sulphur content coal is available in eastern Kentucky.

4. The Bardstown Independent School District and the Nelson County School System offer excellent educational facilities and programs. In addition, there are six nonpublic schools in the county. Higher educational facilities located within 50 miles of Bardstown include one university, four senior colleges, one junior college, and two community colleges. The Nelson County Area Vocational Education Center at Bardstown offers courses in seven areas, while the Elizabethtown State Vocational-Technical School, 26 miles from Bardstown, offers training in twelve courses.

Community Programs for Improvement

Bardstown

Recent highway construction is expected to relieve traffic congestion in the city. Projects completed are: the reconstruction of a portion of lower South Fourth Street and Old Gilky Run Road to connect with Kentucky 49; extension of West Broadway to connect with U. S. 62W; connection of U. S. 31E and U. S. 62; and relocation of Kentucky 245 that will provide excellent highway access from U. S. 62 northeast of Bardstown to Interstate 65. The community also plans to extend East Broadway and connect it with U. S. 62E.

The Flaget Memorial Hospital completed a 20-bed addition to the existing facilities.

The capacity of the water treatment plant has been expanded to 2,250,000 gallons per day. Insertion of rapid rate filters will double the treatment capacity, if necessary. In addition, a 250,000 gallon standpipe was erected.

The city is now accepting bids on construction that will increase the present sewage treatment plant capacity by 100 percent.

South Central Bell has just completed a \$2.7 million central telephone office. A new electronic switching system will greatly improve the telephone services.

Holiday Inn has added convention facilities to accommodate business meetings.

A savings and loan association has constructed new facilities and a branch savings and loan association has opened an office in Bardstown.

A drive-in bank and three additional retail stores are being constructed in the shopping center.

A skating rink has been completed.

A new city park provides a fully equipped area for small children and planned activities for age groups 6 to 12 and 13 to 19.

The Bardstown Independent School District improvements include: construction of an athletic track field and stadium; renovation of a storage building for use as an early childhood education program; expansion of a handicapped program, allowing all youngsters in the special education range to be trained by certified staff members; and renovation of basement to provide facilities for handicapped student work programs, business-office programs, and distributive education programs.

Bloomfield

A new city building, which provides space for city offices, a community center, and the police and fire departments, has been constructed.

A new subdivision has been developed.

Construction on a new city park has begun. The park facilities will include a baseball diamond, picnic area, fishing reservoir, and tennis, basketball, and croquet courts. Eventually the city plans to install a swimming pool.

New Haven

A new 500 gpm pumper has been purchased for the fire department.

A municipal building has been completed.

Construction on a 160,000 gpd sewage treatment plant is nearing completion. In addition, water and sewer lines are being extended to a subdivision. The water treatment plant has added a settling basin, coagulation with lime, and fluoride treatment to its facilities.

Land has been purchased for the development of an 8-home subdivision.

Two new business establishments have recently opened and another has expanded its facilities.

An \$83,000 swimming pool has been constructed.

The Nelson County School System has completed a \$300,000 gymnasium at the junior high school. The Nelson County Vocational Education Center plans to add three courses to its curriculum.

Recreation, Entertainment and Livability

Nelson County is part of Kentucky's ten-county "land of history" region. Bardstown, the county seat, is vibrantly alive in its charming edifices of early Americana and attracts thousands of visitors each year. Most famous of all is Federal Hill, dominated by the three-story brick mansion which has been made world famous by the song, "My Old Kentucky Home," composed by Stephen Collins Foster. Other sight-seeing attractions include Wickland, home of three governors; St. Joseph's Protophedral, first Catholic cathedral west of the Allegheny Mountains; Old Talbott Tavern, erected in the latter part of the 18th century; Our Lady of Gethsemane Monastery, first monastery of Trappist Monks in the United States; and the Barton Museum of Whiskey History, depicting 170 years of the distilling industry in the United States.

Bardstown also offers ample facilities for recreation provided by the city's outstanding recreation department. Professional planning has resulted in a recreation program designed for all age groups. The department has recently completed a park for children and is now looking ahead to future needs.

Opportunity for fishing, boating, and water skiing is available at the 250-acre Sympson Lake near Bardstown. Also near Bardstown is Bernheim Forest, 10,000 acres of Kentucky woodland, preserved as a natural forest and wildlife sanctuary.

Other interesting historic sites within 35 miles of Bardstown include Lincoln Homestead State Shrine, restored settlement of Lincoln's grandparents; Abraham Lincoln Birthplace National Historic Site, 100 acres of the original Thomas Lincoln farm where Abraham Lincoln was born; and Lincoln's Boyhood Home, his last home in Kentucky.

Bardstown is only 33 miles from Louisville, allowing easy access to the numerous cultural and sporting events of this metropolitan area.

THE LABOR MARKET

POPULATION TRENDS

Area	Population				Percent Change	
	1973*	1970	1960	1950	1960-70	1950-60
Bardstown	N. A.	5,816	4,798	4,154	+21.2	+15.5
Bloomfield	N. A.	1,072	916	666	+17.0	+37.5
New Haven	N. A.	977	1,009	563	- 3.2	+79.2
Labor Market						
Area	181,700	180,948	158,382	136,268	+14.2	+16.2
Nelson County	23,500	23,477	22,168	19,521	+ 5.9	+13.6
Anderson County	10,300	9,358	8,618	8,984	+ 8.6	- 4.2
Bullitt County	31,100	26,090	15,726	11,349	+65.9	+38.6
Hardin County	73,100	78,421	67,789	50,312	+15.7	+34.7
Larue County	11,600	10,672	10,346	9,956	+ 3.2	+ 3.9
Marion County	16,200	16,714	16,887	17,212	- 1.0	- 1.8
Spencer County	5,500	5,488	5,680	6,157	- 3.4	- 7.7
Washington County	10,400	10,728	11,168	12,777	- 3.9	-12.6

*Provisional Estimates.

Sources: U. S. Department of Commerce, Bureau of the Census, Census of Population, 1970, 1960, 1950. U. S. Bureau of the Census, Current Population Reports, Series P-26, June 1973.

GENERAL EMPLOYMENT CHARACTERISTICS, 1973

Major Employment Group	Employment	
	Nelson County	Labor Market Area
TOTAL	8,020	52,980
Agricultural	1,220	8,140
Nonagricultural	6,800	44,840
Manufacturing	1,700	8,540
Government	940	9,650
Trade and Services	1,508	10,166

Source: Kentucky Department for Human Resources, Bureau for Administration and Operations.

MANUFACTURING EMPLOYMENT TRENDS BY INDUSTRY
SEPTEMBER 1974 AND 1964

Industry	Nelson County			Labor Market Area		
	1974	1964	% Change	1974	1964	% Change
TOTAL	1,586	1,056	+ 50.2	8,566	4,199	+104.00
Food & Kindred						
Products	540	759	- 28.9	2,018	1,934	+ 4.30
Tobacco	0	2	- 100.0	72	22	+227.30
Apparel, Textiles,						
Leather	194	198	- 2.0	1,339	929	+ 44.10
Lumber, Furniture	45	42	+ 7.1	374	209	+ 78.90
Printing & Publishing,						
Paper	603	18	+3250.0	1,123	244	+360.20
Chemicals, Petroleum						
& Coal, Rubber	31	6	+ 416.7	1,010	152	+564.50
Stone, Clay & Glass	68	31	+ 119.4	553	110	+402.70
Primary Metals	0	0	0	24	0	--
Machinery, Metal						
Products, Equipment	0	0	0	1,350	224	+502.67
Other	105	0	--	703	375	+ 87.50

Source: Kentucky Department for Human Resources, Number of Workers in Manufacturing Industries Covered by Kentucky Unemployment Insurance Law Classified by Industry and County, September, 1974, September, 1964.

NELSON COUNTY MANUFACTURING FIRMS,
THEIR PRODUCTS AND EMPLOYMENT

<u>Firm</u> (Establishment date)	<u>Product</u>	<u>Employment</u>			<u>Organized</u>
		<u>Total</u>	<u>Male</u>	<u>Female</u>	
<u>Bardstown</u>					
Bardstown Asphalt Company, Inc. (1958)	Asphalt	4	4	0	
Bardstown Farms, Inc. (1966)	Country hams, bacon	5	4	1	
Bardstown Manufacturers, Inc. (1950)	Ladies' knit suits	230	12	218	*
Bardstown Mills (1819)	Feed	8	8	0	
Barton Brands, Ltd. (1879)	Whiskey, feed	285	225	60	*
Bird & Son, Inc. (1966)	Building materials	172	165	7	*
Boones Abattoir, Inc. (1946)	Meat processing	14	10	4	
Burroughs Corporation (1972)	Fabric business machine ribbons, paper rolls for business machines	180	68	112	*
Cleveland Welding & Equipment Company (1950)	Steel tanks, steel fabrication	9	8	1	
Bardstown Ready Mix Concrete Company (1951)	Ready mix concrete	41	40	1	
Heaven Hill Distilleries, Inc. (1935)	Whiskey, gin, vodka distillers dried grain	306	232	74	*
Lily-Tulip Division of Owens-Illinois, Inc. (1968)	Paper cups and plates, plastic cups and containers	509	356	153	*
R. A. Parrish Concrete Products (1958)	Concrete blocks, precast concrete silo staves	18	16	2	
Standard Publishing Company (1902)	Newspaper, letterpress printing, offset printing	19	9	10	
The Willett Distilling Company (1937)	Whiskey	47	30	17	*

(continued)

<u>Firm</u> (<u>Establishment Date</u>) <u>Product</u>	<u>Employment</u>			<u>Organized</u>	
	<u>Total</u>	<u>Male</u>	<u>Female</u>		
<u>Bloomfield</u>					
D. B. Sutherland & Sons (1885)	Flour, cornmeal, feed, seasoning	20	16	4	
<u>Boston</u>					
James B. Beam Distilling Company (1953)	Whiskey, distillers dried grain	71	70	1	*
David E. Wallace	Country hams	2	2	0	
<u>Deatsville</u>					
T. W. Samuels Distillery (1948)	Whiskey	78	60	18	
<u>Fairfield</u>					
Joseph E. Seagram & Sons, Inc.	Whiskey	6	6	0	*

*See Labor Organizations below.

Source: Kentucky Department of Commerce, Division of Research and Planning.

LABOR ORGANIZATIONS

<u>Union</u>	<u>Representing manufacturing workers at:</u>
Distillery Workers Union	Barton Brands, Ltd., Heaven Hill Distilleries, Inc.; James B. Beam Distilling Company; Joseph E. Seagram & Sons, Inc., The Willett Distilling Company
International Ladies' Garment Workers	Bardstown Manufacturers, Inc.
Teamsters	Bird & Son, Inc., Burroughs Corporation
International Brotherhood of Pulp, Sulphite and Paper Mill Workers	Lily-Tulip Division of Owens-Illinois, Inc.

ESTIMATED MALE LABOR SUPPLY
BARDSTOWN, BLOOMFIELD, AND NEW HAVEN LABOR MARKET AREA

Area	Current			Future	
	Total	Not in Labor Force	Unemployed	Under- employed	Reaching 18 yrs. of age before 1981
Labor Market					
Area	6,250	40	2,130	4,080	9,596
Nelson	920	0	570	350	1,561
Anderson	230	0	120	110	426
Bullitt	540	0	170	370	1,638
Hardin	3,110	0	510	2,600	3,454
Larue	320	0	130	190	597
Marion	580	0	310	270	1,049
Spencer	170	40	60	70	275
Washington	380	0	260	120	596

Sources: Kentucky Department for Human Resources, Kentucky Labor Supply Estimates by County, 1974. Kentucky Department of Commerce Future Labor Supply before 1981.

ESTIMATED FEMALE LABOR SUPPLY
BARDSTOWN, BLOOMFIELD, AND NEW HAVEN LABOR MARKET AREA

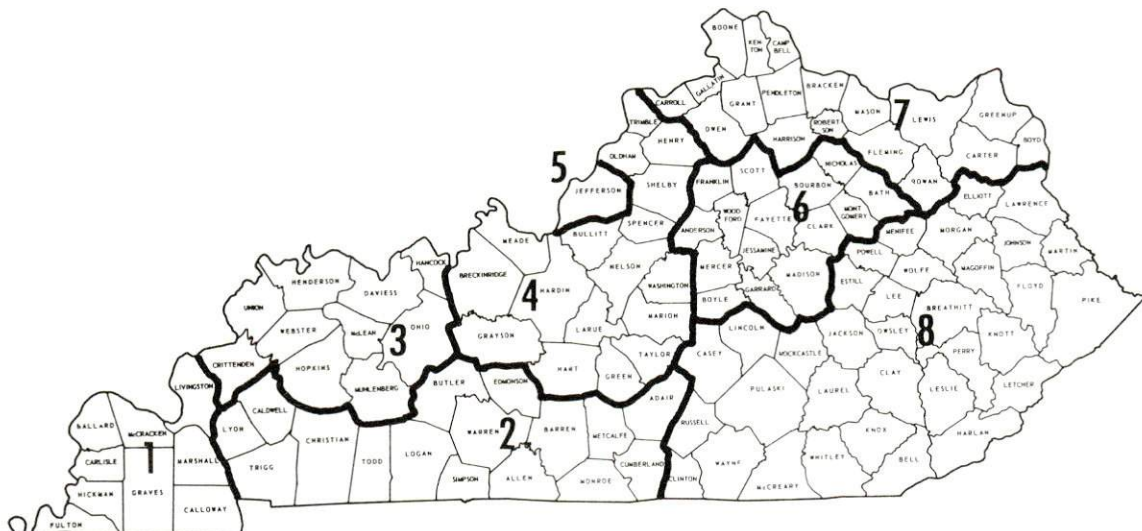
Area	Current			Future	
	Total	Not in Labor Force	Unemployed	Under- employed	Reaching 18 yrs. of age before 1981
Labor Market					
Area	9,880	6,010	880	2,990	9,274
Nelson	610	0	170	440	1,510
Anderson	250	0	70	180	457
Bullitt	890	190	100	600	1,538
Hardin	6,420	5,130	150	1,140	3,276
Larue	490	230	40	220	586
Marion	540	130	170	240	1,016
Spencer	410	330	40	40	329
Washington	270	0	140	130	562

Sources: Kentucky Department for Human Resources, Kentucky Labor Supply Estimates by County, 1974. Kentucky Department of Commerce, Future Labor Supply before 1981.

WAGES

Occupational wage rates for specific industries are usually not available to most government agencies, and wage data furnished to state employment agencies by industrial employers is protected from disclosure by federal law. The most reliable up-to-date wage information can be obtained by direct contact with local employers.

Associated Industries of Kentucky, a voluntary organization of Kentucky businesses, regularly collects occupational wage rates and fringe benefits data from participating member firms. Data is compiled for over 130 clearly defined office, production, and service occupations. Tabulations are published for eight regions of Kentucky, as shown on the map below. It should be noted that the data may be weighted by the preponderance of firms in the larger cities and may be somewhat higher than the rates paid in the smaller communities. Data from these tabulations are available, upon request, from the Kentucky Department of Commerce, Frankfort, Kentucky 40601.



Associated Industries of Kentucky Area Wage Surveys

PER CAPITA PERSONAL INCOME

<u>Area</u>	<u>1973</u>	<u>1969</u>	<u>% Change</u>
Nelson County	\$3,524	\$2,528	+39.4
Labor Market Area			
Range	\$5,029 to 3,120	\$4,090 to 2,143	N. A.
Kentucky	4,050	2,894	+39.9
U. S.	5,041	3,733	+35.1

Sources: U. S. Department of Commerce, Office of Business Economics, Survey of Current Business, August, 1974. U. S. Department of Commerce, Bureau of Economic Analysis, April, 1975.

TRANSPORTATION

Rail

Line serving Bardstown - Louisville & Nashville Railroad Company
Services - Freight stops weekdays, team track for 10 cars; siding
space for 10 cars; nearest piggyback facilities at Louisville, 33
miles distant

Line serving New Haven - Louisville & Nashville Railroad Company
Services - 3 northbound and southbound freights stop weekly, 1 north-
bound and southbound through freight daily, team track, siding space;
nearest piggyback facilities at Louisville, 47 miles from New Haven

For details on routing, schedules, rates, and services, contact:

Manager, Industrial Development
Louisville & Nashville Railroad
908 West Broadway
Louisville, Kentucky 40201

Truck Service

Bardstown

Company

Home Office

Best Way Express, Inc.	710 Poplar Avenue Nashville, Tennessee 37210
Central Motor Express, Inc.	P. O. Drawer C. Campbellsville, Kentucky 40011
Cooper-Jarrett, Inc.	23 South Essex Avenue Orange, New Jersey 07050
Distillery Transfer Service, Inc. **	Depot Bardstown, Kentucky 40004
Kentucky Truck Lines, Inc. **	P. O. Box 92 Frankfort, Kentucky 40601
McDuffee Motor Freight, Inc.	3047 Lonyo Road Detroit, Michigan 48209
McLean Trucking Company	617 Waughtown Street Winston-Salem, North Carolina 27107
Overnite Transportation Company	1100 Commerce Road Richmond, Virginia 23209
Turner Expediting Service	Box 21333, Standiford Field Louisville, Kentucky 40221

Bloomfield

Taylorsville Transfer Company	Taylorsville, Kentucky 40071
-------------------------------	------------------------------

New Haven

Overnite Transportation Company	1100 Commerce Road Richmond, Virginia 23209
---------------------------------	--

Other Freight Services

Shipping Center

United Parcel Service	Louisville, 33 miles from Bardstown
-----------------------	--

*Local terminal.

**Distillery products and supplies only.

HIGHWAY MILES AND TRUCK TRANSIT TIME IN DAYS FROM BARDSTOWN, KENTUCKY, TO SELECTED MARKET CENTERS

City	Delivery		City	Delivery	
	Highway Miles	Time TL		Highway Miles	Time TL
Atlanta, Ga.	422	3	Los Angeles, Calif.	2,141	7
Birmingham, Ala.	358	3	Louisville, Ky.	33	1
Chicago, Ill.	325	3	Nashville, Tenn.	162	3
Cincinnati, Ohio	134	2	New Orleans, La.	700	5
Cleveland, Ohio	383	2	New York, N. Y.	809	5
Detroit, Mich.	395	3	Pittsburgh, Pa.	445	5
Knoxville, Tenn.	229	2	St. Louis, Mo.	296	2

Source: Delivery Time only - Overnite Transportation Company, 1100
Commerce Road, Richmond, Virginia 23209.

Air

<u>Local</u>	<u>Nearest Commercial</u>
Samuels Field	Standiford Field
Location: 2 miles west of Bardstown	Louisville, 33 miles from Bardstown
Runways: 1 paved	3 paved
Length: 4,000 feet	7,800 feet, 5,000 feet, 7,250 feet
Traffic	
Control: Wind sock	Control tower, approach control, ground control, radar service, departure control
Lighting: Sundown to sunrise, rotating beacon, med. int. runway edge lights, Reil on R/W 20, obs. lights	Runways, obstructions, beacon and approach and touchdown lights, center line on runways 1 - 19
Services: Gas and oil (80-100), charter, flight instruction (Jet A)	Louisville-Jefferson County Air Board; 80, 100, 115, jet fuel; storage; major A & E repairs; TWA, American, Eastern, Delta, Piedmont, Ozark and Allegheny; Hertz, Avis, Budget and National rent-a-car service; restaurant; taxi; and city bus service
Air Freight Service:	Air freight terminal

	<u>Bardstown</u>	<u>Bloomfield</u>	<u>New Haven</u>
<u>Bus</u> -	Southern Greyhound Bus Lines	Nearest bus service at Bardstown, 15 miles distant	Southern Grey- hound Bus Lines
<u>Taxi</u> -	1 company, 24-hour radio dispatched service		
<u>Rental Services</u> -	Local or one-way U-Haul rentals, truck rentals	Nearest rental service at Bardstown, 15 miles distant	Nearest rental service at Bardstown, 14 miles distant

Natural Gas

Company serving Bardstown - Louisville Gas & Electric Company

Source of supply - Texas Gas Transmission Corporation

Size of transmission mains - 26 inches (supplier); 8 inches (distributor)

Distribution mains - 2, 4, 6, and 8 inches

Distribution pressure - 45 psi

Btu content - 1050 per cubic foot

Specific gravity - .588

For rates and supplies contact:

Gas Sales Department

Louisville Gas & Electric Company

311 West Chestnut Street

Louisville, Kentucky 40202

Bloomfield and New Haven - Natural gas service is not available.

POWER AND FUEL

Electricity

Company serving Bardstown - Bardstown Municipal Light and Water Company

Source of power - Kentucky Utilities Company

Total generating capacity - 1,735,000 KW

For industrial rates contact:

Bardstown Municipal Light and Water Company
220 North Fifth Street
Bardstown, Kentucky 40004

Company serving Bloomfield and New Haven - Kentucky Utilities Company

Source of power - Kentucky Utilities Company

Total generating capacity - 1,735,000 KW

For industrial rates contact:

Director of Industrial Development
Kentucky Utilities Company
120 South Limestone
Lexington, Kentucky 40507

Company serving Nelson County - Salt River RECC

Source of power - East Kentucky Power Cooperative

Total generating capacity - 548,000 KW

For industrial rates contact:

Salt River RECC
1111 West Brashear Avenue
Bardstown, Kentucky 40004

Other Fuels

Propane and butane

Bennett J. A., Inc., Taylorsville, Kentucky 40071
Big 3 Gas Company of Lebanon Junction, Preston Highway,
Lebanon Junction, Kentucky 40150
Coleman Gas Service Company, 1106 North Third Street,
Bardstown, Kentucky 40004
Greenwell Brothers Bottled & Bulk Gas, Railroad Street,
Taylorsville, Kentucky 40071
Masden Supply Company, Poplar Street, Lebanon Junction,
Kentucky 40150
Ugite LP-Gas Service, New Haven, Kentucky 40051

Fuel oils

Distillate fuel oil -

Armstrong Marathon Service, Bloomfield Road, Taylorsville,
Kentucky 40071
Bowling & Cecil Marathon Distributors, Center Street, New Haven,
Kentucky 40051
Newcomb J. C. & Son, Inc., 607 North Fourth, Bardstown,
Kentucky 40004
Regal Oil Company, Main Street, Bardstown, Kentucky 40004
Spank Oil Company, Maple Hill, Bardstown, Kentucky 40004
Sprigg Coal & Fuel Oil Company, Blue Grass Court, Bardstown,
Kentucky 40004

Residual fuel oil - Arrangements must be made with the refinery.

Low sulphur content coal - Available in eastern Kentucky

WATER AND SEWERAGE

Water

Company serving Bardstown - Bardstown Municipal Light and Water Company

Source - Sympson Lake

Treatment plant capacity - 2,250,000 gpd*

Average daily consumption - 1,000,000 gallons

Peak daily consumption - 1,350,000 gallons

Type treatment - Coagulation, sedimentation, filtration, softening, fluoride adjustment, disinfection

Storage capacity - 1,950,000 gallons

Size lines - 16, 12, 10, 8 and 6 inches

Average pressure - 65 psi

Average temperature - 61 degrees F.

MONTHLY WATER RATES FOR WHOLESALE AND INDUSTRIAL CONSUMERS

First	3,000 gallons	\$3.25 Minimum
Next	75,000 gallons	.50 per M gallons
All over	78,000 gallons	.40 per M gallons

Tap-on charge: \$100 - within corporate limits
125 - outside corporate limits

*Insertion of rapid rate filters will double treatment capacity.

Company serving Bloomfield - Bloomfield Municipal Water and Sewer
Department

Source - Treated water purchased from city of Taylorsville

Average daily consumption - 100,000 gallons

Storage capacity - 350,000 gallons

Size lines - 8, 6, and 4 inches

Average pressure - 90 psi

MONTHLY WATER RATES FOR WHOLESALE
AND INDUSTRIAL CONSUMERS

First	2,000 gallons	\$4.45 Minimum
Next	3,000 gallons	.95 per M gallons
Next	5,000 gallons	.90 per M gallons
Next	5,000 gallons	.85 per M gallons
Next	5,000 gallons	.80 per M gallons
Next	30,000 gallons	.75 per M gallons
All over	50,000 gallons	.65 per M gallons

Tap-on charge: \$175

Company serving New Haven - New Haven Municipal Water and Sewer
Department

Source - Rolling Fork River

Treatment plant capacity - 144,000 gpd

Average daily consumption - 38,000 gallons

Peak daily consumption - 50,000 gallons

Type treatment - Prechlorination, coagulation, sedimentation, filtration,
disinfection

Storage capacity - 115,000 gallons

Size lines - 6, 4, and 2 inches

Average pressure - 50 psi

MONTHLY WATER RATES FOR WHOLESALE
AND INDUSTRIAL CONSUMERS

First	1,500 gallons	\$5.00 Minimum
Next	1,500 gallons	1.10 per M gallons
Next	2,000 gallons	1.00 per M gallons
Next	5,000 gallons	.80 per M gallons
Next	10,000 gallons	.60 per M gallons

Tap-on charge: \$100

Surface water sources - Rolling Fork and Beech Fork of Salt River
Average discharge - Rolling Fork near Boston 1,726 cfs (36 years,
USGS); Beech Fork at Bardstown 906 cfs (35 years, USGS)
Expected ground water yield - 5 gpm or less over entire county

Sewerage

Company serving Bardstown - Bardstown Municipal Sewerage Service
Design capacity - 750,000 gpd*
Average daily flow - 640,000 gallons
Treatment - Primary and secondary
Type treatment - Clarifier, trickling filters, anaerobic digestion,
drying beds
Treated effluent discharged into - Town Creek
Size of sanitary mains - 12, 10, and 8 inches
Size of storm mains - Variable (separate from sanitary mains)
Rates - (Based on water usage)

First	3,000 gallons	\$1.00 Minimum
Next	47,000 gallons	.10 per M gallons
All over	50,000 gallons	.05 per M gallons

Tap-on charge: \$100 within corporate limits
350 outside corporate limits

Company serving Bloomfield - Bloomfield Municipal Water and Sewer
Department
Design capacity - 150,000 gpd
Average daily flow - 60,000 gallons
Treatment - Primary and secondary
Type treatment - Aeration, clarifier, drying beds
Treated effluent discharged into - Simpson Creek
Size of sanitary mains - 12, 8, and 6 inches
Rates - 100 percent of monthly water bill

Tap-on charge: \$125

The city of New Haven is installing a 160,000 gpd sewage treatment
plant.

*The city is now accepting bids on construction that will increase the
present sewage treatment plant capacity by 100 percent.

LOCAL GOVERNMENT

City

Bardstown

Structure - Mayor - 4-year term; 6 councilmen - 2-year terms

Budget 1974-75-General Fund \$134,100

Water and Sewer Fund 302,000

City Electric System 876,000

Fees and licenses - Annual business licenses range from \$15 to \$500, depending on type of business.

Bloomfield

Structure - Board of Trustees: Chairman - 2-year term; 4 board members - 2-year terms

Budget 1974-75-General Fund \$ 75,000

Water and Sewer Fund 65,000

Fees and licenses - Annual business licenses range from \$5 to \$275, depending on type of business.

New Haven

Structure - Board of Trustees: Chairman - 2-year term; 4 board members - 2-year terms

Budget 1974-75-General Fund \$ 39,286

Fees and licenses - Annual business licenses range from \$10 to \$300, depending upon the type of business; annual unloading license - \$15

County

Structure - County Judge - 4-year term; 5 magistrates - 4-year terms

Budget 1974-75 - General Fund \$383,908; Road Fund \$218,500

Assessed Value of Property, 1974

<u>Classes of Property</u>	<u>Bardstown</u>	<u>Bloomfield</u>
Real Estate	\$47,715,866	\$4,383,131
Tangibles	13,738,056	1,458,723

<u>Classes of Property</u>	<u>New Haven</u>	<u>Nelson County</u>
Real Estate and Tangibles	\$2, 599, 919	
Real Estate		\$140, 705, 380
Tangibles		31, 591, 764
Public Service		13, 152, 538 (1973)

Property Taxes

Land and buildings are taxed by the state and may be taxed by local jurisdictions. The state rate is \$0.015 per \$100 of assessed valuation.

Tangible personal property owned by manufacturers (automobiles, trucks, finished goods, office furniture, office equipment) is taxed by the state at \$0.15 per \$100 and may be taxed by local jurisdictions.

Manufacturing machinery, raw materials inventories, pollution control equipment, and goods in process inventories are not subject to local taxation. The state rate is \$0.15 per \$100.

Property stored in public warehouses is not subject to local taxation. The state rate is only \$0.015 per \$100.

All property is assessed at 100 percent of fair cash value.

Local Property Tax Rate Per \$100 of Assessed Valuation, 1974*

<u>Taxing Jurisdiction</u>	<u>Bardstown</u>	<u>Bloomfield</u>	<u>New Haven</u>	<u>Nelson County</u>
County	\$.180	\$.180	\$.180	\$.180
School	.650	.560	.560	.560
City	.250	.275	.300	

Planning and Zoning

Joint agency - Joint City-County Planning Commission of Nelson County
Zoning enforced - All areas

Subdivision regulations enforced - All areas

Local codes enforced - Building code enforced in city limits of Bardstown only

Mandatory state codes enforced - Plumbing, National Fire Protection Association Code, National Building Code (for major buildings and residential construction containing more than 12 bedrooms per building)

Other programs - Public housing

*Kentucky Department of Revenue, Kentucky Property Tax Rates, 1974.



NELSON COUNTY COURTHOUSE

Safety

<u>Police</u>	<u>Bardstown*</u>	<u>Bloomfield</u>	<u>New Haven</u>	<u>Nelson County</u>
Total staff	13	3	2	4
Radio-patrol cars	2	1	1	4

FireAmerican Insurance
Association Fire

Rating	6	8	8
Full-time staff	1		
Volunteers	22	18	32

Sanitation

	<u>Bardstown</u>	<u>Bloomfield</u>	<u>New Haven</u>
Type service	Municipal	Private	Private
Fee charged:			
residential	\$1.50 per month	\$2.00 per month	\$2.50 per month
business	Varies (\$2.00 minimum)	\$10.00 per month	Varies according to volume
Collection frequency:			
residential	Weekly	Weekly	Weekly
business	Service as needed	Weekly	Service as needed
Trash pickup	On call	Annually	
Disposal method	Landfill	Landfill	Landfill
Industrial service:			
Inside city limits	Fee varies according to volume and collection frequency	Terms can be negotiated	Terms can be negotiated
Outside city limits	Fee varies according to volume and collection frequency	Terms can be negotiated	Terms can be negotiated

*Bardstown-Nelson County Fire Department serves all of Nelson County.

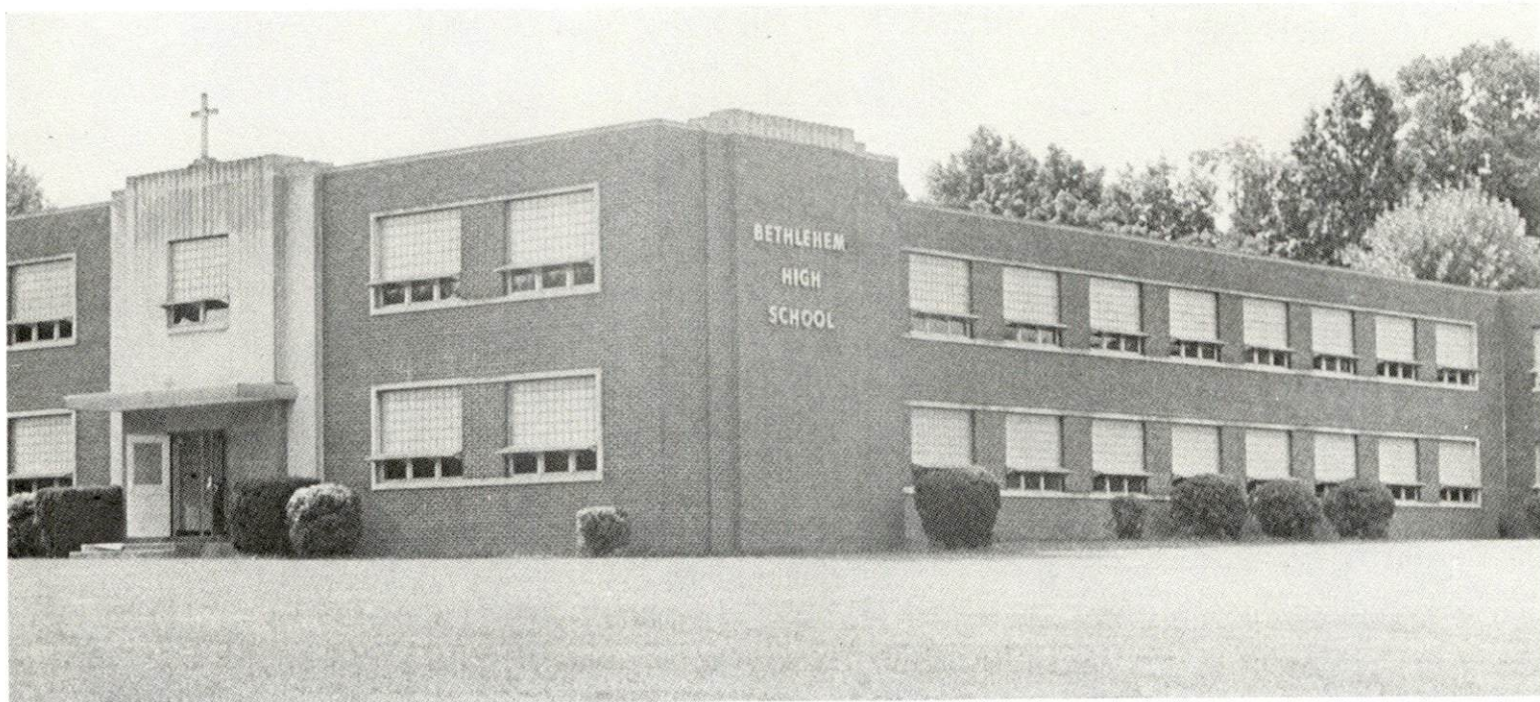
EDUCATION

Public Schools

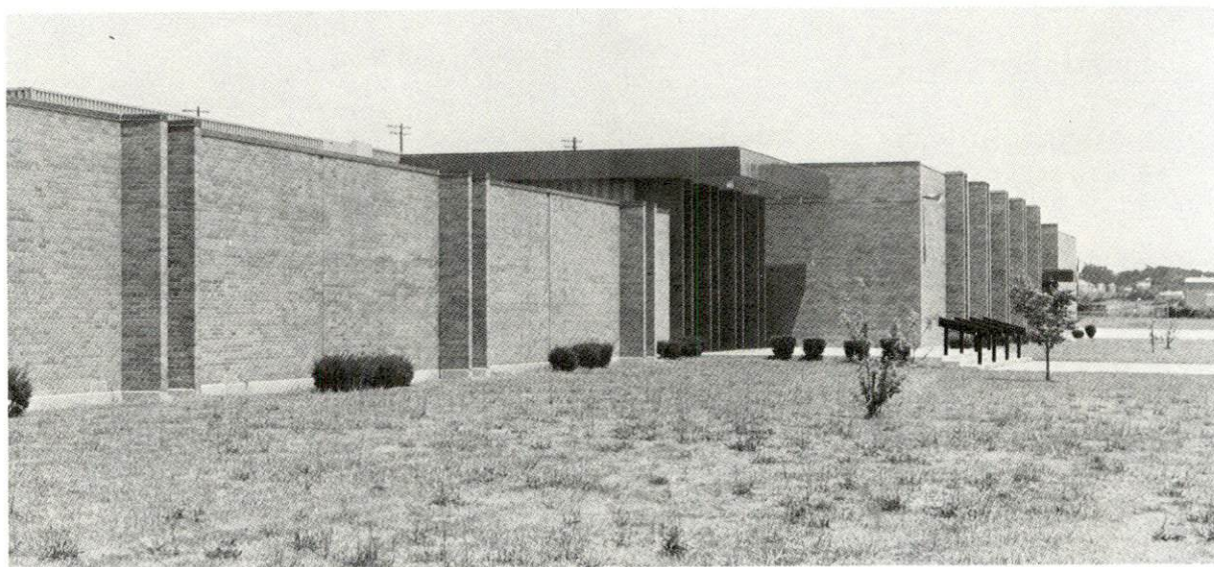
	<u>Bardstown</u>	<u>Nelson County</u>
Total Enrollment (1974)	1,608	4,078
Elementary	685	1,790
Junior High	390	1,280
High School	533	1,008
Student-Teacher Ratio	19 - 1	22 - 1
Elementary	19 - 1	22 - 1
Junior High	28 - 1	23 - 1
High School	16 - 1	21 - 1
Accreditation	Southern Association of Colleges and Schools	Southern Association of Colleges and Schools
Percent High School Graduates to College	28.3	23.3
Expenditures Per Pupil (1973-74)	\$772.13	\$592.53
Bonded Indebtedness, June 30, 1974	\$1,593,000	\$2,426,000

Nonpublic Schools

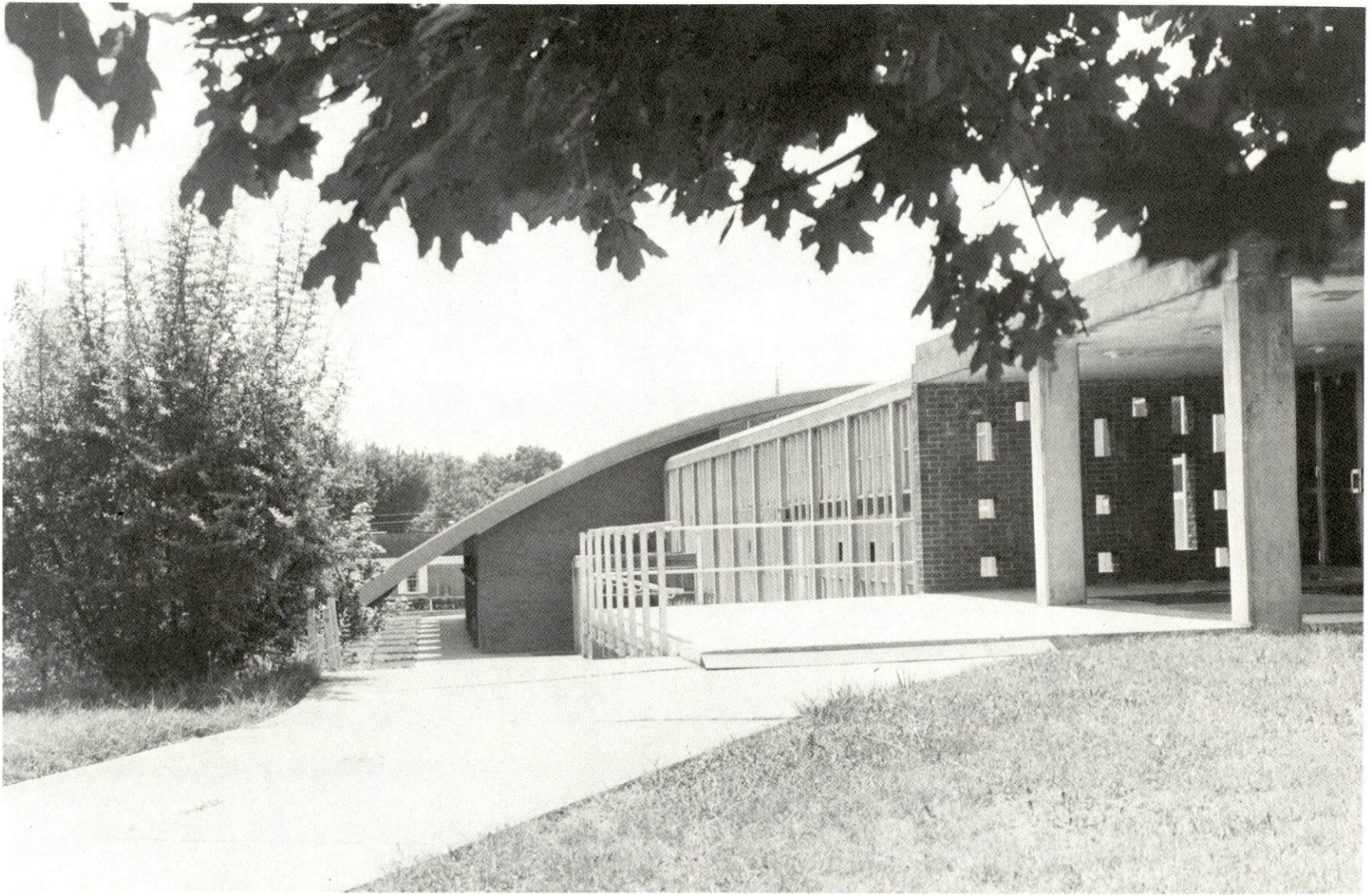
Total Enrollment	1,129
Elementary	822
High School	307
Student-Teacher Ratio	22 - 1
Elementary	24 - 1
High School	17 - 1



BETHLEHEM HIGH SCHOOL



NELSON COUNTY SENIOR HIGH SCHOOL



BARDSTOWN HIGH SCHOOL

Vocational Schools

	<u>Nearest State School</u>	<u>Nearest Area Education Center</u>
	Elizabethtown State Vocational-Technical School	Nelson County Area Vocational Education Center
Location	Elizabethtown	Bardstown
Miles Distant	26 miles from Bardstown	
Curriculum	Appliance Repair Auto Mechanics Carpentry Drafting Electricity Welding Commercial Foods Health Careers Machine Shop Industrial Machine Repair Radio and TV Repair Commercial Heating and Refrigeration	Health Careers Air Conditioning and Refrigeration Auto Mechanics Carpentry Drafting Electricity Welding

Arrangements can be made to provide training in the specific production skills required by an industrial plant. Instruction may be conducted either in the vocational school or in the industrial plant, depending upon the desired arrangement and the availability of special equipment.

Colleges and Universities

<u>Name</u>	<u>Location</u>	<u>Area - Within 50 miles</u>	
		<u>Enrollment (Fall, 1974)</u>	<u>Highest Degree Conferred</u>
University of Louisville	Louisville	14,343	Ph. D., M. D., D. M. D., J. D.
Spalding College	Louisville	1,130	Masters
Bellarmino College	Louisville	1,353	Baccalaureate
Jefferson Community College	Louisville	4,137	Associate
Southwest Campus	Louisville	501	Associate
Centre College	Danville	796	Baccalaureate
Elizabethtown Community College	Elizabethtown	978	Associate
St. Catharine Junior College	St. Catharine	125	Associate
Campbellsville College	Campbellsville	678	Baccalaureate

HEALTH

Hospitals

<u>General Hospital</u>	<u>Location</u>	<u>Beds</u>
Flaget Memorial Hospital	Bardstown	52

General hospital facilities - X-ray equipment, clinical laboratory, operating room, emergency room, maternity ward, nursery, delivery room, cardiac intensive care room, pharmacy, surgical recovery room

Medical staff - 9 doctors, 12 registered nurses, 4 registered nurses (part time), 18 nurses aides, 2 lab technologists, 2 registered X-ray technicians

Other - Comprehensive Care Center, Bardstown

Ambulance Service

Ambulance service is provided by the local funeral homes.

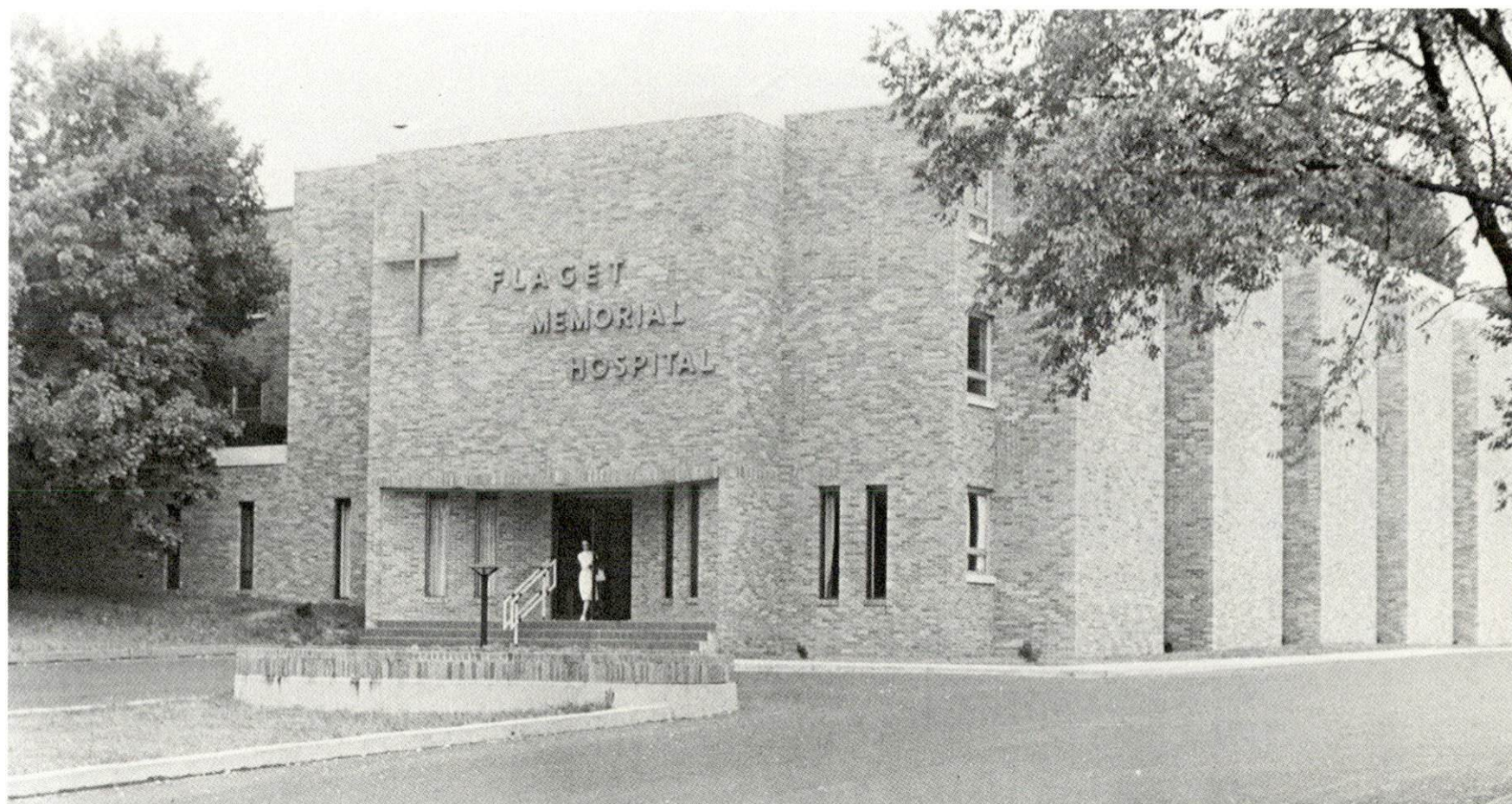
Nursing Homes

	<u>Number</u>	<u>Beds</u>
Personal care homes	1	96

Public Health

Facility - Nelson County Health Department

Staff - 2 registered nurses (full time), 2 registered nurses (part time), 1 health environmentalist, 1 community health worker, 1 clerk typist (full time), 2 clerk typists (part time)



FLAGET MEMORIAL HOSPITAL

OTHER LOCAL FACILITIES

Communications

	<u>Bardstown</u>	<u>Bloomfield</u>	<u>New Haven</u>
Telephone -	South Central Bell	South Central Bell	South Central Bell
Services -	Standard	Standard	Standard
Telegraph -	Western Union	Nearest service at Bardstown	Nearest service at Bardstown
Postal-U. S. Post Office			
Class -	First	Second	Third
Mail received -	4 times daily	2 times daily	Once daily
Mail dispatched -	2 times daily	2 times daily	Once daily
Newspapers -	The Kentucky Standard		
Weekly and circulation-	8,000		
Other papers received from -	Louisville and Lexington, Kentucky	Bardstown, Louisville, and Lexington, Kentucky	Bardstown and Louisville, Kentucky
Radio -	WBRT		
Stations received from-	Elizabethtown, Louisville, and Lexington, Kentucky; Cincinnati, Ohio; Nashville, Tennessee	Elizabethtown, Shelbyville, Louisville, and Lexington, Kentucky; Cincinnati, Ohio; Nashville, Tennessee	Bardstown and Louisville, Kentucky
Television -			
Cable service -	Yes	No	No
Reception from -	Louisville, Lexington, and Bowling Green, Kentucky	Louisville and Lexington, Kentucky	Louisville, Kentucky
Kentucky Educational Television -	Bardstown, Bloomfield, New Haven - Elizabethtown transmitter, Channel 23; Louisville transmitter, Channel 15		

Library Services

Public library - Nelson County Public Library

Branch library locations - Bloomfield, Boston, Chaplin, New Haven,
Coxs Creek

Size collection - 35,000 volumes

Circulation, 1973-74 - 103,600 volumes

Services - Bookmobile, periodicals, story hour, films, projectors,
color TV, framed paintings, records, inter-library loan service

Day Care Center (Bardstown)

Hours of operation - 6:30 a.m. to 6:00 p.m., Monday through Friday

Age - 3 months to 6 years

Fully supervised program

Staff - 7 full-time and 2 part-time employees

Religious Institutions

	<u>Bardstown</u>	<u>Bloomfield</u>	<u>New Haven</u>
Number of churches -	11	7	3
Denominations	AME Zion	Baptist	Baptist
	Baptist	Methodist	Catholic
	Roman Catholic	Christian	Methodist
	Christian	Presbyterian	
	Church of Christ	Church of God	
	Methodist	Church of God of	
	Presbyterian	Prophecy	
	Jehovah's Witnesses		
Nearest Synagogues -	Louisville, Kentucky, 33 miles north of Bardstown		
Congregations	Adath Israel and Brith Shalom - reform; Anshei Sfard and Keneseth Israel - orthodox; Adath Jeshurun - conservative		

Financial Institutions

<u>Banks</u>	<u>Assets</u>	<u>Deposits</u>	<u>Statement Date</u>
<u>Bardstown</u>			
Farmers Bank & Trust Company	\$17,890,174.94	\$14,915,659.98	6/30/75
Wilson & Muir Bankers	17,065,998.02	14,332,472.26	6/30/75
<u>Bloomfield</u>			
Muir, Wilson & Muir	9,963,000.00	8,682,000.00	6/30/75
<u>New Haven</u>			
Bank of New Haven	5,461,287.62	4,785,281.02	6/30/75

Savings and Loan Associations

	<u>Assets</u>	<u>Shared Accounts</u>	<u>Statement Date</u>
Nelson County Federal Savings & Loan Association, Inc. (Bardstown)	8,137,096.21	7,304,279.05	12/31/74

Hotels and Motels

	<u>Bardstown</u>
Total number	7
Total units	249

Clubs and Organizations

Bardstown

Business and Civic - Bardstown - Nelson County Chamber of Commerce, Jaycees, Kiwanis, Optimist, Lions, Bardstown Industrial Development Corporation

Fraternal - Masons, Knights of Columbus, AMVETS, American Legion

Women's - Eastern Star, Bardstown Garden Club, DAR, Homemakers, Woman's Club

Youth - FFA, Peanuts League, Minor League, Little League, Babe Ruth League, Boy Scouts, Girl Scouts, Brownies, Cub Scouts, 4-H, Junior Music Club, Key Club, Track and Field Program, Powder Puff Football, Junior Achievement

Other - Nelson County Historical Society, Stephen Foster Music Club, Parents Without Partners, Welcome Wagon, Senior Citizens, DECA

Bloomfield

Business and Civic - Lions, Bloomfield-East Nelson County Industrial Development Board

Fraternal - Masons, American Legion

Women's - Garden Club, Eastern Star, Homemakers

Youth - Boy Scouts, Girl Scouts, Cub Scouts

New Haven

Business and Civic - Optimist

Women's - Homemakers

Youth - 4-H, Boy Scouts

Other - Senior Citizens

RECREATION

Local

	<u>Bardstown</u>	<u>Bloomfield</u>	<u>New Haven</u>
Public Recreation Facilities			
Supervised program -	Yes	During summer months	Yes
Parks -	3	*	1
Playgrounds -	5	2	2
Swimming pools -	2 (1 presently being used)		1
Golf course -	1		
Tennis courts -	3		1
Baseball diamonds -	5	2	2
Football fields -	4	1	
Other -	Billiards, ping pong, tour-mobile, basketball courts		Outdoor basketball court; picnic area; playground equipment
Private Recreation Facilities			
Tennis court -			1
Golf course -	1		
Swimming pool -	1		
Movie theater -	1 (drive-in)		
Bowling facility -	1 (9 lanes)		
Other -	Skating rink Lighted croquet court		Gymnasium

Tourist Attractions

Trappist Monastery of Our Lady of Gethsemane, My Old Kentucky Home State Park, Saint Joseph's Proto-Cathedral, The Barton Museum of Whiskey History, Old Talbott Tavern, Spalding Hall Museum, Wickland-home of three governors, Pioneer Cemetery, John Fitch Monument

Cultural Events

"The Stephen Foster Story" - outdoor musical drama

*A city park is presently under construction. Facilities will include a baseball diamond, tennis and basketball courts, picnic area, and fishing reservoir.



MY OLD KENTUCKY HOME

Area (Within 35 miles)

Abraham Lincoln Birthplace National Historic Site

Bernheim Forest

Lincoln Boyhood Home

Lincoln Homestead State Shrine

Louisville offers numerous cultural and sporting events.

Sympson Lake

AGRICULTURE - NATURAL RESOURCES - CLIMATE

Agriculture*

	<u>Nelson County</u>	<u>Labor Market Area</u>
Total land area (acres)	279,616	1,796,288
Percent of area in farm land	83.2	76.8
Number of farms	1,548	10,672
Average size of farms (acres)	150.3	129.2
1969 value of all farm products	\$13,222,066	\$ 70,409,402
Value per farm	8,541	6,598
Total crop sales	3,542,854	23,446,527
Total livestock & livestock products	9,654,639	43,676,863
1973 agricultural production included:		
Burley tobacco (lbs.) (est.)	3,151,000	22,343,000
Corn for grain (bu.) (est.)	1,323,000	7,405,700
Cattle and calves (number)	57,700	348,100
Hogs and pigs (number) (preliminary)	31,000	113,500
Milk production, 1972 (lbs.)	77,430,000	407,330,000

Natural Resources

Principal mineral resources	Limestone
Other mineral resources	Local residual clays
Acres of commercial forest land	116,300
Most abundant tree species	White oak, red oak, hickory, yellow poplar, beech, yellow pine and hard maple

*U. S. Department of Commerce, Bureau of the Census, Census of Agriculture, 1969. U. S. Department of Agriculture and Kentucky Department of Agriculture, Kentucky Agricultural Statistics, 1973.

Climate*

Nelson County

Temperature

Annual mean (30-year record)	55.6 degrees
Average annual 1974	56.3 degrees
Record highest, July, 1966 (14-year record)	101.0 degrees
Record lowest, January, 1963 (14-year record)	- 20.0 degrees
Normal heating degree days (30-year record)	4,645
(Heating degree day totals are the sums of negative departures of average daily temperatures from 65 degrees F.)	

Precipitation

Mean annual total (30-year record)	43.11 inches
Mean annual snowfall (27-year record)	17.40 inches
Total precipitation 1974	42.93 inches
Mean number days precipitation (.01 inch or more) (27-year record)	124
Average number days thunderstorms (27-year record)	45

Prevailing winds (15-year record)	South
-----------------------------------	-------

*U. S. Department of Commerce, Environmental Science Services Administration, Climatological Data, 1974. Station of record: Louisville, Kentucky.

HISTORY

Nelson County was formed in 1784 by the Virginia General Assembly, the fourth county established in the district of Kentucky. The county was named in honor of Thomas Nelson, Revolutionary War general, signer of the Declaration of Independence, and Governor of Virginia. The county covers 437 square miles. Chaplin Creek and Beech Fork of Salt River flow along a greater part of its eastern and southeastern boundaries, and Rolling Fork of Salt River forms its southwestern line.

Bardstown, county seat of Nelson County, is rich in history and tradition. In its early years, Bardstown rivaled Louisville and Lexington as a center for social and educational facilities. In fact, Bardstown held a position in national affairs of far greater proportion than its size of population. A great emphasis was placed on education. Salem Academy was established in 1778 by James Priestley. The Bardstown Grammar School was started in 1782. Nazareth Academy for girls was founded in the early 1800's and St. Joseph College for boys was launched in 1819. Both attained a high reputation in educational circles, and today St. Joseph's Protophedral houses several paintings accredited to such masters as Murillo, Rubens, Jacob Hart, Van Bree, Van Byck, and the Van Eyck Brothers.

Federal Hill, the home of John Rowan, Jr., ranks among the finest of old mansions. It is one of the best preserved homes in the country. And due to its setting and the way of life around the mid 1800's, it became the inspiration of a ballad set to music in 1852 by Stephen Collins Foster, a cousin of the Rowan family, entitled "My Old Kentucky Home." This three-story brick mansion, built by Judge Rowan in 1795, is renowned as the gracious image of the South's gentle, leisurely way of life before the Civil War. Visitors to the fine old home can step for a moment into another world, charming and mellow, in the golden age of belles and gallantry.

Wickland, a perfect example of Georgian architecture, was built in 1817. It is the "Home of Three Governors," Charles A. Wickliffe and J. W. C. Beckham of Kentucky and Robert Charles Wickliffe of Louisiana. Wickland rivals "My Old Kentucky Home" in historical importance, and certainly equals it from the standpoint of natural beauty.

Bardstown's courthouse square is historic in itself. It is here that we find the John Fitch Monument, a memorial to the inventor of the steamboat, who died at Bardstown in 1798. The monument was built in 1927 from appropriations made by the U. S. Congress. The Old Slave Block, where negro slaves were bought and sold prior to the Civil War is located on the courthouse lawn. Erected in 1779, the Old Talbott Inn, originally a stagecoach stop, is said to be the oldest inn in continuous operation west of the Alleghenies.

In 1850, population in Nelson County was reported at 14,788. By 1900, the population had increased to 16,587. Population increased slightly to 16,830 in 1910 and then decreased to 16,137 by 1920. At that time, population began increasing, reaching 18,004 in 1940, 22,168 in 1960, and 23,477 in 1970.

Employment in Nelson County is well diversified. In 1973 total employment in the county averaged 8,020; with 1,220 employed in agriculture; 1,700 in manufacturing; 1,508 in trade and services; and 940 in government. Largest of the county's firms are Bardstown Manufacturers, Inc.; Barton Brands, Inc.; Burroughs Corporation; Heaven Hill Distilleries, Inc.; and Lily-Tulip Division of Owens-Illinois, Inc.