

1981

Industrial Resources: Pike County

Kentucky Library Research Collections
Western Kentucky University, spcol@wku.edu

Follow this and additional works at: https://digitalcommons.wku.edu/pike_cty

 Part of the [Business Administration, Management, and Operations Commons](#), [Growth and Development Commons](#), and the [Infrastructure Commons](#)

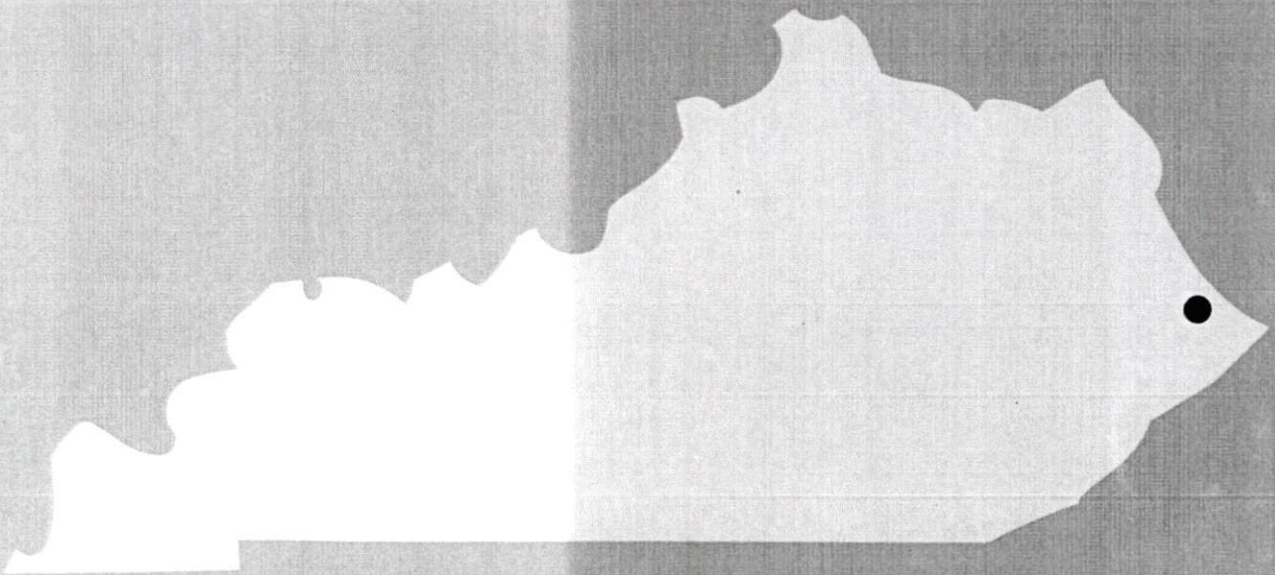
Recommended Citation

Kentucky Library Research Collections, "Industrial Resources: Pike County" (1981). *Pike County*. Paper 8.
https://digitalcommons.wku.edu/pike_cty/8

This Report is brought to you for free and open access by TopSCHOLAR®. It has been accepted for inclusion in Pike County by an authorized administrator of TopSCHOLAR®. For more information, please contact topscholar@wku.edu.

Pike County

A comprehensive
report on
Pike County, Ky.



KENTUCKY & CO.

The state that's run like a business.

A COMPREHENSIVE REPORT ON
PIKE COUNTY, KENTUCKY

Prepared by
The Kentucky Department of Commerce
Division of Research and Planning
in cooperation with
The Pike County Chamber of Commerce

1981

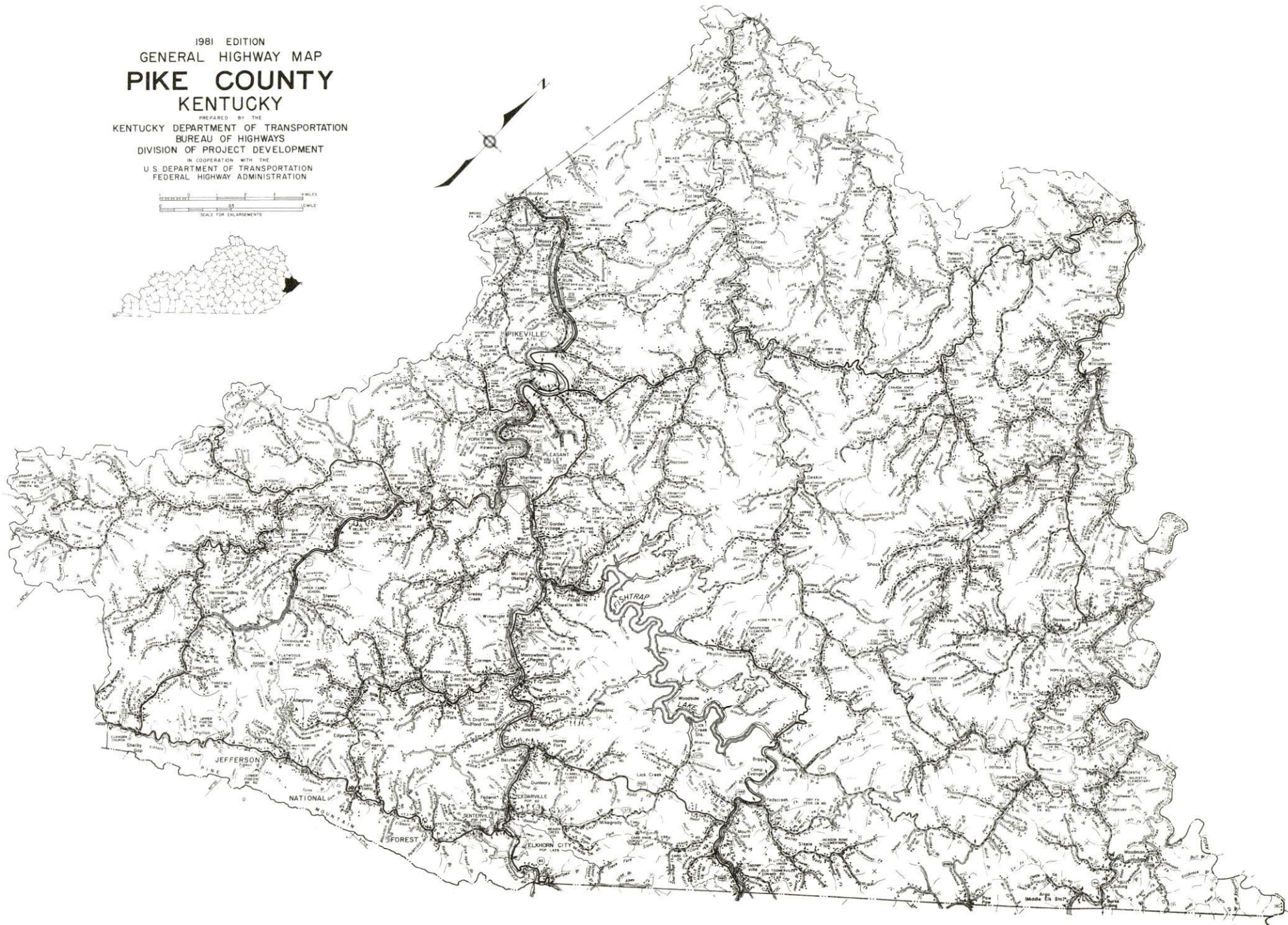
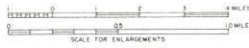
TABLE OF CONTENTS

<u>Chapter</u>	<u>Page</u>
INDUSTRIAL SITES	i
PIKE COUNTY, KENTUCKY - A RESOURCE PROFILE	1
THE LABOR MARKET AREA	3
Population	3
Labor Force Characteristics of Residents, 1980	3
Estimated Male Labor Supply	4
Estimated Female Labor Supply	4
Pike County Manufacturing Firms, Their Products and Employment	5
Labor Organizations in Manufacturing Firms	6
Industrial Services	6
Average Weekly Wages by Industry, by Place of Work, 1980	7
Per Capita Personal Income	9
TRANSPORTATION	10
Rail	10
Highways	10
Truck Service	11
Air	13
Bus	14
Taxi	14
Rental Services	14
Water	14
POWER AND FUEL	15
Electricity	15
Natural Gas	15
Other Fuels	15
WATER AND SEWERAGE	17
Public Water Supply	17
Sewerage	21
CLIMATE	22

<u>Chapter</u>	<u>Page</u>
LOCAL GOVERNMENT	23
City	23
County	23
Assessed Value of Property	23
Property Taxes	24
Combined State and Local Rates Per \$100 Valuation, 1980	25
Utilities Gross Receipts Tax for Schools	25
Planning and Zoning	26
Safety	26
Police	26
Fire	26
Rescue Service	27
Refuse Collection and Disposal	27
EDUCATION	28
Public Schools	28
Nonpublic Schools	28
Area Colleges and Universities	29
Vocational Schools	31
HEALTH	33
Local Medical Personnel	33
Hospitals	33
Other Medical Facilities	34
Ambulance Service	34
Public Health	34
OTHER LOCAL FACILITIES	35
Communications	35
Library Services	36
Religious Institutions	36
Financial Institutions	37
Hotels and Motels	37
Clubs and Organizations	38
RECREATION	39

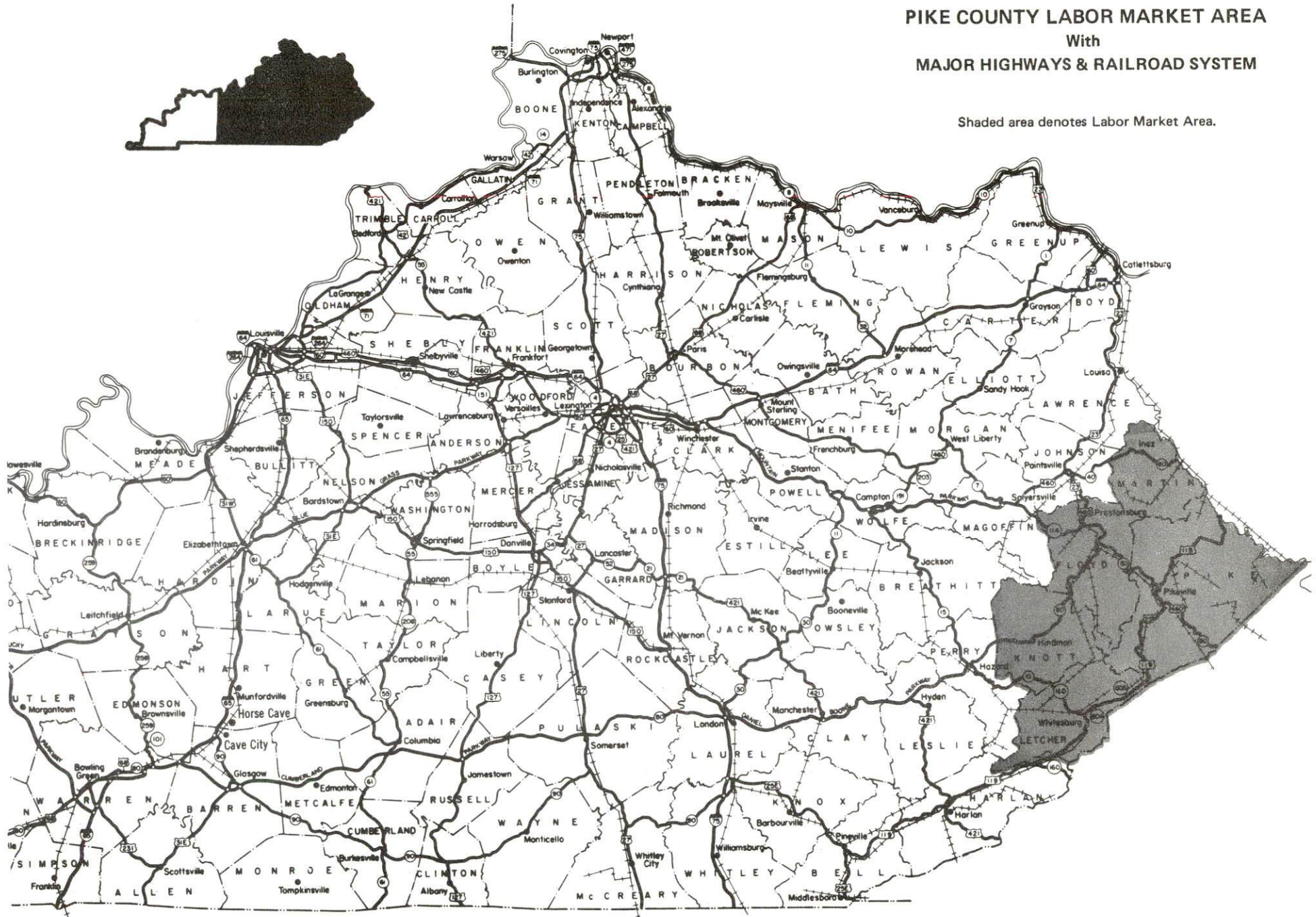
1981 EDITION
GENERAL HIGHWAY MAP
PIKE COUNTY
KENTUCKY

PREPARED BY THE
KENTUCKY DEPARTMENT OF TRANSPORTATION
BUREAU OF HIGHWAYS
DIVISION OF PROJECT DEVELOPMENT
IN COOPERATION WITH THE
U.S. DEPARTMENT OF TRANSPORTATION
FEDERAL HIGHWAY ADMINISTRATION



PIKE COUNTY LABOR MARKET AREA With MAJOR HIGHWAYS & RAILROAD SYSTEM

Shaded area denotes Labor Market Area.



PIKE COUNTY, KENTUCKY - A RESOURCE PROFILE

Pike County is located in the Big Sandy River Valley in extreme southeastern Kentucky. Pike County, covering an area of 782 square miles, is the largest county in the state. It is also one of the largest underground bituminous coal-producing counties in the United States. Pike County, nestled in the Cumberland Range of the Appalachian Mountains, is within 240 miles of Louisville, Kentucky; Knoxville, Tennessee, and Cincinnati, Ohio. In 1980 the county population was 81,123.

Pikeville, the county seat, was chosen in 1968 as one of the nation's first group of model cities. In 1976, Pikeville was chosen as an "All Kentucky City" for the fourth time. The 1980 city population was 4,756.

Elkhorn City is located 23 miles southeast of Pikeville on the Kentucky-Virginia border. The 1980 population was 1,446.

Economic Framework

In 1980, total employment in Pike County averaged 27,607 with 27,570 persons employed in nonagricultural jobs. Appropriately for a county located over one of the greatest coal fields in the nation, mining and quarrying led in number of persons employed with an average of 9,327 workers. Trade and services provided 6,174 jobs; government 2,620; and 256 in manufacturing. Major manufactured products include soft drinks and concrete products.

Per capita income in Pike County in 1979 was \$7,337 or \$285 above the Kentucky average. Between 1975 and 1979, per capita income increased 40 percent.

The labor market area includes Pike County, the four adjacent Kentucky counties plus Buchanan County and Dickenson County, Virginia, and Mingo County, West Virginia. In 1980, nonagricultural employment in the Kentucky portion of the labor market area averaged 58,198. Area employment included 19,034 jobs in mining and quarrying, 12,536 in trade and services, 5,882 in government and 970 in manufacturing.

Resources for Growth

1. There is a current estimated labor supply of 15,271 men and 14,686 women available for industrial jobs in the Kentucky portion of the labor market area. In addition, 7,461 young men and 6,842 young women will become 18 years of age before 1986. The current and future labor supplies will be supplemented by men and women in the bordering Virginia and West Virginia counties.

2. Three railroads serve Pike County - the Chessie System, the Norfolk and Western, and the Clinchfield. Pikeville and Elkhorn City are each served by two trucking companies.

3. Electrical power is provided by the Kentucky Power Company. Natural gas is provided in Pikeville by the Pikeville Public Works Department with the Columbia Gas Transmission Corporation as the source of supply. There are two distributors of propane and four distributors of distillate fuel oil located in Pike County.

4. Education is an important growth asset for Pike County. The Pikeville Independent School System is accredited by the Southern Association of Colleges and Schools. The Pike County Area Vocational Education Center offers 13 different courses.

Pikeville College confers bachelor degrees in arts, science, music education and business administration. Associate degrees are offered in accounting, secretarial science, early childhood education, mining technology and industrial engineering technology. The fall 1980 enrollment was 616.

The Pikeville Cut Through Project

The "Pikeville Cut Through" is a \$60 million project which will relocate the river, railroad and highways that form a loop around the city. The goal is to create more than 200 acres of additional land for commercial and residential development. The project is scheduled to enter the final phase during 1982.

THE LABOR MARKET AREA

The Labor Market area includes Pike County and the adjoining Kentucky counties of Floyd, Knott, Letcher and Martin.

Area	POPULATION		Percent Nonwhite
	1980	1970	
Pikeville	4,756	5,205	3.8
Elkhorn City	1,446	1,081	0.6
Labor Market Area	192,439	144,188	N/A
Pike County	81,123	61,059	0.6
Floyd County	48,764	35,889	0.6
Knott County	17,940	14,698	0.8
Letcher County	30,687	23,165	1.2
Martin County	13,925	9,377	0.2

Note: The 1980 counts of population by race are provisional.

Source: U.S. Department of Commerce, Bureau of the Census, 1980 Census of Population and Housing, March 1981.

LABOR FORCE CHARACTERISTICS OF RESIDENTS, 1980

	Pike County	Labor Market Area
Civilian Labor Force	29,506	63,722
Employment	27,607	58,375
Agricultural	37	177
Nonagricultural	27,570	58,198
Unemployment	1,899	5,347
Rate of Unemployment (%)	6.4	8.4

Source: Kentucky Department for Human Resources, Kentucky Labor Force Estimates, Annual Averages, 1980.

ESTIMATED MALE LABOR SUPPLY
PIKE COUNTY LABOR MARKET AREA

Area	Current			Future	
	Total	Not in Labor Force	Unemployed	Under- employed Reaching 18 years of age before 1986	
Labor Market Area*	15,271	8,549	4,376	2,346	7,461
Pike	3,713	1,170	1,612	931	3,093
Floyd	4,618	2,731	1,142	745	1,823
Knott	2,739	1,983	482	274	850
Letcher	3,726	2,665	879	182	1,142
Martin	475	0	261	214	553

*Additional workers may be drawn from other nearby counties.

Note: Unemployed - persons unemployed and actively seeking work;
Underemployed - persons employed but working only 14 to 26 weeks per year; Not in Labor Force - represents the number of persons who would enter the labor force if suitable employment were available (based on the assumption that persons in Kentucky would like to participate in the labor force in the same proportion that they do nationally).

Sources: Kentucky Department for Human Resources, Kentucky Labor Supply Estimates by County, 1980. Kentucky Department of Commerce, Future Labor Supply before 1986.

ESTIMATED FEMALE LABOR SUPPLY
PIKE COUNTY LABOR MARKET AREA

Area	Current			Future	
	Total	Not in Labor Force	Unemployed	Under- employed Reaching 18 years of age before 1986	
Labor Market Area*	14,686	11,551	971	2,164	6,842
Pike	4,738	3,594	287	857	2,939
Floyd	4,335	3,339	314	682	1,567
Knott	2,066	1,752	129	185	730
Letcher	3,263	2,866	169	228	1,092
Martin	284	0	72	212	514

*Additional workers may be drawn from other nearby counties.

Note: Unemployed - persons unemployed and actively seeking work;
Underemployed - persons employed but working only 14 to 26 weeks per year; Not in Labor Force - represents the number of persons who would enter the labor force if suitable employment were available (based on the assumption that persons in Kentucky would like to participate in the labor force in the same proportion that they do nationally).

Sources: Kentucky Department for Human Resources, Kentucky Labor Supply Estimates by County, 1980. Kentucky Department of Commerce, Future Labor Supply before 1986.

PIKE COUNTY MANUFACTURING FIRMS,
THEIR PRODUCTS AND EMPLOYMENT

Firm (Establishment date)	Product	Employment			Labor Unions
		Total	Male	Female	
<u>Pikeville</u>					
Adams Construction Corporation (1955)	Concrete ready mix, bituminous concrete	36	30	6	Steelworkers*
Appalachian News-Express (1920)	Newspaper	13	6	7	
Big-Four Concrete, Inc. (1980)	Concrete, ready mixed	8	7	1	
Big Sandy Electric & Supply Company (1944)	Coils for electric motors, fabricated metal products, fabricated conveyor belt components	13	10	3	Steelworkers*
East Kentucky Beverage Company, Inc. (1931)	Soft drinks	118	110	8	Steelworkers*
Hayes Metal Company (1975)	Metal fabrication, machine tools, material handling equipment	37	35	2	
Keene Garage Welding Shop (1945)	Machine shop welding	4	4	0	
Medusa Aggregates Company (1974)	Asphalt, crushed limestone	18	15	3	Steelworkers*
Pikeville Ready Mix (1969)	Ready mixed concrete	23	21	2	
<u>Robinson Creek</u>					
Colley Block Company, Inc. (1958)	Concrete block	31	30	1	
Precision Machinery and Tool Company (1975)	Machinery, prototype pilot-run parts, screws	3	2	1	

*See Labor Organizations below.

Source: Kentucky Department of Commerce, Division of Research and Planning.

LABOR ORGANIZATIONS IN MANUFACTURING FIRMS

Union

Representing workers at:

United Steelworkers of
America, AFL-CIO

Adams Construction Corporation;
East Kentucky Beverage Company, Inc.;
Big Sandy Electric & Supply Company;
Medusa Aggregates Company

INDUSTRIAL SERVICES

<u>Type of Services</u>	<u>Location</u>	<u>Mileage from Pikeville</u>
Tool & Die, Machine & Pattern Shops	Paintsville, Kentucky	40
Metal Service Centers	Pikeville, Kentucky	-
Heat Treating	Richmond, Kentucky	149
Metal Finishers	Huntington, West Virginia	105
Electric Motor Repair	Whitesburg, Kentucky	49

Source: Kentucky Directory of Selected Industrial Services, 1980.
Kentucky Department of Commerce, Division of Research and Planning.

AVERAGE WEEKLY WAGES BY INDUSTRY,
BY PLACE OF WORK, 1980

	<u>Pike County</u>	<u>Floyd County</u>	<u>Knott County</u>
All Industries	\$319.95	\$283.67	\$266.20
Mining & Quarrying	425.78	395.68	353.70
Contract Construction	348.68	330.73	266.14
Manufacturing	335.40	295.73	163.54
Transportation, Communications & Public Utilities	312.47	328.11	258.89
Wholesale & Retail Trade	199.61	197.15	169.85
Finance, Insurance & Real Estate	305.82	240.57	336.16
Services	206.84	210.85	180.51
State/Local Government	215.54	214.74	206.65
Other	163.47	63.42	*
	<u>Letcher County</u>	<u>Martin County</u>	
All Industries	\$296.21	\$482.94	
Mining & Quarrying	426.02	580.54	
Contract Construction	267.04	310.07	
Manufacturing	247.62	*	
Transportation Communications & Public Utilities	244.50	274.50	
Wholesale & Retail Trade	164.74	164.54	
Finance, Insurance & Real Estate	195.03	248.93	
Services	198.50	325.49	
State/Local Government	204.89	176.00	
Other	*	0	

*Not disclosed.

Note: Excludes domestic workers, railway workers, certain nonprofit corporations, majority of federal government workers, and self-employed workers.

Source: Kentucky Department for Human Resources, Average Weekly Wages of Workers Covered by Kentucky Unemployment Insurance Law, 1980.

PER CAPITA PERSONAL INCOME

<u>Area</u>	<u>1979</u>	<u>1975</u>	<u>Percent Change</u>
Pike County	\$7,337	\$5,259	39.5
Labor Market Area Range	\$4,830 - 8,085	\$3,051 - 5,259	N/A
Kentucky	7,052	4,882	44.4
U.S.	8,637	5,861	47.4

Source: U.S. Department of Commerce, Bureau of Economic Analysis,
 April 1981. U.S. Department of Commerce, Bureau of Economic Analysis,
 August 1981.

TRANSPORTATION

Rail

Line serving Pikeville - The Chessie System

Services - Freight service as needed; 8 through freights daily, 4 eastbound and 4 westbound; nearest piggyback facilities - Huntington, West Virginia, 107 miles north

Line serving Elkhorn City - Clinchfield Railroad Company

Services - Main line, 1 northbound and 1 southbound freights make daily stops, 2 northbound and 2 southbound through freights daily, switching facilities, team track space for 10 cars, siding space for 300 cars. Nearest piggyback facilities are in Kingsport, Tennessee, 113 miles south.

The Norfolk and Western Railway Company provides service to several coal mining operations in Pike County.

For details on routing, schedules, rates, and services, contact:

General Manager
Clinchfield Railroad Company
229 Nolichucky Avenue
Erwin, Tennessee 37650
(615) 743-7091

and/or

The Chessie System
Real Estate and Industrial Development Department
808 Dixie Terminal Building
Cincinnati, Ohio 45202
(513) 369-5258

Highways

Pikeville is served by U.S. highways 23, 460, and 119. The Mountain Parkway, a multi-lane toll-road, is only 49 miles northwest of Pikeville via four-lane U.S. 23-460 and Kentucky 114. Highway access between Pikeville and Elkhorn City is provided by U.S. 23, 460 and Kentucky 80.

The U.S. 23 Pikeville by-pass is currently under construction. The by-pass is routed west of the city and is expected to be completed during 1982.

Pikeville is connected with Williamson, West Virginia, by U.S. 119. Construction is currently under way to widen the road to four lanes.

Truck Service

Company

Home Office

Overnite Transportation
Company*

1000 Semmes Avenue
P.O. Box 1216
Richmond, Virginia 23209

Smith's Transfer Corporation
of Virginia**

P.O. Box 1000
Staunton, Virginia 24401

*Interstate and intrastate.

**Interstate only.

Other Freight ServicesNearest Shipping Center

Purolator Courier Corporation*
 United Parcel Service**

Huntington, West Virginia
 Prestonsburg, Kentucky***

HIGHWAY MILES AND TRUCK TRANSIT TIME IN DAYS FROM
 PIKEVILLE, KENTUCKY, TO SELECTED MARKET CENTERS

City	Highway Miles	Delivery		City	Highway Miles	Delivery	
		Time TL				Time TL	
Atlanta, Ga.	432	1		Los Angeles, Ca.	2,327	6-8	
Baltimore, Md.	543	1-2		Louisville, Ky.	219	1	
Birmingham, Ala.	493	1-2		Nashville, Tenn.	346	1	
Chicago, Ill.	499	1-2		New Orleans, La.	835	2	
Cincinnati, Ohio	225	1		New York, N.Y.	715	3	
Cleveland, Ohio	405	1		Pittsburg, Pa.	375	1	
Detroit, Mich.	484	3		St. Louis, Mo.	482	1-2	
Knoxville, Tenn.	239	1					

Note: Mileage computations are via the best interstate or primary highways, not necessarily the most direct route of travel.

Sources: Rand McNally Road Atlas, 1979. Official Kentucky Mileage Map, 1979. Delivery time - Overnite Transportation Company, 1100 Commerce Road, Richmond, Virginia 23209.

*For regular scheduled pickups or for occasional pickups, arrangements must be made with the Lexington, Kentucky, office of Purolator Courier Corporation.

**For regular scheduled pickups or for occasional pickups, arrangements must be made with the Louisville office of United Parcel Service.

***Plans for a United Parcel Service shipping center in Pikeville are currently under negotiation.

Air

Local*

Pikeville Airport
Location: 2 miles northwest of Pikeville
Runways: 1 paved
Length: 2,750 feet
Traffic
Control: Wind sock
Lighting: None
Services: Tie-down facilities, flight instruction, charter

Air Freight
Service: Chartered air freight services must be arranged.

Nearest Scheduled Commercial Airline Service

Tri-State Airport (Walker-Long Field)
Location: 9 miles southwest of Huntington, West Virginia; 112
miles northeast of Pikeville
Runways: 2 paved
Length: 6,509 feet and 3,007 feet
Traffic
Control: Tower
Lighting: Beacon, runway
Services: Piedmont and USAir airlines; 100 LL and jet fuel; major
repairs, major Avionics repairs; hangars and tie-downs;
charter service; flight instructions; plane rental;
U.S. Customs; taxi; limousine; car rentals; weather
information; restaurant

Air Freight
Service: Air carriers accept air freight on a space available
basis.

*A new airport in Pike County is presently under construction. A 3,600-foot runway is scheduled for completion by the end of 1981. Tentative future plans include two runways which will be 5,500 feet and 6,000 feet in length.

Bus - Trailways Bus Lines serves both Pikeville and Elkhorn City. Pikeville is also served by Southern Greyhound Bus Lines.

Taxi - Individual operators serve Pikeville with 12-hour-per-day, radio-dispatched service

Rental Services - Car, truck and trailer rentals are available in Pikeville.

Water

The nearest navigable river is the Big Sandy River. Pikeville is approximately 85 miles from the point on the Big Sandy River where a 6-foot navigation channel begins. The confluence of the Big Sandy and Ohio rivers is approximately 100 miles north of Pikeville.

POWER AND FUEL

Electricity

Company serving Pike County - Kentucky Power Company
Source of power - Kentucky Power Company
Total generating capacity - 1,060,000 KW
For industrial rates contact:

Kentucky Power Company
1701 Central Avenue
P.O. Box 1428
Ashland, Kentucky 41101
(606) 329-2220

Natural Gas

Company serving Pikeville - Pikeville Public Works Department
Source of supply - Columbia Gas Transmission Corporation and local wells
Size of transmission mains - 2, 4 and 6 inches (supplier);
2, 4 and 6 inches (distributor)
Distribution mains - 2, 4 and 6 inches
Distribution pressure - 20 to 35 psi
Btu content - 1,174 per cubic foot;
Specific gravity - .60
For rates and supplies contact:

Pikeville Public Works Department
City Hall
304 Auxier Avenue
Pikeville, Kentucky 41501
(606) 437-6700

Elkhorn City is served by a privately-owned local gas company, Lyda Gas Company, Inc. The source of supply is one private gas well and the supply is limited to only a few residential customers.

Other Fuels

Propane

Buckeye Gas Products Company
(bulk plant)
Collins Street
Virgie, Kentucky 41572

Owens Bottled Gas Service
Russell Street
Elkhorn City, Kentucky 41522

Fuel Oils

Distillate fuel oil -

Ashland Oil Company
(bulk plant)
Box 2070
Pikeville, Kentucky 41501

Coleman Oil Company, Inc.
(bulk plant)
P.O. Box 2009
Pikeville, Kentucky 41501

Chapman's Fuel Oil Service
Route 1
Box 713
Elkhorn City, Kentucky 41522

Kentucky Oil & Refining Company
(bulk plant)
Route 1, Box 63
Betsy Layne, Kentucky 41605

Residual fuel oil - Arrangements must be made with the refinery.

Low sulphur content coal - Available locally

WATER AND SEWERAGE

Public Water Supply

Company serving Pikeville - Pikeville Utilities Department*
City Hall
304 Auxier Avenue
Pikeville, Kentucky 41501
(606) 437-4561

Source - Big Sandy River

Treatment plant capacity - 1,500,000 gallons per day

Average daily consumption - 1,400,000 gallons

Peak daily consumption - At capacity

Type treatment - Coagulated, settled, filtered, chlorinated,
fluoridated

Storage capacity - 1,610,000 gallons

Size lines - 2, 4, 6, 8, 10 and 12 inches

Average pressure - 105 psi

MONTHLY WATER RATES

First	2,000 gallons	\$4.60 (Minimum)
Next	3,000 gallons	1.96 per M gallons
Next	5,000 gallons	1.88 per M gallons
Next	10,000 gallons	1.79 per M gallons
Next	30,000 gallons	1.47 per M gallons
Next	50,000 gallons	1.31 per M gallons
Next	200,000 gallons	.82 per M gallons
Over	300,000 gallons	.65 per M gallons

(Contd.)

*A new 7 million-gallon-per-day water treatment plant is in the design stage. Construction of the plant will begin when funding becomes available.

Company serving Elkhorn City - Elkhorn City Water Department
 City Hall
 Elkhorn City, Kentucky 41522
 (606) 754-5080

Source - Russell Fork of the Big Sandy River
 Treatment plant capacity - 480,000 gallons per day*
 Average daily consumption - 150,000 gallons
 Peak daily consumption - 175,000 gallons
 Type treatment - settled, filtered, chlorinated
 Storage capacity - 200,000 gallons
 Size lines - 2, 4, 6 and 8 inches
 Average pressure - 115 psi
 Average temperature - 60 degrees F.

MONTHLY WATER RATES

<u>Meter size</u>		<u>Minimum bills</u>
5/8-inch	First 2,000 gallons	\$ 5.00
1-inch	First 2,000 gallons	10.00
1 1/2-inch	First 2,000 gallons	15.00
3-inch	First 2,000 gallons	40.00

Schedule above minimum bills:

Next	2,000 gallons	\$1.00 per M gallons
Next	4,000 gallons	.80 per M gallons
Next	4,000 gallons	.70 per M gallons
Next	4,000 gallons	.60 per M gallons
Next	4,000 gallons	.50 per M gallons
Next	20,000 gallons	.40 per M gallons
Over	40,000 gallons	.30 per M gallons

Tap-on charge: \$100

*A study is currently under way for plans to increase the treatment capacity through revitalization of the water treatment plant.

Name of water district - Marrowbone Creek Water District
P.O. Box 82
Reginia, Kentucky 41559
(606) 754-4218 or 754-5021

Area served - Southcentral Pike County
Date when water district began operating - 1977
Source of raw water - Russell Fork of the Big Sandy River
Capacity of treatment plant - 777,600 gallons per day
Type of treatment - Coagulation, sedimentation, filtration
Average amount of water used in a 24-hour period - 325,000 gallons
Peak amount of water used in a 24-hour period - 390,000 gallons
Storage capacity - 410,000 gallons
Average pressure - 48 to 50 psi
Average temperature - 55 degrees F.
Size lines - 4, 6, 8 and 10 inches

MONTHLY WATER RATES

First	2,000 gallons	\$2.50 (Minimum bill)
Next	2,000 gallons	1.80 per M gallons
Next	2,000 gallons	1.50 per M gallons
Next	4,000 gallons	1.10 per M gallons
Next	10,000 gallons	.60 per M gallons
Next	20,000 gallons	.50 per M gallons

Connection fee:

3/4-inch meter	- \$250
1-inch meter	- 400
1 1/2-inch meter	- 550
2-inch meter	700

Name of water district - Sandy Valley Water District
P.O. Box 127
Betsy Layne, Kentucky 41605
(606) 478-5500

Area served - Northern Pike County and southern Floyd County
Date when water district began operating - 1969
Source of supply of treated water - Pikeville Utilities Department
Average amount of water used in a 24-hour period - 460,500 gallons
Storage capacity - 300,000*
Average pressure - 40 psi
Average temperature - 80 degrees F.
Size lines - 8 and 12 inches

(Contd.)

*Presently not in operation.

MONTHLY WATER RATES

5/8-inch meter

First	2,000 gallons	\$ 5.00 (Minimum)
Next	3,000 gallons	1.80 per M gallons
Next	15,000 gallons	1.60 per M gallons
Next	30,000 gallons	1.10 per M gallons
Next	50,000 gallons	.60 per M gallons
Over	100,000 gallons	.55 per M gallons

1-inch meter

First	5,000 gallons	\$10.40 (Minimum)
Next	15,000 gallons	1.60 per M gallons
Next	30,000 gallons	1.10 per M gallons
Next	50,000 gallons	.80 per M gallons
Over	100,000 gallons	.55 per M gallons

1 1/2-inch meter

First	10,000 gallons	\$18.40 (Minimum)
Next	10,000 gallons	1.60 per M gallons
Next	30,000 gallons	1.10 per M gallons
Next	50,000 gallons	.80 per M gallons
Over	100,000 gallons	.55 per M gallons

2-inch meter

First	25,000 gallons	\$39.90 (Minimum)
Next	25,000 gallons	1.10 per M gallons
Next	50,000 gallons	.80 per M gallons
Over	100,000 gallons	.55 per M gallons

Tap-on charge:

5/8-inch meter	- \$150
1-inch meter	- 260
1 1/2-inch meter	- 405
2-inch meter	- 505

Water District - The new Shelby Valley Water District will serve as a distribution system and will purchase treated water from the Marrowbone Creek Water District and the new City of Pikeville water system. Construction is expected to begin in the late fall of 1981. The system will contain more than 20 miles of lines, serving part of southwestern Pike County and following U.S. 23 to Virgie, Kentucky.

Raw Water

Surface water sources - Big Sandy River - Levisa Fork and Russell Fork
Average discharge - Levisa Fork at Pikeville - 1,497 cfs (43-years, USGS, unadjusted); Russell Fork at Elkhorn City - 758 cfs (20-years, USGS, unadjusted)
Expected ground water yield - 50 to 200 gpm in the major portion of Pike County, 5 to 50 gpm along the extreme south and northwest borders of the county

Sewerage

Company serving Pikeville - Pikeville Utilities Department
City Hall
304 Auxier Avenue
Pikeville, Kentucky 41501
(606) 432-3132 or 432-1262

Design capacity - 800,000 gallons per day
Average daily flow - 362,000 gallons
Treatment - Primary and secondary
Type treatment - Primary settling tanks, trickling filter, secondary clarifier drying beds, chlorination tank
Treated effluent discharged into - Levisa Fork of the Big Sandy River
Size of sanitary and storm mains - 4 to 36 inches
Rates - 85 percent of monthly water bill
Tap-on charge: \$100

Company serving Elkhorn City - Elkhorn City Sanitary Sewer System
City Hall
Elkhorn City, Kentucky 41522
(606) 754-5080

Design capacity - 150,000 gallons
Average daily flow - 80,000 gallons
Treatment - Primary and secondary
Type treatment - Extended aeration
Treated effluent discharged into - Russell Fork of the Big Sandy River
Size of sanitary mains - 4 to 10 inches
Rates - 125 percent of monthly water bill
Tap-on charge : \$100

CLIMATE

Pike County

Temperature

Normal (30-year record)	56.1 degrees
Average annual 1980	55.1 degrees
Record highest, July, 1952 (35-year record)	102.0 degrees
Record lowest, January, 1966 (35-year record)	-15.0 degrees
Normal heating degree days (30-year record)	4,306
(Heating degree day totals are the sums of negative departures of average daily temperatures from 65 degrees F.)	

Precipitation

Normal (30-year record)	41.47 inches
Mean annual snowfall (43-year record)	16.20 inches
Total precipitation 1980	33.27 inches
Mean number days precipitation (.01 inch or more) (35-year record)	133
Mean number days thunderstorms (37-year record)	45

Prevailing Winds (9-year record)

West-southwest

Relative Humidity (19-year record)

1 a.m.	81 percent
7 a.m.	85 percent
1 p.m.	57 percent
7 p.m.	64 percent

Source: U.S. Department of Commerce, Environmental Science Services Administration, Climatological Data, 1980.
Station of record: Bristol, Johnson City, Kingsport, Tennessee.

LOCAL GOVERNMENT

City

Pikeville

Structure - Mayor - 4-year term; 4 commissioners - 2-year terms;
city manager

Budget 1981 - General Fund \$1,448,785
Water and Sewer Fund 660,250
City Gas System 1,682,000

Fees and licenses - Occupational license taxes - 1 1/2 percent on
net profits of business, 1 1/2 percent on wages, 1/2 percent on contracts

Elkhorn City

Structure - Mayor - 4-year term; 6 council members - 2-year terms

Budget 1980 - General Fund \$71,512
Water and Sewer Fund 83,760

Fees and licenses - Business licenses range from \$5 to \$400 per year;
auto stickers - \$5 per year; unloading license - \$50 per year

County

Structure - County Judge/Executive - 4-year term;
4 magistrates - 4-year terms

Budget 1980-81 - General Fund \$1,154,681; Road Fund \$1,038,987

Assessed Value of Property, 1980

<u>Classes of Property</u>	<u>Pikeville</u>	<u>Elkhorn City</u>	<u>Pike County</u>
Real Estate and Tangibles	\$87,625,314	\$9,981,141	\$742,911,753
Real Estate	65,346,482	-	398,611,900
Tangibles	22,278,832	-	344,299,853

Property Taxes

All property in Kentucky is assessed at 100 percent of fair cash value.

Land and buildings are taxed by the state and may be taxed by local jurisdictions. The state rate is \$0.241 per \$100 of assessed valuation.

Manufacturing machinery, raw materials inventories, pollution control equipment, and goods in the process of manufacture are not subject to local taxation. The state rate is \$0.15 per \$100.

Other tangible personal property owned by manufacturers (automobiles, trucks, finished goods, office furniture, office equipment) is taxed by the state at \$0.45 per \$100 and may be taxed by local jurisdictions.

Property stored in public warehouses in a transit status is not subject to local taxation. The state rate is only \$0.015 per \$100.

Intangible personal property located in Kentucky (money in hand, shares of stock, notes, bonds, accounts receivable, and other credits) is taxed by the state at \$0.25 per \$100, and is not subject to local taxation.

Private leaseholds in industrial facilities owned by cities or counties and financed by industrial revenue bonds are subject to a state tax of \$0.015 per \$100 of value (essentially the lessee's equity, adjusted for appreciation or depreciation). Local taxation is not permitted.

Combined State and Local Rates Per \$100 Valuation, 1980*
(100% assessment)

	<u>Inside City of Pikeville</u>	<u>Inside City of Elkhorn City</u>
1. Land and buildings	\$1.249	\$0.844
2. Mfg. machinery, raw materials, goods in process, pollution control equipment	0.150	0.150
3. Finished goods, office equipment, vehicles, other tangibles	1.458	1.053
4. Intangibles (accounts rec., notes, bonds, etc.)	0.250	0.250
5. Leaseholds in industrial revenue bond financed plants	0.015	0.015

	<u>Outside City</u>
1. Land and buildings	\$0.644
2. Mfg. machinery, raw materials, goods in process, pollution control equipment	0.150
3. Finished goods, office equipment, vehicles, other tangibles	0.853
4. Intangibles (accounts rec., notes, bonds, etc.)	0.250
5. Leaseholds in industrial revenue bond financed plants	0.015

Utilities Gross Receipts Tax for Schools

A 3 percent tax is levied on utilities receipts for schools in Pike County. Tax is paid by all consumers of utilities as an add-on to the utilities bills. Exempted are receipts from utilities services that are resold and the receipts from the sale of energy or energy-producing fuels that exceed 3 percent of the cost of production in manufacturing, processing, mining or refining.

*Kentucky Department of Commerce.

Planning and Zoning

Joint agency - Pikeville-Elkhorn City-Pike County Planning Commission
Zoning enforced - Within city limits of Pikeville and Elkhorn City
Subdivision regulation enforced - Within city limits of Pikeville and Elkhorn City
Local codes enforced - None
Mandatory state codes enforced - Kentucky Plumbing Code, National Electric Code, Kentucky Boiler Regulations and Standards, Kentucky Building Code (modeled after BOCA code and applying to buildings with an occupancy of 100 or more persons)

Safety

<u>Police</u>	<u>Pikeville</u>	<u>Elkhorn City</u>	<u>Sheriff</u>	<u>Pike County</u>
Total staff	12	4	10	4
Radio-patrol cars	4	2	8	3

<u>Fire</u>	<u>Pikeville</u>	<u>Elkhorn City</u>
American Insurance Association Fire Rating	7 and 8*	9
Full-time staff	12	-
Volunteers	10	16

The Pike County Fire Department has 17 fire-protection areas which are operated by approximately 500 volunteers. The American Insurance Association fire ratings for these fire-protection areas are listed below.

- Belfry - 10
- Big Creek - 10
- Coal Run Village - 9
- Dorton - 10
- Ferrells Creek - 10
- Grapevine - 10
- John's Creek - 10
- Feds Creek - 10
- Lookout - 10
- Millard - 10
- Marrowbone - 10
- Phelps - 10
- Shelby Valley - 10
- Symasore - 10
- Freeburn - 10
- Upper Pond Creek - 10
- Blackbery - 10

*A fire rating of 8 applies in areas recently annexed by the city.

Rescue Service

Pike County Emergency and Rescue Squad, Inc.

Number of volunteers - 28

Equipment - Four-wheel-drive truck, 3/4-ton truck, jeep, van, (all radio-equipped); 4 16-foot aluminum boats; 15 CB radio sets; personal pagers for all volunteers; 2 rescue saws; 2 portable generators; 2 porta-powers; hydraulic jack; "jaws of life"

Personnel training- Standard first aid, skin diving, emergency medical technician course

Refuse Collection and Disposal

	<u>Pikeville</u>	<u>Elkhorn City</u>
Type service	Municipal	Municipal
Fee charged:		
residential	\$8.50 per month	\$4 per month
business	\$4.19 per minute of service per week	\$5 to \$16 per month
industrial	\$4.19 per minute of service per week	N/A
Collection frequency:		
residential	Twice weekly	Once weekly
business	6 times weekly	Twice weekly
industrial	6 times weekly	N/A
Trash pickup	Twice weekly	Upon request
Disposal method	County transfer station	County transfer station

Pike County is divided into four solid-waste collection areas. Private cartage companies are franchised by the county to collect the waste. These companies provide door to door collection for a nominal monthly charge. Pick-up is available for industries at negotiable rates.

The collectors bring the solid waste to transfer stations located in each solid-waste area. Each station is equipped with a solid-waste hopper which compacts any type of waste from household litter to large appliances. County-owned sanitation trucks then transport the compacted waste to Pike County's licensed landfill near Elkhorn City.

EDUCATION

Public Schools

	<u>Pikeville Independent</u>	<u>Pike County*</u>
Total Enrollment (Spring 1981)	1,207	16,257 (K-12)
Elementary	607	12,117
High School	600	4,140
Student-Teacher Ratio	19-1	20-1
Elementary	19-1	22-1
High School	18-1	16-1
Accreditation	Southern Association of Colleges and Schools	
Percent High School Graduates to College (1980)	87.7	26.7
Expenditures Per Pupil (1979-80)	\$1,272.80	\$1,112.91
Bonded Indebtedness (June 30, 1980)	\$3,082,000	\$14,105,000

Nonpublic Schools

St. Brendan Academy Elementary
St. Francis of Assisi Elementary

*Recent additions to the Pike County school system include a new athletic facility for Virgie High School and a new building for Lookout Elementary School. A new building to house Elkhorn City High School is under way.

Area Colleges and Universities

<u>Name</u>	<u>Location (Miles distant)</u>	<u>Enrollment (Fall, 1980)</u>	<u>Highest Degree Conferred</u>
Pikeville College	Pikeville, Kentucky	616	Baccalaureate/Masters*
Prestonsburg Community College	Prestonsburg, Kentucky (27)	751	Associate
Alice Lloyd College	Pippa Passes, Kentucky (50)	395	Baccalaureate
Clinch Valley College of University of Virginia	Wise, Virginia (59)	1,145	Baccalaureate
Hazard Community College	Hazard, Kentucky (73)	326	Associate
Southeast Community College	Cumberland, Kentucky (73)	578	Associate
Lees Junior College	Jackson, Kentucky (90)	337	Associate
Marshall University	Huntington, West Virginia (105)	11,856	Academic & Professional
Kentucky Christian College	Grayson, Kentucky (116)	495	Baccalaureate
Morehead State University	Morehead, Kentucky (119)	7,163	Masters, Specialist/ Doctorate**
University of Charleston	Charleston, West Virginia (121)	2,039	Baccalaureate
King College, Inc.	Bristol, Tennessee (126)	234	Baccalaureate
Virginia Intermount College	Bristol, Virginia (126)	647	Baccalaureate
West Virginia State College	Institute, West Virginia (131)	4,366	Baccalaureate
Sue Bennett College	London, Kentucky (133)	256	Associate
Union College	Barbourville, Kentucky (138)	929	Masters, Specialist
Eastern Kentucky University	Richmond, Kentucky (143)	14,185	Masters, Specialist/ Doctorate***

(Contd.)

Area Colleges and Universities (Contd.)

<u>Name</u>	<u>Location (Miles distant)</u>	<u>Enrollment (Fall, 1980)</u>	<u>Highest Degree Conferred</u>
Lexington Technical Institute	Lexington, Kentucky (147)	2,111	Associate
Lincoln Memorial University	Harrogate, Tennessee (147)	1,215	Baccalaureate
Transylvania University	Lexington, Kentucky (147)	810	Baccalaureate/ Masters****
University of Kentucky	Lexington, Kentucky (147)	23,468	Doctorate, M.D., D.M.D., J.D.
West Virginia Institute of Technology	Montgomery, West Virginia (150)	3,342	Baccalaureate

Pikeville College is a four-year, independent, co-educational college affiliated with the United Presbyterian Church. The institution is a liberal arts college offering courses leading to the degrees of Bachelor of Arts, Bachelor of Science, Bachelor of Music Education, and Bachelor of Business Administration. Associate degrees are offered in accounting, secretarial science, early childhood education, mining technology and industrial engineering technology. Masters degree courses are taught on the Pikeville campus by faculty members of Pikeville College and Morehead State University. The degrees are issued by Morehead State University.

*Courses in the masters degree programs are taught on the Pikeville campus by faculty members of Pikeville College and Morehead State University. The degrees are issued by Morehead State University.

**Joint doctoral degree programs are offered in cooperation with the University of Kentucky, Lexington.

***Joint doctoral degree programs are offered in cooperation with the University of Kentucky, Lexington, and cooperative doctoral degree programs are offered with Michigan State University and the University of Maryland.

****Courses in the masters degree program are taught on the Transylvania campus by faculty members of Xavier University of Cincinnati. The degree is issued by Xavier University.

Vocational Schools

Both the state vocational-technical schools and the area vocational education centers are operated by the Kentucky Department of Education. The state vocational-technical schools enroll persons full time who are at least 16 years of age and not in school. These students attend classes for six hours each day. The area vocational education centers are designed to accommodate high school students who are at least 15 years of age. These students attend vocational school for three hours each day. The state vocational-technical schools and the area education centers offer evening courses to enable working adults to upgrade current job skills.

Nearest State School

Location	Mayo State Vocational-Technical School
Miles Distant	Paintsville
Curriculum	40
	Business and Office
	Accounting/Jr. Management
	Clerical
	Court and Conference Reporter
	Data Processing
	Secretarial (Legal and Medical)
	Consumer and Home Economics
	Consumer and Family Life Skills
	Health and Personal Services Occupations
	Cosmetology
	Nursing Aide
	Practical Nursing
	Industrial Education
	Auto Body Repair
	Auto Mechanics
	Carpentry-Building Trades
	Diesel and Heavy Equipment Maintenance and Repair
	Drafting (Mechanical)
	Drafting (Technical)
	Electronic Communications
	Graphic Arts (Printing)
	Highway Technology
	Industrial Electricity
	Industrial Electronics
	Machine Shop
	Mining Maintenance Mechanics
	Radio and Television Repair
	Refrigeration, Air Conditioning and Heating
	Welding
	Learning Resource Center

Nearest Area Education Center

Location Pike County Area Vocational Education Center
Phelps (Pike County)
Curriculum Industrial Education
Carpentry
Drafting
Industrial Electricity
Mine Maintenance
Welding

Location Pike County Area Vocational Education Center
Belfry (Pike County)
Curriculum Industrial Education
Auto Mechanics
Electricity
Machine Shop
Mining Careers
Welding

Location Pike County Area Vocational Education Center
Millard (Pike County)
Curriculum Business and Office
Business Office
Health and Personal Service Occupations
Health Careers
Industrial Education
Auto Mechanics
Carpentry-Building Trades
Diesel Mechanics
Drafting
Electricity
Mine Maintenance

Arrangements can be made to provide training in the specific production skills required by an industrial plant. Instruction may be conducted either in the vocational school or in the industrial plant, depending upon the desired arrangement and the availability of special equipment.

HEALTH

Local Medical Personnel

Physicians - 80
Dentists - 19

Hospitals

<u>General Hospital*</u>	<u>Location</u>	<u>Beds</u>
The Methodist Hospital of Kentucky**	Pikeville	227
Williamson Appalachian Regional Hospital	South Williamson (30 miles distant)	143

The Methodist Hospital of Kentucky

General hospital facilities - 6 operating rooms, emergency room, X-ray, pathology, laboratory, eletrocardiogram, eletroencephalogram, mental health, intensive care, coronary care, pediatrics, obstetrics, physical therapy, respiratory therapy, radioisotope unit (scanner), radiation therapy (linear accelerator)

Medical staff - 40 physicians (16 active, 18 courtesy, 6 dental) including urologist, pathologist, surgeon, OB-GYN, internists, cardiologist, radiologist, ophthalmologist, anesthesiologist, otolaryngologist, and psychiatrist; 54 registered nurses, 84 licensed practical nurses

Williamson Appalachian Regional Hospital

General hospital facilities and services - 3 operating rooms, 4 X-ray diagnostic machines, facilities for radiation therapy (with the exception of cobalt), fully equipped laboratory, EKG machine, fully equipped physical therapy department, 3 whirlpools and electro-myography, pharmacy, home health care, social service department

Medical staff - 35 physicians (31 active, 1 consulting, 3 courtesy), 41 registered nurses, 33 licensed practical nurses, 46 nurse's aides

*In addition, the Williamson Memorial Hospital is located 31 miles north-east of Pikeville in Williamson, West Virginia.

**An eight-bed neo-natal intensive care unit is currently under construction. Completion of the new unit is targeted for December, 1981.

Other Medical Facilities

Mountain Comprehensive Care Center - Pikeville

The Pike County Department of Social Services has established a daily commuter service to transport Pike Countians in need of medical attention to doctors' offices, clinics and hospitals in Louisville, Lexington or any other city within reasonable distance. The county provides this service to all Pike Countians free of charge.

Ambulance Service

Name - Pike County Ambulance Service

Staff - 14 employees including 8 emergency medical technicians
(all employees have first aid and CPR training)

Service - 24 hours, 7 days a week

Equipment - 5 fully equipped vans

Name - Elkhorn City Area Ambulance Service

Staff - 15 volunteers including 2 emergency medical technicians
and 1 EMT trainee

Service - 24 hours, 7 days a week

Equipment - 3 fully equipped ambulances

Public Health

Facility - Pike County Health Department

Staff - 1 health officer, 6 health environmentalists, 9 registered nurses, 1 X-ray technician, 1 nutritionist, 1 health educator, 8 clerks

OTHER LOCAL FACILITIES

<u>Communications</u>	<u>Pikeville</u>	<u>Elkhorn City</u>
Telephone - Services -	South Central Bell Standard	South Central Bell Standard
Telegraph - Services -	Western Union Toll-free number 1-800-325-5100 Counter service	Western Union Toll-free number 1-800-325-5100
Postal - U.S. Post Office Class -	First	Second
Mail received -	3 times daily	2 times daily
Mail dispatched -	3 times daily	2 times daily
Newspapers Semi-weekly and circulation -	Appalachian News Express - 10,500	
Other papers delivered from -	Huntington and Williamson, West Virginia; Louisville and Lexington, Kentucky	Huntington and Williamson, West Virginia; Louis- ville, Pikeville and Lexington, Kentucky
Radio -	WLSI-AM, WPKE-AM, WDHR-FM and WHJC-AM (Buskirk, Kentucky)	WECL-FM, WBPA-AM
Stations received from -	Prestonsburg and Louisville, Kentucky; Cincinnati, Ohio; Huntington and Williamson, West Virginia; Bristol, Tennessee; many FM stations available through cable service	Pikeville, Louis- ville Jenkins, Kentucky; Cincinnati, Ohio; Grundy, Virginia; Bristol, Tennessee; Williamson, West Virginia; 50 FM stations avail- able through cable service

(Contd.)

	<u>Pikeville</u>	<u>Elkhorn City</u>
Television Cable service Reception from -	Huntington and Charleston, West Virginia; Bristol, Tennessee; Atlanta, Georgia	Huntington, Charleston and Bluefield, West Virginia; Bristol, Oak Hill and Johnson City, Tennessee; Hazard, Kentucky; Atlanta, Georgia

Altogether, there are 58 CATV systems operating in Pike County.

Kentucky Educational Television	Pikeville transmitter, Channel 22	Pikeville transmitter, Channel 22
------------------------------------	---	---

Library Services

Public library - Pikeville Public Library
 Size of collection - 25,000 volumes
 Circulation, 1980-81 - 50,000
 Services - Meeting rooms, periodicals, newspapers, genealogy,
 recordings, audio-visual equipment, microfilm, microfilm printer-
 reader, reference collection, art loans, Interlibrary Loan, library
 school for pre-schoolers

College library - O'Rear Robinson Library of Pikeville College
 Size of collection - 87,500 volumes
 Special collections - Kentucky Civil War, Lillie Chaffin Collection
 Services - Periodicals, newspapers, microfilm, microfilm reader-
 printer, copying machine, tapes, records, record players,
 cassettes and cassette player, microbook (17,500 on record),
 music library (2,000 records), science library, media center

Religious Institutions - Pike County

Number of churches - 287
 Denominations - Baptist
 Catholic
 Christian
 Church of Christ
 Church of God
 Episcopal
 Free Will Baptist
 Methodist
 Presbyterian
 Southern Baptist
 Wesleyan

Nearest Synagogue - Ashland, Kentucky, 106 miles distant
 Congregation - Agudath Achim (reform)

Financial Institutions

<u>Banks</u>	<u>Assets</u>	<u>Deposits</u>	<u>Statement Date</u>
Pikeville National Bank and Trust Company	\$236,421,000.00	\$193,364,000.00	6/30/81
The First National Bank of Pikeville	154,789,171.22	141,936,422.79	6/30/81
The Citizens Bank of Pikeville	92,398,840.85	81,065,574.57	6/30/81
<u>Savings and Loan Association</u>	<u>Assets</u>	<u>Savings Accounts</u>	<u>Statement Date</u>
Family Federal Savings and Loan Association	\$ 62,402,473.00	\$ 51,796,855.00	9/30/81
United Federal Savings and Loan Association	41,470,317.27	39,198,826.61	6/30/81
<u>Hotels and Motels - Pike County</u>			
Total number -	18		
Total rooms -	707		

Clubs and Organizations

Alcoholics Anonymous
American Association of
University Women
American Cancer Society
American Red Cross
Army Reserves
Beta Sigma Phi Sorority
Big Sandy Area Community
Action Program
Boy Scouts of America
CAP Area Club, Inc.
Thomas Cecil Lodge #375
Chloe Creek Improvement Club
Church of Women
Community Action Agency
Daughters of American
Revolution
Eastern Kentucky Concentrated
Employment Program
El Hasa Temple, Shrine Club
Elkhorn City Bassmen's Club
Elkhorn City Women's Club
Girl Scouts of America
Jaycees
Kentucky Beta Mu
Kentucky Bar Association
McCombs Homemakers Club
Mingo-Pike County CB Club
Model City Community Development
Agency
Mountain Dew Hillbilly Clan
Mountain Mental Health and Mental
Retardation Association
Mullins Band Boosters
Now Organization
Order of Eastern Star
Pike County Bar Association
Pike County Chamber of Commerce
Pike County Civil Defense
Pike County Cooperative Extension
Service
Pike County Historical Society
Pike County Medical Society
Pike County Social Services
Pikeville Arts and Crafts Association
Pikeville Business and Professional
Women's Club
Pikeville Concert Association
Pikeville Fire Department Ladies'
Auxiliary
Pikeville Junior Women's Club
Pikeville Kiwanis Club
Pikeville Lions Club
Pikeville Ministerial Association
Pikeville Parent Teachers Organization
Pikeville-Pike County Airport Board
Pikeville Rotary Club
Pikeville Shriners Club
Pikeville Women's Club, Inc.
Preservation Council of Pike County, Inc.
Queen Esther Rebekah Lodge #53
Russell Fork Fish and Game Club
Senior Citizens
Soil Conservation Service
Southern Labor Union Welfare
Urban Renewal Community Development
Agency

RECREATION

Local

Pike County is in the center of Kentucky's mountain vacationland and is surrounded by some of the most majestic scenery in the eastern United States.

Pikeville has recently developed a 15-acre public recreational area which offers ballfields, tennis courts, handball courts, a track, and a football field. In addition, a recreation building has been developed with covered tennis courts and a swimming pool. A small city park in Pikeville has basketball goals and a playground.

Private facilities in Pikeville include a country club, golf course, swimming pool, drive-in and indoor theaters.

Elkhorn City is presently constructing a park which will consist of a playground, ballfield, swimming pool and picnic shelters. The park is scheduled for completion in July 1982.

Fishtrap Lake, which lies in Pike County, offers boating, fishing and camping areas. The Fishtrap Lake Wildlife area, approximately 16 miles from Pikeville, offers state-regulated hunting in season.

In addition, Breaks Interstate Park, located at Elkhorn City in Pike County, encompasses 3,910 acres and is the site of the largest canyon east of the Mississippi River. Park facilities include a lodge, restaurant, housekeeping cottages, tent and trailer campsites, picnic areas, playgrounds, hiking trails, horseback riding, fishing, fishing boat rentals, community pool, visitor's center, and a gift shop.

Area (Within 90 miles)

Jenny Wiley State Resort Park, 27 miles north of Pikeville at Prestonsburg, takes full advantage of its picturesque highland setting. The 1,700-acre park offers facilities and activities such as a lodge, a dining room, a gift shop, cottages, a lodge pool, recreation rooms, primitive campsites, picnic areas, planned recreation, playground, golf, hiking, horseback riding, shuffleboard, fishing, and fishing boat and pedal boat rentals.

(Contd.)

Kingdom Come State Park, located 73 miles southwest of Pikeville near Cumberland, Kentucky, contains 1,000 beautiful mountain acres. It is named for John Fox, Jr.'s, "The Little Shepherd of Kingdom Come", which was written in 1903 and was the first U.S. novel to sell one million copies. Features include a three-acre fishing lake, a picnic area, a hiking trail, a playground, and Raven Rock, a fascinating stone formation with a large cave opening at the top. The park is located on the mid-way point of the Little Shepherd Trail, a hiking and driving trail which follows Pine Mountain from Harlan to Whitesburg.

Buckhorn Lake State Resort Park, 89 miles west of Pikeville at Buckhorn, is a full-facility resort park with a 36-room lodge. The lodge itself offers a dining room with a lake view, a gift shop, a pool, meeting rooms, and a recreation room. Other park facilities and activities include a beach, a bathhouse, a picnic shelter, 72 campsites, a playground, mini-golf, tennis, a dock with open and covered slips, boat rentals, a 40-foot levee plus a fishing pier, bicycle rentals, and planned recreation.