

1970

Industrial Resources: Pulaski County

Kentucky Library Research Collections
Western Kentucky University, spcol@wku.edu

Follow this and additional works at: https://digitalcommons.wku.edu/pulaski_cty

 Part of the [Business Administration, Management, and Operations Commons](#), [Growth and Development Commons](#), and the [Infrastructure Commons](#)

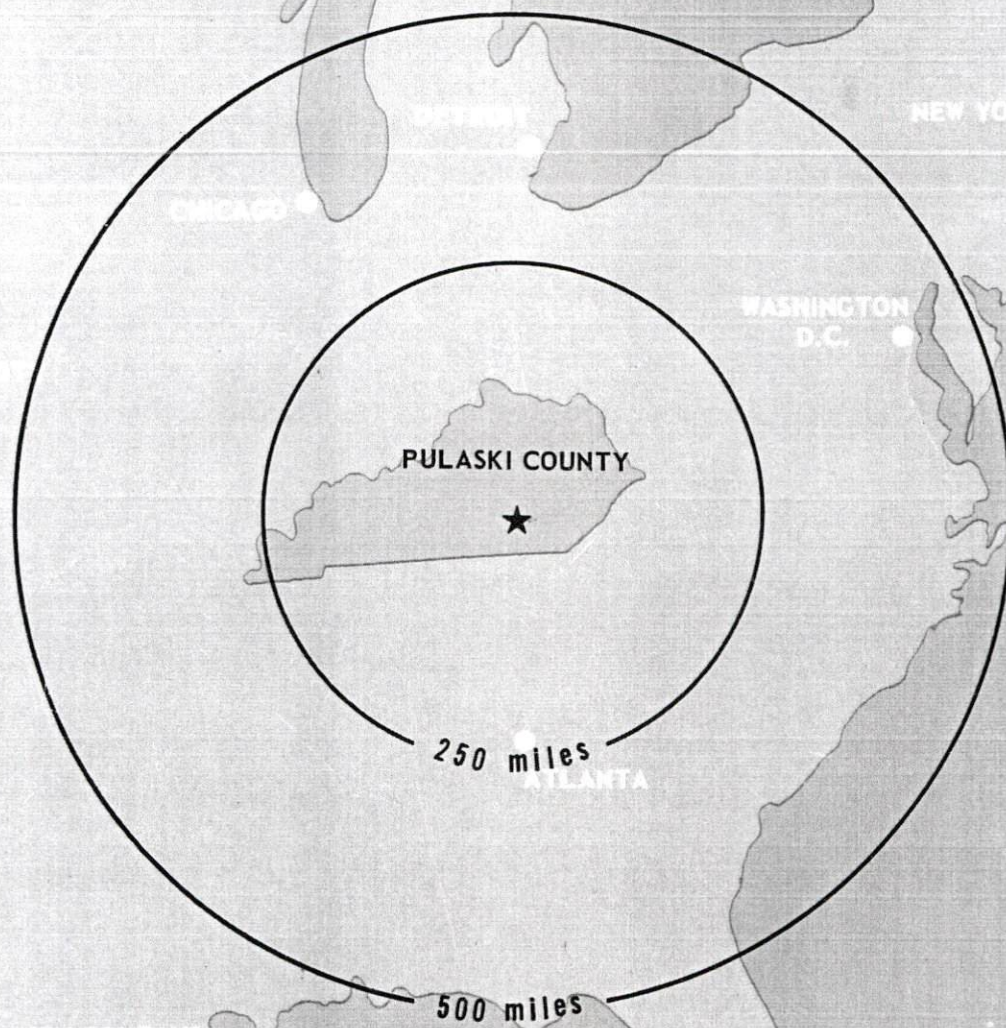
Recommended Citation

Kentucky Library Research Collections, "Industrial Resources: Pulaski County" (1970). *Pulaski County*. Paper 35.
https://digitalcommons.wku.edu/pulaski_cty/35

This Report is brought to you for free and open access by TopSCHOLAR®. It has been accepted for inclusion in Pulaski County by an authorized administrator of TopSCHOLAR®. For more information, please contact topscholar@wku.edu.

INDUSTRIAL RESOURCES

PULASKI COUNTY ***KENTUCKY***



PULASKI COUNTY INDUSTRIAL SITES

1970

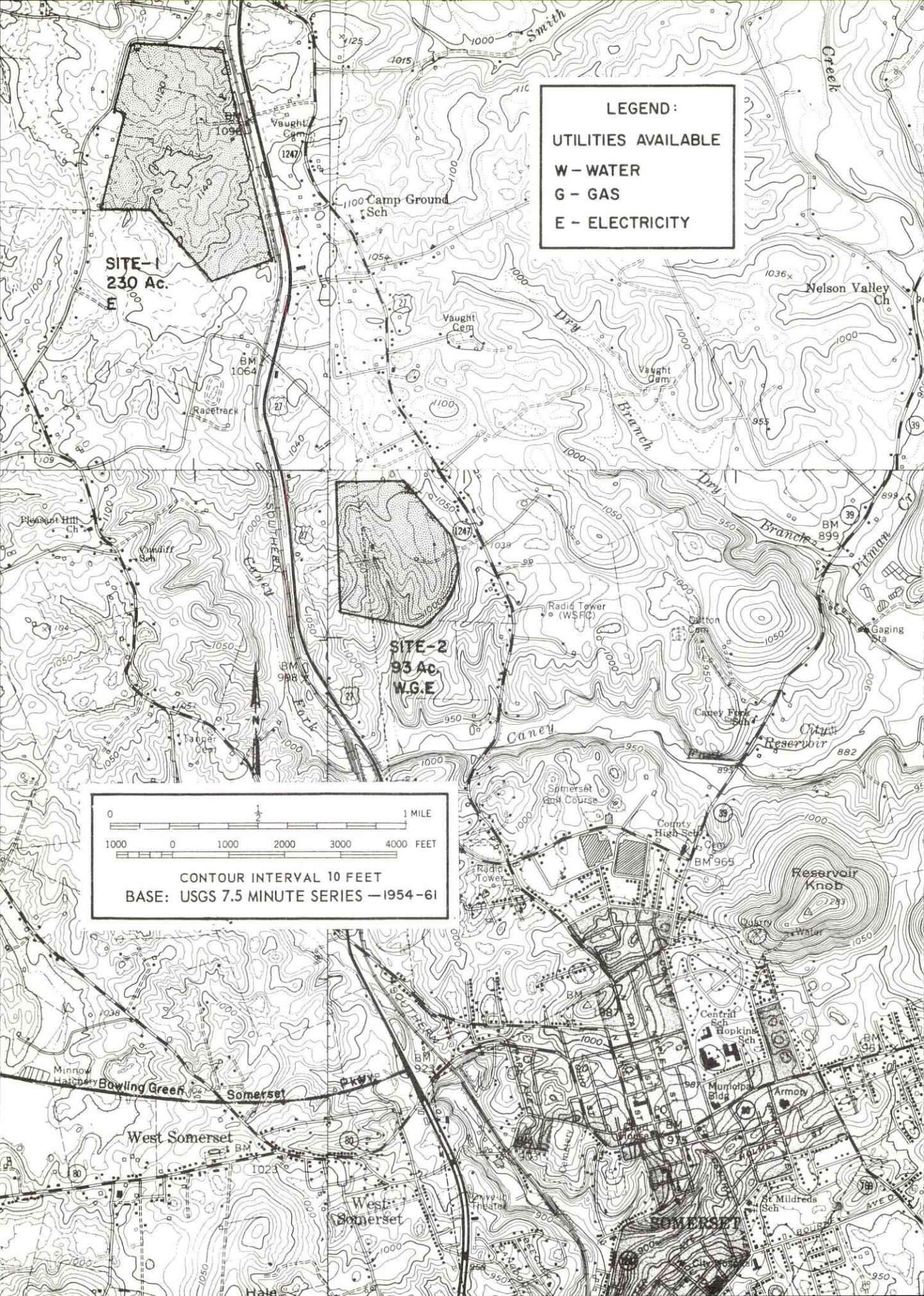
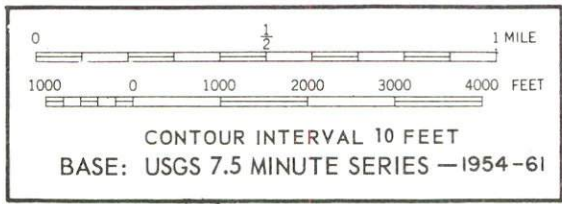
For additional information concerning the following sites, contact Mr. James F. Vaught, President of the Pulaski County Industrial Foundation, Somerset, Kentucky, or the Kentucky Department of Commerce, Frankfort, Kentucky.

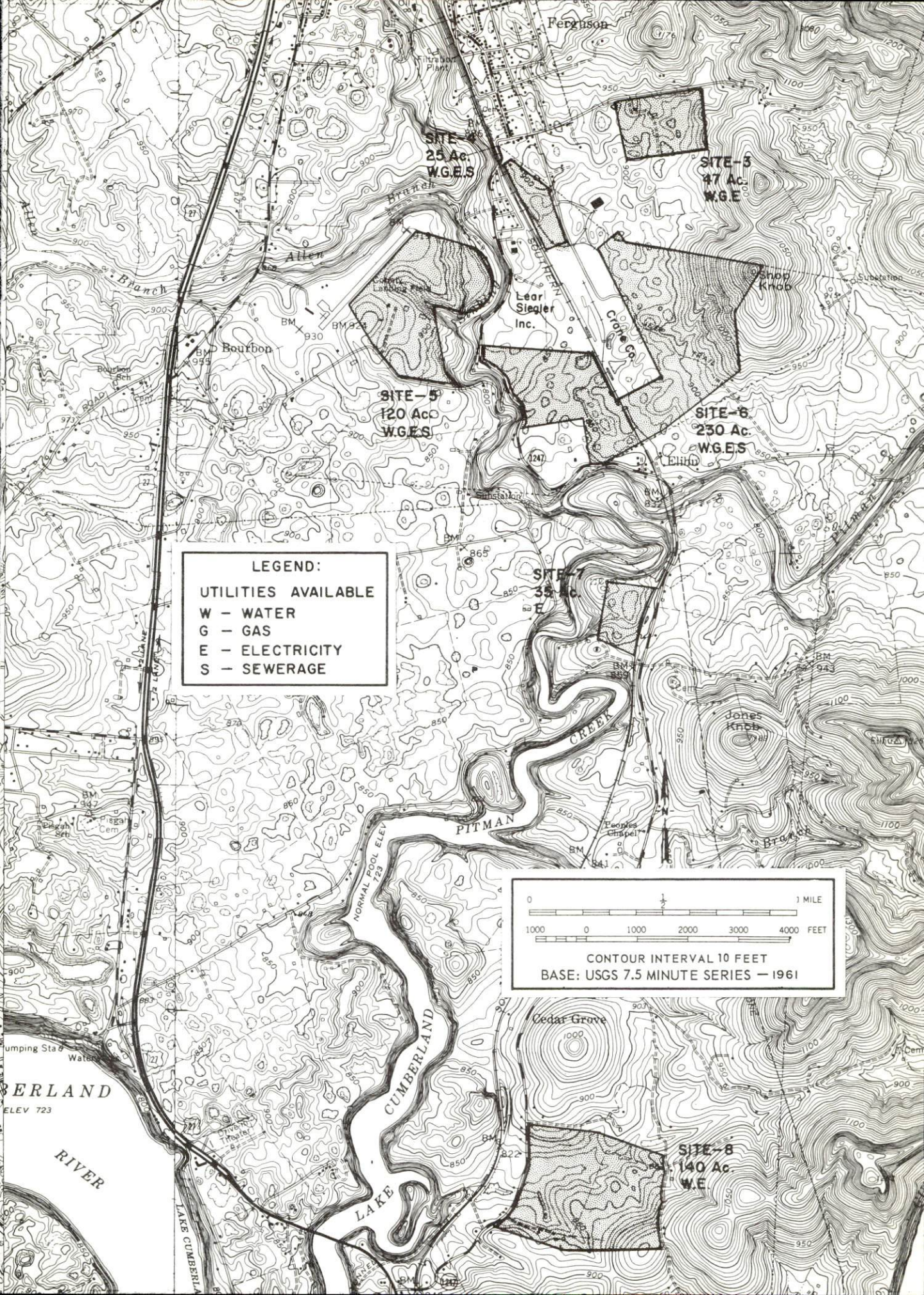
- SITE # 1:** ACREAGE AND TOPOGRAPHY: 230 acres, gently rolling to rolling
 LOCATION: 1 1/4 miles north-northwest of Somerset
 HIGHWAY ACCESS: U. S. 27 east of site (access road onto site passes over railroad trackage); traffic-bound, county-maintained road off U. S. 27 borders site on northwest
 RAILROADS: Southern Railway tracks bound the site on east
 GAS: Somerset Gas Service - 6-inch line one-half mile southwest of site (8-inch parallel line to be constructed).
 WATER: Presently no treated water on site - in approximately one year a 3-inch line is to be constructed northwest of site (Pleasant Hill Water District).
 ELECTRICITY: South Kentucky RECC
 SEWERAGE: Package plant necessary
 OWNERSHIP: Private
- SITE # 2:** ACREAGE AND TOPOGRAPHY: 93 acres, level to rolling
 LOCATION: 200 feet north-northwest of Somerset city limits
 HIGHWAY ACCESS: Gravel access road onto site from Kentucky 1247
 RAILROADS: Rail service not feasible
 WATER: Pulaski County Water District No. 1
 SIZE LINE: 6-inch line 400 feet from eastern boundary of site
 GAS: Somerset Gas Service SIZE LINE: 6-inch main 600 feet from site
 ELECTRICITY: Kentucky Utilities Company
 SEWERAGE: Package plant necessary
 OWNERSHIP: Private
- SITE # 3:** ACREAGE AND TOPOGRAPHY: 47 acres, fairly level to gently rolling
 LOCATION: One-half mile southeast of Somerset
 HIGHWAY ACCESS: Access by Gover Lane (gravel) off Kentucky 1247
 RAILROADS: Not rail served
 WATER: Kentucky Water Service SIZE LINE: 10-inch line 1,800 feet from site
 GAS: Somerset Gas Service SIZE LINE: 6-inch main 1,800 feet from site
 ELECTRICITY: South Kentucky RECC or Kentucky Utilities Company
 SEWERAGE: Package plant
 OWNERSHIP: Private
- SITE # 4:** ACREAGE AND TOPOGRAPHY: 25 acres, level
 LOCATION: 3,000 feet south of Somerset city limits
 HIGHWAY ACCESS: Blacktopped access road off Gover Lane which connects with Kentucky 1247. Direct access onto northwest section of site from Kentucky 1247 presently not very good.
 RAILROADS: Southern Railway System - spur on site
 WATER: Kentucky Water Service SIZE LINE: 10-inch line adjacent to eastern boundary
 GAS: Somerset Gas Service SIZE LINE: 6-inch main adjacent to eastern boundary
 ELECTRICITY: Kentucky Utilities Company
 SEWERAGE: Somerset Municipal Service - 8-inch main 300 feet from site
 OWNERSHIP: Private
- SITE # 5:** ACREAGE AND TOPOGRAPHY: 120 acres, gently rolling to very rolling
 LOCATION: 600 feet south of Somerset city limits
 HIGHWAY ACCESS: Best access from U. S. 27 via gravel road off Monticello Road, or gravel access road southwest of site off U. S. 27. Site not easily accessible from Kentucky 1247.
 RAILROADS: Not rail served
 WATER: Kentucky Water Service SIZE LINE: 8- and 16-inch lines parallel approximately 3,000 feet from site
 GAS: Somerset Gas Service SIZE LINE: 4-inch main 3,000 feet from site
 ELECTRICITY: South Kentucky RECC or Kentucky Utilities Company
 SEWERAGE: Somerset Municipal Service - 10-inch main 3,000 feet from site
 OWNERSHIP: Private
- SITE # 6:** ACREAGE AND TOPOGRAPHY: Total acreage - 230; 77 acres west of railroad tracks, 153 acres east of tracks. Gently rolling to very rolling
 LOCATION: One-half mile south-southeast of Somerset
 HIGHWAY ACCESS: Kentucky 1247 borders site on east; access to western section of site via blacktopped road off Gover Lane.
 RAILROADS: Southern Railway bisects site
 WATER: Kentucky Water Service SIZE LINE: 8-inch line 1,200 feet from site
 GAS: Somerset Gas Service SIZE LINE: 6-inch main 1,200 feet from site
 ELECTRICITY: Kentucky Utilities Company
 SEWERAGE: Somerset Municipal Service - 8-inch main 1,200 feet from site
 OWNERSHIP: Private
- SITE # 7:** ACREAGE AND TOPOGRAPHY: 35 acres, rolling
 LOCATION: 1 1/2 miles south-southeast of Somerset
 HIGHWAY ACCESS: Gravel road off Kentucky 1247 (over railroad trackage)
 RAILROADS: Southern Railway tracks border site on east
 WATER: Nearest water line (8-inch) approximately 6,000 feet from site
 GAS: Nearest gas main (6-inch) approximately 6,000 feet from site
 ELECTRICITY: South Kentucky RECC
 SEWERAGE: Package plant necessary
 OWNERSHIP: Private
- SITE # 8:** ACREAGE AND TOPOGRAPHY: 140 acres, gently rolling to rolling
 LOCATION: Approximately one-half mile north of Burnside
 HIGHWAY ACCESS: Kentucky 1247 bounds site on west. Approximately 2,500 feet via Kentucky 1247 to junction of Kentucky Routes 90 and 27. Access road to John Sherman Cooper power plant borders site on south
 RAILROADS: Southern Railway spur to John Sherman Cooper power plant borders site on south.
 WATER: Burnside Municipal Water Works SIZE LINE: 6-inch line approximately 2,500 feet from site
 GAS: Not feasible
 ELECTRICITY: South Kentucky RECC
 SEWERAGE: Package plant
 OWNERSHIP: Private
- SITE # 9:** ACREAGE AND TOPOGRAPHY: 25 acres, flat
 LOCATION: 6 miles southwest of Somerset
 HIGHWAY ACCESS: Traffic-bound, county maintained access road off Kentucky 80
 RAILROADS: Not rail served
 WATER: Pulaski County Water District No. 2 SIZE LINE: 6-inch line 300 feet from site
 GAS: Nearest gas line (6-inch) approximately 6 miles from site
 ELECTRICITY: South Kentucky RECC
 SEWERAGE: Package plant necessary
 OWNERSHIP: South Kentucky RECC
- SITE # 10:** ACREAGE AND TOPOGRAPHY: Approximately 20-30 acres, level
 LOCATION: 1 mile south of Burnside
 HIGHWAY ACCESS: Borders U. S. 27
 RAILROADS: Southern Railway System
 WATER: Burnside Municipal Waterworks
 GAS: Natural gas not available
 ELECTRICITY: Kentucky Utilities Company
 SEWERAGE: Package plant necessary
 OWNERSHIP: Privately owned

LEGEND:
UTILITIES AVAILABLE
W - WATER
G - GAS
E - ELECTRICITY

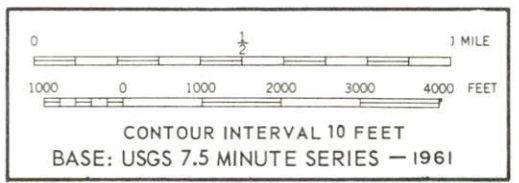
SITE-1
230 Ac.
E

SITE-2
93 Ac.
W,G,E





LEGEND:
 UTILITIES AVAILABLE
 W - WATER
 G - GAS
 E - ELECTRICITY
 S - SEWERAGE



SITE-1
 25 Ac.
 W.G.E.S

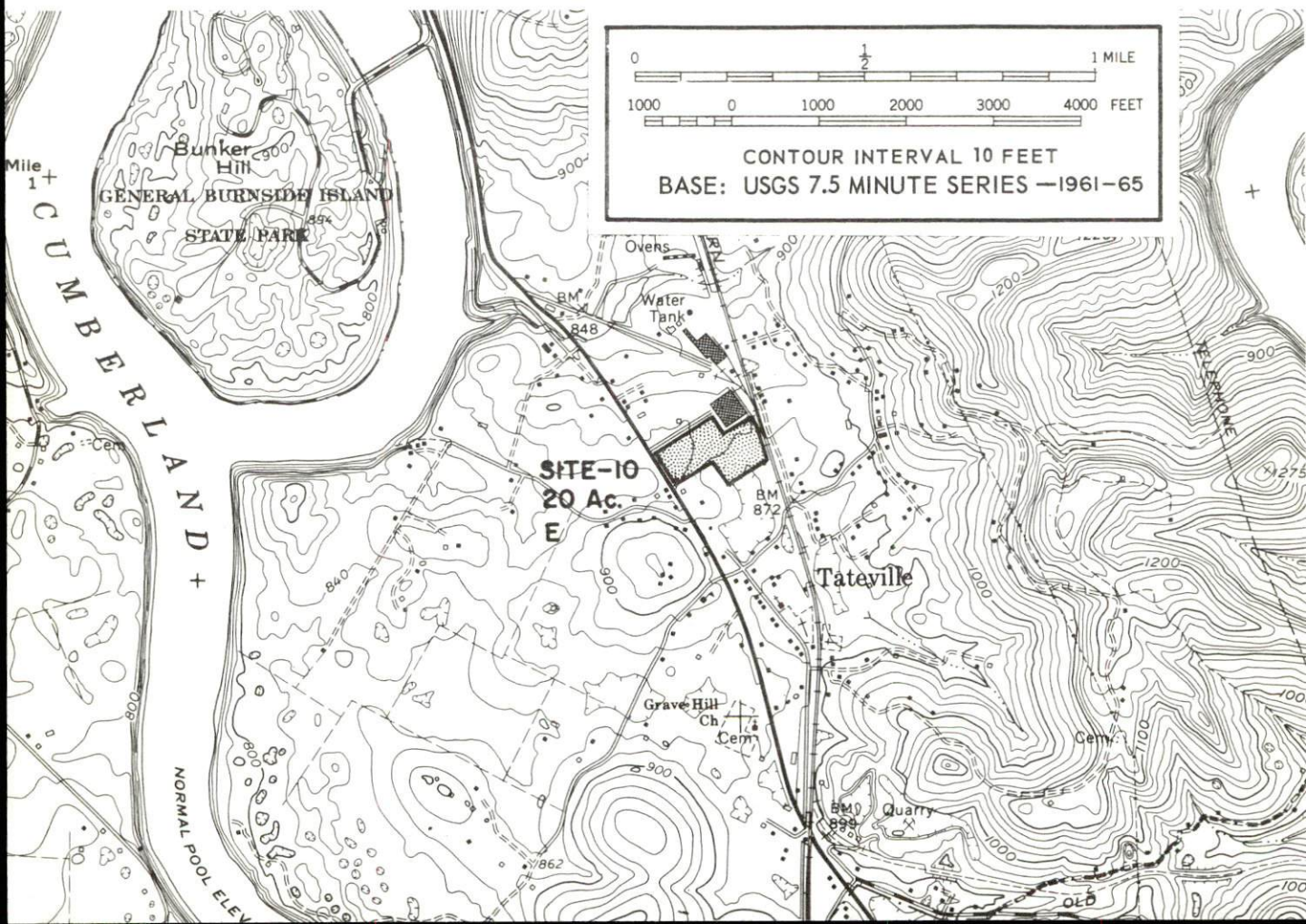
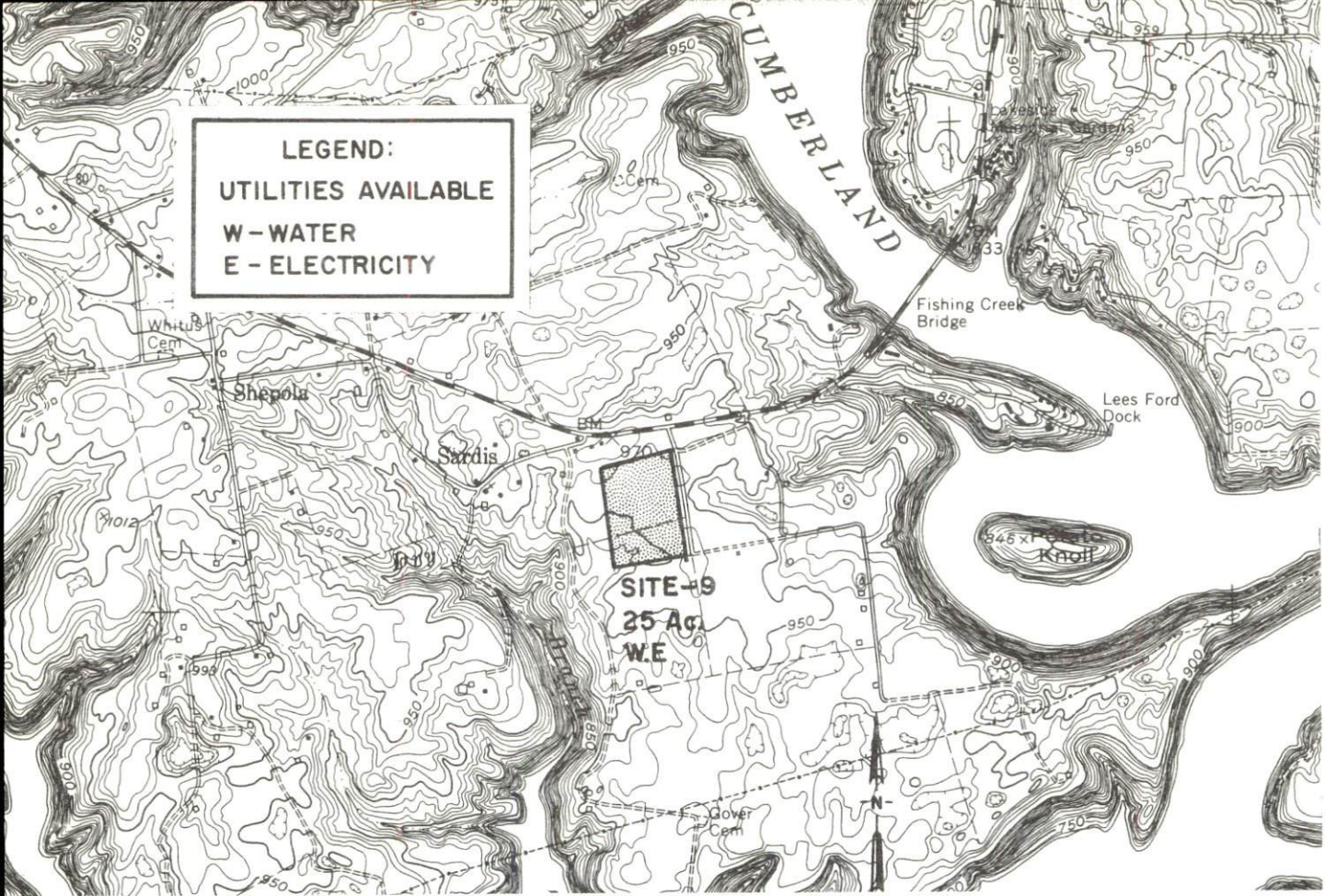
SITE-2
 47 Ac.
 W.G.E

SITE-3
 120 Ac.
 W.G.E.S

SITE-4
 230 Ac.
 W.G.E.S

SITE-5
 35 Ac.
 W.G.E.S

SITE-6
 140 Ac.
 W.E



INDUSTRIAL RESOURCES
PULASKI COUNTY, KENTUCKY

Prepared by
The Kentucky Department of Commerce
in cooperation with
Somerset-Pulaski County Chamber of Commerce
and
Burnside Chamber of Commerce

1970

TABLE OF CONTENTS

Chapter	Page
INDUSTRIAL SITES	i
PULASKI COUNTY, KENTUCKY - A RESOURCE PROFILE	1
THE LABOR MARKET	4
Population Trends	4
General Employment Characteristics	4
Manufacturing Employment Trends by Industry	4
Major Pulaski County Manufacturing Firms, Their Products and Employment	5
Wage Rates for Selected Occupations	6
Labor Organizations	7
Current and Future Labor Supply	7
Total Personal Income	8
Per Capita Personal Income	8
EDUCATION	9
Public Schools	9
Parochial, Private and Special Schools	9
Vocational Schools	10
Colleges and Universities	10
TRANSPORTATION	11
Rail	11
Truck Service	11
Air	12
Bus	12
Taxi	12
Rental Services	12
Water	12
POWER AND FUEL	13
Electricity	13
Natural Gas	13

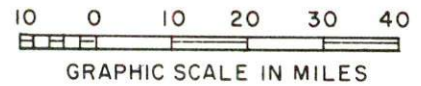
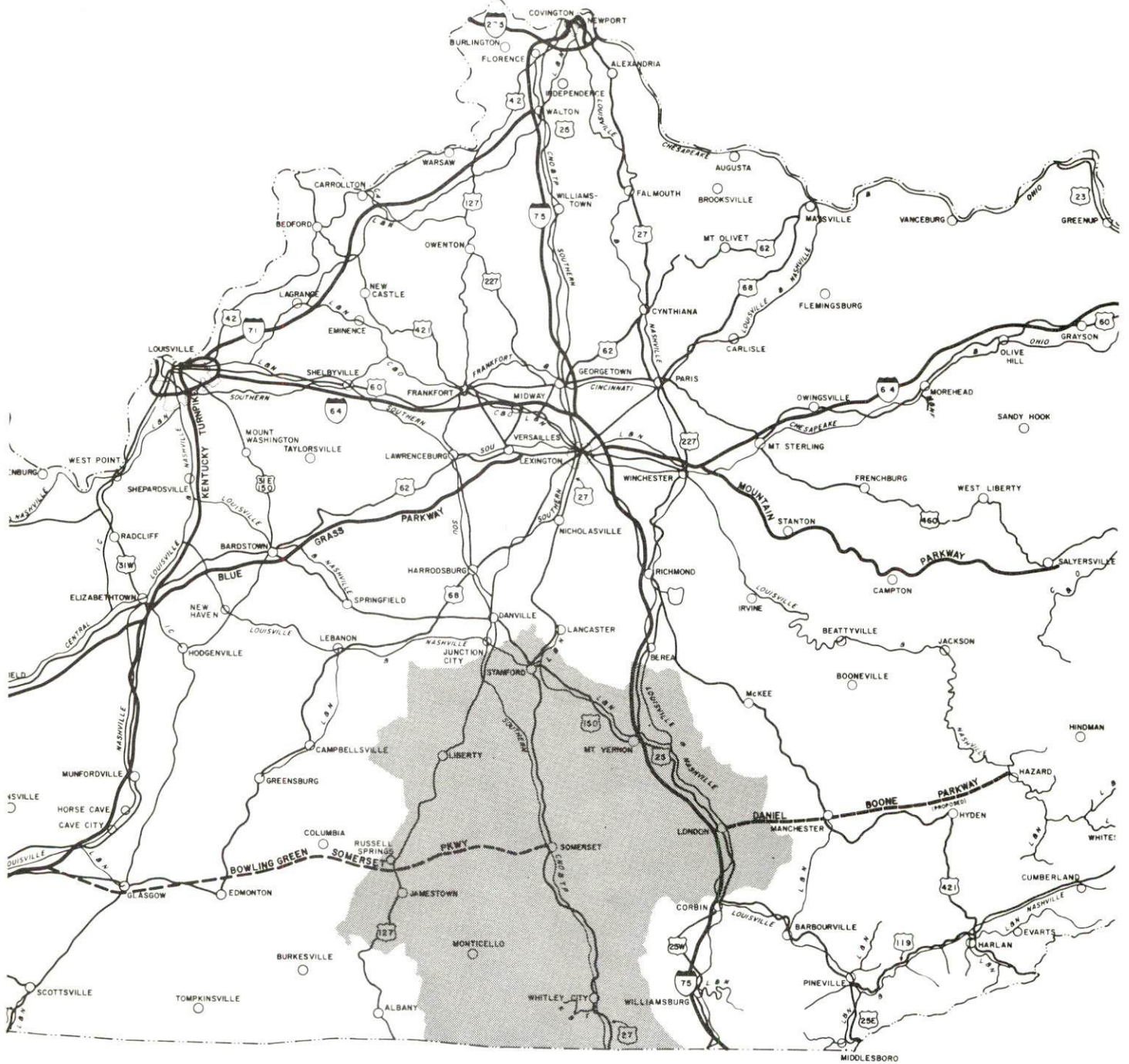
<u>Chapter</u>	<u>Page</u>
WATER AND SEWERAGE	16
Water	16
Sewerage	18
LOCAL GOVERNMENT	19
City	19
County	19
Assessed Value of Property	19
Local General Property Tax Rates Per \$100 of	
Assessed Valuation - 1969	19
Planning and Zoning	20
Safety	20
Police	20
Fire	20
Rescue Service	20
Sanitation	21
HEALTH	22
Hospitals	22
Nursing Homes	22
Public Health	22
OTHER LOCAL FACILITIES	24
Communications	24
Library Services	24
Religious Institutions	25
Financial Institutions	25
Savings and Loan Associations	25
Hotels and Motels	25
Clubs and Organizations	25
RECREATION	27
Local	27
Area	27
AGRICULTURE - NATURAL RESOURCES - CLIMATE	29
Agriculture	29
Natural Resources	29
Climate	29
HISTORY	30



AERIAL VIEW OF SOMERSET, KENTUCKY

PULASKI COUNTY LABOR MARKET AREA

* Shaded area denotes labor market area



PULASKI COUNTY, KENTUCKY - A RESOURCE PROFILE

Location

Pulaski County, located in southcentral Kentucky near the Tennessee border, is 130 miles northwest of Knoxville, Tennessee, and 163 miles south of Cincinnati, Ohio. Population of Somerset, county seat of Pulaski County, was estimated at 14,000 in 1969 with population of Pulaski County estimated at 34,400.

The Economic Framework

Total employment in Pulaski County averaged 12,225 in 1968 with manufacturing providing 2,850 of these jobs. During the first nine years of the decade manufacturing increased by almost 1,880 jobs or 195 percent. Major industrial products are furniture and apparel.

Per capita income in the county in 1968 was \$1,737. Between 1959 and 1968, per capita personal income in the county increased 84 percent.

The Pulaski County labor market area includes Pulaski and the seven surrounding counties. Area employment totals 37,850 including 11,275 in agriculture. Manufacturing furnishes 6,400 jobs. Area industrial employment has more than doubled since 1959 with sharpest gains in the apparel and lumber and furniture industries.

Despite important industrial gains in recent years the area still has a deficit of 7,340 manufacturing jobs when measured against the national industrial employment-population ratio. This indicates an area where the potential for additional manufacturing production is excellent.

Resources For Growth

1. There is a current estimated labor supply of 8,890 men and 8,045 women available for industrial jobs in the labor market area. In addition, 8,060 young men and 7,560 young women will become 18 years of age by 1975 and potentially available for work.

2. The local transportation capability is good. The Southern Railway System provides the county with a variety of services. U. S. Highway 27, a two-lane north-south "AAA" trucking route, serves the county. Highway transportation to the west will be significantly improved with completion of the Bowling Green-Somerset Parkway. Interstate 75 is only 35 miles east of Somerset. The Somerset-Pulaski County Airport

has a 3,900 foot paved runway capable of accommodating light aircraft. Commercial air service is available at the London-Corbin War Memorial Airport, only 35 miles from Somerset.

3. Electricity is available in large quantity. The John Sherman Cooper Power Station is located on Lake Cumberland at Burnside and operated by the East Kentucky Power Cooperative. South Kentucky RECC and the Kentucky Utilities Company provide electric power to portions of the county. Natural gas is available in the Somerset vicinity. The water supply from Lake Cumberland is more than adequate for continued growth.

4. Industrial sites - Pulaski County has 10 sites available for industrial use.

5. Education is an important growth asset for Pulaski County. Three school systems operate within the county and educational television is being made available.

Three senior and three junior colleges are located within 50 miles of the county, with the Somerset Community College located in Somerset.

The Somerset Area Vocational School is located in Somerset and offers training in eleven different courses. In conjunction with the vocational school, a \$1,042,179 Aeronautics Center is to be constructed and expected to be opened the second semester of the 1970-71 school year. The building will be located on a 15.4 acre tract of land adjacent to the airport. The aeronautical division of the center is expected to accommodate 120 students the first year of operation and will train FFA - qualified airplane mechanics. The center will be the only facility of its kind in Kentucky and one of five in the United States.

Community Programs For Improvement

In 1968, Somerset was designated an All-Kentucky City for a second time. The award was the result of successful community programs and industrial expansion. The city was cited for the addition of 1,000 industrial jobs through plant expansion, increased school capacity, annexation which nearly doubled its population, and improvements to its hospital facility.

The city and county are actively continuing their programs for community improvement. Projects which will be beneficial to the county include long-range plans for the hospital which will encompass a total comprehensive health center and provide a 345-bed capacity, further development of General Burnside State Park, a multi-million dollar state hospital which will care for some 450 retarded persons and have a staff of

400, renovation of the Pulaski County Courthouse, a community cultural and recreation center, and extension of gas and sewer mains to the recently annexed areas at Somerset.

Recreation

General Burnside Island State Park, at Burnside, is an island in Lake Cumberland made accessible by a causeway. The park offers a variety of water sports and recreational facilities, including an 18-hole golf course.

A number of primitive camping and picnic areas are contained in the Daniel Boone National Forest, which covers over a half million acres. Two state parks - Cumberland Falls and Natural Bridge - are within the boundaries of the forest.

The congenial atmosphere of the Somerset-Burnside communities and the scenic beauty of Lake Cumberland are decisive reasons why many tourists vacation in the area annually. The 8-mile distance between the two towns is continually being narrowed as new commercial business establishments choose sites along U. S. 27.

THE LABOR MARKET

POPULATION TRENDS ^{1/}

Area	1969 (Est.)	1960	1950	Percent Change	
				1960-69	1950-60
Labor Market Area	138,900	140,706	161,140	- 1.3	- 14.5
Pulaski County	34,400	34,402	38,452	0	- 10.5
Somerset	14,000	7,112	7,097	96.9	+ 0.2
Burnside	800	575	615	39.1	- 16.3

GENERAL EMPLOYMENT CHARACTERISTICS ^{2/}

Major Employment Group	1968	1968
	Pulaski County	Labor Market Area
TOTAL	12,224	37,841
Agricultural	2,836	11,277
Nonagricultural	9,388	26,564
Manufacturing	2,847	6,411
Trade and Services	2,011	5,607
Government	1,814	5,728
Other	2,716	8,818

MANUFACTURING EMPLOYMENT TRENDS BY INDUSTRY SEPTEMBER 1959 AND 1968 ^{3/}

Industry	Pulaski County			Labor Market Area		
	1968	1959	% Change	1968	1959	% Change
TOTAL	2,847	965	195.0	6,411	2,801	128.9
Food & Kindred Products	129	91	41.8	553	410	34.9
Apparel, Textiles, Leather	515	520	- 1.0	2,492	1,068	133.3
Lumber & Furniture	1,515	210	621.4	2,374	1,059	124.2
Printing, Publishing, Paper	46	24	91.7	73	47	55.3
Chemicals, Petroleum, Coal, Rubber	282	62	354.8	307	115	167.0
Stone, Clay & Glass	337	37	810.8	377	66	471.2
Machinery & Metal Products	21	20	5.0	221	35	531.4
Other	2	1		14	1	

MAJOR PULASKI COUNTY MANUFACTURING FIRMS,
THEIR PRODUCTS AND EMPLOYMENT ^{4/}

Firm	Product	Employment		
		T	M	F
<u>Burnside</u>				
Cumberland Charcoal Corp.	Charcoal briquets	125	125	0
Hamer Hardwood Manufacturers, Inc.	Lumber, truck trailer flooring	93	90	3
<u>Eubank</u>				
G. F. Perdue Lumber Co.	Rough lumber	20	20	0
<u>Ferguson</u>				
Crane Co.	Vitreous china, sanitary ware	132	122	10
Lear Siegler, Inc.	Automobile seat frames, automobile seat assemblies	620	520	100
Mid-State Generator Co.	Rebuilt generators	21	20	1
Mi-Marker Corp.	Laundry markers and marking kits	10	4	6
<u>Somerset</u>				
Blue Grass Coca Cola Bottling Co.	Soft drinks	16	16	0
City Lumber & Concrete Block	Concrete block	16	14	2
Commonwealth-Journal, Inc.	Newspaper, job printing	38	28	10
Cornett Machine Shop	Rebuilt engines, machine work, hard chrome plating	19	18	1
Cumberland Wood & Chair Corp.	Bunk beds, beds and headboards, chairs	152	150	2
Denney Lumber Co., Inc.	Lumber, crossties	12	12	0
General Electric Co.	Pressed glassware	126	76	50
Kentucky Stone Co.	Agricultural lime	10		
Palm Beach Co.	Men's coats	550	30	520
Ready Mix Concrete Co.	Ready mixed concrete	14	13	1
Robinson Milling Co., Inc.	Flour, corn meal, feed	14	13	1
Smith Monument Works	Monuments	11	10	1
Somerset Machine Co.	Custom machinery, metal fabrication	12	12	0

Firm	Product	Employment		
		T	M	F
Somerset Refinery, Inc.	Gasoline, kerosene, diesel fuel	38	35	3
Southern Belle Dairy Co., Inc.	Fluid milk, ice cream mix	94	82	12
Van Hook Bros. Stave Co.	Barrel staves, headings	20	20	0
<u>Science Hill</u>				
Cumberland Stave Co., Inc.	Barrel staves, headings	40	40	0
Hardwick Block & Tile Co.	Concrete block & brick	18	17	1
Henry Frame & Lumber Co.	Mattress frames, chair parts, surveyors stakes	48	48	0
Vaught Bros. Mfg. Co., Inc.	Box springs, frames, hardwood dimension, pallets	58	55	3

WAGE RATES FOR SELECTED OCCUPATIONS
SOMERSET AND BURNSIDE, KENTUCKY ^{5/}

Classification	Starting	Maximum	Prevailing
<u>Production Employees</u>			
Assembler	\$1.70	\$2.00	\$1.85
Inspector	1.70	2.00	1.90
Production Laborer	1.70	2.00	1.85
Welder, Arc or Acetylene (Class-A)	2.00	2.75	2.40
<u>Service Employees</u>			
Electrician (Class-A)	\$1.75	\$3.50	\$2.75
Laborer	1.60	2.50	1.85
Machinist	3.00	3.80	3.25
Mechanic, Maintenance	2.50	3.50	2.75
Truck Driver, Industrial (Class-A)	1.75	2.80	2.10
<u>Office Employees</u>			
Bookkeeper	\$2.00	\$3.25	\$2.90
File Clerk	1.60	2.00	1.80
Receptionist	1.60	2.00	1.80
Secretary	1.60	2.55	1.95
Typist	1.60	2.25	1.85

LABOR ORGANIZATIONS

<u>Union</u>	<u>Representing Workers at:</u>
International Union of Electrical, Radio and Machine Workers (AFL-CIO) IUE Local 767	Somerset Glass Plant # 652 of General Electric Co.
International Brotherhood of Operative Potters	Crane Co.
Amalgamated Clothing Workers of America	Palm Beach Co.
United Auto Workers	Lear Siegler, Inc.
Laborers' International Union of North America, Local No. 576	Cumberland Charcoal Co.
Amalgamated Meat Cutters & Butcher Workmen of North America	Southern Belle Dairy Co.

CURRENT AND FUTURE LABOR SUPPLY - PULASKI COUNTY LABOR MARKET AREA

County	Current Labor Supply ^{6/} 1969			Future Labor Supply by 1975 ^{7/} (Becoming 18 Years of Age)		
	Total	Male	Female	Total	Male	Female
Labor Market						
Area	16,932	8,888	8,044	15,617	8,060	7,557
Pulaski	2,900	1,362	1,538	3,677	1,907	1,770
Casey	1,838	1,079	759	1,557	794	763
Laurel	2,663	1,012	1,651	2,829	1,434	1,395
Lincoln	2,048	1,357	691	1,732	898	834
McCreary	1,619	652	967	1,569	801	768
Rockcastle	1,666	973	693	1,408	743	665
Russell	1,821	1,082	739	1,145	594	551
Wayne	2,377	1,371	1,006	1,700	889	811

TOTAL PERSONAL INCOME 8/

Area	1968	1959	% Change
Pulaski County	\$ 59,740,000	\$ 32,060,000	+86.3
Labor Market Area	204,636,000	108,746,000	+88.2
Kentucky	8,360,000,000	4,655,000,000	+79.6

PER CAPITA PERSONAL INCOME 9/

Area	1968	1959	% Change
Pulaski County	\$1,737	\$ 943	+84.2
Labor Market Area	\$879 - 1,743	\$467 - 943	+88.2 - +84.8
Kentucky	2,614	1,552	+68.4

EDUCATION

Public Schools

	<u>Science Hill Independent</u>	<u>Somerset Independent</u>	<u>Pulaski County</u>
Total Enrollment	168	2,490	5,649
Elementary	168	1,705	3,294
High School	--	785	2,355
Student-Teacher Ratio	21-1	23-1	23-1
Elementary	21-1	24-1	26-1
High School	--	21-1	21-1
State Rating of High School		Comprehensive	3 Standard 2 Provisional
Other Accreditations		Southern Association of Colleges and Schools	
Percent High School Graduates to College	--	60.5	28.0
Current Expenditures Per Pupil	\$370.72	\$374.42	\$356.86
Bonded Indebtedness	--	\$1,272,000	\$1,186,000

Parochial, Private and Special Schools

	<u>Parochial</u>
Total Enrollment	74
Elementary	74
Student-Teacher Ratio	19-1
Elementary	19-1

Vocational Schools

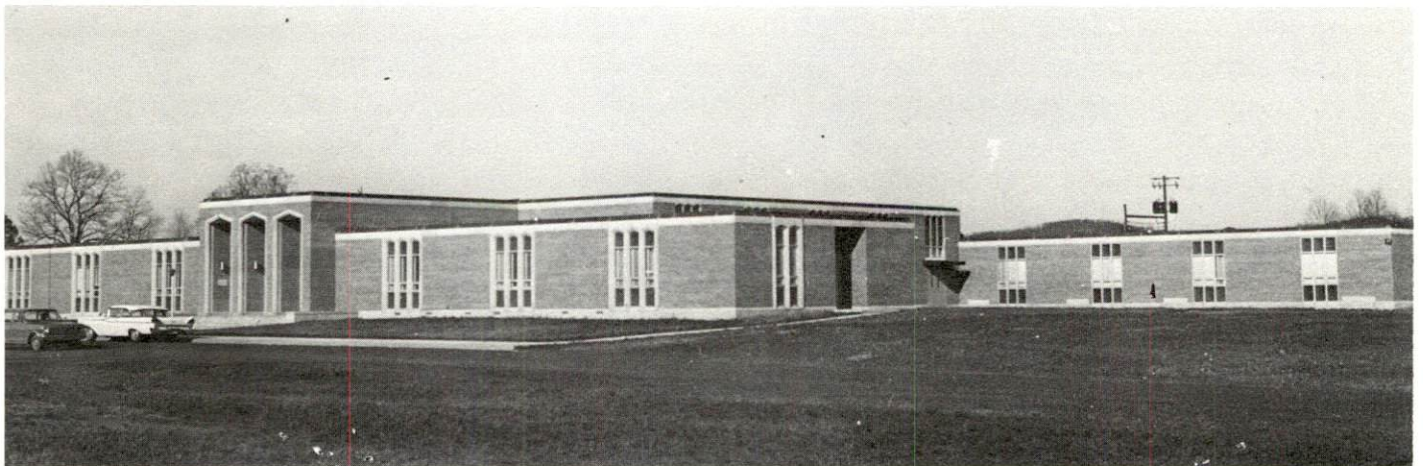
Location
Curriculum

Nearest Area School

Somerset, Kentucky
Accounting Jr. Mgmt.
General Clerical
Secretarial-Steno
Health Careers
Distributive Education
Electronics (Technology)
Appliance Repair
Auto Mechanics, Printing
Drafting, Machine Shop

Colleges and Universities

<u>Name</u>	<u>Area - Within 50 miles</u>		<u>Highest Degree Conferred</u>
	<u>Location</u>	<u>Enrollment</u>	
Somerset Community College	Somerset	559	Associate
Sue Bennett	London	321	Associate
Cumberland College	Williamsburg	1,771	Baccalaureate
Lindsey Wilson	Columbia	524	Associate
Centre College	Danville	740	Baccalaureate
Berea College	Berea	1,394	Baccalaureate



SOMERSET COMMUNITY COLLEGE

TRANSPORTATION

Rail

Lines serving Somerset, Burnside, Science Hill, and Eubank:
Southern Railway System

Services - Freight, passenger (Somerset), switching, siding, REA
Express pickup and delivery service

RAILWAY TRANSIT TIME FROM SOMERSET, KENTUCKY, TO: 10/

City	No. of Days		City	No. of Days	
	CL			CL	
Atlanta, Ga.	2		Knoxville, Tenn.	2	
Birmingham, Ala.	2		Los Angeles, Calif.	8	
Chicago, Ill.	4		Nashville, Tenn.	3	
Cincinnati, Ohio	2		New Orleans, La.	3	
Cleveland, Ohio	4		New York, N. Y.	5	
Detroit, Mich.	4		Pittsburgh, Pa.	4	

Truck Service 11/

Company

Home Office

Detherage Freight Line	Somerset, Kentucky
Dixie Ohio Express, Inc.	Akron, Ohio
Eagle Express Co., Inc.	Somerset, Kentucky
Eldridge Truck Line	Somerset, Kentucky
McLean Trucking Co.	Winston-Salem, North Carolina
Monticello-Albany Freight Line, Inc.	Monticello, Kentucky
Killion Motor Express, Inc.	Louisville, Kentucky
United Parcel Service	Louisville, Kentucky

HIGHWAY MILES AND TRUCK TRANSIT TIME IN DAYS FROM
SOMERSET, KENTUCKY, TO SELECTED MARKET CENTERS

City	Highway Miles	Delivery Time ^{12/}		City	Highway Miles	Delivery Time	
		LTL	TL			LTL	TL
Atlanta, Ga.	395	3	2	Los Angeles, Calif.	2,258	7	5
Birmingham, Ala.	456	4	3	Louisville, Ky.	130	1	1
Chicago, Ill.	457	3	2	Nashville, Tenn.	196	2	1
Cincinnati, Ohio	163	1	1	New Orleans, La.	819	4	2
Cleveland, Ohio	407	2	2	New York, N. Y.	813	4	2
Detroit, Mich.	421	3	2	Pittsburgh, Pa.	429	4	2
Knoxville, Tenn.	135	1	1	St. Louis, Mo.	410	3	2

Air

	<u>Local</u>	<u>Nearest Commercial</u>
Name:	Somerset-Pulaski County Airport	London-Corbin War Memorial Airport
Location:	500 feet-adjacent to city limits	3 miles south-southeast of London
Runways:	1 paved	1 paved
Length:	3,900 ft.	6,000 ft.
Traffic Control:	Wind tee and wind sock	Wind sock
Lighting:	Beacon and runway lights	Beacon, runway and obstruction lights
Services:	80 and 100 octane, A & E repair, general flying service, taxi, car rentals	80 and 100 octane, JP-A-50, Piedmont Airlines, taxi, U-Drive-It, weather, flight training, charter and ambulance service, vending machines

Bus

Southern Greyhound Bus Lines (Somerset)
Southern Greyhound Bus Lines, Shortway Lines (Burnside)

Taxi

24-hour, radio dispatched service, Somerset:
B-Line Cab Co., City and Veterans Cab Co.

Rental Services

Car rentals (Somerset-Pulaski County Airport)
U-Haul (Somerset)

Water

Lake Cumberland, Burnside
Navigable for a distance of 105 miles
Barge service - coal is presently being hauled to the John Sherman Cooper Power Station

POWER AND FUEL

Electricity

Company serving Somerset, Burnside, Eubank, Ferguson,
Science Hill - Kentucky Utilities Company

Source of power - Kentucky Utilities Company

Total generating capacity - 740,000 KW

Industrial rates negotiated by - Kentucky Utilities Company, Industrial
Development Department, Lexington, Kentucky

Company serving Pulaski County - South Kentucky RECC

Source of power - East Kentucky Power Cooperative

Total generating capacity - 515,000 KW

Industrial rates negotiated by - South Kentucky RECC, Somerset, Kentucky

Natural Gas

Company serving Somerset - Somerset Gas Service

Source of supply - Texas Eastern Transmission Corporation

Size of suppliers transmission line - 30-inch

Distribution lines - 2, 3, and 4 inches

Size of Somerset Gas Service transmission lines - 6-inch line and
8-inch line - parallel

BTU content - 1,030 BTU per cubic feet; Specific gravity - 0.6

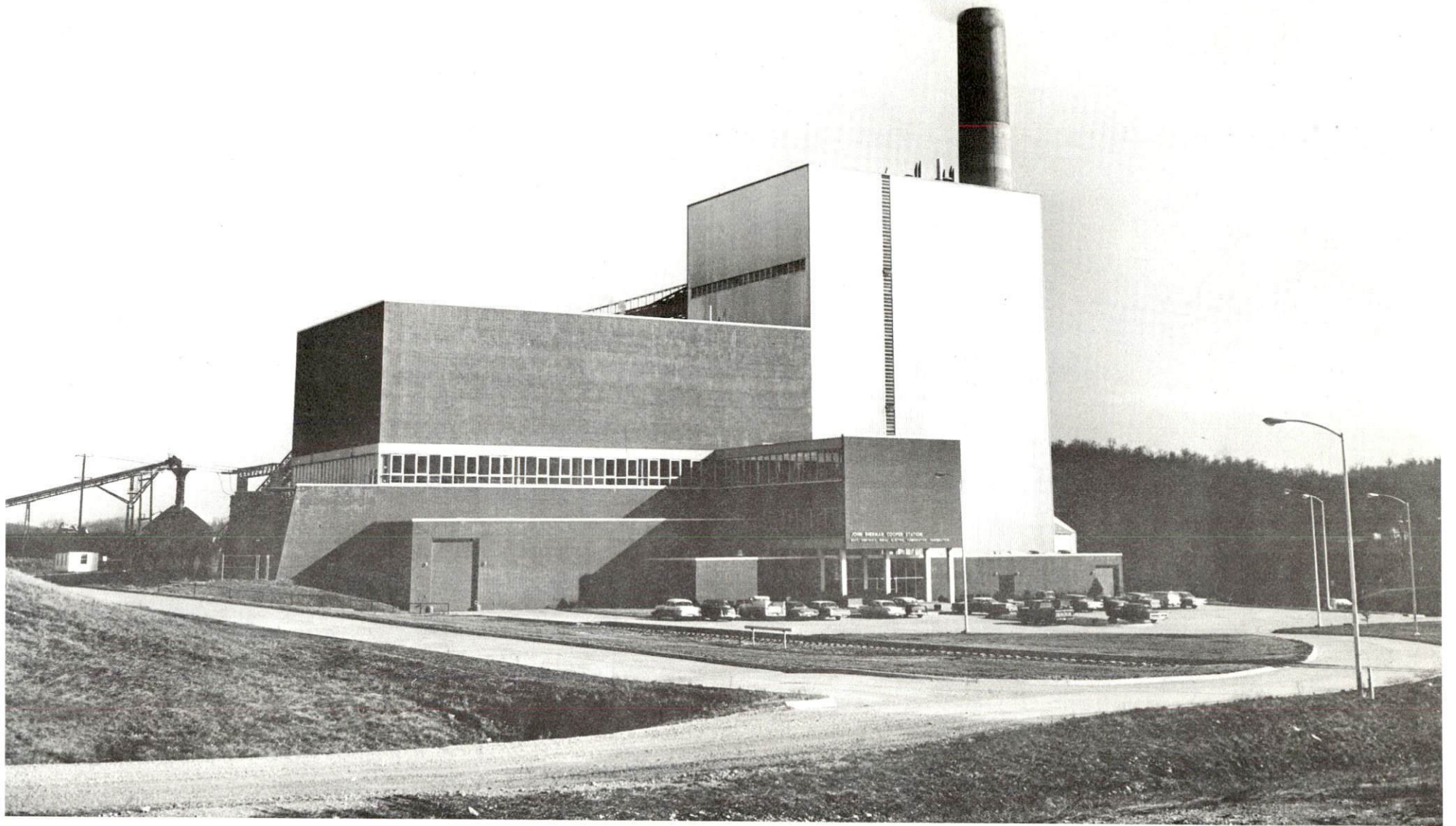
Distribution pressure - 15 oz. to 30 lbs.

Rates

First	1,000 cu. ft.	\$1.79
Next	1,000 cu. ft.	1.29
Next	3,000 cu. ft.	.94 per M cu. ft.
Next	5,000 cu. ft.	.84 per M cu. ft.
Next	10,000 cu. ft.	.74 per M cu. ft.
All over	20,000 cu. ft.	.64 per M cu. ft.

Industrial Rates

First	1,000 cu. ft.	\$1.79 per M cu. ft.
All over		.64 per M cu. ft.



JOHN SHERMAN COOPER STATION
EAST KENTUCKY POWER COOPERATIVE

Company serving Ferguson - Ferguson Gas Service
Source of supply - Somerset Gas Service
Size of transmission lines - 6-inch
Distribution lines - 2-inch
BTU content - 1,030; Specific gravity - 0.6
Distribution pressure - 15 oz.

Rates

1,000 cu. ft.	\$ 1.88
2,000 cu. ft.	3.23
3,000 cu. ft.	4.22
4,000 cu. ft.	5.21
5,000 cu. ft.	6.20
10,000 cu. ft.	10.61
20,000 cu. ft.	18.38
25,000 cu. ft.	21.74
30,000 cu. ft.	25.10
50,000 cu. ft.	38.54
75,000 cu. ft.	55.34
100,000 cu. ft.	72.14

Natural gas facilities are not available in other communities of Pulaski County. There are three distributors of manufactured gas in Pulaski County.

WATER AND SEWERAGE

Water

Company serving Somerset and Ferguson - Kentucky Water Service Company, Inc.

Source - Lake Cumberland

Treatment plant capacity - 1,500,000 gpd

Average daily consumption - 1,358,000 gallons

Peak daily consumption - 1,500,000 gallons

Type treatment - Rapid sand - treatment facilities will be expanded by changing from rapid sand filters to micro floc filter process

Storage capacity - 1,900,000 gallons

Average pressure - 102 psi

Average temperature - 50° F.

Size mains - 16, 12, 10, 8, 6 and 4 inches

MONTHLY WATER RATES FOR WHOLESALE AND INDUSTRIAL CONSUMERS

First	1,000 gallons	\$2.50 (Minimum)
Next	1,000 gallons	.95 per M gallons
Next	4,000 gallons	.90 per M gallons
Next	19,000 gallons	.80 per M gallons
Next	25,000 gallons	.75 per M gallons
Next	25,000 gallons	.65 per M gallons
Next	25,000 gallons	.55 per M gallons
Next	100,000 gallons	.40 per M gallons
All over	200,000 gallons	.35 per M gallons

Company serving Burnside - Burnside Municipal Waterworks

Source - Lake Cumberland

Treatment plant capacity - 300,000 gpd

Average daily consumption - 60,000 gallons

Peak daily consumption - 280,000 gallons

Type treatment - Alum, lime, chlorine

Storage capacity - 100,000 gallons

Average pressure - 70 psi

Size mains - 4 and 6 inches

MONTHLY WATER RATES FOR WHOLESALE
AND INDUSTRIAL CONSUMERS

First	2,000 gallons	\$1.825 per M gallons
Next	1,000 gallons	1.45 per M gallons
Next	2,000 gallons	1.30 per M gallons
Next	5,000 gallons	1.20 per M gallons
Next	15,000 gallons	1.05 per M gallons
Next	25,000 gallons	.90 per M gallons
Next	50,000 gallons	.75 per M gallons
Excess of	100,000 gallons	.60 per M gallons

Minimum charge \$3.65 per month

Water district - Pulaski County Water District # 1

Communities served by water district - Science Hill and unincorporated area between Somerset and Science Hill

Peak month, daily average - 56,660 gallons

Rates

First	2,000 gallons used per month	\$4.50 minimum 5/8 or 3/4
Next	3,000 gallons used per month	1.20 per M gallons
Next	5,000 gallons used per month	1.00 per M gallons
Next	15,000 gallons used per month	.90 per M gallons
Next	75,000 gallons used per month	.75 per M gallons
All over	100,000 gallons used per month	.60 per M gallons

Water district - Pulaski County Water District # 2

Communities served by water district - Nancy and unincorporated area between Somerset and Nancy

Peak month, daily average - 54,787 gallons

<u>Number of Gallons of Water (or less) Per Month</u>	<u>Monthly Charge Per 1,000 Gallons (or less) Per Month</u>
---	---

Large Business Establishments (1-inch water meter)

First	5,000	\$1.80
Next	5,000	1.50
Next	10,000	.85
Next	30,000	.75
Next	50,000	.60
All over	100,000	.50

Schools-Factory (2-inch water meter)

First	20,000	\$1.25
Next	30,000	.75
Next	50,000	.60
All over	100,000	.50

Surface water sources - Cumberland Lake

Average discharge - Supplied by Cumberland River and Pitman Creek,
total about 8,800 cfs

Expected ground water yield - Northern portion of county is 5 to 50 gpm
and in other portions of county less than 5 gpm

Sewerage

Company serving Somerset - Somerset Sewer System

Design capacity - 2,550,000 gpd

Average daily flow - 900,000 gallons

Treatment - Primary and secondary

Type treatment - Aeration, clarifier, drying beds

Treated effluent discharged into - Sinking Creek

Size of sanitary mains - 8, 10, 12, 16 and 21 inches

Rates

	<u>Gallons of Water Used Per Month</u>	<u>Per M Gallons</u>
First	1,000	\$1.50 (Minimum)
Next	5,000	.60
Next	44,000	.50
Next	50,000	.40
Next	100,000	.30
Over	200,000	.25

Septic tanks are utilized for sewerage disposal in other portions of
Pulaski County.

LOCAL GOVERNMENT

City

Structure - Somerset: Mayor - 4 year term; 12 councilmen - 2 year terms

Budget 1969 - General Fund \$335,844

Fees and licenses - Business license fee - \$5 to \$200 annually

Structure - Burnside: Mayor - 4 year term; 6 councilmen - 2 year terms

Budget 1968-69 - \$37,955.58

Fees and licenses - Occupational license fee - \$15 to \$50 annually

County

Structure - County judge - 4 year term; 5 magistrates - 4 year terms

Budget 1969-70 - General Fund \$259,875; Road Fund \$87,000

Assessed Value of Property

<u>Classes of Property*</u>	<u>Somerset</u>	<u>Burnside</u>	<u>Pulaski County</u>
Real Estate & Personal		\$3,042,475	
Real Estate	\$39,126,320		\$109,266,270
Tangibles	9,933,220		22,354,530
Public Service	5,626,969	692,480	22,085,172

Local General Property Tax Rates Per \$100 of Assessed Valuation - 1969 ^{13/}

<u>Taxing Unit**</u>	<u>Somerset</u>	<u>Burnside</u>	<u>Science Hill</u>	<u>Ferguson</u>	<u>Pulaski County</u>
State	\$.015	\$.015	\$.015	\$.015	\$.015
County	.159	.159	.159	.159	.159
School	.759	.345	.369	.345	.345
City	.380	.306	.250	.240	
Total	\$1.313	\$.825	\$.793	\$.759	\$.519

*Property assessed at 100 percent of fair value.

**Manufacturing machinery, raw materials inventories and goods in process inventories are not subject to local tax. State rate is only .15 per \$100.

Planning and Zoning

Agency - Somerset Planning Commission

Plans completed - Comprehensive plan, subdivision regulations

Plans in process - Comprehensive plan (revision), housing element study, revised zoning ordinance

Codes adopted - All major codes

Other programs - Public housing

Safety

<u>Police</u>	<u>Somerset</u>	<u>Burnside</u>	<u>Science Hill</u>	<u>Pulaski County</u>
Total staff	23	1	1	7
Radio-patrol cars	3	1	0	3
Other equipment	Standard			Standard

<u>Fire</u>	<u>Somerset</u>	<u>Burnside</u>
American Insurance Association Fire Rating	Class 7 & 9	Class 7
Full-time staff	10	1
Volunteers	17	15
Equipment:		
500 gpm pumper		1
600 gpm pumper	1	
750 gpm pumper	2	1
1964 Pontiac auto	1	

Rescue Service

Somerset-Pulaski County Rescue Squad:

Number of volunteers - 45

Equipment - 2 panel trucks and 1 utility truck - all equipped with 2-way radios; 3 boats, 2 outboard motors; 3 boat trailers; 2 generators; lake dragging and first aid equipment

Personnel training - American Red Cross first aid training course

Sanitation

	<u>Somerset</u>	<u>Burnside</u>
Type service	municipal	private
Cost	business charged according to volume, residences \$1.00 mo.	\$1.50 mo. residential
Collection frequency	business-daily, residential-weekly	weekly
Disposal method	land fill	changing from open dump to land fill

HEALTH

Hospitals

	<u>Number</u>	<u>Beds</u>
General Hospital	1	118

Hospital facilities: 5 operating rooms; 3 emergency rooms; X-ray equipment; therapy unit; EKG; complete pathological and clinical laboratory; training facility for nursing - students from Berea College, for students obtaining associate degrees in nursing and certified laboratory assistants from Somerset Community College, and vocational training for nurses aides, orderlies and ward clerks; home health service within a 25-mile radius of the hospital.

Medical staff - 20 physicians (full-time), 25 physicians (courtesy), 10 dentists, 27 registered nurses, 208 full-time employees, 50 part-time employees

Lake Cumberland Comprehensive Care Center (outpatient service)

Medical staff - Children's Service Director, Volunteer Coordinator, Mental Health Worker, Pastoral Alcoholism Counselor, Administrator, Psychiatric Nurse, Mental Health Educator School Consultant, Psychologist, Psychiatrist, Children's Service Specialist

Adult Day Care Center - 1 aide

Children's Day Care Centers (2) - 2 full-time teachers, 2 full-time aides in each unit, 15 volunteer aides (part-time)

Nursing Homes

	<u>Number</u>	<u>Beds</u>
Personal Care Homes	5	236

Public Health

Facility - Pulaski County Health Department
Staff - Nutritionist, nurse, 2 sanitarians, 3 clerks
Budget, 1969-70 - \$82,254.



SOMERSET CITY HOSPITAL

OTHER LOCAL FACILITIES

Communications

Telephone - General Telephone Company of Kentucky
Services - Standard

Telegraph - Western Union, 103 South Main Street, Somerset
Services - Telephone

Postal

U. S. Post Office Class	<u>Somerset</u> 1st	<u>Burnside</u> 2nd	<u>Eubank</u> 3rd	<u>Science Hill</u> 3rd	<u>Ferguson</u> 3rd
Mail received daily	three	twice	twice	twice	twice
Mail dispatched daily	three	once	twice	twice	once

Newspaper - Commonwealth - Journal, Somerset
Circulation - Approximately 8,500
Published Monday through Friday

Radio - WSFC (AM-FM) and WTLO-Somerset
Hours of operation - WSFC - 5:25 a. m. to 11:00 p. m.
Hours of operation - WTLO - Daytime station
Stations received from - Lexington and Louisville, Kentucky,
Knoxville, Tennessee

Television - No local station

Cable service - Television Reception Corporation, Commonwealth
Cable Company, (Somerset) Burnside CA TV Cable Service (Burnside)
Reception from - Knoxville, Tennessee; Lexington, Kentucky
Kentucky Educational Television - Channel 29, WKSO, Somerset
transmitter

Library Services

Public library - Somerset-Pulaski County Library
Size collection - 18,000
Circulation, 1968 - 159,000
Services - Records, framed pictures, story hour, arts group,
bookmobile

Public library - Burnside Public Library
 Average monthly circulation - 700
 Hours of operation - 12 noon to 5 p. m. - Wednesday, Friday,
 Saturday; 6 to 9 p. m. Monday

Religious Institutions

Denominations - Baptist, Methodist, Christian, Church of Christ,
 Presbyterian, Catholic, Church of God, Assembly of God, Episcopal,
 Lutheran

Financial Institutions

<u>Bank</u>	<u>Statement as of June 30, 1969</u>	
	<u>Assets</u>	<u>Deposits</u>
The Citizens National Bank, Somerset (12-31-68)	\$14,785,295.79	\$13,553,061.71
The First & Farmers National Bank, Somerset	35,898,116.34	33,097,119.21
<u>Savings and Loan Associations</u>	<u>Assets</u>	<u>Shared Accounts</u>
Mutual Federal Savings & Loan Association of Somerset	\$16,595,057.20	\$14,533,810.47
American Federal Savings & Loan Association (12-31-68)	932,583.44	823,883.51

Hotels and Motels

<u>No. of Hotels and Motels in Somerset-Burnside Area</u>	<u>No. of Units and Rooms</u>
20	565

Clubs and Organizations

Business and Civic - (Somerset) Somerset-Pulaski County Chamber of
 Commerce, Jaycees, Lions Club, Kiwanis Club, PTA, Rotary Club
 (Burnside) - Burnside Chamber of Commerce, Lake Cumberland
 Development Foundation of Burnside, Inc.

Fraternal - (Somerset) - American Legion, VFW, Masons
 (Burnside) - Masonic Lodge

Women's - (Somerset) - Somerset Business & Professional Woman's Club, Junior Woman's Club, Woman's Club, Jaycettes, Literary Club, Chatauga Club

(Burnside) - Eastern Star, Women's Club, Homemakers

Youth - Girl Scouts, Boy Scouts, Little League, Babe Ruth League; Burnside Key Club

Other - Burnside Golf Club, YMCA

RECREATION

Local

Public Recreation Facilities (Somerset-Burnside Area)

Supervised program - Somerset and Burnside
Parks - Pulaski County Park, Burnside City Park
Playgrounds - 7
Swimming pools - YMCA pool, Somerset
Golf courses - 18-hole course
Tennis courts - 3
Baseball diamonds - 3
Football fields - 1

Private Recreation Facilities

Country clubs - 1
Golf courses - 1, par-3 (lighted)
Swimming pools - 1
Movie theaters - 2 indoor, 2 drive-ins
Bowling lanes - 1
Other - Skating rink, billiards

Tourist Attractions

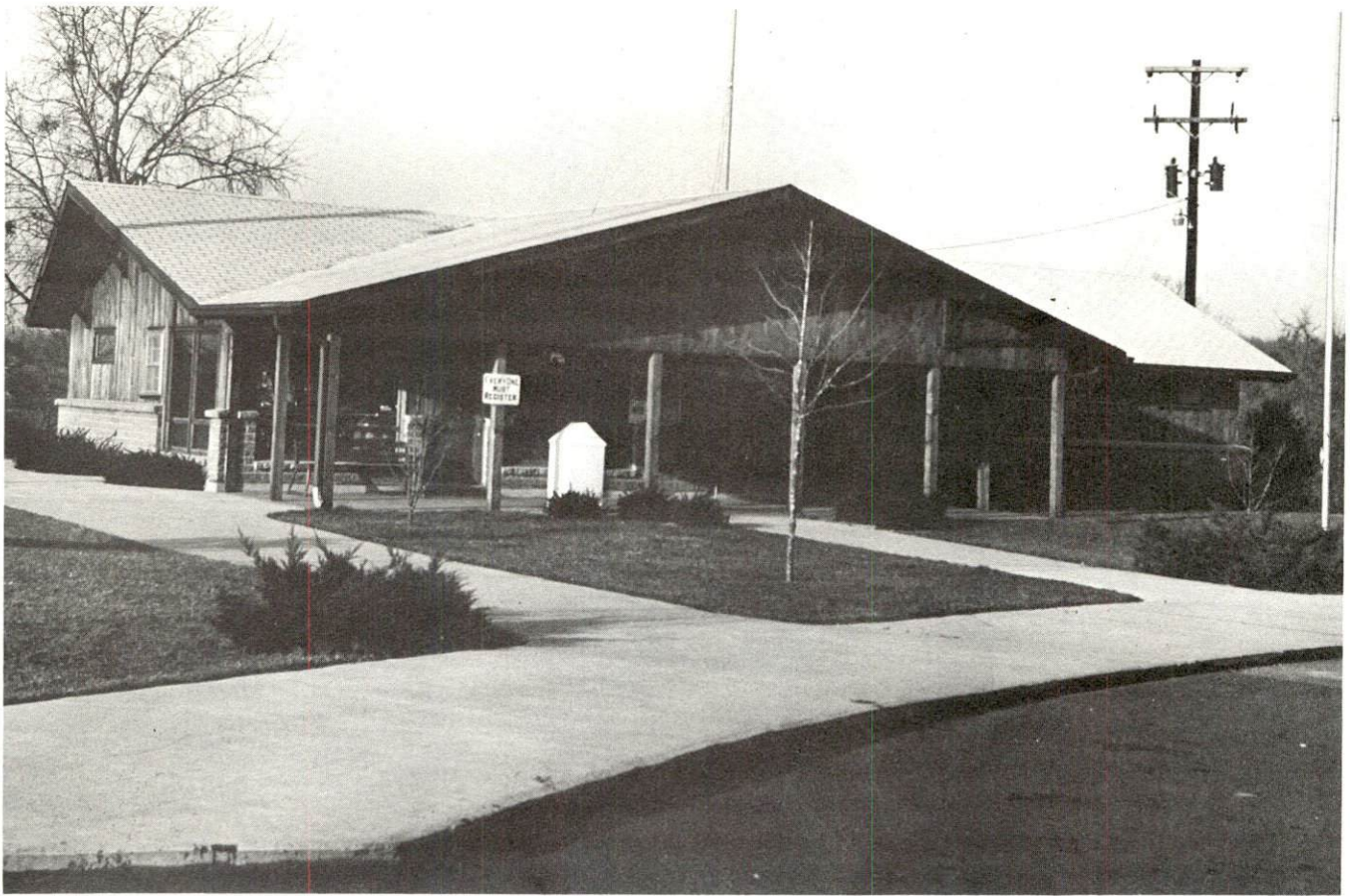
General Burnside Island State Park
Lake Cumberland
Daniel Boone National Forest
Mill Springs Civil War Battle Site

Cultural Events

Theater group - Local and college
Orchestra - Composed of local people - adults and young people
Art exhibits

Area (Within 25 miles)

Cumberland Falls State Park
Lake Cumberland State Park



GOLF PRO SHOP
GENERAL BURNSIDE ISLAND STATE PARK



BOAT STORAGE
BURNSIDE FISHING DOCK

AGRICULTURE - NATURAL RESOURCES - CLIMATE

Agriculture 14/

	<u>Pulaski County</u>	<u>Labor Market Area</u>
Total land area (acres)	418,560	2,100,480
Percent of area in farm land	64.9	60.0
Number of farms	3,260	13,711
Average size of farms (acres)	83.3	90.4
1964 value of all farm products	\$8,661,238	\$40,841,917
Value per farm	2,657	2,929
Total crop sales	4,601,536	21,811,523
Total livestock & livestock products	4,058,776	18,996,461
1967 agricultural production included:		
Burley tobacco (lbs.)	5,279,000	25,719,000
Corn (bu.)	1,282,000	5,285,000
Cattle and calves (number)	59,200	232,000
Hogs and pigs (number)	14,400	69,400
Milk production (1966) (lbs.)	70,200,000	250,065,000

Natural Resources

Principal mineral resources	Coal, limestone
Other mineral resources	Clay, sand and gravel, petroleum
Acres of commercial forest land	209,800
Most abundant tree species	White oaks, red oaks, hickories, yellow pines, yellow poplar, beech, hard maple

Climate

Temperature		
Annual mean	59.6	(30-year record)
Average annual 1968	57.3	
Record highest August, 1968	99	(8-year record)
Record lowest January, 1966	- 9	(8-year record)
Seasonal heating degree-days	3,494	(30-year record)
Precipitation		
Mean annual total	45.85 inches (30-year record)	
Mean annual snow and sleet	12.3 inches (26-year record)	
Total precipitation 1968	35.76 inches	
Mean No. days precipitation	.01 inches or more 126 (26-year record)	
Average No. days thunderstorms	48 (26-year record)	
Prevailing winds	northeast (14-year record)	

HISTORY

Pulaski County, the twenty-seventh county formed in the state, dates from 1798. The northern and western parts of Pulaski County are gently rolling areas, while the southern and eastern portions are hilly and mountainous. Approximately one-half of its eastern border follows Rockcastle River. Several miles of Cumberland Lake lies in the southern part of the county. This lake has been the incentive for recreational development and is one of Kentucky's favorite tourist attractions. The county was named for Count Joseph Casimir Pulaski, a liberty-loving Pole, who after unsuccessful attempts to restore the independence of his own country, migrated to America and entered the military service during the Revolutionary War period.

Somerset, the county seat, was established in 1801, incorporated as a town in 1810 and as a city in 1888. The city was named for Somerset County in England from where some of the settlers came. The city is located at the edge of the mountains and is known as the Gateway to the Mountains.

Zollicoffer Park, 9 miles west of Somerset, an area set aside in memory of General Felix Zollicoffer and his men, was dedicated on October 7, 1933. During the Civil War several battles were fought near Somerset. The Battle of Mill Springs on Fishing Creek in 1862 was a Federal victory in which Confederate General Zollicoffer and more than one hundred and fifty of his men were killed.

Burnside, originally Point Isabel, was named for General A. E. Burnside, Union General who was stationed in Burnside during the Civil War. The town was named Burnside at the time of its incorporation in 1889 and has no doubt utilized as many transportation methods as any town its size in the U. S. Situated on the Cumberland River, Burnside had the title of "Head of Navigation of the Cumberland River." Burnside came into its own as a river point during 1870-80, when it appeared coal might be successfully barged down to Nashville, and then the railroad entered to help shape the future. The river met the railroad at Burnside and goods shipped in by rail could be distributed to the towns along the river via steamboats and barges. Another important mode of transportation was the stagecoach, which ran between Monticello and Burnside and carried both mail and cargo as well as passengers.

Events of importance:

- * The first boat to make the trip from Nashville to Burnside was the Jefferson, in 1832.
- * The railroad which first ran from Cincinnati to Chattanooga through Burnside in 1878 was first visioned by the leaders of our country as early as 1837.
- * The Burnside area had a stagecoach line in operation from the late 1800's up until the early 1900's.
- * The Seven Gables Hotel, which opened in the late 1800's, is still in existence today.
- * The town of Burnside was relocated in 1951 with the construction of Wolf Creek Dam.
- * Today, after the formation of Lake Cumberland, thousands of tourists visit the area each year to enjoy the facilities of the lake.

Names worthy of remembrance are:

- * Cyrenius Wait, who produced the first raw silk in Kentucky at Somerset in 1841.
- * Andrew James, a distinguished lawyer, who was in politics for 20 years either as a State Representative or Secretary of State.
- * Galen Bishop, who migrated to Missouri and became a famous physician and surgeon.
- * Judge John Sherman Cooper, Sr., who served as County School Superintendent, County Judge, Collector of Internal Revenue, and Chairman of the State Board of Railroad Commissioners.
- * Venus Ramey, who was Miss America in 1945.
- * John Sherman Cooper, one of the most popular persons in Kentucky, who is now serving one of several terms in the United States Senate and is former Ambassador to India.

SOURCES OF INFORMATION

- 1/ U. S. Department of Commerce, Bureau of the Census, Census of Population, 1950, 1960. Department of Rural Sociology, University of Kentucky, Kentucky County Provisional Population Estimates: January 1, 1969. Somerset-Pulaski County Chamber of Commerce.
- 2/ Kentucky Department of Economic Security, Division of Research and Statistics.
- 3/ Kentucky Department of Economic Security, Number of Workers in Manufacturing Industries Covered by Kentucky Unemployment Insurance Law Classified by Industry and County, September 1959, September 1968.
- 4/ Kentucky Department of Commerce, 1969 Kentucky Directory of Manufacturers.
- 5/ Kentucky Department of Economic Security, Division of Employment Service, Somerset Office.
- 6/ Kentucky Department of Economic Security, Kentucky Labor Supply Estimates by County, January 1969.
- 7/ Kentucky Department of Commerce, Future Labor Supply by 1975.
- 8/ University of Kentucky, Office of Development Services and Business Research, Total Personal Income for Kentucky.
- 9/ University of Kentucky, Office of Development Services and Business Research, Per Capita Income in Kentucky.
- 10/ Southern Railway System, Louisville, Kentucky.
- 11/ Kentucky Department of Motor Transportation, Motor Carrier Directory, 1969.
- 12/ Eagle Express Company, Inc., Somerset, Kentucky.
- 13/ Farmer & Humble Certified Public Accountants, 1969 Kentucky Tax Rate Schedule.
- 14/ U. S. Department of Commerce, Bureau of the Census, Census of Agriculture, 1964. Kentucky Department of Agriculture, Kentucky Agricultural Statistics, 1968.

All other information was obtained from governmental offices, local businesses and organizations.