

1981

Industrial Resources: Simpson County - Franklin

Kentucky Library Research Collections
Western Kentucky University, spcol@wku.edu

Follow this and additional works at: https://digitalcommons.wku.edu/simpson_cty

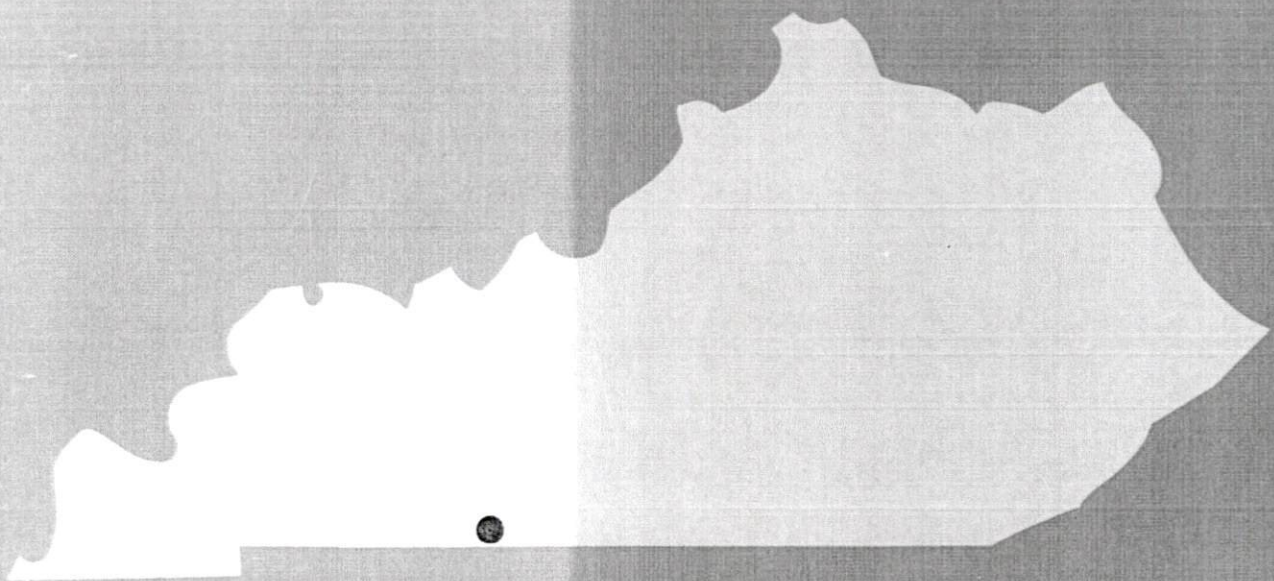
 Part of the [Business Administration, Management, and Operations Commons](#), [Growth and Development Commons](#), and the [Infrastructure Commons](#)

Recommended Citation

Kentucky Library Research Collections, "Industrial Resources: Simpson County - Franklin" (1981). *Simpson County*. Paper 7.
https://digitalcommons.wku.edu/simpson_cty/7

This Report is brought to you for free and open access by TopSCHOLAR®. It has been accepted for inclusion in Simpson County by an authorized administrator of TopSCHOLAR®. For more information, please contact topscholar@wku.edu.

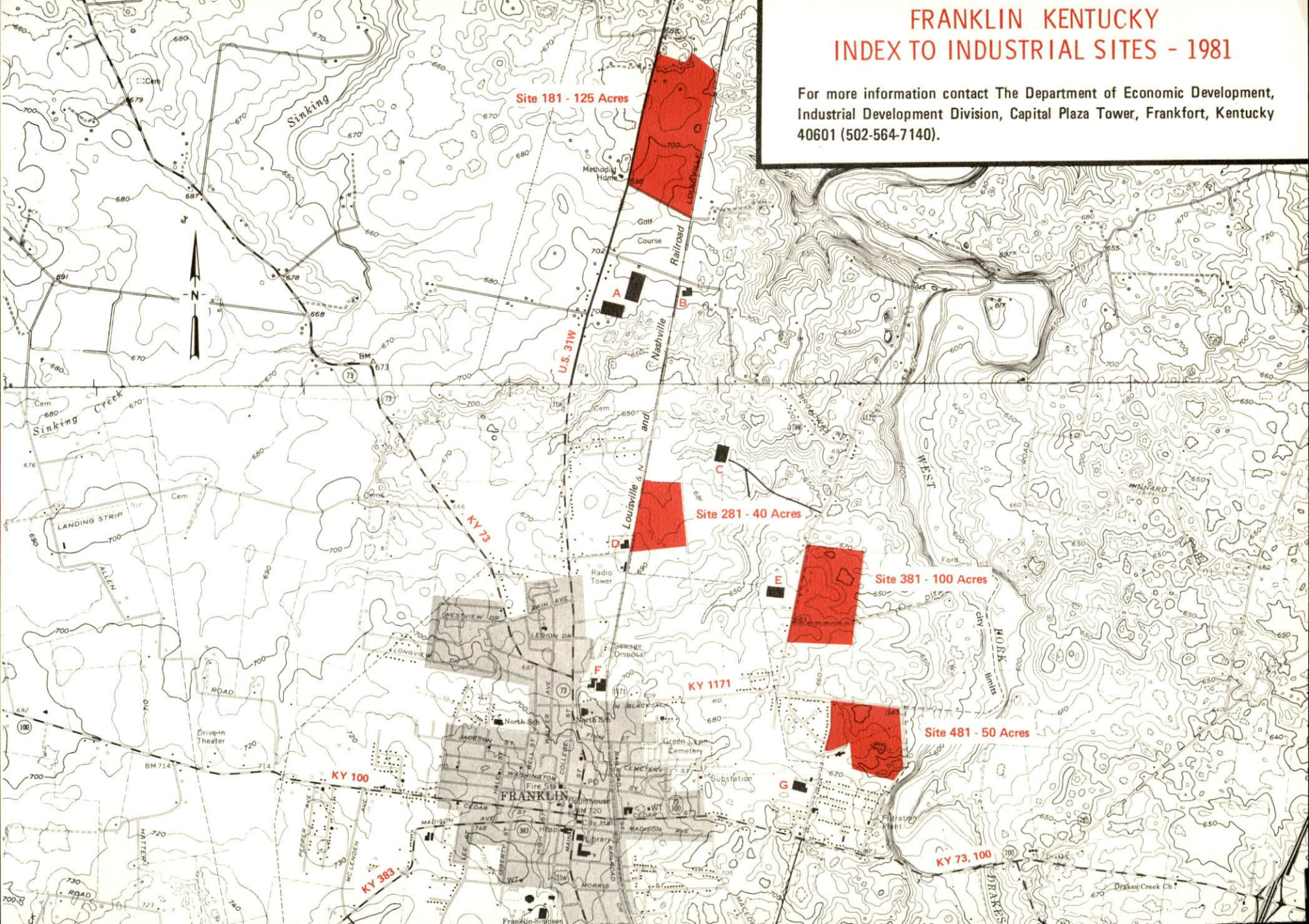
A comprehensive
report on
Franklin, Ky.



KENTUCKY & CO.
The state that's run like a business.

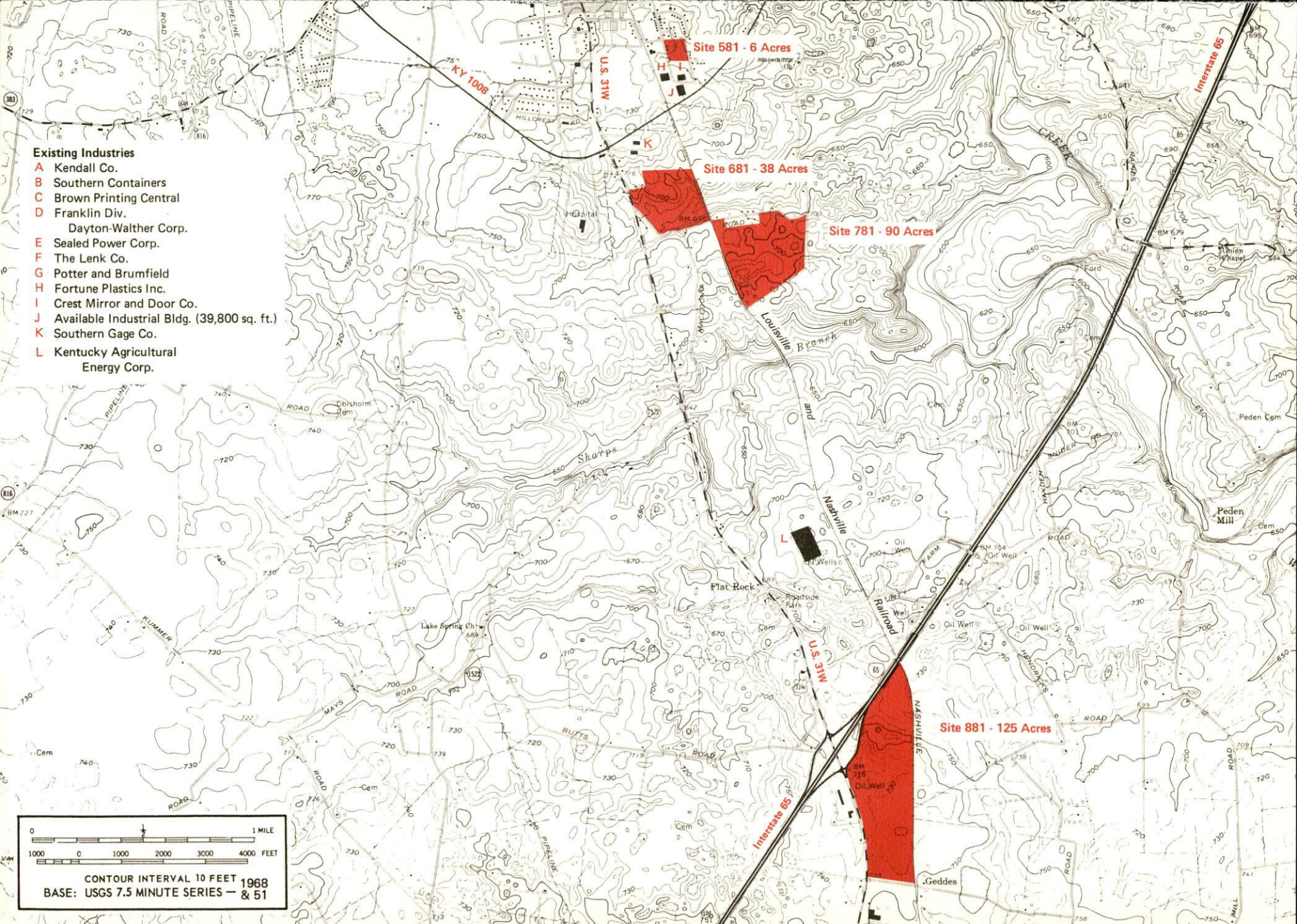
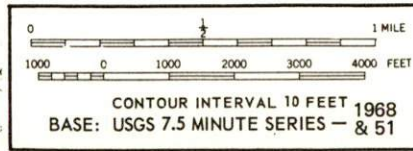
FRANKLIN KENTUCKY INDEX TO INDUSTRIAL SITES - 1981

For more information contact The Department of Economic Development,
Industrial Development Division, Capital Plaza Tower, Frankfort, Kentucky
40601 (502-564-7140).



Existing Industries

- A** Kendall Co.
- B** Southern Containers
- C** Brown Printing Central
- D** Franklin Div.
Dayton-Walther Corp.
- E** Sealed Power Corp.
- F** The Lenk Co.
- G** Potter and Brumfield
- H** Fortune Plastics Inc.
- I** Crest Mirror and Door Co.
- J** Available Industrial Bldg. (39,800 sq. ft.)
- K** Southern Gage Co.
- L** Kentucky Agricultural
Energy Corp.



A COMPREHENSIVE REPORT ON
FRANKLIN, KENTUCKY

Prepared by
The Kentucky Department of Commerce
Division of Research and Planning
in cooperation with
The Franklin-Simpson County Chamber of Commerce

1981

TABLE OF CONTENTS

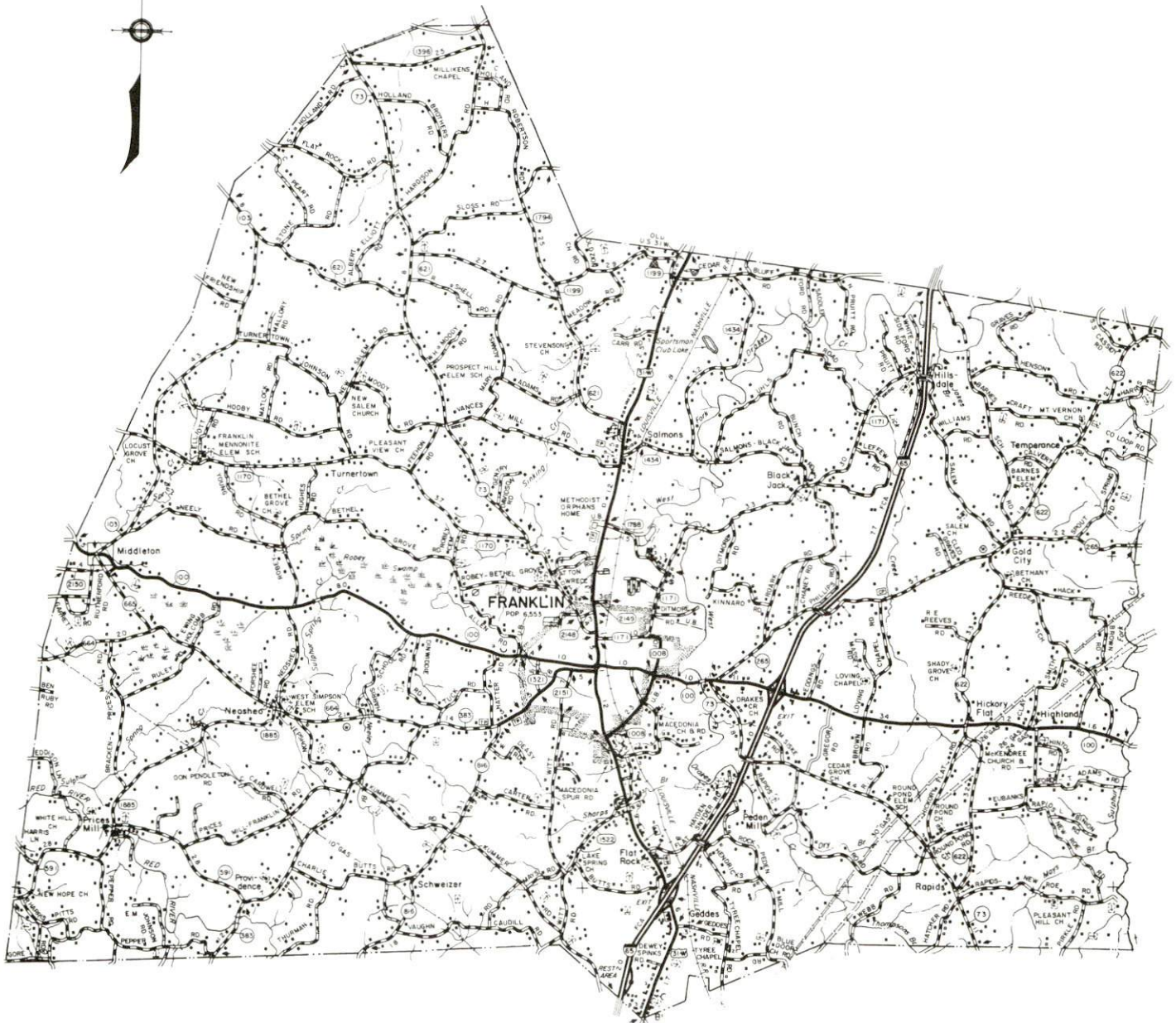
<u>Chapter</u>	<u>Page</u>
INDUSTRIAL SITES	i
THE LABOR MARKET AREA	1
Population	1
Labor Force Characteristics of Residents, 1980	1
Estimated Male Labor Supply	2
Estimated Female Labor Supply	2
Major Franklin Manufacturing Firms, Their Products and Employment	3
Labor Organizations in Manufacturing Firms	4
Industrial Services	5
Average Weekly Wages by Industry, by Place of Work, 1980	6
Per Capita Personal Income	8
TRANSPORTATION	9
Rail	9
Highways	9
Truck Service	10
Air	12
Bus	12
Taxi	12
Rental Services	12
Water	12
POWER AND FUEL	13
Electricity	13
Natural Gas	14
Other Fuels	14
WATER AND SEWERAGE	15
Water	15
Raw Water	17
Sewerage	17
CLIMATE	18

<u>Chapter</u>	<u>Page</u>
LOCAL GOVERNMENT	19
City	19
County	19
Assessed Value of Property	20
Property Taxes	20
Combined State and Local Rates Per \$100 Valuation, 1980	21
Utilities Gross Receipts Tax for Schools	21
Planning and Zoning	21
Safety	22
Police	22
Fire	22
Rescue Service	22
Refuse Collection and Disposal	22
EDUCATION	23
Public Schools	23
Nonpublic Schools	23
Area Colleges and Universities	24
Vocational Schools	25
HEALTH	27
Local Medical Personnel	27
Hospitals	27
Other Medical Facilities	27
Ambulance Service	27
Public Health	27
OTHER LOCAL FACILITIES	28
Communications	28
Library Services	29
Religious Institutions	29
Financial Institutions	29
Motels	30
Clubs and Organizations	30
RECREATION	31

1980 EDITION
GENERAL HIGHWAY MAP
SIMPSON COUNTY
KENTUCKY

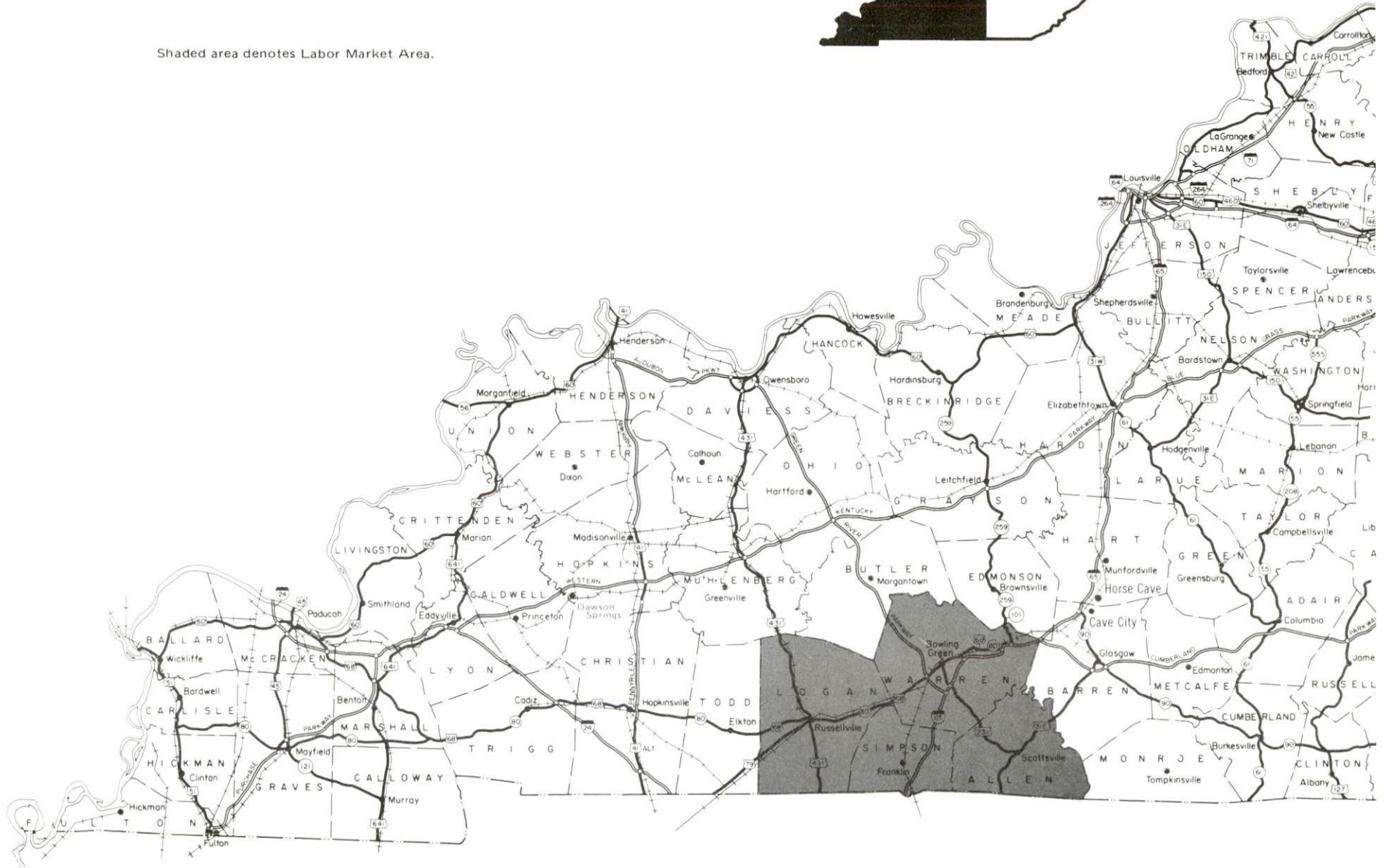
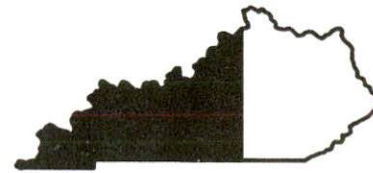
PREPARED BY THE
KENTUCKY DEPARTMENT OF TRANSPORTATION
OFFICE OF TRANSPORTATION PLANNING
DIVISION OF FACILITIES PLANNING

IN COOPERATION WITH THE
U.S. DEPARTMENT OF TRANSPORTATION
FEDERAL HIGHWAY ADMINISTRATION



FRANKLIN LABOR MARKET AREA
With
MAJOR HIGHWAY & RAILROAD SYSTEM

Shaded area denotes Labor Market Area.



THE LABOR MARKET AREA

The Franklin Labor Market Area includes Simpson County and the adjoining Kentucky counties of Allen, Logan and Warren.

Area	POPULATION		Percent Nonwhite
	1980	1970	
Franklin	7,738	6,553	20.7
Labor Market Area	124,767	105,329	N/A
Simpson County	14,673	13,054	12.4
Allen County	14,128	12,598	1.3
Logan County	24,138	21,793	9.3
Warren County	71,828	57,884	9.0

Note: The 1980 counts of population by race are provisional.

Source: U.S. Department of Commerce, Bureau of the Census, March 1981, as published in Special Report No. 8, State Data Center, Urban Studies Center, University of Louisville, March 1981.

LABOR FORCE CHARACTERISTICS OF RESIDENTS, 1980

	Simpson County	Labor Market Area
Civilian Labor Force	6,512	61,603
Employment	5,894	56,347
Agricultural	741	4,319
Nonagricultural	5,153	52,028
Unemployment	618	5,256
Rate of Unemployment (%)	9.5	8.5

Source: Kentucky Department for Human Resources, Kentucky Labor Force Estimates, Annual Averages, 1980.

ESTIMATED MALE LABOR SUPPLY
FRANKLIN LABOR MARKET AREA

Area	Current			Future	
	Total	Not in Labor Force	Unemployed	Under-employed	Reaching 18 years of age before 1986
Labor Market Area*	6,371				8,897
Simpson	437	98	149	190	679
Allen	464	96	178	190	531
Logan	748	154	274	320	992
Warren	3,132	414	728	1,990	2,357
Robertson, Tenn.	560	N/A	N/A	N/A	1,353
Sumner, Tenn.	1,030	N/A	N/A	N/A	2,985

*Additional workers may be drawn from other nearby counties.

Note: Not in Labor Force - persons who would enter the labor force if suitable employment were available; Unemployed - persons unemployed and actively seeking work; Underemployed - persons employed but working only 14 to 26 weeks per year.

Sources: Kentucky Department for Human Resources, Kentucky Labor Supply Estimates by County, 1979. Tennessee Department of Economic & Community Development, Available Labor, February 1979. Kentucky Department of Commerce, Future Labor Supply before 1986.

ESTIMATED FEMALE LABOR SUPPLY
FRANKLIN LABOR MARKET AREA

Area	Current			Future	
	Total	Not in Labor Force	Unemployed	Under-employed	Reaching 18 years of age before 1986
Labor Market Area*	6,857				8,579
Simpson	425	44	141	240	591
Allen	457	43	164	250	516
Logan	641	70	251	320	981
Warren	2,784	168	686	1,930	2,281
Robertson, Tenn.	780	N/A	N/A	N/A	1,320
Sumner, Tenn.	1,770	N/A	N/A	N/A	2,890

*Additional workers may be drawn from other nearby counties.

Note: Not in Labor Force - persons who would enter the labor force if suitable employment were available; Unemployed - persons unemployed and actively seeking work; Underemployed - persons employed but working only 14 to 26 weeks per year.

Sources: Kentucky Department for Human Resources, Kentucky Labor Supply Estimates by County, 1979. Tennessee Department of Economic & Community Development, Available Labor, February 1979. Kentucky Department of Commerce, Future Labor Supply before 1986.

MAJOR FRANKLIN MANUFACTURING FIRMS,
THEIR PRODUCTS AND EMPLOYMENT*

Firm (Establishment date)	Product	Employment			Labor Unions
		Total	Male	Female	
Alliance Rubber Company, Inc. (1958)	Rubber bands	48	18	30	
Anaconda Company, Brass Division (1966)	Welded copper air conditioning tube	120	100	20	
Brown Printing Central, Division of Brown Printing Company (1979)	Catalogs, business magazines	161	120	41	
Fortune Plastics, Inc. (1978)	Plastic bottles	60	---	---	
Franklin Division, Dayton-Walther Corporation (1959)	Jacks for mobile homes and campers, couplers for mobile homes, industrial jacks and stampings	150	142	8	Auto Workers**
Kendall Company, Adhesive Plant (1962)	Industrial adhesive tape products, consumer and athletic adhesive tapes	550	---	---	
Kendall Company, Polyken Plant (1956)	Industrial adhesive tapes, pipeline coating	310	261	49	
The Lenk Company (1953)	Contract aerosol fillers, solid and liquid cleaning products	300	149	151	
Potter and Brumfield (1956)	Electrical relays, solenoids	500	178	322	

(Contd.)

<u>Firm (Establishment date)</u>	<u>Product</u>	<u>Employment</u>			<u>Labor Unions</u>
		<u>Total</u>	<u>Male</u>	<u>Female</u>	
Sealed Power Corporation (1972)	Transmissions, piston rings, small engines	250	139	111	
Southern Gage Company, Franklin Division (1968)	Thread, plain and snap gauges, machine shop	92	85	7	Machinists**
Weyerhaeuser Company (1970)	Corrugated shipping containers	186	171	15	

*Firms with 45 employees or more.

**See Labor Organizations below.

Source: Kentucky Department of Commerce, Division of Research and Planning.

LABOR ORGANIZATIONS IN MANUFACTURING FIRMS

<u>Union</u>	<u>Representing workers at:</u>
International Association of Machinists and Aerospace Workers, AFL-CIO	Southern Gage Company, Franklin Division
International Brotherhood of Electrical Workers, AFL-CIO	Neon Fluorescent Engineering Company
International Union, United Automobile, Aerospace and Agricultural Implement Workers of America	Franklin Division, Dayton-Walther Corporation

INDUSTRIAL SERVICES

<u>Types of Services</u>	<u>Location</u>	<u>Mileage from Franklin</u>
Tool & Die, Machine & Pattern Shops	Russellville, Kentucky	22 miles northwest
	Bowling Green, Kentucky	23 miles north
Metal Service Centers	Russellville, Kentucky	22 miles northwest
	Bowling Green, Kentucky	23 miles north
Heat Treating	Nashville, Tennessee	49 miles south
Metal Finishers	Nashville, Tennessee	49 miles south
Electric Motor Repair	Bowling Green, Kentucky	23 miles north
	Auburn, Kentucky	25 miles northwest

Sources: Kentucky Directory of Selected Industrial Services, 1979;
Kentucky Department of Commerce, Division of Research and Planning.

AVERAGE WEEKLY WAGES BY INDUSTRY,
BY PLACE OF WORK, 1980

	<u>Simpson County</u>	<u>Allen County</u>
All Industries	\$222.82	\$203.85
Mining & Quarrying	*	118.94
Contract Construction	159.54	137.90
Manufacturing	260.00	237.99
Transportation, Communications & Public Utilities	323.14	248.01
Wholesale & Retail Trade	155.90	176.93
Finance, Insurance & Real Estate	243.39	204.52
Services	151.40	128.65
State/Local Government	205.52	188.84
Other	*	*

	<u>Logan County</u>	<u>Warren County</u>
All Industries	\$200.70	\$223.88
Mining & Quarrying	179.28	269.07
Contract Construction	228.82	238.72
Manufacturing	215.44	264.92
Transportation, Communications & Public Utilities	249.27	309.37
Wholesale & Retail Trade	158.25	170.37
Finance, Insurance & Real Estate	196.78	237.86
Services	157.24	181.27
State/Local Government	204.70	256.87
Other	135.59	121.63

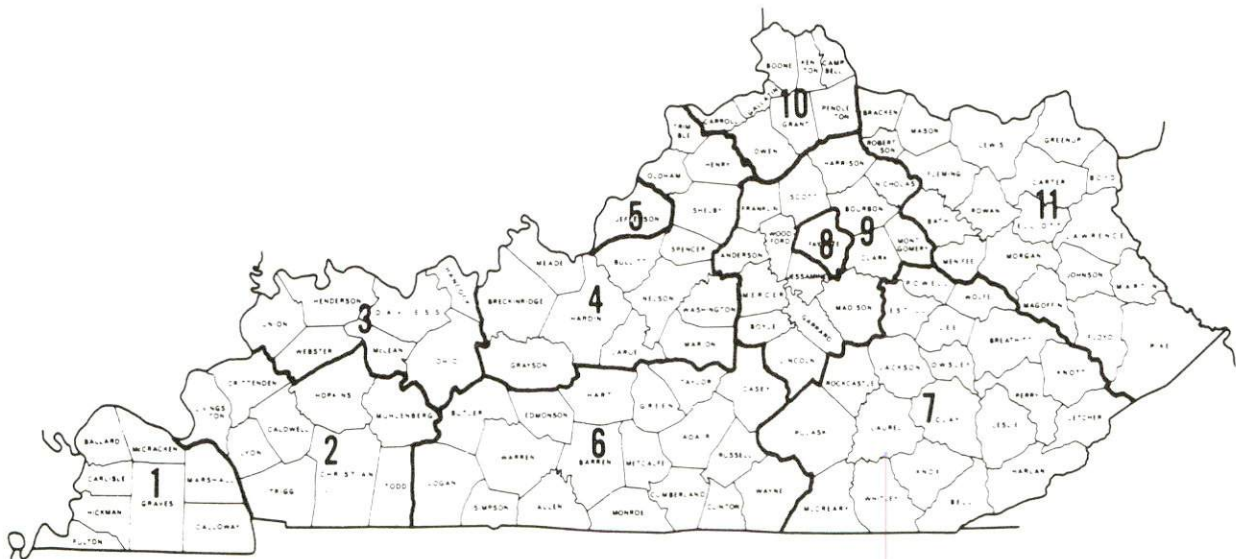
*Not disclosed.

Note: Excludes domestic workers, railway workers, certain nonprofit corporations, majority of federal government workers, and self-employed workers.

Source: Kentucky Department for Human Resources, Average Weekly Wages of Workers Covered by Kentucky Unemployment Insurance Law, 1980.

Occupational wage rates for specific industries are usually not available to most government agencies, and wage data furnished to state employment agencies by individual industrial employers is protected from disclosure by federal law. The most reliable up-to-date wage information can be obtained by direct contact with local employers.

Associated Industries of Kentucky, a voluntary organization of Kentucky businesses, regularly collects occupational wage rates and fringe benefits data from participating member firms. Data is compiled for over 127 clearly defined office, production, and service occupations. Tabulations are published for eleven regions of Kentucky, as shown on the map below. It should be noted that the data may be weighted by the preponderance of firms in the larger cities and may be somewhat higher than the rates paid in the smaller communities. Data from these tabulations are available, upon request, from the Kentucky Department of Commerce, Frankfort, Kentucky 40601.



Associated Industries of Kentucky Area Wage Surveys

Up-to-date occupational wage rates of the existing industries are maintained by South Kentucky Industrial Development Association, Post Office Box 726, Hopkinsville, Kentucky 42240.

<u>PER CAPITA PERSONAL INCOME</u>			
<u>Area</u>	<u>1979</u>	<u>1975</u>	<u>Percent Change</u>
Simpson County	\$7,617	\$4,379	73.9
Labor Market Area Range	\$5,990 - 7,617	\$3,707 - 4,776	N/A
Kentucky	7,052	4,882	44.4
U.S.	8,637	5,861	47.4

Source: U.S. Department of Commerce, Bureau of Economic Analysis, April 1981.

TRANSPORTATION

Rail

Line serving Franklin - Louisville and Nashville Railroad

Services - Main line; 1 southbound and 1 northbound freight stops daily; 9 southbound and 11 northbound through freights daily; switching facilities; team track space available for 25 cars; siding space available for 20 cars; piggyback facilities available at Bowling Green, 23 miles north of Franklin.

For details on routing, schedules, rates, and services, contact:

Director of Industrial Development
Louisville and Nashville Railroad Company
P. O. Box 32290
Louisville, Kentucky 40232
(502) 587-5723

Highways

Franklin is provided direct access to the Interstate Highway System via I-65, a major north/south artery extending from Chicago, Illinois, to Mobile, Alabama. Franklin is 3 miles west of I-65 and is also served by U.S. Highway 31-W and Kentucky Highway 100, both class "AAA" (80,000 pounds gross load limit) trucking highways.

Truck Service

Company

Bowling Green Express, Inc.*

Franklin Express Company,
Inc.** (T)

Interstate Motor Freight
System**

McLean Trucking Company**

Overnite Transportation
Company*

Renner's Express, Inc.*

Smith's Transfer Corporation**

United Trucking Service, Inc.

Home Office

Plum Springs Road
Bowling Green, Kentucky 42101

31 West North Street
P. O. Box 208
Franklin, Kentucky 42134

110 Ionia Northwest
Grand Rapids, Michigan 49501
P. O. Box 213
Winston-Salem, North Carolina 27102

1000 Semmes Avenue
P. O. Box 1216
Richmond, Virginia 23209
1350 South West Street
P. O. Box 882
Indianapolis, Indiana 46206

P. O. Box 1000
Staunton, Virginia 24401
8505 West Warren
Dearborn, Michigan 48126

(T) Terminal.

*Interstate and intrastate.

**Interstate only.

<u>Other Freight Services</u>	<u>Nearest Shipping Center or Home Office</u>
Purolator Courier Corporation*	Louisville, Kentucky, 134 miles northeast
United Parcel Service*	Bowling Green, Kentucky, 23 miles north
KATO Express, Inc. (air cargo service)**	Elizabethtown, Kentucky, 91 miles northeast
Red Arrow Delivery Service (air cargo service)***	Bowling Green, Kentucky, 23 miles north
Federal Express Corporation****	Clarksville, Tennessee, 62 miles southwest

HIGHWAY MILES AND TRUCK TRANSIT TIME IN DAYS FROM
FRANKLIN, KENTUCKY, TO SELECTED MARKET CENTERS

City	Highway Miles	Delivery		City	Highway Miles	Delivery	
		Time TL				Time TL	
Atlanta, Ga.	291	1		Los Angeles, Ca.	2,074	6	
Baltimore, Md.	713	2		Louisville, Ky.	134	Same day	
Birmingham, Ala.	245	1		Nashville, Tenn.	49	Same day	
Chicago, Ill.	426	2		New Orleans, La.	566	2	
Cincinnati, Ohio	235	1		New York, N. Y.	875	3	
Cleveland, Ohio	479	2		Pittsburgh, Pa.	515	2	
Detroit, Mich.	494	2		St. Louis, Mo.	290	1	
Knoxville, Tenn.	226	1					

Note: Mileage computations are via the best interstate or primary highways, not necessarily the most direct route of travel.

Sources: Rand McNally Road Atlas, 1979. Official Kentucky Mileage Map, 1979. Delivery time - Bowling Green Express, Inc., P. O. Box 13303, Louisville, Kentucky 40213.

- *For regular scheduled pickups or for occasional pickups, arrangements must be made with the Louisville office of Purolator Courier Corporation or United Parcel Service.
- **Daily pickup and delivery service is available to and from Standiford Field in Louisville. Arrangements for service should be made through the home office in Elizabethtown. Call toll-free, 1-800-732-4484.
- ***Daily pickup and delivery service is available to and from Standiford Field in Louisville, Kentucky, and Nashville Metropolitan Airport in Nashville, Tennessee. Arrangements for service should be made through the shipping center in Bowling Green.
- ****For information on scheduling, rates, and services, contact the Federal Express shipping station at Clarksville, Tennessee, or call the home office in Memphis, Tennessee, toll-free at 1-800-238-5355 (in Tennessee, call 1-800-542-5171).

Air

Local

Location: WHAK Field
3 miles west-southwest of Franklin
Runways: 1 turf
Length: 2,400 feet
Traffic
Control: Wind sock
Lighting: Sundown to sunrise
Services: 100 fuel on request, overnight tie-downs,
storage hangars

Nearest Scheduled Commercial Airline Service

Location: Nashville Metropolitan Airport
6 miles southeast of Nashville, Tennessee;
49 miles south of Franklin
Runways: 3 paved
Length: 8,000 feet; 7,700 feet; 4,320 feet
Traffic
Control: Tower
Lighting: Beacon, runway
Services: American, Braniff, Delta, Eastern, Ozark,
Piedmont, Republic, TWA, and USAir airlines;
Allegheny Commuter, Scheduled Skyways, Sunbird,
and Tennessee Airways commuter air carriers;
100 LL, 100, and jet fuel; major repairs,
major Avionics repairs; tie-downs and hangars;
charter service; flight instructions; plane
rentals; U.S. Customs, car rental; limousine;
taxi; weather information; hotel; restaurant

Air Freight
Service: Air freight terminal

Bus - Southern Greyhound Bus Lines

Taxi - One taxi company, 24-hour service, radio-dispatched

Rental Services - Auto, truck, and trailer rentals are available in
Bowling Green, 24 miles north of Franklin.

Water

Franklin is located approximately 58 miles southeast of a point on the Green River where a 9-foot navigation channel is maintained from Paradise, Kentucky, in Muhlenberg County north to the confluence of the Green and Ohio Rivers.

POWER AND FUEL

Electricity

Company serving Franklin - Franklin Electric Plant Board
Source of power - Tennessee Valley Authority
Total generating capacity - 28,539,945 KW
For industrial rates contact:

South Kentucky Industrial
Development Association, Inc.
P. O. Box 726
Hopkinsville, Kentucky 42240
(502) 885-5392

and/or

Franklin Electric Plant Board
P. O. Box 349
309 North High Street
Franklin, Kentucky 42134
(502) 586-4441

Company serving Simpson County - Warren Rural Electric Cooperative
Corporation
Source of power - Tennessee Valley Authority
Total generating capacity - 28,539,945 KW
For industrial rates contact:

South Kentucky Industrial
Development Association, Inc.
P. O. Box 726
Hopkinsville, Kentucky 42240
(502) 885-5392

and/or

Warren RECC
P. O. Box 1118
951 Fairview Avenue
Bowling Green, Kentucky 42101
(502) 842-6541

Natural Gas

Company serving Franklin - Western Kentucky Gas Company
Source of supply - Texas Gas Transmission Corporation
Size of transmission mains - 6 inches (supplier);
4 inches (distributor)
Distribution mains - 6, 4, and 2 inches
Distribution pressure - Up to 30 psi
Btu content - 1,006 per cubic foot
Specific gravity - .60
For rates and supplies contact:

Western Kentucky Gas Company
P. O. Box 866
Owensboro, Kentucky 42301
(502) 685-8000

Other Fuels

Propane

Pargas of Franklin
700 North Main Street
Franklin, Kentucky 42134

Southern States Franklin
Petroleum Cooperative
P. O. Box 512
Gold City Road
Franklin, Kentucky 42134

Other distributors of propane are located in Bowling Green,
23 miles north of Franklin.

Fuel oils

Distillate fuel oil -

A. L. Johnson
Gulf Oil Products
P. O. Box 283
Russellville Road
Franklin, Kentucky 42134

Southern States Franklin
Petroleum Cooperative
P. O. Box 512
Gold City Road
Franklin, Kentucky 42134

Other distributors of distillate fuel oil are located in
Bowling Green and Russellville, Kentucky.

Residual fuel oil - Arrangements must be made with the refinery.

Low sulphur content coal - Available in Kentucky.

WATER AND SEWERAGE

Water

Company serving Franklin - Franklin Municipal Water System
P. O. Box 522
Franklin, Kentucky 42134
(502) 586-8611 or 586-9522

Source - West Fork Drakes Creek
Treatment plant capacity - 3,500,000 gallons per day
Average daily consumption - 2,044,000 gallons
Peak daily consumption - 2,800,000 gallons
Type treatment - Clarification, sand filtration, coagulation
Storage capacity - 1,175,000 gallons*
Size lines - 16, 12, 8, and 6 inches
Average pressure - 50 psi
Average temperature - 58 degrees F.

MONTHLY WATER RATES

Residential/Inside City

First	2,000 gallons	\$3.25 (Minimum)
Next	18,000 gallons	1.05 per M gallons
Next	80,000 gallons	.50 per M gallons
Next	900,000 gallons	.45 per M gallons
Over	1,000,000 gallons	.40 per M gallons

Residential/Outside City

Inside rate times \$1.50

Commercial/Inside City

1.5 times inside residential rate

Commercial/Outside City

1.5 times outside residential rate

Tap-on charge: 5/8- and 3/4-inch meter - \$250
Charge for larger meters varies according
to size of meter and location.

*Funding has been approved for construction of a 1,000,000 gallon treated water storage tank. The project is expected to be completed early 1982.

Name of water district - Simpson County Water District
P. O. Box 1118
Bowling Green, Kentucky 42101
(502) 842-6541

Area served - Simpson County excluding the City of Franklin
Date when water district began operating - 1967
Source of supply of treated water - City of Franklin
Average amount of water used in a 24-hour period - 486,025 gallons
Peak amount of water used in a 24-hour period - 711,890 gallons
Storage capacity - 300,000 gallons
Average pressure - 60 psi
Average temperature - 60 degrees F.
Size lines - 10, 8, 6, 4, 3, and 2 inches
Rates -

First	2,000 gallons	\$5.00 (Minimum for residential customers)
Next	2,000 gallons	1.50 per M gallons
Next	2,000 gallons	1.10 per M gallons
Next	4,000 gallons	.90 per M gallons
Next	20,000 gallons	.80 per M gallons
Next	50,000 gallons	.70 per M gallons
Next	60,000 gallons	.50 per M gallons
All over	140,000 gallons	.40 per M gallons

Contribution in aid of construction

5/8-inch meter (Residential)	\$ 250
3/4-inch meter	300
1-inch meter	350
1 1/2-inch meter	500
2-inch meter	675
3-inch meter	950
4-inch meter	1,350
6-inch or larger meter	Actual cost

Raw Water

Surface water sources - Drakes Creek
Average discharge - West Fork Drakes Creek near Franklin, Kentucky,
218 cfs (11 years, USGS) unadjusted
Expected ground water yield - 50 to 200 gpm along major streams,
5 to 50 gpm over remainder of county.

Sewerage

Company serving Franklin - Franklin Municipal Water System
P. O. Box 522
Franklin, Kentucky 42134
(502) 586-8611 or 586-9522

Design capacity - 1,200,000 gallons per day
Average daily flow - 1,000,000 gallons
Treatment - Primary and secondary
Type treatment - Clarifier, drying beds, trickling filter,
anaerobic digestion
Treated effluent discharged into - West Fork Drakes Creek
Size of sanitary mains - 6 to 36 inches
Size of storm mains - 48 inches
Rates -

Residential/Inside City

First 2,000 gallons	\$2.00 (Minimum)
Over 2,000 gallons	.60 per M gallons

Residential/Outside City

Inside rate times \$1.50

Commercial/Inside City

1.5 times inside residential rate

Commercial/Outside City

1.5 times outside residential rate

Tap-on charge: \$400

CLIMATE

Simpson County

Temperature

Normal (30-year record)	59.4 degrees
Average annual 1980	59.2 degrees
Record highest, July 1952 (41-year record)	107.0 degrees
Record lowest, January 1963 (41-year record)	-15.0 degrees
Normal heating degree days (30-year record)	3,696
(Heating degree day totals are the sums of negative departures of average daily temperatures from 65 degrees F.)	

Precipitation

Normal (30-year record)	46.00 inches
Mean annual snowfall (39-year record)	11.60 inches
Total precipitation 1980	34.92 inches
Mean number days precipitation (.01 inch or more) (39-year record)	119
Mean number days thunderstorms (39-year record)	54

Prevailing Winds (22-year record)

South

Relative Humidity (15-year record)

Midnight	79 percent
6 a.m.	84 percent
Noon	58 percent
6 p.m.	62 percent

Source: U.S. Department of Commerce, Environmental Science Services Administration, Climatological Data, 1980.
Station of record: Nashville, Tennessee.

LOCAL GOVERNMENT

City

Structure - Mayor - 4-year term; 6 council members - 2-year terms;
Budget 1980 - General Fund \$610,270.00
 Water and Sewer Fund 832,760.00
Fees and licenses - Business license fees range from \$25 to \$1,100
annually; auto sticker fee \$10 annually
Manufacturing:

The first 3 years any manufacturer, manufacturing plant,
or factory is in operation it shall be exempt from the
payment of a fee under section 110.13 of the Franklin
Code of Ordinance.

Thereafter:

Up to 50 employees: \$2 for each of first 25; \$1 each, balance	\$ 75
Up to 100 employees: \$2 each, first 50; \$1 each, balance	150
Up to 300 employees: \$2 each, first 100; \$1 each, balance	400
Up to 500 employees: \$2 each, first 100; \$1 each, balance	600
Over 500 employees	750

County

Structure - County Judge/Executive - 4-year term;
4 magistrates - 4-year terms
Budget 1980-81 - General Fund \$351,813; Road Fund \$327,446

Assessed Value of Property

<u>Classes of Property</u>	<u>Franklin (1979)</u>	<u>Simpson County (1981)</u>
Real Estate	\$62,272,470	\$201,779,170
Tangibles	17,983,842	44,556,150

Property Taxes

All property in Kentucky is assessed at 100 percent of fair cash value.

Land and buildings are taxed by the state and may be taxed by local jurisdictions. The state rate is \$0.241 per \$100 of assessed valuation.

Manufacturing machinery, raw materials inventories, pollution control equipment, and goods in the process of manufacture are not subject to local taxation. The state rate is \$0.15 per \$100.

Other tangible personal property owned by manufacturers (automobiles, trucks, finished goods, office furniture, office equipment) is taxed by the state at \$0.45 per \$100 and may be taxed by local jurisdictions.

Property stored in public warehouses in a transit status is not subject to local taxation. The state rate is only \$0.015 per \$100.

Intangible personal property located in Kentucky (money in hand, shares of stock, notes, bonds, accounts receivable, and other credits) is taxed by the state at \$0.25 per \$100, and is not subject to local taxation.

Private leaseholds in industrial facilities owned by cities or counties and financed by industrial revenue bonds are subject to a state tax of \$0.015 per \$100 of value (essentially the lessee's equity, adjusted for appreciation or depreciation). Local taxation is not permitted.

Combined State and Local Rates Per \$100 Valuation, 1980*
 (100% assessment)

	<u>Inside City of Franklin</u>	<u>Outside City</u>
1. Land and buildings	\$0.883	\$0.659
2. Mfg. machinery, raw materials, goods in process, pollution control equipment	0.150	0.150
3. Finished goods, office equipment, vehicles, other tangibles	1.054	0.830
4. Intangibles (accounts rec., notes, bonds, etc.)	0.250	0.250
5. Leaseholds in industrial revenue bond financed plants	0.015	0.015

Utilities Gross Receipts Tax for Schools

A 3 percent tax is levied on utilities receipts for schools in Simpson County. Tax is paid by all consumers of utilities as an add-on to the utilities bills. Exempted are receipts from utilities services that are resold and the receipts from the sale of energy or energy producing fuels that exceed 3 percent of the cost of production in manufacturing, processing, mining or refining.

Planning and Zoning

Joint agency - Franklin-Simpson County Planning and Zoning Commission
 Zoning enforced - All areas
 Subdivision regulations enforced - All areas
 Mandatory state codes enforced - Kentucky Plumbing Code, National Electric Code, Kentucky Boiler Regulations and Standards, National Fire Protection Association Standards of Safety (for buildings with an occupancy of less than 100 persons), Kentucky Building Code (modeled after BOCA code and applying to buildings with an occupancy of 100 or more persons)

*Kentucky Department of Commerce.

Safety

<u>Police</u>	<u>Franklin</u>	<u>Simpson County</u>
Total staff	15	6
Radio-patrol cars	5	4

Fire

American Insurance Association Fire Rating	8	10
Full-time staff	1	--
Volunteers	16	--

Rescue Service

Franklin-Simpson County Rescue Squad:

Number of volunteers - 25

Equipment - 4 trucks, 1 jeep, 1 station wagon, 5 mobile units, 1 base, 1 resuscitator, 3 geiger counters, search lights, 2 sets of scuba diving equipment, stokes basket, scoop stretcher, 4 generators, 2 chain saws, 3 water pumps, 2 boats with motors

Personnel training - First aid, 2 scuba divers, training with Army Reserves, annual Kentucky Rescue Association drill

Refuse Collection and Disposal

	<u>Franklin</u>
Type service	Municipal
Fee charged:	
residential	\$3.25 monthly
business	Negotiated
industrial	Negotiated
Collection frequency:	
residential	Weekly
business	Negotiated
industrial	Negotiated
Trash pickup	On request
Disposal method	Landfill

EDUCATION

Public Schools

Simpson County

Total Enrollment (October 1980)	3,084
Elementary	1,656
Middle School	490
High School	938
Student-Teacher Ratio	17-1
Elementary	17-1
Middle School	15-1
High School	17-1
Accreditation	Southern Association of Colleges and Schools
Percent High School Graduates to College	42.9
Expenditures Per Pupil (1979-80)	\$1,389.41
Bonded Indebtedness (June 30, 1980)	\$4,327,000

Nonpublic Schools

Franklin Mennonite Elementary

Total Enrollment	30
Elementary	30
Student-Teacher Ratio	15-1
Elementary	15-1

Area Colleges and Universities

<u>Name</u>	<u>Location (Miles distant)</u>	<u>Enrollment (Fall 1980)</u>	<u>Highest Degree Conferred</u>
Western Kentucky University	Bowling Green, Kentucky (23)	13,358	Masters, Specialist*
Belmont College	Nashville, Tennessee (49)	1,587	Baccalaureate
David Lipscomb	Nashville, Tennessee (49)	2,316	Baccalaureate
Fisk University	Nashville, Tennessee (49)	1,009	Masters
Free Will Baptist Bible College	Nashville, Tennessee (49)	513	Baccalaureate
Meharry Medical College	Nashville, Tennessee (49)	1,017	M.S., M.D., D.D.S.
Scarritt College	Nashville, Tennessee (49)	94	Masters
Trevecca Nazarene College	Nashville, Tennessee (49)	920	Baccalaureate
Tennessee State University	Nashville, Tennessee (49)	8,317	Masters
Vanderbilt University	Nashville, Tennessee (49)	8,874	Academic and Professional

*Joint doctoral degree programs are offered in cooperation with the University of Kentucky, Lexington, and cooperative doctoral degree programs are offered with the University of Louisville.

Vocational Schools

Both the state vocational-technical schools and the area vocational education centers are operated by the Kentucky Department of Education. The state vocational-technical schools enroll persons full time who are at least 16 years of age and not in school. These students attend classes for six hours each day. The area vocational education centers are designed to accommodate high school students who are at least 15 years of age. These students attend vocational school for three hours each day. The state vocational-technical schools and the area education centers offer evening courses to enable working adults to upgrade current job skills.

Nearest State School

Location	Bowling Green State Vocational- Technical School
Miles Distant	Bowling Green
Curriculum	23 miles north Business and Office Accounting/Jr. Management Clerical Secretarial Consumer and Home Economics Commercial Foods Distributive Education Fashion Merchandising Health and Personal Services Occupations Dental Assistant Health Careers Nurse Assistant Practical Nurse* Respiratory Therapy* Surgical Technician Industrial Education Auto Body Repair Auto Mechanics Carpentry Civil Highway Technology Electronics Technology Graphic Arts (Printing) Industrial Electricity Machine Shop Masonry Refrigeration and Air Conditioning Small Engine Repair Technical Drafting Tool and Die Making Welding

*These courses are taught at the T. J. Samson Community Hospital in Glasgow.

Nearest Area Education Center

Location	The Franklin-Simpson High School
Curriculum	Vocational Education Department
	Franklin
	Agriculture
	Business and Office
	Auto Mechanics
	Carpentry
	Electricity
	Industrial Electricity
	Masonry
	Welding

Arrangements can be made to provide training in the specific production skills required by an industrial plant. Instruction may be conducted either in the vocational school or in the industrial plant, depending upon the desired arrangement and the availability of special equipment.

HEALTH

Local Medical Personnel

Physicians - 4
Dentists - 7

Hospitals

<u>General Hospital</u>	<u>Location</u>	<u>Beds</u>
Franklin-Simpson Memorial Hospital	Franklin	50

General hospital facilities - Laboratory, X-ray, emergency room, nursery, operating room, delivery room, cardiac monitoring, radiology services, pharmacy, inhalation therapy, physical therapy

Medical staff - 4 general practitioners, 8 consulting physicians, 16 registered nurses, 11 licensed practical nurses, 30 aides and orderlies, 4 X-ray and medical technologists

Other Medical Facilities

Comprehensive Care Center

Ambulance Service

Name - Franklin-Simpson County Ambulance Service
Staff - 12 emergency medical technicians, 1 paramedic
Service - 24-hour service, county-wide
Equipment - 2 fully-equipped ambulances

Public Health

Facility - Simpson County Health Department
Staff - 2 environmentalists, 2 full-time nurses, 1 part-time nurse, 3 clerks, 1 outreach worker, and local physicians on contract for medical services

OTHER LOCAL FACILITIES

Communications

Telephone - South Central Bell Telephone Company
Services - Standard

Telegraph - Western Union Telegraph Company
Services - Counter service; toll-free number (800-325-5100)

Postal - U.S. Post Office
Class - First
Mail received - Once daily
Mail dispatched - Once daily

Newspapers - Franklin Favorite
Semiweekly and circulation - 4,800
Other papers
received from - Bowling Green and Louisville, Kentucky;
Nashville, Tennessee

Radio - WFKN-AM
Stations received from - Russellville, Scottsville, Bowling Green,
Lexington, Louisville, Hopkinsville and
Glasgow, Kentucky; Nashville, Clarksville,
Gallatin, and Springfield, Tennessee

Television -
Cable service*
Reception from - Bowling Green, Kentucky; Nashville, Tennessee

Kentucky Educational
Television - Channel 53, Bowling Green, Kentucky, transmitter
Channel 8, Nashville, Tennessee, transmitter

*Franklin has been approved for cable service. The service should be available throughout the city by 1982.

Library Services

Public library - Goodnight Memorial Library*
Size collection - 25,541 volumes
Circulation, 1979-80 - 39,373
Services - Story hour, loan records, framed reproductions,
magazines, films, culture and enrichment program, art exhibits,
civic club meeting room, hospital service, service for the
handicapped, reader-printer

Religious Institutions

Number of churches - 25
Denominations - Baptist
Catholic
Church of Christ
Episcopal
Jehovah's Witnesses
Lutheran
Methodist
Nazarene
Presbyterian
Seventh Day Adventist

Nearest Synagogues - Nashville, 49 miles south
Congregations - Sherith Israel (orthodox)
Ohabai Shalom (reform)
West End Synagogue (conservative)

Financial Institutions

<u>Banks</u>	<u>Assets</u>	<u>Deposits</u>	<u>Statement Date</u>
Franklin Bank and Trust Company	\$ 30,216,952.01	\$26,983,199.03	6/30/80
Simpson County Bank	55,602,032.00	49,013,363.00	6/30/80
<u>Savings and Loan Associations</u>	<u>Assets</u>	<u>Savings Accounts</u>	<u>Statement Date</u>
First Federal Savings and Loan Association**	\$110,930,168.13	\$99,088,308.68	6/30/80

*The receipts from a \$.05 library tax will be used to refurbish the auditorium which is connected to the library. Presently the auditorium is closed by the fire marshal. The wiring and doors will be replaced and a sprinkler system will be installed throughout the auditorium and library. Total cost of the refurbishing is approximately \$97,000.

**Main office is located in Bowling Green.

Motels

Total number - 2
Total rooms - 98

Clubs and Organizations

American Association of Retired Persons	Little League Baseball
American Legion Ladies' Auxiliary	Masonic Lodge 101
American Legion Post 62	Masonic Lodge 177
American Legion Post 202	National Association for the Advancement of Colored People
Babe Ruth Baseball	Optimist Club
Bass Club	Order of the Eastern Star
Boy Scouts	Pee Wee Baseball
Business and Professional Women's Club	Pee Wee Football
Cub Scouts	Quarterback Club
Daughters of the American Revolution	Rotary Club
Disabled American Veterans	Simpson County Education Association
Ducks Unlimited	Simpson County Fish and Game Club
Elite Club	Simpson County Historical Society
Ella Hoy Goodnight Music Club	Simpson County Homemakers
Franklin Country Club	Simpson County Retired Teachers Association
Franklin Elementary Parent-Teacher Association	Simpson Elementary Parent-Teacher Association
Franklin Garden Club	Veterans of Foreign Wars
Franklin Jaycees	Veterans of Foreign Wars Ladies' Auxiliary
Franklin Shrine Club	
Franklin-Simpson Band Boosters	
Franklin-Simpson Baseball Boosters	
Franklin-Simpson Bow Hunters Club	
Franklin-Simpson Chamber of Commerce	
Franklin-Simpson Hospital Auxiliary	
Franklin-Simpson Jayceettes	
Friends of the Goodnight Library	
Girl Scouts	
Lincoln Elementary Parent-Teacher Association	
Lions Club	

RECREATION

Local

Excellent recreational facilities are provided the citizens of Franklin.

A well-maintained city park with a community building is available. Featuring a fully-equipped kitchen and a recreation area, the building provides for civic meetings and family gatherings. Two mini parks and four well-equipped playgrounds afford the youngsters with excellent facilities. In addition, a swimming pool, eight tennis courts, four baseball diamonds and a football field are available.

Private recreational facilities include the Franklin Country Club with an 18-hole golf course, a swimming pool, and four tennis courts.

There is one drive-in movie theater in Franklin.

The Franklin-Simpson County Fair is held every year during the third week in July and an antique car show and craft fair is held annually on the third weekend in August.

Area (Within 50 miles)

Beech Bend Park, just west of Bowling Green which is 23 miles north of Franklin, is a 1,000-acre amusement park which overlooks Barren River and offers over 42 rides, an Olympic-size pool, a zoo, miniature golf, horseback riding, camping, and skating. The Beech Bend International Raceway has several national championships scheduled each year.

Barren River Lake State Resort Park, approximately 40 miles northeast of Franklin near Glasgow, is a full-facility resort park offering a resort lodge, a coffee shop, cottages, a lodge pool, a beach, riding stables, nature trails, open and covered boat slips, a 9-hole par-3 golf course, lighted handball and tennis courts, shuffleboard, park camping with service building, a restaurant, fishing and pleasure boat rentals, picnic areas, and a playground. Barren River Lake, which covers 10,000 acres, is a popular area for skiing, sailing, fishing, and swimming.

Lake Malone State Park, located in southern Muhlenberg County, approximately 45 miles northwest of Franklin, offers camping facilities, swimming, fishing, and boating on a 788-acre lake. Playground facilities and picnic shelters are located in a beautiful scenic cliff area. Located across from the entrance to the park is an inn featuring luxury rooms, a restaurant, a swimming lake, a beach, boating, fishing, tennis, and nature trails.

Mammoth Cave National Park is located approximately 50 miles northeast of Franklin near Cave City. Beneath 51,000 park acres, Mammoth Cave is among the major tourist attractions of all time. It is one of the largest cave networks ever discovered, with at least 150 miles charted on five levels and vast areas not yet mapped. Some famous sights are Snowball Dining Room (267 feet below surface), Frozen Niagara, Crystal Lake, and Bottomless Pit. The park also features scenic boat trips on the Green River and nature and hiking trails. Park accommodations include a hotel with distinctive gift shops featuring native Kentucky and Southern Highland Handicrafts, a motor lodge, hotel cottages, woodland cottages, and a hotel annex with budget accommodations and craft shop featuring live exhibits of broom making and weaving. Other park facilities include the hotel dining room and coffee shop, a service center, group meeting facilities, a campground, a picnic area, and tennis and shuffleboard courts.

Western Kentucky University, 23 miles north of Franklin, provides an array of cultural and athletic activities.

Nashville, Tennessee, "Country Music Capital of the World," is 49 miles south of Franklin and offers a wide variety of entertainment, cultural activities, and sports events.