

1982

# Industrial Resources: Trigg County - Cadiz

Kentucky Library Research Collections  
Western Kentucky University, [spcol@wku.edu](mailto:spcol@wku.edu)

Follow this and additional works at: [https://digitalcommons.wku.edu/trigg\\_cty](https://digitalcommons.wku.edu/trigg_cty)

 Part of the [Business Administration, Management, and Operations Commons](#), [Growth and Development Commons](#), and the [Infrastructure Commons](#)

---

## Recommended Citation

Kentucky Library Research Collections, "Industrial Resources: Trigg County - Cadiz" (1982). *Trigg County*. Paper 10.  
[https://digitalcommons.wku.edu/trigg\\_cty/10](https://digitalcommons.wku.edu/trigg_cty/10)

This Report is brought to you for free and open access by TopSCHOLAR®. It has been accepted for inclusion in Trigg County by an authorized administrator of TopSCHOLAR®. For more information, please contact [topscholar@wku.edu](mailto:topscholar@wku.edu).

IR Trigg Co.

317

A comprehensive  
report on  
**Cadiz, Ky.**



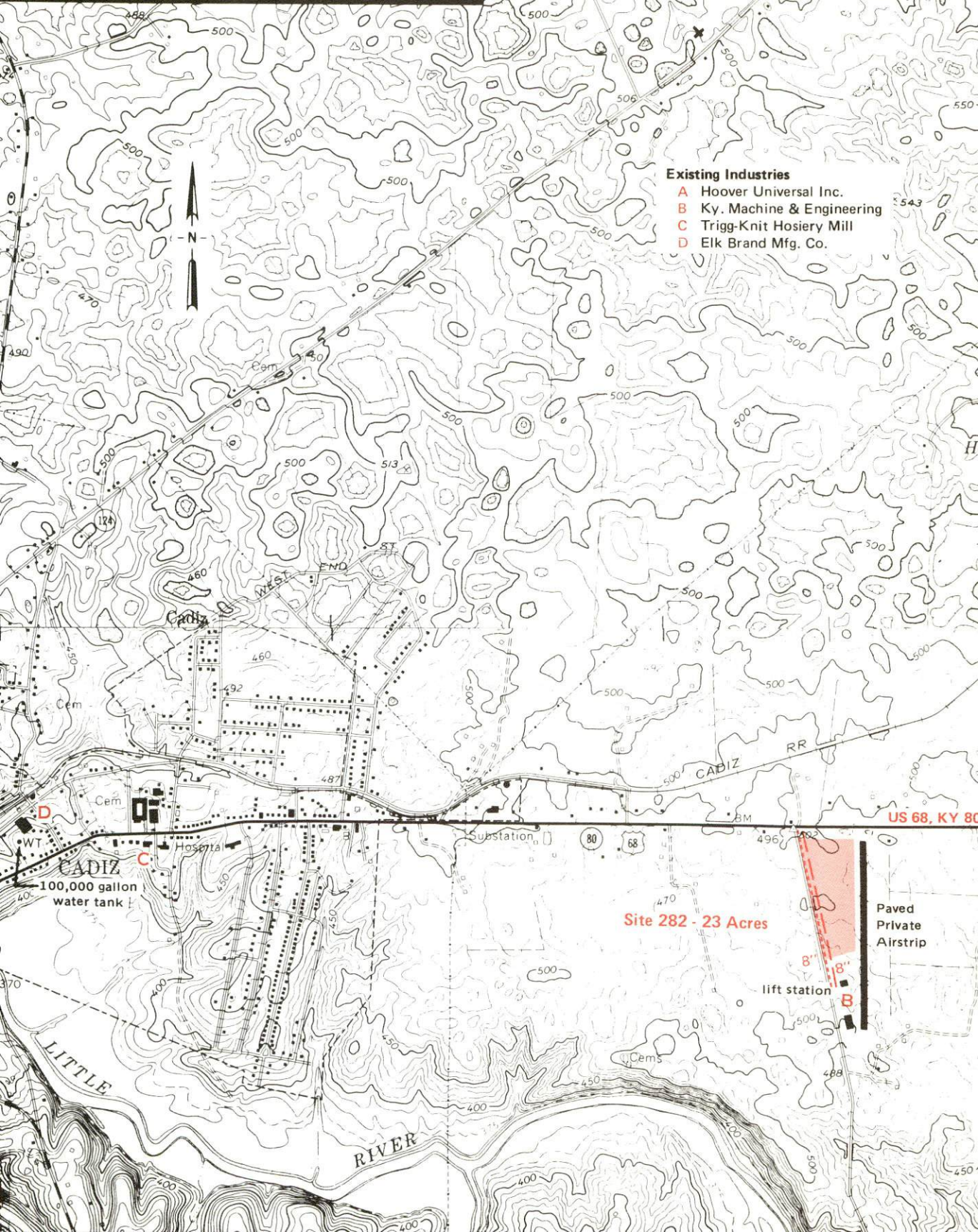
**KENTUCKY & CO.**  
The state that's run like a business.



# CADIZ, KENTUCKY

## Industrial Sites — 1982

For more information contact the Department of Economic Development, Office of Business Development, Industrial Development Division, Capital Plaza Tower, Frankfort, Kentucky 40601 (502-564-7140).



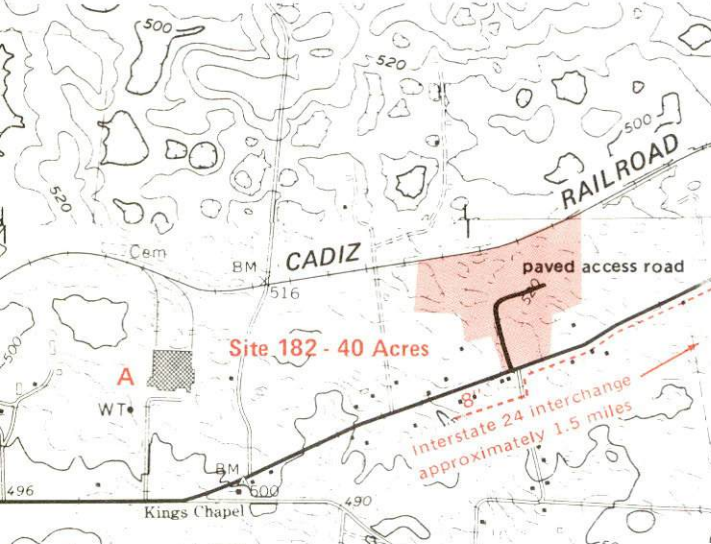




**Site 182 - 40 Acres**

**CADIZ-TRIGG COUNTY INDUSTRIAL PARK**

- LOCATION: Approximately 2.3 miles east of Cadiz city limits
- ZONING: Not zoned
- HIGHWAY ACCESS: US 68/KY 80 adjacent to southern boundary
- RAILROAD: Cadiz Railroad adjacent to northern boundary
- WATER: City of Cadiz Water Works
  - Size Line: 8-inch line along south side of US 68/KY 80
- NATURAL GAS: Western Kentucky Gas Company
  - Size Line: 4-inch line approximately 600 feet west along south side of US 68/KY 80
- ELECTRICITY: Pennyrile RECC
- SEWERAGE: City of Cadiz Sewer System
  - Size Line: 8-inch line approximately 1.6 miles west; Sewer service will be provided by Trigg County Development Association upon commitment by industry to locate
- OWNERSHIP: Trigg County Industrial Development Authority



**Site 282 - 23 Acres**

- LOCATION: Approximately 0.7 mile west of city limits
- ZONING: Not zoned
- HIGHWAY ACCESS: US 68/KY 80 approximately 200 feet north via paved road
- RAILROAD: Not rail served
- WATER: City of Cadiz Water Works
  - Size Line: 8-inch line along western boundary
- NATURAL GAS: Western Kentucky Gas Company
  - Size Line: 4-inch line along north side of US 68/KY 80
- ELECTRICITY: Pennyrile RECC
- SEWERAGE: City of Cadiz Sewer System
  - Size Line: 8-inch force main along western boundary
- OWNERSHIP: Private

SCALE: 1 inch = 2000 feet  
 CONTOUR INTERVAL: 10 feet  
 BASE: USGS 7.5 minute series - 1967

**UTILITIES**  
 - - - - - Water Line  
 ———— Sewer Line



A COMPREHENSIVE REPORT ON  
CADIZ, KENTUCKY

Prepared by  
The Kentucky Department of Economic Development  
Division of Research and Planning  
in cooperation with  
The Cadiz-Trigg County Chamber of Commerce

1982



## TABLE OF CONTENTS

<u>Chapter</u>	<u>Page</u>
INDUSTRIAL SITES . . . . .	i
CADIZ, KENTUCKY - A RESOURCE PROFILE . . . . .	1
THE LABOR MARKET AREA . . . . .	3
Population . . . . .	3
Labor Force Characteristics of Residents, 1981 . . . . .	3
Estimated Male Labor Supply . . . . .	4
Estimated Female Labor Supply . . . . .	5
Cadiz Manufacturing Firms, Their Products and Employment . . . . .	6
Labor Organizations in Manufacturing Firms . . . . .	7
Industrial Services . . . . .	7
Average Weekly Wages by Industry, by Place of Work, 1981 . . . . .	8
Per Capita Personal Income . . . . .	10
TRANSPORTATION . . . . .	11
Rail . . . . .	11
Highways . . . . .	11
Truck Service . . . . .	12
Air . . . . .	14
Bus . . . . .	15
Rental Services . . . . .	15
Water . . . . .	15
POWER AND FUEL . . . . .	16
Electricity . . . . .	16
Natural Gas . . . . .	16
Other Fuels . . . . .	17
WATER AND SEWERAGE . . . . .	18
Public Water Supply . . . . .	18
Raw Water . . . . .	19
Sewerage . . . . .	19
CLIMATE . . . . .	20

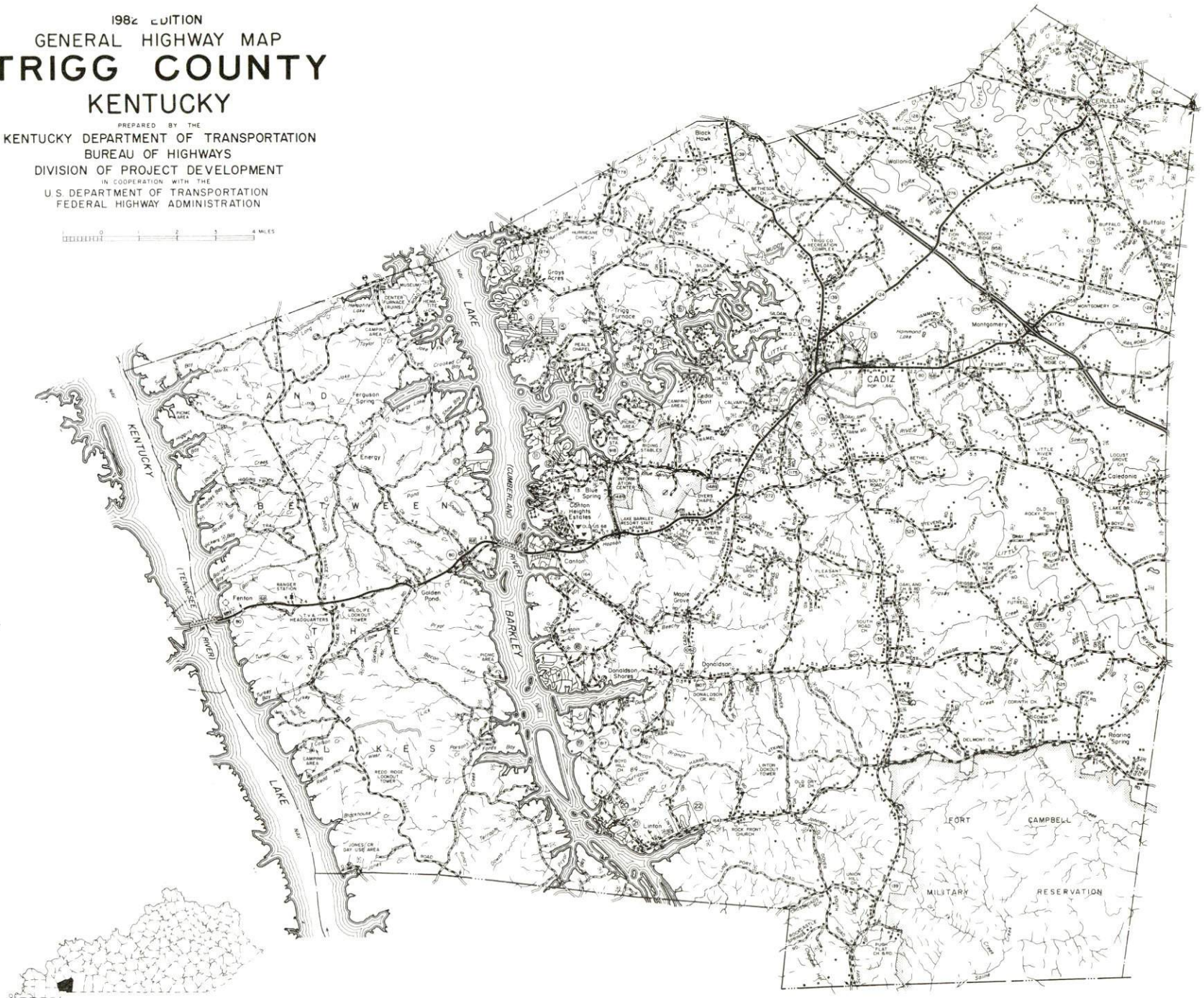


<u>Chapter</u>	<u>Page</u>
LOCAL GOVERNMENT . . . . .	21
City . . . . .	21
County . . . . .	21
Assessed Value of Property . . . . .	21
Property Taxes . . . . .	22
Combined State and Local Rates Per \$100 Valuation, 1981 . . . . .	23
Planning and Zoning . . . . .	23
Safety . . . . .	23
Police . . . . .	23
Fire . . . . .	23
Rescue Service . . . . .	24
Refuse Collection and Disposal . . . . .	24
EDUCATION . . . . .	25
Public Schools . . . . .	25
Area Colleges and Universities . . . . .	26
Vocational Schools . . . . .	28
HEALTH . . . . .	30
Local Medical Personnel . . . . .	30
Hospitals . . . . .	30
Other Medical Facilities . . . . .	30
Ambulance Service . . . . .	30
Public Health . . . . .	30
OTHER LOCAL FACILITIES . . . . .	31
Communications . . . . .	31
Library Services . . . . .	31
Religious Institutions . . . . .	32
Financial Institutions . . . . .	32
Hotels and Motels . . . . .	32
Clubs and Organizations . . . . .	33
RECREATION . . . . .	34



1982 EDITION  
GENERAL HIGHWAY MAP  
**TRIGG COUNTY**  
KENTUCKY

PREPARED BY THE  
KENTUCKY DEPARTMENT OF TRANSPORTATION  
BUREAU OF HIGHWAYS  
DIVISION OF PROJECT DEVELOPMENT  
IN COOPERATION WITH THE  
U.S. DEPARTMENT OF TRANSPORTATION  
FEDERAL HIGHWAY ADMINISTRATION

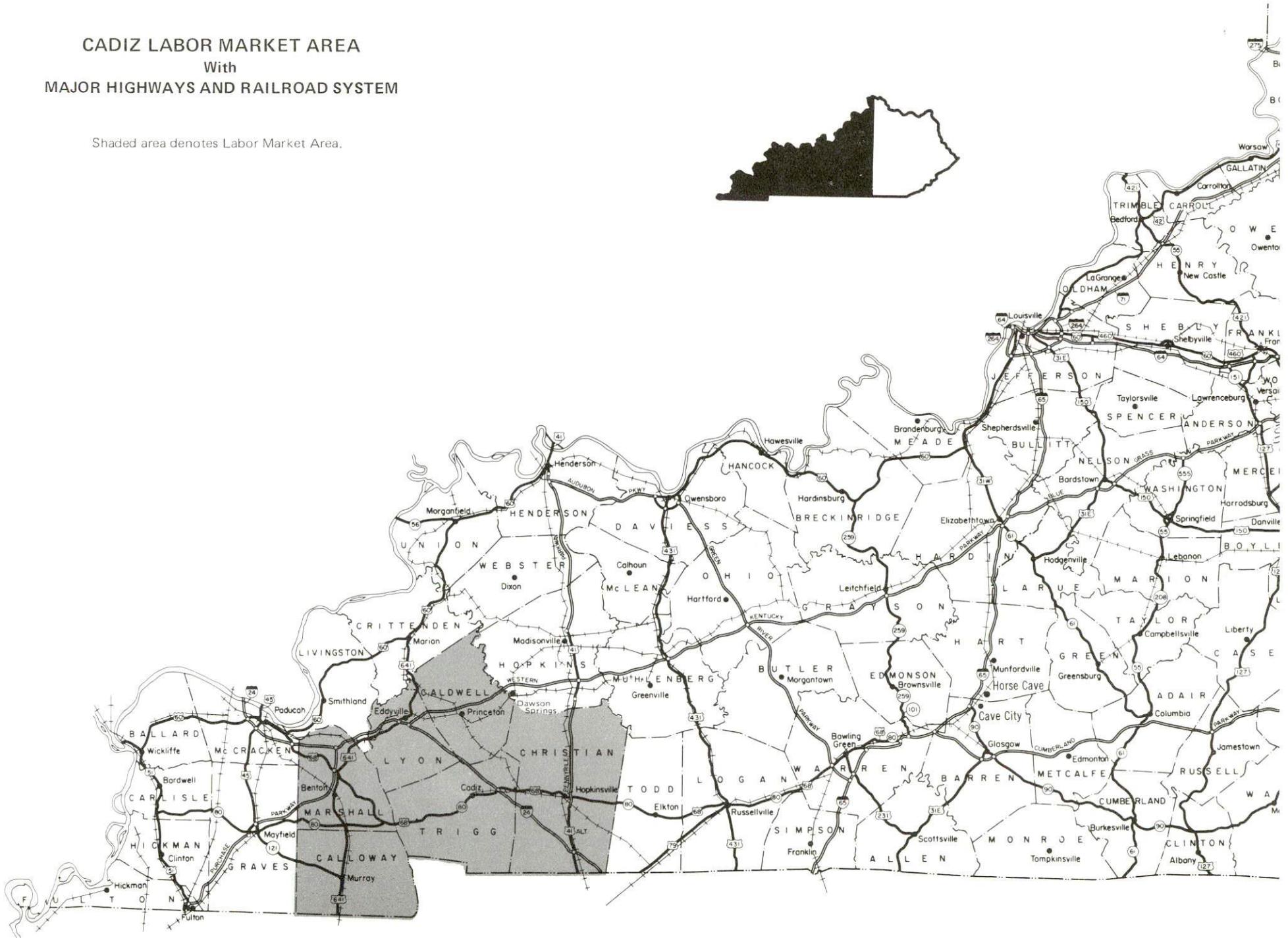
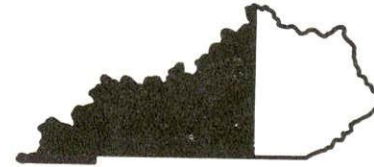




# CADIZ LABOR MARKET AREA

With  
MAJOR HIGHWAYS AND RAILROAD SYSTEM

Shaded area denotes Labor Market Area.





## CADIZ, KENTUCKY - A RESOURCE PROFILE

Cadiz, county seat of Trigg County, is located in western Kentucky's lake region, 191 miles southwest of Louisville, Kentucky; 82 miles northwest of Nashville, Tennessee; and 228 miles southeast of St. Louis, Missouri. Cadiz had a 1980 population of 1,661, and Trigg County with a land area of 408 square miles, had a 1980 population of 9,384.

### The Economic Framework

Total employment in Trigg County in 1981 averaged 4,883 persons, with 4,337 persons employed in nonagricultural jobs. Manufacturing provided 716 jobs; state and local government provided 467 jobs; wholesale and retail trade provided 350 jobs; and service occupations provided 245 jobs. Manufacturing employment is greatest in the fabricated metal products, apparel and related products, and lumber and wood products industries.

Per capita personal income in the county in 1980 was \$7,130. Between 1976 and 1980 per capita income increased by 40 percent.

Cadiz is the hub of a labor market area which includes Trigg and its five surrounding Kentucky counties. Area employment in 1981 averaged 55,083 with 51,760 employed in nonagricultural jobs. Manufacturing provided 9,873 jobs; state and local government provided 7,958 jobs; wholesale and retail trade provided 8,808 jobs; and service occupations provided 5,411 jobs.

### Resources for Growth

1. There is a current estimated labor supply of 11,543 men and 9,268 women available for industrial jobs in the labor market area. In addition, 5,741 young men and 5,456 young women will become 18 years of age and potentially available for work before 1986.

2. Local transportation capability is excellent. The city operates its own railroad spur, which intersects with the Illinois Central Gulf Railroad 10 miles east of Cadiz. U. S. Highway 68/Kentucky Highway 80, a "AAA" trucking highway, serves Cadiz directly and provides access to Interstate Highway 24, six miles east of the city. Two parkway systems - the Pennyrile Parkway and the Western Kentucky Parkway - are accessible within 25 miles of Cadiz. Five common carriers provide the city with motor freight service, and two small airports are located within six miles. The nearest scheduled commercial airline service is at Nashville Metropolitan Airport at Nashville, Tennessee, 88 miles southeast of Cadiz.

3. Electric power is provided by Tennessee Valley Authority through the Pennyrite Rural Electric Cooperative Corporation. Natural gas service is provided by Western Kentucky Gas Company. There are six propane dealers and nine fuel oil distributors within 25 miles of Cadiz.

4. Education is an important growth asset for Cadiz. The Trigg County public school system is accredited by the Southern Association of Colleges and Schools. There are 17 institutions of higher learning within 90 miles of Cadiz. A state vocational-technical school is located at Madisonville, 55 miles northeast of Cadiz, and two area vocational education centers-one in Princeton, 20 miles north of Cadiz and one in Hopkinsville, 22 miles east of Cadiz-also offer vocational training.



## THE LABOR MARKET AREA

The Cadiz Labor Market Area includes Trigg County and the adjoining Kentucky counties of Caldwell, Calloway, Christian, Lyon and Marshall.

POPULATION			
Area	1980	1970	Percent Nonwhite
Cadiz	1,661	1,987	20.3
Labor Market Area	151,893	131,658	N/A
Trigg County	9,384	8,620	12.7
Caldwell County	13,473	13,179	6.4
Calloway County	30,031	27,692	3.6
Christian County	66,878	56,224	28.9
Lyon County	6,490	5,562	5.4
Marshall County	25,637	20,381	0.2

Note: The 1980 counts of population by race are provisional.

Sources: U. S. Department of Commerce, Bureau of the Census, 1980 Census of Population and Housing, March 1981; 1980 Census of Population, Number of Inhabitants. Population Research Unit, Urban Studies Center, University of Louisville, Kentucky Demographics: The 1980 Census of Kentucky, Characteristics of Population, Households, Housing, January 1982.

### LABOR FORCE CHARACTERISTICS OF RESIDENTS, 1981

	Trigg County	Labor Market Area
Civilian Labor Force	5,398	60,998
Employment	4,883	55,083
Agricultural	546	3,323
Nonagricultural	4,337	51,760
Unemployment	515	5,915
Rate of Unemployment (%)	9.5	9.7

Source: Kentucky Cabinet for Human Resources, Kentucky Labor Force Estimates, Annual Averages, 1981.

ESTIMATED MALE LABOR SUPPLY  
CADIZ LABOR MARKET AREA

Area	Current			Future	
	Total	Not in Labor Force	Unemployed	Under-employed	Reaching 18 years of age before 1986
Labor Market Area*	11,543	-	-	-	5,741
Trigg	462	0	292	170	412
Caldwell	790	200	404	186	526
Calloway	2,545	730	727	1,088	960
Christian	3,243	353	1,123	1,767	2,505
Lyon	225	0	139	86	187
Marshall	3,819	2,595	830	394	852
Stewart (Tenn.)	459	N/A	N/A	N/A	299

\*Additional workers may be drawn from other nearby counties.

Note: Not in Labor Force - represents the number of persons who would enter the labor force if suitable employment were available (based on the assumption that persons in Kentucky would like to participate in the labor force in the same proportion that they do nationally).  
Unemployed - persons unemployed and actively seeing work; Under-employed - persons employed but working only 14 to 26 weeks per year.

Sources: Kentucky Cabinet for Human Resources, Kentucky Labor Supply Estimates by Area Development District and County, 1981. Tennessee Department of Employment Security, Available Labor Estimates, 1981. Kentucky Department of Economic Development, Future Labor Supply before 1986.



ESTIMATED FEMALE LABOR SUPPLY  
CADIZ LABOR MARKET AREA

Area	Current			Future	
	Total	Not in Labor Force	Unemployed	Under-employed	
Labor Market Area*	9,268	-	-	-	Reaching 18 years of age before 1986
Trigg	410	0	223	187	5,456
Caldwell	973	353	309	311	377
Calloway	1,853	253	526	1,074	497
Christian	2,953	996	858	1,099	895
Lyon	191	0	106	85	2,426
Marshall	2,643	1,701	378	564	162
Stewart (Tenn.)	245	N/A	N/A	N/A	821

\*Additional workers may be drawn from other nearby counties.

Note: Not in Labor Force - represents the number of persons who would enter the labor force if suitable employment were available (based on the assumption that persons in Kentucky would like to participate in the labor force in the same proportion that they do nationally).  
Unemployed - persons unemployed and actively seeking work; Under-employed - persons employed but working only 14 to 26 weeks per year.

Sources: Kentucky Cabinet for Human Resources, Kentucky Labor Supply Estimates by Area Development District and County, 1981. Tennessee Department of Employment Security, Available Labor Estimates, 1981. Kentucky Department of Economic Development, Future Labor Supply before 1986.

CADIZ MANUFACTURING FIRMS,  
THEIR PRODUCTS AND EMPLOYMENT

Firm (Establishment date)	Product	Employment			Labor Unions
		Total	Male	Female	
Agrico Farm Center (1967)	Fertilizer	6	5	1	
Averitt Lumber Company (1975)	Lumber, industrial timbers, wood chips	63	62	1	
B & B Food Products, Inc. (1966)	Country hams, bacon, sausage	6	4	2	
Bailey Lumber Company (1960)	Sawmill, Lumber	35	34	1	
Brimmer Lumber Company (1978)	Lumber	10	-	-	
The Cadiz Record (1876)	Newspaper	5	2	3	
Elk Brand Manufacturing Company (1967)	Dungarees	202	19	183	
Hoover Universal, Inc., Metal Seating Division (1965)	Automotive and truck seat springs	250	-	-	Steelworkers*
Kentucky Machine & Engineering (1972)	Machine shop, metal fabri- cation	52	49	3	
Noel Concrete & Excavating Company, Inc. (1967)	Ready-mixed concrete	13	12	1	
Ramsey Saw Mill, Inc. (1975)	Handle blanks	10	-	-	
Southern States Cooperative (1976)	Fertilizer, feed, farm supplies	4	4	-	
Trace Industries (1981)	Camping stools wood	6	-	-	
Trigg-Knit Hosiery Mill (1952)	Children's, men's hosiery	39	-	-	

\*See Labor Organizations.

Source: Kentucky Department of Economic Development, 1982 Kentucky Directory of Manufacturers; Kentucky Department of Economic Development, Division of Research and Planning.



LABOR ORGANIZATIONS IN MANUFACTURING FIRMS

Union

Representing workers at:

United Steelworkers of  
America, AFL-CIO

Hoover Universal, Inc., Metal Seating  
Division

INDUSTRIAL SERVICES

<u>Types of Services</u>	<u>Location</u>	<u>Mileage from Cadiz</u>
Tool & Die, Machine & Pattern Shops	Cadiz, Kentucky	-
Metal Service Centers	Russellville, Kentucky	58
	Greenville, Kentucky	62
Heat Treating	Nashville, Tennessee	82
Metal Finishers	Nashville, Tennessee	82
Electric Motor Repair	Hopkinsville, Kentucky	22

Source: Kentucky Department of Economic Development, Kentucky Directory  
of Selected Industrial Services, 1981.

AVERAGE WEEKLY WAGES BY INDUSTRY  
BY PLACE OF WORK, 1981

	<u>Trigg County</u>	<u>Caldwell County</u>	<u>Calloway County</u>
All Industries	\$205.15	\$216.75	\$216.34
Mining & Quarrying	*	379.96	*
Contract Construction	264.27	219.15	257.76
Manufacturing	246.55	254.19	236.66
Transportation, Communications & Public Utilities	312.10	305.36	334.96
Wholesale & Retail Trade	133.25	164.72	166.17
Finance, Insurance & Real Estate	216.46	246.15	212.68
Services	150.33	176.51	190.94
State/Local Government	200.19	217.81	241.80
Other	172.53	170.48	229.70

	<u>Christian County</u>	<u>Lyon County</u>	<u>Marshall County</u>
All Industries	\$218.84	\$214.13	\$350.19
Mining & Quarrying	373.46	*	*
Contract Construction	278.90	320.05	387.20
Manufacturing	246.93	*	509.58
Transportation, Communications & Public Utilities	278.44	198.95	345.42
Wholesale & Retail Trade	189.44	120.14	157.67
Finance, Insurance & Real Estate	239.77	185.75	245.29
Services	180.53	124.41	177.62
State/Local Government	237.06	233.45	203.82
Other	159.53	0	124.00

\*Not disclosed.

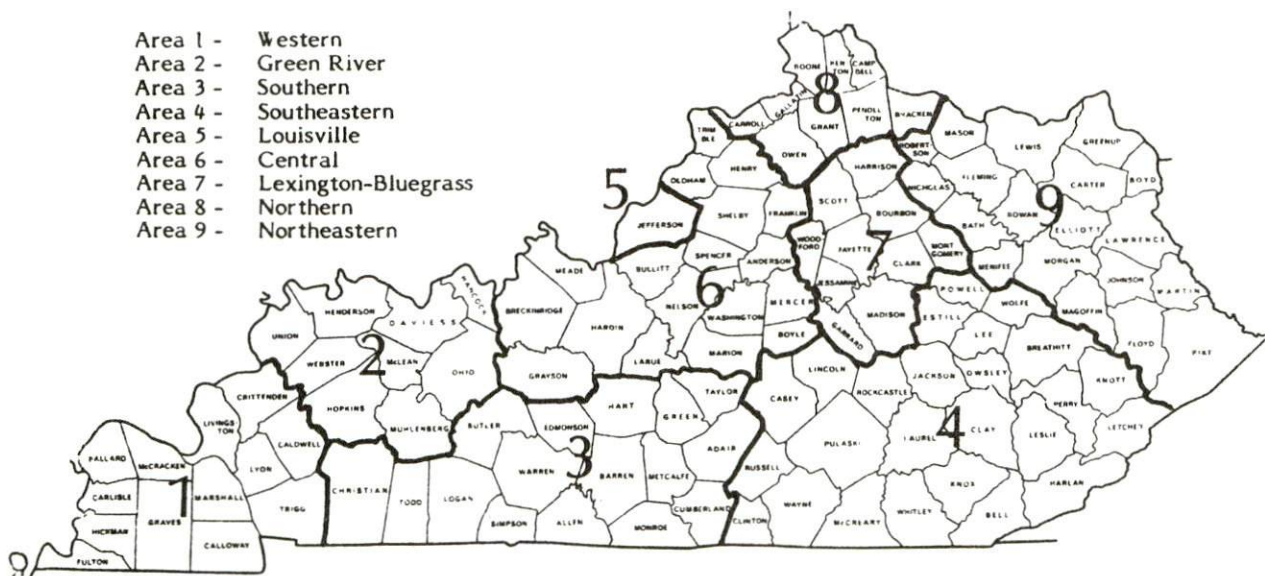
Note: Excludes domestic workers, railway workers, certain nonprofit corporations, majority of federal government workers, and self-employed workers.

Source: Kentucky Department for Human Resources, Average Weekly Wages of Workers Covered by Kentucky Unemployment Insurance Law, 1981.



Occupational wage rates for specific industries are usually not available to most government agencies, and wage data furnished to state employment agencies by individual industrial employers are protected from disclosure by federal law. The most reliable up-to-date wage information can be obtained by direct contact with local employers.

Associated Industries of Kentucky, a voluntary organization of Kentucky businesses, regularly collects occupational wage rates and fringe benefits data from participating member firms. Data are compiled for over 127 clearly defined office, production, and service occupations. Tabulations are published for nine geographical areas of Kentucky, as shown on the map below. It should be noted that the data may be weighted by the preponderance of firms in the larger cities and may be somewhat higher than the rates paid in the smaller communities. Data from these tabulations are available, upon request, from the Kentucky Department of Economic Development, Frankfort, Kentucky 40601.



Associated Industries of Kentucky Area Wage Surveys

Up-to-date occupational wage rates of the existing industries are maintained by South Kentucky Industrial Development Association, Post Office Box 726, Hopkinsville, Kentucky 42240.

PER CAPITA PERSONAL INCOME

<u>Area</u>	<u>1976</u>	<u>1980</u>	<u>Percent Change</u>
Trigg County	\$5,112	\$7,130	39.5
Labor Market Area			
Range	\$4,552 - 5,434	\$6,405 - 7,662	N/A
Kentucky	5,263	7,662	45.6
U. S.	6,367	9,511	49.4

Source: U. S. Bureau of Economic Analysis, Kentucky Economic Information System, June 1982.



## TRANSPORTATION

### Rail

Line serving Cadiz - Cadiz Railroad Company; joins the Illinois Central Gulf Railroad at Gracey, Kentucky, 10 miles east of Cadiz.

Services - Freight, carload only; one local freight from Cadiz to Gracey and return Monday through Friday and Saturday as needed; switching facilities; two team tracks at Cadiz accommodating 20 cars; piggyback facilities. One team track at Montgomery, five miles distant, for eight cars, switching to Illinois Central Gulf daily at Gracey.

For details on routing, schedules, rates, and services, contact:

Cadiz Railroad Company  
P. O. Drawer B  
Cadiz, Kentucky 42211  
(502) 522-8555

### Highways

Cadiz is served by U. S. Highway 68/Kentucky Highway 80, a "AAA" trucking highway. Interstate 24, with an interchange six miles east of Cadiz via U. S. 68, extends from southern Illinois to Nashville, Tennessee. The Pennyryle Parkway, a north-south multilane toll road, is accessible 23 miles east of Cadiz at Hopkinsville, Kentucky. The Western Kentucky Parkway, an east-west multilane toll road, is accessible 23 miles northeast of Cadiz via Kentucky Highway 139, a "AA" trucking highway, and Interstate Highway 24.

## Truck Service

<u>Company</u>	<u>Home Office</u>
McLean Trucking Company*	P. O. Box 213 Winston-Salem, North Carolina 27154
Overnite Transportation Company**	1000 Semmes Avenue P. O. Box 1216 Richmond, Virginia 23209
Renners Express, Inc.**	1350 South West Street Indianapolis, Indiana 46225
Robbins Truck Line, Inc.**	Route 1 Box 429 Hardinsburg, Kentucky 40143
Smith's Transfer Corporation*	P. O. Box 1000 Staunton, Virginia 24401
<u>Other Freight Services</u>	<u>Nearest Shipping Center or Home Office</u>
Purolator Courier Corporation***	Paducah, 59 miles northwest
United Parcel Service****	Hopkinsville, 22 miles northwest
KATO Express, Inc. (air cargo service)*****	Elizabethtown, 147 miles northeast

\*Interstate service only.

\*\*Interstate and intrastate service.

\*\*\*For regular scheduled pickups or for occasional pickups, arrangements must be made with the Louisville, Kentucky, office of Purolator Courier Corporation.

\*\*\*\*For regular scheduled pickups or for occasional pickups, arrangements must be made with the Louisville office of United Parcel Service.

\*\*\*\*\*Daily pickup and delivery service is available to and from Standiford Field in Louisville. Arrangements for service should be made through the home office in Elizabethtown.



HIGHWAY MILES AND TRUCK TRANSIT TIME IN DAYS FROM  
CADIZ, KENTUCKY, TO SELECTED MARKET CENTERS

City	Delivery		City	Delivery	
	Highway Miles	Time TL		Highway Miles	Time TL
Atlanta, Ga.	324	1	Los Angeles, Ca.	2,073	6-8
Baltimore, Md.	789	2	Louisville, Ky.	191	1
Birmingham, Ala.	276	1	Nashville, Tenn.	82	1
Chicago, Ill.	394	1	New Orleans, La.	599	1-2
Cincinnati, Ohio	292	1	New York, N. Y.	939	2-3
Cleveland, Ohio	536	1-2	Pittsburgh, Pa.	579	1-2
Detroit, Mich.	551	2-3	St. Louis, Mo.	228	1
Knoxville, Tenn.	259	1			

Note: Mileage computations are via the best interstate or primary highways, not necessarily the most direct route of travel.

Sources: Rand McNally Road Atlas, 1981. Official Kentucky Mileage Map, 1979. Delivery time - Overnite Transportation Company; P. O. Box 1216; Richmond, Virginia 23209.

## Air

### Local

Location: Woodruff Airport (private)  
1 1/2 miles east of Cadiz  
Runways: 1 bituminous  
Length: 2,910 feet  
Traffic  
Control: Wind sock  
Lighting: On request  
Services: None

Location: Lake Barkley State Park Airport  
6 miles west-southwest of Cadiz  
Runways: 1 paved  
Length: 4,800 feet  
Traffic  
Control: Wind sock  
Lighting: Radio-controlled medium intensity runway lights,  
VASI, REIL  
Services: Tiedowns

### Nearest Scheduled Commercial Airline Service\*

Location: Nashville Metropolitan Airport  
6 miles southeast of Nashville, Tennessee; 88 miles  
southeast of Cadiz  
Runways: 3 paved  
Length: 8,000 feet; 7,700 feet; 4,320 feet  
Traffic  
Control: Tower  
Lighting: Beacon, runway  
Services: American, Braniff, Delta, Eastern, Ozark, Piedmont,  
Republic, TWA, USAir, Allegheny Commuter, Skyways,  
Sunbird, Tennessee Airways; fuel - 100LL, jet-A;  
tie-downs, hangars; major A & P repairs, major  
Avionics repairs; APU, charter, flight instruction,  
oxygen, plane rental, survival equipment, U. S. Customs;  
taxi, limousine, car rental, public transit; weather  
information, restaurant, snack bar

Air Freight  
Service: Air freight terminal

\*Commuter air carrier service is provided by Allegheny Commuter at Outlaw Field which is located 7 miles northwest of Clarksville, Tennessee; 34 miles southeast of Cadiz. Commuter service is also provided by Sunbird Airlines at Kyle Field which is located 5 miles northwest of Murray, Kentucky; 43 miles southwest of Cadiz.

Bus - Brooks Bus Line

Rental Services - Car, truck and trailer rentals available.

Water

Cadiz is located less than 10 miles from Lake Barkley - a navigable waterway to the Ohio River, via the Cumberland River or the Tennessee River. The nearest riverport is operated by the Port Authority of Lyon County, 30 miles northwest of Cadiz near Eddyville, Kentucky. A riverport is also located at Clarksville, Tennessee, 42 miles southeast of Cadiz.



## POWER AND FUEL

### Electricity

Company serving Cadiz and Trigg County - Pennyrile Rural Electric  
Cooperative Corporation

Source of power - Tennessee Valley Authority

Total generating capacity - 31,109,160 KW

For industrial rates contact:

South Kentucky Industrial Development Association, Inc.

P. O. Box 726

Hopkinsville, Kentucky 42240

(502) 885-5392

and/or

Pennyrile RECC

2000 Harrison Street

P. O. Box 551

Hopkinsville, Kentucky 42240

### Natural Gas

Company serving Cadiz - Western Kentucky Gas Company

Source of supply - Texas Gas Transmission Corporation

Size of transmission mains - 10-inch (supplier);

6-inch (distributor)

Distribution mains - 2 and 4-inch

Distribution pressure - 10-25 psi

Btu content - 1,000 per cubic foot

Specific gravity - 0.60

For rates and supplies contact:

District Manager

Western Kentucky Gas Company

215 West Main Street

P. O. Box 643

Princeton, Kentucky 42445

(502) 365-5512

Other Fuels (Within 25 miles)

Propane

Amgas, Inc. (bulk plant)  
P. O. Box 128  
Gracey, Kentucky 42232

Fortner L P Gas Company, Inc.  
(bulk plant)  
P. O. Box 312  
Princeton, Kentucky 42445

Larry Osting and Sons L P Gas,  
Inc., (bulk Plant)  
210 Garrett Street  
Princeton, Kentucky 42445

Pargas of Hopkinsville (bulk plant)  
Ft. Campbell Boulevard  
Hopkinsville, Kentucky 42240

Southern State Hopkinsville  
Petroleum Co-op (bulk plant)  
520 Wooldridge Road  
Hopkinsville, Kentucky 42240

Trigg County Speedway Gas  
Company, Inc., (bulk plant)  
Route 6  
294 East Main  
Cadiz, Kentucky 42211

Fuel oils

Distillate fuel oil -

Home Oil and Gas Company  
(bulk plant)  
P. O. Box 384  
East Ninth Street  
Hopkinsville, Kentucky 42240

Hopkinsville Oil Company, Inc.  
(bulk plant)  
708 North Main  
Hopkinsville, Kentucky 42240

Wayne Hunt, Ashland Oil  
Distributor (bulk plant)  
P. O. Box 31  
1106 West 15th Street  
Hopkinsville, Kentucky 42240

J. B. Hyde Distributing  
Company (bulk plant)  
U. S. 68 East  
Cadiz, Kentucky 42211

Jack D. Jones, Distributor  
(bulk plant)  
P. O. Box 665  
800 West 15th Street  
Hopkinsville, Kentucky 42240

Key Oil Company (bulk plant)  
P. O. Box 92  
206 25th Street  
Hopkinsville, Kentucky 42240

R. C. McKinney, Inc. (bulk plant)  
P. O. Box 85  
14th and Clay Streets  
Hopkinsville, Kentucky 42240

Southern State Hopkinsville  
Petroleum Co-op (bulk plant)  
520 Wooldridge Road  
Hopkinsville, Kentucky 42240

F. M. Wilcox, Inc., (bulk plant)  
P. O. Box 149  
Princeton, Kentucky 42445

Residual fuel oil - Arrangements must be made with the refinery.

Low sulphur content coal - Available in Kentucky.

## WATER AND SEWERAGE

### Public Water Supply

Company serving Cadiz - City of Cadiz Water Works  
P. O. Box 436  
Marion Street  
Cadiz, Kentucky 42211  
(502) 522-8244

Source - Spring; accessory source - Little River  
Treatment plant capacity - 500,000 gallons per day  
Average daily consumption - 300,000 gallons  
Peak daily consumption - 375,000 gallons  
Type treatment - coagulation, filtration, flocculation, flouridation,  
sedimentation  
Storage capacity - 725,000 gallons  
Size lines - 2, 3, 4, 6 and 8 inches  
Average pressure - 50 psi  
Average temperature - 68 degrees F.

### MONTHLY WATER RATES

#### Inside City

First	2,000 gallons	\$5.34 (Minimum)
Next	3,000 gallons	1.80 per M gallons
Next	5,000 gallons	1.47 per M gallons
Next	10,000 gallons	1.07 per M gallons
Next	30,000 gallons	.94 per M gallons
Next	50,000 gallons	.73 per M gallons
All over	100,000 gallons	.60 per M gallons

#### Outside City

First	2,000 gallons	\$6.32 (Minimum)
Next	3,000 gallons	2.13 per M gallons
Next	5,000 gallons	1.80 per M gallons
Next	10,000 gallons	1.47 per M gallons
Next	30,000 gallons	1.26 per M gallons
Next	50,000 gallons	.94 per M gallons
All over	100,000 gallons	.60 per M gallons



Minimum Monthly Charges

3/4-inch meter - \$ 5.34 (inside city)  
6.32 (outside city)  
1-inch meter - 9.20 (all areas)  
2-inch meter - 24.43 (all areas)

Tap-on charge:

	<u>Inside City</u>	<u>Outside City</u>
3/4-inch meter	\$150	\$200
1-inch meter	300	325
2-inch meter	425	450

Raw Water

Surface water sources - Lake Barkley and Little River  
Average discharge - Little River near Cadiz - 347 cfs (41 years, USGS)  
Expected ground water yield - 50 to 200 gpm along Little River and on eastern shore of Lake Barkley; 5 gpm or less in band along peninsula between Kentucky Lake and Lake Barkley; 5 to 50 gpm over remainder of county

Sewerage

Company serving Cadiz - City of Cadiz Sewer System  
P. O. Box 436  
Franklin Street  
Cadiz, Kentucky 42211  
(502) 522-8244

Design capacity - 200,000 gallons per day  
Average daily flow - 120,000 gallons  
Treatment - Primary and secondary  
Type treatment - aeration, extended aeration, grit removal, clarification, drying beds  
Treated effluent discharges into - Little River  
Size of sanitary mains - 6, 8, 10 and 12 inches  
Size of storm mains - Up to 12 inches  
Rates- Based upon water usage:

First	2,000 gallons	\$4.18 (Minimum)
Next	3,000 gallons	1.47 per M gallons
Next	5,000 gallons	1.21 per M gallons
Next	10,000 gallons	.94 per M gallons
Next	30,000 gallons	.87 per M gallons
Next	50,000 gallons	.73 per M gallons
All over	100,000 gallons	.67 per M gallons

Tap-on charge : \$150

## CLIMATE

### Trigg County

#### Temperature

Normal (30-year record)	59.4 degrees
Average annual 1981	58.7 degrees
Record highest, July 1952 (42-year record)	107.0 degrees
Record lowest, January 1963 (42-year record)	-15.0 degrees
Normal heating degree days (30-year record)	3,696
(Heating degree day totals are the sums of negative departures of average daily temperatures from 65 degrees F.)	

#### Precipitation

Normal (30-year record)	46.00 inches
Mean annual snowfall (40-year record)	11.60 inches
Total precipitation 1981	41.68 inches
Mean number days precipitation (.01 inch or more) (40-year record)	119
Mean number days thunderstorms (40-year record)	54

#### Prevailing Winds (22-year record)

South

#### Relative Humidity (16-year record)

Midnight	79 percent
6 a.m.	84 percent
Noon	58 percent
6 p.m.	61 percent

Source: U. S. Department of Commerce, Environmental Science Services Administration, Climatological Data, 1981.  
Station of record: Nashville, Tennessee.

LOCAL GOVERNMENT

City

Structure - Mayor - 4-year term; 6 council member - 2-year terms  
Budget 1982 - General Fund \$308,650  
                  Water and Sewer Fund 285,818  
Fees and licenses - Payroll tax - one percent of gross salaries;  
                  business privilege license - fee based on gross receipts,  
                  ranges from \$25 to \$625

County

Structure - County Judge/Executive - 4-year term;  
                  7 magistrates - 4-year terms  
Budget 1981-82 - General Fund \$340,306; Road Fund \$320,010

Assessed Value of Property\*

<u>Classes of Property</u>	<u>Cadiz (1981)</u>	<u>Trigg County (1982-83)</u>
Real Estate	\$14,210,915	\$133,701,183
Tangibles	5,322,589	26,906,013

\*Excludes Homestead Exemptions.



## Property Taxes

All property in Kentucky is assessed at 100 percent of fair cash value.

Land and buildings are taxed by the state and may be taxed by local jurisdictions. The state rate is \$0.229 per \$100 of assessed valuation.

Manufacturing machinery, raw materials inventories, pollution control equipment, and goods in the process of manufacture are not subject to local taxation. The state rate is \$0.15 per \$100.

Other tangible personal property owned by manufacturers (automobiles, trucks, finished goods, office furniture, office equipment) is taxed by the state at \$0.45 per \$100 and may be taxed by local jurisdictions.

Property stored in public warehouses in a transit status is not subject to local taxation. The state rate is only \$0.015 per \$100.

Intangible personal property located in Kentucky (money in hand, shares of stock, notes, bonds, accounts receivable, and other credits) is taxed by the state at \$0.25 per \$100, and is not subject to local taxation.

Private leaseholds in industrial facilities owned by cities or counties and financed by industrial revenue bonds are subject to a state tax of \$0.015 per \$100 of value (essentially the lessee's equity, adjusted for appreciation or depreciation). Local taxation is not permitted.

Combined State and Local Rates Per \$100 Valuation, 1981\*  
(100% assessment)

	<u>Site Inside City of Cadiz</u>	<u>Site Inside Unincorporated Trigg County</u>
1. Land and buildings	\$0.803	\$0.551
2. Mfg. machinery, raw materials, goods in process, pollution control equipment	0.150	0.150
3. Finished goods, office equipment, vehicles, other tangibles	1.024	0.772
4. Intangibles (accounts rec., notes, bonds, etc.)	0.250	0.250
5. Property stored in public warehouses in a transit status	0.015	0.015
6. Leaseholds in industrial revenue bond financed plants	0.015	0.015

Planning and Zoning

There is currently no active planning and zoning commission in Cadiz.

Mandatory state codes enforced - Kentucky Plumbing Code, National Electric Code, Kentucky Boiler Regulations and Standards, Kentucky Building Code (modeled after BOCA code)

Safety

<u>Police</u>	<u>Cadiz</u>	<u>Trigg County</u>
Total staff	4 full-time 1 part-time	4 full-time 2 part-time
Radio-patrol cars	2	3

Fire

Insurance Services Organization, Public Protection Classification	7	9
Volunteers	18	**

\*Kentucky Department of Economic Development.

\*\*There are 8 volunteer fire departments providing fire protection to Trigg County.

Rescue Service

Trigg County Disaster and Emergency Services:

Number of volunteers - 60

Equipment - 1 rescue truck, Jaws of Life, mobile operations center, all-terrain vehicles, communications equipment

Personnel training - Emergency medical technician, first-aid, auto extrication, cardiopulmonary resuscitation, water rescue, underground rescue

Refuse Collection and Disposal

	<u>Cadiz</u>	<u>Trigg County</u>
Type service	Municipal	Private
Fee charged:		
residential	\$ 3.75 per month	By contract
business	18.75 per month	By contract
industrial	325.00 per month	By contract
Collection frequency:		
residential	Weekly	By contract
business	Twice weekly	By contract
industrial	Daily	By contract
Trash pickup	Weekly	-
Disposal method	Landfill	Landfill

Trigg County residents may dispose of refuse at the county land fill free of charge.



EDUCATION

Public School

Trigg County

Total Enrollment (Spring 1982)	1,950
Elementary	792
Middle School	471
High School	687
Student-Teacher Ratio	20-1
Elementary	20-1
Middle School	19-1
High School	19-1
Accreditation	Southern Association of Colleges and Schools
Percent High School Graduates to College (1981)	53.2
Expenditures Per Pupil (1980-81)	\$1,573.61
Bonded Indebtedness (June 30, 1981)	\$1,895,000

Area Colleges and Universities

<u>Name</u>	<u>Location (Miles distant)</u>	<u>Enrollment (Fall, 1981)</u>	<u>Highest Degree Conferred</u>
Hopkinsville Community College	Hopkinsville, Kentucky (22)	1,082	Associate
Murray State University	Murray, Kentucky (38)	7,722	Masters, Specialist/ Doctorate*
Austin Peay State University	Clarksville, Tennessee (41)	5,211	Academic and Professional
Madisonville Community College	Madisonville, Kentucky (55)	966	Associate
Paducah Community College	Paducah, Kentucky (68)	1,843	Associate
Bethel College	McKenzie, Tennessee (78)	424	Baccalaureate
Belmont College	Nashville, Tennessee (82)	1,793	Baccalaureate
David Lipscomb College	Nashville, Tennessee (82)	2,375	Baccalaureate
Fisk University	Nashville, Tennessee (82)	944	Masters
Free Will Baptist Bible College	Nashville, Tennessee (82)	587	Baccalaureate
Meharry Medical College	Nashville, Tennessee (82)	965	Academic and Professional
Scarritt College	Nashville, Tennessee (82)	77	Masters
Trevacca Nazarene College	Nashville, Tennessee (82)	961	Baccalaureate

(Contd.)

\*Joint doctoral degree programs are offered in cooperation with the University of Kentucky, Lexington.

\*\*Joint doctoral degree programs are offered in cooperation with the University of Kentucky, Lexington, and cooperative doctoral degree programs are offered with the University of Louisville.

### Area Colleges and Universities

<u>Name</u>	<u>Location (Miles distant)</u>	<u>Enrollment (Fall, 1981)</u>	<u>Highest Degree Conferred</u>
Tennessee State University	Nashville, Tennessee (82)	7,730	Academic and Professional
Vanderbilt University	Nashville, Tennessee (82)	8,911	Academic and Professional
University of Tennessee	Martin, Tennessee (82)	5,538	Academic and Professional
Western Kentucky University	Bowling Green, Kentucky (87)	13,174	Masters, Specialist/ Doctorate**

\*Joint doctoral degree programs are offered in cooperation with the University of Kentucky, Lexington.

\*\*Joint doctoral degree programs are offered in cooperation with the University of Kentucky, Lexington, and cooperative doctoral degree programs are offered with the University of Louisville.



## Vocational Schools

Both the state vocational-technical schools and the area vocational education centers are operated by the Kentucky Department of Education. The state vocational-technical schools enroll persons full time who are at least 16 years of age and not in school. These students attend classes for six hours each day. The area vocational education centers are designed to accommodate high school students who are at least 15 years of age. These students attend vocational school for three hours each day. The state vocational-technical schools and the area education centers offer evening courses to enable working adults to upgrade current job skills.

### Nearest State School

Location	Madisonville State Vocational-Technical School Madisonville
Miles Distant	55
Curriculum	Health and Personal Services Occupations Licensed Practical Nursing Medical Laboratory Technician - C Medical Secretary Nurse's Aide/Orderly Radiologic Technology Respiratory Therapy Surgical Technologist Industrial Education Auto Body Repair Auto Mechanics Carpentry Diesel Mechanics Drafting Electronics Industrial Electricity Machine Shop Mine Equipment Maintenance and Operations Welding Learning Resource Center

Nearest Area Education Center

Location Caldwell County Area Vocational Education Center  
Princeton  
Miles Distant 20  
Curriculum Consumer and Home Economics  
Food Services  
Health and Personal Services Occupations  
Health Careers  
Industrial Education  
Air Conditioning and Refrigeration  
Auto Mechanics  
Carpentry  
Industrial Electricity  
Welding

Location Christian County Area Vocational Education Center  
Hopkinsville  
Miles Distant 22  
Curriculum Agriculture  
Adult Farmer  
Young Adult Farmer  
Industrial Education  
Auto Body Repair  
Auto Mechanics  
Carpentry/Building Trades  
Electricity  
Heating and Air Conditioning  
Machine Shop  
Masonry  
Welding

Arrangements can be made to provide training in the specific production skills required by an industrial plant. Instruction may be conducted either in the vocational school or in the industrial plant, depending upon the desired arrangement and the availability of special equipment.

## HEALTH

### Local Medical Personnel

Physicians - 4  
Dentists - 4

### Hospitals

<u>General Hospital</u>	<u>Location</u>	<u>Beds</u>
Trigg County Hospital, Inc.	Cadiz	40

General hospital facilities - Laboratory, emergency room, nursery, obstetrics, gynecology, X-ray, EKG, cardiac care unit. The Trigg County Hospital is part of Western Kentucky Hospital Services, Inc., which participates in the Mid South Regional Medical Program, the Pennyroyal Mental Retardation Program, Comprehensive Health Planning, and the Red Cross Whole Blood Program.

Medical staff - 3 physicians, 8 registered nurses, 6 licensed practical nurses

### Other Medical Facilities

Trigg County Medical Arts Building\*

### Ambulance Service

Ambulance service is available from the Trigg County Hospital, Inc. They have 11 emergency medical technicians that provide county-wide, 24-hour service seven days per week, and two fully-equipped ambulances.

### Public Health

Facility - Pennyroyal District Health Department (Trigg County)  
Staff - Full time: two community health workers, two community health nurses, two clerks, one health environmentalists.  
Part time: one plumbing inspector.

\*The Trigg County Medical Arts Building opened in November of 1980 and contains five office suites.



## OTHER LOCAL FACILITIES

### Communications

Telephone - South Central Bell Telephone Company  
Services - Standard

Telegraph - Western Union  
Services - Toll-free number, 1-800-325-5100

Postal - U. S. Post Office  
Class - First  
Mail received - Twice daily  
Mail dispatched - Once daily

Newspapers - The Cadiz Record  
Weekly and circulation - 3,600  
Other papers  
received from - Hopkinsville, Louisville and Paducah, Kentucky;  
Evansville, Indiana

Radio - WKDZ-AM&FM  
Stations received from - Hopkinsville, Louisville, Paducah,  
Murray and Princeton, Kentucky;  
Nashville, Tennessee

Television -  
Cable service  
Reception from - Paducah and Bowling Green, Kentucky;  
Evansville, Indiana; Nashville,  
Tennessee  
Kentucky Educational  
Television - Madisonville transmitter - Channel 35;  
Murray-Mayfield transmitter - Channel 21

### Library Services

Public library - John L. Street Library  
Size collection - 12,000 volumes  
Circulation, 1980-81 - 41,536  
Services - Magazines, newspapers, information file material, art,  
film strips, film strip projector, story hour, Interlibrary  
Loan, 16 mm films and projectors, slide projectors, records,  
record player, tape recorder, genealogy and Kentucky collections,  
local oral history tapes, Courier-Journal news clippings,  
bookmobile, summer reading program

Religious Institutions

Denominations - Baptist  
Catholic  
Christian  
Church of Christ  
Church of God  
Methodist  
Presbyterian

Nearest Synagogues - Hopkinsville, 22 miles east  
Congregations - Adath Israel (reform)

Financial Institutions

<u>Banks</u>	<u>Assets</u>	<u>Deposits</u>	<u>Statement Date</u>
Bank of Cadiz & Trust Company	\$17,520,747.52	\$15,514,572.83	12/31/81
Trigg County Farmers Bank	48,290,682.65	42,780,638.47	12/31/81
<u>Savings and Loan Associations</u>	<u>Assets</u>	<u>Savings Accounts</u>	<u>Statement Date</u>
Hopkinsville Federal Savings and Loan Association (A branch of this institution is located at Cadiz.)	\$101,263,862.68	\$94,420,263.91	12/31/81

Hotels and Motels

Total number - 4  
Total rooms - 45

Excellent accommodations are also available at Lake Barkley State Resort Park, only seven miles from Cadiz. The resort lodge includes 120 rooms, four suites and nine cottages, in addition to dining, convention and recreation facilities.

## Clubs and Organizations

American Legion  
Boy Scouts  
Brownies  
Business and Professional Women's Club  
C-B Radio Club  
Cadiz Bass Club  
Cadiz Powerboat Club  
Cadiz-Trigg County Chamber of Commerce  
Cadiz-Trigg County Tourist Commission  
Civitan Club  
Cub Scouts  
Daughters of the American Revolution  
Epsilon Sigma Alpha Sorority  
Eastern Star  
Explorers  
4-H  
Foxhunters Association  
Fraternal Order of Eagles  
Future Farmers of America (FFA)  
Garden Club  
Girl Scouts  
Homemakers  
Hospital Auxiliary  
Iota Tau Sorority  
Jaycees  
Jaycettes  
Lions  
Little League  
Masonic Lodge  
National Secretaries Association  
Optimist  
Rotary  
Sportsman Club  
Teen Club  
Trigg County Shrine Club  
West Kentucky Trailbike Riders Association  
West Trigg County Economic Development Association  
Women's Club  
Women's Missionary Union  
Woodmen of the World Society



## RECREATION

### Local

Cadiz offers recreational opportunities of many types. The 100-acre Trigg County Recreation Complex includes two lighted softball fields, one pony league baseball field, one peanut league field, one little league field, a horse show ring, a motorcycle track, hiking trails and picnicking facilities. The Army Corps of Engineers had developed a park and picnic area in the city also. Cadiz has an active tourism committee and two local tourist information centers have been opened since 1980. The city's proximity to western Kentucky's lake area provides even further possibilities for outdoor enjoyment. Annual events in Cadiz include the Trigg County Ham Festival, held each October; and the Memorial Day Crappie Tournament.

Lake Barkley State Resort Park, only seven miles west of Cadiz, is located on the scenic Little River embayment of the 58,000-acre Lake Barkley. The magnificent lodge includes 120 rooms, four suites, nine cottages, a dining room, a coffee shop, a gift shop, two meeting rooms, and a recreation room. An activities center with a capacity for 400 and a 80-site campground are located near the lodge. A lodge pool, a beach and a bathhouse, an 18-hole golf course, tennis courts, a riding stable, a trapshooting range, a basketball court, hiking trails, playgrounds, and a picnic area comprise the recreational facilities. The marina near the lodge has everything for the "boat lover": covered and open slips, launching ramp, and rentals for fishing boats, skiing boats, and pleasure-ride pontoons. A small public airport is also available.

### Area (Within 50-miles)

Cadiz is adjacent to one of the largest outdoor recreation areas in the southeastern United States - the Land Between the Lakes. This 170,000-acre wooded peninsula between Kentucky and Barkley lakes offers a variety of recreational facilities for hiking, camping, hunting, fishing, boating and swimming. Several centers operated on the peninsula by the Tennessee Valley Authority also stress environmental education and conservation.

Two other state resort parks are located on the western shore of Kentucky Lake - Kenlake and Kentucky Dam Village.

Charm and serenity exemplify Kenlake State Resort Park which is located on the 160,000-acre Kentucky Lake, 19 miles west of Cadiz. The park offers hotel and cottage accommodations and an efficient camping site. Other facilities include a 9-hole golf course, pool and lake swimming, horseback riding, hiking trails, fishing, boating, picnicking, playgrounds, shuffleboard, planned recreation, and one of the finest tennis complexes in the area.

Kentucky Dam Village State Resort, located 44 miles northwest of Cadiz at Gilbertsville, is one of the largest and most popular vacation resorts in Kentucky. A modern lodge with 72 rooms, six different cottage types, and a 225-site campground make up the accommodations. A recently completed convention center has a theater-seating capacity of 750 persons and a seating capacity of 500 for dinner. For smaller groups, the convention center can be partitioned. There is also a dining room overlooking the 160,000-acre Kentucky Lake, a coffee shop, a snack bar; two gift shops, a meeting room, an activities center, and a recreation room. Recreational activities to choose from include boating and fishing at the largest docking facility in the Kentucky parks system, golf at the 18-hole Village Green Course, hiking, horseback riding, picnicking, swimming at the lodge pool or off the sand beach, and tennis.

Embraced by probably the most beautiful wooded area in Western Kentucky, Pennyriple Forest State Resort Park at Dawson Springs is located 45 miles northeast of Cadiz. The lodge and cottages nestled within the trees provide excellent accommodations. Other facilities and activities include a dining room, a gift shop, rental rowboats and pedal boats, a 9-hole golf course, hiking trails, horseback riding, picnicking, playgrounds, shuffleboard, swimming at the lodge pool and off a sand beach, and two tennis courts. Lake Beshear, only four miles from the lodge, sports good fishing.

Jefferson Davis Monument State Shrine is located 33 miles east of Cadiz at Fairview. The shrine is at the site of the birthplace of Jefferson Davis, a former U. S. Senator, Secretary of War, and the only president of the Confederate States of America. The 16-acre park contains a 351-foot obelisk with an elevator to the top for viewing, a museum, a gift shop, and a playground with picnic tables.