

1990

# Industrial Resources: Union County

Kentucky Library Research Collections  
Western Kentucky University, [spcol@wku.edu](mailto:spcol@wku.edu)

Follow this and additional works at: [https://digitalcommons.wku.edu/union\\_cty](https://digitalcommons.wku.edu/union_cty)

 Part of the [Business Administration, Management, and Operations Commons](#), [Growth and Development Commons](#), and the [Infrastructure Commons](#)

---

## Recommended Citation

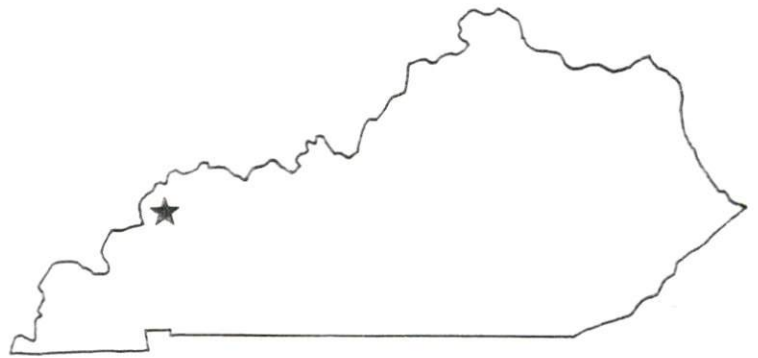
Kentucky Library Research Collections, "Industrial Resources: Union County" (1990). *Union County*. Paper 18.  
[https://digitalcommons.wku.edu/union\\_cty/18](https://digitalcommons.wku.edu/union_cty/18)

This Report is brought to you for free and open access by TopSCHOLAR®. It has been accepted for inclusion in Union County by an authorized administrator of TopSCHOLAR®. For more information, please contact [topscholar@wku.edu](mailto:topscholar@wku.edu).

IK  
665

*Resources for Economic Development*

# Union County



**KENTUCKY**  
*Open for Business*

---

RESOURCES FOR ECONOMIC DEVELOPMENT  
UNION COUNTY, KENTUCKY

Prepared by  
The Kentucky Cabinet for Economic Development  
Division of Research and Planning  
in cooperation with  
The Morganfield Chamber of Commerce;  
The City of Morganfield;  
The Sturgis Chamber of Commerce;  
and  
The City of Uniontown

1990

Division Director - Pamela K. Riley; program manager - Keith Roberts; research - Barry K. Holder, Jr.; clerical - Wanda Sharp; graphics - Robert Owens, Pat Coleman; cartography - Edwin Scott, Dave Clark. Cost of printing paid from state funds.

## TABLE OF CONTENTS

<u>Chapter</u>	<u>Page</u>
UNION COUNTY, KENTUCKY - A RESOURCE PROFILE .....	1
THE LABOR MARKET STATISTICS .....	2
Labor Market Area Map.....	2
Population .....	3
Population Projections .....	3
Estimated Labor Supply .....	3
Labor Force Characteristics of Residents, 1989 .....	4
Selected Components of Nonagricultural Employment, by Place of Work, 1989.....	5
Per Capita Personal Income .....	6
Average Placement Wages .....	7
Average Weekly Wages of Workers Covered by Unemployment Insurance 1988 - Bar Chart .....	8
Average Weekly Wages by Industry, by Place of Work, 1988.....	9
EXISTING INDUSTRY .....	10
Union County Manufacturing Firms, Their Products and Employment.....	10
Recent Industrial Developments.....	11
Labor Organizations in Manufacturing Firms.....	11
Selected Industrial Services.....	12
TRANSPORTATION .....	13
Highways .....	13
Truck Service.....	13
Selected Market Location Map.....	14
Rail .....	15
Air .....	15
Water.....	15
UTILITIES.....	16
Electricity .....	16
Natural Gas .....	16
Public Water Supply .....	17
Sewerage .....	18
CLIMATE .....	20

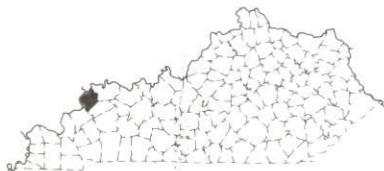
<u>Chapter</u>	<u>Page</u>
LOCAL GOVERNMENT .....	21
Structure .....	21
Planning and Zoning .....	21
Local Fees and Licenses .....	21
State and Local Property Taxes .....	22
Combined State and Local Rates Per \$100 Valuation, 1989.....	22
EDUCATION .....	24
Public Schools .....	24
Nonpublic Schools .....	24
Area Colleges and Universities.....	24
Vocational Training.....	25
OTHER LOCAL FACILITIES.....	26
Local Medical Personnel .....	26
Hospitals.....	26
Other Medical Facilities and Services .....	26
Banks and Savings & Loan Associations.....	26
Newspapers.....	26
Telephone Service.....	26
RECREATION .....	27
COMMUNITY IMPROVEMENTS .....	28



# GENERAL HIGHWAY MAP UNION COUNTY KENTUCKY

PREPARED BY THE  
KENTUCKY TRANSPORTATION CABINET  
DEPARTMENT OF HIGHWAYS  
DIVISION OF PLANNING  
IN COOPERATION WITH THE  
U.S. DEPARTMENT OF TRANSPORTATION  
FEDERAL HIGHWAY ADMINISTRATION

0 1 2 3 4 MILES





## UNION COUNTY, KENTUCKY - A RESOURCE PROFILE

Union County, with a 1988 estimated population of 16,900 is located in the westernmost part of the Western Kentucky Coal Field. The Ohio River flows along the western boundary of the county while the Tradewater River forms the southern boundary. The county covers a total land area of 341 square miles. The topography varies from broad, flat flood plains to island-like hill masses.

Morganfield, the county seat of Union County, is located 32 miles southwest of Evansville, Indiana; 143 miles southwest of Louisville, Kentucky; 158 miles northwest of Nashville, Tennessee; and 199 miles southeast of St. Louis, Missouri. Sturgis is located 11 miles southwest of Morganfield and Uniontown is 6 miles north of Morganfield. According to 1988 estimates, Morganfield had a population of 3,690, Sturgis totaled 2,030, and Uniontown had 1,000 residents.

**The Economic Framework** - The total number of Union County residents employed in 1989 averaged 5,738. Manufacturing firms in the county reported 1,115 employees; wholesale and retail trade provided 967 jobs; 1,271 people were employed in service occupations; state and local government accounted for 567 employees; and 1,974 people were employed by mining and quarrying operations.

**Labor Supply** - There is a current estimated labor supply of 8,679 persons available for industrial jobs in the labor market area. In addition, from 1990 through 1994, 6,116 young persons in the area will become 18 years of age and potentially available for industrial jobs.

**Transportation** - Major highways serving Union County include U.S. 60, Kentucky 56 and Kentucky 109, all "AAA"-rated trucking highways. The Pennyrite and Audubon Parkways, multi-lane toll roads, are located 23 miles east of Morganfield. The Western Kentucky Parkway, a multi-lane highway, is accessible 54 miles south of Morganfield. Twenty-one common carrier trucking companies provide interstate and/or intrastate service to Union County. The Tradewater Railway Company provides main line rail service to Morganfield and Sturgis. The nearest commercial airline service is available at Dress Regional Airport in Evansville, Indiana, 35 miles northeast of Morganfield. The Morganfield Airport, four miles east of Morganfield, maintains a 2,700-foot paved runway and the Sturgis Airport, one mile southeast of Sturgis, has three 5,000-foot runways.

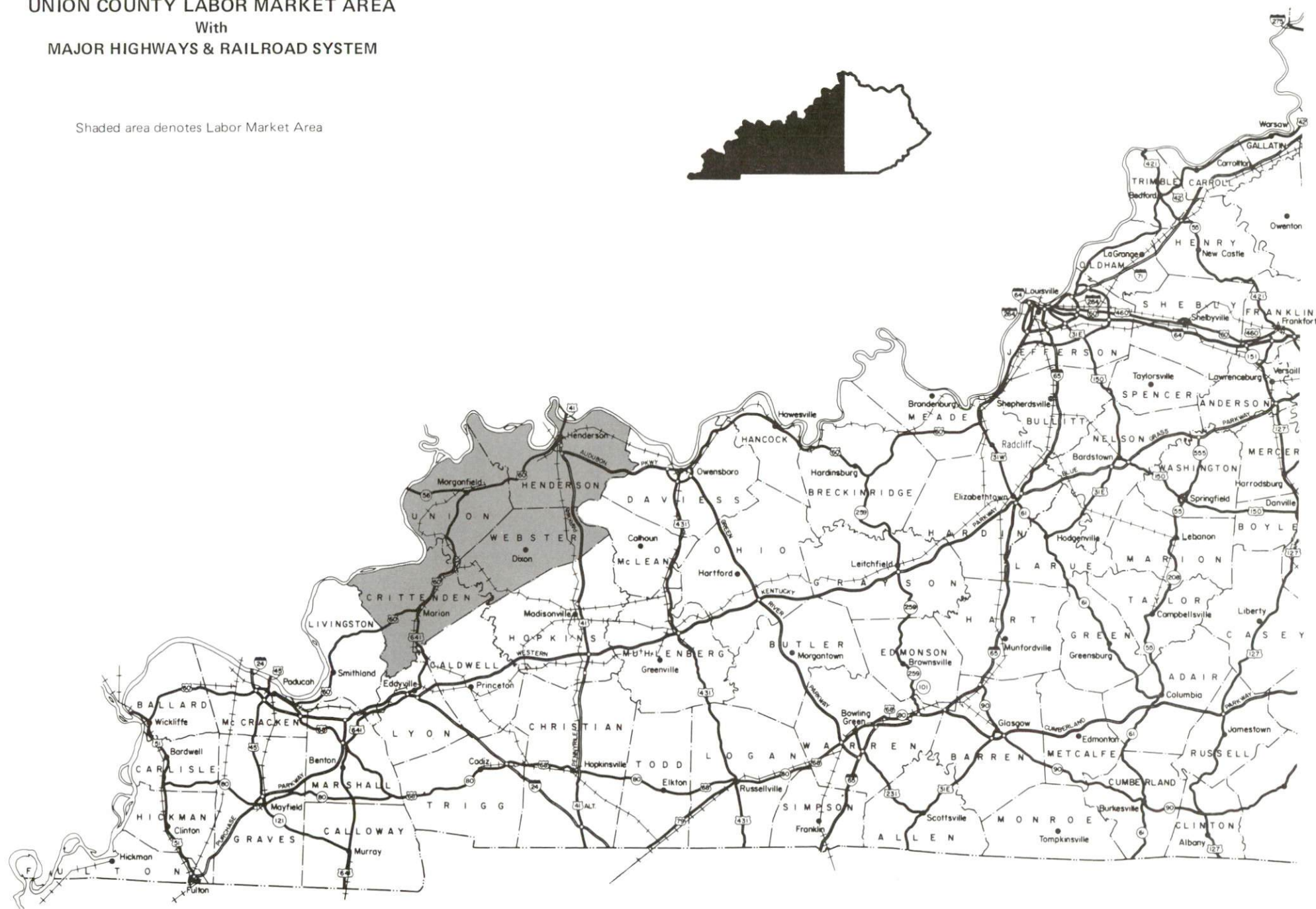
**Power and Fuel** - Kentucky Utilities Company provides electric power to Morganfield, Sturgis, Uniontown, and portions of Union County. Henderson-Union RECC also provides electric power to Union County. Natural gas is provided to Morganfield and Uniontown by the City of Morganfield Municipal Gas System and to Sturgis by the City of Sturgis Municipal Gas System.

**Education** - The Union County School System, which is accredited by the Southern Association of Colleges and Schools, provides public education to Union County. Seven institutions of higher learning are located within 55 miles of Morganfield. The Madisonville State Vocational-Technical School, 48 miles southeast of Morganfield and the Union County Area Vocational Education Center in Morganfield, each provide vocational training for Union County. In addition, the Earle C. Clements Job Corps Center, at Morganfield, provides academic and vocational training services.



UNION COUNTY LABOR MARKET AREA  
With  
MAJOR HIGHWAYS & RAILROAD SYSTEM

Shaded area denotes Labor Market Area



## LABOR MARKET STATISTICS

The Union County Labor Market Area includes Union County and the adjoining Kentucky counties of Crittenden, Henderson, and Webster. In addition, the labor market area is supplemented by Gallatin County, Illinois, which forms the western boundary of Union County.

	POPULATION		
	<u>1988*</u>	<u>1980</u>	<u>1970</u>
Labor Market Area	81,600	82,709	73,688
Morganfield	3,690	3,781	3,563
Sturgis	2,030	2,293	2,210
Uniontown	1,000	1,169	1,255
Waverly	480	434	335
Union County	16,900	17,821	15,882

\* Population estimates.

Sources: U.S. Department of Commerce, Bureau of the Census, August 1989; November 1989.

	POPULATION PROJECTIONS			
	<u>2000</u>	<u>2010</u>	<u>2020</u>	<u>2030</u>
Labor Market Area	83,790	85,100	85,170	83,740
Union County	17,210	17,490	17,480	17,190

Source: University of Louisville, Urban Studies Center, State Data Center.

	ESTIMATED LABOR SUPPLY			
	Current			Future
	<u>Total</u>	<u>Unemployed</u>	<u>Employed Part-Time</u>	<u>Not in Labor Force</u>
				<u>Becoming 18 years of age 1990 thru 1994</u>
Labor Market Area*	8,679	2,480	3,919	2,280
Union County	2,484	374	1,164	946
				6,116
				1,326

\* Additional workers may be drawn from other nearby counties.

Note: Unemployed - persons unemployed and actively seeking work; Employed Part-Time - persons employed but working only 14 to 26 weeks per year; Not in Labor Force - represents the number of persons who would enter the labor force if suitable employment were available (based on the assumption that persons in Kentucky would like to participate in the labor force in the same proportion that they do nationally).

Sources: Kentucky Cabinet for Human Resources, Kentucky Labor Supply Estimates by County, 1989. Kentucky Cabinet for Economic Development, Future Labor Supply Becoming 18 Years of Age, 1990 thru 1994.

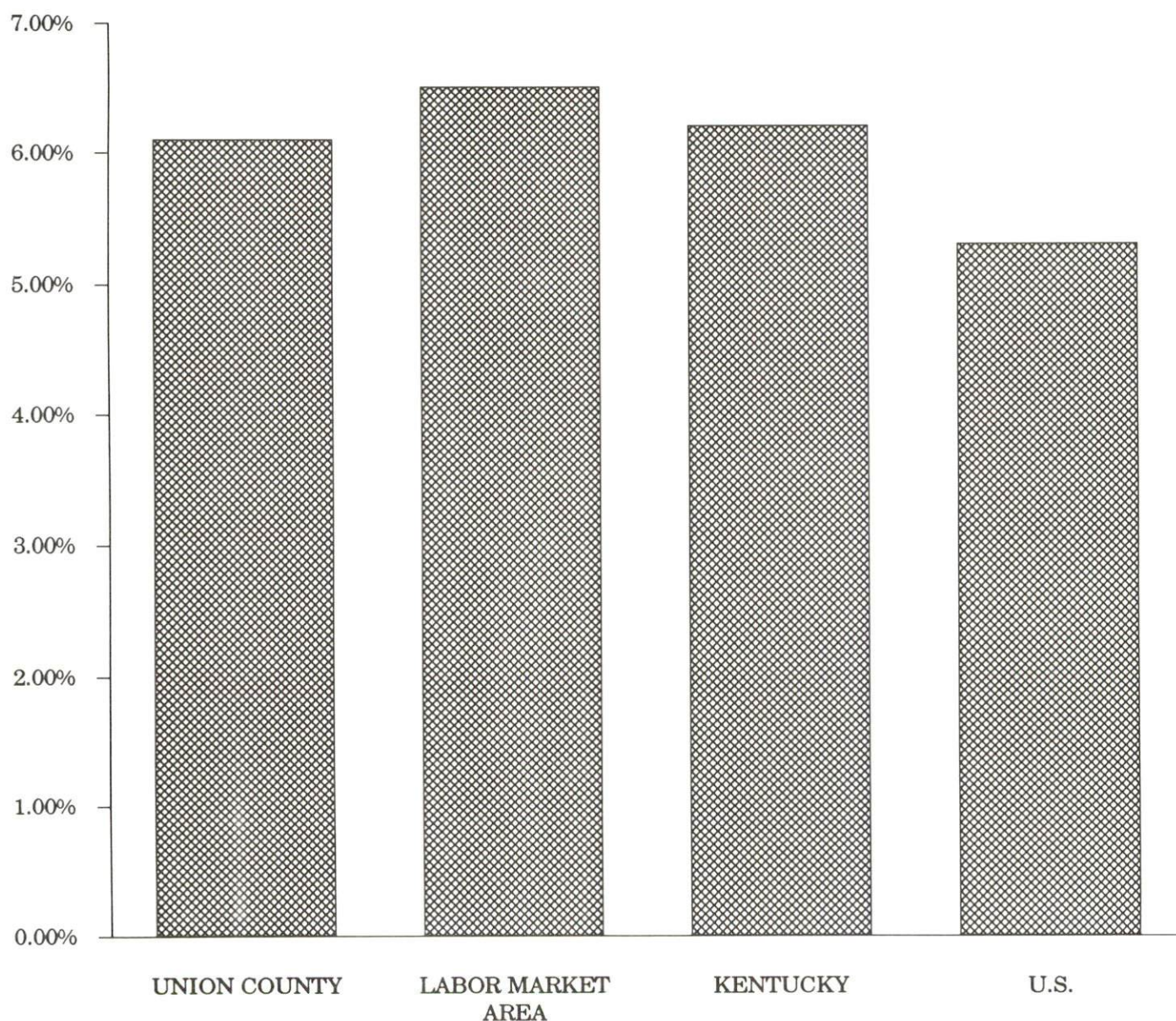


# LABOR FORCE CHARACTERISTICS OF RESIDENTS, 1989

	Union County	Labor Market Area
Civilian Labor Force	6,112	37,998
Employment	5,738	35,518
Unemployment	374	2,480
Rate of Unemployment (%)	6.1	6.5

Source: Kentucky Cabinet for Human Resources, Kentucky Labor Force Estimates, Annual Averages, 1989.

## UNEMPLOYMENT RATES 1989

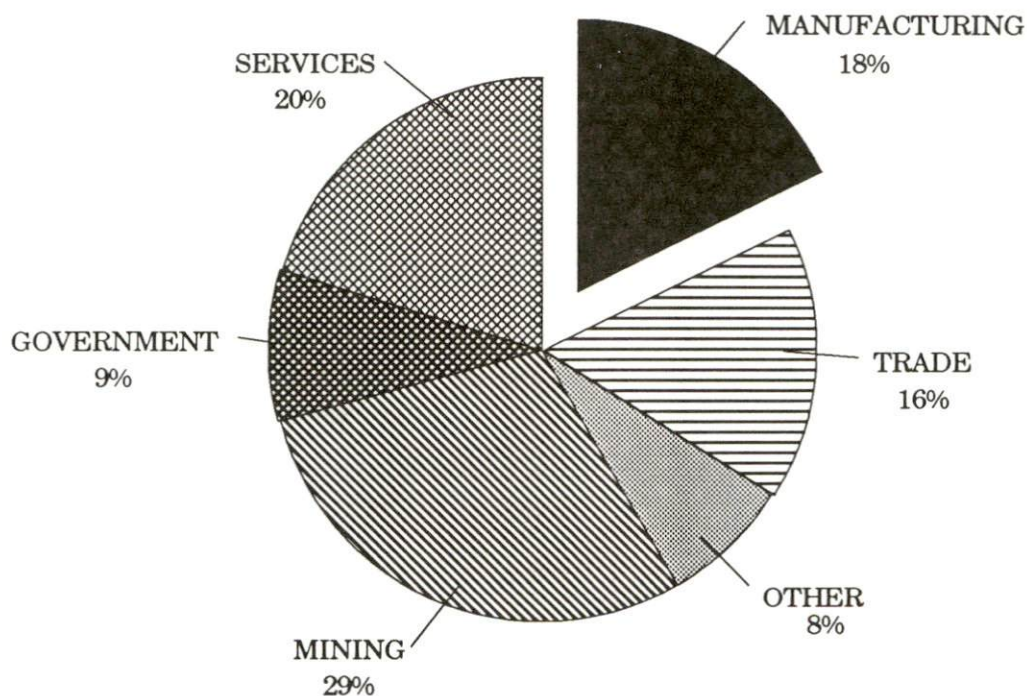


SELECTED COMPONENTS OF NONAGRICULTURAL EMPLOYMENT  
BY PLACE OF WORK, 1989

	Union County	Labor Market Area
All Industries (total)	6,307	29,593
Manufacturing	1,143	8,014
Wholesale & Retail Trade	979	5,891
Services	1,276	5,728
State/Local Government	567	3,284
Mining & Quarrying	1,843	3,433

Note: Excludes domestic workers, railway workers, certain nonprofit corporations, majority of federal government workers, and self-employed workers.  
Source: Kentucky Cabinet for Human Resources, *Average Monthly Workers Covered by Kentucky Unemployment Insurance Law, 1989*.

UNION COUNTY



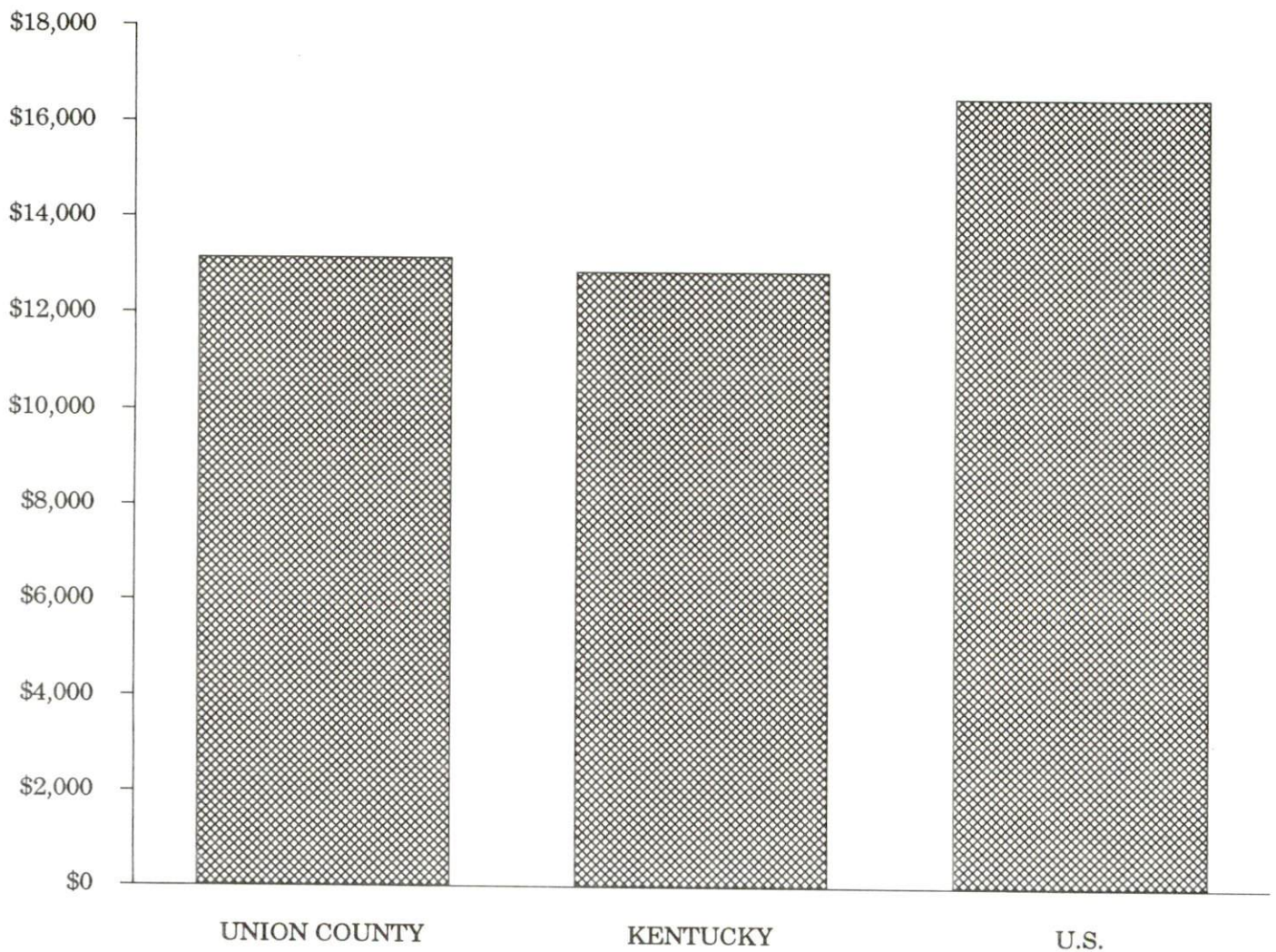


PER CAPITA PERSONAL INCOME

Area	1984	1988	Percent Change
Union County	\$11,219	\$13,128	17.0
Labor Market Area Range	\$8,791 - \$12,436	\$10,345 - \$14,536	-
Kentucky	\$10,411	\$12,830	23.2
U.S.	\$13,116	\$16,490	25.7

Sources: U.S. Bureau of Economic Analysis, Kentucky Economic Information System, April 1990.

PER CAPITA PERSONAL INCOME  
1988



## AVERAGE PLACEMENT WAGES

Union County is served by the Henderson local office of the Kentucky Department for Employment Services. The focus of the following data is on job placements made by the Henderson local office and may therefore be used as an indicator of the wages which employers in the area pay new employees. During the twelve months which ended on June 30, 1989, the local employment office filled 2,968 job openings in various occupational categories. The average hourly wage for selected occupational categories were:

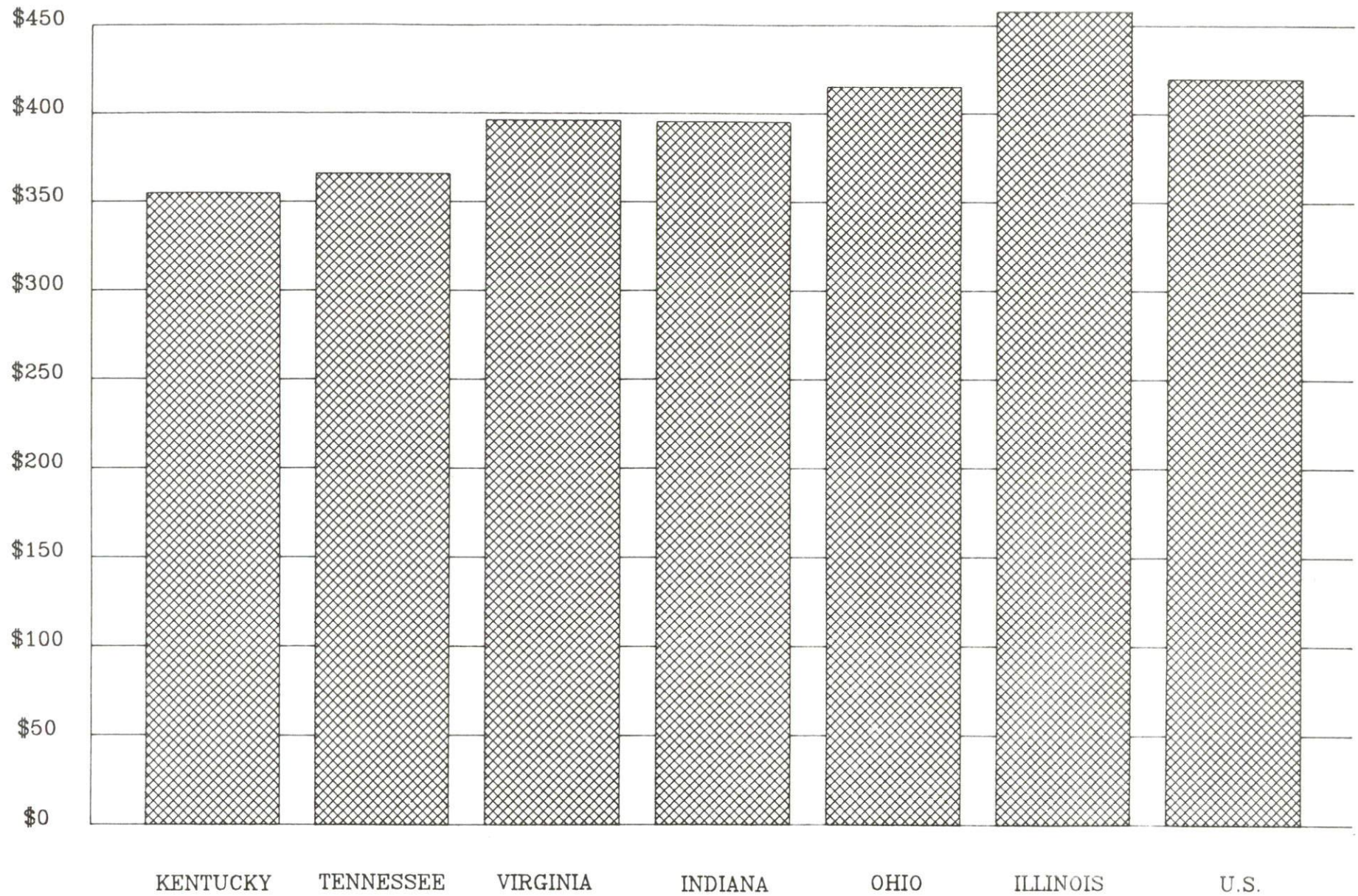
<u>OCCUPATIONAL CATEGORY</u>	<u>NUMBER OF PLACEMENTS</u>	<u>AVERAGE WAGE(\$)</u>
All Occupations	2,968	4.40
Clerical	401	3.86
Sales	18	5.10
Services (excluding domestic)	704	3.52
Agricultural, Fishery, Forestry, etc.	410	3.56
Processing	592	4.43
Machine Trades	81	6.50
Bench Work	218	4.94
Structural	184	6.89
Motor Freight/ Transportation	32	5.82
Packaging and Materials Handling	220	3.86
Other	40	13.27

The Henderson local office also serves Henderson and Webster Counties. The above occupational categories are taken from the Dictionary of Occupational Titles published by the U.S. Department of Labor.

Source: Kentucky Cabinet for Human Resources, Department for Employment Services.



AVERAGE WEEKLY WAGES OF WORKERS COVERED BY  
UNEMPLOYMENT INSURANCE - 1988





AVERAGE WEEKLY WAGES BY INDUSTRY  
BY PLACE OF WORK, 1988

	Union County	Kentucky (State- Wide)	Tennessee	Virginia
All Industries	\$442.43	\$352.31	\$363.12	\$392.56
Mining & Quarrying	789.21	603.27	495.85	596.88
Contract Construction	316.13	380.71	394.27	422.27
Manufacturing	339.68	464.92	416.73	452.60
Transportation, Communications & Public Utilities	504.57	468.17	485.13	554.17
Wholesale & Retail Trade	204.80	238.88	N/A	N/A
Finance, Insurance & Real Estate	329.21	401.17	269.27	466.23
Services	253.80	298.98	343.48	391.67
State/Local Government	318.31	377.81	403.21	457.00
	<u>Indiana</u>	<u>Ohio</u>	<u>Illinois</u>	<u>U. S.</u>
All Industries	\$392.63	\$411.08	\$454.10	\$416.33
Mining & Quarrying	635.77	579.73	674.62	660.40
Contract Construction	449.87	465.46	584.10	469.85
Manufacturing	532.06	569.98	555.83	517.62
Transportation, Communications & Public Utilities	502.69	519.17	584.83	542.33
Wholesale & Retail Trade	N/A	N/A	N/A	N/A
Finance, Insurance & Real Estate	406.58	444.33	579.88	532.52
Services	317.98	348.48	402.38	384.31
State/Local Government	395.31	428.10	453.12	442.71

N/A Not Available.

Note: The average weekly wage for each category includes the salaries and wages of all persons working for that type business. For example, the manufacturing category includes both production workers and administrative personnel. Excludes domestic workers, railway workers, certain nonprofit corporations, majority of federal government workers, and self-employed workers.

Source: Kentucky Cabinet for Human Resources, Average Weekly Wages of Workers Covered by Kentucky Unemployment Insurance Law, 1988. U.S. Department of Labor, Bureau of Labor Statistics, Average Annual Pay by State and Industry, August 29, 1989.



# EXISTING INDUSTRY

## UNION COUNTY MANUFACTURING FIRMS, THEIR PRODUCTS AND EMPLOYMENT

<u>Firm</u> <u>(Establishment date)</u>	<u>Product</u>	<u>1989</u> <u>Average Employment</u>
<b>Morganfield</b>		
Barrons Processed Meats (1960)	Meat processing, ground beef, steak, pork sausage	5
Crop Production Services (1977)	Fertilizer, chemicals	8
Custom Feed Mills, Inc. (1950)	Feed	8
Ferrocraft, Division of Dart Industries, Inc. (1948)	Wire display equipment, metal advertising displays	25
Hite's Imperial Printing (1987)	Printing	4
Morganfield Ice Company (1918)	Ice	3
Rayloc (1973)	Automotive parts, brakes, water pumps	310
Sheller-Globe Corporation (1979)	Automotive interior & exterior trim, automotive exterior lamp assemblies	320
Sonoco Products Company (1973)	Paper tubing	20
T & G Construction and Supply Company, Inc. (1978)	Industrial paint finishing equipment, conveyor systems, air replacement systems	25
Union Fertilizer Company, Inc. (1964)	Fertilizer	10
Western Kentucky Rubber Division (1979)	Automotive ball joint seals, rubber bumpers, electrical connectors	100
<b>Sturgis</b>		
Circle-O Farm Center (1974)	Fertilizer liquid & dry mix	5
Mine Safe Electronics, Inc. (1975)	Methane monitoring equipment, fire sensing communication equipment, voice communication equipment	15
Morgan Concrete, Inc. (1964)	Ready-mixed concrete	7
Saturn Machine and Welding (1964)	Coke oven equipment, specialized machinery	60

(Continued)

<u>Firm</u> <u>(Establishment date)</u>	<u>Product</u>	<u>1989</u> <u>Average Employment</u>
Sturgis Clothing Company (1947)	Men's slacks	170
Sturgis News, Inc. (1885)	Newspaper, job printing	5
<b>Uniontown</b>		
Kentucky Cap Manufacturing Company (1968)	Ball, golf & tennis caps	40
<b>Waverly</b>		
Drury's Candy Land (1962)	Candy	2

Sources: Kentucky Cabinet for Economic Development, Division of Research and Planning; Sturgis Chamber of Commerce.

#### RECENT INDUSTRIAL DEVELOPMENTS

Two new manufacturing firms recently initiated operations in Sturgis including Thorp Aero, Inc., a light-weight aircraft producer and 3G's, a manufacturer of sweatshirts. These new businesses created a total of 28 jobs.

#### LABOR ORGANIZATIONS IN MANUFACTURING FIRMS

<u>Union</u>	<u>Representing workers at:</u>
Amalgamated Clothing and Textile Workers Union, AFL-CIO	Kentucky Cap Manufacturing Company

## SELECTED INDUSTRIAL SERVICES

<u>Types of Services</u>	<u>Location</u>	<u>Mileage from Morganfield</u>
Custom Data Processing	Henderson, Kentucky	23
Custom Plastics Producers	Corydon, Kentucky	14
Electric Motor Repair	Henderson, Kentucky	23
Grinding, Precision & Tool	Corydon, Kentucky	14
Heat Treating Facilities	Evansville, Indiana	32
Industrial Equipment & Supplies	Madisonville, Kentucky	48
Industrial Gases	Henderson, Kentucky	23
Industrial Waste Removal	Henderson, Kentucky	23
Machine Shops, Tool & Die	Corydon, Kentucky	14
Metal Castings	Henderson, Kentucky	23
Metal Finishers	Owensboro, Kentucky	53
Metal Service Centers	Owensboro, Kentucky	53
Millwrights	Evansville, Indiana	32
Public Warehouse Facilities	Henderson, Kentucky	23

Sources: Kentucky Cabinet for Economic Development, Kentucky Directory of Selected Industrial Services, 1987; Division of Research and Planning.

## TRANSPORTATION

### Highways

Major "AAA"-rated (80,000-pound gross load limit) trucking highways serving Union County include U.S. 60, Kentucky 109, and a portion of Kentucky 56.

Morganfield and Sturgis are both served by U.S. 60. In addition, Morganfield is served by Kentucky Highways 56, 130, and 359. Sturgis is served by Kentucky Highways 109, 270, and 365. Uniontown is served by Kentucky Highways 130 and 360. U.S. 60 is accessible 6 miles south of Uniontown via Kentucky 130.

Access to the Pennyrile and Audubon Parkways, multi-lane toll roads, is available 23 miles east of Morganfield via U.S. 60. The Western Kentucky Parkway, another multi-lane highway, is accessible 54 miles south of Morganfield via U.S. 60 and U.S. 641. Access to Interstate 24 is 52 miles south of Morganfield via U.S. 60 and U.S. 641.

#### HIGHWAY MILES FROM MORGANFIELD, KENTUCKY, TO SELECTED MARKET CENTERS

City	Highway Miles	City	Highway Miles
Atlanta, GA	399	Los Angeles, CA	2,037
Baltimore, MD	742	Louisville, KY	143
Birmingham, AL	345	Nashville, TN	158
Chicago, IL	322	New Orleans, LA	628
Cincinnati, OH	241	New York, NY	903
Cleveland, OH	491	Pittsburgh, PA	531
Detroit, MI	479	St. Louis, MO	199
Knoxville, TN	336		

Note: Mileage computations are via the best interstate or primary highways, not necessarily the most direct route of travel.

Sources: Rand McNally Deluxe Motor Carriers' Road Atlas, 1989. Official Kentucky Mileage Map, 1980.

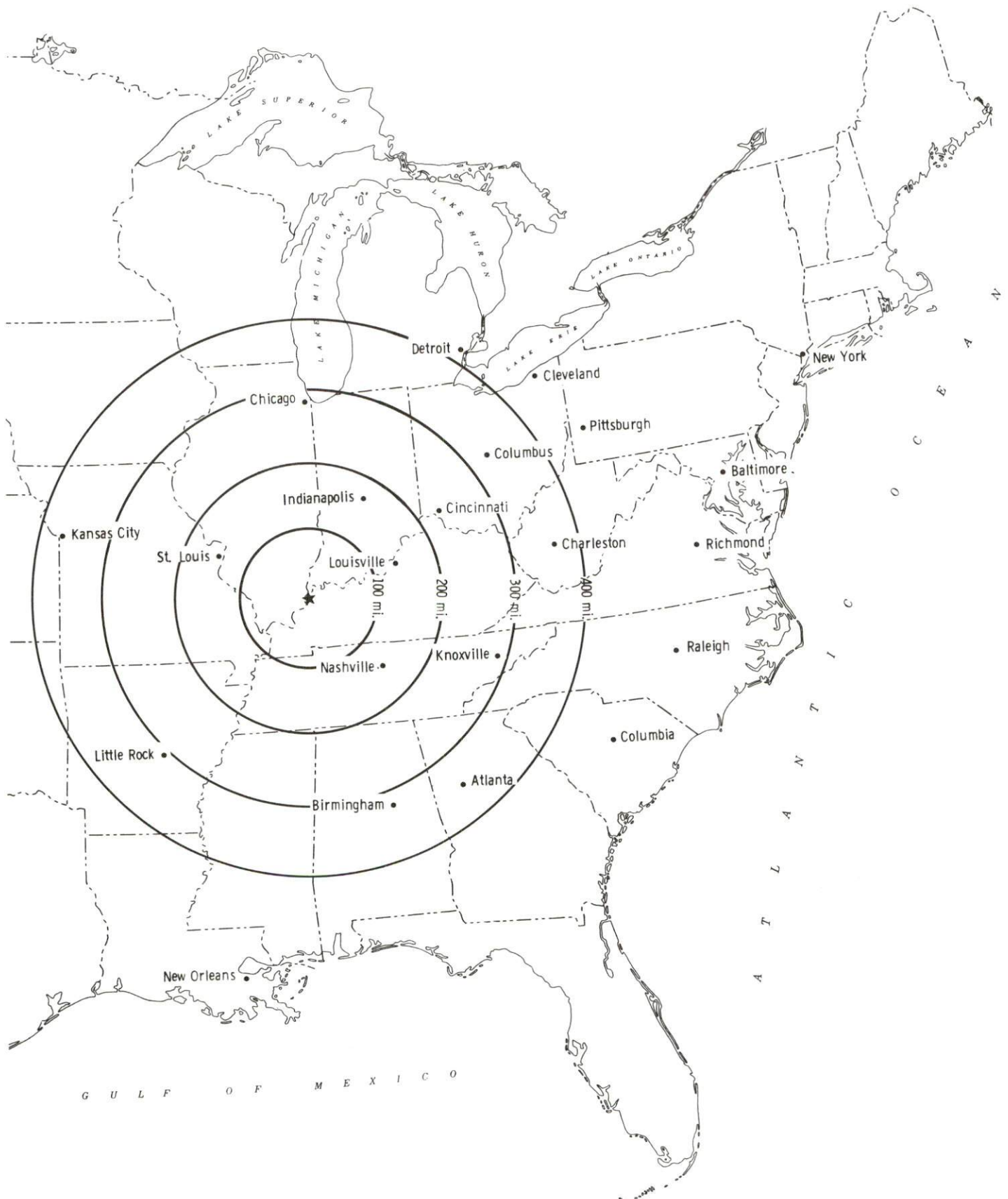
### Truck Service

Twenty-one common carrier trucking companies provide interstate and/or intrastate service to Union County.

Source: American Motor Carrier Directory, Fall 1990.



## Selected Market Centers



## Rail

The Tradewater Railway Company provides main line rail service to Morganfield and Sturgis. In addition, service is provided from Morganfield to Princeton where the Tradewater rail line connects with the Paducah and Louisville Railroad; and south of Sturgis, where the Tradewater line extends to Providence then connects with a rail line operated by CSX Transportation.

The nearest piggyback facilities are provided by CSX Transportation at Evansville, Indiana, 32 miles northeast of Morganfield.

For details on routing, schedules, rates, and services contact:

Tradewater Rail Company  
P.O. Box 66  
Sturgis, Kentucky 42459  
(502) 333-4151

## Air

### Local

Morganfield Airport  
Location: 4 miles east of Morganfield  
Runways: 1 paved  
Length: 2,700 feet  
Traffic  
Control: Wind tee  
Lighting: Low intensity, dusk to dawn, VASI  
Services: Tie-downs

Sturgis Airport  
Location: 1 mile southeast of Sturgis  
Runways: 3 paved  
Length: 5,000 feet each  
Traffic  
Control: Wind sock and tetrahedron  
Lighting: MIRL and VASI 18-36 sunset to sunrise,  
rotating beacon, tetrahedron  
Services: 100LL octane fuel, Jet-A fuel, flight  
training, tie-downs, hangars

### Nearest Scheduled Commercial Airline Service

Evansville Dress Regional Airport  
Location: 3 miles north of Evansville, Indiana;  
35 miles northeast of Morganfield  
Air Service: American Eagle, ComAir, TransWorld Express,  
Northwest Link, USAir, United Express  
Daily Arrivals  
& Departures: 88

## Water

The Ohio River forms the western boundary of Union county, and Uniontown is located at mile 843 on the Ohio River. A 9-foot navigation channel is maintained for the river's entire length. Several public terminals are located along the Ohio River in Union County.

## UTILITIES

### Electricity

Company serving **Morganfield, Sturgis, Uniontown** and portions of Union  
County - Kentucky Utilities company  
Source of power - Kentucky Utilities Company  
For industrial rates contact:

Industrial Development Department  
Kentucky Utilities Company  
One Quality Street  
Lexington, Kentucky 40507  
(606) 255-1461

Company serving **the remainder of Union County** - Henderson-Union Rural  
Electric Cooperative Corporation  
Source of power - Big Rivers Electric Corporation  
For industrial rates contact:

Henderson-Union RECC  
P.O. Drawer 18  
Henderson, Kentucky 42420  
(502) 826-3991 or (800) 242-7069

### Natural Gas

Company serving **Morganfield and Uniontown** - City of Morganfield  
Municipal Gas System  
Source of supply - Texas Gas Transmission Corporation  
For rates and supplies contact:

City Administrator  
130 East Main Street  
P.O. Box 420  
Morganfield, Kentucky 42437  
(502) 389-2525

Company serving **Sturgis** - City of Sturgis Municipal Gas System  
Source of supply - Texas Gas Transmission Corporation  
For rates and supplies contact:

City of Sturgis Municipal Gas System  
206 West Sixth Street  
Sturgis, Kentucky 42459  
(502) 333-2166

## Public Water Supply

### Company serving Morganfield -

City of Morganfield  
P.O. Box 420  
130 East Main Street  
Morganfield, Kentucky 42437  
(502) 389-1695

Source - Ohio River

Treatment plant capacity -	6,000,000 gallons per day
Average daily consumption -	1,800,000 gallons
Peak daily consumption -	2,800,000 gallons
Storage capacity -	2,900,000 gallons including clear well
Water pressure -	47 psi to 78 psi

The City of Morganfield is in the process of installing 15 new fire hydrants and increasing the size of the water mains. The \$38,000 project is scheduled for completion by Summer 1991.

### Company serving Sturgis -

City of Sturgis  
P.O. Box 98  
206 West Sixth Street  
Sturgis, Kentucky 42459  
(502) 333-2166 (office)  
(502) 333-4348 (plant)

Source - Ohio River

Treatment plant capacity -	1,200,000 gallons per day
Average daily consumption -	300,000 gallons
Peak daily consumption -	400,000 gallons
Storage capacity -	1,000,000 gallons, including clear wells
Water pressure -	62 psi

### Company serving Uniontown -

City of Uniontown  
P.O. Box 548  
Uniontown, Kentucky 42461  
(502) 822-9118

Source - Ohio River

Treatment plant capacity -	205,000 gallons per day
Average daily consumption -	120,000 gallons
Peak daily consumption -	205,000 gallons
Storage capacity -	370,000 gallons including clear well
Water pressure -	65 psi to 75 psi

The City of Uniontown recently completed construction of a 100,000-gallon elevated water storage tank. Total cost of the project was \$225,000.



Name of water district - Union County Water District  
P.O. Box 146  
Morganfield, Kentucky 42437  
(502) 389-3868

Area served - All of Union County, except for the cities of Morganfield, Sturgis, and Uniontown

Source of supply of treated water - City of Morganfield

Amount of treated water that can be purchased - Up to 1,000,000 gallons per day

Average daily consumption - 650,000 gallons

Peak daily consumption - 780,000 gallons

Storage capacity - 410,000 gallons

Water pressure - 30 psi to 150 psi

The Union County Water District plans to construct a 300,000-gallon elevated water storage tank and make improvements to the pumping system.

#### Raw Water

Surface water sources - Ohio and Tradewater Rivers

Average discharge - Ohio River at Evansville, Indiana - 133,300 cfs  
(34 years, USGS, unadjusted); Tradewater River at Olney, Kentucky - 337 cfs (47 years, USGS)

Expected ground water yield - 500 to 1,000 gpm along the Ohio River;  
50 to 200 gpm along the Tradewater River; 5 to 50 gpm in the central and southeastern portions of the county; 5 gpm or less in the remainder of the county

#### Sewerage

Company serving Morganfield - City of Morganfield  
130 East Main Street  
P.O. Box 420  
Morganfield, Kentucky 42437  
(502) 389-3934

Design capacity - 3,500,000 gallons per day

Average daily flow - 1,600,000 gallons

Type of treatment - Primary and secondary

Treated effluent discharged into - Casey Creek to Ohio River

Company serving Sturgis -

City of Sturgis  
P.O. Box 98  
200 West Sixth Street  
Sturgis, Kentucky 42459  
(502) 333-2166 (office)  
(502) 333-4348 (plant)

Design capacity -

500,000 gallons per day

Average daily flow -

200,000 gallons

Type of treatment -

Primary, secondary, and tertiary

Treated effluent discharged into - Cypress Creek

Company serving Uniontown -

City of Uniontown  
P.O. Box 548  
Uniontown, Kentucky 42461  
(502) 822-4277

Design capacity -

200,000 gallons per day

Average daily flow -

120,000 gallons

Type of treatment -

Secondary

Treated effluent discharged into - Tributary to Lost Creek, then to  
Ohio River

## CLIMATE

### Union County

#### Temperature

Normal (30-year record)	55.70 degrees
Average annual 1988	55.60 degrees
Record highest, July 1954 (48-year record)	105.00 degrees
Record lowest, February 1951 (48-year record)	-23.00 degrees
Normal heating degree days (30-year record)	4,729
(Heating degree day totals are the sums of negative departures of average daily temperatures from 65 degrees F.)	

#### Precipitation

Normal (30-year record)	41.55 inches
Mean annual snowfall (48-year record)	13.90 inches
Total precipitation 1988	38.43 inches
Mean number days precipitation (.01 inch or more) (48-year record)	115.20
Mean number days thunderstorms (48-year record)	44.90

#### Prevailing winds (through 1963)

South-Southwest

#### Relative Humidity (27-year record)

Midnight	78 percent
6 a.m.	81 percent
Noon	59 percent
6 p.m.	62 percent

Source: U.S. Department of Commerce, Environmental Science Services Administration, Climatological Data, 1988. Station of record: Evansville, Indiana.



## LOCAL GOVERNMENT

### Structure

The Cities of Morganfield, Sturgis, and Uniontown are each governed by a mayor and six council members. The mayors are each elected to a four-year term, while the council members serve two-year terms each. Union County is governed by a county judge/executive and six magistrates. Each county official serves a four-year term.

### Planning and Zoning

Joint agency - Union County Planning Commission

Participating cities - Morganfield, Sturgis, and Waverly

Zoning enforced - Within corporate limits of Morganfield, Sturgis and Waverly

Subdivision regulations enforced - All areas

Mandatory state codes enforced - Kentucky Plumbing Code, National Electric Code, Kentucky Boiler Regulations and Standards, Kentucky Building Code (modeled after BOCA code)

### Local Fees and Licenses

The City of Morganfield levies license fees on various types of businesses within the corporate limits ranging from \$10 to \$60 annually. The City of Sturgis levies annual business license fees ranging from \$5 to \$150. Automobile stickers are \$5 annually. The City of Uniontown also levies business license fees ranging from \$10 to \$30 annually. In addition, a fee of \$15 is charged for automobile stickers.

## State and Local Property Taxes

All property in Kentucky, except items exempted by the state constitution, is taxed by the state. Property which also may be taxed by local jurisdictions includes land and buildings, finished goods inventories, automobiles, trucks, office furniture and office equipment. Local taxing jurisdictions in Kentucky include counties, cities, and school districts.

All property in Kentucky is assessed at 100 percent of fair cash value.

### COMBINED STATE AND LOCAL RATES PER \$100 VALUATION, 1989

	<u>Morganfield</u>	<u>Sturgis</u>
Land and Buildings	1.144	0.979
Manufacturing		
Machinery	0.150	0.150
Pollution Control		
Equipment	0.150	0.150
Inventories		
Raw Materials	0.001	0.001
Goods in Process	0.001	0.001
Finished Goods	0.939	0.756
Automobiles & Trucks	1.383	1.200
Other Tangible		
Personal Property	1.388	1.205
Intangibles (Accounts		
receivable*, money		
in hand, stock,		
notes, bonds)	0.250	0.250
Goods Stored in Public		
Warehouses in Transit		
Status	0.001	0.001
Private Leaseholds in		
Industrial Revenue		
Bond Financed		
Facilities	0.015	0.015

COMBINED STATE AND LOCAL RATES PER \$100 VALUATION, 1989

	<u>Uniontown</u>	<u>Unincorporated Union County</u>
Land and Buildings	0.970	0.552
Manufacturing		
Machinery	0.150	0.150
Pollution Control		
Equipment	0.150	0.150
Inventories		
Raw Materials	0.001	0.001
Goods in Process	0.001	0.001
Finished Goods	0.741	0.337
Automobiles & Trucks	1.185	0.781
Other Tangible		
Personal Property	1.190	0.786
Intangibles (Accounts		
receivable*, money		
in hand, stock,		
notes, bonds)	0.250	0.250
Goods Stored in Public		
Warehouses in Transit		
Status	0.001	0.001
Private Leaseholds in		
Industrial Revenue		
Bond Financed		
Facilities	0.015	0.015

Three watershed districts in Union County levy a special tax on property within their boundaries, not county-wide. The rates range from \$0.035 to \$0.250 per \$100.

\* Accounts receivable are taxed at 85 percent of face value, for an effective rate of \$0.2125 per \$100 valuation.



## EDUCATION

### Public Schools

	Union County
Total Enrollment (Fall, 1989)	3,001
Accreditation	Southern Association of Colleges and Schools
Pupil-Teacher Ratio (1988-89)	18-1
Percent High School Graduates to College (1988-89)	41.9
Expenditures Per Pupil (1988-89)	\$2,930.05

The Union County School System recently completed construction of the Union County Middle School. The \$5 million project consolidated all middle schools within the county. In addition, the School System is in the process of renovating and expanding the Morganfield and Sturgis Elementary Schools. The \$4 million project is scheduled for completion by Fall 1991.

### Nonpublic Schools

<u>School</u>	<u>Enrollment</u>	<u>Grades</u>
Saint Ann Interparochial Elementary	300	K-8

### Area Colleges and Universities

<u>Name</u>	<u>Location (Miles distant)</u>	<u>Enrollment (Fall, 1989)</u>
Henderson Community College	Henderson, Kentucky (23)	1,246
University of Evansville	Evansville, Indiana (32)	5,713
University of Southern Indiana	Evansville, Indiana (32)	3,290
Madisonville Community College	Madisonville, Kentucky (48)	1,960
Brescia College	Owensboro, Kentucky (53)	689
Kentucky Wesleyan College	Owensboro, Kentucky (53)	716
Owensboro Community College	Owensboro, Kentucky (53)	2,125

## Vocational Training

Vocational training is available at both the state vocational-technical schools and the area vocational education centers. The state vocational-technical schools are post-secondary institutions. The area vocational education centers are designed to supplement the curriculum of high school students. Both the state vocational-technical schools and the area vocational education centers offer evening courses to enable working adults to upgrade current job skills.

Arrangements can be made to provide training in the specific production skills required by an industrial plant. Instruction may be conducted either in the vocational school or in the industrial plant, depending upon the desired arrangement and the availability of special equipment.

### Bluegrass State Skills Corporation

The Bluegrass State Skills Corporation, an independent public corporation created and funded by the Kentucky General Assembly, provides programs of skills training to meet the needs of business and industry from entry level to advanced training, and from upgrading present employees to retraining experienced workers.

The Bluegrass State Skills Corporation is the primary source for skills training assistance for a new or existing company. The Corporation works in partnership with other employment and job training resources and programs, as well as Kentucky's economic development activities, to package a program customized to meet the specific needs of a company.

<u>Vocational School</u>	<u>Location (Mileage from Morganfield)</u>	<u>Cumulative Enrollment 1988-1989</u>
Madisonville State Vocational- Technical School	Madisonville, Kentucky (48)	463
Union County Area Vocational Education Center	Morganfield, Kentucky	290

### **The Earle C. Clements Job Corps Center**

The Earle C. Clements Job Corps Center, at Morganfield is part of a federally funded training program administered by the U.S. Department of Labor through a contract with Career Systems Development Corporation. The Center provides opportunities for disadvantaged young men and women between the ages of 16 and 21 for development in academic and vocational skills

## OTHER LOCAL FACILITIES

### Local Medical Personnel

Physicians - 9

Dentists - 8

### Hospitals

<u>General Hospital</u>	<u>Location</u>	<u>Beds</u>
Union County Methodist Hospital	Midway between Morganfield and Sturgis	54

Medical staff - 7 physicians, 14 registered nurses, and 4 licensed practical nurses

### Other Medical Facilities

Green River Comprehensive Care Center  
Trover Clinic  
Union County Health Department  
Union County Methodist Ambulance Service  
Uniontown Medical Center

### Banks and Savings & Loan Associations

Farmers State Bank (Sturgis)  
First Federal Savings & Loan Association  
Morganfield National Bank  
Union Bank and Trust Company

### Newspapers

Morganfield: The Union County Advocate (weekly)  
Sturgis: The Sturgis News (weekly)

### Telephone Service

South Central Bell Telephone Company



## RECREATION

### Local

A variety of public recreational facilities are available in Morganfield. Four tennis courts, a swimming pool, five lighted softball fields, two baseball fields, a football field, picnic and playground areas and four shelter houses are available at a city park. In addition, two mini-parks including playground areas and basketball goals are located in the community.

The Breckinridge Golf and Country Club, at Morganfield, is a private club featuring a clubhouse, a dining room, a 9-hole golf course with 18 tees, a swimming pool and two tennis courts.

The Morganfield Lions Club sponsors a Corn Festival at Morganfield in September. Performances by local bands, merchant promotions and a barbecue picnic are featured events.

Public recreation facilities at Sturgis include two parks, four tennis courts, a swimming pool, three baseball diamonds and football field. Bowling lanes and a skating rink are located at Sullivan, four miles south of Sturgis.

The Sturgis Chamber of Commerce sponsors a Trade day at Sturgis in June. The celebration includes a parade, carnival and flea market.

Public recreational facilities at Uniontown include a mini-park, a ball park, and a concessions building. Also, the City of Uniontown maintains a boat dock on the Ohio River as a recreational facility.

The Union County Fair is held each summer at the Union County Fairgrounds near the Sturgis Airport. Featured events include harness racing, a horse show, and a demolition derby.

The 5,420-acre Higginson-Henry Wildlife Area, located about 6 miles southeast of Morganfield, features 80-acre Lake Mauzy, boat ramps and picnic areas. A private sporting clays shooting range is located nearby.

Moffit Lake Recreation Area, a 128-acre park located about 12 miles southeast of Morganfield offers a 50-acre lake, a 300-foot swimming beach, campsite with utility hook-ups, a boat dock, pavilion, restrooms and fishing.

Public boat ramps are available on the Ohio River in Caseyville, five miles west of Sturgis and on the Tradewater River near Sturgis.

### Area (Within 65 miles)

Ben Hawes State Park  
John James Audubon State Park  
Kentucky Dam Village State Resort Park  
Land Between the Lakes National Recreation Area  
Pennyrile Forest State Resort Park

## COMMUNITY IMPROVEMENTS

### Recent

Sturgis was chosen as a "Kentucky Certified City" in 1989. The award is based on achievement in the following categories: economic development, community organizations, utilities, infrastructure, community appearance, downtown revitalization, education, and recreation. The Certified Cities Program is sponsored by the Kentucky Chamber of Commerce.

Two new manufacturing firms recently initiated operations in Sturgis including Thorp Aero, Inc., a light-weight aircraft producer and 3G's, a manufacturer of sweatshirts. These new businesses created a total of 28 jobs.

The Union County School System recently completed construction of the Union County Middle School. The \$5 million project consolidated all middle schools within the county.

The City of Morganfield, along with participating businesses, recently completed a project which improved and refurbished the downtown area. The project included an extensive remodeling of business storefronts, construction of new sidewalks and street curbs, and general landscaping and overall aesthetic improvements.

The City of Uniontown recently completed construction of a 100,000-gallon elevated water storage tank. Total cost of the project was \$225,000.

### Under Way

The Union County School System is in the process of renovating and expanding the Morganfield and Sturgis Elementary Schools. The \$4 million project is scheduled for completion by Fall 1991.

The City of Morganfield is in the process of installing 15 new fire hydrants and increasing the size of the water mains. The \$38,000 project is scheduled for completion by Summer 1991.

Several local community and business developments are under way in Sturgis including a renovation of the train depot's exterior and the American Legion Building, refurbishment of storefronts, new sidewalks and park benches, and general aesthetic improvements.

### Planned

The Union County Water District plans to construct a 300,000-gallon elevated water storage tank and make improvements to the pumping system.