

1990

Industrial Resources: Anderson County

Kentucky Library Research Collections
Western Kentucky University, spcol@wku.edu

Follow this and additional works at: https://digitalcommons.wku.edu/anderson_cty

 Part of the [Business Administration, Management, and Operations Commons](#), [Growth and Development Commons](#), and the [Infrastructure Commons](#)

Recommended Citation

Kentucky Library Research Collections, "Industrial Resources: Anderson County" (1990). *Anderson County*. Paper 10.
https://digitalcommons.wku.edu/anderson_cty/10

This Report is brought to you for free and open access by TopSCHOLAR®. It has been accepted for inclusion in Anderson County by an authorized administrator of TopSCHOLAR®. For more information, please contact topscholar@wku.edu.

LR
641

Anderson

Resources for Economic Development

Lawrenceburg



KENTUCKY
Open for Business

RESOURCES FOR ECONOMIC DEVELOPMENT
LAWRENCEBURG, KENTUCKY

Prepared by
The Kentucky Cabinet for Economic Development
Division of Research and Planning
in cooperation with
Anderson County Chamber of Commerce

1990

Division Director - Pamela K. Riley; program manager - Keith Roberts; research - Jane E. Sullivan; clerical - Wanda Sharp; graphics - Robert Owens, Pat Coleman; cartography - Edwin Scott, Dave Clark. Cost of printing paid from state funds.

TABLE OF CONTENTS

<u>Chapter</u>	<u>Page</u>
LAWRENCEBURG, KENTUCKY - A RESOURCE PROFILE.....	1
THE LABOR MARKET STATISTICS	2
Labor Market Area Map	2
Population	3
Population Projections.....	3
Estimated Labor Supply.....	3
Labor Force Characteristics of Residents, 1989	4
Selected Components of Nonagricultural Employment, by Place of Work, 1988	5
Per Capita Personal Income	6
Average Placement Wages	7
Average Weekly Wages of Workers Covered by Unemployment Insurance F.Y. 1987-88 - Bar Chart.....	8
Average Weekly Wages by Industry, by Place of Work, 1988	9
EXISTING INDUSTRY	10
Lawrenceburg Manufacturing Firms, Their Products and Employment.....	10
Labor Organizations in Manufacturing Firms.....	11
Selected Industrial Services	12
TRANSPORTATION.....	13
Highways	13
Truck Service	13
Selected Market Location Map.....	14
Rail.....	15
Air.....	15
Water	15
UTILITIES.....	16
Electricity	16
Natural Gas	16
Public Water Supply	17
Sewerage	17
CLIMATE	18

<u>Chapter</u>	<u>Page</u>
LOCAL GOVERNMENT	19
Structure.....	19
Planning and Zoning	19
Local Fees and Licenses.....	19
State and Local Property Taxes	20
Combined State and Local Rates Per \$100 Valuation, 1989.....	20
EDUCATION.....	21
Public Schools	21
Area Colleges and Universities.....	21
Vocational Training.....	22
OTHER LOCAL FACILITIES	23
Local Medical Personnel.....	23
Hospitals	23
Other Medical Facilities and Services	23
Banks and Savings & Loan Associations	23
Newspapers.....	23
Telephone Service	23
RECREATION	24
COMMUNITY IMPROVEMENTS	25

GENERAL HIGHWAY MAP ANDERSON COUNTY KENTUCKY

PREPARED BY THE
KENTUCKY TRANSPORTATION CABINET
DEPARTMENT OF HIGHWAYS
DIVISION OF PLANNING
IN COOPERATION WITH THE
U.S. DEPARTMENT OF TRANSPORTATION
FEDERAL HIGHWAY ADMINISTRATION



LAWRENCEBURG, KENTUCKY - A RESOURCE PROFILE

Lawrenceburg, the county seat of Anderson County, is located in the rolling to hilly terrain of central Kentucky's famous Blue Grass Region. The 1988 estimated population of Anderson County was 14,100, with a 1988 estimate of 7,340 people residing within the Lawrenceburg city limits. Lawrenceburg is located 20 miles west of Lexington, Kentucky; 55 miles east of Louisville, Kentucky; and 108 miles south of Cincinnati, Ohio.

The Economic Framework - The total number of Anderson County residents employed in 1989 averaged 6,687. In 1988, manufacturing firms in the county reported 1,007 employees; wholesale and retail trade provided 751 jobs; 292 people were employed in service occupations; state and local government accounted for 460 employees; and contract construction firms provided 85 jobs.

Labor Supply - There is a current estimated labor supply of 14,704 persons available for industrial jobs in the labor market area. In addition, from 1990 through 1994, 11,962 young persons in the area will become 18 years of age and potentially available for industrial jobs.

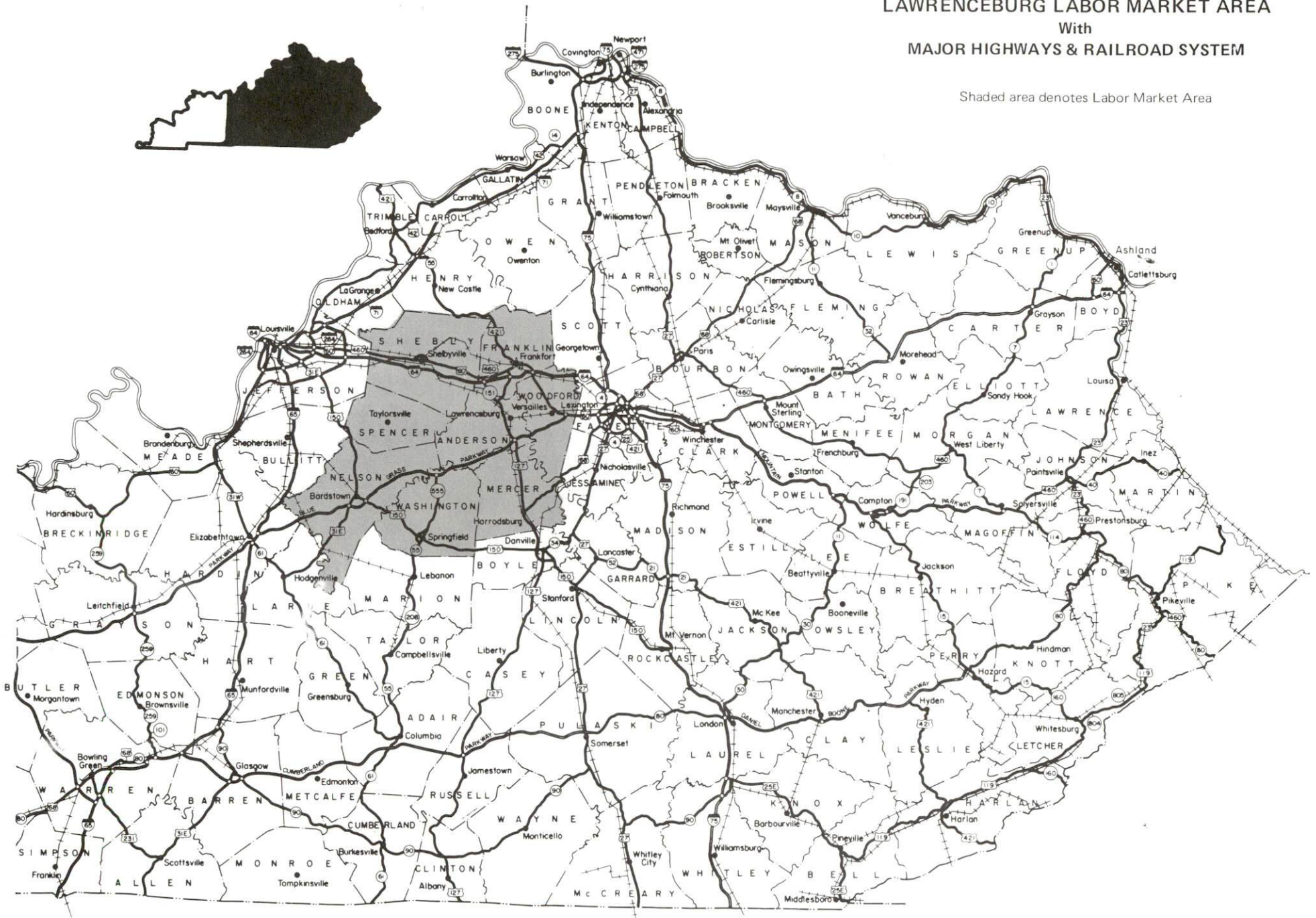
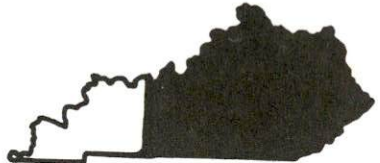
Transportation - Major "AAA"-rated highways serving Lawrenceburg are U.S. Highways 127 and 62, and Kentucky Highway 151. Kentucky Highway 44, a "AA"-rated highway, also serves Lawrenceburg. The Blue Grass Parkway is located four miles south of Lawrenceburg, and Interstate 64 can be accessed 10 miles north. Thirty-three trucking companies provide interstate and/or intrastate service to Lawrenceburg. The nearest local airport is located in Frankfort, 14 miles north of Lawrenceburg, and the nearest scheduled commercial airline service is available at the Bluegrass Airport, 19 miles east of Lawrenceburg, near Lexington. Rail service is provided to Lawrenceburg by the Southern Railway System.

Power and Fuel - Electric power is provided to Lawrenceburg by Kentucky Utilities Company and to Anderson County by Fox Creek RECC, which is supplied by East Kentucky Power Cooperative. Natural gas service is provided by the Western Kentucky Gas Company, which is supplied by Texas Gas Transmission Corporation.

Education - Primary and secondary public education is provided to Lawrenceburg by the Anderson County School System. There are fifteen institutions of higher learning located within sixty-five miles of the city. In addition, vocational education facilities are available in Frankfort, Harrodsburg, and Lexington, all within 25 miles of Lawrenceburg.

LAWRENCEBURG LABOR MARKET AREA With MAJOR HIGHWAYS & RAILROAD SYSTEM

Shaded area denotes Labor Market Area



LABOR MARKET STATISTICS

The Lawrenceburg Labor Market Area includes Anderson County and the adjoining Kentucky counties of Franklin, Mercer, Nelson, Shelby, Spencer, Washington and Woodford.

POPULATION			
	<u>1988*</u>	<u>1980</u>	<u>1970</u>
Labor Market Area	170,100	158,791	132,925
Lawrenceburg	7,340	5,167	3,579
Anderson County	14,100	12,567	9,358

* Population estimates.

Sources: U.S. Department of Commerce, Bureau of the Census, August 1989; November 1989.

POPULATION PROJECTIONS				
	<u>1995</u>	<u>2000</u>	<u>2010</u>	<u>2020</u>
Labor Market Area	179,195	184,493	191,572	195,046
Anderson County	16,186	17,266	18,925	20,141

Source: University of Louisville, Urban Studies Center, State Data Center.

ESTIMATED LABOR SUPPLY					
	<u>Current</u>				<u>Future</u>
	<u>Total</u>	<u>Unemployed</u>	<u>Employed Part-Time</u>	<u>Not in Labor Force</u>	<u>Becoming 18 years of age 1990 thru 1994</u>
Labor Market Area*	14,704	5,637	6,890	2,177	11,962
Anderson County	1,387	444	598	345	1,022

* Additional workers may be drawn from other nearby counties.

Note: Unemployed - persons unemployed and actively seeking work; Employed Part-Time - persons employed but working only 14 to 26 weeks per year; Not in Labor Force - represents the number of persons who would enter the labor force if suitable employment were available (based on the assumption that persons in Kentucky would like to participate in the labor force in the same proportion that they do nationally).

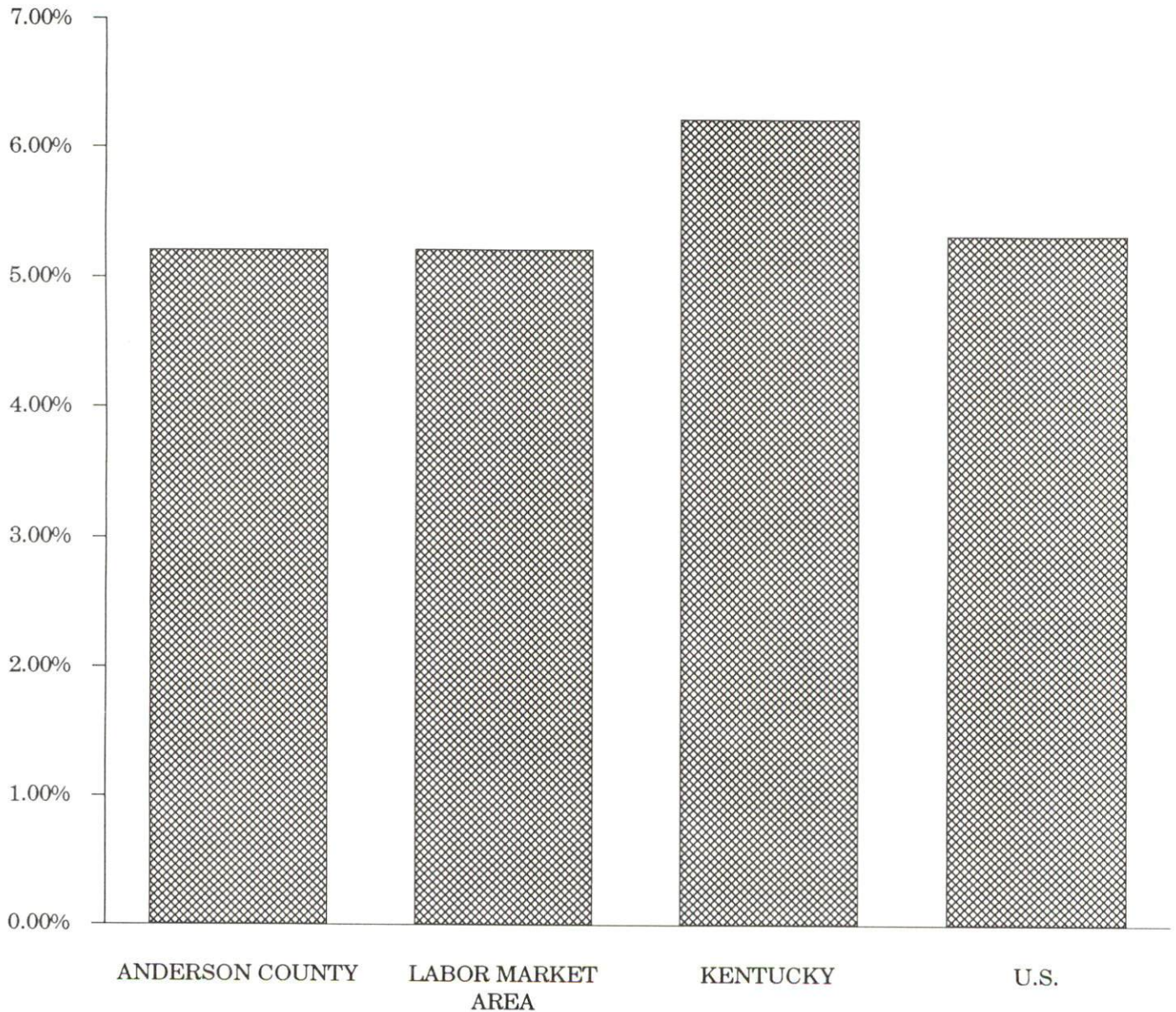
Sources: Kentucky Cabinet for Human Resources, Kentucky Labor Supply Estimates by County, 1988. Kentucky Cabinet for Economic Development, Future Labor Supply Becoming 18 Years of Age, 1990 thru 1994.

LABOR FORCE CHARACTERISTICS OF RESIDENTS, 1989

	Anderson County	Labor Market Area
Civilian Labor Force	7,053	88,023
Employment	6,687	82,479
Unemployment	366	4,544
Rate of Unemployment (%)	5.2	5.2

Source: Kentucky Cabinet for Human Resources, Kentucky Labor Force Estimates, Annual Averages, 1989.

UNEMPLOYMENT RATES
1989

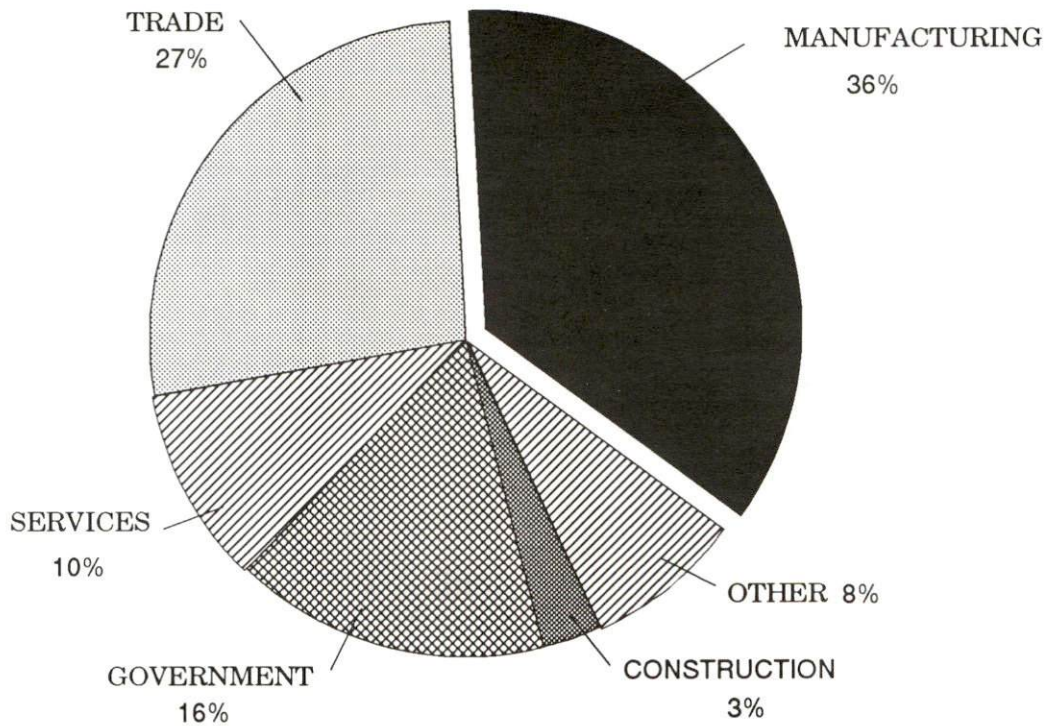


SELECTED COMPONENTS OF NONAGRICULTURAL EMPLOYMENT
BY PLACE OF WORK, 1988

	Anderson County	Labor Market Area
All Industries (total)	2,793	60,545
Manufacturing	1,007	15,833
Wholesale & Retail Trade	751	11,373
Services	292	7,944
State/Local Government	460	17,661
Contract Construction	85	2,531

Note: Excludes domestic workers, railway workers, certain nonprofit corporations, majority of federal government workers, and self-employed workers.
Source: Kentucky Cabinet for Human Resources, Average Monthly Workers Covered by Kentucky Unemployment Insurance Law, 1988.

ANDERSON COUNTY

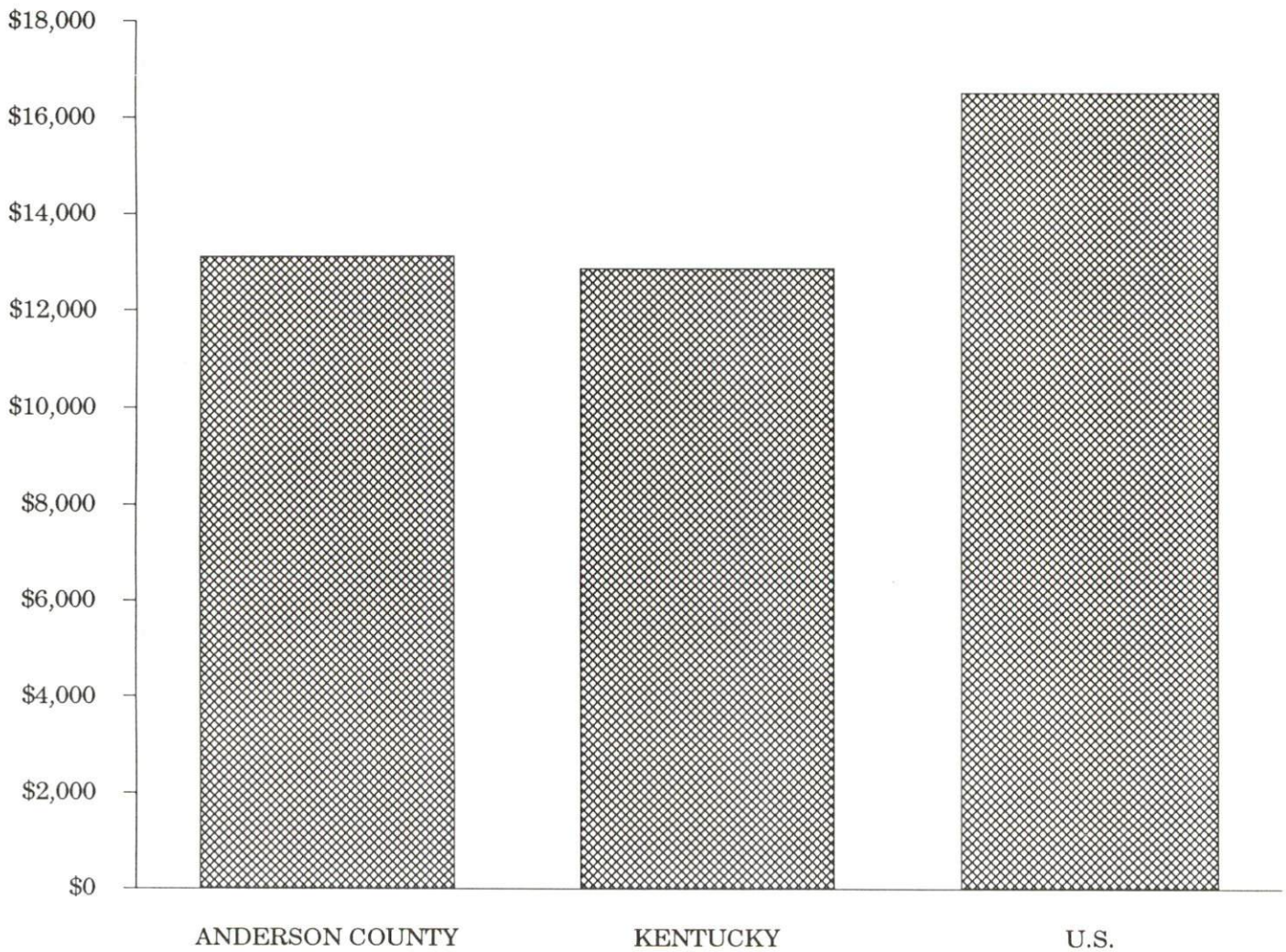


PER CAPITA PERSONAL INCOME

Area	1984	1988	Percent Change
Anderson County	\$10,696	\$13,105	22.5
Labor Market Area Range	\$9,155 - \$18,977	\$10,638 - \$20,691	-
Kentucky	\$10,411	\$12,830	23.2
U.S.	\$13,116	\$16,490	25.7

Sources: U.S. Bureau of Economic Analysis, Kentucky Economic Information System, April 1990.

PER CAPITA PERSONAL INCOME
1988



AVERAGE PLACEMENT WAGES

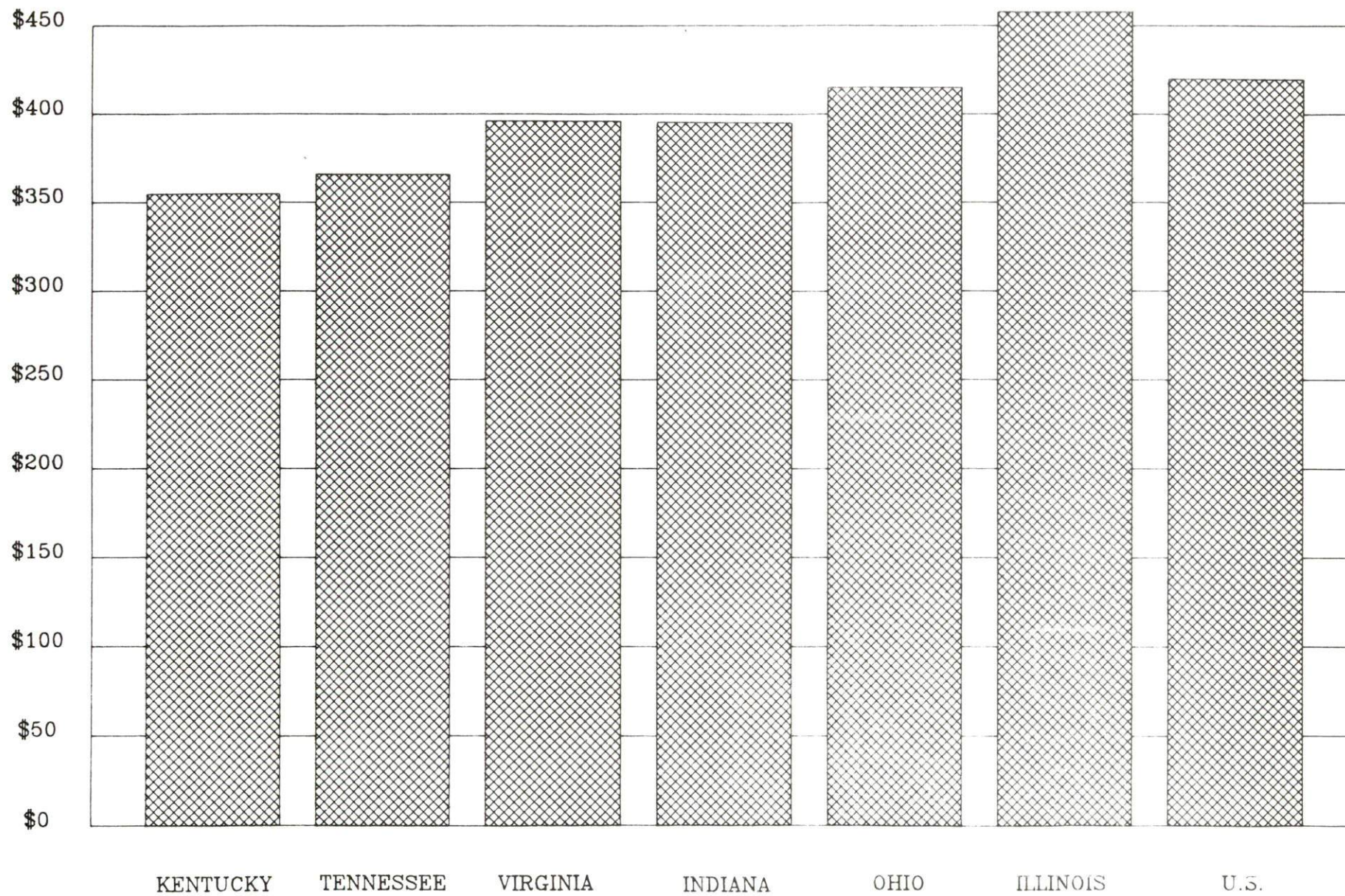
Anderson County is served by the Frankfort local office of the Kentucky Department for Employment Services. The focus of the following data is on job placements made by the Frankfort local office and may therefore be used as an indicator of the wages which employers in the area pay new employees. During the twelve months which ended on June 30, 1989, the local employment office filled 3,040 job openings in various occupational categories. The average hourly wage for selected occupational categories were:

<u>OCCUPATIONAL CATEGORY</u>	<u>NUMBER OF PLACEMENTS</u>	<u>AVERAGE WAGE(\$)</u>
All Occupations	3,040	5.10
Clerical	841	3.77
Sales	145	4.25
Services (excluding domestic)	543	4.44
Agricultural, Fishery, Forestry, etc.	34	3.76
Processing	121	8.32
Machine Trades	302	5.86
Bench Work	344	6.10
Structural	202	5.31
Motor Freight/ Transportation	133	6.82
Packaging and Materials Handling	244	5.16
Other	10	6.46

The Frankfort local office also serves Franklin, and Woodford Counties. The above occupational categories are taken from the Dictionary of Occupational Titles published by the U.S. Department of Labor.

Source: Kentucky Cabinet for Human Resources, Department for Employment Services.

AVERAGE WEEKLY WAGES OF WORKERS COVERED BY
UNEMPLOYMENT INSURANCE - 1988



AVERAGE WEEKLY WAGES BY INDUSTRY
BY PLACE OF WORK, 1988

	Anderson County	Kentucky (State- Wide)	Tennessee	Virginia
All Industries	\$336.93	\$352.31	\$363.12	\$392.56
Mining & Quarrying	*	603.27	495.85	596.88
Contract Construction	279.82	380.71	394.27	422.27
Manufacturing	462.24	464.92	416.73	452.60
Transportation, Communications & Public Utilities	446.67	468.17	485.13	554.17
Wholesale & Retail Trade	240.01	238.88	N/A	N/A
Finance, Insurance & Real Estate	327.58	401.17	269.27	466.23
Services	189.45	298.98	343.48	391.67
State/Local Government	306.53	377.81	403.21	457.00
	<u>Indiana</u>	<u>Ohio</u>	<u>Illinois</u>	<u>U. S.</u>
All Industries	\$392.63	\$411.08	\$454.10	\$416.33
Mining & Quarrying	635.77	579.73	674.62	660.40
Contract Construction	449.87	465.46	584.10	469.85
Manufacturing	532.06	569.98	555.83	517.62
Transportation, Communications & Public Utilities	502.69	519.17	584.83	542.33
Wholesale & Retail Trade	N/A	N/A	N/A	N/A
Finance, Insurance & Real Estate	406.58	444.33	579.88	532.52
Services	317.98	348.48	402.38	384.31
State/Local Government	395.31	428.10	453.12	442.71

* Not disclosed.

N/A Not Available.

Note: The average weekly wage for each category includes the salaries and wages of all persons working for that type business. For example, the manufacturing category includes both production workers and administrative personnel. Excludes domestic workers, railway workers, certain nonprofit corporations, majority of federal government workers, and self-employed workers.

Source: Kentucky Cabinet for Human Resources, Average Weekly Wages of Workers Covered by Kentucky Unemployment Insurance Law, 1988. U.S. Department of Labor, Bureau of Labor Statistics, Average Annual Pay by State and Industry, August 29, 1989.

EXISTING INDUSTRY

LAWRENCEBURG MANUFACTURING FIRMS,
THEIR PRODUCTS AND EMPLOYMENT

<u>Firm</u> <u>(Establishment date)</u>	<u>Product</u>	<u>1989</u> <u>Average Employment</u>
Anderson County Farm Service (1953)	Feed	6
Anderson News (1877)	Newspaper	7
Anderson Tool & Die (1974)	Custom machines, tools, dies, molds	6
Boulevard Distillers & Importers, Inc. (1855)	Distilled spirits	165
Commonwealth Distillery Company (1983)	Whiskey	11
Cromwell-Williams Ltd. (1985)	Decals, decorated ceramic glass items	10
Custom Tool & Manufacturing Company (1987)	Electronic wiring harnesses	8
Edward Sausage Company (1939)	Barbeque ribs, sausage, and barbeque turkey	100
Florida Tile Industries Division of Florida Tile Industries, Inc. (1968)	Wall tile	323
General Cable Company (1974)	Telephone cable	149
The House of Seagram (1895)	Dried feed, bourbon whiskey	56
Independent Tool Company (1982)	Parts and specially machined prototypes, fixtures, tools and dies	8
Kentucky Nutrition Service, Inc. (1980)	Livestock mineral mixes	8
The Kentucky Stone Company (1936)	Road crushed stone, agricultural lime	19
Lawrenceburg Printing (1971)	Commercial offset printing	5
Lawrenceburg Supply Company (1907)	Ready mix concrete, lumber, hardware	16
Mago Construction Company, Inc. (1970)	Bituminous concrete, surface mixes	4
Thera-Flex, Inc. (1986)	Therapeutic pads and lotion for horses	1
Universal Fasteners, Inc. (1955)	Metal fasteners and closures	229

Source: Kentucky Cabinet for Economic Development, Division of Research and Planning.

LABOR ORGANIZATIONS IN MANUFACTURING FIRMS

Union

Distillery, Wine and Allied Workers'
International Union, AFL-CIO-CLC

International Brotherhood of Firemen
and Oilers, AFL-CIO

International Ladies' Garment Workers
Union, AFL-CIO

International Association of Machine
and Aerospace Workers, AFL-CIO

United Steelworkers of America,
AFL-CIO

Representing works at:

Boulevard Distillers and
Importers, Inc.
House of Seagram

House of Seagram

Universal Fasteners, Inc.

Universal Fasteners, Inc.

The Kentucky Stone Company

SELECTED INDUSTRIAL SERVICES

<u>Types of Services</u>	<u>Location</u>	<u>Mileage from Lawrenceburg</u>
Custom Data Processing	Frankfort, Kentucky	14
	Lexington, Kentucky	20
Custom Plastics Producers	Lexington, Kentucky	20
	Shelbyville, Kentucky	24
	Nicholasville, Kentucky	26
Electric Motor Repair	Lexington, Kentucky	20
Grinding, Precision & Tool	Lexington, Kentucky	20
Heat Treating Facilities	Frankfort, Kentucky	14
	Lexington, Kentucky	20
Industrial Equipment & Supplies	Frankfort, Kentucky	14
	Lexington, Kentucky	20
Industrial Gases	Lexington, Kentucky	20
Industrial Waste Removal	Frankfort, Kentucky	14
	Lexington, Kentucky	20
Machine Shops, Tool & Die	Lawrenceburg, Kentucky	-
Metal Castings	Cynthiana, Kentucky	46
Metal Finishers	Lexington, Kentucky	20
Metal Service Centers	Lexington, Kentucky	20
Millwrights	Lexington, Kentucky	20
	Nicholasville, Kentucky	26
Public Warehouse Facilities	Frankfort, Kentucky	14
	Lexington, Kentucky	20

Sources: Kentucky Cabinet for Economic Development, Kentucky Directory of Selected Industrial Services, 1987; Division of Research and Planning.

TRANSPORTATION

Highways

Major highways serving Lawrenceburg are U.S. Highways 127 and 62, and Kentucky Highways 44 and 151. U.S. 127, U.S. 62, and Kentucky 151 are "AAA"-rated (80,000-pound gross load limit) trucking highways. Kentucky 44 is a "AA"-rated (62,000-pound gross load limit) trucking highway. The Blue Grass Parkway, a multi-lane toll road extending east and west, is accessible four miles south of Lawrenceburg via U.S. 127. Interstate 64, a major east-west route, lies ten miles north of Lawrenceburg via U.S. 127. Interstate 64 connects with Interstate 75, a major north-south corridor, thirty-three miles from Lawrenceburg.

HIGHWAY MILES FROM LAWRENCEBURG, KENTUCKY, TO SELECTED MARKET CENTERS

City	Highway Miles	City	Highway Miles
Atlanta, GA	384	Los Angeles, CA	2,141
Baltimore, MD	554	Louisville, KY	55
Birmingham, AL	416	Nashville, TN	198
Chicago, IL	342	New Orleans, LA	718
Cincinnati, OH	108	New York, NY	733
Cleveland, OH	338	Pittsburgh, PA	361
Detroit, MI	356	St. Louis, MO	313
Knoxville, TN	191		

Note: Mileage computations are via the best interstate or primary highways, not necessarily the most direct route of travel.

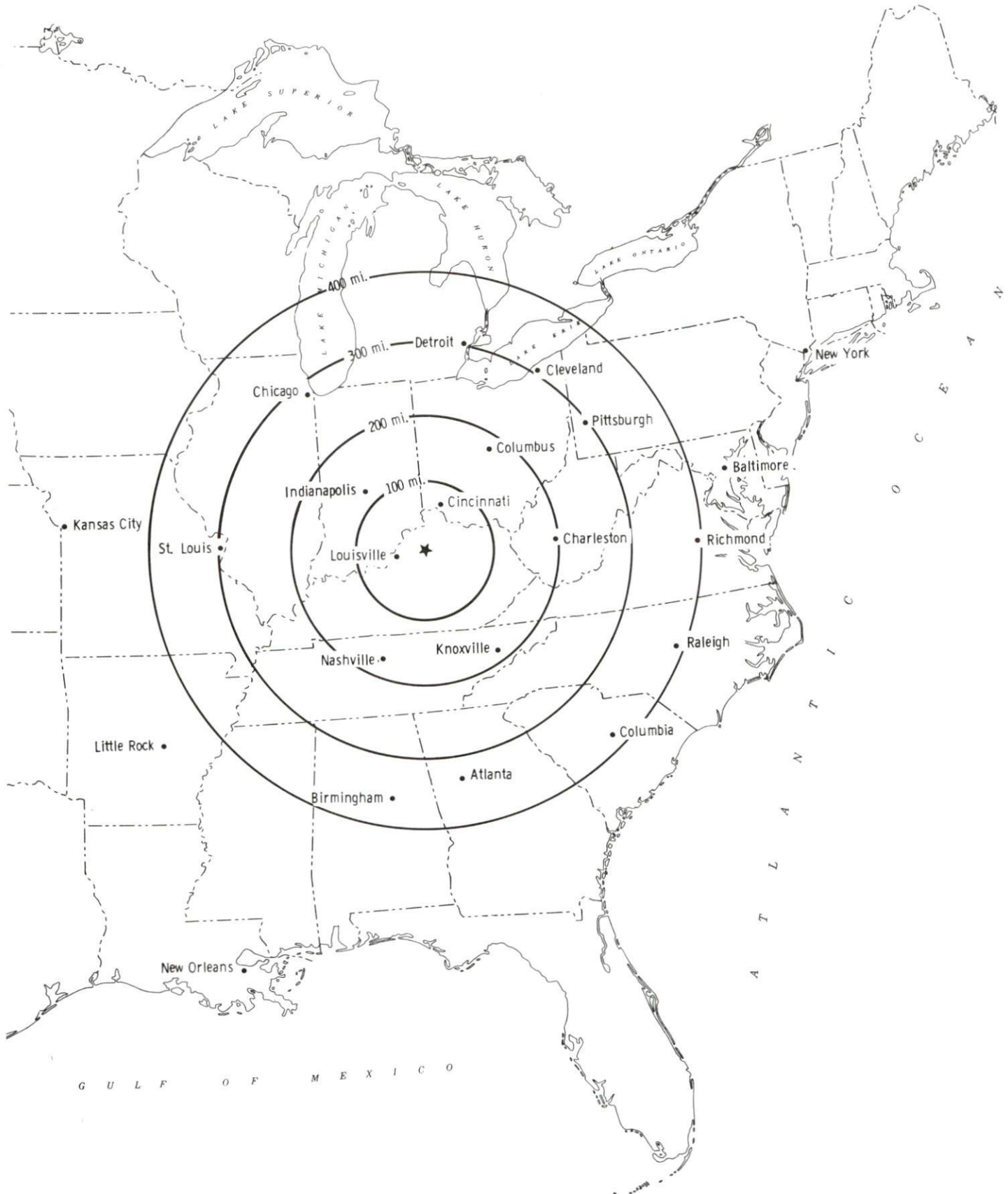
Sources: Rand McNally Deluxe Motor Carriers' Road Atlas, 1989. Official Kentucky Mileage Map, 1980.

Truck Service

Thirty-three firms provide interstate and/or intrastate trucking service to Lawrenceburg. One trucking firm maintains a terminal in Lawrenceburg.

Source: American Motor Carrier Directory, Spring 1990.

Selected Market Centers



Rail

Main line rail service is provided to Lawrenceburg by the Southern Railway System. The nearest piggyback facility is operated by Southern Railway System and is located in Georgetown, Kentucky, twenty-seven miles northeast.

For details on routing, schedules, rates, and services contact:

District Sales Manager
Norfolk Southern Corporation
1402 South 15th Street
Louisville, Kentucky 40210
(502) 636-6023

Air

Local

Location:	Capital City Airport One mile west of Frankfort, 14 miles north of Lawrenceburg
Runways:	One paved
Length:	5,000 feet
Traffic Control:	Wind tee
Lighting:	Beacon, runway lights sundown to sunrise, REILS and VASI
Services:	100 octane, jet fuel; hangar; storage; auto rentals; taxi

Nearest Scheduled Commercial Airline Service

Location:	Bluegrass Airport 4 miles west of Lexington, Kentucky; 16 miles east of Lawrenceburg
Air Service:	Delta, USAir, TWA, United Express, JetStream, Air Kentucky, American Eagle, ComAir
Daily Arrivals & Departures:	116

Water

Lawrenceburg is located 14 miles from a point on the Kentucky River in Frankfort, where a 6-foot navigation channel is maintained.

Lawrenceburg is located 55 miles east of Louisville, where the Louisville and Jefferson County Riverport and the Port of Louisville are located on the Ohio River. The Louisville and Jefferson County Riverport has been designated as a Foreign Trade Zone and offers complete U.S. Customs services for exports and imports.

UTILITIES

Electricity

Company serving Lawrenceburg and portions of eastern Anderson County -
Kentucky Utilities Company
Source of power - Kentucky Utilities Company
For industrial rates contact:

Industrial Development Department
Kentucky Utilities Company
One Quality Street
Lexington, Kentucky 40507
(606) 255-1461

Company serving the majority of Anderson County - Fox Creek Rural
Electric Cooperative Corporation
Source of power - East Kentucky Power Cooperative
For industrial rates contact:

Industrial Development Division
East Kentucky Power Cooperative
P. O. Box 707
Winchester, Kentucky 40391
(606) 744-4812

and/or

Fox Creek Rural Electric Cooperative
Corporation
P.O. Box 150
Lawrenceburg, Kentucky 40342
(502) 839-3442
(800) 372-7160

Natural Gas

Company serving Lawrenceburg - Western Kentucky Gas Company
Source of supply - Texas Gas Transmission Corporation
For rates and supplies contact:

Western Kentucky Gas Company
311 West Seventh Street
Owensboro, Kentucky 42301
(502) 685-8026

Public Water Supply

Company serving Lawrenceburg - City of Lawrenceburg
205 East Woodford Street
Lawrenceburg, Kentucky 40342
(502) 839-5372

Source -	Kentucky River
Treatment plant capacity -	2,250,000 gallons per day
Average daily consumption -	1,500,000 gallons
Peak daily consumption -	2,000,000 gallons
Storage capacity -	1,775,000 gallons
Water pressure -	35 psi to 60 psi

The city of Lawrenceburg has recently completed a \$565,000 project in which 14,449 feet of water mains were installed and a 500,000 gallon storage tank was constructed.

Sewerage

Company serving Lawrenceburg - City of Lawrenceburg
205 East Woodford Street
Lawrenceburg, Kentucky 40342
(502) 839-5372

Design capacity -	1,900,000 gallons per day
Average daily flow -	900,000 gallons
Type of treatment -	Secondary
Treated effluent discharged into -	Hammonds Creek

CLIMATE

Anderson County

Temperature

Normal (30-year record)	54.90 degrees
Average annual 1988	54.90 degrees
Record highest, July 1988 (44-year record)	103.00 degrees
Record lowest, January 1963 (44-year record)	-21.00 degrees
Normal heating degree days (30-year record) (Heating degree day totals are the sums of negative departures of average daily temperatures from 65 degrees F.)	4,818

Precipitation

Normal (30-year record)	45.68 inches
Mean annual snowfall (44-year record)	16.20 inches
Total precipitation 1988	38.90 inches
Mean number days precipitation (.01 inch or more) (44-year record)	129.50
Mean number days thunderstorms (44-year record)	45.30

Prevailing winds (through 1963)

South

Relative Humidity (25-year record, except 1 a.m. - 24-year record)

1 a.m.	77 percent
7 a.m.	81 percent
1 p.m.	60 percent
7 p.m.	64 percent

Source: U.S. Department of Commerce, Environmental Science Services Administration, Climatological Data, 1988. Station of record: Lexington, Kentucky.

LOCAL GOVERNMENT

Structure

The city of Lawrenceburg is governed by a mayor and six council members. The mayor serves a four-year term, and the council members serve two-year terms. Anderson County is served by a county judge/executive and six magistrates, each of which serves a four-year term.

Planning and Zoning

Joint agency - Lawrenceburg - Anderson County Kentucky Joint
Planning Commission

Participating city - Lawrenceburg

Zoning enforced - All areas

Subdivision regulations enforced - All areas

Local codes enforced - Building and housing in all areas

Mandatory state codes enforced - Kentucky Plumbing Code, National
Electric Code, Kentucky Boiler Regulations and Standards, Kentucky
Building Code (modeled after BOCA code)

Local Fees and Licenses

The city of Lawrenceburg charges business license fees ranging from \$25 to \$500. Anderson County also requires businesses to pay an annual license fee ranging from \$25 to \$150.

State and Local Property Taxes

All property in Kentucky, except items exempted by the state constitution, is taxed by the state. Property which also may be taxed by local jurisdictions includes land and buildings, finished goods inventories, automobiles, trucks, office furniture and office equipment. Local taxing jurisdictions in Kentucky include counties, cities, and school districts.

All property in Kentucky is assessed at 100 percent of fair cash value.

COMBINED STATE AND LOCAL RATES PER \$100 VALUATION, 1989

	<u>Lawrenceburg</u>	<u>Unincorporated Anderson County</u>
Land and Buildings	0.9040	0.6750
Manufacturing		
Machinery	0.1500	0.1500
Pollution Control		
Equipment	0.1500	0.1500
Inventories		
Raw Materials	0.0010	0.0010
Goods in Process	0.0010	0.0010
Finished Goods	0.7196	0.4906
Automobiles & Trucks	1.2096	0.9806
Other Tangible		
Personal Property	1.1686	0.9396
Intangibles (Accounts receivable*, money in hand, stock, notes, bonds)	0.2500	0.2500
Goods Stored in Public Warehouses in Transit Status	0.0010	0.0010
Private Leaseholds in Industrial Revenue Bond Financed Facilities	0.0150	0.0150

* Accounts receivable are taxed at 85 percent of face value, for an effective rate of \$0.2125 per \$100 valuation.

EDUCATION

Public Schools

Anderson County

Total Enrollment (Fall, 1989)	2,748
Pupil-Teacher Ratio (1988-89)	18.8-1
Percent High School Graduates to College (1988-89)	50.3
Expenditures Per Pupil (1988-89)	\$2,380.29

Area Colleges and Universities

<u>Name</u>	<u>Location (Miles distant)</u>	<u>Enrollment (Fall, 1989)</u>
Kentucky State University	Frankfort, Kentucky (14)	2,190
Midway College	Midway, Kentucky (18)	524
Lexington Community College	Lexington, Kentucky (20)	3,928
Transylvania University	Lexington, Kentucky (20)	1,076
University of Kentucky	Lexington, Kentucky (20)	22,957
Georgetown College	Georgetown, Kentucky (27)	1,562
Centre College	Danville, Kentucky (28)	857
Asbury College	Wilmore, Kentucky (36)	1,076
Saint Catharine College	Springfield, Kentucky (36)	242
Eastern Kentucky University	Richmond, Kentucky (48)	14,268
Bellarmino College	Louisville, Kentucky (55)	3,724
Jefferson Community College	Louisville, Kentucky (55)	9,039
Spalding University	Louisville, Kentucky (55)	1,112
University of Louisville	Louisville, Kentucky (55)	23,182
Berea College	Berea, Kentucky (62)	1,550

Vocational Training

Vocational training is available at both the state vocational-technical schools and the area vocational education centers. The state vocational-technical schools are post-secondary institutions. The area vocational education centers are designed to supplement the curriculum of high school students. Both the state vocational-technical schools and the area vocational education centers offer evening courses to enable working adults to upgrade current job skills.

Arrangements can be made to provide training in the specific production skills required by an industrial plant. Instruction may be conducted either in the vocational school or in the industrial plant, depending upon the desired arrangement and the availability of special equipment.

Bluegrass State Skills Corporation

The Bluegrass State Skills Corporation, an independent public corporation created and funded by the Kentucky General Assembly, provides programs of skills training to meet the needs of business and industry from entry level to advanced training, and from upgrading present employees to retraining experienced workers.

The Bluegrass State Skills Corporation is the primary source for skills training assistance for a new or existing company. The Corporation works in partnership with other employment and job training resources and programs, as well as Kentucky's economic development activities, to package a program customized to meet the specific needs of a company.

<u>Vocational School</u>	<u>Location (Miles distant)</u>	<u>Cumulative Enrollment 1988-1989</u>
Franklin County Area Vocational Education Center	Frankfort (14)	210
Harrodsburg Area Vocational Education Center	Harrodsburg (19)	263
Central Kentucky State Vocational- Technical School	Lexington (20)	1,043

OTHER LOCAL FACILITIES

Local Medical Personnel

Physicians - 8

Dentists - 4

Hospitals

<u>General Hospitals</u>	<u>Location</u>	<u>Beds</u>
Woodford Memorial Hospital	Versailles (10)	83
HCA King's Daughters Memorial Hospital	Frankfort (14)	190

Woodford Memorial Hospital

Medical staff - 19 active physicians, 40 registered nurses, 7 licensed practical nurses, 28 physicians on courtesy staff

HCA King's Daughters Memorial Hospital

Medical staff - 45 physicians, 86 registered nurses, 2 licensed practical nurses, 19 physicians on courtesy staff

Other Medical Facilities and Services

Anderson County Health Department
Anderson Emergency Medical Services
Lawrenceburg Specialty Clinic

Banks and Savings & Loan Associations

The Anderson National Bank
The Lawrenceburg National Bank
Harrodsburg First Federal Savings &
Loan Association (Lawrenceburg branch)

Newspapers

Anderson News (weekly)

Telephone Service

South Central Bell

RECREATION

Local

The recreational opportunities in Lawrenceburg include baseball, softball, basketball and soccer. There are two public parks in Lawrenceburg which provide access to three playgrounds, a swimming pool, an 18-hole golf course, tennis courts, and football fields.

The city of Lawrenceburg and Anderson County recently constructed an additional shelter house and purchased new equipment for the American Legion Park. Universal Fasteners, Inc. donated \$10,000 in playground equipment for the park.

Beaver Lake, located approximately 10 miles southwest of Lawrenceburg off U.S. 62, provides a 170-acre fishing lake. Facilities at the lake include boat slips, year-round boat rental and primitive camping.

Area (Within 40 miles)

Kentucky's State Capital
Old Fort Harrod State Park
Taylorsville Lake State Park
Constitution Square
Herrington Lake
Pleasant Hill
Waveland State Shrine
The Kentucky Horse Park
Lincoln Homestead State Park
Isaac Shelby State Shrine
Perryville Battlefield State Shrine
My Old Kentucky Home State Park

COMMUNITY IMPROVEMENTS

Recent

The Lawrenceburg - Anderson County Industrial Foundation has developed 167 acres on U.S. 127 as a second industrial park. The construction of an access road through the park is nearly completed and water and sewer lines are currently being installed.

The city of Lawrenceburg recently completed a \$565,000 water line expansion project. New water mains totaling 14,449 linear feet were installed and a 500,000 gallon storage tank was constructed.

Underway

California Water Beds is constructing a warehousing facility in the new industrial park. Thirty people are expected to be employed by the company.

Universal Fasteners, Inc. is undergoing a \$7 - 9 million expansion project which will add 80,000-square feet to the plant.

Construction is underway to expand a section of U.S. 127 from the Franklin County line to the Bluegrass Parkway. The \$2.8 million project will add two lanes and should be completed by summer 1991.

The construction of a new Anderson County Health Department will be completed by mid-1991. The \$390,000 project will offer expanded services to the community.

Planned

The Anderson Packaging Company, which currently distributes and warehouses packaging materials, plans to construct a manufacturing facility by winter 1991.

Plans to build a vocational school are currently under consideration. The proposed vocational school's program will be based on local business and industry needs and will promote programs for training and preparing industrial laborers.