

1987

## Industrial Resources: Bourbon County - Paris

Kentucky Library Research Collections  
Western Kentucky University, [spcol@wku.edu](mailto:spcol@wku.edu)

Follow this and additional works at: [https://digitalcommons.wku.edu/bourbon\\_cty](https://digitalcommons.wku.edu/bourbon_cty)

 Part of the [Business Administration, Management, and Operations Commons](#), [Growth and Development Commons](#), and the [Infrastructure Commons](#)

---

### Recommended Citation

Kentucky Library Research Collections, "Industrial Resources: Bourbon County - Paris" (1987). *Bourbon County*. Paper 7.  
[https://digitalcommons.wku.edu/bourbon\\_cty/7](https://digitalcommons.wku.edu/bourbon_cty/7)

This Report is brought to you for free and open access by TopSCHOLAR®. It has been accepted for inclusion in Bourbon County by an authorized administrator of TopSCHOLAR®. For more information, please contact [topscholar@wku.edu](mailto:topscholar@wku.edu).

IR  
489 Bourbon County

## RESOURCES FOR ECONOMIC DEVELOPMENT

---

# Paris

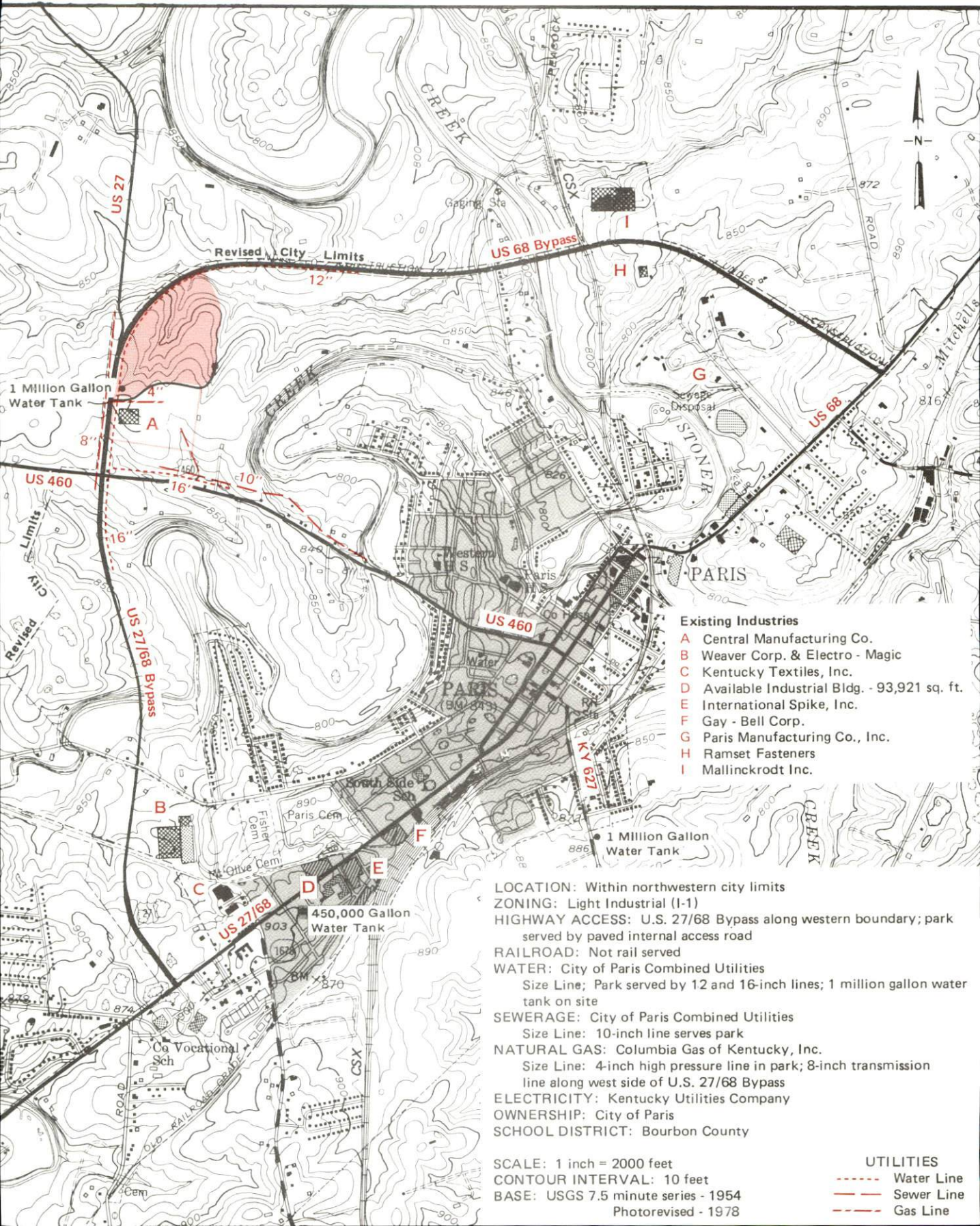


---

**KENTUCKY**  
The business environment is right.

# PARIS, KENTUCKY --- Site 187 --- 43 Acres

For more information contact the Kentucky Department of Economic Development, Industrial Development & Marketing Division, Capital Plaza Tower, Frankfort, Kentucky 40601 (502-564-7140).



- Existing Industries**
- A Central Manufacturing Co.
  - B Weaver Corp. & Electro - Magic
  - C Kentucky Textiles, Inc.
  - D Available Industrial Bldg. - 93,921 sq. ft.
  - E International Spike, Inc.
  - F Gay - Bell Corp.
  - G Paris Manufacturing Co., Inc.
  - H Ramset Fasteners
  - I Mallinckrodt Inc.

**LOCATION:** Within northwestern city limits  
**ZONING:** Light Industrial (I-1)  
**HIGHWAY ACCESS:** U.S. 27/68 Bypass along western boundary; park served by paved internal access road  
**RAILROAD:** Not rail served  
**WATER:** City of Paris Combined Utilities  
 Size Line; Park served by 12 and 16-inch lines; 1 million gallon water tank on site  
**SEWERAGE:** City of Paris Combined Utilities  
 Size Line: 10-inch line serves park  
**NATURAL GAS:** Columbia Gas of Kentucky, Inc.  
 Size Line: 4-inch high pressure line in park; 8-inch transmission line along west side of U.S. 27/68 Bypass  
**ELECTRICITY:** Kentucky Utilities Company  
**OWNERSHIP:** City of Paris  
**SCHOOL DISTRICT:** Bourbon County

**SCALE:** 1 inch = 2000 feet  
**CONTOUR INTERVAL:** 10 feet  
**BASE:** USGS 7.5 minute series - 1954  
 Photorevised - 1978

**UTILITIES**

- Water Line
- Sewer Line
- Gas Line

RESOURCES FOR ECONOMIC DEVELOPMENT  
PARIS, KENTUCKY

Prepared by  
The Kentucky Department of Economic Development  
Division of Research and Planning  
in cooperation with  
The Paris-Bourbon County Chamber of Commerce

1987

Program manager - Andrew Dennis; research - Bill Morris; clerical - Bobbi Graves; graphics - Tony Ceconi, Robert Owens; cartography - Site Evaluation Branch, Division of Industrial Development and Marketing. Cost of printing paid from state funds.

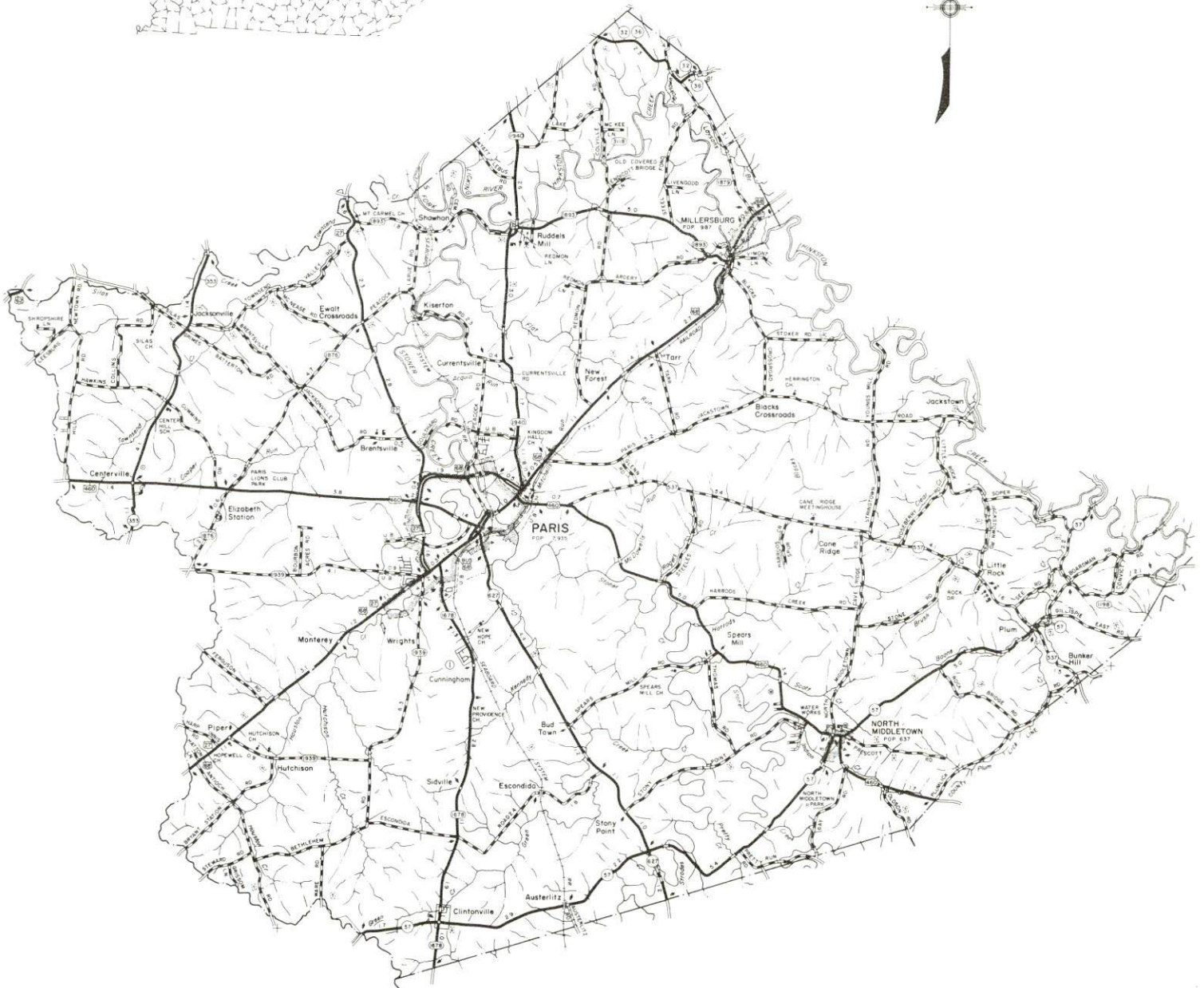
## TABLE OF CONTENTS

<u>Chapter</u>	<u>Page</u>
INDUSTRIAL SITES . . . . .	i
PARIS, KENTUCKY - A RESOURCE PROFILE . . . . .	1
THE LABOR MARKET AREA . . . . .	2
Population . . . . .	2
Population Projections . . . . .	2
Labor Force Characteristics of Residents, 1985 . . . . .	3
Selected Components of Nonagricultural Employment, by Place of Work, 1985 . . . . .	3
Per Capita Personal Income . . . . .	4
Estimated Male Labor Supply . . . . .	5
Estimated Female Labor Supply . . . . .	5
Average Weekly Wages by Industry, by Place of Work, 1985 . . . . .	6
EXISTING INDUSTRY . . . . .	8
Bourbon County Manufacturing Firms, Their Products and Employment . . . . .	8
Labor Organizations in Manufacturing Firms . . . . .	10
Recent Industrial Developments . . . . .	11
Selected Industrial Services . . . . .	11
TRANSPORTATION . . . . .	12
Rail . . . . .	12
Highways . . . . .	12
Truck Service . . . . .	13
Air . . . . .	14
Air Express Service . . . . .	14
Taxi . . . . .	14
Rental Services . . . . .	14
Water . . . . .	15
POWER AND FUEL . . . . .	16
Electricity . . . . .	16
Natural Gas . . . . .	17
Other Fuels . . . . .	17
WATER AND SEWERAGE . . . . .	18
Public Water Supply . . . . .	18
Sewerage . . . . .	19
CLIMATE . . . . .	20

<u>Chapter</u>	<u>Page</u>
LOCAL GOVERNMENT . . . . .	21
Structure . . . . .	21
Planning and Zoning . . . . .	21
Local Fees and Licenses . . . . .	21
State and Local Property Taxes . . . . .	22
Combined State and Local Rates Per \$100 Valuation, 1986 . . . . .	22
Safety . . . . .	23
Police . . . . .	23
Fire . . . . .	23
Rescue Service . . . . .	23
Refuse Collection and Disposal . . . . .	23
EDUCATION . . . . .	24
Public Schools . . . . .	24
Nonpublic Schools . . . . .	24
Area Colleges and Universities . . . . .	25
Vocational Schools . . . . .	26
HEALTH . . . . .	28
Local Medical Personnel . . . . .	28
Hospitals . . . . .	28
Other Medical Facilities . . . . .	28
Ambulance Service . . . . .	28
OTHER LOCAL FACILITIES . . . . .	29
Communications . . . . .	29
Library Services . . . . .	29
Religious Institutions . . . . .	29
Financial Institutions . . . . .	30
Hotels and Motels . . . . .	30
RECREATION . . . . .	31
COMMUNITY IMPROVEMENTS . . . . .	34

1986 EDITION  
GENERAL HIGHWAY MAP  
**BOURBON COUNTY**  
**KENTUCKY**

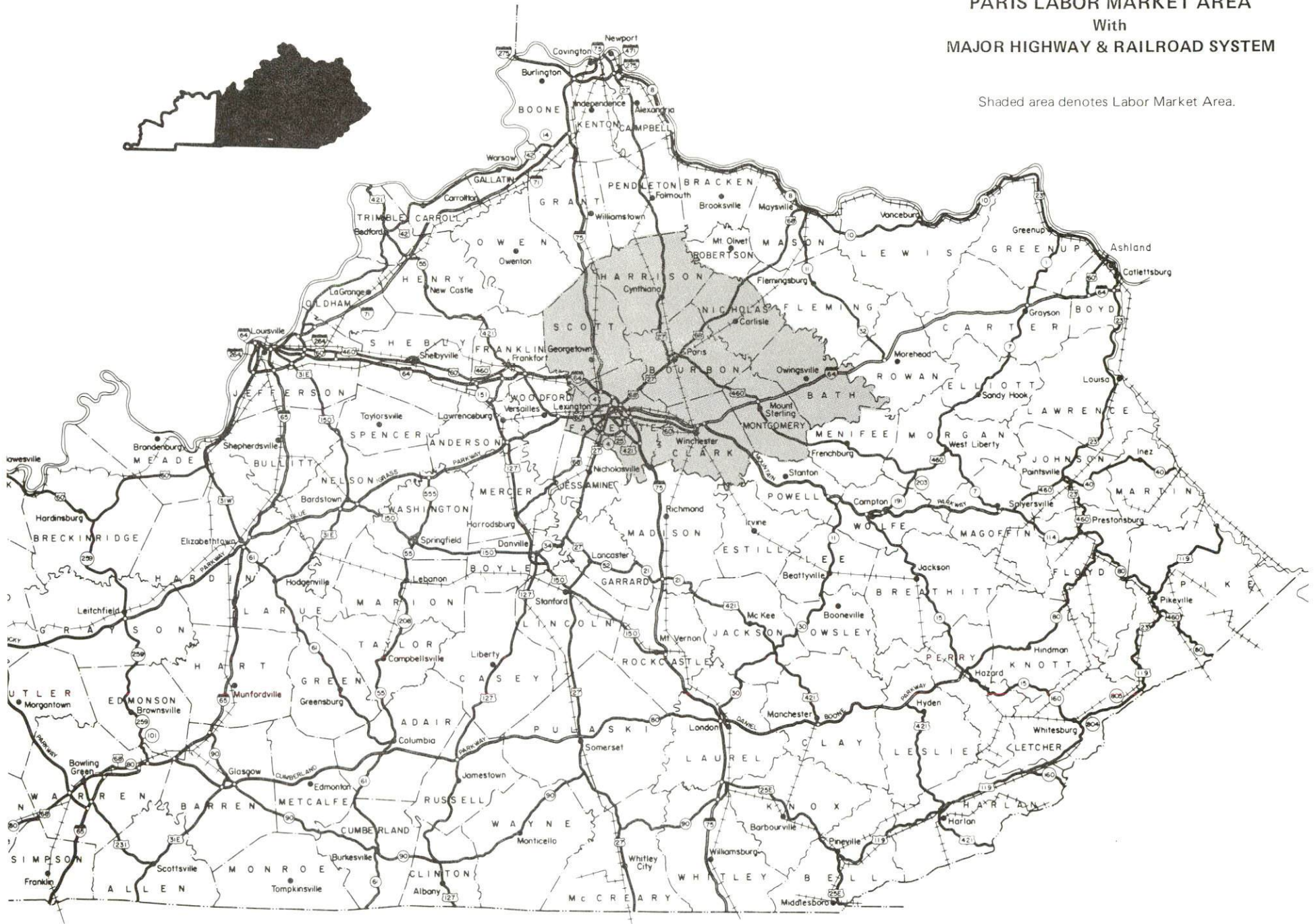
PREPARED BY THE  
KENTUCKY TRANSPORTATION CABINET  
DEPARTMENT OF HIGHWAYS  
DIVISION OF PLANNING  
IN COOPERATION WITH THE  
U.S. DEPARTMENT OF TRANSPORTATION  
FEDERAL HIGHWAY ADMINISTRATION





# PARIS LABOR MARKET AREA With MAJOR HIGHWAY & RAILROAD SYSTEM

Shaded area denotes Labor Market Area.



## PARIS, KENTUCKY - A RESOURCE PROFILE

Paris, the county seat of Bourbon County, is located in central Kentucky's Blue Grass Region, an area famous for its many beautiful horse farms and its gently-rolling topography. Paris is located 19 miles northeast of Lexington, Kentucky; 86 miles south of Cincinnati, Ohio; and 189 miles north of Knoxville, Tennessee.

Bourbon County had a 1984 estimated population of 19,203 persons, with 7,893 persons residing inside the corporate limits of Paris.

**The Economic Framework** - The total number of Bourbon County residents employed in 1985 averaged 9,940, with nonagricultural jobs accounting for 8,450 workers. Manufacturing firms in the county reported 1,175 employees; wholesale and retail trade provided 1,310 jobs; 600 people were employed in service occupations; and state and local government accounted for 680 employees.

**Labor Supply** - There is a current estimated labor supply of 15,220 men and 15,560 women available for industrial jobs in the labor market area. In addition, from 1987 through 1991, 12,910 young men and 12,000 young women in the area will become 18 years of age and potentially available for industrial jobs.

**Transportation** - The Trans-Kentucky Transportation Railroad, Inc., (T.T.I.) and CSX Transportation both provide main line rail freight service to Paris. Paris is served by U.S. Highways 27, 68, and 460, and by Kentucky Route 627 - all "AAA"-rated trucking highways. Twenty-six common carrier trucking companies are authorized to serve Paris. The nearest scheduled commercial airline service is available at Lexington's Bluegrass Airport, 24 miles southwest of Paris. The nearest navigable waterway is the Kentucky River at Frankfort, 36 miles west of Paris.

**Power and Fuel** - Paris receives electric power from City of Paris Combined Utilities and Kentucky Utilities Company (the two companies interchange electric power). Clark Rural Electric Cooperative Corporation and Harrison Rural Electric Cooperative Corporation provide electric power to Bourbon County. Columbia Gas of Kentucky provides natural gas service to Paris. There are three propane dealers and three fuel oil dealers located in Paris.

**Education** - Primary and secondary public education is provided by the Paris Independent School System in the city of Paris, and by the Bourbon County School System in Bourbon County. Both school systems are accredited by the Southern Association of Colleges and Schools. Two nonpublic schools also operate in Bourbon County. There are 12 institutions of higher learning located within 60 miles of Paris. Vocation training facilities are available at Cynthiana, Lexington, and Winchester, all within 20 miles of Paris.

## LABOR MARKET STATISTICS

The Paris Labor Market Area includes Bourbon County and the adjoining Kentucky counties of Bath, Clark, Fayette, Harrison, Montgomery, Nicholas and Scott.

### POPULATION

Area	1984*	1980	1970	Percent Nonwhite
				1980
Paris	7,893	7,935	7,823	20.6
Labor Market Area	333,959	326,099	280,102	N/A
Bourbon County	19,203	19,405	18,476	10.2
Bath County	10,220	10,025	9,235	3.3
Clark County	29,223	28,322	24,090	6.5
Fayette County	210,150	204,165	174,323	14.5
Harrison County	15,579	15,166	14,158	3.2
Montgomery County	20,344	20,046	15,364	5.4
Nicholas County	7,297	7,157	6,508	1.9
Scott County	21,943	21,813	17,948	7.3

\* Population estimates.

Note: The 1980 city counts of population by race are provisional.

Sources: U.S. Department of Commerce, Bureau of the Census, 1980 Census of Population and Housing, March 1981; 1980 Census of Population, Number of Inhabitants. University of Louisville, Urban Studies Center, Population Unit, October 1985; Kentucky Population Research Notes, Issue Number One, May 1985.

### POPULATION PROJECTIONS

Area	1990	1995	2000	2010
Labor Market Area	354,877	368,912	379,619	394,561
Bourbon County	19,662	20,016	20,232	20,364
Bath County	10,596	10,878	11,083	11,339
Clark County	31,081	32,565	33,731	35,330
Fayette County	223,311	232,104	238,725	247,882
Harrison County	16,300	16,822	17,165	17,661
Montgomery County	21,343	22,155	22,845	23,790
Nicholas County	7,722	8,051	8,288	8,618
Scott County	24,862	26,321	27,550	29,577

Source: University of Louisville, Urban Studies Center, Population Research Unit, How Many Kentuckians: Population Forecasts, 1980-2020, the 1986 Edition, Spring 1986.

LABOR FORCE CHARACTERISTICS OF RESIDENTS, 1985

	<u>Bourbon County</u>	<u>Labor Market Area</u>
Civilian Labor Force	10,576	177,671
Employment	9,940	167,012
Agricultural	1,489	8,739
Nonagricultural	8,451	158,273
Unemployment	636	10,659
Rate of Unemployment (%)	6.0	6.0

Source: Kentucky Cabinet for Human Resources, Kentucky Labor Force Estimates, Annual Averages, 1985.

SELECTED COMPONENTS OF NONAGRICULTURAL EMPLOYMENT  
BY PLACE OF WORK, 1985

	<u>Bourbon County</u>	<u>Labor Market Area</u>
All Industries (total)	5,193	151,149
Manufacturing	1,175	30,122
Wholesale & Retail Trade	1,314	38,628
Services	599	30,433
State/Local Government	678	22,646
Contract Construction	346	8,314

Note: Excludes domestic workers, railway workers, certain nonprofit corporations, majority of federal government workers, and self-employed workers.

Source: Kentucky Cabinet for Human Resources, Average Monthly Workers Covered by Kentucky Unemployment Insurance Law, 1985.

PER CAPITA PERSONAL INCOME

<u>Area</u>	<u>1980</u>	<u>1984</u>	<u>Percent Change</u>
Bourbon County	\$ 10,592	\$ 14,560	37.5
Labor Market Area Range	\$5,638 - 10,592	\$7,557 - 14,560	N/A
Kentucky	7,644	10,232	33.9
U.S.	9,494	12,772	34.5

Sources: U.S. Department of Commerce, Bureau of Economic Analysis.  
Kentucky Economic Information System, June 1986.

ESTIMATED MALE LABOR SUPPLY  
PARIS LABOR MARKET AREA

Area	Current				Future
	Total Male	Unemployed	Under-employed	Not in Labor Force	Becoming 18 years of age 1987 thru 1991
Labor Market Area*	15,221	6,222	8,558	441	12,907
Bourbon	697	326	371	0	847
Bath	752	462	290	0	393
Clark	1,129	632	497	0	1,305
Fayette	8,904	3,229	5,675	0	7,518
Harrison	917	339	386	192	612
Montgomery	1,224	724	500	0	1,006
Nicholas	566	145	172	249	303
Scott	1,032	365	667	0	923

ESTIMATED FEMALE LABOR SUPPLY  
PARIS LABOR MARKET AREA

Area	Current				Future
	Total Female	Unemployed	Under-employed	Not in Labor Force	Becoming 18 years of age 1987 thru 1991
Labor Market Area*	15,563	4,437	9,652	1,474	11,998
Bourbon	635	310	325	0	726
Bath	739	194	213	332	418
Clark	1,275	639	636	0	1,162
Fayette	9,140	2,375	6,765	0	7,126
Harrison	1,025	182	363	480	538
Montgomery	1,318	417	529	372	873
Nicholas	567	113	164	290	278
Scott	864	207	657	0	877

\* Additional workers may be drawn from other nearby counties.

Note: Unemployed - persons unemployed and actively seeking work; Underemployed - persons employed but working only 14 to 26 weeks per year; Not in Labor Force - represents the number of persons who would enter the labor force if suitable employment were available (based on the assumption that persons in Kentucky would like to participate in the labor force in the same proportion that they do nationally).

Sources: Kentucky Cabinet for Human Resources, Kentucky Labor Supply Estimates by County, 1985. Kentucky Department of Economic Development, Future Labor Supply Becoming 18 Years of Age, 1987 thru 1991.

AVERAGE WEEKLY WAGES BY INDUSTRY  
BY PLACE OF WORK, 1985

	<u>Bourbon County</u>	<u>Bath County</u>	<u>Clark County</u>	<u>Fayette County</u>
All Industries	\$272.43	\$227.46	\$318.58	\$334.95
Mining & Quarrying	*	0	*	733.11
Contract Construction	351.62	258.21	344.07	339.93
Manufacturing	357.15	*	399.16	533.18
Transportation, Communications & Public Utilities	342.85	435.45	508.00	401.22
Wholesale & Retail Trade	204.11	172.83	197.95	224.06
Finance, Insurance & Real Estate	305.16	240.25	294.13	351.92
Services	182.34	130.07	211.14	285.59
State/Local Government	280.39	268.38	280.77	356.53
Other	268.42	*	116.39	286.06

	<u>Harrison County</u>	<u>Montgomery County</u>	<u>Nicholas County</u>	<u>Scott County</u>
All Industries	\$291.80	\$251.56	\$230.11	\$296.56
Mining & Quarrying	0	301.86	0	*
Contract Construction	315.96	308.56	166.23	288.22
Manufacturing	400.22	300.06	*	396.26
Transportation, Communications & Public Utilities	375.93	330.86	*	429.01
Wholesale & Retail Trade	149.12	188.97	141.75	156.21
Finance, Insurance & Real Estate	276.14	269.18	309.00	303.88
Services	213.58	203.03	*	210.12
State/Local Government	287.91	285.51	246.54	258.29
Other	244.01	190.63	238.85	278.23

\* Not disclosed.

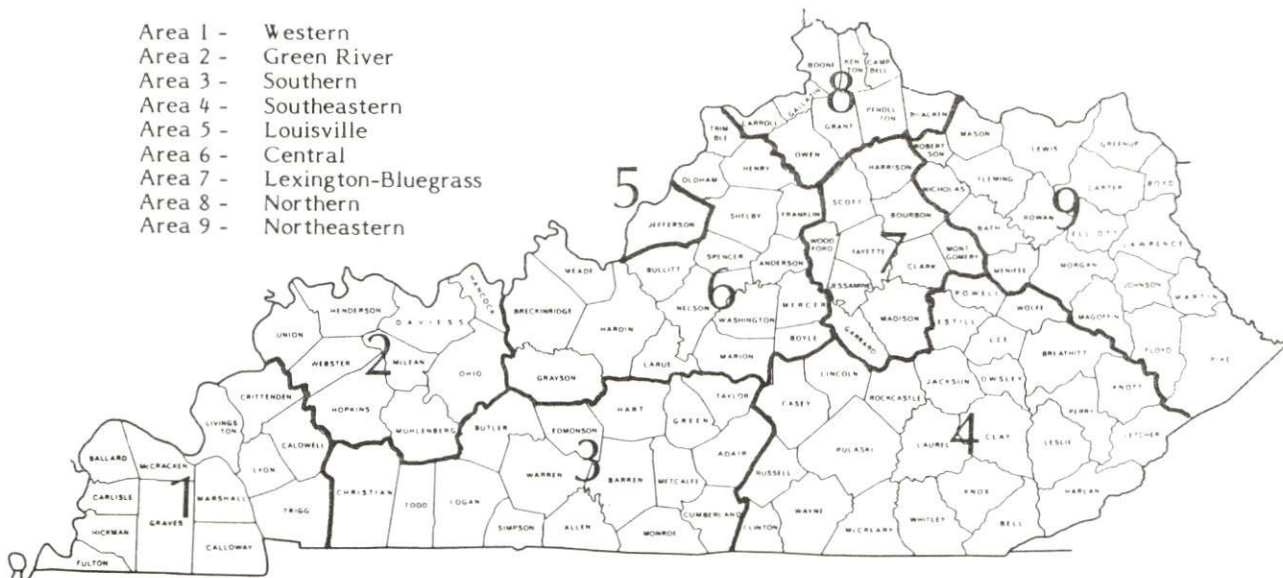
Note: The average weekly wage for each category includes the salaries and wages of all persons working for that type business. For example, the manufacturing category includes both production workers and administrative personnel. Excludes domestic workers, railway workers, certain nonprofit corporations, majority of federal government workers, and self-employed workers.

Source: Kentucky Cabinet for Human Resources, Average Weekly Wages of Workers Covered by Kentucky Unemployment Insurance Law, 1985.

Occupational wage rates for specific industries are usually not available to most government agencies, and wage data furnished to state employment agencies by individual industrial employers are protected from disclosure by federal law. The most reliable up-to-date wage information can be obtained by direct contact with local employers.

Associated Industries of Kentucky, a voluntary organization of Kentucky businesses, regularly collects occupational wage rates and fringe benefits data from participating member firms. Data are compiled for over 127 clearly defined office, production, and service occupations. Tabulations are published for nine geographical areas of Kentucky, as shown on the map below. It should be noted that the data may be weighted by the preponderance of firms in the larger cities and may be somewhat higher than the rates paid in the smaller communities. Data from these tabulations are available, upon request, from the Kentucky Department of Economic Development, Frankfort, Kentucky 40601.

- Area 1 - Western
- Area 2 - Green River
- Area 3 - Southern
- Area 4 - Southeastern
- Area 5 - Louisville
- Area 6 - Central
- Area 7 - Lexington-Bluegrass
- Area 8 - Northern
- Area 9 - Northeastern



Associated Industries of Kentucky Area Wage Surveys



EXISTING INDUSTRY

BOURBON COUNTY MANUFACTURING FIRMS,  
THEIR PRODUCTS AND EMPLOYMENT

Firm (Establishment date)	Product	Employment			Labor Unions
		Total	Male	Female	
<b>Paris</b>					
Apex Enterprises, Inc. (1973)	Tool & die	5	--	--	
Bourbon Architectural Millwork, Inc. (1984)	Architectural millwork, wood cabinets, custom furniture	16	16	0	
Bourbon Graphics Box (1984)	Commercial printing	5	--	--	
Bourbon Packing Company (1945)	Meat processing	3	3	0	
The Citizen Adver- tiser, Inc. (1807)	Newspaper publishing, job printing	6	2	4	
Colcord Winery & Vineyards (1976)	Table wines	2	2	0	
Concrete Materials Corporation (1967)	Ready-mixed concrete, concrete septic tanks, concrete blocks	7	7	0	
C. P. Cook, Inc. (1971)	Country hams, bacon	3	3	0	

(Continued)

Firm (Establishment date)	Product	Employment			Labor Unions
		Total	Male	Female	
Faulconer Manufac- turing Company, Inc. (1969)	Custom cabinets, millwork, bank fixtures, custom interiors, fiberglass products	8	7	1	
Gay-Bell Corporation (1946)	Tobacco hogsheads & repair, wood pallets	14	12	2	
Hinkle Contracting Corporation (1962)	Asphalt	3	--	--	
International Spike, Inc. (1972)	Fertilizer spikes	80	20	60	
Kentucky Textiles Inc. (1981)	Swimwear, knit garments	250	40	210	
Lucky Brothers, Inc. (1928)	Machine shop	5	5	0	
Mallinckrodt, Inc. (1980)	High purity chemicals, pharma- ceutical preparations	188	83	105	
Paris Manufacturing Company, Inc. (1972)	Steering arms, transmission adapters	18	17	1	
Quillin Leather & Tack (1979)	Leather goods, tack & halters	6	2	4	
Ramset Fasteners (1979)	Stud guns, fastening systems	85	50	35	

(Continued)

Firm (Establishment date)	Product	Employment			Labor Unions
		Total	Male	Female	
Weaver Corporation and Electro-Magic (1952)	Automotive hoists, automotive service equipment, pressure & steam washers	290	235	55	Allied Industrial Workers*
<b>Millersburg</b>					
The W. R. Stamler Corporation (1953)	Conveyor belt feeder- breakers, hydraulic mine & railroad car movers	157	142	15	

\* See Labor Organizations below.

Sources: Kentucky Department of Economic Development, 1986 Kentucky Directory of Manufacturers; Division of Research and Planning.

#### RECENT INDUSTRIAL DEVELOPMENTS

In 1986, Central Manufacturing Company announced plans to locate a new manufacturing facility at Paris. The plant is expected to employ 50 persons and will produce automotive wheels.

#### LABOR ORGANIZATIONS IN MANUFACTURING FIRMS

##### Union

International Union, Allied  
Industrial Workers of America,  
AFL-CIO

##### Representing workers at:

Weaver Corporation and Electro-  
Magic

SELECTED INDUSTRIAL SERVICES

<u>Types of Service</u>	<u>Location</u>	<u>Mileage from Paris</u>
Custom Plastics Producers	Georgetown	18
	Lexington	19
Electric Motor Repair	Winchester	17
	Lexington	19
Grinding, Precision & Tool	Winchester	17
	Georgetown	18
Heat Treating Facilities	Georgetown	18
	Lexington	19
Industrial Equipment & Supplies	Lexington	19
Industrial Gases	Lexington	19
Industrial Waste Removal	Lexington	19
Machine Shops, Tool & Die	Paris	-
Metal Finishers	Georgetown	18
	Lexington	19
Metal Service Centers	Lexington	19
Millwrights	Lexington	19
Public Warehouse Facilities	Paris	-

Sources: Kentucky Department of Economic Development, Kentucky Directory of Selected Industrial Services, 1985; Division of Research and Planning.

## TRANSPORTATION

### Rail

Line serving Paris - T.T.I. Railroad (Trans-Kentucky Transportation Railroad, Inc.)

Services - The T.T.I. Railroad operates a connecting line between the CSX Transportation rail lines at Paris and at Maysville, 48 miles northeast of Paris. The T.T.I. Railroad provides 14 local freights weekly from Paris to Maysville and return, switching services, team track space for 8 to 10 cars and siding space for 50 cars.

Line serving Paris - CSX Transportation

Services - One northbound freight makes daily stops; one northbound freight switcher stops three times per week; nine northbound and nine southbound through freights daily; switching services; team track space for 10 cars; siding space for 65 cars. The nearest piggyback service is provided by Southern Railway System at Danville, 56 miles southwest of Paris.

For details on routing, schedules, rates, and services, contact:

Vice President - Marketing  
Trans-Kentucky Transportation  
Railroad, Inc.  
199 East Main Street  
Lexington, Kentucky 40507  
(606) 253-9200

and/or

Manager of Industrial Development  
CSX Transportation  
P. O. Box 2157  
Louisville, Kentucky 40201  
(502) 587-5228

### Highways

U.S. Highways 27, 68, and 460 west of Paris, and Kentucky Route 627 are "AAA"-rated, 80,000-pound gross load limit, highways serving Paris. Access to Interstate 64 is available 15 miles southwest of Paris via U.S. 27, and 15 miles south via Kentucky 627. Access to Interstate Highway 75 is available 15 miles southwest of Paris via U.S. 27, and 16 miles west of Paris via U.S. 460. Access to the Mountain Parkway, a multilane toll road, is 16 miles southeast of Paris via Kentucky 627 and Interstate 64.

## Truck Service

ABF Cartage, Inc.*	Lawrenceburg Transfer Company Inc.*
ANR Freight System, Inc.**	Manning Motor Express, Inc.*
ARA/Smith's**	McDaniel Motor Express, Inc.**
American Freight System, Inc.**	Middlewest Freightways, Inc.*
Bailey's Express, Inc.*	O.K. Trucking Company*
Bestway Express, Inc.*	Overnite Transportation Company*
CW Transport, Inc.*	Owenton Express, Inc.*
Carolina Freight Carriers Corporation*	P-I-E Nationwide, Inc.**
Central Transport, Inc.**	Preston Trucking Company, Inc.*
Craig's Express, Inc.**	R-W Service System, Inc.*
Duff Truck Line, Inc.*	Roadway Express, Inc.*
General Highway Express, Inc.**	Suburban Motor Freight, Inc.*
Holland Motor Express, Inc.*	
Jones Truck Lines, Inc.*	

\* Interstate and intrastate service.

\*\* Interstate service only.

\*\*\* Intrastate service only.

Source: American Motor Carrier Directory, Fall 1986.

### HIGHWAY MILES AND TRUCK TRANSIT TIME IN DAYS FROM PARIS, KENTUCKY, TO SELECTED MARKET CENTERS

City	Highway Miles	Delivery		City	Highway Miles	Delivery	
		Time TL				Time TL	
Atlanta, GA	381	1		Los Angeles, CA	2,199	5	
Baltimore, MD	549	2		Louisville, KY	92	1	
Birmingham, AL	417	1		Nashville, TN	229	1	
Chicago, IL	373	2		New Orleans, LA	746	2	
Cincinnati, OH	86	1		New York, NY	721	-	
Cleveland, OH	330	1		Pittsburgh, PA	373	1	
Detroit, MI	345	1		St. Louis, MO	354	1	
Knoxville, TN	189	1					

Note: Mileage computations are via the best interstate or primary highways, not necessarily the most direct route of travel.

Sources: Rand McNally Road Atlas, 1979. Official Kentucky Mileage Map, 1985. Delivery time - Overnite Transportation Company, 1020 Whipple Court, Lexington, Kentucky 40574.

## Air

### Local

Cynthiana-Harrison County Airport  
Location: 1.5 miles south of Cynthiana;  
14 miles north of Paris  
Runways: 1 paved  
Length: 3,200 feet  
Traffic  
Control: Wind sock and lighted wind tee  
Lighting: Runway lights - sundown to sunrise, VASI,  
REIL, RTGBCN  
Services: 80 and 100LL fuel; major A & P repairs;  
hangar, tie-downs; taxi; A and I service

### Nearest Scheduled Commercial Airline Service

Bluegrass Airport  
Location: 5 miles west of Lexington, Kentucky;  
24 miles southwest of Paris  
Runways: 2 paved  
Length: 7,000 feet; 3,500 feet  
Traffic  
Control: Tower  
Lighting: Approach lighting system, beacon, runways and  
obstructions lighted, VASI  
Services: Delta, Piedmont, United, USAir, Allegheny  
Commuter, Piedmont Commuter, Eastern  
Metro, Comair, American Eagle; fuel - 100LL  
and jet-A; hangars, tie-downs; major A & P  
repairs; major Avionics repairs; APU,  
charter, flight instruction, oxygen, plane  
rentals, survival equipment; taxi, limousine,  
car rentals, courtesy car, weather  
information; restaurant, snack bar  
Air Freight  
Service: Air freight terminal

### Air Express Service

Several major companies offer air express services in Kentucky. These companies provide a quick means of shipping small to medium-sized packages expeditiously.

### Taxi

Two companies with radio-dispatched taxicabs provide 24-hour service, seven days per week.

### Rental Services

Car, truck and trailer rental services are available locally.

## Water

The nearest navigable waterway is the Kentucky River at Frankfort, 36 miles west of Paris, where a 6-foot navigation channel begins. Private port facilities are located on the Ohio River at Maysville, 48 miles northeast of Paris, and a public riverport is under development at Maysville. Public riverport facilities are available in the Northern Kentucky area, approximately 87 miles north of Paris, and at Louisville, 92 miles west of Paris. The Louisville and Jefferson County Riverport Authority has been designated as a foreign trade zone and offers complete U.S. Customs services for exports and imports. The Port of Louisville, a privately owned facility, is also located at Louisville.



## POWER AND FUEL

### Electricity

Company serving parts of Paris - City of Paris Combined Utilities

Sources of power - City of Paris Combined Utilities; Kentucky Utilities Company\*

For industrial rates contact:

City of Paris Combined Utilities  
800 Pleasant Street  
Paris, Kentucky 40361-1790  
(606) 987-2630

and/or

Industrial Development Department  
Kentucky Utilities Company  
One Quality Street  
Lexington, Kentucky 40507  
(606) 255-1461

Company serving parts of Paris and Bourbon County - Kentucky Utilities Company

Source of power - Kentucky Utilities Company

For industrial rates contact:

Industrial Development Department  
Kentucky Utilities Company  
One Quality Street  
Lexington, Kentucky 40507  
(606) 255-1461

Companies serving parts of Bourbon County - Clark Rural Electric Cooperative Corporation and Harrison Rural Electric Cooperative Corporation

Source of power - East Kentucky Power Cooperative

For industrial rates contact:

Industrial Development Division  
East Kentucky Power Cooperative  
P. O. Box 707  
Winchester, Kentucky 40391  
(606) 744-4812

\* The City of Paris Combined Utilities and Kentucky Utilities Company interchange electrical power.

## Natural Gas

Company serving Paris - Columbia Gas of Kentucky, Inc.  
Source of supply - Columbia Gas Transmission Corporation  
Size of transmission mains - 8-inch (supplier); 6 and 8 inches (distributor)  
Distribution mains - 2, 3, 4, 6, 8 and 10 inches  
Distribution pressure - 45 psi to 180 psi  
Btu content - 1,000 per cubic foot  
Specific gravity - 0.60  
For rates and supplies contact:

Columbia Gas of Kentucky, Inc.  
429 Main Street  
P. O. Box 304  
Paris, Kentucky 40361  
(606) 987-4450

## Other Fuels

### Propane

Buckeye Gas Products Company  
Cynthiana Road  
Paris, Kentucky 40361

Hinkle Oil Company  
136 East Main Street  
Paris, Kentucky 40361

Coe Oil Service  
Cynthiana Road  
Paris, Kentucky 40361

### Fuel oils

Distillate fuel oil -

Coe Oil Service  
Cynthiana Road  
Paris, Kentucky 40361

West Oil Company, Inc.\*\*  
1604 South Main Street  
Paris, Kentucky 40361

Hinkle Oil Company  
136 East Main Street  
Paris, Kentucky 40361

Residual fuel oil - Arrangements must be made with the refinery.

Low sulphur content coal - Available in Kentucky.

## WATER AND SEWERAGE

### Public Water Supply

Company serving Paris - City of Paris Combined Utilities\*  
800 Pleasant Street  
Paris, Kentucky 40361-1790  
(606) 987-2630

Source - Stoner Creek

Treatment plant capacity - 3,000,000 gallons per day

Average daily consumption - 1,400,000 gallons

Peak daily consumption - 2,500,000 gallons

Treatment processes - Rapid mix, coagulation, flocculation, sedimentation, filtration, chlorination, and fluoridation

Storage capacity - 2,900,000 gallons, including 459,000 gallons in clear well

Size lines - 2 through 20 inches

Water pressure - 50 psi to 125 psi

### MONTHLY WATER RATES

First	2,000 gallons	\$5.25 (Minimum bill)
Next	8,000 gallons	1.60 per M gallons
Next	40,000 gallons	1.40 per M gallons
Next	50,000 gallons	1.20 per M gallons
All over	100,000 gallons	1.00 per M gallons

### Minimum Monthly Charges

7/8-inch or 3/4-inch meter	\$ 5.25
1-inch meter	8.50
1 1/2-inch meter	12.25
2-inch meter	18.00
3-inch meter	25.00
4-inch meter	52.00
6-inch meter	100.00

### Outside City Rates

Customers outside the city limits are assessed a 40 percent surcharge on the above monthly water rates.

(Continued)

\* Improvement projects recently completed by the city of Paris to its water treatment and distribution systems include installation of a liquid-alum system, and the construction of a new 1,000,000-gallon elevated storage tank.

## MONTHLY PRIVATE FIRE PROTECTION RATES

Private fire hydrant (standard) -	\$ 8.50
Sprinkler system (4-inch connection)	17.50
Sprinkler system (6-inch connection)	20.00
Sprinkler system (8-inch connection)	25.00
Sprinkler system (10-inch connection)	30.00

### Tap-on charge:

5/8-inch x 3/4-inch meter	\$200
1-inch meter	260

The tap-on charge for larger meters is the cost of labor and materials.

### Sewerage

Company serving Paris - City of Paris Combined Utilities\*  
800 Pleasant Street  
Paris, Kentucky 40361-1790  
(606) 987-2630

Design capacity - 3,168,000 gallons per day

Average daily flow - 1,500,000 gallons

Type of treatment - Secondary

Treatment processes - Grit removal, trickling filter, chlorination,  
sludge drying beds

Treated effluent discharged into - Stoner Creek

Size of sanitary mains - 6 to 16 inches

Size of storm mains - 6 to 48 inches

Monthly rates - 100 percent of monthly water bill

Tap-on charge: Residential (single family) - \$300  
Business and industrial - \$0.20 per square foot

\* Sewer service was recently extended to the city's industrial site on U.S. Highway 27. Planned improvements include construction of a new three-stage treatment facility by 1988.

## CLIMATE

### Bourbon County

#### Temperature

Normal (30-year record)	54.90 degrees
Average annual 1985	54.60 degrees
Record highest, August 1983 (41-year record)	103.00 degrees
Record lowest, January 1963 (41-year record)	-21.00 degrees
Normal heating degree days (30-year record)	4,814
(Heating degree day totals are the sums of negative departures of average daily temperatures from 65 degrees F.)	

#### Precipitation

Normal (30-year record)	45.68 inches
Mean annual snowfall (30-year record)	16.50 inches
Total precipitation 1985	37.75 inches
Mean number days precipitation (.01 inch or more) (41-year record)	130.70
Mean number days thunderstorms (41-year record)	45.80

Prevailing Winds (through 1963) South

#### Relative Humidity

1 a.m.	77 percent (21-year record)
7 a.m.	82 percent (22-year record)
1 p.m.	60 percent (22-year record)
7 p.m.	64 percent (22-year record)

Source: U.S. Department of Commerce, Environmental Science Services Administration, Climatological Data, 1985. Station of record: Lexington, Kentucky.

## LOCAL GOVERNMENT

### Structure

The city of Paris is served by a mayor, four commissioners, and a city manager. Bourbon County is served by a county judge/executive and seven magistrates.

### Planning and Zoning

Joint agency - Bourbon County Joint Planning Commission

Participating cities - Paris, Millersburg, North Middletown

Zoning enforced - All areas

Subdivision regulations enforced - All areas

Local codes enforced - Building and housing codes enforced in all areas.

Mandatory state codes enforced - Kentucky Plumbing Code, National Electric Code, Kentucky Boiler Regulations and Standards, Kentucky Building Code (modeled after BOCA code)

### Local Fees and Licenses

The city of Paris levies an occupational license tax of one and one-half percent on wages, and one and one-half percent on net profits of businesses inside the city (\$25 minimum).

A 3 percent tax is levied on utilities receipts for schools in Bourbon County. Tax is paid by all consumers of utilities as an add-on to the utilities bills. Exempted are receipts from utilities services that are resold and the receipts from the sale of energy or energy producing fuels that exceed 3 percent of the cost of production in manufacturing, processing, mining or refining.

## State and Local Property Taxes

All property in Kentucky, except items exempted by the state constitution, is taxed by the state. Property which also may be taxed by local jurisdictions includes land and buildings, finished goods inventories, automobiles, trucks, office furniture and office equipment. Local taxing jurisdictions in Kentucky include counties, cities, and school districts.

All property in Kentucky is assessed at 100 percent of fair cash value.

### COMBINED STATE AND LOCAL RATES PER \$100 VALUATION, 1986

	<u>Paris and Paris Independent School District</u>	<u>Paris and Bourbon County School District</u>	<u>Unincorporated Bourbon County</u>
Land and Buildings	\$1.0423	\$0.7813	\$0.6133
Manufacturing			
Machinery	0.1500	0.1500	0.1500
Pollution Control			
Equipment	0.1500	0.1500	0.1500
Inventories			
Raw Materials	0.0010	0.0010	0.0010
Goods in Process	0.0010	0.0010	0.0010
Finished Goods	0.8400	0.5790	0.4090
Automobiles & Trucks	1.3788	1.0178	0.8478
Other Tangible			
Personal operty	1.2890	1.0280	0.8580
Intangibles (Accounts receivable*, money in hand, stock, notes, bonds)	0.2500	0.2500	0.2500
Goods Stored in Public Warehouses in Transit Status	0.0010	0.0010	0.0010
Private Leaseholds in Industrial Revenue Bond Financed Facilities	0.0150	0.0150	0.0150

\* Accounts receivable are taxed at 85 percent of face value, for an effective rate of \$0.2125 per \$100 valuation.

## Safety

Police	Paris	Bourbon County
Total staff	20 full-time 6 special	7
Radio-patrol cars	6	5
<b>Fire*</b>		
Insurance Services Office, Public Protection Classification	6	*
Full-time staff	22	8
Volunteers	20	22

## Rescue Service

Emergency rescue service in Bourbon County is provided by the Paris/Bourbon County Emergency Medical Services.

## Refuse Collection and Disposal

The city of Paris provides municipal refuse collection service to residential customers and some business customers inside the corporate limits. Private companies provide refuse collection and disposal service to all other customers.

\* Includes copyrighted material of ISO Commercial Risk Services, Inc., with its permission.

\*\* Property located within the city of Millersburg has a class 7 rating, and property located in the city of North Middletown has a class 6 rating. All other property in unincorporated Bourbon County has a class 10 rating.



## EDUCATION

### Public Schools

	Paris Independent	Bourbon County
Total Enrollment (Fall, 1986)	1,330	2,405
Kindergarten	116	164
Elementary	565	1,065
Junior High	-	401
Middle School	288	-
High School	361	775
Accreditation	Southern Association of Colleges & Schools	Southern Association of Colleges & Schools
Pupil-Teacher Ratio (1985-86)	18-1	18-1
Percent High School Graduates to College (1985-86)	51.9	52.2
Expenditures Per Pupil (1985-86)	\$2,080.34	\$2,117.59

### Nonpublic Schools\*

<u>School</u>	<u>Enrollment</u>	<u>Grades</u>
St. Mary Elementary	80	1-6
Millersburg Military Institute	88	7-12

\* The Meter School, a special education pre-school, is located in Paris and is currently licensed to teach 14 developmentally disabled students. AccuTran, Inc., provides vocational training for 45 handicapped adults.

## Area Colleges and Universities

<u>Name</u>	<u>Location (Miles Distant)</u>	<u>Enrollment (Fall, 1985)</u>	<u>Highest Degree Conferred</u>
Georgetown College	Georgetown (18)	1,315	Masters
Lexington Community College	Lexington (19)	2,538	Associate
Transylvania University	Lexington (19)	856	Baccalaureate*
University of Kentucky	Lexington (19)	20,895	Doctorate, M.D., D.M.D., J.D.
Midway College	Midway (29)	314	Associate
Kentucky State University	Frankfort (36)	2,012	Masters
Asbury College	Wilmore (37)	980	Baccalaureate
Eastern Kentucky University	Richmond (38)	12,229	Masters, Specialist**
Maysville Community College	Maysville (48)	766	Associate
Berea College	Berea (52)	1,566	Baccalaureate
Centre College	Danville (54)	804	Baccalaureate
Morehead State University	Morehead (59)	5,695	Masters, Specialist**

\* Courses in a masters degree program are taught on the Transylvania campus by faculty members of Xavier University of Cincinnati. The degree is issued by Xavier University.

\*\* Joint doctoral degree programs are offered in cooperation with the University of Kentucky, Lexington. The degrees are issued by the University of Kentucky.

## Vocational Training

The Bluegrass State Skills Corporation, an independent public corporation created and funded by the Kentucky General Assembly, provides programs of skills training to meet the needs of business and industry from entry level to advanced training, and from upgrading present employees to retraining experienced workers.

The Bluegrass State Skills Corporation is the primary source for skills training assistance for a new or existing company. The Corporation works in partnership with other employment and job training resources and programs, as well as Kentucky's economic development activities, to package a program customized to meet the specific needs of a company.

Vocational training is available at both the state vocational-technical schools and the area vocational education centers. The state vocational-technical schools are post-secondary institutions. The area vocational education centers are designed to supplement the curriculum of high school students. Both the state vocational-technical schools and the area vocational education centers offer evening courses to enable working adults to upgrade current job skills.

Arrangements can be made to provide training in the specific production skills required by an industrial plant. Instruction may be conducted either in the vocational school or in the industrial plant, depending upon the desired arrangement and the availability of special equipment.

(Continued)

### Nearest State School

Central Kentucky State Vocational-Technical School  
Lexington, 19 miles distant

Academic Related Subjects	Industrial Education
Language	Air Conditioning
Math	Auto Body Repair
Technical Related Math	Auto Mechanics
Business & Office	Carpentry
Accounting	Drafting (with CAD/CAM)
Clerical	Electronics
Secretarial	Graphic Arts
Consumer & Home Economics	Industrial Electricity
Commercial Foods	Machine Shop
Distributive Education	Welding
Retail Training-Merchan-	Learning Resource Center
dising/Food Marketing	GED
Hotel/Motel-Waiter/Waitress-	Public Service
Housekeeping Services	E.M.T. Training
Health & Personal Services	Fire Training
Occupations	Cardiopulmonary
Cosmetology	Resuscitation
Dental Assistant	First Aid
Nurse's Aide	Industrial Fire Brigade
Practical Nursing	Training
Surgical Technician	Apprenticeship
Ward Clerk	Electrical
Medications Aide	Tool & Die
Home Health Care	Up-Grade Programs
Geriatric	

### Nearest Area Education Centers

Area vocational education centers are located at Cynthiana, Lexington, and Winchester, all within 20 miles of Paris. Courses offered at one or more of these centers include the following:

Agriculture	Auto Mechanics
Horticulture	Auto Parts
Business & Office	Carpentry-Building Trades
Business Management	Diesel Mechanics
Clerical	Electricity
Computer Math	Electronic Service
Introduction to Computers	Graphic Arts
Secretarial	Heating & Air Conditioning
Health & Personal Services	Industrial Electricity
Occupations	Machine Shop
Health Services	Masonry
Industrial Education	Plumbing
Auto Body Repair	Welding

## HEALTH

### Local Medical Personnel

Physicians - 12

Dentists - 8

### Hospitals

<u>General Hospital</u>	<u>Location</u>	<u>Beds</u>
Bourbon General Hospital	Paris	60

Medical staff - 12 doctors, 24 registered nurses, and 2 licensed practical nurses

### Other Medical Facilities

Bourbon County Comprehensive Care Center

Bourbon County Health Department - a public health facility

### Ambulance Service

Name - Paris-Bourbon County Emergency Medical Service

Staff - 3 emergency medical technicians (full-time), 12 emergency medical technicians (part-time), and 10 others in training

## OTHER LOCAL FACILITIES

### Communications

Telephone -	South Central Bell
Telegraph -	Western Union Toll-Free number, 1-800-325-6000; counter service available
Newspapers - Weekly and circulation -	Bourbon County Citizen - 4,000 The Citizen Advertiser - 10,000
Radio -	WRPZ-AM, WCOZ-FM
Television - Airwave reception from -	Lexington, Kentucky
Cable service -	Centel Cable Television Company of Kentucky
Educational Television -	The Kentucky Educational Television (K.E.T.) network is available statewide

### Library Services

Public library - Paris-Bourbon County Public Library	
Size collection - 37,393 volumes	
Circulation, 1985-86 - 83,760	
Genealogical library - John Fox, Jr., Genealogical Library	
Special collections - Original manuscript of John Fox, Jr.'s, novel, <u>Little Shepherd of Kingdom Come</u>	

### Religious Institutions

Denominations -	AME	Community Mission
	Baptist	Episcopal
	Catholic	Methodist
	Christian	Nazarene
	Church of Christ	Presbyterian
	Church of God	
Nearest Synagogues -	Lexington, 19 miles southwest	
Congregations -	Adath Israel (reform)	
	Ohavey Zion (traditional)	

**Financial Institutions**

<u>Banks</u>	<u>Assets</u>	<u>Deposits</u>	<u>Statement Date</u>
<b>Paris</b>			
Bourbon Agricultural Bank & Trust Company	\$105,010,360.00	\$90,259,478.00	6/30/86
The National Bank & Trust Company of Paris	30,455,737.00	27,268,330.00	12/31/85
<b>Millersburg</b>			
Farmers-Exchange Bank	4,732,181.23	3,926,537.01	6/30/86
<b>Savings and Loan Associations</b>			
<u>Savings and Loan Associations</u>	<u>Assets</u>	<u>Deposits</u>	<u>Statement Date</u>
Blue Grass Federal Savings & Loan Association	\$22,525,915.00	\$19,926,502.00	12/31/85

**Hotels and Motels**

Total number - 2  
 Total rooms - 16

## RECREATION

### Local

A number of public recreational facilities are available in Paris. Bourbon Park, a 30-acre county park, contains lighted softball/baseball fields, a track, a tennis court, fairground facilities, pavilions, basketball/volleyball courts (one court can be flooded during winter months for ice skating), exercise stations, picnic areas, and horseshoe pits. Garrard Park, a city park, features 9 tennis courts, a lighted softball/baseball field, and a picnic pavilion. A senior citizens center is also located in Paris.

Private recreational facilities include a country club with a 9-hole golf course and a swimming pool, a commercial 9-hole golf course, a YMCA with an Olympic-size swimming pool, a health club, a bowling facility, and a drive-in movie theatre.

Many horse farms are located at Paris, and some of these offer tours to the public. The Paris-Bourbon County Chamber of Commerce also sponsors and coordinates tour programs of horse farms. Two triple crown winners have made their home in the Paris area.

Other tourist attractions include the Duncan Tavern Historic Center and the adjoining Anne Duncan House. The two buildings have been restored as historical shrines, and offer public tours, exhibits of early Kentucky artists, a museum, and an extensive genealogy library which contains the original manuscript of Little Shepherd of Kingdom Come, written by John Fox, Jr. Both buildings are furnished with period antiques.

The Cane Ridge Shrine in Bourbon County houses the Old Cane Ridge Meeting House Church. Built in 1791, it was the first church of the Disciples of Christ denomination.

The Colville Covered Bridge, built in 1877, is located northeast of Paris and is open to traffic. The bridge is on the National Register of Historic Places.

A variety of recreational activities are held in Paris. Babe Ruth League and Little League teams are active in the city, and the Paris Arts Club organizes theatrical performances and programs each month. Annual events in Paris include the Bourbon County Fair, the American Legion Horse Show, and the Lions Club's barrel race and quarter horse show.



## Area (Within 45 miles)

Lexington, 19 miles southwest of Paris, offers a variety of cultural, sporting, and recreational activities. Thoroughbred and harness racing is presented at Keeneland Race course and the Red Mile Harness Track during several meets each year. The University of Kentucky and Transylvania University offer a number of sporting events. The University of Kentucky basketball games are held at Rupp Arena, the world's largest basketball arena. Other attractions include Lexington Philharmonic concerts, Lexington Children's Theatre, and plays performed by Broadway touring companies, all held in the recently renovated Opera House.

The Kentucky Horse Park, a park dedicated to horses and to man's love for horses, is located 22 miles southwest of Paris near Lexington. The park, which contains more than 1,000 acres of Kentucky Bluegrass, features the International Museum of the Horse; the Man O'War Memorial; an antique carriage display; horseback and pony rides; walking farm tours; horse-drawn tours; a restaurant; a gift shop; and a campground area, which offers swimming, tennis, and planned activities. Numerous special events are held year-round and include various horse shows, steeplechasing, dressage, polo games, and rodeos.

Blue Licks Battlefield State Park is located near Mt. Olivet, 23 miles northeast of Paris. The 100-acre park is on the site of the last Revolutionary War battle in Kentucky. A museum features Indian and pioneer artifacts, an audiovisual program, and prehistoric bones from animals trapped at Blue Licks. Facilities include ten primitive campsites, a gift shop, picnic shelters and grills, a playground, a snack bar, and an Olympic-size swimming pool. The Licking River, a popular fishing stream, runs through the park.

Waveland State Shrine, 24 miles southwest of Paris near Lexington, features an 1847 Greek Revival mansion depicting Kentucky lifestyles from the days of early settlers to the antebellum era of gentility and elegance as well as the Civil War and postwar periods. The shrine also includes the Kentucky Life Museum and a plantation village on ten acres with many shops and displays.

The spirit of Daniel Boone and his pioneers is reborn at Fort Boonesborough State Park in Boonesboro, 25 miles south of Paris. In the re-created fort, pioneer crafts of the eighteenth century are demonstrated by using functioning antiques from the frontier era. Cabins are furnished as they would have been in the days of Boone, and documentary films are presented which depict the struggle of the first Kentuckians to make the Kentucky wilderness a home. A gift shop within the fort offers for sale all the handcrafted items made at the fort. Other recreational facilities and activities of the park include the finest sand beach on the Kentucky River with a modern bathhouse and a modern camping area with 187 sites.

White Hall State Shrine, 31 miles south of Paris near Richmond, one of the grand estate houses of post-Civil War Kentucky, is the Italianate mansion of Cassius Marcellus Clay, the early abolitionist and politician. Kentucky handcrafts are sold in the White Hall gift shop, only a short walk from the mansion.

Frankfort, the capital of Kentucky, is 36 miles west of Paris. Points of interest in Frankfort include the Capitol Building, a 34-foot floral clock, the Daniel Boone Monument, several museums, and old homes with their original furnishings. Frankfort is also the home of Kentucky State University, which offers many cultural activities and sporting events.

The Daniel Boone National Forest, approximately 39 miles east of Paris, covers 640,000 acres of timberland in eastern Kentucky. It encompasses much of Kentucky's great beauty and provides a vacation paradise. There are scenic hiking trails, rivers and streams stocked with a variety of fish, hunting preserves, camping sites, and numerous other natural and historical attractions.

Kincaid Lake State Park, 41 miles north of Paris near Falmouth, offers many opportunities for the outdoors lover. The park offers a 175-acre lake, a sand beach, a 209-site campground, a gift shop/grocery store, a bathhouse, swimming, boating, hiking, picnicking, an amphitheatre, shuffleboard, miniature golf, tennis, and organized recreational programs in the summer months.

Pleasant Hill, a restored Shaker Village located 45 miles southwest of Paris, is a National Historic Landmark. Over 20 buildings and grounds have been restored to display unique Shaker skills in furniture making, crafts, and architecture. Dining rooms, lodging, craft shops, and seasonal festivals and plays are offered.

## COMMUNITY IMPROVEMENTS

### Recent

Paris was chosen as a "Kentucky Certified City" in 1986. The award is based on achievement in economic and community development. The Certified Cities program is sponsored by the Kentucky Chamber of Commerce.

An industrial development committee has been formed in Paris to assist in locating new industries and retaining existing industries. The committee includes city and county administration officials, members of the Paris-Bourbon County Chamber of Commerce, and local business and finance leaders; financial backing is provided through an industrial development corporation.

In 1986, Central Manufacturing Company announced plans to locate a new manufacturing facility at Paris. The plant is expected to employ 50 persons and will produce automotive wheels.

Recent improvements to the fresh water treatment system at Paris include installation of liquid-alum equipment and construction of a new 1,000,000-gallon elevated water storage tank.

### Planned

Tentative plans are being made for construction of a new wastewater treatment facility.

A new elementary school is planned for the Bourbon County school system.