

1995

# Industrial Resources: Bracken County

Kentucky Library Research Collections  
Western Kentucky University, [spcol@wku.edu](mailto:spcol@wku.edu)

Follow this and additional works at: [https://digitalcommons.wku.edu/bracken\\_cty](https://digitalcommons.wku.edu/bracken_cty)

 Part of the [Business Administration, Management, and Operations Commons](#), [Growth and Development Commons](#), and the [Infrastructure Commons](#)

---

## Recommended Citation

Kentucky Library Research Collections, "Industrial Resources: Bracken County" (1995). *Bracken County*. Paper 4.  
[https://digitalcommons.wku.edu/bracken\\_cty/4](https://digitalcommons.wku.edu/bracken_cty/4)

This Report is brought to you for free and open access by TopSCHOLAR®. It has been accepted for inclusion in Bracken County by an authorized administrator of TopSCHOLAR®. For more information, please contact [topscholar@wku.edu](mailto:topscholar@wku.edu).

22  
78

# Kentucky

## Resources For Economic Development

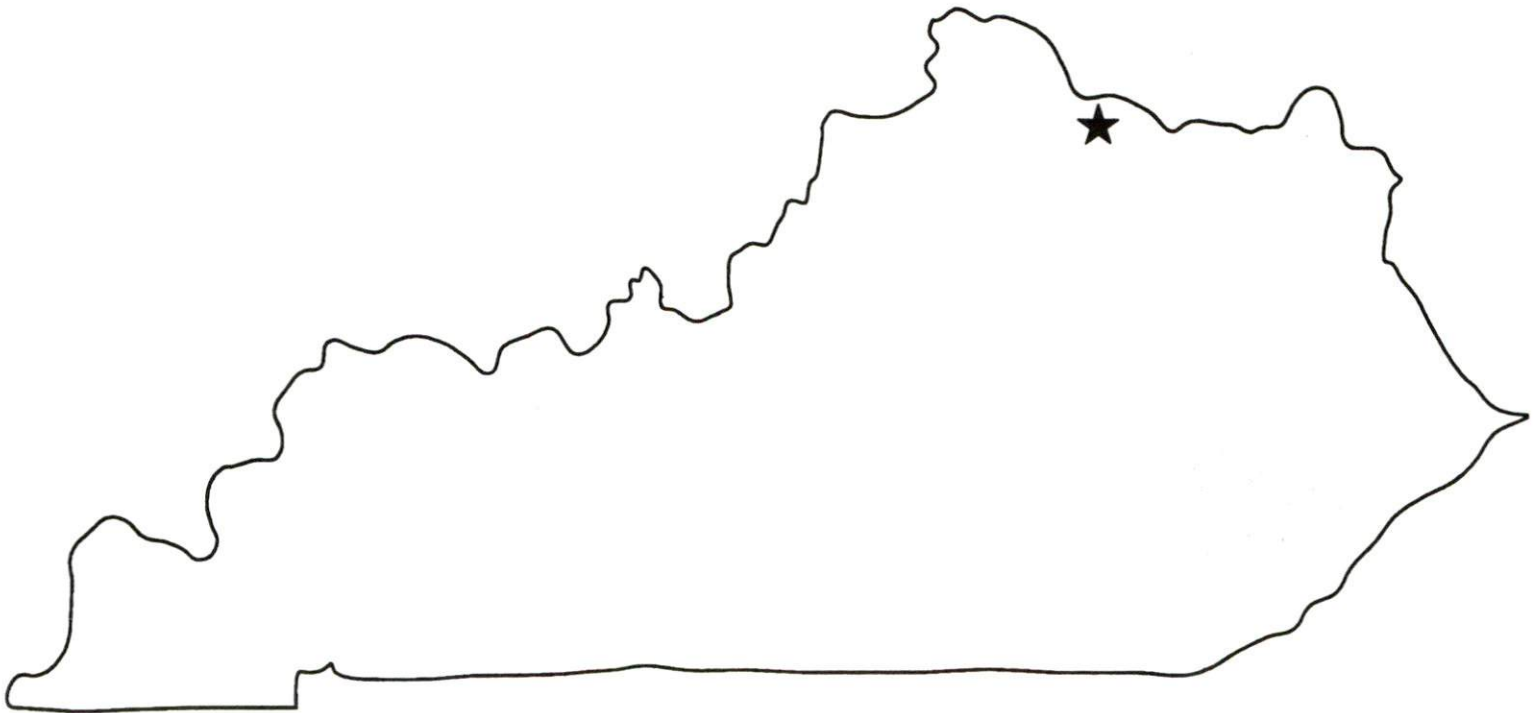
### Bracken County

Albany  
Barbourville  
Ballard County  
Bardonia • Booneville      Berea  
Bowling Green • Boyd & Greenup Counties  
Bracken County • Brandenburg • Breckinridge  
Brownsville • Bullitt County • Burkesville • Cadiz  
Campbellsville • Campton • Carlisle • Cartersville  
Carrollton • Cave City • Clinton • Columbia • Corbin • Cynthiana  
Danville • Dawson Springs • Edmonton • Elizabethtown • Estill County  
Elliott County • Falmouth & Butler • Flemingsburg • Frankfort • Franklin  
Franchburg • Fulton County • Gallatin County • Georgetown • Grant County • Greensburg  
Grayson & Olive Hill • Glasgow • Hancock County • Harlan County • Harrodsburg • Hart County  
Hazard • Henderson • Henry County • Hodgenville • Hopkinsville • Christian County • Jackson County  
Jackson • Knott County • LaGrange & Buckner • Lancaster • Lawrenceburg • Lebanon • Leitchfield  
Grayson County • Letcher County • Lexington • Liberty • Casey County • Logan County • Louisville  
London • Louisa • Lyon County • Madisonville & Earlington • Manchester • Marshall County • Mayfield  
Maysville • McCreary County • Marion • McLean County • Middletown • Pineville • Monticello • Morehead  
Morgantown • Mt. Sterling • Mt. Vernon • Muhlenberg County • Murray • Nicholasville • Northern Kentucky  
Ohio County • Owensboro • Owenton • Owingsville • Paducah • Paducah • Paris • Pike County • Powell  
Prestonsburg • Princeton • Radcliff • Richmond • Russell County • Scottsville • Shelbyville • Somerset  
Springfield • Stamping Ground • Stanford-Lincoln County • Tompkinsville & Campbell • Towsontown  
Todd County • Union County • Vanhook • Versailles • Webster County • West Liberty • Williamsburg  
Winchester, Kentucky

# Kentucky

## Resources For Economic Development

### Bracken County



BRACKEN CO>S4.00



CB9

Prepared by  
The Kentucky Cabinet for Economic Development  
Division of Research  
in cooperation with  
Bracken County Chamber of Commerce  
Bracken County Fiscal Court

1995

Division Director - Ron Morgan; program manager - Keith Roberts; research -  
Leisa Saylor, clerical - Wanda Sharp; graphics - Robert Owens. Cost of printing  
paid from state funds.

## TABLE OF CONTENTS

<u>Chapter</u>	<u>Page</u>
BRACKEN COUNTY, KENTUCKY - A RESOURCE PROFILE.....	1
THE LABOR MARKET STATISTICS.....	2
Labor Market Area Map.....	2
Population.....	3
Population Projections.....	3
Estimated Labor Supply.....	3
Labor Force Characteristics of Residents, 1994.....	4
Selected Components of Nonagricultural Employment, by Place of Work, 1993.....	5
Per Capita Personal Income.....	6
Average Placement Wages.....	7
Average Weekly Wages of Workers Covered by Unemployment Insurance 1993 - Bar Chart.....	8
Average Weekly Wages by Industry, by Place of Work, 1993.....	9
EXISTING INDUSTRY.....	10
Bracken County Manufacturing Firms, Their Products and Employment.....	10
Recent Industrial Developments.....	10
Labor Organizations in Manufacturing Firms.....	11
Selected Industrial Services.....	11
TRANSPORTATION.....	12
Highways.....	12
Truck Service.....	12
Selected Market Location Map.....	13
Rail.....	14
Air.....	14
Water.....	15
UTILITIES.....	16
Electricity.....	16
Natural Gas.....	17
Public Water Supply.....	18
Raw Water.....	19
Sewerage.....	19
CLIMATE.....	20

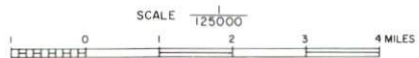
<u>Chapter</u>	<u>Page</u>
LOCAL GOVERNMENT.....	21
Structure.....	21
Planning and Zoning.....	21
Local Fees and Licenses.....	21
State and Local Property Taxes.....	22
EDUCATION.....	23
Public Schools.....	23
Nonpublic Schools.....	23
Area Colleges and Universities.....	23
Vocational Training .....	24
OTHER LOCAL FACILITIES.....	26
Local Medical Personnel.....	26
Hospitals.....	26
Other Medical Facilities and Services.....	26
Banks and Savings & Loan Associations.....	26
Newspapers.....	26
Telephone Service.....	26
RECREATION.....	27





# GENERAL HIGHWAY MAP BRACKEN COUNTY KENTUCKY

PREPARED BY THE  
 KENTUCKY TRANSPORTATION CABINET  
 DEPARTMENT OF HIGHWAYS  
 DIVISION OF PLANNING  
 IN COOPERATION WITH THE  
 U.S. DEPARTMENT OF TRANSPORTATION  
 FEDERAL HIGHWAY ADMINISTRATION





## BRACKEN COUNTY, KENTUCKY - A RESOURCE PROFILE

Bracken County, with a 1992 estimated population of 8,066, has a land area of 203 square miles. Brooksville, the county seat of Bracken County, is located in the Outer Bluegrass Region of northern Kentucky. In 1992, Brooksville had an estimated population of 664. Brooksville is located 52 miles southeast of Cincinnati, Ohio; 121 miles northeast of Louisville, Kentucky; and 297 miles southwest of Pittsburgh, Pennsylvania.

Augusta, situated along the Ohio River in northern Bracken County and located eight miles north of Brooksville, had a 1992 estimated population of 1,347.

**The Economic Framework** - The total number of Bracken County residents employed in 1994 averaged 3,435. In 1993, wholesale and retail trade provided 241 jobs; 243 people were employed in service occupations; state and local government accounted for 328 employees; and contract construction firms provided 18 jobs.

**Labor Supply** - There is a current estimated labor supply of 3,974 persons available for industrial jobs in the labor market area. In addition, from 1996 through 2000, 4,297 young persons in the area will become 18 years of age and potentially available for industrial jobs.

**Transportation** - Major highways serving Bracken County include Kentucky Highways 8 and 546, both "AAA"-rated (80,000-pound gross load limit) trucking highways. Kentucky Highways 10, 19, 22, and 1159 are all "AA"-rated (62,000-pound gross load limit) trucking highways. Nineteen common carrier trucking companies provide interstate and/or intrastate service to Bracken County. CSX Transportation provides main line rail service to Augusta. The Cincinnati/Northern Kentucky International Airport near Covington, Kentucky, and the Blue Grass Airport near Lexington, Kentucky, both within 67 miles of Brooksville, provide the nearest scheduled commercial airline services. The Fleming-Mason Airport, 26 miles southeast of Brooksville, has a 5,000-foot paved runway. The Cynthiana-Harrison County Airport, 31 miles southwest of Brooksville, maintains a 3,200-foot paved runway.

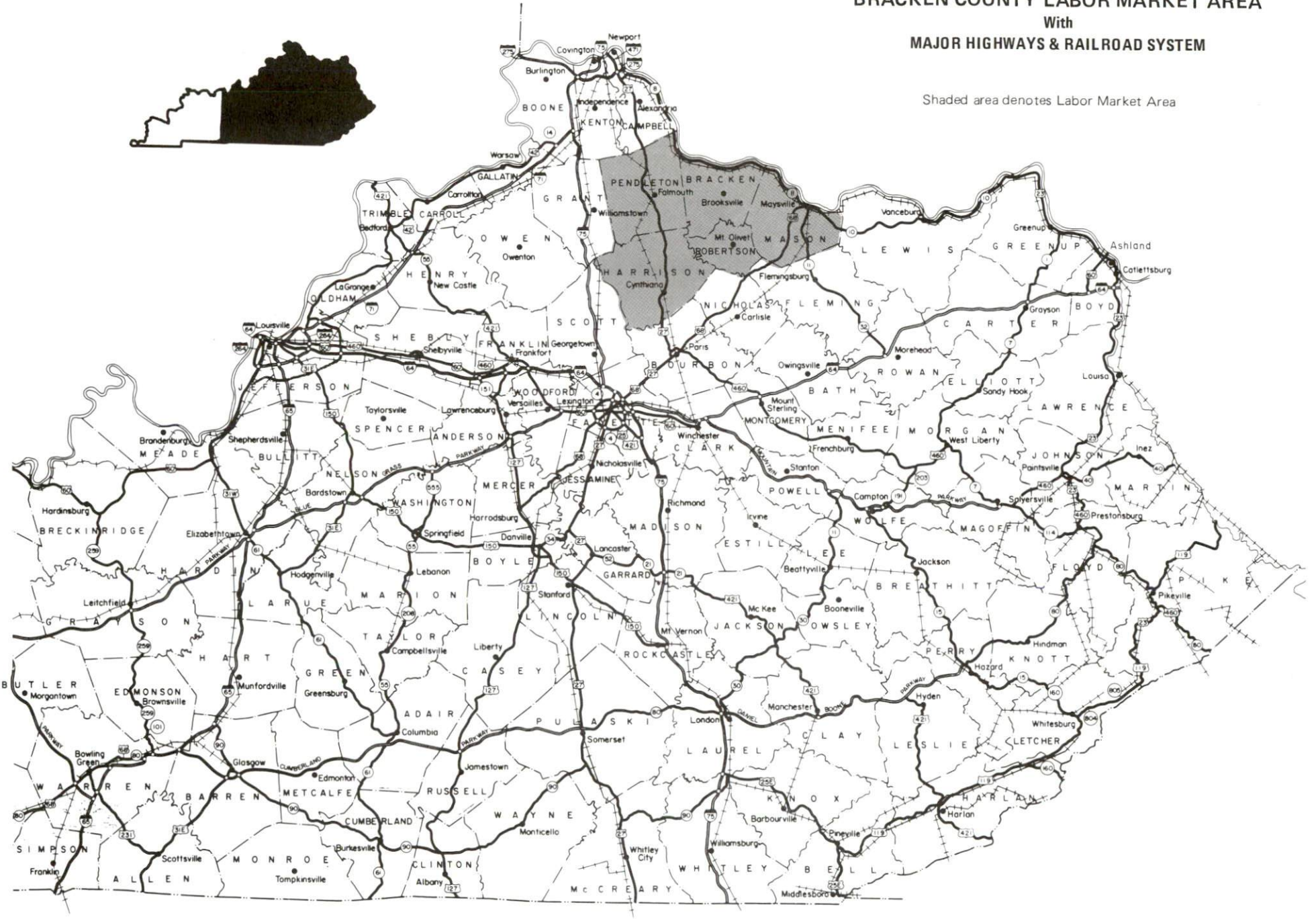
**Power and Fuel** - Kentucky Utilities Company provides electric power to Augusta, Brooksville, and other portions of Bracken County. Harrison Rural Electric Cooperative Corporation provides electric power to most of western Bracken County. The remainder of the county is served by Fleming-Mason Rural Electric Cooperative Corporation. Augusta Utility Department provides natural gas service to Augusta and vicinity. Brooksville Utilities provides natural gas service to Brooksville and surrounding areas.

**Education** - Primary and secondary education is provided to Augusta by the Augusta Independent School System and to the remainder of Bracken County by the Bracken County School System. Ten institutions of higher learning are located within 52 miles of Brooksville. Vocational training is provided by Kentucky Tech-Northern Kentucky in Covington, Kentucky, 51 miles northwest of Brooksville; the Maysville Area Vocational Education Center in Maysville, Kentucky, 20 miles east of Brooksville; and by the Harrison County Area Vocational Education Center in Cynthiana, Kentucky, 29 miles southwest of Brooksville.

# BRACKEN COUNTY LABOR MARKET AREA

With  
MAJOR HIGHWAYS & RAILROAD SYSTEM

Shaded area denotes Labor Market Area





## LABOR MARKET STATISTICS

The Bracken County Labor Market Area includes Bracken County and the adjoining Kentucky counties of Harrison, Mason, Pendleton, and Robertson.

### POPULATION

	<u>1992*</u>	<u>1990</u>	<u>1980</u>	<u>1970</u>
Labor Market Area	56,662	54,840	53,923	50,770
Augusta	1,347	1,336	1,455	1,434
Brooksville	664	670	680	609
Bracken County	8,066	7,766	7,738	7,227

\*Population estimates.

Source: U.S. Department of Commerce, Bureau of the Census.

### POPULATION PROJECTIONS

	<u>1995</u>	<u>2000</u>	<u>2010</u>	<u>2020</u>
Labor Market Area	56,728	58,472	61,411	63,893
Bracken County	8,002	8,202	8,496	8,671

Note: Population projections are from Moderate Growth Series forecast.

Source: University of Louisville, Urban Studies Center, State Data Center.

### ESTIMATED LABOR SUPPLY

	<u>Current</u>			<u>Future</u>
	<u>Total</u>	<u>Unemployed</u>	<u>Not in Labor Force</u>	<u>Becoming 18 years of age 1996 thru 2000</u>
Labor Market Area*	3,974	1,815	2,159	4,297
Bracken County	806	307	499	614

\* Additional workers may be drawn from other nearby counties.

Note: Unemployed - persons unemployed and actively seeking work; Not in Labor Force - represents the number of persons who would enter the labor force if suitable employment were available (based on the assumption that persons in Kentucky would like to participate in the labor force in the same proportion that they do nationally). Underemployed persons (employed only 14 to 26 weeks during the year) are no longer included in labor surplus estimates.

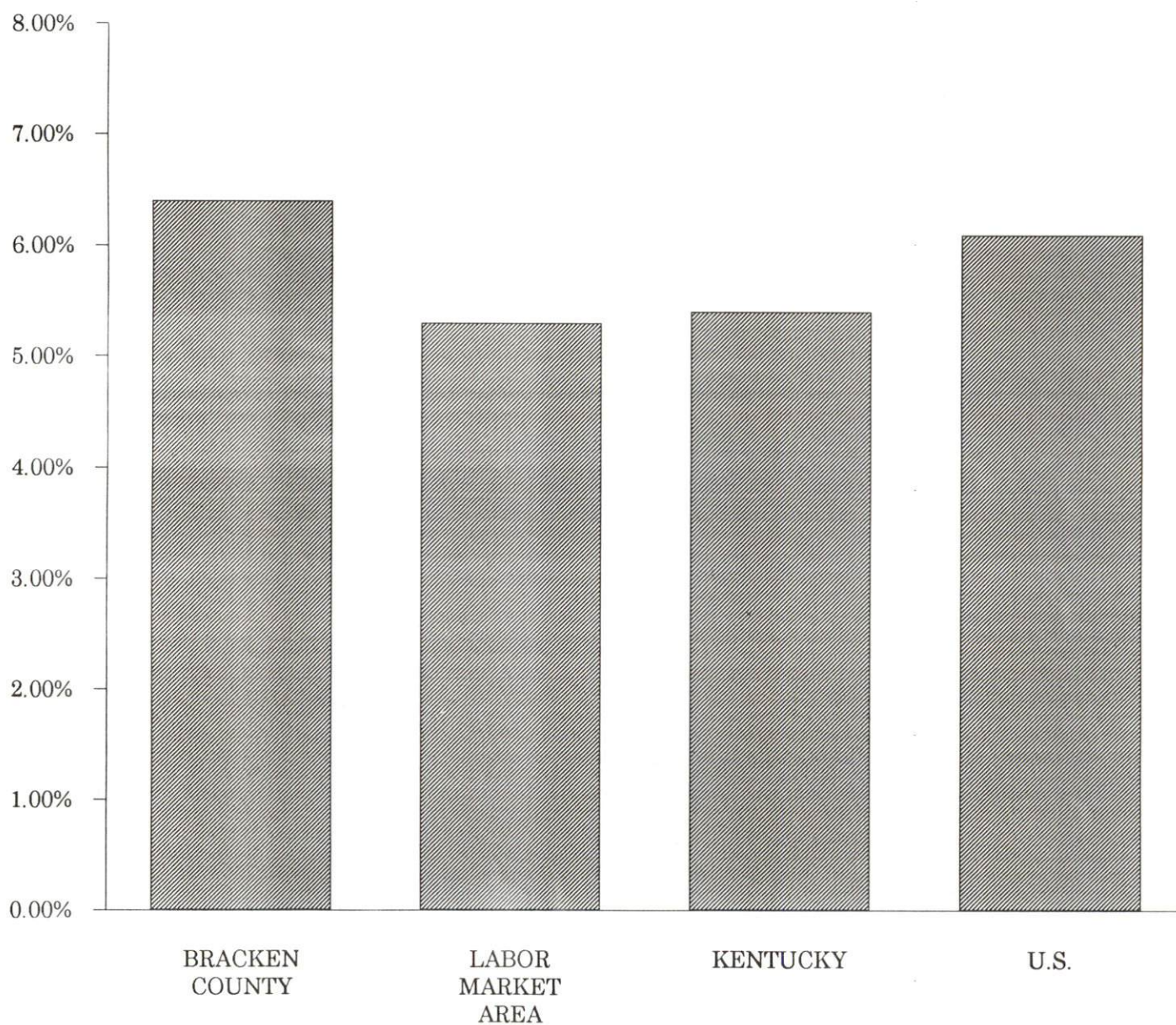
Sources: Kentucky Cabinet for Human Resources, Kentucky Labor Surplus Estimates by County, 1993. Kentucky Cabinet for Economic Development, Future Labor Supply Becoming 18 Years of Age, 1996 thru 2000.

## LABOR FORCE CHARACTERISTICS OF RESIDENTS, 1994

	<u>Bracken County</u>	<u>Labor Market Area</u>
Civilian Labor Force	3,668	26,657
Employment	3,435	25,248
Unemployment	233	1,409
Rate of Unemployment (%)	6.4	5.3

**Source:** Kentucky Cabinet for Human Resources, Kentucky Labor Force Estimates, Annual Averages, 1994.

### UNEMPLOYMENT RATES 1994





SELECTED COMPONENTS OF NONAGRICULTURAL EMPLOYMENT  
BY PLACE OF WORK, 1993

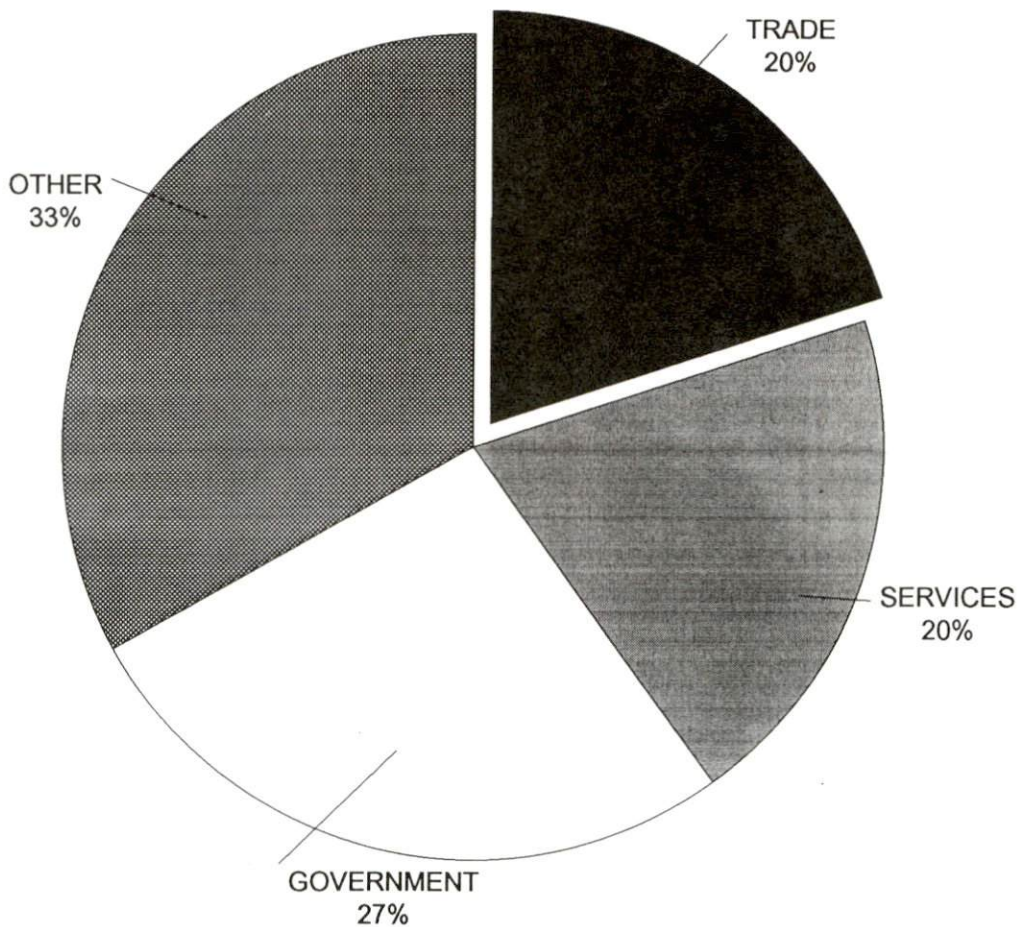
	<u>Bracken County</u>	<u>Labor Market Area</u>
All Industries (total)	1,246	17,078
Manufacturing	N/A	5,290
Wholesale & Retail Trade	241	4,113
Services	243	2,665
State/Local Government	328	2,561
Contract Construction	18	430

**N/A:** Not Available.

**Note:** Excludes domestic workers, railway workers, certain nonprofit corporations, majority of federal government workers, and self-employed workers.

**Source:** Kentucky Cabinet for Human Resources, Average Monthly Workers Covered by Kentucky Unemployment Insurance Law, 1993.

BRACKEN COUNTY



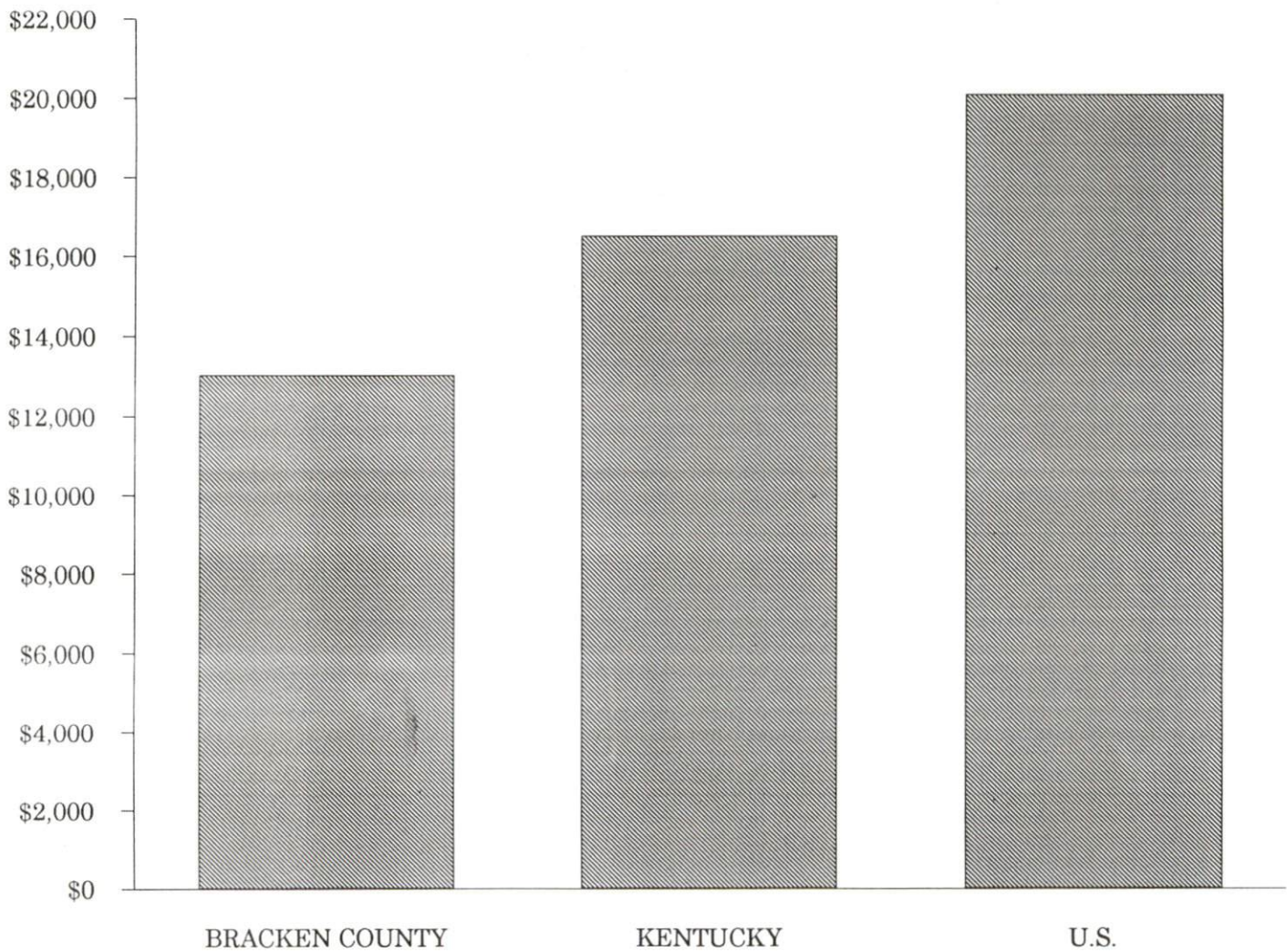


PER CAPITA PERSONAL INCOME

<u>Area</u>	<u>1988</u>	<u>1992</u>	<u>Percent Change</u>
Bracken County	\$10,202	\$13,043	27.8
Labor Market Area Range	\$8,941 - \$11,480	\$12,203 - \$15,736	-
Kentucky	\$12,751	\$16,528	29.6
U.S.	\$16,610	\$20,105	21.0

**Source:** U.S. Department of Commerce, Bureau of Economic Analysis, Regional Economic Information System.

PER CAPITA PERSONAL INCOME  
1992



## AVERAGE PLACEMENT WAGES

---

Bracken County is served by the Maysville local office of the Kentucky Department for Employment Services. The focus of the following data is on job placements made by the Maysville local office and may therefore be used as an indicator of the wages which employers in the area pay new employees. During the twelve months which ended on June 30, 1994, the local employment office filled 1,724 job openings in various occupational categories. The average hourly wage for selected occupational categories were:

<u>OCCUPATIONAL CATEGORY</u>	<u>NUMBER OF PLACEMENTS</u>	<u>AVERAGE WAGE(\$)</u>
All Occupations	1,724	4.86
Clerical	112	4.47
Sales	163	4.40
Services (excluding domestic)	135	4.32
Agricultural, Fishery, Forestry, etc.	12	5.16
Processing	11	4.14
Machine Trades	204	5.22
Bench Work	415	4.74
Structural	116	6.40
Motor Freight/ Transportation	12	4.94
Packaging and Materials Handling	470	4.44
Other	29	11.32

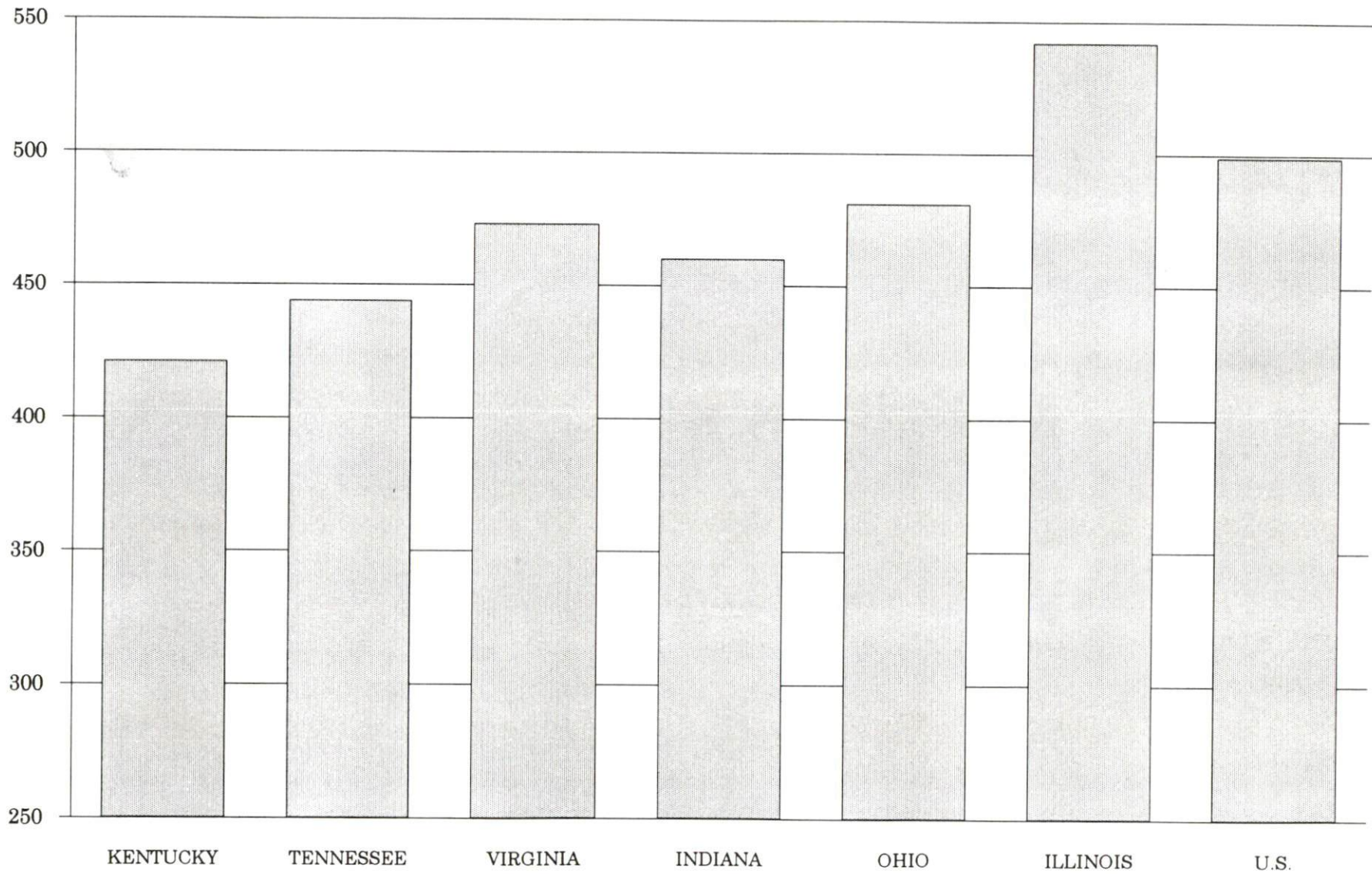
The Maysville local office also serves Fleming, Lewis, Mason, and Robertson Counties. The above occupational categories are taken from the Dictionary of Occupational Titles published by the U.S. Department of Labor.

---

**Source:** Kentucky Cabinet for Human Resources, Department for Employment Services.



**AVERAGE WEEKLY WAGES OF WORKERS COVERED BY  
UNEMPLOYMENT INSURANCE - 1993**



AVERAGE WEEKLY WAGES BY INDUSTRY  
BY PLACE OF WORK, 1993\*

	<u>Bracken County</u>	<u>Kentucky (Statewide)</u>	<u>Tennessee</u>	<u>Virginia</u>
All Industries	\$302.39	\$421.30	\$444.00	\$473.00
Mining & Quarrying	.00	691.01	605.00	684.00
Contract Construction	225.46	440.47	467.00	464.00
Manufacturing	N/A	541.18	522.00	543.00
Transportation, Communications & Public Utilities	594.87	567.94	572.00	648.00
Wholesale & Retail Trade	190.02	287.24	N/A	N/A
Finance, Insurance & Real Estate	331.62	449.89	495.00	523.00
Services	159.78	350.41	394.00	455.00
State/Local Government	315.69	413.84	N/A	N/A
	<u>Indiana</u>	<u>Ohio</u>	<u>Illinois</u>	<u>U. S.</u>
All Industries	\$460.00	\$481.00	\$542.00	\$499.00
Mining & Quarrying	757.00	645.00	738.00	816.00
Contract Construction	509.00	534.00	658.00	530.00
Manufacturing	629.00	670.00	667.00	623.00
Transportation, Communications & Public Utilities	561.00	600.00	682.00	643.00
Wholesale & Retail Trade	N/A	N/A	N/A	N/A
Finance, Insurance & Real Estate	527.00	568.00	748.00	693.00
Services	391.00	422.00	494.00	475.00
State/Local Government	N/A	N/A	N/A	N/A

\* Wages for U.S. and surrounding states rounded to nearest dollar.

N/A Not Available.

**Note:** The average weekly wage for each category includes the salaries and wages of all persons working for that type business. For example, the manufacturing category includes both production workers and administrative personnel. Excludes domestic workers, railway workers, certain nonprofit corporations, majority of federal government workers, and self-employed workers.

**Source:** Kentucky Cabinet for Human Resources, Average Weekly Wages of Workers Covered by Kentucky Unemployment Insurance Law, 1993. U.S. Department of Labor, Bureau of Labor Statistics, Employment and Wages, Annual Averages, 1993, October, 1994.

## EXISTING INDUSTRY

### BRACKEN COUNTY MANUFACTURING FIRMS, THEIR PRODUCTS AND EMPLOYMENT

<u>Firm</u> <u>(Establishment date)</u>	<u>Product</u>	<u>1994</u> <u>Average Employment</u>
<b>Augusta</b>		
Clopay Corporation (1956)	Polypropylene film, polyethylene film, laminated polyethylene film	130
Clopay Corporation Health Care Plant (1956)	Polyethylene film, polypropylene film, laminated polyethylene film	100
F.A. Neider Company (1883)	Furniture glides, metal fasteners, metal stampings	20
<b>Brooksville</b>		
The Bracken County News (1930)	Newspaper	3
Stewart's Farm Supply (1907)	Feed	4
Wood Lumber Company (1972)	Dog houses, utility sheds	1
<b>Germantown</b>		
Germantown Milling Company (1910)	Feed	6

**Source:** Kentucky Cabinet for Economic Development, Division of Research;  
Bracken County Chamber of Commerce.

### RECENT INDUSTRIAL DEVELOPMENTS

L & W Engineering has announced plans to construct a \$37,000,000 metal stamping facility at Augusta/Brooksville/Bracken County Industrial Park. Construction is scheduled to begin in the Fall of 1995, and will employ approximately 250 people when operating at full capacity. State funds will be used to construct an access road into the Industrial Park. The projected cost is \$500,000 and completion is scheduled for Fall of 1995.



## LABOR ORGANIZATIONS IN MANUFACTURING FIRMS

There are no labor unions representing workers in Bracken County manufacturing firms.

### SELECTED INDUSTRIAL SERVICES

---

---

<u>Types of Services</u>	<u>Location</u>	<u>Mileage from Brooksville</u>
Custom Plastics Producers	Flemingsburg, Kentucky	37
	Williamstown, Kentucky	37
Electric Motor Repair	Maysville, Kentucky	20
Heat Treating Facilities	Georgetown, Kentucky	50
Industrial Waste Removal	Butler, Kentucky	28
Machine Shops, Tool & Die	Maysville, Kentucky	20
Metal Castings	Cynthiana, Kentucky	29
Metal Finishers	Georgetown, Kentucky	50
	Newport, Kentucky	51
Metal Service Centers	Alexandria, Kentucky	37
Millwrights & Riggers	Independence, Kentucky	47

---

**Sources:** Kentucky Cabinet for Economic Development, Division of Research.

## TRANSPORTATION

### Highways

Bracken County and Augusta are served by Kentucky Highways 8 and 546, both "AAA"-rated (80,000-pound gross load limit) trucking highways. Kentucky Highways 10, 19, 22, and 1159 are "AA"-rated (62,000-pound gross load limit) trucking highways providing service to the county.

Interstate 75, a major north-south corridor, is accessible from Brooksville via Kentucky Routes 19 and 8, and Interstate 275, 46 miles northwest. Access to Interstate 64 is available near Morehead, 61 miles southeast of Brooksville. Access to "AAA"-rated U.S. Highway 52, in Ohio, is available in Augusta via toll ferry.

#### HIGHWAY MILES FROM BROOKSVILLE, KENTUCKY, TO SELECTED MARKET CENTERS

City	Highway Miles	City	Highway Miles
Atlanta, GA	438	Los Angeles, CA	2,197
Baltimore, MD	491	Louisville, KY	121
Birmingham, AL	473	Nashville, TN	254
Chicago, IL	316	New Orleans, LA	772
Cincinnati, OH	52	New York, NY	669
Cleveland, OH	234	Pittsburgh, PA	297
Detroit, MI	270	St. Louis, MO	370
Knoxville, TN	214		

**Note:** Mileage computations are via the best interstate or primary highways, not necessarily the most direct route of travel.

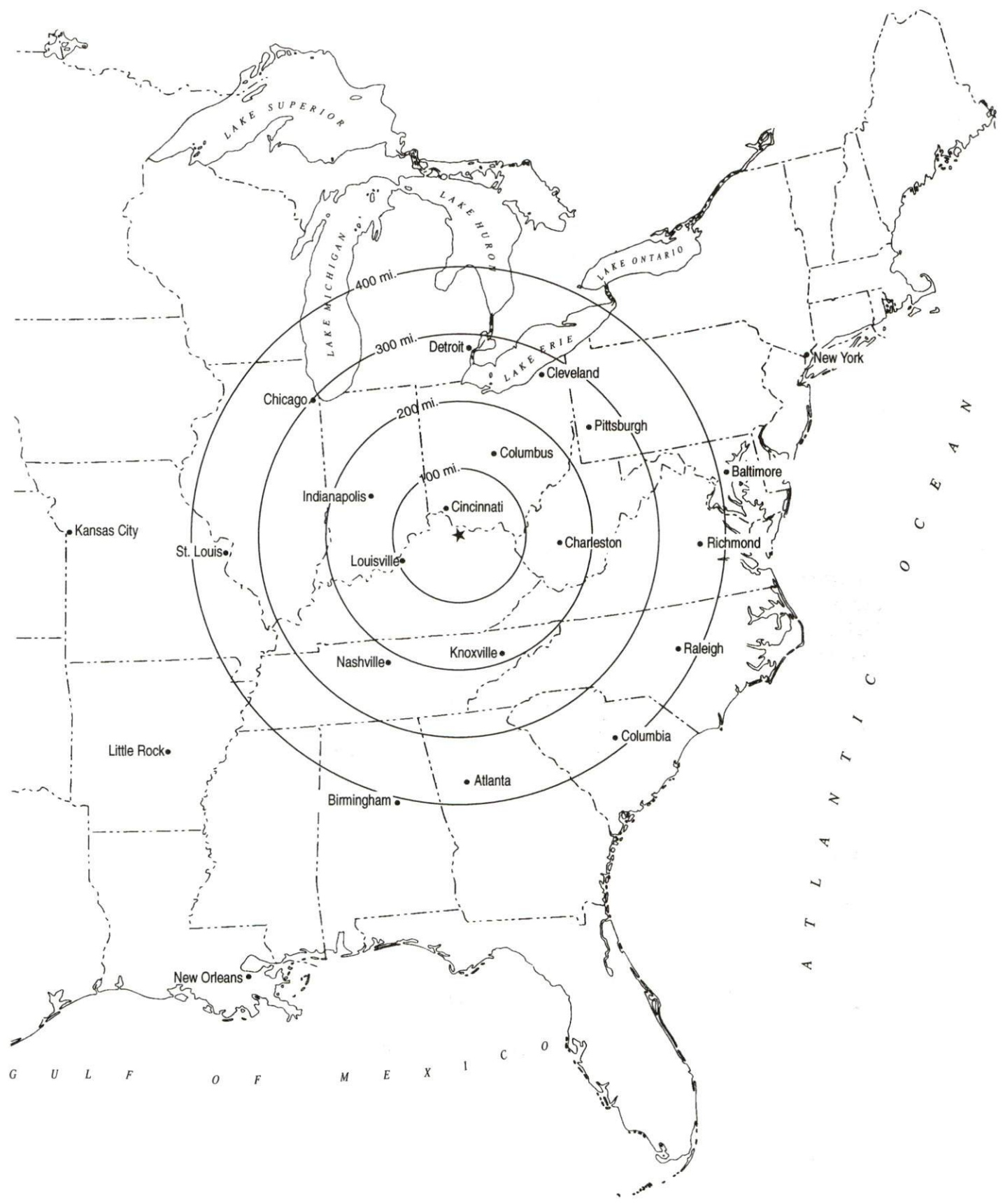
**Sources:** Rand McNally Standard Highway Mileage Guide, 1990. Official Kentucky Mileage Map, 1985.

### Truck Service

Nineteen common carrier trucking companies provide interstate and/or intrastate service to Bracken County.

**Source:** American Motor Carrier Directory, Spring 1995.

# Selected Market Centers



## Rail

CSX Transportation provides main line rail service to Augusta, Kentucky; eight miles north of Brooksville. The nearest intermodal facilities are available at Cincinnati, Ohio; 52 miles northwest of Brooksville.

For details on routing, schedules, rates, and services contact:

Manager  
Industrial Development  
CSX Transportation  
9420 Bunsen Parkway  
Suite 212  
Louisville, Kentucky 40220  
(502) 499-3025

## Air

### Nearest Small Craft Airports

Location: Fleming-Mason Airport  
6 miles south of Maysville, Kentucky  
26 miles southeast of Brooksville

Runways: 1 paved

Length: 5,000 feet

Traffic Control: Segmented circle and wind sock

Lighting: PCL Low, Med, Hi; PAPI; beacon; runway lights  
(sundown to sunrise)

Services: 100LL and jet-A fuel; major A & P repairs; hangar;  
tie-downs; flight instruction; taxi service; auto fuel;  
attended 7 a.m. to dusk on request

Location: Cynthiana-Harrison County Airport  
2 miles south of Cynthiana Kentucky;  
31 miles southwest of Brooksville

Runways: 1 paved

Length: 3,200 feet

Traffic Control: Wind sock and lighted wind tee

Lighting: Runway lights (sundown to sunrise), VASI,  
REIL, RTGBCN

Services: 80 and 100LL fuel; tie down; taxi



Nearest Scheduled Commercial Airline Service

Cincinnati/Northern Kentucky  
International Airport  
Location: 8 miles southwest of Covington, Kentucky;  
59 miles northwest of Brooksville  
Air Service: American, American Eagle, ComAir, Continental,  
Continental Express, Delta, Northwest,  
Northwest AirlinK, TWA, United, United  
Express, USAir, USAir Express  
Daily Arrivals  
& Departures: 846

Blue Grass Airport  
Location: 4 miles west of Lexington, Kentucky;  
67 miles southwest of Brooksville  
Air Service: American Eagle, Atlantic Southeast, ComAir,  
Delta, Northwest AirlinK, TW Express,  
United Express, USAir  
Daily Arrivals  
& Departures: 120

**Water**

Augusta is located on the Ohio River, one of the most heavily traveled inland waterways in the United States. A nine-foot navigation channel is maintained along the entire length of the Ohio River.



## UTILITIES

### Electricity

Company serving **Brooksville, Augusta, and other portions of Bracken County** - Kentucky Utilities Company

Source of power - Kentucky Utilities Company

For industrial rates contact:

Economic Development Department  
Kentucky Utilities Company  
One Quality Street  
Lexington, Kentucky 40507  
(606) 255-2100

Company serving **most of western Bracken County** - Harrison Rural Electric Cooperative Corporation

Source of power - East Kentucky Power

For industrial rates contact:

Industrial Development Department  
East Kentucky Power  
P.O. Box 707  
Winchester, Kentucky 40392-0707  
(606) 744-4812

and/or

Harrison Rural Electric Cooperative Corporation  
P.O. Box 130  
Cynthiana, Kentucky 41031  
(606) 234-3131 or (800) 842-7481

Company serving **portions of south central, southeastern, and extreme northeastern Bracken County** - Fleming-Mason Rural Electric

Cooperative Corporation

Source of power - East Kentucky Power

For industrial rates contact:

Industrial Development Department

East Kentucky Power

P.O. Box 707

Winchester, Kentucky 40392-0707

(606) 744-4812

and/or

Fleming-Mason Rural Electric

Cooperative Corporation

P.O. Box 328

Flemingsburg, Kentucky 41041

(606) 845-2661 or (800) 464-3144

#### **Natural Gas**

Company serving **Augusta and vicinity** - Augusta Utility Department

Source of supply - Columbia Gas Transmission Corporation

For rates and supplies contact:

Augusta Utility Department

219 Main Street

P.O. Box 85

Augusta, Kentucky 41002

(606) 756-2183

Company serving **Brooksville and vicinity** - Brooksville Utilities

Source of supply - Columbia Gas Transmission Corporation

For rates and supplies contact:

Brooksville Utilities

P.O. Box 216

Brooksville, Kentucky 41004

(606) 735-2501

## Public Water Supply

Company serving **Augusta** - City of Augusta  
P.O. Box 85  
Augusta, Kentucky 41002  
(606) 756-2183 Fax #(606) 756-2185

Source - Two wells  
Treatment plant capacity - 760,000 gallons per day  
Average daily consumption - 329,000 gallons  
Peak daily consumption - 470,000 gallons  
Storage capacity - 300,000 gallons  
Water pressure - 56 psi to 64 psi

Construction of a new 1.7 million gallons-per-day water treatment plant is planned for Augusta. The \$1.9 million project is scheduled for completion in the Spring of 1996.

Company serving **Brooksville** - City of Brooksville  
P.O. Box 216  
Brooksville, Kentucky 41004  
(606) 735-2501

Source of treated water - Bracken County Water District #1  
Maximum amount available - 300,000 gallons per day  
Average daily consumption - 70,000 gallons  
Peak daily consumption - 100,000 gallons  
Storage capacity - 50,000 gallons  
Water pressure - 38 psi to 48 psi

Company serving **Bracken County** - Bracken County Water District #1  
P.O. Box 201  
Brooksville, Kentucky 41004  
(606) 735-3513

Source - Local wells  
Treatment plant capacity - 600,000 gallons per day  
Average daily consumption - 360,000 gallons  
Peak daily consumption - 390,000 gallons  
Storage capacity - 152,000 gallons  
Water pressure - 30 psi to 260 psi

Construction of a new 300,000 gallon water storage tank is planned for Bracken County. The estimated cost of the project is \$350,000 and completion is scheduled for Fall of 1995. A \$715,000 Community Development Block Grant will be used to install 26 miles of water lines in eastern Bracken County. The water lines will serve approximately 130 families.

## Raw Water

Surface water sources - Ohio River, North Fork Licking River  
Average discharge - Ohio River at Greenup Dam, Kentucky 89,450 cfs  
(24 year record)  
Expected ground water yield - 500 to 1,000 gpm along the Ohio River,  
50 to 200 gpm in extreme southwestern Bracken County, 5 to 50 gpm in  
the remainder of the county.

## Sewerage

Company serving **Augusta** - City of Augusta  
P.O. Box 85  
Augusta, Kentucky 41002  
(606) 756-2183 Fax #(606) 756-2185

Design capacity - 330,000 gallons per day  
Average daily flow - 180,000 gallons  
Type of treatment - Primary  
Treated effluent discharged into - Ohio River

Company serving **Brooksville** - City of Brooksville  
P.O. Box 216  
Brooksville, Kentucky 41004  
(606) 735-2501

Design capacity - 125,000 gallons per day  
Average daily flow - 60,000 gallons  
Type of treatment - Primary  
Treated effluent discharged into - Locust Creek

## CLIMATE

### Bracken County

#### Temperature

Normal (30-year record)	53.20 degrees
Average annual 1993	53.20 degrees
Record highest, July 1988 (32-year record)	103.00 degrees
Record lowest, January 1977 (32-year record)	-25.00 degrees
Normal heating degree days (32-year record)	5,248
(Heating degree day totals are the sums of negative departures of average daily temperatures from 65 degrees F.)	

#### Precipitation

Normal (30-year record)	41.33 inches
Mean annual snowfall (46-year record)	23.20 inches
Total precipitation 1993	38.71 inches
Mean number days precipitation (.01 inch or more) (46-year record)	130.20
Mean number days thunderstorms (46-year record)	42.60

#### Prevailing winds (through 1963)

South-Southwest

#### Relative Humidity (31-year record)

1 a.m.	78 percent
7 a.m.	82 percent
1 p.m.	60 percent
7 p.m.	64 percent

**Source:** U.S. Department of Commerce, Environmental Science Services Administration, Climatological Data, 1993, Station of record: Cincinnati, Ohio.



## LOCAL GOVERNMENT

### Structure

The Cities of Augusta and Brooksville are each governed by a mayor and six council members. The mayors serve a four-year term while the council members serve two-year terms each. Bracken County is governed by a county judge/executive and eight magistrates. Each county official serves a four-year term.

### Planning and Zoning

There are no planning and zoning agencies operating within Bracken County at the present time.

Mandatory state codes enforced - Kentucky Plumbing Code, National Electric Code, Kentucky Boiler Regulations and Standards, Kentucky Building Code (modeled after BOCA code)

### Local Fees and Licenses

The City of Augusta levies a one percent occupational license tax on wages, salaries, and commissions of individuals employed within the city and a one percent tax on the net profits of businesses located within the city. The tax cannot exceed \$100 per year for an individual or business. Manufacturing firms are levied a one percent license tax based on its annual gross receipts. The tax cannot exceed \$500.

The City of Brooksville levies occupational license fees on all business enterprises and activities within the city. Certain specified businesses pay a flat rate, and all others pay an amount ranging from \$37.50 to \$900 annually, on the basis of gross receipts. The wages, salaries, and commissions of individuals are taxed at the rate of 1.75 percent.

## PROPERTY TAXES

The Kentucky Constitution requires the state to tax all classes of taxable property, and state statutes allow local jurisdictions to tax only a few classes. All locally taxed property is subject to county taxes and school district taxes (either a county school district or an independent school district). Property located inside of city limits may also be subject to city property taxes.

Special local taxing jurisdictions (fire protection districts, watershed districts, and sanitation districts) levy taxes within their operating areas (usually a small portion of community or county).

Property assessments in Kentucky are at 100% fair cash value. Accounts receivable are taxed at 85% of face value.

### **STATE PROPERTY TAX RATES PER \$100 VALUATION**

<u>Selected Classes of Property</u>	<u>1994 State Rate</u>	<u>Local Taxation Permitted</u>
Real Estate	\$0.172	YES
Manufacturing Machinery	0.150	NO
Pollution Control Equipment	0.150	NO
Inventories		
Raw Materials	0.050	NO
Goods in Process	0.050	NO
Finished Goods	0.050	YES
Motor Vehicles	0.450	YES
Other Tangible Personal Property	0.450	YES
Intangibles (Accounts Receivable, Money on Hand)	0.250	NO

### **LOCAL PROPERTY TAX RATES PER \$100 VALUATION, 1994**

<u>Taxing Jurisdiction</u>	<u>Real Estate</u>	<u>Finished Goods &amp; Tangibles</u>	<u>Motor Vehicles</u>
Bracken County	\$0.3190	\$0.3540	\$0.3530
School Districts:			
Bracken County	0.2400	0.2400	0.3500
Augusta Independent	0.6140	0.6140	0.5760
Cities:			
Augusta	0.1950	0.2460	0.2460
Brooksville	0.1977	0.2910	0.2910

## EDUCATION

### Public Schools

	Augusta Independent	Bracken County
Total Enrollment (Fall, 1993)	315	1,218
Pupil-Teacher Ratio (1991-92)	14.5-1	18.5-1
Percent High School Graduates to College (1991-92)	57.7	51.4
Expenditures Per Pupil (1991-92)	\$3,729.68	\$3,203.00

### Nonpublic Schools

<u>School</u>	<u>Enrollment</u>	<u>Grades</u>
Saint Augustine School	67	1-8

### Area Colleges and Universities

<u>Name</u>	<u>Location (Miles from Brooksville)</u>	<u>Enrollment (Fall, 1993)</u>
Maysville Community College	Maysville, Kentucky (20)	1,535
Northern Kentucky University	Highland Heights, Kentucky (48)	12,024
Georgetown College	Georgetown, Kentucky (50)	1,383
Athenaeum of Ohio	Cincinnati, Ohio (52)	236
Cincinnati Bible Seminary	Cincinnati, Ohio (52)	938
College of Mt. St. Joseph	Cincinnati, Ohio (52)	2,594
Hebrew Union College	Cincinnati, Ohio (52)	129
Southern Ohio College	Cincinnati, Ohio (52)	356
University of Cincinnati	Cincinnati, Ohio (52)	28,301
Xavier University	Cincinnati, Ohio (52)	6,279



## VOCATIONAL-TECHNICAL TRAINING

Kentucky Tech schools are operated by the Cabinet for Workforce Development and provide secondary (Sec) and postsecondary (P/S) vocational-technical training.

<u>Kentucky Tech Schools</u>	<u>Location (Mileage from Brooksville)</u>	<u>Number of Program Offerings</u>	<u>Cumulative Enrollment 1993-1994</u>	<u>Approximate Number Completing Long Term Programs Annually</u>
Kentucky Tech-Northern Kentucky	Covington (51)	13	<u>Sec</u> <u>P/S</u> 32   5,510	56
Kentucky Tech-Central Kentucky	Lexington (63)	21	<u>Sec</u> <u>P/S</u> N/A   5,875	249
Kentucky Tech-Northern Campbell	Highland Heights (51)	5	<u>Sec</u> <u>P/S</u> 29   130	30
Maysville Area Vocational Education Center	Maysville (20)	4	<u>Sec</u> <u>P/S</u> 93   42	16
Harrison County Area Vocational Education Center	Cynthiana (29)	5	<u>Sec</u> <u>P/S</u> 401   N/A	N/A
Northern Kentucky Health Occupation Center	Edgewood (47)	4	<u>Sec</u> <u>P/S</u> N/A   345	99

### Customized Training

The Kentucky Tech system, through its Training and Development Coordinators, will provide technical assistance and will identify and develop low-cost customized training programs and services for both established and prospective businesses. Businesses needing customized training should contact a Training and Development Coordinator located at Kentucky Tech-Central, Lexington, Kentucky (606-255-8501) and Kentucky Tech-Northern Kentucky, Covington, Kentucky (606-431-2700).

A Career Connections Assessment Center is located at Kentucky Tech-Central, Lexington, Kentucky (606-255-8501) and Kentucky Tech-Northern Kentucky, Covington, Kentucky (606-431-2700).

### Tech Prep

Tech Prep is a combined secondary and postsecondary program of studies that leads to an associate degree or diploma in a technical field. Harrison County Area Vocational Education Center offers programs in Tech Prep in the areas of automotive technology, carpentry, electrical technology, machine tool technology and welding.

### Adult Education Services

Adult Education programs are available to adults who want to develop new skills, improve basic skills or earn a high school equivalency diploma. In Bracken County, adult literacy and adult basic education are provided by Bracken County For Literacy, Inc., P.O. Box 92, Courthouse Square, Brooksville, Kentucky 41004.

### Bluegrass State Skills Corporation

The Bluegrass State Skills Corporation, an independent public corporation created and funded by the Kentucky General Assembly, provides programs of skills training to meet the needs of business and industry from entry level to advanced training, and from upgrading present employees to retraining experienced workers.

The Bluegrass State Skills Corporation is a major source for skills training assistance for a new or existing company. The Corporation works in partnership with other employment and job training resources and programs, as well as Kentucky's economic development activities, to package a program customized to meet the specific needs of a company.

## OTHER LOCAL FACILITIES

### Local Medical Personnel

Physicians - 5

Dentists - 2

### Hospitals

<u>General Hospitals</u>	<u>Location</u>	<u>Beds</u>
Meadowview Regional Hospital	Maysville, Kentucky; 20 miles east of Brooksville	111
Harrison Memorial Hospital	Cynthiana, Kentucky; 29 miles southwest of Brooksville	99

Meadowview Regional Hospital

Medical staff - 24 active staff physicians, 80 registered nurses, and 20 licensed practical nurses

Harrison Memorial Hospital

Medical staff - 15 physicians, 53 registered nurses, and 18 licensed practical nurses

### Other Medical Facilities and Services

Bracken County Health Department  
Bracken County Ambulance Service  
Bracken Center, Inc. (nursing home)  
Bracken County Comprehensive Care Center  
Comprehend of Maysville  
Rural Home Health Services of Augusta

### Banks and Savings & Loan Associations

Bank of Germantown (Germantown)  
First National Bank (Brooksville)  
Trans Financial Bank (Augusta)

### Newspapers

Bracken County News (weekly)

### Telephone Service

GTE Kentucky



## RECREATION

### Local

Public recreation facilities in Bracken County include the Jett Memorial Park located in Brooksville. The park offers a swimming pool, a tennis court, a picnic shelter, a playground and mini-golf. The Augusta Community Park in Augusta features a tennis court, and a bandstand for public concerts. Mains Memorial Park, located in historic Augusta, features a fountain and memorial marker. The Germantown City Park provides a ball field and horseshoe pits.

**Historic Augusta** is a river town built around the Augusta Public Square and site of the Augusta College (1822-1847), the first established Methodist College. Augusta boasts a wine cellar (Junction of Routes Ky. 8 and Ky. 19), the home of Dr. Joshua Taylor Bradford, world famous surgeon; the homes of General John Payne and the parents of General George C. Marshall. The town is built over an ancient burial ground. The Augusta Ferry Boat is one of only two still operating on the Ohio River. Augusta's unique bed-and-breakfast inns and a number of antique shops and galleries, many listed on the National Register of Historic Places, were featured in the October 1994 Colonial Home magazine.

**Brooksville**, in the center of the county, is the county seat of Bracken County. Once called Woodward's Crossroads, the beautiful Courthouse, built in 1915 and the original jail built in 1833, is located here. The Ware Hotel, built before 1800, is one of the oldest buildings; when the first Courthouse was being built, court was held in the hotel.

**Walcott Covered Bridge**, one of Kentucky's oldest remaining covered bridges, is located five miles north of Brooksville. Constructed in 1824, the bridge is 75-feet long.

Special events in Bracken County include the annual Sternwheel Regatta, July 4th Celebration, Germantown Celebration, Augusta Heritage Days, Brooksville Harvest Festival, Winter Craft Festival, Writers Round Table, and Old Fashion Christmas in Augusta.

### Area (Within 65 miles)

- Blue Licks Battlefield State Park
- Fort Boonesborough State Park
- Keeneland Race Course
- Kentucky Horse Park
- Kincaid Lake State Park
- Kincaid Regional Theatre
- Waveland State Historic Site

# Kentucky

**Cabinet For Economic Development**

2300 Capital Plaza Tower, 500 Mero Street, Frankfort, KY 40601, 502 • 564 • 7140



*Printed on recycled paper.*