

1988

Industrial Resources: Breckinridge County

Kentucky Library Research Collections
Western Kentucky University, spcol@wku.edu

Follow this and additional works at: https://digitalcommons.wku.edu/breckinridge_cty

 Part of the [Business Administration, Management, and Operations Commons](#), [Growth and Development Commons](#), and the [Infrastructure Commons](#)

Recommended Citation

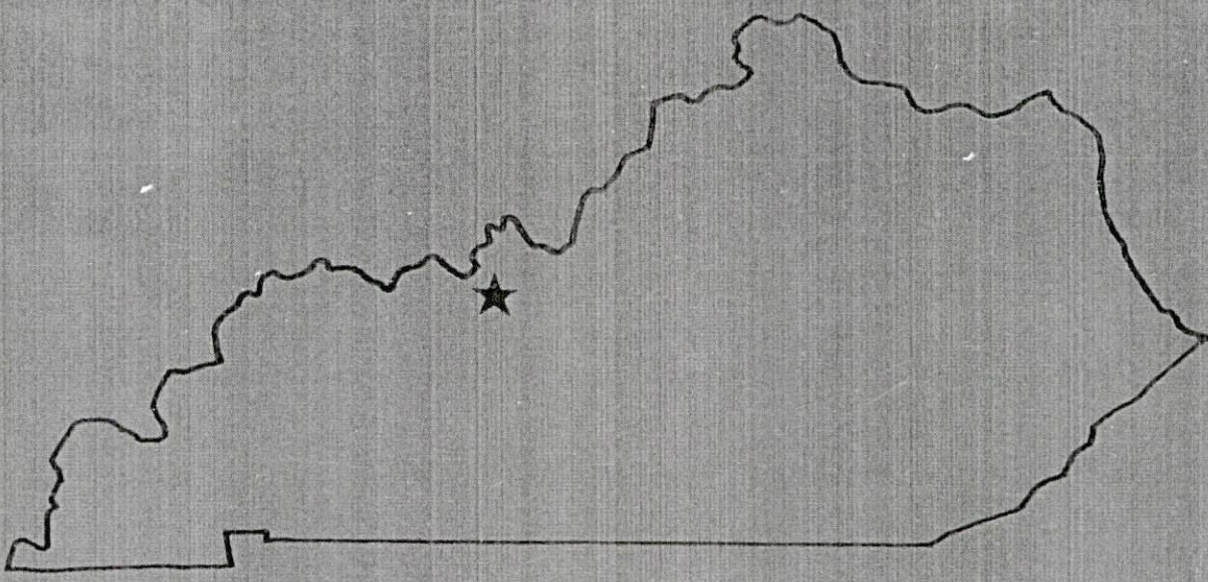
Kentucky Library Research Collections, "Industrial Resources: Breckinridge County" (1988). *Breckinridge County*. Paper 5.
https://digitalcommons.wku.edu/breckinridge_cty/5

This Report is brought to you for free and open access by TopSCHOLAR®. It has been accepted for inclusion in Breckinridge County by an authorized administrator of TopSCHOLAR®. For more information, please contact topscholar@wku.edu.



RESOURCES FOR ECONOMIC DEVELOPMENT

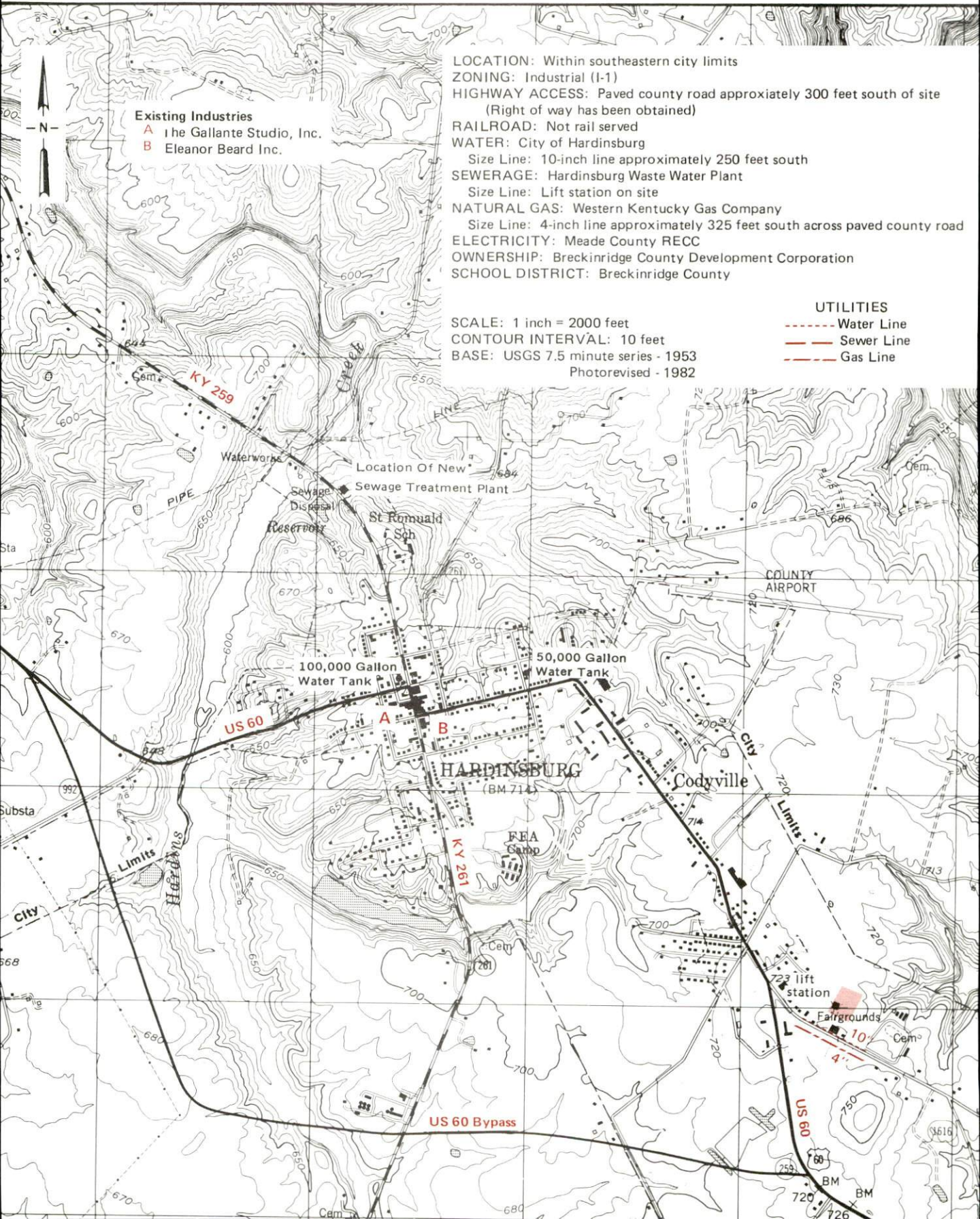
Breckinridge County



KENTUCKY
The business environment is right.

HARDINSBURG, KENTUCKY --- Site 188 --- 3.8 Acres

For more information contact the Kentucky Department of Economic Development, Industrial Development & Marketing Division, Capital Plaza Tower, Frankfort, Kentucky 40601 (502-564-7140).



LOCATION: Within southeastern city limits
ZONING: Industrial (I-1)
HIGHWAY ACCESS: Paved county road approximately 300 feet south of site
(Right of way has been obtained)
RAILROAD: Not rail served
WATER: City of Hardinsburg
Size Line: 10-inch line approximately 250 feet south
SEWERAGE: Hardinsburg Waste Water Plant
Size Line: Lift station on site
NATURAL GAS: Western Kentucky Gas Company
Size Line: 4-inch line approximately 325 feet south across paved county road
ELECTRICITY: Meade County RECC
OWNERSHIP: Breckinridge County Development Corporation
SCHOOL DISTRICT: Breckinridge County

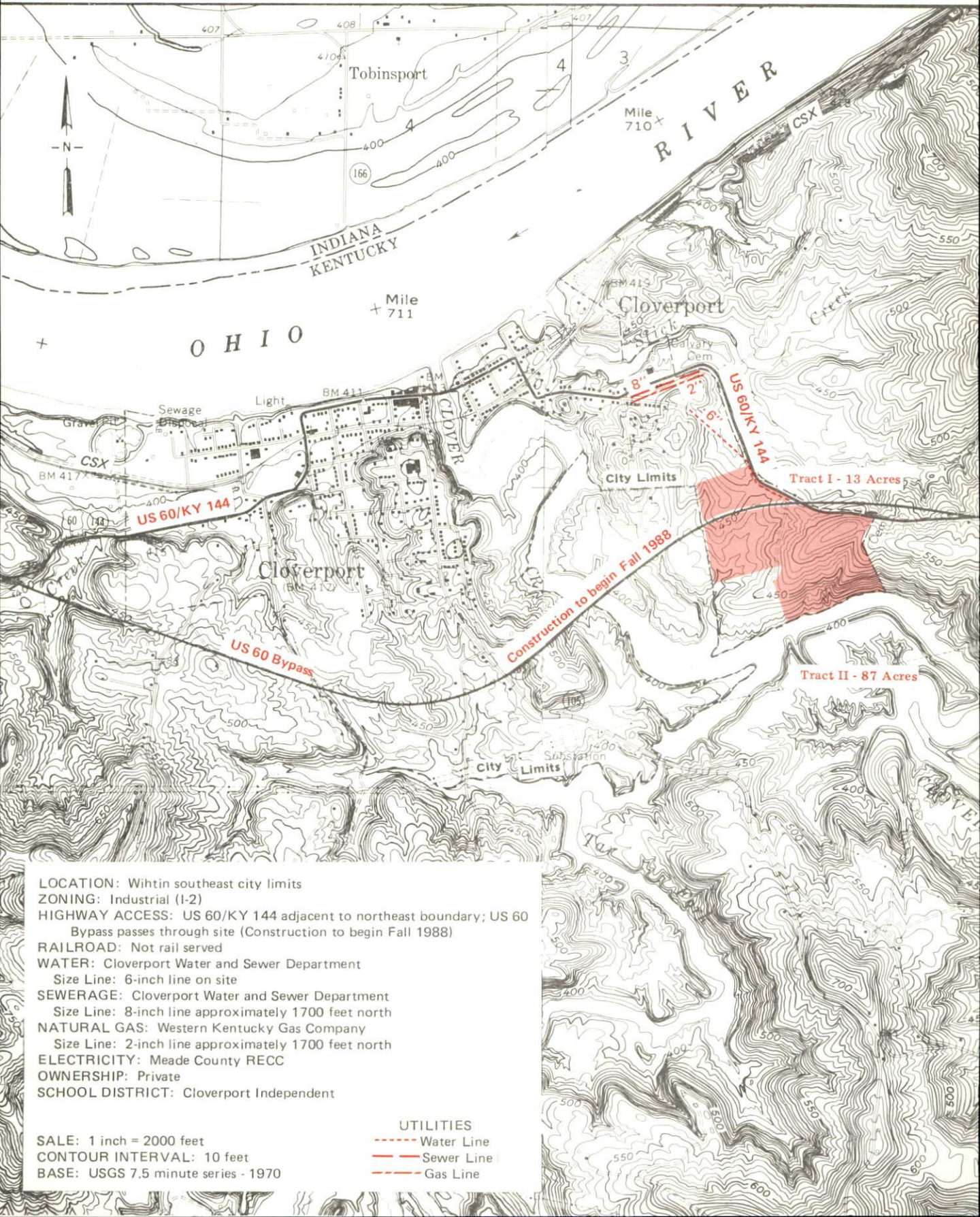
SCALE: 1 inch = 2000 feet
CONTOUR INTERVAL: 10 feet
BASE: USGS 7.5 minute series - 1953
Photorevised - 1982

UTILITIES
----- Water Line
----- Sewer Line
----- Gas Line

Existing Industries
A The Gallante Studio, Inc.
B Eleanor Beard Inc.

CLOVERPORT, KENTUCKY --- Site 188 --- 100 Acres

For more information contact the Kentucky Department of Economic Development, Industrial Development & Marketing Division, Capital Plaza Tower, Frankfort, Kentucky 40601 (502-564-7140).



LOCATION: Within southeast city limits
ZONING: Industrial (I-2)
HIGHWAY ACCESS: US 60/KY 144 adjacent to northeast boundary; US 60 Bypass passes through site (Construction to begin Fall 1988)
RAILROAD: Not rail served
WATER: Cloverport Water and Sewer Department
 Size Line: 6-inch line on site
SEWERAGE: Cloverport Water and Sewer Department
 Size Line: 8-inch line approximately 1700 feet north
NATURAL GAS: Western Kentucky Gas Company
 Size Line: 2-inch line approximately 1700 feet north
ELECTRICITY: Meade County RECC
OWNERSHIP: Private
SCHOOL DISTRICT: Cloverport Independent

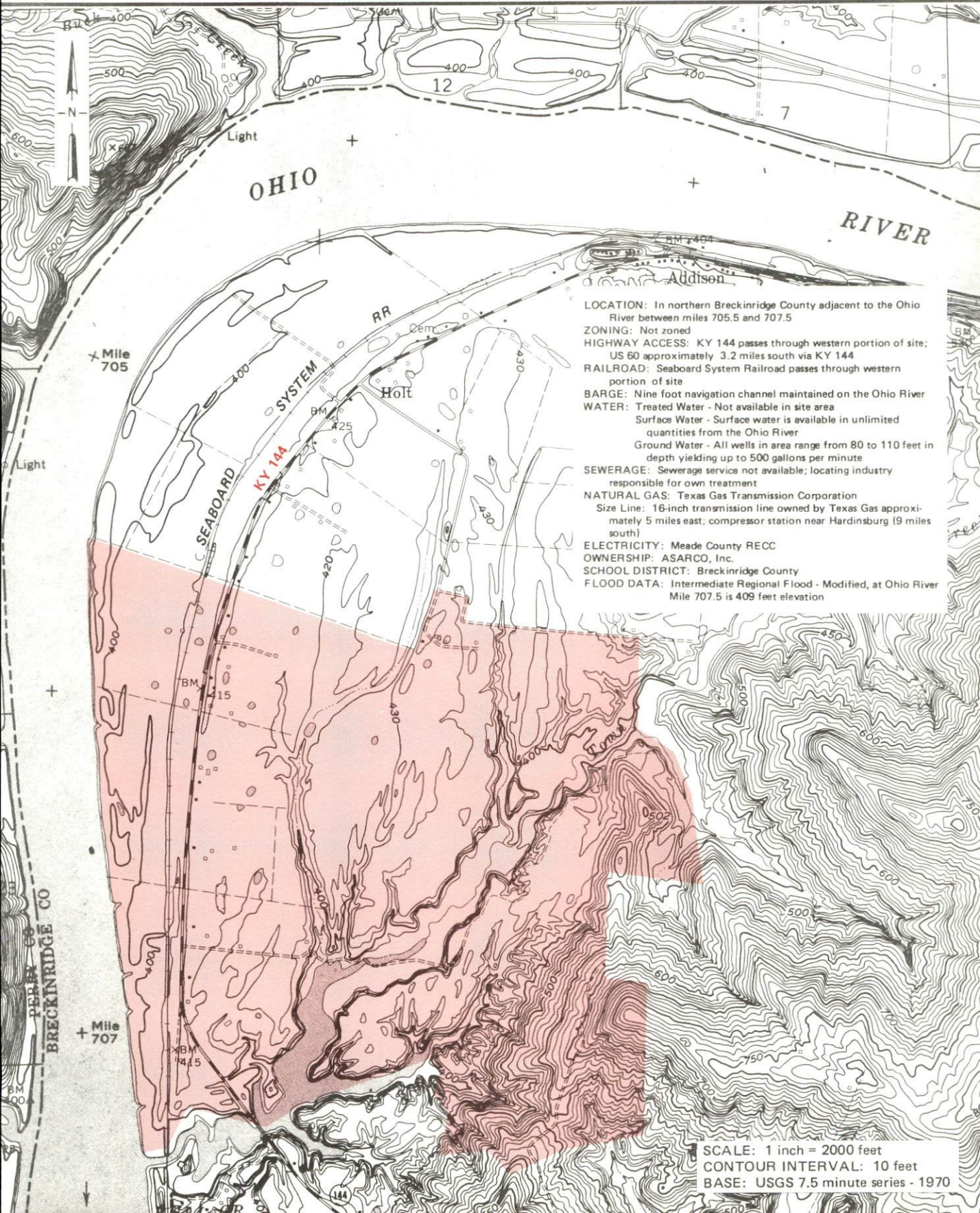
SALE: 1 inch = 2000 feet
CONTOUR INTERVAL: 10 feet
BASE: USGS 7.5 minute series - 1970

UTILITIES
 - - - - - Water Line
 - - - - - Sewer Line
 - - - - - Gas Line

BRECKINRIDGE COUNTY, KENTUCKY --- 1,750 Acres

Holt Bottom - ASARCO Site

For more information contact the Kentucky Department of Economic Development, Industrial Development & Marketing Division, Capital Plaza Tower, Frankfort, Kentucky 40601 (502-564-7140).



- LOCATION:** In northern Breckinridge County adjacent to the Ohio River between miles 705.5 and 707.5
- ZONING:** Not zoned
- HIGHWAY ACCESS:** KY 144 passes through western portion of site; US 60 approximately 3.2 miles south via KY 144
- RAILROAD:** Seaboard System Railroad passes through western portion of site
- BARGE:** Nine foot navigation channel maintained on the Ohio River
- WATER:** Treated Water - Not available in site area
Surface Water - Surface water is available in unlimited quantities from the Ohio River
Ground Water - All wells in area range from 80 to 110 feet in depth yielding up to 500 gallons per minute
- SEWERAGE:** Sewerage service not available; locating industry responsible for own treatment
- NATURAL GAS:** Texas Gas Transmission Corporation
Size Line: 16-inch transmission line owned by Texas Gas approximately 5 miles east; compressor station near Hardinsburg (9 miles south)
- ELECTRICITY:** Meade County RECC
- OWNERSHIP:** ASARCO, Inc.
- SCHOOL DISTRICT:** Breckinridge County
- FLOOD DATA:** Intermediate Regional Flood - Modified, at Ohio River Mile 707.5 is 409 feet elevation

SCALE: 1 inch = 2000 feet
 CONTOUR INTERVAL: 10 feet
 BASE: USGS 7.5 minute series - 1970

RESOURCES FOR ECONOMIC DEVELOPMENT
BRECKINRIDGE COUNTY, KENTUCKY

Prepared by
The Kentucky Department of Economic Development
Division of Research and Planning
in cooperation with
The Breckinridge County Industrial and
Economic Development Foundation, Inc.;
The Cloverport Industrial Foundation;
The City of Cloverport;
and
The City of Irvington

1988

Program manager - Andrew Dennis; research - Barry K. Holder, Jr.; clerical - Bobbi Graves; graphics - Tony Cecconi, Robert Owens, Pat Coleman; cartography - Site Evaluation Branch, Division of Industrial Development and Marketing. Cost of printing paid from state funds.

TABLE OF CONTENTS

<u>Chapter</u>	<u>Page</u>
INDUSTRIAL SITES	i
BRECKINRIDGE COUNTY, KENTUCKY - A RESOURCE PROFILE	1
THE LABOR MARKET AREA	2
Population	2
Population Projections	2
Labor Force Characteristics of Residents, 1986	3
Selected Components of Nonagricultural Employment, by Place of Work, 1986	3
Per Capita Personal Income	4
Estimated Male Labor Supply	5
Estimated Female Labor Supply	5
Average Weekly Wages by Industry, by Place of Work, 1986	6
EXISTING INDUSTRY	8
Breckinridge County Manufacturing Firms, Their Products and Employment	8
Labor Organizations in Manufacturing Firms	9
Selected Industrial Services	9
TRANSPORTATION	10
Rail	10
Highways	10
Truck Service	11
Air	12
Air Express Service	12
Water	12
POWER AND FUEL	13
Electricity	13
Natural Gas	13
Other Fuels	14
WATER AND SEWERAGE	15
Public Water Supply	15
Raw Water	18
Sewerage	18
CLIMATE	20

<u>Chapter</u>	<u>Page</u>
LOCAL GOVERNMENT	21
Structure	21
Planning and Zoning	21
Local Fees and Licenses	21
State and Local Property Taxes	22
Combined State and Local Rates Per \$100 Valuation, 1986	22
Safety	24
Police	24
Fire	24
Rescue Service	24
Refuse Collection and Disposal	24
EDUCATION	25
Public Schools	25
Nonpublic Schools	25
Area Colleges and Universities	26
Vocational Training	27
HEALTH	29
Local Medical Personnel	29
Hospitals	29
Other Medical Facilities	29
Ambulance Service	29
OTHER LOCAL FACILITIES	30
Communications	30
Library Services	30
Religious Institutions	30
Financial Institutions	31
Hotels and Motels	31
RECREATION	32
COMMUNITY IMPROVEMENTS	34

1987 EDITION
GENERAL HIGHWAY MAP
BRECKINRIDGE COUNTY
KENTUCKY

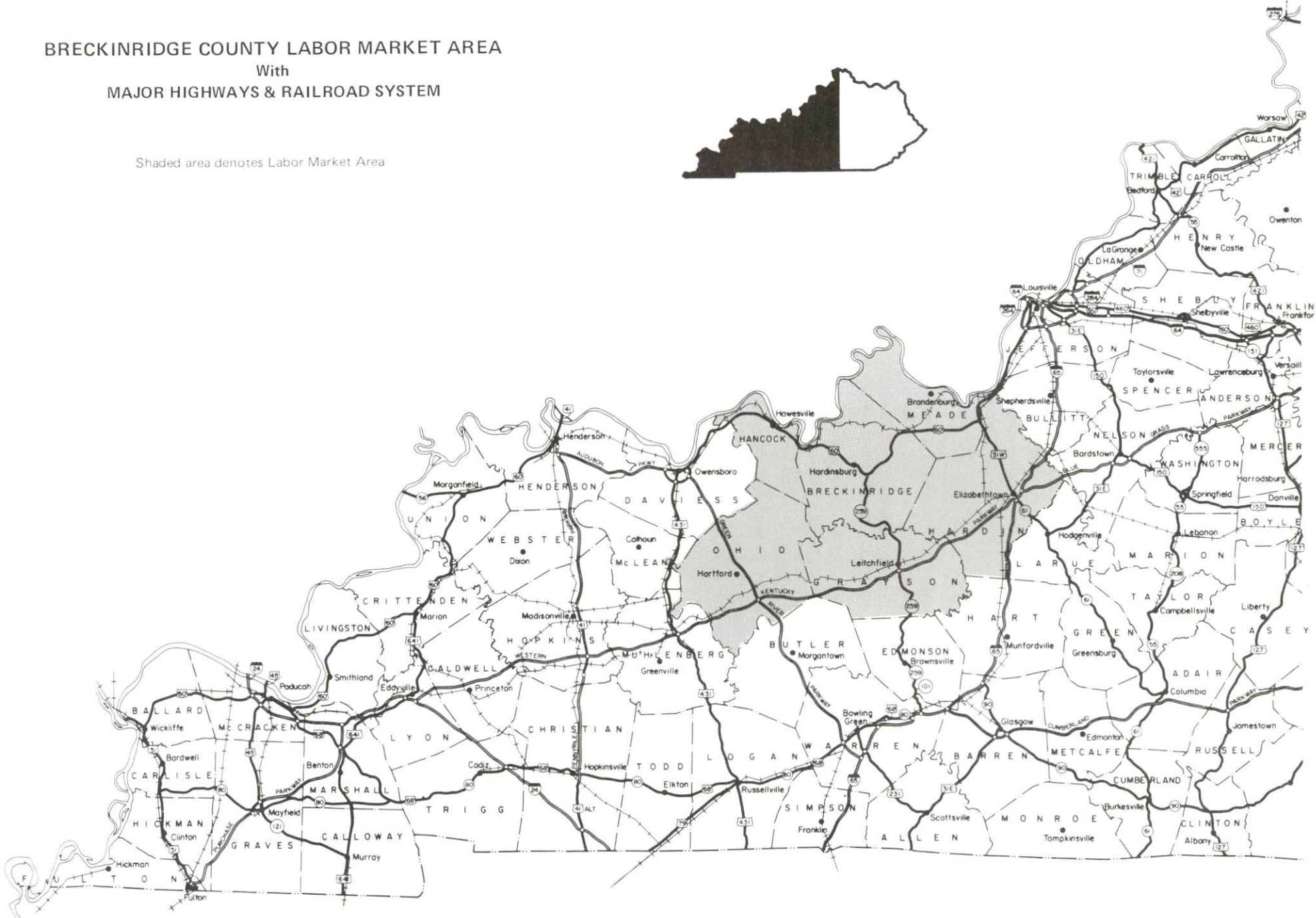
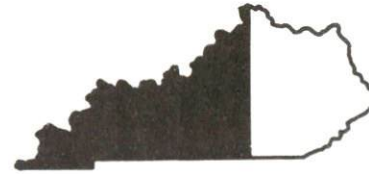
PREPARED BY THE
KENTUCKY TRANSPORTATION CABINET
DEPARTMENT OF HIGHWAYS
DIVISION OF PLANNING
IN COOPERATION WITH THE
U.S. DEPARTMENT OF TRANSPORTATION
FEDERAL HIGHWAY ADMINISTRATION



BRECKINRIDGE COUNTY LABOR MARKET AREA

With
MAJOR HIGHWAYS & RAILROAD SYSTEM

Shaded area denotes Labor Market Area



BRECKINRIDGE COUNTY, KENTUCKY - A RESOURCE PROFILE

Breckinridge County is situated in the northwestern section of central Kentucky's Mississippian Plateaus Region, and covers a land area of 565 square miles. The Ohio River, a major commercial waterway, forms the northwestern border of the county.

Breckinridge County, which had a 1986 population of 17,000 persons, contains three principal cities, including Hardinsburg, Cloverport, and Irvington. Hardinsburg, the county seat, had an estimated 1984 population of 2,160 persons. Cloverport, located 12 miles northwest of Hardinsburg, had an estimated 1984 population of 1,420; Irvington is 18 miles northeast of Hardinsburg and had an estimated 1984 population of 1,356 persons.

The Economic Framework - The total number of Breckinridge County residents employed in 1986 averaged 6,680. Manufacturing firms in the county reported 240 employees; wholesale and retail trade provided 670 jobs; 330 people were employed in service occupations; state and local government accounted for 520 employees; contract construction firms provided 140 jobs; and 40 people were employed by mining and quarrying operations.

Labor Supply - There is a current estimated labor supply of 11,340 men and 15,200 women available for industrial jobs in the labor market area. In addition, from 1987 through 1991, 7,395 young men and 7,120 young women in the area will become 18 years of age and potentially available for industrial jobs.

Transportation - CSX Transportation provides main line rail service to Cloverport and Irvington. "AAA"-rated trucking highways serving the area include U.S. 60 and the segment of Kentucky Route 79 from Harned, 4 miles southeast of Hardinsburg, to Irvington. Major parkways and interstate highways accessible within 50 miles of Hardinsburg include the Western Kentucky Parkway, the Green River Parkway, and Interstate Highways 64 and 65. Six common carrier trucking companies are authorized to serve Breckinridge County; one company maintains a terminal at Hardinsburg. The nearest scheduled commercial airline service is available at Louisville's Standiford Field, 66 miles northeast of Hardinsburg. The Breckinridge County Airport has a paved 3,500-foot runway. The northwestern boundary of Breckinridge County is formed by the Ohio River, where a 9-foot navigation channel is maintained. Hardinsburg is located 47 miles east of Owensboro, Kentucky, where a riverport is maintained.

Power and Fuel - Meade County Rural Electric Cooperative Corporation, whose source of power is Big Rivers Electric Corporation, provides electric power to Breckinridge County. Western Kentucky Gas Company provides natural gas service to Hardinsburg and Cloverport, and Valley Gas, Inc., provides natural gas service to Irvington; source of supply for both companies is Texas Gas Transmission Corporation.

Education - The Cloverport Independent School System provides primary and secondary public education to Cloverport. The Breckinridge County School System serves Hardinsburg and the remainder of the county. One private school also operates in Hardinsburg. In addition, there are 8 institutions of higher learning within 70 miles of Hardinsburg. Vocational training facilities are available in Daviess County and in Harned, Kentucky, both within 50 miles of Hardinsburg.

LABOR MARKET STATISTICS

The Breckinridge County Labor Market Area includes Breckinridge County and the adjoining Kentucky counties of Grayson, Hancock, Hardin, Meade and Ohio.

POPULATION

Area	1986*	1980	1970	Percent Nonwhite
				1980
Hardinsburg	2,160	2,211	1,547	10.1
Cloverport	1,420	1,585	1,388	2.0
Irvington	1,356	1,409	1,300	17.7
Labor Market Area	184,800	178,993	154,321	-
Breckinridge County	17,000	16,861	14,789	3.8
Grayson County	21,600	20,854	16,445	0.6
Hancock County	8,000	7,742	7,080	1.6
Hardin County	93,800	88,917	78,421	14.7
Meade County	23,000	22,854	18,796	9.0
Ohio County	21,400	21,765	18,790	1.4

* Population estimates. City estimates are for 1984.

Note: The 1980 city counts of population by race are provisional.

Sources: U.S. Department of Commerce, Bureau of the Census, 1980 Census of Population and Housing, March 1981; 1980 Census of Population, Number of Inhabitants. University of Louisville, Urban Studies Center, Population Unit, October 1985; University of Louisville, Urban Studies Center, State Data Center, June 1987 Newsletter, Vol. 5 No. 4.

POPULATION PROJECTIONS

Area	1990	1995	2000	2010
Labor Market Area	196,418	208,568	219,910	241,707
Breckinridge County	17,069	17,399	17,621	17,907
Grayson County	23,916	25,242	26,275	27,919
Hancock County	8,473	8,770	9,037	9,452
Hardin County	99,335	106,939	114,333	129,797
Meade County	23,853	24,888	26,036	27,878
Ohio County	23,772	25,330	26,608	28,754

Source: University of Louisville, Urban Studies Center, Population Research Unit, How Many Kentuckians: Population Forecasts, 1980-2020, the 1986 Edition, Spring 1986.

LABOR FORCE CHARACTERISTICS OF RESIDENTS, 1986

	<u>Breckinridge County</u>	<u>Labor Market Area</u>
Civilian Labor Force	7,471	67,042
Employment	6,683	60,426
Unemployment	788	6,616
Rate of Unemployment (%)	10.5	9.9

Source: Kentucky Cabinet for Human Resources, Kentucky Labor Force Estimates, Annual Averages, 1986.

SELECTED COMPONENTS OF NONAGRICULTURAL EMPLOYMENT
BY PLACE OF WORK, 1986

	<u>Breckinridge County</u>	<u>Labor Market Area</u>
All Industries (total)	2,163	37,695
Manufacturing	237	10,418
Wholesale & Retail Trade	674	9,780
Services	326	4,734
State/Local Government	516	6,713
Contract Construction	136	1,741
Mining & Quarrying	43	758

Note: Excludes domestic workers, railway workers, certain nonprofit corporations, majority of federal government workers, and self-employed workers.
Source: Kentucky Cabinet for Human Resources, Average Monthly Workers Covered by Kentucky Unemployment Insurance Law, 1986.

PER CAPITA PERSONAL INCOME

<u>Area</u>	<u>1980</u>	<u>1984</u>	<u>Percent Change</u>
Breckinridge County	\$ 5,453	\$ 7,799	43.0
Labor Market Area Range	\$5,382 - 8,553	\$7,589 - 10,211	-
Kentucky	7,644	10,232	33.9
U.S.	9,494	12,772	34.5

Sources: U.S. Department of Commerce, Bureau of Economic Analysis. Kentucky Economic Information System, June 1986.

ESTIMATED MALE LABOR SUPPLY
BRECKINRIDGE COUNTY LABOR MARKET AREA

Area	Current				Future
	Total Male	Unemployed	Under-employed	Not in Labor Force	Becoming 18 years of age 1987 thru 1991
Labor Market					
Area*	11,338	3,487	5,361	2,490	7,395
Breckinridge	932	425	507	0	719
Grayson	2,036	918	649	469	913
Hancock	597	200	186	211	373
Hardin	4,099	910	3,189	0	3,278
Meade	1,030	269	414	347	1,210
Ohio	2,644	765	416	1,463	902

ESTIMATED FEMALE LABOR SUPPLY
BRECKINRIDGE COUNTY LABOR MARKET AREA

Area	Current				Future
	Total Female	Unemployed	Under-employed	Not in Labor Force	Becoming 18 years of age 1987 thru 1991
Labor Market					
Area*	15,201	3,129	4,065	8,007	7,118
Breckinridge	1,603	363	350	890	692
Grayson	2,148	437	550	1,161	876
Hancock	940	155	194	591	359
Hardin	4,707	1,222	2,001	1,484	3,191
Meade	2,619	385	539	1,695	1,079
Ohio	3,184	567	431	2,186	921

* Additional workers may be drawn from other nearby counties.

Note: Unemployed - persons unemployed and actively seeking work; Underemployed - persons employed but working only 14 to 26 weeks per year; Not in Labor Force - represents the number of persons who would enter the labor force if suitable employment were available (based on the assumption that persons in Kentucky would like to participate in the labor force in the same proportion that they do nationally).

Sources: Kentucky Cabinet for Human Resources, Kentucky Labor Supply Estimates by County, 1986. Kentucky Department of Economic Development, Future Labor Supply Becoming 18 Years of Age, 1987 thru 1991.

AVERAGE WEEKLY WAGES BY INDUSTRY
BY PLACE OF WORK, 1986

	<u>Breckinridge County</u>	<u>Grayson County</u>	<u>Hancock County</u>
All Industries	\$235.44	\$243.15	\$574.01
Mining & Quarrying	252.35	407.29	273.66
Contract Construction	231.94	232.83	453.07
Manufacturing	269.67	270.49	662.02
Transportation, Communications & Public Utilities	376.71	314.40	*
Wholesale & Retail Trade	180.65	189.22	153.91
Finance, Insurance & Real Estate	312.06	272.57	260.55
Services	194.95	175.14	180.72
State/Local Government	278.75	260.33	266.02
Other	149.94	182.62	*
	<u>Hardin County</u>	<u>Meade County</u>	<u>Ohio County</u>
All Industries	\$281.07	\$339.47	\$329.49
Mining & Quarrying	393.05	288.23	690.78
Contract Construction	316.36	191.72	306.85
Manufacturing	399.87	*	302.31
Transportation, Communications & Public Utilities	337.27	455.84	462.89
Wholesale & Retail Trade	186.23	200.02	190.38
Finance, Insurance & Real Estate	301.67	225.17	274.69
Services	250.75	153.95	211.99
State/Local Government	318.55	305.86	267.45
Other	251.90	157.80	173.02

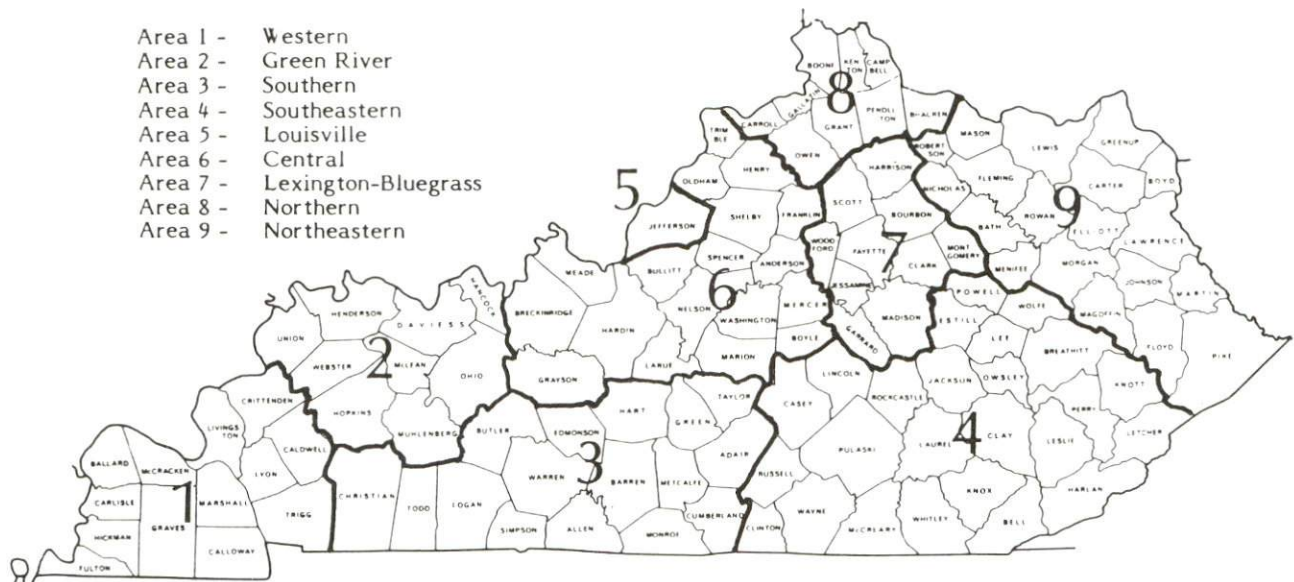
* Not disclosed.

Note: The average weekly wage for each category includes the salaries and wages of all persons working for that type business. For example, the manufacturing category includes both production workers and administrative personnel. Excludes domestic workers, railway workers, certain nonprofit corporations, majority of federal government workers, and self-employed workers.

Source: Kentucky Cabinet for Human Resources, Average Weekly Wages of Workers Covered by Kentucky Unemployment Insurance Law, 1986.

Occupational wage rates for specific industries are usually not available to most government agencies, and wage data furnished to state employment agencies by individual industrial employers are protected from disclosure by federal law. The most reliable up-to-date wage information can be obtained by direct contact with local employers.

Associated Industries of Kentucky, a voluntary organization of Kentucky businesses, regularly collects occupational wage rates and fringe benefits data from participating member firms. Data are compiled for over 127 clearly defined office, production, and service occupations. Tabulations are published for nine geographical areas of Kentucky, as shown on the map below. It should be noted that the data may be weighted by the preponderance of firms in the larger cities and may be somewhat higher than the rates paid in the smaller communities. Data from these tabulations are available, upon request, from the Kentucky Department of Economic Development, Frankfort, Kentucky 40601.



Associated Industries of Kentucky Area Wage Surveys

EXISTING INDUSTRY

BRECKINRIDGE COUNTY MANUFACTURING FIRMS, THEIR PRODUCTS AND EMPLOYMENT

Firm (Establishment date)	Product	Average Employment		
		Total	Male	Female
Hardinsburg				
Eleanor Beard, Inc. (1920)	Hand quilted spreads and comforters, ladies' robes	40	0	40
Breck County Ready Mix Company (1974)	Ready-mix concrete	6	5	1
Cloverport Mill, Division of Jasper American Manu- facturing (1972)	Sawmill	13	13	0
Dobbs Seed and Grain Company (1967)	Feed	17	-	-
The Galante Studio, Inc. (1929)	Needlecraft, com- forts, bedspreads, pillows, diaper bags, and space savers	103	-	-
Herald News Publishing Company, Inc. (1917)	Newspaper, job printing	8	2	6
White Stone Company (1958)	Crushed limestone	15	-	-
Cloverport				
American Olean Tile Company (1889)	Unglazed quarry tile	85	51	34
Irvington				
Community Milling Company (1919)	Flour, feed	3	3	0
The Kentucky Stone Company (1936)	Crushed limestone, aglime	19	19	0

(Continued)

Firm (Establishment date)	Product	Average Employment		
		Total	Male	Female
Westview				
K.B. Niles Lumber (1965)	Rough lumber	1	1	0

Sources: Kentucky Department of Economic Development, 1987 Kentucky Directory of Manufacturers; Division of Research and Planning.

LABOR ORGANIZATIONS IN MANUFACTURING FIRMS

There are no labor unions representing manufacturing firms in Breckinridge County at the present time.

SELECTED INDUSTRIAL SERVICES

<u>Types of Service</u>	<u>Location</u>	<u>Mileage from Hardinsburg</u>
Custom Data Processing	Elizabethtown	42
Custom Plastics Producers	Owensboro	47
Electric Motor Repair	Leitchfield	30
Grinding, Precision & Tool	Owensboro	47
Heat Treating Facilities	Louisville	66
Industrial Equipment & Supplies	Owensboro	47
Industrial Gases	Elizabethtown	42
Industrial Waste Removal	Elizabethtown	42
Machine Shops, Tool & Die	McQuady	7
Metal Castings	McHenry	45
Metal Finishers	Hartford Elizabethtown	39 42
Metal Service Centers	Owensboro	47
Millwrights	Radcliff Owensboro	44 47
Public Warehouse Facilities	Elizabethtown	42

Sources: Kentucky Department of Economic Development, Kentucky Directory of Selected Industrial Services, 1987; Division of Research and Planning.

TRANSPORTATION

Rail

Line serving Cloverport and Irvington - CSX Transportation

Services - Main line; stops are made as needed; switching services are available; team track and siding space is available in Irvington. The nearest piggyback facilities are located in Louisville, Kentucky, 78 miles northeast of Cloverport and 48 miles northeast of Irvington.

For details on routing, schedules, rates, and services contact:

Manager
Industrial Development
CSX Transportation
908 West Broadway
P. O. Box 2157
Louisville, Kentucky 40201
(502) 587-7746

Highways

U.S. Highway 60 connects Hardinsburg, Cloverport and Irvington. U.S. 60, a "AAA"-rated (80,000-pound gross load limit) trucking highway, is the principal route serving Breckinridge County. Other highways serving the county are Kentucky Highways 79, 86, 259 and 261.

The Western Kentucky Parkway, a multi-lane toll road, is 31 miles south of Hardinsburg via Kentucky 259, or 42 miles southeast of Hardinsburg via U.S. 60 and Kentucky 86. Kentucky Highways 86 and 259 are "AA"-rated (62,000-pound gross load limit) trucking highways between Hardinsburg and the Western Kentucky Parkway.

Interstate 65, a major north-south corridor, is also accessible 42 miles southeast of Hardinsburg via U.S. 60 and Kentucky 86.

Interstate 64 is accessible 50 miles north of Hardinsburg via U.S. 60 and Indiana Route 37, and also 34 miles north of Irvington via Kentucky Route 79 and Indiana Route 135.

The Green River Parkway, another of Kentucky's multi-lane toll roads, is 37 miles southwest of Hardinsburg via "AA"-rated Kentucky 261 and "AAA"-rated Kentucky 69.

Highway improvement projects currently under way in Breckinridge County include construction of by-passes around Hardinsburg and Cloverport; and reconstruction and widening of U.S. Highway 60 from the by-pass at Hardinsburg east to Irvington.

Truck Service

ARA/Smith's*
 Jones Truck Lines, Inc.*
 Majors Transit, Inc.*

Manning Motor Express, Inc.*
 Overnite Transportation Company*
 Robbins Motor Express, Inc.* (T)

(T) Terminal in Hardinsburg.

* Interstate and intrastate service

Source: American Motor Carrier Directory, Fall 1987; Breckinridge County Industrial and Economic Development Foundation, Inc.

HIGHWAY MILES AND TRUCK TRANSIT TIME IN DAYS FROM HARDINSBURG, KENTUCKY, TO SELECTED MARKET CENTERS

City	Highway Miles	Delivery		City	Highway Miles	Delivery	
		Time TL				Time TL	
Atlanta, GA	388	2		Los Angeles, CA	2,100	6	
Baltimore MD	664	3		Louisville, KY	66	1	
Birmingham, AL	342	2		Nashville, TN	146	1	
Chicago, IL	358	2		New Orleans, LA	663	3	
Cincinnati, OH	167	1		New York, NY	814	5	
Cleveland, OH	411	2		Pittsburgh, PA	454	1	
Detroit, MI	426	3		St. Louis, MO	255	1	
Knoxville, TN	307	2					

Note: Mileage computations are via the best interstate or primary highways, not necessarily the most direct route of travel.

Sources: Rand McNally Deluxe Motor Carriers' Road Atlas, 1987. Official Kentucky Mileage Map, 1980. Delivery time - Overnite Transportation Company, P. O. Box 99308, Louisville, Kentucky.

Air

Local

Breckinridge County Airport
Location: 1 mile east of Hardinsburg
Runways: 1 paved
Length: 3,500 feet
Traffic
Control: Wind sock
Lighting: Sunset to sunrise, rotating beacon
Services: Tie-downs

Nearest Scheduled Commercial Airline Service*

Standiford Field
Location: 4 miles southeast of center of Louisville, Kentucky;
70 miles northeast of Hardinsburg
Runways: 2 paved
Length: 10,000 feet; 7,250 feet
Traffic
Control: Control Tower
Lighting: Runways, obstructions, beacon and approach; touch-down lights and center line on one runway
Services: American Airlines, Delta, Eastern, Ozark, Piedmont, Northeast, TWA, United, USAir, Jetstream, Allegheny Commuter, Comair, Florida Express; fuel - 100 and jet-A; major A & P repairs, major Avionics repairs, APU, charter, oxygen, U.S. Customs; taxi, car rentals, limousine, courtesy car, public transit; Weather Bureau, restaurant, snack bar

Air Freight
Service: Air freight terminal

Air Express Service

Several major companies offer air express services in Kentucky. These companies provide a quick means of shipping small to medium-sized packages expeditiously.

Water

The Ohio River forms the north-northwestern boundary of Breckinridge County. Hardinsburg is located 47 miles east of Owensboro, Kentucky, where a riverport is maintained. The Owensboro Riverport Authority operates the riverport facility on a 50-acre site at Ohio River Mile 759.

* Commuter air carrier service is provided by Allegheny Commuter and Northwest Air Link at the Owensboro-Daviess County Airport which is located 3 1/2 miles west-south-west of Owensboro, Kentucky; 51 miles west of Hardinsburg.

POWER AND FUEL

Electricity

Company serving Breckinridge County - Meade County Rural Electric
Cooperative Corporation
Source of power - Big Rivers Electric Corporation
For industrial rates contact:

Meade County RECC
P. O. Box 367
Brandenburg, Kentucky 40108
(502) 422-2162

Natural Gas

Company serving Hardinsburg - Western Kentucky Gas Company
Source of supply - Texas Gas Transmission Corporation
Size of transmission mains - 26-inch (supplier); 2-inch (distributor)
Distribution mains - 2 and 3 inches
Distribution pressure - Up to 35 psi
Btu content - 1,000 per cubic foot
Specific gravity - .60
For rates and supplies contact:

Western Kentucky Gas Company
311 West 7th Street
Owensboro, Kentucky 42301
(502) 685-8067

Company serving Cloverport - Western Kentucky Gas Company
Source of supply - Texas Gas Transmission Corporation
Size of transmission mains - 6-inch (supplier); N/A (distributor)
Distribution mains - 2 to 6 inches
Distribution pressure - Up to 30 psi
Btu content - 1,000 per cubic foot
Specific gravity - .60
For rates and supplies contact:

Western Kentucky Gas Company
311 West 7th Street
Owensboro, Kentucky 42301
(502) 685-8067

Company serving Irvington - Valley Gas, Inc.

Source of supply - Texas Gas Transmission Corporation

Size of transmission mains - 30 and 26 inches (supplier); 3 inches (distributor)

Distribution mains - 2 and 4 inches

Distribution pressure - 10 to 20 psi

Btu content - 1,024 per cubic foot

Specific gravity - 0.58

For rates and supplies contact:

Valley Gas, Inc.
P. O. Box 218
Irvington, Kentucky 40146
(502) 547-2455

Other Fuels

Propane

Thermogas Company
Highway 60 West
Hardinsburg, Kentucky 40143

Irvington Gas Company, Inc.
P. O. Box 55
Irvington, Kentucky 40146

Lyons Skelgas Company
P. O. Box 280
Hardinsburg, Kentucky 40143

Fuel oils

Distillate fuel oil -

Ashland Oil Company
Highway 261 South
Hardinsburg, Kentucky 40143

Ken Stiff Oil Company
Highway 60
Garfield, Kentucky 40140

Emmick Marketing, Inc. (Chevron)
Highway 60 West
Hardinsburg, Kentucky 40143

Residual fuel oil - Arrangements must be made with the refinery.

Low sulphur content coal - Available in Kentucky.

WATER AND SEWERAGE

Public Water Supply

Company serving Hardinsburg - City of Hardinsburg
P. O. Box 149
Hardinsburg, Kentucky 40143
(502) 756-2213 (office)
(502) 257-2484 (plant)

Source - Rough River Reservoir
Treatment plant capacity - 1,000,000 gallons per day
Average daily consumption - 350,000 gallons
Peak daily consumption - 550,000 gallons
Treatment processes - Rapid mix, coagulation, flocculation, filtration,
chlorination, fluoridation
Storage capacity - 700,000 gallons, including clear well
Size lines - 2 through 10 inches
Water pressure - 50 to 80 psi

MONTHLY WATER RATES

First	2,000 gallons	\$8.00 (Minimum)
Next	3,000 gallons	3.50 per M gallons
Next	5,000 gallons	2.80 per M gallons
Next	10,000 gallons	2.00 per M gallons
All over	20,000 gallons	1.60 per M gallons

Minimum Monthly Charges for First 2,000 Gallons Used -

3/4-inch meter -	\$ 8.00
1-inch meter -	10.50
1 1/2-inch meter -	12.50
2-inch meter -	25.00
3-inch meter -	40.00

Tap-on charge:

3/4-inch meter - \$300
Larger than 3/4-inch meter - \$300, plus cost of meter

Company serving Cloverport - Cloverport Water & Sewer Department*
227 West Main Street
Cloverport, Kentucky 40111-1399
(502) 788-6487

Source - 2 wells; each has a pumping capacity of 300 gpm
Treatment plant capacity - 350,000 gallons per day
Average daily consumption - 139,450 gallons
Peak daily consumption - 262,000 gallons
Treatment processes - Aeration, chlorination, fluoridation
Storage capacity - 370,000 gallons, including clear well
Size lines - 4 through 10 inches
Water pressure - 78 to 94 psi

MONTHLY WATER RATES

Inside City

First	2,000 gallons	\$8.00 (Minimum)
Next	3,000 gallons	3.00 per M gallons
Next	5,000 gallons	2.75 per M gallons
Next	15,000 gallons	2.50 per M gallons
All over	25,000 gallons	1.50 per M gallons

Outside City

125 percent of inside city rates

Tap-on charge:

3/4-inch meter - \$150

Larger than 3/4-inch meter - Cost of labor and materials

* The Cloverport Water and Sewer Department is planning to construct 20 miles of water line to serve western Breckinridge County and eastern Hancock County. The \$1.2 million project is scheduled for completion in late 1988.

Company serving Irvington - Irvington Water System*
P. O. Box 374
Irvington, Kentucky 40146
(502) 547-3835 (office)
(502) 547-6336 (plant)

Source - 420 gpm wells
Treatment plant capacity - 240,000 gallons per day
Average daily consumption - 130,000 gallons
Peak daily consumption - 180,000 gallons
Treatment processes - Coagulation, flocculation, sedimentation,
filtration, chlorination, fluoridation
Storage capacity - 238,500 gallons, including clear well
Size lines - 3/4 through 8 inches
Water pressure - 52 to 68 psi

MONTHLY WATER RATES

Inside City

First	2,000 gallons	\$7.58 (Minimum)
Next	3,000 gallons	2.32 per M gallons
Next	5,000 gallons	1.96 per M gallons
All over	10,000 gallons	1.72 per M gallons

Outside City

First	2,000 gallons	\$11.08 (Minimum)
Next	3,000 gallons	3.37 per M gallons
Next	5,000 gallons	2.86 per M gallons
All over	10,000 gallons	2.54 per M gallons

Tap-on charge:

3/4-inch meter - \$250, plus \$100 for road crossing when
necessary
Larger than 3/4-inch meter - Cost of labor and materials
A \$50.00 meter deposit is required for both residential and
commercial customers.

* In joint cooperation with the city of Irvington, the city of Hardinsburg is designing a 12.5-mile water main extension to Irvington and constructing a 200,000-gallon water storage tank. Irvington city officials have entered into an agreement with the Hardinsburg Water Department to purchase treated water from Hardinsburg and then distribute the water to the customers in Irvington. Total cost of the project is estimated at \$1,000,000 and is scheduled for completion by mid-1988.

Raw Water

Surface water sources - Ohio River, Rough River, Rough River Lake, Tules Creek, Hardins Creek, Sinking Creek, Clover Creek and its Beech and Tar Forks

Average discharge - Ohio River at Louisville, Kentucky - 115,800 cfs (57 years, USGS); Rough River near Dundee, Kentucky - 1,072 cfs (46 years USGS, unadjusted)

Expected ground water yield - 500 to 1,000 gpm along the Ohio River; 50 to 200 gpm along a narrow strip from southwest to northeast Breckinridge County; 5 to 50 gpm at eastern and southwestern boundaries of the county; 5 gpm or less in the remainder of the county

Sewerage

Company serving Hardinsburg - Hardinsburg Waste Water Plant*
P. O. Box 149
Hardinsburg, Kentucky 40143
(502) 756-2213

Design capacity - 200,000 gallons per day

Average daily flow - At capacity

Type of treatment - Primary and secondary

Treatment processes - Grit removal, primary sedimentation, trickling filter, secondary sedimentation, chlorination, anaerobic digester, sludge drying beds

Treated effluent discharged into - Hardins Creek

Size of sanitary mains - 4 through 12 inches

Monthly rates - 40 percent of monthly water bill

Tap-on charge: \$100

* The city of Hardinsburg is in the process of constructing a new 732,000-gallon-per-day wastewater treatment plant. The \$3,300,000 facility will use an extended aeration treatment process. Completion date is scheduled for mid-1989.

Company serving Cloverport - Cloverport Water and Sewer Department*
227 West Main Street
Cloverport, Kentucky 40111-1399
(502) 788-6487

Design capacity - 200,000 gallons per day
Average daily flow - 146,000 gallons
Type of treatment - Primary and secondary
Treatment processes - Screening, grit removal, extended aeration,
chlorination, aerobic digester, sludge drying beds, sludge
holding tank
Treated effluent discharged into - Ohio River
Size of sanitary mains - 4, 6, and 8 inches
Size of storm mains - 8 through 32 inches
Monthly rates - Based on water usage; minimum bill - \$4.70 for first
2,000 gallons used; \$2.35 for each additional 1,000 gallons used;
a surcharge of \$3.80 is assessed to each monthly bill
Tap-on charge: \$150

Irvington

Construction of a wastewater treatment facility for the city of Irvington is expected to begin in mid-1988. The \$2,500,000 project will include a 144,000-gallon-per-day tertiary treatment plant and a small diameter collection system.

* The Cloverport Water and Sewer Department recently completed a \$775,000 sewer line extension project. Two new lift stations were constructed as well. The entire city is now served by the sewerage system.

CLIMATE

Breckinridge County

Temperature

Normal (30-year record)	55.70 degrees
Average annual 1986	57.00 degrees
Record highest, July 1954 (46-year record)	105.00 degrees
Record lowest, February 1951 (46-year record)	-23.00 degrees
Normal heating degree days (30-year record)	4,729
(Heating degree day totals are the sums of negative departures of average daily temperatures from 65 degrees F.)	

Precipitation

Normal (30-year record)	41.55 inches
Mean annual snowfall (30-year record)	14.10 inches
Total precipitation 1986	37.68 inches
Mean number days precipitation (.01 inch or more) (46-year record)	115.70
Mean number days thunderstorms (46-year record)	45.10

Prevailing winds (through 1963)

South-Southwest

Relative Humidity (25-year record)

Midnight	78 percent
6 a.m.	81 percent
Noon	59 percent
6 p.m.	62 percent

Source: U.S. Department of Commerce, Environmental Science Services Administration, Climatological Data, 1986. Station of record: Evansville, Indiana.

LOCAL GOVERNMENT

Structure

In Hardinsburg, Cloverport and Irvington, each city elects a mayor to serve a four-year term and six council members to serve two-year terms.

Breckinridge County is served by a county judge/executive and six magistrates. Each holds a four-year term.

Planning and Zoning

City agency - Hardinsburg Planning and Zoning Commission
Zoning enforced - Within the city of Hardinsburg
Subdivision regulations enforced - Within the city of Hardinsburg
Local codes enforced - None
Mandatory state codes enforced - Kentucky Plumbing code, National Electric Code, Kentucky Boiler Regulations and Standards, Kentucky Building Code (modeled after BOCA code)

City agency - Cloverport Planning and Zoning Commission
Zoning enforced - Within the city of Cloverport
Subdivision regulations enforced - Within the city of Cloverport
Local codes enforced - None
Mandatory state codes enforced - Kentucky Plumbing code, National Electric Code, Kentucky Boiler Regulations and Standards, Kentucky Building Code (modeled after BOCA code)

City agency - Irvington Planning and Zoning Commission
Zoning enforced - Within the city of Irvington
Subdivision regulations enforced - Within the city of Irvington
Local codes enforced - Building and housing
Mandatory state codes enforced - Kentucky Plumbing code, National Electric Code, Kentucky Boiler Regulations and Standards, Kentucky Building Code (modeled after BOCA code)

Local Fees and Licenses

The city of Hardinsburg levies license fees on various types of businesses ranging from \$25 to \$100; in addition, a fee of \$10 is charged for automobile stickers. The city of Cloverport also requires several types of businesses to pay a license fee ranging from \$20 to \$30 annually; and a \$10 fee is charged for automobile stickers. The city of Irvington charges businesses \$15 annually for a license fee; and \$10 annually for both an automobile sticker and unloading license.

A 3 percent tax is levied on utilities receipts for schools in Breckinridge County. Tax is paid by all consumers of utilities as an add-on to the utilities bills. Exempted are receipts from utilities services that are resold and the receipts from the sale of energy or energy producing fuels that exceed 3 percent of the cost of production in manufacturing, processing, mining or refining.

State and Local Property Taxes

All property in Kentucky, except items exempted by the state constitution, is taxed by the state. Property which also may be taxed by local jurisdictions includes land and buildings, finished goods inventories, automobiles, trucks, office furniture and office equipment. Local taxing jurisdictions in Kentucky include counties, cities, and school districts.

All property in Kentucky is assessed at 100 percent of fair cash value.

COMBINED STATE AND LOCAL RATES PER \$100 VALUATION, 1986

	Hardinsburg	Cloverport/ Breckinridge County Schools	Cloverport/ Cloverport Schools
Land and Buildings	\$0.940	\$0.747	\$1.077
Manufacturing			
Machinery	0.150	0.150	0.150
Pollution Control			
Equipment	0.150	0.150	0.150
Inventories			
Raw materials	0.001	0.001	0.001
Goods in Process	0.001	0.001	0.001
Finished Goods	0.765	0.560	0.890
Automobiles & Trucks	1.191	1.040	1.370
Other Tangible			
Personal Property	1.214	1.009	1.339
Intangibles (Accounts receivable*, money in hand, stock, notes, bonds)	0.250	0.250	0.250
Goods Stored in Public Warehouses in Transit Status	0.001	0.001	0.001
Private Leaseholds in Industrial Revenue Bond Financed Facilities	0.015	0.015	0.015

(Continued)

	Irvington	Unincorporated Breckinridge County
Land and Buildings	\$0.949	\$0.630
Manufacturing		
Machinery	0.150	0.150
Pollution Control		
Equipment	0.150	0.150
Inventories		
Raw materials	0.001	0.001
Goods in Process	0.001	0.001
Finished Goods	0.774	0.455
Automobiles & Trucks	1.231	0.911
Other Tangible		
Personal Property	1.223	0.904
Intangibles (Accounts receivable*, money in hand, stock, notes, bonds)	0.250	0.250
Goods Stored in Public Warehouses in Transit Status	0.001	0.001
Private Leaseholds in Industrial Revenue Bond Financed Facilities	0.015	0.015

* Accounts receivable are taxed at 85 percent of face value, for an effective rate of \$0.2125 per \$100 valuation.

Safety

Police	Hardinsburg	Cloverport
Total staff	3 full-time 2 part-time	2 full-time 1 part-time 2 volunteers
Radio-patrol cars	3	2
	Irvington	Breckinridge County
Total staff	2	4
Radio-patrol cars	1	6
Fire*	Hardinsburg	Cloverport
Insurance Services Office, Public Protection Classification	7	7
Volunteers	17	17
	Irvington	Breckinridge County
Insurance Services Office, Public Protection Classification	6	10
Volunteers	24	100
Rescue Service		

Rescue service is provided to the Hardinsburg community by Hardinsburg Rescue Squad, to the Cloverport community by Cloverport Area Volunteer Fire Department, and to the Irvington community by Irvington Fire Department Rescue Squad.

Refuse Collection and Disposal

The city of Hardinsburg and the city of Cloverport provide refuse collection and disposal service to businesses and residents. Both the city of Irvington and the remainder of unincorporated Breckinridge County contract through private companies for this type of service.

* Includes copyrighted material of ISO Commercial Risk Services, Inc., with its permission.

EDUCATION

Public Schools

	Cloverport Independent*	Breckinridge County**
Total Enrollment (Fall 1987)	326	2,640
Kindergarten	24	230
Elementary	168	1,617
Junior High	43	-
High School	91	793
 Pupil-Teacher Ratio (1985-86)	 15-1	 20-1
 Percent High School Graduates to College (1986-87)	 22.7	 43.4
 Expenditures Per Pupil (1985-86)	 \$2,132.43	 \$1,975.37

Nonpublic Schools

<u>School</u>	<u>Enrollment</u>	<u>Grades</u>
St. Romauld Elementary	225	K-8
St. Romauld High School	100	9-12

* The Cloverport Independent School System recently renovated its high school building. Total cost of the project exceeded \$400,000.

** Recently completed projects by the Breckinridge County School System include the construction of a \$297,000 administration building; installation of a new roof and renovation of the gymnasium at the high school, which totaled \$340,000; and a \$100,000 renovation of all elementary school classrooms.

Area Colleges and Universities

<u>Name</u>	<u>Location (Miles distant)</u>	<u>Enrollment (Fall, 1986)</u>	<u>Highest Degree Conferred</u>
Elizabethtown Community College	Elizabethtown (42)	2,091	Associate
Brescia College	Owensboro (47)	709	Baccalaureate*
Kentucky Wesleyan College	Owensboro (47)	791	Baccalaureate*
Owensboro Community College	Owensboro (47)	1,095	Associate
Bellarmino College	Louisville (66)	2,644	Masters
Jefferson Community College	Louisville (66)	6,996	Associate
Spalding University	Louisville (66)	1,154	Doctorate
University of Louisville	Louisville (66)	20,217	Doctorate, M.D., D.M.D., J.D.
Fort Knox Extension Campuses**			

* Courses in masters degree programs are taught on campus by faculty members of Western Kentucky University or Murray State University. The degrees are issued by Western Kentucky University or Murray State University.

** Seven universities operate extension campuses at Fort Knox Military Reservation, approximately 37 miles east of Hardinsburg. The extension campuses are operated by: Eastern Kentucky University, Eldorado College, Embry Riddle Aeronautical University, University of Kentucky, University of Louisville, University of Southern California, and Western Kentucky University.

Vocational Training

The Bluegrass State Skills Corporation, an independent public corporation created and funded by the Kentucky General Assembly, provides programs of skills training to meet the needs of business and industry from entry level to advanced training, and from upgrading present employees to retraining experienced workers.

The Bluegrass State Skills Corporation is the primary source for skills training assistance for a new or existing company. The Corporation works in partnership with other employment and job training resources and programs, as well as Kentucky's economic development activities, to package a program customized to meet the specific needs of a company.

Vocational training is available at both the state vocational-technical schools and the area vocational education centers. The state vocational-technical schools are post-secondary institutions. The area vocational education centers are designed to supplement the curriculum of high school students. Both the state vocational-technical schools and the area vocational education centers offer evening courses to enable working adults to upgrade current job skills.

Arrangements can be made to provide training in the specific production skills required by an industrial plant. Instruction may be conducted either in the vocational school or in the industrial plant, depending upon the desired arrangement and the availability of special equipment.

Nearest State School

Elizabethtown State Vocational-Technical School
Elizabethtown, 42 miles east of Hardinsburg

Agriculture	Electricity
Agricultural Mechanics	Electronics
Business & Office	Industrial Machine Maintenance
Accounting/Management	Machine Shop
Clerical	Plumbing
Secretarial	Radio & TV Repair
Word Processing	Welding
Consumer & Home Economics	Public Service Occupations
Commercial Foods	Business/Industry Security
Consumer & Family Life	Training
Skills	CPR Training
Industrial Education	Electrical Safety Training
Air Conditioning	Emergency Medical Care
Appliance Repair	Fire Service Training
Auto Mechanics	First Aid & Safety
Carpentry	Rescue & Emergency Services
Diesel Mechanics	Training
Drafting (with CAD/CAM)	

(Continued)

Daviess County State Vocational-Technical School
Owensboro, 47 miles west of Hardinsburg

Business & Office	Drafting (with CAD/CAM)
Clerical	Welding
Secretarial	Learning Resource Center
Consumer & Home Economics	Public Service Occupations
Child Care Services	Business/Industry Security
Commercial Foods	Training
Health & Personal Services	CPR Training
Occupations	Electrical Safety Training
Cosmetology	Emergency Medical Care
Industrial Education	Fire Service Training
Auto Body Repair	First Aid & Safety
Auto Mechanics	Rescue & Emergency Services
Diesel Mechanics	Training

Owensboro Vocational-Technical School
Owensboro, 47 miles west of Hardinsburg

Health & Personal Services	Instrumentation
Health Services	Machine Shop
Practical Nursing	Masonry
Industrial Education	Plumbing
Air Conditioning	Radio & TV Repair
Carpentry	Sheet Metal
Electricity	Welding
Electronics	Learning Resource Center

Nearest Area Education Center

Breckinridge County Area Vocational Education Center
Harned, 4 miles southeast of Hardinsburg

Business & Office	Industrial Education
Accounting/Management	Auto Mechanics
Clerical	Carpentry
Secretarial	Machine Shop
Health & Personal Services	Welding
Occupations	
Health Services	

HEALTH

Local Medical Personnel

	Hardinsburg	Cloverport	Irvington
Physicians -	4	1	2
Dentists -	2	1	2

Hospitals

<u>General Hospital</u>	<u>Location</u>	<u>Beds</u>
Breckinridge Memorial Hospital	Hardinsburg	45

Medical staff - 8 doctors, 15 registered nurses, and 6 licensed practical nurses

Other Medical Facilities

Lincoln Trail District Health Department, Breckinridge County Health Center (a public health facility)*
North Central Comprehensive Care Center (a mental health-mental retardation board) - Hardinsburg

Ambulance Service

Name - Trent-Dowell Funeral Home - Hardinsburg
Staff - 2 emergency medical technicians

* The Lincoln Trail District Health Department recently spent \$161,000 for construction of the 6,500-square-foot Breckinridge County Health Center.

OTHER LOCAL FACILITIES

Communications

Telephone -	South Central Bell Telephone Company serves Hardinsburg and Cloverport; Brandenburg Telephone Company serves Irvington
Telegraph -	Western Union Toll-Free number, 1-800-325-6000
Newspapers - Weekly and circulation -	Breckinridge County Herald News 5,800
Radio -	WHIC-AM/FM - Hardinsburg
Television - Airwave reception from -	Bowling Green and Louisville, Kentucky; Evansville, Indiana
Cable service -	Tele-Media Corporation serves Hardinsburg and Cloverport
Educational Television -	The Kentucky Educational Television (K.E.T.) network is available statewide

Library Services

Public library - Breckinridge County Public Library - main office in Hardinsburg, branches at Cloverport and Irvington
Size collection - 73,728 volumes
Circulation, 1986-87 - 101,190, includes books, audiovisual, and magazines

Religious Institutions

Breckinridge County

Denominations -	Baptist	Jehovah's Witnesses
	Catholic	Missionary
	Christian	Nazarene
	Church of Christ	Presbyterian
	Holiness	United Methodist
	Independent	Wesleyan
Nearest Synagogues - Congregations -	Owensboro, 47 miles west of Hardinsburg Adath Israel (reform)	

Financial Institutions

<u>Banks</u>	<u>Assets</u>	<u>Deposits</u>	<u>Statement Date</u>
Breckinridge Bank (Cloverport)	\$10,332,917.18	\$ 8,331,278.98	6/30/87
The Farmers Bank (Hardinsburg and Irvington)	36,527,765.15	32,857,515.08	6/30/87
First State Bank (Hardinsburg and Irvington)	67,261,029.07	60,039,264.62	6/30/87
<u>Savings and Loan Associations</u>	<u>Assets</u>	<u>Deposits</u>	<u>Statement Date</u>
First Federal Savings & Loan Association of Leitchfield*	\$36,575,165.42	\$34,273,017.47	12/31/87

Hotels and Motels

	Hardinsburg	Irvington
Total number -	1	1
Total rooms -	10	16

* Figures include totals for main office in Leitchfield and branch office in Hardinsburg.

RECREATION

Local

A wide variety of recreational facilities and events are available in Breckinridge County. The Breckinridge Community Center at Hardinsburg has a 9-hole golf course, a swimming pool, tennis courts, and game and recreation areas. The Hardinsburg city park features volleyball, basketball, and tennis courts, a playground, and a picnic area. Other miscellaneous facilities in Hardinsburg include playgrounds, ball fields, tennis courts, and an FFA camp.

The Breckinridge County Fairgrounds, located near Hardinsburg, features a lighted softball field for adult leagues, in addition to the regular fair facilities. The fair is held the first week in September and offers 6 days of contests, displays, arts and crafts activities, and a parade.

Cloverport has a park situated on the Ohio River featuring boat-launching facilities. The U.S. Army Corps of Engineers has constructed a boat-launching ramp also. Other facilities at Cloverport include picnic areas, tennis courts and ball fields.

Annual events in Cloverport include the Sacajawea Festival, held the first weekend in August, which features a parade, food, contests, plays, arts and crafts, music and fireworks. The Cloverport boosters hold a spring picnic with games and contests. During fishing season, Cloverport hosts bass tournaments each weekend.

Facilities in Irvington include the Chuck Carter Memorial Park with tennis courts, a lighted ball park, and a playground; and Irvington Community Park, which features a ball field, a basketball court, a playground, and a picnic area. A privately-owned skating rink and an arcade are also located at Irvington.

The Yellowbank Wildlife Management Area, located at the northern tip of Breckinridge County, is a 4,055-acre area popular for seasonal hunting.

Area (Within 70 miles of Hardinsburg)

Noteworthy for its spaciousness, **Rough River Dam State Resort Park** at Falls of Rough is 20 miles south of Hardinsburg. The 637-acre park on Rough River Lake has a 40-room lodge with a dining room, a coffee shop, a gift shop, a meeting room, and a 2,500-foot lighted airstrip. Cottages and camping sites are also available. Recreational facilities include a launching ramp, a dock with open and covered slips, fishing and pleasure boat rentals, a 9-hole, 3-par golf course, a swimming pool, a sand beach with a bathhouse complex, tennis courts, an archery range, hiking and fitness trails, picnic and playground areas, and planned recreation. Cruise boat excursions on Rough River Lake are available on the "Lady of the Lake" in season.

Owensboro, 47 miles west of Hardinsburg, is Kentucky's third largest city. Owensboro is a source of many entertainment and recreational facilities associated with larger communities. Points of interest include museums, an orchestra and two colleges.

Nolin River Lake, 48 miles southeast of Hardinsburg, is just north of Mammoth Cave National Park. The lake has a surface area of 5,800 acres and offers facilities for camping, boating, and fishing.

Ben Hawes State Park, 55 miles west of Hardinsburg near Owensboro, is a 300-acre park which is open year-round. It contains a playground, tennis courts, hiking trails, a picnic area and shelters, including an 18-hole and 9-hole golf course, pro shop, driving range and archery range.

Abraham Lincoln Birthplace National Historic Site, located 57 miles southeast of Hardinsburg near Hodgenville, features the log cabin which was the birthplace of Abraham Lincoln, enclosed within a granite memorial shrine. The grounds include 116 acres of the original Thomas Lincoln farm and a visitors' center with audiovisual programs and exhibits on the Lincoln family.

Louisville, 66 miles northeast of Hardinsburg, provides a wide variety of recreational opportunities. The most noted recreational event in Louisville is the Kentucky Derby at Churchill Downs. The "Run for the Roses" is the oldest continuously held horse race in the United States. Other attractions include: Kentucky Center for the Arts, Macauley Theatre, Actors Theatre of Louisville, Louisville Children's Theatre, the Louisville Bach Society, the Louisville Orchestra, the Louisville Ballet, the Kentucky Opera Association, several museums, the Louisville Zoological Gardens, University of Louisville sporting events, rock concerts, and the "Belle of Louisville" sternwheeler.

My Old Kentucky Home State Park, 68 miles east of Hardinsburg in Bardstown, portrays an image of the South's gentle and leisurely home life before the Civil War. The restored Georgian Colonial mansion is where composer Stephen Foster visited and where he was inspired to write "My Old Kentucky Home." One of the nation's most successful outdoor dramas, "The Stephen Foster Story", is presented in the park's amphitheatre during the summer months. The park also offers a 40-site campground, a gift shop, a 9-hole golf course and pro shop, a picnic area, and planned recreation.

Bernheim Forest Arboretum and Nature Center, located 69 miles east of Hardinsburg, is a privately endowed 10,000-acre forest and wildlife refuge. The area contains over 1,400 labeled varieties of plants, trees and shrubs; ornamental gardens; a museum; nature trails and waterfowl ponds.

COMMUNITY IMPROVEMENTS

Recent

The Cloverport Water and Sewer Department recently completed a \$775,000 sewer line extension project. Two new lift stations were constructed as well. The entire city is now served by the sewerage system.

A 38-acre industrial park, located near U.S. 60 in Hardinsburg, was recently developed. The site provides access to all utilities including natural gas, electric, water and sewerage.

Recently completed projects by the Breckinridge County School System include the construction of a \$297,000 administration building; installation of a new roof and renovation of the gymnasium at the high school, which totaled \$340,000; and a \$100,000 renovation of all elementary school classrooms.

The Cloverport Independent School System recently renovated its high school building. Total cost of the project exceeded \$400,000.

The Lincoln Trail District Health Department recently spent \$161,000 for the construction of the 6,500-square-foot Breckinridge County Health Center.

Under Way

The city of Hardinsburg is in the process of constructing a new 732,000-gallon-per-day wastewater treatment plant. The \$3,300,000 facility will use an extended aeration treatment process. Completion date is scheduled for mid-1989.

In joint cooperation with the city of Irvington, the city of Hardinsburg is designing a 12.5-mile water main extension to Irvington and constructing a 200,000-gallon water storage tank. Irvington city officials have entered into an agreement with the Hardinsburg Water Department to purchase treated water from Hardinsburg and then distribute the water to the customers in Irvington. Total cost of the project is estimated at \$1,000,000 and scheduled for completion by mid-1988.

Highway improvement projects currently under way in Breckinridge County include construction of bypasses around Hardinsburg and Cloverport; and reconstruction and widening of U.S. Highway 60 from the bypass at Hardinsburg east to Irvington.

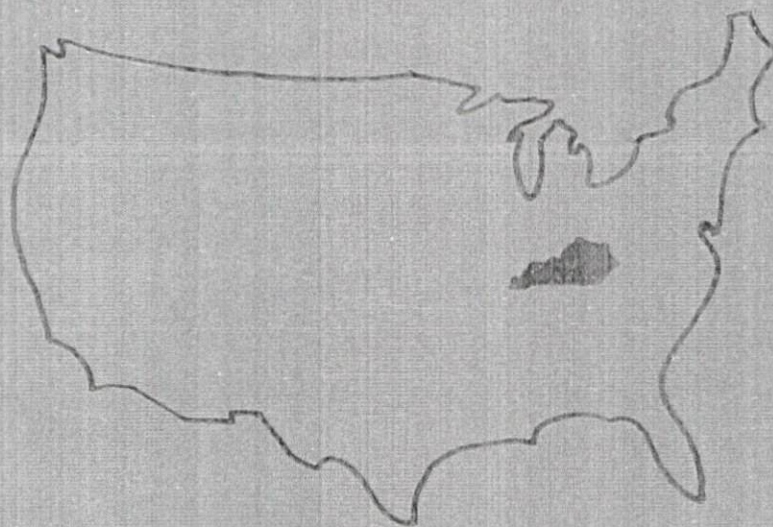
The city of Irvington has been awarded a \$750,000 Community Development Block Grant designated for improvements of a neighborhood in the northern portion of Irvington. The project should be completed by mid-1989.

Construction of a four-classroom addition to the Breckinridge County School System's elementary schools is under way and scheduled for completion in Spring 1988.

Planned

Construction of a wastewater treatment facility for the city of Irvington is expected to begin in mid-1988. The \$2,500,000 project will include a 144,000-gallon-per-day tertiary treatment plant and a small diameter collection system.

The Cloverport Water and Sewer Department is planning to construct 20 miles of water line to serve western Breckinridge County and eastern Hancock County. The \$1.2 million project is scheduled for completion in late 1988.



Kentucky Commerce Cabinet
Department of Economic Development
Capital Plaza Tower
Frankfort, Kentucky 40601
(502) 564-7140