

1988

Industrial Resources: Bullitt County

Kentucky Library Research Collections
Western Kentucky University, spcol@wku.edu

Follow this and additional works at: https://digitalcommons.wku.edu/bullitt_cty

 Part of the [Business Administration, Management, and Operations Commons](#), [Growth and Development Commons](#), and the [Infrastructure Commons](#)

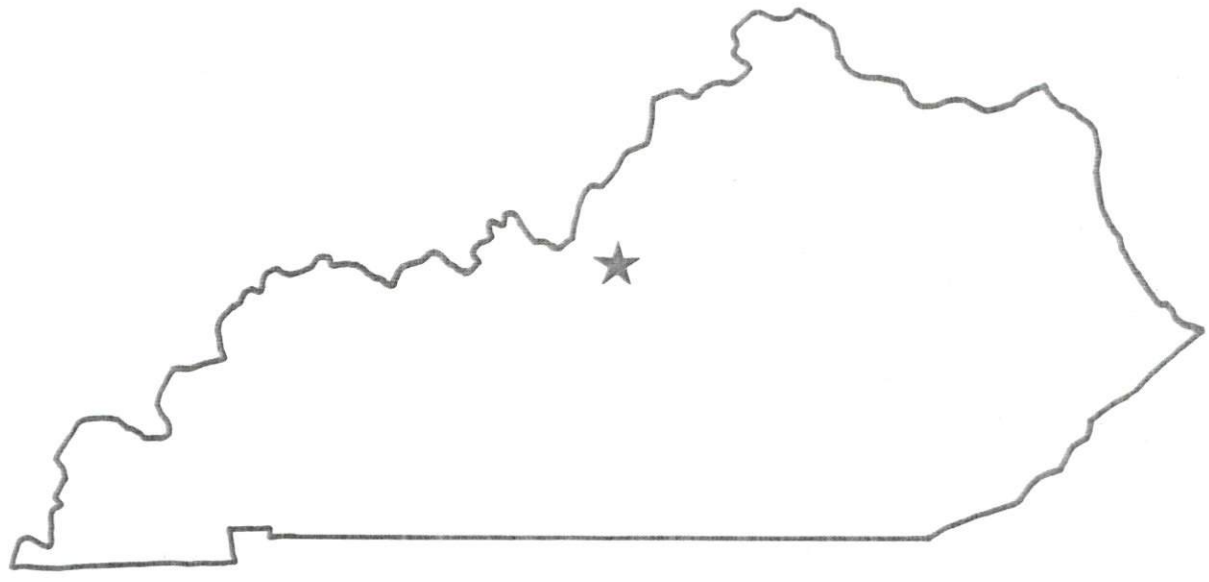
Recommended Citation

Kentucky Library Research Collections, "Industrial Resources: Bullitt County" (1988). *Bullitt County*. Paper 6.
https://digitalcommons.wku.edu/bullitt_cty/6

This Report is brought to you for free and open access by TopSCHOLAR®. It has been accepted for inclusion in Bullitt County by an authorized administrator of TopSCHOLAR®. For more information, please contact topscholar@wku.edu.

RESOURCES FOR ECONOMIC DEVELOPMENT

Bullitt County



KENTUCKY
Open for Business

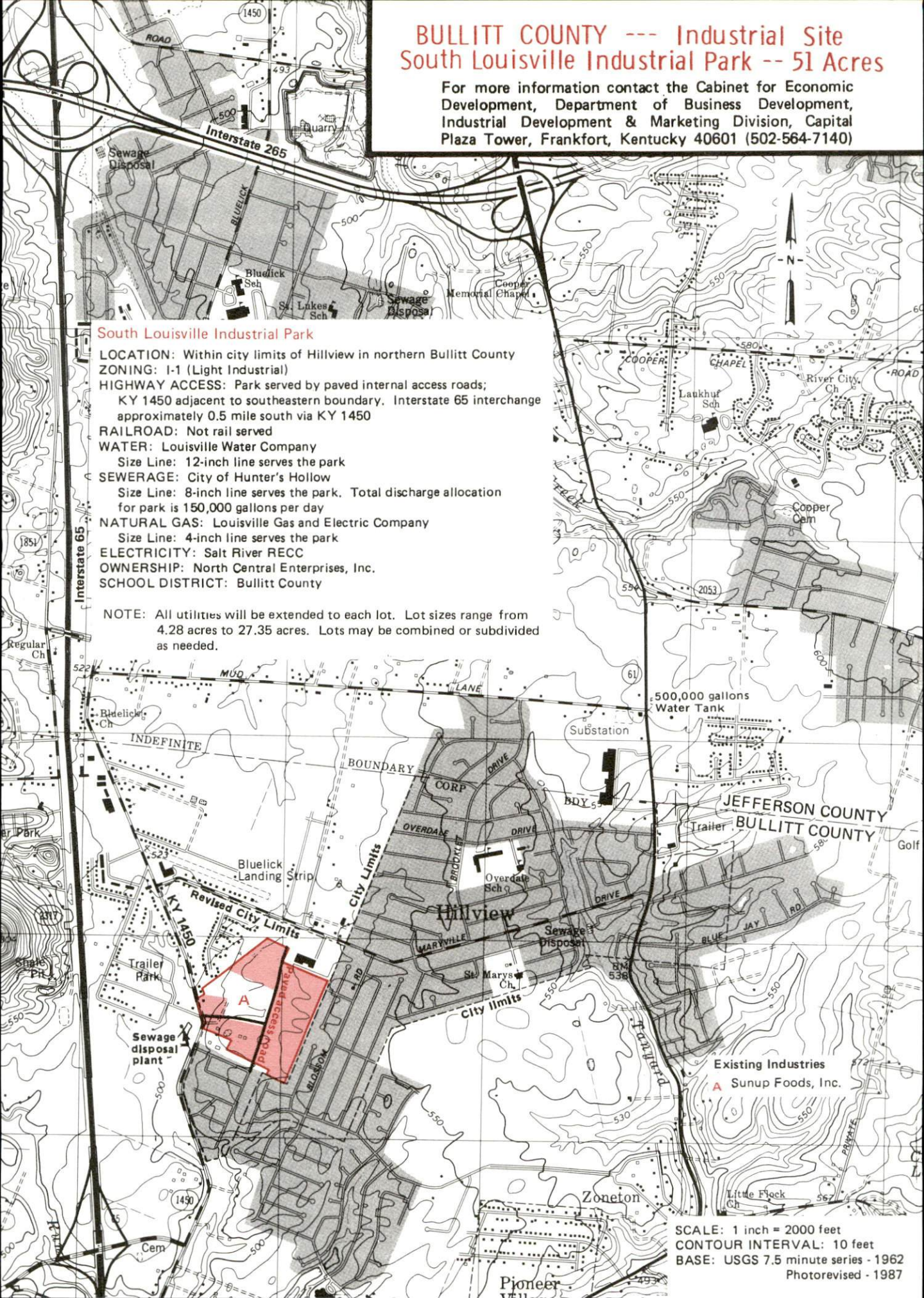
BULLITT COUNTY --- Industrial Site South Louisville Industrial Park -- 51 Acres

For more information contact the Cabinet for Economic Development, Department of Business Development, Industrial Development & Marketing Division, Capital Plaza Tower, Frankfort, Kentucky 40601 (502-564-7140)

South Louisville Industrial Park

- LOCATION:** Within city limits of Hillview in northern Bullitt County
ZONING: I-1 (Light Industrial)
HIGHWAY ACCESS: Park served by paved internal access roads;
 KY 1450 adjacent to southeastern boundary. Interstate 65 interchange approximately 0.5 mile south via KY 1450
RAILROAD: Not rail served
WATER: Louisville Water Company
 Size Line: 12-inch line serves the park
SEWERAGE: City of Hunter's Hollow
 Size Line: 8-inch line serves the park. Total discharge allocation for park is 150,000 gallons per day
NATURAL GAS: Louisville Gas and Electric Company
 Size Line: 4-inch line serves the park
ELECTRICITY: Salt River RECC
OWNERSHIP: North Central Enterprises, Inc.
SCHOOL DISTRICT: Bullitt County

NOTE: All utilities will be extended to each lot. Lot sizes range from 4.28 acres to 27.35 acres. Lots may be combined or subdivided as needed.

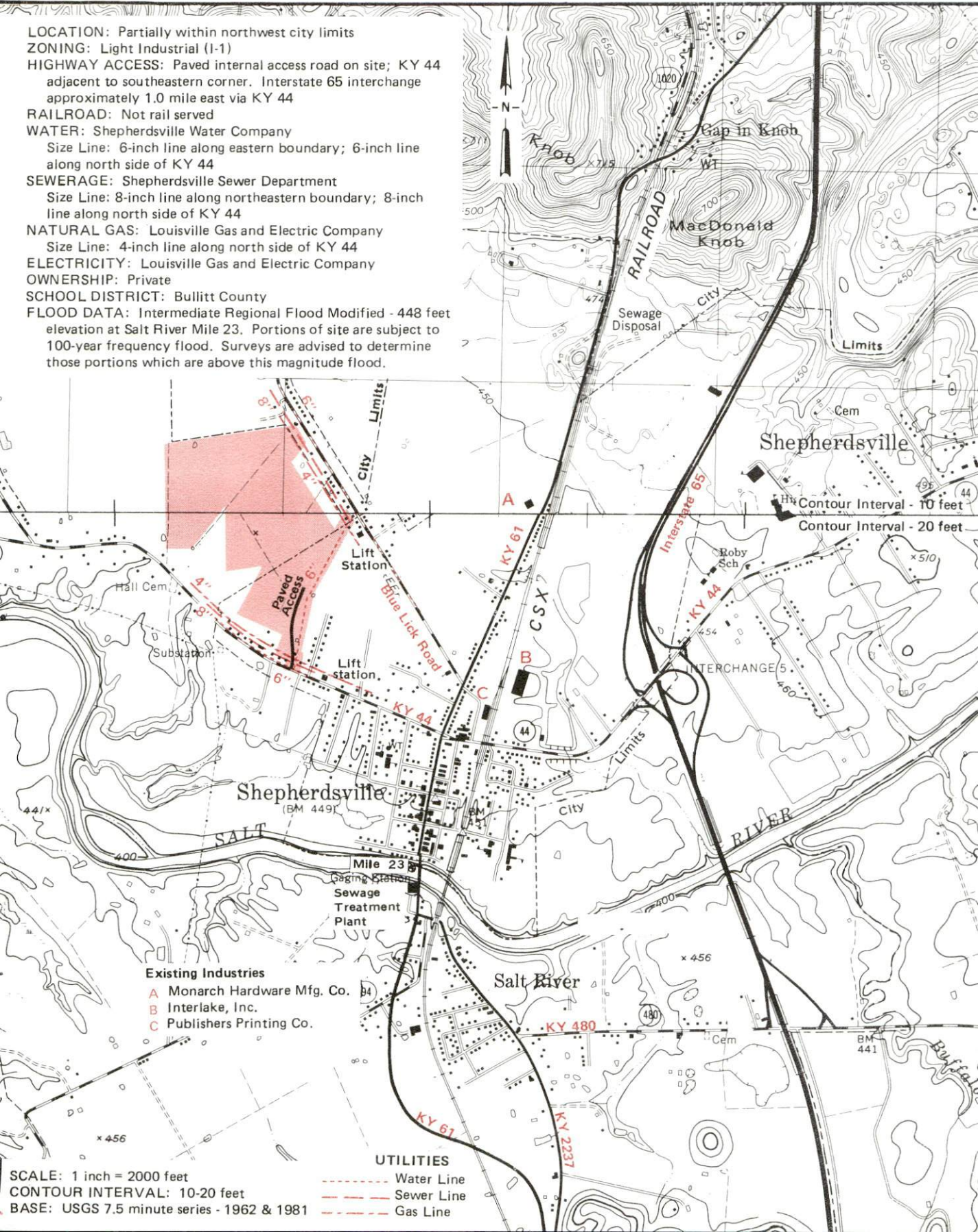


SCALE: 1 inch = 2000 feet
 CONTOUR INTERVAL: 10 feet
 BASE: USGS 7.5 minute series - 1962
 Photorevised - 1987

SHEPHERDSVILLE, KENTUCKY --- Site 188 --- 136 Acres

For more information contact the Cabinet for Economic Development, Department of Business Development,
Industrial Development & Marketing Division, Capital Plaza Tower, Frankfort, Kentucky 40601
(502-564-7140)

- LOCATION:** Partially within northwest city limits
- ZONING:** Light Industrial (I-1)
- HIGHWAY ACCESS:** Paved internal access road on site; KY 44 adjacent to southeastern corner. Interstate 65 interchange approximately 1.0 mile east via KY 44
- RAILROAD:** Not rail served
- WATER:** Shepherdsville Water Company
Size Line: 6-inch line along eastern boundary; 6-inch line along north side of KY 44
- SEWERAGE:** Shepherdsville Sewer Department
Size Line: 8-inch line along northeastern boundary; 8-inch line along north side of KY 44
- NATURAL GAS:** Louisville Gas and Electric Company
Size Line: 4-inch line along north side of KY 44
- ELECTRICITY:** Louisville Gas and Electric Company
- OWNERSHIP:** Private
- SCHOOL DISTRICT:** Bullitt County
- FLOOD DATA:** Intermediate Regional Flood Modified - 448 feet elevation at Salt River Mile 23. Portions of site are subject to 100-year frequency flood. Surveys are advised to determine those portions which are above this magnitude flood.



- Existing Industries**
- A Monarch Hardware Mfg. Co.
 - B Interlake, Inc.
 - C Publishers Printing Co.

- UTILITIES**
- Water Line
 - Sewer Line
 - Gas Line

SCALE: 1 inch = 2000 feet
 CONTOUR INTERVAL: 10-20 feet
 BASE: USGS 7.5 minute series - 1962 & 1981

RESOURCES FOR ECONOMIC DEVELOPMENT
BULLITT COUNTY, KENTUCKY

Prepared by
The Kentucky Department of Business Development
Division of Research and Planning
in cooperation with
The Bullitt County Chamber of Commerce

1988

Program manager - Andrew Dennis; research - Keith Roberts; clerical - Bobbi Graves; graphics - Tony Cecconi, Robert Owens, Pat Coleman; cartography - Site Evaluation Branch, Division of Industrial Development and Marketing. Cost of printing paid from state funds.

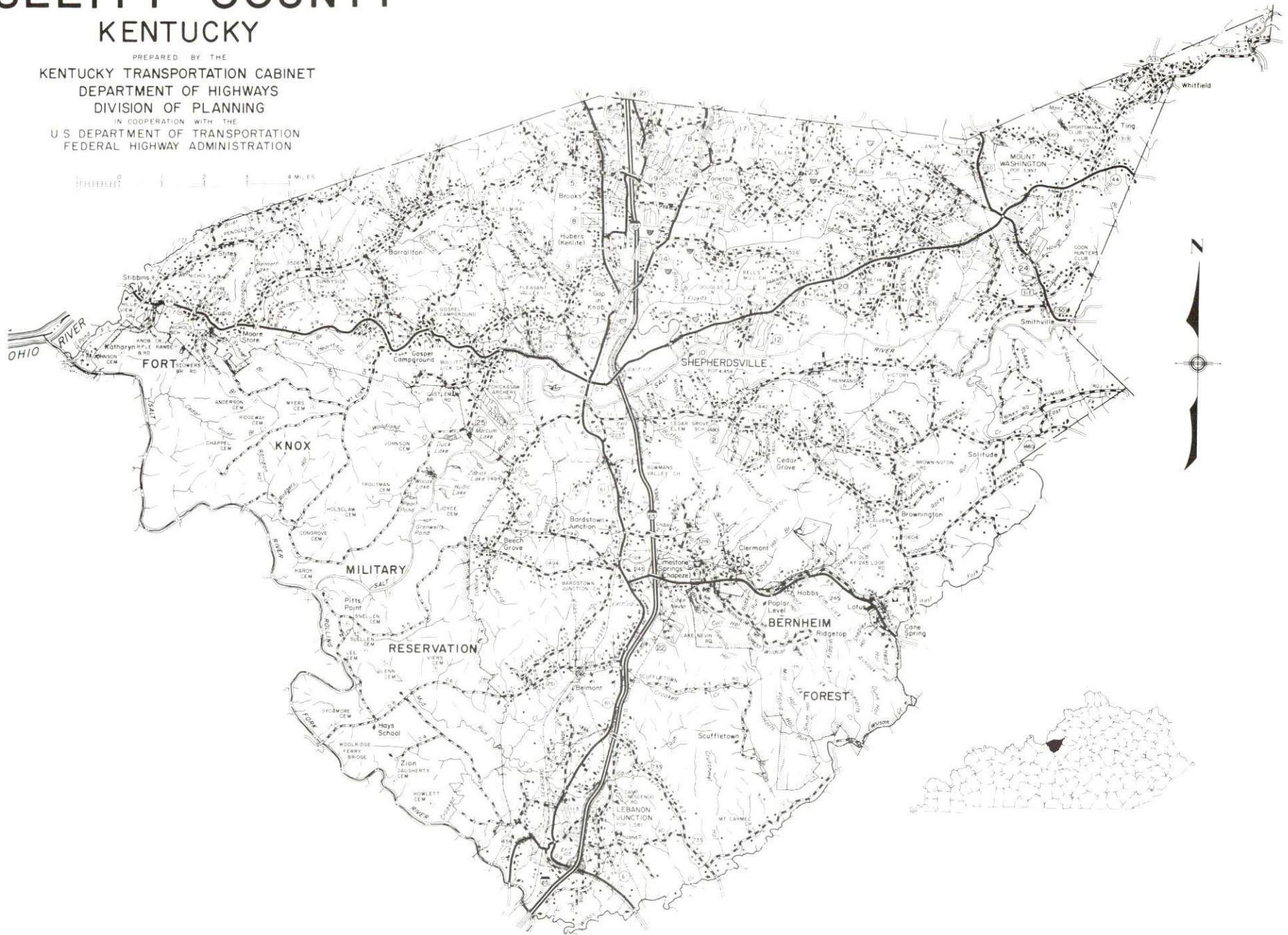
TABLE OF CONTENTS

<u>Chapter</u>	<u>Page</u>
INDUSTRIAL SITES	i
BULLITT COUNTY, KENTUCKY - A RESOURCE PROFILE	1
THE LABOR MARKET STATISTICS	2
Labor Market Area Map	2
Population	3
Population Projections	3
Unemployment Rates, 1980-1987 - Line Chart	4
Labor Force Characteristics of Residents, 1987	5
Selected Components of Nonagricultural Employment, by Place of Work, 1986	5
Estimated Male Labor Supply	6
Estimated Female Labor Supply	6
Average Placement Wages	7
Per Capita Personal Income	7
Average Weekly Wages of Workers Covered by Unemployment Insurance F.Y. 1986-87 - Bar Chart	8
Average Weekly Wages by Industry, by Place of Work, 1986	9
EXISTING INDUSTRY	10
Bullitt County Manufacturing Firms, Their Products and Employment	10
Labor Organizations in Manufacturing Firms	13
Recent Industrial Developments	13
Selected Industrial Services	14
TRANSPORTATION	15
Rail	15
Highways	15
Truck Service	16
Air	17
Air Express Service	17
Bus	17
Water	17
POWER AND FUEL	18
Electricity	18
Natural Gas	19
Other Fuels	19
WATER AND SEWERAGE	20
Public Water Supply	20
Sewerage	23

<u>Chapter</u>	<u>Page</u>
CLIMATE	25
LOCAL GOVERNMENT	26
Structure	26
Planning and Zoning	26
Local Fees and Licenses	26
State and Local Property Taxes	27
Combined State and Local Rates Per \$100 Valuation, 1987	27
Safety	29
Police	29
Fire	29
Rescue Service	29
Refuse Collection and Disposal	29
EDUCATION	30
Public Schools	30
Nonpublic Schools	30
Area Colleges and Universities	31
Vocational Training	32
HEALTH	34
Local Medical Personnel	34
Hospitals	34
Other Medical Facilities	34
Ambulance Service	34
OTHER LOCAL FACILITIES	35
Communications	35
Library Services	35
Religious Institutions	35
Financial Institutions	36
Hotels and Motels	36
Clubs and Organizations	36
RECREATION	37
COMMUNITY IMPROVEMENTS	39

GENERAL HIGHWAY MAP BULLITT COUNTY KENTUCKY

PREPARED BY THE
KENTUCKY TRANSPORTATION CABINET
DEPARTMENT OF HIGHWAYS
DIVISION OF PLANNING
IN COOPERATION WITH THE
U.S. DEPARTMENT OF TRANSPORTATION
FEDERAL HIGHWAY ADMINISTRATION



BULLITT COUNTY, KENTUCKY - A RESOURCE PROFILE

Bullitt County is located in north central Kentucky at the junction of the Outer Blue Grass and the Knobs Regions. The county covers a land area of 300 square miles. Bullitt County had a 1986 estimated population of 46,387 persons.

Shepherdsville, the county seat of Bullitt County, is located 20 miles south of Louisville, Kentucky; 121 miles southwest of Cincinnati, Ohio; and 156 miles northeast of Nashville, Tennessee. Shepherdsville had an estimated population of 4,870 persons in 1986. Other cities in Bullitt County include Hillview, located 5 miles northeast of Shepherdsville, with a 1986 estimated population of 7,210; Lebanon Junction, located 12 miles south of Shepherdsville, with a 1986 estimated population of 1,790; and Mt. Washington, 11 miles east of Shepherdsville, with a 1986 estimated population of 5,050.

The Economic Framework - The total number of Bullitt County residents employed in 1987 averaged 19,490. In 1986, manufacturing firms in the county reported 1,460 employees; wholesale and retail trade provided 1,485 jobs; 520 people were employed in service occupations; state and local government accounted for 1,300 employees; and contract construction firms provided 360 jobs.

Labor Supply - There is a current estimated labor supply of 34,260 men and 39,790 women available for industrial jobs in the labor market area. In addition, from 1988 through 1992, 33,680 young men and 32,350 young women in the area will become 18 years of age and potentially available for industrial jobs.

Transportation - CSX Transportation provides main line rail service to Shepherdsville and Lebanon Junction. Interstate 65 is routed through Bullitt County. Other "AAA"-rated trucking highways routed through Bullitt County include U.S. 31E, Kentucky 44, and Kentucky 61. There are 29 trucking companies serving Bullitt County, including one company with a local terminal. The nearest scheduled commercial airline service is available at Louisville's Standiford Field, located 15 miles north of Shepherdsville. Public riverport facilities also are located at Louisville.

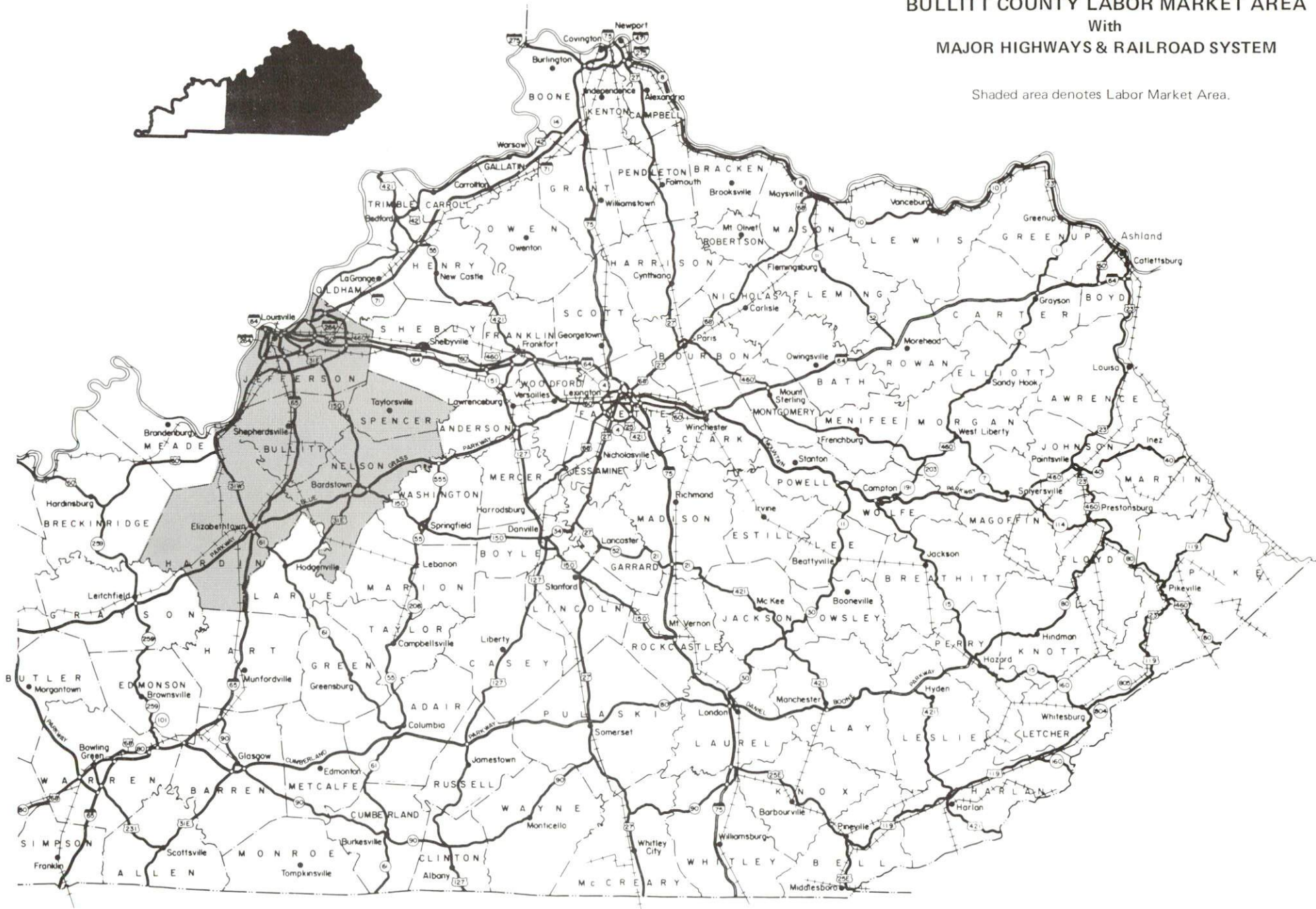
Power and Fuel - Louisville Gas and Electric Company provides electric power to Shepherdsville, Mt. Washington, Hillview, and parts of Bullitt County. Kentucky Utilities Company provides electric power to Lebanon Junction, and East Kentucky Power Cooperative serves the remainder of the county through the Salt River Rural Electric Cooperative Corporation. Louisville Gas and Electric Company also provides natural gas service to Shepherdsville, Mt. Washington, and Hillview. There are two propane dealers and four fuel oil dealers in Bullitt County.

Education - The Bullitt County Public School System provides primary and secondary education for residents of Bullitt County. Two nonpublic elementary schools also operate in the county. There are seven colleges and universities located within 40 miles of Shepherdsville. The Jefferson State Vocational-Technical School at Louisville, 20 miles north of Shepherdsville, and the Elizabethtown State Vocational-Technical School at Elizabethtown, 26 miles southwest of Shepherdsville, each offer instruction in more than 25 course areas. The Bullitt County Area Vocational Education Center at Shepherdsville offers instruction in eight course areas.

BULLITT COUNTY LABOR MARKET AREA

With MAJOR HIGHWAYS & RAILROAD SYSTEM

Shaded area denotes Labor Market Area.



LABOR MARKET STATISTICS

The Bullitt County Labor Market Area includes Bullitt County and the adjoining Kentucky counties of Hardin, Jefferson, Nelson, and Spencer.

POPULATION

Area	1986*	1980	1970	Percent Nonwhite
				1980
Shepherdsville	4,870	4,454	2,769	2.2
Mt. Washington	5,050	3,997	2,020	0.0
Lebanon Junction	1,790	1,581	1,571	1.5
Hillview	7,210	7,124	**	0.8
Labor Market Area	856,796	850,418	828,531	-
Bullitt County	46,387	43,346	26,090	0.8
Hardin County	93,811	88,911	78,421	14.7
Jefferson County	680,741	684,648	695,055	16.9
Nelson County	29,588	27,584	23,477	6.6
Spencer County	6,269	5,929	5,488	2.7

* Population estimates.

** The city of Hillview was established after the 1970 census report.

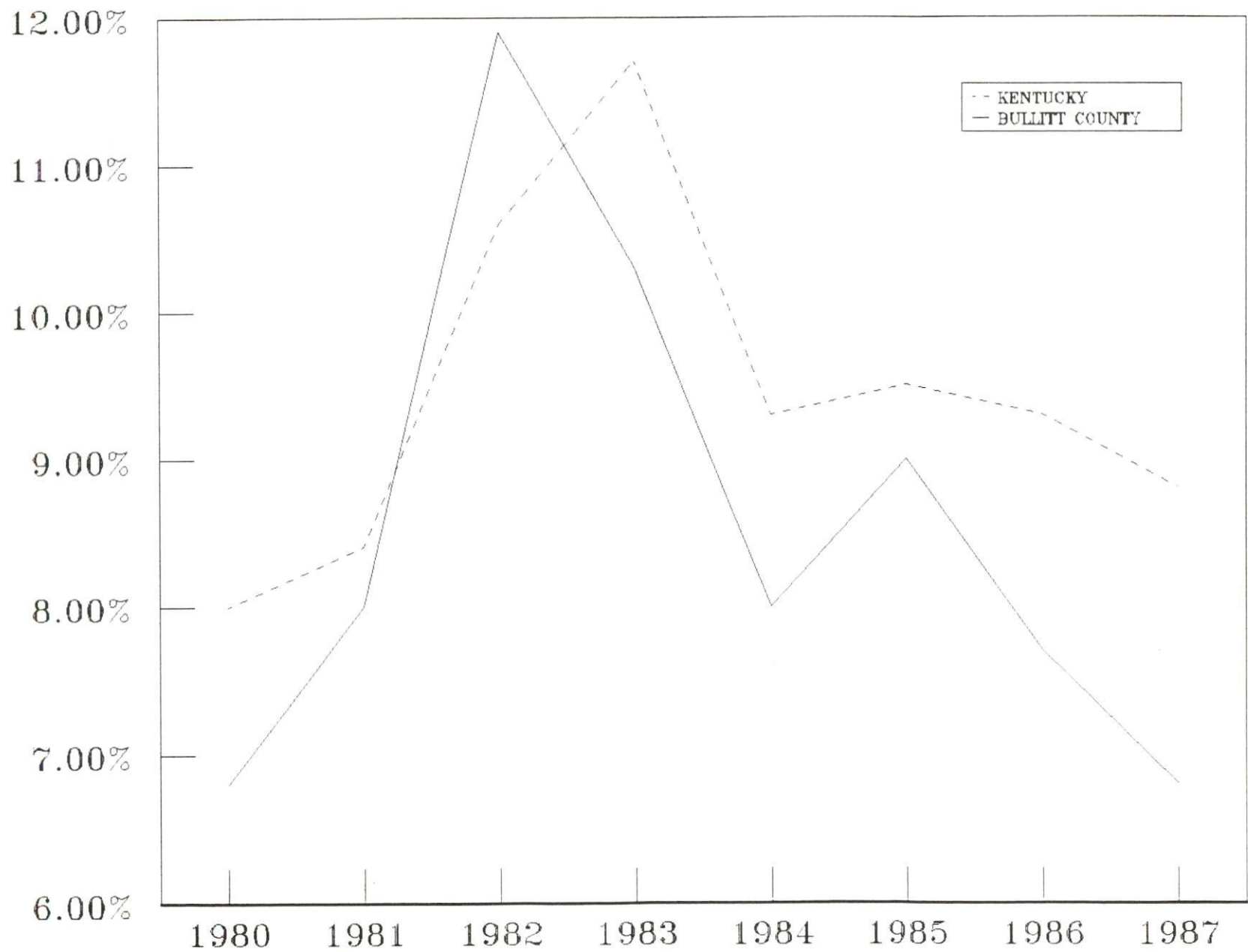
Sources: U.S. Department of Commerce, Bureau of the Census. University of Louisville, Urban Studies Center, Population Unit.

POPULATION PROJECTIONS

Area	1990	1995	2000	2010
Labor Market Area	870,717	885,302	898,281	918,224
Bullitt County	49,227	53,070	56,362	60,940
Hardin County	99,335	106,939	114,333	129,797
Jefferson County	685,347	686,874	687,921	685,944
Nelson County	30,560	32,066	33,229	35,111
Spencer County	6,248	6,353	6,436	6,432

Source: University of Louisville, Urban Studies Center, Population Research Unit, How Many Kentuckians: Population Forecasts, 1980-2020, the 1986 Edition, Spring 1986.

UNEMPLOYMENT RATES



LABOR FORCE CHARACTERISTICS OF RESIDENTS, 1987

	<u>Bullitt County</u>	<u>Labor Market Area</u>
Civilian Labor Force	20,902	429,297
Employment	19,486	397,967
Unemployment	1,416	31,330
Rate of Unemployment (%)	6.8	7.3

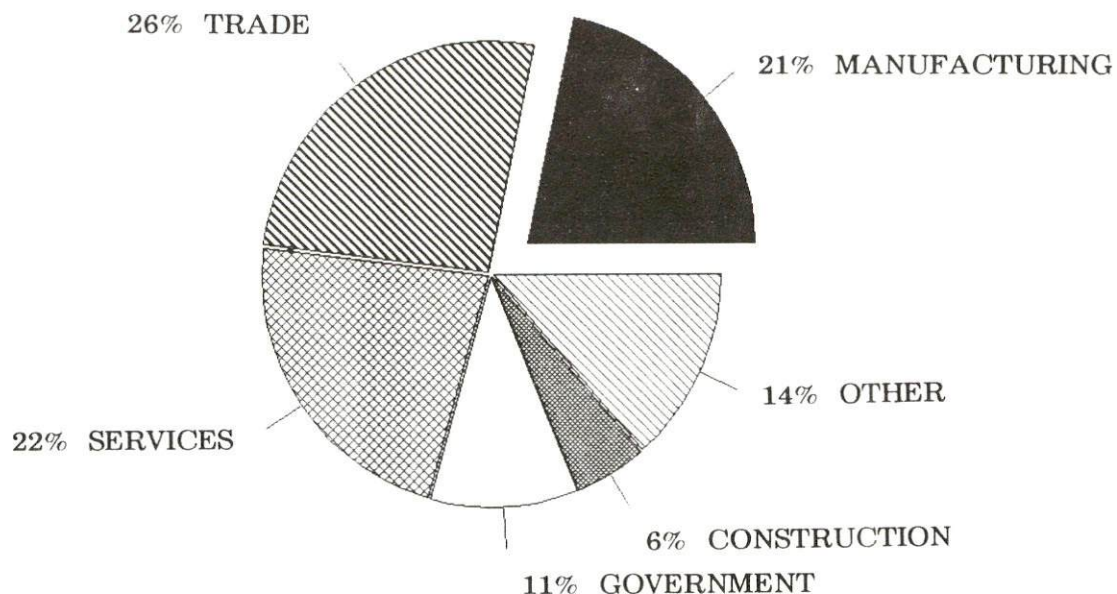
Source: Kentucky Cabinet for Human Resources, Kentucky Labor Force Estimates, Annual Averages, 1987.

**SELECTED COMPONENTS OF NONAGRICULTURAL EMPLOYMENT
BY PLACE OF WORK, 1986**

	<u>Bullitt County</u>	<u>Labor Market Area</u>
All Industries (total)	5,673	353,191
Manufacturing	1,460	76,595
Wholesale & Retail Trade	1,485	93,135
Services	519	79,704
State/Local Government	1,304	36,969
Contract Construction	357	18,128

Note: Excludes domestic workers, railway workers, certain nonprofit corporations, majority of federal government workers, and self-employed workers.
Source: Kentucky Cabinet for Human Resources, Average Monthly Workers Covered by Kentucky Unemployment Insurance Law, 1986.

BULLITT COUNTY



ESTIMATED MALE LABOR SUPPLY
BULLITT COUNTY LABOR MARKET AREA

Area	Current				Future
	Total Male	Unemployed	Under-employed	Not in Labor Force	Becoming 18 years of age 1988 thru 1992
Labor Market					
Area*	34,260	16,347	17,879	34	33,677
Bullitt	1,770	861	909	0	2,501
Hardin	4,099	910	3,189	0	3,326
Jefferson	26,646	13,617	13,029	0	26,392
Nelson	1,488	850	638	0	1,189
Spencer	257	109	114	34	269

ESTIMATED FEMALE LABOR SUPPLY
BULLITT COUNTY LABOR MARKET AREA

Area	Current				Future
	Total Female	Unemployed	Under-employed	Not in Labor Force	Becoming 18 years of age 1988 thru 1992
Labor Market					
Area*	39,787	15,295	20,306	4,186	32,346
Bullitt	3,835	733	1,071	2,031	2,406
Hardin	4,707	1,222	2,001	1,484	3,161
Jefferson	28,963	12,486	16,477	0	25,348
Nelson	1,703	747	639	317	1,200
Spencer	579	107	118	354	231

* Additional workers may be drawn from other nearby counties.

Note: Unemployed - persons unemployed and actively seeking work; Underemployed - persons employed but working only 14 to 26 weeks per year; Not in Labor Force - represents the number of persons who would enter the labor force if suitable employment were available (based on the assumption that persons in Kentucky would like to participate in the labor force in the same proportion that they do nationally).

Sources: Kentucky Cabinet for Human Resources, Kentucky Labor Supply Estimates by County, 1986. Kentucky Department of Economic Development, Future Labor Supply Becoming 18 Years of Age, 1988 thru 1992.

AVERAGE PLACEMENT WAGES

Bullitt County is served by the Louisville local office of the Kentucky Department for Employment Services. The focus of the following data is on job placements made by the Louisville local office and may therefore be used as an indicator of the wages which employers in the area pay new employees. During the twelve months which ended on June 30, 1987, the local employment office filled 16,808 job openings in various occupational categories. The average hourly wage for selected occupational categories were:

<u>OCCUPATIONAL CATEGORY</u>	<u>NUMBER OF PLACEMENTS</u>	<u>AVERAGE WAGE(\$)</u>
All Occupations	16,808	4.62
Clerical	1,511	3.90
Sales	1,131	3.69
Services (excluding domestic)	5,114	3.45
Agricultural, Fishery, Forestry, etc.	139	3.81
Processing	355	6.21
Machine Trades	550	5.49
Bench Work	457	5.94
Structural	906	4.87
Motor Freight/ Transportation	335	4.64
Packaging and Materials Handling	5,834	5.60
Other	42	5.02

The Louisville local office also serves Henry, Jefferson, Oldham, Shelby, Spencer, and Trimble Counties. The above occupational categories are taken from the Dictionary of Occupational Titles published by the U.S. Department of Labor.

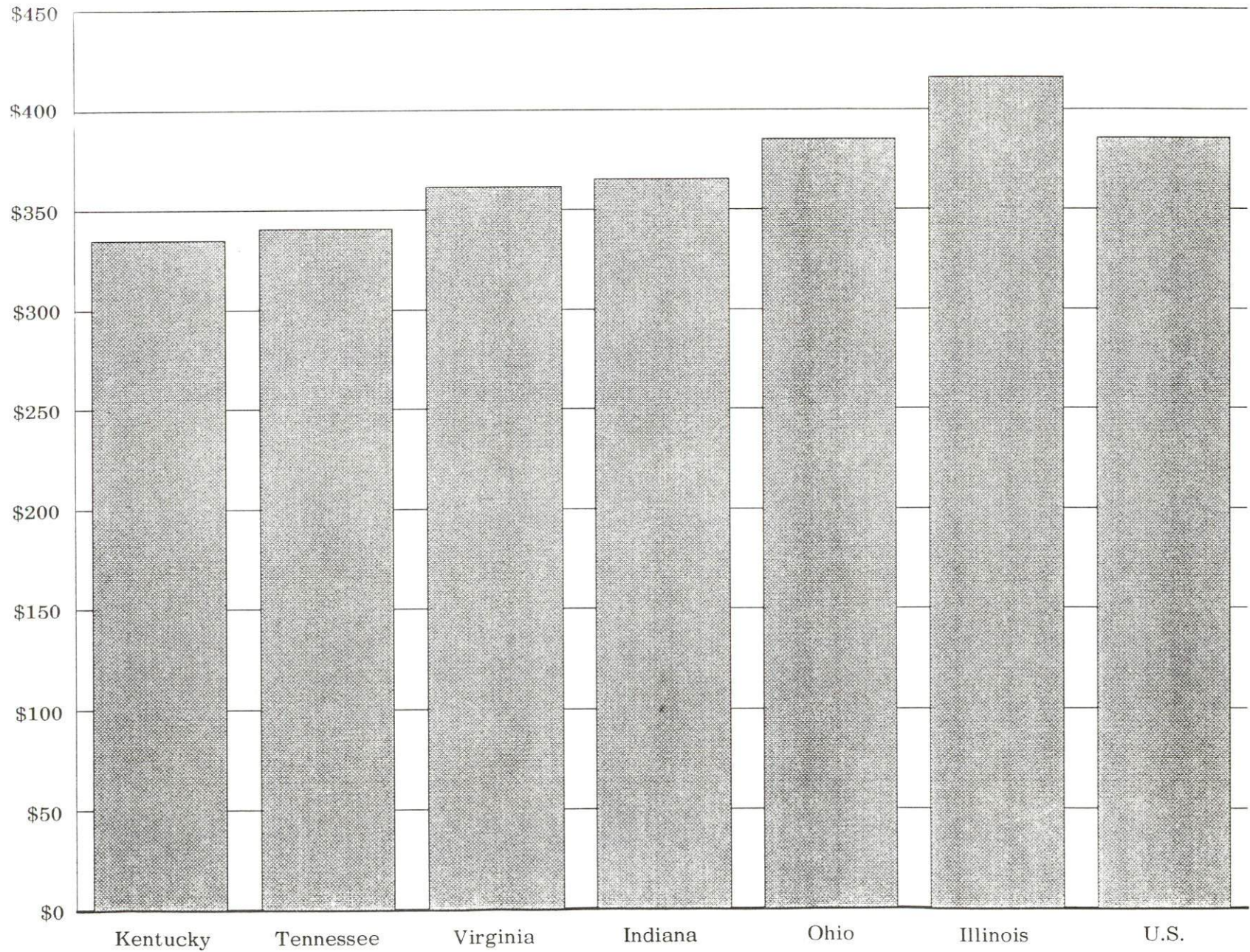
Source: Kentucky Cabinet for Human Resources, Department for Employment Services.

PER CAPITA PERSONAL INCOME

<u>Area</u>	<u>1982</u>	<u>1986</u>	<u>Percent Change</u>
Bullitt County	\$ 7,756	\$ 9,765	25.9
Labor Market Area Range	\$7,756 - 11,598	\$9,280 - 14,482	-
Kentucky	9,277	11,342	22.3
U.S.	11,480	14,636	27.5

Sources: Kentucky Economic Information System, April 1988.

AVERAGE WEEKLY WAGES OF WORKERS COVERED BY
UNEMPLOYMENT INSURANCE F. Y. 1986-87



AVERAGE WEEKLY WAGES BY INDUSTRY
BY PLACE OF WORK, 1986

	<u>Bullitt County</u>	<u>Hardin County</u>	<u>Jefferson County</u>
All Industries	\$281.69	\$281.07	\$368.42
Mining & Quarrying	*	393.05	467.19
Contract Construction	228.20	316.36	375.82
Manufacturing	406.76	399.87	529.33
Transportation, Communications & Public Utilities	333.07	337.27	457.08
Wholesale & Retail Trade	171.29	186.23	262.12
Finance, Insurance & Real Estate	255.84	301.67	422.86
Services	183.90	250.75	295.10
State/Local Government	306.80	318.55	377.86
Other	182.77	251.90	220.69
	<u>Nelson County</u>	<u>Spencer County</u>	
All Industries	\$283.20	\$223.36	
Mining & Quarrying	377.35	0	
Contract Construction	349.24	*	
Manufacturing	376.36	189.46	
Transportation, Communications & Public Utilities	412.95	221.21	
Wholesale & Retail Trade	176.23	160.62	
Finance, Insurance & Real Estate	263.30	*	
Services	173.71	222.12	
State/Local Government	292.44	263.71	
Other	206.24	*	

* Not disclosed.

Note: The average weekly wage for each category includes the salaries and wages of all persons working for that type business. For example, the manufacturing category includes both production workers and administrative personnel. Excludes domestic workers, railway workers, certain nonprofit corporations, majority of federal government workers, and self-employed workers.

Source: Kentucky Cabinet for Human Resources, Average Weekly Wages of Workers Covered by Kentucky Unemployment Insurance Law, 1986.

EXISTING INDUSTRY

BULLITT COUNTY MANUFACTURING FIRMS,
THEIR PRODUCTS AND EMPLOYMENT

<u>Firm</u> <u>(Establishment date)</u>	<u>Product</u>	<u>1987</u> <u>Average Employment</u>	<u>Labor</u> <u>Unions</u>
Shepherdsville			
Anderson Applied Technology (1964)	Printing press tension & speed controls	2	
Bullitt County Stone Company (1967)	Agricultural lime, crushed stone, rip rap	43	
Interlake, Inc. (1973)	Conveyors	225	Carpenters*
Mago Construction Company, Inc. (1967)	Bituminous concrete mixes	3	
Monarch Hardware Manufacturing Company (1965)	Exit hardware, hydraulic closures, decorative door hardware	61	
Piccola Manufacturing, Inc. (1957)	Material handling, equipment, steel & aluminum fabrication	16	
Publishers Printing Company (1866)	Offset lithographic printing	652	
Quality Crushed Stone Company, Inc. (1966)	Agricultural lime, crushed limestone, ready mixed concrete	21	
Quality Ready Mix, Inc. (1960)	Ready mixed concrete	5	

(Continued)

<u>Firm</u> <u>(Establishment date)</u>	<u>Product</u>	<u>1987</u> <u>Average Employment</u>	<u>Labor</u> <u>Unions</u>
Charles H. Reichmuth, Inc. (1962)	Rough lumber, ties	11	
Standard Publishing Company, The Pioneer News (1985)	Commercial printing, newspaper	50	
Brooks			
Best Made Pallet, Inc. (1982)	Pallet stock	30	
Kentucky Solite Corporation (1972)	Aggregate for concrete block	45	
Phyl-Lar Cabinet Company (1979)	Kitchen cabinets, counter tops, restaurant fixtures	3	
Clermont			
James B. Beam Distilling Company (1795)	Whiskey, cordials, cocktails, vodka, distillers dried grains	485	Distillery Workers*
Magnum Mold and Tool Corporation (1982)	Plastic injection molds	15	
Hillview			
Taylor Battery Com- pany** (1952)	Rebuilt batteries	21	
Ziniz Company (1969)**	Conveyors, steel fabrication, special machine	195	Carpenters*

(Continued)

<u>Firm</u> <u>(Establishment date)</u>	<u>Product</u>	<u>1987</u> <u>Average Employment</u>	<u>Labor</u> <u>Unions</u>
Lebanon Junction			
Mac Manufacturing Company (1957)	Barrel lifts, automatic barrel filling device, automatic barrel stenciler	18	
Mt. Washington			
B & B Screw Machine Specialists, Ltd. (1965)***	Screw machine products, shafts & collars, screws	22	
Harvey Hardware Company (1979)	Door hardware	10	
Hercules Coach Company (1988)	Motor homes, ambulances, executive coaches	35	
Hiteco, Inc. (1968)	Ready-mixed concrete	12	
Town and Country Auto Supply, Inc. (1972)	Machine shop	7	
Walker Machine Tool Company, Inc. (1959)	Plastic molding, molds & dies, machine shop	31	

* See Labor Organizations on next page.

** These companies are located in Hillview, but list Louisville, Kentucky, mailing addresses.

*** This company is located at Mt. Washington, but lists a Taylorsville, Kentucky, mailing address.

Sources: Kentucky Department of Economic Development, 1988 Kentucky Directory of Manufacturers; Division of Research and Planning.

LABOR ORGANIZATIONS IN MANUFACTURING FIRMS

Union

Representing workers at:

Distillery, Wine and Allied
Workers' International
Union, AFL-CIO-CLC
United Brotherhood of
Carpenters and Joiners
of America, AFL-CIO

James B. Beam Distilling Company

Interlake, Inc.;
Ziniz Company

RECENT INDUSTRIAL DEVELOPMENTS

A new industrial park, the South Louisville Industrial Park of Bullitt County, was recently developed. The site contains 72 acres and all utilities are available. Sunup Foods, Inc., recently announced plans to construct a plant in the new park. Sunup Foods will manufacture processed food products and employ approximately 70 persons.

SELECTED INDUSTRIAL SERVICES

<u>Types of Service</u>	<u>Location</u>	<u>Mileage from Shepherdsville</u>
Custom Data Processing	Louisville	20
	Elizabethtown	26
Custom Plastics Producers	Fairdale	10
	Mt. Washington	11
Electric Motor Repair	Louisville	20
	Elizabethtown	26
Grinding, Precision & Tool	Clermont	5
Heat Treating Facilities	Louisville	20
Industrial Equipment & Supplies	Louisville	20
Industrial Gases	Louisville	20
	Elizabethtown	26
Industrial Waste Removal	Louisville	20
	Elizabethtown	26
Machine Shops, Tool & Die	Louisville	20
	Elizabethtown	26
Metal Castings	Louisville	20
Metal Finishers	Louisville	20
	Jeffersontown	24
	Elizabethtown	26
Metal Service Centers	Louisville	20
Millwrights	Louisville	20
Public Warehouse Facilities	Louisville	20
	Elizabethtown	26

Sources: Kentucky Department of Economic Development, Kentucky Directory of Selected Industrial Services, 1987; Division of Research and Planning.

TRANSPORTATION

Rail

CSX Transportation provides main line rail service to Shepherdsville and Lebanon Junction. Mt. Washington is not served directly by rail. The nearest piggyback facilities are located in Louisville, 20 miles north of Shepherdsville.

For details on routing, schedules, rates, and services contact:

Manager
Industrial Development
CSX Transportation
908 West Broadway
P. O. Box 2157
Louisville, Kentucky 40201
(502) 587-7746

Highways

Interstate 65, a major north-south highway, is routed through central Bullitt County. I-65 was recently widened from four lanes to six lanes through the county. Interchanges are located at Shepherdsville, Clermont, Lebanon Junction, and Kentucky 1526. Another interchange is presently under construction at Kentucky Route 480. Interstate 65 provides access to I-64 and I-71 at Louisville, 20 miles north of Shepherdsville; and to the Western Kentucky and Bluegrass Parkways near Elizabethtown, 26 miles southwest of Shepherdsville.

Other "AAA"-rated (80,000-pound gross load limit) trucking highways serving Bullitt County include U.S. Highway 31E, serving Mt. Washington; Kentucky Route 44, serving Mt. Washington and Shepherdsville; and Kentucky Route 61, serving Hillview, Shepherdsville and Lebanon Junction.

Truck Service (Bullitt County)

ABF Freight System, Inc.*	Majors Transit, Inc.*
A & H Truck Line, Inc.*	Manning Motor Express, Inc.*
ANR Freight System, Inc.*	Old Dominion Freight Line**
Advance Transportation Company*	Overnite Transportation Company*
American Freight System, Inc.**	Owenton Express, Inc.*
Averitt Express, Inc.*	P-I-E Nationwide, Inc.*
Bowman Transportation, Inc.**	Preston Trucking Company, Inc.*
Carolina Freight Carriers Corporation*	Quick Freight Systems*
Churchill Truck Lines, Inc.*	R-W Service System, Inc.*
Consolidated Freightways Corporation of Delaware*	Roadway Express, Inc.*
F-F-E Transportation Services, Inc.*	Spartan Express, Inc.*
Hohenwald Truck Lines, Inc.*	TNT Holland Motor Express, Inc.*
Robert Ice Truck Line, Inc. (T)*	Thurston Motor Lines, Inc.*
Jones Truck Lines, Inc.*	Tyme Dedicatd Truck Service, Inc.*
	Yellow Freight System, Inc.*

(T) Terminal in Shepherdsville.

* Interstate and intrastate service.

** Interstate service only.

Source: American Motor Carrier Directory, Spring 1988.

HIGHWAY MILES AND TRUCK TRANSIT TIME IN DAYS FROM SHEPHERDSVILLE, KENTUCKY, TO SELECTED MARKET CENTERS

City	Highway Miles	Delivery		City	Highway Miles	Delivery	
		Time TL				Time TL	
Atlanta, GA	395	2		Los Angeles, CA	2,106	5	
Baltimore MD	618	2		Louisville, KY	20	1	
Birmingham, AL	345	2		Nashville, TN	156	1	
Chicago, IL	306	2		New Orleans, LA	670	3	
Cincinnati, OH	121	1		New York, NY	778	-	
Cleveland, OH	366	1		Pittsburgh, PA	408	1	
Detroit, MI	379	2		St. Louis, MO	279	1	
Knoxville, TN	332	2					

Note: Mileage computations are via the best interstate or primary highways, not necessarily the most direct route of travel.

Sources: F and McNally Deluxe Motor Carriers' Road Atlas, 1987. Official Kentucky Mileage Map, 1980. Delivery time - Overnite Transportation Company, P. O. Box 99308, Louisville, Kentucky 40299.

Air

Nearest Scheduled Commercial Airline Service

Standiford Field
Location: 4 miles southeast of center of Louisville, Kentucky;
16 miles north of Shepherdsville
Runways: 2 paved
Length: 10,000 feet; 7,250 feet
Traffic
Control: Control Tower
Lighting: Runways, obstructions, beacon and approach; touch-
down lights and center line on one runway
Services: American Airlines, Delta, Eastern, Piedmont,
Northwest, TWA, United, USAir, Jetstream,
Allegheny Commuter, Comair, Braniff; fuel - 100
and jet-A; major A & P repairs, major Avionics
repairs, APU, charter, oxygen, U.S. Customs; taxi,
car rentals, limousine, courtesy car, public
transit; Weather Bureau, restaurant, snack bar,
gift shop, USO, bank
Air Freight
Service: Air freight terminal

Air Express Service

Several major companies offer air express services in Kentucky. These companies provide a quick means of shipping small to medium-sized packages expeditiously.

Bus

The Transit Authority of the River City (TARC), a Louisville intracity bus line, provides morning and evening express service between Louisville and Bullitt County.

Water

The nearest navigable waterway is the Ohio River, 15 miles west of Shepherdsville, where a nine-foot navigation channel is maintained. The Louisville and Jefferson County Riverport Authority operates a public riverport complex on the Ohio River near Louisville, 20 miles north of Shepherdsville. The port complex offers facilities for cargo transfer and storage, and barge fleetings. The Louisville and Jefferson County Riverport Authority has been designated as a Foreign Trade Zone and offers complete U.S. Customs services for exports and imports.

The Port of Louisville, a private riverport facility, also operates at Louisville.

POWER AND FUEL

Electricity

Company serving Shepherdsville, Mt. Washington, and parts of Bullitt
County - Louisville Gas and Electric Company
Source of power - Louisville Gas and Electric Company
For industrial rates contact:

Louisville Gas and Electric Company
P. O. Box 32010
Louisville, Kentucky 40232
(502) 566-4246

Company serving Lebanon Junction - Kentucky Utilities Company
Source of power - Kentucky Utilities Company
For industrial rates contact:

Industrial Development Department
Kentucky Utilities Company
One Quality Street
Lexington, Kentucky 40507
(606) 255-1461

Company serving a major portion of Bullitt County - Salt River Rural
Electric Cooperative Corporation
Source of power - East Kentucky Power Cooperative
For industrial rates contact:

Industrial Development Division
East Kentucky Power Cooperative
P. O. Box 707
Winchester, Kentucky 40391
(606) 744-4812

and/or

Salt River RECC
Highway 44E
Shepherdsville, Kentucky 40165
(502) 543-3083

Natural Gas

Company serving Shepherdsville and Mt. Washington - Louisville Gas and Electric Company

Source of supply - Texas Gas Transmission Corporation

Size of transmission mains - 30 and 26 inches (supplier); 12 inches (distributor)

Distribution mains - 2 to 8 inches

Distribution pressure - 10 to 35 psi

Btu content - 1,022 per cubic foot

Specific gravity - 0.582

For rates and supplies contact:

Louisville Gas and Electric Company
P. O. Box 32010
Louisville, Kentucky 40232
(502) 566-4488

Natural gas service is not available in Lebanon Junction.

Other Fuels

Propane

Ferrell Gas Company

Preston Highway

Lebanon Junction, Kentucky 40150

Buckeye Gas Products Company

Highway 61 South

Shepherdsville, Kentucky 40165

Fuel oils

Distillate fuel oil -

Ace Oil Distributors, Inc.

Old Highway 61

Shepherdsville, Kentucky 40165

Harris Gulf Service

North Main Street

Mt. Washington, Kentucky 40047

Agenbright Oil Company

Preston Highway

Lebanon Junction, Kentucky 40150

Dawson and Reesor Service Station
and Fuel Oil

Second and Buckman Streets

Shepherdsville, Kentucky 40165

Residual fuel oil - Arrangements must be made with the refinery.

Low sulphur content coal - Available in Kentucky.

WATER AND SEWERAGE

Public Water Supply

Company serving Shepherdsville - Shepherdsville Water Company*
1015 Beech Street
P. O. Box 400
Shepherdsville, Kentucky 40165
(502) 543-2923

Source - Salt River

Treatment plant capacity - 500,000 gallons per day

Average daily consumption - 402,000 gallons

Peak daily consumption - 500,000 gallons

Treatment processes - Rapid mix, flocculation, sedimentation, filtration,
chlorination, fluoridation, coagulation

Storage capacity - 615,200 gallons, including clear well

Size lines - 4 to 8 inches

Water pressure - 50 to 70 psi

MONTHLY WATER RATES

First	2,000 gallons	\$8.19 (Minimum)
Next	3,000 gallons	2.63 per M gallons
Next	5,000 gallons	2.10 per M gallons
Next	15,000 gallons	2.00 per M gallons
Next	25,000 gallons	1.70 per M gallons
Next	50,000 gallons	1.50 per M gallons
All over	100,000 gallons	1.40 per M gallons

Tap-on charge:

3/4-inch meter	\$300
1-inch meter	500
2-inch meter	700
3-inch meter	Cost of installation

* The Shepherdsville Water Department has tentative plans to construct a new fresh water treatment plant or connect to lines from the Louisville Water Company within the next two to three years.

Company serving Mt. Washington - Mt. Washington Water & Sewer Company
 208 Snapp Street
 P. O. Box 285
 Mt. Washington, Kentucky 40047
 (502) 538-4216

Source - Louisville Water Company
 Average daily consumption - 939,507 gallons
 Peak daily consumption - 1,000,000 gallons
 Storage capacity - 500,000 gallons
 Size lines - 3 to 10 inches
 Water pressure - 39 to 62 psi

MONTHLY WATER RATES

First	2,500 gallons	\$7.99 (Minimum)
Next	1,000 gallons	1.46 per M gallons
Next	2,000 gallons	1.58 per M gallons
Next	10,000 gallons	1.32 per M gallons
All over	15,500 gallons	1.10 per M gallons

Tap-on charge:

3/4-inch meter	\$ 800
1-inch meter	1,100
2-inch meter	1,500
3-inch meter	1,800

Company serving Lebanon Junction - Lebanon Junction Water Works
 Main Street
 P. O. Box 61
 Lebanon Junction, Kentucky 40150
 (502) 833-4311

Source - Bardstown Municipal Light and Water Company
 Average daily consumption - 100,000 gallons
 Peak daily consumption - 130,000 gallons
 Storage capacity - 336,000 gallons
 Size lines - 8 inches
 Water pressure - 40 to 70 psi

MONTHLY WATER RATES

First	2,000 gallons	\$8.60 (Minimum charge)
Next	4,000 gallons	3.60 per M gallons
Next	4,000 gallons	3.00 per M gallons
Next	5,000 gallons	2.40 per M gallons
Next	10,000 gallons	2.00 per M gallons
All over	25,000 gallons	1.80 per M gallons

Tap-on charge:

5/8-inch meter	\$350
3/4-inch meter	400
1-inch meter	450
1 1/2-inch meter	600
2-inch meter	950
3-inch meter and larger	Cost of installation

Name of water district - Salt River Water District*
P. O. Box 430
Shepherdsville, Kentucky 40165
(502) 955-6103

Area served - Areas surrounding Shepherdsville
Date when water district began operating - 1963
Source of raw water - Salt River
Capacity of treatment plant - 504,000 gallons per day
Treatment processes - Rapid mix, coagulation, flocculation, filtration,
chlorination, and fluoridation
Average amount of water used in a 24-hour period - 500,000 gallons
Peak amount of water used in a 24-hour period - 700,000 gallons
Storage capacity - 798,000 gallons
Size lines - 1 to 10 inches
Water pressure - 40 to 75 psi

MONTHLY WATER RATES

Residential

First	3,000 gallons	\$9.20 (Minimum)
Next	5,000 gallons	1.60 per M gallons
Next	7,000 gallons	1.40 per M gallons
Next	10,000 gallons	1.35 per M gallons
All over	25,000 gallons	1.25 per M gallons

Commercial

First	3,000 gallons	\$10.20 (Minimum)
Next	5,000 gallons	1.80 per M gallons
All over	8,000 gallons	1.55 per M gallons

Tap-on charge:

5/8-inch meter - \$350

Larger than 5/8-inch meter - Cost of labor and materials

* The Salt River Water District is presently installing a transmission line which will connect with the Louisville Water Company lines. When completed, the Louisville Water Company will be the main source of supply of treated water. The water district is also installing seven miles of new water lines in South Bullitt County and constructing two new storage tanks. Combined cost of these projects is approximately \$2.7 million and completion is scheduled for fall of 1988.

Sewerage

Company serving Shepherdsville - Shepherdsville Sewer Department*
P. O. Box 400
Shepherdsville, Kentucky 40165
(502) 543-2923

Design capacity - 1,000,000 gallons per day
Average daily flow - 450,000 gallons
Type of treatment - Secondary
Treatment processes - Screening, extended aeration, chlorination,
aerobic digester, sludge drying beds, activated sludge
Treated effluent discharged into - Salt River
Size of sanitary mains - 4 to 8 inches
Monthly rates - Based on metered water usage

First	2,000 gallons	\$6.89 (Minimum)
Next	3,000 gallons	2.56 per M gallons
Next	5,000 gallons	2.24 per M gallons
Next	15,000 gallons	2.18 per M gallons
Next	25,000 gallons	1.94 per M gallons
Next	50,000 gallons	1.81 per M gallons
Next	100,000 gallons	1.74 per M gallons
All over	200,000 gallons	1.50 per M gallons

Tap-on charge:

Residential - \$500

Commercial - Based on size of water service line

5/8 - to	3/4-inch	\$ 500
	1-inch	1,000
1 1/2-inch		1,500
	2-inch	2,000
	3-inch	3,000
	4-inch or larger	1,000 per inch of line diameter

* A \$1.5 million expansion project of the sewage system in Shepherdsville is planned. The project will consist of installing two new pump stations, constructing seven new lift stations, and the installation of 24,000 feet of additional sewer mains. The sewer main expansion will serve 187 new customers. This project is scheduled to be completed by December 1988.

Company serving Mt. Washington - Mt. Washington Water & Sewer Company*
P. O. Box 285
Mt. Washington, Kentucky 40047
(502) 538-4216

Design capacity - 400,000 gallons per day
Average daily flow - 540,000 gallons
Type of treatment - Secondary
Treatment processes - Grit removal, aerobic digester, sludge drying beds,
chlorination
Treated effluent discharged into - McCullough Creek
Size of sanitary mains - 12 inches
Size of storm mains - Based upon water usage

Up to	2,500 gallons	\$7.99 (Minimum)
Next	1,000 gallons	1.46 per M gallons
Next	1,000 gallons	1.58 per M gallons
Next	1,000 gallons	1.59 per M gallons
Next	10,000 gallons	1.32 per M gallons
All over	15,000 gallons	.80 per M gallons

Customers not connected to the city's water system - \$12.75
per month

Tap-on charge: \$1,200

Company serving Lebanon Junction - Lebanon Junction Sewerage
Department
Main Street
P. O. Box 61
Lebanon Junction, Kentucky 40150
(502) 833-4311 or (502) 957-2193

Design capacity - 100,000 gallons per day
Average daily flow - 65,000 gallons
Type of treatment - Primary
Treatment processes - Screening, grit removal, aerobic digester
Treated effluent discharged into - Rolling Fork River
Size of sanitary mains - 8 inches
Monthly rates - 80 percent of monthly water bill
Tap-on charge: \$350

* The Mt. Washington Water and Sewer Department is presently upgrading and expanding the sewage treatment plant and installing new high pressure lines. This \$1.5 million project is scheduled to be completed in the fall of 1988.

CLIMATE

Bullitt County

Temperature

Normal (30-year record)	56.10 degrees
Average annual 1986	57.80 degrees
Record highest, July 1954 (39-year record)	105.00 degrees
Record lowest, January 1963 (39-year record)	-20.00 degrees
Normal heating degree days (30-year record) (Heating degree day totals are the sums of negative departures of average daily temperatures from 65 degrees F.)	4,525

Precipitation

Normal (30-year record)	43.56 inches
Mean annual snowfall (30-year record)	17.10 inches
Total precipitation 1986	37.51 inches
Mean number days precipitation (.01 inch or more) (39-year record)	124.50
Mean number days thunderstorms (39-year record)	45.20

Prevailing winds (through 1963)

South

Relative Humidity (26-year record)

1 a.m.	76 percent
7 a.m.	81 percent
1 p.m.	59 percent
7 p.m.	61 percent

Source: U.S. Department of Commerce, Environmental Science Services Administration, Climatological Data, 1986. Station of record: Louisville, Kentucky.

LOCAL GOVERNMENT

Structure

The cities of Shepherdsville, Lebanon Junction, and Mt. Washington are served by a mayor-city council form of government. Bullitt County is served by a county judge/executive and four magistrates.

Planning and Zoning

Joint agency - Bullitt County Planning Commission
Participating cities - Hillview, Lebanon Junction, Mt. Washington, and Shepherdsville
Zoning enforced - All areas
Subdivision regulations enforced - All areas
Local codes enforced - Building code within corporate limits of participating cities
Mandatory state codes enforced - Kentucky Plumbing code, National Electric Code, Kentucky Boiler Regulations and Standards, Kentucky Building Code (modeled after BOCA code)

Local Fees and Licenses

Business license fees in Shepherdsville range from \$25 to \$400 per year. An unloading license fee of \$25 per year is also levied in Shepherdsville.

In Lebanon Junction, business license fees range from \$10 to \$400 per year (most licenses are \$25 per year). Unloading licenses are \$35 per year.

Business license fees in Mt. Washington range from \$10 to \$600 per year (most are \$40 per year). Unloading licenses are \$40 per year.

A 3 percent tax is levied on utilities receipts for schools in Bullitt County. Tax is paid by all consumers of utilities as an add-on to the utilities bills. Exempted are receipts from utilities services that are resold and the receipts from the sale of energy or energy producing fuels that exceed 3 percent of the cost of production in manufacturing, processing, mining or refining.

State and Local Property Taxes

All property in Kentucky, except items exempted by the state constitution, is taxed by the state. Property which also may be taxed by local jurisdictions includes land and buildings, finished goods inventories, automobiles, trucks, office furniture and office equipment. Local taxing jurisdictions in Kentucky include counties, cities, and school districts.

All property in Kentucky is assessed at 100 percent of fair cash value.

COMBINED STATE AND LOCAL RATES PER \$100 VALUATION, 1987

	Shepherdsville	Lebanon Junction
Land and Buildings	\$0.8059	\$0.9344
Manufacturing		
Machinery	0.150	0.150
Pollution Control		
Equipment	0.150	0.150
Inventories		
Raw materials	0.001	0.001
Goods in Process	0.001	0.001
Finished Goods	0.6397	0.7682
Automobiles & Trucks	1.1045	1.2275
Other Tangible		
Personal Property	1.0887	1.2172
Intangibles (Accounts receivable*, money in hand, stock, notes, bonds)	0.250	0.250
Goods Stored in Public Warehouses in Transit Status	0.001	0.001
Private Leaseholds in Industrial Revenue Bond Financed Facilities	0.015	0.015

(Continued)

	Mt. Washington	Unincorporated Bullitt County
Land and Buildings	\$0.8274	\$0.5944
Manufacturing		
Machinery	0.150	0.150
Pollution Control		
Equipment	0.150	0.150
Inventories		
Raw materials	0.001	0.001
Goods in Process	0.001	0.001
Finished Goods	0.6612	0.4282
Automobiles & Trucks	1.1205	0.8875
Other Tangible		
Personal Property	1.1102	0.8772
Intangibles (Accounts receivable*, money in hand, stock, notes, bonds)	0.250	0.250
Goods Stored in Public Warehouses in Transit Status	0.001	0.001
Private Leaseholds in Industrial Revenue Bond Financed Facilities	0.015	0.015

* Accounts receivable are taxed at 85 percent of face value, for an effective rate of \$0.2125 per \$100 valuation.

Safety

Police	Shepherdsville	Lebanon Junction	Mt. Washington
Total staff	9	3	6
Radio-patrol cars	10	3	3
	Bullitt County Police	Bullitt County Sheriff	
Total staff	10	14	
Radio-patrol cars	10	14	
Fire*	Shepherdsville	Lebanon Junction	Mt. Washington
Insurance Services Office, Public Protection Classification	6	5	7
Volunteers	35	30	63

Fire protection districts in Bullitt County are Mt. Washington, Nichols, Southeast Bullitt, and Zoneton. These districts each have public protection classifications of 9/9, except for Zoneton, which has a classification of 6/9. The first number of the classification applies to property within 5 road miles of a responding fire station and within 1,000 feet of a fire hydrant. The last number of the classification applies to property within 5 road miles of a responding fire station, but more than 1,000 feet from a fire hydrant. The remainder of the county is designated class 10.

Rescue Service

Rescue service in Bullitt County is provided by the Shepherdsville Fire Department, the Mt. Washington Fire Department District Rescue Squad, and the Lebanon Junction Rescue Squad. Each agency has emergency medical technicians on its staff.

Refuse Collection and Disposal

Residential, commercial, and industrial customers contract with private haulers for garbage collection and disposal. Fees vary according to the frequency of collection and the volume of refuse to be collected. Some Bullitt County cities handle the billing and fee collection for private haulers serving their areas. Disposal is at the county landfill.

* Includes copyrighted material of ISO Commercial Risk Services, Inc., with its permission.

EDUCATION

Public Schools

	Bullitt County*
Total Enrollment (May, 1988)	10,048
Kindergarten	795
Elementary	3,773
Middle School	2,328
High School	3,152
 Pupil-Teacher Ratio (1985-86)	 22-1
 Percent High School Graduates to College (1985-86)	 38.7
 Expenditures Per Pupil (1985-86)	 \$1,914.33

Nonpublic Schools

<u>School</u>	<u>Enrollment</u>	<u>Grades</u>
St. Aloysius Elementary	173	1-8
St. Benedict Elementary	140	1-8

* The Bullitt County School System recently formed the "Bullitt County Educational Consortium." This program pursues a comprehensive partnership with selected universities, business/industry, and the community. The school system incorporated the research and knowledge of these entities to improve the quality of education in Bullitt County.

Area Colleges and Universities

<u>Name</u>	<u>Location (Miles distant)</u>	<u>Enrollment (Fall, 1987)</u>	<u>Highest Degree Conferred</u>
Bellarmino College	Louisville, Kentucky (20)	3,624	Masters
Jefferson Community College	Louisville, Kentucky (20)	7,750	Associate
Spalding University	Louisville, Kentucky (20)	1,177	Doctorate
University of Louisville	Louisville, Kentucky (20)	21,087	Doctorate, M.D., D.M.D., J.D.
Indiana University Southeast	New Albany, Indiana (23)	4,873	Masters (Education only)
Elizabethtown Community College	Elizabethtown, Kentucky (26)	2,346	Associate
Saint Catharine College	Springfield, Kentucky (40)	265	Associate

Lindsey Wilson College, located in Columbia, Kentucky, offers an evening college program in Shepherdsville. Classes are conducted two nights per week at Bullitt Central High School. Programs leading to an Associate Degree in Business Management are offered at the present time.

Vocational Training

The Bluegrass State Skills Corporation, an independent public corporation created and funded by the Kentucky General Assembly, provides programs of skills training to meet the needs of business and industry from entry level to advanced training, and from upgrading present employees to retraining experienced workers.

The Bluegrass State Skills Corporation is the primary source for skills training assistance for a new or existing company. The Corporation works in partnership with other employment and job training resources and programs, as well as Kentucky's economic development activities, to package a program customized to meet the specific needs of a company.

Vocational training is available at both the state vocational-technical schools and the area vocational education centers. The state vocational-technical schools are post-secondary institutions. The area vocational education centers are designed to supplement the curriculum of high school students. Both the state vocational-technical schools and the area vocational education centers offer evening courses to enable working adults to upgrade current job skills.

Arrangements can be made to provide training in the specific production skills required by an industrial plant. Instruction may be conducted either in the vocational school or in the industrial plant, depending upon the desired arrangement and the availability of special equipment.

Nearest State Schools

Jefferson State Vocational-Technical School
Louisville, 20 miles distant

Agriculture	Carpentry
Horticulture	Diesel Mechanics
Business & Office	Electricity
Accounting/Management	Electronics
Clerical	Graphic Arts
Data Processing	Machine Shop
Secretarial	Masonry
Consumer & Home Economics	Plumbing
Child Care	Welding
Commercial Foods	Learning Resource Center
Health & Personal Services	Public Service Occupations
Occupations	Business/Industry Security
Cosmetology	Training
Dental Assisting	CPR Training
Medical Assisting	Electrical Safety Training
Practical Nursing	Emergency Medical Care
Surgical Technology	Fire Service Training
Industrial Education	First Aid & Safety
Air Conditioning	Rescue & Emergency Services
Auto Body Repair	Training
Auto Mechanics	

(Continued)

Elizabethtown State Vocational-Technical School
Elizabethtown, 26 miles distant

Agriculture	Electricity
Agricultural Mechanics	Electronics
Business & Office	Industrial Machine Maintenance
Accounting/Management	Machine Shop
Clerical	Plumbing
Secretarial	Radio & TV Repair
Word Processing	Welding
Consumer & Home Economics	Public Service Occupations
Commercial Foods	Business/Industry Security
Consumer & Family Life	Training
Skills	CPR Training
Industrial Education	Electrical Safety Training
Air Conditioning	Emergency Medical Care
Appliance Repair	Fire Service Training
Auto Mechanics	First Aid & Safety
Carpentry	Rescue & Emergency Services
Diesel Mechanics	Training
Drafting (with CAD/CAM)	

Nearest Area Education Center

Bullitt County Area Vocational Education Center
Shepherdsville

Home Economics	Auto Mechanics
Commercial Foods	Commercial Arts
Health & Personal Services	Graphic Arts
Occupations	Radio & TV Repair
Health Services	Welding
Industrial Education	
Air Conditioning	

HEALTH

Local Medical Personnel

Physicians - 13

Dentists - 14

Hospitals

There are 17 hospitals with facilities for acute care, psychiatric care, rehabilitation, and chemical dependency treatment located in Louisville, 20 miles from Shepherdsville. Also, hospitals are located in nearby Elizabethtown, 26 miles southwest of Shepherdsville, and Bardstown, 23 miles southeast of Shepherdsville.

Other Medical Facilities

Bullitt County Health Department

Bullitt County PT Clinic (an outpatient physical therapy center)

Seven Counties Services, Inc. (a mental health center)

Ambulance Service

Name - Bullitt County Emergency Medical Services

Staff - 25 emergency medical technicians, 2 paramedics

OTHER LOCAL FACILITIES

Communications

Telephone -	ALLTEL Kentucky, Inc., serves Mt. Washington and Shepherdsville; South Central Bell Telephone Company serves Lebanon Junction and Hillview
Telegraph -	Western Union Toll-Free number, 1-800-325-6000
Newspapers - Bi-weekly and circulation -	Pioneer News 6,000
Television - Airwave reception from - Cable service - Educational Television -	Louisville, Kentucky Cooke Cable Vision, Inc. The Kentucky Educational Television (K.E.T.) network is available statewide

Library Services

Public library - Ridgeway Memorial Library (Shepherdsville)
Size collection - 79,000 volumes
Circulation, 1986-87 - 143,000

Religious Institutions

Bullitt County

Denominations -	Assembly of God Baptist Catholic Christian Church of Christ Church of God	Fellowship Baptist Jehovah's Witnesses Methodist Nazarene Pentecostal Presbyterian
Nearest synagogues - Congregations -	Louisville, 20 miles north of Shepherdsville Adath Israel Brith Sholom (reform) Adath Jeshurum (conservative) Anshei Sfard (orthodox) Keneseth Israel (orthodox) Sholom (reform)	

Financial Institutions

<u>Banks</u>	<u>Assets</u>	<u>Deposits</u>	<u>Statement Date</u>
Bullitt County Bank	\$24,138,000.00	\$21,756,000.00	3/31/88
The Peoples Bank of Bullitt County	70,061,301.46	58,585,967.59	12/31/87
The Peoples Bank of Mt. Washington	36,693,355.00	33,249,700.00	12/31/87

<u>Savings and Loan Associations</u>	<u>Assets</u>	<u>Deposits</u>	<u>Statement Date</u>
Bullitt Federal Savings and Loan Association	\$36,189,125.00	\$33,068,734.00	12/31/87

Hotels and Motels

Total number - 3
Total rooms - 300

Clubs and Organizations

American Red Cross	Future Teachers of America (FTA)
Boy Scouts	Friendship Center
Bullitt Council of the Arts	Girl Scouts
Bullitt County Chamber of Commerce, Inc.	Homemakers
Bullitt County Newcomers Club	Jaycees
Bullitt County Saddle Club	Knights of Columbus
Bullitt County Senior Citizens	Lions Club
Bullitt County Women's Club	Masons
Bullitt County YMCA	Ministerial Association
Cub Scouts	Optimist Club
Eastern Star	Parents-Teachers Association (PTA)
4-H	Peaceful Valley Saddle Club
Future Farmers of America (FFA)	Shrine Club
	Young Democrats

RECREATION

Local

Bullitt County features a wide variety of recreational facilities and opportunities for all ages. Several public parks are located in the county. The 10-acre Shepherdsville Recreational Park features 3 baseball fields, a football field, and a play area. Mt. Washington's public parks include a 25-acre community park with 2 baseball fields, 2 tennis courts, and a basketball court; and the Mt. Washington Lions Club Park featuring a playground and picnic area. Lebanon Junction has a 3-acre city park with a tennis court, a basketball court, a picnic area, a tot lot, a shelter, and a ball field complex with 2 ball fields, a concession stand and restrooms. The Bullitt County Recreation Complex includes 2 softball fields, 4 baseball fields, a soccer field, a playground, and a concession stand with restrooms.

Bernheim Forest Arboretum and Nature Center, located 7 miles southeast of Shepherdsville, is a privately endowed 10,000-acre forest and wildlife refuge. The area contains over 1,200 labeled varieties of plants, trees and shrubs; ornamental gardens; a nature center; nature trails and waterfowl ponds.

The Jim Beam's American Outpost Museum and Tourist Center offers tours of the James B. Beam Distilling Company, the world's largest bourbon producer. The center is located near Clermont.

Camp Crescendo, a modern youth camp specializing in the training of high school bands, covers 300 acres near Lebanon Junction and features a junior Olympic pool, a 20-acre lake, and accommodations. The camp is available in off-season months for meetings and retreats.

The KOA Campground, near Shepherdsville, offers a walking tour of pre-historic Indian rock shelters.

Other recreational facilities include a saddle club horse show ring, the North Bullitt Little League Field, Valley View Lake, West Bullitt Recreation Park, 3 golf courses, a campground, a go-cart track, bowling centers, and skating rinks.

Area (Within 50 miles of Shepherdsville)

Louisville, 20 miles north of Shepherdsville, provides a wide variety of recreational opportunities. The most noted recreational event in Louisville is the Kentucky Derby at Churchill Downs. The "Run for the Roses" is the oldest continuously held horse race in the United States. Other attractions include: Kentucky Center for the Arts, Macauley Theatre, Actors Theatre of Louisville, Louisville Children's Theatre, the Louisville Bach Society, the Louisville Orchestra, the Louisville Ballet, the Kentucky Opera Association, several museums, the Louisville Zoological Gardens, University of Louisville sporting events, rock concerts, and the "Belle of Louisville" sternwheeler.

My Old Kentucky Home State Park, 23 miles southeast of Shepherdsville in Bardstown, portrays an image of the South's gentle and leisurely home life before the Civil War. The restored Georgian Colonial mansion is where composer Stephen Foster visited and where he was inspired to write "My Old Kentucky Home." A world-renown outdoor drama, "The Stephen Foster Story", is presented in the park's amphitheatre during the summer months. The park also offers a 40-site campground, a gift shop, a 9-hole golf course and pro shop, a picnic area, and planned recreation.

E. P. "Tom" Sawyer State Park, 26 miles northeast of Shepherdsville, is located near Louisville. Recreational facilities include an outdoor Olympic-size pool, a bathhouse, 12 lighted tennis courts, bicycle moto-cross track (BMX), softball fields, a one-mile fitness trail, a picnic area, an archery range, and soccer fields. Planned recreation and playground are offered year-round. Indoor facilities are available for basketball, volleyball, exercise classes, dance classes and various other events.

Taylorville Lake State Park, 28 miles east of Shepherdsville near Taylorville, was developed by the U.S. Army Corps of Engineers. The 3,050-acre lake and 10,700-acre recreation area features full-service marina facilities, fishing, boating, swimming, and wildlife recreation.

Abraham Lincoln Birthplace National Historic Site, located 41 miles south of Shepherdsville near Hodgenville, features the log cabin which was the birthplace of Abraham Lincoln, enclosed within a granite memorial shrine. The grounds include 116 acres of the original Thomas Lincoln farm and a visitors' center with audiovisual programs and exhibits on the Lincoln family.

Lincoln Homestead State Park, 45 miles southeast of Shepherdsville near Springfield, is a 153-acre park on land settled by Abraham Lincoln's family. The actual building in which Nancy Hanks, mother of President Lincoln, lived during her courtship with Thomas Lincoln is preserved here as well as a replica of the 1782 cabin where Thomas Lincoln lived as a boy. The park also maintains a museum, a gift shop, a picnic area, and an 18-hole golf course.

COMMUNITY IMPROVEMENTS

Recent

A new industrial park, the South Louisville Industrial Park of Bullitt County, was recently developed. The site contains 72 acres and all utilities are available. Sunup Foods, Inc., recently announced plans to construct a plant in the new park. Sunup Foods will manufacture processed food products and employ approximately 70 persons.

Development of a new Boy Scout camp was recently completed in Bullitt County. The facility contains 900 acres adjoining Bernheim Forest. The camp will serve 19 Kentucky counties and will be open year-round. This \$6 million facility was funded through private donations.

The Bullitt County School System recently formed the "Bullitt County Educational Consortium." This program pursues a comprehensive partnership with selected universities, business/industry, and the community. The school system incorporated the research and knowledge of these entities to improve the quality of education in Bullitt County.

Interstate 65 was recently widened from four-lanes to six-lanes through Bullitt County. A new interchange was also constructed at Kentucky 1526. Another interchange at Kentucky 480 is presently under construction.

Under Way

The Mt. Washington Water and Sewer Department is presently upgrading and expanding the sewage treatment plant and installing new high pressure lines. This \$1.5 million project is scheduled to be completed in the fall of 1988.

The Salt River Water District is presently installing a transmission line which will connect with the Louisville Water Company lines. When completed, the Louisville Water Company will be the main source of supply of treated water. The water district is also installing seven miles of new water lines in South Bullitt County and constructing two new storage tanks. Combined cost of these projects is approximately \$2.7 million and scheduled to be completed in the fall of 1988.

Planned

There are tentative plans for the construction of a Kentucky Railway Museum and Kentucky Information and Visitor Center at the Bernheim interchange of Interstate 65.

The Bullitt County School System plans to establish a daycare center in the fall of 1988. The center will initially be for three- to five-year-old children of school system employees.

A \$1.5 million expansion project of the sewage system in Shepherdsville is planned. The project will consist of installing two new pump stations, construct seven new lift stations, and the installation of 24,000 feet of additional sewer mains. The sewer main expansion will serve 187 new customers. This project is scheduled to be completed by December 1988.

The Shepherdsville Water Department has tentative plans to construct a new fresh water treatment plant or connect to lines from the Louisville Water Company within the next two to three years.



**Cabinet for Economic Development
Department of Business Development
Capital Plaza Tower
Frankfort, Kentucky 40601
(502) 564-7140**