

1975

Industrial Resources: Calloway County - Murray

Kentucky Library Research Collections
Western Kentucky University, spcol@wku.edu

Follow this and additional works at: https://digitalcommons.wku.edu/calloway_cty

 Part of the [Business Administration, Management, and Operations Commons](#), [Growth and Development Commons](#), and the [Infrastructure Commons](#)

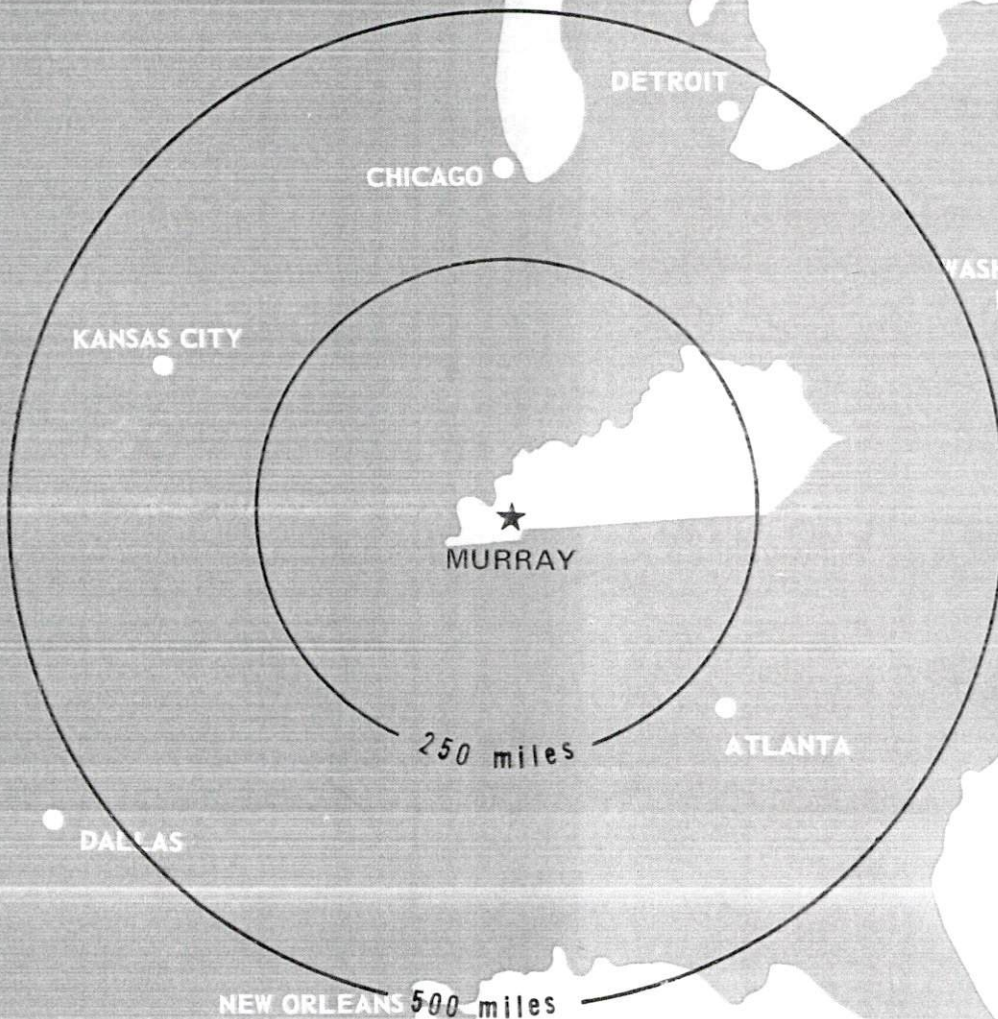
Recommended Citation

Kentucky Library Research Collections, "Industrial Resources: Calloway County - Murray" (1975). *Calloway County*. Paper 9.
https://digitalcommons.wku.edu/calloway_cty/9

This Report is brought to you for free and open access by TopSCHOLAR®. It has been accepted for inclusion in Calloway County by an authorized administrator of TopSCHOLAR®. For more information, please contact topscholar@wku.edu.

INDUSTRIAL RESOURCES

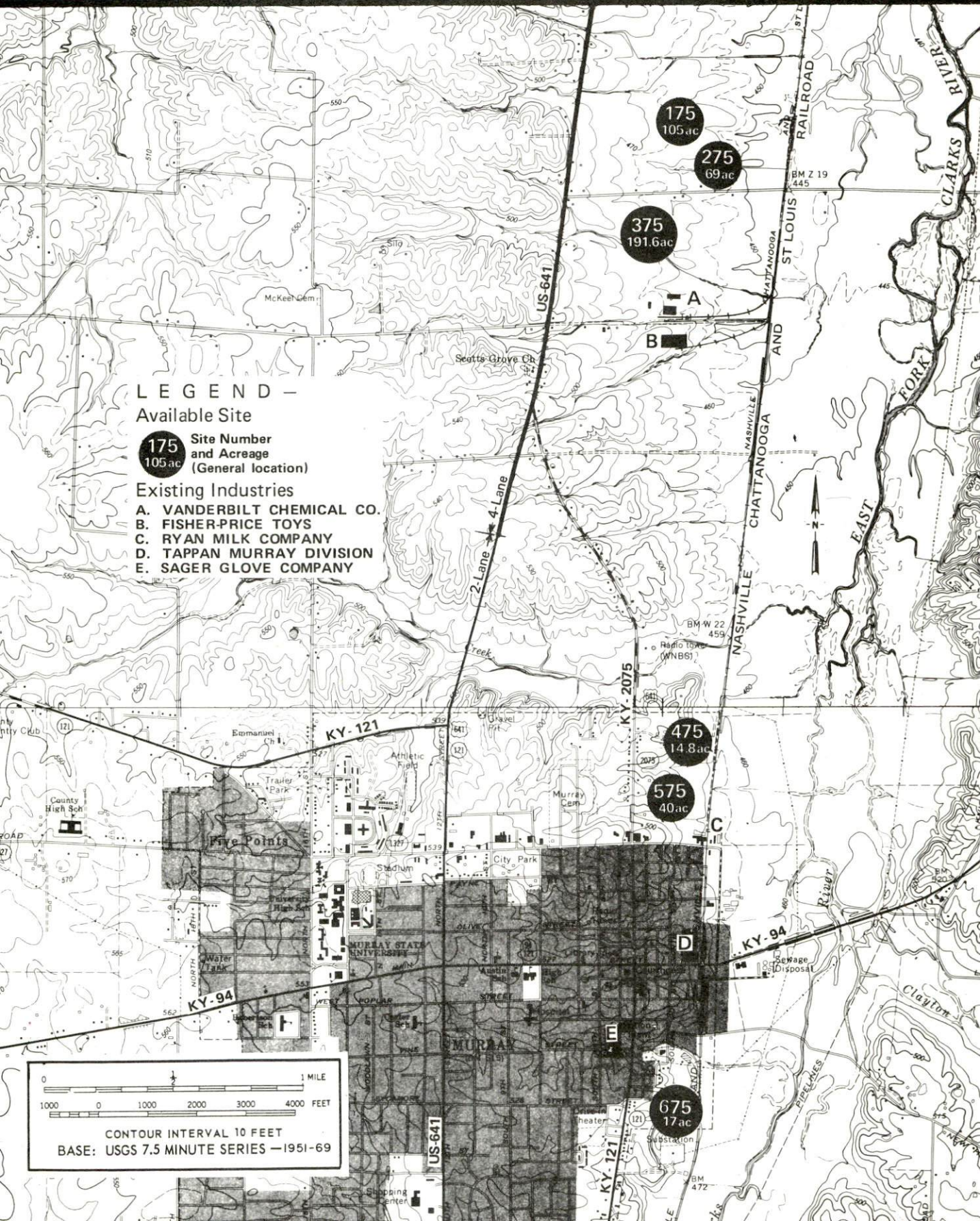
MURRAY KENTUCKY



CALLOWAY COUNTY, KENTUCKY

MURRAY, KENTUCKY --- Index to Industrial Sites --- 1975

For detailed data on individual sites, contact Mr. James L. Johnson, Executive Director, Murray Chamber of Commerce, Murray, Kentucky 42071 or the Kentucky Department of Commerce, Capital Plaza Tower, Frankfort, Kentucky 40601

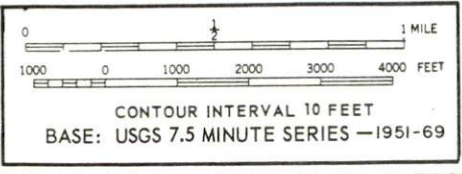


LEGEND - Available Site

175 Site Number
105 ac and Acreage
 (General location)

Existing Industries

- A. VANDERBILT CHEMICAL CO.
- B. FISHER-PRICE TOYS
- C. RYAN MILK COMPANY
- D. TAPPAN MURRAY DIVISION
- E. SAGER GLOVE COMPANY



INDUSTRIAL RESOURCES

MURRAY, KENTUCKY

Prepared by

The Kentucky Department of Commerce

in cooperation with

The Murray Chamber of Commerce

1975

This copy has been prepared by the Kentucky Department of Commerce,
Division of Research and Planning, and the cost of printing paid from
state funds.

TABLE OF CONTENTS

<u>Chapter</u>	<u>Page</u>
INDUSTRIAL SITES	i
MURRAY, KENTUCKY - A RESOURCE PROFILE	1
THE LABOR MARKET	6
Population Trends	6
General Employment Characteristics, 1972	6
Manufacturing Employment Trends by Industry	7
Murray Manufacturing Firms, Their Products and Employment	7
Wages	10
Labor Organizations	11
Estimated Male Labor Supply	11
Estimated Female Labor Supply	11
Per Capita Personal Income	12
TRANSPORTATION	13
Rail	13
Truck Service	13
Air	14
Bus	15
Taxi	15
Rental Services	15
POWER AND FUEL	16
Electricity	16
Natural Gas	16
Other Fuels	16
WATER AND SEWERAGE	19
Water	19
Sewerage	21
LOCAL GOVERNMENT	23
City	23
County	23

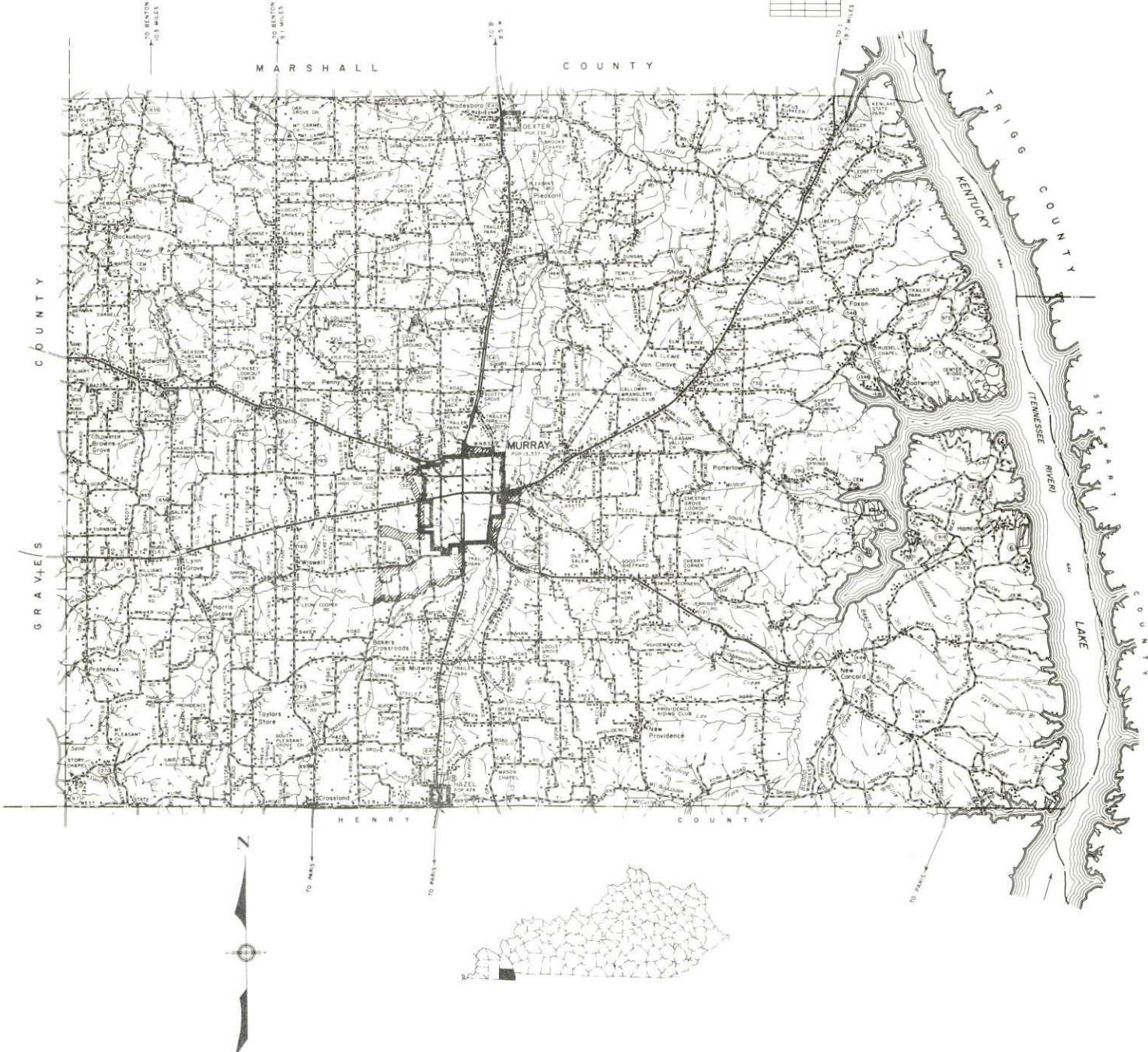
<u>Chapter</u>	<u>Page</u>
Assessed Value of Property, 1974	23
Property Taxes	23
Local Property Tax Rate Per \$100 of Assessed Valuation, 1973	24
Utilities Gross Receipts Tax for Schools	24
Planning and Zoning	24
Safety	25
Police	25
Fire	25
Rescue Service	25
Professional Ambulance Service	25
Sanitation	26
 EDUCATION	 27
Public Schools	27
Nonpublic Schools	27
Vocational Schools	28
Colleges and Universities	28
 HEALTH	 32
Hospitals	32
Other Medical Facilities	32
Nursing Homes	32
Public Health	33
 OTHER LOCAL FACILITIES	 35
Communications	35
Library Services	35
Religious Institutions	36
Financial Institutions	36
Hotels and Motels	37
Clubs and Organizations	37
 RECREATION	 38
Local	38
Area	38
 AGRICULTURE - NATURAL RESOURCES - CLIMATE	 40
Agriculture	40
Natural Resources	40
Climate	41
 HISTORY	 42

GENERAL HIGHWAY MAP CALLOWAY COUNTY KENTUCKY

PREPARED BY THE
KENTUCKY DEPARTMENT OF HIGHWAYS
DIVISION OF PLANNING
IN COOPERATION WITH THE
U.S. DEPARTMENT OF TRANSPORTATION
FEDERAL HIGHWAY ADMINISTRATION



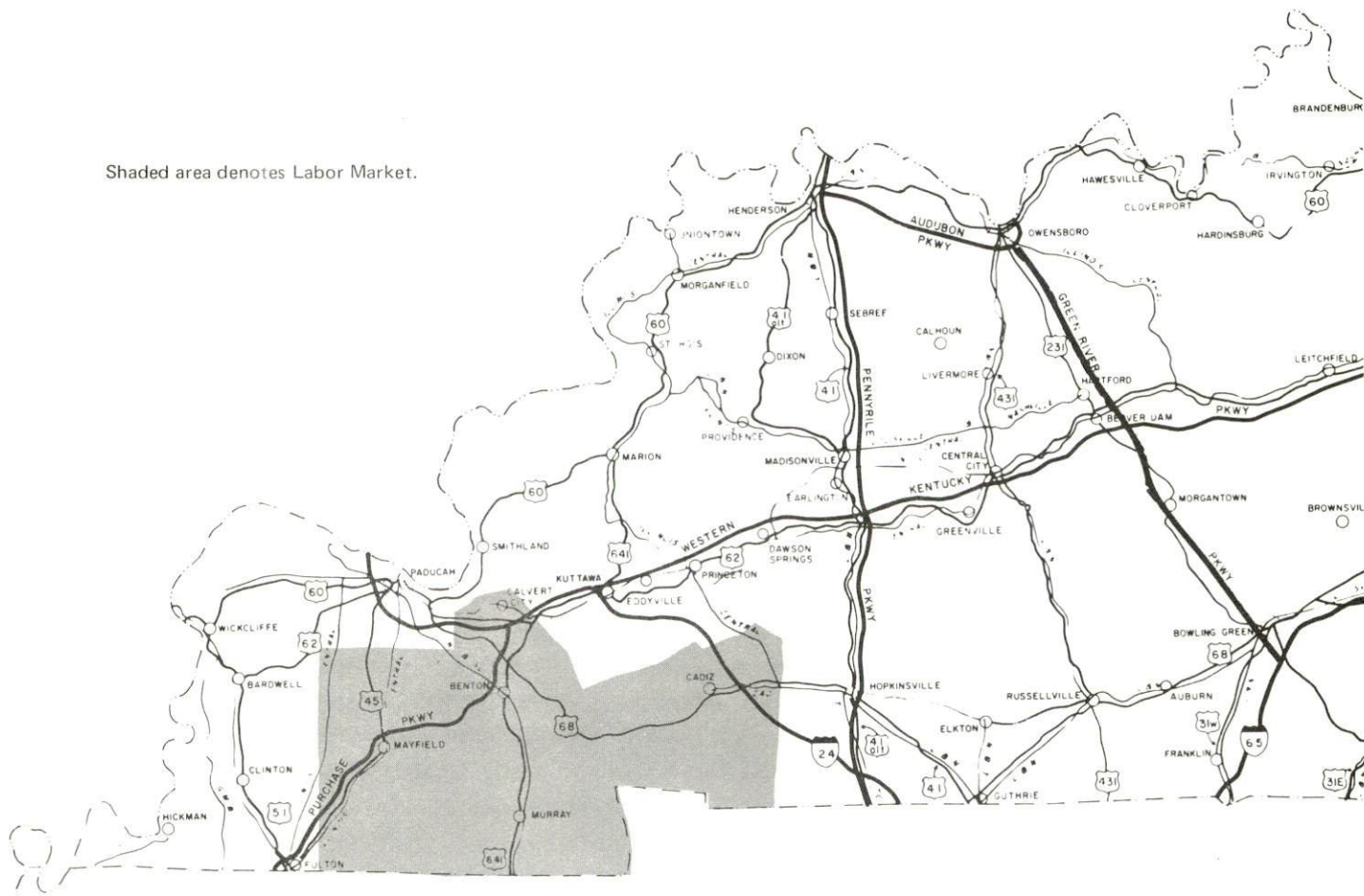
ORIGINAL DATA	
1969	
REVISIONS	
DATE	BY



MURRAY LABOR MARKET AREA



Shaded area denotes Labor Market.



MURRAY, KENTUCKY - A RESOURCE PROFILE

Murray, county seat of and largest city in Calloway County, is located in the flatlands of the Jackson Purchase Region of western Kentucky. The Purchase is both an historic and a geographic hub of America. Before settlers entered the territory, it was a borderland between northern and southern Indian tribes. In the pre-Civil War era it was a borderland between free and slave states. In Murray and Calloway County visitors discover a pleasing mixture of the best of all four regions, including true southern hospitality which is part of the area's priceless heritage.

Murray is 45 miles southeast of Paducah, Kentucky; 121 miles southwest of Evansville, Indiana; 124 miles northwest of Nashville, Tennessee; and 205 miles southeast of St. Louis, Missouri. The Blood River inlet of Kentucky Lake is only 8 miles east of Murray.

Surrounding Murray are the waterways of Kentucky's southwest corner--the Western Waterlands--known for huge lakes and numerous rivers and streams. The proximity to the Western Waterlands has made the community a tourist center, and has proven to be a great asset for industrial growth.

Murray had a 1970 population of 13,537, and Calloway County, with a land area of 384 square miles, had a 1970 population of 27,692.

The Economic Framework

Total employment in Calloway County averaged 11,340 in 1972 with manufacturing providing 1,500 of these jobs, government 3,870, trade and services 2,730 and agriculture providing 940 jobs. Manufacturing employment has increased by approximately 180 jobs since 1963. Major industrial products are gas and electric ranges and toys.

Per capita personal income was \$2,919 in 1972, an increase of 77 percent since 1962.

The Murray labor market area includes Calloway County, its three surrounding Kentucky counties and Henry County, Tennessee. The 1972 total employment in the Kentucky portion of the labor market area totaled 35,250 jobs including 9,240 in manufacturing, 7,140 in government, 6,740 in trade and services, and 3,200 in agriculture. Area manufacturing employment has increased by nearly 39 percent since 1963 with the sharpest gains in the chemical, rubber, and metal products industries.

Resources for Growth

1. There is a current estimated labor supply of 4,270 men and 4,310 women available for industrial jobs in the labor market area, not including the additional persons that would commute from the adjoining Tennessee counties. In addition, 3,900 young men and 3,670 young women in the Kentucky portion of the labor market area will become 18 years of age by 1980 and will be potentially available for work.

2. The local transportation capability is good. Several major highway arteries are located near Murray. The Purchase Parkway, located 19 miles north, can be obtained via U.S. 641 which is a main north-south route through Murray. The Western Kentucky Parkway, located 49 miles northeast of Murray, provides access to major thru-ways to the northeast. Under construction is Interstate 24 from Chattanooga to points in Illinois connecting with other interstates to Chicago and St. Louis. Interstate 24 will have an entrance located 28 miles north of Murray. There are six trucklines serving Murray and the Louisville and Nashville Railroad provides a variety of services. Murray's Kyle Field provides service for light aircraft, and commercial air service is available in Paducah, 45 miles northwest of Murray.

3. Energy - In Murray, natural gas service is provided by the Murray Natural Gas System and electricity by the Murray Electric System. West Kentucky RECC supplies the county. Both utilities receive their power from the Tennessee Valley Authority. There are four distillate fuel oil distributors and one propane and butane distributor serving Calloway County.

4. Education is an important growth asset for the Murray area. Two school systems operate in the county. An area vocational education center offering seven courses is located in Murray. The nearest state vocational-technical school is located in Paducah, 45 miles distant, and offers 14 courses.

Murray is also the home of Murray State University. The institution was founded in 1922 as Murray Normal School. In 1966 the General Assembly passed an act enabling the Board of Regents to change the name to Murray State University. The University now has an enrollment of over 7,000 students. The University is a multi-purpose institution comprised of five schools: Applied Science and Technology, Arts and Sciences, Business, Education, and the Graduate School. Pre-professional curricula also are provided in a variety of professional careers.

Community Programs for Improvement

Public and private sectors have shown and continue to demonstrate interest in Murray by building their community through constant improvements. Cooperation, planning, and action are the basis for their community programs.

The City of Murray Water System is constantly adding new distribution mains and replacing old mains in keeping up with the growth of the city. They are in the very early stages of planning an additional well to increase their water supply.

The sewer system has under construction 30,000 feet of interceptor mains. They are also installing 12,000 to 14,000 feet of 8-inch collector mains to be completed in 1975. They are in the process of filing for a grant in order to begin improvements and additions to their present sewage treatment facility. This project is to be completed in 1976.

The Federal Topics Program is currently underway to relieve some of Murray's traffic problems. Murray was one of two cities to receive a grant for downtown traffic renewal and as a result has already completed four-laning a second section of Twelfth Street and Main Street. Other projects under this program will include widening intersections and providing synchronized traffic signals in the downtown area.

A 50-unit low-income municipal housing project was completed in 1972. An 80-unit HUD project for medium to low-income families opened in July of 1974.

Sixteen subdivisions are under active development. Seven trailer parks are in operation and a one-million dollar mobile home park, one of the largest in the United States, has been completed on U. S. 641 North.

Recently completed is the Murray State University football stadium. The new stadium seats 23,000 people and has an Astro-turf playing field. A \$4.5 million special education school for hearing and speech is under construction on Murray's college campus. It will serve as a diagnostic center for the region and is to be completed in 1976.

In September of 1972 a new Murray Area Vocational Education Center opened offering seven various vocational courses.

Recent changes in the curriculum in the Murray Independent School System include a move toward individualized instruction, an alternative program, a cooperative program, the introduction of exploratory courses, limited team teaching, and a learning center. Two new units in Special

Education will be offered this fall and career education has become an integral part of their entire curriculum.

The Calloway County School System has constructed three new elementary schools. They are adding to their staff three teachers who will teach the educable mentally retarded. Plans are underway for providing central office facilities near the county high school and for constructing additions to the high school.

Murray-Calloway County Hospital opened their most recent addition of 34 acute beds in January of 1974 bringing the total inpatient-care to 167. The hospital is currently planning a long-range project to begin expanding their supportive services to 40 acute beds beginning within the next 15 months.

The Houston-McDevitt Clinic is having a comprehensive study done for expansion purposes. Plans are in progress to enlarge the staff to between 25 and 30 doctors.

Business and Industrial

A new seven story bank building is under construction. The Bank of Murray will be completed in Fall, 1975 and will have two TV Drive-In windows. Several new businesses have opened in one of the newer shopping centers and 8 new commercial businesses have opened on Arcadia Avenue.

Fisher Price Toys which completed its plant early in 1974 employs 352. Forsyth Industries purchased five acres for its new plant which will employ 50 people when completed.

Recreation, Entertainment and Livability

Murray's location in the heart of Kentucky's Land of the Lakes region makes it an excellent recreation area. Adjacent to Murray are Kentucky Lake, the world's largest man-made lake, and Lake Barkley with 1,000 miles of shoreline. Three Kentucky state parks, within minutes of Murray, offer a wide variety of activities including a summer theater program.

Land Between the Lakes National Recreation Area is a 170,000 acre heavily wooded peninsula between Kentucky and Barkley Lakes. It is one of the newest and largest recreation areas in the nation. It features a 5,000 acre Conservation Education Center and one of the finest buffalo herds in the nation.

Lake Barkley State Resort Park is a 3,600 acre park featuring the ultimate in wood structured lodges and a variety of recreational activities, including an 18-hole golf course and a 152 slip marina. Kentucky Lake presents one of the largest fishing events in the Kentucky Lake Fall Fishing Derby. The Governor's Cup Regatta and the Watkins Cup Regatta are features of Kenlake State Resort Park every May and October. Kentucky Dam Village State Resort Park at Gilbertsville is another feature of the area. The Septemberfest, a square and round dance festival, is held here annually. The Kaintuck Territory is a 167-acre 1880 frontier settlement reproduction where the Music and Crafts Fair is held.

The Murray State University Thoroughbreds are perennial challengers for major honors in the seven intercollegiate sports in the Ohio Valley Conference. In addition, several lectures, recitals, concerts, and plays are presented each year on campus and are open to the public.

THE LABOR MARKET

POPULATION TRENDS

Area	Population				Percent Change	
	1972	1970	1960	1950	1960-70	1950-60
Murray	N/A	13,537	9,303	6,035	+45.5	+54.2
Labor Market						
Area	89,400	87,632	76,599	74,581	+14.4	+ 2.7
Calloway County	27,800	27,692	20,972	20,147	+32.0	+ 4.1
Graves County	31,500	30,939	30,021	31,364	+ 3.1	- 4.3
Marshall County	21,500	20,381	16,736	13,387	+21.8	+25.0
Trigg County	8,600	8,620	8,870	9,683	- 2.8	- 8.4

Sources: U. S. Department of Commerce, Bureau of the Census, Census of Population, 1970, 1960, 1950. U. S. Bureau of the Census, Population Division.

GENERAL EMPLOYMENT CHARACTERISTICS, 1972

Major Employment Group	Employment	
	Calloway County	Labor Market Area*
TOTAL	11,340	35,250
Agricultural	940	3,200
Nonagricultural	10,400	32,050
Manufacturing	1,500	9,240
Government	3,870	7,140
Trade and Services	2,732	6,744
Other	2,298	8,926

*Includes Calloway, Graves, Marshall and Trigg Counties.

Source: Kentucky Department for Human Resources, Bureau for Administration and Operations.

MANUFACTURING EMPLOYMENT TRENDS BY INDUSTRY
SEPTEMBER 1973 AND 1963

Industry	Calloway County			Labor Market Area*		
	1973	1963	%Change	1973	1963	%Change
TOTAL	1,566	1,284	+ 22.0	9,580	6,898	+ 38.9
Food & Kindred Products	140	73	+ 91.8	229	295	- 22.4
Tobacco	1	1	0	1	24	- 95.8
Apparel, Textiles, Leather	208	371	- 43.9	2,026	2,543	- 20.3
Lumber, Furniture	15	4	+275.0	366	269	+ 36.1
Printing & Publishing, Paper	42	22	+ 90.9	127	80	+ 58.8
Chemicals, Petroleum & Coal, Rubber	61	6	+916.7	3,773	2,112	+ 78.6
Stone, Clay & Glass	19	21	- 9.5	406	244	+ 66.4
Primary Metals	0	0	0	698	527	+ 32.4
Machinery, Metal Products, Equipment	1,011	786	+ 28.6	1,662	800	+ 107.8
Other	69	0	--	292	4	+7,200.0

*Includes Calloway, Graves, Marshall and Trigg Counties.

Source: Kentucky Department for Human Resources, Number of Workers in Manufacturing Industries Covered by Kentucky Unemployment Insurance Law Classified by Industry and County, September 1973, September 1963.

MURRAY MANUFACTURING FIRMS,
THEIR PRODUCTS AND EMPLOYMENT

Firm (Establishment date)	Product	Employment			
		Total	Male	Female	Organized
Chrisman Popcorn Co. (1947)	Popcorn	5	4	1	
Ellis Popcorn Co., Inc. (1950)	Popcorn	4	3	1	
Fisher-Price Toys (1974)	Toys	352	160	192	
Fitts Block & Ready Mix Co., Inc. (1945)	Concrete block, ready mixed concrete	17	17	0	
Forsyth Industries (1973)	Metal stamping, air conditioning tubing	50*			
Fulton Ice Co., Inc. (1924)	Ice	3			

<u>Firm</u>	<u>Product</u>	<u>Employment</u>			<u>Organized</u>
		<u>Total</u>	<u>Male</u>	<u>Female</u>	
General Development Corp. of Kentucky (1973)	Silicone carbide	30			
Hutson Chemical Co., Inc. (1938)	Fertilizer	15	13	2	
J. G. Chemists (1960)	Industrial adhe- sives, cleaners, solvents	2	2	0	
Ledger & Times Publish- ing Co., Inc. (1879)	Newspaper	19	8	11	
Murray Fabrics, Inc. (1955)	Knitted tubing	17	3	14	
Murray Machine & Tool Co. (1921)	Pump houses, septic, water tanks, ornamen- tal ironwork, machine shop	12	12	0	
Parker Popcorn Co., Inc. (1937)	Popcorn process- ing	8	8	0	
Redmon Stake Co. (1969)	Wood stakes	3	1	2	
Ryan Milk Co. (1929)	Milk, cream, sour cream	95	80	15	**
Sager Glove Co. (1965)	Safety apparel	60	10	50	
Standard Textile Co. (1965)	Work uniforms				
Tappan Co., Murray Div. (1946)	Gas and electric ranges	925	885	40	**
Vanderbilt Chemical Corp. (1969)	Industrial chemi- cal additives	37	35	2	**
Winchester Printing Services, Inc. (1948)	Job printing	11	6	5	
York Spring Co. (1970)	Springs	20	5	15	

*Estimated.

**See Labor Organizations, page 11.

Source: Kentucky Department of Commerce, Division of Research and Planning.



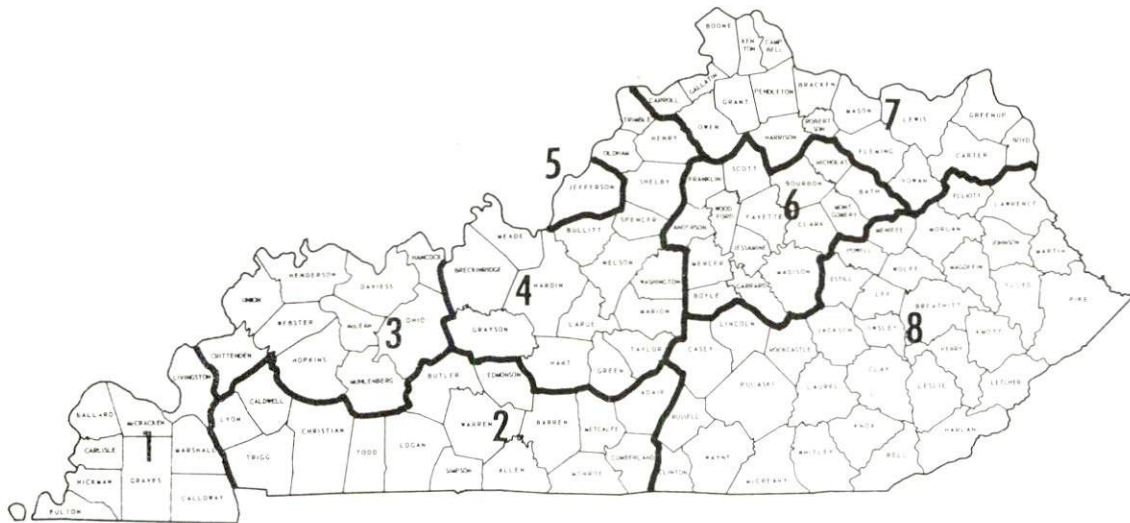
VANDERBILT CHEMICAL CORP.

FISHER-PRICE TOYS

WAGES

Occupational wage rates for specific industries are usually not available to most government agencies, and wage data furnished to state employment agencies by industrial employers is protected from disclosure by federal law. The most reliable up-to-date wage information can be obtained by direct contact with local employers.

Associated Industries of Kentucky, a voluntary organization of Kentucky businesses, regularly collects occupational wage rates and fringe benefits data from participating member firms. Data is compiled for over 130 clearly defined office, production, and service occupations. Tabulations are published for eight regions of Kentucky, as shown on the map below. It should be noted that the data may be weighted by the preponderance of firms in the larger cities and may be somewhat higher than the rates paid in the smaller communities. Data from these tabulations are available, upon request, from the Kentucky Department of Commerce, Frankfort, Kentucky 40601.



Associated Industries of Kentucky Area Wage Surveys

LABOR ORGANIZATIONS

<u>Union</u>	<u>Representing Manufacturing Workers at:</u>
Amalgamated Meat Cutters and Butcher Workmen of North America	Ryan Milk Company
Amalgamated Garment Workers of America	Standard Textile Company
United Auto Workers	Tappan Company
Oil, Chemical and Atomic Workers	Vanderbilt Chemical Company

ESTIMATED MALE LABOR SUPPLY
MURRAY LABOR MARKET AREA

<u>Area</u>	<u>Current</u>			<u>Future</u>	
	<u>Total</u>	<u>Not in Labor Force</u>	<u>Unemployed</u>	<u>Under employed</u>	<u>Reaching 18 yrs. of age by 1980</u>
Labor Market					
Area	4,270	1,220	1,300	1,750	3,899
Calloway	1,270	0	430	840	1,004
Graves	1,420	520	400	500	1,443
Marshall	1,360	700	380	280	1,007
Trigg	220	0	90	130	445

Sources: Kentucky Department for Human Resources, Kentucky Labor Supply Estimates by County, 1973. Kentucky Department of Commerce, Future Labor Supply by 1980.

ESTIMATED FEMALE LABOR SUPPLY
MURRAY LABOR MARKET AREA

<u>Area</u>	<u>Current</u>			<u>Future</u>	
	<u>Total</u>	<u>Not in Labor Force</u>	<u>Unemployed</u>	<u>Under employed</u>	<u>Reaching 18 yrs. of age by 1980</u>
Labor Market					
Area	4,310	1,190	1,000	2,120	3,670
Calloway	1,110	0	270	840	972
Graves	1,100	0	410	690	1,333
Marshall	1,740	1,080	230	430	972
Trigg	360	110	90	160	393

Sources: Kentucky Department for Human Resources, Kentucky Labor Supply Estimates by County, 1973. Kentucky Department of Commerce, Future Labor Supply by 1980.

PER CAPITA PERSONAL INCOME

<u>Area</u>	<u>1972</u>	<u>1962</u>	<u>% Change</u>
Calloway County	\$2,919	\$1,645	+ 77.4
Labor Market			
Area Range	\$3,575 - 2,919	\$1,626 - 1,228	N. A.
Kentucky	3,634	1,769	105.4
U. S.	4,549	2,381	91.1

Sources: Office of Development Services and Business Research, College of Economics, University of Kentucky, Kentucky Personal Income 1929/68. U. S. Department of Commerce, Office of Business Economics, Survey of Current Business, May, 1974, August, 1974.

TRANSPORTATION

Rail

Line serving Murray - Louisville & Nashville Railroad Company
Services - Freight - one northbound and one southbound thru freight
each day, seven days a week; siding for 100 cars, switching facilities.
Nearest piggyback facilities - Paris, Tennessee, 33 miles distant.

For details on routing, schedules, rates and services, contact:

Manager of Industrial Development
Louisville & Nashville Railroad Co.
908 West Broadway
Louisville, Kentucky 40203

Truck Service

<u>Company</u>	<u>Home Office</u>
Jack Cole-Dixie Highway Express	2625 Territorial Road St. Paul, Minnesota 55114
Harper Truck Service, Inc.	1266 North 8th Street Paducah, Kentucky 42002
United Trucking of Kentucky, Inc.	332 Hood Avenue Lebanon, Kentucky 40033
McLean Trucking Company	P. O. Box 213, 617 Waughtown St. Winston Salem, North Carolina 27107
Paschall Truck Lines, Inc.*	Route 4 Murray, Kentucky 42071
T. I. M. E. - DC, Inc.	P. O. Box 2550 Lubbock, Texas 79408

Other Freight Services

Nearest Shipping Center

United Parcel Service	Paducah, 45 miles distant
REA Express	Mayfield, 21 miles distant

*Local terminal.

HIGHWAY MILES AND TRUCK TRANSIT TIME IN DAYS FROM
MURRAY, KENTUCKY, TO SELECTED MARKET CENTERS

City	Delivery		City	Delivery	
	Highway Miles	Time TL		Highway Miles	Time TL
Atlanta, Ga.	376	2	Los Angeles, Calif.	1,967	3
Birmingham, Ala.	311	2	Louisville, Ky.	229	1
Chicago, Ill.	435	1	Nashville, Tenn.	124	1
Cincinnati, Ohio	342	1	New Orleans, La.	548	2
Cleveland, Ohio	590	2	New York, N. Y.	1,001	2
Detroit, Mich.	550	1	Pittsburgh, Pa.	626	2
Knoxville, Tenn.	309	2	St. Louis, Mo.	205	1

Source: Delivery time only - Harper Truck Service, Inc., P. O. Box 338, Paducah, Kentucky 42001

Air

	<u>Local</u>	<u>Nearest Commercial</u>
Location:	Kyle Field* Murray, 5 miles northwest	Barkley Field Paducah, Kentucky 45 miles distant
Runways:	1 paved	2 paved
Length:	4,000 feet	6,500 feet; 4,000 feet
Traffic Control:	Wind sock and tee	Wind tee and ILS System
Lighting:	Beacon, runway lights sundown to sunrise	Beacon, boundary, obstruction, runway lights and runway end identification lights; medium intensity approach lighting system under construction
Services:	80-100 octane, charter and flight instruction; hangar and tie down	Delta and Ozark Airlines, 80 and 100 octane, JA-1 fuel, taxi, limousine, U-Drive-It, storage, major A & E repairs; restaurant.
Air Freight Service:		On space-available basis

*A new joint state and federal project recently got underway to develop more parking area for airplanes, a new radio navigation directional beacon; to install new medium-intensity runway lighting, and for the construction of a new taxi-way. A final completion date has not been set.

Bus - Brooks Bus Lines, Inc.
Southern Greyhound Bus Lines

Taxi - 18-hour daily service by Radio Cab Company

Rental Services - Car, truck, and trailer rentals

POWER AND FUEL

Electricity

Company serving Murray - Murray Electric System
Source of power - Tennessee Valley Authority
Total generating capacity - 23,200,000 KW
For industrial rates contact:

Murray Electric System
401 Olive Street
Murray, Kentucky 42071

Company serving Calloway County - West Kentucky RECC
Source of power - Tennessee Valley Authority
Total generating capacity - 23,200,000 KW
For industrial rates contact:

West Kentucky RECC
P. O. Box 589
Mayfield, Kentucky 42066

Natural Gas

Company serving Murray - Murray Natural Gas System
Source of supply - Texas Gas Transmission Corporation
Size of transmission mains - 26 and 30 inches (supplier);
6 inches (distributor)
Distribution mains - 2, 4, and 6 inches
Distribution pressure - 20 to 50 psi
Btu content - 1,000 per cubic foot; Specific gravity - .60
For rates and supplies contact:

Murray Natural Gas System
P. O. Box 466
Murray, Kentucky 42071

Other Fuels

Propane and Butane - Texgas Corporation
Railroad Avenue
Murray, Kentucky

Fuel Oils

Distillate fuel oil - Gulf Oil Products Distributor
403 S. 2nd.
Murray, Kentucky

Kentucky Lake Oil Company
New Concord Road
Murray, Kentucky

Texaco Bulk Plant
S. 2nd.
Murray, Kentucky

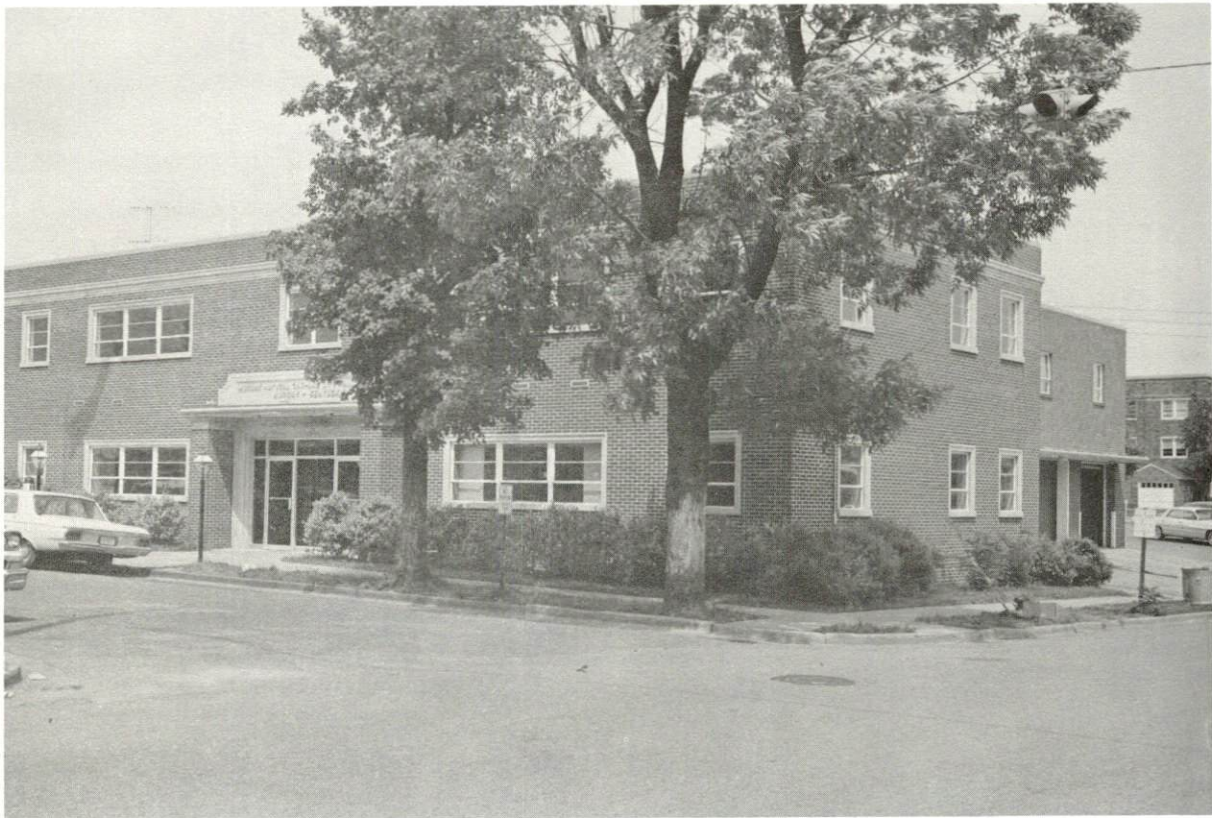
Standard Oil Co. Agent and Bulk Plant
Railroad Avenue
Murray, Kentucky

Residual fuel oil - arrangements must be made with the refinery.

Low sulphur content coal - Available in Eastern Kentucky



MURRAY, ELECTRIC SYSTEM
MURRAY WATER AND SEWER SYSTEM



MURRAY CITY HALL AND NATURAL GAS BUILDING

WATER AND SEWERAGE

Water

Company serving Murray - Murray Water and Sewer System*

Source - 5 wells

Treatment plant capacity - 5,000,000 gpd

Average daily consumption - 2,500,000 gallons

Peak daily consumption - 2,800,000 gallons

Type treatment - Iron removal, chlorination, fluoridation, caustic soda

Storage capacity - 3,250,000 gallons

Size lines - 4, 6, 8, 10, 12, and 16 inches

Average pressure - 50 psi

Average temperature - 60 degrees F.

MONTHLY WATER RATES FOR WHOLESALE AND INDUSTRIAL CONSUMERS

INSIDE:

Minimum Rate		\$2.50
First	2,000 gallons	1.25 per M gallons
Next	2,000 gallons	1.11 per M gallons
Next	2,000 gallons	.95 per M gallons
Next	2,000 gallons	.81 per M gallons
Next	2,000 gallons	.70 per M gallons
Next	25,000 gallons	.56 per M gallons
Next	25,000 gallons	.41 per M gallons
Next	240,000 gallons	.31 per M gallons
Next	1,700,000 gallons	.25 per M gallons
All over	2,000,000 gallons	.20 per M gallons

(Continued)

*Several new distribution mains are being added and several old mains replaced. The construction of a new well is being discussed.

OUTSIDE:

Minimum Rate \$3.00

First	2,000 gallons	1.50 per M gallons
Next	2,000 gallons	1.36 per M gallons
Next	2,000 gallons	1.20 per M gallons
Next	2,000 gallons	1.11 per M gallons
Next	2,000 gallons	.91 per M gallons
Next	25,000 gallons	.81 per M gallons
Next	25,000 gallons	.60 per M gallons
Next	240,000 gallons	.35 per M gallons
Next	1,700,000 gallons	.25 per M gallons
All over	2,000,000 gallons	.20 per M gallons

TAP ON CHARGES

<u>Meter Size</u>	<u>In City</u>	<u>Outside City</u>
3/4 -inch	\$ 75.00	\$100.00
1 -inch	90.00	115.00
1 1/2-inch	120.00	145.00
2 -inch	135.00	160.00

Name of water district - Murray #3 Water District

Area served - Western portion of Calloway County

Date when water district began operating - November 1970

Source of supply of treated water - Murray Water and Sewer System

Average amount of water used in a 24-hour period - 16,000 gallons

Storage capacity - 50,000 gallons

Size lines - 6-inch

Rates -

First	1,500 gallons	\$4.50 minimum
Next	3,500 gallons	2.50 per M gallons
Next	5,000 gallons	1.00 per M gallons
Next	10,000 gallons	.85 per M gallons
Next	30,000 gallons	.70 per M gallons
Next	50,000 gallons	.55 per M gallons
All over	100,000 gallons	.40 per M gallons

Tap-on charge - 5/8 & 3/4-inch	\$200.00
1 -inch	300.00
2 -inch	500.00

Surface water sources - Tennessee and Clarks Rivers
 Average discharge - Clarks River at Murray, 88.6 cfs (20 years, USGS).
 Expected ground water yield - 5 to 50 gpm along Kentucky Lake along the eastern border of the county; 500 to 1,000 gpm over remainder of county.

Sewerage

Company serving Murray - Murray Water and Sewer System*
 Design capacity - 2,500,000 gallons per day
 Average daily flow - 1,715,000 gallons; Treatment - primary and secondary
 Type treatment - Primary and secondary settling, trickling filter, digester with vacuum filter for sludge.
 Treated effluent discharged into - Branch of Clarks River
 Size of sanitary mains - 6, 8, 10, 15, 18, and 24 inches

Rates (Based on water usage) -

<u>INSIDE:</u>		
Minimum Rate		\$2.50
First	2,000 gallons	1.25 per M gallons
Next	2,000 gallons	.36 per M gallons
Next	2,000 gallons	.32 per M gallons
Next	2,000 gallons	.27 per M gallons
Next	2,000 gallons	.24 per M gallons
Next	25,000 gallons	.18 per M gallons
Next	25,000 gallons	.14 per M gallons
Next	240,000 gallons	.10 per M gallons
Next	1,700,000 gallons	.09 per M gallons
All over	2,000,000 gallons	.07 per M gallons

(Continued)

*Under construction is 30,000 feet of 12-, 18-, and 24-inch interceptor mains. Within the next few weeks installation of 12,000 to 14,000 feet of an 8-inch collector system will begin. This project will be completed in 1975. Improvements and additions to the present sewage treatment plant are expected to be completed in 1976.

OUTSIDE:

Minimum Rate

\$3.00

First	2,000 gallons	1.50 per M gallons
Next	2,000 gallons	.432 per M gallons
Next	2,000 gallons	.384 per M gallons
Next	2,000 gallons	.324 per M gallons
Next	2,000 gallons	.288 per M gallons
Next	25,000 gallons	.216 per M gallons
Next	25,000 gallons	.168 per M gallons
Next	240,000 gallons	.120 per M gallons
Next	1,700,000 gallons	.108 per M gallons
All over	2,000,000 gallons	.084 per M gallons

LOCAL GOVERNMENT

City

Murray

Structure - Mayor 4-year term; 12 councilmen - 2-year terms

Budget 1973-74 - General Fund	\$835,500
Water and Sewer Fund	485,258
City Gas System	656,976

Fees and licenses - Annual business license fee ranging from \$1.65 to \$440.00; annual vehicle license tax \$10.00; insurance tax 7 percent

County

Structure - County Judge - 4-year term; 4 magistrates - 4-year terms

Budget 1973-74 - General Fund	\$351,000
Road Fund	140,000

Assessed Value of Property, 1974

<u>Classes of Property</u>	<u>Murray</u>	<u>Calloway County</u>
Real Estate	\$66,989,467	\$138,949,591 (1973)
Tangibles	30,341,982	42,664,351 (1973)
Public Service	5,081,128	14,864,436 (1972)

Property Taxes

Land and buildings are taxed by the state and may be taxed by local jurisdictions. The state rate is \$0.015 per \$100 of assessed valuation.

Tangible personal property owned by manufacturers (automobiles, trucks, finished good, office furniture, office equipment) is taxed by the state at \$0.15 per \$100 and may be taxed by local jurisdictions.

Manufacturing machinery, raw materials inventories, and goods in process inventories are not subject to local taxation. The state rate is \$0.15 per \$100.

Property stored in public warehouses is not subject to local taxation. The state rate is only \$0.015 per \$100.

Property Taxes (continued)

All property is assessed at 100 percent of fair cash value.

Local Property Tax Rate Per \$100 of Assessed Valuation, 1973*

<u>Taxing Jurisdiction</u>	<u>Murray</u>	<u>Calloway County</u>
County	.222	.222
School	.567	.349
City	.400	

Utilities Gross Receipts Tax for Schools

Calloway County levies a 3 percent tax on utilities receipts for schools. This tax is paid by all consumers of utilities. Exempted are receipts from utilities services that are resold and the receipts from the sale of energy or energy producing fuels that exceed 3 percent of the cost of production in manufacturing, processing, mining or refining.

Planning and Zoning

City agency - Murray Planning Commission

Zoning enforced - In Murray only

Subdivision regulations enforced - Four-mile radius from 12th and Main Streets. Recently the subdivision regulations were revised and updated.

Local codes enforced - Building inspecting

Mandatory state codes enforced - Plumbing, National Fire Protection Association Code, National Building Code (for major buildings and residential construction containing more than 12 bedrooms per building)

Other programs underway include public housing and housing for the aged, design more parking space in downtown district and ease some of the current parking problems, and trying to organize a base map for the city.

*Kentucky Department of Revenue, Kentucky Property Tax Rates, 1973.

Safety

<u>Police</u>	<u>Murray</u>	<u>Calloway County</u>
Total staff	26	8
Radio-patrol cars	4	5
Other equipment	Radar timing devices, connected on computer with the national criminal information center	Base station maintains radio communication with State Police in Kentucky and surrounding Tennessee communities.

Fire

American Insurance Association Fire Rating	5
Full-time staff	60
Volunteers	8
Equipment:	
1,000 gpm pumpers	3
750 gpm pumper	1
Aerial ladder truck	1 (85 feet)
Other	Chief's car - 1

Rescue Service

Calloway County Fire-Rescue, Inc.

Number of volunteers - 35

Equipment - One 750-gpm pumper with 1,000 gallon storage capacity, one 1,000 gallon tanker, 2 motor boats with dragging equipment, all vehicles radio equipped.

Personnel training - First aid, emergency medical training, fire-fighting techniques and water rescue training.

Professional Ambulance Service

Staff - 6 full-time, 2 part-time, 2 volunteers

Equipment - 2 completely equipped ambulances, 1 ambulance for standby.

Personnel training - Emergency medical training, advanced first aid.

Sanitation

	<u>Murray</u>	<u>Calloway County</u>
Type service	Municipal	Each business and residence is responsible for its own garbage disposal.
Fee charged:		
residential	\$2.50 per mo.	
business	\$2.50 to \$40.00 per mo.	
Collection frequency:		
residential	Weekly	
business	Weekly to daily	
Trash pickup	Semi-annual	
Disposal method	Landfill	The city landfill is available to everyone. There is a charge, based on the amount of garbage, for anything more than a car load full.

EDUCATION

Public Schools

	<u>Murray Independent</u>	<u>Calloway County</u>
Total Enrollment (1973)	2,071	2,645
Elementary	766	1,820
Middle School	672	
High School	633	825
Student-Teacher Ratio	21 to 1	27 to 1
Elementary	23 to 1	29 to 1
Middle School	20 to 1	
High School	19 to 1	23 to 1
Accreditation	1973-74 Southern Association of Colleges and Schools	1973-74 Southern Association of Colleges and Schools
Percent High School Graduates to College	65.3	47.2
Expenditures Per Pupil (1972-73)	\$565.45	\$489.77
Bonded Indebtedness, June 30, 1973	\$2,824,000	\$431,000

Nonpublic Schools

	<u>University School for Special Education Teacher Training</u>
Total Enrollment	196
Elementary	196
Student-Teacher Ratio	19 to 1
Elementary	19 to 1

Vocational Schools

	<u>Nearest State School</u>	<u>Nearest Area Education Center</u>
Location	West Kentucky State Vocational Technical School Paducah, Kentucky	Murray Area Vocational Education Center Murray, Kentucky
Miles Distant	45 miles	
Curriculum	Clerical Secretarial Learning Lab Electronics (Communications) Auto Body Repair Auto Mechanics Barbering Carpentry- Building Trades Commercial Foods Cosmetology Drafting Electricity Masonry Tailoring	Clerical Secretarial Marketing and Distributive Education Appliance Repair Auto Body Repair Auto Mechanics Carpentry- Building Trades

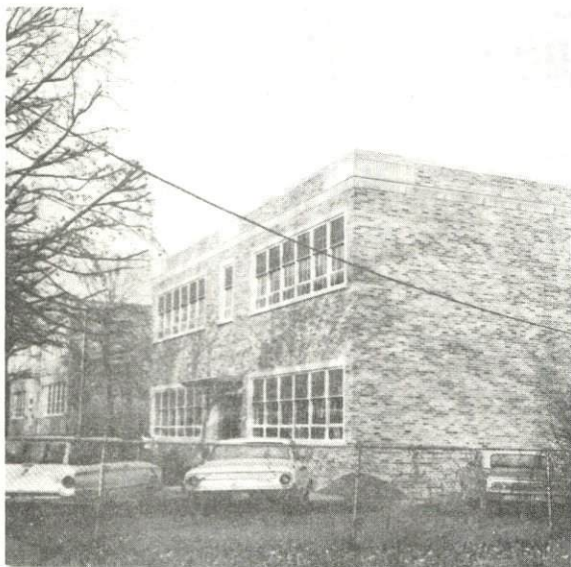
Arrangements can be made to provide training in the specific production skills required by an industrial plant. Instruction may be conducted either in the vocational school or in the industrial plant, depending upon the desired arrangement and the availability of special equipment.

Colleges and Universities

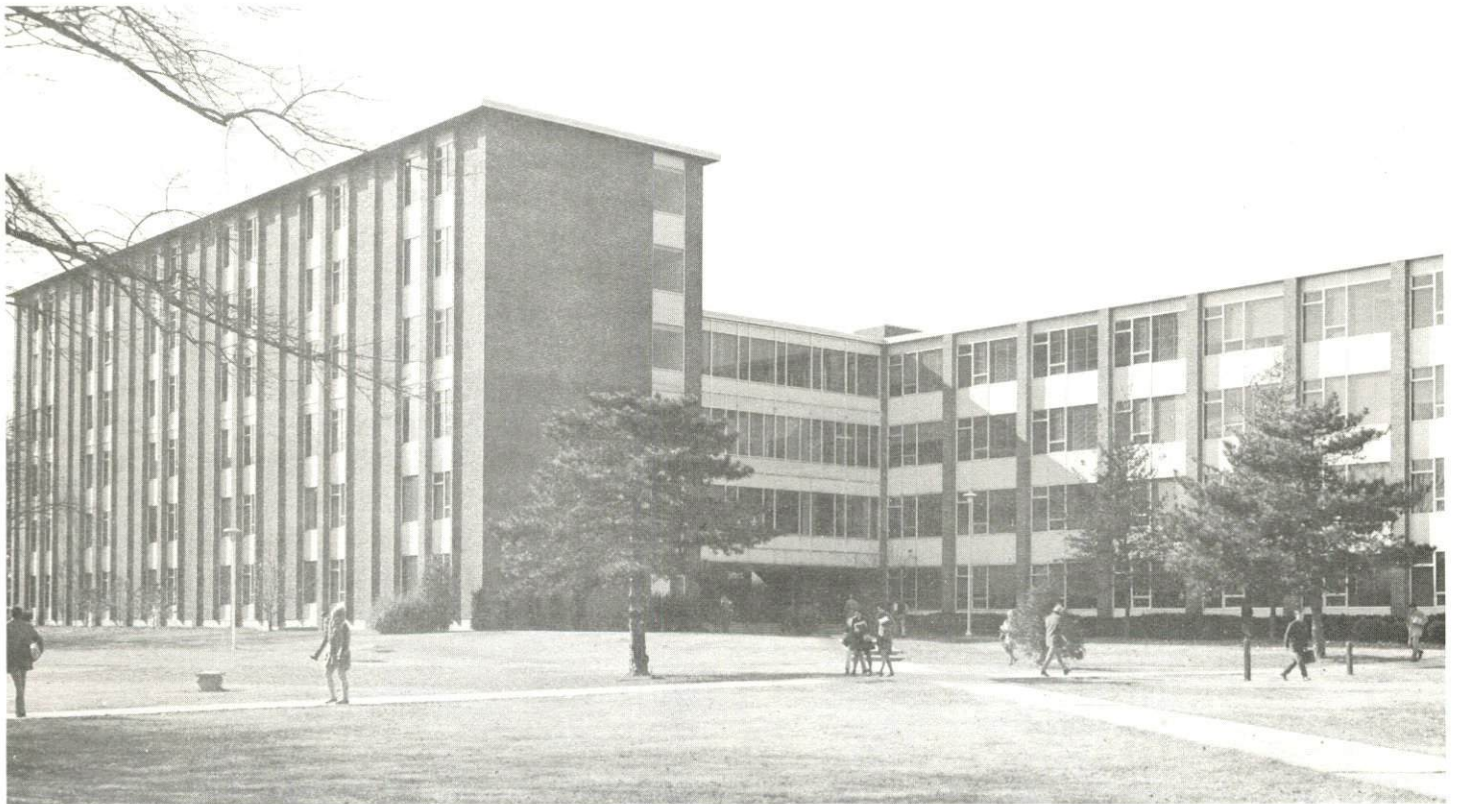
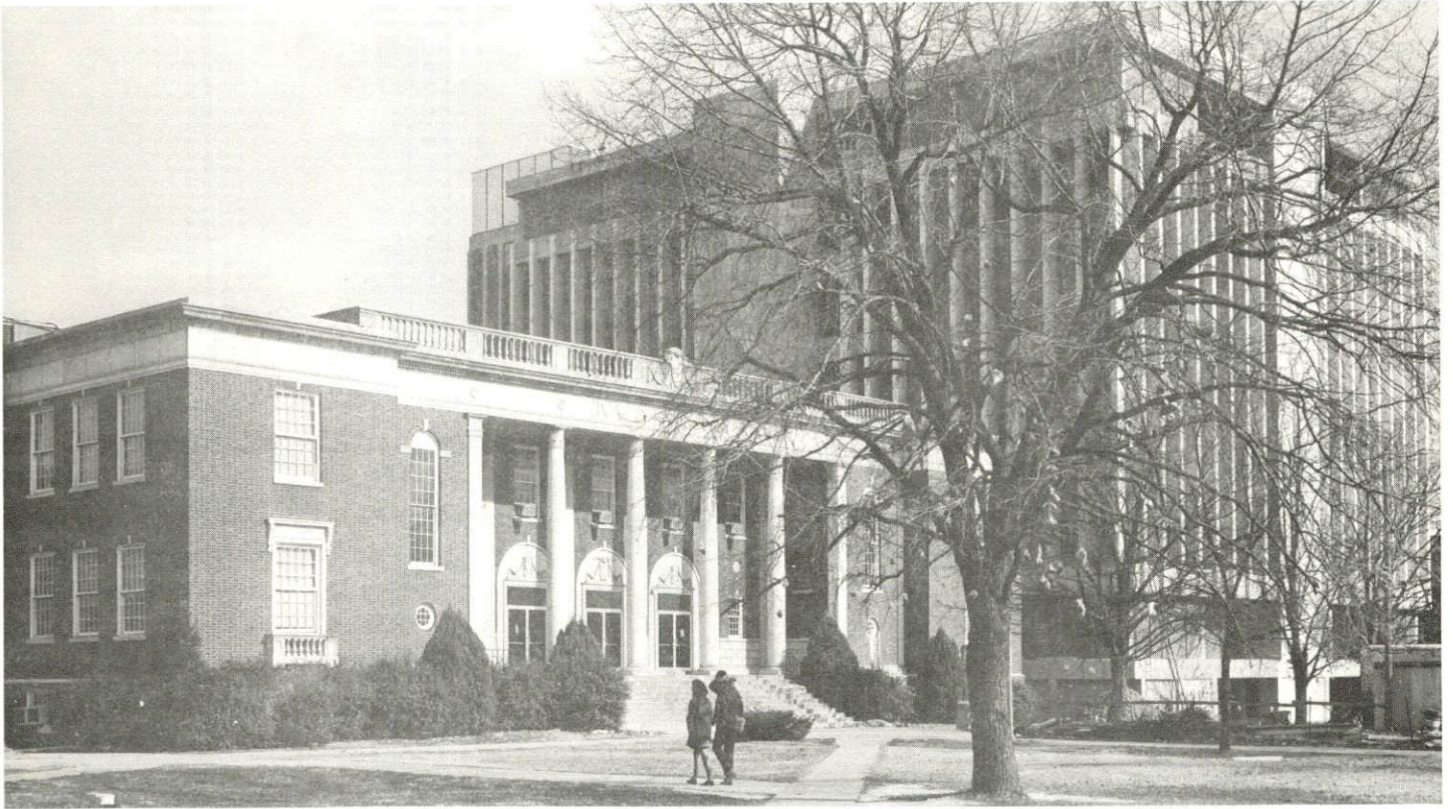
<u>Name</u>	<u>Area - Within 50 miles</u>		<u>Highest Degree Conferred</u>
	<u>Location</u>	<u>Enrollment (Fall, 1973)</u>	
Murray State University	Murray	7,239	Masters, Ph. D.*
Paducah Community College	Paducah	1,048	Associate

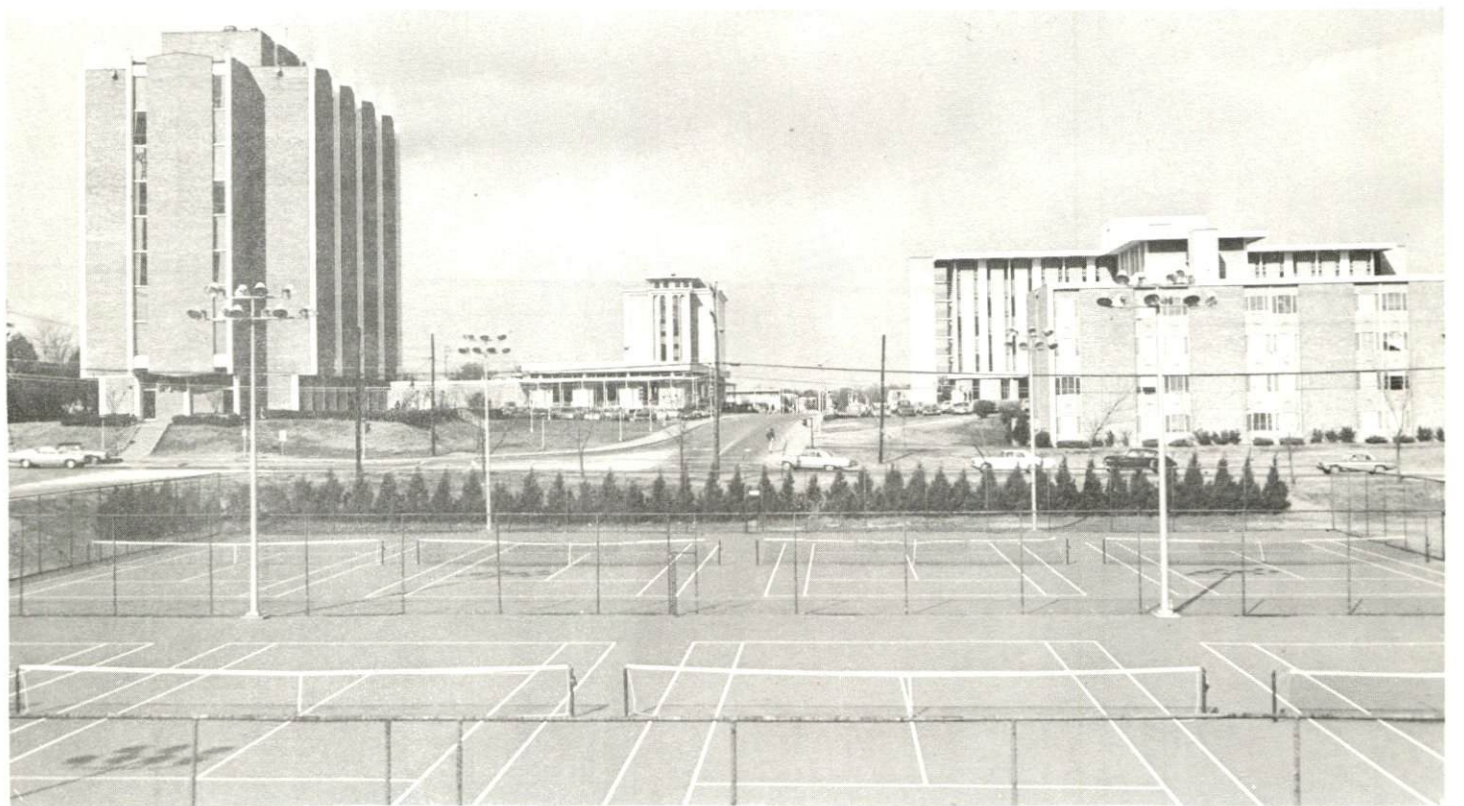
*Cooperative program with the University of Kentucky, Lexington, for a Ph. D. in education only.

ELEMENTARY AND HIGH SCHOOLS



MURRAY STATE UNIVERSITY





HEALTH

Hospitals

<u>General Hospital</u>	<u>Location</u>	<u>Beds</u>
Murray - Calloway County Hospital	Murray	167

General hospital facilities - 61 convalescent beds; 3 operating rooms; 4-bed intensive coronary unit, cardiac care linked by computer with Vanderbilt Hospital at Nashville, Tennessee; 24-hours a day for monitoring; diagnostic X-ray department, pharmacy, laboratory defibrillator, obstetric department, respiratory and physical therapy, and social services department.

Medical staff - 23 doctors, 33 full- and 5 part-time registered nurses, 38 full- and 4 part-time licensed practical nurses. The student nurses attending Murray State University practice training at the hospital.

Other Medical Facilities

Houston - McDevit Clinic, Inc.

General hospital facilities - Laboratory, X-ray department, physical therapy, pharmacy, patient rooms. Services offered are outpatient medical practice and house calls.

Medical staff - 17 doctors, 2 registered nurses, 8 licensed practical nurses, 15 assistant office nurses, 4 lab technicians, lab assistant, 2 X-ray technicians, dark room assistant, physical therapist, 3 registered pharmacists.

Nursing Homes

	<u>Number</u>	<u>Beds</u>
Extended care homes	1	32 intermediate care 56 extended care
Personal care homes	1	71

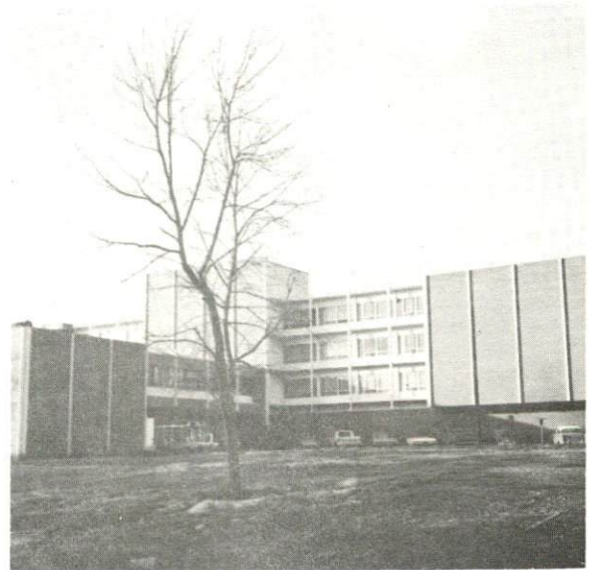
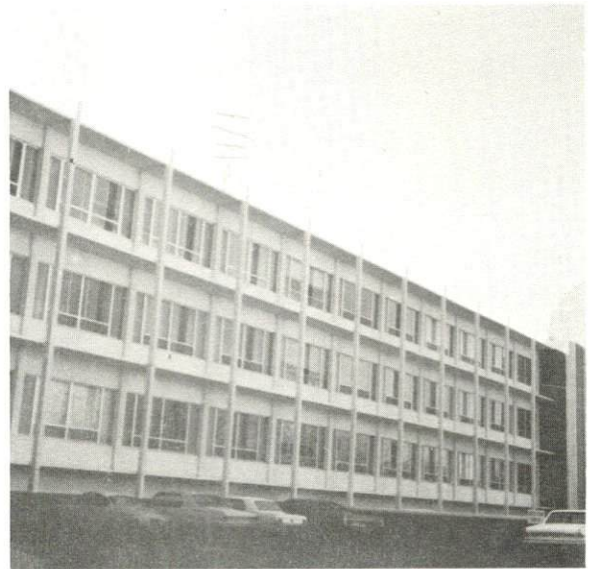
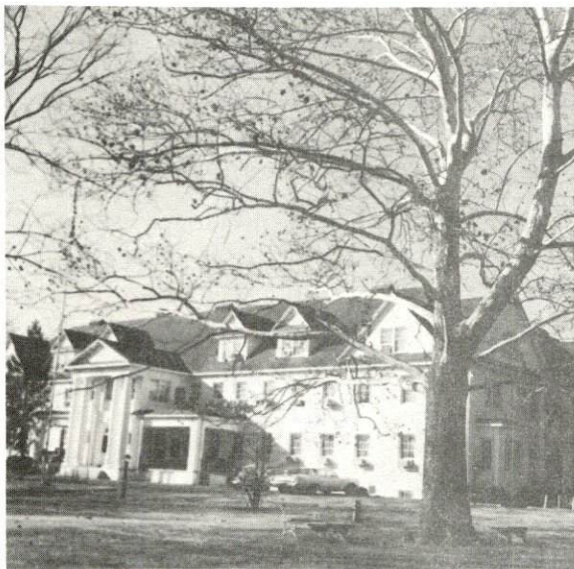
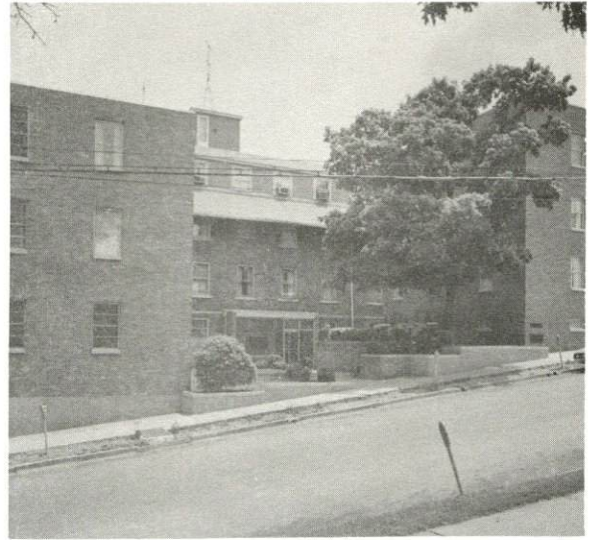
Public Health

Facility - Calloway County Health Center

Staff - Administrator, 2 sanitarians, 3 public health nurses, 1 plumbing inspector (state employee), and 2 clerks. Part-time - 1 nutritionist, 1 nurse, 1 sanitarian

Budget 1973-74 - \$91,777.42

HOSPITAL, CHURCH, CLINICS



OTHER LOCAL FACILITIES

Communications

Telephone - South Central Bell Telephone Company
Services - Standard services, plus touch tone dialing; approximately
13,000-unit Centrex system at Murray State University

Telegraph - Western Union Telegraph Company
Services - Office, message delivery by telephone and messenger

Postal - U. S. Post Office - Main office and contact station at Murray
State University
Class - First
Mail received - 3 times daily
Mail dispatched - 3 times daily

Newspapers -
Daily except Sunday, and circulation - Ledger and Times - 7,300
Murray Democrat - 3,250
University News - 9,000
Other papers received from - Louisville and Paducah, Kentucky;
Memphis and Nashville, Tennessee; New York, New York

Radio - WNBS-AM, WAAW-FM, WKMU-FM
Stations received from - All radio networks and independent stations
within a 150-mile radius

Television -
Cable service
Reception from - 11 channels and constant weather scan which includes
Paducah, Kentucky; Jackson and Nashville, Tennessee; Harrisburg,
Illinois; and Cape Girardeau, Missouri

Kentucky Educational Television - Murray transmitter, Channel 21

Library Services

Public library - Calloway County Public Library
Size collection - 42,000 volumes
Circulation, 1973-74 - 202,089
Services - Bookmobile serves city and county. Shut-in service through
the bookmobile, films, periodicals, paintings, microfilms, story
hours - twice weekly, children's programs, adult and junior great

Library Services (Continued)

books, discussion groups, book reviews held regularly, special displays, Jackson Purchase regional library headquarters.

Private library - Murray State University Library (open to the public)

Size collection - 295,011

Special collections - Early history of Kentucky and Tennessee; genealogy; TVA publications; Jesse Stuart Collection consisting of manuscripts and letters; Kentuckiana and Jackson Purchase collections; manuscripts of Nathan B. Stubblefield, Harry Lee Waterfield, Mancil Venson, and Edward T. Breathitt; the Gregory Papers, and the Everett Papers from Obion County, Tennessee.

Religious Institutions

Murray - Calloway County

Number of churches -	71
Denominations -	Baptist
	Methodist
	Nazarene
	Pentecostal
	Presbyterian
	Church of Christ
	Christian
	Church of Jesus Christ
	of Latter Day Saints
	St. Leo Catholic Church
	Jehovah's Witnesses
	Wayman Chapel A. M. E.
	St. John's Episcopal
	Immanuel Luthern
	Seventh Day Adventist
Nearest Synagogue -	Paducah, 45 miles distant
Congregation -	Temple Israel (reform)

Financial Institutions

<u>Banks</u>	<u>Statement as of June 28, 1974</u>	
	<u>Assets</u>	<u>Deposits</u>
Bank of Murray	\$62,293,725.00	\$55,322,737.00*
Peoples Bank of Murray, Ky.	42,619,281.22	37,864,165.83
Dees Bank of Hazel, Ky.	7,168,098.26	6,528,362.07

*Financial statement as of June 30, 1974.

Savings and Loan Associations

Assets

Shared Accounts

Murray Branch of Hopkinsville
Federal Savings and Loan
Association

\$41,549,242.90*

\$37,470,087.13

Hotels and Motels

Total number - 5
Units - 177

Clubs and Organizations

Business and Civic - Agriculture Council, American Red Cross, Big "M" Club, Calloway County Association for Retarded Children, Calloway County Bar Association, Calloway County Drug Council, Calloway County Mental Health Association, Calloway County Conservation Club, Farm Bureau, Calloway County Medical Association, Civitan Club, Calloway County Alcoholic Council, Alcoholics Anonymous, Kiwanis, Lions, Murray Chamber of Commerce, Dental Society, Hospital Association, Jaycees, Ministerial Association, Insurance Association, Board of Realtors, Newcomers Club, Optimist Club, Rotary Club, Young Business Men's Club.

Fraternal - American Legion, Disabled Veterans, Fraternal Order of Police, Moose, Murray Masonic Lodge 105, Shrine Club, Professional Firefighters, Thoroughbred Club, VFW, Woodmen of the World, Elks.

Women's - American A. A. U. W., Associated Women of Farm Bureau, B & PW Club, Calloway County Genealogical Society, Calloway County Homemakers Club, DAR, Daughters of the Confederacy, Magazine Club, Jaycettes, Women's Club, Nature Palette, Secretarial Association, Quota Club, Rose and Garden Club, Tops Club, Woodmen of the World Sorority, Eastern Star.

Youth - Boy Scouts of America, 4-H, Girl Scouts, Murray Baseball Association, Cub Scouts, Brownies, FFA, FHA, FBLA, FTA, Beta Club, Little League.

Other - Weight Watchers, Senior Citizens Club.

*Assets for Murray, Kentucky, are approximately \$7,000,000 for 1974.

RECREATION

<u>Local</u>	<u>Municipal</u>	<u>Murray State University**</u>
Public Recreation Facilities		
Supervised program -	Year round program	
Parks -	1*	
Playgrounds -	3 (neighborhood parks)	
Swimming pools -		1 - indoor
Tennis courts -	6	8
Baseball diamonds -	2 - lighted	1 - lighted
Other -	Basketball court - 1 picnic shelters and grills at city park; soccer field	

Private Recreation Facilities

Country clubs -	2	
Golf courses -	2 - (18-hole)	
Movie theaters -	4 indoor; 1 drive-in	
Bowling facility	1 - (18 lanes)	
Other -	1 miniature golf course Racket Club - with racket and tennis courts and swimming pool	

Tourist Attractions

Murray State University
 The Confederate Memorial
 The Original Calloway County Courthouse from which Marshall, Graves,
 and Calloway Counties originated.

Cultural Events

Lectures, recitals and concerts at Murray State University. Several plays presented each year by the University's drama department.

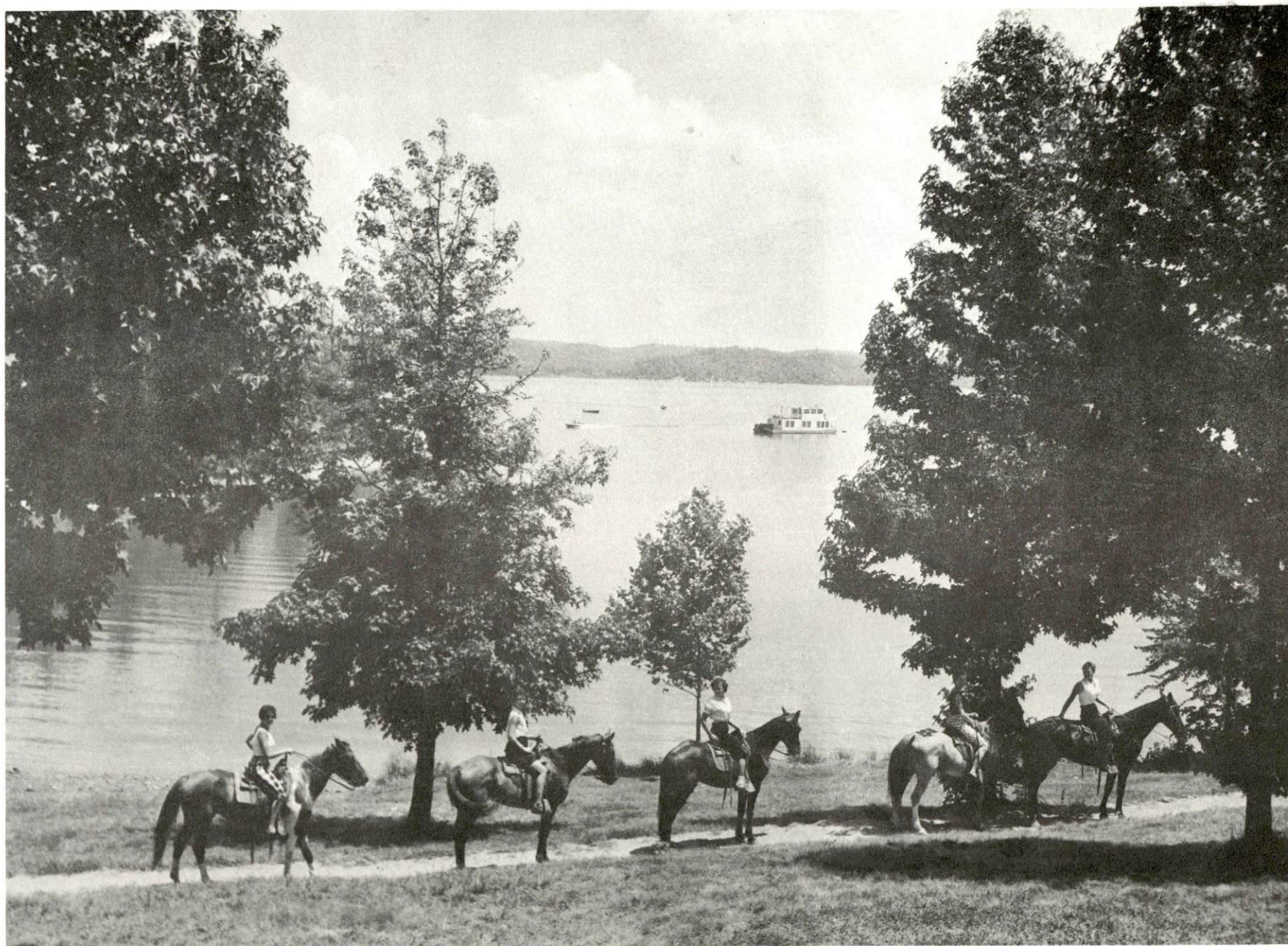
Area (Within 25 miles)

Kentucky Dam Village State Resort Park, Land Between the Lakes National Recreation Area, Lake Barkley State Resort Park, Kenlake State Resort Park

*Plans have been completed for a new 100-acre park to be constructed.

The estimated one million dollar project is now ready to obtain funding.

**Facilities open to the public.



EXCELLENT RECREATIONAL FACILITIES

AGRICULTURE - NATURAL RESOURCES - CLIMATE

Agriculture*

	<u>Calloway County</u>	<u>Labor Market Area</u>
Total land area (acres)	245,824	1,059,008
Percent of area in farm land	69.1	62.9
Number of farms	1,527	5,442
Average size of farms (acres)	111.1	122.4
1969 value of all farm products	\$ 8,785,594	\$31,086,603
Value per farm	5,753	5,712
Total crop sales	4,449,083	13,538,787
Total livestock & livestock products	4,307,243	17,383,418
1972 agricultural production included:		
Burley tobacco (lbs.) (est.)	364,000	2,595,000
Corn for grain (bu.)	912,000 **	3,813,600
Cattle and calves (number)	25,600 **	97,100
Hogs and pigs (number)	12,400 **	100,800
Milk production, 1971 (lbs.)	27,380,000	67,830,000

Natural Resources

Principal mineral resources	Sand and gravel
Other mineral resources	Clay and shale
Acres of commercial forest land	77,100
Most abundant tree species	Red oak, white oak, hickory, sweetgum, ash, cottonwood, and blackgum

*U. S. Department of Commerce, Bureau of the Census, Census of Agriculture, 1969. U. S. Department of Agriculture and Kentucky Department of Agriculture, Kentucky Agricultural Statistics, 1972.

**Preliminary figures.

Climate*

Calloway County

Temperature

Annual mean (30-year record)	59.4 degrees
Average annual 1973	60.5 degrees
Record highest, July, 1966 (8-year record)	103.0 degrees
Record lowest, January, 1966 (8-year record)	- 6.0 degrees
Normal heating degree days (30-year record)	3,696
(Heating degree day totals are the sums of negative departures of average daily temperatures from 65 degrees F.)	

Precipitation

Mean annual total (30-year record)	46.00 inches
Mean annual snow and sleet (32-year record)	11.30 inches
Total precipitation 1973	59.78 inches
Mean number days precipitation (.01 inch or more) (32-year record)	119
Average number days thunderstorms (32-year record)	56

Prevailing winds (34-year record)

Northwest

*U. S. Department of Commerce, Environmental Science Services Administration, Climatological Data, 1973. Station of record: Nashville, Tennessee.

HISTORY

Calloway County is located in the western end of Kentucky in that area known as the Jackson Purchase. The county is bordered on the south by the Tennessee state line, and on its eastern side extending the full length, is Kentucky Lake, the world's largest man-made lake. The area is well-drained by both forks of the Clarks River, the Tennessee River and their tributaries. Most of the 384 square miles of territory is level and its soil is fertile. This was the western extent of the barren lands which the Indians had kept cleared of trees in order to hunt buffalo.

The first settlement in Calloway County was made by David Jones in 1812 in the northern part of the county. Wadesboro, near there, became the first county seat and developed into a flourishing town after a land office was established there. After the public lands were sold Wadesboro lost its prominence and the county seat was moved in 1844 to Murray, near the center of the county.

Calloway became Kentucky's seventy-second county in 1822. Taken from Hickman County, it was moved in honor of Colonel Richard Calloway, a Virginian who migrated to Kentucky in 1777 and became one of the first members of the Virginia Assembly from west of the mountains. Calloway was known as a defender of the frontier and was appointed by Governor Patrick Henry to survey the site of Boonesborough.

Murray was named for John L. Murray, a Kentuckian who served in the U.S. Congress. A city of 13,537 in 1970, Murray is the home of Murray State University. Founded in 1922 as the Murray Normal School, the University has become an important institution for the state with an enrollment of over 7,000 students.

In 1830 Calloway County had 5,164 inhabitants. The population grew steadily to 20,147 in 1950 and 20,972 in 1960. There was significant growth during the next decade to 27,692 in 1970.

Agriculture accounted for 940 of the county's 11,340 employed in 1972, with burly tobacco, corn, cattle, milk and hogs the principal products. Manufacturing employed 1,500, with the greatest concentration in production of machinery and metal products. Tappan Company, which employs over 900 persons producing gas and electric ranges, is the county's largest firm. Murray is one of the largest dark-fired tobacco markets in the world and processes a large portion of the nation's popcorn. Twenty million tons of high-grade silica sand, used in the glass and foundry industries, is located in southeastern Calloway County.

Kentucky Lake and the adjacent Land Between the Lakes Area offer a vast recreation area, extensive tourist facilities, and make Calloway County the recipient of a large tourist trade.

Among noted citizens in Calloway County history was Nathan B. Stubblefield, a pioneer experimentalist in the field of wireless telephony whom many credit to have been the first to transmit the human voice successfully by radio.