

1984

Industrial Resources: Carroll County - Carrollton

Kentucky Library Research Collections
Western Kentucky University, spcol@wku.edu

Follow this and additional works at: https://digitalcommons.wku.edu/carroll_cty

 Part of the [Business Administration, Management, and Operations Commons](#), [Growth and Development Commons](#), and the [Infrastructure Commons](#)

Recommended Citation

Kentucky Library Research Collections, "Industrial Resources: Carroll County - Carrollton" (1984). *Carroll County*. Paper 7.
https://digitalcommons.wku.edu/carroll_cty/7

This Report is brought to you for free and open access by TopSCHOLAR®. It has been accepted for inclusion in Carroll County by an authorized administrator of TopSCHOLAR®. For more information, please contact topscholar@wku.edu.

IR CARROLL COUNTY

434

RESOURCES
FOR
ECONOMIC
DEVELOPMENT

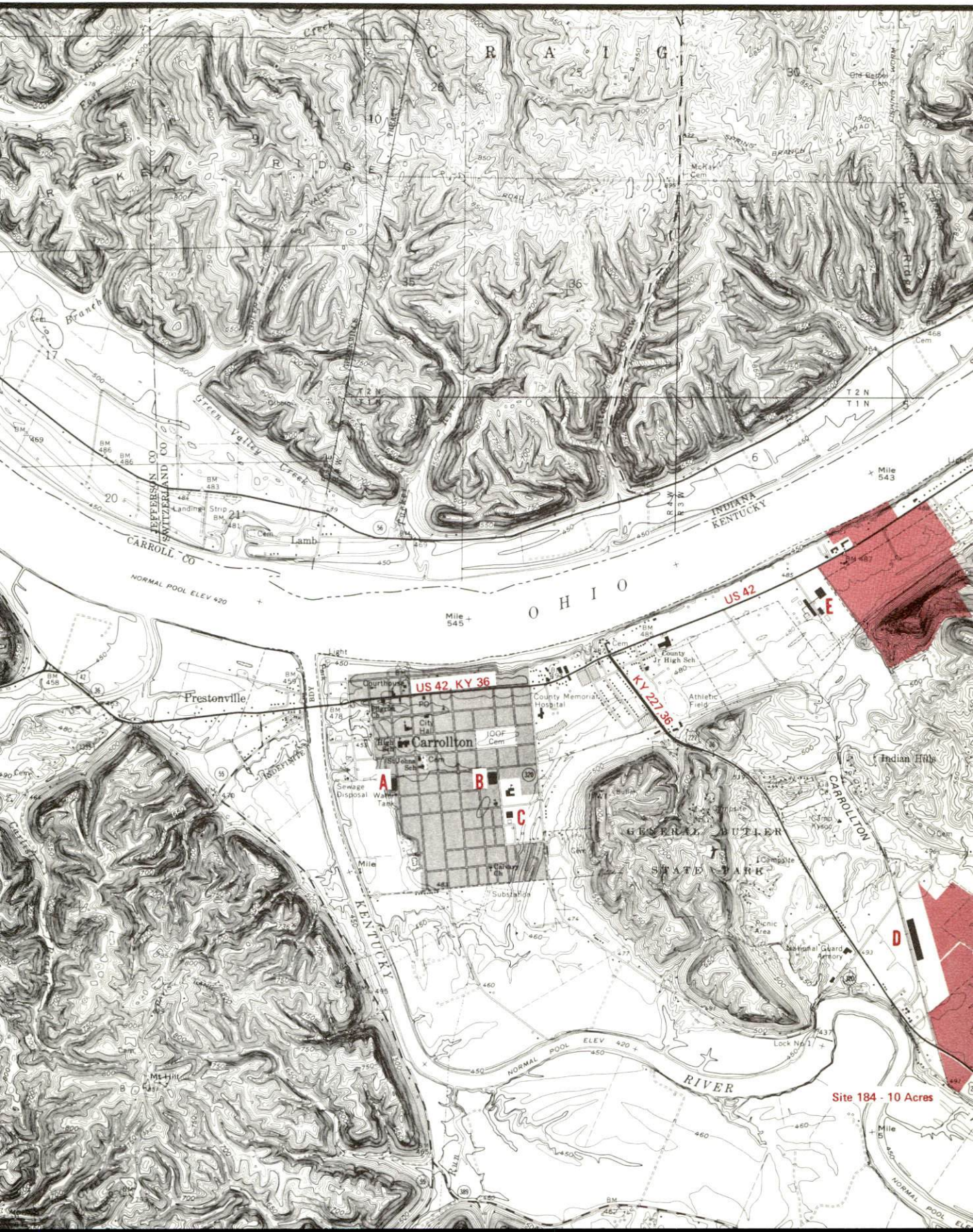
CARROLLTON

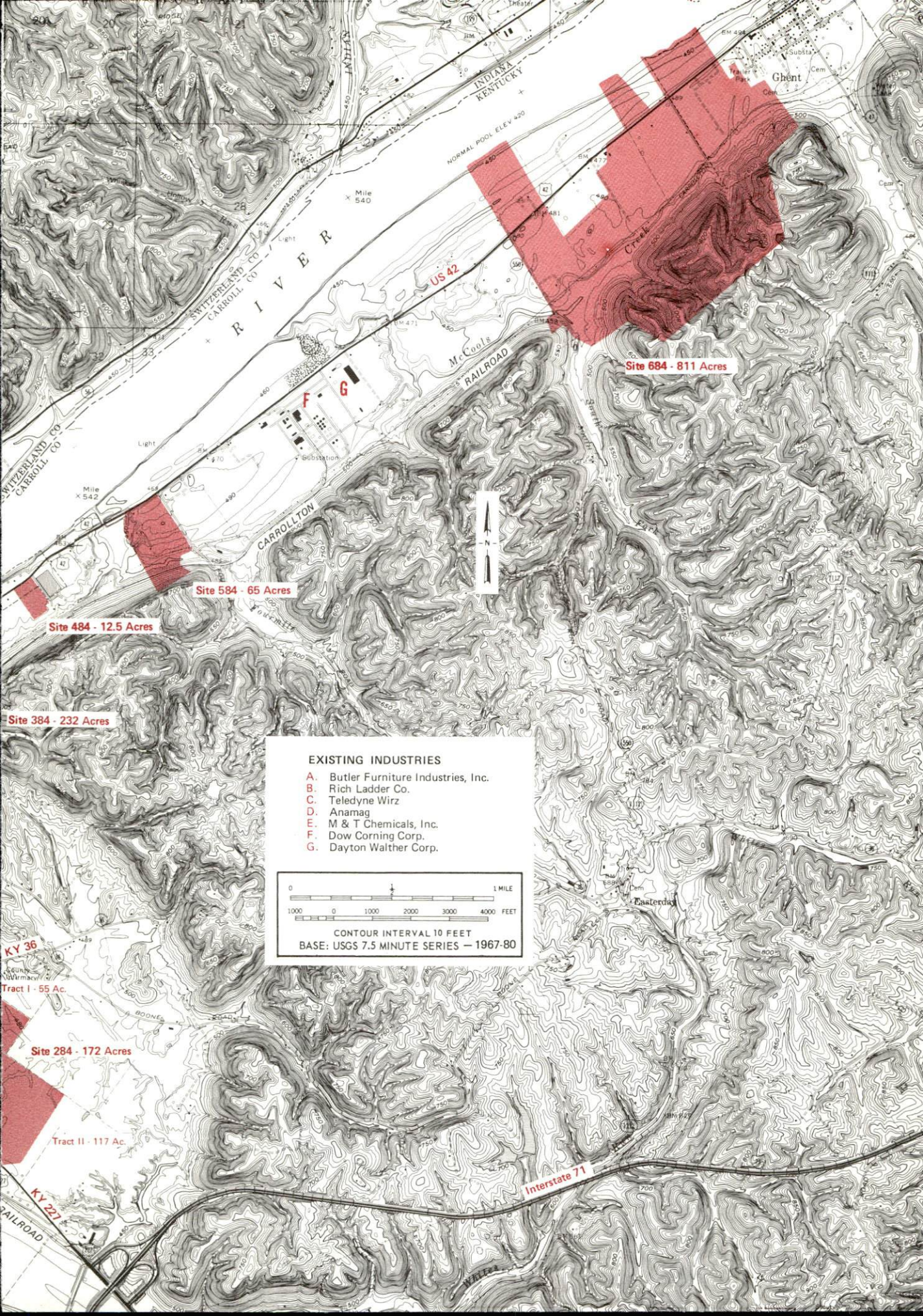


KENTUCKY
The Business Environment is Right

CARROLLTON, KENTUCKY --- Index to Industrial Sites --- 1984

For detailed data on individual sites contact the Kentucky Department of Economic Development, Industrial Development & Marketing Division, Capital Plaza Tower, Frankfort, Kentucky 40601 (502-564-7140).





INDIANA
KENTUCKY

R I V E R

US 42

McCoole
RAILROAD

CARROLLTON

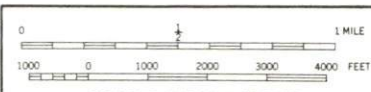
Site 584 - 65 Acres

Site 484 - 12.5 Acres

Site 384 - 232 Acres

EXISTING INDUSTRIES

- A. Butler Furniture Industries, Inc.
- B. Rich Ladder Co.
- C. Teledyne Wirz
- D. Anamag
- E. M & T Chemicals, Inc.
- F. Dow Corning Corp.
- G. Dayton Walther Corp.



CONTOUR INTERVAL 10 FEET
BASE: USGS 7.5 MINUTE SERIES - 1967-80

Site 684 - 811 Acres

KY 36

Tract I - 55 Ac.

Site 284 - 172 Acres

Tract II - 117 Ac.

KY 227

Interstate 71

RESOURCES FOR ECONOMIC DEVELOPMENT
CARROLLTON, KENTUCKY

Prepared by
The Kentucky Department of Economic Development
Division of Research and Planning
in cooperation with
The City of Carrollton
and
The Carroll County Chamber of Commerce

1984

Program manager - Pamela Riley; research - Bill Morris; clerical - Bobbi Graves; graphics - Frank Ferrante, Tony Cecconi, Robert Owens; cartography - Site Evaluation Branch, Division of Industrial Development and Marketing. Cost of printing paid from state funds.

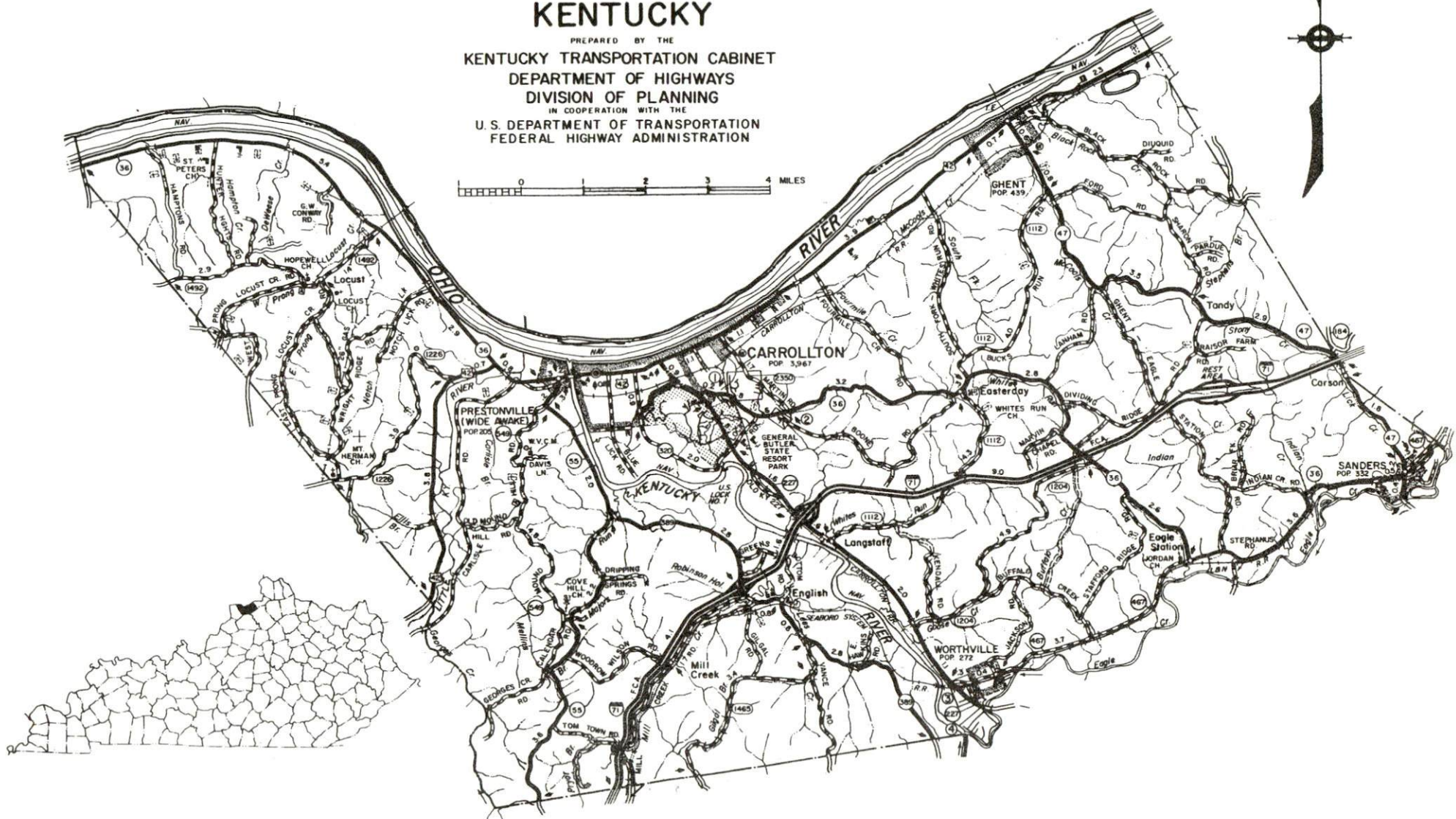
TABLE OF CONTENTS

<u>Chapter</u>	<u>Page</u>
INDUSTRIAL SITES	i
CARROLLTON, KENTUCKY - A RESOURCE PROFILE	1
THE LABOR MARKET AREA	3
Population	3
Labor Force Characteristics of Residents, 1983	3
Selected Components of Nonagricultural Employment, by Place of Work, 1983	4
Carrollton Manufacturing Firms, Their Products and Employment	4
Labor Organizations in Manufacturing Firms	6
Industrial Services	7
Estimated Male Labor Supply	8
Estimated Female Labor Supply	8
Average Weekly Wages By Industry, by Place of Work, 1983	9
Per Capita Personal Income	11
TRANSPORTATION	12
Rail	12
Highways	12
Truck Service	12
Air	14
Bus	15
Taxi	15
Rental Services	15
Water	16
POWER AND FUEL	17
Electricity	17
Natural Gas	17
Other Fuels	18
WATER AND SEWERAGE	19
Public Water Supply	19
Raw Water	21
Sewerage	22
CLIMATE	23

<u>Chapter</u>	<u>Page</u>
LOCAL GOVERNMENT	24
City	24
County	24
Assessed Value of Property, 1983	24
Property Taxes	25
Combined State and Local Rates Per \$100 Valuation, 1983	26
Utilities Gross Receipts Tax for Schools	26
Planning and Zoning	26
Safety	27
Police	27
Fire	27
Rescue Service	27
Refuse Collection and Disposal	27
EDUCATION	28
Public Schools	28
Area Colleges and Universities	29
Vocational Schools	30
HEALTH	33
Local Medical Personnel	33
Hospitals	33
Other Medical Facilities	33
Ambulance Service	33
Public Health	33
OTHER LOCAL FACILITIES	34
Communications	34
Library Services	34
Religious Institutions	35
Financial Institutions	35
Hotels and Motels	35
Clubs and Organizations	36
RECREATION	37
COMMUNITY IMPROVEMENTS	40

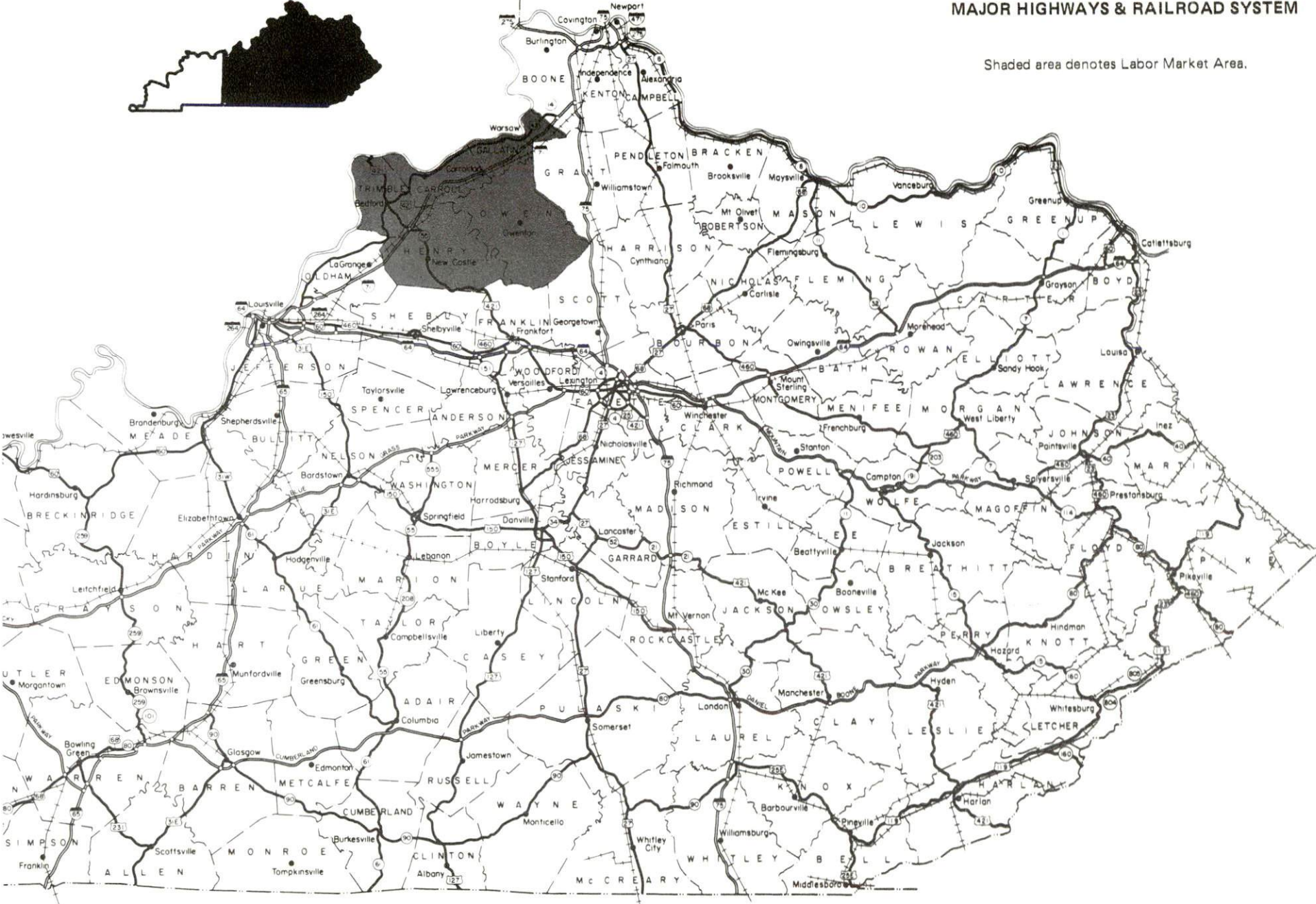
1984 EDITION
GENERAL HIGHWAY MAP
CARROLL COUNTY
KENTUCKY

PREPARED BY THE
KENTUCKY TRANSPORTATION CABINET
DEPARTMENT OF HIGHWAYS
DIVISION OF PLANNING
IN COOPERATION WITH THE
U.S. DEPARTMENT OF TRANSPORTATION
FEDERAL HIGHWAY ADMINISTRATION



CARROLLTON LABOR MARKET AREA With MAJOR HIGHWAYS & RAILROAD SYSTEM

Shaded area denotes Labor Market Area.



CARROLLTON, KENTUCKY - A RESOURCE PROFILE

Carrollton, the county seat of Carroll County, is located at the confluence of the Kentucky and Ohio Rivers, midway between Louisville, Kentucky, 51 miles southwest, and Cincinnati, Ohio, 58 miles northeast. Carrollton is one of the world's largest tobacco market areas and has eight local tobacco warehouses. Carrollton had a 1980 population of 3,967. Carroll County, which has a land area of 130 square miles, had a 1980 population of 9,270.

General Butler State Resort Park and Ski Butler, Kentucky's only alpine ski area, are both located in Carrollton. Carrollton has been chosen as a Kentucky Certified City in 1981, 1982, and 1983. The award is based upon achievement in a wide variety of community-related categories and is sponsored by the Kentucky Chamber of Commerce.

The Economic Framework

The total number of Carroll County residents employed in 1983 averaged 4,590, with nonagricultural jobs accounting for 4,290 workers. Manufacturing employers in the county reported 1,480 workers; wholesale and retail trade 480; state and local government 550; and 270 employees in the service industries. Manufacturing employment is greatest in chemical and allied products, transportation equipment, and fabricated metal products.

Per capita personal income in Carroll County in 1982 was \$9,409, or \$516 above the state average. Between 1978 and 1982 per capita personal income increased by 53 percent.

The Carrollton labor market area includes Carroll County and the adjoining Kentucky counties of Gallatin, Henry, Owen, and Trimble, plus Jefferson and Switzerland Counties across the Ohio River in Indiana. The total number of residents in the Kentucky portion of the labor market area employed in 1983 averaged 19,015, with nonagricultural jobs accounting for 16,390 workers. Manufacturing employers in this area reported 2,010 workers; wholesale and retail trade 1,460; state and local government 1,670; and 600 in service industries.

Resources for Growth

1. Labor Supply - There is a current labor supply of 2,455 men and 2,600 women available for industrial jobs in the Kentucky portion of the labor market area. In addition, from 1984 through 1988, 1,750 young men and 1,730 young women in the area will become 18 years of age and potentially available for industrial jobs.

2. Transportation - Freight service is provided by the Carrollton Railroad - a subsidiary of Seaboard System Railroad - which operates a 15-mile branch line connecting with the Seaboard System at Worthville, 9 miles southeast of Carrollton. Interstate Highway 71, U.S. Highway 42, and Kentucky Highway 227 are "AAA"-rated, 80,000-pound gross load limit highways serving Carrollton. Of the 16 common carrier trucking companies serving Carrollton, 3 maintain local terminal facilities. Interstate and intrastate service is available. The nearest scheduled commercial airline services are located at the Greater Cincinnati International Airport, 54 miles northeast of Carrollton, and at Standiford Field near Louisville, 54 miles southwest of Carrollton. Carrollton is located at the confluence of the Kentucky River, where a 6-foot navigation channel is maintained, and the Ohio River, where a 9-foot navigation channel is maintained. A privately owned port facility is located at Carrollton.

3. Power and Fuel - Kentucky Utilities Company provides electric power to Carrollton and portions of Carroll County. East Kentucky Power Cooperative provides electric power to the Owen County Rural Electric Cooperative Corporation and the Shelby Rural Electric Cooperative Corporation; these distribute power to the remainder of Carroll County. Carrollton Utilities, whose source of supply is Texas Gas Resources Corporation, provides natural gas service to Carrollton. There are four distributors of propane and two fuel oil distributors within 25 miles of Carrollton.

4. Education - The Carroll County Public School System enrolled 1,798 students in Spring 1984, and is accredited by the Southern Association of Colleges and Schools.

There are 18 institutions of higher learning within 75 miles of Carrollton, including 15 universities and senior colleges.

The nearest vocational school is the Carroll County Area Vocational Education Center in Carrollton, which offers training in 14 course areas. The Jefferson State Vocational-Technical School, the Northern Kentucky Health Occupations Center, the Northern Kentucky State Vocational-Technical School, and the Northern Campbell County Vocational-Technical School are all located within 65 miles of Carrollton and offer training in a total of 38 different course areas. The Indiana Vocational Technical College-Southeast, located at Madison, Indiana, 13 miles northwest of Carrollton, offers instruction in 10 course areas.

THE LABOR MARKET AREA

The Carrollton Labor Market Area includes Carroll County and the adjoining Kentucky counties of Gallatin, Henry, Owen, and Trimble. The Carrollton Labor Market Area also encompasses the Indiana counties of Jefferson and Switzerland across the Ohio River from Carrollton.

POPULATION			
<u>Area</u>	<u>1980</u>	<u>1970</u>	<u>Percent Nonwhite</u>
Carrollton	3,967	3,884	3.0
Labor Market Area	42,029	36,386	N/A
Carroll County	9,270	8,523	2.0
Gallatin County	4,842	4,134	2.7
Henry County	12,740	10,910	5.5
Owen County	8,924	7,470	2.5
Trimble County	6,253	5,349	0.1

Note: The 1980 counts of population by race are provisional.

Sources: U.S. Department of Commerce, Bureau of the Census, 1980 Census of Population and Housing, March 1981; 1980 Census of Population, Number of Inhabitants. Population Research Unit, Urban Studies Center, University of Louisville, Kentucky Demographics: The 1980 Census of Kentucky, Characteristics of Population, Households, Housing, January 1982.

LABOR FORCE CHARACTERISTICS OF RESIDENTS, 1983

	<u>Carroll County</u>	<u>Labor Market Area*</u>
Civilian Labor Force	4,887	20,735
Employment	4,591	19,015
Agricultural	305	2,625
Nonagricultural	4,286	16,390
Unemployment	296	1,720
Rate of Unemployment (%)	6.1	8.3

* Carroll County and the four adjoining Kentucky counties.

Source: Kentucky Cabinet for Human Resources, Kentucky Labor Force Estimates, Annual Averages, 1983.

SELECTED COMPONENTS OF NONAGRICULTURAL EMPLOYMENT,
BY PLACE OF WORK, 1983

	Carroll County	Labor Market Area*
All Industries (total)	3,317	7,240
Manufacturing	1,478	2,006
Wholesale & Retail Trade	476	1,456
Services	268	598
State/Local Government	553	1,666
Contract Construction	166	274

* Carroll County and the four adjoining Kentucky counties.

Note: Excludes domestic workers, railway workers, certain nonprofit corporations, majority of federal government workers, and self-employed workers.

Source: Kentucky Cabinet for Human Resources, Average Monthly Workers Covered by Kentucky Unemployment Insurance Law, 1983.

CARROLLTON MANUFACTURING FIRMS,
THEIR PRODUCTS AND EMPLOYMENT

Firm (Establishment date)	Product	Employment			Labor Unions
		Total	Male	Female	
AnaMag (1981)	Copper magnet wire	112	--	--	
Butler Furniture Industries, Inc. (1971)	Water bed furniture, juvenile furniture, wood dinette sets, chairs	62	41	21	
Carroll County Crate Company (1982)	Wood crates	11	--	--	
Carrollton Cabinet Company, Inc. (1960)	Electronic and clock cabinets	35	5	30	
Carrollton Redrying Company (1946)	Tobacco redrying	32	28	4	
Coo Par (1949)	Ready-mixed concrete	12	11	1	Teamsters*

(Contd.)

<u>Firm (Establishment date)</u>	<u>Product</u>	<u>Employment</u>			<u>Labor Unions</u>
		<u>Total</u>	<u>Male</u>	<u>Female</u>	
Dayton Walther Corporation, Carrollton Divison (1972)	Disc brakes, drums, steering knuckles, auto hubs	499	422	77	Auto Workers*
Dow Corning Corporation (1967)	Silicones	226	197	29	
Hills Dairy (1898)	Milk	4	4	0	
Kawneer Company (1965)	Aluminum appliance trim, auto parts	148	86	62	Auto Workers*
M & T Chemicals, Inc. (1958)	Organotin chemicals, inorganic tin chemicals	334	283	51	
News-Democrat (1867)	Newspaper, job printing	5	2	3	
Ohio Valley Paving Company (1953)	Asphaltic concrete	3	3	0	Operating Engineers*
Rich Ladder Company (1945)	Wood ladders, wood crates	105	45	60	
Teledyne Wirz (1954)	Metal collapsible tubes	87	34	53	Steelworkers*

* See Labor Organizations below.

Sources: Kentucky Department of Economic Development, 1984 Kentucky Directory of Manufacturers; Division of Research and Planning.

Other Major Carroll County Industries: Kentucky Utilities Company, an electric power generation and transmission company, operates a plant at Ghent, Kentucky, which employs 200 persons.

LABOR ORGANIZATIONS IN MANUFACTURING FIRMS

<u>Union</u>	<u>Representing workers at:</u>
International Brotherhood of Teamsters, Chauffeurs, Warehousemen and Helpers of America	Coo Par
International Union of Operating Engineers, AFL-CIO	Ohio Valley Paving Company
International Union, United Automobile, Aerospace and Agricultural Implement Workers of America	Dayton Walther Corporation, Carrollton Division; Kawneer Company
United Steelworkers of America, AFL-CIO	Teledyne Wirz

INDUSTRIAL SERVICES

<u>Types of Services</u>	<u>Location</u>	<u>Mileage from Carrollton</u>
Custom Plastics Producers	Crestwood, Kentucky	34
	Florence, Kentucky	45
Electric Motor Repair	Madison, Indiana	13
	Louisville, Kentucky	51
	Cincinnati, Ohio	58
Grinding, Precision & Tool	Erlanger, Kentucky	52
	Louisville, Kentucky	51
	Cincinnati, Ohio	58
Heat Treating Facilities	Louisville, Kentucky	51
	Frankfort, Kentucky	55
	Cincinnati, Ohio	58
Industrial Equipment & Supplies	Madison, Indiana	13
	Florence, Kentucky	45
Industrial Gases	Louisville, Kentucky	51
	Cincinnati, Ohio	58
Industrial Waste Removal	Buckner, Kentucky	32
	Louisville, Kentucky	51
	Cincinnati, Ohio	58
	Newport, Kentucky	58
Machine Shops, Tool & Die	Ghent, Kentucky	8
	Madison, Indiana	13
Metal Finishers	Louisville, Kentucky	51
	Jeffersontown, Kentucky	56
	Covington, Kentucky	57
	Cincinnati, Ohio	58
	Newport, Kentucky	58
Metal Service Centers	Madison, Indiana	13
	Louisville, Kentucky	51
	Covington, Kentucky	57
	Cincinnati, Ohio	58
Millwrights	Louisville, Kentucky	51
	Villa Hills, Kentucky	54
	Covington, Kentucky	57
	Cincinnati, Ohio	58

Sources: Kentucky Department of Economic Development, Kentucky Directory of Selected Industrial Services, 1983; Division of Research and Planning.

ESTIMATED MALE LABOR SUPPLY
CARROLLTON LABOR MARKET AREA

Area	Current			Not in Labor Force	Future
	Total	Unemployed	Under- employed		Becoming 18 years of age 1984 thru 1988
Labor Market					
Area*	2,455	1,091	720	644	1,751
Carroll	324	168	156	0	393
Gallatin	463	173	59	231	212
Henry	756	382	197	177	517
Owen	672	238	198	236	332
Trimble	240	130	110	0	297

* Additional workers may be drawn from other nearby counties.

Note: Unemployed - persons unemployed and actively seeking work;
Underemployed - persons employed but working only 14 to 26 weeks per year;
Not in Labor Force - represents the number of persons who would enter the labor force if suitable employment were available (based on the assumption that persons in Kentucky would like to participate in the labor force in the same proportion that they do nationally).

Sources: Kentucky Cabinet for Human Resources, Kentucky Labor Supply Estimates by Area Development District and County, 1982. Kentucky Department of Economic Development, Future Labor Supply Becoming 18 Years of Age, 1984 thru 1988.

ESTIMATED FEMALE LABOR SUPPLY
CARROLLTON LABOR MARKET AREA

Area	Current			Not in Labor Force	Future
	Total	Unemployed	Under- employed		Becoming 18 years of age 1984 thru 1988
Labor Market					
Area*	2,598	606	824	1,168	1,729
Carroll	348	110	238	0	363
Gallatin	558	68	133	357	227
Henry	871	265	224	382	536
Owen	558	91	134	333	333
Trimble	263	72	95	96	270

* Additional workers may be drawn from other nearby counties.

Note: Unemployed - persons unemployed and actively seeking work;
Underemployed - persons employed but working only 14 to 26 weeks per year;
Not in Labor Force - represents the number of persons who would enter the labor force if suitable employment were available (based on the assumption that persons in Kentucky would like to participate in the labor force in the same proportion that they do nationally).

Sources: Kentucky Cabinet for Human Resources, Kentucky Labor Supply Estimates by Area Development District and County, 1982. Kentucky Department of Economic Development, Future Labor Supply Becoming 18 Years of Age, 1984 thru 1988.

AVERAGE WEEKLY WAGES BY INDUSTRY,
BY PLACE OF WORK, 1983

	<u>Carroll County</u>	<u>Gallatin County</u>	<u>Henry County</u>
All Industries	\$ 306.36	\$ 262.27	\$ 242.22
Mining & Quarrying	0	*	0
Contract Construction	362.27	*	201.40
Manufacturing	371.63	166.97	344.83
Transportation, Communications & Public Utilities	404.22	227.11	288.30
Wholesale & Retail Trade	193.13	206.96	149.26
Finance, Insurance & Real Estate	283.25	223.94	298.73
Services	153.73	447.50	167.71
State/Local Government	235.10	217.77	278.56
Other	*	142.75	179.54
	<u>Owen County</u>	<u>Trimble County</u>	
All Industries	\$ 236.12	\$ 357.17	
Mining & Quarrying	0	0	
Contract Construction	236.16	*	
Manufacturing	*	*	
Transportation, Communications & Public Utilities	*	*	
Wholesale & Retail Trade	186.63	94.16	
Finance, Insurance & Real Estate	224.71	252.40	
Services	131.85	143.19	
State/Local Government	223.73	246.29	
Other	*	*	

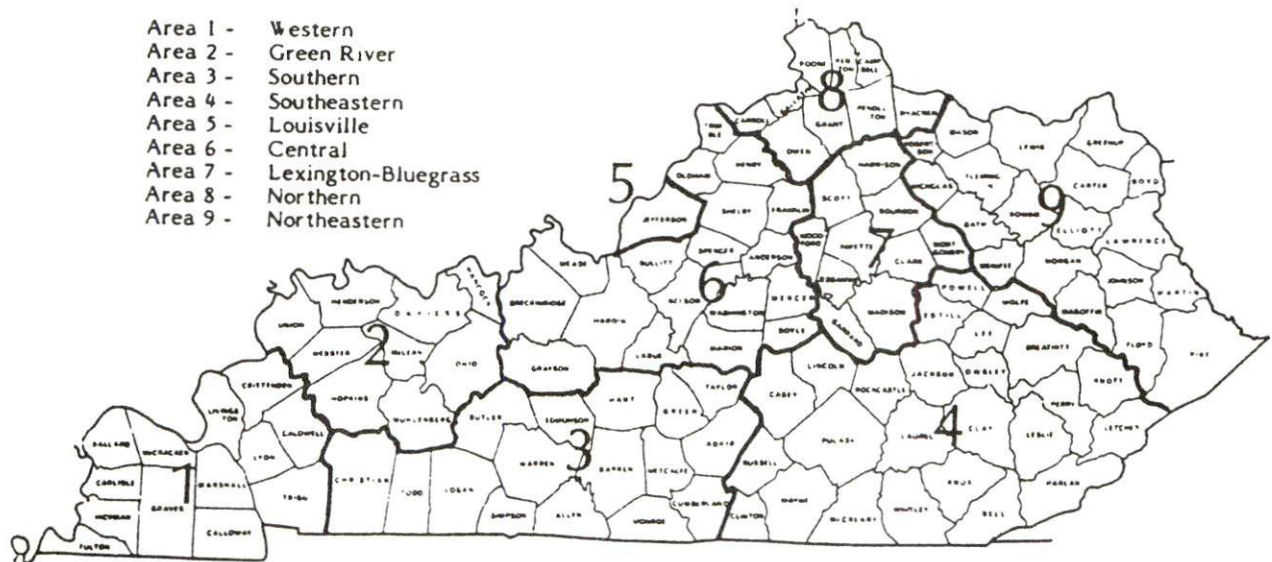
* Not disclosed.

Note: Excludes domestic workers, railway workers, certain nonprofit corporations, majority of federal government workers, and self-employed workers.

Source: Kentucky Cabinet for Human Resources, Average Weekly Wages of Workers Covered by Kentucky Unemployment Insurance Law, 1983.

Occupational wage rates for specific industries are usually not available to most government agencies, and wage data furnished to state employment agencies by individual industrial employers are protected from disclosure by federal law. The most reliable up-to-date wage information can be obtained by direct contact with local employers.

Associated Industries of Kentucky, a voluntary organization of Kentucky businesses, regularly collects occupational wage rates and fringe benefits data from participating member firms. Data are compiled for over 127 clearly defined office, production, and service occupations. Tabulations are published for nine geographical areas of Kentucky, as shown on the map below. It should be noted that the data may be weighted by the preponderance of firms in the larger cities and may be somewhat higher than the rates paid in the smaller communities. Data from these tabulations are available, upon request, from the Kentucky Department of Economic Development, Frankfort, Kentucky 40601.



Associated Industries of Kentucky Area Wage Surveys

PER CAPITA PERSONAL INCOME

<u>Area</u>	<u>1978</u>	<u>1982</u>	<u>Percent Change</u>
Carroll County	\$ 6,152	\$ 9,409	52.9
Labor Market Area Range*	\$4,661 - 6,152	\$ 6,743 - 9,409	N/A
Kentucky	6,389	8,893	39.2
U. S.	7,776	11,100	42.7

* Carroll County and the four adjoining Kentucky counties.

Sources: U.S. Department of Commerce, Bureau of Economic Analysis, Survey of Current Business, April 1983; Commerce News, April 29, 1984. Kentucky Economic Information System, July 1984.

TRANSPORTATION

Rail

Line serving **Carrollton** - The Carrollton Railroad (a subsidiary of the Seaboard System Railroad)

Services - Branch line, connecting with Seaboard System Railroad at Worthville, 9 miles southeast of Carrollton; 1 local turnaround daily from Worthville, and one northbound Seaboard freight stops daily at Worthville; switching services; team track space for 60 cars; siding space for 50 cars; nearest piggyback facilities located at Louisville, Kentucky, 51 miles southwest of Carrollton, and at Cincinnati, Ohio, 58 miles northeast

For details on routing, schedules, rates, and services, contact:

The Carrollton Railroad
P.O. Box 116
Carrollton, Kentucky 41008
(502) 732-6179

and/or

Manager of Industrial Development
Seaboard System Railroad
P.O. Box 32290
Louisville, Kentucky 40232
(502) 587-5228

Highways

"AAA"-rated, 80,000-pound gross load limit highways serving Carrollton include Interstate 71, U.S. Highway 42, and Kentucky Highway 227. Interstate 71, which has interchanges located 4 miles southeast of Carrollton, provides direct access to Interstate 75, 36 miles northeast of Carrollton, and to Interstate Highways 64 and 65, both within 50 miles of Carrollton, at Louisville.

Truck Service

<u>Company</u>	<u>Home Office</u>
Briggs Transportation Company*	St. Paul, Minnesota 55113
Budig Western*	1100 Gest Street Cincinnati, Ohio 45203
CCC Highway, Inc.*	1148 Euclid Avenue 301 CAL Building Cleveland, Ohio 44115

(Cont'd)

<u>Company</u>	<u>Home Office</u>
E & G Motor Express, Inc. (T)*	Route 1, Box 36 U.S. 42 West Carrollton, Kentucky 41008
Expressway, Inc.*	1105 St. Louis Louisville, Kentucky 40210
IML Freight, Inc.*	P.O. Box 30277 Salt Lake City, Utah 84130
Jones Transfer Company**	300 Jones Avenue Monroe, Michigan 48161
Leoni Motor Express, Inc.*	Chicago Heights, Illinois 60411
The O.K. Trucking Company*	3000 East Crescentville Road Cincinnati, Ohio 45241
Overnite Transportation Company (T)*	1000 Semmes Avenue P.O. Box 1216 Richmond, Virginia 23209
Owenton Express, Inc. (T)*	P.O. Box 328 U.S. 42 West Carrollton, Kentucky 41008
R-W Service System, Inc.*	20225 Goddard Road Taylor, Michigan 48180
Roadway Express, Inc.*	1077 Gorge Boulevard Akron, Ohio 44310
Robbins Truck Line, Inc.*	P.O. Box 429 Hardinsburg, Kentucky 40143
Smith's Transfer Corporation**	P.O. Box 1000 Staunton, Virginia 24401
United Trucking Service, Inc.*	8505 West Warren Dearborn, Michigan 48126

(T) Local terminal.

* Interstate and intrastate service.

** Interstate service only.

Sources: American Motor Carrier Directory, Spring, 1984. Department of Economic Development, Division of Research and Planning.

Other Freight Services

Emery

Federal Express

Purolator Courier

United Parcel Service

Nearest Office or Shipping Center

Louisville, Kentucky, 51 miles southwest

Cincinnati, Ohio, 58 miles northeast

Louisville, Kentucky, 51 miles southwest

Erlanger, Kentucky, 52 miles northeast

Louisville, Kentucky, 51 miles southwest

Cincinnati, Ohio, 58 miles northeast

Louisville, Kentucky 51 miles southwest

Cincinnati, Ohio, 58 miles northeast

**HIGHWAY MILES AND TRUCK TRANSIT TIME IN DAYS FROM
CARROLLTON, KENTUCKY, TO SELECTED MARKET CENTERS**

City	Highway Miles	Delivery Time TL	City	Highway Miles	Delivery Time TL
Atlanta, Ga.	433	2	Los Angeles, Ca.	2,159	4
Baltimore, Md.	555	2	Louisville, Ky.	51	1
Birmingham, Ala.	415	2	Nashville, Tenn.	223	1
Chicago, Ill.	343	2	New Orleans, La.	740	2
Cincinnati, Ohio	58	1	New York, N. Y.	705	-
Cleveland, Ohio	302	2	Pittsburgh, Pa.	345	2
Detroit, Mich.	317	2	St. Louis, Mo.	314	1
Knoxville, Tenn.	267	2			

Note: Mileage computations are via the best interstate or primary highways, not necessarily the most direct route of travel.

Sources: Rand McNally Road Atlas, 1979. Official Kentucky Mileage Map, 1980.
Delivery time - Overnite Transportation Company, P.O. Box 1216, Richmond, Virginia 23209.

Air

Local

Location: Madison Municipal Airport
5 miles west of Madison, Indiana;
approximately 18 miles west of Carrollton

Runways: 1 paved
Length: 3,200 feet

Traffic Control: Unicom frequency, Standiford Field approach control

Lighting: Beacon, runway, REIL

Services: 100 octane, A & P repair, tie-down and hangars,
charter service, flight instruction, plane
rental, car rental, taxi

Air Freight Service: Chartered air freight services must be arranged.

(Cont'd)

Nearest Scheduled Commercial Airline Service

Location:	Greater Cincinnati International Airport 8 miles southwest of Covington, Kentucky; 54 miles northeast of Carrollton
Runways:	3 paved
Length:	9,500 feet; 7,800 feet; 5,500 feet
Traffic Control:	Local and ground flight data, clearance delivery, arrival and departure data, arrival and departure radar, satellite control
Lighting:	Beacon, VASI, MALS-RAIL, ALS-SFL, HIRL, CL, TDZ
Services:	American, Delta, Pan Am, Piedmont, Republic, TWA, United, USAir, Wright/Aeromech, Air Florida, Britt Airways, Comair, Tennessee Airways, Trans-Midwest; fuel - 100LL, 100, jet-A; hangars, tie-downs; major A & P repairs, major Avionics repairs; APU, charter, flight instruction, oxygen, plane rental, survival equipment, U. S. Customs; weather information; taxi, limousine, car rentals, courtesy car; restaurant, snack bar; hotel
Air Freight Services:	Air freight terminal
Location:	Standiford Field 5 miles southeast of center of Louisville, Kentucky; 54 miles southwest of Carrollton
Runways:	2 paved
Length:	10,000 feet; 7,250 feet
Traffic Control:	Control tower
Lighting:	Runways, obstructions, beacon and approach; touch- down lights and center line on one runway
Services:	Delta, Eastern, Ozark, Piedmont, TWA, United, USAir, Wright Airways, Allegheny Commuter, Comair, Florida Express; fuel - 100 and jet-A; major A & P repairs; major Avionics repairs; APU, charter, oxygen, U. S. Customs; taxi, car rentals, limousine, courtesy car, public transit; Weather Bureau; restaurant, snack bar
Air Freight Service:	Air freight terminal

Bus - Southern Greyhound Bus Lines

Taxi - One company provides 24-hour service, seven days per week, with radio-dispatched taxicabs.

Rental Services - Cars and trucks may be leased in Carrollton, and trucks and trailers may be leased in Madison, Indiana, 13 miles west of Carrollton. Complete car, truck and trailer rental services are available in Louisville, Kentucky, 51 miles southwest of Carrollton, and in Northern Kentucky/Cincinnati area, 57 miles northeast of Carrollton.

Water

Carrollton is located at the confluence of the Kentucky and Ohio Rivers. A 6-foot navigation channel is maintained on the Kentucky River, and a 9-foot navigation channel is maintained on the Ohio River. A privately owned port facility is located at Carrollton.

Port facilities are also available in Louisville, Kentucky, 51 miles southwest of Carrollton, and in the Northern Kentucky/Cincinnati area, 57 miles northeast of Carrollton. The Louisville-Jefferson County Riverport Authority and the Northern Kentucky Port Authority have been designated as Foreign Trade Zones and offer complete U.S. Customs Services for exports and imports. The Port of Louisville, while privately owned, is also available for public use.

POWER AND FUEL

Electricity

Company serving **Carrollton and portions of Carroll County** - Kentucky Utilities Company

Source of power - Kentucky Utilities Company

Total generating capacity - 3,164,000 KW*

For industrial rates contact:

Industrial Development Department
Kentucky Utilities Company
One Quality Street
Lexington, Kentucky 40507
(606) 255-1461

Companies serving portions of **Carroll County** - Owen County Rural Electric Cooperative Corporation, Shelby Rural Electric Cooperative Corporation

Source of power - East Kentucky Power Cooperative

Total generating capacity - 1,309,000 KW**

For industrial rates contact:

Industrial Development Division
East Kentucky Power Cooperative
P.O. Box 707
Winchester, Kentucky 40391
(606) 744-4812

Natural Gas

Company serving **Carrollton** - Carrollton Utilities

Source of supply - Texas Gas Resources Corporation

Size of transmission mains - 26 inches (supplier); 6 inches (distributor)

Distribution mains - 6, 4, 3 and 2 inches

Distribution pressure - 160 to 15 psi

Btu content - 1,000 per cubic foot

Specific gravity - 0.6

For rates and supplies contact:

Manager
Carrollton Utilities
P.O. Box 277
Carrollton, Kentucky 41008
(502) 732-4221

* Kentucky Utilities Company's total generating capacity will be increased when a new 650,000 KW generation plant is completed in Hancock County in 1993.

** East Kentucky Power Cooperative's total generating capacity will be increased when a new 650,000 KW coal-fired generation plant is completed in southeast Clark County in 1992.

Other Fuels

Propane (Within 25 miles)

Blue Flame of Madison*
301 West Main
Madison, Indiana 47250

Buckeye Gas Products Company*
Sparta, Kentucky 41086

Silgas*
Glencoe, Kentucky 41046

Sullivan's Doxol Gas
West Main
Warsaw, Kentucky 41095

Fuel oils

Distillate fuel oil -

Bobby L. Harper Distributing
Company, Inc.*
601 Park Avenue, P.O. Box 427
Carrollton, Kentucky 41008

Key Oil Company*
Highway 227, P.O. Box 180
Carrollton, Kentucky 41008

Residual fuel oil - Arrangements must be made with the refinery.

Low sulphur content coal - Available in Kentucky.

* Bulk plant.

WATER AND SEWERAGE

Public Water Supply

Company serving **Carrollton** - Carrollton Utilities
 601 Sycamore Street, P.O. Box 277
 Carrollton, Kentucky 41008
 (502) 732-4221

Source - 2 wells; pumping capacities - 600 gallons per minute, 550 gallons per minute

Treatment plant capacity - 1,440,000 gallons per day

Average daily consumption - 600,000 gallons

Peak daily consumption - 900,000 gallons

Type treatment - Softening (lime, alum), filtration, chlorination, fluoridation

Storage capacity - 1,000,000 gallons

Size lines - 4, 6, 8, 10 and 12 inches

Average pressure - 125 psi

Average temperature - 15 degrees C.

MONTHLY WATER RATES

Inside City Limits

First	1,000 gallons	\$ 3.25 (Minimum)
Next	4,000 gallons	1.55 per M gallons
Next	15,000 gallons	1.18 per M gallons
Next	20,000 gallons	1.05 per M gallons
Next	60,000 gallons	.80 per M gallons
Over	100,000 gallons	.67 per M gallons

Outside City Limits

First	1,000 gallons	\$ 4.05 (Minimum)
Next	4,000 gallons	1.76 per M gallons
Next	15,000 gallons	1.39 per M gallons
Next	20,000 gallons	1.16 per M gallons
Next	60,000 gallons	.90 per M gallons
Over	100,000 gallons	.78 per M gallons

Minimum Monthly Charges

<u>Meter Sizes</u>	<u>Inside City Limits</u>	<u>Outside City Limits</u>
5/8 or 3/4-inch	\$ 3.25	\$ 4.05
1-inch	3.85	4.85
1 1/4 or 1 1/2-inch	4.30	5.35
2-inch	5.90	6.95
3-inch	8.50	9.55
4-inch	12.20	13.50
6-inch	21.65	23.20

(Cont'd)

Tap-on charge:

Meter Size

5/8 or 3/4-inch	\$225
1-inch	250
1 1/4 or 1 1/2-inch	275
2-inch or larger	Cost of labor and materials plus 10 percent

Name of water district - Carroll County Water District #1*

P.O. Box 311
Ghent, Kentucky 41045
(502) 732-4034

Area served - Carroll County east of the Kentucky River

Date when water district began operating - 1965

Source of raw water - 3 wells; pumping capacities - 350 gpm, 150 gpm, 150 gpm

Capacity of treatment plant - 500,000 gallons per day

Type of treatment - Chlorination and fluoridation

Average amount of water used in a 24-hour period - 400,000 gallons

Peak amount of water used in a 24-hour period - 440,000 gallons

Storage capacity - 222,000 gallons including clear well

Average pressure - 67 psi

Average temperature - 52 degrees F.

Size lines - 6 and 4 inches

MONTHLY WATER RATES

First	1,000 gallons	\$ 7.00 (Minimum)
Next	9,000 gallons	1.50 per M gallons
Next	10,000 gallons	1.00 per M gallons
Next	10,000 gallons	.85 per M gallons
Next	10,000 gallons	.75 per M gallons
Next	10,000 gallons	.70 per M gallons
Next	50,000 gallons	.60 per M gallons
Over	100,000 gallons	.50 per M gallons

Tap-on charge:

3/4-inch meter	\$200
1-inch meter	300

* Carroll County Water District #1 is planning a \$1,200,000 expansion project. Improvements will include a new well, a new pump station, and an expansion of the service area.

Name of water district - West Carroll Water District
P.O. Box 45
Carrollton, Kentucky 41008
(502) 732-4034

Area served - Carroll County west of the Kentucky River, part of Trimble County

Date when water district began operating - 1976

Source of supply of treated water - Carrollton Utilities, Henry County Water District, Trimble County Water District

Average amount of water used in a 24-hour period - 260,000 gallons

Peak amount of water used in a 24-hour period - 300,000 gallons

Storage capacity - 230,000 gallons

Average pressure - 55 psi

Average temperature - N/A

Size lines - 3, 4, and 6 inches

MONTHLY WATER RATES

First	2,000 gallons	\$ 8.50 (Minimum)
Next	3,000 gallons	3.25 per M gallons
Next	5,000 gallons	2.25 per M gallons
Next	90,000 gallons	1.25 per M gallons
Over	100,000 gallons	.90 per M gallons

Tap-on charge: 5/8 x 3/4-inch meter \$235

Raw Water

Surface water sources - Ohio River, Kentucky River

Average discharge - Ohio River at Markland Dam, 123,000 cfs (12-year record, USGS); Kentucky River at Lock 2 at Lockport, 8,323 cfs (57-year record, USGS, unadjusted)

Expected ground water yield - 500-1,000 gpm along Ohio River on county's northern border; 5 to 50 gpm along Kentucky River and county's southeastern border; 5 gpm or less over remainder of county

Sewerage

Company serving **Carrollton** - Carrollton Utilities*
601 Sycamore Street, P.O. Box 277
Carrollton, Kentucky 41008
(502) 732-4221

Design capacity - 500,000 gallons per day
Average daily flow - 460,000 gallons**
Type of treatment - Primary
Treatment processes - Settling, clarifier, drying beds, digester
Treated effluent discharged into - Kentucky River
Size of sanitary mains - 6, 8, 10 and 12 inches
Size of storm mains - 6 to 36 inches
Monthly rates - Based on water usage

	<u>Inside City Limits</u>	<u>Outside City Limits</u>
First 1,000 gallons	\$ 3.25 (Minimum)	\$ 4.05 (Minimum)
Next 4,000 gallons	1.55 per M gallons	1.76 per M gallons
Next 15,000 gallons	1.18 per M gallons	1.39 per M gallons
Next 20,000 gallons	1.05 per M gallons	1.16 per M gallons
Next 60,000 gallons	.80 per M gallons	.90 per M gallons
Over 100,000 gallons	.67 per M gallons	.78 per M gallons

Tap-on charge: \$600

* Construction is expected to begin in late 1984 on a new \$4,000,000 secondary wastewater treatment plant. The existing plant will be renovated and will continue to provide primary treatment. The new system is expected to be completed in late 1985, and should have a capacity of approximately 750,000 gallons per day.

** Kentucky Natural Resources and Environmental Protection Cabinet.

CLIMATE

Carroll County

Temperature

Normal (30-year record)	56.20 degrees
Average annual 1983	56.30 degrees
Record highest, July 1954 (36-year record)	105.00 degrees
Record lowest, January 1963 (36-year record)	-20.00 degrees
Normal heating degree days (30-year record) (Heating degree day totals are the sums of negative departures of average daily temperatures from 65 degrees F.)	4,525

Precipitation

Normal (30-year record)	43.56 inches
Mean annual snowfall (36-year record)	17.30 inches
Total precipitation 1983	47.38 inches
Mean number days precipitation (.01 inch or more) (36-year record)	124
Mean number days thunderstorms (36-year record)	45

Prevailing Winds (15-year record)

South

Relative Humidity (23-year record)

1 a.m.	76 percent
7 a.m.	81 percent
1 p.m.	59 percent
7 p.m.	61 percent

Source: U.S. Department of Commerce, Environmental Science Services Administration, Climatological Data, 1983. Station of record: Louisville, Kentucky.

LOCAL GOVERNMENT

City

Structure - Mayor - 4-year term; 6 council members - 2-year terms

Budget 1983-84 - General Fund \$ 724,503
Water and Sewer Fund 400,000
City Gas System 5,000,000

Fees and licenses - Business licenses range from \$5 to \$500 annually; annual license to manufacture any products by processing, assembling or converting (except alcoholic beverages) - \$200; unloading license - \$30 to \$90 annually, depending on vehicle weight; annual vehicle sticker (automobile) - \$10; annual vehicle sticker (truck and trailer) - \$10 to \$20, depending on vehicle weight

County

Structure - County Judge/Executive - 4-year term; 3 magistrates - 4-year terms

Budget 1983-84 - General Fund \$435,633; Road Fund \$243,871

Assessed Value of Property, 1983*

<u>Classes of Property</u>	Carrollton	Carroll County
Real Estate	\$38,897,421	\$107,800,861
Tangibles	18,791,323	30,372,755

* Excludes Homestead Exemptions.

Property Taxes

All property in Kentucky is assessed at 100 percent of fair cash value.

Land and buildings are taxed by the state and may be taxed by local jurisdictions. The state rate is \$0.221 per \$100 of assessed valuation.

Manufacturing machinery, raw materials inventories, pollution control equipment, and goods in the process of manufacture are not subject to local taxation. The state rate is \$0.15 per \$100.

Other tangible personal property owned by manufacturers (automobiles, trucks, finished goods, office furniture, office equipment) is taxed by the state at \$0.45 per \$100 and may be taxed by local jurisdictions.

Intangible personal property located in Kentucky (money in hand, shares of stock, notes, bonds, accounts receivable, and other credits) is taxed by the state at \$0.25 per \$100, and is not subject to local taxation.

Property stored in public warehouses in a transit status is not subject to local taxation. The state rate is only \$0.015 per \$100.

Private leaseholds in industrial facilities owned by cities or counties and financed by industrial revenue bonds are subject to a state tax of \$0.015 per \$100 of value (essentially the lessee's equity, adjusted for appreciation or depreciation). Local taxation is not permitted.

Combined State and Local Rates Per \$100 Valuation, 1983*
(100% assessment)

	<u>Site Inside City of Carrollton</u>	<u>Site Inside Unincorporated Carroll County</u>
1. Land and buildings	0.9780	0.7380
2. Mfg. machinery, raw materials, goods in process, pollution control equipment	0.1500	0.1500
3. Finished goods, office equipment, vehicles, other tangibles	1.2423	1.0023
4. Intangibles (accounts receivable, notes, bonds, etc.)	0.2500	0.2500
5. Property stored in public warehouses in a transit status	0.0150	0.0150
6. Leaseholds in industrial revenue bond financed plants	0.0150	0.0150

Utilities Gross Receipts Tax for Schools

A 3 percent tax is levied on utilities receipts for schools in Carroll County. Tax is paid by all consumers of utilities as an add-on to the utilities bills. Exempted are receipts from utilities services that are resold and the receipts from the sale of energy or energy producing fuels that exceed 3 percent of the cost of production in manufacturing, processing, mining or refining.

Planning and Zoning

City agency - Carrollton Planning Commission

Zoning enforced - City only

Subdivision regulations enforced - City only

Local codes enforced - None

Mandatory state codes enforced - Kentucky Plumbing Code, National Electric Code, Kentucky Boiler Regulations and Standards, Kentucky Building Code (modeled after BOCA code)

* Kentucky Department of Economic Development.

Safety

Police	Carrollton	Carroll County
Total staff	13	3
Radio-patrol cars	3	2
Fire		
Insurance Services Office, Public Protection Classification		
	6	*
Full-time staff	4	-
Volunteers	20 plus 4 substitutes	*
Rescue Service		

Carrollton-Carroll County Rescue Squad:

Number of volunteers - 20

Equipment - Fully equipped auto rescue carry-all, fully equipped 1972 GMC van, 1972 Dodge truck, 2 boats, 4,000-watt portable generator, 8-ton jack, porta-power, hooligan wrecking bar, metal saw; RS-10 kit includes 2 porta-powers, wench, and hand tools for extrication

Personnel training - Emergency medical technician, first aid, cardiopulmonary resuscitation, auto rescue, water rescue, fire extinguishing, hazardous material training, radiological monitoring, local volunteers will do diving

All safety-related agencies in Carrollton and Carroll County are dispatched through a centralized dispatching system.

Refuse Collection and Disposal

	Carrollton	Carroll County
Type service	Private	Private
Fee charged:		
residential	\$6.00 per month	\$5.50 per month
business and industrial	By contract	By contract
Collection frequency:		
residential	Weekly	Weekly
business and industrial	By contract	By contract
Trash pickup	Annually	Annually
Disposal method	Landfill	Landfill

* Volunteer fire departments are located in the Carroll County communities of Ghent, which has a Class 7 fire protection rating, and Prestonville, Sanders and Worthville, which have Class 10 ratings.

EDUCATION

Public Schools

Carroll County

Total Enrollment (Spring, 1984)	1,798
Elementary	854
Middle School	453
High School	491
Student-Teacher Ratio	16-1
Elementary	17-1
Middle School	16-1
High School	14-1
Accreditation	Southern Association of Colleges and Schools
Percent High School Graduates to College (1983)	32.5
Expenditures Per Pupil (1982-83)	\$ 1,839.37
Bonded Indebtedness (June 30, 1983)	\$2,658,000

Area Colleges and Universities

<u>Name</u>	<u>Location (Miles distant)</u>	<u>Enrollment (Fall, 1983)</u>	<u>Highest Degree Conferred</u>
Hanover College	Hanover, Indiana (18)	999	Baccalaureate
Bellarmino College	Louisville, Kentucky (51)	2,809	Masters
Jefferson Community College	Louisville, Kentucky (51)	7,076	Associate
Spalding University	Louisville, Kentucky (51)	1,115	Masters, Specialist
University of Louisville	Louisville, Kentucky (51)	19,750	Doctorate, M.D., D.M.D., J.D.
Thomas More College	Ft. Mitchell, Kentucky (53)	1,335	Baccalaureate
Kentucky State University	Frankfort, Kentucky (55)	2,431	Masters
Indiana University Southeast	New Albany, Indiana (56)	4,671	Masters (Education only)
Athenaeum of Ohio Cincinnati Bible Seminary	Cincinnati, Ohio (58)	187	Masters
	Cincinnati, Ohio (58)	899	Academic & Professional
College of Mt. St. Joseph	Cincinnati, Ohio (58)	1,600	Masters
Hebrew Union College	Cincinnati, Ohio (58)	157	Academic & Professional
Southern Ohio College	Cincinnati, Ohio (58)	1,316	Associate
University of Cincinnati	Cincinnati, Ohio (58)	38,533	Academic & Professional
Xavier University Northern Kentucky University	Cincinnati, Ohio (58)	6,992	Masters
	Highland Heights, Kentucky (62)	9,361	Masters, J.D.
Midway College	Midway, Kentucky (67)	413	Associate
Georgetown College	Georgetown, Kentucky (73)	1,302	Masters

Vocational Schools

Both the state vocational-technical schools and the area vocational education centers are operated by the Kentucky Department of Education. The state vocational-technical schools enroll persons full time who are at least 16 years of age and not in school. These students attend classes for six hours each day. The area vocational education centers are designed to accommodate high school students who are at least 15 years of age. These students attend vocational school for three hours each day. The state vocational-technical schools and the area education centers offer evening courses to enable working adults to upgrade current job skills.

Nearest State Schools

Location	Jefferson State Vocational-Technical School
Miles Distant	Louisville
Curriculum	51
	Agriculture
	Ornamental Horticulture
	Business and Office
	Accounting/Jr. Management
	Clerical
	Data Processing
	Secretarial
	Word Processing
	Consumer and Home Economics
	Consumer and Family Life Skills
	Culinary Arts (Commercial Foods)
	Health and Personal Services Occupations
	Cosmetology
	Child Care Aide
	Dental Assistant
	Licensed Practical Nursing
	Medical Assistant
	Nurse's Aide
	Surgical Technician
	Ward Clerk
	Industrial Education
	Air Conditioning and Refrigeration
	Auto Body Repair
	Auto Mechanics
	Carpentry-Building Trades
	Diesel Mechanics
	Electricity
	Electronics
	Graphic Arts (Printing)
	Machine Shop
	Masonry
	Plumbing
	Welding
	Computer Literacy
	Learning Resource Center

(Cont'd)

Location	Northern Kentucky Health Occupations Center
Miles Distant	Edgewood
Curriculum	55 Health and Personal Services Occupations Dental Assisting Licensed Practical Nursing Medical Assisting Medical Secretary
Location	Northern Kentucky State Vocational-Technical School
Miles Distant	Covington
Curriculum	57 Business and Office Occupations Clerical Data Processing Secretarial Consumer and Home Economics Child Care Services Commercial Foods Health and Personal Services Occupations Cosmetology Industrial Education Air Conditioning and Refrigeration Auto Body Repair and Refinishing Automotive Technology Carpentry Communications Electronics Drafting (with CAD/CAM) Electronics Machine Shop Masonry Welding Learning Resource Center
Location	Northern Campbell County Vocational-Technical School
Miles Distant	Highland Heights
Curriculum	62 Industrial Education Auto Mechanics (Foreign) Carpentry-Interior Finishing Commercial Arts Diesel Mechanics Graphic Arts Industrial Electronics Plumbing Learning Resource Center

(Cont'd)

Nearest Area Education Center

Location	Carroll County Area Vocational Education Center Carrollton
Curriculum	Business and Office Accounting Basic Computers Business Math Clerical Office Machines Secretarial Shorthand Typing Word Processing Health and Personal Services Occupations Health Careers Industrial Education Auto Mechanics Carpentry Industrial Electricity Welding

Nearest Vocational Technical College

Location	Indiana Vocational Technical College-Southeast (Ivy Tech) Madison, Indiana
Miles Distant	13 The Indiana Vocational Technical College-Southeast is a unit of a statewide system of 13 state-supported regional vocational technical institutes. The college offers day and evening classes for post-secondary students and working adults. Ivy Tech offers courses leading to occupational certificates, technical certificates, and associate in applied science degrees.
Curriculum	Business Sciences Accounting Technology Administrative Secretary Computer Programming Technology Health Occupations Medical Assistant Nursing Assistant Practical Nursing Trade and Technical Automotive Body Repair Technology Automotive Service Technology Industrial Electronics Technology Welding Technology

Arrangements can be made to provide training in the specific production skills required by an industrial plant. Instruction may be conducted either in the vocational school or in the industrial plant, depending upon the desired arrangement and the availability of special equipment.

HEALTH

Local Medical Personnel

Physicians - 9
Dentists - 2 full time; 1 orthodontist, part time

Hospitals

<u>General Hospital</u>	<u>Location</u>	<u>Beds</u>
Carroll County Memorial Hospital	Carrollton	54

General hospital facilities - Operating room, recovery room, emergency room, X-ray, laboratory, OB section, nursery, blood bank, physical therapy, electrocardiography, cardiac monitors, respiratory therapy, endoscopic procedures and ultrasound

Medical staff - Active - 8 physicians, 15 registered nurses, 10 graduate licensed practical nurses, 5 medical technologists, X-ray technologist, X-ray technician, respiratory therapist, physical therapist, 2 medical records technicians, 4 dentists; Consulting - 6 physicians, 2 psychologists; Courtesy -10 physicians

Other Medical Facilities

Comprehensive Care Center

Ambulance Service

Name - Carroll County Ambulance Service
Staff - Full-time emergency medical technician; 27 volunteers, 22 with emergency medical technician training
Service - 24-hour, county-wide service, seven days per week
Equipment - 1 van and 2 fully equipped modular ambulances with back-boards, stretchers, scoop stretchers, air and bar splints, resuscitator, wrecking bar, built-a-boards, and a stairchair

Public Health

Facility - Three Rivers District, Carroll County Health Center
Staff - Acting director; nurse, full time; nurse, part time; outreach worker; clerk; health environmentalist, part time

OTHER LOCAL FACILITIES

Communications

Telephone - Services -	South Central Bell Telephone Company Standard
Telegraph - Services -	Western Union Telegraph Company Toll-free number, 1-800-325-5100; counter service available
Postal - Class - Mail received - Mail dispatched -	U.S. Post Office First Once daily Once daily
Newspapers - Weekly and circulation - Other daily papers received from -	The News-Democrat, 3,300 Louisville and Lexington, Kentucky; Indianapolis and Madison, Indiana; Cincinnati, Ohio
Radio - Stations received from -	WIKI-FM, Stereo Louisville and Lexington, Kentucky; Madison and Vevay, Indiana; Cincinnati, Ohio
Television - Cable service Reception from -	 Louisville and Lexington, Kentucky; Indianapolis and Bloomington, Indiana; Cincinnati, Ohio
Kentucky Educational Television -	Channel 52, Owenton transmitter Channel 68, Louisville transmitter

Library Services

Public library - Carroll County Public Library
Size collection - 17,247 volumes
Circulation, 1982-83 - 34,293
Services - Bookmobile, magazines, newspapers, records, record player, films,
projectors, microfilm, microfilm reader-printer, polaroid cameras, copy
machine, paintings, genealogy collection, Kentuckiana section, summer
reading program, story hour, meeting room, Interlibrary Loan

Religious Institutions

Denominations -	Apostolic Baptist Calvary Temple Catholic Christian Church of Christ Disciples of Christ Latter Day Saints Lutheran Pentecostal United Methodist United Pentecostal Wesleyan
Nearest Synagogues -	Louisville, Kentucky (51 miles southwest) Cincinnati, Ohio (58 miles northeast)
Congregations -	Louisville - 5 (conservative, orthodox, reform) Cincinnati - 16 (conservative, orthodox, reform, traditional)

Financial Institutions

<u>Banks</u>	<u>Assets</u>	<u>Deposits</u>	<u>Statement Date</u>
Carrollton			
The First National Bank of Carrollton	\$ 16,582,336.85	\$ 14,295,636.91	12/31/83
Kentucky State Bank	21,746,804.59	19,211,268.13	12/31/83
Milton, Kentucky (12 miles west of Carrollton)			
Farmers Bank of Milton	23,524,811.30	19,917,020.48	12/31/83
<u>Savings and Loan Associations</u>	<u>Assets</u>	<u>Savings Accounts</u>	<u>Statement Date</u>
Carrollton Federal Savings and Loan Association	\$ 10,092,972.00	\$ 8,638,383.00	12/31/83

Hotels and Motels*

Total number - 6
Total rooms - 200

* Includes facilities at General Butler State Resort Park.

Clubs and Organizations

American Legion
Art Club
Athletic Boosters
Benevolent and Protective Order of Elks
Beta Club
Boy Scouts
Brownies
Business and Professional Women's Club
Carroll County Chamber of Commerce
Carroll County Community Development Corporation
Carroll County Emergency Medical Technican Association
Carroll County Garden Club
Carroll County Homemaker's Club
Carroll County Industrial Development Foundation
Carroll County Memorial Hospital Auxiliary
Carroll County Safety Council
Carroll County Youth Council
Carrollton Women's Club
Carrollton Younger Women's Club
Conservation Club
Cub Scouts
Daughters of the American Revolution
Disabled American Veterans
Eastern Star
Future Farmers of America (FFA)
Future Homemakers of America (FHA)
Garden Club
Ghent Women's Club
Girl Scouts
Homemakers
Independent Order of Odd Fellows
Independent Order of Odd Fellows Auxiliary
Jaycees
Key Club
Kiwanis
Little League
Loyal Order of Moose
Masons
Port William Historical Society
Rotary International
Science Club
Veterans of Foreign Wars

RECREATION

Local

Carrollton's location on the Ohio and Kentucky Rivers affords an interesting variety of recreational opportunities. The area's pleasant quality of life is complemented by a city park, a county park and a state resort park, as well as organized team sports, annual festivals and even occasional stops by sternwheeler steamboats that cruise the Ohio River between Louisville, Kentucky, and Cincinnati, Ohio.

The 6-acre **Point Park** is located at the confluence of the Kentucky and Ohio Rivers and offers a playground, camping and picnic areas, a softball field, a soccer field, and a frisbee golf course.

A 35-acre lighted recreational park is located in Carroll County. The park offers six tennis courts, two softball fields, a volleyball court, a soccer field, a playground, a tot lot, basketball goals, a junior Olympic-size swimming pool with dressing rooms and restrooms, a wading pool, a golf driving range, picnic tables, and grills.

General Butler State Resort Park is located at Carrollton. The park includes a 30-acre lake, a boat dock, a 9-hole golf course, a miniature golf course, a swimming pool, playgrounds, shuffleboard, tennis courts, planned recreation, fishing, camping, horseback riding, 58 lodge rooms, cottages, and gift shops. General Butler's family home, the Butler Mansion, has been restored and contains a museum of Ohio River lore. Another unique feature is the Ski Butler ski area that has five ski runs, a ski shop, rental equipment, a ski school and chair lifts.

The Carrollton Recreation Department and the local churches provide supervised recreational programs, including little league football, baseball, basketball, and soccer teams for boys and girls. Six playgrounds, tennis courts, a baseball diamond, a football field, boating facilities, and private docks are located throughout the city.

Annual events in Carroll County include the Carroll County Fair in early July, featuring exhibits and 4-H judging; the Goldenrod Gala in early June - an arts and crafts festival; and the Tobacco Festival in late September, featuring a parade, a flea market, and entertainment. A performing arts series brings four professional touring groups to Carrollton each year.

Area (Within 60 miles)

Madison, Indiana, 13 miles west of Carrollton, is the home of the Madison Regatta, where the Indiana Governor's Cup Race pits the world's fastest race boats in high-speed competition. Recreational facilities available to Carrollton area residents at Madison include indoor and outdoor movie theatres, boating, municipal and private golf courses, racquetball courts, tennis courts, swimming pools, camping areas and nature trails. Madison is also noted for its many stately homes and historic buildings. Among the annual events held in Madison are the Chautauqua of the Arts, Old Court Days, and the Tri Kappa Tour of Historic Homes.

Clifty Falls State Park at Madison, Indiana, was established in 1920 and contains over 1,300 acres of scenic beauty overlooking the Ohio River.

Glenwood Hall, located 15 miles southeast of Carrollton on the Kentucky River, is a private 2,500-acre resort with a marina, a clubhouse, lakes, a restaurant, a yacht club, an airstrip, stables, tennis courts, a camping area, two pools, an 18-hole golf course and several other recreational facilities.

Big Bone Lick State Park in Boone County, Kentucky, 35 miles northeast of Carrollton, provides a unique combination of educational and recreational pleasures. Visitors can walk through the natural outdoor museum with replicas and exhibits that tell the story of Big Bone Lick. Recreational activities and facilities include a modern campground with 62 sites, fishing in a nearby lake, an indoor museum and gift shop, picnic grounds, tennis, shuffleboard, volleyball, basketball, horseshoes, planned recreation, and a swimming pool in the camping area.

E. P. "Tom" Sawyer State Park, 45 miles southwest of Carrollton, is located near Louisville, Kentucky. Recreational facilities include an outdoor Olympic-size pool, a bathhouse, 12 lighted tennis courts, a picnic area, an archery range, and soccer fields. Planned recreation and a playground are offered year-round. Indoor facilities are available for basketball, volleyball, exercise classes, dance classes and various other events.

Louisville, Kentucky, 51 miles southwest of Carrollton, provides a wide variety of recreational opportunities. The most noted recreational event in Louisville is the Kentucky Derby at Churchill Downs. The "Run for the Roses" is the oldest continuously held horse race in the United States. Other attractions include: Kentucky Center for the Arts, Macauley Theatre, Actors Theatre of Louisville, Louisville Children's Theatre, the Louisville Bach Society, the Louisville Orchestra, the Louisville Ballet, the Kentucky Opera Association, several museums, the Louisville Zoological Gardens, University of Louisville sporting events, rock concerts, and the "Belle of Louisville" sternwheeler.

Frankfort, the capital of Kentucky, is 55 miles southeast of Carrollton. Points of interest in Frankfort include the Capitol Building, a 34-foot floral clock, the Daniel Boone Monument, several museums, and old homes with their original furnishings. Frankfort is also the home of Kentucky State University which offers many cultural activities and sporting events.

The **Northern Kentucky/Metro Area** is within 60 miles of Carrollton. With downtown Cincinnati, Ohio, directly across the Ohio River, this area blends a rich Germanic heritage with progressive development, creating an unusual urban-rural character. The area offers convention centers, historic villages and cathedrals, museums, and cultural activities.

Cincinnati, Ohio, is 58 miles northeast of Carrollton. Cincinnati provides a wide variety of entertainment, cultural facilities and activities, and sports events - all within a few minutes drive. The Cincinnati Zoo offers entertainment the whole family can enjoy. Kings Island is the largest family entertainment center in the entire Midwest. The Cincinnati Riverfront Stadium is the home of the Cincinnati Reds baseball and Bengals pro football teams. The Riverfront Coliseum offers NCAA basketball action with the University of Cincinnati Bearcats. Cultural interests include the Cincinnati Symphony Orchestra, various art galleries and museums, libraries, and legitimate theaters presenting Broadway plays.

Horse racing meets are held at two courses in the Northern Kentucky/Cincinnati area. **Latonia Race Course** in Florence, Kentucky, offers thoroughbred and harness racing, and **River Downs Racetrack** in Cincinnati, Ohio, offers seasonal thoroughbred racing meets.

COMMUNITY IMPROVEMENTS

Recent

Carrollton was chosen as a "Kentucky Certified City" in 1981, 1982, and 1983. The award is based on achievement in the following categories: economic development, transportation, public affairs, utilities, health, commercial development, housing, education, and recreation. The Certified Cities Program is sponsored by the Kentucky Chamber of Commerce.

Kentucky Utilities Company placed a new 500 MW generating unit on line in 1984 at its Ghent station.

The Carroll County School System implemented several new programs during the 1983-84 school year. These included advanced placement classes in English at the high school, a gifted program for all grade levels, and a microcomputer program and lab for all grade levels.

A junior Olympic-size swimming pool with dressing rooms, restrooms and a wading pool, and a golf driving range were opened at the county park in 1983. Soccer and volleyball facilities have been added also.

Under Way

Interstate Highway 71 is being upgraded in Carroll County. A heavy asphalt overlay is being applied and the drainage system is being improved. Bridges are also being replaced along U.S. Highway 42 in the county.

Improvement projects under way at the Carroll County schools include development of subject sequence and scope guides for teachers, and institution of advanced placement classes in U.S. history at the high school.

Planned

Construction of a new \$4,000,000 wastewater treatment facility for Carrollton Utilities is scheduled to begin during 1984. The new plant will provide secondary treatment for up to 750,000 gallons of wastewater per day. The existing plant will be renovated and will continue to provide primary treatment.

An expansion project planned for the Carroll County Water District #1 is scheduled to begin in 1984. The project includes extending lines, constructing a new ground storage tank and pump station, digging a new 350-gpm well, and adding a new 80,000-gallon clearwell. Estimated cost of the project is \$1,200,000.

The Carroll County Community Development Corporation is involved in a downtown revitalization project in Carrollton. Plans call for the addition of new marketing displays and lighting fixtures, development of commercial and residential sites, reconstruction of the town's Main Street and replacement of underground utility lines, and development of new parking areas and access roads at Point Park.

New facilities planned for the county park include a horse show arena, horse barns, and an exhibit hall.

Planned improvements to the Carroll County School System include the development of academic teams for competition at the high school level, and institution of a tri-level academic program at the high school, offering students a choice of general, academic, and honors curricula.

JAN 20 1985

Kentucky Commerce Cabinet
Department of Economic Development
Capital Plaza Tower
Frankfort, Kentucky 40601
(502) 564-7140