

1976

# Industrial Resources: Christian County - Hopkinsville

Kentucky Library Research Collections  
Western Kentucky University, [spcol@wku.edu](mailto:spcol@wku.edu)

Follow this and additional works at: [https://digitalcommons.wku.edu/christian\\_cty](https://digitalcommons.wku.edu/christian_cty)

 Part of the [Business Administration, Management, and Operations Commons](#), [Growth and Development Commons](#), and the [Infrastructure Commons](#)

---

## Recommended Citation

Kentucky Library Research Collections, "Industrial Resources: Christian County - Hopkinsville" (1976). *Christian County*. Paper 9.  
[https://digitalcommons.wku.edu/christian\\_cty/9](https://digitalcommons.wku.edu/christian_cty/9)

This Report is brought to you for free and open access by TopSCHOLAR®. It has been accepted for inclusion in Christian County by an authorized administrator of TopSCHOLAR®. For more information, please contact [topsolar@wku.edu](mailto:topsolar@wku.edu).

#25

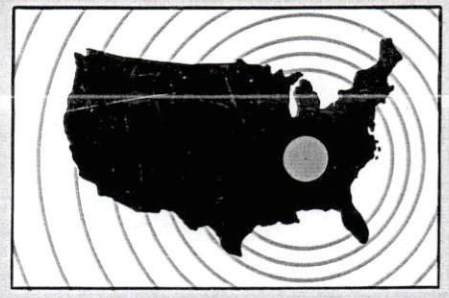
1977

Christian County

# **INDUSTRIAL RESOURCES**

## **Hopkinsville**

**Kentucky  
first**



**DEPARTMENT OF COMMERCE**

# HOPKINSVILLE, KENTUCKY

## INDUSTRIAL PARK

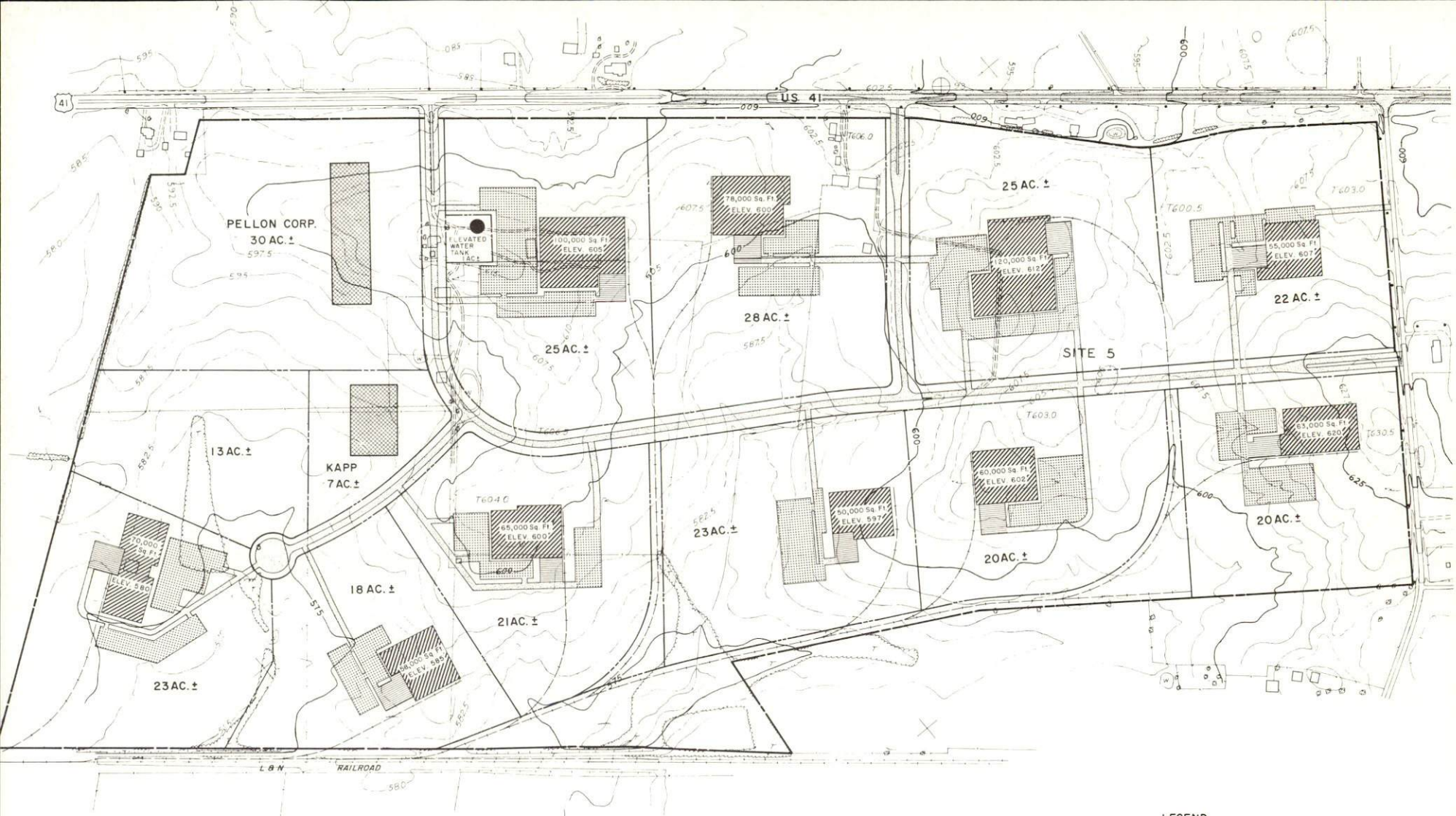


TURNPIKE

L&N RAILROAD

274 ACRE  
INDUSTRIAL PARK

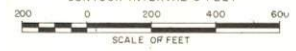
U.S. 41A



NOTE:  
FOR PLANNING PURPOSES ONLY  
NOT FOR ENGINEERING USE.

POSSIBLE DEVELOPMENT PLAN  
HOPKINSVILLE, KENTUCKY  
INDUSTRIAL PARK

FEBRUARY 1976  
CONTOUR INTERVAL 5 FEET

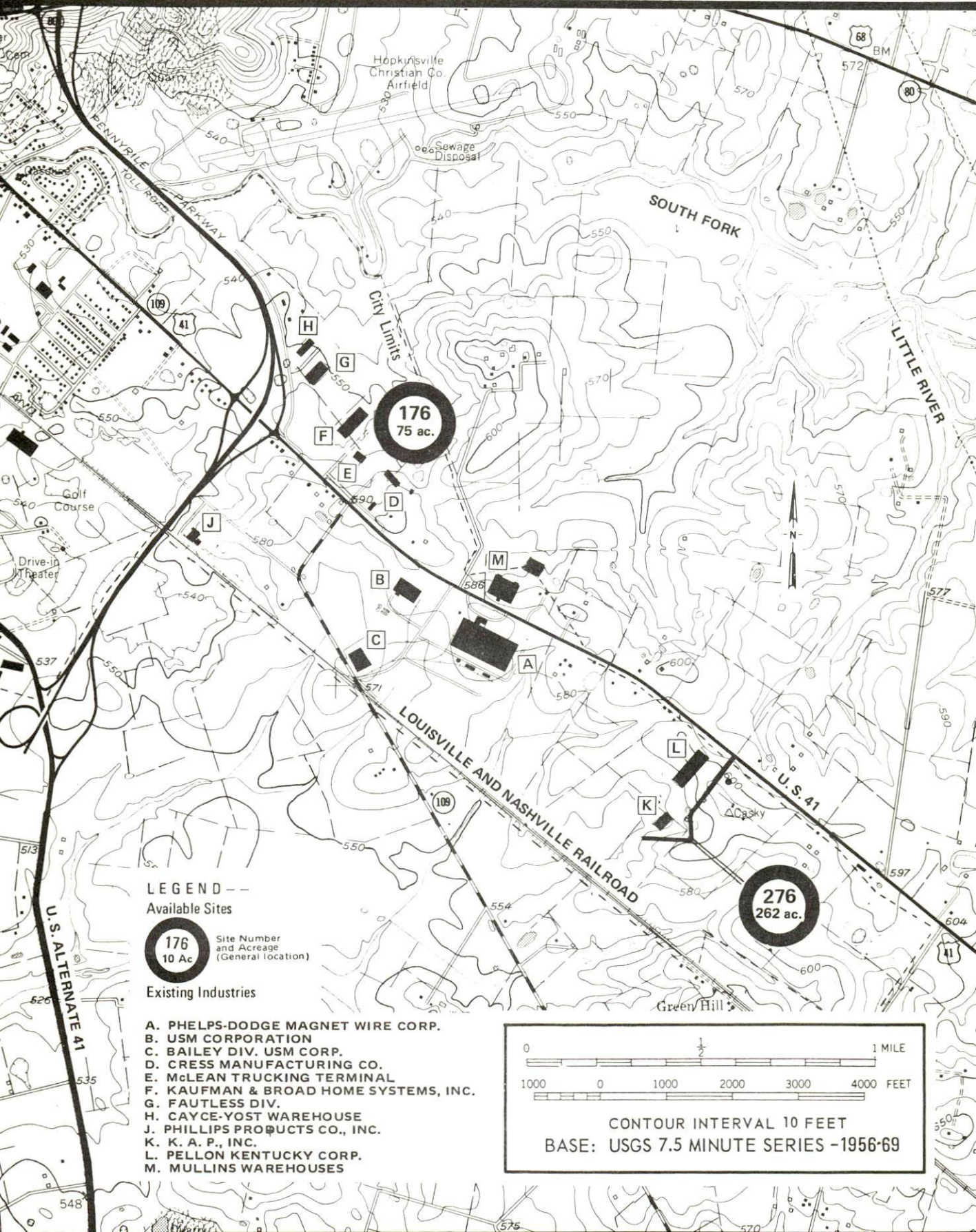


LEGEND

- BUILDING
- PARKING
- TRUCK LOADING
- ROAD
- RAIL
- PROPERTY BOUNDARY
- TRACT BOUNDARY

# HOPKINSVILLE, KENTUCKY --- Index to Industrial Sites --- 1976

For detailed data on individual sites, contact Mr. William T. Bostock, Jr., P. O. Box 565, South Virginia Street, Hopkinsville, Kentucky 42240, or the Industrial Development Division, Kentucky Department of Commerce, Capital Plaza Tower, Frankfort, Kentucky 40601.

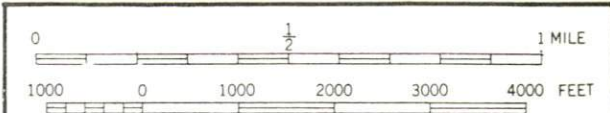


**LEGEND ---**  
Available Sites

**176**  
10 Ac. Site Number and Acreage (General location)

Existing Industries

- A. PHELPS-DODGE MAGNET WIRE CORP.
- B. USM CORPORATION
- C. BAILEY DIV. USM CORP.
- D. CRESS MANUFACTURING CO.
- E. McLEAN TRUCKING TERMINAL
- F. KAUFMAN & BROAD HOME SYSTEMS, INC.
- G. FAULTLESS DIV.
- H. CAYCE-YOST WAREHOUSE
- J. PHILLIPS PRODUCTS CO., INC.
- K. K. A. P., INC.
- L. PELLON KENTUCKY CORP.
- M. MULLINS WAREHOUSES



CONTOUR INTERVAL 10 FEET  
BASE: USGS 7.5 MINUTE SERIES -1956-69

INDUSTRIAL RESOURCES  
HOPKINSVILLE, KENTUCKY

Prepared by  
The Kentucky Department of Commerce  
Division of Research and Planning  
in cooperation with  
The Hopkinsville-Christian County Chamber of Commerce

1976

## TABLE OF CONTENTS

<u>Chapter</u>	<u>Page</u>
INDUSTRIAL SITES . . . . .	i
HOPKINSVILLE, KENTUCKY - A RESOURCE PROFILE . . . . .	1
THE LABOR MARKET AREA . . . . .	3
Population . . . . .	3
General Employment Characteristics, 1974 . . . . .	3
Manufacturing Employment by Industry . . . . .	4
Hopkinsville Manufacturing Firms, Their Products and Employment . . . . .	5
Labor Organizations . . . . .	7
Estimated Male Labor Supply . . . . .	13
Estimated Female Labor Supply . . . . .	13
Wages . . . . .	14
Per Capita Personal Income . . . . .	15
TRANSPORTATION . . . . .	16
Rail . . . . .	16
Highways . . . . .	17
Truck Service . . . . .	17
Air . . . . .	18
Bus . . . . .	19
Taxi . . . . .	19
Rental Services . . . . .	19
Travel Agency . . . . .	19
POWER AND FUEL . . . . .	20
Electricity . . . . .	20
Natural Gas . . . . .	21
Other Fuels . . . . .	21
WATER AND SEWERAGE . . . . .	23
Water . . . . .	23
Sewerage . . . . .	24
CLIMATE . . . . .	25

<u>Chapter</u>	<u>Page</u>
LOCAL GOVERNMENT. . . . .	27
City . . . . .	27
County . . . . .	27
Assessed Value of Property, 1975 . . . . .	27
Property Taxes . . . . .	27
Local Property Tax Rate Per \$100 of Assessed Valuation, 1976 . . . . .	28
Utilities Gross Receipts Tax for Schools . . . . .	28
Planning and Zoning . . . . .	28
Safety . . . . .	28
Police. . . . .	28
Fire . . . . .	29
Rescue Service. . . . .	29
Solid Waste. . . . .	29
EDUCATION . . . . .	30
Public Schools . . . . .	30
Nonpublic Schools . . . . .	30
Area Colleges and Universities . . . . .	33
Vocational Schools . . . . .	34
HEALTH . . . . .	35
Local Medical Personnel. . . . .	35
Hospitals. . . . .	35
Other Medical Facilities . . . . .	35
Ambulance Service . . . . .	35
Nursing Homes . . . . .	36
Public Health. . . . .	36
OTHER LOCAL FACILITIES . . . . .	39
Communications . . . . .	39
Library Services . . . . .	40
Religious Institutions . . . . .	40
Financial Institutions . . . . .	40
Hotels and Motels . . . . .	43
Clubs and Organizations . . . . .	43
RECREATION. . . . .	44
COMMUNITY IMPROVEMENTS . . . . .	46
HISTORY . . . . .	50



# GENERAL HIGHWAY MAP CHRISTIAN COUNTY KENTUCKY



PREPARED BY THE  
KENTUCKY DEPARTMENT OF TRANSPORTATION  
OFFICE OF TRANSPORTATION PLANNING  
DIVISION OF TRANSPORTATION FACILITIES PLANNING  
IN COOPERATION WITH THE  
U.S. DEPARTMENT OF TRANSPORTATION  
FEDERAL HIGHWAY ADMINISTRATION



ORIGINAL DATA	REVISIONS	
DATE	BY	REVISIONS



FORT CAMPBELL MILITARY RESERVATION



## HOPKINSVILLE, KENTUCKY - A RESOURCE PROFILE

Hopkinsville, the county seat of Christian County, is located in the southwestern section of Kentucky. Hopkinsville is 170 miles southwest of Louisville, Kentucky; 74 miles northwest of Nashville, Tennessee; 271 miles southwest of Cincinnati, Ohio; 82 miles south of Evansville, Indiana; and 251 miles southeast of St. Louis, Missouri. This progressive and growing city had a 1973 estimated population of 25,607.

Christian County, covering a land area of 725 miles, is the second largest county in Kentucky. Located in the Pennyrile Region of western Kentucky, Christian County is bordered on the south by Tennessee, to the west by the Land Between the Lakes Recreation Area, to the east by fertile agricultural lands, and the Western Kentucky coal fields to the north. In 1975, Christian County had an estimated population of 69,800.

### The Economic Framework

The total number of Christian County residents employed in 1974 averaged 18,850, including 1,800 in agriculture and 3,140 in government. Manufacturing employers in the county reported 3,630 workers; trade and services firms employed 6,560; mining employed 60. Major industrial products are: lighting fixtures, apparel, shoes, magnet wire, and bowling balls.

Total unemployment in Christian County averaged 4.9 percent of the labor force in 1974.

Per capita personal income in the county in 1974 was \$4,366, an increase of 46.3 percent since 1970.

The Hopkinsville labor market area includes Christian County, the five adjoining Kentucky counties, and Montgomery and Stewart Counties in Tennessee. The total number of residents in the Kentucky portion of the labor market area employed in 1974 averaged 63,180, including 5,150 in agriculture and 9,500 in government. Manufacturing employers in the Kentucky portion of the labor market area reported 10,590 workers; trade and services firms employed 16,460; mining reported 4,830.

Fort Campbell, a U.S. military reservation which is located in Christian and Trigg Counties, Kentucky, and Montgomery and Stewart Counties, Tennessee, has a tremendous economic impact on the area. In 1976, the daily on post population was 33,000. The Fort's combined military and civilian payroll in 1975 was over \$222 million. In April, 1974, the Hopkinsville - Clarksville area was designated a Standard Metropolitan Statistical Area.

## Resources for Growth

1. Labor Supply - There is a current estimated labor supply of 7,220 men and 11,740 women available for industrial jobs in the Kentucky portion of the labor market area. In addition, 7,370 young men and 7,070 young women in this area will become 18 years of age by 1982 and potentially available for work. The current labor supply would be supplemented by the number of men and women in the adjoining Tennessee counties who are available for industrial jobs.

2. Transportation - The Louisville & Nashville Railroad and the Illinois Central Gulf Railroad both provide Hopkinsville with a variety of services. Hopkinsville is served by U.S. Highways 41, 41-A, and 68, and the Pennyriple Parkway. The Pennyriple Parkway passes along the eastern side of the city and three interchanges are located at Hopkinsville. Access onto the Western Kentucky Parkway is available 25 miles to the north via the Pennyriple Parkway. Construction is progressing on Interstate 24 which intersects with U.S. 41-A, 12 miles south of Hopkinsville. Four of the ten trucking companies that serve Hopkinsville maintain terminals in the city. A shipping center for United Parcel Service is also located in Hopkinsville. The Hopkinsville-Christian County Airport has a 5,000-foot paved runway capable of accommodating small jets. Commercial air service is available at Outlaw Field, 21 miles south of Hopkinsville.

3. Utilities and Fuel - Electricity is furnished to Hopkinsville by the Hopkinsville Electric Plant Board and to Christian County by the Pennyriple RECC, with TVA serving as the source of supply. Natural gas service is provided by the Western Kentucky Gas Company. There are four distributors of propane and seven distributors of distillate fuel oil serving Hopkinsville.

4. Education - The Christian County School System is a progressive system. All seventeen schools in the system are rated comprehensive, Kentucky's highest rating. Hopkinsville Community College, a part of the University of Kentucky Community College System, provides two years of liberal arts and career-oriented programs and offers an Associate Degree in Arts, Science, or Applied Science. The college also offers adult and continuing education courses as well as facilities for community civic activities. There are seventeen other colleges and universities within 80 miles of Hopkinsville. Vocational training is available at the Christian County Area Vocational Education Center in Hopkinsville which offers ten course areas, and at the Madisonville State Vocational-Technical School, 34 miles away, which offers sixteen course areas.

## THE LABOR MARKET AREA

POPULATION			
Area	1975*	1970	<u>Percent Nonwhite</u> 1970
Hopkinsville	25,607**	21,250	24.9
Labor Market Area	176,500	154,550	
Christian County	69,800	56,224	22.5
Caldwell County	13,500	13,179	7.1
Hopkins County	42,900	38,167	7.9
Muhlenberg County	30,300	27,537	4.3
Todd County	11,000	10,823	14.3
Trigg County	9,000	8,620	18.0

\*Provisional Estimates.

\*\*1973 Population Estimates.

Sources: U.S. Department of Commerce, Bureau of the Census, Census of Population, 1970. U.S. Department of Commerce, Bureau of the Census, Current Population Reports, Series P-25, No. 562, June 1975; Series P-26, No. 75-17, May 1976.

### GENERAL EMPLOYMENT CHARACTERISTICS, 1974

Major Employment Group	Employment by Place of Residence of Workers	
	Christian County	Labor Market Area
Total Employment	18,851	63,183
Agriculture	1,797	5,154
Government	3,136	9,499
	Employment by Location of Jobs	
	Christian County	Labor Market Area
Manufacturing	3,627	10,587
Trade and Services	6,556	16,461
Mining	64	4,828

Sources: Kentucky Department for Human Resources, Bureau for Administration and Operations; Kentucky Department of Mines and Minerals, Annual Report.

MANUFACTURING EMPLOYMENT BY INDUSTRY  
SEPTEMBER 1975

<u>Industry</u>	<u>Christian County</u>	<u>Labor Market Area</u>
TOTAL	3,321	9,890
Food & Kindred Products	184	438
Tobacco	9	9
Apparel, Textiles, Leather	1,230	2,966
Lumber, Furniture	143	987
Printing & Publishing, Paper	73	219
Chemicals, Petroleum & Coal, Rubber	136	890
Stone, Clay & Glass	78	293
Primary Metals	413	570
Machinery, Metal Products, Equipment	909	3,360
Other	146	158

Source: Kentucky Department for Human Resources, Number of Workers in Manufacturing Industries Covered by Kentucky Unemployment Insurance Law Classified by Industry and County, September, 1975.

HOPKINSVILLE MANUFACTURING FIRMS,  
THEIR PRODUCTS AND EMPLOYMENT

Firm (Establishment date)	Product	Employment			Organized
		Total	Male	Female	
A G Supply Co. (1960)	Insecticides	17	15	2	
Bailey Division, USM Corp. (1976)	Molded rubber products	12	11	1	
Blue Lake Block Co. (1951)	Concrete block, precast concrete products	42	40	2	
Blue Streak Printers, Inc. (1959)	Job printing	4	4	0	
Burdine's Printing Co. (1973)	Commercial job printing	1	0	1	
Chestnut & Anderson Grain Co. (1946)	Corn, wheat, soy beans	5	5	0	
Coca Cola Bottling Co. (1932)	Soft drinks	53			
Cress Manufacturing Co. (1973)	Electric pottery kilns	10	9	1	
Dalton Brothers Brick Co. (1870)	Brick	8	7	1	
Dr. Pepper Bottling Co. (1946)	Soft drinks	7	7	0	
Ebonite Co. (1967)	Bowling balls	262	250	12	*
Elk Brand Manufacturing Co., Inc. (1930)	Men's and boys' jeans, slacks, walking shorts, jackets	240	40	200	
Faultless Division, Bliss & Laughlin Industries (1970)	Decorative furniture hardware, casters, plastic products	155	80	75	
W. R. Grace & Co. (1964)	Fluid fertilizer	24	23	1	
Hampton Meat Processing (1975)	Meat processing	11	9	2	
Hopkinsville Apparel (1976)	Men's, boys' and girls' jeans	150	15	135	
Hopkinsville Clothing Manufacturing Co. (1927)	Men's and boys' jeans	423	73	350	
Hopkinsville Milling Co. (1874)	Wheat flour, corn meal	60	58	2	*
Hopkinsville Sign Co. (1961)	Signs	4	3	1	
Hopkinsville Stone Co. (1930)	Agricultural limestone, bituminous concrete	60	48	12	(Contd.)

<u>Firm</u> (Establishment date)	<u>Product</u>	<u>Employment</u>			
		<u>Total</u>	<u>Male</u>	<u>Female</u>	<u>Organized</u>
International Shoe Co. (1946)	Men's shoes	421	97	324	*
KAP, Inc. (1974)	Steel wire,tire cord	23	15	8	
K-Y Clothing Manufac- turing, Inc. (1966)	Men's work coveralls, coats, jackets	60	8	52	
Kaufman & Broad Home Systems, Inc. (1971)	Mobile homes	72			
Kentucky New Era, Inc. (1869)	Newspaper	53	34	19	
Kirkpatrick Concrete Supply Co., Inc. (1948)	Ready mixed concrete	20	18	2	
Lilly Brothers Seed Co., Inc. (1958)	Feed, fertilizer	25	23	2	
Mid Continent Spring Co. of Kentucky (1957)	Compression torsion springs	185	95	90	
Model Pure Milk Co., Inc. (1948)	Fluid milk	4	3	1	
R. C. Owen Co. (1936)	Hardwood floor- ing and lumber, pallets	70	68	2	
Pellon Kentucky Corp. (1973)	Nonwoven textiles	65	55	10	
Pepsi Cola-General Bottlers, Inc. (1939)	Carbonated beverages	53	47	6	
Phelps Dodge Magnet Wire Corp. (1965)	Magnet wire	450	400	50	*
Phillips Products Co., Inc. (1966)	Plastic products	128	83	45	*
Smith & Profitt Machine Co. (1963)	Machine shop, special machinery, jigs, fixtures, tools, dies	23	21	2	
Southern Printing, Inc. (1953)	Job printing, offset printing	8	5	3	
Southwestern Tobacco Co., Inc. (1918)	Tobacco redrying	115	55	60	
Staz on Bait Co., Inc. (1962)	Prepared fish baits	2			
Superior Graphite Co. (1976)	Gradular synthetic graphite (desulphured)	20	19	1	

(Contd.)



<u>Firm</u> (Establishment date)	<u>Product</u>	<u>Employment</u>			<u>Organized</u>
		<u>Total</u>	<u>Male</u>	<u>Female</u>	
Swift Chemical Co. (1935)	Agricultural chemicals	10	9	1	
Thomas Industries, Inc. (1955)	Lighting fixtures, medicine cabinets, decorative mirrors	590	350	240	*
U.S.M. Corp. (1965)	Fasteners	78	68	10	*

\*See Labor Organizations below.

Source: Kentucky Department of Commerce, Division of Research and Planning.

#### LABOR ORGANIZATIONS

<u>Union</u>	<u>Representing manufacturing workers at:</u>
International Leather Goods, Plastic and Novelty Workers' Union	Ebonite Company
Retail, Wholesale and Department Store Union	Hopkinsville Milling Company
United Steelworkers of America	International Shoe Company
United Auto Workers	Phelps Dodge Magnet Wire Corp.
Teamsters	Phillips Products Company
Electrical Workers and Teamsters	Thomas Industries, Inc.
International Association of Machinists	U.S.M. Corporation



PHILLIPS PRODUCTS COMPANY, INC.



COCA-COLA BOTTLING COMPANY



KAUFMAN & BROAD HOME SYSTEMS, INC.



THOMAS INDUSTRIES, INC.



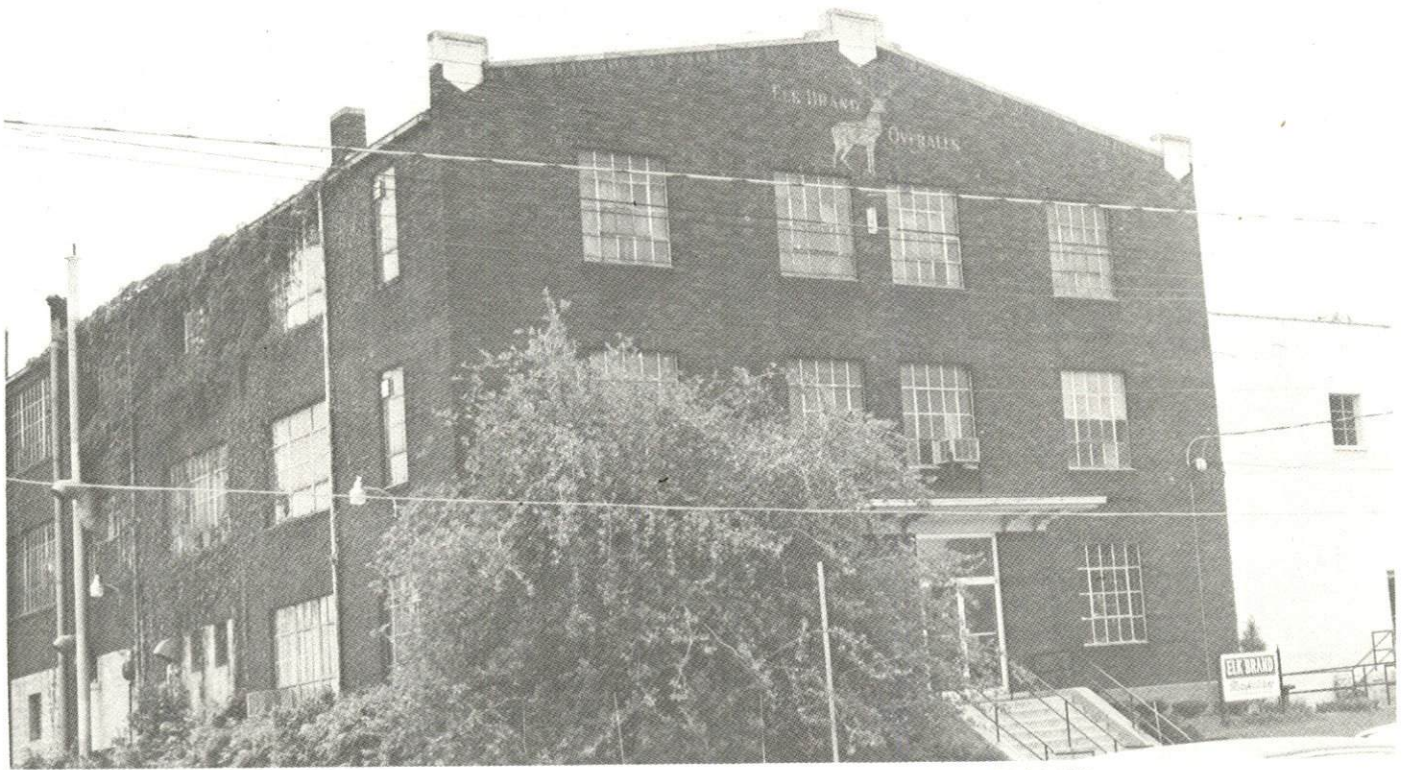
EBONITE COMPANY



HOPKINSVILLE CLOTHING MANUFACTURING COMPANY



PHELPS DODGE MAGNET WIRE CORPORATION



ELK BRAND MANUFACTURING COMPANY



INTERNATIONAL SHOE COMPANY

ESTIMATED MALE LABOR SUPPLY  
HOPKINSVILLE LABOR MARKET AREA

Area	Current			Future	
	Total	Not in Labor Force	Unemployed	Under- employed	Reaching 18 yrs. of age before 1982
Labor Market					
Area	7,220	2,520	1,770	2,930	7,373
Christian	4,060	1,950	530	1,580	2,624
Caldwell	1,050	570	310	170	565
Hopkins	840	0	370	470	1,883
Muhlenberg	650	0	300	350	1,316
Todd	320	0	120	200	552
Trigg	300	0	140	160	433

Sources: Kentucky Department for Human Resources, Kentucky Labor Supply Estimates by County, 1975. Kentucky Department of Commerce, Future Labor Supply before 1982.

ESTIMATED FEMALE LABOR SUPPLY  
HOPKINSVILLE LABOR MARKET AREA

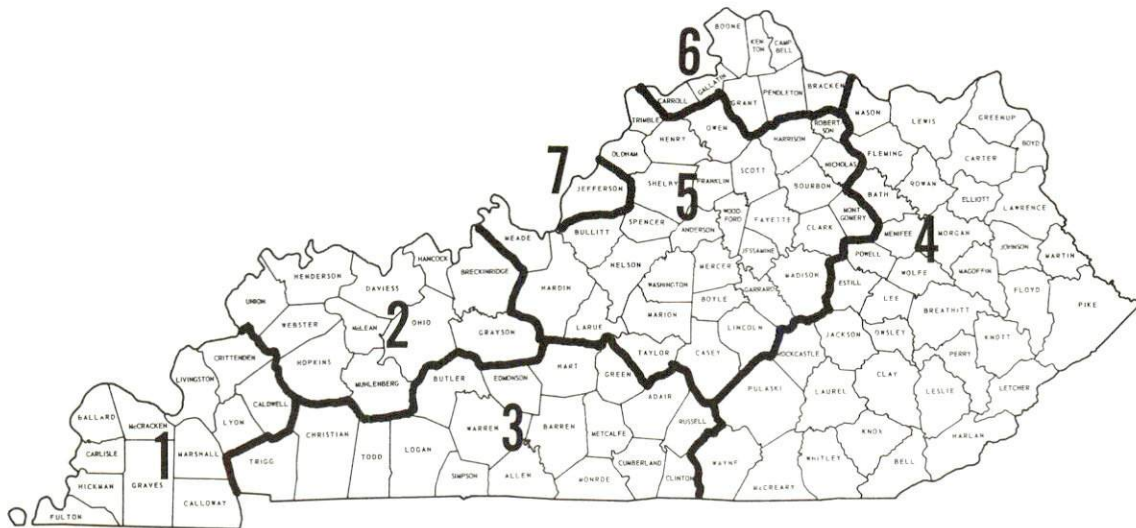
Area	Current			Future	
	Total	Not in Labor Force	Unemployed	Under- employed	Reaching 18 yrs. of age before 1982
Labor Market					
Area	11,740	7,840	1,230	2,670	7,073
Christian	6,550	5,080	440	1,030	2,521
Caldwell	1,220	680	260	280	564
Hopkins	840	0	170	670	1,715
Muhlenberg	2,380	1,890	140	350	1,363
Todd	460	190	100	170	533
Trigg	290	0	120	170	377

Sources: Kentucky Department for Human Resources, Kentucky Labor Supply Estimates by County, 1975. Kentucky Department of Commerce, Future Labor Supply before 1982.

## WAGES

Occupational wage rates for specific industries are usually not available to most government agencies, and wage data furnished to state employment agencies by individual industrial employers is protected from disclosure by federal law. The most reliable up-to-date wage information can be obtained by direct contact with local employers.

Associated Industries of Kentucky, a voluntary organization of Kentucky businesses, regularly collects occupational wage rates and fringe benefits data from participating member firms. Data is compiled for over 127 clearly defined office, production, and service occupations. Tabulations are published for seven regions of Kentucky, as shown on the map below. It should be noted that the data may be weighted by the preponderance of firms in the larger cities and may be somewhat higher than the rates paid in the smaller communities. Data from these tabulations are available, upon request, from the Kentucky Department of Commerce, Frankfort, Kentucky 40601.



Associated Industries of Kentucky Area Wage Surveys



Up-to-date occupational wage rates of the existing industries are maintained by South Kentucky Industrial Development Association, Post Office Box 726, Hopkinsville, Kentucky 42240.

PER CAPITA PERSONAL INCOME

<u>Area</u>	<u>1974</u>	<u>1970</u>	<u>Percent Change</u>
Christian County	\$4,366	\$2,984	46.3
Labor Market Area			
Range	\$3,740 - 5,248	\$2,426 - 3,404	N. A.
Kentucky	4,442	3,112	42.7
U.S.	5,448	3,966	37.4

Sources: U.S. Department of Commerce, Bureau of Economic Analysis, Survey of Current Business, August 1975. U.S. Department of Commerce, Bureau of Economic Analysis, March 1976.

## TRANSPORTATION

### Rail

Line serving Hopkinsville - Louisville & Nashville Railroad

Services - One northbound and one southbound freight stops daily; six northbound and six southbound through freights daily; switching facilities; team track with space for ten cars; nearest piggyback facilities at Clarksville, Tennessee, 26 miles distant

Line serving Hopkinsville - Illinois Central Gulf Railroad

Services - One northbound freight on Mondays, Wednesdays and Fridays; one southbound freight on Sundays, Tuesdays and Thursdays; switching facilities; team track with space for 11 cars; nearest piggyback facilities at Princeton, Kentucky, 29 miles distant

For details on routing, schedules, rates and services, contact:

Manager of Industrial Development  
Louisville & Nashville Railroad Company  
908 West Broadway  
Louisville, Kentucky 40203  
(502) 587-5000

and/or

Manager of Industrial Development  
Illinois Central Gulf Railroad Company  
112 North 4th Street  
St. Louis, Missouri 63102  
(314) 241-9400

## Highways

Hopkinsville is served by U.S. Highways 41, 41-A, and 68, and the Pennyrile Parkway. The Pennyrile Parkway, which extends from Hopkinsville north to Henderson, Kentucky, passes along the eastern side of town with three interchanges located at Hopkinsville. Access onto the Western Kentucky Parkway, a major east-west highway artery, is available 25 miles to the north via the Pennyrile Parkway. Construction is progressing on Interstate 24 which intersects with U.S. 41-A, 12 miles south of Hopkinsville. When completed, Interstate 24 will provide Hopkinsville with excellent highway access to the south and midwest.

## Truck Service

<u>Company</u>	<u>Home Office</u>
A & H Truck Lines, Inc.	1111 East Louisiana Street Evansville, Indiana 47717
Harper Truck Service, Inc.	1266 North 8th Street Paducah, Kentucky 42002
Marvin Hayes Lines, Inc.*	P.O. Box 468 Clarksville, Tennessee 37901
McLean Trucking Company*	P.O. Box 213 Winston-Salem, North Carolina 27102
O'Nan Transportation Company	P.O. Box 308 Carrollton, Kentucky 41008
Pulaski Highway Express*	733 North Main Street Hopkinsville, Kentucky 42240
Renner's Express, Inc.*	P.O. Box 882 Indianapolis, Indiana 46206
T. I. M. E. -DC, Inc.	P.O. Box 2550 Lubbock, Texas 79408
United Trucking Service	3047 Lonyo Road Detroit, Michigan 48209
Wilson Freight Company	3636 Follett Avenue Cincinnati, Ohio 45223
<u>Other Freight Services</u>	<u>Shipping Center</u>
United Parcel Service **	Hopkinsville

\*Local terminal.

\*\*For regular scheduled pickups or for occasional pickups, arrangements must be made with the Louisville office of U. P. S.

HIGHWAY MILES AND TRUCK TRANSIT TIME IN DAYS FROM  
HOPKINSVILLE, KENTUCKY, TO SELECTED MARKET CENTERS

City	Highway Miles	Delivery		City	Highway Miles	Delivery	
		Time*	TL			Time	TL
Atlanta, Ga.	316	3		Los Angeles, Calif.	2,096	5	
Birmingham, Ala.	270	3		Louisville, Ky.	170	1	
Chicago, Ill.	372	3		Nashville, Tenn.	74	1	
Cincinnati, Ohio	271	3		New Orleans, La.	591	3	
Cleveland, Ohio	515	3		New York, N. Y.	918	4	
Detroit, Mich.	530	3		Pittsburgh, Pa.	558	3	
Knoxville, Tenn.	251	3		St. Louis, Mo.	251	3	

\*The delivery time indicates maximum service rather than expedited service. In many cases expedited service would reduce transit time by one day. Overnight service is provided to direct points-Louisville and Nashville

Source: Delivery Time Only - Renner's Express, Inc., P.O. Box 882, 1350 South West Street, Indianapolis, Indiana 46206.

Air

	<u>Local</u>	<u>Nearest Commercial</u>
	Hopkinsville-Christian County Airport	Outlaw Field
Location:	1 mile east of Hopkinsville	7 miles northwest of Clarksville, Tennessee; 21 miles from Hopkinsville
Runways:	1 paved	2 paved
Length:	5,000 feet	4,100 feet; 5,000 feet
Traffic		
Control:	Wind sock on north- west corner	
Lighting:	Sundown to sunrise	Beacon, runway (hours of darkness)
Services:	100 LL octane, charter, major and minor A & E repairs, flight training, tie down, taxi, car rentals	Ozark and Aerie Airlines, 80/87 and 100/130 octane, jet fuel, major repairs, charter, flight instruction, hangars, tie downs, weather information available, car rentals, taxi, snack bar, rest rooms
Air Freight		
Service:	Chartered air freight services must be arranged	Accepted on a space available basis

Bus - Greyhound Bus Lines  
Bowling Green-Hopkinsville Bus Line  
Brooks Bus Line

Taxi - Three companies with 24-hour, radio-dispatched service

Rental Services - Car, truck and trailer rentals

Travel Agency - Pennyrile Travel Advisers

## POWER AND FUEL

### Electricity

Company serving Hopkinsville - Hopkinsville Electric Plant Board

Source of power - Tennessee Valley Authority

Total generating capacity - 26,723,430 KW

For industrial rates contact:

South Kentucky Industrial Development  
Association, Inc.

Post Office Box 726

Hopkinsville, Kentucky 42240

(502) 885-5392

and/or

Hopkinsville Electric Plant Board

101 North Main Street

Hopkinsville, Kentucky 42240

(502) 886-3303

Company serving Christian County - Pennyrile RECC

Source of power - Tennessee Valley Authority

Total generating capacity - 23,723,430 KW

For industrial rates contact:

South Kentucky Industrial Development  
Association, Inc.

Post Office Box 726

Hopkinsville, Kentucky 42240

(502) 885-5392

and/or

Pennyrile RECC

2000 Harrison Street

Hopkinsville, Kentucky 42240

(502) 886-2555

## Natural Gas

Company serving Hopkinsville - Western Kentucky Gas Company  
Source of supply - Texas Gas Transmission Corporation and St. Charles  
Production

Size of transmission mains - 10 inches (supplier);  
6 and 8 inches (distributor)

Distribution mains - 2 to 8 inches

Distribution pressure - 25 psi

Btu content - 1,000 per cubic foot; Specific gravity - .60

For rates and supplies contact:

Western Kentucky Gas Company  
Industrial Development Department  
311 West 7th Street  
Owensboro, Kentucky 42301  
(502) 684-8811

## Other Fuels

### Propane and butane

Pargas of Hopkinsville  
Fort Campbell Boulevard  
Hopkinsville, Kentucky

Southern States Hopkinsville Petroleum Cooperative  
520 Wooldridge Road  
Hopkinsville, Kentucky

Texgas Corporation (bulk)  
Kelly Lane  
Clarksville, Tennessee

Miller's Bottled Gas, Inc. (bulk)  
110 East Campbell Lane  
Bowling Green, Kentucky

Fuel oils

Distillate fuel oil -

Paul Altsheler Oil Company  
2943 Ft. Campbell Boulevard  
Hopkinsville, Kentucky

Ashland Petroleum Company (bulk)  
2316 Ft. Campbell Boulevard  
Hopkinsville, Kentucky

Exxon Company USA (bulk)  
800 West 1st Street  
Hopkinsville, Kentucky

Hopkinsville Oil Company  
708 North Main Street  
Hopkinsville, Kentucky

J. B. Hyde (Gulf)  
700 West 15th Street  
Hopkinsville, Kentucky

R. C. McKinney (Texaco)  
1408 South Clay  
Hopkinsville, Kentucky

Standard Oil Company (bulk)  
118 South Clay  
Hopkinsville, Kentucky

Residual fuel oil - Arrangements must be made with the refinery.

Low sulphur content coal - Available in Kentucky.



## WATER AND SEWERAGE

### Water

Company serving Hopkinsville - Sewerage and Water Works Commission\*  
101 North Main Street  
Hopkinsville, Kentucky 42240  
(502) 886-3304

Source - Little River and four impounded lakes  
Treatment plant capacity - 7,000,000 gpd  
Average daily consumption - 3,500,000 gallons  
Peak daily consumption - 4,400,000 gallons  
Type treatment - Flash mix, flocculation, clarification, filtration,  
sterilization  
Storage capacity - 4,700,000 gallons  
Size lines - 4, 6, 8, 10, 12, 16, and 18 inches  
Average pressure - 80 psi  
Average temperature - 60 degrees F.

### MONTHLY WATER RATES FOR WHOLESALE AND INDUSTRIAL CONSUMERS

First	3,000 cu. ft.	\$ .90 per 100 cu. ft.
Next	3,000 cu. ft.	.70 per 100 cu. ft.
Next	3,000 cu. ft.	.55 per 100 cu. ft.
Next	3,000 cu. ft.	.50 per 100 cu. ft.
Next	3,000 cu. ft.	.40 per 100 cu. ft.
All over	15,000 cu. ft.	.30 per 100 cu. ft.

### Meter Minimum Rate

5/8-inch	\$ 2.70 per month	300 cu. ft.
3/4-inch	3.60 per month	400 cu. ft.
1-inch	5.50 per month	600 cu. ft.
1 1/2-inch	11.00 per month	1,200 cu. ft.
2-inch	18.00 per month	2,000 cu. ft.
3-inch	33.00 per month	
4-inch	55.00 per month	
6-inch	215.00 per month	

Tap-on charge: None in city

\*The water treatment plant capacity was recently expanded to 7,000,000 gpd. A 2,000,000 gallon tank is being constructed and is scheduled to be in operation by May of 1977.

Private Fire Protection

Through 2-inch connection	\$ 45.00 per year
Through 3-inch connection	65.00 per year
Through 4-inch connection	105.00 per year
Through 6-inch connection	190.00 per year
Through 8-inch connection	275.00 per year
Through 10-inch connection	420.00 per year

Rates and charges not metered - Billed semi-annually in advance

City of Hopkinsville Billed Monthly

Fire Hydrants, per year, per hydrant \$30.00

Surface water sources - Little River

Average discharge - Little River near Cadiz, Kentucky, 343 cfs  
(35 years, USGS)

Expected ground water yield - Varies throughout the county from a high  
of 200-500 gpm to 5 gpm or less; the majority is 50 gpm or less

Sewerage

Company serving Hopkinsville - Sewerage and Water Works Commission\*  
101 North Main Street  
Hopkinsville, Kentucky 42240  
(502) 886-3304

Design capacity - 3,000,000 gpd

Average daily flow - 2,300,000 gallons; Treatment - Primary and  
secondary

Type treatment - Grit removal, comminutor, primary settling, fast rate  
trickling filters, sludge removal, secondary settling, anaerobic digestion,  
sludge drying beds

Treated effluent discharged into - Little River

Size of sanitary mains - 8 to 21 inches

Rates - 80 percent of monthly water bill - \$2.16 minimum per month

Tap-on charge: None in city

---

\*A 201 Facilities Plan to determine the improvements needed in the  
sewerage system is underway. Currently there are plans for another  
treatment plant, pumping station, outfalls and collector wells, estimated  
to cost \$12 million.

## CLIMATE

### Christian County

#### Temperature

Annual mean (30-year record)	59.4 degrees
Average annual 1975	60.2 degrees
Record highest, July, 1966 (10-year record)	103.0 degrees
Record lowest, January, 1966 (10-year record)	- 6.0 degrees
Normal heating degree days (30-year record)	3,696
(Heating degree day totals are the sums of negative departures of average daily tempera- tures from 65 degrees F.)	

#### Precipitation

Mean annual total (30-year record)	46.00 inches
Mean annual snowfall (34-year record)	10.90 inches
Total precipitation 1975	60.58 inches
Mean number days precipitation (.01 inch or more) (34-year record)	119
Average number days thunderstorms (34-year record)	56

Prevailing Winds (22-year record) South

#### Relative Humidity (10-year record)

Midnight	80 percent
6 a. m.	85 percent
Noon	59 percent
6 p. m.	62 percent

Source: U.S. Department of Commerce, Environmental Science Services  
Administration, Climatological Data, 1975. Station of record:  
Nashville, Tennessee.



HOPKINSVILLE CITY HALL



CHRISTIAN COUNTY COURTHOUSE

LOCAL GOVERNMENT

City

Structure - Mayor - 4-year term; 12 councilmen - 2-year terms  
Budget 1975 - General Fund \$2,000,000  
Income 1975-76 - Water and Sewer Fund 1,506,665  
Fees and licenses - Occupational license tax - one percent of gross salary; business licenses vary according to the type of business; annual license fees for manufacturers - 50 employees or less - \$100, 51 to 100 employees - \$150, over 100 employees - \$200

County

Structure - County Judge - 4-year term; 8 magistrates - 4-year terms  
Budget 1975-76 - General Fund \$702,990; Road Fund \$197,500

Assessed Value of Property, 1975

<u>Classes of Property</u>	<u>Hopkinsville</u>	<u>Christian County</u>
Real Estate and Tangibles	\$190,000,000	
Real Estate		\$265,951,143
Tangibles		75,587,086

Property Taxes

Land and buildings are taxed by the state and may be taxed by local jurisdictions. The state rate is \$0.015 of assessed valuation.

Tangible personal property owned by manufacturers (automobiles, trucks, finished goods, office furniture, office equipment) is taxed by the state at \$0.15 per \$100 and may be taxed by local jurisdictions.

Manufacturing machinery, raw materials inventories, pollution control equipment and goods in process inventories are not subject to local taxation. The state rate is \$0.15 per \$100.

Property stored in public warehouses in transit status is not subject to local taxation. The state rate is only \$0.015 per \$100.

All property is assessed at 100 percent of fair cash value.

Local Property Tax Rate Per \$100 of Assessed Valuation, 1976\*

<u>Taxing Jurisdiction</u>	<u>Hopkinsville</u>	<u>Christian County</u>
County	\$ .158	\$ .158
School	.563	.420
City	.310	
Special (not county wide): Watersheds		
	East Fork, Pond River	\$ .0009
	West Fork, Pond River	.0010
	Trade Water	.0010
	Fire Protection	.0010

Utilities Gross Receipts Tax for Schools

Christian County levies a 3 percent tax on utilities receipts for schools. This tax is paid by all consumers of utilities as an add-on to the utilities bills. Exempted are receipts from utilities services that are resold and the receipts from the sale of energy or energy producing fuels that exceed 3 percent of the cost of production in manufacturing, processing, mining or refining.

Planning and Zoning

Joint agency - Hopkinsville-Christian County Planning Commission  
 Zoning enforced - In Hopkinsville and Pembroke only  
 Subdivision regulations enforced - County-wide  
 Local codes enforced - Housing and building  
 Mandatory state codes enforced - Plumbing, National Fire Protection Association Code, National Building Code (for major buildings and residential construction containing more than 12 bedrooms per building)

Safety

<u>Police</u>	<u>Hopkinsville</u>	<u>Christian County</u>
Total staff	50	12
Radio-patrol cars	10	6

\*Kentucky Department of Education, Bureau of Administration and Finance. South Kentucky Industrial Development Association. City of Hopkinsville, city clerk's office.

<u>Fire</u>	<u>Hopkinsville</u>	<u>Christian County</u>
American Insurance Association Fire Rating	5	
Full-time staff	70	
Volunteers		30
Stations	3	1

Rescue Service

Christian County Rescue Squad:

Number of volunteers - 45 to 50

Equipment - 2 generators, 1 boat, lake dragging equipment, 20 privately owned boats available for use, 30 radio-equipped cars (citizens band), a station wagon, 8-man squad van, a field kitchen, 2 oxygen units, a fire truck used for vehicle fires, and other heavy duty rescue equipment

Personnel training - All personnel trained in standard First Aid and some with advanced Red Cross training, 18 men skilled in lake dragging, 3 professional scuba divers available

Solid Waste

	<u>Hopkinsville</u>	<u>Christian County</u>
Type service	Municipal	Private
Fee charged:		
residential	\$2.50 per month	\$5.00 per month
business	Varies according to volume	Contract
industrial	Varies according to volume (minimum-\$55 per month)	Contract
Collection frequency:		
residential	Once weekly	Once weekly
business	As required	Contract
industrial	As required	Contract
Trash pickup	Every two weeks	None
Disposal method	Sanitary landfill	Sanitary landfill

## EDUCATION

### Public Schools

#### Christian County

Total Enrollment (May, 1976)	10,157
Elementary	4,348
Middle School	2,888
High School	2,921
Student-Teacher Ratio	19-1
Elementary	18-1
Middle School	21-1
High School	19-1
Accreditation	Southern Association of Colleges and Schools
Percent High School Graduates to College	46.1
Expenditures Per Pupil (1974-75)	\$620.71
Bonded Indebtedness, June 30, 1975	\$11,227,000*

### Nonpublic Schools

	<u>Hopkinsville</u>	<u>Ft. Campbell</u>
Total Enrollment	140	3,266
Elementary	140	2,166
High School		1,100
Student-Teacher Ratio	11-1	22-1
Elementary	11-1	25-1
High School		17-1

\*Includes advance refunding issue-\$825,000.

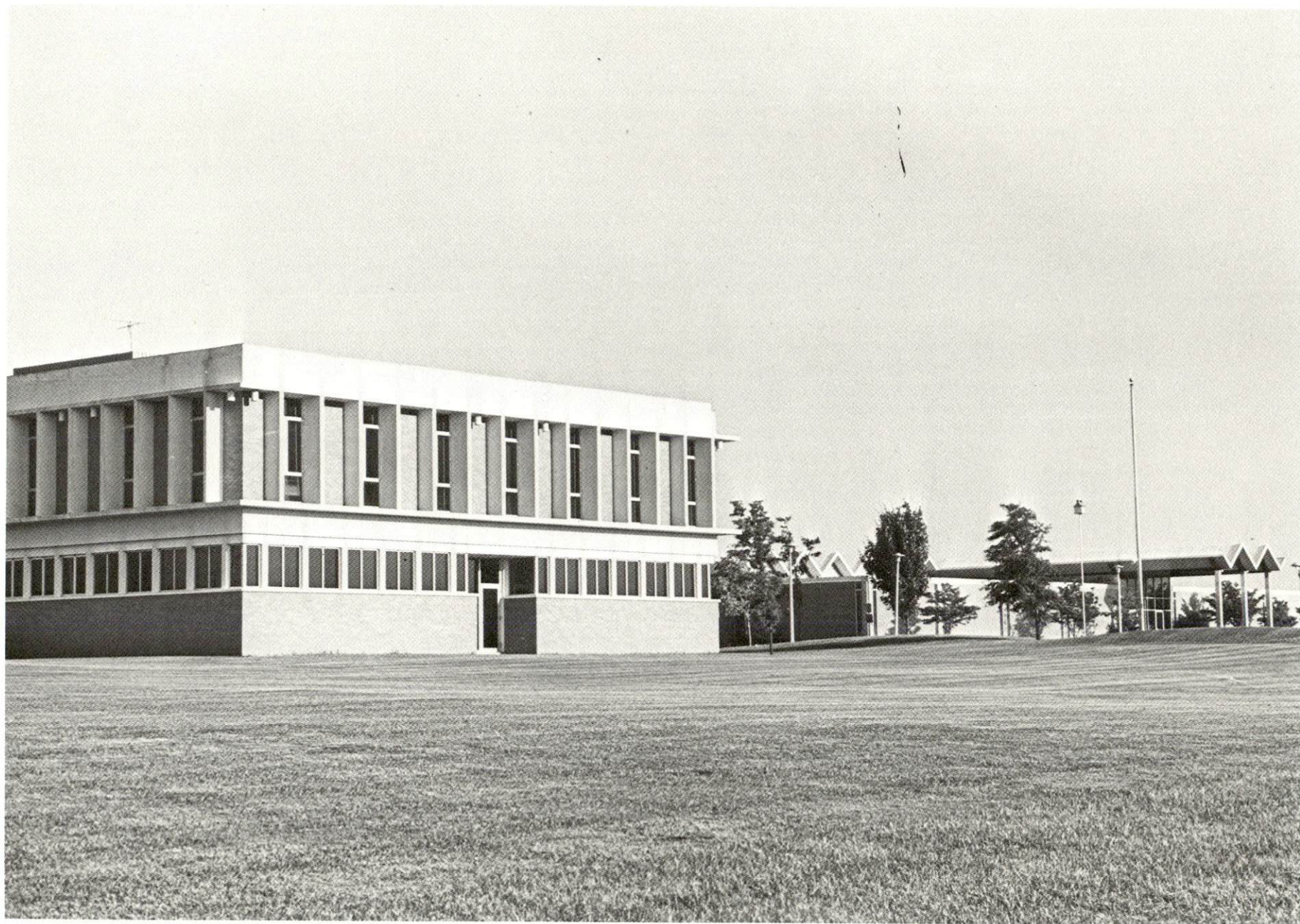




CHRISTIAN COUNTY HIGH SCHOOL



HOPKINSVILLE HIGH SCHOOL



HOPKINSVILLE COMMUNITY COLLEGE

Area Colleges and Universities

<u>Name</u>	<u>Location (Miles distant)</u>	<u>Enrollment (Fall, 1975)</u>	<u>Highest Degree Conferred</u>
Hopkinsville Community College	Hopkinsville	1,215	Associate
Austin Peay State University	Clarksville, Tennessee(28)	4,167	Academic and Professional
Madisonville Community College	Madisonville(34)	624	Associate
Murray State University	Murray(57)	7,885	Masters, Ph. D. *
Western Kentucky University	Bowling Green(65)	13,040	Masters, Ph. D. *
Henderson Community College	Henderson(72)	672	Associate
Belmont College	Nashville, Tennessee(74)	1,114	A. B. , B. S. , A. A.
David Lipscomb	Nashville, Tennessee(74)	2,086	A. B. , B. S.
Fisk University	Nashville, Tennessee(74)	1,428	B. A. , B. S. , M. A. , B. M.
George Peabody College for Teachers	Nashville, Tennessee(74)	1,865	Academic and Professional
Meharry Medical College	Nashville, Tennessee(74)	790	M. S. , M. D. , D. D. S. Certificates
Scarritt College for Christ Work	Nashville, Tennessee(74)	200	B. A. , M. A. , M. C. W.
Trevecca Nazarene College	Nashville, Tennessee(74)	856	A. B. , B. S.
Tennessee State University	Nashville, Tennessee(74)	5,686	A. A. , B. S. , B. A. , M. A. , M. S.
Vanderbilt University	Nashville, Tennessee(74)	7,034	Academic and Professional
Brescia College	Owensboro(76)	928	Baccalaureate
Kentucky Wesleyan College	Owensboro(76)	708	Baccalaureate
Paducah Community College	Paducah(79)	1,320	Associate

\*Cooperative program with the University of Kentucky, Lexington, for a Ph. D. in education only.

Vocational Schools

	<u>Nearest State School</u>	<u>Nearest Area Education Center</u>
	Madisonville State Vocational-Technical School	Christian County Area Vocational Education Center
Location	Madisonville	Hopkinsville
Miles Distant	34	
Curriculum	Health and Personal Service Certified Lab Assistant Health Careers Medical Secretary Practical Nursing Respiratory Therapy Surgical Technician Industrial Education Auto Body Repair Auto Mechanics Carpentry Drafting Electronics (Communications) Industrial Electricity Machine Shop Mining Maintenance Mechanics Welding	Agribusiness Industrial Education Appliance Repair Auto Body Repair Auto Mechanics Carpentry Drafting Electricity Machine Shop Masonry Welding

Arrangements can be made to provide training in the specific production skills required by an industrial plant. Instruction may be conducted either in the vocational school or in the industrial plant, depending upon the desired arrangement and the availability of special equipment.

## HEALTH

### Local Medical Personnel

Physicians - 45  
Dentists - 15

### Hospitals

<u>General Hospital</u>	<u>Location</u>	<u>Beds</u>
Jennie Stuart Memorial Hospital	Hopkinsville	228

General hospital facilities - 5 operating rooms, coronary care unit, OB section, pediatrics, X-ray, radioisotope, laboratory, pathology, physical therapy, blood bank, intensive care unit, pharmacy, renal dialysis unit, emergency room, Associate Degree nursing program with Hopkinsville Community College, cobalt treatment unit, and laboratory technological school

Medical staff - 56 doctors, 76 registered nurses, 59 licensed practical nurses

### Other Medical Facilities

The Pennyroyal Regional Comprehensive Mental Health-Mental Retardation Center and the Western State Hospital, a mental treatment facility, are located in Hopkinsville. Outwood State Hospital for the mentally retarded is located in northwestern Christian County.

### Ambulance Service

Name - Hopkinsville Fire Department  
Staff - 4 Emergency Medical Technicians assigned to 2 ambulances at all times  
Service - 24-hour, county-wide  
Equipment - 2 ambulances

Nursing Homes

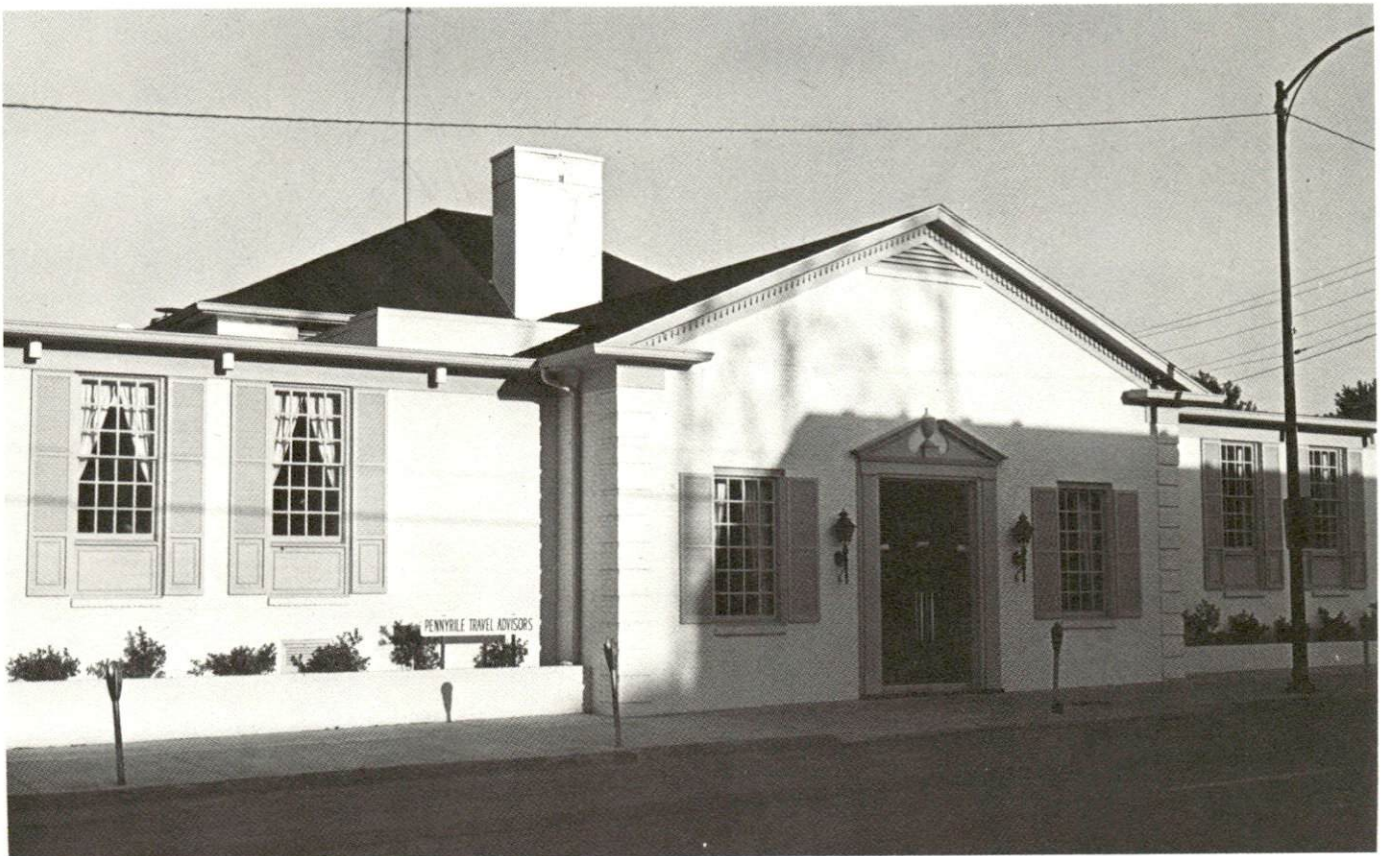
	<u>Number</u>	<u>Beds</u>
Extended care homes	1	33
Personal care homes	4	321

Public Health

Facility - Christian County Health Department  
Staff - 1 doctor (part time), 5 registered nurses, 4 health  
environmentalists, 4 clerks



KENTUCKY NEW ERA, INC.



MEMORIAL BUILDING



FIRST CITY BANK AND TRUST COMPANY



PLANTERS BANK AND TRUST COMPANY



## OTHER LOCAL FACILITIES

### Communications

Telephone - South Central Bell Telephone Company  
Services - Standard

Telegraph - Western Union  
Services - Standard

Postal - U.S. Post Office  
Class - First (8,454 Revenue Units)  
Mail received - Twice daily  
Mail dispatched - Twice daily

Newspapers - The Kentucky New Era  
Daily and circulation - 15,500  
Other papers received from - Louisville, Kentucky; Evansville, Indiana;  
Nashville, Tennessee

Radio - WABD, WHOP, WKOA-WKOF (all in Christian County)  
Stations received from - Bowling Green, Cadiz, Louisville, and  
Russellville, Kentucky; Nashville, Tennessee

Television -  
Cable service  
Reception from - Three stations from Nashville, Tennessee received  
without cable service; Paducah and Bowling Green, Kentucky,  
Evansville, Indiana, and Cape Girardeau, Missouri received with  
cable service.

### Educational

Television - Madisonville transmitter - Channel 35, Nashville trans-  
mitter - Channel 8

Library Services

Public library - Hopkinsville Public Library

Size collection - 31,420 volumes

Circulation, 1974-75 - 77,113

Services - Newspapers, magazines, records, microfilm, microfilm reader-printer, films, filmstrips, slides, carousel projector, 8 mm and 16 mm projectors, stereo reel-to-reel tape recorder, story hour, bookmobile

Private library - Hopkinsville Community College

Size collection - 28,411 volumes

Special collections - Kentucky collection

Services - 18 newspapers, 136 periodicals, 3,000 records, cassettes, filmstrips, reel-to-reel tapes, audio-visual equipment, microfilm of Census Records, copying machine, open to the public

Religious Institutions

Number of churches in Christian County - 104

Denominations - Assembly of God, Baptist, Catholic, Christian, Christian Science, Church of Christ, Church of God, Church of Jesus Christ of Latter Day Saints, Church of the Nazarene, Episcopal, Jehovah's Witnesses, Lutheran, Methodist, Methodist Episcopal, Pentecostal, Presbyterian, Salvation Army, Seventh Day Adventist, United Methodist, Universalist

Synagogue - Adath Israel (reform)

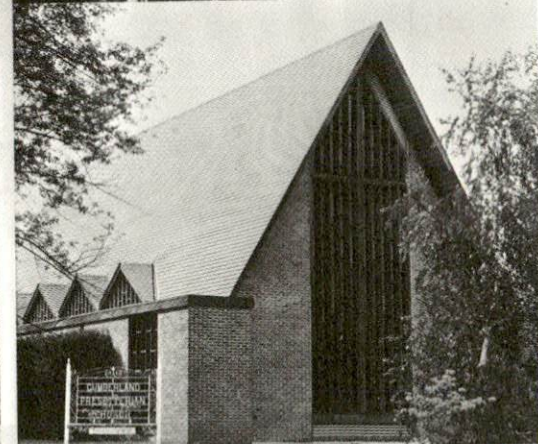
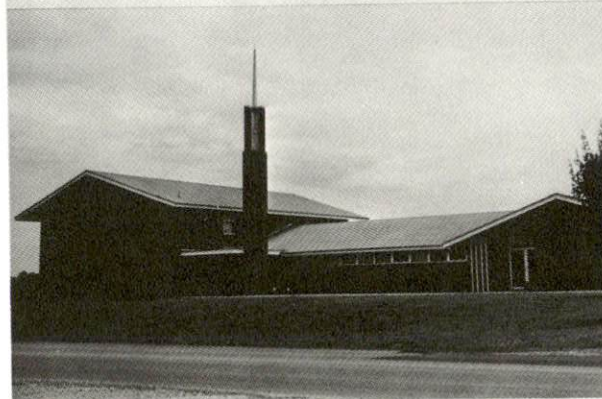
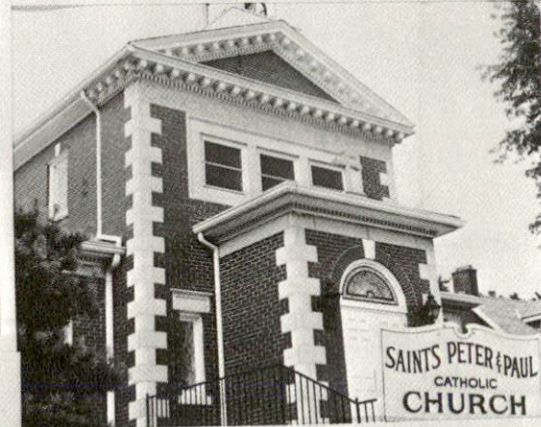
Financial Institutions

<u>Banks</u>	<u>Assets</u>	<u>Deposits</u>	<u>Statement Date</u>
First City Bank and Trust Company	\$71,920,135.66	\$64,059,465.07	12-31-75
Planters Bank & Trust Company	\$92,832,858.11	\$83,241,682.81	12-31-75

<u>Savings and Loan Associations</u>	<u>Assets</u>	<u>Shared Accounts</u>	<u>Statement Date</u>
First Federal Savings & Loan Association	\$24,911,727.44	\$22,398,301.96	12-31-75
Hopkinsville Federal Savings and Loan	\$52,324,536.05	\$48,402,857.24	12-31-75



PENNYRILE MALL - A REGIONAL SHOPPING CENTER



SOME OF HOPKINSVILLE'S CHURCHES

Hotels and Motels

Total number - 18

Total units - 553

Clubs and Organizations

Business and Civic - Chamber of Commerce, Jaycees, Rotary, Kiwanis, Lions, Optimist, VFW, Farm Bureau, Civitan, Western Kentucky State Fair Board, United Fund, Pioneers, Inc., and Business and Professional Women's Club

Fraternal - Shriners, Elks, Masons, Moose, Epsilon Sigma Alpha, IOOF, Ye Old Timers Club, D.A.V., and Woodmen of the World

Women's - National Secretaries Association, Altrusa Club, Eastern Star, Rebekahs, Junior Auxiliary, DAR, Homemakers, Garden Club, AAUW, League of Women Voters, Daughters of the Confederacy, Jaycee-ettes; Lions, Civitan, Elks, Moose, American Legion and VFW Auxiliaries

Youth - Junior Achievement, Boy Scouts, Girl Scouts, YMCA, Brownies, FFA, FHA, 4-H, FTA, Beta Club, Girls Guards, and Sunbeams

## RECREATION

### Local

Hopkinsville offers a year-round recreational program with a full-time director and staff. The Hopkinsville-Christian County Recreation Board operates and maintains a variety of recreational facilities which are available for public use. There are seven parks, eight playgrounds, two swimming pools, ten tennis courts, nine baseball diamonds, a foot ball field, two gymnasiums, a country club, and a golf course. The department sponsors a supervised playground program during the summer months and also offers lessons in golf, tennis, swimming, and arts and crafts.

Private recreational opportunities include indoor and outdoor movie theaters, a country club, a golf course, swimming pools, bowling lanes, riding stables, two dude ranches for children, a roller skating rink, and trap shooting facilities.

The Pennyrile Festival of Arts is celebrated in Hopkinsville the second week in October. It offers juried art exhibits, programs in drama and music, and a tour of a garden of blooming mums. Other local cultural events include a Community Concert Series, held at Hopkinsville Community College, and productions by the Pennyrile Players Association, a community theater group. Points of interest in Christian County include the Pennyroyal Area Historical Museum, the 101st Airborne Museum at Fort Campbell, a pioneer cemetery, many homes of antebellum architecture, and the burial site of Edgar Cayce, the world famous clairvoyant.

### Area(Within 55 miles)

Hopkinsville is located near two of the largest inland lakes in America, Kentucky Lake and Lake Barkley, which include over 3,300 miles of shoreline. This lakeland area offers numerous recreational facilities for water sports, fishing, boating, camping, and hunting.

Located around this lakeland area are three of the state's finest resort parks - Kentucky Dam Village State Resort Park, Kenlake State Resort Park, and Lake Barkley State Resort Park. All three parks offer the following facilities:

Lakeside locations  
Lodge, cottage, and camping accommodations  
Dining rooms, picnic area, and gift shops  
Golf, swimming, fishing, boat rentals,  
horseback riding, tennis, playgrounds,  
and planned recreation.

Land Between the Lakes National Recreation Area is a beautiful 170,000-acre woodland that has been developed by TVA into a major area for outdoor recreation, conservation, and environmental learning. It is a peninsula 5 to 10 miles wide and stretching for 40 miles north to south between Kentucky Lake and Lake Barkley. There are facilities for fishing, boating, hiking, swimming, hunting, and camping.

Pennyrile Forest State Resort Park, located 21 miles northwest of Hopkinsville, is comprised of 435 acres with a resort lodge, cottages, and camping facilities. The park features a 55-acre lake, a beach and bathhouse, a swimming pool, tennis courts, a 9-hole golf course, boat rentals, horseback riding, hiking trails, and picnic areas.

Lake Malone State Park is located 50 miles northeast of Hopkinsville on Lake Malone. The park is open all year and offers camping sites, boating, fishing, swimming, hiking, and picnicking.

The Jefferson Davis Monument State Shrine, located 10 miles east of Hopkinsville at Fairview, is the site of the birthplace of Confederate President Jefferson Davis. A 351-foot obelisk with an elevator to the top provides a panoramic view of the scenic countryside.

## COMMUNITY IMPROVEMENTS

### Industrial and Commercial

The Hopkinsville Industrial Foundation is developing a 274-acre industrial park. Water and sewer lines have been installed throughout the park and a 2 million gallon water tower which will serve the park is scheduled for completion by May of 1977. An east-west access road has been constructed and a north-south access road extending a mile through the park is under construction. In addition, the city plans to build a four-lane road to extend the entire length of the park's northern border. The Pennyrile RECC is constructing a 69,000 KVA substation to serve the park.

In 1976, one clothing manufacturer, Elk Brand Manufacturing Company, expanded its operation, and one new clothing manufacturer, Hopkinsville Apparel, began operations.

Bailey Division of U.S.M. Corporation, a manufacturer of molded rubber products, completed a new \$2 million plant in 1976.

Superior Graphite Company, a manufacturer of granular synthetic graphite, purchased an existing industrial building and will invest \$1.8 million to adapt it.

Hampton Meat Processing, a locally owned operation, opened in July, 1975.

Fort Wayne Leasing Company, which leases and maintains tractor-trailers, opened in a new building in March, 1975.

First City Bank constructed a new four-story main bank building with off-street parking facilities.

Planters Bank completed an extensive renovation and expansion of its main office in the downtown area, estimated to cost \$1.5 million.

Twenty-five commercial businesses recently began operations in new facilities. Twenty-two additional businesses have recently opened in renovated or expanded commercial space.



## Utilities

The water treatment plant capacity was recently expanded to 7,000,000 gpd. One additional 700,000 gallon clearwell and a 2 million gallon water tower have been added to the storage facilities. Another 2 million gallon water tower which will serve the Hopkinsville Industrial Park and the southeastern section of the city is scheduled for completion by May of 1977.

A 201 Facilities Plan is being conducted to determine what improvements are needed to upgrade the municipal sewerage system. Currently there are plans for another treatment plant, pumping station, outfalls and collector mains, estimated to cost \$12 million.

The Christian County Water District has let bids for the construction of 80 miles of water lines and a 150,000 gallon water storage tank. The water district will serve the northwestern quarter of the county and will purchase treated water from the Barkley Lake Water District, the City of Hopkinsville, and the City of Crofton.

## Transportation

The Airport Board has completed plans for the expansion of the Hopkinsville-Christian County Airport. Major improvements will include a full parallel taxiway and apron, an access road to the new apron, and taxiway lighting. Construction is expected to begin in the fall of 1976 with completion scheduled for the spring of 1977.

Construction is progressing on Interstate 24 which intersects with U.S. 41-A, 12 miles south of Hopkinsville. When completed, Interstate 24 will provide Hopkinsville with excellent highway access to the south and midwest.

## Education

The Christian County School System recently completed a new \$1.4 million middle school, a new music building at Hopkinsville High School, and a \$260,000 addition to the vocational school which provides space and equipment for an auto body shop, a masonry shop, and a machine shop. A project to renovate and air condition ten schools is underway. In addition, the school system has received a superior rating from the Kentucky Department of Education.

Plans for a Library-Learning Resource Center at Hopkinsville Community College are now in the pre-architectural stage. The new facility is expected to be completed in two years. The college has expanded its night program curriculum to allow community residents to obtain a college degree by attending night classes.

### Health

A new \$1.5 million laboratory and X-ray wing has been opened at the Jennie Stuart Memorial Hospital. A cancer diagnostic and treatment center has been established at the hospital and contains a \$500,000 cobalt machine for the treatment of cancer.

Approval has been received for a \$3.5 million Rest and Convalescent Home Complex to provide complete health care for the elderly.

### Public Safety

The city and county are instituting a 911 Emergency System which will provide a 24-hour, central dispatching service for all emergency calls.

The Hopkinsville Fire Department opened a new \$140,000 fire station on Skyline Drive to replace an existing substation.

The Hopkinsville Fire Department which provides ambulance service will receive two new standard ambulances and one modular unit with cardiac care equipment. Two additional ambulances will be located at satellite stations in the county.

### Recreation

The Little River Park Project, now under construction, will provide 1.5 miles of open space for active and passive recreation. A decorative fountain, picnic tables, rest rooms, a shelter house, and landscaping will be completed by the fall of 1976. A dam to raise the water level in the river and fishing piers are under construction.

The East 18th Street Park, the West 18th Street Park, and the Durrett Avenue Playground have been upgraded.

A Little League Park, with four ball fields, bleachers, scoreboxes, and a concession stand, has been completed.

Facilities at the new Second Street Park includes a basketball court, playground equipment, picnic tables, and benches.

Funds have been approved for the construction of six additional tennis courts at Ruff Park.

### Other

The \$1.1 million conversion of an old warehouse to a modern public library is underway at the site of the Little River Park development project. The new library will accommodate 100,000 volumes and will have a complete children's library, an auditorium, and a roof top garden. When the project is completed in December, 1976, the library will offer new and expanded services to the community.

The City of Hopkinsville began its first Community Change Project with the redevelopment of the Durrett Avenue area. A five-year plan for improving city services to the neighborhood was developed and \$75,000 in Community Development funds were allocated for paving three streets, extending sewer service, and establishing a mini-park.

The new Pennyroyal Area Historical Museum was dedicated in July of 1976.

## HISTORY

Christian County was created from Logan County by the General Assembly of the Commonwealth of Kentucky, December 13, 1796, though the county did not come into existence until March 1, 1797. The county was named in honor of Colonel William Christian, 1743-1786, a native of Augusta County, Virginia. This soldier, statesman, frontiersman, served in the Continental Army during the Revolutionary War. After the war, as a Virginia planter, he became a member of the convention which formed Virginia as a state. The Colonel married Annie Henry, a sister of the great orator and statesman, Patrick Henry. Coming to Kentucky in 1785, he settled near Louisville. The following year Christian was killed by the Indians across the Ohio River in Southern Indiana.

As originally formed, Christian County included all land north of the Tennessee line, west of Logan County and the Green River, south of the Ohio River, and east of the Tennessee River. Counties formed out of Christian County between 1798 and 1860 include: Caldwell, Crittenden, Henderson, Hopkins, Livingston, Lyon, Muhlenberg, McLean, Todd, Trigg, Union, and Webster.

The first settlement in the county was made by James Davis and John Montgomery, natives of Augusta County, Virginia. Around 1782, they came by flatboat up the Cumberland River and from the Ohio River, and built a blockhouse about 1 mile southeast of Pembroke near the West Fork of Red River. The grave of Davis, dating from 1797, is the oldest marked grave in the county. For a period of the next twenty years, settlement of the county proceeded slowly with a greater concentration in North Christian. This fact was due to the greater abundance of fresh water, wild game, and timber for building. The level to gently rolling fertile land in South Christian was settled in the first quarter of the 1800's, consisting of large farms supported by slave labor. This fact would tend to divide the county into two sections of sentiment as the Civil War approached.

The first settler on the site of Hopkinsville was Bartholomew Wood, a native of North Carolina, who settled here in 1796. He built a log cabin at the present corner of Ninth and Virginia Streets near the "Rock Spring." The following year, on November 21, 1797, a commission, appointed by the county court to locate the county seat, selected a site between the two forks of Little River at the "Rock Spring." Wood donated five acres of land upon which the county courthouse and jail were built. This original grant is today bounded by Fifth, Main, and Seventh Streets, with Little River on the west. The town was first called Elizabeth, but the name was changed to Hopkinsville in April, 1804, in order to avoid conflict

with another town of the same name in Hardin County. The new name honored General Samuel Hopkins, 1753-1818, a native of Albemarle County, Virginia, and an officer in the Continental Army. He was living in Henderson County at the time of his death.

Education has long exercised a vital role in the life of Hopkinsville and Christian County. With the gift by Bartholomew Wood of a plot of ground, a school was erected about 1812 and operated as a private academy. Public education had its beginning in the community in 1842. South Kentucky College, in operation from 1849 until 1914, and Bethel College, in existence from 1854 until 1964, provided an excellent form of religious training in higher education. Hopkinsville Community College continues the outstanding tradition of these earlier institutions.

Christian County had a population of 2,318 in 1800, and by 1950 had reached 42,359. The next decade saw rapid growth with the 1960 population totaling 56,904. Between 1960 and 1970, the population remained relatively stable. By 1975, there was substantial growth with the population estimated to be 69,800.

The total number of Christian County residents employed in 1974 averaged 18,850, including 1,800 in agriculture and 3,140 in government. Manufacturing employers in the county reported 3,630 workers; trade and services firms employed 6,560; mining employed 60. Christian County's largest industrial firms are Thomas Industries, Inc., which makes lighting fixtures; Phelps Dodge Magnet Wire Corporation, which manufactures magnet wire; Hopkinsville Clothing Manufacturing Company, which manufactures men's and boys' jeans; and International Shoe Company, which makes men's shoes.

Famous Christian County natives include Edward T. Breathitt, Governor of Kentucky from 1963 to 1967; Edgar Cayce, world famous clairvoyant; and Adlai E. Stevenson, former U.S. Vice-president and great grandfather of the Adlai Stevenson, who was twice a candidate for U.S. President during the fifties.

Production supervisor: Patsy Wallace; research: Pamela Kay Riley;  
clerical: Barbara Blair; graphics: N. C. Montague, Frank Ferrante,  
Tony Cecconi; cartography: Site Development Section. Cost of printing  
paid from state funds.

**Kentucky Department of Commerce  
Capital Plaza Tower  
Frankfort, Kentucky 40601**

**Industrial Development Division  
(502) 564-7140**

**Community Services Division  
(502) 564-4300**

**Business Development Division  
(502) 564-3862**

**Research and Planning Division  
(502) 564-4886**

**Office of Minority Business Enterprise  
(502) 564-4270**

**Map Sales Office  
133 Holmes Street  
(502) 564-4715**

**International Trade & Investment  
Promotion Division  
(502) 564-2170**

**Agri-Business Division  
(502) 564-7140**

**Industrial Development Finance Authority  
(502) 564-4554**