

1988

Industrial Resources: Crittenden County - Marion

Kentucky Library Research Collections
Western Kentucky University, spcol@wku.edu

Follow this and additional works at: https://digitalcommons.wku.edu/crittenden_cty

 Part of the [Business Administration, Management, and Operations Commons](#), [Growth and Development Commons](#), and the [Infrastructure Commons](#)

Recommended Citation

Kentucky Library Research Collections, "Industrial Resources: Crittenden County - Marion" (1988). *Crittenden County*. Paper 6.
https://digitalcommons.wku.edu/crittenden_cty/6

This Report is brought to you for free and open access by TopSCHOLAR®. It has been accepted for inclusion in Crittenden County by an authorized administrator of TopSCHOLAR®. For more information, please contact topscholar@wku.edu.

RESOURCES FOR ECONOMIC DEVELOPMENT

Marion

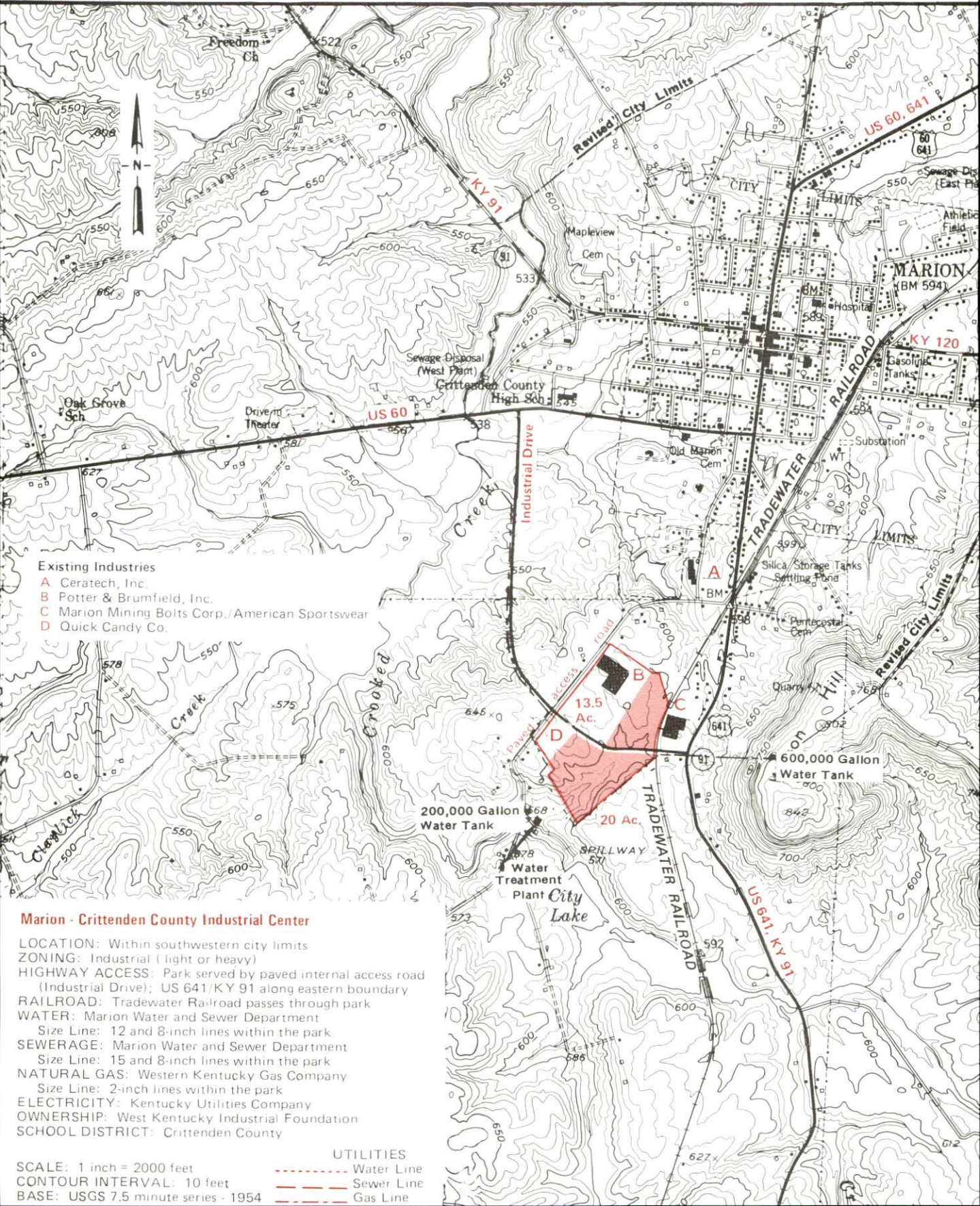


KENTUCKY

Open for Business

MARION, KENTUCKY --- Site 188 --- 33.5 Acres

For more information contact the Cabinet for Economic Development, Department of Business Development, Industrial Development & Marketing Division, Capital Plaza Tower, Frankfort, Kentucky 40601 (502-564-7140)



Existing Industries

- A Ceratech, Inc.
- B Potter & Brumfield, Inc.
- C Marion Mining Bolts Corp./American Sportswear
- D Quick Candy Co.

Marion - Crittenden County Industrial Center

- LOCATION: Within southwestern city limits
- ZONING: Industrial (light or heavy)
- HIGHWAY ACCESS: Park served by paved internal access road (Industrial Drive); US 641/KY 91 along eastern boundary
- RAILROAD: Tradewater Railroad passes through park
- WATER: Marion Water and Sewer Department
 - Size Line: 12 and 8-inch lines within the park
- SEWERAGE: Marion Water and Sewer Department
 - Size Line: 15 and 8-inch lines within the park
- NATURAL GAS: Western Kentucky Gas Company
 - Size Line: 2-inch lines within the park
- ELECTRICITY: Kentucky Utilities Company
- OWNERSHIP: West Kentucky Industrial Foundation
- SCHOOL DISTRICT: Crittenden County

SCALE: 1 inch = 2000 feet	--- Water Line
CONTOUR INTERVAL: 10 feet	--- Sewer Line
BASE: USGS 7.5 minute series - 1954	--- Gas Line

RESOURCES FOR ECONOMIC DEVELOPMENT
MARION, KENTUCKY

Prepared by
The Kentucky Department of Business Development
Division of Research and Planning
in cooperation with
The Crittenden County Chamber of Commerce

1988

Program manager - Andrew Dennis; research - Keith Roberts; clerical - Bobbi Graves; graphics - Tony Cecconi, Robert Owens, Pat Coleman; cartography - Site Evaluation Branch, Division of Industrial Development and Marketing. Cost of printing paid from state funds.

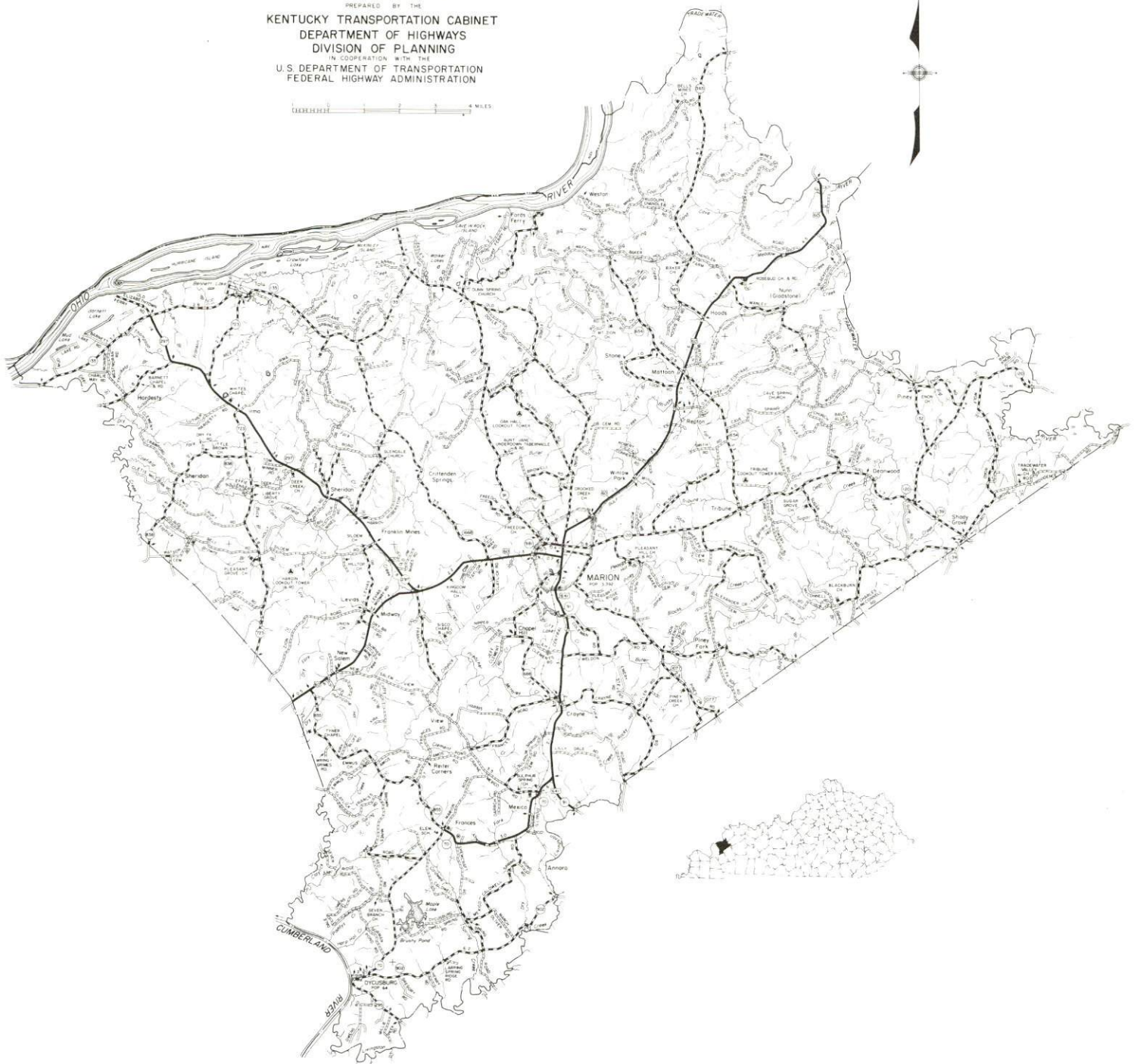
TABLE OF CONTENTS

<u>Chapter</u>	<u>Page</u>
INDUSTRIAL SITES	i
MARION, KENTUCKY - A RESOURCE PROFILE	1
THE LABOR MARKET STATISTICS	2
Population	2
Population Projections	2
Labor Force Characteristics of Residents, 1987	3
Selected Components of Nonagricultural Employment, by Place of Work, 1986	3
Per Capita Personal Income	4
Estimated Male Labor Supply	5
Estimated Female Labor Supply	5
Average Weekly Wages by Industry, by Place of Work, 1986	6
EXISTING INDUSTRY	8
Marion Manufacturing Firms, Their Products and Employment	8
Labor Organizations in Manufacturing Firms	8
Recent Industrial Developments	9
Selected Industrial Services	9
TRANSPORTATION	10
Rail	10
Highways	10
Truck Service	10
Air	11
Air Express Service	13
Water	13
POWER AND FUEL	14
Electricity	14
Natural Gas	14
Other Fuels	15
WATER AND SEWERAGE	16
Public Water Supply	16
Raw Water	16
Sewerage	17
CLIMATE	18

<u>Chapter</u>	<u>Page</u>
LOCAL GOVERNMENT	19
Structure	19
Planning and Zoning	19
Local Fees and Licenses	19
State and Local Property Taxes	20
Combined State and Local Rates Per \$100 Valuation, 1987	20
Safety	21
Police	21
Fire	21
Rescue Service	21
Refuse Collection and Disposal	21
EDUCATION	22
Public Schools	22
Area Colleges and Universities	23
Vocational Training	24
HEALTH	26
Local Medical Personnel	26
Hospitals	26
Other Medical Facilities	26
Ambulance Service	26
OTHER LOCAL FACILITIES	27
Communications	27
Library Services	27
Religious Institutions	27
Financial Institutions	28
Hotels and Motels	28
Clubs and Organizations	28
RECREATION	29
COMMUNITY IMPROVEMENTS	31

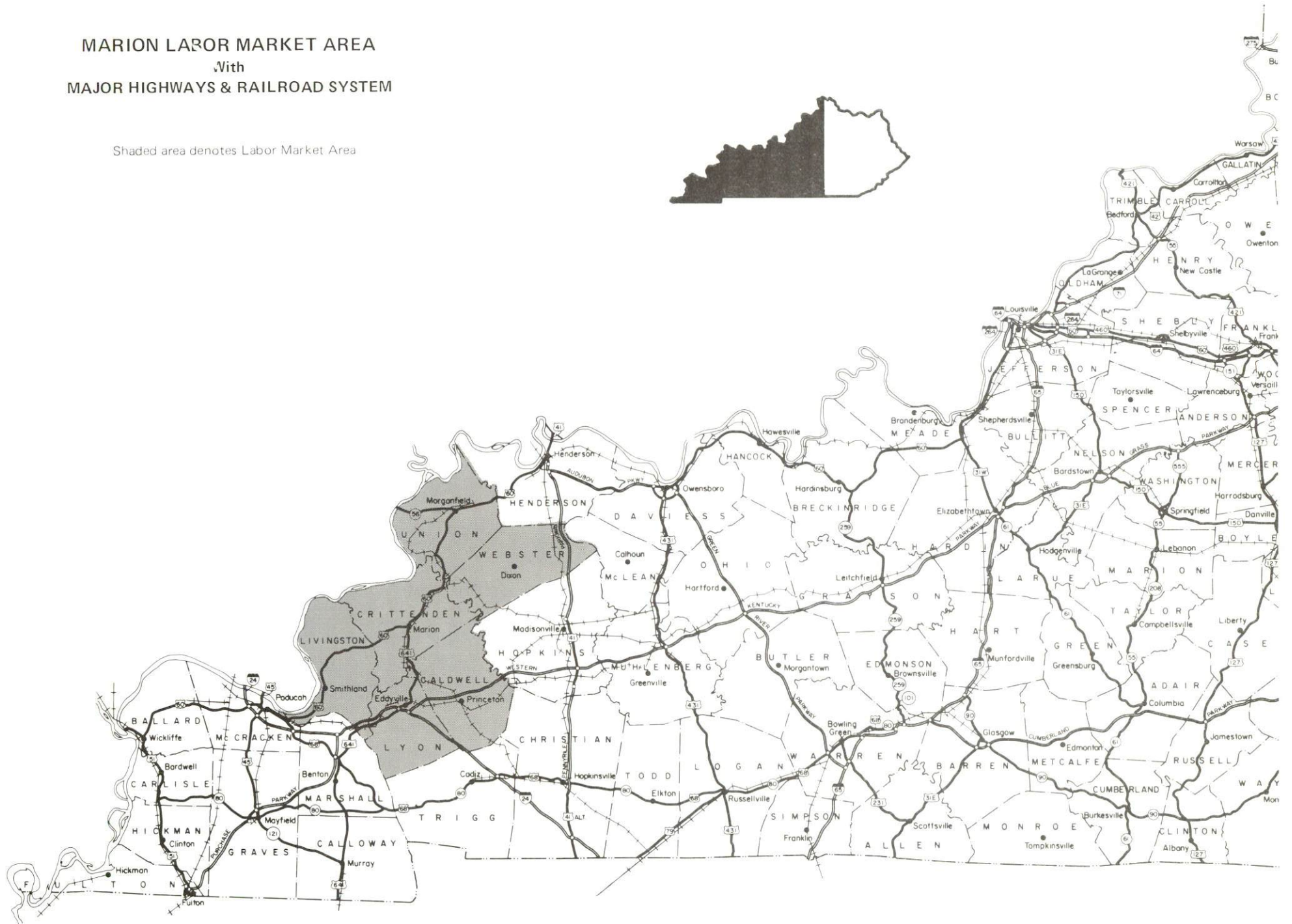
GENERAL HIGHWAY MAP
CRITTENDEN COUNTY
KENTUCKY

PREPARED BY THE
KENTUCKY TRANSPORTATION CABINET
DEPARTMENT OF HIGHWAYS
DIVISION OF PLANNING
IN COOPERATION WITH THE
U.S. DEPARTMENT OF TRANSPORTATION
FEDERAL HIGHWAY ADMINISTRATION



MARION LABOR MARKET AREA With MAJOR HIGHWAYS & RAILROAD SYSTEM

Shaded area denotes Labor Market Area



MARION, KENTUCKY - A RESOURCE PROFILE

Marion, the county seat of Crittenden County, is located in the Western Kentucky Fluorspar District of the Mississippian Plateaus area of extreme western Kentucky. Marion is located 64 miles southwest of Evansville, Indiana; 127 miles northwest of Nashville, Tennessee; 179 miles southwest of Louisville, Kentucky; and 218 miles southeast of St. Louis, Missouri. In 1986, Marion had an estimated population of 3,250.

Crittenden County, which covers a land area of 360 square miles, is a well-dissected upland characterized by a variety of irregularly-shaped, sandstone-capped hills and ridges. The Ohio River forms the northwestern boundary of Crittenden County. In 1986 Crittenden County had an estimated population of 8,800.

The Economic Framework - The total number of Crittenden County residents employed in 1987 averaged 2,930. In 1986, manufacturing firms in the county reported 420 employees; wholesale and retail trade provided 370 jobs; 310 people were employed in service occupations; state and local government accounted for 300 employees; contract construction firms provided 30 jobs; and 20 people were employed by mining and quarrying operations.

Labor Supply - There is a current estimated labor supply of 5,000 men and 7,615 women available for industrial jobs in the labor market area. In addition, from 1988 through 1992, 2,655 young men and 2,530 young women in the area will become 18 years of age and potentially available for industrial jobs.

Transportation - The Tradewater Railway Company provides rail service to Marion. Marion is served by U.S. 60 and 641, both "AAA"-rated trucking highways. Interstate 24 is located 21 miles south of Marion via U.S. 641. Interstate and intrastate trucking service is available. The Marion Airport, 2 miles southwest of Marion, provides a 2,500-foot grass runway and the Sturgis Airport, 19 miles north of Marion, provides three 5,000-foot paved runways. Scheduled commercial airline service is available at the Barkley Regional Airport near Paducah, 51 miles southwest; and at Evansville Dress Regional Airport in Evansville, Indiana, 68 miles northeast of Marion.

Power and Fuel - Electric power is provided to Marion and parts of Crittenden County by the Kentucky Utilities Company. Crittenden County is also served by the Henderson-Union Rural Electric Cooperative Corporation. Natural gas service is provided by the Western Kentucky Gas Company. Five distributors of propane and five distributors of distillate fuel oil are located within 30 miles of Marion.

Education - Primary and secondary education is provided by the Crittenden County School System. Three universities and four community colleges are located within 65 miles of Marion. The Madisonville State Vocational-Technical School in Madisonville, 39 miles east of Marion, offers 20 courses. The Caldwell County Area Vocational Education Center in Princeton, 22 miles southeast of Marion, offers training in 8 courses.

LABOR MARKET STATISTICS

The Marion Labor Market Area includes Crittenden County and the adjoining Kentucky counties of Caldwell, Livingston, Lyon, Union, and Webster.

POPULATION

Area	1986*	1980	1970	Percent Nonwhite
				1980
Marion	3,250	3,392	3,008	2.3
Labor Market Area	69,700	71,042	63,994	-
Crittenden County	8,800	9,207	8,493	1.0
Caldwell County	13,300	13,473	13,179	6.4
Livingston County	9,000	9,219	7,596	0.4
Lyon County	6,400	6,490	5,562	5.4
Union County	17,600	17,821	15,882	18.9
Webster County	14,600	14,832	13,282	6.1

* Population estimates.

Note: The 1980 city counts of population by race are provisional.

Sources: U.S. Department of Commerce, Bureau of the Census, 1980 Census of Population and Housing, March 1981; 1980 Census of Population, Number of Inhabitants. University of Louisville, Urban Studies Center, Population Unit.

POPULATION PROJECTIONS

Area	1990	1995	2000	2010
Labor Market Area	72,615	74,314	75,551	77,435
Crittenden County	9,351	9,622	9,797	10,082
Caldwell County	13,325	13,328	13,255	13,100
Livingston County	9,308	9,425	9,472	9,436
Lyon County	6,606	6,729	6,768	6,771
Union County	18,774	19,557	20,261	21,468
Webster County	15,251	15,653	15,998	16,578

Source: University of Louisville, Urban Studies Center, Population Research Unit, How Many Kentuckians: Population Forecasts, 1980-2020, the 1986 Edition, Spring 1986.

LABOR FORCE CHARACTERISTICS OF RESIDENTS, 1987

	Crittenden County	Labor Market Area
Civilian Labor Force	3,326	27,706
Employment	2,930	24,860
Unemployment	396	2,846
Rate of Unemployment (%)	11.9	10.3

Source: Kentucky Cabinet for Human Resources, Kentucky Labor Force Estimates, Annual Averages, 1987.

SELECTED COMPONENTS OF NONAGRICULTURAL EMPLOYMENT
BY PLACE OF WORK, 1986

	Crittenden County	Labor Market Area
All Industries (total)	1,555	17,140
Manufacturing	417	3,107
Wholesale & Retail Trade	372	3,109
Services	310	2,875
State/Local Government	298	2,774
Contract Construction	29	681
Mining & Quarrying	22	3,089

Note: Excludes domestic workers, railway workers, certain nonprofit corporations, majority of federal government workers, and self-employed workers.
Source: Kentucky Cabinet for Human Resources, Average Monthly Workers Covered by Kentucky Unemployment Insurance Law, 1986.

PER CAPITA PERSONAL INCOME

<u>Area</u>	<u>1980</u>	<u>1984</u>	<u>Percent Change</u>
Crittenden County	\$ 6,993	\$ 9,464	35.3
Labor Market Area Range	\$6,026 - 8,494	\$8,482 - 11,157	-
Kentucky	7,644	10,232	33.9
U.S.	9,494	12,772	34.5

Sources: U.S. Department of Commerce, Bureau of Economic Analysis. Kentucky Economic Information System, June 1986.

ESTIMATED MALE LABOR SUPPLY
MARION LABOR MARKET AREA

Area	Current				Future
	Total Male	Unemployed	Under- employed	Not in Labor Force	Becoming 18 years of age 1988 thru 1992
Labor Market					
Area*	4,999	1,849	1,715	1,435	2,655
Crittenden	936	291	208	437	355
Caldwell	1,011	376	290	345	532
Livingston	593	371	222	0	355
Lyon	412	213	199	0	172
Union	930	345	585	0	696
Webster	1,117	253	211	653	545

ESTIMATED FEMALE LABOR SUPPLY
MARION LABOR MARKET AREA

Area	Current				Future
	Total Female	Unemployed	Under- employed	Not in Labor Force	Becoming 18 years of age 1988 thru 1992
Labor Market					
Area*	7,615	1,501	1,531	4,583	2,530
Crittenden	1,064	221	165	678	324
Caldwell	1,488	337	351	800	464
Livingston	859	168	218	473	317
Lyon	473	57	163	253	162
Union	1,574	312	332	930	651
Webster	2,157	406	302	1,449	612

* Additional workers may be drawn from other nearby counties.

Note: Unemployed - persons unemployed and actively seeking work; Underemployed - persons employed but working only 14 to 26 weeks per year; Not in Labor Force - represents the number of persons who would enter the labor force if suitable employment were available (based on the assumption that persons in Kentucky would like to participate in the labor force in the same proportion that they do nationally).

Sources: Kentucky Cabinet for Human Resources, Kentucky Labor Supply Estimates by County, 1986. Kentucky Department of Economic Development, Future Labor Supply Becoming 18 Years of Age, 1988 thru 1992.

AVERAGE WEEKLY WAGES BY INDUSTRY
BY PLACE OF WORK, 1986

	<u>Crittenden County</u>	<u>Caldwell County</u>	<u>Livingston County</u>
All Industries	\$249.57	\$262.87	\$321.70
Mining & Quarrying	313.66	353.75	494.26
Contract Construction	272.55	219.65	492.62
Manufacturing	*	327.59	175.78
Transportation, Communications & Public Utilities	305.73	404.49	474.41
Wholesale & Retail Trade	160.27	191.45	159.11
Finance, Insurance & Real Estate	267.34	310.94	253.70
Services	187.24	226.97	222.89
State/Local Government	246.72	276.73	249.39
Other	162.14	173.53	*
	<u>Lyon County</u>	<u>Union County</u>	<u>Webster County</u>
All Industries	\$266.47	\$433.11	\$346.02
Mining & Quarrying	0	720.38	772.19
Contract Construction	353.46	353.17	270.77
Manufacturing	*	309.17	292.40
Transportation, Communications & Public Utilities	210.51	468.41	517.11
Wholesale & Retail Trade	141.85	194.97	210.52
Finance, Insurance & Real Estate	257.95	303.30	280.26
Services	138.39	249.38	143.96
State/Local Government	313.38	294.62	271.53
Other	*	235.10	180.50

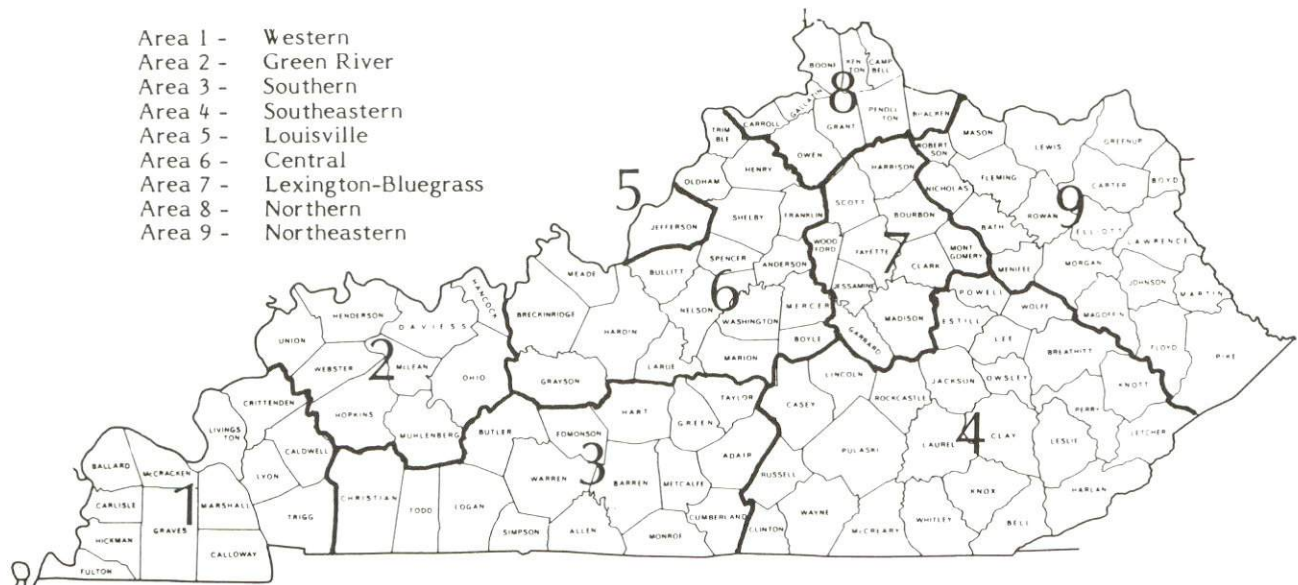
* Not disclosed.

Note: The average weekly wage for each category includes the salaries and wages of all persons working for that type business. For example, the manufacturing category includes both production workers and administrative personnel. Excludes domestic workers, railway workers, certain nonprofit corporations, majority of federal government workers, and self-employed workers.

Source: Kentucky Cabinet for Human Resources, Average Weekly Wages of Workers Covered by Kentucky Unemployment Insurance Law, 1986.

Occupational wage rates for specific industries are usually not available to most government agencies, and wage data furnished to state employment agencies by individual industrial employers are protected from disclosure by federal law. The most reliable up-to-date wage information can be obtained by direct contact with local employers.

Associated Industries of Kentucky, a voluntary organization of Kentucky businesses, regularly collects occupational wage rates and fringe benefits data from participating member firms. Data are compiled for over 127 clearly defined office, production, and service occupations. Tabulations are published for nine geographical areas of Kentucky, as shown on the map below. It should be noted that the data may be weighted by the preponderance of firms in the larger cities and may be somewhat higher than the rates paid in the smaller communities. Data from these tabulations are available, upon request, from the Kentucky Department of Economic Development, Frankfort, Kentucky 40601.



Associated Industries of Kentucky Area Wage Surveys

EXISTING INDUSTRY

MARION MANUFACTURING FIRMS, THEIR PRODUCTS AND EMPLOYMENT

Firm (Establishment date)	Product	Average Employment		
		Total	Male	Female
American Sportswear of Marion, Inc. (1987)	Men's & ladies' sportswear	190	-	-
Cera Tech, Inc. (1987)	Industrial ceramics	40	-	-
Crittenden Press, Inc. (1876)	Newspaper, offset printing	9	6	3
Hurst Welding and Machine, Inc. (1986)	Machine shop, tool & die	8	8	0
Kentucky Stone Company (1946)	Agricultural lime, crushed stone, asphalt	20	20	0
Marion Machine Works, Inc. (1936)	Precision machine work, universal ramps, steel fabrication & erection	9	6	3
Marion Mining Bolts Corporation (1987)	Mine roof bolts	90	-	-
Ohio River Concrete Corporation (1973)	Ready-mixed concrete	5	4	1
Potter and Brumfield (1959)	Electro-magnetic relays	456	-	-
Turner and Conyer Lumber Company, Inc. (1958)	Furniture stock, lumber, clay pipe spacers, pallets, boxes	36	35	1

Sources: Kentucky Department of Economic Development, 1987 Kentucky Directory of Manufacturers; Division of Research and Planning.

LABOR ORGANIZATIONS IN MANUFACTURING FIRMS

There are presently no labor unions representing manufacturing firms in Marion.

RECENT INDUSTRIAL DEVELOPMENTS

Marion Mining Bolts Corporation; American Sportswear of Marion, Inc., and Cera Tech, Inc., began operations in their new Marion manufacturing facilities during 1987. These new manufacturing firms employ approximately 300 persons at the present time.

SELECTED INDUSTRIAL SERVICES

<u>Types of Service</u>	<u>Location</u>	<u>Mileage from Marion</u>
Custom Data Processing	Paducah, Kentucky	45
Custom Plastics Producers	Providence, Kentucky	22
	Kuttawa, Kentucky	23
Electric Motor Repair	Madisonville, Kentucky	39
	Paducah, Kentucky	45
Grinding, Precision & Tool	Corydon, Kentucky	44
Heat Treating Facilities	Evansville, Indiana	64
Industrial Equipment & Supplies	Madisonville, Kentucky	39
	Paducah, Kentucky	45
Industrial Gases	Madisonville, Kentucky	39
	Paducah, Kentucky	45
Industrial Waste Removal	Dawson Springs, Kentucky	36
Machine Shops, Tool & Die	Marion, Kentucky	-
Metal Castings	Henderson, Kentucky	54
Metal Finishers	Paducah, Kentucky	45
Metal Service Centers	Hopkinsville, Kentucky	51
Millwrights	Hopkinsville, Kentucky	51
Public Warehouse Facilities	Calvert City, Kentucky	31
	Paducah, Kentucky	45

Sources: Kentucky Department of Economic Development, Kentucky Directory of Selected Industrial Services, 1987; Division of Research and Planning.

TRANSPORTATION

Rail

Line serving Marion - Tradewater Railway Company

The Tradewater Railway Company provides rail service from Morganfield to Princeton, where it connects with the Paducah and Louisville Railroad. No trains make regular stops in Marion, but will stop if requested. There is siding space for 100 cars in Marion.

For details on routing, schedules, rates, and services, contact:

Tradewater Railway Company
P. O. Box 66
Sturgis, Kentucky 42459
(502) 333-4151

Highways

Major highways serving Marion are U.S. Highways 60 and 641. Both highways are "AAA"-rated (80,000-pound gross load limit) trucking highways. Other highways serving Marion are Kentucky Routes 91 and 120. Kentucky 91 is "AAA"-rated north of Marion.

Access to Interstate 24 is available 21 miles south of Marion near Eddyville. An interchange of the Western Kentucky Parkway, a multi-lane east-west highway, is also located 21 miles south of Marion.

Truck Service

A & H Truck Line, Inc.*
Averitt Express, Inc.*
F-F-E Transportation Services,
Inc.*
Hohenwald Truck Lines, Inc.*

Majors Transit, Inc.*
Manning Motor Express, Inc.*
Overnite Transportation Company*
R-W Service System, Inc.*
Thompson, Steve D. Trucking, Inc.*

* Interstate and intrastate service.

Source: American Motor Carrier Directory, Fall 1987.

HIGHWAY MILES AND TRUCK TRANSIT TIME IN DAYS FROM
MARION, KENTUCKY, TO SELECTED MARKET CENTERS

City	Highway Miles	Delivery		City	Highway Miles	Delivery Time TL
		Time TL				
Atlanta, GA	366	2		Los Angeles, CA	2,045	4
Baltimore MD	777	3		Louisville, KY	179	1
Birmingham, AL	316	2		Nashville, TN	127	1
Chicago, IL	356	2		New Orleans, LA	641	2
Cincinnati, OH	280	2		New York, NY	937	4
Cleveland, OH	525	2		Pittsburgh, PA	567	4
Detroit, MI	538	2		St. Louis, MO	218	1
Knoxville, TN	303	2				

Note: Mileage computations are via the best interstate or primary highways, not necessarily the most direct route of travel.

Sources: Rand McNally Deluxe Motor Carriers' Road Atlas, 1987. Official Kentucky Mileage Map, 1980. Delivery time - Overnite Transportation Company, Highway 68 & I-24, Paducah, Kentucky 42001.

Air

Local

Location: Marion Airport
 2 miles southwest of Marion
 Runways: 1 grass
 Length: 2,500 feet
 Traffic
 Control: None
 Lighting: None
 Services: None

(Continued)

Location: Sturgis Airport
 1 mile southeast of Sturgis;
 19 miles north of Marion
 Runways: 3 paved
 Length: 5,000 feet each
 Traffic
 Control: Wind sock and tetrahedron
 Lighting: MIRL and VASI 18-36 sunset to sunrise, rotating beacon,
 tetrahedron
 Services: 100 octane, Jet Fuel, flight training, tie-downs,
 hangars

Nearest Scheduled Commercial Airline Service

Location: Barkley Regional Airport
 6 miles west of Paducah, Kentucky;
 51 miles southwest of Marion
 Runways: 2 paved
 Length: 6,499 feet; 4,000 feet
 Traffic
 Control: Control tower
 Lighting: HIRL, MALSRail, REIL, VASI, MIRL, MITL, rotating
 beacon
 Services: Allegheny Commuter, American Eagle, Northwest Air
 Link, Trans World Express, fuel - 100LL and
 jet-A; hangar, 10 T-hangars, 45 tie-downs;
 major and minor A & P repairs; APU, charter,
 flight instruction, plane rental, aerial
 photography; car rentals, limousine, restaurant,
 weather information; Part 139 Airport Operating
 Certificate, airport security

Air Freight
 Service: Air carriers accept air freight on a space available
 basis

Location: Evansville Dress Regional Airport
 3 miles north of Evansville, Indiana;
 68 miles northeast of Marion
 Runways: 3 paved
 Length: 8,021 feet; 5,080 feet; 3,500 feet
 Traffic
 Control: Control tower
 Lighting: Beacon, runway
 Services: Eastern, USAir, Piedmont, Northwest, Trans World
 Express, Continental Express, Comair, American
 Eagle; fuel - 100LL, jet-A; hangars, tie-downs;
 major A & P repairs, major Avionics repairs;
 flight instruction, APU, charter, oxygen, plane
 rental, survival equipment; taxi, car rentals,
 courtesy car; weather information; restaurant,
 hotel

Air Freight
 Service: Air freight terminal

Air Express Service

Several major companies offer air express services in Kentucky. These companies provide a quick means of shipping small to medium-sized packages expeditiously.

Water

Marion is located approximately 10 miles from the Ohio River which forms the northwestern boundary of Crittenden County. A 9-foot navigation channel is maintained the entire length of the Ohio River.

Three public riverports are located within a 55-mile radius of Marion. The Lyon County Riverport is located on Lake Barkley, 24 miles south of Marion; the Paducah-McCracken County Riverport is located 37 miles southwest of Marion; and the Henderson County Riverport is located approximately 54 miles northeast of Marion.

POWER AND FUEL

Electricity

Company serving Marion and portions of Crittenden County - Kentucky
Utilities Company
Source of power - Kentucky Utilities Company
For industrial rates contact:

Industrial Development Department
Kentucky Utilities Company
One Quality Street
Lexington, Kentucky 40507
(606) 255-1461

Company serving the majority of Crittenden County - Henderson-Union
Rural Electric Cooperative Corporation
Source of power - Big Rivers Electric Corporation
For industrial rates contact:

Henderson-Union RECC
P. O. Box 18
Henderson, Kentucky 42420
(502) 826-3991

Natural Gas

Company serving Marion - Western Kentucky Gas Company
Source of supply - Texas Gas Transmission Corporation
Size of transmission mains - 26-inch (supplier); 6-inch (distributor)
Distribution mains - 2 to 4 inches
Distribution pressure - Up to 30 psi
Btu content - 1,000 per cubic foot
Specific gravity - 0.60
For rates and supplies contact:

Western Kentucky Gas Company
P. O. Box 866
Owensboro, Kentucky 42302
(502) 685-8067

Other Fuels

Propane (Within 30 miles)

Amgas, Inc.
201 Good Street
Princeton, Kentucky 42445

Fortner LP Gas Company
Cadiz Road
Princeton, Kentucky 42445

Southern States Cooperative
205 East Railroad
Clay, Kentucky 42404

Suburban Propane
Highway 109
Sturgis, Kentucky 42459

Texgas Corporation
Highway 60
Salem, Kentucky 42078

Fuel oils

Distillate fuel oil - (Within 30 miles)

Ashland Petroleum Company
East Depot Street
Marion, Kentucky 42064

Beaver Brothers Texaco
(bulk plant)
301 South Main Street
Marion, Kentucky 42064

Hart Gas and Oil Company, Inc.
North Broadway
Providence, Kentucky 42450

Hays Oil Company
(Southern States Cooperative)
Highway 109
Sturgis, Kentucky 42457

Morgan Gas and Oil, Inc.
(Sunoco)
409 North Court Street
Morganfield, Kentucky 42437

Residual fuel oil - Arrangements must be made with the refinery.

Low sulphur content coal - Available in Kentucky.

WATER AND SEWERAGE

Public Water Supply

Company serving Marion - City of Marion Water and Sewer Department*
108 East Bellville Street
Marion, Kentucky 42064
(502) 965-2266

Source - Two city-owned lakes
Treatment plant capacity - 829,000 gallons per day
Average daily consumption - 488,768 gallons
Peak daily consumption - 630,000 gallons
Treatment processes - Coagulation, sedimentation, fluoridation,
chlorination, rapid mix, flocculation, filtration
Storage capacity - 766,000 gallons, including clear well
Size lines - 2 to 8 inches
Water pressure - 40 to 115 psi

MONTHLY WATER RATES

First	2,000 gallons	\$5.83 (Minimum)
Next	3,000 gallons	1.94 per M gallons
Next	10,000 gallons	1.55 per M gallons
Next	10,000 gallons	1.28 per M gallons
All over	25,000 gallons	0.98 per M gallons

Tap-on charge:

	<u>Inside City</u>	<u>Outside City</u>
3/4-inch	\$200	\$300
Meter larger than 3/4	200 plus cost of materials	300 plus cost of materials

Raw Water

Surface water sources - Ohio and Tradewater Rivers; Crooked, Coefield, Caney, Hurricane Rush, and Pine Creeks
Average discharge - Ohio River at Evansville, Indiana - 133,000 cfs (34 years, USGS, unadjusted); Tradewater River at Olney, Kentucky - 334 cfs (44 years USGS)
Expected ground water yield - 500 to 1,000 gpm along Ohio River; 50 to 200 gpm along Tradewater River, west central and south central portions of Crittenden County; 5 to 50 gpm in central and western portion of county; 5 gpm or less along southeastern border of the county and a small portion on the northwestern border of county

* An improvement project of the fresh water treatment system in Marion is planned. The project will consist of cleaning and repairing the intakes from city lakes and improvements to the transfer system. This \$38,000 project will begin in the spring of 1988.

Sewerage

Company serving Marion - City of Marion Water and Sewer Department*
108 East Bellville Street
Marion, Kentucky 42064
(502) 965-2266

Design capacity - 500,000 gallons per day

Average daily flow - 460,000 gallons

Type of treatment - Secondary

Treatment processes - Chlorination, sludge drying beds, screening,
extended aeration, secondary sedimentation, aerobic digester,
polishing lagoon

Treated effluent discharged into - Rush Creek

Size of sanitary mains - 6 to 18 inches

Size of storm mains - 12 to 48 inches

Monthly rates -

MONTHLY SEWER RATES

First	2,000 gallons	\$5.25 (Minimum)
Next	3,000 gallons	1.75 per M gallons
Next	10,000 gallons	1.40 per M gallons
Next	10,000 gallons	1.15 per M gallons
All over	25,000 gallons	0.88 per M gallons

Tap-on charge:

Inside city - \$200

Outside city - \$300

* An improvement project of the sewerage treatment system in Marion is under way. The project will consist of an evaluation study, system rehabilitation, and sewer treatment plant upgrade. The \$752,000 project is scheduled for completion in the fall of 1988.

CLIMATE

Crittenden County

Temperature

Normal (30-year record)	55.70 degrees
Average annual 1986	57.00 degrees
Record highest, July 1954 (46-year record)	105.00 degrees
Record lowest, February 1951 (46-year record)	-23.00 degrees
Normal heating degree days (30-year record) (Heating degree day totals are the sums of negative departures of average daily temperatures from 65 degrees F.)	4,729

Precipitation

Normal (30-year record)	41.55 inches
Mean annual snowfall (30-year record)	14.10 inches
Total precipitation 1986	37.68 inches
Mean number days precipitation (.01 inch or more) (46-year record)	115.70
Mean number days thunderstorms (46-year record)	45.10

Prevailing winds (through 1963)

South-Southwest

Relative Humidity (25-year record)

Midnight	78 percent
6 a.m.	81 percent
Noon	59 percent
6 p.m.	62 percent

Source: U.S. Department of Commerce, Environmental Science Services Administration, Climatological Data, 1986. Station of record: Evansville, Indiana.

LOCAL GOVERNMENT

Structure

The city of Marion is served by a mayor and six council members. The mayor is elected to a four-year term and the council members serve two-year terms. Crittenden County is served by a county judge/executive and six magistrates. The judge/executive and magistrates are elected to four-year terms.

Planning and Zoning

At the present time, there is no active planning and zoning commission in Marion or Crittenden County, but mandatory state codes are enforced.

Mandatory state codes enforced - Kentucky Plumbing code, National Electric Code, Kentucky Boiler Regulations and Standards, Kentucky Building Code (modeled after BOCA code)

Local Fees and Licenses

The city of Marion levies an occupational tax of 0.75 percent on all wages, salaries and commissions earned within the city. A net profits tax of 0.75 percent is levied on businesses within the city. Manufacturers are exempted from the net profits tax, and in lieu pay a fixed fee based on the number of employees. The annual fee is: \$100 for 1 to 49 employees, \$200 for 50 to 99 employees, and \$300 for 100 or more employees. A municipal insurance premium tax of four percent is also levied by the city.

A 3 percent tax is levied on utilities receipts for schools in Crittenden County. Tax is paid by all consumers of utilities as an add-on to the utilities bills. Exempted are receipts from utilities services that are resold and the receipts from the sale of energy or energy producing fuels that exceed 3 percent of the cost of production in manufacturing, processing, mining or refining.

State and Local Property Taxes

All property in Kentucky, except items exempted by the state constitution, is taxed by the state. Property which also may be taxed by local jurisdictions includes land and buildings, finished goods inventories, automobiles, trucks, office furniture and office equipment. Local taxing jurisdictions in Kentucky include counties, cities, and school districts.

All property in Kentucky is assessed at 100 percent of fair cash value.

COMBINED STATE AND LOCAL RATES PER \$100 VALUATION, 1987

	Marion	Unincorporated Crittenden County
Land and Buildings	\$0.785	\$0.555
Manufacturing		
Machinery	0.150	0.150
Pollution Control		
Equipment	0.150	0.150
Inventories		
Raw materials	0.001	0.001
Goods in Process	0.001	0.001
Finished Goods	0.579	0.349
Automobiles & Trucks	1.004	0.775
Other Tangible		
Personal Property	1.028	0.798
Intangibles (Accounts receivable*, money in hand, stock, notes, bonds)	0.250	0.250
Goods Stored in Public Warehouses in Transit Status	0.001	0.001
Private Leaseholds in Industrial Revenue Bond Financed Facilities	0.015	0.015

* Accounts receivable are taxed at 85 percent of face value, for an effective rate of \$0.2125 per \$100 valuation.

Safety

Police	Marion	Crittenden County
Total staff	6	3
Radio-patrol cars	2	2
Fire*		
Insurance Services Office, Public Protection Classification	6	**
Volunteers	22	40
Rescue Service		

The Crittenden County DES Rescue Squad and Fire Department provides rescue service to Marion and Crittenden County.

Refuse Collection and Disposal

Private contractors provide refuse collection and disposal in Marion and Crittenden County.

* Includes copyrighted material of ISO Commercial Risk Services, Inc., with its permission.

** Three fire districts serve Crittenden County. Property located within these districts maintain a class 9 fire rating. Property located in unincorporated Crittenden County, not within a fire district, is class 10.

EDUCATION

Public Schools

	Crittenden County*
Total Enrollment (January, 1988)	1,589
Kindergarten	148
Elementary	708
Middle School	263
High School	470
Pupil-Teacher Ratio (1985-86)	19-1
Percent High School Graduates to College (1985-86)	40.9
Expenditures Per Pupil (1985-86)	\$1,986.44

* The Crittenden County School System recently completed the construction of a new multi-purpose room and science lab at the high school and middle school. Cost of these additions was approximately \$560,000.

Area Colleges and Universities

<u>Name</u>	<u>Location (Miles distant)</u>	<u>Enrollment (Fall, 1987)</u>	<u>Highest Degree Conferred</u>
Madisonville Community College	Madisonville, Kentucky (39)	1,514	Associate
Paducah Community College	Paducah, Kentucky (45)	2,298	Associate
Hopkinsville Community College	Hopkinsville, Kentucky (51)	1,341	Associate
Henderson Community College	Henderson, Kentucky (54)	1,116	Associate
Murray State University	Murray, Kentucky (63)	7,376	Masters, Specialist*
University of Southern Indiana	Evansville, Indiana (64)	4,624	Masters
University of Evansville	Evansville, Indiana (64)	3,550	Masters

* Joint doctoral degree programs are offered in cooperation with the University of Kentucky, Lexington. The degrees are issued by the University of Kentucky.

Vocational Training

The Bluegrass State Skills Corporation, an independent public corporation created and funded by the Kentucky General Assembly, provides programs of skills training to meet the needs of business and industry from entry level to advanced training, and from upgrading present employees to retraining experienced workers.

The Bluegrass State Skills Corporation is the primary source for skills training assistance for a new or existing company. The Corporation works in partnership with other employment and job training resources and programs, as well as Kentucky's economic development activities, to package a program customized to meet the specific needs of a company.

Vocational training is available at both the state vocational-technical schools and the area vocational education centers. The state vocational-technical schools are post-secondary institutions. The area vocational education centers are designed to supplement the curriculum of high school students. Both the state vocational-technical schools and the area vocational education centers offer evening courses to enable working adults to upgrade current job skills.

Arrangements can be made to provide training in the specific production skills required by an industrial plant. Instruction may be conducted either in the vocational school or in the industrial plant, depending upon the desired arrangement and the availability of special equipment.

Nearest State School

Madisonville State Vocational-Technical School
Madisonville, Kentucky, 39 miles distant

Consumer & Home Economics
Consumer & Family Life
Skills
Industrial Education
Auto Body Repair
Auto Mechanics
Carpentry
Diesel Mechanics
Drafting (with CAD/CAM)
Electricity
Electronics
Machine Shop
Mine Maintenance Technology

Tool & Die Making
Welding
Learning Resource Center
Public Service Occupations
Business/Industry Security
Training
CPR Training
Electrical Safety Training
Emergency Medical Care
Fire Service Training
First Aid & Safety
Rescue & Emergency Services
Training

Nearest Area Education Center

Caldwell County Area Vocational Education Center
Princeton, Kentucky, 22 miles distant

Home Economics
Commercial Foods
Health & Personal Services
Occupations
Health Services
Industrial Education
Air Conditioning

Auto Mechanics
Carpentry
Electricity
Welding

HEALTH

Local Medical Personnel

Physicians - 9
Dentists - 3

Hospitals

<u>General Hospital</u>	<u>Location</u>	<u>Beds</u>
Crittenden County Hospital*	Marion	37

Medical staff - 8 physicians, 15 registered nurses, and 8 licensed practical nurses

Other Medical Facilities

Crittenden County Health Center
Marion Physicians Clinic

Ambulance Service

Name - Crittenden County Ambulance Service
Staff - 9 emergency medical technicians

* A renovation and expansion project is currently under way at the Crittenden County Hospital. The capacity will be increased to 50 beds, including a six-bed intensive care unit. The \$3.2 million project will be completed in the spring of 1988.

OTHER LOCAL FACILITIES

Communications

Telephone - Telegraph -	South Central Bell Telephone Company Western Union Toll-Free number, 1-800-325-6000
Newspapers - Weekly and circulation -	Crittenden Press - 4,600; Early Bird Shopper's Guide - 7,800
Radio -	WMJL-AM
Television - Airwave reception from -	Paducah, Kentucky; Nashville, Tennessee; Harrisburg, Illinois; St. Louis, Missouri; Evansville, Indiana
Cable service - Educational Television -	C-4 Media Cable The Kentucky Educational Television (K.E.T.) network is available statewide

Library Services

Public library - Crittenden County Public Library
Size collection - 30,755 volumes
Circulation, 1986-87 - 66,703

Religious Institutions

Denominations -	Ambassadors for Christ Assembly of God Baptist Catholic Christian Church of Christ	Church of God Jehovah's Witnesses Mennonite (Amish) Methodist Pentecostal Presbyterian
Nearest Synagogues - Congregations -	Paducah, 45 miles southwest Temple Israel (reform)	

Financial Institutions

<u>Banks</u>	<u>Assets</u>	<u>Deposits</u>	<u>Statement Date</u>
Farmers Bank and Trust Company	\$46,397,000.00	\$39,719,000.00	12/31/87
The Peoples Bank	13,195,791.00	11,751,098.00	6/30/87
<u>Savings and Loan Associations</u>	<u>Assets</u>	<u>Deposits</u>	<u>Statement Date</u>
First Federal Savings and Loan Association	\$64,083,617.35	\$61,691,882.22	12/31/87

Hotels and Motels

Total number - 3
Total rooms - 28

Clubs and Organizations

American Legion	Gun Club
American Legion Auxiliary	Homemakers
Boy Scouts	Kentucky Crafters Guild
Crittenden County Chamber of Commerce	Lions Club
Crittenden County Historic Society	Little League Baseball/Football
Eagles	Masonic Lodge
Eastern Star	Ministerial Association
Federation of Women's Club	NARFE - National Association of Retired Federal Employees
4-H	Peewee League
Future Business Leaders of America (FBLA)	Pony League
Future Farmers of America (FFA)	Town and Country Riding Club
Future Homemakers of America (FHA)	Trace Area Tradesman
Girl Scouts	Veterans of Foreign Wars (VFW)
	Western Kentucky Industrial Foundation
	Woodmen of the World

RECREATION

Local

Public recreational facilities at Marion include two parks, two playgrounds, four tennis courts, five baseball/softball diamonds, two football fields, a fairground with an exhibition building, a livestock show barn and a horse show ring.

The Marion/Crittenden Park features four lighted baseball/softball diamonds, three lighted tennis courts, a shuffleboard court, a shelterhouse, restrooms, concession stand, picnic areas with grills and ample parking. Two basketball courts and a six-lane running track were recently added.

The Veterans Memorial Park provides excellent and well-maintained playground equipment and facilities for children age 12 and under.

Of special interest to residents and visitors to Marion is the Bob Wheeler Museum. The privately-owned museum contains the largest collection of hand tools and home utensils in western Kentucky. In addition to memorabilia, a 186-year old loom is on display. In perfect working order, the loom is used in conjunction with the Crittenden County School System to teach students the art of weaving.

Fohs Hall Community Center is a restored school building which now houses the Chamber of Commerce. The center also provides facilities for community activities and contains a civic auditorium.

Private facilities include a country club with a nine-hole golf course, a swimming pool and clubhouse, and a drive-in movie theatre.

Area (Within 60 miles)

Kentucky Dam Village State Resort Park, located 26 miles southwest of Marion near Gilbertsville, is one of the largest and most popular vacation resorts in Kentucky. A modern lodge with 46 rooms, 67 cottages, and a 225-site campground make up the accommodations. The park includes a 4,000-foot lighted airstrip. There is also a dining room overlooking Kentucky Lake, a coffee shop, a snack bar, two gift shops, a meeting room, an activities center, and a recreation room. Recreational activities to choose from include boating and fishing at the largest docking facility in the Kentucky parks system, golf at the 18-hole Village Green Course, fishing, hiking, horseback riding, picnicking, swimming at the lodge pool or off the sand beach, and tennis.

The Land Between the Lakes, located on a 170,000-acre wooded peninsula, is an outdoor recreational and conservational education center. The Golden Pond Visitors Center offers a multimedia theatre/planetarium and observatory. Camping, swimming, fishing, boating, hiking, a buffalo herd on a 250-acre range, an Environmental Education Center for school study groups, an educational farm and a central station with films and displays are among the attractions. Kentucky Lake and Lake Barkley are among the top fishing and water sport recreation areas in the southeastern United States. The Land Between the Lakes area is 30 miles south of Marion.

Pennyrile Forest State Resort Park near Dawson Springs is located 42 miles southeast of Marion. The 24-room lodge and cottages nestled within the trees provide excellent accommodations. Other facilities and activities include a dining room, a gift shop, rental rowboats and pedal boats, a 9-hole golf course, hiking trails, horseback riding, picnicking, playgrounds, shuffleboard, swimming at the lodge pool and off a sand beach, and two tennis courts. Lake Beshear, only four miles from the lodge, sports good fishing.

Paducah is located 45 miles southwest of Marion. As Kentucky's seventh largest city, Paducah provides many recreational opportunities. Points of interest include the Alben W. Barkley Monument, Barkley Museum, Chief Paduke Statue, and many other attractions.

Lake Barkley State Resort Park, 49 miles south of Marion near Cadiz, is located on an embayment of Lake Barkley. The magnificent lodge includes 130 rooms, five suites, 13 cottages, a dining room, a coffee shop, a gift shop, two meeting rooms, and a recreation room. An activities center with a capacity for 1,000, a complete fitness center, and an 80-site campground are located near the lodge. A lodge pool, a beach and a bathhouse, an 18-hole golf course, a pro shop, tennis courts, a riding stable, a trapshooting range, a basketball court, hiking trails, playgrounds, and a picnic area round out the recreational facilities. The marina near the lodge has everything for the "boat lover": covered and open slips, a launching ramp, and rentals for fishing boats, skiing boats, and pleasure ride pontoons. An airport is available also.

Just north of Henderson, 56 miles northeast of Marion, is the **John James Audubon State Park**, a 692-acre park where the famed naturalist gathered material for his painting, "The Birds of America." Many paintings by Audubon and his sons, and 126 first-edition prints of his paintings are on display at the Audubon Memorial and Nature Museum which is the focal point of the park. Other park features include the Audubon woods, a bird sanctuary, and a 12-acre nature preserve lake. The park has cottages and camping sites. Recreational facilities include a 28-acre recreational lake, a beach and a bathhouse, rental rowboats and pedal boats, a dock, a 9-hole golf course, hiking trails picnic shelters, and playgrounds. Organized recreation programs are offered during the summer.

Charm and serenity exemplify Kenlake State Resort Park which is located on Kentucky Lake, 58 miles southwest of Marion. The park offers hotel and cottage accommodations and an efficient camping site. Other facilities include a 9-hole golf course, pool and lake swimming, horseback riding, hiking trails, fishing, boating, picnicking, planned recreation, and one of the finest tennis complexes in the area.

COMMUNITY IMPROVEMENTS

Recent

Marion Mining Bolts Corporation; American Sportswear of Marion, Inc.; and Cera Tech, Inc., began operations in their new Marion manufacturing facilities during 1987. These new manufacturing firms employ approximately 300 persons at the present time.

Quick's Candy, Inc., recently announced plans to construct a manufacturing facility in the Marion Industrial Park. The \$3.2 million plant is scheduled to be completed in September 1988. Quick's Candy will employ approximately 200 persons.

The city of Marion recently completed paving approximately 40 miles of city streets.

A new boat ramp and parking lot was recently constructed at the Dam 50 Park in Crittenden County.

The Crittenden County School System recently completed the construction of a new multi-purpose room and science lab at the high school and middle school. Cost of these additions was approximately \$560,000.

Under Way

A renovation and expansion project is currently under way at the Crittenden County Hospital. The capacity will be increased to 50 beds, including a six-bed intensive care unit. The \$3.2 million project will be completed in the spring of 1988.

An improvement project of the sewerage treatment system in Marion is under way. The project will consist of an evaluation study, system rehabilitation, and sewer treatment plant upgrade. The \$752,000 project is scheduled for completion in the fall of 1988.

Planned

An improvement project of the fresh water treatment system in Marion is planned. The project will consist of cleaning and repairing the intakes from city lakes and improvements to the transfer system. This \$38,000 project will begin in the spring of 1988.



**Cabinet for Economic Development
Department of Business Development
Capital Plaza Tower
Frankfort, Kentucky 40601
(502) 564-7140**