

1986

Industrial Resources - Cumberland County

Kentucky Library Research Collections
Western Kentucky University, spcol@wku.edu

Follow this and additional works at: https://digitalcommons.wku.edu/cumberland_cty

 Part of the [Business Administration, Management, and Operations Commons](#), [Growth and Development Commons](#), and the [Infrastructure Commons](#)

Recommended Citation

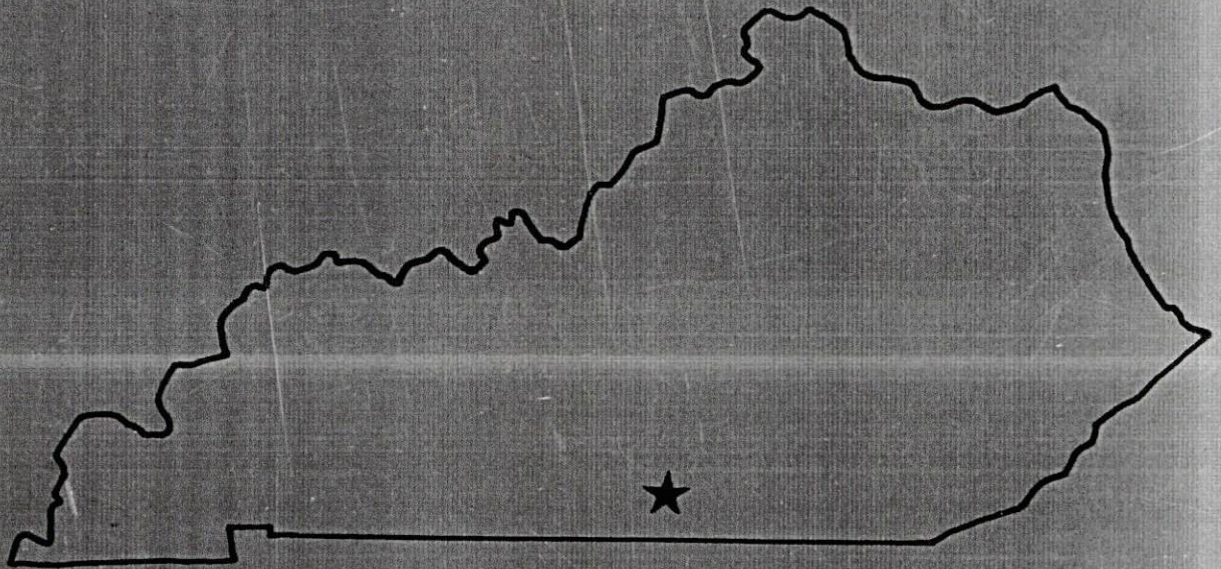
Kentucky Library Research Collections, "Industrial Resources - Cumberland County" (1986). *Cumberland County*. Paper 6.
https://digitalcommons.wku.edu/cumberland_cty/6

This Report is brought to you for free and open access by TopSCHOLAR®. It has been accepted for inclusion in Cumberland County by an authorized administrator of TopSCHOLAR®. For more information, please contact topscholar@wku.edu.

IR
472 Cumberland County

RESOURCES FOR ECONOMIC DEVELOPMENT

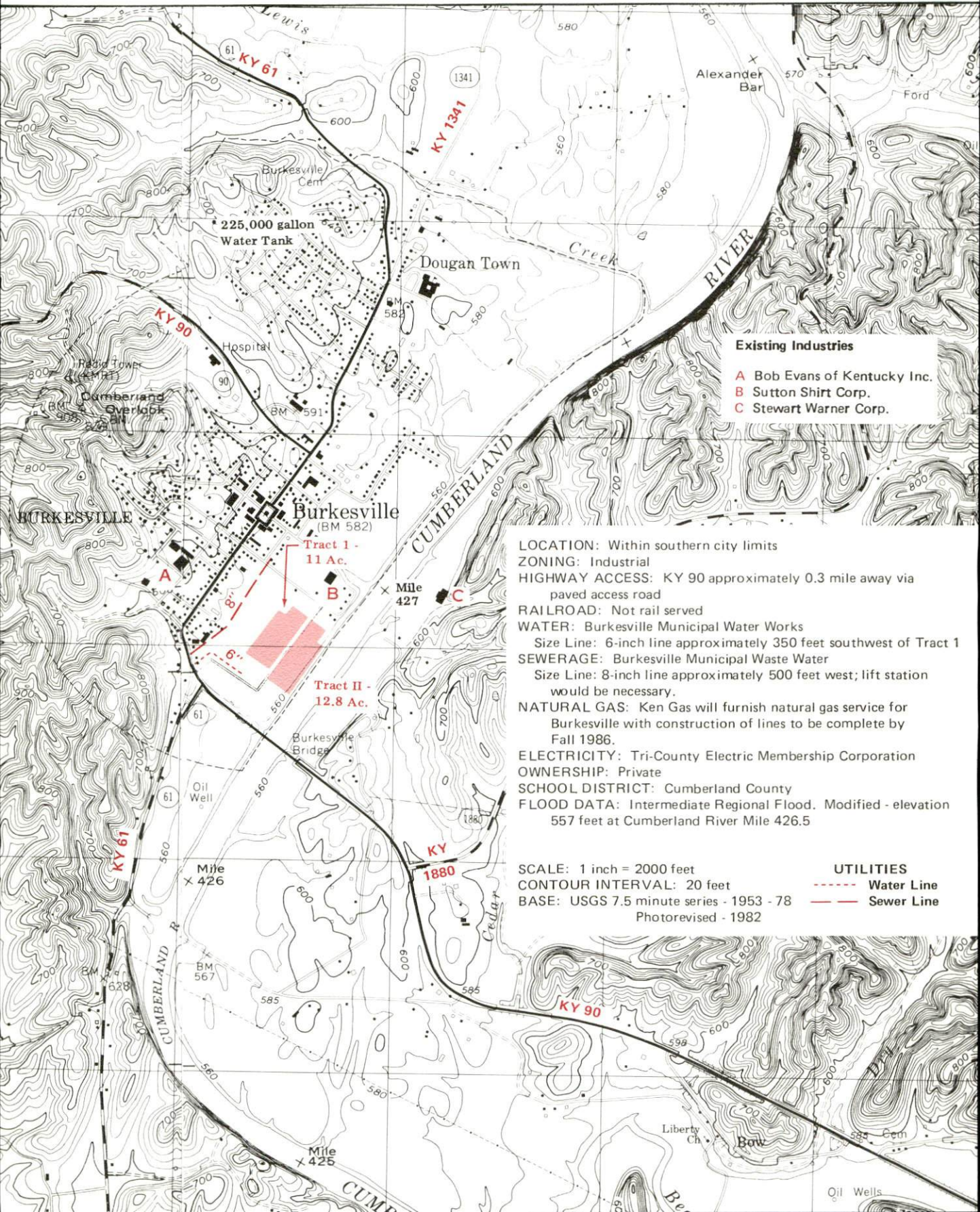
Burkesville



KENTUCKY
The business environment is right.

BURKESVILLE, KENTUCKY --- Site 186 --- 23.8 Acres

For more information contact the Kentucky Department of Economic Development, Industrial Development & Marketing Division, Capital Plaza Tower, Frankfort, Kentucky 40601 (502-564-7140).



Existing Industries

- A Bob Evans of Kentucky Inc.
- B Sutton Shirt Corp.
- C Stewart Warner Corp.

LOCATION: Within southern city limits
ZONING: Industrial
HIGHWAY ACCESS: KY 90 approximately 0.3 mile away via paved access road
RAILROAD: Not rail served
WATER: Burkesville Municipal Water Works
 Size Line: 6-inch line approximately 350 feet southwest of Tract 1
SEWERAGE: Burkesville Municipal Waste Water
 Size Line: 8-inch line approximately 500 feet west; lift station would be necessary.
NATURAL GAS: Ken Gas will furnish natural gas service for Burkesville with construction of lines to be complete by Fall 1986.
ELECTRICITY: Tri-County Electric Membership Corporation
OWNERSHIP: Private
SCHOOL DISTRICT: Cumberland County
FLOOD DATA: Intermediate Regional Flood. Modified - elevation 557 feet at Cumberland River Mile 426.5

SCALE: 1 inch = 2000 feet
CONTOUR INTERVAL: 20 feet
BASE: USGS 7.5 minute series - 1953 - 78
 Photorevised - 1982

UTILITIES
 - - - - - Water Line
 - - - - - Sewer Line

RESOURCES FOR ECONOMIC DEVELOPMENT
BURKESVILLE, KENTUCKY

Prepared by
The Kentucky Department of Economic Development
Division of Research and Planning
in cooperation with
The Burkesville-Cumberland County Chamber of Commerce

1986

Program manager - Andrew Dennis; research - Bill Morris; clerical - Bobbi Graves; graphics - Frank Ferrante, Tony Cecconi, Robert Owens; cartography - Site Evaluation Branch, Division of Industrial Development and Marketing. Cost of printing paid from state funds.

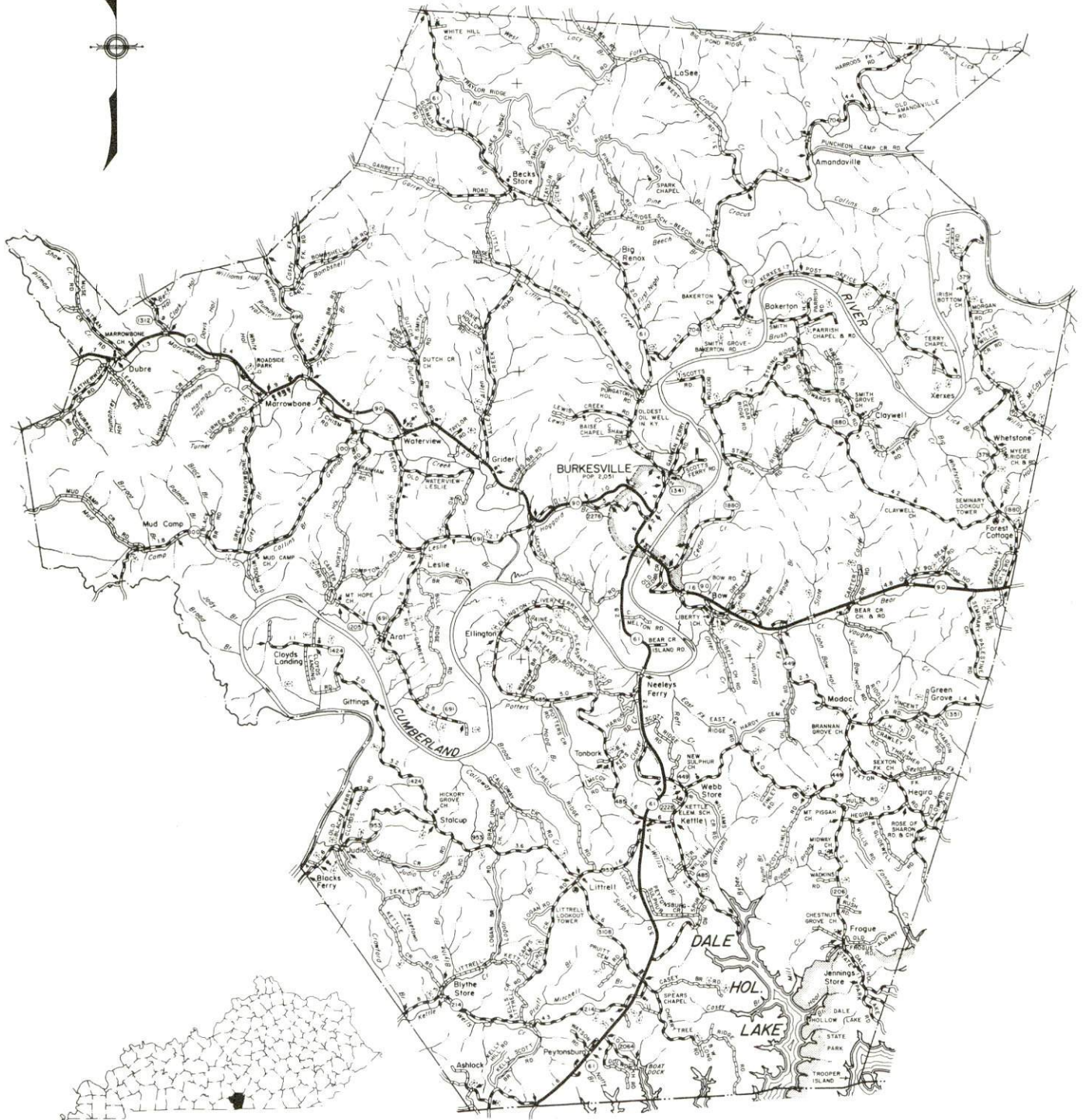
TABLE OF CONTENTS

<u>Chapter</u>	<u>Page</u>
INDUSTRIAL SITES	i
BURKESVILLE, KENTUCKY - A RESOURCE PROFILE	1
LABOR MARKET STATISTICS	2
Population	2
Population Projections	2
Labor Force Characteristics of Residents, 1984	3
Selected Components of Nonagricultural Employment, by Place of Work, 1984	3
Per Capita Personal Income	4
Estimated Male Labor Supply	5
Estimated Female Labor Supply	5
Average Weekly Wages By Industry, by Place of Work, 1984	6
EXISTING INDUSTRY	8
Cumberland County Manufacturing Firms, Their Products and Employment	8
Labor Organizations in Manufacturing Firms	9
Industrial Services	9
TRANSPORTATION	10
Rail	10
Highways	10
Truck Service	10
Air	11
Air Express Service	13
Water	13
POWER AND FUEL	14
Electricity	14
Natural Gas	14
Other Fuels	14
WATER AND SEWERAGE	15
Public Water Supply	15
Sewerage	17

<u>Chapter</u>	<u>Page</u>
CLIMATE	19
LOCAL GOVERNMENT	20
Structure	20
Planning and Zoning	20
Local Fees and Licenses	20
State and Local Property Taxes	21
Safety	22
Police	22
Fire	22
Rescue Service	22
Refuse Collection and Disposal	22
EDUCATION	23
Public Schools	23
Area Colleges and Universities	23
Vocational Schools	24
HEALTH	26
Local Medical Personnel	26
Hospitals	26
Other Medical Facilities	26
Ambulance Service	26
OTHER LOCAL FACILITIES	27
Communications	27
Library Services	27
Religious Institutions	27
Financial Institutions	27
Hotels and Motels	27
RECREATION	28
COMMUNITY IMPROVEMENTS	30

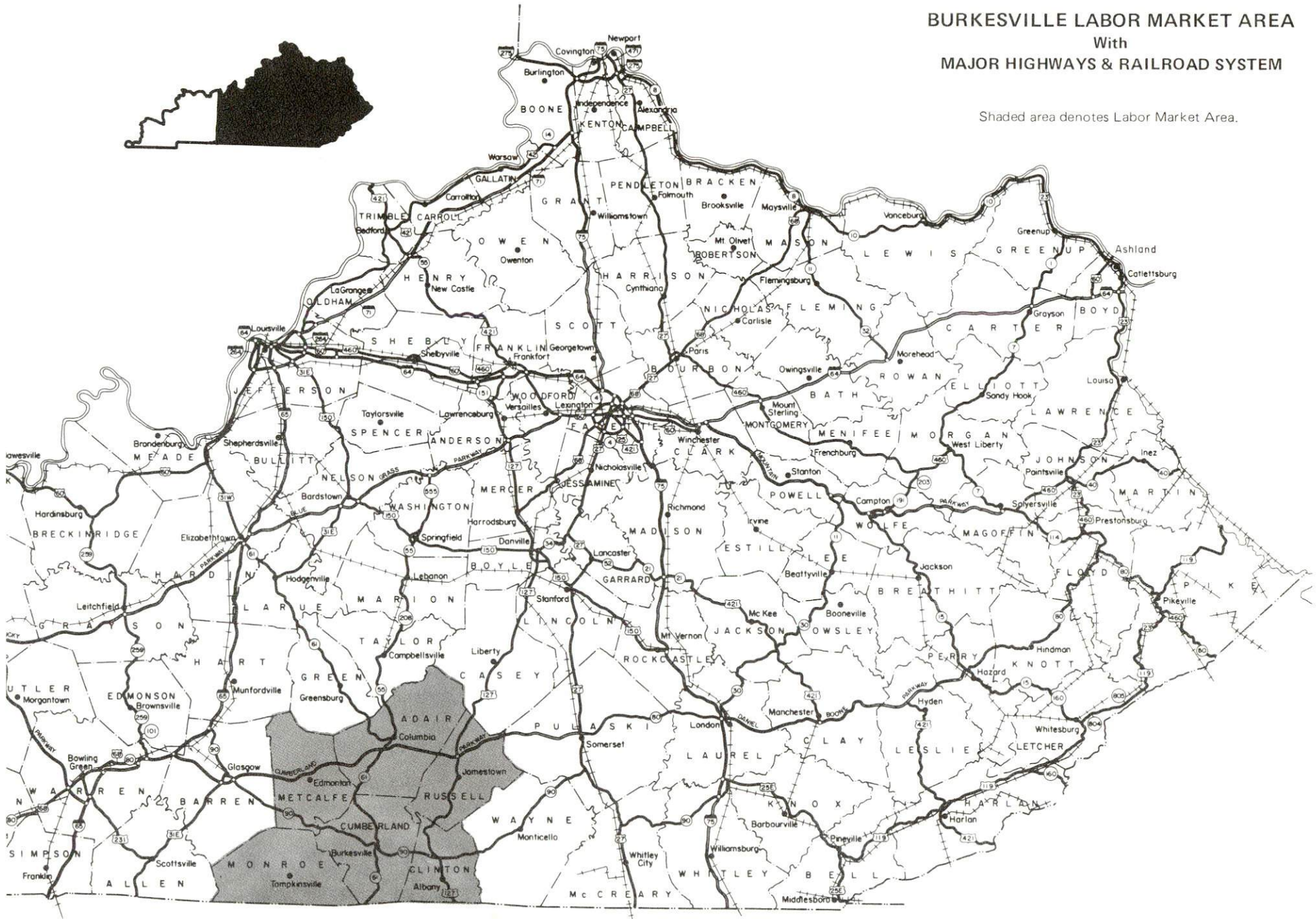
1985 EDITION
GENERAL HIGHWAY MAP
CUMBERLAND COUNTY
KENTUCKY

PREPARED BY THE
KENTUCKY TRANSPORTATION CABINET
DEPARTMENT OF HIGHWAYS
DIVISION OF PLANNING
IN COOPERATION WITH THE
U.S. DEPARTMENT OF TRANSPORTATION
FEDERAL HIGHWAY ADMINISTRATION



BURKESVILLE LABOR MARKET AREA With MAJOR HIGHWAYS & RAILROAD SYSTEM

Shaded area denotes Labor Market Area.



BURKESVILLE, KENTUCKY - A RESOURCE PROFILE

Burkesville, the county seat of Cumberland County, is situated in south-central Kentucky's Cumberland River Valley, 133 miles northeast of Nashville, Tennessee, and 145 miles south of Louisville, Kentucky. Burkesville had a 1984 estimated population of 2,042 persons.

Cumberland County, located adjacent to the Kentucky-Tennessee state line, is a well-dissected plateau in which the most conspicuous topographic feature is the Cumberland River's broad meandering loops. The county has a land area of 304 square miles, and had a 1984 estimated population of 7,327 persons.

The Economic Framework - The total number of Cumberland County residents employed in 1984 averaged 4,170, with nonagricultural jobs accounting for 3,720 workers. Manufacturing firms in the county reported 670 employees; wholesale and retail trade provided 250 jobs; 290 people were employed in service occupations; and state and local government accounted for 220 employees.

Labor Supply - There is a current estimated labor supply of 6,490 men and 4,370 women available for industrial jobs in the labor market area. In addition, from 1986 through 1990, 3,030 young men and 2,910 young women in the area will become 18 years of age and potentially available for industrial jobs.

Transportation - Burkesville is served by Kentucky Highway 90, a "AAA"-rated highway. Five common carrier trucking companies provide interstate and intrastate service to Burkesville. The nearest airports offering scheduled commercial airline service are Nashville Metropolitan Airport near Nashville, Tennessee; Standiford Field near Louisville, Kentucky; and Lexington, Kentucky's Bluegrass Airport, all within 150 miles of Burkesville. Albany-Spring Creek Airport, 22 miles southeast of Burkesville near Albany, has one paved 2,600-foot runway. Burkesville is located 39 miles east of Glasgow, where CSX Transportation operates the privately-owned Glasgow Railroad. The nearest navigable waterway is the Cumberland River at Celina, Tennessee, 25 miles south of Burkesville.

Power and Fuel - The Tri-County Electric Membership Corporation, whose source of electricity is Tennessee Valley Authority, provides electric power to Burkesville and most of Cumberland County. A natural gas system is scheduled to be installed in Burkesville by September of 1986. Two propane dealers and four fuel oil dealers are located within 40 miles of Burkesville.

Education - The Cumberland County public school system provides the residents of Cumberland County with primary and secondary education. There are three colleges and one state university located within 75 miles of Burkesville. Vocational training is provided by the Clinton Area Vocational Education Center, 18 miles southeast of Burkesville, and by the Somerset State Vocational-Technical School, and the Bowling Green State Vocational-Technical School, both within 75 miles of Burkesville.

LABOR MARKET STATISTICS

The Burkesville Labor Market Area includes Cumberland County and the adjoining Kentucky counties of Adair, Clinton, Metcalfe, Monroe and Russell, plus Clay County in Tennessee.

POPULATION

Area	1984*	1980	1970	Percent Nonwhite
				1980
Burkesville	2,042	2,051	1,717	14.4
Labor Market Area	70,534	67,388	58,422	N/A
Cumberland County	7,327	7,289	6,850	5.4
Adair County	15,737	15,233	13,037	3.6
Clinton County	9,854	9,321	8,174	0.2
Metcalfe County	10,188	9,484	8,177	3.0
Monroe County	12,569	12,353	11,642	3.0
Russell County	14,859	13,708	10,542	0.9

* Population estimates.

Note: The 1980 city counts of population by race are provisional.

Sources: U.S. Department of Commerce, Bureau of the Census, 1980 Census of Population and Housing, March 1981; 1980 Census of Population, Number of Inhabitants. University of Louisville, Urban Studies Center, Population Unit, October 1985; Kentucky Population Research Notes, Issue Number One, May 1985.

POPULATION PROJECTIONS

Area	1990	1995	2000	2010
Labor Market Area	76,383	81,038	84,512	89,991
Cumberland County	7,853	8,185	8,392	8,694
Adair County	17,121	18,116	18,866	19,999
Clinton County	10,574	11,200	11,714	12,573
Metcalfe County	10,801	11,522	12,062	12,921
Monroe County	13,004	13,437	13,745	14,187
Russell County	17,030	18,578	19,733	21,617

Source: University of Louisville, Urban Studies Center, Population Research Unit, How Many Kentuckians: Population Forecasts, 1980-2020, the 1984 Edition, September 1984.

LABOR FORCE CHARACTERISTICS OF RESIDENTS, 1984

	<u>Cumberland County Labor Market Area*</u>	
Civilian Labor Force	4,483	32,850
Employment	4,172	28,953
Agricultural	454	4,058
Nonagricultural	3,718	24,895
Unemployment	311	3,897
Rate of Unemployment (%)	6.9	11.9

* Includes Cumberland County and the five adjoining Kentucky counties.

Source: Kentucky Cabinet for Human Resources, Kentucky Labor Force Estimates, Annual Averages, 1984.

SELECTED COMPONENTS OF NONAGRICULTURAL EMPLOYMENT,
BY PLACE OF WORK, 1984

	<u>Cumberland County Labor Market Area*</u>	
All Industries (total)	1,554	13,612
Manufacturing	667	5,936
Wholesale & Retail Trade	249	2,213
Services	289	1,604
State/Local Government	224	2,639
Contract Construction	23	295
Mining & Quarrying	32	327

* Includes Cumberland County and the five adjoining Kentucky counties.

Note: Excludes domestic workers, railway workers, certain nonprofit corporations, majority of federal government workers, and self-employed workers.

Source: Kentucky Cabinet for Human Resources, Average Monthly Workers Covered by Kentucky Unemployment Insurance Law, 1984.

PER CAPITA PERSONAL INCOME

<u>Area</u>	<u>1979</u>	<u>1983</u>	<u>Percent Change</u>
Cumberland County	\$ 4,797	\$ 6,500	35.5
Labor Market Area Range*	\$3,540 - 4,797	\$4,977 - 6,500	N/A
Kentucky	7,124	9,396	31.9
U. S.	8,651	11,687	35.1

* Includes Cumberland County and the five adjoining Kentucky counties.

Sources: U.S. Department of Commerce, Bureau of Economic Analysis; Commerce News, August 28, 1984; May 7, 1985. Kentucky Economic Information System, June 1985.

ESTIMATED MALE LABOR SUPPLY
BURKESVILLE LABOR MARKET AREA

Area	Current			Not in Labor Force	Future
	Total Male	Unemployed	Under- employed		Becoming 18 years of age 1986 thru 1990
Labor Market Area*	6,492				3,026
Cumberland	498	217	281	0	266
Adair	906	483	423	0	590
Clinton	1,077	297	284	496	380
Metcalfe	590	216	272	102	399
Monroe	935	330	241	364	479
Russell	2,258	895	418	945	598
Clay (Tenn.)	228	N/A	N/A	N/A	314

ESTIMATED FEMALE LABOR SUPPLY
BURKESVILLE LABOR MARKET AREA

Area	Current			Not in Labor Force	Future
	Total Female	Unemployed	Under- employed		Becoming 18 years of age 1986 thru 1990
Labor Market Area*	4,366				2,910
Cumberland	246	94	152	0	262
Adair	556	303	253	0	593
Clinton	721	194	262	265	365
Metcalfe	573	183	201	189	368
Monroe	609	234	227	148	499
Russell	1,527	451	314	762	538
Clay (Tenn.)	134	N/A	N/A	N/A	285

* Additional workers may be drawn from other nearby counties.

Note: Unemployed - persons unemployed and actively seeking work;
Underemployed - persons employed but working only 14 to 26 weeks per year;
Not in Labor Force - represents the number of persons who would enter the labor force if suitable employment were available (based on the assumption that persons in Kentucky would like to participate in the labor force in the same proportion that they do nationally).

Sources: Kentucky Cabinet for Human Resources, Kentucky Labor Supply Estimates by County, 1984 Tennessee Department of Economic and Community Development, Tennessee Available Labor, 1984. Kentucky Department of Economic Development Future Labor Supply Becoming 18 Years of Age, 1986 thru 1990.

AVERAGE WEEKLY WAGES BY INDUSTRY,
BY PLACE OF WORK, 1984

	<u>Cumberland County</u>	<u>Adair County</u>	<u>Clinton County</u>
All Industries	\$ 183.49	\$ 222.21	\$ 184.26
Mining & Quarrying	211.60	267.42	315.24
Contract Construction	175.79	245.25	120.20
Manufacturing	167.60	216.83	154.61
Transportation, Communications & Public Utilities	155.89	292.88	234.79
Wholesale & Retail Trade	163.11	154.96	169.41
Finance, Insurance & Real Estate	214.50	299.72	225.70
Services	171.87	192.19	166.87
State/Local Government	260.64	300.45	215.93
Other	*	116.16	*
	<u>Metcalfe County</u>	<u>Monroe County</u>	<u>Russell County</u>
All Industries	\$ 186.14	\$ 204.77	\$ 203.50
Mining & Quarrying	154.93	*	224.19
Contract Construction	131.95	123.79	233.74
Manufacturing	151.21	203.97	201.33
Transportation, Communications & Public Utilities	369.85	467.68	340.05
Wholesale & Retail Trade	153.52	178.72	152.70
Finance, Insurance & Real Estate	202.06	283.13	214.62
Services	250.44	141.66	163.81
State/Local Government	234.34	230.99	250.69
Other	*	172.06	*

* Not disclosed.

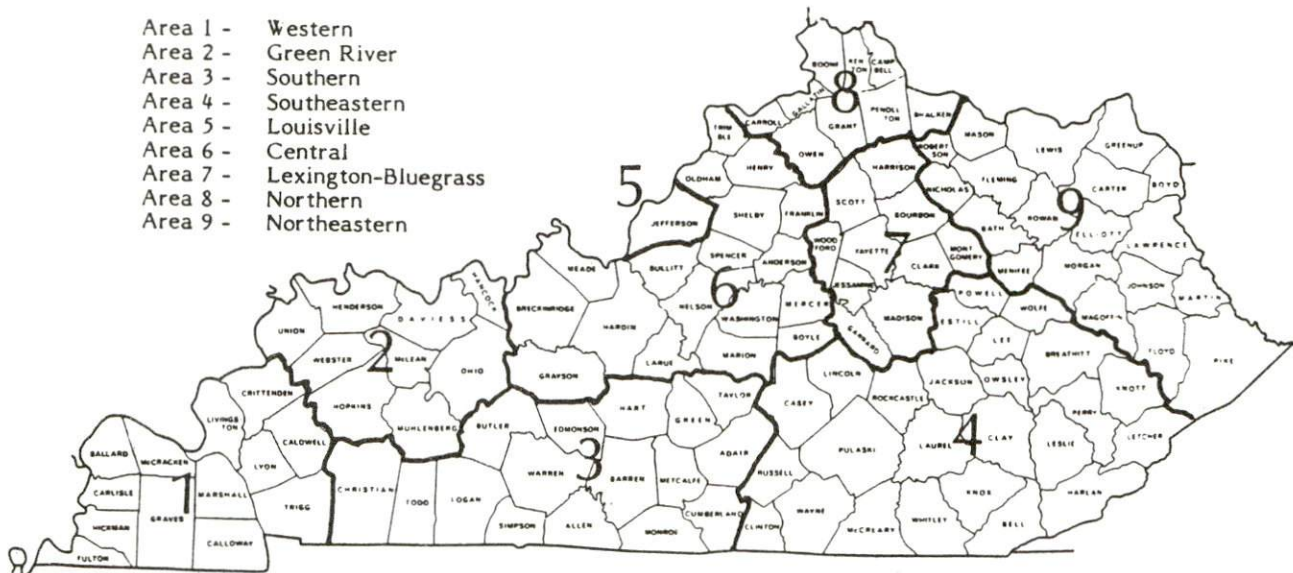
Note: Excludes domestic workers, railway workers, certain nonprofit corporations, majority of federal government workers, and self-employed workers.

Source: Kentucky Cabinet for Human Resources, Average Weekly Wages of Workers Covered by Kentucky Unemployment Insurance Law, 1984.

Up to date occupational wage rates of the existing industries are maintained by South Kentucky Industrial Development Association, Post Office Box 726, Hopkinsville, Kentucky 42240.

Occupational wage rates for specific industries are usually not available to most government agencies, and wage data furnished to state employment agencies by individual industrial employers are protected from disclosure by federal law. The most reliable up-to-date wage information can be obtained by direct contact with local employers.

Associated Industries of Kentucky, a voluntary organization of Kentucky businesses, regularly collects occupational wage rates and fringe benefits data from participating member firms. Data are compiled for over 127 clearly defined office, production, and service occupations. Tabulations are published for nine geographical areas of Kentucky, as shown on the map below. It should be noted that the data may be weighted by the preponderance of firms in the larger cities and may be somewhat higher than the rates paid in the smaller communities. Data from these tabulations are available, upon request, from the Kentucky Department of Economic Development, Frankfort, Kentucky 40601.



Associated Industries of Kentucky Area Wage Surveys

EXISTING INDUSTRY

CUMBERLAND COUNTY MANUFACTURING FIRMS, THEIR PRODUCTS AND EMPLOYMENT

<u>Firm</u> (Establishment date)	<u>Product</u>	<u>Employment</u>			<u>Labor Unions</u>
		<u>Total</u>	<u>Male</u>	<u>Female</u>	
Burkesville					
Burkesville-Cumberland County Press, Inc. (1920)	Newspaper, commercial printing	6	2	4	
Bob Evans of Kentucky, Inc. (1970)	Men's and women's uniforms	260	60	200	
Farmers Feed Mill (1956)	Feed	3	3	0	
Lake Cumberland Cedar, Inc. (1985)	Cedar lumber	20	--	--	
Johnny Rich Lumber Company, Inc. (1966)	Rough lumber	26	25	1	
Shamrock Stone, Inc. (1961)	Crushed stone, agricultural lime	5	--	--	
Stewart Warner Corporation, Southwind Division (1980)	Heat transfer products, truck heaters, oil coolers, personal heaters	60	48	12	
Sutton Shirt Corporation (1971)	Shirts	241	33	208	
Marrowbone					
Oshkosh B'gosh, Inc. (1979)	Men's and boys' jeans	150	17	133	Garment Workers*
York & Vibbert, Inc. (1966)	Lumber, custom sawing, pallet parts	17	17	0	

*See Labor Organizations on the next page.

Sources: Kentucky Department of Economic Development, 1986 Kentucky Directory of Manufacturers; Division of Research and Planning.

LABOR ORGANIZATIONS IN MANUFACTURING FIRMS

<u>Union</u>	<u>Representing workers at:</u>
United Garment Workers of America, AFL-CIO	Oshkosh B'gosh, Inc.

SELECTED INDUSTRIAL SERVICES

<u>Types of Services</u>	<u>Location</u>	<u>Mileage from Burkesville</u>
Custom Plastics Producers	Bowling Green, Kentucky	72
	Franklin, Kentucky	88
Electric Motor Repair	Glasgow, Kentucky	39
	Somerset, Kentucky	70
	Bowling Green, Kentucky	72
Grinding, Precision & Tool	Nashville, Tennessee	133
	Hopkinsville, Kentucky	135
	Louisville, Kentucky	145
Heat Treating Facilities	Nashville, Tennessee	133
	Louisville, Kentucky	145
	Lexington, Kentucky	146
Industrial Equipment & Supplies	Bowling Green, Kentucky	72
	Springfield, Kentucky	97
Industrial Gases	Campbellsville, Kentucky	69
	Somerset, Kentucky	70
	Bowling Green, Kentucky	72
Industrial Waste Removal	Somerset, Kentucky	70
	Elizabethtown, Kentucky	92
	Russellville, Kentucky	101
Machine Shops, Tool & Die	Monticello, Kentucky	33
	Tompkinsville, Kentucky	35
Metal Finishers	Elizabethtown, Kentucky	92
	Hartford, Kentucky	118
Metal Service Centers	Bowling Green, Kentucky	72
	Russellville, Kentucky	101
Millwrights	Bowling Green, Kentucky	72
	Franklin, Kentucky	88
	Elizabethtown, Kentucky	92
Public Warehouse Facilities	Bowling Green, Kentucky	72
	Elizabethtown, Kentucky	92

Sources: Kentucky Department of Economic Development, Kentucky Directory of Selected Industrial Services, 1985; Division of Research and Planning.

TRANSPORTATION

Rail

Line nearest **Burkesville** - The nearest rail service is provided by CSX Transportation at Glasgow, 39 miles west of Burkesville. The privately-owned Glasgow Railroad is operated by CSX Transportation.

For details on routing, schedules, rates, and services contact:

Manager of Industrial Development
CSX Transportation
P.O. Box 2157
Louisville, Kentucky 40201
(502) 587-5228

Highways

Burkesville is served by Kentucky Highway 90, a "AAA"-rated (80,000-pound gross load limit) trucking highway, and by Kentucky Highway 61, which is "AAA"-rated south of Burkesville. Burkesville is 14 miles west of U.S. Highway 127 and 31 miles southeast of an interchange of the Cumberland Parkway, a multilane toll road. Kentucky 90 and the Cumberland Parkway provide access to Interstate 65 approximately 60 miles west of Burkesville. Kentucky 90 is part of the Appalachian Highway System network which provides Burkesville with access to Interstate 75, 74 miles northeast of the city. Construction of an improved access route from Burkesville to Interstate 40 south of the state line is planned.

Truck Service

ARA/Smith's*
Bestway Express, Inc.*
Manning Motor Express, Inc.*

Monticello-Albany Freight Lines,
Inc.*
Overnite Transportation Company*

* Interstate and intrastate.

Source: American Motor Carrier Directory, Spring 1986.

HIGHWAY MILES AND TRUCK TRANSIT TIME IN DAYS FROM
BURKESVILLE, KENTUCKY, TO SELECTED MARKET CENTERS

City	Highway Miles	Delivery		City	Highway Miles	Delivery	
		Time TL				Time TL	
Atlanta, Ga.	375	1		Los Angeles, Ca.	2,158	3	
Baltimore, Md.	687	1		Louisville, Ky.	145	1	
Birmingham, Ala.	329	1		Nashville, Tenn.	133	1	
Chicago, Ill.	437	1		New Orleans, La.	650	2	
Cincinnati, Ohio	224	1		New York, N. Y.	849	2	
Cleveland, Ohio	463	1		Pittsburgh, Pa.	489	1	
Detroit, Mich.	483	1		St. Louis, Mo.	350	1	
Knoxville, Tenn.	191	1					

Note: Mileage computations are via the best interstate or primary highways, not necessarily the most direct route of travel.

Sources: Rand McNally Road Atlas, 1979. Official Kentucky Mileage Map, 1985.

Delivery time - Manning Motor Express, Inc., Glasgow, Kentucky 42141.

Air

Local

Location: Albany-Spring Creek Airport
4 miles southwest of Albany, Kentucky;
22 miles southeast of Burkesville

Runway: 1 paved
Length: 2,600 feet

Traffic Control: Wind sock

Lighting: Runway lights, sunset to sunrise

Services: Fuel - 100LL; minor A & P repairs, part-time; tie-down;
hangar; charter pilot, part-time; flight training; taxi, motel,
restaurant

Air Freight Service: Chartered air freight services must be arranged

(Continued)

Nearest Scheduled Commercial Airline Service

Standiford Field
Location: 5 miles southeast of center of Louisville, Kentucky;
140 miles north of Burkesville
Runways: 2 paved
Length: 10,000 feet; 7,250 feet
Traffic
Control: Control tower
Lighting: Runways, obstructions, beacon and approach; touch-
down lights and center line on one runway
Services: Delta, Eastern, Ozark, Piedmont, Britt Airways, Midstate,
Republic, TWA, United, USAir, Allegheny Commuter,
Comair, Florida Express; fuel - 100 and jet-A; major A & P
repairs; major Avionics repairs; APU, charter, oxygen, U. S.
Customs; taxi, car rentals, limousine, courtesy car,
public transit; Weather Bureau; restaurant, snack bar
Air Freight
Service: Air freight terminal

Bluegrass Airport
Location: 5 miles west of Lexington, Kentucky;
147 miles northeast of Burkesville
Runways: 2 paved
Length: 7,000 feet; 3,500 feet
Traffic
Control: Tower
Lighting: Approach lighting system, beacon, runways and
obstructions lighted, VASI
Services: Delta, Piedmont, United, USAir, Allegheny Commuter,
Piedmont Commuter, Eastern Metro, Comair, American
Eagle; fuel - 100LL and jet-A; hangars, tie-downs; major
A & P repairs; major Avionics repairs; APU, charter, flight
instruction, oxygen, plane rentals, survival equipment; taxi,
limousine, car rentals, courtesy car, weather information;
restaurant, snack bar
Air Freight
Service: Air freight terminal

(Continued)

Location: Nashville Metropolitan Airport
 6 miles southeast of Nashville, Tennessee;
 139 miles southwest of Burkesville
Runways: 3 paved
Length: 8,000 feet; 7,700 feet; 4,320 feet
Traffic Control: Tower
Lighting: Beacon, runway
Services: American, Delta, Eastern, Ozark, Pan Am, Piedmont,
 Republic, TWA, United, USAir, Allegheny Commuter,
 Southwest, Comair, Florida Express, Air Midwest,
 Peoples Express, Prime Air, Sunbird, Tennessee Airways;
 fuel - 100LL, jet-A; tie-downs, hangars; major A & P
 repairs, major Avionics repairs; APU, charter, flight
 instruction, oxygen, plane rental, survival equipment, U. S.
 Customs; taxi, limousine, car rental, courtesy car, public
 transit; weather information; restaurant, snack bar
Air Freight Service: Air freight terminal

Air Express Service

Several major companies offer air express services in Kentucky. These companies provide a quick means of shipping small to medium-sized packages expeditiously.

Water

The nearest navigable waterway is the Cumberland River at Celina, Tennessee, 25 miles south of Burkesville, where a 9-foot navigation channel begins.

POWER AND FUEL

Electricity

Company serving **Burkesville and Cumberland County** - Tri-County Electric Membership Corporation
Source of power - Tennessee Valley Authority
For industrial rates contact:

South Kentucky Industrial Development
Association, Inc.
P.O. Box 726
Hopkinsville, Kentucky 42240
(502) 885-5392

and/or

Tri-County Electric Membership Corporation
405 College Street
P. O. Box 40
Lafayette, Tennessee 37083
(615) 666-2111

Natural Gas

Plans are being made to provide natural gas service to Burkesville. Four- and 6-inch mains will be run to Burkesville by Ken-Gas of Kentucky, Inc. The city's industrial site will be included in the service area. Service is scheduled to begin during the fall of 1986.

Other Fuels (Within 40 miles)

Propane

Ken-Gas of Kentucky, Inc.
Route 3, Box 26 A
Albany, Kentucky 42602

Pargas of Glasgow
214 Industrial Drive
P. O. Box 272
Glasgow, Kentucky 42141

Fuel oils

Distillate fuel oil -

Ashland Oil, Inc.
921 West Main
Glasgow, Kentucky 42141

Edwin Bradshaw Oil
Marrowbone, Kentucky 42759

Ken-Gas of Kentucky, Inc.
Route 3, Box 26 A
Albany, Kentucky 42602

Travis Oil and Ready Mix
2000 Glasgow Pike
Tompkinsville, Kentucky 42167

Residual fuel oil - Arrangements must be made with the refinery.

Low sulphur content coal - Available in Kentucky.

WATER AND SEWERAGE

Public Water Supply

Company serving **Burkesville** - Burkesville Municipal Water Works
 City Hall
 P. O. Box 177
 Burkesville, Kentucky 42717
 (502) 864-4141

Source - Cumberland River
 Treatment plant capacity - 504,000 gallons per day
 Average daily consumption - 300,000 gallons
 Peak daily consumption - 410,000 gallons
 Treatment processes - Rapid mix, coagulation, flocculation, sedimentation,
 filtration, chlorination, and fluoridation
 Storage capacity - 958,000 gallons, including clear well
 Size lines - 2 through 10 inches
 Water pressure - 40 psi to 100 psi

MONTHLY WATER RATES

Inside City

First	2,000 gallons	\$4.70 (Minimum)
Next	13,000 gallons	1.50 per M gallons
Next	15,000 gallons	1.25 per M gallons
All over	30,000 gallons	1.10 per M gallons

Outside City

First	2,000 gallons	\$9.35 (Minimum)
Next	3,000 gallons	2.90 per M gallons
Next	5,000 gallons	2.35 per M gallons
All over	10,000 gallons	1.45 per M gallons

Tap-on charge:

<u>Meter Size</u>	<u>Inside City</u>	<u>Outside City</u>
5/8-inch x 3/4-inch	\$ 150	\$ 200
3/4-inch	175	250
1-inch	275	300
1 1/2-inch	375	500
2-inch	575	1,000
3-inch	1,000	1,500

Name of water district - Marrowbone Water District*

P. O. Box 112
Marrowbone, Kentucky 42759
(502) 864-3133

Area served - Marrowbone Valley, Little Renox, Big Renox, Bakertown

Date when water district began operating - December 1968

Source of raw water - Cumberland River

Capacity of treatment plant - 500,000 gallons per day

Treatment processes - Rapid mix, coagulation, flocculation, sedimentation,
filtration, chlorination, fluoridation

Average amount of water used in a 24-hour period - 140,000 gallons

Peak amount of water used in a 24-hour period - 198,660 gallons

Storage capacity - 310,000 gallons (including clear well)

Size lines - 8, 6, 4, 3, and 2 inches

Water pressure - 50 psi to 120 psi

MONTHLY WATER RATES

First	2,000 gallons	\$6.85 (Minimum)
Next	2,000 gallons	2.25 per M gallons
Next	2,000 gallons	1.95 per M gallons
Next	4,000 gallons	1.60 per M gallons
Next	10,000 gallons	1.40 per M gallons
All over	20,000 gallons	1.20 per M gallons

Tap-on charge:

5/8- x 3/4-inch meter - \$300

1-inch meter - \$600

Name of water district - South Cumberland Water District

P. O. Box 177
Burkesville, Kentucky 42717
(502) 864-4141

Area served - Southern Cumberland County

Date when water district began operating - 1976

Source of supply of treated water - Burkesville Municipal Water Works

Average amount of water used in a 24-hour period - 125,000 gallons

Peak amount of water used in a 24-hour period - 150,000 gallons

Storage capacity - 100,000 gallons

Size lines - 2 through 8 inches

Water pressure - 30 psi to 100 psi

(Continued)

* Recently completed improvement projects include construction of a new 100,000-gallon water storage tank and installation of fast-flow filters and new pumps.

MONTHLY WATER RATES

5/8- x 3/4-inch and 3/4-inch meters;

First	2,000 gallons	\$ 9.50 (Minimum)
Next	3,000 gallons	3.50 per M gallons
Next	5,000 gallons	2.55 per M gallons
All over	10,000 gallons	1.60 per M gallons

1-inch meter:

First	5,000 gallons	\$ 20.00 (Minimum)
Next	5,000 gallons	2.55 per M gallons
All over	10,000 gallons	1.60 per M gallons

1½-inch meter:

First	12,500 gallons	\$ 50.00 (Minimum)
All over	12,500 gallons	1.60 per M gallons

2-inch meter:

First	25,000 gallons	\$100.00 (Minimum)
All over	25,000 gallons	1.60 per M gallons

Tap-on charge:

Meter Size

5/8- x 3/4-inch or 3/4-inch	\$300
1-inch	375
1½-inch	735
2-inch or larger	Actual cost of installation

Sewerage

Company serving **Burkesville** - Burkesville Municipal Waste Water
 City Hall
 P. O. Box 177
 Burkesville, Kentucky 42717
 (502) 864-4141

Design capacity - 250,000 gallons per day

Average daily flow - 185,000 gallons*

Type of treatment - Secondary

Treatment processes - Screening, grit removal extended aeration, activated sludge, chlorination, sludge drying beds

Treated effluent discharged into - Cumberland River

Size of sanitary mains - 6, 8, and 10 inches

Size of storm mains - 12 through 30 inches

(Continued)

* A sewer rehabilitation project was completed recently, resulting in a substantial decrease in the sewerage system's infiltration inflow.

Monthly rates - Based on water usage:

First	2,000 gallons	\$4.10 (Minimum)
Next	13,000 gallons	1.50 per M gallons
Next	15,000 gallons	1.25 per M gallons
All over	30,000 gallons	1.10 per M gallons

A surcharge is assessed to customers discharging waste water with BOD and SS concentrations in excess of 240 mg/l.

Tap-on charge: None

CLIMATE

Cumberland County

Temperature

Normal (30-year record)	58.80 degrees
Average annual 1984	58.10 degrees
Record highest, September 1954 (43-year record)	103.00 degrees
Record lowest, January 1966 (43-year record)	-9.00 degrees
Normal heating degree days (30-year record) (Heating degree day totals are the sums of negative departures of average daily temperatures from 65 degrees F.)	3,658

Precipitation

Normal (30-year record)	47.29 inches
Mean annual snowfall (29-year record)	12.30 inches
Total precipitation 1984	48.54 inches
Mean number days precipitation (.01 inch or more) (42-year record)	127.10
Mean number days thunderstorms (42-year record)	47.00

Prevailing Winds (through 1963)

Northeast

Relative Humidity (24-year record)

1 a.m.	80 percent
7 a.m.	85 percent
1 p.m.	59 percent
7 p.m.	63 percent

Source: U.S. Department of Commerce, Environmental Science Services Administration, Climatological Data, 1984. Station of record: Knoxville, Tennessee.

LOCAL GOVERNMENT

Structure

Burkesville is served by a mayor and six council members. Cumberland County is served by a county judge/executive and eight magistrates.

Planning and Zoning

City agency - Planning and Zoning Commission of Burkesville, Kentucky

Zoning enforced - Within the city of Burkesville

Subdivision regulations enforced - Within the corporate limits of Burkesville, and one mile beyond

Local codes enforced - Building and housing

Mandatory state codes enforced - Kentucky Plumbing Code, National Electric Code, Kentucky Boiler Regulations and Standards, Kentucky Building Code (modeled after BOCA code)

Local Fees and Licenses

Burkesville levies an occupational license tax of three-fourths of one percent on wages and net profits of businesses, with a \$150 maximum tax.

A 3 percent tax is levied on utilities receipts for schools in Cumberland County. Tax is paid by all consumers of utilities as an add-on to the utilities bills. Exempted are receipts from utilities services that are resold and the receipts from the sale of energy or energy producing fuels that exceed 3 percent of the cost of production in manufacturing, processing, mining or refining.

State and Local Property Taxes

All property in Kentucky, except items exempted by the state constitution, is taxed by the state. Property which also may be taxed by local jurisdictions includes land and buildings, finished goods inventories, automobiles, trucks, office furniture and office equipment. Local taxing jurisdictions in Kentucky include counties, cities, and school districts.

All property in Kentucky is assessed at 100 percent of fair cash value.

COMBINED STATE AND LOCAL RATES PER \$100 VALUATION, 1985

	<u>Burkesville</u>	<u>Unincorporated Cumberland County</u>
Land and Buildings	\$ 0.8050	\$ 0.5730
Manufacturing Machinery	0.150	0.150
Pollution Control Equipment	0.150	0.150
Inventories		
Raw materials	0.001*	0.001*
Goods in Process	0.001*	0.001*
Finished Goods	0.6003*	0.3683*
Automobiles and Trucks	1.0593	0.8273
Other Tangible Personal Property	1.0493	0.8173
Intangibles (Accounts receivable, money in hand, stock, notes, bonds)	0.250**	0.250**
Goods Stored in Public Warehouses in Transit Status	0.001*	0.001*
Private Leaseholds in Industrial Revenue Bond Financed Facilities	0.015	0.015

* Includes 1986 state rate.

** Accounts receivable are taxed at 85 percent of face value, for an effective rate of \$0.2125 per \$100 valuation.

Safety

Police	Burkesville	Cumberland County
Total staff	6	3
Radio-patrol cars	2	2
Fire*		
Insurance Services Office, Public Protection Classification	6	10
Volunteers	21	**
Rescue Service		

The Cumberland County Rescue Squad and members of the Burkesville Fire Department provide rescue service to Burkesville and Cumberland County.

Refuse Collection and Disposal

The city of Burkesville's municipal sanitation department provides refuse collection and disposal service to Burkesville and to all industries located in the county.

* Includes copyrighted material of ISO Commercial Risk Services, Inc., with its permission.

** Cumberland County residents receive fire protection service from the Burkesville Fire Department and the Marrowbone Fire Department.

EDUCATION

Public Schools

Cumberland County

Total Enrollment (Spring, 1986)	1,165
Kindergarten	102
Elementary	741
High School	322
 Pupil-Teacher Ratio (1984-85)	 18-1
 Percent High School Graduates to College (1984-85)	 35.6
 Expenditures Per Pupil (1984-85)	 \$1,885.24

Area Colleges and Universities

<u>Name</u>	<u>Location (Miles distant)</u>	<u>Enrollment (Fall, 1985)</u>	<u>Highest Degree Conferred</u>
Lindsey Wilson College	Columbia (29)	635	Associate*
Campbellsville College	Campbellsville (69)	648	Baccalaureate
Somerset Community College	Somerset (70)	1,161	Associate
Western Kentucky University	Bowling Green (72)	11,259	Masters, Specialist**

* Lindsey Wilson College is changing from a two-year to a four-year institution. Beginning in Fall 1986 the college will offer classes for juniors. In the 1986-87 school year it will add classes for seniors and award its first baccalaureate degrees.

** Joint doctoral degree programs are offered in cooperation with the University of Kentucky, Lexington, and cooperative doctoral degree programs are offered with the University of Louisville. The degrees are issued by the University of Kentucky or the University of Louisville.

Vocational Schools

The Kentucky Department of Education operates both the state vocational-technical schools and the area vocational education centers. The state vocational-technical schools are post-secondary institutions. The area vocational education centers are designed to supplement the curriculum of high school students. Both the state vocational-technical schools and the area vocational education centers offer evening courses to enable working adults to upgrade current job skills.

Arrangements can be made to provide training in the specific production skills required by an industrial plant. Instruction may be conducted either in the vocational school or in the industrial plant, depending upon the desired arrangement and the availability of special equipment.

Nearest State School

Somerset State Vocational-Technical School
Somerset, 70 miles distant

Business & Office	Auto Mechanics
Accounting/Jr. Management	Aviation Maintenance Technician
Clerical	Diesel Mechanics
Data Processing	Drafting (with CAD/CAM)
Secretarial	Graphic Arts (Printing)
Health & Personal Services Occupations	Machine Shop
Health Careers	Industrial Electronics
Licensed Practical Nursing	Welding
Industrial Education	Computer Literacy
Appliance Repair	Learning Resource Center
Auto Body Repair	Up-Grade Programs

(Continued)

Bowling Green State Vocational-Technical School
Bowling Green, 72 miles distant

Agriculture	Auto Body Repair
Adult Agriculture	Auto Mechanics
Business & Office	Carpentry
Accounting/Jr. Management	Diesel Mechanics
Clerical	Electricity
Secretarial	Electronics
Retailing	Graphic Arts (Printing)
Consumer & Home Economics	Industrial Maintenance
Commercial Foods	Machine Shop
Consumer & Family Life Skills	Masonry
Health & Personal Services Occupations	Plumbing
Dental Assistant	Related Math
Health Careers	Refrigeration & Air Conditioning
Nurse Assistant	Technical Drafting
Practical Nurse	Tool & Die Making
Radiological Technology	Truck Driving
Respiratory Therapy	Welding
Surgical Technician	Learning Resources Center
Industrial Education	Computer Lab
Automated Manufacturing/Robotics	

Nearest Area Education Center

Clinton County Area Vocational Education Center
Albany, 18 miles distant

Business & Office	Industrial Education
Clerical	Auto Mechanics
Secretarial	Carpentry-Building Trades
Health & Personal Services Occupations	Electricity
Health Services	Welding

HEALTH

Local Medical Personnel

Physicians - 3
Dentists - 6

Hospitals

<u>General Hospital</u>	<u>Location</u>	<u>Beds</u>
Cumberland County Hospital	Burkesville	31

Medical staff - 3 doctors, 7 registered nurses, and 11 licensed practical nurses

Other Medical Facilities

Cumberland County Health Department

Ambulance Service

Name - Cumberland County Ambulance Service
Staff - 34 emergency medical technicians

OTHER LOCAL FACILITIES

Communications

Telephone -	Duo County Telephone Cooperative Corporation, Inc., and General Telephone Company
Telegraph -	Western Union Toll-free number, 1-800-325-6000
Newspaper - Weekly and circulation -	Cumberland County News 2,957
Radio -	WKYR-AM
Television - Cable service - Educational television -	Mid Kentucky Cable Systems The Kentucky Educational Television (K.E.T.) network is available statewide

Library Services

Public library - The Cumberland County Library
Size collection - 42,932 volumes
Circulation, 1984-85 - 63,383

Religious Institutions

Denominations	Assembly of God Baptist Catholic Christian Church of Christ Church of God	Church of the Lord Jesus Christ Jehovah's Witnesses Methodist Nazarene
---------------	--	--

Nearest Synagogues - Nashville, Tennessee, 133 miles southwest
Louisville, Kentucky, 145 miles north
Lexington, Kentucky, 146 miles northeast

Financial Institutions

<u>Banks</u>	<u>Assets</u>	<u>Deposits</u>	<u>Statement Date</u>
Bank of Cumberland	\$33,498,284.88	\$30,333,564.49	12/31/85
Bank of Marrowbone	\$15,461,316.00	\$13,515,998.00	12/31/85

Hotels and Motels

Total number - 2
Total rooms - 58

RECREATION

Local

A supervised recreation program is held each summer at the Veterans Memorial Park in Burkesville. The park features a swimming pool, lighted baseball and softball fields, a basketball court, a miniature golf course, three lighted tennis courts, a 3/8-mile running track, 1,000 feet of river frontage, and a picnic area. The fairground is also located at the park.

Other public recreational facilities include school playgrounds, basketball courts, tennis courts, and a baseball field. A bowling facility is also located at Burkesville.

A country club is located at 76 Falls, 15 miles from Burkesville, and features a golf course and swimming pool. Membership is open to residents of Cumberland and Clinton Counties.

The Cumberland County Sportsmen's Club owns a 60-acre farm 10 miles south of Burkesville, and sponsors regular trap shoots.

Dale Hollow Lake State Park, 9 miles south of Burkesville, is located alongside 48 square miles of surface water in southeastern Cumberland County. Park facilities include a marina, a picnic area, and 144 sites for tent and trailer camping. Dale Hollow Lake straddles the Kentucky-Tennessee state line. Several private recreation facilities are located near the lake.

Annual events held at Burkesville include the men's and women's Southern Kentucky Softball Tournament, hosted by Burkesville; the Cumberland County Fair, held each August; a three-day arts and crafts show held each September; and the Cumberland County Oil Festival, held each September to show appreciation to the oil industry.

Area (Within 65 miles)

Lake Cumberland State Resort Park near Jamestown, 25 miles northeast of Burkesville, is a 3,000-acre park located on the 50,000-acre Lake Cumberland, which sports excellent bass, bluegill, and crappie fishing. The park features a modern 48-room resort lodge which is perched on a high bluff above the lake. The lodge has a swimming pool, a dining room, a gift shop, and a multi-purpose activities center. Other park facilities include an additional swimming pool, riding stables, tennis courts, hiking trails, a 9-hole golf course, miniature golf, a picnic area, and a playground. A marina offers houseboats, and fishing boats and motors for rent plus year-round launching ramps.

Old Mulkey Meeting House State Shrine, 38 miles southwest of Burkesville near Tompkinsville, offers picnic areas and playgrounds. The house was built in 1804, and is the oldest log meeting house in the state. Daniel Boone's sister is buried in the graveyard and authentic records written in pokeberry ink are on display.

The Daniel Boone National Forest, approximately 50 miles east of Burkesville, covers 640,000 acres of timberland in eastern Kentucky. It encompasses much of Kentucky's great beauty and provides a vacation paradise. There are scenic hiking trails, rivers and streams stocked with a variety of fish, hunting preserves, camping sites, and numerous other natural and historical attractions.

Mammoth Cave National Park is located 52 miles northwest of Burkesville near Cave City. Beneath 52,000 park acres, Mammoth Cave is among the major tourist attractions of all times. It is the largest cave network ever discovered, with over 300 miles of caverns. Some famous sights are Snowball Dining Room (267 feet below surface), Frozen Niagra, Crystal Lake, and Bottomless Pit. The park also features scenic boat trips on the Green River and nature and hiking trails. Park accommodations include a hotel with distinctive gift shops featuring native Kentucky and Southern Highland handicrafts, a motor lodge, hotel cottages, and woodland cottages. Other park facilities include the hotel dining room and coffee shop, a service center, group meeting facilities, a campground, a picnic area, and tennis and shuffleboard courts. The park is open for tours every day of the year (except Christmas Day).

Nolin River Lake is just north of Mammoth Cave National Park. The lake has a surface area of 5,800 acres and offers facilities for camping, boating, and fishing.

Barren River Lake State Resort Park, 53 miles west of Burkesville near Glasgow, is a full-facility resort park offering a 51-room resort lodge, a coffee shop, 12 cottages, a lodge pool, a beach, riding stables, nature trails, open and covered boat slips, a 9-hole golf course, lighted handball and tennis courts, shuffleboard, park camping with a service building, a restaurant, fishing and pleasure boat rentals, picnic areas, and a playground. Barren River Lake, which covers 10,000 acres, is a popular area for skiing, sailing, fishing, and swimming.

General Burnside State Park, 54 miles northeast of Burkesville, is Kentucky's only island state park. Rising out of Lake Cumberland and surrounded by beautiful Kentucky mountains, the park offers excellent fishing, an 18-hole golf course which is open year-round, a picnic area, a 161-site camping area for tents and recreational vehicles, a marina on the mainland near the park, and recreation.

The Big South Fork National River and Recreation Area, 64 miles east of Burkesville near Whitley City, is being developed as an outdoor recreation area by the U.S. Army Corps of Engineers in cooperation with the National Park Service. The area lies along the Big South Fork of the Cumberland River in Kentucky and Tennessee and encompasses some of the state's most rugged and scenic terrain. Recreational opportunities in the "National Area" include hiking, camping, horseback riding and picnicking, whitewater rafting, canoeing and kayaking trips. The Big South Fork Scenic Railway offers a chance to see part of the rugged Cumberland River area by rail. The train operates on a regular schedule between Stearns and the Big South Fork National River and Recreation Area near the historic Blue Heron Coal Tipple, a distance of about 5 miles each direction.

Green River Lake State Park near Campbellsville, 65 miles north of Burkesville, is made up of 1,300 acres surrounding an 8,200-acre lake. The park is open all year-round and offers 96 campsites, a beach, boat docks, fishing, and a picnic area.

COMMUNITY IMPROVEMENTS

Recent

A new city hall has been constructed at Burkesville. The new \$80,000 facility houses city offices, the police department, a dispatching center, and a conference room.

A new industrial site has been designated by the city of Burkesville.

Recent improvement projects completed by the Marrowbone Water District include construction of a new 100,000-gallon water storage tank and installation of fast-flow filters and pumps.

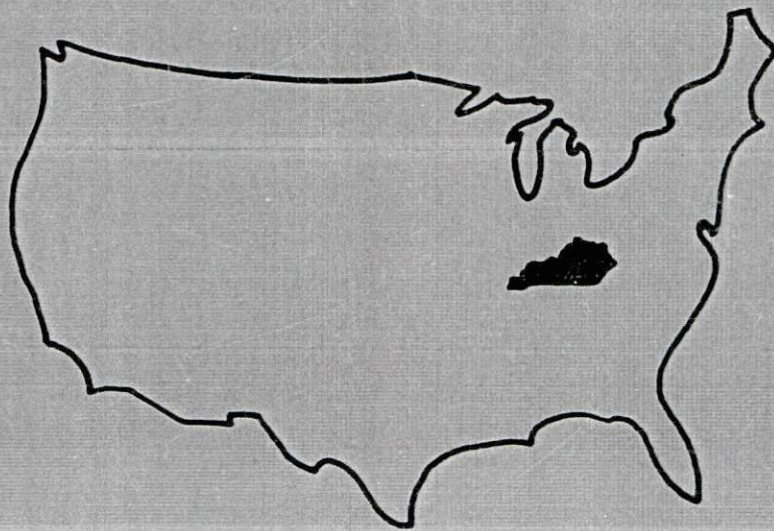
Under Way

Natural gas service is scheduled to be available in Burkesville by September of 1986. The system is being installed by Ken-Gas of Kentucky, Inc.

Planned

A contract has been let for construction of a new water storage tank for the South Cumberland Water District.

Plans are being made to construct a \$1,400,000 middle school for the Cumberland County School System.



**Kentucky Commerce Cabinet
Department of Economic Development
Capital Plaza Tower
Frankfort, Kentucky 40601
(502) 564-7140**