

1977

## Industrial Resources - Daviess County

Kentucky Library Research Collections  
Western Kentucky University, [spcol@wku.edu](mailto:spcol@wku.edu)

Follow this and additional works at: [https://digitalcommons.wku.edu/daviess\\_cty](https://digitalcommons.wku.edu/daviess_cty)



Part of the [Business Administration, Management, and Operations Commons](#), [Growth and Development Commons](#), and the [Infrastructure Commons](#)

---

### Recommended Citation

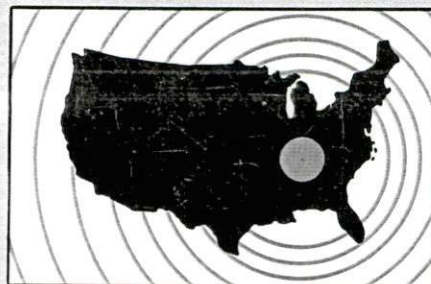
Kentucky Library Research Collections, "Industrial Resources - Daviess County" (1977). *Daviess County*. Paper 9.  
[https://digitalcommons.wku.edu/daviess\\_cty/9](https://digitalcommons.wku.edu/daviess_cty/9)

This Report is brought to you for free and open access by TopSCHOLAR®. It has been accepted for inclusion in Daviess County by an authorized administrator of TopSCHOLAR®. For more information, please contact [topscholar@wku.edu](mailto:topscholar@wku.edu).

# ***INDUSTRIAL RESOURCES***

## **OWENSBORO**

**Kentucky  
first**



**DEPARTMENT OF COMMERCE**



# OWENSBORO, KENTUCKY --- Index to Industrial Sites --- 1977

For detailed data on individual sites, contact Drewery I. Page, Owensboro-Daviess County Chamber of Commerce, 119 West 2nd Street, Owensboro, Kentucky 42301, or the Industrial Development Division, Kentucky Department of Commerce, Capital Plaza Tower, Frankfort, Kentucky 40601.



0 1000 2000 3000 4000 FEET  
1 MILE  
CONTOUR INTERVAL 10 FEET  
BASE: USGS 7.5 MINUTE SERIES — 1968

## LEGEND — Available Sites

177  
10 ac.

Site Number and Acreage (General Location)

- Existing Industries
- A. KENTUCKY ELECTRONICS, INC.
  - B. OWENSBORO BRICK AND TILE CO.
  - C. HAMMOND PLASTIC MIDWEST, INC.
  - D. FLEISCHMAN DISTILLERIES CORP.
  - E. HENDRICK SCREEN CO.
  - F. AMERICAN CIGAR DIV. AMERICAN BRANDS, INC.
  - G. GENERAL ELECTRIC CO.
  - H. WESTINGHOUSE
  - J. MODERN WELDING CO., INC.
  - K. MURPHY MILLER, INC.
  - L. GLENMORE DISTILLERIES CO.
  - M. OHIO VALLEY FORGINGS
  - N. GREEN RIVER STEEL
  - O. DEWEY AND ALMY CHEMICAL DIVISION
  - P. PINKERTON TOBACCO COMPANY
  - Q. MARKS MFG. COMPANY
  - R. RAGU FOODS, INC., DIV. OF CHESEBROUGH PONDS
  - S. V. E. ANDERSON MFG. CO.







INDUSTRIAL RESOURCES

OWENSBORO, KENTUCKY

Prepared by  
The Kentucky Department of Commerce  
Division of Research and Planning  
in cooperation with  
The Owensboro-Daviess County Chamber of Commerce

1977

# TABLE OF CONTENTS

<u>Chapter</u>	<u>Page</u>
INDUSTRIAL SITES . . . . .	i
OWENSBORO, KENTUCKY - A RESOURCE PROFILE. . . . .	1
THE LABOR MARKET AREA. . . . .	4
Population. . . . .	4
Labor Force Characteristics of Residents, 1975. . . . .	4
Nonagricultural Employment by Industry, by Place of Work, 1975 . . . . .	5
Major Owensboro Manufacturing Firms, Their Products and Employment . . . . .	6
Labor Organizations . . . . .	8
Estimated Male Labor Supply . . . . .	9
Estimated Female Labor Supply . . . . .	9
Average Weekly Wages by Industry, by Place of Work, 1975 . .	10
Per Capita Personal Income. . . . .	12
TRANSPORTATION . . . . .	13
Rail. . . . .	13
Highways . . . . .	13
Truck Service . . . . .	14
Air . . . . .	15
Bus . . . . .	16
Taxi . . . . .	16
Rental Services . . . . .	16
Water. . . . .	16
POWER AND FUEL . . . . .	18
Electricity. . . . .	18
Natural Gas . . . . .	21
Other Fuels . . . . .	21
WATER AND SEWERAGE . . . . .	23
Water. . . . .	23
Sewerage . . . . .	27
CLIMATE . . . . .	28



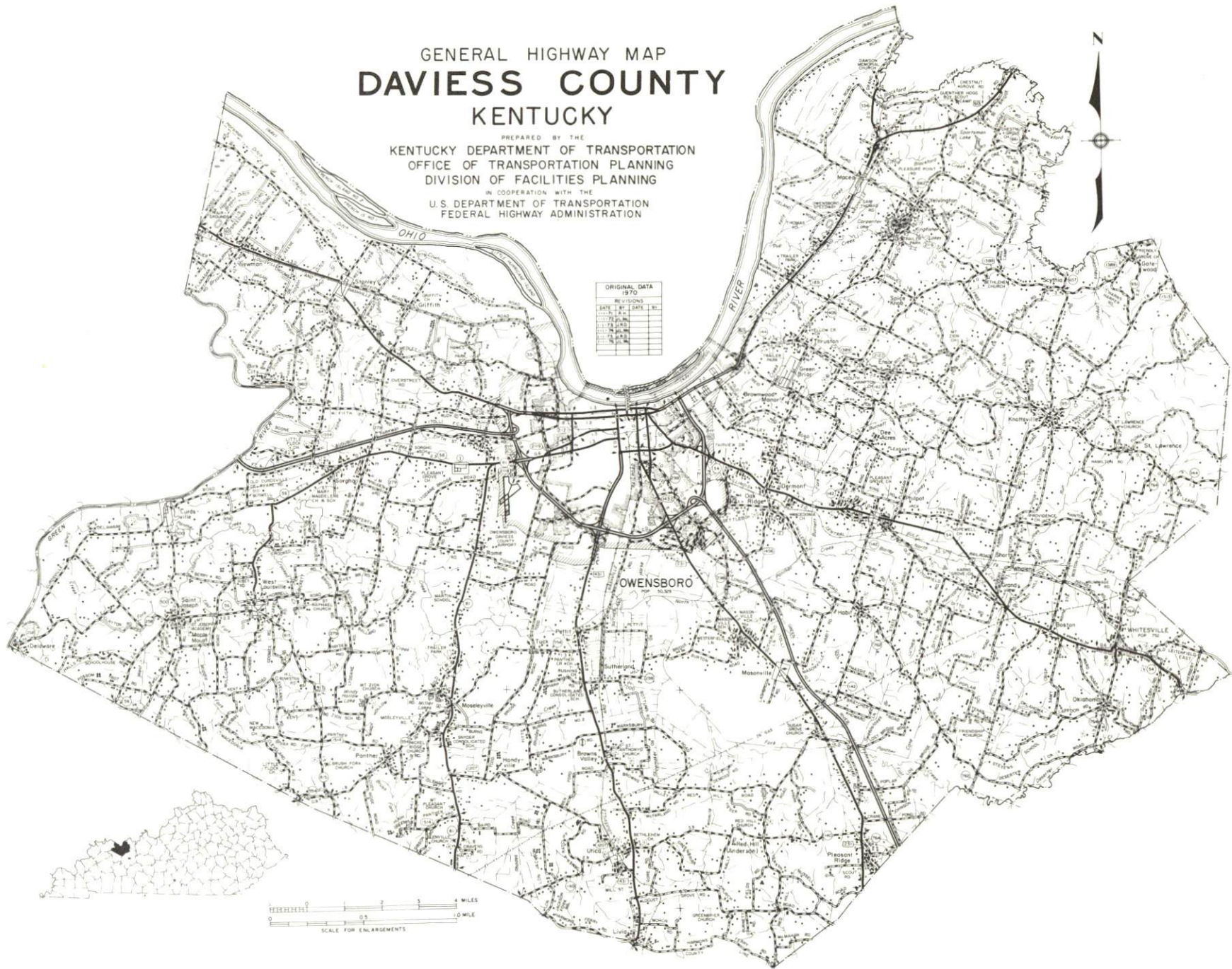
<u>Chapter</u>	<u>Page</u>
LOCAL GOVERNMENT . . . . .	29
City . . . . .	29
County . . . . .	29
Assessed Value of Property, 1976-77 . . . . .	29
Property Taxes . . . . .	29
Local Property Tax Rate Per \$100 of Assessed Valuation, 1976 . . . . .	30
Utilities Gross Receipts Tax for Schools . . . . .	30
Planning and Zoning . . . . .	32
Safety . . . . .	32
Police . . . . .	32
Fire . . . . .	32
Rescue Service . . . . .	32
Solid Waste . . . . .	33
EDUCATION . . . . .	35
Public Schools . . . . .	35
Nonpublic Schools . . . . .	35
Area Colleges and Universities . . . . .	38
Vocational Schools . . . . .	39
HEALTH . . . . .	41
Local Medical Personnel . . . . .	41
Hospitals . . . . .	41
Other Medical Facilities . . . . .	41
Ambulance Service . . . . .	42
Nursing Homes . . . . .	42
Public Health . . . . .	42
OTHER LOCAL FACILITIES. . . . .	43
Communications . . . . .	43
Library Services . . . . .	45
Religious Institutions . . . . .	45
Financial Institutions . . . . .	45
Hotels and Motels . . . . .	46
Clubs and Organizations . . . . .	46
RECREATION . . . . .	47
COMMUNITY IMPROVEMENTS . . . . .	50
HISTORY . . . . .	53

GENERAL HIGHWAY MAP  
**DAVISS COUNTY**  
KENTUCKY

PREPARED BY THE  
KENTUCKY DEPARTMENT OF TRANSPORTATION  
OFFICE OF TRANSPORTATION PLANNING  
DIVISION OF FACILITIES PLANNING

IN COOPERATION WITH THE  
U.S. DEPARTMENT OF TRANSPORTATION  
FEDERAL HIGHWAY ADMINISTRATION

ORIGINAL DATA			
1970			
REVISIONS			
DATE	BY	DATE	BY
1970-71	R.H.		
1970-72	J.L.M.		
1970-73	J.R.D.		
1970-74	J.L.M.		
1970-75	J.R.D.		
1970-76	J.L.M.		







Aerial View of Owensboro, Kentucky



A map of the study area in Kentucky, showing five counties: Henderson, Daviess, Hancock, McLean, and Ohio. The counties are outlined in black and labeled with their names in capital letters. Henderson is on the left, Daviess is in the center, Hancock is on the top right, McLean is on the bottom left, and Ohio is on the bottom right.

[illegible]



## OWENSBORO, KENTUCKY - A RESOURCE PROFILE

Owensboro, a city with an estimated population of 51,355 in 1973, is the third largest city in Kentucky and the county seat of Daviess County. It is the home of Brescia College and Kentucky Wesleyan College, both of which are four-year coeducational liberal arts colleges. Owensboro, situated on the south bank of the Ohio River in northwestern Kentucky, is 37 miles southeast of Evansville, Indiana; 134 miles north of Nashville, Tennessee; and 110 miles southwest of Louisville, Kentucky. St. Louis, Missouri, and Cincinnati, Ohio, are within a 220-miles radius of Owensboro.

Daviess County, located in Kentucky's Western Coal Field Region, covers a land area of 462 square miles. The Ohio River forms the county's northern boundary. The county, which is also designated as a Standard Metropolitan Statistical Area by the Bureau of the Census, had an estimated population of 81,200 in 1975.

### The Economic Framework

The total number of Daviess County residents employed in 1975 averaged 31,820, with nonagricultural jobs accounting for 30,250 workers. Manufacturing employers in the county reported 6,825 workers; mining and quarrying 560; construction firms 1,450; transportation, communications and public utilities 1,740; wholesale and retail trade 6,380; finance, insurance, and real estate 980; and employees in the service industries 3,640. Major industrial products are radio and television components, tobacco products, steel, office furniture, and whiskey.

Total unemployment in Daviess County averaged 8.3 percent of the labor force in 1975.

Per capita personal income in the county in 1974 was \$4,666, an increase of 37.0 percent since 1970.

The Owensboro labor market area includes Daviess, the four adjoining Kentucky counties, and Spencer County in Indiana. The total number of residents in the Kentucky portion of the labor market area employed in 1975 averaged 64,300, with nonagricultural jobs accounting for 60,650 workers. Manufacturing employers in the area reported 13,800 workers; mining and quarrying 3,420; construction firms 2,360; transportation, communications, and public utilities 2,780; wholesale and retail trade 10,200; finance, insurance, and real estate 1,510; and employees in the service industries 6,170.

## Resources for Growth

1. Labor Supply - There is a current estimated labor supply of 6,290 men and 5,070 women available for industrial jobs in the Kentucky portion of the labor market area. In addition, 8,070 young men and 7,900 young women in this area will become 18 years of age before 1983 and potentially available for work. The current labor supply would be supplemented by the number of men and women in the adjoining Indiana county who are available for industrial jobs.

2. Transportation - Rail, highway, water, and air capabilities are excellent. Two railroads, the Louisville and Nashville Railroad and the Illinois Central Gulf Railroad, provide a variety of services, including piggyback service. The Audubon Parkway, a four-lane east-west highway, provides direct access to the north-south Pennyryle Parkway. Direct access to the Western Kentucky Parkway is provided by the four-lane north-south Green River Parkway. This parkway extends to Bowling Green, Kentucky, where it intersects with Interstate 65, a principal north-south highway. Four of the twelve truck lines serving Owensboro maintain terminals in the city. A \$2.7 million public river terminal was officially opened in 1976. Four commercial barge lines provide regular service to Owensboro. Commuter air service is available at the Owensboro-Daviess County Airport, and commercial air service is available at the Evansville Dress Regional Airport, 41 miles from Owensboro.

3. Utilities and Fuel - Electric power is supplied to the City of Owensboro by the Owensboro Municipal Utilities. Daviess County is served electricity by the Kentucky Utilities Company and the Green River Electric Corporation. Natural gas service is provided by the Western Kentucky Gas Company, whose source of supply is the Texas Gas Transmission Corporation. There are seven distributors of propane and eight distributors of distillate fuel oil located in Owensboro.

4. Education - Education is an important growth asset for Owensboro. The city and county school systems offer comprehensive educational programs. The nonpublic schools also provide educational opportunities for over 4,400 kindergarten through high school students.

There are two fully accredited, coeducational colleges located in the city: Brescia College and Kentucky Wesleyan College. Both colleges confer Baccalaureate degrees. Kentucky Wesleyan offers an associate of arts degree in twelve fields including such areas of interest to industry as commercial art, business administration and economics, instrumentation technology, data processing, and chemistry technology. Brescia College offers associate of arts degrees in human relations and engineering technology. Graduate degrees in six fields are available through the Higher Education Consortium operated at the two local colleges in conjunction with



Murray State University and Western Kentucky University. Both local colleges offer adult and continuing education programs.

Owensboro Business College awards associate degrees in the fields of business administration, data processing, data management, and secretarial and clerical work.

In addition to these colleges, one university, one university extension campus, one senior college and two community colleges are located within 50 miles of Owensboro.

Two vocational training facilities, the Daviess County State Vocational-Technical School offering 23 courses, and the Owensboro Vocational-Technical School offering 10 courses, are located in Owensboro. The Owensboro Vocational-Technical School will expand its curriculum when classes are moved to the new classroom building now under construction.

# THE LABOR MARKET AREA

## POPULATION

Area	1975*	1970	Percent Nonwhite
			1970
Owensboro	51,355**	50,329	6.3
Labor Market Area	155,700	150,449	N. A.
Daviess County	81,200	79,486	4.3
Hancock County	7,400	7,080	2.0
Henderson County	36,900	36,031	8.4
McLean County	10,200	9,062	0.9
Ohio County	20,000	18,790	1.4

\*Provisional Estimates.

\*\*1973 Population Estimates.

Sources: U.S. Department of Commerce, Bureau of the Census, Census of Population, 1970. U.S. Department of Commerce, Bureau of the Census, Current Population Reports, Series P-25, No. 562, June 1975; Series P-26, No. 75-17, May 1976.

## LABOR FORCE CHARACTERISTICS OF RESIDENTS, 1975

	<u>Daviess County</u>	<u>Labor Market Area</u>
Civilian Labor Force	34,691	69,733
Employment	31,819	64,299
Agricultural	1,565	3,647
Nonagricultural	30,254	60,652
Unemployment	2,872	5,434
Rate of Unemployment (%)	8.3	7.8

Source: Kentucky Department for Human Resources, Kentucky Labor Force Estimates, Annual Averages, 1975.



NONAGRICULTURAL EMPLOYMENT  
BY INDUSTRY, BY PLACE OF WORK, 1975

	<u>Daviess County</u>	<u>Labor Market Area</u>
All Industries	21,647	40,402
Mining & Quarrying	563	3,424
Contract Construction	1,447	2,356
Manufacturing	6,825	13,799
Food & Kindred Products	1,269	1,451
Tobacco	988	988
Apparel, Textiles, Leather	13	637
Lumber, Furniture	409	1,323
Printing & Publishing, Paper	158	711
Chemicals, Petroleum & Coal,		
Rubber	367	948
Stone, Clay & Glass	300	548
Primary Metals	597	3,552
Machinery, Metal Products,		
Equipment	2,724	3,573
Other Manufacturing	2	70
Transportation, Communications &		
Public Utilities	1,744	2,784
Wholesale & Retail Trade	6,380	10,198
Finance, Insurance & Real Estate	978	1,511
Services	3,639	6,167
Other	72	129

Note: Excludes domestic workers, railway workers; certain nonprofit corporations; majority of federal, state, and local government workers; and self employed workers. Labor market area totals for some employment categories exclude employment that was not disclosed for individual counties. Manufacturing detail may not add to totals because of rounding of base data.

Source: Kentucky Department for Human Resources, Average Monthly Workers Covered by Kentucky Unemployment Insurance Law, 1975.

MAJOR OWENSBORO MANUFACTURING FIRMS,  
THEIR PRODUCTS AND EMPLOYMENT\*

Firm (Establishment date)	Product	Employment			Organized
		Total	Male	Female	
American Cigar (1956)	Cigars	580	160	420	**
V. E. Anderson Manufacturing Company(1943)	Aluminum windows and doors, wood windows	225	200	25	**
Baskin-Robbins, Inc. (1920)	Fluid milk, ice cream	80	72	8	**
Colonial Baking Company (1959)	Bread and rolls	150	136	14	**
Field Packing Company, Inc. (1915)	Meat packing	372	320	52	
The Fleischmann Distilling Corporation (1940)	Whiskey, feed, cooperage	95	90	5	**
General Electric Company (1918)	Radio and TV tubes and components, special electron tubes	1,610	470	1,140	**
Glenmore Distilleries Company (1901)	Whiskey, gin, vodka, cocktails	300	225	75	**
W. R. Grace & Company, Dewey & Almy Chemical Division (1959)	Battery separators, latex, cellulosic fibers	297	280	17	**
Green River Steel, Division of Jessup Steel Company (1952)	Bars, billets, blooms, stainless steel, carbon and alloy steel	744	721	23	**
Hodge Tobacco Company (1880)	Tobacco processing	165	143	22	
Kentucky Electronics, Inc. (1960)	Wire drawing, cathode ray tube parts, electro-mechanical assemblies	169	77	92	**
Medley Distilling Company (1940)	Whiskey, animal feed supplement	138	105	33	
Modern Welding Company, Inc. (1933)	Storage tanks, pressure vessels, fabricated structural steel	184	180	4	
Murphy-Miller, Inc. (1945)	Office chairs and desks	500	450	50	**

(Contd. )



<u>Firm (Establishment Date)</u>	<u>Product</u>	<u>Employment</u>			<u>Organized</u>
		<u>Total</u>	<u>Male</u>	<u>Female</u>	
Opportunity Center Workshop (1960)	Styrofoam products, corsages, grading stakes, tobacco sticks	75	40	35	
Owensboro Brick & Tile Company (1952)	Face brick	100	95	5	
Owensboro Grain Company	Soybean oil, meal	70	70	0	
Owensboro Ice Cream & Dairy Products (1927)	Milk, ice cream	74	66	8	**
Owensboro Publishing Company (1929)	Newspaper	113	62	51	
Pinkerton Tobacco Company (1973)	Chewing and smoking tobacco	250			**
Premium Allied Tool, Inc. (1966)	Metal stampings, wire forms, weldments	69	54	15	
Ragu Foods, Inc. (1974)	Spaghetti sauce	50			
Westinghouse Incan- descent Lamp Plant (1945)	Incandescent lamps	178	56	122	**
Whitehall Furniture, Inc. (1968)	Wood office furniture	82	66	16	

\*50 employees or more.

\*\*See Labor Organizations below.

Source: Kentucky Department of Commerce, Division of Research  
and Planning.

## LABOR ORGANIZATIONS

<u>Union</u>	<u>Representing workers at the following manufacturing firms:</u>
Tobacco Workers International	American Cigar
Teamsters, Chauffeurs and Warehousemen (Truck Drivers);	
United Brotherhood of Carpenters (Workers)	V. E. Anderson Manufacturing Company
Local Dairyworkers Union	Baskin-Robbins, Inc.
Bakery and Confectionery Workers Union (Bakers);	
Teamsters (Salesmen)	Colonial Baking Company
International Brotherhood of Boilermakers, Iron Shipbuilders, Blacksmiths, Forgers, and Helpers	W. R. Grace Company
Distillery, Rectifying and Wine Workers International; Firemen and Oilers Union	The Fleishmann Distilling Company
Teamsters and Chauffeurs	General Concrete Products Company
Guards; Industrial Workers Distillery Workers; Firemen and Oilers	General Electric Company
Guards; Steelworkers	Glenmore Distilleries Company
Hod Carriers	Green River Steel Corporation
Kentucky Laborers' District Council, Laborers' International Union of North America - AFL-CIO	Katterjohn Concrete Company
Steelworkers	Kentucky Concrete Pipe Company
Carpenters; Millwrights; Laborers	Kentucky Electronics, Inc.
Upholsterers International Union	Lloyds Mechanical Erection Company
Boilermakers	Murphy-Miller, Inc.
Teamsters	Ohio Valley Forgings
Teamsters	Owensboro Concrete Company
	Owensboro Ice Cream and Dairy Products
Steelworkers (Shop employees)	Owensboro Iron Works, Inc.
Tobacco Workers, AFL-CIO	The Pinkerton Tobacco Company
Teamsters	Ready-Mixed Concrete Company
Teamsters	Transit-Mix Concrete Company
Industrial Workers	Westinghouse Electric Corporation (9th and Bolivar Street)



ESTIMATED MALE LABOR SUPPLY  
OWENSBORO LABOR MARKET AREA

Area	Current				Future
	Total	Not in Labor Force	Unemployed	Under- employed	Reaching 18 yrs. of age before 1983
Labor Market					
Area	6,290	320	3,910	2,060	8,068
Daviess	3,190	0	2,110	1,080	4,467
Hancock	590	320	160	110	361
Henderson	1,470	0	1,020	450	1,898
McLean	370	0	250	120	405
Ohio	670	0	370	300	937

Sources: Kentucky Department for Human Resources, Kentucky Labor Supply Estimates by County, 1976. Kentucky Department of Commerce, Future Labor Supply before 1983.

ESTIMATED FEMALE LABOR SUPPLY  
OWENSBORO LABOR MARKET AREA

Area	Current				Future
	Total	Not in Labor Force	Unemployed	Under- employed	Reaching 18 yrs. of age before 1983
Labor Market					
Area	5,070	610	1,520	2,940	7,901
Daviess	2,330	0	760	1,570	4,357
Hancock	740	540	60	140	389
Henderson	1,280	70	480	730	1,880
McLean	240	0	90	150	446
Ohio	480	0	130	350	829

Sources: Kentucky Department for Human Resources, Kentucky Labor Supply Estimates by County, 1976. Kentucky Department of Commerce, Future Labor Supply before 1983.

AVERAGE WEEKLY WAGES BY INDUSTRY,  
BY PLACE OF WORK, 1975

	<u>Daviess County</u>	<u>Hancock County</u>	<u>Henderson County</u>
All Industries	\$168.02	\$256.94	\$162.43
Mining & Quarrying	235.85	*	260.17
Contract Construction	189.89	268.97	255.59
Manufacturing	200.57	275.80	175.22
Transportation, Communications & Public Utilities	235.15	216.56	208.64
Wholesale & Retail Trade	127.24	94.07	127.62
Finance, Insurance & Real Estate	166.58	119.99	149.04
Services	128.36	100.76	124.55
Other	121.83	*	102.60
	<u>McLean County</u>	<u>Ohio County</u>	
All Industries	\$164.60	\$220.91	
Mining & Quarrying	289.16	*	
Contract Construction	114.79	185.21	
Manufacturing	149.15	132.32	
Transportation, Communications & Public Utilities	268.08	157.35	
Wholesale & Retail Trade	109.57	107.73	
Finance, Insurance & Real Estate	109.72	154.26	
Services	96.22	104.22	
Other	*	74.63	

Note: Excludes domestic workers, railway workers; certain nonprofit corporations; majority of federal, state and local government workers; and self employed workers.

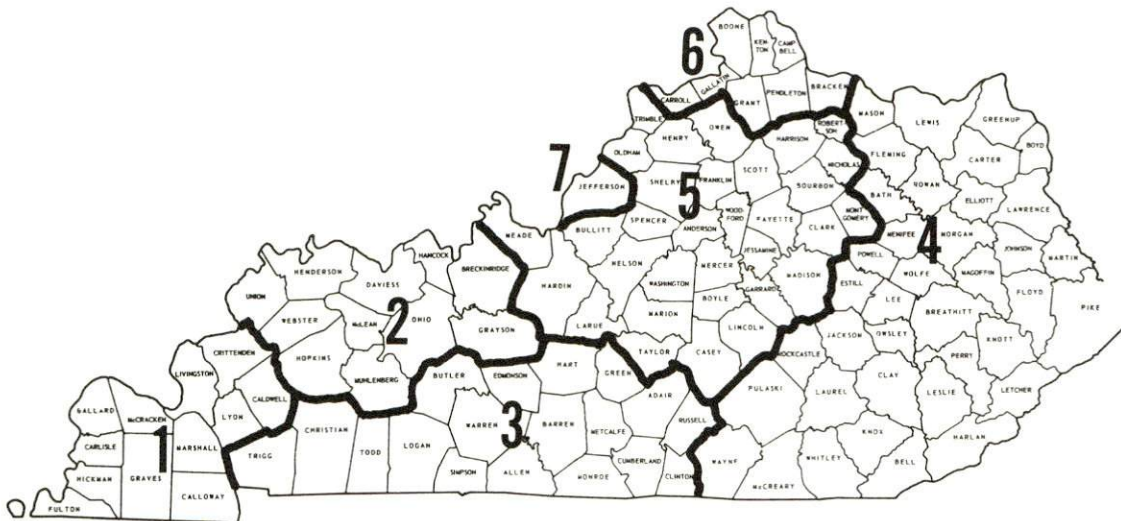
\*Not disclosed.

Source: Kentucky Department for Human Resources, Average Weekly Wages of Workers Covered by Unemployment Insurance, 1975.



Occupational wage rates for specific industries are usually not available to most government agencies, and wage data furnished to state employment agencies by individual industrial employers is protected from disclosure by federal law. The most reliable up-to-date wage information can be obtained by direct contact with local employers.

Associated Industries of Kentucky, a voluntary organization of Kentucky businesses, regularly collects occupational wage rates and fringe benefits data from participating member firms. Data is compiled for over 127 clearly defined office, production, and service occupations. Tabulations are published for seven regions of Kentucky, as shown on the map below. It should be noted that the data may be weighted by the preponderance of firms in the larger cities and may be somewhat higher than the rates paid in the smaller communities. Data from these tabulations are available, upon request, from the Kentucky Department of Commerce, Frankfort, Kentucky 40601.



Associated Industries of Kentucky Area Wage Surveys

PER CAPITA PERSONAL INCOME

<u>Area</u>	<u>1974</u>	<u>1970</u>	<u>Percent Change</u>
Daviess County	\$4,666	\$3,407	37.0
Labor Market Area			
Range	\$3,859 - 4,772	\$2,437 - 3,407	N.A.
Kentucky	4,442	3,112	42.7
U. S.	5,448	3,966	37.4

Sources: U. S. Department of Commerce, Bureau of Economic Analysis, Survey of Current Business, August 1975. U. S. Department of Commerce, Bureau of Economic Analysis, March 1976.



## TRANSPORTATION

### Rail

Line serving Owensboro - Louisville & Nashville Railroad

Services - One northbound and one southbound freight stop daily;  
two northbound and two southbound through freights daily;  
switching facilities; siding space for approximately 300 cars;  
piggyback facilities for 6 cars without switching

Line serving Owensboro - Illinois Central Gulf Railroad

Services - On a branch line that has three weekly freight runs;  
siding space for 115 to 130 cars; piggyback facilities

For details on routing, schedules, rates, and services, contact:

Manager of Industrial Development  
Louisville & Nashville Railroad  
908 West Broadway  
Louisville, Kentucky 40203  
(502) 587-5000

and/or

Manager of Industrial Development  
Illinois Central Gulf Railroad Company  
112 North 4th Street  
St. Louis, Missouri 63102  
(314) 241-9400

### Highways

U. S. Highways 60, 231 and 431 and Kentucky Highways 54, 56 and 81 converge at Owensboro. In addition, Owensboro is surrounded by a network of major highways. The Audubon Parkway, a four-lane east-west highway, provides direct access to the north-south Pennyrile Parkway. The Green River Parkway connects Owensboro with the Western Kentucky Parkway, 30 miles to the south, and Interstate 65 at Bowling Green, 63 miles away. An interchange of Interstate 64, providing direct access to Louisville and St. Louis, is located only 36 miles north of Owensboro.

## Truck Service

### Company

### Home Office

A & H Truck Line, Inc. *	1111 East Louisiana Street Evansville, Indiana 47717
Able Express, Inc.	801 South 13th Street Louisville, Kentucky 40210
Brada Miller Freight System, Inc.	1210 South Union Street Kokomo, Indiana 46901
Branch Motor Express	115 Fifth Avenue New York, New York 10011
Interstate Motor Freight System	134 Grandville Avenue Grand Rapids, Michigan 49502
Ligon Specialized Haulers, Inc.*	Highway 85 E Madisonville, Kentucky 42431
McLean Trucking Company	P. O. Box 213 Winston-Salem, North Carolina 27102
Majors Transit, Inc.	P. O. Box 7 Caneyville, Kentucky 42721
Owensboro Express, Inc.*	Alsop Lane, P. O. Box 1365 Owensboro, Kentucky 42301
Roadway Express, Inc.	1077 Gorge Boulevard Akron, Ohio 44309
T.I.M.E. - DC, Inc.	P. O. Box 2550 Lubbock, Texas 79408
Transport Motor Express, Inc.*	Meyer Road, P. O. Box 958 Fort Wayne, Indiana 46801

### Other Freight Services

### Shipping Center

United Parcel Service

Owensboro

---

\*Local terminal.



HIGHWAY MILES AND TRUCK TRANSIT TIME IN DAYS FROM  
OWENSBORO, KENTUCKY, TO SELECTED MARKET CENTERS

City	Delivery		City	Delivery	
	Highway Miles	Time TL		Highway Miles	Time TL
Atlanta, Ga.	376	2	Los Angeles, Calif.	2,052	5
Chicago, Ill.	341	1	Louisville, Ky.	110	1
Cincinnati, Ohio	211	1	Nashville, Tenn.	134	2
Cleveland, Ohio	455	2	New York, N. Y.	858	4
Detroit, Mich.	470	2	St. Louis, Mo.	207	1

Source: Delivery Time Only - T.I.M.E. - DC, Inc. General Office,  
P. O. Box 2550, Lubbock, Texas, 79408.

Air

<u>Local</u>	<u>Nearest Commercial</u>
Owensboro-Daviess County Airport*	Evansville Dress Regional Airport
Location: 3.5 miles west-southwest of Owensboro	4 miles northeast of Evansville, 41 miles from Owensboro
Runways: 2 paved	3 paved
Length: 6,500 and 3,700 feet	8,027, 5,084 and 2,968 feet
Traffic	
Control: Control tower, ground con- trol, guards, ILS System, radar vectoring available through Evansville Airport approach control	Unicom, approved instrument approach (ILS-VOR)
Lighting: Beacon, wind tee, obstruc- tion lights and taxi lights, VASI-4, high intensity runway lights	Beacon, runway (hours of darkness)
Services: Air Kentucky (commuter carrier with 9 arrivals and 9 departures daily); 100 oc- tane; Jet A fuel; major A & E repairs; storage; fire and rescue truck; general flying service; taxi and rental cars; 15 T-hangar units	Eastern, Delta and Allegheny Airlines; fuel - 80/87, 100/130, jet fuel, minor repairs; hangars and tie downs; charter, weather in- formation; taxi, car rentals, and limousine; restaurant
Air Freight Service:	Air freight terminal regularly serviced by freight carrying airlines

\*Airport service facilities will be remodeled and expanded within the  
next two years.

Bus - Owensboro Transit System (Intracity)

Southern Greyhound Bus Lines

Fuqua Bus Line

Evansville and Ohio Valley Bus Lines

Taxi - 2 companies - 24-hour, radio-dispatched service

Rental Services - Car, truck and trailer rentals

Water -

Located on the Ohio River, a major river in the Eastern United States Inland Waterways system, Owensboro is an excellent location for river transportation. Navigation on the Ohio River is being improved by the construction of new and larger locks and dams under the supervision of the U. S. Corps of Engineers. This project, in part, provides for the number of lockages to be reduced from 46 to 18 and the present method of double locking large tows to be eliminated by the new 1,200-foot lock chambers. These improvements will substantially decrease transportation time and cost.

The Owensboro Riverport Authority was established in 1967 by the city of Owensboro for the purpose of developing riverport facilities and developing land to attract river-oriented industries. The authority officially opened a \$2.7 million public river terminal in June, 1976. This facility, located on a 50-acre site, will initially provide general cargo and warehousing facilities as well as space reserved for future construction of bulk and liquid cargo terminals. Two new companies have operations underway in the 235-acre industrial park.

Commercial barge lines providing regular service to Owensboro include American Commercial Barge Line, Union Barge Line, Mississippi Valley, and Walker Towing Company. Irregular barge service is provided by Ohio Barge Line.

# RIVER TERMINALS - OWENSBORO, KENTUCKY

Owner or Operator	Type of Freight	Shelter
Owensboro River Rail Terminal (Division of Owensboro River Sand & Gravel)*	Steel, scrap iron and miscellaneous freight	None
Owensboro River Terminal	Petroleum products	Storage tanks
Owensboro Riverport Authority**	General cargo	Warehouse
Ashland Oil & Refining Company and Owensboro Ashland Company (Sohio-Ashland)	Oil (crude)	Storage tanks
Texaco, Inc.	Petroleum products	Storage tanks
Glenmore Distilleries	Grain alcohol	Storage tanks
Standard Oil Company (Kentucky)	Petroleum products and fuel oil	Storage tanks
Mid-America Terminal of Kentucky, Inc.	Coal	None
Missouri Portland Cement Company	Bulk cement	Silos
Owensboro Grain Company, Inc.	Grain	None
Owensboro River Sand and Gravel Company	Sand and gravel	Silos, truck- loading hop- pers and garage
Murphy Grain and Milling Company	Grain	None
Green Coal Company	Coal	None
Marks Steel Products Company	Molasses	Storage tanks

\*Private and public facility.

\*\*Public facility; all others are private.



## POWER AND FUEL

### Electricity

Company serving Owensboro - Owensboro Municipal Utilities

Source of power - Owensboro Municipal Utilities

Total generating capacity - 445,000 KW

For industrial rates contact:

General Manager  
Owensboro Municipal Utilities  
115 East Fourth Street  
Owensboro, Kentucky 42301  
(502) 926-3200

Company serving Daviess County - Kentucky Utilities Company

Source of power - Kentucky Utilities Company

Total generating capacity - 1,615,500 KW

For industrial rates contact:

Industrial Development Department  
Kentucky Utilities Company  
120 South Limestone Street  
Lexington, Kentucky 40507  
(606) 255-1461

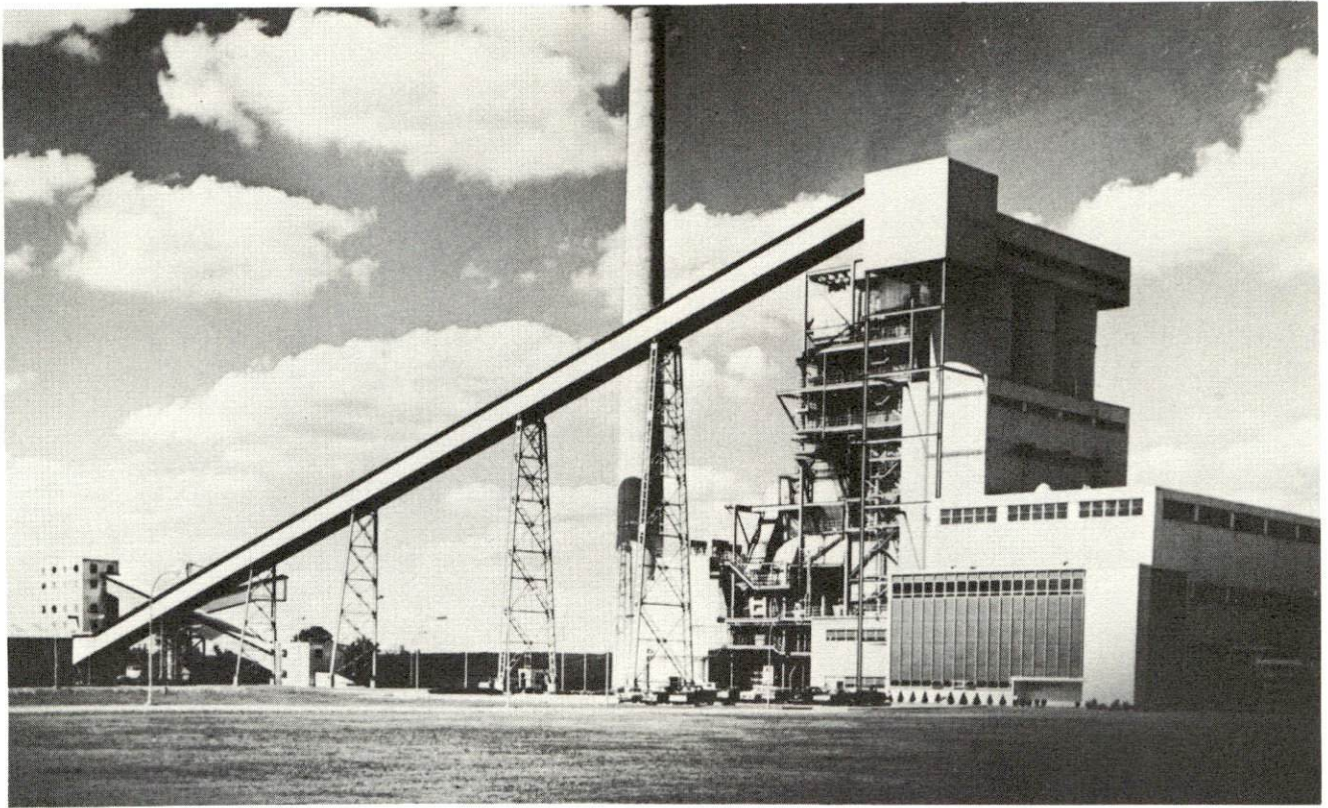
Company serving Daviess County - Green River Electric Corporation

Source of power - Big Rivers Electric Corporation

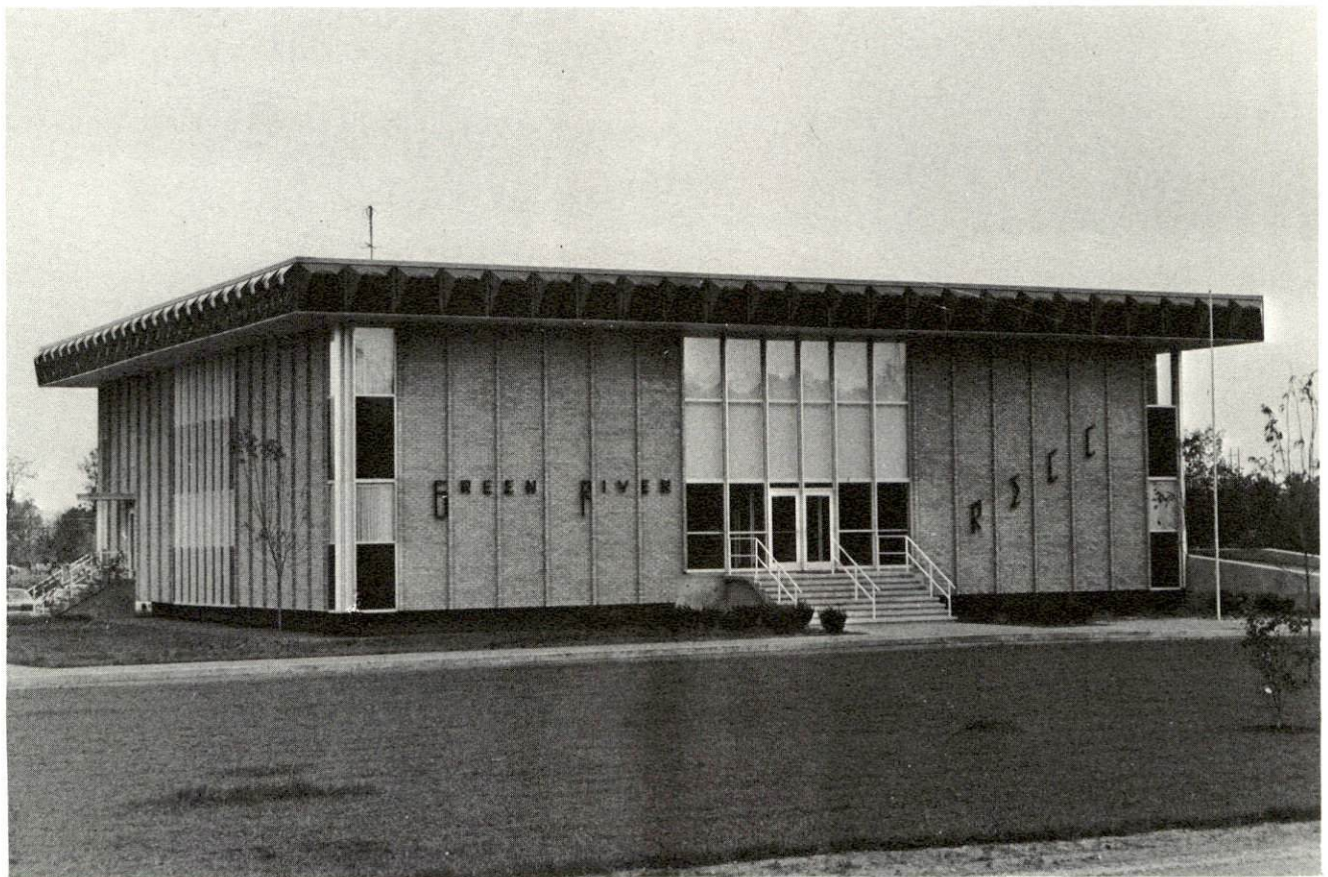
Total generating capacity - 590,000 KW

For industrial rates contact:

Green River Electric Corporation  
3111 Fairview Drive  
Owensboro, Kentucky 42301  
(502) 926-4141



Owensboro Municipal Utilities Electric Generating Station



Green River Electric Corporation





Western Kentucky Gas Company Building - General Office



Texas Gas Transmission Corporation, Owensboro



### Natural Gas

Company serving Owensboro - Western Kentucky Gas Company  
Source of supply - Texas Gas Transmission Corporation  
Size of transmission mains - 4 to 36 inches (supplier)  
Distribution mains - 2 to 12 inches  
Distribution pressure - 4 ounces to 35 psi  
Btu content - 1,000 per cubic foot  
Specific gravity - .589  
For rates and supplies contact:

Director of Marketing  
Western Kentucky Gas Company  
311 West 7th Street  
Owensboro, Kentucky 42301  
(502) 684-8811

### Other Fuels

#### Propane

Empiregas, Inc., of Owensboro, 2108 Calhoun Road, Owensboro  
Industrial Petroleum Supply, 416 West 3rd, Owensboro  
Miles LP Gas, Inc., Keller Road, Owensboro  
Pargas of Owensboro, 308 East 25th, Owensboro  
Pyrofax Gas Service - Suburban Gas and Heating Company,  
2124 Calhoun Road, Owensboro  
Sure Gas, Inc., 1301 Daviess Street, Owensboro  
Texaco LP Gas Products-Jay's LP Gas, Inc., Pleasant  
Valley Road, Owensboro

Fuel oils

Distillate fuel oil -

American Fuel Oil - Amoco Oil Company, distributor  
(bulk plant), Pleasant Valley Road, Owensboro  
Ashland Petroleum Company (bulk plant), 1021 East 2nd, Owensboro  
Gulf Heating Oil-T. J. Bartlett Company, distributor (bulk plant),  
1309 West 9th, Owensboro  
Industrial Petroleum Supply, 416 West 3rd, Owensboro  
Phillips 66 Fuel Oils-Owensboro Oil Company, distributor  
(bulk plant), 2111 Highway 60-E, Owensboro  
Shell Heating Oils-Browning Oil Company, distributor (bulk  
plant), 1621 West 7th, Owensboro  
Southern States Co-op, Inc. Owensboro Petroleum Service,  
distributor (bulk plant), Coast Guard Lane, Owensboro  
Standard Oil Company (bulk plant), 1817 Hardinsburg Road, Owensboro

Residual fuel oil - Arrangements must be made with the refinery.

Low sulphur content coal - Available in eastern Kentucky.

## WATER AND SEWERAGE

### Water

Company serving Owensboro - Owensboro Municipal Utilities  
115 East Fourth Street  
Owensboro, Kentucky 42301  
(502) 926-3200

Source - 28 wells

Treatment plant capacity - 20,000,000 gallons per day\*

Average daily consumption - 9,300,000 gallons

Peak daily consumption - 12,800,000 gallons

Type treatment - Aeration, softening, filtration, chlorination,  
fluoridation

Storage capacity - 6,000,000 gallons

Size lines - 6 to 24 inches

Average pressure - 55 psi

Average temperature - 57 degrees F.

---

\*The city recently completed a \$2,000,000 expansion of the treatment facilities, which increased the capacity to 20,000,000 gallons per day.



MONTHLY WATER RATES FOR WHOLESALE  
AND INDUSTRIAL CONSUMERS

---

<u>Cubic Feet Delivered in Any One Month</u>		<u>Inside City</u> <u>Per 100 Cu. Ft.</u>	<u>Outside City</u> <u>Per 100 Cu. Ft.</u>
First	1,500 cu. ft.	\$ .446	\$ .669
Next	8,500 cu. ft.	.342	.512
Next	190,000 cu. ft.	.246	.369
All over	200,000 cu. ft.	.202	.304

<u>Minimum Charge for Metered Service</u>		<u>Inside City</u>	<u>Outside City</u>
5/8 or	3/4-inch meter	\$ 1.59	\$ 2.39
	1-inch meter	4.38	6.56
1 1/4-inch meter		7.16	10.74
1 1/2-inch meter		9.55	14.32
	2-inch meter	15.91	23.87
	3-inch meter	28.43	42.65
	4-inch meter	43.17	64.76
	6-inch meter	79.56	110.34
	8-inch meter	159.12	238.68

<u>Fire Protection Service (Monthly Fees)</u>		<u>Inside City</u>	<u>Outside City</u>
	2-inch service connection	\$ 5.37	\$ 7.90
	4-inch service connection	10.53	15.80
	6-inch service connection	15.21	22.82
	8-inch service connection	19.89	29.84
Tap-on charge:	3/4-inch tap	\$135	
	1-inch tap	205	
	1 1/2-inch tap	370	
	2-inch tap	Charge at actual cost of installation	

Name of water district - West Daviess County Water District  
2430 East Fourth Street  
Owensboro, Kentucky 42301  
(502) 685-5594

Area served - West Daviess County

Date when water district began operating - 1968

Source of supply of treated water - Owensboro Municipal Utilities

Average amount of water used in a 24-hour period - 250,000 gallons

Peak amount of water used in a 24-hour period - 350,000 gallons

Storage capacity - 650,000 gallons; Average pressure - 70 psi

Average temperature - 58 degrees F.; Size lines 2 to 12 inches

Rates -

First	2,000 gallons	\$6.50 (Minimum)
Next	2,000 gallons	2.50 per M gallons
Next	2,000 gallons	2.00 per M gallons
Next	4,000 gallons	1.75 per M gallons
Next	20,000 gallons	1.55 per M gallons
Next	20,000 gallons	1.40 per M gallons
Next	20,000 gallons	1.25 per M gallons
Next	30,000 gallons	1.10 per M gallons
Next	50,000 gallons	1.00 per M gallons
Next	50,000 gallons	.80 per M gallons
Next	50,000 gallons	.65 per M gallons
All over	250,000 gallons	.50 per M gallons

Tap-on charge: 3/4- by 5/8-inch - \$250

Name of water district - Southeast Daviess County Water District  
2430 East Fourth Street  
Owensboro, Kentucky 42301  
(502) 685-5594

Area served - Southeast Daviess County

Date when water district began operating - 1966

Source of supply of treated water - Owensboro Municipal Utilities

Average amount of water used in a 24-hour period - 500,000 gallons

Peak amount of water used in a 24-hour period - 550,000 gallons

Storage capacity - 750,000 gallons; Average pressure - 75 psi

Average temperature - 58 degrees F.; Size lines - 2 to 12 inches

Rates -

First	2,000 gallons	\$5.00 (Minimum)
Next	8,000 gallons	1.00 per M gallons
Next	10,000 gallons	.90 per M gallons
Next	20,000 gallons	.80 per M gallons
All over	40,000 gallons	.70 per M gallons

Tap-on charge: 3/4- by 5/8-inch - \$250

Name of water district - East Daviess County Water Association\*

Route 1

Maceo, Kentucky

(502) 264-1326

Area served - East Daviess County

Date when water district began operating - 1972

Source of supply of treated water - Owensboro Municipal Utilities

Average amount of water used in a 24-hour period - 100,000 gallons

Peak amount of water used in a 24-hour period - 125,000 gallons

Storage capacity - 250,000 gallons

Average pressure - 35 psi

Average temperature - 58 degrees F.

Size lines - 3 and 6 inches

Rates -

First	2,000 gallons	\$6.00 (Minimum)
Next	4,000 gallons	1.75 per M gallons
Next	4,000 gallons	1.50 per M gallons
Next	40,000 gallons	1.25 per M gallons
Next	50,000 gallons	1.00 per M gallons
Next	100,000 gallons	.80 per M gallons
All over	200,000 gallons	.70 per M gallons

Tap-on charges:	3/4-inch	\$171
	1-inch	250
	1 1/2-inch	350
	2-inch	450

Surface water sources - Ohio River and Green River

Average discharge - Ohio River at Evansville, Indiana, 133,000 cfs

(34 years, USGS); Green River at Calhoun, Kentucky, 10,920 cfs

(40 years, unadjusted, USGS)

Expected ground water yield - 500 to 1,000 gpm along the Ohio River;

5 to 50 gpm in western tip of county; 5 gpm or less over remainder

of county

---

\*A \$1 million planned expansion project will include the installation of a 350,000-gallon water storage tank and 62 miles of additional water mains to serve approximately 370 new customers.



## Sewerage

Company serving Owensboro - Owensboro Sewer Commission\*

City Hall

Owensboro, Kentucky 42301

(502) 684-7251

Design capacity - 12,000,000 gallons per day (average) - 16,000,000  
gallons per day (maximum)

Average daily flow - 8,500,000 gallons

Treatment - Primary and secondary

Type treatment - Primary settling, activated biological tower, activated  
sludge in aeration tanks, secondary clarification, chemical stabiliza-  
tion of solids, drying beds, hauling off of stabilized solids

Treated effluent discharged into - Ohio River

Size of sanitary mains - 6 to 96 inches

Size of storm mains - 8 to 96 inches

Rates - 100 percent of monthly water bill inside city limits

150 percent of monthly water bill outside city limits

Tap-on charge: \$100

---

\*An expansion project has been completed which increased the sewage  
treatment plant capacity to 12,000,000 gpd average to 16,000,000  
gpd maximum and added secondary treatment.

## CLIMATE

### Daviess County

#### Temperature

Annual mean (30-year record)	56.0 degrees
Average annual 1975	57.0 degrees
Record highest, July, 1966 (15-year record)	104.0 degrees
Record lowest, January, 1963 (15-year record)	-18.0 degrees
Normal heating degree days (30-year record)	4,629
(Heating degree day totals are the sums of negative departures of average daily temperatures from 65 degrees F.)	

#### Precipitation

Mean annual total (30-year record)	41.88 inches
Mean annual snowfall (36-year record)	13.10 inches
Total precipitation 1975	51.01 inches
Mean number days precipitation (.01 inch or more) (35-year record)	115
Average number days thunderstorms (35-year record)	46

#### Prevailing Winds (14-year record)

South -  
southwest

#### Relative Humidity (14-year record)

Midnight	79 percent
6 a.m.	81 percent
Noon	60 percent
6 p.m.	63 percent

Source: U. S. Department of Commerce, Environmental Science Services  
Administration, Climatological Data, 1975. Station of record:  
Evansville, Indiana.

## LOCAL GOVERNMENT

### City

Structure - Mayor - 4-year term; 4 commissioners - 2-year terms;  
City manager

Budget 1976 - General Fund	\$ 8,614,675
Sewer Fund	1,075,000
Water Fund	1,227,000
Electric Fund	10,998,000

Fees and licenses - Occupational license tax of 1 percent on wages and net profits; regulatory license fees range from \$15 to \$400 annually

### County

Structure - County Judge - 4-year term; 3 magistrates - 4-year terms  
Budget 1975-76 - General Fund \$1,576,518; Road Fund \$485,380

### Assessed Value of Property, 1976-77

<u>Classes of Property</u>	<u>Owensboro</u>	<u>Daviess County</u>
Real Estate	\$338,353,379	\$602,478,070
Tangibles	93,684,578	149,824,404

### Property Taxes

All property in Kentucky is assessed at 100 percent of fair cash value.

Land and buildings are taxed by the state and may be taxed by local jurisdictions. The state rate is \$0.315 per \$100 of assessed valuation. Beginning January 1, 1977, local school tax rates were reduced by \$0.30 per \$100 valuation and the state rate was increased by \$0.30 per \$100 (from \$0.015), resulting in no net change in the combined state and local rates.

Manufacturing machinery, raw materials inventories, pollution control equipment, and goods in the process of manufacture are not subject to local taxation. The state rate is \$0.15 per \$100.

Other tangible personal property owned by manufacturers (automobiles, trucks, finished goods, office furniture, office equipment) is taxed by the state at \$0.45 per \$100 and may be taxed by local jurisdictions. Beginning January 1, 1977, local school rates were reduced by \$0.30



per \$100 valuation and the state rate was raised by \$0.30 per \$100 (from \$0.15).

Property stored in public warehouses in a transit status is not subject to local taxation. The state rate is only \$0.015 per \$100.

Intangible personal property located in Kentucky (money in hand, shares of stock, notes, bonds, accounts, and other credits) is taxed by the state at \$0.25 per \$100, and is not subject to local taxation.

Intangible personal property owned by corporations in Kentucky as a result of business transactions performed out-of-state, but having a tax situs in Kentucky (accounts receivable, notes, bonds, credits, non-domestic bank deposits, licensing or royalty agreements, shares of stock of any affiliated company, etc.) is taxed by the state at \$0.015, and is not subject to local taxation.

Local Property Tax Rate Per \$100 of Assessed Valuation, 1976\*

<u>Taxing Jurisdiction</u>	<u>Owensboro</u>	<u>Daviess County</u>
County	\$ .166	\$ .166
School	.880	.574
City	.450	

Special (not county wide): Fire protection - \$ .002

Utilities Gross Receipts Tax for Schools

Daviess County levies a 3 percent tax on utilities receipts for schools. This tax is paid by all consumers of utilities as an add-on to the utilities bills. Exempted are receipts from utilities services that are resold and the receipts from the sale of energy or energy producing fuels that exceed 3 percent of the cost of production in manufacturing, processing, mining or refining.

\*Kentucky Department of Revenue.





Owensboro Public Library



Daviess County Courthouse

## Planning and Zoning

Joint agency - Owensboro Metropolitan Planning Commission\*

Zoning enforced - All areas

Subdivision regulations enforced - All areas

Local codes enforced - Housing and electrical codes enforced in the city; housing and building codes enforced in the county

Mandatory state codes enforced - Plumbing, National Fire Protection Association Code, National Building Code (for major buildings and residential construction containing more than 12 bedrooms per building)

## Safety

<u>Police</u>	<u>Owensboro</u>	<u>Daviess County</u>
Total staff	138	20
Radio-patrol cars	32	10

## Fire

American Insurance

Association Fire Rating	4	
Full-time staff	99	2 units
Volunteers		9 units

## Rescue Service

Owensboro Volunteer Rescue Squad:

Staff - Operated by Owensboro Fire Department

Equipment - Rescue truck, dragging equipment, resusitator, boat and motor, ambulance

Personnel training - Fire training, Red Cross first aid

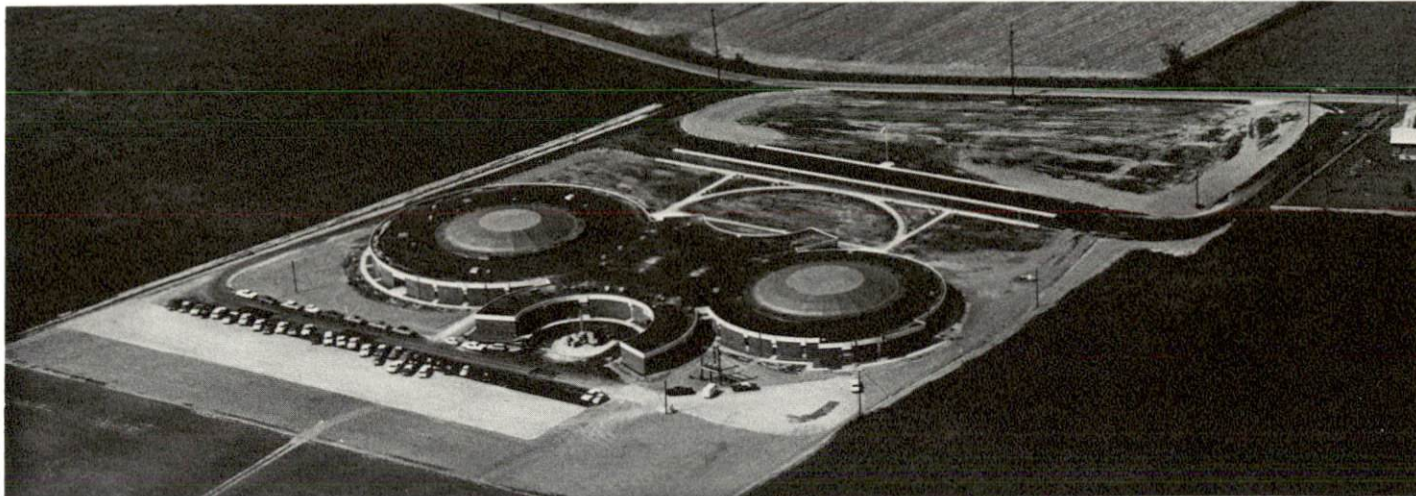
---

\*Includes Daviess County and the communities of Owensboro and Whitesville.



Solid Waste

	<u>Owensboro</u>	<u>Daviess County</u>
Type service	Municipal	Private
Fee charged:		
residential	\$3 per month	\$4 per month
business	\$6 to \$45 per month	\$1.50 per cubic yard (containerized)
industrial	\$6 to \$45 per month	\$1.50 per cubic yard (containerized)
Collection frequency:		
residential	Weekly	Twice weekly
business	As needed	As needed
industrial	As needed	As needed
Trash pickup	Call basis	Call basis
Disposal method	Landfill	Landfill



Apollo High School



Daviess County High School



Owensboro High School

## EDUCATION

### Public Schools

	<u>Owensboro Independent</u>	<u>Daviess County</u>
Total Enrollment (Fall, 1976)	6,035	9,251
Elementary	2,350	4,042
Junior High	1,581	2,035
High School	2,104	3,174
Student-Teacher Ratio	16-1	21-1
Elementary	14-1	22-1
Junior High	18-1	20-1
High School	18-1	20-1
Accreditation	Southern Association of Colleges and Schools	Southern Association of Colleges and Schools
Percent High School Graduates to College	45.3	37.9
Expenditures Per Pupil (1974-75)	\$846.50	\$757.49
Bonded Indebtedness, June 20, 1976	\$4,356,000	\$5,290,000

### Nonpublic Schools

	<u>Owensboro</u>	<u>Daviess County</u>
Total Enrollment (Fall, 1976)	2,624	1,802
Student-Teacher Ratio	24-1	23-1

Mount Saint Joseph Academy, located at Maple Mount, Kentucky, 15 miles from Owensboro, is a resident and day student high school for girls. This school was established in 1874 and is accredited by the Southern Association of Colleges and Schools and the Kentucky Department of Education.





Mount Saint Joseph Academy





Science Building - Brescia College

### Area Colleges and Universities

<u>Name</u>	<u>Location (Miles Distant)</u>	<u>Enrollment (Fall, 1976)</u>	<u>Highest Degree Conferred</u>
Brescia College	Owensboro	930	Baccalaureate*
Kentucky Wesleyan College	Owensboro	718	Baccalaureate*
Henderson Community College	Henderson (26)	802	Associate
Indiana State University Evansville Campus	Evansville, Indiana (33)	2,965**	Academic and Professional
University of Evansville	Evansville, Indiana (33)	4,904	Academic and Professional
St. Meinrad College (men)	St. Meinrad, Indiana (46)	245**	Baccalaureate
Madisonville Community College	Madisonville (47)	652	Associate

---

\*The Owensboro Higher Education Consortium was formed in 1969 to provide graduate level programs on the local campuses. Murray State University and Western Kentucky University provide the faculty members and issue the degrees.

\*\*Full-time undergraduate students.



## Vocational Schools

### Nearest State School

Location	Daviess County State Vocational- Technical School
Curriculum	Owensboro Agriculture - Adult and Young Farmer; Business and Office - Clerical, Secretarial; Consumer and Home Economics - Child Care Services, Food Services; Health and Personal Services - Cosmetology; Industrial Education - Air Conditioning and Heating, Auto Body Repair, Auto Mechanics, Build- ing Maintenance, Diesel Mechanics, Drafting, Electronics (Communications), Graphic Arts - Printing, Instrumentation, Machine Shop, Masonry, Small Engine Repair, Welding; Learning Resource Center; Public Service Programs - Environmental Protection, Fire Service Training, Law Enforcement Education, Local Government Employees

### Nearest Area Education Center

Location	Owensboro Vocational-Technical School *
Curriculum	Owensboro Health and Personal Services - Health Careers, Practical Nursing; Industrial Education - Carpentry-Building Trades, Electronics (Communications), Machine Shop, Office Machines Repair; Public Service Programs - Environmental Protection, Fire Service Training, Law Enforcement Education, Local Government Employees

Arrangements can be made to provide training in the specific production skills required by an industrial plant. Instruction may be conducted either in the vocational school or in the industrial plant, depending upon the desired arrangement and the availability of special equipment.

\*A new 72,000 square foot building is being built to accommodate the Owensboro Vocational-Technical School classes. Courses in plumbing, EMT training, sheet metalwork, and appliance repair will be added to the curriculum. The Daviess County State Vocational-Technical School and the Owensboro Vocational-Technical School will work in coordination so that only the welding course will be offered at both schools.



Owensboro-Daviess County Hospital



Our Lady of Mercy Hospital



## HEALTH

### Local Medical Personnel

Physicians - 82

Dentists - 38

### Hospitals

<u>General Hospital</u>	<u>Location</u>	<u>Beds</u>
Owensboro-Daviess County	Owensboro	458
Our Lady of Mercy Hospital	Owensboro	130

#### Owensboro-Daviess County Hospital\*

General hospital facilities - 10 operating rooms, 2 recovery rooms, OB section, X-ray, pharmacy, physical therapy, clinical pathology laboratories, emergency room, intensive care unit, coronary unit inhalation therapy department, nursery, cafeteria and gift shop

Medical staff - 82 doctors and dentists, 163 registered nurses, 89 licensed practical nurses

#### Our Lady of Mercy Hospital

General hospital facilities - 4 operating rooms, 1 recovery room, psychiatric unit, X-ray, emergency room, pharmacy, intensive care-coronary care unit, respiratory therapy

Medical staff - 100 doctors and dentists, 60 registered nurses, 35 licensed practical nurses

### Other Medical Facilities

Green River District Home Health Agency

Green River Mental Health Center

---

\*A \$6.5 to \$7 million hospital addition is scheduled for completion by the end of 1976.



### Ambulance Service

Name - Owensboro-Daviess County Ambulance Service, Inc.

Staff - 7 emergency medical technicians (full time), 5 emergency medical technicians (part time)

Service - 24-hour, radio-dispatched service throughout the county

Equipment - 4 modular ambulances

### Nursing Homes

#### Daviess County

##### Number

11

##### Beds

550 Personal care

160 Extended care

128 Intermediate care

22 Nursing home

### Public Health

Facility - Daviess County Health Department

Full-time staff - 11 community health nurses, 2 licensed practical nurses, 4 health environmentalists, 2 community health workers, 5 clerk typists

Part-time staff - 6 pediatricians, 1 dentist, 1 physical therapist, 1 plumbing inspector

## OTHER LOCAL FACILITIES

### Communications

Telephone - South Central Bell Telephone Company  
Services - All standard services

Telegraph - Western Union  
Services - Telephone and messenger delivery

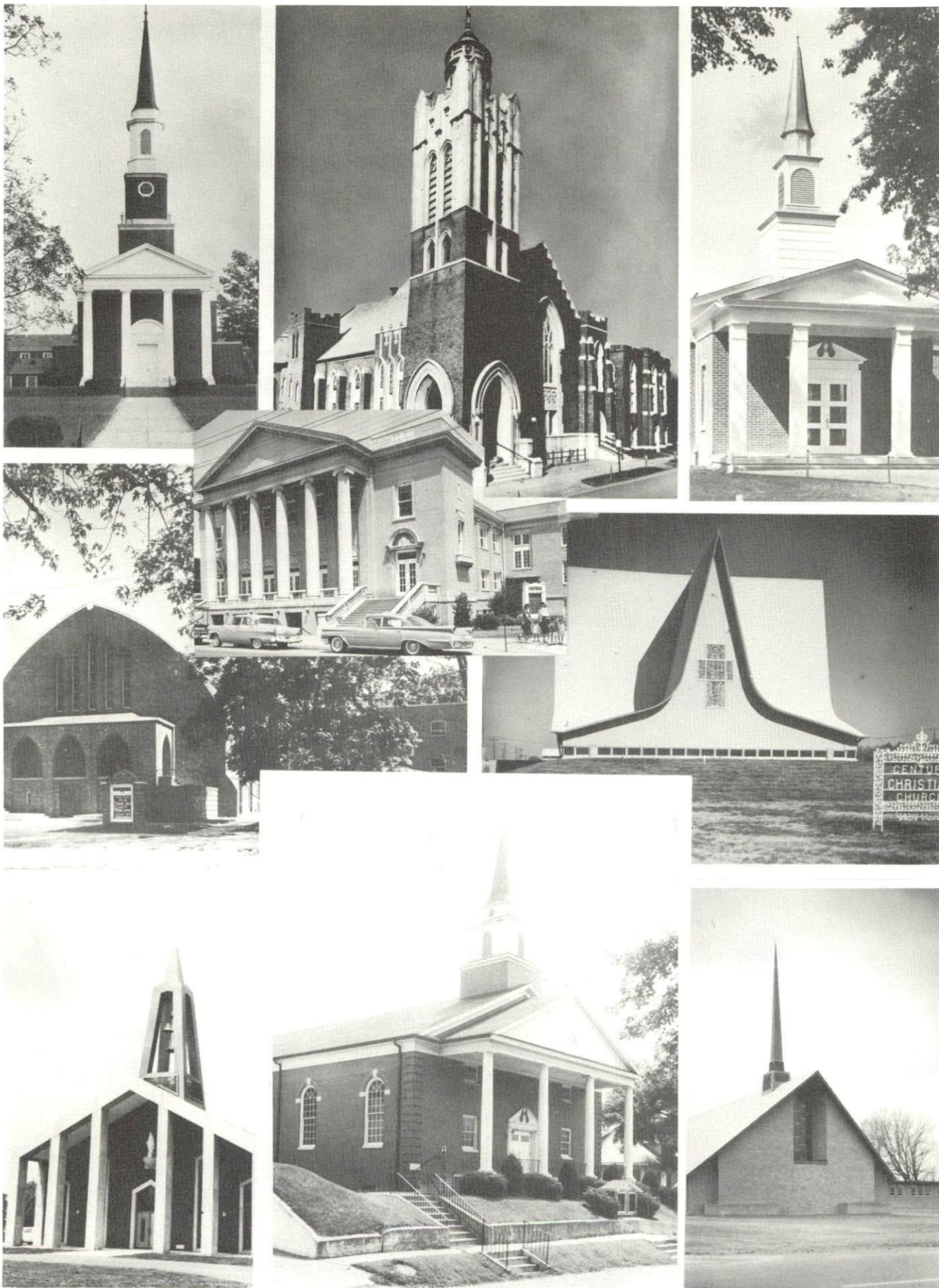
Postal - U. S. Post Office  
Class - First  
Mail received - 5 times daily  
Mail dispatched - 5 times daily (plus 3 airmail flights daily  
receiving and dispatching mail)

Newspapers - Messenger and Inquirer  
Daily and circulation - 31,700  
Other papers received - Louisville Courier-Journal, Louisville  
Times, Evansville Press and Evansville Courier

Radio - WVJS-AM, WSTO-FM (Stereo), WOMI-AM, WBKR-FM (Stereo)  
Stations received from - Henderson and Madisonville, Kentucky;  
Evansville, Indiana; Chicago, Illinois

Television - WVJS - Channel 2, operating from 3:45-9:00 p.m. daily  
Cable service  
Reception from - Henderson, Kentucky; Evansville, Indiana  
Cable reception from - Louisville, Paducah and Bowling Green,  
Kentucky; Olney, Illinois; Evansville, Indiana

Educational Television - Madisonville, Kentucky, transmitter -  
Channel 35; Evansville, Indiana, transmitter - Channel 9;  
Carbondale, Illinois, transmitter - Channel 8



Some of Owensboro's 70 churches



## Library Services

Public library - Owensboro-Daviess County Public Library

Size collection - 96,464 volumes

Circulation, 1975-76 - 348,882 (library and bookmobile)

Services - Framed paintings, microfilm, movie films, filmstrips, bookmobile, children's story hour, children's programs, participates in Head Start, services for the blind, headquarters for Audubon Regional Library, business research service, inter-library loan, teenage and adult book club, library auditorium, movie programs, wheelchairs and strollers available, lending service for 35 mm projectors and screen, Poloroid cameras, motion picture cameras, cable TV (KET for GED certificate), and mini-gallery

## Religious Institutions

	<u>Owensboro</u>	<u>Daviess County</u>
Number of churches -	70	134
Denominations -	27 denominations represented in the county	

Synagogue - Adath Israel (reform)

## Financial Institutions

<u>Banks</u>	<u>Assets</u>	<u>Deposits</u>	<u>Statement Date</u>
Central Bank and Trust Company	\$ 64,018,674.31	\$ 56,740,603.71	6/30/76
Citizens State Bank	77,803,423.62	69,383,267.22	6/30/76
Owensboro National Bank	115,328,181.26	104,945,688.82	6/30/76

<u>Savings and Loan Associations</u>	<u>Assets</u>	<u>Shared Accounts</u>	<u>Statement Date</u>
First Home Federal Savings and Loan Association	\$44,311,961.79	\$38,999,969.69	12/31/75
Lincoln Federal Savings and Loan Association	25,364,286.38	20,692,838.30	12/31/75
Owensboro Federal Savings and Loan Association	92,967,359.04	84,914,532.79	6/30/76

### Hotels and Motels

Total number - 17\*

Total units - 794

### Clubs and Organizations

There are approximately 175 clubs and organizations in Owensboro which include most major civic, business, professional, fraternal, charitable, sports, agricultural and youth organizations.

---

\*A new 400-unit motel with convention facilities and indoor swimming pool is scheduled to be completed by mid-1977.

## RECREATION

### Local

Owensboro has excellent public recreational facilities that are supervised and maintained by the Owensboro Recreation Department. Public recreational facilities include 14 parks and playgrounds, 3 swimming pools, one 18-hole and two 9-hole golf courses, 20 tennis courts, 9 baseball diamonds, 3 croquet courts and 9 basketball courts. Shively Park, a 10-acre park with a baseball diamond, football field, playground equipment and shelter house, has opened recently. Similar facilities will be constructed at the new Thompson-Berry Park. Owensboro's Sportscenter has an air-conditioned 7,000-seat auditorium-arena, an Olympic swimming pool, and a covered ice skating rink. The Sportscenter is the home court of the nationally known Wesleyan Panthers, winner of the NCAA small college championship four times since 1966.

Among the private recreational facilities are two country clubs with golf courses, six swimming pools, four indoor and three outdoor movie theaters, two bowling facilities, YWCA, Family-Y, and indoor and outdoor tennis courts.

The Owensboro Regatta, the annual Kentucky Governor's cup race for unlimited hydroplanes, opens with a parade of boats, bands, floats, and beauty queens. Other entertainment includes rock concerts, square dancing, folk festivals, and stunt flying.

Numerous cultural events are provided by the Theatre Workshop, Owensboro Symphony Orchestra, Art Guild, and Symphony Youth Orchestra and other local groups. Kentucky Wesleyan College and Brescia College also offer cultural events. Owensboro's Festival of Arts features art exhibits, dramatics, music events, and writing seminars.

Other interesting attractions of the Owensboro area are the Owensboro Area Museum, Glenmore's Little Museum, Uncle Tom's Daviess County Cabin, and the world's largest sassafras tree.

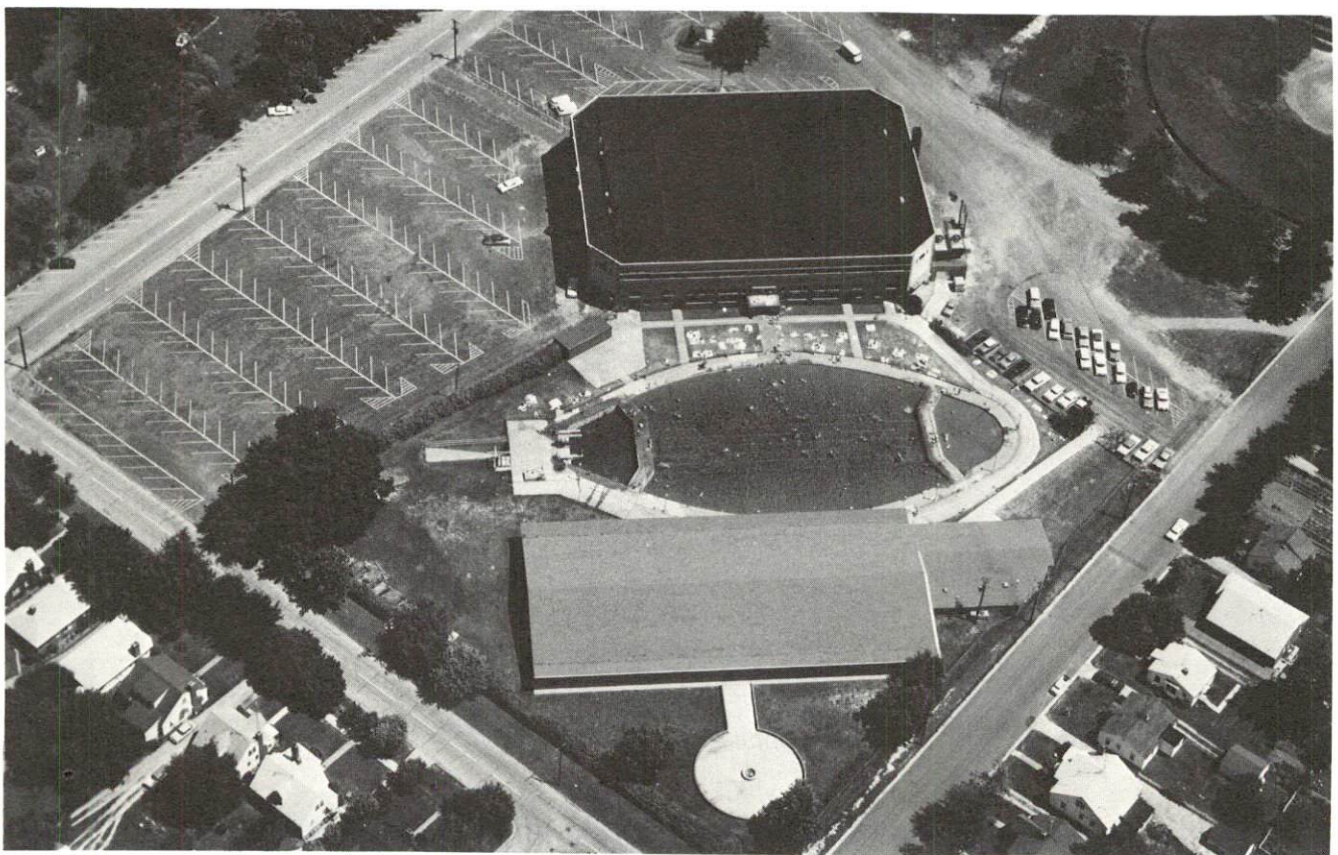
Ben Hawes State Park, 4 miles west of Owensboro, is a 300-acre park open year round. It contains a softball field, tennis courts, hiking trails, shelter houses, and an 18-hole and a 9-hole golf course.

Windy Hollow Recreational Area, 10 miles from Owensboro, has thirteen small well stocked lakes, cabins, trailer sites, restaurant, and country store. The park offers swimming, boating, fishing, picnicking, hiking, and playgrounds.





Family-Y, Owensboro



Owensboro Sportscenter

Area (Within 55 miles)

Lake Malone State Park, located on Lake Malone, has facilities for camping, swimming, boating, fishing, hiking, and picnicking. A dock, boat and motor rentals, and paddle boats are also available.

John James Audubon State Park, containing 645 forested acres where the naturalist studied and painted from nature, has cottage accommodations and camping sites, a 28-acre recreation lake, a 12-acre nature preserve lake, beach and bathhouse, dock, boat rentals, a 9-hole golf course, and picnic and playground areas. Special features of the park are the Audubon Nature Museum and two nature trails.

Rough River Dam State Resort Park is a 377-acre park located on Rough River Lake. Campsites, lodges, and cottages are available. Other features include a swimming pool, beach, bathhouse, boat and motor rentals, tennis, hiking, 9-hole par-3 golf course, miniature golf course, picnicking, playground and supervised recreation.

Henderson, Kentucky, provides harness racing at the Audubon Raceway and thoroughbred racing at James C. Ellis Park.

The Lincoln Boyhood National Memorial, 30 miles north of Owensboro at Lincoln City, Indiana, preserves the Lincoln farm and the burial site of Nancy Hanks Lincoln. The memorial contains reconstructed log buildings, an exhibit shelter, and a visitor center with an auditorium and museum.

Santa Claus Land, located 35 miles northeast of Owensboro at Santa Claus, Indiana, is a 45-acre amusement park with a Christmas theme.



## COMMUNITY IMPROVEMENTS

### Industrial and Commercial

Two companies have begun construction on new facilities in the 235-acre riverport industrial park. Hammond Plastics Midwest, Inc., producers of polystyrene pellets, will open a new plant in January, 1977, and employ approximately 100. National Molasses Company is relocating its bulk distribution terminal at the riverport industrial site.

The Dominion Road Machinery Company has scheduled ground breaking for a new plant that will eventually employ 500 to 600. Ragu Foods, Inc., has completed a 125,000-square foot addition to its facilities. The Green River Steel Corporation has recently completed a \$2,000,000 project for the installation of pollution control equipment. Baskin-Robbins, Inc., plans a \$3,000,000 expansion of their facilities that will create 50 additional jobs.

A new 60-unit and a new 100-unit motel have been completed. A 400-unit motel and convention facility is being constructed on the Ohio River. It will have an indoor swimming pool area and a banquet room with a seating capacity of 2,500.

Construction of a new shopping center will begin soon.

### Transportation

The Owensboro Riverport Authority has constructed a \$2.7 million public river terminal on a 50-acre site. The riverport now provides general cargo and warehousing facilities and has space reserved for future construction of bulk and liquid cargo terminals.

The Owensboro-Daviess County Airport has built 15 T-hangar units and installed high intensity runway lights and a VASI-4 lighting system. The airport plans to relocate, remodel and expand the airport service facilities.

The city plans to purchase five additional buses to upgrade the present intracity transit system.

### Utilities

Owensboro Municipal Utilities recently completed a \$2 million expansion of the water treatment facilities, which increased the capacity to 20 million gallons per day.



An expansion project has been completed which increased the municipal sewage treatment plant capacity to 12 million gallons per day average and 16 million gallons per day maximum and added secondary treatment.

The East Daviess County Water Association plans to install a 350,000-gallon water storage tank and 62 miles of additional water mains to serve 370 new customers.

### Education

The Daviess County School System has completed construction of a new elementary school designed to accommodate approximately 400 students.

The Owensboro Independent School District has expanded the adult education program, developed a comprehensive parent education program and integrated career education and consumer education into all levels of the school program.

Brescia College has completed a \$325,000 Speech and Hearing Clinic. A building adjacent to the campus has been purchased and renovated to serve as a kindergarten training center. Two tennis courts, which are open to the public, have been built. The college plans to construct a new 15,000-square foot student center. New programs are being offered in special education training, chemical technology and engineering technology.

Kentucky Wesleyan College will begin a Weekend College Program in September, 1977, that will provide weekend courses for those persons who are employed full time. Nine major corporations are participating in a recently established WAGES program at Kentucky Wesleyan College, which allows a student to hold a full-time job and still complete a degree in a normal period of time.

The Owensboro Vocational-Technical School is constructing a 72,000-square foot classroom building at a cost of \$2,155,000.

### Health

The Owensboro-Daviess County Hospital is building a new \$6.5 to \$7 million surgical wing with eight operating rooms, laboratory, recovery room, emergency room service, and radiology, physical therapy and pulmonary respiratory departments.

### Public Safety

The Owensboro Police Department has been relocated into a renovated office building.

The Owensboro Fire Department has acquired a new 1,250 gpm pumper. The recently expanded Daviess County Fire Department now has two full-time units and nine volunteer units operating throughout the county. In addition, two more volunteer units are planned. Five 1,250-gallon tankers were purchased in 1975, and two 400 gpm mini-pumpers are on order.

### Recreation

Shively Park is a recently completed city park with a lighted baseball diamond, football field, playground equipment, concession stand and shelter house. Similar facilities are planned at Thompson-Berry Park. The city also plans to obtain English Park, an old lock and dam site, and convert it into a riverside park.

### Other

A \$1.75 million City Hall was completed in 1975.

The Green River ADD has constructed a new office building.

## HISTORY

Daviess County, 462 square miles in size, is located in western Kentucky and is bounded on the north by the Ohio River. Green River forms most of its western border, and Panther Creek bisects the county from east to west. The land surface is level to hilly and the soil consists of rich loams and clays well-adapted to agriculture. Lying in the Western Coal Field Region, the county has large deposits of coal.

The first settlement in the area was made at Owensboro in 1798 by William Smithers, who was impressed by the numerous canebrakes along the Ohio and the plentiful game there. Other settlers soon joined Smithers, and Owensboro became a regular stopping place for riverboats on the Ohio. Originally known as Yellow Bank, the town was later called Rossborough. When the town was chartered in 1866 it was named Owensboro for Colonel Abraham Owen, who lost his life at Tippecanoe while serving under General Harrison.

Daviess became Kentucky's fifty-eighth county in 1815, its territory taken from Ohio County. It was named for Colonel Joseph Hamilton Daveiss (by some oversight the county's name is spelled differently), who moved to Kentucky from Virginia and lived, among other places, at Owensboro. Daveiss was the first western lawyer to argue a case before the Supreme Court and served as U. S. District Attorney for Kentucky.

Industry came to Daviess County soon after its establishment. A distillery which began operation in 1820 was an improvement on the first attempt made by Robert McFarland a few years before. This second plant, established by Robert Triplett, became one of the fastest growing concerns in the state. By 1887 there were 75 distilleries in Daviess County producing some 350 barrels of whiskey a day. Today the industry serves as a vital part of the county's economy.

Owensboro, the county seat, is a progressive city with an estimated population of 51,355 in 1973. It is the home of Kentucky Wesleyan and Brescia Colleges, both four-year institutions. Also, Owensboro Higher Education Consortium in cooperation with Western Kentucky University and Murray State University now offers Masters degrees on the Brescia College and Kentucky Wesleyan College campuses.

In 1820, Daviess County had a population of 3,876. This grew to 57,241 in 1950, 70,588 in 1960, and 79,486 in 1970. In 1975, Daviess County had an estimated population of 81,200.



The total number of Daviess County residents employed in 1975 averaged 31,820, with nonagricultural jobs accounting for 30,250 workers. Manufacturing employers in the county reported 6,825 workers; mining and quarrying 560; construction firms 1,450; transportation, communications, and public utilities 1,740; wholesale and retail trade 6,380; finance, insurance, and real estate 980; and employees in the service industries 3,640. Largest of the county's manufacturing firms are General Electric Company which employs some 1,600 people and produces radio and television components, The American Cigar Company, Green River Steel Corporation, and Murphy Miller, Inc. The county produces large quantities of coal and petroleum.

Production supervisor: Patsy Wallace; research: Terry Patterson;  
clerical: Mildred Keefer; graphics: N. C. Montague, Frank Ferrante,  
Tony Cecconi; cartography: Site Development Section. Cost of printing  
paid from state funds.

Kentucky Department of Commerce  
Capital Plaza Tower  
Frankfort, Kentucky 40601

Industrial Development Division  
(502) 564-7140

Community Services Division  
(502) 564-4300

Business Development Division  
(502) 564-3862

Research and Planning Division  
(502) 564-4886

Office of Minority Business Enterprise  
(502) 564-4270

Map Sales Office  
133 Holmes Street  
(502) 564-4715

International Trade & Investment  
Promotion Division  
(502) 564-2170

Agri-Business Division  
(502) 564-6784

Industrial Development Finance Authority  
(502) 564-4554