

1979

# Industrial Resources: Fayette County - Lexington

Kentucky Library Research Collections  
Western Kentucky University, [spcol@wku.edu](mailto:spcol@wku.edu)

Follow this and additional works at: [https://digitalcommons.wku.edu/fayette\\_cty](https://digitalcommons.wku.edu/fayette_cty)

 Part of the [Business Administration, Management, and Operations Commons](#), [Growth and Development Commons](#), and the [Infrastructure Commons](#)

---

## Recommended Citation

Kentucky Library Research Collections, "Industrial Resources: Fayette County - Lexington" (1979). *Fayette County*. Paper 8.  
[https://digitalcommons.wku.edu/fayette\\_cty/8](https://digitalcommons.wku.edu/fayette_cty/8)

This Report is brought to you for free and open access by TopSCHOLAR®. It has been accepted for inclusion in Fayette County by an authorized administrator of TopSCHOLAR®. For more information, please contact [topscholar@wku.edu](mailto:topscholar@wku.edu).

# ***INDUSTRIAL RESOURCES***

## **LEXINGTON**

***Kentucky  
first***



**DEPARTMENT OF COMMERCE**

IR  
142

# LEXINGTON, KENTUCKY --- Index to Industrial Sites --- 1979

For detailed data on individual sites, contact Mr. Ray Gillespie, Greater Lexington Chamber of Commerce, 421 North Broadway, Lexington, Kentucky 40508, or the Industrial Development Division, Kentucky Department of Commerce, Capital Plaza Tower, Frankfort, Kentucky 40601.



0 1000 2000 3000 4000 FEET  
0 1 MILE  
CONTOUR INTERVAL 10 FEET  
BASE: USGS 7.5 MINUTE SERIES - 1978

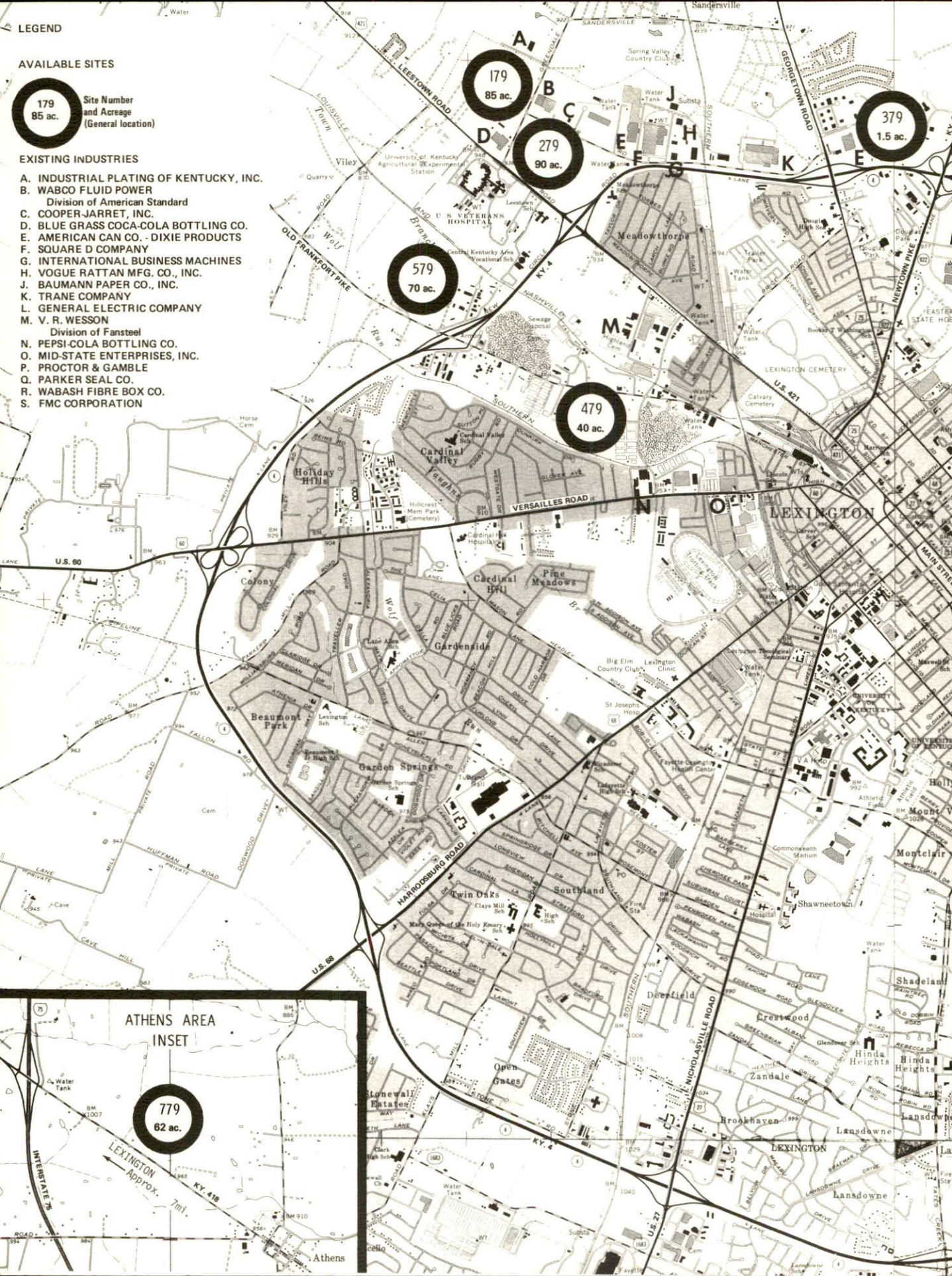
AVAILABLE SITES

**179**  
85 ac.

Site Number and Acreage (General location)

EXISTING INDUSTRIES

- A. INDUSTRIAL PLATING OF KENTUCKY, INC.
- B. WABCO FLUID POWER  
Division of American Standard
- C. COOPER-JARRET, INC.
- D. BLUE GRASS COCA-COLA BOTTLING CO.
- E. AMERICAN CAN CO. - DIXIE PRODUCTS
- F. SQUARE D COMPANY
- G. INTERNATIONAL BUSINESS MACHINES
- H. VOGUE RATTAN MFG. CO., INC.
- J. BAUMANN PAPER CO., INC.
- K. TRANE COMPANY
- L. GENERAL ELECTRIC COMPANY
- M. V. R. WESSON  
Division of Fansteel
- N. PEPSI-COLA BOTTLING CO.
- O. MID-STATE ENTERPRISES, INC.
- P. PROCTOR & GAMBLE
- Q. PARKER SEAL CO.
- R. WABASH FIBRE BOX CO.
- S. FMC CORPORATION



ATHENS AREA INSET

**779**  
62 ac.

LEXINGTON Approx. 7mi.

Athens

INDUSTRIAL RESOURCES  
LEXINGTON, KENTUCKY

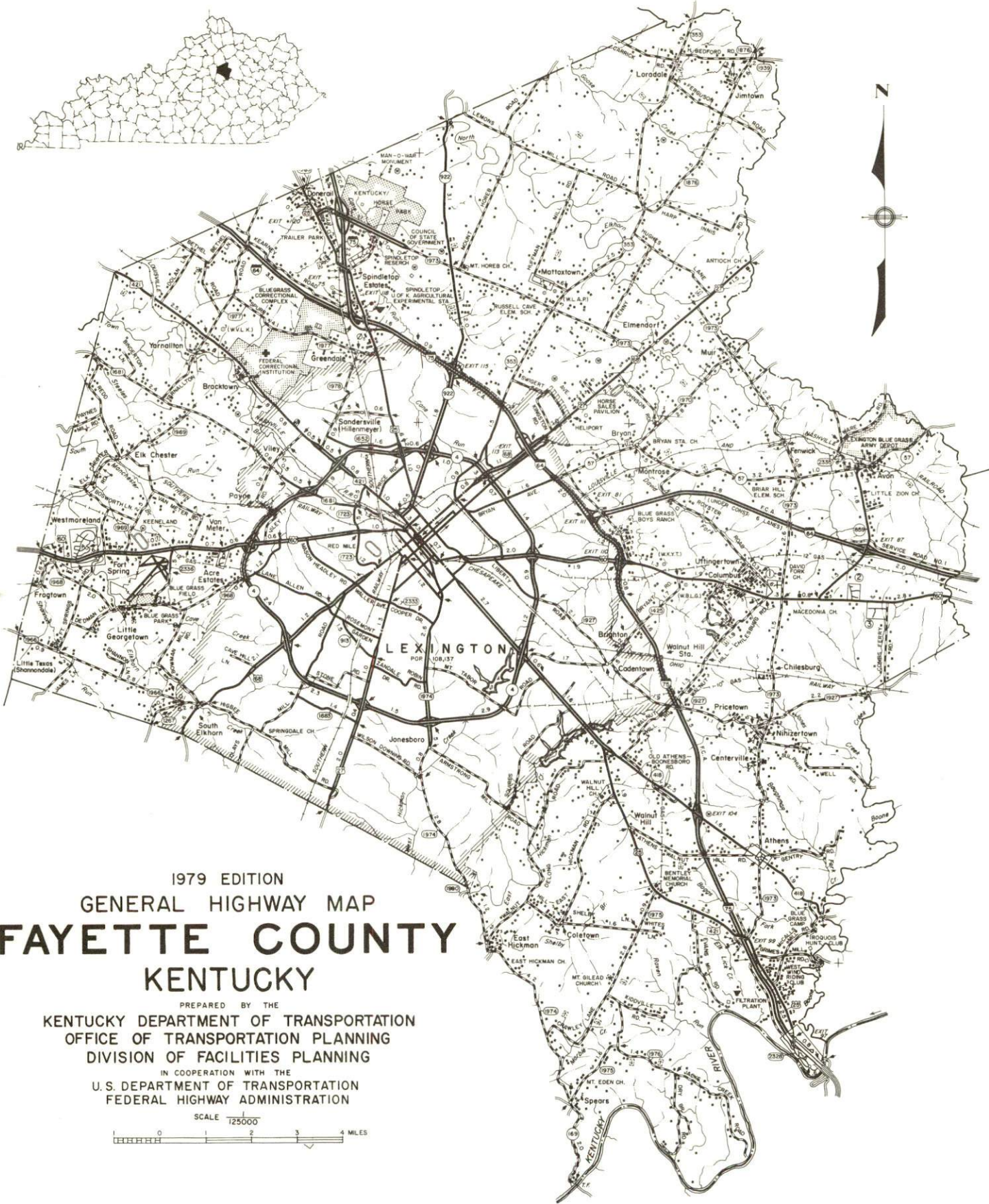
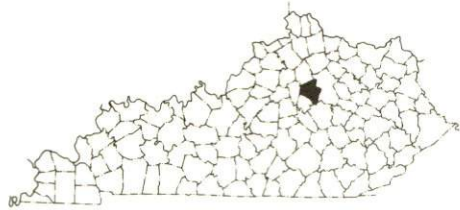
Prepared by  
The Kentucky Department of Commerce  
Division of Research and Planning  
in cooperation with  
The Greater Lexington Area Chamber of Commerce

1979

## TABLE OF CONTENTS

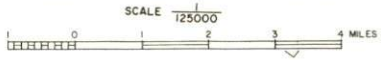
<u>Chapter</u>	<u>Page</u>
INDUSTRIAL SITES . . . . .	i
SUMMARY OF INDUSTRIAL RESOURCES - LEXINGTON, KENTUCKY . . . . .	1
THE LABOR MARKET AREA . . . . .	7
Population . . . . .	7
Labor Force Characteristics of Residents, 1977 . . . . .	7
Major Lexington Manufacturing Firms, Their Products and Employment . . . . .	8
Labor Organizations . . . . .	11
Industrial Services . . . . .	12
Estimated Male Labor Supply . . . . .	13
Estimated Female Labor Supply . . . . .	13
Average Weekly Wages by Industry, by Place of Work, 1977 . . . . .	14
Per Capita Personal Income . . . . .	16
TRANSPORTATION . . . . .	17
Rail . . . . .	17
Highways . . . . .	18
Truck Service . . . . .	19
Air . . . . .	22
Bus . . . . .	22
Taxi . . . . .	22
Rental Services . . . . .	22
Water . . . . .	22
POWER AND FUEL . . . . .	23
Electricity . . . . .	23
Natural Gas . . . . .	24
Other Fuels . . . . .	24
WATER AND SEWERAGE . . . . .	27
Water . . . . .	27
Sewerage . . . . .	29
CLIMATE . . . . .	30

<u>Chapter</u>	<u>Page</u>
LOCAL GOVERNMENT . . . . .	31
Lexington-Fayette Urban County . . . . .	31
Assessed Value of Property, 1978-79 . . . . .	31
Property Taxes . . . . .	32
Utilities Gross Receipts Tax for Schools . . . . .	33
Planning and Zoning . . . . .	33
Safety . . . . .	33
Police . . . . .	33
Fire . . . . .	33
Rescue Service . . . . .	33
Refuse Collection and Disposal . . . . .	34
EDUCATION . . . . .	35
Public Schools . . . . .	35
Nonpublic Schools . . . . .	35
Area Colleges and Universities . . . . .	37
Vocational Schools . . . . .	39
HEALTH . . . . .	42
Local Medical Personnel . . . . .	42
Hospitals . . . . .	42
Other Medical Facilities . . . . .	42
Ambulance Service . . . . .	42
Public Health . . . . .	43
OTHER LOCAL FACILITIES . . . . .	44
Communications . . . . .	44
Library Services . . . . .	45
Religious Institutions . . . . .	45
Financial Institutions . . . . .	46
Hotels and Motels . . . . .	46
Clubs and Organizations . . . . .	46
RECREATION . . . . .	49
COMMUNITY IMPROVEMENTS . . . . .	52



1979 EDITION  
 GENERAL HIGHWAY MAP  
**FAYETTE COUNTY**  
 KENTUCKY

PREPARED BY THE  
 KENTUCKY DEPARTMENT OF TRANSPORTATION  
 OFFICE OF TRANSPORTATION PLANNING  
 DIVISION OF FACILITIES PLANNING  
 IN COOPERATION WITH THE  
 U.S. DEPARTMENT OF TRANSPORTATION  
 FEDERAL HIGHWAY ADMINISTRATION





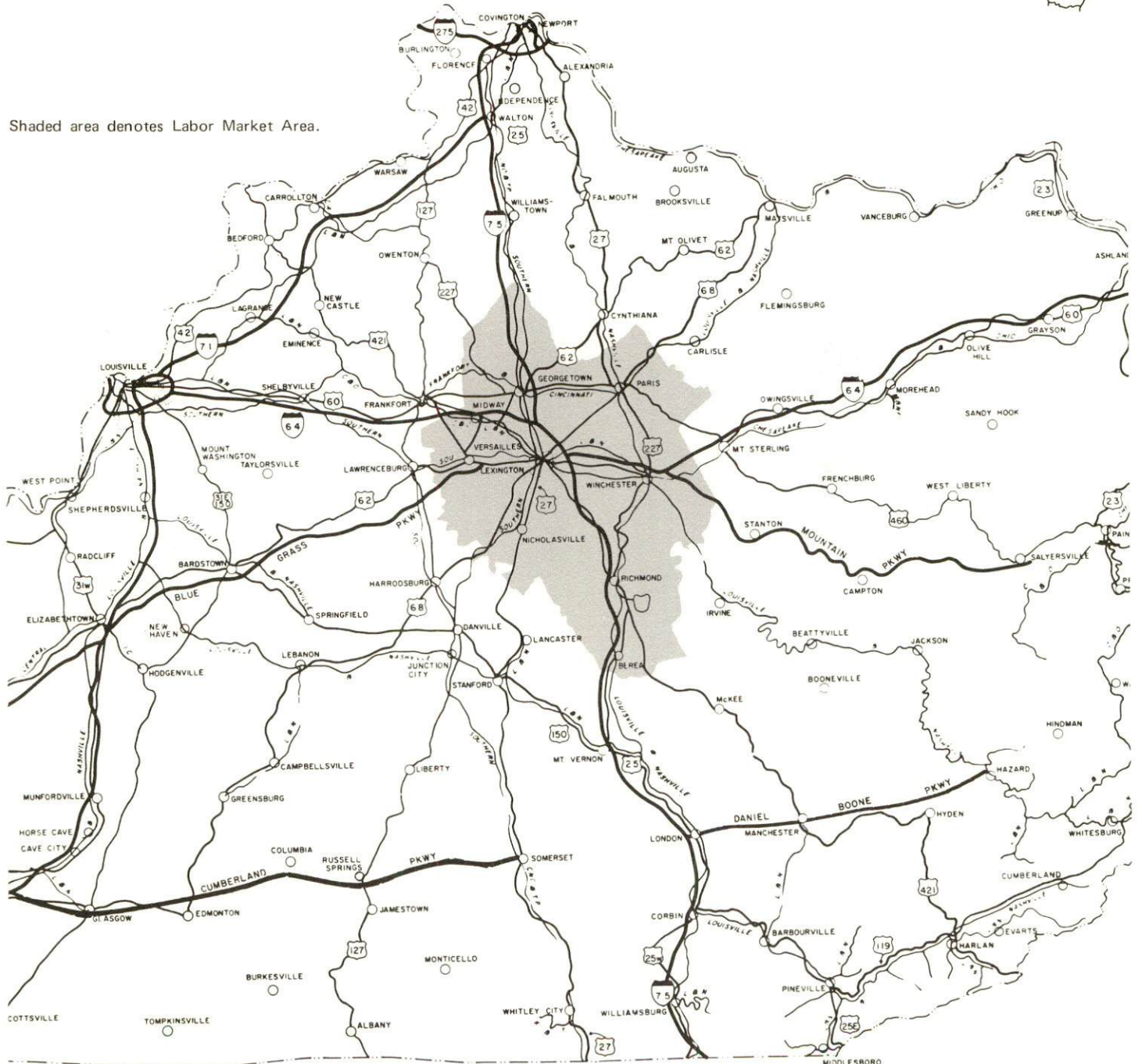


AERIAL VIEW OF LEXINGTON, KENTUCKY

# LEXINGTON LABOR MARKET AREA

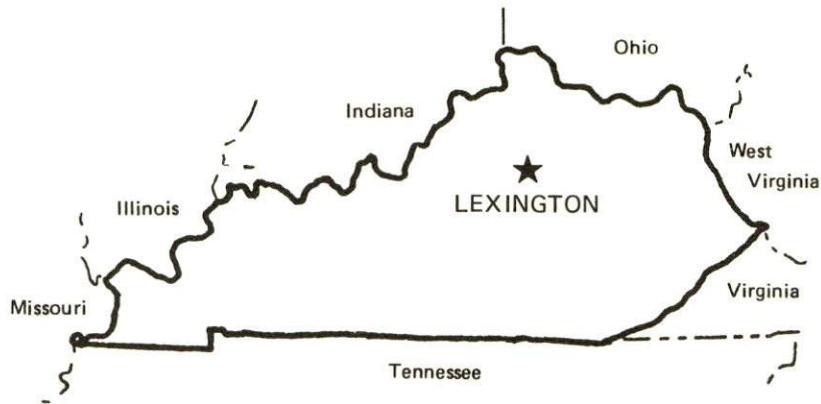


Shaded area denotes Labor Market Area.



SUMMARY OF INDUSTRIAL RESOURCES  
LEXINGTON, KENTUCKY

LOCATION



Road Distance in Miles:

Atlanta	<u>362</u>	Baltimore	<u>541</u>
Chicago	<u>352</u>	Detroit	<u>337</u>
New York	<u>703</u>	St. Louis	<u>335</u>

POPULATION

Fayette County, 1977	<u>189,900</u>
Labor Market Area, 1977	<u>342,700</u>
% Nonwhite, Fayette County, 1970	<u>12.7</u>

LABOR ANALYSIS

Labor Market Area - Fayette, Bourbon, Clark, Jessamine, Madison, Scott and Woodford Counties

Estimated available workers from labor market area:

Male	<u>11,156</u>	Female	<u>11,708</u>
Unemployment rate, 1977		Labor Market Area	<u>3.1%</u>
Fayette County	<u>3.0%</u>	Madison County	<u>3.1%</u>
Bourbon County	<u>3.3%</u>	Scott County	<u>2.4%</u>
Clark County	<u>4.1%</u>	Woodford County	<u>2.2%</u>
Jessamine County	<u>3.7%</u>		

Total employment, Fayette County, 1977 - 97,100

Manufacturing employment in labor market area, 1977 - 33,530

Major local manufacturing plants:

<u>Name</u>	<u>Employment</u>
<u>American Can Company</u>	<u>450</u>
<u>Brown and Williamson Tobacco Corporation</u>	<u>401</u>
<u>F M C Corporation</u>	<u>475</u>
<u>General Electric Company, Lamp Plant</u>	<u>431</u>
<u>International Business Machines</u>	<u>6,605</u>
<u>Lexington Herald-Leader Company</u>	<u>420</u>
<u>Square D Company</u>	<u>1,732</u>
<u>Trane Company</u>	<u>752</u>
<u>Wabco Fluid Power</u>	<u>418</u>

Labor unions in local manufacturing plants:

Teamsters; IUE; IBEW; Typographical; Sheet Metal Workers; Textile Workers; Machinists; Newspaper Guild; Printing and Graphic Communications; UAW; Bakery, Confectionery and Tobacco Workers; Mailers

TRANSPORTATION

Highways:

Interstates - I-64, I-75; Parkway - Blue Grass Parkway  
U.S. Highways - U.S. 421, U.S. 27, U.S. 68, U.S. 60, U.S. 25

Rail:

Railroads - Louisville and Nashville Railroad, The Chessie System, and Southern Railway System  
Piggyback service - L & N Railroad piggyback facilities located in Lexington

Truck:

Number of interstate motor carriers - 27; Local terminals - 22

Water:

Nearest navigable river - Kentucky River  
Nearest public port - Louisville, Kentucky; Distance - 72 miles

Air:

Nearest commercial service - Blue Grass Field, Lexington  
Airlines serving - Delta, Eastern, Piedmont and Allegheny Airlines

## UTILITIES AND SERVICES

### Electricity

Local distributor - Kentucky Utilities Company  
Source of power - Kentucky Utilities Company

### Natural Gas:

Local distributor - Columbia Gas of Kentucky, Inc.  
Source of supply - Columbia Gas Transmission Corporation  
Available for new industry - No

### Other Fuels:

Number of local propane distributors - 2  
Number of local distillate fuel oil distributors - 8

### Water, treated:

Local supplier - Kentucky-American Water Company  
Excess system capacity - 10,000,000 gpd based on average flow  
Expansions planned - 16,000,000 gpd expansion of Kentucky River plant

### Water, raw:

Sources - Kentucky River, West Hickman Creek, South Elkhorn Creek, Elkhorn Creek

### Sewer:

Excess treatment capacity - 5,750,000 gpd  
Planned expansions - 22,000,000 gpd expansion of Town Branch plant and 8,050,000 gpd expansion of West Hickman plant

### Industrial Services:

	<u>Location</u>	<u>Miles Distant</u>
Tool & Die, Machine & Pattern Shops	<u>Lexington</u>	<u>--</u>
Metal Service Centers	<u>Lexington</u>	<u>--</u>
Heat Treating	<u>Georgetown</u>	<u>16</u>
	<u>Richmond</u>	<u>27</u>
Metal Finishers	<u>Lexington</u>	<u>--</u>
Electric Motor Repair	<u>Lexington</u>	<u>--</u>

CLIMATE

Temperature, Normal - 55.2 degrees F.  
Precipitation, Normal - 44.49 inches  
Snowfall, Mean Annual - 15.90 inches  
Prevailing winds - South  
Relative humidity (%) - 7 a.m. 81; 7 p.m. 63

GOVERNMENT

Type - Urban County - Mayor and 15 council members  
Police personnel - full-time - 343  
Fire department personnel - full-time - 393  
Fire insurance rating (A.I.A.), class - Inside Urban County - 3, 5, 9, 10

TAXES

Property taxes:

Combined state and local rates per \$100 valuation, 1978  
(100% assessment)

Lexington-Fayette Urban County

1. Land and buildings	
District #1	\$1.5055
District #2	0.9825
District #3	1.4448
District #4	1.2487
District #5	1.1786
District #6	1.0291
District #7	1.2252
District #8	1.2953
District #10	1.4589
District #11	1.4914
District #12	1.2393
District #13	1.3094
2. Mfg. machinery, raw materials, goods in process, pollution control equipment	0.150
3. Finished goods, office equipment, vehicles, other tangibles	1.1175
4. Intangibles (accounts receivable, notes, bonds, etc.)	0.250
5. Leaseholds in I. R. bond financed plants	0.015

Special local taxes:

Net profits tax - 2 percent in Lexington-Fayette Urban County  
Utilities tax - 3% of electric, gas, water, sewer, telephone services

## EDUCATION

State vocational-technical school - Central Kentucky State Vocational-Technical School, Lexington  
Area vocational education centers - Southside and Northside Area Vocational Education Centers, Lexington  
College or university - University of Kentucky, Transylvania University, Lexington Technical Institute (all located in Lexington)

### Public Schools:

High school enrollment - 7,329; Student/teacher ratio - 19-1  
Junior high school enrollment - 8,072; Student/teacher ratio - 17-1  
Elementary school enrollment - 17,966; Student/teacher ratio - 17-1

### Nonpublic Schools:

#### Parochial and Private

Enrollment - 3,540; Student/teacher ratio - 18-1

#### Special Education

Enrollment - 229; Student/teacher ratio - 11-1

## FINANCIAL INSTITUTIONS

Banks - 7; Total assets - \$1,084,316,728.26  
Savings & loan associations - 4; Total assets - \$222,526,282.10

## COMMUNICATIONS

Local newspapers - Daily - The Lexington Herald, The Lexington Leader  
Local radio stations - 2 AM, 2 FM, 3 AM & FM  
Local television stations - 3

## MEDICAL

Number of physicians locally - 844; Number of dentists locally - 197  
Hospitals - 5 general hospitals and 3 special hospitals  
Total number of beds - 2,997

## RELIGIOUS FACILITIES

Churches - Approximately 200; Synagogues - 2

## PUBLIC LODGING

Total number hotels and motels - 41; Total rooms - Approximately 4,200

RECREATION FACILITIES

Public golf courses - 5; Parks - 65; Tennis courts - 66  
Swimming pools - 10; Country clubs - 6  
Other major facilities - 20 indoor and outdoor movie theatres,  
2 bowling facilities

Nearest state resort park - Natural Bridge State Resort Park  
Camping; Swimming; Fishing; Boating; Lodgings;  
Dining facility; Open year round



THE LABOR MARKET AREA

POPULATION			
Area	1977*	1970	Percent Nonwhite 1970
Lexington-Fayette			
Urban County	188,744**	174,323	12.7
Labor Market Area	342,700	309,431	N/A
Fayette County	189,900	174,323	12.7
Bourbon County	18,700	18,476	12.4
Clark County	26,300	24,090	7.7
Jessamine County	23,000	17,430	6.8
Madison County	48,400	42,730	6.8
Scott County	19,700	17,948	9.4
Woodford County	16,700	14,434	10.8

\*Provisional Estimates.

\*\*1976 Population Estimates.

Sources: U. S. Department of Commerce, Bureau of the Census, Census of Population, 1970. U. S. Department of Commerce, Bureau of the Census, Current Population Reports, Series P-25, No. 756, January 1979; Series P-26, No. 77-17, November 1978.

LABOR FORCE CHARACTERISTICS OF RESIDENTS, 1977

	Fayette County	Labor Market Area
Civilian Labor Force	100,086	182,138
Employment	97,100	176,514
Agricultural	2,882	11,214
Nonagricultural	94,218	165,300
Unemployment	2,986	5,624
Rate of Unemployment (%)	3.0	3.1

Source: Kentucky Department for Human Resources, Kentucky Labor Force Estimates, Annual Averages, 1977.

MAJOR LEXINGTON MANUFACTURING FIRMS,  
THEIR PRODUCTS AND EMPLOYMENT\*

Firm (Establishment date)	Product	Employment			Organized
		Total	Male	Female	
American Can Company - Dixie Products (1958)	Paper cups, containers	450	230	220	**
American Technical Industries, Inc. (1962)	Artificial Christmas wreaths and trees, hair brush curlers, machine parts	207	153	54	**
The American Tobacco Company (N/A)	Tobacco leaf processing	141	108	33	
Blue Grass Coca-Cola Bottling Company (1904)	Soft drinks	108	99	9	
Brown and Williamson Tobacco Corporation (1946)	Tobacco redrying	401	230	171	**
Dr. Pepper Bottling Company of Lexington (1970)	Soft drinks	136	130	6	
F M C Corporation, Crane and Excavator Division (1973)	Hydraulic truck cranes	475	325	150	
Featherlite Pre-Cast (1958)	Prestressed concrete products	102	100	2	
General Electric Company, Kentucky Glass Plant (1947)	Incandescent lamp glass bulbs	100	70	30	**
General Electric Company, Lexington Lamp Plant (1947)	Sealed beam auto- motive headlamps	431	150	281	**
International Business Machines (1956)	Electric typewriters and supplies, duplicating machines	6,605	5,768	837	
Irvin Industries, Inc. (1941)	Auto seat belts, air structures, metal parts	200	N/A	N/A	**
Lexington Herald-Leader Company (1870)	Newspapers	420	282	138	**

(Contd.)

Firm (Establishment date)	Product	Employment			Organized
		Total	Male	Female	
Mid-States Enterprises, Inc., Visumatic Industrial Products Division (1962)	Electronic mechanical sub assembly, screw feeding equipment, automation assembly equipment	225	50	175	
Opportunity Workshop of Lexington, Inc. (1961)	Typewriter parts, wood boxes, pallets	130	80	50	
Parker Seal Company (1971)	Synthetic rubber rings, seals, cord	180	N/A	N/A	**
Pepsi-Cola Bottling Company (1941)	Soft drinks	136	130	6	**
Proctor and Gamble Manufacturing Company, Lexington Food Product Plant (1957)	Peanut butter	193	158	35	
Rainbo Baking Company (1959)	Bread, rolls	204	176	28	**
R. J. Reynolds Tobacco Company (1917)	Tobacco processing	300	200	100	
Seven-Up Bottling Company of Lexington (1967)	Soft drinks	136	130	6	
Square D Company (1957)	Electrical equipment	1,732	1,157	575	**
Standard Products Company (1952)	Motor vehicle weatherstrip	240	130	110	**
Star Tool and Die Company, Inc. (1957)	Metal stampings, auto parts, typewriter parts, dies, jigs, fixtures	115	60	55	
Trane Company (1963)	Air conditioning equipment, heating equipment, air handling equipment	752	644	108	**
G. F. Vaughan Tobacco Company, Inc. (1963)	Tobacco stemming, redrying	200	150	50	**

(Contd.)

<u>Firm (Establishment date)</u>	<u>Product</u>	<u>Employment</u>			<u>Organized</u>
		<u>Total</u>	<u>Male</u>	<u>Female</u>	
Vogue Rattan Manufacturing Company, Inc. (1951)	Rattan furniture	100	69	31	**
WABCO Fluid Power, Division of American Standard (1964)	Pneumatic valves, pneumatic and hydraulic cylinders	418	304	114	**
V. R. Wesson, Division of Fansteel (1958)	Mining tools, carbide cutting tools, carbide blades	225	145	80	

\*Firms with 100 employees or more.

\*\*See Labor Organizations below.

Source: Kentucky Department of Commerce, Division of Research and Planning.

LABOR ORGANIZATIONS

<u>Union</u>	<u>Representing manufacturing workers at:</u>
International Brotherhood of Teamsters, Chauffeurs, Warehousemen and Helpers of America (Teamsters)	American Can Company - Dixie Products; Borden, Inc.; Burley Belt Chemical Company; W. T. Congleton Company; Industrial Plating of Kentucky, Inc.; Kentucky Concrete Pipe Company, Inc.; Parker Seal Company; Pepsi-Cola Bottling Company; Rainbo Baking Company; Vogue Rattan Manufacturing Company; WABCO Fluid Power, Division of American Standard
International Union of Electrical, Radio and Machine Workers, AFL-CIO (IUE)	American Technical Industries, Inc.
International Brotherhood of Electrical Workers, AFL-CIO (IBEW)	Square D Company; General Electric Company, Kentucky Glass Plant and Lexington Lamp Plant
International Typographical Union, AFL-CIO	Byron-Page Printing Company, Inc.; The Keystone Printery, Inc.; Lexington Herald-Leader Company
Sheet Metal Workers' International Association	Kirk and Blum Manufacturing Company; Homco Mechanical Contractors, Inc.; H. H. Thomas Sheet Metal Works
United Textile Workers of America, AFL-CIO	Irvin Industries, Inc.
International Association of Machinists and Aerospace Workers, AFL-CIO (Machinists)	Square D Company
The Newspaper Guild, AFL-CIO	Lexington Herald-Leader Company
International Printing and Graphic Communications Union, AFL-CIO	Lexington Herald-Leader Company
International Union, United Automobile, Aerospace and Agricultural Implement Workers of America (UAW)	Standard Products Company; Trane Company

(Contd.)

<u>Union</u>	<u>Representing manufacturing workers at:</u>
Bakery, Confectionery and Tobacco Workers' International Union, AFL-CIO, CLC	Brown and Williamson Tobacco Corporation; Rainbo Baking Company; Tobacco States Chemical Company; G. F. Vaughan Tobacco Company, Inc.
International Mailers Union	Lexington Herald-Leader Company

INDUSTRIAL SERVICES

	<u>Location</u>	<u>Miles Distant</u>
Tool & Die, Machine & Pattern Shops	Lexington	--
Metal Service Centers	Lexington	--
Heat Treating	Georgetown Richmond	16 27
Metal Finishers	Lexington	--
Electric Motor Repair	Lexington	--

Source: Kentucky Directory of Selected Industrial Services, 1977.

ESTIMATED MALE LABOR SUPPLY  
LEXINGTON LABOR MARKET AREA

Area	Current			Future	
	Total	Not in Labor Force	Unemployed	Under- employed	Reaching 18 years of age before 1985
Labor Market					
Area	11,156	0	3,236	7,920	14,577
Fayette	5,888	0	1,708	4,180	8,188
Bourbon	458	0	188	270	902
Clark	719	0	329	390	1,250
Jessamine	799	0	249	550	815
Madison	2,392	0	492	1,900	1,792
Scott	560	0	150	410	857
Woodford	340	0	120	220	773

Sources: Kentucky Department for Human Resources, Kentucky Labor Supply Estimates by County, 1977. Kentucky Department of Commerce, Future Labor Supply Before 1985.

ESTIMATED FEMALE LABOR SUPPLY  
LEXINGTON LABOR MARKET AREA

Area	Current			Future	
	Total	Not in Labor Force	Unemployed	Under- employed	Reaching 18 years of age before 1985
Labor Market					
Area	11,708	0	2,388	9,320	13,921
Fayette	6,188	0	1,278	4,910	7,777
Bourbon	530	0	140	390	820
Clark	906	0	246	660	1,147
Jessamine	857	0	187	670	831
Madison	2,207	0	367	1,840	1,722
Scott	605	0	95	510	846
Woodford	415	0	75	340	778

Sources: Kentucky Department for Human Resources, Kentucky Labor Supply Estimates by County, 1977. Kentucky Department of Commerce, Future Labor Supply Before 1985.

AVERAGE WEEKLY WAGES BY INDUSTRY,  
BY PLACE OF WORK, 1977

	<u>Fayette County</u>	<u>Bourbon County</u>	<u>Clark County</u>	<u>Jessamine County</u>
All Industries	\$199.40	\$153.22	\$201.54	\$167.66
Mining & Quarrying	395.84	*	*	*
Contract Construction	239.72	200.69	212.77	179.96
Manufacturing	275.85	170.25	246.51	211.27
Transportation, Communications & Public Utilities	242.88	204.74	272.95	202.69
Wholesale & Retail Trade	144.10	121.72	119.61	137.81
Finance, Insurance & Real Estate	194.08	177.52	160.62	156.67
Services	183.72	113.87	120.85	133.68
Other	161.14	106.92	181.50	105.61
	<u>Madison County</u>	<u>Scott County</u>	<u>Woodford County</u>	
All Industries	\$155.99	\$173.78	\$181.49	
Mining & Quarrying	113.28	*	0	
Contract Construction	144.48	157.96	182.45	
Manufacturing	181.99	204.24	205.28	
Transportation, Communications & Public Utilities	160.92	206.17	276.14	
Wholesale & Retail Trade	116.54	117.78	112.55	
Finance, Insurance & Real Estate	151.34	135.60	151.83	
Services	169.33	128.97	136.40	
Other	73.64	*	203.80	

\*Not disclosed.

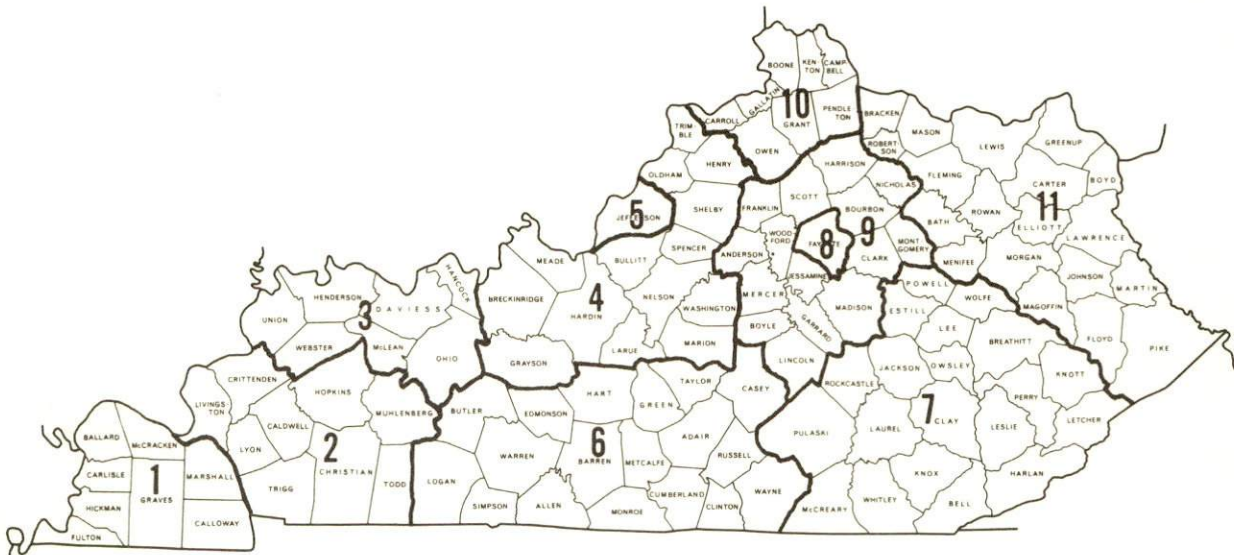
Note: Excludes domestic workers, railway workers; certain nonprofit corporations; majority of federal, state, and local government workers; and self-employed workers.

Source: Kentucky Department for Human Resources, Average Weekly Wages of Workers Covered by Kentucky Unemployment Insurance Law, 1977.



Occupational wage rates for specific industries are usually not available to most government agencies, and wage data furnished to state employment agencies by individual industrial employers is protected from disclosure by federal law. The most reliable up-to-date wage information can be obtained by direct contact with local employers.

Associated Industries of Kentucky, a voluntary organization of Kentucky businesses, regularly collects occupational wage rates and fringe benefits data from participating member firms. Data is compiled for over 127 clearly defined office, production, and service occupations. Tabulations are published for eleven regions of Kentucky, as shown on the map below. It should be noted that the data may be weighted by the preponderance of firms in the larger cities and may be somewhat higher than the rates paid in the smaller communities. Data from these tabulations are available, upon request, from the Kentucky Department of Commerce, Frankfort, Kentucky 40601.



Associated Industries of Kentucky Area Wage Surveys

PER CAPITA PERSONAL INCOME

<u>Area</u>	<u>1977</u>	<u>1973</u>	<u>Percent Change</u>
Fayette County	\$7,221	\$4,873	48.2
Labor Market Area			
Range	\$4,844 - 7,221	\$3,304 - 4,923	N/A
Kentucky	5,989	4,021	48.9
U. S.	7,026	4,980	41.1

Source: U. S. Department of Commerce, Bureau of Economic Analysis,  
April 1979.

## TRANSPORTATION

### Rail

Lines serving Lexington - Louisville and Nashville Railroad Company,  
The Chessie System, and Southern Railway System

#### Services:

Louisville and Nashville Railroad - Main line; two northbound and two southbound freights make daily stops; one northbound and one southbound through freights daily; switching facilities; two team tracks - one with space for four cars and one with space for six cars; piggyback facilities.

For details on routing, schedules, rates, and services, contact:

Manager of Industrial Development  
Louisville and Nashville Railroad Company  
908 West Broadway  
Louisville, Kentucky 40201  
(502) 587-5000

The Chessie System - Main line; one eastbound train from Lexington to Russell originates in Lexington daily except Sunday; one eastbound freight from Louisville to Russell stops at Lexington daily; other trains added when needed; one westbound train stops daily except Sunday; one westbound through freight daily; 24-hour switching available Monday-Thursday, 16-hour switching on Friday, 8-hour switching on Saturday and Sunday; team track space for 15 cars; nearest Chessie System piggyback facilities located in Cincinnati, Ohio, 83 miles north.

For details on routing, schedules, rates, and services, contact:

Real Estate and Industrial Development  
The Chessie System  
808 Dixie Terminal Building  
Cincinnati, Ohio 45202  
(513) 369-5258

(Contd.)

Southern Railway System - Main line; one local to and from Lawrenceburg, Kentucky, stops daily except Sunday; one local from Cincinnati, Ohio, to Danville, Kentucky, stops daily except Sunday; one local from Danville, Kentucky, to Cincinnati, Ohio, stops daily except Sunday; twelve northbound and twelve southbound through freights daily; switching facilities; siding space for 350 cars; nearest Southern Railway piggyback facilities located at Danville, 35 miles southwest.

For details on routing, schedules, rates, and services, contact:

Industrial Development Manager  
Southern Railway System  
P. O. Box 1808  
Washington, D. C. 20013  
(202) 628-4460

and/or

District Sales Manager  
Southern Railway System  
701 South Broadway  
Lexington, Kentucky 40508  
(606) 252-2242

### Highways

Lexington is served by two interstate highways, a parkway, and ten other primary and access highways.

Interstate 75 is a major north-south route stretching from Detroit, Michigan, to Knoxville, Tennessee. Interstate 64 is an important east-west route linking Charleston, West Virginia, to St. Louis, Missouri. Access to the Blue Grass Parkway, a four-lane toll-road providing access to western Kentucky, is 10 miles west of Lexington via U.S. 60. Access to the Mountain Parkway, a multilane toll-road to eastern Kentucky, is 22 miles east of Lexington via I-64. Other "AAA" trucking highways serving Lexington are U.S. 421, U.S. 27, U.S. 68, U.S. 60 and U.S. 25. The primary and access highways serving Lexington are linked together by the New Circle Road, a beltway encircling the city.

A major highway improvement project to widen U.S. 60 to six lanes from the New Circle Road west to just beyond the Blue Grass Airport is currently under way.

## Truck Service

<u>Company</u>	<u>Home Office</u>
Aetna Freight Lines, Inc.*	P. O. Box 44-11 Wheelersburg, Ohio 45694
Bestway Express, Inc.** (T)	905 Visco Drive Nashville, Tennessee 37210
Branch Motor Express Company *(T)	114 Fifth Avenue New York, New York 10011
Bronaugh Motor Express, Inc.* (T)	1025 Nandino Boulevard Lexington, Kentucky 40511
Consolidated Freightways Corporation of Delaware* (T)	175 Linfield Drive Menlo Park, California 94025
Cooper-Jarret, Inc.** (T)	Hanover Plaza Morristown, New Jersey 07960
Eagle Express Company** (T)	P. O. Box 680 Somerset, Kentucky 42501
Eldridge Truck Line* (T)	P. O. Box 659 Somerset, Kentucky 42501
Epes Transport System, Inc.** (T)	P. O. Box 24038 Richmond, Virginia 23224
General Highway Express, Inc.** (T)	P. O. Box 727 Sidney, Ohio 45365
Hazard Express, Inc.* (T)	P. O. Box 746 Hazard, Kentucky 41701
Helms Express** (T)	P. O. Box 340 Irwin, Pennsylvania 15642
Interstate Motor Freight System** (T)	134 Grandville Avenue, S.W. Grand Rapids, Michigan 49503
Kentucky Truck Lines, Inc.*** (Distillery products and supplies only)	601 Wilkinson Boulevard Frankfort, Kentucky 40601
McDaniel Motor Express, Inc.* (T)	P. O. Box 64 Lexington, Kentucky 40505
McLean Trucking Company** (T)	P. O. Box 213 Winston-Salem, North Carolina 27102
Monticello-Albany Freight Line, Inc.*	160 South Main Street Monticello, Kentucky 42633
O. K. Trucking Company* (T)	3000 East Crescentville Cincinnati, Ohio 45241

(Contd.)

<u>Company</u>	<u>Home Office</u>
Oak's Truck Line*	Irvine Road Beattyville, Kentucky 41311
Overnite Transportation Company*(T)	P. O. Box 1216 Richmond, Virginia 23209
Roadway Express, Inc.**(T)	1077 Gorge Boulevard Akron, Ohio 44309
Ryder Truck Lines, Inc.**	P. O. Box 2408 Jacksonville, Florida 32203
Shepherd Truck Line, Inc.*(T)	P. O. Box 117 Irvine, Kentucky 40336
Smith's Transfer Corporation**(T)	P. O. Box 1000 Staunton, Virginia 24401
Stewart Truck Lines*	U. S. 25 Dry Ridge, Kentucky 41035
United Trucking Service, Inc.*(T)	3047 Lonyo Street Detroit, Michigan 48209
Jack Walker Trucking Service, Inc.*(T)	1506 Fort Sumpter Drive Lexington, Kentucky 40505
Wilson Freight Company**(T)	11353 Reed Hartman Boulevard Cincinnati, Ohio 45241

(T)Local terminal.  
 \*Interstate and intrastate.  
 \*\*Interstate only.  
 \*\*\*Intrastate only.

Other Freight ServicesNearest Shipping Center

Purolator Courier Corporation\* Lexington  
 United Parcel Service\* Lexington

Air freight service is available through numerous companies in Lexington.

HIGHWAY MILES AND TRUCK TRANSIT TIME IN DAYS FROM  
 LEXINGTON, KENTUCKY, TO SELECTED MARKET CENTERS

City	Delivery		City	Delivery	
	Highway Miles	Time TL*		Highway Miles	Time TL*
Atlanta, Ga.	362	1	Los Angeles, Ca.	2,180	7-8
Baltimore, Md.	541	1-2	Louisville, Ky.	72	1
Birmingham, Ala.	398	1	Nashville, Tenn.	210	1
Chicago, Ill.	352	1-2	New Orleans, La.	727	3-4
Cincinnati, Ohio	78	1	New York, N. Y.	703	3-4
Cleveland, Ohio	317	2-3	Pittsburgh, Pa.	343	1
Detroit, Mich.	337	3-4	St. Louis, Mo.	335	1
Knoxville, Tenn.	175	1			

\*Transit time does not include the day of pickup.

Source: Delivery Time Only - Overnite Transportation Company,  
 P. O. Box 1216, Richmond, Virginia 23209.

\*For regular scheduled pickups or for occasional pickups, arrangements must be made with the Louisville office of Purolator Courier Corporation or United Parcel Service.

## Air

### Commercial

Location: Blue Grass Field  
4.5 miles west of Lexington  
Runways: 2 paved  
Length: 6,500 feet; 3,500 feet  
Traffic Control: Tower; radar services - arrival/departure, Stage II contact approach control, ground control; Automatic Terminal Information Service  
Lighting: Approach lighting system, beacon, runways and obstructions lighted  
Services: Delta, Eastern, Piedmont and Allegheny Airlines; fuel - 24-hour service, 80, 100, and jet fuel; repair service - Major A and E repairs, Certified Avionics repair station; National Weather Service; flight instructions; charter service; storage; taxi, limousine, car and aircraft rentals; restaurant

Air Freight Service: Air freight terminal regularly serviced by freight carrying airlines

Bus - Lextran (intracity), Greyhound Bus Lines

Taxi - 4 companies, 24-hour radio dispatched service

Rental Services - Car, truck, limousine, bus, trailer, and camper rentals; aircraft rental and charter service available at Blue Grass Field

### Water

The nearest navigable river is the Kentucky River. Lexington is approximately 18 miles north of a point on the Kentucky River where a 6-foot navigation channel is maintained.



POWER AND FUEL

Electricity

Company serving Lexington and the major part of Fayette  
County - Kentucky Utilities Company  
Source of power - Kentucky Utilities Company  
Total generating capacity - 2,238,400 KW  
For industrial rates contact:

Industrial Development Department  
Kentucky Utilities Company  
120 South Limestone Street  
Lexington, Kentucky 40507  
(606) 255-1461

Companies serving parts of Fayette County - Blue Grass Rural Electric  
Cooperative Corporation and Clark Rural Electric Cooperative  
Corporation  
Source of power - East Kentucky Power Cooperative  
Total generating capacity - 867,000 KW  
For industrial rates contact:

Industrial Development Division  
East Kentucky Power Cooperative  
P. O. Box 707  
Winchester, Kentucky 40391  
(606) 744-4812

and/or

Blue Grass RECC  
U. S. 27 North  
P. O. Drawer D  
Nicholasville, Kentucky 40356  
(606) 885-4191

and/or

Clark RECC  
Route 15  
P. O. Box 748  
Winchester, Kentucky 40391  
(606) 744-4251

Natural Gas

Company serving Lexington - Columbia Gas of Kentucky, Inc.  
Source of supply - Columbia Gas Transmission Corporation  
Size of transmission mains - 12 inches (supplier)  
12, 10, 8 and 6 inches (distributor)  
Distribution mains - 16, 12, 10, 8, 6, 4 and 2 inches  
Distribution pressure - Low: 4 to 6 psi  
Intermediate: 35 to 50 psi  
High: 100 to 200 psi  
Btu content - 1,030 per cubic foot  
Specific gravity - 0.59  
For rates and supplies contact:

District Manager  
Columbia Gas of Kentucky, Inc.  
P. O. Box 241  
Lexington, Kentucky 40501  
(606) 255-3612

Other Fuels

Propane

Williams Energy Company  
P. O. Box 77  
Winchester, Kentucky 40391  
(office located in  
Lexington)

Crawford Gas and Appliances, Inc.  
1104 Winchester Road  
Lexington, Kentucky 40505

(Contd.)

Fuel oils

Distillate fuel oil -

Ashland Petroleum Company  
Old Frankfort Pike  
Lexington, Kentucky 40511

Central Kentucky Petroleum  
Old Frankfort Pike  
Lexington, Kentucky 40511

Chevron U.S.A., Inc.  
1750 Old Frankfort Pike  
Lexington, Kentucky 40511

Exxon Company U.S.A.  
Old Frankfort Pike  
Lexington, Kentucky 40511

Doc Ferrell Gulf  
Distributor, Inc.  
1120 West Manchester  
Lexington, Kentucky 40508

H & R Oil Company  
Georgetown Road  
Lexington, Kentucky 40502

Keller Oil Company  
630 New Circle Road  
Lexington, Kentucky 40501

Moore Oil Company  
Old Frankfort Pike  
Lexington, Kentucky 40511

Residual fuel oil - Arrangements must be made with the refinery.

Low sulphur content coal - Available in eastern Kentucky.



KENTUCKY-AMERICAN WATER COMPANY

## WATER AND SEWERAGE

### Water

Company serving Lexington - Kentucky-American Water Company\*  
2300 Richmond Road  
Lexington, Kentucky 40502  
(606) 269-2386

Source - Kentucky River and Number 4 Reservoir

Treatment plant capacity - Kentucky River Plant: 24,000,000 gpd\*\*  
Richmond Road Plant: 16,000,000 gpd\*\*  
Total: 40,000,000 gpd

Average daily consumption - 30,000,000 gallons

Peak daily consumption - 44,130,000 gallons

Type treatment - Coagulation, sedimentation, filtration, chlorination,  
fluoridation

Storage capacity - 13,000,000 gallons

Size lines - 30 to 2 1/2 inches

Average pressure - Pumped at 80 psi

Average temperature - 60 degrees F.

(Contd.)

---

\*Plans and specifications are being prepared for a project to expand the capacity of the Kentucky River Plant to 40,000,000 gpd. Construction is expected to begin in the summer of 1979 and will be completed during 1980.

\*\*Both treatment plants have a 25 percent overload pumping capacity.

MONTHLY AND QUARTERLY WATER RATES FOR RESIDENTIAL,  
COMMERCIAL, AND INDUSTRIAL CONSUMERS

	<u>Cubic Feet Per</u>		<u>Rate per 100 Cubic Feet</u>
	<u>Month</u>	<u>Quarter</u>	
For the first	5,000	15,000	\$0.92532
For the next	30,000	90,000	\$0.67014
For the next	300,000	900,000	\$0.38944
For all over	335,000	1,005,000	\$0.25740

MINIMUM CHARGES

All metered general water service customers shall pay a minimum charge based on the size of meter installed. Such minimum charge will entitle the customer to as much water as the charge will pay for at the scheduled meter rates. Water used in excess of such amount will be billed at the meter rate schedule.

<u>Size of Meter</u>	<u>Minimum Charge per</u>	
	<u>Month</u>	<u>Quarter</u>
5/8"	\$ 2.75	\$ 8.25
3/4"	4.13	12.39
1"	6.85	20.55
1 1/2"	13.77	41.31
2"	22.02	66.06
3"	47.61	142.83
4"	72.67	218.01
6"	152.91	458.73

Tap-on charge: None

Surface water sources - Kentucky River, West Hickman Creek, South Elkhorn Creek, Elkhorn Creek

Average discharge - Kentucky River at Lock 10 near Winchester, Kentucky - 5,253 cfs (70 years, unadjusted, USGS); West Hickman Creek at Jonestown, Kentucky, maximum discharge 1977 - 539 cfs (USGS); South Elkhorn Creek at Fort Spring, Kentucky - 31.7 cfs (27 years, USGS)

Expected ground water yield - 50 to 200 gpm along southeastern border and northwestern corner of county; 5 gpm or less along eastern border and east central portion of county; 5 to 50 gpm over remainder of county

## Sewerage

Company serving Lexington - Lexington-Fayette Urban County  
Government\*

Sanitary Sewer Division  
136 Walnut Street  
Lexington, Kentucky 40507  
(606) 255-5631 Ext. 215

Design capacity - Plant No. 1: 18,000,000 gpd  
Plant No. 2: 8,750,000 gpd  
Total: 26,750,000 gpd

Average daily flow - Plant No. 1: 15,500,000 gallons  
Plant No. 2: 5,500,000 gallons

Treatment - Plant No. 1: Primary and secondary  
Plant No. 2: Primary, secondary and tertiary

Type treatment - Modified Kraus process, drying beds, and heat  
treatment in both plants

Treated effluent discharged into - Plant No. 1: Town Branch  
Plant No. 2: West Hickman Creek

Size of sanitary mains - 8 to 36 inches

Size of storm mains - 8 to 108 inches

Rates - Sewer charges are included in the property tax rates in  
urban service districts where sewer service is provided.

Tap-on charge: Prior to every future tap-on or connection to any  
sewer pipe, main lateral, trunk line, interceptor or other  
installation or facility of the sanitary sewer system, there shall  
be paid a fee or charge which shall be solely for the privilege of  
connecting to the system and shall be in addition to the require-  
ment that connections to the system be made at the sole expense  
of connecting property owner. Such tap-on, connection or privi-  
lege fee, is established as follows:

Business, professional, commercial and industrial buildings -  
a fee to be based on \$0.20 per square foot of floor space  
with a minimum of \$175 for each sewer connection.

\*Construction is underway on the Eastern Interceptor project. The pro-  
ject includes construction of a pumping station, force main, gravity  
main, and outfall sewers. Construction of a second pumping station  
which will divert approximately 1,000,000 gpd to the Town Branch  
treatment plant is planned for 1980.

Step I of a 201 Facilities plan to determine the feasibility of expand-  
ing the Town Branch treatment plant to a capacity of 40,000,000 gpd has  
recently been completed and applications have been submitted to EPA to  
begin work on construction plans and specifications for the project.

Step II of a 201 Facilities Plan, the preparation of construction plans  
and specifications for the expansion of the West Hickman sewage treatment  
plant to a capacity of 16,800,000, is underway and expected to be com-  
pleted by January of 1980.

A Sewer System Evaluation Survey for replacement and rehabilitation of  
the sewer system is under way.

## CLIMATE

### Fayette County

#### Temperature

Normal (30-year record)	55.2 degrees
Average annual 1977	55.8 degrees
Record highest, September, 1954 (33-year record)	103.0 degrees
Record lowest, January, 1963 (33-year record)	-21.0 degrees
Normal heating degree days (30-year record)	4,729
(Heating degree day totals are the sums of negative departures of average daily temperatures from 65 degrees F.)	

#### Precipitation

Normal (30-year record)	44.49 inches
Mean annual snowfall (33-year record)	15.90 inches
Total precipitation 1977	40.16 inches
Mean number days precipitation (.01 inch or more) (33-year record)	131
Mean number days thunderstorms (33-year record)	47

#### Prevailing Winds (17-year record)

South

#### Relative Humidity

1 a.m.	76 percent (13-year record)
7 a.m.	81 percent (14-year record)
1 p.m.	59 percent (14-year record)
7 p.m.	63 percent (14-year record)

Source: U. S. Department of Commerce, Environmental Science Services Administration, Climatological Data, 1977.  
Station of record: Lexington, Kentucky.



LOCAL GOVERNMENT

Lexington-Fayette Urban County

Structure - The governments of the City of Lexington and the County of Fayette merged on January 1, 1974, to form the Lexington-Fayette Urban County. The citizens of the Urban County are represented by a fifteen-member council. Twelve council members are elected from districts for two-year terms, and three are elected at-large for four-year terms. The government's organization provides that:

The Chief Executive shall be the Mayor who is elected for a four-year term.

Administrative coordination shall be provided by the Chief Administrative Officer who is appointed by the Council.

Operational management shall be provided by six departmental commissioners who are appointed by the Mayor.

Service and taxing districts - The Charter of the Urban County Government established separate service and taxing districts:

- I. The General Services District includes the entire Urban County. Property owners receive all services of the Urban County Government except
  - (1) Sanitary sewers
  - (2) Refuse collection
  - (3) Street lights
  - (4) Street cleaning

- II. The Full Urban Services District property owners receive the above four services. Partial Urban Services Districts have been established for those property owners who receive one, two or three of the above four services.

Budget 1978-79 - General Funds:

General Services District -	\$39,500,000
Full Urban Services District -	8,700,000
Sewer Fund -	4,400,000*

Fees and licenses - Occupational license fees of 2 percent of all salaries, wages, commissions and other compensation earned by persons in the Urban County for work done or services performed in the Urban County, and 2 percent of the net profits of all businesses, professions or occupations from activities conducted in the Urban County.

Assessed Value of Property, 1978-79

<u>Classes of Property</u>	<u>Lexington-Fayette Urban County</u>
Real Estate	\$2,270,671,680
Tangibles	509,152,370

\*Includes \$3,000,000 already accounted for in the general fund of the full urban services district fund.

## Property Taxes

All property in Kentucky is assessed at 100 percent of fair cash value.

Land and buildings are taxed by the state and may be taxed by local jurisdictions. The state rate is \$0.315 per \$100 of assessed valuation. Lexington-Fayette Urban County is divided into thirteen urban service districts. The property tax rates for land and buildings in each district reflect the level of urban services provided. The combined state and local rates per \$100 of assessed valuation of land and buildings and the urban services included in the tax rate are shown in the following table.

<u>Service District #</u>	<u>Land &amp; Buildings</u>	<u>Urban Services</u>
1	\$1.5055	Sewer, street cleaning, street lights, garbage
2	0.9825	No urban services
3	1.4448	Sewer, garbage
4	1.2487	Garbage only
5	1.1786	Sewer only
6	1.0291	Street lights only
7	1.2252	Sewer, street lights
8	1.2953	Street lights, garbage
9	*	*
10	1.4589	Sewer, street cleaning, garbage
11	1.4914	Sewer, street lights, garbage
12	1.2393	Sewer, street cleaning, street lights
13	1.3094	Street cleaning, street lights, garbage

Manufacturing machinery, raw materials inventories, pollution control equipment, and goods in the process of manufacture are not subject to local taxation. The state rate is \$0.15 per \$100.

Other tangible personal property owned by manufacturers (automobiles, trucks, finished goods, office furniture, office equipment) is taxed by the state at \$0.45 per \$100 and may be taxed by local jurisdictions. The combined state and local rate per \$100 of assessed valuation is \$1.1175 for the entire Lexington-Fayette Urban County.

Property stored in public warehouses in a transit status is not subject to local taxation. The state rate is only \$0.015 per \$100.

Intangible personal property located in Kentucky (money in hand, shares of stock, notes, bonds, accounts receivable, and other credits) is taxed by the state at \$0.25 per \$100, and is not subject to local taxation.

Private leaseholds in industrial facilities owned by cities or counties and financed by industrial revenue bonds are subject to a state tax of \$0.015 per \$100 of value (essentially the lessee's equity, adjusted for appreciation or depreciation). Local taxation is not permitted.

\*The taxing district designated as District #9 is reserved for intangible property taxed by the state only and is not a physical area of the Urban County.

Utilities Gross Receipts Tax for Schools

A 3 percent tax is levied on utilities receipts for schools in Fayette County. Tax is paid by all consumers of utilities as an add-on to the utilities bills. Exempted are receipts from utilities services that are resold and the receipts from the sale of energy or energy producing fuels that exceed 3 percent of the cost of production in manufacturing, processing, mining or refining.

Planning and Zoning

Joint agency - Lexington-Fayette Urban County Planning Commission  
Zoning enforced - All areas  
Subdivision regulations enforced - All areas  
Local codes enforced - Housing and building  
Mandatory state codes enforced - Plumbing, National Fire Protection Association Code, National Building Code (for major buildings and residential construction containing more that 12 bedrooms per building)

Safety

<u>Police</u>	<u>Lexington-Fayette Urban County Police</u>	<u>Fayette County Sheriff's Office</u>
Staff	343 police officers 35 safety officers	30
Radio-patrol cars	425 (including patrol wagons and motorcycles)	All privately owned vehicles

Fire

Lexington-Fayette County Metro

American Insurance Association Fire Rating	Zone 1 - Class 3* Zones 2 and 3 - Class 5, 9 and 10**
Full-time staff	393
Number of stations	14 plus a training center

Rescue Service

Emergency Medical Rescue Squad, operated by the Lexington-Fayette County Metro Fire Department, provides rescue service.

\*Zone 1 - Class 3 applies to all class rated property.

\*\*Zones 2 and 3 -

Within five miles of in service Lexington-Fayette Metro Fire Station:  
 Within 1,000 feet of accessible fire hydrant - Class 5 applies;  
 Over 1,000 feet from accessible fire hydrant - Class 9 applies.  
 Over five miles from in service Lexington-Fayette Metro Fire Station:  
 Class 10 applies.

Refuse Collection and Disposal

Lexington-Fayette Urban County

	<u>Inside Service District</u>	<u>Outside Service District</u>
Type service	Municipal	Private
Fee charged:		
residential	*	\$108 per year
business	*	Contract
industrial	*	Contract
Collection frequency:		
residential	Twice weekly	Twice weekly
business	Twice weekly	Contract
industrial	Twice weekly	Contract
Trash pickup	Once weekly	Contract
Disposal method	Landfill	Landfill

\*Fees for refuse collection are included in the property tax rates in the urban service districts where this service is provided.

## EDUCATION

### Public Schools

	<u>Fayette County</u>
Total Enrollment (Fall, 1978)	33,367
Elementary	17,966
Junior High	8,072
High School	7,329
Student-Teacher Ratio	17-1
Elementary	17-1
Junior High	17-1
High School	19-1
Accreditation	Southern Association of Colleges and Schools (13 schools)
Percent High School Graduates to College	56.3
Expenditures Per Pupil (1977-78)	\$1,218.57
Bonded Indebtedness, June 30, 1978	\$45,436,000

### Nonpublic Schools

	<u>Parochial and Private</u>	<u>Special Education</u>
Total Number of Schools	18	4
Total Enrollment	3,540	229
Elementary	2,490	
Junior High	165	
High School	885	
Student-Teacher Ratio	18-1	11-1
Elementary	21-1	
Junior High	12-1	
High School	14-1	



BLANDING-KIRWAN DORMITORY COMPLEX  
UNIVERSITY OF KENTUCKY

### Area Colleges and Universities

<u>Name</u>	<u>Location (Miles distant)</u>	<u>Enrollment (Fall, 1978)</u>	<u>Highest Degree Conferred</u>
University of Kentucky	Lexington	22,463	Ph.D., M.D., D.M.D., J.D.
Transylvania University	Lexington	789	Masters*
Lexington Technical Institute	Lexington	1,867	Associate
Georgetown College	Georgetown (16)	1,092	Masters
Midway Junior College	Midway (18)	310	Associate
Asbury College	Wilmore (18)	1,272	Baccalaureate
Southeastern Christian College	Winchester (23)	124	Associate
Eastern Kentucky University	Richmond (27)	13,815	Masters, Ph.D.**
Kentucky State University	Frankfort (28)	2,195	Masters

\*Courses in the masters degree program are taught on the Transylvania campus by Xavier University of Cincinnati faculty members. The degree is issued by Xavier University.

\*\*Joint doctoral degree programs are offered in cooperation with the University of Kentucky, Lexington.



ADMINISTRATION BUILDING  
TRANSYLVANIA UNIVERSITY



Vocational Schools

Nearest State School

Location	Central Kentucky State Vocational-Technical School
Curriculum	Lexington Agriculture Equine Education Business and Office Clerical Secretarial Consumer and Home Economics Commercial Foods Consumer Education Health and Personal Service Occupations Cosmetology Dental Assistant Operating Room Technician Orderly/Nurse Assistant Practical Nursing Marketing and Distributive Education Industrial Education Auto Body Repair Auto Mechanics Carpentry Drafting Electronics Graphic Arts (Printing) Industrial Electricity Machine Shop Masonry Office Machine Repair Sheet Metal (includes Heating and Air Conditioning) Welding Learning Resource Center

Nearest Area Education Centers

Location	Southside Area Vocational Education Center
Curriculum	Lexington Health and Personal Service Occupations Health Careers Industrial Education Air Conditioning and Refrigeration Auto Body Repair Auto Mechanics Carpentry Electricity Electronic Service Masonry

Location	Northside Area Vocational Education Center
Curriculum	Lexington Agriculture Horticulture Industrial Education Machine Shop Welding

Arrangements can be made to provide training in the specific production skills required by an industrial plant. Instruction may be conducted either in the vocational school or in the industrial plant, depending upon the desire arrangement and the availability of special equipment.



COUNCIL OF STATE GOVERNMENTS

## HEALTH

### Local Medical Personnel

Physicians - 844  
Dentists - 197

### Hospitals

<u>General Hospitals</u>	<u>Beds</u>
Central Baptist Hospital	297
Good Samaritan Hospital	298
St. Joseph Hospital	436
University of Kentucky Hospital	474
Veterans Administration Hospital	873

<u>Special Hospitals</u>	<u>Beds</u>
Cardinal Hill Hospital (Convalescent and rehabilitation)	100
Eastern State Hospital (Psychiatric)	455
Shriners Hospital For Crippled Children (pediatric and orthopedic)	64

### Other Medical Facilities

Bluegrass East Comprehensive Care Center  
Planned Parenthood Center

### Ambulance Service

Name - Metropolitan Ambulance Service, Inc.  
Staff - 6 emergency medical technicians, 5 staff members training  
to be emergency medical technicians, 1 dispatcher  
Service - 24-hours daily  
Equipment - 4 fully equipped ambulances

Name - Emergency Medical Resuce Service  
Staff - 36 employees (emergency medical technicians and paramedics)  
plus back-up provided by the Lexington-Fayette Urban County  
Fire Department  
Service - 24-hours daily  
Equipment - 4 fully equipped ambulances

Public Health

Facility - Lexington-Fayette County Health Department

Staff - (Professional and technical services only), 10 public health administrators, 3 physicians, 48 registered nurses, 6 licensed practical nurses, 6 nurse practitioners/physician assistants, 18 environmentalists, 2 researchers, 5 health educators, 2 laboratory technicians, 3 physical therapists, 1 speech pathologist, 5 social workers, 2 recreational therapists, 2 nutritionists, 2 accountants, 1 personnel officer, 2 staff assistants, 1 maintenance supervisor, 2 general supervisors

OTHER LOCAL FACILITIES

Communications

Telephone - General Telephone of Kentucky  
Services - Standard

Telegraph - Western Union  
Services - Counter service, toll free number for mailgrams and  
international and telegram messages

Postal - U. S. Post Office  
Class - First  
Mail received - 24 hours daily  
Mail dispatched - 24 hours daily

Newspapers - The Lexington Herald; The Lexington Leader  
Daily and  
circulation - 63,465                      33,859  
Saturday and  
circulation - The Lexington Herald-Leader - 89,034  
Sunday and  
circulation - The Lexington Herald-Leader - 101,786  
Other papers  
received from - Louisville, Kentucky, and Cincinnati, Ohio

Radio - WBLG-AM              WAXU-AM & FM  
          WJMM-FM              WLAP-AM & FM  
          WKQQ-FM              WVLK-AM & FM  
          WNVL-AM  
Other stations  
received from - Louisville, Kentucky, and Cincinnati, Ohio

Television - WKYT - Channel 27 (CBS)  
              WLEX - Channel 18 (NBC)  
              WTVQ - Channel 62 (ABC)  
Reception from - Lexington and Louisville, Kentucky; Cincinnati, Ohio

Kentucky Educational  
Television - Lexington-Richmond transmitter, Channel 46

## Library Services

### Public library - Lexington Public Library

Size collection - 241,708 volumes

Circulation, 1977-78 - 723,721 items

Services - Main library; 4 branches open full time, 1 satellite branch, 3 bookmobiles; special services provided to the jails, nursing homes, homebound, senior citizens, and the disadvantaged; framed prints; tapes; large print books; records, copying skills materials for the new adult reader; 375 periodicals; 33 current newspapers; newspapers on microfilm, Urban County documents and news magazines on microfiche; general vertical file; community information index; local history index; regularly scheduled children's programs and movies; adult programs and movies; artist in residence and art displays

### University library - Margaret I. King Library, University of Kentucky (open to the public)

Size collection - 1,706,653 volumes and 1,718,432 microforms

Specialized libraries - Art, music, chemistry and physics, biological sciences, theology, archeology, agriculture, business, law, math, education, medicine, rare books room

Special collections - Regional Ohio Valley and Kentucky history including manuscripts of prominent political figures, photographic and audiovisual archives, history of printing and the private press including five operational hand presses dating back to the 1840's, family and local history materials

### University library - Frances Carrick Thomas Library, Transylvania University (open to the public)

Size collection - 75,000 volumes

Special collections - Early medicine, Kentucky history, manuscripts from Jefferson Davis, museum of scientific apparatus

## Religious Institutions

Number of churches - Approximately 200

Denominations - African Methodist Episcopal, Apostolic, Assembly of God, Baha'i, Baptist, Catholic, Christian, Christian Science, Church of Christ, Church of God, Community Church, Disciples of Christ, Eastern Orthodox, Episcopal, Holiness, House of God, Jehovah's Witnesses, Latter Day Saints, Lutheran, Methodist, Nazarene, Pentecostal, Presbyterian, Salvation Army, Seventh Day Adventist, Unitarian Universalist, United Church of Christ, Wesleyan

Number of Synagogues - 2

Congregations - Ohavey Zion (traditional); Adath Israel (reform)

## Financial Institutions

<u>Banks</u>	<u>Assets</u>	<u>Deposits</u>	<u>Statement Date</u>
Bank of Commerce and Trust Company	\$ 94,848,249.50	\$ 88,750,649.63	6/30/78
Bank of Lexington	67,806,350.00	63,385,031.00	6/30/78
Bank of the Bluegrass	9,477,043.00	8,507,028.00	6/30/78
Central Bank and Trust Company	160,003,297.00	147,078,349.00	12/31/77
Citizens Union National Bank and Trust Company	135,286,044.84	122,125,762.39	12/31/77
First Security National Bank and Trust Company	510,532,079.00	417,011,096.00	6/30/78
Second National Bank and Trust Company	106,363,664.92	95,787,570.90	6/30/78
<u>Savings and Loan Associations</u>	<u>Assets</u>	<u>Savings Accounts</u>	<u>Statement Date</u>
First Federal Savings and Loan Association	\$ 80,203,949.35	\$ 70,355,898.64	6/30/78
Lexington Federal Savings and Loan Association	115,698,558.49	104,835,070.65	6/30/78
New Union Federal Savings and Loan Association	13,879,682.74	12,771,473.90	6/30/78
Peoples Federal Savings and Loan Association	12,744,091.52	11,615,002.64	6/30/78

## Hotels and Motels

Total number - 41

Total units - Approximately 4,200 (including 600 units presently under construction)

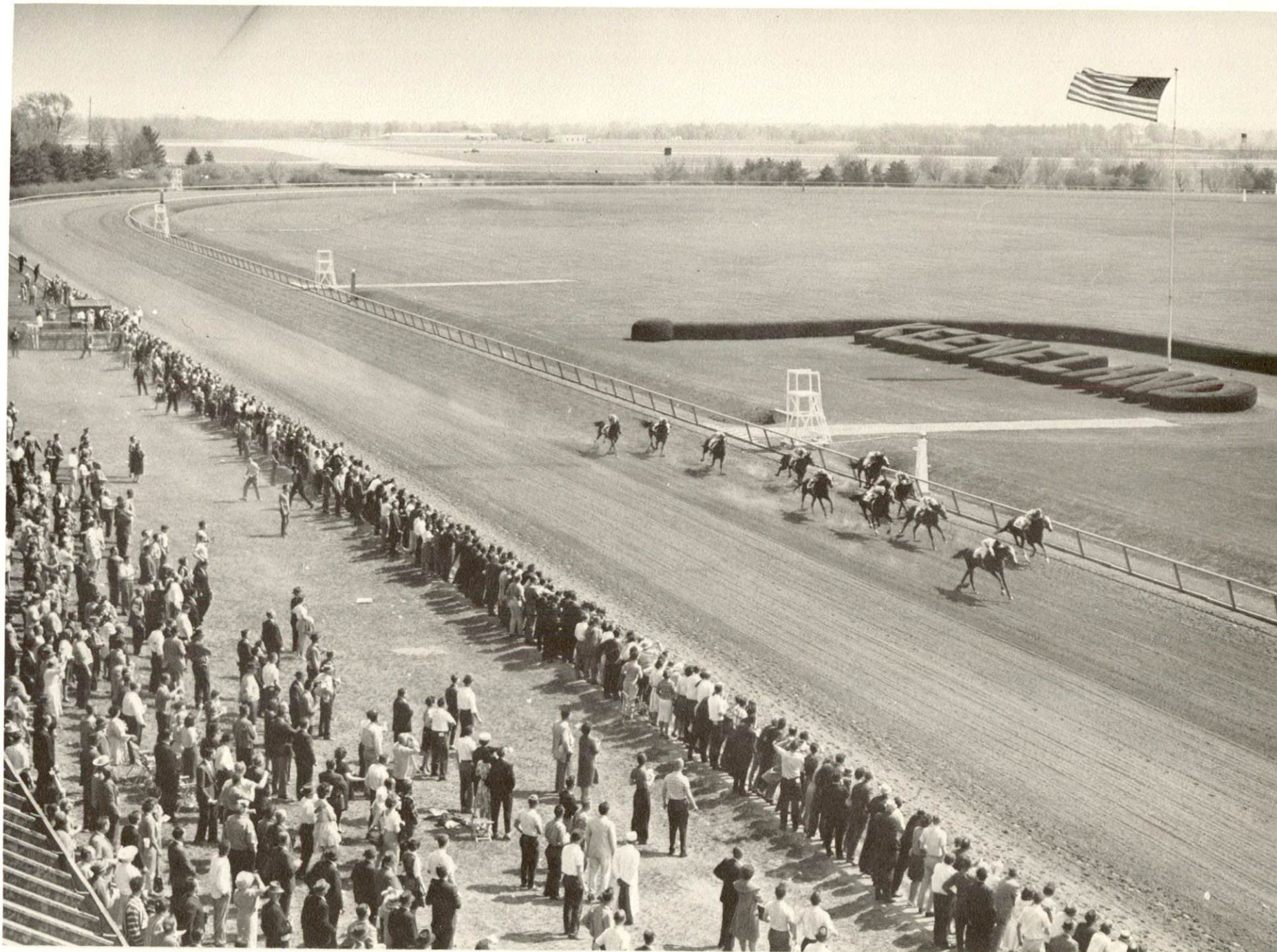
## Clubs and Organizations

There are more than 300 clubs and organizations in Lexington including most major civic, business, professional, fraternal, charitable, sports, farm and youth organizations.





BLUEGRASS HORSE FIELD



KEENELAND RACE COURSE

## RECREATION

### Local

Lexington is an outstanding Kentucky center for sports and cultural events and the site of many historic buildings and homes.

Sports and entertainment events are available at Rupp Arena (seating capacity 23,000) in the Lexington Center. Rupp Arena is the home court of the 1978 NCAA basketball championship team, the University of Kentucky Wildcats. A convention center, hotel, restaurants and shopping mall round out the facilities at the center. The 57,000-seat University of Kentucky Commonwealth Stadium is the scene of exciting football games.

Some of the finest thoroughbred and harness racing in the world is available at Keeneland Race Course and the Red Mile Trotting Track. The Lexington Junior League Horse Show, the nation's largest outdoor saddlehorse show, is held at the trotting track each July. The Kentucky Horse Park was recently completed and hosted the World Championship Three Day Event -- the first time the event has ever been held in the United States. Facilities at the park include a visitors information center with a film presentation, a museum, gift shop, walking tour, events area, horseback and pony rides, horsedrawn rides, vehicle demonstration area, restaurant, picnic area and campground. Several private companies offer tours of Lexington thoroughbred, standardbred and saddledbred horse farms.

The recently renovated Lexington Opera House hosts national tours of Broadway shows, concerts by the Lexington Philharmonic Orchestra and the Central Kentucky Youth Symphony and Youth Concert Orchestras, and productions of the Lexington Children's Theatre and the Lexington Ballet.

The Chamber Music Society of Central Kentucky presents concerts annually featuring chamber music ensembles of national and international reputation. In addition to its regular subscription concerts, the Lexington Philharmonic Orchestra performs youth concerts, operas, summer concerts in city parks and performances in the Fayette County Schools. Subscriptions are available to the Central Kentucky Concert and Lecture Series which sponsors appearances by world renowned groups and individuals in the arts and sciences.

The Lexington Lions Club Blue Grass Fair held each summer at Masterson Station Park has the distinction of being the largest U. S. fair under canvas. A Bluegrass music festival is also held at Masterson Station Park.

Important historic buildings and homes in Lexington include Ashland, the estate of Kentucky statesman Henry Clay; the Henry Clay Law Office; the Hunt-Morgan House, built by Kentucky's first millionaire; the restored Lexington Opera House; the Mary Todd Lincoln House, home of Abraham Lincoln's wife before her marriage; and the Patterson Cabin, Lexington's oldest building.

A variety of museums, galleries and libraries are open to the public in Lexington. The Headley Museum, Inc., features an outstanding collection of jeweled bibelots; the Keeneland Library at the race track is a leading depository for information about thoroughbred racing; the Lexington Public Library features an artist in residence and art displays; Transylvania University has a museum of early 1800's medical equipment; the University of Kentucky features the U. K. Art Gallery, King Library with over 1.7 million volumes, a special rare books room, and an anthropology museum.

The Lexington-Fayette County Metro Parks Department maintains 65 parks and playgrounds with year-round supervised recreational programs staffed by more than 130 employees. Recent program offerings include gymnastics, woodworking, modern dance, arts and crafts, drama, ceramics, basketball, drawing, guitar, yoga, tennis, and general sports activities. Facilities available at the public parks include 10 swimming pools and 66 tennis courts. Other facilities open to the public include 5 golf courses, 2 bowling facilities, and over 20 indoor and drive-in movie theatres.

Private facilities include six country clubs.

Area (Within 60 miles)

Natural Bridge State Resort Park, easily accessible to Lexington via the Mountain Parkway, is situated near the nationally famous Red River Gorge area and the Daniel Boone National Forest. A 35-room lodge, cottages, dining room, 95 campsites, swimming pool, skylift, 54-acre lake, playground and picnic area are available at the park. Activities include swimming, fishing, hiking, boating and horseback riding. The park is famous for its twelve natural arches and outstanding varieties of plants and wildlife.

State parks near Lexington are Old Fort Harrod State Park, Fort Boonesborough State Park, Lincoln Homestead State Park and My Old Kentucky Home State Park.

State shrines near Lexington are Perryville Battlefield State Shrine, Waveland State Shrine, Isaac Shelby State Shrine, Constitution Square State Shrine and White Hall State Shrine.

Another popular historic attraction is Pleasant Hill, a restored Shaker Village, near Danville.

Lexington is only 72 miles from Louisville, Kentucky, and 78 miles from Cincinnati, Ohio, via interstate making the cultural activities and sporting events available in those cities easily accessible to Lexington residents.

## COMMUNITY IMPROVEMENTS

### Industrial and Commercial

Ground was broken on September 27, 1978, for the Wabash Fiberboard Box Company which will produce cardboard boxes. The plant will have 200,000 square feet and will employ 250 people.

The corporate headquarters of General Energy Corporation, Lapata Coal Company, Crescent Industries, L. T. Ruth Coal Company and Union Coal Company, and a regional office of Phillips Petroleum Products have recently moved to Lexington.

The Lexington Herald-Leader Company recently broke ground for a new production facility and construction is underway on a new headquarters for Kentucky Utilities. Construction is nearing completion on Kincaid Tower, a multistory office building adjacent to the Lexington Center.

The Lexington Center, a \$50 million sports, entertainment, hotel, convention and shopping complex, has been completed and has become an important asset to Lexington's tourist and convention trade.

Two large regional shopping centers -- South Park and North Park, have been developed. Each shopping center has a department store, grocery, retail shops and six cinemas.

Plans are being made to build a state and local government office building downtown.

Over one hundred new businesses opened in Lexington in 1978. Seven new restaurants and lounges are scheduled to open soon.

Six hundred motel rooms are under construction and a motel and condominium complex is planned adjacent to the Red Mile Trotting Track.

### Transportation

#### Highways:

Projects currently underway include the reconstruction of a portion of I-75/I-64 and widening U.S. 60 to six lanes from New Circle Road west to just beyond Blue Grass Airport.

Construction has begun on a 2-mile section of the Man O'War Parkway between Harrodsburg Road and Richmond Road. When finished, the parkway, which is intended to serve local residential traffic, will run parallel to the New Circle Road for 17 miles from Versailles Road southwest to Winchester Road.

Highway improvements in the planning stages include: widening Ironworks Pike from the Kentucky Horse Park to Newtown Pike; extension of Newtown Pike to four lanes to the University of Kentucky; widening Meadowthorpe Street from Forbes to Lyle; installation of a bridge on Leestown Road; installation of a four-lane bridge for Jefferson Street; upgrading Georgetown Road to Richmond Road; construction of a new interchange at Clays Mill Road; reconstruction of U.S. 27 to Nicholasville; construction of an interchange at Mt. Tabor Road extending Mt. Tabor Road through Tates Creek to the New Circle Road; and a study is being made to determine the feasibility of installing an underpass or overpass on South Broadway at the railroad tracks.

#### Air:

Expansion of the long-term parking lot, employee parking lot and field maintenance facilities at Blue Grass Field have recently been completed. A new runway and taxi-way lighting system is being installed and two eight-bay T-hangars are under construction. The baggage claim area is being expanded and a new conveyor system is being installed. Construction is under way on a new safety/communications building. A study is underway on a master plan for expansion and should be completed by February 1979.

#### Utilities

##### Water:

Plans and specifications are being prepared for a project to expand the capacity of the Kentucky River water treatment plant to 40,000,000-gallons per day. Construction is expected to begin during the summer of 1979 and be completed during 1980.

##### Sewerage:

Construction is under way on the Eastern Interceptor project. The project includes construction of a pumping station, force main, gravity main, and outfall sewers. Construction of a second pumping station which will divert approximately 1,000,000-gallons per day to the Town Branch sewage treatment plant is planned for 1980.

Step I of a 201 Facilities Plan to determine the feasibility of expanding the Town Branch sewage treatment plant to a capacity of 40,000,000-gallons per day has recently been completed and applications have been submitted to EPA to begin work on construction plans and specifications for the project.

Step II of a 201 Facilities Plan, the preparation of construction plans and specifications for the expansion of the West Hickman sewage treatment plant to a capacity of 16,800,000-gallons per day, is under way and expected to be completed by January of 1980.

A Sewer System Evaluation Survey for replacement and rehabilitation of the sewer system is under way.

## Education

### University of Kentucky:

Construction is nearing completion on the \$7 million College of Nursing/Health Sciences Learning Center; the \$2 million Sanders/Brown Research Center on Aging; the \$6.3 million Fine Arts Center; and the \$3.7 million Tobacco and Health Research Institute.

A \$4.9 million 200-unit apartment complex for married students and their families is now under construction. Also under construction are an office/classroom/library addition to the law school; and a \$205,000 renovation at the Medical Center housing 16 neonatal/intensive care units.

Other projects under way include improvement and replacement of the main boiler plant, a \$400,000 hospital equipment storage building, an addition to the Shively Sports Center, and \$450,000 in renovations for the handicapped such as installation of elevators and ramps.

A master program for the general expansion and renovation of the University Hospital is now under way. Improvements to the existing University Hospital are expected to include: new emergency rooms, clinical labs, operating rooms, a pharmacy central supply unit, and other medically related areas.

Buildings now in the design stage for the University of Kentucky include a \$6.6 million building for the College of Architecture; a \$12.5 million primary/ambulatory care center; a new pharmacy building; a new medical research building; a new parking structure adjacent to the medical center; and long-term renovation for the medical center facilities. The renovation will house a 50-bed neonatal/intensive care unit. Also, a \$4 million addition to the Student Center is planned.

### Fayette County School System:

A new elementary school is under construction in the southeast section of the county.

Julia R. Ewan Elementary School was recently renovated. Renovations are under way at Bryan Station Senior High School and at Linlee Elementary School.

A Comprehensive Arts Program was begun in the elementary schools this year. The program is staffed by four teachers in art and music.

A program to teach cardiopulmonary resuscitation to staff and students at all junior and senior high schools was recently begun.

Construction was recently completed on the new Northside Area Vocational Education Center and classes have recently begun there. Construction of a new building for the Southside Area Vocational Education Center is planned.



### Health and Safety

The Lexington-Fayette Urban County Health Department has recently moved into a new \$2.5 million building.

The Lexington-Fayette Urban County Police Department will initiate a Safety Officer Program soon. The program is designed to provide non-critical police services at a reduced cost. Thirty-five Safety Officers will be assigned to limited duties in the areas of traffic investigation and crime prevention allowing regular police officers more time to devote to crime related duties.

### Recreation

The Kentucky State Horse Park opened during the summer of 1978 and hosted the World Championship Three-Day Event in September. The park contains 1,032 acres and features a museum, walking tour, events area, horseback and pony rides, a vehicle demonstration area, restaurant, picnic area and campground.

Program manager: Patsy Wallace; production supervisor: Pam Riley;  
research: Prudence Runyan; clerical: Linda Fint and Annette Mitchell;  
graphics: Frank Ferrante, Tony Cecconi and Richard Spencer; cartography:  
Industrial Development Division. Cost of printing paid from state funds.

Kentucky Department of Commerce  
Capital Plaza Tower  
Frankfort, Kentucky 40601

Office of the Commissioner  
(502) 564-4270

Industrial Development Division  
(502) 564-7140

Existing Industries Division  
(502) 564-4300

Office of Minority Business Enterprise  
(502) 564-2064

Agribusiness Division  
(502) 564-6784

International Trade and Investment  
Promotion Division  
(502) 564-2170

Research and Planning Division  
(502) 564-4886  
Map Sales Office  
133 Holmes Street  
(502) 564-4715

Kentucky Development Finance Authority (KDFA)  
(502) 564-4554

Kentucky Film Commission  
(502) 564-2240