

1986

Industrial Resources - Floyd County - Prestonsburg

Kentucky Library Research Collections
Western Kentucky University, spcol@wku.edu

Follow this and additional works at: https://digitalcommons.wku.edu/floyd_pty



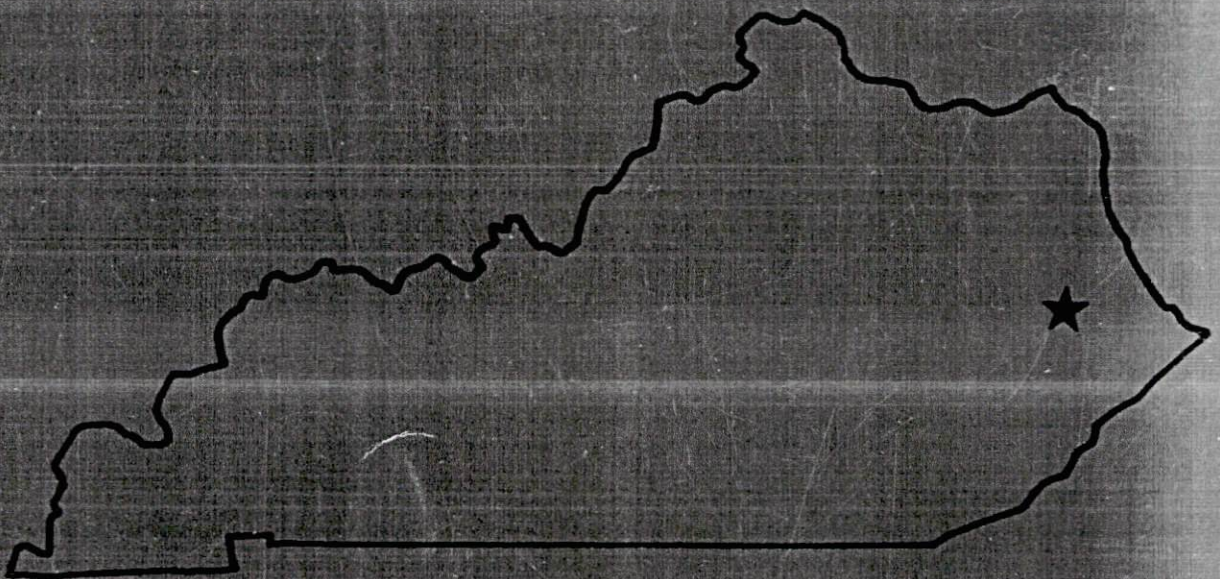
Part of the [Business Administration, Management, and Operations Commons](#), [Growth and Development Commons](#), and the [Infrastructure Commons](#)

Recommended Citation

Kentucky Library Research Collections, "Industrial Resources - Floyd County - Prestonsburg" (1986). *Floyd County*. Paper 6.
https://digitalcommons.wku.edu/floyd_pty/6

This Report is brought to you for free and open access by TopSCHOLAR®. It has been accepted for inclusion in Floyd County by an authorized administrator of TopSCHOLAR®. For more information, please contact topscholar@wku.edu.

Prestonsburg

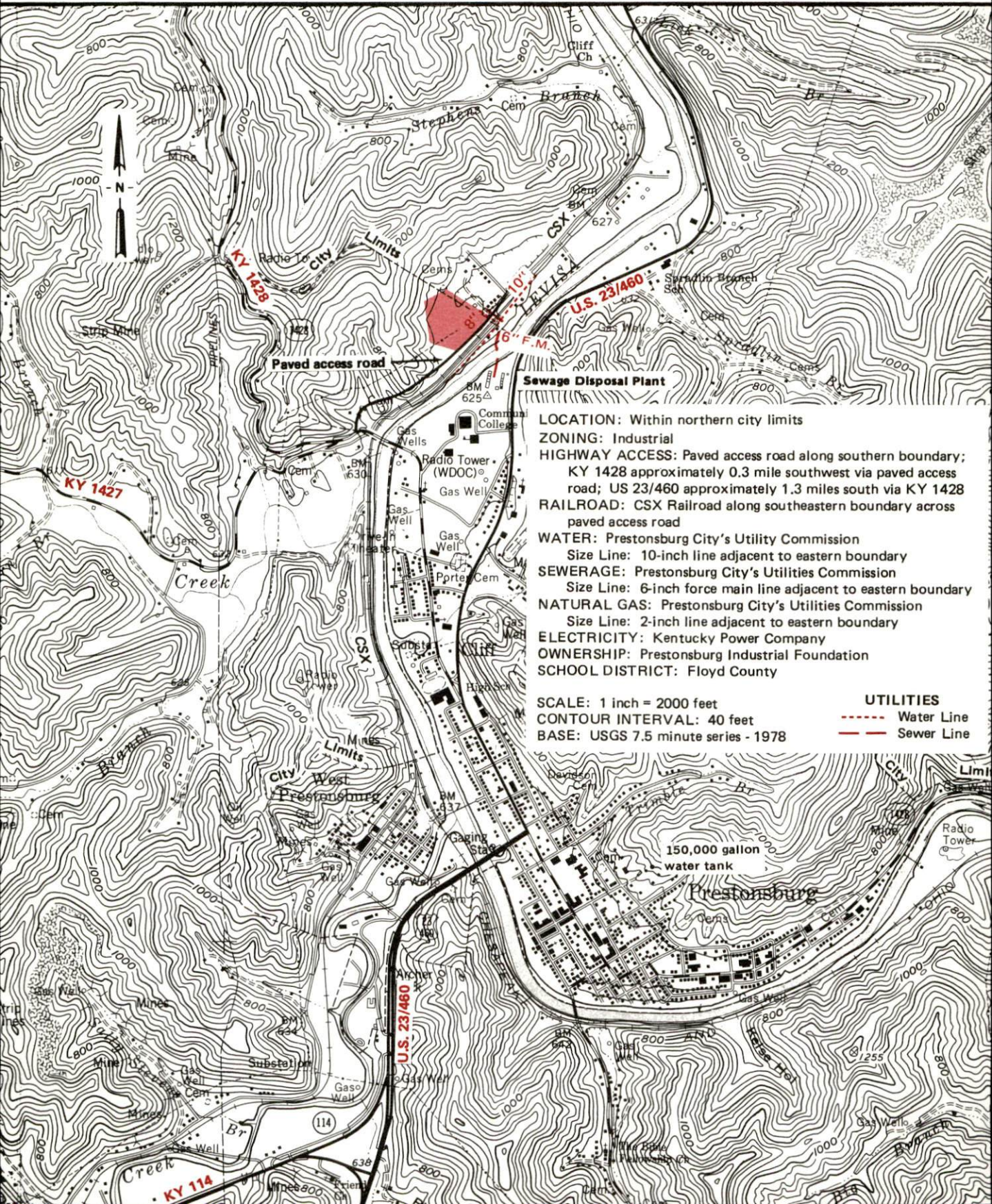


KENTUCKY

The business environment is right.

PRESTONSBURG, KENTUCKY --- Site 186 --- 8.3 Acres

For more information contact the Kentucky Department of Economic Development, Industrial Development & Marketing Division, Capital Plaza Tower, Frankfort, Kentucky 40601 (502-564-7140).



LOCATION: Within northern city limits

ZONING: Industrial

HIGHWAY ACCESS: Paved access road along southern boundary;
KY 1428 approximately 0.3 mile southwest via paved access
road; US 23/460 approximately 1.3 miles south via KY 1428

RAILROAD: CSX Railroad along southeastern boundary across
paved access road

WATER: Prestonsburg City's Utility Commission

Size Line: 10-inch line adjacent to eastern boundary

SEWERAGE: Prestonsburg City's Utilities Commission

Size Line: 6-inch force main line adjacent to eastern boundary

NATURAL GAS: Prestonsburg City's Utilities Commission

Size Line: 2-inch line adjacent to eastern boundary

ELECTRICITY: Kentucky Power Company

OWNERSHIP: Prestonsburg Industrial Foundation

SCHOOL DISTRICT: Floyd County

SCALE: 1 inch = 2000 feet

CONTOUR INTERVAL: 40 feet

BASE: USGS 7.5 minute series - 1978

UTILITIES

--- Water Line
--- Sewer Line

RESOURCES FOR ECONOMIC DEVELOPMENT
PRESTONSBURG, KENTUCKY

Prepared by
The Kentucky Department of Economic Development
Division of Research and Planning
in cooperation with
The Floyd County Chamber of Commerce

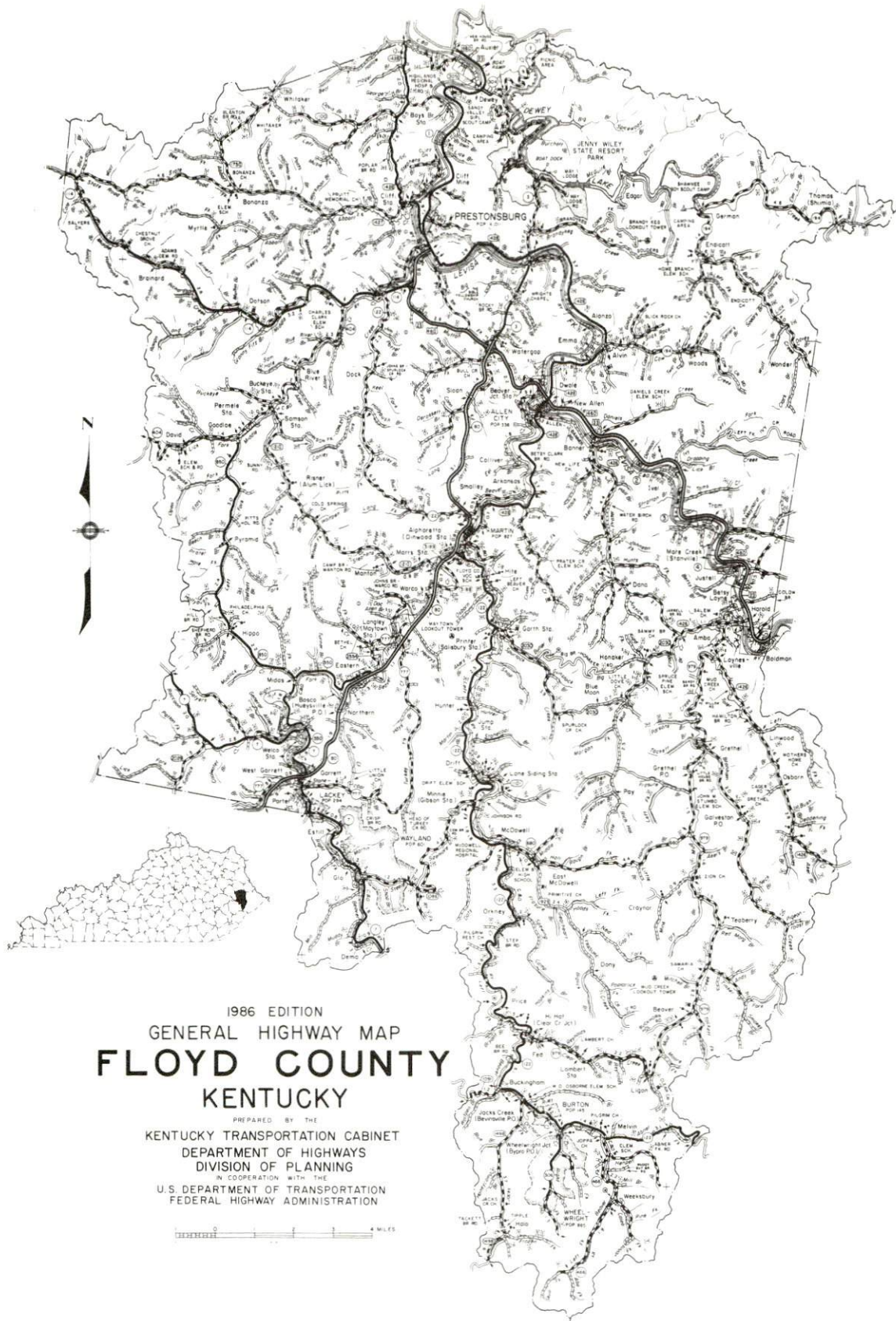
1986

Program manager - Andrew Dennis; research - James R. Thompson; clerical - Bobbi Graves; graphics - Frank Ferrante, Tony Cecconi, Robert Owens; cartography - Site Evaluation Branch, Division of Industrial Development and Marketing. Cost of printing paid from state funds.

TABLE OF CONTENTS

<u>Chapter</u>	<u>Page</u>
INDUSTRIAL SITES	i
PRESTONSBURG, KENTUCKY - A RESOURCE PROFILE	1
LABOR MARKET STATISTICS	2
Population	2
Population Projections	2
Labor Force Characteristics of Residents, 1985	3
Selected Components of Nonagricultural Employment, by Place of Work, 1985	3
Per Capita Personal Income	3
Estimated Male Labor Supply	4
Estimated Female Labor Supply	4
Average Weekly Wages By Industry, by Place of Work, 1985	5
EXISTING INDUSTRY	7
Prestonsburg Manufacturing Firms, Their Products and Employment	7
Recent Industrial Developments	7
Labor Organizations in Manufacturing Firms	7
Selected Industrial Services	8
TRANSPORTATION	9
Rail	9
Highways	9
Truck Service	9
Air	10
Air Express Service	11
Water	11
POWER AND FUEL	12
Electricity	12
Natural Gas	12
Other Fuels	13
WATER AND SEWERAGE	14
Public Water Supply	14
Sewerage	15

<u>Chapter</u>	<u>Page</u>
CLIMATE	16
LOCAL GOVERNMENT	17
Structure	17
Planning and Zoning	17
Local Fees and Licenses	17
State and Local Property Taxes	18
Safety	19
Police	19
Fire	19
Rescue Service	19
Refuse Collection and Disposal	19
EDUCATION	20
Public Schools	20
Nonpublic Schools	20
Area Colleges and Universities	21
Vocational Training	22
HEALTH	24
Local Medical Personnel	24
Hospitals	24
Other Medical Facilities	24
Ambulance Service	24
OTHER LOCAL FACILITIES	25
Communications	25
Library Services	25
Religious Institutions	25
Financial Institutions	26
Hotels and Motels	26
Clubs and Organizations	27
RECREATION	28
COMMUNITY IMPROVEMENTS	30



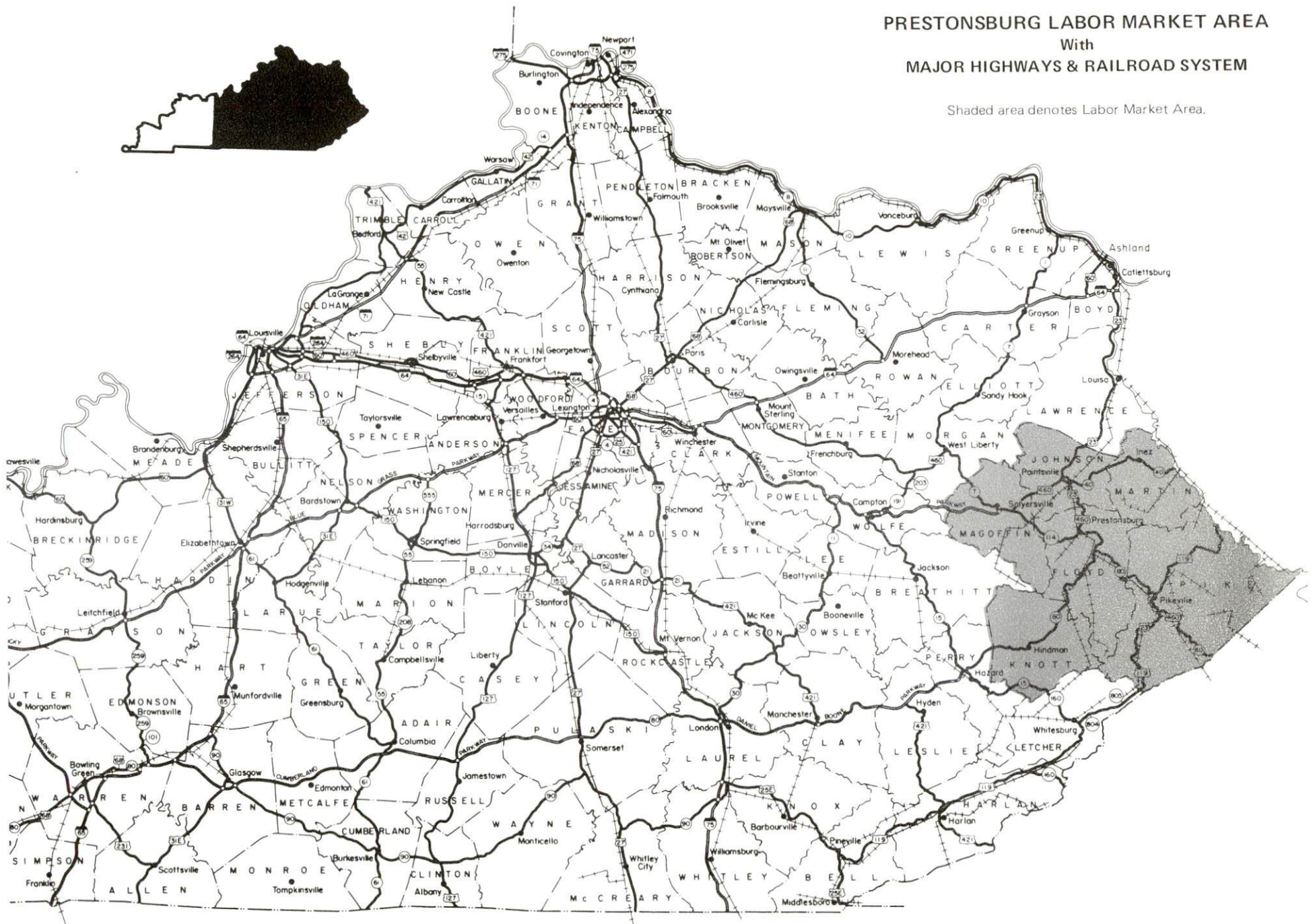
1986 EDITION
GENERAL HIGHWAY MAP
FLOYD COUNTY
KENTUCKY

PREPARED BY THE
KENTUCKY TRANSPORTATION CABINET
DEPARTMENT OF HIGHWAYS
DIVISION OF PLANNING
IN COOPERATION WITH THE
U.S. DEPARTMENT OF TRANSPORTATION
FEDERAL HIGHWAY ADMINISTRATION

0 1 2 3 4 MILES

PRESTONSBURG LABOR MARKET AREA With MAJOR HIGHWAYS & RAILROAD SYSTEM

Shaded area denotes Labor Market Area.



PRESTONSBURG, KENTUCKY - A RESOURCE PROFILE

Prestonsburg, the county seat of Floyd County, was recognized as a Kentucky Certified City in 1985. Prestonsburg, located in the Eastern Coal Field Region of Kentucky, is 120 miles southeast of Lexington, Kentucky; 192 miles southeast of Louisville, Kentucky; 198 miles southeast of Cincinnati, Ohio; and 203 miles northeast of Knoxville, Tennessee. In 1984, Prestonsburg had an estimated population of 3,915. Floyd County, which covers a land area of 393 square miles, had a 1984 estimated population of 50,802.

The Economic Framework - The total number of Floyd County residents employed in 1985 averaged 14,190. Manufacturing firms in the county reported 360 employees; wholesale and retail trade provided 2,560 jobs; 1,660 people were employed in service occupations; state and local government accounted for 1,540 employees; contract construction firms provided 400 jobs; and 2,470 people were employed by mining and quarrying operations.

Labor Supply - There is a current estimated labor supply of 20,600 men and 27,120 women available for industrial jobs in the labor market area. In addition, from 1986 through 1990, 9,640 young men and 9,180 young women in the area will become 18 years of age and potentially available for industrial jobs.

Transportation - Rail service is provided to Prestonsburg by CSX Transportation. Prestonsburg is served by U.S. 23/460 and Kentucky 114. The Mountain Parkway, twenty-two miles northwest, provides easy access to Interstate 64, ninety-eight miles northwest. Kentucky 80, four miles south of Prestonsburg, provides access to the Daniel Boone Parkway, forty-six miles southwest. Six trucking companies provide Prestonsburg with interstate and intrastate service. The Combs Airport, eight miles north of Prestonsburg, has a 3,200-foot paved runway. The Big Sandy Regional Airport, nineteen miles northeast of Prestonsburg, has a 5,000-foot paved runway. The nearest scheduled commercial airline is the Tri-State Airport (Walker-Long Field), nine miles southwest of Huntington, West Virginia, seventy-three miles northeast of Prestonsburg.

Power and Fuel - Electric power is provided to Prestonsburg and Floyd County by Kentucky Power Company, an electric generation and transmission company. Floyd County is also provided electric power by the Big Sandy Rural Electric Cooperative Corporation, which is supplied by East Kentucky Power Cooperative. Natural gas is provided to Prestonsburg by the Prestonsburg City's Utilities Commission, which is supplied by Kentucky-West Virginia Gas Company. Three distributors of propane and seven distributors of distillate fuel oil serve Prestonsburg.

Education - Primary and secondary education is provided to Prestonsburg and Floyd County by the Floyd County School System. Four nonpublic schools serve Floyd County. Prestonsburg Community College, a unit of the University of Kentucky Community College System, offers associate degree programs and curricula for the first two years of a baccalaureate program. Two universities, three senior colleges, and three community colleges are located within eighty miles of Prestonsburg. Prestonsburg is provided vocational training by Garth Area Vocational Education Center at Martin, eleven miles south of Prestonsburg and Mayo State Vocational-Technical School at Paintsville, thirteen miles north of Prestonsburg.

LABOR MARKET STATISTICS

The Prestonsburg Labor Market Area includes Floyd County and the adjoining Kentucky counties of Johnson, Knott, Magoffin, Martin and Pike.

POPULATION

Area	1984*	1980	1970	Percent Nonwhite
				1980
Prestonsburg	3,915	4,011	3,422	0.5
Labor Market Area	206,696	199,699	149,005	N/A
Floyd County	50,802	48,764	35,889	0.6
Johnson County	25,611	24,432	17,539	0.3
Knott County	18,308	17,940	14,698	0.8
Magoffin County	14,109	13,515	10,443	0.2
Martin County	14,518	13,925	9,377	0.2
Pike County	83,348	81,123	61,059	0.6

* Population estimates.

Note: The 1980 city counts of population by race are provisional.

Sources: U.S. Department of Commerce, Bureau of the Census, 1980 Census of Population and Housing, March 1981; 1980 Census of Population, Number of Inhabitants. University of Louisville, Urban Studies Center, Population Unit, October 1985; Kentucky Population Research Notes, Issue Number One, May 1985.

POPULATION PROJECTIONS

Area	1990	1995	2000	2010
Labor Market Area	220,665	232,179	242,212	257,985
Floyd County	53,586	55,826	57,752	60,693
Johnson County	28,235	30,364	32,113	35,081
Knott County	19,056	19,698	20,295	21,253
Magoffin County	15,359	16,453	17,442	19,108
Martin County	15,669	16,662	17,583	19,105
Pike County	88,760	93,176	97,027	102,745

Source: University of Louisville, Urban Studies Center, Population Research Unit, How Many Kentuckians: Population Forecasts, 1980-2020, the 1986 Edition, Spring 1986.

LABOR FORCE CHARACTERISTICS OF RESIDENTS, 1985

	<u>Floyd County</u>	<u>Labor Market Area</u>
Civilian Labor Force	16,476	67,288
Employment	14,191	57,889
Unemployment	2,285	9,399
Rate of Unemployment (%)	13.9	14.0

Source: Kentucky Cabinet for Human Resources, Kentucky Labor Force Estimates, Annual Averages, 1985.

SELECTED COMPONENTS OF NONAGRICULTURAL EMPLOYMENT,
BY PLACE OF WORK, 1985

	<u>Floyd County</u>	<u>Labor Market Area</u>
All Industries (total)	9,828	43,052
Manufacturing	359	1,204
Wholesale & Retail Trade	2,559	10,021
Services	1,661	6,165
State/Local Government	1,537	6,794
Contract Construction	399	1,116
Mining & Quarrying	2,471	14,176

Note: Excludes domestic workers, railway workers, certain nonprofit corporations, majority of federal government workers, and self-employed workers.

Source: Kentucky Cabinet for Human Resources, Average Monthly Workers Covered by Kentucky Unemployment Insurance Law, 1985.

PER CAPITA PERSONAL INCOME

<u>Area</u>	<u>1980</u>	<u>1984</u>	<u>Percent Change</u>
Floyd County	\$ 6,182	\$ 7,069	14.4
Labor Market Area Range	\$4,796 - 7,264	\$6,446 - 8,291	N/A
Kentucky	7,644	10,232	33.9
U. S.	9,494	12,772	34.5

Sources: U.S. Department of Commerce, Bureau of Economic Analysis. Kentucky Economic Information System, June 1986.

ESTIMATED MALE LABOR SUPPLY
PRESTONSBURG LABOR MARKET AREA

Area	Current				Future
	Total Male	Unemployed	Under-employed	Not in Labor Force	Becoming 18 years of age 1986 thru 1990
Labor Market					
Area*	20,600	6,640	3,948	10,012	9,637
Floyd	5,291	1,466	950	2,875	2,274
Johnson	2,173	801	550	822	1,111
Knott	2,273	639	375	1,259	906
Magoffin	1,537	586	292	659	699
Martin	1,515	353	242	920	712
Pike	7,811	2,795	1,539	3,477	3,935

ESTIMATED FEMALE LABOR SUPPLY
PRESTONSBURG LABOR MARKET AREA

Area	Current				Future
	Total Female	Unemployed	Under-employed	Not in Labor Force	Becoming 18 years of age 1986 thru 1990
Labor Market					
Area*	27,117	2,759	3,348	21,010	9,183
Floyd	6,684	819	839	5,026	2,079
Johnson	2,885	484	435	1,966	1,033
Knott	2,468	186	245	2,037	833
Magoffin	1,867	168	205	1,494	695
Martin	2,185	99	298	1,788	726
Pike	11,028	1,003	1,326	8,699	3,817

* Additional workers may be drawn from other nearby counties.

Note: Unemployed - persons unemployed and actively seeking work;
Underemployed - persons employed but working only 14 to 26 weeks per year;
Not in Labor Force - represents the number of persons who would enter the labor force if suitable employment were available (based on the assumption that persons in Kentucky would like to participate in the labor force in the same proportion that they do nationally).

Sources: Kentucky Cabinet for Human Resources, Kentucky Labor Supply Estimates by County, 1985. Kentucky Department of Economic Development, Future Labor Supply Becoming 18 Years of Age, 1986 thru 1990.

AVERAGE WEEKLY WAGES BY INDUSTRY,
BY PLACE OF WORK, 1985

	<u>Floyd County</u>	<u>Johnson County</u>	<u>Knott County</u>
All Industries	\$ 339.78	\$ 285.70	\$ 350.73
Mining & Quarrying	497.79	458.01	479.63
Contract Construction	334.34	233.81	325.51
Manufacturing	354.68	*	220.14
Transportation, Communications & Public Utilities	394.72	374.31	291.49
Wholesale & Retail Trade	244.46	220.00	190.77
Finance, Insurance & Real Estate	332.56	318.07	583.88
Services	294.56	237.21	222.58
State/Local Government	281.14	287.50	293.54
Other	167.90	317.81	0
	<u>Magoffin County</u>	<u>Martin County</u>	<u>Pike County</u>
All Industries	\$ 315.94	\$ 630.32	\$ 373.04
Mining & Quarrying	499.52	784.81	547.61
Contract Construction	240.84	*	312.29
Manufacturing	344.12	*	411.15
Transportation, Communications & Public Utilities	291.35	358.03	394.43
Wholesale & Retail Trade	161.45	224.74	221.21
Finance, Insurance & Real Estate	336.86	*	355.06
Services	230.41	372.04	298.80
State/Local Government	264.40	255.15	284.21
Other	*	*	235.79

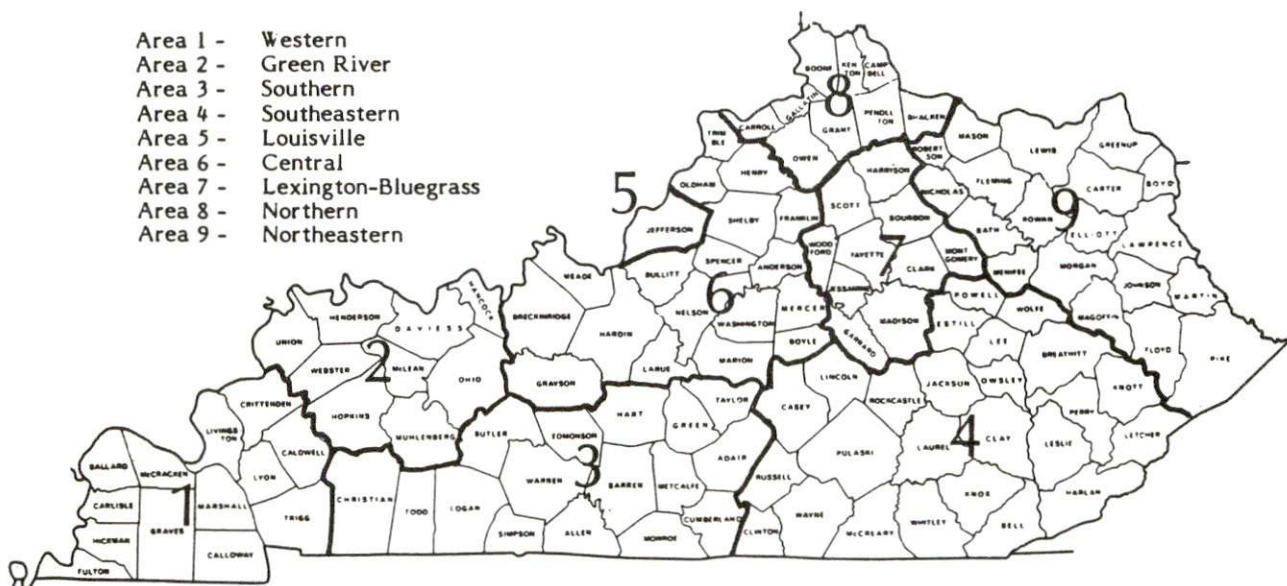
* Not disclosed.

Note: The average weekly wage for each category includes the salaries and wages of all persons working for that type business. For example, the manufacturing category includes both production workers and administrative personnel. Excludes domestic workers, railway workers, certain nonprofit corporations, majority of federal government workers, and self-employed workers.

Source: Kentucky Cabinet for Human Resources, Average Weekly Wages of Workers Covered by Kentucky Unemployment Insurance Law, 1985.

Occupational wage rates for specific industries are usually not available to most government agencies, and wage data furnished to state employment agencies by individual industrial employers are protected from disclosure by federal law. The most reliable up-to-date wage information can be obtained by direct contact with local employers.

Associated Industries of Kentucky, a voluntary organization of Kentucky businesses, regularly collects occupational wage rates and fringe benefits data from participating member firms. Data are compiled for over 127 clearly defined office, production, and service occupations. Tabulations are published for nine geographical areas of Kentucky, as shown on the map below. It should be noted that the data may be weighted by the preponderance of firms in the larger cities and may be somewhat higher than the rates paid in the smaller communities. Data from these tabulations are available, upon request, from the Kentucky Department of Economic Development, Frankfort, Kentucky 40601.



Associated Industries of Kentucky Area Wage Surveys

EXISTING INDUSTRY

PRESTONSBURG MANUFACTURING FIRMS, THEIR PRODUCTS AND EMPLOYMENT

<u>Firm (Establishment date)</u>	<u>Product</u>	<u>Employment</u>		
		<u>Total</u>	<u>Male</u>	<u>Female</u>
Kentucky Highlands Publishing Company, Inc. (1970)	Printing	2	2	0
Kentucky Welding Supply, Inc. (1985)	Oxygen, nitrogen, miscellaneous gases	15	--	--
May Sign Company, Inc. (1952)	Plastic and road signs, displays	12	10	2
Mountain Printing Company (1925)	Commercial printing	4	3	1
Prestonsburg Publishing Company, Inc. (1937)	Newspaper	17	9	8
Wells Ready Mix Concrete, Inc. (1958)	Ready-mixed concrete	4	4	0

*See Labor Organizations below.

Sources: Kentucky Department of Economic Development, 1986 Kentucky Directory of Manufacturers; Division of Research and Planning.

RECENT INDUSTRIAL DEVELOPMENTS

In 1985, Kentucky Welding Supply reported a \$1 million expansion, increasing employment by 23.

LABOR ORGANIZATIONS IN MANUFACTURING FIRMS

There are no labor organizations representing manufacturing workers in Prestonsburg at the present time.

SELECTED INDUSTRIAL SERVICES

<u>Types of Services</u>	<u>Location</u>	<u>Mileage from Prestonsburg</u>
Custom Plastics Producers	Ashland, Kentucky	77
Electric Motor Repair	Martin, Kentucky	12
Grinding, Precision & Tool	Huntington, West Virginia	78
Heat Treating Facilities	Lexington, Kentucky	120
	Richmond, Kentucky	122
Industrial Equipment & Supplies	Ashland, Kentucky	77
	Huntington, West Virginia	78
Industrial Gases	Prestonsburg, Kentucky	-
Industrial Waste Removal	Ashland, Kentucky	77
Machine Shops, Tool & Die	Pikeville, Kentucky	27
Metal Finishers	Lexington, Kentucky	120
	Richmond, Kentucky	122
Metal Service Centers	Pikeville, Kentucky	27
Millwrights	Lexington, Kentucky	120
Public Warehouse Facilities	Lexington, Kentucky	120

Sources: Kentucky Department of Economic Development, Kentucky Directory of Selected Industrial Services, 1985; Division of Research and Planning.

TRANSPORTATION

Rail

Line serving **Prestonsburg** - CSX Transportation

Services - Branch line; freight stops on an as needed basis; eleven eastbound and eleven westbound through freights daily; switching service; team track space for ten cars; siding space for 160 cars; the nearest piggyback facilities are located at Kingsport, Tennessee, 132 miles southwest

For details on routing, schedules, rates, and services contact:

Real Estate and Industrial Development Department
CSX Transportation
Suite 500 Cornell Center
11311 Cornell Park Drive
Cincinnati, Ohio 45242
(513) 369-5525

Highways

Major highways serving Prestonsburg are U.S. 23/460 and Kentucky 114, both "AAA" rated (80,000-pound gross load limit) trucking highways. Access to the Mountain Parkway, a multi-lane toll road, is twenty-two miles northwest of Prestonsburg via Kentucky 114. The Mountain Parkway intersects with Interstate 64, ninety-eight miles northwest of Prestonsburg. Kentucky 80, four miles south of Prestonsburg, is a multi-lane highway which provides access to the Daniel Boone Parkway, forty-six miles southwest of Prestonsburg near Hazard. The Daniel Boone Parkway then provides access to Interstate 75, 105 miles southwest of Prestonsburg.

The reconstruction and rerouting of U.S. 23 from Prestonsburg to Paintsville is planned. The project is still in the design phase at the present time.

Truck Service

ARA/Smith's*
Bestway Express, Inc.**
Consolidated Motor Express, Inc.**
Hazard Express, Inc.**

Manning Motor Express, Inc.**
Overnite Transportation
Company (T)**

(T) Terminal, interchange.

* Interstate service only.

** Interstate and intrastate service.

Source: American Motor Carrier Directory, Spring 1986.

HIGHWAY MILES AND TRUCK TRANSIT TIME IN DAYS FROM
PRESTONSBURG, KENTUCKY, TO SELECTED MARKET CENTERS

City	Highway Miles	Delivery Time TL	City	Highway Miles	Delivery Time TL
Atlanta, Ga.	396	1	Los Angeles, Ca.	2,300	5
Baltimore, Md.	509	2	Louisville, Ky.	192	1
Birmingham, Ala.	457	1	Nashville, Tenn.	308	1
Chicago, Ill.	472	1	New Orleans, La.	799	2
Cincinnati, Ohio	198	1	New York, N. Y.	681	-
Cleveland, Ohio	371	1	Pittsburgh, Pa.	341	2
Detroit, Mich.	457	1	St. Louis, Mo.	455	1
Knoxville, Tenn.	203	1			

Note: Mileage computations are via the best interstate or primary highways, not necessarily the most direct route of travel.

Sources: Rand McNally Road Atlas, 1979. Official Kentucky Mileage Map, 1985.

Delivery time - Overnite Transportation Company, 1020 Whipple Court, Lexington, Kentucky 40574.

Air

Local

Combs Airport
 Location: 8 miles north of Prestonsburg
 Runways: One paved
 Length: 3,200 feet
 Traffic
 Control: Wind sock
 Lighting: None
 Services: 100LL octane; jet-A fuel; flight instruction

Big Sandy Regional Airport*

Location: 19 miles northeast of Prestonsburg
 Runways: One paved
 Length: 5,000 feet

* Construction of the first phase of the Big Sandy Regional Airport has been completed. The first phase included the installation of a 5,000-foot runway and a parallel taxi-way. Phase two, which includes construction of a terminal, installation of lighting, and construction of an access road, is under way.

Nearest Scheduled Commercial Airline Service

Location:	Tri-State Airport (Walker-Long Field) 9 miles southwest of Huntington, West Virginia; 73 miles northeast of Prestonsburg
Runways:	2 paved
Length:	6,509 feet and 3,007 feet
Traffic Control:	Tower
Lighting:	Beacon, runway
Services:	Piedmont, USAir, Comair; fuel - 100LL, jet-A; tie-downs, hangars; major A & P repairs, major Avionics repairs; APU, charter, flight instruction, oxygen, plane rental, survival equipment, U.S. Customs; taxi, limousine, car rental; weather information; restaurant
Air Freight Service:	Air freight terminal

Air Express Service

Several major companies offer air express services in Kentucky. These companies provide a quick means of shipping small to medium-sized packages expeditiously.

Water

The Big Sandy River is the nearest navigable waterway. Prestonsburg is approximately 50 miles from a point on the Big Sandy River where a 6-foot navigation channel is maintained for about six miles. At that point, a 9-foot navigation channel is maintained to the Ohio River.

POWER AND FUEL

Electricity

Company serving **Prestonsburg and most of Floyd County** - Kentucky Power Company

Source of power - Kentucky Power Company

For industrial rates contact:

Kentucky Power Company
1701 Central Avenue
P.O. Box 1428
Ashland, Kentucky 41101
(606) 329-2220

Company serving **parts of Floyd County** - Big Sandy Rural Electric Cooperative Corporation

Source of power - East Kentucky Power Cooperative

For industrial rates contact:

Industrial Development Division
East Kentucky Power Cooperative
P.O. Box 707
Winchester, Kentucky 40391
(606) 744-4812

and/or

Big Sandy RECC
Eleventh Street
P. O. Box 1746
Paintsville, Kentucky 41240
(606) 789-4095

Natural Gas

Company serving **Prestonsburg** - Prestonsburg City's Utilities Commission

Source of supply - Kentucky-West Virginia Gas Company

Size of transmission mains - 10-inch (supplier); 4- and 6-inch (distributor)

Distribution mains - 2 to 6 inches

Distribution pressure - 18 psi to 50 psi

Btu content - 1,000 per cubic foot

Specific gravity - .675

For rates and supplies contact:

Prestonsburg City's Utilities Commission
1048 South Lake Drive
Prestonsburg, Kentucky 41653
(606) 886-6871

Other Fuels

Propane

Buckeye Gas Products Company
Route 23
Paintsville, Kentucky 41240

Hardware Charlie Gas Company
Route 23
Paintsville, Kentucky 41240

Comstock's Bottle Gas
Martin, Kentucky 41649

Fuel oils

Distillate fuel oil -

Action Petroleum Company, Inc.
Stanley & Baldwin Streets
West Prestonsburg, Kentucky 41668

Moore Brothers Oil Company
Route 1428
Allen, Kentucky 41601

Ashland Petroleum Company
HC77, Box 20
Hagerhill, Kentucky 41222

Pelphrey Supply Company, Inc.
P. O. Box 112, U.S. 23 South
Paintsville, Kentucky 41240

Coleman Oil Company, Inc.
Shelbiana, Kentucky 41562

Pikeville Oil & Tire and Mountain
Petroleum Companies, Inc.
Banner, Kentucky 41603

Kentucky Oil and Refining Company
P. O. Box 63
Betsy Layne, Kentucky 41605

Residual fuel oil - Arrangements must be made with the refinery.

Low sulphur content coal - Available in Kentucky.

WATER AND SEWERAGE

Public Water Supply

Company serving **Prestonsburg** - Prestonsburg City's Utilities Commission*
1048 South Lake Drive
Prestonsburg, Kentucky 41653
(606) 886-6871

Source - Levisa Fork of Big Sandy River
Treatment plant capacity - 3,000,000 gallons per day**
Average daily consumption - 1,600,000 gallons
Peak daily consumption - 1,700,000 gallons
Treatment processes - Coagulation, sedimentation, chlorination, rapid mix, flocculation, filtration, fluoridation
Storage capacity - 2,960,000 gallons, including clear well
Size lines - 2 to 14 inches
Water pressure - 65 psi to 150 psi

MONTHLY WATER RATES

Inside Prestonsburg

First	2,000 gallons	\$4.25 (Minimum)
Next	98,000 gallons	1.60 per M gallons
All over	100,000 gallons	1.10 per M gallons

Outside City Limits

First	2,000 gallons	\$6.25 (Minimum)
Next	98,000 gallons	2.25 per M gallons
All over	100,000 gallons	1.35 per M gallons

Tap-on charge: No charge inside corporate city limits; \$250 outside corporate limits; \$100 additional charge if road crossing is required

* The Prestonsburg City's Utilities Commission recently completed the installation of a 400,000-gallon elevated water storage tank. Also, there are plans to extend water service to the city of Martin in 1986.

** The treatment plant capacity is currently 3 million gallons per day, but there are built-in capabilities to increase it to 4 million gallons per day.

Sewerage

Company serving **Prestonsburg** - Prestonsburg City's Utilities Commission
1048 South Lake Drive
Prestonsburg, Kentucky 41653
(606) 886-6871

Design capacity - 1,000,000 gallons per day

Average daily flow - 4,843,000 gallons

Type of treatment - Primary and secondary

Treatment processes - Screening, grit removal, primary sedimentation,
extended aeration, activated sludge, chlorination, aerobic digester,
anaerobic digester, sludge drying beds

Treated effluent discharged into - Levisa Fork of Big Sandy River

Size of sanitary mains - 6 to 15 inches

Size of storm mains - 18 to 60 inches

Monthly rates - 70 percent of monthly water bill

Tap-on charge:

Residential - \$250

Commercial and Industrial - Actual cost of installation

CLIMATE

Floyd County

Temperature

Normal (30-year record)	55.90 degrees
Average annual 1985	55.20 degrees
Record highest, July 1952 (40-year record)	102.00 degrees
Record lowest, January 1985 (40-year record)	-21.00 degrees
Normal heating degree days (30-year record)	4,356
(Heating degree day totals are the sums of negative departures of average daily temperatures from 65 degrees F.)	

Precipitation

Normal (30-year record)	41.24 inches
Mean annual snowfall (30-year record)	16.10 inches
Total precipitation 1985	35.23 inches
Mean number days precipitation (.01 inch or more) (40-year record)	133.40
Mean number days thunderstorms (42-year record)	43.60

Prevailing Winds (through 1963)

Northeast

Relative Humidity (24-year record)

1 a.m.	80 percent
7 a.m.	85 percent
1 p.m.	57 percent
7 p.m.	63 percent

Source: U.S. Department of Commerce, Environmental Science Services Administration, Climatological Data, 1985. Station of record: Bristol, Johnson City, Kingsport, Tennessee.

LOCAL GOVERNMENT

Structure

Prestonsburg is served by a mayor, eight council members and a city administrator. Floyd County is served by a county judge/executive and four magistrates.

Planning and Zoning

City agency - Prestonsburg Planning Commission

Zoning enforced - Yes

Subdivision regulations enforced - Within city limits

Local codes enforced - Building and housing

Mandatory state codes enforced - Kentucky Plumbing Code, National Electric Code, Kentucky Boiler Regulations and Standards, Kentucky Building Code (modeled after BOCA code)

Local Fees and Licenses

The city of Prestonsburg levies an occupational license fee of 1½ percent of gross salaries of individuals and 1½ percent of net profits of businesses. Business licenses range from \$10 to \$200 annually.

State and Local Property Taxes

All property in Kentucky, except items exempted by the state constitution, is taxed by the state. Property which also may be taxed by local jurisdictions includes land and buildings, finished goods inventories, automobiles, trucks, office furniture and office equipment. Local taxing jurisdictions in Kentucky include counties, cities, and school districts.

All property in Kentucky is assessed at 100 percent of fair cash value.

COMBINED STATE AND LOCAL RATES PER \$100 VALUATION, 1985

	<u>Prestonsburg</u>	<u>Unincorporated Floyd County</u>
Land and Buildings	\$ 0.876	\$ 0.626
Manufacturing Machinery	0.150	0.150
Pollution Control Equipment	0.150	0.150
Inventories		
Raw materials	0.001*	0.001*
Goods in Process	0.001*	0.001*
Finished Goods	0.733*	0.483*
Automobiles and Trucks	1.228	0.978
Other Tangible Personal Property	1.182	0.932
Intangibles (Accounts receivable, money in hand, stock, notes, bonds)	0.250**	0.250**
Goods Stored in Public Warehouses in Transit Status	0.001*	0.001*
Private Leaseholds in Industrial Revenue Bond Financed Facilities	0.015	0.015

* Includes 1986 state rate.

** Accounts receivable are taxed at 85 percent of face value, for an effective rate of \$0.2125 per \$100 valuation.

Safety

Police	Prestonsburg	Floyd County
Total staff	12	5
Radio-patrol cars	6	4

Fire*

Insurance Services Office,

Public Protection

Classification

4

**

Full-time staff

12

Volunteers

25

Rescue Service

Prestonsburg Rescue Squad

Floyd County Emergency and Rescue Squad

Refuse Collection and Disposal

Refuse collection and disposal is provided to Prestonsburg by the city of Prestonsburg. Service to Floyd County is provided by county government.

* Includes copyrighted material of ISO Commercial Risk Services, Inc., with its permission.

** Seventeen fire departments serve Floyd County with insurance classifications ranging from 4 to 10. Each fire department has approximately twenty member volunteers.

EDUCATION

Public Schools

Floyd County*

Total Enrollment (June, 1986)	9,238
Kindergarten	698
Elementary	6,077
High School	2,463
Pupil-Teacher Ratio (1984-85)	22-1
Percent High School Graduates to College (1984-85)	44.0
Expenditures Per Pupil (1984-85)	\$1,603.43

Nonpublic Schools

<u>School</u>	<u>Enrollment</u>	<u>Grades</u>
Mountain Christian Academy Elementary	225	K -8
Mountain Christian Academy High School	75	9-11
Mountain Christian Academy	3	2-5
The David School High School	60	8-12

* The Floyd County School System plans to construct a new middle school at Prestonsburg, a new elementary school at Allen, a new elementary school at Garrett-Wayland, and a new school at Wheelwright-McDowell in 1987.

Area Colleges and Universities

<u>Name</u>	<u>Location (Miles distant)</u>	<u>Enrollment (Fall, 1985)</u>	<u>Highest Degree Conferred</u>
Prestonsburg Community College	Prestonsburg, Kentucky	1,343	Associate
Pikeville College	Pikeville, Kentucky (27)	600	Baccalaureate*
Alice Lloyd College	Pippa Passes, Kentucky (40)	546	Baccalaureate
Hazard Community College	Hazard, Kentucky (50)	607	Associate
Lees College	Jackson, Kentucky (63)	398	Associate
Ashland Community College	Ashland, Kentucky (77)	1,922	Associate
Marshall University	Huntington, West Virginia (78)	11,320	Academic & Professional
Morehead State University	Morehead, Kentucky (80)	5,695	Masters, Specialist**
Southeast Community College	Cumberland, Kentucky (80)	822	Associate

Prestonsburg Community College

Prestonsburg Community College, a unit of the University of Kentucky Community College System, offers courses leading to the Associate in Applied Science degree, the Associate in Arts degree and the Associate in Science degree. The Community College is charged with three specific functions: 1) to offer career-oriented programs designed to prepare students for immediate technical or semi-professional employment; 2) to offer curricula for the first two years of a baccalaureate program, which courses parallel University offerings and are transferable to the Lexington campus of the University of Kentucky or to another four-year institution either public or private; and 3) to provide general educational opportunities for citizens in its area.

* Courses in masters degree programs are taught on the Pikeville campus by faculty members of Pikeville College and Morehead State University. The degrees are issued by Morehead State University.

** Joint doctoral degree programs are offered in cooperation with the University of Kentucky, Lexington. The degrees are issued by the University of Kentucky.

Vocational Training

The Bluegrass State Skills Corporation, an independent public corporation created and funded by the Kentucky General Assembly, provides programs of skills training to meet the needs of business and industry from entry level to advanced training, and from upgrading present employees to retraining experienced workers.

The Bluegrass State Skills Corporation is the primary source for skills training assistance for a new or existing company. The Corporation works in partnership with other employment and job training resources and programs, as well as Kentucky's economic development activities, to package a program customized to meet the specific needs of a company.

Vocational training is available at both the state vocational-technical schools and the area vocational education centers. The state vocational-technical schools are post-secondary institutions. The area vocational education centers are designed to supplement the curriculum of high school students. Both the state vocational-technical schools and the area vocational education centers offer evening courses to enable working adults to upgrade current job skills.

Arrangements can be made to provide training in the specific production skills required by an industrial plant. Instruction may be conducted either in the vocational school or in the industrial plant, depending upon the desired arrangement and the availability of special equipment.

Nearest State School

Mayo State Vocational-Technical School
Paintsville, Kentucky, 13 miles distant

Business & Office
Accounting/Management
Business Education
Clerical
Court & Conference Reporter
Data Processing
Secretarial (Legal & Medical)
Consumer & Home Economics
Consumer & Family Life Skills
Health & Personal Services Occupations
Cosmetology
Practical Nursing
Industrial Education
Air Conditioning & Refrigeration
Auto Body Repair
Automotive Technology

Carpentry-Building Trades
Diesel & Heavy Equipment
Maintenance & Repair
Drafting - Mechanical
Drafting - Technical (with
CAD/CAM)
Electronic Communications
Electronic Technology
Graphic Arts (Printing)
Highway Technology
Industrial Electricity
Machine Shop
Mine Machine Operation
Mine Maintenance Technology
Welding
Learning Resource Center

(Continued)

Nearest Area Education Center

Garth Area Vocational Education Center
Martin, Kentucky, 11 miles distant

Business & Office

Accounting/Jr. Management
Clerical
Model Office
Secretarial

Industrial Education

Auto Mechanics

Carpentry

Industrial Electricity
Machine Shop
Mine Maintenance Technology
Welding

Carl D. Perkins Job Corp Center
Prestonsburg, Kentucky

The Carl D. Perkins Job Corps Center, at Prestonsburg, is part of a federally funded training program administered by the U. S. Department of Labor through a contract with a private company. The center provides opportunities for disadvantaged young men and women between the ages of 16 and 21 to develop academic and vocational skills. The curriculum includes: buildings and ground maintenance, carpentry, culinary arts, plumbing and masonry.

HEALTH

Local Medical Personnel

Physicians - 60
Dentists - 8

Hospitals

<u>General Hospital</u>	<u>Location</u>	<u>Beds</u>
Highland Regional Medical Center	Prestonsburg	184
Our Lady of the Way Hospital	Martin, 12 miles distant	39
McDowell Appalachian Regional Hospital	McDowell, 20 miles distant	60

Highlands Regional Medical Center

Medical staff - Sixty doctors, sixty-two licensed practical nurses, and fifty-four registered nurses

Our Lady of the Way Hospital

Medical staff - Forty-one doctors, twenty-four licensed practical nurses, eighteen registered nurses

McDowell Appalachian Regional Hospital

Medical staff - Eight doctors, seventeen licensed practical nurses, twenty-seven registered nurses

Other Medical Facilities

Archer Memorial Clinic
Family Practice Center
Mountain Comprehensive Care Center
Potter Clinic

Ambulance Service

Name - P & B Ambulance Service
Staff - Ten emergency medical technicians

OTHER LOCAL FACILITIES

Communications

Telephone -	South Central Bell Telephone Company
Telegraph -	Western Union Toll-free number, 1-800-325-6000
Newspaper - Weekly and circulation -	Floyd County Times 12,500
Radio -	WLKS; WPRT; WQHY
Television - Airwave reception from -	Lexington and Hazard, Kentucky; Huntington, West Virginia
Cable service -	Consolidated Communication Group Tel Com, Inc.
Educational television -	The Kentucky Educational Television (K.E.T.) network is available statewide

Library Services

Public library -	Floyd County Public Library
Size collection -	68,000 volumes
Circulation, 1984-85 -	56,540
College library -	Prestonsburg Community College Library
Size collection -	31,500 volumes
Special collections -	Local and state history (includes some genealogical information)

Religious Institutions

Floyd County

Denominations -	Assembly of God	Episcopal
	Baptist	Methodist
	Catholic	Presbyterian
	Christian	Pentecostal
	Church of Jesus Christ	Seventh Day
	of Latter Day Saints	Adventist
	Church of God	
Nearest Synagogues -	Ashland, Kentucky, 77 miles north of Prestonsburg Huntington, West Virginia, 78 miles northeast of Prestonsburg	
Congregations -	Agudath Achim (reform) B'nai Shalom (conservative and reform)	

Financial Institutions

<u>Banks</u>	<u>Assets</u>	<u>Deposits</u>	<u>Statement Date</u>
First Commonwealth Bank*	\$139,291,281.00	\$120,425,863.97	6/30/86
The Bank Josephine	118,975,338.00	104,646,705.00	12/31/85

<u>Savings and Loan Associations</u>	<u>Assets</u>	<u>Savings Accounts</u>	<u>Statement Date</u>
United Federal Savings and Loan Association	\$ 38,709,214.00	\$ 34,995,658.00	5/86

Hotels and Motels**

Total number - 7
Total rooms - 319

An additional 49 rooms and 17 cottages are available at Jenny Wiley State Resort Park near Prestonsburg.

* The First Commonwealth Bank completed construction of a five-story, 72,000 square-foot facility in September 1986.

** Construction of Holiday Inn, a 117-room hotel, was completed in Spring 1986. The full-service hotel is located one and one-half miles south of Prestonsburg.

Clubs and Organizations

American Legion	Independent Order of Odd Fellows (IOOF)
American Legion Auxiliary	Jenny Wiley Drama Association
Band Parents Association	Jenny Wiley Festival, Inc.
Beta Club	Jenny Wiley Summer Music Theater, Inc.
Boy Scouts of America	Junior Women's Club
Brownie Scouts	K-Club
Business and Professional Women's Club	Kentucky Highlands Folk Festival, Inc.
Chamber of Commerce	Kiwanis
Circle K	Masonic Order
Cub Scouts	Medical Society
Daughters of the American Revolution (DAR)	Ministerial Association
Downtown Merchants Association	Parents for Better Schools
Eagles	Parent-Teachers Association (PTA)
Eastern Kentucky Concert Series, Inc.	Prestonsburg Industrial Corporation
Eastern Star	Rebekah
Floyd County Fair Board	Red Cross
4-H Club	Rotary
Future Farmers of America (FFA)	Veterans of Foreign Wars (VFW)
Future Homemakers of America (FHA)	Veterans of Foreign Wars Ladies Auxiliary
Girl Scouts	Woman's Club
Highland Striders Jogging Club	Woodmen of the World
Homemakers Club	United Way
Humane Society	

RECREATION

Local

Recreation in the Prestonsburg area is centered around its 32-acre Archer Park. Facilities include seven all-weather tennis courts, a skating rink, a basketball gymnasium with a stage for theatrical productions, a senior citizens center, three lighted baseball fields, an Olympic-sized swimming pool, two fenced playgrounds, racquetball facilities, several camping spaces, a horse ring, and four shelters. Classes in gymnastics and square dancing are offered. A county fair and horse show are held at the park annually. Also, there are plans for the installation of additional senior citizens recreational facilities in 1987.

A county park at Allen, Kentucky, 4 miles south of Prestonsburg, includes a 9-hole golf course, tennis courts, baseball diamonds, a swimming pool, and meeting rooms.

A park at Auxier, Kentucky, 6 miles north of Prestonsburg, includes a racquetball court, baseball field, basketball court, playground, shelter and restroom facilities.

Annual events held in Prestonsburg include the Kentucky Highlands Folk Festival which is held the Friday, Saturday and Sunday after Labor Day; the Jenny Wiley Festival which is held the second week in October; and the Old Christmas Party which is held the Sunday following the 6th of January.

The city of Prestonsburg has plans to build three new miniature parks in downtown area in the near future.

Jenny Wiley State Resort Park, near Prestonsburg, takes full advantage of its picturesque highland setting. The 1,700-acre park offers facilities and activities such as a lodge, a dining room, a gift shop, cottages, a lodge pool, recreation rooms, campsites, picnic areas, planned recreation, playground, golf, hiking, horseback riding, shuffleboard, fishing, and fishing boat and pedal boat rentals. A summer music theatre presents Broadway musicals in a 90-seat amphitheater.

Area (Within 80 miles)

Breaks Interstate Park, 50 miles southeast of Prestonsburg, encompasses 3,910 acres and is the site of the largest canyon east of the Mississippi River. Park facilities include a lodge, restaurant, housekeeping cottages, tent and trailer campsites, picnic areas, playgrounds, hiking trails, horseback riding, fishing, fishing boat rentals, community pool, visitor's center, and a gift shop.

Natural Bridge State Resort Park near Slade, 67 miles west of Prestonsburg, is located in the Daniel Boone National Forest where cliffs and stone arches fill the landscape. The rugged awesomeness of the great Natural Bridge is the main attraction. The park has a 35-room resort lodge with a dining room and gift shop, ten rustic cottages, and 95 camping sites. Other facilities include a lake, a swimming pool, picnic shelters and playgrounds, hiking trails, and a riding stable.

Red River Gorge, most of which is located in Wolfe County adjacent to Natural Bridge State Resort Park, has three waterfalls, 59 natural sandstone arches, and the Red River Gorge Loop Drive, a 30-mile scenic route on Kentucky's 715 and 77 which passes along the Red River. The Daniel Boone National Forest Visitor Information Center on Kentucky 715 is located on the loop drive.

Buckhorn Lake State Resort Park, 67 miles southwest of Prestonsburg at Buckhorn, is a full-facility resort park with a 36-room lodge. The lodge itself offers a dining room with a lake view, a gift shop, a pool, meeting rooms, and a recreation room. Other park facilities and activities include a beach, a bathhouse, a picnic shelter, 72 campsites, a playground, mini-golf, tennis, a dock with open and covered slips, boat rentals, a 40-foot levee plus a fishing pier, bicycle rentals, and planned recreation.

Grayson Lake State Park is located 69 miles north of Prestonsburg near Grayson. Facilities available include 71 campsites, a beach, and a picnic area. Good fishing and organized recreational programs can be found during the summer. The park is located in the 7,350-acre Grayson Lake Wildlife Area.

Kingdom Come State Park, located 78 miles southwest of Prestonsburg near Cumberland, Kentucky, contains 961 beautiful mountain acres. It is named for John Fox, Jr.'s, "The Little Shepherd of Kingdom Come", which was written in 1903 and was the first U.S. novel to sell one million copies. Features include a three-acre fishing lake, a picnic area, a hiking trail, a playground, and Raven Rock, a fascinating stone formation with a large cave opening at the base. The park is located on the midway point of the Little Shepherd Trail, a hiking and driving trail which follows Pine Mountain from Harlan to Whitesburg.

COMMUNITY IMPROVEMENTS

Recent

Prestonsburg was chosen as a "Kentucky Certified City" in 1985. The award is based on achievement in the following categories: economic development, transportation, public affairs, utilities, health, commercial development, housing, education and recreation. The Certified Cities Program is sponsored by the Kentucky Chamber of Commerce.

The Prestonsburg City's Utilities Commission recently completed the installation of a 400,000-gallon elevated water storage tank.

The First Commonwealth Bank completed construction of a five-story, 72,000 square-foot facility in September 1986.

Construction of Holiday Inn, a 117-room hotel, was completed in Spring 1986. The full-service hotel is located one and one-half miles south of Prestonsburg.

In 1985, Kentucky Welding Supply reported a \$1 million expansion, increasing employment by 23.

Two shopping centers, Glynview Plaza and Prestonsburg Village, have recently opened in Prestonsburg. Each shopping center contains several stores, including major discount and grocery stores.

Under Way

Construction of the first phase of the Big Sandy Regional Airport has been completed. The first phase included the installation of a 5,000-foot runway and a parallel taxi-way. Phase two, which includes construction of a terminal, installation of lighting, and construction of an access road development, is under way.

A new access bridge, across the Levisa Fork of Big Sandy River to the industrial site, is under construction. The new bridge, which is located on Kentucky 1428, will be completed in Fall 1986.

Installation of a new heating and cooling system by the Prestonsburg Community College, at the Martin Study Center, is under way. The project will be completed in Fall 1986.

Planned

The reconstruction and rerouting of U.S. 23 from Prestonsburg to Paintsville is planned. The project is still in the design phase at the present time.

The city of Prestonsburg has plans to build three new miniature parks in the downtown area in the near future.

Prestonsburg Community College plans to build a 28,000 square foot learning resource center and a 200-car parking lot by 1988.

The Prestonsburg City's Utilities Commission has plans to extend water service to the city of Martin in 1986.

The Floyd County School System plans to construct a new middle school at Prestonsburg, a new elementary school at Allen, a new elementary school at Garrett-Wayland, and a new school at Wheelwright-McDowell in 1987.

There are plans for the installation of additional senior citizens recreational facilities at Archer Park in 1987.



**Kentucky Commerce Cabinet
Department of Economic Development
Capital Plaza Tower
Frankfort, Kentucky 40601
(502) 564-7140**