

1979

Industrial Resources - Franklin County - Frankfort

Kentucky Library Research Collections
Western Kentucky University, spcol@wku.edu

Follow this and additional works at: https://digitalcommons.wku.edu/franklin_pty

 Part of the [Business Administration, Management, and Operations Commons](#), [Growth and Development Commons](#), and the [Infrastructure Commons](#)

Recommended Citation

Kentucky Library Research Collections, "Industrial Resources - Franklin County - Frankfort" (1979). *Franklin County*. Paper 8.
https://digitalcommons.wku.edu/franklin_pty/8

This Report is brought to you for free and open access by TopSCHOLAR®. It has been accepted for inclusion in Franklin County by an authorized administrator of TopSCHOLAR®. For more information, please contact topscholar@wku.edu.

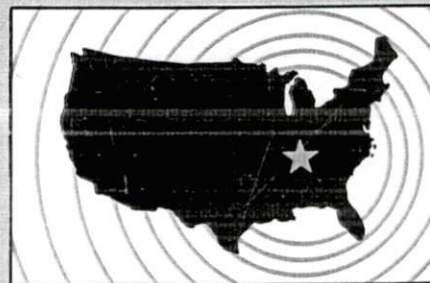
12147

Franklin County

INDUSTRIAL RESOURCES

FRANKFORT

**Kentucky
first**

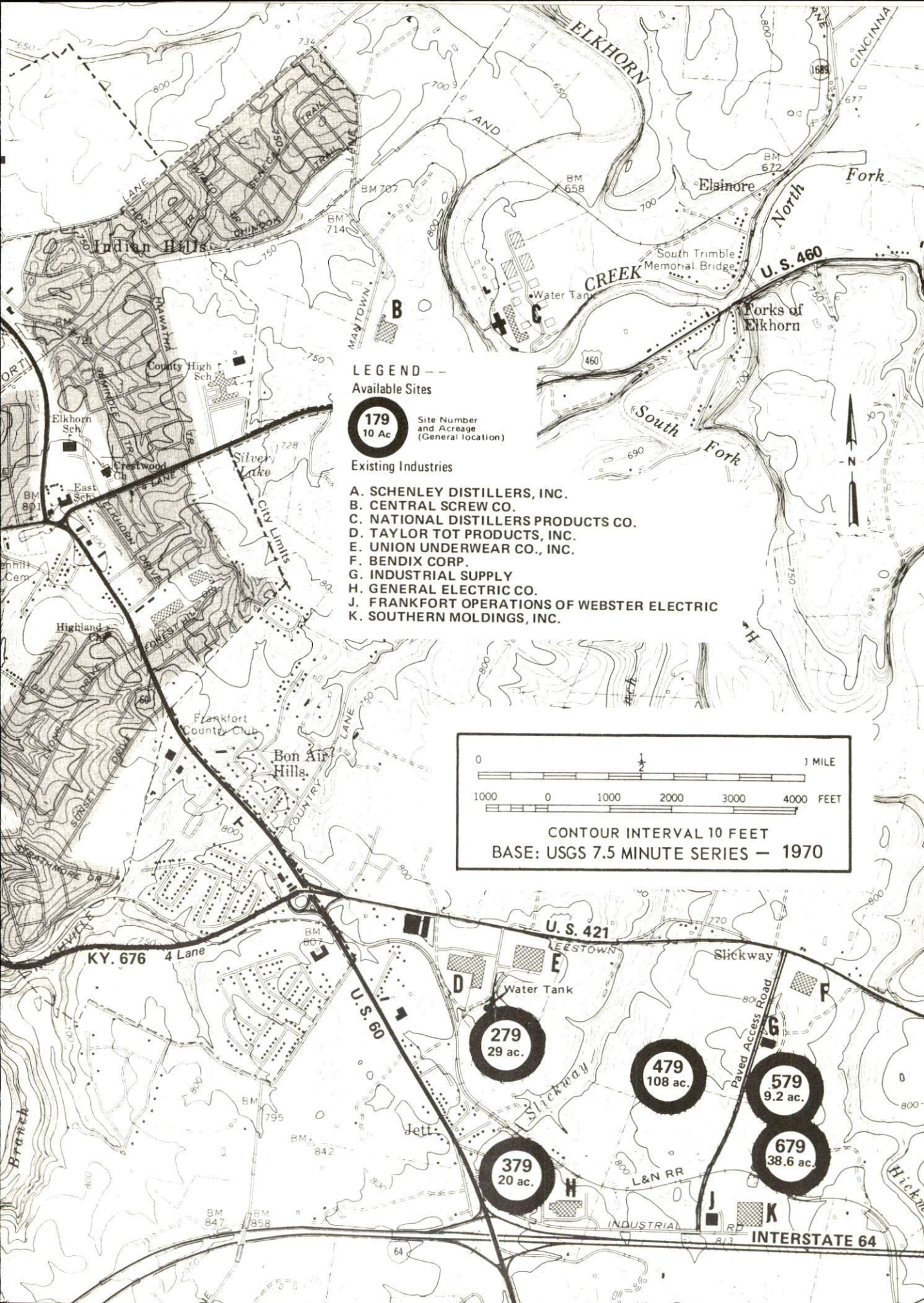


DEPARTMENT OF COMMERCE

FRANKFORT, KENTUCKY --- Index to Industrial Sites --- 1979

For detailed data on individual sites contact Frankfort-Franklin County Chamber of Commerce, 7172 Wilkinson Street, Frankfort, Kentucky 40601, or the Industrial Development Division, Kentucky Department of Commerce, Capital Plaza Tower, Frankfort, Kentucky 40601.





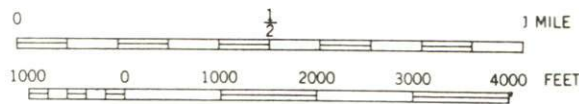
LEGEND
Available Sites

179
10 Ac

Site Number and Acreage (General location)

Existing Industries

- A. SCHENLEY DISTILLERS, INC.
- B. CENTRAL SCREW CO.
- C. NATIONAL DISTILLERS PRODUCTS CO.
- D. TAYLOR TOT PRODUCTS, INC.
- E. UNION UNDERWEAR CO., INC.
- F. BENDIX CORP.
- G. INDUSTRIAL SUPPLY
- H. GENERAL ELECTRIC CO.
- J. FRANKFORT OPERATIONS OF WEBSTER ELECTRIC
- K. SOUTHERN MOLDINGS, INC.



CONTOUR INTERVAL 10 FEET
BASE: USGS 7.5 MINUTE SERIES — 1970

279
29 ac.

479
108 ac.

579
9.2 ac.

679
38.6 ac.

379
20 ac.

INDUSTRIAL RESOURCES

FRANKFORT, KENTUCKY

Prepared by
The Kentucky Department of Commerce
Division of Research and Planning
in cooperation with
The Frankfort-Franklin County Chamber of Commerce

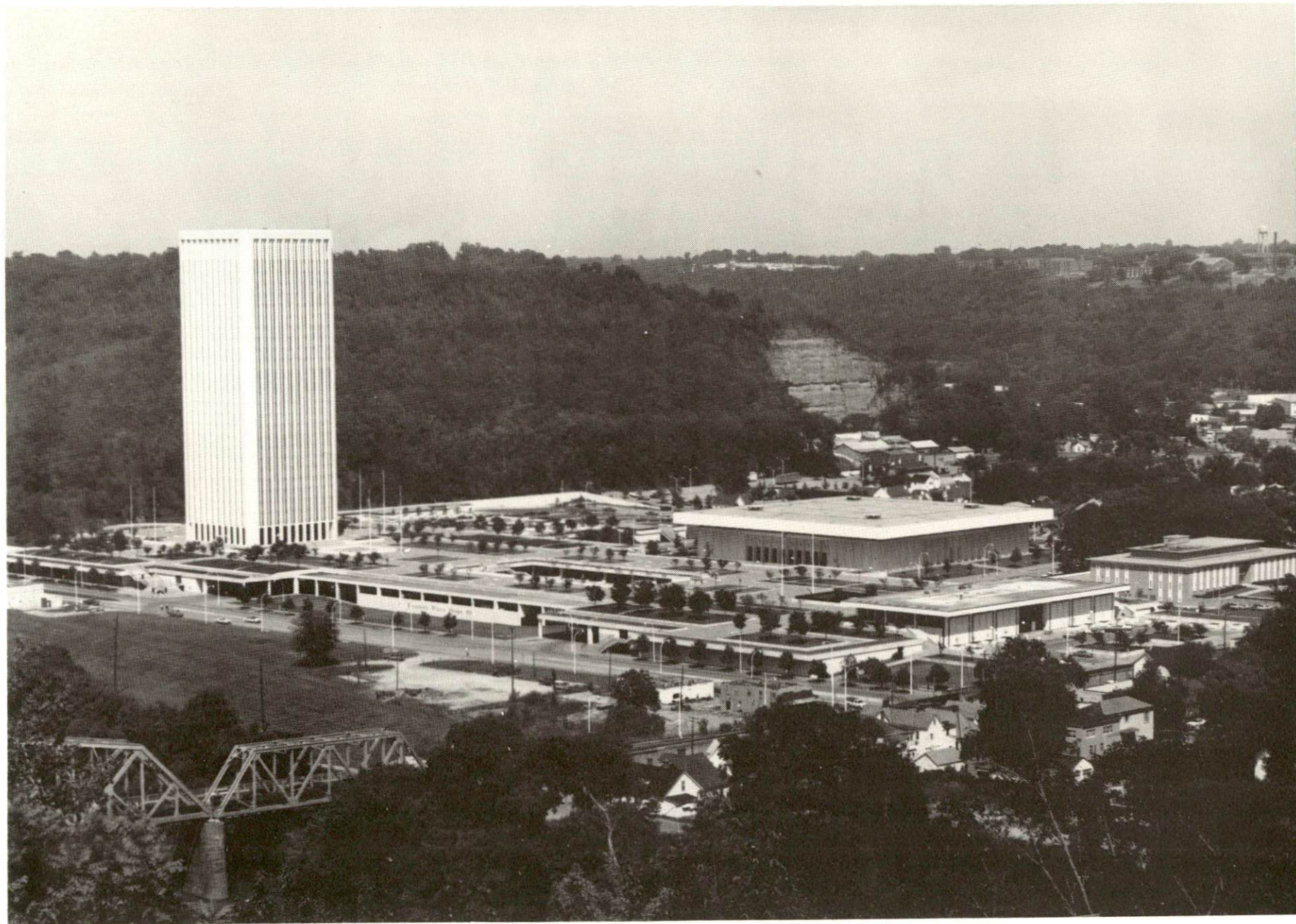
1979

Program manager: Patsy Wallace; production supervisor: Pam Riley;
research: Mildred Keefer; clerical: Linda Fint; graphics: Frank
Ferrante, Tony Cecconi, Richard Spencer; cartography: Industrial
Development Division. Cost of printing paid from state funds.

TABLE OF CONTENTS

<u>Chapter</u>	<u>Page</u>
INDUSTRIAL SITES	i
SUMMARY OF INDUSTRIAL RESOURCES - FRANKFORT, KENTUCKY	1
THE LABOR MARKET AREA	6
Population	6
Labor Force Characteristics of Residents, 1977	6
Frankfort Manufacturing Firms, Their Products and Employment	7
Labor Organizations	10
Industrial Services	10
Estimated Male Labor Supply	11
Estimated Female Labor Supply	11
Average Weekly Wages by Industry, by Place of Work, 1977	12
Per Capita Personal Income	14
TRANSPORTATION	15
Rail	15
Highways	15
Truck Service	16
Air	18
Bus	19
Taxi	19
Rental Services	19
Water	19
POWER AND FUEL	20
Electricity	20
Natural Gas	20
Other Fuels	21
WATER AND SEWERAGE	22
Water	22
Sewerage	24
CLIMATE	25

<u>Chapter</u>	<u>Page</u>
LOCAL GOVERNMENT	27
City	27
County	27
Assessed Value of Property, 1978	27
Property Taxes	28
Combined State and Local Rates Per \$100 Valuation, 1978	28
Utilities Gross Receipts Tax for Schools	29
Planning and Zoning	29
Safety	29
Police	29
Fire	29
Refuse Collection and Disposal	29
EDUCATION	31
Public Schools	31
Nonpublic Schools	31
Area Colleges and Universities	33
Vocational Schools	34
HEALTH	37
Local Medical Personnel	37
Hospitals	37
Other Medical Facilities	37
Ambulance Service	37
Public Health	37
OTHER LOCAL FACILITIES	38
Communications	38
Library Services	39
Religious Institutions	39
Financial Institutions	41
Hotels and Motels	41
Clubs and Organizations	42
RECREATION	45
COMMUNITY IMPROVEMENTS	48



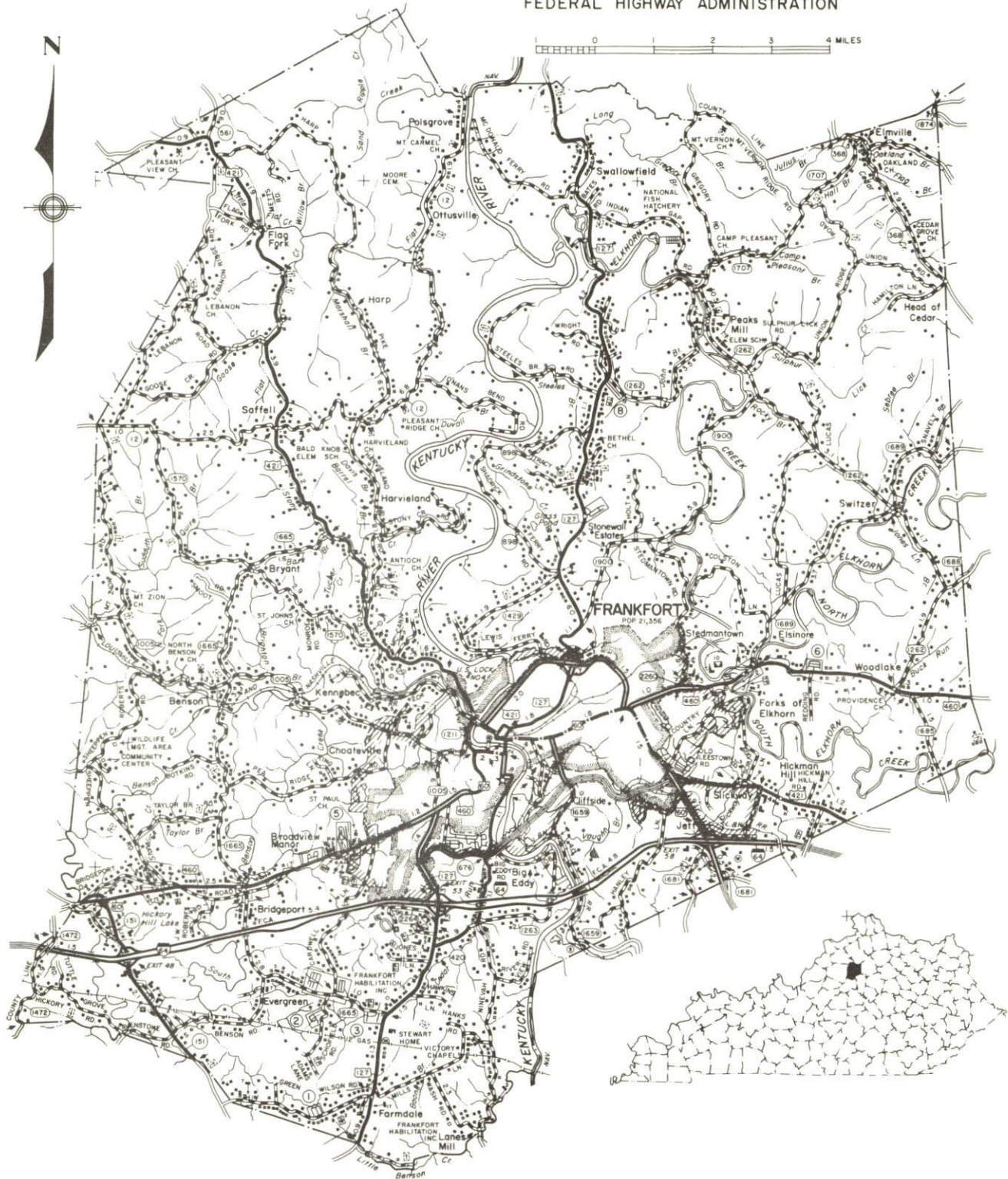
CAPITAL PLAZA COMPLEX



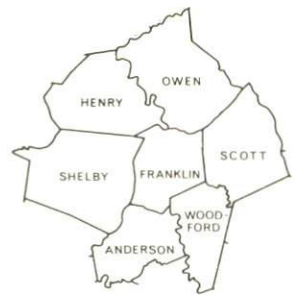
KENTUCKY STATE CAPITOL

1979 EDITION
GENERAL HIGHWAY MAP
FRANKLIN COUNTY
KENTUCKY

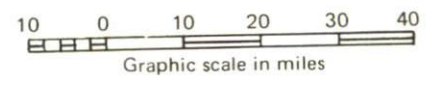
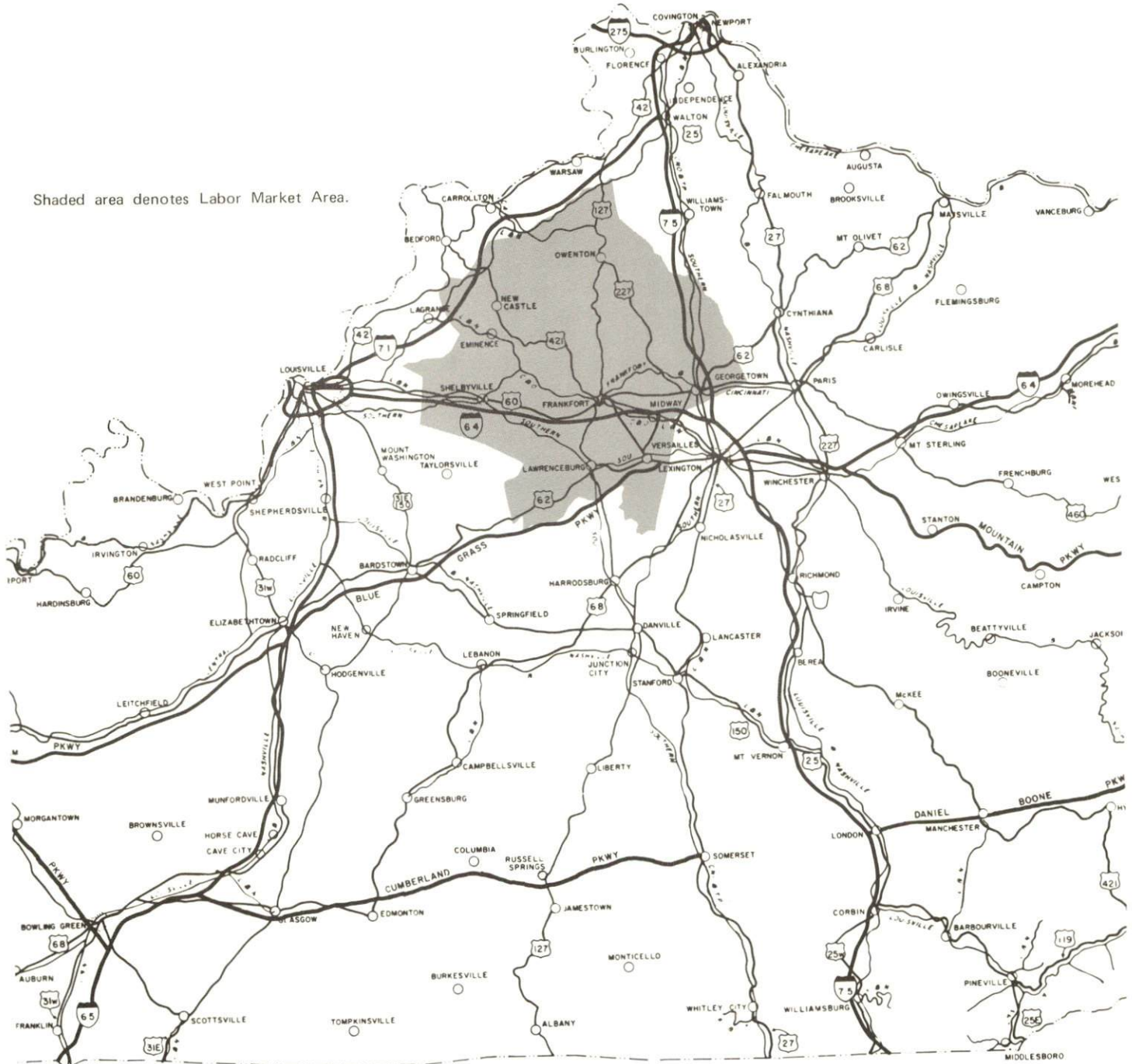
PREPARED BY THE
KENTUCKY DEPARTMENT OF TRANSPORTATION
OFFICE OF TRANSPORTATION PLANNING
DIVISION OF FACILITIES PLANNING
IN COOPERATION WITH THE
U.S. DEPARTMENT OF TRANSPORTATION
FEDERAL HIGHWAY ADMINISTRATION



FRANKFORT LABOR MARKET AREA

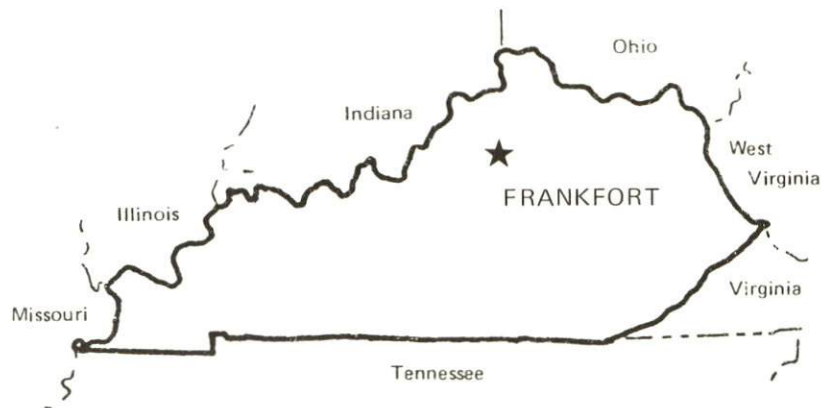


Shaded area denotes Labor Market Area.



SUMMARY OF INDUSTRIAL RESOURCES FRANKFORT, KENTUCKY

LOCATION



Road Distance in Miles:

Atlanta	390	Baltimore	569
Chicago	345	Detroit	358
New York	731	St. Louis	316

POPULATION

City of Frankfort, 1976	23,150
Franklin County, 1977	38,600
Labor Market Area, 1977	126,400
% Nonwhite, Franklin County, 1977	8.0

LABOR ANALYSIS

Labor Market Area - Franklin, Anderson, Henry, Owen, Scott, Shelby, and Woodford Counties

Estimated available workers from labor market area:

Male	3,357	Female	4,039
Unemployment rate, 1977		Labor Market Area	3.4%
Franklin County	3.9%	Scott County	2.4%
Anderson County	4.0%	Shelby County	3.0%
Henry County	4.4%	Woodford County	2.2%
Owen County	6.4%		

Total employment, Franklin County, 1977 - 18,130

Manufacturing employment in labor market area, 1977 - 11,890
Major local manufacturing plants, 100 employees or more:

<u>Name</u>	<u>Employment</u>
<u>Bendix Corporation, Frankfort Plant</u>	<u>537</u>
<u>Central Screw Company</u>	<u>214</u>
<u>Frankfort Operations of Western Electric</u>	<u>185</u>
<u>General Electric Company</u>	<u>215</u>
<u>National Distillers Products Company</u>	<u>763</u>
<u>Schenley Distillers, Inc.</u>	<u>350</u>
<u>Southern Moldings, Inc.</u>	<u>176</u>
<u>The Frank F. Taylor Company</u>	<u>125</u>
<u>Trigometer, Inc.</u>	<u>100</u>
<u>Union Underwear Company, Inc.</u>	<u>840</u>

Labor unions in local manufacturing plants:

Distillery Workers; Guards; Plumbers; Industrial Workers; Machinists;
Steelworkers; Teamsters; Typographical

TRANSPORTATION

Highways:

Interstates - I-64, 3 miles south; I-75, 20 miles east
Parkway - Blue Grass Parkway, 18 miles south
U.S. Highways - 460, 60, 127 and 421

Rail:

Railroad - Louisville and Nashville Railroad
Piggyback service - Yes

Truck:

Number of interstate motor carriers - 14; Terminals - 3

Water:

Nearest navigable river - Kentucky River, Frankfort
Nearest public riverport - Louisville; Distance - 53 miles

Air:

Nearest commercial service - Blue Grass Field; Distance - 28 miles;
Airlines serving - Eastern, Delta, Piedmont and Allegheny

Nearest local airport - Capital City Airport, Frankfort
Distance - 1 mile west; Runway length - 5,000 feet

UTILITIES AND SERVICES

Electricity:

Local distributor - Frankfort Electric and Water Plant Board
Source of power - Kentucky Utilities Company

Natural Gas:

Local distributor - Columbia Gas of Kentucky, Inc.
Source of supply - Columbia Gas Transmission Company
Available for new industry - Not at the present time

Other Fuels:

Number of local propane distributors - 2
Number of local distillate fuel oil distributors - 4

Water, treated:

Local supplier - Municipal
Excess municipal system capacity - 12,119,000 gpd

Water, raw:

Source for industrial use - Kentucky River

Sewer:

Excess treatment capacity - 100,000 gpd
Expansions under way - Construction of a 9,000,000 gpd secondary
sewage treatment plant scheduled to be completed in 1980

Industrial Services:

	<u>Location</u>	<u>Miles Distant</u>
Tool & Die, Machine & Pattern Shops	<u>Frankfort</u>	<u>--</u>
	<u>Georgetown</u>	<u>18</u>
	<u>Lexington</u>	<u>28</u>
Metal Service Centers	<u>Lexington</u>	<u>28</u>
Heat Treating	<u>Georgetown</u>	<u>18</u>
Metal Finishers	<u>Frankfort</u>	<u>--</u>
Electric Motor Repair	<u>Lexington</u>	<u>28</u>

CLIMATE

Temperature, Normal - 55.2 degrees F.
Precipitation, Normal - 44.49 inches
Snowfall, Mean Annual - 15.90 inches
Prevailing winds - South
Relative humidity (%) - 7 a.m. - 81; 7 p.m. - 63

GOVERNMENT

Type - Mayor-City Commission-City Manager
Police personnel - full-time - 56
Fire department personnel - full-time - 63
Fire insurance rating (A.I.A.), class - Inside city - 5
Outside city - 10

TAXES

Property taxes:

Combined state and local rates per \$100 valuation, 1978
(100% assessment)

	<u>Inside City of Frankfort</u>	<u>Outside City</u>
1. Land and buildings	\$1.111	\$0.755
2. Mfg. machinery, raw materials, goods in process, pollution control equipment	0.150	0.150
3. Finished goods, office equipment, vehicles, other tangibles	1.246	0.890
4. Intangibles (accounts rec., notes, bonds, etc.)	0.250	0.250
5. Leaseholds in I. R. bond financed plants	0.015	0.015

Special local taxes:

Net profits tax - 1 percent
Utilities tax - 3 percent of electric, gas, water, sewer, telephone services

EDUCATION

State vocational-technical school - Lexington, 28 miles distant
Area vocational education center - Frankfort
College or university - Kentucky State University, Frankfort

Public Schools:

High school enrollment - 1,744; Student/teacher ratio - 19-1
Junior high enrollment - 1,667; Student/teacher ratio - 19-1
Elementary school enrollment - 3,828; Student/teacher ratio - 21-1

Nonpublic Schools:

Enrollment - 467; Student/teacher ratio - 14-1

FINANCIAL INSTITUTIONS

Banks - 2; Total assets - \$230,804,184.14
Savings & loan associations - 2; Total assets - \$93,086,120.31

COMMUNICATIONS

Local newspaper - The State Journal - Daily except Saturday
Local radio stations - WFKY-AM, WKYW-FM, WKED-AM
Television reception - Cable service available; Channel 10, Frankfort

MEDICAL

Number of physicians locally - 33; Number of dentists locally - 17
Hospital - King's Daughters' Memorial Hospital; Number of beds - 157

RELIGIOUS FACILITIES

Churches - 53; Synagogues - Lexington, 28 miles distant

PUBLIC LODGING

Total number hotels and motels - 6; Total rooms - 392

RECREATION FACILITIES

Public golf courses - 2; Parks - 3; Tennis courts - 22
Swimming pools - 3; Country club - 1
Local tourist attractions include the State Capitol, Old State House, Governor's Mansion, Daniel Boone's Grave, the Floral Clock, Kentucky Historical Military Museum and several distilleries.

Nearest state park - Old Fort Harrod State Park
Open year round; Picnic area; Pioneer fort; Outdoor drama, "Legend of Daniel Boone", June through August

THE LABOR MARKET AREA

POPULATION			
Area	1977*	1970	Percent Nonwhite 1970
Frankfort	23,150**	21,902	12.7
Labor Market Area	126,400	113,600	N/A
Franklin County	38,600	34,481	8.0
Anderson County	11,300	9,358	4.8
Henry County	11,600	10,910	7.2
Owen County	8,500	7,470	3.6
Scott County	19,700	17,948	9.4
Shelby County	20,000	18,999	12.9
Woodford County	16,700	14,434	10.8

*Provisional Estimates.

**1976 Population Estimates.

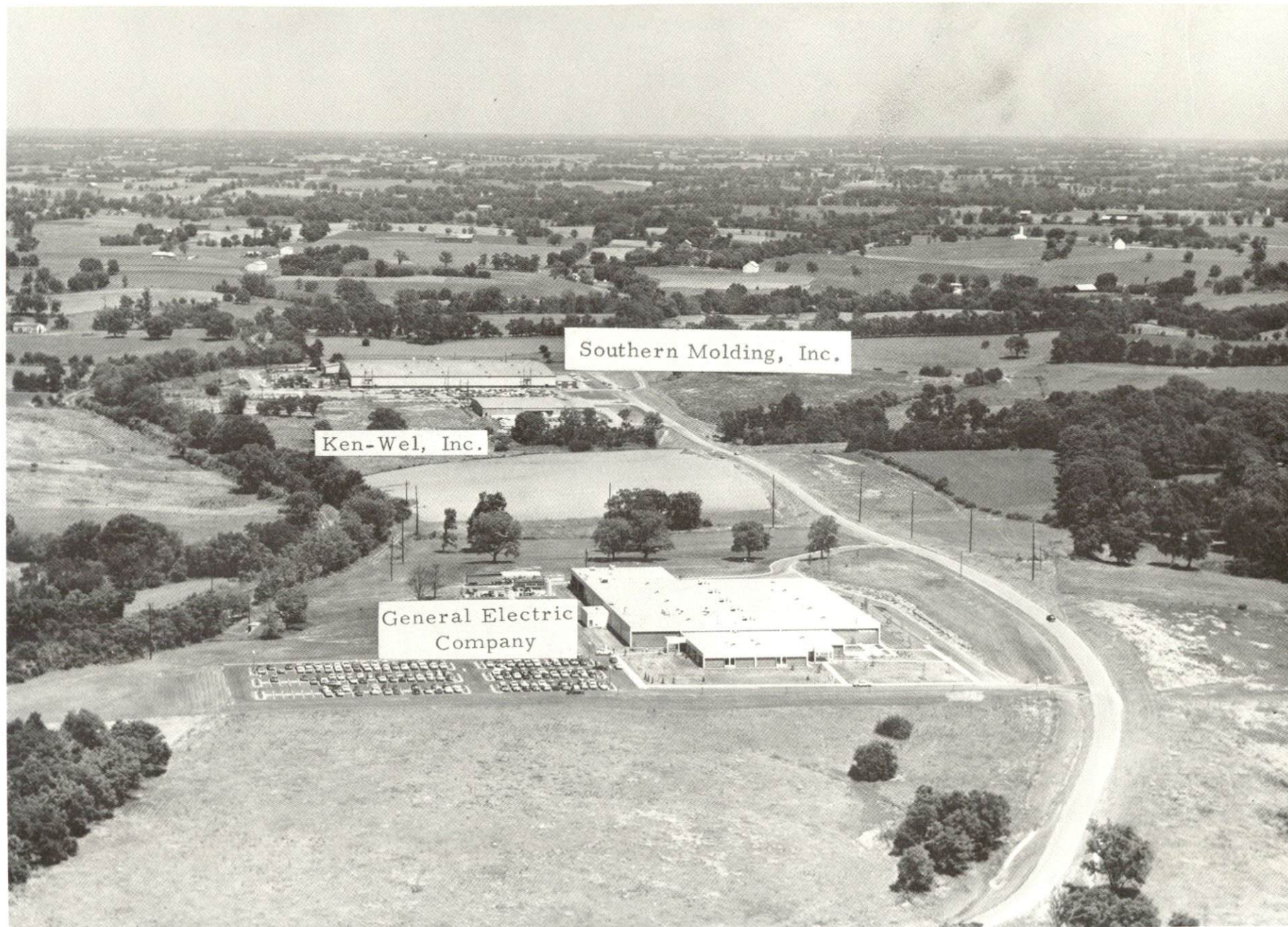
Sources: U. S. Department of Commerce, Bureau of the Census, Census of Population, 1970. U. S. Department of Commerce, Bureau of the Census, Current Population Reports, Series P-25, No. 756, January 1979. Series P-26, No. 77-17, November 1978.

LABOR FORCE CHARACTERISTICS OF RESIDENTS, 1977		
	Franklin County	Labor Market Area
Civilian Labor Force	18,869	61,913
Employment	18,130	59,757
Agricultural	522	7,745
Nonagricultural	17,608	52,012
Unemployment	739	2,156
Rate of Unemployment (%)	3.9	3.5

Source: Kentucky Department for Human Resources, Kentucky Labor Force Estimates, Annual Averages, 1977.

FRANKFORT MANUFACTURING FIRMS,
THEIR PRODUCTS AND EMPLOYMENT

Firm (Establishment date)	Product	Employment			Organized
		Total	Male	Female	
Bendix Corporation, Frankfort Plant (1967)	Air brake components	537	400	137	*
Cash Rubber Stamp Service (1965)	Rubber stamps, marking equipment	2	1	1	
Central Screw Company (1957)	Screws, nuts, bolts	214	182	32	*
Frankfort Materials Company (1964)	Bituminous concrete mix	5	5	0	
Frankfort Operations of Western Electric (1954)	Ignition trans- formers, hydraulic pumps	185	58	127	*
Frankfort Publishing Company (1917)	Newspaper, commer- cial printing	50	35	15	
Frankfort Tool and Die (1968)	Tools and dies, fixtures, weld- ments, punch and press stamping	2	1	1	
George W. Gayle and Sons (1855)	Scraper rings, electric type- writer parts, parachute and helicopter hard- ware	16	9	7	
General Electric Company (1971)	Plastic parts and material	215	131	84	
Harrod-Carter, Inc. (N/A)	Ready mixed con- crete, crushed stone, agri- cultural lime	43	42	1	*
Horn and Goin Company (1949)	Ready mixed concrete	23	22	1	
Lyons Lumber Company (1909)	Millwork	11	10	1	
National Distillers Products Company (1935)	Whiskey, feed	763	532	231	*
Progressive Printers (1972)	Offset printing	7	3	4	



AERIAL VIEW OF INDUSTRIAL PARK

<u>Firm (Establishment date)</u>	<u>Product</u>	<u>Employment</u>			<u>Organized</u>
		<u>Total</u>	<u>Male</u>	<u>Female</u>	
Rebecca Ruth Candy, Inc. (1929)	Candy	16	3	13	
Roberts Printing Company, Inc. (1910)	Letterpress printing, offset printing	7	6	1	*
Schenley Distillers, Inc. (1869)	Whiskey, distillers dried grain	350	250	100	*
Southern Moldings, Inc. (1974)	Metal stamping, roll forming	176	109	67	
The Frank F. Taylor Company (1964)	Metal fabrication, nickel chrome plating, heat sealing-chair cushions	125	55	70	*
Trigometer, Inc. (1963)	Thermal tempera- ture control devices, emis- sions control components, electric range components	100	20	80	
Union Underwear Company, Inc. (1932)	Men's broadcloth shorts, men's knit briefs and T-shirts	840	80	760	

*See Labor Organizations below.

Sources: Kentucky Department of Commerce, Division of Research and Planning; The Frankfort-Franklin County Chamber of Commerce.

LABOR ORGANIZATIONS

<u>Union</u>	<u>Representing manufacturing workers at:</u>
Distillery, Wine and Allied Workers' International Union, AFL-CIO-CLC	National Distillers Products Company; Schenley Distillers, Inc.
International Guards Union of America	National Distillers Products Company
United Association of Journeymen and Apprentices of the Plumbing and Pipe Fitting Industry of the United States and Canada, AFL-CIO	National Distillers Products Company; Schenley Distillers, Inc.
Allied Industrial Workers, AFL-CIO	Bendix Corporations, Frankfort Plant; Frankfort Operations of Western Electric
International Association of Machinists and Aerospace Workers, AFL-CIO	Bendix Corporation, Frankfort Plant; Central Screw Company; Schenley Distillers, Inc.; The Frank F. Taylor Company
United Steelworkers of America, AFL-CIO	Harrod-Carter, Inc.
International Brotherhood of Teamsters, Chauffeurs, Warehousemen and Helpers of America	Harrod-Carter, Inc.
International Typographical Union, AFL-CIO	Roberts Printing Company

INDUSTRIAL SERVICES

	<u>Location</u>	<u>Miles Distant</u>
Tool & Die, Machine & Pattern Shops	Frankfort	--
	Georgetown	18
	Lexington	28
Metal Service Centers	Lexington	28
Heat Treating	Georgetown	18
Metal Finishers	Frankfort	--
Electric Motor Repair	Lexington	28
Source: <u>Kentucky Directory of Selected Industrial Services, 1977.</u>		

ESTIMATED MALE LABOR SUPPLY
FRANKFORT LABOR MARKET AREA

Area	Current			Future	
	Total	Not in Labor Force	Unemployed	Under-employed	Reaching 18 years of age before 1985
Labor Market Area	3,357	0	1,337	2,020	5,427
Franklin	1,083	0	453	630	1,544
Anderson	245	0	135	110	479
Henry	316	0	146	170	484
Owen	314	0	144	170	340
Scott	560	0	150	410	857
Shelby	499	0	189	310	950
Woodford	340	0	120	220	773

Sources: Kentucky Department for Human Resources, Kentucky Labor Supply Estimates by County, 1977. Kentucky Department of Commerce, Future Labor Supply Before 1985.

ESTIMATED FEMALE LABOR SUPPLY
FRANKFORT LABOR MARKET AREA

Area	Current			Future	
	Total	Not in Labor Force	Unemployed	Under-employed	Reaching 18 years of age before 1985
Labor Market Area	4,039	690	819	2,530	5,217
Franklin	1,076	0	286	790	1,558
Anderson	266	0	86	180	448
Henry	552	270	82	200	452
Owen	439	230	89	120	293
Scott	605	0	95	510	846
Shelby	686	190	106	390	842
Woodford	415	0	75	340	778

Sources: Kentucky Department for Human Resources, Kentucky Labor Supply Estimates by County, 1977. Kentucky Department of Commerce, Future Labor Supply Before 1985.

AVERAGE WEEKLY WAGES BY INDUSTRY,
BY PLACE OF WORK, 1977

	<u>Franklin County</u>	<u>Anderson County</u>	<u>Henry County</u>	<u>Owen County</u>
All Industries	\$187.35	\$169.97	\$147.38	\$153.03
Mining & Quarrying	*	*	*	0
Contract Construction	255.48	111.75	122.35	140.32
Manufacturing	208.75	211.71	195.51	142.74
Transportation, Communications & Public Utilities	255.84	277.47	158.79	251.95
Wholesale & Retail Trade	123.29	104.82	106.23	129.42
Finance, Insurance & Real Estate	195.23	156.99	179.37	151.39
Services	189.75	95.70	104.89	151.85
Other	112.60	28.42	*	*

	<u>Scott County</u>	<u>Shelby County</u>	<u>Woodford County</u>
All Industries	\$173.78	\$155.91	\$181.49
Mining & Quarrying	*	0	0
Contract Construction	157.96	124.34	182.45
Manufacturing	204.24	189.64	205.28
Transportation, Communications & Public Utilities	206.17	226.31	276.14
Wholesale & Retail Trade	117.78	129.37	112.55
Finance, Insurance & Real Estate	135.60	166.44	151.83
Services	128.97	122.87	136.40
Other	*	138.01	203.80

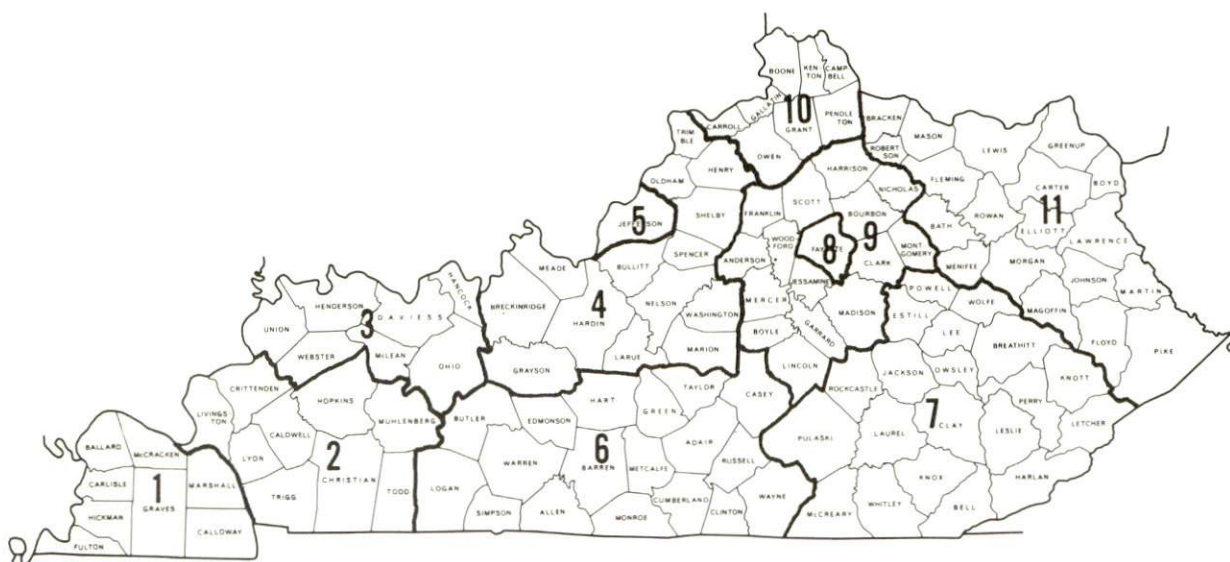
*Not disclosed.

Note: Excludes domestic workers, railway workers; certain nonprofit corporations; majority of federal, state, and local government workers; and self-employed workers.

Source: Kentucky Department for Human Resources, Average Weekly Wages of Workers Covered by Kentucky Unemployment Insurance Law, 1977.

Occupational wage rates for specific industries are usually not available to most government agencies, and wage data furnished to state employment agencies by individual industrial employers is protected from disclosure by federal law. The most reliable up-to-date wage information can be obtained by direct contact with local employers.

Associated Industries of Kentucky, a voluntary organization of Kentucky businesses, regularly collects occupational wage rates and fringe benefits data from participating member firms. Data is compiled for over 127 clearly defined office, production, and service occupations. Tabulations are published for eleven regions of Kentucky, as shown on the map below. It should be noted that the data may be weighted by the preponderance of firms in the larger cities and may be somewhat higher than the rates paid in the smaller communities. Data from these tabulations are available, upon request, from the Kentucky Department of Commerce, Frankfort, Kentucky 40601.



Associated Industries of Kentucky Area Wage Surveys

PER CAPITA PERSONAL INCOME

<u>Area</u>	<u>1977</u>	<u>1973</u>	<u>Percent Change</u>
Franklin County	\$6,842	\$4,522	51.3
Labor Market Area			
Range	\$4,762 - 7,022	\$3,172 - 4,923	N/A
Kentucky	5,989	4,021	48.9
U. S.	7,026	4,980	41.1

Source: U. S. Department of Commerce, Bureau of Economic Analysis,
April 1979.

TRANSPORTATION

Rail

Line serving Frankfort - Louisville & Nashville Railroad

Services - 1 northbound and 1 southbound freight stop daily (6 days per week), 1 northbound and 1 southbound through freight daily, switching facilities, team track space for 6 cars plus limited siding space, piggyback facilities

For details on routing, schedules, rates, and services, contact:

Manager of Industrial Development
Louisville & Nashville Railroad Company
908 West Broadway
Louisville, Kentucky 40201
(502) 587-5000

Highways

Frankfort is served by Interstate 64 with interchanges located east and west of the city. Interstate 64 connects with Interstate 75 approximately 22 miles east of Frankfort. The Blue Grass Parkway is located 18 miles southeast of the city via four-lane U.S. 60.

Frankfort is also served by U.S. Highways 460, 60, 127 and 421.

A new four-lane by-pass, covering 5.5 miles between U.S. 60 and U.S. 127, is under construction. The by-pass is expected to be completed by late 1979 and will greatly relieve downtown traffic congestion. An access road, also under construction, will connect the by-pass with East Main Street.

Truck Service

<u>Company</u>	<u>Home Office</u>
Bestway Express, Inc.*	905 Visco Drive Nashville, Tennessee 37210
Branch Motor Express Company*	114 Fifth Avenue New York, New York 10011
Bronaugh Motor Express, Inc.**	1025 Nandino Boulevard Lexington, Kentucky 40511
Claxon Truck Line, Inc.**	453 Versailles Road P. O. Box 678 Frankfort, Kentucky 40602
Consolidated Freightways Corporation*	175 Linfield Drive Menlo Park, California 94025
Cooper-Jarrett, Inc.*	Hanover Plaza Morristown, New Jersey 07960
Interstate Motor Freight System*	134 Grandview Avenue, S. W. Grand Rapids, Michigan 49503
Kentucky Truck Lines, Inc.***	Wilkinson Street P. O. Box 92 Frankfort, Kentucky 40602
McLean Trucking Company*	P. O. Box 213 Winston-Salem, North Carolina 27102
O. K. Trucking Company**	3000 East Crescentville Cincinnati, Ohio 45241
Overnite Transportation Company***	1000 Semmes Avenue P. O. Box 1216 Richmond, Virginia 23209
Smith's Transfer Corporation*	P. O. Box 1000 Staunton, Virginia 24401
Turner Expediting Service***	P. O. Box 21333 Standiford Field Louisville, Kentucky 40221
United Trucking Service, Inc.** (McDuffee Trucking Company)	3047 Lonyo Street Detroit, Michigan 48209
Wilson Freight Company*	11353 Reed Hartman Highway Cincinnati, Ohio 45241

*Interstate only.

**Interstate and intrastate.

***Intrastate only.

Other Freight ServicesNearest Shipping Center

Purolator Courier Corporation*
United Parcel Service*

Lexington, Kentucky, 28 miles distant
Lexington, Kentucky, 28 miles distant

HIGHWAY MILES AND TRUCK TRANSIT TIME IN DAYS FROM
FRANKFORT, KENTUCKY, TO SELECTED MARKET CENTERS

City	Highway Miles	Delivery		City	Highway Miles	Delivery	
		Time TL				Time TL	
Atlanta, Ga.	390	2		Los Angeles, Ca.	2,161	5	
Baltimore, Md.	569	2		Louisville, Ky.	53	1	
Birmingham, Ala.	408	2		Nashville, Tenn.	212	1	
Chicago, Ill.	345	2		New Orleans, La.	729	2	
Cincinnati, Ohio	99	1		New York, N. Y.	731	3	
Cleveland, Ohio	343	1		Pittsburgh, Pa.	371	1	
Detroit, Mich.	358	1		St. Louis, Mo.	316	1	
Knoxville, Tenn.	203	1					

Source: Delivery Time Only - Claxon Truck Line, Inc., 453 Versailles
Road, P. O. Box 678, Frankfort, Kentucky 40602.

*For regular scheduled pickups or for occasional pickups, arrangements must be made with the Louisville office of Purolator Courier Corporation or United Parcel Service.

Air

Local

Location: Capital City Airport
1 mile west of Frankfort
Runways: 1 paved
Length: 5,000 feet
Traffic
Control: Wind tee
Lighting: Beacon, runway lights sundown to
sunrise, REILS
Services: Air Kentucky Airlines, 100 octane,
jet fuel, hangar storage, auto
rental, taxi
Air Freight
Service: Air carrier accepts air freight on
a space available basis

Nearest Commercial

Location: Blue Grass Field
Lexington, Kentucky, 28 miles east
of Frankfort
Runways: 2 paved
Length: 6,500 and 3,500 feet
Traffic
Control: Tower; radar services -
arrival and departure control,
Stage II contact approach control,
ground control; Automatic Terminal
Information Service
Lighting: Approach lighting system, beacon,
runways and obstructions lighted
Services: Eastern, Delta, Piedmont, and
Allegheny Airlines; 80, 100 and
jet fuel; major A & E repairs,
Certified Avionics repair
station; National Weather Service;
storage; flight instructions;
charter service; restaurant;
taxi, limousine and car rentals
Air Freight
Service: Air carriers accept air freight on
a space available basis

Bus - Southern Greyhound Bus Lines, Trailways Bus Lines, and
Frankfort Bus Line (intracity service)

Taxi - Radio-dispatched service - 6 a.m. to 9 p.m. daily

Rental Services - Car, truck and trailer rentals

Water

Frankfort is located on the Kentucky River where a 6-foot navigation channel is maintained. Unloading facilities for sand and gravel are located at Frankfort on the Kentucky River. Frankfort is only 53 miles from Louisville where port facilities are maintained on the Ohio River.

POWER AND FUEL

Electricity

Frankfort and parts of Franklin County are served by the Frankfort Electric and Water Plant Board. Some of the outlying sections of Franklin County are served by the Kentucky Utilities Company, Lexington, Kentucky, and Fox Creek RECC, Lawrenceburg, Kentucky.

For industrial rates contact:

Frankfort Electric and Water Plant Board
315 West Second Street
Frankfort, Kentucky 40601
(502) 223-3401

Natural Gas

Company serving Frankfort - Columbia Gas of Kentucky, Inc.
Source of supply - Columbia Gas Transmission Corporation
Size of transmission mains - 6, 8, 10 and 12 inches (supplier)
6 and 8 inches (distributor)
Distribution mains - 2 to 12 inches
Distribution pressure - 4 ounces
Btu content - 1,000 per cubic foot
Specific gravity - 0.6
For rates and supplies contact:

Columbia Gas of Kentucky, Inc.
P. O. Box 429
Frankfort, Kentucky 40602
(502) 223-8237

Other Fuels

Propane

Burley Oil Company
Versailles Road
Frankfort, Kentucky 40601

Southern States Cooperative, Inc.
Jett Petroleum Service
P. O. Box 632
Frankfort, Kentucky 40602

Fuel oils

Distillate fuel oil -

Burley Oil Company
Versailles Road
Frankfort, Kentucky 40601

Robinson's Oil Company
Versailles Road
Frankfort, Kentucky 40601

Phillips 66
Louisville Road
Frankfort, Kentucky 40601

Schiller's American Oil
Versailles Road
Frankfort, Kentucky 40601

Residual fuel oil - Arrangements must be made with the refinery.

Low sulphur content coal - Available in eastern Kentucky.

WATER AND SEWERAGE

Water

Company serving Frankfort - Frankfort Electric and Water Plant Board*
315 West Second Street
Frankfort, Kentucky 40601
(502) 223-3401

Source - Kentucky River

Treatment plant capacity - 18,000,000 gallons per day

Average daily consumption - 4,567,000 gallons

Peak daily consumption - 5,881,000 gallons

Type treatment - Flocculation, sedimentation, filtration,
fluoridation and chlorination

Storage capacity - 11,200,000 gallons

Size lines - 2 1/4, 4, 6, 8, 12, 14 and 16 inches

Average pressure - 80 psi

Average temperature - 65 degrees F.

*Water lines have been extended to four new subdivisions and a new shopping center and there are plans to extend additional lines into one of the subdivisions. Plans are also under way to extend lines to serve the U. S. 127 South commercial development and the New West Franklin County High School.

MONTHLY WATER RATES FOR WHOLESALE
AND INDUSTRIAL CONSUMERS

		<u>City</u>
First	5,000 gallons	\$1.00 per M gallons
Next	20,000 gallons	.80 per M gallons
Next	175,000 gallons	.60 per M gallons
Next	800,000 gallons	.50 per M gallons
Excess		.35 per M gallons
Minimum up to 2,000 gallons		2.00

		<u>Rural (Outside City Limits)</u>
First	5,000 gallons	\$2.00 per M gallons
Next	20,000 gallons	.80 per M gallons
Next	175,000 gallons	.60 per M gallons
Next	800,000 gallons	.50 per M gallons
Excess		.35 per M gallons
Minimum up to 2,000 gallons		4.00

		<u>City</u>	<u>Rural (Outside City Limits)</u>
Minimum Bill:			
5/8 and 3/4-inch meters	\$	2.00	\$ 4.00
1-inch meters		4.50	4.50
1 1/2-inch meters		7.50	7.50
2-inch meters		15.00	15.00
3-inch meters		30.00	30.00
4-inch meters		60.00	60.00
6-inch meters		90.00	90.00
8-inch meters		150.00	150.00

Fire Hydrants: Per Hydrant - \$35.00 per year

Sprinkler Service and Private Hydrants:

Size of Service	2-inch	\$ 36.00 per year
Size of Service	4-inch	105.00 per year
Size of Service	6-inch	210.00 per year
Size of Service	8-inch	350.00 per year
Size of Service	10-inch	525.00 per year

Tap-on charge: Within city limits - \$ 2.00
 Outside city limits - 250.00
 Industrial customers - Actual cost

Surface water sources - Kentucky River and Elkhorn Creek
Average discharge - Kentucky River at Lock 4 at Frankfort - 7,065 cfs
(52 years, USGS, unadjusted); Elkhorn Creek near Frankfort -
603 cfs (40 years, USGS)
Expected ground water yield - 5 gpm or less along entire western
boundary and northeast corner; 5 to 50 gpm along Kentucky River
in south central portion of county and a portion along southeast
boundary; 50 to 200 gpm along Kentucky River in north central
portion and remainder of county

Sewerage

Company serving Frankfort - Frankfort Municipal Sewer Board*
315 West Second Street
Frankfort, Kentucky 40601
(502) 875-2448

Design capacity - 3,400,000 gallons per day
Average daily flow - 3,300,000 gallons
Treatment - Primary
Type treatment - Clarifiers, digestors and drying beds
Treated effluent discharged into - Kentucky River
Size of sanitary mains - 8 to 27 inches
Size of storm mains - 12 to 36 inches
Rates - \$.95 per 1,000 gallons of water for residential users;
\$1.15 per 1,000 gallons water consumed for industrial users

Tap-on charge: \$300 in the city
\$360 outside city

*Construction is under way on a 9,000,000 gallon per day secondary sewage treatment plant. When the new plant is completed in 1980 use of the existing plant will be discontinued. The Meadows-Westgate truck sewer line, necessary for the continued development and growth of West Frankfort is under construction. An engineering design for continuing to upgrade existing lines and for the extension of lines is in progress.

CLIMATE

Franklin County

Temperature

Normal (30-year record)	55.2 degrees
Average annual 1977	55.8 degrees
Record highest, September, 1954 (33-year record)	103.0 degrees
Record lowest, January, 1963 (33-year record)	-21.0 degrees
Normal heating degree days (30-year record)	4,729
(Heating degree day totals are the sums of negative departures of average daily temperatures from 65 degrees F.)	

Precipitation

Normal (30-year record)	44.49 inches
Mean annual snowfall (33-year record)	15.90 inches
Total precipitation 1977	40.16 inches
Mean number days precipitation (.01 inch or more) (33-year record)	131
Mean number days thunderstorms (33-year record)	47

Prevailing Winds (17-year record)

South

Relative Humidity

1 a.m.	76 percent (13-year record)
7 a.m.	81 percent (14-year record)
1 p.m.	59 percent (14-year record)
7 p.m.	63 percent (14-year record)

Source: U. S. Department of Commerce, Environmental Science
Services Administration, Climatological Data, 1977.
Station of record: Lexington, Kentucky.



MUNICIPAL BUILDING - CITY OF FRANKFORT

LOCAL GOVERNMENT

City

Structure - Mayor - 4-year term; 4 commissioners - 2-year terms;
city manager

Budget 1978-79 - General Fund \$4,104,607

Fees and licenses - Occupational license fee of one percent of all salaries, wages, commissions and other compensation earned by every person in the city for work done or services rendered in the city and one percent of the net profits of all businesses, professions or other activities conducted in the city

County

Structure - County Judge/Executive - 4-year term;
6 magistrates - 4-year terms

Budget 1978-79 - General Fund \$763,982; Road Fund \$410,000

Assessed Value of Property, 1978

<u>Classes of Property</u>	<u>Frankfort</u>	<u>Franklin County</u>
Real Estate	\$244,557,485	\$413,050,873
Tangibles	49,033,854	77,100,022

Property Taxes

All property in Kentucky is assessed at 100 percent of fair cash value.

Land and buildings are taxed by the state and may be taxed by local jurisdictions. The state rate is \$0.315 per \$100 of assessed valuation.

Manufacturing machinery, raw materials inventories, pollution control equipment, and goods in the process of manufacture are not subject to local taxation. The state rate is \$0.15 per \$100.

Other tangible personal property owned by manufacturers (automobiles, trucks, finished goods, office furniture, office equipment) is taxed by the state at \$0.45 per \$100 and may be taxed by local jurisdictions.

Property stored in public warehouses in a transit status is not subject to local taxation. The state rate is only \$0.015 per \$100.

Intangible personal property located in Kentucky (money in hand, shares of stock, notes, bonds, accounts receivable, and other credits) is taxed by the state at \$0.25 per \$100, and is not subject to local taxation.

- Private leaseholds in industrial facilities owned by cities or counties and financed by industrial revenue bonds are subject to a state tax of \$0.015 per \$100 of value (essentially the lessee's equity, adjusted for appreciation or depreciation). Local taxation is not permitted.

Combined State and Local Rates Per \$100 Valuation, 1978* (100% assessment)

	<u>Inside City of Frankfort</u>	<u>Outside City</u>
1. Land and buildings	\$1.111	\$0.755
2. Mfg. machinery, raw materials, goods in process, pollution control equipment	0.150	0.150
3. Finished goods, office equipment, vehicles, other tangibles	1.246	0.890
4. Intangibles (accounts rec., notes, bonds, etc.)	0.250	0.250
5. Leaseholds in I. R. bond financed plants	0.015	0.015

*Kentucky Department of Commerce.

Utilities Gross Receipts Tax for Schools

A 3 percent tax is levied on utilities receipts for schools in Franklin County. Tax is paid by all consumers of utilities as an add-on to the utilities bills. Exempted are receipts from utilities services that are resold and the receipts from the sale of energy or energy producing fuels that exceed 3 percent of the cost of production in manufacturing, processing, mining or refining.

Planning and Zoning

Joint agency - Frankfort-Franklin County Planning Commission
Zoning enforced - City only
Subdivision regulations enforced - All areas
Local codes enforced - Housing and building in the city
Mandatory state codes enforced - Plumbing, National Fire Protection Association Code, National Building Code (for major buildings and residential construction containing more than 12 bedrooms per building)

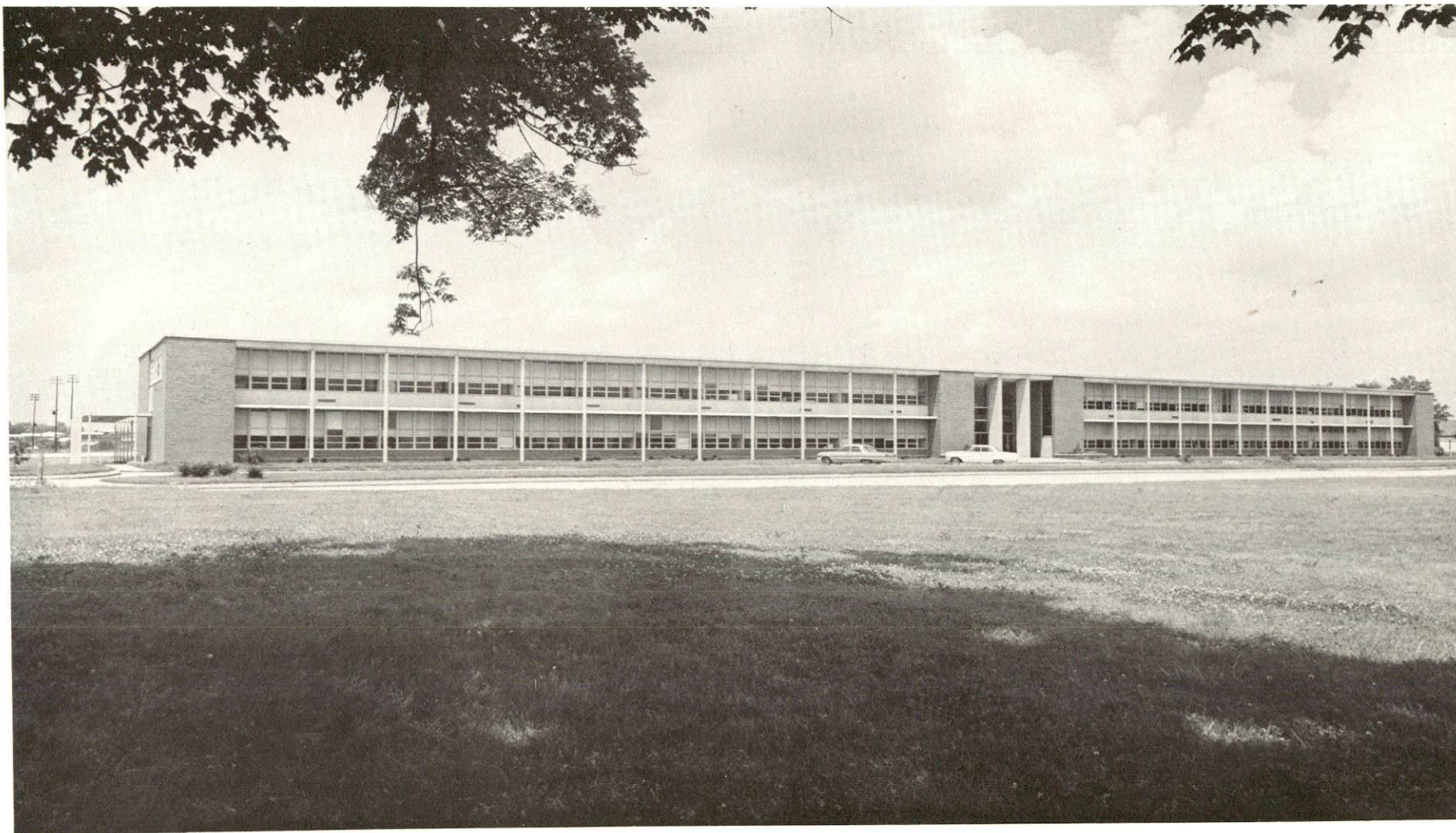
Safety

<u>Police</u>	<u>Frankfort</u>	<u>Franklin County</u>
Total staff	56	9
Radio-patrol cars	53	5
<u>Fire</u>		
American Insurance Association Fire Rating	5	10
Full-time staff	63	15

Refuse Collection and Disposal

	<u>Frankfort</u>	<u>Franklin County</u>
Type service	Municipal*	Private
Fee charged:		
residential	None	Contract
business		Contract
industrial		Contract
Collection frequency:		
residential	Weekly	Once weekly
business		When desired
industrial		When desired
Trash pickup	Once a week	When desired
Disposal method	Private compactor station and landfill	Landfill

*Residential service only; business and industrial service must be arranged through private contractors.



FRANKLIN COUNTY HIGH SCHOOL

EDUCATION

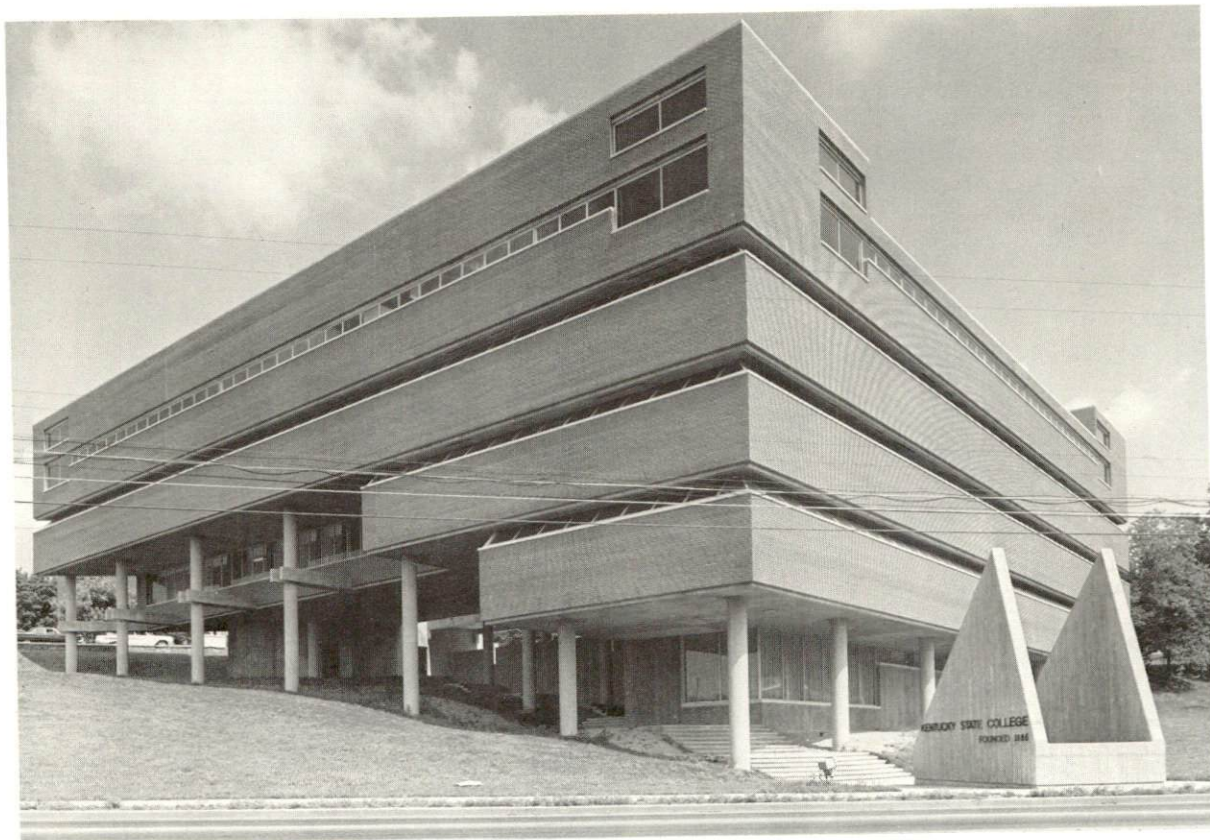
Public Schools

	<u>Frankfort Independent</u>	<u>Franklin County</u>
Total Enrollment (October, 1978)	918	6,361
Elementary	547*	3,321
Junior High		1,667
High School	371	1,373
Student-Teacher Ratio	18-1	21-1
Elementary	18-1	22-1
Junior High		19-1
High School	18-1	20-1
Accreditation	Southern Association of Colleges and Schools	Southern Association of Colleges and Schools
Percent High School Graduates to College	54.9	50.8
Expenditures Per Pupil (1977-78)	\$1,069.37	\$973.75
Bonded Indebtedness, June 30, 1978	-0-	\$7,176,000

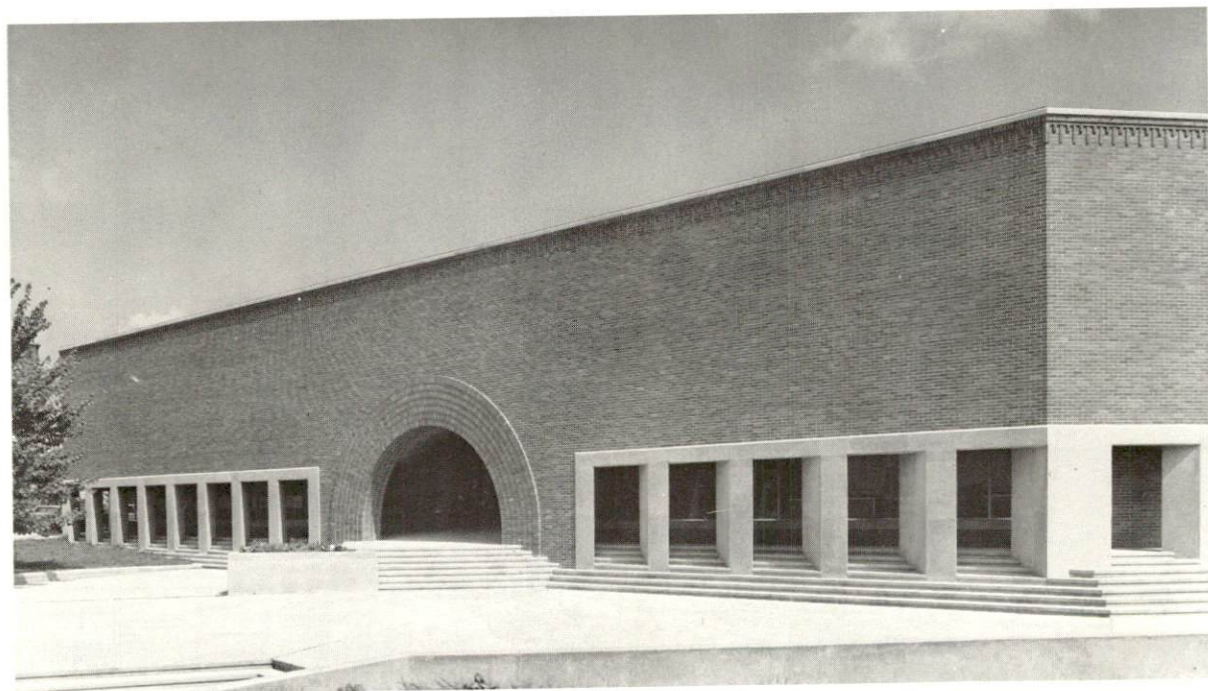
Nonpublic Schools

	<u>Good Shepherd</u>	<u>Capital Day</u>	<u>Tabernacle Christian</u>
Total Enrollment	306	146	15
Elementary	226	146	6
Junior High	80		6
High School			3
Student-Teacher Ratio	21-1	9-1	5-1
Elementary	21-1	9-1	6-1
Junior High	21-1		6-1
High School			3-1

*Includes 40 kindergarten students.



KENTUCKY STATE UNIVERSITY
CLASSROOM BUILDING



BLAZER LIBRARY BUILDING

Area Colleges and Universities

<u>Name</u>	<u>Location (Miles distant)</u>	<u>Enrollment (Fall, 1978)</u>	<u>Highest Degree Conferred</u>
Kentucky State University	Frankfort	2,195	Masters
Midway Junior College	Midway (14)	310	Associate
Georgetown College	Georgetown (18)	1,092	Masters
Lexington Technical Institute	Lexington (28)	1,867	Associate
Transylvania University	Lexington (28)	789	Masters*
University of Kentucky	Lexington (28)	22,463	Ph.D., M.D., D.M.D., J.D.
Asbury College	Wilmore (31)	1,271	Baccalaureate
Centre College	Danville (44)	754	Baccalaureate
Southeastern Christian College	Winchester (46)	124	Associate
St. Catharine College	St. Catharine (51)	161	Associate
Eastern Kentucky University	Richmond (52)	13,815	Masters, Ph.D.**
Bellarmino College	Louisville (53)	1,861	Baccalaureate
Jefferson Community College	Louisville (53)	4,411	Associate
Spalding College	Louisville (53)	988	Masters
University of Louisville	Louisville (53)	18,365	Ph.D., M.D., D.M.D., J.D.

*Courses in the masters degree program are taught on the Transylvania campus by Xavier University of Cincinnati faculty members. The degree is issued by Xavier University.

**Joint doctoral degree programs are offered in cooperation with the University of Kentucky, Lexington.

Vocational Schools

Nearest State School

Location	Central Kentucky State Vocational- Technical School
Miles Distant	Lexington 28
Curriculum	Agriculture Equine Education Business and Office Clerical Secretarial Consumer and Home Economics Commercial Foods Consumer Education Health and Personal Service Occupations Cosmetology Dental Assistant Operating Room Technician Orderly/Nurse Assistant Practical Nursing Marketing and Distributive Education Industrial Education Auto Body Repair Auto Mechanics Carpentry Drafting Electronics Graphic Arts (Printing) Industrial Electricity Machine Shop Office Machine Repair Sheet Metal (includes Heating & Air Conditioning) Welding Learning Resource Center

Nearest Area Education Center

Location	Franklin County Area Vocational Education Center
Curriculum	Frankfort Distributive Education Industrial Education Auto Body Auto Mechanics Drafting Electricity Machine Shop Welding

Arrangements can be made to provide training in the specific production skills required by an industrial plant. Instruction may be conducted either in the vocational school or in the industrial plant, depending upon the desired arrangement and the availability of special equipment.



KING'S DAUGHTERS' MEMORIAL HOSPITAL

HEALTH

Local Medical Personnel

Physicians - 33
Dentists - 17

Hospitals

<u>General Hospital</u>	<u>Location</u>	<u>Beds</u>
King's Daughters' Memorial Hospital	Frankfort	157

General hospital facilities - 5 operating rooms, recovery room, laboratory, X-ray, intensive care unit, emergency room, coronary care unit, pharmacy, OB section with nursery, neurosurgery and neurology services including E.E.G., physical therapy, respiratory therapy, nuclear medicine, social services, blood bank, outpatient surgery

Medical staff - 44 medical doctors, 10 dentists, 74 registered nurses, 19 licensed practical nurses, 60 nursing technicians, 6 orderlies

Other Medical Facilities

Bluegrass West Comprehensive Care Center

Ambulance Service

Name - Frankfort-Franklin County Ambulance Service
Staff - 24 - Advanced first aid and first aid training; emergency medical technician training
Service - 24-hour, county-wide
Equipment - Three ambulances; drag hooks; access to civil defense boat; oxygen and resuscitation equipment

Public Health

Facility - Franklin County Health Department
Staff - Administrator, 1 physician, 5 nurses, 3 environmental inspectors, 1 health officer, 3 clerk typists, 1 child development specialist, 3 community health workers, 1 family planner, home health service agency (1 visiting nurse and 2 nurse aides), TB testing technician available Mondays, Wednesdays and Fridays

OTHER LOCAL FACILITIES

Communications

Telephone - South Central Bell Telephone Company
Services - Standard

Telegraph - Western Union
Services - Standard

Postal - U. S. Post Office
Class - First
Mail received - Five times daily
Mail dispatched - Three times daily

Newspapers - The State Journal
Daily, except Saturday,
and circulation - 10,500 daily; 11,000 Sunday
Other papers
received from - Louisville and Lexington, Kentucky;
Cincinnati, Ohio

Radio - WFKY-AM, WKYW-FM, WKED-AM
Stations received from - Louisville and Lexington, Kentucky;
Cincinnati, Ohio

Television -
Cable service
Reception from - Louisville and Lexington, Kentucky;
Cincinnati, Ohio
Cable 10 - Local programming, 7:00 p.m. to 8:30 p.m. with some
exceptions for longer programs
Kentucky Educational
Television - Owenton transmitter, Channel 52

Library Services

Public library - Paul Sawyer Public Library

Size collection - 48,000 volumes

Circulation, 1978-79 - 114,839

Services - Phone and personal reference service; story hour; art exhibits; annual pet day; records; magazines and paperbacks; films; copying machine; audiovisuals for loan; classroom collections; interlibrary loan; bookmobile service to suburban and rural areas; meeting room facilities

Other libraries - Kentucky Department of Libraries

Size collection - 101,000 volumes

Special collections - 28,606 Federal documents

Circulation, 1977-78 - Books, 18,684; reference, 7,227;
interlibrary loans, 12,030

University library - Blazer Library, Kentucky State University

Size collection - 188,020 volumes

Special collection - 6,000 volume of literature by and about
Afro-American blacks

Services - All collegiate library services; photocopiers; and New York Times, Pittsburg Courier, Louisville Courier Journal, Louisville Leader, Louisville Defender, and Lexington Herald on microfilm

Religious Institutions

Number of churches - 53

Denominations - AME, Assembly of God, Baha'i, Baptist, Catholic, Christian, Christian Science, Church of Christ, Church of God, Jehovah's Witnesses, Lutheran, Methodist, Nazarene, Pentecostal, Presbyterian, Salvation Army, Seventh Day Adventist, Wesleyan

Nearest Synagogues - Lexington, Kentucky, 28 miles distant

Congregations - Ohavey Zion (traditional)
Adath Israel (reform)



PAUL SAWYIER PUBLIC LIBRARY

Financial Institutions

<u>Banks</u>	<u>Assets</u>	<u>Deposits</u>	<u>Statement Date</u>
Farmers Bank and Capital Trust Company	\$196,855,171.82	\$177,095,318.79	6/30/78
The State National Bank of Frankfort	33,949,012.32	31,550,781.78	6/30/78
<u>Savings and Loan Associations</u>	<u>Assets</u>	<u>Savings Accounts</u>	<u>Statement Date</u>
First Federal Savings and Loan Association	\$54,985,209.11	\$49,526,660.67	6/30/78
Capital Federal Savings and Loan Association	38,100,911.20	11,455,297.57	6/30/78

Hotels and Motels

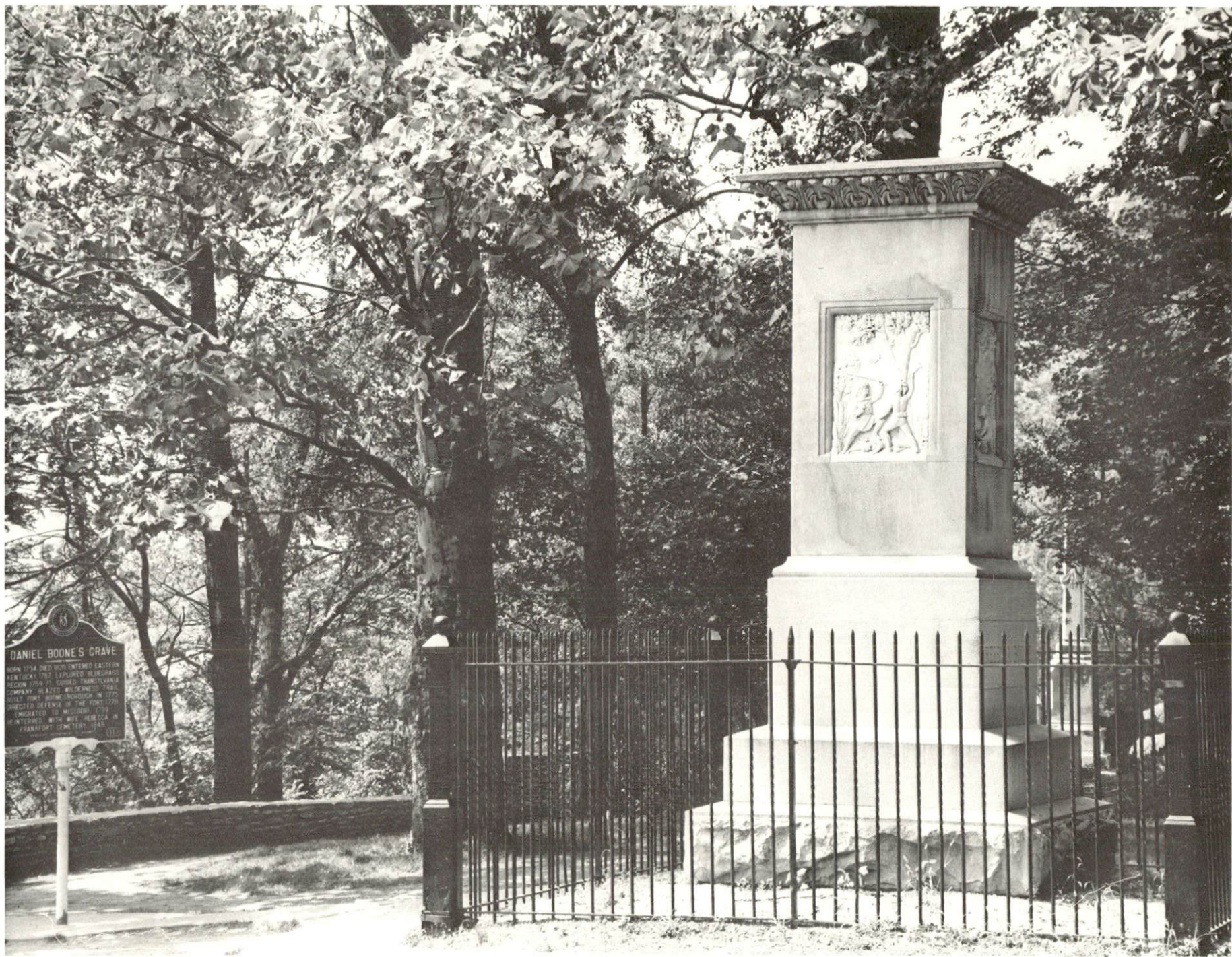
Total number - 6
Total units - 392

Clubs and Organizations

Altrusa	Franklin County Democratic Women's Club
Alpha Delta Kappa	Franklin County Homemakers
American Association of University Women	Franklin County Medical Society
American Business Women's Association	Franklin County Young Democrats
American Cancer Society	Fraternal Order of Police
American Contract Bridge League	Future Farmers of America
American Legion	Future Teachers of America
American Legion Auxiliary	Garden Clubs
American Radio Relay League	Girl Scouts
American Red Cross	Great Books
American War Mothers	Hadassah
Arthritis Foundation	Heritage Women's Club
Audubon Society	Hiram Lodge
Beta Sigma Phi	Human Relations Forum
Big Brothers	Humane Society
Bluegrass Orchid Society	Independent Order of Odd Fellows
Bluegrass Toastmasters	Jaycees
Boy Scouts	Jay-C-Ettes
Business and Professional Women's Club	Junior Achievement
Capital City Philatelic Association	Junior Optimist Band
Capitolite	Kentucky Historical Society
Central Kentucky Genealogical Society	Kentucky State University Alumni
Chamber of Commerce	Kiwanis
Child Development Center	Knights of Columbus
Chinese Style Karate Club	LaLeche League
Christian Women's Club	Lions
Church Women United	Little Theater
Civitan	Masons
Colonial Dames	Masonic Temple Association
Common Cause	Mizpah Lodge
Community Chorus	Moose
Cub Scouts	Optimist
Daughters of the American Revolution	Paul Sawyer Art Club
Delta Theta Chi	Phi Beta Psi
Eastern Star	Radio Club
Elks	Rotary
Elks Auxiliary	Ruritan
4-H	Salvation Army
Frankfort Arts Foundation	Senior Citizens
Frankfort Bird Club	Shriners
Frankfort Boat Club	3-Link Rebekah Lodge
Frankfort Dulcimer Players	TOPS
Frankfort Ministerial Association	United Daughters of the Confederacy
Frankfort Woman's Club	United Fund
Franklin County Bar Association	United Nations Association
Franklin County Council on Aging	Veterans of Foreign Wars
	Veterans of Foreign Wars Ladies Auxiliary
	Weight Watchers
	Welcome Wagon
	YMCA
	Younger Women's Club



JUNIPER HILL MUNICIPAL PARK
18-HOLE GOLF COURSE



DANIEL BOONE'S GRAVE

RECREATION

Local

The city of Frankfort offers a variety of recreation facilities and programs. The Frankfort Recreation Department supports a supervised summer program, 3 parks, 3 swimming pools, 13 playgrounds, 22 tennis courts, 12 baseball diamonds, and 3 football fields. Winter activities co-sponsored by the recreation department include church and industrial basketball leagues, male and female volleyball leagues, Paul Weddle basketball leagues for boys and girls ages 7 to 10, as well as bridge and archery clubs. Two 18-hole golf courses are available to the public. The city provides student supervision for summer activities at 16 neighborhood parks.

The Frankfort YMCA offers numerous programs for children and adults. The facility, located in the Capital Plaza area, includes a swimming pool, racquet ball court, hand ball court, weight lifting equipment, fitness center and ladies exercise room. Planned programs include pre-school, elementary through high school, and adult swimming classes. Special children's programs include art classes, gymnastics and seasonal ball teams; bus trips are also scheduled. Adult classes are organized in art, bridge, belly dancing and disco dancing. Regular exercise classes are available for adults.

Private recreation facilities in Frankfort are as extensive as the public facilities. The country club offers an 18-hole golf course, swimming pool and tennis courts. A bowling facility and five movie theaters - four indoor and one drive-in - are available to the public.

Local tourist attractions are numerous. The State Capitol, Old State House, Governor's Mansion, Daniel Boone's Grave, the Floral Clock, Kentucky Historical Military Museum, and several distilleries are seen by thousands of tourists each year. Kentucky State University offers various cultural events, tours of the campus including historic Jackson Hall, and exhibits and sporting attractions held in the Sports Center. Capital Expo, an annual festival spotlighting Kentucky heritage, also offers international foods, folk music, and arts and crafts.

Area (Within 55 miles)

Lexington, 28 miles east of Frankfort, offers a variety of cultural, sporting, and recreational activities. Thoroughbred and harness racing is presented at Keeneland Race Course and the Red Mile Harness Track during several meets each year. The University of Kentucky and Transylvania University offer a number of sporting events. The University of Kentucky basketball games are held at Rupp Arena, the world's largest basketball arena. Other attractions include Lexington Philharmonic Concerts, Lexington Children's Theatre, and plays performed by Broadway touring companies, all held in the recently renovated Opera House.

The Kentucky State Horse Park, located 21 miles east of Frankfort near Lexington, opened in the fall of 1978 and hosted the World Championship Three Day Event. Facilities at the park include a visitors information center with a film presentation, museum, gift shop, walking tour, events area, horseback and pony rides, horsedrawn rides, vehicle demonstration area, restaurant, picnic area, and campground.

Old Fort Harrod State Park in Harrodsburg, 35 miles south of Frankfort, features a full-scale reproduction of the pioneer fort built 200 years ago. The 28-acre park also contains a museum, a pioneer cemetery, a federal monument, a church which enshrines the log cabin where Lincoln's parents were wed, picnic-playground areas, shelter house, and gift shop. The outdoor production of the "Legend of Daniel Boone" is held in the park amphitheatre during the summer months.

Fort Boonesborough State Park, 51 miles southeast of Frankfort, features a reconstructed fort on the site of the pioneer fort built by Daniel Boone in 1775. The park is located on 184 acres on the Kentucky River and offers camping facilities, beach, bathhouse and sundeck, boat docks, and picnic-playground area. One hour riverboat cruises on the Kentucky River are available Memorial Day through Labor Day.

My Old Kentucky Home State Park in Bardstown, 55 miles southwest of Frankfort, features the stately Georgian Colonial mansion where Stephen Foster visited and was inspired to write "My Old Kentucky Home," the official Kentucky State song. "The Stephen Foster Story," an outdoor musical drama, is presented in the park amphitheatre during the summer months. The park also offers camping facilities, playground and picnic areas, and a 9-hole golf course.

(Cont'd.)

Six state shrines are located within 55 miles of Frankfort. Waveland State Shrine, near Lexington, features an 1847 Greek Revival mansion, the Kentucky Life Museum with hundreds of pioneer items and Civil War relics, and a plantation village on 10 acres with many shops and displays. White Hall State Shrine, north of Richmond, is the site of the Italianate mansion of Cassius Marcellus Clay, the early anti-slavery leader and politician. Perryville Battlefield State Shrine, the site of the largest Civil War battle in Kentucky, offers a museum, a picnic area and playground. Constitution Square State Shrine in Danville features a reproduction of Kentucky's first courthouse square with the original 1792 Post Office, and replicas of the jail, courthouse and meeting house. Issac Shelby State Shrine, south of Danville, is the burial site of Kentucky's first and fifth governor. Lincoln Homestead State Shrine, a 153-acre park on the original land settled by the Lincoln family in Kentucky, has a replica of the 1782 cabin where Lincoln lived as a boy, the original cabin of his mother, a museum, gift shop, picnic area, and 18-hole golf course.

Louisville, 53 miles west of Frankfort, is the home of Churchill Downs, the racing track where the world famous Kentucky Derby is held each May. Thoroughbred horse racing is held at Churchill Downs during two meets each year and harness racing is available at Louisville Downs. Other attractions at Louisville include the Belle of Louisville, the Louisville Zoological Gardens, the Museum of Natural History and Science, and the J. B. Speed Art Museum. A variety of cultural activities are offered with performances by Actors Theatre, the Louisville Ballet Company, the Kentucky Opera Association, and the Louisville Orchestra.

COMMUNITY IMPROVEMENTS

Commercial

A new 200-car parking complex, with commercial space, has been completed to provide more downtown parking space. Additional parking facilities are planned for downtown in the area formerly occupied by the Capital Theatre. A new parking structure has been completed near the Capitol.

Ten new businesses have opened in the Century Plaza Shopping Center and five new stores have located in a shopping center on U. S. 127. A new commercial mall, Brighton Park, is continuing to be developed. Fifteen businesses have already opened in the under-roof mall and 22,000 additional square feet of commercial space will be available in 1979. Several fast-food restaurants have opened in the area of U. S. 127 and Louisville Road.

Downtown businesses are renovating facilities on an individual basis.

A tourist trade center is planned for the Juniper Hills Park site. The facility is to include a tourist commission, a public information office, and an office for the Frankfort-Franklin County Chamber of Commerce.

Water and Sewerage

The Frankfort Electric and Water Plant Board has extended water lines to four new subdivisions and a new shopping center and there are plans to extend additional lines into one of the subdivisions. Plans are also underway to extend lines to serve the U. S. 127 South commercial development and the new West Franklin County High School.

Construction is under way on a 9,000,000 gallon per day secondary sewage treatment plant with completion scheduled for 1980. The Meadows-Westgate truck sewer line, necessary for the continued development and growth of Frankfort, is under construction. An engineering design for continuing to upgrade existing lines and for the extension of lines is in progress.

Transportation

A new airport terminal and restaurant have been completed at Capitol City Airport.

Railroad crossings in downtown Frankfort have been repaired and improved.

To relieve downtown traffic congestion, a new four-lane bypass, covering 5.5 miles between U. S. 60 and U. S. 127, is under construction and scheduled to be completed by late 1979. An access road will connect the bypass with East Main Street where the new Department for Human Resources building and the Health Services building are located.

Public Safety

The Frankfort Police Department moved into a new facility which was remodeled and redecorated specifically for departmental use. In 1978 a 40-hour in-service training program for officers was begun.

The West Frankfort Fire Station was completed and opened in October 1977, bringing the total number of city fire stations to four. One new fire truck and two new ambulances have been purchased. The city fire department has added four dispatchers and one 40-hour training officer to the staff.

Education

The Frankfort Independent School System is planning an addition to the Frankfort High School which will include a new library, a new chemistry lab and a new biology lab.

The Franklin County School System is constructing a second high school with completion scheduled by October 1979. Bridgeport Elementary School has been renovated, renovation of Bald Knob Elementary School is in progress, and there are plans to renovate Peaks Mill Elementary School.

Other

Renovation of the first and second floors of the Paul Sawyer Library has been completed.

The City of Frankfort Neighborhood Development Agency is administering a grant received from the U. S. Department of Housing and Urban Development for the revitalization of second floor structures into updated housing. The pilot program, which consists of three apartments, will soon be available for occupancy.

A neighborhood playground and park area is planned for south Frankfort. The Frankfort Neighborhood Development Agency plans to acquire the land and the city will apply for funds from the Bureau of Outdoor Recreation to equip the park.

Kentucky Department of Commerce
Capital Plaza Tower
Frankfort, Kentucky 40601

Office of the Commissioner
(502) 564-4270

Industrial Development Division
(502) 564-7140

Existing Industries Division
(502) 564-4300

Office of Minority Business Enterprise
(502) 564-2064

Agribusiness Division
(502) 564-6784

International Trade and Investment
Promotion Division
(502) 564-2170

Research and Planning Division
(502) 564-4886
Map Sales Office
133 Holmes Street
(502) 564-4715

Kentucky Development Finance Authority (KDFA)
(502) 564-4554

Kentucky Film Commission
(502) 564-2240