

1972

Industrial Resources - Fulton County - Hickman

Kentucky Library Research Collections
Western Kentucky University, spcol@wku.edu

Follow this and additional works at: https://digitalcommons.wku.edu/fulton_cty



Part of the [Business Administration, Management, and Operations Commons](#), [Growth and Development Commons](#), and the [Infrastructure Commons](#)

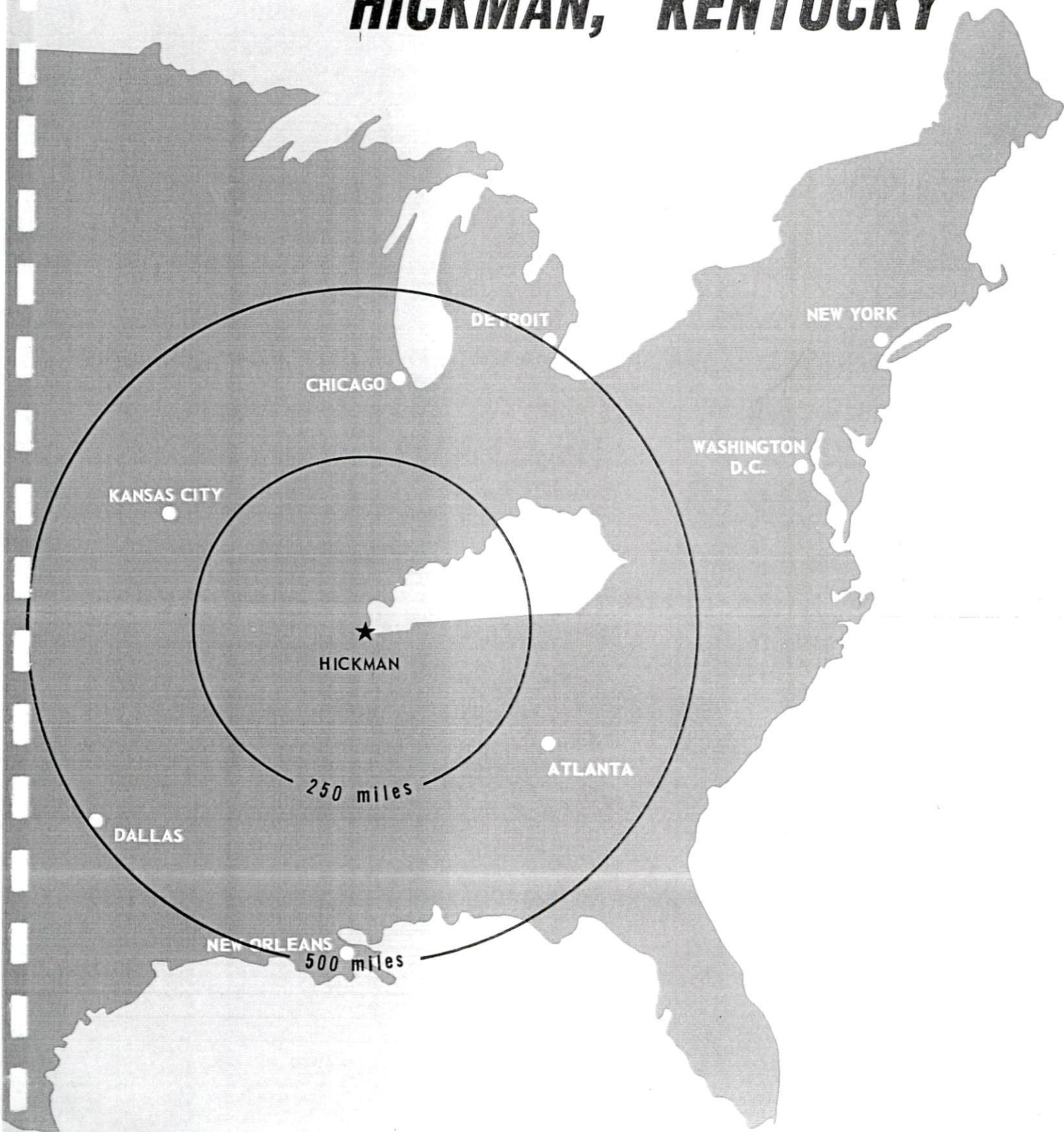
Recommended Citation

Kentucky Library Research Collections, "Industrial Resources - Fulton County - Hickman" (1972). *Fulton County*. Paper 17.
https://digitalcommons.wku.edu/fulton_cty/17

This Report is brought to you for free and open access by TopSCHOLAR®. It has been accepted for inclusion in Fulton County by an authorized administrator of TopSCHOLAR®. For more information, please contact topscholar@wku.edu.

INDUSTRIAL RESOURCES

HICKMAN, KENTUCKY



HICKMAN INDUSTRIAL SITES

1972

For more information about the following sites, contact Mr. Elbert Burcham, Chairman, Industrial Committee, Hickman Chamber of Commerce, or the Kentucky Department of Commerce, Washington and Wapping Streets, Frankfort, Kentucky 40601.

SITE # 1: ACREAGE: 165 acres

LOCATION: Approximately 1 1/2 miles from west city limits
HIGHWAY ACCESS: Kentucky Route 94 borders site on north
RAILROADS: Illinois Central Railroad runs through site
WATER: Hickman Utilities Department
SIZE LINE: 8-inch line 2,000 feet from site
GAS: Hickman Gas System
SIZE MAIN: 4-inch main 2,000 feet from site
ELECTRICITY: Hickman-Fulton RECC
SEWERAGE: Hickman Utilities Department
12-inch line 2,000 feet from site
OPTIONED BY: Hickman Development Corporation

SITE # 2: ACREAGE: 200 acres

LOCATION: Approximately 1 mile from west city limits
HIGHWAY ACCESS: Kentucky Route 94 through the site
RAILROADS: Illinois Central Railroad runs through site.
WATER: Hickman Utilities Department
SIZE LINE: 8-inch line 1,200 feet from site
GAS: Hickman Gas System
SIZE MAIN: 4-inch main 1,200 feet from site
ELECTRICITY: Hickman-Fulton RECC
SEWERAGE: Hickman Utilities Department
12-inch line 1,200 feet from site
OPTIONED BY: Hickman Development Corporation

SITE # 3: ACREAGE: 33 acres

LOCATION: Approximately one-fourth mile from south city limits
HIGHWAY ACCESS: Kentucky 94 Bypass through site
RAILROADS: Illinois Central Railroad runs through site
WATER: Hickman Utilities Department
SIZE LINE: 8-inch line on property
GAS: Hickman Gas System
SIZE MAIN: 4-inch main on property
ELECTRICITY: Hickman-Fulton RECC
SEWERAGE: Hickman Utilities Department
10-inch line on property
OWNERSHIP: Hickman Development Corporation

SITE # 4: ACREAGE: 80 acres

LOCATION: Adjacent to city on southeast
ZONING: Commercial
HIGHWAY ACCESS: Kentucky Route 125
RAILROADS: Illinois Central Railroad borders site on west side
WATER: Hickman Utilities Department
SIZE LINE: 8-inch line on property
GAS: Hickman Gas System
SIZE MAIN: 6-inch main on property
ELECTRICITY: Hickman-Fulton RECC
SEWERAGE: Hickman Utilities Department
12-inch line on property
OPTIONED BY: Hickman Development Corporation

SITE # 5: ACREAGE: 2+ acres

LOCATION: Within eastern city limits
ZONING: Commercial
HIGHWAY ACCESS: City maintained access road from 7th Street
RAILROADS: Not rail served - rail 600 feet from site
WATER: Hickman Utility Department
SIZE LINE: 8-inch line on property
GAS: Hickman Gas System
SIZE MAIN: 2-inch main on property
ELECTRICITY: Hickman Electric System
SEWERAGE: Hickman Utility Department
8-inch line on property
OWNERSHIP: Hickman Canning Company

SITE # 6: ACREAGE: 10 acres

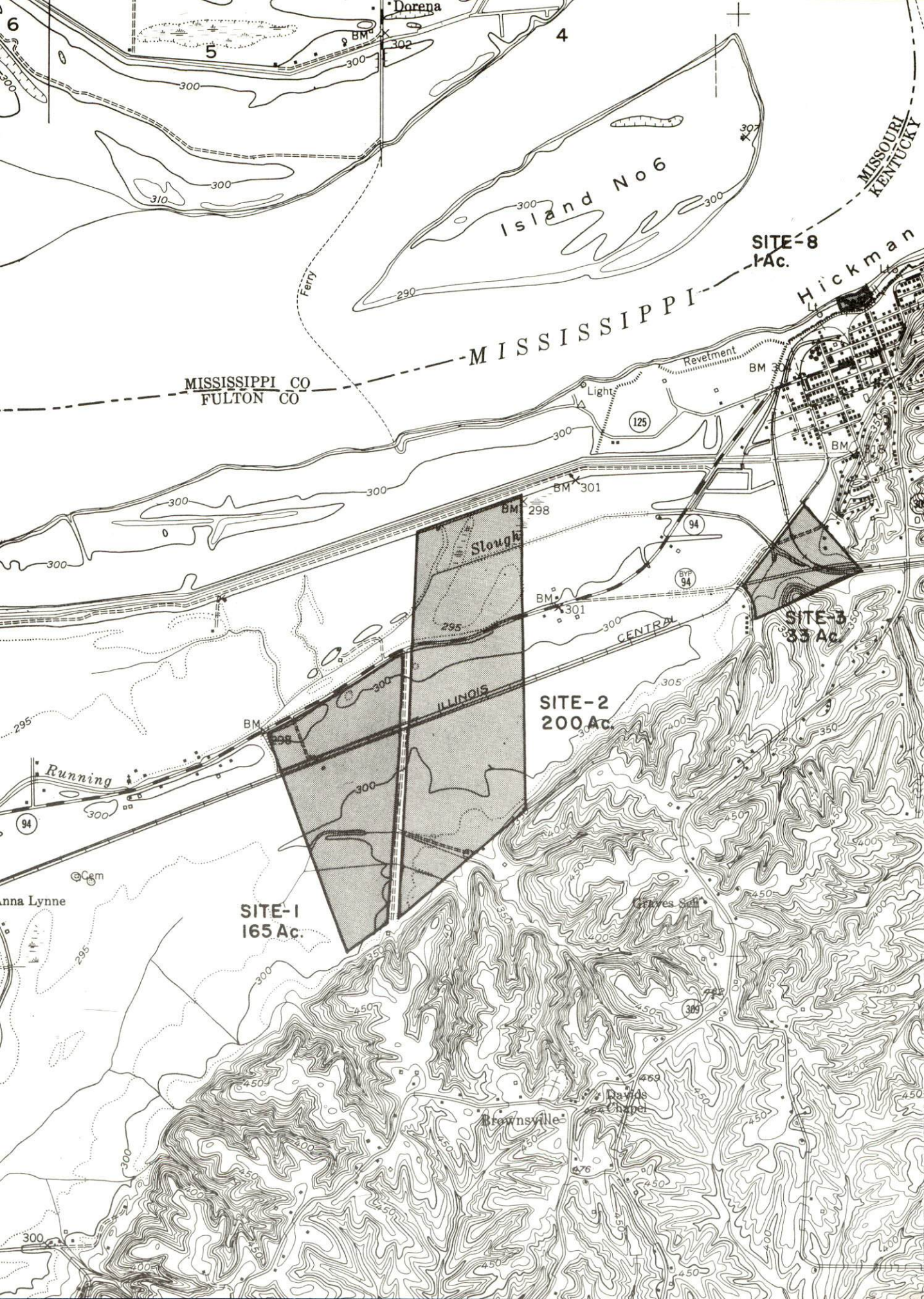
LOCATION: Within east city limits
HIGHWAY ACCESS: On city - maintained street with access to Kentucky Route 94
RAILROADS: Not rail served
WATER: Hickman Utility Department
SIZE LINE: 8-inch line on property
GAS: Hickman Gas System
SIZE MAIN: 2-inch main on property
ELECTRICITY: Hickman-Fulton RECC
SEWERAGE: Hickman Utility Department
10-inch line on property
OWNERSHIP: Hickman Development Corporation

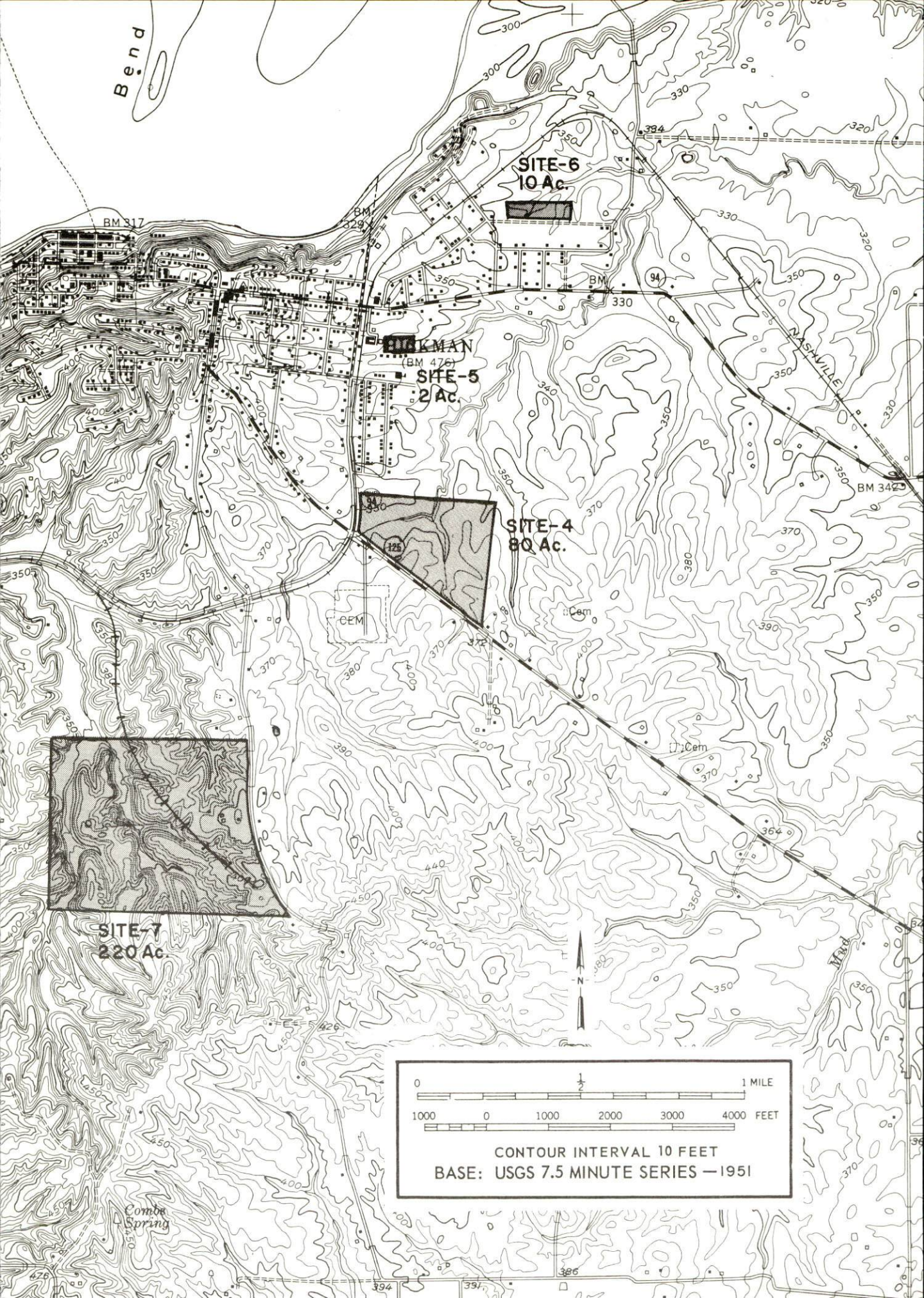
SITE # 7: ACREAGE: 220 acres

LOCATION: Adjoins south city limits
ZONING: Commercial
HIGHWAY ACCESS: Cory Drive (city maintained)
RAILROADS: A spur of the Illinois Central Railroad runs through the middle of the property
WATER: Hickman Utility Department
SIZE LINE: 8-inch line on property
GAS: Hickman Gas System
SIZE MAIN: 6-inch main along east side of Cory Drive
ELECTRICITY: Hickman-Fulton RECC
SEWERAGE: Hickman Utility Department
8-inch line along east side of Cory Drive
OPTIONED BY: Hickman Development Corporation

SITE # 8: ACREAGE: 1+ acres

LOCATION: Adjoins north city limits and fronts on Mississippi River
HIGHWAY ACCESS: City street
RAILROADS: Illinois Central joins south side of property
WATER: Hickman Utility System
SIZE LINE: 8-inch line on property
GAS: Hickman Gas System
SIZE MAIN: 2-inch main on property
ELECTRICITY: Hickman Electric System
SEWERAGE: Hickman Utility Department
12-inch line 100 feet from site
OWNERSHIP: Hickman Development Corporation





INDUSTRIAL RESOURCES

HICKMAN, KENTUCKY

Prepared by

The Kentucky Department of Commerce

in cooperation with

The Hickman Development Corporation

and

The Hickman Chamber of Commerce

1972

TABLE OF CONTENTS

<u>Chapter</u>	<u>Page</u>
INDUSTRIAL SITES	i
HICKMAN, KENTUCKY - A RESOURCE PROFILE	1
THE LABOR MARKET.	4
Population Trends	4
General Employment Characteristics, 1969	4
Manufacturing Employment Trends by Industry	4
Hickman Manufacturing Firms, Their Products and Employment	5
Wage Rates for Selected Occupations	5
Labor Organizations	7
Current and Future Labor Supply.	7
Total Personal Income	7
Per Capita Personal Income.	7
EDUCATION	8
Public Schools	8
Vocational Schools	8
Colleges and Universities	9
TRANSPORTATION	10
Rail	10
Truck Service	10
Air	11
Taxi	11
Water.	11
POWER AND FUEL	12
Electricity.	12
Natural Gas	12
WATER AND SEWERAGE	13
Water.	13
Sewerage	14

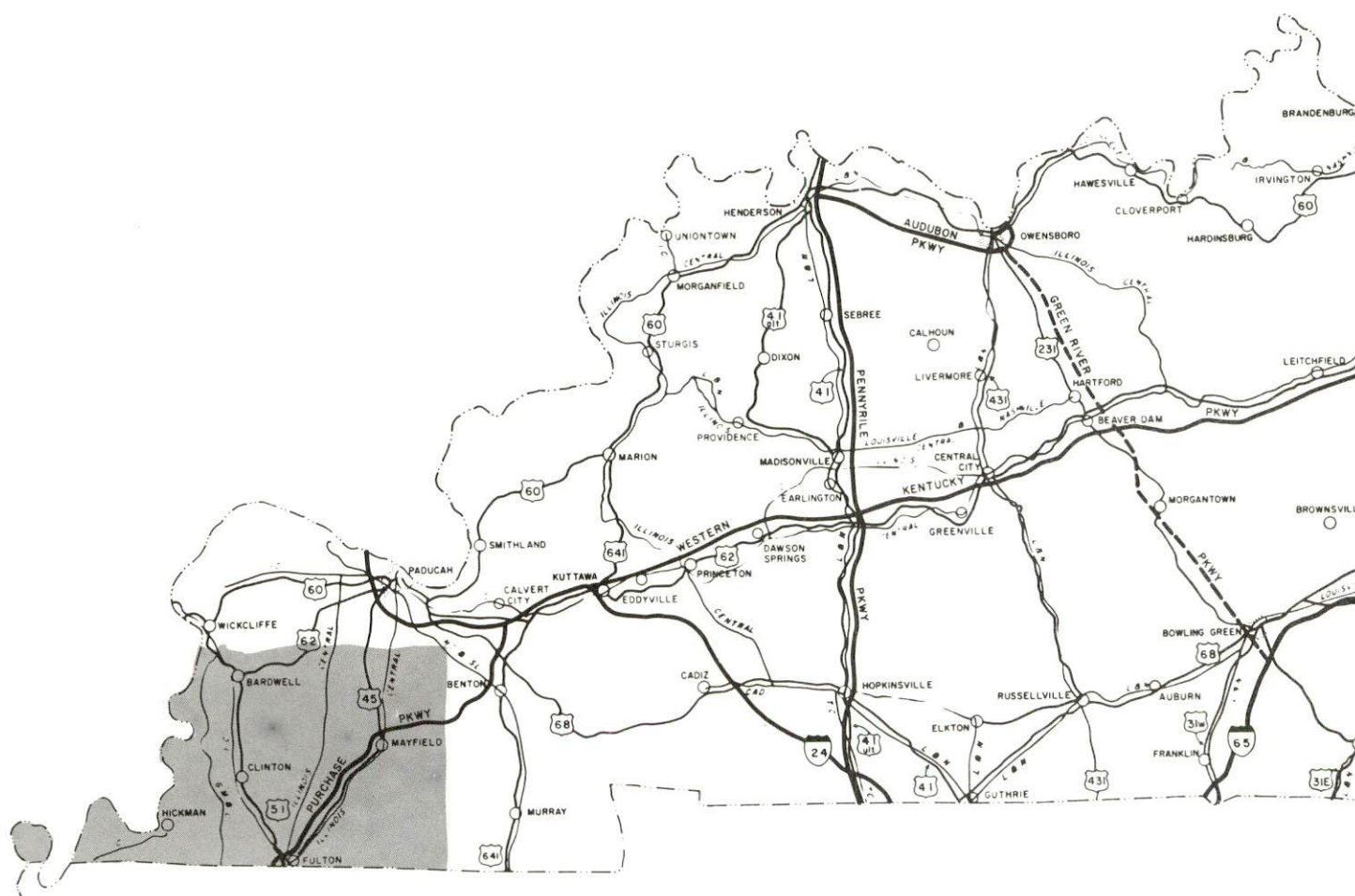
<u>Chapter</u>	<u>Page</u>
LOCAL GOVERNMENT.	15
City.	15
County.	15
Assessed Value of Property, 1970	15
Local General Property Tax Rates Per \$100 of Assessed Valuation, 1971	15
Planning and Zoning.	15
Safety	16
Police	16
Fire	16
Rescue Service	16
Sanitation	16
HEALTH	17
Hospitals	17
Nursing Homes.	17
Public Health	17
OTHER LOCAL FACILITIES	18
Communications	18
Library Services	18
Religious Institutions	18
Financial Institutions	19
Hotels and Motels	19
Clubs and Organizations.	19
RECREATION.	20
Local	20
Area	20
AGRICULTURE - NATURAL RESOURCES - CLIMATE	21
Agriculture	21
Natural Resources	21
Climate	21
HISTORY.	22



Aerial View of Hickman, Kentucky

HICKMAN LABOR MARKET AREA

Shaded area denotes labor market area



HICKMAN, KENTUCKY - A RESOURCE PROFILE

Location

Hickman, the county seat of Fulton County, is located in the extreme western portion of Kentucky on the eastern shore of the Mississippi River. Hickman is 55 miles south of Paducah, 196 miles southeast of St. Louis, Missouri, and 129 miles northwest of Nashville, Tennessee.

The 1970 population of Hickman was 3,048. Fulton County had a 1970 population of 10,183.

The Economic Framework

Total employment in Fulton County in 1970 averaged 4,000 with agriculture providing 600 jobs, manufacturing 700, trade and services 1,250, and government 400. Since 1960 manufacturing employment has increased by approximately 19 percent. Major industrial products are men's and boys' clothing, and graphite products.

Cotton is an important crop in Fulton County, providing over \$1 million in farm income each year on 4,100 acres of rich river bottom land. The only cotton gin in Kentucky is operated in Hickman.

Per capita income in the county in 1969 was \$2,670. Between 1959 and 1969, per capita personal income in the county increased approximately 84 percent.

The Hickman labor market area includes Fulton, Hickman, Carlisle, and Graves Counties, Kentucky; and Weakley, Obion, and Lake Counties, Tennessee. In 1970, employment in the Kentucky portion of the labor market area totaled 18,600 jobs with agriculture providing 3,000, manufacturing 4,985, trade and services 4,215, and government 1,000. Industrial employment in this area has increased approximately 14 percent since 1960 with the sharpest gains in the chemical, rubber, machinery and metal products industries.

Resources For Growth

1. There is a current estimated labor supply of 1,880 men and 1,335 women available for industrial jobs in the labor market area. In addition, 2,980 young men and 2,800 young women will become 18 years of age by 1977 and potentially available for work. Also, the current labor supply would be increased by the number of men and women in the adjoining Tennessee Counties who are available for industrial jobs.

2. The local transportation capability is excellent. The Illinois Central Railroad serves Hickman with a variety of services. The Jackson Purchase Parkway connects the Hickman area with the Western Kentucky Parkway and will connect with I-24 upon its completion. Commercial air service is available at Barkley Field, Paducah, Kentucky, 55 miles distant. Water transportation is excellent as Hickman's harbor is the only still water port on the Mississippi River between St. Louis, Missouri, and Memphis, Tennessee.

3. Tennessee Valley Authority provides abundant electric power to the Hickman Electric System. Hickman-Fulton RECC provides electric power in the county and is supplied by Tennessee Valley Authority. Kentucky Utilities Company also provides electric power in the county. Natural gas is furnished in Hickman by the Hickman Gas System whose source of supply is the Trunkline Gas Company. The raw water supply is adequate for continued growth.

4. Industrial sites - Hickman has 8 sites available for industrial use.

5. Education is an important growth asset for Hickman. Two school systems operate within the county. Two universities and one community college are within 50 miles of the county.

The West Kentucky and Tilghman Area Vocational Schools are located in Paducah, Kentucky, only 55 miles distant, and offer training in 13 and 19 courses, respectively.

Fulton County will have a new vocational school in the Spring of 1972.

Community Programs For Improvement

Completed community improvements include: a new country club with golf course, clubhouse, pool, and playground; a new rural water system; and a new U. S. Coast Guard station with office space, repair and warehouse facilities.

Community projects under construction include: a \$28,000 port feasibility study, and the expansion of Hickman's largest industry - the Graphite Products Division of the Carborundum Company.

Planned community improvements include: a new \$600,000 vocational school, the third expansion of the Graphite-Electrode plant of the Carborundum Company, and a new 750-gpm pump and well for their water system.

Recreation, Entertainment, and Livability

One of the best 18-hole golf courses in America boasting of the "Best Fairways in the South" is located just a few miles from the Hickman city limits.

Boat races are held annually on the Mississippi River.

Columbus-Belmont Battlefield State Park, 27 miles distant, has camping accommodations only. The facilities include miniature golf, hiking trails, picnic area and shelter, and playground.

A portion of the Reelfoot National Wildlife Refuge extends into the southern portion of western Fulton County.

Kentucky Dam Village State Resort Park, 54 miles distant, is a 1,200-acre park with a village inn, lake cottages and camping facilities, pool, 18-hole golf course, bridle paths, playground, tennis court, air strip, and Kentucky Lake for boating and fishing.

Lake Barkley State Resort Park, 75 miles distant, is a 3,000-acre resort park. The facilities include a lodge and cottages, and camping sites. Recreational activities include fishing, boating, swimming, and golfing.

Lake Barkley, formed by Barkley Dam, has 1,004 miles of shoreline bordering its 93,000-acre reservoir. Recreational activities include fishing, boating, camping, swimming, hunting, and picnicking. The dam near Grand Rivers is 157 feet high and 10,180 feet long.

Land Between the Lakes National Recreational Area consists of 170,000 acres of wooded ridge formed into a peninsula by Kentucky and Barkley Lakes. Activities include: fishing, water sports, hunting, and camping.

Kentucky Lake and Kentucky Dam, with 2,380 miles of shoreline, is the longest of any man-made lake in the world. The recreational activities include fine fishing and water sports, swimming, boating, and water skiing. The huge dam is TVA's largest and controls the waters of the Tennessee River near its junction with the Ohio River at Paducah. The dam is 206 feet high, 8,422 feet long, and cost \$115 million.

Kenlake State Resort Park, 56 miles distant, is an 1,800-acre resort park with hotel, cottages and camping facilities. The park activities include: fishing, boating, pool and lake swimming, horseback riding, golfing, tennis, and shuffleboard.

THE LABOR MARKET

POPULATION TRENDS ^{1/}

Area	Population			Percent Change	
	1970	1960	1950	1960-70	1950-60
Hickman	3,048	1,537	2,268	+98.3	-32.2
Labor Market Area	53,190	53,632	59,016	- 0.8	- 9.1
Fulton County	10,183	11,256	13,668	- 9.5	-17.6
Graves County	30,939	30,021	31,364	+ 3.1	- 4.3
Hickman County	6,264	6,747	7,778	- 7.2	-15.3
Carlisle County	5,354	3,608	6,206	- 4.5	- 9.6

GENERAL EMPLOYMENT CHARACTERISTICS, 1970 ^{2/}

Major Employment Group	Employment	
	Fulton County	Labor Market Area
TOTAL	4,000	18,600
Agricultural	600	3,000
Nonagricultural	3,400	15,600
Manufacturing	700	4,986
Trade and Services	1,249	4,215
Government	400	1,000
Other	1,051	5,363

MANUFACTURING EMPLOYMENT TRENDS BY INDUSTRY SEPTEMBER 1970 AND 1960 ^{3/}

Industry	Fulton County			Labor Market Area		
	1970	1960	%Change	1970	1960	%Change
TOTAL	765	642	+19.2	5,069	4,454	+ 13.8
Food & Kindred Products	129	82	+57.3	273	372	- 26.6
Apparel, Textiles, Leather	420	453	- 7.3	2,347	3,219	- 27.1
Lumber & Furniture	0	78	-	87	289	- 69.9
Printing, Publishing, Paper	21	16	+31.3	85	74	+ 14.9
Chemicals, Petroleum,						
Coal, Rubber	10	0	-	1,130	0	-
Stone, Clay & Glass	6	13	-53.8	368	133	+ 176.7
Primary Metals	0	0	-	0	302	-
Machinery & Metal						
Products*	179	0	-	544	14	+3785.7
Others	0	0	-	235	51	+ 360.8

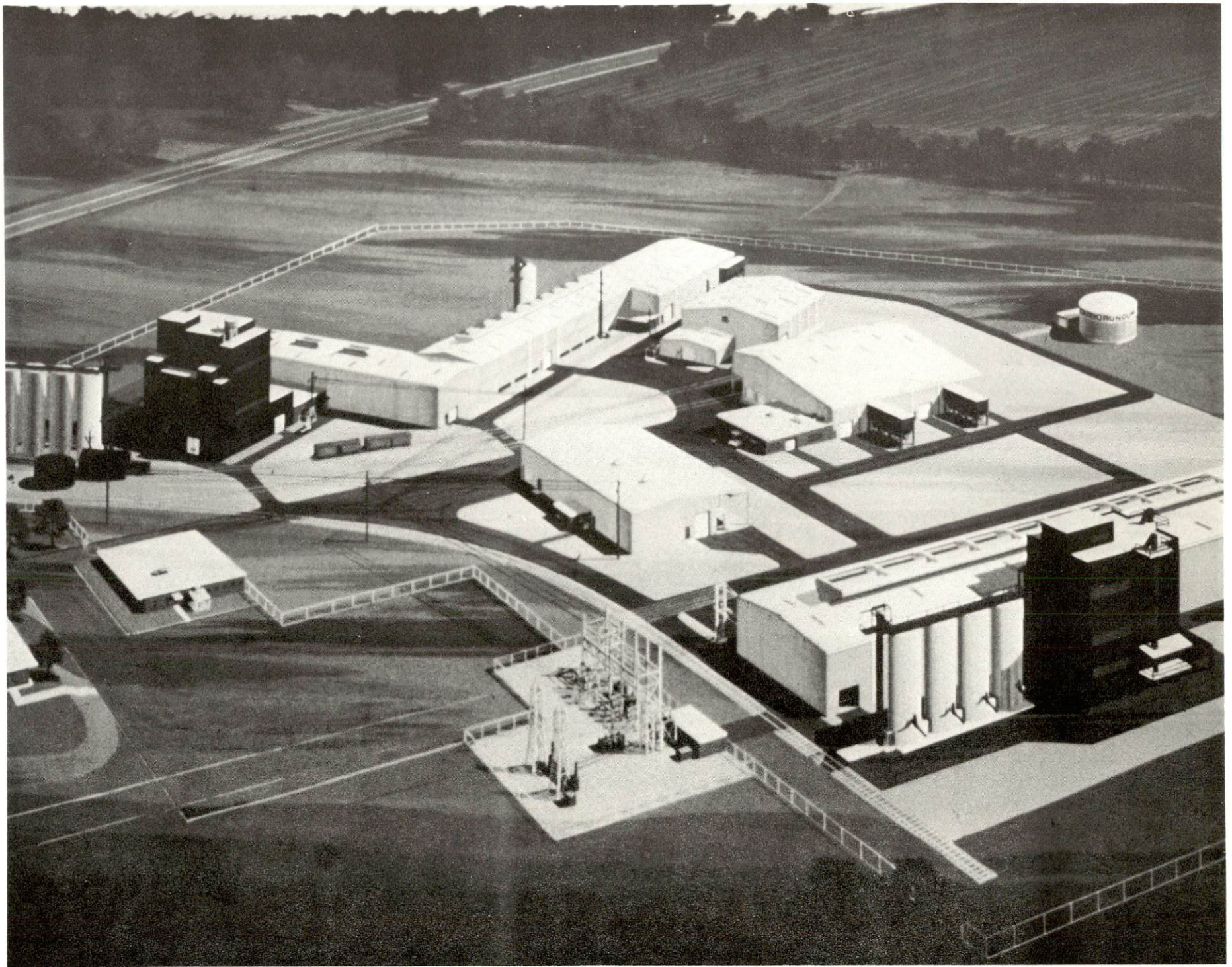
*One manufacturing plant has been reclassified from electrical machinery to stone, clay, and glass industries (1971).

HICKMAN MANUFACTURING FIRMS,
THEIR PRODUCTS AND EMPLOYMENT ^{4/}

<u>Firm</u>	<u>Product</u>	<u>Employment</u>		
		<u>Total</u>	<u>Male</u>	<u>Female</u>
Cagles Glass & Supply Co.	Aluminum storm doors, windows, metal awnings, mobile home porch	3	2	1
Graphite Products Div., The Carborundum Co.	Graphite products	140	135	5
The Hickman Courier	Newspaper, offset printing	4	1	3
Hickman Garment Corp.	Men's, boys' jackets and rainwear	135	10	125
Lattus Ready Mix	Ready mix concrete, concrete products	4	4	0
Roper Pecan Co.	Shelled pecans	67	12	55

WAGE RATES FOR SELECTED OCCUPATIONS
HICKMAN, KENTUCKY ^{5/}

<u>Classification</u>	<u>Rates Per Hour</u>		
	<u>Starting</u>	<u>Maximum</u>	<u>Prevailing</u>
Assembler	\$1.60	\$2.10	\$1.70
Inspector	1.60	2.40	1.90
Production Laborer	1.60	2.20	1.80
Welder, Arc or Acetylene (Class-A)	1.60	2.60	2.25
<u>Service Employees</u>			
Electrician (Class-A)	\$1.60	\$3.00	\$2.50
Laborer	1.60	2.50	2.00
Machinist	1.60	3.00	2.50
Mechanic, Maintenance	1.60	3.00	2.50
Truck Driver, Industrial (Class-A)	1.60	2.20	1.90
<u>Office Employees</u>			
Bookkeeper	\$1.60	\$2.00	\$1.80
File Clerk	1.60	2.00	1.80
Receptionist	1.60	2.00	1.80
Secretary	1.60	2.20	1.90
Typist	1.60	2.00	1.80



The Carborundum Company

LABOR ORGANIZATIONS

Union

Oil, Chemical & Atomic Workers
International Union

Representing Workers at:

Graphite Products Division,
Carborundum Company

CURRENT AND FUTURE LABOR SUPPLY - HICKMAN LABOR MARKET AREA

<u>Area</u>	<u>Current Labor Supply, 1971 ^{6/}</u>			<u>Future Labor Supply by 1977 ^{7/}</u> <u>(Becoming 18 Years of Age)</u>		
	<u>Total</u>	<u>Male</u>	<u>Female</u>	<u>Total</u>	<u>Male</u>	<u>Female</u>
Labor Market						
Area	3,215	1,879	1,336	5,776	2,979	2,797
Fulton	396	163	233	1,173	600	573
Graves	1,815	1,105	710	3,317	1,725	1,592
Hickman	348	201	147	704	373	331
Carlisle	656	410	246	582	281	301

TOTAL PERSONAL INCOME ^{8/}

<u>Area</u>	<u>1969*</u>	<u>1959</u>	<u>% Change</u>
Fulton County	\$ 27,802,000	\$ 17,014,000	+63.4
Labor Market Area	140,033,000	71,019,000	+97.2
Kentucky	9,202,000,000	4,655,000,000	+97.6

PER CAPITA PERSONAL INCOME ^{9/}

<u>Area</u>	<u>1969*</u>	<u>1959</u>	<u>% Change</u>
Fulton County	\$2,670	\$1,451	+84.0
Labor Market Area	\$2,180 to 2,770	\$1,069 to 1,451	NA
Kentucky	2,847	1,552	+83.4

*Preliminary figures.

EDUCATION

Public Schools

	<u>Fulton County</u>
Total Enrollment	1,527
Elementary	428
Junior High	696
High School	403
Student-Teacher Ratio	20-1
Elementary	19-1
Junior High	24-1
High School	18-1
State Rating of High School	Standard
Percent High School Graduates to College	33.8
Current Expenditures Per Pupil	\$428.31
Bonded Indebtedness, June 30, 1971	\$333,000

Vocational Schools

	<u>Nearest Area School</u>
	West Kentucky Area Vocational School
Location	Paducah
Miles Distant	49
Curriculum	General Clerical
	Secretarial-Steno
	Electronics (Communication)
	Auto Body Repair
	Auto Mechanics
	Barbering
	Carpentry
	Commercial Foods
	Cosmetology
	Drafting
	Electricity
	Masonry
	Tailoring

Nearest Area School

Location	Tilghman Area Vocational School
Miles Distant	Paducah
Curriculum	49
	Distributive Education
	Health Careers
	Nurse Aide
	Practical Nursing
	Surgical Technician
	Ward Clerk
	Electronics (Communication)
	Highway Technology
	Appliance Repair
	Auto Body Repair
	Auto Mechanics
	Carpentry
	Cosmetology
	Drafting
	Electricity
	Machine Shop
	Service Station Attendant
	Small Engine Repair
	Weldings

Colleges and Universities

<u>Name</u>	<u>Area - Within 50 miles</u>		<u>Highest Degree Conferred</u>
	<u>Location</u>	<u>Enrollment</u>	
Murray State University	Murray, Kentucky	7,063	Masters
Paducah Community College	Paducah, Kentucky	1,228	Associate
University of Tennessee Martin Branch	Martin, Tennessee	4,500	Masters

TRANSPORTATION

Rail

Line serving Hickman - Illinois Central Railroad

Services - Freight, siding, switching

RAILWAY TRANSIT TIME FROM HICKMAN, KENTUCKY, TO: 10/

No. of Days		No. of Days	
City	CL	City	CL
Atlanta, Ga.	3	Los Angeles, Calif.	5
Birmingham, Ala.	2	Louisville, Ky.	2
Chicago, Ill.	2	Nashville, Tenn.	3
Cincinnati, Ohio	3	New Orleans, La.	3
Cleveland, Ohio	3	New York, N. Y.	4
Detroit, Mich.	3	Pittsburgh, Pa.	3
Knoxville, Tenn.	3	St. Louis, Mo.	2

Truck Service

Company

Home Office

Henry Edwards Trucking Co.	Clinton, Kentucky
Harper Truck Service, Inc.	Paducah, Kentucky
McLean Trucking Company	Winston-Salem, North Carolina
United Parcel Service	Louisville, Kentucky

HIGHWAY MILES AND TRUCK TRANSIT TIME IN DAYS FROM HICKMAN, KENTUCKY, TO SELECTED MARKET CENTERS

City	Highway Miles	Delivery Time <u>11/</u>		City	Highway Miles	Delivery Time	
		LTL	TL			LTL	TL
Atlanta, Ga.	423	2-3	1	Los Angeles, Cal.	1,843	9-11	4-5
Birmingham, Ala.	280	2-3	2	Louisville, Ky.	279	1-2	1
Chicago, Ill.	446	2	1	Nashville, Tenn.	167	1-2	1
Cincinnati, Ohio	400	2	1	New Orleans, La.	467	3	2
Cleveland, Ohio	644	3	1-2	New York, N. Y.	1,048	3-4	2
Detroit, Mich.	663	3	1-2	Pittsburgh, Pa.	683	3	2
Knoxville, Tenn.	354	3	1	St. Louis, Mo.	179	1-2	1

Air

Nearest Commercial

	Barkley Field
Location:	8 miles west of Paducah; 55 miles from Hickman
Runways:	2 paved
Length:	4,000 ft.; 6,500 ft.
Traffic Control:	Wind tee, radio
Lighting:	Beacon, boundary, obstruction, runway lights, and runway end identification lights
Services:	80 and 100 octane jet fuel, Delta and Ozark Airlines, taxi, limousine, U-Drive-It, storage, major A & E repairs

Taxi

One company, 24-hour service

Water

Hickman Harbor, a still water port on the Mississippi River, has unloading facilities, 24-hour tow service, fresh water and refueling service for the large freight boats and barges that serve the area. Hickman is a headquarters for the U. S. Coast Guard, serving an area of 190 miles up and down the river. The harbor is also the home base of the Coast Guard Cutter SUMAC.

Sand & Gravel Grain Company, a subsidiary of Bunge Corporation, is completing a million bushel capacity grain terminal on the Hickman Harbor.

POWER AND FUEL

Electricity

Company serving Hickman - Hickman Electric System

Source of power - Tennessee Valley Authority

Total generating capacity - 19,400,000 KW

Industrial rates furnished by - Hickman Electric System, Hickman, Kentucky

Companies serving Fulton County - (1) Kentucky Utilities Company;
(2) Hickman-Fulton RECC

Sources of power - (1) Kentucky Utilities Company; (2) Tennessee Valley Authority

Total generating capacity - (1) 1,215,000 KW; (2) 19,400,000 KW

Industrial rates furnished by - Kentucky Utilities Company, Clinton, Kentucky; Hickman-Fulton RECC, Hickman, Kentucky

Natural Gas

Company serving Hickman - Hickman Gas System

Source of supply - Trunkline Gas Company

Size of transmission lines - Hickman Gas System, 4-inch; Trunkline Gas Company, 30-inch

Distribution lines - 1 to 4 inches

BTU content - 1,020; Specific gravity - .060

Distribution pressure - 40 psi

Monthly Rates:

First	500 cu. ft.	\$2.00 (minimum)
Next	2,500 cu. ft.	1.16 per M cu. ft.
Next	7,000 cu. ft.	.95 per M cu. ft.
Next	10,000 cu. ft.	.84 per M cu. ft.
Next	20,000 cu. ft.	.74 per M cu. ft.
All over	40,000 cu. ft.	.63 per M cu. ft.

WATER AND SEWERAGE

Water

Company serving Hickman - Public Utilities Department

Source - 2 deep wells

Treatment plant capacity - 2,500,000 gpd

Average daily consumption - 950,000 gallons

Peak daily consumption - 1,400,000 gallons

Type treatment - filtration, chlorination

Storage capacity - 900,000 gallons

Size mains - 8, 6, and 4 inches

Average pressure - 80 to 100 psi

Average temperature - 55 to 60 degrees

MONTHLY WATER RATES FOR WHOLESALE AND INDUSTRIAL CONSUMERS

First	2,000 gallons	\$8.00
Next	8,000 gallons	1.05 per M gallons
Next	15,000 gallons	.975 per M gallons
Next	25,000 gallons	.750 per M gallons
Next	50,000 gallons	.675 per M gallons
Next	100,000 gallons	.300 per M gallons
All over	200,000 gallons	.150 per M gallons

Name of water district - Fulton County-South Western Kentucky Water District

Area served - Western portion of Fulton County

Date when water district began operating - August 1971

Source of supply of treated water - City of Fulton

Amount of water which can be purchased in a 24-hour period - 1,224,000 gallons

Average amount of water used in a 24-hour period - 35,000 gallons

Peak amount of water used in a 24-hour period - 50,000 gallons

Facilities - 2 elevated tanks, each has a capacity of 100,000 gallons

Average pressure - 52 psi

Average temperature - 65 degrees

Size mains - 8, 6, 4, 3, and 2 inches

Rates:

First	2,000 gallons	\$5.00 (minimum)
Next	3,000 gallons	1.25 per M gallons
Next	5,000 gallons	.90 per M gallons
Next	8,000 gallons	.70 per M gallons
Next	10,000 gallons	.60 per M gallons
Next	20,000 gallons	.50 per M gallons
Next	50,000 gallons	.40 per M gallons

Surface water sources - Mississippi River, Obion and Bayou de Chein
Creeks

Average discharge - Bayou de Chein near Clinton (in neighboring Hickman
County) 87.9 cfs (30-year record, USGS)

Expected ground water yield - 50 to 1,000 gpm over entire county

Sewerage

Company serving Hickman - City of Hickman

Design capacity - 300,000 gallons per day

Type treatment - 2 lagoons

Treated effluent discharged into - Bayou de Chein Creek

Size of sanitary mains - 6, 8, and 12 inches

Rates - 50 percent of monthly water bill

LOCAL GOVERNMENT

City

Structure - Mayor - 4-year term; 4 commissioners - 4-year terms; city manager
Budget 1971 - General Fund \$83,200; Water and Sewer Fund \$127,791;
Gas Fund \$200,890
Fees and licenses - Occupational licenses vary from \$3 to \$410 per year.

County

Structure - County Judge - 4-year term; 4 magistrates - 4-year terms
Budget 1971-72 - General Fund \$106,400; Road Fund \$74,184

Assessed Value of Property, 1970

<u>Classes of Property*</u>	<u>Hickman</u>	<u>Fulton County</u>
Real Estate	\$5,744,045	\$49,632,417
Tangibles	2,132,596	17,194,355
Public Service	416,549	8,432,471 ('69)

Local General Property Tax Rates Per \$100 of Assessed Valuation, 1971 ^{12/}

<u>Taxing Unit**</u>	<u>Hickman</u>	<u>Fulton County</u>
State	\$.015	\$.015
County	.225	.225
School	.432	.432
City	.440	
Total	\$1.112	\$.672

Planning and Zoning

Agency - Hickman Planning and Zoning Commission
Codes adopted - Building, Housing, Plumbing, Electric, Fire, Gas

*Property assessed at 100 percent of fair value.

**Manufacturing machinery, raw materials inventories and goods in process inventories are not subject to local tax. State rate is only \$0.15 per \$100.

Safety

<u>Police</u>	<u>Hickman</u>	<u>Fulton County</u>
Total staff	5	5
Radio-patrol cars	2	2

Fire

American Insurance Association Fire Rating	7
Full-time staff	1
Volunteers	17
Equipment:	
750 gpm pumpers	2

Rescue Service

Hickman Rescue Squad:

Number of volunteers - 17

Equipment - boat and motor, radio equipment, Scuba diving equipment

Personnel training - first aid, Scuba diving training

Sanitation

	<u>Hickman</u>	<u>Fulton County</u>
Type service	municipal for residents, private for business	Private
Cost:		
residential	municipal is free	\$1.50 per month
business	private contract	contracted
Collection frequency:		
residential	municipal once weekly	as required
business	as required	as required
Trash pickup	municipal once weekly private once weekly	as required
Disposal method	municipal land fill private land fill	land fill

HEALTH

Hospitals

<u>General Hospitals</u>	<u>Location</u>	<u>Beds</u>
Fulton Hospital	Fulton, Kentucky	46
Hillview Hospital	Fulton, Kentucky	24

Fulton Hospital facilities - operating room, delivery room, emergency room, X-ray and laboratory facilities

Medical staff - 6 medical doctors, 7 registered nurses, 1 graduate licensed practical nurse, 7 licensed practical nurses

Hillview Hospital facilities - operating room, emergency room, X-ray, laboratory and EKG facilities

Medical staff - 2 medical doctors, 1 registered nurse, 3 graduate licensed practical nurses, 3 licensed practical nurses

Nursing Homes

	<u>Number</u>	<u>Beds</u>
Extended care homes	2	44
Personal care homes	1	17

Public Health

Facility - Fulton County Health Center

Staff - nurse, clerk, sanitarian

Budget 1971-72 - \$47,842

OTHER LOCAL FACILITIES

Communications

Telephone - South Central Bell Telephone Company
Services - standard

Telegraph - Western Union
Services - by telephone

Postal - U. S. Post Office
Class - Second
Mail received - twice daily
Mail dispatched - once daily

Newspapers - Hickman Courier
Weekly and circulation - 1,800
Other papers received from - Fulton, Louisville, and Paducah, Kentucky;
Memphis, Tennessee

Radio -
Stations received from - Fulton, Paducah, and Mayfield, Kentucky;
McKenzie and Union City, Tennessee; Cairo, Illinois

Television -
Reception from - Paducah, Kentucky; Cape Girardeau and St. Louis,
Missouri; Carbondale, Illinois; Memphis, Tennessee
Kentucky Educational Television - Murray transmitter, Channel 21

Library Services

Public Libraries - Hickman Public Library
Size collection - 8,282 volumes
Circulation, 1971 - 20,000
Services - records, magazines, film strip, film, art, story hour during
summer months, bookmobile

Religious Institutions

Number of churches - 12
Denominations - Catholic, Christian, Church of Christ, Methodist,
Missionary Baptist, Episcopal, The Church of Jesus Christ, United
Methodist, Southern Baptist, Church of God, Holiness, Freewill Baptist

Financial Institutions

<u>Bank</u>	<u>Statement as of June 30, 1971</u>	
	<u>Assets</u>	<u>Deposits</u>
The Citizens Bank	\$6,753,044	\$6,096,613
<u>Savings and Loan Associations</u>	<u>Assets</u>	<u>Shared Accounts</u>
Hickman Federal Savings & Loan Association	\$2,097,000	\$1,965,000

Hotels and Motels

There are 6 hotels and motels with 178 units located in Fulton, 20 miles distant.

Clubs and Organizations

Business and Civic - Lions Club, Chamber of Commerce, Riverport Authority, Hickman Development Corporation

Fraternal - American Legion, Moose Lodge, Masons

Women's - Eastern Star, Women's Club, Mothers Club, Homemakers

Youth - 4-H, FFA, FHA

Other - Hickman Recreation Club, Riding Club

RECREATION

Local

Public Recreation Facilities

- Park - 1
- Playground - 1
- Baseball diamond - 1
- Football field - 1

Private Recreation Facilities

- Country club - 1
- Golf course - 1 (18-hole)
- Swimming pool - 1
- Other - 1 tennis court

Tourist Attractions

- Mississippi River for water sports
- Mississippi River Ferry

Area (Within 75 miles)

- Columbus-Belmont Battlefield State Park
- Reelfoot Lake
- Mid South Boat Races
- Kentucky Dam Village State Resort Park
- Lake Barkley State Resort Park
- Land Between the Lakes National Recreational Area
- Kentucky Lake and Dam
- Kenlake State Resort Park

AGRICULTURE - NATURAL RESOURCES - CLIMATE

Agriculture 13/

	<u>Fulton County</u>	<u>Labor Market Area</u>
Total land area (acres)	129,920	770,560
Percent of area in farm land	82.9	74.8
Number of farms	453	4,370
Average size of farms (acres)	237.6	132.1
1964 value of all farm products	\$5,475,291	\$22,441,722
Value per farm	12,087	5,135
Total crop sales	3,621,725	10,671,084
Total livestock & livestock products	1,853,565	11,766,606
1969 agricultural production included:		
Dark tobacco (lbs.)	7,000	3,224,000
Corn (bu.)	955,000	4,582,000
Cattle and calves (number)	13,300	101,800
Hogs and pigs (number)	23,500	108,500
Milk production (1968) (lbs.)	5,640,000	63,916,000

Natural Resources

Principal mineral resources	Sand and gravel
Other mineral resources	Clay, oil, and gas
Acres of commercial forest land	32,300
Most abundant tree species	Red oaks, white oaks, cottonwood, sweetgum, hickory, ash and soft maple

Climate 14/

	<u>Fulton County</u>
Temperature	
Annual mean (30-year record)	59.6 degrees
Average annual (1970)	58.7 degrees
Record highest (September 1954) (28-year record)	104 degrees
Record lowest (January 1963) (28-year record)	- 5 degrees
Seasonal heating degree-days (30-year record)	3,821
Precipitation	
Mean annual total (30-year record)	45.23 inches
Mean annual snow and sleet (28-year record)	10 inches
Total precipitation (1970)	49.98 inches
Mean number days precipitation (.01 inches or more) (28-year record)	114
Average number days thunderstorms (22-year record)	53
Prevailing winds (22-year record)	Southwest

HISTORY

Fulton County lies at the extreme western tip of Kentucky, bordered by the Mississippi River to the west and Tennessee to the south. Several of the county's 184 square miles are detached from the rest, lying within a great coil of the Mississippi, so that one must pass either through Missouri or Tennessee to get to the area. The soils are alluvial, especially in the Mississippi bottoms, which extend some twenty-five miles inland, and clay-based in the uplands, where there are some small hills whose soil is productive.

In 1811 a powerful earthquake spent its greatest force in Fulton County, causing violent changes in its land surface. At this time the Mississippi River actually flowed backwards for several hours, and several lakes were created, including Reelfoot Lake to the south.

Fulton became Kentucky's ninety-ninth county, carved out of Hickman County in 1845 and named in honor of Robert Fulton, whose famous steamboat, "The Clermont," was the first commercially successful one in America. Hickman, the county seat, was first settled by James Mills in 1819 and named Mills Point. In 1837 its name was changed to Hickman for the family of the wife of G. W. L. Marr, who then owned the townsite. This river town of 3,048 persons in 1970 serves the surrounding agricultural region as a shipping point. It is built on three levels of a large bluff overlooking the Mississippi. Mark Twain mentioned Hickman in his Life on the Mississippi as one of the most beautiful towns along the river.

The town of Fulton lies on the Kentucky-Tennessee border and plays an important economic role by receiving nearly all banana shipments coming into the county via the Mississippi and readying them for shipment throughout America. Known as the "Banana Capital of America," Fulton is the home of an annual international Banana Festival.

In 1850, five years after its formation, the county had a population of 4,446. By 1950 this had reached 13,668, subsequently declining to 11,256 in 1960 and 10,183 in 1970.

Agriculture accounted for 600 of the county's 4,000 employed in 1970, with corn, cattle, and hogs the principal products. Fulton County also produces over nine-tenths of the cotton grown in Kentucky on large tracts of land, still called plantations, in the Mississippi bottom lands.

Manufacturing employment stood at 700 in 1970, with heaviest concentration in the production of apparel, food-related and minerals products industries. Largest of the county's firms are in Fulton: Henry I. Siegel Company, making men's and boys' clothing, and Ferry-Morse Seed Company, which packages garden seed. In Hickman are Hickman Garment Corporation, making men's and boys' jackets, and Graphite Products Division of the Carborundum Company.

John Luther Jones, the "Casey" Jones immortalized in song and story for his bravery as a railroad engineer, was a native of Fulton County.

SOURCES OF INFORMATION

- 1/ U. S. Department of Commerce, Bureau of the Census, Census of Population, 1950, 1960, 1970.
- 2/ Kentucky Department of Economic Security, Division of Research and Statistics.
- 3/ Kentucky Department of Economic Security, Number of Workers in Manufacturing Industries Covered by Kentucky Unemployment Insurance Law Classified by Industry and County, September 1970, September 1960.
- 4/ Kentucky Department of Commerce, Division of Research and Planning.
- 5/ Kentucky Department of Economic Security, Division of Employment Services, Mayfield Office.
- 6/ Kentucky Department of Economic Security, Kentucky Labor Supply Estimates by County, January 1971.
- 7/ Kentucky Department of Commerce, Future Labor Supply by 1977.
- 8/ University of Kentucky, Office of Development Services and Business Research, Total Personal Income for Kentucky.
- 9/ University of Kentucky, Office of Development Services and Business Research, Per Capita Income in Kentucky.
- 10/ Illinois Central Railroad, Louisville, Kentucky.
- 11/ McLean Trucking Company, Winston-Salem, North Carolina.
- 12/ Kentucky Department of Revenue.
- 13/ U. S. Department of Commerce, Bureau of the Census, Census of Agriculture, 1964. U. S. Department of Agriculture and Kentucky Department of Agriculture, Kentucky Agricultural Statistics, 1970.
- 14/ U. S. Department of Commerce, Environmental Science Services Administration, Climatological Data, 1970.

All other information was obtained from governmental offices, local businesses and organizations.

This copy has been prepared by the Kentucky Department of Commerce,
Division of Research and Planning, and the cost of printing paid from
state funds.