

1986

# Industrial Resources: Graves County - Mayfield

Kentucky Library Research Collections  
Western Kentucky University, [spcol@wku.edu](mailto:spcol@wku.edu)

Follow this and additional works at: [https://digitalcommons.wku.edu/graves\\_cty](https://digitalcommons.wku.edu/graves_cty)

 Part of the [Business Administration, Management, and Operations Commons](#), [Growth and Development Commons](#), and the [Infrastructure Commons](#)

---

## Recommended Citation

Kentucky Library Research Collections, "Industrial Resources: Graves County - Mayfield" (1986). *Graves County*. Paper 7.  
[https://digitalcommons.wku.edu/graves\\_cty/7](https://digitalcommons.wku.edu/graves_cty/7)

This Report is brought to you for free and open access by TopSCHOLAR®. It has been accepted for inclusion in Graves County by an authorized administrator of TopSCHOLAR®. For more information, please contact [topscholar@wku.edu](mailto:topscholar@wku.edu).



IL  
474 Graves County

## RESOURCES FOR ECONOMIC DEVELOPMENT

---

# Mayfield



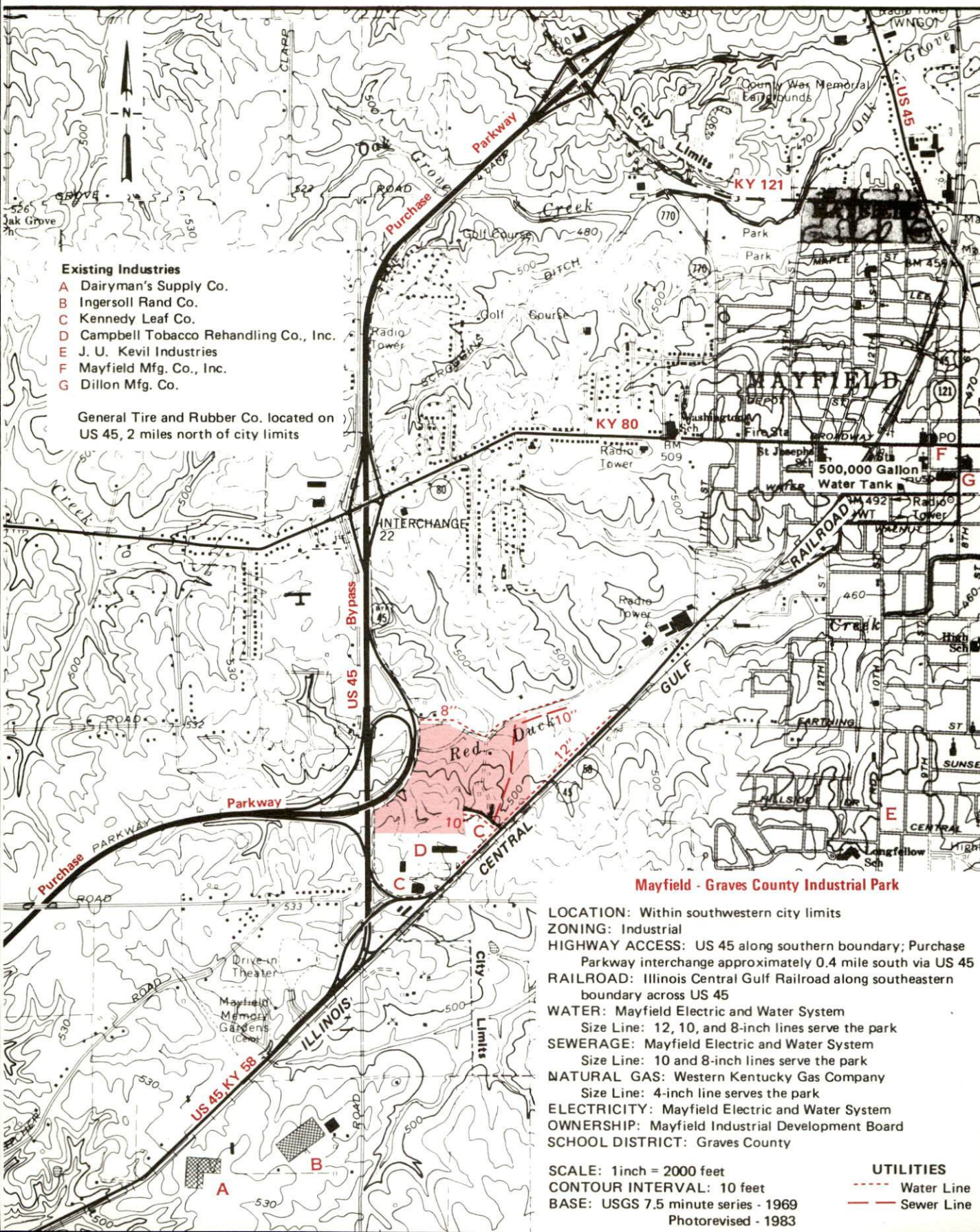
---

**KENTUCKY**  
The business environment is right.



# MAYFIELD, KENTUCKY --- Site 186 --- 58 Acres

For more information contact the Kentucky Department of Economic Development, Industrial Development & Marketing Division, Capital Plaza Tower, Frankfort, Kentucky 40601 (502-564-7140).





RESOURCES FOR ECONOMIC DEVELOPMENT  
**MAYFIELD, KENTUCKY**

Prepared by  
The Kentucky Department of Economic Development  
Division of Research and Planning  
in cooperation with  
The Mayfield-Graves County Chamber of Commerce  
and  
The Mayfield-Graves County Industrial Development Board

1986



Program manager - Andrew Dennis; research - Bill Morris; clerical - Bobbi Graves; graphics - Frank Ferrante, Tony Cecconi, Robert Owens; cartography - Site Evaluation Branch, Division of Industrial Development and Marketing. Cost of printing paid from state funds.



## TABLE OF CONTENTS

<u>Chapter</u>	<u>Page</u>
INDUSTRIAL SITES .....	i
MAYFIELD, KENTUCKY - A RESOURCE PROFILE .....	1
LABOR MARKET STATISTICS .....	2
Population .....	2
Population Projections .....	2
Labor Force Characteristics of Residents, 1985 .....	3
Selected Components of Nonagricultural Employment, by Place of Work, 1985 .....	3
Per Capita Personal Income .....	3
Estimated Male Labor Supply .....	4
Estimated Female Labor Supply .....	4
Average Weekly Wages By Industry, by Place of Work, 1985 .....	5
EXISTING INDUSTRY .....	7
Mayfield Manufacturing Firms, Their Products and Employment .....	7
Labor Organizations in Manufacturing Firms .....	10
Industrial Services .....	11
TRANSPORTATION .....	12
Rail .....	12
Highways .....	12
Truck Service .....	13
Air .....	14
Air Express Service .....	14
Water .....	15
POWER AND FUEL .....	16
Electricity .....	16
Natural Gas .....	17
Other Fuels .....	17
WATER AND SEWERAGE .....	18
Public Water Supply .....	18
Raw Water .....	19
Sewerage .....	20

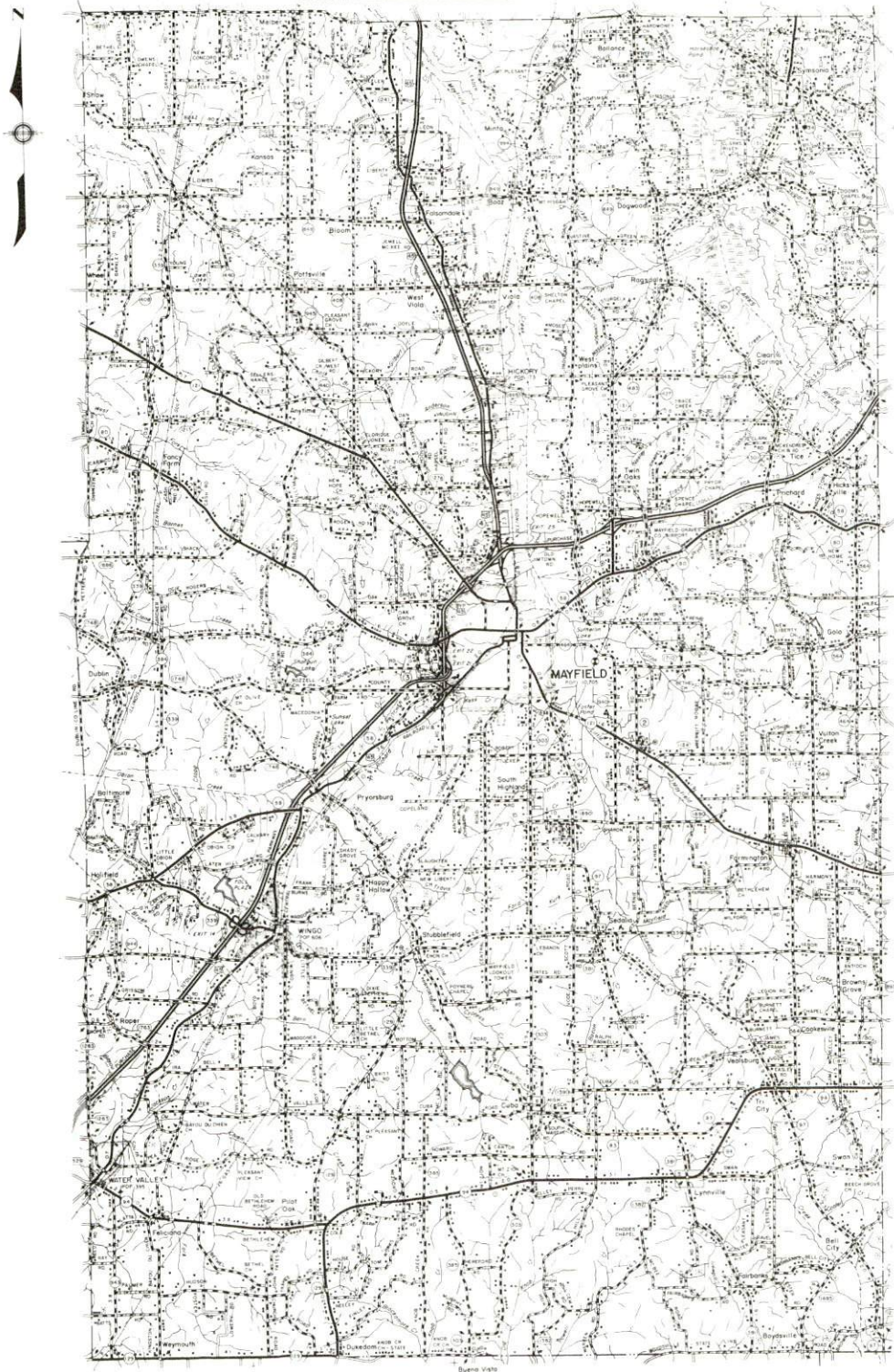


<u>Chapter</u>	<u>Page</u>
CLIMATE .....	21
LOCAL GOVERNMENT .....	22
Structure .....	22
Planning and Zoning .....	22
Local Fees and Licenses .....	22
State and Local Property Taxes .....	23
Safety .....	24
Police .....	24
Fire .....	24
Rescue Service .....	24
Refuse Collection and Disposal .....	24
EDUCATION .....	25
Public Schools .....	25
Nonpublic Schools .....	25
Area Colleges and Universities .....	26
Vocational Schools .....	26
HEALTH .....	28
Local Medical Personnel .....	28
Hospitals .....	28
Other Medical Facilities .....	28
Ambulance Service .....	28
OTHER LOCAL FACILITIES .....	29
Communications .....	29
Library Services .....	29
Religious Institutions .....	30
Financial Institutions .....	30
Hotels and Motels .....	30
RECREATION .....	31
COMMUNITY IMPROVEMENTS .....	33



1985 EDITION  
GENERAL HIGHWAY MAP  
**GRAVES COUNTY**  
KENTUCKY

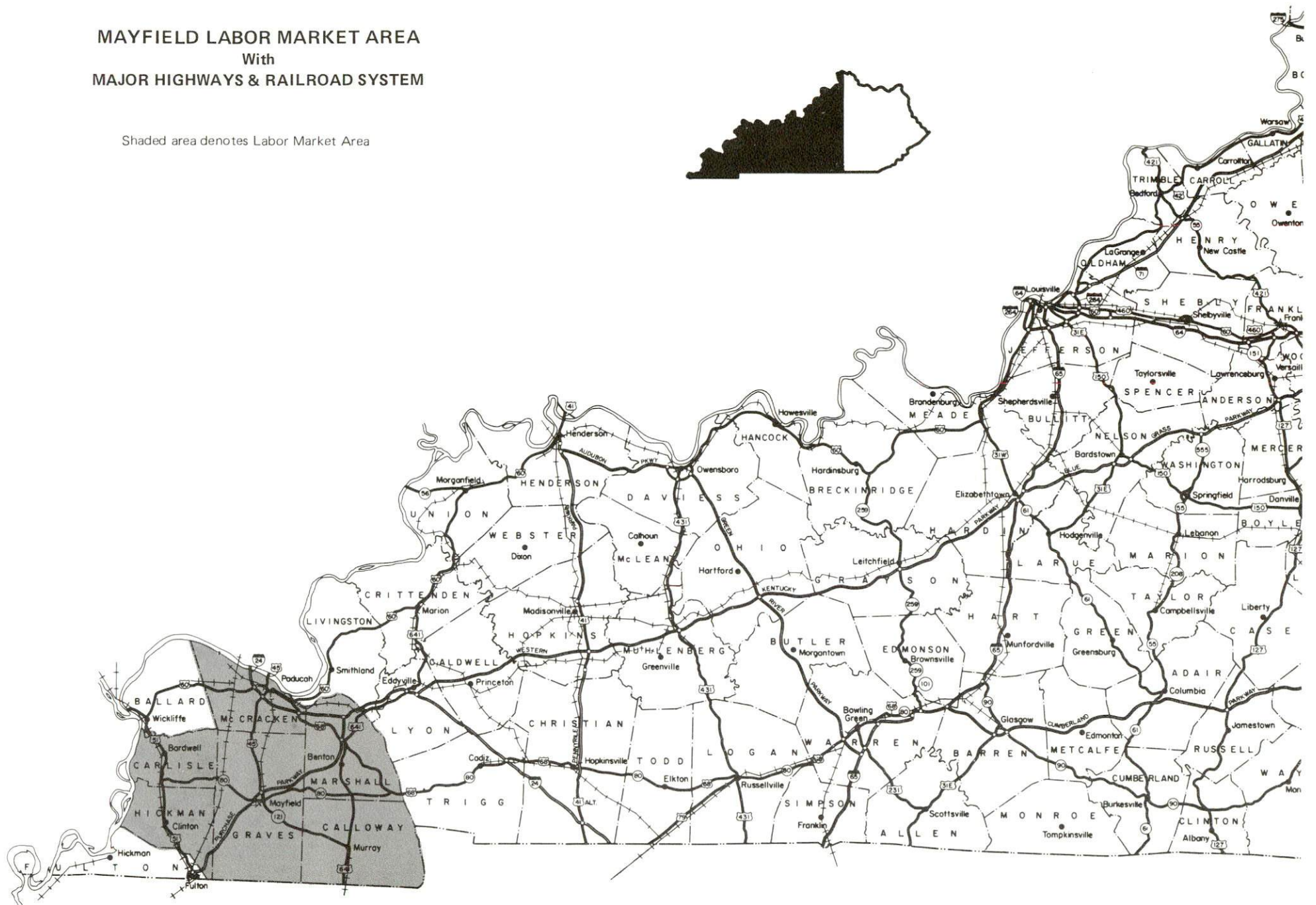
PREPARED BY THE  
KENTUCKY TRANSPORTATION CABINET  
DEPARTMENT OF HIGHWAYS  
DIVISION OF PLANNING  
IN COOPERATION WITH THE  
U.S. DEPARTMENT OF TRANSPORTATION  
FEDERAL HIGHWAY ADMINISTRATION  
SC7





# MAYFIELD LABOR MARKET AREA With MAJOR HIGHWAYS & RAILROAD SYSTEM

Shaded area denotes Labor Market Area





## MAYFIELD, KENTUCKY - A RESOURCE PROFILE

Mayfield, county seat of Graves County, is situated in western Kentucky's Jackson Purchase Region. Graves County is bordered on the south by the Tennessee state line. Mayfield is located 229 miles southwest of Louisville, Kentucky; 135 miles northwest of Nashville, Tennessee; and 194 miles southeast of St. Louis, Missouri. Graves County had a 1984 estimated population of 32,990 persons, 10,124 of whom lived within the city of Mayfield.

**The Economic Framework** - The total number of Graves County residents employed in 1985 averaged 13,500. Manufacturing firms in the county reported 3,060 employees; wholesale and retail trade provided 2,160 jobs; 1,260 people were employed in service occupations; and state and local government accounted for 1,120 employees.

**Labor Supply** - There is a current estimated labor supply of 14,150 men and 12,720 women available for industrial jobs in the labor market area. In addition, from 1986 through 1990, 8,050 young men and 7,730 young women in the area will become 18 years of age and potentially available for industrial jobs.

**Transportation** - The railroad line serving Mayfield is being purchased by the Paducah and Louisville Railway during 1986. Major highways serving Mayfield include the Purchase Parkway, a multilane, controlled-access highway; U.S. Highway 45; and Kentucky Routes 121 and 80. There are 16 common carrier trucking companies which serve Mayfield. The Mayfield-Graves County Airport has a paved 4,625-foot runway. The nearest scheduled commercial airline service is available at Barkley Regional Airport, 27 miles north of Mayfield near Paducah. Public riverport facilities are located at the confluence of the Ohio River and the Tennessee-Tombigbee Waterway at Paducah, 27 miles north of Mayfield. Public riverport facilities are also located on the Mississippi River at Hickman, 43 miles southwest of Mayfield, and on Barkley Lake, 50 miles northeast of Mayfield.

**Power and Fuel** - Electric power is provided to Mayfield by the Mayfield Electric and Water Systems, whose source of power is Tennessee Valley Authority. Electric power to Graves County is supplied by West Kentucky Rural Electric Cooperative Corporation and by Jackson Purchase Electric Cooperative Corporation. Natural gas service is provided to Mayfield by Western Kentucky Gas Company. There are two propane dealers and three fuel oil dealers located at Mayfield.

**Education** - The Mayfield Independent School System provides primary and secondary public education to the residents of Mayfield, and is accredited by the Southern Association of Colleges and Schools. The Graves County School System provides primary and secondary public education to residents of the remainder of Graves County. Two nonpublic schools also operate in Graves County. The Mid-Continent Baptist Bible College, located in Mayfield, offers a baccalaureate degree in theology. Three other institutions of higher learning are located within 40 miles of Mayfield. Vocational training is available at Mayfield Area Vocational Education Center and at the West Kentucky State Vocational-Technical School, 27 miles north of Mayfield.

## LABOR MARKET STATISTICS

The Mayfield Labor Market Area includes Graves County and the adjoining Kentucky counties of Calloway, Carlisle, Hickman, McCracken and Marshall. The Tennessee state line forms the southern boundary of Graves County. The labor market area is supplemented by the Tennessee counties of Henry and Weakley.

### POPULATION

Area	1984*	1980	1970	Percent Nonwhite
				1980
Mayfield	10,124	10,705	10,724	11.9
Labor Market Area	161,747	162,579	148,911	N/A
Graves County	32,990	34,049	30,939	4.7
Calloway County	30,455	30,031	27,692	3.6
Carlisle County	5,309	5,487	5,354	1.0
Hickman County	5,711	6,065	6,264	10.5
McCracken County	61,365	61,310	58,281	10.5
Marshall County	25,917	25,637	20,381	0.2

\* Population estimates.

Note: The 1980 city counts of population by race are provisional.

Sources: U.S. Department of Commerce, Bureau of the Census, 1980 Census of Population and Housing, March 1981; 1980 Census of Population, Number of Inhabitants. University of Louisville, Urban Studies Center, Population Unit, October 1985; Kentucky Population Research Notes, Issue Number One, May 1985.

### POPULATION PROJECTIONS

Area	1990	1995	2000	2010
Labor Market Area	171,356	180,304	184,928	191,568
Graves County	35,522	37,053	38,107	39,722
Calloway County	31,050	31,663	31,987	32,201
Carlisle County	5,430	5,515	5,568	5,621
Hickman County	6,000	6,011	5,976	5,874
McCracken County	63,621	68,013	69,610	71,962
Marshall County	29,733	32,049	33,680	36,188

Source: University of Louisville, Urban Studies Center, Population Research Unit, How Many Kentuckians: Population Forecasts, 1980-2020, the 1984 Edition, September 1984.



### LABOR FORCE CHARACTERISTICS OF RESIDENTS, 1985

	<u>Graves County</u>	<u>Labor Market Area*</u>
Civilian Labor Force	15,207	72,747
Employment	13,504	65,070
Unemployment	1,703	7,677
Rate of Unemployment (%)	11.2	10.6

\* Graves County and the five adjoining Kentucky counties.

Source: Kentucky Cabinet for Human Resources, Kentucky Labor Force Estimates, Annual Averages, 1985.

### SELECTED COMPONENTS OF NONAGRICULTURAL EMPLOYMENT, BY PLACE OF WORK, 1985

	<u>Graves County</u>	<u>Labor Market Area*</u>
All Industries (total)	8,570	50,784
Manufacturing	3,057	11,227
Wholesale & Retail Trade	2,157	14,395
Services	1,259	9,290
State/Local Government	1,122	7,884
Contract Construction	250	2,476

\* Graves County and the five adjoining Kentucky counties.

Note: Excludes domestic workers, railway workers, certain nonprofit corporations, majority of federal government workers, and self-employed workers.

Source: Kentucky Cabinet for Human Resources, Average Monthly Workers Covered by Kentucky Unemployment Insurance Law, 1985.

### PER CAPITA PERSONAL INCOME

<u>Area</u>	<u>1980</u>	<u>1984</u>	<u>Percent Change</u>
Graves County	\$ 7,193	\$ 10,533	46.4
Labor Market Area Range*	\$5,935 - 8,980	\$8,945 - 12,053	N/A
Kentucky	7,644	10,232	33.9
U. S.	9,494	12,772	34.5

\* Graves County and the five adjoining Kentucky counties.

Sources: U.S. Department of Commerce, Bureau of Economic Analysis. Kentucky Economic Information System, June 1986.

ESTIMATED MALE LABOR SUPPLY  
MAYFIELD LABOR MARKET AREA

Area	Current				Future
	Total Male	Unemployed	Under-employed	Not in Labor Force	Becoming 18 years of age 1986 thru 1990
Labor Market					
Area*	14,153				8,053
Graves	2,916	1,074	694	1,148	1,230
Calloway	2,007	591	1,145	271	891
Carlisle	385	246	139	0	230
Hickman	417	255	145	17	204
McCracken	2,854	1,745	1,109	0	2,296
Marshall	4,041	903	503	2,635	930
Henry (Tenn.)	721	N/A	N/A	N/A	1,058
Weakley (Tenn.)	812	N/A	N/A	N/A	1,214

ESTIMATED FEMALE LABOR SUPPLY  
MAYFIELD LABOR MARKET AREA

Area	Current				Future
	Total Female	Unemployed	Under-employed	Not in Labor Force	Becoming 18 years of age 1986 thru 1990
Labor Market					
Area*	12,721				7,733
Graves	2,612	597	877	1,138	1,262
Calloway	1,445	382	1,063	0	910
Carlisle	363	137	118	108	199
Hickman	250	59	151	40	221
McCracken	2,839	1,272	1,567	0	2,221
Marshall	3,706	584	685	2,437	927
Henry (Tenn.)	906	N/A	N/A	N/A	984
Weakley (Tenn.)	600	N/A	N/A	N/A	1,009

\* Additional workers may be drawn from other nearby counties.

Note: Unemployed - persons unemployed and actively seeking work;  
Underemployed - persons employed but working only 14 to 26 weeks per year;  
Not in Labor Force - represents the number of persons who would enter the labor force if suitable employment were available (based on the assumption that persons in Kentucky would like to participate in the labor force in the same proportion that they do nationally).

Sources: Kentucky Cabinet for Human Resources, Kentucky Labor Supply Estimates by County, 1984. Kentucky Department of Economic Development, Future Labor Supply Becoming 18 Years of Age, 1986 thru 1990. Tennessee Department of Economic and Community Development.



AVERAGE WEEKLY WAGES BY INDUSTRY,  
BY PLACE OF WORK, 1985

	<u>Graves County</u>	<u>Calloway County</u>	<u>Carlisle County</u>
All Industries	\$ 305.74	\$ 264.12	\$ 208.31
Mining & Quarrying	380.76	*	0
Contract Construction	261.05	271.20	358.46
Manufacturing	418.21	326.78	184.96
Transportation, Communications & Public Utilities	433.83	346.34	*
Wholesale & Retail Trade	198.15	187.01	174.65
Finance, Insurance & Real Estate	285.02	259.65	268.74
Services	204.24	225.54	193.36
State/Local Government	306.26	306.79	245.81
Other	205.59	222.82	0
	<u>Hickman County</u>	<u>McCracken County</u>	<u>Marshall County</u>
All Industries	\$ 206.04	\$ 300.02	\$ 401.39
Mining & Quarrying	0	0	*
Contract Construction	315.56	354.55	483.11
Manufacturing	*	407.19	622.30
Transportation, Communications & Public Utilities	318.20	421.91	419.49
Wholesale & Retail Trade	219.43	211.98	180.46
Finance, Insurance & Real Estate	230.56	282.74	297.74
Services	151.00	303.32	187.90
State/Local Government	272.94	318.42	265.17
Other	*	153.35	131.69

\* Not disclosed.

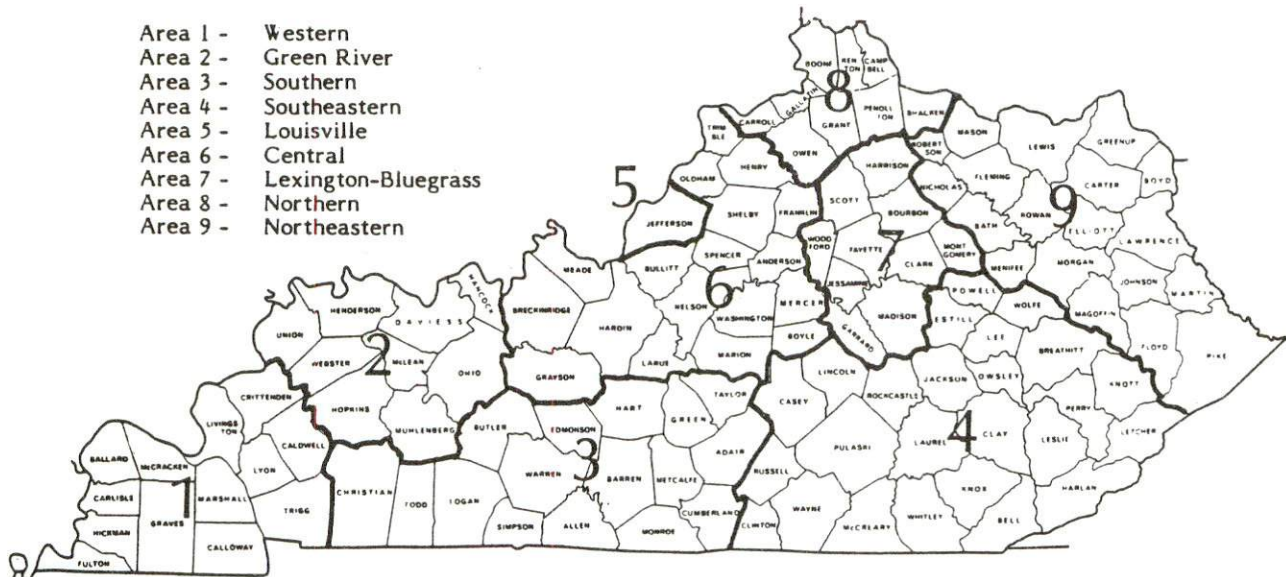
Note: The average weekly wage for each category includes the salaries and wages of all persons working for that type business. For example, the manufacturing category includes both production workers and administrative personnel. Excludes domestic workers, railway workers, certain nonprofit corporations, majority of federal government workers, and self-employed workers.

Source: Kentucky Cabinet for Human Resources, Average Weekly Wages of Workers Covered by Kentucky Unemployment Insurance Law, 1985.

Up to date occupational wage rates of the existing industries are maintained by South Kentucky Industrial Development Association, Post Office Box 726, Hopkinsville, Kentucky 42240.

Occupational wage rates for specific industries are usually not available to most government agencies, and wage data furnished to state employment agencies by individual industrial employers are protected from disclosure by federal law. The most reliable up-to-date wage information can be obtained by direct contact with local employers.

Associated Industries of Kentucky, a voluntary organization of Kentucky businesses, regularly collects occupational wage rates and fringe benefits data from participating member firms. Data are compiled for over 127 clearly defined office, production, and service occupations. Tabulations are published for nine geographical areas of Kentucky, as shown on the map below. It should be noted that the data may be weighted by the preponderance of firms in the larger cities and may be somewhat higher than the rates paid in the smaller communities. Data from these tabulations are available, upon request, from the Kentucky Department of Economic Development, Frankfort, Kentucky 40601.



Associated Industries of Kentucky Area Wage Surveys



## EXISTING INDUSTRY

### MAYFIELD MANUFACTURING FIRMS, THEIR PRODUCTS AND EMPLOYMENT

<u>Firm (Establishment date)</u>	<u>Product</u>	<u>Employment</u>			<u>Labor Unions</u>
		<u>Total</u>	<u>Male</u>	<u>Female</u>	
Broadway Printing Company (1979)	Commercial printing	1	--	--	
Campbell Tobacco Rehandling Company, Inc. (1959)	Leaf tobacco processing	98	29	69	Bakery, Confectionery and Tobacco Workers*
Leon Dick & Son Printing (1959)	Commercial printing	12	--	--	
Dillon Manufacturing Company, Inc. (1985)	Men's sport coats, ladies skirts	475	--	--	
Easterday Tie & Timber Company (1967)	Treated railroad ties, utility poles	42	40	2	
General Tire & Rubber Company (1960)	Tires, curing bladders	1,646	--	--	Rubber Workers*
Glasco Lamp Company, Inc. (1974)	Lamps, lamp shade frames	16	--	--	
Greer Neon Company, Inc. (1951)	Neon and plexi- glass signs	5	3	2	

(Continued)

<u>Firm</u> (Establishment date)	<u>Product</u>	<u>Employment</u>			<u>Labor Unions</u>
		<u>Total</u>	<u>Male</u>	<u>Female</u>	
Ingersoll Rand Company, Centrifugal Air Compressor Division (1970)	Centrifugal air com- pressors	300	250	50	Machinists*
K & T Lamp & Shade Company (1969)	Lamps and shades	28	--	--	
Kendor Wood, Inc. (1982)	Wood cabinet doors	38	--	--	
Kennedy Leaf Tobacco Company (1984)	Tobacco processing	10	8	2	
J. U. Kevil Industries (1971)	Shipping skids, crates, work aprons, tool bags, cloths, industrial wipers	90	40	50	
Mayfield Machine & Tool Company (1979)	Job shop, machine tools	17	15	2	
Mayfield Manufacturing Company, Inc. (1979)	Ladies' fashion slacks, ladies' slacks, pantsuits	432	30	402	
Mayfield Printing, Inc. (1933)	Job printing, rolled and flat labels, computer labels, litho- graphic color printing	48	30	18	

(Continued)



<u>Firm</u> (Establishment date)	<u>Product</u>	<u>Employment</u>			<u>Labor Unions</u>
		<u>Total</u>	<u>Male</u>	<u>Female</u>	
Mayfield Septic Tank & Concrete Company (1956)	Ready- mixed concrete and precast products, concrete septic tanks	8	7	1	
Mayfield Sweet Feed Mill, Inc. (1930)	Feed	28	26	2	
Messenger Newspapers, Inc. (1900)	Newspaper, engraving, commercial printing	26	16	10	
Newman Lamp Company, Inc. (1970)	Lamps, lamp shades, metal finishing and plating	8	7	1	
Pavco, Inc. (1981)	Ready- mixed concrete	12	-	-	
Tackett Lamp & Shade Company, Inc. (1957)	Lamps, lamp shades, wire ring sets	21	10	11	
Universal Lamp & Shade, Inc. (1972)	Residential lamps and shades	8	--	--	
World Tower Company, Inc. (1957)	Radio and TV microwave towers	22	20	2	

\*See Labor Organizations on next page.

Sources: Kentucky Department of Economic Development, 1986 Kentucky Directory of Manufacturers; Division of Research and Planning; Mayfield-Graves County Chamber of Commerce.

## LABOR ORGANIZATIONS IN MANUFACTURING FIRMS

### Union

### Representing workers at:

Bakery, Confectionery and  
Tobacco Workers'

International Union,  
AFL-CIO, CLC

Campbell Tobacco Rehandling Company, Inc.

International Association  
of Machinists and  
Aerospace Workers,  
AFL-CIO

Ingersoll Rand Company, Centrifugal Air  
Compressor Division

United Rubber, Cork,  
Linoleum and Plastic  
Workers of America,  
AFL-CIO

General Tire and Rubber Company



# SELECTED INDUSTRIAL SERVICES

<u>Types of Services</u>	<u>Location</u>	<u>Mileage from Mayfield</u>
Custom Plastics Producers	Fulton, Kentucky	24
	Kuttawa, Kentucky	44
Electric Motor Repair	Mayfield, Kentucky	-
Grinding, Precision & Tool	Mayfield, Kentucky	-
Heat Treating Facilities	Nashville, Tennessee	135
	Evansville, Indiana	136
Hot-Dip Galvanizing	Nashville, Tennessee	135
Industrial Equipment & Supplies	Mayfield, Kentucky	-
Industrial Gases	Paducah, Kentucky	27
	Hopkinsville, Kentucky	70
Industrial Waste Removal	Paducah, Kentucky	27
	Dawson Springs, Kentucky	68
Machine Shops, Tool & Die	Mayfield, Kentucky	-
Metal Finishers	Mayfield, Kentucky	-
Metal Service Centers	Hopkinsville, Kentucky	70
	Nashville, Tennessee	135
Millwrights	Paducah, Kentucky	27
	Hopkinsville, Kentucky	70
Public Warehouse Facilities	Mayfield, Kentucky	-

Sources: Kentucky Department of Economic Development, Kentucky Directory of Selected Industrial Services, 1985; Division of Research and Planning.

## TRANSPORTATION

### Rail

Mayfield is currently served by the Illinois Central Gulf Railroad (ICG). The Paducah and Louisville Railway recently purchased the ICG track from Paducah to Louisville, and is now negotiating to purchase the segment of ICG track from Mayfield to Paducah. For more information on routing, schedules, rates, and services contact:

Manager of Industrial Development  
Illinois Central Gulf Railroad  
331 Salem Place  
Suite 165  
Fairview Heights, Illinois  
(618) 624-8304

and/or

Paducah and Louisville Railway  
1500 Kentucky Avenue  
Paducah, Kentucky 42001  
(502) 443-1246

### Highways

Mayfield is served by the Purchase Parkway - a four-lane toll road which is the primary route through the Purchase Area. The parkway connects with Interstate 24 just 28 miles northeast of Mayfield. The parkway terminates 24 miles southwest of Mayfield at South Fulton, Tennessee.

In addition, Mayfield is also served by U.S. Highway 45, which is four lanes wide north of Mayfield to Paducah, and by Kentucky Highways 80 and 121. All three of these routes are "AAA"-rated (80,000-pound gross load limit) trucking highways, with the exception of Kentucky 80 west of Mayfield which is a "AA"-rated (62,000-pound gross load limit) highway.



## Truck Service

A & H Truck Line, Inc.\*  
 ARA Smith's\*  
 American Freight System, Inc.\*  
 Bailey's Express, Inc.\*  
 Bestway Express, Inc.\*  
 Buske Lines, Inc.\*\*  
 Celebrity Freight Systems,  
 Inc.\*\*  
 Edwards, Henry Trucking  
 Company\*\*  
 Jones Truck Lines, Inc.\*

Majors Transit, Inc.\*  
 Manning Motor Express,  
 Inc.\*  
 Milan Express Company,  
 Inc.\*  
 Overnite Transportation  
 Company\*  
 Paschall Truck Lines, Inc.\*  
 Roadway Express, Inc.\*  
 Yellow Freight System, Inc.\*

\* Interstate and intrastate.

\*\* Interstate only.

Source: American Motor Carrier Directory, Spring 1986; Kentucky Department of Economic Development, Division of Research and Planning.

### HIGHWAY MILES AND TRUCK TRANSIT TIME IN DAYS FROM MAYFIELD, KENTUCKY, TO SELECTED MARKET CENTERS

City	Highway Miles	Delivery Time TL	City	Highway Miles	Delivery Time TL
Atlanta, Ga.	377	1	Los Angeles, Ca.	1,964	4-5
Baltimore, Md.	808	1-2	Louisville, Ky.	229	1
Birmingham, Ala.	331	1	Nashville, Tenn.	135	1
Chicago, Ill.	386	2	New Orleans, La.	537	1-2
Cincinnati, Ohio	330	1-2	New York, N. Y.	970	3
Cleveland, Ohio	574	2	Pittsburgh, Pa.	610	1-2
Detroit, Mich.	589	2	St. Louis, Mo.	194	1-2
Knoxville, Tenn.	312	1			

Note: Mileage computations are via the best interstate or primary highways, not necessarily the most direct route of travel.

Sources: Rand McNally Road Atlas, 1979. Official Kentucky Mileage Map, 1985.  
 Delivery time - Overnite Transportation Company, Memphis Junction Road,  
 Bowling Green, Kentucky 42101.

## Air

### Local

Mayfield-Graves County Airport\*

Location: 3.5 miles east-northeast of Mayfield

Runways: 1 paved

Length: 4,625 feet

Traffic

Control: Wind sock, Unicom 122.8

Lighting: VASI, REIL, lighted wind sock, rotating beacon

Services: Fuel - 100LL, air charter, flight instruction, hangar, tie-downs,  
plane rental, major and minor A & P repairs, taxi, car rental, telephone, aerial photography, and aerial advertising

Air Freight Service: Chartered air freight services must be arranged.

### Nearest Scheduled Commercial Airline Service\*\*

Barkley Regional Airport

Location: 6 miles west of Paducah, Kentucky;  
27 miles north of Mayfield

Runways: 2 paved

Length: 6,499 feet; 4,000 feet

Traffic

Control: Wind sock, wind tee

Lighting: HIRL, MALSRail, REIL, VASI, MIRL, MITL, rotating beacon

Services: Allegheny Commuter, Tangle,  
Midwest, Ozark, Republic Express; fuel - 100  
hangar, 10 T-hangars, 30 tie-downs; major and minor A & P repairs; APU, charter, flight instruction, plane rental, aerial photography; car rentals, limousine, restaurant, weather information; Part 139 Airport Operating Certificate, airport security

Air Freight Service: Air carriers accept air freight on a space available basis

### **Air Express Service**

Several major companies offer air express services in Kentucky. These companies provide a quick means of shipping small to medium-sized packages expeditiously.

\* The runway at the Mayfield-Graves County Airport was extended to 4,625 feet in 1984.

\*\* Additional airline services are available at Nashville Metropolitan Airport, 141 miles southeast of Mayfield, near Nashville, Tennessee; and at Evansville Dress Regional Airport, 141 miles northeast of Mayfield, near Evansville, Indiana.



## **Water**

Mayfield's location places it within close proximity of three of Kentucky's public riverport facilities. The Paducah-McCracken County Riverport, located 27 miles north of Mayfield, at Paducah, is a general cargo and bulk handling facility at the confluence of the Ohio and Tennessee Rivers. The riverport is situated at the northern terminus of the Tennessee-Tombigbee Waterway.

The Hickman-Fulton County Riverport, located at Hickman, Kentucky, 43 miles southwest of Mayfield, is a general cargo facility located within the Hickman Harbor on the Mississippi River.

The Port Authority of Lyon County operates a public riverport on Barkley Lake, approximately 50 miles northeast of Mayfield, and offers docking, cargo transfer, and cargo storage facilities.

## POWER AND FUEL

### Electricity

Company serving **Mayfield** - Mayfield Electric and Water Systems  
Source of power - Tennessee Valley Authority  
For industrial rates contact:

Mayfield Electric and Water Systems  
301 East Broadway  
Mayfield, Kentucky 42066  
(502) 247-4661

and/or

South Kentucky Industrial  
Development Association, Inc.  
P. O. Box 726  
Hopkinsville, Kentucky 42240  
(502) 885-5392

Company serving **central and southern portions of Graves County** - West  
Kentucky Rural Electric Cooperative Corporation  
Source of power - Tennessee Valley Authority  
For industrial rates contact:

West Kentucky RECC  
1218 West Broadway  
P. O. Box 589  
Mayfield, Kentucky 42066  
(502) 247-1321

and/or

South Kentucky Industrial  
Development Association, Inc.  
P. O. Box 726  
Hopkinsville, Kentucky 42240  
(502) 885-5392

Company serving **northern portion of Graves County** - Jackson Purchase Electric  
Cooperative Corporation  
Source of power - Big Rivers Electric Corporation  
For industrial rates contact:

Jackson Purchase Electric  
Cooperative Corporation  
2900 Irvin Cobb Drive  
P. O. Box 3188  
Paducah, Kentucky 42002-3188  
(502) 442-7321 or (800) 633-4044



## Natural Gas

Company serving **Mayfield** - Western Kentucky Gas Company  
Source of supply - Texas Gas Transmission Corporation  
Size of transmission mains - Two (2) 26-inch, one (1) 30-inch (supplier);  
6-inch (distributor)  
Distribution mains - 2, 3, 4 and 6 inches  
Distribution pressure - 45 to 50 psi  
Btu content - 1,000 per cubic foot  
Specific gravity - 0.60  
For rates and supplies contact:

Western Kentucky Gas Company  
311 West 7th Street  
Owensboro, Kentucky 42301  
(502) 685-8067

## Other Fuels

### Propane

Cal Gas  
U.S. Highway 45 North  
Mayfield, Kentucky 42066

Ohio Valley Gas Company  
(Bulk plant)  
832 West Broadway  
Mayfield, Kentucky 42066

### Fuel oils

Distillate fuel oil -

Ashland Petroleum Company, Inc.  
1000 Paducah Road  
Mayfield, Kentucky 42066

Seay Oil Company  
415 North Eighth Street  
Mayfield, Kentucky 42066

Hadley Oil Company  
Chevron USA Products (bulk plant)  
1372 West Broadway  
Mayfield, Kentucky 42066

Residual fuel oil - Arrangements must be made with the refinery.

Low sulphur content coal - Available in Kentucky.

## WATER AND SEWERAGE

### Public Water Supply

Company serving **Mayfield** - Mayfield Electric and Water Systems  
 301 East Broadway  
 Mayfield, Kentucky 42066  
 (502) 247-4661

Source - Four wells (total pumping capacity - 3,500 gpm)  
 Treatment plant capacity - 3,200,000 gallons per day  
 Average daily consumption - 1,250,000 gallons  
 Peak daily consumption - 1,800,000 gallons  
 Treatment processes - Aeration, chlorination, fluoridation, and softening  
 Storage capacity - 1,240,000 gallons  
 Size lines - 6 inches through 12 inches  
 Average pressure - 62 to 67 psi

### MONTHLY WATER RATES

#### Within the City (All meter sizes)

##### Usage

First	2,000 gallons	\$3.00 (Minimum)
Next	3,000 gallons	1.50 per M gallons
Next	5,000 gallons	1.35 per M gallons
Next	15,000 gallons	1.15 per M gallons
Next	25,000 gallons	.95 per M gallons
Next	50,000 gallons	.90 per M gallons
Next	100,000 gallons	.85 per M gallons
Next	100,000 gallons	.75 per M gallons
Next	200,000 gallons	.70 per M gallons
Next	500,000 gallons	.60 per M gallons
Over	1,000,000 gallons	.50 per M gallons

#### Outside the City (All meter sizes)

Customers outside the city of Mayfield pay 50% above the rates charged within the corporate limits.

#### MINIMUM CHARGES: (Based upon the size of meter used)

	<u>Within the City Limits</u>	<u>Outside the City Limits</u>
Under 1-inch meter	\$ 3.00	\$ 4.50
1-inch to 1 3/4-inch meter	6.40	9.60
2-inch meter	21.60	32.40
3-inch meter	43.20	64.80
4-inch meter	67.50	101.25
6-inch meter	155.25	232.88



FIRE HYDRANT RATE:

\$4.90 per month per hydrant

SPRINKLER SYSTEM RATES:

4-inch connection -- Under 600 Heads \$100.00 per year  
2 cents per head per year for additional heads over 600

6-inch connection -- Under 600 Heads \$130.00 per year  
2 cents per head per year for additional heads over 600

8-inch connection -- Under 600 Heads \$210.00 per year  
2 cents per head per year for additional heads over 600

CONNECTION FEES FOR WATER SERVICE CONNECTIONS FOR LOTS  
NOT PREVIOUSLY HAVING A WATER SERVICE ARE AS FOLLOWS:

	Urban Inside City Limits	Rural Outside City Limits
5/8-inch x 3/4-inch meter	\$110.00	\$165.00
1-inch meter	130.00	195.00
2-inch meter	170.00	255.00

All meters under 1-inch on water main on Fancy Farm Road, west from city limits \$350.00

3-inch and 4-inch or larger meter - Actual cost of installation. If larger meter service is requested on property now being served, the fee for the larger meter less the fee for the smaller meter shall be charged for the new installation.

\$400 for connection to serve fire protection sprinkler system on 6-inch water main.

\$525 for connection to serve fire protection sprinkler system on 8-inch water main.

\$650 for connection to serve fire protection sprinkler system on 10-inch water main.

\$800 for connection to serve fire protection sprinkler system on 12-inch water main.

**Raw Water**

Surface water sources - Mayfield Creek, Obion Creek, West Fork of Clarks River  
Average discharge - West Fork of Clarks River near Brewers, Kentucky -95.5  
cfs (15 years, 1968 to 1983, USGS)  
Expected ground water yield - 500 to 1,000 gpm over entire county

## Sewerage

Company serving **Mayfield** - Mayfield Electric and Water Systems\*  
301 East Broadway  
Mayfield, Kentucky 42066  
(502) 247-4661

Design capacity - 2,300,000 gallons per day

Average daily flow - 1,450,000 gallons

Type of treatment - Secondary

Treatment processes - Grit removal, primary sedimentation, activated sludge, anaerobic digester, sludge drying beds

Treated effluent discharged into - Unnamed tributary of Mayfield Creek

Size of sanitary mains - 6 inches through 21 inches

### MONTHLY SEWER RATES AND CHARGES

100% of the monthly water bill

Sewer connection charge inside the city limits - \$175.00

Sewer connection charge outside the city limits -- \$262.50

The following are surcharges for industrial wastewater discharged into the municipal sewerage system at levels exceeding normal strengths:

BOD in excess of 200 mg/l - For each part per million in excess of 200 mg/l the rates shall be increased by one-fifth of one percent.

pH greater than 7.5 or less than 6.5 - 25 percent surcharge on regular rates.

---

\* Plans are being made to expand the Mayfield sewerage system to provide tertiary treatment of wastewater.

## CLIMATE

### Graves County

#### Temperature

Normal (30-year record)	59.10 degrees
Average annual 1984	58.90 degrees
Record highest, July 1980 (42-year record)	104.00 degrees
Record lowest, January 1982 (42-year record)	-7.00 degrees
Normal heating degree days (30-year record)	3,913
(Heating degree day totals are the sums of negative departures of average daily temperatures from 65 degrees F.)	

#### Precipitation

Normal (30-year record)	47.65 inches
Mean annual snowfall (29-year record)	10.20 inches
Total precipitation 1984	55.82 inches
Mean number days precipitation (.01 inch or more) (42-year record)	112.90
Mean number days thunderstorms (23-year record)	51.50

#### Prevailing Winds (through 1964)

Southwest

#### Relative Humidity (22-year record)

Midnight	N/A
6 a.m.	82 percent
Noon	59 percent
6 p.m.	N/A

Source: U.S. Department of Commerce, Environmental Science Services Administration, Climatological Data, 1984. Station of record: Cairo, Illinois.



## **LOCAL GOVERNMENT**

### **Structure**

Mayfield is governed by a mayor and 12 council members. Graves County is served by a county judge/executive and three commissioners.

### **Planning and Zoning**

City agency - City of Mayfield Planning and Zoning Commission

Zoning enforced - Within the city of Mayfield

Subdivision regulations enforced - Within the city of Mayfield and 3 miles beyond the corporate limits

Local codes enforced - Building and Housing

Mandatory state codes enforced - Kentucky Plumbing Code, National Electric Code, Kentucky Boiler Regulations and Standards, Kentucky Building Code (modeled after BOCA code)

### **Local Fees and Licenses**

The city of Mayfield levies an earnings tax of 1½ percent of gross wages. Business regulatory licenses levied by the city are based on gross receipts for most types of businesses, with minimums ranging from \$10 to \$300 annually. The city's business regulatory license for manufacturing firms is based on employment as follows: 200 or fewer employees - \$250 annually; more than 200 employees, but not over 500 employees - \$500 annually; more than 500 employees, but not over 1,000 employees - \$750 annually; more than 1,000 employees - \$1,000 annually. Mayfield also levies an annual vehicle tax of \$15 for automobiles, and \$17 to \$19 for trucks.

A 3 percent tax is levied on utilities receipts for schools in the Graves County School District. Tax is paid by all consumers of utilities as an add-on to the utilities bills. Exempted are receipts from utilities services that are resold and the receipts from the sale of energy or energy producing fuels that exceed 3 percent of the cost of production in manufacturing, processing, mining or refining.

## State and Local Property Taxes

All property in Kentucky, except items exempted by the state constitution, is taxed by the state. Property which also may be taxed by local jurisdictions includes land and buildings, finished goods inventories, automobiles, trucks, office furniture and office equipment. Local taxing jurisdictions in Kentucky include counties, cities, and school districts.

All property in Kentucky is assessed at 100 percent of fair cash value.

### COMBINED STATE AND LOCAL RATES PER \$100 VALUATION, 1985

	<b><u>Mayfield and Mayfield Independent School District</u></b>	<b><u>Mayfield and Graves County School District</u></b>	<b><u>Unincorporated Graves County</u></b>
Land and Buildings	\$ 1.4460	\$ 0.8970	\$ 0.5240
Manufacturing Machinery	0.150	0.150	0.150
Pollution Control Equipment	0.150	0.150	0.150
Inventories			
Raw materials	0.001*	0.001*	0.001*
Goods in Process	0.001*	0.001*	0.001*
Finished Goods	1.2352*	0.6862*	0.3132*
Automobiles and Trucks	1.6842	1.1352	0.7622
Other Tangible Personal Property	1.6842	1.1352	0.7622
Intangibles (Accounts receivable, money in hand, stock, notes, bonds)	0.250**	0.250**	0.250**
Goods Stored in Public Warehouses in Transit Status	0.001*	0.001*	0.001*
Private Leaseholds in Industrial Revenue Bond Financed Facilities	0.015	0.015	0.015

Three (3) special taxing districts in Graves County levy property taxes on real estate in their district boundaries at rates ranging from \$0.10 to \$0.20 per \$100 valuation.

\* Includes 1986 state rate.

\*\* Accounts receivable are taxed at 85 percent of face value, for an effective rate of \$0.2125 per \$100 valuation.

## Safety

Police	Mayfield	Graves County
Total staff	30	5 full-time 2 part-time
Radio-patrol cars	7	6

## Fire\*

Insurance Services Office, Public Protection Classification	4**	***
Full-time staff	40	-

## Rescue Service

Mayfield-Graves County Rescue Squad

## Refuse Collection and Disposal

Private companies provide refuse collection and disposal service in Mayfield and Graves County.

---

\* Includes copyrighted material of ISO Commercial Risk Services, Inc., with its permission.

\*\* The city of Mayfield has applied for a fire insurance rating of 3.

\*\*\* The city of Wingo has an insurance classification of 6. The Cuba, Melber, Sedalia, and Wingo Rural fire districts are class 9 within 5 road miles of a fire station. Property located within the Fancy Farm fire district and within 3 road miles of a fire station is rated class 8 if within 1,000 feet of a fire hydrant, and class 9 if more than 1,000 feet from a fire hydrant. Property located within the Symsonia fire district and within 5 road miles of a fire station is rated class 7 if less than 1,000 feet from a fire hydrant and class 9 if more than 1,000 feet from a fire hydrant. All remaining property in unincorporated Graves County has a class 10 rating.



## EDUCATION

### Public Schools

	Mayfield Independent*	Graves County**
Total Enrollment (Spring, 1986)	1,639	3,919
Kindergarten	103	282
Elementary	605	2,459
Middle School	408	-
High School	523	1,178
Accreditation	Southern Association of Colleges and Schools	
Pupil-Teacher Ratio (1984-85)	18-1	21-1
Percent High School Graduates to College (1984-85)	57.4	36.6
Expenditures Per Pupil (1984-85)	\$1,953.51	\$1,757.21

### Nonpublic Schools

<u>School</u>	<u>Enrollment</u>	<u>Grades</u>
St. Joseph	105	K-8
Charles L. Shedd Research Academy	40	***

\* A new middle school for the Mayfield Independent School System is scheduled to be completed in 1986.

\*\* The Graves County School System is constructing a new central high school complex. The academic section was opened during the 1985-86 school year, and the gymnasium is scheduled for completion during 1986.

\*\*\* The Charles L. Shedd Research Academy is a special education institution serving dyslexic children.

### Area Colleges and Universities

<u>Name</u>	<u>Location (Miles distant)</u>	<u>Enrollment (Fall, 1985)</u>	<u>Highest Degree Conferred</u>
Mid-Continent Baptist Bible College	Mayfield, Kentucky	200	Baccalaureate*
Murray State University	Murray, Kentucky (21)	7,294	Masters, Specialist**
Paducah Community College	Paducah, Kentucky (27)	1,682	Associate
University of Tennessee, at Martin	Martin, Tennessee (36)	5,064	Masters

### Vocational Schools

The Kentucky Department of Education operates both the state vocational-technical schools and the area vocational education centers. The state vocational-technical schools are post-secondary institutions. The area vocational education centers are designed to supplement the curriculum of high school students. Both the state vocational-technical schools and the area vocational education centers offer evening courses to enable working adults to upgrade current job skills.

Arrangements can be made to provide training in the specific production skills required by an industrial plant. Instruction may be conducted either in the vocational school or in the industrial plant, depending upon the desired arrangement and the availability of special equipment.

(Continued)

\* Bachelor of Arts in Theology only. Spring 1986 enrollment.

\*\* Joint doctoral degree programs are offered in cooperation with the University of Kentucky, Lexington. The degrees are issued by the University of Kentucky.

### Nearest State School

West Kentucky State Vocational-Technical School  
Paducah, 27 miles distant

#### Business & Office

Accounting/Jr. Management  
Clerical  
Court & Conference Reporting  
Medical Secretary  
Retailing  
Secretarial  
Tailoring  
Word Processing

#### Health Occupations

Dental Assistant  
Dental Lab Technology Assistant  
Dental Office Manager  
Expanded Duties Dental Auxiliary  
Practical Nursing  
Medical Assisting  
Radiology  
Respiratory Therapy  
Surgical Technician

#### Personal Services Occupations

Barbering  
Cosmetology

#### Consumer & Home Economics

Dietary Department

#### Industrial Education

Air Conditioning & Refrigeration  
Architectural Drafting  
Auto Body Repair  
Auto Mechanics  
Carpentry  
Civil & Highway Technology  
Diesel Mechanics  
Electricity  
Electronics  
Graphic Arts  
Masonry  
Machine Shop  
Mechanical Shop  
Mechanical Drafting  
Welding

#### Special Vocational Programs

E.M.T. Training  
Paramedic Training  
First Aid & Safety  
Fireman Training

Learning Resource Center

### Nearest Area Education Center

Mayfield Area Vocational Education Center  
Mayfield

#### Agriculture

Adult Farmer

#### Business & Office

Accounting Management  
Clerical  
Secretarial

#### Health Occupations

Health Services

#### Industrial Education

Auto Body Repair  
Auto Mechanics  
Electricity  
Machine Shop  
Welding



## HEALTH

### Local Medical Personnel

Physicians - 28

Dentists - 10

### Hospitals

<u>General Hospital</u>	<u>Location</u>	<u>Beds</u>
Community Hospital, Inc.	Mayfield	116

Medical staff - 25 doctors, 39 registered nurses, and 33 licensed practical nurses

### Other Medical Facilities

Graves County Health Department (a public health facility)

J. U. Kevil Mental Health and Mental Retardation Center

Mayfield Clinic, Inc.

Morgan-Haugh Clinic

### Ambulance Service

Name - Mayfield Fire Department

Staff - 24 emergency medical technicians

## OTHER LOCAL FACILITIES

### Communications

Telephone -	Mayfield - South Central Bell Telephone Company; Graves County - West Kentucky Telephone Cooperative Corporation
Telegraph -	Western Union Toll-free number, 1-800-325-6000
Newspaper - Daily, except Sunday, and circulation -	The Mayfield Messenger  7,600*
Radio -	WNGO-AM; WYMC-AM; WXID-FM
Television - Airwave reception from -	Local cable access - Channel 14  Paducah, Kentucky; Harrisburg, Illinois; Cape Girardeau, Missouri
Cable service -	Mayfield-Mayfield Cablevision; Graves County-Galaxy Cablevision, Inc.
Educational television -	The Kentucky Educational Television (K.E.T.) network is available statewide

### Library Services

- Public library - Graves County Library (Mayfield)  
Size collection - 50,000 volumes  
Circulation, 1984-85 - 85,000 library, 52,287 bookmobile
- College library - Anne Parrish Markham Library at Mid-Continent Baptist Bible  
College  
Size collection - 30,000 volumes  
Special collections - Rare books

---

\* The Mayfield Messenger also publishes a special weekly edition which has a circulation of 8,500.

## Religious Institutions

Denominations -	Assembly of God	Full Gospel
	Baptist	Latter Day Saints
	Christian	Methodist
	Christian Scientist	Pentecostal
	Church of Christ	Presbyterian
	Church of God	Roman Catholic
	Church of Nazarene	Seventh Day Adventist
	Deliverance	Tabernacle Church/
	Episcopal	Non-Denominational

Nearest Synagogues - Paducah, 27 miles north of Mayfield  
 Congregations - Temple Israel (reform)

## Financial Institutions

<u>Banks</u>	<u>Assets</u>	<u>Deposits</u>	<u>Statement Date</u>
The Exchange Bank	\$ 42,006,298.05	\$ 36,776,627.18	12/31/85
The First National Bank of Mayfield	47,141,102.00	40,241,797.00	12/31/85
Liberty Savings Bank	86,756,999.00	77,393,506.00	12/31/85

<u>Savings and Loan Associations</u>	<u>Assets</u>	<u>Savings Accounts</u>	<u>Statement Date</u>
First Federal Savings and Loan Association	\$ 93,060,899.59	\$ 90,697,026.43	12/31/85
Lincoln Federal Savings and Loan Association	595,888,611.00	531,144,668.00	12/31/84

## Hotels and Motels

Total number - 4  
 Total rooms - 138



## RECREATION

### Local

Public recreation facilities include four parks, one mini-park, nature trails, five playgrounds, ten tennis courts, seven baseball diamonds, an adult softball field, football stadium, fairgrounds, and a public swimming complex. The Mayfield-Graves County Park Board provides a year-round supervised recreation program.

Private recreation facilities include two country clubs with 18-hole golf courses and swimming pools, a movie theater, a drive-in theater, a bowling facility, a skating rink, and a swim and racquet club.

Annual recreational activities and events in Mayfield are numerous and varied. Mayfest, held during the first week in May, is a week-long celebration of spring. Events include educational, artistic, and athletic contests; arts and crafts; a flea market; a parade; and fireworks.

The Purchase District Fair is held annually during the first week of June at the newly renovated fairgrounds. A vast array of events, a large midway, and harness racing are featured. Other events held at the fairgrounds include the National Truck Pull, held each summer and fall; the Trade-Fest, a three-day gathering of local merchants selling merchandise at discounts (also held each spring and fall); and Trade Day, a large flea market held each Monday.

The Mayfield-Graves County Christmas Parade takes place on a Saturday in November to begin the annual Christmas shopping season. The event is sponsored by the local Jaycees, and always has over 100 entries. The day is also used to turn on the downtown Christmas lights, with Christmas carols, stories and refreshments in the downtown mini-park.

The Purchase Players is a local community theatre group working to expand the availability of theatre arts in the area. A children's theatre group is also active in Mayfield.

### Area (Within 45 miles)

**Murray, Kentucky**, located 21 miles southeast of Mayfield, is home to Murray State University, the host for a variety of cultural and athletic events and activities. Murray State University is also home to the National Museum of Boy Scouts of America, featuring exhibits on scouting from 1910 to the present.

**Paducah** is located 27 miles north of Mayfield. As Kentucky's seventh largest city, Paducah provides many recreational opportunities. Points of interest include the Alben W. Barkley Monument, Barkley Museum, and many other attractions.

A Confederate cannon, a network of earthen trenches, and a massive chain and anchor give the feeling of being transported back to the Civil War. All of this and more can be discovered at **Columbus-Belmont Battlefield State Park** at Columbus, 31 miles west of Mayfield. Other attractions at the 156-acre park include a 38-site campground, a gift shop, a historical hiking trail, miniature golf, a picnic area, and a playground. A visit to the museum at the park, which is in a building that served as a Civil War infirmary, offers a display of Civil War relics and early Indian artifacts and an audiovisual slide program on the Battle of Belmont.

**Kentucky Dam Village State Resort Park**, located 33 miles northeast of Mayfield near Gilbertsville, is one of the largest and most popular vacation resorts in Kentucky. A modern lodge with 72 rooms, six different cottage types, and a 225-site campground make up the accommodations. There is also a dining room overlooking Kentucky Lake, a coffee shop, a snack bar, two gift shops, a meeting room, an activities center, and a recreation room. Recreational activities to choose from include boating and fishing at the largest docking facility in the Kentucky parks system, golf at the 18-hole Village Green Course, fishing, hiking, horseback riding, picnicking, swimming at the lodge pool or off the sand beach, and tennis.

**The Land Between the Lakes**, located on a 170,000-acre wooded peninsula, is an outdoor recreational and conservational education center. Camping, swimming, fishing, boating, hiking, a buffalo herd on a 250-acre range, an Environmental Education Center for school study groups, an educational farm and a central station with films and displays are among the attractions. Kentucky Lake and Lake Barkley are among the top fishing and water sport recreation areas in the southeastern United States. The Land Between the Lakes area is 34 miles east of Mayfield.

Charm and serenity exemplify **Kenlake State Resort Park** which is located on Kentucky Lake, 35 miles east of Mayfield. The park offers hotel and cottage accommodations and an efficient camping site. Other facilities include a 9-hole golf course, pool and lake swimming, horseback riding, hiking trails, fishing, boating, picnicking, planned recreation, and one of the finest tennis complexes in the area.

**Lake Barkley State Resort Park**, 41 miles east of Mayfield near Cadiz, is located on an embayment of Lake Barkley. The magnificent lodge includes 130 rooms, five suites, 13 cottages, a dining room, a coffee shop, a gift shop, two meeting rooms, and a recreation room. An activities center with a capacity for 1,000, a complete fitness center, and an 80-site campground are located near the lodge. A lodge pool, a beach and a bathhouse, an 18-hole golf course, tennis courts, a riding stable, a trapshooting range, a basketball court, hiking trails, playgrounds, and a picnic area round out the recreational facilities. The marina near the lodge has everything for the "boat lover": covered and open slips, a launching ramp, and rentals for fishing boats, skiing boats, and pleasure ride pontoons. An airport is available also.



## COMMUNITY IMPROVEMENTS

### Recent

Mayfield was chosen as a "Kentucky Certified City" in 1985, marking its third consecutive year of certification. The award is based upon achievement in economic and community development. The Certified Cities Program is sponsored by the Kentucky Chamber of Commerce.

During 1984, two companies announced that new manufacturing facilities were being located at Mayfield. In 1985, three companies announced plans to expand their current manufacturing facilities at Mayfield.

The runway at Mayfield-Graves County Airport was extended to 4,625 feet in length in 1984.

The city's industrial park was improved recently with the addition of new roadways and paving, curbing, sewers, and some grading.

A new connector street between Kentucky Route 303 and Kentucky Route 121 was constructed recently.

The academic section of the new Graves County High School was completed recently. Work is continuing on the school's physical education and gymnasium complex. Cost of the project is estimated at \$10,000,000.

The First National Bank of Mayfield recently opened a new drive-in banking facility.

A tourist commission was formed in Mayfield in 1985.

### Under Way

Kentucky Highway 121 at Mayfield is being widened to three lanes from College Street south to Kentucky Route 97.

A new middle school for the Mayfield Independent School System is scheduled for completion during the latter half of 1986.

A renovation project is under way at the Hall Hotel building in Mayfield. The former hotel is being converted for use as offices, a restaurant and retail spaces.

A downtown redevelopment project is currently under way in Mayfield. The project includes facade improvements and addition of decorative awnings to store fronts, conversion of existing buildings to boutiques, painting and landscaping improvements.

Another renovation project under way involves the conversion of the former Legion Theatre into an arts center for the city.



As part of an extensive renovation project at the Mayfield-Graves County Fairgrounds, a new grandstand is being constructed, and a new entrance with restrooms is being added.

Lighting improvements are being made at the ball fields of the Mayfield-Graves County Park.

#### **Planned**

A project to add tertiary treatment capability to Mayfield's wastewater treatment plant is planned. Construction is scheduled to begin in early 1987.

Tentative plans are being made for the construction of a new industrial spec building at the city's industrial park.

Construction of a bypass around the city's south and east sides is tentatively planned.

A new main office facility is being constructed for the Exchange Bank in Mayfield.



Kentucky Commerce Cabinet  
Department of Economic Development  
Capital Plaza Tower  
Frankfort, Kentucky 40601  
(502) 564-7140