

1970

Industrial Resources: Hardin County

Kentucky Library Research Collections
Western Kentucky University, spcol@wku.edu

Follow this and additional works at: https://digitalcommons.wku.edu/hardin_cty

 Part of the [Business Administration, Management, and Operations Commons](#), [Growth and Development Commons](#), and the [Infrastructure Commons](#)

Recommended Citation

Kentucky Library Research Collections, "Industrial Resources: Hardin County" (1970). *Hardin County*. Paper 5.
https://digitalcommons.wku.edu/hardin_cty/5

This Report is brought to you for free and open access by TopSCHOLAR®. It has been accepted for inclusion in Hardin County by an authorized administrator of TopSCHOLAR®. For more information, please contact topscholar@wku.edu.

INDUSTRIAL RESOURCES

HARDIN COUNTY

KENTUCKY



RADCLIFF - VINE GROVE - WEST POINT
INDUSTRIAL SITES

1970

RADCLIFF INDUSTRIAL SITES

For additional information concerning the following sites, contact Robert Shipp, Radcliff Chamber of Commerce, Radcliff, Kentucky; or the Kentucky Department of Commerce, Frankfort, Kentucky.

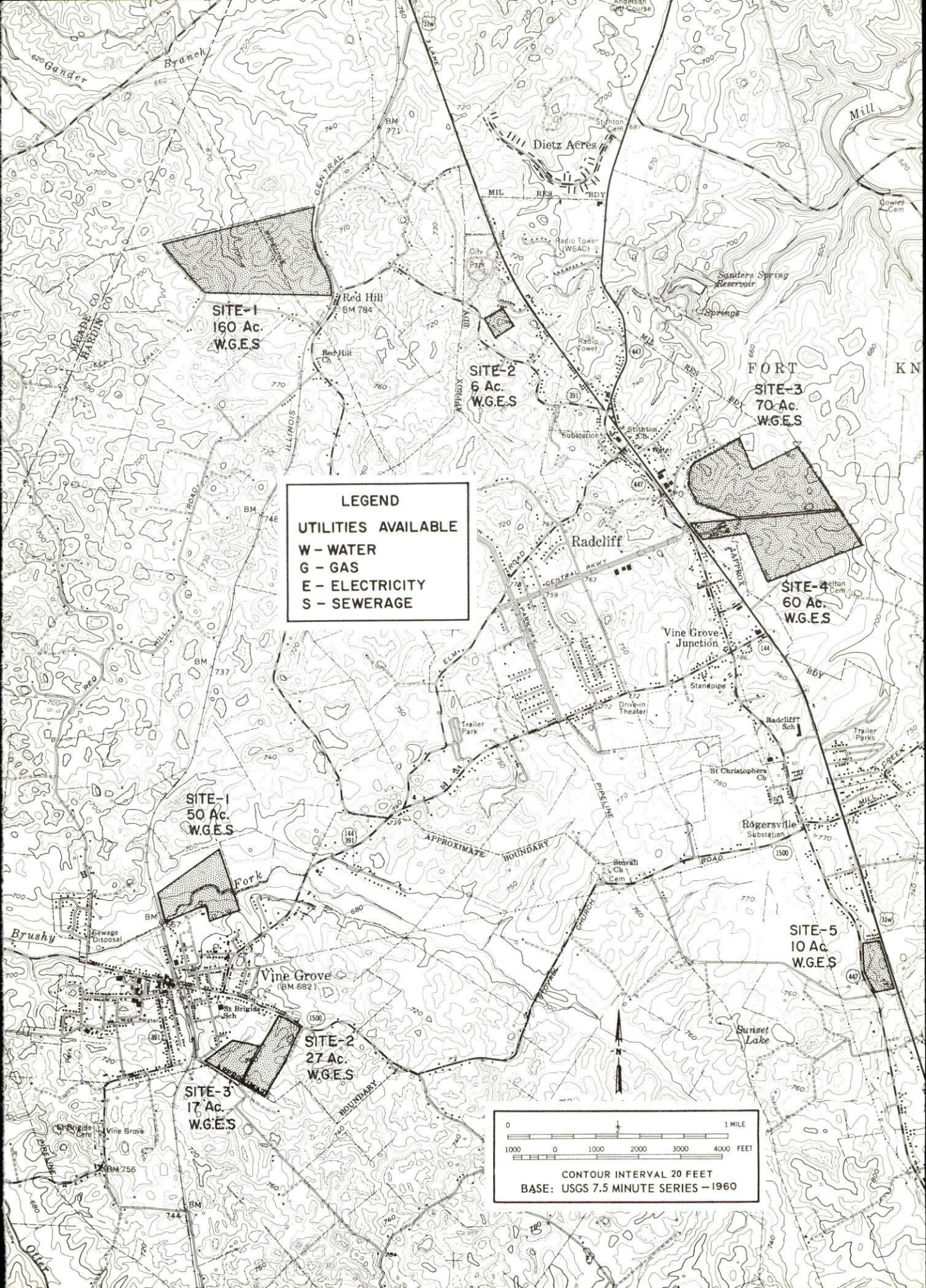
SITE #1: ACREAGE AND TOPOGRAPHY: 160 acres, gently rolling
LOCATION: Northwest of City of Radcliff
HIGHWAY ACCESS: 31-W east of site; Kentucky 391 at southeast corner
RAILROADS: Illinois Central on east side of site
WATER: Hardin County Water District
GAS: Louisville Gas & Electric Co.
ELECTRICITY: Kentucky Utilities Company or Nolin RECC
SEWERAGE: Radcliff Sewerage System
OPTIONED BY: Radcliff Industrial Foundation

SITE #2: ACREAGE AND TOPOGRAPHY: 6 acres, level
LOCATION: Northwest of City of Radcliff
ZONING: Light industrial
HIGHWAY ACCESS: Globe Street on south side; 31-W on east side; Kentucky 391 on west side
RAILROADS: Not rail served
WATER: Hardin County Water District
SIZE LINE: 8-inch, 1,000 feet from site
GAS: Louisville Gas & Electric Co.
ELECTRICITY: Kentucky Utilities Company
SEWERAGE: Radcliff Sewerage System
OPTIONED BY: Radcliff Industrial Foundation

SITE #3: ACREAGE AND TOPOGRAPHY: 70 acres, rolling
LOCATION: Southeast of Radcliff
HIGHWAY ACCESS: Paved access road from US 31-W, unimproved road on site
RAILROADS: Not rail served
WATER: Hardin County Water District
SIZE LINE: 6-inch
GAS: Louisville Gas & Electric Co.
ELECTRICITY: Kentucky Utilities Company
SEWERAGE: Radcliff Sewerage System
OWNERSHIP: Privately owned

SITE #4: ACREAGE AND TOPOGRAPHY: 60 acres, level
LOCATION: Southeast of Radcliff
HIGHWAY ACCESS: Access to site would be from US 31-W.
RAILROADS: Not rail served
WATER: Hardin County Water District
SIZE LINE: 6-inch
GAS: Louisville Gas & Electric Co.; line 1,200 feet from site
ELECTRICITY: Kentucky Utilities Company
SEWERAGE: Radcliff Sewerage System
OPTIONED BY: Radcliff Industrial Foundation

SITE #5: ACREAGE AND TOPOGRAPHY: 10 acres, level
LOCATION: South of Radcliff
ZONING: Light industrial
HIGHWAY ACCESS: US 31-W on east; Kentucky 447 on west side of site
RAILROADS: Not rail served
WATER: Hardin County Water District
SIZE LINE: 8-inch
GAS: Louisville Gas & Electric Co.
ELECTRICITY: Kentucky Utilities Company
SEWERAGE: Radcliff Sewerage System
OWNERSHIP: Privately owned



SITE-1
160 Ac.
W.G.E.S

SITE-2
6 Ac.
W.G.E.S

FORT
SITE-3
70 Ac.
W.G.E.S

SITE-4
60 Ac.
W.G.E.S

SITE-1
50 Ac.
W.G.E.S

SITE-2
27 Ac.
W.G.E.S

SITE-3
17 Ac.
W.G.E.S

SITE-5
10 Ac.
W.G.E.S

LEGEND
UTILITIES AVAILABLE
W - WATER
G - GAS
E - ELECTRICITY
S - SEWERAGE

0 1000 0 1000 2000 3000 4000 FEET 1 MILE
CONTOUR INTERVAL 20 FEET
BASE: USGS 7.5 MINUTE SERIES - 1960

VINE GROVE INDUSTRIAL SITES

For additional information concerning the following sites, contact David Lovell, Kentucky Utilities Company, Radcliff, Kentucky; or the Kentucky Department of Commerce, Frankfort, Kentucky.

SITE #1: ACREAGE AND TOPOGRAPHY: 50 acres, level
LOCATION: Northwest of City of Vine Grove
HIGHWAY ACCESS: Gravel city street leads to
Kentucky 144
RAILROADS: Illinois Central Railroad
WATER: Vine Grove Water and Sewer Co.
SIZE LINE: 6-inch line, 500 feet from site
GAS: Louisville Gas & Electric Co.
SIZE LINE: 2 and 10 inches
ELECTRICITY: Kentucky Utilities Company
SEWERAGE: Municipal, 8-inch main, 500 feet from site
OWNERSHIP: Privately owned

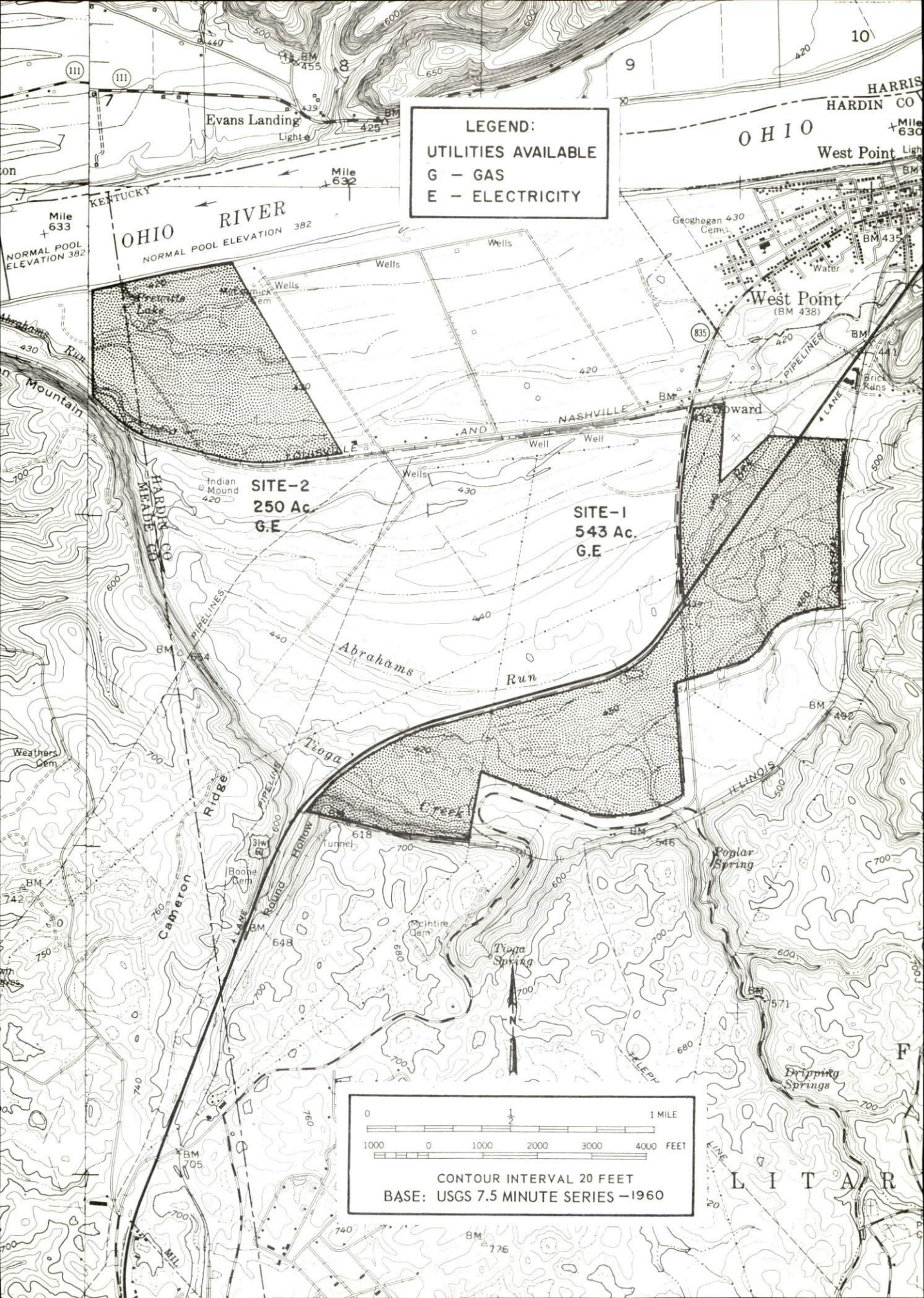
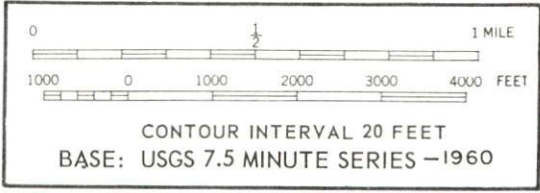
SITE #2: ACREAGE AND TOPOGRAPHY: 27 acres, rolling
LOCATION: Southeast of City of Vine Grove
HIGHWAY ACCESS: Kentucky 1500
RAILROADS: Not rail served
WATER: Vine Grove Water and Sewer Co.
SIZE LINE: 2-inch, 200 feet from site
GAS: Louisville Gas & Electric Co.
SIZE LINE: 2-inch
ELECTRICITY: Kentucky Utilities Company
SEWERAGE: Municipal, 8-inch main
OPTIONED BY: Civic Club

SITE #3: ACREAGE AND TOPOGRAPHY: 17 acres, level
LOCATION: South of City of Vine Grove
HIGHWAY ACCESS: City street to Kentucky 1500
RAILROADS: Not rail served
WATER: Vine Grove Water and Sewer Co.
SIZE LINE: 6-inch
GAS: Louisville Gas & Electric Co.
SIZE LINE: 2-inch
ELECTRICITY: Kentucky Utilities Company
SEWERAGE: Municipal, 8-inch main
OPTIONED BY: Civic Club

LEGEND:
UTILITIES AVAILABLE
 G - GAS
 E - ELECTRICITY

SITE-2
 250 Ac.
 G.E.

SITE-1
 543 Ac.
 G.E.



WEST POINT INDUSTRIAL SITES

For additional information concerning the following sites, contact Mr. W. E. Roberts, Chairman, Industrial Committee, West Point, Kentucky 40177, or the Kentucky Department of Commerce, Frankfort, Kentucky 40601.

SITE #1: ACREAGE AND TOPOGRAPHY: 543 acres, level to hilly
LOCATION: South to southwest of West Point
HIGHWAY ACCESS: U. S. 31-W and Kentucky 835
RAILROADS: Illinois Central Railroad borders site on east;
Louisville & Nashville Railroad borders site on north.
WATER: West Point Water Works
GAS: Louisville Gas and Electric Company
ELECTRICITY: Louisville Gas and Electric Company
SEWERAGE: Municipal
OWNERSHIP: Private

SITE #2: ACREAGE AND TOPOGRAPHY: 250 acres, level
LOCATION: West of West Point
HIGHWAY ACCESS: County road from Kentucky 835
RAILROADS: Louisville & Nashville Railroad borders site on
the south and west.
WATER: Wells
GAS: Louisville Gas and Electric Company
ELECTRICITY: Louisville Gas and Electric Company
SEWERAGE: Package plant necessary
OWNERSHIP: Private

ELIZABETHTOWN INDUSTRIAL SITES

1970

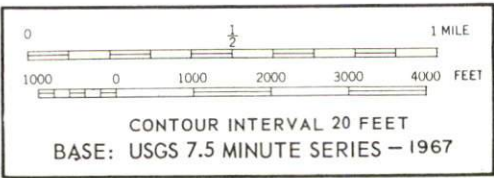
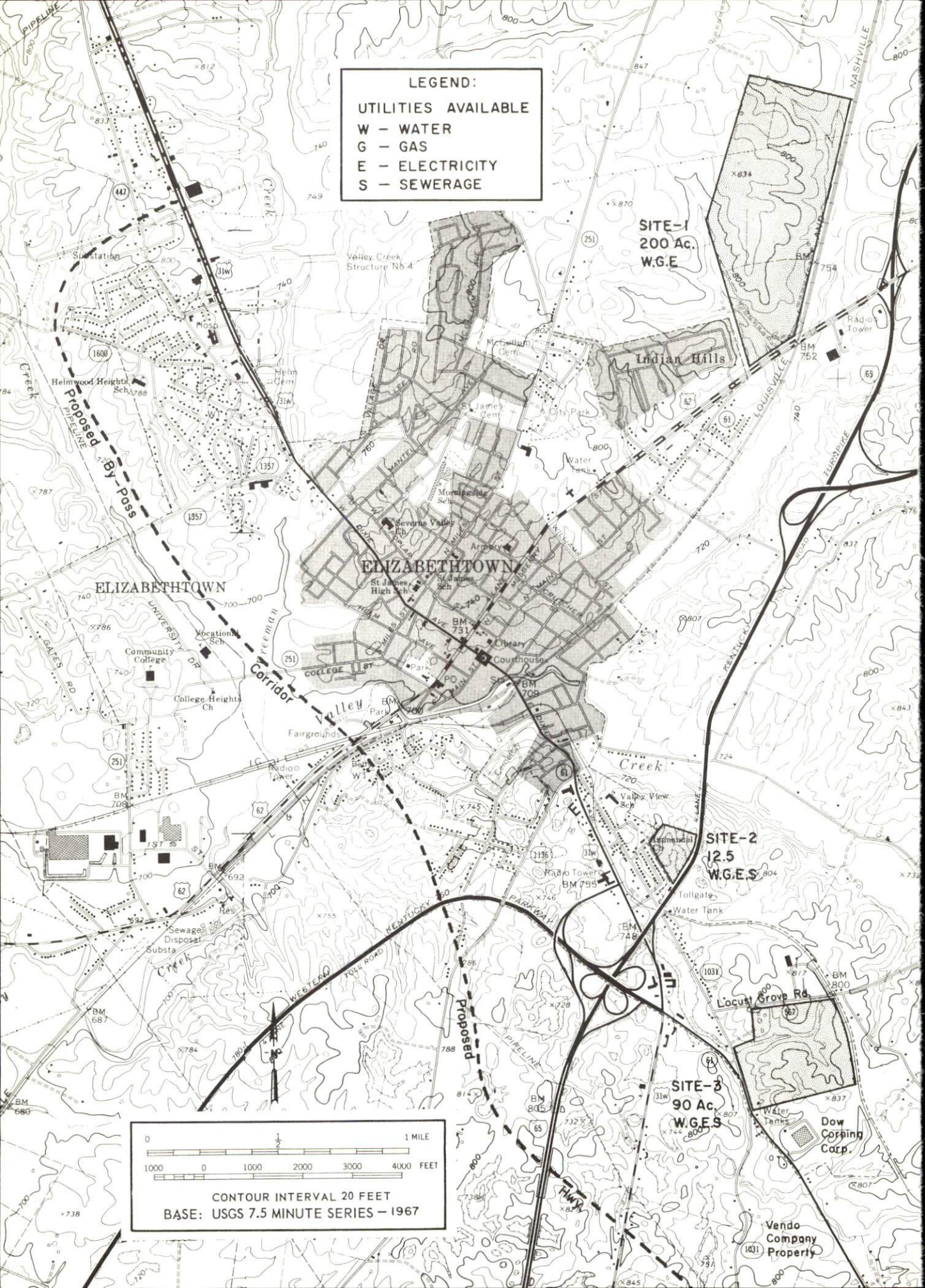
For additional information concerning the Elizabethtown industrial sites, contact Mr. Lawrence Hughes, Elizabethtown Industrial Development Foundation, Inc., or the Kentucky Department of Commerce, Frankfort, Kentucky.

SITE #1: ACREAGE AND TOPOGRAPHY: 200 acres, level to gently rolling
LOCATION: Northeast of city; southern boundary of site within city limits
ZONING: Agricultural
HIGHWAY ACCESS: Site fronts on U. S. 62
RAILROADS: Louisville & Nashville Railroad borders site on the east
WATER: Elizabethtown Water & Gas Company
SIZE LINE: 8-inch line out Shepherdsville Road, approximately 3,000 feet from west boundary of site
GAS: Elizabethtown Water & Gas Company
SIZE LINE: 8-inch main along southwest boundary of site
ELECTRICITY: Nolin RECC
SEWERAGE: Package plant necessary
OWNERSHIP: Privately owned

SITE #2: ACREAGE AND TOPOGRAPHY: 12.5 acres, rolling
LOCATION: Within southeast city limits
ZONING: Industrial
HIGHWAY ACCESS: Paved access road to site from U. S. 31-W; approximately three-fourth mile from interchange on I-65
RAILROADS: Not rail served
WATER: Elizabethtown Water & Gas Company
SIZE LINE: 8-inch main approximately 600 feet from site
GAS: Elizabethtown Water & Gas Company, 3-inch main 400 feet from site
ELECTRICITY: Kentucky Utilities Company
SEWERAGE: Municipal sewerage system; 8-inch main approximately 500 feet from site
OWNERSHIP: Privately owned

SITE #3: ACREAGE AND TOPOGRAPHY: 90 acres, level to rolling
LOCATION: Within southeast city limits
ZONING: Industrial
HIGHWAY ACCESS: Site fronts Kentucky 1031 and Kentucky 61
RAILROADS: Illinois Central Railroad borders site on the east
WATER: Elizabethtown Water & Gas Company
SIZE LINE: 8-inch line fronts site
GAS: Elizabethtown Water & Gas Company
SIZE LINE: 3-inch main fronts site; 8-inch main along Locust Grove Road
ELECTRICITY: Kentucky Utilities Company
SEWERAGE: Municipal sewerage system; 8-inch main fronts site
OWNERSHIP: Elizabethtown Industrial Development Foundation, Inc.

LEGEND:
UTILITIES AVAILABLE
W - WATER
G - GAS
E - ELECTRICITY
S - SEWERAGE



SITE-1
200 AC.
W.G.E.

SITE-2
12.5
W.G.E.S

SITE-3
90 Ac.
W.G.E.S

Dow Corning Corp.

Vendo Company Property

ELIZABETHTOWN

ELIZABETHTOWN

Proposed By-pass

Proposed Pipeline

Freeman Valley Corridor

Radio Tower

Indian Hills

Creek

Locust Grove Rd.

Vendo Company Property

Valley Creek Structure No. 4

Helmwood Heights Sch. 798

Community College

College Heights Ch.

St. James High Sch.

St. James Sch.

St. James Sch.

St. James Sch.

St. James Sch.

St. James Sch.

St. James Sch.

St. James Sch.

St. James Sch.

St. James Sch.

St. James Sch.

St. James Sch.

St. James Sch.

St. James Sch.

St. James Sch.

St. James Sch.

St. James Sch.

St. James Sch.

St. James Sch.

St. James Sch.

St. James Sch.

St. James Sch.

St. James Sch.

St. James Sch.

St. James Sch.

St. James Sch.

St. James Sch.

St. James Sch.

St. James Sch.

St. James Sch.

St. James Sch.

St. James Sch.

St. James Sch.

St. James Sch.

LEGEND:
UTILITIES AVAILABLE
W - WATER
E - ELECTRICITY

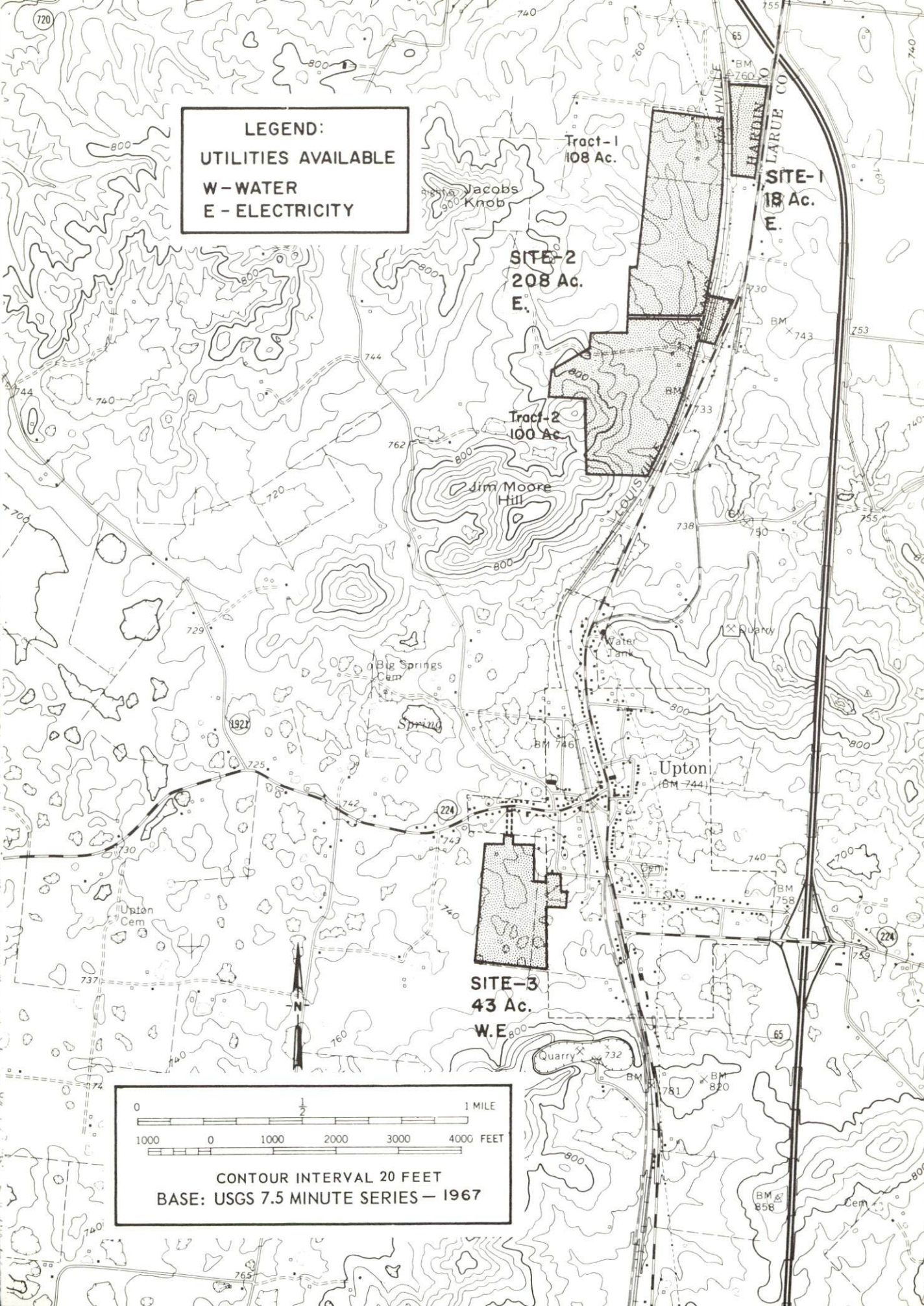
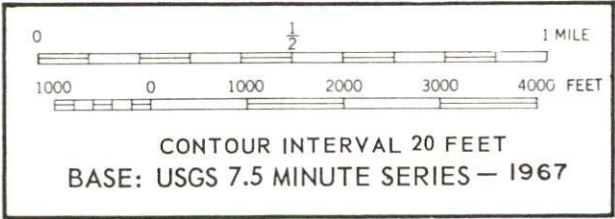
Tract-1
108 Ac.

SITE-2
208 Ac.
E.

Tract-2
100 Ac.

SITE-1
18 Ac.
E.

SITE-3
43 Ac.
W.E.



UPTON INDUSTRIAL SITES

For additional information concerning the following sites, contact Charles T. Wilcox, Chairman, Upton Industrial Land Development Committee, Upton, Kentucky, or the Kentucky Department of Commerce, Frankfort, Kentucky.

SITE # 1: ACREAGE AND TOPOGRAPHY: 18 acres, level
LOCATION: 1 mile north of Upton city limits
HIGHWAY ACCESS: U. S. 31-W borders the site
on the east
RAILROADS: Louisville & Nashville Railroad borders
the site on the west
WATER: Upton Water Company
SIZE LINE: 8-inch line approximately 1 mile from site
GAS: Natural gas not presently available
ELECTRICITY: Kentucky Utilities Company
SEWERAGE: Package plant necessary
OPTIONED BY: Upton Industrial Land Development
Committee

SITE # 2: ACREAGE AND TOPOGRAPHY: 208 acres, level to
rolling
LOCATION: 1 mile north of city limits
HIGHWAY ACCESS: Gravel access road from U. S. 31-W
RAILROADS: Louisville & Nashville Railroad borders
site on the east
WATER: Upton Water Company
SIZE LINE: 8-inch line approximately one-fourth mile
from southern boundary of site
GAS: Natural gas not presently available
ELECTRICITY: Kentucky Utilities Company
SEWERAGE: Package plant necessary
OPTIONED BY: Upton Industrial Land Development
Committee

SITE # 3: ACREAGE AND TOPOGRAPHY: 43 acres, level to
gently rolling
LOCATION: Southwestern section of city
HIGHWAY ACCESS: Two blocks from U. S. 31-W and
Kentucky 224; paved access road onto northeast
corner of site; unimproved road from Kentucky 224.
RAILROADS: Not rail served
WATER: Upton Water Company
SIZE LINE: 8-inch line approximately 550 feet
GAS: Natural gas not presently available
ELECTRICITY: Kentucky Utilities Company
SEWERAGE: Package plant necessary
OPTIONED BY: Upton Industrial Land Development
Committee

INDUSTRIAL RESOURCES
HARDIN COUNTY, KENTUCKY

Prepared by

The Kentucky Department of Commerce

in cooperation with

The Elizabethtown-Hardin County Chamber of Commerce
The West Point Chamber of Commerce
The Radcliff Chamber of Commerce
The Cities of Upton and Vine Grove

1970

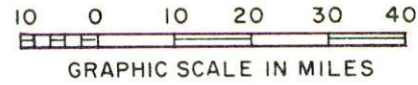
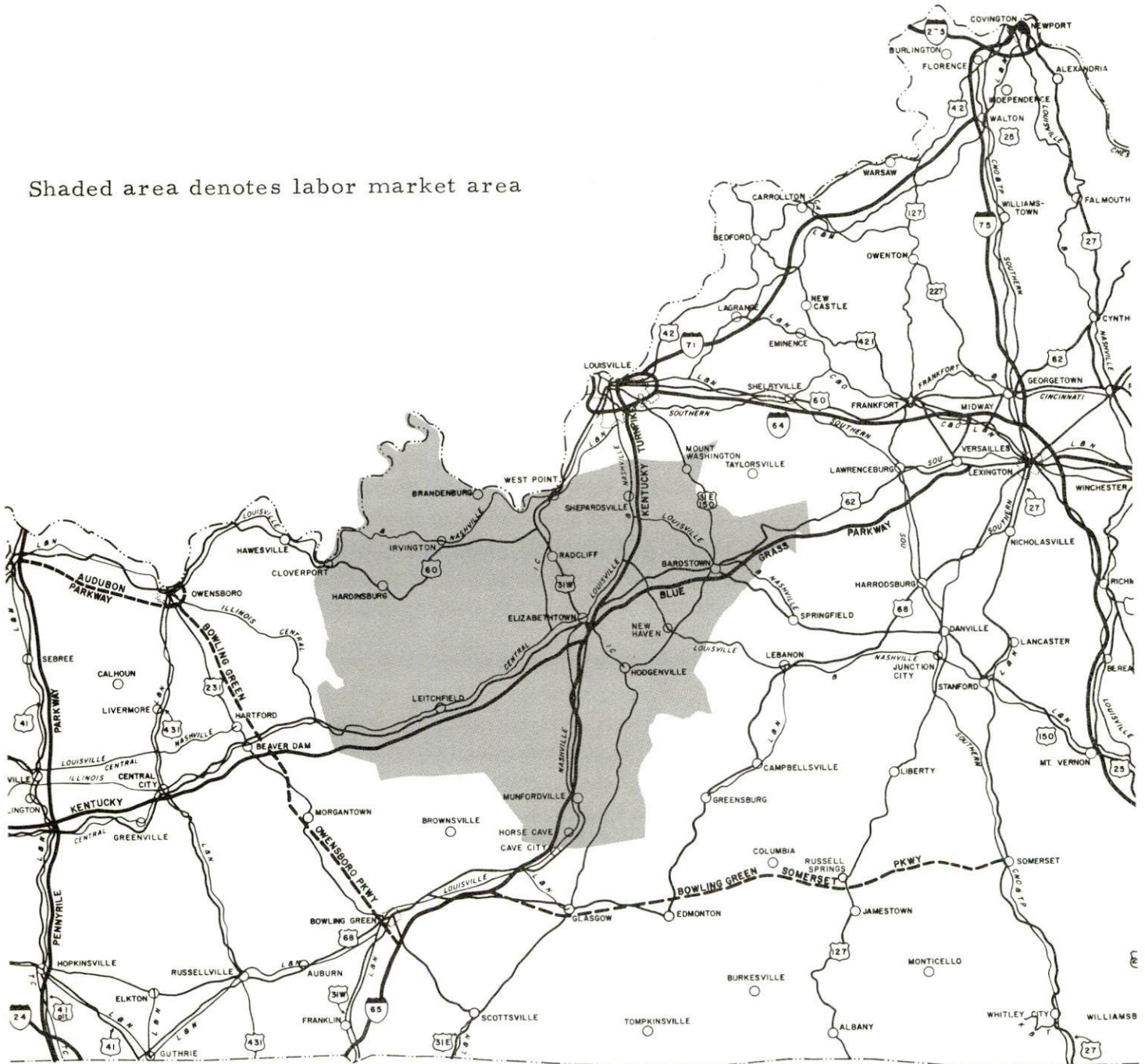
TABLE OF CONTENTS

<u>Chapter</u>	<u>Page</u>
INDUSTRIAL SITES	i
HARDIN COUNTY, KENTUCKY - A RESOURCE PROFILE.	1
THE LABOR MARKET.	5
Population Trends	5
General Employment Characteristics.	5
Manufacturing Employment Trends by Industry	6
Hardin County Manufacturing Firms, Their Products, and Employment.	6
Wage Rates for Selected Occupations	8
Labor Organizations	9
Current and Future Labor Supply	10
Total Personal Income	10
Per Capita Personal Income.	10
EDUCATION	11
Public Schools	11
Parochial, Private and Special Schools.	11
Vocational Schools	12
Colleges and Universities	12
TRANSPORTATION	15
Rail	15
Truck Service	15
Air	17
Bus.	18
Taxi	18
Rental Services	18
POWER AND FUEL	19
Electricity	19
Natural Gas	19
WATER AND SEWERAGE	21
Water.	21
Sewerage	25

<u>Chapter</u>	<u>Page</u>
LOCAL GOVERNMENT.	27
County	27
City	27
Assessed Value of Property - 1969	28
Local General Property Tax Rates Per \$100 of Assessed Valuation - 1969.	28
Planning and Zoning	29
Safety	29
Police.	29
Fire	30
Rescue Service.	30
Sanitation	31
HEALTH	32
Hospitals.	32
Nursing Homes	32
Public Health.	32
OTHER LOCAL FACILITIES	35
Communications	35
Library Services	36
Religious Institutions	36
Financial Institutions	36
Hotels and Motels.	37
Clubs and Organizations	37
RECREATION.	39
Local	39
Area.	43
AGRICULTURE - NATURAL RESOURCES - CLIMATE.	44
Agriculture.	44
Natural Resources	44
Climate	44
HISTORY	45

HARDIN COUNTY LABOR MARKET AREA

Shaded area denotes labor market area



HARDIN COUNTY, KENTUCKY - A RESOURCE PROFILE

Location

Hardin County, covering a land area of 616 square miles, is located in northcentral Kentucky. The northern tip of the county lies along the Ohio River and touches the southwestern boundary of Jefferson County. The county is bounded on the north by Bullitt County, on the east by Nelson and Larue Counties, on the south by Grayson and Hart Counties, and on the east by Breckinridge and Meade Counties. The county has an estimated 1970 population of 80,200.

Elizabethtown, the largest town in the county, serves as the county seat. It is located near the center of the county 40 miles south of Louisville, 75 miles north of Bowling Green, and 150 miles southwest of Cincinnati. The community of Upton is located in south Hardin County near I-65. West Point, Radcliff, and Vine Grove are located in the northcentral part of the county near the Jefferson County line.

Fort Knox, a U. S. Army reservation and repository of the nation's gold reserve, is located in Hardin County. Covering 110,000 acres, the reservation also reaches into Bullitt and Meade Counties.

The Economic Framework

Total employment in Hardin County averaged 17,100 in 1968, with government providing 6,925 of the jobs, and trade and services another 3,900 jobs. During the first nine years of the decade manufacturing increased by almost 1,844 jobs or 286.8 percent. The major industrial products are: computer sub-assembly, printed circuit cards, electric timing devices and motors, auto V-belts and auto hose, apparel, silicone sealants, ceramic, and alnico magnets.

Per capita income in the county in 1968 was \$3,915. Between 1959 and 1968, per capita personal income in the county increased \$1,725.

The Hardin County labor market area includes Hardin and its seven surrounding counties. Area employment in 1968 totaled 46,850, including 10,165 in agriculture. In 1969, manufacturing furnished 7,300 jobs. Area industrial employment has nearly doubled since 1960, with the sharpest employment gains in the apparel, machinery and metal products, and chemical industries.

Despite important industrial gains in recent years the area still has a deficit of 13,079 manufacturing jobs when measured against the national industrial employment-population ratio. This indicates an area where the potential for additional manufacturing production is excellent.

Resources for Growth

1. There is a current estimated labor supply of 4,760 men and 5,350 women available for industrial jobs in the labor market area. In addition, 10,575 young men and 10,300 young women will become 18 years of age by 1976 and potentially available for work. Since Radcliff, Vine Grove, and West Point are located in the northern half of the county, their labor supply would possibly be affected by available labor from Jefferson County.

2. The local transportation capability is good. The Illinois Central Railroad and the Louisville & Nashville Railroad provide the county with a variety of services. The county has more than adequate trucking service. I-65, a north-south route, the Blue Grass Parkway, and the Western Kentucky Parkway converge just south of Elizabethtown. The Elizabethtown-Hardin County Airport has a 2,800-foot paved runway capable of accommodating light aircraft. Commercial air service is available at Standiford Field, Louisville, only 40 miles north of Elizabethtown.

3. Electricity is available in large quantity. Kentucky Utilities, Louisville Gas and Electric, and Nolin Rural Electric Cooperative provide electric power to portions of the county. Natural gas is furnished in West Point, Radcliff, and Vine Grove by the Louisville Gas and Electric Company. Elizabethtown is served by the Elizabethtown Water & Gas Company, whose source of supply is the Texas Gas Transmission Corporation.

4. Industrial sites - Hardin County has 16 sites available for industrial use.

5. Education is an important growth asset for Hardin County. Three school systems operate within the county.

Five junior and four senior colleges are located within 50 miles of the county, and the Elizabethtown Community College and Fort Knox Community College are located in the county.

The Elizabethtown Vocational Extension Center is located in Elizabethtown, and offers training in six different courses. The Jefferson County Area Vocational School is only 40 miles away and offers nineteen different courses.

Community Programs for Improvement

The communities of Hardin County have aggressively sought ways to provide better and more modern facilities for their residents and to increase their attractiveness to industry.

Elizabethtown is constructing a 3,000,000 gpd water treatment plant and plans to double the size of the present sewerage treatment plant with a 12-inch force main and pumping station. Other community improvements include a sheltered work shop, Wesley Hill Top House, and the installation of a 20,000-foot natural gas loop line. New construction includes the Federal Land Bank building and Kentucky Galvanizing Company plant. Projects under construction include a 12-unit apartment building and the Elizabethtown Senior High School, which is locating on a 46-acre tract and will contain 103,400 square feet. Projects proposed include a four-lane bypass to lead off the Western Kentucky Parkway and circle the city to the west; a new shopping center to house a department store, a drug store, a supermarket and a dress shop; and a 100-unit apartment building.

Upton has a new post office building, a new motel, a new telephone system, and two new subdivisions.

West Point has submitted plans for an extension of the water and sewer mains and a new 250,000-gallon water storage facility. The city will also double the capacity of the water treatment plant. Recent improvements completed by the West Point Independent School District include the installation of new aluminum windows, tile flooring, and a gas furnace. A new city park offers boat docks, picnic tables and grills, camping and restroom facilities, and paved parking space which can accommodate 140 cars. Negotiations are in process which may eventually provide air ambulance service from the West Point area to Louisville.

Radcliff has plans to double sewage treatment capacity and build a contact stabilization pond and enlarge overloaded lift stations. Radcliff has a new shopping center with the first stage of construction completed and the second stage underway. A new elementary school is also under construction.

Vine Grove has plans for a new water treatment plant, a new sewage treatment plant, and additional water and sewer lines.

Recreation, Entertainment and Livability

There is a wide variety of recreational facilities in the Hardin County area. Boating and fishing are excellent along the Ohio and Salt Rivers as well as the numerous creeks and ponds in the county. Other recreation includes golf, swimming, tennis, softball, baseball, and football.

Rough River State Park is only 28 miles away and Nolin Reservoir is only 30 miles away.

Proximity to Louisville provides the area with entertainment such as the Kentucky Derby, the Kentucky State Fair, Actors' Theatre, Kentucky Opera Association, Louisville Ballet, Louisville Orchestra, harness racing, and professional baseball and basketball.

THE LABOR MARKET

POPULATION TRENDS ^{1/}

	Population			Percent Change	
	1970 (Est.)	1960	1950	1960-70	1950-60
Elizabethtown	14,500	9,641	5,807	+50.4	+66.0
Upton	N. A.	547	383	-	+42.8
West Point	N. A.	1,957	1,669	-	+17.3
Radcliff	N. A.	3,384	N. A.	-	-
Vine Grove	N. A.	2,435	1,252	-	+94.5
Labor Market Area	201,800	111,865	148,472	+80.4	-24.7
Hardin County	80,200	67,789	50,312	+36.6	+34.7
Breckinridge County	14,600	14,734	15,528	- 0.9	- 5.1
Bullitt County	21,800	15,726	11,349	+38.6	+38.6
Grayson County	15,500	15,834	17,063	- 2.1	- 7.2
Hart County	13,600	14,119	15,321	- 3.7	- 7.8
Larue County	10,800	10,346	9,956	+ 4.4	+ 3.9
Meade County	24,100	18,938	9,422	+27.3	+ 1.0
Nelson County	21,200	22,168	19,521	- 4.4	+13.5

GENERAL EMPLOYMENT CHARACTERISTICS, 1968 ^{2/}

Major Employment Group	Employment	
	Hardin County	Labor Market Area
TOTAL	17,109	46,843
Agricultural	1,421	10,163
Nonagricultural	15,688	36,680
Manufacturing	2,326	6,899
Trade and Services	3,896	8,905
Government	6,928	10,427
Other	2,538	10,449

MANUFACTURING EMPLOYMENT TRENDS BY INDUSTRY
JUNE 1960 AND 1969 ^{3/}

Industry	Hardin County			Labor Market Area		
	1969	1960	% Change	1969	1960	% Change
TOTAL	2,487	643	+ 286.8	7,297	4,055	+ 80.0
Food & kindred products	165	72	+ 129.2	1,900	1,720	+ 10.5
Tobacco	0	0	-	16	9	+ 77.8
Apparel, textiles, leather	420	156	+ 169.2	1,771	803	+ 120.5
Lumber & furniture	0	16	-	196	222	- 11.7
Printing, publishing, paper	78	45	+ 73.3	465	95	+ 389.5
Chemicals, petroleum, coal, rubber	697	10	+6870.0	1,361	550	+ 147.5
Stone, clay & glass	86	106	- 18.9	281	418	- 32.8
Machinery & metal products	750	62	+1109.7	1,009	62	+1527.4
Other	291	176	+ 65.3	298	176	+ 69.3

HARDIN COUNTY MANUFACTURING FIRMS,
THEIR PRODUCTS AND EMPLOYMENT ^{4/}

Firm	Product	Employment		
		Total	Male	Female
<u>Elizabethtown</u>				
Armour & Co.	Cheese	25	23	2
Bean Publishing Co., Inc.	Newspaper, letterpress printing, offset printing	31	20	11
Bishop Lumber Co.	Hardwood lumber, cross-ties	8	8	0
Clinton Industries, Inc.	Tools, dies, special machines	9		
Coca-Cola Bottling Co.	Soft drinks	115	103	12
Colt Industries, Inc.				
Crucible Magnetics Div.	Ceramic, alnico magnets	606	504	102
Diecks Lumber Co., Inc.	Concrete block, cabinets	37	35	2
Dow Corning Corporation	Silicone sealants	200		
E-Town Sportwear Corp.	Men's slacks	362	45	317
Edlins Machine Shop	Machine shop	3	3	0
Elizabethtown Ice Cream Company	Ice cream, ice	32	22	10
Elizabethtown Ready Mix Concrete Co.	Ready mixed concrete	19	19	0
Gates Rubber Company	Auto V-belts, curved auto hose	469	321	148

(cont'd)

<u>Firm</u>	<u>Product</u>	<u>Employment</u>		
		<u>Total</u>	<u>Male</u>	<u>Female</u>
<u>Elizabethtown (cont'd)</u>				
Hardin County Locker Plant	Meat packing	5	4	1
Ingraham Industries, Div. of McGraw Edison Co.	Electric mechanical timing devices, motors, electric mechanical program switches	305	102	203
Interstate Auto Supply Co.	Rebuilt motors	32	27	5
The Jenkins-Essex Co., Inc.	Wood windows, doors, cabinets, concrete block	55	51	4
Kent Records, Inc.	Phonograph records	35	10	25
Kentucky Galvanizing Co., Inc.	Guardrails and posts	10		
Kentucky Thermo-Plastics	Vinyl, plastic compounds	31	30	1
Modern Welding Co., Inc.	Steel fabrication	9	7	2
White Dove Bakery	Bakery products	9	3	6
<u>Upton</u>				
The Kentucky Stone Co.	Agricultural lime	10		
<u>West Point</u>				
Riverside Industries	Parts for plastics industry machine			(under construction)
<u>Radcliff</u>				
D. G. Brays Cabinet Shop	Cabinets	2	2	0
Control Data Corporation	Computer sub-assembly, printed circuit cards	300		
England Electronics	Voltage regulators for 3 KW multimeters, control box for gen- erator set	24	4	20
Knox Engravers, Inc.	Plastic signs, rubber stamps, name tags	3	1	2
Radcliff Concrete, Inc.	Ready mixed concrete	18	17	1
Royalty Printing Co. and The Sentinel	Newspaper, job printing, name labels for Army clothing	6	4	2
<u>Cecilia</u>				
Gulf Oil Corporation, Gulf Chemical Div.	Fertilizer	9	8	1
Charles Skees Feed and Seed	Feed	7	7	0
Skees Egg Company	Ham processing	20	4	16

WAGE RATES FOR SELECTED OCCUPATIONS 5/

Classification	Starting	Maximum	Prevailing
----------------	----------	---------	------------

Elizabethtown

Production Employees

Assembler	\$1.60 hr.	\$2.90 hr.	\$2.08 hr.
Inspector	1.60 hr.	2.08 hr.	
Production Laborer	1.80 hr.	2.83 hr.	

Service Employees

Electrician (Class-A)	\$4.12 hr.	\$4.37 hr.	
Laborer	1.60 hr.	2.25 hr.	
Mechanic, Maintenance	1.60 hr.	3.19 hr.	\$2.08 hr.
Truck Driver, Industrial (Class-A)	1.60 hr.	2.25 hr.	

Office Employees

Bookkeeper	\$95 wk.	\$125 wk.	
File Clerk	1.60 hr.	2.05 hr.	
Secretary	225 mo.	400 mo.	
Typist	1.79 hr.	8,030 yr.	\$300 mo.
Receptionist	1.60 hr.	450 mo.	300 mo.

Upton

Office Employees

Bookkeeper	\$95 wk.	\$100 wk.	
File Clerk	1.60 hr.	1.90 hr.	
Receptionist	50 wk.	75 wk.	
Secretary	225 mo.	350 mo.	
Typist	225 mo.	350 mo.	

West Point

Production Employees

Production Laborer	\$1.60 hr.
--------------------	------------

Service Employees

Laborer	\$1.60 hr.
Truck Driver, Industrial (Class-A)	2.50 hr.

<u>Classification</u>	<u>Starting</u>	<u>Maximum</u>	<u>Prevailing</u>
-----------------------	-----------------	----------------	-------------------

Radcliff

Service Employees

Machinist	\$1.60 hr.	\$2.25 hr.	
Mechanic, Maintenance	50 wk.	100 wk.	
Truck Driver, Industrial (Class-A)	1.60 hr.	3.50 hr.	\$2.25 hr.

Office Employees

Bookkeeper	\$75 wk.	\$125 wk.	
File Clerk	1.60 hr.	2.05 hr.	
Receptionist	250 mo.	325 mo.	
Secretary	225 mo.	350 mo.	
Typist	225 mo.	350 mo.	

Vine Grove

Office Employees

Bookkeeper or Accounting Clerk	\$95 wk.	\$100 wk.	
File Clerk	1.60 hr.	1.90 hr.	
Receptionist	50 wk.	75 wk.	
Secretary	225 mo.	350 mo.	
Stenographer	225 mo.	350 mo.	

LABOR ORGANIZATIONS

Union

Representing Workers at:

Elizabethtown

International Chemical Workers
 International Union of Electrical
 Workers
 United Rubber, Cork, Linoleum,
 and Plastic Workers of America
 International Union of Electrical,
 Radio, and Machine Workers
 International Union of Electrical,
 Radio, and Machine Workers
 United Mine Workers

Dow Corning Corporation
 Polyflex Division of Gates Rubber Co.
 Gates Rubber Company
 Colt Industries, Inc., Crucible
 Magnetics Division
 Ingraham Industries, Division of
 McGraw Edison Co.
 Elizabethtown Ready Mix Concrete Co.

Radcliff

Teamsters

Radcliff Concrete, Inc.

There are no unions representing manufacturing firms in Upton, West Point or Vine Grove.

CURRENT AND FUTURE LABOR SUPPLY -
HARDIN COUNTY LABOR MARKET AREA

County	1970 ^{6/}			Future Labor Supply by 1976 (Becoming 18 Years of Age) ^{7/}		
	Total	Male	Female	Total	Male	Female
Labor Market Area	10,120	4,762	5,358	20,865	10,579	10,286
Hardin	1,740	852	888	6,694	3,402	3,292
Breckinridge	1,300	580	720	1,616	794	822
Bullitt	815	300	515	2,157	1,140	1,017
Grayson	1,750	1,036	714	1,655	806	849
Hart	1,139	641	498	1,425	755	670
Larue	525	289	236	1,158	582	576
Meade	1,163	236	927	3,151	1,613	1,538
Nelson	1,688	828	860	3,009	1,487	1,522

TOTAL PERSONAL INCOME ^{8/}

Area	1968	1959	% Change
Hardin County	\$ 349,335,000	\$ 148,528,000	+135.2
Labor Market Area	603,196,000	217,683,000	+122.0
Kentucky	8,516,000,000	4,655,000,000	+ 82.9

PER CAPITA PERSONAL INCOME ^{9/}

Area	1968	1959	% Change
Hardin County	\$3,915	\$2,190	+78.8
Labor Market Area	\$1,627 to 3,915	\$817 to 2,190	+99.1 to +78.8
Kentucky	2,645	1,552	+70.4

EDUCATION

Public Schools

	<u>Elizabethtown Independent</u>	<u>West Point Independent</u>	<u>Hardin County</u>
Total Enrollment	2,613	241	8,556
Elementary	1,692	241	5,249
Junior High School			716
High School	921		2,591
Student-Teacher Ratio	23-1	26-1	23-1
Elementary	23-1	26-1	24-1
Junior High			27-1
High School	23-1		21-1
State Rating of High School	Comprehensive		Comprehensive(1) Standard (2)
Other Accreditations	The Southern Assoc. of Colleges and Schools		
Percent High School Graduates to College	58.9		40.1
Current Expenditures Per Pupil	\$428.35	\$427.68	\$388.43
Bonded Indebtedness June 30, 1969	\$935,000	None	\$2,861,000

Parochial, Private and Special Schools

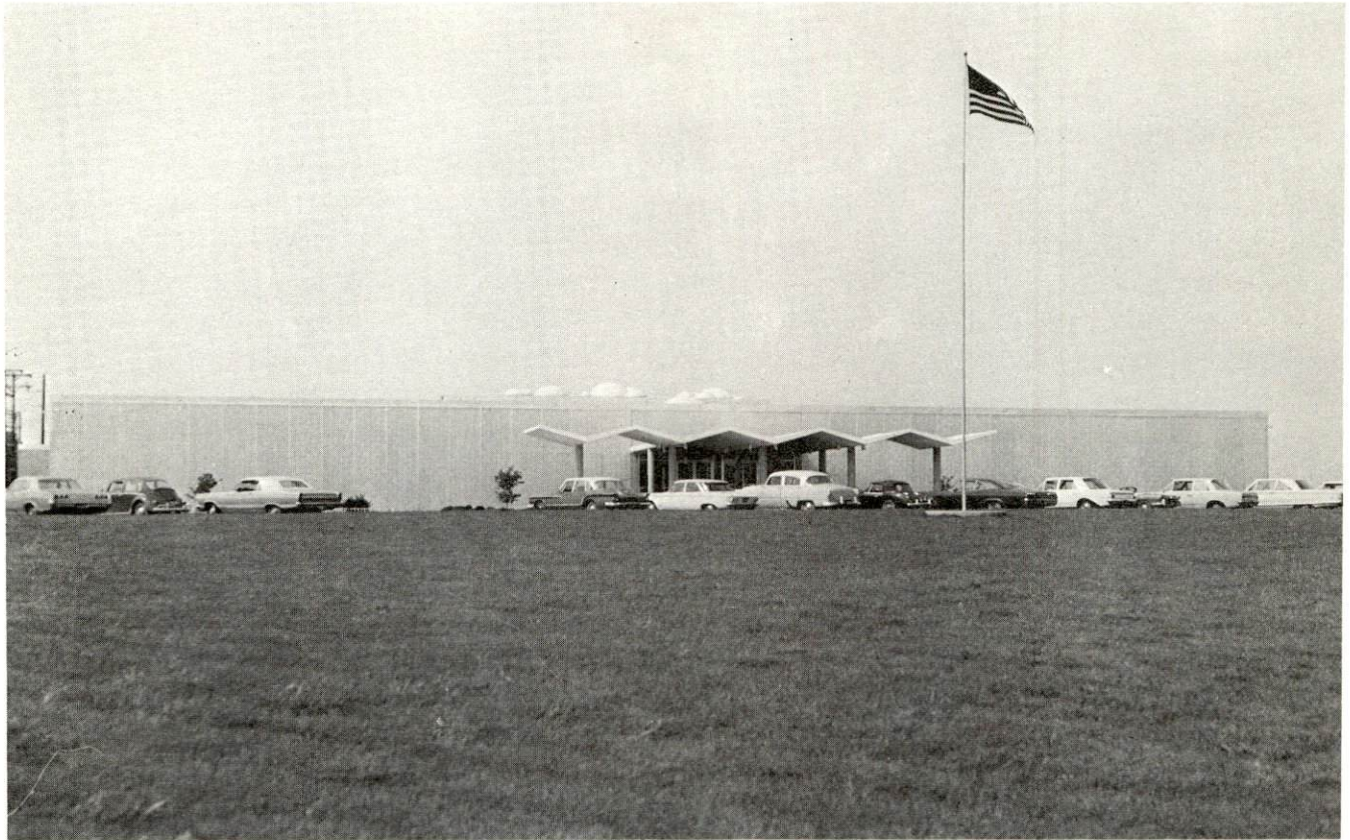
	<u>Private</u>	<u>Parochial</u>	<u>Ungraded</u>
Total Enrollment	4,949	754	21
Elementary	3,117	754	
Junior High	1,110		
High School	722		
Student-Teacher Ratio	26-1	29-1	21-1
Elementary	29-1	29-1	
Junior High	24-1		
High School	22-1		

Vocational Schools

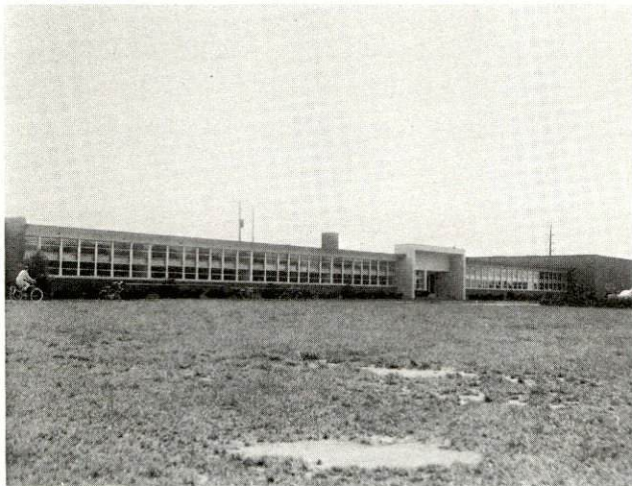
	<u>Nearest Area School</u>	<u>Nearest Extension Center</u>
Location	Jefferson County	Elizabethtown
Miles Distant	40 miles from Elizabethtown	
Curriculum	Accounting Jr. Management General Clerical Secretarial-Steno Mechanics, Drafting Horticulture Appliance Repair Practical Nursing Printing Electronics (Communications) Air Conditioning and Refrigeration Auto Body Repair Welding Auto Mechanics Commercial Foods Heavy Equipment Machine Shop Office Machine Repair Radio and TV Repair	Appliance Repair Auto Mechanics Carpentry Drafting Electricity Welding

Colleges and Universities

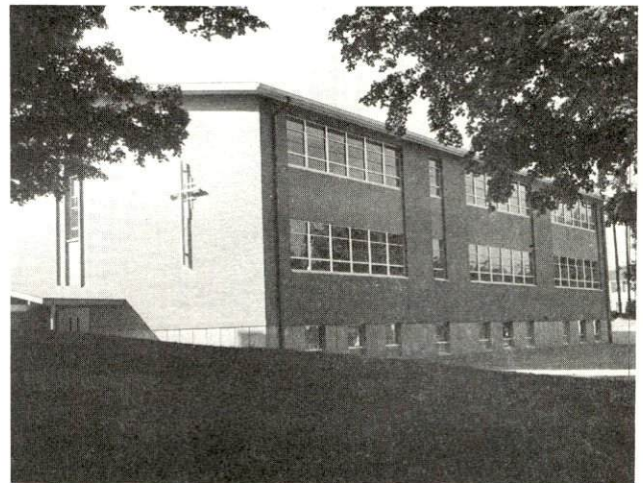
<u>Name</u>	<u>Area - Within 50 Miles</u>		<u>Highest Degree Conferred</u>
	<u>Location</u>	<u>Enrollment</u>	
Elizabethtown Community College	Elizabethtown	630	Associate
Fort Knox Community College	Fort Knox	408	Associate
Lindsey Wilson College	Columbia	574	Associate
Campbellsville College	Campbellsville	882	Baccalaureate
St. Catharine Academy	St. Catharine	156	Associate
Jefferson Community College	Louisville	2,179	Associate
Bellarmino-Ursuline College	Louisville	1,876	Baccalaureate
Spalding College	Louisville	1,622	Masters
University of Louisville	Louisville	9,057	Ph. D., D.M.D. J.D., M.D.



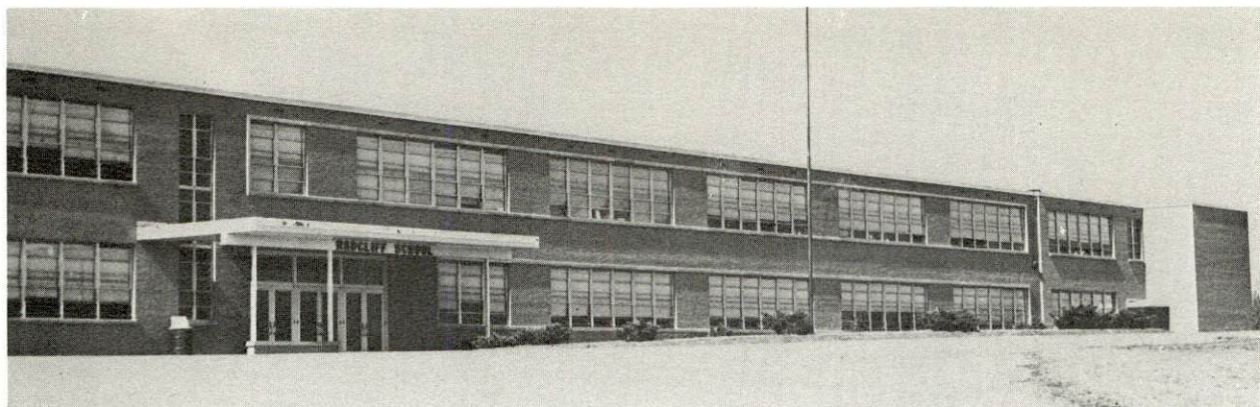
ELIZABETHTOWN COMMUNITY COLLEGE



HELMWOOD HEIGHTS
ELEMENTARY SCHOOL



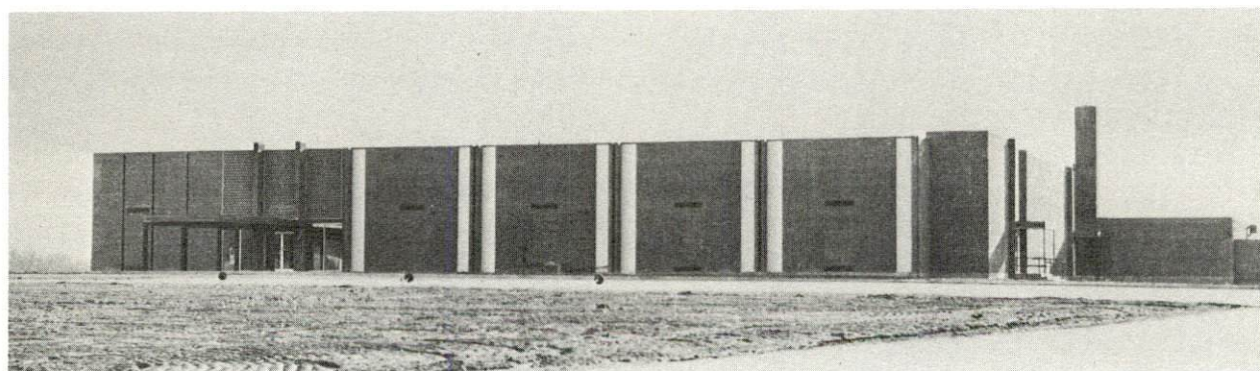
ST. JAMES PAROCHIAL SCHOOL
(ELEMENTARY)



RADCLIFF ELEMENTARY SCHOOL



ST. CHRISTOPHER'S SCHOOL - RADCLIFF



NORTH HARDIN JUNIOR HIGH SCHOOL - VINE GROVE

TRANSPORTATION

Rail

Lines serving Elizabethtown - Illinois Central Railroad and Louisville & Nashville Railroad

Services - Freight, passenger, switching, siding, REA Express pickup and delivery service

Line serving Upton - Louisville & Nashville Railroad

Services - Siding, freight, switching facilities

Lines serving West Point - Illinois Central Railroad Company and Louisville & Nashville Railroad

Services - Through freight only

Line serving Radcliff - Illinois Central Railroad

Services - Freight

Line serving Vine Grove - Illinois Central Railroad

Services - Siding, freight

RAILWAY TRANSIT TIME FROM ELIZABETHTOWN, KENTUCKY, TO: 10/

City	No. of Days		City	No. of Days	
	CL			CL	
Atlanta, Ga.	2		Los Angeles, Calif.	4	
Birmingham, Ala.	2		Louisville, Ky.	1	
Chicago, Ill.	3		Nashville, Tenn.	1	
Cincinnati, Ohio	2		New Orleans, La.	3	
Cleveland, Ohio	3		New York, N. Y.	5	
Detroit, Mich.	4		Pittsburgh, Pa.	4	
Knoxville, Tenn.	3		St. Louis, Mo.	2	

Truck Service

Company

Home Office

Elizabethtown

Associated Transport, Inc.
Best Way Express, Inc.
Crutcher Transfer Line, Inc.
Dixie Highway Express, Inc.
Leitchfield Transfer

New York, New York
Nashville, Tennessee
Louisville, Kentucky
St. Paul, Minnesota
Leitchfield, Kentucky

(cont'd)

<u>Company</u>	<u>Home Office</u>
<u>Elizabethtown (cont'd)</u>	
Majors Truck Line, Inc.	Caneyville, Kentucky
McLean Trucking Company	Winston-Salem, North Carolina
Southern Forwarding Company	Memphis, Tennessee
Terminal Transport Company, Inc.	Atlanta, Georgia
Turner Expediting Service	Louisville, Kentucky
Wilson Freight Company (Restricted S-B)	Cincinnati, Ohio
<u>Upton</u>	
Associate Transport	New York, New York
Crutcher Transfer Line, Inc.	Louisville, Kentucky
Majors Truck Line, Inc.	Caneyville, Kentucky
Southern Forwarding Company	Memphis, Tennessee
Wilson Freight Company (southbound only)	Cincinnati, Ohio
United Parcel	Louisville, Kentucky
<u>West Point</u>	
Associated Transport, Inc. (Restricted on S-B to Elizabethtown)	New York, New York
Consolidated Freightways	Menlo Park, California
Cooper-Jarrett, Inc.	Orange, New Jersey
Crutcher Transfer Line, Inc.	Louisville, Kentucky
Dixie Highway Express, Inc.	St. Paul, Minnesota
Dixie Ohio Express, Inc.	Akron, Ohio
Majors Truck Line, Inc. (Restricted to S-B to Clarkson)	Caneyville, Kentucky
Meade Transport, Inc.	Owensboro, Kentucky
Southern Forwarding Company	Memphis, Tennessee
Wilson Freight Company (Restricted S-B)	Cincinnati, Ohio
<u>Radcliff</u>	
Associated Transport, Inc.	New York, New York
Brown's Supply Company	Vine Grove, Kentucky
Cooper-Jarrett, Inc.	Orange, New Jersey
Crutcher Transfer Lines, Inc.	Louisville, Kentucky
Dixie Ohio Express, Inc.	Akron, Ohio
Majors Truck Line, Inc. (Restricted on S-B to Clarkson)	Caneyville, Kentucky
McLean Trucking Company	Winston-Salem, North Carolina

CompanyHome OfficeRadcliff (cont'd)

Meade Transport, Inc.
 Southern Forwarding Company
 Wilson Freight Company
 (Restricted S-B)

Owensboro, Kentucky
 Memphis, Tennessee
 Cincinnati, Ohio

Vine Grove

Brown's Supply Company
 Meade Transport, Inc.
 McLean Trucking Company
 (Off-route restricted to S-B)

Vine Grove, Kentucky
 Owensboro, Kentucky
 Winston-Salem, North Carolina

HIGHWAY MILES AND TRUCK TRANSIT TIME IN DAYS FROM
 ELIZABETHTOWN, KENTUCKY, TO SELECTED MARKET CENTERS

City	Highway Miles	Delivery Time <u>11/</u>		City	Highway Miles	Delivery Time	
		LTL	TL			LTL	TL
Atlanta, Ga.	359	2	1	Los Angeles, Calif.	2,146	7	6
Birmingham, Ala.	315	2	1	Louisville, Ky.	40	1	1
Chicago, Ill.	338	3	2	Nashville, Tenn.	128	1	1
Cincinnati, Ohio	150	1	1	New Orleans, La.	658	3	2
Cleveland, Ohio	391	2	2	New York, N. Y.	804	3	2
Detroit, Mich.	407	3	2	Pittsburgh, Pa.	435	3	2
Knoxville, Tenn.	296	2	1	St. Louis, Mo.	304	3	2

AirLocalNearest Commercial

	Elizabethtown-Hardin County Airport	Standiford Field
Location:	Route 31-W, 4 miles north of Elizabethtown	Louisville
Runways:	1 paved	3 paved
Length:	2,800 ft.	7,250 ft.; 5,000 ft.; 7,800 ft.
Traffic		
Control:	Wind tee and wind sock	Control tower, approach and ground control, radar service
Lighting:	Runway and taxi, rotating beacon	Runways, obstructions, beacon, approach lights, center line on runways
Services:	Charter service, flight instruction, 80-115 octane fuel	Air Board; 80, 100, 115 octane; jet fuel; storage; car rentals; restaurant; taxi and bus service; major A&E repairs; TWA, American, Eastern, Delta, Piedmont, Ozark, Allegheny, and Northern Airlines

Bus

Elizabethtown - Greyhound Bus Lines, Kentucky Bus Lines, Trailways

Upton, West Point, Radcliff - Greyhound Bus Lines

Taxi

Elizabethtown and Radcliff - 24-hour radio-dispatched service

Rental Services

Elizabethtown and Radcliff - Car and truck

POWER AND FUEL

Electricity

Company serving Elizabethtown, Upton, Radcliff and Vine Grove - Kentucky Utilities Company

Source of power - Kentucky Utilities Company

Total generating capacity - 740,000 KW

Industrial rates negotiated by - Kentucky Utilities Company, Lexington, Kentucky

Company serving West Point - Louisville Gas & Electric Company

Source of power - Louisville Gas & Electric Company

Total generating capacity - 1,468,000 KW

Industrial rates negotiated by - Louisville Gas & Electric Company, Louisville, Kentucky

Company serving Hardin County - Nolin Rural Electric Cooperative Corporation

Source of power - East Kentucky Power Cooperative

Total generating capacity - 515,000 KW

Industrial rates negotiated by - Nolin Rural Electric Cooperative Corporation, Elizabethtown, Kentucky

Natural Gas

Company serving Elizabethtown - Elizabethtown Water & Gas Company

Source of supply - Texas Gas Transmission Corporation

Size of transmission lines - 8 and 6 inches

Distribution lines - 8, 6, 4, 3, and 2 inches

BTU content - 1,000; Specific gravity - 0.6

Distribution pressure - 25 to 30 psi

GENERAL RATE SCHEDULE

First	600 cu. ft. or less	\$1.50 Minimum Bill
Next	1,400 cu. ft.	1.10 per MCF used per month
Next	3,000 cu. ft.	.95 per MCF used per month
Next	95,000 cu. ft.	.80 per MCF used per month
Over	100,000 cu. ft.	.75 per MCF used per month

SEASONAL RATE SCHEDULE

First	600 cu. ft. or less	\$1.50 Minimum Bill
Next	1,400 cu. ft.	1.25 per MCF used per month
Next	3,000 cu. ft.	1.05 per MCF used per month
Next	95,000 cu. ft.	.90 per MCF used per month
Over	100,000 cu. ft.	.85 per MCF used per month

HIGH LOAD FACTOR RATE SCHEDULE

First	20,000 cu. ft.	\$.90 per MCF used per month
Next	80,000 cu. ft.	.75 per MCF used per month
Next	400,000 cu. ft.	.65 per MCF used per month
Over	500,000 cu. ft.	.55 per MCF used per month

INTERRUPTIBLE GAS RATE SCHEDULE - Negotiated

Company serving Upton - Manufactured gas used

Company serving Radcliff, West Point, and Vine Grove - Louisville Gas & Electric Company

Source of supply - Texas Gas Transmission Corporation

Size of transmission lines - 26-inch; 500 to 700 psig

Distribution lines - 2, 4, and 8 inches

BTU content - 1,000; Specific gravity - 0.6

Distribution pressure - 2 to 50 psig

Rates - Rates will be furnished by Louisville Gas & Electric Company, Louisville, Kentucky

WATER AND SEWERAGE

Water

Elizabethtown

Company serving Elizabethtown - Elizabethtown Water & Gas Company
Source - 2 springs and 2 wells
Treatment plant capacity - 2,500,000 gpd
Average daily consumption - 2,220,000 gallons
Peak daily consumption - 2,669,000 gallons
Type treatment - settling, filtering, chlorination and fluoridation
Storage capacity - 1,456,000 gallons
Average pressure - 60 to 80 psi
Average temperature - 40 to 60° F.
Size mains - 14, 12, 10, 8, 6, and 4 inches

Remarks: Construction of a new 3,000,000 gpd treatment plant is under-way with completion scheduled for early 1971. The raw water supply will be increased by a 300,000,000 gallon reservoir and storage capacity will be increased to 4,456,000 gallons.

MONTHLY WATER RATES FOR WHOLESALE AND INDUSTRIAL CONSUMERS

First	2,000 gals.	\$2.70 Minimum
Next	3,000 gals.	1.10 per M gals.
Next	5,000 gals.	.95 per M gals.
Next	5,000 gals.	.85 per M gals.
Next	10,000 gals.	.75 per M gals.
Next	10,000 gals.	.60 per M gals.
Next	20,000 gals.	.40 per M gals.
All over	55,000 gals.	.30 per M gals.

Upton

Company serving Upton - Upton Water Company
Source - 2 deep wells
Treatment plant capacity - 450,000 gpd
Average daily consumption - 25,000 gallons
Peak daily consumption - 50,000 gallons
Type treatment - softeners and chlorination
Storage capacity - 76,000 gallons
Average pressure - 90 psi
Average temperature - 40 to 45° F.
Size mains - 8, 6, and 4 inches

MONTHLY WATER RATES - COMMERCIAL

First	4,000 gals.	\$7.00
Next	11,000 gals.	.80 per M gals.
Next	35,000 gals.	.70 per M gals.
Next	50,000 gals.	.60 per M gals.
All over first	100,000 gals.	.50 per M gals.

West Point

Company serving West Point - West Point Water Works
 Source - 2 wells
 Treatment plant capacity - 300,000 gpd
 Average daily consumption - 160,000 gallons
 Peak daily consumption - 210,000 gallons
 Type treatment - Soda ash, lime, alum, chlorine, filtration
 Storage capacity - 100,000 gallons
 Average pressure - 45 psi
 Average temperature - 58°
 Size mains - 8, 6, 4 and 2 inches

MONTHLY WATER RATES FOR WHOLESALE
AND INDUSTRIAL CONSUMERS

First	3,000 gals. or less per month	\$3.43
	3,001 through 4,000 gals. per month	4.30
	4,001 through 5,000 gals. per month	5.00
	5,001 through 6,000 gals. per month	5.63
	6,001 through 7,000 gals. per month	6.25
	7,001 through 8,000 gals. per month	6.88
	8,001 through 9,000 gals. per month	7.38
	9,001 through 10,000 gals. per month	7.88
	10,001 through 11,000 gals. per month	8.38
All over	11,000 gals., per 1,000 gals. or part thereof	.44

Radcliff

Company serving Radcliff - Hardin County Water District No. 1
 Source - Spring fed reservoirs and deep wells
 Treatment plant capacity - Saunders Spring 500 gpm, Muldraugh Plant
 1,400 gpm
 Average daily consumption - 1,100,000 gallons
 Peak daily consumption - 1,400,000 gallons; Type treatment - complete
 Storage capacity - 867,000 gallons
 Average pressure - 50 psi
 Average temperature - 60°
 Size mains - 6, and 8 inches

MONTHLY WATER RATES FOR WHOLESAL
AND COMMERCIAL CONSUMERS

Commercial Rates for 3/4-inch Meter

Minimum rate		\$10.00 per month
(Minimum rate entitles customer to 10,000 gals.)		
First	10,000 gals.	1.00 per M gals.
Next	10,000 gals.	.80 per M gals.
Next	20,000 gals.	.60 per M gals.
Next	60,000 gals.	.50 per M gals.
All over	100,000 gals.	.40 per M gals.

Commercial Rates for 1-inch Meter

Minimum rate		\$30.00 per month
(Minimum rate entitles customer to 50,000 gals.)		
First	50,000 gals.	.60 per M gals.
Next	50,000 gals.	.50 per M gals.
All over	100,000 gals.	.40 per M gals.

Commercial Rates for 1 1/2-inch Meter

Minimum rate		\$46.00 per month
(Minimum rate entitles customer to 75,000 gals.)		
First	75,000 gals.	.60 per M gals.
Next	25,000 gals.	.50 per M gals.
All over	100,000 gals.	.40 per M gals.

Commercial Rates for 2-inch Meter

Minimum rate		\$60.00 per month
(Minimum rate entitles customer to 120,000 gals.)		
First	120,000 gals.	.50 per M gals.
All over	120,000 gals.	.40 per M gals.

Vine Grove

Company serving Vine Grove - Vine Grove Water & Sewer Company
Source - Brushy Fork Creek and Otter Creek
Treatment plant capacity - 250,000 gpd
Average daily consumption - 220,000 gallons
Peak daily consumption - 260,000 gallons
Type treatment - chlorination
Storage capacity - 469,000 gallons
Average pressure - 60 psi
Average temperature - 38°
Size mains - 8, 6, 4, and 2 inches

MONTHLY WATER RATES FOR WHOLESALE
AND INDUSTRIAL CONSUMERS

First	2,000 gals.	\$3.50 (Minimum)
Next	3,000 gals.	1.15 per M gals.
Next	5,000 gals.	1.10 per M gals.
Next	5,000 gals.	1.05 per M gals.
Next	5,000 gals.	.95 per M gals.
Next	5,000 gals.	.85 per M gals.
Next	25,000 gals.	.75 per M gals.
Next	50,000 gals.	.55 per M gals.
Next	100,000 gals.	.45 per M gals.

Hardin County

Company serving Hardin County - Hardin County Water District No. 2
 Source of treated water - Hardin County Water District No. 1
 Amount available to District No. 2 - 40,000,000 gallons monthly
 Average monthly use - 10,000,000 gallons
 Size mains - 8, 6, and 4 inches
 Storage capacity - 200,000 gallons

MONTHLY WATER RATES FOR WHOLESALE
AND INDUSTRIAL CONSUMERS

Minimum rate		\$5.60 (First 2,000 gals.)
Next	2,000 gals.	1.50 per M gals.
Next	6,000 gals.	.80 per M gals.
Next	30,000 gals.	.70 per M gals.
Next	60,000 gals.	.60 per M gals.
All over	100,000 gals.	.50 per M gals.

Surface water sources - Ohio, Salt and Rolling Fork Rivers and local impoundments
 Average discharge - Ohio unlimited; Rolling Fork near Boston about 1,700 cfs; Salt River at Shepherdsville about 1,500 cfs
 Expected ground water yield - varies widely from 5 to 50 gpm and 500 to 1,000 gpm depending on location. Large springs are common.
 Yield along main streams - 500 to 1,000 gpm along Ohio alluvial belt

Sewerage

Elizabethtown

Company serving Elizabethtown - municipal
Design capacity - 1,100,000 gpd
Average daily flow - capacity
Treatment - primary and secondary
Type treatment - aeration, clarifier, digesters, sludge drying beds,
pre- and post-chlorination, one 16-acre lagoon
Treated effluent discharged into - Valley Creek
Size of sanitary mains - 16, 12, 10, 8, and 6 inches
Rates - Sewer rate is \$1.50 minimum bill increasing to one third of the
water bill after 3,700 gallons of water used. Out-of-town rate is 50
percent higher than in-town rates.

Remarks: Conditional contract has been let to double the size of the
present sewage treatment plant with 12-inch force main and pumping
station.

Upton

Company serving Upton - septic tanks utilized

West Point

Company serving West Point - municipal
Design population - 5,000
Serving - approximately 2,500 persons
Treatment - primary
Type treatment - chlorine, drying beds
Treated effluent discharged into - Ohio River
Size of sanitary mains - 6 to 12 inches
Size of storm mains - 6 to 24 inches
Rates - 50 percent of monthly water bill

Radcliff

Company serving Radcliff - municipal
Design capacity - 500,000 gpd
Average daily flow - 500,000 gallons
Type treatment - aeration, clarifier, drying beds.
Treated effluent discharged into - Mill Creek
Size of sanitary mains - 8-inch

Billing Rate 3, 3/4-inch commercial meter requiring 10,000 gallons or more sewage per month.

Minimum Rate Per Month - \$9.25

(Minimum rate entitles the customer to 10,000 gallons of sewage)

First	10,000 gals.	\$0.925 per 1,000 gals.
Next	5,000 gals.	0.60 per 1,000 gals.
Next	35,000 gals.	0.486 per 1,000 gals.
Next	50,000 gals.	0.30 per 1,000 gals.
All Over	100,000 gals.	0.20 per 1,000 gals.

Billing Rate 4, 1-inch commercial meter requiring 50,000 gallons or more sewage per month.

Minimum Rate Per Month - \$29.25

(Minimum rate entitles the customer to 50,000 gallons of sewage)

First	50,000 gals.	\$0.585 per 1,000 gals.
Next	50,000 gals.	0.30 per 1,000 gals.
All Over	100,000 gals.	0.20 per 1,000 gals.

Billing Rate 5, 1 1/2-inch commercial meter requiring 100,000 gallons or more sewage per month.

Minimum Rate Per Month - \$44.25

(Minimum rate entitles the customer to 100,000 gallons of sewage)

First	100,000 gals.	\$0.4425 per 1,000 gals.
All Over	100,000 gals.	0.20 per 1,000 gals.

Billing Rate 6, 2-inch commercial meter requiring 175,000 gallons sewage per month.

Minimum Rate Per Month - \$59.25

(Minimum rate entitles the customer to 175,000 gallons of sewage)

First	175,000 gals.	\$0.3386 per 1,000 gals.
All Over	175,000 gals.	0.20 per 1,000 gals.

Vine Grove

Company serving Vine Grove - municipal
Design capacity - 250,000 gpd
Average daily flow - 250,000 gallons
Type treatment - clarifier, drying beds, chlorine
Treated effluent discharged into - Brushy Fork Creek
Size of sanitary mains - 8 and 6 inches
Size of storm mains - 48 inches
Rates - 60 percent of monthly water bill

LOCAL GOVERNMENT

County

Structure - County Judge - 4-year term; 8 magistrates - 4-year terms
Budget 1969-70 - General Fund - \$335,626; Road Fund - \$233,712

City

Elizabethtown

Structure - Mayor - 4-year term; 6 councilmen - 2-year terms
Estimated Income, 1969 - General Fund - \$333,028.81; Water and Sewer
Fund - \$197,191.26 (net); Gas Fund - \$198,340.80 (net)
Fees and licenses - Business privilege license - \$2 to \$400 annually

Upton

Structure - 5-member Board of Trustees
Budget 1970 - General Fund - \$3,500; Water and Sewer Fund - \$11,000
Fees and licenses - Business license fee - \$25 annually

West Point

Structure - Mayor - 4-year term; 6 councilmen - 2-year terms
Budget 1968 - \$86,874.65; Water and Sewer Fund \$28,074.23 (1968-69)
Fees and licenses - Business license fee - \$10 annually

Radcliff

Structure - Mayor - 4-year term; 6 councilmen - 2-year terms
Budget 1970 - General Fund - \$203,980
Fees and licenses - Unloading license - \$30.50 per year; Business
license - \$50 and \$100 base fee plus \$15 per employee

Vine Grove

Structure - Mayor - 4-year term; 6 councilmen - 2-year terms
Budget 1970 - General Fund - \$39,000; Water and Sewer Fund - \$49,000
Fees and licenses - Unloading license - \$10.50 annually; construction
contractor - \$50.50 annually; painters, plumbers, etc. - \$25.50 annually

Assessed Value of Property - 1969

<u>Classes of Property*</u>	<u>Hardin County</u>	<u>Elizabethtown</u>	<u>Upton</u>
Real Estate & Personal	--	--	\$1,601,000
Real Estate	\$199,804,733	\$66,452,410	--
Tangibles	33,903,667	12,022,557	--
Public Service	24,707,236	--	--
	<u>West Point</u>	<u>Radcliff</u>	<u>Vine Grove</u>
Real Estate	\$2,999,040	\$26,745,760	\$10,050,941
Tangibles	454,826	6,002,717	353,346

Local General Property Tax Rates Per \$100 of Assessed Valuation - 1969 ^{12/}

<u>Taxing Unit**</u>	<u>Hardin County</u>	<u>Elizabethtown</u>	<u>Upton</u>
State	\$.015	\$.015	\$.015
County	.167	.167	.167
School	.419	.653	.419
City		.220	.160
Total	\$.601	\$1.055	\$.761
	<u>West Point</u>	<u>Radcliff</u>	<u>Vine Grove</u>
State	\$.015	\$.015	\$.015
County	.167	.167	.167
School	.944	.419	.419
City	.230	.1485	.220
Total	\$1.356	\$.7495	\$.821

*Property assessed at 100 percent of fair value.

**Manufacturing machinery, raw materials inventories and goods in process inventories are not subject to local tax. State rate is only \$.15 per \$100.

Planning and Zoning

Elizabethtown

Agency - Planning and Zoning Commission
Plans completed - Zoning Ordinance; Subdivision Regulations, Major Street Plan, Housing and Population Study, Base Map, Existing Land Use Map, Existing Land Use Analysis, Population and Economic Analysis, Neighborhood Analysis

West Point

Agency - Planning and Zoning Commission
Plans completed - Subdivision Regulations, Comprehensive Plan, Zoning Ordinance

Radcliff

Agency - Planning and Zoning Commission
Plans completed - Comprehensive Plan, Subdivision Regulations, Public Improvements Program, Capital Improvements Budget, Zoning Ordinance

Vine Grove

Agency - Planning and Zoning Commission
Plans completed - Base Map, Existing Land Use Map, Existing Land Use Analysis, Population and Economic Analysis

Safety

<u>Police</u>	<u>Hardin County</u>	<u>Elizabethtown</u>	<u>Upton</u>
Total staff	5	15	*
Radio-patrol cars	3	14	
Other equipment		Standard	

*Adequate police protection is provided by three Kentucky state troopers, who reside in Upton, and the Hardin County Sheriff's Department.

	<u>West Point</u>	<u>Radcliff</u>	<u>Vine Grove</u>
Total staff	3 full-time 3 part-time	8	3
Radio-patrol cars	1	4	2
Other equipment	Standard	Standard	Standard

<u>Fire</u>	<u>Hardin County</u>	<u>Elizabethtown</u>	<u>Upton</u>
American Insurance			
Assoc. Fire Rating		6	
Full-time staff		5	
Volunteers	16	23	40
Equipment:			
1,000 gpm pumpers		1	
750 gpm pumpers		2	1
500 gpm pumpers		1	1
250 gpm pumpers	4		
100 gpm pumpers	1		
utility truck		1	
reserve tank truck		1	1 emergency vehicle

	<u>West Point</u>	<u>Radcliff</u>	<u>Vine Grove</u>
American Insurance			
Assoc. Fire Rating	8	7	7
Full-time staff		1	
Volunteers	17	25	25
Equipment:			
1,000 gpm pumpers	1		
750 gpm pumpers		1	2
500 gpm pumpers		1	2
100 gpm pumper	1		
utility truck	1	1	1

Rescue Service

Hardin County Rescue Squad:

Number of volunteers - 16 (part of county fire department)

Equipment - Standard rescue equipment

Personnel training - Scuba diving

<u>Sanitation</u>	<u>Hardin County</u>	<u>Elizabethtown</u>	<u>Upton</u>
Type service	Private	Private	Private
Cost:			
Residential	According to volume	35¢ per pickup	\$2 per mo. (min.)
Business		\$2 per mo.	\$3 per mo. (min.)
Collection frequency:			
Residential	Weekly	Weekly	Weekly
Business	Call basis	As needed	Call basis
Disposal method	Sanitary land fill	Sanitary land fill	Sanitary land fill
	<u>West Point</u>	<u>Radcliff</u>	<u>Vine Grove</u>
Type service	Private	Private	Private
Cost:			
Residential	85¢ per mo.		\$2 per mo.
Business	\$1 per mo.		\$2 to \$15 per mo.
Collection frequency:			
Residential	Twice weekly		Twice weekly
Business	Twice weekly		Twice weekly
Trash pickup		Twice weekly	
Disposal method	Incinerator	Sanitary land fill	Sanitary land fill

HEALTH

Hospitals

	<u>Number</u>	<u>Beds</u>
Hardin Memorial Hospital, Elizabethtown	1	159
General hospital facilities - medical and dental facilities for surgery, pediatrics, X-ray, intensive care facilities, laboratory, pharmacy		
Medical staff - 28 doctors, 56 registered nurses, 26 graduate licensed practical nurses		

Nursing Homes

	<u>Number</u>	<u>Beds</u>
Extended care homes, Elizabethtown	2	168
Personal care homes, Elizabethtown	2	75

Public Health

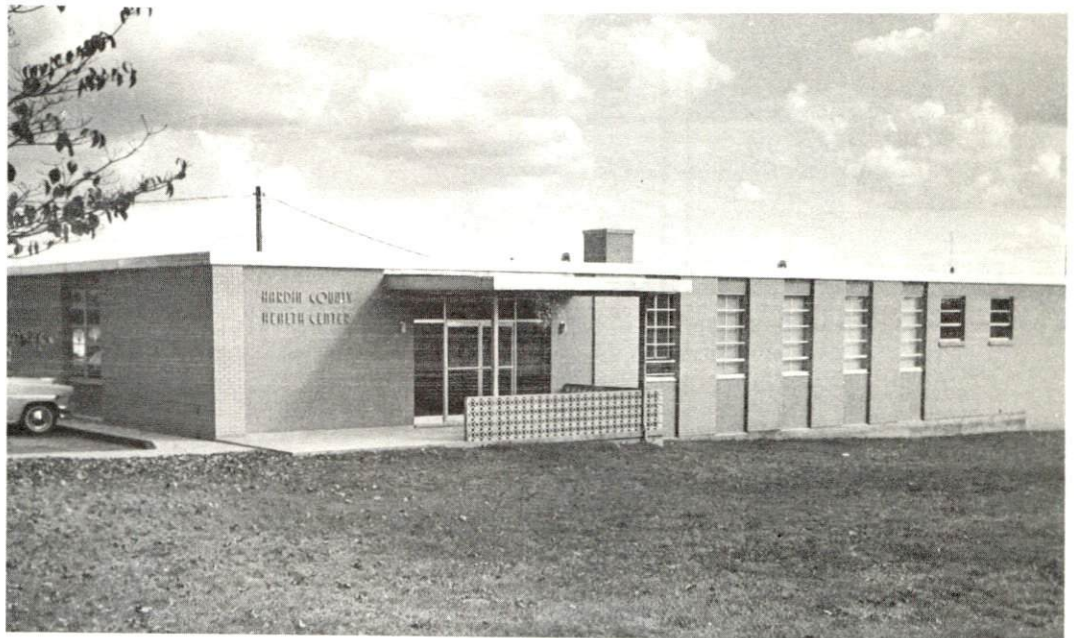
Facility - Hardin County Health Department

Staff - Administrative assistant; 5 nurses; 3 sanitarians;; 3 clerk-typists; 1 custodian; part-time medical clinician; dental hygienist and dental auxiliary worker

Budget 1969-70 - \$117,085



HARDIN
MEMORIAL
HOSPITAL

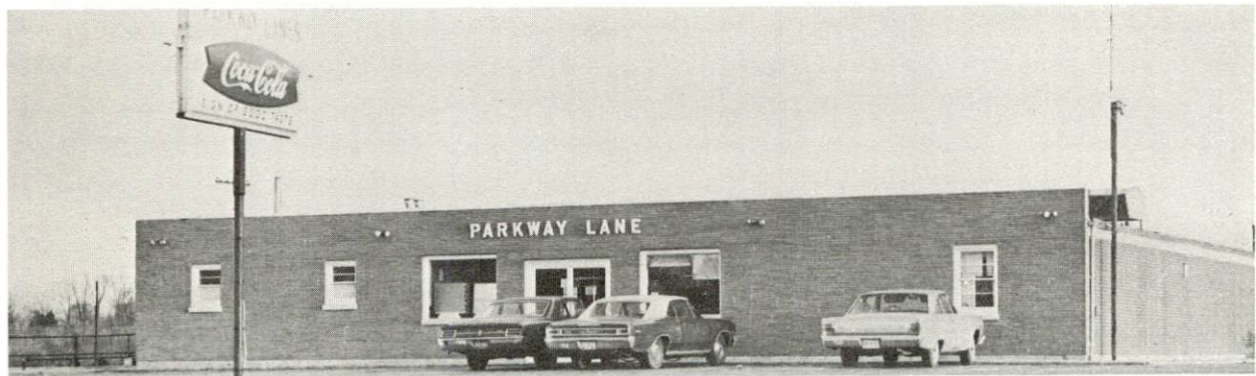


HARDIN
COUNTY
HEALTH
DEPARTMENT



REGIONAL
HEARING
CENTER

RADCLIFF BUSINESS ESTABLISHMENTS



OTHER LOCAL FACILITIES

Communications

Telephone - Elizabethtown, Upton, and West Point - General Telephone Company
Services - Standard

Radcliff and Vine Grove - Brandenburg Telephone Company
Services - Standard

Telegraph - Elizabethtown and Upton - Western Union Telegraph Company
Services - Telephone and messenger

West Point, Radcliff and Vine Grove - nearest telegraph service at Fort Knox

Postal -

	<u>Elizabethtown</u>	<u>Upton</u>	<u>West Point</u>
--	----------------------	--------------	-------------------

Class U.S. Post Office	1	3	2
Mail received daily	15	2	2
Mail dispatched daily	14	2	2

	<u>Radcliff</u>	<u>Vine Grove</u>	<u>Fort Knox</u>
--	-----------------	-------------------	------------------

Class U.S. Post Office	1	2	1
Mail received daily	3	3	8
Mail dispatched daily	3	3	4

Newspapers - Elizabethtown - Hardin County Enterprise (semiweekly)
Elizabethtown News (semiweekly)
Radcliff - The Sentinel (weekly)

Radio - WIEL-AM, WQXZ-FM - Elizabethtown; WSAC-AM and FM - Radcliff stations received from Lexington and Louisville, Kentucky, and Cincinnati, Ohio

Television - Elizabethtown

Cable service

Reception from - Bowling Green and Louisville, Kentucky

Kentucky Educational Television-Lexington transmitter, Channel 46

Upton

Reception from - Louisville and Bowling Green, Kentucky

Radcliff, Vine Grove, West Point

Reception from - Louisville and Bowling Green, Kentucky

Kentucky Educational Television - Elizabethtown transmitter, Channel 23

Library Services

Public library - Hardin County Free Public Library (Oxbow Regional System), Elizabethtown

Size collection - 40,000 volumes

Circulation, 1968-69 - 138,717 volumes plus 6,291 non-book material

Services - bookmobile, children's story hour, records, pictures, tapes, library building is available for community programs

Public library - Elizabethtown Community College Media Center

Size collection - 17,000 volumes

Services - check-out privileges for the public

Private library - Brown Pusey, Elizabethtown

Size collection - 2,000 volumes (approximately)

Special collection - History

Hours - 10 a.m. to 5 p.m. daily except Sunday

Upton, West Point, Radcliff and Vine Grove are serviced by a bookmobile.

Religious Institutions

Number of churches - 45

Denominations - Baptist, Methodist, Catholic, Christian, Presbyterian, Episcopal, Church of Christ, Wesleyan, Church of God, Nazarene, Lutheran, Assembly of God, Pentecostal, Seventh Day Adventist, Jehovah's Witnesses, Cumberland Presbyterian

Financial Institutions

<u>Bank</u>	<u>Statement as of December 31, 1969</u>	
	<u>Assets</u>	<u>Deposits</u>
Citizens Bank of Elizabethtown	\$10,347,943.38	\$ 9,024,310.07
The FirstHardin National Bank, Elizabethtown	34,046,646.28	30,245,877.52
The Bank of Sonora	1,221,649.85	1,027,410.59
The Cecilian Bank, Cecilia	6,056,561.41	5,246,226.78
Fort Knox National Bank	15,065,855.00	13,150,133.00
Farmers Bank, Vine Grove	3,736,402.57	3,140,338.78

Statement as of December 31, 1969

Savings and Loan Associations

Assets

Shared Accounts

The First Federal Savings & Loan
Association of Elizabethtown

\$36,495,918.20

\$30,863,534.48

Hotels and Motels

Number in Hardin County - 21
Number of rooms or units - 860

Clubs and Organizations

Elizabethtown

Business and Civic - Chamber of Commerce, Jaycees, Lions, Rotary,
Optimist, Civitan, Civic Club Council

Fraternal - Knights of Columbus, Moose, American Legion, Masonic
Lodge, Modern Woodsmen

Women's - Homemakers, Junior Woman's Club, Younger Woman's
Club, Woman's Club, PTA, Business and Professional Women's Club

Youth - FHA, FFA, Boy Scouts, Girl Scouts, Junior Achievement

Upton

Business and Civic - Upton Industrial Land Development

Fraternal - Masons

Women's - Homemakers, Eastern Star

Youth - 4-H, FFA, FHA

West Point

Business and Civic - Jaycees, Chamber of Commerce

Fraternal - Masons

Women's - Eastern Star, Homemakers and Book Club

Youth - Boy Scouts, Girl Scouts, 4-H

Radcliff

Business and Civic - Jaycees, Chamber of Commerce, Optimist, City Council, Hairdressers Guild, AFGE, Civil Defense Unit, Radcliff Ministerial Association, All States Tropical Fish Club, Radcliff PTA

Fraternal - Masonic Lodge No. 919

Women's - Radcliff Homemakers, Bob-O-Link Homemakers, Eastern Star, Younger Woman's Club, Longview Homemakers

Youth - Boy Scouts, Girl Scouts

Vine Grove

Business and Civic - Civic Service Club, PTA, Optimist Service Club

Fraternal - Masonic, Knights of Columbus, American Legion

Women's - Woman's Club, Homemakers, Eastern Star, Amaranth

Youth - Teenage Club, Boy Scouts, Girl Scouts

Other - Sportman's Club

RECREATION

Local

Elizabethtown

Public Recreation Facilities

Supervised program - yes
Parks - 3
Playgrounds - 4
Swimming pool - 1
Golf course - 1 par 3
Tennis courts - 10
Baseball diamonds - 3
Football field - 1
Other - driving range

Private Recreation Facilities

Country club - 1
Golf course - 1
Swimming pool - 1
Movie theaters - 1 indoor, 1 drive-in
Bowling lane - 1
Other - 4 tennis courts, practice putting green, driving range,
Sportsman's Lake

Tourist Attractions

42-acre Freeman Lake Park (Lincoln Heritage House)

Cultural and Sports Events

Elizabethtown Community College - basketball
The Lively Arts (Elizabethtown residents)

Upton

Public Recreation Facilities

Parks - (planning to develop a 3-acre park)
Playground - 1
Baseball diamond - 1
Other - Twilight Riding Club

Private Recreation Facilities

Other - Billiards

West Point

Public Recreation Facilities

Supervised program - West Point Recreation Park
Park - 1 (school)
Playground - 1
Swimming pool - public beach on river
Tennis courts - 2
Baseball diamond - 1
Other - boat dock and park

Private Recreation Facilities

Country club - 1 at Brandenburg
Other - 2 tennis courts

Radcliff

Public Recreation Facilities

Supervised program - Radcliff Recreation Department
Park - 1
Playgrounds - 3
Tennis courts - 2
Baseball diamonds - 3

Private Recreation Facilities

Movie theater - 1 drive-in
Bowling lane - 1 (12 lanes)
Other - skating rink

Tourist Attractions

Fort Knox
Lincoln Cemetery

Cultural Events

Hardin County Playhouse



ELIZABETHTOWN COUNTRY CLUB



ELIZABETHTOWN MUNICIPAL SWIMMING POOL

RECREATION FACILITIES - RADCLIFF



Vine Grove

Public Recreation Facilities

Supervised program - Vine Grove Recreation Program

Park - 1

Playground - 1

Tennis courts - 2

Baseball diamonds - 3

Football field - 1

Other - outdoor basketball court

Private Recreation Facilities

Golf course - 1

Swimming pool - 1

Other - Saddle Club, Sportsman's Club

Cultural Events

Fall Festival

Area (Within 25 miles)

Abraham Lincoln Birthplace National Park, 13 miles

Lincoln's Knob Creek Home, 5 miles east of Hodgenville

My Old Kentucky Home at Bardstown

The Patton Museum and the Gold Vault, 15 miles at Fort Knox

Rough River State Park, 25 miles

AGRICULTURE - NATURAL RESOURCES - CLIMATE 12/

Agriculture 13/

	<u>Hardin County</u>	<u>Labor Market Area</u>
Total land area (acres)	394,240	2,188,160
Percent of area in farm land	66.0	74.0
Number of farms	2,033	12,127
Average size of farms (acres)	128.0	281.7
1964 value of all farm products	\$8,381,057	\$52,043,356
Value per farm	4,123	4,292
Total crop sales	3,237,638	24,211,484
Total livestock & livestock products	5,138,596	27,722,446
1967 agricultural production included:		
Burley tobacco (lbs.)	3,407,000	28,734,000
Corn (bu.)	2,158,000	8,597,000
Cattle and calves (number)	53,500	302,900
Hogs and pigs (number)	35,700	174,800
Milk production, 1966 (lbs.)	41,230,000	274,915,000

Natural Resources

Principal mineral resources	limestone
Other mineral resources	petroleum, natural gas, rock asphalt, glass sand, sand and gravel, some clay
Acres of commercial forest land	149,300
Most abundant tree species	white oak, red oak, ash, hickory, yellow poplar, beech, hard maple, yellow pine

Climate 14/

	<u>Hardin County</u>
Temperature	
Annual mean (30-year record)	55.6 degrees
Average annual (1968)	54.1 degrees
Record highest (July and August 1966)	98.0 degrees
Record lowest, January 1966	-10.0 degrees
Seasonal heating degree-days (30-year record)	4,683
Precipitation	
Mean annual total (30-year record)	44.73 inches
Mean annual snow and sleet (24-year record)	16.00 inches
Total precipitation 1968	43.32 inches
Mean number days precipitation (24-year record) (.01 inch or more)	128
Average number days thunderstorms	48
Prevailing winds (24-year record - 17-year record)	South

HISTORY

Hardin was Kentucky's fifteenth county. It was formed from Nelson County and later, Ohio, Breckinridge, and Larue Counties were formed from it, as well as parts of Grayson, Hart, and Meade.

Hardin County is bounded by the Ohio River on the north, the Rolling Fork of Salt River on the northeast, and the Nolin River, which forms part of the boundary with Grayson County.

Even though Colonel John Hardin was not one of the first settlers, the county bears his name. Colonel Hardin served his county and his country well as he participated in the French and Indian Wars, the Revolution and the Indian wars in the early 1790's. In 1792, he was sent to negotiate a treaty with the Miami Indians and was murdered by them at what is now Hardin, Ohio.

Elizabethtown, the county seat, was established in 1780 and was named after the wife of one of the first settlers, Colonel Andrew Hynes.

Hardin County has produced its share of important citizens. Thomas Lincoln lived in Elizabethtown in 1796, and later he lived at Knob Creek, then a part of Hardin County, with his son Abraham. James Buchanan, later President of the United States, lived in Elizabethtown for a short period of time. Duff Green, later a member of President Jackson's "Kitchen Cabinet," was a merchant partner of Major Ben Helm who was twice Governor of Kentucky. General George Armstrong Custer lived in Elizabethtown from 1871 to 1873 while writing My Life on the Plains. John Young Brown was a citizen of Hardin County when he was elected Governor of Kentucky in 1891. During the Civil War, General S. B. Buckner, General John Hunt Morgan, and General H. B. Lyon all made campaigns into the Elizabethtown area.

SOURCES OF INFORMATION

- 1/ U. S. Department of Commerce, Bureau of the Census, Census of Population, 1950, 1960. Department of Rural Sociology, University of Kentucky, Kentucky County Provisional Population Estimates: January 1, 1970. Elizabethtown-Hardin County Chamber of Commerce.
- 2/ Kentucky Department of Economic Security, Division of Research and Statistics.
- 3/ Kentucky Department of Economic Security, Number of Workers in Manufacturing Industries Covered by Unemployment Insurance Law Classified by Industry and County, June 1960, June 1969.
- 4/ Kentucky Department of Commerce, 1970 Kentucky Directory of Manufacturers.
- 5/ Kentucky Department of Economic Security, Division of Employment Service, Elizabethtown Office.
- 6/ Kentucky Department of Economic Security, Kentucky Labor Supply Estimates by County, January 1970.
- 7/ Kentucky Department of Commerce, Future Labor Supply by 1976.
- 8/ University of Kentucky, Office of Development Services and Business Research, Total Personal Income for Kentucky.
- 9/ University of Kentucky, Office of Development Services and Business Research, Per Capita Income in Kentucky.
- 10/ Louisville & Nashville Railroad, Louisville, Kentucky.
- 11/ Dixie Ohio Express, Inc., Akron, Ohio.
- 12/ Kentucky Department of Revenue, Kentucky Property Tax Rates, 1969.
- 13/ U. S. Department of Commerce, Bureau of the Census, Census of Agriculture, 1964. U. S. Department of Agriculture and Kentucky Department of Agriculture, Kentucky Agricultural Statistics, 1968.
- 14/ U. S. Department of Commerce, Environmental Science Services Administration, Climatological Data, 1967.

All other information was obtained from governmental offices, local businesses and organizations.

This copy has been prepared by the Kentucky Department of Commerce,
Division of Research and Planning, and the cost of printing paid from
state funds.