

1983

Industrial Resources: Harrison County - Cynthiana

Kentucky Library Research Collection
Western Kentucky University, spcol@wku.edu

Follow this and additional works at: https://digitalcommons.wku.edu/harrison_cty



Part of the [Business Administration, Management, and Operations Commons](#), [Growth and Development Commons](#), and the [Infrastructure Commons](#)

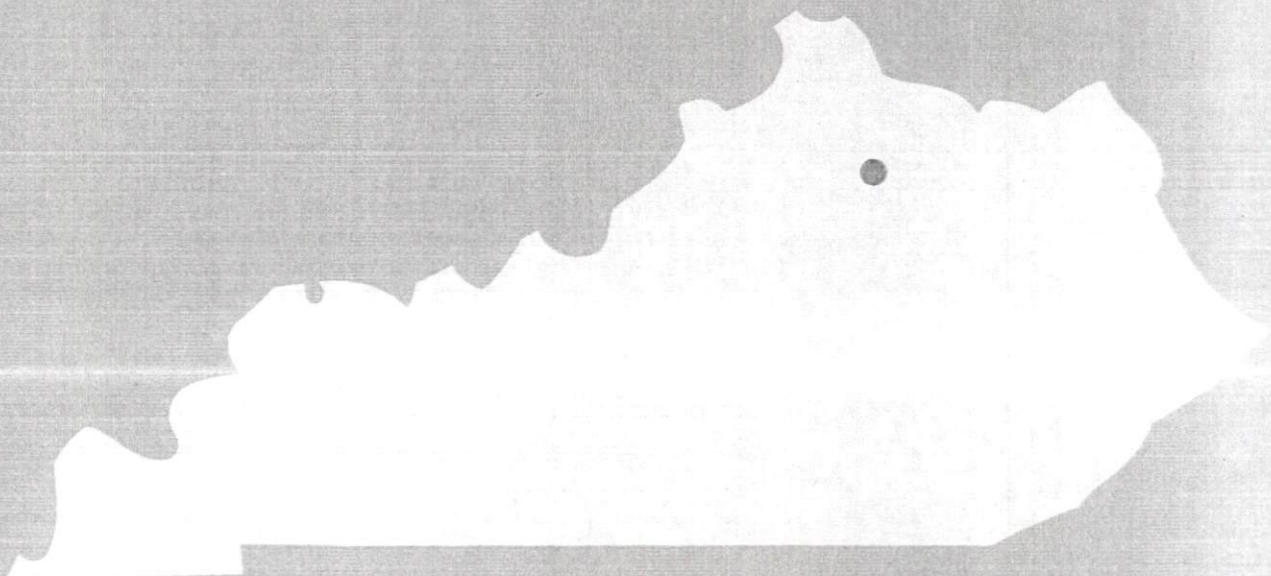
Recommended Citation

Kentucky Library Research Collection, "Industrial Resources: Harrison County - Cynthiana" (1983). *Harrison County*. Paper 8.
https://digitalcommons.wku.edu/harrison_cty/8

This Report is brought to you for free and open access by TopSCHOLAR®. It has been accepted for inclusion in Harrison County by an authorized administrator of TopSCHOLAR®. For more information, please contact topscholar@wku.edu.

1983

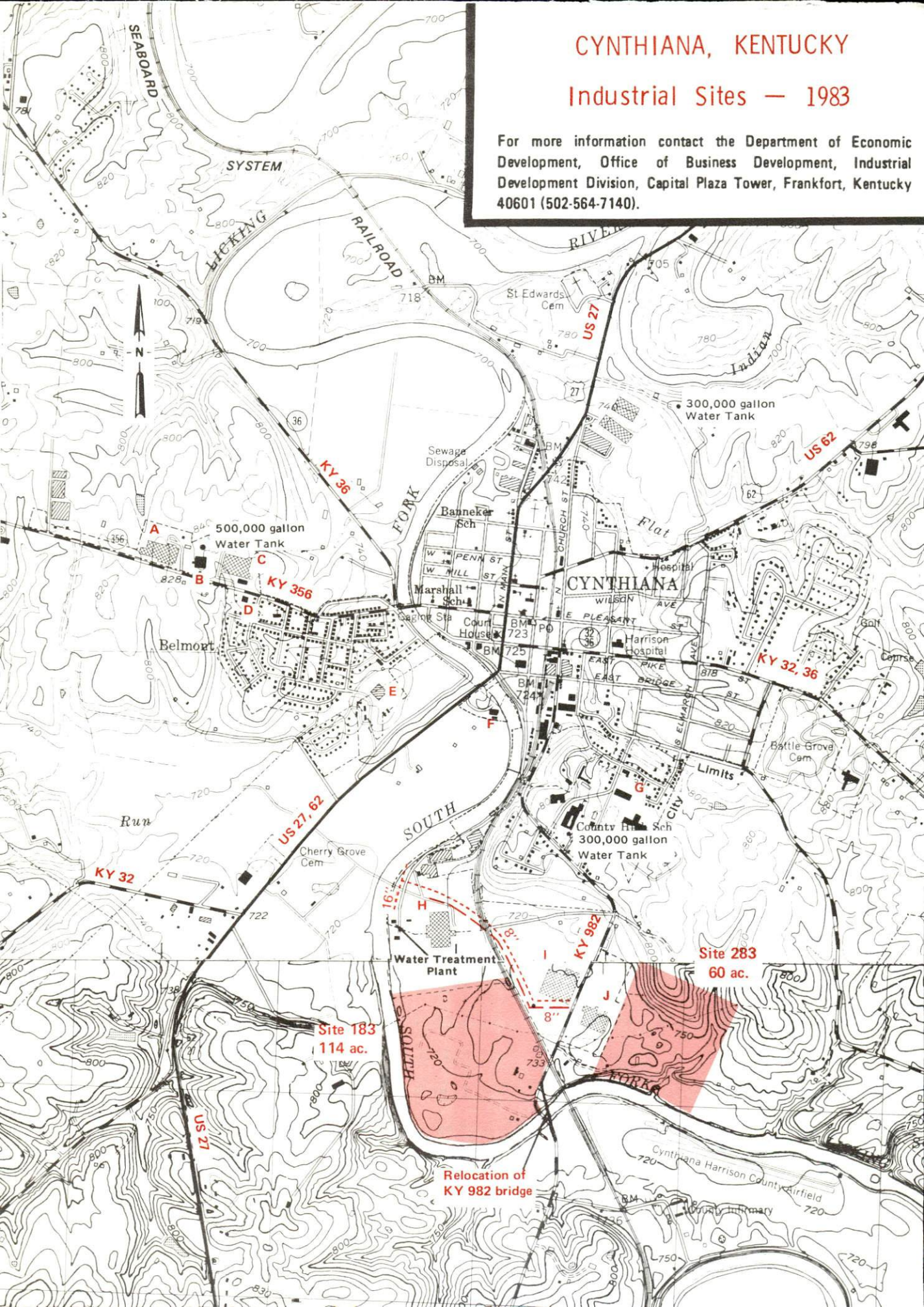
**A comprehensive
report on
Cynthiana, Ky.**



CYNTHIANA, KENTUCKY

Industrial Sites — 1983

For more information contact the Department of Economic Development, Office of Business Development, Industrial Development Division, Capital Plaza Tower, Frankfort, Kentucky 40601 (502-564-7140).



Site 183 - 114 Acres

LOCATION: Adjacent to southern city limits

ZONING: Industrial

HIGHWAY ACCESS: KY 982 adjacent to southeastern boundary

RAILROAD: Seaboard System Railroad along eastern boundary

WATER: City of Cynthiana Water Department

Size Line: 8-inch line across Seaboard System Railroad; a 16-inch line and the water treatment plant are located approximately 1400 feet north of site.

NATURAL GAS: Columbia Gas of Kentucky, Inc.

Size Line: 6-inch high pressure line passes through southeastern portion of site

ELECTRICITY: Kentucky Utilities Company

SEWERAGE: City of Cynthiana Sewerage Department

Size Line: 8-inch line across Seaboard System Railroad

OWNERSHIP: Private

FLOOD DATA: Intermediate Regional Flood-Modified (Elev. 718 feet at KY 982 bridge)

Site 283 - 60 Acres

LOCATION: Adjacent to southeastern city limits

ZONING: None

HIGHWAY ACCESS: KY 982 approximately 750 feet west of site

RAILROAD: Seaboard System Railroad spur adjacent to western boundary

WATER: City of Cynthiana Water Department

Size Line: 8-inch line approximately 500 feet west

NATURAL GAS: Columbia Gas of Kentucky, Inc.

Size Line: 6-inch high pressure line approximately 800 feet west across KY 982

ELECTRICITY: Harrison Rural Electric Cooperative Corporation

SEWERAGE: City of Cynthiana Sewerage Department

Size Line: 8-inch line approximately 500 feet west

OWNERSHIP: Private

Existing Industries

- A Bundy Tubing
- B E. D. Bullard Co.
- C Cleveland Twist Drill
Cynthiana Plant
- D Production Plating, Inc.
- E Available Industrial Bldg. - 88,612 sq. ft.
- F Webber Farms, Inc.
Sales and distribution
- G Blue Grass Industries
- H Ladish Co. - Ky. Division
- I Minnesota Mining and Mfg. Co.
- J Eaton Corporation

SCALE: 1 inch = 2000 feet

CONTOUR INTERVAL: 10 feet

BASE: USGS 7.5 minute series - 1954-1969
Photorevised - 1978

UTILITIES

Water Line - - - - -
Sewer Line - - - - -

A COMPREHENSIVE REPORT ON
CYNTHIANA, KENTUCKY

Prepared by
The Kentucky Department of Economic Development
Division of Research and Planning
in cooperation with
The Cynthiana-Harrison County Chamber of Commerce

1983

Program manager - Pamela Riley; research - Bill Morris; clerical - Shirley Wood; graphics - Frank Ferrante, Tony Cecconi; Robert Owens; cartography - Site Evaluation Branch, Division of Industrial Development. Cost of printing paid from state funds.

TABLE OF CONTENTS

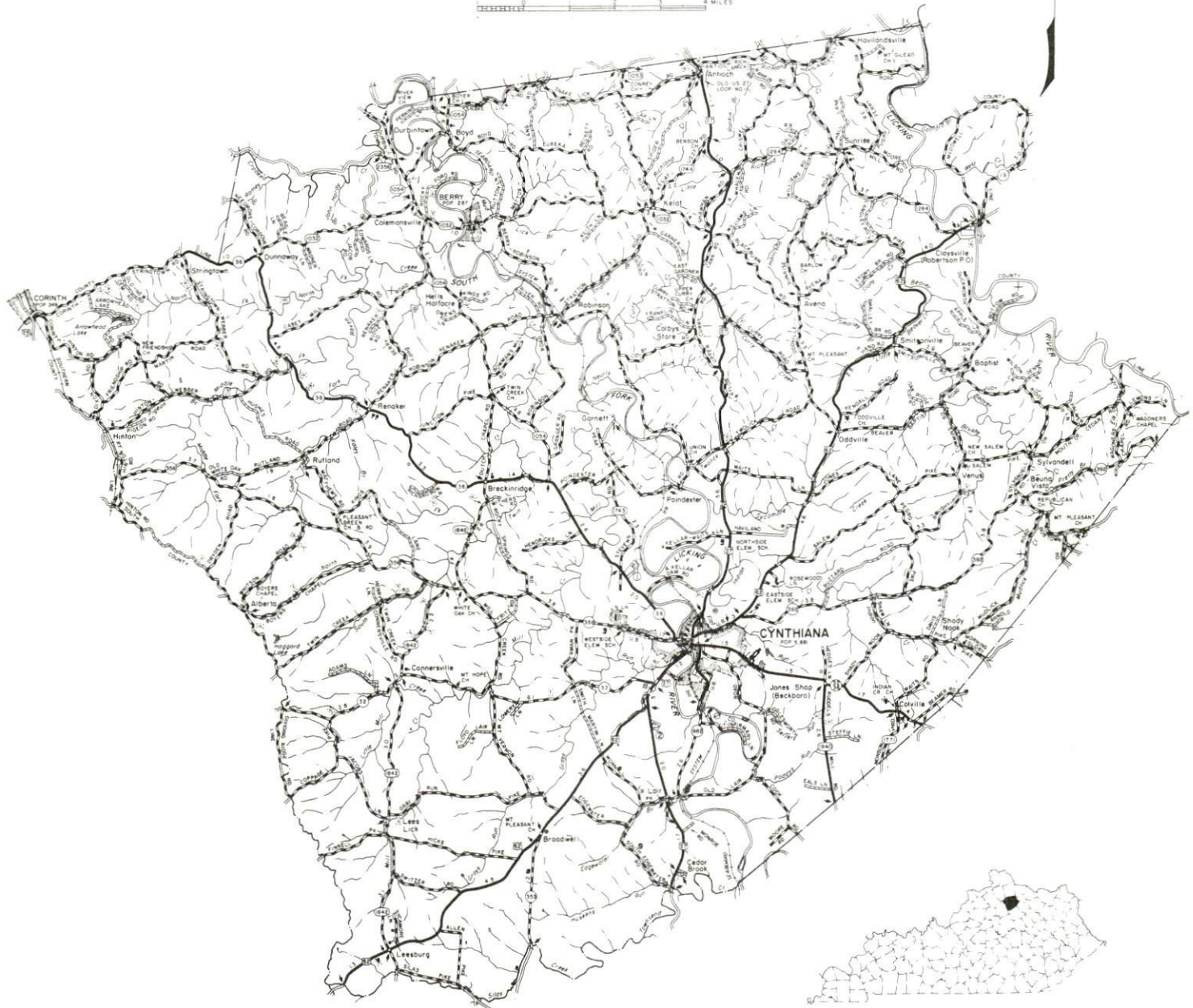
<u>Chapter</u>	<u>Page</u>
INDUSTRIAL SITES	i
CYNTHIANA, KENTUCKY - A RESOURCE PROFILE	1
THE LABOR MARKET AREA	3
Population	3
Labor Force Characteristics of Residents, 1982	3
Selected Components of Nonagricultural Employment, by Place of Work, 1982	4
Cynthiana Manufacturing Firms, Their Products and Employment	5
Labor Organizations in Manufacturing Firms	6
Industrial Services	7
Estimated Male Labor Supply	8
Estimated Female Labor Supply	9
Average Weekly Wages by Industry, by Place of Work, 1982	10
Per Capita Personal Income	12
TRANSPORTATION	13
Rail	13
Highways	13
Truck Service	14
Air	16
Bus	16
Taxi	16
Rental Services	16
Water	16
POWER AND FUEL	17
Electricity	17
Natural Gas	18
Other Fuels	18
WATER AND SEWERAGE	19
Public Water Supply	19
Raw Water	19
Sewerage	20
CLIMATE	21

<u>Chapter</u>	<u>Page</u>
LOCAL GOVERNMENT	22
City	22
County	22
Assessed Value of Property, 1983	22
Property Taxes	23
Combined State and Local Rates Per \$100 Valuation, 1983	23
Planning and Zoning	24
Safety	24
Police	24
Fire	24
Rescue Service	24
Refuse Collection and Disposal	25
EDUCATION	26
Public Schools	26
Nonpublic Schools	26
Area Colleges and Universities	27
Vocational Schools	28
HEALTH	30
Local Medical Personnel	30
Hospitals	30
Other Medical Facilities	30
Ambulance Service	30
Public Health	31
OTHER LOCAL FACILITIES	32
Communications	32
Library Services	32
Religious Institutions	33
Financial Institutions	33
Hotel and Motels	33
Clubs and Organizations	34
RECREATION	35
COMMUNITY IMPROVEMENTS	38

1983 EDITION
GENERAL HIGHWAY MAP
HARRISON COUNTY
KENTUCKY

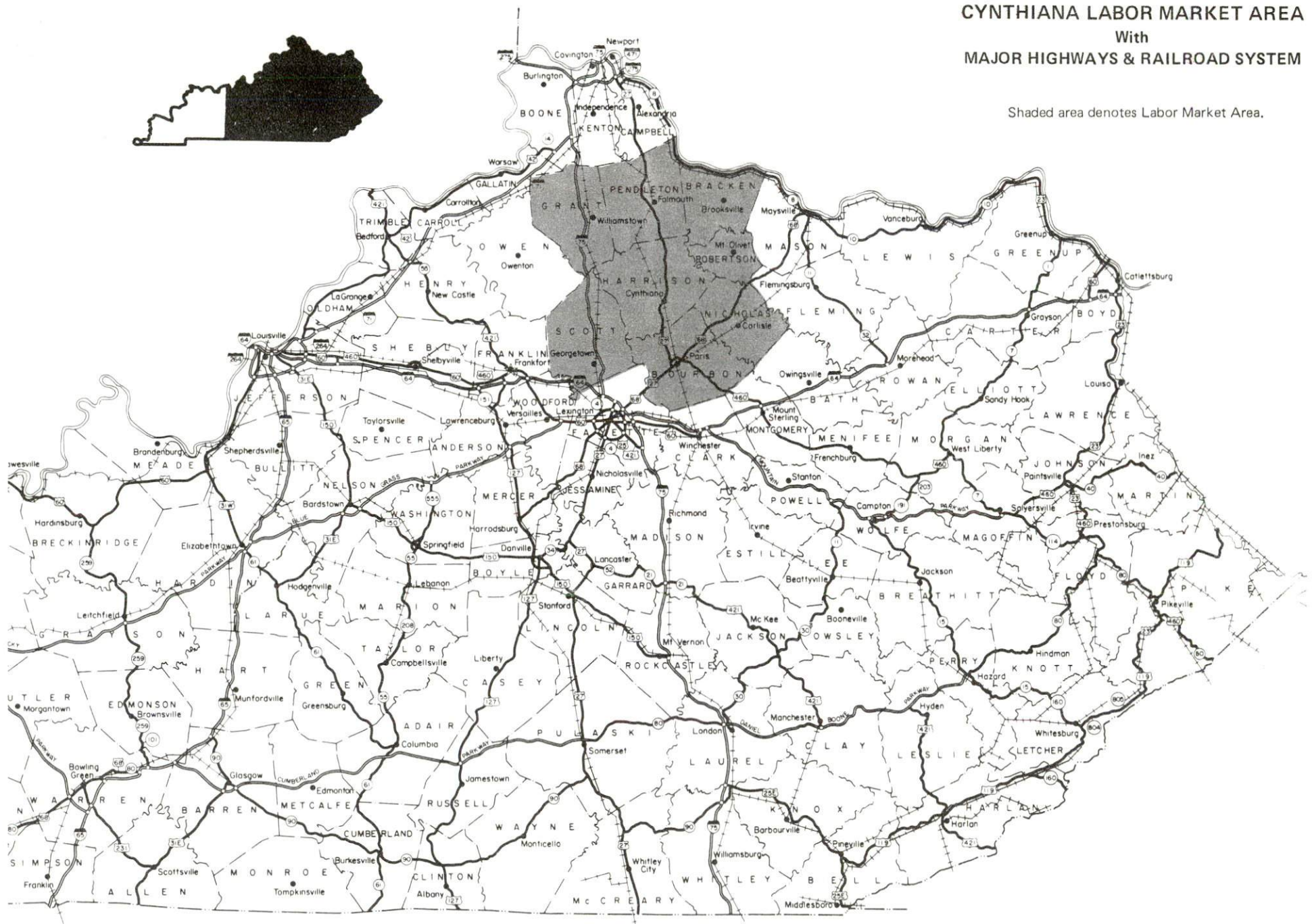
PREPARED BY THE
KENTUCKY TRANSPORTATION CABINET
DEPARTMENT OF HIGHWAYS
DIVISION OF PROJECT DEVELOPMENT
IN COOPERATION WITH THE
U.S. DEPARTMENT OF TRANSPORTATION
FEDERAL HIGHWAY ADMINISTRATION

0 1 2 3 4 MILES



CYNTHIANA LABOR MARKET AREA With MAJOR HIGHWAYS & RAILROAD SYSTEM

Shaded area denotes Labor Market Area.



CYNTHIANA, KENTUCKY - A RESOURCE PROFILE

Cynthiana, the county seat of Harrison County, is located in north-central Kentucky, 34 miles northeast of Lexington, Kentucky; 59 miles southeast of Cincinnati, Ohio; 99 miles east of Louisville, Kentucky; and 201 miles northeast of Knoxville, Tennessee. Cynthiana had a 1980 population of 5,881.

Cynthiana was named a "Kentucky Certified City" for 1982 for achievements in the areas of economic and community development.

Harrison County covers a land area of 310 square miles in the Blue Grass Region of central Kentucky. The 1980 population of the county was 15,166.

The Economic Framework

The total number of Harrison County residents employed in 1982 averaged 6,820, with nonagricultural jobs accounting for 5,970 workers. Manufacturing employers in the county reported 1,680 workers; wholesale and retail trade 785; services occupations 560; and 470 employees in state and local government. Manufacturing employment is greatest in primary metal industries, instruments and related products, and fabricated metal products.

Per capita personal income in Harrison County in 1981 was \$8,321. Between 1977 and 1981, per capita income increased by 48 percent.

The Cynthiana labor market area includes Harrison County and the adjoining Kentucky counties of Bourbon, Bracken, Grant, Nicholas, Pendleton, Robertson and Scott. The total number of residents of the labor market area employed in 1982 averaged 43,250, with nonagricultural jobs accounting for 37,590 workers. Manufacturing employers in this area reported 6,500 workers; wholesale and retail trade 4,240; state and local government 3,360; and 2,590 in the services industries.

Resources for Growth

1. Labor Supply - There is a current labor supply of 5,460 men and 6,150 women available for industrial jobs in the labor market area. In addition, from 1983 through 1987, 4,430 young men and 4,090 young women in the area will become 18 years of age and potentially available for industrial jobs.

2. Transportation - Major highways serving Cynthiana include U. S. Highways 27 and 62, and Kentucky Route 36. Access to Interstate 75 is 19 miles southwest via U. S. 62, or 30 miles northwest via Kentucky Route 36. Interstate 64 and the Mountain Parkway are accessible 31 miles south via U. S. 27 and Kentucky 627.

Twenty-one common carrier trucking companies are authorized to serve Cynthiana.

The nearest scheduled commercial airline service is at Blue Grass Field near Lexington, 39 miles southwest of Cynthiana. The local Cynthiana-Harrison County Airport has one paved 3,200-foot runway.

3. Power and Fuel - Kentucky Utilities Company provides electricity to Cynthiana and parts of Harrison County. Harrison Rural Electric Cooperative Corporation, which is supplied by East Kentucky Power Cooperative, provides electricity to the remainder of Harrison County. Columbia Gas of Kentucky, Inc., whose source of supply is Columbia Gas Transmission Corporation, provides Cynthiana with natural gas service. Two distributors of propane and two fuel oil dealers operate in the city.

4. Education - The Harrison County School System enrolled 2,848 students in the spring of 1983. A parochial elementary school also operates in Cynthiana.

Five universities, two senior colleges, one junior college, one community college, and one technical institute are located within 55 miles of Cynthiana.

The Central Kentucky State Vocational-Technical School at Lexington, 34 miles southwest, offers training in 20 course areas. The Harrison County Area Vocational Education Center in Cynthiana offers instruction in eight course areas.

THE LABOR MARKET AREA

The Cynthiana Labor Market Area includes Harrison County and the adjoining Kentucky counties of Bourbon, Bracken, Grant, Nicholas, Pendleton, Robertson and Scott.

POPULATION

<u>Area</u>	<u>1980</u>	<u>1970</u>	<u>Percent Nonwhite</u>
Cynthiana	5,881	6,356	6.8
Labor Market Area	97,846	86,428	N/A
Harrison County	15,166	14,158	3.2
Bourbon County	19,405	18,476	10.2
Bracken County	7,738	7,227	0.8
Grant County	13,308	9,999	0.4
Nicholas County	7,157	6,508	1.9
Pendleton County	10,989	9,949	0.5
Robertson County	2,270	2,163	0.4
Scott County	21,813	17,948	7.3

Note: The 1980 counts of population by race are provisional.

Sources: U. S. Department of Commerce, Bureau of the Census, 1980 Census of Population and Housing, March 1981; 1980 Census of Population, Number of Inhabitants. Population Research Unit, Urban Studies Center, University of Louisville, Kentucky Demographics: The 1980 Census of Kentucky, Characteristics of Population, Households, Housing, January 1982.

LABOR FORCE CHARACTERISTICS OF RESIDENTS, 1982

	<u>Harrison County</u>	<u>Labor Market Area</u>
Civilian Labor Force	7,486	47,846
Employment	6,821	43,249
Agricultural	853	5,663
Nonagricultural	5,968	37,586
Unemployment	665	4,597
Rate of Unemployment (%)	8.9	9.6

Source: Kentucky Cabinet for Human Resources, Kentucky Labor Force Estimates, Annual Averages, 1982.

SELECTED COMPONENTS OF NONAGRICULTURAL EMPLOYMENT,
BY PLACE OF WORK, 1982

	<u>Harrison County</u>	<u>Labor Market Area</u>
All Industries (total)	3,895	19,780
Manufacturing	1,676	6,496
Wholesale & Retail Trade	785	4,239
Services	556	2,590
State/Local Government	470	3,358

Note: Excludes domestic workers, railway workers, certain nonprofit corporations, majority of federal government workers, and self-employed workers.

Source: Kentucky Cabinet for Human Resources, Average Monthly Workers Covered by Kentucky Unemployment Insurance Law, 1982.

CYNTHIANA MANUFACTURING FIRMS,
THEIR PRODUCTS AND EMPLOYMENT

<u>Firm</u> (Establishment date)	<u>Product</u>	<u>Employment</u>			<u>Labor Unions</u>
		<u>Total</u>	<u>Male</u>	<u>Female</u>	
Blue Grass Industries, Inc. (1968)	Men's knit underwear	190	17	173	
E. D. Bullard Company (1972)	Safety head- gear and equipment	100	20	80	
Bundy Tubing, Division of Bundy Corporation (1965)	Steel tubing- automotive, refrigera- tion coils	236	202	34	Auto Workers*
Burley Belt Fertilizer Company (1948)	Fertilizer	4	3	1	
Cleveland Twist Drill, Cynthiana Plant, an Acme Cleveland Corporation (1972)	Wire, tool blanks, drill finish	260	-	-	
Cynthiana Publishing Company, Inc. (1945)	Newspaper, web print- ing, type- setting	34	14	20	
Cynthiana Ready-Mix, Inc. (1960)	Ready-mixed concrete	3	3	-	
Cynthiana Screw Corporation, Division of VSI Corporation (1980)	Screws	65	60	5	
Eaton Corporation (1970)	Gray iron castings	227	186	41	
Harrison Machine Shop (1942)	Machine shop	2	-	-	
Hicks Tool & Die Company (1981)	Machine shop, tools and dies, jigs and fixtures	2	2	-	

(Contd.)

<u>Firm (Establishment date)</u>	<u>Product</u>	<u>Employment</u>			<u>Labor Unions</u>
		<u>Total</u>	<u>Male</u>	<u>Female</u>	
Ladish Company, Kentucky Division (1961)	Stainless steel valves, fittings, forged steel fittings	196	181	15	Steelworkers*
Minnesota Mining & Manufacturing Company (3-M) (1969)	Copiers, overhead projectors, plates, transparent tape, note pads	267	99	168	
Production Plating, Inc. (1965)	Electroplating, metal finish- ing	32	19	13	
Taylor Farms Country Hams, Inc. (1895)	Country hams, bacon	7	3	4	
Webber Farms, Inc. (1947)	Sausage	148	133	15	

*See Labor Organizations below.

Source: Kentucky Department of Economic Development, Division of Research and Planning.

LABOR ORGANIZATIONS IN MANUFACTURING FIRMS

<u>Union</u>	<u>Representing workers at:</u>
International Union, United Automobile, Aerospace and Agricultural Implement Workers of America	Bundy Tubing, Division of Bundy Corporation
United Steelworkers of America, AFL-CIO	Ladish Company, Kentucky Division

INDUSTRIAL SERVICES

<u>Types of Services</u>	<u>Location</u>	<u>Mileage from Cynthiana</u>
Custom Plastics Producers	Georgetown	21
Electric Motor Repair	Lexington	34
Grinding, Precision & Tool	Georgetown	21
Heat Treating Facilities	Georgetown	21
Industrial Equipment & Supplies	Lexington	34
Industrial Gases	Lexington	34
Industrial Waste Removal	Butler	33
	Lexington	34
Machine Shops, Tool & Die	Cynthiana	-
Metal Finishers	Cynthiana	-
Metal Service Centers	Lexington	34
Millwrights	Lexington	34

Sources: Kentucky Department of Economic Development, Kentucky Directory of Selected Industrial Services, 1983; Kentucky Department of Economic Development, Division of Research and Planning.

ESTIMATED MALE LABOR SUPPLY
CYNTHIANA LABOR MARKET AREA

Area	Current				Future
	Total	Unemployed	Under- employed	Not in Labor Force	Becoming 18 years of age 1983 thru 1987
Labor Market					
Area*	5,460	2,812	1,621	1,027	4,432
Harrison	637	433	204	0	649
Bourbon	686	392	294	0	894
Bracken	757	302	106	349	357
Grant	569	365	204	0	638
Nicholas	584	165	97	322	296
Pendleton	820	433	179	208	580
Robertson	325	148	29	148	90
Scott	1,082	574	508	0	928

*Additional workers may be drawn from other nearby counties.

Note: Unemployed - persons unemployed and actively seeking work; Underemployed - persons employed but working only 14 to 26 weeks per year. Not in Labor Force - represents the number of persons who would enter the labor force if suitable employment were available (based on the assumption that persons in Kentucky would like to participate in the labor force in the same proportion that they do nationally).

Sources: Kentucky Cabinet for Human Resources, Kentucky Labor Supply Estimates by Area Development District and County, 1982. Kentucky Department of Economic Development, Future Labor Supply Becoming 18 Years of Age, 1983 thru 1987.

ESTIMATED FEMALE LABOR SUPPLY
CYNTHIANA LABOR MARKET AREA

Area	Current			Future	
	Total	Unemployed	Under- employed	Not in Labor Force	Becoming 18 years of age 1983 thru 1987
Labor Market					
Area*	6,151	1,785	2,127	2,239	4,093
Harrison	633	232	324	77	583
Bourbon	851	375	476	0	769
Bracken	938	114	139	685	345
Grant	1,009	209	228	572	650
Nicholas	497	130	100	267	303
Pendleton	974	360	175	439	479
Robertson	306	40	67	199	104
Scott	943	325	618	0	860

*Additional workers may be drawn from other nearby counties.

Note: Unemployed - persons unemployed and actively seeking work; Underemployed - persons employed but working only 14 to 26 weeks per year. Not in Labor Force - represents the number of persons who would enter the labor force if suitable employment were available (based on the assumption that persons in Kentucky would like to participate in the labor force in the same proportion that they do nationally).

Sources: Kentucky Cabinet for Human Resources, Kentucky Labor Supply Estimates by Area Development District and County, 1982. Kentucky Department of Economic Development, Future Labor Supply Becoming 18 Years of Age, 1983 thru 1987.

AVERAGE WEEKLY WAGES BY INDUSTRY
BY PLACE OF WORK, 1982

	<u>Harrison County</u>	<u>Bourbon County</u>	<u>Bracken County</u>	<u>Grant County</u>
All Industries	\$264.33	\$242.15	\$230.55	\$209.67
Mining & Quarrying	*	*	0	0
Contract Construction	307.07	265.82	152.91	218.92
Manufacturing	337.25	291.98	*	266.92
Transportation, Communications & Public Utilities	303.46	313.40	345.39	328.40
Wholesale & Retail Trade	164.72	192.87	162.88	161.74
Finance, Insurance & Real Estate	245.41	283.89	219.17	209.27
Services	188.95	166.94	110.09	133.13
State/Local Government	253.97	270.41	202.68	236.87
Other	204.81	233.98	*	101.93
	<u>Nicholas County</u>	<u>Pendleton County</u>	<u>Robertson County</u>	<u>Scott County</u>
All Industries	\$211.58	\$240.57	\$207.87	\$241.91
Mining & Quarrying	0	*	0	*
Contract Construction	161.20	168.36	*	255.88
Manufacturing	*	310.78	0	317.68
Transportation, Communications & Public Utilities	*	212.60	*	401.95
Wholesale & Retail Trade	160.74	150.96	128.40	153.60
Finance, Insurance & Real Estate	263.51	179.43	*	257.19
Services	*	123.85	*	184.31
State/Local Government	207.49	238.11	206.31	212.19
Other	167.66	*	0	282.29

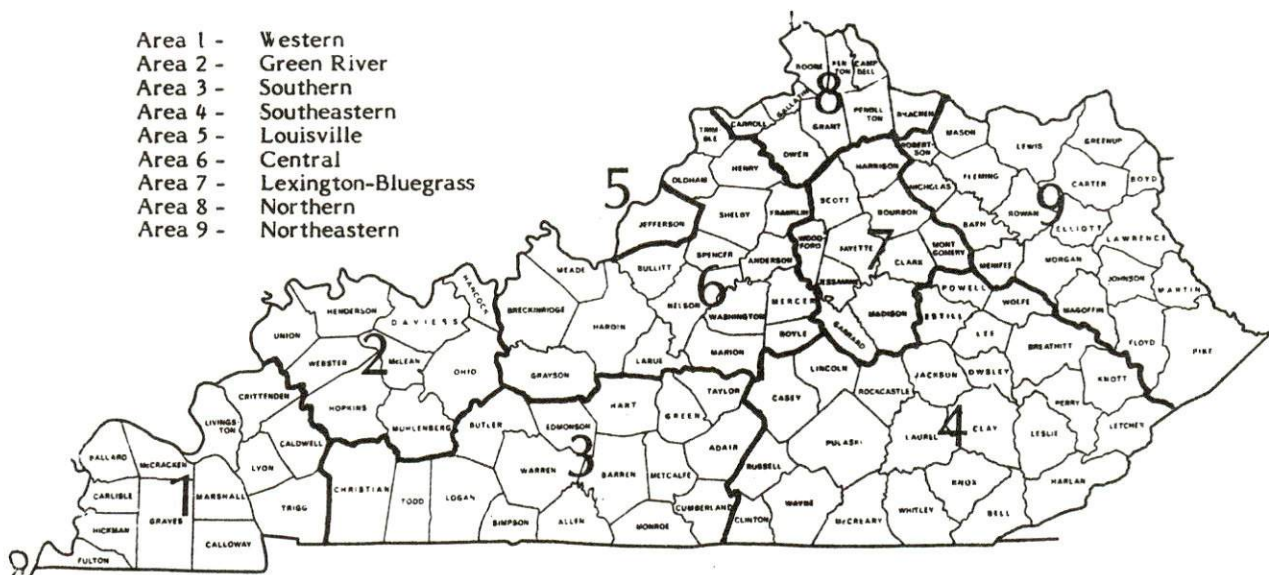
*Not disclosed.

Note: Excludes domestic workers, railway workers, certain nonprofit corporations, majority of federal government workers, and self-employed workers.

Source: Kentucky Cabinet for Human Resources, Average Weekly Wages of Workers Covered by Kentucky Unemployment Insurance Law, 1982.

Occupational wage rates for specific industries are usually not available to most government agencies, and wage data furnished to state employment agencies by individual industrial employers are protected from disclosure by federal law. The most reliable up-to-date wage information can be obtained by direct contact with local employers.

Associated Industries of Kentucky, a voluntary organization of Kentucky businesses, regularly collects occupational wage rates and fringe benefits data from participating member firms. Data are compiled for over 127 clearly defined office, production, and service occupations. Tabulations are published for nine geographical areas of Kentucky, as shown on the map below. It should be noted that the data may be weighted by the preponderance of firms in the larger cities and may be somewhat higher than the rates paid in the smaller communities. Data from these tabulations are available, upon request, from the Kentucky Department of Economic Development, Frankfort, Kentucky 40601.



Associated Industries of Kentucky Area Wage Surveys

PER CAPITA PERSONAL INCOME

<u>Area</u>	<u>1977</u>	<u>1981</u>	<u>Percent Change</u>
Harrison County	\$5,634	\$8,321	47.7
Labor Market Area Range	\$4,090 - 7,159	\$5,745 - 12,056	N/A
Kentucky	5,797	8,416	45.2
U. S.	6,984	10,495	50.3

Source: U. S. Bureau of Economic Analysis, Kentucky Economic Information System, May 1983.

TRANSPORTATION

Rail

Line serving Cynthiana - Seaboard System Railroad

Services - Main line; freights stop four times weekly; 6 southbound and 8 northbound through freights daily; switching services; team track space for 12 cars; siding space for 100 cars; nearest piggyback service located at Frankfort*, 39 miles southwest of Cynthiana

For details on routing, schedules, rates, and services, contact:

Manager of Industrial Development
Seaboard System Railroad
P. O. Box 32290
Louisville, Kentucky 40232
(502) 587-5228

Highways

Major highways serving Cynthiana include U. S. Highways 27 and 62, and Kentucky Route 36. U. S. 62 connects the city with Interstate 75, 19 miles to the southwest near Georgetown. Interstate 75 is also accessible 30 miles northwest via Kentucky 36. The junction of Interstate 64 and the Mountain Parkway is 31 miles south via U. S. 27 and Kentucky Route 627.

*The nearest piggyback service is available at Frankfort. Seaboard provides piggyback service from Frankfort through the Louisville ramp with highway service substituted for rail between the two cities. Rates are charged from Frankfort.

Truck Service

<u>Company</u>	<u>Home Office</u>
ANR Freight System, Inc.*	One Woodward Avenue Detroit, Michigan 48226
Bestway Express, Inc.**	520 Lester Avenue Nashville, Tennessee 37210
Bishop Motor Express**	Grand Rapids, Michigan 49502
Branch Motor Express Company**	114 Fifth Avenue New York, New York 10011
C W Transport, Inc.**	610 High Street Wisconsin Rapids, Wisconsin 54494
Consolidated Freightways Corporation of Delaware**	175 Linfield Drive Menlo Park, California 94025
Craig's Express**	U. S. Highway 27 Falmouth, Kentucky 41040
Duff Truck Line, Inc.**	Broadway and Vine Streets P. O. Box 359 Lima, Ohio 45802
F.M.S. Transportation** (truck load only)	2564 Harley Drive St. Louis, Missouri 63043
Helms Express**	Irwin, Pennsylvania 15642
Lawrenceburg Transfer Company, Inc.**	Highway 27, P. O. Box 220 Lawrenceburg, Kentucky 40342
Leoni Motor Express, Inc.**	Chicago Heights, Illinois 60411
McLean Trucking Company*	P. O. Box 213 Winston-Salem, North Carolina 27102
Mercury Motor Express, Inc.**	2511 North Grady Avenue Tampa, Florida 33607
Middlewest Freightways, Inc.**	6810 Prescott Avenue St. Louis, Missouri 63147
The O. K. Trucking Company**	3000 East Crescentville Road Cincinnati, Ohio 45241
P-I-E (Pacific Intermountain Express)**	25 North Via Monte Walnut Creek, California 94598
Renner's Express, Inc.*	1350 South West Street P. O. Box 882 Indianapolis, Indiana 46206
Roadway Express, Inc.**	1077 Gorge Boulevard Akron, Ohio 44310
Ryder Truck Lines, Inc.**	2050 Kings Road P. O. Box 2408 Jacksonville, Florida 32202

(Contd.)

CompanyHome Office

J. Fred Smith Trucking
Company (piggyback carrier
for railroad freight)***

112 Nichols Street
Danville, Kentucky 40422
P. O. Box 1000
Staunton, Virginia 24401

Smith's Transfer Corporation*

*Interstate service only.

**Interstate and intrastate service.

***Intrastate service only.

Source: American Motor Carrier Directory, Fall 1983.

Other Freight ServicesNearest Office or Shipping Center

Emery
Federal Express
Purolator Courier
United Parcel Service

Lexington, 34 miles southwest
Lexington, 34 miles southwest
Lexington, 34 miles southwest
Lexington, 34 miles southwest

HIGHWAY MILES AND TRUCK TRANSIT TIME IN DAYS FROM
CYNTHIANA, KENTUCKY, TO SELECTED MARKET CENTERS

City	Highway Miles	Delivery Time		City	Highway Miles	Delivery Time	
		TL				TL	
Atlanta, Ga.	394	2		Los Angeles, Ca.	2,207	3	
Baltimore, Md.	556	3		Louisville, Ky.	99	1	
Birmingham, Ala.	440	1		Nashville, Tenn.	244	1	
Chicago, Ill.	346	1		New Orleans, La.	761	2	
Cincinnati, Ohio	59	1		New York, N. Y.	706	2	
Cleveland, Ohio	303	2		Pittsburgh, Pa.	346	1	
Detroit, Mich.	318	2		St. Louis, Mo.	362	1	
Knoxville, Tenn.	201	1					

Note: Mileage computations are via the best interstate or primary highways, not necessarily the most direct route of travel.

Sources: Rand McNally Road Atlas, 1979. Official Kentucky Mileage Map, 1980. Delivery time - Branch Motor Express Company, 114 Fifth Avenue, New York, New York 10011; Lawrenceburg Transfer Company, Inc., Highway 27, P. O. Box 220, Lawrenceburg, Kentucky 40342.

Air

Local

Cynthiana-Harrison County Airport
Location: 1.5 miles south of Cynthiana
Runways: 1 paved
Length: 3,200 feet
Traffic
Control: Wind sock and lighted wind tee
Lighting: Runway lights-sundown to sunrise, VASI, REIL, RTGBCN
Services: 80 and 100LL fuel; major A & P repairs; hangar, tie down; flight instructions; taxi; A and I service

Nearest Scheduled Commercial Airline Service

Blue Grass Field
Location: 5 miles west of Lexington, Kentucky;
39 miles southwest of Cynthiana
Runways: 2 paved
Length: 6,500 feet; 3,500 feet
Traffic
Control: Tower
Lighting: Approach lighting system, beacon, runways and obstructions lighted, VASI
Services: Delta, Frontier, Piedmont, USAir, Allegheny Commuter, Comair, Tennessee Airways; fuel - 100LL and jet-A; hangars, tie-downs; major A & P repairs, major Avionics repairs; APU, charter, flight instruction, oxygen, plane rentals, survival equipment; taxi, limousine, car rentals, courtesy car; weather information; restaurant, snack bar

Air Freight
Service: Air freight terminal

Bus - Greyhound Bus Lines

Taxi - One company, radio-dispatched service from 6 a.m. to 11 p.m.

Rental Services - Car, truck and trailer rental services are available in Paris, 15 miles south of Cynthiana, and in Georgetown, 21 miles southwest.

Water

The nearest navigable waterway is the Kentucky River at Frankfort, 39 miles southwest of Cynthiana, where a 6-foot navigation channel is maintained. The Ohio River, with a 9-foot navigation channel, is accessible 47 miles northeast of Cynthiana at Maysville where a general cargo facility is proposed for development.

POWER AND FUEL

Electricity

Company serving Cynthiana and parts of Harrison County - Kentucky
Utilities Company

Source of power - Kentucky Utilities Company

Total generating capacity - 2,639,100 KW*

For industrial rates contact:

Industrial Development Department
Kentucky Utilities Company
One Quality Street
Lexington, Kentucky 40507
(606) 255-1461

Company serving major portion of Harrison County - Harrison Rural
Electric Cooperative Corporation

Source of power - East Kentucky Power Cooperative

Total generating capacity - 1,304,000 KW**

For industrial rates contact:

Industrial Development Division
East Kentucky Power Cooperative
P. O. Box 707
Winchester, Kentucky 40391
(606) 744-4812

*A new generating unit is under construction in Carroll County. Due to be completed in 1984, the unit will have a generating capacity of 511,000 KW.

**East Kentucky Power Cooperative's total generating capacity will be increased when a new 600,000 KW coal-fired generation plant is completed in southeast Clark County in 1992.

Natural Gas

Company serving Cynthiana - Columbia Gas of Kentucky, Inc.
Source of supply - Columbia Gas Transmission Corporation
Size of transmission mains - 10 and 12-inch (supplier);
6 and 8-inch (distributor)
Distribution mains - 2, 3, 4, 6, 8 and 10 inches
Distribution pressure - 4 ounces to 200 psi
Btu content - 1,020 per cubic foot
Specific gravity - .60
For rates and supplies contact:

Columbia Gas of Kentucky, Inc.
105 South Walnut Street
P. O. Box 277
Cynthiana, Kentucky 41031
(606) 234-1801

Other Fuels

Propane

Southern States Cynthiana
Cooperative (bulk plant)
Railroad Avenue
Cynthiana, Kentucky 41031

Stan Harvey Gas Company (bulk plant)
115 West Pike Street
Cynthiana, Kentucky 41031

Fuel oils

Distillate fuel oil -

Ashland Oil Distributorship,
Division of Harrison Motor
Company
Connersville Pike
Cynthiana, Kentucky 41031

Northfield Oil Company (bulk plant)
Falmouth Pike
Cynthiana, Kentucky 41031

Residual fuel oil - Arrangements must be made with the refinery.

Low sulphur content coal - Available in Kentucky.

WATER AND SEWERAGE

Public Water Supply

Company serving Cynthiana - Cynthiana Municipal Water Works
P. O. Box 67
Cynthiana, Kentucky 41031
(606) 234-3707

Source - South Fork Licking River
Treatment plant capacity - 3,000,000 gallons per day
Average daily consumption - 1,700,000 gallons
Peak daily consumption - 2,200,000 gallons
Type treatment - Pre-and post-chlorination, quick mix aeration
floculation, sedimentation, filtration, fluoridation
Storage capacity - 1,900,000 gallons including clear well
Size lines - 4, 6, 8, 10 and 16 inches
Average pressure - 35 psi
Average temperature - 62 degrees F.

MONTHLY WATER RATES

0 -	2,000 gallons	\$3.90 (Minimum)
2,000 -	8,000 gallons	1.40 per M gallons
8,000 -	20,000 gallons	0.95 per M gallons
20,000 -	50,000 gallons	0.70 per M gallons
50,000 -	100,000 gallons	0.55 per M gallons
100,000 -	1,000,000 gallons	0.40 per M gallons
Over	1,000,000 gallons	0.30 per M gallons

There is an additional charge of 33 1/3 percent of the above schedule of rates charged to consumers for water which is delivered outside the city limits. .

Tap-on charge: Inside city limits - No charge
Outside city limits - \$100 residential plus cost of labor and materials; \$200 commercial plus cost of labor and materials

Raw Water

Surface water sources - South Fork Licking River
Average discharge - South Fork Licking River at Cynthiana - 766 cfs
(44 years, USGS)
Expected ground water yield - 50 to 200 gpm along South Fork Licking River south of Cynthiana and along the northeastern border of Harrison County; 5 to 50 gpm in the southern portion of county and along the South Fork Licking River north of Cynthiana; 5 gpm or less in remainder of county

Sewerage

Company serving Cynthiana - City of Cynthiana Wastewater Treatment Plant*
North Locust Street
Cynthiana, Kentucky 41031
(606) 234-2437

Design capacity - 1,500,000 gallons per day; peak hydraulic
capacity - 3,000,000 gallons per day

Average daily flow - 700,000 gallons

Type of treatment - Tertiary

Treatment processes - Pre-aeration, rotating biological contactors,
clarifiers, incineration

Treated effluent discharged into - South Fork Licking River

Size of sanitary mains - 4, 6, 8, 16 and 24 inches

Size of storm mains - 16, 18 and 24 inches

Monthly rates -

First 2,000 gallons \$3.00 (Minimum)

2,000-500,000 gallons \$1.20 per M gallons

Over 500,000 gallons \$0.55 per M gallons

Tap-on charge:

Inside city limits - No charge

Outside city limits - \$100 residential plus
installation cost; \$200 commercial plus
installation cost

*An improvement project at the wastewater treatment facility is under way. The project involves the removal of digestors and grit filters, and their replacement with static screens. Installation of the rotating biological clarification system is presently 95 percent complete.

CLIMATE

Harrison County

Temperature

Normal (30-year record)	55.20 degrees
Average annual 1982	55.50 degrees
Record highest, September 1954 (38-year record)	103.00 degrees
Record lowest, January 1963 (38-year record)	-21.00 degrees
Normal heating degree days (30-year record)	4,729
(Heating degree day totals are the sums of negative departures of average daily temperatures from 65 degrees F.)	

Precipitation

Normal (30-year record)	44.49 inches
Mean annual snowfall (39-year record)	16.40 inches
Total precipitation 1982	38.76 inches
Mean number days precipitation (.01 inch or more) (38-year record)	131
Mean number days thunderstorms (38-year record)	46

Prevailing Winds (17-year record) South

Relative Humidity

1 a.m.	77 percent (18-year record)
7 a.m.	81 percent (19-year record)
1 p.m.	60 percent (19-year record)
7 p.m.	64 percent (19-year record)

Source: U. S. Department of Commerce, Environmental Science Services Administration, Climatological Data, 1982.
Station of record: Lexington, Kentucky.

LOCAL GOVERNMENT

City

Structure - Mayor - 4-year term; 4 commissioners - 2-year terms
Budget 1982-83 - General Fund \$1,275,144*
 Water and Sewer Fund 717,255
Fees and licenses - Occupational license taxes - 1 1/2 percent on all
 wages, salaries, commissions and other compensation of individuals
 and 1 1/2 percent on net profits of businesses; regulatory license
 fees for specified businesses range from \$5 to \$300 per year

County

Structure - County Judge/Executive - 4-year term;
 8 magistrates - 4-year terms
Budget 1982-83 - General Fund \$396,908; Road Fund \$374,428

Assessed Value of Property, 1983**

<u>Classes of Property</u>	<u>Cynthiana</u>	<u>Harrison County</u>
Real Estate	\$93,693,583	\$221,179,033
Tangibles	17,933,957	36,915,466

*Does not include revenue sharing.

**Excludes Homestead Exemptions.

Property Taxes

All property in Kentucky is assessed at 100 percent of fair cash value.

Land and buildings are taxed by the state and may be taxed by local jurisdictions. The state rate is \$0.221 per \$100 of assessed valuation.

Manufacturing machinery, raw materials inventories, pollution control equipment, and goods in the process of manufacture are not subject to local taxation. The state rate is \$0.15 per \$100.

Other tangible personal property owned by manufacturers (automobiles, trucks, finished goods, office furniture, office equipment) is taxed by the state at \$0.45 per \$100 and may be taxed by local jurisdictions.

Intangible personal property located in Kentucky (money in hand, shares of stock, notes, bonds, accounts receivable, and other credits) is taxed by the state at \$0.25 per \$100, and is not subject to local taxation.

Property stored in public warehouses in a transit status is not subject to local taxation. The state rate is only \$0.015 per \$100.

Private leaseholds in industrial facilities owned by cities or counties and financed by industrial revenue bonds are subject to a state tax of \$0.015 per \$100 of value (essentially the lessee's equity, adjusted for appreciation or depreciation). Local taxation is not permitted.

Combined State and Local Rates Per \$100 Valuation, 1983* (100% assessment)

	<u>Site Inside City of Cynthiana</u>	<u>Site Inside Unincorporated Harrison County</u>
1. Land and buildings	\$0.836	\$0.676
2. Mfg. machinery, raw materials, goods in process, pollution control equipment	0.150	0.150
3. Finished goods, office equipment, vehicles, other tangibles	1.082	0.922
4. Intangibles (accounts rec., notes, bonds, etc.)	0.250	0.250
5. Property stored in public warehouses in a transit status	0.015	0.015
6. Leaseholds in industrial revenue bond financed plants	0.015	0.015

*Kentucky Department of Economic Development.

Planning and Zoning

Joint agency - Cynthiana-Berry Planning and Zoning Commission*
Zoning enforced - Within the city limits of Cynthiana and Berry
Subdivision regulations enforced - Within the city limits of Cynthiana and Berry
Local codes enforced - Building codes within the city limits of Cynthiana and Berry
Mandatory state codes enforced - Kentucky Plumbing Code, National Electric Code, Kentucky Boiler Regulations and Standards, Kentucky Building Code (modeled after BOCA code)

Safety

<u>Police</u>	<u>Cynthiana</u>	<u>Harrison County</u>
Total staff	16 full time 12 auxiliary	4
Radio-patrol cars	5	2
<u>Fire</u>		
Insurance Services Office, Public Protection Classification	6	**
Full-time staff	19	-
Volunteers	27	**

Rescue Service

Harrison County Volunteer Rescue Squad:

Number of volunteers - 10

Equipment - Dragging equipment; boats and motors; three generators; lights; small foam truck; three air packs; metal saw; porta-power; first aid equipment; two blowers for fighting grass fires; eight air tanks; chain saw; heat gun; air splint; resuscitator; backboards; 1,800-gallon pumper; 4-wheel drive equipment truck

Personnel training - 2 emergency medical technicians, state fire training, basic first aid, cardiopulmonary resuscitation training

*Participating cities: Cynthiana and Berry.

**The Harrison County Fire Protection Area has a rating of Class 9 within 5 road miles of a responding fire station and Class 10 more than 5 road miles. The Northern Harrison County Rural Fire Department has a rating of Class 10. In addition, the city of Berry, which has a rating of Class 7, is served by the Berry Fire Department.

Refuse Collection and Disposal

Cynthiana

Type service	Municipal*
Fee charged:	
residential	\$9.00 quarterly
business	By contract
industrial	By contract
Collection frequency:	
residential	Weekly
business	By contract
industrial	By contract
Trash pickup	As requested
Disposal method	Landfill

The collection of refuse in Harrison County is handled by a private company. County residents may have pickup service at the rate of \$4 per month. The fee charged to an industry is based on the volume of refuse. In addition, approximately 60 dumpsters are located throughout the county.

*Municipal refuse collection services are available to industry. However, if the industry chooses to provide its own services, the municipal-county landfill is available for the following rates: pickup truck load, \$1.50; 1 ton, \$3.00; over 1 ton, \$4.50.

EDUCATION

Public Schools

Harrison County

Total Enrollment (Spring 1983)	2,848
Elementary	1,586
Junior High	441
High School	821
Student-Teacher Ratio	18-1
Elementary	20-1
Junior High	15-1
High School	17-1
Percent High School Graduates to College (1982)	23.6
Expenditures Per Pupil (1981-82)	\$1,436.61
Bonded Indebtedness (June 30, 1983)	\$6,128,000*

Nonpublic Schools

St. Edward

Total Enrollment	95
Elementary	95
Student-Teacher Ratio	24-1
Elementary	24-1

*Includes refunding issue of \$2,095,000.

Area Colleges and Universities

<u>Name</u>	<u>Location (Miles distant)</u>	<u>Enrollment (Fall, 1982)</u>	<u>Highest Degree Conferred</u>
Georgetown College	Georgetown (21)	1,029	Masters
Midway College	Midway (31)	349	Associate
Lexington Technical Institute	Lexington (34)	2,462	Associate
Transylvania University	Lexington (34)	701	Baccalaureate*
University of Kentucky	Lexington (34)	22,829	Doctorate, M.D., D.M.D., J.D.
Kentucky State University	Frankfort (39)	2,322	Masters
Maysville Community College	Maysville (47)	571	Associate
Northern Kentucky University	Highland Heights (51)	9,399	Masters, J.D.
Asbury College	Wilmore (52)	1,179	Baccalaureate
Eastern Kentucky University	Richmond (55)	13,041	Masters, Specialist**

*Courses in a masters degree program are taught on the Transylvania campus by faculty members of Xavier University of Cincinnati. The degree is issued by Xavier University.

**Joint doctoral degree programs are offered in cooperation with the University of Kentucky, Lexington. The degrees are issued by the University of Kentucky.

Vocational Schools

Both the state vocational-technical schools and the area vocational education centers are operated by the Kentucky Department of Education. The state vocational-technical schools enroll persons full time who are at least 16 years of age and not in school. These students attend classes for six hours each day. The area vocational education centers are designed to accommodate high school students who are at least 15 years of age. These students attend vocational school for three hours each day. The state vocational-technical schools and the area education centers offer evening courses to enable working adults to upgrade current job skills.

Nearest State School

Location	Central Kentucky State Vocational-Technical School Lexington
Miles Distant	34
Curriculum	Business and Office Accounting Clerical Secretarial Consumer and Home Economics Commercial Foods Health and Personal Services Occupations Cosmetology Dental Assistant Nurse's Aide Practical Nursing Surgical Technician Industrial Education Air Conditioning Auto Body Repair Auto Mechanics Carpentry Drafting Electronics Graphic Arts Industrial Electricity Machine Shop Masonry Welding Learning Resource Center

Nearest Area Education Center

Location	Harrison County Area Vocational Education Center Cynthiana
Curriculum	Business and Office Clerical Secretarial Health and Personal Services Occupations Health Careers Industrial Education Auto Mechanics Carpentry-Building Trades Industrial Electricity Machine Shop Welding

Arrangements can be made to provide training in the specific production skills required by an industrial plant. Instruction may be conducted either in the vocational school or in the industrial plant, depending upon the desired arrangement and the availability of special equipment.

Lexington Technical Institute

The Lexington Technical Institute is a unit of Kentucky's community college system operating on the University of Kentucky campus. The Institute awards the Associate in Applied Science degree in the following programs: Accounting Technology; Architectural Technology; Civil Engineering Technology; Data Processing Technology; Dental Hygiene; Dental Laboratory Technology; Electrical Engineering Technology (Electronics Option); Management Technology (Business and Transportation options); Mechanical Engineering Technology; Nuclear Medicine Technology; Nursing; Radiologic Technology; Real Estate; Respiratory Therapy; Secretarial and Office Administration.

HEALTH

Local Medical Personnel

Physicians - 12 full time
 9 part time
Dentists - 7

Hospitals

<u>General Hospital</u>	<u>Location</u>	<u>Beds</u>
Harrison Memorial Hospital*	Cynthiana	83 acute care 10 extended care 6 ICU-CCU

General hospital facilities - 2 operating rooms, emergency room suite with treatment and trauma rooms, outpatient surgery, outpatient clinic, ICU-CCU, laboratory, X-ray, EKG, physical therapy, delivery room and nursery, respiratory therapy

Medical staff - 12 active staff physicians, dentist, 37 registered nurses, 20 licensed practical nurses, 46 nurse's aides, 2 registered nurse anesthetists, 4 medical technologists, lab assistant, 5 X-ray technologists, physical therapists, 3 respiratory therapists, 2 pharmacists (full time), 3 pharmacists (part time), dietitian; emergency room coverage on weekends

Other Medical Facilities

Harrison County Comprehensive Care Center

Services - Mental health; mental retardation prevention and treatment services, including inpatient services; outpatient services for children and adults, partial hospitalization, consultation and education service, alcohol and drug abuse services, and emergency services 24 hours per day, seven days per week

Staff - Full-time: Partial hospitalization aide, intake receptionist, 2 social workers; Part-time: Psychiatrist, psychologist, psychiatric nurse

Ambulance Service

Name - Brown Ambulance Service, Inc.

Staff - 8 emergency medical technicians, 2 registered nurses

Service - 24 hours daily; direct communication with hospital

Equipment - 4 fully equipped ambulances and heavy rescue equipment which includes two 4-ton winches and spreader

*The Harrison Memorial Hospital completed a \$6,000,000 expansion and renovation project in May of 1983. New facilities include an ICU-CCU unit, an emergency room with six treatment areas, an ultrasonography unit, and an outpatient clinic.

Public Health

Facility - WEDCO District, Harrison County Health Center and Home Health Service

Staff - Full time: Health environmentalist, 4 registered nurses, community health worker, outreach worker, 2 clerks; Part time: Physician, nutritionist, registered nurse practitioner, ARPN nurse, Green Thumb clerical worker

OTHER LOCAL FACILITIES

Communications

Telephone - South Central Bell Telephone Company
Services - Standard

Telegraph - Western Union Telegraph Company
Services - Toll-free number, 1-800-325-5100

Postal - U. S. Post Office
Class - First
Mail received - Once daily
Mail dispatched - Once daily

Newspapers -
Weekly and circulation - Cynthiana Democrat - 5,600
Other papers
received from - Lexington and Louisville, Kentucky;
Cincinnati, Ohio

Radio - WCYN-AM/FM
Stations received from - Lexington and Louisville, Kentucky;
Cincinnati, Ohio

Television -
Cable service
Reception from - Lexington and Louisville, Kentucky;
Cincinnati, Ohio
Kentucky Educational
Television - Lexington-Richmond transmitter, Channel 46;
Owenton transmitter, Channel 52

Library Services

Public library - Cynthiana Public Library
Size collection - 46,156 volumes
Circulation, 1981-82 - 160,309
Services - Bookmobile, pamphlets, film and filmstrips, audiovisual equipment, microfilm, microfilm reader/printer, periodicals, recordings, framed paintings, sports equipment, talking books for the blind, delivery to the handicapped, story hour, Library Club, color TV for Kentucky ETV classes, photocopying and duplicating, telephone reference, Interlibrary Loan, community meeting room, sponsor of series of Forums, branch library at Berry

Religious Institutions

Denominations - Assembly of God
Baptist
Catholic
Christian
Church of Christ
Church of the Advent Episcopal
Church of the Nazarene
Disciples of Christ Christian Church
First Church of God
Good Shepherd Pentecostal
Interdenominational
Methodist
Pentecostal Church of God
Pilgrim Holiness
Presbyterian
Riverview Mission
Seventh Day Adventist

Nearest Synagogues - Lexington, 34 miles southwest of Cynthiana
Congregations - Adath Israel (reform)
Ohavey Zion (traditional)

Financial Institutions

<u>Banks</u>	<u>Assets</u>	<u>Deposits</u>	<u>Statement Date</u>
Farmers National Bank	\$45,034,615.07	\$39,712,634.89	12/31/82
Harrison Deposit Bank & Trust Company	23,226,000.00	20,773,000.00	12/31/82
The National Bank of Cynthiana	60,371,645.00	48,101,521.00	3/31/83

<u>Savings and Loan Associations</u>	<u>Assets</u>	<u>Savings Accounts</u>	<u>Statement Date</u>
First Federal Savings & Loan Association of Cynthiana	\$32,334,638.00	\$30,412,101.00	6/30/82

Hotels and Motels

Total number - 1
Total rooms - 27

Clubs and Organizations

American Cancer Society	Harrison County Women's Club
American Legion	Harrison County Young Farmers
American Legion Auxiliary	Harrison Memorial Hospital
Arlington Rebecca Lodge	Auxiliary
Beta Sigma Phi	Inquisitors' Club
Boy Scouts	Kiwanis Club
Brownies	Ladies Golf Association
Business and Professional	La Leche League
Women's Club	Licking River Rovers' Square Dancers
Candy Strippers	Lions Club
Chamber of Commerce	Masonic Lodge
Children of the American	Ministerial Association
Revolution	National Farmers Organization
Community of Berry Lions Club	Odd Fellows
Cub Scouts	Optimist Club
Cynthiana Country Club	Parent Teachers Association
Cynthiana-Harrison County	Quail Club
Humane Society	Red Cross
Daughters of the American	Republican Women's Club
Revolution	Rod and Gun Club
Democratic Women's Club	Rotary
Disabled American Veterans	Saddle & Spur
Eastern Star	Thoroughbred Club
Elks	Thursday Club (Senior Citizens)
Elks Auxiliary	Trails and Trowels Club
Farm Bureau	United Daughters of the Confederacy
4-H Club	Veterans of Foreign Wars
Future Farmers of America	Veterans of Foreign Wars Ladies'
Future Homemakers of America	Auxiliary
Garden Club	Welcome Wagon
Girl Scouts	
Harrison County Arts Council	
Harrison County Band Boosters	
Harrison County Commission	
on Aging	
Harrison County Coon	
Hunters Club	
Harrison County Fair Board	
Harrison County Historical	
Society	
Harrison County Hospice	
Harrison County Industrial	
Foundation	
Harrison County Iris Society	
Harrison County Junior Women's	
Club	
Harrison County Little League	
Harrison County REACT	
Harrison County Retired	
Teachers	
Harrison County Society for	
Retarded Citizens	

RECREATION

Local

The Cynthiana-Harrison County Recreation Department provides public recreational opportunities through a county-wide program. Public recreation facilities include three parks, two mini-parks, and a gymnasium. The department also leases all recreational facilities at the high school for public use. These facilities include a swimming pool, four tennis courts, and three baseball diamonds.

River Road Park is a 15-acre recreational facility located on the South Fork Licking River. The park contains a baseball diamond, two softball diamonds, a large picnic shelter, a picnic area, a concession stand, restrooms, shuffleboard courts, basketball courts, and volleyball courts.

Reverend Ross Park is an 8-acre facility featuring a tennis court, playground equipment, a picnic area, and three shelters.

Water Street Park offers two basketball courts and picnic tables.

The department oversees summer little league activities at the high school ball fields. It also schedules a variety of activities at the gymnasium including square dancing, volleyball, and a winter basketball program.

Annual events in Cynthiana include the Harrison County Fair, a charity horseshow, an Iris Festival, and a Burley Festival.

Private recreational facilities available in Cynthiana include an indoor movie theater, a drive-in theater, bowling lanes, a health spa, and a country club with a swimming pool and 9-hole golf course.

Area (Within 55 miles)

Blue Licks Battlefield State Park is located near Mt. Olivet, 24 miles east of Cynthiana. The 100-acre park is on the site of the last Revolutionary War battle in Kentucky. A museum features Indian and pioneer artifacts, an audiovisual program, and prehistoric bones from animals trapped at Blue Licks. Facilities include ten primitive campsites, a gift shop, picnic shelters and grills, a playground, a snack bar, and an Olympic-size swimming pool. Fishing is available at the Licking River which runs through the park.

Kincaid Lake State Park, 26 miles north of Cynthiana near Falmouth, offers many opportunities for the outdoors lover. The park offers a 175-acre lake, a sand beach, a 209-site campground, a gift shop/grocery store, a bathhouse, swimming, boating, hiking, picnicking, an amphitheatre, shuffleboard, miniature golf, tennis, and organized recreational programs in the summer months.

The Kentucky Horse Park, a park dedicated to horses and to man's love for horses, is located 28 miles southwest of Cynthiana near Lexington. The park, which contains more than 1,000 acres of Kentucky Bluegrass, features the International Museum of the Horse; the Man O'War Memorial; an antique carriage display; horseback and pony rides; walking farm tours; horse-drawn tours; a restaurant; a gift shop; and a campground area, which offers swimming, tennis, and planned activities. Numerous special events are held year-round and include various horse shows, steeplechasing, dressage, polo games, and rodeos.

Lexington, 34 miles southwest of Cynthiana, offers a variety of cultural, sporting, and recreational activities. Thoroughbred and harness racing is presented at Keeneland Race Course and Red Mile Harness Track during several meets each year. The University of Kentucky and Transylvania University offer a number of sporting events. The University of Kentucky basketball games are held at Rupp Arena, the world's largest basketball arena. Other attractions include Lexington Philharmonic concerts, Lexington Children's Theatre, and plays performed by Broadway touring companies, all held in the recently renovated Opera House.

Waveland State Shrine, 39 miles southwest of Cynthiana near Lexington, features an 1847 Greek Revival mansion depicting Kentucky lifestyles from the days of early settlers to the antebellum era of gentility and elegance as well as the Civil War and postwar periods. The shrine also includes the Kentucky Life Museum and a plantation village on ten acres with many shops and displays.

Frankfort, the capital of Kentucky, is 39 miles southwest of Cynthiana. Points of interest in Frankfort include the Capitol Building, a 34-foot floral clock, the Daniel Boone Monument, several museums and old homes with their original furnishings. Frankfort is also the home of Kentucky State University which offers many cultural activities and sporting events.

The spirit of Daniel Boone and his pioneers is reborn at Fort Boonesborough State Park in Boonesboro, 40 miles south of Cynthiana. In the re-created fort, pioneer crafts of the eighteenth century are demonstrated by using functioning antiques from the frontier era. Cabins are furnished as they would have been in the days of Boone and documentary films are presented which depict the struggle of the first Kentuckians to make the Kentucky wilderness a home. A gift shop within the fort offers for sale all the handcrafted items made at the fort. Other recreational facilities and activities of the park include the finest sand beach on the Kentucky River with a modern bathhouse and a modern camping area with 187 sites.

White Hall State Shrine, 47 miles south of Cynthiana near Richmond, one of the grand estate houses of post-Civil War Kentucky, is the Italianate mansion of Cassius Marcellus Clay, the early abolitionist and politician. Kentucky handcrafts are sold in the White Hall gift shop, only a short walk from the mansion.

Big Boone Lick State Park in Boone County, 52 miles northwest of Cynthiana, provides a unique combination of educational and recreational pleasures. Visitors can walk through the natural outdoor museum with replicas and exhibits that tell the story of Big Boone Lick. Recreational activities and facilities include a modern campground with 62 sites, fishing in a nearby lake, an indoor museum and gift shop, picnic grounds, tennis, shuffleboard, volleyball, basketball, horse shoes, planned recreation, and a swimming pool in the camping area.

COMMUNITY IMPROVEMENTS

Recent

In 1982 Cynthiana was chosen as a "Kentucky Certified City" by the Kentucky Chamber of Commerce. The award is based on achievement or potential in the following categories: economic development, transportation, public affairs, utilities, health care, commercial development, housing, education, and recreation.

An expansion project at Cleveland Twist Drill, Cynthiana Plant, was completed during the fall of 1983. The \$3,000,000 project involved the installation of new machinery for the wire drill area, and production capacity was doubled. Employment at the plant increased to 260.

Approximately \$32,000 has been spent since 1982 to upgrade the Cynthiana Municipal Waterworks facility. The improvements ranged from new valves and renovated filters to new instrumentation systems.

A \$6,000,000 expansion and renovation project at the Harrison Memorial Hospital was completed in May of 1983. The project consisted of a 24,000-square-foot addition to the hospital, renovation of approximately 5,000 square feet in the existing structure, and construction of the 14,500-square-foot Professional Arts Building. Among the new facilities are an intensive care-coronary care unit, an emergency room with six treatment areas, an ultrasonography unit, and an outpatient clinic.

Under Way

Improvements to Cynthiana's wastewater treatment plant are virtually complete. Digestors and grit filters have been replaced with static screens. The new treatment process uses rotating secondary biological clarification and the facility was approximately 95% complete at the end of 1983. Since 1980, the investment has totalled \$5,600,000.

Construction of a combination weight lifting/football dressing room at Harrison County High School is under way, with completion scheduled for early 1984.