

1986

Industrial Resources: Johnson County - Paintsville

Kentucky Library Research Collections
Western Kentucky University, spcol@wku.edu

Follow this and additional works at: https://digitalcommons.wku.edu/johnson_cty



Part of the [Business Administration, Management, and Operations Commons](#), [Growth and Development Commons](#), and the [Infrastructure Commons](#)

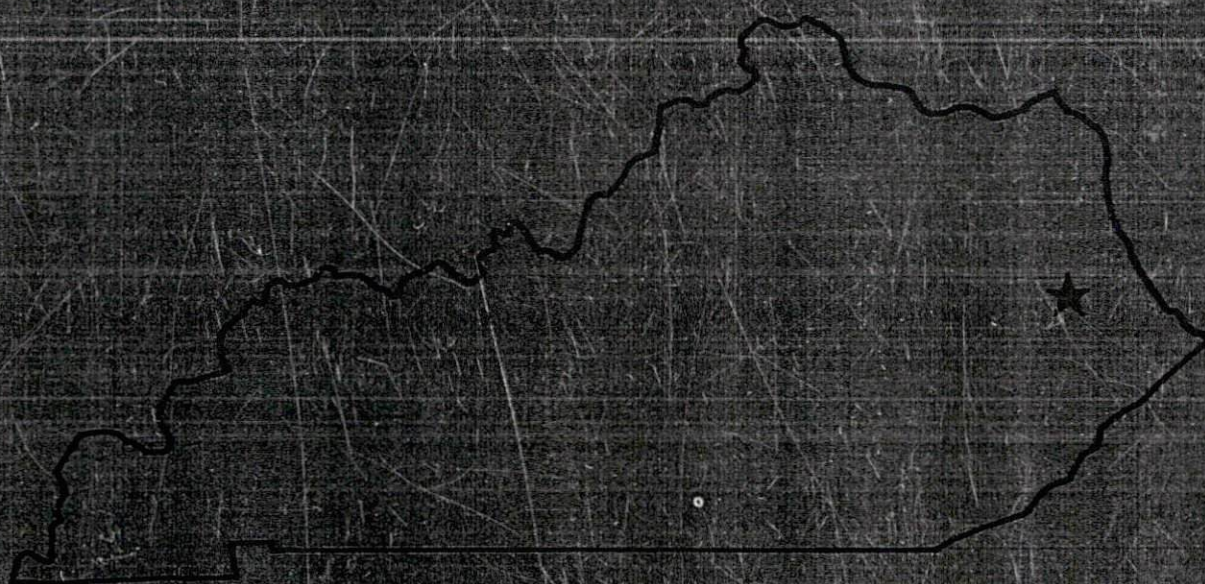
Recommended Citation

Kentucky Library Research Collections, "Industrial Resources: Johnson County - Paintsville" (1986). *Johnson County*. Paper 7.
https://digitalcommons.wku.edu/johnson_cty/7

This Report is brought to you for free and open access by TopSCHOLAR®. It has been accepted for inclusion in Johnson County by an authorized administrator of TopSCHOLAR®. For more information, please contact topscholar@wku.edu.

RESOURCES FOR ECONOMIC DEVELOPMENT

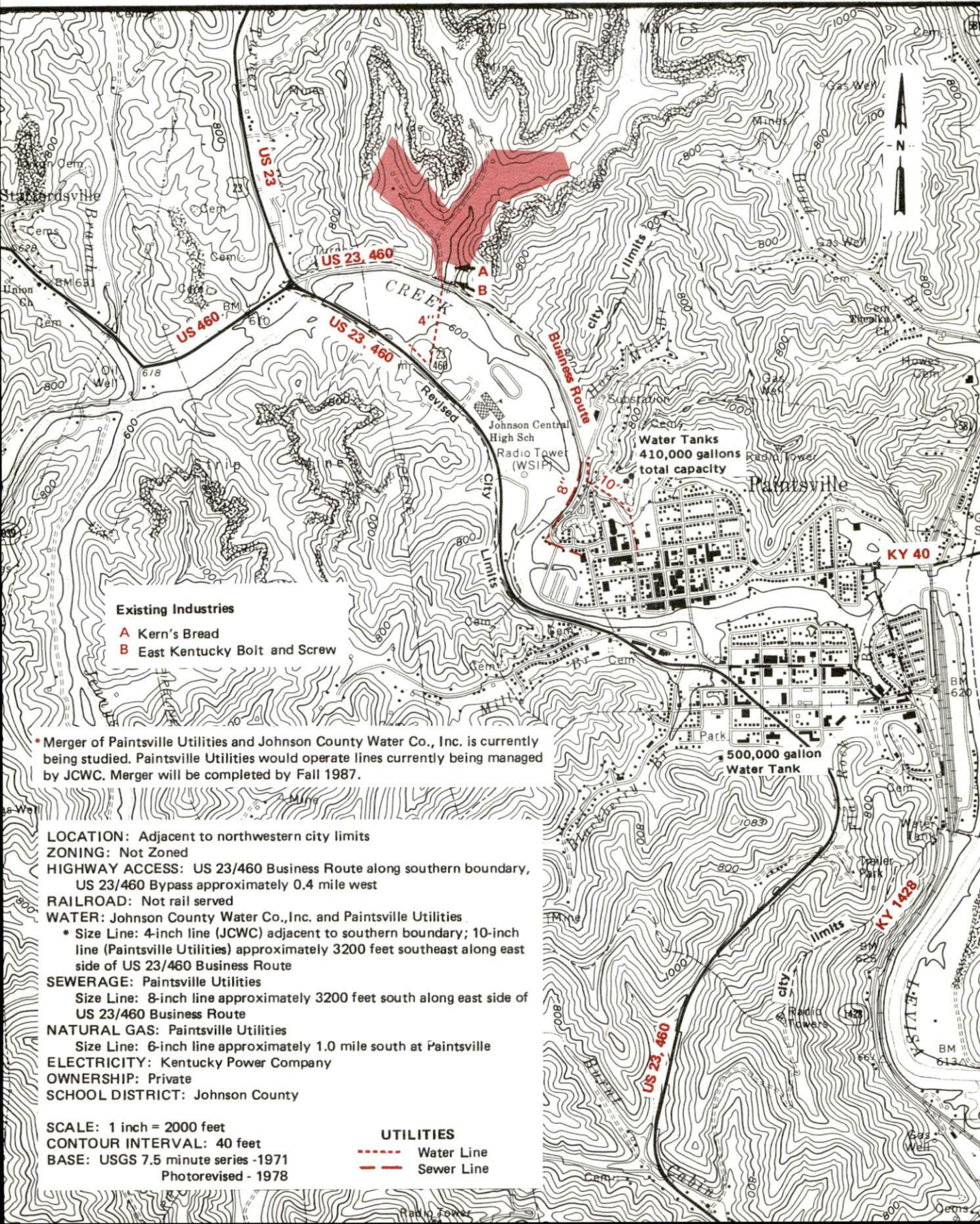
Paintsville



KENTUCKY
The business environment is right.

PAINTSVILLE, KENTUCKY --- Site 186 --- 53 Acres

For more information contact the Kentucky Department of Economic Development, Industrial Development & Marketing Division, Capital Plaza Tower, Frankfort, Kentucky 40601 (502-564-7140).



RESOURCES FOR ECONOMIC DEVELOPMENT
PAINTSVILLE, KENTUCKY

Prepared by
The Kentucky Department of Economic Development
Division of Research and Planning
in cooperation with
The Paintsville/Johnson County Chamber of Commerce

1986

Program manager - Andrew Dennis; research - James R. Thompson; clerical - Bobbi Graves; graphics - Frank Ferrante, Tony Cecconi, Robert Owens; cartography - Site Evaluation Branch, Division of Industrial Development and Marketing. Cost of printing paid from state funds.

TABLE OF CONTENTS

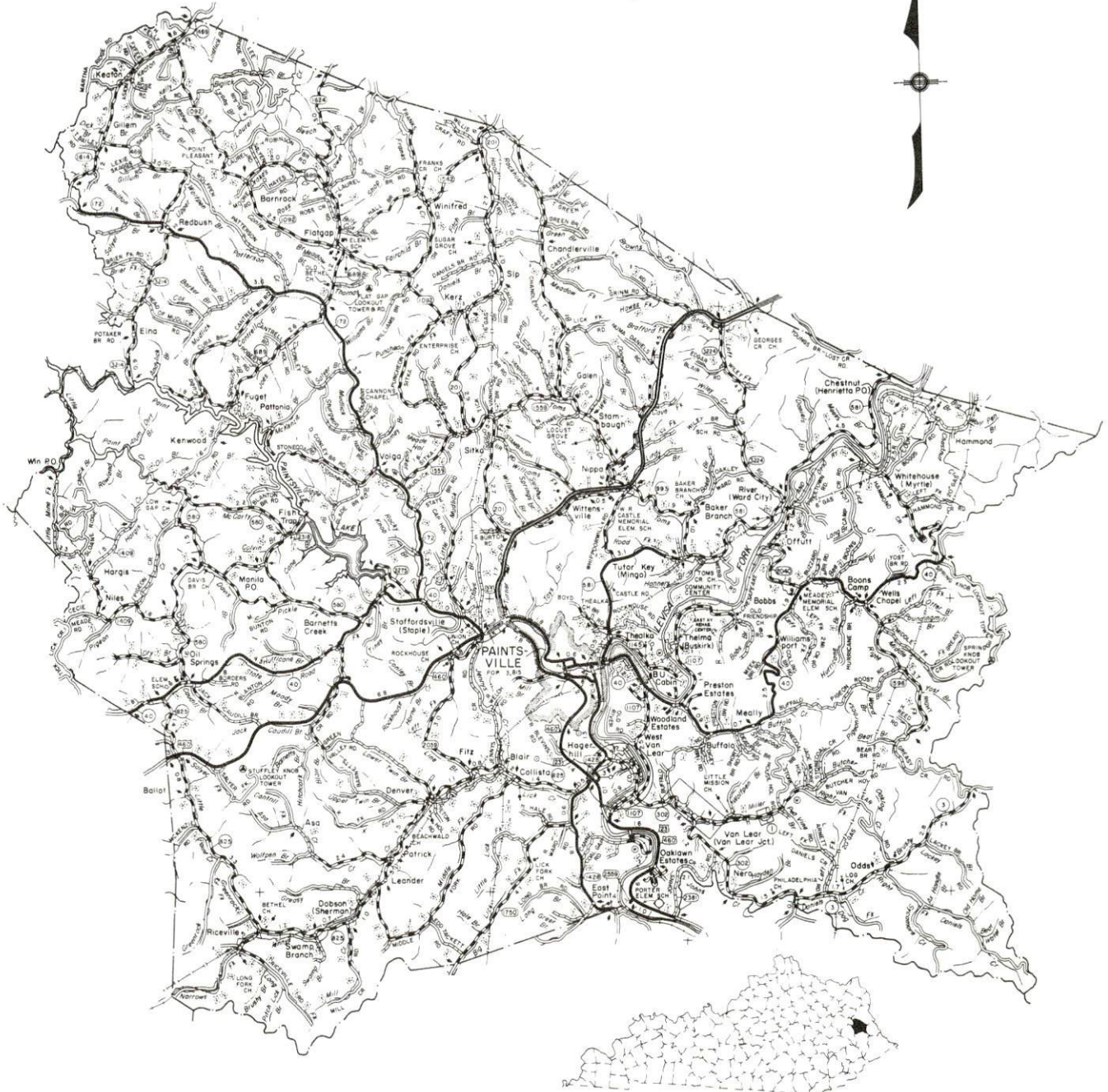
| <u>Chapter</u> | <u>Page</u> |
|--|-------------|
| INDUSTRIAL SITES | i |
| PAINTSVILLE, KENTUCKY - A RESOURCE PROFILE | 1 |
| LABOR MARKET STATISTICS | 2 |
| Population | 2 |
| Population Projections | 2 |
| Labor Force Characteristics of Residents, 1985 | 3 |
| Selected Components of Nonagricultural Employment, by Place of Work, 1985 | 3 |
| Per Capita Personal Income | 3 |
| Estimated Male Labor Supply | 4 |
| Estimated Female Labor Supply | 4 |
| Average Weekly Wages By Industry, by Place of Work, 1985 | 5 |
| EXISTING INDUSTRY | 7 |
| Paintsville Manufacturing Firms, Their Products and Employment | 7 |
| Labor Organizations in Manufacturing Firms | 7 |
| Selected Industrial Services | 8 |
| TRANSPORTATION | 9 |
| Rail | 9 |
| Highways | 9 |
| Truck Service | 9 |
| Air | 10 |
| Air Express Service | 11 |
| Water | 11 |
| POWER AND FUEL | 12 |
| Electricity | 12 |
| Natural Gas | 12 |
| Other Fuels | 13 |
| WATER AND SEWERAGE | 14 |
| Public Water Supply | 14 |
| Sewerage | 15 |

| <u>Chapter</u> | <u>Page</u> |
|--------------------------------------|-------------|
| CLIMATE | 16 |
| LOCAL GOVERNMENT | 17 |
| Structure | 17 |
| Planning and Zoning | 17 |
| Local Fees and Licenses | 17 |
| State and Local Property Taxes | 18 |
| Safety | 19 |
| Police | 19 |
| Fire | 19 |
| Rescue Service | 19 |
| Refuse Collection and Disposal | 19 |
| EDUCATION | 20 |
| Public Schools | 20 |
| Nonpublic Schools | 20 |
| Area Colleges and Universities | 21 |
| Vocational Training | 22 |
| HEALTH..... | 23 |
| Local Medical Personnel | 23 |
| Hospitals | 23 |
| Other Medical Facilities | 23 |
| Ambulance Service | 23 |
| OTHER LOCAL FACILITIES..... | 24 |
| Communications | 24 |
| Library Services | 24 |
| Religious Institutions | 24 |
| Financial Institutions | 25 |
| Hotels and Motels | 25 |
| RECREATION | 26 |
| COMMUNITY IMPROVEMENTS | 28 |

1986 EDITION
GENERAL HIGHWAY MAP
JOHNSON COUNTY
KENTUCKY

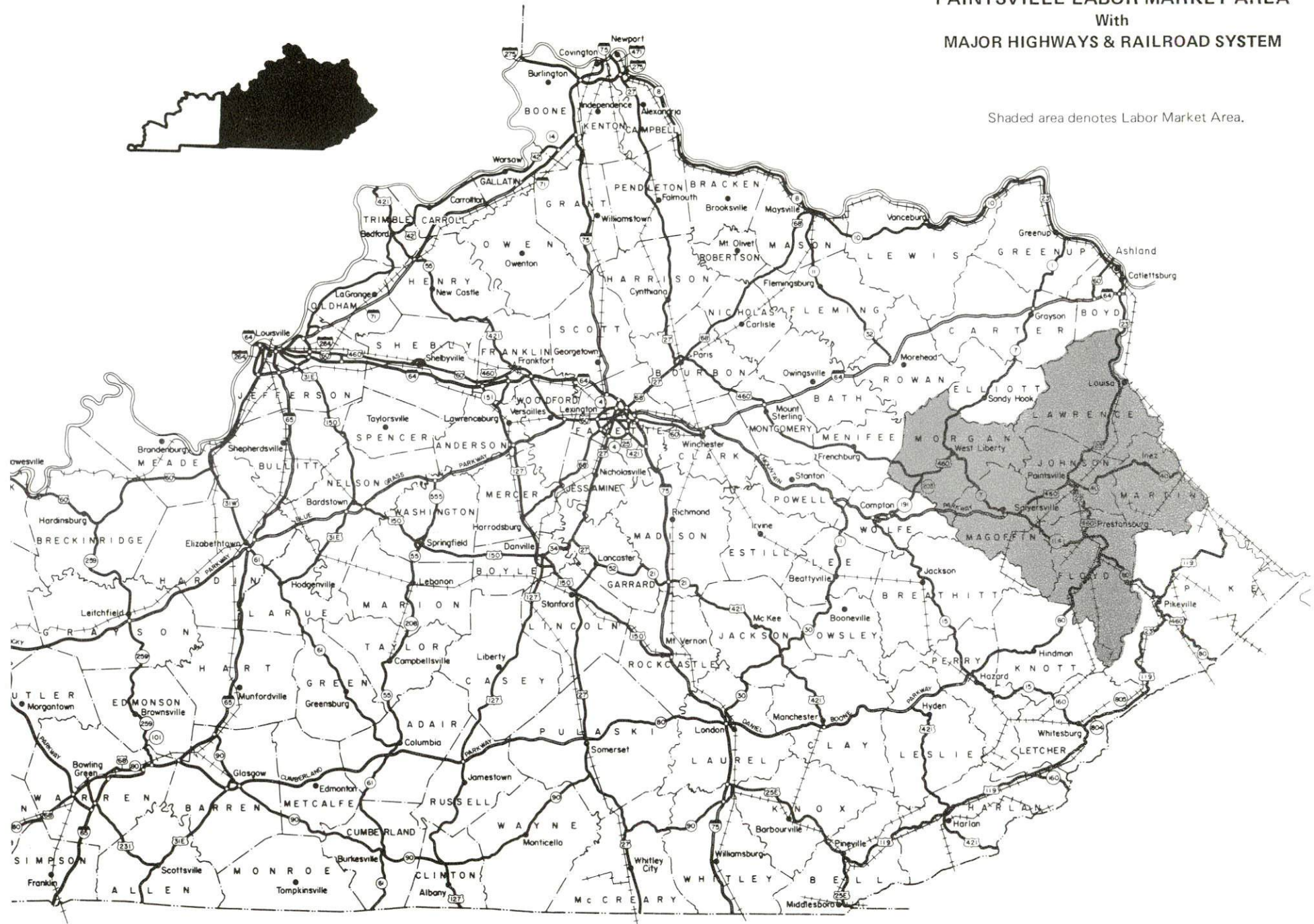
PREPARED BY THE
KENTUCKY TRANSPORTATION CABINET
DEPARTMENT OF HIGHWAYS
DIVISION OF PLANNING
IN COOPERATION WITH THE
U.S. DEPARTMENT OF TRANSPORTATION
FEDERAL HIGHWAY ADMINISTRATION

0 1 2 3 4 MILES



PAINTSVILLE LABOR MARKET AREA With MAJOR HIGHWAYS & RAILROAD SYSTEM

Shaded area denotes Labor Market Area.



PAINTSVILLE, KENTUCKY - A RESOURCE PROFILE

Paintsville, the county seat of Johnson County, is located in the Eastern Coal Field Region of Kentucky. Paintsville, with a 1984 estimated population of 3,654, is located 116 miles southeast of Lexington, Kentucky; 188 miles southeast of Louisville, Kentucky; 194 miles southeast of Cincinnati, Ohio; and 216 miles northeast of Knoxville, Tennessee.

Johnson County, with a 1984 estimated population of 25,611, has a land area of 264 square miles.

The Economic Framework - The total number of Johnson County residents employed in 1985 averaged 8,305. Manufacturing firms in the county reported 320 employees; wholesale and retail trade provided 1,830 jobs; 800 people were employed in service occupations; state and local government accounted for 1,040 employees; and 700 people were employed by mining and quarrying operations.

Labor Supply - There is a current estimated labor supply of 13,700 men and 17,130 women available for industrial jobs in the labor market area. In addition, from 1986 through 1990, 6,020 young men and 5,710 young women in the area will become eighteen years of age and potentially available for industrial jobs.

Transportation - Rail service is provided to Paintsville by CSX Transportation. Major highways serving Paintsville include U.S. 23 and U.S. 460. The Mountain Parkway is located eighteen miles southwest via U.S. 460. Interstate 64 is located fifty-six miles north via U.S. 23 and ninety-four miles northwest via U.S. 460 and the Mountain Parkway. Six trucking companies provide Paintsville with interstate and intrastate service. Combs Airport, five miles south of Paintsville, has a 3,200-foot paved runway. Big Sandy Regional Airport, twenty miles southeast of Paintsville, has a 5,000-foot paved runway. Tri-State Airport (Walker-Long Field), nine miles southwest of Huntington, West Virginia, sixty miles northeast of Paintsville, is the nearest scheduled commercial airline.

Power and Fuel - Electric power is provided to Paintsville and Johnson County by the Kentucky Power Company, an electric generation and transmission company. Johnson County is also served by the Big Sandy Rural Electric Cooperative Corporation, which is supplied by the East Kentucky Power Cooperative. Natural gas is provided to Paintsville by Paintsville Utilities, which is supplied by Kentucky-West Virginia Gas Company. Two distributors of propane and six distributors of distillate fuel oil serve Paintsville.

Education - Primary and secondary education is provided by the Paintsville Independent and Johnson County School Systems.

Excel College, located in Paintsville, is a two-year business college offering associate degrees in business administration, accounting, executive secretarial, and legal secretarial.

Two universities, three senior colleges, and three community colleges are located within 70 miles of Paintsville.

Vocational education is provided to Paintsville and Johnson County by the Mayo State Vocational-Technical School, located in Paintsville.

LABOR MARKET STATISTICS

The Paintsville Labor Market Area includes Johnson County and the adjoining Kentucky counties of Floyd, Lawrence, Magoffin, Martin and Morgan.

POPULATION

| <u>Area</u> | <u>1984*</u> | <u>1980</u> | <u>1970</u> | <u>Percent Nonwhite 1980</u> |
|-------------------|--------------|-------------|-------------|----------------------------------|
| Paintsville | 3,654 | 3,815 | 3,868 | 0.4 |
| Labor Market Area | 131,998 | 126,860 | 93,993 | N/A |
| Johnson County | 25,611 | 24,432 | 17,539 | 0.3 |
| Floyd County | 50,802 | 48,764 | 35,889 | 0.6 |
| Lawrence County | 14,835 | 14,121 | 10,726 | 0.4 |
| Magoffin County | 14,109 | 13,515 | 10,443 | 0.2 |
| Martin County | 14,518 | 13,925 | 9,377 | 0.2 |
| Morgan County | 12,123 | 12,103 | 10,019 | 0.4 |

* Population estimates.

Note: The 1980 city counts of population by race are provisional.

Sources: U.S. Department of Commerce, Bureau of the Census, 1980 Census of Population and Housing, March 1981; 1980 Census of Population, Number of Inhabitants. University of Louisville, Urban Studies Center, Population Unit, October 1985; Kentucky Population Research Notes, Issue Number One, May 1985.

POPULATION PROJECTIONS

| <u>Area</u> | <u>1990</u> | <u>1995</u> | <u>2000</u> | <u>2010</u> |
|-------------------|-------------|-------------|-------------|-------------|
| Labor Market Area | 142,272 | 150,872 | 158,304 | 170,626 |
| Johnson County | 28,235 | 30,364 | 32,113 | 35,081 |
| Floyd County | 53,586 | 55,826 | 57,752 | 60,693 |
| Lawrence County | 16,826 | 18,544 | 20,005 | 22,614 |
| Magoffin County | 15,359 | 16,453 | 17,442 | 19,108 |
| Martin County | 15,669 | 16,662 | 17,583 | 19,105 |
| Morgan County | 12,597 | 13,023 | 13,409 | 14,025 |

Source: University of Louisville, Urban Studies Center, Population Research Unit, How Many Kentuckians: Population Forecasts, 1980-2020, the 1986 Edition, Spring 1986.

LABOR FORCE CHARACTERISTICS OF RESIDENTS, 1985

| | <u>Johnson County</u> | <u>Labor Market Area</u> |
|--------------------------|-----------------------|--------------------------|
| Civilian Labor Force | 9,590 | 43,357 |
| Employment | 8,305 | 37,100 |
| Unemployment | 1,285 | 6,257 |
| Rate of Unemployment (%) | 13.4 | 14.4 |

Source: Kentucky Cabinet for Human Resources, Kentucky Labor Force Estimates, Annual Averages, 1985.

SELECTED COMPONENTS OF NONAGRICULTURAL EMPLOYMENT, BY PLACE OF WORK, 1985

| | <u>Johnson County</u> | <u>Labor Market Area</u> |
|--------------------------|-----------------------|--------------------------|
| All Industries (total) | 5,348 | 25,168 |
| Manufacturing | 323 | 1,231 |
| Wholesale & Retail Trade | 1,827 | 5,975 |
| Services | 802 | 3,535 |
| State/Local Government | 1,038 | 4,436 |
| Contract Construction | 197 | 846 |
| Mining & Quarrying | 704 | 6,801 |

Note: Excludes domestic workers, railway workers, certain nonprofit corporations, majority of federal government workers, and self-employed workers.

Source: Kentucky Cabinet for Human Resources, Average Monthly Workers Covered by Kentucky Unemployment Insurance Law, 1985.

PER CAPITA PERSONAL INCOME

| <u>Area</u> | <u>1980</u> | <u>1984</u> | <u>Percent Change</u> |
|-------------------------|-----------------|-----------------|-----------------------|
| Johnson County | \$ 6,483 | \$ 7,903 | 21.9 |
| Labor Market Area Range | \$4,586 - 7,029 | \$6,172 - 8,172 | N/A |
| Kentucky | 7,644 | 10,232 | 33.9 |
| U. S. | 9,494 | 12,772 | 34.5 |

Sources: U.S. Department of Commerce, Bureau of Economic Analysis. Kentucky Economic Information System, June 1986.

ESTIMATED MALE LABOR SUPPLY
PAINTSVILLE LABOR MARKET AREA

| Area | Current | | | Future | |
|--------------|------------|------------|----------------|--------------------|---|
| | Total Male | Unemployed | Under-employed | Not in Labor Force | Becoming 18 years of age 1986 thru 1990 |
| Labor Market | | | | | |
| Area* | 13,696 | 4,363 | 2,771 | 6,562 | 6,023 |
| Johnson | 2,173 | 801 | 550 | 822 | 1,111 |
| Floyd | 5,291 | 1,466 | 950 | 2,875 | 2,274 |
| Lawrence | 1,641 | 565 | 347 | 729 | 663 |
| Magoffin | 1,537 | 586 | 292 | 659 | 699 |
| Martin | 1,515 | 353 | 242 | 920 | 712 |
| Morgan | 1,539 | 592 | 390 | 557 | 564 |

ESTIMATED FEMALE LABOR SUPPLY
PAINTSVILLE LABOR MARKET AREA

| Area | Current | | | Future | |
|--------------|--------------|------------|----------------|--------------------|---|
| | Total Female | Unemployed | Under-employed | Not in Labor Force | Becoming 18 years of age 1986 thru 1990 |
| Labor Market | | | | | |
| Area* | 17,129 | 1,894 | 2,227 | 13,008 | 5,711 |
| Johnson | 2,885 | 484 | 435 | 1,966 | 1,033 |
| Floyd | 6,684 | 819 | 839 | 5,026 | 2,079 |
| Lawrence | 1,902 | 185 | 249 | 1,468 | 663 |
| Magoffin | 1,867 | 168 | 205 | 1,494 | 695 |
| Martin | 2,185 | 99 | 298 | 1,788 | 726 |
| Morgan | 1,606 | 139 | 201 | 1,266 | 515 |

* Additional workers may be drawn from other nearby counties.

Note: Unemployed - persons unemployed and actively seeking work;
Underemployed - persons employed but working only 14 to 26 weeks per year;
Not in Labor Force - represents the number of persons who would enter the labor force if suitable employment were available (based on the assumption that persons in Kentucky would like to participate in the labor force in the same proportion that they do nationally).

Sources: Kentucky Cabinet for Human Resources, Kentucky Labor Supply Estimates by County, 1985. Kentucky Department of Economic Development, Future Labor Supply Becoming 18 Years of Age, 1986 thru 1990.

AVERAGE WEEKLY WAGES BY INDUSTRY,
BY PLACE OF WORK, 1985

| | <u>Johnson County</u> | <u>Floyd County</u> | <u>Lawrence County</u> |
|---|----------------------------|--------------------------|----------------------------|
| All Industries | \$ 285.70 | \$ 339.78 | \$ 292.57 |
| Mining & Quarrying | 458.01 | 497.79 | 385.85 |
| Contract Construction | 233.81 | 334.34 | 393.84 |
| Manufacturing | * | 354.68 | 175.47 |
| Transportation, Communications & Public Utilities | 374.31 | 394.72 | 506.33 |
| Wholesale & Retail Trade | 220.00 | 244.46 | 193.57 |
| Finance, Insurance & Real Estate | 318.07 | 332.56 | 253.74 |
| Services | 237.21 | 294.56 | 230.79 |
| State/Local Government | 287.50 | 281.14 | 265.69 |
| Other | 317.81 | 167.90 | 0 |
| | <u>Magoffin County</u> | <u>Martin County</u> | <u>Morgan County</u> |
| All Industries | \$ 315.94 | \$ 630.32 | \$ 257.06 |
| Mining & Quarrying | 499.52 | 784.81 | 428.08 |
| Contract Construction | 240.84 | * | 254.67 |
| Manufacturing | 344.12 | * | 165.79 |
| Transportation, Communications & Public Utilities | 291.35 | 358.03 | 332.75 |
| Wholesale & Retail Trade | 161.45 | 224.74 | 181.21 |
| Finance, Insurance & Real Estate | 336.86 | * | 279.76 |
| Services | 230.41 | 372.04 | 222.72 |
| State/Local Government | 264.40 | 255.15 | 275.20 |
| Other | * | * | 109.75 |

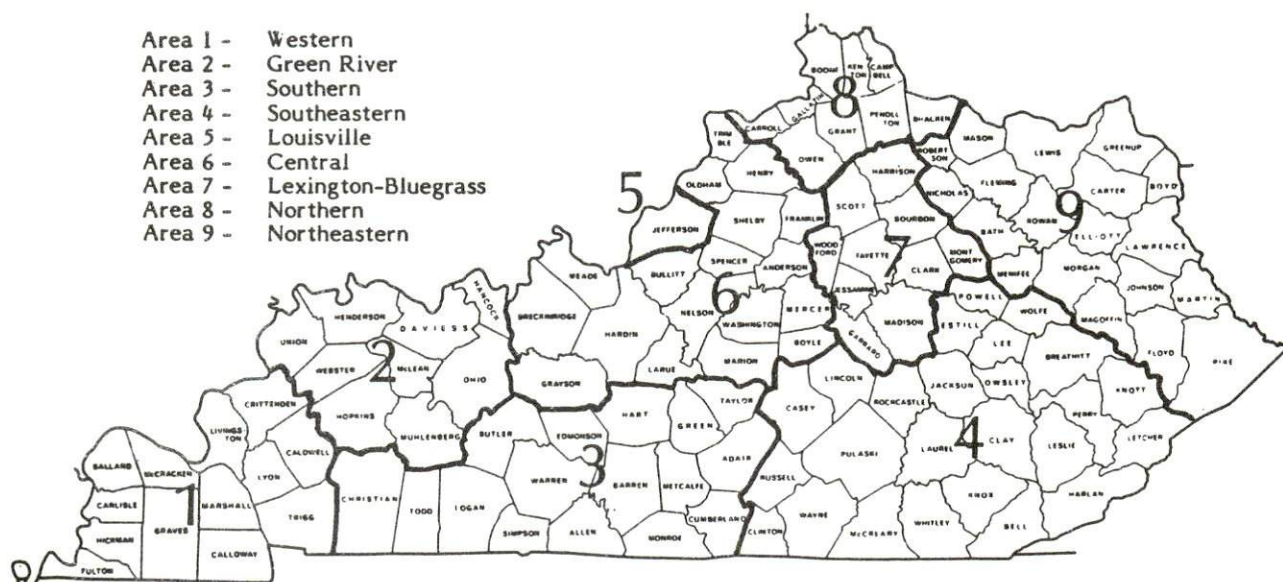
* Not disclosed.

Note: The average weekly wage for each category includes the salaries and wages of all persons working for that type business. For example, the manufacturing category includes both production workers and administrative personnel. Excludes domestic workers, railway workers, certain nonprofit corporations, majority of federal government workers, and self-employed workers.

Source: Kentucky Cabinet for Human Resources, Average Weekly Wages of Workers Covered by Kentucky Unemployment Insurance Law, 1985.

Occupational wage rates for specific industries are usually not available to most government agencies, and wage data furnished to state employment agencies by individual industrial employers are protected from disclosure by federal law. The most reliable up-to-date wage information can be obtained by direct contact with local employers.

Associated Industries of Kentucky, a voluntary organization of Kentucky businesses, regularly collects occupational wage rates and fringe benefits data from participating member firms. Data are compiled for over 127 clearly defined office, production, and service occupations. Tabulations are published for nine geographical areas of Kentucky, as shown on the map below. It should be noted that the data may be weighted by the preponderance of firms in the larger cities and may be somewhat higher than the rates paid in the smaller communities. Data from these tabulations are available, upon request, from the Kentucky Department of Economic Development, Frankfort, Kentucky 40601.



Associated Industries of Kentucky Area Wage Surveys

EXISTING INDUSTRY

PAINTSVILLE MANUFACTURING FIRMS, THEIR PRODUCTS AND EMPLOYMENT

| <u>Firm</u> (Establishment date) | <u>Product</u> | <u>Employment</u> | | | <u>Labor Unions</u> |
|--------------------------------------|--|-------------------|-------------|---------------|---------------------|
| | | <u>Total</u> | <u>Male</u> | <u>Female</u> | |
| Adams Construction Company (1962) | Bituminous concrete, concrete ready mix, crushed limestone | 24 | 24 | 0 | |
| American Standard, Inc. (1969) | Plumbing fittings | 350 | 175 | 175 | Steelworkers* |
| Commercial Printing Company (1955) | Offset printing, book publishing | 5 | 3 | 2 | |
| McGahan Feed Company (1942) | Feed | 9 | 6 | 3 | |
| Paintsville Ready Mix Company (1979) | Concrete, ready mixed | 6 | -- | -- | |
| Red's Machine Shop, Inc. (1979) | Machine shop | 6 | -- | -- | |
| Sandy Valley Press, Inc. (1964) | Newspaper, job printing | 10 | 5 | 5 | |
| TMC Print Shop (1985) | Commercial printing | 3 | -- | -- | |

*See Labor Organizations below.

Sources: Kentucky Department of Economic Development, 1986 Kentucky Directory of Manufacturers; Division of Research and Planning.

LABOR ORGANIZATIONS IN MANUFACTURING FIRMS

Union

United Steelworkers of America, AFL-CIO

Representing workers at:

American Standard, Inc.

SELECTED INDUSTRIAL SERVICES

| <u>Types of Services</u> | <u>Location</u> | <u>Mileage from Paintsville</u> |
|---------------------------------|---------------------------|---------------------------------|
| Custom Plastics Producers | Ashland, Kentucky | 64 |
| Electric Motor Repair | Martin, Kentucky | 25 |
| | Pikeville, Kentucky | 40 |
| Grinding, Precision & Tool | Huntington, West Virginia | 65 |
| Heat Treating Facilities | Lexington, Kentucky | 116 |
| | Richmond, Kentucky | 118 |
| Industrial Equipment & Supplies | Ashland, Kentucky | 64 |
| | Huntington, West Virginia | 65 |
| Industrial Gases | Prestonsburg, Kentucky | 13 |
| Industrial Waste Removal | Ashland, Kentucky | 64 |
| Machine Shops, Tool & Die | Paintsville | - |
| Metal Finishers | Lexington, Kentucky | 116 |
| | Richmond, Kentucky | 118 |
| Metal Service Centers | Huntington, West Virginia | 65 |
| Millwrights | Lexington, Kentucky | 116 |
| Public Warehouse Facilities | Lexington, Kentucky | 116 |

Sources: Kentucky Department of Economic Development, Kentucky Directory of Selected Industrial Services, 1985; Division of Research and Planning.

TRANSPORTATION

Rail

Line serving **Paintsville** - CSX Transportation

Services - Main line; three eastbound and three westbound freights stop daily; eight eastbound and eight westbound through freights daily; switching services; team track space for twenty cars; siding space for 900 cars; piggyback facilities are located at Kingsport, Tennessee, 145 miles southwest

For details on routing, schedules, rates, and services contact:

Real Estate and Industrial Development Department
CSX Transportation
Suite 500 Cornell Center
11311 Cornell Park Drive
Cincinnati, Ohio 45242
(513) 369-5525

Highways

Major highways serving Paintsville include U.S. 23 and U.S. 460, both "AAA" rated (80,000-pound gross load limit) trucking highways. Kentucky Highway 40, a "AA" rated (62,000-pound gross load limit) trucking highway, also serves Paintsville. Access to the Mountain Parkway, a multi-lane toll road, is eighteen miles southwest of Paintsville via U.S. 460. The Mountain Parkway intersects with Interstate 64, ninety-four miles northwest of Paintsville. Access to Interstate 64 is also available fifty-six miles north of Paintsville via U.S. 23. Kentucky 80, seventeen miles south of Paintsville, is a multi-lane highway which provides access to the Daniel Boone Parkway, fifty-nine miles southeast of Paintsville. The Daniel Boone Parkway then connects with Interstate 75, 118 miles southwest of Paintsville.

The reconstruction and widening of the intersection of U.S. 23 and U.S. 460 is under way. The intersection will be completed in Fall 1986.

There are plans for the reconstruction and four-laning of U.S. 23 between Paintsville and Prestonsburg. The project is in the design phase at the present.

Truck Service

ARA/Smith's*
Bestway Express, Inc.**
Buske Lines, Inc.*
Hazard Express, Inc.**

Manning Motor Express, Inc.**
Overnite Transportation
Company**

* Interstate service only.

** Interstate and intrastate service.

Source: American Motor Carrier Directory, Spring 1986.

HIGHWAY MILES AND TRUCK TRANSIT TIME IN DAYS FROM
PAINTSVILLE KENTUCKY, TO SELECTED MARKET CENTERS

| City | Highway Miles | Delivery Time TL | City | Highway Miles | Delivery Time TL |
|------------------|------------------|------------------------|------------------|------------------|------------------------|
| Atlanta, Ga. | 409 | 1 | Los Angeles, Ca. | 2,296 | 5 |
| Baltimore, Md. | 496 | 2 | Louisville, Ky. | 188 | 1 |
| Birmingham, Ala. | 470 | 4 | Nashville, Tenn. | 320 | 1 |
| Chicago, Ill. | 468 | 1 | New Orleans, La. | 812 | 2 |
| Cincinnati, Ohio | 194 | 1 | New York, N. Y. | 668 | - |
| Cleveland, Ohio | 358 | 1 | Pittsburgh, Pa. | 328 | 2 |
| Detroit, Mich. | 453 | 1 | St. Louis, Mo. | 451 | 1 |
| Knoxville, Tenn. | 216 | 1 | | | |

Note: Mileage computations are via the best interstate or primary highways, not necessarily the most direct route of travel.

Sources: Rand McNally Road Atlas, 1979. Official Kentucky Mileage Map, 1985.

Delivery time - Overnite Transportation, 1020 Whipple Court, Lexington, Kentucky.

Air

Local

Combs Airport
 Location: Five miles south of Paintsville
 Runways: 1 paved
 Length: 3,200 feet
 Traffic
 Control: Wind sock
 Lighting: None
 Services: 100LL octane, jet-A fuel, flight instruction

Big Sandy Regional Airport*
 Location: Twenty miles southeast of Paintsville
 Runways: 1 paved
 Length: 5,000-foot

(Continued)

* Construction of the first phase of the Big Sandy Regional Airport has been completed. The first phase included the installation of a 5,000-foot runway and a parallel taxi-way. Phase two, which includes terminal development, lighting, and access road development, is under way.

Nearest Scheduled Commercial Airline Service

| | |
|-------------|---|
| Location: | Tri-State Airport (Walker-Long Field) 9 miles southwest of Huntington, West Virginia; 60 miles northeast of Paintsville |
| Runways: | 2 paved |
| Length: | 6,509 feet and 3,007 feet |
| Traffic | |
| Control: | Tower |
| Lighting: | Beacon, runway |
| Services: | Piedmont, USAir, Comair; fuel - 100LL, jet-A; tie-downs, hangars; major A & P repairs, major Avionics repairs; APU, charter, flight instruction, oxygen, plane rental, survival equipment, U.S. Customs; taxi, limousine, car rental; weather information; restaurant |
| Air Freight | |
| Service: | Air freight terminal |

Air Express Service

Several major companies offer air express services in Kentucky. These companies provide a quick means of shipping small to medium-sized packages expeditiously.

Water

Access to the inland waterway system is provided by the Big Sandy River, located approximately 40 miles northeast of Paintsville. A 6-foot navigation channel is maintained from the headwaters of the Big Sandy River to a point midway to the Ohio River. From this point a 9-foot navigation channel is maintained to the confluence with the Ohio River, approximately 60 miles from Paintsville.

POWER AND FUEL

Electricity

Company serving **Paintsville and parts of Johnson County** - Kentucky Power Company

Source of power - Kentucky Power Company
For industrial rates contact:

Kentucky Power Company
1701 Central Avenue
P.O. Box 1428
Ashland, Kentucky 41101
(606) 329-2220

Company serving **parts of Johnson County** - Big Sandy Rural Electric Cooperative Corporation

Source of power - East Kentucky Power Cooperative
For industrial rates contact:

Industrial Development Division
East Kentucky Power Cooperative
P.O. Box 707
Winchester, Kentucky 40391
(606) 744-4812

and/or

Big Sandy RECC
Eleventh Street
P. O. Box 1746
Paintsville, KY 41240
(606) 789-4095

Natural Gas

Company serving **Paintsville** - Paintsville Utilities

Source of supply - Kentucky-West Virginia Gas Company
Size of transmission mains - 8-inch (supplier); 6-inch (distributor)
Distribution mains - 1 1/4 to 6 inches
Distribution pressure - 20 psi to 200 psi
Btu content - 1,044 per cubic foot
Specific gravity - .69
For rates and supplies contact:

Paintsville Utilities
P. O. Box 631
Paintsville, Kentucky 41240-0631
(606) 789-2630

Other Fuels

Propane

Buckeye Gas Products Company
Route 23
Paintsville, Kentucky 41240

Hardware Charlie Gas Company
Route 23
Paintsville, Kentucky 41240

Fuel oils

Distillate fuel oil -

Action Petroleum, Inc.
Stanley & Baldwin Streets
Prestonsburg, Kentucky 41653

Pelphrey Supply Company, Inc.
P. O. Box 112, U.S. 23 South
Paintsville, Kentucky 41240

Ashland Petroleum Company
HC77, Box 20
Hager Hill, Kentucky 41222

Pikeville Oil and Tire and
Mountain Petroleum Companies,
Inc.
Banner, Kentucky 41603

Coleman Oil Company, Inc.
Shelbiana, Kentucky 41562

Kentucky Oil and Refining
Company
P. O. Box 63
Betsy Layne, Kentucky 41605

Residual fuel oil - Arrangements must be made with the refinery.

Low sulphur content coal - Available in Kentucky.

WATER AND SEWERAGE

Public Water Supply

Company serving **Paintsville** - Paintsville Utilities
P. O. Box 631
Paintsville, Kentucky 41240-0631
(606) 789-2630

Source - Levisa Fork of the Big Sandy River
Treatment plant capacity - 3,000,000 gallons per day
Average daily consumption - 1,496,000 gallons
Peak daily consumption - 1,610,000 gallons
Treatment processes - Rapid mix, coagulation, flocculation, sedimentation, filtration, chlorination, fluoridation
Storage capacity - 1,405,000 gallons, including clear well
Size lines - 3/4 to 12 inches
Water pressure - 80 psi

MONTHLY WATER RATES

Inside City Limits

| | | |
|----------|-----------------|-----------------------|
| First | 2,000 gallons | \$4.60 (Minimum bill) |
| Next | 3,000 gallons | 2.15 per M gallons |
| Next | 5,000 gallons | 2.06 per M gallons |
| Next | 15,000 gallons | 1.90 per M gallons |
| Next | 25,000 gallons | 1.80 per M gallons |
| Next | 50,000 gallons | 1.65 per M gallons |
| All over | 100,000 gallons | 1.55 per M gallons |

Outside City Limits

| | | |
|----------|-----------------|-----------------------|
| First | 2,000 gallons | \$6.70 (Minimum bill) |
| Next | 3,000 gallons | 2.93 per M gallons |
| Next | 5,000 gallons | 2.63 per M gallons |
| Next | 15,000 gallons | 2.33 per M gallons |
| Next | 25,000 gallons | 2.08 per M gallons |
| Next | 50,000 gallons | 1.93 per M gallons |
| All over | 100,000 gallons | 1.83 per M gallons |

Tap-on charge: \$75

Sewerage

Company serving **Paintsville** - Paintsville Utilities
P. O. Box 631
Paintsville, Kentucky 41240-0631
(606) 789-2630

Design capacity - 730,000 gallons per day*

Average daily flow - 500,000 gallons

Type of treatment - Primary

Treatment processes - Screening, grit removal, primary sedimentation, chlorination, anaerobic digester, sludge drying beds

Treated effluent discharged into - Levisa Fork of the Big Sandy River

Size of sanitary mains - 8 to 14 inches

Size of storm mains - 12 to 48 inches

Monthly rates -

| | | |
|----------|-----------------|--------------------|
| First | 2,000 gallons | \$9.10 Minimum |
| Next | 3,000 gallons | 4.50 per M gallons |
| Next | 5,000 gallons | 4.45 per M gallons |
| Next | 15,000 gallons | 4.20 per M gallons |
| Next | 25,000 gallons | 4.05 per M gallons |
| Next | 50,000 gallons | 3.85 per M gallons |
| All over | 100,000 gallons | 3.65 per M gallons |

Tap-on charge:

Residential - \$100
Commercial - \$150

* Expansion and renovation of its sewerage treatment plant by Paintsville Utilities is under way. The \$6 million project, which will double the treatment capacity of the existing facility, will be completed in early 1988.

CLIMATE

Johnson County

Temperature

| | |
|---|----------------|
| Normal (30-year record) | 55.90 degrees |
| Average annual 1985 | 55.20 degrees |
| Record highest, July 1952 (40-year record) | 102.00 degrees |
| Record lowest, January 1985 (40-year record) | -21.00 degrees |
| Normal heating degree days (30-year record) (Heating degree day totals are the sums of negative departures of average daily temperatures from 65 degrees F.) | 4,356 |

Precipitation

| | |
|---|--------------|
| Normal (30-year record) | 41.24 inches |
| Mean annual snowfall (30-year record) | 16.10 inches |
| Total precipitation 1985 | 35.23 inches |
| Mean number days precipitation (.01 inch or more) (40-year record) | 133.40 |
| Mean number days thunderstorms (42-year record) | 43.60 |

Prevailing Winds (through 1963)

Northeast

Relative Humidity (24-year record)

| | |
|--------|------------|
| 1 a.m. | 80 percent |
| 7 a.m. | 85 percent |
| 1 p.m. | 57 percent |
| 7 p.m. | 63 percent |

Source: U.S. Department of Commerce, Environmental Science Services Administration, Climatological Data, 1985. Station of record: Bristol, Johnson City, Kingsport, Tennessee.

LOCAL GOVERNMENT

Structure

Paintsville is served by a mayor and six council members. Johnson County is served by a county judge/executive and three commissioners.

Planning and Zoning

City agency - Paintsville Planning and Zoning Commission

Zoning enforced - City only

Subdivision regulations enforced - City only

Local codes enforced - Building and housing

Mandatory state codes enforced - Kentucky Plumbing Code, National Electric Code, Kentucky Boiler Regulations and Standards, Kentucky Building Code (modeled after BOCA code)

Local Fees and Licenses

The city of Paintsville levies an occupational license tax of one percent on gross salaries of individuals and one percent on net profits of businesses.

State and Local Property Taxes

All property in Kentucky, except items exempted by the state constitution, is taxed by the state. Property which also may be taxed by local jurisdictions includes land and buildings, finished goods inventories, automobiles, trucks, office furniture and office equipment. Local taxing jurisdictions in Kentucky include counties, cities, and school districts.

All property in Kentucky is assessed at 100 percent of fair cash value.

COMBINED STATE AND LOCAL RATES PER \$100 VALUATION, 1985

| | <u>Paintsville and Paintsville Independent School District</u> | <u>Paintsville and Johnson County School District</u> | <u>Unincorporated Johnson County</u> |
|--|--|---|--|
| Land and Buildings | \$ 1.1524 | \$ 0.8874 | \$ 0.7770 |
| Manufacturing Machinery | 0.150 | 0.150 | 0.150 |
| Pollution Control Equipment | 0.150 | 0.150 | 0.150 |
| Inventories | | | |
| Raw materials | 0.001* | 0.001* | 0.001* |
| Goods in Process | 0.001* | 0.001* | 0.001* |
| Finished Goods | 0.9894* | 0.6834* | 0.5730* |
| Automobiles and Trucks | 1.439 | 1.1610 | 1.0506 |
| Other Tangible Personal Property | 1.4384 | 1.1324 | 1.0220 |
| Intangibles (Accounts receivable, money in hand, stock, notes, bonds) | 0.250** | 0.250** | 0.250** |
| Goods Stored in Public Warehouses in Transit Status | 0.001* | 0.001* | 0.001* |
| Private Leaseholds in Industrial Revenue Bond Financed Facilities | 0.015 | 0.015 | 0.015 |

* Includes 1986 state rate.

** Accounts receivable are taxed at 85 percent of face value, for an effective rate of \$0.2125 per \$100 valuation.

Safety

| Police | Paintsville | Johnson County |
|-------------------|--------------------|-----------------------|
| Total staff | 17 | 8 |
| Radio-patrol cars | 8 | 12 |

Fire*

| | | |
|---|----|-----|
| Insurance Services Office, Public Protection Classification | 6 | ** |
| Full-time staff | 8 | |
| Volunteers | 25 | 140 |

Rescue Service

Johnson County Rescue Squad, Inc.

Refuse Collection and Disposal

Refuse collection and disposal service is provided to Paintsville by the city of Paintsville. Service to Johnson County is provided through private contractors.

* Includes copyrighted material of ISO Commercial Risk Services, Inc., with its permission.

** Johnson County is served by seven fire departments with each having approximately 20 volunteers. Those fire departments and classifications are: Oil Springs - 10; W. R. Castle - 9/9; Thelma - 10; W. Van Lear - 7/9; Williamsport - 10; Thealka - 10; and Paintsville - 6.

EDUCATION

Public Schools

| | Paintsville Independent | Johnson County |
|--|---|-------------------|
| Total Enrollment (May, 1986) | 861 | 4,295 |
| Kindergarten | 54 | 356 |
| Elementary | 310 | 1,943 |
| Junior High | - | 658 |
| Middle School | 200 | - |
| High School | 297 | 1,338 |
| Accreditation | Southern Association of Colleges and Schools | |
| Pupil-Teacher Ratio (1984-85) | 18-1 | 22-1 |
| Percent High School Graduates to College (1984-85) | 76.2 | 31.3 |
| Expenditures Per Pupil (1984-85) | \$2,297.18 | \$1,678.91 |

Nonpublic Schools

| <u>School</u> | <u>Enrollment</u> | <u>Grades</u> |
|---|-------------------|---------------|
| Our Lady of the Mountains Elementary | 115 | K-8 |

Area Colleges and Universities

| <u>Name</u> | <u>Location (Miles distant)</u> | <u>Enrollment (Fall, 1985)</u> | <u>Highest Degree Conferred</u> |
|-------------------------------|-------------------------------------|------------------------------------|-------------------------------------|
| Excel College Prestonsburg | Paintsville | 225 | Associate |
| Community College | Prestonsburg (13) | 1,343 | Associate |
| Pikeville College | Pikeville (40) | 600 | Baccalaureate* |
| Alice Lloyd College | Pippa Passes (53) | 546 | Baccalaureate |
| Lees College | Jackson (59) | 398 | Associate |
| Hazard Community College | Hazard (63) | 607 | Associate |
| Ashland Community College | Ashland (64) | 1,922 | Associate |
| Marshall University | Huntington, West Virginia (65) | 11,320 | Academic & Professional |
| Morehead State University | Morehead (67) | 5,695 | Masters, Specialist** |

Excel College

Excel College, located in Paintsville, is a two-year accredited business college. Established in 1985, Excel College offers associate degrees in business administration, accounting, executive secretarial, and legal secretarial.

* Courses in masters degree programs are taught on the Pikeville campus by faculty members of Pikeville College and Morehead State University. The degrees are issued by Morehead State University.

** Joint doctoral degree programs are offered in cooperation with the University of Kentucky, Lexington. The degrees are issued by the University of Kentucky.

Vocational Training

The Bluegrass State Skills Corporation, an independent public corporation created and funded by the Kentucky General Assembly, provides programs of skills training to meet the needs of business and industry from entry level to advanced training, and from upgrading present employees to retraining experienced workers.

The Bluegrass State Skills Corporation is the primary source for skills training assistance for a new or existing company. The Corporation works in partnership with other employment and job training resources and programs, as well as Kentucky's economic development activities, to package a program customized to meet the specific needs of a company.

Vocational training is available at both the state vocational-technical schools and the area vocational education centers. The state vocational-technical schools are post-secondary institutions. The area vocational education centers are designed to supplement the curriculum of high school students. Both the state vocational-technical schools and the area vocational education centers offer evening courses to enable working adults to upgrade current job skills.

Arrangements can be made to provide training in the specific production skills required by an industrial plant. Instruction may be conducted either in the vocational school or in the industrial plant, depending upon the desired arrangement and the availability of special equipment.

Nearest State School

Mayo State Vocational-Technical School
Paintsville

Business & Office

Accounting/Management
Business Education
Clerical
Court & Conference Reporter
Data Processing
Secretarial (Legal & Medical)
Consumer & Home Economics
Consumer & Family Life Skills
Health & Personal Services Occupations
Cosmetology
Practical Nursing
Industrial Education
Air Conditioning & Refrigeration
Auto Body Repair
Automotive Technology

Carpentry-Building Trades

Diesel & Heavy Equipment
Maintenance & Repair
Drafting - Mechanical
Drafting - Technical (with
CAD/CAM)
Electronic Communications
Electronic Technology
Graphic Arts (Printing)
Highway Technology
Industrial Electricity
Machine Shop
Mine Machine Operation
Mine Maintenance Technology
Welding
Learning Resource Center

HEALTH

Local Medical Personnel

Physicians - 37
Dentists - 14

Hospitals

| <u>General Hospital</u> | <u>Location</u> | <u>Beds</u> |
|--------------------------------------|---------------------------------|-------------|
| Paul B. Hall Regional Medical Center | Paintsville | 72 |
| Highlands Regional Medical Center | 8 miles south of Paintsville | 184 |

Paul B. Hall Regional Medical Center

Medical staff - Forty-one doctors, thirty registered nurses, and twenty-one licensed practical nurses

Highlands Regional Medical Center*

Medical staff - Sixty doctors, fifty-four registered nurses, and sixty-two licensed practical nurses

Other Medical Facilities

Big Sandy District Health Department

Ambulance Service

Name - Burchett's Ambulance Service
Staff - 18 emergency medical technicians

* Highlands Regional Medical Center is in the process of developing a breast cancer screening diagnostic center. Completion is scheduled for January 1987.

OTHER LOCAL FACILITIES

Communications

| | |
|--|---|
| Telephone - | South Central Bell |
| Telegraph - | Western Union Toll-free number, 1-800-325-6000 |
| Newspaper - Weekly and circulation - | The Mountain Chronicle - 3,500 The Paintsville Herald - 6,300 |
| Radio - | WSIP-AM/FM; WKLW-AM |
| Television - Airwave reception from - | Lexington, Kentucky; Charleston and Huntington, West Virginia |
| Cable service - Educational television - | CMA Cablevision The Kentucky Educational Television (K.E.T.) network is available statewide |

Library Services

Public library - Johnson County Public Library
Size collection - 50,929 volumes
Circulation, 1984-85 - 239,880

Religious Institutions

Johnson County

| | |
|----------------------|---|
| Denominations - | Baptist Catholic Christian Church of Jesus Christ of Latter Day Saints Church of God Jehovah Witness Methodist Pentecostal |
| Nearest Synagogues - | Ashland, Kentucky, 64 miles north Huntington, West Virginia, 65 miles northeast |
| Congregations - | Agudath Achim (reform) B'nai Shalom (conservative and reform) |

Financial Institutions

| <u>Banks</u> | <u>Assets</u> | <u>Deposits</u> | <u>Statement Date</u> |
|---------------------------|------------------|------------------|---------------------------|
| Citizens National Bank | \$116,021,972.78 | \$100,143,970.38 | 6/30/86 |
| First National Bank | 52,530,621.80 | 47,252,368.89 | 6/30/86 |

| <u>Savings and Loan Associations</u> | <u>Assets</u> | <u>Savings Accounts</u> | <u>Statement Date</u> |
|---|------------------|-----------------------------|---------------------------|
| Family Federal Savings and Loan Association | \$ 66,735,309.00 | \$ 62,796,399.00 | 12/31/85 |

Hotels and Motels

Total number - 3
Total rooms - 310

RECREATION

Local

Excellent recreational facilities are provided for the citizens of Paintsville. The Paintsville park and playground, which covers a 16-acre area, offers a lighted Little League field, a lighted baseball and softball field, lighted tennis courts, basketball courts, a swimming pool, an Olympic racing pool, and a service building with restroom facilities.

A community center provides covered facilities and a lighted area for family outings. A 5-acre park adjacent to the center features a Little League field, basketball courts, racquetball courts, 320-meter running track, playground equipment, and grills.

Other facilities available to Paintsville residents include baseball/softball diamonds, and croquet, horseshoe, basketball, volleyball, tennis and handball courts.

Paintsville Country Club has an 18-hole golf course, a swimming pool, and several tennis courts, which are open to the public. Several notable golf tournaments are held there each year.

A stadium owned by the Paintsville Independent School District is the site for football games, an annual horse show, and events connected with the annual Apple Festival.

Paintsville Lake, a 1,139-acre recreational lake, is located 4 miles west of Paintsville. Recreational opportunities include fishing, boating, swimming, and hunting.

Area (Within 85 miles)

Jenny Wiley State Resort Park, near Paintsville takes full advantage of its picturesque highland setting. The 1,700-acre park offers facilities and activities such as a lodge, a dining room, a gift shop, cottages, a lodge pool, recreation rooms, campsites, picnic areas, planned recreation, playground, golf, hiking, horseback riding, shuffleboard, fishing, and fishing boat and pedal boat rentals. A summer music theatre presents Broadway musicals in a 90-seat amphitheater.

Dewey Lake, located in adjoining Floyd County, is a 1,100-acre lake midst the 10,000-acre Dewey Lake State Forest. The lake affords excellent white bass and crappie fishing, shore-line picnic areas with tables and grills, and state-regulated hunting (seasonal).

Grayson Lake State Park is located 56 miles northwest of Paintsville near Grayson. Facilities available include 71 campsites, a beach, and a picnic area. Good fishing and organized recreational programs can be found during the summer. The park is located in the 7,350-acre Grayson Lake Wildlife Area.

Breaks Interstate Park, 63 miles south of Paintsville, encompasses 3,910 acres and is the site of the largest canyon east of the Mississippi River. Park facilities include a lodge, restaurant, housekeeping cottages, tent and trailer campsites, picnic areas, playgrounds, hiking trails, horseback riding, fishing, fishing boat rentals, community pool, visitor's center, and a gift shop.

Natural Bridge State Resort Park near Slade, 63 miles west of Paintsville, is located in the Daniel Boone National Forest where cliffs and stone arches fill the landscape. The rugged awesomeness of the great Natural Bridge is the main attraction. The park has a 35-room resort lodge with a dining room and gift shop, ten rustic cottages, and 95 camping sites. Other facilities include a lake, a swimming pool, picnic shelters and playgrounds, hiking trails, and a riding stable.

Red River Gorge, most of which is located in Wolfe County adjacent to Natural Bridge State Resort Park, has three waterfalls, 59 natural sandstone arches, and the Red River Gorge Loop Drive, a 30-mile scenic route on Kentucky's 715 and 77 which passes along the Red River. The Daniel Boone National Forest Visitor Information Center on Kentucky 715 is located on the loop drive.

Cave Run Lake, constructed by the U.S. Army Corps of Engineers, is located 69 miles northwest of Paintsville within the 640,000-acre Daniel Boone National Forest. The lake area offers everything for the camper, the boatsman, the hunter, the fisherman, and "the lover of leisure."

Greenbo Lake State Resort Park, which is located 80 miles north of Paintsville near Ashland, has a magnificent fieldstone lodge. The lodge offers 36 rooms, a dining room, a gift shop, a meeting room, a lodge pool, and a recreation room. Other facilities and activities at or near the park include a well-equipped campground, a marina, miniature golf, tennis courts, playgrounds, shuffleboard, planned recreation, fishing, hiking, horseback riding, and picnicking.

Buckhorn Lake State Resort Park, 83 miles southwest of Paintsville at Buckhorn, is a full-facility resort park with a 36-room lodge. The lodge itself offers a dining room with a lake view, a gift shop, a pool, meeting rooms, and a recreation room. Other park facilities and activities include a beach, a bathhouse, a picnic shelter, 72 campsites, a playground, mini-golf, tennis, a dock with open and covered slips, boat rentals, a 40-foot levee plus a fishing pier, bicycle rentals, and planned recreation.

Carter Caves State Resort Park, 84 miles northwest of Paintsville, provides a restful atmosphere with its mountain wildflowers, a rippling stream, the underground wonders of three caves, a 28-room lodge, a restaurant, and a gift shop. Recreational facilities available include something for the whole family with playgrounds, two swimming pools (one Olympic-size), tennis courts, shuffleboard, a 9-hole golf course, miniature golf, boating, fishing, horseback riding, picnicking, and cave tours.

COMMUNITY IMPROVEMENTS

Recent

The development of a 35-acre industrial site near the intersection of U.S. 23 and Kentucky 201 has been completed.

Construction of the first phase of the Big Sandy Regional Airport has been completed. The first phase included the installation of a 5,000-foot runway and a parallel taxi-way. Phase two, which includes terminal development, lighting, and access road development, is under way.

The Johnson County School System recently implemented a computer-assisted instruction program which serves 1,910 students daily.

Under Way

Expansion and renovation of its sewerage treatment plant by Paintsville Utilities is under way. The \$6 million project, which will double the treatment capacity of the existing facility, will be completed in early 1988.

The reconstruction and widening of the intersection of U.S. 23 and U.S. 460 is under way. The intersection will be completed in Fall 1986.

Construction of a four-county regional jail is under way in Paintsville. The regional jail will be opened in 1987.

Street and sidewalk renovation and reconstruction is under way in downtown Paintsville. The completion of the \$72,000 project will be Fall 1986.

Highland Regional Medical Center is in the process of developing a breast cancer screening diagnostic center. Completion is scheduled for January 1987.

Planned

There are plans for the reconstruction and four-laning of U.S. 23 between Paintsville and Prestonsburg. The project is still in the design phase at the present time.

The Paintsville Independent School System plans to build a \$1.5 million multi-purpose classroom complex at the Paintsville Elementary School in 1987.

The city of Paintsville has plans to build a new city municipal building and a new fire station building.

The Johnson County School System has plans to install an asphalt running track at Johnson Central High School.