

1979

# Industrial Resources: Lewis County - Vanceburg and Tollesboro

Kentucky Library Research Collections  
Western Kentucky University, [spcol@wku.edu](mailto:spcol@wku.edu)

Follow this and additional works at: [https://digitalcommons.wku.edu/lewis\\_pty](https://digitalcommons.wku.edu/lewis_pty)



Part of the [Business Administration, Management, and Operations Commons](#), [Growth and Development Commons](#), and the [Infrastructure Commons](#)

---

## Recommended Citation

Kentucky Library Research Collections, "Industrial Resources: Lewis County - Vanceburg and Tollesboro" (1979). *Lewis County*. Paper 8.  
[https://digitalcommons.wku.edu/lewis\\_pty/8](https://digitalcommons.wku.edu/lewis_pty/8)

This Report is brought to you for free and open access by TopSCHOLAR®. It has been accepted for inclusion in Lewis County by an authorized administrator of TopSCHOLAR®. For more information, please contact [topscholar@wku.edu](mailto:topscholar@wku.edu).

# ***INDUSTRIAL RESOURCES***

**VANCEBURG**

**TOLLESBORO**

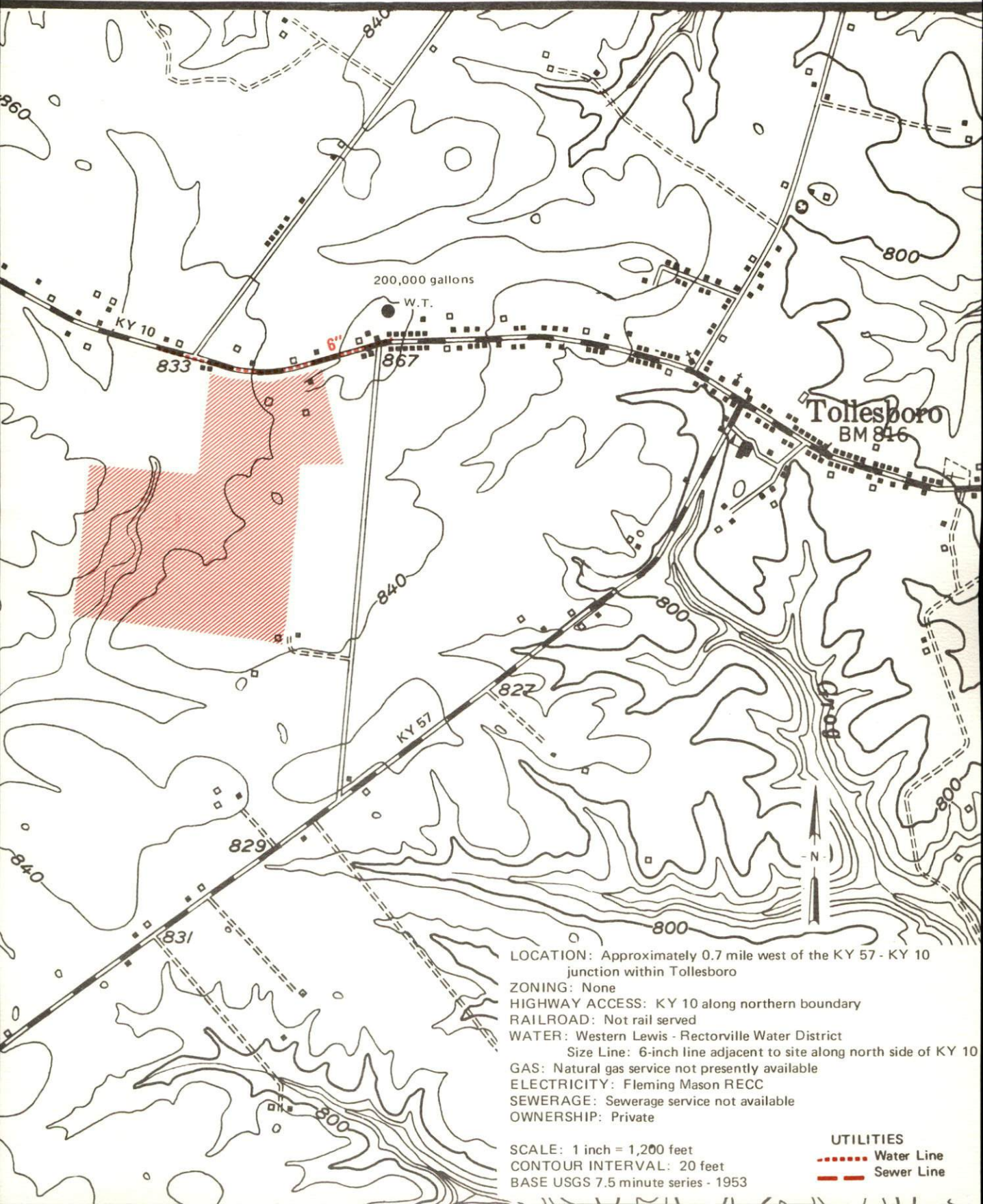
**Kentucky  
first**



**DEPARTMENT OF COMMERCE**

# TOLLESBORO, KENTUCKY --- Site No. 179 --86 Acres

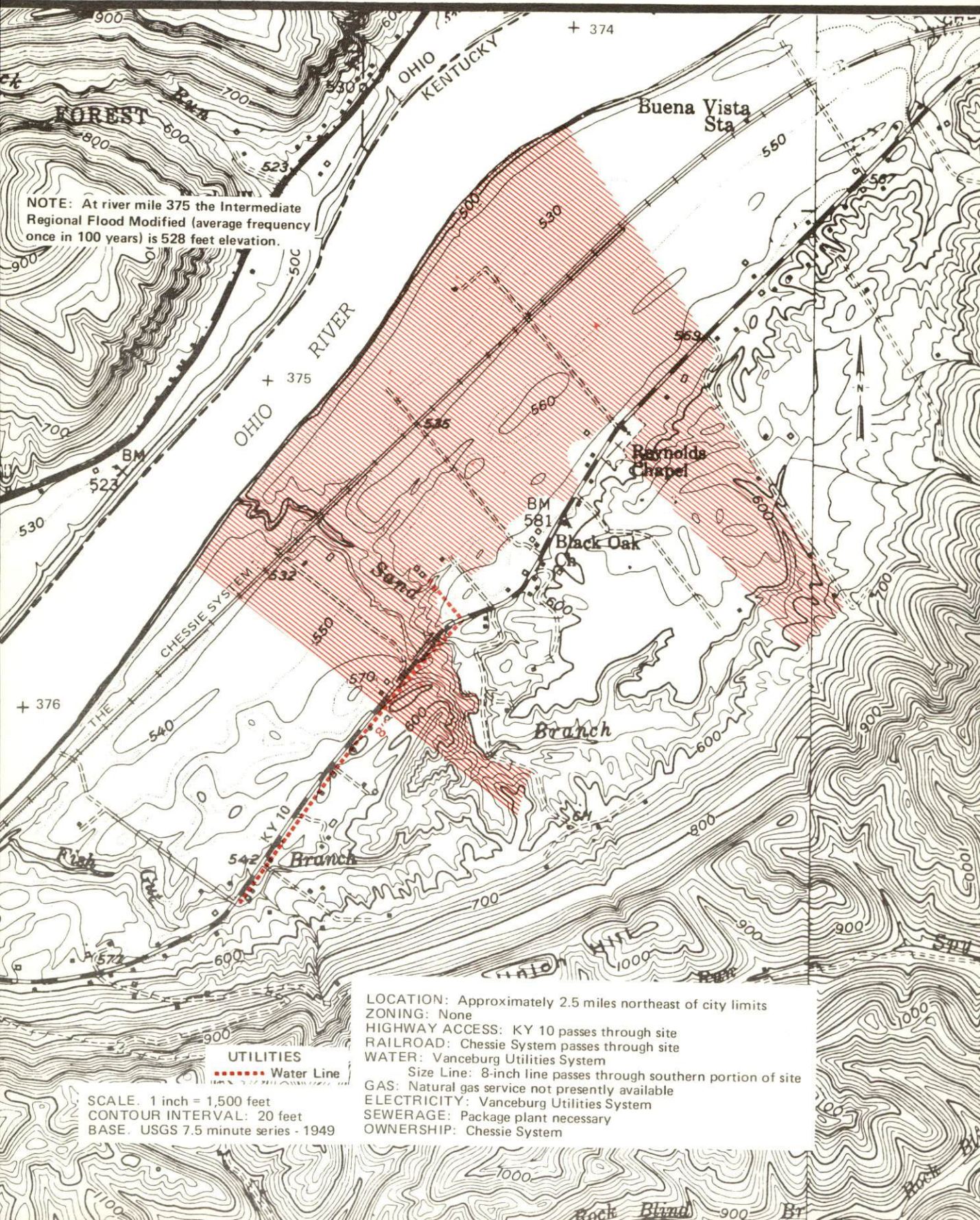
For more information contact Mr. Tom Barbour, c/o Barbour and Son Funeral Home, Tollesboro, Kentucky 41189, or the Industrial Development Division, Kentucky Department of Commerce, Capital Plaza Tower, Frankfort, Kentucky 40601.





# VANCEBURG, KENTUCKY --- Site No. 179 -- 530 Acres

For more information contact Mayor Howard Shelton, City Building, Vanceburg, Kentucky 41179, or the Industrial Development Division, Kentucky Department of Commerce, Capital Plaza Tower, Frankfort, Kentucky 40601.





INDUSTRIAL RESOURCES  
VANCEBURG AND TOLLESBORO, KENTUCKY

Prepared by  
The Kentucky Department of Commerce  
Division of Research and Planning  
in cooperation with  
The City of Vanceburg  
and  
The City of Tollesboro

1979



Program supervisor - Pamela Riley; research - John McMurray;  
clerical - Linda Fint and Sharon Mills; graphics - Frank Ferrante,  
Tony Cecconi, Richard Spencer; cartography - Industrial Development  
Division. Cost of printing paid from state funds.



# TABLE OF CONTENTS

<u>Chapter</u>	<u>Page</u>
INDUSTRIAL SITES . . . . .	i
SUMMARY OF INDUSTRIAL RESOURCES - VANCEBURG AND TOLLESBORO, KENTUCKY . . . . .	1
THE LABOR MARKET AREA . . . . .	7
Population . . . . .	7
Labor Force Characteristics of Residents, 1978 . . . . .	7
Vanceburg and Tollesboro Manufacturing Firms, Their Products and Employment . . . . .	8
Labor Organizations . . . . .	8
Industrial Services . . . . .	9
Estimated Male Labor Supply . . . . .	10
Estimated Female Labor Supply . . . . .	10
Average Weekly Wages by Industry, by Place of Work, 1978 . . . . .	11
Per Capita Personal Income . . . . .	13
TRANSPORTATION . . . . .	14
Rail . . . . .	14
Highways . . . . .	15
Truck Service . . . . .	15
Air . . . . .	16
Taxi . . . . .	16
Water . . . . .	17
POWER AND FUEL . . . . .	18
Electricity . . . . .	18
Natural Gas . . . . .	19
Other Fuels . . . . .	20
WATER AND SEWERAGE . . . . .	22
Water . . . . .	22
Sewerage . . . . .	25
CLIMATE . . . . .	26



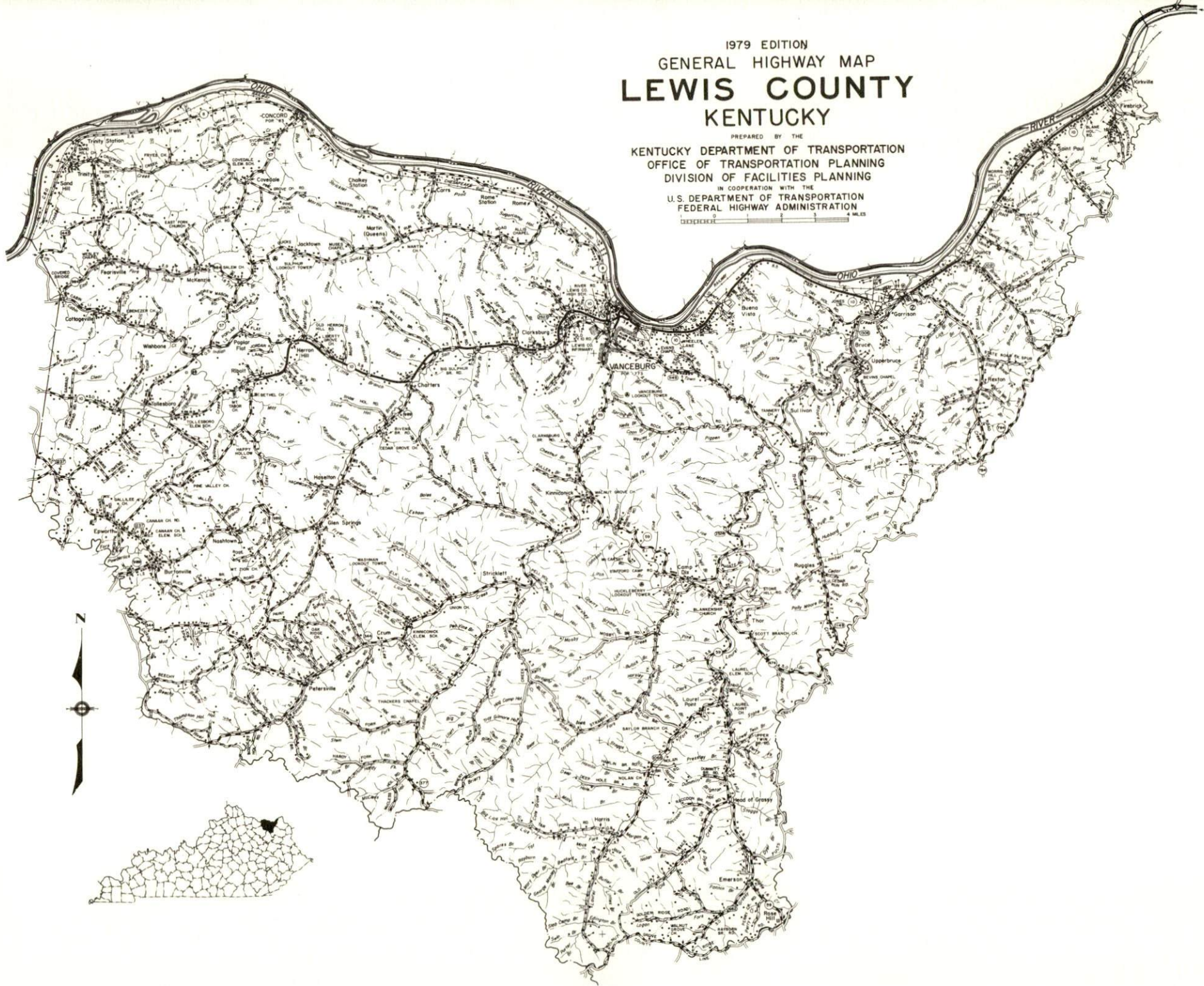
<u>Chapter</u>	<u>Page</u>
LOCAL GOVERNMENT . . . . .	27
City . . . . .	27
County . . . . .	27
Assessed Value of Property, 1978 . . . . .	27
Property Taxes . . . . .	28
Combined State and Local Rates Per \$100 Valuation, 1979 . . . . .	28
Planning and Zoning . . . . .	29
Safety . . . . .	29
Police . . . . .	29
Fire . . . . .	29
Rescue Service . . . . .	29
Refuse Collection and Disposal . . . . .	29
EDUCATION . . . . .	30
Public Schools . . . . .	30
Area Colleges and Universities . . . . .	31
Vocational Schools . . . . .	32
HEALTH . . . . .	34
Local Medical Personnel . . . . .	34
Hospitals . . . . .	34
Other Medical Facilities . . . . .	35
Ambulance Service . . . . .	35
Public Health . . . . .	35
OTHER LOCAL FACILITIES . . . . .	36
Communications . . . . .	36
Library Services . . . . .	37
Religious Institutions . . . . .	37
Financial Institutions . . . . .	37
Hotels and Motels . . . . .	37
Clubs and Organizations . . . . .	38
RECREATION . . . . .	39
COMMUNITY IMPROVEMENTS . . . . .	41

1979 EDITION  
GENERAL HIGHWAY MAP  
**LEWIS COUNTY**  
KENTUCKY

PREPARED BY THE  
KENTUCKY DEPARTMENT OF TRANSPORTATION  
OFFICE OF TRANSPORTATION PLANNING  
DIVISION OF FACILITIES PLANNING

IN COOPERATION WITH THE  
U.S. DEPARTMENT OF TRANSPORTATION  
FEDERAL HIGHWAY ADMINISTRATION

0 1 2 3 4 MILES

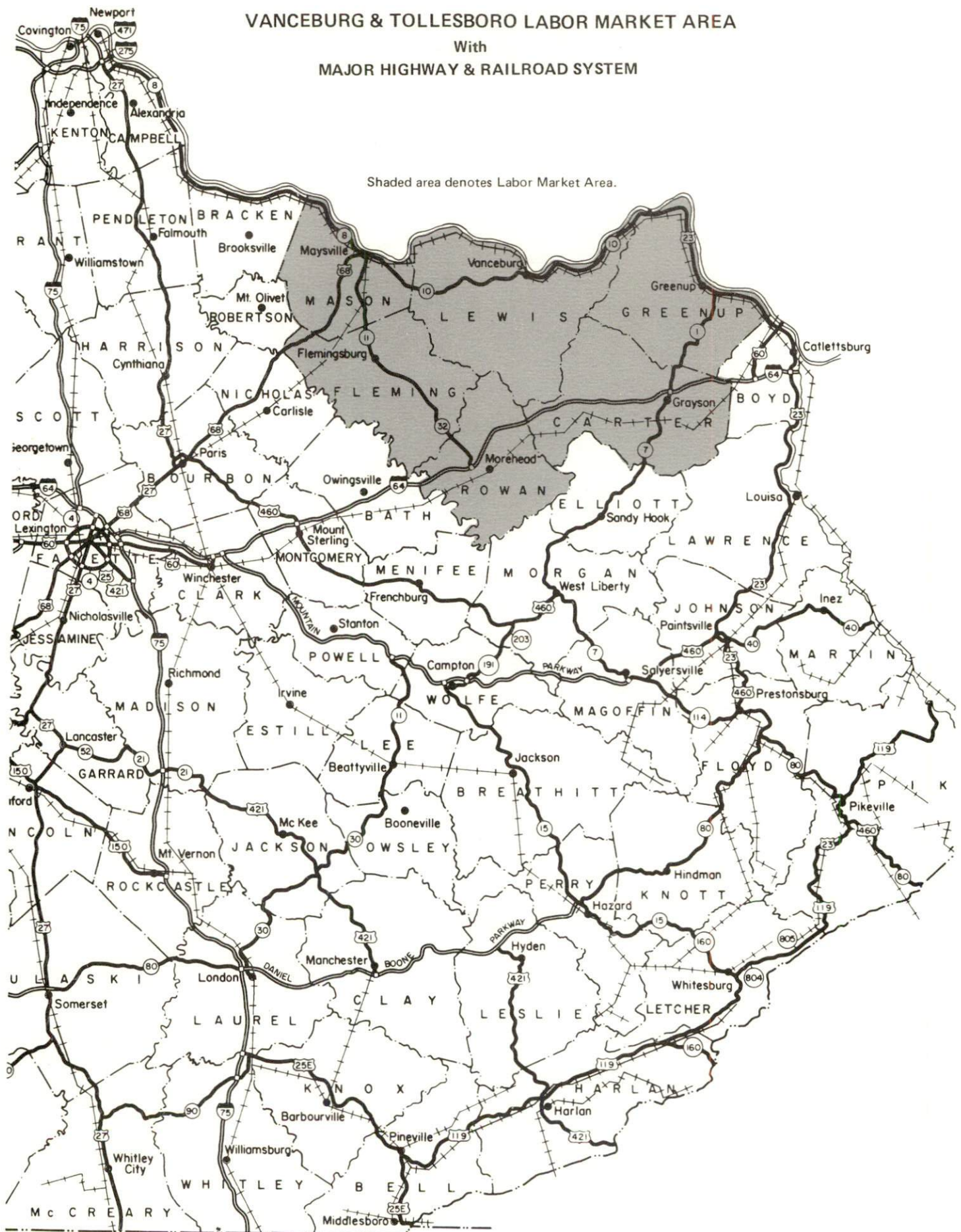




## VANCEBURG & TOLLESBORO LABOR MARKET AREA

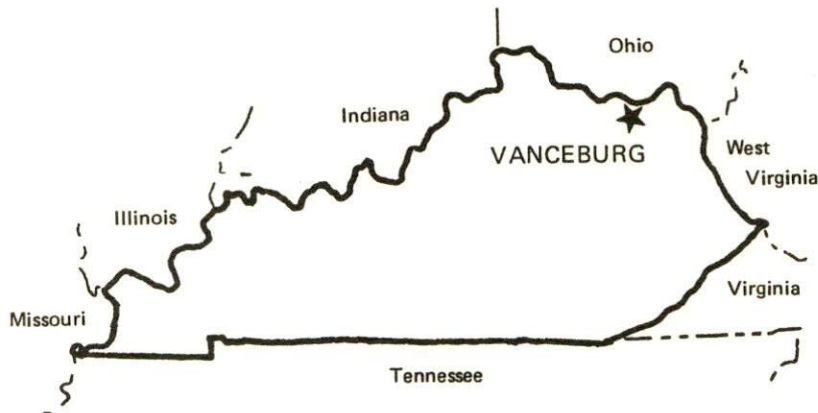
With  
MAJOR HIGHWAY & RAILROAD SYSTEM

Shaded area denotes Labor Market Area.



# SUMMARY OF INDUSTRIAL RESOURCES VANCEBURG AND TOLLESBORO, KENTUCKY

## LOCATION



## Road Distance in Miles from Vanceburg:

Atlanta	<u>466</u>	Baltimore	<u>503</u>
Chicago	<u>382</u>	Detroit	<u>309</u>
New York	<u>659</u>	St. Louis	<u>435</u>

## POPULATION

City of Vanceburg, 1976	<u>1,769</u>
City of Tollesboro, 1976	<u>267</u>
Lewis County, 1978	<u>13,900</u>
Labor Market Area, 1978	<u>120,600</u>
% Nonwhite, Lewis County, 1977	<u>0.2</u>

## LABOR ANALYSIS

Labor Market Area - Lewis, Carter, Fleming, Greenup, Mason and Rowan Counties

Estimated available workers from labor market area, 1978:

Male	<u>4,495*</u>	Female	<u>3,744*</u>
Unemployment rate, 1978		Labor Market Area	<u>5.4%</u>
Lewis County	<u>7.6%</u>	Greenup County	<u>3.8%</u>
Carter County	<u>8.9%</u>	Mason County	<u>4.1%</u>
Fleming County	<u>4.9%</u>	Rowan County	<u>5.2%</u>

\*In addition, the labor supply will be supplemented by the number of men and women in the adjoining Ohio counties of Adams and Scioto who are available for industrial jobs.



Total employment, Lewis County, 1978 - 4,243  
Manufacturing employment in labor market area, 1978 - 10,904  
Major local manufacturing plants:

<u>Name</u>	<u>Employment</u>
<u>Vanceburg</u>	
<u>U.S. Shoe Corporation</u>	<u>439</u>
<u>U.S. Shoe Corporation, Bow Plant</u>	<u>200</u>

Labor unions in local manufacturing plants:

None

#### INDUSTRIAL SERVICES

	<u>Location</u>	<u>Mileage from Vanceburg</u>
Tool & Die, Machine & Pattern Shops	<u>Ashland, Kentucky</u>	<u>55</u>
Metal Service Centers	<u>Huntington, West Virginia</u>	<u>72</u>
Heat Treating	<u>Huntington, West Virginia</u>	<u>72</u>
Metal Finishers	<u>Huntington, West Virginia</u>	<u>72</u>
Electric Motor Repair	<u>Portsmouth, Ohio</u>	<u>24</u>

#### TRANSPORTATION

##### Rail:

###### Vanceburg

Railroad - The Chessie System  
Distance to nearest piggyback - 49 miles

###### Tollesboro

Nearest railroad service - The Chessie System and TTI Railroad at  
Maysville, 13 miles away  
Distance to nearest piggyback service - 67 miles

##### Highways:

Interstate - I-64, 28 miles south of Vanceburg  
Major Kentucky highways serving Lewis County - 10, 57 and 59

##### Truck:

Number of interstate motor carriers - 4; Local terminals - 0

Air:

Nearest scheduled airline service - Tri-State Airport, 9 miles southwest of Huntington, West Virginia; Distance - 72 miles southeast of Vanceburg; Airlines serving - Piedmont and USAir

Nearest local airports -

Fleming-Mason Airport, 22 miles west of Tollesboro and 40 miles southwest of Vanceburg; Runway length - 3,900 feet

Seller Field - 35 miles south of Vanceburg; Runway length - 2,500 feet

Water:

Nearest navigable river - Ohio River

Nearest public port - Northern Kentucky-Cincinnati Area  
Distance - 95 miles northwest of Vanceburg

UTILITIES AND SERVICES

Electricity:

Vanceburg

Local distributor - Vanceburg Electric Light, Heat and Power System  
Source of power - Kentucky Power Company

Tollesboro

Local distributor - Fleming-Mason RECC  
Source of power - East Kentucky Power Cooperative

Natural Gas:

Vanceburg

Local distributor - Vanceburg Electric Light, Heat and Power System  
Source of supply - Columbia Gas Transmission Corporation  
Available for new industry - No

Tollesboro

Local distributor - Western Lewis-Rectorville Gas and Water District  
Source of supply - Columbia Gas Transmission Corporation  
Available for new industry - No

Other Fuels:

Number of area propane distributors - 5  
Number of area distillate fuel oil distributors - 8



Water, treated:

Vanceburg

Local supplier - Municipal  
Excess municipal system capacity - 460,000 gpd  
Storage capacity - 350,000 gallons  
Expansions planned - No

Tollesboro

Local supplier - Western Lewis-Rectorville Gas and Water District  
Excess municipal system capacity - 36,000 gpd  
Storage capacity - 225,000 gallons  
Expansions planned - No

Water, raw:

Source for industrial use - Ohio River

Sewer:

Vanceburg

Excess treatment capacity - 50,000 gpd  
Planned expansions - No

Tollesboro

Septic tanks are being used for sewage disposal at the present time.

CLIMATE

Temperature, Normal - 54.0 degrees F.  
Precipitation, Normal - 39.04 inches  
Snowfall, Mean Annual - 24.6 inches  
Prevailing winds - South-southwest  
Relative humidity ( $\frac{67}{100}$ ) - 7 a.m. 81; 7 p.m. 64

GOVERNMENT

Vanceburg

Type - Mayor-City Council  
Police personnel - full-time - 4  
Fire department personnel - volunteer - 18  
Fire insurance rating (A.I.A.), class - Inside city - 7  
Outside city - 10

## Tollesboro

Type - Board of Trustees

Police personnel - full-time - 1

Fire department personnel - volunteer - 35

Fire insurance rating (A.I.A.), class - Inside city - 9

Outside city - 10

## TAXES

### Property taxes:

Combined state and local rates per \$100 valuation, 1979  
(100% assessment)

	<u>Inside City of Vanceburg</u>	<u>Inside City of Tollesboro</u>	<u>Outside City</u>
1. Land and buildings	\$0.881	\$0.741	\$0.741
2. Mfg. machinery, raw materials, goods in process, pollution control equipment	0.150	0.150	0.150
3. Finished goods, office equipment, vehicles, other tangibles	1.052	0.912	0.912
4. Intangibles (accounts receivable, notes, bonds, etc.)	0.250	0.250	0.250
5. Leaseholds in I. R. bond financed plants	0.015	0.015	0.015

## EDUCATION

Nearest state vocational-technical school - Ashland State Vocational-Technical School at Ashland, 55 miles from Vanceburg

Nearest area vocational education center - Greenup County Area Vocational Education Center at South Shore, 24 miles from Vanceburg

Colleges and universities - Six institutions of higher learning located within a 75-mile radius of Vanceburg

### Public Schools:

High school enrollment - 1,067; Student/teacher ratio - 23-1

Elementary school enrollment - 2,034; Student/teacher ratio - 20-1

## MEDICAL

Number of physicians locally - 2; Number of dentists locally - 1

Nearest hospitals - Haywood Hospital at Maysville, 31 miles from Vanceburg, and Fleming County Hospital at Flemingsburg, 32 miles from Vanceburg; Total number of beds - 165 acute, 58 skilled nursing



### COMMUNICATIONS

Local newspaper - Lewis County Herald - Weekly

Local radio station - WKKS-AM

Television reception - Cable service available in Vanceburg; Tollesboro receives stations from Lexington, Kentucky, and Cincinnati, Ohio

### RELIGIOUS FACILITIES

Churches - 7 in Vanceburg, 5 in Tollesboro

Nearest synagogues - Portsmouth, Ohio, 24 miles from Vanceburg

### FINANCIAL INSTITUTIONS

Vanceburg and Tollesboro

Banks - 2; Total assets - \$43,458,164.57

### PUBLIC LODGING

Total number hotels and motels - 1; Total rooms - 10

### RECREATION FACILITIES

Vanceburg

Park; 2 tennis courts; Basketball court; Football field and 2 baseball diamonds at local high school; Boat dock

Tollesboro

Lions Club Park with a baseball diamond, tennis court and playground

Nearest state park - Carter Caves State Resort Park

Camping; Swimming; Fishing; Boating; Lodgings; Dining facility;

Open year round

# THE LABOR MARKET AREA

Area	POPULATION		Percent Nonwhite**
	1978*	1970	
Vanceburg	1,769**	1,773	0.3
Tollesboro	267**	251	N/A
Labor Market Area	120,600	111,046	N/A
Lewis County	13,900	12,355	0.2
Carter County	23,300	19,850	0.2
Fleming County	11,700	11,366	2.6
Greenup County	37,000	33,192	0.5
Mason County	17,200	17,273	10.4
Rowan County	17,500	17,010	1.4

\*Provisional Estimates.

\*\*1976 Population Estimates; 1970 Percent Nonwhite for cities; 1977 Percent Nonwhite for counties.

Sources: U.S. Department of Commerce, Bureau of the Census, Census of Population, 1970. U.S. Department of Commerce, Bureau of the Census, Current Population Reports, Series P-25, No. 756, January 1979; Series P-26, No. 78-17, August 1979. University of Louisville, Urban Studies Center, Population Research Unit, Kentucky's Population Disaggregations of 1977 Estimates, December 1978.

## LABOR FORCE CHARACTERISTICS OF RESIDENTS, 1978

	Lewis County	Labor Market Area
Civilian Labor Force	4,594	48,746
Employment	4,243	46,118
Agricultural	610	3,649
Nonagricultural	3,633	42,469
Unemployment	351	2,628
Rate of Unemployment (%)	7.6	5.4

Source: Kentucky Department for Human Resources, Kentucky Labor Force Estimates, Annual Averages, 1978.



VANCEBURG AND TOLLESBORO MANUFACTURING FIRMS,  
THEIR PRODUCTS AND EMPLOYMENT

<u>Firm (Establishment date)</u>	<u>Product</u>	<u>Employment</u>		
		<u>Total</u>	<u>Male</u>	<u>Female</u>
<u>Vanceburg</u>				
Oval A. Goodwin Sawmill (1960)	Lumber and chips	19	18	1
Lewis County Herald Publishing Company (1924)	Newspaper	3	0	3
Moore and White Lumber Company (1958)	Rough lumber, veneer logs, cross ties	38	35	3
C. J. Thomas and Son, Inc. (1945)	Wood pallets	21	20	1
U. S. Shoe Corporation (1957)	Ladies' shoes	439	109	330
U. S. Shoe Corporation, Bow Plant (1967)	Shoe ornaments, binding and lining; processing insoles and outsoles	200		
<u>Tollesboro</u>				
R. S. Salvage Company (1964)	Lumber and pallets	5	4	1

Source: Kentucky Department of Commerce, Division of Research and Planning.

LABOR ORGANIZATIONS

There are no unions representing manufacturing workers in Lewis County at the present time.

# INDUSTRIAL SERVICES

	<u>Location</u>	<u>Mileage from Vanceburg</u>
Tool & Die, Machine & Pattern Shops	Ashland, Kentucky	55
Metal Service Centers	Huntington, West Virginia	72
Heat Treating	Huntington, West Virginia	72
Metal Finishers	Huntington, West Virginia	72
Electric Motor Repair	Portsmouth, Ohio	24

Sources: Kentucky Directory of Selected Industrial Services, 1979.  
Kentucky Department of Commerce, Division of Research and Planning.



ESTIMATED MALE LABOR SUPPLY  
VANCEBURG AND TOLLESBORO LABOR MARKET AREA\*

Area	Current			Future	
	Total	Not in Labor Force	Unemployed	Under-employed	Reaching 18 years of age before 1985
Labor Market					
Area	4,495	801	1,274	2,420	5,423
Lewis	503	92	171	240	697
Carter	795	160	335	300	962
Fleming	393	85	118	190	552
Greenup	948	250	248	450	1,785
Mason	598	118	180	300	784
Rowan	1,258	96	222	940	643

\*In addition, the labor supply will be supplemented by the number of men in the adjoining Ohio counties of Adams and Scioto who are available for industrial jobs.

Sources: Kentucky Department for Human Resources, Kentucky Labor Supply Estimates by County, 1978. Kentucky Department of Commerce, Future Labor Supply Before 1985.

ESTIMATED FEMALE LABOR SUPPLY  
VANCEBURG AND TOLLESBORO LABOR MARKET AREA\*

Area	Current			Future	
	Total	Not in Labor Force	Unemployed	Under-employed	Reaching 18 years of age before 1985
Labor Market					
Area	3,744	340	1,354	2,050	5,259
Lewis	397	37	180	180	683
Carter	651	68	353	230	976
Fleming	332	36	126	170	522
Greenup	875	107	268	500	1,684
Mason	572	56	206	310	779
Rowan	917	36	221	660	615

\*In addition, the labor supply will be supplemented by the number of women in the adjoining Ohio counties of Adams and Scioto who are available for industrial jobs.

Sources: Kentucky Department for Human Resources, Kentucky Labor Supply Estimates by County, 1978. Kentucky Department of Commerce, Future Labor Supply Before 1985.

AVERAGE WEEKLY WAGES BY INDUSTRY,  
BY PLACE OF WORK, 1978

	<u>Lewis County</u>	<u>Carter County</u>	<u>Fleming County</u>
All Industries	\$130.52	\$169.01	\$156.14
Mining & Quarrying	0	*	*
Contract Construction	*	229.57	168.16
Manufacturing	*	164.07	151.45
Transportation, Communications & Public Utilities	142.46	260.73	249.69
Wholesale & Retail Trade	104.72	130.99	140.75
Finance, Insurance & Real Estate	*	188.68	177.06
Services	117.12	126.15	127.15
Other	0	103.13	66.43
	<u>Greenup County</u>	<u>Mason County</u>	<u>Rowan County</u>
All Industries	\$329.15	\$184.65	\$175.56
Mining & Quarrying	*	*	*
Contract Construction	236.06	233.07	203.05
Manufacturing	425.90	209.96	167.25
Transportation, Communications & Public Utilities	275.87	298.37	260.73
Wholesale & Retail Trade	154.57	137.18	121.81
Finance, Insurance & Real Estate	157.99	181.48	215.38
Services	132.97	149.63	195.87
Other	*	*	0

\*Not disclosed.

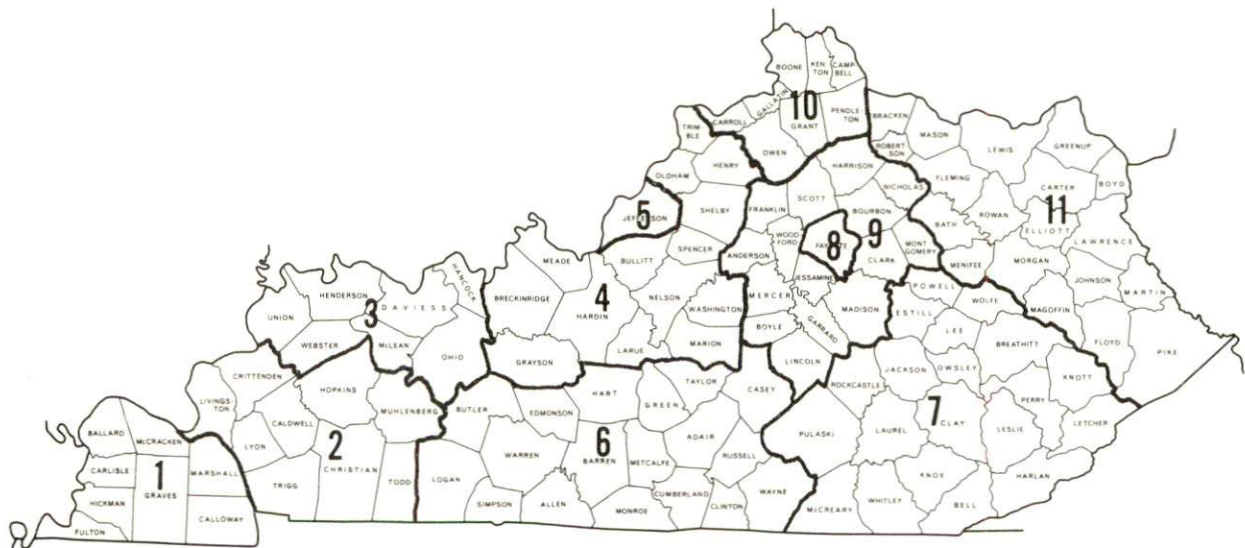
Note: Excludes domestic workers, railway workers; certain nonprofit corporations; majority of federal, state, and local government workers; and self-employed workers.

Source: Kentucky Department for Human Resources, Average Weekly Wages of Workers Covered by Kentucky Unemployment Insurance Law, 1978.



Occupational wage rates for specific industries are usually not available to most government agencies, and wage data furnished to state employment agencies by individual industrial employers is protected from disclosure by federal law. The most reliable up-to-date wage information can be obtained by direct contact with local employers.

Associated Industries of Kentucky, a voluntary organization of Kentucky businesses, regularly collects occupational wage rates and fringe benefits data from participating member firms. Data is compiled for over 127 clearly defined office, production, and service occupations. Tabulations are published for eleven regions of Kentucky, as shown on the map below. It should be noted that the data may be weighted by the preponderance of firms in the larger cities and may be somewhat higher than the rates paid in the smaller communities. Data from these tabulations are available, upon request, from the Kentucky Department of Commerce, Frankfort, Kentucky 40601.



Associated Industries of Kentucky Area Wage Surveys

PER CAPITA PERSONAL INCOME

<u>Area</u>	<u>1977</u>	<u>1973</u>	<u>Percent Change</u>
Lewis County	\$3,665	\$2,479	47.8
Labor Market Area			
Range	\$3,665 - 6,008	\$2,461 - 3,896	N/A
Kentucky	5,989	4,021	48.9
U.S.	7,026	4,980	41.1

Source: U.S. Department of Commerce, Bureau of Economic Analysis,  
April 1979.



## TRANSPORTATION

### Rail

#### Line serving Vanceburg - The Chessie System

Services - Local freight service provided 6 days a week by a turn around from Russell, Kentucky; 4 eastbound and 4 westbound through freights daily; switching facilities; team track space for 10 cars; piggyback facilities available at Russell, Kentucky, 49 miles southeast of Vanceburg

Nearest lines serving Tollesboro - The Chessie System and TTI Railroad provide rail service at Maysville, 13 miles northwest of Tollesboro

#### Services -

The Chessie System - One eastbound and one westbound freight stops daily; 2 eastbound and 2 westbound through freights daily; switching facilities; team track space for 50 to 60 cars; siding space for 150 cars; piggyback facilities located at Russell, Kentucky, 67 miles east of Tollesboro, and at Cincinnati, Ohio, 77 miles northwest of Tollesboro

TTI Railroad - One local freight from Paris to Maysville and return makes daily stops; switching facilities; team track space for 6 cars; siding space for 12 cars; piggyback facilities will be available by the spring of 1980. TTI Railroad interconnects with the Chessie System at Maysville and with the Louisville and Nashville Railroad at Paris.

For details on routing, schedules, rates, and services, contact:

Real Estate and Industrial Development  
The Chessie System  
808 Dixie Terminal Building  
Cincinnati, Ohio 45202  
(513) 369-5258

and/or

Manager, Marketing and Development  
TTI Railroad  
Kincaid Tower  
Lexington, Kentucky 40507  
(606) 253-9200

## Highways

Major highway access through Lewis County is provided by Kentucky Routes 10, 57, and 59. Interstate 64 is located 28 miles south of Vanceburg via Kentucky 59.

## Truck Service

### Company

### Home Office

### Vanceburg and Tollesboro

Budig Western*	1100 Gest Street Cincinnati, Ohio 45203
McDaniel Motor Express, Inc.**	1115 Winchester Road P. O. Box 64 Lexington, Kentucky 40505
Overnite Transportation Company**	1000 Semmes Avenue P. O. Box 1216 Richmond, Virginia 23209
Reinhardt Transfer Company*	1410 Tenth Street P. O. Box 7 Portsmouth, Ohio 45662

### Other Freight Services

### Nearest Shipping Center

Purolator Courier Corporation***	Ashland, 55 miles east of Vanceburg
United Parcel Service***	Maysville, 31 miles west of Vanceburg

### HIGHWAY MILES AND TRUCK TRANSIT TIME IN DAYS FROM VANCEBURG, KENTUCKY, TO SELECTED MARKET CENTERS

City	Highway Miles	Delivery Time*		City	Highway Miles	Delivery Time*	
		TL				TL	
Atlanta, Ga.	466	1-2		Los Angeles, Ca.	2,289	7-8	
Baltimore, Md.	503	2		Louisville, Ky.	183	1	
Birmingham, Ala.	507	1-2		Nashville, Tenn.	319	1	
Chicago, Ill.	382	1		New Orleans, La.	836	3	
Cincinnati, Ohio	95	1		New York, N. Y.	659	3	
Cleveland, Ohio	256	1-2		Pittsburgh, Pa.	299	2	
Detroit, Mich.	309	2-3		St. Louis, Mo.	435	1	
Knoxville, Tenn.	279	1					

\*Delivery time does not include the day of pickup.

Source: Delivery Time Only - Overnite Transportation Company, 1000 Semmes Avenue, P. O. Box 1216, Richmond, Virginia 23209.

\*Interstate and intrastate.

\*\*Intrastate only.

\*\*\*For regular scheduled pickups or for occasional pickups, arrangements must be made with the Louisville office of Purolator Courier Corporation or United Parcel Service.

## Air

### Nearest Small Craft

Location: Fleming-Mason Airport  
22 miles west of Tollesboro; 40 miles southwest of Vanceburg

Runways: One paved  
Length: 3,900 feet

Traffic Control: Segmented circle and wind cone

Lighting: Medium intensity runway lighting and beacon - sundown to sunrise

Services: 80, 100 and Jet A fuel; flight instructions; mechanic on duty; courtesy car; open 24-hours daily

Location: Seller Field  
35 miles south of Vanceburg

Runways: One paved  
Length: 2,500 feet

Traffic Control: Wind sock and tetrahedron

Lighting: None

Services: Tie down and hangar

### Nearest Scheduled Airline Service

Location: Tri-State Airport (Walker-Long Field)  
9 miles southwest of Huntington, West Virginia; 72 miles southeast of Vanceburg

Runways: 2 paved  
Length: 3,007 feet and 6,509 feet

Traffic Control: Control tower, approach control, radar control, ground control

Lighting: Beacon, runway

Services: Piedmont and USAir Airlines; fuel LL-100, Jet A; major repairs, major avionics repairs; hangars; tie downs; restaurant; APU; flight instructions; charter, plane rental; taxi, limousine, and car rentals

Air Freight Service: Air carriers accept air freight on a space available basis

Taxi - 24-hour service available in Vanceburg



## Water

The Ohio River, which forms the northern boundary of Lewis County, provides the area with water transportation capabilities. The Maysville-Mason County Port Authority is planning to develop a public port on the Ohio River at Maysville, 13 miles west of Tollesboro and 31 miles west of Vanceburg. The planned port will serve as a general cargo facility. Public port facilities are presently available in the Northern Kentucky-Cincinnati Area, 95 miles northwest of Vanceburg.

## POWER AND FUEL

### Electricity

Company serving Vanceburg and part of Lewis County - Vanceburg Electric  
Light, Heat and Power System

Source of power - Kentucky Power Company

Total generating capacity - 1,002,600 KW

For industrial rates contact:

Vanceburg Electric Light,  
Heat and Power System  
P. O. Box 117  
Vanceburg, Kentucky 41179  
(606) 796-2641

Company serving Tollesboro and most of Lewis County - Fleming-Mason  
Rural Electric Cooperative Corporation

Source of power - East Kentucky Power Cooperative

Total generating capacity - 867,000 KW

For industrial rates contact:

Industrial Development Division  
East Kentucky Power Cooperative  
P. O. Box 707  
Winchester, Kentucky 40391  
(606) 744-4812

and/or

Fleming-Mason RECC  
P. O. Drawer 328  
Elizaville Road  
Flemingsburg, Kentucky 41041  
(606) 845-2661

Company serving parts of Lewis County - (1) Grayson Rural Electric Cooperative Corporation; (2) Kentucky Power Company  
Source of power - (1) East Kentucky Power Cooperative; (2) Kentucky Power Company  
Total generating capacity - (1) 867,000 KW; (2) 1,002,600 KW  
For industrial rates contact:

Industrial Development Division  
East Kentucky Power Cooperative  
P. O. Box 707  
Winchester, Kentucky 40391  
(606) 744-4812

and/or

Grayson RECC  
109 Bagby Park  
Grayson, Kentucky 41143  
(606) 474-5136

and/or

Kentucky Power Company  
P. O. Box 1428  
Ashland, Kentucky 41101  
(606) 324-2144

#### Natural Gas

Company serving Vanceburg - Vanceburg Electric Light, Heat and Power System  
Source of supply - Columbia Gas Transmission Corporation  
Size of transmission mains - 6-inch (supplier); 4-inch (distributor)  
Distribution mains - 3, 4, and 6 inches  
Distribution pressure - 15 psi  
Btu content - 1,000 per cubic foot; Specific gravity - .60  
For rates and supplies contact:

Superintendent  
Vanceburg Electric Light, Heat and Power System  
P.O. Box 117  
Vanceburg, Kentucky 41179  
(606) 796-2641

(Contd.)



Company serving Tollesboro - Western Lewis-Rectorville Gas and Water District

Source of supply - Columbia Gas Transmission Corporation

Size of transmission mains - 6-inch (supplier);  
3-inch (distributor)

Distribution mains - 2 and 3 inches

Distribution pressure - 60 psi

Btu content - 1,025 per cubic foot; Specific gravity - .62

For rates and supplies contact:

Western Lewis-Rectorville  
Gas and Water District

P.O. Box 633

Maysville, Kentucky 41056

(606)564-9333

### Other Fuels

#### Propane

Kegley Appliance and  
Furniture Store  
Main Street  
Vanceburg, Kentucky 41179

Vanceburg Supply Company  
Market Street  
Vanceburg, Kentucky 41179

Stan Harvey Gas Company  
Rt. #10  
Tollesboro, Kentucky 41189

Ripley Gas Company  
Ripley, Ohio 45167  
(serves Tollesboro only)

Williams Energy Company  
Elizaville Road  
Flemingsburg, Kentucky 41041

(Contd.)

## Fuel Oils

### Distillate fuel oil -

Ashland Oil Refining Company  
(Bulk Plant)  
RFD #1  
Vanceburg, Kentucky 41179

Standard Oil Company, Inc.  
of Kentucky (Bulk Plant)  
U.S. Route 23  
South Shore, Kentucky 41175

In addition, the following fuel oil distributors are located in Maysville, only 13 miles from Tollesboro:

Breslin Oil Company  
Lexington Street  
Maysville, Kentucky 41056

Gulf Oil Products Distributor  
Lexington Street  
Maysville, Kentucky 41056

Chevron U.S.A., Inc.  
Blue Run Road  
Maysville, Kentucky 41056

M.C. Russell Company  
Texaco Products  
Lexington Street  
Maysville, Kentucky 41056

Finch Oil Company  
U.S. Highway 68  
Maysville, Kentucky 41056

Union Oil Company  
Blue Run Road  
Maysville, Kentucky 41056

Residual fuel oil - Arrangements must be made with the refinery.

Low sulphur content coal - Available in Kentucky.

## WATER AND SEWERAGE

### Water

Company serving Vanceburg - Vanceburg Electric Light,  
Heat and Power System  
607 Front Street  
Vanceburg, Kentucky 41179  
(606)796-2641

Source - Two wells

Treatment plant capacity - 720,000 gallons per day

Average daily consumption - 211,000 gallons

Peak daily consumption - 260,000 gallons

Type treatment - Chlorination and fluoridation

Storage capacity - 350,000 gallons

Size lines - 6, 8, and 10 inches

Average pressure - 50 psi

Average temperature - 40 degrees F.

### MONTHLY WATER RATES FOR WHOLESALE AND INDUSTRIAL CONSUMERS

First	1,500 gallons	\$3.00 (Minimum)
Next	3,500 gallons	1.75 per M gallons
Next	5,000 gallons	1.40 per M gallons
Next	10,000 gallons	1.00 per M gallons
Next	30,000 gallons	.75 per M gallons
All over	50,000 gallons	.65 per M gallons

Tap-on charge: \$150



Name of water district - Western Lewis-Rectorville Gas  
and Water District  
P.O. Box 633  
Maysville, Kentucky 41056  
(606)564-9333

Area served - The city of Tollesboro, western Lewis County and  
eastern Mason County

Date when water district began operating - 1961

Source of raw water - Three wells

Capacity of treatment plant - 216,000 gallons per day\*

Type of treatment - Chlorination

Average amount of water used in a 24-hour period - 156,000 gallons

Peak amount of water used in a 24-hour period - 180,000 gallons

Storage capacity - 225,000 gallons

Average pressure - 45 psi

Average temperature - 40 degrees F.

Size lines - 2 to 8 inches

Monthly rates -

First	1,000 gallons	\$3.75 (Minimum)
Next	2,000 gallons	1.50 per M gallons
Next	2,000 gallons	1.00 per M gallons
Next	5,000 gallons	.85 per M gallons
Next	5,000 gallons	.75 per M gallons
Over	15,000 gallons	.65 per M gallons

Fire Hydrants - Annual water charge - \$40 each

Tap-on charge - Residential - \$225

Name of water district - Salt Lick Water Association, Inc.  
Route #10  
Vanceburg, Kentucky 41179  
(606)796-2552

Area served - 5½ miles west of Vanceburg on Kentucky 10

Date when water district began operating - November 26, 1969

Source of supply of treated water - Vanceburg Electric Light,  
Heat and Power System

Average amount of water used in a 24-hour period - 10,100 gallons

Peak amount of water used in a 24-hour period - 16,250 gallons

Storage capacity - None

Average pressure - 50 psi

Average temperature - 40 degrees F.

Size lines - 3, 4, and 6 inches

Monthly rates -

First	1,500 gallons	\$5.90 (Minimum)
Next	3,500 gallons	1.25 per M gallons
Next	5,000 gallons	1.00 per M gallons
Next	10,000 gallons	.90 per M gallons
All over	20,000 gallons	.80 per M gallons

Tap-on charge: \$220

\*Kentucky Department For Natural Resources and Enviromental Protection.

Name of water district - Black Oak Water Association, Inc.

Route #2

Vanceburg, Kentucky 41179

(606)796-3224

Area served - 2 miles beginning  $3\frac{1}{2}$  miles east of Vanceburg on  
Kentucky 10

Date when water district began operating - November 17, 1971

Source of supply of treated water - Vanceburg Electric Light,  
Heat and Power System

Average amount of water used in a 24-hour period - 10,000 gallons

Peak amount of water used in a 24-hour period - 15,000 gallons

Storage capacity - None

Average pressure - 30 psi

Average temperature - 40 degrees F.

Size lines - 3 and 4 inches

Monthly fees including sales tax -

First	2,000 gallons	\$ 7.35 (Minimum)
	5,000 gallons	15.23
	10,000 gallons	21.79
	15,000 gallons	27.04
	20,000 gallons	32.29
All over	20,000 gallons	.84 per M gallons

Tap-on charge: \$200 plus, (if cost of actual  
installation exceeds \$200, customer must pay  
full cost)

Surface water sources - Vanceburg - Ohio River; Tollesboro - Cabin Creek

Average discharge - Ohio River at Greenup Dam, Kentucky - 92,110 cfs  
(10-year record, USGS); Cabin Creek near Tollesboro - 32.7 cfs  
(6-year record, USGS)

Expected ground water yield - 500 to 1,000 gpm along the Ohio River;  
5 to 50 gpm in isolated bands throughout the county; 5 gpm or less  
over the remainder of the county

## Sewerage

Company serving Vanceburg - Vanceburg Electric Light,  
Heat and Power System  
607 Front Street  
Vanceburg, Kentucky 41179  
(606)796-2641

Design capacity - 250,000 gallons per day

Average daily flow - 200,000 gallons

Treatment - Primary and secondary

Type treatment - Aeration, clarifier, digester

Treated effluent discharged into - Ohio River

Size of sanitary mains - 6, 8, 10, and 12 inches

Size of storm mains - 16 to 24 inches

Rates - City - 80 percent of monthly water bill

Subdivision - 125 percent of monthly water bill

Tap-on charge: \$90

Tollesboro - Septic tanks are being used for sewage disposal at the present time. An application has been made for funds to conduct the study phase of a 201 Facilities Plan.



## CLIMATE

### Lewis County

#### Temperature

Normal (30-year record)	54.0 degrees
Average annual 1978	51.0 degrees
Record highest, August, 1962 (17-year record)	102.0 degrees
Record lowest, January, 1977 (17-year record)	-25.0 degrees
Normal heating degree days (30-year record)	5,070
(Heating degree day totals are the sums of negative departures of average daily temperatures from 65 degrees F.)	

#### Precipitation

Normal (30-year record)	39.04 inches
Mean annual snowfall (31-year record)	24.60 inches
Total precipitation 1978	46.83 inches
Mean number days precipitation (.01 inch or more) (31-year record)	129
Mean number days thunderstorms (31-year record)	44

#### Prevailing Winds (16-year record)

South-southwest

#### Relative Humidity (16-year record)

1 a.m.	77 percent
7 a.m.	81 percent
1 p.m.	59 percent
7 p.m.	64 percent

Source: U.S. Department of Commerce, Environmental Science  
Services Administration, Climatological Data, 1978.  
Station of record: Cincinnati, Ohio, Greater Cincinnati Airport.

## LOCAL GOVERNMENT

### City

#### Vanceburg

Structure - Mayor - 4-year term; 6 councilmen - 2-year terms

Budget 1978-79 - General Fund	\$ 69,716
Water and Sewer Fund	100,627
City Gas System	314,603
City Electric System	903,255

Fees and licenses - Occupational licenses range from \$25.50 to \$600.50 annually; vehicle stickers - \$5.25 annually

#### Tollesboro

Structure - Board of Trustees - Chairman and 4 board members - 2-year terms

Budget - General Fund - N/A

Fees and licenses - None at the present time

### County

Structure - County Judge/Executive - 4-year term;  
3 magistrates - 4-year terms

Budget 1979-80 - General Fund \$293,400; Road Fund \$115,000

### Assessed Value of Property, 1978

<u>Classes of Property</u>	<u>Vanceburg</u>	<u>Tollesboro</u>	<u>Lewis County</u>
Real Estate and Tangibles	\$12,517,429	N/A	
Real Estate			\$60,234,565
Tangibles			14,861,876

## Property Taxes

All property in Kentucky is assessed at 100 percent of fair cash value.

Land and buildings are taxed by the state and may be taxed by local jurisdictions. The state rate is \$0.279 per \$100 of assessed valuation.

Manufacturing machinery, raw materials inventories, pollution control equipment, and goods in the process of manufacture are not subject to local taxation. The state rate is \$0.15 per \$100.

Other tangible personal property owned by manufacturers (automobiles, trucks, finished goods, office furniture, office equipment) is taxed by the state at \$0.45 per \$100 and may be taxed by local jurisdictions.

Property stored in public warehouses in a transit status is not subject to local taxation. The state rate is only \$0.015 per \$100.

Intangible personal property located in Kentucky (money in hand, shares of stock, notes, bonds, accounts receivable, and other credits) is taxed by the state at \$0.25 per \$100, and is not subject to local taxation.

Private leaseholds in industrial facilities owned by cities or counties and financed by industrial revenue bonds are subject to a state tax of \$0.015 per \$100 of value (essentially the lessee's equity, adjusted for appreciation or depreciation). Local taxation is not permitted.

### Combined State and Local Rates Per \$100 Valuation, 1979\* (100% assessment)

	<u>Inside City of Vanceburg</u>	<u>Inside City of Tollesboro**</u>	<u>Outside City</u>
1. Land and buildings	\$0.881	\$0.741	\$0.741
2. Mfg. machinery, raw materials, goods in process, pollution control equipment	0.150	0.150	0.150
3. Finished goods, office equipment, vehicles, other tangibles	1.052	0.912	0.912
4. Intangibles (accounts rec., notes, bonds, etc.)	0.250	0.250	0.250
5. Leaseholds in I.R. bond financed plants	0.015	0.015	0.015

\*Kentucky Department of Commerce.

\*\*The City of Tollesboro does not levy a city tax at the present time.



## Planning and Zoning

Presently there is no planning and zoning commission in Lewis County.

Mandatory state codes enforced - Plumbing, National Fire Protection Association Code, National Building Code (for major buildings and residential construction containing more than 12 bedrooms per building)

## Safety

<u>Police</u>	<u>Vanceburg</u>	<u>Tollesboro</u>	<u>Lewis County</u>
Total staff	4	1	6
Radio-patrol cars	2	1	0

## Fire

American Insurance Association Fire Rating	7	9*
Volunteers	18	35

## Rescue Service

Vanceburg Fire Department Rescue Squad:

Number of volunteers - 18

Equipment - Rescue van, basic first aid equipment, basic rescue and recovery equipment, fire fighting equipment

Personnel training - Fire fighting, first aid, emergency medical technician training.

## Refuse Collection and Disposal

	<u>Vanceburg</u>	<u>Tollesboro</u>	<u>Lewis County</u>
Type service	Municipal	Private	Private
Fee charged:			
residential	\$3.50 per month	\$3.50 per month	\$3.50 per month
business	Negotiated	\$10 per month	Negotiated
industrial	Negotiated	Negotiated	Negotiated
Collection frequency:			
residential	Once weekly	Once weekly	Once weekly
business	As needed	As needed	As needed
industrial	As needed	As needed	As needed
Trash pickup	On call basis	None	When desired
Disposal method	Sanitary landfill	Sanitary landfill	Sanitary landfill

\*Applies to all Class Rated Property inside corporate limits.

## EDUCATION

### Public Schools

	<u>Lewis County</u>
Total Enrollment (April 1979)	3,101
Elementary	2,034
High School	1,067
Student-Teacher Ratio	21-1
Elementary	20-1
High School	23-1
Percent High School Graduates to College	28.1
Expenditures Per Pupil (1977-78)	\$848.48
Bonded Indebtedness, June 30, 1978	\$1,359,000

### Area Colleges and Universities

<u>Name</u>	<u>Location (Miles distant)*</u>	<u>Enrollment (Fall, 1978)</u>	<u>Highest Degree Conferred</u>
Shawnee State Community College	Portsmouth, Ohio (24)	1,687	Associate and Baccalaureate**
Maysville Community College	Maysville, Kentucky (31)	374	Associate
Morehead State University	Morehead, Kentucky (39)	7,681	Masters, Specialist***
Ohio University (Ironton Campus)	Ironton, Ohio (53)	1,006	Associate and Baccalaureate**
Ashland Community College	Ashland, Kentucky (55)	1,417	Associate
Marshall University	Huntington, West Virginia (72)	11,144	Academic and Professional

\*Mileage from Vanceburg.

\*\*Baccalaureate Degree issued by Ohio University. Courses taught on the Ironton Campus of Ohio University and Shawnee State Community College Campus respectively.

\*\*\*Joint doctoral degree programs are offered in cooperation with the University of Kentucky, Lexington.



## Vocational Schools

Location  
Miles Distant  
Curriculum

### Nearest State School

Ashland State Vocational-  
Technical School  
Ashland  
55 miles from Vanceburg  
Business and Office  
Clerical  
Secretarial  
Consumer and Home Economics  
Child Care Services  
Commercial Food Services  
Health and Personal Services Occupations  
Cosmetology  
Practical Nursing  
Nurse Assistant  
Industrial Education  
Auto Body Repair  
Auto Mechanics  
Carpentry-Building Trades  
Drafting  
Electronics Technician  
Industrial Electricity  
Machine Shop  
Radio and TV Repair  
Related Map and Blueprint  
Tool and Die Making  
Welding

Nearest Area Education Center\*

Location	Greenup County Area Vocational- Education Center
Miles Distant	South Shore
Curriculum	24 miles from Vanceburg
	Agriculture
	Horticulture
	Business and Office
	Clerical
	Secretarial
	Health and Personal Services Occupations
	Health Careers
	Industrial Education
	Aircraft Mechanics
	Auto Mechanics
	Carpentry-Building Trades
	Drafting
	Industrial Electricity

Arrangements can be made to provide training in the specific production skills required by an industrial plant. Instruction may be conducted either in the vocational school or in the industrial plant, depending upon the desired arrangement and the availability of special equipment.

\*Construction is under way on the Lewis County Area Vocational Education Center in Vanceburg. Classes are tentatively scheduled to begin in the new school in January of 1981. The curriculum will include classes in Business and Office, Auto Mechanics, Auto Body Repair, Carpentry and Welding.

## HEALTH

### Local Medical Personnel

#### Vanceburg

Physicians - 2  
Dentists - 1

### Hospitals

<u>General Hospital*</u>	<u>Location</u>	<u>Beds</u>
Hayswood Hospital	Maysville, 31 miles from Vanceburg	113 acute; 30 skilled nursing
Fleming County Hospital**	Flemingsburg, 32 miles from Vanceburg	52 acute; 28 skilled nursing

#### Hayswood Hospital

General hospital facilities - 3 operating rooms, recovery room, intensive care, 3 X-ray units, obstetrical unit, nursery, laboratory, pharmacy, physical therapy, respiratory therapy, nuclear medicine, cardiac care monitor, medical staff library, doctor's paging system

Medical staff - 21 physicians (8 family practitioners, 3 general practitioners, 1 anesthesiologist, 1 pediatrician, 1 neurologist, 1 ophthalmologist, 1 obstetrician/gynecologist, 1 internist, 3 general surgeons, 1 nuclear medicine specialist), 52 registered nurses, 27 licensed practical nurses, 2 physical therapists, 1 respiratory therapist

#### Fleming County Hospital

General hospital facilities - Operating room, laboratory, X-ray, obstetrical section, emergency room, coronary unit, physical therapy, pharmacy, respiratory therapy

Medical staff - 5 doctors, 16 courtesy, 11 registered nurses (full time), 3 registered nurses (part time), 3 licensed practical nurses (full time), 2 licensed practical nurses (part time), 29 aides (full time), 12 aides (part time), 7 orderlies (full time), 1 activities director (full time), 1 physical therapist, 1 respiratory therapist, 1 pharmacist, 2 laboratory technologists.

\*There are three hospitals in nearby Portsmouth, Ohio, 24 miles from Vanceburg.

\*\*Fleming County Hospital has begun a 10,000-square-foot building program for expansion of ancillary departments. The estimated completion date is August, 1980.



### Other Medical Facilities

Vanceburg Health Care Center, Inc.

### Ambulance Service

Name - Lewis County Ambulance Service

Staff - 9 emergency medical technicians, bookkeeper-dispatcher,  
director

Service - 24-hour, county-wide emergency service; transferring  
service to area hospitals

Equipment - 2 full-equipped ambulances; 3 transferring ambulances

### Public Health

Facility - Lewis County Health Department

Staff - Full-time: 3 nurses, health environmentalist, 2 clerks;  
part-time: community health worker and a doctor for family planning

## OTHER LOCAL FACILITIES

### Communications

	<u>Vanceburg</u>	<u>Tollesboro</u>
Telephone -	General Telephone	General Telephone
Services -	Company Standard	Company Standard
Telegraph -	Western Union	Western Union
Services -	Toll-free number	Toll-free number
Postal - U.S. Post Office		
Class -	Second	Third
Mail received -	Once daily	Twice daily
Mail dispatched -	Once daily	Twice daily
Newspapers -	Lewis County Herald	
Weekly and circulation -	4,200	
Other papers		
received from -	Maysville and Lexington, Kentucky; Portsmouth and Cincinnati, Ohio; Huntington, West Virginia	Vanceburg, Maysville, Lexington and Louisville, Kentucky; Portsmouth and Cincinnati, Ohio; Huntington, West Virginia
Radio -	WKKS-AM	
Stations received from -	Maysville and Lexington, Kentucky; Portsmouth and Cincinnati, Ohio; Huntington, West Virginia	Vanceburg, Maysville, Lexington and Louisville, Kentucky; Portsmouth and Cincinnati, Ohio; Huntington, West Virginia
Television -		
Cable service -	Yes	No
Reception from -	Lexington, Kentucky; Cincinnati, Ohio; Huntington and Charleston, West Virginia	Cincinnati, Ohio; Lexington, Kentucky
Kentucky Educational		
Television -	Morehead transmitter, Channel 38	Morehead transmitter, Channel 38

## Library Services

Public library - Lewis County Public Library

Size collection - 26,489 volumes

Circulation, 1977-78 - 131,478

Services - Records, films, sports equipment, story hour, newspapers, magazines, paintings, conference room, audiovisual equipment, microfilm reader-printer, radio programs, bookmobile service to Tollesboro and Lewis County, talking books for the blind, inter-library loan, summer reading program, services to shut-ins, guidance in development of special programs for organizations and individuals, tours upon request.

## Religious Institutions

	<u>Vanceburg</u>	<u>Tollesboro</u>
Number of churches -	7	5
Denominations -	Baptist Catholic Christian Christian Baptist Church of God Church of the First Born Methodist	Christian Kentucky Christian Methodist Pilgrim Holiness
Nearest Synagogues -	Portsmouth, Ohio, 24 miles from Vanceburg	Portsmouth, Ohio, 42 miles from Tollesboro
Congregations -	Bene Abraham (reform)	Bene Abraham (reform)

## Financial Institutions

<u>Banks</u>	<u>Assets</u>	<u>Deposits</u>	<u>Statement Date</u>
Citizens Deposit Bank	\$37,359,164.57	\$33,871,798.83	12/31/78
First National Bank of Lewis County	6,099,000.00	5,070,000.00	12/31/78

## Hotels and Motels

	<u>Vanceburg</u>
Total number -	1
Total units -	10



## Clubs and Organizations

### Vanceburg and Tollesboro

American Legion  
Babe Ruth Baseball  
Boy Scouts  
Civic Club  
Cub Scouts  
Eastern Star  
4-H  
Future Farmers of America  
Future Homemakers of America  
Garden Club  
Homemakers  
Jaycees  
Jaycettes  
Girl Scouts  
Lewis County Chamber of Commerce  
Lewis County Woman's Club  
Lions  
Masons  
Ministerial Association  
Little League  
Senior Citizens Center  
Sportsman's Clubs  
Woman's Club  
Youth Center

## RECREATION

### Local

Public recreational facilities in Vanceburg are located at a public park and the Lewis County High School. The public park, located on a stream off the Ohio River, contains two lighted tennis courts, a basketball court, a shelterhouse, and a boat dock. Plans have been made to develop this park by resurfacing the tennis courts, and adding a volleyball court, fencing, picnic tables and grills, a playground, and a concession booth. Facilities at the high school include a football field and two baseball diamonds. Little League and Babe Ruth activities are available at these diamonds during the summer.

Recreational facilities in Tollesboro are located at the Lions Club Park, which contains a baseball diamond, tennis court, and playground. The city has purchased 3 acres of land from the Lions Club for development of a ball field and recreation area.

An indoor movie theater in Vanceburg provides private recreational facilities in Lewis County. The Ohio River borders Lewis County on the north and provides ideal boating, fishing, and other water sports opportunities.

Area (Within 60 miles)

Carter Caves State Resort Park is located approximately 37 miles from Vanceburg in a beautiful region of cliffs, streams and caves. Twenty caves are located in the park itself. Park accommodations include a lodge with a dining room, cottages, and camping facilities. The park features the 45-acre Smoky Valley Lake, swimming, fishing, hiking, canoeing, cave tours, a 9-hole golf course, miniature golf, boat rentals, dock, picnic shelters, and playgrounds. Tygart's State Forest, located on the western boundary of the park, is open for hiking, picnicking, and state regulated hunting in season.

The 8,270-acre Cave Run Lake, located approximately 45 miles from Vanceburg, provides opportunities for fishing, boating, and camping.

Greenbo Lake State Resort Park near Greenup is 49 miles from Vanceburg. This 3,300-acre park is at the site of early iron works and has a primitive iron ore smelter. Accommodations include a lodge with a dining room, gift shop and nearby pool, and camping facilities. Features of the park include fishing, swimming, beach, bathhouse, boats, motors, a boat dock, hiking trails, picnic shelter, playgrounds, mini-golf, tennis courts, and the 225-acre Greenbo Lake.

Grayson Lake State Park is 51 miles from Vanceburg near Grayson. This 2,712-acre park is developed on a 1,500-acre lake. The park has a beach, picnic area, camping area and boat dock.

Blue Licks Battlefield State Park is approximately 56 miles from Vanceburg. This 100-acre park is on the site of the last battle of the Revolution and the last Indian-pioneer struggle of Kentucky. The park offers camping sites, an Olympic-size swimming pool, bathhouse, hiking trails, a picnic shelter, a playground, and fishing. A monument to 60 pioneers (including Daniel Boone's son) who died here in an Indian ambush and a museum featuring historical objects are located on the grounds.

In addition to the Kentucky state parks, there are four Ohio state parks within 60 miles of Vanceburg.



## COMMUNITY IMPROVEMENTS

### Vanceburg

A \$500,000 building and expansion program has allowed the Citizens Deposit Bank to add a new vault and a second drive-in window lane to its Tollesboro branch; add a drive-in lane to the Court Street branch; and to install a cash vault and completely remodel the main office.

A 15,000-square-foot, \$200,000 expansion at the U.S. Shoe Corporation, Bow Plant, will create 125 new jobs.

A \$1,100 grant has enabled the Vanceburg Fire Department Rescue Squad to establish a civil defense unit.

The Lewis County Sheriff's Department has purchased a base radio with six mobile units for the department at a cost of \$11,000.

A \$1,804,000 Health Care Center has been completed. The new facility has 90 intermediate and 20 personal care beds. The staff is comprised of 50 employees.

A new subdivision, containing 72 moderate income homes, has been developed 4 miles east of town with an additional 67 units planned. Also, a private developer plans to develop a 52-unit, low income, federally subsidized housing project in Vanceburg.

Construction is under way on the Lewis County Area Vocational Education Center. Classes are tentatively scheduled to begin at the new school in January of 1981.

A ferry boat connecting Vanceburg with a landing at Sandy Springs, Ohio, is now in service.

Construction of two electric generating plants will soon begin in the Vanceburg area. They are:

The Greenup Dam plant will be a 70 megawatt, \$70 million project. Construction will be completed in 1982. Generated electricity will go to the Vanceburg Utility Company.

The Kentucky Power Company will construct a coal-fired plant in the Carr's area, 10 miles west of Vanceburg. The installation will generate 2,600 megawatts of electricity which will go to the American Electric grid system. A \$1.5 billion construction cost is projected.

## Tollesboro

A new saw mill and pallet factory has begun operations.

Two poultry houses are now in production with a combined capacity of 40,000 laying chickens.

An application has been filed for funds to conduct the study phase of a 201 Facilities Plan for the future construction of sewage treatment facilities for the city.

Completion of the new city hall building provided offices for the mayor, police and ambulance service.

Construction of 20 moderate income homes has been completed and an additional 25 modular homes are being planned.

The city has purchased 3 acres of land from the Lions Club for development of a ball field and recreation area.

General Telephone Company's plans for the Tollesboro exchange are for the construction of a new building, equipped with the latest in modern facilities. Completion is expected in early 1980.