

1982

Industrial Resources: Lincoln County - Stanford

Kentucky Library Research Collections
Western Kentucky University, spcol@wku.edu

Follow this and additional works at: https://digitalcommons.wku.edu/lincoln_cty

 Part of the [Business Administration, Management, and Operations Commons](#), [Growth and Development Commons](#), and the [Infrastructure Commons](#)

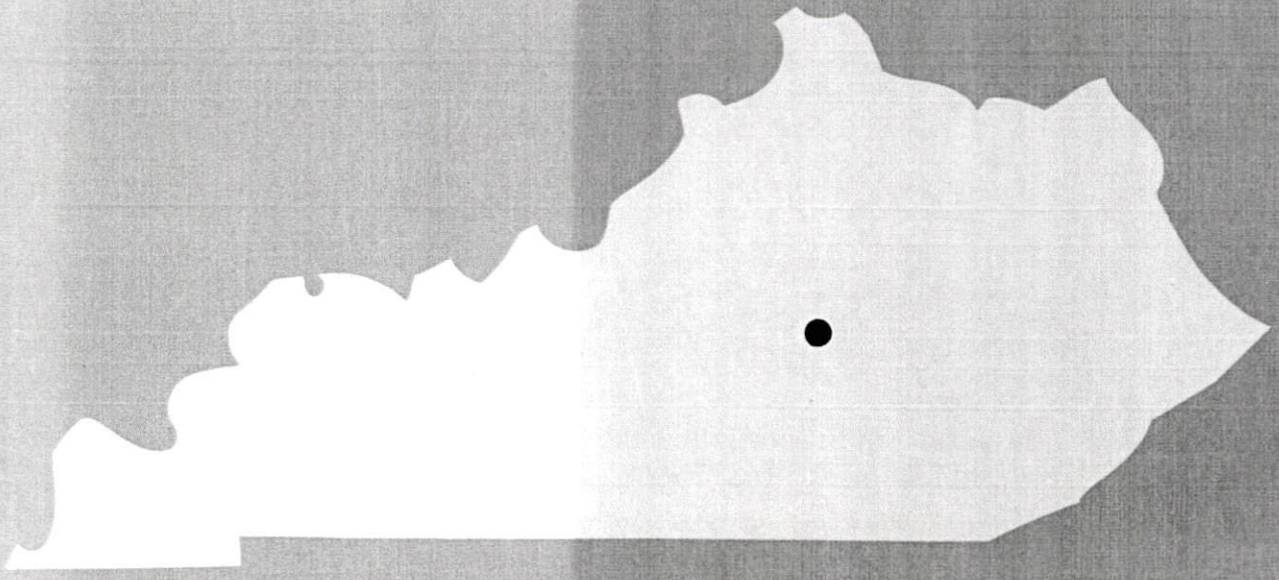
Recommended Citation

Kentucky Library Research Collections, "Industrial Resources: Lincoln County - Stanford" (1982). *Lincoln County*. Paper 9.
https://digitalcommons.wku.edu/lincoln_cty/9

This Report is brought to you for free and open access by TopSCHOLAR®. It has been accepted for inclusion in Lincoln County by an authorized administrator of TopSCHOLAR®. For more information, please contact topscholar@wku.edu.

IR
257
Lincoln County, Ky.

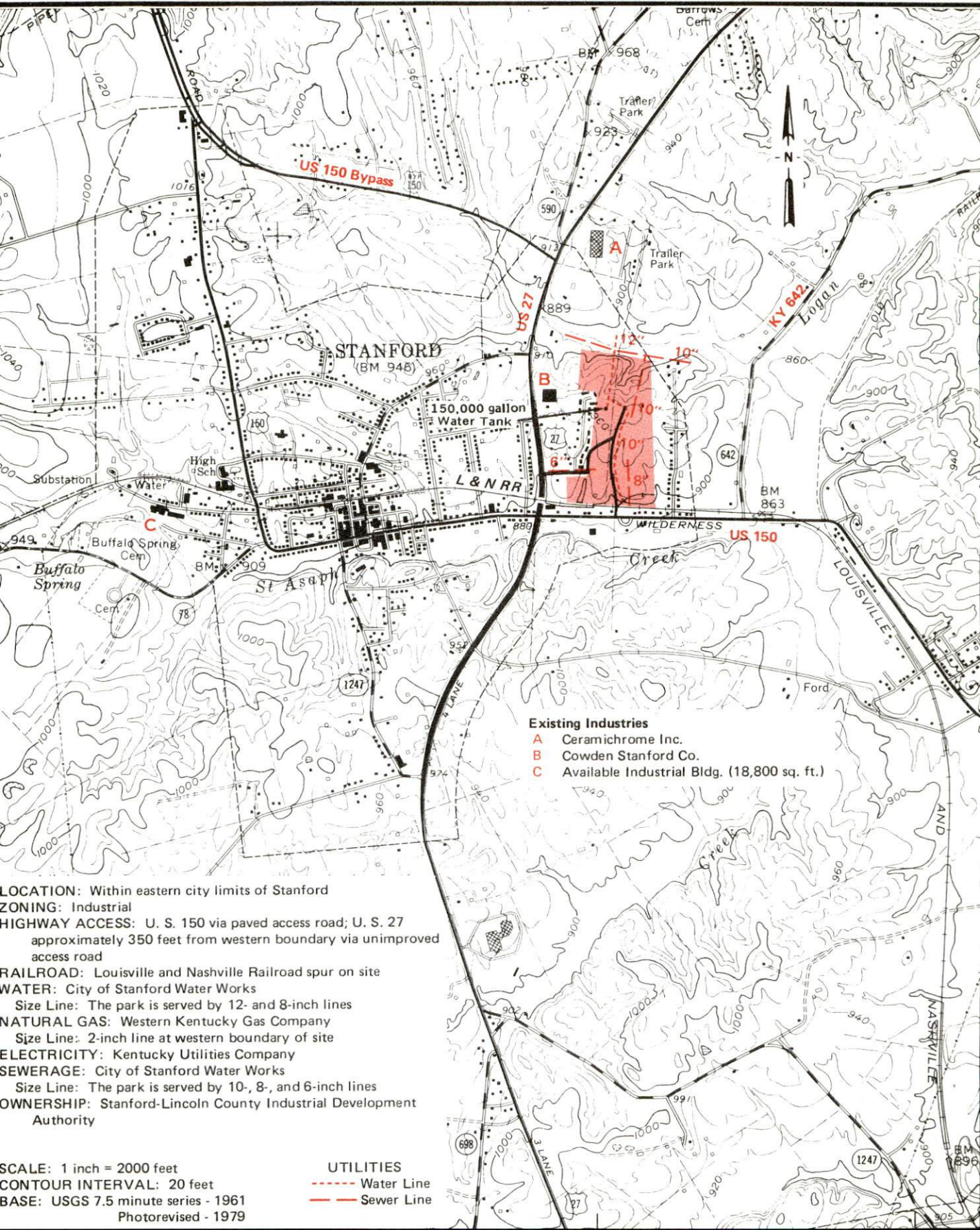
A comprehensive
report on
Stanford, Ky.



KENTUCKY & CO.
The state that's run like a business.

STANFORD, KENTUCKY --- Site 182 --- 50 Acres

For more information contact the Department of Economic Development, Office of Business Development, Industrial Development Division, Capital Plaza Tower, Frankfort, Kentucky 40601 (502-564-7140).



- Existing Industries**
- A Ceramichrome Inc.
 - B Cowden Stanford Co.
 - C Available Industrial Bldg. (18,800 sq. ft.)

LOCATION: Within eastern city limits of Stanford
ZONING: Industrial
HIGHWAY ACCESS: U. S. 150 via paved access road; U. S. 27 approximately 350 feet from western boundary via unimproved access road
RAILROAD: Louisville and Nashville Railroad spur on site
WATER: City of Stanford Water Works
 Size Line: The park is served by 12- and 8-inch lines
NATURAL GAS: Western Kentucky Gas Company
 Size Line: 2-inch line at western boundary of site
ELECTRICITY: Kentucky Utilities Company
SEWERAGE: City of Stanford Water Works
 Size Line: The park is served by 10-, 8-, and 6-inch lines
OWNERSHIP: Stanford-Lincoln County Industrial Development Authority

SCALE: 1 inch = 2000 feet
CONTOUR INTERVAL: 20 feet
BASE: USGS 7.5 minute series - 1961
 Photorevised - 1979

UTILITIES
 --- Water Line
 --- Sewer Line

A COMPREHENSIVE REPORT ON
STANFORD, KENTUCKY

Prepared by
The Kentucky Department of Economic Development
Division of Research and Planning
in cooperation with
Lincoln County Chamber of Commerce

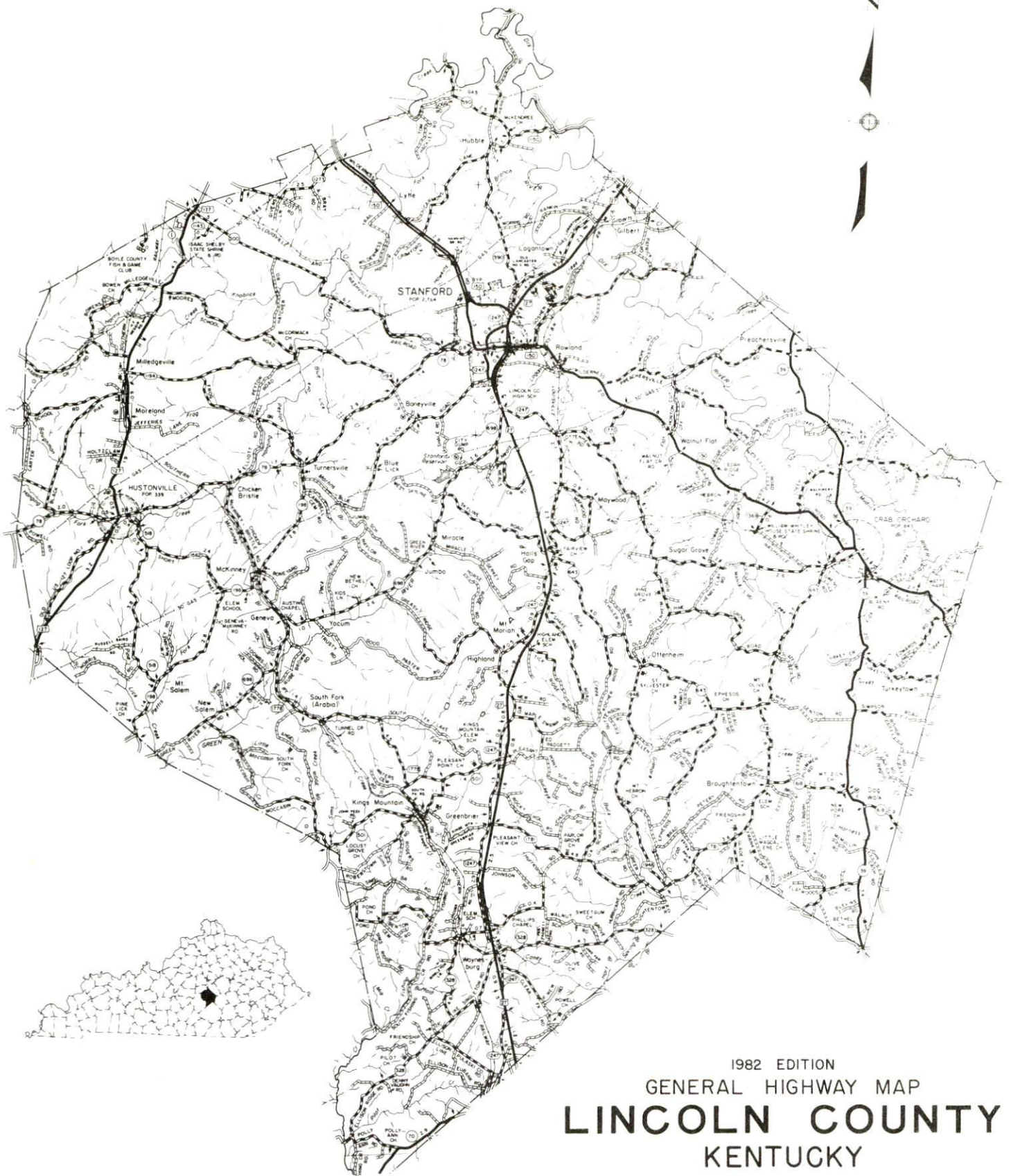
1982

Program manager - Brenda Roberts; research - John McMurray and Andrew Dennis; clerical - Lisa Richards; graphics - Frank Ferrante, Tony Cecconi, Robert Owens; cartography - Site Evaluation Section, Industrial Development Division. Cost of printing paid from state funds.

TABLE OF CONTENTS

<u>Chapter</u>	<u>Page</u>
INDUSTRIAL SITES	i
STANFORD, KENTUCKY - A RESOURCE PROFILE	1
THE LABOR MARKET AREA	3
Population	3
Labor Force Characteristics of Residents, 1981	3
Estimated Male Labor Supply	4
Estimated Female Labor Supply	4
Stanford Manufacturing Firms, Their Products and Employment	5
Labor Organizations in Manufacturing Firms	5
Industrial Services	6
Average Weekly Wages by Industry, by Place of Work, 1981	7
Per Capita Personal Income	9
TRANSPORTATION	10
Rail	10
Highways	10
Truck Service	11
Air	13
Bus	13
Rental Services	13
Water	13
POWER AND FUEL	14
Electricity	14
Natural Gas	15
Other Fuels	15
WATER AND SEWERAGE	16
Public Water Supply	16
Raw Water	16
Sewerage	17
CLIMATE	18

<u>Chapter</u>	<u>Page</u>
LOCAL GOVERNMENT	19
City	19
County	19
Assessed Value of Property	19
Property Taxes	20
Combined State and Local Rates Per \$100 Valuation, 1981	20
Planning and Zoning	21
Safety	21
Police	21
Fire	21
Rescue Service	21
Refuse Collection and Disposal	21
EDUCATION	22
Public Schools	22
Area Colleges and Universities	22
Vocational Schools	23
HEALTH	25
Local Medical Personnel	25
Hospitals	25
Other Medical Facilities	25
Ambulance Service	25
Public Health	25
OTHER LOCAL FACILITIES	26
Communications	26
Library Services	26
Religious Institutions	27
Financial Institutions	27
Hotels and Motels	27
Clubs and Organizations	28
RECREATION	29



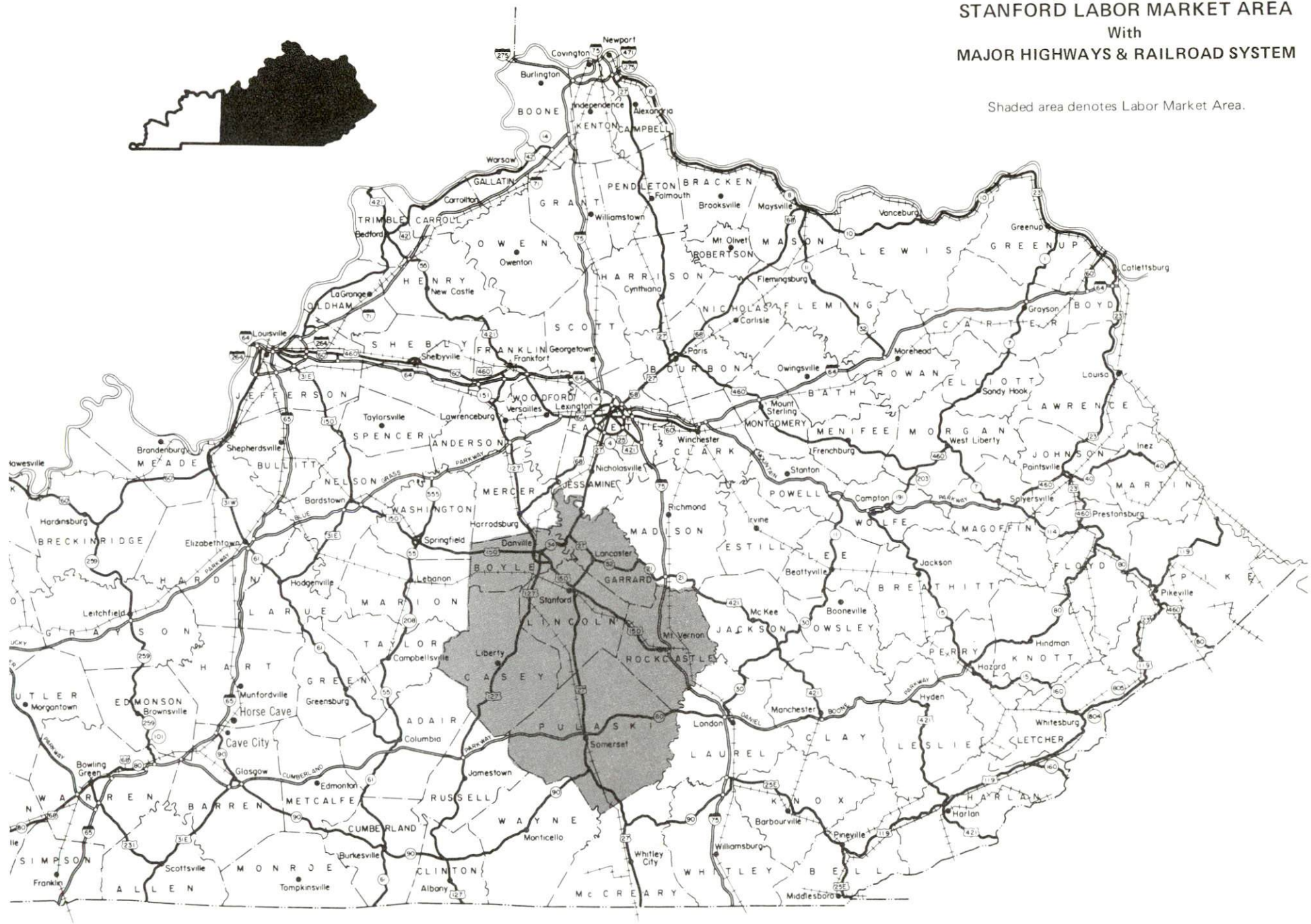
1982 EDITION
 GENERAL HIGHWAY MAP
LINCOLN COUNTY
KENTUCKY

PREPARED BY THE
 KENTUCKY DEPARTMENT OF TRANSPORTATION
 BUREAU OF HIGHWAYS
 DIVISION OF PROJECT DEVELOPMENT
 IN COOPERATION WITH THE
 U.S. DEPARTMENT OF TRANSPORTATION
 FEDERAL HIGHWAY ADMINISTRATION



STANFORD LABOR MARKET AREA With MAJOR HIGHWAYS & RAILROAD SYSTEM

Shaded area denotes Labor Market Area.



STANFORD - A RESOURCE PROFILE

Stanford, the county seat of Lincoln County and Kentucky's second oldest city, is situated in south central Kentucky. Stanford is located within 175 miles of Lexington and Louisville, Kentucky; Knoxville and Nashville, Tennessee; and Cincinnati, Ohio. Stanford had a 1980 population of 2,764.

Lincoln County, which contains 340 square miles of land area, is located on the outer edge of Kentucky's Bluegrass Region. The county had a 1980 population of 18,053.

The Economic Framework

The total number of Lincoln County residents employed in 1980 averaged 5,846, with nonagricultural jobs accounting for 4,654 workers. Manufacturing employers in the county reported 388 workers; construction firms 71; transportation, communications, and public utilities 30; wholesale and retail trade 422; finance, insurance, and real estate 118; and employees in the service industries 273. Manufacturing employment is greatest in the apparel and related products industry.

Per capita income in the county in 1979 was \$5,260. Between 1975 and 1979, per capita income increased by 54 percent.

The Stanford labor market area includes Lincoln and the five adjoining counties. The total number of residents of the labor market area employed in 1980 averaged 51,417, with nonagricultural jobs accounting for 46,404 workers. Manufacturing employers in the area reported 9,693 workers; construction firms 1,154; transportation, communications, and public utilities 1,392; wholesale and retail trade 7,647; finance, insurance, and real estate 1,137; and employees in the service industries 4,118.

Resources for Growth

1. There is a current labor supply of 8,644 men and 5,702 women available for industrial jobs in the labor market area. In addition, 5,064 young men and 4,813 young women in the area will become 18 years of age before 1986 and potentially available for work.

2. The Louisville and Nashville Railroad provides service to Stanford. The nearest piggyback facilities are Southern Railway facilities at Danville, 11 miles northwest of Stanford. U.S. Highways 27 and 150 and Kentucky Highway 27 serve Stanford. U.S. Highways 150 and 127 provide four-lane access to the Blue Grass Parkway, 36 miles to the north. An interchange of southbound Interstate 75 is located 27 miles southeast of Stanford via U.S. 150. Northbound Interstate 75 can be reached at Richmond, 34 miles to the northeast via U.S. 27 and Kentucky 52, a "AA" rated highway with a 62,000 pound gross load limit.

Eleven common carriers serve Stanford with interstate and intrastate service. Goodall Field, 7 miles north of Stanford, is equipped with a 4,000 foot runway which can accommodate light aircraft. The nearest scheduled airline service is available at Blue Grass Field, 4 miles west of Lexington and 38 miles north of Stanford. The nearest navigable waterway is the Kentucky River. Stanford is located 55 miles from a point on the Kentucky River in Frankfort where unloading facilities for sand and gravel are available. A 6-foot navigation channel is maintained on the Kentucky River throughout its course to the Ohio River near Carrollton, Kentucky.

3. Kentucky Utilities Company provides electric power to Stanford and portions of Lincoln County. Inter-County RECC and South Kentucky RECC also provide electricity to Lincoln County. Western Kentucky Gas Company serves Stanford. There are four distributors of propane and seven distributors of distillate fuel oil within 25 miles of Stanford. Low sulphur content coal is available from eastern Kentucky.

4. One public school system operates in Lincoln County. The Lincoln County School System serves over 4,000 students. There are nine institutions of higher learning within 45 miles of Stanford. The Somerset State Vocational-Technical School 34 miles distant, offers training in 16 different courses. The Garrard County Vocational Education Center, 8 miles distant, offers six courses.

THE LABOR MARKET AREA

The Stanford Labor Market Area includes Lincoln County and the adjoining Kentucky counties of Boyle, Casey, Garrard, Pulaski and Rockcastle.

POPULATION			
Area	1980	1970	Percent Nonwhite
Stanford	2,764	2,474	11.3
Labor Market Area	129,566	108,450	N/A
Lincoln County	19,053	16,663	4.2
Boyle County	25,066	21,861	9.5
Casey County	14,818	12,930	0.3
Garrard County	10,853	9,457	5.5
Pulaski County	45,803	35,234	1.5
Rockcastle County	13,973	12,305	0.3

Note: The 1980 counts of population by race are provisional.

Source: U.S. Department of Commerce, Bureau of the Census, 1980 Census of Population and Housing, March 1981.

LABOR FORCE CHARACTERISTICS OF RESIDENTS, 1981

	Lincoln County	Labor Market Area
Civilian Labor Force	7,304	58,635
Employment	6,276	53,219
Agricultural	1,165	4,900
Nonagricultural	5,111	48,319
Unemployment	1,028	5,416
Rate of Unemployment (%)	14.1	9.2

Source: Kentucky Department for Human Resources, Kentucky Labor Force Estimates, Annual Averages, 1981.

ESTIMATED MALE LABOR SUPPLY
STANFORD LABOR MARKET AREA

Area	Current			Future	
	Total	Not in Labor Force	Unemployed	Under-employed	Reaching 18 years of age before 1986
Labor Market Area*	8,644	2,889	3,489	2,266	5,064
Lincoln	2,382	1,533	486	363	799
Boyle	1,046	0	526	520	938
Casey	975	286	375	314	584
Garrard	877	499	201	177	409
Pulaski	2,688	571	1,454	663	1,641
Rockcastle	676	0	447	229	693

*Additional workers may be drawn from other nearby counties.

Note: Unemployed - persons unemployed and actively seeking work;
Underemployed - persons employed but working only 14 to 26 weeks per year; Not in Labor Force - represents the number of persons who would enter the labor force if suitable employment were available (based on the assumption that persons in Kentucky would like to participate in the labor force in the same proportion that they do nationally).

Sources: Kentucky Department for Human Resources, Kentucky Labor Supply Estimates by County, 1980. Kentucky Department of Economic Development, Future Labor Supply before 1986.

ESTIMATED FEMALE LABOR SUPPLY
STANFORD LABOR MARKET AREA

Area	Current			Future	
	Total	Not in Labor Force	Unemployed	Under-employed	Reaching 18 years of age before 1986
Labor Market Area*	5,702	1,380	2,117	2,205	4,816
Lincoln	1,244	551	405	288	755
Boyle	949	0	438	511	900
Casey	641	203	182	256	576
Garrard	360	5	168	187	424
Pulaski	1,807	347	707	753	1,541
Rockcastle	701	274	217	210	620

*Additional workers may be drawn from other nearby counties.

Note: Unemployed - persons unemployed and actively seeking work;
Underemployed - persons employed but working only 14 to 26 weeks per year; Not in Labor Force - represents the number of persons who would enter the labor force if suitable employment were available (based on the assumption that persons in Kentucky would like to participate in the labor force in the same proportion that they do nationally).

Sources: Kentucky Department for Human Resources, Kentucky Labor Supply Estimates by County, 1980. Kentucky Department of Economic Development, Future Labor Supply before 1986.

STANFORD MANUFACTURING FIRMS,
THEIR PRODUCTS AND EMPLOYMENT

Firm (Establishment date)	Product	Employment			Labor Unions
		Total	Male	Female	
Ceramichrome, Inc. (1977)	Ceramic colors, plaster molds, ceramic bodies	71	42	29	
Cherokee Sales Corporation (1956)	Truck beds, lime spreaders, post hole diggers	19	18	1	
Commonwealth Lumber Company (1979)	Kiln dried lumber, lumber dimension	20	19	1	
Cowden-Stanford Company (1965)	Men's and boys' work clothing, girls' and ladies' jeans and skirts	278	32	246	Teamsters*
The Interior Journal (1860)	Newspapers, commercial printing	6	3	3	
Lincoln County Ready Mix (1978)	Ready mixed concrete	11	10	1	
Stanford Ready Mix and Auto Sales, Inc. (1957)	Ready mixed concrete	10	10	-	
Stanford Wood Products Company, Inc. (1947)	Wood store fixtures, bank fixtures, contract furniture, plastic laminated furniture	15	14	1	

*See Labor Organizations below.

Source: Kentucky Department of Economic Development, 1982 Kentucky Directory of Manufacturers.

LABOR ORGANIZATIONS IN MANUFACTURING FIRMS

<u>Union</u>	<u>Representing workers at:</u>
International Brotherhood of Teamsters, Chauffeurs, Warehousemen and Helpers of America	Cowden-Stanford Company

INDUSTRIAL SERVICES

<u>Types of Services</u>	<u>Location</u>	<u>Miles distant</u>
Tool & Die, Machine & Pattern Shops	Lancaster	8
	Danville	11
Metal Service Centers	Lexington	46
Heat Treating	Richmond	32
Metal Finishers	Richmond	32
Electric Motor Repair	Somerset	34

Source: Kentucky Department of Economic Development, Kentucky Directory of Selected Industrial Services, 1981.

AVERAGE WEEKLY WAGES BY INDUSTRY,
BY PLACE OF WORK, 1980

	<u>Lincoln County</u>	<u>Boyle County</u>	<u>Casey County</u>
All Industries	\$209.83	\$239.60	\$167.97
Mining & Quarrying	*	*	*
Contract Construction	197.71	270.10	177.44
Manufacturing	201.88	295.43	142.47
Transportation, Communications & Public Utilities	346.88	349.00	348.75
Wholesale & Retail Trade	145.62	179.72	142.70
Finance, Insurance & Real Estate	214.70	238.26	245.66
Services	170.95	188.30	128.78
State/Local Government	211.21	239.08	218.75
Other	111.39	187.54	*

	<u>Garrard County</u>	<u>Pulaski County</u>	<u>Rockcastle County</u>
All Industries	\$187.55	\$227.01	\$179.07
Mining & Quarrying	*	361.47	284.84
Contract Construction	207.40	196.08	138.44
Manufacturing	217.54	258.75	174.18
Transportation, Communications & Public Utilities	249.90	314.91	231.50
Wholesale & Retail Trade	123.99	170.90	148.24
Finance, Insurance & Real Estate	225.48	266.56	228.40
Services	153.40	219.12	167.09
State/Local Government	193.28	211.00	200.80
Other	*	160.42	*

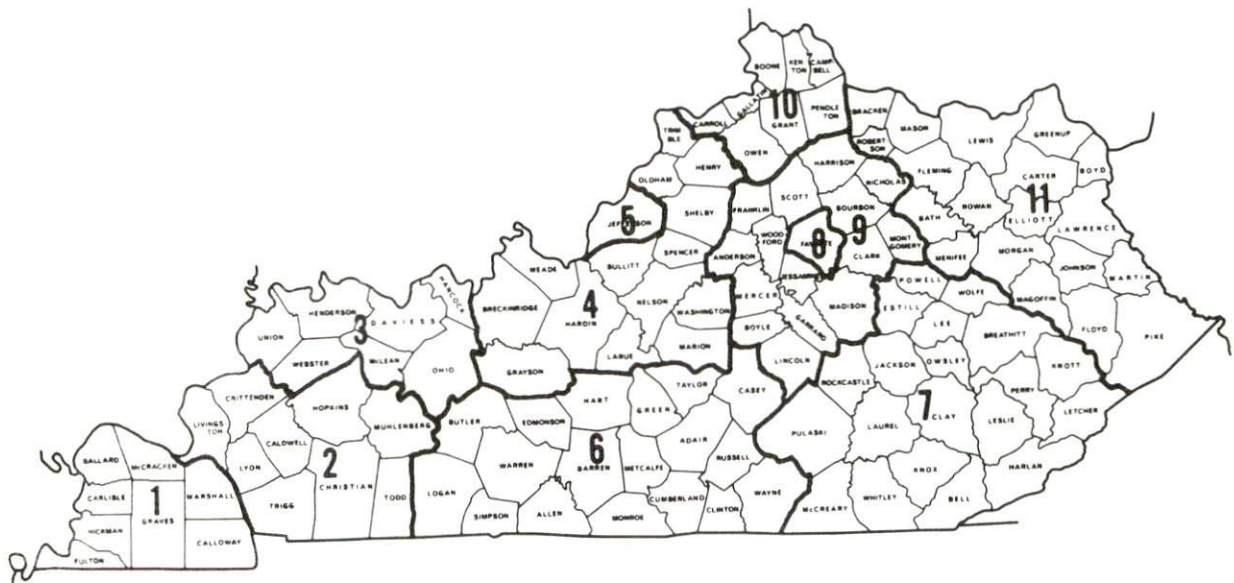
*Not disclosed.

Note: Excludes domestic workers, railway workers, certain nonprofit corporations, majority of federal government workers, and self-employed workers.

Source: Kentucky Department for Human Resources, Average Weekly Wages of Workers Covered by Kentucky Unemployment Insurance Law, 1980.

Occupational wage rates for specific industries are usually not available to most government agencies, and wage data furnished to state employment agencies by individual industrial employers is protected from disclosure by federal law. The most reliable up-to-date wage information can be obtained by direct contact with local employers.

Associated Industries of Kentucky, a voluntary organization of Kentucky businesses, regularly collects occupational wage rates and fringe benefits data from participating member firms. Data is compiled for over 127 clearly defined office, production, and service occupations. Tabulations are published for eleven regions of Kentucky, as shown on the map below. It should be noted that the data may be weighted by the preponderance of firms in the larger cities and may be somewhat higher than the rates paid in the smaller communities. Data from these tabulations are available, upon request, from the Kentucky Department of Economic Development, Frankfort, Kentucky 40601.



Associated Industries of Kentucky Area Wage Surveys

PER CAPITA PERSONAL INCOME

<u>Area</u>	<u>1976</u>	<u>1980</u>	<u>Percent Change</u>
Lincoln County	\$3,845	\$5,393	40.3
Labor Market Area			
Range	\$2,980 - 5,314	\$4,305 - 7,738	N/A
Kentucky	5,263	7,662	45.6
U.S.	6,367	9,511	49.4

Source: U.S. Department of Commerce, Bureau of Economic Analysis,
 April 1981. U.S. Department of Commerce, Bureau of Economic Analysis,
 August 1981.

TRANSPORTATION

Rail

Line serving Stanford - Louisville and Nashville Railroad

Services - Northbound and southbound freights stop twice weekly; northbound or southbound through freights 6 days a week; switching facilities; team track for 10 cars. The nearest piggyback facilities are Southern Railway facilities at Danville, 11 miles northwest of Stanford. The nearest L&N piggyback facilities are located at Frankfort and Bardstown, both 55 miles from Stanford. via "AAA" rated roads.*

For details on routing, schedules, rates, and services, contact:

Director of Industrial Development
Louisville and Nashville Railroad
P.O. Box 32290
Louisville, Kentucky 40232
(502) 587-5723

Highways

U.S. Highways 27 and 150 and Kentucky Highway 27 serve Stanford. U.S. Highways 150 and 127 provide four-lane access to the Blue Grass Parkway, 36 miles to the north. An interchange of southbound Interstate 75 is located 27 miles southeast of Stanford via U.S. 150. Northbound Interstate 75 can be reached at Richmond, 34 miles to the northeast via U.S. 27 and Kentucky 52, an "AA" rated highway with a 62,000 pound gross load limit.

*The nearest piggyback service is available at Bardstown and Frankfort, both 55 miles from Stanford. L & N provides piggyback service from Bardstown and Frankfort through the Louisville ramp with highway service substituted for rail between the two cities. Rates are charged from Bardstown or Frankfort.

Truck Service

<u>Company</u>	<u>Home Office</u>
Bronaugh Motor Express, Inc.*	1025 Nandino Boulevard Lexington, Kentucky 40511
Courier-Newsom Express, Inc.*	P.O. Box 270 Columbus, Indiana 47201
Eldridge Truck Line*	P.O. Box 659 Somerset, Kentucky 42501
Interstate System**	110 Ionia NW Grand Rapids, Michigan 49503
Lawrenceburg Transfer Company, Inc.*	P.O. Box 220 Lawrenceburg, Kentucky 40342
Mason and Dixon Lines, Inc.**	P.O. Box 969 Kingsport, Tennessee 37662
McLean Trucking Company**	P.O. Box 213 Winston-Salem, North Carolina 27154
Mercury Freight Lines, Inc.**	P.O. Box 1247 Mobile, Alabama 36633
Middlewest Freightways, Inc.**	6810 Prescott Avenue St. Louis, Missouri 63147
Overnite Transportation Company*	1000 Semmes Avenue Richmond, Virginia 23209
Smith's Transfer Corporation**	P.O. Box 1000 Stanton, Virginia 24401
<u>Other Freight Services</u>	<u>Nearest Shipping Center</u>
United Parcel Service***	Danville, 11 miles distant

*Interstate and intrastate service.

**Interstate service only.

***For regular scheduled pickups or for occasional pickups, arrangements must be made with the Louisville office of United Parcel Service.

HIGHWAY MILES AND TRUCK TRANSIT TIME IN DAYS FROM
STANFORD, KENTUCKY, TO SELECTED MARKET CENTERS

City	Delivery		City	Delivery	
	Highway Miles	Time TL		Highway Miles	Time TL
Atlanta, Ga.	334	2	Los Angeles, Ca.	2,192	5-6
Baltimore, Md.	583	3	Louisville, Ky.	94	1
Birmingham, Ala.	363	2	Nashville, Tenn.	167	1
Chicago, Ill.	386	2	New Orleans, La.	658	3
Cincinnati, Ohio	120	1	New York, N. Y.	745	3
Cleveland, Ohio	367	2	Pittsburgh, Pa.	385	2
Detroit, Mich.	379	2	St. Louis, Mo.	357	2
Knoxville, Tenn.	141	1			

Note: Mileage computations are via the best interstate or primary highways, not necessarily the most direct route of travel.

Sources: Rand McNally Road Atlas, 1979. Official Kentucky Mileage Map, 1979. Delivery time - Bronaugh Motor Express, Inc., 1025 Nandino Boulevard, Lexington, Kentucky 40511.

Air

Local

Location: Goodall Field
4 miles south of Danville,
7 miles north of Stanford

Runways: 1 paved
Length: 4,000 feet

Traffic Control: Wind sock

Lighting: Rotating beacon (sundown to sunrise), REIL

Services: Fuel (100LL, jet-A), major A & P repair, charter service, hanger, tiedown, flight instruction, aircraft rental

Air Freight Service: Chartered air freight service must be arranged.

Nearest Scheduled Airline Service

Location: Blue Grass Field
4 miles west of Lexington, Kentucky;
38 miles north of Stanford

Runways: 2 paved
Length: 6,500 feet; 3,500 feet

Traffic Control: Tower

Lighting: Approach lighting system, beacon, runways and obstructions lighted, VASI

Services: USAir, Delta, Piedmont, Frontier, Comair, Tennessee Airways; fuel - 80, 100LL, jet-A; hangers, tie-downs; major A & P repairs, major Avionics repairs; APU, charter, flight instruction, oxygen, plane rentals, survival equipment; taxi, limousine, car rentals, courtesy car, weather information, restaurant, snack bar

Air Freight Service: Air freight terminal

Bus - Southern Greyhound Bus Lines; Trailways Bus Lines

Rental Services - Car, trailer and truck rentals available in Danville, 11 miles away.

Water

The nearest navigable waterway is the Kentucky River. Stanford is located 55 miles from a point on the Kentucky River in Frankfort where unloading facilities for sand and gravel are available. A 6-foot navigation channel is maintained on the Kentucky River throughout its course to the Ohio River near Carrollton, Kentucky.

POWER AND FUEL

Electricity

Company serving Stanford and parts of Lincoln County - Kentucky
Utilities Company

Source of power - Kentucky Utilities Company

Total generating capacity - 2,639,100 KW*

For industrial rates contact:

Industrial Development Department
Kentucky Utilities Company
One Quality Street
Lexington, Kentucky 40507
(606) 255-1461

Companies serving Lincoln County - Inter-County Rural Electric
Cooperative Corporation and the South Kentucky Rural Electric
Cooperative Corporation

Source of power - East Kentucky Power Cooperative

Total generating capacity - 1,304,000 KW

For industrial rates contact:

Industrial Development Division
East Kentucky Power Cooperative
P.O. Box 707
Winchester, Kentucky 40391
(606) 744-4812

and/or

Inter-County RECC
P.O. Box 87
Danville, Kentucky 40422
(606) 236-4561

and/or

South Kentucky RECC
P.O. Box 910
Somerset, Kentucky 42501
(606) 678-4121

*A new generating unit is under construction in Carroll County. Due to be completed in 1984, the unit will have a generating capacity of 511,000 KW.

Natural Gas

Company serving Stanford - Western Kentucky Gas Company

Source of supply - Tennessee Gas Pipeline Company

Size of transmission mains - 24 inches (supplier);
4 inches (distributor)

Distribution mains - 6, 4 and 2 inches

Distribution pressure - 35 psi (maximum)

Btu content - 1,018 per cubic foot

Specific gravity - 0.60

For rates and supplies contact:

Western Kentucky Gas Company
424 West Main Street
P.O. Box 640
Danville, Kentucky 40422
(606) 236-5371

Other Fuels

Propane (Within 25 miles)

Brights Bottle Gas Company
100 West Brook
Burgin, Kentucky 40310

Parsons Gas and Appliance Service
Route 3
Mt. Vernon, Kentucky 40456

Buckeye Gas Products Company
Hustonville, Kentucky 40437

Smith and Sons Gas Company
U.S. Highway 27
Waynesville, Kentucky 40489

Fuel oils

Distillate fuel oil - (Within 25 miles)

Ashland Fuel Oil
Shelby City, Kentucky 40422

Pinkeston Oil Company
Parksville, Kentucky 40464

Baird Oil Company
New U.S. Highway 27
Stanford, Kentucky 40484

Richmond-Scheuer Oil Company
Stanford Road
Danville, Kentucky 40422

Chevron USA, Inc.
David Avenue
Danville, Kentucky 40422

Texaco, Inc.
Hope Street
Danville, Kentucky 40422

Little Jack and Doug
Gulf Oil Products
719 Dillehay
Danville, Kentucky 40422

Residual fuel oil - Arrangements must be made with the refinery.

Low sulphur content coal - Available in eastern Kentucky.

WATER AND SEWERAGE

Public Water Supply

Company serving Stanford - The City of Stanford Water Works
P.O. Box 45
Stanford, Kentucky 40484
(606) 365-2788

Source - 40 acre city owned lake
Treatment plant capacity - 1,000,000 gallons per day
Average daily consumption - 375,000 gallons
Peak daily consumption - 535,000 gallons
Type treatment - Chlorination, filtration, coagulation, fluoridation
Storage capacity - 800,000
Size lines - up to 8 inches
Average pressure - 70 psi
Average temperature - 60 degrees F.

MONTHLY WATER RATES

First	2,000 gallons	\$4.00
Next	8,000 gallons	1.30 per M gallons
Next	20,000 gallons	1.20 per M gallons
Next	20,000 gallons	1.10 per M gallons
Next	25,000 gallons	1.00 per M gallons
Next	25,000 gallons	.90 per M gallons
All over	100,000 gallons	.75 per M gallons

Tap-on charge: \$150 insie city limits
\$200 outise city limits

Raw Water

Surface water sources - Dix River and Fishing Creek
Average discharge - Dix River near Danville,
469 cfs (38-year record, USGS)
Expected ground water yield - 5 to 50 gpm in southern tip of the
county and a small part in the far eastern part of the county;
5 gpm or less over the remainder of the county

Sewerage

Company serving Stanford - The City of Stanford Water Works*

P.O. Box 45

Stanford, Kentucky 40484

(606) 365-2788

Design capacity - 400,000 gallons per day

Average daily flow - 300,000 gallons

Treatment - Primary and secondary

Type treatment - Primary and secondary clarifiers, trickling filter

Treated effluent discharged into - Logan's Creek, to Dix River,
to Herrington Lake

Size of sanitary mains - 6, 8 and 12 inches

Size of storm mains - 20 through 36 inches

Rates -

First	2,000 gallons	\$3.75
Next	8,000 gallons	.88 per M gallons
Next	20,000 gallons	.75 per M gallons
Next	20,000 gallons	.63 per M gallons
Next	25,000 gallons	.50 per M gallons
Next	25,000 gallons	.38 per M gallons
All over	100,000 gallons	.31 per M gallons

Tap-on charge: \$500

*In late 1982, Stanford will begin construction of a new waste water treatment system. The new system will be tied in with the old plant increasing the total design capacity to 800,000 gallons per day. The \$2 million project is tentatively scheduled for completion in late 1983.

CLIMATE

Lincoln County

Temperature

Normal (30-year record)	55.2 degrees
Average annual 1980	54.3 degrees
Record highest, September 1954 (36-year record)	103.0 degrees
Record lowest, January 1963 (36-year record)	-21.0 degrees
Normal heating degree days (30-year record)	4,729
(Heating degree day totals are the sums of negative departures of average daily temperatures from 65 degrees F.)	

Precipitation

Normal (30-year record)	44.49 inches
Mean annual snowfall (36-year record)	17.00 inches
Total precipitation 1980	34.69 inches
Mean number days precipitation (.01 inch or more) (36-year record)	131
Mean number days thunderstorms (36-year record)	47

Prevailing Winds (17-year record)

South

Relative Humidity

1 a.m.	77 percent (16-year record)
7 a.m.	81 percent (17-year record)
1 p.m.	60 percent (17-year record)
7 p.m.	64 percent (17-year record)

Source: U.S. Department of Commerce, Environmental Science Services Administration, Climatological Data, 1980.
Station of record: Lexington, Kentucky.

LOCAL GOVERNMENT

City

Structure - Mayor - 4-year term; 6 council members - 2-year terms
Budget 1982 - General Fund \$244,225
 Water and Sewer Fund \$260,000 (estimated)
Fees and licenses - Privilege licenses range from \$15.50 to \$50.50
per year

County

Structure - County Judge/Executive - 4-year term;
4 magistrates - 4-year terms
Budget 1981-82 - General Fund \$326,201; Road Fund \$379,275

Assessed Value of Property, 1981*

<u>Classes of Property</u>	<u>Stanford</u>	<u>Lincoln County</u>
Real Estate	\$33,449,360	\$171,105,796
Tangibles	9,029,201	29,752,691

*Excludes Homestead Exemptions.

Property Taxes

All property in Kentucky is assessed at 100 percent of fair cash value.

Land and buildings are taxed by the state and may be taxed by local jurisdictions. The state rate is \$0.229 per \$100 of assessed valuation.

Manufacturing machinery, raw materials inventories, pollution control equipment, and goods in the process of manufacture are not subject to local taxation. The state rate is \$0.15 per \$100.

Other tangible personal property owned by manufacturers (automobiles, trucks, finished goods, office furniture, office equipment) is taxed by the state at \$0.45 per \$100 and may be taxed by local jurisdictions.

Property stored in public warehouses in a transit status is not subject to local taxation. The state rate is only \$0.015 per \$100.

Intangible personal property located in Kentucky (money in hand, shares of stock, notes, bonds, accounts receivable, and other credits) is taxed by the state at \$0.25 per \$100, and is not subject to local taxation.

Private leaseholds in industrial facilities owned by cities or counties and financed by industrial revenue bonds are subject to a state tax of \$0.015 per \$100 of value (essentially the lessee's equity, adjusted for appreciation or depreciation). Local taxation is not permitted.

Combined State and Local Rates Per \$100 Valuation, 1981* (100% assessment)

	<u>Inside City of Stanford</u>	<u>Site Inside Unincorporated Lincoln County</u>
1. Land and buildings	\$0.7706	\$0.6306
2. Mfg. machinery, raw materials, goods in process, pollution control equipment	0.1500	0.1500
3. Finished goods, office equipment, vehicles, other tangibles	0.9916	0.8516
4. Intangibles (accounts receivable, notes, bonds, etc.)	0.2500	0.2500
5. Leaseholds in industrial revenue bond financed plants	0.0150	0.0150

*Kentucky Department of Economic Development.

Planning and Zoning

City agency - City of Stanford Planning Commission
Zoning enforced - City only
Subdivision regulations enforced - City and two miles beyond corporate city limits
Local codes enforced - Building and Housing
Mandatory state codes enforced - Kentucky Plumbing Code, National Electric Code, Kentucky Boiler Regulations and Standards, National Fire Protection Association Standards of Safety (for buildings with an occupancy of less than 100 persons), Kentucky Building Code (modeled after BOCA code and applying to buildings with an occupancy of 100 or more persons)

Safety

<u>Police</u>	<u>Stanford</u>	<u>Lincoln County</u>
Total staff	5	5
Radio-patrol cars	2	4

Fire

American Insurance Association Fire Rating	7
Full-time staff	1
Volunteers	18

Rescue Service

Stanford Rescue Squad:

Number of volunteers - 40
Equipment - Two radio equipped rescue trucks, ambulance, lake dragging equipment, 14 and 16-foot volunteer boats, jeep (3/4) ton K12
Personnel training - Scuba diving training, Bureau of Mines training, Red Cross training, emergency medical technician and cliff rescue.

Refuse Collection and Disposal

	<u>Stanford</u>	<u>Lincoln County</u>
Type service	Municipal	Several Haulers
Fee charged:		
residential	\$4.40 monthly (\$8.80 outside city)	\$ 3.00 monthly
business	Negotiated	
industrial	Negotiated	\$10.00 per truck load
Collection frequency:		
residential	Weekly	
business	Daily	
industrial	Contract	
Trash pickup	Weekly	
Disposal method	Landfill	Landfill

EDUCATION

Public Schools

Lincoln County

Total Enrollment (Spring 1982)	4,049
Elementary	2,843
High School	1,206
Student-Teacher Ratio	18-1
Elementary	18-1
High-School	17-1
Percent High School Graduates to College (1981)	25.6
Expenditures Per Pupil (1980-81)	\$1,247.38
Bonded Indebtedness (June 30, 1980)	\$3,569,000

Area Colleges and Universities

<u>Name</u>	<u>Location (Miles distant)</u>	<u>Enrollment (Fall, 1981)</u>	<u>Highest Degree Conferred</u>
Centre College	Danville (11)	685	Baccalaureate
Berea College	Berea (29)	1,587	Baccalaureate
Eastern Kentucky University	Richmond (32)	13,394	Masters, Specialist/ Doctorate*
Somerset Community College	Somerset (34)	1,065	Associate
Asbury College	Wilmore (40)	23,441	Baccalaureate
University of Kentucky	Lexington (42)	750	Doctorate, M.D., D.M.D., J.D.
Transylvania University	Lexington (42)	2,302	Baccalaureate, Masters**
Lexington Technical Institute	Lexington (42)	246	Associate
St. Catharine College	Springfield (44)		Associate

*Joint doctoral degree programs are offered in cooperation with the University of Kentucky, Lexington, and cooperative doctoral degree programs are offered with Michigan State University and the University of Maryland.

**Courses in the masters degree program are taught on the Transylvania campus by faculty members of Xavier University of Cincinnati. The degree is issued by Xavier University.

Vocational Schools

Both the state vocational-technical schools and the area vocational education centers are operated by the Kentucky Department of Education. The state vocational-technical schools enroll persons full time who are at least 16 years of age and not in school. These students attend classes for six hours each day. The area vocational education centers are designed to accommodate high school students who are at least 15 years of age. These students attend vocational school for three hours each day. The state vocational-technical schools and the area education centers offer evening courses to enable working adults to upgrade current job skills.

Nearest State School

Somerset State Vocational-Technical School

Location	Somerset
Miles Distant	34
Curriculum	Business and Office Accounting/Jr. Management Clerical Data Processing Secretarial Health and Personal Services Occupations Health Careers Licensed Practical Nursing Industrial Education Appliance Repair Auto Body Repair Auto Mechanics Aviation Maintenance Technician Diesel Mechanics Drafting Graphic Arts (Printing) Machine Shop Technical Electronics Welding Learning Resource Center

Nearest Area Education Center

Location	Garrard County Area Vocational Education Center
Miles Distant	Lancaster 8
Curriculum	Health and Personal Services Occupations Health Careers Industrial Education Auto Mechanics Carpentry Drafting Electricity Welding

Arrangements can be made to provide training in the specific production skills required by an industrial plant. Instruction may be conducted either in the vocational school or in the industrial plant, depending upon the desired arrangement and the availability of special equipment.

HEALTH

Local Medical Personnel

Physicians - 5
Dentists - 4

Hospitals

<u>General Hospital</u>	<u>Location</u>	<u>Beds</u>
Fort Logan Hospital	Stanford	73

General hospital facilities - X-ray, laboratory, operating rooms, recovery room, blood bank, pharmacy, electrocardiography, physical therapy, cardiac monitoring, respiratory therapy, emergency and output services

Medical staff - 12 doctors, 22 registered nurses, 16 graduate licensed practical nurses, 4 dentists, 54 total employees. Skilled nursing facility, 30 beds

Other Medical Facilities

Southern Bluegrass Division of Blue Grass Mental Health - Mental Retardation Board, Inc.

Staff - 2 psychologists (1 full and 1 part time), 3 psychiatrists (part time), social worker, 4 mental health associates, drug counselor, alcohol counselor, 2 licensed practical nurses (1 full and 1 part time)

Ambulance Service

Ambulance service is provided by the Stanford Rescue Squad. In addition, the Waynesburg Area Rescue Squad and the East End Ambulance Service serve southern and eastern Lincoln County.

Public Health

Facility - Lincoln County Health Department
Staff - Acting assistant administrator, sanitarian, registered nurse, community health worker, clerk

OTHER LOCAL FACILITIES

Communications

Telephone - South Central Bell Telephone Company
Services - Standard

Services - Toll-free number 1-800-325-5100. Counter service
available in Danville

Postal - U.S. Post Office
Class - First
Mail received - Twice daily
Mail dispatched - Once daily

Newspaper - Interior Journal The Lincoln County Post
Weekly and circulation - 3,200 3,500
Other papers
received from - Lexington, Louisville, Danville and
Richmond, Kentucky

Radio - WRSL, AM-FM
Major stations
received from - Lexington, Louisville, Danville, Somerset,
Lancaster and Richmond, Kentucky

Television -
Cable service
Reception from - Lexington and Louisville, Kentucky
Kentucky Educational
Television - Lexington transmitter, Channel 46;
Somerset transmitter, Channel 29

Library Services

Public library - Harvey Helm Memorial Library
Size collection - 31,000 volumes
Circulation, 1980-81 - 128,809
Services - Magazines, records, film projectors, children's story hour,
pictures, bookmobiles, copying machine, meeting rooms,
microfilm reader-printer

Religious Institutions

Number of churches - 13
Denominations - Baptist
Christian
Church of God
Episcopal
Methodist
Pentecostal
Presbyterian

Nearest Synagogues - Lexington, Kentucky, 42 miles distant
Congregations - Adath Israel (reform)
Ohavey Zion (traditional)

Financial Institutions

<u>Banks</u>	<u>Assets</u>	<u>Deposits</u>	<u>Statement Date</u>
Lincoln County National Bank	\$29,752,341.36	\$25,583,997.30	12/31/81
<u>Savings and Loan Associations</u>	<u>Assets</u>	<u>Savings Accounts</u>	<u>Statement Date</u>
Lincoln County Federal Savings and Loan Associaton	\$32,156,031.58	\$29,870,338.47	12/31/81

Hotels and Motels (Lincoln County)

Total number - 6
Total rooms - 67

Clubs and Organizations

American Legion
Boy Scouts
Brownie Troop
Business & Professional Women's Club
Daughters of the American Revolution
Eastern Star
Fellowship of Christian Athletes
Ft. Logan Hospital Auxiliary
Garden Club
Girl Scouts
The Lincoln County Bow Hunter Club
Lincoln County Chamber of Commerce
Lincoln County Dairy Association
Lincoln County Democratic Women's Club
Lincoln County Historical Society
The Lincoln County Homemakers Club
Lincoln County Republican Women's Club
Lincoln County Retired Teachers Association
The Lincoln County Teenage 4-H Club
Lincoln County Teenage Republican Club
Lions Club
Masonic Lodge
Ministerial Association
Rainbow Girls
Rotary Club
Stanford Women's Club

RECREATION

Local

A new multi-purpose recreational park was recently completed in Stanford. The new park, located adjacent to the Lincoln County High School, contains four tennis courts, water fountain, lighted playground and a softball field.

The Farm Bureau Youth Center is the location of various activities for the youth and adults of Stanford. The Lincoln County Fair and Horse Show and little league baseball games are among the events held there.

The Dix River Country Club provides a 9-hole golf course and a swimming pool for its members. Other private recreation facilities include a drive-in theatre and two tennis courts.

The Harvey Helm Museum provides historical records, genealogical records, and a collection of historical articles.

William Whitley House State Shrine, near Stanford, is the first brick house west of the Allegheny Mountains, built 1787-94. Whitley laid out Kentucky's first race track here and started U.S. counter-clockwise racing. The facility provides picnic and playground areas in a ten-acre park.

Area (Within 60 miles)

Isaac Shelby State Shrine, 11 miles north of Stanford near Danville, is the burial site of Kentucky's first governor and one of the Commonwealth's foremost statesmen.

Constitution Square State Shrine, 11 miles north of Stanford in Danville, is a reproduction of Kentucky's first courthouse square, including the original 1792 post office which was the first in the west.

Old Fort Harrod State Park, 20 miles north of Stanford, is a 28-acre park in Harrodsburg that features a full-scale reproduction of the original Fort Harrod. The park also contains the log cabin where Abraham Lincoln's parents were wed, the Mansion Museum which houses mementos associated with the great periods of Kentucky history, a pioneer cemetery, and a federal monument dedicated to pioneers. The "Legend of Daniel Boone", an outdoor drama which brings to life on stage the men and women who made Kentucky, is performed in the park amphitheatre during the summer months.

Perryville Battlefield State Shrine, 21 miles northwest of Stanford near Perryville, is the site of the largest Civil War battle in Kentucky. A museum, a picnic area, and a playground are located on the grounds.

White Hall State Shrine, 32 miles northeast of Stanford near Richmond, one of the grand estate houses of post-Civil War Kentucky, is the Italianate mansion of Cassius Marcellus Clay, the early abolitionist and politician. Kentucky handicrafts are sold in the White Hall gift shop, only a short walk from the mansion.

Lincoln Homestead State Park, 38 miles northwest of Stanford near Springfield, is a 153-acre park on the original land settled by Abraham Lincoln's family. The actual building in which Nancy Hanks, mother of President Lincoln, lived during her courtship with Thomas Lincoln is preserved here as well as a replica of the 1782 cabin where Lincoln lived as a boy. The park also has a museum, a gift shop, a picnic area, and an 18-hole golf course.

General Burnside State Park, 42 miles south of Stanford, is Kentucky's only island state park. Rising out of Lake Cumberland and surrounded by beautiful Kentucky mountains, the park offers excellent fishing, an 18-hole golf course which is open year-round, a picnic area, a 150-site camping area for tents and recreational vehicles, a marina on the mainland near the park, and planned recreation.

The spirit of Daniel Boone and his pioneers is reborn at Fort Boonesborough State Park in Boonesborough, approximately 45 miles northeast of Stanford. In the re-created fort 16 pioneer crafts of the eighteenth century are demonstrated by Kentuckians using functioning antiques from the frontier era. Cabins are furnished as they would have been in the days of Boone and documentary films are presented which depict the struggle of the first Kentuckians to make the Kentucky wilderness a home. A gift shop within the fort offers for sale all the handcrafted items made at the fort, along with a wide variety of handicrafts from throughout Kentucky. Other recreational facilities and activities of the park include the finest sand beach on the Kentucky River with a modern bathhouse, sun deck, and snack shop; a modern camping area with 187 sites; a central service building housing showers, restrooms, and laundry facilities for campers; a pavilion with a gift shop and grocery inside and a playground and basketball, volleyball, and shuffleboard courts on the grounds; and planned daily activities and special events under the guidance of a trained recreation director. Near the park is the dock of the Dixie Belle sternwheel excursion boat which operates one-hour trips daily on the Kentucky River leaving from the Fort Boonesborough boat dock.

Green River Lake State Park near Campbellsville, 55 miles west of Stanford, is made up of 1,300 acres surrounding an 8,200-acre lake. The park is open all year-round and offers 96 campsites, a beach, boat docks, fishing, swimming, and a picnic area.

My Old Kentucky Home State Park, 55 miles from Stanford in Bardstown, portrays an image of the South's gentle and leisurely home life before the Civil War. The restored Georgian Colonial mansion is where composer Stephen Foster visited and where he was inspired to write "My Old Kentucky Home". One of the nation's most successful outdoor dramas, "The Stephen Foster Story", is presented in the park's amphitheatre mid-June until Labor Day. The park also offers a 40-site campground, a gift shop, a 9-hole golf course and pro shop, a picnic area, and planned recreation.

The Kentucky Horse Park, a park dedicated to horses and to man's love for horses, is located 57 miles northeast of Stanford in Lexington. The park, which contains more than 1,000 acres of Kentucky Bluegrass, features the International Museum of the Horse; the Man O'War Memorial; an antique carriage display; horseback and pony rides; walking farm tours; horse-drawn tours; planned recreation; a restaurant; a gift shop; and a campground area, which offers swimming, tennis, and planned activities. Numerous special events are held year-round and include various horse shows, steeplechasing, dressage, polo games, and three-day eventing.

Waveland State Shrine, 57 miles northeast of Stanford near Lexington, features an 1847 Greek Revival mansion depicting Kentucky lifestyles from the days of early settlers to the antebellum era of gentility and elegance as well as the Civil War and postwar periods. The shrine also includes the Kentucky Life Museum and a plantation village on ten acres with many shops and displays.