

1972

Industrial Resources: Logan County

Kentucky Library Research Collection
Western Kentucky University, spcol@wku.edu

Follow this and additional works at: https://digitalcommons.wku.edu/logan_cty



Part of the [Business Administration, Management, and Operations Commons](#), [Growth and Development Commons](#), and the [Infrastructure Commons](#)

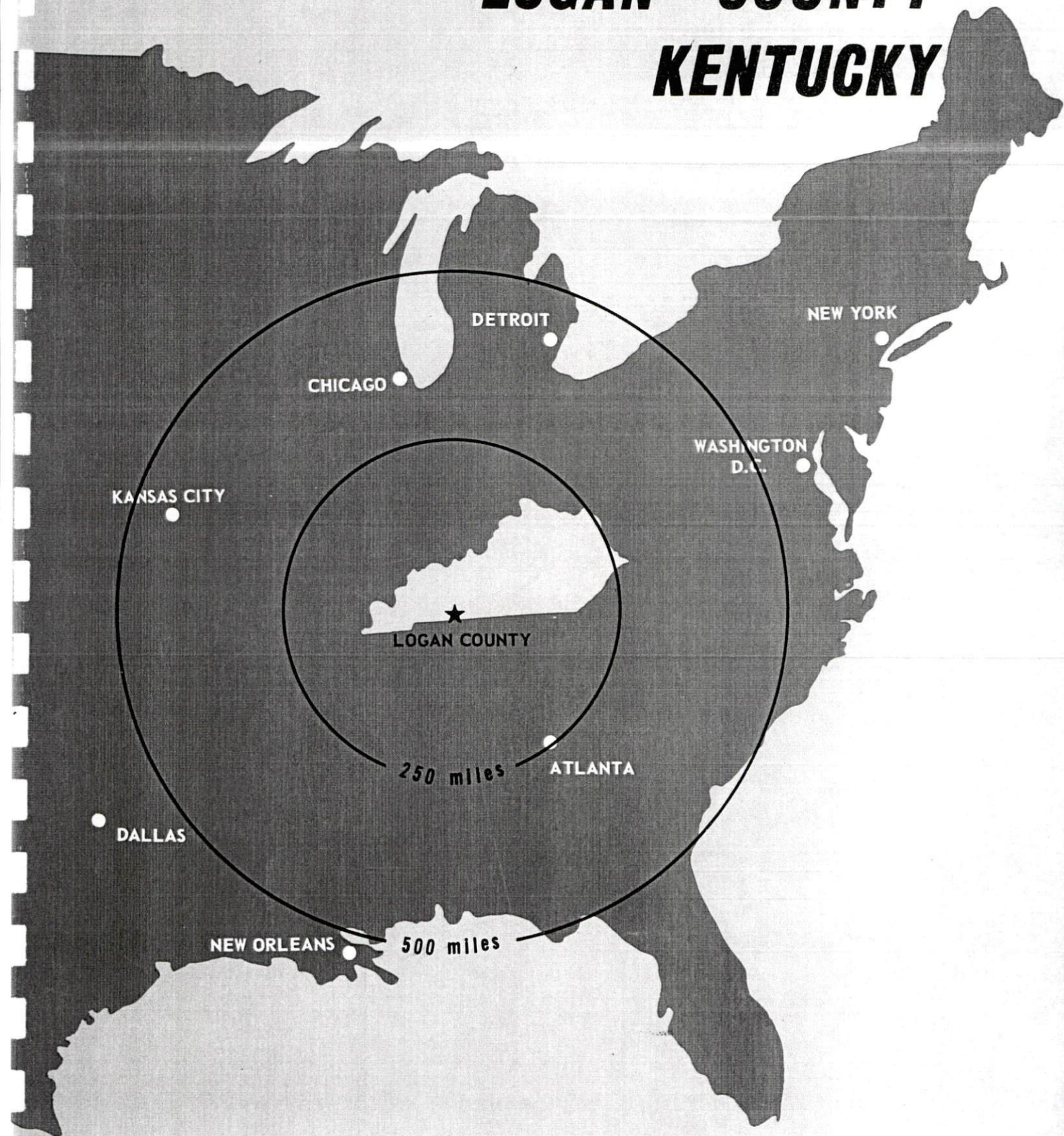
Recommended Citation

Kentucky Library Research Collection, "Industrial Resources: Logan County" (1972). *Logan County*. Paper 9.
https://digitalcommons.wku.edu/logan_cty/9

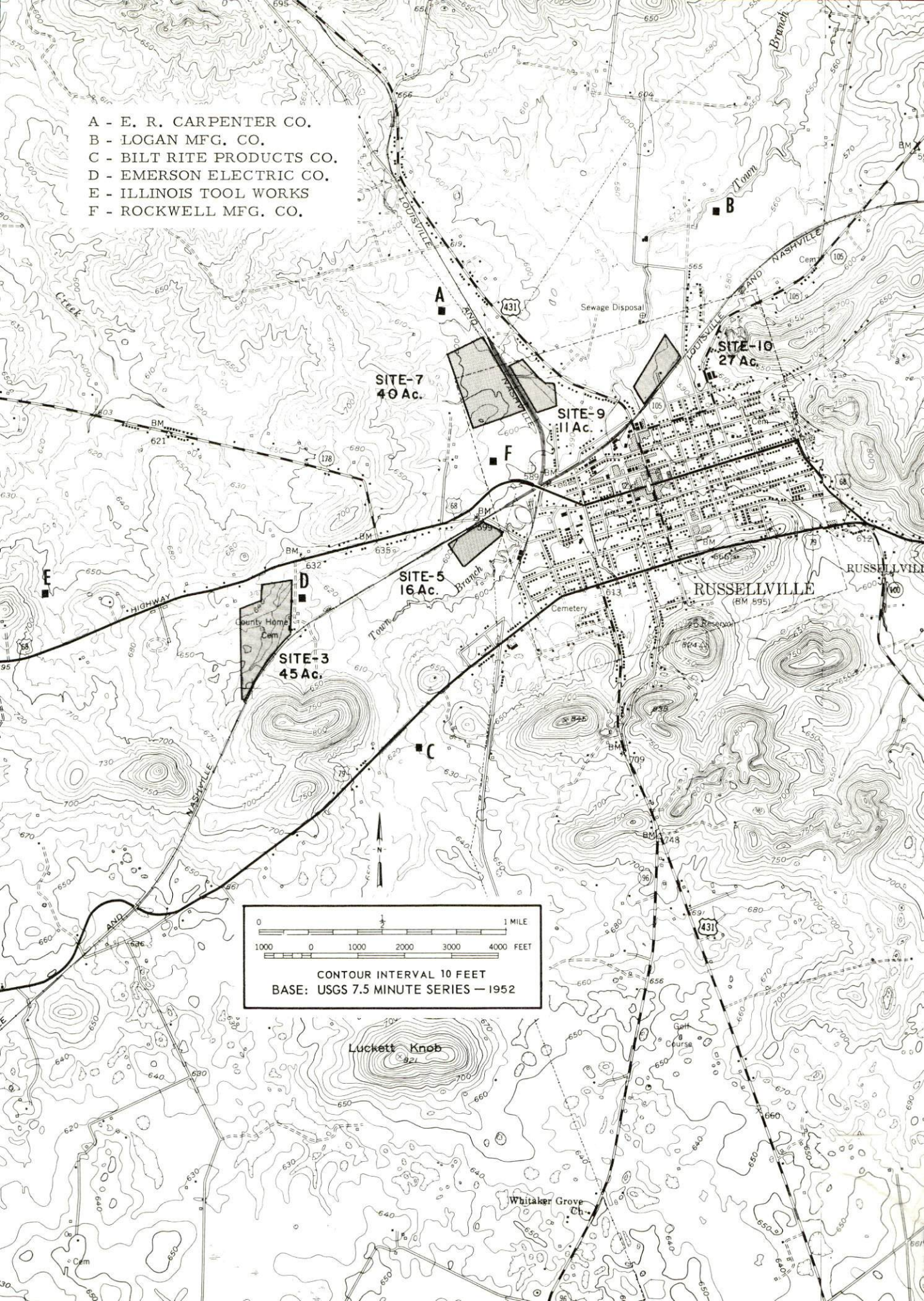
This Report is brought to you for free and open access by TopSCHOLAR®. It has been accepted for inclusion in Logan County by an authorized administrator of TopSCHOLAR®. For more information, please contact topscholar@wku.edu.

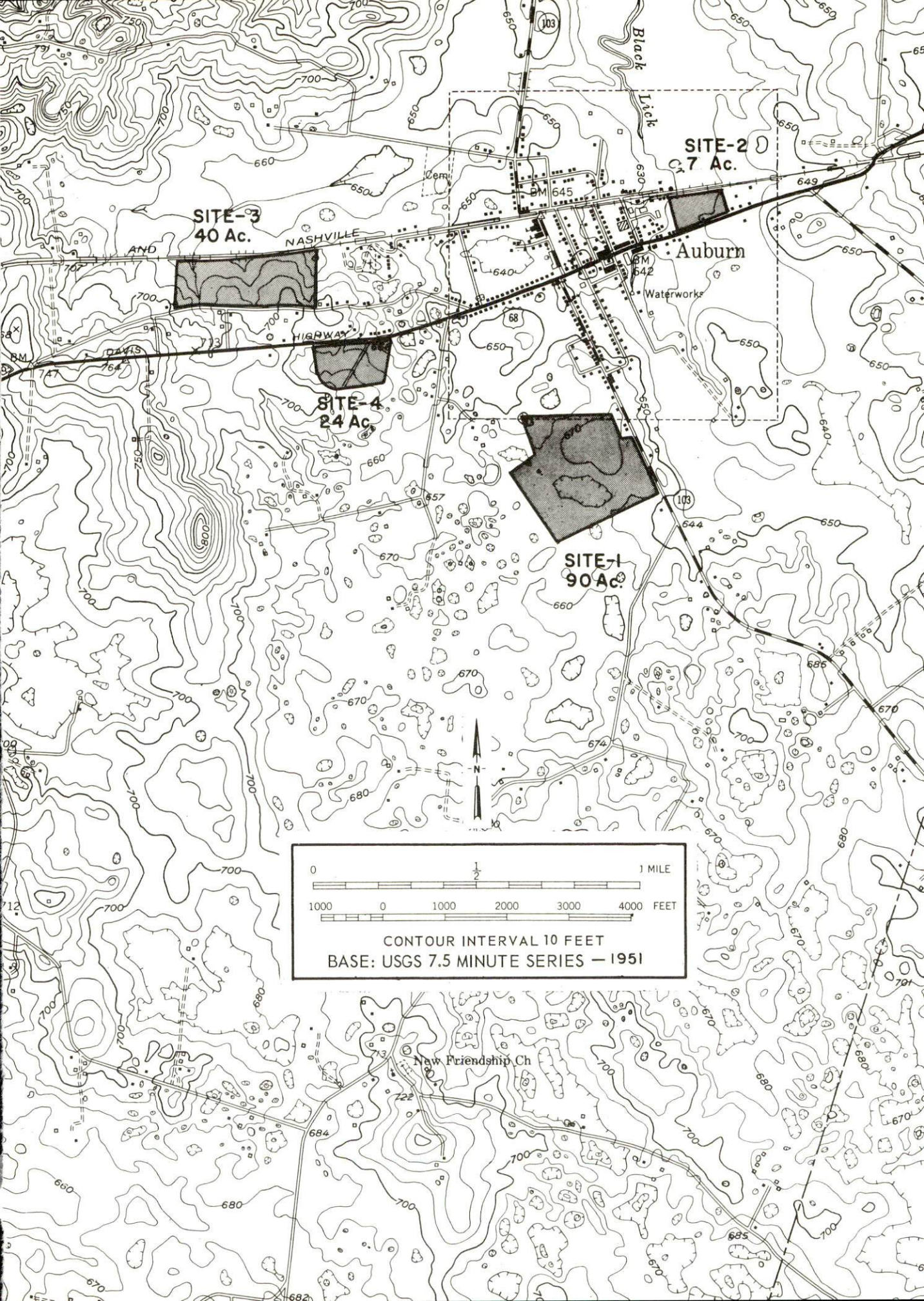
INDUSTRIAL RESOURCES

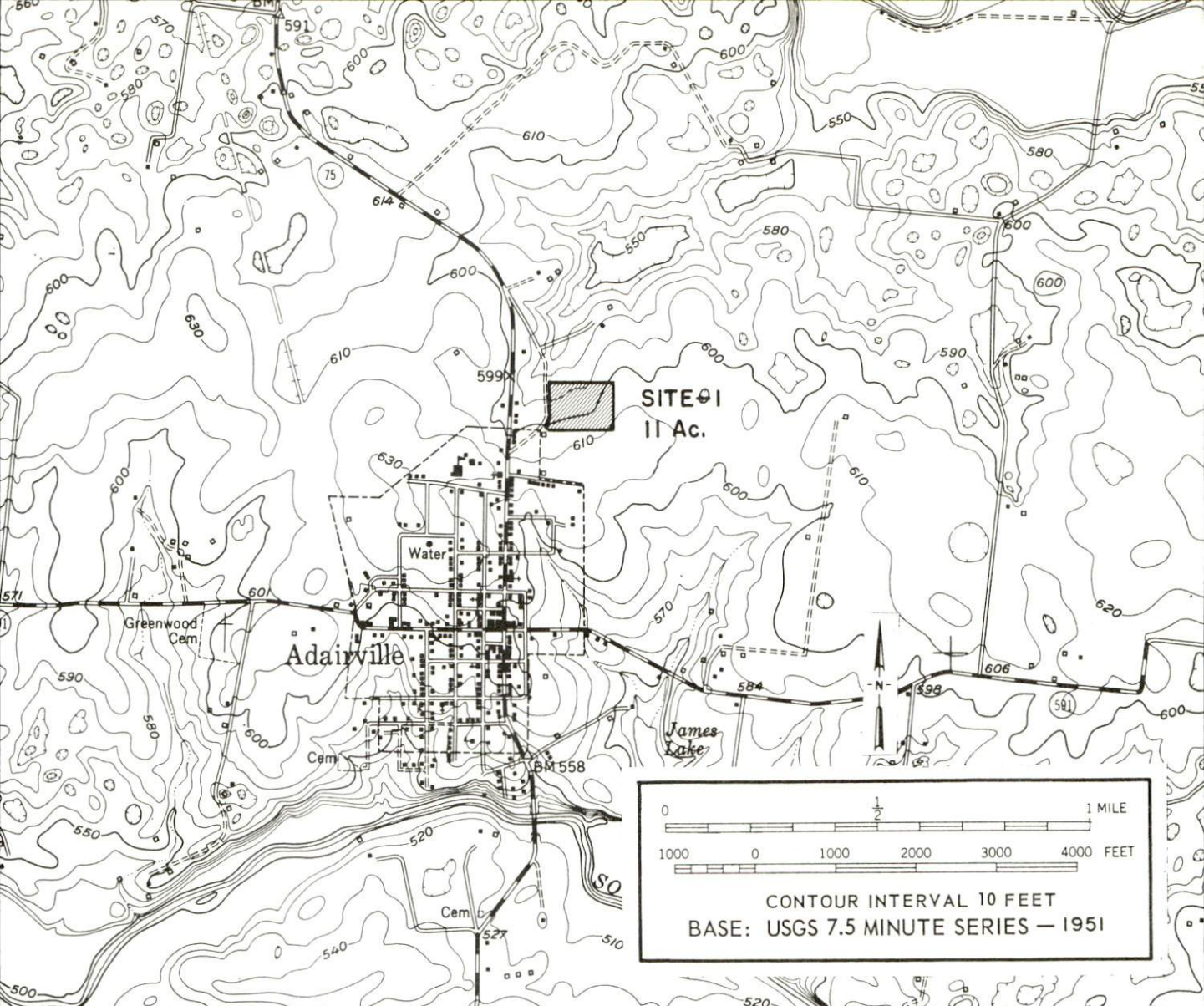
LOGAN COUNTY KENTUCKY



- A - E. R. CARPENTER CO.
B - LOGAN MFG. CO.
C - BILT RITE PRODUCTS CO.
D - EMERSON ELECTRIC CO.
E - ILLINOIS TOOL WORKS
F - ROCKWELL MFG. CO.



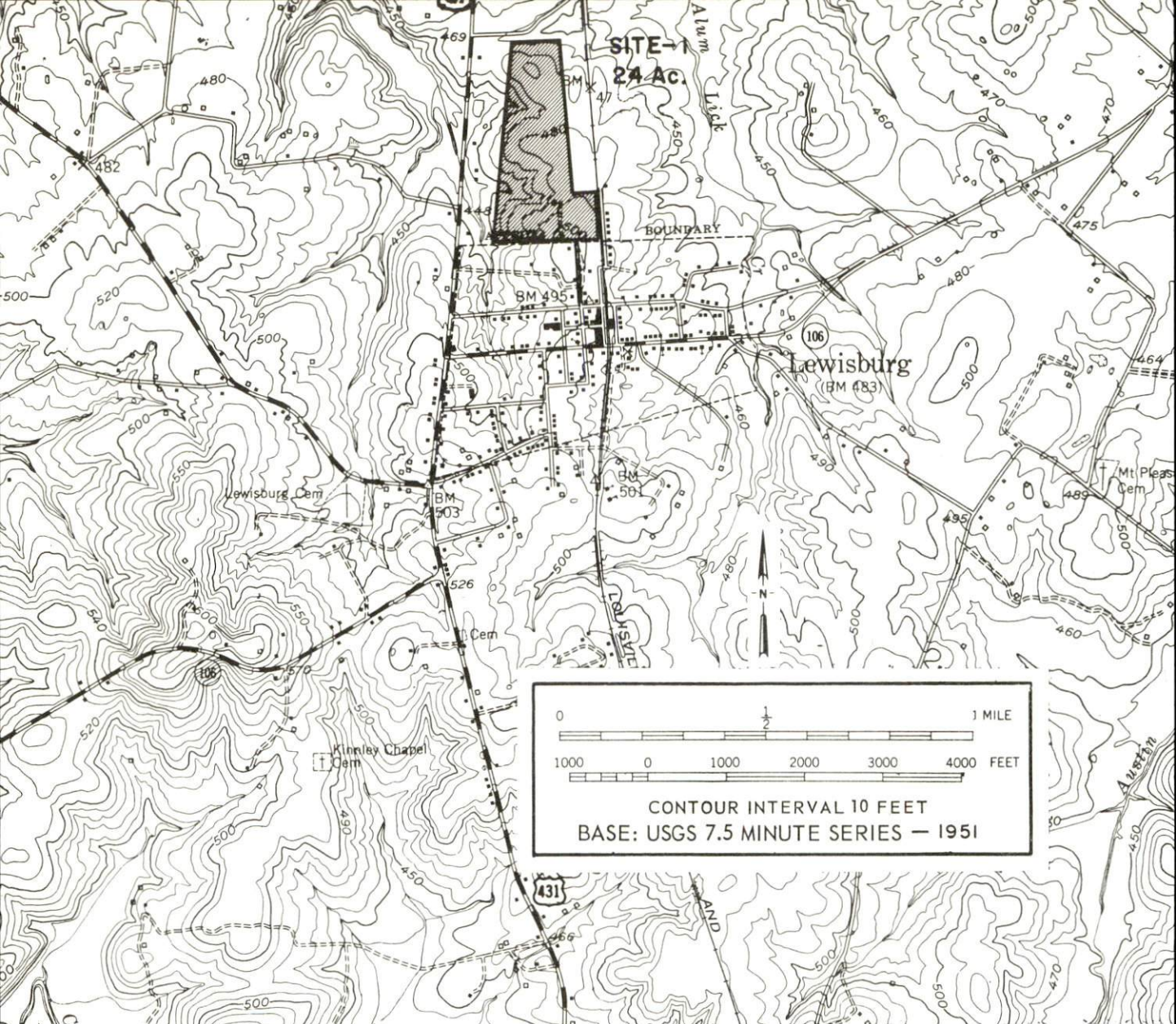




For further information concerning the following sites, contact Mr. Burton Estep, Adairville Banking Company, or the Kentucky Department of Commerce, Frankfort, Kentucky.

ADAIRVILLE

SITE #1: ACREAGE: 11 acres
 LOCATION: North of city limits
 ZONING: None
 HIGHWAY ACCESS: Unpaved access road to U. S. 431
 RAILROADS: Not rail served
 WATER: Adairville Water Works
 SIZE LINE: 6-inch line, 200 feet from site
 GAS: Western Kentucky Gas Company
 SIZE MAIN: 4-inch main, 200 feet from site
 ELECTRICITY: Pennyrile RECC
 SEWERAGE: Adairville Sewerage Plant, 8-inch main
 200 feet from site
 OWNERSHIP: Private



For further information concerning the following site, contact Mr. R. C. McReynolds, Lewisburg Banking Company, Lewisburg, Kentucky, or the Kentucky Department of Commerce, Frankfort, Kentucky.

LEWISBURG

SITE #1: ACREAGE: 24 acres
 LOCATION: North part of city
 ZONING: None
 HIGHWAY ACCESS: City street to U. S. 431
 RAILROADS: Louisville & Nashville Railroad along
 portion of east boundary
 WATER: Lewisburg Water Works
 SIZE LINE: 6-inch line adjacent to site
 GAS: Natural gas not available
 ELECTRICITY: Pennyriple RECC
 SEWERAGE: Plans for treatment plant under contract
 OWNERSHIP: Private

For additional information concerning the following industrial sites, contact Mayor H. D. Scott, Auburn, Kentucky; or the Kentucky Department of Commerce, Frankfort, Kentucky.

AUBURN

SITE #1: ACREAGE: 90 acres
LOCATION: Along southern boundary of Auburn
ZONING: None
HIGHWAY ACCESS: Kentucky 103 along portion of east border
RAILROADS: Not rail served
WATER: Auburn Water & Sewer Department
SIZE LINE: 6-inch line, adjacent to site
GAS: Western Kentucky Gas Company
SIZE MAIN: 2-inch main, adjacent to site
ELECTRICITY: Warren RECC
SEWERAGE: Auburn Water & Sewer Department
OWNERSHIP: Auburn Industrial Foundation

SITE #2: ACREAGE: 7 acres
LOCATION: East of business district, within city limits
ZONING: None
HIGHWAY ACCESS: U. S. 68 along south border
RAILROADS: Louisville & Nashville Railroad along north boundary
WATER: Auburn Water & Sewer Department
SIZE LINE: 6-inch line on site
GAS: Western Kentucky Gas Company
SIZE MAIN: 4-inch main on site
ELECTRICITY: Warren RECC
SEWERAGE: Auburn Water & Sewer Department
OWNERSHIP: Private

SITE #3: ACREAGE: 40 acres
LOCATION: Three-quarter mile west of Auburn
ZONING: None
HIGHWAY ACCESS: Paved access road to U. S. 68
RAILROADS: Louisville & Nashville Railroad along north border
WATER: Auburn Water & Sewer Department
SIZE LINE: 6-inch line, 250 feet from site
GAS: Western Kentucky Gas Company
SIZE MAIN: 2-inch main, 250 feet from site
ELECTRICITY: Warren RECC
SEWERAGE: Auburn Water & Sewer Department
OWNERSHIP: Private

SITE #4: ACREAGE: 24 acres
LOCATION: Just west of Auburn city limits
ZONING: None
HIGHWAY ACCESS: U. S. 68 along north border
RAILROADS: Not rail served
WATER: Auburn Water & Sewer Department
SIZE LINE: 6-inch line across U. S. 68
GAS: Western Kentucky Gas Company
SIZE MAIN: 2-inch main across U. S. 68
ELECTRICITY: Warren RECC
SEWERAGE: Auburn Water & Sewer Department
OWNERSHIP: Private

LOGAN COUNTY INDUSTRIAL SITES

1972

For more information about the following sites, contact Wallace Herndon, Mayor, City Hall, Russellville, Kentucky; or the Kentucky Department of Commerce, Washington and Wapping Streets, Frankfort, Kentucky 40601.

RUSSELLVILLE

SITE #3: ACREAGE: 45 acres
LOCATION: West Russellville
ZONING: Industrial
HIGHWAY ACCESS: Access road to U. S. 68
RAILROADS: Louisville & Nashville Railroad along south-southeast boundary
WATER: Russellville Water & Sewer Company
SIZE LINE: 6-inch line, 400 feet from site
GAS: Western Kentucky Gas Company
SIZE MAIN: 10-inch main adjacent to site
ELECTRICITY: Pennyryle RECC
SEWERAGE: Russellville Water & Sewer Company
OWNERSHIP: Private

SITE #5: ACREAGE: 16 acres
LOCATION: West Russellville
ZONING: Industrial
HIGHWAY ACCESS: City street along east border
RAILROADS: Louisville & Nashville Railroad along north boundary
WATER: Russellville Water & Sewer Company
SIZE LINE: 12-inch line 400 feet from site
GAS: Western Kentucky Gas Company
SIZE MAIN: 4-inch main adjacent to site
ELECTRICITY: Russellville Electric Plant Board
SEWERAGE: Russellville Water & Sewer Company
OWNERSHIP: Private

SITE #7: ACREAGE: 40 acres
LOCATION: Northwestern city limits
ZONING: Industrial
HIGHWAY ACCESS: Access road 400 feet from site
RAILROADS: Louisville & Nashville Railroad along east boundary
WATER: Russellville Water & Sewer Company
SIZE LINE: 12-inch line across railroad tracks
GAS: Western Kentucky Gas Company
SIZE MAIN: 4-inch main adjacent to site
ELECTRICITY: Russellville Electric Plant Board
SEWERAGE: Russellville Water & Sewer Company
OWNERSHIP: Private

SITE #9: ACREAGE: 11 acres
LOCATION: North Russellville
ZONING: Industrial
HIGHWAY ACCESS: City street to U. S. 431
RAILROADS: Louisville & Nashville Railroad along west boundary
WATER: Russellville Water & Sewer Company
SIZE LINE: 6-inch line on site
GAS: Western Kentucky Gas Company
SIZE MAIN: 3-inch main along Kentucky 431
ELECTRICITY: Russellville Electric Plant Board
SEWERAGE: Russellville Water & Sewer Company
OWNERSHIP: Private

SITE #10: ACREAGE: 27 acres
LOCATION: Northern part of city
ZONING: Industrial
HIGHWAY ACCESS: City street on site
RAILROADS: Louisville & Nashville Railroad along south boundary
WATER: Russellville Water & Sewer Company
SIZE LINE: 6-inch line adjacent to site
GAS: Western Kentucky Gas Company
SIZE MAIN: 3-inch main adjacent to site
ELECTRICITY: Russellville Electric Plant Board
SEWERAGE: Russellville Water & Sewer Company
OWNERSHIP: Private

INDUSTRIAL RESOURCES
LOGAN COUNTY, KENTUCKY

Prepared by
The Kentucky Department of Commerce
in cooperation with
The Russellville-Logan County Chamber of Commerce
The City of Adairville
The City of Auburn
and
The Lewisburg Industrial Corporation

1972

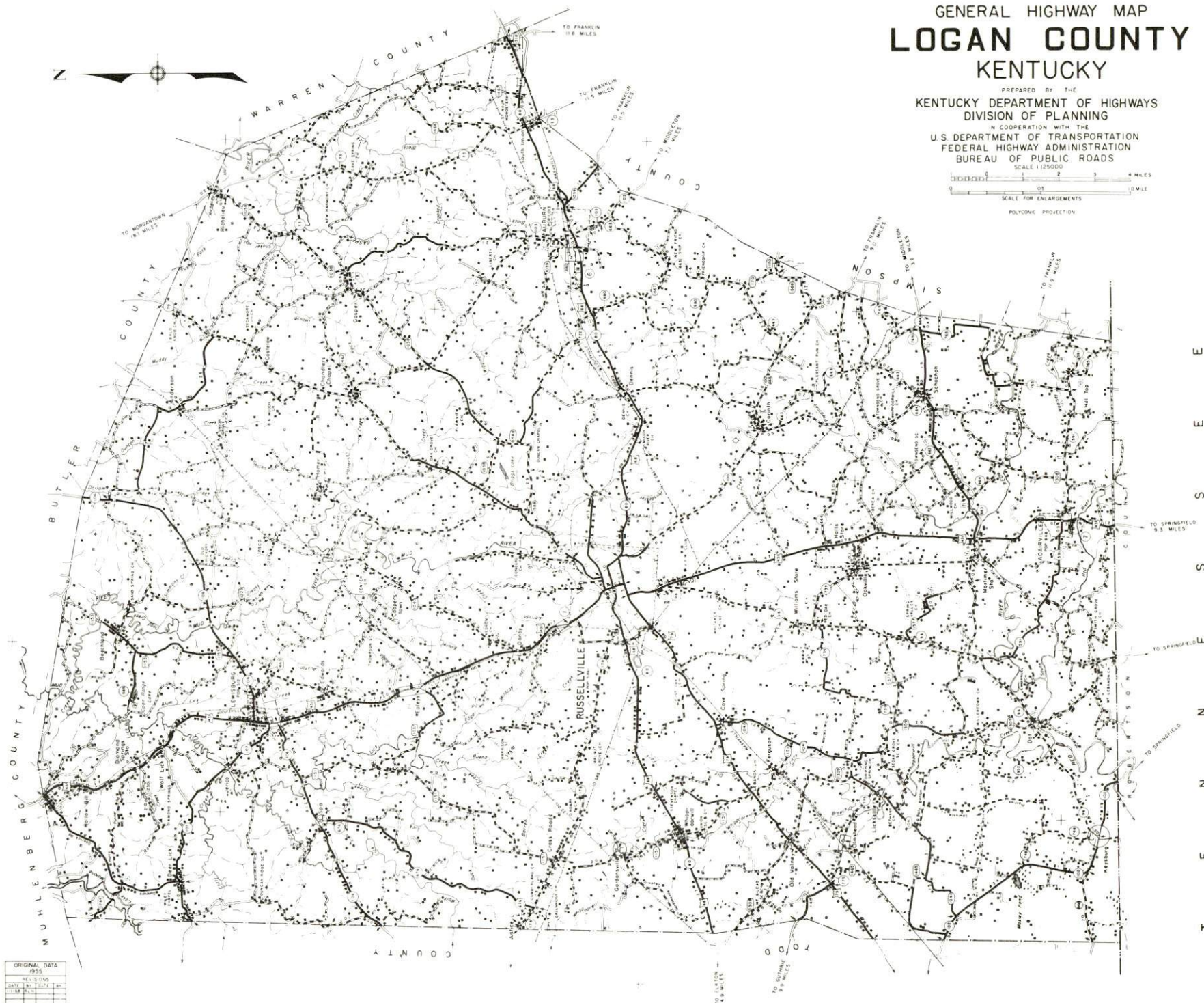
TABLE OF CONTENTS

<u>Chapter</u>	<u>Page</u>
INDUSTRIAL SITES	i
LOGAN COUNTY, KENTUCKY - A RESOURCE PROFILE.	1
THE LABOR MARKET	4
Population Trends	4
General Employment Characteristics, 1970.	4
Manufacturing Employment Trends by Industry	4
Major Logan County Manufacturing Firms, Their Products and Employment	7
Wage Rates for Selected Occupations.	8
Labor Organizations	9
Current and Future Labor Supply	10
Total Personal Income	10
Per Capita Personal Income	10
EDUCATION	11
Public Schools	11
Parochial Schools	11
Vocational Schools.	13
Colleges and Universities.	13
TRANSPORTATION	14
Rail	14
Truck Service.	14
Air.	15
Bus	15
Taxi	15
Rental Services	15
POWER AND FUEL	16
Electricity	16
Natural Gas.	16
WATER AND SEWERAGE	18
Water	18
Sewerage	20

<u>Chapter</u>	<u>Page</u>
LOCAL GOVERNMENT	21
City	21
County	21
Assessed Value of Property, 1970	21
Local General Property Tax Rates Per \$100 of	
Assessed Valuation, 1971.	22
Planning and Zoning	22
Safety	22
Police	22
Fire	22
Rescue Service	23
Sanitation	23
HEALTH.	25
Hospitals.	25
Nursing Homes	25
Public Health.	25
OTHER LOCAL FACILITIES	26
Communications	26
Library Services	28
Religious Institutions	28
Financial Institutions	29
Hotels and Motels.	29
Clubs and Organizations	29
RECREATION	31
Local	31
Area.	32
AGRICULTURE - NATURAL RESOURCES - CLIMATE	33
Agriculture.	33
Natural Resources	33
Climate	33
HISTORY.	34

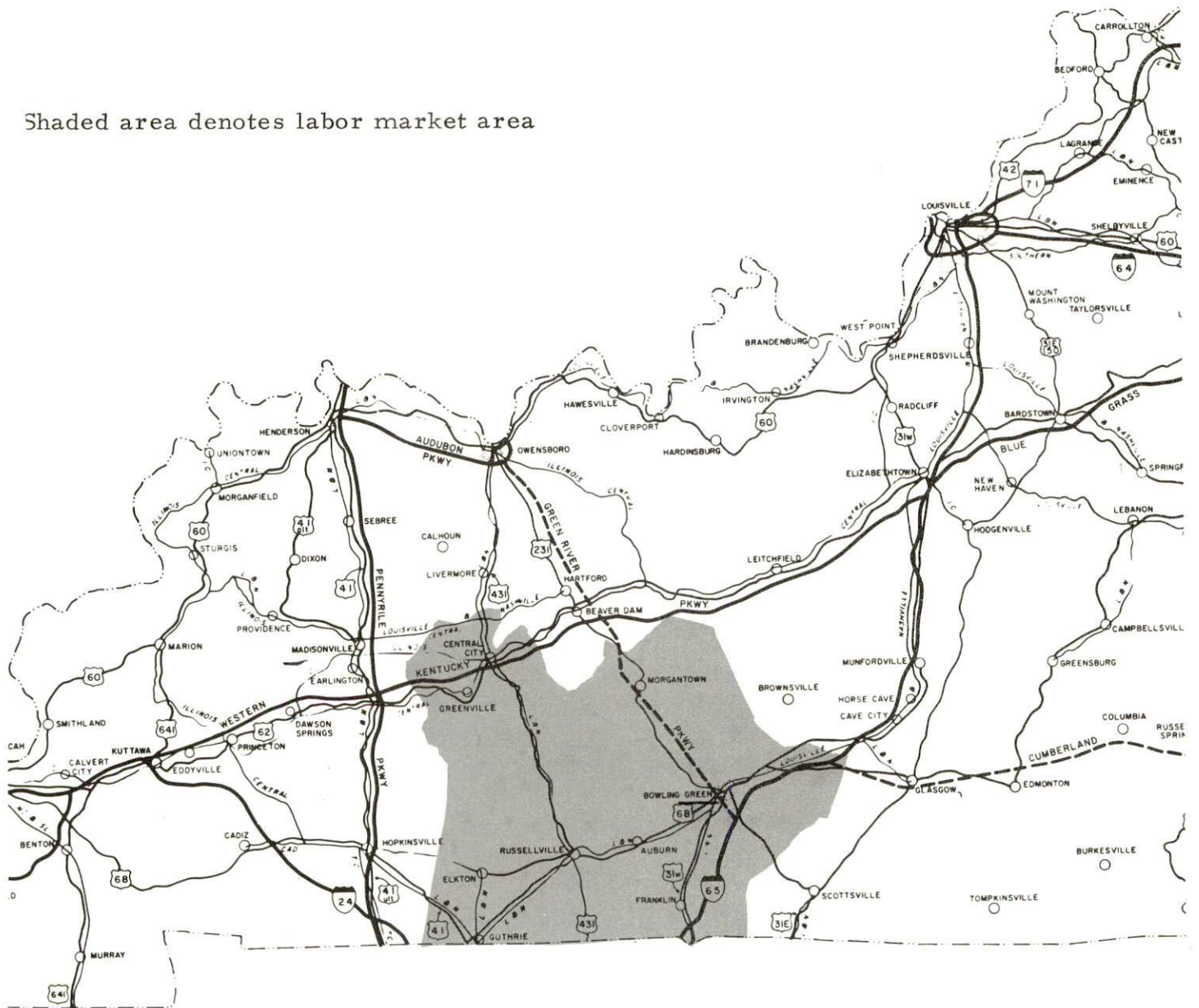
GENERAL HIGHWAY MAP
LOGAN COUNTY
KENTUCKY

PREPARED BY THE
KENTUCKY DEPARTMENT OF HIGHWAYS
DIVISION OF PLANNING
IN COOPERATION WITH THE
U.S. DEPARTMENT OF TRANSPORTATION
FEDERAL HIGHWAY ADMINISTRATION
BUREAU OF PUBLIC ROADS

[illegible]

LOGAN COUNTY LABOR MARKET AREA

Shaded area denotes labor market area



LOGAN COUNTY, KENTUCKY - A RESOURCE PROFILE

Location

Logan County, located in the southwestern part of Kentucky, is in the Pennyriple Region, which includes the famous Kentucky and Barkley Lakes and the new Land Between the Lakes National Recreation Area. Russellville, the county seat, is the hub of Logan County. Adairville, Auburn, and Lewisburg are only minutes away. Russellville is 103 miles from Paducah, 126 miles from Louisville, and 51 miles from Nashville, Tennessee.

The 1970 population of Logan County was 21,793. The 1970 population of Russellville was 6,456, Adairville 973, Auburn 1,160, and Lewisburg 651.

The Economic Framework

Total employment in Logan County averaged 9,300 in 1970, with manufacturing providing 3,200 of these jobs. Agriculture provided 2,000 jobs, and trade and services provided 1,370 jobs. Industrial employment is heaviest in machinery and metal products and apparel industries.

Per capita personal income in the county in 1969 was \$2,620, an increase of over 123 percent since 1959.

In the Logan County labor market area, which includes Logan and its five surrounding Kentucky counties, the total employment in 1970 was 57,200. Manufacturing provided 14,100 jobs while trade and services provided 11,235 jobs and agriculture provided 7,700 jobs. Area industrial employment has more than doubled since 1960 with sharpest gains in machinery and metal products, apparel, textiles, chemicals, and rubber industries.

Resources for Growth

1. There is a current estimated labor supply of 3,765 men and 3,155 women available for industrial jobs in the labor market area. Commuting from surrounding counties to jobs in Russellville is commonplace today. In addition, 8,100 young men and 7,790 young women will become 18 years of age by 1977 and potentially available for industrial jobs.

2. The local transportation capability is good. Interstate 65 is approximately 30 miles from Russellville, and the Western Kentucky Parkway is 37 miles distant. The Bowling Green-Owensboro Parkway and the Bowling Green-Somerset Parkway are expected to be completed

in 1972 and will give easy access to the major highway arteries. The Louisville & Nashville Railroad serves Logan County with a variety of services. Commercial air service is available only minutes away at Bowling Green. In addition, the Russellville-Logan County Airport has a 2,800-foot paved runway and Lewisburg has a 2,000-foot turf runway for light aircraft.

3. Energy - Natural gas is provided by the Western Kentucky Gas Company, and electricity is supplied by the Russellville Electric Plant Board, the Pennyryle RECC, and the Warren RECC.

4. Industrial sites - Russellville has five industrial sites; however, additional acreage is available for industrial use. Adairville has one industrial site, Auburn has four industrial sites, and Lewisburg has one industrial site.

5. There are two universities, two senior colleges, and one community college within 80 miles of Russellville. An area vocational school is located in Bowling Green, 30 miles distant, and an extension center is located in Russellville.

Community Programs for Improvement

Russellville

Recent: new 80-acre park, community center, several new stores, new elementary school, 40 additional low-rent housing units, soil analysis survey made on 30,000 acres (3-mile radius), and a feasibility study made on water, sewage treatment plant, water district, city traffic, by-pass, and recreational park.

Planned: new wing on hospital, expansion of water treatment plant, water district for northern and central Logan County, and a billion-gallon lake to provide water for the Lewisburg and Russellville water district.

Adairville

Recent: 40 low-rent housing units, expansion of Odom Sausage Plant (under construction), new subdivision, remodeled store fronts on city square, several new stores, \$100,000 expansion of the Auburn Hosiery Mill.

Planned: water district, 40 additional low-rent housing units.

Auburn

Recent: new park with softball field, playground equipment, picnic areas and lights for after dark activities, remodeled store fronts on city square, paving of several city streets, and additional Mercury vapor lights installed.

Planned: tennis courts, swimming pool, horseshoe court, and miniature golf course for city park.

Lewisburg

Recent: new Mercury vapor lights, community center, several city streets paved.

Planned: a new sewage treatment plant to be completed in the Fall of 1972.

Recreation, Entertainment and Livability

Logan County is within easy driving distance to many of Kentucky's beautiful lakes and state parks. Fishing, boating, sailing, swimming and picnicking are available. Cabins and lodges are abundant.

Western Kentucky University, located in Bowling Green, offers a complete program of NCAA major college athletics. Lectures, concerts, and art exhibits are also open to the public.

The world renowned Mammoth Cave is located just north of Logan County.

Lake Malone, an 825-acre lake with 100 miles of shoreline, is located only 12 miles from Russellville.

The 1,100-acre Audubon Council, Boy Scouts of America camp, serving 26 counties in west Kentucky, is one of the newest and finest camps in mid-America. It is located about 2 miles northwest of Russellville and surrounds a 150-acre lake which it leases from the City of Russellville.

THE LABOR MARKET

POPULATION TRENDS^{1/}

Area	Population			Percent Change	
	1970	1960	1950	1960-70	1950-60
Russellville	6,456	5,861	4,529	+10.2	+29.4
Adairville	973	848	800	+14.7	+ 6.0
Auburn	1,160	1,013	994	+14.5	+ 1.9
Lewisburg	651	512	496	+27.1	+ 3.2
Labor Market Area	140,362	126,676	133,471	+10.8	- 5.1
Logan County	21,793	20,896	22,335	+ 4.3	- 6.4
Butler County	9,723	9,586	11,309	+ 1.4	-15.2
Muhlenberg County	27,537	27,791	32,501	- 0.9	+14.5
Simpson County	13,054	11,548	11,678	+13.0	- 1.1
Todd County	10,823	11,364	12,890	- 4.8	-11.8
Warren County	57,432	45,491	42,758	+26.2	+ 6.4

GENERAL EMPLOYMENT CHARACTERISTICS, 1970^{2/}

Major Employment Group	Employment	
	Logan County	Labor Market Area
TOTAL	9,300	57,200
Agricultural	2,000	7,700
Nonagricultural	7,300	49,500
Manufacturing	3,200	14,100
Trade and Services	1,370	11,234
Government	1,000	8,100

MANUFACTURING EMPLOYMENT TRENDS BY INDUSTRY SEPTEMBER 1970 AND 1960^{3/}

Industry	Logan County			Labor Market Area		
	1970	1960	%Change	1970	1960	%Change
TOTAL	3,342	1,079	+ 209.7	13,921	5,779	+ 140.9
Food & kindred products	215	82	+ 162.2	838	713	+ 17.5
Tobacco	0	0	-	142	171	- 17.0
Apparel, textiles, leather	930	613	+ 51.7	4,258	1,946	+ 118.8
Lumber & furniture	279	125	+ 123.2	1,172	773	+ 51.6
Printing, publishing, paper	19	8	+ 137.5	185	98	+ 88.8
Chemicals, petroleum, coal, rubber	195	47	+ 314.9	1,065	102	+ 944.1
Stone, clay & glass	18	15	+ 20.0	55	51	+ 7.8
Primary metals	360	188	+ 91.5	449	188	+ 138.8
Machinery & metal products	1,212	0	-	5,604	1,736	+ 222.8
Other	114	1	+11300.0	153	1	+15200.0



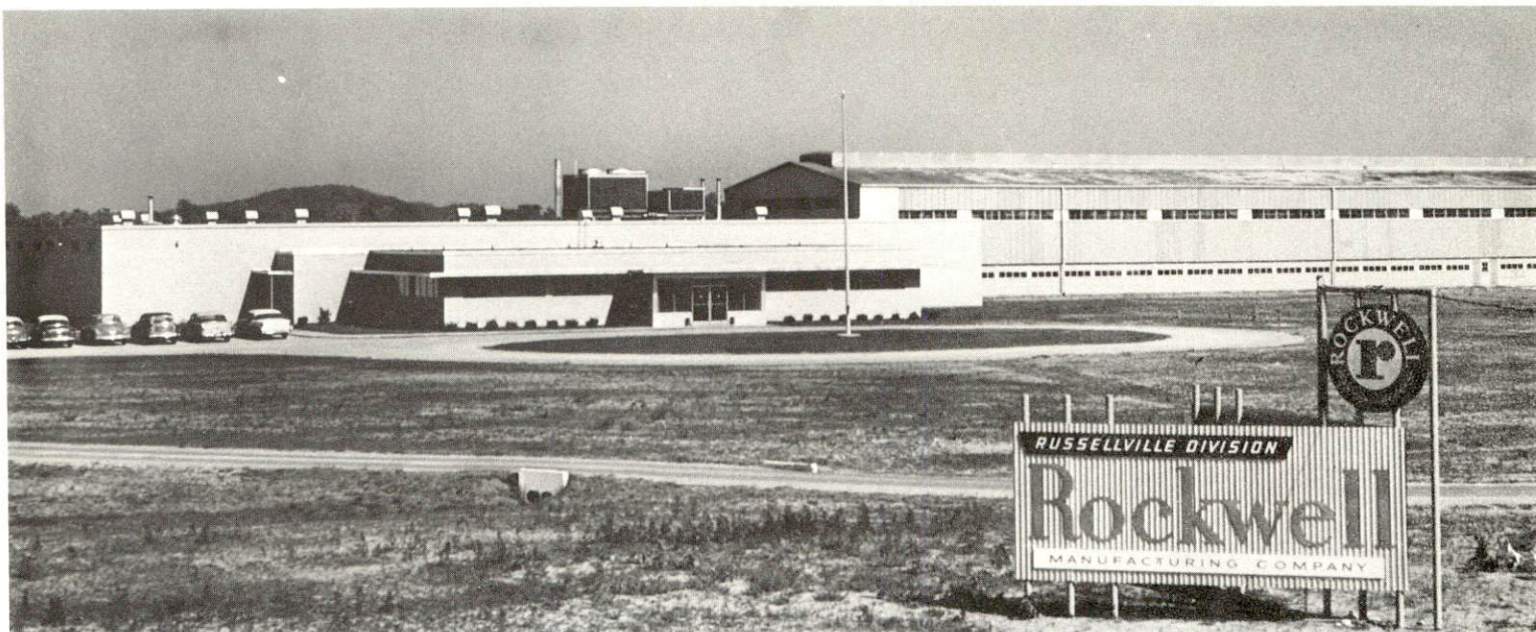
EMERSON ELECTRIC CO.



BILT-RITE PRODUCTS, INC.
DIVISION OF U. S. INDUSTRIES



LOGAN MANUFACTURING CO.



ROCKWELL MANUFACTURING COMPANY



ILLINOIS TOOL WORKS, INC.

MAJOR LOGAN COUNTY MANUFACTURING FIRMS,
THEIR PRODUCTS AND EMPLOYMENT 4

Firm	Product	Employment		
		Total	Male	Female
<u>Adairville</u>				
Auburn Hosiery Mills, Inc.	Women's hosiery	217	51	166
Odom Sausage Co.	Sausage, lard	56	46	10
<u>Auburn</u>				
Auburn Dyeing & Finishing Co.	Ladies' hosiery, panty hose	155	15	140
Auburn Hosiery Mills, Inc.	Ladies' hosiery, panty hose	150	70	80
The Auburn Mills, Inc.	Flour, corn meal, feed	29	27	2
Auburn Roller Mills	Corn meal, feed	25	24	1
Caldwell Lace Leather Co. , Inc.	Leather tanning, gaskets, leather laces	90	83	7
Graham Mfg. , Inc.	Church furniture, institutional, motel furniture	61	60	1
<u>Lewisburg</u>				
Hinton Lumber, Inc.	Rough lumber	26	25	1
Kentucky Mills Lumber & Mfg. Co.	Pallets, bases, skids, boxes	60	51	9
<u>Russellville</u>				
Bilt Rite Products Co.	Cages, wire mesh, wire drawing, poultry brooders	75	73	2
E. R. Carpenter Co.	Urethane foam cushion	200		
Coca-Cola Bottling Co.	Soft drinks	36	32	4
Commonwealth Fertilizer Co. , Inc.	Fertilizer	33	31	2
Emerson Electric Co.	Hermetic electric motors	1,000	500	500
Illinois Tool Works, Inc.	Metal fasteners	NA		
Logan Mfg. Co.	Men's work pants	372	65	307
Rockwell Mfg. Co.	Aluminum die castings	313	185	128

WAGE RATES FOR SELECTED OCCUPATIONS
RUSSELLVILLE, KENTUCKY 5/

<u>Classification</u>	<u>Wages Per Hour</u>		
	<u>Starting</u>	<u>Maximum</u>	<u>Prevailing</u>
<u>Production Employees</u>			
Assembler	\$1.94	\$2.51	\$2.08
Inspector	1.95	3.00	2.30
Production Laborer	1.75	2.46	1.88
Welder, Arc or Acetylene (Class-A)	1.93	2.75	2.30
<u>Service Employees</u>			
Electrician (Class-A)	\$2.75	\$5.00	\$3.79
Laborer	1.60	3.25	2.63
Machinist	2.55	4.10	3.14
Mechanic, Maintenance	2.25	3.82	3.10
Truck Driver, Industrial (Class-A)	1.80	3.95	2.50
<u>Office Employees</u>			
Bookkeeper	\$1.60	\$2.20	\$2.05
File Clerk	1.65	2.10	1.85
Receptionist	1.60	1.80	1.68
Secretary	1.65	2.40	2.35
Typist	1.60	1.78	1.68

WAGE RATES FOR SELECTED OCCUPATIONS
ADAIRVILLE, KENTUCKY 5/

<u>Classification</u>	<u>Wages Per Hour</u>		
	<u>Starting</u>	<u>Maximum</u>	<u>Prevailing</u>
<u>Production Employees</u>			
Inspector	\$1.60	\$2.00	\$1.80
Production Laborer	1.60	1.70	1.65

WAGE RATES FOR SELECTED OCCUPATIONS
AUBURN, KENTUCKY ^{5/}

<u>Classification</u>	<u>Wages Per Hour</u>		
	<u>Starting</u>	<u>Maximum</u>	<u>Prevailing</u>
<u>Production Employees</u>			
Assembler	\$1.60	\$1.70	\$1.65
Inspector	1.60	2.10	2.03
Production Laborer	1.60	2.05	1.80
Package Machine Operator	1.60	2.25	1.86
Boarding Machine Operator	1.60	1.66	1.61
Production Operator		2.00	1.79
<u>Office Employees</u>			
Chief Clerk	\$1.60	\$2.00	\$1.70

WAGE RATES FOR SELECTED OCCUPATIONS
LEWISBURG, KENTUCKY ^{5/}

<u>Classification</u>	<u>Wages Per Hour</u>		
	<u>Starting</u>	<u>Maximum</u>	<u>Prevailing</u>
<u>Production Employees</u>			
Production Laborer	\$1.60	\$2.00	\$1.80
Nailer	1.70	2.20	1.90

LABOR ORGANIZATIONS

<u>Union</u>	<u>Representing workers at:</u>
Teamsters	Russellville Coca-Cola Co.
AIW	U. S. Industries, Inc.
Amalgamated Meat Cutters Union	Odom Sausage Co.

CURRENT AND FUTURE LABOR SUPPLY -
LOGAN COUNTY LABOR MARKET AREA

<u>Area</u>	<u>Current Labor Supply, 1971 ^{6/}</u>			<u>Future Labor Supply by 1977 ^{7/}</u> <u>(Becoming 18 Years of Age)</u>		
	<u>Total</u>	<u>Male</u>	<u>Female</u>	<u>Total</u>	<u>Male</u>	<u>Female</u>
Labor Market Area	6,916	3,763	3,153	15,887	8,101	7,786
Logan	822	270	552	2,552	1,312	1,240
Butler	1,290	809	481	1,184	605	579
Muhlenberg	2,164	815	1,349	3,313	1,687	1,626
Simpson	345	220	125	1,493	748	745
Todd	770	460	310	1,263	642	621
Warren	1,525	1,189	336	6,082	3,107	2,975

TOTAL PERSONAL INCOME ^{8/}

<u>Area</u>	<u>1969*</u>	<u>1959</u>	<u>% Change</u>
Logan County	\$ 57,252,000	\$ 24,094,000	+137.6
Labor Market Area	342,824,000	158,958,000	+115.6
Kentucky	9,202,000,000	4,655,000,000	+ 97.6

PER CAPITA PERSONAL INCOME ^{9/}

<u>Area</u>	<u>1969*</u>	<u>1959</u>	<u>% Change</u>
Logan County	\$2,620	\$1,173	+123.3
Labor Market Area	\$1,580 to 3,000	\$684 to 1,451	NA
Kentucky	2,847	1,552	+ 83.4

*Preliminary figures.

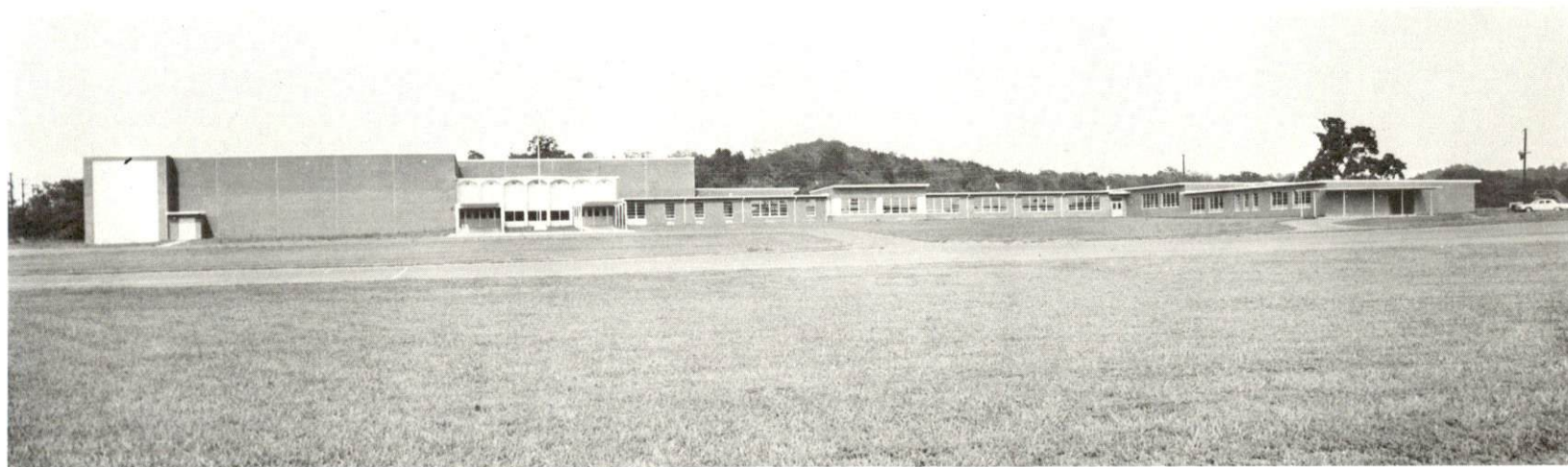
EDUCATION

Public Schools

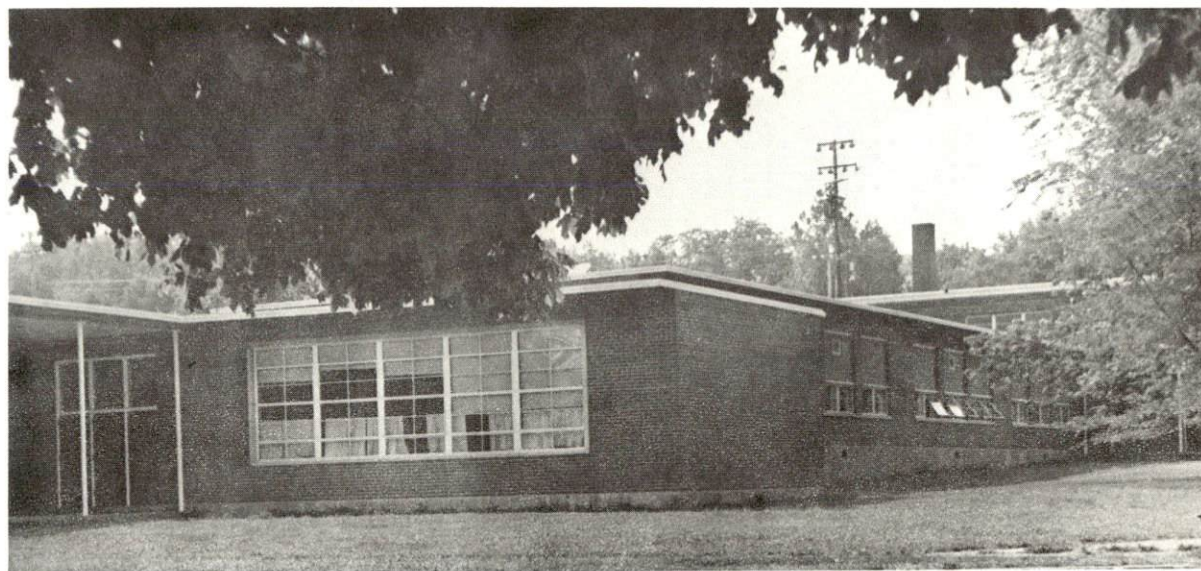
	<u>Russellville</u>	<u>Logan County</u>
Total Enrollment	1,756	3,428
Elementary	856	2,505
Middle School	433	
High School	467	923
Student-Teacher Ratio	20 to 1	22 to 1
Elementary	22 to 1	25 to 1
Middle School	22 to 1	
High School	16 to 1	19 to 1
State Rating of High School	Standard	Basic
Other Accreditations	Southern Association of Colleges and Schools	
Percent High School Graduates to College	65.8	43.8
Current Expenditures Per Pupil	\$445.53	\$442.05
Bonded Indebtedness, June 30, 1971	\$1,287,000	\$340,000

Parochial Schools

Total Enrollment	58
Elementary	58
Student-Teacher Ratio	19 to 1
Elementary	19 to 1



RUSSELLVILLE HIGH SCHOOL AND
DE GRAFFENRIED AUDITORIUM



LOGAN ELEMENTARY SCHOOL

Vocational Schools

	<u>Nearest Area School</u>	<u>Nearest Extension Center</u>
	Bowling Green Area Vocational School	Russellville Extension Center
Location	Bowling Green	Russellville
Miles Distant	29 miles	
Curriculum	Dental Assistant	Appliance Repair
	Health Careers	Auto Mechanics
	Nurse Aide	Carpentry
	Practical Nursing	Drafting
	Surgical Technician	Electricity
	Ward Clerk	Machine Shop
	Distributive Education	Welding
	Electronics (Technology)	Health Careers
	Highway Technology	
	Technical Drafting	
	Air Conditioning & Refrigeration	
	Auto Body Repair	
	Auto Mechanics	
	Carpentry	
	Commercial Foods	
	Drafting	
	Electricity	
	Machine Shop	
	Office Machines Repair	
	Printing	
	Radio & TV Repair	
	Small Engine Repair	
	Tool & Die Making	
	Welding	
	Dental Technician	

Colleges and Universities

<u>Name</u>	<u>Area - Within 80 miles</u>		<u>Highest Degree Conferred</u>
	<u>Location</u>	<u>Enrollment</u>	
Hopkinsville Community College	Hopkinsville	540	Associate
Brescia College	Owensboro	957	Baccalaureate
Kentucky Wesleyan College	Owensboro	839	Baccalaureate
Western Kentucky University	Bowling Green	11,400	Masters
Murray State University	Murray	7,063	Masters

TRANSPORTATION

Rail

Line serving Auburn, Lewisburg, and Russellville - Louisville & Nashville Railroad

Services - Freight, siding, switching. Piggyback service is available at Bowling Green, 29 miles from Russellville.

Adairville - The nearest rail service is at Russellville, 12 miles distant.

RAILWAY TRANSIT TIME FROM RUSSELLVILLE, KENTUCKY, TO: 10/

No. of Days		No. of Days	
City	CL	City	CL
Atlanta, Ga.	3	Los Angeles, Calif.	6
Birmingham, Ala.	3	Louisville, Ky.	2
Chicago, Ill.	3	Nashville, Tenn.	2
Cincinnati, Ohio	2	New Orleans, La.	4
Cleveland, Ohio	4	New York, N. Y.	5
Detroit, Mich.	5	Pittsburgh, Pa.	4
Knoxville, Tenn.	3	St. Louis, Mo.	3

Truck Service

Russellville

Company

Associated Transport, Inc.
McLean Trucking Co.
Motor Freight Corporation
Renner's Express, Inc.
United Parcel Service

Home Office

New York, New York
Winston-Salem, North Carolina
Terre Haute, Indiana
Louisville, Kentucky
Bowling Green, Kentucky

HIGHWAY MILES AND TRUCK TRANSIT TIME IN DAYS FROM
RUSSELLVILLE, KENTUCKY, TO SELECTED MARKET CENTERS

City	Highway Miles	Delivery Time <u>11</u> / LTL TL		City	Highway Miles	Delivery Time LTL TL	
		LTL	TL			LTL	TL
Atlanta, Ga.	307	2-3	1-2	Los Angeles, Calif.	2,007	8-10	4-5
Birmingham, Ala.	256	2-3	1-2	Louisville, Ky.	126	1	1
Chicago, Ill.	400	3	1-2	Nashville, Tenn.	51	1	1
Cincinnati, Ohio	249	1-2	1	New Orleans, La.	581	3- 4	2
Cleveland, Ohio	482	3	2	New York, N. Y.	895	4- 5	2
Detroit, Mich.	504	3	1-2	Pittsburgh, Pa.	508	3	1-2
Knoxville, Tenn.	248	1	1	St. Louis, Mo.	310	2- 3	1-2

Air

	<u>Local</u>	<u>Nearest Commercial</u>
	Russellville-Logan County Airport	Bowling Green-Warren County Municipal Airport
Location:	Russellville	Bowling Green, 30 miles distant
Runways:	1 paved	2 paved
Length:	2,800 ft.	4,000 ft.; 6,500 ft.
Traffic Control:	Wind sock	Wind tee
Lighting:	Runway from dusk to midnight	Runways, obstruction, beacons and wind tee
Services:	80-100 octane, charter, flight instruction, tie down	80-100 octane, jet A-50, storage, minor A & E repairs, FAA flight service station, taxi and car rental service, restaurant, Wright Airlines
	<u>Russellville</u>	<u>Adairville</u>
<u>Bus</u>	Bowling Green- Hopkinsville Bus Line	Fuqua Bus Line
		<u>Auburn and Lewisburg</u>
		Bowling Green- Hopkinsville Bus Line
<u>Taxi</u>	24-hour service	
<u>Rental Services</u>	Car and trailer service	

POWER AND FUEL

Electricity

Company serving Russellville - Russellville Electric Plant Board
Source of power - Tennessee Valley Authority
Total generating capacity - 19,400,000 KW
Industrial rates furnished by - Russellville Electric Plant Board,
Russellville, Kentucky

Company serving Auburn - Warren RECC
Source of power - Tennessee Valley Authority
Total generating capacity - 19,400,000 KW
Industrial rates furnished by - Warren RECC, Bowling Green, Kentucky

Company serving Lewisburg and Adairville - Pennyriple RECC
Source of power - Tennessee Valley Authority
Total generating capacity - 19,400,000 KW
Industrial rates furnished by - Pennyriple RECC, Hopkinsville, Kentucky

Companies serving Logan County - Pennyriple RECC and Warren RECC
Source of power - Tennessee Valley Authority
Total generating capacity - 19,400,000 KW
Industrial rates furnished by - Pennyriple RECC, Hopkinsville, Kentucky;
Warren RECC, Bowling Green, Kentucky

Natural Gas

Company serving Russellville - Western Kentucky Gas Company
Source of supply - Texas Gas Transmission Corporation
Size of transmission main - 4 inches
Distribution mains - 2, 3, and 4 inches
BTU content - 1,000; Specific gravity - .65
Distribution pressure - 15 to 35 psi
Rates - Industrial rates will be furnished by the Western Kentucky Gas
Company, Owensboro, Kentucky.

Company serving Adairville - Western Kentucky Gas Company
Source of supply - Texas Gas Transmission Corporation
Size of transmission main - 3 inches
Distribution mains - 2 and 3 inches
BTU content - 1,000; Specific gravity - .65
Distribution pressure - 15 to 30 psi
Rates - Industrial rates will be furnished by the Western Kentucky Gas
Company, Owensboro, Kentucky.

Company serving Auburn - Western Kentucky Gas Company
Source of supply - Texas Gas Transmission Corporation
Size of transmission main - 6 inches
Distribution mains - 2 and 4 inches
BTU content - 1,040; Specific gravity - .60
Distribution pressure - 20 to 40 psi
Rates - Industrial rates will be furnished by the Western Kentucky Gas Company, Owensboro, Kentucky.

Lewisburg - Natural gas is not available in Lewisburg. Liquified petroleum is available to the residents from local distributors.

WATER AND SEWERAGE

Water

Company serving Russellville - Russellville Water and Sewer Department

Source - 4 lakes, wells

Treatment plant capacity - 1,700,000 gpd

Average daily consumption - 1,200,000 gallons

Peak daily consumption - 1,500,000 gallons

Type treatment - chlorination and filtration

Storage capacity - 1,600,000 gallons

Size mains - 6 to 12 inches

Average pressure - 95 psi

Average temperature - 65 degrees

MONTHLY WATER RATES FOR WHOLESALE AND INDUSTRIAL CONSUMERS

First	2,000 gals.	\$2.50 (Minimum)
Next	3,000 gals.	.90 per M gals.
Next	5,000 gals.	.80 per M gals.
Next	15,000 gals.	.70 per M gals.
Next	25,000 gals.	.60 per M gals.
Next	50,000 gals.	.50 per M gals.
All over	100,000 gals.	.35 per M gals.

Company serving Adairville - Adairville Water Works

Source - Red River

Treatment plant capacity - 360,000 gpd

Average daily consumption - 85,000 gallons

Peak daily consumption - 90,000 gallons

Type treatment - rapid sand filter

Storage capacity - 150,000 gallons

Size mains - 4, 6, and 8 inches

Average pressure - 80 psi

Average temperature - 64 degrees

MONTHLY WATER RATES FOR WHOLESALE AND INDUSTRIAL CONSUMERS

First	1,000 gals.	\$2.00 (Minimum)
Next	2,000 gals.	.90 per M gals.
Next	3,000 gals.	.75 per M gals.
Next	4,000 gals.	.60 per M gals.
All over	10,000 gals.	.40 per M gals.

Company serving Auburn - Auburn Water & Sewer System

Source - spring

Treatment plant capacity - 200,000 gpd

Average daily consumption - 100,000 gallons

Peak daily consumption - 142,000 gallons

Type treatment - sand filter, settling basin and chlorine

Storage capacity - 65,000 gallons

Size mains - 1 to 6 inches

Average pressure - 55 psi

Average temperature - 68 degrees

MONTHLY WATER RATES FOR WHOLESALE
AND INDUSTRIAL CONSUMERS

First	2,000 gals.	\$2.80 (Minimum)
Next	2,000 gals.	1.20 per M gals.
Next	6,000 gals.	1.00 per M gals.
Next	10,000 gals.	.90 per M gals.
Next	10,000 gals.	.80 per M gals.
Next	20,000 gals.	.70 per M gals.
Next	50,000 gals.	.60 per M gals.
All over	100,000 gals.	.50 per M gals.

Company serving Lewisburg - Lewisburg Water Works

Source - lake

Treatment plant capacity - 108,000 gpd

Average daily consumption - 60,000 gallons

Peak daily consumption - 75,000 gallons

Type treatment - rapid sand filter

Storage capacity - 125,000 gallons

Size mains - 4 to 6 inches

Average pressure - 60 psi

Average temperature - 68 degrees

MONTHLY WATER RATES FOR WHOLESALE
AND INDUSTRIAL CONSUMERS

First	2,000 gals.	\$4.50 (Minimum)
Next	3,000 gals.	1.30 per M gals.
Next	5,000 gals.	.80 per M gals.
Next	15,000 gals.	.65 per M gals.
All over	25,000 gals.	.45 per M gals.

Surface water sources - Mud and Red Rivers

Average discharge - Mud River near Lewisburg 149 cfs (30-year record, USGS)

Expected ground water yield - 5 to 200 gpm in southern half of county,
5 gpm or less in northern half of county

Sewerage

Company serving Russellville - Russellville Water and Sewer Department

Design capacity - 1,200,000 gpd

Average daily flow - 900,000 gallons

Treatment - primary and secondary

Type treatment - clarifier, drying beds

Treated effluent discharged into - Town Creek

Size of sanitary mains - 6 to 18 inches

Rates - 75 percent of monthly water bill

Company serving Adairville - Adairville Sewage Plant

Design capacity - 150,000 gpd

Average daily flow - 98,000 gallons

Treatment - secondary

Type treatment - aeration, clarifier, drying beds

Treated effluent discharged into - Red River

Size of sanitary mains - 8, 10, and 12 inches

Rates - 100 percent of monthly water bill

Company serving Auburn - Auburn Water & Sewer System

Design capacity - 350,000 gpd

Average daily flow - 145,000 gallons

Treatment - primary and secondary

Type treatment - clarifier, oxidation basin, drying beds

Treated effluent discharged into - Black Lick Creek

Size of sanitary mains - 6, 8, and 10 inches

Size of storm mains - 12 inches

Rates - 80 percent of monthly water bill

Lewisburg - Septic tanks are presently being used for sewage disposal.

Completion of a sewage treatment plant is scheduled in the Fall of 1972.

LOCAL GOVERNMENT

City

Russellville

Structure - Mayor - 4-year term; 6 councilmen - 2-year terms
Budget 1970-71 - General Fund \$288,947; Water and Sewer Fund \$286,962
Fees and licenses - Occupational license tax of 1 percent on wages or on wages and profits

Adairville

Structure - Mayor - 4-year term; 6 councilmen - 2-year terms
Budget 1970-71 - General Fund \$21,000; Water and Sewer Fund \$26,424
Fees and licenses - Unloading license fee of \$35.50 annually

Auburn

Structure - Mayor - 4-year term; 6 councilmen - 2-year terms
Budget 1971-72 - General Fund \$52,600; Water and Sewer Fund \$55,110
Fees and licenses - Unloading license fee of \$15.50 per year and \$7.50 auto sticker; occupational license tax of 1 percent on wages or on wages and profits

Lewisburg

Structure - Board of Trustees Chairman - 2-year term; 5 members - 2-year terms
Budget 1970-71 - General Fund \$19,416
Fees and licenses - Unloading license fee of \$15.00 per year and \$7.50 auto sticker

County

Structure - County Judge - 4-year term; 8 magistrates - 4-year terms
Budget 1970-71 - General Fund \$267,700; Road Fund \$47,200

Assessed Value of Property, 1970

Classes of Property*	<u>Russellville</u>	<u>Auburn</u>	<u>Lewisburg</u>	<u>Logan County</u>
Real Estate	\$27,264,552	\$3,755,175	\$226,709	\$84,821,015
Tangibles	8,358,644	748,309	58,769	34,151,428
Public Service	1,865,227	300,701		12,411,957 ('69)

*Property assessed at 100 percent of fair value.

Local General Property Tax Rates Per \$100 of Assessed Valuation, 1971 ^{12/}

<u>Taxing Unit*</u>	<u>Russellville</u>	<u>Adairville</u>	<u>Auburn</u>	<u>Lewisburg</u>	<u>Logan County</u>
State	\$.015	\$.015	\$.015	\$.015	\$.015
County	.276	.276	.276	.276	.276
School	.642	.413	.413	.413	.413
City	.240	.440	.340	.260	
Total	\$1.173	\$1.144	\$1.044	\$.964	\$.704

Planning and Zoning

Agency - Russellville Planning Commission

Plans completed - Comprehensive Plan, Subdivision Regulations, Zoning Ordinance

Codes adopted - Building, Housing, Plumbing, Electric, Fire, and Gas

Safety

<u>Police</u>	<u>Russellville</u>	<u>Adairville</u>	<u>Auburn</u>	<u>Lewisburg</u>	<u>Logan County</u>
Total staff	16	1	3	2	3
Radio-patrol cars	2	1	1	1	3

Fire

American Insurance

Association Fire Rating 7 7 7 7

Full-time staff 3

Volunteers 17 21 20 23

Equipment:

1,000 gpm pumpers 1 1

750 gpm pumpers 1 1

500 gpm pumpers 1 1 1

ladder trucks 2

utility trucks 1 1(rural)

emergency truck 1

*Manufacturing machinery, raw materials inventories and goods in process inventories are not subject to local tax. State rate is only \$0.15 per \$100.

Rescue Service

Russellville

Civil Defense Rescue Squad

Number of volunteers - 2,500

Equipment - monitoring sets, 2 trucks, generators, chain saws, boat and motor dragging equipment, ambulance with oxygen, 150-bed hospital available (American Legion), food and medical supplies for 2,300 people

Personnel training - first aid, monitoring

Auburn

Auburn Rescue Squad

Number of volunteers - 18

Equipment - truck, lighting unit, diving equipment, oxygen, chain saws, dragging equipment, stretchers

Personnel training - first aid

Sanitation

	<u>Russellville</u>	<u>Adairville</u>	<u>Auburn</u>
Type service	private	private	private
Cost:			
residential	contract	\$2.25 per month	\$2.25 per month
business	contract	contract	contract
Collection frequency:			
residential	weekly	weekly	weekly
business	as needed	3 times weekly	as needed
Trash pickup	as needed	as needed	weekly
Disposal method	land fill	land fill	land fill

	<u>Lewisburg</u>	<u>Logan County</u>
Type service	private	private
Cost:		
residential	contract	contract
business	contract	contract
Collection frequency:		
residential	weekly	when needed
business	twice a month	when needed
Trash pickup	as needed	when desired
Disposal method	land fill	land fill



LOGAN COUNTY PUBLIC LIBRARY



SOUTHERN DEPOSIT BANK

HEALTH

Hospitals

<u>General Hospital</u>	<u>Location</u>	<u>Beds</u>
Logan County Hospital	Russellville	100

General hospital facilities - 3 operating rooms, recovery room, laboratory, obstetrical section, X-ray, pharmacy and inhalation therapist

Medical staff - 11 doctors, 15 registered nurses, 17 licensed practical nurses, 1 pathologist, 3 radiologists (consultants)

Nursing Homes

Russellville

	<u>Number</u>	<u>Beds</u>
Extended care homes	3	100

Auburn

Extended care	1	30
---------------	---	----

Public Health

Facility - Logan County Health Department - Russellville

Staff - nutritionist, sanitarian, 3 nurses, 1 clerk, 1 clerk (part-time), 1 nurse (part-time)

Budget 1971-72 - \$61,230

OTHER LOCAL FACILITIES

Communications

Russellville

Telephone - South Central Bell Telephone Company
Services - Standard

Telegraph - Western Union
Services - Standard

Postal - U. S. Post Office
Class - First
Mail received - 6 times daily
Mail dispatched - 6 times daily

Newspapers -	News Democrat	Logan Leader
Weekly and circulation -	5,200	4,500
Other papers received from - Owensboro, Louisville, and Bowling Green, Kentucky; Nashville, Tennessee		

Radio - WRUS - AM-FM
Stations received from - Bowling Green, Hopkinsville, and Franklin, Kentucky; Nashville, Tennessee

Television -
Reception from - Bowling Green, Kentucky; Nashville, Tennessee
Kentucky Educational Television - Channel 53, Bowling Green transmitter

Adairville

Telephone - Logan Telephone Cooperative, Inc.
Services - Standard

Telegraph - Western Union
Services - Phone to Russellville

Postal - U. S. Post Office
Class - Third
Mail received - Once daily
Mail dispatched - Once daily

Newspapers - Adairville Enterprise
Weekly and circulation - 740
Other papers received from - Owensboro, Louisville, and Bowling Green, Kentucky; Nashville, Tennessee

Radio -

Stations received from - Russellville, Hopkinsville, and Louisville, Kentucky; Nashville, Springfield, and Gallatin, Tennessee

Television -

Reception from - Bowling Green, Kentucky; Nashville, Tennessee
Kentucky Educational Television - Channel 53, Bowling Green transmitter

Auburn

Telephone - Logan Telephone Cooperative, Inc.
Services - Standard

Telegraph - Western Union
Services - Phone to Russellville

Postal - U. S. Post Office
Class - First
Mail received - Twice daily
Mail dispatched - Twice daily

Newspapers -

Other papers received from - Russellville, Owensboro, Bowling Green, and Louisville, Kentucky; Nashville, Tennessee

Radio -

Stations received from - Russellville, Louisville, Bowling Green, Hopkinsville, and Central City, Kentucky; Nashville, Tennessee

Television -

Reception from - Bowling Green, Kentucky; Nashville, Tennessee
Kentucky Educational Television - Channel 53, Bowling Green transmitter

Lewisburg

Telephone - Logan Telephone Cooperative, Inc.
Services - Standard

Telegraph - Western Union
Services - Phone to Russellville

Postal - U. S. Post Office
Class - Second
Mail received - Once daily
Mail dispatched - Once daily

Newspapers -

Other papers received from - Russellville, Owensboro, Bowling Green, and Louisville, Kentucky

Radio -

Stations received from - Russellville, Louisville, Bowling Green, Hopkinsville, and Central City, Kentucky; Nashville, Tennessee

Television -

Reception from - Bowling Green, Kentucky; Nashville, Tennessee
Kentucky Educational Television - Channel 53, Bowling Green transmitter

Library Services

Public Libraries - Logan County Library, Russellville

Size collection - 28,000 volumes

Circulation, 1970 - 95,256

Services - records, films, tapes, microfilm, periodicals, story hour, meeting rooms, paintings and audio-visual equipment

Adairville, Auburn, and Lewisburg are served by bookmobile.

Religious Institutions

	<u>Russellville</u>	<u>Adairville</u>
Number of churches -	14	4
Denominations -	Baptist	Baptist
	Catholic	Church of Christ
	Christian	Methodist
	Church of Christ	Nondenominational
	Methodist	
	Cumberland Presbyterian	
	Presbyterian U. S. A.	
	Independent Church of Christ	
	Holiness	
	Episcopal	
	Pentecostal	
	Church of God	
	Jehovah's Witnesses	
	<u>Auburn</u>	<u>Lewisburg</u>
Number of churches -	8	5
Denominations -	Presbyterian	Baptist
	Christian	Church of Christ
	Church of Christ	Methodist
	Methodist	Cumberland Presbyterian
	Baptist	

Financial Institutions

<u>Bank</u>	<u>Statement as of June 30, 1971</u>	
	<u>Assets</u>	<u>Deposits</u>
<u>Russellville</u>		
The Citizens National Bank	\$10,076,901.22	\$ 9,084,632.33
Southern Deposit Bank	9,805,122.78	8,721,485.16
<u>Adairville</u>		
Adairville Banking Company	\$ 2,355,032.55	\$ 1,821,223.89
<u>Auburn</u>		
Auburn Banking Company	\$ 3,627,600.17	\$ 3,201,977.47
<u>Lewisburg</u>		
Lewisburg Banking Company	\$ 2,692,496.58	\$ 2,317,214.24 (Dec. 31, 1970)
<u>Savings and Loan Associations</u>	<u>Assets</u>	<u>Shared Accounts</u>
First Federal Savings and Loan Association of Russellville	\$13,530,604.48	\$12,543,564.90

Hotels and Motels

Number - 6
Units - 106

Clubs and Organizations

Russellville

Business and Civic - Chamber of Commerce, Jaycees, IOOF, Kiwanis, Lions, Logan County Civic Development Corporation, Rotary, PTA, Optimist, Junior Chamber of Commerce

Fraternal - American Legion, Masons, Moose, Royal Arch Masons, VFW, WOW

Women's - American Legion Auxiliary, DAR, Homemakers, Junior Woman's Club, Rebekah Lodge, Logan County Garden Club, Woman's Club, Historical Society, Jaycettes

Youth - Boy Scouts, Girl Scouts, FFA, Teen Town Club, 4-H Club, Junior conservation, FHA, Little League, Pony League

Adairville

Business and Civic - Chamber of Commerce

Women's - Chamber of Commerce Ladies' Auxiliary

Youth - Junior conservation, 4-H, FFA, FHA, Little League, Pony League

Auburn

Business and Civic - Rotary, Chamber of Commerce, PTA

Fraternal - Masons, American Legion, WOW

Women's - Garden Club, Homemakers, American Legion Auxiliary, Young
Women's Garden Club, Eastern Star

Youth - Boy Scouts, Girl Scouts, Cub Scouts, Brownies, 4-H, FFA, FHA,
FTA, FBLA, Teen Town, Pony League, Little League

Other - Mixed Bowling League, Auburn Fish and Game Club

Lewisburg

Business and Civic - PTA, Lions, Lewisburg Industrial Corporation

Fraternal - Masons

Women's - Homemakers, Eastern Star

Youth - Little League

Other - Coon Range Fish and Game Club

RECREATION

Local

	<u>Russellville</u>	<u>Adairville</u>
Public Recreation Facilities		
Supervised program -	playground activities	playground activities
Parks -	2	
Playgrounds -	5	1
Swimming pool -	1	
Golf courses -	1	2
Tennis courts -	6	2
Baseball diamonds -	4	1
Football fields -	2	
Other -	Teen-Town, community theater	James Lake, fishing and picnic area

Private Recreation Facilities	
Country club -	1
Golf course -	1
Swimming pool -	1
Movie theaters -	1 indoor, 1 outdoor
Other -	miniature golf

	<u>Auburn</u>	<u>Lewisburg</u>
Public Recreation Facilities		
Supervised program -	playground activities	playground activities
Park -	1	
Playgrounds -	2	1
Tennis courts -	2	2
Baseball diamonds -	1	1
Other -		Coon Range Fish and Game Club, picnicking and boating area, lodge for meetings and trap shooting range

Private Recreation Facilities	
Swimming pool -	1

Tourist Attractions -

Russellville

Old Southern Bank Building - first bank robbed by Jesse James gang;
tobacco festival; site of first confederate capitol of Kentucky at West Fourth
and Winter Streets

Adairville

Strawberry Festival last week-end in May; Duel Site Farm Scene of duel between Andrew Jackson and Charles Dickinson; Red River Meeting House, site of the Great Revival of 1800

Auburn

Shaker Museum, Shaker Festival second week in July

Cultural Events -

Russellville

Community Concert Series

Area (Within 50 miles of Russellville)

Lake Malone State Park; Lake Barkley State Park; Mammoth Cave National Park; Jefferson Davis Monument State Shrine; Western Kentucky University, Bowling Green, offers a complete program of NCAA major college athletics. Lectures, concerts, and art exhibits are open to the public.

AGRICULTURE - NATURAL RESOURCES - CLIMATE

Agriculture 13/

	<u>Logan County</u>	<u>Labor Market Area</u>
Total land area (acres)	360,320	1,694,720
Percent of area in farm land	83.0	72.6
Number of farms	2,123	8,786
Average size of farms (acres)	140.9	140.1
1964 value of all farm products	\$11,619,384	\$ 44,850,665
Value per farm	5,473	5,105
Total crop sales	6,001,097	21,624,575
Total livestock & livestock products	5,617,297	23,220,229
1969 agricultural production included:		
Burley tobacco (lbs.)	2,780,000	13,246,000
Corn (bu.)	2,128,000	9,423,000
Cattle and calves (number)	48,300	214,900
Hogs and pigs (number)	30,500	157,000
Milk production (1968) (lbs.)	61,770,000	205,445,000

Natural Resources

Principal mineral resources	Limestone and petroleum
Other mineral resources	Natural gas, rock asphalt, silica sand, coal and clays occur but are not considered of commercial importance
Acres of commercial forest land	109,300
Most abundant tree species	Red oak, white oak, hickory, yellow poplar, sweetgum, ash, and beech

Climate 14/

	<u>Logan County</u>
Temperature	
Annual mean (30-year record)	60.0 degrees
Average annual 1970	58.8 degrees
Record highest July, 1966 (5-year record)	103 degrees
Record lowest January, 1966 (5-year record)	- 6 degrees
Seasonal heating degree-days (30-year record)	3,578
Precipitation	
Mean annual total (30-year record)	45.14 inches
Mean annual snow and sleet (29-year record)	11.6 inches
Total precipitation 1970	46.93 inches
Mean number days precipitation (.01 inch or more) (29-year record)	118
Average number days thunderstorms (29-year record)	55
Prevailing winds (22-year record)	South

HISTORY

Logan County, 563 square miles in area, is located in the southwestern part of Kentucky, its southern border formed by the Tennessee state line. Its surface is hilly in the heavily timbered northern area and level in the highly cultivated southern portion. The soil is based upon red clay and is very fertile. The Mud River flows north from the center of the county at Russellville, and Red River and its tributaries drain the southern plains.

The first visitors to the area were surveyors commissioned by Virginia in 1779 under the direction of Dr. Thomas Walker to establish the boundary line between western lands that belonged to Virginia and North Carolina. The initials of two of the surveyors, James West and Issac Bledsoe, were found carved on a tree under the date 1780. The earliest settlements in the county were at Maulding's Station on Red River and at Russellville in 1780, at Muddy River Licks the next year, and at Kilgore's Station on the state boundary in 1782. In the same year James Smart settled on the Elk Fork of Red River. Although most of the first settlements survived, they did not grow very rapidly because of marauding Indians.

Logan became the state's thirteenth county during Kentucky's first year of statehood in 1792. It is named for General Benjamin Logan, a Virginia migrant who came to Kentucky to promote settlement of the Transylvania Company and later moved to Logan County. A leading figure in Kentucky history during the Revolution, Logan served in the Virginia Legislature from the Kentucky District when it was decided that Kentucky could become a state and helped write Kentucky's first constitution.

Russellville, the county seat, was settled at a large spring, now located on East Main Street, for which the town was called Big Boiling Spring at its founding in 1790. The name was changed to honor General William Russell, a Revolutionary War officer and original owner of the land. It was the home of two early colleges, Bethel and Logan Colleges, supported by the Baptists and Methodists, respectively. The Old Southern Bank here was the scene of an historic robbery in 1868 by Jesse James and four companions who posed as wealthy cattle buyers. Russellville, with its old homes and stately trees, is now a thriving trade and industrial center with a population of over 6,000.

Twelve miles east of Russellville in the center of a progressive rural community lies Auburn, the county's second largest town. Near Auburn is South Union, an old settlement of the Shaker sect whose thrift and hard work made it an enviable agricultural community for many years. Since the Shakers did not believe in marriage and progeny, however, there is no longer a colony there, although the buildings remain. At Auburn there is a Shaker Museum and an annual drama based on the history of the South Union colony.

In 1800 Logan County had a population of 5,807, which grew to an all-time high of 25,999 in 1900. A fairly steady decline brought the population to 22,335 in 1950 and 20,896 in 1960. In the next decade, however, the trend was reversed due largely to industrial growth, to 21,793 in 1970.

Agricultural employment accounted for 2,000 of the county's 9,200 employed in 1969. Principal products included burley tobacco, corn, cattle, and hogs. Russellville is an important market for tobacco. 3,200 were employed in manufacturing in 1970. The most important industrial products are machinery and metal products, lumber, and furniture. Russellville's largest firms are: Emerson Electric Company, which makes electric motors; Logan Manufacturing Company, making men's work pants; and Rockwell Manufacturing Company, aluminum die castings. Auburn's largest firms are Auburn Dyeing and Finishing Company and Auburn Hosiery Mills, both of which make ladies' hosiery, and Caldwell Lace Leather Company. At Adairville there is another Auburn Hosiery Mills plant, and Kentucky Mills Lumber and Manufacturing Company is at Lewisburg.

Recreational facilities in the county include Lake Malone, an 825-acre lake with 100 miles of shoreline, and the Audubon Council, Boy Scouts of America Camp, one of the newest and finest camps in mid-America.

Logan County has produced more than her share of famous citizens, including four Kentucky Governors: John Breathitt, James T. Morehead, John J. Crittenden, and Charles S. Morehead. Five governors of other states were once Logan Countians: Ninian Edwards and John McLean of Illinois, Richard K. Call of Florida, Robert Crittenden of Arkansas, and Fletcher Stockdale of Texas.

SOURCES OF INFORMATION

- 1/ U. S. Department of Commerce, Bureau of the Census, Census of Population, 1950, 1960, 1970.
- 2/ Kentucky Department of Economic Security, Division of Research and Statistics.
- 3/ Kentucky Department of Economic Security, Number of Workers in Manufacturing Industries Covered by Kentucky Unemployment Insurance Law Classified by Industry and County, September 1960, September 1970.
- 4/ Kentucky Department of Commerce, 1971 Kentucky Directory of Manufacturers.
- 5/ Kentucky Department of Economic Security, Division of Employment Services, Bowling Green Office.
- 6/ Kentucky Department of Economic Security, Kentucky Labor Supply Estimates by County, January 1971.
- 7/ Kentucky Department of Commerce, Future Labor Supply by 1977.
- 8/ University of Kentucky, Office of Development Services and Business Research, Total Personal Income for Kentucky.
- 9/ University of Kentucky, Office of Development Services and Business Research, Per Capita Income in Kentucky.
- 10/ Louisville & Nashville Railroad, Louisville, Kentucky.
- 11/ McLean Trucking Company, Winston-Salem, North Carolina.
- 12/ Kentucky Department of Revenue.
- 13/ U. S. Department of Commerce, Bureau of the Census, Census of Agriculture, 1964. U. S. Department of Agriculture and Kentucky Department of Agriculture, Kentucky Agricultural Statistics, 1970.
- 14/ U. S. Department of Commerce, Environmental Science Services Administration, Climatological Data, 1970.

All other information was obtained from governmental offices, local businesses and organizations.