

1984

Industrial Resources: Marion County - Lebanon

Kentucky Library Research Collections
Western Kentucky University, spcol@wku.edu

Follow this and additional works at: https://digitalcommons.wku.edu/marion_cty



Part of the [Business Administration, Management, and Operations Commons](#), [Growth and Development Commons](#), and the [Infrastructure Commons](#)

Recommended Citation

Kentucky Library Research Collections, "Industrial Resources: Marion County - Lebanon" (1984). *Marion County*. Paper 8.
https://digitalcommons.wku.edu/marion_cty/8

This Report is brought to you for free and open access by TopSCHOLAR®. It has been accepted for inclusion in Marion County by an authorized administrator of TopSCHOLAR®. For more information, please contact topscholar@wku.edu.

I.R.

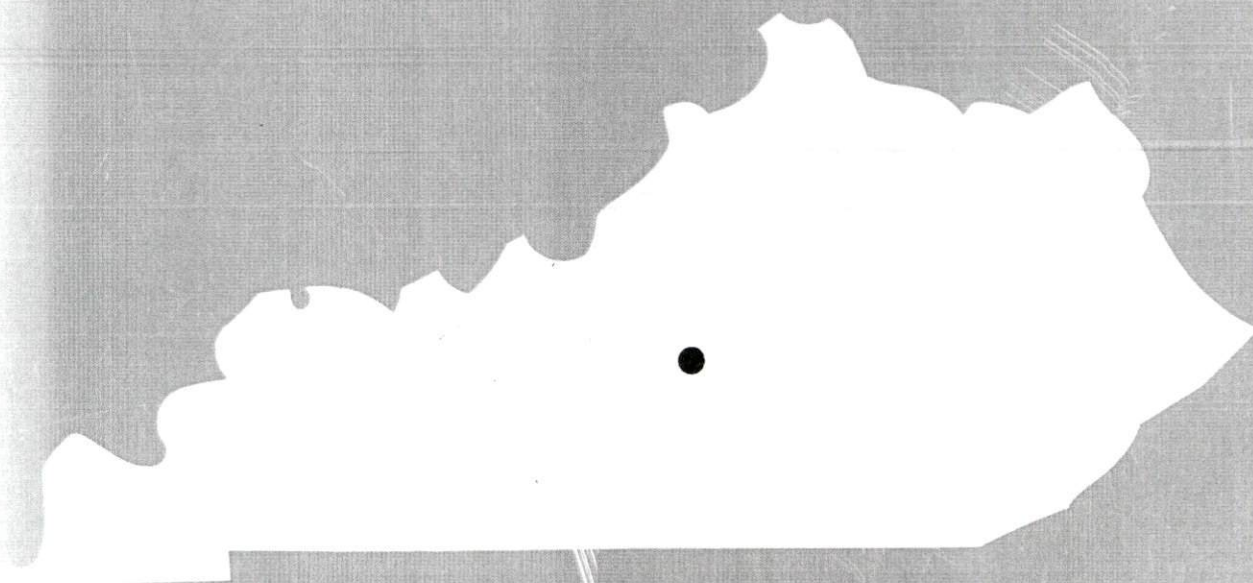
Marion County

370

1984

**A comprehensive
report on**

Lebanon, Ky.



Site 184 - 46 Acres

LOCATION: Within western city limits
ZONING: Industrial
HIGHWAY ACCESS: US 68/KY 55 via paved right of way
RAILROAD: Seaboard System Railroad adjacent to northern boundary
WATER: Lebanon Water Works Company
Size Line: 12-inch line on site
NATURAL GAS: Western Kentucky Gas Company
Size Line: 2-inch line approximately 300 feet south along north side of US 68/KY 55
ELECTRICITY: Kentucky Utilities Company
SEWERAGE: City of Lebanon Sewer Department
Size Line: 21-inch line approximately 200 feet south
OWNERSHIP: Private

Site 284 - 45 Acres

LOCATION: Within southwest city limits
ZONING: Industrial
HIGHWAY ACCESS: KY 208 via paved state road (number to be assigned)
RAILROAD: Seaboard System Railroad adjacent to eastern corner
WATER: Lebanon Water Works Company
Size Line: 12-inch line serves the site
NATURAL GAS: Western Kentucky Gas Company
Size Line: 4-inch line along west side of KY 208
ELECTRICITY: Kentucky Utilities Company or Inter-County RECC
SEWERAGE: City of Lebanon Sewer Department
Size Line: 10-inch line serves the site
OWNERSHIP: Marion County Industrial Foundation Inc.

Site 384 - 203 Acres

LOCATION: Within southwest city limits
ZONING: Industrial
HIGHWAY ACCESS: KY 208 adjacent to western boundary; paved state road adjacent to northern boundary of Tract I (number to be assigned)
RAILROAD: Seaboard System Railroad adjacent to eastern boundary
WATER: Lebanon Water Works Company
Size Line: 12-inch line along southern boundary of Tract I
NATURAL GAS: Western Kentucky Gas Company
Size Line: 4-inch line along northern boundary of Tract II
ELECTRICITY: Kentucky Utilities Company or Inter-County RECC
SEWERAGE: City of Lebanon Sewer Department
Size Line: 10-inch line crosses eastern portion of Tract I
OWNERSHIP: Tract I - Marion County Industrial Foundation, Inc.
Tract II - Private

SCALE: 1 inch = 2000 feet
CONTOUR INTERVAL: 10-20 feet
BASE: USGS 7.5 minute series - 1953
Photorevised - 1979

UTILITIES
----- Water Line
----- Sewer Line

Existing Industries

- A Jane & Linda Sportswear Co. #2
- B Lebanon Oak Flooring Co.
- C Independent Stave Co.
- D Kentucky Cooperage Co.
- E Jane and Linda Sportswear Co. #1
- F Angell Mfg. Co.

Industrial Sites — 1984

A COMPREHENSIVE REPORT ON
LEBANON, KENTUCKY

Prepared by
The Kentucky Department of Economic Development
Division of Research and Planning
in cooperation with
The Lebanon/Marion County Chamber of Commerce

1984

Program manager - Pamela Riley; research - James Thompson; clerical - Shirley Wood; graphics - Frank Ferrante, Tony Cecconi, Robert Owens; cartography - Site Evaluation Branch, Division of Industrial Development. Cost of printing paid from state funds.

TABLE OF CONTENTS

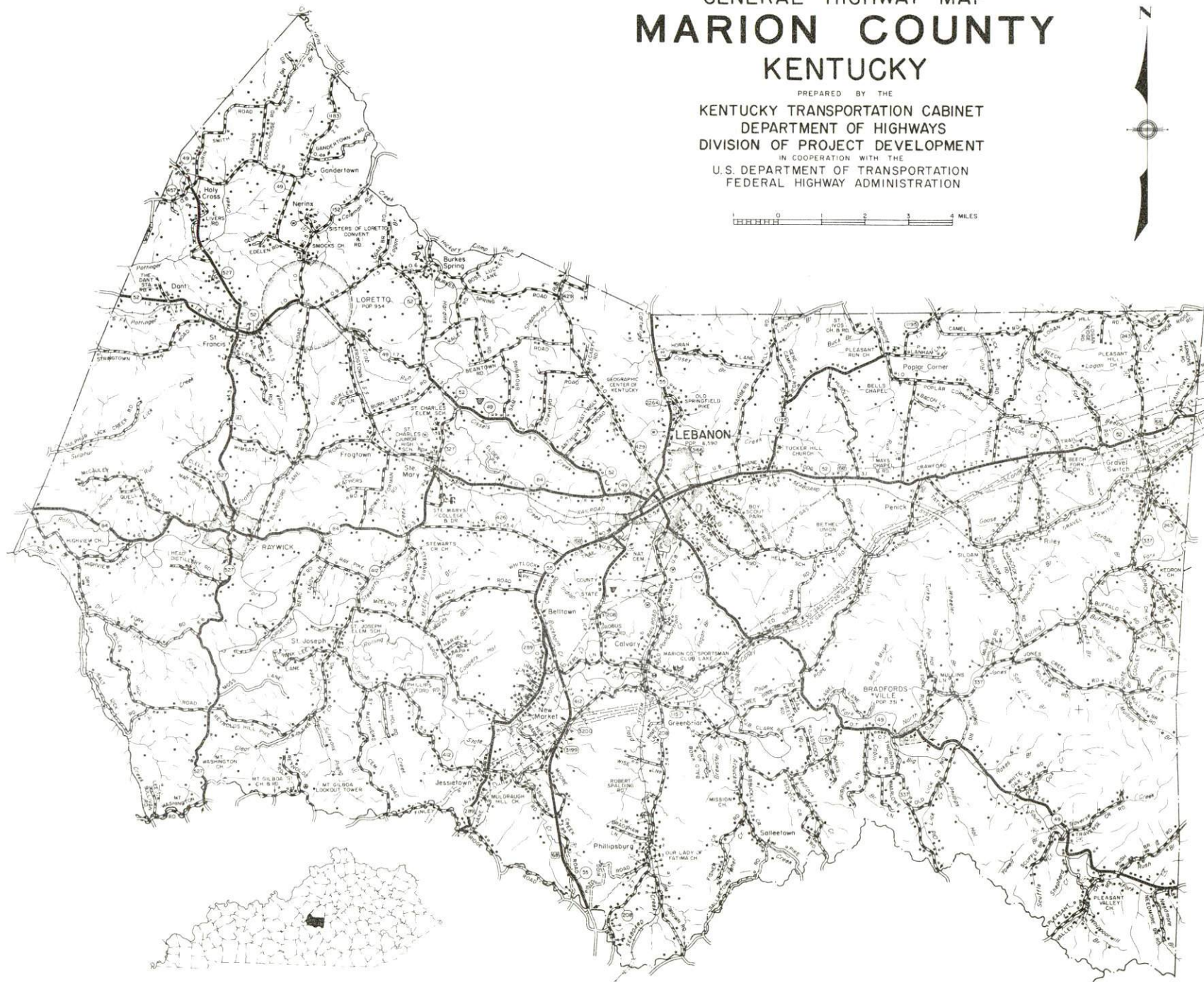
<u>Chapter</u>	<u>Page</u>
INDUSTRIAL SITES	i
LEBANON, KENTUCKY - A RESOURCE PROFILE	1
THE LABOR MARKET AREA	3
Population	3
Labor Force Characteristics of Residents, 1982	3
Selected Components of Nonagricultural Employment, by Place of Work, 1982	4
Marion County Manufacturing Firms, Their Products and Employment	5
Labor Organizations in Manufacturing Firms	6
Industrial Services	7
Estimated Male Labor Supply	8
Estimated Female Labor Supply	8
Average Weekly Wages by Industry, by Place of Work, 1982	9
Per Capita Personal Income	11
TRANSPORTATION	12
Rail	12
Highways	12
Truck Service	13
Air	15
Bus	16
Taxi	16
Rental Services	16
Water	16
POWER AND FUEL	17
Electricity	17
Natural Gas	18
Other Fuels	18
WATER AND SEWERAGE	19
Public Water Supply	19
Raw Water	20
Sewerage	20
CLIMATE	21

<u>Chapter</u>	<u>Page</u>
LOCAL GOVERNMENT	22
City	22
County	22
Assessed Value of Property, 1983	22
Property Taxes	22
Combined State and Local Rates Per \$100 Valuation, 1983	23
Utilities Gross Receipts Tax for Schools	23
Planning and Zoning	23
Safety	24
Police	24
Fire	24
Rescue Service	24
Refuse Collection and Disposal	24
EDUCATION	25
Public Schools	25
Nonpublic Schools	25
Area Colleges and Universities	26
Vocational Schools	27
HEALTH	29
Local Medical Personnel	29
Hospitals	29
Ambulance Service	29
Public Health	29
OTHER LOCAL FACILITIES	30
Communications	30
Library Services	30
Religious Institutions	31
Financial Institutions	31
Hotel and Motels	31
Clubs and Organizations	32
RECREATION	33
COMMUNITY IMPROVEMENTS	37

1983 EDITION
GENERAL HIGHWAY MAP
MARION COUNTY
KENTUCKY

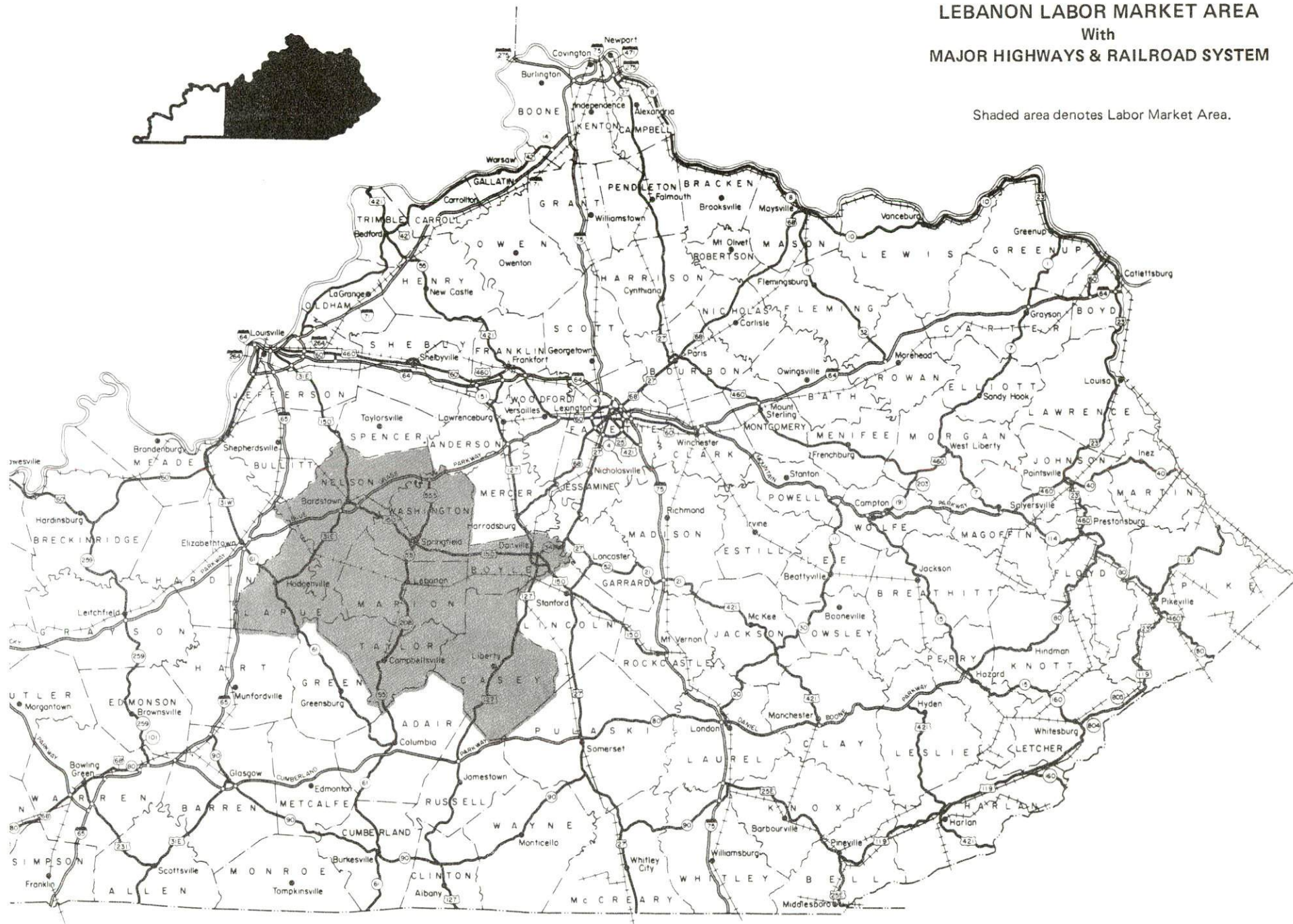
PREPARED BY THE
KENTUCKY TRANSPORTATION CABINET
DEPARTMENT OF HIGHWAYS
DIVISION OF PROJECT DEVELOPMENT
IN COOPERATION WITH THE
U.S. DEPARTMENT OF TRANSPORTATION
FEDERAL HIGHWAY ADMINISTRATION

0 1 2 3 4 MILES



LEBANON LABOR MARKET AREA With MAJOR HIGHWAYS & RAILROAD SYSTEM

Shaded area denotes Labor Market Area.



LEBANON, KENTUCKY - A RESOURCE PROFILE

Lebanon, the county seat of Marion County, is located 3 miles south-east of the geographical center of the state of Kentucky. Lebanon, with a population of 6,590 in 1980, is located 62 miles southwest of Lexington, Kentucky; 66 miles southeast of Louisville, Kentucky; 145 miles southwest of Cincinnati, Ohio; 170 miles northeast of Nashville, Tennessee; and 185 miles northwest of Knoxville, Tennessee.

Marion County, with a 1980 population of 17,910, covers a land area of 347 square miles.

The Economic Framework

The total number of Marion County residents employed in 1982 averaged 6,670, with nonagricultural jobs accounting for 5,850 workers. Manufacturing employers in the county reported 780 workers; wholesale and retail trade 735; services 560; and state and local government 540. Manufacturing employment is greatest in apparel and related products, lumber and wood products, and fabricated metal products.

Per capita personal income in Marion County in 1981 was \$5,730. Between 1977 and 1981, per capita income increased by 51 percent.

The Lebanon labor market area includes Marion and the six adjoining counties. The total number of residents of the labor market area employed in 1982 averaged 54,320, with nonagricultural jobs accounting for 48,430 workers. Manufacturing employers in the area reported 13,045 workers; wholesale and retail trade 7,680; state and local government 4,490; and services 3,870.

Resources for Growth

1. Labor Supply - There is a current labor supply of 7,140 men and 6,670 women available for industrial jobs in the labor market area. In addition, from 1984 through 1988, 5,890 young men and 5,750 young women in the area will become 18 years of age and potentially available for work.

2. Transportation - The Seaboard System Railroad provides rail service to Lebanon. Lebanon is served directly by U. S. Highway 68 and Kentucky Highway 55, both "AAA" rated trucking highways. Access to the Blue Grass Parkway, a four-lane toll road, is 23 miles north of Lebanon. Fourteen common carriers have authority to serve Lebanon. The nearest commercial airports are the Blue Grass Field, located 57 miles northeast in Lexington, and Standiford Field, located 61 miles northwest in Louisville. The Lebanon-Springfield Airport, 4 miles north of Lebanon, has a 4,000-foot paved runway to accommodate small aircraft.

3. Power and Fuel - Electric power is provided to Lebanon and parts of Marion County by the Kentucky Utilities Company, an electric generation and transmission company. Marion County is also served by the Inter-County Rural Electric Cooperative Corporation, which is supplied by the East Kentucky Power Cooperative. Lebanon is provided natural gas service by the Western Kentucky Gas Company, which is supplied by the Tennessee Gas Pipeline Company. Four distributors of propane and five distributors of distillate fuel oil serve Lebanon.

4. Education - Primary and secondary education is provided to Lebanon and Marion County by the Marion County School System.

There are five universities, six senior colleges, three junior colleges, three community colleges, and one technical institute located within 70 miles of Lebanon.

The Elizabethtown State Vocational-Technical School in Elizabethtown, 51 miles northwest, currently offers training in thirteen courses with nine courses scheduled to be added to the curriculum in April of 1984. Marion County Area Vocational Education Center in Lebanon offers training in eight courses.

THE LABOR MARKET AREA

The Lebanon Labor Market Area includes Marion County and the adjoining Kentucky counties of Boyle, Casey, Larue, Nelson, Taylor and Washington.

POPULATION

<u>Area</u>	<u>1980</u>	<u>1970</u>	<u>Percent Nonwhite</u>
Lebanon	6,590	5,528	16.9
Labor Market Area	129,242	113,520	N/A
Marion County	17,910	16,714	8.0
Boyle County	25,066	21,861	9.5
Casey County	14,818	12,930	0.3
Larue County	11,922	10,672	4.7
Nelson County	27,584	23,477	6.6
Taylor County	21,178	17,138	5.6
Washington County	10,764	10,728	10.3

Note: The 1980 counts of population by race are provisional.

Sources: U. S. Department of Commerce, Bureau of the Census, 1980 Census of Population and Housing, March 1981; 1980 Census of Population, Number of Inhabitants. Population Research Unit, Urban Studies Center, University of Louisville, Kentucky Demographics: The 1980 Census of Kentucky, Characteristics of Population, Households, Housing, January 1982.

LABOR FORCE CHARACTERISTICS OF RESIDENTS, 1982

	<u>Marion County</u>	<u>Labor Market Area</u>
Civilian Labor Force	7,773	61,364
Employment	6,770	54,321
Agricultural	918	5,888
Nonagricultural	5,852	48,433
Unemployment	1,003	7,043
Rate of Unemployment (%)	12.9	11.5

Source: Kentucky Cabinet for Human Resources, Kentucky Labor Force Estimates, Annual Averages, 1982.

SELECTED COMPONENTS OF NONAGRICULTURAL EMPLOYMENT,
BY PLACE OF WORK, 1982

	<u>Marion County</u>	<u>Labor Market Area</u>
All Industries (total)	2,915	32,949
Manufacturing	779	13,045
Wholesale & Retail Trade	735	7,679
Services	563	3,868
State/Local Government	541	4,492

Note: Excludes domestic workers, railway workers, certain nonprofit corporations, majority of federal government workers, and self-employed workers.

Source: Kentucky Cabinet for Human Resources, Average Monthly Workers Covered by Kentucky Unemployment Insurance Law, 1982.

MARION COUNTY MANUFACTURING FIRMS,
THEIR PRODUCTS AND EMPLOYMENT

Firm (Establishment date)	Product	Employment			Labor Unions
		Total	Male	Female	
Lebanon					
Angell Manufacturing Company (1965)	Name plates, plaques, aluminum trim	105	75	30	Electrical Workers, IUE*
Central Kentucky Drying Company, Inc. (1977)	Kiln dried lumber, cooperage stock	6	-	-	
Central Kentucky Tool and Engineering Company (1970)	Precision machine parts, stampings, tools, dies, fabrication, machine shop welding	9	8	1	
Deeps Farm Supply (1953)	Feed	5	4	1	
Fourth Street Fertilizer, Inc. (1964)	Fertilizer mixing	5	4	1	
Independent Stave Company, Inc. (1983)	Whiskey barrels	130	-	-	Coopers*
Jane & Linda Sportswear Company # 1 (1958)	Ladies' sportswear	246	34	212	Ladies Garment Workers*
Jane & Linda Sportswear Company # 2 (1982)	Ladies' blouses	190	9	181	Ladies Garment Workers*
Kemp Lumber Company (1950)	Rough lumber, dimension stock, cedar posts	11	11	0	
Kentucky Cooperage Company, Inc. (1983)	White oak whiskey barrels	36	-	-	

<u>Firm (Establishment date)</u>	<u>Product</u>	<u>Employment</u>			<u>Labor Unions</u>
		<u>Total</u>	<u>Male</u>	<u>Female</u>	
The Lebanon Enterprise, Inc. (1966)	Newspaper, printing	10	2	8	
Lebanon Machine Shop (1955)	Machine shop	3	3	0	
Lebanon Oak Flooring Company (1916)	Flooring, furniture dimension, millwork products	66	64	2	Woodworkers*
Professional Molded Products (1953)	Foot shaped molded shoes	5	1	4	
T & H Feed Service, Inc. (1956)	Feed	7	6	1	
<u>Loretto</u>					
Makers Mark Distillery, Inc. (1953)	Whiskey	52	28	24	

*See Labor Organizations below.

Sources: Kentucky Department of Economic Development, 1984 Kentucky Directory of Manufacturers; Division of Research and Planning.

LABOR ORGANIZATIONS IN MANUFACTURING FIRMS

<u>Union</u>	<u>Representing workers at:</u>
International Union of Electrical, Radio and Machine Workers, AFL-CIO	Angell Manufacturing Company
Coopers' International Union of North America, AFL-CIO	Independent Stave Company, Inc.
International Ladies' Garment Workers Union, AFL-CIO	Jane & Linda Sportswear Company # 1 Jane & Linda Sportswear Company # 2
International Woodworkers of America, AFL-CIO	Lebanon Oak Flooring Company

INDUSTRIAL SERVICES

<u>Types of Services</u>	<u>Location</u>	<u>Mileage from Lebanon</u>
Custom Plastics Producers	Springfield	8
Electric Motor Repair	Lebanon	-
Grinding, Precision & Tool	Louisville	66
	Richmond	67
Heat Treating Facilities	Frankfort	59
	Lexington	62
	Louisville	66
Industrial Equipment & Supplies	Frankfort	59
	Lexington	62
	Louisville	66
Industrial Gases	Campbellsville	20
Industrial Waste Removal	Elizabethtown	51
	Frankfort	59
	Lexington	62
	Louisville	66
Machine Shops, Tool & Die	Springfield	8
Metal Finishers	Elizabethtown	51
Metal Service Centers	Lexington	62
	Louisville	66
Millwrights	Elizabethtown	51
	Nicholasville	54
	Lexington	62
	Louisville	66

Sources: Kentucky Department of Economic Development, Kentucky Directory of Selected Industrial Services, 1983; Division of Research and Planning.

ESTIMATED MALE LABOR SUPPLY
LEBANON LABOR MARKET AREA

Area	Total	Unemployed	Current	Not in Labor Force	Future
			Under- employed		Becoming 18 years of age 1984 thru 1988
Labor Market					
Area*	7,142	4,484	2,491	167	5,894
Marion	1,069	732	337	0	910
Boyle	1,310	748	562	0	1,130
Casey	912	514	325	73	666
Larue	608	395	213	0	456
Nelson	1,643	1,172	471	0	1,351
Taylor	1,034	579	455	0	857
Washington	566	344	128	94	524

*Additional workers may be drawn from other nearby counties.

Note: Unemployed - persons unemployed and actively seeking work; Underemployed - persons employed but working only 14 to 26 weeks per year. Not in Labor Force - represents the number of persons who would enter the labor force if suitable employment were available (based on the assumption that persons in Kentucky would like to participate in the labor force in the same proportion that they do nationally).

Sources: Kentucky Cabinet for Human Resources, Kentucky Labor Supply Estimates by Area Development District and County, 1982. Kentucky Department of Economic Development, Future Labor Supply Becoming 18 Years of Age, 1984 thru 1988.

ESTIMATED FEMALE LABOR SUPPLY
LEBANON LABOR MARKET AREA

Area	Total	Unemployed	Current	Not in Labor Force	Future
			Under- employed		Becoming 18 years of age 1984 thru 1988
Labor Market					
Area*	6,668	2,559	2,483	1,626	5,747
Marion	820	271	299	250	907
Boyle	1,104	558	546	0	1,083
Casey	1,109	260	256	593	662
Larue	682	176	243	263	459
Nelson	1,751	793	595	363	1,357
Taylor	601	205	396	0	828
Washington	601	296	148	157	451

*Additional workers may be drawn from other nearby counties.

Note: Unemployed - persons unemployed and actively seeking work; Underemployed - persons employed but working only 14 to 26 weeks per year. Not in Labor Force - represents the number of persons who would enter the labor force if suitable employment were available (based on the assumption that persons in Kentucky would like to participate in the labor force in the same proportion that they do nationally).

Sources: Kentucky Cabinet for Human Resources, Kentucky Labor Supply Estimates by Area Development District and County, 1982. Kentucky Department of Economic Development, Future Labor Supply Becoming 18 Years of Age, 1984 thru 1988.

AVERAGE WEEKLY WAGES BY INDUSTRY
BY PLACE OF WORK, 1982

	<u>Marion County</u>	<u>Boyle County</u>	<u>Casey County</u>	<u>Larue County</u>
All Industries	\$203.35	\$258.08	\$185.09	\$190.88
Mining & Quarrying	*	301.60	*	0
Contract Construction	260.33	274.28	220.34	147.75
Manufacturing	244.32	310.46	155.36	179.34
Transportation, Communications & Public Utilities	235.98	366.80	365.24	373.43
Wholesale & Retail Trade	159.92	196.57	147.23	160.06
Finance, Insurance & Real Estate	243.19	261.56	243.20	263.97
Services	158.30	217.60	142.71	147.35
State/Local Government	228.89	270.86	245.00	227.17
Other	143.65	189.46	*	199.50
	<u>Nelson County</u>	<u>Taylor County</u>	<u>Washington County</u>	
All Industries	\$257.25	\$229.11	\$200.50	
Mining & Quarrying	381.44	237.13	*	
Contract Construction	315.56	233.18	322.71	
Manufacturing	337.83	238.15	208.58	
Transportation, Communications & Public Utilities	390.66	382.88	198.58	
Wholesale & Retail Trade	173.27	159.93	154.34	
Finance, Insurance & Real Estate	221.60	249.92	271.01	
Services	148.65	182.87	140.14	
State/Local Government	245.30	239.26	215.24	
Other	199.40	200.07	124.81	

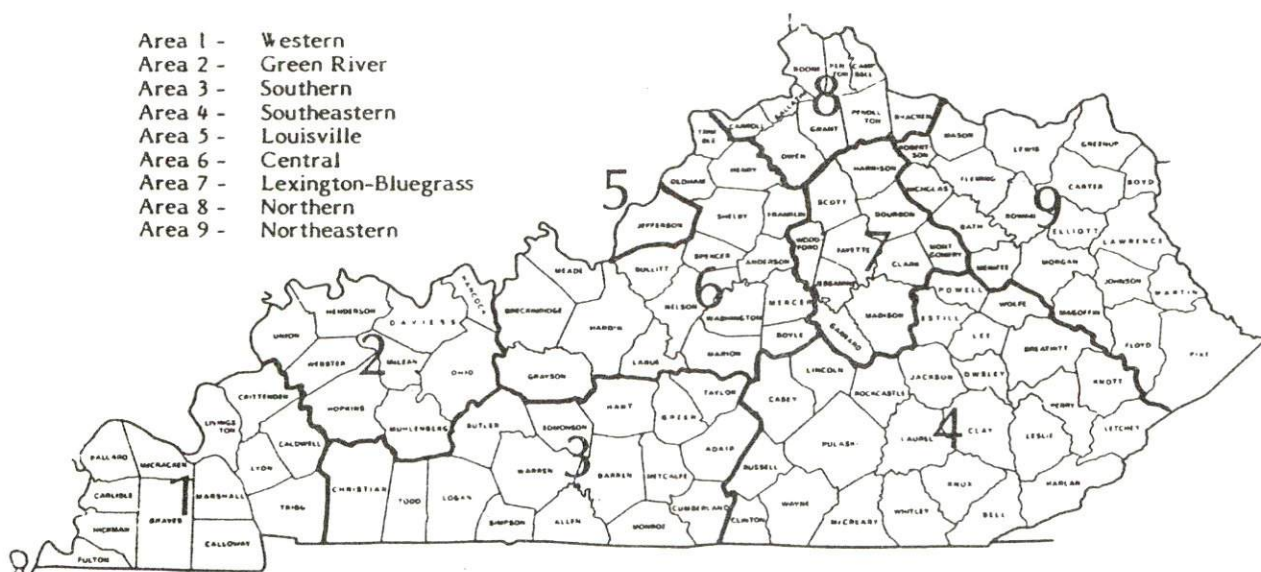
*Not disclosed.

Note: Excludes domestic workers, railway workers, certain nonprofit corporations, majority of federal government workers, and self-employed workers.

Source: Kentucky Cabinet for Human Resources, Average Weekly Wages of Workers Covered by Kentucky Unemployment Insurance Law, 1982.

Occupational wage rates for specific industries are usually not available to most government agencies, and wage data furnished to state employment agencies by individual industrial employers are protected from disclosure by federal law. The most reliable up-to-date wage information can be obtained by direct contact with local employers.

Associated Industries of Kentucky, a voluntary organization of Kentucky businesses, regularly collects occupational wage rates and fringe benefits data from participating member firms. Data are compiled for over 127 clearly defined office, production, and service occupations. Tabulations are published for nine geographical areas of Kentucky, as shown on the map below. It should be noted that the data may be weighted by the preponderance of firms in the larger cities and may be somewhat higher than the rates paid in the smaller communities. Data from these tabulations are available, upon request, from the Kentucky Department of Economic Development, Frankfort, Kentucky 40601.



Associated Industries of Kentucky Area Wage Surveys

PER CAPITA PERSONAL INCOME

<u>Area</u>	<u>1977</u>	<u>1981</u>	<u>Percent Change</u>
Marion County	\$3,798	\$5,730	50.9
Labor Market Area Range	\$3,121 - 5,702	\$4,839 - 8,736	N/A
Kentucky	5,797	8,416	45.2
U.S.	6,984	10,495	50.3

Source: U. S. Bureau of Economic Analysis, Kentucky Economic Information System, May 1983.

TRANSPORTATION

Rail

Line serving Lebanon - Seaboard System Railroad

Services - One freight stops three times weekly (northbound and southbound); one local to Campbellsville, Lebanon Junction and Junction City (weekly); switching services available as needed; team track space for 8 cars; and siding space for 94 cars. Nearest Seaboard System Railroad piggyback facilities are located at Louisville, 66 miles northwest of Lebanon. The Southern Railway System provides piggyback facilities at Danville, 31 miles to the east.

For details on routing, schedules, rates, and services, contact:

Manager of Industrial Development
Seaboard System Railroad
P. O. Box 32290
Louisville, Kentucky 40232
(502) 587-5228

Highways

Lebanon is served by two "AAA" rated trucking highways, U. S. Highway 68 and Kentucky Highway 55.

Access to the Blue Grass Parkway, an east-west toll road, is 23 miles to the north. The Blue Grass Parkway provides easy access to Interstate 65, 48 miles northwest of Lebanon at Elizabethtown, and Interstates 64 and 75, 66 miles northeast of Lebanon near Lexington. The Cumberland Parkway, an east-west toll road, is located 40 miles to the south at Columbia.

The reconstruction of Kentucky 55 from Lebanon to a point 3.76 miles south, at Belltown, is planned. The section from Walnut Street in Lebanon to Kentucky 208 will be four-lane and from Kentucky 208 to Belltown will be two-lane. The \$6.1 million project is scheduled to start in Spring 1984 and be completed in Fall 1985.

Truck Service

Company

Home Office

Bestway Express, Inc.*

520 Lester Drive
Nashville, Tennessee 37210

Buske Lines, Inc.
(truck load only)*

123 West Tyler Street
Litchfield, Illinois 62056
Campbellsville, Kentucky 42718
1105 St. Louis
Louisville, Kentucky 40210

Central Motor Express, Inc.**
Expressway, Inc.**

F.M.S. Transportation
(truck load only)**

P. O. Box 22628
St. Louis, Missouri 63147

IML Freight, Inc.**

P. O. Box 30277
Salt Lake City, Utah 84119

Lawrenceburg Transfer
Company, Inc.*

P. O. Box 220
Lawrenceburg, Kentucky 40342
Chicago Heights, Illinois 60411

Leoni Motor Express, Inc.**
The Maryland Transportation
Company*

1111 Frankfurst Avenue
Baltimore, Maryland 21225

The Mason and Dixon Lines,
Inc.**

P. O. Box 969
Kingsport, Tennessee 37662

Old Dominion Freight Line,
Inc.*

P. O. Box 2006
High Point, North Carolina 27261

Overnite Transportation
Company*

1000 Semmes Avenue
P. O. Box 1216
Richmond, Virginia 23209

Robbins Truck Line, Inc.**

P. O. Box 429
Hardinsburg, Kentucky 40143

Smith's Transfer Corporation**

P. O. Box 1000
Staunton, Virginia 24401

Other Freight Services

Nearest Office or Shipping Center

Emery

Lexington, 62 miles northeast
Louisville, 66 miles northwest

KATO Express, Inc. (air
cargo service)
Purolator Courier

Elizabethtown, 51 miles northwest
Lexington, 62 miles northeast
Louisville, 66 miles northwest
Campbellsville, 20 miles south

United Parcel Service

*Interstate service only.

**Interstate and intrastate service.

Source: American Motor Carrier Directory, Spring 1984.

HIGHWAY MILES AND TRUCK TRANSIT TIME IN DAYS FROM
LEBANON, KENTUCKY, TO SELECTED MARKET CENTERS

City	Delivery		City	Delivery	
	Highway Miles	Time TL		Highway Miles	Time TL
Atlanta, Ga.	378	1	Los Angeles, Ca.	2,174	-
Baltimore, Md.	603	2	Louisville, Ky.	66	1
Birmingham, Ala.	366	1	Nashville, Tenn.	170	1
Chicago, Ill.	358	1	New Orleans, La.	687	1
Cincinnati, Ohio	145	1	New York, N. Y.	765	2
Cleveland, Ohio	379	1	Pittsburgh, Pa.	405	1
Detroit, Mich.	399	1	St. Louis, Mo.	329	1
Knoxville, Tenn.	185	1			

Note: Mileage computations are via the best interstate or primary highways, not necessarily the most direct route of travel.

Sources: Rand McNally Road Atlas, 1979. Official Kentucky Mileage Map, 1980. Delivery time - Robbins Truck Line, Inc., P. O. Box 429, Hardinsburg, Kentucky 40143.

Air

Local

Location: Lebanon-Springfield Airport
4 miles north of Lebanon
Runways: 1 paved
Length: 4,000 feet
Traffic
Control: Wind sock, VOR/DME
Lighting: Flashing tower beacon, sunset to sunrise
Services: Fuel - 80 and 100 LL, major and minor A & P repairs, flight instruction, tie down and hangar

Nearest Scheduled Commercial Airline Service

Location: Blue Grass Field
5 miles west of Lexington, Kentucky;
57 miles northeast of Lebanon
Runways: 2 paved
Length: 6,500 feet; 3,500 feet
Traffic
Control: Tower
Lighting: Approach lighting system, beacon, runways and obstructions lighted, VASI
Services: Delta, Frontier, Piedmont, USAir, Comair, Tennessee Airways; fuel - 100LL and jet-A; hangars, tie-downs; major A & P repairs, major Avionics repairs; APU, charter, flight instruction, oxygen, plane rentals, survival equipment; taxi, limousine, car rentals, courtesy car; weather information; restaurant, snack bar

Air Freight
Service: Air freight terminal

Location: Standiford Field
5 miles southeast of center of Louisville, Kentucky;
61 miles northwest of Lebanon
Runways: 3 paved
Length: 7,800 feet; 7,250 feet; 5,000 feet
Traffic
Control: Control tower
Lighting: Runways, obstructions, beacon and approach and touch-down lights, center line on one runway
Services: Delta, Eastern, Ozark, Piedmont, TWA, United, USAir, Wright Airways, Allegheny Commuter, Comair, and Florida Express; fuel - 100 and jet-A; tie downs; major A & P repairs; major Avionics repairs; APU, charter, oxygen, U. S. Customs; taxi, car rentals, limousine, courtesy car, public transit; weather information; restaurant, snack bar

Air Freight
Service: Air freight terminal

Bus - Greyhound Bus Lines

Taxi - One company, 24-hour service

Rental Services - Truck and trailer rentals available locally.

Water

Lebanon is located 66 miles southwest of Louisville where port facilities are available on the Ohio River. In addition, the Louisville-Jefferson County Riverport has been designated as a Foreign Trade Zone and offers complete U. S. customs services for exports and imports.

POWER AND FUEL

Electricity

Company serving Lebanon and parts of Marion County - Kentucky
Utilities Company

Source of power - Kentucky Utilities Company

Total generating capacity - 2,639,100 KW*

For industrial rates contact:

Industrial Development Department
Kentucky Utilities Company
One Quality Street
Lexington, Kentucky 40507
(606) 255-1461

Company serving most of Marion County - Inter-County Rural Electric
Cooperative Corporation

Source of power - East Kentucky Power Cooperative

Total generating capacity - 1,304,000 KW**

For industrial rates contact:

Industrial Development Division
East Kentucky Power Cooperative
P. O. Box 707
Winchester, Kentucky 40391
(606) 744-4812

*A new generating unit is under construction in Carroll County. Due to be completed in 1984, the unit will have a generating capacity of 511,000 KW.
**East Kentucky Power Cooperative's total generating capacity will be increased when a new 600,000 KW coal-fired generation plant is completed in southeast Clark County in 1992.

Natural Gas

Company serving Lebanon - Western Kentucky Gas Company
Source of supply - Tennessee Gas Pipeline Company
Size of transmission mains - 24 and 30 inches (supplier):
6 inches (distributor)
Distribution mains - 1 1/4, 2, 3, 4 and 6 inches
Distribution pressure - winter - 25 psi; summer - 15 psi
Btu content - 1,000 per cubic foot
Specific gravity - 0.60
For rates and supplies contact:

Western Kentucky Gas Company
251 West Main Street
Lebanon, Kentucky 40033
(502) 692-3103

Other Fuels

Propane

AmeriGas
P. O. Box 64
New Haven, Kentucky 40051

Hughes Gas Service
550 West Main Street
Lebanon, Kentucky 40033

Buckeye Gas
550 West Main Street
Lebanon, Kentucky 40033

Sure Flame Gas Company, Inc.
334 West Main Street
Springfield, Kentucky 40069

Fuel oils

Distillate fuel oil -

Abell Oil Company
(Shell bulk plant)
677 West Main Street
Lebanon, Kentucky 40033

Marion Oil Company, Inc.
(Sunoco bulk plant)
401 West Main Street (rear)
Lebanon, Kentucky 40033

Haydon Oil Company
(Ashland bulk plant)
334 West Main Street
Springfield, Kentucky 40069

Phelps Energy
(Texaco bulk plant)
730 South Columbia Avenue
Campbellsville, Kentucky 42718

W. W. Long Oil Company
(Gulf bulk plant)
P. O. Box 204
Campbellsville, Kentucky 42718

Residual fuel oil - Arrangements must be made with the refinery.

Low sulphur content coal - Available in Kentucky.

WATER AND SEWERAGE

Public Water Supply

Company serving Lebanon - Lebanon Water Works Company
120 South Proctor Knott Avenue
Lebanon, Kentucky 40033
(502) 692-2491

Source - Rolling Fork River

Treatment plant capacity - 2,500,000 gallons per day*

Average daily consumption - 1,300,000 gallons

Peak daily consumption - 1,500,000 gallons

Type treatment - Filtration, coagulation, chlorination, fluoridation

Storage capacity - 1,352,000 gallons

Size lines - 4, 6, 8, 10, 12 and 16 inches

Average pressure - 72 psi

MONTHLY WATER RATES

First	200 cubic feet	\$3.40
Next	400 cubic feet	1.00 per 100 cubic feet
Next	900 cubic feet	.80 per 100 cubic feet
Next	1,500 cubic feet	.70 per 100 cubic feet
Next	7,000 cubic feet	.55 per 100 cubic feet
Next	990,000 cubic feet	.50 per 100 cubic feet
All over	1,000,000 cubic feet	.45 per 100 cubic feet

Tap-on charge: 3/4-inch \$150

1-inch and larger - Actual cost of labor and materials

*The Lebanon Water Works expanded its water treatment plant capacity from 2 million gallons a day to 2.5 million gallons a day. The \$450,000 project was completed in January 1984. There are plans at a later date to increase the capacity to 3 million gallons per day.

Raw Water

Surface water sources - Rolling Fork River

Average discharge - Rolling Fork River near Lebanon 341 cfs
(44-year record, USGS)

Expected ground water yield - 5 gpm or less over entire county except
for a small section in the eastern part of the county along the
Rolling Fork River where the ground water yield ranges between 5
and 50 gpm

Sewerage

Company serving Lebanon - City of Lebanon Sewer Department

P. O. Box 125

Lebanon, Kentucky 40033

(502) 692-6272

Design capacity - 1,250,000 gallons per day

Average daily flow - 900,000 gallons

Treatment - Primary

Type treatment - Aerobic aeration, drying beds, clarifier

Treated effluent discharged into - Hardins Creek

Size of sanitary mains - 8 to 21 inches

Size of storm mains - 12 to 54 inches

Rates - 60 percent of monthly water bill

Tap-on charge: \$300

CLIMATE

Marion County

Temperature

Normal (30-year record)	55.2 degrees
Average annual 1982	55.5 degrees
Record highest, September 1954 (38-year record)	103.0 degrees
Record lowest, January 1963 (38-year record)	-21.0 degrees
Normal heating degree days (30-year record)	4,729
(Heating degree day totals are the sums of negative departures of average daily temperatures from 65 degrees F.)	

Precipitation

Normal (30-year record)	44.49 inches
Mean annual snowfall (39-year record)	16.40 inches
Total precipitation 1982	38.76 inches
Mean number days precipitation (.01 inch or more) (38-year record)	131
Mean number days thunderstorms (38-year record)	46

Prevailing Winds (17-year record)

South

Relative Humidity

1 a.m.	77 percent (18-year record)
7 a.m.	81 percent (19-year record)
1 p.m.	60 percent (19-year record)
7 p.m.	64 percent (19-year record)

Source: U. S. Department of Commerce, Environmental Science
Services Administration, Climatological Data, 1982.
Station of record: Lexington, Kentucky.

LOCAL GOVERNMENT

City

Structure - Mayor - 4-year term; 6 council members - 2-year terms
Budget 1983-84 - General Fund \$834,400
 1981-82 - Water Fund 364,780
 1983-84 - Sewer Fund 173,155
Fees and licenses - Occupational and business licenses range from
 \$25 to \$400 per year

County

Structure - County Judge/Executive - 4-year term;
 8 magistrates - 4-year terms
Budget 1982-83 - General Fund \$300,100; Road Fund \$293,292

Assessed Value of Property, 1983*

<u>Classes of Property</u>	<u>Lebanon</u>	<u>Marion County</u>
Real Estate	\$58,695,418	\$185,559,208
Tangibles	14,665,756	32,101,260

Property Taxes

All property in Kentucky is assessed at 100 percent of fair cash value.

Land and buildings are taxed by the state and may be taxed by local jurisdictions. The state rate is \$0.221 per \$100 of assessed valuation.

Manufacturing machinery, raw materials inventories, pollution control equipment, and goods in the process of manufacture are not subject to local taxation. The state rate is \$0.15 per \$100.

Other tangible personal property owned by manufacturers (automobiles, trucks, finished goods, office furniture, office equipment) is taxed by the state at \$0.45 per \$100 and may be taxed by local jurisdictions.

Intangible personal property located in Kentucky (money in hand, shares of stock, notes, bonds, accounts receivable, and other credits) is taxed by the state at \$0.25 per \$100, and is not subject to local taxation.

Property stored in public warehouses in a transit status is not subject to local taxation. The state rate is only \$0.015 per \$100.

Private leaseholds in industrial facilities owned by cities or counties and financed by industrial revenue bonds are subject to a state tax of \$0.015 per \$100 of value (essentially the lessee's equity, adjusted for appreciation or depreciation). Local taxation is not permitted.

*Excludes Homestead Exemptions.

Combined State and Local Rates Per \$100 Valuation, 1983*
(100% assessment)

	<u>Site Inside City of Lebanon</u>	<u>Site Inside Unincorporated Marion County</u>
1. Land and buildings	\$0.8480	\$0.6020
2. Mfg. machinery, raw materials, goods in process, pollution control equipment	0.1500	0.1500
3. Finished goods, office equipment, vehicles, other tangibles	1.1139	0.8679
4. Intangibles (accounts rec., notes, bonds, etc.)	0.2500	0.2500
5. Property stored in public warehouses in a transit status	0.0150	0.0150
6. Leaseholds in industrial revenue bond financed plants	0.0150	0.0150

Utilities Gross Receipts Tax for Schools

A 3 percent tax is levied on utilities receipts for schools in Marion County. Tax is paid by all consumers of utilities as an add-on to the utilities bills. Exempted are receipts from utilities services that are resold and the receipts from the sale of energy or energy producing fuels that exceed 3 percent of the cost of production in manufacturing, processing, mining or refining.

Planning and Zoning

City agency - Lebanon Planning and Zoning Commission
 Zoning enforced - City only
 Subdivision regulations enforced - City and three miles beyond the city limits
 Local codes enforced - Building and housing
 Mandatory state codes enforced - Kentucky Plumbing Code, National Electric Code, Kentucky Boiler Regulations and Standards, Kentucky Building Code (modeled after BOCA code)

*Kentucky Department of Economic Development.

Safety

<u>Police</u>	<u>Lebanon</u>	<u>Marion County</u>
---------------	----------------	----------------------

Total staff	13 (full-time)	5
	1 (part-time)	
Radio-patrol cars	4	4

Fire

Insurance Services

Office, Public Protection Classification	7	*
Full-time staff	-	-
Volunteers	20	-

Rescue Service

Marion County Rescue Squad:

Number of volunteers - 20

Equipment - Two vehicles, a Jaw-of-Life rescue apparatus, a torch outfit, a porta-power, boat, scuba diving equipment, hammers, jacks, and extraction equipment

Personnel training - All volunteers receive multimedia first aid training; 13 volunteers have had emergency medical technician training

Refuse Collection and Disposal

	<u>Lebanon</u>	<u>Marion County</u>
Type service	Municipal	County
Fee charged:		
residential	\$4.50	Service is provided without charge to county residents and businesses
business	\$7.50 - \$10.00	
industrial	\$9.00 - \$14.00	
Collection frequency:		
residential	Weekly	Bimonthly
business	Daily	Bimonthly
industrial	Daily	-
Trash pickup	Annually	Annually
Disposal method	Sanitary landfill	Sanitary landfill

*Fire protection in Marion County is provided by the City of Lebanon Fire Department, the Bradfordville F.P.A., the Loretto F.P.A., the New Hope F.P.A., and the Gravel Switch Fire Department. The three fire protection areas have a Class 9 rating within 5 road miles of a responding fire station. All other areas of unincorporated Marion County have a Class 10 rating.

EDUCATION

Public Schools

Marion County

Total Enrollment (Spring 1983)	3,444
Elementary	1,514
Junior High	962
High School	968
Student-Teacher Ratio	21-1
Elementary	19-1
Junior High	23-1
High School	24-1
Percent High School Graduates to College (1982)	36.8
Expenditures Per Pupil (1982-83)	\$1,702.68
Bonded Indebtedness (June 30, 1983)	\$4,144,000*

Nonpublic Schools**

	<u>St. Augustine Elementary</u>	<u>St. Francis of Assisi Elementary</u>
Total Enrollment	393	94
Elementary	393 (1-8)	94 (1-6)
Student-Teacher Ratio	23-1	23-1
Elementary	23-1	23-1

*Includes refunding issue of \$2,055,000.

**Source: Kentucky School Directory 1982-83.

Area Colleges and Universities

<u>Name</u>	<u>Location (Miles distant)</u>	<u>Enrollment (Fall, 1982)</u>	<u>Highest Degree Conferred</u>
St. Catharine College	Springfield (8)	227	Associate
Campbellsville College	Campbellsville (20)	702	Baccalaureate
Centre College	Danville (31)	718	Baccalaureate
Lindsey Wilson College	Columbia (39)	428	Associate
Asbury College	Wilmore (46)	1,179	Baccalaureate
Elizabethtown Community College	Elizabethtown (51)	2,187	Associate
Kentucky State University	Frankfort (59)	2,322	Masters
Lexington Technical Institute	Lexington (62)	2,462	Associate
Transylvania University	Lexington (62)	701	Baccalaureate*
University of Kentucky	Lexington (62)	22,829	Doctorate, M.D., D.M.D., J.D.
Midway College	Midway (63)	349	Associate
Berea College	Berea (65)	1,599	Baccalaureate
Bellarmino College	Louisville (66)	2,350	Masters
Jefferson Community College	Louisville (66)	6,595	Associate
Spalding College	Louisville (66)	763	Masters, Specialist
University of Louisville	Louisville (66)	19,744	Doctorate, M.D., D.M.D., J.D.
Eastern Kentucky University	Richmond (67)	13,041	Masters, Specialist**
Somerset Community College	Somerset (69)	1,128	Associate

*Courses in a masters degree program are taught on the Transylvania campus by faculty members of Xavier University of Cincinnati. The degree is issued by Xavier University.

**Joint doctoral degree programs are offered in cooperation with the University of Kentucky, Lexington. The degrees are issued by the University of Kentucky.

Vocational Schools

Both the state vocational-technical schools and the area vocational education centers are operated by the Kentucky Department of Education. The state vocational-technical schools enroll persons full time who are at least 16 years of age and not in school. These students attend classes for six hours each day. The area vocational education centers are designed to accommodate high school students who are at least 15 years of age. These students attend vocational school for three hours each day. The state vocational-technical schools and the area education centers offer evening courses to enable working adults to upgrade current job skills.

Nearest State School

Location	Elizabethtown State Vocational- Technical School
Miles Distant	Elizabethtown 51
Curriculum	Business and Office Accounting Management* Clerical Secretarial Word Processing* Consumer and Home Economics Commercial Foods Retail Store Worker* Industrial Education Agricultural Mechanics* Air Conditioning Appliance Repair Auto Mechanics Carpentry Diesel Mechanics* Drafting Electronics* General Industry Worker* Industrial Electricity Industrial Maintenance Machine Shop Masonry* Plumbing* Radio and T.V. Repair Welding

*Tentatively scheduled to begin April 1984.

Nearest Area Education Center

Location	Marion County Area Vocational Education Center
Curriculum	Lebanon Business and Office Clerical Secretarial Health and Personal Services Occupations Health Services Industrial Education Air Conditioning Auto Body Repair Auto Mechanics Carpentry Welding

Arrangements can be made to provide training in the specific production skills required by an industrial plant. Instruction may be conducted either in the vocational school or in the industrial plant, depending upon the desired arrangement and the availability of special equipment.

HEALTH

Local Medical Personnel

Physicians - 14
Dentists - 8

Hospitals

<u>General Hospital</u>	<u>Location</u>	<u>Beds</u>
Spring View Hospital	Lebanon	75

General hospital facilities - Surgical and delivery suites, ICU/CCU, anesthesia, postoperative recovery room, emergency services, pharmacy, radiology, electrocardiography, nuclear medicine, ultrasound, clinical and pathological laboratories, blood bank, respiratory therapy, physical therapy, hospital auxiliary, and chaplaincy program

Medical staff - Fourteen doctors, two registered nurse anesthetists, two surgical technicians, seven laboratory technicians, three radiology technicians, 40 registered nurses, 29 licensed practical nurses, one social worker, one pharmacist, one physical therapist, one respiratory therapist

Ambulance Service

Name - Marion County Ambulance Service
Staff - 3 emergency medical technicians (full time); 15
 emergency medical technicians (part time)
Service - 24-hour service to all of Marion County
Equipment - 3 ambulances, fully-equipped

Public Health

Facility - Marion County Health Department
Staff - 4 registered nurses, 3 clerks, community health service aide, environmentalist, and administrative specialist

OTHER LOCAL FACILITIES

Communications

Telephone - General Telephone Company
Services - Standard

Telegraph - Western Union
Services - Toll-free number, 1-800-325-5100

Postal - U. S. Post Office
Class - First
Mail received - Twice daily
Mail dispatched - Twice daily

Newspapers - The Lebanon Enterprise
Weekly and circulation - 6,450
Other papers
received from - Louisville, Kentucky

Radio - WLBN-AM; WLSK-FM
Stations received from - Louisville and Lexington, Kentucky

Television -
Cable service
Reception from - Campbellsville, Louisville, and Lexington,
Kentucky; Atlanta, Georgia
Kentucky Educational
Television - Elizabethtown transmitter - Channel 23
Louisville transmitter - Channel 68

Library Services

Public library - Marion County Public Library
Size collection - 30,000 volumes
Circulation, 1981-82 - 101,445
Services - Member of Kentucky Interlibrary Communications Network,
magazines, records, pictures, story hour, meeting room, films,
projector, tapes, bookmobile, microfilm reader-printer, photocopy
machines

Religious Institutions

Marion County

Number of churches - 45
Denominations - A.M.E.
Baptist
C.M.E.
Catholic
Christian
Church of Christ
Church of God
Church of Jesus Christ of
Latter Day Saints
Jehovah's Witnesses
Methodist
Pentecostal
Presbyterian

Nearest Synagogues - Lexington, 62 miles northeast
Louisville, 66 miles northwest
Congregations - Lexington - Adath Israel (reform)
Ohavey Zion (traditional)
Louisville - Adath Israel Brith Sholom (reform)
Adath Jeshurum (conservative)
Anshei Sfard (orthodox)
Keneseth Israel (orthodox)
Sholom (reform)

Financial Institutions

<u>Banks</u>	<u>Assets</u>	<u>Deposits</u>	<u>Statement Date</u>
Citizens National Bank	\$35,333,495.00	\$31,363,375.00	12/31/82
Farmers National Bank	28,268,035.00	25,132,411.00	12/31/82
Marion National Bank	34,399,086.42	28,832,963.95	12/31/82

<u>Savings and Loan Associations</u>	<u>Assets</u>	<u>Savings Accounts</u>	<u>Statement Date</u>
Marion County Savings and Loan Association	\$ 7,783,439.65	\$ 7,162,216.09	12/31/82

Hotels and Motels

Total number - 2
Total rooms - 41

Clubs and Organizations

American Legion
American Legion Auxiliary
Business and Professional Women's Club
Daughters of Isabella Lebanon
Eastern Star
Kiwanis Club of Lebanon
Knights of Columbus
Lebanon-Marion County Chamber of Commerce
Lebanon Jaycees
Lebanon Rotary Club
Lebanon Senior Citizens Club
Marion County Bar Association
Marion County Civic Women's Club
Marion County Historical Society
Marion County Homemakers Association
Marion County Industrial Foundation
Marion County Sportsman Club
Marion County Water District
Mary Immaculate Hospital Auxiliary
Masonic Order of Lebanon Lodge
Monday Study Club
Thoreau Club
Veterans of Foreign Wars
Veterans of Foreign Wars Ladies Auxiliary

RECREATION

Local

Public recreational facilities in or near Lebanon include eight tennis courts, one park, four playgrounds, one swimming pool, three baseball diamonds, two football fields, and one skating rink. Also, there are plans for a community center to be built at the park.

Sportsman's Lake, near the Lebanon city limits, is a public recreational area owned by the Commonwealth of Kentucky and operated by Marion County. The lake and surrounding area offers a clubhouse, a playground, and facilities for fishing, picnicking, and archery.

The Lebanon Country Club, a privately-owned facility, offers a 9-hole golf course, a swimming pool, and two tennis courts.

Makers Mark Distillery at Loretto is Kentucky's oldest operating mill and distillery on its original site. Tours are offered Monday through Friday. Facilities include a visitor/reception house which features artifacts of old time distilling and a quarehouse, the equivalent of the modern package store. The Makers Mark Distillery has been entered on the National Register of Historic Places and has been named a Kentucky Landmark.

Lebanon is the home of the annual Marion County Ham Days, held the last weekend in September, and the Marion County Fair, which is held each year in July.

Area (Within 70 miles)

Lincoln Homestead State Park, 13 miles north of Lebanon near Springfield, is a 153-acre park on land settled by Abraham Lincoln's family. The actual building in which Nancy Hanks, mother of President Lincoln, lived during her courtship with Thomas Lincoln is preserved here as well as a replica of the 1782 cabin where Thomas Lincoln lived as a boy. The park also has a museum, a gift shop, a picnic area, and an 18-hole golf course.

Taylorsville Lake, 22 miles north of Lebanon, near Taylorsville, was developed by the U. S. Army Corps of Engineers. The 3,050-acre lake and 10,700-acre recreation area offers facilities for fishing, boating, swimming, and wildlife recreation.

Green River Lake State Park near Campbellsville, 23 miles south of Lebanon, is made up of 1,300 acres surrounding an 8,200-acre lake. The park is open all year-round and offers 96 campsites, a beach, boat docks, fishing, and a picnic area.

My Old Kentucky Home State Park, 25 miles northwest of Lebanon in Bardstown, portrays an image of the South's gentle and leisurely home life before the Civil War. The restored Georgian Colonial mansion is where composer Stephen Foster visited and where he was inspired to write "My Old Kentucky Home." One of the nation's most successful outdoor dramas, "The Stephen Foster Story", is presented in the park's amphitheatre during the summer months. The park also offers a 40-site campground, a gift shop, a 9-hole golf course and pro shop, a picnic area, and planned recreation.

Old Fort Harrod State Park, 31 miles northeast of Lebanon, is a 28-acre park in Harrodsburg that features a full-scale reproduction of the original Fort Harrod. The park also contains the log cabin where Abraham Lincoln's parents were wed, the Mansion Museum which houses mementos associated with the great periods of Kentucky history, a pioneer cemetery, and a federal monument dedicated to pioneers. The "Legend of Daniel Boone" and "Lincoln" are two excellent outdoor dramas which are performed at the Old Fort Amphitheater during the summer months.

Herrington Lake, 38 miles east of Lebanon near Danville and Harrodsburg, was developed by the Kentucky Utilities Company in 1925. Dix River Dam near Pleasant Hill is located on the 3,600-acre lake. Fishing, boating, and swimming can all be enjoyed on the lake. Camping and fishing facilities are available near Danville and Harrodsburg.

Abraham Lincoln Birthplace National Historic Site, located 39 miles west of Lebanon near Hodgenville, features the log cabin, which was the birthplace of Abraham Lincoln, enclosed within a granite memorial shrine. The grounds include 116 acres of the original Thomas Lincoln farm and a visitor's center with audiovisual programs and exhibits on the Lincoln family.

Bernheim Forest Arboretum and Nature Center, located 40 miles northwest of Lebanon, is a privately endowed 10,000-acre forest and wildlife refuge. The area contains over 1,400 labeled varieties of plant, trees and shrubs; ornamental gardens; a museum; nature trails and waterfowl ponds.

Frankfort, the capital of Kentucky, is 59 miles northeast of Lebanon. Points of interest in Frankfort include the Capitol Building, a 34-foot floral clock, the Daniel Boone Monument, several museums and old homes with their original furnishings. Frankfort is also the home of Kentucky State University which offers many cultural activities and sporting events.

Lexington, 62 miles northeast of Lebanon, offers a variety of cultural, sporting, and recreational activities. Thoroughbred and harness racing is presented at Keeneland Race Course and the Red Mile Harness Track during several meets each year. The University of Kentucky and Transylvania University offer a number of sporting events. The University of Kentucky basketball games are held at Rupp Arena, the world's largest basketball arena. Other attractions include Lexington Philharmonic concerts, Lexington Children's Theatre, and plays performed by Broadway touring companies, all held in the recently renovated Opera House.

The Kentucky Horse Park, a park dedicated to horses and to man's love for horses, is located 70 miles northeast of Lebanon near Lexington. The park, which contains more than 1,000 acres of Kentucky Bluegrass, features the International Museum of the Horse; the Man O'War Memorial; an antique carriage display; horseback and pony rides; walking farm tours; horse-drawn tours; a restaurant; a gift shop; and a campground area, which offers swimming, tennis, and planned activities. Numerous special events are held year-round and include various horse shows, steeplechasing, dressage, polo games, and rodeos.

Louisville, 66 miles northwest of Lebanon, provides a wide variety of recreational opportunities. The most noted recreational event in Louisville is the Kentucky Derby at Churchill Downs. The "Run for the Roses" is the oldest continuously held horse race in the United States. Other attractions include: Macauley Theatre, Actors Theatre of Louisville, Louisville Children's Theatre, the Louisville Bach Society, the Louisville Orchestra, the Louisville Ballet, the Kentucky Opera Association, several museums, the Louisville Zoological Gardens, University of Louisville sporting events, rock concerts, and the "Belle of Louisville" sternwheeler.

E. P. "Tom" Sawyer State Park is located near Louisville. Recreational facilities include an outdoor Olympic-size pool, a bathhouse, 12 lighted tennis courts, a picnic area, an archery range, and soccer fields. Planned recreation and a playground are offered year-round. Indoor facilities are available for basketball, volleyball, exercise classes, dance classes and various other events.

Lake Cumberland State Resort Park near Jamestown, 70 miles southeast of Lebanon, is a 3,000-acre park located on the 50,000-acre Lake Cumberland, which sports excellent bass, bluegill, and crappie fishing. The park features a modern 48-room resort lodge which is perched on a high bluff above the lake. The lodge has a swimming pool, a dining room, a gift shop, and a multi-purpose activities center. Other park facilities include an additional swimming pool, riding stables, tennis courts, hiking trails, a 9-hole golf course, miniature golf, a picnic area, and a playground. A marina offers houseboats, and fishing boats and motors for rent plus year-round launching ramps.

Five state shrines are located within a 70-mile radius of Lebanon.

Perryville Battlefield State Shrine, near Perryville, is the site of the largest Civil War battle in Kentucky. A museum, a picnic area, and a playground are located on the grounds. Constitution Square State Shrine, in Danville, is a reproduction of Kentucky's first courthouse square, including the original 1792 post office which was the first in the west. Issac Shelby State Shrine, near Danville, is the burial site of Kentucky's first governor and one of the Commonwealth's foremost statesmen. William Whitley House State Shrine, near Stanford, is the first brick house west of the Allegheny Mountains, built 1787-94. Whitley laid out Kentucky's first race track here and started U. S. counterclockwise racing. The facility provides picnic and playground areas in a ten-acre park. Waveland State Shrine, near Lexington, features an 1847 Greek Revival mansion depicting Kentucky lifestyles

from the days of early settlers to the antebellum era of gentility and elegance as well as the Civil War and postwar periods. The shrine also includes the Kentucky Life Museum and a plantation village on ten acres with many shops and displays.

COMMUNITY IMPROVEMENTS

Recent

The Lebanon Water Works expanded its water treatment plant capacity from 2 million gallons a day to 2.5 million gallons a day. The \$450,000 project was completed in January 1984. There are also plans at a later date to increase the capacity to 3 million gallons per day.

The City of Lebanon recently completed a \$432,000 downtown revitalization project. The project included planting trees, moving light lines, removing old signs, and resurfacing sidewalks.

Renovation of the exterior of City Hall and the fire house was recently completed.

The construction of a new emergency services building was completed in December 1983. The \$125,000 building houses the fire department, ambulance service, the rescue service and the disaster and emergency service.

The City of Lebanon recently purchased a 75-foot aerial ladder and pumper fire truck, a new \$36,000 garbage packer, and a \$15,000 hydraulic sewer cleaner.

Renovation of the city park was recently completed. The \$50,000 project included the construction of new sidewalks, the renovation of the restrooms and the paving of the parking lot.

The City of Lebanon recently completed the reconstruction of several streets located throughout the city.

In the spring of 1983, the Marion County Ambulance Service purchased a new \$25,000 ambulance.

The Marion County School System recently completed the installation of a heating system at the Lebanon Junior High School. Also, there are plans for the renovation of the interior of Lebanon Junior High School.

Under Way

Currently under construction is a connector road from Kentucky 208 to Kentucky 49. The \$150,000 project, which will also be used as an access road through the industrial site, will be completed in the summer of 1984.

Construction of storm drains throughout the city is currently under way. The \$95,000 project, which will include 6 sites, is scheduled to be completed in the spring of 1984.

Several programs are either under way or planned within the Marion County School System. They include a computer science program, a practical arts program, a competency-based vocational home economics program, a tutorial program, a COMP math program, and an individualized language arts program.

Planned

The reconstruction of Kentucky 55 from Lebanon to a point 3.76 miles south at Belltown is planned. The section from Walnut Street in Lebanon to Kentucky 208 will be four-lane and from Kentucky 208 to Belltown will be two-lane. The \$6.1 million project is scheduled to start in Spring 1984 and to be completed in Fall 1985.

The City of Lebanon Sewer Department has plans to extend sewer service to the Kentucky Highway 208 area.

There are plans to build a community center at the city park.