

1976

# Industrial Resources: Marshall County - Benton, Hardin, and Calvert City

Kentucky Library Research Collections  
Western Kentucky University, [spcol@wku.edu](mailto:spcol@wku.edu)

Follow this and additional works at: [https://digitalcommons.wku.edu/marshall\\_cty](https://digitalcommons.wku.edu/marshall_cty)

 Part of the [Business Administration, Management, and Operations Commons](#), [Growth and Development Commons](#), and the [Infrastructure Commons](#)

---

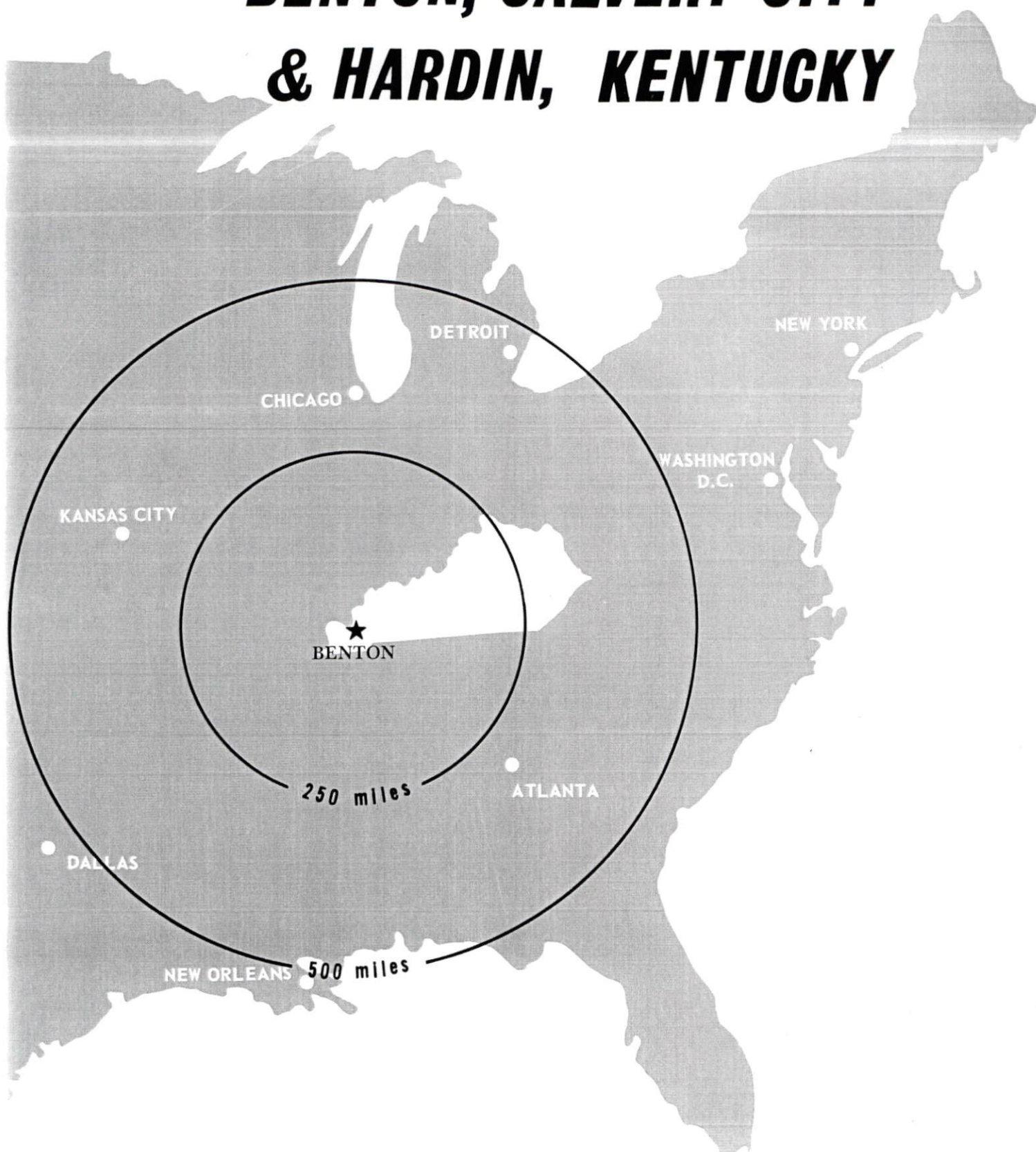
## Recommended Citation

Kentucky Library Research Collections, "Industrial Resources: Marshall County - Benton, Hardin, and Calvert City" (1976). *Marshall County*. Paper 11.  
[https://digitalcommons.wku.edu/marshall\\_cty/11](https://digitalcommons.wku.edu/marshall_cty/11)

This Report is brought to you for free and open access by TopSCHOLAR®. It has been accepted for inclusion in Marshall County by an authorized administrator of TopSCHOLAR®. For more information, please contact [topscholar@wku.edu](mailto:topscholar@wku.edu).

# INDUSTRIAL RESOURCES

## ***BENTON, CALVERT CITY & HARDIN, KENTUCKY***

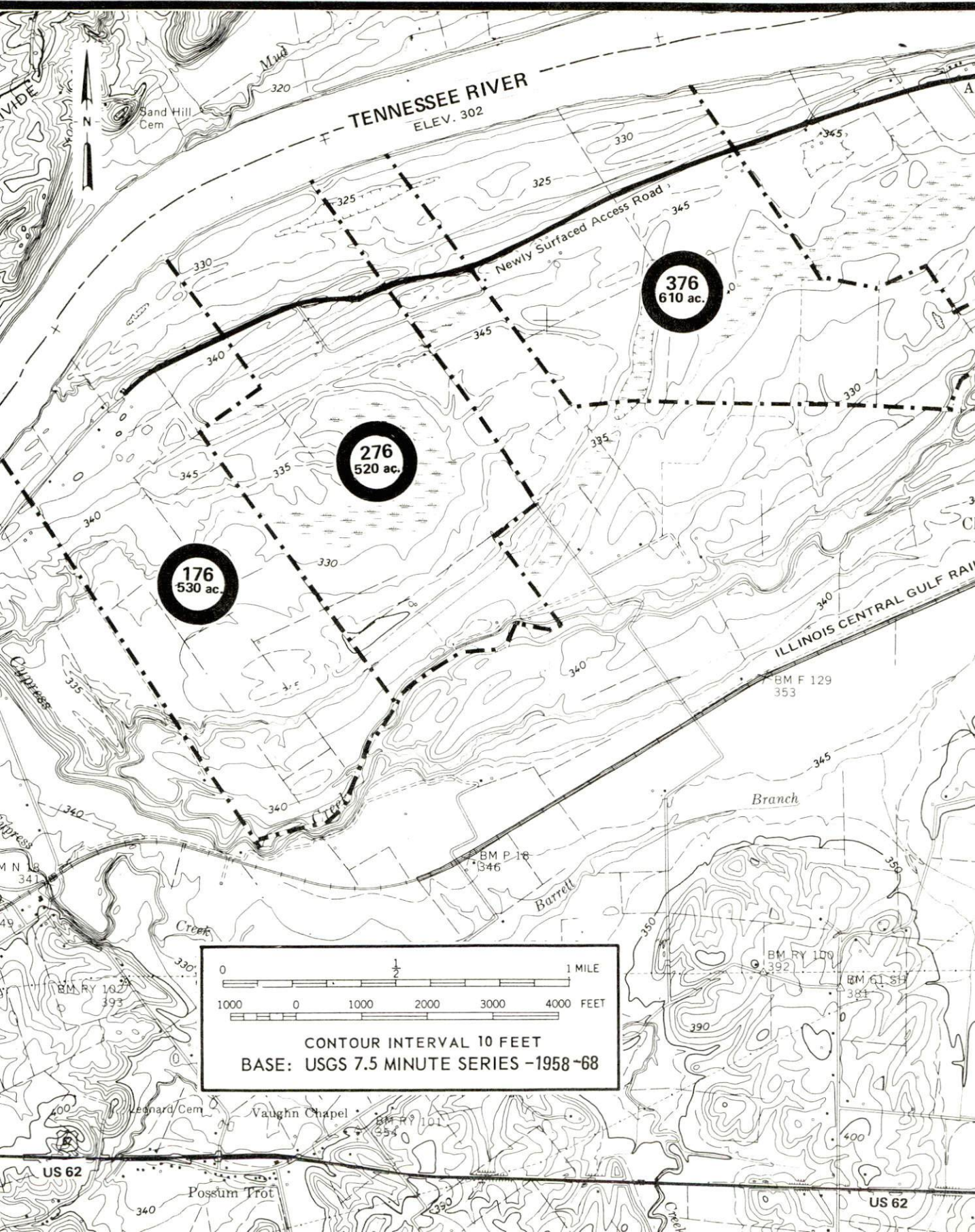


MARSHALL COUNTY, KENTUCKY

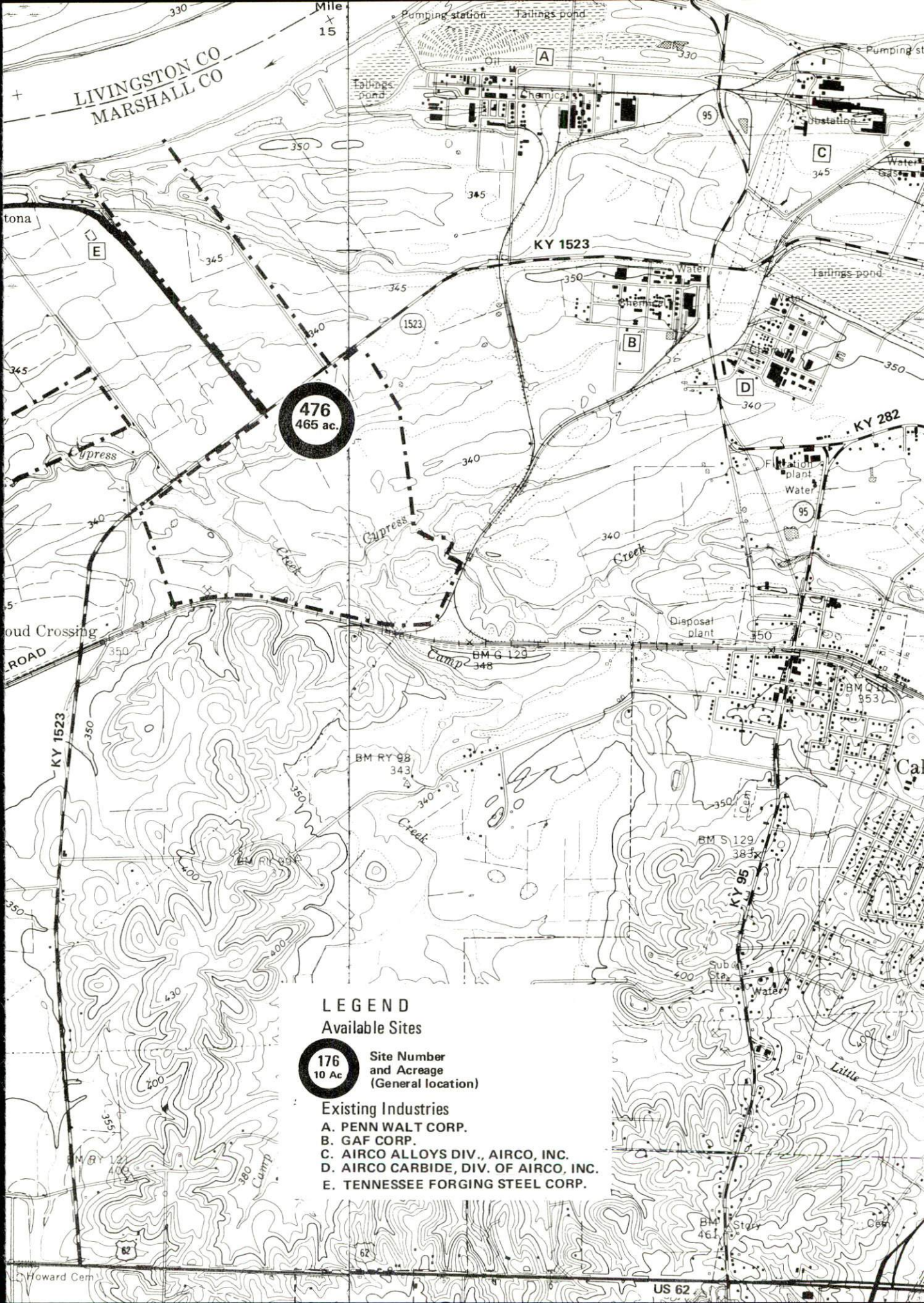


# CALVERT CITY, KENTUCKY --- Index to Industrial Sites --- 1976

For detailed data on individual sites, contact Mr. Gene Ray, GAF Corporation, Calvert City, Kentucky 42029, or the Industrial Development Division, Kentucky Department of Commerce, Capital Plaza Tower, Frankfort, Kentucky 40601.







LIVINGSTON CO  
MARSHALL CO

476  
465 ac.

### LEGEND Available Sites

176

10 Ac

Site Number  
and Acreage  
(General location)

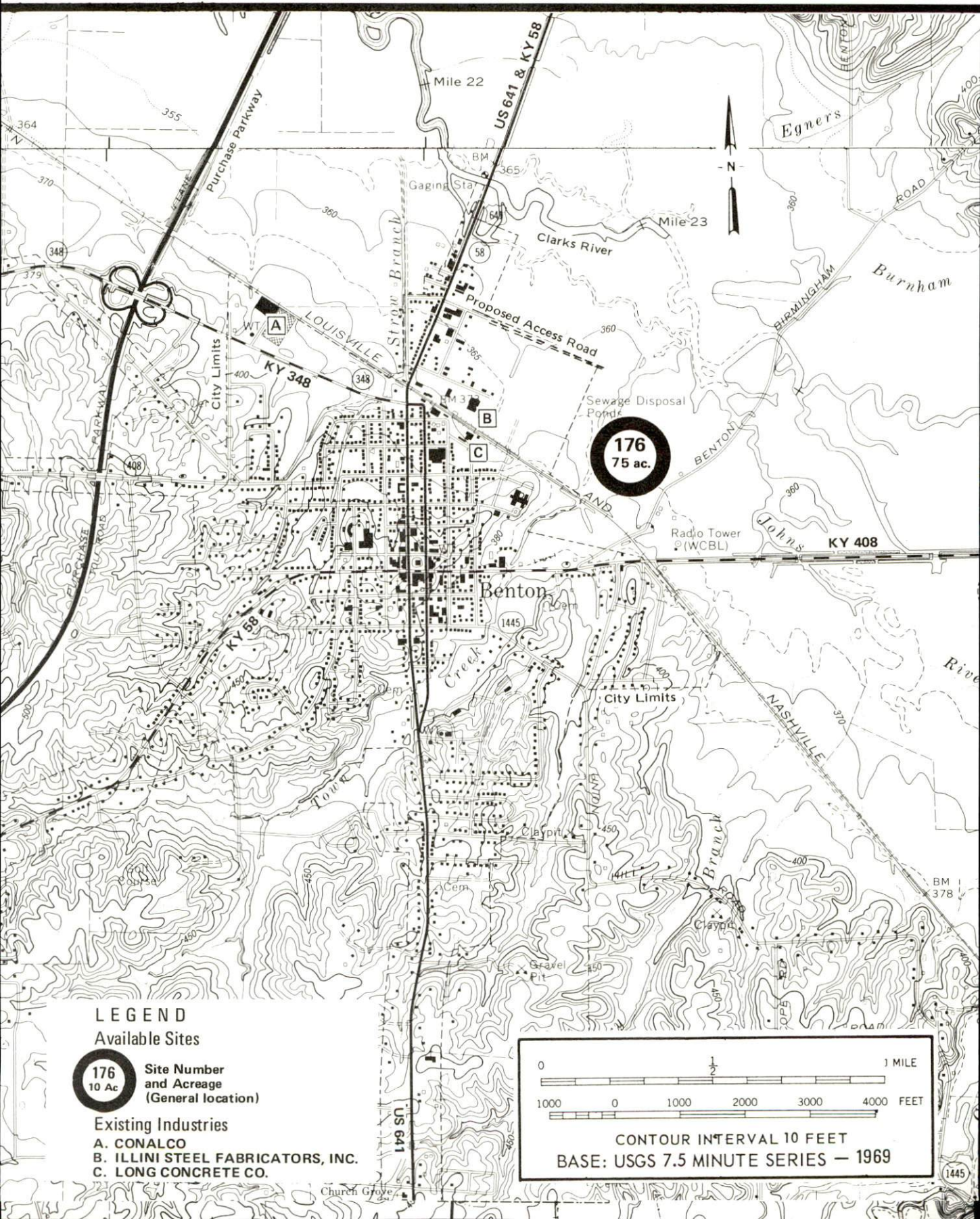
#### Existing Industries

- A. PENN WALT CORP.
- B. GAF CORP.
- C. AIRCO ALLOYS DIV., AIRCO, INC.
- D. AIRCO CARBIDE, DIV. OF AIRCO, INC.
- E. TENNESSEE FORGING STEEL CORP.



# BENTON KENTUCKY --- Index to Industrial Sites -- 1976

For detailed data on individual sites, contact Pete Gunn III, 108 East 12th Street, Benton, Kentucky 42025, or the Industrial Development Division, Kentucky Department of Commerce, Capital Plaza Tower, Frankfort, Kentucky 40601.





INDUSTRIAL RESOURCES  
BENTON, CALVERT CITY, AND HARDIN, KENTUCKY

Prepared by  
The Kentucky Department of Commerce  
in cooperation with  
The Marshall County Chamber of Commerce

1976



This copy has been prepared by the Kentucky Department of Commerce, Division of Research and Planning, and the cost of printing paid from state funds.

Production Supervisor  
Patsy Wallace

Research  
Robert McNeil Shipley

Clerical  
Dorothy Tierney

Graphics  
N. C. Montague  
Frank Ferrante  
Tony Cecconi

Cartography  
Site Development Section



# TABLE OF CONTENTS

| <u>Chapter</u>   | <u>Page</u> |
|--|-------------|
| INDUSTRIAL SITES. . . . .  | i           |
| BENTON, CALVERT CITY, AND HARDIN, KENTUCKY -<br>A RESOURCE PROFILE . . . . .                     | 1           |
| THE LABOR MARKET AREA . . . . .  | 4           |
| Population. . . . .  | 4           |
| General Employment Characteristics, 1974. . . . .  | 4           |
| Manufacturing Employment by Industry . . . . .   | 5           |
| Benton, Calvert City, and Hardin Manufacturing Firms,<br>Their Products and Employment . . . . . | 5           |
| Labor Organizations . . . . .  | 7           |
| Estimated Male Labor Supply . . . . .  | 11          |
| Estimated Female Labor Supply . . . . .  | 11          |
| Wages . . . . .  | 12          |
| Per Capita Personal Income. . . . .  | 13          |
| TRANSPORTATION. . . . .  | 14          |
| Rail . . . . .   | 14          |
| Highways . . . . .   | 15          |
| Truck Service . . . . .  | 17          |
| Air. . . . .   | 18          |
| Bus. . . . .   | 19          |
| Rental Services . . . . .  | 19          |
| Water. . . . .   | 19          |
| POWER AND FUEL. . . . .  | 20          |
| Electricity . . . . .  | 20          |
| Natural Gas . . . . .  | 21          |
| Other Fuels . . . . .  | 22          |
| WATER AND SEWERAGE . . . . .   | 24          |
| Water. . . . .   | 24          |
| Sewerage . . . . .   | 31          |
| CLIMATE . . . . .  | 34          |



| <u>Chapter</u>                                 | <u>Page</u> |
|--|-------------|
| LOCAL GOVERNMENT . . . . .                     | .35         |
| City . . . . .                                 | .35         |
| County . . . . .                               | .35         |
| Assessed Value of Property, 1975 . . . . .     | .37         |
| Property Taxes . . . . .                       | .37         |
| Local Property Tax Rate Per \$100 of           |             |
| Assessed Valuation, 1975 . . . . .             | .37         |
| Occupational License Tax for Schools . . . . . | .37         |
| Planning and Zoning . . . . .                  | .38         |
| Safety . . . . .                               | .38         |
| Police . . . . .                               | .38         |
| Fire . . . . .                                 | .38         |
| Rescue Service . . . . .                       | .38         |
| Solid Waste . . . . .                          | .39         |
| EDUCATION . . . . .                            | .41         |
| Public Schools . . . . .                       | .41         |
| Area Colleges and Universities . . . . .       | .41         |
| Vocational Schools . . . . .                   | .42         |
| HEALTH . . . . .                               | .43         |
| Local Medical Personnel . . . . .              | .43         |
| Hospitals . . . . .                            | .43         |
| Other Medical Facilities . . . . .             | .45         |
| Ambulance Service . . . . .                    | .45         |
| Nursing Homes . . . . .                        | .45         |
| Public Health . . . . .                        | .45         |
| OTHER LOCAL FACILITIES . . . . .               | .46         |
| Communications . . . . .                       | .46         |
| Library Services . . . . .                     | .47         |
| Religious Institutions . . . . .               | .49         |
| Financial Institutions . . . . .               | .49         |
| Hotels and Motels . . . . .                    | .49         |
| Clubs and Organizations . . . . .              | .50         |
| RECREATION . . . . .                           | .51         |
| COMMUNITY IMPROVEMENTS . . . . .               | .53         |
| HISTORY . . . . .                              | .56         |



# GENERAL HIGHWAY MAP MARSHALL COUNTY KENTUCKY

PREPARED BY THE  
KENTUCKY DEPARTMENT OF TRANSPORTATION  
BUREAU OF HIGHWAYS  
DIVISION OF PLANNING

IN COOPERATION WITH THE  
U.S. DEPARTMENT OF TRANSPORTATION  
FEDERAL HIGHWAY ADMINISTRATION



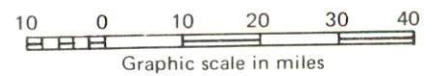
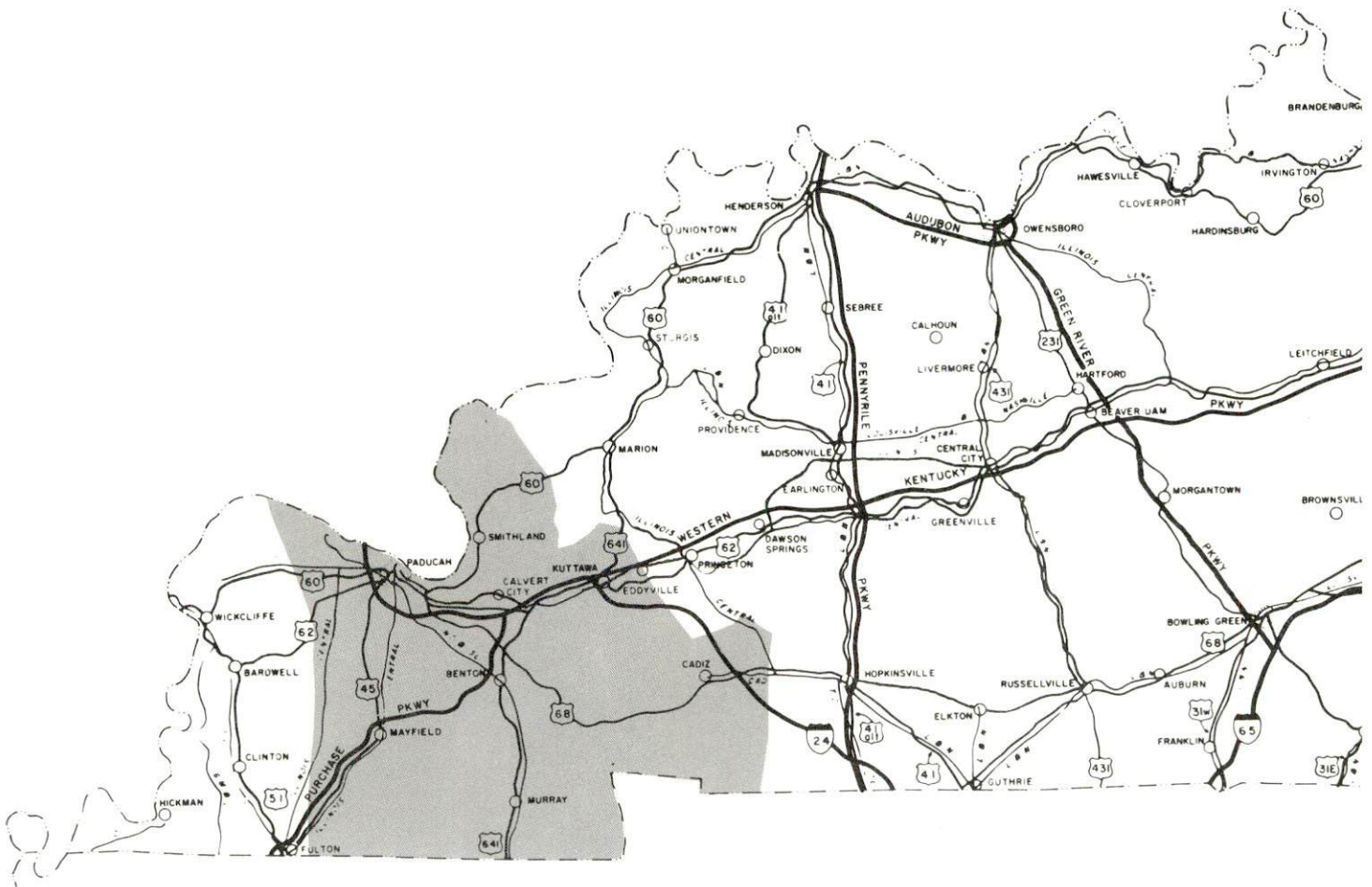
| ORIGINAL DATA<br>1969 |        |      |    |
|-----------------------|--------|------|----|
| REVISIONS             |        |      |    |
| DATE                  | BY     | DATE | BY |
| 1-1-71                | W.L.M. |      |    |
| 1-1-72                | J.R.D. |      |    |
| 1-1-73                | J.R.D. |      |    |
| 1-1-74                | J.R.D. |      |    |
| 1-1-75                | J.R.D. |      |    |
| 1-1-76                | J.R.D. |      |    |
| 1-1-77                | J.R.D. |      |    |
| 1-1-78                | J.R.D. |      |    |
| 1-1-79                | J.R.D. |      |    |
| 1-1-80                | J.R.D. |      |    |



# BENTON, CALVERT CITY AND HARDIN LABOR MARKET AREA



Shaded area denotes Labor Market Area.



## BENTON, CALVERT CITY, AND HARDIN, KENTUCKY - A RESOURCE PROFILE

Benton, the county seat of Marshall County, had a population of 3,540 in 1973. Ten manufacturing firms, employing nearly 700 persons, are located here. Calvert City, in northern Marshall County, possesses most of the county's heavy industry. Since 1949, seven manufacturing firms, six of them chemical plants, have located here. These companies employ more than 2,800 persons. In addition, Tennessee Forging Steel Corporation is constructing a new plant at Calvert City which will employ 120 persons. In 1973, Calvert City had a population of 2,050. Hardin, with a 1973 population of 558, is located in south central Marshall County.

Marshall County, situated in the Jackson Purchase physiographic region of Kentucky, covers some 303 square miles and possesses excellent resources for industrial expansion. Marshall County had a population of 21,900 in 1974.

### The Economic Framework

The total number of Marshall County residents employed in 1974 averaged 6,870, including 320 in agriculture and 1,120 in government. Manufacturing employers in the county reported 3,240 workers; trade and services firms employed 1,355. Major industrial products are: ferroalloys; vinyl chloride, caustic soda; acrylic acid polymer; metal and juvenile furniture; refrigerants propellants; potash; hydrofluoric acid; sodium chlorate; polyvinyl acetate alcohol; acetylenics; polyvinyl chloride; detergents; methylamines formaldehyde; and steel billets.

Total unemployment in Marshall County averaged 9.5 percent of the labor force in 1974.

Per capita personal income in the county in 1973 was \$3,644, an increase of 28.7 percent since 1969.

The Benton, Calvert City and Hardin labor market area includes Marshall County and the six adjoining counties. Total area employment averaged 74,010 jobs in 1974, including 3,550 in agriculture, 11,630 in government, 18,350 in trade and services, and 15,680 in manufacturing.



## Resources for Growth

1. Labor Supply: There is a current labor supply of 7,770 men and 8,320 women available for industrial jobs in the labor market area. In addition, 7,230 young men and 6,900 young women in the area will become 18 years of age before 1981 and potentially available for work.

2. Transportation: Benton and Hardin are located on a main line of the Louisville and Nashville Railroad which provides these cities with a variety of rail services. Piggyback facilities are available at Paris, Tennessee, 40 miles south of Benton and 33 miles south of Hardin. Calvert City is served by the Illinois Central Gulf Railroad. The nearest ICG piggyback facilities are located at Paducah, 20 miles west of Calvert City.

Five trucking lines provide service to Benton and eight serve Calvert City. Marshall County possesses an excellent highway system: the Jackson Purchase Parkway traverses the county in a north-south direction; the Western Kentucky Parkway is located just 21 miles east of Calvert City, 31 miles northeast of Benton, and 38 miles northeast of Hardin via U. S. Highways 641 and 62; and U. S. Interstate Highway 24 (under construction) will adjoin the Purchase Parkway at Calvert City when the Kentucky portion of the route is completed.

The Kentucky Dam State Park Airport near Gilbertsville is equipped with a 4,000-foot paved runway which can accommodate medium-sized aircraft and small jet aircraft. Commercial air service is available at Paducah's Barkley Field, 20 miles west of Calvert City, 25 miles northwest of Benton, and 32 miles northwest of Hardin.

Water transportation will be available at Calvert City upon completion of the city's municipally owned and operated riverport in the Spring of 1976.

3. Power and Fuel: The Tennessee Valley Authority provides electric power to Benton through the Benton Electric System and to portions of Calvert City and Marshall County through the West Kentucky Rural Electric Cooperative Corporation. The Jackson Purchase RECC, whose source of power is the Kentucky Utilities Company, also serves parts of Calvert City and Marshall County.

Natural gas is distributed to Benton by the Union Gas Company of Kentucky, whose source of supply is the Texas Gas Transmission Corporation. Calvert City receives its natural gas from the Western Kentucky Gas Company, whose source of supply is the Texas Gas Transmission Corporation. The Hardin Municipal Gas System, also supplied by the Texas Gas Transmission Corporation, serves Hardin.

Benton and Calvert City are each served by two propane and butane distributors; Hardin by one; and Marshall County by one. Five distributors of distillate fuel oil serve Benton; one serves Calvert City; and two serve Hardin.

4. Education: All public schools in Marshall County are consolidated into the Marshall County School System. There are no private or parochial schools in the county. Marshall County is located within 90 miles of three universities and two community colleges. The West Kentucky State Vocational-Technical School in Paducah offers training in 14 areas. The Marshall County Area Vocational Education Center at Benton offers six areas of study.



# THE LABOR MARKET AREA

## POPULATION

| <u>Area</u>       | <u>1974*</u> | <u>1970</u> | <u>Percent Nonwhite</u> |
|-------------------|--------------|-------------|-------------------------|
|                   |              |             | <u>1970</u>             |
| Benton            | 3,540**      | 3,652       | 0.1                     |
| Calvert City      | 3,050**      | 2,104       | 0.1                     |
| Hardin            | 558**        | 522         | N.A.                    |
| Labor Market Area | 164,700      | 159,071     |                         |
| Marshall County   | 21,900       | 20,381      | 0.2                     |
| Calloway County   | 28,600       | 27,692      | 3.2                     |
| Graves County     | 31,800       | 30,939      | 4.9                     |
| Livingston County | 8,400        | 7,596       | 0.7                     |
| Lyon County       | 5,900        | 5,562       | 7.5                     |
| McCracken County  | 59,000       | 58,281      | 10.4                    |
| Trigg County      | 9,100        | 8,620       | 18.0                    |

\*Provisional Estimates.

\*\*1973 Population Estimates

Sources: U. S. Department of Commerce, Bureau of the Census, Census of Population, 1970. U. S. Bureau of the Census, Current Population Reports, Series P-25, No. 562, June 1975; Series P-26, No. 120, June 1975.

## GENERAL EMPLOYMENT CHARACTERISTICS, 1974

| <u>Major Employment Group</u> | <u>Employment by Place of Residence<br/>of Workers</u> |                          |
|-------------------------------|--|--------------------------|
|                               | <u>Marshall County</u>                                 | <u>Labor Market Area</u> |
|                               |  |                          |
| Total Employment              | 6,874  | 74,008                   |
| Agriculture                   | 319  | 3,551                    |
| Government                    | 1,124  | 11,631                   |
| <br>                          |  |                          |
|                               | <u>Employment by Location of Jobs</u>                  |                          |
|                               | <u>Marshall County</u>                                 | <u>Labor Market Area</u> |
| Manufacturing                 | 3,241  | 15,677                   |
| Trade and Services            | 1,355  | 18,349                   |

Source: Kentucky Department for Human Resources, Bureau for Administration and Operations.

MANUFACTURING EMPLOYMENT BY INDUSTRY  
SEPTEMBER 1974

| <u>Industry</u>              | <u>Marshall County</u> | <u>Labor Market Area</u> |
|------------------------------|------------------------|--------------------------|
| TOTAL                        | 3,094                  | 16,188                   |
| Food & Kindred Products      | 18                     | 725                      |
| Tobacco                      | 0                      | 6                        |
| Apparel, Textiles, Leather   | 0                      | 3,093                    |
| Lumber, Furniture            | 144                    | 381                      |
| Printing & Publishing, Paper | 22                     | 296                      |
| Chemicals, Petroleum &       |                        |                          |
| Coal, Rubber                 | 2,097                  | 5,817                    |
| Stone, Clay & Glass          | 20                     | 583                      |
| Primary Metals               | 774                    | 955                      |
| Machinery, Metal Products,   |                        |                          |
| Equipment                    | 17                     | 3,693                    |
| Other                        | 2                      | 639                      |

Source: Kentucky Department for Human Resources, Number of Workers in Manufacturing Industries Covered by Kentucky Unemployment Insurance Law Classified by Industry and County, September, 1974.

BENTON, CALVERT CITY, AND HARDIN MANUFACTURING FIRMS,  
THEIR PRODUCTS AND EMPLOYMENT

| <u>Firm</u> (Establishment date)               | <u>Product</u>   | <u>Employment</u> |             |               | <u>Organized</u> |
|--|--|-------------------|-------------|---------------|------------------|
|  |  | <u>Total</u>      | <u>Male</u> | <u>Female</u> |                  |
| <u>Benton</u>                                  |  |                   |             |               |                  |
| Benton Ready Mix & Asphalt, Inc. (1963)        | Ready mixed concrete, asphalt paving                         | 8                 | 7           | 1             |                  |
| Birmingham Milling Company (1931)              | Feed   | 2                 | 2           | 0             |                  |
| Blue Grass Cooperage Co., Inc. (1948)          | Barrel staves, headings                                      | 18                | 18          | 0             |                  |
| Bluegrass Trailer Manufacturing Company (1971) | Horse trailers, portable industrial air tanks, boat trailers | 8                 | 7           | 1             |                  |
| Conalco-Ashby Division (1968)                  | Metal and juvenile furniture                                 | 600               | 150         | 450           | *                |
| Farley Concrete Products, Inc. (1962)          | Concrete pipe  | 5                 | 4           | 1             |                  |
| (Continued)                                    |  |                   |             |               |                  |

(Continued)



| <u>Firm</u> (Establishment date)                                  | <u>Product</u>  | <u>Employment</u> |             |               | <u>Organized</u> |
|---|---|-------------------|-------------|---------------|------------------|
|   |   | <u>Total</u>      | <u>Male</u> | <u>Female</u> |                  |
| <u>Benton (Cont. )</u>  |   |                   |             |               |                  |
| Illini Steel Fabricators, Inc. (1970)                             | Skids, special machinery, material handling equipment                                       | 16                | 15          | 1             | *                |
| Kentucky Waterland Press (1888)                                   | Newspaper, job printing   | 12                |             |               |                  |
| Long Concrete Company (1946)                                      | Concrete block, ready mixed concrete, pre cast concrete                                     | 13                | 12          | 1             |                  |
| George M. Phelps & Son (1960)                                     | Crossties, pallet stock, flooring   | 1                 | 1           | 0             |                  |
| <u>Calvert City</u>   |   |                   |             |               |                  |
| Air Products & Chemicals, Inc. (1955)                             | Polyvinyl acetate, alcohol, acetylenics, polyvinyl chloride                                 | 484               | 462         | 22            | *                |
| Airco Alloys - Division of Airco, Inc. (1949)                     | Ferroalloys   | 721               | 698         | 23            | *                |
| Airco Carbide - Division of Airco, Inc. (1953)                    | Acetylene, carbon paste, hydrated lime  | 93                | 92          | 1             | *                |
| American Aniline & Extract Company (1954)                         | Difunctional monomers, textile sizes  | 23                | 20          | 3             |                  |
| GAF Corporation (1956)  | Acetylenics, detergents, methylamines formaldehyde  | 356               | 337         | 19            | *                |
| B. F. Goodrich Chemical Company (1952)                            | Vinyl chloride, caustic soda, acrylic acid polymer  | 600               |             |               | *                |
| Pennwalt Corporation (1949)                                       | Refrigerants propellants, chlorine caustic soda, potash, hydrofluoric acid, sodium chlorate | 570               | 545         | 25            | *                |
| Tennessee Forging Steel Corporation, Calvert City Division (1975) | Steel billets   | 120               |             |               |                  |
| (continued)   |   |                   |             |               |                  |

(continued)

| <u>Firm (Establishment date)</u>             | <u>Product</u>         | <u>Employment</u> |             |               | <u>Organized</u> |
|--|------------------------|-------------------|-------------|---------------|------------------|
|  |                        | <u>Total</u>      | <u>Male</u> | <u>Female</u> |                  |
| <u>Hardin</u><br>Lees Country Hams<br>(1946) | Country hams,<br>bacon | 5                 | 3           | 2             |                  |

\*See Labor Organizations below.

Source: Kentucky Department of Commerce, Division of Research and Planning.

#### LABOR ORGANIZATIONS

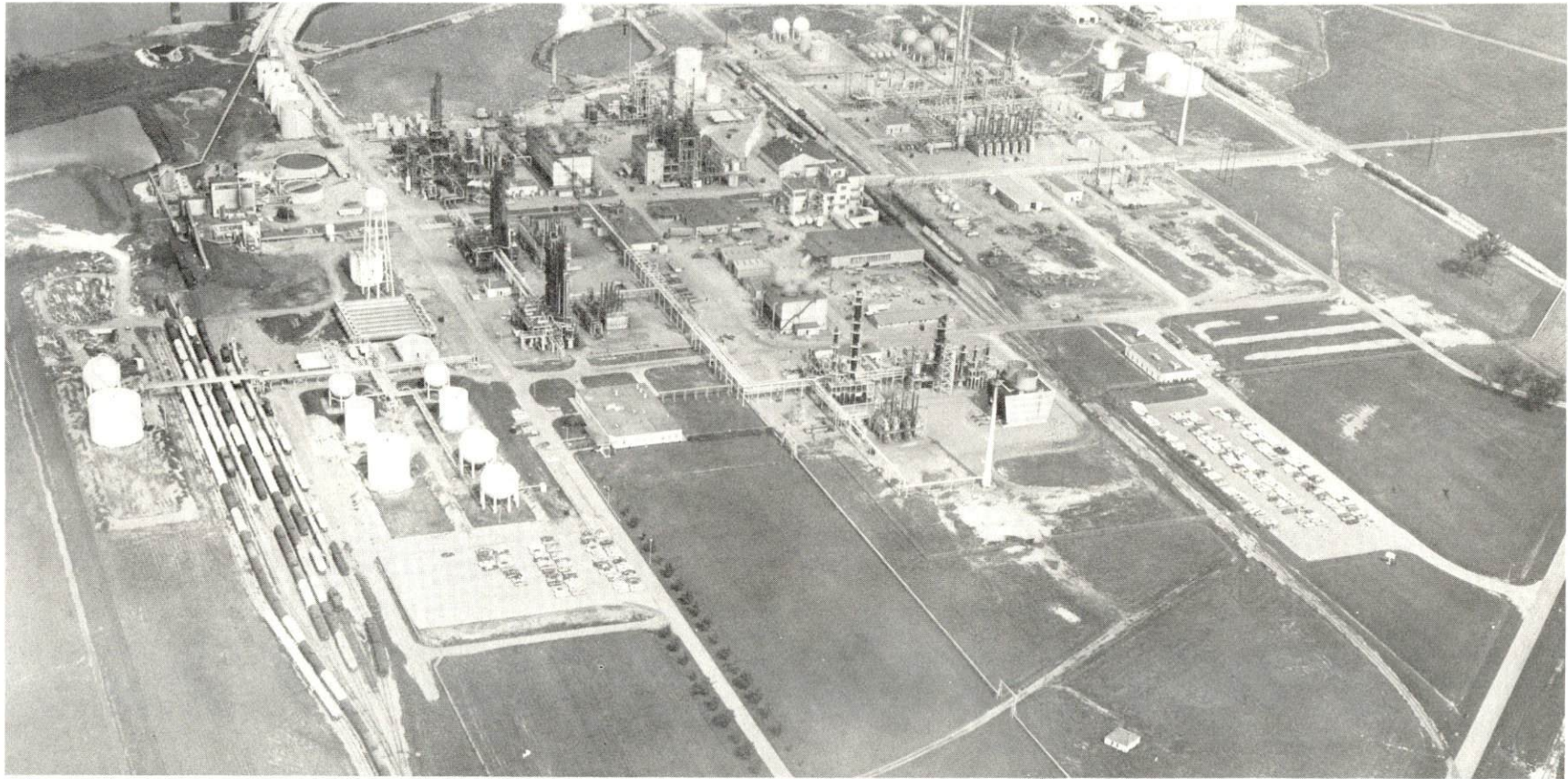
| <u>Union</u>  | <u>Representing manufacturing workers at:</u>  |
|---|--|
| International Association of<br>Machinists and Aerospace<br>Workers | B. F. Goodrich Chemical Company<br>GAF Corporation<br>Pennwalt Corporation<br>Illini Steel Fabricators, Inc. |
| International Brotherhood<br>of Teamsters                           | Pennwalt Corporation   |
| Oil, Chemical, and Atomic<br>Workers                                | Airco Carbide - Division of Airco, Inc.<br>Air Products and Chemicals, Inc.                                  |
| Aluminum Workers International                                      | Conalco - Ashby Division   |
| United Auto Workers   | Airco Alloys - Division of Airco, Inc.   |





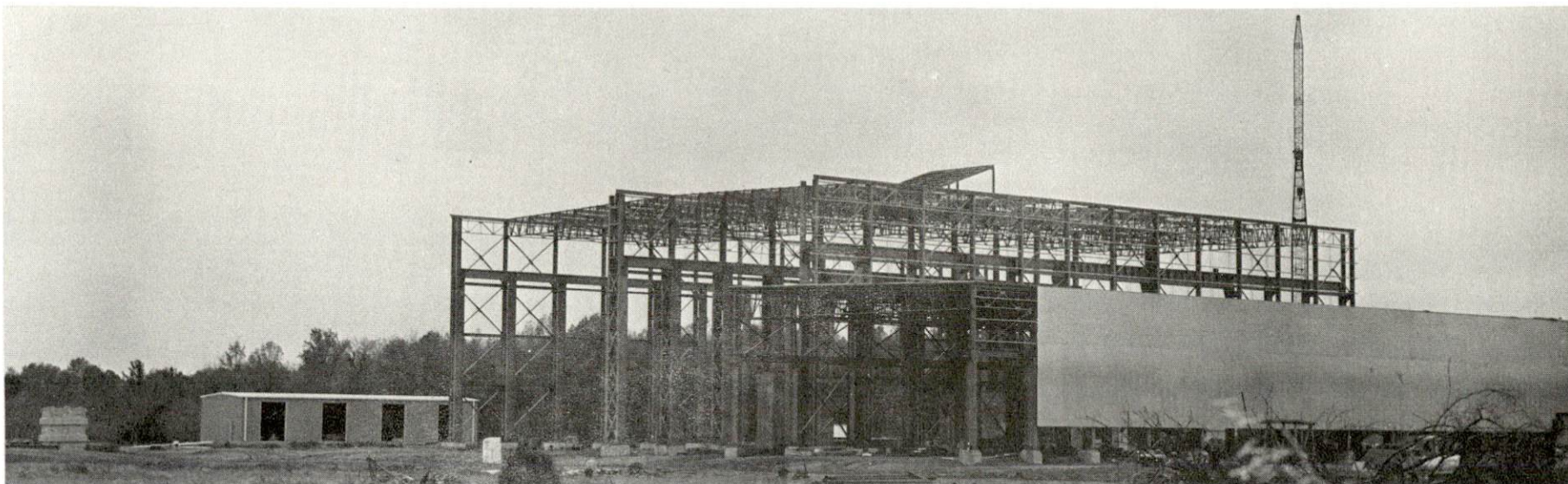
AIR PRODUCTS & CHEMICALS, INC., CALVERT CITY



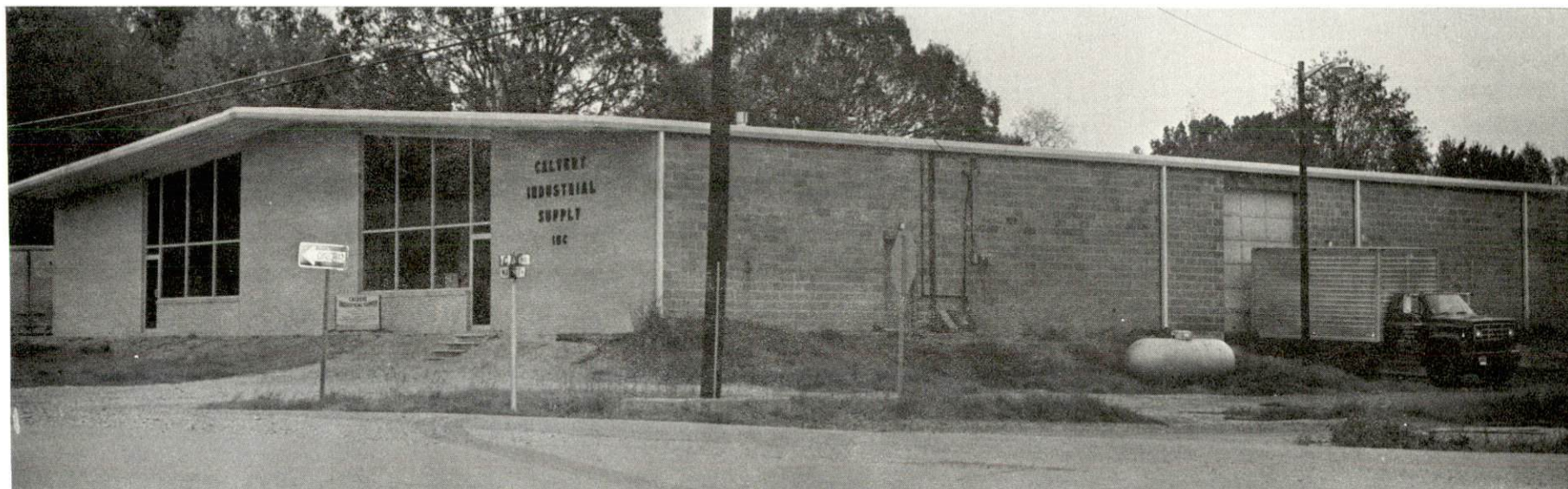


B. F. GOODRICH CHEMICAL COMPANY, CALVERT CITY





TENNESSEE FORGING STEEL CORPORATION, CALVERT CITY



CALVERT CITY WAREHOUSE & STORAGE



ESTIMATED MALE LABOR SUPPLY  
BENTON, CALVERT CITY, AND HARDIN LABOR MARKET AREA

| Area         | Current |                    |            | Future         |                                     |
|--------------|---------|--------------------|------------|----------------|-------------------------------------|
|              | Total   | Not in Labor Force | Unemployed | Under-employed | Reaching 18 yrs. of age before 1981 |
| Labor Market |         |                    |            |                |                                     |
| Area         | 7,010   | 1,640              | 2,280      | 3,090          | 7,229                               |
| Marshall     | 2,460   | 1,640              | 500        | 320            | 986                                 |
| Calloway     | 1,360   | 0                  | 310        | 1,050          | 1,002                               |
| Graves       | 900     | 0                  | 400        | 500            | 1,453                               |
| Livingston   | 300     | 0                  | 130        | 170            | 325                                 |
| Lyon         | 140     | 0                  | 70         | 70             | 209                                 |
| McCracken    | 1,550   | 0                  | 730        | 820            | 2,808                               |
| Trigg        | 300     | 0                  | 140        | 160            | 446                                 |

Sources: Kentucky Department for Human Resources, Kentucky Labor Supply Estimates by County, 1975. Kentucky Department of Commerce, Future Labor Supply before 1981.

ESTIMATED FEMALE LABOR SUPPLY  
BENTON, CALVERT CITY, AND HARDIN LABOR MARKET AREA

| Area         | Current |                    |            | Future         |                                     |
|--------------|---------|--------------------|------------|----------------|-------------------------------------|
|              | Total   | Not in Labor Force | Unemployed | Under-employed | Reaching 18 yrs. of age before 1981 |
| Labor Market |         |                    |            |                |                                     |
| Area         | 7,560   | 2,530              | 1,510      | 3,520          | 6,902                               |
| Marshall     | 2,400   | 1,730              | 220        | 450            | 952                                 |
| Calloway     | 1,260   | 0                  | 310        | 950            | 965                                 |
| Graves       | 1,040   | 0                  | 420        | 620            | 1,350                               |
| Livingston   | 190     | 0                  | 60         | 130            | 304                                 |
| Lyon         | 130     | 0                  | 60         | 70             | 173                                 |
| McCracken    | 2,250   | 800                | 320        | 1,130          | 2,767                               |
| Trigg        | 290     | 0                  | 120        | 170            | 391                                 |

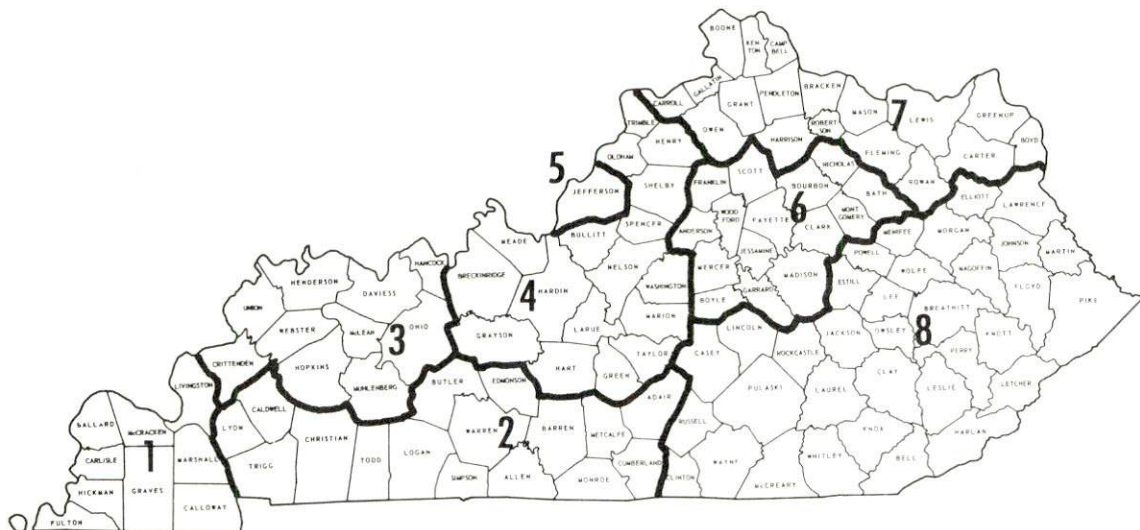
Sources: Kentucky Department for Human Resources, Kentucky Labor Supply Estimates by County, 1975. Kentucky Department of Commerce, Future Labor Supply before 1981.



## WAGES

Occupational wage rates for specific industries are usually not available to most government agencies, and wage data furnished to state employment agencies by industrial employers is protected from disclosure by federal law. The most reliable up-to-date wage information can be obtained by direct contact with local employers.

Associated Industries of Kentucky, a voluntary organization of Kentucky businesses, regularly collects occupational wage rates and fringe benefits data from participating member firms. Data is compiled for over 130 clearly defined office, production, and service occupations. Tabulations are published for eight regions of Kentucky, as shown on the map below. It should be noted that the data may be weighted by the preponderance of firms in the larger cities and may be somewhat higher than the rates paid in the smaller communities. Data from these tabulations are available, upon request, from the Kentucky Department of Commerce, Frankfort, Kentucky 40601.



Associated Industries of Kentucky Area Wage Surveys

Up-to-date occupational wage rates of the existing industries are maintained by South Kentucky Industrial Development Association, Post Office Box 726, Hopkinsville, Kentucky 42240.

PER CAPITA PERSONAL INCOME

| <u>Area</u>             | <u>1973</u>     | <u>1969</u>     | <u>% Change</u> |
|-------------------------|-----------------|-----------------|-----------------|
| Marshall County         | \$3,644         | \$2,832         | +28.7           |
| Labor Market Area Range | \$3,441 - 4,304 | \$2,265 - 3,149 | N.A.            |
| Kentucky                | 4,050           | 2,894           | +39.9           |
| U. S.                   | 5,041           | 3,733           | +35.1           |

Sources: U. S. Department of Commerce, Office of Business Economics, Survey of Current Business, August, 1974. U. S. Department of Commerce, Bureau of Economic Analysis, April, 1975.



## TRANSPORTATION

### Rail

Line serving Benton - Louisville and Nashville Railroad

Services - 1 local freight daily; switching facilities; team track with space for 6 cars; additional siding space for 23 cars; nearest piggyback facilities available at Paris, Tennessee, 40 miles south of Benton

Line serving Calvert City - Illinois Central Gulf Railroad

Services - 4 freights making daily stops (one northbound, one southbound, and 2 local freights running between Paducah and Calvert City 6 days per week); 2 switch engines which only serve the industrial plants; team track with space for 6 to 8 cars; additional siding space for approximately 200 cars; nearest piggyback facilities available at Paducah, 20 miles west of Calvert City

Line serving Hardin - Louisville and Nashville Railroad

Services - 1 local freight daily; switching facilities; team track with space for 6 cars; additional siding space for 22 cars; nearest piggyback facilities available at Paris, Tennessee, 33 miles south of Hardin

For details on routing, schedules, rates, and services, contact:

Manager of Industrial Development  
Louisville and Nashville Railroad Company  
908 West Broadway  
Louisville, Kentucky 40203  
(502) 587-5000

and

Assistant Superintendent  
Illinois Central Gulf Railroad Company  
1500 Kentucky Avenue  
Paducah, Kentucky 42001  
(502) 442-6274

## Highways

Marshall County is served by an excellent system of interstate and primary highways. The Purchase Parkway (toll road) traverses the county; the Western Kentucky Parkway (toll road) is located just 21 miles east of Calvert City, 31 miles northeast of Benton, and 38 miles northeast of Hardin; and U. S. Interstate Highway 24 (under construction) will adjoin the Purchase Parkway near Calvert City. The Kentucky portion of I-24 is presently open to traffic from its junction with U. S. Highway 60 west of Paducah northward into Illinois, and from its junction with U. S. Highway 68 east of Cadiz to the Tennessee state line.

In addition, a right-of-way is currently being purchased for the reconstruction of U. S. Highway 641 from 1.1 miles south of the Benton city limits to approximately 4.5 miles north of Murray, Kentucky, a total distance of some 12.4 miles. Tentative plans have been made to begin receiving bids for the project in September 1976.

U. S. Highway 62 provides transportation service to the Calvert City area; U. S. Highway 68 traverses the county, passing 5 miles east of Benton; and Kentucky Highway 80 intersects U. S. 641 at Hardin.





CROUCH TRUCK TERMINAL (under construction)  
LIQUID TRANSPORTERS, INC.

## Truck Service

### Company

### Home Office

#### Benton

|                                 |  |
|---------------------------------|--|
| Jack Cole-Dixie Highway Company | 2625 Territorial Road<br>St. Paul, Minnesota 55114             |
| Harper Truck Service, Inc.      | 1266 North 8th Street<br>Paducah, Kentucky 42002               |
| McLean Trucking Company         | 617 Waughtown Street<br>Winston-Salem, North Carolina<br>27107 |
| Paschall Truck Lines, Inc.      | Route 4<br>Murray, Kentucky 42071                              |
| T.I.M.E. - DC, Inc.             | P. O. Box 2550<br>Lubbock, Texas 79408                         |

#### Calvert City

|  |  |
|--|--|
| Crouch Trucking Company                                | Calvert City, Kentucky 42029                                   |
| Harper Truck Service, Inc.                             | 1266 North 8th Street<br>Paducah, Kentucky 42002               |
| McLean Trucking Company                                | 617 Waughtown Street<br>Winston-Salem, North Carolina<br>27107 |
| Modern Truck Lines, Inc.                               | 1230 North 8th Street<br>Paducah, Kentucky 42002               |
| Paschall Truck Lines, Inc.                             | Route 4<br>Murray, Kentucky 42071                              |
| Cooper-Jarrett, Inc.<br>(bulk commodities - tank)      | 23 South Essex Avenue<br>Orange, New Jersey 07050              |
| Liquid Transporters, Inc.<br>(bulk commodities - tank) | P. O. Box 21395<br>Louisville, Kentucky 40221                  |
| O'Nan Transportation Company                           | P. O. Box 308<br>Carrollton, Kentucky 41008                    |
| Southern Tank Lines, Inc.<br>(bulk commodities - tank) | 4107 Bells Lane<br>Louisville, Kentucky 40211                  |

### Other Freight Services

### Shipping Center

United Parcel Service

Paducah, 20 miles west of Calvert  
City



HIGHWAY MILES AND TRUCK TRANSIT TIME IN DAYS FROM  
CALVERT CITY, KENTUCKY, TO SELECTED MARKET CENTERS

| City             | Delivery         |            | City                | Delivery         |            |
|------------------|------------------|------------|---------------------|------------------|------------|
|                  | Highway<br>Miles | Time<br>TL |                     | Highway<br>Miles | Time<br>TL |
| Atlanta, Ga.     | 366              | 2          | Los Angeles, Calif. | 2,058            | 4          |
| Birmingham, Ala. | 320              | 2          | Louisville, Ky.     | 193              | 1          |
| Chicago, Ill.    | 425              | 2          | Nashville, Tenn.    | 124              | 2          |
| Cincinnati, Ohio | 294              | 2          | New Orleans, La.    | 600              | 2          |
| Cleveland, Ohio  | 541              | 2          | New York, N. Y.     | 953              | 3          |
| Detroit, Mich.   | 553              | 2          | Pittsburgh, Pa.     | 584              | 3          |
| Knoxville, Tenn. | 301              | 2          | St. Louis, Mo.      | 204              | 1          |

Source: Delivery Time only - Harper Truck Service Inc., 1266 North  
8th Street, Paducah, Kentucky 42002

Air

|                         | <u>Local</u>                                  | <u>Nearest Commercial</u>   |
|-------------------------|---|---|
|                         | Kentucky Dam State<br>Park Airport            | Barkley Field   |
| Location:               | Gilbertsville, 12<br>miles from Benton        | Paducah, 25 miles from Benton<br>and 20 miles from Calvert City   |
| Runways:                | 1 paved                                       | 1 paved   |
| Length:                 | 4,000 feet                                    | 6,500 feet  |
| Traffic                 |   |   |
| Control:                | Wind tee                                      | Tower and ground control  |
| Lighting:               | Runway lights sun-<br>down to sunrise         | Beacon; boundary; obstruction<br>runway lights and runway end<br>identification lights; medium<br>intensity approach lighting system                            |
| Services:               | 100 octane, jet fuel,<br>tie down, car rental | Delta and Ozark Airlines; 80 and<br>100 octane; JA-1 fuel; taxi;<br>limousine; U-Drive-It; storage;<br>major A & E repairs; restaurant<br>6:00 a.m. - 4:30 p.m. |
| Air Freight<br>Service: |   | Freight accepted on a space<br>available basis  |

|                          | <u>Benton</u>   | <u>Calvert City</u>  |
|--------------------------|---|--|
| <u>Bus</u> -             | Southern Greyhound<br>Bus Lines<br>Western Kentucky<br>Stages, Inc. | Southern Greyhound<br>Bus Lines<br>Western Kentucky<br>Stages, Inc.<br>Kentucky Bus Line |
| <u>Rental Services</u> - | Auto and trailer rentals  | Auto and trailer rentals   |

There are no commercial bus, taxi, or rental services in Hardin.

Water - Calvert City is constructing a one million dollar riverport facility on the Tennessee River which is scheduled for completion in the Spring of 1976. The city will own and operate the port which is being financed through the issuance of municipal bonds. The facility will have a 50-foot crane and will be served by both rail and highway transportation. The port will be capable of handling four barges at one time.



## POWER AND FUEL

### Electricity

Company serving Benton - Benton Electric System  
Source of power - Tennessee Valley Authority  
Total generating capacity - 26,723,430 KW

For industrial rates contact:

Benton Electric System  
540 Mayfield Highway  
Benton, Kentucky 42025  
(502) 527-2361 or 527-3651

and/or

South Kentucky Industrial  
Development Association, Inc.  
Post Office Box 726  
Hopkinsville, Kentucky 42240  
(502) 885-5392

Companies serving Calvert City and Marshall County - (1) Jackson  
Purchase RECC; (2) West Kentucky RECC  
Source of power - (1) Kentucky Utilities Company; (2) Tennessee  
Valley Authority  
Total generating capacity - (1) 1,615,500 KW; (2) 26,723,430 KW

For industrial rates contact:

West Kentucky RECC  
1218 West Broadway  
Mayfield, Kentucky 42066  
(502) 247-1321

and/or

Jackson Purchase RECC  
2900 Irvin Cobb Drive  
Paducah, Kentucky 42001  
(502) 442-7321

Company serving Hardin - West Kentucky RECC  
Source of power - Tennessee Valley Authority  
Total generating capacity - 26,723,430 KW

For industrial rates contact:

West Kentucky RECC  
1218 West Broadway  
Mayfield, Kentucky 42066  
(502) 247-1321

#### Natural Gas

Company serving Benton - Union Gas Company of Kentucky  
Source of supply - Texas Gas Transmission Corporation  
Size of transmission mains - 26, 30, and 36 inches (supplier);  
4 inches (distributor)  
Distribution mains - 4 and 2 inches  
Distribution pressure - 30 psi (summer), 45 psi (winter)  
Btu content - 1,005 per cubic foot  
Specific gravity - .593

For rates and supplies contact:

Union Gas Company of Kentucky  
101 East 11th Street  
Benton, Kentucky 42025  
(502) 527-2841

Company serving Calvert City - Western Kentucky Gas Company  
Source of supply - Texas Gas Transmission Corporation  
Size of transmission mains - 26 and 28 inches (supplier);  
6 inches (distributor)  
Distribution mains - 2 and 4 inches  
Distribution pressure - 35 psi  
Btu content - 1,000 per cubic foot; Specific gravity - .600

For rates and supplies contact:

Western Kentucky Gas Company  
1515 Broadway  
Paducah, Kentucky 42001  
(502) 362-8350 Calvert City  
442-4326 Paducah



Company serving Hardin - Hardin Municipal Gas System  
Source of supply - Texas Gas Transmission Corporation  
Size of transmission mains - 4 inches (distributor)  
Distribution mains - 2 inches  
Distribution pressure - 40 - 60 psi  
Btu content - 1,008 per cubic foot; Specific gravity - .60 - .65

For rates and supplies contact:

Hardin Municipal Gas System  
City Hall  
Hardin, Kentucky 42048  
(502) 437-4361

#### Other Fuels

##### Propane and butane

###### Benton

Texgas Corporation, Railroad Avenue  
Murray, Kentucky 42071 (18 miles south of Benton)  
Ohio Valley Gas Company, 832 West Broadway  
Mayfield, Kentucky 42066 (20 miles west of Benton)

###### Calvert City

Texgas Corporation, 1011 North Beltline Highway  
Paducah, Kentucky 42001 (20 miles west of Calvert City)  
Tri-State Consolidated Gas Company, Highway 60 E  
Paducah, Kentucky 42001

###### Hardin

Texgas Corporation, Railroad Avenue  
Murray, Kentucky (11 miles south of Hardin)

###### Marshall County (only)

Lake Region L.P. Gas Company, Highway 68  
Benton, Kentucky 42025

## Fuel oils

Distillate fuel oil -

### Benton

Ashland Petroleum Company (bulk plant), 102 Main Street  
Benton, Kentucky 42025

Stanley Lindsey Oil Company-Sun Oil (bulk plant)  
909 Main Street, Benton, Kentucky 42025

James Taylor Gulf Oil (bulk plant), 327 East 7th Street  
Benton, Kentucky 42025

Richard Rudolph Standard Oil (bulk plant), 500 Poplar Street  
Benton, Kentucky 42025

Service Oil Company, Inc. (bulk plant), 92 North Main Street  
Benton, Kentucky 42025

### Calvert City

E. M. Bailey Distributing Company (bulk plant)  
1000 South 8th Street, Paducah, Kentucky 42001 (20 miles  
west of Calvert City)

### Hardin

Richard Rudolph Standard Oil (bulk plant), 500 Poplar Street  
Benton, Kentucky 42025 (7 miles north of Hardin)

Service Oil Company, Inc. (bulk plant), 92 North Main Street  
Benton, Kentucky 42025

Residual fuel oil - arrangements must be made with the refinery.

Low sulphur content coal - Available in Kentucky.



## WATER AND SEWERAGE

### Water

Company serving Benton - Benton Water and Sewer System  
101 East 11th Street  
Benton, Kentucky 42025  
(502) 527-5361

Source - Two wells  
Treatment plant capacity - 1,440,000 gpd  
Average daily consumption - 400,000 gallons  
Peak daily consumption - 456,517 gallons  
Type treatment - Chlorination, fluoridation, lime  
Storage capacity - 840,000 gallons  
Size lines - 12, 10, 8, and 6 inches  
Average pressure - 96-108 psi

### MONTHLY WATER RATES FOR WHOLESALE AND INDUSTRIAL CONSUMERS

| <u>Quantity</u>         | <u>Rate</u>                       |
|-------------------------|-----------------------------------|
| 0 - 1,500 gallons       | 2.00 (Minimum)                    |
| 1,500 - 3,000 gallons   | 3.00                              |
| 3,000 - 3,500 gallons   | 4.00                              |
| 3,500 - 4,000 gallons   | 4.50                              |
| 4,000 - 4,500 gallons   | 5.00                              |
| 4,500 - 5,000 gallons   | 5.50                              |
| 5,000 - 5,500 gallons   | 6.00                              |
| 5,500 - 6,000 gallons   | 6.50                              |
| 6,000 - 6,500 gallons   | 7.00                              |
| 6,500 - 7,000 gallons   | 7.50                              |
| 7,000 - 20,000 gallons  | 7.50 plus \$.70 per 1,000 gallons |
| 20,000 - 40,000 gallons | 16.60 plus .50 per 1,000 gallons  |
| Over 40,000 gallons     | 26.60 plus .40 per 1,000 gallons  |

Tap-on charge: \$125

Company serving Calvert City - Calvert City Water and Sewer System  
Calvert City, Kentucky 42029  
(502) 395-4020

Source - Three wells

Treatment plant capacity - 1,080,000 gpd

Average daily consumption - 850,000 gallons

Peak daily consumption - 1,000,000 gallons

Type treatment - Iron removal, pressure filters, chlorination,  
fluoridation

Storage capacity - 1,035,000 gallons

Size lines - 8, 6, and 4 inches

Average pressure - 90 psi

Average temperature - 58 degrees F.

MONTHLY WATER RATES FOR WHOLESALE  
AND INDUSTRIAL CONSUMERS

|       | <u>Quantity</u> | <u>Rate</u>        |
|-------|-----------------|--------------------|
| First | 2,000 gallons   | \$3.50             |
| Next  | 3,000 gallons   | 1.00 per M gallons |
| Next  | 5,000 gallons   | .80 per M gallons  |
| Next  | 5,000 gallons   | .70 per M gallons  |
| Next  | 5,000 gallons   | .60 per M gallons  |
| Next  | 5,000 gallons   | .50 per M gallons  |
| Next  | 25,000 gallons  | .40 per M gallons  |
| Over  | 50,000 gallons  | .30 per M gallons  |

Tap-on charge: \$150 inside city limits  
250 outside city limits



Company serving Hardin - Hardin Municipal Water System  
Hardin, Kentucky 42048  
(502) 437-4361

Source - Two wells  
Treatment plant capacity - 57,600 gpd  
Average daily consumption - 52,000 gallons  
Type treatment - Sand filtration, chlorination, fluoridation  
Storage capacity - 50,000 gallons  
Size lines - 6 and 4 inches  
Average pressure - 60-70 psi

MONTHLY WATER RATES FOR WHOLESALE  
AND INDUSTRIAL CONSUMERS

Minimum Charges for First 2,000 Gallons

|                               |                   |
|-------------------------------|-------------------|
| 5/8-inch service connection   | \$ 4.75 per month |
| 3/4-inch service connection   | 6.00 per month    |
| 1-inch service connection     | 10.00 per month   |
| 1 1/2-inch service connection | 12.50 per month   |
| 2-inch service connection     | 18.75 per month   |
| 3-inch service connection     | 37.50 per month   |
| 4-inch service connection     | 80.00 per month   |

Rates After Minimum Charge

|      |                |                       |
|------|----------------|-----------------------|
| Next | 3,000 gallons  | \$ 1.25 per M gallons |
| Next | 5,000 gallons  | 1.10 per M gallons    |
| Next | 5,000 gallons  | 1.00 per M gallons    |
| Next | 5,000 gallons  | .90 per M gallons     |
| Next | 5,000 gallons  | .75 per M gallons     |
| Next | 25,000 gallons | .60 per M gallons     |
| Over | 50,000 gallons | .40 per M gallons     |

Tap-on charge: \$150

Name of water district - North Marshall Water District  
Route 7, P. O. Box 141  
Benton, Kentucky 42025  
(502) 527-8730

Area served - Gilbertsville; Kentucky Dam Village State Park; both sides of U. S. 68 west to the McCracken County line; Highway 641 north to Kentucky Dam; Highway 641 south to 2 miles north of Benton; U. S. 68 south to Highway 58; both sides of Highway 58 to Kentucky Lake

Date when water district began operating - July, 1964

Source of raw water - Kentucky Lake; 1 well at Gilbertsville; 1 well at Kentucky Dam Village State Park; 2 wells near the junction of Highways 641 and 1422

Capacity of treatment plant - 3 treatment plants with a combined capacity of 1,600 gpm

Type of treatment - Chlorination, lime\*

Average amount of water used in a 24-hour period - 350,000 gallons

Peak amount of water used in a 24-hour period - 666,667 gallons

Storage capacity - 580,000 gallons

Average pressure - 60-65 psi

Average temperature - 50 degrees F.

Size lines - 8, 6, and 4 inches

Rates -

|       |                |                    |
|-------|----------------|--------------------|
| First | 2,000 gallons  | \$4.75 (Minimum)   |
| Next  | 3,000 gallons  | 2.00 per M gallons |
| Next  | 5,000 gallons  | 1.75 per M gallons |
| Next  | 5,000 gallons  | 1.50 per M gallons |
| Next  | 5,000 gallons  | 1.25 per M gallons |
| Next  | 5,000 gallons  | 1.10 per M gallons |
| Next  | 25,000 gallons | 1.00 per M gallons |
| Over  | 50,000 gallons | .50 per M gallons  |

#### Monthly Minimum Charge

|                    |               |         |
|--------------------|---------------|---------|
| 5/8-inch service   | 2,000 gallons | \$ 4.75 |
| 3/4-inch service   | 2,000 gallons | 5.00    |
| 1-inch service     | 2,000 gallons | 8.00    |
| 1 1/2-inch service | 2,000 gallons | 10.00   |
| 2-inch service     | 2,000 gallons | 15.00   |
| 3-inch service     | 2,000 gallons | 30.00   |
| 4-inch service     | 2,000 gallons | 65.00   |

Tap-on charge: \$300

\*Presently in the process of installing a process for fluoridation.

Name of water district - South Marshall Water District  
201 East 11th Street  
Benton, Kentucky 42025  
(502) 527-1383

Area served - From Hardin city limits north along Highway 641 to  
approximately 3/4 mile north of South Marshall Junior High School

Date when water district began operating - February, 1966

Source of supply of treated water - Hardin Municipal Water System

Average amount of water used in a 24-hour period - 18,700 gallons

Storage capacity - 30,000 gallons

Average pressure - 60-70 psi

Size lines - 6, 4, 3, and 2 inches

Rates -

Minimum Charges for First 2,000 Gallons

|                               |                   |
|-------------------------------|-------------------|
| 5/8-inch service connection   | \$ 4.75 per month |
| 3/4-inch service connection   | 6.00 per month    |
| 1-inch service connection     | 10.00 per month   |
| 1 1/2-inch service connection | 12.50 per month   |
| 2-inch service connection     | 18.75 per month   |
| 3-inch service connection     | 37.50 per month   |
| 4-inch service connection     | 80.00 per month   |

Rates After Minimum Charge

|      |                |                      |
|------|----------------|----------------------|
| Next | 3,000 gallons  | \$1.25 per M gallons |
| Next | 5,000 gallons  | 1.10 per M gallons   |
| Next | 5,000 gallons  | 1.00 per M gallons   |
| Next | 5,000 gallons  | .90 per M gallons    |
| Next | 5,000 gallons  | .75 per M gallons    |
| Next | 25,000 gallons | .60 per M gallons    |
| Over | 50,000 gallons | .40 per M gallons    |

Tap-on charge: \$150



Name of water district - West Marshall Water District  
Route 2  
Benton, Kentucky 42025  
(502) 527-5361

Area served - Along Highway 348 to the Graves County line; 7 miles  
west from the Benton city limits

Date when water district began operating - August, 1969

Source of supply of treated water - Benton Water and Sewer System

Average amount of water used in a 24-hour period - 6,521 gallons

Peak amount of water used in a 24-hour period - 10,000 gallons

Storage capacity - 500,000 gallons

Average pressure - 96-108 psi

Size lines - 6 and 4 inches

Rates -

|                         |                    |
|-------------------------|--------------------|
| 0 - 2,000 gallons       | \$7.00 (Minimum)   |
| 2,001 - 5,000 gallons   | 2.25 per M gallons |
| 5,001 - 10,000 gallons  | 2.00 per M gallons |
| 10,001 - 20,000 gallons | 1.75 per M gallons |
| Over 20,000 gallons     | 1.50 per M gallons |

Tap-on charge: \$300

Name of water district - Jonathan Creek Water District  
P. O. Box 396  
Benton, Kentucky 42025  
(502) 354-8474

Area served - Southeastern Marshall County (Aurora and Fairdealing areas)

Date when water district began operating - Autumn, 1968

Source of raw water - Kentucky Lake

Capacity of treatment plant - Supply - to 1,500 people

Type of treatment - Chlorination, lime, alum\*

Average amount of water used in a 24-hour period - 110,000-124,000 gallons

Peak amount of water used in a 24-hour period - 300,000 gallons (summer)

Storage capacity - 250,000 gallons

Average pressure - 100 psi

Size lines - 8, 6, 4, 3, and 2 inches

Rates -

Residential - 5/8-inch Meter

|       |                |                    |
|-------|----------------|--------------------|
| First | 1,200 gallons  | \$6.25 (Minimum)   |
| Next  | 3,800 gallons  | 2.50 per M gallons |
| Next  | 5,000 gallons  | 2.00 per M gallons |
| Next  | 5,000 gallons  | 1.60 per M gallons |
| Next  | 5,000 gallons  | 1.40 per M gallons |
| Next  | 5,000 gallons  | 1.25 per M gallons |
| Next  | 5,000 gallons  | 1.15 per M gallons |
| Next  | 5,000 gallons  | 1.00 per M gallons |
| Next  | 5,000 gallons  | .85 per M gallons  |
| Over  | 40,000 gallons | .75 per M gallons  |

Commercial - (Monthly Minimum Charge)

|                  |               |         |
|------------------|---------------|---------|
| 3/4-inch meter   | 1,200 gallons | \$ 9.35 |
| 1-inch meter     | 1,200 gallons | 15.00   |
| 1 1/2-inch meter | 1,200 gallons | 22.00   |
| 2-inch meter     | 1,200 gallons | 32.00   |
| 3-inch meter     | 1,200 gallons | 63.00   |
| 4-inch meter     | 1,200 gallons | 94.00   |
| 6-inch meter     | 1,200 gallons | 125.00  |

|                |                  |       |              |        |
|----------------|------------------|-------|--------------|--------|
| Tap-on charge: | 5/8-inch meter   | \$300 | 2-inch meter | \$ 700 |
|                | 3/4-inch meter   | 325   | 3-inch meter | 850    |
|                | 1-inch meter     | 400   | 4-inch meter | 1,000  |
|                | 1 1/2-inch meter | 500   |              |        |

\*Fluoridation is to be added to the treatment process in the near future.

Surface water sources - Kentucky Lake, the Tennessee River, and East Fork of the Clarks River  
 Average discharge - Tennessee River at Gilbertsville 65,480 cfs (9 years USGS) unadjusted; Clarks River near Benton 9,380 cfs (36 years USGS)  
 Expected ground water yield - 500 to 1,000 gallons per minute in entire county with the exception of the eastern border along Kentucky Lake which records 5 to 50 gallons per minute

### Sewerage

Company serving Benton\* - Benton Water and Sewer System  
 101 East 11th Street  
 Benton, Kentucky 42025  
 (502) 527-5361

Design population - 8,600  
 Average daily flow - 600,000 gallons; Treatment - Primary and secondary  
 Type treatment - Two polishing lagoons (a 16-acre primary lagoon and a 10-acre finishing lagoon)  
 Treated effluent discharged into - East Fork of the Clarks River  
 Size of sanitary mains - 8, 6, and 4 inches  
 Rates -

|          |                |                               |
|----------|----------------|-------------------------------|
| 0 -      | 1,500 gallons  | \$1.00 (Minimum)              |
| 1,500 -  | 3,000 gallons  | 1.00                          |
| 3,000 -  | 3,500 gallons  | 1.33                          |
| 3,500 -  | 4,000 gallons  | 1.50                          |
| 4,000 -  | 4,500 gallons  | 1.67                          |
| 4,500 -  | 5,000 gallons  | 1.83                          |
| 5,000 -  | 5,500 gallons  | 2.00                          |
| 5,500 -  | 6,000 gallons  | 2.17                          |
| 6,000 -  | 6,500 gallons  | 2.33                          |
| 6,500 -  | 7,000 gallons  | 2.50                          |
| 7,000 -  | 20,000 gallons | 2.50 plus \$.23 per M gallons |
| 20,000 - | 40,000 gallons | 5.53 plus .17 per M gallons   |
| Over     | 40,000 gallons | 8.87 plus .13 per M gallons   |

The maximum sewer bill is \$25.

Tap-on charge: \$125

---

\*The Federal Environmental Protection Agency has approved a 201 Facilities Plan to upgrade sewerage service to Benton, Hardin, and the remainder of Marshall County excluding Calvert City and Gilbertsville. The target date for completion of the 201 Plan is Summer, 1976.



Company serving Calvert City - Calvert City Water and Sewer System\*  
Calvert City, Kentucky 42029  
(502) 395-4020

Design capacity - 270,000 gpd  
Average daily flow - At capacity  
Treatment - Primary and secondary  
Type treatment - Trickling filters, drying beds  
Treated effluent discharged into - Cypress Creek  
Size of sanitary mains - 12 and 10 inches  
Rates - 50 percent of monthly water bill  
\$2.90 - minimum monthly sewer bill

Tap-on charge: \$150

International Pollution Control, Inc., (IPC) a subsidiary of Petrolite Corporation, maintains a plant at Calvert City for the disposal of chemical wastes from four of the city's chemical plants. IPC has a contract with these plants for the elimination of their liquid wastes. These wastes are burned in an incinerator-type apparatus which is capable of handling 4,800 gallons per day. Additional information will be provided, upon request, by International Pollution Control, Inc., Highway 1523, P. O. Box 574, Calvert City, Kentucky 42029 - (502) 395-7515.

---

\*A new sewage treatment plant is being constructed for Calvert City with a grant from the Federal Environmental Protection Agency. Completion of the facility is scheduled for the Fall of 1976. The design capacity of the plant will be 390,000 gallons per day. Primary and secondary treatment will be utilized: a three cell aerated lagoon system; chlorination; final clarification; sludge drying beds. In addition, Calvert City has applied to E.P.A. for a 201 Facilities Plan which, if approved, will examine the feasibility of improving the entire city sewerage system.

Company serving Hardin\* - Hardin Municipal Sewer System  
Hardin, Kentucky 42048  
(502) 437-4361

Design capacity - 70,000 gpd  
Average daily flow - Approximately 50,000 gallons  
Treatment - Primary  
Type treatment - Contact stabilization  
Treated effluent discharged into - Martins Creek  
Size of sanitary mains - 8 inches  
Rates - 65 percent of monthly water bill

Tap-on charge: \$25

---

\*The Federal Environmental Protection Agency has approved a 201 Facilities Plan to upgrade sewerage service to Benton, Hardin, and the remainder of Marshall County, excluding Calvert City and Gilbertsville. The target date for completion of the 201 Plan is Summer, 1976.

## CLIMATE

### Marshall County

#### Temperature

|  |               |
|--|---------------|
| Annual mean (30-year record)   | 59.4 degrees  |
| Average annual 1974  | 58.8 degrees  |
| Record highest, July, 1954 (32-year record)  | 104.0 degrees |
| Record lowest, January, 1963 (32-year record)  | - 5.0 degrees |
| Normal heating degree days (30-year record)  | 3,833         |
| (Heating degree day totals are the sums<br>of negative departures of average daily<br>temperatures from 65 degrees F.) |               |

#### Precipitation

|   |              |
|---|--------------|
| Mean annual total (30-year record)                                    | 47.12 inches |
| Mean annual snowfall (32-year record)                                 | 9.50 inches  |
| Total precipitation 1974  | 37.91 inches |
| Mean number days precipitation (.01 inch or more)<br>(32-year record) | 115          |
| Average number days thunderstorms<br>(22-year record)                 | 53           |

#### Prevailing Winds (22-year record)

Southwest

#### Relative Humidity (22-year record)

|          |            |
|----------|------------|
| 6 a. m.  | 82 percent |
| 12 p. m. | 59 percent |

Source: U. S. Department of Commerce, Environmental Science  
Services Administration, Climatological Data, 1974. Station  
of record: Cairo, Illinois.



## LOCAL GOVERNMENT

### City

#### Benton

Structure - Mayor - 4-year term; 6 councilmen - 2-year terms

|                               |              |
|-------------------------------|--------------|
| Budget 1975-76 - General Fund | \$290,028.67 |
| Water and Sewer Fund          | 147,850.06   |
| City Gas System               | 222,150.84   |

Fees and licenses - Annual occupational license fees range from \$15 to \$300

#### Calvert City

Structure - Mayor - 4-year term; 6 councilmen - 2-year terms

|                               |           |
|-------------------------------|-----------|
| Budget 1975-76 - General Fund | \$102,850 |
| Water and Sewer Fund          | 173,861   |

Fees and licenses - Annual occupational license fees range from \$10 to \$100

#### Hardin

Structure - Mayor - 4-year term; 6 councilmen - 2-year terms

|                               |           |
|-------------------------------|-----------|
| Budget 1975-76 - General Fund | \$ 14,000 |
| Water and Sewer Fund          | 34,000    |
| City Gas System               | 52,000    |

Fees and licenses - Annual business license - \$15; annual unloading license - \$15 or \$5 if the person, partnership, company, or corporation does not unload more than \$80 worth of merchandise per month

### County

Structure - County Judge - 4-year term; 3 magistrates - 4-year terms

|                               |           |
|-------------------------------|-----------|
| Budget 1975-76 - General Fund | \$342,315 |
| Road Fund                     | 179,100   |



MUNICIPAL BUILDING, CALVERT CITY



### Assessed Value of Property, 1975

| <u>Classes of Property</u> | <u>Benton</u> | <u>Calvert City</u>    |
|----------------------------|---------------|------------------------|
| Real Estate and Tangibles  |               | \$ 14,750,680          |
| Real Estate                | \$24,637,875  |                        |
| Tangibles                  | 8,541,256     |                        |
|                            | <u>Hardin</u> | <u>Marshall County</u> |
| Real Estate                | \$ 1,865,240  | \$170,476,968          |
| Tangibles                  | 325,725       | 38,430,348             |

### Property Taxes

Land and buildings are taxed by the state and may be taxed by local jurisdictions. The state rate is \$0.015 per \$100 of assessed valuation.

Tangible personal property owned by manufacturers (automobiles, trucks, finished goods, office furniture, office equipment) is taxed by the state at \$0.15 per \$100 and may be taxed by local jurisdictions.

Manufacturing machinery, raw materials inventories, pollution control equipment and goods in process inventories are not subject to local taxation. The state rate is \$0.15 per \$100.

Property stored in public warehouses is not subject to local taxation. The state rate is only \$0.015 per \$100.

All property is assessed at 100 percent of fair cash value.

### Local Property Tax Rate Per \$100 of Assessed Valuation, 1975\*

| <u>Taxing Jurisdiction</u> | <u>Benton</u> | <u>Calvert City</u> | <u>Hardin</u> | <u>Marshall County</u> |
|----------------------------|---------------|---------------------|---------------|------------------------|
| County                     | \$ .212       | \$ .212             | \$ .212       | \$ .212                |
| School                     | .450          | .450                | .450          | .450                   |
| City                       | .220          | .230                | .200          |                        |

### Occupational License Tax for Schools

Marshall County levies a one-half of one percent occupational license tax on wages, salaries, and commissions of individuals and on net profits of businesses. Exempted are nonresidents and certain businesses including public service companies that pay ad valorem taxes, insurance companies, banks, and trust companies.

\*Kentucky Department of Revenue.



## Planning and Zoning

City agency - Benton Planning and Zoning Commission

Zoning enforced - City only

Subdivision regulations enforced - 3-mile radius from the courthouse

Local codes enforced - Housing and building

Mandatory state codes enforced - Plumbing, National Fire Protection Association Code, National Building Code (for major buildings and residential construction containing more than 12 bedrooms per building)

City agency - Calvert City Planning and Zoning Commission

Zoning enforced - City only

Subdivision regulations enforced - City and 5 miles beyond city limits

Local codes enforced - Housing and building

Mandatory state codes enforced - Plumbing, National Fire Protection Association Code, National Building Code (for major buildings and residential construction containing more than 12 bedrooms per building)

Hardin has no planning and zoning commission.

## Safety

| <u>Police</u>     | <u>Benton</u> | <u>Calvert City</u> | <u>Hardin</u> | <u>Marshall County</u> |
|-------------------|---------------|---------------------|---------------|------------------------|
| Total staff       | 7             | 2                   | 1             | 7                      |
| Radio-patrol cars | 2             | 2                   | 1             | 7                      |

### Fire

American Insurance

|                         |    |    |    |
|-------------------------|----|----|----|
| Association Fire Rating | 7  | 7  |    |
| Volunteers              | 20 | 20 | 10 |

### Rescue Service

Marshall County Rescue Squad:

Number of volunteers - 22

Equipment - 3 trucks, 3 boats, 1 jeep, 1 10KW generator (AC), 3 DC generators, 1 convalescent car; planned - purchase of a new truck equipped with all extraction equipment

Personnel training - Relevant experience in rescue work; Civil Defense training planned for men working with the new extraction equipment

Solid Waste

|                       | <u>Benton</u>   | <u>Calvert City</u>        | <u>Hardin and<br/>Marshall County</u>   |
|-----------------------|---|----------------------------|---|
| Type service          | Municipal for residents,<br>private for business and industry | Municipal                  | County dumpster service   |
| Fee charged:          |   |                            |   |
| residential           | No charge   | \$3.25 or \$4.25 per month | Refuse tax  |
| business              | According to volume   | According to volume        | Refuse tax  |
| industrial            | According to volume   | According to volume        | Refuse tax  |
| Collection frequency: |   |                            |   |
| residential           | Twice weekly  | Twice weekly               | Twice weekly  |
| business              | According to volume   | Twice weekly               | Twice weekly  |
| industrial            | According to volume   | Twice weekly               | Twice weekly  |
| Trash pickup          | Weekly  | Monthly                    | Annual clean-up campaign except in special situations when county sanitation vehicles are available |
| Disposal method       | Sanitary landfill   | Private sanitary landfill* | Sanitary landfill   |

International Pollution Control, Inc., with offices at Calvert City, provides a sanitary landfill for disposal of solid wastes. This service is available to any manufacturing firm in the area. Each firm is charged a rate per ton of solid waste.

---

\*Owned and operated by International Pollution Control, Inc., a subsidiary of Petrolite Corporation.



CALVERT CITY ELEMENTARY SCHOOL



## EDUCATION

### Public Schools

|  | <u>Marshall County</u>                          |
|--|---|
| Total Enrollment (Fall, 1975)            | 4,673   |
| Elementary                               | 2,208   |
| Junior High                              | 1,287   |
| High School                              | 1,178   |
| Student-Teacher Ratio                    | 19 - 1  |
| Elementary                               | 18 - 1  |
| Junior High                              | 20 - 1  |
| High School                              | 20 - 1  |
| Accreditation                            | Southern Association<br>of Colleges and Schools |
| Percent High School Graduates to College | 42.2  |
| Expenditures Per Pupil (1973-74)         | \$546.27  |
| Bonded Indebtedness, June 30, 1974       | \$4,582,000*                                    |

### Area Colleges and Universities

| <u>Name</u>                    | <u>Location<br/>(Miles Distant)</u> | <u>Enrollment<br/>(Fall, 1974)</u> | <u>Highest Degree<br/>Conferred</u> |
|--------------------------------|-------------------------------------|------------------------------------|-------------------------------------|
| Murray State University        | Murray (11)                         | 7,106                              | Masters, Ph. D.                     |
| Paducah Community College      | Paducah (25)                        | 1,001                              | Associate                           |
| Hopkinsville Community College | Hopkinsville (53)                   | 950                                | Associate                           |
| Madisonville Community College | Madisonville (74)                   | 476                                | Associate                           |
| Austin Peay State University   | Clarksville,<br>Tennessee (83)      | 4,124                              | Academic and<br>Professional        |
| Southern Illinois University   | Carbondale,<br>Illinois (89)        | 19,147                             | Academic and<br>Professional        |

\*Includes Advance Refunding issues of \$250,000.

## Vocational Schools

|               | <u>Nearest State School</u>   | <u>Nearest Area Education Center</u>  |
|---------------|---|---|
|               | West Kentucky State<br>Vocational-Technical<br>School   | Marshall County Area<br>Vocational Education Center   |
| Location      | Paducah   | Benton  |
| Miles Distant | 20 miles from<br>Calvert City   |   |
| Curriculum    | Clerical<br>Secretarial<br>Learning Lab<br>Electronics<br>(Communications)<br>Auto Body Repair<br>Auto Mechanics<br>Barbering<br>Carpentry - Building<br>Trades<br>Commercial Foods<br>Cosmetology<br>Drafting<br>Electricity<br>Masonry<br>Tailoring | Marketing and Distributive<br>Education<br>Auto Body Repair<br>Auto Mechanics<br>Electricity<br>Machine Shop<br>Welding |

Arrangements can be made to provide training in the specific production skills required by an industrial plant. Instruction may be conducted either in the vocational school or in the industrial plant, depending upon the desired arrangement and the availability of special equipment.

## HEALTH

### Local Medical Personnel

|            | <u>Benton</u> | <u>Calvert City</u> |
|------------|---------------|---------------------|
| Physicians | 7             | 2                   |
| Dentists   | 4             | 3                   |

There are no physicians or dentists residing in Hardin.

### Hospitals

| <u>General Hospitals</u>  | <u>Location</u>               | <u>Beds</u>                       |
|---------------------------|-------------------------------|-----------------------------------|
| Benton Municipal Hospital | Benton                        | 41 plus 34 in Long-term Care Unit |
| Western Baptist Hospital  | Paducah, 25 miles from Benton | 319                               |
| Lourdes Hospital          | Paducah                       | 259                               |

#### Benton Municipal Hospital

General hospital facilities - Operating room, X-ray, emergency room, OB section, nursery, respiratory therapy, physical therapy, lighted heliport, coronary care unit

Medical staff - 7 medical doctors, surgeon, pathologist, radiologist, 12 registered nurses, and 8 licensed practical nurses

#### Western Baptist Hospital

General hospital facilities - Emergency room, X-ray and laboratory equipment, intensive care unit, coronary care unit, OB-GYN facilities, 2 delivery rooms, 6 operating rooms, recovery room, pharmacy, inhalation therapy, physical therapy, cobalt and radiation therapy, EEG department, progressive care unit, and pediatric department

Medical staff - 109 medical doctors and dentists, 97 registered nurses, 108 licensed practical nurses





CALVERT CITY CONVALESCENT CENTER

### Lourdes Hospital

General hospital facilities - Emergency room, X-ray and laboratory equipment, inhalation therapy, radiation therapy, pediatric department, 7 operating rooms, electrocardiology, psychiatric inpatient service, intensive care unit, coronary care unit, progressive care unit, renal dialysis unit, physical therapy, blood bank

Medical staff - 84 medical doctors, 121 registered nurses, 84 licensed practical nurses

### Other Medical Facilities

Lee Cox Memorial Hospital Clinic, Calvert City

General facilities - Outpatient services, some laboratory work, annual physical examinations for industry personnel, emergency treatment for industry personnel, X-ray facilities

Medical staff - 2 physicians, licensed practical nurse, 3 general staff

### Ambulance Service

Name - Marshall County Ambulance Service

Staff - 12 Emergency Medical Technicians (EMT); 1 employee with advanced First Aid training; bookkeeper

Service - 24 hours per day

Equipment - 2 van ambulances; 1 module ambulance; all standard medical equipment

### Nursing Homes

Calvert City Convalescent Center

10 personal care beds

90 intermediate care beds

### Public Health

Facility - Marshall County Health Department, Benton

Staff - 2 registered nurses, 1 registered nurse (part time), 2 sanitarians, 1 sanitarian (part time), 2 clerks; 1 nutritionist 2 days per week; 1 administrator 2 days per week; 1 family planning-community health worker 2 days per week; 1 state plumbing inspector 2 days per week; a home health nurse based in Calloway County but in Marshall County when needed (in process of hiring a full-time home health nurse for Marshall County)

Facility - Benton Mental Health Center

Staff - Psychologist, mental health specialist, secretary (full time), secretary (part time)

## OTHER LOCAL FACILITIES

### Communications

|                                    | <u>Benton</u>  | <u>Calvert City</u>  |
|------------------------------------|--|--|
| Telephone -                        | South Central Bell   | Kentucky Telephone   |
| Services -                         | Telephone Company<br>Standard  | Company<br>Standard  |
| Telegraph -                        | Western Union -<br>Paducah office  | Western Union -<br>Paducah office  |
| Postal - U.S. Post Office          |  |  |
| Class -                            | First  | First  |
| Mail received -                    | Three times daily  | Once daily   |
| Mail dispatched -                  | Three times daily  | Once daily   |
| Newspapers -                       | The Tribune Courier  | The Tribune Courier  |
| Bi-weekly and<br>circulation -     | 6,000  | 6,000  |
| Other papers<br>received from -    | Paducah, Murray,<br>and Louisville,<br>Kentucky  | Paducah and Louisville,<br>Kentucky  |
| Radio -                            | WCBL AM-FM   | WCBL AM-FM   |
| Stations received from -           | Many stations are<br>received from a<br>five state area  | Many stations are<br>received from a<br>five state area                    |
| Television -                       |  |  |
| Cable service -                    | Yes  | No   |
| Reception from -                   | Paducah and Bowling<br>Green, Kentucky;<br>Cape Girardeau,<br>Missouri; Harris-<br>burg, Illinois;<br>Nashville, Tennessee | Paducah, Kentucky;<br>Cape Girardeau,<br>Missouri, Harrisburg,<br>Illinois |
| Kentucky Educational<br>Television | Murray, Channel 21   | Murray, Channel 21   |

(Cont. )



Hardin

|                                      |  |
|--------------------------------------|--|
| Telephone -                          | West Kentucky Rural Telephone<br>Cooperative                         |
| Services -                           | Standard   |
| Telegraph -                          | Western Union - Paducah office                                       |
| Postal - U. S. Post Office           |  |
| Class -                              | Second   |
| Mail received -                      | 3 times daily  |
| Mail dispatched -                    | 3 times daily  |
| Newspapers -                         | The Tribune Courier  |
| Bi-weekly and circulation -          | 6,000  |
| Other papers received from -         | Paducah, Murray and Louisville,<br>Kentucky                          |
| Radio -                              | WCBL AM-FM   |
| Stations received from -             | Many stations are received from a<br>five state area                 |
| Television -                         |  |
| Reception from -                     | Paducah, Kentucky; Cape Girardeau,<br>Missouri; Harrisburg, Illinois |
| Kentucky Educational<br>Television - | Murray, Channel 21   |

Library Services

Public library - Marshall County Public Library, Benton\*  
Size collection - 45,000 volumes including the two branch libraries  
Circulation, 1974-75 - 193,729  
Services - Records, magazines, films, story hour, reading programs, bookmobile, Bicentennial Program in conjunction with WPSD TV - Paducah, film program for retarded children, micro-film reader-printer, duplicating machine, cassette recorder (oral history program), service to nursing homes, art exhibits, public meeting room

Public library - Marshall County Public Library, Calvert City  
Size collection - 7,000 volumes  
Circulation, 1974-75 - 46,475  
Services - Records, magazines, story hour, films, projector, record player, reading program, bookmobile service

---

\*Member - Kentucky Inter-Library Communications Network.



COMMERCIAL AREA, CALVERT CITY

Public library - Marshall County Public Library, Hardin  
 Size collection - 10,000 volumes  
 Circulation, 1974-75 - 34,322  
 Services - Records, magazines, story hour, films, projector,  
 record player, bookmobile service

#### Religious Institutions

Number of churches - 70 (Marshall County)  
 Denominations - Baptist, Catholic, Christian, Church of Christ,  
 Church of God, Church of the Nazarene, Episcopal, Jesus Name,  
 Jehovah's Witnesses, Lutheran, United Methodist, Presbyterian,  
 Assembly of God

Nearest synagogue - Paducah, 25 miles from Benton  
 Congregation - Temple Israel (reform)

#### Financial Institutions

| <u>Banks</u>               | <u>Assets</u>   | <u>Deposits</u> | <u>Statement<br/>Date</u> |
|----------------------------|-----------------|-----------------|---------------------------|
| Bank of Benton             | \$31,824,785.47 | \$27,904,866.22 | 6/30/75                   |
| Bank of Marshall<br>County | 39,753,671.17   | 34,952,969.99   | 6/30/75                   |
| Calvert Bank               | 7,538,643.78    | 6,655,293.19    | 6/30/75                   |
| First Liberty Bank         | 7,102,826.07    | 6,217,013.07    | 6/30/75                   |

| <u>Savings and Loan<br/>Associations</u>      | <u>Assets</u>   | <u>Shared<br/>Accounts</u> | <u>Statement<br/>Date</u> |
|---|-----------------|----------------------------|---------------------------|
| First Federal Savings<br>and Loan Association | \$39,500,000.00 | \$38,000,000.00            | 6/30/75                   |
| Valley Building and Loan<br>Association       | 3,133,207.60    | 2,708,224.20               | 6/30/75                   |

#### Hotels and Motels

##### Marshall County

|              |                 |
|--------------|-----------------|
| Total number | 60              |
| Total units  | 529 motel rooms |
|              | 331 cottages    |



## Clubs and Organizations

### Marshall County

Business and Civic - American Red Cross, Lions Club, P. T. A., Rotary Club, United Fund, Jaycees, Civil Defense, Coast Guard Auxiliary, Conservation Club, Kentucky-Barkley Lakes Board of Realtors, Kentucky Dam Tourist Association, Kentucky Lake Power Squadron, Kentucky's Western Waterlands, Citizens Band Club, Arts and Crafts Guild, Bar Association, Chamber of Commerce, Farm Bureau, Library Board, Medical Association, Senior Citizens, Soil Improvement Association, National Hairdressers and Cosmetologists Association, Recovery, Inc., Society for the Preservation of Southern Harmony Singing, Optimist Club, Western Association of Children Under Six, Association for Exceptional Children

Fraternal - American Legion, D. A. R., Disabled American Veterans, Epsilon Sigma Alpha International, Fraternal Order of Police, Shriners Club, Masonic Order, Woodmen of the World

Women's - Woman's Club, Jaycee-ettes, Senior Woman's Club, Business and Professional Women's Club, Homemakers of America, Eastern Star, Women of Woodcraft

Youth - Boy Scouts, Cub Scouts, Future Farmers of America, Future Homemakers of America, Girl Scouts

Other - Gun Club, Riding Club, Athletic Boosters Clubs, Band Boosters Clubs, Coonhunters Club, Bow Hunters Club

## RECREATION

### Local

One of the finest outdoor recreational areas in the eastern United States is located in and around Marshall County. Kentucky Dam, TVA's largest, was completed in 1944 on the Tennessee River near Gilbertsville. It created Kentucky Lake, one of the top fishing, water sport and recreation areas in this part of the country. The lake forms the entire eastern border of Marshall County. Two state resort parks are located in the county: Kentucky Dam Village, near Gilbertsville, and Kenlake, near Hardin and Aurora. Open all year, Kentucky Dam Village features a year-around lodge, camping, a marina, water sports, picnicking, horseback riding, and an 18-hole golf course. Kenlake State Resort Park, open April to mid-November, has a resort hotel, camping, an amphitheatre, water sports, picnicking, horseback riding, hiking, tennis courts, and a 9-hole golf course.

The Marshall County Recreation Department sponsors supervised recreation programs during the summer in Benton, Calvert City, and Hardin. Benton maintains a city park with a public swimming pool, tennis courts, playgrounds, and athletic fields. Calvert City has recently completed a \$150,000 public park which includes tennis courts, a motorcycle race track, athletic fields, and playgrounds. Hardin is presently constructing a city park which will contain lighted tennis courts, basketball courts, an athletic field, picnic facilities, and shuffleboard. Benton and Calvert City have private country clubs, each with an 18-hole golf course and a swimming pool.

### Area (Within 100 miles)

Lake Barkley was formed when the U. S. Army Corps of Engineers built a dam on the Cumberland River in the early 1960's. A 1 3/4-mile free flowing canal connects Lake Barkley with Kentucky Lake. Like Kentucky Lake, it is a major fishing and water recreation area.

The Land Between the Lakes is a major national area for outdoor recreation and conservation education developed by TVA on a 170,000-acre wooded peninsula (5-10 miles wide and 40 miles long) between Kentucky Lake and Lake Barkley. Camping, fishing, hunting, boating, picnicking, and swimming are offered. In addition, the area features a 5,000-acre Environmental Education Center for school study groups. There are 400 miles of country roads and Buffalo herd on a 250-acre range.

Lake Barkley State Resort Park near Cadiz has a beautiful year-around lodge with dining and meeting rooms. Guest rooms overlook the lake. In addition, the park offers facilities for camping, swimming, boating, horseback riding, picnicking, and tennis. There is also an 18-hole golf course.

Pennyrile Forest State Resort Park, near Dawson Springs, maintains a resort lodge and facilities for camping, boating, fishing, swimming, horseback riding, picnicking and tennis. There is also a supervised recreation program and a 9-hole golf course.

Reelfoot Lake, west of Fulton, is a 70-square mile lake popular for fishing. Kentucky maintains a 2,000-acre wildlife area near the lake for hunting.

Columbus-Belmont Battlefield State Park, near Columbus, is the site of Civil War fortifications and a giant anchor and chain which the Union Army installed across the Mississippi River to prevent the passage of Confederate gunboats. The anchor and chain are on exhibit. In addition, the park has camping facilities, picnic areas, hiking trails, and a playground.

Jefferson Davis Monument State Shrine, near Fairview and Hopkinsville, is the site of the birthplace of Jefferson Davis, statesman and only President of the Confederate States of America. A 351-foot obelisk, built with private contributions by the Daughters of the Confederacy, stands as a memorial to Davis. A 20-acre park on the site includes a picnic area and playground.

Lake Malone State Park, near Dunmore and Greenville, features an inn, restaurant, swimming, boating, fishing, tennis, hiking, picnicking, horseback riding, and a playground.



## COMMUNITY IMPROVEMENTS

### Recent:

#### Benton

1. New Marshall County High School complex, 5 miles east of Benton.
2. New South Marshall Elementary School between Benton and Hardin.
3. New 10- and 12-inch water mains to meet water supply requirements.
4. New 500,000-gallon water storage tank.
5. New radio-patrol car; portable and car radios; and electronic sirens for the police department.

#### Calvert City

1. New Calvert City Convalescent Center containing 10 personal care and 90 intermediate care beds.
2. New \$150,000 public park which includes tennis courts, a motorcycle race track, athletic fields, and playgrounds.
3. Two new pressure filters for the public water system.

#### Hardin

1. New \$40,000 professional building (doctors' and business offices).
2. New \$8,000 City Hall.
3. New well for the city water system.

#### Marshall County

1. New radio dispatching system for the sheriff's department.

Underway:

Benton

1. North Marshall Water District continually adding new water lines; also, a new well.
2. A 201 Facilities Plan to upgrade sewerage services.
3. Construction of a new Wal-Mart Discount City department store which will feature 36 departments and employ approximately 65 employees.

Calvert City

1. Tennessee Forging Steel Corporation constructing a new plant which will initially employ 120 persons.
2. Construction of the municipally financed and operated one million dollar Calvert City Riverport, due for completion in the Spring of 1976.
3. Construction of a new sewage treatment plant with a treatment capacity of 390,000 gallons per day.
4. Continuing municipal urban renewal program.
5. New 750 gpm pumper for the fire department scheduled for delivery by March, 1976.

Hardin

1. Construction of a new city park which will contain lighted tennis courts, basketball courts, an athletic field, picnic facilities and shuffleboard.
2. New \$100,000 Marshall County Public Library - Hardin Branch building.
3. New \$250,000 grain merchandising and storage complex which, when completed, will be able to accommodate some \$200,000 bushels of grain.
4. A 201 Facilities Plan to upgrade sewerage services.

Planned:

Benton

1. Reconstruction, including widening, of U. S. Highway 641 between Benton and Murray, Kentucky.
2. Purchase of a new truck with all extraction equipment by the Marshall County Rescue Squad.

Calvert City

1. New city hall complex with municipal, library, and fire station buildings.



## HISTORY

Marshall County is located in the Jackson Purchase physiographic region of Kentucky. This area, situated in the extreme western portion of the state between the Tennessee and Mississippi Rivers, was purchased from the Chickasaw Indians for \$300,000 in 1818 by General Andrew Jackson and then Governor of Kentucky, Isaac Shelby. The total Purchase land area of 8,500 square miles subsequently was divided into Kentucky's eight and Tennessee's twenty westernmost counties.

The first settlers arrived in what is now Marshall County in 1818. In 1842, the county was formed out of Calloway County and named for John Marshall, first Chief Justice of the U. S. Supreme Court. Benton, the county seat, was incorporated as a city in 1845. It was named for Thomas Hart Benton, a U. S. Senator from Missouri, and in 1973 had a population of 3,540. Calvert City, in northern Marshall County, was incorporated in 1871. In 1973, the city had a population of 2,050. Hardin, near the site of the first settlement in the county, had a 1973 population of 558.

Two famous Marshall County spring celebrations date from the county's early years. "Tater Day," celebrated on the first Monday in April for some 90 years, is a glorified county court day when people from all over the county gather at the Courthouse Square in Benton to buy and sell produce; swap knives, guns, and other commodities; meet friends; and enjoy old southern home style cooking. "Big Singing Day," the old Southern Harmony Singing event, is a community singing jamboree established by J. R. Lemon, a western Kentucky newspaperman in 1884. The singing commences at 10 a.m. on the fourth Sunday in May, and continues through two sessions, with about 150 singers gathering in the circuit courtroom and 5,000 listeners outside. Tradition has it that the songs date to 1853 when migrants came to Marshall County from North Carolina, transporting their household goods by covered wagon. These migrants are said to have brought with them an old hymn book entitled Southern Harmony containing hymns in the primitive "shape-note" form. It was these hymns that inspired old Southern Harmony singing in Marshall County.

The economy of Marshall County was based mainly on subsistence agriculture until Kentucky Dam on the Tennessee River was completed by the Tennessee Valley Authority in 1944. The creation of Kentucky Lake transformed the region into one with vast resources for industry and recreation. Prior to 1949, there was no industry in Calvert City. Since that time, however, six major chemical companies have located in the city, presently employing more than 2,800 people. In addition,

a large steel firm is constructing a plant near Calvert City. A major manufacturer of metal and juvenile furniture located in Benton in 1968. This company employs 600 persons. The total number of Marshall County residents employed in 1974 averaged 6,870. Industrial development has generated a significant increase in the county's population from 13,387 in 1950 to 21,900 in 1974, a rise of 63.6 percent. The Tennessee - Tombigbee Waterway, scheduled for completion by 1981, will place Marshall County in an enviable position for continued industrial expansion. The Waterway will link the Tennessee River with the Tombigbee River in Alabama, thus providing a much shorter navigable water route to the Gulf of Mexico.

In addition, it should be noted that the tourist trade, resulting from construction of Kentucky Lake and the formation of Kenlake and Kentucky Dam Village State Resort Parks, has generated much revenue for the county, while providing an almost unlimited variety of recreational opportunities for its residents.

Although the coming of Kentucky Lake and the huge chemical plants have transformed Marshall County into an industrial center, the area still retains its pioneer traditions and old-time country flavor. Such folklore was fondly publicized for many years by the late Louisville Courier-Journal columnist Joe Creason, perhaps Marshall County's most popular native son.