

1990

## Industrial Resources: McCreary County

Kentucky Library Research Collections  
Western Kentucky University, [spcol@wku.edu](mailto:spcol@wku.edu)

Follow this and additional works at: [https://digitalcommons.wku.edu/mccreary\\_cty](https://digitalcommons.wku.edu/mccreary_cty)



Part of the [Business Administration, Management, and Operations Commons](#), [Growth and Development Commons](#), and the [Infrastructure Commons](#)

---

### Recommended Citation

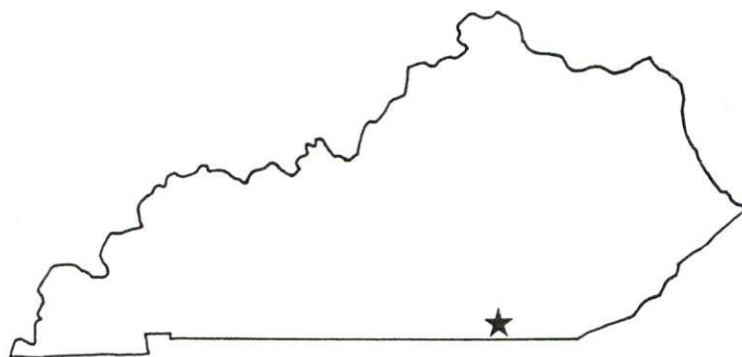
Kentucky Library Research Collections, "Industrial Resources: McCreary County" (1990). *McCreary County*. Paper 5.  
[https://digitalcommons.wku.edu/mccreary\\_cty/5](https://digitalcommons.wku.edu/mccreary_cty/5)

This Report is brought to you for free and open access by TopSCHOLAR®. It has been accepted for inclusion in McCreary County by an authorized administrator of TopSCHOLAR®. For more information, please contact [topscholar@wku.edu](mailto:topscholar@wku.edu).

R  
60

# *Resources for Economic Development*

## McCreary County



**KENTUCKY**  
*Open for Business*

---

RESOURCES FOR ECONOMIC DEVELOPMENT  
MCCREARY COUNTY, KENTUCKY

Prepared by  
The Kentucky Cabinet for Economic Development  
Division of Research and Planning  
in cooperation with  
McCreary County Chamber of Commerce

1990

## TABLE OF CONTENTS

<u>Chapter</u>	<u>Page</u>
MCCREARY COUNTY, KENTUCKY - A RESOURCE PROFILE .....	1
THE LABOR MARKET STATISTICS .....	2
Labor Market Area Map.....	2
Population .....	3
Population Projections .....	3
Estimated Labor Supply .....	3
Labor Force Characteristics of Residents, 1989 .....	4
Selected Components of Nonagricultural Employment, by Place of Work, 1988.....	5
Per Capita Personal Income .....	6
Average Placement Wages.....	7
Average Weekly Wages of Workers Covered by Unemployment Insurance 1988 - Bar Chart .....	8
Average Weekly Wages by Industry, by Place of Work, 1988.....	9
EXISTING INDUSTRY.....	10
McCreary County Manufacturing Firms, Their Products and Employment.....	10
Labor Organizations in Manufacturing Firms .....	11
Selected Industrial Services.....	12
TRANSPORTATION .....	13
Highways.....	13
Truck Service.....	13
Selected Market Location Map .....	14
Rail .....	15
Air .....	15
UTILITIES.....	16
Electricity.....	16
Natural Gas .....	16
Public Water Supply .....	16
Sewerage.....	16
CLIMATE .....	17

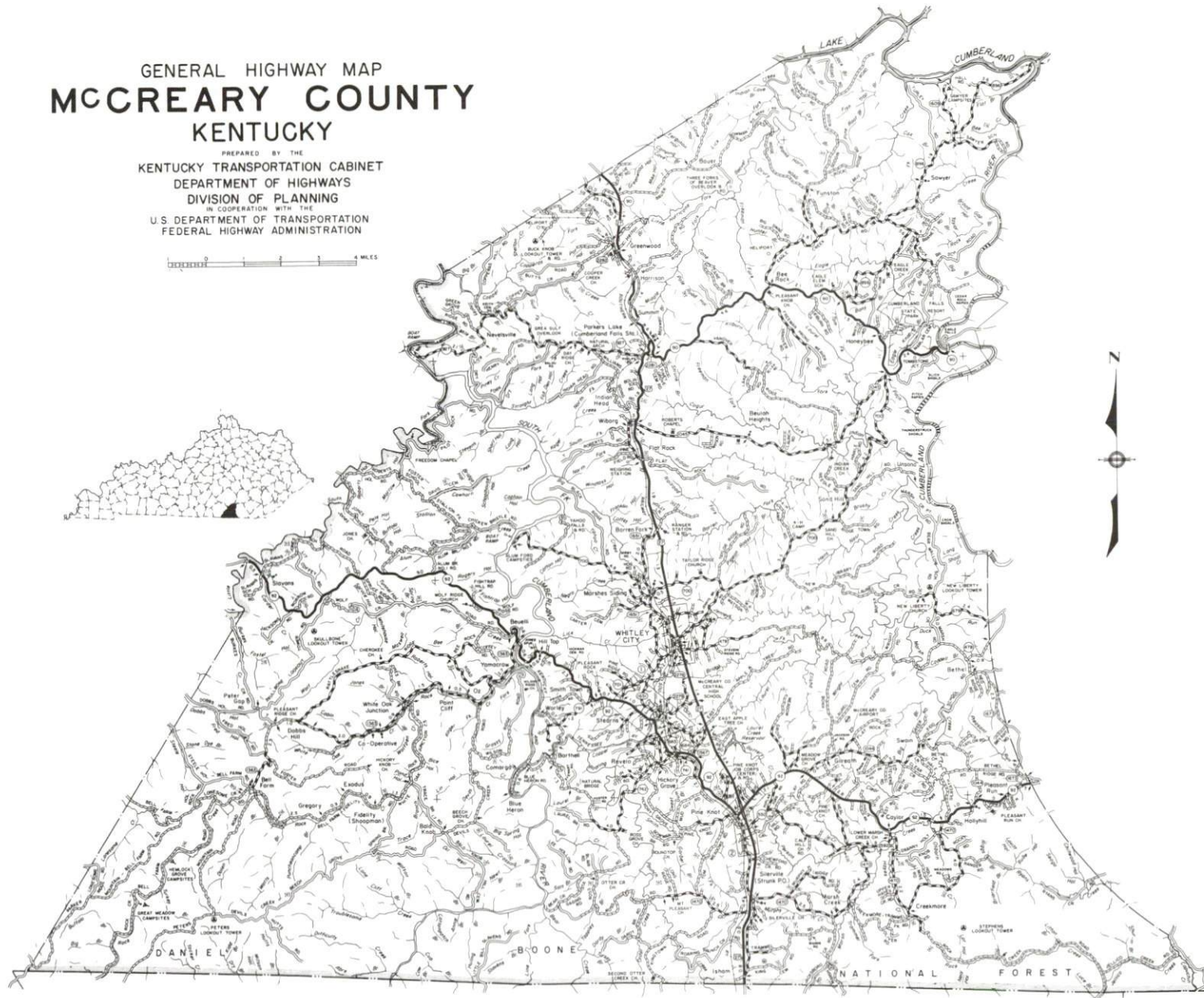
<u>Chapter</u>	<u>Page</u>
LOCAL GOVERNMENT .....	18
Structure .....	18
Planning and Zoning .....	18
State and Local Property Taxes .....	19
Combined State and Local Rates Per \$100 Valuation, 1989 .....	19
EDUCATION.....	20
Public Schools.....	20
Area Colleges and Universities .....	20
Vocational Training .....	21
OTHER LOCAL FACILITIES .....	22
Local Medical Personnel.....	22
Hospitals .....	22
Other Medical Facilities and Services .....	22
Banks and Savings & Loan Associations .....	22
Newspapers.....	22
Telephone Service .....	22
RECREATION .....	23
COMMUNITY IMPROVEMENTS .....	25



GENERAL HIGHWAY MAP  
**MCCREARY COUNTY**  
KENTUCKY

PREPARED BY THE  
KENTUCKY TRANSPORTATION CABINET  
DEPARTMENT OF HIGHWAYS  
DIVISION OF PLANNING  
IN COOPERATION WITH THE  
U.S. DEPARTMENT OF TRANSPORTATION  
FEDERAL HIGHWAY ADMINISTRATION

0 1 2 3 4 5 MILES



## MCCREARY COUNTY, KENTUCKY - A RESOURCE PROFILE

McCreary County covers a land area of 427 square miles in the Eastern Coal Fields Region of Kentucky. The county is situated in the southern portion of the Daniel Boone National Forest. According to the federal forest service, 10 million board-feet of lumber will be produced in McCreary County in 1990. McCreary County had an estimated population of 16,100 persons in 1988. Whitley City, the county seat, is located 92 miles northwest of Knoxville, Tennessee; 161 miles southeast of Louisville, Kentucky; 107 miles south of Lexington; and 185 miles south of Cincinnati, Ohio. Stearns is located approximately three miles south of Whitley City, and Pine Knot is located approximately five miles south of Whitley City.

**The Economic Framework** - The total number of McCreary County residents employed in 1989 averaged 3,415. In 1988, manufacturing firms in the county reported 473 employees; wholesale and retail trade provided 319 jobs; 185 people were employed in service occupations; state and local government accounted for 564 employees; contract construction firms provided 46 jobs; and 63 people were employed by mining and quarrying operations.

**Labor Supply** - There is a current estimated labor supply of 32,464 persons available for industrial jobs in the labor market area. In addition, from 1990 through 1994, 12,288 young persons in the area will become 18 years of age and potentially available for industrial jobs.

**Transportation** - Whitley City and Pine Knot are directly served by U.S. Highway 27. Stearns, which is served by Kentucky Highway 92 and 1651, is located one mile from U.S. 27. Interstate 75 can be accessed 21 miles east of Pine Knot via Kentucky 92. The Cumberland Parkway is located 31 miles north of Whitley City via U.S. 27. Eleven common carrier trucking companies provide interstate and/or intrastate service to McCreary County. The Norfolk Southern Corporation provides rail service to McCreary County. Stearns is also served by the Kentucky and Tennessee Railway. The nearest scheduled commercial airline service is available at McGhee Tyson Airport in Knoxville, Tennessee, 102 miles southeast of Whitley City, and at Bluegrass Airport near Lexington, Kentucky, 110 miles north of Whitley City. The McCreary County Airport, located four miles northeast of Pine Knot, provides facilities for small aircraft.

**Power and Fuel** - Kentucky Utilities Company provides electricity to Whitley City, Stearns and Pine Knot, in addition to a small portion of McCreary County. A major portion of the county is served by South Kentucky Rural Electric Cooperative Corporation, whose source of power is East Kentucky Power Cooperative. The Cumberland valley Rural Electric Cooperative Corporation also serves a small portion of southeastern McCreary County. Natural gas is not currently available in McCreary County.

**Education** - Primary and secondary education is provided by the McCreary County School System. Thirteen institutions of higher learning are located within 95 miles of Whitley City. Vocational training is available at the Somerset State Vocational-Technical School at Somerset, 31 miles north of Whitley City. The nearest Area Vocational Education Center is located in Monticello, 32 miles west of Whitley City. In addition, the Pine Knot Civilian Conservation Center, a unit of the Job Corps training program, is located in Pine Knot.

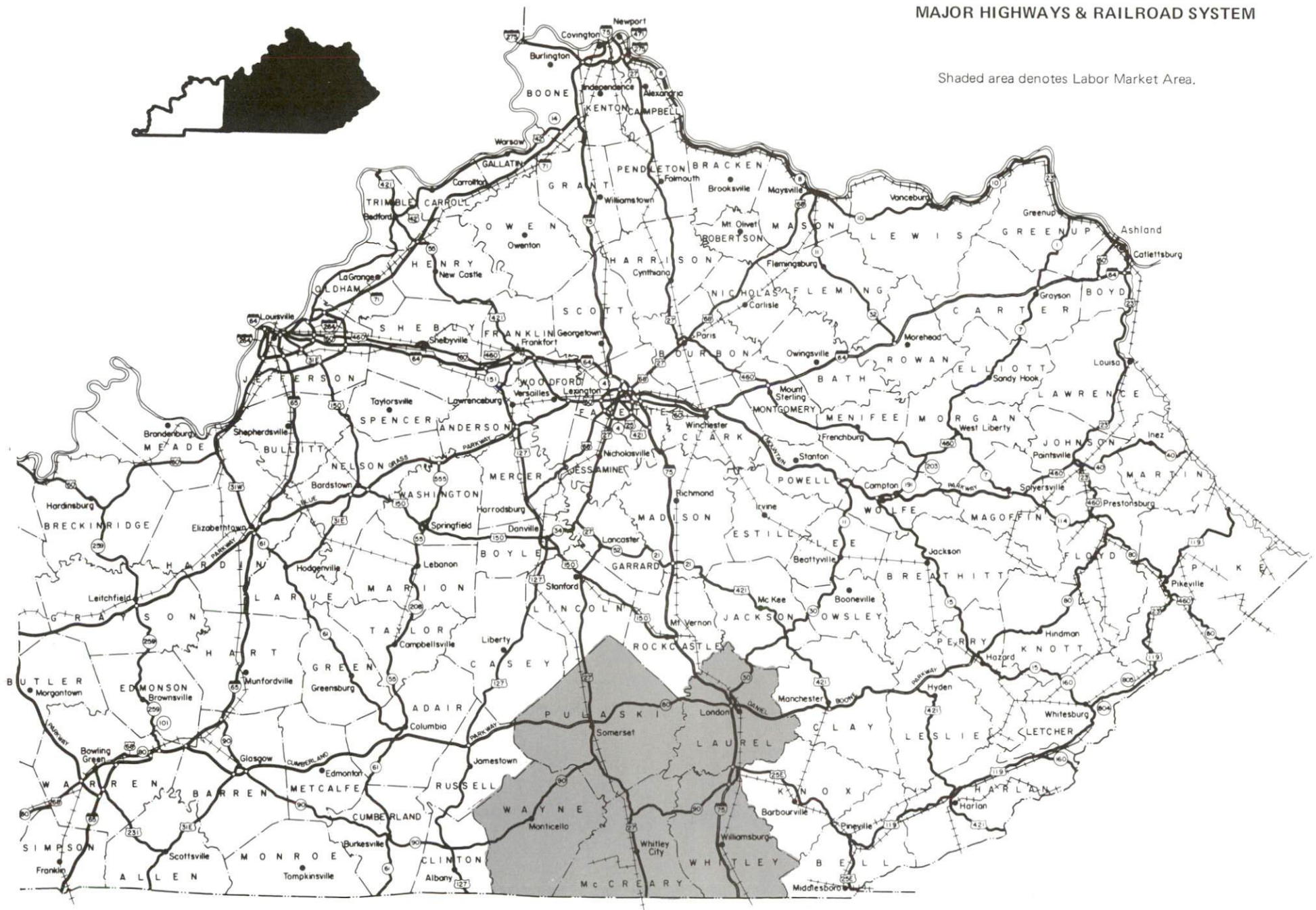


# McCREARY COUNTY LABOR MARKET AREA

With

MAJOR HIGHWAYS & RAILROAD SYSTEM

Shaded area denotes Labor Market Area.





# LABOR MARKET STATISTICS

The McCreary County Labor Market Area includes McCreary County and the adjoining Kentucky counties of Laurel, Pulaski, Wayne and Whitley.

## POPULATION

	<u>1988*</u>	<u>1980</u>	<u>1970</u>
Labor Market Area	160,700	150,837	113,581
Pine Knot**	N/A	1,389	-
Stearns**	N/A	1,557	-
Whitley City**	N/A	1,683	1,060
McCreary County	16,100	15,634	12,548

\* Population estimates.

Sources: U.S. Department of Commerce, Bureau of the Census, August 1989; November 1989.

\*\* Whitley City, Stearns and Pine Knot are unincorporated urban places which have been recognized as "census designated places" or "CDP's" by the Bureau of the Census for the 1980 census. The CDP's are closely settled population centers without incorporated limits; the boundaries are delineated by the Census Bureau.

Sources: U.S. Department of Commerce, Bureau of the Census, 1980 Census of Population and Housing, March 1981; 1980 Census of Population, Number of Inhabitants. University of Louisville, Urban Studies Center, Population Unit, October 1985; University of Louisville, Urban Studies Center, State Data Center, June 1987 Newsletter, Vol. 5 No. 4.

## POPULATION PROJECTIONS

	<u>1995</u>	<u>2000</u>	<u>2010</u>	<u>2020</u>
Labor Market Area	181,754	190,547	204,546	215,659
McCreary County	19,312	20,550	22,627	24,509

Source: University of Louisville, Urban Studies Center, State Data Center.

## ESTIMATED LABOR SUPPLY

	<u>Current</u>				<u>Future</u>
	<u>Total</u>	<u>Unemployed</u>	<u>Employed Part-Time</u>	<u>Not in Labor Force</u>	<u>Becoming 18 years of age 1990 thru 1994</u>
Labor Market Area*	32,464	5,774	7,324	19,366	12,288
McCreary County	5,601	755	726	4,120	1,451

\* Additional workers may be drawn from other nearby counties.

Note: Unemployed - persons unemployed and actively seeking work; Employed Part-Time - persons employed but working only 14 to 26 weeks per year; Not in Labor Force - represents the number of persons who would enter the labor force if suitable employment were available (based on the assumption that persons in Kentucky would like to participate in the labor force in the same proportion that they do nationally).

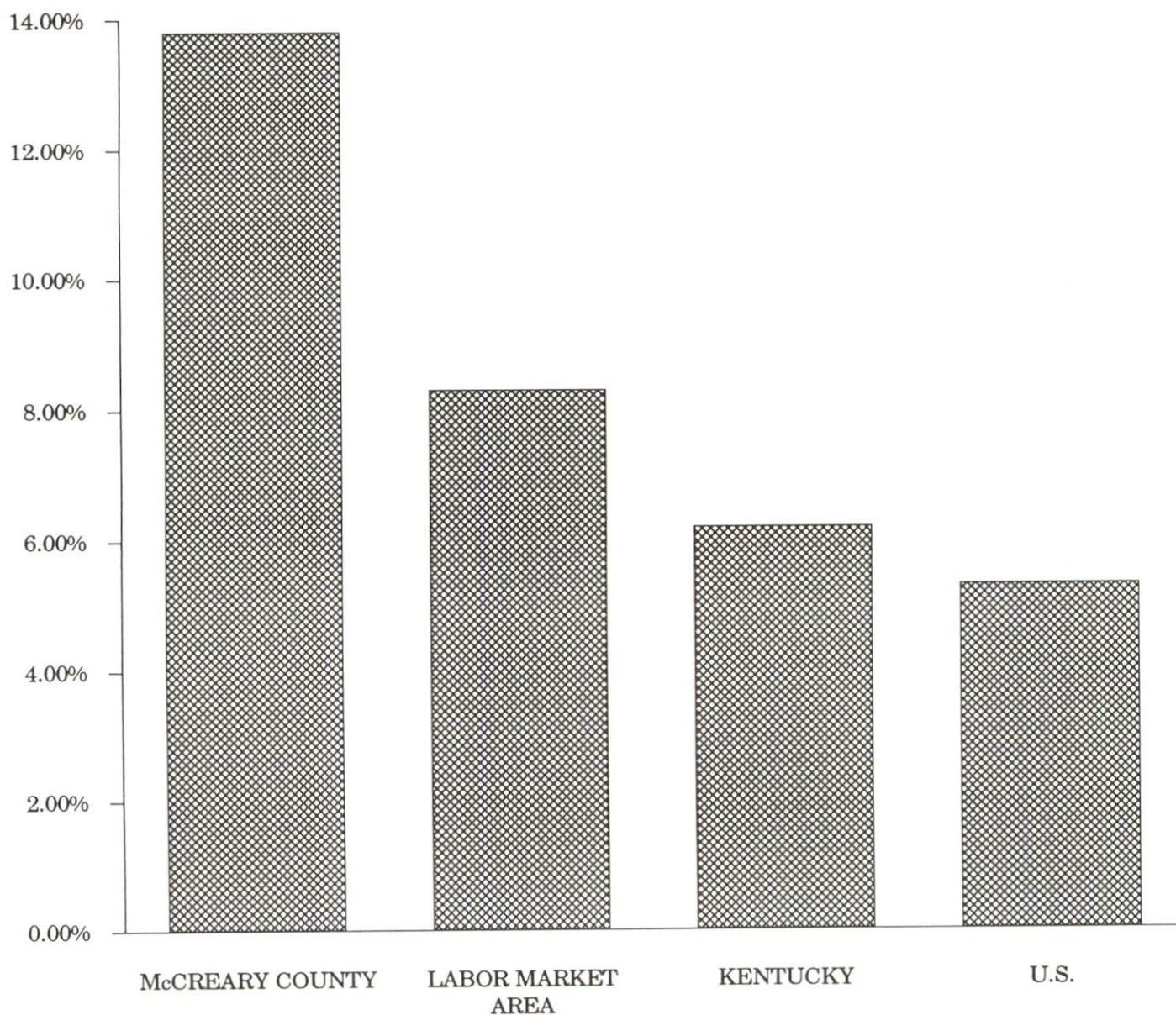
Sources: Kentucky Cabinet for Human Resources, Kentucky Labor Supply Estimates by County, 1988. Kentucky Cabinet for Economic Development, Future Labor Supply Becoming 18 Years of Age, 1990 thru 1994.

# LABOR FORCE CHARACTERISTICS OF RESIDENTS, 1989

	McCreary County	Labor Market Area
Civilian Labor Force	3,963	63,146
Employment	3,415	57,911
Unemployment	548	5,235
Rate of Unemployment (%)	13.8	8.3

Source: Kentucky Cabinet for Human Resources, Kentucky Labor Force Estimates, Annual Averages, 1989.

## UNEMPLOYMENT RATES 1989



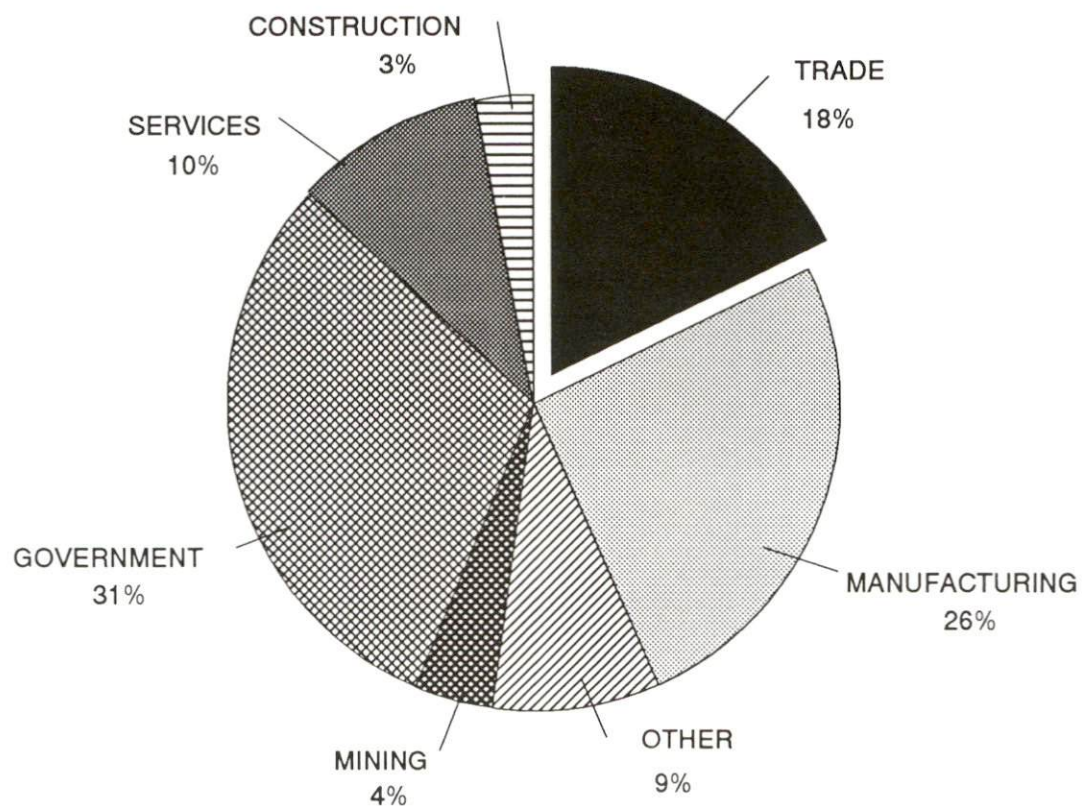


SELECTED COMPONENTS OF NONAGRICULTURAL EMPLOYMENT  
BY PLACE OF WORK, 1988

	McCreary County	Labor Market Area
All Industries (total)	1,819	46,456
Manufacturing	473	11,623
Wholesale & Retail Trade	319	12,619
Services	185	8,208
State/Local Government	564	6,785
Contract Construction	46	2,504
Mining & Quarrying	63	1,278

Note: Excludes domestic workers, railway workers, certain nonprofit corporations, majority of federal government workers, and self-employed workers.  
Source: Kentucky Cabinet for Human Resources, Average Monthly Workers Covered by Kentucky Unemployment Insurance Law, 1988.

MCCREARY COUNTY



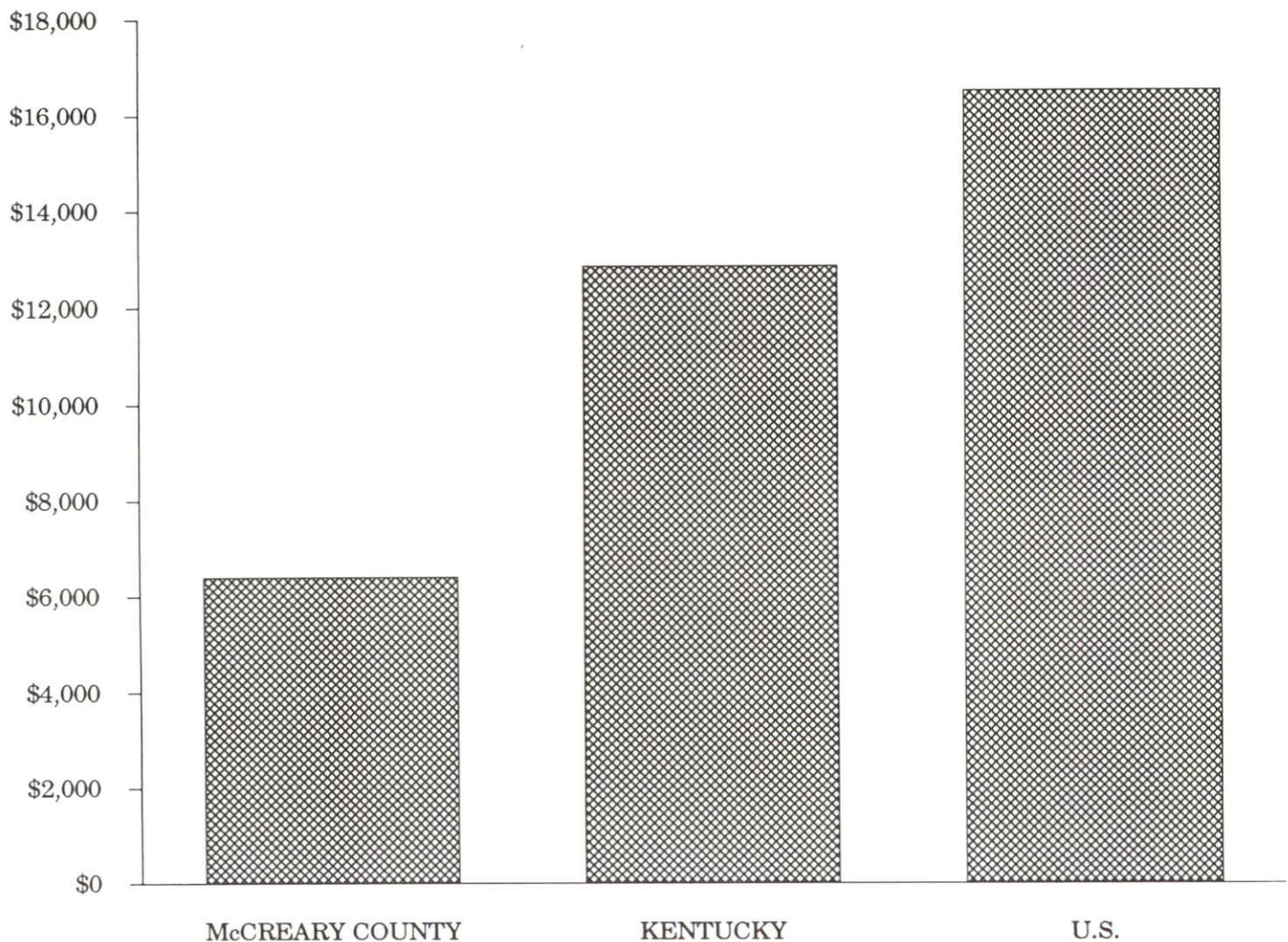


PER CAPITA PERSONAL INCOME

Area	1984	1988	Percent Change
McCreary County	\$5,064	\$6,391	21.0
Labor Market Area Range	\$5,064 - \$8,849	\$6,391 - \$11,409	-
Kentucky	\$10,411	\$12,830	23.2
U.S.	\$13,116	\$16,490	25.7

Sources: U.S. Bureau of Economic Analysis, Kentucky Economic Information System, April 1990.

PER CAPITA PERSONAL INCOME  
1988



## AVERAGE PLACEMENT WAGES

---

McCreary County is served by the Somerset local office of the Kentucky Department for Employment Services. The focus of the following data is on job placements made by the Somerset local office and may therefore be used as an indicator of the wages which employers in the area pay new employees. During the twelve months which ended on June 30, 1989, the local employment office filled 5,504 job openings in various occupational categories. The average hourly wage for selected occupational categories were:

<u>OCCUPATIONAL CATEGORY</u>	<u>NUMBER OF PLACEMENTS</u>	<u>AVERAGE WAGE(\$)</u>
All Occupations	5,504	4.06
Clerical	1,339	3.61
Sales	109	3.68
Services (excluding domestic)	442	3.36
Agricultural, Fishery, Forestry, etc.	51	4.04
Processing	72	3.71
Machine Trades	238	4.04
Bench Work	2,347	4.03
Structural	489	5.31
Motor Freight/ Transportation	58	4.18
Packaging and Materials Handling	215	4.88
Other	85	3.62

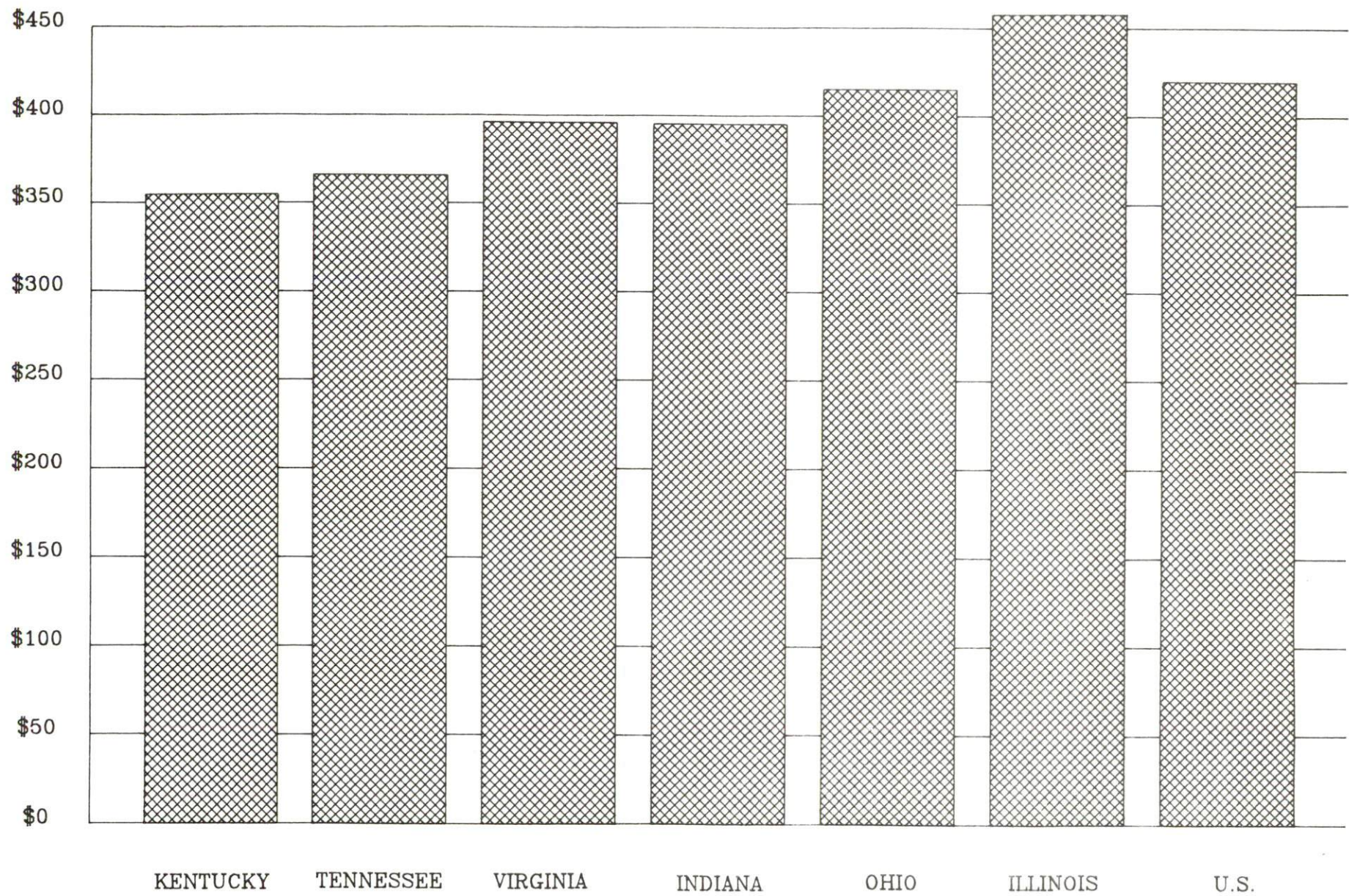
The Somerset local office also serves Adair, Casey, Clinton, Cumberland, Green, Pulaski, Russell, Taylor, and Wayne Counties. The above occupational categories are taken from the Dictionary of Occupational Titles published by the U.S. Department of Labor.

---

Source: Kentucky Cabinet for Human Resources, Department for Employment Services.



AVERAGE WEEKLY WAGES OF WORKERS COVERED BY  
UNEMPLOYMENT INSURANCE - 1988





AVERAGE WEEKLY WAGES BY INDUSTRY  
BY PLACE OF WORK, 1988

	McCreary County	Kentucky (State- Wide)	Tennessee	Virginia
All Industries	\$256.18	\$352.31	\$363.12	\$392.56
Mining & Quarrying	579.75	603.27	495.85	596.88
Contract Construction	369.79	380.71	394.27	422.27
Manufacturing	180.85	464.92	416.73	452.60
Transportation, Communications & Public Utilities	399.30	468.17	485.13	554.17
Wholesale & Retail Trade	156.61	238.88	N/A	N/A
Finance, Insurance & Real Estate	378.38	401.17	269.27	466.23
Services	213.69	298.98	343.48	391.67
State/Local Government	305.86	377.81	403.21	457.00
	<u>Indiana</u>	<u>Ohio</u>	<u>Illinois</u>	<u>U. S.</u>
All Industries	\$392.63	\$411.08	\$454.10	\$416.33
Mining & Quarrying	635.77	579.73	674.62	660.40
Contract Construction	449.87	465.46	584.10	469.85
Manufacturing	532.06	569.98	555.83	517.62
Transportation, Communications & Public Utilities	502.69	519.17	584.83	542.33
Wholesale & Retail Trade	N/A	N/A	N/A	N/A
Finance, Insurance & Real Estate	406.58	444.33	579.88	532.52
Services	317.98	348.48	402.38	384.31
State/Local Government	395.31	428.10	453.12	442.71

N/A Not Available.

Note: The average weekly wage for each category includes the salaries and wages of all persons working for that type business. For example, the manufacturing category includes both production workers and administrative personnel. Excludes domestic workers, railway workers, certain nonprofit corporations, majority of federal government workers, and self-employed workers.

Source: Kentucky Cabinet for Human Resources, Average Weekly Wages of Workers Covered by Kentucky Unemployment Insurance Law, 1988. U.S. Department of Labor, Bureau of Labor Statistics, Average Annual Pay by State and Industry, August 29, 1989.

# EXISTING INDUSTRY

## MCCREARY COUNTY MANUFACTURING FIRMS, THEIR PRODUCTS AND EMPLOYMENT

<u>Firm</u> <u>(Establishment date)</u>	<u>Product</u>	<u>1989</u> <u>Average Employment</u>
<b>Parkers Lake</b>		
Danny Vaught Quality Hardwoods (1967)	Hardwood and softwood lumber	9
<b>Pine Knot</b>		
Academy Broadway Corporation (1977)	Sleeping bags	110
Bowater Woodlands Southern Division (1953)	Pulpwood processor	2
McCreary Option (1987)	Wood crafts, contract labor	27
D.H. Campbell, Inc.(1960)	Heavy equipment refurbishers	12
Gregory Lumber (1984)	Rough sawn graded lumber and pallet components	18
Kentucky Hills Industries (1970)	Cornshuck flowers and dolls, Handweavings, wood handicrafts	40
McCreary County Hardwoods, Inc. (1970)	Lumber crossties	15
Pine Knot Lumber Company (1978)	Rough lumber, chips, sawdust	12
<b>Stearns</b>		
American Bag Company (1976)	Air bags for automobiles	57
J. Davis Enterprises, Inc. (1990)	Manufacture tent components	40
McCreary Manufacturing (1962)	Men's shirts, women's blouses	210
Outdoor Venture Corporation (1972)	Tents	129
Sterns Railway Service (1988)	Railroad car refurbisher	5
<b>Whitley City</b>		
McCreary County Ready Mix (1982)	Concrete block, ready mixed concrete	4
McCreary County Record (1918)	Newspaper, job printing	7
Midwest Crafts (1974)	Coal novelties	2
Winfield Apparel (1989)	Men and ladies' uniform pants men and ladies' jeans	45

Sources: Kentucky Cabinet for Economic Development, Division of Research and Planning.

## LABOR ORGANIZATIONS IN MANUFACTURING FIRMS

### Union

Amalgamated Clothing and Textile  
Workers Union, AFI-CIU

### Representing workers at:

Outdoor Venture Corporation



# SELECTED INDUSTRIAL SERVICES

<u>Types of Services</u>	<u>Location</u>	<u>Mileage from Whitley City</u>
Custom Data Processing	Somerset	31
	London	56
Custom Plastics Producers	Mt. Vernon	57
	Middlesboro	78
Electric Motor Repair	Corbin	43
Grinding, Precision & Tool	Richmond	101
Heat Treating Facilities	Richmond	101
Industrial Equipment & Supplies	Knoxville	92
	Richmond	101
Industrial Gases	Somerset	31
	Corbin	43
Industrial Waste Removal	Somerset	31
	Corbin	43
Machine Shops, Tool & Die	Somerset	31
	Monticello	32
Metal Castings	Middlesboro	78
Metal Finishers	Richmond	101
Metal Service Centers	Knoxville	92
	Richmond	101
Millwrights	Knoxville	92
Public Warehouse Facilities	Corbin	43

Sources: Kentucky Cabinet for Economic Development, Kentucky Directory of Selected Industrial Services, 1987; Division of Research and Planning.

## TRANSPORTATION

### Highways

Whitley City and Pine Knot are served directly by U.S. 27, a "AAA"-rated (80,000-pound gross load limit) trucking highway. Stearns, which is served by Kentucky 92, a "AA"-rated (62,000-pound gross load limit) trucking highway is located one mile from U.S. 27. Interstate 75 is accessible 21 miles east of Pine Knot via Kentucky 92. The Cumberland Parkway, an east-west toll road, is located 31 miles north of Whitley City via U.S. 27.

#### HIGHWAY MILES FROM WHITLEY CITY, KENTUCKY, TO SELECTED MARKET CENTERS

City	Highway Miles	City	Highway Miles
Atlanta, GA	287	Los Angeles, CA	2,265
Baltimore, MD	640	Louisville, KY	179
Birmingham, AL	342	Nashville, TN	270
Chicago, IL	449	New Orleans, LA	682
Cincinnati, OH	184	New York, NY	819
Cleveland, OH	424	Pittsburgh, PA	447
Detroit, MI	442	St. Louis, MO	437
Knoxville, TN	92		

Note: Mileage computations are via the best interstate or primary highways, not necessarily the most direct route of travel.

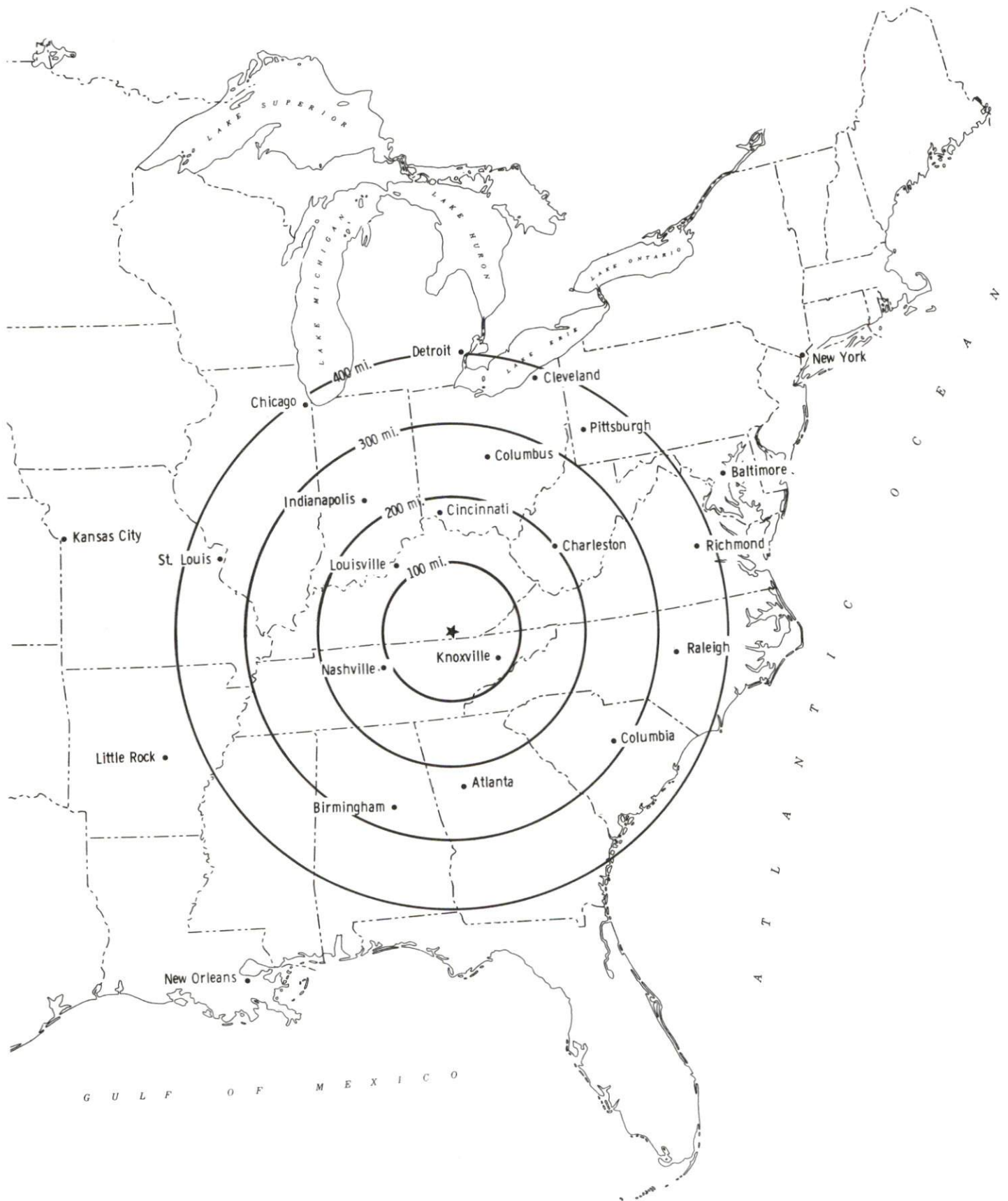
Sources: Rand McNally Deluxe Motor Carriers' Road Atlas, 1989. Official Kentucky Mileage Map, 1980.

### Truck Service

Eleven trucking companies provide interstate and/or intrastate trucking service to Whitley City. One trucking firm specializes in heavy equipment hauling.

Source: American Motor Carrier Directory, Fall 1990.

## Selected Market Centers





## Rail

Main line rail service is provided to Whitley City, Stearns, and Pine Knot by Norfolk Southern Corporation. Stearns is also served by Kentucky and Tennessee Railway. The nearest piggyback facilities are maintained by Norfolk Southern at Knoxville, 92 miles south of Whitley City.

For details on routing, schedules, rates, and services contact:

District Sales Manager  
Norfolk Southern Corporation  
1402 South 15th Street  
Louisville, Kentucky 40210  
(502) 636-6023

and/or

Manager  
Kentucky and Tennessee Railway  
P.O. Box 368  
Stearns, Kentucky 42647

## Air

### Local

Location:	McCreary County Airport
Runways:	4 miles east of Pine Knot
Length:	One turf and gravel
Traffic	3,000 feet
Control:	Wind sock
Lighting:	None
Services:	None

The McCreary County Airport board recently received \$275,000 from the Kentucky Office of Aeronautics to pave the runway and taxi way and construct aprons for 11 tiedowns. Plans to construct an administration building have also been made.

### Nearest Scheduled Commercial Airline Service

Location:	McGhee Tyson Airport
	10 miles south of Knoxville, Tennessee;
	102 miles southeast of Whitley City
Air Service:	American Eagle, ComAir, Delta, Eastern Metro Express, Northwest, USAir, TransWorld Express, United, United Express, Iowa Airways

Daily Arrivals & Departures:	120
---------------------------------	-----

Location:	Bluegrass Airport
	4 miles west of Lexington, Kentucky;
	110 miles north of Whitley City
Air Service:	Delta, USAir, TWA, United Express, JetStream, Air Kentucky, American Eagle, ComAir

Daily Arrivals & Departures:	116
---------------------------------	-----

## UTILITIES

### Electricity

Company serving Whitley City, Stearns, Pine Knot, and a small portion  
of McCreary County - Kentucky Utilities Company  
Source of power - Kentucky Utilities Company  
For industrial rates contact:

Industrial Development Department  
Kentucky Utilities Company  
One Quality Street  
Lexington, Kentucky 40507  
(606) 255-1461

Company serving a major portion of McCreary County - South Kentucky  
Rural Electric Cooperative Corporation  
Company serving small portion of southeastern McCreary County -  
Cumberland Valley Rural Electric Cooperative Corporation  
Source of power - East Kentucky Power Cooperative  
For industrial rates contact:

Industrial Development Division  
East Kentucky Power Cooperative  
P. O. Box 707  
Winchester, Kentucky 40391  
(606) 744-4812

### Natural Gas

Natural gas service is not available in McCreary County at the present  
time. However, negotiations to extend natural gas service to McCreary County  
are underway.

### Public Water Supply

Company serving McCreary County - McCreary County Water District  
Box 488  
Whitley City, Kentucky 42653  
(606) 376-2540

Source -	Laurel Creek Reservoir
Treatment plant capacity -	1,200,000 gallons per day
Average daily consumption -	783,381 gallons
Peak daily consumption -	900,000 gallons
Storage capacity -	925,000 gallons
Water pressure -	32 psi to 180 psi

The McCreary County Water District is currently implementing improvement  
projects at the filtration plant which will increase McCreary County's water  
treatment capacity to 1.5 million gallons per day.

### Sewerage

Septic tanks and several package treatment plants are used for sewerage  
disposal in Whitley City, Stearns, and Pine Knot. Plans to construct sewerage  
treatment facilities to serve the communities of Whitley City, Stearns, and Pine  
Knot are currently being formulated.

## CLIMATE

### McCreary County

#### Temperature

Normal (30-year record)	58.90 degrees
Average annual 1988	57.70 degrees
Record highest, September 1954 (47-year record)	103.00 degrees
Record lowest, January 1985 (47-year record)	-24.00 degrees
Normal heating degree days (30-year record)	3,658
(Heating degree day totals are the sums of negative departures of average daily temperatures from 65 degrees F.)	

#### Precipitation

Normal (30-year record)	47.29 inches
Mean annual snowfall (46-year record)	12.60 inches
Total precipitation 1988	34.66 inches
Mean number days precipitation (.01 inch or more) (46-year record)	126.00
Mean number days thunderstorms (46-year record)	47.00

#### Prevailing winds (through 1963)

Northeast

#### Relative Humidity (28-year record)

1 a.m.	80 percent
7 a.m.	85 percent
1 p.m.	59 percent
7 p.m.	63 percent

Source: U.S. Department of Commerce, Environmental Science Services Administration, Climatological Data, 1988. Station of record: Knoxville, Tennessee.



## LOCAL GOVERNMENT

### Structure

The communities of Whitley City, Stearns, and Pine Knot are unincorporated urban areas. McCreary County is served by a county judge/executive and four magistrates, all of which are elected to four-year terms.

### Planning and Zoning

There is no planning and zoning commission in McCreary County at the present time.

Mandatory state codes enforced - Kentucky Plumbing Code, National Electric Code, Kentucky Boiler Regulations and Standards, Kentucky Building Code (modeled after BOCA code)

## State and Local Property Taxes

All property in Kentucky, except items exempted by the state constitution, is taxed by the state. Property which also may be taxed by local jurisdictions includes land and buildings, finished goods inventories, automobiles, trucks, office furniture and office equipment. Local taxing jurisdictions in Kentucky include counties, cities, and school districts.

All property in Kentucky is assessed at 100 percent of fair cash value.

### COMBINED STATE AND LOCAL RATES PER \$100 VALUATION, 1989

	Unincorporated McCreary County
Land and Buildings	\$0.955
Manufacturing	
Machinery	0.150
Pollution Control	
Equipment	0.150
Inventories	
Raw Materials	0.001
Goods in Process	0.001
Finished Goods	0.638
Automobiles & Trucks	0.947
Other Tangible	
Personal Property	1.087
Intangibles (Accounts	
receivable*, money	
in hand, stock,	
notes, bonds)	0.250
Goods Stored in Public	
Warehouses in Transit	
Status	0.001
Private Leaseholds in	
Industrial Revenue	
Bond Financed	
Facilities	0.015

\* Accounts receivable are taxed at 85 percent of face value, for an effective rate of \$0.2125 per \$100 valuation.

## EDUCATION

### Public Schools

#### McCreary County

Total Enrollment (Fall, 1989)	3,524
Pupil-Teacher Ratio (1988-89)	18.3-1
Percent High School Graduates to College (1988-89)	21.6
Expenditures Per Pupil (1988-89)	\$2,284.81

### Area Colleges and Universities

<u>Name</u>	<u>Location (Miles distant)</u>	<u>Enrollment (Fall, 1989)</u>
Cumberland College	Williamsburg, Kentucky (28)	1,880
Somerset Community College	Somerset, Kentucky (31)	1,755
Sue Bennett College	London, Kentucky (56)	544
Union College	Barbourville, Kentucky (56)	1,047
Lindsey Wilson College	Columbia, Kentucky (73)	1,153
Berea College	Berea, Kentucky ((74)	1,550
Centre College	Danville, Kentucky (76)	857
Lincoln Memorial University	Harrogate, Tennessee (84)	1,780
Eastern Kentucky University	Richmond, Kentucky (87)	14,268
Campbellsville College	Campbellsville, Kentucky (92)	760
Johnson Bible College	Knoxville, Tennessee (92)	434
Knoxville College	Knoxville, Tennessee (92)	1,225
University of Tennessee, at Knoxville	Knoxville, Tennessee (92)	25,016

### Local Higher Education Opportunities

Several college level courses, such as Business, English, Math, Computers, and Economics, are held in McCreary County through an off campus program of the Somerset Community College. Approximately 500 McCreary County residents are enrolled in these classes which are held at McCreary County Central High School and Whitley City Middle School.

McCreary County officials have began an application process to the University of Kentucky Community College System to establish a satellite of the Somerset Community College in McCreary County.



## Vocational Training

Vocational training is available at both the state vocational-technical schools and the area vocational education centers. The state vocational-technical schools are post-secondary institutions. The area vocational education centers are designed to supplement the curriculum of high school students. Both the state vocational-technical schools and the area vocational education centers offer evening courses to enable working adults to upgrade current job skills.

Arrangements can be made to provide training in the specific production skills required by an industrial plant. Instruction may be conducted either in the vocational school or in the industrial plant, depending upon the desired arrangement and the availability of special equipment.

### Bluegrass State Skills Corporation

The Bluegrass State Skills Corporation, an independent public corporation created and funded by the Kentucky General Assembly, provides programs of skills training to meet the needs of business and industry from entry level to advanced training, and from upgrading present employees to retraining experienced workers.

The Bluegrass State Skills Corporation is the primary source for skills training assistance for a new or existing company. The Corporation works in partnership with other employment and job training resources and programs, as well as Kentucky's economic development activities, to package a program customized to meet the specific needs of a company.

<u>Vocational School</u>	<u>Location (Miles Distant) From Whitley City</u>	<u>Cumulative Enrollment 1988-1989</u>
Somerset State Vocational-Technical School	Somerset, Kentucky (31)	909
Oneida State Area Vocational-Technical School	Oneida, Tennessee (20)	558
Wayne County Area Education Center	Monticello, Kentucky (32)	409
Pine Knot Civilian Conservation	Pine Knot, Kentucky (5)	220

## OTHER LOCAL FACILITIES

### Local Medical Personnel

Physicians - 7  
Dentists - 4

### Hospitals

<u>General Hospital</u>	<u>Location</u>	<u>Beds</u>
Humana Hospital Lake Cumberland	Somerset, Kentucky, 31 miles north of Whitley City	244
Scott County Hospital	Oneida, Tennessee, 20 miles south of Whitley City	99

#### Humana Hospital Lake Cumberland

Medical staff - 55 active physicians; 20 courtesy physicians; 154 registered nurses, and 49 licensed practical nurses

#### Scott County Hospital and Nursing Home

Medical staff - 8 physicians; 30 registered nurses; 42 licensed practical nurses

### Other Medical Facilities and Services

Winchester, Patton and Burgess Professional Service Corporation  
McCreary Christian Care Center  
McCreary County Health Center  
McCreary County Ambulance Service  
Cumberland Manor Rest Home, Inc.  
McCreary County Health Care Facility

### Banks and Savings & Loan Associations

Bank of McCreary County

### Newspapers

McCreary County Record

### Telephone Service

Highland Telephone Cooperative, Inc.

## RECREATION

### Local

Recreational opportunities abound throughout McCreary County, ranging from indoor activities to rugged outdoor adventures. The McCreary County Park, just south of Whitley City, offers a swimming pool, three baseball/softball fields, two basketball courts, a picnic area, a shelter, a children's playground, hiking and fitness trails, and a community building.

The 4-H Camp, in eastern McCreary County, has an overnight lodge, a horse show ring and a picnic shelter.

The Stearns Golf Course is a semi-private, nine-hole golf course with a swimming pool and lighted tennis courts on the premises. The Sterns golf course is rated among the best nine-hole golf courses in the southeastern United States by the Professional Golfers' Association of America. Limited food facilities are also available.

Recreation facilities at McCreary County schools include baseball fields, a football field, track, and gymnasiums.

Supervised recreational programs include T-ball, Babe Ruth League, church league, Little League basketball, and adult league softball.

Privately owned recreational facilities for miniature golf, roller skating and archery are also located in the area.

McCreary County is located in the southern portion of the Daniel Boone National Forest, a rugged 640,000-acre timberland stretching throughout east central Kentucky. Scenic and recreational sites within 20 miles of Whitley City include Natural Arch Picnic and Scenic Area with a limestone arch, trails and sheltered picnic facilities; Sawyer Campground, featuring picnic areas and a boat launching ramp on Lake Cumberland; Yahoo Falls Picnic Area, with a shelter house, trails, and rugged scenic views of a 113-foot waterfall; Alum Ford, a camping and boat launching area; Great Meadow Camping Area; Hemlock Grove with a picnic area and trout stream; Bell Farm Hunter and Horse Camp Site; Apple Tree Rifle Range; Barren Fork Primitive Camping Area; and Sheltowee Trace Natural Recreation Trail.

The Big South Fork National River and Recreation Area was developed by the U.S. Army Corps of Engineers in cooperation with the National Park Service. The "National Area" is located along the Big South Fork of the Cumberland River from Whitley City in Kentucky, south to Oneida in Tennessee. Recreational opportunities in this rugged scenic area include whitewater rafting, canoeing, kayaking, camping, hiking, horse back riding and picnicking.

The Blue Heron Recreation Area, a restored mining camp, has been completed by the Corps of Engineers and is operated by the National Park Service. The Interpretive exhibits provide visitors with an opportunity to witness life as it would have been when the mining camp operated on the banks of the Big South Fork of the Cumberland River. A campground, scenic overlooks and hiking trails are also located in the area.



The Big South Fork Scenic Railway offers a chance to see part of the rugged Cumberland River area by rail. The train operates on a regular schedule between Stearns and the Blue Heron Recreation Area within the Big South Fork National River and Recreation area, a distance of about six miles in each direction.

**Cumberland Falls State Resort Park** is located 20 miles northeast of Whitley City near Corbin in the Daniel Boone National Forest. The park is famous for Cumberland Falls which drops 68 feet over a rock precipice and shows one of only two known "moonbows" in the world at full moon. The park offers 73 lodge rooms, woodland suites, 25 cottages, a convention center, camping, fishing, swimming, hiking, horseback riding, picnicking, tennis, backpacking, a nature center, shuffleboard, planned recreation, a playground, a gift shop, and an amphitheater.

**Lake Cumberland**, accessible 23 miles north of Whitley City, is one of the nation's most productive fishing lakes with excellent bass, bluegill and crappie fishing. Covering over 50,000 acres, with over 1,200 miles of shoreline, the lake is well known for its scenic beauty amid the surrounding palisades and woodlands.

Area (Within 60 miles of Whitley City)

General Burnside State Park  
Lake Cumberland State Resort Park  
Levi Jackson Wilderness Road State Park  
Laurel Lake

## COMMUNITY IMPROVEMENTS

### Recent

The most significant activity in McCreary County involves the developments of the Blue Heron Recreation Area within the Big South Fork River and Recreation Area and the opening of the Stearns Museum. The U.S. Corps of Engineers recently completed the construction of the Blue Heron Recreation Area which will be maintained by the National Park Service. The \$13.5 million project includes a reconstructed coal mining town with interpretive exhibits, related overlooks, trails, campground, and roads. The McCreary County Heritage Foundation invested approximately \$120,000 in the Stearns Museum which exhibits memorabilia from the Stearns Coal and Lumber Company and McCreary County. In addition, downtown Stearns was recently placed on the National Register of Historic Places.

The final section of U.S. 27 to be reconstructed was completed in the spring of 1990. Kentucky Highway 2279, providing access from U.S. 27 to Stearns, was completed in the fall of 1989 and is to be renumbered as Kentucky Highway 92.

A \$3.4 million middle school was completed in 1989.

A sixty-bed nursing home facility was opened in Pine Knot in 1990. The McCreary County Health Care Facility has 20 intermediate care beds and 40 skilled nursing beds.

The Highland Telephone Cooperative, Inc. has recently completed extensive improvements in the Stern and Pine Knot areas. Telecommunication services were greatly enhanced by the project.

### Underway

The McCreary County Airport Board recently received a \$275,000 grant from the Kentucky Office of Aeronautics to pave a 3,000-foot runway and taxiway and to construct an apron for 11 tiedowns. This project is expected to be completed in 1991. The Airport Board plans to apply for an additional matching funds grant to construct a hangar and an administration building. The \$100,000 grant would require the Airport Board to acquire \$50,000 in matching funds.

The McCreary County Water District is currently undergoing a line extension project which will add approximately 130 residential customers. A 50,000 gallon elevated tank will also be constructed. The \$1.9 million project is the first phase in a series of improvements to be implemented throughout the system. Phase II of the project will consist of the installation of a 10-inch line to the filtration plant. Proposed improvements to the water treatment plant include the addition of two new filters, and a claricone, and additional improvements which will increase the plant's treatment capacity to 1.5 million gallons per day.

McCreary County has obtained a cost estimate for the construction of a sewer system to serve Whitley City, Stearns, Marshes Siding, and Pine Knot. McCreary County is currently seeking funding for the project.

## Planned

A new county health department is currently planned for Whitley City. The county plans to invest approximately \$625,000 in the project.

Negotiations are underway to extend a natural gas pipeline to McCreary County.

The McCreary County School Board plans to construct a new middle school in Whitley City in the near future.

The U.S. Corps of Engineers and The National Park Service plan to construct a lodge at the Big South Fork River and Recreation Area.