

1987

# Industrial Resources: Meade County - Brandenburg

Kentucky Library Research Collections  
Western Kentucky University, [spcol@wku.edu](mailto:spcol@wku.edu)

Follow this and additional works at: [https://digitalcommons.wku.edu/meade\\_cty](https://digitalcommons.wku.edu/meade_cty)



Part of the [Business Administration, Management, and Operations Commons](#), [Growth and Development Commons](#), and the [Infrastructure Commons](#)

---

## Recommended Citation

Kentucky Library Research Collections, "Industrial Resources: Meade County - Brandenburg" (1987). *Meade County*. Paper 6.  
[https://digitalcommons.wku.edu/meade\\_cty/6](https://digitalcommons.wku.edu/meade_cty/6)

This Report is brought to you for free and open access by TopSCHOLAR®. It has been accepted for inclusion in Meade County by an authorized administrator of TopSCHOLAR®. For more information, please contact [topscholar@wku.edu](mailto:topscholar@wku.edu).



Meade County, Ky.

## RESOURCES FOR ECONOMIC DEVELOPMENT

# Brandenburg

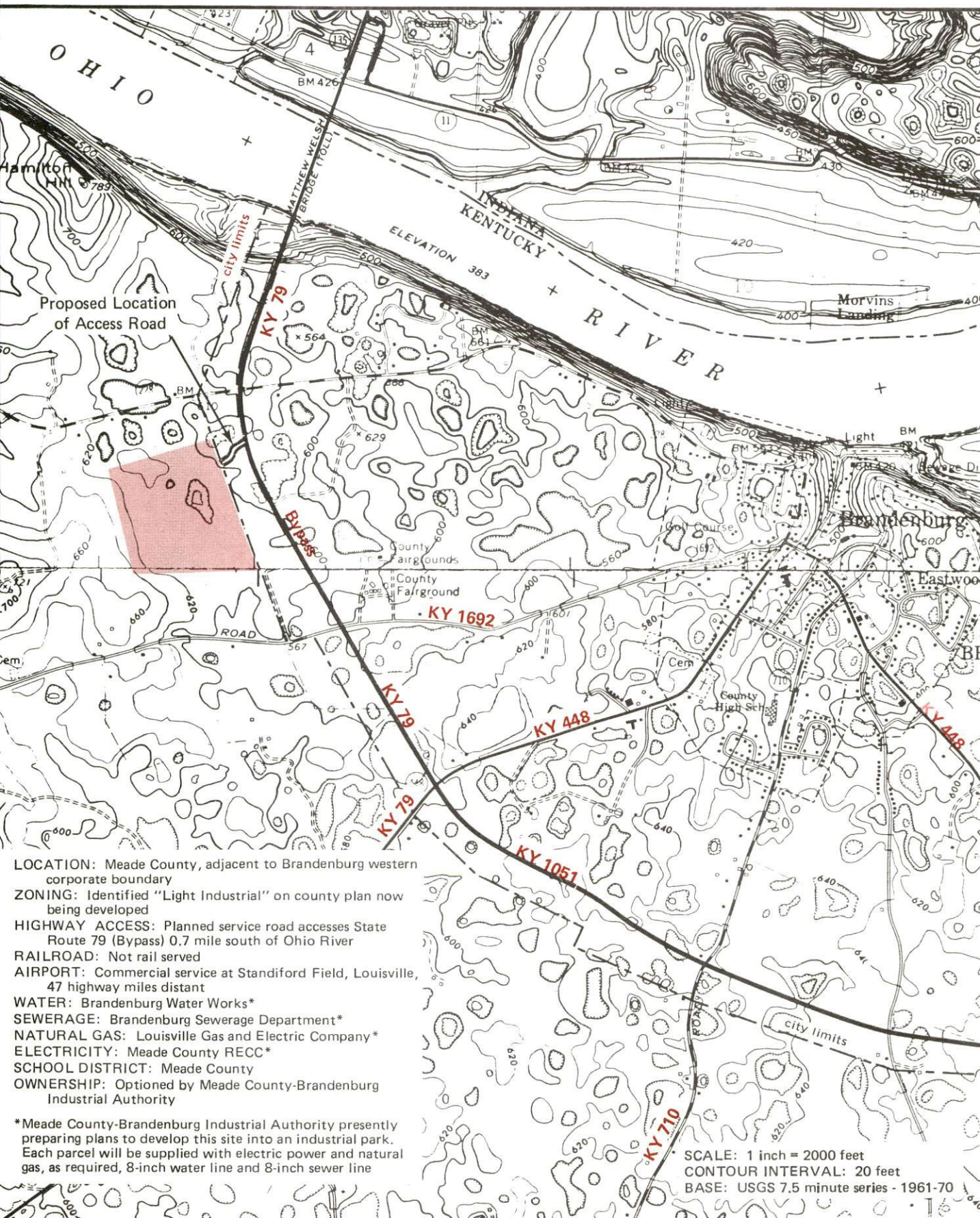


**KENTUCKY**  
The business environment is right.



# BRANDENBURG, KENTUCKY -- Site 187 -- 71 Acres

For more information contact the Kentucky Department of Economic Development, Industrial Development & Marketing Division, Capital Plaza Tower, Frankfort, Kentucky 40601 (502-564-7140).



- LOCATION:** Meade County, adjacent to Brandenburg western corporate boundary
- ZONING:** Identified "Light Industrial" on county plan now being developed
- HIGHWAY ACCESS:** Planned service road accesses State Route 79 (Bypass) 0.7 mile south of Ohio River
- RAILROAD:** Not rail served
- AIRPORT:** Commercial service at Standiford Field, Louisville, 47 highway miles distant
- WATER:** Brandenburg Water Works\*
- SEWERAGE:** Brandenburg Sewerage Department\*
- NATURAL GAS:** Louisville Gas and Electric Company\*
- ELECTRICITY:** Meade County RECC\*
- SCHOOL DISTRICT:** Meade County
- OWNERSHIP:** Optioned by Meade County-Brandenburg Industrial Authority

\*Meade County-Brandenburg Industrial Authority presently preparing plans to develop this site into an industrial park. Each parcel will be supplied with electric power and natural gas, as required, 8-inch water line and 8-inch sewer line

SCALE: 1 inch = 2000 feet  
CONTOUR INTERVAL: 20 feet  
BASE: USGS 7.5 minute series - 1961-70

RESOURCES FOR ECONOMIC DEVELOPMENT  
BRANDENBURG, KENTUCKY

Prepared by  
The Kentucky Department of Economic Development  
Division of Research and Planning  
in cooperation with  
The Meade County Area Chamber of Commerce

1987

Program manager - Andrew Dennis; research - Keith Roberts; clerical - Bobbi Graves; graphics - Tony Cecconi, Robert Owens, Pat Coleman; cartography - Site Evaluation Branch, Division of Industrial Development and Marketing. Cost of printing paid from state funds.



## TABLE OF CONTENTS

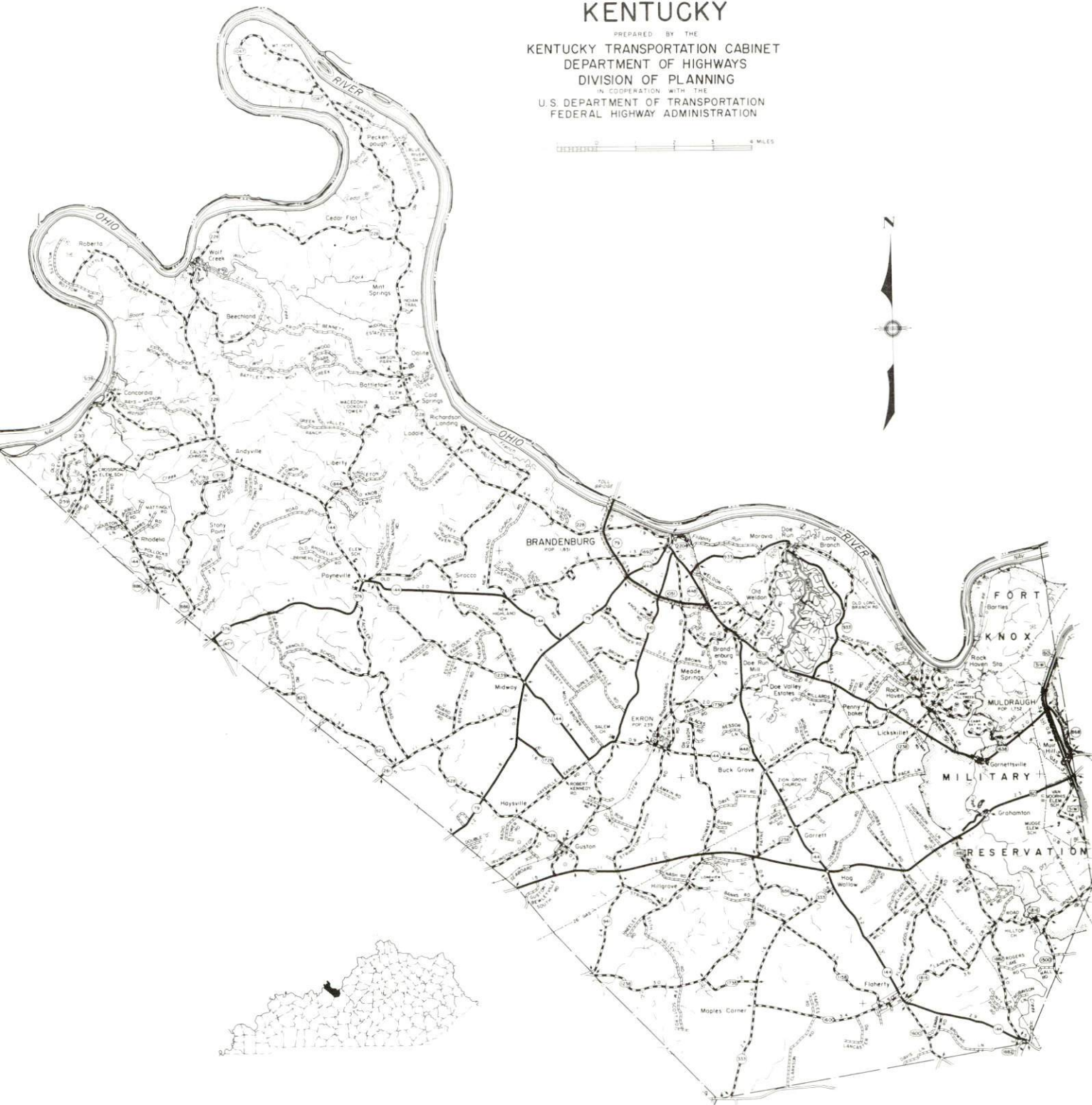
<u>Chapter</u>	<u>Page</u>
INDUSTRIAL SITES . . . . .	i
BRANDENBURG, KENTUCKY - A RESOURCE PROFILE . . . . .	1
THE LABOR MARKET AREA . . . . .	2
Population . . . . .	2
Population Projections . . . . .	2
Labor Force Characteristics of Residents, 1986 . . . . .	3
Selected Components of Nonagricultural Employment, by Place of Work, 1985 . . . . .	3
Per Capita Personal Income . . . . .	4
Estimated Male Labor Supply . . . . .	5
Estimated Female Labor Supply . . . . .	5
Average Weekly Wages by Industry, by Place of Work, 1985 . . . . .	6
EXISTING INDUSTRY . . . . .	8
Meade County Manufacturing Firms, Their Products and Employment . . . . .	8
Labor Organizations in Manufacturing Firms . . . . .	9
Selected Industrial Services . . . . .	10
TRANSPORTATION . . . . .	11
Rail . . . . .	11
Highways . . . . .	11
Truck Service . . . . .	11
Air . . . . .	12
Air Express Service . . . . .	13
Water . . . . .	13
POWER AND FUEL . . . . .	14
Electricity . . . . .	14
Natural Gas . . . . .	14
Other Fuels . . . . .	15
WATER AND SEWERAGE . . . . .	16
Public Water Supply . . . . .	16
Raw Water . . . . .	17
Sewerage . . . . .	17
CLIMATE . . . . .	18

<u>Chapter</u>	<u>Page</u>
LOCAL GOVERNMENT . . . . .	19
Structure . . . . .	19
Planning and Zoning. . . . .	19
Local Fees and Licenses . . . . .	19
State and Local Property Taxes . . . . .	20
Combined State and Local Rates Per \$100 Valuation, 1986 . . . . .	20
Safety . . . . .	21
Police . . . . .	21
Fire . . . . .	21
Rescue Service . . . . .	21
Refuse Collection and Disposal. . . . .	21
EDUCATION . . . . .	22
Public Schools . . . . .	22
Nonpublic Schools . . . . .	22
Area Colleges and Universities . . . . .	23
Vocational Schools . . . . .	24
HEALTH . . . . .	26
Local Medical Personnel . . . . .	26
Hospitals . . . . .	26
Other Medical Facilities . . . . .	26
Ambulance Service . . . . .	26
OTHER LOCAL FACILITIES . . . . .	27
Communications . . . . .	27
Library Services . . . . .	27
Religious Institutions . . . . .	27
Financial Institutions . . . . .	28
Hotels and Motels . . . . .	28
Clubs and Organizations. . . . .	28
RECREATION . . . . .	29
COMMUNITY IMPROVEMENTS . . . . .	31

1986 EDITION  
GENERAL HIGHWAY MAP  
**MEADE COUNTY**  
**KENTUCKY**

PREPARED BY THE  
KENTUCKY TRANSPORTATION CABINET  
DEPARTMENT OF HIGHWAYS  
DIVISION OF PLANNING  
IN COOPERATION WITH THE  
U.S. DEPARTMENT OF TRANSPORTATION  
FEDERAL HIGHWAY ADMINISTRATION

0 1 2 3 4 MILES

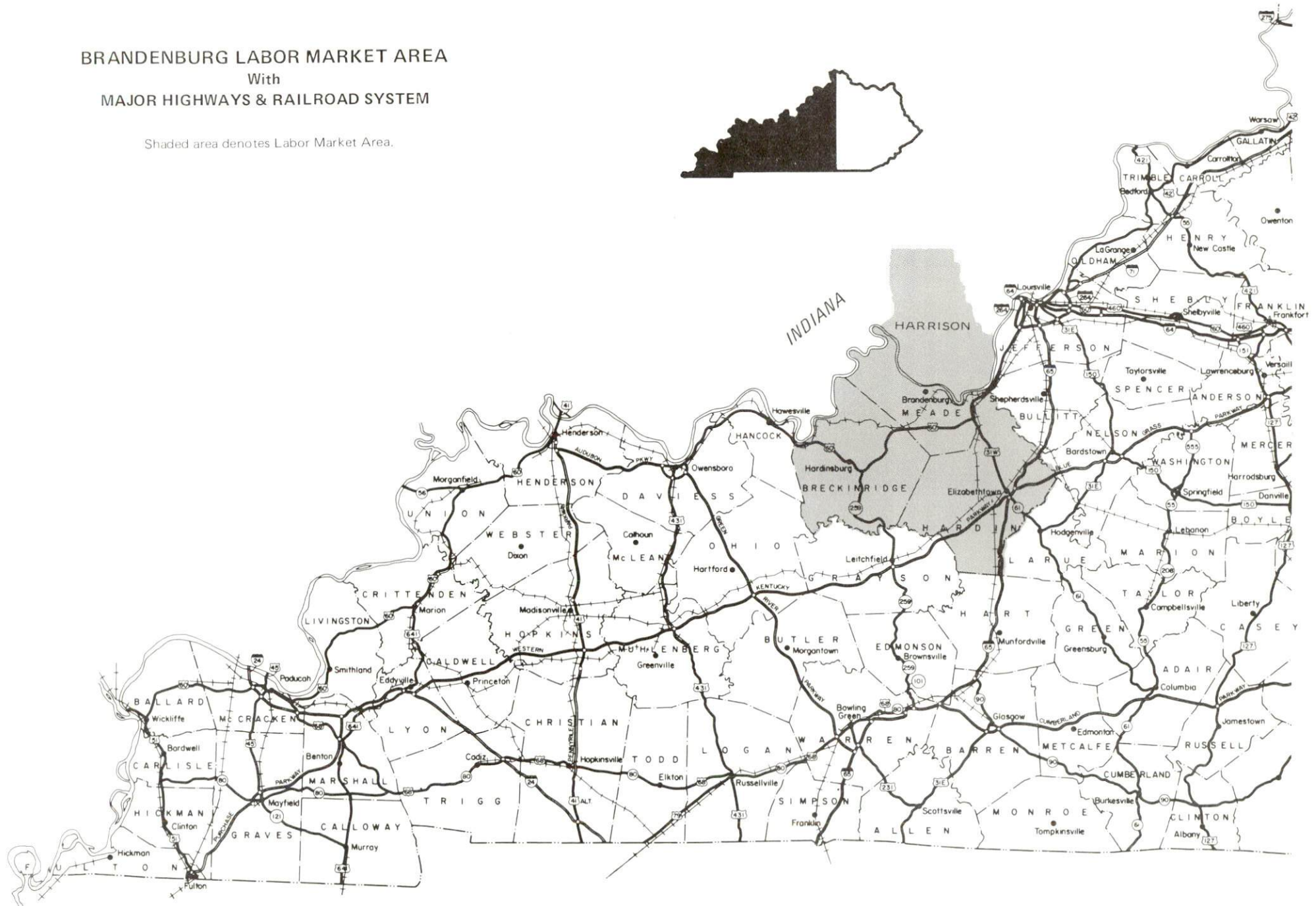




# BRANDENBURG LABOR MARKET AREA

With  
MAJOR HIGHWAYS & RAILROAD SYSTEM

Shaded area denotes Labor Market Area.



## BRANDENBURG, KENTUCKY - A RESOURCE PROFILE

Brandenburg, the county seat of Meade County, is situated on the south bank of the Ohio River in north central Kentucky. Brandenburg is located 46 miles southwest of Louisville, Kentucky; 147 miles southwest of Cincinnati, Ohio; and 165 miles north of Nashville, Tennessee. In 1984, the city had an estimated population of 1,984 persons.

Meade County covers a land area of 307 square miles. The Ohio River forms the entire northern boundary of the county. In 1985, Meade County had an estimated population of 23,172 persons.

**The Economic Framework** - The total number of Meade County residents employed in 1986 averaged 6,050. In 1985, manufacturing firms in the county reported 540 employees; wholesale and retail trade provided 480 jobs; 210 people were employed in service occupations; state and local government accounted for 460 employees; and contract construction firms provided 80 jobs.

**Labor Supply** - There is a current estimated labor supply of 6,060 men and 8,930 women available for industrial jobs in the labor market area. In addition, from 1987 through 1991, 5,210 young men and 4,960 young women in the area will become 18 years of age and potentially available for industrial jobs.

**Transportation** - Main line rail service is provided to Brandenburg by CSX Transportation. Principle AAA-rated trucking highways directly serving Meade County are Kentucky Routes 79 and 448 and U.S. Highway 60. Interstate 64 is located 19 miles north of Brandenburg. Access to Interstate 65 and two of Kentucky's parkways is located 34 miles southeast of the city. Nine common carrier trucking companies provide interstate and intrastate service to Brandenburg. The nearest commercial airline service is available at Standiford Field in Louisville, 45 miles northeast. Three privately-owned commercial docks are located on the Ohio River in Brandenburg.

**Power and Fuel** - Electric power is provided to Brandenburg and Meade County by the Louisville Gas and Electric Company and the Meade County Rural Electric Cooperative Corporation. Natural gas service is provided by the Louisville Gas and Electric Company. Three distributors of propane and two distributors of distillate fuel oil serve Brandenburg.

**Education** - Primary and secondary education is provided to Brandenburg and Meade County by the Meade County School System. Six colleges and universities are located within 50 miles of Brandenburg. In addition, six universities and two colleges operate extension campuses at the Fort Knox Military Reservation, 19 miles southeast. The Elizabethtown State Vocational-Technical School, 34 miles southeast of Brandenburg, offers training in 31 courses. Vocational training is also available locally at the Meade County Area Vocational Education Center.



## LABOR MARKET STATISTICS

The Brandenburg Labor Market Area includes Meade County and the adjoining Kentucky counties of Breckinridge and Hardin. The Brandenburg Labor Market Area also encompasses the Indiana county of Harrison, across the Ohio River from Brandenburg.

### POPULATION

Area	1985*	1980	1970	Percent Nonwhite
				1980
Brandenburg	1,984	1,831	1,637	3.4
Labor Market Area	132,390	128,632	112,006	-
Meade County	23,172	22,854	18,796	9.0
Breckinridge County	16,911	16,861	14,789	3.8
Hardin County	92,307	88,917	78,421	14.7

\* Population estimates. City estimates are for 1984.

Note: The 1980 city counts of population by race are provisional.

Sources: U.S. Department of Commerce, Bureau of the Census, 1980 Census of Population and Housing, March 1981; 1980 Census of Population, Number of Inhabitants. University of Louisville, Urban Studies Center, Population Unit, October 1985; University of Louisville, Urban Studies Center, State Data Center, Provisional Estimates of the Population of Counties and Components of Change, July 1, 1985.

### POPULATION PROJECTIONS

Area	1990	1995	2000	2010
Labor Market Area	140,257	149,226	157,990	175,582
Meade County	23,853	24,888	26,036	27,878
Breckinridge County	17,069	17,399	17,621	17,907
Hardin County	99,335	106,939	114,333	129,797

Source: University of Louisville, Urban Studies Center, Population Research Unit, How Many Kentuckians: Population Forecasts, 1980-2020, the 1986 Edition, Spring 1986.

LABOR FORCE CHARACTERISTICS OF RESIDENTS, 1986

	<u>Meade County</u>	<u>Labor Market Area*</u>
Civilian Labor Force	6,706	47,023
Employment	6,052	43,449
Unemployment	654	3,574
Rate of Unemployment (%)	9.8	7.6

\* Meade County and the two adjoining Kentucky counties.

Source: Kentucky Cabinet for Human Resources, Kentucky Labor Force Estimates, Annual Averages, 1986.

SELECTED COMPONENTS OF NONAGRICULTURAL EMPLOYMENT  
BY PLACE OF WORK, 1985

	<u>Meade County</u>	<u>Labor Market Area*</u>
All Industries (total)	2,164	22,970
Manufacturing	543	4,656
Wholesale & Retail Trade	477	7,042
Services	208	3,336
State/Local Government	461	4,204
Contract Construction	79	1,271
Mining & Quarrying	0	89

\* Meade County and the two adjoining Kentucky Counties.

Note: Excludes domestic workers, railway workers, certain nonprofit corporations, majority of federal government workers, and self-employed workers.

Source: Kentucky Cabinet for Human Resources, Average Monthly Workers Covered by Kentucky Unemployment Insurance Law, 1985.



PER CAPITA PERSONAL INCOME

<u>Area</u>	<u>1980</u>	<u>1984</u>	<u>Percent Change</u>
Meade County	\$ 5,706	\$ 7,792	36.6
Labor Market Area Range*	\$5,453 - 6,416	\$7,792 - 8,874	-
Kentucky	7,644	10,232	33.9
U.S.	9,494	12,772	34.5

\* Meade County and the two adjoining Kentucky counties.

Sources: U.S. Department of Commerce, Bureau of Economic Analysis. Kentucky Economic Information System, June 1986.

ESTIMATED MALE LABOR SUPPLY  
BRANDENBURG LABOR MARKET AREA

Area	Current				Future
	Total Male	Unemployed	Under-employed	Not in Labor Force	Becoming 18 years of age 1987 thru 1991
Labor Market Area*	6,061	1,604	4,110	347	5,207
Meade	1,030	269	414	347	1,210
Breckinridge	932	425	507	0	719
Hardin	4,099	910	3,189	0	3,278

ESTIMATED FEMALE LABOR SUPPLY  
BRANDENBURG LABOR MARKET AREA

Area	Current				Future
	Total Female	Unemployed	Under-employed	Not in Labor Force	Becoming 18 years of age 1987 thru 1991
Labor Market Area*	8,929	1,970	2,890	4,069	4,962
Meade	2,619	385	539	1,695	1,079
Breckinridge	1,603	363	350	890	692
Hardin	4,707	1,222	2,001	1,484	3,191

\* Additional workers may be drawn from other nearby counties.

Note: Unemployed - persons unemployed and actively seeking work; Underemployed - persons employed but working only 14 to 26 weeks per year; Not in Labor Force - represents the number of persons who would enter the labor force if suitable employment were available (based on the assumption that persons in Kentucky would like to participate in the labor force in the same proportion that they do nationally).

Sources: Kentucky Cabinet for Human Resources, Kentucky Labor Supply Estimates by County, 1986. Kentucky Department of Economic Development, Future Labor Supply Becoming 18 Years of Age, 1987 thru 1991.



AVERAGE WEEKLY WAGES BY INDUSTRY  
BY PLACE OF WORK, 1985

	<u>Meade County</u>	<u>Breckinridge County</u>	<u>Hardin County</u>
All Industries	\$324.83	\$228.67	\$274.82
Mining & Quarrying	*	212.18	413.36
Contract Construction	290.10	227.41	306.24
Manufacturing	*	265.93	378.21
Transportation, Communications & Public Utilities	445.52	389.96	332.02
Wholesale & Retail Trade	179.97	170.22	184.66
Finance, Insurance & Real Estate	217.44	301.28	285.58
Services	142.07	200.02	238.81
State/Local Government	283.40	269.51	315.99
Other	173.59	191.64	262.87

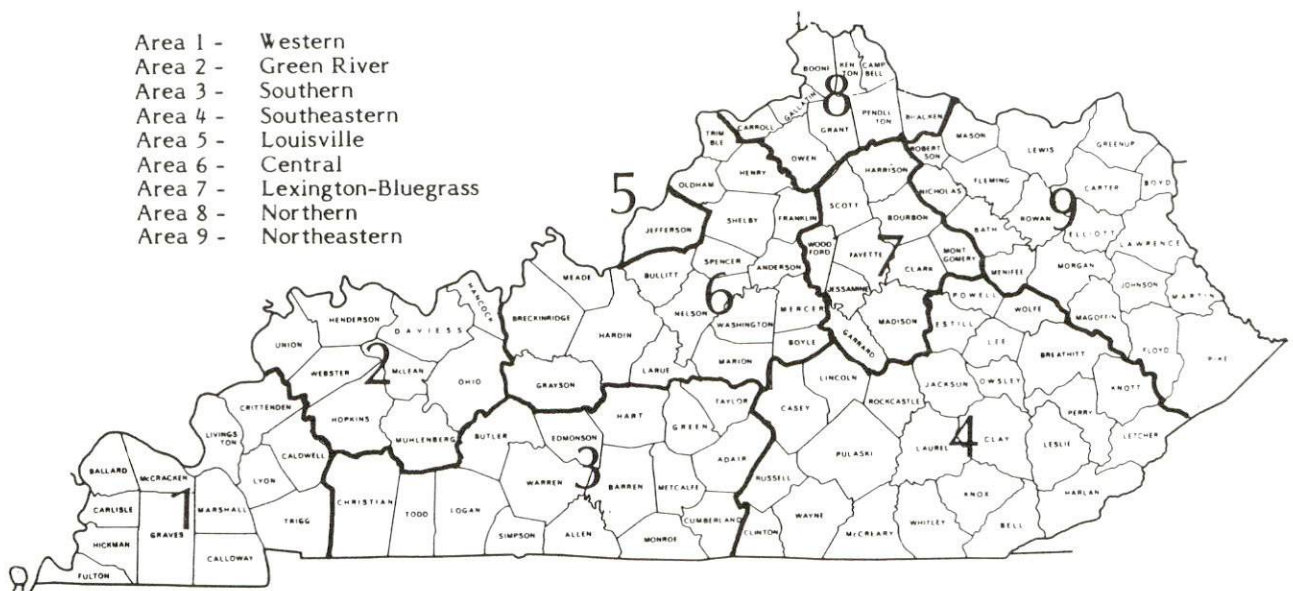
\* Not disclosed.

Note: The average weekly wage for each category includes the salaries and wages of all persons working for that type business. For example, the manufacturing category includes both production workers and administrative personnel. Excludes domestic workers, railway workers, certain nonprofit corporations, majority of federal government workers, and self-employed workers.

Source: Kentucky Cabinet for Human Resources, Average Weekly Wages of Workers Covered by Kentucky Unemployment Insurance Law, 1985.

Occupational wage rates for specific industries are usually not available to most government agencies, and wage data furnished to state employment agencies by individual industrial employers are protected from disclosure by federal law. The most reliable up-to-date wage information can be obtained by direct contact with local employers.

Associated Industries of Kentucky, a voluntary organization of Kentucky businesses, regularly collects occupational wage rates and fringe benefits data from participating member firms. Data are compiled for over 127 clearly defined office, production, and service occupations. Tabulations are published for nine geographical areas of Kentucky, as shown on the map below. It should be noted that the data may be weighted by the preponderance of firms in the larger cities and may be somewhat higher than the rates paid in the smaller communities. Data from these tabulations are available, upon request, from the Kentucky Department of Economic Development, Frankfort, Kentucky 40601.



Associated Industries of Kentucky Area Wage Surveys



## EXISTING INDUSTRY

### MEADE COUNTY MANUFACTURING FIRMS, THEIR PRODUCTS AND EMPLOYMENT

Firm (Establishment date)	Product	Average Employment			Labor Unions
		Total	Male	Female	
Brandenburg					
Meade County Messenger (1892)	Newspaper	15	5	10	
Meade County Ready Mix, Inc. (1959)	Ready-mixed concrete	9	9	0	
Midway Meat Processing, Inc. (1961)	Meat slaughtering, processing, hides	15	-	-	
Olin Corporation (1952)	Glycol ethers, industrial chemicals, surface active agents	256	220	36	Electrical Workers; Plumbers; Fireman & Oilers; Guards*
Ekron					
Derby Car & Manufacturing, Inc. (1975)	Railroad car repair	30	28	2	

\* See Labor Organizations on next page.

Sources: Kentucky Department of Economic Development, 1987 Kentucky Directory of Manufacturers; Division of Research and Planning.

## LABOR ORGANIZATIONS IN MANUFACTURING FIRMS

<u>Union</u>	<u>Representing workers at:</u>
International Brotherhood of Electrical Workers, AFL-CIO	Olin Corporation
International Brotherhood of Firemen and Oilers, AFL-CIO	Olin Corporation
International Guards Union of American	Olin Corporation
United Association of Journeymen and Apprentices of the Plumbing and Pipe Fitting Industry of the United States and Canada, AFL-CIO	Olin Corporation

## SELECTED INDUSTRIAL SERVICES

<u>Types of Service</u>	<u>Location</u>	<u>Mileage from Brandenburg</u>
Custom Plastics Producers	Fairdale	40
	Louisville	46
Electric Motor Repair	Elizabethtown	34
	Louisville	46
Grinding, Precision & Tool	Louisville	46
Heat Treating Facilities	Louisville	46
Industrial Equipment & Supplies	Louisville	46
Industrial Gases	Elizabethtown	34
	Louisville	46
Industrial Waste Removal	Elizabethtown	34
	Louisville	46
Machine Shops, Tool & Die	Elizabethtown	34
	Louisville	46
Metal Finishers	Elizabethtown	34
	Louisville	46
Metal Service Centers	Louisville	46
Millwrights	Elizabethtown	34
	Louisville	46
Public Warehouse Facilities	Elizabethtown	34
	Louisville	46

Sources: Kentucky Department of Economic Development, Kentucky Directory of Selected Industrial Services, 1985; Division of Research and Planning.



## TRANSPORTATION

### Rail

Line serving **Brandenburg** - CSX Transportation

Services - Main line; one northbound and one southbound through freights daily, stops made as needed; switch engine; team track space for five cars; nearest piggyback facilities are located in Louisville, 46 miles northeast

For details on routing, schedules, rates, and services contact:

Corporate Communications  
CSX Transportation  
908 West Broadway  
Louisville, Kentucky 40203  
(502) 587-5445

### Highways

Principle highways directly serving the city of Brandenburg are Kentucky Routes 79 and 448. The major highway serving Meade County is U.S. Highway 60. Access to U.S. 60 is 11 miles southwest of the city via Kentucky 79 or 10 miles southeast of Brandenburg via Kentucky 448. All three highways are AAA-rated (80,000-pound gross load limit) trucking highways.

Interstate 64, a major east-west highway, is located 19 miles north of Brandenburg via Indiana State Route 135. Access to Interstate 65 and two of Kentucky's multilane parkways, the Blue Grass Parkway and Western Kentucky Parkway, is 34 miles southeast of Brandenburg in Elizabethtown, Kentucky.

### Truck Service

ANR Freight System, Inc.\*  
ARA/Smith's\*  
Consolidated Freightways  
Corporation of Delaware\*  
Jones Truck Lines, Inc.\*

Majors Transit, Inc.\*  
Manning Motor Express, Inc.\*  
Overnite Transportation Company\*  
Spartan Express, Inc.\*  
Yellow Freight System, Inc.\*

\* Interstate and intrastate service.

Source: American Motor Carrier Directory, Spring 1987.

HIGHWAY MILES AND TRUCK TRANSIT TIME IN DAYS FROM  
BRANDENBURG, KENTUCKY, TO SELECTED MARKET CENTERS

City	Highway Miles	Delivery		City	Highway Miles	Delivery	
		Time TL				Time TL	
Atlanta, GA	407	2		Los Angeles, CA	2,100	5	
Baltimore MD	644	3		Louisville, KY	46	1	
Birmingham, AL	361	2		Nashville, TN	165	1	
Chicago, IL	338	2		New Orleans, LA	682	3	
Cincinnati, OH	147	1		New York, NY	794	5	
Cleveland, OH	391	2		Pittsburgh, PA	434	1	
Detroit, MI	406	2		St. Louis, MO	255	1	
Knoxville, TN	287	2					

Note: Mileage computations are via the best interstate or primary highways, not necessarily the most direct route of travel.

Sources: Rand McNally Road Atlas, 1979. Official Kentucky Mileage Map, 1980.  
Delivery time - Overnite Transportation Company, P. O. Box 99308, Louisville, Kentucky 40299.

Air

Nearest Small Craft Airport\*

Location:	Breckinridge County Airport 1 mile east of Hardinsburg; 28 miles southwest of Brandenburg
Runways:	1 paved
Length:	3,500 feet
Traffic	
Control:	Wind sock
Lighting:	Sunset to sunrise

(Continued)

\* A privately-owned airstrip, with a 1,800-foot turf runway, is located approximately seven miles west of Brandenburg

**Elizabethtown Airport**  
**Location:** 4 miles west of Elizabethtown;  
 38 miles southeast of Brandenburg  
**Runways:** 1 paved  
**Length:** 5,000 feet  
**Traffic**  
**Control:** Unicom, wind sock  
**Lighting:** Runway and beacon, VASI, REILS, lighted taxiway  
**Services:** Commuter air service provided by Comair and  
 Jetstream International, 100 octane, jet-A fuel,  
 charter, major A & P repairs, hangar, tie-down,  
 flight instruction  
**Air Freight**  
**Service:** Chartered air freight service must be arranged

Nearest Scheduled Commercial Airline Service

**Standiford Field**  
**Location:** 4 miles southeast of center of Louisville, Kentucky;  
 45 miles northeast of Brandenburg  
**Runways:** 2 paved  
**Length:** 10,000 feet; 7,250 feet  
**Traffic**  
**Control:** Control Tower  
**Lighting:** Runways, obstructions, beacon and approach; touch-  
 down lights and center line on one runway  
**Services:** American Airlines, Delta, Eastern, Ozark, Piedmont,  
 Northeast, TWA, United, USAir, Jetstream,  
 Allegheny Commuter, Comair, Florida Express;  
 fuel - 100 and jet-A; major A & P repairs, major  
 Avionics repairs, APU, charter, oxygen, U.S.  
 Customs; taxi, car rentals, limousine,  
 courtesy car, public transit; Weather Bureau,  
 restaurant, snack bar  
**Air Freight**  
**Service:** Air freight terminal

**Air Express Service**

Several major companies offer air express services in Kentucky. These companies provide a quick means of shipping small to medium-sized packages expeditiously.

**Water**

The Ohio River forms the northern boundary of Meade County. A nine-foot navigation channel is maintained on the Ohio River. Three privately-owned commercial docks are located in Brandenburg.



## POWER AND FUEL

### Electricity

Company serving parts of Brandenburg and Meade County - Louisville  
Gas and Electric Company  
Source of power - Louisville Gas and Electric Company  
For industrial rates contact:

Louisville Gas and Electric Company  
P. O. Box 32010  
Louisville, Kentucky 40232  
(502) 566-4246

Company serving parts of Brandenburg and Meade County - Meade County  
Rural Electric Cooperative Corporation  
Source of power - Big Rivers Electric Corporation  
For industrial rates contact:

Big Rivers Electric Corporation  
201 Third Street  
P. O. Box 24  
Henderson, Kentucky 42420  
(502) 827-2561

and/or

Meade County Rural Electric Cooperative  
Corporation  
P. O. Box 367  
Brandenburg, Kentucky 40108  
(502) 422-2162

### Natural Gas

Company serving Brandenburg - Louisville Gas and Electric Company  
Source of supply - Texas Gas Transmission Company  
Size of transmission mains - 26-inch (supplier); 16-inch  
(distributor)  
Distribution mains - 2 to 6 inches  
Distribution pressure - 35 psi  
Btu content - 1,025 per cubic foot  
Specific gravity - 0.585  
For rates and supplies contact:

Louisville Gas and Electric Company  
Economic Development and Market Research  
P. O. Box 32010  
Louisville, Kentucky 40232  
(502) 566-4488

## Other Fuels

### Propane (Within 11 miles)

Biddle's Bottle Gas Company  
Route 2  
Brandenburg, Kentucky 40108

Kelly & Sons Bottled Gas  
Route 1  
Brandenburg, Kentucky 40108

Irvington Gas Company  
Center and 1st Avenue  
Irvington, Kentucky 40146

### Fuel oils

Distillate fuel oil -

Shacklette Oil Company  
364 Broadway  
Brandenburg, Kentucky 40108

Ray West Oil Company  
Route 2  
Brandenburg, Kentucky 40108

Residual fuel oil - Arrangements must be made with the refinery.

Low sulphur content coal - Available in Kentucky.

## WATER AND SEWERAGE

### Public Water Supply

Company serving Brandenburg - Brandenburg Water Works  
P. O. Box 305  
Brandenburg, Kentucky 40108  
(502) 422-4981

Source - Wells; 1,000 gallons per minute pumping capacity

Treatment plant capacity - 800,000 gallons per day

Average daily consumption - 350,000 gallons

Peak daily consumption - 500,000 gallons

Treatment processes - Sedimentation, filtration, chlorination,  
fluoridation

Storage capacity - 300,000 gallons

Size lines - 4 to 8 inches

Water pressure - 30 psi to 95 psi

### MONTHLY WATER RATES

#### Inside city limits

First	2,000 gallons	\$8.07	Minimum
Next	3,000 gallons	2.32	per M gallons
Next	5,000 gallons	2.13	per M gallons
Next	10,000 gallons	1.88	per M gallons
Next	15,000 gallons	1.55	per M gallons
Over	35,000 gallons	1.29	per M gallons

#### Outside city limits

First	2,000 gallons	\$8.90	Minimum
Next	3,000 gallons	2.56	per M gallons
Next	5,000 gallons	2.32	per M gallons
Next	10,000 gallons	2.07	per M gallons
Next	15,000 gallons	1.71	per M gallons
Over	35,000 gallons	1.42	per M gallons

#### Tap-on charge:

Inside city - \$150 plus labor and materials

Outside city - \$300 plus labor and materials

The newly-formed Meade County Water District is presently installing waterlines in Meade County. The \$2 million first phase has been completed and is in operation. The water district will serve the entire county when in full operation.



## Raw Water

Surface water sources - Ohio River

Average discharge - Ohio River at Louisville, Kentucky - 115,800 cfs (57 years-USGS)

Expected ground water yield - 500 to 1,000 gpm along the Ohio River; 50 to 500 gpm in central and eastern portion of the county; 5 to 50 gpm in southern and central section of the county; 5 gpm or less in remainder of Meade County

## Sewerage

Company serving Brandenburg - Brandenburg Wastewater Treatment Plant\*  
P. O. Box 305  
Brandenburg, Kentucky 40108  
(502) 422-4981

Design capacity - 400,000 gallons per day

Average daily flow - 150,000 gallons

Type of treatment - Primary and secondary

Treatment processes - Primary sedimentation, rotating biological contactors, secondary sedimentation, chlorination, aerobic digester, sludge drying beds

Treated effluent discharged into - Ohio River

Size of sanitary mains - 8 to 12 inches

Size of storm mains - 18 to 48 inches

Monthly rates - 100 percent of monthly water bill plus a surcharge for excessive strength sewage as follows:

B.O.D. - \$0.14 per pound in excess of 250 mg/l

Suspended solids - \$0.14 per pound in excess of 250 mg/l

Tap-on charge: \$750 plus labor and materials

---

\* The city of Brandenburg recently completed the installation of a new sewage collector system. Cost of the new system was approximately \$425,000.

## CLIMATE

### Meade County

#### Temperature

Normal (30-year record)	56.10 degrees
Average annual 1985	56.20 degrees
Record highest, July 1954 (38-year record)	105.00 degrees
Record lowest, January 1963 (38-year record)	-20.00 degrees
Normal heating degree days (30-year record)	4,525
(Heating degree day totals are the sums of negative departures of average daily temperatures from 65 degrees F.)	

#### Precipitation

Normal (30-year record)	43.56 inches
Mean annual snowfall (30-year record)	17.30 inches
Total precipitation 1985	37.75 inches
Mean number days precipitation (.01 inch or more) (38-year record)	124.60
Mean number days thunderstorms (38-year record)	45.10

#### Prevailing winds (through 1963)

South

#### Relative Humidity (25-year record)

1 a.m.	76 percent
7 a.m.	81 percent
1 p.m.	59 percent
7 p.m.	61 percent

Source: U.S. Department of Commerce, Environmental Science Services Administration, Climatological Data, 1985. Station of record: Louisville, Kentucky.

## LOCAL GOVERNMENT

### Structure

The city of Brandenburg is served by a mayor and six council members. The mayor serves a four-year term and the council members serve two-year terms. Meade County is served by a county judge/executive and six magistrates. The county judge/executive and magistrates are elected to four-year terms.

### Planning and Zoning

City agency - Brandenburg Planning Commission  
Zoning enforced - Within city limits  
Subdivision regulations enforced - Within city and three miles beyond corporate limits  
Local codes enforced - Building and housing within city limits  
Mandatory state codes enforced - Kentucky Plumbing code, National Electric Code, Kentucky Boiler Regulations and Standards, Kentucky Building Code (modeled after BOCA code)

### Local Fees and Licenses

The city of Brandenburg levies a business license fee on businesses and professions operating within the city. The fee is \$20 annually. The city also levies an unloading license, \$20 per year, and an insurance premium tax which is five percent of the premium amount.

A 3 percent tax is levied on utilities receipts for schools in Meade County. Tax is paid by all consumers of utilities as an add-on to the utilities bills. Exempted are receipts from utilities services that are resold and the receipts from the sale of energy or energy producing fuels that exceed 3 percent of the cost of production in manufacturing, processing, mining or refining.



## State and Local Property Taxes

All property in Kentucky, except items exempted by the state constitution, is taxed by the state. Property which also may be taxed by local jurisdictions includes land and buildings, finished goods inventories, automobiles, trucks, office furniture and office equipment. Local taxing jurisdictions in Kentucky include counties, cities, and school districts.

All property in Kentucky is assessed at 100 percent of fair cash value.

### COMBINED STATE AND LOCAL RATES PER \$100 VALUATION, 1986

	<u>Within City of Brandenburg</u>	<u>Unincorporated Meade County</u>
Land and Buildings	\$0.9821	\$0.6541
Manufacturing		
Machinery	0.150	0.150
Pollution Control		
Equipment	0.150	0.150
Inventories		
Raw materials	0.001	0.001
Goods in Process	0.001	0.001
Finished Goods	0.7971	0.4691
Automobiles & Trucks	1.2891	0.9611
Other Tangible		
Personal Property	1.2461	0.9181
Intangibles (Accounts receivable*, money in hand, stock, notes, bonds)	0.250	0.250
Goods Stored in Public Warehouses in Transit Status	0.001	0.001
Private Leaseholds in Industrial Revenue Bond Financed Facilities	0.015	0.015

\* Accounts receivable are taxed at 85 percent of face value, for an effective rate of \$0.2125 per \$100 valuation.

## Safety

Police	Brandenburg	Meade County
Total staff	3	4
Radio-patrol cars	2	2
Fire*		
Insurance Services Office, Public Protection Classification	**	**
Volunteers		150
Rescue Service		

Rescue service in Meade County is provided through the combined resources of all police, fire, and emergency services in Meade County.

## Refuse Collection and Disposal

Private contractors provide refuse collection and disposal in Brandenburg and Meade County. The private haulers are contracted by the city and county governments.

\* Includes copyrighted material of ISO Commercial Risk Services, Inc., with its permission.

\*\* The Brandenburg fire department recently merged with the Meade County fire department. The fire insurance classification rating for Brandenburg is class 7 and all other areas in the Meade County district is class 9. Other fire districts in Meade County which hold a class 9 rating are Battletown, Ekron, Flaherty, and Payneville. Wolf Creek and Rhodelia fire districts and all other areas in unincorporated Meade County are class 10.

## EDUCATION

### Public Schools

	Meade County*
Total Enrollment (April 1987)	3,483
Kindergarten	297
Elementary	1,558
Middle School	527
High School	1,101
Pupil-Teacher Ratio (1985-86)	22-1
Percent High School Graduates to College (1985-86)	49.0
Expenditures Per Pupil (1985-86)	\$1,888.85

### Nonpublic Schools

<u>School</u>	<u>Enrollment</u>	<u>Grades</u>
St. John the Apostle Elementary	130	1-6

\* The Meade County School System completed construction of additional classrooms at three of the elementary schools in the spring of 1987. Approximate cost of these additions was \$1.3 million.



## Area Colleges and Universities

<u>Name</u>	<u>Location (Miles distant)</u>	<u>Enrollment (Fall, 1986)</u>	<u>Highest Degree Conferred</u>
Fort Knox Extension Campuses	Fort Knox, Kentucky (19)	*	*
Elizabethtown Community College	Elizabethtown, Kentucky (34)	2,091	Associate
Indiana University, Southeast	New Albany, Indiana (40)	4,657	Masters (Education only)
University of Louisville	Louisville, Kentucky (46)	20,217	Doctorate, M.D., D.M.D., J.D.
Bellarmino College	Louisville, Kentucky (46)	2,644	Masters
Spalding University	Louisville, Kentucky (46)	1,154	Doctorate
Jefferson Community College	Louisville, Kentucky (46)	6,996	Associate

\* Six universities and two colleges operate extension campuses at Fort Knox Military Reservation, 19 miles southeast of Brandenburg. These extension campuses confer various graduate and undergraduate degrees, including doctorate degrees in policy analysis and education. The extension campuses' programs are open to the public, and the Fall 1985 total enrollment was 1,943. The extension campuses include: Central Texas College, Eastern Kentucky University, Embry Riddle Aeronautical University, Sullivan Junior College of Business, University of Kentucky, University of Louisville, University of Southern California, and Western Kentucky University.

## Vocational Training

The Bluegrass State Skills Corporation, an independent public corporation created and funded by the Kentucky General Assembly, provides programs of skills training to meet the needs of business and industry from entry level to advanced training, and from upgrading present employees to retraining experienced workers.

The Bluegrass State Skills Corporation is the primary source for skills training assistance for a new or existing company. The Corporation works in partnership with other employment and job training resources and programs, as well as Kentucky's economic development activities, to package a program customized to meet the specific needs of a company.

Vocational training is available at both the state vocational-technical schools and the area vocational education centers. The state vocational-technical schools are post-secondary institutions. The area vocational education centers are designed to supplement the curriculum of high school students. Both the state vocational-technical schools and the area vocational education centers offer evening courses to enable working adults to upgrade current job skills.

Arrangements can be made to provide training in the specific production skills required by an industrial plant. Instruction may be conducted either in the vocational school or in the industrial plant, depending upon the desired arrangement and the availability of special equipment.

### Nearest State School

Elizabethtown State Vocational-Technical School  
Elizabethtown, Kentucky, 34 miles distant

Agriculture	Electricity
Agricultural Mechanics	Electronics
Business & Office	Industrial Machine Maintenance
Accounting/Management	Machine Shop
Clerical	Plumbing
Secretarial	Radio & TV Repair
Word Processing	Welding
Consumer & Home Economics	Public Service Occupations
Commercial Foods	Business/Industry Security
Consumer & Family Life	Training
Skills	CPR Training
Industrial Education	Electrical Safety Training
Air Conditioning	Emergency Medical Care
Appliance Repair	Fire Service Training
Auto Mechanics	First Aid & Safety
Carpentry	Rescue & Emergency Services
Diesel Mechanics	Training
Drafting (with CAD/CAM)	

Nearest Area Education Center

Meade County Area Vocational Education Center  
Brandenburg

Child Care Service Training  
Electronics  
Emergency Medical Technician  
Training  
Health Services\*  
Industrial Education  
Air Conditioning & Heating

Auto Mechanics  
Carpentry  
Industrial Electricity  
Industrial Electronics  
Welding  
Marketing & Distributive  
Education

---

\* In cooperation with the Harrison County Hospital in Corydon, Indiana.



## HEALTH

### Local Medical Personnel (Meade County)

Physicians - 5

Dentists - 3

### Hospitals

<u>General Hospital</u>	<u>Location</u>	<u>Beds</u>
Hardin Memorial Hospital	Elizabethtown, 34 miles southeast of Brandenburg	300
Harrison County Hospital	Corydon, Indiana, 19 miles north of Brandenburg	68
Breckinridge Memorial Hospital	Hardinsburg, 29 miles southwest of Brandenburg	45

#### Hardin Memorial Hospital

Medical staff - 92 physicians, 300 registered nurses, 35 licensed  
practical nurses

#### Harrison County Hospital

Medical staff - 20 active physicians, 30 registered nurses, 5  
licensed practical nurses

#### Breckinridge Memorial Hospital

Medical staff - 9 physicians, 24 registered nurses, 8 licensed  
practical nurses

### Other Medical Facilities

Meade County Health Department (a public health facility)

Meade County Medical Center

### Ambulance Service

Name - Meade County Medical Service

Staff - Six full-time and ten part-time emergency medical  
technicians

## OTHER LOCAL FACILITIES

### Communications

Telephone -	Brandenburg Telephone Company
Telegraph -	Western Union
	Toll-Free number, 1-800-325-6000
Newspapers -	
Weekly and	
circulation -	The Messenger - 5,500;
	The Pioneer - 4,000
Radio -	WMMG-AM & FM
Television -	
Airwave reception	
from -	Louisville, Kentucky; Nashville,
	Tennessee; Chicago, Illinois
Cable service -	J & L Cable TV
Educational	
Television -	The Kentucky Educational Television
	(K.E.T.) network is available
	statewide

### Library Services

Public library - Meade County Public Library  
Size collection - 45,377 volumes  
Circulation, 1985-86 - 75,781

### Religious Institutions

Denominations -	Assembly of God	Jehovah's Witness
	Baptist	Latter Day Saints
	Catholic	Nazarene
	Christian	Presbyterian
	Church of Christ	Southern Baptist
	Episcopal	United Methodist
	Holiness	

Nearest Synagogues -	Louisville, Kentucky, 46 miles northeast of Brandenburg
Congregations -	Adath Israel Brith Sholom (reform)
	Adath Jeshurum (conservative)
	Anshei Sfard (orthodox)
	Keneseth Israel (orthodox)
	Sholom (reform)

## Financial Institutions

<u>Banks</u>	<u>Assets</u>	<u>Deposits</u>	<u>Statement Date</u>
Farmers Deposit Bank	\$51,975,215.67	\$42,012,266.48	12/31/86
Meade County Bank	18,103,746.88	16,039,653.19	12/31/86

## Hotels and Motels

### Meade County

Total number -	6
Total rooms -	89

## Clubs and Organizations

Ancestral Trails Historical Society	Meade Association of Retarded Citizens
Brandenburg Civic Women's Club	Meade County Area Chamber of Commerce
Christian Oriented Drug Action Program	Meade County Arts Club
Daughters of the American Revolution (DAR)	Meade County/Brandenburg Industrial Authority
Jaycees	Meade County Center for the Arts (MECCA)
Knights of Columbus	Meade County Homemakers
Lions Club	Meade County Senior Citizens
Loyal Order of the Moose	Rotary Club
Main Street Association	
Masonic Lodge	



## RECREATION

### Local

Local recreation facilities in Brandenburg include a country club with an 18-hole golf course and the Meade-Olin Park which includes a swimming pool, tennis courts, ball fields, basketball courts, picnic areas, a shelter area and a playground. Flippin Run Park and Concordia Park each have boat ramps and picnic areas, plus soccer fields at Flippin Run. The newly developed Riverbluff Resort Park offers camping, a swimming pool, and lodges.

Otter Creek Park, located in eastern Meade County, is a 3,000-acre woodland on the Ohio River. Facilities at the park include a restaurant; a 24-unit lodge; cottages; 165 campsites; horseback riding; swimming; hiking trails; fishing; boat ramp; tennis, basketball and volleyball courts; ball fields; playgrounds and picnic pavilions.

Other recreational facilities in Meade County include: the Doe Valley Golf Club, with an 18-hole golf course, restaurant, and lounge; the Doe Valley Swim and Tennis Club which has two swimming pools, tennis courts, a sand beach on Doe Valley Lake, and a restaurant/lodge; and the Hillcrest Club which offers a 9-hole golf course, swimming pool, tennis courts, and clubhouse.

The Towne by the River Festival is an annual event held in Brandenburg each July featuring an arts and crafts fair, cruise boat rides, fishing tournament, and entertainment. Other annual events are the Meade County Fair, Down Home Days and an auto show.

### Area (Within 60 miles)

Noteworthy for its spaciousness, **Rough River Dam State Resort Park** at Falls of Rough is 41 miles southwest of Brandenburg. The 637-acre park on Rough River Lake has a 40-room lodge with a dining room, a coffee shop, a gift shop, and a meeting room. Cottages and camping sites are also available. Recreational facilities include a launching ramp, a dock with open and covered slips, fishing and pleasure boat rentals, a 9-hole, 3-par golf course, a swimming pool, a sand beach with a bathhouse complex, tennis courts, an archery range, hiking and fitness trails, picnic and playground areas, and planned recreation. Cruise boat excursions on Rough River Lake are available on the "Lady of the Lake" in season.

Louisville, 46 miles northeast of Brandenburg, provides a wide variety of recreational opportunities. The most noted recreational event in Louisville is the Kentucky Derby at Churchill Downs. The "Run for the Roses" is the oldest continuously held horse race in the United States. Other attractions include: Kentucky Center for the Arts, Macauley Theatre, Actors Theatre of Louisville, Louisville Children's Theatre, the Louisville Bach Society, the Louisville Orchestra, the Louisville Ballet, the Kentucky Opera Association, several museums, the Louisville Zoological Gardens, University of Louisville sporting events, rock concerts, and the "Belle of Louisville" sternwheeler.

Abraham Lincoln Birthplace National Historic Site, located 49 miles southeast of Brandenburg near Hodgenville, features the log cabin which was the birthplace of Abraham Lincoln, enclosed within a granite memorial shrine. The grounds include 116 acres of the original Thomas Lincoln farm and a visitors' center with audiovisual programs and exhibits on the Lincoln family.

Bernheim Forest Arboretum and Nature Center, located 49 miles southeast of Brandenburg, is a privately endowed 10,000-acre forest and wildlife refuge. The area contains over 1,400 labeled varieties of plants, trees and shrubs; ornamental gardens; a museum; nature trails and waterfowl ponds.

E. P. "Tom" Sawyer State Park, 58 miles northeast of Brandenburg, is located near Louisville. Recreational facilities include an outdoor Olympic-size pool, a bathhouse, 12 lighted tennis courts, a one-mile fitness trail, a picnic area, an archery range, and soccer fields. Planned recreation and playground are offered year-round. Indoor facilities are available for basketball, volleyball, exercise classes, dance classes and various other events.

My Old Kentucky Home State Park, 60 miles southeast of Brandenburg in Bardstown, portrays an image of the South's gentle and leisurely home life before the Civil War. The restored Georgian Colonial mansion is where composer Stephen Foster visited and where he was inspired to write "My Old Kentucky Home." One of the nation's most successful outdoor dramas, "The Stephen Foster Story", is presented in the park's amphitheatre during the summer months. The park also offers a 40-site campground, a gift shop, a 9-hole golf course and pro shop, a picnic area, and planned recreation.

## COMMUNITY IMPROVEMENTS

### Recent

The Meade County School System completed construction of additional classrooms at three of the elementary schools in the spring of 1987. Approximate cost of these additions was \$1.3 million.

The city of Brandenburg recently completed the installation of a new sewage collector system. Cost of the new system was approximately \$425,000.

Brandenburg was recently accepted into the "Main Street Program" which was established by the Kentucky Heritage Council. The major goal of the program is the preservation and development of downtown areas. Brandenburg has been designated a "model city" by the council.

### Under Way

The newly-formed Meade County Water District is presently installing waterlines in Meade County. The \$2 million first phase has been completed and in operation. The water district will serve the entire county when in full operation.