

1973

# Industrial Resources: Mercer County - Harrodsburg

Kentucky Library Research Collections  
Western Kentucky University, [spcol@wku.edu](mailto:spcol@wku.edu)

Follow this and additional works at: <https://digitalcommons.wku.edu/mercercnty>



Part of the [Business Administration, Management, and Operations Commons](#), [Growth and Development Commons](#), and the [Infrastructure Commons](#)

---

## Recommended Citation

Kentucky Library Research Collections, "Industrial Resources: Mercer County - Harrodsburg" (1973). *Mercer County*. Paper 14.  
<https://digitalcommons.wku.edu/mercercnty/14>

This Report is brought to you for free and open access by TopSCHOLAR®. It has been accepted for inclusion in Mercer County by an authorized administrator of TopSCHOLAR®. For more information, please contact [topscholar@wku.edu](mailto:topscholar@wku.edu).

# INDUSTRIAL RESOURCES

## ***HARRODSBURG KENTUCKY***



MERCER COUNTY, KENTUCKY



## HARRODSBURG INDUSTRIAL SITES

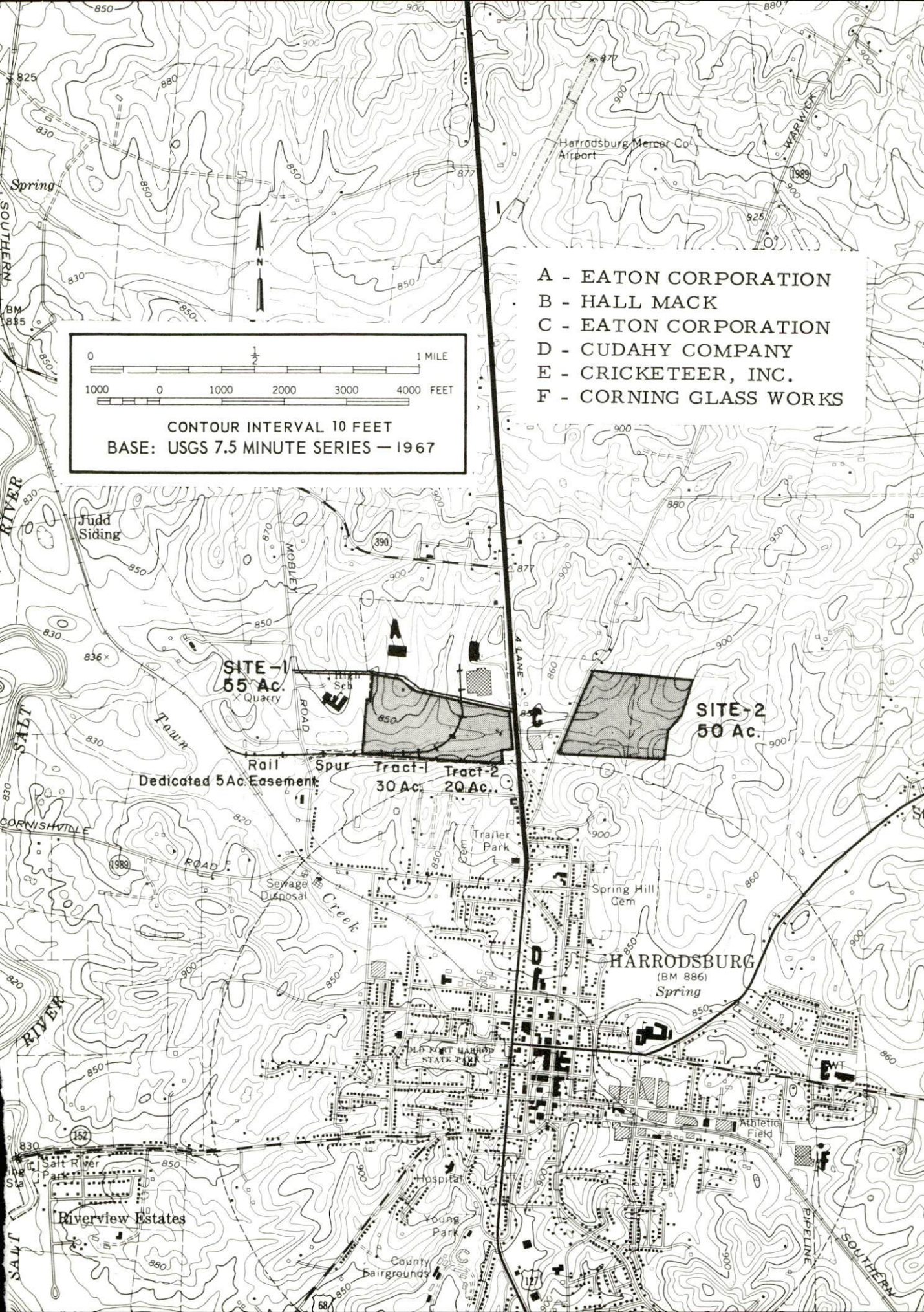
1973

For more information about the following sites, contact Gene Royalty, Chairman, Mercer Industrial Development Corporation, Harrodsburg, Kentucky, or the Kentucky Department of Commerce, Capital Plaza Office Tower, Frankfort, Kentucky.

SITE #1: ACREAGE: 55 acres  
LOCATION: Within north city limits, fronting on U. S. 127  
ZONING: Industrial  
HIGHWAY ACCESS: Site fronts on U. S. 127  
RAILROAD: Southern Railway - easement secured for rail extension onto site  
WATER: Harrodsburg Municipal Water Company  
SIZE LINE: 12-inch line along north boundary of site  
GAS: Western Kentucky Gas Company  
SIZE MAIN: 4-inch main along north boundary of site  
ELECTRICITY: Kentucky Utilities Company  
SEWERAGE: Harrodsburg Sewage Treatment Plant  
SIZE LINE: 8-inch line on site  
OWNERSHIP: Mercer Industrial Development Corporation

SITE #2: ACREAGE: 50 acres  
LOCATION: Within north city limits, 700-feet from U. S. 127 via Nicholas Road  
ZONING: Industrial  
HIGHWAY ACCESS: Paved road leading to U. S. 127  
RAILROAD: Not rail served  
WATER: Harrodsburg Municipal Water Plant  
SIZE LINE: 12 and 16-inch lines approximately 1,300 feet south of site; elevated tank also located approximately 1,300 feet south of site  
GAS: Western Kentucky Gas Company  
SIZE MAIN: 2-inch main approximately 100 feet from site  
ELECTRICITY: Kentucky Utilities Company  
SEWERAGE: Harrodsburg Sewage Treatment Plant  
SIZE LINE: 8-inch line 900 feet west of site  
OPTIONED BY: Mercer Industrial Development Corporation





- A - EATON CORPORATION
- B - HALL MACK
- C - EATON CORPORATION
- D - CUDAHY COMPANY
- E - CRICKETEER, INC.
- F - CORNING GLASS WORKS

0 1 1 MILE  
1000 0 1000 2000 3000 4000 FEET  
CONTOUR INTERVAL 10 FEET  
BASE: USGS 7.5 MINUTE SERIES — 1967

**SITE-1**  
55 Ac.  
Quarry

**SITE-2**  
50 Ac.

Rail Spur Tract-1 Tract-2  
Dedicated 5Ac. Easement 30 Ac. 20 Ac.

**HARRODSBURG**  
(BM 886)  
Spring

Riverview Estates

OLD FORT HARRODSBURG  
STATE PARK

Hospital

Young Park

County Fairgrounds

Sewage Disposal

Creek

Trailer Park

Spring Hill Gem

Athletic Field

Pipeline

Southern



INDUSTRIAL RESOURCES  
HARRODSBURG, KENTUCKY

Prepared by  
The Kentucky Department of Commerce  
in cooperation with  
The Mercer Chamber of Commerce, Inc.  
and  
The Mercer Industrial Development Corporation

1973



This copy has been prepared by the Kentucky Department of Commerce, Division of Research and Planning, and the cost of printing paid from state funds.



# TABLE OF CONTENTS

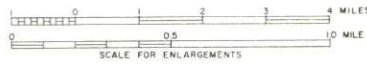
<u>Chapter</u>	<u>Page</u>
INDUSTRIAL SITES . . . . .	i
HARRODSBURG, KENTUCKY - A RESOURCE PROFILE . . . .	1
THE LABOR MARKET . . . . .	4
Population Trends . . . . .	4
General Employment Characteristics, 1971 . . . . .	4
Manufacturing Employment Trends by Industry . . . . .	8
Mercer County Manufacturing Firms, Their Products and Employment . . . . .	8
Area Occupational Wage Rates . . . . .	9
Labor Organizations . . . . .	12
Estimated Male Labor Supply . . . . .	12
Estimated Female Labor Supply . . . . .	13
Per Capita Personal Income . . . . .	13
TRANSPORTATION . . . . .	14
Rail . . . . .	14
Truck Service . . . . .	14
Air . . . . .	15
Bus . . . . .	16
Taxi . . . . .	16
Rental Services . . . . .	16
POWER AND FUEL . . . . .	17
Electricity . . . . .	17
Natural Gas . . . . .	17
Other Fuels . . . . .	18
WATER AND SEWERAGE . . . . .	19
Water . . . . .	19
Sewerage . . . . .	21
LOCAL GOVERNMENT . . . . .	22
City . . . . .	22
County . . . . .	22



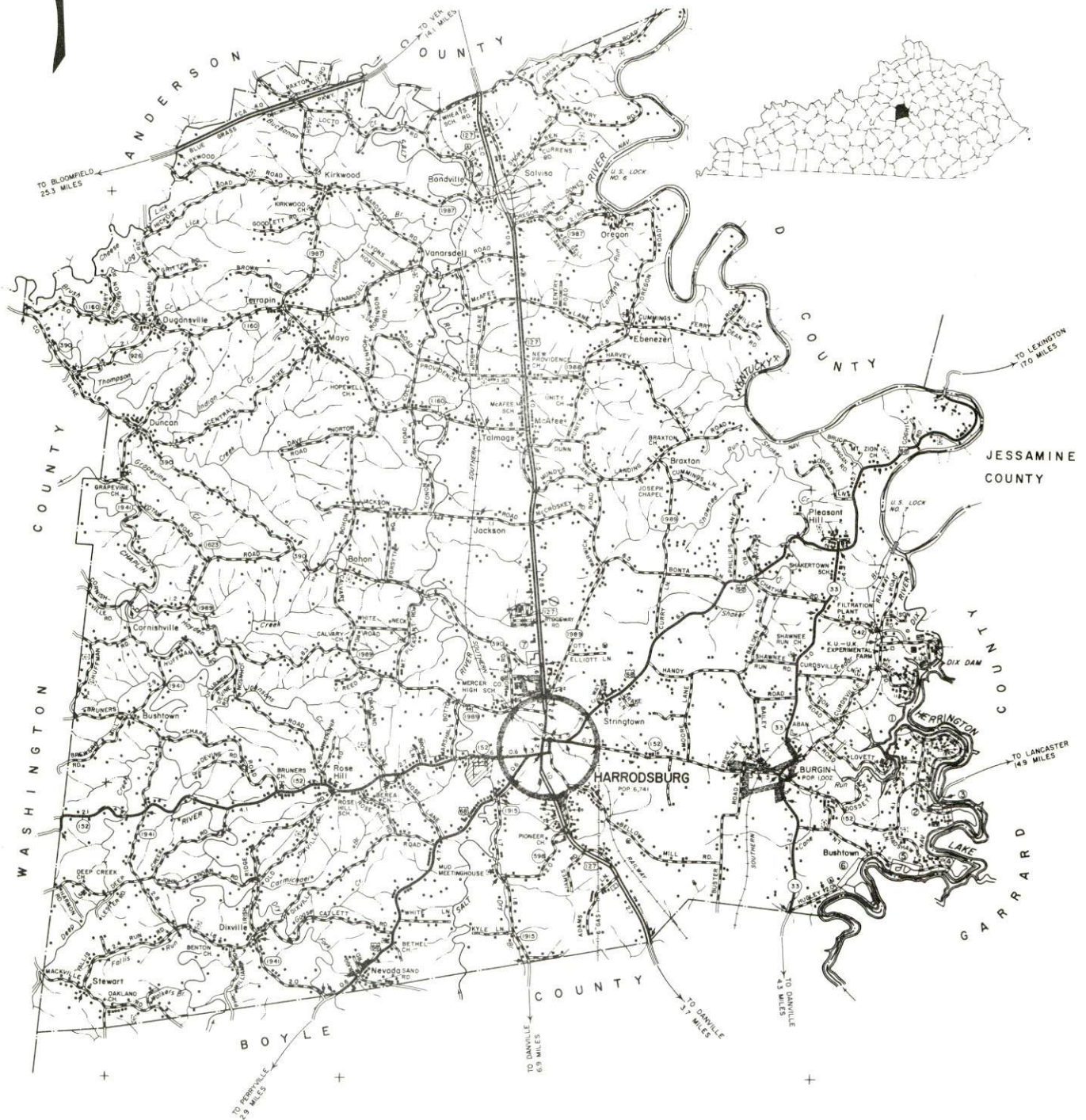
<u>Chapter</u>	<u>Page</u>
Assessed Value of Property, 1972 . . . . .	22
Property Taxes . . . . .	22
Local Property Tax Rates Per \$100 of	
Assessed Valuation, 1972 . . . . .	23
Planning and Zoning . . . . .	23
Safety . . . . .	23
Police . . . . .	23
Fire . . . . .	23
Rescue Service . . . . .	23
Sanitation . . . . .	24
EDUCATION . . . . .	25
Public Schools . . . . .	25
Nonpublic Schools . . . . .	25
Vocational Schools . . . . .	27
Colleges and Universities . . . . .	28
HEALTH . . . . .	29
Hospitals . . . . .	29
Public Health . . . . .	29
OTHER LOCAL FACILITIES . . . . .	31
Communications . . . . .	31
Library Services . . . . .	31
Religious Institutions . . . . .	31
Financial Institutions . . . . .	32
Hotels and Motels . . . . .	32
Clubs and Organizations . . . . .	32
RECREATION . . . . .	33
Local . . . . .	33
Area . . . . .	33
AGRICULTURE - NATURAL RESOURCES - CLIMATE . . . . .	36
Agriculture . . . . .	36
Natural Resources . . . . .	36
Climate . . . . .	37
HISTORY . . . . .	38

# GENERAL HIGHWAY MAP MERCER COUNTY KENTUCKY

PREPARED BY THE  
KENTUCKY DEPARTMENT OF HIGHWAYS  
DIVISION OF PLANNING  
IN COOPERATION WITH THE  
U.S. DEPARTMENT OF TRANSPORTATION  
FEDERAL HIGHWAY ADMINISTRATION



ORIGINAL DATA 1968			
REVISIONS			
DATE	BY	DATE	BY
1-1-69	R.H.		
1-1-70	J.W.		
1-1-71	R.H.		
1-1-72	J.W.		
1-1-73	R.H.		

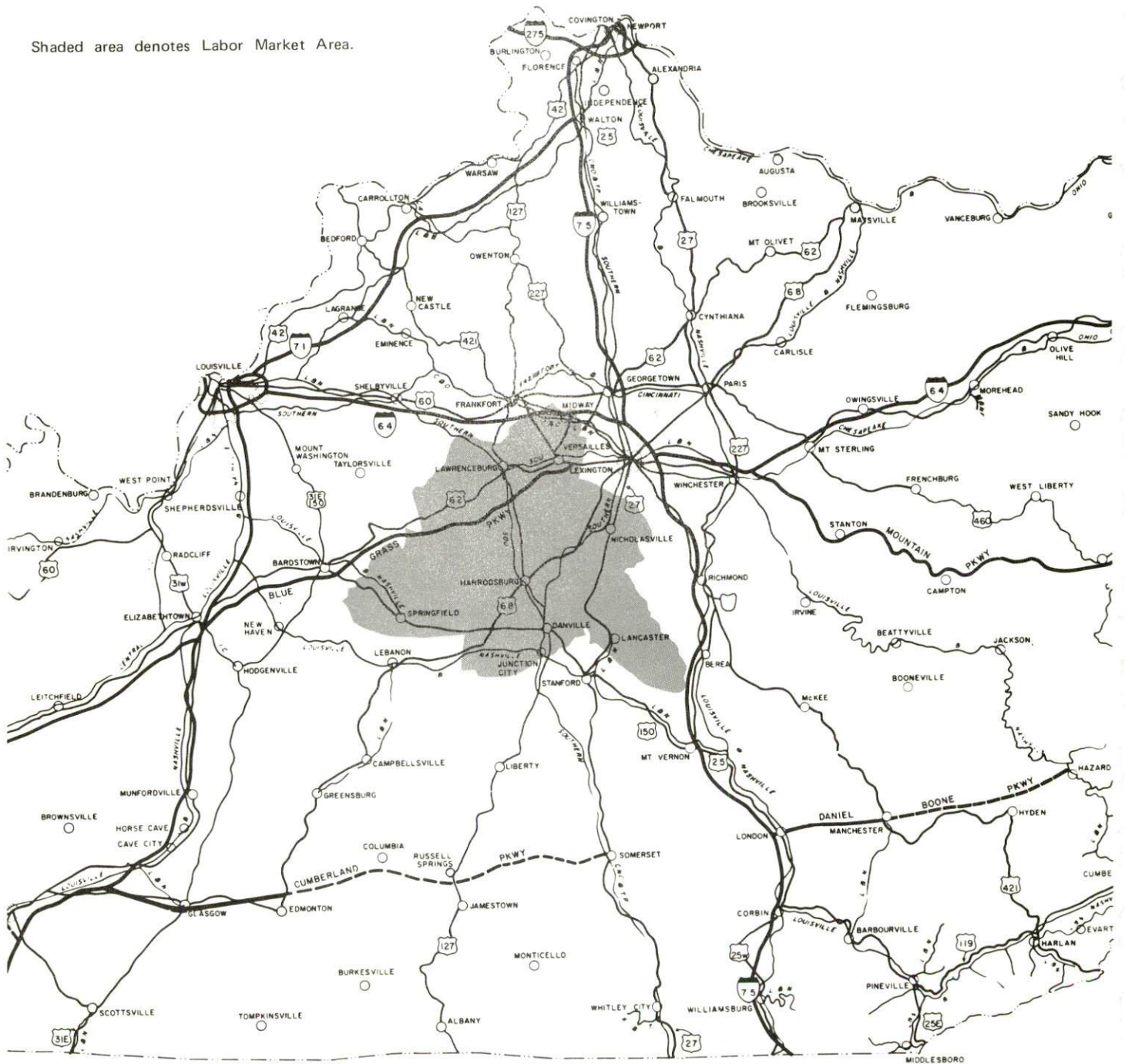




# HARRODSBURG LABOR MARKET AREA



Shaded area denotes Labor Market Area.



## HARRODSBURG, KENTUCKY - A RESOURCE PROFILE

Harrodsburg, the county seat of Mercer County, is located in central Kentucky in the Bluegrass Region. This historic town was founded in 1785 and was the first permanent pioneer settlement west of the Alleghenies. It has easy accessibility to three metropolitan areas - 33 miles to Lexington, 71 miles to Louisville, and 114 miles to Cincinnati, Ohio. The population of Harrodsburg in 1970 was 6,741, while Mercer County had a total of 15,960.

### The Economic Framework

Total employment in Mercer County averaged 5,600 in 1971 with manufacturing providing 1,750 of these jobs. Agriculture provided 1,080 jobs. Major industrial products are optical glass, ophthalmic glass, auto and truck air conditioners, men's jackets and suits.

Per capita personal income in the county in 1970 was \$2,786, an increase of 90 percent in the last decade.

In the Harrodsburg labor market area, which includes Mercer County and its six surrounding counties, total employment in 1971 averaged 35,110. Manufacturing provided 9,640 of these jobs, agriculture provided 6,670, and trade and services provided 6,931. Since 1962 area manufacturing employment has shown the sharpest gain in the stone, clay and glass, printing, and machinery industries.

Despite important industrial gains in recent years, the area still has a deficit of 918 manufacturing jobs when measured against the national manufacturing employment-population ratio.

### Resources for Growth

1. There is a current estimated labor supply of 6,170 men and 6,155 women available for industrial jobs in the labor market area. In addition, by 1979 there will be 4,970 men and 4,630 women reaching 18 years of age and potentially available for work.

2. The local transportation capability is good. Harrodsburg is served by U.S. Routes 68 and 127 and Kentucky Highways 152 and 390. An interchange of the Blue Grass Parkway is located just 16 miles north of Harrodsburg. This parkway connects with the nationwide interstate highway



system at Elizabethtown and Lexington, Kentucky. Freight service is provided by the Southern Railway System. Commercial air service is available in Lexington, only minutes away. Nine truck lines have authority to serve Harrodsburg, with additional service provided by United Parcel and REA Express.

3. Energy - Electricity is supplied to Harrodsburg by the Kentucky Utilities Company. Mercer County is supplied by Kentucky Utilities, Fox Creek RECC, and Inter County RECC. Natural gas is furnished by the Western Kentucky Gas Company. There are four distributors of propane and three distributors of distillate fuel oil in the Harrodsburg area.

4. Industrial sites - Harrodsburg has two industrial sites available

5. Five senior colleges, four universities, and three junior colleges are within a 50 mile radius of Harrodsburg. Centre College, located in Danville, Kentucky, 9 miles away, is a coeducational liberal arts college. The campus covers approximately 50 acres, with excellent athletic fields, residences, and classroom buildings. Centre offers a Bachelor of Arts degree. The Harrodsburg Vocational Education Center offers training in seven course areas. The nearest state vocational-technical school is at Lexington, 32 miles distant.

#### Community Programs for Improvement

Recent community improvements include: a municipal building, a county elementary and junior high school, Morgan Row restoration, Shakertown restoration, a low-rent housing project, a City-County planning commission, improvements in Old Fort Harrod, a shopping center, six subdivisions, Burgin Independent School District constructing a new gymnasium and two classrooms, City High School expanded, new football and track facilities, remodeling of two banks, completion of youth center, upgrading of electric facilities, second fire station on east side of city, new community shelter house in west end, improved lighting for outdoor amphitheater and a 70-unit trailer park near Herrington Lake.

#### Recreation, Entertainment and Livability

Harrodsburg has three local outdoor recreation areas. Pioneer Memorial State Park, a reproduction of Old Fort Harrod, has picnic area, shelter house, and amphitheater where outdoor drama is performed from June through August each year. Young's Park has a picnic area, playground and shelter house. Mercer County Fish & Game Farm has facilities for fishing and a picnic area.

Herrington Lake, 8 miles from Harrodsburg, with 325 miles of shoreline, offers excellent fishing, boating, swimming, water skiing, and camping and dining facilities.

Lexington, 33 miles distant, offers the full spectrum of sophisticated entertainment, cultural and sporting events. The finest thoroughbred racing is found at Keeneland, with harness and trotting races at the Red Mile Trotting Track. The University of Kentucky has nine months of sports excitement each year.

Four state parks with excellent facilities as well as five state shrines are located within a 50 mile radius.



## THE LABOR MARKET

### POPULATION TRENDS

Area	Population			Percent Change	
	1970	1960	1950	1960-70	1950-60
Harrodsburg	6,741	6,061	5,262	+11.2	+15.2
Labor Market Area	98,457	90,924	91,635	+ 8.3	- .8
Mercer County	15,960	14,596	14,643	+ 9.3	- 0.3
Anderson County	9,358	8,618	8,984	+ 8.6	- 4.2
Boyle County	21,090	21,257	20,532	- 0.8	+ 3.5
Garrard County	9,457	9,747	11,029	- 3.0	-11.6
Jessamine County	17,430	13,625	12,458	+27.9	+ 9.4
Washington County	10,728	11,168	12,777	- 3.9	-12.6
Woodford County	14,434	11,913	11,212	+21.2	+ 6.3

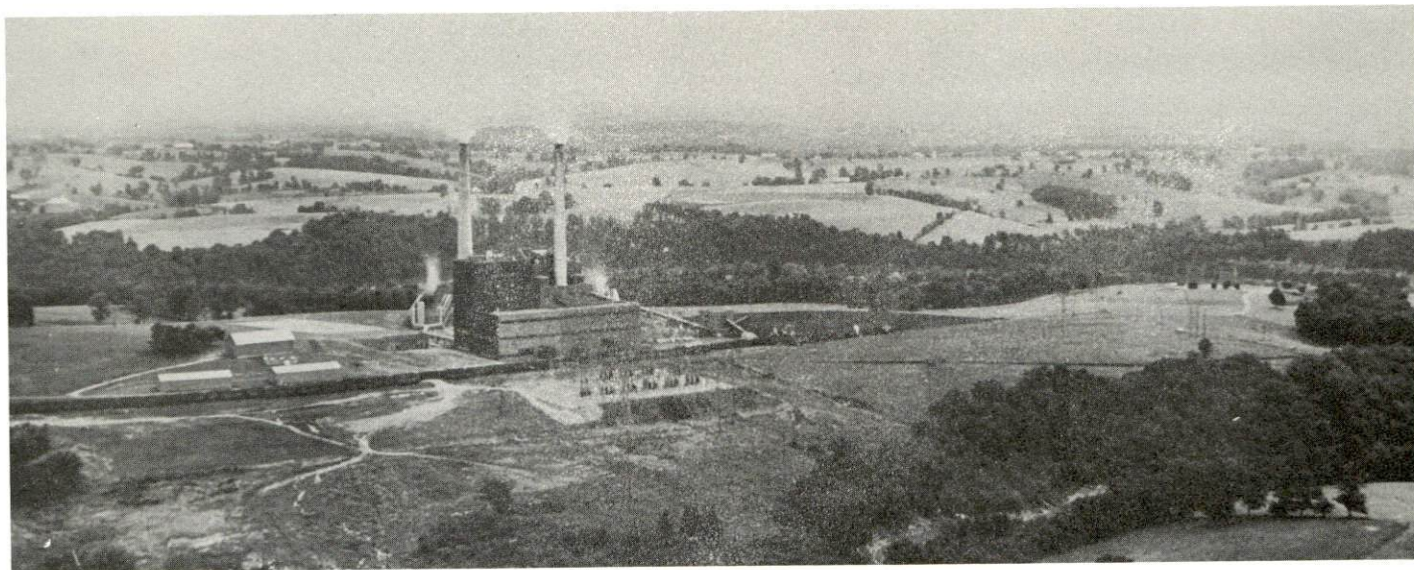
Source: U. S. Department of Commerce, Bureau of the Census, Census of Population, 1970, 1960, 1950.

### GENERAL EMPLOYMENT CHARACTERISTICS, 1971

Major Employment Group	Employment	
	Mercer County	Labor Market Area
TOTAL	5,600	35,110
Agricultural	1,080	6,670
Nonagricultural	4,520	28,440
Manufacturing	1,750	9,640
Government	520	4,250
Trade and Services	1,046	6,931
Other	1,204	7,619

Source: Kentucky Department of Economic Security, Division of Research and Statistics.

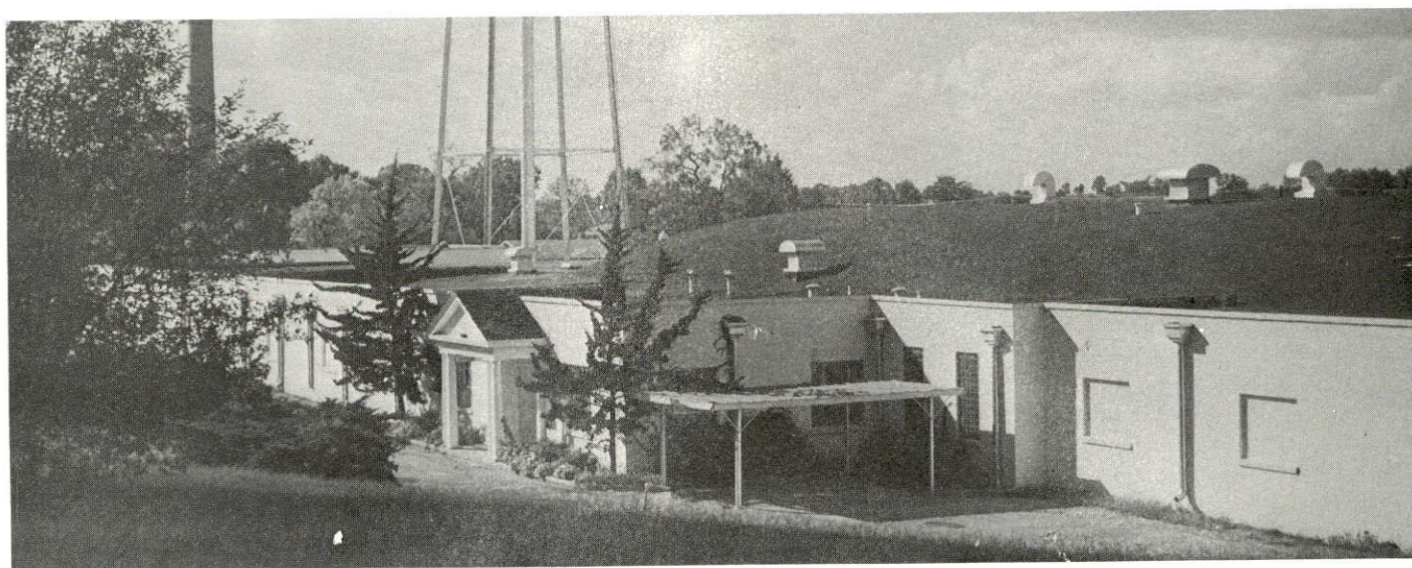




E. W. BROWN GENERATING PLANT



CORNING GLASS WORKS

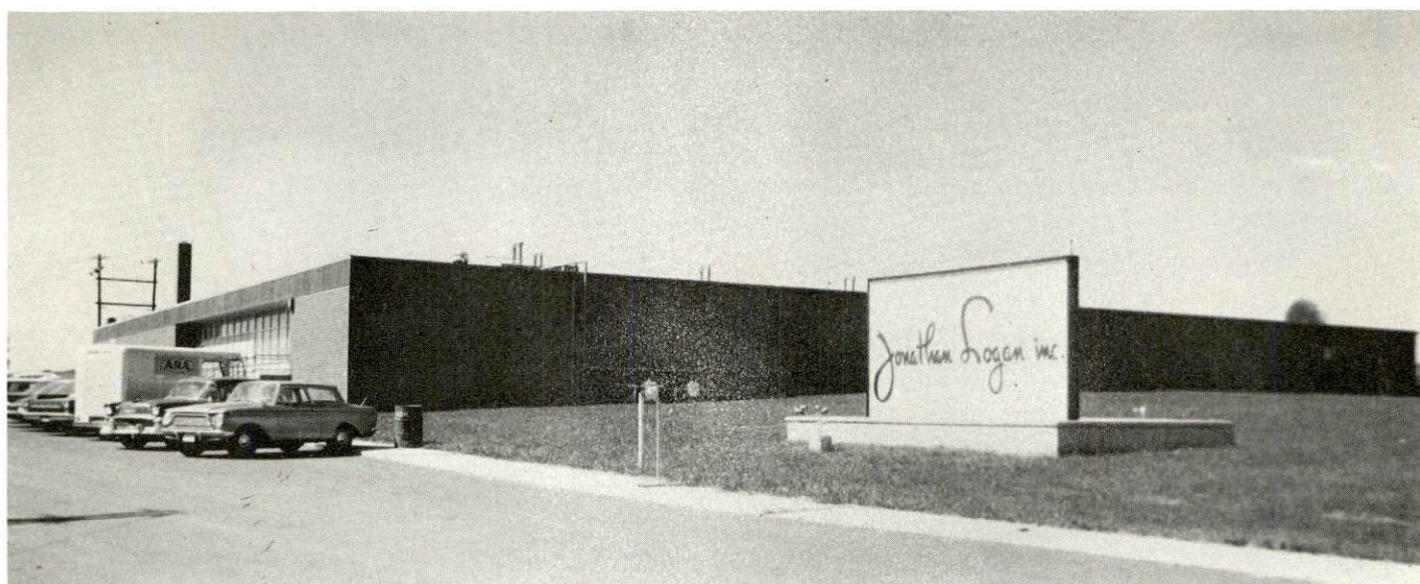


CRICKETEER, INC.

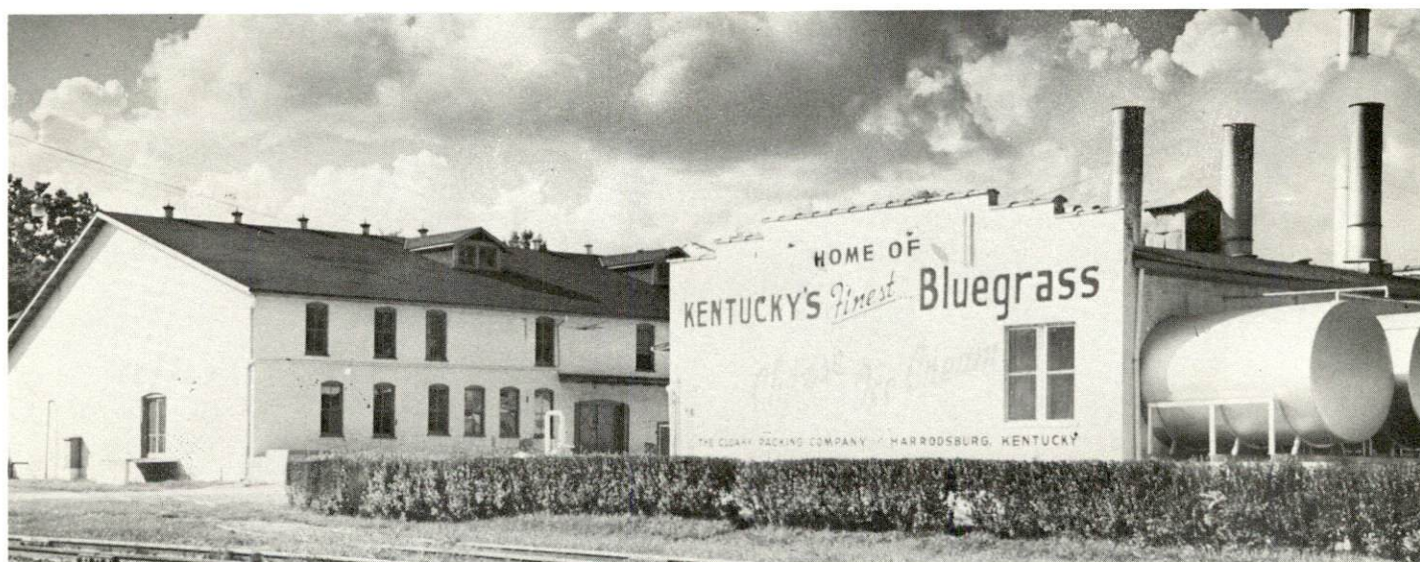




O. K. PRECISION TOOL & DIE COMPANY, INC.



MERCER DRESS CORPORATION  
(JONATHAN LOGAN, INC.)



CUDAHY COMPANY





EATON CORPORATION  
CLIMATE CONTROL DIVISION



MANUFACTURING EMPLOYMENT TRENDS BY INDUSTRY  
MARCH 1972 AND 1962

Industry	Mercer County			Labor Market Area		
	1972	1962	% Change	1972	1962	% Change
TOTAL	2,186	844	+ 159.0	9,878	5,825	+ 69.6
Food & Kindred Products	63	141	- 55.3	1,265	1,373	- 7.9
Tobacco	1	5	- 80.0	201	364	- 44.8
Apparel, Textiles, Leather	599	343	+ 74.6	2,340	2,215	+ 5.6
Lumber, Furniture	4	2	+ 100.0	258	104	+148.1
Printing & Publishing, Paper	17	16	+ 6.3	983	194	+406.7
Chemicals, Petroleum & Coal, Rubber	0	0	0	152	16	+850.0
Stone, Clay & Glass	367	8	+ 4487.5	1,435	560	+156.3
Machinery, Metal Products, Equip.	472	4	+11700.0	1,502	206	+629.1
Other	663	325	+ 104.0	1,742	793	+119.7

Source: Kentucky Department of Economic Security, Number of Workers in Manufacturing Industries Covered by Kentucky Unemployment Insurance Law Classified by Industry and County, March 1972, March 1962.

MERCER COUNTY MANUFACTURING FIRMS,  
THEIR PRODUCTS AND EMPLOYMENT

FIRM PRODUCTS AND EMPLOYMENT				
Firm	Product	Employment		
		Total	Male	Female
<u>Harrodsburg</u>				
Eaton Corporation	Auto and truck			
Climate Control Division	air conditioners, electric shift components	601	288	313
Corning Glass Works	Optical, ophthalmic glass	900	540	360
Cricketeer, Inc.	Men's jackets and suits	413	15	398
Cudahy Company	Cheese, dried whey	60	51	9
Hall Mack - Division of Textron	Bathroom accessories	351	234	117
Harrodsburg Herald	Offset, letterpress printing	17	8	9

(cont'd.)

<u>Firm</u>	<u>Product</u>	<u>Employment</u>		
		<u>Total</u>	<u>Male</u>	<u>Female</u>
<u>Burgin</u>				
Kentucky Molded Boats, Inc.	Fiberglass boats	7	6	1
Mercer Dress Corporation	Women's dresses	250	50	200
O.K. Precision Tool & Die Company	Tools, dies, molds	6	6	0

Sources: Kentucky Department of Commerce, 1973 Kentucky Directory of Manufacturers; Mercer Industrial Development Corporation.

#### AREA OCCUPATIONAL WAGE RATES

Reliable wage data for specific communities are not available for publication. The best source for manufacturing wages in Harrodsburg are the major firms listed in this survey. The Department of Commerce will assist in obtaining data by specific occupation for a specific community.

Associated Industries of Kentucky publishes an excellent annual Survey of Wages and Related Practices. This survey shows wages for eight regions of the state but not for specific communities. It does give a good indication of competing rates in the area.

Harrodsburg is in Area 6 which includes the counties shown on the inset map.



[illegible]

A sample of wages by occupation in this area are shown below.

Job	PRODUCTION EMPLOYEES -- HOURLY				Weighted
Classification	Firms and Employees	RATES REPORTED			Averages
Assembler (D)	11/658	2--To--\$1.99 133--\$2.00-\$2.49	298--\$2.50-\$2.99 224--\$3.00-\$3.49	1--\$3.50-\$3.99	\$2.74
Inspector (C)	16/225	27To--\$1.99 8--\$2.00-\$2.49	172--\$2.50-\$2.99 18--\$3.00-\$3.49	7--\$3.50-\$3.99 18--\$5.50-Up	\$3.14
Machinist (D)	3/40	1--\$2.00-\$2.49	39--\$3.00-\$3.49		\$3.28
Production Laborer	26/816	3--To--\$1.99 89--\$2.00-\$2.49	255--\$2.50-\$2.99 467--\$3.00-\$3.49	2--\$3.50-\$3.99	\$2.88
Punch Press Operator (C)	12/216	6--\$2.00-\$2.49	69--\$2.50-\$2.99	141--\$3.00-\$3.49	\$3.03
Sewing Machine Operator (B)	1/1586	1586--\$2.00-\$2.49			\$2.03
Welder (Arc and Acetylene) (B)	3/58	29--\$3.50-\$3.99	29--\$4.00-\$4.49		\$3.81
Fork Lift Operator	25/166	1--To--\$1.99 7--\$2.00-\$2.49	60--\$2.50-\$2.99 34--\$3.00-\$3.49	54--\$4.00-\$4.49 10--\$4.50-\$4.99	\$3.41
First Line Foreman or Supervisor	32/146	5--\$2.00-\$2.49 2--\$2.50-\$2.99 5--\$3.00-\$3.49	17--\$3.50-\$3.99 22--\$4.00-\$4.49 7--\$4.50-\$4.99	16--\$5.00-\$5.49 72--\$5.50-Up	\$5.20

## Area Six

Job Classification	SERVICE EMPLOYEES -- HOURLY				Weighted Averages
	Firms and Employees	R A T E S     R E P O R T E D			
Crane Operator Overhead (A)	2/6	6--\$3.00-\$3.49			\$3.26
Electrician (B)	10/52	1--\$3.00-\$3.49 31--\$3.50-\$3.99	19--\$4.00-\$4.49 1--\$5.50-Up		\$3.95
Laborer	15/124	11--\$2.00-\$2.49 68--\$2.50-\$2.99	43--\$3.00-\$3.49 2--\$3.50-\$3.99		\$2.84
Mechanic-Maintenance (All Around)	31/248	1--\$2.00-\$2.49 62--\$2.50-\$2.99	20--\$3.00-\$3.49 100--\$3.50-\$3.99	53--\$4.00-\$4.49 12--\$4.50-\$4.99	\$3.62
Tool, Die or Guage Maker (C)	4/9	8--\$3.50-\$3.99	1--\$4.50-\$4.99		\$3.77
Welder	8/16	4--\$2.00-\$2.49 4--\$2.50-\$2.99	1--\$3.00-\$3.49 5--\$3.50-\$3.99	2--\$4.00-\$4.49	\$3.18

Job Classification	OFFICE EMPLOYEES -- MONTHLY			Weighted Averages	
	Firms and Employees	R A T E S      R E P O R T E D			
Draftsman	16/52	3--To--\$349 2--\$400-\$449 3--\$450-\$499	8--\$500-\$549 5--\$550-\$599 6--\$600-\$649	3--\$650-\$699 16--\$700-\$799 6--\$800-Up	\$621
File Clerk	9/36	10--To--\$349	22--\$350-\$399	4--\$400-\$449	\$360
Secretary-- Junior	33/117	6--To--\$349 5--\$350-\$399 26--\$400-\$449	19--\$450-\$499 38--\$500-\$549 13--\$550-\$599	3--\$600-\$649 6--\$650-\$699 1--\$700-\$799	\$494
Stenographer-- Junior	9/41	2--To--\$349 14--\$350-\$399	18--\$400-\$449 4--\$450-\$499	1--\$500-\$549 2--\$550-\$599	\$416
Telephone Operator- Receptionist	30/32	3--To--\$349 6--\$350-\$399	11--\$400-\$449 5--\$450-\$499	4--\$500-\$549 3--\$550-\$599	\$434
Typist	17/160	8--To--\$349 140--\$350-\$399	7--\$400-\$449 5--\$450-\$499		\$392

By permission of Associated Industries of Kentucky, 200 West Chestnut Street, Louisville,  
Kentucky 40202



## LABOR ORGANIZATIONS

<u>Union</u>	<u>Representing manufacturing workers at:</u>
Amalgamated Meat Cutters & Butcher Workmen of North America	Cudahy Company
Amalgamated Clothing Workers of America	Cricketeer, Inc.
American Flint Glass Workers Union of North America	Corning Glass Works
International Ladies' Garment Workers Union	Mercer Dress Corporation
United Steel Workers	Hall Mack

### ESTIMATED MALE LABOR SUPPLY HARRODSBURG LABOR MARKET AREA

<u>Area</u>	<u>Current</u>			<u>Future</u>	
	<u>Total</u>	<u>Not in Labor Force</u>	<u>Unemployed</u>	<u>Under- employed</u>	<u>Reaching 18 yrs. of age by 1979</u>
Labor Market					
Area	6,170	1,081	1,376	3,713	4,971
Mercer	1,000	190	207	603	795
Anderson	315	0	107	208	455
Boyle	1,595	267	329	999	1,036
Garrard	793	304	147	342	486
Jessamine	1,463	251	299	913	845
Washington	502	69	182	251	591
Woodford	502	0	105	397	763

Sources: Kentucky Department of Economic Security, Kentucky Labor Supply Estimates by County, 1972. Kentucky Department of Commerce, Future Labor Supply by 1979.

ESTIMATED FEMALE LABOR SUPPLY  
HARRODSBURG LABOR MARKET AREA

Area	Current				Future
	Total	Not in Labor Force	Unemployed	Under- employed	Reaching 18 yrs. of age by 1979
Labor Market					
Area	6,154	655	814	4,685	4,641
Mercer	775	0	123	652	706
Anderson	464	31	63	370	437
Boyle	1,238	0	201	1,037	978
Garrard	685	212	83	390	432
Jessamine	1,396	0	171	1,225	810
Washington	839	412	108	319	573
Woodford	757	0	65	692	705

Sources: Kentucky Department of Economic Security, Kentucky Labor Supply Estimates by County, 1972. Kentucky Department of Commerce, Future Labor Supply by 1979.

PER CAPITA PERSONAL INCOME

Area	1970	1960	% Change
Mercer County	\$2,786*	\$1,466	+90.0
Labor Market Area			
Range	\$1,828 to 3,719*	\$1,091 to 1,989	N. A.
Kentucky	3,099	1,581	+96.0
U. S.	3,933	2,216	+77.5

\*Unadjusted for commuting.

Sources: University of Kentucky, Office of Development Services and Business Research, Per Capita Income in Kentucky. U. S. Department of Commerce, Bureau of Economic Analysis, Survey of Current Business, August 1972.



## TRANSPORTATION

### Rail

Line serving Harrodsburg - Southern Railway System

Services - Freight agent makes daily calls to industry for car orders and shipping papers; 15 car siding, switching, piggyback service available at Danville, 9 miles away

For details on routing, schedules, rates, and services, contact:

District Sales Manager  
Southern Railway System  
1402 South 15th Street  
Louisville, Kentucky 40210

### Truck Service

<u>Company</u>	<u>Home Office</u>
Best Way Express, Inc.	710 Poplar Avenue Nashville, Tennessee 37210
Bronaugh Motor Express, Inc.	1115 Winchester Road Lexington, Kentucky 40505
Cooper-Jarrett, Inc.	23 South Essex Avenue Orange, New Jersey 07050
Davenport's Transfer *	125 East Broadway Harrodsburg, Kentucky 40330
Lawrenceburg Transfer Company	Court Street Lawrenceburg, Kentucky 40342
McLean Trucking Company	617 Waughtown Street Winston-Salem, North Carolina 27107
O. K. Trucking Company	1810 South Street Cincinnati, Ohio 45204
Smith's Transfer Corporation of Virginia	P.O. Box 1000 Staunton, Virginia 24401
Turner Expediting Service	Standiford Field Louisville, Kentucky 40221

### Other Freight Services

United Parcel Service	Nearest shipping center, Danville, 9 miles away
REA Express	Nearest shipping center, Lexington

\*Local Terminal.

# HIGHWAY MILES AND TRUCK TRANSIT TIME IN DAYS FROM HARRODSBURG, KENTUCKY, TO SELECTED MARKET CENTERS

City	Highway Miles	Delivery		City	Highway Miles	Delivery	
		Time TL				Time TL	
Atlanta, Ga.	343	1		Los Angeles, Calif.	2,177	4	
Birmingham, Ala.	389	1		Louisville, Ky.	71	1*	
Chicago, Ill.	368	1		Nashville, Tenn.	192	1	
Cincinnati, Ohio	114	1		New Orleans, La.	750	2	
Cleveland, Ohio	358	1		New York, N.Y.	773	2	
Detroit, Mich.	369	1		Pittsburgh, Pa.	398	1	
Knoxville, Tenn.	167	1		St. Louis, Mo.	334	1	

\*Two hour service on requested emergency.

Source: Delivery time only - Lawrenceburg Transfer Company,  
Lawrenceburg, Kentucky.

## Air

	<u>Local</u>	<u>Nearest Commercial</u>
	Harrodsburg-Mercer County Airport	Blue Grass Field
Location:	Harrodsburg - 2 miles north	4.5 miles west of Lexington
Runways:	1 turf	3 paved
Length:	3,000 feet	6,500 feet, 3,500 feet, 3,500 feet
Traffic		
Control:	Wind sock	Tower approach and ground control, ILS system
Lighting:	Runway lights from sunset until midnight	Approach lighting system, beacons, runways and obstruction lights
Services:	80 and 100 octane, minor repairs	80, 100, 145 and Jet Fuel, major A & E repairs and storage, charter service, flight instruction, Weather Bureau, Eastern, Delta, Piedmont and Allegheny Airlines
Air Freight		
Service:	Chartered air freight service must be arranged	Freight accepted on a space- available basis



<u>Bus</u> -	Southern Greyhound Bus Lines Trailways Bus System
<u>Taxi</u> -	24 hour, radio-dispatched service
<u>Rental Services</u> -	Cars, trucks and trailers

## POWER AND FUEL

### Electricity

Company serving Harrodsburg - Kentucky Utilities Company

Source of power - Kentucky Utilities Company

Total generating capacity - 1,215,000 KW

For industrial rates contact:

Industrial Development Department

Kentucky Utilities Company

1120 South Limestone Street

Lexington, Kentucky 40507

Company serving Mercer County - Fox Creek RECC; Inter-County RECC

Source of power - East Kentucky Power Cooperative

Total generating capacity - 548,000 KW

For industrial rates contact:

Fox Creek RECC

P.O. Box 211

Lawrenceburg, Kentucky 40342

and/or

Inter-County RECC

P.O. Box 87

Danville, Kentucky 40422

### Natural Gas

Company serving Harrodsburg - Western Kentucky Gas Company

Source of supply - Tennessee Gas Transmission Company

Size of transmission mains - 30-inch (supplier)

Distribution mains - 2-inch through 6-inch

Distribution pressure - 20 psi summer; 50 psi winter

Btu content - 1,015

Specific gravity - .59

For rates and supplies contact:

Western Kentucky Gas Company

Greenville Street

Harrodsburg, Kentucky 40330



## Other Fuels

Propane and butane - Four distributors in area - Suburban Propane -  
Nicholasville; Bright's Bottle Gas - Burgin; Sure Flame Gas Company -  
Springfield; Doxol Gas of Moreland - Moreland-Hustonville

Fuel Oils - Three distributors in area

Distillate fuel oil - Marathon - Marathon Oil Company  
Ashland - Clark and Keller Oil Company  
Arco - Watts and Durr Oil Company

Residual fuel oil - arrangements must be made with the refinery;  
nearest at Somerset

Low sulphur content coal - Available in Kentucky

## WATER AND SEWERAGE

### Water

Company serving Harrodsburg - Harrodsburg Municipal Water Plant  
Source - Kentucky River  
Treatment plant capacity - 2,000,000 gpd\*  
Average daily consumption - 1,250,000 gallons  
Peak daily consumption - 1,600,000 gallons  
Type treatment - Rapid sand filter  
Storage capacity - 1,100,000 gallons  
Size mains - 4 to 16 inches  
Average pressure - 60 psi  
Average temperature - 60 degrees F.

#### MONTHLY WATER RATES FOR WHOLESALE AND INDUSTRIAL CONSUMERS

First	250 cu. ft.	\$2.50 (Min. bill)
Next	750 cu. ft.	.85 per 100 cu. ft.
Next	3,000 cu. ft.	.65 per 100 cu. ft.
Next	6,000 cu. ft.	.45 per 100 cu. ft.
Next	25,000 cu. ft.	.30 per 100 cu. ft.
Next	25,000 cu. ft.	.28 per 100 cu. ft.
Next	50,000 cu. ft.	.25 per 100 cu. ft.
All over	110,000 cu. ft.	.22 per 100 cu. ft.

Name of water district - North Mercer Water District  
Area served - Northwest, west, southwest portions of Mercer County  
Source of supply of treated water - Harrodsburg Municipal Water Plant  
Average amount of water used in a 24-hour period - 78,300 gallons  
Storage capacity - 200,000 gallons  
Average pressure - 50 psi  
Size lines - 3-inch to 8-inch

\*Applications for federal assistance have been submitted for additional settling, flocculation, cleanwell and waste water treatment plant at approximate cost of \$242,500. This expenditure would increase the water treatment capacity to 3 million gallons per day.



Rates -

Class "A"

First	15,000 gallons	\$17.50 (Min.)
Over	15,000 gallons	.75 per M gallons

Class "B"

First	4,000 gallons	5.75 (Min.)
Next	6,000 gallons	.85 per M gallons
Over	10,000 gallons	.75 per M gallons

Class "C" Domestic

First	1,000 gallons	4.50 (Min.)
Next	2,000 gallons	1.25 per M gallons
Next	2,000 gallons	1.00 per M gallons
Over	5,000 gallons	.85 per M gallons

Name of water district - Lake Village Water District

Area served - East portion Mercer County

Source of supply of treated water - Danville

Average amount of water used in a 24-hour period - 86,600 gallons

Storage capacity - 50,000 gallons

Size lines - 2-inch thru 6-inch

Rates -

First	1,000 gallons	\$ 6.00 (Min.)
Next	2,000 gallons	2.25 per M gallons
Next	1,500 gallons	1.75 per M gallons
Next	1,500 gallons	1.25 per M gallons
Over	6,000 gallons	1.00 per M gallons

Surface water sources - Herrington Lake, Kentucky River and the Salt River

Average discharge - Kentucky River at lock 6 near Salvisa, Kentucky 6,482 cfs (46 year record, unadjusted); Salt River near Harrodsburg 48.1 cfs (19 year record)

Expected ground water yield - 50 to 200 gpm along Salt River; 5 to 50 gpm along Kentucky River; 5 gpm or less in remainder of county

## Sewerage

Company serving Harrodsburg - Harrodsburg Sewage Treatment Plant

Design capacity - 500,000 gallons (estimated capacity)\*

Average daily flow - 950,000 gallons

Treatment - Primary and secondary

Type treatment - Aeration, clarifier, and drying beds

Treated effluent discharged into - Salt River

Size of sanitary mains - 4-inch to 18-inch

Size of storm mains - 6-inch to 60-inch

Rates - 50 percent of monthly water consumption

---

\*Application for federal assistance has been submitted for expansion of sewage treatment plant at approximate cost of \$1,220,000. This expenditure would increase the treatment capacity to approximately 1.3 million gallons per day.



## LOCAL GOVERNMENT

### City

Structure - Mayor - 4-year term; 4 commissioners - 4-year terms  
Budget 1973 - General Fund \$429,704; Water and Sewer Fund \$382,488  
Fees and licenses - The City of Harrodsburg requires a business license for all commercial type businesses. Fees range from \$10 to \$100 annually. Manufacturing any type product not otherwise classified in Chapter 70: trade, occupation and business licenses, where number of employees are 1-10 pay \$25, 11-24 pay \$50, 25-149 pay \$200, 150 or more pay \$300, except for first five years in operation. Municipal motor vehicle license, \$10 annually

### County

Structure - County Judge - 4-year term; 6 magistrates - 4-year terms  
Budget 1972-73 - General Fund \$114,550; Road Fund \$119,100

### Assessed Value of Property, 1972

<u>Classes of Property</u>	<u>Harrodsburg</u>	<u>Mercer County</u>
Real Estate	\$31,615,066	\$105,283,326
Tangibles	7,340,460	20,957,208
Public Service	2,789,856	71,245,397 (1971)

### Property Taxes

Land and buildings are taxed by the state and may be taxed by local jurisdictions. The state rate is \$0.015 per \$100 of assessed valuation.

Tangible personal property owned by manufacturers (automobiles, trucks, finished goods, office furniture, office equipment) is taxed by the state at \$0.15 per \$100 and may be taxed by local jurisdictions.

Manufacturing machinery, raw materials inventories, and goods in process inventories are not subject to local taxation. The state rate is \$0.15 per \$100.

Property stored in public warehouses is not subject to local taxation. The state rate is only \$0.015 per \$100.

All property is assessed at 100 percent of fair cash value.

Local Property Tax Rates Per \$100 of Assessed Valuation, 1972\*

<u>Taxing Jurisdiction</u>	<u>Harrodsburg</u>	<u>Mercer County</u>
County	\$ .183	\$ .183
School	.819	.633
City	.250	

Planning and Zoning

Joint agency - Greater Mercer County Planning Commission  
Zoning enforced - In all areas  
Subdivision regulations enforced - In all areas  
Local codes enforced - Housing and Building codes  
Mandatory state codes enforced - Plumbing, National Fire Protection  
Association Code, National Building Code (for major buildings and  
residential construction containing more than 12 bedrooms per building)  
Other program - Public Housing

Safety

<u>Police</u>	<u>Harrodsburg</u>	<u>Mercer County</u>
Total staff	10	4
Radio-patrol cars	2	3

Fire

American Insurance		
Association Fire Rating	6	
Full-time staff	6	
Volunteers	20	20
Equipment:		
1,000 gpm pumpers	2	
750 gpm pumper		1
Ladder truck	1	
Tank trucks		2
Rescue truck	1	
Rescue boat	1	

Rescue Service

Fire Department Rescue Squad:  
Equipment - Rescue truck equipped with oxygen, MSA resuscitator,  
portable generator, grappling hooks  
Personnel training - First Aid, Civil Defense

\*Kentucky Department of Revenue, Kentucky Property Tax Rates, 1972



## Sanitation

### Harrodsburg

Type service	Municipal
Fee charged:	
residential	\$2.50 per month
business	\$5.00 per month
Collection frequency:	
residential	Fee based on one pickup per week
business	Rates increase according to volume
Trash pickup	2 city wide clean ups per year
Disposal method	Sanitary landfill

Private contractor provides disposal service for local industries.

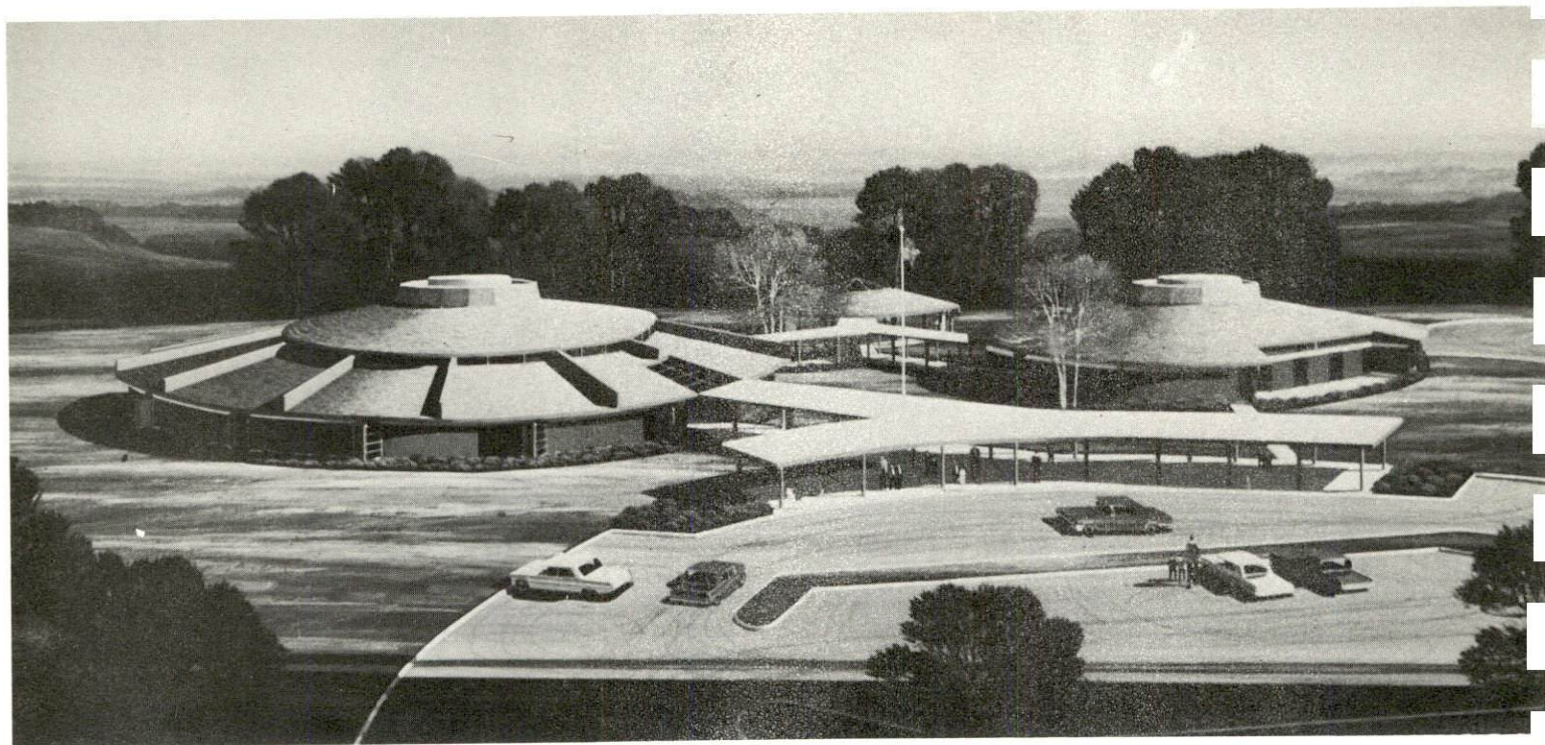
## EDUCATION

### Public Schools

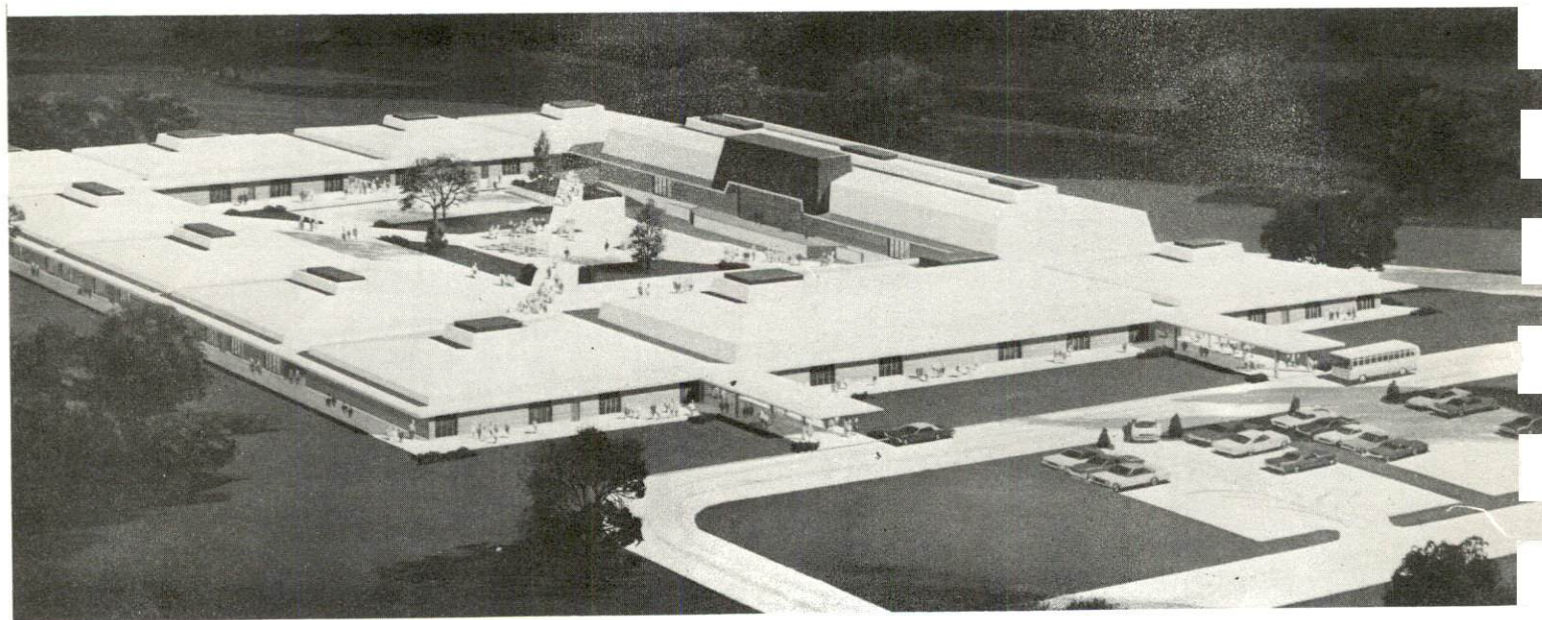
	<u>Harrodsburg Independent</u>	<u>Burgin Independent</u>	<u>Mercer County</u>
Total Enrollment (Fall 1972)	1,400	475	1,925
Elementary	1,000	275	1,050
High School	400	200	875
Student-Teacher Ratio	26-1	25-1	24-1
Elementary	25-1	25-1	26-1
High School	26-1	25-1	22-1
Accreditation	Southern Association of Colleges and Schools		
Percent High School Graduates to College	58.5	46.7	22.7
Expenditures Per Pupil (1971-72)	\$520.68	\$448.12	\$496.52
Bonded Indebtedness, June 30, 1972	\$1,701,000	\$353,000	\$2,150,000

### Nonpublic Schools

Total Enrollment	81
Elementary	81
Student-Teacher Ratio	20-1
Elementary	20-1



EVAN HARLOW ELEMENTARY SCHOOL



MERCER COUNTY ELEMENTARY SCHOOL



## Vocational Schools

	<u>Nearest State School</u>	<u>Nearest Area Education Center</u>
	Central Kentucky State Vocational-Technical School	Harrodsburg Area Vocational Education Center
Location	Lexington, Kentucky	Harrodsburg, Kentucky
Miles Distant	32	
Curriculum	Accounting Jr. Management Clerical Secretarial Marketing and Distributive Education Practical Nursing Learning Lab Electronics (Communications) Technical Drafting Auto Body Repair Auto Mechanics Commercial Foods Cosmetology Drafting Electricity Machine Shop Office Machines Repair Printing Sheet Metal Welding	Clerical Secretarial Health Careers Auto Mechanics Carpentry Electricity Welding

Arrangements can be made to provide training in the specific production skills required by an industrial plant. Instruction may be conducted either in the vocational school or in the industrial plant, depending upon the desired arrangement and the availability of special equipment.

## Colleges and Universities

	<u>Area - Within 50 miles</u>		
<u>Name</u>	<u>Location</u>	<u>Enrollment (Fall 1972)</u>	<u>Highest Degree Conferred</u>
Asbury College	Wilmore	1,115	Baccalaureate
Berea College	Berea	1,356	Baccalaureate
Centre College	Danville	758	Baccalaureate
Georgetown College	Georgetown	1,243	Masters
Eastern Kentucky University	Richmond	10,580	Masters, Ph. D.*
Kentucky State University	Frankfort	1,961	Masters
Midway Junior College	Midway	252	Associate
St. Catharine Junior College	St. Catharine	131	Associate
Southeastern Christian College	Winchester	130	Associate
Transylvania University	Lexington	726	Baccalaureate
University of Kentucky	Lexington	19,538	Ph. D., M. D., D. M. D., J. D.
Lexington Technical Institute **	Lexington		

\*Cooperative program with the University of Kentucky, Lexington for a Doctorate in Education only.

\*\*Included in University of Kentucky (Lexington) enrollment.

## HEALTH

### Hospitals

<u>General Hospital</u>	<u>Location</u>	<u>Beds</u>
James B. Haggin Memorial Hospital	Harrodsburg	80

General hospital facilities - 2 operating rooms, emergency room, X-ray, laboratory, OB section, EKG, intensive care, pharmacy

Medical staff - 8 doctors, 14 registered nurses, 12 licensed practical nurses

### Public Health

Facility - Mercer County Health Department

Staff - Health officer (part-time), 2 nurses, 1 clerk, sanitarian, nutritionist (part-time)

Budget 1972-73 - \$53,321





HARRODSBURG MUNICIPAL BUILDING



JAMES B. HAGGIN MEMORIAL HOSPITAL

## OTHER LOCAL FACILITIES

### Communications

Telephone - South Central Bell Telephone Company  
Services - Standard

Telegraph - Western Union  
Services - Local phone number for service

Postal - U.S. Post Office  
Class - First  
Mail received - 2 times daily  
Mail dispatched - 2 times daily

Newspapers - Harrodsburg Herald  
Weekly and circulation - 5,000  
Other papers  
received from - Louisville and Lexington, Kentucky

Radio - WHBN, AM-FM  
Stations received from - Louisville and Lexington, Kentucky

Television -  
Reception from - Louisville and Lexington, Kentucky; Cincinnati, Ohio  
Kentucky Educational  
Television - Lexington transmitter, Channel 46

### Library Services

Public library - Mercer County Public Library  
Size collection - 16,500 volumes  
Circulation, 1972 - 88,000  
Services - Story hour, films, film clips, projector, paintings,  
magazines, records, bookmobile

### Religious Institutions

Number of churches - 10  
Denominations - Baptist, Catholic, Christian, Church of Christ, Church  
of God, Episcopal, Methodist, Presbyterian, Jehovah's Witnesses  
Nearest Synagogues - Lexington, 33 miles  
Congregations - Adath Israel (reform); Ohavey Zion (traditional)



## Financial Institutions

<u>Banks</u>	<u>Statement as of December 31, 1972</u>	
	<u>Assets</u>	<u>Deposits</u>
Mercer County National Bank	\$ 9,807,056	\$ 8,559,541
State Bank & Trust Company	8,883,709	8,004,215
Citizens Bank - Burgin	3,109,478	2,698,440
<u>Savings and Loan Associations</u>	<u>Assets</u>	<u>Shared Accounts</u>
Harrodsburg First Federal		
Savings & Loan	\$18,847,346	\$16,484,098
Mercer Federal Savings & Loan	9,237,204	8,434,280

## Hotels and Motels

Total number - 8  
Units - 220

## Clubs and Organizations

Business and Civic - Chamber of Commerce, Jaycees, Kiwanis, Lions, Rotary, Optimist, Ruritan, Medical Society, Ministerial Association, Red Cross, Toastmaster, PTA

Fraternal - American Legion, Masonic Lodge, VFW, Disabled American Veterans

Women's - Woman's Club, DAR, Eastern Star, Homemakers, Garden Club, B & PW Club

Youth - Girl Scouts, Brownies, Boy Scouts, Cub Scouts, 4-H, FFA, FHA, Young Historian Club, Forensic Club

Other - Harrodsburg Historical Society, Mercer County Fish and Game Club, Mercer County Archery Club, Historic Harrodstown Committee, Mercer Youth Council, Rook Club, Mercer County Roadrunners (camping enthusiasts)



## RECREATION

### Local

#### Public Recreation Facilities

Supervised program - Mercer County Recreation Department

Parks - 3

Playgrounds - 4

Swimming pool - 1

Golf course - 1

Tennis courts - 3

Baseball diamonds - 2

Football fields - 3

Other - Archery range, roller rink

#### Private Recreation Facilities

Swimming pools - 2

Movie theater - 1 drive-in

#### Tourist Attractions

Pioneer Red Arrow Tour, Old Fort Harrod State Park, Shakertown,

Outdoor drama - June through August, new tourist map for tour of historic Harrodsburg

### Area (Within 50 miles)

#### Cultural Events

Central Kentucky Youth Symphony Society, Lexington

Lexington Philharmonic Orchestra

Central Kentucky Concert and Lecture Series

The University of Kentucky and Transylvania University offer art exhibits, lectures, concerts, theater and sports

The Stephen Foster Story, musical outdoor drama, Bardstown

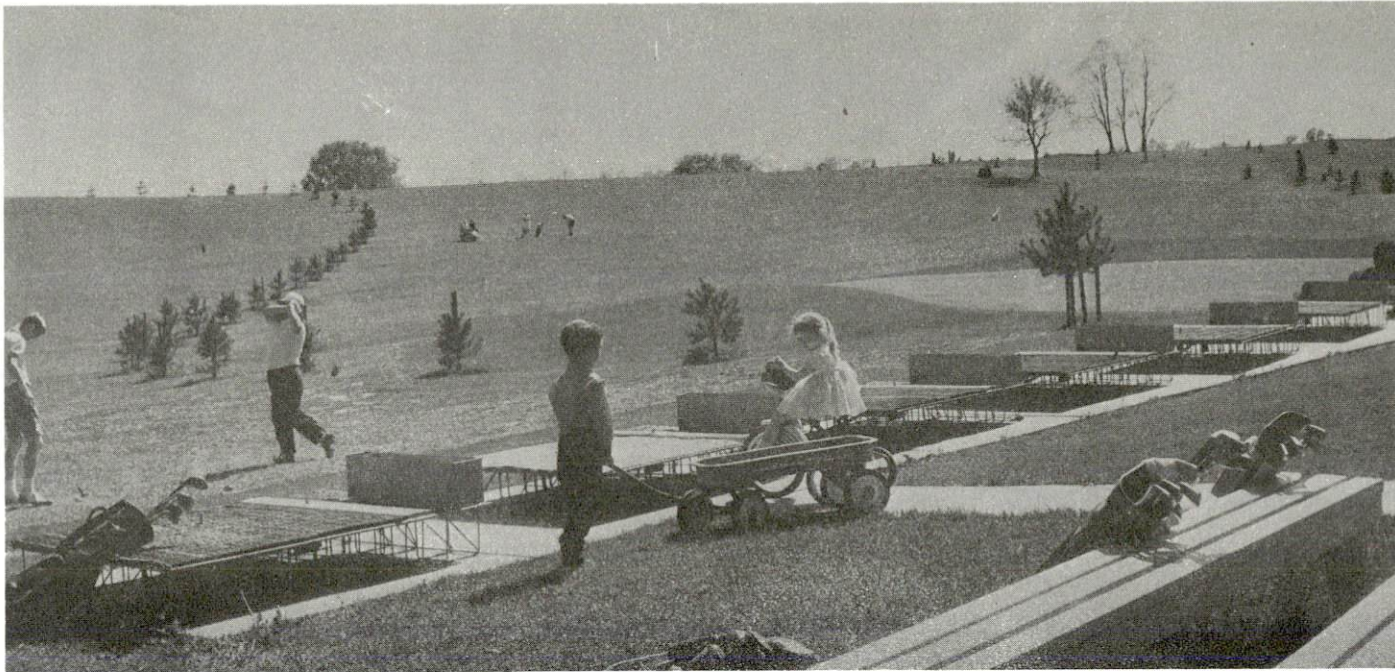
#### State Parks

Lincoln Homestead State Park, Springfield, has picnic area, playground, golf, gift shop, museum

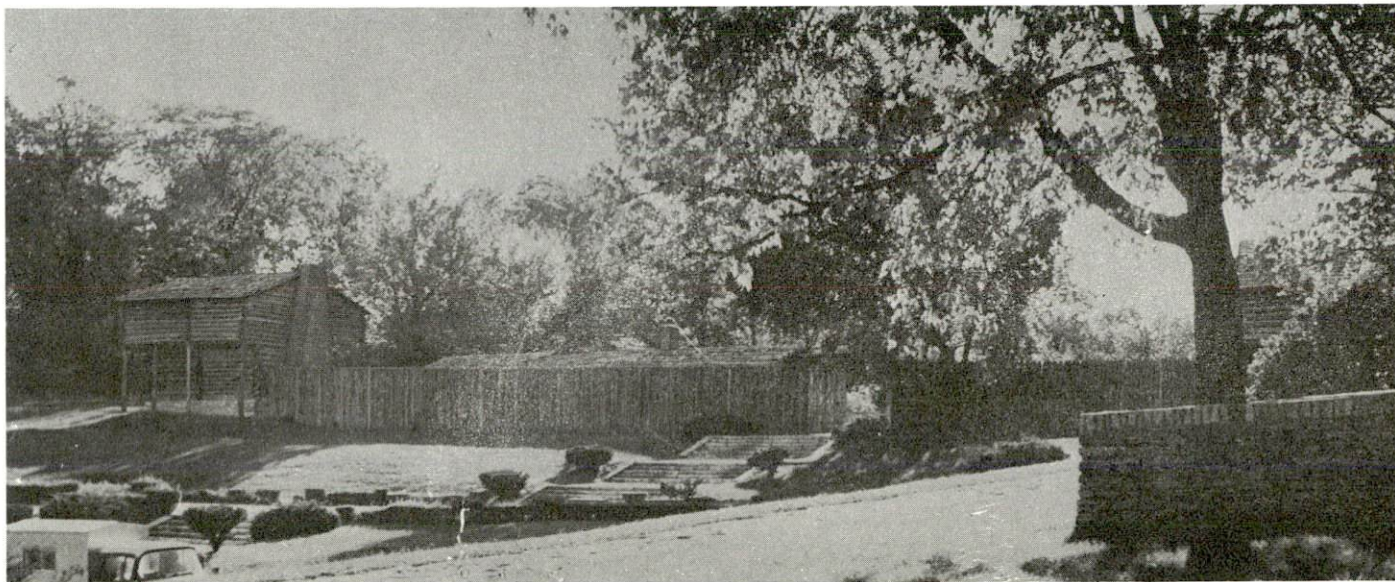
Fort Hill State Park, Frankfort, picnic area only

My Old Kentucky Home State Park, Bardstown, has picnic area, playground, golf, gift shop, museum

Green River State Park, Campbellsville, has camping, picnic area, swimming beach, fishing



GOLF COURSE



FORT HARROD

Area (cont'd.)

State Shrines

Perryville Battlefield State Shrine, Perryville

Constitution Square State Shrine, Danville

Issac Shelby State Shrine, Danville

Waveland State Shrine, Lexington

State Capitol, Frankfort



# AGRICULTURE - NATURAL RESOURCES - CLIMATE

## Agriculture\*

	<u>Mercer County</u>	<u>Labor Market Area</u>
Total land area (acres)	163,584	997,184
Percent of area in farm land	91.0	90.3
Number of farms	1,313	7,404
Average size of farms (acres)	113.4	121.7
1969 value of all farm products	\$11,022,215	\$ 63,360,578
Value per farm	8,394	8,557
Total crop sales	4,586,704	29,070,578
Total livestock & livestock products	6,425,875	34,207,548
1970 agricultural production included:		
Burley tobacco (lbs.)	6,482,000	43,331,000
Corn (bu.)	267,000	1,641,000
Cattle and calves (number)	43,500	222,600
Hogs and pigs (number)	12,100	58,300
Milk production, 1969 (lbs.)	43,470,000	179,240,000

## Natural Resources

Principal mineral resources	Limestone
Other mineral resources	Low sulphur content coal
Acres of commercial forest land	17,500 (11 percent of land area)
Most abundant tree species	White and red oak, hickory, ash, hard maple, black walnut

\*U.S. Department of Commerce, Bureau of the Census, Census of Agriculture, 1969. U.S. Department of Agriculture and Kentucky Department of Agriculture, Kentucky Agricultural Statistics, 1971.

## Climate\*

### Mercer County

#### Temperature

Annual mean (30-year record)	55.6 degrees
Average annual 1972	54.2 degrees
Record highest, July, 1966** (9-year record)	98.0 degrees
Record lowest, January, 1972 (9-year record)	-11.0 degrees
Normal heating degree days (30-year record)	4,683
(Heating degree day totals are the sums of negative departures of average daily temperatures from 65 degrees F.)	

#### Precipitation

Mean annual total (30-year record)	44.73 inches
Mean annual snow and sleet (28-year record)	16.3 inches
Total precipitation 1972	57.61 inches
Mean number days precipitation (.01 inch or more) (28-year record)	129
Average number days thunderstorms (28-year record)	47
Prevailing winds (17-year record)	South

---

\*U. S. Department of Commerce, Environmental Science Services Administration, Climatological Data, 1972. Station of record: Lexington, Kentucky.

\*\*Also on earlier dates, months, or years.

## HISTORY

Mercer County, the sixth county in Kentucky, was formed by the Virginia Legislature in 1785. This territory was originally part of Lincoln County. It was named after General Hugh Mercer, a native of Scotland as well as a popular and well known surgeon in Virginia, before losing his life in the Revolutionary battle of Princeton in 1777.

The Harrodsburg area was first explored in 1774 by 31 settlers led by Captain James Harrod. They settled an area of one-half acre "in lot" and ten acres "out lot" and each man was entitled to develop this land. They were forced out by the Indians but returned in early Spring of 1775. The settlers called their place Harrod's town and while they were away they referred to it as Old town but when they returned in 1775 it was called Harrodsburg. General George Rogers Clark arrived and was given command of the irregular troops, because the Indians were troublesome. Women and children followed and in the Fall of 1775 the first school was opened by Mrs. William Cooms and Harrodsburg was the first family settlement west of the Alleghenies.

Daughter's College was established in 1840 and graduated over 400 girls before it was discontinued early in the 1900's. It was transformed into Beaumont Inn, because it couldn't compete with Georgetown College, Hamilton College, and Kentucky University (renamed University of Kentucky in 1916).

The Shakers, who settled at Shakertown, or Pleasant Hill, contributed greatly to the development of Mercer County. They had a sawmill, grist mill and a fulling mill. A renovation and restoration program of the original buildings is now in progress.

Three distinguished Governors of Kentucky were born in Harrodsburg - John Adair, Gabriel Slaughter, and Beriah Magoffin.

In 1777 the census figures showed a count of 198 in the settlement and in 1870 the census showed 14,142 in Mercer County. The population has varied slightly over the years and showed its greatest increase, 9.3 percent between 1960 and 1970. The 1970 population was 15,960.

In 1971 the total employment in Mercer County averaged 5,600 with manufacturing providing 1,750 of these jobs. Major manufacturers in Harrodsburg are Corning Glass Works, optical and ophthalmic glass, Eaton Corporation, air conditioners for trucks, Cricketeer, Inc., men's suits and jackets. Hall Mack, Division of Textron, bathroom accessories. Nearby Burgin, Kentucky has Mercer Dress Corporation making women's dresses.