

1980

Industrial Resources: Montgomery County - Mount Sterling

Kentucky Library Research Collections
Western Kentucky University, spcol@wku.edu

Follow this and additional works at: https://digitalcommons.wku.edu/montgomery_cty



Part of the [Business Administration, Management, and Operations Commons](#), [Growth and Development Commons](#), and the [Infrastructure Commons](#)

Recommended Citation

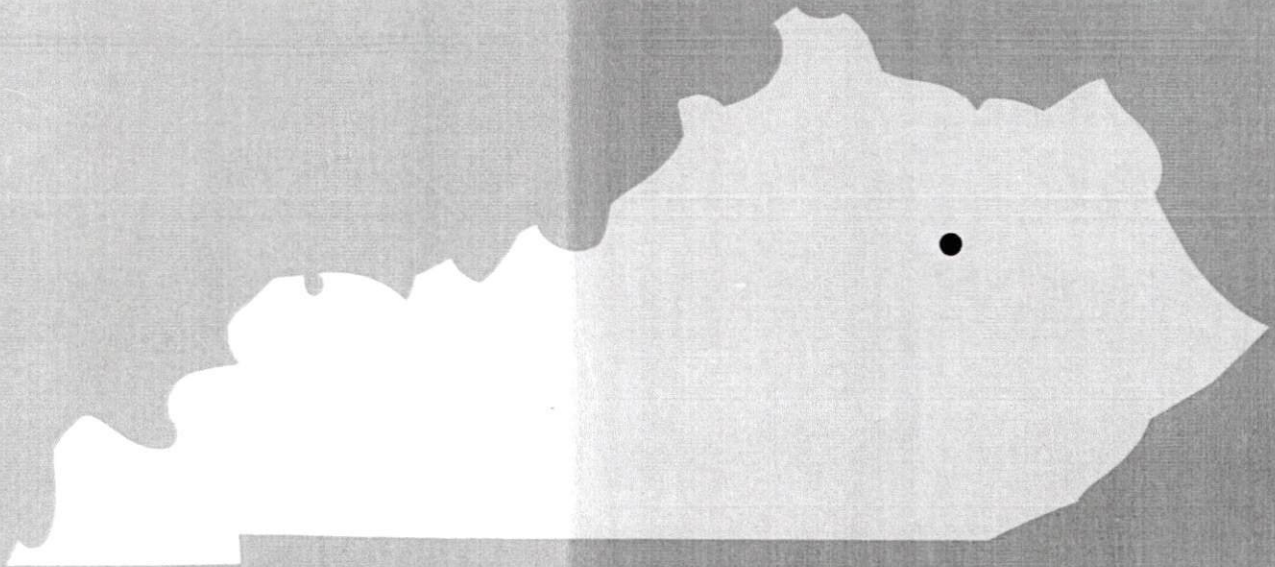
Kentucky Library Research Collections, "Industrial Resources: Montgomery County - Mount Sterling" (1980). *Montgomery County*. Paper 9.
https://digitalcommons.wku.edu/montgomery_cty/9

This Report is brought to you for free and open access by TopSCHOLAR®. It has been accepted for inclusion in Montgomery County by an authorized administrator of TopSCHOLAR®. For more information, please contact topscholar@wku.edu.

1K
224

Montgomery County

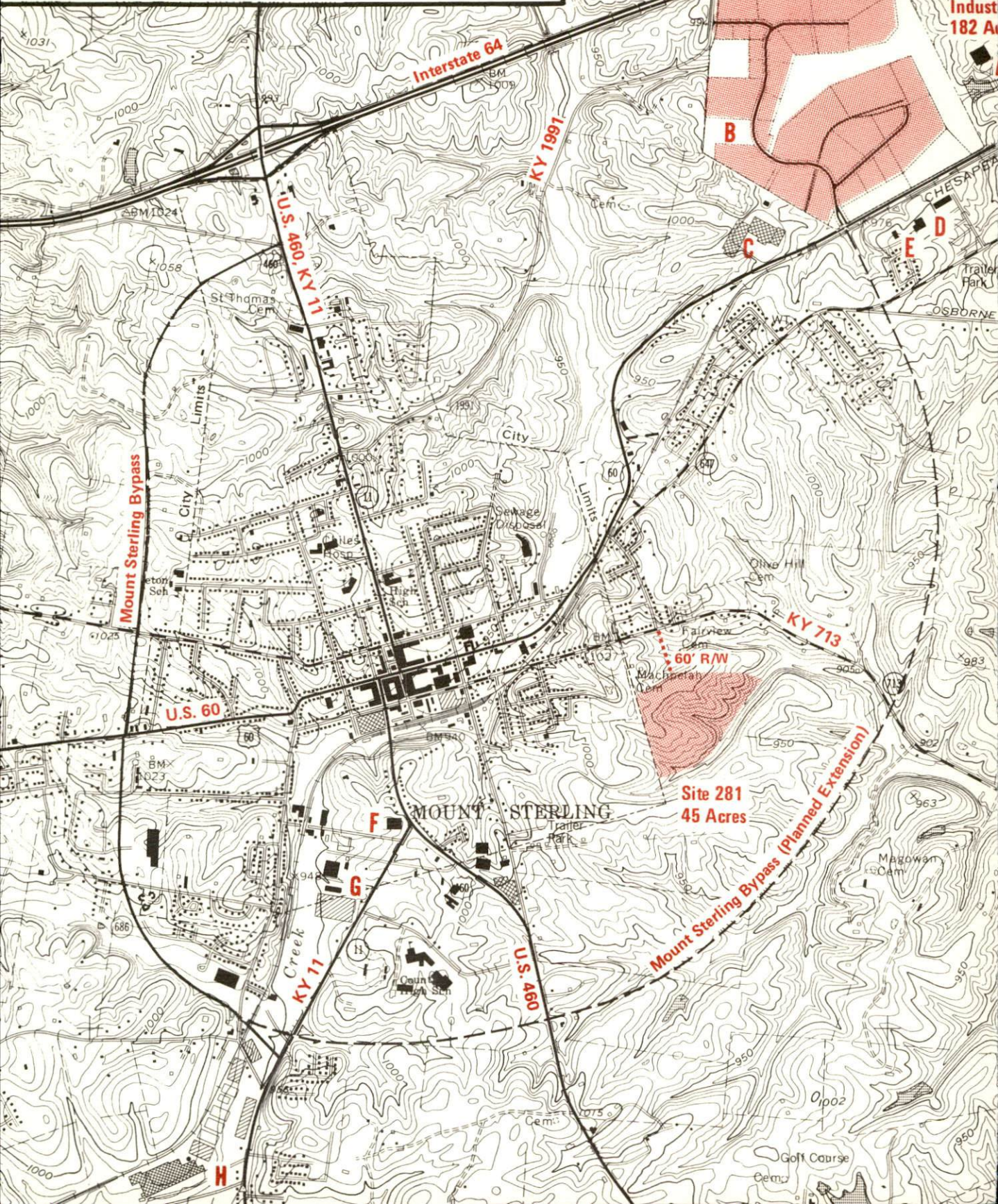
A comprehensive
report on
Mt. Sterling, Ky.

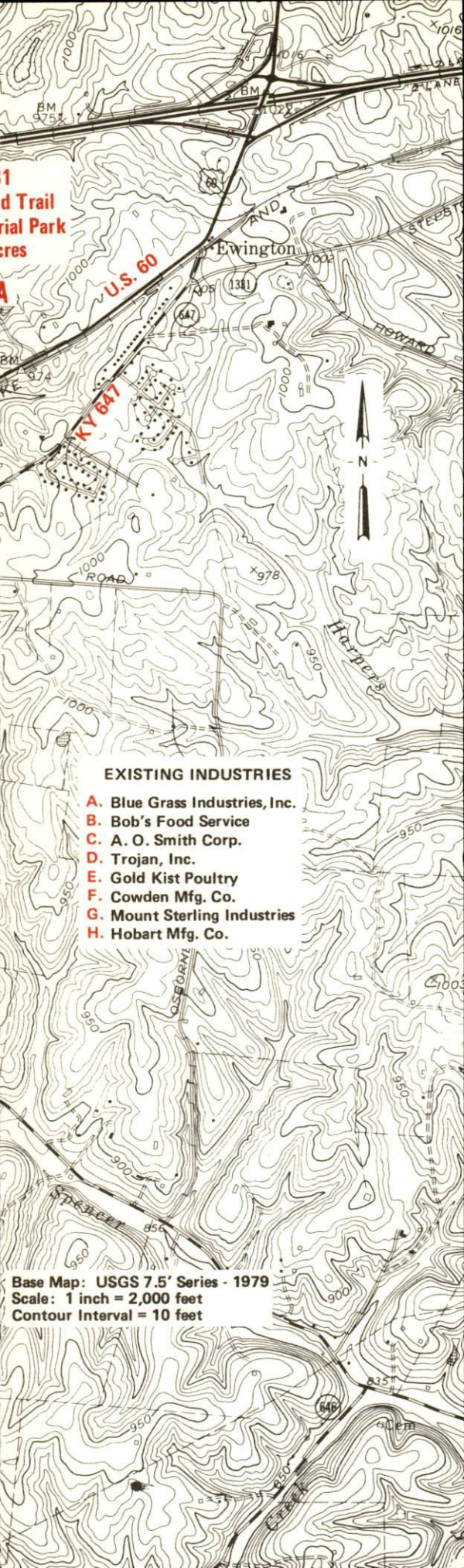


KENTUCKY & CO.
The state that's run like a business.

MOUNT STERLING, KENTUCKY
Industrial Sites --- 1981

For more information contact Harry G. Hoffman, County Judge/Executive of Montgomery County, Mount Sterling-Montgomery County Industrial Authority, Mount Sterling, Kentucky 40353, or the Kentucky Department of Commerce, Economic Development Division, Capital Plaza Tower, Frankfort, Kentucky 40601.





EXISTING INDUSTRIES

- A. Blue Grass Industries, Inc.
- B. Bob's Food Service
- C. A. O. Smith Corp.
- D. Trojan, Inc.
- E. Gold Kist Poultry
- F. Cowden Mfg. Co.
- G. Mount Sterling Industries
- H. Hobart Mfg. Co.

Base Map: USGS 7.5' Series - 1979
Scale: 1 inch = 2,000 feet
Contour Interval = 10 feet



Park-like atmosphere of Midland Trail Industrial Park



Spacious lots characterize Midland Trail Industrial Park



Location of rail spur to be extended into Midland Trail Industrial Park

A COMPREHENSIVE REPORT ON
MT. STERLING, KENTUCKY

Prepared by
The Kentucky Department of Commerce
Division of Research and Planning
in cooperation with
The Mt. Sterling-Montgomery County Chamber of Commerce
and
The Mt. Sterling-Montgomery County Industrial Foundation

1980

TABLE OF CONTENTS

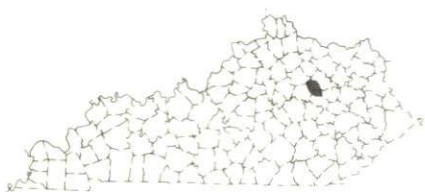
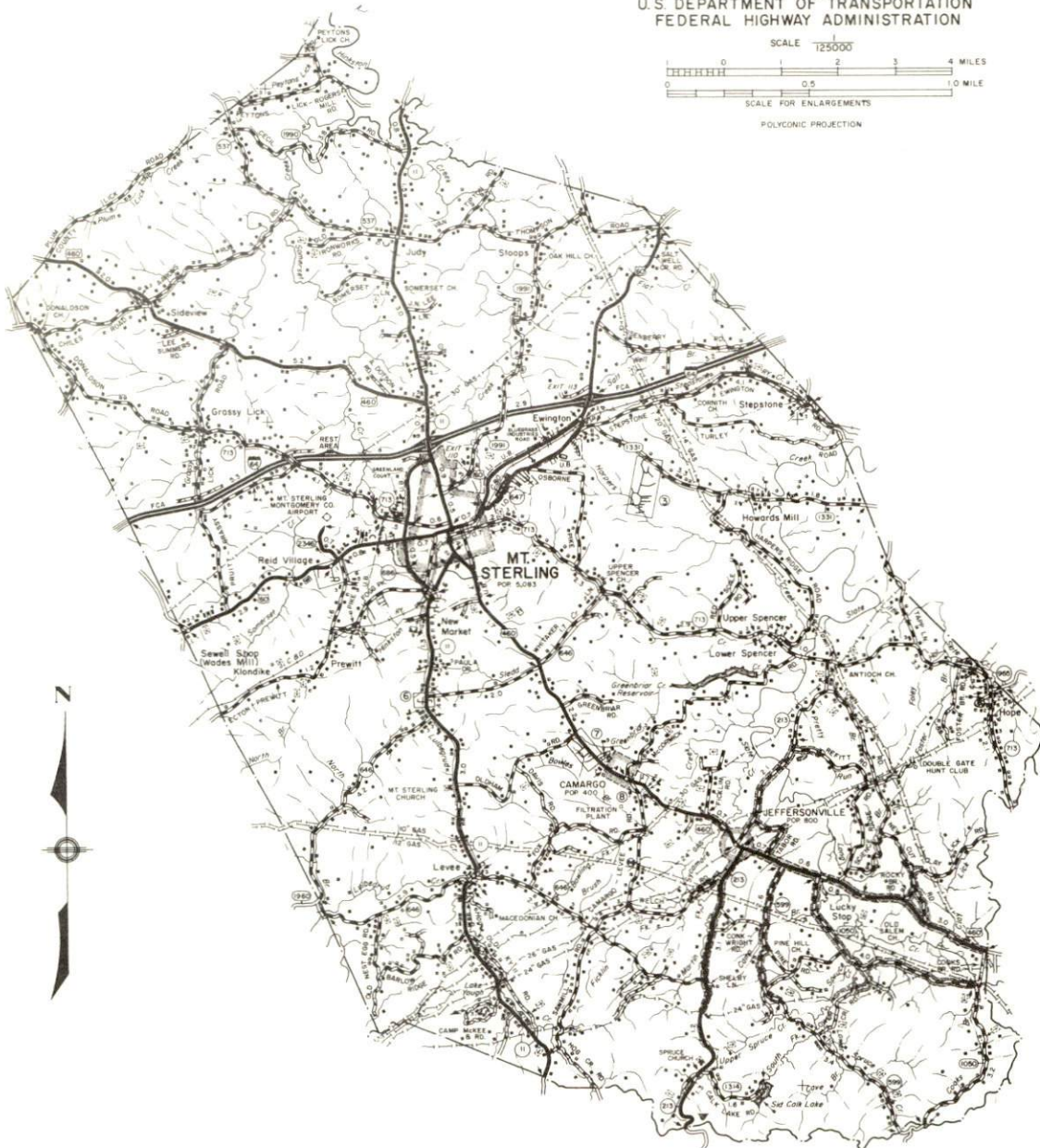
<u>Chapter</u>	<u>Page</u>
INDUSTRIAL SITES	i
THE LABOR MARKET AREA	1
Population	1
Labor Force Characteristics of Residents, 1979	1
Estimated Male Labor Supply	2
Estimated Female Labor Supply	2
Mt. Sterling Manufacturing Firms, Their Products and Employment	3
Labor Organizations	4
Industrial Services	4
Supportive Services	4
Average Weekly Wages by Industry, by Place of Work, 1979	5
Per Capita Personal Income	7
Retail Sales by Major Store Group, 1979	7
TRANSPORTATION	8
Rail	8
Highways	8
Truck Service	9
Air	11
Bus	12
Taxi	12
Rental Services	12
Water	12
POWER AND FUEL	13
Electricity	13
Natural Gas	14
Other Fuels	14
WATER AND SEWERAGE	16
Water	16
Sewerage	17
CLIMATE	18

<u>Chapter</u>	<u>Page</u>
LOCAL GOVERNMENT	19
City	19
County	19
Assessed Value of Property, 1979	19
Property Taxes	19
Combined State and Local Rates Per \$100	
Valuation, 1980	21
Planning and Zoning	21
Safety	21
Police	21
Fire	21
Rescue Service	22
Refuse Collection and Disposal	22
EDUCATION	23
Public Schools	23
Nonpublic Schools	23
Area Colleges and Universities	24
Vocational Schools	25
HEALTH	29
Local Medical Personnel	29
Hospitals	29
Other Medical Facilities	29
Ambulance Service	29
Public Health	29
OTHER LOCAL FACILITIES	30
Communications	30
Library Services	31
Religious Institutions	31
Financial Institutions	31
Hotels and Motels	31
Clubs and Organizations	32
RECREATION	33
COMMUNITY IMPROVEMENTS	36

1980 EDITION
GENERAL HIGHWAY MAP
MONTGOMERY COUNTY
KENTUCKY

PREPARED BY THE
KENTUCKY DEPARTMENT OF TRANSPORTATION
OFFICE OF TRANSPORTATION PLANNING
DIVISION OF FACILITIES PLANNING
IN COOPERATION WITH THE
U.S. DEPARTMENT OF TRANSPORTATION
FEDERAL HIGHWAY ADMINISTRATION

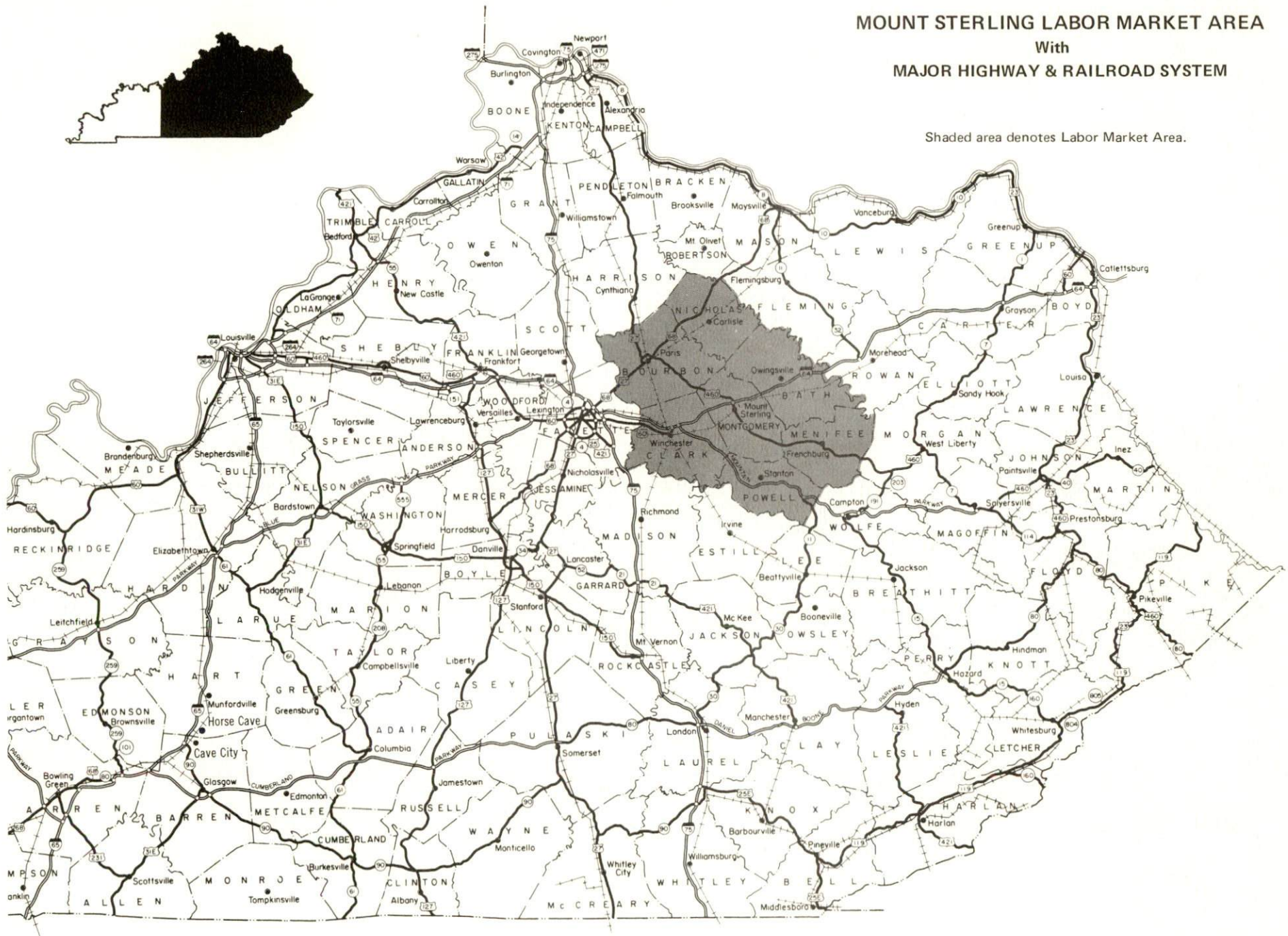
SCALE 1:25000
0 1 2 3 4 MILES
0 0.5 1.0 MILE
SCALE FOR ENLARGEMENTS
POLYCONIC PROJECTION



MOUNT STERLING LABOR MARKET AREA

With MAJOR HIGHWAY & RAILROAD SYSTEM

Shaded area denotes Labor Market Area.



THE LABOR MARKET AREA

The Labor Market Area includes Montgomery County and the adjoining Kentucky counties of Bath, Bourbon, Clark, Menifee, Nicholas, and Powell.

POPULATION			
<u>Area</u>	<u>1980*</u>	<u>1970</u>	<u>Percent Nonwhite</u> <u>1970</u>
Mt. Sterling	5,809	5,083	16.0
Labor Market Area	101,085	85,427	N/A
Montgomery County	20,072	15,364	7.4
Bath County	9,994	9,235	4.4
Bourbon County	19,360	18,476	12.4
Clark County	28,334	24,090	7.7
Menifee County	5,080	4,050	0.6
Nicholas County	7,172	6,508	2.2
Powell County	11,073	7,704	0.9

*Official Preliminary Count from 1980 Census.

Sources: U.S. Department of Commerce, Bureau of the Census, Census of Population, 1970. State Data Center of Kentucky, Urban Studies Center, University of Louisville, Special Report No. 1, 1980; Special Report No. 7, 1980.

LABOR FORCE CHARACTERISTICS OF RESIDENTS, 1979		
	<u>Montgomery County</u>	<u>Labor Market Area</u>
Civilian Labor Force	7,861	45,367
Employment	7,316	42,759
Agricultural	630	4,596
Nonagricultural	6,686	38,163
Unemployment	545	2,608
Rate of Unemployment (%)	6.9	5.7

Source: Kentucky Department for Human Resources, Kentucky Labor Force Estimates, Annual Averages, 1979.

ESTIMATED MALE LABOR SUPPLY
MT. STERLING LABOR MARKET AREA

Area	Current				Future
	Total	Not in Labor Force	Unemployed	Under- employed	Reaching 18 years of age before 1986
Labor Market					
Area	3,491	638	1,353	1,500	4,319
Montgomery	795	121	284	390	791
Bath	428	66	182	180	428
Bourbon	610	132	208	270	893
Clark	935	177	368	390	1,219
Menifee	174	33	81	60	226
Nicholas	215	49	76	90	309
Powell	334	60	154	120	453

*Additional workers may be drawn from other nearby counties.

Sources: Kentucky Department for Human Resources, Kentucky Labor Supply Estimates by County, 1979. Kentucky Department of Commerce, Future Labor Supply before 1986.

ESTIMATED FEMALE LABOR SUPPLY
MT. STERLING LABOR MARKET AREA

Area	Current				Future
	Total	Not in Labor Force	Unemployed	Under- employed	Reaching 18 years of age before 1986
Labor Market					
Area	3,368	283	1,255	1,830	3,899
Montgomery	626	55	261	310	661
Bath	366	28	168	170	405
Bourbon	643	60	193	390	840
Clark	1,094	83	351	660	1,144
Menifee	136	12	74	50	206
Nicholas	178	20	68	90	257
Powell	325	25	140	160	386

*Additional workers may be drawn from other nearby counties.

Sources: Kentucky Department for Human Resources, Kentucky Labor Supply Estimates by County, 1979. Kentucky Department of Commerce, Future Labor Supply before 1986.

NOTE: "Not in Labor Force" represents those persons who are not now in the labor force, but would enter the labor force if suitable employment were available. Unemployed persons are those persons who are unemployed and actively seeking work. Underemployed persons are those persons who are employed, but are working only 14 to 26 weeks per year.

MT. STERLING MANUFACTURING FIRMS,
THEIR PRODUCTS AND EMPLOYMENT

Firm (Establishment date)	Product	Employment			Labor Unions
		Total	Male	Female	
Atlas Concrete Products Corporation (1946)	Ready mixed concrete, asphalt	9	8	1	
Blue Grass Industries, Inc. (1955)	Men's woven under-shorts, men's knit underwear	508	33	475	
Clay Storage Company (1953)	Tobacco redrying, prizing	60	20	40	
Cowden-Mt. Sterling (1944)	Men's and boys' work and play clothing	325	16	309	Teamsters*
Hasco Newspapers, Inc. (1961)	Newspaper, commercial printing	20	10	10	
The Hobart Manufacturing Company (1965)	Home dishwashers	855	774	81	Auto Workers*
Ruth Hunt Candy (1923)	Candy	6	2	4	
Majestic Manufacturing (1981)	Conveyor systems	15	-	-	
Rex Moore Harness Shop (1949)	Harness	1	1	0	
Mt. Sterling Industries, Inc. (1966)	Tools, dies, jigs and fixtures, machine shop, special machinery, electro-mechanical assemblies	75	30	45	
A. O. Smith Corporation (1964)	Hermetic and appliance motors	1,000	600	400	IBEW*
Southern Wood Treatment Company, Inc. (1975)	Treated wood products	10	-	-	
Trojan, Inc. (1960)	Coiled wire products, insert and transfer plastic molding, electro-mechanical sub-assembly, incandescent light bulbs	156	70	86	

*See Labor Organizations below.

Source: Kentucky Department of Commerce, Division of Research and Planning.

LABOR ORGANIZATIONS

<u>Union</u>	<u>Representing manufacturing workers at:</u>
International Brotherhood of Teamsters, Chauffeurs, Warehousemen and Helpers of America	Cowden-Mt. Sterling
International Union, United Automobile, Aerospace and Agricultural Implement Workers of America	The Hobart Manufacturing Company
International Brotherhood of Electrical Workers, AFL-CIO	A. O. Smith Corporation

INDUSTRIAL SERVICES

	<u>Location</u>	<u>Miles Distant</u>
Tool & Die, Machine & Pattern Shops	Mt. Sterling	--
Metal Service Centers	Lexington	36
Heat Treating	Richmond Georgetown	38 46
Metal Finishers	Lexington Richmond	36 38
Electric Motor Repair	Lexington	36
Source: <u>Kentucky Directory of Selected Industrial Services, 1979.</u>		

SUPPORTIVE SERVICES

	<u>Located in Mt. Sterling</u>
Engineering Firms	3
Contract Security Service	1
Industrial Refuse Collection Service	1
General Contractors	14

AVERAGE WEEKLY WAGES BY INDUSTRY,
BY PLACE OF WORK, 1979

	<u>Montgomery County</u>	<u>Bath County</u>	<u>Bourbon County</u>	<u>Clark County</u>
All Industries	\$178.77	\$169.05	\$181.46	\$237.31
Mining & Quarrying	*	0	*	*
Contract Construction	224.49	215.13	222.94	221.17
Manufacturing	203.05	*	186.77	300.80
Transportation, Communications & Public Utilities	200.09	332.35	243.85	316.65
Wholesale & Retail Trade	141.80	124.23	157.06	140.40
Finance, Insurance & Real Estate	182.45	185.57	205.99	183.70
Services	161.27	160.00	173.78	174.63
Other	156.72	*	188.27	144.28

	<u>Menifee County</u>	<u>Nicholas County</u>	<u>Powell County</u>
All Industries	\$165.29	\$199.44	\$173.26
Mining & Quarrying	249.85	0	189.56
Contract Construction	*	*	224.45
Manufacturing	96.77	*	170.27
Transportation, Communications & Public Utilities	182.57	332.33	265.78
Wholesale & Retail Trade	122.11	167.56	103.54
Finance, Insurance & Real Estate	*	178.55	*
Services	164.00	142.25	173.27
Other	0	188.12	0

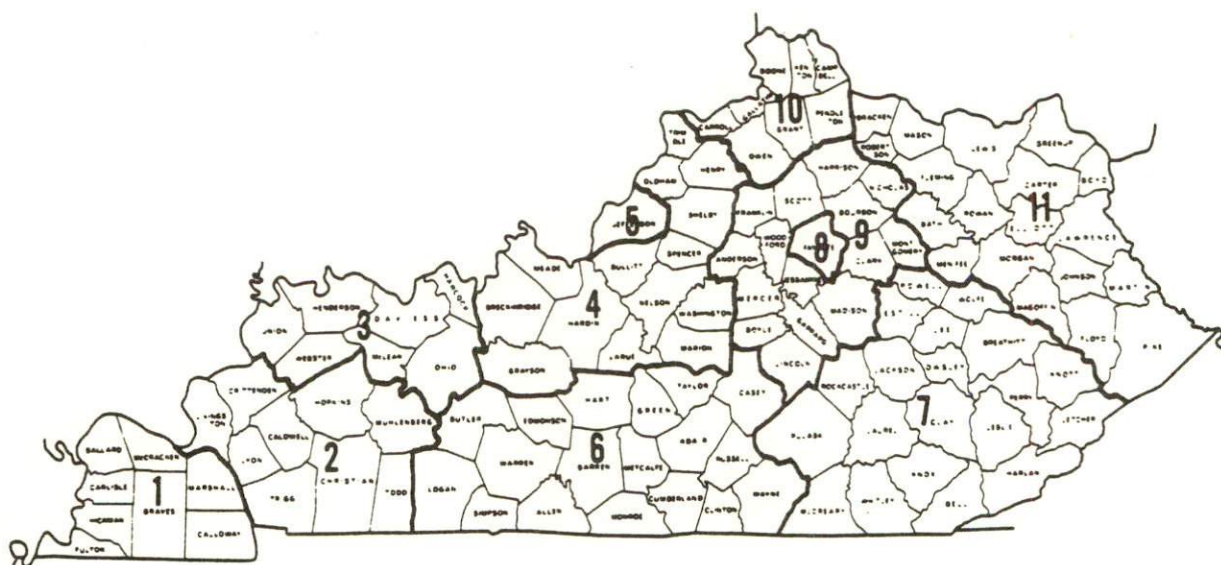
*Not disclosed.

Note: Excludes domestic workers, railway workers; certain nonprofit corporations; majority of federal government workers; and self-employed workers. Effective January 1, 1979, the Kentucky Unemployment Insurance Law extended coverage to include all state and local government agencies (shown in the Services category).

Source: Kentucky Department for Human Resources, Average Weekly Wages of Workers Covered by Kentucky Unemployment Insurance Law, 1979.

Occupational wage rates for specific industries are usually not available to most government agencies, and wage data furnished to state employment agencies by individual industrial employers is protected from disclosure by federal law. The most reliable up-to-date wage information can be obtained by direct contact with local employers.

Associated Industries of Kentucky, a voluntary organization of Kentucky businesses, regularly collects occupational wage rates and fringe benefits data from participating member firms. Data is compiled for over 127 clearly defined office, production, and service occupations. Tabulations are published for eleven regions of Kentucky, as shown on the map below. It should be noted that the data may be weighted by the preponderance of firms in the larger cities and may be somewhat higher than the rates paid in the smaller communities. Data from these tabulations are available, upon request, from the Kentucky Department of Commerce, Frankfort, Kentucky 40601.



Associated Industries of Kentucky Area Wage Surveys

PER CAPITA PERSONAL INCOME

<u>Area</u>	<u>1978</u>	<u>1974</u>	<u>Percent Change</u>
Montgomery County	\$5,889	\$4,180	40.9
Labor Market Area			
Range	\$3,455 - 7,315	\$2,509 - 5,071	N/A
Kentucky	6,605	4,524	46.0
U.S.	7,840	5,428	44.4

Source: U.S. Department of Commerce, Bureau of Economic Analysis,
April 1980.

RETAIL SALES BY MAJOR STORE GROUP, 1979

	<u>Montgomery County</u>
Total Retail Sales	\$90,690,000
Food Stores	27,127,000
Eating & Drinking Places	3,911,000
General Merchandise Stores	6,809,000
Furniture, Home Furnishings & Appliances Stores	4,248,000
Automotive Dealers	17,589,000
Drugstores	2,847,000
All other stores	28,159,000

Source: Sales and Marketing Management, Survey of Buying Power,
July 28, 1980.

TRANSPORTATION

Rail

Line serving Mt. Sterling - The Chessie System

Services - Main line; one eastbound and one westbound freight stops daily; one eastbound and one westbound through freight daily; team track space for 8 cars; siding space for 30 cars; nearest Chessie System piggyback facilities located at Huntington, West Virginia, 90 miles east of Mt. Sterling, and at Cincinnati, Ohio, 114 miles northwest of Mt. Sterling

For details on routing, schedules, rates, and services, contact:

The Chessie System
Real Estate and Industrial Development
808 Dixie Terminal Building
Cincinnati, Ohio 45202
(513) 369-5258

Highways

Mt. Sterling is served by east-west Interstate 64, U.S. Highways 60 and 460, and Kentucky 11. Two interchanges of Interstate 64 are located at Mt. Sterling and access onto north-south Interstate 75 is only 30 miles west of the city. In addition, the Mountain Parkway is located 14 miles west of the city.

A 1.6-mile extension of the Mt. Sterling Bypass from U.S. 60 West to U.S. 460 North has been completed. Construction on extensions of the bypass from U.S. 460 South to Kentucky 11 South and from U.S. 460 South to U.S. 60 East is scheduled to begin in the spring of 1981 with completion scheduled within one year.

Truck Service

Name: Bronaugh Motor Express, Inc.
1025 Nandino Boulevard
Lexington, Kentucky 40511
Service: Interstate and intrastate
Regular or irregular route carrier: Regular
Nearest terminal: Lexington (606) 253-1341
Pickup and delivery: Both
General or specified commodities: General

Name: Cooper-Jarrett, Inc.
Hanover Plaza
Morristown, New Jersey 07960
Service: Interstate
Regular or irregular route carrier: Regular
Nearest terminal: Lexington (606) 233-0534
Pickup and delivery: Both
General or specified commodities: General

Name: Interstate Motor Freight System
110 Ionia, N. W.
Grand Rapids, Michigan 49503
Service: Interstate
Regular or irregular route carrier: Regular
Nearest terminal: Lexington (606) 255-5681
Pickup and delivery: Both
General or specified commodities: Both

Name: McLean Trucking Company
P. O. Box 213
Winston-Salem, North Carolina 27102
Service: Interstate
Regular or irregular route carrier: Regular
Nearest terminal: Lexington (606) 255-4473
Pickup and delivery: Both
General or specified commodities: General

Name: O. K. Trucking Company
3000 East Crescentville Road
Cincinnati, Ohio 45241
Service: Interstate and intrastate
Regular or irregular route carrier: Regular
Nearest terminal: Lexington (606) 252-2221
Pickup and delivery: Both
General or specified commodities: General

(Contd.)

Name: Overnite Transportation Company
P. O. Box 1216
Richmond, Virginia 23209
Service: Interstate and intrastate
Regular or irregular route carrier: Regular
Nearest terminal: Lexington (606) 233-0693
Pickup and delivery: Both
General or specified commodities: General

Name: Smith's Transfer Corporation
P. O. Box 1000
Staunton, Virginia 24401
Service: Interstate
Regular or irregular route carrier: Regular
Nearest terminal: Lexington (606) 252-6633
Pickup and delivery: Both
General or specified commodities: General

Other Freight Services

Nearest Shipping Center

Purolator Courier Corporation*
United Parcel Service*

Lexington, 36 miles west
Clay City, 15 miles south

*For regular scheduled pickups or for occasional pickups, arrangements must be made with the Louisville office of Purolator Courier Corporation or United Parcel Service.

HIGHWAY MILES AND TRUCK TRANSIT TIME IN DAYS FROM
MT. STERLING, KENTUCKY, TO SELECTED MARKET CENTERS

City	Highway Miles	Delivery		City	Highway Miles	Delivery	
		Time*	TL			Time*	TL
Atlanta, Ga.	380	1		Los Angeles, Ca.	2,216	7-8	
Baltimore, Md.	519	1-2		Louisville, Ky.	109	1	
Birmingham, Ala.	434	1		Nashville, Tenn.	246	1	
Chicago, Ill.	388	1		New Orleans, La.	763	2	
Cincinnati, Ohio	114	1		New York, N. Y.	691	3	
Cleveland, Ohio	353	1		Pittsburgh, Pa.	351	1	
Detroit, Mich.	373	3		St. Louis, Mo.	371	1	
Knoxville, Tenn.	186	1					

*Delivery time does not include the day of pickup.

Note: Mileage computations are via the best interstate or primary highways, not necessarily the most direct route of travel.

Sources: Rand McNally Road Atlas, 1979. Official Kentucky Mileage Map, 1979. Delivery time - Overnite Transportation Company, P. O. Box 1216, Richmond, Virginia 23209.

Air

Local

Mt. Sterling-Montgomery County Airport*

Location: 2 miles west of Mt. Sterling

Runways: 1 paved

Length: 2,800 feet

Traffic

Control: Wind sock and tetrahedron

Lighting: Sunset to sunrise, rotating beacon,
VASI and REIL

Services: 100 octane gasoline, charter, flight
instruction, tie down, hangar, major
and minor A & E repairs

Air Freight

Services: Chartered air freight services must
be arranged

(Contd.)

*The land has been acquired for the future construction of a second runway which can accommodate small jets.

Nearest Scheduled Airline Service

Location: Blue Grass Field
4 1/2 miles west of Lexington, Kentucky;
40 miles west of Mt. Sterling
Runways: 2 paved
Length: 6,500 feet; 3,500 feet
Traffic
Control: Tower
Lighting: Approach lighting system, beacon, runways
and obstructions lighted, VASI
Services: Delta, Frontier, Piedmont, and USAir
airlines; Tennessee Airways commuter
air carrier; fuel - 24-hour service,
100, and jet fuel; repair service -
major A & E repairs, Certified
Avionics repair station; National
Weather Service; flight instructions;
charter service; storage; taxi,
limousine and car rentals; restaurant
Air Freight
Service: Air freight terminal

Bus - Greyhound Bus Lines; nine buses leave Mt. Sterling daily going to Lexington, Ashland, and Paintsville.

Taxi - One company, 24-hour radio-dispatched service

Rental Services - Truck, trailer, and car rentals are available in Mt. Sterling.

Water

The Kentucky River is the nearest navigable river. Mt. Sterling is located 25 miles northeast of a point on the Kentucky River where a 6-foot navigation channel is maintained.

In addition, Mt. Sterling is located 49 miles south of a point on the Ohio River at Maysville. The Maysville-Mason County Port Authority is planning to develop a public port at Maysville which will serve as a general cargo facility.

The Eastern Kentucky Port Authority is in the process of negotiating to purchase land for the construction of a general port facility on the Ohio River at Ashland. Mt. Sterling is 84 miles west of Ashland.

POWER AND FUEL

Electricity

Company serving Mt. Sterling and parts of Montgomery County -
Kentucky Utilities Company

Source of power - Kentucky Utilities Company

Total generating capacity - 2,238,400 KW

For industrial rates contact:

Industrial Development Department
Kentucky Utilities Company
One Quality Street
Lexington, Kentucky 40507
(606) 255-1461

Company serving parts of Montgomery County - Clark Rural Electric
Cooperative Corporation

Source of power - East Kentucky Power Cooperative

Total generating capacity - 867,000 KW

For industrial rates contact:

Industrial Development Division
East Kentucky Power Cooperative
P. O. Box 707
Winchester, Kentucky 40391
(606) 744-4812

and/or

Clark RECC
P. O. Box 748
Winchester, Kentucky 40391
(606) 744-4251

Natural Gas

Company serving Mt. Sterling - Columbia Gas of Kentucky, Inc.
Source of supply - Columbia Gas Transmission Corporation
Size of transmission mains - 20, 14 and 12 inches (supplier)
Distribution mains - 2 through 12 inches
Distribution pressure - Medium pressure available to new
industry - 20 psi in summer, 50 psi in winter
But content - 1,005 per cubic foot
Specific gravity - 0.570
For rates and supplies contact:

Utilization Manager
Columbia Gas of Kentucky, Inc.
P. O. Box 241
Lexington, Kentucky 40584
(606) 255-3612

Natural gas service is available for new industry and all other
classes of customers.

Other Fuels

Propane

Distributors serving industrial, commercial and residential
customers in Mt. Sterling

Buckeye Gas Products Company	Columbia Hydrocarbon Corporation*
P. O. Box 77	Marble Cliff Office
Winchester, Kentucky 40391	P. O. Box 2318
	Columbus, Ohio 43216

Miller LP Gas Company
131 West Main
P. O. Box 607
Owingsville, Kentucky 40360

Distributors serving residential customers only

Amburgey's Farmers Supply	Eads Supply and LP Gas
Route 2, Camargo Road	Route 1, P. O. Box 729
Mt. Sterling, Kentucky 40353	Mt. Sterling, Kentucky 40353

Southern States Cooperative, Inc.
Brooks Avenue
Owingsville, Kentucky 40360

*Marketing representatives for Columbia Hydrocarbon are located in
several Kentucky cities.

Fuel oils

Distillate fuel oil -

Distributors serving industrial, commercial, and residential customers in Mt. Sterling

Bonfield Brothers, Inc.
Texaco Distributor
P. O. Box 415, Calk Avenue
Mt. Sterling, Kentucky 40353

Chevron USA, Inc.
1750 Old Frankfort Pike
Lexington, Kentucky 40504

Given Oil Service
P. O. Box 239
207 East Main
Mt. Sterling, Kentucky 40353

Distributors serving residential customers only

Gateway Gas and Oil
P. O. Box 749
Mt. Sterling, Kentucky 40353

Residual fuel oil - Arrangements must be made with the refinery.

Low sulphur content coal - Available in nearby eastern Kentucky.

WATER AND SEWERAGE

Water

Company serving Mt. Sterling - Mt. Sterling Water Works and Sewer System*

14 South Bank Street

Mt. Sterling, Kentucky 40353

(606) 498-0166

Source - Slate Creek Impoundment and Greenbriar Reservoir

Treatment plant capacity - 3,000,000 gallons per day

Average daily consumption - 1,994,000 gallons

Peak daily consumption - 2,260,000 gallons

Type treatment - Rapid sand filters

Storage capacity - 1,500,000 gallons

Size lines - 16, 12, 10, 8, 6 and 4 inches

Average pressure - 80 psi

Average temperature - 55 degrees F.

MONTHLY WATER RATES

(billed in cubic feet)

Rate (Net)

First	100 cu. ft.	\$3.10 (Minimum)
Next	600 cu. ft.	1.15 per 100 cu. ft.
Next	1,300 cu. ft.	1.05 per 100 cu. ft.
Next	1,300 cu. ft.	.95 per 100 cu. ft.
Next	3,400 cu. ft.	.80 per 100 cu. ft.
Next	6,600 cu. ft.	.65 per 100 cu. ft.
Next	13,300 cu. ft.	.50 per 100 cu. ft.
Next	26,700 cu. ft.	.45 per 100 cu. ft.
All over	53,300 cu. ft.	.40 per 100 cu. ft.

Minimum Monthly Charges

5/8 or 3/4-inch meter	\$ 2.90
1-inch meter	3.50
1 1/4 or 1 1/2-inch meter	4.50
2-inch meter	5.50
3-inch meter	8.00
4-inch meter	12.00
6-inch meter	22.00

Tap-on charge: 3/4-inch meter \$150

1-inch meter and larger meters - Cost of labor and materials plus 25 percent

*A new 500,000-gallon elevated storage tank is planned for the southwest side of the system. Also new mains were recently installed in the Ross Melton development and the Follett development west of the Mt. Sterling Bypass.

Surface water sources - Hinkston Creek which flows into the South Fork of the Licking River

Average discharge - Nearest gaging station - South Fork Licking River at Cynthiana, 758 cfs (40 years, USGS)

Expected ground water yield - 5 gpm or less over entire county

Sewerage

Company serving Mt. Sterling - Mt. Sterling Water Works and Sewer System

14 South Bank Street

Mt. Sterling, Kentucky 40353

(606) 498-0166

Design capacity - 5,310,000 gallons per day

Average daily flow - 2,660,000 gallons

Treatment - Primary, secondary, and aeration

Type treatment - Grit removal, primary sedimentation, trickling filter, bio-surf with secondary settling and post-aeration and drying beds

Treated effluent discharged into - Hinkston Creek

Size of sanitary mains - 10 to 27 inches

Size of storm mains - 10 to 27 inches

Monthly rates - (Based on water consumption)

First	100 cu. ft.	\$2.27 (Minimum)
Next	600 cu. ft.	1.02 per 100 cu. ft.
Next	1,300 cu. ft.	.87 per 100 cu. ft.
Next	1,300 cu. ft.	.77 per 100 cu. ft.
Next	3,400 cu. ft.	.72 per 100 cu. ft.
Next	6,600 cu. ft.	.67 per 100 cu. ft.
Next	13,300 cu. ft.	.62 per 100 cu. ft.
Next	26,700 cu. ft.	.57 per 100 cu. ft.
All over	53,000 cu. ft.	.52 per 100 cu. ft.

Tap-on charge: \$100

CLIMATE

Montgomery County

Temperature

Normal (30-year record)	55.2 degrees
Average annual 1978	53.0 degrees
Record highest, September, 1954 (34-year record)	103.0 degrees
Record lowest, January, 1963 (34-year record)	-21.0 degrees
Normal heating degree days (30-year record)	4,729
(Heating degree day totals are the sums of negative departures of average daily temperatures from 65 degrees F.)	

Precipitation

Normal (30-year record)	44.49 inches
Mean annual snowfall (34-year record)	16.70 inches
Total precipitation 1978	57.73 inches
Mean number days precipitation (.01 inch or more) (34-year record)	131
Mean number days thunderstorms (34-year record)	47

<u>Prevailing Winds</u> (17-year record)	South
--	-------

Relative Humidity

1 a.m.	77 percent (14-year record)
7 a.m.	81 percent (15-year record)
1 p.m.	60 percent (15-year record)
7 p.m.	64 percent (15-year record)

Source: U.S. Department of Commerce, Environmental Science
Services Administration, Climatological Data, 1978.
Station of record: Lexington, Kentucky.

LOCAL GOVERNMENT

City

Structure - Mayor - 4-year term; 8 councilmen - 2-year terms;
city administrator
Budget 1979-80 - General Fund \$1,083,537
Fees and licenses - Business licenses - \$50 per year; occupational
license taxes - one-half of one percent on wages and on the net
profits of businesses with a maximum of \$150 per year (to be
effective in 1981 pending final approval of the city council)

County

Structure - County Judge/Executive - 4-year term;
3 commissioners - 4-year terms
Budget 1979-80 - General Fund \$526,554; Road Fund \$66,400

Assessed Value of Property, 1979

<u>Classes of Property</u>	<u>Mt. Sterling</u>	<u>Montgomery County</u>
Real Estate	\$64,112,780	\$183,657,839
Tangibles	14,331,860	34,099,698

Property Taxes

All property in Kentucky is assessed at 100 percent of fair cash value.

Land and buildings are taxed by the state and may be taxed by local jurisdictions. The state rate is \$0.241 per \$100 of assessed valuation.

Manufacturing machinery, raw materials inventories, pollution control equipment, and goods in the process of manufacture are not subject to local taxation. The state rate is \$0.15 per \$100.

Other tangible personal property owned by manufacturers (automobiles, trucks, finished goods, office furniture, office equipment) is taxed by the state at \$0.45 per \$100 and may be taxed by local jurisdictions.

Property stored in public warehouses in a transit status is not subject to local taxation. The state rate is only \$0.015 per \$100.

Intangible personal property located in Kentucky (money in hand, shares of stock, notes, bonds, accounts receivable, and other credits) is taxed by the state at \$0.25 per \$100, and is not subject to local taxation.

Private leaseholds in industrial facilities owned by cities or counties and financed by industrial revenue bonds are subject to a state tax of \$0.015 per \$100 of value (essentially the lessee's equity, adjusted for appreciation or depreciation). Local taxation is not permitted.



Montgomery County Courthouse



City offices and private businesses in downtown Mt. Sterling

Combined State and Local Rates Per \$100 Valuation, 1980*
(100% assessment)

	<u>Inside City of Mt. Sterling</u>	<u>Outside City</u>
1. Land and buildings	\$0.922	\$0.681
2. Mfg. machinery, raw materials, goods in process, pollution control equipment	0.150	0.150
3. Finished goods, office equipment, vehicles, other tangibles	1.131	0.890
4. Intangibles (accounts receivable, notes, bonds, etc.)	0.250	0.250
5. Leaseholds in I. R. bond financed plants	0.015	0.015

Planning and Zoning

City agency - Mt. Sterling Planning and Zoning Commission

Zoning enforced - City only

Subdivision regulations enforced - City and 3 miles beyond city limits**

Mandatory state codes enforced - Kentucky Plumbing Code, National

Electric Code, Kentucky Boiler Regulations and Standards, National

Fire Protection Association Standards of Safety (for buildings with

an occupancy of less than 100 persons), Kentucky Building Code

(modeled after BOCA code and applying to buildings with an occupancy of 100 or more persons)

Safety

<u>Police</u>	<u>Mt. Sterling</u>	<u>Montgomery County</u>
Total staff	25***	7
Radio-patrol cars	8 and a crime prevention unit	2
<u>Fire</u>		
American Insurance Association Fire Rating	6	10
Full-time staff	13	
Volunteers	11	24

*Kentucky Department of Commerce.

**There are plans to extend the extraterritorial jurisdiction for subdivisions regulations to 5 miles beyond city limits.

***Total staff includes 17 full-time police officers.

Rescue Service

Montgomery County Rescue Squad:

Number of volunteers - 12

Equipment - Four-wheel drive truck with a generator, lighting system and mini-pumper, radiation monitoring equipment

Personnel training - First aid, emergency medical technician training, hazardous material training, and radiological monitoring

Refuse Collection and Disposal

	<u>Mt. Sterling</u>	<u>Montgomery County</u>
Type service	Private	Private
Fee charged:		
residential	\$4 per month	\$4.50 per month
business	Based on type of establishment and volume collected	Based on type of establishment and volume collected
industrial	Contract	Contract
Collection frequency:		
residential	Twice weekly	Once weekly
business	Monday through Saturday	Contract
industrial	Contract	Contract
Trash pickup	Once monthly	Once monthly
Disposal method	Sanitary landfill	Sanitary landfill

Gateway Service Corporation is a private company which provides refuse collection services to industrial customers. Services include 4-, 6-, and 8-cubic yard containers with rental charges based on the size of container. Fees for services are based on the volume and frequency of collection. Disposal is at Gateway's sanitary landfill located 8 miles southwest of Mt. Sterling.

EDUCATION

Public Schools

Montgomery County

Total Enrollment (March 1980)	4,264
Elementary	2,138
Middle School	673
High School	1,453
Student-Teacher Ratio	18-1
Elementary	18-1
Middle School	20-1
High School	16-1
Accreditation	Southern Association of Colleges and Schools
Percent High School Graduates to College	39.1
Expenditures Per Pupil (1978-79)	\$1,092.19
Bonded Indebtedness, June 30, 1979	\$2,723,000

Nonpublic Schools

Fellowship of Christian Academy

Total Enrollment	24
Elementary	24
Student-Teacher Ratio	8-1
Elementary	8-1

Area Colleges and Universities

<u>Name</u>	<u>Location (Miles distant)</u>	<u>Enrollment (Fall, 1979)</u>	<u>Highest Degree Conferred</u>
Morehead State University	Morehead (31)	7,030	Masters, Specialist*
Lexington Technical Institute	Lexington (36)	2,074	Associate
Transylvania University	Lexington (36)	810	Masters**
University of Kentucky	Lexington (36)	22,899	Doctorate, M.D., D.M.D., J.D.
Eastern Kentucky University	Richmond (38)	13,668	Masters, Specialist***
Georgetown College	Georgetown (44)	1,189	Masters
Midway Junior College	Midway (48)	328	Associate
Maysville Community College	Maysville (49)	462	Associate
Berea College	Berea (50)	1,434	Baccalaureate

*Joint doctoral degree programs are offered in cooperation with the University of Kentucky, Lexington.

**Courses in the Masters degree program are taught on the Transylvania campus by Xavier University of Cincinnati faculty members. The degree is issued by Xavier University.

***Joint doctoral degree programs are offered in cooperation with the University of Kentucky, Lexington, and cooperative doctoral degree programs are offered with Michigan State University and the University of Maryland.

Vocational Schools

Nearest State School

Location
Miles Distant
Curriculum

Central Kentucky State Vocational-
Technical School
Lexington
36
Business and Office
Clerical
Secretarial
Consumer and Home Economics
Commercial Foods
Health and Personal Services Occupations
Cosmetology
Dental Assistant
Nurse's Aide
Practical Nursing
Surgical Technician
Industrial Education
Auto Body Repair
Auto Mechanics
Carpentry
Drafting
Electronics
Graphic Arts
Industrial Electricity
Machine Shop
Masonry
Office Machine Repair
Sheet Metal, Heating and Cooling
Welding
Learning Resource Center

(Contd.)

Nearest Area Education Center

Location	Montgomery County Area Vocational Education Center*
Curriculum	Mt. Sterling Business and Office Accounting/Jr. Management Clerical Secretarial Industrial Education Auto Mechanics Carpentry Drafting Industrial Electricity

Arrangements can be made to provide training in the specific production skills required by an industrial plant. Instruction may be conducted either in the vocational school or in the industrial plant, depending upon the desired arrangement and the availability of special equipment.

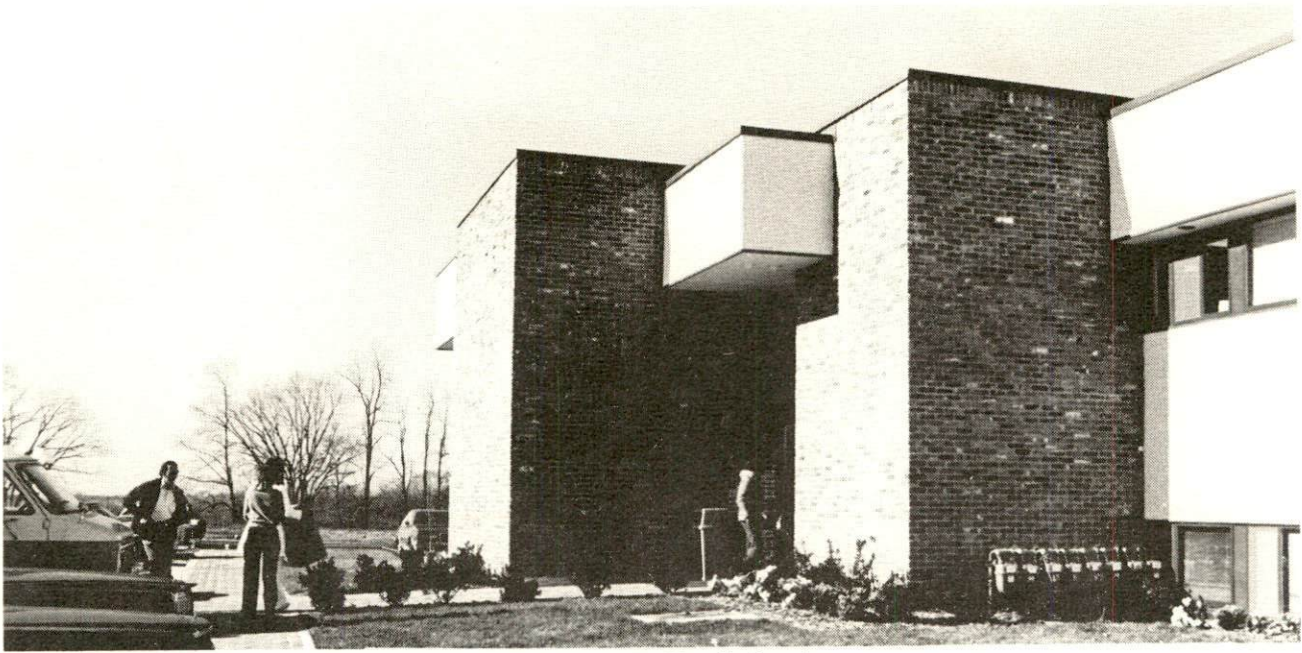
*Planned improvements include the addition of a welding shop and the expansion of the industrial electricity course to include electronics.



Athletic facilities at elementary school



One of Mt. Sterling's elementary schools



Mt. Sterling Medical Center



Montgomery County Health and Civic Center



Mary Chiles Hospital

HEALTH

Local Medical Personnel

Physicians - 9
Dentists - 8

Hospitals

<u>General Hospital</u>	<u>Location</u>	<u>Beds</u>
Mary Chiles Hospital	Mt. Sterling	64 acute beds plus 40 skilled nursing beds

General hospital facilities - 2 operating rooms, recovery room, delivery room, nursery, X-ray department, laboratory, inhalation therapy, respiratory therapy, cardiology laboratory, physical therapy department, 4-bed intensive care-coronary care unit, emergency department with 24-hour physician staffing, 40-bed extended care facility

Medical staff - 12 doctors on active staff, 28 registered nurses, 21 licensed practical nurses, 3 physical therapists, dietician, 2 pharmacists (Total medical and dental staff - 42 including consulting and courtesy staff)

Other Medical Facilities

Mt. Sterling Medical Center - 7 physician offices, laboratory, and X-ray room

Cave Run Clinic - 6 physician offices, laboratory and X-ray room

Comprehensive Care Center - Comprehensive psychiatric, psychological and social services; marriage, family and personal counseling; hospital and partial hospitalization care; consultation and education; alcohol and drug education; vocational evaluation and work activities; 24-hour emergency service

Ambulance Service

Twenty-four hour ambulance service is provided by two local funeral homes.

Public Health

Facility - Montgomery County Health Department
(part of the Gateway District Health Department)
Staff - 3 registered nurses, 2 community health workers, health environmentalist, 2 clerks

OTHER LOCAL FACILITIES

Communications

Telephone - South Central Bell Telephone Company
Services - Standard

Telegraph - Western Union
Services - Toll-free telephone number

Postal - U.S. Post Office
Class - First
Mail received - Twice daily
Mail dispatched - Twice daily

Newspapers - Mt. Sterling Advocate*
 Montgomery County News
Weekly and circulation - 5,200 and 5,000 respectively
Other papers
received from - Lexington, Louisville and
 Winchester, Kentucky;
 Cincinnati, Ohio

Radio - WMST-AM & FM
Stations received from - Lexington, Louisville and
 Winchester, Kentucky;
 Cincinnati, Ohio

Television -
Cable service - 12 channels and one FM station
Reception from - Lexington and Louisville, Kentucky;
 Cincinnati, Ohio

Kentucky Educational
Television - Lexington-Richmond transmitter, Channel 46

*The Mt. Sterling Advocate publishes a weekly shopper's guide which is mailed free in nine counties.

Library Services

Public library - Mt. Sterling-Montgomery County Library

Size collection - 30,000 volumes

Circulation, 1979-80 - 40,000 volumes

Services - Books, magazines, records, art display, special Kentucky collection, children's story hour, meeting space, bookmobile, interlibrary loan, audiovisual equipment, genealogy collection

Religious Institutions

Number of churches - 30 in Montgomery County

Denominations - Baptist, Catholic, Charismatic, Christian, Christian Independent, Christian and Missionary Alliance, Church of Christ, Church of God, Episcopal, Full Faith Gospel, Methodist Episcopal, Nazarene, Nondenominational, Presbyterian, United Methodist

Nearest Synagogues - Lexington, 36 miles west of Mt. Sterling

Congregations - Adath Israel (reform), Ohavey Zion (traditional)

Financial Institutions

<u>Banks</u>	<u>Assets</u>	<u>Deposits</u>	<u>Statement Date</u>
Exchange Bank of Kentucky	\$36,733,073.50	\$31,675,913.26	6/30/80
Montgomery Bank and Trust Company	29,707,118.62	26,567,501.54	6/30/80
Mt. Sterling National Bank	42,279,272.00	37,396,074.00	6/30/80
Traders National Bank and Trust Company	38,597,374.00	32,955,847.50	6/30/80
<u>Savings and Loan Associations</u>	<u>Assets</u>	<u>Savings Accounts</u>	<u>Statement Date</u>
Mt. Sterling Federal Savings and Loan Association	\$15,324,489.63	\$13,773,446.76	6/30/80

Hotels and Motels

Total number - 5

Total rooms - 190

Clubs and Organizations

American Legion
American Legion Auxiliary
Beta Club
Beta Sigma Phi (Gamma Delta Chapter)
Boy Scouts
Brownies
Chamber of Commerce
Civitan Club
Daughters of the American Revolution (DAR)
Eastern Star
Free and Accepted Masons (F & AM)
Farm Bureau
Fine Arts Guild
4-H
Future Farmers of America (FFA)
Future Homemakers of America (FHA)
Garden Club
Girl Scouts
Historical Society
Homemakers
Independent Order of Odd Fellows (IOOF)
Jaycees
Kiwanis Club
Lioness Club
Lions Club
Little Theatre Group
Mary Chiles Hospital Auxiliary
Masons
Metropolitan Woman's Club
Ministerial Association
Rebekahs
Rotary
Senior Citizens
Tuesday Club
Welcome Wagon
Woman's Civic Club

RECREATION

Local

Mt. Sterling offers a variety of recreational opportunities for all ages. The Mt. Sterling-Montgomery County Recreation, Tourism, and Convention Commission, which has a full-time director and three staff members, maintains the facilities in the three local parks. The Mt. Sterling-Montgomery County Pool and Park contains a covered junior Olympic-size swimming pool, bathhouse facilities, four lighted tennis courts, an outdoor basketball court, a tot lot with a variety of playground equipment, and a picnic area with a covered shelter. A softball diamond is located at Spenser Park and the newly developed Pribble Park has two Little League baseball diamonds, an all-purpose building, and a picnic area. Supervised programs are offered year round in activities such as softball, baseball, swimming, tennis, Little League football, soccer, and adult basketball and volleyball. In addition, the Montgomery County Board of Education maintains a variety of recreational facilities at the local schools which can be used for a number of supervised programs. These facilities include five gymnasiums, two football fields, two Little League baseball diamonds, five tennis courts, three playgrounds and an outdoor basketball court. The Recreation Commission has located in a renovated building with offices and a recreation center offering ping-pong, pool, and pinball machines.

Private recreational facilities include a country club with a swimming pool and a 9-hole golf course; one indoor and two drive-in movie theaters; Sid Calk Lake, Inc., a private recreational and real estate development; The McKee Boy Scout Reservation; and Greenbriar Lake, a fishing lake.

October Court Day is an annual event which attracts thousands of people to Mt. Sterling. With the old time trading and selling of everything from Barlow knives to hunting dogs, this event marks the opening of the fall term of court. Court Day is held on the third Monday in October, however, the festivities begin the Saturday before.

A new event held in Mt. Sterling is the old fashioned Gate City Days, which features a week of historic displays, games, costume contests, and the largest parade of the year.

Area (Within 55 miles)

Fort Boonesborough State Park, 24 miles southwest of Mt. Sterling on the Kentucky River, features a reproduction of the pioneer fort built by Daniel Boone and his band of brave pioneers in 1775. The park offers camping sites, beach and bathhouse, boat and motor rentals, docks, and a playground/picnic area. Riverboat cruises on the Kentucky River, daily activities, and special events provide recreation for children and adults Memorial Day through Labor Day.

(Contd.)

The Daniel Boone National Forest, which covers 650,000 acres of timberland in eastern Kentucky, is within easy driving distance of Mt. Sterling. The forest is a vast reserve of natural wooded beauty. There are scenic hiking trails, rivers and creeks stocked with rainbow trout, special hunting preserves, and many camping and fishing facilities.

Natural Bridge State Resort Park, 33 miles south of Mt. Sterling, is a 1,899-acre park located in the Daniel Boone National Forest where cliffs and stone arches fill the landscape. The main attraction of the park is Natural Bridge, the largest of 12 natural sandstone arches in the park. The park has a 35-room resort lodge with a dining room and gift shop, efficiency and one-bedroom cottages, and 95 camping sites. Other facilities include a 54-acre lake, a swimming pool, picnic shelters and playgrounds, hiking trails, and a riding stable. A sky-lift going up to Natural Bridge is operated from April 15 to October 31.

Blue Licks Battlefield State Park, 35 miles to the north, is the last site of what was called the last battle of the Revolution and the Indian-Pioneer struggle in Kentucky. Tourist attractions at the park include a monument to pioneers who fought in the Battle of Blue Licks, and a museum with exhibits of prehistoric animal bones, Indian and pioneer artifacts, and an audiovisual program. Facilities for swimming, fishing, hiking, and picnicking are also provided.

Carter Caves State Resort Park, 52 miles to the east, covers 1,000 acres encompassing beautiful cliffs, streams and 20 caves. Among the 20 caves is Bat Cave, the home of the Social Bat which is included on the U.S. list of vanishing species. The park has a 28-room lodge, dining room, coffee shop, gift shop, and one and two-bedroom cottages. Other facilities at the park include 86 campsites, a swimming pool, a 37-acre lake, a 9-hole golf course, pro shop, miniature golf course, picnic shelter, playground, 300-seat convention center, and tennis courts. Guided tours of the caves are available. Tygarts State Forest, 800 acres on the western boundary of the park, is open for hiking, picnicking, and state regulated hunting in season.

The 8,270-acre Cave Run Lake is located 26 miles east of Mt. Sterling within the Daniel Boone National Forest. The Lake was constructed by the U.S. Army Corps of Engineers and the U.S. Forest Service is developing the recreational facilities which include camp sites, a beach, boat ramps, fishing areas, and hiking trails.

Waveland State Shrine near Lexington is the site of a complete plantation village, a Greek Revival mansion, and the Kentucky Life Museum with hundreds of pioneer items and Civil War relics. White Hall State Shrine near Richmond is the site of the Italianate mansion of Cassius Marcellus Clay, the early abolitionist and politician.

The scenic landscape of the Bluegrass is the home of many championship horses with a number of farms open to the public. Lexington, 36 miles to the west, offers excellent thoroughbred and harness racing at Keeneland Race Course and Red Mile Harness Track which feature several meets each year.

(Contd.)

The Kentucky Horse Park, located on 963 rolling bluegrass acres near Lexington, is the first park dedicated to the horse. Facilities at the park include a visitors information center with a film presentation, a museum, gift shop, walking tour, events area, horseback and pony rides, horsedrawn rides, vehicle demonstration area, restaurant, picnic area and campground. Several private companies offer tours of Lexington thoroughbred, standardbred and saddlebred horse farms.

COMMUNITY IMPROVEMENTS

Industrial and Commercial

Midland Trail Industrial Park, located just east of Mt. Sterling on U.S. 60, is a multi-county industrial park site developed by the Mt. Sterling-Montgomery County Industrial Foundation. The park contains 186 acres of land available for industrial use with all utilities and rail service available on-site.

Bob's Food Service, a regional food distribution firm, is the first occupant of Midland Trail Industrial Park. The firm is expected to be in operation in its new facility early in 1981 with 75 employees.

The Mt. Sterling Advocate, a weekly newspaper, has purchased an adjoining building which will provide additional office space and storage for newsprint. The expansion will double the size of existing plant facilities. The newspaper has also purchased new compugraphic typesetting equipment. The Advocate Advertiser, a weekly shopper, is now published by the newspaper and mailed free in a nine-county area.

The Montgomery County News, a weekly newspaper published by the Kentucky Publishing Company, began serving Mt. Sterling and Montgomery County in the spring of 1980. The newspaper has a projected circulation of 5,000 copies to be distributed by mail and there are plans to extend circulation to the entire county and surrounding counties. Composed and published in Morehead, the newspaper has an editorial, advertising and distribution office in Mt. Sterling.

A six-block area of downtown Mt. Sterling has been placed on the National Register of Historic Places.

A new shopping center, Mt. Sterling Plaza, has opened.

Transportation

A 1.6-mile extension of the Mt. Sterling Bypass from U.S. 60 West to U.S. 460 North has been completed. Construction on extensions of the bypass from U.S. 460 South to Kentucky 11 South and from U.S. 460 South to U.S. 60 East is scheduled to begin in the spring of 1981 with completion scheduled within one year.

The 2,800-foot runway of the Mt. Sterling-Montgomery County Airport has been resurfaced, visual approach slope indicator (VASI) lights and strobe lights have been installed at each end of the runway, a new 200 by 300-foot parking area for planes has been completed, and new fuel facilities have been installed. In addition, the land has been acquired for the future construction of a second runway which can accommodate small jets.



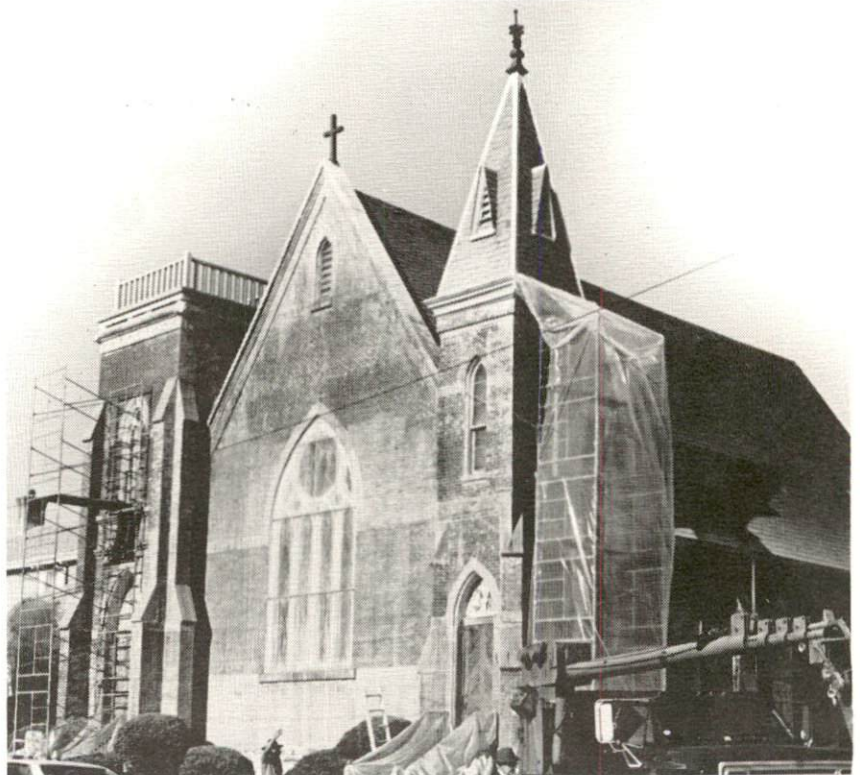
Downtown buildings slated for historic renovation and preservation



Ample parking space available in downtown Mt. Sterling



Rehabilitation of old hotel building



Renovation of downtown church building

Utilities

The Mt. Sterling Water Works and Sewer System has installed new water mains in the Ross Melton development and the Follett development west of the Mt. Sterling Bypass. There are plans to construct a new 500,000-gallon elevated water storage tank to serve the southwest side of the system.

The capacity of the sewage treatment plant has been increased to 5,310,000 gallons per day and the treatment process has been improved.

Plans are under way for the construction of a new building to house offices for the Mt. Sterling Water Works and Sewer System. The new building should be ready for occupancy by the end of 1981.

Education

The C. C. Chenault Vocational Agriculture and Horticulture Center, which houses all of the Montgomery County School System's vocational classes, was completed in 1977. The facility also includes two modern greenhouses.

A secondary alternative learning program was established at the Montgomery County High School in 1979.

Projects in the planning stage include additional classrooms at Mapleton Elementary School and additional classrooms and a new library at Camargo Elementary School; a new middle school for grades 6 through 8; and an expansion of the area vocational education center facilities.

The State Board of Occupational Education has approved plans for the construction of a state vocational-technical school at Morehead. Funding for construction of the school is expected during the 1980-82 biennium. The school will provide postsecondary vocational training for students in the region which includes Montgomery County.

Health

A major expansion and renovation project was completed at Mary Chiles Hospital in the spring of 1980. Twenty beds including a four-bed intensive care-coronary care unit were added and the first and second floors of the hospital were renovated. Additional medical specialists have been recruited to staff the expanded hospital facilities.

In addition, new radio communication equipment, received through the Boone Regional Emergency Medical Service, has been installed at the hospital to provide contact with ambulances.

A new 60-bed nursing home, the Montgomery County Care Center, provides 52 intermediate care and 8 personal care beds. Construction of a 30-bed addition to the facility is planned.

Construction of the Montgomery County Health and Civic Center was completed in the spring of 1980. The Montgomery County Health Department offices are located in the new facility which contains space for examination rooms, a laboratory, and X-ray equipment.

The Mt. Sterling Medical Center is a new, modern steel and concrete structure which houses offices for seven physicians and a laboratory and X-ray room.

Adjacent to the Mt. Sterling Medical Center, is a new one-story building housing a pharmacy, a dentist's office, and a cardiac rehabilitation room.

A new building to house the Cave Run Clinic is planned. The building will contain offices for six physicians, a laboratory, and an X-ray room.

Public Safety

The Mt. Sterling Police Department has established a selection process for police officers involving written and physical examinations and other evaluations. The department participates in the formal education incentive program and has increased the law enforcement training requirements to a minimum of 80 hours a year. The force presently receives an average of 120 hours of training a year.

In addition, the police department has received and is implementing three federal grants providing (1) an emergency power source for radio equipment, (2) funds for radio equipment and telephone recording equipment, (3) and a cooperative communications center to be located at police headquarters which combines all emergency communications and provides a central dispatching unit. Dark room equipment has also been purchased and installed.

The Mt. Sterling Fire Department plans to purchase another pumper and to hire several additional full-time employees by the spring of 1981.

The Montgomery County Fire Department has added two 1,000 gpm pumpers each with a 750-gallon tank and one 260-gallon mini-pumper with a 500 gpm pump. A second fire station has been constructed and an emergency operations center has been installed in the new station. There are plans for the construction of three more fire stations - one at Judy, one at the Midland Trail Industrial Park, and one at the levee, 6 miles north of Mt. Sterling. This will enable the fire department to cover the entire county adequately and will reduce the American Insurance Association Fire Rating for the county to nine.

There are plans to expand the training of the Montgomery County Rescue Squad's volunteers with an automobile extrication course and additional general rescue training courses.

Recreation

An existing building has been renovated to house offices for the Mt. Sterling-Montgomery County Recreation Commission and a recreation center.

There are plans to develop an outdoor sports facility with areas for baseball, soccer and other sporting events. The development will be sponsored by two civic clubs and several private individuals.

There are plans to develop a recreational area as part of the overall development of the Midland Trail Industrial Park.

Other

A revenue bond issued by Montgomery County was sponsored by the four Mt. Sterling banks to make new home loans available at an interest rate of 8.7 percent. At the end of 1980, approximately \$2.5 million in funds were still available for the loan program which will continue through 1981.

The new 21,000-square-foot Montgomery County Health and Civic Center was completed in the spring of 1980 at a total cost of \$1 million. The two-story building was designed to consolidate several public service facilities and houses expanded facilities for the Montgomery County Health Department, offices of the Bureau for Manpower Services, space for additional offices, a large civic activities room which can be partitioned into three separate sections, and a catering kitchen. Ample parking space is also available.

City Hall and offices of the Mt. Sterling Police Department have been renovated.

The City has hired a city administrator.

City officials have applied for "701" funds to update and revise the land use plan, zoning ordinances, and other planning documents.

The Tenny Hill Housing and Urban Development Project to rehabilitate Tenny Hill Avenue in the southeast section of Mt. Sterling is under way. This \$450,000 project involves the rehabilitation of 26 houses, the acquisition of 12 parcels of land to be used for a housing development, and the widening of Tenny Hill Avenue. The project is scheduled to be completed in May of 1981. The City also plans to apply for grants to redevelop the area surrounding Tenny Hill Avenue.

The Mt. Sterling-Montgomery County Public Library began operating in January of 1980 under a demonstration grant from the Commonwealth of Kentucky. The library, which was previously privately run, now offers an expanded collection and additional services including a bookmobile, audiovisual equipment, Interlibrary Loan, and full-time hours of operation.