

1978

# Industrial Resources: Nelson County - Bardstown and Bloomfield

Kentucky Library Research Collections  
Western Kentucky University, [spcol@wku.edu](mailto:spcol@wku.edu)

Follow this and additional works at: [https://digitalcommons.wku.edu/nelson\\_cty](https://digitalcommons.wku.edu/nelson_cty)

 Part of the [Business Administration, Management, and Operations Commons](#), [Growth and Development Commons](#), and the [Infrastructure Commons](#)

---

## Recommended Citation

Kentucky Library Research Collections, "Industrial Resources: Nelson County - Bardstown and Bloomfield" (1978). *Nelson County*. Paper 9.  
[https://digitalcommons.wku.edu/nelson\\_cty/9](https://digitalcommons.wku.edu/nelson_cty/9)

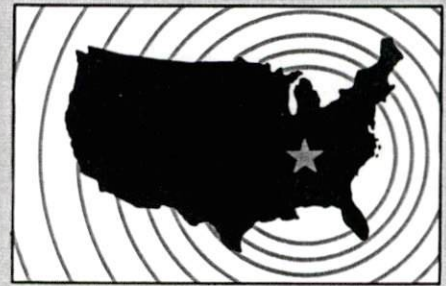
This Report is brought to you for free and open access by TopSCHOLAR®. It has been accepted for inclusion in Nelson County by an authorized administrator of TopSCHOLAR®. For more information, please contact [topscholar@wku.edu](mailto:topscholar@wku.edu).

# ***INDUSTRIAL RESOURCES***

## **BARDSTOWN**

## **BLOOMFIELD**

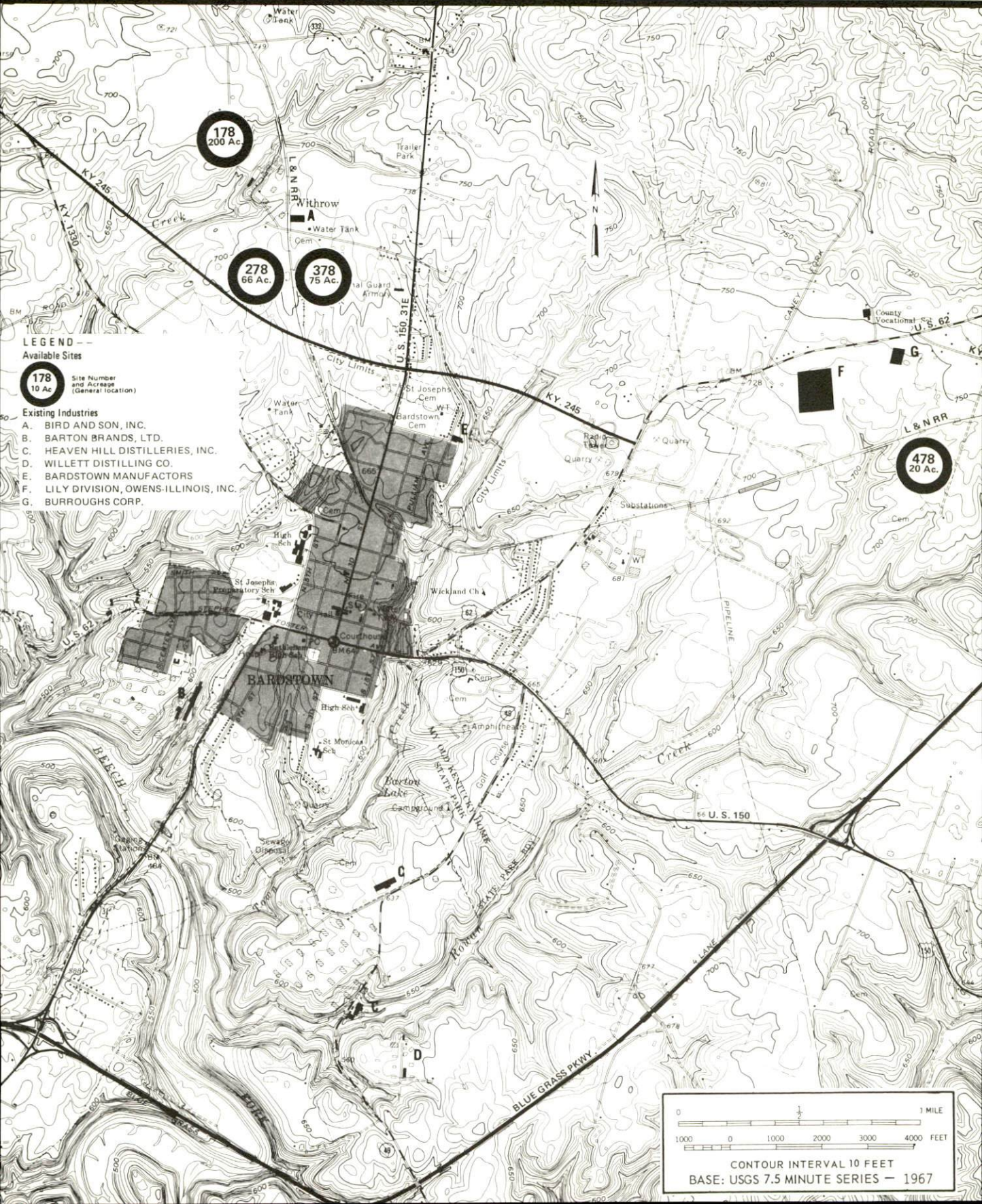
**Kentucky  
first**



**DEPARTMENT OF COMMERCE**

# BARDSTOWN, KENTUCKY --- Index to Industrial Sites --- 1978

For detailed data on individual sites, contact Mr. Jack Kelly, 202 E. Stephen Foster Avenue, Bardstovvn, Kentucky 40004 or the Kentucky Department of Commerce, Industrial Development Division, Capital Plaza Tower, Frankfort, Kentucky 40601.

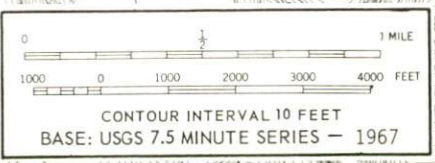


**LEGEND ---**  
**Available Sites**

- 178**  
10 Ac. Site Number and Acreage (General location)
- 278**  
66 Ac.
- 378**  
75 Ac.
- 478**  
20 Ac.

**Existing Industries**

- A. BIRD AND SON, INC.
- B. BARTON BRANDS, LTD.
- C. HEAVEN HILL DISTILLERIES, INC.
- D. WILLETT DISTILLING CO.
- E. BARDSTOVVN MANUFACTORS
- F. LILY DIVISION, OWENS-ILLINOIS, INC.
- G. BURROUGHS CORP.



INDUSTRIAL RESOURCES  
BARDSTOWN AND BLOOMFIELD, KENTUCKY

Prepared by  
The Kentucky Department of Commerce  
Division of Research and Planning  
in cooperation with  
The Bardstown Chamber of Commerce  
and  
The City of Bloomfield

1978

## TABLE OF CONTENTS

<u>Chapter</u>	<u>Page</u>
INDUSTRIAL SITES . . . . .	i
SUMMARY OF INDUSTRIAL RESOURCES - BARDSTOWN AND BLOOMFIELD, KENTUCKY . . . . .	1
THE LABOR MARKET AREA . . . . .	7
Population . . . . .	7
Labor Force Characteristics of Residents, 1976 . . . . .	7
Nelson County Manufacturing Firms, Their Products and Employment . . . . .	8
Labor Organizations . . . . .	10
Industrial Services . . . . .	10
Estimated Male Labor Supply . . . . .	11
Estimated Female Labor Supply . . . . .	11
Average Weekly Wages By Industry, By Place of Work, 1976 . . . . .	12
Per Capita Personal Income . . . . .	14
TRANSPORTATION . . . . .	15
Rail . . . . .	15
Highways . . . . .	15
Truck Service . . . . .	16
Air . . . . .	17
Bus . . . . .	18
Taxi . . . . .	18
Rental Services . . . . .	18
Water . . . . .	18
POWER AND FUEL . . . . .	19
Electricity . . . . .	19
Natural Gas . . . . .	20
Other Fuels . . . . .	20
WATER AND SEWERAGE . . . . .	22
Water . . . . .	22
Sewerage . . . . .	24
CLIMATE . . . . .	25

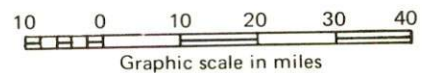
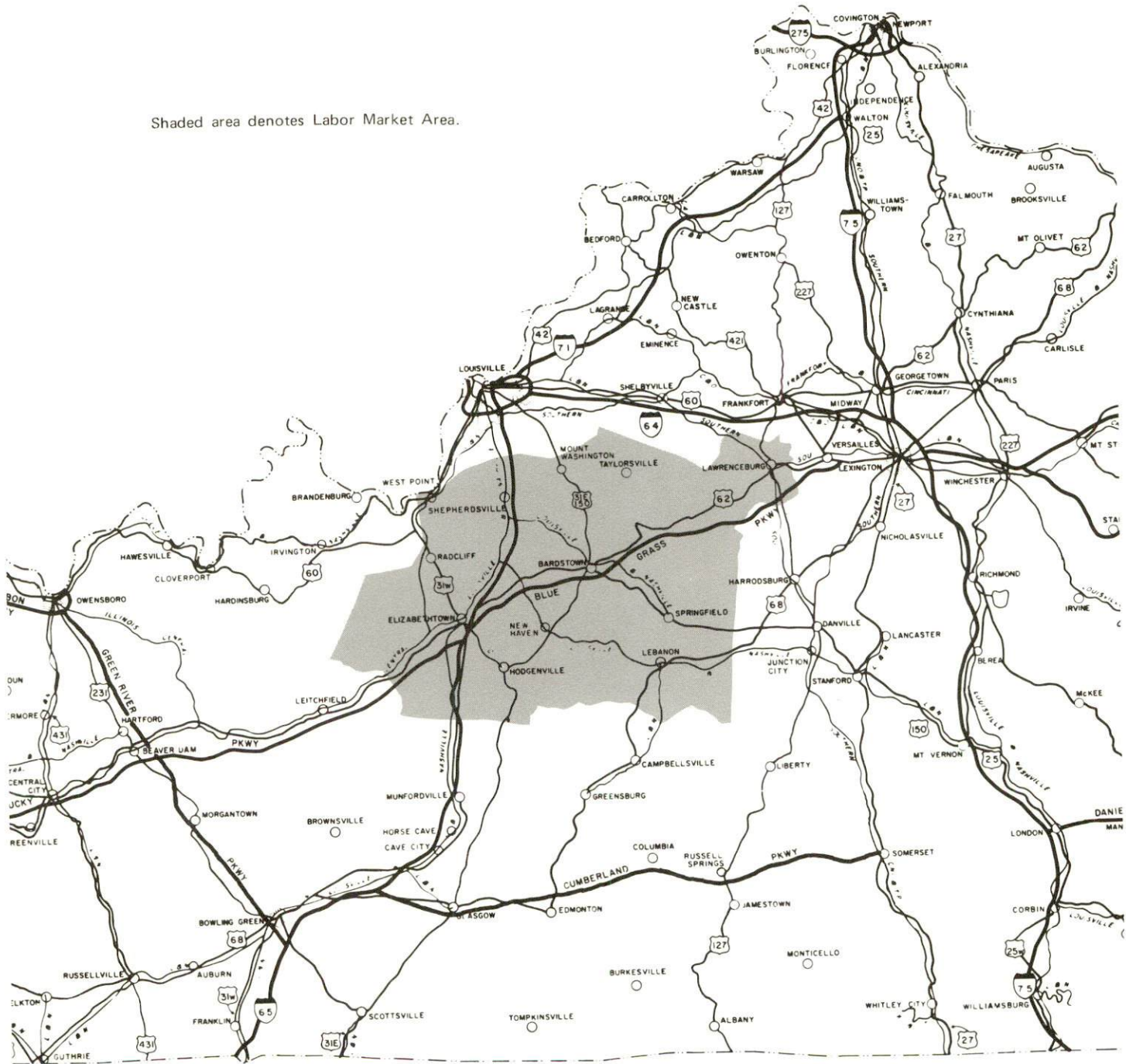
<u>Chapter</u>	<u>Page</u>
LOCAL GOVERNMENT . . . . .	26
City . . . . .	26
County . . . . .	26
Assessed Value of Property, 1977 . . . . .	26
Property Taxes . . . . .	27
Combined State and Local Rates Per \$100 Valuation, 1977 . . . . .	27
Planning and Zoning . . . . .	28
Safety . . . . .	28
Police . . . . .	28
Fire . . . . .	28
Rescue Service . . . . .	28
Refuse Collection and Disposal . . . . .	28
EDUCATION . . . . .	29
Public Schools . . . . .	29
Nonpublic Schools . . . . .	29
Area Colleges and Universities . . . . .	30
Vocational Schools . . . . .	31
HEALTH . . . . .	32
Local Medical Personnel . . . . .	32
Hospitals . . . . .	32
Other Medical Facilities . . . . .	32
Ambulance Service . . . . .	32
Public Health . . . . .	32
OTHER LOCAL FACILITIES . . . . .	33
Communications . . . . .	33
Library Services . . . . .	34
Religious Institutions . . . . .	34
Financial Institutions . . . . .	35
Hotels and Motels . . . . .	35
Clubs and Organizations . . . . .	36
RECREATION . . . . .	37
COMMUNITY IMPROVEMENTS . . . . .	39



# BARDSTOWN & BLOOMFIELD LABOR MARKET AREA



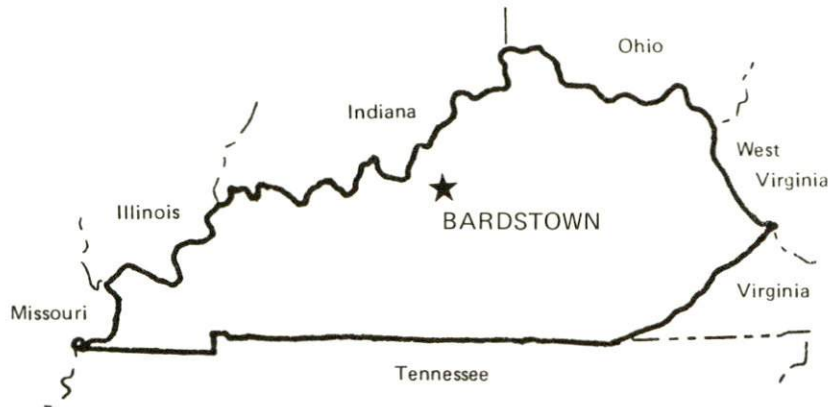
Shaded area denotes Labor Market Area.





SUMMARY OF INDUSTRIAL RESOURCES  
BARDSTOWN AND BLOOMFIELD, KENTUCKY

LOCATION



Road Distance in Miles:

Atlanta	399	Baltimore	601
Chicago	<u>331</u>	Detroit	<u>397</u>
New York	<u>763</u>	St. Louis	<u>302</u>

POPULATION

City of Bardstown, 1975	6,671
City of Bloomfield, 1975	<u>947</u>
Nelson County, 1976	24,600
Labor Market Area, 1976	<u>194,000</u>
% Nonwhite - Nelson County, 1976	<u>7.7</u>

LABOR ANALYSIS

Labor Market Area - Nelson, Anderson, Bullitt, Hardin, Larue, Marion, Spencer and Washington Counties

Estimated available workers from labor market area:

Male	<u>8,270</u>	Female	<u>9,920</u>
Unemployment rate, 1976		Labor Market Area	<u>6.4%</u>
Nelson County	8.4%	Larue County	<u>5.0%</u>
Anderson County	<u>4.3%</u>	Marion County	<u>8.3%</u>
Bullitt County	<u>4.9%</u>	Spencer County	<u>5.7%</u>
Hardin County	<u>6.2%</u>	Washington County	<u>8.0%</u>

Total employment, Nelson County, 1976 - 8,900

Manufacturing employment in labor market area, 1976 - 7,920

Major local manufacturing plants:

<u>Name</u>	<u>Employment</u>
<u>Owens-Illinois, Inc.</u>	<u>530</u>
<u>Barton Brands, Ltd.</u>	<u>285</u>
<u>Heaven Hill Distilleries, Inc.</u>	<u>250</u>
<u>Bird &amp; Son, Inc.</u>	<u>206</u>
<u>Bardstown Manufacturers</u>	<u>200</u>
<u>Burroughs Corporation</u>	<u>188</u>

Labor unions in local manufacturing plants:

Distillery Workers; Ladies' Garment Workers; Teamsters;  
Paperworkers

TRANSPORTATION

Highways:

Interstate - I-65, 23 miles west; Parkway - Blue Grass Parkway  
U.S. Highways - U.S. 62, 31-E and 150

Rail:

Railroad - Louisville and Nashville Railroad Company  
Distance to nearest piggyback - 39 miles

Truck:

Number of interstate motor carriers - 8  
Local terminals - 1 (intrastate carrier)

Water:

Nearest navigable river - Ohio River  
Nearest public riverport - Louisville  
Distance - 39 miles

Air:

Nearest commercial service - Louisville  
Distance - 39 miles; Airlines serving - TWA, American, Eastern,  
Delta, Piedmont, Ozark, Allegheny and Air Kentucky (commuter)  
Nearest local airport - Samuels Airport  
Distance - 2 miles from Bardstown; Runway length - 4,000 feet

UTILITIES AND SERVICES

Electricity:

Bardstown

Local distributor - Bardstown Municipal Light and Water Company  
Source of power - Kentucky Utilities Company

Bloomfield

Local distributor - Kentucky Utilities Company  
Source of power - Kentucky Utilities Company

Natural Gas:

Bardstown

Local distributor - Louisville Gas and Electric Company  
Source of supply - Texas Gas Transmission Corporation  
Available for new industry - No

Bloomfield

Natural gas is not available in Bloomfield.

Other Fuels:

Number of area propane distributors - 6  
Number of area distillate fuel oil distributors - 6

Water, treated:

Bardstown

Local supplier - Municipal; Excess municipal system capacity - 350,000 gpd;  
Expansions planned - Yes

Bloomfield

Local supplier - Municipal; Excess municipal system capacity - 36,000 gpd;  
Expansions planned - No

Water, raw:

Source for industrial use - Sympson Lake

Sewer:

Bardstown

Excess treatment capacity - 150,000 gpd  
Planned expansions - Yes

(Contd.)

Bloomfield

Excess treatment capacity - 60,000 gpd  
Planned expansions - No

Industrial Services

	<u>Location</u>	<u>Miles Distant</u>
Tool & Die, Machine & Pattern Shops	<u>Elizabethtown</u>	<u>25</u>
Metal Service Centers	<u>Louisville</u>	<u>39</u>
Heat Treating	<u>Louisville</u>	<u>39</u>
Metal Finishers	<u>Elizabethtown</u>	<u>25</u>
Electric Motor Repair	<u>Lebanon</u>	<u>25</u>

CLIMATE

Temperature, Normal - 55.2 degrees F.  
Precipitation, Normal - 44.49 inches  
Snowfall, Mean Annual - 15.70 inches  
Prevailing Winds - South  
Relative Humidity (%) - 7 a.m. - 81; 7 p.m. - 63

GOVERNMENT

Bardstown

Type - Mayor-City Council  
Police personnel - Full-time - 15  
Fire department personnel - Volunteers - 25  
Fire insurance rating (A.I.A.), class - Inside city - 6  
Outside city - 10

Bloomfield

Type - Mayor-City Council  
Police personnel - Full-time - 4  
Fire department personnel - Volunteers - 21  
Fire insurance rating (A.I.A.), class - Inside city - 8  
Outside city - 10

TAXES

Property taxes:

Combined state and local rates per \$100 valuation, 1977  
(100% assessment)

	<u>Inside City of Bardstown</u>	<u>Inside City of Bloomfield</u>	<u>Outside City</u>
1. Land and buildings	<u>\$1.100</u>	<u>\$1.035</u>	<u>\$0.760</u>
2. Mfg. machinery, raw materials, goods in process, pollution control equipment	<u>0.150</u>	<u>0.150</u>	<u>0.150</u>
3. Finished goods, office equipment, vehicles, other tangibles	<u>1.235</u>	<u>1.170</u>	<u>0.895</u>
4. Intangibles (accounts, notes, bonds, etc.)	<u>0.250</u>	<u>0.250</u>	<u>0.250</u>

EDUCATION

State vocational-technical school - Elizabethtown, 25 miles distant  
Area vocational education center - Bardstown  
Colleges - St. Catharine Junior College, 12 miles distant;  
Elizabethtown Community College, 25 miles distant

Public Schools:

High school enrollment - 1,721; Student/teacher ratio - 18-1  
Junior High/Middle school enrollment - 1,587; Student/teacher ratio - 19-1  
Elementary school enrollment - 2,555; Student/teacher ratio - 18-1

Nonpublic Schools:

Enrollment - 1,257; Student/teacher ratio - 21-1

FINANCIAL INSTITUTIONS

Bardstown

Banks - 2; Total assets - \$42,200,446.15  
Savings & loan associations - 2; Total assets - \$102,709,143.60\*

Bloomfield

Banks - 1; Total assets - \$12,448,284.80

\*Includes assets of First Federal Savings & Loan Association of Elizabethtown which has a branch office in Bardstown.

### COMMUNICATIONS

Local newspaper - The Kentucky Standard, weekly

Local radio station - WBRT

Television station - Cable service available

### MEDICAL

Number of physicians locally - 11; Number of dentists locally - 8  
Hospital - Flaget Memorial Hospital; Number of beds - 52

### RELIGIOUS FACILITIES

Churches - 21; Nearest synagogues - Louisville, 39 miles distant

### PUBLIC LODGING

Total number hotels and motels - 7; Total rooms - 249

### RECREATION FACILITIES

#### Bardstown

Public golf courses - 1; Parks - 3; Tennis courts - 3  
Swimming pools - 2; Country clubs - 1

#### Bloomfield

Parks - 1; Tennis courts - 1

State park - My Old Kentucky Home State Park, Bardstown

Tours of My Old Kentucky Home; "The Stephen Foster Story" outdoor  
drama in summer; Park camping; Golf; Open year round

THE LABOR MARKET AREA

Area	POPULATION		Percent Nonwhite
	1976*	1970	1970
Bardstown	6,671**	5,816	15.4
Bloomfield	947**	1,072	20.9
Labor Market Area	194,000	180,948	N/A
Nelson County	24,600	23,477	7.7
Anderson County	10,800	9,358	4.8
Bullitt County	34,900	26,090	0.9
Hardin County	80,200	78,421	9.0
Larue County	11,100	10,672	4.7
Marion County	16,400	16,714	8.8
Spencer County	5,600	5,488	4.4
Washington County	10,400	10,728	10.6

\*Provisional Estimates.

\*\*1975 Population Estimates.

Sources: U.S. Department of Commerce, Bureau of the Census, Census of Population, 1970. U.S. Department of Commerce, Bureau of the Census, Current Population Reports, Series P-25, No. 665, May 1977; Series P-26, No. 76-17, July 1977.

LABOR FORCE CHARACTERISTICS OF RESIDENTS, 1976

	Nelson County	Labor Market Area
Civilian Labor Force	9,719	65,641
Employment	8,901	61,435
Agricultural	1,189	7,298
Nonagricultural	7,712	54,137
Unemployment	818	4,206
Rate of Unemployment (%)	8.4	6.4

Source: Kentucky Department for Human Resources, Kentucky Labor Force Estimates, Annual Averages, 1976.

NELSON COUNTY MANUFACTURING FIRMS,  
THEIR PRODUCTS AND EMPLOYMENT

Firm (Establishment date)	Product	Employment			Organized
		Total	Male	Female	
Bardstown Asphalt Company, Inc. (1958)	Asphalt	4	4	0	
Bardstown Farms, Inc. (1966)	Country hams, bacon	5	4	1	
Bardstown Manufacturers (1950)	Ladies' knit suits	200	10	190	*
Bardstown Mills (1819)	Feed	8	8	0	
Barton Brands, Ltd. (1879)	Whiskey, feed	285	225	60	*
Bird & Son, Inc. (1966)	Building materials	206	173	33	*
Boones Abattoir, Inc. (1946)	Meat processing	16	8	8	
Burroughs Corporation (1972)	Fabric business machine ribbons, paper rolls for business machines	188	68	120	*
Cleveland Welding & Equipment Company (1950)	Steel tanks, miscellaneous steel fabrication	9	8	1	
Elizabethtown Ready Mix Concrete Company (1951)	Ready mix concrete	41	40	1	
Heaven Hill Distilleries, Inc. (1935)	Whiskey, gin, vodka, distillers dried grains	250	200	50	*
Lily Division of Owens-Illinois, Inc. (1968)	Paper cups and plates, plastic cups and containers	530	370	160	*
Mago Construction Company, Inc. (1958)	Bituminous concrete surface mixes	22	19	3	
R.A. Parrish Concrete Products (1958)	Concrete blocks, precast concrete silo staves	17	16	1	

(Contd.)



<u>Firm</u> (Establishment date)	<u>Product</u>	<u>Employment</u>			<u>Organized</u>
		<u>Total</u>	<u>Male</u>	<u>Female</u>	
Standard Publishing Company (1900)	Newspaper, letterpress printing, offset printing	24	13	11	
The Willett Distilling Company (1937)	Whiskey	47	30	17	*
<u>Bloomfield</u>					
D.B. Sutherland & Sons, Inc. (1810)	Flour, corn meal, sea- soning for meat and poultry, feed	20	16	4	
<u>Boston</u>					
James B. Beam Distilling Company (1953)	Whiskey, distillers dried grain	74	68	6	*
David E. Wallace (N/A)	Country hams	2	2	0	
Kirby Woolsey & Son (1950)	Lumber, crossties, chips	25	24	1	

\*See Labor Organizations below.

Source: Kentucky Department of Commerce, Division of Research and Planning.

## LABOR ORGANIZATIONS

<u>Union</u>	<u>Representing manufacturing workers at:</u>
Distillery, Rectifying, Wine and Allied Workers' International Union	Barton Brands, Ltd.; Heaven Hill Distilleries, Inc.; James B. Beam Distilling Company; The Willett Distilling Company
International Ladies' Garment Workers' Union	Bardstown Manufacturers
International Brotherhood of Teamsters, Chauffeurs, Warehousemen and Helpers of America	Bird & Son, Inc.; Burroughs Corporation
United Paperworkers International Union	Lily Division of Owens-Illinois, Inc.

## INDUSTRIAL SERVICES

	<u>Location</u>	<u>Miles Distant</u>
Tool & Die, Machine & Pattern Shops	Elizabethtown	25
Metal Service Centers	Louisville	39
Heat Treating	Louisville	39
Metal Finishers	Elizabethtown	25
Electric Motor Repair	Lebanon	25

Source: Kentucky Directory of Selected Industrial Services, 1977.

ESTIMATED MALE LABOR SUPPLY  
BARDSTOWN AND BLOOMFIELD LABOR MARKET AREA

Area	Current			Under- employed	Future
	Total	Not in Labor Force	Unemployed		Reaching 18 years of age before 1983
Labor Market					
Area	8,270	0	4,170	4,100	9,744
Nelson	1,200	0	840	360	1,538
Anderson	340	0	230	110	454
Bullitt	920	0	520	400	1,751
Hardin	3,750	0	1,190	2,560	3,440
Larue	430	0	240	190	606
Marion	900	0	620	280	1,032
Spencer	210	0	130	80	301
Washington	520	0	400	120	622

Sources: Kentucky Department for Human Resources, Kentucky Labor Supply Estimates by County, 1976. Kentucky Department of Commerce, Future Labor Supply Before 1983.

ESTIMATED FEMALE LABOR SUPPLY  
BARDSTOWN AND BLOOMFIELD LABOR MARKET AREA

Area	Current			Under- employed	Future
	Total	Not in Labor Force	Unemployed		Reaching 18 years of age before 1983
Labor Market					
Area	9,920	5,760	1,110	3,050	9,238
Nelson	660	0	200	460	1,506
Anderson	310	0	130	180	449
Bullitt	800	0	150	650	1,609
Hardin	6,470	5,060	280	1,130	3,234
Larue	350	70	60	220	568
Marion	490	100	150	240	1,029
Spencer	450	370	40	40	295
Washington	390	160	100	130	548

Sources: Kentucky Department for Human Resources, Kentucky Labor Supply Estimates by County, 1976. Kentucky Department of Commerce, Future Labor Supply Before 1983.

AVERAGE WEEKLY WAGES BY INDUSTRY,  
BY PLACE OF WORK, 1976

	<u>Nelson County</u>	<u>Anderson County</u>	<u>Bullitt County</u>	<u>Hardin County</u>
All Industries	\$168.62	\$156.49	\$155.20	\$152.76
Mining & Quarrying	381.73	*	*	155.94
Contract Construction	186.79	108.40	145.24	200.95
Manufacturing	207.96	189.55	199.78	190.65
Transportation, Communications & Public Utilities	259.16	253.24	186.85	192.70
Wholesale & Retail Trade	117.30	101.00	129.81	121.47
Finance, Insurance & Real Estate	141.80	154.15	147.97	155.17
Services	98.68	94.35	95.26	126.40
Other	75.49	63.52	*	93.01

	<u>Larue County</u>	<u>Marion County</u>	<u>Spencer County</u>	<u>Washington County</u>
All Industries	\$112.28	\$121.32	\$151.85	\$119.45
Mining & Quarrying	0	*	0	0
Contract Construction	87.37	126.86	*	220.66
Manufacturing	112.00	150.58	130.18	131.38
Transportation, Communications & Public Utilities	211.21	148.60	148.10	145.10
Wholesale & Retail Trade	105.27	100.71	111.70	85.07
Finance, Insurance & Real Estate	154.07	136.33	*	167.20
Services	90.15	95.54	172.65	82.76
Other	46.29	69.80	*	*

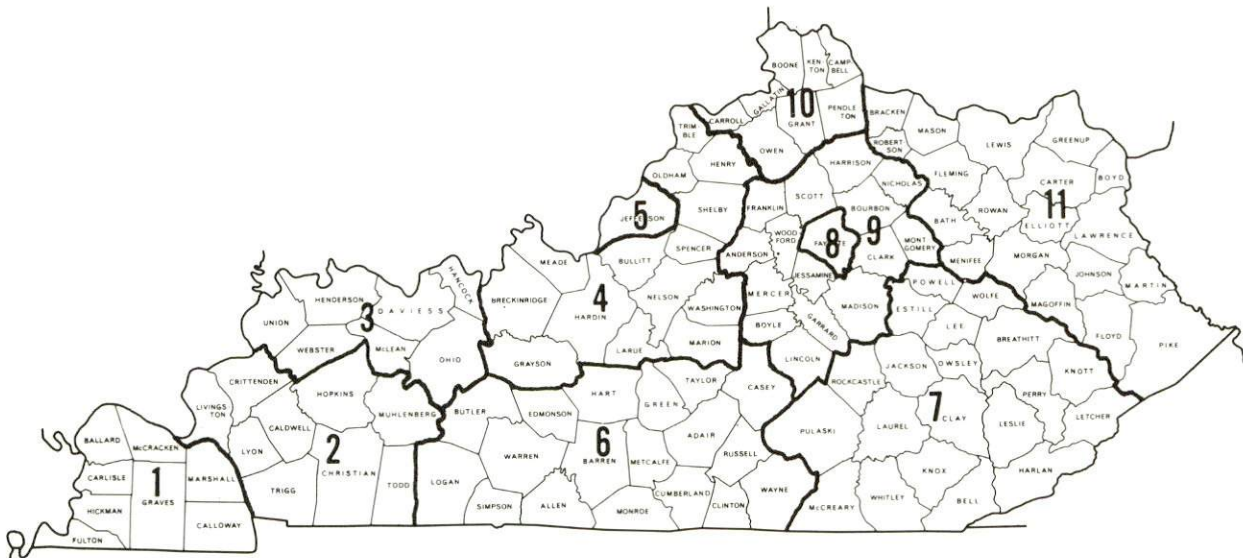
\*Not disclosed.

Note: Excludes domestic workers, railway workers; certain nonprofit corporations; majority of federal, state, and local government workers; and self-employed workers.

Source: Kentucky Department for Human Resources, Average Weekly Wages of Workers Covered by Unemployment Insurance Law, 1976.

Occupational wage rates for specific industries are usually not available to most government agencies, and wage data furnished to state employment agencies by individual industrial employers is protected from disclosure by federal law. The most reliable up-to-date wage information can be obtained by direct contact with local employers.

Associated Industries of Kentucky, a voluntary organization of Kentucky businesses, regularly collects occupational wage rates and fringe benefits data from participating member firms. Data is compiled for over 127 clearly defined office, production, and service occupations. Tabulations are published for eleven regions of Kentucky, as shown on the map below. It should be noted that the data may be weighted by the preponderance of firms in the larger cities and may be somewhat higher than the rates paid in the smaller communities. Data from these tabulations are available, upon request, from the Kentucky Department of Commerce, Frankfort, Kentucky 40601.



Associated Industries of Kentucky Area Wage Surveys

PER CAPITA PERSONAL INCOME

<u>Area</u>	<u>1975</u>	<u>1971</u>	<u>Percent Change</u>
Nelson County	\$4,398	\$3,064	43.5
Labor Market Area			
Range	\$3,825 - 5,867	\$2,583 - 4,254	N/A
Kentucky	4,886	3,314	47.4
U.S.	5,903	4,195	40.7

Sources: U.S. Department of Commerce, Bureau of Economic Analysis, Survey of Current Business, April 1977. U.S. Department of Commerce, Bureau of Economic Analysis, March 1976.

## TRANSPORTATION

### Rail

Line serving Bardstown - Louisville & Nashville Railroad Company

Services - Branch line, turn around local service, switching facilities, team track with space for 8 cars, siding space available for 8 cars, nearest piggyback facilities available at Louisville, 39 miles distant, with 24-hour service to and from Bardstown.

For details on routing, schedules, rates, and services contact:

Manager of Industrial Development  
Louisville & Nashville Railroad Company  
908 West Broadway  
Louisville, Kentucky 40203  
(502) 587-5000

Bloomfield is not rail served.

### Highways

Major highways serving Bardstown are the Blue Grass Parkway, U.S. 62, and U.S. 31-E and 150. The Blue Grass Parkway interconnects with Interstate 65, 23 miles west of Bardstown. In addition, Kentucky 245 provides direct access to northbound Interstate 65.

Bloomfield is served by the Blue Grass Parkway, U.S. 62, and Kentucky Routes 48 and 55.

## Truck Service

### Company

### Home Office

#### Bardstown

Bestway Express, Inc.*	710 Poplar Avenue Nashville, Tennessee 37210
Central Motor Express, Inc.**	P.O. Drawer C Campbellsville, Kentucky 40011
Consolidated Freightways Corporation of Delaware*	175 Linfield Drive Menlo Park, California 94025
Cooper-Jarrett, Inc.*	23 South Essex Avenue Orange, New Jersey 07050
Distillery Transfer Service, Inc. (Distillery products and supplies only)***	Louisville Road Bardstown, Kentucky 40004
Interstate Motor Freight System*	134 Grandville Avenue, S.W. Grand Rapids, Michigan 49503
Kentucky Truck Lines, Inc. (Distillery products and supplies only)***	601 Wilkinson Boulevard Frankfort, Kentucky 40601
McLean Trucking Company*	617 Waughtown Street Winston-Salem, North Carolina 27107
Overnite Transportation Company**	1100 Commerce Road Richmond, Virginia 23209
Turner Expediting Service***	Box 21333, Standiford Field Louisville, Kentucky 40221

#### Bloomfield

Taylorsville Transfer Line**	Main Cross Taylorsville, Kentucky 40071
Distillery Transfer Service, Inc. (Distillery products and service only)***	Louisville Road Bardstown, Kentucky 40004

#### Other Freight Services

#### Nearest Shipping Center

United Parcel Service Purolator Courier Corporation	Louisville, 39 miles from Bardstown Louisville
--	---

\*Interstate only.  
\*\*Interstate and intrastate.  
\*\*\*Intrastate only.



HIGHWAY MILES AND TRUCK TRANSIT TIME IN DAYS FROM  
BARDSTOWN, KENTUCKY, TO SELECTED MARKET CENTERS

City	Highway Miles	Delivery		City	Highway Miles	Delivery	
		Time*	TL			Time*	TL
Atlanta, Ga.	399	2		Los Angeles, Cal.	2,147	7	
Baltimore, Md.	601	2		Louisville, Ky.	39	1	
Birmingham, Ala.	353	2		Nashville, Tenn.	157	1	
Chicago, Ill.	331	2-3		New Orleans, La.	674	4	
Cincinnati, Ohio	140	1		New York, N.Y.	763	4	
Cleveland, Ohio	377	2-3		Pittsburgh, Pa.	403	3	
Detroit, Mich.	397	2-3		St. Louis, Mo.	302	2	
Knoxville, Tenn.	235	1					

\*Transit time does not include the day of pickup.

Source: Delivery Time Only - Overnite Transportation Company,  
P.O. Box 1216, Richmond, Virginia 23209

Air

	<u>Local</u>	<u>Nearest Commercial</u>
Location:	Samuels Field 2 miles west of Bardstown	Standiford Field Louisville, 39 miles northwest of Bardstown
Runways:	1 paved	3 paved
Length:	4,000 feet	7,800 feet; 5,000 feet; 7,250 feet
Traffic Control:	Wind sock	Control Tower, approach control, ground control, guards, radar service - departure control, clearance delivery
Lighting:	Sundown to sunrise, rotating beacon, Med. Int. Runway edge lights, Reil on R/W 20, Obs. lights, Visual approach slope lights	Runways, obstructions, beacon, and approach and touchdown lights, center line on runways 1-19
Services:	Gas and oil (100,80), charter, flight instruction	TWA, American, Eastern, Delta, Piedmont, Ozark, Allegheny and Air Kentucky (commuter) Airlines; Louisville-Jefferson County Air Board; 100, jet fuel; storage, major A & E repairs; Hertz and Avis, National rent-a-car service, taxi, and city bus service, Budget Rent-A-Car Service; restaurant
Air Freight Service:	Chartered air service must be arranged	Air freight terminal

	<u>Bardstown</u>	<u>Bloomfield</u>
<u>Bus</u> -	Southern Greyhound Bus Lines	Nearest bus service at Bardstown, 13 miles distant
<u>Taxi</u> -	1 company, 24-hour, radio-dispatched service	
<u>Rental Services</u> -	Local or one-way U-Haul rentals, car and truck rentals	Nearest rental services at Bardstown, 13 miles distant

Water

Bardstown is 41 miles from the Ohio River at Louisville where port facilities are available. Louisville has also been classified as a Foreign Trade Zone and offers complete U.S. customs services for exports and imports.

POWER AND FUEL

Electricity

Company serving Bardstown - Bardstown Municipal Light and Water Company

Source of power - Kentucky Utilities Company

Total generating capacity - 2,238,400 KW

For industrial rates contact:

Industrial Development Department  
Kentucky Utilities Company  
120 South Limestone Street  
Lexington, Kentucky 40507  
(606) 255-1461

and/or

Bardstown Municipal Light and Water Company  
220 North Fifth Street  
Bardstown, Kentucky 40004  
(502) 348-5947

Company serving Bloomfield - Kentucky Utilities Company

Source of power - Kentucky Utilities Company

Total generating capacity - 2,238,400 KW

For industrial rates contact:

Industrial Development Department  
Kentucky Utilities Company  
120 South Limestone Street  
Lexington, Kentucky 40507  
(606) 255-1461

Company serving Nelson County - Salt River Rural Electric  
Cooperative Corporation

Source of power - East Kentucky Power Cooperative

Total generating capacity - 867,000 KW

For industrial rates contact:

Industrial Development Division  
East Kentucky Power Cooperative  
P.O. Box 707  
Winchester, Kentucky 40391  
(606) 744-4812

and/or

Salt River RECC  
111 West Brashear Avenue  
Bardstown, Kentucky 40004  
(502) 348-3931

## Natural Gas

Company serving Bardstown - Louisville Gas & Electric Company  
Source of supply - Texas Gas Transmission Corporation  
Size of transmission mains - 26 inches (supplier)  
8 inches (distributor)  
Distribution mains - 2, 4, 6, and 8 inches  
Distribution pressure - 45 psi  
Btu content - 1,000 per cubic foot minimum; Specific gravity - .588  
For rates and supplies contact:

Sales Engineer  
Louisville Gas & Electric Company  
311 West Chestnut  
P.O. Box 32010  
Louisville, Kentucky 40232  
(502) 566-4253

Natural gas is not available to Bloomfield.

## Other Fuels

### Propane

J.A. Bennett, Inc.  
Taylorsville, Kentucky 40071

Big 3 Gas Company of Lebanon Junction  
Preston Highway  
Lebanon Junction, Kentucky 40150

Coleman Gas Service Company  
1106 North Third Street  
Bardstown, Kentucky 40004

Greenwell Brothers Bottled & Bulk Gas  
Railroad Street  
Taylorsville, Kentucky 40071

Masden Supply Company  
Poplar Street  
Lebanon Junction, Kentucky 40150

Ugite LP-Gas Service  
New Haven, Kentucky 40051

Fuel oils

Distillate fuel oil -

Armstrong Marathon Service  
Bloomfield Road  
Taylorsville, Kentucky 40071

Bowling & Cecil Marathon Distributors  
Center Street  
New Haven, Kentucky 40051

J.C. Newcomb & Son, Inc.  
607 North Fourth  
Bardstown, Kentucky 40004

Regal Oil Company  
Main Street  
Bloomfield, Kentucky 40008

Spank Oil Company  
Maple Hill  
Bardstown, Kentucky 40004

Sprigg Coal & Fuel Oil Company  
Blue Grass Court  
Bardstown, Kentucky 40004

Residual fuel oil - Arrangements must be made with the refinery.

Low sulphur content coal - Available in eastern Kentucky.

## WATER AND SEWERAGE

### Water

Company serving Bardstown - Bardstown Municipal Light and Water Company\*  
220 North Fifth Street  
Bardstown, Kentucky 40004  
(502) 348-5947

Source - Sympson Lake  
Treatment plant capacity - 2,250,000 gpd  
Average daily consumption - 1,600,000 gallons  
Peak daily consumption - 1,900,000 gallons  
Type treatment - Coagulation, sedimentation, filtration, softening,  
fluoride adjustment, disinfection  
Storage capacity - 2,165,000 gallons  
Size lines - 16, 12, 10, 8, and 6 inches  
Average pressure - 50 psi  
Average temperature - 62 degrees F.

#### MONTHLY WATER RATES FOR WHOLESALE AND INDUSTRIAL CONSUMERS

First	3,000 gallons	\$3.75 (Minimum)
Next	75,000 gallons	.535 per M gallons
All over	78,000 gallons	.435 per M gallons
Tap-on charge:	Residential and commercial	- \$100 inside city 125 outside city
	Industrial	- Negotiated

\*A preliminary engineering report is underway on an expansion project which will increase the capacity of the water treatment plant to 3,000,000 gallons per day. Upon completion of this project it will be possible to double the treatment capacity by the insertion of rapid rate filters. Construction is underway on a 250,000 gallon elevated storage tank.

Company serving Bloomfield - Bloomfield Municipal  
Water and Sewer Department  
Box 204  
Bloomfield, Kentucky 40008  
(502) 252-5746

Source - Treated water purchased from Taylorsville Water System  
Amount that can be purchased in a 30-day period - 5,000,000 gallons  
Average daily consumption - 90,000 gallons  
Peak daily consumption - 130,000 gallons  
Storage capacity - 320,000 gallons  
Size lines - 8, 6, 4, and 2 inches  
Average pressure - 70 psi

MONTHLY WATER RATES FOR WHOLESALE  
AND INDUSTRIAL CONSUMERS

First	2,000 gallons	\$4.45 Minimum
Next	3,000 gallons	0.95 per M gallons
Next	5,000 gallons	0.90 per M gallons
Next	5,000 gallons	0.85 per M gallons
Next	5,000 gallons	0.80 per M gallons
Next	30,000 gallons	0.75 per M gallons
All over	50,000 gallons	0.65 per M gallons

Tap-on charge: Residential - \$175  
Commercial - \$200

Surface water sources - Rolling Fork and Beech Fork of Salt River  
Average discharge - Rolling Fork near Boston, 1,752 cfs (38-years,  
USGS)  
Expected ground water yield - 5 gpm or less over entire county

## Sewerage

Company serving Bardstown - Bardstown Municipal Sewerage Service\*  
220 North Fifth Street  
Bardstown, Kentucky 40004  
(502) 348-5947

Design capacity - 750,000 gallons per day  
Average daily flow - 600,000 gallons  
Treatment - Secondary  
Type treatment - Comminutor, clarifier, trickling filters, anaerobic digestion, drying beds  
Treated effluent discharged into - Town Creek  
Size of sanitary mains - 18, 12, and 8 inches  
Size of storm mains - Variable (separate from sanitary mains)  
Rates -

First	3,000 gallons	\$2.50 Minimum
All over	3,000 gallons	0.25 per M gallons

Tap-on charge: Residential and Commercial - \$100 inside city  
175 outside city

Industrial - Negotiated

Company serving Bloomfield - Bloomfield Municipal Water and Sewer  
Department  
Box 204  
Bloomfield, Kentucky 40008  
(502) 252-5746

Design capacity - 150,000 gallons per day  
Average daily flow - 90,000 gallons  
Treatment - Primary and secondary  
Type treatment - Aeration, clarifier, drying beds, lagoons  
Treated effluent discharged into - Simpson Creek  
Size of sanitary mains - 12, 8, and 6 inches  
Rates - 100 percent of monthly water bill  
Tap-on charge: \$125

\*Bids will be let in July of 1978 on a construction project which will expand the capacity of the sewage treatment plant to 3 million gallons per day and improve the treatment process. The new process will consist of 2-cell primary aerated lagoons with a holding capacity of 10 million gallons. The lagoons will serve as a flow equalization basin from which the effluent will be pumped through packed biological filters which provides tertiary treatment. Treatment by chlorination and post aeration will then be used prior to discharge. Bids will also be let in July of 1978 on construction of the Withrow Creek Interceptor and a new pump station. The interceptor will run around the north, south and west ends of town.



## CLIMATE

### Nelson County

#### Temperature

Normal (30-year record)	55.2 degrees
Average annual 1976	52.9 degrees
Record highest, September, 1954 (32-year record)	103.0 degrees
Record lowest, January, 1963 (32-year record)	-21.0 degrees
Normal heating degree days (30-year record)	4,729
(Heating degree days totals are the sums of negative departures of average daily temperatures from 65 degrees F.)	

#### Precipitation

Normal (30-year record)	44.49 inches
Mean annual snowfall (32-year record)	15.70 inches
Total precipitation 1976	37.48 inches
Mean number days precipitation (.01 inch or more) (32-year record)	130
Mean number days thunderstorms (32-year record)	47

#### Prevailing Winds (17-year record)

South

#### Relative Humidity

1 a.m.	76 percent (12-year record)
7 a.m.	81 percent (13-year record)
1 p.m.	59 percent (13-year record)
7 p.m.	63 percent (13-year record)

Source: U.S. Department of Commerce, Environmental Science Services Administration, Climatological Data, 1976. Station of record: Lexington, Kentucky.

LOCAL GOVERNMENT

City

Bardstown

Structure - Mayor - 4-year term; 6 councilmen - 2-year terms

Budget 1977 - General Fund \$ 243,700  
Water Fund . 269,500  
Sewer Fund 117,000  
City Electric System 1,028,000

Fees and licenses - Business licenses range from \$15 to \$500 a year, depending on type of business

Bloomfield

Structure - Mayor - 4-year term; 6 councilmen - 2-year terms

Budget 1977-78 - General Fund \$50,000  
Water and Sewer Fund 58,000

Fees and licenses - Business licenses range from \$5 to \$275 a year, depending on type of business

County

Structure - County Judge/Executive - 4-year term;

5 magistrates - 4-year terms

Budget 1977-78 - General Fund \$816,514; Road Fund \$205,600

Assessed Value of Property, 1977

<u>Classes of Property</u>	<u>Bardstown</u>	<u>Bloomfield</u>	<u>Nelson County</u>
Real Estate	\$46,078,551	\$5,085,443	\$199,699,336
Tangibles	11,645,084	1,432,019	35,588,887

## Property Taxes

All property in Kentucky is assessed at 100 percent of fair cash value.

Land and buildings are taxed by the state and may be taxed by local jurisdictions. The state rate is \$0.315 per \$100 of assessed valuation.

Manufacturing machinery, raw materials inventories, pollution control equipment, and goods in the process of manufacture are not subject to local taxation. The state rate is \$0.15 per \$100.

Other tangible personal property owned by manufacturers (automobiles, trucks, finished goods, office furniture, office equipment) is taxed by the state at \$0.45 per \$100 and may be taxed by local jurisdictions.

Property stored in public warehouses in a transit status is not subject to local taxation. The state rate is only \$0.015 per \$100.

Intangible personal property located in Kentucky (money in hand, shares of stock, notes, bonds, accounts, and other credits) is taxed by the state at \$0.25 per \$100, and is not subject to local taxation.

Intangible personal property owned by corporations in Kentucky as a result of business transactions performed out-of-state, but having a tax situs in Kentucky (accounts receivable, notes, bonds, credits, non-domestic bank deposits, licensing or royalty agreements, shares of stock of any affiliated company, etc.) is taxed by the state at \$0.015 and is not subject to local taxation.

### Combined State and Local Rates Per \$100 Valuation, 1977\* (100% assessment)

	<u>Inside City of Bardstown</u>	<u>Inside City of Bloomfield</u>	<u>Outside City</u>
1. Land and buildings	\$1.100	\$1.035	\$0.760
2. Mfg. machinery, raw materials, goods in process, pollution control equipment	0.150	0.150	0.150
3. Finished goods, office equipment, vehicles, other tangibles	1.235	1.170	0.895
4. Intangibles (accounts, notes, bonds, etc.)	0.250	0.250	0.250

\*Kentucky Department of Commerce.

Planning and Zoning

Joint agency - Joint City-County Planning Commission of Nelson County\*  
 Zoning enforced - All areas  
 Subdivision regulations enforced - All areas  
 Local codes enforced - Building code enforced in city limits of Bardstown only  
 Mandatory state codes enforced - Plumbing, National Fire Protection Association Code, National Building Code (for major buildings and residential construction containing more than 12 bedrooms per building)

Safety

<u>Police</u>	<u>Bardstown</u>	<u>Bloomfield</u>	<u>Nelson County</u>	
			<u>Police</u>	<u>Sheriff</u>
Total staff	15	4	4	4
Radio-patrol cars	4	1	3	4
 <u>Fire</u>				
American Insurance Association Fire Rating	6	8	10	
Volunteers	25	21	**	

Rescue Service

Rescue service is provided by the Bardstown Volunteer Fire Department.

Refuse Collection and Disposal

	<u>Bardstown</u>	<u>Bloomfield</u>
Type service	Municipal	Private
Fee charged:		
residential	\$2.00 per month	\$2.50 per month
business	Varies (\$3.00 minimum)	By contract
industrial	Varies according to volume and frequency of collection	By contract
Collection frequency:		
residential	Weekly	Weekly
business	Service as needed	Bi-weekly
industrial	Service as needed	By contract
Trash pickup	On call	Annually
Disposal method	Landfill	Landfill

\*Includes Nelson County and the cities of Bardstown, Bloomfield, Fairfield and New Haven.

\*\*Bardstown-Nelson County Fire Department serves all of Nelson County.

## EDUCATION

### Public Schools

	<u>Bardstown Independent</u>	<u>Nelson County</u>
Total Enrollment (Fall, 1977)	1,602	4,261
Elementary	726	1,829
Junior High		1,257
Middle School	330	
High School	546	1,175
Student-Teacher Ratio	16-1	20-1
Elementary	17-1	19-1
Junior High		20-1
Middle School	17-1	
High School	14-1	21-1
Accreditation	Southern Association of Colleges and Schools	Southern Association of Colleges and Schools
Percent High School Graduates to College	33.3	28.2
Expenditures Per Pupil (1976-77)	\$962	\$790
Bonded Indebtedness, June 30, 1977	\$1,343,000	\$2,475,000

### Nonpublic Schools

	<u>Bardstown</u>	<u>Nelson County</u>
Total Enrollment	802	455
Elementary	488	455
High School	314	
Student-Teacher Ratio	21-1	21-1
Elementary	29-1	21-1
High School	14-1	

Area Colleges and Universities

<u>Name</u>	<u>Location (Miles Distant)</u>	<u>Enrollment (Fall, 1977)</u>	<u>Highest Degree Conferred</u>
St. Catharine Junior College	St. Catharine (12)	161	Associate
Elizabethtown Community College	Elizabethtown (25)	1,548	Associate
Bellarmino College	Louisville (39)	1,782	Baccalaureate
Jefferson Community College	Louisville (39)	5,036	Associate
Southwest Campus	Louisville (39)	558	Associate
Spalding College	Louisville (39)	1,003	Masters
University of Louisville	Louisville (39)	17,799	Ph.D., M.D., D.M.D., J.D.
Centre College	Danville (44)	782	Baccalaureate
Campbellsville College	Campbellsville (45)	691	Baccalaureate

Vocational Schools

Nearest State School

Location	Elizabethtown State Vocational-Technical School
Miles Distant	Elizabethtown
Curriculum	25
	Consumer and Home Economics
	Commercial Foods
	Health and Personal Service Occupations
	Health Careers
	Industrial Education
	Air Conditioning and Refrigeration
	Appliance Repair
	Auto Mechanics
	Carpentry-Building Trades
	Drafting
	Electronics (Communications)
	Industrial Electricity
	Industrial Machine Repair
	Machine Shop
	Radio and TV Repair
	Welding
	Public Service Programs
	Fire Service Training

Nearest Area Education Center

Location	Nelson County Area Vocational Education Center
Curriculum	Bardstown
	Health and Personal Service Occupations
	Health Careers
	Industrial Education
	Appliance Repair
	Auto Mechanics
	Carpentry-Building Trades
	Drafting
	Industrial Electricity
	Welding

Arrangements can be made to provide training in the specific production skills required by an industrial plant. Instruction may be conducted either in the vocational school or in the industrial plant, depending upon the desired arrangement and the availability of special equipment.

## HEALTH

### Local Medical Personnel

	<u>Bardstown</u>	<u>Bloomfield</u>
Physicians	10	1
Dentists	7	1

### Hospitals

<u>General Hospital</u>	<u>Location</u>	<u>Beds</u>
Flaget Memorial Hospital	Bardstown	52

General hospital facilities - X-ray equipment, clinical laboratory, operating room, emergency room, maternity ward, nursery, delivery room, cardiac intensive care unit, pharmacy, surgical recovery room, respiratory therapy department

Medical staff - 13 physicians, 12 registered nurses, 5 registered nurses (part time), 5 licensed practical nurses, 16 nurses aides, 2 laboratory technologists, 1 registered x-ray technician

### Other Medical Facilities

North Central Comprehensive Care Center, Bardstown  
Sisters of Charity and Community Health Services

### Ambulance Service

Name - Nelson County Ambulance Service  
Staff - 6 emergency medical technicians with 2 stationed at Bardstown, 2 at Bloomfield and 2 at New Haven  
Service - 24 hours a day, 7 days a week  
Equipment - 4 ambulances fully equipped by EMT standards

### Public Health

Facility - Nelson County Health Department  
Staff - 2 registered nurses (full time), 1 registered nurse (part time), 1 health environmentalist, 2 clerk typists (1 full time, 1 part time)



## OTHER LOCAL FACILITIES

### Communications

	<u>Bardstown</u>	<u>Bloomfield</u>
Telephone - Services -	South Central Bell Standard	South Central Bell Standard
Telegraph -	Western Union	Nearest service at Bardstown
Postal - U.S. Post Office		
Class -	First	Second
Mail received -	4 times daily	2 times daily
Mail dispatched -	2 times daily	2 times daily
Newspapers -	The Kentucky Standard	
Weekly and circulation -	8,900	
Other papers received from -	Louisville and Lexington, Kentucky	Bardstown, Louisville, and Lexington, Kentucky
Radio -	WBRT	
Stations received from -	Elizabethtown, Louisville and Lexington, Kentucky; Cincinnati, Ohio; Nashville, Tennessee	Elizabethtown, Shelbyville, Louisville and Lexington, Kentucky; Cincinnati, Ohio; Nashville, Tennessee
Television -		
Cable service	Yes	No
Reception from -	Louisville, Lexington and Bowling Green, Kentucky	Louisville and Lexington, Kentucky
Kentucky Educational Television -	Elizabethtown transmitter, Channel 23; Louisville transmitter, Channel 15	

## Library Services

Public library - Nelson County Public Library, Bardstown  
Branch library locations - Bloomfield, Boston, Chaplin, New Haven,  
Coxs Creek  
Size collection - 48,526 volumes  
Circulation, 1976-77 - 139,341 volumes  
Services - Bookmobile, periodicals, story hour, films, projectors,  
color TV, framed paintings, records, inter-library loan service,  
microfilm reader-printer

## Religious Institutions

	<u>Bardstown</u>	<u>Bloomfield</u>
Number of churches -	12	9
Denominations -	AME Zion	Baptist
	Baptist	Christian
	Christian	Church of God
	Church of Christ	Church of God
	Church of God	of Prophecy
	Jehovah's Witnesses	Methodist
	Methodist	Presbyterian
	Presbyterian	
	Roman Catholic	

Nearest Synagogues - Louisville, Kentucky, 39 miles north of Bardstown  
Congregations - Adath Israel and Brith Shalom (reform); Anshei Sfard  
and Keneseth Israel (orthodox); Adath Jeshurun (conservative)

Financial Institutions

<u>Banks</u>	<u>Assets</u>	<u>Deposits</u>	<u>Statement Date</u>
<u>Bardstown</u>			
Farmers Bank & Trust Company	\$20,649,665.54	\$17,493,790.51	6/30/77
Wilson & Muir Bank & Trust Company	21,550,780.61	18,288,723.43	6/30/77
<u>Bloomfield</u>			
Banking House of Muir, Wilson & Muir	12,448,284.80	10,908,705.76	6/30/77
<u>Savings and Loan Associations</u>	<u>Assets</u>	<u>Savings Accounts</u>	<u>Statement Date</u>
Nelson County Federal Savings & Loan Association, Inc.	\$15,584,365.98	\$13,681,776.00	6/30/77
First Federal Savings & Loan Association of Elizabethtown (Bardstown Branch)*	87,124,777.62	76,971,498.98	12/31/77

Hotels and Motels

	<u>Bardstown</u>
Total number	7
Total units	249

\*Includes total assets of First Federal Savings & Loan Association of Elizabethtown.

## Clubs and Organizations

### Bardstown

Business and Civic - Bardstown-Nelson County Chamber of Commerce, Jaycees, Kiwanis, Optimist, Bardstown Industrial Development Corporation

Fraternal - Masons, Knights of Columbus, AMVETS, American Legion

Women's - Eastern Star, Bardstown Garden Club, DAR, Homemakers, Woman's Club

Youth - FFA, Peanuts League, Minor League, Little League, Babe Ruth League, Boy Scouts, Girl Scouts, Brownies, Cub Scouts, 4-H, Junior Music Club, Key Club, Track and Field Program, Powder Puff Football, Junior Achievement

Other - Nelson County Historical Society, Stephen Foster Music Club, Parents Without Partners, Welcome Wagon, Senior Citizens, DECA

### Bloomfield

Business and Civic - Lions, Bloomfield-East Nelson County Industrial Development Board, Jaycees, Bloomfield Business Association

Fraternal - Masons, American Legion

Women's - Garden Club, Eastern Star, Homemakers

Youth - Girl Scouts, Boy Scouts, Cub Scouts, Little League Football and Basketball

Other - Bloomfield Historical Society, Bloomfield Tobacco Festival Association, Field and Stream Club, Bardstown-Nelson County Civil Defense

## RECREATION

### Local

#### Bardstown

Bardstown provides a supervised recreation program and offers various facilities which include a municipal park with a picnic area and playground; a mini-park with two basketball courts, a volleyball court, and an area for horseshoe pitching; a Jaycee park which includes a pavillion, a picnic area, a playground, and reservoir fishing.

Other public facilities available include swimming pool; golf course; 3 tennis courts, 2 of which are lighted; 5 baseball diamonds; 4 football fields; billiards; ping-pong; and a tourmobile (summer months).

Private facilities available include a country club, swimming pool, tennis court, drive-in movie theater, bowling facility, skating rink, and lighted croquet court.

A \$551,000 recreation grant has been received for construction of olympic, diving, and baby pool complex. This construction is to be completed by the summer of 1979. Also planned is the construction of 4 additional lighted tennis courts and 3 more basketball courts. An amateur boxing program and exercise programs for adults are to be established.

Bardstown, the bourbon capital of the world, offers many historical and educational attractions. These attractions include: The Stephen Foster Story, a living, musical memorial to Stephen Foster, America's first great composer; My Old Kentucky Home, federal style mansion made famous by Stephen Foster's immortal song "My Old Kentucky Home"; Old Talbott Tavern, said to be the oldest American hotel in continuous operation West of the Alleghenies; Barton Museum of Whiskey History; St. Joseph Cathedral; Spalding Hall; Wickland, the home of three governors; and John Fitch Monument.

#### Bloomfield

A supervised recreation program is provided in Bloomfield during the summer months. Facilities available are 2 playgrounds, 2 baseball diamonds, and 1 football field.

A new 12-acre city park has been constructed which provides tennis and basketball courts, picnic area, horseshoe pitching, volleyball and fishing reservoir. Phase 2 of the Bloomfield city park will be the construction of a baseball field which is scheduled to begin in the summer of 1978.



MY OLD KENTUCKY HOME

Area (Within 30 miles)

Bernheim Forest, 14 miles west of Bardstown, is a renowned 10,000-acre sanctuary with national forest, fishing lakes, famous arboretum, nature center and museum.

Abraham Lincoln's Boyhood Home, approximately 20 miles southwest of Bardstown, is the site of Lincoln's last home in Kentucky.

Lincoln's Homestead State Shrine, approximately 25 miles southeast of Bardstown, is a 153-acre park on the original land settled by the Lincoln family in Kentucky.

Abraham Lincoln Birthplace National Historic Site is just 28 miles southwest of Bardstown. The granite memorial shrine encloses the log cabin which was the birthplace of Abraham Lincoln.

## COMMUNITY IMPROVEMENTS

### Bardstown

The new Kentucky Home Square shopping center has opened. Commercial establishments at the shopping center include two supermarkets, a drugstore, a general merchandise store, a men's clothing store, a shoe store, a jewelry store, a card and gift shop, a bakery and a liquor store. Two restaurants and a branch of the Wilson and Muir Bank have also located in the shopping area.

A new mini-shopping center with a total of 9,000 square feet of space has opened on North Third Street. Four new businesses are located in this area.

The Louisville Store rebuilt a 7,400-square foot area at a cost of \$800,000 and Houck Office Building and Apartments constructed a 3,840-square foot building at a cost of \$75,000.

Several new businesses have opened in the central business district and two businesses have added on to their present locations. A number of other businesses have improved their storefronts.

The DAR supervised the planting of trees, clean-up and beautification of the Old City Cemetery.

A preliminary engineering report is underway on an expansion project which will increase the capacity of the municipal water treatment plant to 3,000,000 gallons per day. Upon completion of this project it will be possible to double the treatment capacity by the insertion of rapid rate filters. Construction is underway on a 250,000 gallon elevated storage tank.

The Bardstown Municipal Sewerage Service plans to let bids in July of 1978 on a construction project which will increase the capacity of the sewage treatment plant to 3,000,000 gallons per day and improve the treatment process. Bids will also be let in July of 1978 on construction of the Withrow Creek Interceptor and a new pump station. The interceptor will run around the north, south and west ends of town.

Improvements by the Bardstown Independent School System include the construction of a storage building, a concession building, football stadium bleachers and a parking area for buses, and the renovation of the track.

The Nelson County School System remodeled eight classrooms at Bloomfield Junior High School. These classrooms were ready for the 1977-78 school year.



Approval has been granted for a 9,300-square foot addition to the Nelson County Area Vocational Education Center. Construction will begin as soon as matching funds are available.

A \$551,000 recreation grant has been received and construction is underway on an olympic, diving and baby pool complex. The complex is scheduled to open in the summer of 1979. In addition, the construction of four additional lighted tennis courts and three additional basketball courts is planned.

#### Bloomfield

Six new businesses that have recently located in Bloomfield include a craft shop, a fast food market, a farm store, a welding shop, an antique and gift shop and an automotive parts store. Humphrey Brothers Hardware has recently been renovated.