

1971

## Industrial Resources: Pulaski County

Kentucky Library Research Collections  
Western Kentucky University, [spcol@wku.edu](mailto:spcol@wku.edu)

Follow this and additional works at: [https://digitalcommons.wku.edu/pulaski\\_cty](https://digitalcommons.wku.edu/pulaski_cty)



Part of the [Business Administration, Management, and Operations Commons](#), [Growth and Development Commons](#), and the [Infrastructure Commons](#)

---

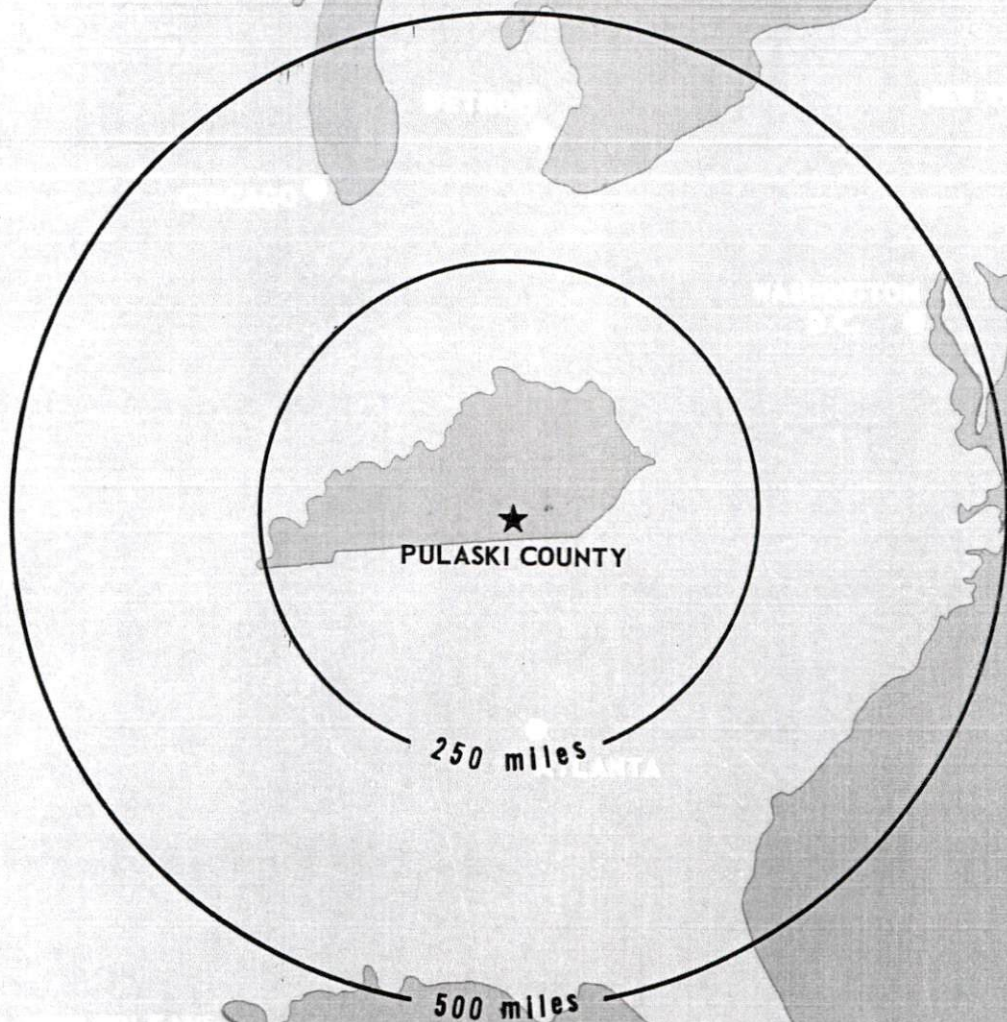
### Recommended Citation

Kentucky Library Research Collections, "Industrial Resources: Pulaski County" (1971). *Pulaski County*. Paper 33.  
[https://digitalcommons.wku.edu/pulaski\\_cty/33](https://digitalcommons.wku.edu/pulaski_cty/33)

This Report is brought to you for free and open access by TopSCHOLAR®. It has been accepted for inclusion in Pulaski County by an authorized administrator of TopSCHOLAR®. For more information, please contact [topscholar@wku.edu](mailto:topscholar@wku.edu).

# INDUSTRIAL RESOURCES

## ***PULASKI COUNTY KENTUCKY***





# PULASKI COUNTY INDUSTRIAL SITES

1971

For additional information concerning the following Somerset sites, contact Mr. Herman Schoolcraft, President of the Pulaski County Industrial Foundation, Somerset, Kentucky, or the Kentucky Department of Commerce, Frankfort, Kentucky.

## Somerset

SITE # 1: ACREAGE: 230 acres  
LOCATION: 1 1/4 miles northwest of Somerset  
HIGHWAY ACCESS: U. S. 27 east of site (access road onto site passes over railroad trackage) Traffic-bound, county-maintained road off U. S. 27 borders site on northwest.  
RAILROADS: Southern Railway System tracks adjacent to east boundary  
WATER: Pleasant Hill Water District  
SIZE LINE: 6-inch line on site  
GAS: Somerset Gas Company  
SIZE MAIN: 6-inch main 1/2 mile to southwest, 8-inch main being constructed parallel to 6-inch main.  
ELECTRICITY: South Kentucky RECC  
SEWERAGE: Package plant necessary  
OWNERSHIP: Private

SITE # 2: ACREAGE: 3 acres  
LOCATION: 1 mile west of Somerset  
HIGHWAY ACCESS: Kentucky Route 80 bounds site on north. Site has county road access on the three remaining boundaries  
RAILROADS: Not rail served  
WATER: Pulaski County Water District, Number 2 SIZE LINE: 6-inch line 200 feet across Highway 80  
GAS: Somerset Gas Service  
SIZE MAIN: 4-inch main 200 feet across Highway 80  
ELECTRICITY: South Kentucky RECC  
SEWERAGE: Septic tank on property  
OWNERSHIP: Private

SITE # 3: ACREAGE: 35 acres  
LOCATION: 1 1/2 miles southeast of Somerset  
HIGHWAY ACCESS: Gravel road off Kentucky Route 1247  
RAILROADS: Southern Railway System tracks border site on east  
WATER: Nearest water line (8-inch) approximately 6,000 feet from site  
GAS: Nearest gas main (6-inch) approximately 6,000 feet from site.  
ELECTRICITY: South Kentucky RECC  
SEWERAGE: Package plant necessary  
OWNERSHIP: Private

SITE # 4: ACREAGE: 10 acres  
LOCATION: 1/2 mile south of Somerset  
HIGHWAY ACCESS: Kentucky Route 1247 bounds site on east.  
RAILROADS: Not rail served  
WATER: Kentucky Water Service Company, Inc. SIZE LINE: 16-inch line adjacent to north boundary  
GAS: Somerset Gas Service  
SIZE MAIN: 8-inch main 2,400 feet away  
ELECTRICITY: South Kentucky RECC  
SEWERAGE: Somerset Sewer System  
OWNERSHIP: Private

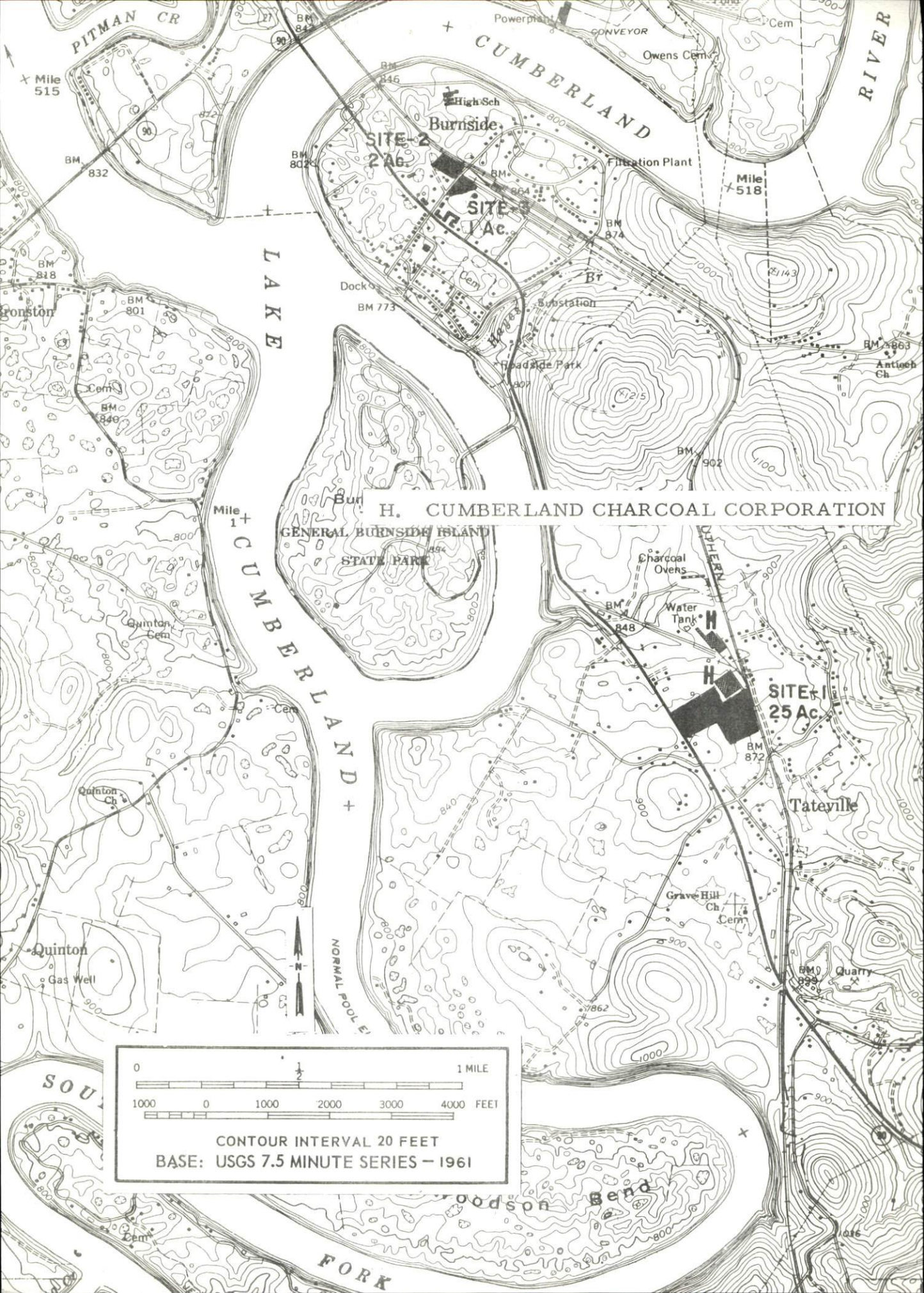
SITE # 5: ACREAGE: 177 acres  
LOCATION: 1/2 mile south of Somerset  
HIGHWAY ACCESS: Kentucky Route 1247 borders site on southeast; access to eastern section of site via blacktopped road off Gover Lane  
RAILROADS: Southern Railway System tracks run through western section of site.  
WATER: Kentucky Water Service Company, Inc. SIZE LINE: 16-inch line 300 feet away  
GAS: Somerset Gas Service  
SIZE MAIN: 6-inch main 1,200 feet away  
ELECTRICITY: South Kentucky RECC or Kentucky Utilities Company  
SEWERAGE: Somerset Sewer System  
OWNERSHIP: Private

SITE # 6: ACREAGE: 25 acres  
LOCATION: 6 miles southwest of Somerset  
HIGHWAY ACCESS: Traffic-bound, county-maintained road off Kentucky Route 80  
RAILROADS: Not rail served  
WATER: Pulaski County Water District, Number 2 SIZE LINE: 6-inch line 200 feet away  
GAS: Natural gas not presently available  
ELECTRICITY: South Kentucky RECC  
SEWERAGE: Package plant necessary  
OWNERSHIP: South Kentucky RECC

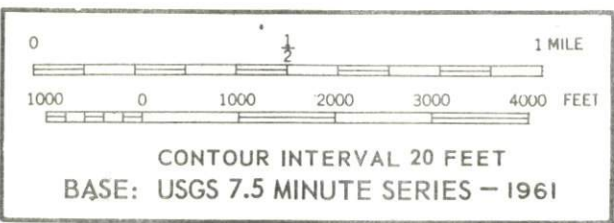








H. CUMBERLAND CHARCOAL CORPORATION  
GENERAL BURNSIDE ISLAND  
STATE PARK





For additional information concerning the following Burnside sites, contact Mr. T. B. Grissom of the Burnside Industrial Committee, Burnside, Kentucky, or the Kentucky Department of Commerce, Frankfort, Kentucky.

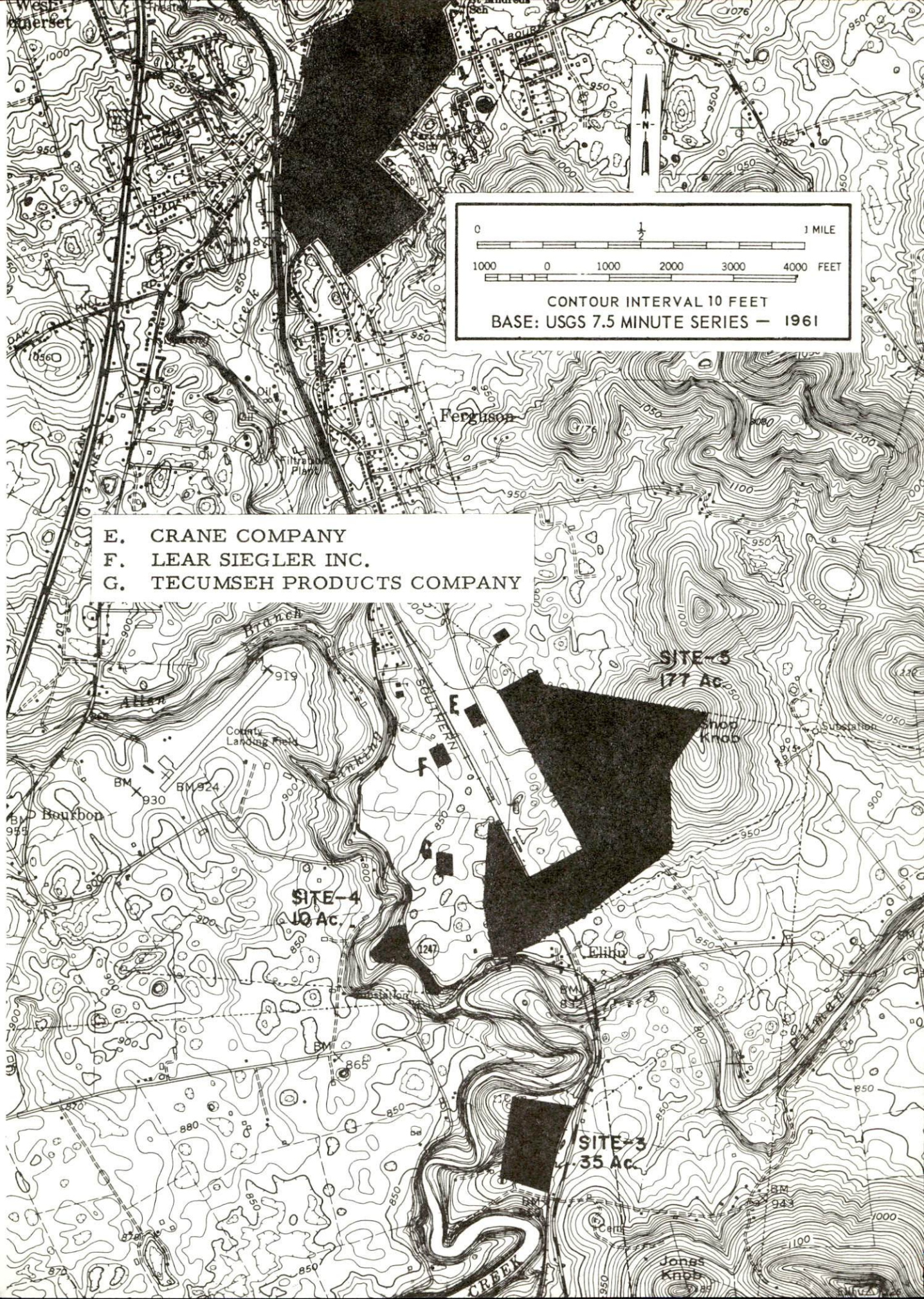
Burnside

SITE # 1: ACREAGE: 20 to 30 acres  
 LOCATION: 1 mile south of Burnside  
 HIGHWAY ACCESS: U. S. 27 bounds site on west  
 RAILROADS: Southern Railway System tracks  
               bound site on east  
 WATER: To be served by a water district in the  
           process of organizing  
 GAS: Natural gas is presently not available in  
       Burnside  
 ELECTRICITY: Kentucky Utilities Company  
 SEWERAGE: Package plant necessary  
 OWNERSHIP: Private

SITE # 2: ACREAGE: 2 acres  
 LOCATION: Within northwest city limits of  
           Burnside  
 ZONING: Industrial  
 HIGHWAY ACCESS: City street to Kentucky  
                   Route 90  
 RAILROADS: Southern Railway System tracks  
               bound property on the north  
 WATER: Burnside Municipal Water Works  
       SIZE LINE: 6-inch line on property  
 GAS: Natural gas is presently not available in  
       Burnside.  
 ELECTRICITY: Kentucky Utilities Company  
 SEWERAGE: Package plant necessary  
 OWNERSHIP: Private

SITE # 3: ACREAGE: Approximately 1 acre  
 LOCATION: Within northwest Burnside city  
           limits  
 ZONING: Industrial  
 HIGHWAY ACCESS: City street to Kentucky  
                   Route 90  
 RAILROADS: Southern Railway System, spur  
               on north boundary of property  
 WATER: Burnside Municipal Water Works  
       SIZE LINE: 6-inch line on property  
 GAS: Natural gas is presently not available  
       in Burnside  
 ELECTRICITY: Kentucky Utilities Company  
 SEWERAGE: Package plant necessary  
 OWNERSHIP: Private





E. CRANE COMPANY  
F. LEAR SIEGLER INC.  
G. TECUMSEH PRODUCTS COMPANY

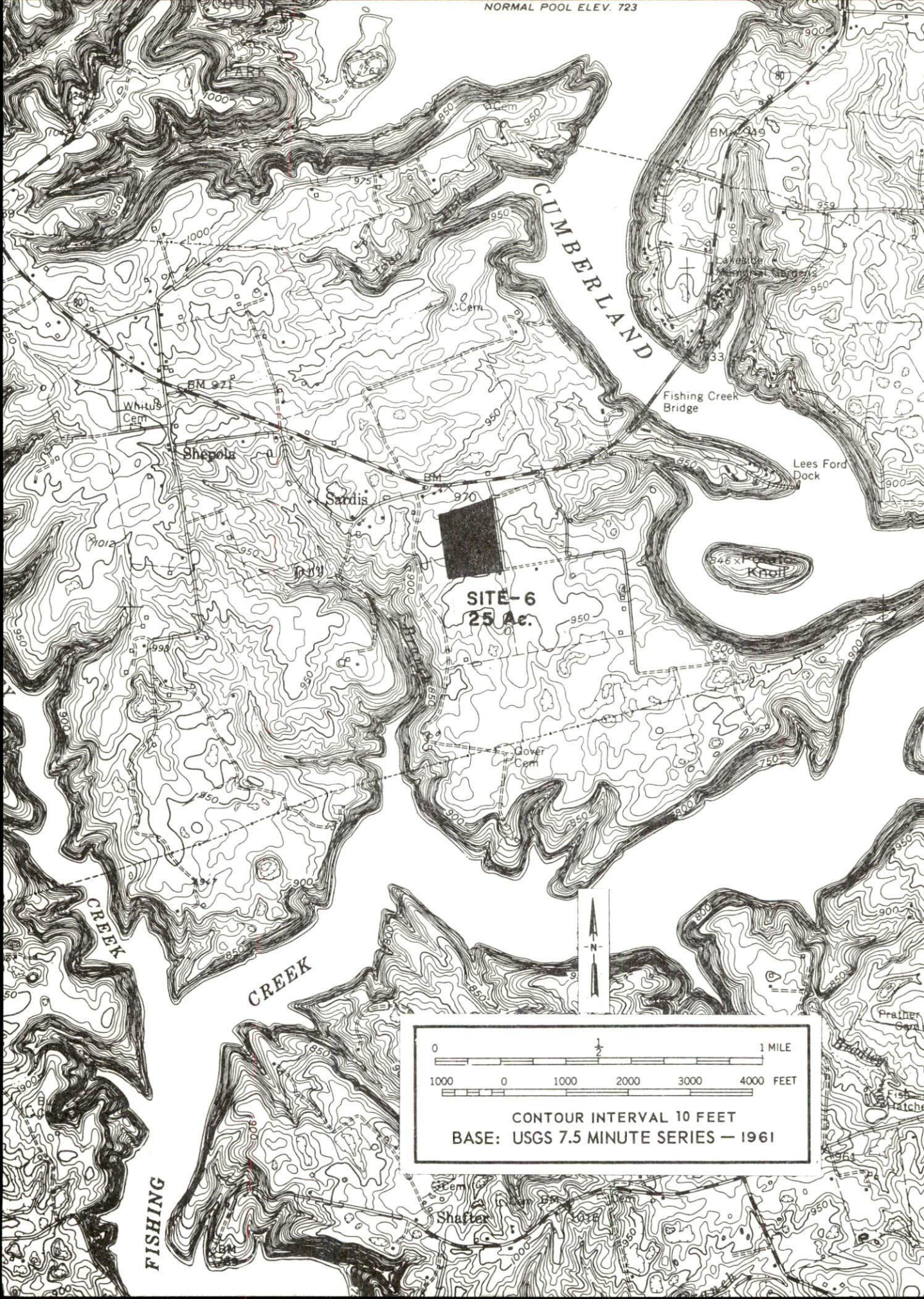
0 1 1 MILE  
1000 0 1000 2000 3000 4000 FEET  
CONTOUR INTERVAL 10 FEET  
BASE: USGS 7.5 MINUTE SERIES — 1961

SITE-3  
177 Ac.

SITE-4  
10 Ac.

SITE-3  
35 Ac.





0 1/2 1 MILE

1000 0 1000 2000 3000 4000 FEET

CONTOUR INTERVAL 10 FEET  
BASE: USGS 7.5 MINUTE SERIES — 1961



INDUSTRIAL RESOURCES  
PULASKI COUNTY, KENTUCKY

Prepared by  
The Kentucky Department of Commerce  
in cooperation with  
Somerset-Pulaski County Chamber of Commerce  
and  
Burnside Chamber of Commerce  
1971



This copy has been prepared by the Kentucky Department of Commerce,  
Division of Research and Planning, and the cost of printing paid from  
state funds.



# TABLE OF CONTENTS

<u>Chapter</u>	<u>Page</u>
INDUSTRIAL SITES . . . . .	i
PULASKI COUNTY, KENTUCKY - A RESOURCE PROFILE. . . . .	1
THE LABOR MARKET . . . . .	4
Population Trends . . . . .	4
General Employment Characteristics, 1969. . . . .	4
Manufacturing Employment Trends by Industry . . . . .	4
Major Pulaski County Manufacturing Firms, Their Products and Employment . . . . .	5
Wage Rates for Selected Occupations . . . . .	6
Labor Organizations . . . . .	6
Current and Future Labor Supply . . . . .	7
Total Personal Income . . . . .	7
Per Capita Personal Income. . . . .	7
EDUCATION . . . . .	8
Public Schools . . . . .	8
Parochial School . . . . .	8
Vocational Schools . . . . .	9
Colleges and Universities . . . . .	9
TRANSPORTATION . . . . .	10
Rail . . . . .	10
Truck Service . . . . .	10
Air . . . . .	11
Bus . . . . .	11
Taxi . . . . .	11
Rental Services . . . . .	11
Water. . . . .	11
POWER AND FUEL . . . . .	13
Electricity . . . . .	13
Natural Gas . . . . .	13
WATER AND SEWERAGE . . . . .	15
Water. . . . .	15
Sewerage . . . . .	18



<u>Chapter</u>	<u>Page</u>
LOCAL GOVERNMENT . . . . .	.20
City . . . . .	.20
County . . . . .	.20
Assessed Value of Property - 1970 . . . . .	.20
Local General Property Tax Rates Per \$100 of Assessed Valuation - 1970 . . . . .	.20
Planning and Zoning . . . . .	.21
Safety . . . . .	.21
Police . . . . .	.21
Fire . . . . .	.21
Rescue Service . . . . .	.21
Sanitation . . . . .	.22
HEALTH . . . . .	.23
Hospitals . . . . .	.23
Nursing Homes . . . . .	.23
Public Health . . . . .	.24
OTHER LOCAL FACILITIES . . . . .	.25
Communications . . . . .	.25
Library Services . . . . .	.25
Religious Institutions . . . . .	.26
Financial Institutions . . . . .	.26
Hotels and Motels . . . . .	.26
Clubs and Organizations . . . . .	.26
RECREATION . . . . .	.28
Local . . . . .	.28
Area . . . . .	.28
AGRICULTURE - NATURAL RESOURCES - CLIMATE . . . . .	.30
Agriculture . . . . .	.30
Natural Resources . . . . .	.30
Climate . . . . .	.30
HISTORY . . . . .	.31



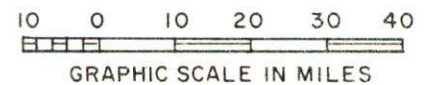
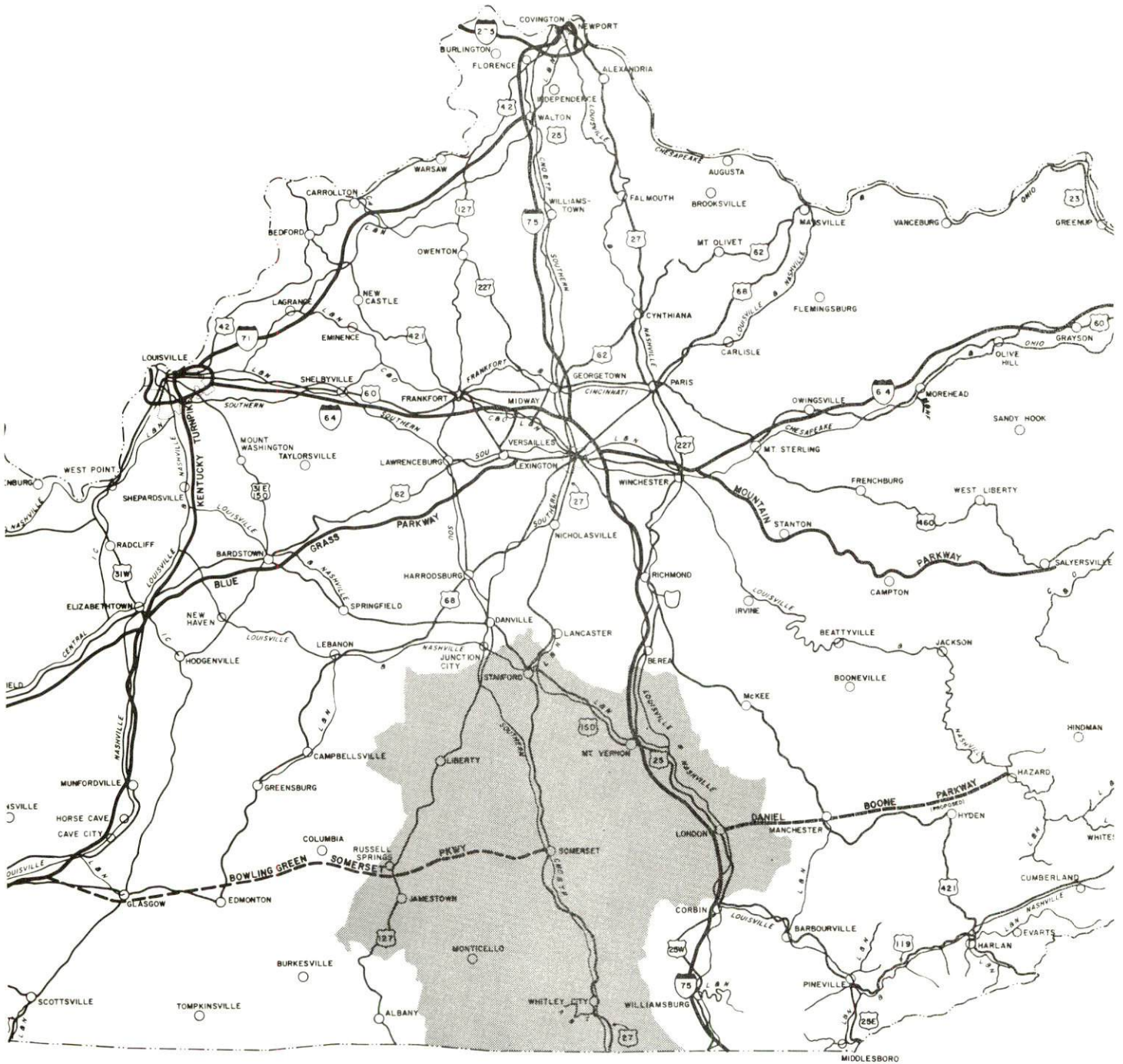


AERIAL VIEW OF SOMERSET, KENTUCKY



# PULASKI COUNTY LABOR MARKET AREA

\* Shaded area denotes labor market area





## PULASKI COUNTY, KENTUCKY - A RESOURCE PROFILE

### Location

Pulaski County, located in southcentral Kentucky near the Tennessee border, is 80 miles south of Lexington, 125 miles southeast of Louisville, 130 miles northwest of Knoxville, Tennessee, and 163 miles south of Cincinnati, Ohio.

Pulaski County had a 1970 population of 35,234. The population of Somerset, the county seat of Pulaski County, was 10,436. Burnside had a population of 586, and Science Hill's population was 470.

### The Economic Framework

Total employment in Pulaski County averaged 12,200 in 1969 with manufacturing providing 2,600 of these jobs. During the decade of the 1960's manufacturing increased by 1,715 jobs or approximately 155 percent. Major industrial products are home furnishings, apparel, automobile accessories, and compressors for air conditioners.

Per capita income in 1969 was \$2,170. Between 1959 and 1969, per capita personal income in the county increased by over 125 percent.

The Pulaski County labor market area includes Pulaski and the seven adjoining counties. Area employment totals 37,500 jobs including 10,100 in agriculture. Manufacturing furnishes 6,475 jobs. Area manufacturing employment has increased by over 3,150 jobs during the past decade. This is an increase of over 105 percent with the sharpest gains in the apparel, and lumber and furniture industries.

Despite important industrial gains in recent years the area still has a deficit of 7,916 manufacturing jobs when measured against the national industrial employment-population ratio. This indicates an area where the potential for additional manufacturing production is excellent.

### Resources for Growth

1. There is a current labor supply of 8,855 men and 7,570 women available for industrial jobs in the labor market area. In addition, 8,565 young men and 8,020 young women will become 18 years of age by 1977 and potentially available for work.



2. The local transportation capability is good. The Southern Railway System serves Somerset and Burnside with a variety of services. Interstate 75, 33 miles to the east, is a major highway artery into the industrial north and south. The local airport provides air service for small aircraft and commercial air service is available in London, 35 miles east of Somerset.

3. Energy - natural gas is provided by the Somerset Gas Service and the Ferguson Gas Service. Electricity is provided by the Kentucky Utilities Company, South Kentucky Rural Electric Cooperative Corporation, and the Jackson County Rural Electric Cooperative Corporation. The local raw water supply from Lake Cumberland is more than adequate for continued growth.

4. Industrial sites - Pulaski County has nine available industrial sites, totaling 513 acres.

5. Education is an important growth asset for Pulaski County. Three school systems operate within the county and educational television is now available.

Three senior and two junior colleges are within 50 miles of the county, with the Somerset Community College located in Somerset.

The Somerset Area Vocational School is located in Somerset and offers training in eleven different courses. In conjunction with the vocational school, an Aeronautics Center provides training for FAA-qualified aircraft mechanics.

#### Community Programs for Improvement

In 1970, Somerset was designated an All-Kentucky city for the third time. The award was the result of successful community programs and industrial expansion. Somerset is now a certified city and an approved growth center which makes available other Federal funds to be used for improvements.

Recent community improvements: The Somerset City Hospital has installed \$138,000 worth of new equipment, including a two-way radio for home health personnel to use when in the field; the Lake Cumberland Comprehensive Care Center has extended services to Adair, Cumberland, Taylor, and Green Counties and is now serving a 10-county area; Suburban Carriers, Incorporated, has just created a city bus franchise in Somerset and the owners have a 15-year exclusive franchise to operate in Somerset; Tecumseh Products Company has located in Somerset this year its multi-million dollar manufacturing plant that will eventually employ 1,700 to 2,000 workers; The Municipal Water Service expanded its treatment plant from 1.5 million gallons per day capacity to 3 million gallons per day;



a Babe Ruth League baseball park has been constructed which has an electric scoreboard, sodded field, bleachers and concession stand. In Burnside, Lakeshore Drive has been made into a scenic drive; the Boy Scout and Cub Scout troops have been reorganized and improvements made on the scout house.

Community improvements under construction: A new bypass is being constructed and should be completed in November, 1975; the Somerset Independent School System has under construction 10 additional classrooms to existing buildings; and the old post office building is being remodeled to house the library facilities.

Planned community improvements: The Somerset Shopping Plaza is being planned and construction should begin in the very near future. It will have 125,000 square feet of space and will include 6 large establishments and numerous smaller ones. The Pulaski County School System has planned a library and reading room at White Lily Elementary, a physical education building and two additional rooms at Burnside Elementary, and a gymnasium and some additional rooms at Pulaski County High. The Crane Company has planned a 3 million dollar addition to its plant at Ferguson. It will be an 88,000 square-foot addition, which will increase production by 50 percent and increase the number of employees from 150 to 250. The Somerset City Hospital plans to have all hospitals in the area connected for emergency medical communications, and also plans to expand to a 300- or 350-bed facility in the near future. The Somerset Independent School System has plans for new facilities for a middle school. The Somerset City Sewer System plans to build a new 2 million gallon per day treatment plant, 2 new lagoons, and to extend 18- and 24-inch lines to Tecumseh Products Company. The Ferguson Gas Service is going to install a new regulator and about one-half mile of mains. Plans have been formulated for a Burnside Sewer System to be constructed sometime in the near future.

#### Recreation, Entertainment, and Livability

General Burnside Island State Park, at Burnside, is an island in Lake Cumberland made accessible by a causeway. The park offers a variety of water sports and recreational facilities, including an 18-hole golf course.

A number of primitive camping and picnic areas are contained in the Daniel Boone National Forest, which covers over a half million acres. Cumberland Falls State Resort Park is another scenic area within a short driving time of the Somerset-Burnside area.



# THE LABOR MARKET

## POPULATION TRENDS <sup>1/</sup>

Area	Population			Percent Change	
	1970	1960	1950	1960-70	1950-60
Somerset	10,436	7,112	7,097	+46.7	+ 0.2
Burnside	586	575	615	+ 1.9	- 6.5
Science Hill	470	463	445	+ 1.5	+ 4.0
Labor Market Area	141,876	140,706	161,140	+ 0.8	-14.5
Pulaski County	35,234	34,403	38,452	+ 2.4	-10.5
Casey County	12,930	14,327	17,446	- 9.8	-17.9
Laurel County	27,386	24,901	25,797	+10.0	- 3.5
Lincoln County	16,663	16,503	18,668	+ 1.0	-11.6
McCreary County	12,548	12,463	16,660	+ 0.7	-25.2
Rockcastle County	12,305	12,334	13,925	- 0.2	-11.4
Russell County	10,542	11,076	13,717	- 4.8	-19.6
Wayne County	14,268	14,700	16,475	- 2.9	-10.8

## GENERAL EMPLOYMENT CHARACTERISTICS, 1969 <sup>2/</sup>

Major Employment Group	Employment	
	Pulaski County	Labor Market Area
TOTAL	12,200	37,500
Agricultural	2,500	10,100
Nonagricultural	9,700	27,400
Manufacturing	2,600	6,478
Trade and Services	2,259	6,080
Government	1,900	5,500
Other	2,941	9,342

## MANUFACTURING EMPLOYMENT TRENDS BY INDUSTRY SEPTEMBER 1970 AND 1960 <sup>3/</sup>

Industry	Pulaski County			Labor Market Area		
	1970	1960	%Change	1970	1960	%Change
TOTAL	2,825	1,110	+154.5	6,130	2,979	+105.7
Food & Kindred Products	146	180	- 18.9	611	528	+ 15.7
Apparel, Textiles, Leather	548	482	+ 13.7	2,413	1,243	+ 94.1
Lumber & Furniture	1,443	218	+561.9	1,982	867	+128.6
Printing, Publishing, Paper	50	20	+150.0	77	39	+ 97.4
Chemicals, Petroleum,						
Coal, Rubber	253	88	+187.5	278	136	+104.4
Stone, Clay & Glass	360	99	+263.6	386	128	+201.6
Machinery & Metal Products	23	22	+ 4.5	368	37	+894.6
Other	2	1	-	15	1	-



MAJOR PULASKI COUNTY MANUFACTURING FIRMS,  
THEIR PRODUCTS AND EMPLOYMENT <sup>4/</sup>

<u>Firm</u>	<u>Product</u>	<u>Employment</u>		
		<u>Total</u>	<u>Male</u>	<u>Female</u>
<u>Burnside</u>				
Cumberland Charcoal Corp.	Charcoal briquets	125	125	0
Hamer Hardwood Mfgs., Inc.	Lumber, laminated truck flooring	76	75	1
<u>Ferguson</u>				
Crane Co.	Vitreous china, sanitary ware	140	133	7
Lear Siegler, Inc.	Automobile seat frames, automobile seat assemblies	770	620	150
<u>Somerset</u>				
Cumberland Wood & Chair Corp.	Bunk beds, beds, headboards, chairs	152	150	2
General Electric Co., Somerset Glass Plant	Pressed glassware	126	76	50
Palm Beach Company	Men's coats	550	30	520
Southern Belle Dairy Co., Inc.	Fluid milk, ice cream mix	94	82	12
Tecumseh Products Co.	Compressors for air conditioners	500		
<u>Science Hill</u>				
Cumberland Stave Co., Inc.	Barrel staves, headings	40	40	0
Henry Frame and Lumber Company	Mattress frames, chair parts, surveyor stakes	48	48	0
Vaught Brothers Mfg. Co., Inc.	Box springs frames, hardwood dimensions pallets	43	41	2



WAGE RATES FOR SELECTED OCCUPATIONS  
SOMERSET AND BURNSIDE, KENTUCKY <sup>5/</sup>

<u>Classification</u>	<u>Wages Per Hour</u>		
	<u>Starting</u>	<u>Maximum</u>	<u>Prevailing</u>
<u>Production Employees</u>			
Assembler	\$1.70	\$2.00	\$1.85
Inspector	1.70	2.00	1.90
Production Laborer	1.70	2.00	1.85
Welder, Arc or Acetylene (Class-A)	2.15	3.00	2.55
<u>Service Employees</u>			
Electrician (Class-A)	\$1.75	\$3.50	\$2.75
Laborer	1.60	2.50	1.85
Machinist	3.00	3.80	3.25
Mechanic, Maintenance	2.50	3.50	2.75
Truck Driver, Industrial (Class-A)	1.75	2.80	2.10
<u>Office Employees</u>			
Bookkeeper	\$2.00	\$3.25	\$2.90
File Clerk	1.60	2.00	1.80
Receptionist	1.60	2.00	1.80
Secretary	1.60	2.55	1.95
Typist	1.60	2.25	1.85

LABOR ORGANIZATIONS

<u>Union</u>	<u>Representing Workers at:</u>
International Union of Electrical, Radio, and Machine Workers (AFL-CIO) IUE Local 767	General Electric Company, Somerset Glass Plant
International Brotherhood of Operative Potters	Crane Company
Amalgamated Clothing Workers of America	Palm Beach Company
United Auto Workers	Lear Siegler, Inc.
Laborer's International Union of North America	Cumberland Charcoal Company
Amalgamated Meat Cutters and Butcher Workmen of North America	Southern Belle Dairy Company



CURRENT AND FUTURE LABOR SUPPLY -  
PULASKI COUNTY LABOR MARKET AREA

Area	Current Labor Supply, 1971 <sup>6/</sup>			Future Labor Supply by 1977 <sup>7/</sup> (Becoming 18 Years of Age)		
	Total	Male	Female	Total	Male	Female
Labor Market						
Area	16,421	8,854	7,567	16,579	8,563	8,016
Pulaski	3,309	1,692	1,617	4,296	2,225	2,071
Laurel	2,898	1,201	1,697	3,523	1,784	1,739
Lincoln	2,086	1,384	702	2,080	1,061	1,019
McCreary	1,731	742	989	1,892	1,029	863
Rockcastle	2,090	1,294	796	1,638	853	785
Russell	1,936	1,175	761	1,244	620	624
Wayne	2,371	1,366	1,005	1,906	991	915

TOTAL PERSONAL INCOME <sup>8/</sup>

Area	1969*	1959	%Change
Pulaski County	\$ 74,603,000	\$ 32,060,000	+132.7
Labor Market Area	199,099,000	108,746,000	+ 83.1
Kentucky	9,202,000,000	4,655,000,000	+ 97.7

PER CAPITA PERSONAL INCOME <sup>9/</sup>

Area	1969*	1959	%Change
Pulaski County	\$2,170	\$ 953	+127.7
Labor Market Area	\$984 to 2,360	\$597 to 953	N. A.
Kentucky	2,847	1,552	+ 83.4

\*Preliminary figures.

## EDUCATION

### Public Schools

	<u>Science Hill Independent</u>	<u>Somerset Independent</u>	<u>Pulaski County</u>
Total Enrollment	166	2,432	5,863
Elementary	166	1,126	3,411
Junior High		527	
High School		779	2,452
Student-Teacher Ratio	21-1	26-1	23-1
Elementary	21-1	25-1	27-1
Junior High		28-1	
High School		27-1	18-1
State Rating of High School		Comprehensive	Basic and Standard
Other Accreditations		The Southern Association of Colleges and Schools	
Percent High School Graduates to College		62.6	30.5
Current Expenditures Per Pupil	\$441.41	\$443.19	\$430.27
Bonded Indebtedness, June 30, 1970		\$1,206,000	\$1,213,000

### Parochial School

Total Enrollment	60
Elementary	60
Student-Teacher Ratio	15-1
Elementary	15-1



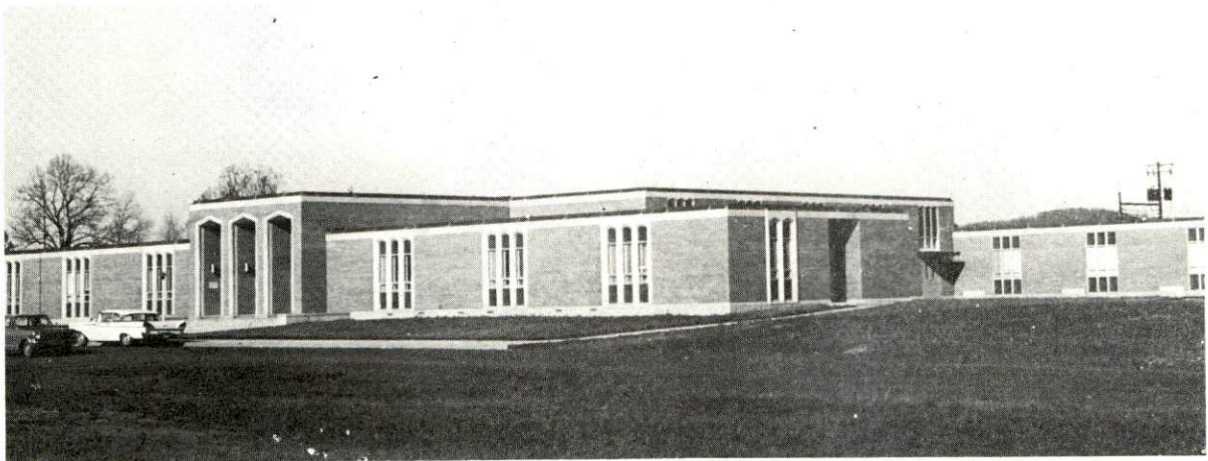
## Vocational Schools

### Nearest Area School

Location	Somerset Area Vocational School Somerset
Curriculum	Data Processing, Printing General Clerical, Machine Shop Secretarial-Steno, Drafting Health Careers, Auto Mechanics Distributive Education Electronics (Technology) Appliance Repair

## Colleges and Universities

<u>Name</u>	<u>Area - Within 50 miles</u>		<u>Highest Degree Conferred</u>
	<u>Location</u>	<u>Enrollment</u>	
Centre College	Danville	774	Baccalaureate
Berea College	Berea	1,400	Baccalaureate
Cumberland College	Williamsburg	1,858	Baccalaureate
Lindsey Wilson Junior College	Columbia	413	Associate
Sue Bennett Junior College	London	192	Associate
Somerset Community College	Somerset	667	Associate



SOMERSET COMMUNITY COLLEGE

## TRANSPORTATION

### Rail

Line serving Somerset and Burnside - Southern Railway System

Services - Carload freight, switching, siding, REA Express

Line serving Science Hill and Eubank - Southern Railway System

Services - Prepaid freight, switching, siding, REA Express

### RAILWAY TRANSIT TIME FROM SOMERSET, KENTUCKY, TO: 10/

No. of Days		No. of Days	
City	CL	City	CL
Atlanta, Ga.	2	Los Angeles, Calif.	8
Birmingham, Ala.	2	Louisville, Ky.	2
Chicago, Ill.	4	Nashville, Tenn.	3
Cincinnati, Ohio	2	New Orleans, La.	3
Cleveland, Ohio	4	New York, N. Y.	5
Detroit, Mich.	4	Pittsburgh, Pa.	4
Knoxville, Tenn.	2	St. Louis, Mo.	3

### Truck Service

#### Somerset and Burnside area:

#### Company

Detherage Freight Line  
 Dixie Ohio Express, Inc.  
 Eagle Express Co., Inc.  
 Eldridge Truck Line  
 Killion Motor Express, Inc.  
 McLean Trucking Co.  
 Monticello-Albany Freight  
 Line, Inc.

#### Home Office

Somerset, Kentucky  
 Akron, Ohio  
 Somerset, Kentucky  
 Somerset, Kentucky  
 Louisville, Kentucky  
 Winston-Salem, North Carolina  
 Monticello, Kentucky



HIGHWAY MILES AND TRUCK TRANSIT TIME IN DAYS FROM  
SOMERSET, KENTUCKY, TO SELECTED MARKET CENTERS

City	Highway Miles	Delivery Time <u>11</u> / LTL TL		City	Highway Miles	Delivery Time LTL TL	
Atlanta, Ga.	387	3	2	Los Angeles, Calif.	2,258	7	4
Birmingham, Ala.	410	3	2	Louisville, Ky.	125	1	1
Chicago, Ill.	458	4	2	Nashville, Tenn.	190	3	2
Cincinnati, Ohio	163	2	1	New Orleans, La.	790	5	3
Cleveland, Ohio	447	3	2	New York, N. Y.	929	5	3
Detroit, Mich.	430	3	2	Pittsburgh, Pa.	481	4	2
Knoxville, Tenn.	130	1	1	St. Louis, Mo.	424	3	2

Air

	<u>Local</u>	<u>Nearest Commercial</u>
	Somerset-Pulaski County Airport	London-Corbon War Memorial Airport
Location:	Somerset	London - 35 miles away
Runways:	1 paved	1 paved
Length:	3,900 ft.	6,000 ft.
Traffic Control:	Wind tee and wind sock	Wind sock
Lighting:	Beacon and runway lights	Beacon, runway, and obstruction lights
Services:	80 and 100 octane, A & E repairs, general flying service, taxi, rent-a-car	80 and 100 octane, JP-A-50, Piedmont Airlines, taxi, U-Drive-It, Weather Bureau, flight training, charter and ambulance service, vending machines

Bus

Somerset and Burnside - Southern Greyhound Bus Line  
Somerset - Suburban Carriers, Inc.

Taxi

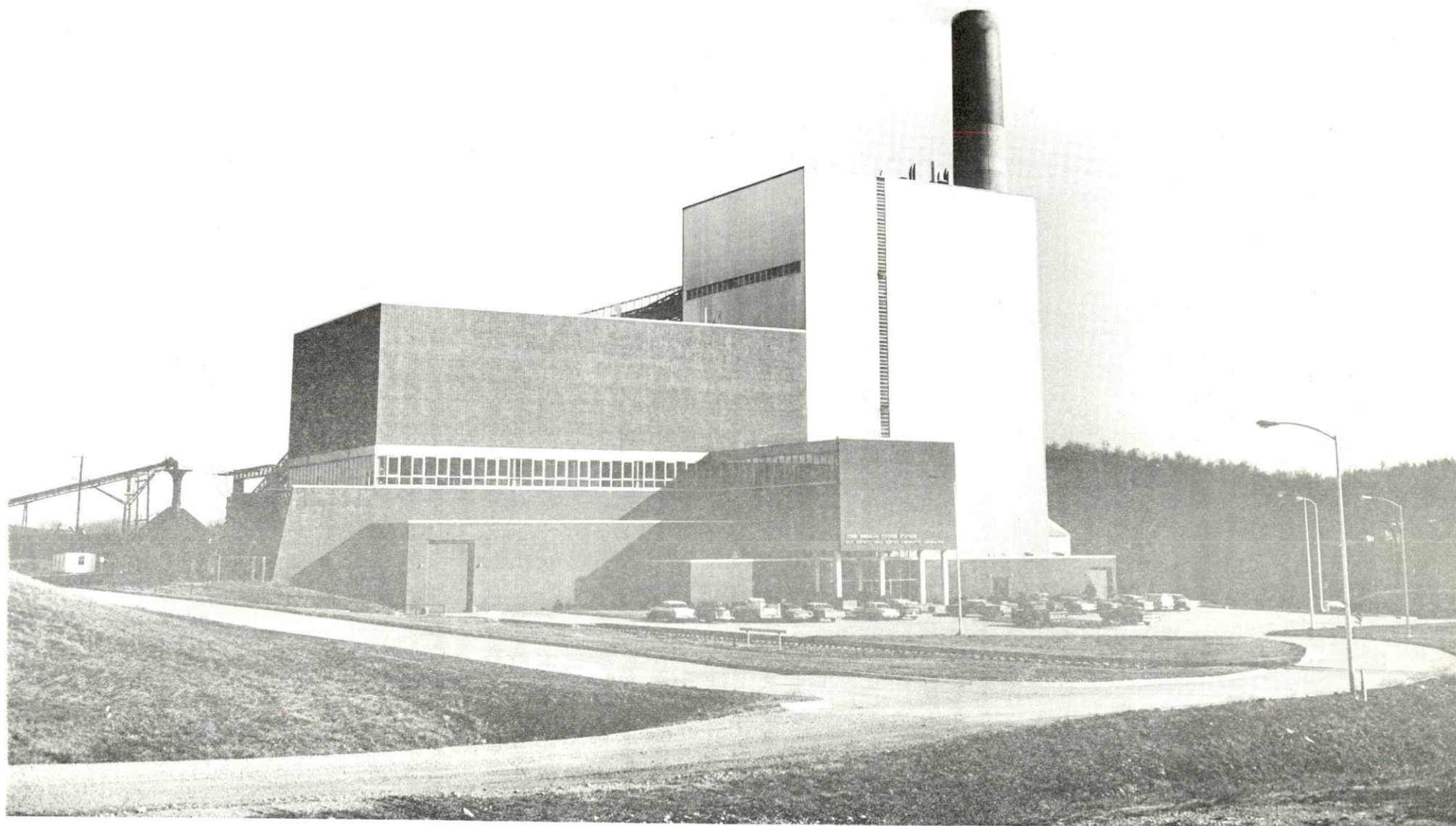
B-Line Cab Company, City and Veterans Cab Company,  
24-hour radio-dispatched service (Somerset)

Rental Services

Car rentals (Somerset-Pulaski County Airport)  
U-Haul (Somerset)

Water

Lake Cumberland, Burnside, navigable for a distance of  
105 miles.  
Barge service - coal is presently being hauled to the  
John Sherman Cooper Power Station.



JOHN SHERMAN COOPER STATION  
EAST KENTUCKY POWER COOPERATIVE



## POWER AND FUEL

### Electricity

Company serving Somerset, Burnside, Eubank, Ferguson, and Science Hill - Kentucky Utilities Company

Source of power - Kentucky Utilities Company

Total generating capacity - 1,215,000 KW

Industrial rates furnished by - Kentucky Utilities Company, Industrial Development Department, Lexington, Kentucky

Company serving Pulaski County - South Kentucky RECC; Jackson County RECC

Source of power - East Kentucky Power Cooperative

Total generating capacity - 548,000 KW

Industrial rates furnished by - South Kentucky RECC, Post Office Box 910, Somerset, Kentucky; Jackson County RECC, McKee, Kentucky

### Natural Gas

Company serving Somerset - Somerset Gas Service

Source of supply - Texas Eastern Transmission Corporation

Size of supplier's transmission lines - 30-inch

Distribution lines - 2-, 4-, 6-, and 8-inch

BTU content - 1020; Specific gravity - .58

Distribution pressure - 12 ounces

#### Rates:

First	1,000 cu. ft.	\$1.90
Next	1,000 cu. ft.	1.40
Next	3,000 cu. ft.	1.05 per M cu. ft.
Next	5,000 cu. ft.	.95 per M cu. ft.
Next	10,000 cu. ft.	.85 per M cu. ft.
All over	20,000 cu. ft.	.75 per M cu. ft.

### Large Commercial

First	1,000 cu. ft.	\$1.90 per M cu. ft.
All over		.75 per M cu. ft.

Industrial - by negotiation

Company serving Ferguson - Ferguson Gas Service  
Source of supply - Somerset Gas Service  
Size of transmission lines - 6-inch  
Distribution lines - 2-inch  
BTU content - 1030; Specific gravity - .6  
Distribution pressure - 15 ounces

Rates:

1,000 cu. ft.	\$ 1.92
2,000 cu. ft.	3.34
3,000 cu. ft.	4.41
4,000 cu. ft.	5.48
5,000 cu. ft.	6.55
10,000 cu. ft.	11.40
20,000 cu. ft.	20.10
25,000 cu. ft.	23.95
30,000 cu. ft.	27.80
50,000 cu. ft.	43.20
70,000 cu. ft.	58.60

Natural gas facilities are not available in other communities of Pulaski County. There are three distributors of manufactured gas in Pulaski County.



## WATER AND SEWERAGE

### Water

Company serving Somerset and Ferguson - Kentucky Water Service Company, Inc.

Source - Lake Cumberland

Treatment plant capacity - 3,000,000 gpd

Average daily consumption - 1,585,000 gallons

Peak daily consumption - 1,900,000 gallons

Type treatment - settlement, flocculation, chlorine, fluoride

Storage capacity - 2,050,000 gallons

Average pressure - 110 psi

Average temperature - 58 degrees

Size mains - 4, 6, 8, 10, 12, and 16 inches

### MONTHLY WATER RATES FOR WHOLESALE AND INDUSTRIAL CONSUMERS

---

#### Somerset and Ferguson Water Rate Schedule (Net)

First	1,000 gallons	\$3.25 (minimum)
Next	1,000 gallons	1.05 per M gallons
Next	4,000 gallons	1.00 per M gallons
Next	19,000 gallons	.90 per M gallons
Next	25,000 gallons	.80 per M gallons
Next	25,000 gallons	.75 per M gallons
Next	25,000 gallons	.65 per M gallons
Next	100,000 gallons	.60 per M gallons
Over	200,000 gallons	.50 per M gallons

#### Minimum Monthly Charges

5/8- or 3/4-inch meter	\$ 3.25
1- or 1 1/4-inch meter	7.25
1 1/2-inch meter	13.25
2-inch meter	20.25
3-inch meter	54.00
4-inch meter	90.00
6-inch meter	182.00

Company serving Burnside - Burnside Municipal Waterworks  
 Source - Lake Cumberland  
 Treatment plant capacity - 300,000 gpd  
 Average daily consumption - 80,000 gallons  
 Peak daily consumption - 280,000 gallons  
 Type treatment - chlorine, lime, alum  
 Storage capacity - 100,000 gallons  
 Average pressure - 60 psi  
 Average temperature - 45 degrees  
 Size mains - 4 and 6 inches

MONTHLY WATER RATES FOR WHOLESALE  
 AND INDUSTRIAL CONSUMERS

---

First	2,000 gallons	\$2.825 per M gallons
Next	1,000 gallons	1.55 per M gallons
Next	2,000 gallons	1.40 per M gallons
Next	5,000 gallons	1.30 per M gallons
Next	15,000 gallons	1.15 per M gallons
Next	25,000 gallons	1.00 per M gallons
Next	50,000 gallons	.85 per M gallons
Excess of	100,000 gallons	.70 per M gallons

Minimum charge                      \$5.65 per month

Name of water district - Pulaski County Water District No. 1  
 Area served - Science Hill and unincorporated area between Somerset  
 and Science Hill  
 Date when water district began operating - 1964  
 Source of supply of treated water - Kentucky Water Service Company, Inc.  
 Amount of water which can be purchased in a 24-hour period - 100,000  
 gallons  
 Average amount of water used in a 24-hour period - 59,300 gallons  
 Storage capacity - 100,000 gallons  
 Average pressure - 75 psi  
 Average temperature - 58 degrees  
 Size mains - 3 and 6 inches

Connection fees -

<u>Number of Connections Desired</u>	<u>Connection Charge</u>
5/8- or 3/4-inch meter connection	\$200
1-inch meter connection	260
2-inch meter connection	355
4-inch non-metered fire service connection	200
6-inch non-metered fire service connection	350



Monthly water bills will be computed on following estimated rate plus tax:

First	1,000 gallons	\$5.00 (minimum)
Next	2,000 gallons	1.50 per M gallons
Next	2,000 gallons	1.25 per M gallons
Next	5,000 gallons	1.00 per M gallons
Next	15,000 gallons	.90 per M gallons
Next	75,000 gallons	.75 per M gallons
Over	100,000 gallons	.60 per M gallons

Name of water district - Pulaski County Water District No. 2

Area served - approximately 13 miles along highway Kentucky 80 west of Somerset as well as Nancy, Kentucky, and adjacent vicinity

Date when water district began operating - Mid 1968

Source of supply of treated water - Kentucky Water Service Company, Inc.

Amount of water which can be purchased in a 24-hour period - 360,000 gallons

Average amount of water used in a 24-hour period - 50,000 gallons

Peak amount of water used in a 24-hour period - 70,000 gallons

Storage capacity - 100,000 gallons; Average pressure - 8 psig

Average temperature - 60 degrees; Size mains - 4, 6, and 8 inches

Connection charges -

1-inch water meter	\$300
2-inch water meter	500

Large Business Establishments (1-inch water meter)

Minimum monthly charge - \$9 (minimum charge for water service entitles customer to 5,000 gallons of water per month.)

First	5,000 gallons	\$1.80 per M gallons
Next	5,000 gallons	1.50 per M gallons
Next	10,000 gallons	.85 per M gallons
Next	30,000 gallons	.75 per M gallons
Next	50,000 gallons	.60 per M gallons
All over	100,000 gallons	.50 per M gallons

Schools-Factory (2-inch water meter)

Minimum monthly charge - \$25 (minimum charge for water service entitles customer to 20,000 gallons of water per month.)

First	20,000 gallons	\$1.25 per M gallons
Next	30,000 gallons	.75 per M gallons
Next	50,000 gallons	.60 per M gallons
All over	100,000 gallons	.50 per M gallons

Name of water district - Pleasant Hill Water District

Area served - north of Somerset along boundaries of U.S. 27 and Kentucky 80

Date when water district began operating - November, 1970

Source of supply of treated water - Kentucky Water Service Company, Inc.

Amount of water which can be purchased in a 24-hour period - 216,000 gallons

Peak amount of water used in a 24-hour period - 9,300 gallons

Storage capacity - 36,000 gallons (concrete tank)

#### Rates (monthly)

First	2,000 gallons	\$5.75 (minimum)
Next	3,000 gallons	1.50 per M gallons
Next	5,000 gallons	1.20 per M gallons
Next	15,000 gallons	1.00 per M gallons
Next	75,000 gallons	.75 per M gallons
All over	100,000 gallons	.60 per M gallons

#### Meter Size

#### Connection Fee

1-inch or less	\$200
1 1/2-inch	300
2-inch	350

Surface water sources - Pitman Creek of Cumberland River, Cumberland Lake

Average discharge - Pitman Creek at Somerset 43.3 cfs (16 years record, USGS)

Expected ground water yield - Northcentral portion of county 5 to 50 gpm; remainder of county 5 gpm or less

#### Sewerage

Company serving Somerset - Somerset City Sewer System

Design capacity - 2,500,000 gpd

Average daily flow - 1,300,000 gallons

Treatment - primary and secondary

Type treatment - aeration, clarifier, drying beds

Treated effluent discharged into - Sinking Creek

Size of sanitary mains - 8 to 18 inches

Monthly rates - based on water usage



First	1,000 gallons	\$2.50 (minimum bill)
Next	6,000 gallons	1.00 per M gallons
Next	6,000 gallons	.95 per M gallons
Next	12,000 gallons	.90 per M gallons
Next	25,000 gallons	.85 per M gallons
Next	50,000 gallons	.80 per M gallons
Next	650,000 gallons	.75 per M gallons
Over	750,000 gallons	.675 per M gallons

Septic tanks are utilized for sewage disposal in other portions of Pulaski County.

## LOCAL GOVERNMENT

### City

#### Somerset

Structure - Mayor - 4-year term; 12 councilmen - 2-year terms

Budget 1970-71 - General Fund \$502,075

Fees and licenses - Business license fees \$5 to \$450 annually

#### Burnside

Structure - Mayor - 4-year term; 6 councilmen - 2-year terms

Budget 1970-71 - General Fund \$26,150

Fees and licenses - Occupational license fees \$15 to \$50 annually

### County

Structure - County Judge - 4-year term; 5 magistrates - 4-year terms

Budget 1970-71 - General Fund \$213,375; Road Fund \$80,000

### Assessed Value of Property - 1970

<u>Classes of Property*</u>	<u>Somerset</u>	<u>Pulaski County</u>
Real Estate	\$52,983,550	\$165,776,260
Tangibles	12,449,040	31,646,120
Public Service		49,574,842 (1969)

### Local General Property Tax Rates Per \$100 of Assessed Valuation - 1970 12/

<u>Taxing Unit**</u>	<u>Somerset</u>	<u>Burnside</u>	<u>Science Hill</u>	<u>Ferguson</u>	<u>Pulaski County</u>
State	\$ .015	\$ .015	\$ .015	\$ .015	\$ .015
County	.143	.143	.143	.143	.143
School	.670	.273	.289	.273	.273
City	.330	.306	.250	.250	
Total	\$1.158	\$ .737	\$ .697	\$ .681	\$ .431

\*Property assessed at 100% of fair value.

\*\*Manufacturing machinery, raw materials inventories and goods in process inventories are not subject to local tax. State rate is only \$0.15 per \$100.



## Planning and Zoning

Agency - Somerset Planning and Zoning Commission

Plans completed - Comprehensive Plan, Street Plan and Report,  
Subdivision Regulations, Zoning Ordinance, Housing Element

Agency - Burnside Planning and Zoning Commission

Plans completed - Comprehensive Plan, Subdivision Regulations,  
Zoning Ordinance, Neighborhood Analysis, Public Improvements  
Program

Codes adopted - Both cities have adopted all major codes.

## Safety

<u>Police</u>	<u>Somerset</u>	<u>Burnside</u>	<u>Pulaski County</u>
Total staff	23	1	6
Radio-patrol cars	3	1	3
Other equipment	Radio base station, walkie-talkie, radar	standard	standard

<u>Fire</u>	<u>Somerset</u>	<u>Burnside</u>	<u>Science Hill</u>
American Insurance Association Fire Rating	7 and 9	7	9
Full-time staff	10		
Volunteers	15	16	12
Equipment:			
750-gpm pumpers	2	1	
500-gpm pumpers		1	one 500-gallon tank pump truck
600-gpm pumper	1		
Other	1 auto		

## Rescue Service

Somerset-Pulaski County Rescue Squad

Number of volunteers - 50 (30 active - 20 inactive)

Equipment - 1 panel truck, 1 panel truck (oxygen-equipped), 1 utility truck,  
1 ambulance (oxygen-equipped), 1 station wagon, all equipped with 2-way  
radios; 3 boats, 4 outboard motors, 3 boat trailers, 2 generators; lake  
dragging and scuba diving equipment, and first aid equipment

Personnel training - American Red Cross first aid training and scuba  
diving and rescue training

Sanitation

	<u>Somerset</u>	<u>Burnside</u>
Type service	municipal	private
Cost:		
residential	\$1 per month	\$3 per month
business	according to volume	according to volume
Collection frequency:		
residential	weekly	monthly
business	daily	monthly
Trash pickup	upon request	monthly
Disposal method	land fill	land fill



## HEALTH

### Hospitals

<u>General Hospital</u>	<u>Location</u>	<u>Beds</u>
Somerset City Hospital	Somerset	113

General hospital facilities - 5 operating rooms, 3 emergency rooms, X-ray equipment and radioactive scanning equipment, therapy unit, EKG, intensive coronary care; training facility for nursing students from Berea College, for students obtaining associate degrees in nursing and certified laboratory assistants from Somerset Community College, and vocational training for nurses aides, orderlies, and ward clerks; home health service within a 10-county area which makes up Health Planning District of Region 14

Medical staff - 21 physicians (full-time), 25 physicians (courtesy), 10 dentists, 35 registered nurses, 256 full-time employees, and 57 part-time employees

### Other Medical Facilities

Lake Cumberland Comprehensive Care Center (outpatient service)

Medical staff - Children's Service Director, Volunteer Coordinator, Mental Health Worker, Pastoral Alcoholism Counselor, Administrator, Psychiatric Nurse, Mental Health Educator School Consultant, Psychologist, Psychiatrist, Children's Service Specialist, Mental Rehabilitation Director, and a day care adult coordinator

Adult Day Care Center - 1 aide

Children's Day Care Centers (5) - 5 full-time teachers, 6 full-time aides in each unit, 40 volunteer aides (part-time)

### Nursing Homes

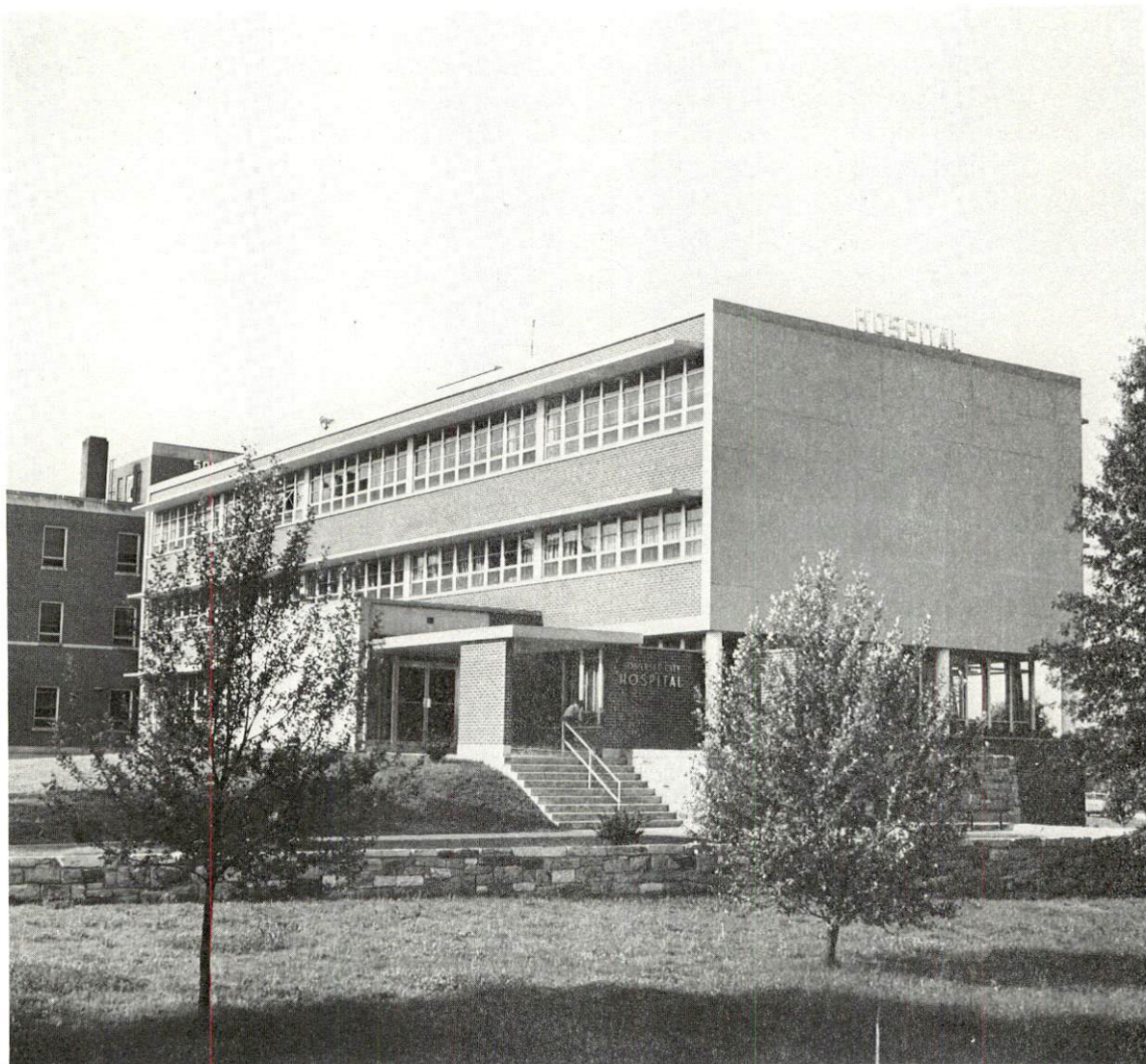
	<u>Number</u>	<u>Beds</u>
Extended care homes	1	69
Personal care homes	5	192

Public Health

Facility - Pulaski County Health Department

Staff - 1 administrator, 1 nutritionist, 2 nurses, 1 sanitarian,  
1 sanitarian helper, 1 plumbing inspector (part-time), and 1 auxiliary  
worker

Budget 1970-71 - \$72,316



SOMERSET CITY HOSPITAL



## OTHER LOCAL FACILITIES

### Communications

Telephone - General Telephone Company of Kentucky  
Services - standard

Telegraph - Western Union, 103 South Main Street, Somerset  
Services - telephone

#### Postal

U. S. Post Office	<u>Somerset</u>	<u>Burnside</u>	<u>Eubank</u>	<u>Science Hill</u>	<u>Ferguson</u>
Class	1st	2nd	3rd	3rd	3rd
Mail received daily	three	once	once	once	once
Mail dispatched daily	three	once	once	once	once

#### Newspapers

Commonwealth-Journal, Somerset  
Daily and circulation - approximately 9,246

The Observer, Somerset

Weekly and circulation - new paper - has been in operation only short time

Radio - WSFC (AM-FM) and WTLO-Somerset

Stations received from - Lexington and Louisville, Kentucky;  
Knoxville, Tennessee

Television - no local station

Cable service - Television Reception Corporation, Commonwealth Cable  
Company, (Somerset); Burnside CA TV Cable Service (Burnside)

Reception from - Knoxville and Nashville, Tennessee; Lexington, Kentucky  
Kentucky Educational Television - Channel 29, WKSO, Somerset transmitter

### Library Services

#### Public libraries -

Somerset-Pulaski County Library

Size collection - 22,000 volumes

Circulation, 1969-70 - 92,148; bookmobile - 68,598

Services - bookmobile, copy machine, tapes, records, microfilm reader

Hours of operation - 9:30 a. m. to 5:30 p. m. Monday through Saturday;  
open Friday night until 9:00

Burnside Public Library

Only a bookmobile stop at the present time

Hours of operation - 3 p. m. to 6 p. m. on Monday, 12 noon to 5 p. m.

Wednesday and Friday; 1 p. m. to 4 p. m. on Saturday

### Religious Institutions

Somerset and Burnside area

Number of churches - 30

Denominations - Baptist, Methodist, Christian, Church of Christ,  
Presbyterian, Catholic, Church of God, Assembly of God, Episcopal,  
Lutheran

### Financial Institutions

<u>Bank</u>	<u>Statement as of December 31, 1970</u>	
	<u>Assets</u>	<u>Deposits</u>
Bank of Somerset	\$ 1,059,373.87	\$ 568,721.45
The Citizens National Bank	16,674,781.22	15,216,703.54
First and Farmers National Bank	44,284,488.00	40,127,810.40
<u>Savings and Loan Associations</u>		<u>Shared Accounts</u>
American Federal Savings and Loan Association	\$ 1,438,416.49	\$ 1,251,792.05
Mutual Federal Savings and Loan Association	19,623,402.94	17,435,549.27
Cumberland Production Credit Association	19,765,343.14	16,285,000.00

### Hotels and Motels

Number - 20

Units - 565

### Clubs and Organizations

#### Somerset

Business and Civic - Somerset-Pulaski County Chamber of Commerce,  
Jaycees, Lions Club, Kiwanis Club, PTA, Rotary Club

Fraternal - American Legion, VFW, Masons

Women's - Somerset Business & Professional Woman's Club, Junior  
Woman's Club, Woman's Club, Jaycettes, Literary Club, Chatauga Club

Youth - Girl Scouts, Boy Scouts, Little League, Babe Ruth League

Other - YMCA



Burnside

Business and Civic - Burnside Chamber of Commerce, Lake Cumberland  
Development Foundation of Burnside, Inc.

Fraternal - Masonic Lodge

Women's - Eastern Star, Woman's Club, Homemakers

Youth - Key Club, Boy Scouts, Cub Scouts,

Other - Burnside Golf Club

Burnside is the birthplace of the Boy Scouts of America.

## RECREATION

### Local

#### Public Recreation Facilities (Somerset-Burnside area)

Supervised program - Somerset and Burnside  
Parks - Pulaski County Park, Burnside City Park  
Playgrounds - 7  
Swimming pool - YMCA pool, Somerset  
Golf course - 18-hole course; Burnside Island  
Tennis courts - 3  
Baseball diamonds - 3  
Football field - 1

#### Private Recreation Facilities (Somerset-Burnside)

Country club - 1  
Golf course - 1 par-3 (lighted)  
Swimming pool - 1  
Movie theaters - 2 indoor, 2 drive-ins  
Bowling lane - 1  
Tennis court - 1  
Other - skating rink, billiards

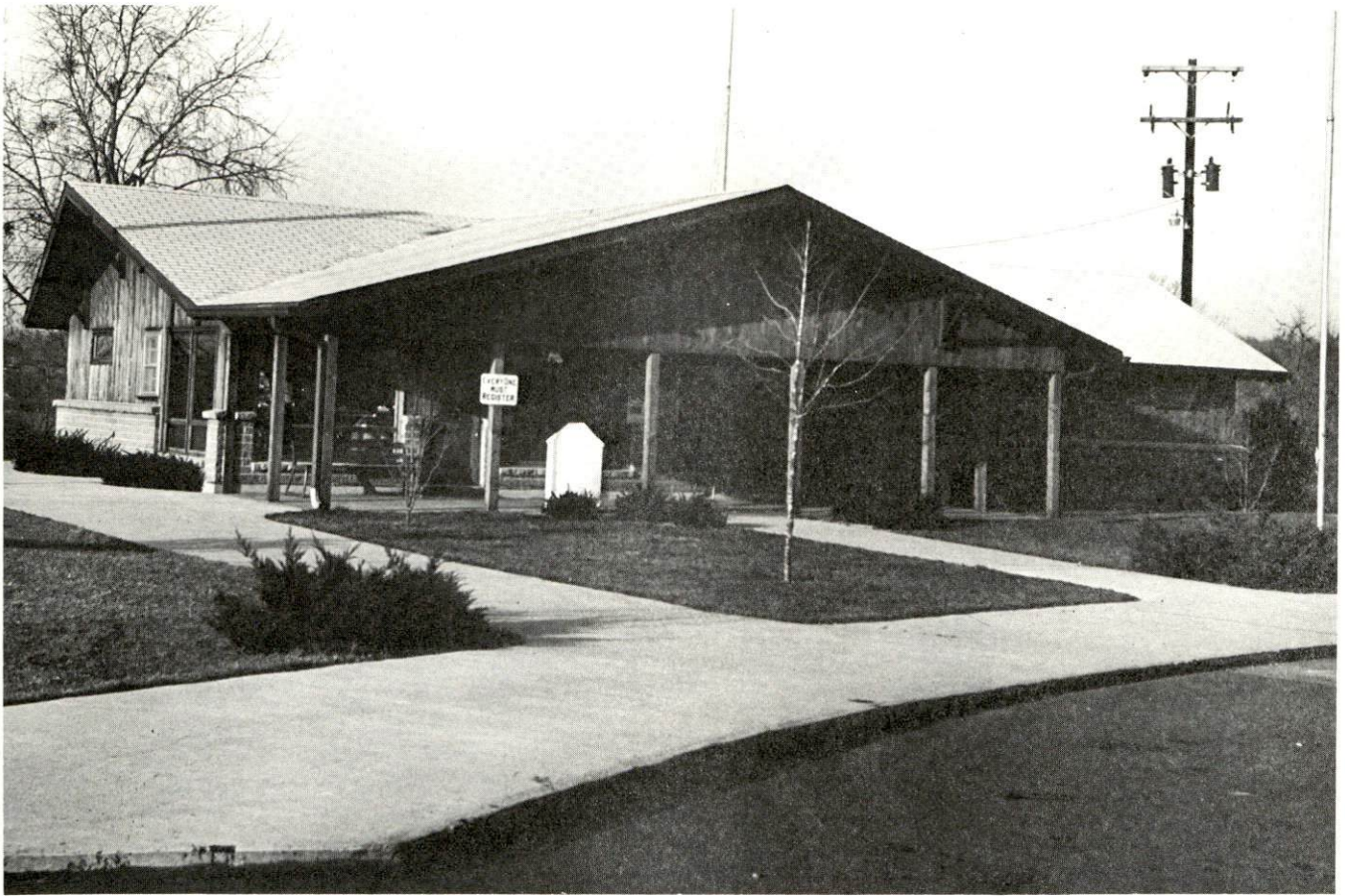
#### Tourist Attractions

General Burnside Island State Park  
Lake Cumberland  
Daniel Boone National Forest  
Mill Springs Civil War Battle Site

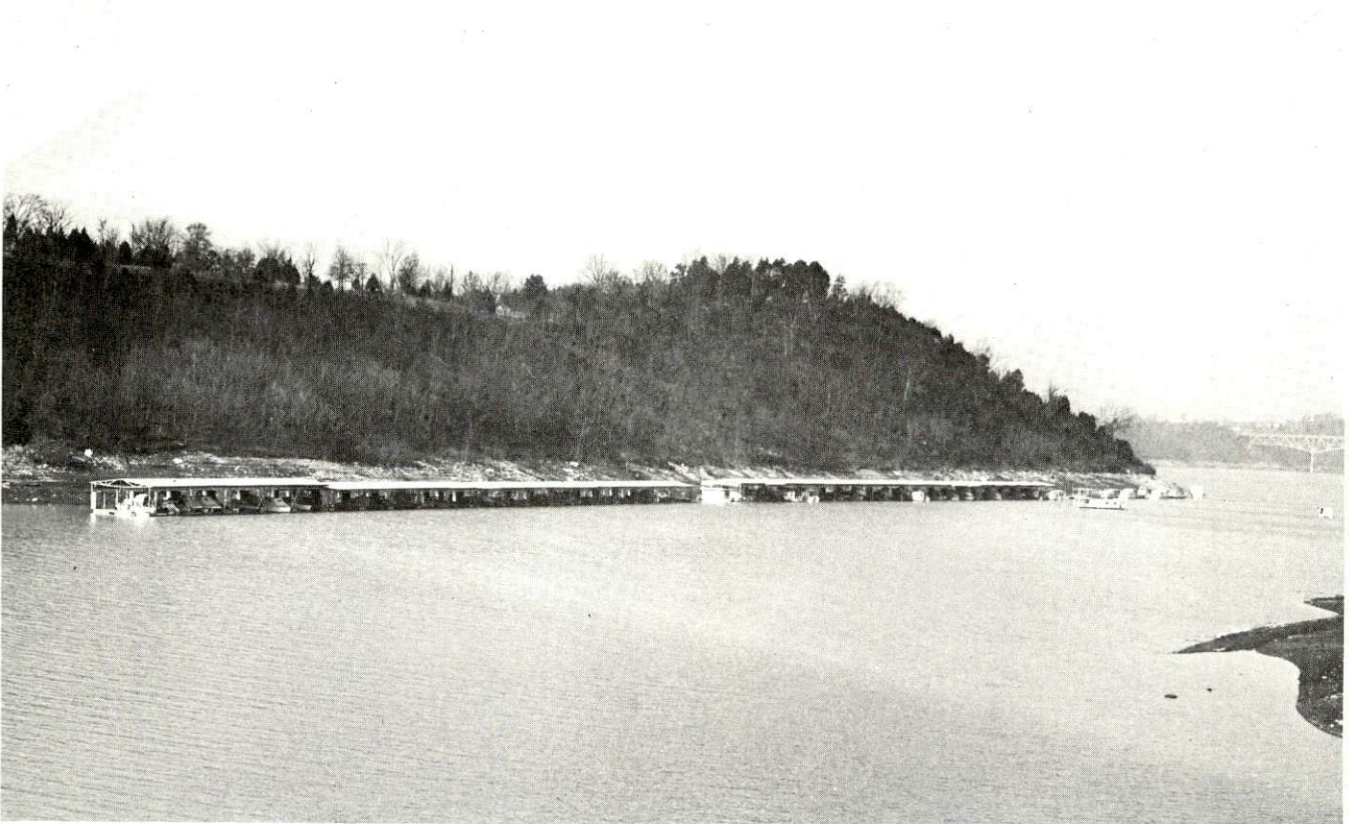
### Area (Within 35 miles)

Cumberland Falls State Resort Park  
Lake Cumberland State Resort Park





GOLF PRO SHOP  
GENERAL BURNSIDE ISLAND STATE PARK



BOAT STORAGE  
BURNSIDE FISHING DOCK

# AGRICULTURE - NATURAL RESOURCES - CLIMATE

## Agriculture <sup>13/</sup>

	<u>Pulaski County</u>	<u>Labor Market Area</u>
Total land area (acres)	418,560	2,100,480
Percent of area in farm land	64.9	58.8
Number of farms	3,260	13,711
Average size of farms (acres)	83.3	90.1
1964 value of all farm products	\$ 8,661,238	\$ 40,841,917
Value per farm	2,657	2,979
Total crop sales	4,601,536	21,811,523
Total livestock & livestock products	4,058,776	18,996,461
1968 agricultural production included:		
Burley tobacco (lbs.)	6,299,000	32,439,000
Corn (bu.)	750,000	3,732,000
Cattle and calves (number)	52,000	229,000
Hogs and pigs (number)	12,900	61,200
Milk production (1967) (lbs.)	72,450,000	252,410,000

## Natural Resources

Principal mineral resources	Coal, limestone, and petroleum
Other mineral resources	Clay, sand and gravel, natural gas, and vein minerals
Acres of commercial forest land	209,800
Most abundant tree species	White oaks, red oaks, hickories, yellow pines, yellow poplar, beech, and hard maple

## Climate <sup>14/</sup>

	<u>Pulaski County</u>
Temperature	
Annual mean (30-year record)	59.6 degrees
Average annual	59.0 degrees
Record highest August, 1968 (10-year record)	99.0 degrees
Record lowest January, 1966 (10-year record)	-9 degrees
Seasonal heating degree-days (30-year record)	3,494
Precipitation	
Mean annual total (30-year record)	45.85 inches
Mean annual snow and sleet (28-year record)	12.9 inches
Total precipitation	43.43 inches
Mean number days precipitation (.01 inches or more) (28-year record)	126
Average number days thunderstorms (28-year record)	47
Prevailing winds (14-year record)	Northeast



## HISTORY

Pulaski County is located in the southcentral part of Kentucky on the southwestern edge of the Eastern Kentucky Coal Fields and covers 630 square miles of territory. Approximately one-half of its eastern border follows Rockcastle River, and a portion of Lake Cumberland lies to the south. The land surface is gently rolling in the northern and western areas and hilly to mountainous in the south and east. A portion of the county lies within the boundaries of Daniel Boone National Forest.

Early settlements in Pulaski County were made along the streams of the area beginning about 1780. Among the first settlers were John Newby, William Owens, Samuel Newell, and Nicholas Jasper. After the Revolutionary War several Virginia soldiers moved into the area, and the population increased rapidly. In 1798 Pulaski became Kentucky's twenty-seventh county, named for Count Joseph Pulaski, a distinguished Pole who entered the American service and was commissioned Brigadier General during the Revolution.

Somerset, the county seat, was established in 1801 and is at the geographical center of the county. It is named for Somerset County in England, from which some of its settlers came. It is known as the "Gateway to the Mountains," an important economic center with a population of over 10,000 in 1970. Somerset was designated an All-Kentucky city for the third time in 1970. Somerset Community College had an enrollment of over 600 in 1970.

Burnside, the county's second largest town, with a population of 586 in 1970, was named for General A. E. Burnside, a Union General stationed there during the Civil War. Burnside was an important river and railroad shipping point during the 1800's and had a stagecoach line in operation until the early 1900's.

In 1800, two years after its founding, Pulaski County had a population of 3,161. By 1950 this had climbed to 38,452, followed by a decline in the next decade to 34,403 in 1960. Due to industrial growth, however, the trend was reversed in the 1960's for a total of 35,234 in 1970.

Agricultural employment accounted for 2,500 of the county's 12,200 employed in 1969, with burley tobacco, corn, cattle and hogs the principal products. Manufacturing was up sharply since 1959 to 2,600 in 1969, with the heaviest concentration of production in the apparel, home furnishings, automobile accessories and compressors for air conditioning. Largest of the county's firms are Lear Siegler, Inc., which makes automobile seat

frames, Palm Beach Company, producing men's coats, Cumberland Wood and Chair Company, Crane Company, which produces china sanitary fixtures, and Tecumseh Products Company, which produces compressors for air conditioners.

Highway transportation in the county will be significantly improved with the completion of the Bowling Green-Somerset Parkway. Excellent recreational facilities are available at General Burnside Island State Park, and Lake Cumberland makes the area a popular tourist attraction.

Among the prominent citizens of Pulaski County is John Sherman Cooper, one of Kentucky's leading political figures. Now serving one of several terms in the United States Senate, Cooper is a former Ambassador to India.



## SOURCES OF INFORMATION

- 1/ U.S. Department of Commerce, Bureau of the Census, Census of Population, 1950, 1960, 1970.
- 2/ Kentucky Department of Economic Security, Division of Research and Statistics.
- 3/ Kentucky Department of Economic Security, Number of Workers in Manufacturing Industries Covered by Kentucky Unemployment Insurance Law Classified by Industry and County, September 1960, September 1970.
- 4/ Kentucky Department of Commerce, 1971 Kentucky Directory of Manufacturers.
- 5/ Kentucky Department of Economic Security, Division of Employment Services, Somerset Office.
- 6/ Kentucky Department of Economic Security, Kentucky Labor Supply Estimates by County, January 1971.
- 7/ Kentucky Department of Commerce, Future Labor Supply by 1977.
- 8/ University of Kentucky, Office of Development Services and Business Research, Total Personal Income for Kentucky.
- 9/ University of Kentucky, Office of Development Services and Business Research, Per Capita Income in Kentucky.
- 10/ Southern Railway System; Louisville, Kentucky.
- 11/ Eagle Express Company, Inc., Somerset, Kentucky.
- 12/ Kentucky Property Tax Rates, Department of Revenue.
- 13/ U.S. Department of Commerce, Bureau of the Census, Census of Agriculture, 1964. U.S. Department of Agriculture and Kentucky Department of Agriculture, Kentucky Agricultural Statistics, 1969.
- 14/ U.S. Department of Commerce, Environmental Science Services Administration, Climatological Data, 1970.

All other information was obtained from governmental offices, local businesses and organizations.