

1976

# Industrial Resources: Rowan County - Morehead

Kentucky Library Research Collections  
Western Kentucky University, [spcol@wku.edu](mailto:spcol@wku.edu)

Follow this and additional works at: [https://digitalcommons.wku.edu/rowan\\_cty](https://digitalcommons.wku.edu/rowan_cty)



Part of the [Business Administration, Management, and Operations Commons](#), [Growth and Development Commons](#), and the [Infrastructure Commons](#)

---

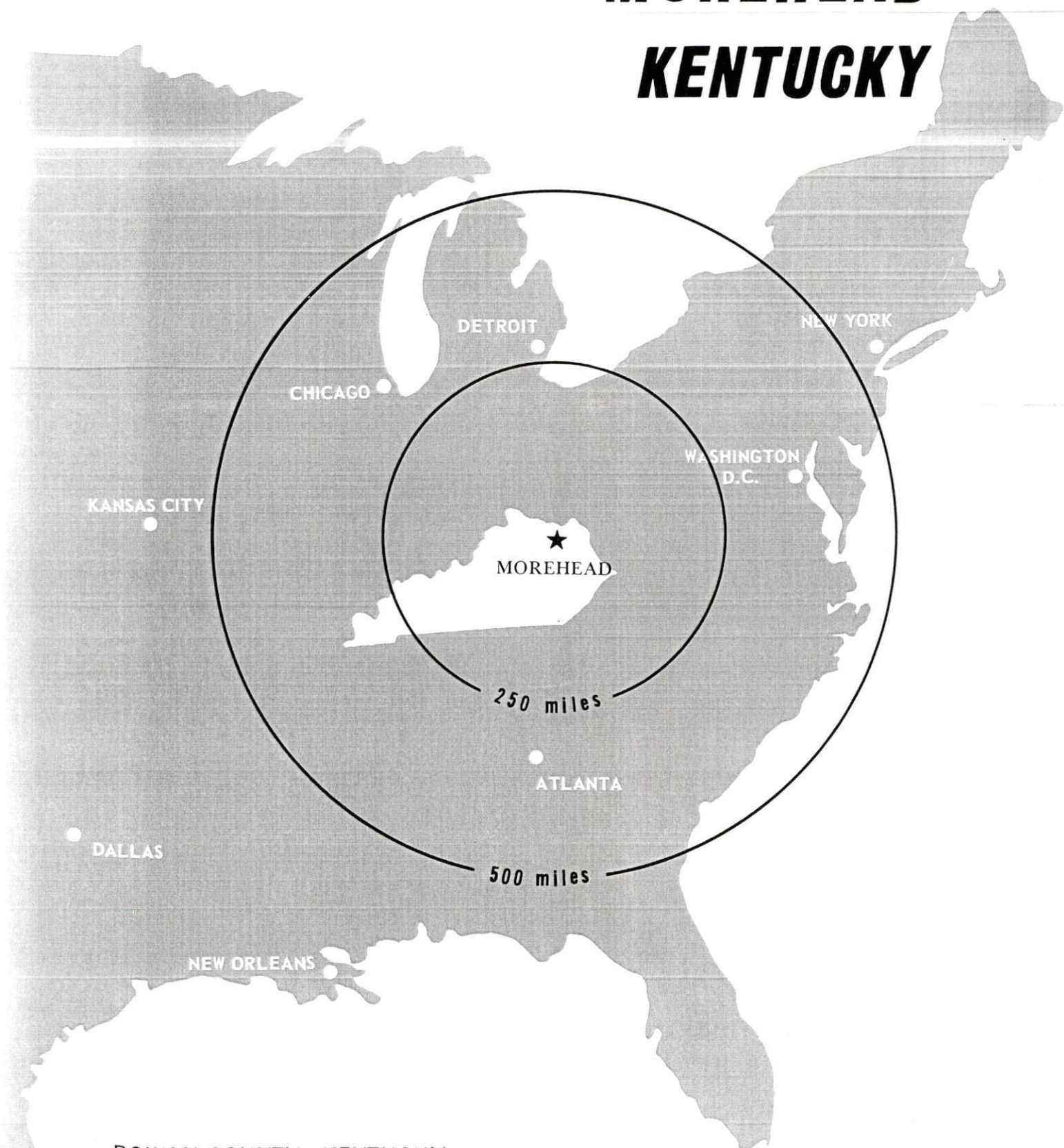
## Recommended Citation

Kentucky Library Research Collections, "Industrial Resources: Rowan County - Morehead" (1976). *Rowan County*. Paper 9.  
[https://digitalcommons.wku.edu/rowan\\_cty/9](https://digitalcommons.wku.edu/rowan_cty/9)

This Report is brought to you for free and open access by TopSCHOLAR®. It has been accepted for inclusion in Rowan County by an authorized administrator of TopSCHOLAR®. For more information, please contact [topscholar@wku.edu](mailto:topscholar@wku.edu).

# INDUSTRIAL RESOURCES

## ***MOREHEAD*** ***KENTUCKY***

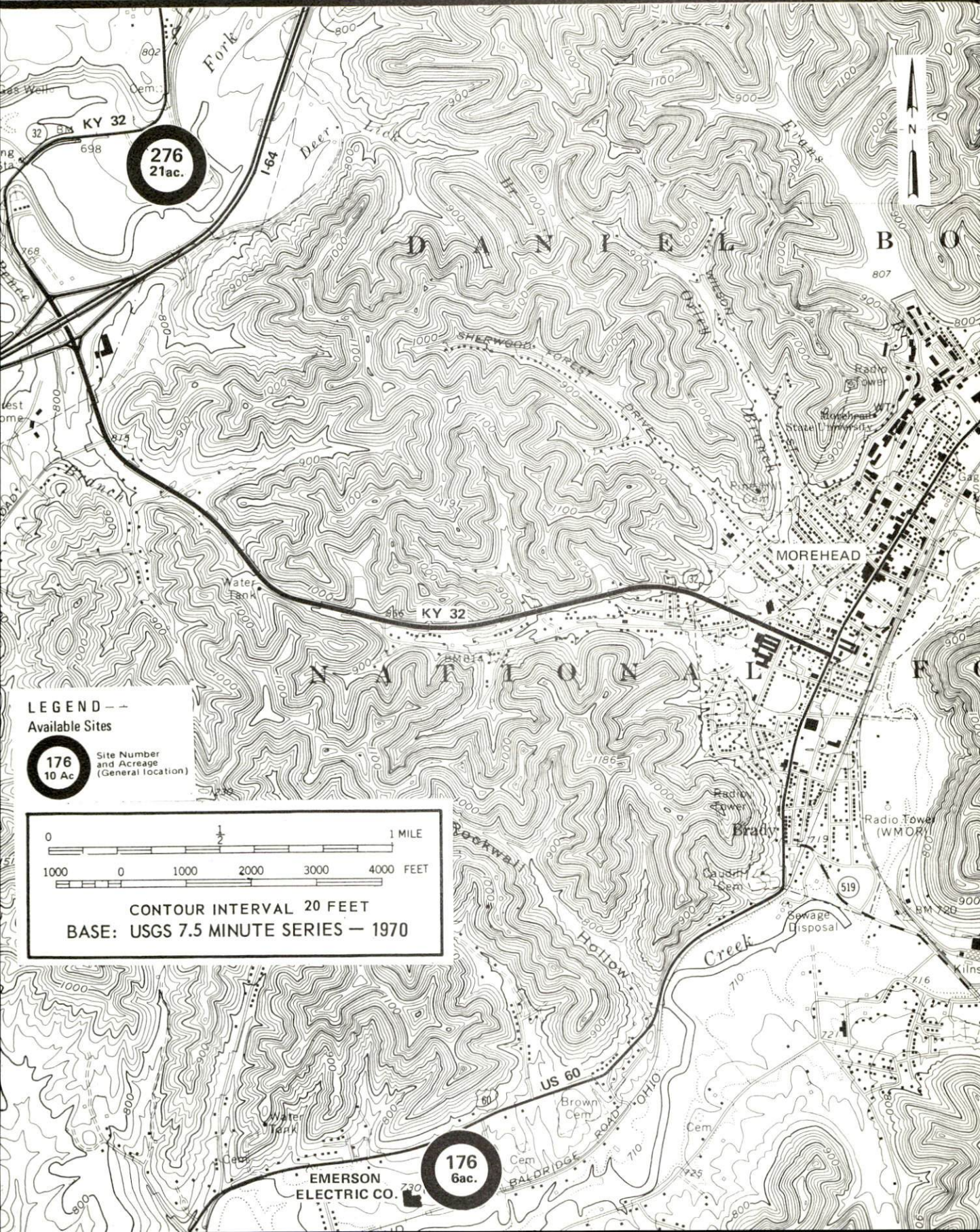


ROWAN COUNTY, KENTUCKY



# MOREHEAD, KENTUCKY --- Index to Industrial Sites --- 1976

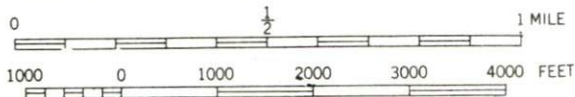
For detailed data on individual sites, contact Mr. Paul Blair, 120 Normal Avenue, Morehead, Kentucky 40351, or the Kentucky Department of Commerce, Capital Plaza Tower, Frankfort, Kentucky 40601.



## LEGEND -- Available Sites

**176**  
10 Ac

Site Number  
and Acreage  
(General location)



CONTOUR INTERVAL 20 FEET  
BASE: USGS 7.5 MINUTE SERIES -- 1970

EMERSON  
ELECTRIC CO.

**176**  
6ac.



INDUSTRIAL RESOURCES

MOREHEAD, KENTUCKY

Prepared by

The Kentucky Department of Commerce

in cooperation with

The Morehead Chamber of Commerce

1976



Production Supervisor  
Patsy Wallace

Research  
Terry Patterson

Clerical  
Barbara Blair

Graphics  
N. C. Montague  
Frank Ferrante  
Tony Cecconi

Cartography  
Site Development Section

## TABLE OF CONTENTS

<u>Chapter</u>	<u>Page</u>
INDUSTRIAL SITES . . . . .	i
MOREHEAD, KENTUCKY - A RESOURCE PROFILE . . . . .	1
THE LABOR MARKET AREA . . . . .	3
Population . . . . .	3
General Employment Characteristics, 1974 . . . . .	3
Manufacturing Employment by Industry . . . . .	4
Morehead Manufacturing Firms, Their	
Products and Employment . . . . .	7
Labor Organizations . . . . .	8
Estimated Male Labor Supply . . . . .	8
Estimated Female Labor Supply . . . . .	8
Wages . . . . .	9
Per Capita Personal Income . . . . .	10
TRANSPORTATION . . . . .	11
Rail . . . . .	11
Highway . . . . .	11
Truck Service . . . . .	11
Air . . . . .	12
Bus . . . . .	13
Taxi . . . . .	13
Rental . . . . .	13
POWER AND FUEL . . . . .	14
Electricity . . . . .	14
Natural Gas . . . . .	15
Other Fuels . . . . .	15
WATER AND SEWERAGE . . . . .	18
Water . . . . .	18
Sewerage. . . . .	20
CLIMATE . . . . .	21
Temperature . . . . .	21
Precipitation . . . . .	21
Prevailing Winds . . . . .	21
Relative Humidity . . . . .	21



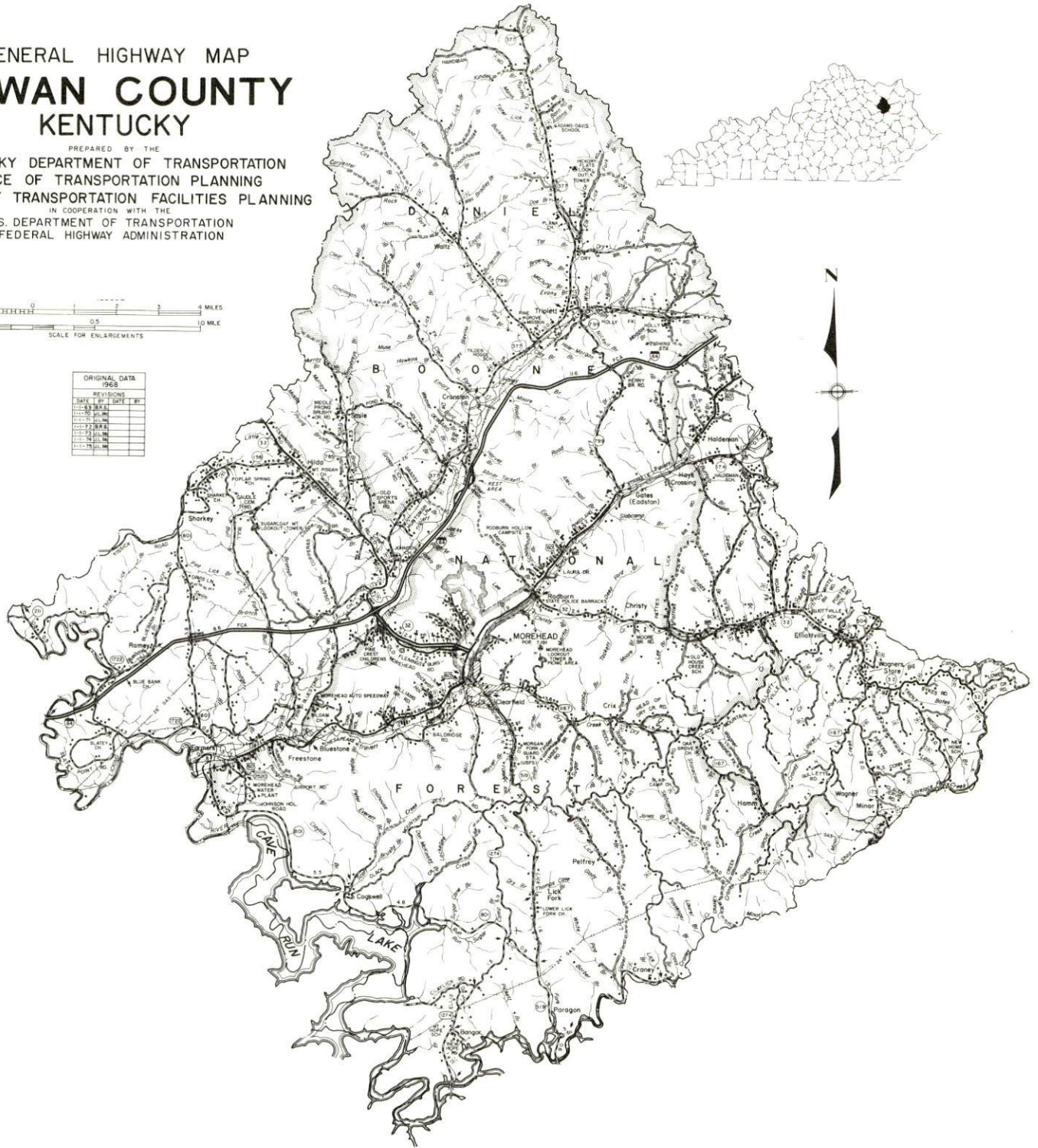
<u>Chapter</u>	<u>Page</u>
LOCAL GOVERNMENT . . . . .	22
City . . . . .	22
County . . . . .	22
Assessed Value of Property, 1974 . . . . .	22
Property Taxes . . . . .	22
Local Property Tax Rate Per \$100 of Assessed Valuation, 1975 . . . . .	23
Safety . . . . .	23
Police . . . . .	23
Fire . . . . .	23
Rescue Service . . . . .	23
Solid Wastes . . . . .	24
EDUCATION . . . . .	25
Public Schools . . . . .	25
Nonpublic Schools . . . . .	25
Vocational Schools . . . . .	27
Area Colleges and Universities . . . . .	29
HEALTH . . . . .	30
Local Medical Personnel . . . . .	30
Hospitals . . . . .	30
Other Medical Facilities . . . . .	30
Ambulance Service . . . . .	30
Nursing Homes . . . . .	31
Public Health . . . . .	31
OTHER LOCAL FACILITIES . . . . .	32
Communications . . . . .	32
Library Services . . . . .	32
Religious Institutions . . . . .	34
Financial Institutions . . . . .	34
Hotels and Motels . . . . .	34
Clubs and Organizations . . . . .	36
RECREATION . . . . .	37
COMMUNITY IMPROVEMENTS . . . . .	38
HISTORY . . . . .	40

# GENERAL HIGHWAY MAP ROWAN COUNTY KENTUCKY

PREPARED BY THE  
KENTUCKY DEPARTMENT OF TRANSPORTATION  
OFFICE OF TRANSPORTATION PLANNING  
DIVISION OF TRANSPORTATION FACILITIES PLANNING  
IN COOPERATION WITH THE  
U.S. DEPARTMENT OF TRANSPORTATION  
FEDERAL HIGHWAY ADMINISTRATION

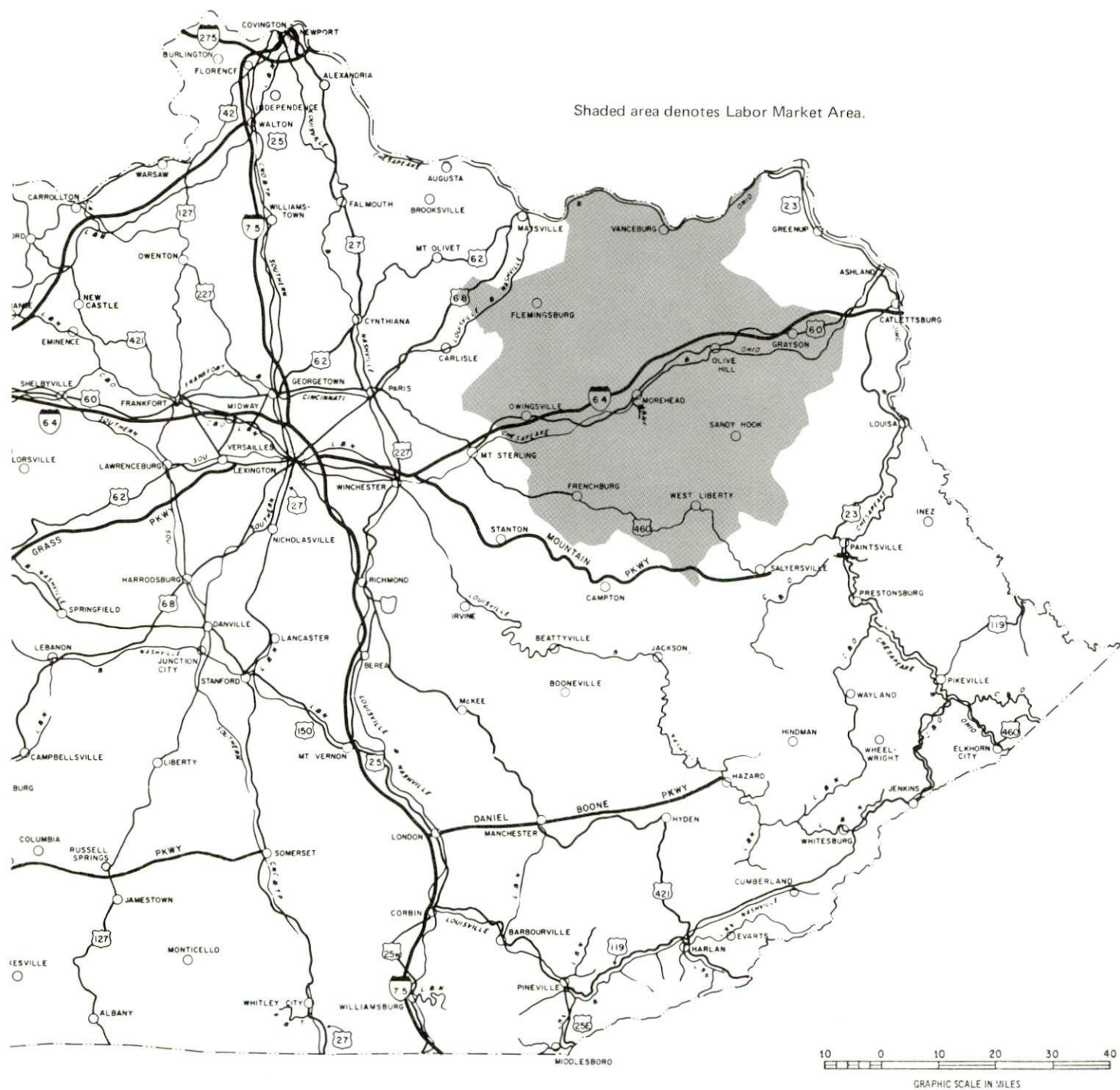


ORIGINAL DATA 1968		
REVISIONS		
DATE	BY	REVISION
11-1-68	W.B.	1.0
11-1-68	W.B.	1.1
11-1-68	W.B.	1.2
11-1-68	W.B.	1.3
11-1-68	W.B.	1.4
11-1-68	W.B.	1.5
11-1-68	W.B.	1.6
11-1-68	W.B.	1.7
11-1-68	W.B.	1.8
11-1-68	W.B.	1.9
11-1-68	W.B.	2.0





A map of the seven counties of the Roanoke region. The counties are labeled as follows: Lewis (top), Fleming (top-left), Carter (top-right), Bath (middle-left), Rowan (center), Elliott (middle-right), Meniffee (bottom-left), and Morgan (bottom-right).



## MOREHEAD, KENTUCKY - A RESOURCE PROFILE

Morehead, the home of Morehead State University and county seat of Rowan County, is situated in the Daniel Boone National Forest of north-eastern Kentucky. It is located 59 miles east of Lexington, 131 miles east of Louisville, 55 miles west of Ashland, and 137 miles southeast of Cincinnati. The city had a 1973 population of 7,215.

Rowan County, covering 290 square miles, had a 1974 population of 16,700.

### The Economic Framework

The total number of Rowan County residents employed in 1974 averaged 8,295, including 280 in agriculture and 2,240 in government. Manufacturing employers in the county reported 690 workers, and trade and services firms employed 2,720. Major industrial products are: men's and boys' dungarees, lumber, and electric parts.

Total unemployment in Rowan County averaged 3.8 percent of the labor force in 1974.

Per capita personal income in the county in 1973 was \$2,541, an increase of 32.7 percent since 1969.

The Morehead labor market area includes Rowan and the seven adjoining counties. The total number of residents of the labor market area employed in 1974 averaged 33,400, including 4,470 in agriculture and 6,430 in government. Manufacturing employers in the labor market area reported 3,540 workers, and trade and services firms employed 5,490.

### Resources for Growth

1. There is a current labor supply of 6,630 men and 5,590 women available for industrial jobs in the labor market area. In addition, 4,600 young men and 4,200 young women in the area will become 18 years of age before 1981 and potentially available for work.

2. Morehead is served by the Chessie System, which provides a variety of rail services. Three truck lines serve Morehead. Interstate 64, U.S. Highway 60, and Kentucky Highways 32 and 519 provide highway access to the city. Local air service is available at the Morehead-Rowan County Airport. Commercial air service is available at Blue Grass Field in Lexington, 59 miles distant.



3. Morehead is supplied electric power by Kentucky Utilities Company. Electricity for Rowan County is furnished by Kentucky Utilities Company, Fleming-Mason RECC, and Grayson RECC. Natural gas is supplied to Morehead by the Morehead Utility Plant Board, while the Delta Natural Gas Company serves parts of Rowan County. There are three propane and butane distributors and five distillate fuel oil distributors in the Morehead area. Low sulphur content coal is available locally.

4. The Rowan County School System provides educational facilities for more than 2,600 students in Rowan County.

Morehead State University, located in Morehead, awards two undergraduate degrees based on four-year programs - the Bachelor of Arts and Bachelor of Science. The university also awards five associate degrees in the following areas: applied arts, applied science, arts, science, and applied business. The graduate degrees offered are the Master of Arts, Master of Science, Master of Music, Master of Business Education, Master of Arts in Education and Master of Higher Education. The University also awards a doctorate degree in education in cooperation with the University of Kentucky.

In addition to Morehead State University, there are four universities, two community colleges, one junior college, and one technical institute located within 70 miles of Morehead.

The Rowan County Area Vocational Education Center, located in Morehead, offers courses in six areas. Ashland State Vocational-Technical School, the nearest state vocational school, offers courses in eighteen educational areas.

## THE LABOR MARKET AREA

### POPULATION

<u>Area</u>	<u>1974*</u>	<u>1970</u>	<u>Percent Nonwhite</u>
			<u>1970</u>
Morehead	7,215**	7,191	2.9
Labor Market Area	92,200	89,818	
Rowan County	16,700	17,010	1.3
Bath County	9,500	9,235	4.4
Carter County	21,200	19,850	0.2
Elliot County	5,700	5,933	0.2
Fleming County	11,500	11,366	2.5
Lewis County	12,800	12,355	0.2
Menifee County	4,400	4,050	0.6
Morgan County	10,400	10,019	0.1

\*Provisional Estimates.

\*\*1973 Population Estimates.

Sources: U.S. Department of Commerce, Bureau of the Census, Census of Population 1970. U.S. Bureau of the Census, Current Population Reports, Series P-25, No. 562, June 1975; Series P-26, No. 120, June 1975.

### GENERAL EMPLOYMENT CHARACTERISTICS, 1974

<u>Major Employment Group</u>	<u>Employment</u>	
	<u>Rowan County</u>	<u>Labor Market Area</u>
TOTAL	8,295*	33,404*
Agricultural	278	4,474
Nonagricultural	8,017	28,930
Manufacturing	691**	3,541**
Government	2,239	6,426
Trade and Services	2,718**	5,492**

\*Total number of county residents employed in 1974.

\*\*Employment reported by employers in the county.

Source: Kentucky Department for Human Resources, Bureau for Administration and Operations.



MANUFACTURING EMPLOYMENT BY INDUSTRY  
SEPTEMBER 1974

<u>Industry</u>	<u>Rowan County</u>	<u>Labor Market Area</u>
TOTAL	644	3,643
Food & Kindred Products	37	58
Apparel, Textiles, Leather	234	2,025
Lumber, Furniture	334	866
Printing & Publishing, Paper	19	175
Stone, Clay & Glass	0	302
Machinery, Metal Products, Equipment	0	197
Other	20	20

Source: Kentucky Department for Human Resources, Number of Workers in Manufacturing Industries Covered by Kentucky Unemployment Insurance Law Classified by Industry and County, September, 1974.



TWO OF MOREHEAD'S WOOD-RELATED INDUSTRIES







COWDEN MOREHEAD COMPANY

MOREHEAD MANUFACTURING FIRMS,  
THEIR PRODUCTS AND EMPLOYMENT

<u>Firm (Establishment date)</u>	<u>Product</u>	<u>Employment</u>			<u>Organized</u>
		<u>Total</u>	<u>Male</u>	<u>Female</u>	
Alexanders Red Cottage Gallery (1965)	Picture and mirror frames	2			
Browning Manufacturing Division, Emerson Electric Company (1974)	Machining of small electric parts	100			
Cloud Concrete Products, Inc.	Concrete products	2	2	0	
Cowden-Morehead Company (1953)	Men's and boys' dungarees	269	25	244	*
East Kentucky Paving Company (1968)	Asphalt paving	30	30	0	
East Kentucky Printing Company (1951)	Commercial printing, book printing	4	2	2	
Drew Evans Tie Company, Inc. (1918)	Lumber	21	20	1	
Gregory Company, Inc. (1944)	Rough lumber, dimension stock, pallets	58	56	2	
Kentucky Art Plaques (1968)	Laminated plaques	9	6	3	
Lexington Concrete Products Company (1969)	Concrete products	32	32	0	
The Morehead News (1894)	Newspaper, commercial printing	31	13	18	
Spring Grove Dairy (1950)	Fluid and ice milk	39	35	4	
Thompson Glass Company	Storm windows	3	3	0	
J. C. Wells & Sons, Inc. (1953)	Pallets	46	45	1	
R. L. Wells Lumber Company, Inc. (1956)	Pallets, lumber, wood chips	81	80	1	
Ray L. White & Sons, Inc. (1952)	Dimension lumber, rough hardwoods, wood pallets	57	55	2	

\*See Labor Organizations, page 8.

Source: Kentucky Department of Commerce, Division of Research and Planning.



# LABOR ORGANIZATIONS

Union Representing manufacturing workers at:

United Garment Workers of  
America

Cowden-Morehead Company

## ESTIMATED MALE LABOR SUPPLY MOREHEAD LABOR MARKET AREA

<u>Area</u>	<u>Current</u>			<u>Future</u>	
	<u>Total</u>	<u>Not in</u>	<u>Unemployed</u>	<u>Under-</u>	<u>Reaching 18 yrs.</u>
		<u>Labor Force</u>		<u>employed</u>	<u>of age before 1981</u>
Labor Market					
Area	6,630	2,350	1,900	2,380	4,600
Rowan	1,240	0	280	960	665
Bath	500	0	320	180	448
Carter	1,770	990	490	290	1,086
Elliot	770	420	210	140	335
Fleming	250	0	70	180	536
Lewis	480	130	110	240	676
Menifee	830	660	110	60	258
Morgan	790	150	310	330	596

Sources: Kentucky Department for Human Resources, Kentucky Labor Supply Estimates by County, 1974. Kentucky Department of Commerce, Future Labor Supply before 1981.

## ESTIMATED FEMALE LABOR SUPPLY MOREHEAD LABOR MARKET AREA

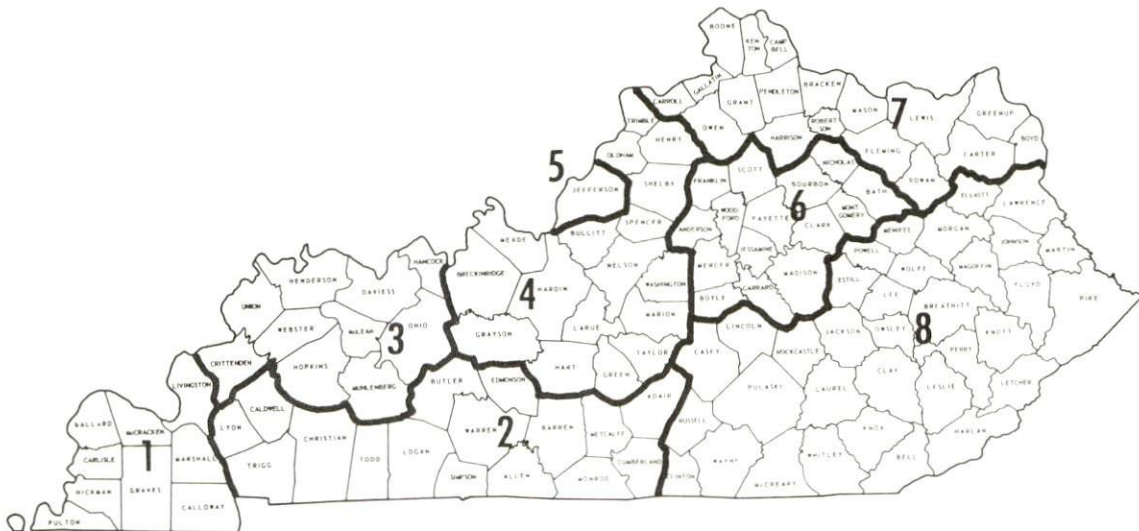
<u>Area</u>	<u>Current</u>			<u>Future</u>	
	<u>Total</u>	<u>Not in</u>	<u>Unemployed</u>	<u>Under-</u>	<u>Reaching 18 yrs.</u>
		<u>Labor Force</u>		<u>employed</u>	<u>of age before 1981</u>
Labor Market					
Area	5,590	3,440	490	1,660	4,200
Rowan	730	0	50	680	550
Bath	590	350	60	180	456
Carter	1,830	1,520	90	220	1,007
Elliot	490	390	40	60	288
Fleming	230	0	70	160	489
Lewis	580	290	110	180	673
Menifee	500	430	20	50	197
Morgan	640	460	50	130	540

Sources: Kentucky Department for Human Resources, Kentucky Labor Supply Estimates by County, 1974. Kentucky Department of Commerce, Future Labor Supply before 1981.

## WAGES

Occupational wage rates for specific industries are usually not available to most government agencies, and wage data furnished to state employment agencies by industrial employers is protected from disclosure by federal law. The most reliable up-to-date wage information can be obtained by direct contact with local employers.

Associated Industries of Kentucky, a voluntary organization of Kentucky businesses, regularly collects occupational wage rates and fringe benefits data from participating member firms. Data is compiled for over 130 clearly defined office, production, and service occupations. Tabulations are published for eight regions of Kentucky, as shown on the map below. It should be noted that the data may be weighted by the preponderance of firms in the larger cities and may be somewhat higher than the rates paid in the smaller communities. Data from these tabulations are available, upon request, from the Kentucky Department of Commerce, Frankfort, Kentucky 40601.



Associated Industries of Kentucky Area Wage Surveys



PER CAPITA PERSONAL INCOME

<u>Area</u>	<u>1973</u>	<u>1969</u>	<u>%Change</u>
Rowan County	\$2,541	\$1,915	32.7
Labor Market Area			
Range	\$2,124 - 3,142	\$1,319 - 2,285	N.A.
Kentucky	4,050	2,894	39.9
U.S.	5,041	3,733	35.1

Sources: U.S. Department of Commerce, Office of Business Economics, Survey of Current Business, August, 1974. U.S. Department of Commerce, Bureau of Economic Analysis, April, 1975.

## TRANSPORTATION

### Rail

Line serving Morehead - The Chessie System

Services - Three eastbound and three westbound freights stop weekly; two through freights daily; switching facilities; siding space for 60 cars; nearest piggyback facilities at Lexington, 59 miles away

For details on routing, schedules, rates, and services, contact:

Real Estate and Industrial Development  
The Chessie System  
2 North Charles Street  
Baltimore, Maryland 21201  
(301) 237-2754

### Highways

Morehead, located at an interchange of Interstate 64, has excellent highway access to the major market areas. In addition, the city is intersected by U.S. Highway 60, another Class AAA highway. Kentucky Highways 32 and 519 also provide access to the city.

### Truck Service

#### Company

#### Home Office

Best Way Express, Inc.

710 Poplar Avenue  
Nashville, Tennessee 37210

McLean Trucking Company

617 Waughtown Street  
Winston-Salem, North Carolina  
27107

Point Express, Inc.

P.O. Box 10185, Station C  
Charleston, West Virginia 25312

#### Other Freight Services

#### Nearest Shipping Center

United Parcel Service

Maysville, 44 miles distant



HIGHWAY MILES AND TRUCK TRANSIT TIME IN DAYS FROM  
MOREHEAD, KENTUCKY, TO SELECTED MARKET CENTERS

City	Highway Miles	Delivery		City	Highway Miles	Delivery	
		Time TL				Time TL	
Atlanta, Ga.	427	2		Los Angeles, Calif.	2,239	7	
Birmingham, Ala.	488	2		Louisville, Ky.	131	2	
Chicago, Ill.	423	2		Nashville, Tenn.	269	2	
Cincinnati, Ohio	137	1		New Orleans, La.	830	3	
Cleveland, Ohio	350	2		New York, N. Y.	661	2	
Detroit, Mich.	396	2		Pittsburgh, Pa.	320	2	
Knoxville, Tenn.	234	2		St. Louis, Mo.	394	2	

Source: Delivery Time Only - Point Express, Inc., P.O. Box 10185,  
Station C, Charleston, West Virginia 25312

Air

	<u>Local</u>	<u>Nearest Commercial</u>
	Morehead-Rowan County Airport	Blue Grass Field
Location:	5 1/2 miles south of Morehead	Lexington, 59 miles distant
Runways:	1 paved	2 paved
Length:	2,600 feet	6,500 and 3,500 feet
Traffic		
Control:	Wind sock, wind tee	Tower; guards; radar services- arrival and departure, stage II contact approach control, ground control; Automatic Terminal Information Service
Lighting:	Runway lights, rotating beacon, VASI, lighted wind tee	Approach lighting system, beacon, runways and obstructions lighted
Services:	100 octane fuel, aircraft charter and leasing, flight instruction, ground school	Delta, Eastern, Piedmont, and Allegheny Airlines; National Weather Service; flight instructions; charter service; storage; 80, 100, 145 octane and jet fuel; Major A & E repairs; Certified Avionics repair station; restaurant; taxi, limousine, and car rentals
Air Freight		
Service:	Chartered air freight services must be arranged	Accepted on a space available basis

Bus - Southern Greyhound Bus Lines

Taxi - Seven companies, 24-hour service

Rental Services - Car rentals, U-Haul, Easy Haul



## POWER AND FUEL

### Electricity

Company serving Morehead and Rowan County - Kentucky Utilities Company

Source of power - Kentucky Utilities Company

Total generating capacity - 1,615,500 KW

For industrial rates contact:

Kentucky Utilities Company  
120 South Limestone  
Lexington, Kentucky 40501  
(606) 255-1461

Company serving Rowan County - Fleming-Mason RECC

Source of power - East Kentucky Power Cooperative

Total generating capacity - 496,000 KW

For industrial rates contact:

Fleming-Mason RECC  
P.O. Drawer 328  
Flemingsburg, Kentucky 41041  
(606) 845-2661

Company serving Rowan County - Grayson RECC

Source of power - East Kentucky Power Cooperative

Total generating capacity - 496,000 KW

For industrial rates contact:

Grayson RECC  
P.O. Box 576  
Grayson, Kentucky 41143  
(606) 474-5136

## Natural Gas

Company serving Morehead - Morehead Utility Plant Board  
Source of supply - Tennessee Gas Pipeline Company  
Size of transmission mains - 26 inches (supplier); 6 inches (distributor)  
Distribution mains - 6, 4, 3, and 2 inches  
Distribution pressure - 25 psi  
Btu content - 1,000 per cubic foot; Specific gravity - .6  
For rates and supplies contact:

Morehead Utility Plant Board  
109 Bishop Avenue  
Morehead, Kentucky 40351  
(606) 784-5538

Company serving parts of Rowan County - Delta Natural Gas Company  
Source of supply - Tennessee Gas Transmission Corporation  
Size of transmission mains - 30 inches (supplier); 2 and 4 inches (distributor)  
Distribution mains - 2 inches  
Distribution pressure - 15 psi  
Btu content - 1050 per cubic foot; Specific gravity -.61  
For rates and supplies contact:

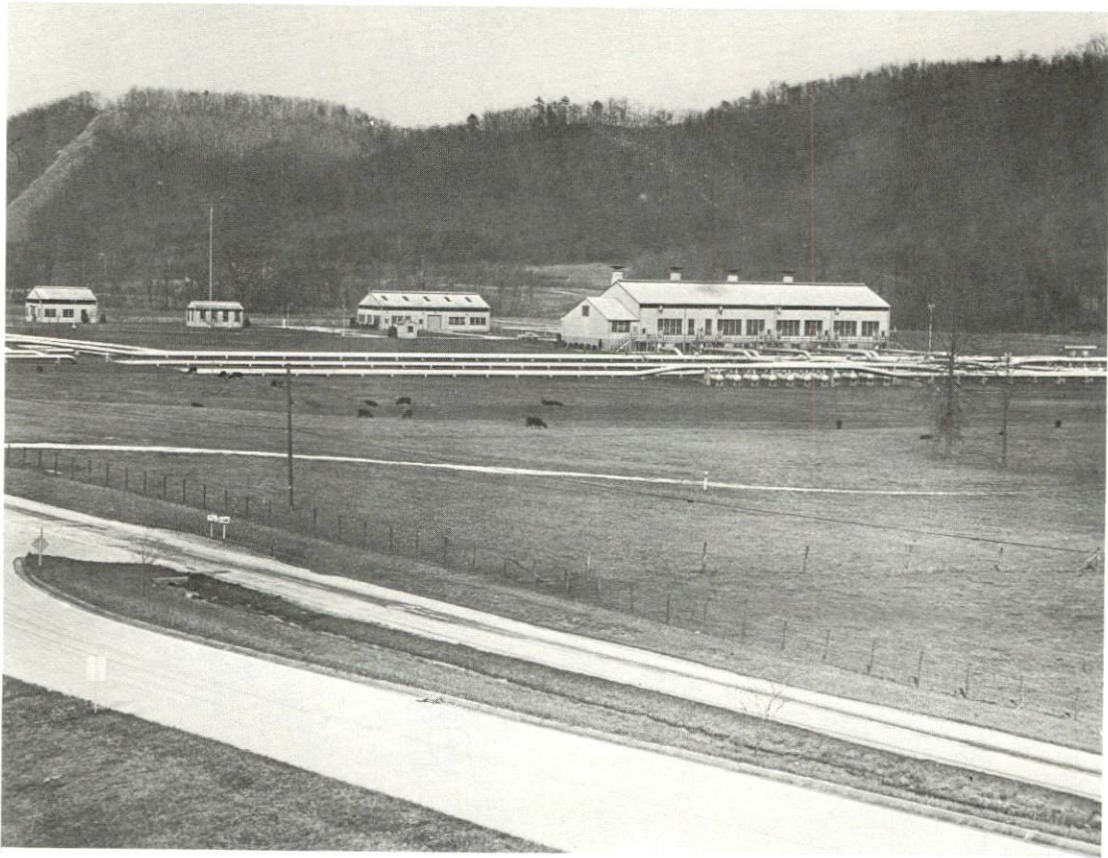
Delta Natural Gas Company  
120 South Main Street  
Winchester, Kentucky 40391  
(606) 744-6171

## Other Fuels

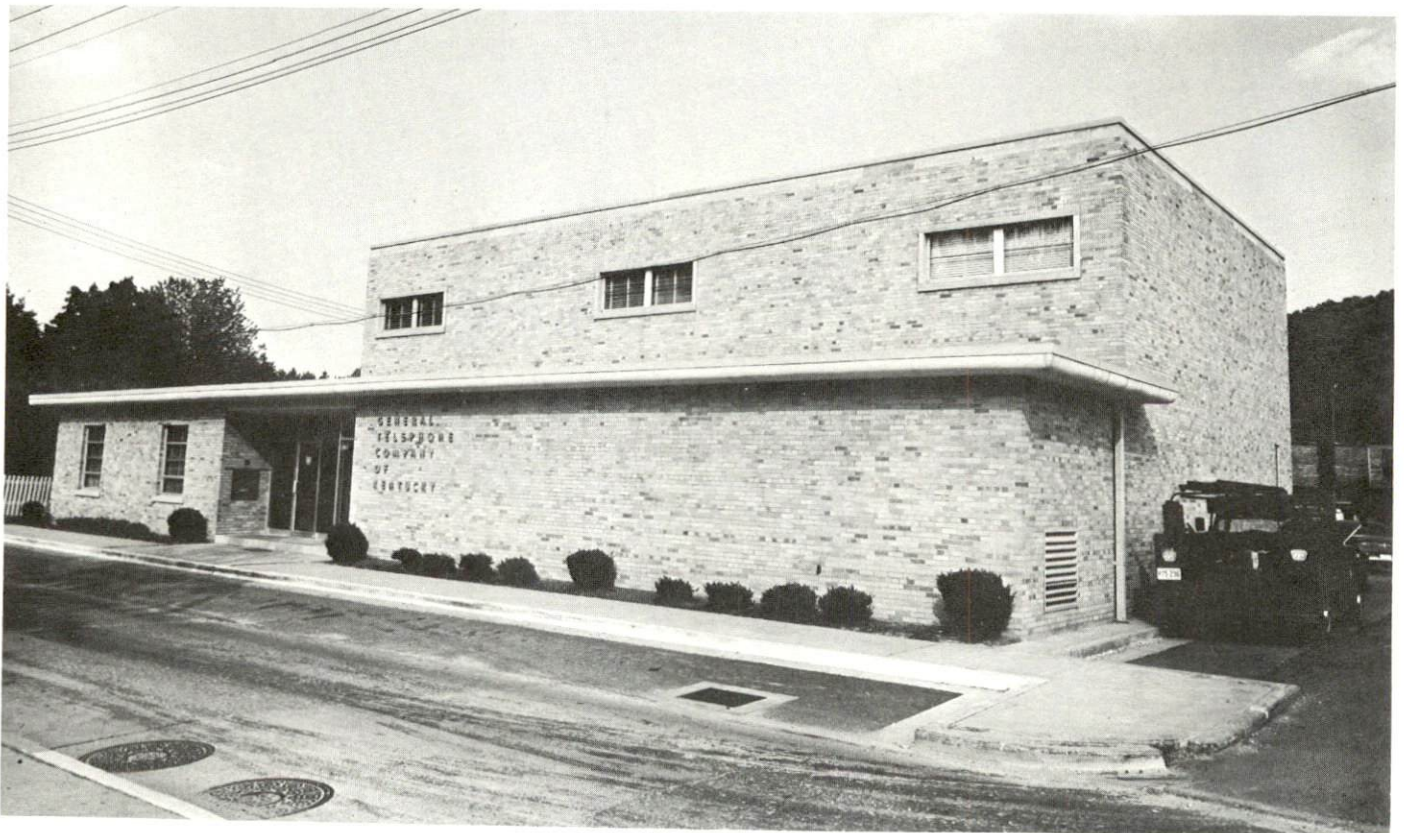
### Propane and butane

Bill Henderson, Inc., U.S. 60 E, Morehead, Kentucky 40351  
Miller LP Gas Company, 133 West Main Street, Owingsville, Kentucky 40360  
Williams Energy Company, U.S. 60 E, Morehead, Kentucky 40351





TENNESSEE GAS TRANSMISSION COMPANY  
BOOSTER STATION



GENERAL TELEPHONE COMPANY OF KENTUCKY

Fuel oils

Distillate fuel oil -

Ashland Oil Refining Company, 218 Rowan Street, Morehead,  
Kentucky 40351

Smith Oil Service, U.S. 60 W, Owingsville, Kentucky 40360

Standard Oil Company, U.S. 60 W, Olive Hill, Kentucky 41164

Vincent Oil Company, Inc., Soldier, Kentucky 41173

Williams Energy Oil Company, 237 East First Street, Morehead,  
Kentucky 40357

Residual fuel oil - Arrangements must be made with the refinery.

Low sulphur content coal - Available locally



## WATER AND SEWERAGE

### Water

Company serving Morehead and  
parts of Rowan County - Morehead Utility Plant Board  
109 Bishop Avenue  
Morehead, Kentucky 40351  
(606) 784-5538

Source - Licking River

Treatment plant capacity - 1,500,000 gpd\*

Average daily consumption - 1,000,000 gallons

Peak daily consumption - 1,150,000 gallons

Type treatment - Flash mix, flocculation, sedimentation, filtration

Storage capacity - 926,000 gallons

Size lines - 16, 10, 8, 6, 4, and 3 inches

Average pressure - 80 psi

Average temperature - 55 degrees F.

### MONTHLY WATER RATES FOR WHOLESALE AND INDUSTRIAL CONSUMERS\*\*

---

First	2,000 gallons	\$2.00 Minimum
Next	4,000 gallons	.80 per 1,000 gallons
Next	4,000 gallons	.70 per 1,000 gallons
Next	20,000 gallons	.60 per 1,000 gallons
Next	20,000 gallons	.50 per 1,000 gallons
Next	250,000 gallons	.40 per 1,000 gallons
Over	300,000 gallons	.35 per 1,000 gallons

Tap-on charge: \$300-3/4-inch meter  
400-1-inch meter  
500-1 1/2-inch meter  
750-2-inch meter

---

\*A complete preliminary study is underway to determine needs for future use.

\*\*There is a 20 percent surcharge for consumers outside city limits.

Company serving Morehead

State University - Morehead State University Water Works  
Morehead State University  
Morehead, Kentucky 40351  
(606) 783-3116

Source - Evans Branch Reservoir, Triplett Creek

Treatment plant capacity - 1,916,000 gpd

Average daily consumption - 500,000 gallons

Peak daily consumption - 675,000 gallons

Type treatment - coagulated, settled, filtered, chlorinated, fluoridated

Storage capacity - 500,000 gallons

Size lines - 8, 6, and 4 inches

Average pressure - 75 psi

Average temperature - 58 degrees F.

Name of water district - Rowan Water, Inc.

P.O. Box 38  
Morehead, Kentucky 40351  
(606) 784-9818

Area served - Rowan County

Date when water district began operating - 1968

Source of supply of treated water - Morehead Utility Plant Board

Average amount of water used in a 24-hour period - 70,000 gallons

Peak amount of water used in a 24-hour period - 125,000 gallons

Storage capacity - 148,000 gallons

Average pressure - 70 psi

Size lines - 8 and 6 inches

Fees -	5/8-inch meter	2,000 gallons	\$ 7.88 Minimum
	3/4-inch meter	3,500 gallons	11.03 Minimum
	1-inch meter	5,000 gallons	14.18 Minimum
	1 1/2-inch meter	15,000 gallons	32.55 Minimum
	2-inch meter	40,000 gallons	61.43 Minimum

Tap-on charge: \$200.00 (5/8-inch meter)

Surface water sources - Licking River, Cave Run Lake, and Triplett Creek

Average discharge - Licking River at Farmers 1,060 cfs (36 years, USGS); Triplett Creek at Morehead 73 cfs (33 years, USGS)

Expected ground water yield - Eastern and southwestern portions of county 5 to 50 gpm; 5 gpm or less in remainder of county

#### Sewerage

Company serving Morehead - Morehead Utility Plant Board  
109 Bishop Avenue  
Morehead, Kentucky 40351  
(606) 784-5538

Design capacity - 2,000,000 gpd\*

Average daily flow - 1,750,000 gallons; Treatment - primary and secondary

Type treatment - settling, chlorination, trickling filter, anaerobic digestion

Treated effluent discharged into - Triplett Creek

Size of sanitary mains - 21, 15, 10, 8, and 6 inches; Size of storm mains - 42, 36, 24, and 18 inches

Rates - 95 percent of monthly water bill

Tap-on charge: \$600

---

\*A new 3 million gpd sewage treatment plant is planned. In addition, new sewer trunk lines will be installed to eliminate the seepage of ground water into the sewerage system.



## CLIMATE

### Temperature

### Rowan County

Annual mean (30-year record)	55.2 degrees
Average annual 1974	55.1 degrees
Record highest, July, 1966 (11-year record)	98.0 degrees
Record lowest, January, 1972 (11-year record)	-11.0 degrees
Normal heating degree days (30-year record)	4,729
(Heating degree day totals are the sums of negative departures of average daily temperatures from 65 degrees F.)	

### Precipitation

Mean annual total (30-year record)	44.49 inches
Mean annual snowfall (30-year record)	15.70 inches
Total precipitation 1974	60.09 inches
Mean number days precipitation (.01 inch or more) (30-year record)	130
Average number days thunderstorms (30-year record)	47

### Prevailing Winds (17-year record)

South

### Relative Humidity (30-year record)

1 AM	76%
7 AM	81%
1 PM	59%
7 PM	64%

Source: U.S. Department of Commerce, Environmental Science Services Administration, Climatological Data, 1974. Station of record: Lexington, Kentucky.

## LOCAL GOVERNMENT

### City

Structure - Mayor - 4-year term; 6 councilmen - 2-year terms

Budget 1975-76 - General Fund \$303,540

Water and Sewer Fund 294,394

City Gas System 464,578

Fees and licenses - Auto sticker-\$10 annually; unloading license-\$25.25;  
occupational licenses range from \$10.25 to \$125.25 annually

### County

Structure - County Judge - 4-year term; 4 magistrates - 4-year terms

Budget 1974-75 - General Fund \$138,434; Road Fund \$51,372

### Assessed Value of Property, 1974

<u>Classes of Property</u>	<u>Morehead</u>	<u>Rowan County</u>
Real Estate	\$32,994,423	\$70,656,407 (1975)
Tangibles	9,556,036	19,323,642 (1975)

### Property Taxes

Land and buildings are taxed by the state and may be taxed by local jurisdictions. The state rate is \$0.015 per \$100 of assessed valuation.

Tangible personal property owned by manufacturers (automobiles, trucks, finished goods, office furniture, office equipment) is taxed by the state at \$0.15 per \$100 and may be taxed by local jurisdictions.

Manufacturing machinery, raw materials inventories, pollution control equipment and goods in process inventories are not subject to local taxation. The state rate is \$0.15 per \$100.

Property stored in public warehouses is not subject to local taxation. The state rate is only \$0.015 per \$100.

All property is assessed at 100 percent of fair cash value.

Local Property Tax Rate Per \$100 of Assessed Valuation, 1975\*

<u>Taxing Jurisdiction</u>	<u>Morehead</u>	<u>Rowan County</u>
County	.171	.171
School	.506	.506
City	.310	

Planning and Zoning

Joint agency - Morehead-Rowan County Joint Planning Commission  
Zoning enforced - City only  
Subdivision regulations enforced - All areas  
Local codes enforced - Housing and building  
Mandatory state codes enforced - Plumbing, National Fire Protection  
Association Code, National Building Code (for major buildings and  
residential construction containing more than 12 bedrooms per building)

Safety

<u>Police</u>	<u>Morehead</u>	<u>Rowan County</u>
Total staff	10	4
Radio-patrol cars	4	2

Fire

American Insurance	
Association Fire Rating	6 and 7
Volunteers	24

Rescue Service

Morehead-Rowan County Volunteer Rescue Squad:  
Number of volunteers - 25  
Equipment - 1 truck, 1 emergency generator, boat and motor, pontoon  
boat and motor rigged with dragging equipment, 1 emergency generator  
Personnel training - Red Cross First Aid Training, Emergency training  
for Search and Rescue

\*Kentucky Department of Revenue.



Solid Wastes

	<u>Morehead</u>	<u>Rowan County</u>
Type service	Municipal	Private
Fee charged:		
residential	\$2 monthly	\$4 monthly
business	Contract	Contract
industrial	Contract	Contract
Collection frequency:		
residential	Twice weekly	Once weekly
business	Contract	Contract
industrial	Contract	Contract
Disposal method	Sanitary landfill	Sanitary landfill

## EDUCATION

### Public Schools

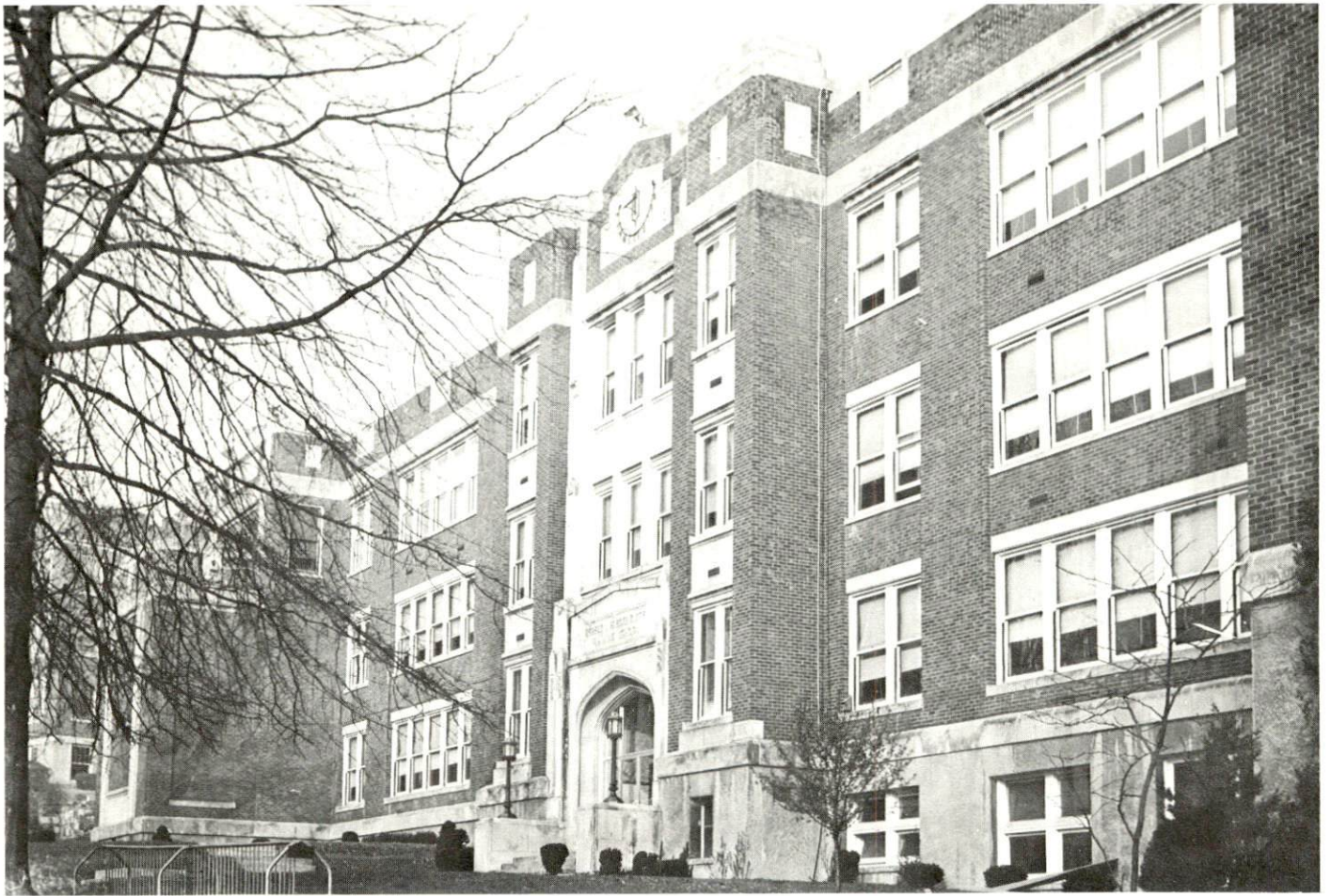
### Rowan County

Total Enrollment (Fall, 1974)	2,635
Elementary	1,810
High School	825
Student-Teacher Ratio	23-1
Elementary	24-1
High School	23-1
Percent High School Graduates to College	44.0
Expenditures Per Pupil (1973-74)	\$577.45
Bonded Indebtedness, June 30, 1974	\$923,000

### Nonpublic Schools

### University Breckinridge

Total Enrollment	574
Elementary	324
High School	250
Student-Teacher Ratio	19-1
Elementary	26-1
High School	14-1



UNIVERSITY BRECKINRIDGE SCHOOL



ROWAN COUNTY HIGH SCHOOL



## Vocational Schools

	<u>Nearest State School</u>	<u>Nearest Area Education Center</u>
	Ashland State Vocational- Technical School	Rowan County Area Vocational Education Center
Location	Ashland	Morehead
Miles Distant	55	
Curriculum	Clerical Secretarial Health Careers Practical Nursing Child Care Food Service Electronics (Technology) Auto Body Repair Auto Mechanics Carpentry-Building Trades Cabinet Making and Millwork Cosmetology Drafting Electricity Machine Shop Radio and TV Service Tool and Die Making Welding	Junior Accounting Management Clerical Secretarial Auto Mechanics Carpentry Drafting

Arrangements can be made to provide training in the specific production skills required by an industrial plant. Instruction may be conducted either in the vocational school or in the industrial plant, depending upon the desired arrangement and the availability of special equipment.



AERIAL VIEW OF MOREHEAD STATE UNIVERSITY



### Area Colleges and Universities

<u>Name</u>	<u>Location</u>	<u>Distance (Miles)</u>	<u>Enrollment (Fall, 1974)</u>	<u>Highest Degree Conferred</u>
Morehead State University	Morehead		6,765	Masters, Ph.D.*
Maysville Commu- nity College	Maysville	44	317	Associate
Southeastern Chris- tian Junior College	Winchester	46	73	Associate
Ashland Commu- nity College	Ashland	55	1,253	Associate
Transylvania University	Lexington	59	664	Masters***
University of Kentucky	Lexington	59	21,586	Ph.D., M.D., D.M.D., J.D.
Lexington Tech- nical Institute	Lexington	59	1,281	Associate
Marshall University	Huntington, West Vir- ginia	61	9,772**	Academic and Professional
Eastern Kentucky University	Richmond	67	12,571	Masters, Ph.D.*

---

\*Cooperative program with the University of Kentucky, Lexington, for a Ph. D. in Education only.

\*\*Enrollment, for Fall, 1973.

\*\*\*Courses are taught on the Transylvania campus by Xavier University of Cincinnati faculty members. The degree is issued by Xavier University.



## HEALTH

### Local Medical Personnel

Physicians - 23

Dentists - 8

### Hospitals

<u>General Hospital</u>	<u>Location</u>	<u>Beds</u>
St. Claire Medical Center	Morehead	94

General hospital facilities and services - Inpatient, outpatient, and emergency services including 3 emergency rooms, 4 operating rooms, 2 delivery rooms, intensive coronary care unit, physical therapy department, diagnostic radiology, EKG laboratory, blood bank, pharmacy, respiratory therapy, clinical and histology laboratory, medical library, home health and homemaker services.

Medical staff - 5 general surgeons, anesthesiologist, 2 urologists, 2 orthopedists, pediatrician, 2 obstetricians, radiologist, 3 family medicine physicians, 4 internal medicine physicians, pathologist, oral surgeon, psychiatrist, 32 registered nurses, 12 licensed practical nurses, 9 laboratory technicians, 7 X-ray technicians, pharmacist, physical therapist, respiratory therapist, continuing education director

Other - The St. Claire Medical Center in affiliation with Morehead State University provides clinical experience for two-year associate programs in nursing, medical assistance, and radiology technology.

### Other Medical Facilities

Morehead Clinic and Cave Run Clinic

### Ambulance Service

Name - Morehead-Rowan County Ambulance

Staff - 3 Emergency Medical Technicians, 4 drivers

Service - 24-hour service throughout county

Equipment - 1 ambulance

Nursing Homes

	<u>Number</u>	<u>Beds</u>
Extended care home	1	61

Public Health

Facility - Rowan County Health Department

Staff - 3 registered nurses, health environmentalist, administrator,  
plumbing inspector, nutritionist, 4 clerk typists

## OTHER LOCAL FACILITIES

### Communications

Telephone - General Telephone Company  
Services - Standard

Telegraph - Western Union  
Services - Telephone and written messages

Postal - U.S. Post Office  
Class - First  
Mail received - Three times daily  
Mail dispatched - Three times daily

Newspapers - The Morehead News  
Weekly and circulation - 5,326  
Other papers  
received from - Louisville, Lexington, and Ashland, Kentucky

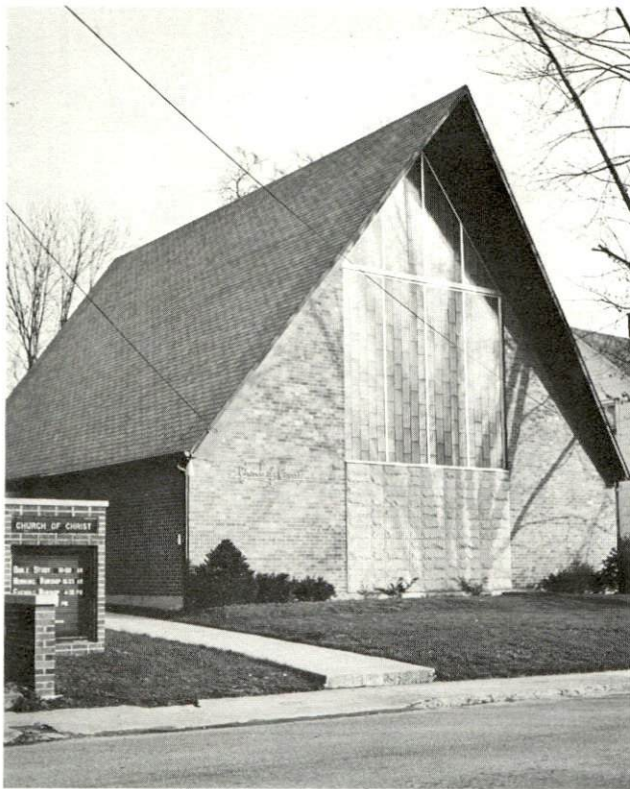
Radio - WMOR AM-FM; WMKY-FM  
Stations received from - Lexington, Ashland, Mt. Sterling and  
Grayson, Kentucky

Television -  
Cable service  
Reception from - Huntington and Charleston, West Virginia; Cincinnati,  
Ohio; Lexington, Kentucky  
Kentucky Educational  
Television - Morehead transmitter, Channel 38

### Library Services

Public library - Rowan County Public Library  
Size collection - 22,046 volumes  
Circulation, 1974-75 - 74,292  
Services - Story hour, reading program, magazines, records, art,  
pamphlets, community meeting room, planned programs, copying  
machine, projector, record player





CHURCH OF CHRIST



METHODIST CHURCH



ST. CLAIRE MEDICAL CENTER

Private library - Johnson Camden Library-Morehead State University  
 Size collection - 450,109 volumes  
 Special collections - Kentucky Room (books about Kentucky or written by Kentucky authors); James Still Room (writings of Kentucky author, James Still)  
 Services - Conference rooms, phonograph records, filmstrips, teaching aids, microfilm readers, microcard readers, microfiche reader-printer, five coin-operated photographic machines

#### Religious Institutions

Number of churches - 15  
 Denominations - Baptist, Catholic, Church of God, Church of Christ, Christian, Episcopal, Methodist, Nazarene, Pentecostal, Presbyterian  
 Nearest Synagogue - Ashland, 55 miles away  
 Congregation - Agudath Achim (reform)

#### Financial Institutions

<u>Banks</u>	<u>Assets</u>	<u>Deposits</u>	<u>Statement Date</u>
Peoples Bank of Morehead	\$13,283,765.83	\$12,145,554.38	6-30-75
The Citizens Bank	12,057,956.76	10,946,412.34	6-30-75

<u>Savings and Loan Associations</u>	<u>Assets</u>	<u>Shared Accounts</u>	<u>Statement Date</u>
First Federal Savings and Loan Association of Morehead	\$ 8,625,293.67	\$ 8,063,993.80	6-30-75

#### Hotels and Motels

Total number - 6  
 Total units - 249





THE CITIZENS BANK



PEOPLES BANK OF MOREHEAD



### Clubs and Organizations

Business and Civic - Chamber of Commerce, Junior Chamber of Commerce, Kiwanis, Breckinridge Key Club, Rowan County High Key Club, Lions, Optimist, Veterans of World War I, Morehead Men's Club, Morehead Merchants Association

Fraternal - Masons, Odd Fellows, American Legion

Women's - Woman's Club, Morehead University Women's Club, Business and Professional Women's Club, American Association of University Women, Veterans of World War I Auxiliary, Rebekah, Eastern Star

Youth - Boy Scouts, Girl Scouts, Cub Scouts, Brownies, FFA, FHA, FAA, Beta Club, FBLA, Junior Achievement, 4-H, FTA

## RECREATION

### Local

Morehead is located in the scenic Daniel Boone National Forest. There are numerous campsites and picnic areas within a very short distance of the city. Also nearby is Cave Run Lake, a recently-constructed lake with 8,270 surface acres. Even though construction is still in progress, the lake is now open for swimming, boating, fishing, and camping.

Morehead offers a variety of recreational facilities - one park, two playgrounds, four baseball diamonds, a swimming pool, outdoor basketball court, four tennis courts, and one drive-in and two indoor-theaters. In addition to these city facilities, Morehead State University permits the public to use its facilities, including the swimming pool and golf course. An added attraction is the University's wide variety of cultural and sporting events.

### Area (Within 30 miles)

Carter Caves State Resort Park, approximately 20 miles northeast of Morehead, is a 1,000-acre park that features a lodge, swimming pool, 9-hole and miniature golf courses, boat rentals, playground and picnic area, and numerous caves.

Grayson Lake State Park, approximately 30 miles away, has a 1,050-acre lake as its center of attraction. The park offers camping sites, beach and bathhouse, and picnic areas.

## COMMUNITY IMPROVEMENTS

### Recent:

Browning Manufacturing Division of Emerson Electric Company has begun manufacturing small electric parts.

A new mental health facility has been built, and two health clinics have doubled the size of their facilities.

Four new businesses have been established.

Recent annexation has extended the city limits to Interstate 64.

A 52-unit and a 100-unit housing project have been constructed.

General Telephone Company has completed a \$2.7 million service improvement and expansion program for the Morehead area.

A community park and a miniature golf course have been completed.

The fire department has acquired a new 1,000 gpm pumper equipped with a 45-foot ladder.

### Underway:

Two shopping centers are being constructed.

A 12-unit and an 8-unit apartment complex are nearing completion.

A new Bridge Street bridge is being erected over Triplett Creek.

Extensive resurfacing of city streets is in progress.



Planned:

A new downtown area parking lot has been proposed.

The Rowan County School System plans to build a new middle school or high school. Rowan County High School is applying for accreditation by the Southern Association of Schools and Colleges.

Development of a new subdivision is planned.

A new lodge and boat marina are scheduled to be constructed on Cave Run Lake.

A new 3 million gpd sewage treatment plant is planned. In addition, new sewer trunk lines will be installed to prevent the seepage of ground water into the sewerage system.

A preliminary study of the water plant facilities is under-way to determine the future needs of the community.

## HISTORY

Rowan County, covering 290 square miles, lies in the Knobs and Eastern Coal Fields geographical regions of Kentucky. Its surface is hilly with a few steep mountains in the eastern portion. The soil is thin with a clay and sand base except in the valleys where there are rich deposits of top soil. The county is drained by the Licking River, which skirts its southern border. Triplett Creek, running through the center of the county, affords some fine locations for water power. Limestone deposits found here are used extensively. A major portion of the area is covered by the Daniel Boone National Forest.

Formed in 1856 as Kentucky's one-hundred-fourth county, Rowan County was named for John Rowan, distinguished jurist and U.S. Senator (1825-1831), who ably defended Kentucky's land claimant law before the U.S. Supreme Court. Rowan became the first president of the Kentucky Historical Society.

Morehead, the county seat, was named in honor of Charles S. Morehead of Nelson County, who was Governor of Kentucky at the time Rowan County was formed, and James T. Morehead of Bullitt County, another Kentucky Governor. Morehead was the site of the Eastern Kentucky Moonlight Schools, established in 1911 to give night instruction to pupils of all ages. Its founder, Mrs. Cora Wilson gained national attention for her success in practically eliminating illiteracy in the area. In 1887, Morehead State Normal School was founded by Mrs. Phoebe Button, later to become a state supported college in 1922, and then Morehead State University in 1966. In the fall of 1974, the University had an enrollment of 6,765.

The earliest recorded population figure for Rowan County was 2,282 in 1860. Growth has been steady since then with a population of 12,708 in 1950, 12,808 in 1960, and 17,010 in 1970. However, by 1974 the population had fallen to 16,700. Morehead had a 1973 population of 7,215.

The total number of Rowan County residents employed in 1974 averaged 8,295, including 280 in agriculture and 2,240 in government. Manufacturing employers in the county reported 690 workers, and trade and services firms employed 2,270. Major industrial products are: men's and boy's dungarees, lumber, and electric parts.