

1975

# Industrial Resources: Shelby County - Shelbyville

Kentucky Library Research Collections  
Western Kentucky University, [spcol@wku.edu](mailto:spcol@wku.edu)

Follow this and additional works at: [https://digitalcommons.wku.edu/shelby\\_cty](https://digitalcommons.wku.edu/shelby_cty)

 Part of the [Business Administration, Management, and Operations Commons](#), [Growth and Development Commons](#), and the [Infrastructure Commons](#)

---

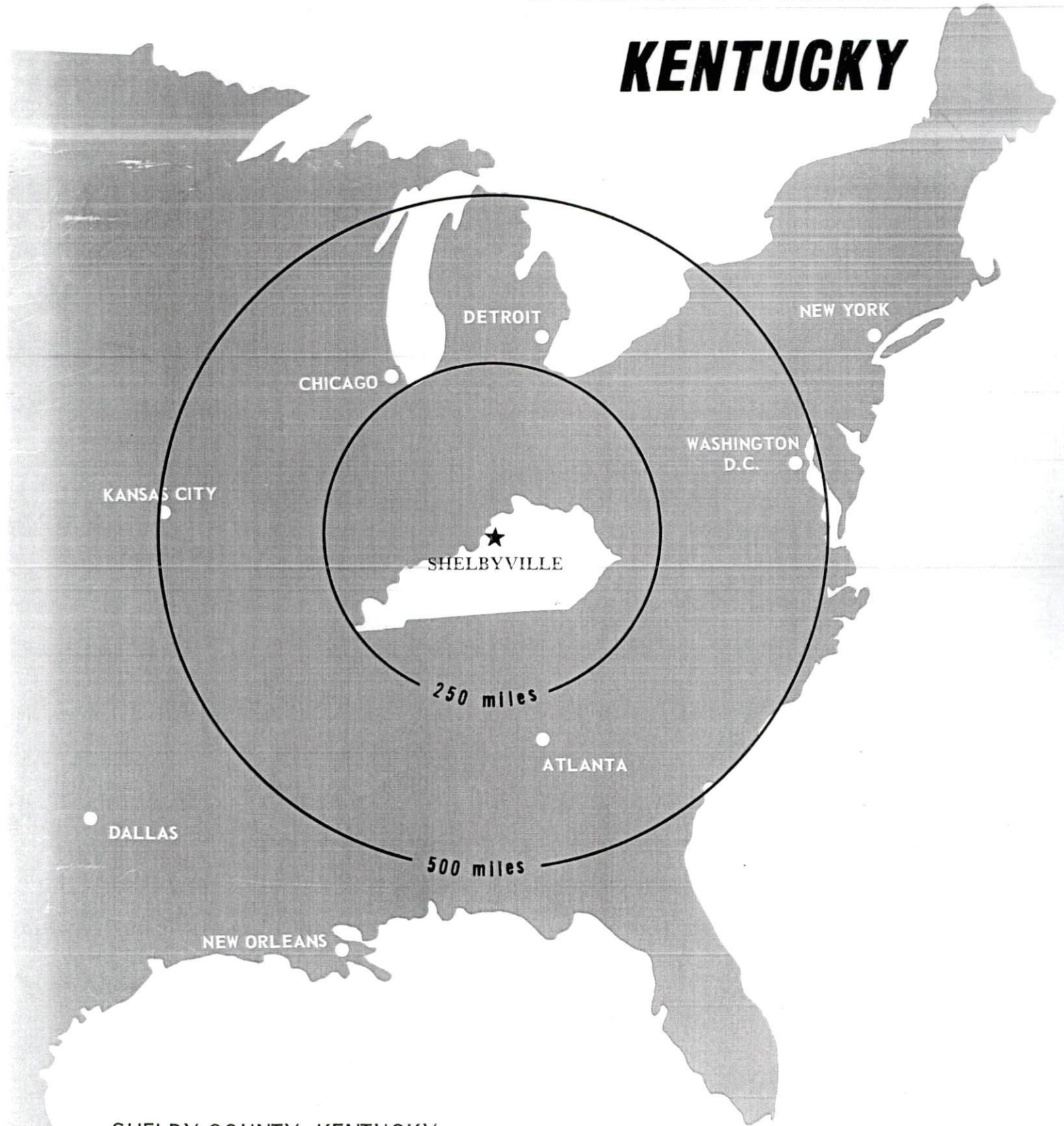
## Recommended Citation

Kentucky Library Research Collections, "Industrial Resources: Shelby County - Shelbyville" (1975). *Shelby County*. Paper 12.  
[https://digitalcommons.wku.edu/shelby\\_cty/12](https://digitalcommons.wku.edu/shelby_cty/12)

This Report is brought to you for free and open access by TopSCHOLAR®. It has been accepted for inclusion in Shelby County by an authorized administrator of TopSCHOLAR®. For more information, please contact [topscholar@wku.edu](mailto:topscholar@wku.edu).

# INDUSTRIAL RESOURCES

## **SHELBYVILLE** **KENTUCKY**

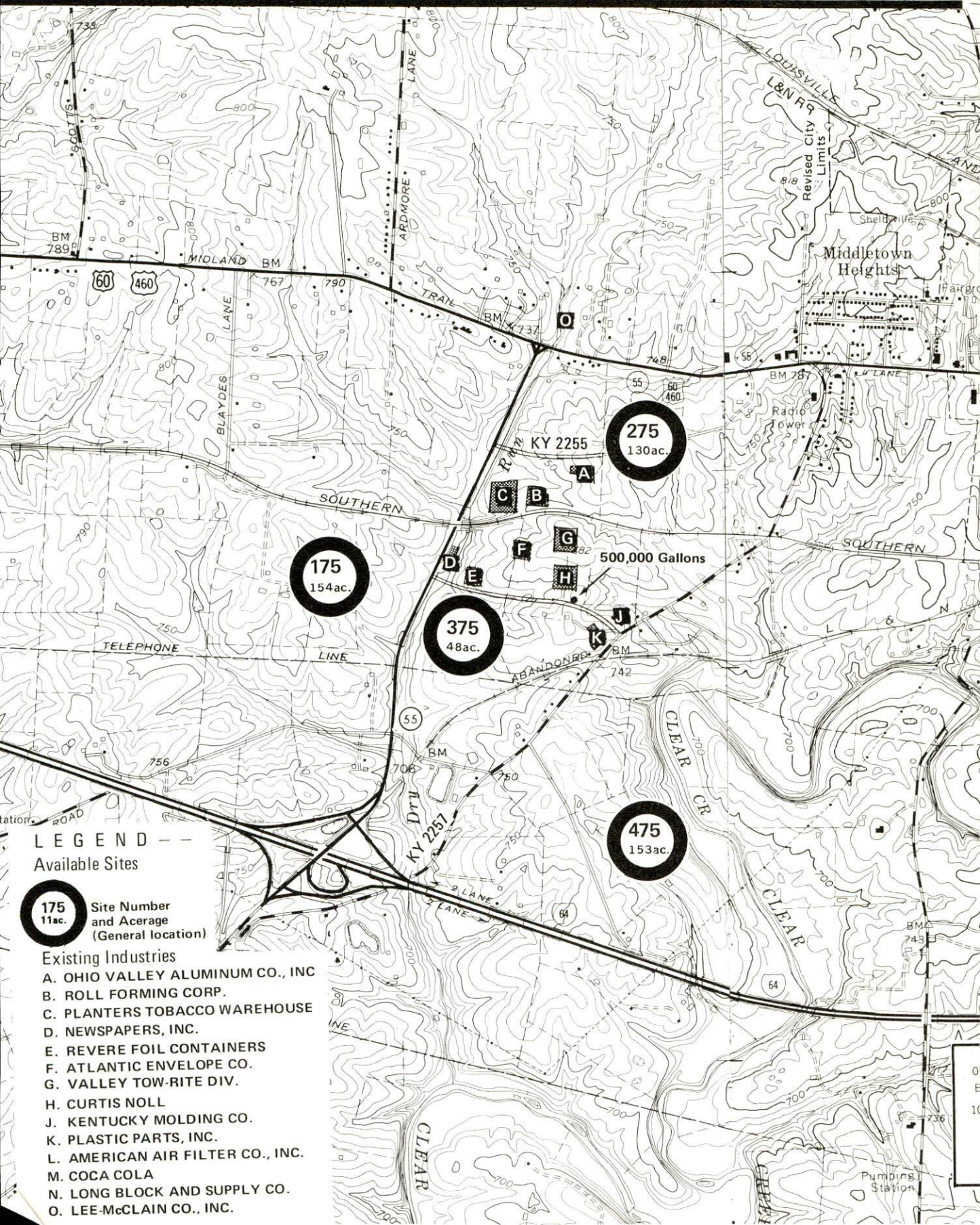


SHELBY COUNTY, KENTUCKY



# SHELBYVILLE, KENTUCKY --- Index to Industrial Sites --- 1975

For detailed data on individual sites contact Mayor Marshall Long, Shelbyville, Kentucky 40065, or the Industrial Development Division, Kentucky Department of Commerce, Capital Plaza Tower, Frankfort, Kentucky 40601.



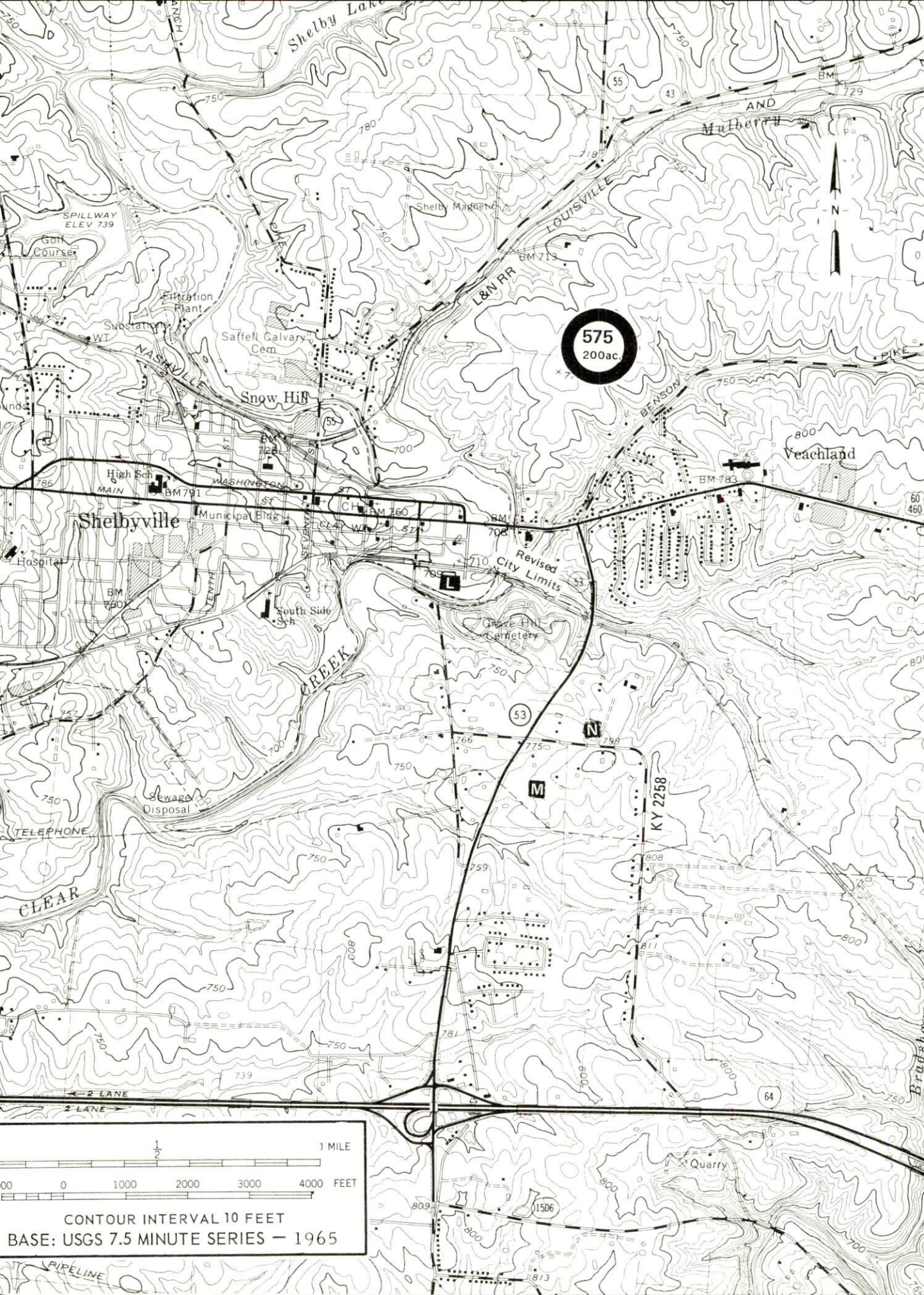
## LEGEND --

Available Sites

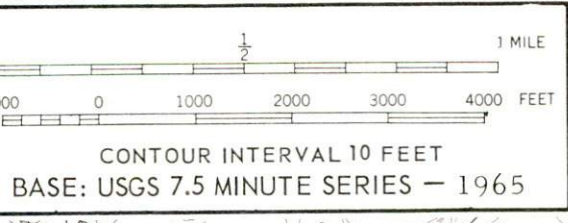
**175**  
11ac. Site Number and Acreage (General location)

- Existing Industries
- A. OHIO VALLEY ALUMINUM CO., INC
  - B. ROLL FORMING CORP.
  - C. PLANTERS TOBACCO WAREHOUSE
  - D. NEWSPAPERS, INC.
  - E. REVERE FOIL CONTAINERS
  - F. ATLANTIC ENVELOPE CO.
  - G. VALLEY TOW-RITE DIV.
  - H. CURTIS NOLL
  - J. KENTUCKY MOLDING CO.
  - K. PLASTIC PARTS, INC.
  - L. AMERICAN AIR FILTER CO., INC.
  - M. COCA COLA
  - N. LONG BLOCK AND SUPPLY CO.
  - O. LEE-McCLAIN CO., INC.





575  
200ac.





INDUSTRIAL RESOURCES  
SHELBYVILLE, KENTUCKY

Prepared by

The Kentucky Department of Commerce

in cooperation with

The Shelby County Chamber of Commerce

and

The Shelby County Industrial Development Foundation

1975



This copy has been prepared by the Kentucky Department of Commerce, Division of Research and Planning, and the cost of printing paid from state funds.

Production Supervisor

Patsy Wallace

Research

Don Stosberg

Clerical

Mildred Keefer

Graphics

N. C. Montague  
Frank Ferrante  
Tony Cecconi

Cartography

Site Development Section



## TABLE OF CONTENTS

<u>Chapter</u>	<u>Page</u>
INDUSTRIAL SITES . . . . .	i
SHELBYVILLE, KENTUCKY - A RESOURCE PROFILE . . . . .	1
THE LABOR MARKET. . . . .	4
Population Trends . . . . .	4
General Employment Characteristics, 1973 . . . . .	4
Manufacturing Employment Trends by Industry . . . . .	5
Major Shelby County Manufacturing Firms, Their Products and Employment . . . . .	6
Labor Organizations . . . . .	7
Estimated Male Labor Supply . . . . .	11
Estimated Female Labor Supply . . . . .	11
Wages. . . . .	12
Per Capita Personal Income. . . . .	13
TRANSPORTATION . . . . .	14
Rail. . . . .	14
Truck Service . . . . .	15
Air . . . . .	16
Bus . . . . .	16
Taxi . . . . .	16
Rental Services . . . . .	16
POWER AND FUEL . . . . .	17
Electricity. . . . .	17
Natural Gas . . . . .	17
Other Fuels . . . . .	18
WATER AND SEWERAGE . . . . .	19
Water. . . . .	19
Sewerage . . . . .	21
LOCAL GOVERNMENT . . . . .	23
City. . . . .	23
County . . . . .	23

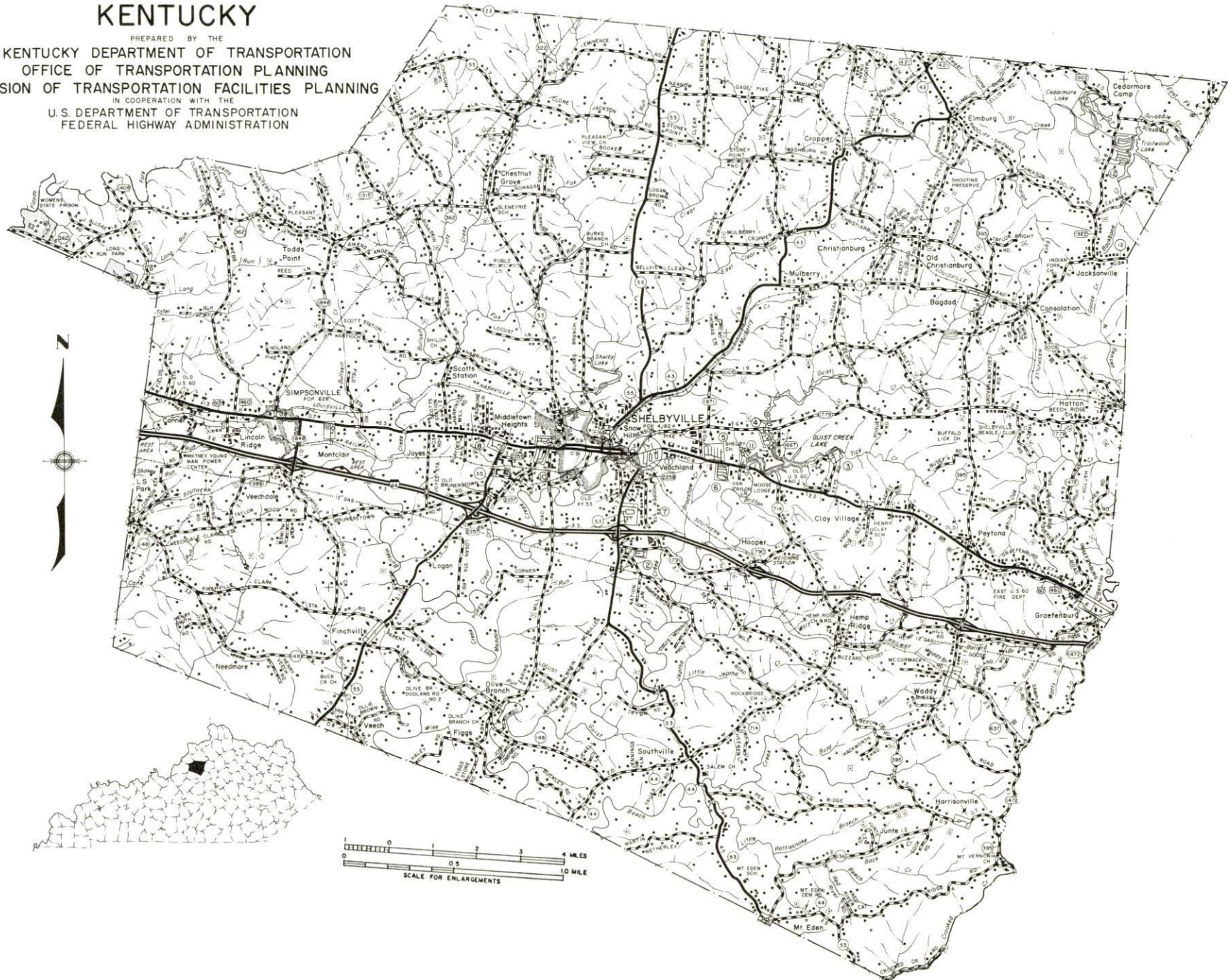


<u>Chapter</u>	<u>Page</u>
Assessed Value of Property, 1974 . . . . .	23
Property Taxes . . . . .	23
Local Property Tax Rate Per \$100 of	
Assessed Valuation, 1974 . . . . .	24
Planning and Zoning . . . . .	24
Safety. . . . .	24
Police . . . . .	24
Fire . . . . .	24
Rescue Service . . . . .	25
Sanitation . . . . .	25
 EDUCATION . . . . .	 26
Public Schools . . . . .	26
Vocational Schools . . . . .	30
Colleges and Universities . . . . .	31
 HEALTH. . . . .	 32
Hospitals . . . . .	32
Ambulance Service . . . . .	32
Nursing Homes. . . . .	32
Public Health . . . . .	32
 OTHER LOCAL FACILITIES. . . . .	 33
Communications . . . . .	33
Library Services. . . . .	33
Religious Institutions . . . . .	33
Financial Institutions . . . . .	35
Hotels and Motels . . . . .	35
Clubs and Organizations . . . . .	35
 RECREATION . . . . .	 36
Local. . . . .	36
Area . . . . .	37
 AGRICULTURE - NATURAL RESOURCES - CLIMATE . . . . .	 38
Agriculture . . . . .	38
Natural Resources . . . . .	38
Climate. . . . .	39
 HISTORY . . . . .	 40



# GENERAL HIGHWAY MAP SHELBY COUNTY KENTUCKY

PREPARED BY THE  
KENTUCKY DEPARTMENT OF TRANSPORTATION  
OFFICE OF TRANSPORTATION PLANNING  
DIVISION OF TRANSPORTATION FACILITIES PLANNING  
IN COOPERATION WITH THE  
U.S. DEPARTMENT OF TRANSPORTATION  
FEDERAL HIGHWAY ADMINISTRATION

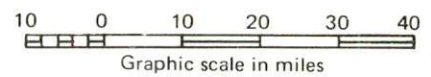
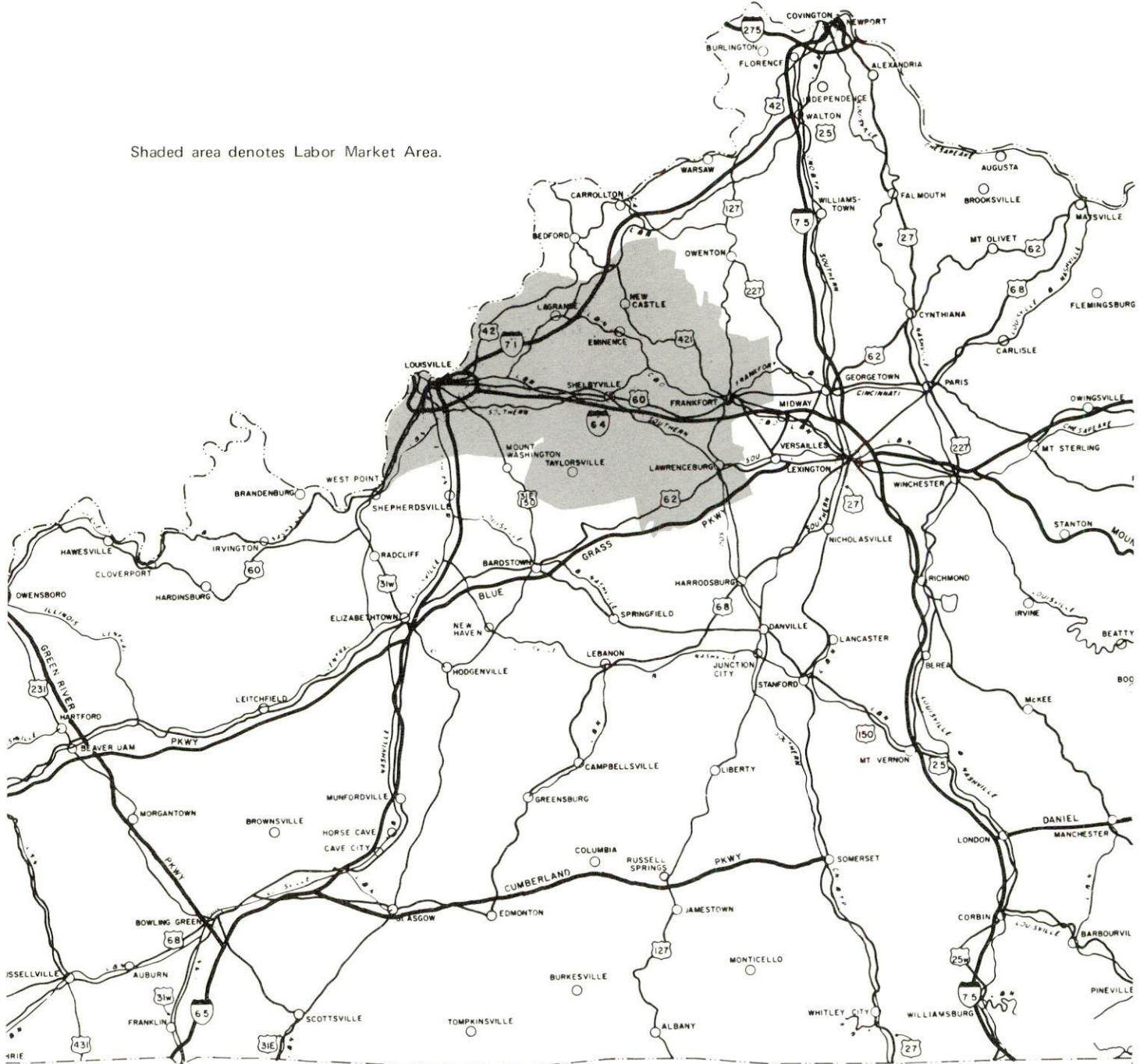




# SHELBYVILLE LABOR MARKET AREA



Shaded area denotes Labor Market Area.





## SHELBYVILLE, KENTUCKY - A RESOURCE PROFILE

Shelbyville, the county seat of Shelby County, is 32 miles east of Louisville, 50 miles west of Lexington, and 90 miles southwest of Cincinnati, Ohio. Its location on Interstate 64, U. S. 60, U. S. 460, and Kentucky 55 makes all of these cities readily accessible from Shelbyville. Shelbyville had a population of 4,812 in 1970.

Shelby County, located in the Bluegrass Region of Central Kentucky, contains 383 square miles of territory. The 1970 population of Shelby County was 18,999.

Shelby County is the largest producer in Kentucky of milk and alfalfa, third in production of clo-tim hay, and sixth in burley tobacco.

### The Economic Framework

Total employment in Shelby County averaged 8,620 jobs in 1973, with agriculture providing 2,020 jobs; trade and services 1,840; and manufacturing 870. From 1964 to 1974, manufacturing employment increased 76 percent. The county's industrial employment is heaviest in the metal products and primary metals industries.

Per capita personal income in the county in 1973 was \$4,250, or \$200 above the Kentucky average. Between 1969 and 1973, per capita personal income in the county increased by 35.2 percent.

Shelbyville is the center of a labor market area that includes Shelby County and the six adjacent counties. The total area employment in 1973 averaged 402,670. Manufacturing provided 108,910 of these jobs while trade and services provided 125,365 and government 53,890.

### Resources for Growth

1. There is a current estimated labor supply of 19,740 men and 21,610 women available for industrial jobs in the labor market area. In addition, approximately 42,960 men and 41,610 women will become 18 years of age before 1981 and potentially available for work.

2. The local transportation capability is good. An entrance to Interstate 64, a link in the nation's major highway network is located 4 miles south of Shelbyville. The county is provided freight service by the Louisville and Nashville Railroad and Southern Railway System. Commercial air service is available in Louisville, 32 miles west of Shelbyville via Interstate 64.

3. Electricity is provided to Shelbyville by the Kentucky Utilities Company and gas service by the Western Kentucky Gas Company. There are two distributors of butane and propane and five distillate fuel oil distributors in Shelbyville. Water and sewerage service is provided by the Shelbyville Municipal Water and Sewer Commission.

4. Four universities, five senior colleges, one community college, two junior colleges and one technical institute are located within a 55-mile radius of Shelbyville. The county is served by the Shelby County School System. An area vocational education center, located in Shelbyville, offers classes in eight subject areas and a state vocational-technical school located in Jeffersontown, 25 miles away, offers classes in twenty-one subject areas.

### Community Programs for Improvement

#### Recent:

1. Twelve downtown stores have been remodeled since 1974.
2. Two Shelbyville shopping centers have been expanded.
3. Three new companies have been established:
  - Valley Tow-Rite, which manufactures trailer hitch products and employs about 100 people
  - Curtis-Noll, Inc., a packaging plant which employs 80 workers
  - Plastic and Metal Finishing, Inc., which does metal finishing and has about 13 employees
4. Coca-Cola Bottling Co., a long established industry in the community, has built and now occupies a new plant.
5. Guist Creek Lake now has a camping area.
6. The Fire Department acquired a new 1,000 gpm pumper in late 1973.
7. The Shelby County Public Library has recently added a special room for its Kentucky Historical Collection.

#### In Progress:

1. A \$1 million plus expansion to Shelby County High School is under construction and due to be completed by August, 1975.



2. A major renovation of Shelby County Middle School West is due for completion in the fall of 1975.

3. A \$400,000 sewerage project now under construction will complete sewer service to all the incorporated areas of the city. This improvement is scheduled for completion in the summer of 1975.

4. A \$100,000 football, track, and baseball stadium is now under construction. Seventy-five percent of this project is paid for by the Athletic Booster Club and twenty-five percent by the school system.

5. Chatham Station, a historic railroad station, is being rebuilt.

Planned:

1. A 165-acre county park is planned. The facility will include 9 ball fields, amphitheater, par-3 golf course, playground, picnic area, miniature golf, child's fishing pond and petting zoo, and eventually a community center.

2. The police department has on order two new patrol cars.

3. A new county ambulance is being ordered.

Recreation, Entertainment and Livability

Recreational facilities in Shelbyville include: 9 ball diamonds, 2 mini-parks, three playgrounds, a municipal swimming pool, tennis courts, one country club with an 18-hole golf course, and three fishing lakes with picnic and boating facilities.

General Butler State Park, My Old Kentucky Home State Park, Old Fort Harrod State Park, and Bernheim Forest are within easy driving distance.

Churchill Downs, home of the Kentucky Derby, is in Louisville only 32 miles away. Two thoroughbred racing meets and the world-famous Kentucky Derby are held there annually. Additional horse racing is held at Keeneland in Lexington, 50 miles distant, and at Miles Park in Louisville. Harness racing is offered at the new Louisville Downs and at Lexington's Big Red Mile Trotting Track.

Louisville, Lexington and Frankfort, all within a 55-mile radius on interstate highways, offer a wide variety of cultural and sports entertainment.

## THE LABOR MARKET

### POPULATION TRENDS

Area	Population				Percent Change	
	1973*	1970	1960	1950	1960-70	1950-60
Shelbyville	N. A.	4,182	4,525	4,403	- 7.6	+ 2.8
Labor Market						
Area	798,200	788,978	697,534	566,013	+13.1	+23.2
Shelby County	19,400	18,999	18,493	17,912	+ 2.7	+ 3.2
Anderson County	10,300	9,358	8,618	8,984	+ 8.6	- 4.1
Franklin County	36,400	34,481	29,421	25,933	+17.2	+13.5
Henry County	10,700	10,910	10,987	11,394	- 0.7	- 3.6
Jefferson County	700,500	695,055	610,947	484,615	+13.8	+26.1
Oldham County	15,400	14,687	13,388	11,018	+ 9.7	+21.5
Spencer County	5,500	5,488	5,680	6,157	- 3.4	- 7.7

\*Provisional estimates.

Sources: U. S. Department of Commerce, Bureau of the Census, Census of Population, 1970, 1960, 1950. U. S. Bureau of the Census, Current Population Reports, Series P-26, June 1973.

### GENERAL EMPLOYMENT CHARACTERISTICS, 1973

Major Employment Group	Employment	
	Shelby County	Labor Market Area
TOTAL	8,620	402,670
Agricultural	2,020	7,570
Nonagricultural	6,600	395,100
Manufacturing	870	108,910
Government	1,080	53,890
Trade and Services	1,838	125,365

Source: Kentucky Department for Human Resources, Bureau for Administration and Operations.



MANUFACTURING EMPLOYMENT TRENDS BY INDUSTRY  
SEPTEMBER 1974 AND 1964

Industry	Shelby County			Labor Market Area		
	1974	1964	% Change	1974	1964	% Change
TOTAL	946	537	+ 76.2	110,974	84,791	+30.9
Food & Kindred						
Products	110	101	+ 8.9	11,445	12,220	- 6.3
Tobacco	0	21	-100.0	11,032	8,927	+23.6
Apparel, Textiles,						
Leather	103	95	+ 8.4	3,310	2,977	+11.2
Lumber, Furniture	0	0	--	3,907	4,965	-21.3
Printing & Publishing,						
Paper	63	20	+215.0	8,782	6,783	+29.5
Chemicals, Petroleum						
& Coal, Rubber	51	14	+264.3	8,881	7,779	+14.2
Stone, Clay & Glass	67	67	--	2,748	2,041	+34.6
Primary Metals	130	85	+ 52.9	2,457	1,920	+28.0
Machinery, Metal						
Products, Equipment	420	134	+213.4	56,515	35,883	+57.5
Other	2	0	--	1,897	1,296	+46.4

Source: Kentucky Department for Human Resources, Number of Workers in Manufacturing Industries Covered by Kentucky Unemployment Insurance Law Classified by Industry and County, September, 1974, September, 1964.

MAJOR SHELBY COUNTY MANUFACTURING FIRMS,  
THEIR PRODUCTS AND EMPLOYMENT

<u>Firm (Establishment Date)</u>	<u>Product</u>	<u>Employment</u>			<u>Organized</u>
		<u>Total</u>	<u>Male</u>	<u>Female</u>	
<u>Shelbyville</u>					
American Air Filter Co., Inc. (1963)	Air filtration systems and equipment	60	44	16	*
Atlantic Envelope Co. (1972)	Envelopes	74	28	46	*
Coca Cola Bottling Co. (1920)	Soft drinks	39	34	5	
Landmark Community Newspapers, Inc. (1968)	Newspapers	65	29	36	
Lee-McClain Co., Inc. (1933)	Men's suits, coats, slacks	100	25	75	
Long Block & Supply Co. (1938)	Concrete block, joists, septic tanks	30	29	1	
Long Silo Co. (1965)	Concrete staves, farm silos	77	75	2	
Edward J. O'Brien Long Co. (1930)	Tobacco redrying	73	51	22	
Ohio Valley Aluminum Co. (1960)	Extrusion billets, scrap ingots	63	60	3	
Plastic Parts, Inc. (1969)	Plastic parts for furniture	45	29	16	
Revere Foil Containers (1967)	Aluminum foil containers	44	23	21	
Roll Forming Corp. (1949)	Custom roll formed products	122	101	21	
Southwestern Tobacco Co., Inc. (1925)	Tobacco prizing	54	50	4	
Valley Tow-Rite Division, Scott & Fitzer Co. (1972)	Trailer hitch products	100	--	--	

(continued)



<u>Firm (Establishment date)</u>	<u>Product</u>	<u>Employment</u>			<u>Organized</u>
		<u>Total</u>	<u>Male</u>	<u>Female</u>	
<u>Bagdad</u>					
Bagdad Roller Mills (1914)	Corn meal, feed	27	24	3	
<u>Simpsonville</u>					
Middletown Manu- facturing Co. (1959)	Swivels, rocker and TV pedestal bases, metal stampings, recliner chair mechanisms	150	75	75	*
F. B. Purnell Sausage Co., Inc. (1955)	Sausage products	45			

\*See Labor Organizations below.

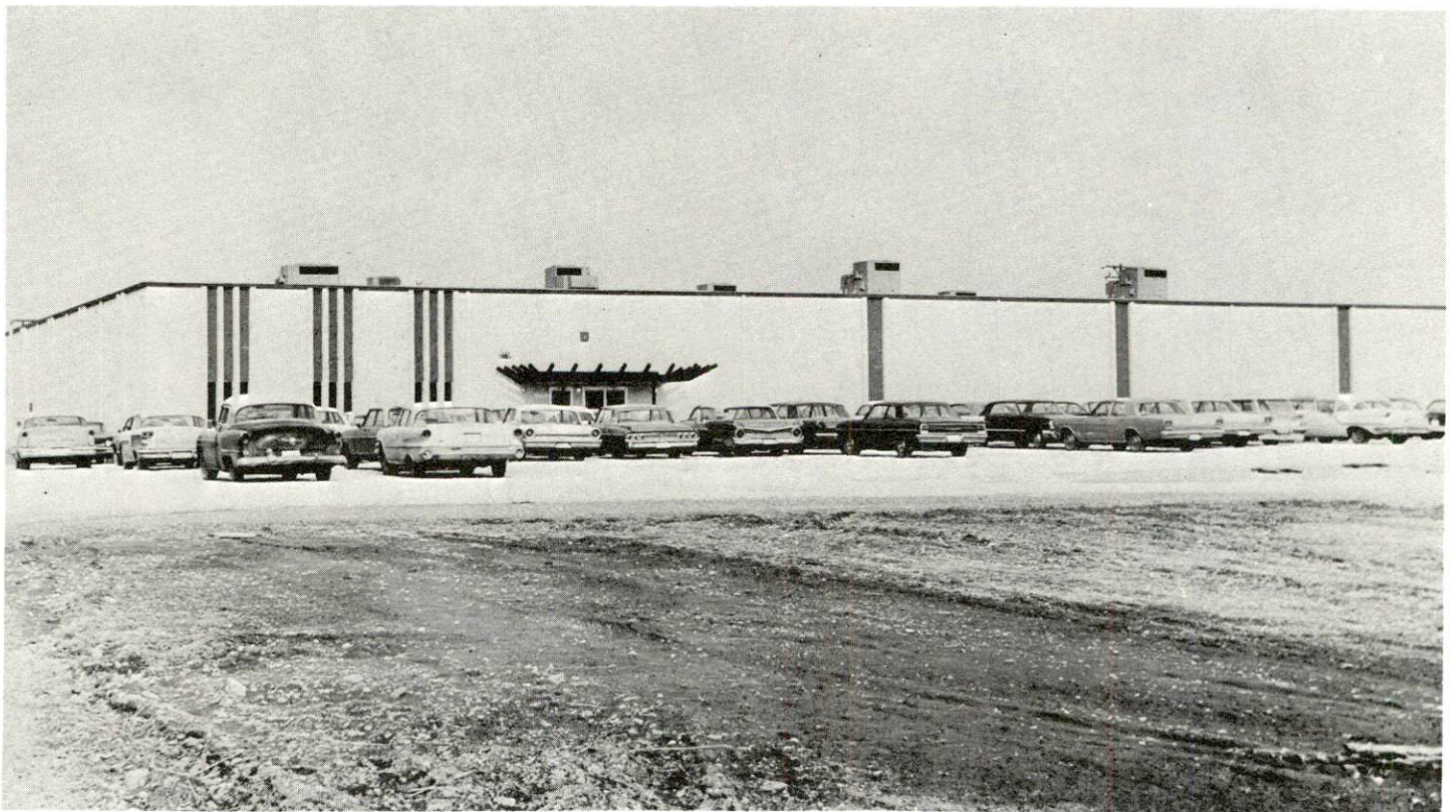
Source: Kentucky Department of Commerce, Division of Research and Planning.

#### LABOR ORGANIZATIONS

<u>Union</u>	<u>Representing manufacturing workers at:</u>
Machinists and Aerospace Workers	Middletown Manufacturing Co.
International Union, United Automobile, Aircraft and Agricultural Independent Workers of America	American Air Filter Company, Inc.
International Brotherhood of Pulp, Sulphite and Paper Mill Workers	Atlantic Envelope Company

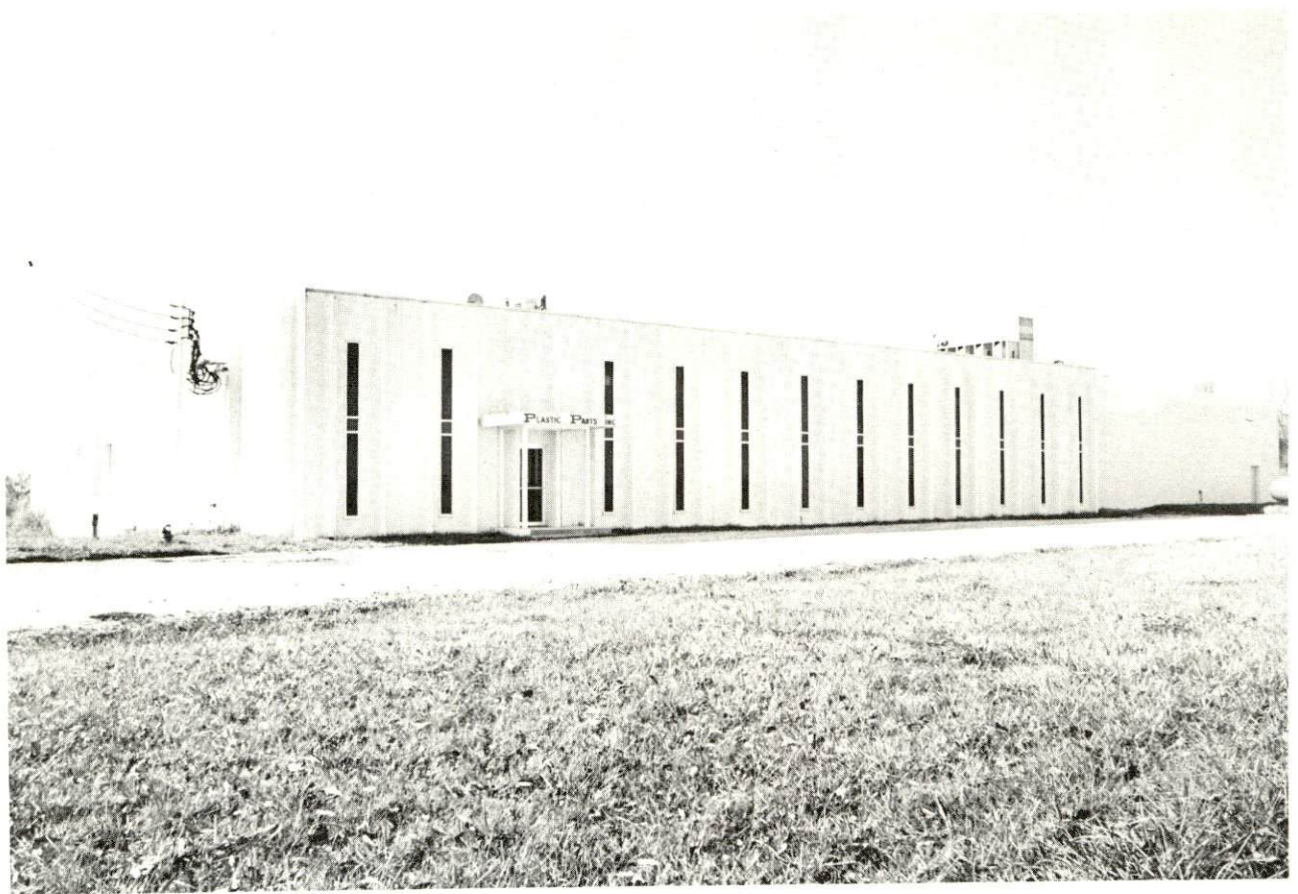


ROLL FORMING CORP.



ATLANTIC ENVELOPE COMPANY



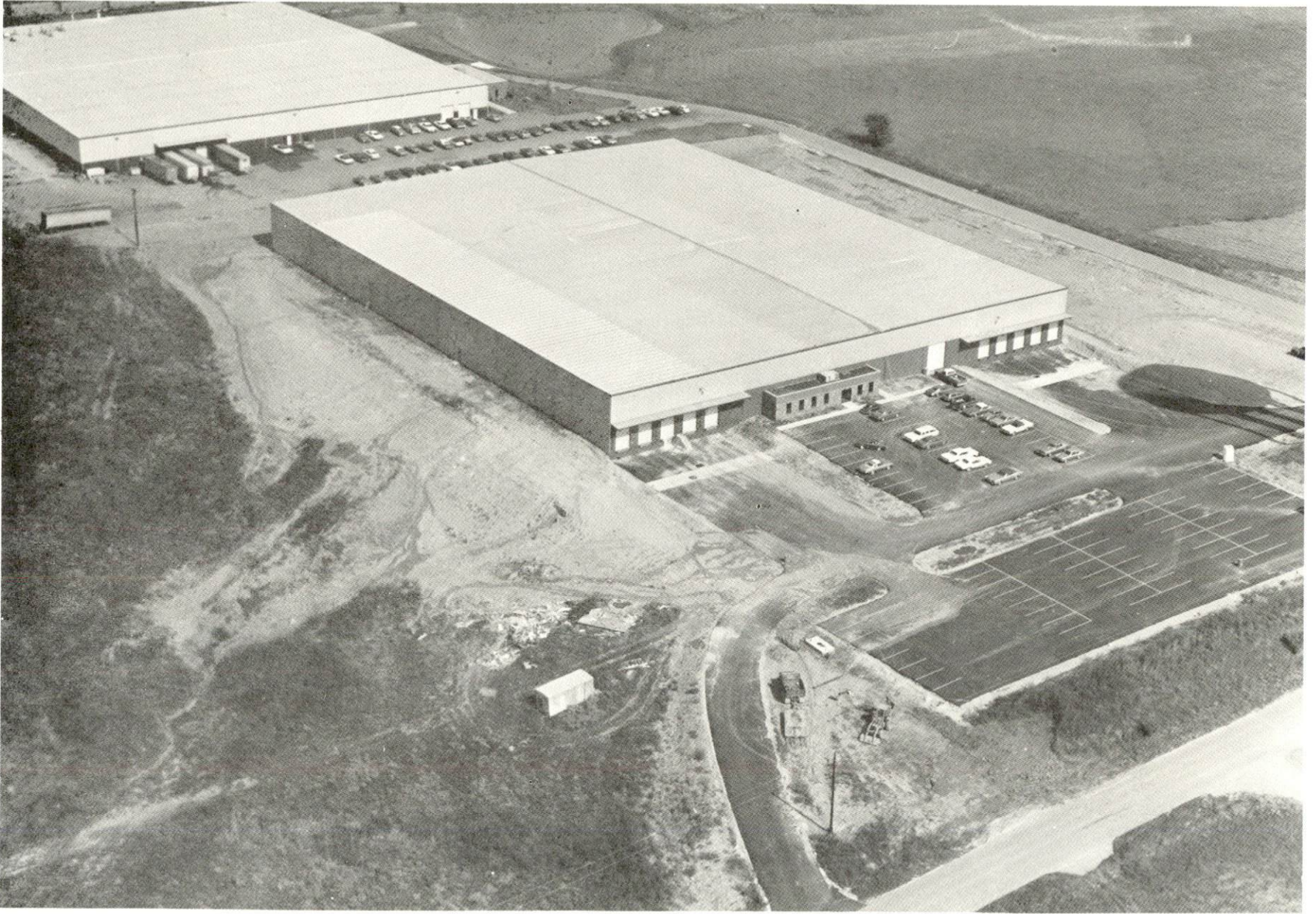


PLASTIC PARTS, INC.



LANDMARK COMMUNITY NEWSPAPERS, INC.





CURTIS-NOLL, INC.



ESTIMATED MALE LABOR SUPPLY  
SHELBYVILLE LABOR MARKET AREA

Area	Current			Under- employed	Future
	Total	Not in Labor Force	Unemployed		Reaching 18 yrs. of age before 1981
Labor Market					
Area	19,740	40	8,140	11,560	42,962
Shelby	480	0	170	310	920
Anderson	230	0	120	110	426
Franklin	1,030	0	420	610	1,632
Henry	250	0	90	160	492
Jefferson	17,170	0	7,220	9,950	38,442
Oldham	410	0	60	350	775
Spencer	170	40	60	70	275

Sources: Kentucky Department for Human Resources, Kentucky Labor Supply Estimates by County, 1974. Kentucky Department of Commerce, Future Labor Supply before 1981.

ESTIMATED FEMALE LABOR SUPPLY  
SHELBYVILLE LABOR MARKET AREA

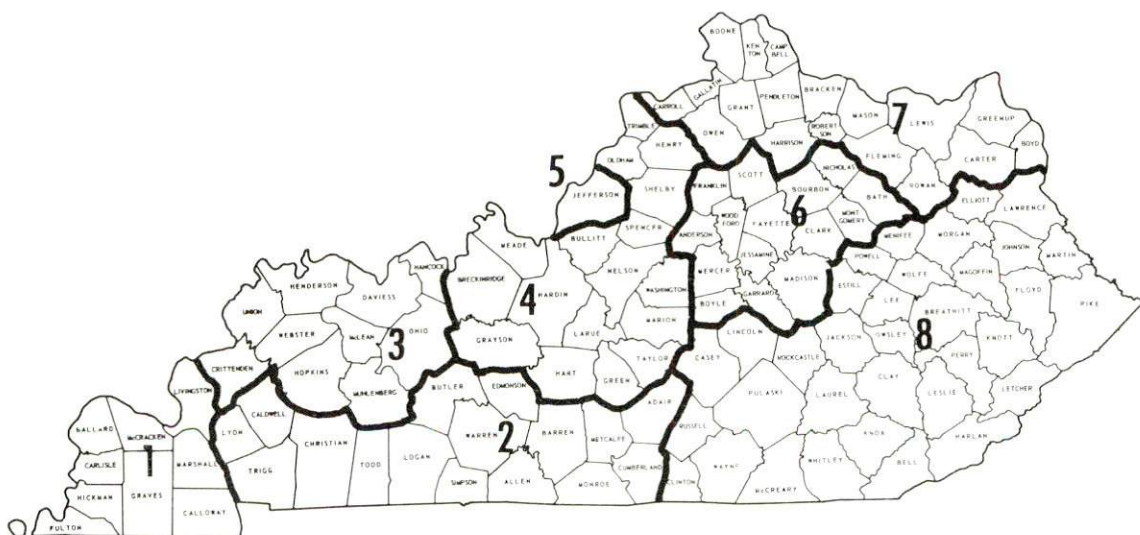
Area	Current			Under- employed	Future
	Total	Not in Labor Force	Unemployed		Reaching 18 yrs. of age before 1981
Labor Market					
Area	21,610	460	4,920	16,230	41,607
Shelby	470	0	90	380	963
Anderson	250	0	70	180	457
Franklin	990	0	220	770	1,593
Henry	240	0	50	190	473
Jefferson	18,820	0	4,420	14,400	37,034
Oldham	430	130	30	270	758
Spencer	410	330	40	40	329

Sources: Kentucky Department for Human Resources, Kentucky Labor Supply Estimates by County, 1974. Kentucky Department of Commerce, Future Labor Supply before 1981.

## WAGES

Occupational wage rates for specific industries are usually not available to most government agencies, and wage data furnished to state employment agencies by industrial employers is protected from disclosure by federal law. The most reliable up-to-date wage information can be obtained by direct contact with local employers.

Associated Industries of Kentucky, a voluntary organization of Kentucky businesses, regularly collects occupational wage rates and fringe benefits data from participating member firms. Data is compiled for over 130 clearly defined office, production, and service occupations. Tabulations are published for eight regions of Kentucky, as shown on the map below. It should be noted that the data may be weighted by the preponderance of firms in the larger cities and may be somewhat higher than the rates paid in the smaller communities. Data from these tabulations are available, upon request, from the Kentucky Department of Commerce, Frankfort, Kentucky 40601.



Associated Industries of Kentucky Area Wage Surveys



PER CAPITA PERSONAL INCOME

<u>Area</u>	<u>1973</u>	<u>1969</u>	<u>% Change</u>
Shelby County	\$4,250	\$3,143	+35.2
Labor Market Area			
Range	\$3,541 - 5,292	\$2,583 - 3,794	N. A.
Kentucky	4,050	2,894	+39.9
U. S.	5,041	3,733	+35.1

Sources: U. S. Department of Commerce, Office of Business Economics, Survey of Current Business, August, 1974. U. S. Department of Commerce, Bureau of Economic Analysis, April, 1975.

## TRANSPORTATION

### Rail

Line serving Shelbyville - Louisville & Nashville Railroad Company

Services - One scheduled freight daily, two northbound and two southbound through freights daily, team track space for five cars, siding for eight cars; piggyback facilities at Frankfort

Line serving Shelbyville - Southern Railway System

Services - 2 freights daily, switching facilities, team track space for 10 cars, siding for 25 cars; piggyback facilities at Louisville

For details on routing, schedules, rates, and services, contact:

Manager of Industrial Development  
Louisville & Nashville Railroad Company  
908 West Broadway  
Louisville, Kentucky 40203

and/or

District Sales Manager  
Southern Railway System  
1402 South 15th Street  
Louisville, Kentucky 40210



Truck Service

Company

Home Office

Claxon Truck Line

P. O. Box C

Frankfort, Kentucky 40601

Cooper-Jarrett, Inc.

23 South Essex Avenue

Orange, New Jersey 07050

Ecklar-Moore Express, Inc.

1475 Forbes Road

Lexington, Kentucky 40505

McDuffee Motor Freight, Inc.

332 High School Avenue

Lebanon, Kentucky 40033

McLean Trucking Company

617 Waughtown Street

Winston-Salem, North Carolina

27107

Motor Freight Corporation

P. O. Box 2057, Idaho Station

Terre Haute, Indiana 47802

O. K. Trucking Company

1810 South Street

Cincinnati, Ohio 45204

Louisville-Shelbyville Express,  
Inc.

2105 Old Shelbyville Road

Louisville, Kentucky 40207

Smith's Transportation Corpora-  
tion of Virginia

P. O. Box 1000

Staunton, Virginia 24401

Turner Expediting Service

Box 21333, Standiford Field

Louisville, Kentucky 40221

Wilson Freight Company

3636 Follett Avenue

Cincinnati, Ohio 45223

Other Freight Services

Shipping Center

United Parcel Service

Louisville, Kentucky, 32 miles  
from Shelbyville

HIGHWAY MILES AND TRUCK TRANSIT TIME IN DAYS FROM  
SHELBYVILLE, KENTUCKY, TO SELECTED MARKET CENTERS

City	Delivery		City	Delivery	
	Highway Miles	Time TL		Highway Miles	Time TL
Atlanta, Ga.	350	1	Los Angeles, Calif.	2,140	4
Birmingham, Ala.	398	2	Louisville, Ky.	32	same day
Chicago, Ill.	324	1	Nashville, Tenn.	214	1
Cincinnati, Ohio	90	1	New Orleans, La.	717	2
Cleveland, Ohio	334	1	New York, N. Y.	737	2
Detroit, Mich.	349	1	Pittsburgh, Pa.	377	2
Knoxville, Tenn.	224	1	St. Louis, Mo.	295	1

Source: Delivery Time only - Louisville-Shelbyville Express, Inc.,  
2105 Old Shelbyville Road, Louisville, Kentucky 40218.

Air

Nearest Commercial

Location: Standiford Field  
Louisville, Kentucky, 32 miles distant

Runways: 3 paved

Length: 7,800, 5,000 and 7,250 feet

Traffic Control: Control tower, approach control, ground control, guards, radar service, clearance delivery

Lighting: Runways, obstructions, beacon and approach and touchdown lights, center line on runway

Services: TWA, American, Eastern, Delta, Piedmont, Ozark and Allegheny Airlines; Louisville-Jefferson County Air Board; 80, 100, 115 jet fuel; storage, major A & E repairs; Hertz, Avis, Budget and National rent-a-car service, restaurant, taxi, and city bus service, Weather Bureau

Air Freight Service: Freight carrying airlines regularly service this terminal

Bus - Southern Greyhound Bus Lines

Taxi - 24-hour, radio-dispatched service

Rental Services - Car, trailer and truck rentals



## POWER AND FUEL

### Electricity

Company serving Shelbyville and part of Shelby County - Kentucky  
Utilities Company  
Source of power - Kentucky Utilities Company  
Total generating capacity - 1,215,000 KW  
For industrial rates contact:

Kentucky Utilities Company  
1100 Main Street  
Shelbyville, Kentucky 40065

Company serving Shelby County - Shelby RECC  
Source of power - East Kentucky Power Cooperative  
Total generating capacity - 548,000 KW  
For industrial rates contact:

Shelby RECC  
P. O. Box 311  
Shelbyville, Kentucky 40065

Company serving Shelby County - Fox Creek RECC  
Source of power - East Kentucky Power Cooperative  
Total generating capacity - 548,000 KW  
For industrial rates contact:

Fox Creek RECC  
P. O. Box 211  
Lawrenceburg, Kentucky 40342

### Natural Gas

Company serving Shelbyville - Western Kentucky Gas Company  
Source of supply - Texas Gas Transmission Corporation  
Size of transmission mains - 30-inch (supplier); 4, 6, and  
8 inches (distributor)  
Distribution mains - 2 to 8 inches  
Distribution pressure - 4 oz. to 60 psi  
Btu content - 1,000 per cubic foot; Specific gravity - .60  
For rates and supplies contact:

Western Kentucky Gas Company  
326 Main Street  
Shelbyville, Kentucky 40065

Other Fuels

Propane and butane

Big 3 Gas Company of Shelby County  
U. S. 60W  
Shelbyville, Kentucky 40065

Shelbyville Silgas, Inc.  
Old Finchville Road  
Shelbyville, Kentucky 40065

Fuel oils

Distillate fuel oil -

Crume-Hundley Oil Co, Inc.  
South 3rd Street  
Shelbyville, Kentucky 40065

W. P. B. Oil Co., Inc.  
Goodman Avenue  
Shelbyville, Kentucky 40065

Long Oil Co.  
U. S. 60W  
Shelbyville, Kentucky 40065

Standard Oil Co.  
North 7th Street  
Shelbyville, Kentucky 40065

Gray Oil Co.  
U. S. 60E  
Shelbyville, Kentucky 40065

Residual fuel oil - Arrangements must be made with the refinery

Low sulphur content coal - Available in Eastern Kentucky



## WATER AND SEWERAGE

### Water

Company serving Shelbyville - Shelbyville Municipal Water and Sewer Commission

Source - Guist Creek Lake

Treatment plant capacity - 3,000,000 gallons per day

Average daily consumption - 1,500,000 gallons

Peak daily consumption - 1,800,000 gallons

Type treatment - Coagulation, sedimentation, filtration, chlorination, fluoridation

Storage capacity - 1,000,000 gallons

Size lines - 4 to 16 inches

Average pressure - 65 to 70 psi

### MONTHLY WATER RATES FOR DOMESTIC AND COMMERCIAL CONSUMERS

First	1,000 gallons	\$2.86 (minimum)
Next	9,000 gallons	1.10 per M gallons
Next	15,000 gallons	.92 per M gallons
Next	25,000 gallons	.76 per M gallons
Next	50,000 gallons	.59 per M gallons
All over	100,000 gallons	.43 per M gallons

### MINIMUM MONTHLY CHARGE (1,000 gallons per month or less)

5/8 or 3/4	inch meter	\$ 2.86
1	inch meter	3.51
1 1/4 or 1 1/2	inch meter	4.16
2	inch meter	5.72
3	inch meter	10.21
4	inch meter	15.39
6	inch meter	28.67

### TAP-ON CHARGES

The charge for tap-on to the city water main shall be \$175 to include a 5/8-inch meter, materials, labor and installation costs for installing the meter at the property line not to exceed 60 feet from the main. For installation requiring more than 60 feet of line the requesting party will be charged \$175 plus the costs of the additional labor, materials, and installation costs.

Tap-on fees for meters greater than 5/8-inch shall be based on the costs of materials, labor, and installation of the meter.

Name of water district - West Shelby Water District  
 Area served - Western Shelby County  
 Date when water district began operating - 1967  
 Source of supply of treated water - Shelbyville Municipal Water and  
 Sewer Commission  
 Average amount of water used in a 24-hour period - 22,000 gallons  
 Peak amount of water used in a 24-hour period - 50,000 gallons  
 Storage capacity - 50,000 gallons  
 Average pressure - 60 psi  
 Average temperature - 60 degrees F.  
 Size lines - 6 to 8 inches  
 Monthly rates -

First	1,000 gallons	\$5.25
Next	2,000 gallons	1.30 per M gallons
Next	2,000 gallons	1.20 per M gallons
Next	3,000 gallons	1.10 per M gallons
Next	5,000 gallons	1.00 per M gallons
Next	7,000 gallons	.90 per M gallons
Next	10,000 gallons	.75 per M gallons
All over	30,000 gallons	.60 per M gallons

Tap-on charge: \$175 for 5/8 or 3/4 inch meter



Name of water district - North Shelby Water Company  
 Area served - Northern Shelby County  
 Date when water district began operating - 1972  
 Source of supply of treated water - Shelbyville Municipal Water and Sewer Commission  
 Average amount of water used in a 24-hour period - 165,000 gallons  
 Peak amount of water used in a 24-hour period - 250,000 gallons  
 Storage capacity - 250,000 gallons  
 Average pressure - 65 psi  
 Size lines - 6 and 8 inches  
 Monthly rates -

First	2,000 gallons	\$8.00 (minimum bill)
Next	3,000 gallons	3.00 per M gallons
Next	5,000 gallons	2.00 per M gallons
Next	40,000 gallons	1.50 per M gallons
All over	50,000 gallons	1.00 per M gallons

Tap-on charge: \$234 for 5/8 or 3/4 inch meters

Surface water sources - Impoundments of small streams  
 Expected ground water yield - 5 gpm or less over the entire county

Sewerage

Company serving Shelbyville - Shelbyville Municipal Water and Sewer Commission\*  
 Design capacity - 1,320,000 gallons per day  
 Average daily flow - 500,000 gallons; Treatment - Primary and secondary  
 Type treatment - Primary clarifiers, trickling filter, secondary clarifiers, chlorine contact basin, heated primary digester, cold secondary digester and drying beds  
 Treated effluent discharged into - Clear Creek  
 Size of sanitary mains - 6, 8, 10, 12, and 15 inches  
 Monthly rates - (Based on amount of water used)

First	1,000 gallons	\$1.22 (minimum)
Next	9,000 gallons	.46 per M gallons
Next	15,000 gallons	.38 per M gallons
Next	25,000 gallons	.32 per M gallons
Next	50,000 gallons	.25 per M gallons
All over	100,000 gallons	.19 per M gallons

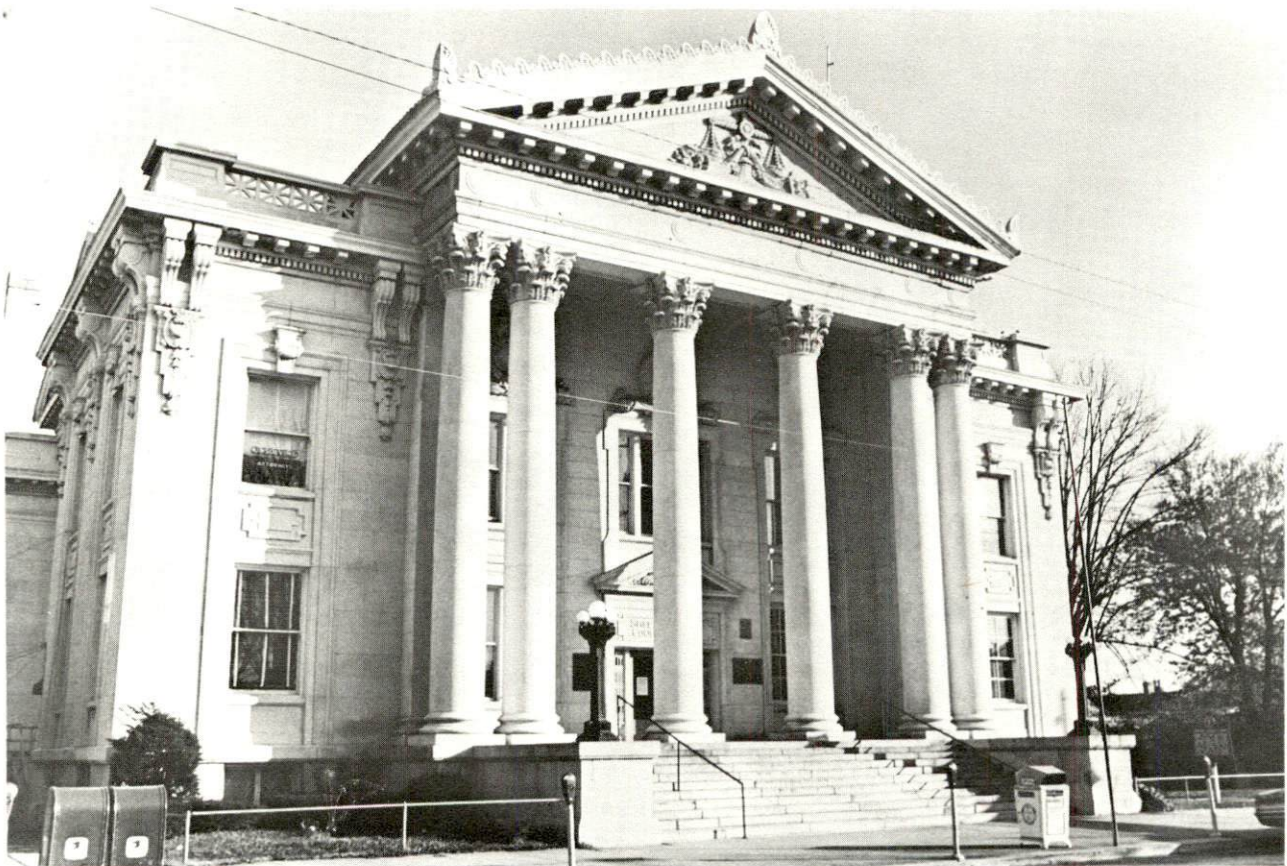
Tap-on charge: \$50

\*Sewerage project under construction will complete service to all incorporated areas of the city.





SHELBYVILLE MUNICIPAL BUILDING



SHELBY COUNTY COURTHOUSE



## LOCAL GOVERNMENT

### City

Structure - Mayor - 4-year term; 6 councilmen - 2-year terms

Budget 1974 - General Fund \$307,789

Water and Sewer Fund 389,349

Fees and licenses - Business license fees range from \$25 to \$400 annually; car stickers - \$10 annually

### County

Structure - County Judge - 4-year term; 7 magistrates - 4-year terms

Budget 1973-74 - General Fund \$196,676; Road Fund \$146,474

### Assessed Value of Property, 1974

<u>Classes of Property</u>	<u>Shelbyville</u>	<u>Shelby County</u>
Real Estate	\$25,432,290	\$176,686,065
Tangibles	8,251,261	21,547,055

### Property Taxes

Land and buildings are taxed by the state and may be taxed by local jurisdictions. The state rate is \$0.015 per \$100 of assessed valuation.

Tangible personal property owned by manufacturers (automobiles, trucks, finished goods, office furniture, office equipment) is taxed by the state at \$0.15 per \$100 and may be taxed by local jurisdictions.

Manufacturing machinery, raw materials inventories, pollution control equipment and goods in process inventories are not subject to local taxation. The state rate is \$0.15 per \$100.

Property stored in public warehouses is not subject to local taxation. The state rate is only \$0.015 per \$100.

All property is assessed at 100 percent of fair cash value.

Local Property Tax Rate Per \$100 of Assessed Valuation, 1974\*

<u>Taxing Jurisdiction</u>	<u>Shelbyville</u>	<u>Shelby County</u>
County	\$ .178	\$ .178
School	.713	.555
City	.270	
Special (not county wide):	\$ .070 (Fire protection)	

Planning and Zoning

Joint agency - Triple S Planning and Zoning Commission  
 Zoning enforced - All areas  
 Subdivision regulations enforced - All areas  
 Local codes enforced - Housing and building codes  
 Mandatory state codes enforced - Plumbing, National Fire Protection Association Code, National Building Code (for major buildings and residential construction containing more than 12 bedrooms per building)

Safety

<u>Police</u>	<u>Shelbyville</u>	<u>Shelby County</u>
Total staff	10	4
Radio-patrol cars	3	4 (no radios)
<u>Fire</u>		
American Insurance Association Fire Rating	6	8
Full-time staff	10	
Volunteers		31
Equipment:		
1,000 gpm pumpers	2	
750 gpm pumpers	1	3
1,200 gpm tanker		1
Other		2 rescue trucks 3 booster pump trucks (3/4 ton pickup)

\*Kentucky Department of Revenue, Kentucky Property Tax Rates, 1974.



Rescue Service

Shelby County Rescue Squad:

Number of volunteers - 31

Equipment - 2 rescue trucks with generators, cutting torch, resuscitator, saw, first aid equipment, 10 hand lights, 2 boats with motors, scuba diving gear, air chisel, two 2-ton power pulls, stretcher

Personnel training - First aid and emergency rescue, fire fighting techniques, annual fire school

Sanitation

	<u>Shelbyville</u>	<u>Shelby County</u>
Type service	Private	Private
Fee charged:		
residential	\$3 per month	\$4 per month
business	By contract	By contract
Collection frequency:		
residential	Weekly	Weekly
business	By contract	By contract
Trash pickup	Weekly	Weekly
Disposal method	Landfill	Landfill

## EDUCATION

### Public Schools

	<u>Shelby County</u>
Total Enrollment (Fall, 1974)	4,584
Elementary	2,297
Junior High	670
High School	1,617
Student-Teacher Ratio	25 - 1
Elementary	26 - 1
Junior High	26 - 1
High School	24 - 1
Accreditation	Southern Association of Colleges and Schools
Percent High School Graduates to College	29.0
Expenditures Per Pupil (1973-74)	\$569.52
Bonded Indebtedness, June 30, 1974	\$2,477,000





SHELBY COUNTY HIGH SCHOOL



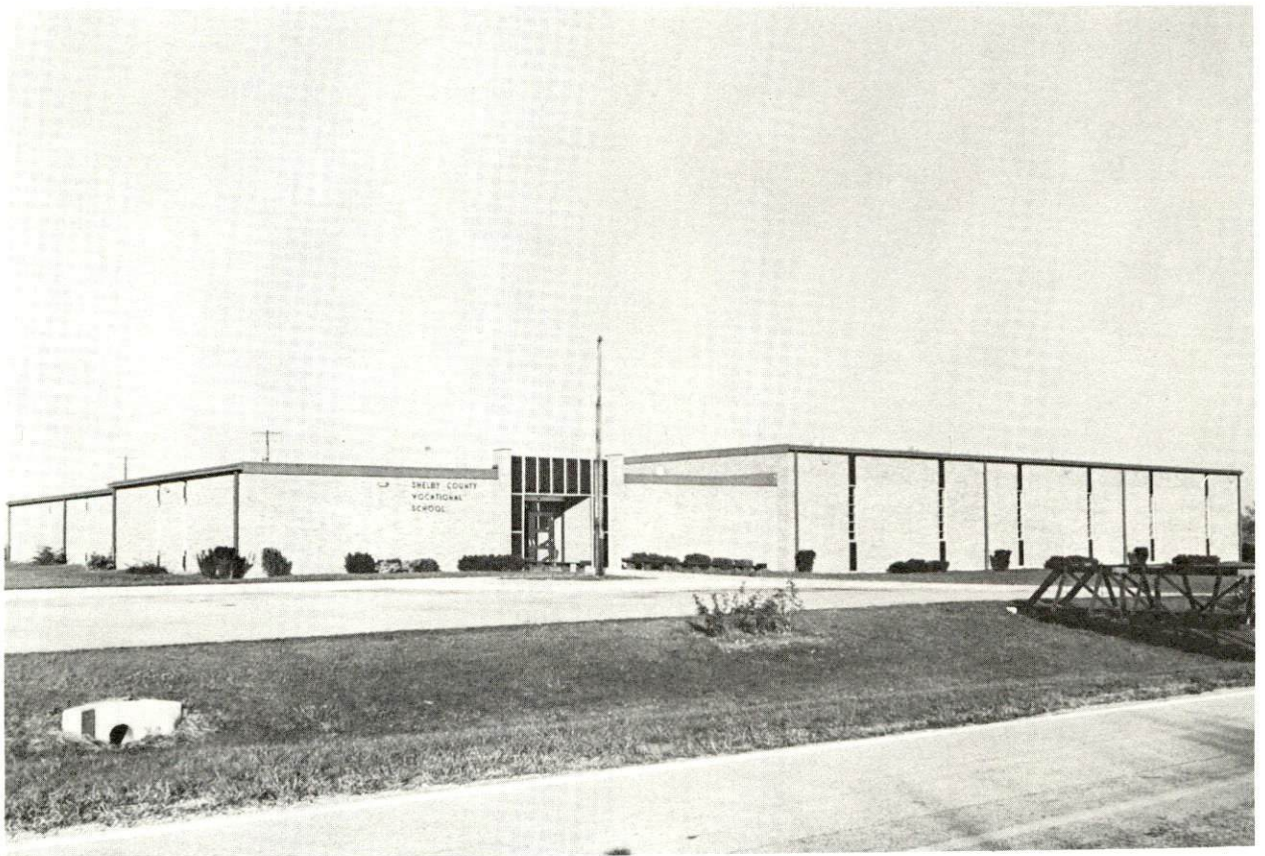


SHELBYVILLE MIDDLE SCHOOL





SOUTHSIDE ELEMENTARY SCHOOL



SHELBY COUNTY VOCATIONAL SCHOOL



Vocational Schools

	<u>Nearest State School</u>	<u>Nearest Area Education Center</u>
	Jefferson County State Vocational- Technical School	Shelby County Area Vocational Education Center
Location	Jeffersontown	Shelbyville
Miles Distant	25	
Curriculum	Mechanics Horticulture Data Processing Clerical Secretarial Marketing & Distributive Education Dental Assistant Floral Design Practical Nursing Learning Lab Electronics (Communications) Air Conditioning and Refrigeration Auto Body Repair Auto Mechanics Commercial Foods Drafting Machine Shop Office Machine Repair Printing Radio & TV Repair Welding	Accounting Jr. Management Clerical Secretarial Auto Mechanics Carpentry Electricity Machine Shop Welding

Arrangements can be made to provide training in the specific production skills required by an industrial plant. Instruction may be conducted either in the vocational school or in the industrial plant, depending upon the desired arrangement and the availability of special equipment.

Colleges and Universities

<u>Name</u>	<u>Area - Within 55 miles</u>		<u>Highest Degree Conferred</u>
	<u>Location</u>	<u>Enrollment (Fall, 1974)</u>	
University of Louisville	Louisville	14,343	Ph. D. , M. D. , D. M. D. , J. D.
Bellarmino College	Louisville	1,353	Baccalaureate
Spalding College	Louisville	1,130	Masters
Jefferson Community College	Louisville	4,137	Associate
Kentucky State University	Frankfort	2,174	Baccalaureate
Georgetown College	Georgetown	1,118	Masters
Transylvania University	Lexington	664	Baccalaureate
University of Kentucky	Lexington	21,586	Ph. D. , M. D. , D. M. D. , J. D.
Lexington Technical Institute	Lexington	1,281	Associate
Midway Junior College	Midway	341	Associate
Centre College	Danville	796	Baccalaureate
Asbury College	Wilmore	1,184	Baccalaureate
St. Catharine Junior College	St. Catharine	125	Associate



## HEALTH

### Hospitals

<u>General Hospital</u>	<u>Location</u>	<u>Beds</u>
King's Daughters' Hospital	Shelbyville	73

### King's Daughters' Hospital

General hospital facilities - Laboratory, X-ray equipment, 2 operating rooms, cystoscopic room, fracture room, obstetric room, 2 delivery rooms, emergency room

Medical staff - 10 physicians, 6 consulting physicians, 16 registered nurses, 11 licensed practical nurses

### Ambulance Service

Name - Shelby County Ambulance Service

Staff - 4 full time, 2 part time

Service - 24-hour

Equipment - 3 ambulances

### Nursing Homes

	<u>Number</u>	<u>Beds</u>
Extended care homes	1	33
Personal care homes	5	338

### Public Health

Facility - Shelby County Health Department

Staff - 1 registered nurse, 1 sanitarian, 1 clerk, 2 nurses (part-time)

## OTHER LOCAL FACILITIES

### Communications

Telephone - South Central Bell Telephone Company  
Services - Standard

Telegraph - Western Union  
Services - Standard

Postal - U. S. Post Office  
Class - First  
Mail received - 2 times daily  
Mail dispatched - 2 times daily

Newspapers - Sentinel News  
Twice weekly and circulation - 7,084  
Other papers received from - Louisville and Lexington, Kentucky

Radio - WCND  
Stations received from - Frankfort, Lexington and Louisville

Television -  
Reception from - Louisville, Lexington, and Cincinnati  
Kentucky Educational Television - Owenton transmitter, Channel 52

### Library Services

Public library - Shelby County Library  
Size collection - 39,500 volumes  
Circulation, 1973-74 - 79,900  
Services - Story hour, films, pictures, records, magazines, meeting room, newspaper, film strip, bookmobile  
Special - Kentucky history collection (books and microfilm)

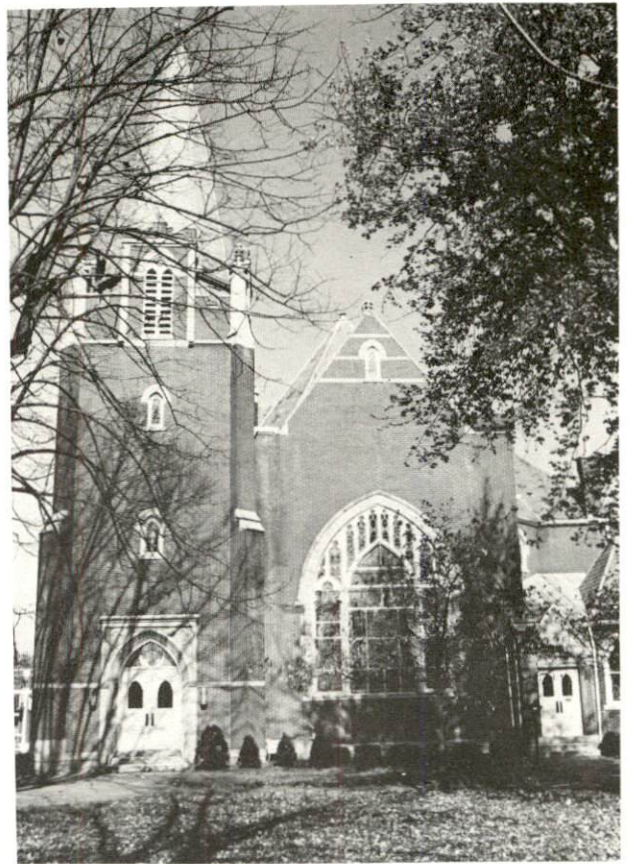
### Religious Institutions

Number of churches - 19  
Denominations - Baptist, Catholic, Christian, Church of Christ, Church of God, Church of Nazarene, Congregational, Disciples of Christ, Episcopal, Interdenominational Chapel, Latter Day Saints, Methodist, Pentecostal, Presbyterian  
Nearest Synagogues - Louisville, 32 miles distant  
Congregations - 2 orthodox, 2 reform, 1 conservative

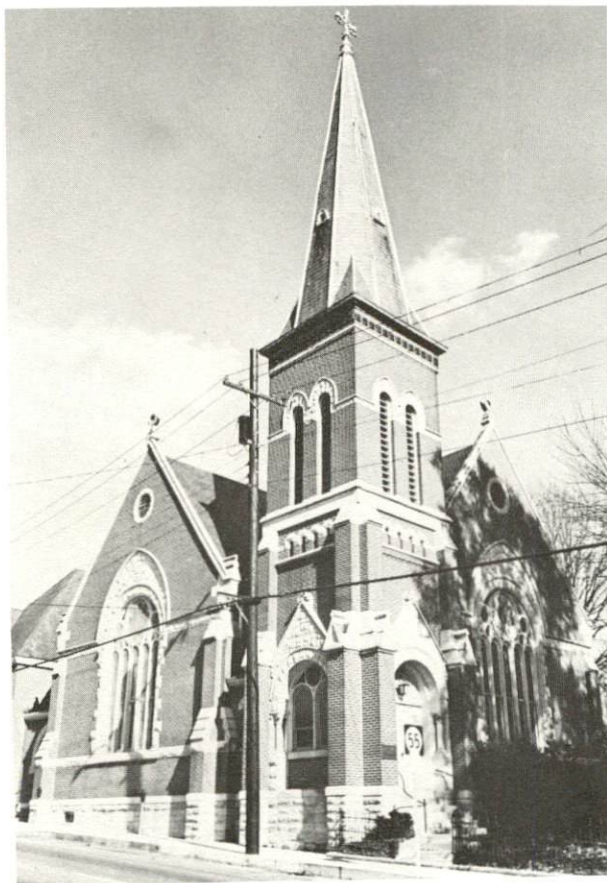




FIRST BAPTIST CHURCH



UNITED CENTENARY METHODIST CHURCH



FIRST PRESBYTERIAN CHURCH



CHURCH OF THE ANNUNCIATION

Financial Institutions

<u>Banks</u>	<u>Assets</u>	<u>Deposits</u>	<u>Statement Date</u>
Shelby County Trust Bank	\$16,985,760	\$15,663,665	12/31/74
Citizens Union Bank	15,444,355	14,064,376	12/31/74
Farmers and Traders Bank	10,141,983	9,155,247	12/31/74
Bank of Shelbyville	9,057,247	8,008,207	12/31/74
Peoples Bank	4,233,513	3,647,102	12/31/74

<u>Savings and Loan Associations</u>	<u>Assets</u>	<u>Shared Accounts</u>	<u>Statement Date</u>
Shelby County First Federal Savings and Loan Association	\$2,169,406	\$1,890,817	June, 1974

Hotels and Motels

Total number - 3  
Total units - 82

Clubs and Organizations

Business and Civic - Chamber of Commerce, Industrial Foundation, Jaycees, Kiwanis, Lions, Rotary, Ruritan, Optimist, Shelby County Historical Society, PTA, Golf and Fishing Club, Guist Creek Ski Club, Guist Creek Bass Club, Farm Bureau, Red Cross, Heart Fund, Cancer Fund

Fraternal - American Legion, Masons, Odd Fellows, Moose, VFW, Rebekahs

Women's - Business and Professional Women, Democratic Woman's Club, Shelby County Garden Club, Eastern Star, Shelby County Homemakers, Hospital Auxiliary, Jennie Benedict Circle, Triple L Club

Youth - Boy Scouts, Girl Scouts, FFA, 4-H



## RECREATION

### Local

#### Public Recreation Facilities

Supervised program - Parks and Recreation Board

Parks - 3

Playgrounds - 3

Swimming pool - 1

Tennis courts - 5

Baseball diamonds - 9

Football fields - 2

#### Private Recreation Facilities

Country club - 1

Golf course - 1

Swimming pool - 1

Movie theater - 1 drive-in

Other - 2 tennis courts

    archery range

    saddle club

    croquet club

#### Tourist Attractions

Wakefield Scearce Galleries and Science Hill Inn

Blackwood Hall, home of Colonel Sanders

Lee's Log Cabin

Guist Creek Lake

Lake Shelby

Chatham Station, historic railroad station

#### Cultural Events

Dinner theatre in Simpsonville

Area (Within 55 miles)

Louisville, 32 miles distant, offers the following cultural and recreational opportunities:

Actors Theatre	Riverfront Plaza
Louisville Ballet Company	Kentucky State Fair
Kentucky Opera Association	Churchill Downs, home of the
Louisville Orchestra	Kentucky Derby
Louisville Zoo	Farmington, home designed by
Museum of Science and History	Thomas Jefferson
Rauch Memorial Planetarium	Kentucky Colonels, professional
J. B. Speed Art Museum	basketball team

Frankfort, the state capital, 21 miles distant, has many historical places of interest and houses a new sports and cultural center

Lexington, 46 miles away, is the home of Keeneland Race Track and offers a variety of entertainment including the Central Kentucky Youth Symphony Orchestra, Lexington Philharmonic Orchestra, and Guignol Theater.

My Old Kentucky Home State Park, General Butler State Park, Old Fort Harrod State Park, and Bernheim Forest are within easy driving distance.



AGRICULTURE - NATURAL RESOURCES - CLIMATE

Agriculture\*

	<u>Shelby County</u>	<u>Labor Market Area</u>
Total land area (acres)	245,120	1,177,984
Percent of area in farm land	92.9	78.1
Number of farms	1,729	7,044
Average size of farms (acres)	131.6	130.6
1969 value of all farm products	\$ 18,820,205	\$ 62,661,292
Value per farm	10,885	8,896
Total crop sales	7,323,610	27,104,519
Total livestock & livestock products	11,482,655	35,479,196
1973 agricultural production included:		
Burley tobacco (lbs.) (est.)	7,068,000	23,422,000
Corn for grain (bu.) (est.)	1,302,000	4,127,300
Cattle and calves (number)	69,900	235,500
Hogs and pigs (number) (preliminary)	20,400	54,200
Milk production, 1972 (lbs.)	152,280,000	393,940,000

Natural Resources

Principal mineral resources	None reported
Acres of commercial forest land	31,300
Most abundant tree species	White oak, red oak, hickory, ash, yellow poplar, hard maple

\*U. S. Department of Commerce, Bureau of the Census, Census of Agriculture, 1969. U. S. Department of Agriculture and Kentucky Department of Agriculture, Kentucky Agricultural Statistics, 1973.

Climate\*

Shelby County

Temperature

Annual mean (30-year record)	55.2 degrees
Average annual 1974	55.1 degrees
Record highest, July, 1966 (11-year record)	98.0 degrees
Record lowest, January, 1972 (11-year record)	-11.0 degrees
Normal heating degree days (30-year record)	4,729
(Heating degree day totals are the sums of negative departures of average daily temperatures from 65 degrees F.)	

Precipitation

Mean annual total (30-year record)	44.49 inches
Mean annual snowfall (30-year record)	15.70 inches
Total precipitation 1974	60.09 inches
Mean number days precipitation (.01 inch or more) (30-year record)	130
Average number days thunderstorms (30-year record)	47

Prevailing winds (17-year record) South

---

\*U. S. Department of Commerce, Environmental Science Services Administration, Climatological Data, 1974. Station of record: Lexington, Kentucky.



## HISTORY

Shelby County is located in the Bluegrass Region of central Kentucky and contains 383 square miles of territory. The land surface is rolling to hilly, and the soil is based on limestone with a red clay foundation and is fertile.

The first settlement in the area was made by Squire Boone, the brother of Daniel Boone, at Painted Stone. By the time Kentucky became a state in 1792, there were sufficient numbers of settlers to warrant the formation of a new county. Shelby became Kentucky's twelfth county formed by territory taken from Jefferson County. It was named to honor Kentucky's first Governor, Isaac Shelby.

Shelbyville became the county seat, its location determined at the first session of court held at the home of Brachett Owen. William Shannon donated land for the townsite. Shelbyville is now a progressive community with a 1970 population of 4,182.

In 1800, Shelby County had a population 8,191. By 1950 this figure had grown to 17,912, with subsequent increases to 18,493 in 1960 and 18,999 in 1970.

Old Stone Inn near Simpsonville has been in operation since its establishment early in the nineteenth century. The original oak and poplar flooring still remains.

Agriculture provided 2,020 jobs of the county's 8,620 total jobs in 1973. Manufacturing employment grew sharply during the 1960 decade, reaching 946 in 1974, an increase of 76 percent from 1964.

The greatest concentration of manufacturing employment is in the metal products industry. The largest of the county's firms are the following: Middletown Manufacturing, Inc., which produces metal swivel bases, at Simpsonville; and Roll Forming

Corporation, which makes custom roll formed products; Lee McClain Co., Inc., which manufactures men's suits, coats and slacks; and Valley Tow-Rite, Inc., which makes trailer hitch products, at Shelbyville.

Interstate Highway 64 passes just south of Shelbyville and provides easy access to Louisville, Frankfort and Lexington.