

1974

Industrial Resources: Taylor County - Campbellsville

Kentucky Library Research Collections
Western Kentucky University, spcol@wku.edu

Follow this and additional works at: https://digitalcommons.wku.edu/taylor_ctty

 Part of the [Business Administration, Management, and Operations Commons](#), [Growth and Development Commons](#), and the [Infrastructure Commons](#)

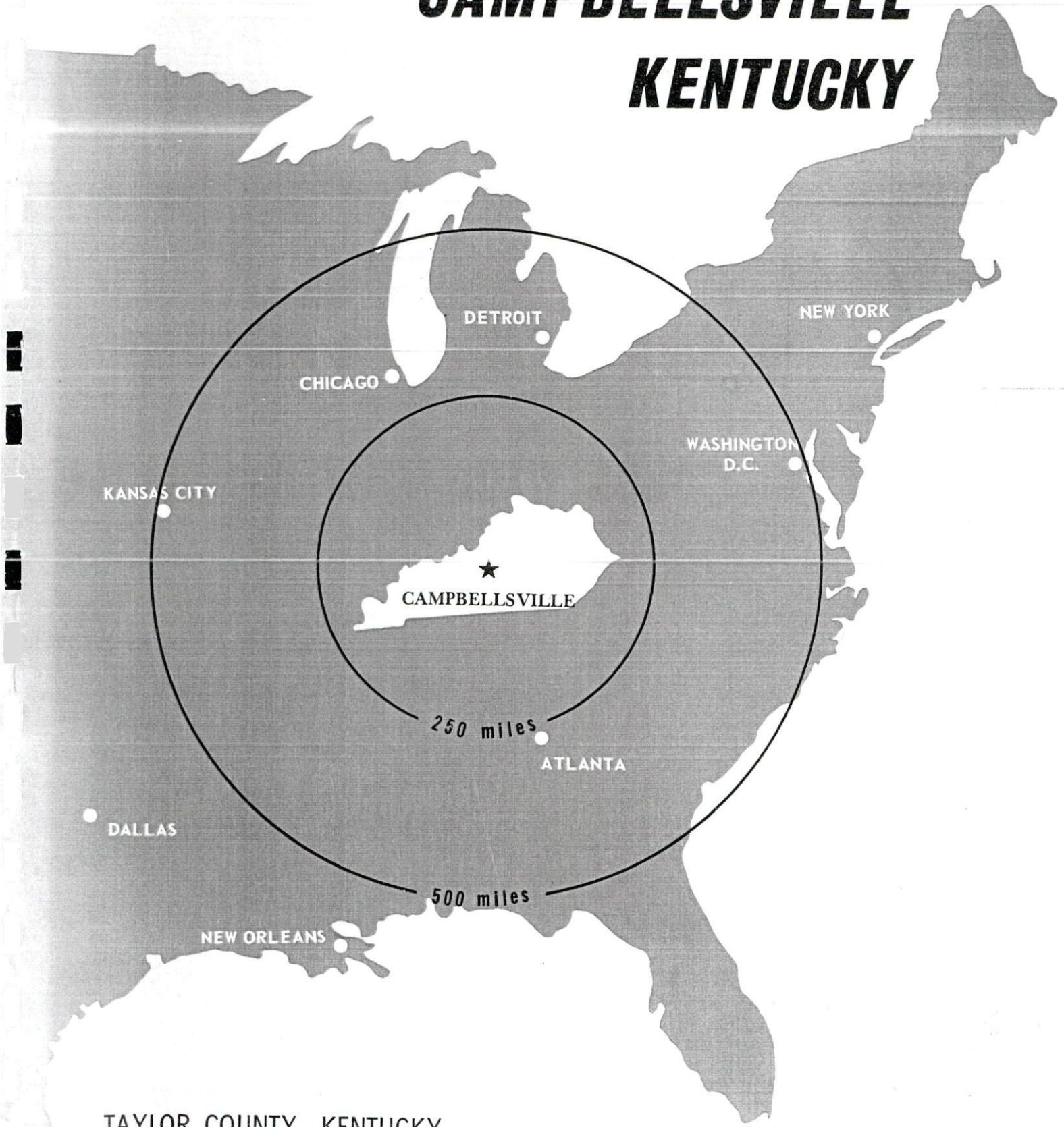
Recommended Citation

Kentucky Library Research Collections, "Industrial Resources: Taylor County - Campbellsville" (1974). *Taylor County*. Paper 11.
https://digitalcommons.wku.edu/taylor_ctty/11

This Report is brought to you for free and open access by TopSCHOLAR®. It has been accepted for inclusion in Taylor County by an authorized administrator of TopSCHOLAR®. For more information, please contact topscholar@wku.edu.

INDUSTRIAL RESOURCES

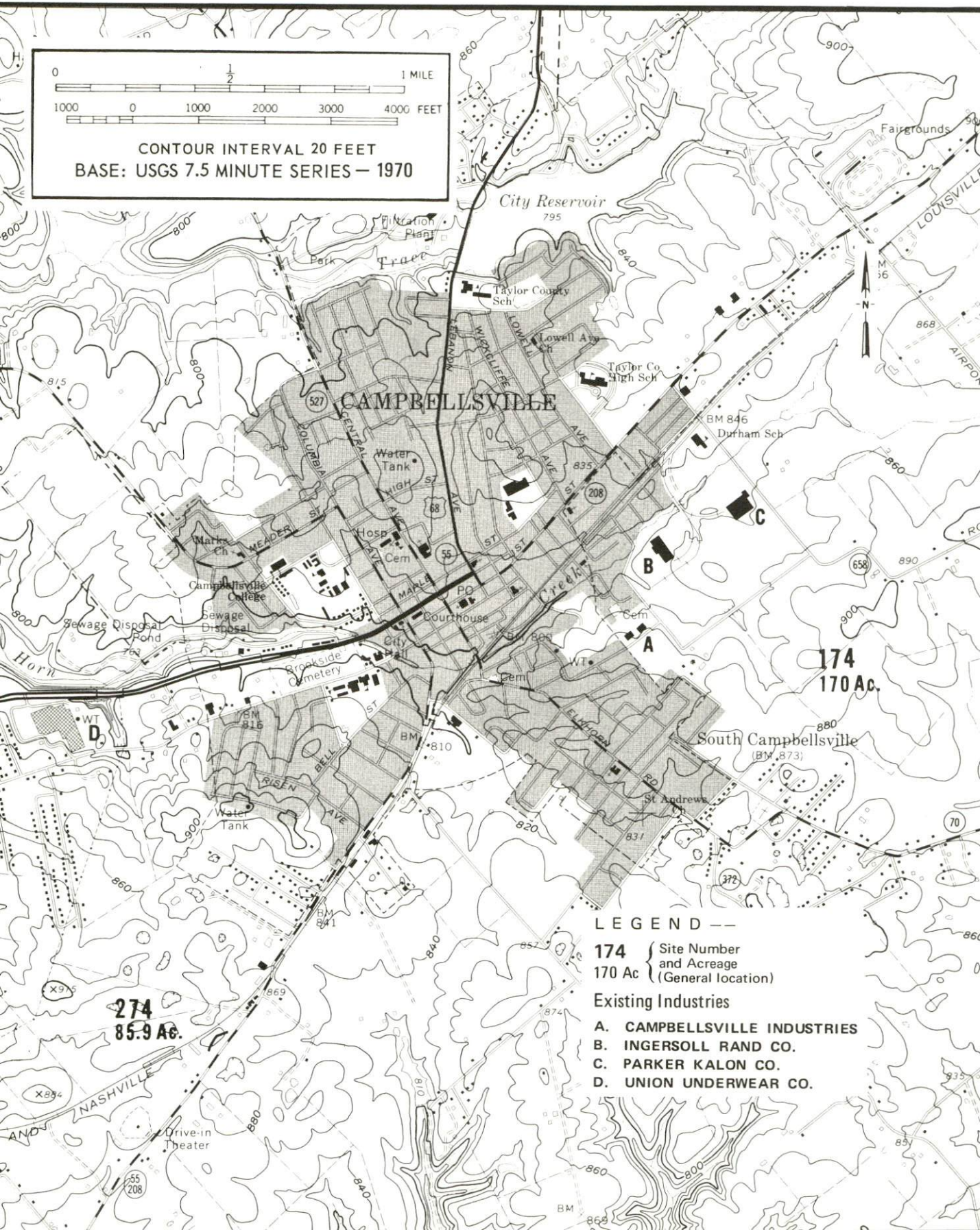
CAMPBELLSVILLE KENTUCKY



TAYLOR COUNTY, KENTUCKY

CAMPBELLSVILLE, KENTUCKY -- Index to Industrial Sites -- 1974

For detailed data on individual sites, contact Mr. William Maupin, Kentucky Utilities Company, Campbellsville, Kentucky or the Kentucky Department of Commerce, Capital Plaza Tower, Frankfort, Kentucky 40601.



0 1/2 1 MILE
 1000 0 1000 2000 3000 4000 FEET

CONTOUR INTERVAL 20 FEET
 BASE: USGS 7.5 MINUTE SERIES — 1970

LEGEND --

174 { Site Number
 and Acreage
 170 Ac { (General location)

Existing Industries

- A. CAMPBELLSVILLE INDUSTRIES
- B. INGERSOLL RAND CO.
- C. PARKER KALON CO.
- D. UNION UNDERWEAR CO.

INDUSTRIAL RESOURCES
CAMPBELLSVILLE, KENTUCKY

Prepared by

The Kentucky Department of Commerce

in cooperation with

The Campbellsville - Taylor County Chamber of Commerce

1974

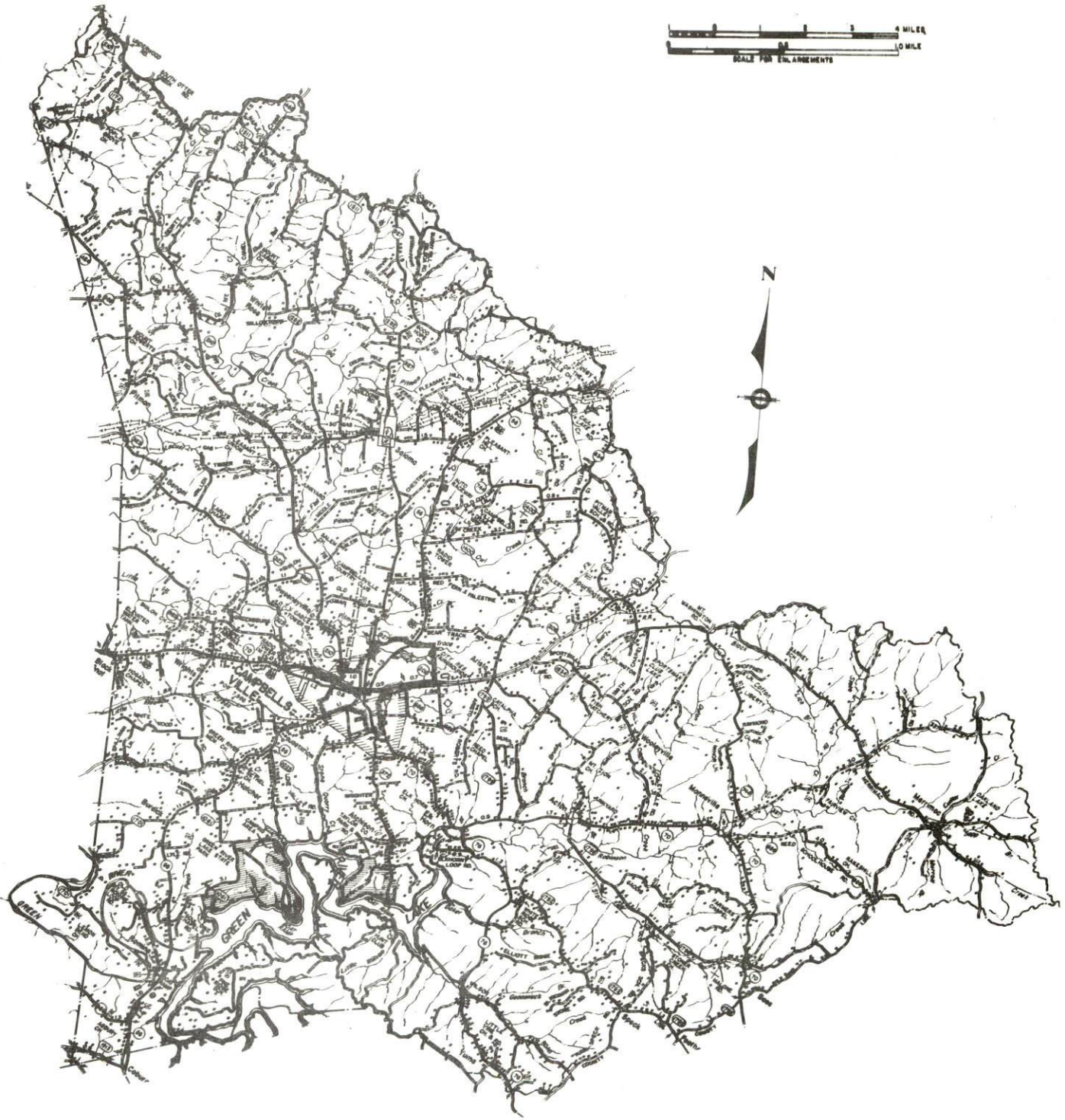
TABLE OF CONTENTS

<u>Chapter</u>	<u>Page</u>
INDUSTRIAL SITES.	i
CAMPBELLSVILLE, KENTUCKY - A RESOURCE PROFILE . . .	1
THE LABOR MARKET.	5
Population Trends	5
General Employment Characteristics, 1972	5
Manufacturing Employment Trends by Industry	6
Major Campbellsville Manufacturing Firms, Their Products and Employment	6
Wages.	10
Labor Organizations	11
Estimated Male Labor Supply	11
Estimated Female Labor Supply	11
Per Capita Personal Income	12
TRANSPORTATION	13
Rail	13
Truck Service	13
Air	14
Bus	14
Taxi	14
Rental Services.	14
POWER AND FUEL	15
Electricity	15
Natural Gas	15
Other Fuels	15
WATER AND SEWERAGE	17
Water	17
Sewerage	18
LOCAL GOVERNMENT	21
City	21
County	21

<u>Chapter</u>	<u>Page</u>
Assessed Value of Property, 1973	21
Property Taxes	21
Local Property Tax Rate Per \$100 of	
Assessed Valuation, 1973	22
Planning and Zoning	22
Safety	22
Police	22
Fire	22
Rescue Service	23
Sanitation	23
 EDUCATION	 24
Public Schools	24
Vocational Schools	24
Colleges and Universities	25
 HEALTH	 30
Hospitals	30
Nursing Homes	30
Public Health	30
 OTHER LOCAL FACILITIES	 32
Communications	32
Library Services	32
Religious Institutions	33
Financial Institutions	33
Hotels and Motels	33
Clubs and Organizations	35
 RECREATION	 36
Local	36
Area	36
 AGRICULTURE - NATURAL RESOURCES - CLIMATE	 38
Agriculture	38
Natural Resources	38
Climate	39
 HISTORY	 40

GENERAL HIGHWAY MAP
TAYLOR COUNTY
KENTUCKY

PREPARED BY THE
KENTUCKY DEPARTMENT OF HIGHWAYS
DIVISION OF PLANNING
IN COOPERATION WITH THE
U.S. DEPARTMENT OF TRANSPORTATION
FEDERAL HIGHWAY ADMINISTRATION





AERIAL VIEW OF CAMPBELLSVILLE, KENTUCKY

CAMPBELLSVILLE, KENTUCKY - A RESOURCE PROFILE

Campbellsville, county seat of Taylor County, is located in the Green River Lake area of southcentral Kentucky. This attractive college town is 86 miles southeast of Louisville, Kentucky; 87 miles southwest of Lexington, Kentucky; 140 miles northeast of Nashville, Tennessee; and 174 miles southwest of Cincinnati, Ohio.

Campbellsville had a 1970 population of 7,598 and Taylor County had a population of 17,138.

The Economic Framework

Total employment in Taylor County in 1972 averaged 9,070, with agriculture providing 1,050 jobs, manufacturing 3,900, trade and services 1,120, and government 550. Since 1963, manufacturing employment has increased by approximately 71 percent or 1,636 jobs. The major industrial product is apparel.

Per capita personal income in the county in 1971 was \$3,000, an increase of 109 percent since 1961.

The Campbellsville labor market area includes Taylor and the five adjoining counties. Area employment in 1972 totaled 29,020, with agriculture providing 7,190 jobs, manufacturing 6,800, trade and services 3,720, and government 2,760. Area manufacturing employment has increased approximately 88 percent since 1963, with the sharpest gains in the apparel industry.

Despite important industrial gains in recent years, the area still has a deficit of 550 manufacturing jobs when measured against the national manufacturing employment-population ratio. This indicates an area with the potential for additional manufacturing production.

Resources for Growth

1. There is a current estimated labor supply of 3,400 men and 4,170 women available for industrial jobs in the labor market area. In addition, 4,260 young men and 4,130 young women will become 18 years of age by 1980 and potentially available for work.

2. The local transportation capability is good. The Louisville & Nashville Railroad serves Campbellsville with a variety of services. Campbellsville is located only 20 miles north of the Cumberland Parkway which runs east and west; and is 40 miles southeast of the junction of Interstate 65 and the Western Kentucky Parkway. U. S. Highway 68 crosses the county and adequate trucking service is available. Taylor

County Airport, with a new 4,000-foot runway, is capable of accommodating light aircraft. Commercial air and freight service is available at Standiford Field in Louisville, 86 miles distant, and at Blue Grass Field in Lexington, 87 miles distant.

3. In Campbellsville, natural gas service is provided by the Western Kentucky Gas Company, and electricity is furnished by the Kentucky Utilities Company. Taylor County is furnished electricity by the Taylor County RECC and Nolin RECC. There is one distributor of propane and butane in Campbellsville serving the area; and four distributors of distillate fuel oil in Campbellsville. The local raw water supply from the Green River Reservoir is adequate for continued growth.

4. Education is an important growth asset for Taylor County. Two school systems operate within the county, the Taylor County School System and the Campbellsville Independent School District.

Two senior colleges, two junior colleges and one community college are located within 50 miles of the county with Campbellsville College located in Campbellsville. Campbellsville College is a four-year coeducational, church affiliated, liberal arts college founded in 1906.

The Green County Area Vocational Education Center, 11 miles distant, offers training in nine different courses. The nearest state vocational training facility, the Somerset State Vocational-Technical School, is 69 miles east of Campbellsville and offers thirteen different course areas.

Community Programs for Improvements

Recent community improvements:

1. Campbellsville Municipal Water and Sewer System installed an 18-inch raw water line to the Green River Reservoir for additional water supply.
2. The new 50,000 square foot Taylor County Junior High School, costing 1.2 million dollars, opened January, 1974, and includes twenty classrooms, a library, cafeteria, and gymnasium.
3. The Campbellsville Independent School District has remodeled an older school at a cost of \$350,000 and converted it into Campbellsville Middle School.
4. The Campbellsville Independent School District has also introduced several new programs including those career oriented,

environmental education, using local people as resource persons in studies, and a program plan of volunteer services for students.

5. The Taylor County Airport extended its runway to 4,000 feet and installed runway lights.

6. The new 33,000 square foot Taylor County Hospital, opened in November, 1973, was a \$1.6 million project solely financed and supported by the local people.

7. The "old armory" building which is used for fall and winter recreational activities has had a portion renovated to be used as a teen center.

8. A new innovative program called "Operation Hitch-Hike" has been designed to provide better employment services to the rural areas.

9. Fifty-four city streets were resurfaced in 1973.

10. Eleven new businesses were established in 1973 and fifteen were either rebuilt or remodeled.

11. An off street parking lot was constructed to handle fifty cars.

12. Forty-three substandard dwellings have been improved.

13. Four new subdivisions were opened in 1973.

14. Parker-Kalon Company expanded 60,000 square feet and increased employment.

Improvements proposed and currently underway:

1. The Campbellsville Municipal Water and Sewer System is gradually increasing their water treatment plant capacity from two million to six million gallons per day.

2. The city has applied for a federal grant to increase the sewerage facilities by adding a new waste water and industrial treatment plant and a new interceptor at a cost of approximately \$3.5 million.

3. The Taylor County School System has plans to build a new three-bay bus garage.

Recreation, Entertainment and Livability

The Taylor County Park, located on the Green River Reservoir, has a beach for swimming, restroom facilities, and additional acreage

MANUFACTURING EMPLOYMENT TRENDS BY INDUSTRY
MARCH 1973 AND 1963

Industry	Taylor County			Labor Market Area		
	1973	1963	%Change	1973	1963	%Change
TOTAL	3,947	2,311	+ 70.8	6,956	3,700	+ 88.0
Food & Kindred Products	159	149	+ 6.7	260	332	- 21.7
Apparel, Textiles, Leather	3,390	1,965	+ 72.5	4,912	2,569	+ 91.2
Lumber, Furniture	76	187	- 59.4	907	611	+ 48.4
Printing & Publishing, Paper	22	9	+144.4	100	30	+ 233.3
Stone, Clay & Glass	0	0	0	29	16	+ 81.3
Machinery, Metal Products, Equipment	300	0	--	679	139	+ 388.5
Other	0	1	-100.0	69	3	+2200.0

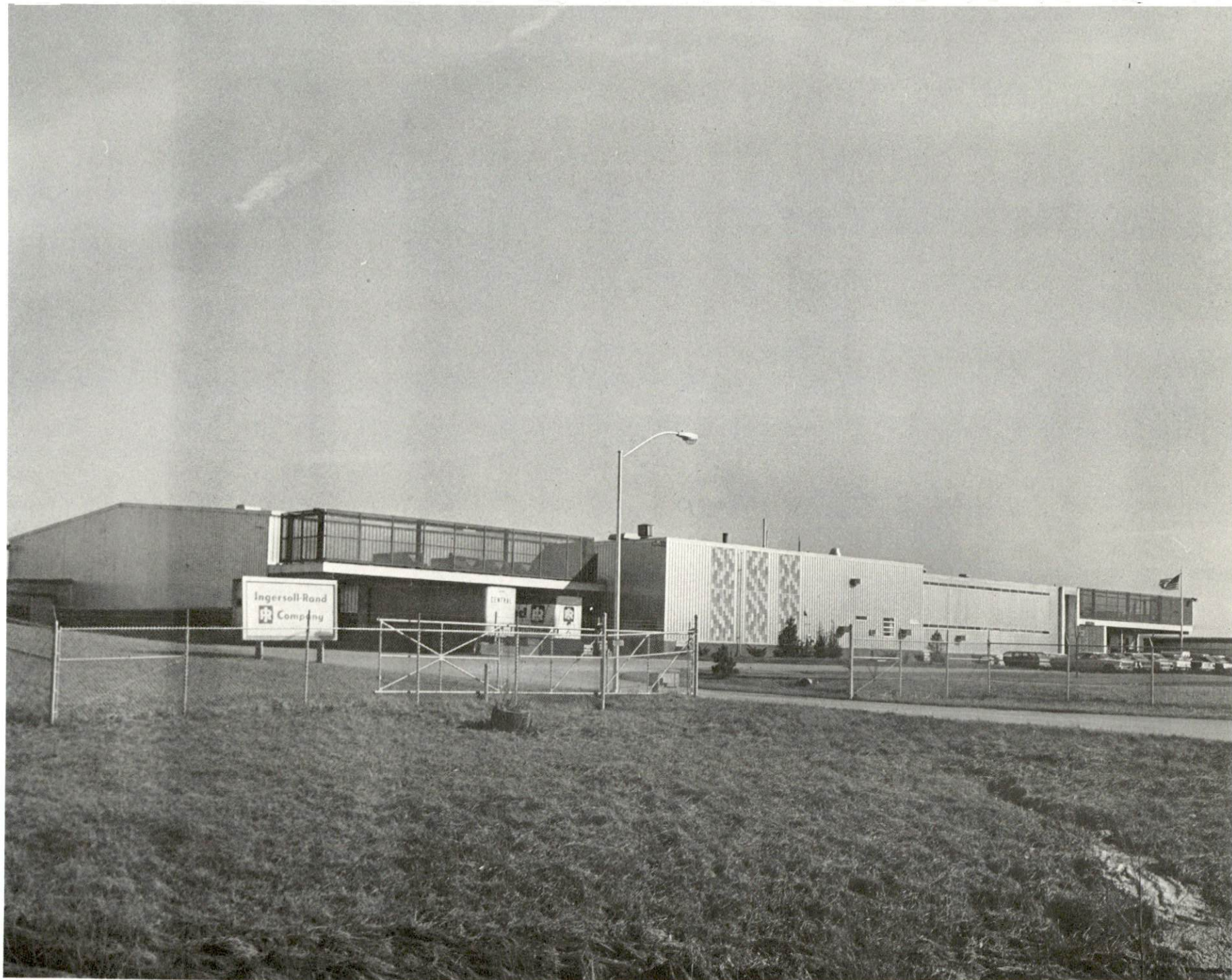
Source: Kentucky Department for Human Resources, Number of Workers in Manufacturing Industries Covered by Kentucky Unemployment Insurance Law Classified by Industry and County, March 1973, March, 1963.

MAJOR CAMPBELLSVILLE MANUFACTURING FIRMS,
THEIR PRODUCTS AND EMPLOYMENT

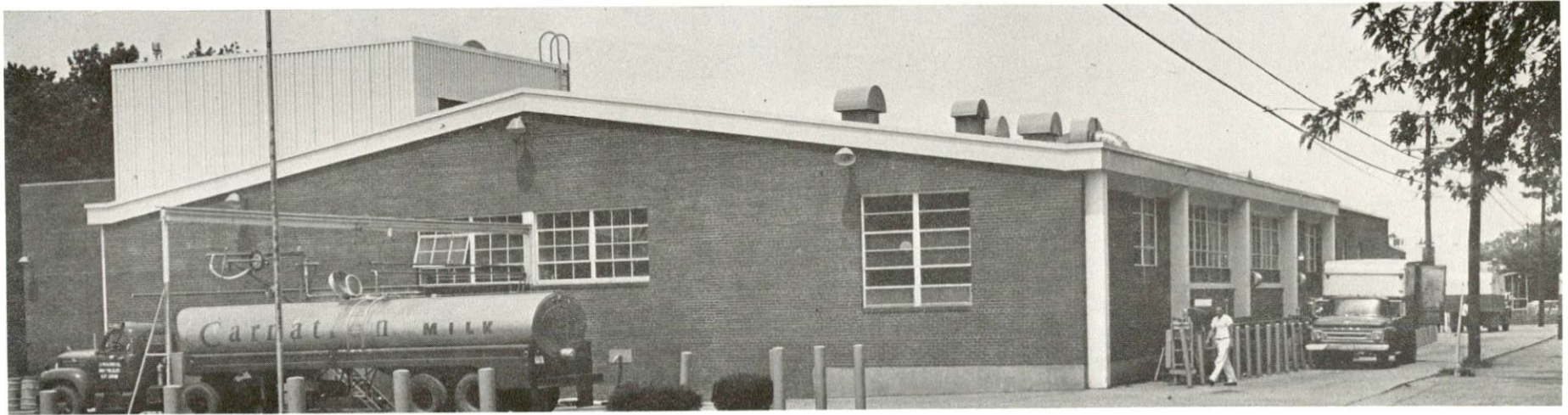
Firm (Establishment Date)	Product	Employment			Organized
		Total	Male	Female	
Campbellsville Industries (1955)	Aluminum church steeples	46	41	5	
Carnation Company (1946)	Evaporated milk	30	29	1	*
Chappells Products, Inc. (1953)	Milk	76	70	6	
Coca-Cola Bottling Co. (1915)	Soft drinks	30	26	4	
Ingersoll Rand Company (1969)	Compressors	110	95	15	
McMahan Furniture Co. (1943)	Cherry repro- duction furniture	33	32	1	
Parker Kalon Co. /Div. of USM Corp. (1964)	Screws	180	170	10	*
Union Underwear Co., Inc. (1948)	Men's and boy's underwear, infants' wear	3300	525	2775	

*See Labor Organizations, Page 10.

Source: Kentucky Department of Commerce, 1974 Kentucky Directory of Manufacturers.



INGERSOLL-RAND COMPANY



CARNATION COMPANY



PARKER-KALON COMPANY



UNION UNDERWEAR COMPANY



CAMPBELLVILLE INDUSTRIES, INC.

LABOR ORGANIZATIONS

<u>Union</u>	<u>Representing manufacturing workers at:</u>
Teamsters	Parker-Kalon Company
Teamsters	Carnation Company

ESTIMATED MALE LABOR SUPPLY CAMPBELLSVILLE LABOR MARKET AREA

<u>Area</u>	Current			Future	
	<u>Total</u>	<u>Not in Labor Force</u>	<u>Unemployed</u>	<u>Under- employed</u>	<u>Reaching 18 yrs. of age by 1980</u>
Labor Market					
Area	3,400	780	1,010	1,610	4,257
Taylor	560	0	140	420	811
Adair	480	0	180	300	595
Casey	780	310	210	260	666
Green	410	130	120	160	534
Larue	520	230	100	190	609
Marion	650	110	260	280	1,042

Sources: Kentucky Department for Human Resources, Kentucky Labor Supply Estimates by County, 1973. Kentucky Department of Commerce, Future Labor Supply by 1980.

ESTIMATED FEMALE LABOR SUPPLY CAMPBELLSVILLE LABOR MARKET AREA

<u>Area</u>	Current			Future	
	<u>Total</u>	<u>Not in Labor Force</u>	<u>Unemployed</u>	<u>Under- employed</u>	<u>Reaching 18 yrs. of age by 1980</u>
Labor Market					
Area	4,170	2,020	630	1,520	4,131
Taylor	540	0	160	380	831
Adair	500	230	70	200	613
Casey	850	540	80	230	660
Green	620	320	90	210	423
Larue	760	490	40	230	588
Marion	900	440	190	270	1,016

Sources: Kentucky Department for Human Resources, Kentucky Labor Supply Estimates by County, 1973. Kentucky Department of Commerce, Future Labor Supply by 1980.

PER CAPITA PERSONAL INCOME

<u>Area</u>	<u>1971</u>	<u>1961</u>	<u>%Change</u>
Taylor County	\$3,000	\$1,437	+108.8
Labor Market Area			
Range	\$1,917- 3,000	\$798- 1,437	N. A.
Kentucky	3,310	1,677	+ 97.3
U. S.	4,164	2,265	+ 83.8

Sources: University of Kentucky, Office of Development Services and Business Research, Per Capita Income in Kentucky. U. S. Department of Commerce, Bureau of Economic Analysis, Survey of Current Business, August, 1973.

TRANSPORTATION

Rail

Line serving Campbellsville - Louisville & Nashville Railroad
 Services - Local freight from Lebanon travels to Campbellsville
 Monday through Friday and connects with north-south, east-west
 freights in Lebanon three days a week. Siding space and switching
 facilities are available in Campbellsville.

For details on routing, schedules, rates, and services, contact:

Manager of Industrial Development
 Louisville & Nashville Railroad Company
 908 West Broadway
 Louisville, Kentucky 40203

Truck Service

<u>Company</u>	<u>Home Office</u>
Central Motor Express, Inc. *	Campbellsville, Kentucky
Bronaugh Motor Express, Inc.	Lexington, Kentucky
<u>Other Freight Services</u>	
	<u>Shipping Center</u>
United Parcel Service**	Campbellsville, Kentucky

HIGHWAY MILES AND TRUCK TRANSIT TIME IN DAYS FROM CAMPBELLSVILLE, KENTUCKY, TO SELECTED MARKET CENTERS

<u>City</u>	<u>Highway</u> <u>Miles</u>	<u>Delivery</u> <u>Time</u> <u>TL</u>	<u>City</u>	<u>Highway</u> <u>Miles</u>	<u>Delivery</u> <u>Time</u> <u>TL</u>
Atlanta, Ga.	346	1	Los Angeles, Calif.	2,193	3
Birmingham, Ala.	280	1	Louisville, Ky.	86	1
Chicago, Ill.	387	1	Nashville, Tenn.	140	1
Cincinnati, Ohio	174	1	New Orleans, La.	624	1
Cleveland, Ohio	418	1	New York, N. Y.	833	3
Detroit, Mich.	439	1	Pittsburgh, Pa.	458	1
Knoxville, Tenn.	133	1	St. Louis, Mo.	350	1

Source: Delivery Time Only - Central Motor Express, Inc.,
 Campbellsville, Kentucky.

* Local Terminal.

** For regular scheduled pickups or for occasional pickups, arrangements
 must be made with the Louisville office of U. P. S.

Air

Local Airport

Taylor County Airport
Location: One mile northeast of Campbellsville
Runways: One paved
Length: 4,000 feet
Traffic Control: Tetrahedron and wind sock
Lighting: Runway lights sundown to midnight
Services: 80-100 octane, jet A-50, charter service,
flight instructions, taxi, and restaurant

Nearest Commercial Airports

Standiford Field	Blue Grass Field
Location: Louisville, 86 miles distant	Lexington, 87 miles away
Runways: Three paved	Two paved
Length: 7,800 feet, 5,000 feet, 7,250 feet	6,500 feet, 3,500 feet
Traffic Control: Tower, approach and ground control, guards, radar service, departure control, radio	Tower, guards, radar arrival/departure control, ground control, ILS system
Lighting: Runways, obstructions, beacon and approach and touchdown lights, center line on runways 1-19	Approach lighting system, beacon, runways and obstruction lighting
Services: TWA, Eastern, American, Delta, Piedmont, Ozark, and Allegheny Airlines; 80, 100, 115 octane, jet fuel, storage, major A & E repairs, Air Board, Hertz and Avis, National rent-a-car service, restaurant, taxi, city bus	Eastern, Delta, Piedmont and Allegheny Airlines; 80, 100 and 145 octane, jet fuel, major A & E repairs, storage, restaurant, Weather Bureau and flight instruction, charter service, taxi, U-Drive-It service

Air

Freight

Service: Regular scheduled basis

Air freight accepted on a space-available basis.

Bus - Southern Greyhound Bus Lines

Taxi - Two taxi companies, 24-hour service, radio equipped

Rental Services - Car, truck and trailer

POWER AND FUEL

Electricity

Company serving Campbellsville - Kentucky Utilities Company
Source of power - Kentucky Utilities Company
Total generating capacity - 1,735,000 KW
For industrial rates contact:

Kentucky Utilities Company
120 South Limestone Street
Lexington, Kentucky

Company serving Taylor County - Taylor County RECC and Nolin RECC
Source of power - East Kentucky Power Cooperative
Total generating capacity - 548,000 KW
For industrial rates contact:

Taylor County Rural Electric Cooperative Corp.
Campbellsville, Kentucky 42718

and/or

Nolin Rural Electric Cooperative Corp.
Elizabethtown, Kentucky 42701

Natural Gas

Company serving Campbellsville - Western Kentucky Gas Company
Source of supply - Tennessee Gas Pipeline Company
Size of transmission mains - 24-inch (supplier); 6-inch (distributor)
Distribution mains - 2, 3, 4 and 6 inches
Distribution pressure - up to 60 psi
Btu content - 1,020 per cubic foot
Specific gravity - .58
For rates and supplies contact:

Industrial Utilization
Western Kentucky Gas Company
P. O. Box 866
Owensboro, Kentucky 42301

Other Fuels

Propane and butane - Doxol Propane, Columbia Road, Campbellsville,
Kentucky

Fuel Oils -

Distillate fuel oil - Hubbard Oil Company, South Columbia Avenue;
W. W. Long, South Columbia Road; White Oil Company, Route 6;
Standard Oil Company, Railroad Street - all located in Campbellsville.

Residual fuel oil - arrangements must be made with the refinery.

Low sulphur content coal - Located in eastern Kentucky

WATER AND SEWERAGE

Water

Company serving Campbellsville - Campbellsville Municipal Water and Sewer System*

Source - City Reservoir and Green River Reservoir

Treatment plant capacity - 2,250,000 gpd¹

Average daily consumption - 1,890,000 gallons

Peak daily consumption - 2,220,000 gallons

Type treatment - Coagulation, sedimentation, filtration, chlorination, and fluorination

Storage capacity - 2,283,000 gallons

Size lines - 2, 4, 6, 8, 10, 12, 16, and 18 inches

Average pressure - 50-55 psi

Average temperature - 60-65°F.

MONTHLY WATER RATES FOR WHOLESALE AND INDUSTRIAL CONSUMERS

Inside City

First	1,000 gallons	\$2.00 (Minimum)
Next	4,000 gallons	.80 per M gallons
Next	20,000 gallons	.70 per M gallons
Next	25,000 gallons	.60 per M gallons
Next	50,000 gallons	.50 per M gallons
Next	100,000 gallons	.40 per M gallons
Next	300,000 gallons	.36 per M gallons
Next	500,000 gallons	.30 per M gallons
Next	1,000,000 gallons	.28 per M gallons
Next	8,000,000 gallons	.18 per M gallons
All over	10,000,000 gallons	.13 per M gallons

*Improvements: the water treatment plant capacity is being increased from 2 million gallons to 6 million gallons per day. Recently an 18-inch raw water line was laid to the Green River Reservoir for additional supply. Bids were opened February, 1974, to install a 10-inch loop around the city.

Outside City

First	1,000 gallons	\$2.00 (Minimum)
Next	4,000 gallons	1.20 per M gallons
Next	20,000 gallons	1.05 per M gallons
Next	25,000 gallons	.80 per M gallons
Next	50,000 gallons	.67 per M gallons
Next	100,000 gallons	.53 per M gallons
Next	300,000 gallons	.48 per M gallons
Next	500,000 gallons	.40 per M gallons
Next	1,000,000 gallons	.37 per M gallons
Next	8,000,000 gallons	.18 per M gallons
All over	10,000,000 gallons	.13 per M gallons

TAPPING FEES

<u>Meter Size</u>	<u>Inside City</u>	<u>Outside City</u>
5/8- by 3/4-inch	\$ 100	\$ 250
3/4-inch	125	275
1-inch	150	300
1 1/2-inch	225	400
2-inch	350	500
2-inch compound	525	750
3-inch compound	800	900
4-inch compound	1,200	1,300
6-inch compound	2,400	2,500

Surface water sources - Green River, Green River Reservoir
Average discharge - Green River near Campbellsville - 873 cfs
(9-year record, unadjusted USGS)
Expected ground water yield - 5 to 50 gpm (northwestern portion),
5 gpm or less in the remaining portion of the county

Sewerage

Company serving - Campbellsville Municipal Water and Sewer System*
Design capacity - 1,800,000 gpd

*A study was made to improve and increase the sewer facilities by adding a new waste water and industrial treatment plant and a new interceptor at a cost of approximately 3.5 million dollars. The city is in the process of applying for Federal assistance in financing the project.

Average daily flow - 1,400,000 gallons
 Treatment - Primary and secondary
 Type treatment - Aeration, clarifier, drying beds
 Treated effluent discharged into - Buckhorn Creek
 Size of sanitary mains - 2 to 12 inches
 Rates - Based on water usage

Inside City

First	1,000 gallons	\$1.70 (Minimum)
Next	4,000 gallons	.68 per M gallons
Next	20,000 gallons	.60 per M gallons
Next	25,000 gallons	.51 per M gallons
Next	50,000 gallons	.425 per M gallons
Next	100,000 gallons	.34 per M gallons
Next	300,000 gallons	.306 per M gallons
Next	500,000 gallons	.255 per M gallons
Next	1,000,000 gallons	.238 per M gallons
Next	8,000,000 gallons	.153 per M gallons
All over	10,000,000 gallons	.1105 per M gallons

Outside City

First	1,000 gallons	\$3.83 (Minimum)
Next	4,000 gallons	1.02 per M gallons
Next	20,000 gallons	.89 per M gallons
Next	25,000 gallons	.68 per M gallons
Next	50,000 gallons	.5695 per M gallons
Next	100,000 gallons	.4505 per M gallons
Next	300,000 gallons	.408 per M gallons
Next	500,000 gallons	.34 per M gallons
Next	1,000,000 gallons	.3145 per M gallons
Next	8,000,000 gallons	.153 per M gallons
All over	10,000,000 gallons	.1105 per M gallons

Tap-on-fee - \$75



CAMPBELLVILLE MUNICIPAL BUILDING



NEW CENTRAL SHOPPING CENTER

LOCAL GOVERNMENT

City

Structure - Mayor - 4-year term; 12 councilmen - 2 year-terms

Budget 1973 - General Fund \$582,755.00

Water and Sewer Fund 574,331.00

Fees and licenses - Unloading license \$50 annually; business license varies from \$10 to \$500 annually; auto tax \$10 annually

County

Structure - County Judge - 4-year term; 6 magistrates - 4-year terms

Budget 1972-73 - General Fund \$155,500.00

Road Fund 43,600.00

Assessed Value of Property, 1973

<u>Classes of Property</u>	<u>Campbellsville</u>	<u>Taylor County</u>
Real Estate	\$29,980,219.00	\$82,917,379.00
Tangibles	5,562,868.00	15,321,216.00
Public Service	4,382,456.00	21,663,696.00

Property Taxes

Land and buildings are taxed by the state and may be taxed by local jurisdictions. The state rate is \$0.015 per \$100 of assessed valuation.

Tangible personal property owned by manufacturers (automobiles, trucks, finished goods, office furniture, office equipment) is taxed by the state at \$0.15 per \$100 and may be taxed by local jurisdictions.

Manufacturing machinery, raw materials inventories, and goods in process inventories are not subject to local taxation. The state rate is \$0.15 per \$100.

Property stored in public warehouses is not subject to local taxation. The state rate is only \$0.015 per \$100.

All property is assessed at 100 percent of fair cash value.

Local Property Tax Rate Per \$100 of Assessed Valuation, 1973*

<u>Taxing Jurisdiction</u>	<u>Campbellsville</u>	<u>Taylor County</u>
County	\$.247	\$.247
School	.603	.494
City	.280	

Planning and Zoning

City agency - Campbellsville Planning and Zoning Commission
 Zoning enforced - City only
 Subdivision regulations enforced - City and three miles beyond city limits
 Local codes enforced - Building, housing, and street codes
 Mandatory state codes enforced - Plumbing, National Fire Protection Association Code, National Building Code (for major buildings and residential construction containing more than 12 bedrooms per building).
 Other programs - Urban renewal and public housing

Safety

<u>Police</u>	<u>Campbellsville</u>	<u>Taylor County</u>
Total staff	17 policemen, 4 dispatchers	4
Radio-patrol cars	4	3
Other equipment	Inter-city band radio, new radar, soon to receive 4 new radio units for cars	Inter-city band radio, due to receive new 2-way radio system and new light system

Fire

American Insurance Association Fire Rating	7	
Full-time staff	5	
Volunteers	23	23
Equipment:		
1,000 gpm pumpers	1	
750 gpm pumpers	1	1
500 gpm pumpers	2	1
1,000-gallon tank truck		1
500-gallon tank truck		1

*Kentucky Department of Revenue, Kentucky Property Tax Rates, 1973.

	<u>Campbellsville</u>	<u>Taylor County</u>
5 KW generator*	1	
3 KW generator	1	
2.5 KW generator	1	1
300 unit generators*	2	2
Attack truck*	used for auto and grass fires, equipped with rescue saw, porta-power compressed air chisel for cutting	

Rescue Service

Taylor County Rescue Squad:

Number of volunteers - 42

Equipment - 4-wheel drive rescue vehicle, Citizens Band and 6 complete mobile radio systems, generators, dragging gear for 30 men, 23 divers, porta-power, 2 boats and motors, multi-media films, 16 mm projector, and teaching equipment for first aid course.

Personnel training - Diving, advanced first aid, rescue squad offers EMT level advanced training program in first aid to private groups and rescue programs in other counties.

Sanitation

	<u>Campbellsville</u>
Type service	Municipal
Fee charged:	
residential	\$4.00 per month
business	\$4.80 per month outside city limits
	Separate contract that varies with each business; contract for private industry will be negotiated
Collection frequency:	
residential	Weekly
business	Daily
Trash pickup	As needed
Disposal method	Sanitary landfill

*Used interchangeably between county and city fire departments.

EDUCATION

Public Schools

	<u>Campbellsville</u>	<u>Taylor County</u>
Total Enrollment (1973-74)	1,612	2,470
Elementary	650	1,228
Middle School	447	
Junior High		478
High School	515	764
Student-Teacher Ratio	21-1	21-1
Elementary	20-1	22-1
Middle School	24-1	
Junior High		24-1
High School	20-1	19-1
Accreditation	Southern Association of Colleges and Schools	Southern Association of Colleges and Schools
Percent High School Graduates to College	35.4	23.2
Expenditures Per Pupil (1972-73)	\$500.11	\$561.30
Bonded Indebtedness, June 30, 1973	\$1,064,000	\$1,653,000

Vocational Schools

Nearest State School

Location	Somerset State Vocational-Technical School	
Miles Distant	Somerset	
Curriculum	69	
	Data Processing	Appliance Repair
	Clerical	Auto Mechanics
	Secretarial	Drafting
	Marketing and Distributive Education	Machine Shop
	Health Careers	Printing
	Learning Lab	
	Electronics (Technology)	
	Aircraft Maintenance	

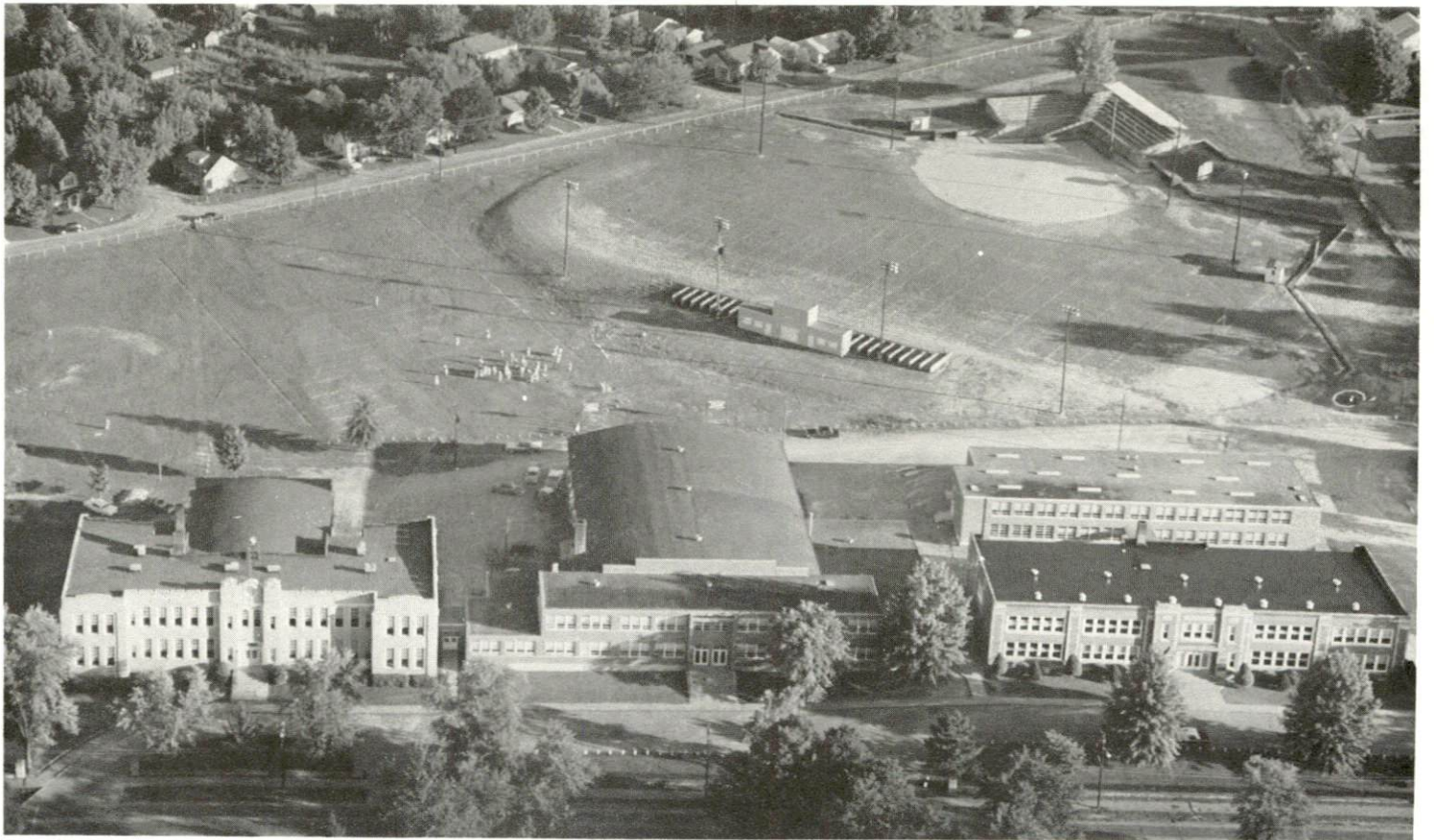
Nearest Area Education Center

Location	Green County Area Vocational Education Center Greensburg
Miles Distant	11
Curriculum	Clerical Secretarial Health Careers Auto Body Repair Auto Mechanic Carpentry Electricity Machine Shop Welding

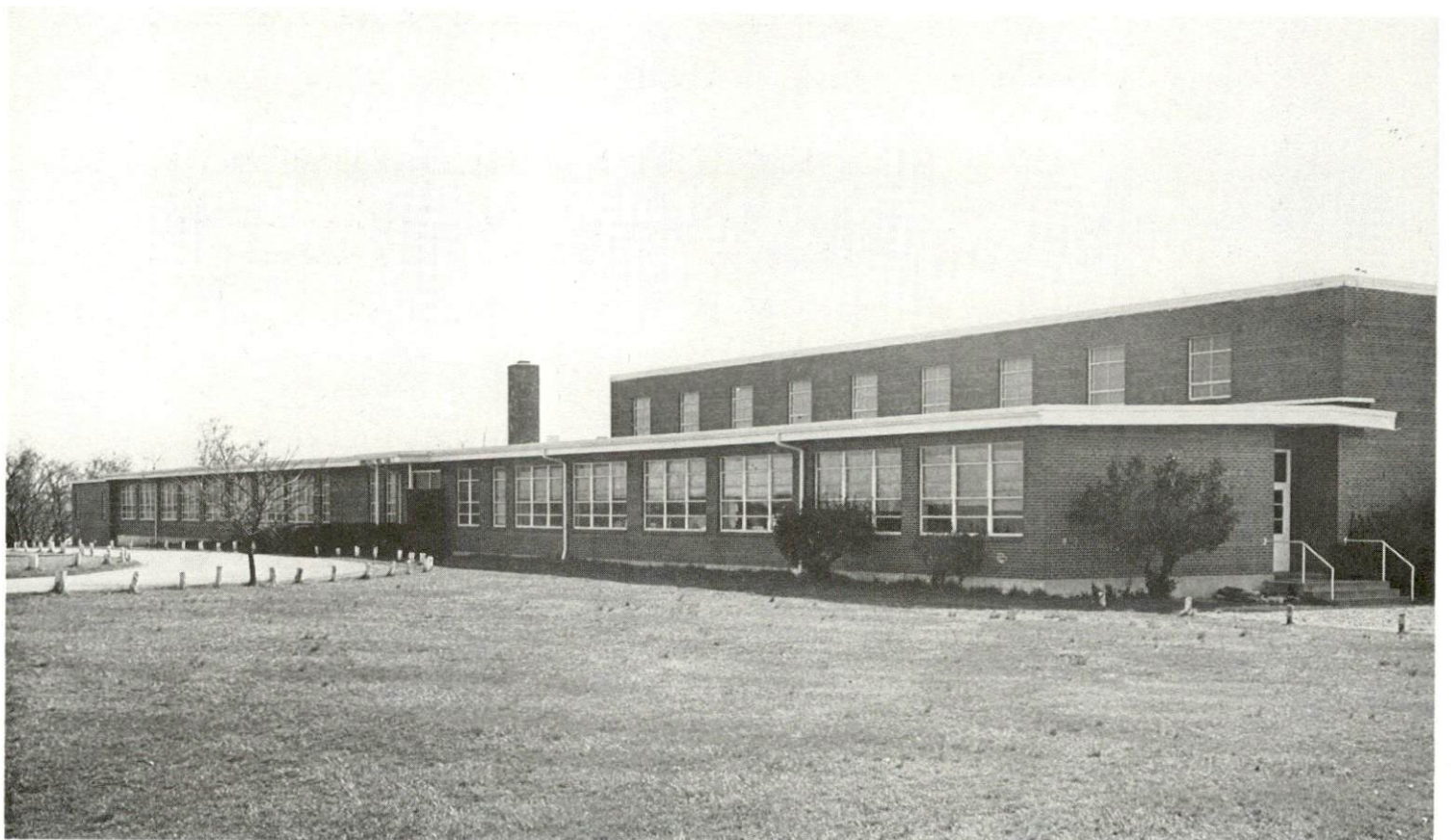
Arrangements can be made to provide training in the specific production skills required by an industrial plant. Instruction may be conducted either in the vocational school or in the industrial plant, depending upon the desired arrangement and the availability of special equipment.

Colleges and Universities

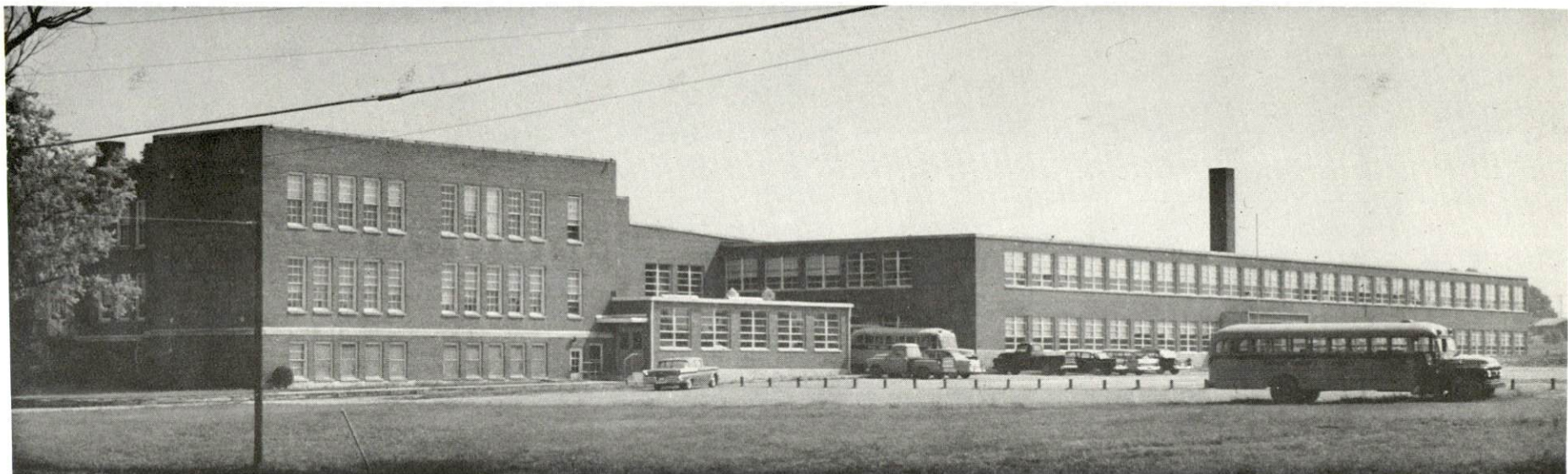
<u>Name</u>	<u>Area - Within 50 miles</u>		
	<u>Location</u>	<u>Enrollment (Fall, 1973)</u>	<u>Highest Degree Conferred</u>
Campbellsville College	Campbellsville	693	Baccalaureate
St. Catharine College	St. Catharine	118	Associate
Elizabethtown Community College	Elizabethtown	837	Associate
Centre College	Danville	810	Baccalaureate
Lindsey Wilson College	Columbia	269	Associate



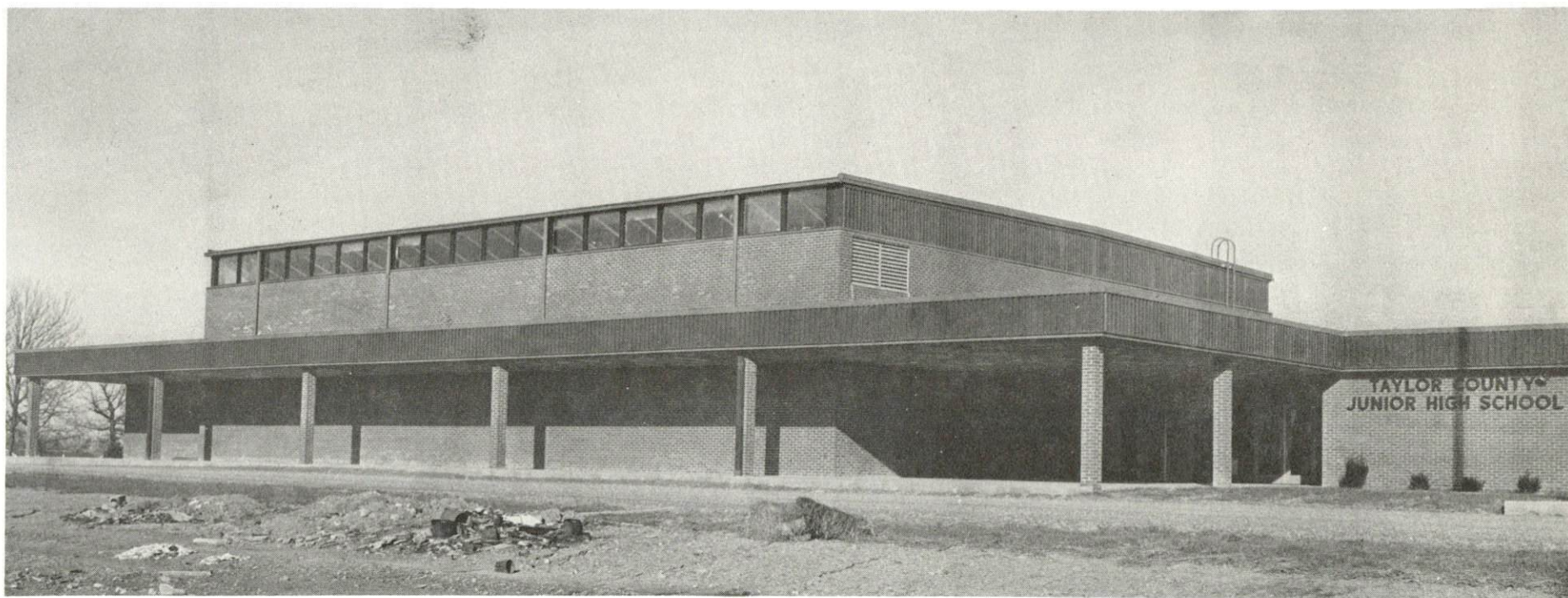
CAMPBELLSVILLE HIGH SCHOOL



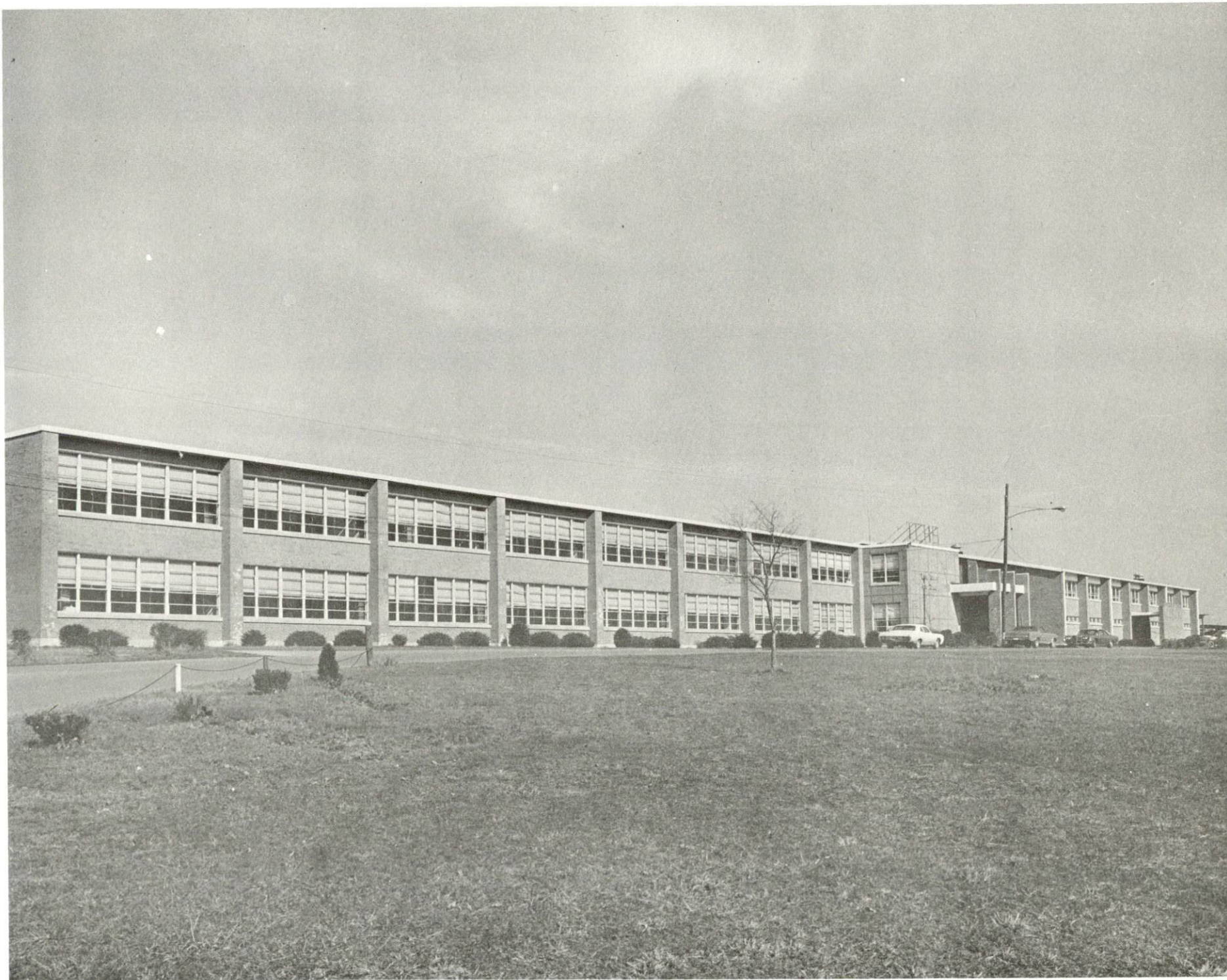
CAMPBELLSVILLE MIDDLE SCHOOL



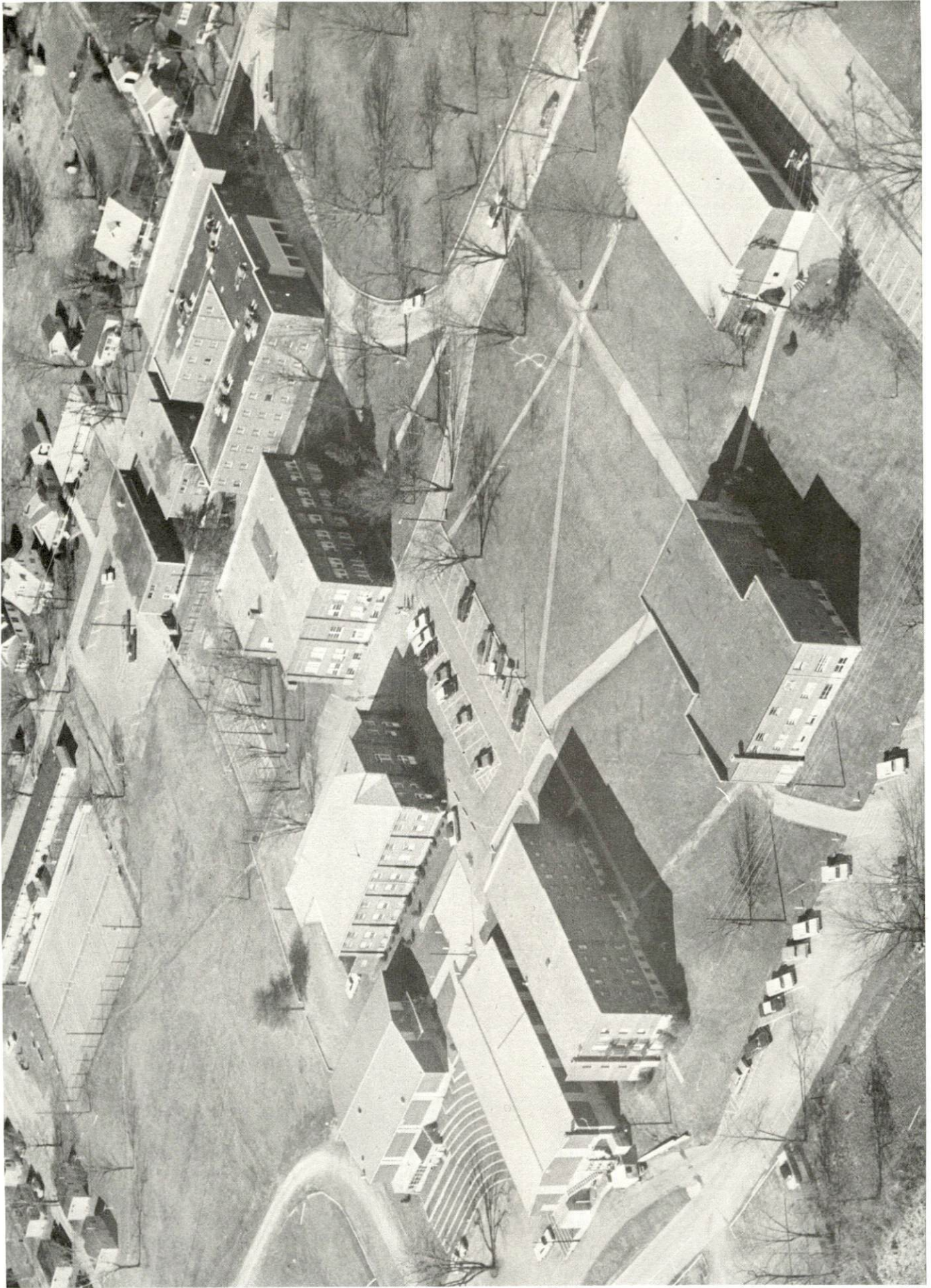
TAYLOR COUNTY GRADE SCHOOL



TAYLOR COUNTY JUNIOR HIGH SCHOOL



TAYLOR COUNTY HIGH SCHOOL



CAMPBELLSVILLE COLLEGE

HEALTH

Hospitals

<u>General Hospital</u>	<u>Location</u>	<u>Beds</u>
Taylor County Hospital	Campbellsville	60

General hospital facilities - Emergency room; 2 operating rooms; 2 X-ray labs; delivery room; inhalation therapy; recovery room; intensive care unit; coronary care unit; cafeteria; gift shop; hospital rooms equipped with individual heating baths, electrical beds, and telephones; Blood Bank; EKG machine; all modern up-to-date equipment

Medical staff - 8 doctors including 1 surgeon; 12 registered nurses (full time); 4 registered nurses (part time); 4 licensed practical nurses; 3 laboratory technicians; 1 X-ray technician; 1 inhalation therapist; 1 dietitian; 1 radiologist (part time); 1 pathologist (part time);

Nursing Homes

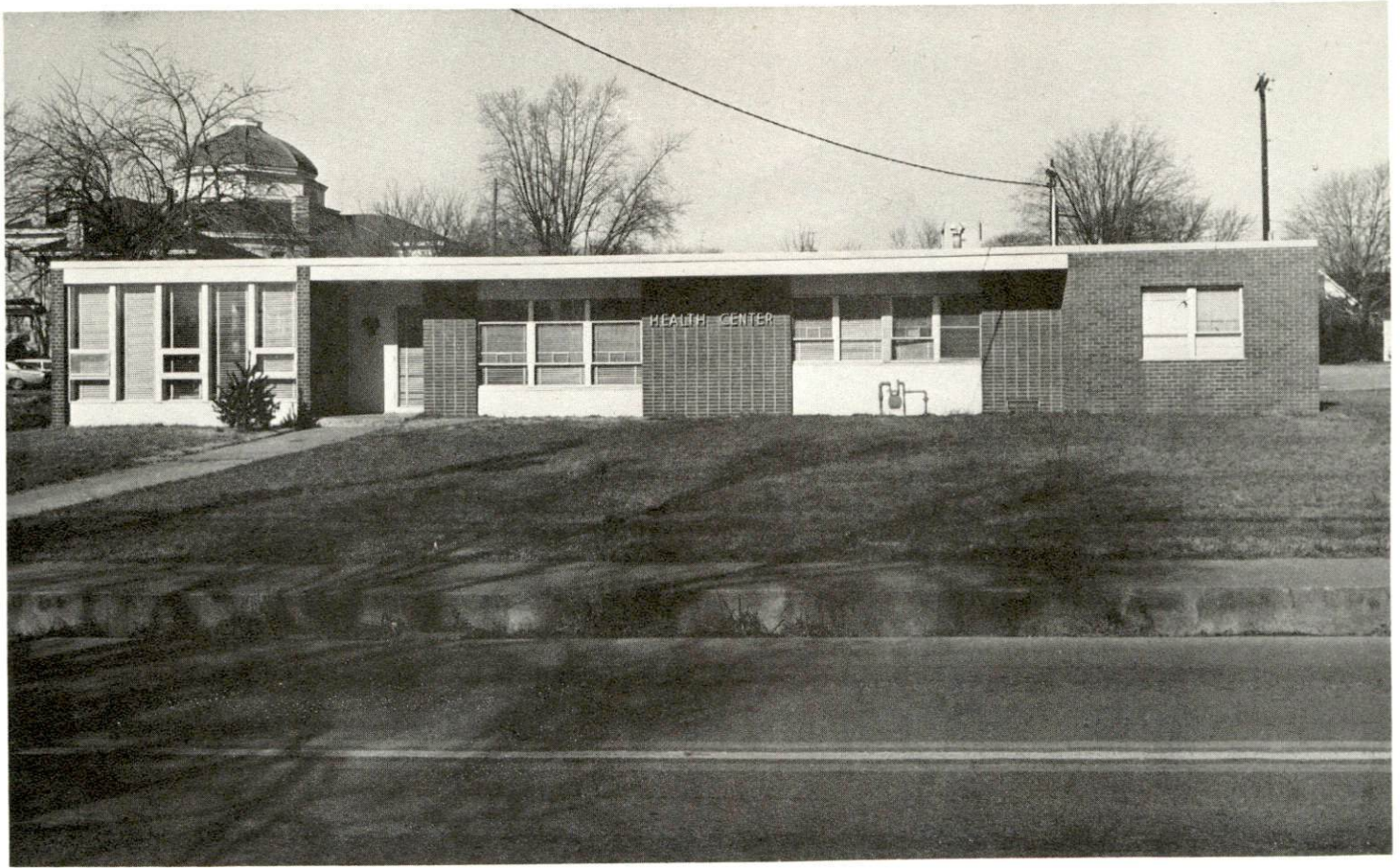
	<u>Number</u>	<u>Beds</u>
Extended care homes	1	71
Personal care homes	1	67

Public Health

Facility - Taylor County Health Department

Staff - 2 registered nurses; 2 clerks; 2 sanitarians (1 sanitarian also serves as administrator); 1 field worker; 1 licensed practical nurse (part time); 1 registered nurse (part time); 1 records clerk (part time)

Budget 1973-74 - \$60,218.33



TAYLOR COUNTY HEALTH CENTER



TAYLOR COUNTY HOSPITAL

OTHER LOCAL FACILITIES

Communications

Telephone - General Telephone Company
Services - Direct dialing

Telegraph - Western Union
Services - Telephone and messenger

Postal - U. S. Post Office
Class - First
Mail received - Twice daily
Mail dispatched - Twice daily

Newspapers - The News Journal The Central Kentucky News
Weekly and circulation - 7,000 8,000
Other papers received from - Louisville, Kentucky

Radio - WTCO-AM-FM
Stations received from - Greensburg, Columbia, Lebanon, Danville,
Bowling Green, Lexington and Louisville, Kentucky; Nashville,
Tennessee

Television -
Reception from - Bowling Green, Lexington, and Louisville, Kentucky;
Nashville, Tennessee

Kentucky Educational Television - Elizabethtown transmitter, Channel
23; Somerset transmitter, Channel 29.

Library Services

Private library - Campbellsville College Library (open to public)
Size collection - 69,000 volumes
Special collections - 2,000 volumes; Kentucky children's curriculum,
books about Kentucky, textbook collection, and government doctrines.
Circulation, 1973 - 28,000 volumes
Services - Periodicals, magazines, newspapers, audio-visual equipment
for classroom use, films, filmstrips, records, tapes, art, projectors,
record player, microfilm copies of census data 1790 to present, lecture
series and film series.

Religious Institutions

Number of churches - 18

Denominations - Baptist
Catholic
Christian
Church of Christ
Church of God
Methodist
Presbyterian
Nazarene

Nearest Synagogues - Louisville, Kentucky, 82 miles distant

Congregations - Adath Israel (reform)
Adath Jeshurun (conservative)
Anshei Sfard (orthodox)
Brith Sholom (reform)
Keneseth Israel (orthodox)

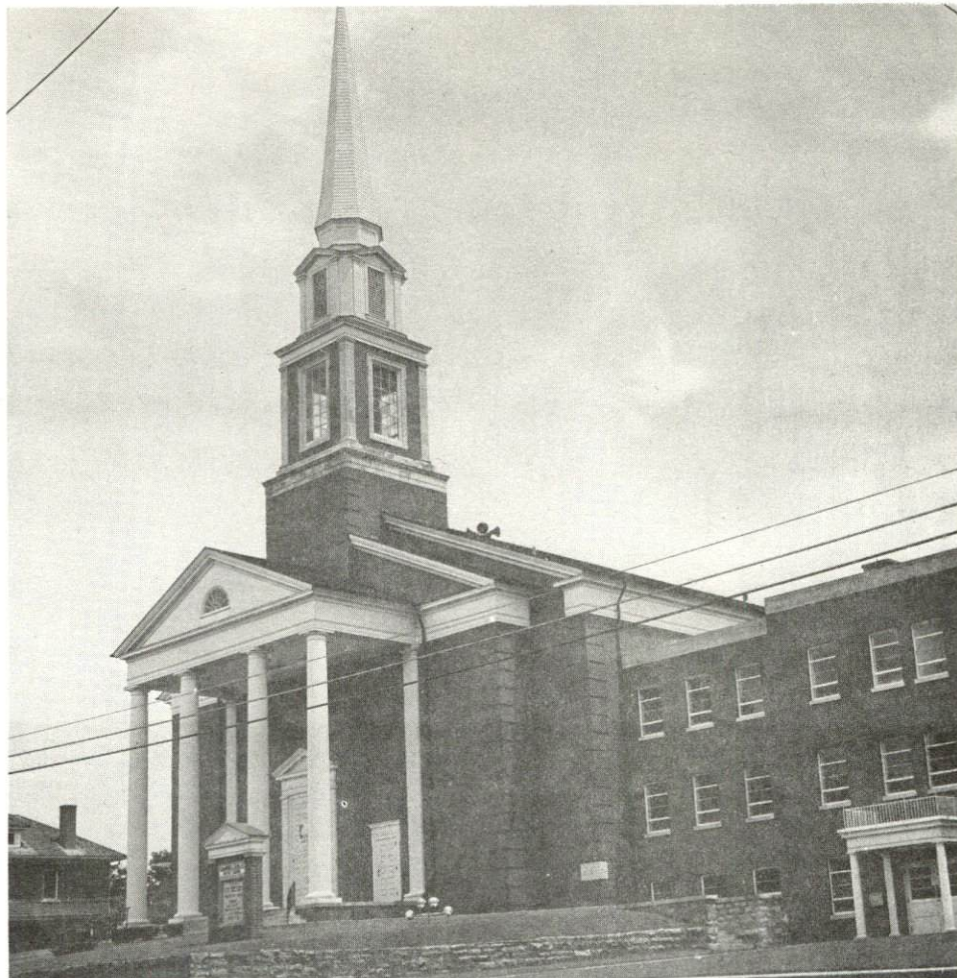
Financial Institutions

<u>Banks</u>	<u>Statement as of December 31, 1973</u>	
	<u>Assets</u>	<u>Deposits</u>
Citizens Bank & Trust Company	\$16,319,265.09	\$13,802,984.09
Taylor County Bank	17,656,019.31	16,279,962.55
<u>Savings and Loan Associations</u>	<u>Assets</u>	<u>Shared Accounts</u>
First Federal Savings and Loan Association	\$33,789,282.97	\$30,097,511.55

Hotels and Motels

Total number - 5

Units - 68



CAMPBELLSVILLE BAPTIST CHURCH



OUR LADY OF PERPETUAL HELP CATHOLIC CHURCH

Clubs and Organizations

Business and Civic - Rotary, Lions, Kiwanis, Jaycees, Chamber of Commerce, Parent and Teachers Association, Optimist Club

Fraternal - American Legion

Women's - Woman's Club, Junior Woman's Club, League of Women Voters, Campbellsville Business and Professional Women's Club, Taylor County Business and Professional Women's Club, Homemaker's Club, American Association of University Women, DAR

Youth - Boy Scouts, Girl Scouts, Brownies, Cub Scouts, 4-H, FFA, FHA, Little League, Football, Baseball, Basketball, Babe Ruth Baseball

Other - Green River Audubon Society, Sportsmen Club, Farm Bureau, National Farm Organization, Historical Society

RECREATION

Local

Public Recreation Facilities

Supervised program - Year round

Parks - 2

Playgrounds - 4

Swimming pool - 1

Golf course - 1 (9-hole)

Tennis courts - 4

Baseball diamonds - 2

Football fields - 2

Private Recreation Facilities

Country Club - 1

Golf course - 1 (9-hole)

Swimming pool - 1

Movie theaters - 1 indoor, 1 drive-in

Bowling facility - 1 (16 lanes)

Tourist Attractions

Several old restored public buildings and homes

Green River Reservoir

Green River Lake State Park

Green River Battlefield

Cultural Events

Community Concert Series

Campbellsville Little Theater

Campbellsville College Drama Presentations

Campbellsville College Glee Club

Area (Within 50 miles)

Green River Lake State Park

Lake Cumberland State Resort Park

Mammoth Cave National Park

Abraham Lincoln Birthplace National Historic Site

Taylor County Park



MILLER PARK



CAMPBELLVILLE COUNTRY CLUB

AGRICULTURE - NATURAL RESOURCES - CLIMATE

Agriculture*

	<u>Taylor County</u>	<u>Labor Market Area</u>
Total land area (acres)	177,280	1,258,880
Percent of area in farm land	86.1	83.6
Number of farms	1,474	9,640
Average size of farms (acres)	103.5	109.2
1969 value of all farm products	\$8,265,811	\$49,997,535
Value per farm	5,607	5,186
Total crop sales	3,606,178	20,700,325
Total livestock & livestock products	4,597,466	28,869,936
1972 agricultural production included:		
Burley tobacco (lbs.) (Est.)	4,859,000	29,666,000
Corn for grain (bu.)	697,200**	4,949,700**
Cattle and calves (number)	37,000**	249,700**
Hogs and pigs (number)	11,600**	71,000**
Milk production, 1971 (lbs.)	36,040	262,690

Natural Resources

Principal mineral resources	Limestone, petroleum
Other mineral resources	Natural gas
Acres of commercial forest land	71,200
Most abundant tree species	White oak, red oak, hickory, ash, yellow poplar, beech, hard maple

*U. S. Department of Commerce, Bureau of the Census, Census of Agriculture, 1969. U. S. Department of Agriculture, and Kentucky Department of Agriculture, Kentucky Agricultural Statistics, 1972.

**Preliminary data.

Climate*

Temperature

Annual mean (30-year record)	55.6 degrees
Average annual, 1972	54.2 degrees
Record highest, July 1966** (9-year record)	98.0 degrees
Record lowest, January, 1972 (9-year record)	-11.0 degrees
Normal heating degree days (30-year record)	4,683
(Heating degree day totals are the sums of negative departures of average daily temperatures from 65 ^o F.)	

Precipitation

Mean annual total (30-year record)	44.73 inches
Mean annual snow and sleet (28-year record)	16.30 inches
Total precipitation 1972	57.61 inches
Mean number days precipitation (.01 inch or more) (28-year record)	129
Average number days thunderstorms (28-year record)	47

Prevailing winds (17-year record) South

*U. S. Department of Commerce, Environmental Science Services Administration, Climatological Data, 1972. Station of record: Lexington, Kentucky.

**Also on earlier dates, months, or years.

HISTORY

Taylor County is located in the central part of Kentucky, its roughly triangular-shaped area covering 284 square miles. Green River Reservoir, an 8,200 acre lake, lies in the southern part of the county, and Pitman Creek flows across its western side. Its surface is level in some areas and hilly in others, with Muldrow's Hills and the Knobs in the northern and eastern sections. The soil ranges from fertile in the river and creek bottoms to thin on the knobs, and more than 45 percent of its area is forested.

The first settlers in Taylor County were Virginians and North Carolinians, many of whom came to claim land in return for Revolutionary War services. The Reverend David Rice, an early Presbyterian leader known in history as Father Rice, established the first church in Kentucky in what is now Taylor County, and led an early fight against legalized slavery in the state.

Taylor was made Kentucky's one-hundredth county in 1848. Taken from Green County, it was named for General Zachary Taylor, who grew up in Kentucky and was elected President the year of the county's formation. In 1869 a group of some 150 Pennsylvania Dutch (German) families migrated to the area, making considerable impact on Community life.

Campbellsville, the county seat, was named for one of the early settlers in the area, Adam Campbell. Incorporated in 1817, more than thirty years before the county was formed, Campbellsville has become a progressive community which was named an All Kentucky City in 1965, 1968, and 1969. Campbellsville College, a four-year institution, had an enrollment of 693 in 1973.

In 1850, two years after its formation, Taylor County had 7,250 inhabitants. The population grew steadily to 14,403 in 1950, 16,285 in 1960, and 17,138 in 1970. Campbellsville had a 1970 population of 7,598.

Agriculture provided 1,050 of the county's 9,070 jobs in 1972, with burley tobacco, corn, cattle, milk, and hogs the principal products. Manufacturing employment grew nearly 71% between 1963 and 1973, reaching 3,947 in 1973. Union Underwear Company, which makes men's and boy's underwear and infants' wear, is the county's largest industry, employing 3,300 workers.

Green River Reservoir provides extensive recreational facilities for those who enjoy fishing, boating, swimming, and camping.