

1988

Industrial Resources: Washington County - Springfield

Kentucky Library Research Collections

Follow this and additional works at: https://digitalcommons.wku.edu/washington_cty



Part of the [Business Administration, Management, and Operations Commons](#), [Growth and Development Commons](#), and the [Infrastructure Commons](#)

Recommended Citation

Kentucky Library Research Collections, "Industrial Resources: Washington County - Springfield" (1988). *Washington County*. Paper 12.

https://digitalcommons.wku.edu/washington_cty/12

This Report is brought to you for free and open access by TopSCHOLAR®. It has been accepted for inclusion in Washington County by an authorized administrator of TopSCHOLAR®. For more information, please contact topscholar@wku.edu.

RESOURCES FOR ECONOMIC DEVELOPMENT

Springfield



RESOURCES FOR ECONOMIC DEVELOPMENT

SPRINGFIELD, KENTUCKY

Prepared by
The Kentucky Department of Business Development
Division of Research and Planning
in cooperation with
The Springfield/Washington County Chamber of Commerce

1988

Program manager - Andrew Dennis; research - Jerry Tolliver; clerical - Bobbi Graves; graphics - Tony Cecconi, Robert Owens, Pat Coleman; cartography - Site Evaluation Branch, Division of Industrial Development and Marketing. Cost of printing paid from state funds.

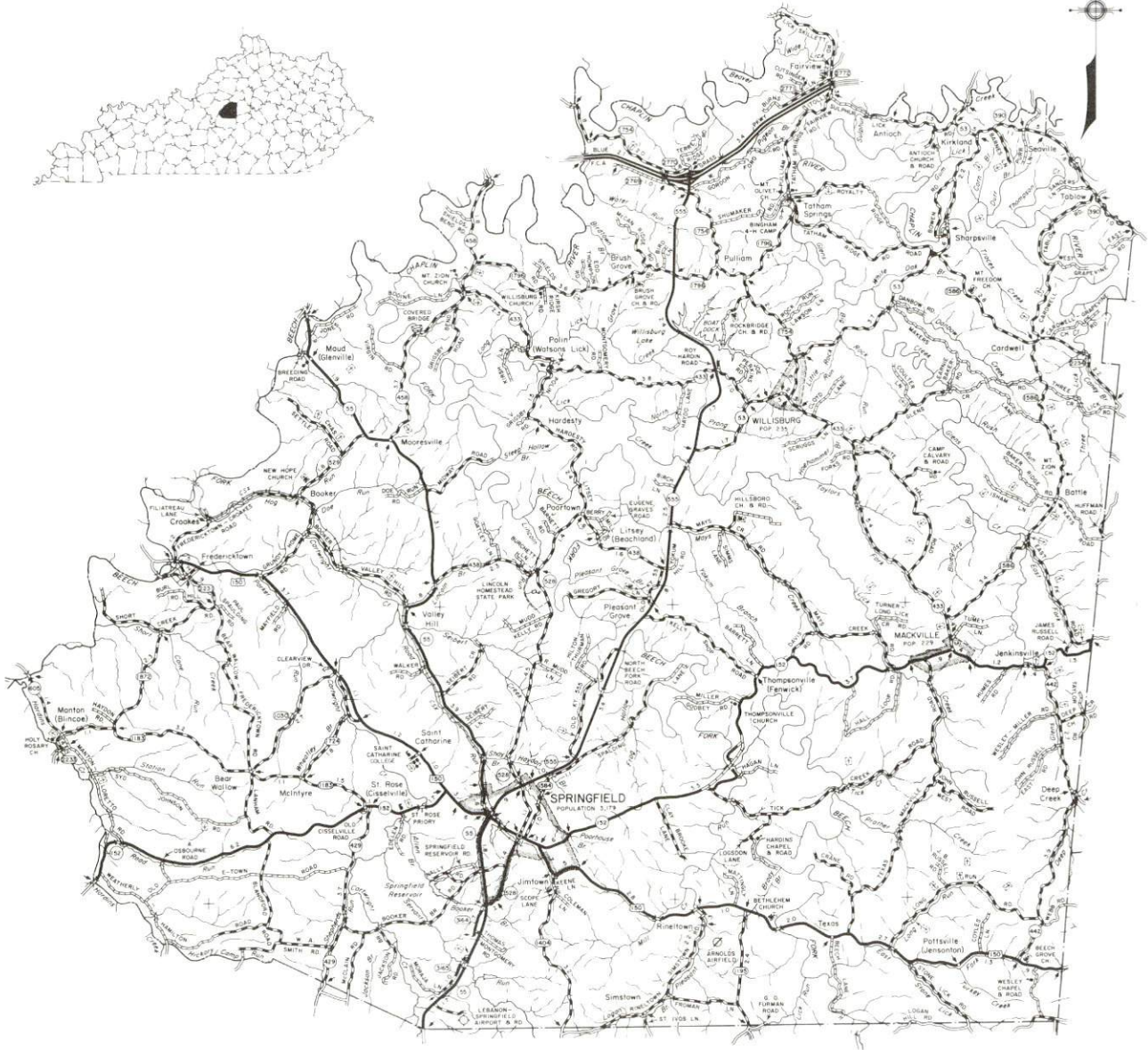
TABLE OF CONTENTS

<u>Chapter</u>	<u>Page</u>
INDUSTRIAL SITES	i
SPRINGFIELD, KENTUCKY - A RESOURCE PROFILE	1
THE LABOR MARKET STATISTICS	2
Population	2
Population Projections	2
Labor Force Characteristics of Residents, 1986	3
Selected Components of Nonagricultural Employment, by Place of Work, 1986	3
Per Capita Personal Income	4
Estimated Male Labor Supply	5
Estimated Female Labor Supply	5
Average Weekly Wages by Industry, by Place of Work, 1986	6
EXISTING INDUSTRY	8
Springfield Manufacturing Firms, Their Products and Employment	8
Labor Organizations in Manufacturing Firms	9
Selected Industrial Services	10
TRANSPORTATION	11
Rail	11
Highways	11
Truck Service	11
Air	12
Water	14
POWER AND FUEL	15
Electricity	15
Natural Gas	15
Other Fuels	16
WATER AND SEWERAGE	17
Public Water Supply	17
Sewerage	18
CLIMATE	19

<u>Chapter</u>	<u>Page</u>
LOCAL GOVERNMENT	20
Structure	20
Planning and Zoning	20
Local Fees and Licenses	20
State and Local Property Taxes	21
Combined State and Local Rates Per \$100 Valuation, 1987	21
Safety	22
Police	22
Fire	22
Rescue Service	22
Refuse Collection and Disposal	22
EDUCATION	23
Public Schools	23
Nonpublic Schools	23
Area Colleges and Universities	24
Vocational Training	25
HEALTH	27
Local Medical Personnel	27
Hospitals	27
Other Medical Facilities	27
Ambulance Service	27
OTHER LOCAL FACILITIES	28
Communications	28
Library Services	28
Religious Institutions	28
Financial Institutions	29
Hotels and Motels	29
RECREATION	30
COMMUNITY IMPROVEMENTS	32

1987 EDITION
GENERAL HIGHWAY MAP
WASHINGTON COUNTY
KENTUCKY

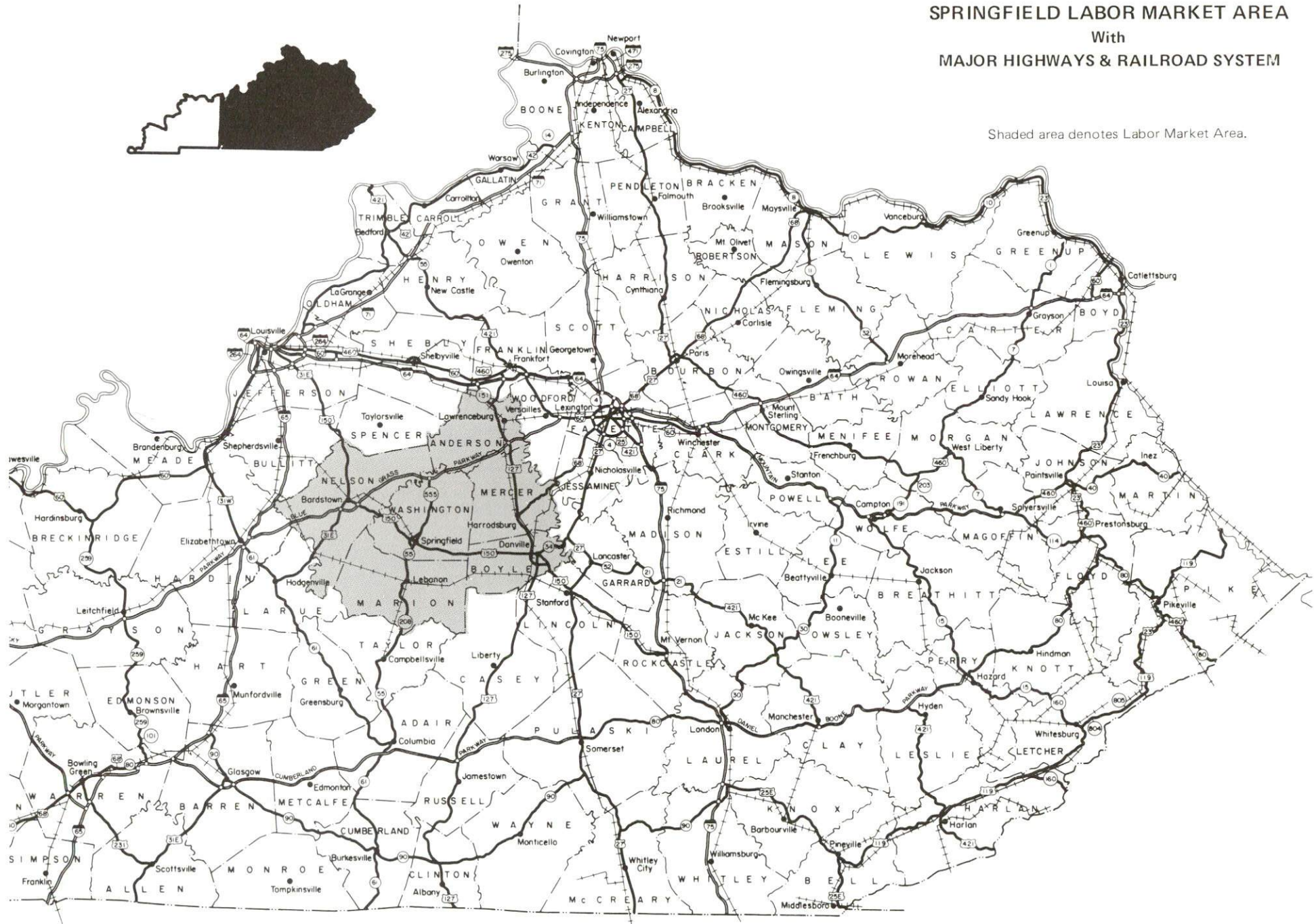
PREPARED BY THE
KENTUCKY TRANSPORTATION CABINET
DEPARTMENT OF HIGHWAYS
DIVISION OF PLANNING
IN COOPERATION WITH THE
U.S. DEPARTMENT OF TRANSPORTATION
FEDERAL HIGHWAY ADMINISTRATION



SPRINGFIELD LABOR MARKET AREA

With MAJOR HIGHWAYS & RAILROAD SYSTEM

Shaded area denotes Labor Market Area.



SPRINGFIELD, KENTUCKY - A RESOURCE PROFILE

Springfield, the county seat of Washington County, is located in central Kentucky's Blue Grass Region, 58 miles southeast of Louisville, Kentucky; 54 miles southwest of Lexington, Kentucky; and 181 miles northwest of Knoxville, Tennessee. Springfield had an estimated 1986 population of 2,890 persons.

Washington County, with a land area of 301 square miles, had an estimated 1986 population of 10,200 persons.

The Economic Framework - The total number of Washington County residents employed in 1986 averaged 4,460. Manufacturing firms in the county reported 468 employees; wholesale and retail trade provided 330 jobs; 218 people were employed in service occupations; state and local government accounted for 388 employees; contract construction firms provided 149 jobs; and 27 people were employed by mining and quarrying operations.

Labor Supply - There is a current estimated labor supply of 5,510 men and 7,120 women available for industrial jobs in the labor market area. In addition, from 1988 through 1992, 4,737 young men and 4,642 young women in the area will become 18 years of age and potentially available for industrial jobs.

Transportation - The nearest rail service is provided by CSX Transportation at Lebanon, 8 miles south of Springfield. "AAA"-rated highways (80,000-pound gross load limits) serving Springfield include U.S. Highway 150, Kentucky Route 555, and Kentucky Route 55 south of the city. Kentucky Route 55 north of Springfield is a "AA"-rated (62,000-pound gross load limit) trucking highway. The Blue Grass Parkway, 16 miles north of Springfield via Kentucky 555, is a controlled-access, multilane toll road connecting Lexington, Interstate 64 and Interstate 75, 54 miles east of Springfield, with Elizabethtown, Interstate 65, and the Western Kentucky Parkway, 43 miles west of Springfield. There are nine common carrier trucking companies providing interstate and/or intrastate service to Springfield. The nearest scheduled commercial airline services are available at Blue Grass Field, 49 miles northeast of Springfield near Lexington, and at Standiford Field, 53 miles northwest of Springfield near Louisville. Two small craft airports are also located near Springfield. Springfield is 51 miles southwest of the Kentucky River at Frankfort where a 6-foot navigation channel begins, and 58 miles southeast of Louisville where two riverports operate on the Ohio River.

Power and Fuel - Kentucky Utilities Company provides electric power to Springfield and parts of Washington County. The remainder of Washington County is served by East Kentucky Power Cooperative through various rural electric cooperatives. Western Kentucky Gas Company, whose source of supply is Tennessee Gas Transmission Company, serves Springfield with natural gas. Four propane dealers and three fuel oil dealers are located within 20 miles of Springfield.

Education - The Washington County Public School System provides primary and secondary education to students in Washington County. A parochial elementary school also operates in Springfield. St. Catharine College, an independent, two-year, co-educational college, is located 3 miles west of Springfield. In addition, 14 institutions of higher learning are located within 58 miles of Springfield. The nearest state vocational-technical school is located at Elizabethtown, 43 miles west of Springfield. Vocational education is also available at the Marion County Area Vocational Education Center at Lebanon, 8 miles south of Springfield.

LABOR MARKET STATISTICS

The Springfield Labor Market Area includes Washington County and the adjoining Kentucky counties of Anderson, Boyle, Marion, Mercer and Nelson.

POPULATION

Area	1986*	1980	1970	Percent Nonwhite
				1980
Springfield	2,890	3,179	2,961	21.5
Labor Market Area	116,000	112,902	98,098	-
Washington County	10,200	10,764	10,728	10.3
Anderson County	13,800	12,567	9,358	3.9
Boyle County	25,500	25,066	21,861	9.5
Marion County	17,700	17,910	16,714	8.0
Mercer County	19,200	19,011	15,960	4.6
Nelson County	29,600	27,584	23,477	6.6

* Population estimates.

Note: The 1980 city counts of population by race are provisional.

Sources: U.S. Department of Commerce, Bureau of the Census, 1980 Census of Population and Housing, March 1981; 1980 Census of Population, Number of Inhabitants. University of Louisville, Urban Studies Center, Population Unit.

POPULATION PROJECTIONS

Area	1990	1995	2000	2010
Labor Market Area	120,607	125,433	129,049	134,144
Washington County	10,408	10,440	10,452	10,407
Anderson County	14,495	15,438	16,166	17,250
Boyle County	26,345	27,301	27,973	28,632
Marion County	18,232	18,639	18,939	19,367
Mercer County	20,567	21,549	22,290	23,377
Nelson County	30,560	32,066	33,229	35,111

Source: University of Louisville, Urban Studies Center, Population Research Unit, How Many Kentuckians: Population Forecasts, 1980-2020, the 1986 Edition, Spring 1986.

LABOR FORCE CHARACTERISTICS OF RESIDENTS, 1986

	Washington County	Labor Market Area
Civilian Labor Force	5,024	56,095
Employment	4,460	50,479
Unemployment	564	5,616
Rate of Unemployment (%)	11.2	10.0

Source: Kentucky Cabinet for Human Resources, Kentucky Labor Force Estimates, Annual Averages, 1986.

SELECTED COMPONENTS OF NONAGRICULTURAL EMPLOYMENT
BY PLACE OF WORK, 1986

	Washington County	Labor Market Area
All Industries (total)	1,750	30,749
Manufacturing	468	9,888
Wholesale & Retail Trade	330	8,098
Services	218	4,663
State/Local Government	388	4,251
Contract Construction	149	1,236
Mining & Quarrying	27	152

Note: Excludes domestic workers, railway workers, certain nonprofit corporations, majority of federal government workers, and self-employed workers.
Source: Kentucky Cabinet for Human Resources, Average Monthly Workers Covered by Kentucky Unemployment Insurance Law, 1986.

PER CAPITA PERSONAL INCOME

<u>Area</u>	<u>1980</u>	<u>1984</u>	<u>Percent Change</u>
Washington County	\$ 5,813	\$ 7,859	35.2
Labor Market Area Range	\$4,980 - 7,710	\$7,146 - 10,756	-
Kentucky	7,644	10,232	33.9
U.S.	9,494	12,772	34.5

Sources: U.S. Department of Commerce, Bureau of Economic Analysis. Kentucky Economic Information System, June 1986.

ESTIMATED MALE LABOR SUPPLY
SPRINGFIELD LABOR MARKET AREA

Area	Current				Future
	Total Male	Unemployed	Under-employed	Not in Labor Force	Becoming 18 years of age 1988 thru 1992
Labor Market Area*	5,510	3,078	2,432	0	4,737
Washington	508	266	242	0	423
Anderson	454	239	215	0	551
Boyle	1,122	558	564	0	1,083
Marion	1,169	743	426	0	747
Mercer	769	422	347	0	744
Nelson	1,488	850	638	0	1,189

ESTIMATED FEMALE LABOR SUPPLY
SPRINGFIELD LABOR MARKET AREA

Area	Current				Future
	Total Female	Unemployed	Under-employed	Not in Labor Force	Becoming 18 years of age 1988 thru 1992
Labor Market Area*	7,120	2,538	2,567	2,015	4,642
Washington	667	298	253	116	424
Anderson	680	274	355	51	538
Boyle	1,208	542	613	53	992
Marion	1,153	359	268	526	758
Mercer	1,709	318	439	952	730
Nelson	1,703	747	639	317	1,200

* Additional workers may be drawn from other nearby counties.

Note: Unemployed - persons unemployed and actively seeking work; Underemployed - persons employed but working only 14 to 26 weeks per year; Not in Labor Force - represents the number of persons who would enter the labor force if suitable employment were available (based on the assumption that persons in Kentucky would like to participate in the labor force in the same proportion that they do nationally).

Sources: Kentucky Cabinet for Human Resources, Kentucky Labor Supply Estimates by County, 1986. Kentucky Department of Economic Development, Future Labor Supply Becoming 18 Years of Age, 1988 thru 1992.

AVERAGE WEEKLY WAGES BY INDUSTRY
BY PLACE OF WORK, 1986

	Washington County	Anderson County	Boyle County
All Industries	\$236.51	\$301.71	\$318.77
Mining & Quarrying	316.61	*	616.59
Contract Construction	288.24	247.85	269.71
Manufacturing	301.59	407.09	427.20
Transportation, Communications & Public Utilities	184.75	433.23	427.69
Wholesale & Retail Trade	174.35	217.99	219.73
Finance, Insurance & Real Estate	301.32	315.05	330.56
Services	152.97	175.45	262.68
State/Local Government	234.00	264.84	306.42
Other	165.90	225.97	244.00
	Marion County	Mercer County	Nelson County
All Industries	\$241.18	\$284.73	\$283.20
Mining & Quarrying	*	0	377.35
Contract Construction	181.45	298.81	349.24
Manufacturing	297.60	392.71	376.36
Transportation, Communications & Public Utilities	263.48	442.29	412.95
Wholesale & Retail Trade	175.86	166.29	176.23
Finance, Insurance & Real Estate	261.63	291.10	263.30
Services	240.52	189.50	173.71
State/Local Government	261.19	285.22	292.44
Other	187.60	196.75	206.24

* Not disclosed.

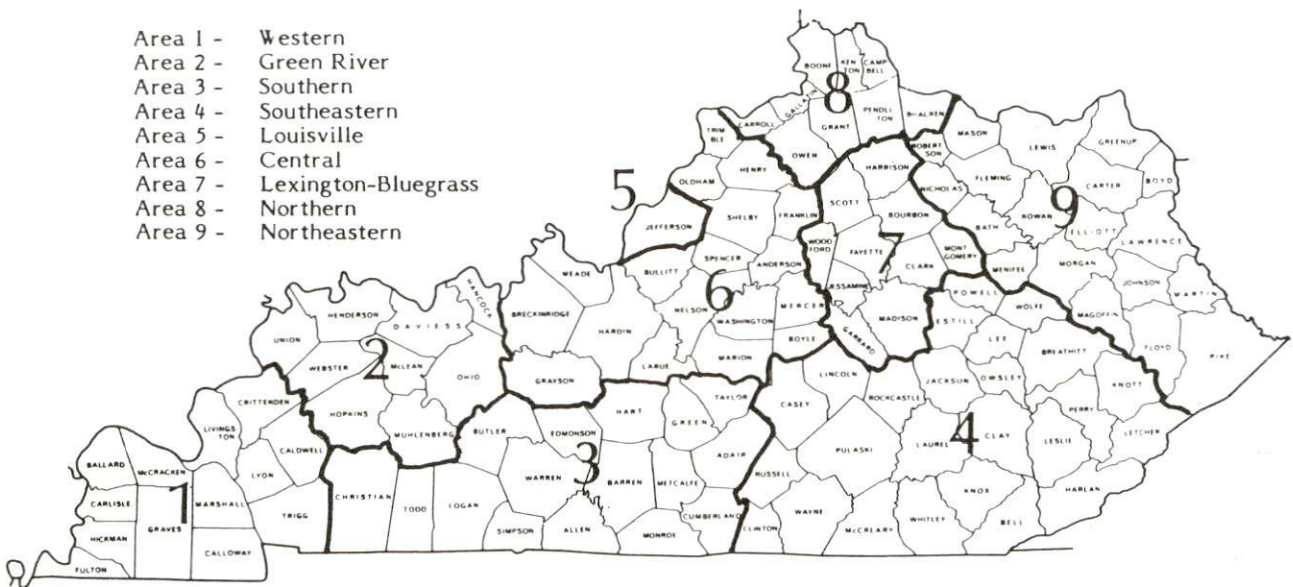
Note: The average weekly wage for each category includes the salaries and wages of all persons working for that type business. For example, the manufacturing category includes both production workers and administrative personnel. Excludes domestic workers, railway workers, certain nonprofit corporations, majority of federal government workers, and self-employed workers.

Source: Kentucky Cabinet for Human Resources, Average Weekly Wages of Workers Covered by Kentucky Unemployment Insurance Law, 1986.

Occupational wage rates for specific industries are usually not available to most government agencies, and wage data furnished to state employment agencies by individual industrial employers are protected from disclosure by federal law. The most reliable up-to-date wage information can be obtained by direct contact with local employers.

Associated Industries of Kentucky, a voluntary organization of Kentucky businesses, regularly collects occupational wage rates and fringe benefits data from participating member firms. Data are compiled for over 127 clearly defined office, production, and service occupations. Tabulations are published for nine geographical areas of Kentucky, as shown on the map below. It should be noted that the data may be weighted by the preponderance of firms in the larger cities and may be somewhat higher than the rates paid in the smaller communities. Data from these tabulations are available, upon request, from the Kentucky Department of Economic Development, Frankfort, Kentucky 40601.

- Area 1 - Western
- Area 2 - Green River
- Area 3 - Southern
- Area 4 - Southeastern
- Area 5 - Louisville
- Area 6 - Central
- Area 7 - Lexington-Bluegrass
- Area 8 - Northern
- Area 9 - Northeastern



Associated Industries of Kentucky Area Wage Surveys

EXISTING INDUSTRY

SPRINGFIELD MANUFACTURING FIRMS,
THEIR PRODUCTS AND EMPLOYMENT

Firm (Establishment date)	Product	Average Employment			Labor Unions
		Total	Male	Female	
All Weather Insulation Company, Inc. (1978)	Cellulose insulation, fiberglas insulation, mulch	14	13	1	
Armour Food Company (1928)	Butter, cheese, dried milk products	130	-	-	Teamsters*
Barber Cabinet Company, Inc. (1948)	Kitchen cabinets, vanities	38	33	5	
H & W Industries, Inc. (1968)	Construction & industrial plastic pipe	107	104	3	Electronic Workers, IUE*
Ken-Mar Tool, Inc. (1976)	Machine shop, service industry machines, sheet metal fabrication	30	29	1	
Montgomery Feed & Farm Service (1918)	Feed	5	4	1	
Nally & Gibson Concrete Company (1970)	Ready-mixed concrete	5	5	0	
Shelburne Industries (1987)	Jeans & casual slacks	40	-	-	
Springfield Redrying Corporation (1961)	Tobacco processing	215	125	90	

(Continued)

<u>Firm</u> <u>(Establishment date)</u>	<u>Product</u>	<u>Average Employment</u>			<u>Labor</u> <u>Unions</u>
		<u>Total</u>	<u>Male</u>	<u>Female</u>	
The Springfield Sun (1916)	Newspaper, job printing	10	3	7	
Wheaton Plastic Company (1977)	Blow molding containers	83	39	44	Paper- workers*

* See Labor Organizations below.

Sources: Kentucky Department of Economic Development, 1988 Kentucky Directory of Manufacturers; Division of Research and Planning.

LABOR ORGANIZATIONS IN MANUFACTURING FIRMS

<u>Union</u>	<u>Representing workers at:</u>
International Brotherhood of Teamsters, Chauffeurs, Warehousemen and Helpers of America	Armour Food Company
International Union of Electronic, Technical, Salaried and Machine Workers, AFL-CIO	H & W Industries, Inc.
United Paperworkers International Union, AFL-CIO	Wheaton Plastic Company

SELECTED INDUSTRIAL SERVICES

<u>Types of Service</u>	<u>Location</u>	<u>Mileage from Springfield</u>
Custom Data Processing	Danville	27
Custom Plastics Producers	Springfield	-
Electric Motor Repair	Lebanon	8
Grinding, Precision & Tool	Lexington	54
	Louisville	58
Heat Treating Facilities	Frankfort	51
	Lexington	54
	Louisville	58
Industrial Equipment & Supplies	Springfield	-
Industrial Gases	Campbellsville	28
Industrial Waste Removal	Elizabethtown	43
Machine Shops, Tool & Die	Springfield	-
Metal Castings	Louisville	58
Metal Finishers	Elizabethtown	43
Metal Service Centers	Lexington	54
	Louisville	58
Millwrights	Wilmore	52
Public Warehouse Facilities	Lexington	54
	Louisville	58

Sources: Kentucky Department of Economic Development, Kentucky Directory of Selected Industrial Services, 1987; Division of Research and Planning.

TRANSPORTATION

Rail

The nearest rail service is provided by the CSX Corporation at Lebanon, Kentucky, 8 miles south of Springfield.

For details on routing, schedules, rates, and services contact:

Manager
Industrial Development
CSX Transportation
908 West Broadway
P. O. Box 2157
Louisville, Kentucky 40201
(502) 587-7746

Highways

U.S. Highway 150 and Kentucky Routes 55 and 555 meet at Springfield. U.S. 150 is rated as a "AAA" (80,000-pound gross load limit) trucking highway, as is Kentucky 555, which serves as a bypass around the city.

Kentucky Route 55 at Springfield is rated "AAA" from its intersection with Bypass 555 south to Lebanon, a distance of nine miles. Kentucky 55 north of Springfield is rated "AA" (62,000-pound gross load limit).

The Blue Grass Parkway, located 16 miles north of Springfield via Kentucky 555, traverses central Kentucky and provides access to the interstate highway system at Lexington, 54 miles east of Springfield, and at Elizabethtown, 43 miles west of Springfield.

Truck Service

Averitt Express, Inc.*
Consolidated Freightways
Corporation of Delaware*
Jones Truck Lines, Inc.*
Lawrenceburg Transfer Company,
Inc.**

Manning Motor Express, Inc.*
Overnite Transportation Company*
Roadway Express, Inc.*
Smith's Transfer Corporation*
Yellow Freight System, Inc.*

* Interstate and intrastate service.

** Interstate service only.

Source: American Motor Carrier Directory, Fall 1987.

HIGHWAY MILES AND TRUCK TRANSIT TIME IN DAYS FROM
SPRINGFIELD, KENTUCKY, TO SELECTED MARKET CENTERS

City	Highway Miles	Delivery		City	Highway Miles	Delivery Time TL
		Time TL				
Atlanta, GA	374	2		Los Angeles, CA	2,166	5
Baltimore MD	595	2		Louisville, KY	58	1
Birmingham, AL	367	2		Nashville, TN	171	1
Chicago, IL	350	2		New Orleans, LA	688	3
Cincinnati, OH	132	1		New York, NY	757	N/A
Cleveland, OH	371	1		Pittsburgh, PA	397	1
Detroit, MI	391	2		St. Louis, MO	321	1
Knoxville, TN	181	2				

Note: Mileage computations are via the best interstate or primary highways, not necessarily the most direct route of travel.

Sources: Rand McNally Deluxe Motor Carriers' Road Atlas, 1987. Official Kentucky Mileage Map, 1980. Delivery time - Overnite Transportation Company, P. O. Box 99308, Louisville, Kentucky 40299.

Air

Local

Location: Arnold Airport
 3 miles southeast of Springfield
 Runways: 2 turf
 Length: 2,100 feet; 2,250 feet
 Traffic
 Control: Wind sock and wind tee
 Services: 100 octane, general flying, hangar, tie-downs

(Continued)

Location: Lebanon-Springfield Airport
 4 miles south of Springfield
 Runways: 1 paved
 Length: 4,000 feet
 Traffic
 Control: Wind sock, Unicom, instrument approach
 Lighting: Sunset to sunrise
 Services: 80 and 100 octane fuel; major and minor repairs;
 hangars and tie-downs; flight instruction; plane
 rental; courtesy car

Nearest Scheduled Commercial Airline Service

Location: Bluegrass Airport
 4 miles west of Lexington, Kentucky;
 49 miles northeast of Springfield
 Runways: 2 paved
 Length: 7,000 feet; 3,500 feet
 Traffic
 Control: Control tower
 Lighting: Approach lighting system, beacon, runways and
 obstructions lighted, VASI
 Services: Delta, Piedmont, USAir, Allegheny Commuter, TWA,
 Jetstream United Express, Eastern Metro, Comair,
 American Eagle; fuel - 100LL and jet-A; hangars,
 tie-downs; major A & P repairs; major Avionics
 repairs; APU, charter, flight instruction, oxygen,
 plane rentals, survival equipment; taxi,
 limousine, car rentals, courtesy car, weather
 information; restaurant, snack bar
 Air Freight
 Service: Air freight terminal

Location: Standiford Field
 4 miles southeast of center of Louisville, Kentucky;
 53 miles northwest of Springfield
 Runways: 2 paved
 Length: 10,000 feet; 7,250 feet
 Traffic
 Control: Control Tower
 Lighting: Runways, obstructions, beacon and approach; touch-
 down lights and center line on one runway
 Services: American Airlines, Delta, Eastern, Piedmont,
 Northwest, TWA, United, USAir, Jetstream,
 Allegheny Commuter, Comair, Braniff; fuel - 100
 and jet-A; major A & P repairs, major Avionics
 repairs, APU, charter, oxygen, U.S. Customs; taxi,
 car rentals, limousine, courtesy car, public
 transit; Weather Bureau, restaurant, snack bar,
 gift shop, USO, bank
 Air Freight
 Service: Air freight terminal

Water

The Louisville and Jefferson County Riverport Authority is located near Louisville, 58 miles north of Springfield on the Ohio River. The riverport has been designated as a Foreign Trade Zone, and offers complete U.S. Customs services for exports and imports. The Port of Louisville, a privately-owned riverport facility, is also available at Louisville.

POWER AND FUEL

Electricity

Company serving Springfield and portions of Washington County - Kentucky
Utilities Company
Source of power - Kentucky Utilities Company
For industrial rates contact:

Industrial Development Department
Kentucky Utilities Company
One Quality Street
Lexington, Kentucky 40507
(606) 255-1461

Company serving a major portion of Washington County - Salt River Rural
Electric Cooperative Corporation
Source of power - East Kentucky Power Cooperative

Company serving northeastern border of Washington County - Fox Creek
Rural Electric Cooperative Corporation
Source of power - East Kentucky Power Cooperative

Company serving southeastern border of Washington County - Inter-County
Rural Electric Cooperative Corporation
Source of power - East Kentucky Power Cooperative
For industrial rates contact:

Industrial Development Division
East Kentucky Power Cooperative
P. O. Box 707
Winchester, Kentucky 40391
(606) 744-4812

Natural Gas

Company serving Springfield - Western Kentucky Gas Company
Source of supply - Tennessee Gas Transmission
Size of transmission mains - 30 inches (supplier); 4 inches (distributor)
Distribution mains - 2 to 6 inches
Distribution pressure - Up to 40 psi
Btu content - 1,000 per cubic foot
Specific gravity - 0.60
For rates and supplies contact:

Western Kentucky Gas Company
311 West Seventh Street
P. O. Box 866
Owensboro, Kentucky 42302
(502) 685-8067

Other Fuels (Within 20 miles)

Propane

Amerigas Propane Service
Depot Street
New Haven, Kentucky 40051

Coleman Gas Service Company
1106 North Third Street
Bardstown, Kentucky 40004

Big 3 Gas
334 West Main Street
Springfield, Kentucky 40069

Hughes Gas Service
550 West Main Street
Lebanon, Kentucky 40033

Fuel oils

Distillate fuel oil -

Ball Brothers Oil Company
Campbellsville Road
Route 2, Box 22
Lebanon, Kentucky 40033

Newcomb Oil Company
1360 John Rowan Boulevard
P. O. Box 390
Bardstown, Kentucky 40004

Haydon Oil Company
334 West Main Street
Springfield, Kentucky 40069

Residual fuel oil - Arrangements must be made with the refinery.

Low sulphur content coal - Available in Kentucky.

WATER AND SEWERAGE

Public Water Supply

Company serving Springfield - Springfield Water and Sewer Commission*
P. O. Box 307
Springfield, Kentucky 40069
(606) 336-3586

Source - 2 reservoirs
Treatment plant capacity - 1,000,000 gallons per day
Average daily consumption - 600,000 gallons
Peak daily consumption - 800,000 gallons
Treatment processes - Rapid mix, coagulation, flocculation, sedimentation,
filtration, chlorination, fluoridation
Storage capacity - 850,000 gallons (including clear well)
Size lines - 10, 8, 6, and 4 inches
Water pressure - 75 psi to 100 psi

MONTHLY WATER RATES

Inside City

First	1,500 gallons	\$6.30 (Minimum)
Next	3,500 gallons	1.80 per M gallons
Next	5,000 gallons	1.38 per M gallons
Next	15,000 gallons	1.14 per M gallons
All over	25,000 gallons	1.02 per M gallons

Tap-on fee: \$200.00

County Rate

First	1,500 gallons	\$9.75 (Minimum)
Next	2,000 gallons	5.50 per M gallons
Next	2,000 gallons	3.25 per M gallons
Next	2,000 gallons	1.90 per M gallons
All over	7,500 gallons	1.80 per M gallons

Tap-on fee: \$350.00

* The Springfield Water and Sewer Commission has recently completed construction of new water distribution lines to the Willisburg and Mackville areas of Washington County, and a new raw water transmission line from Willisburg Lake. A new 150,000-gallon elevated storage tank was also added. A plan to expand the water treatment plant to 1.5 million gallons per day is currently under study. Construction is scheduled to begin in 1988.

Sewerage

Company serving Springfield - Springfield Water and Sewer Commission*
P. O. Box 307
Springfield, Kentucky 40069
(606) 336-3586

Design capacity - 500,000 gallons per day

Average daily flow - 300,000 gallons

Type of treatment - Primary and secondary

Treatment processes - Screening, grit removal, oxidation ditch,
chlorination, aerobic digester, drying beds, dechlorination

Treated effluent discharged into - Road Run Creek

Size of sanitary mains - 6 to 18 inches

Size of storm mains - N/A

Monthly rates -

First	1,500 gallons	\$5.10 (Minimum)
Next	3,500 gallons	2.35 per M gallons
Next	5,000 gallons	2.15 per M gallons
Next	15,000 gallons	2.00 per M gallons
All over	25,000 gallons	1.75 per M gallons

The following surcharge rates shall apply to each user of the sewage treatment system that contributes excessive strength sewage:

BOD -	\$0.17 per lb.
SS -	\$0.17 per lb.
NH ₃ -	\$0.66 per lb.

* The Springfield sewerage system was recently renovated to provide an improved total treatment capacity of 500,000 gallons per day, using an oxidation ditch system. Cost of this project was approximately \$4 million.

CLIMATE

Washington County

Temperature

Normal (30-year record)	54.90 degrees
Average annual 1986	54.40 degrees
Record highest, August 1983 (42-year record)	103.00 degrees
Record lowest, January 1963 (42-year record)	-21.00 degrees
Normal heating degree days (30-year record) (Heating degree day totals are the sums of negative departures of average daily temperatures from 65 degrees F.)	4,814

Precipitation

Normal (30-year record)	45.68 inches
Mean annual snowfall (30-year record)	16.40 inches
Total precipitation 1986	34.86 inches
Mean number days precipitation (.01 inch or more) (42-year record)	130.30
Mean number days thunderstorms (42-year record)	45.60

Prevailing winds (through 1963)

South

Relative Humidity

1 a.m.	77 percent (22-year record)
7 a.m.	82 percent (23-year record)
1 p.m.	60 percent (23-year record)
7 p.m.	64 percent (23-year record)

Source: U.S. Department of Commerce, Environmental Science Services Administration, Climatological Data, 1986. Station of record: Lexington, Kentucky.

LOCAL GOVERNMENT

Structure

Springfield is served by a mayor and six council members. The mayor is elected to a four-year term and the council members serve two-year terms. Washington County is served by a county judge/executive and six magistrates elected to four-year terms.

Planning and Zoning

City agency - Springfield Independent Planning Commission

Zoning enforced - Within city limits

Subdivision regulations enforced - Within corporate limits of Springfield

Mandatory state codes enforced - Kentucky Plumbing code, National Electric Code, Kentucky Boiler Regulations and Standards, Kentucky Building Code (modeled after BOCA code)

Local Fees and Licenses

The city of Springfield levies a one percent occupational license tax on wages, salaries, and commissions of individuals and on net profits of businesses. The city also levies a twenty-five dollar business regulatory license fee and an annual \$50 unloading license fee.

A 3 percent tax is levied on utilities receipts for schools in Washington County. Tax is paid by all consumers of utilities as an add-on to the utilities bills. Exempted are receipts from utilities services that are resold and the receipts from the sale of energy or energy producing fuels that exceed 3 percent of the cost of production in manufacturing, processing, mining or refining.

State and Local Property Taxes

All property in Kentucky, except items exempted by the state constitution, is taxed by the state. Property which also may be taxed by local jurisdictions includes land and buildings, finished goods inventories, automobiles, trucks, office furniture and office equipment. Local taxing jurisdictions in Kentucky include counties, cities, and school districts.

All property in Kentucky is assessed at 100 percent of fair cash value.

COMBINED STATE AND LOCAL RATES PER \$100 VALUATION, 1987

	Site Inside City of Springfield	Site Inside Unincorporated Washington County
Land and Buildings	\$0.6795	\$0.5315
Manufacturing		
Machinery	0.150	0.150
Pollution Control		
Equipment	0.150	0.150
Inventories		
Raw materials	0.001	0.001
Goods in Process	0.001	0.001
Finished Goods	0.4665	0.3185
Automobiles & Trucks	0.904	0.756
Other Tangible		
Personal Property	0.9155	0.7675
Intangibles (Accounts receivable*, money in hand, stock, notes, bonds)	0.250	0.250
Goods Stored in Public Warehouses in Transit Status	0.001	0.001
Private Leaseholds in Industrial Revenue Bond Financed Facilities	0.015	0.015

* Accounts receivable are taxed at 85 percent of face value, for an effective rate of \$0.2125 per \$100 valuation.

Safety

Police	Springfield	Washington County
Total staff	9 full-time	4 full-time
	3 part-time	3 part-time
Radio-patrol cars	2	3
Fire*		
Insurance Services Office, Public Protection Classification	6	**
Full-time staff	-	1
Volunteers	26	60
Rescue Service		

The Washington County Ambulance Service provides rescue to residents of Washington County.

Refuse Collection and Disposal

Refuse collection and disposal is furnished to residents of Springfield and Washington County by city and county government.

* Includes copyrighted material of ISO Commercial Risk Services, Inc., with its permission.

** Fire protection in Washington County is provided by volunteer fire departments in Springfield, Loretto, Mackville, and Willisburg. Areas of Washington County within 5 road miles of a responding fire station have a fire insurance rating of 9. All other areas of unincorporated Washington County have a fire insurance rating of 10.

EDUCATION

Public Schools

	Washington County*
Total Enrollment (Fall, 1987)	1,819
Kindergarten	132
Elementary	1,102
High School	575
 Pupil-Teacher Ratio (1985-86)	 18-6
 Percent High School Graduates to College (1985-86)	 37.8
 Expenditures Per Pupil (1985-86)	 \$2,003.86

Nonpublic Schools

<u>School</u>	<u>Enrollment</u>	<u>Grades</u>
St. Dominic	238	1-8

* The Washington County School District recently constructed a gymnasium and a kitchen facility at the Washington County Elementary School. Cost of this project totaled \$850,000.

Area Colleges and Universities

<u>Name</u>	<u>Location (Miles distant)</u>	<u>Enrollment (Fall, 1986)</u>	<u>Highest Degree Conferred</u>
Saint Catharine College	Springfield	280	Associate
Centre College	Danville (27)	814	Baccalaureate
Campbellsville College	Campbellsville (28)	613	Baccalaureate
Asbury College	Wilmore (42)	939	Baccalaureate
Elizabethtown Community College	Elizabethtown (43)	2,091	Associate
Lindsey Wilson College	Columbia (47)	884	Baccalaureate
Kentucky State University	Frankfort (51)	2,205	Masters
Lexington Community College	Lexington (54)	2,587	Associate
Transylvania University	Lexington (54)	970	Baccalaureate*
University of Kentucky	Lexington (54)	20,788	Doctorate, M.D., D.M.D., J.D.
Midway College	Midway (55)	340	Associate
Bellarmino College	Louisville (58)	2,644	Masters
Jefferson Community College	Louisville (58)	6,996	Associate
Spalding University	Louisville (58)	1,154	Doctorate
University of Louisville	Louisville (58)	20,217	Doctorate, M.D., D.M.D., J.D.

* Courses in a masters degree program are taught on the Transylvania campus by faculty members of Xavier University of Cincinnati. The degree is issued by Xavier University.

St. Catharine College

St. Catharine College, located 3 miles west of Springfield on U.S. Highway 150, is an independent, two-year, co-educational college founded in 1931 by the Dominican Sisters of Kentucky. St. Catharine is committed to providing a solid liberal arts education in a religious context and emphasizes the spiritual, ethical, intellectual, and social development of each student. The College's low student-faculty ratio allows students a maximum of individual attention both inside and outside the classroom.

St. Catharine College offers accredited programs in science, business, agribusiness, agriculture, horticulture, and the liberal arts, and confers the Associate in Arts, Associate in Science, and Associate in Applied Science degrees. Approximately 70 percent of the college's graduates go on to pursue baccalaureate and advanced degrees at four-year institutions.

Many events and cultural activities are open to the community. Regular events at St. Catharine college include choral concerts, art exhibits, performances by Kentucky Opera of Louisville, the annual Peace with Justice Week programs, various professional seminars and continuing education classes. Weekend enrichment classes for talented elementary school students are also provided each semester.

Recent improvements at St. Catharine College include the following: a greenhouse for the new horticulture program; a new agribusiness program; and a new one-year certificate program in office occupations. Also, air-conditioning has been installed in Lourdes Hall classrooms and administrative offices.

Vocational Training

The Bluegrass State Skills Corporation, an independent public corporation created and funded by the Kentucky General Assembly, provides programs of skills training to meet the needs of business and industry from entry level to advanced training, and from upgrading present employees to retraining experienced workers.

The Bluegrass State Skills Corporation is the primary source for skills training assistance for a new or existing company. The Corporation works in partnership with other employment and job training resources and programs, as well as Kentucky's economic development activities, to package a program customized to meet the specific needs of a company.

Vocational training is available at both the state vocational-technical schools and the area vocational education centers. The state vocational-technical schools are post-secondary institutions. The area vocational education centers are designed to supplement the curriculum of high school students. Both the state vocational-technical schools and the area vocational education centers offer evening courses to enable working adults to upgrade current job skills.

Arrangements can be made to provide training in the specific production skills required by an industrial plant. Instruction may be conducted either in the vocational school or in the industrial plant, depending upon the desired arrangement and the availability of special equipment.

(Continued)

Nearest State School

Elizabethtown State Vocational-Technical School
Elizabethtown, 43 miles distant

Agriculture	Electricity
Agricultural Mechanics	Electronics
Business & Office	Industrial Machine Maintenance
Accounting/Management	Machine Shop
Clerical	Plumbing
Secretarial	Radio & TV Repair
Word Processing	Welding
Consumer & Home Economics	Public Service Occupations
Commercial Foods	Business/Industry Security
Consumer & Family Life	Training
Skills	CPR Training
Industrial Education	Electrical Safety Training
Air Conditioning	Emergency Medical Care
Appliance Repair	Fire Service Training
Auto Mechanics	First Aid & Safety
Carpentry	Rescue & Emergency Services
Diesel Mechanics	Training
Drafting (with CAD/CAM)	

Nearest Area Education Center

Marion County Area Vocational Education Center
Lebanon, 8 miles distant

Business & Office	Industrial Education
Clerical	Aircraft Mechanics
Secretarial	Auto Body Repair
Health & Personal Services	Auto Mechanics
Occupations	Carpentry
Health Services	Welding

HEALTH

Local Medical Personnel

Physicians - 7
Dentists - 4
Optometrists - 2

Hospitals

<u>General Hospital</u>	<u>Location</u>	<u>Beds</u>
Spring View Hospital	Lebanon (8 miles south of Springfield)	75

Medical staff - 13 physicians, 31 registered nurses, and 14 licensed practical nurses

Other Medical Facilities

Washington County Health Department (a public health facility)

Ambulance Service

Name - Washington County Ambulance Service
Staff - 3 full-time, 15 volunteers (all are emergency medical technicians)

OTHER LOCAL FACILITIES

Communications

Telephone - Telegraph -	South Central Bell Telephone Company Western Union Toll-Free number, 1-800-325-6000
Newspapers - Weekly and circulation -	Springfield Sun 4,200
Radio -	WLBN-AM; WLSK-FM
Television - Airwave reception from -	Lexington, Louisville, Campbellsville, and Danville, Kentucky 26 cable channels are available
Cable service - Educational Television -	The Kentucky Educational Television (K.E.T.) network is available statewide

Library Services

Public library - Washington County Public Library
Size collection - 31,277 volumes
Circulation, 1986-87 - 47,678

College library - St. Catharine College Media Center
Size collection - 19,000 books; 2,500 volumes of periodicals

Religious Institutions

Denominations -	AME Zion Baptist Catholic Christian Church of Christ Church of God Church of God of America	Church of God of Prophecy Jehovah's Witnesses Methodist Pentecostal Presbyterian United Methodist
Nearest Synagogues -	Lexington, 54 miles northeast	Louisville, 57 miles northwest
Congregations -	Adath Israel (reform) Ohavey Zion (traditional)	Adath Israel Brith Sholom (reform) Adath Jeshurum (con- servative) Anshei Sfard (orthodox) Keneseth Israel (orthodox) Sholom (reform)

Financial Institutions

<u>Banks</u>	<u>Assets</u>	<u>Deposits</u>	<u>Statement Date</u>
First & People's Bank	\$39,788,443	\$32,860,116	6/30/87
Springfield State Bank	72,367,739	65,580,086	6/30/87

<u>Savings and Loan Associations</u>	<u>Assets</u>	<u>Deposits</u>	<u>Statement Date</u>
Great Financial Federal*	\$1,031,693,484	\$879,6878,059	12/30/86

Hotels and Motels

Total number - 2
Total rooms - 21

* Figures are totals for main office in Louisville, and branch offices in Danville, Henderson, Lexington, Liberty, Louisville, Owensboro, Shelbyville and Springfield.

RECREATION

Local

A wide range of public recreational facilities and events are available at Springfield. The city maintains two excellent parks - Idle Hour Park and Springfield Swimming Pool Park. Idle Hour Park features 4 tennis courts; 2 baseball diamonds; a softball diamond; basketball, volleyball, croquet, and shuffleboard courts; horseshoe pits; a tot lot; and a picnic area with three shelters and a concession stand. Features at Springfield Swimming Pool Park include the community pool; basketball courts; a playground; and a picnic area. Three additional tennis courts are located on the grounds of the Washington County schools.

The Washington County Sorghum Festival is Springfield's largest recreational event. Held annually on the first weekend of October, the festival honors Washington County's sorghum producers and offers a variety of activities for the entire family. The festival includes a fireworks display, a hot air balloon race, contests, entertainment, booths, arts and crafts, a parade, an antique car show, and preparation and serving of a 10-foot pizza and a 10-foot biscuit with sorghum and butter.

Many events at St. Catharine College are open to the public. These include concerts, art exhibits, annual performances by the Actors Theatre of Louisville, various professional seminars, and the annual Hofstetter Peace with Justice Lecture.

Lincoln Homestead State Park, 5 miles north of Springfield near Springfield, is a 153-acre park on land settled by Abraham Lincoln's family. The actual building in which Nancy Hanks, mother of President Lincoln, lived during her courtship with Thomas Lincoln is preserved here as well as a replica of the 1782 cabin where Thomas Lincoln lived as a boy. The park also has a museum, a gift shop, a picnic area, and an 18-hole championship golf course.

Willisburg Lake, an attractive fishing and boating lake of about 160 acres, is located 10 miles north of Springfield on Kentucky Route 555. Facilities for boat rentals and trailer camping are available.

Area (Within 45 miles)

Perryville Battlefield State Shrine, 14 miles east of Springfield near Perryville, is the site of the largest Civil War battle in Kentucky. A museum, a gift shop, a picnic area, and a playground are located on the grounds.

My Old Kentucky Home State Park, 17 miles northeast of Springfield in Bardstown, portrays an image of the South's gentle and leisurely home life before the Civil War. The restored Georgian Colonial mansion is where composer Stephen Foster visited and where he was inspired to write "My Old Kentucky Home." One of the nation's most successful outdoor dramas, "The Stephen Foster Story", is presented in the park's amphitheatre during the summer months. The park also offers a 40-site campground, a gift shop, a 9-hole golf course and pro shop, a picnic area, and planned recreation.

Constitution Square State Shrine, 27 miles east of Springfield in Danville, is a reproduction of Kentucky's first courthouse square, including the original 1792 post office which was the first in the west.

Old Fort Harrod State Park, 27 miles east of Springfield, is a 28-acre park in Harrodsburg that features a full-scale reproduction of the original Fort Harrod. The park also contains the log cabin where Abraham Lincoln's parents were wed, the Mansion Museum which houses mementos associated with the great periods of Kentucky history, a pioneer cemetery, and a federal monument dedicated to pioneers. The "Legend of Daniel Boone" and "Lincoln" are two excellent outdoor dramas which are performed at the Old Fort Amphitheater during the summer months.

Green River Lake State Park near Campbellsville, 31 miles south of Springfield, is made up of 1,300 acres surrounding an 8,200-acre lake. The park is open all year-round and offers 156 campsites, a service building, playground, planned recreation, beaches, boat docks, fishing, and a picnic area.

Bernheim Forest Arboretum and Nature Center, located 32 miles northeast of Springfield, is a privately endowed 10,000-acre forest and wildlife refuge. The area contains over 1,400 labeled varieties of plants, trees and shrubs; ornamental gardens; a museum; nature trails and waterfowl ponds.

Isaac Shelby State Shrine, 32 miles east of Springfield near Danville, is the burial site of Kentucky's first governor and one of the Commonwealth's foremost statesmen.

Pleasant Hill, a restored Shaker Village located 34 miles east of Springfield, is a National Historic Landmark. Over 20 buildings and grounds have been restored to display unique Shaker skills in furniture making, crafts, and architecture. Dining rooms, lodging, craft shops, and seasonal festivals and plays are offered.

Taylorsville Lake State Park, 34 miles north of Springfield near Taylorsville, was developed by the U.S. Army Corps of Engineers. The 3,050-acre lake and 10,700-acre recreation area features full-service marina facilities, fishing, boating, swimming, and wildlife recreation.

Herrington Lake, 40 miles east of Springfield near Danville and Harrodsburg, was developed by the Kentucky Utilities Company in 1925. Dix River Dam near Pleasant Hill is located on the 3,600-acre lake. Fishing, boating, and swimming can all be enjoyed on the lake. Camping and fishing facilities are available near Danville and Harrodsburg.

Abraham Lincoln Birthplace National Historic Site, located 45 miles southwest of Springfield near Hodgenville, features the log cabin which was the birthplace of Abraham Lincoln, enclosed within a granite memorial shrine. The grounds include 116 acres of the original Thomas Lincoln farm and a visitors' center with audiovisual programs and exhibits on the Lincoln family.

COMMUNITY IMPROVEMENTS

Recent

The following manufacturing firms recently expanded or have announced plans to expand: All-Weather Insulation Company, Inc.; H & W Industries; Ken-Mar Tool, Inc.; Springfield Redrying Corporation; Armour Food Company; and Wheaton Plastic Company. These plant expansions represent an investment of approximately \$6 million and 135 additional workers.

The Shelburne Garment Company recently located in Springfield and employs 40 workers. Armour Food Company recently opened a new satellite facility in Springfield which employs 14 workers.

The Springfield Water and Sewer Commission has recently completed construction of new water distribution lines to the Willisburg and Mackville areas of Washington County, and a new raw water transmission line from Willisburg Lake. A new 150,000-gallon elevated storage tank was also added.

The Springfield sewerage system was recently renovated to provide an improved total treatment capacity of 500,000 gallons per day, using an oxidation ditch system. Cost of this project was approximately \$4 million.

A \$600,000 downtown renovation project was recently completed which included reconstruction of Main Street, new sidewalks, antique lamp posts, flower beds, trees, and handicap ramps.

Lincoln Heritage Plaza, a multimillion-dollar shopping center, was recently completed.

The Washington County School District recently constructed a gymnasium and a kitchen facility at the Washington County Elementary School. Cost of this project totaled \$850,000.

Planned

A plan to expand the water treatment plant to 1.5 million gallons per day is currently under study. Construction is scheduled to begin in 1988.