

1975

Industrial Resources: Wayne County - Monticello

Kentucky Library Research Collections
Western Kentucky University, spcol@wku.edu

Follow this and additional works at: https://digitalcommons.wku.edu/wayne_cty



Part of the [Business Administration, Management, and Operations Commons](#), [Growth and Development Commons](#), and the [Infrastructure Commons](#)

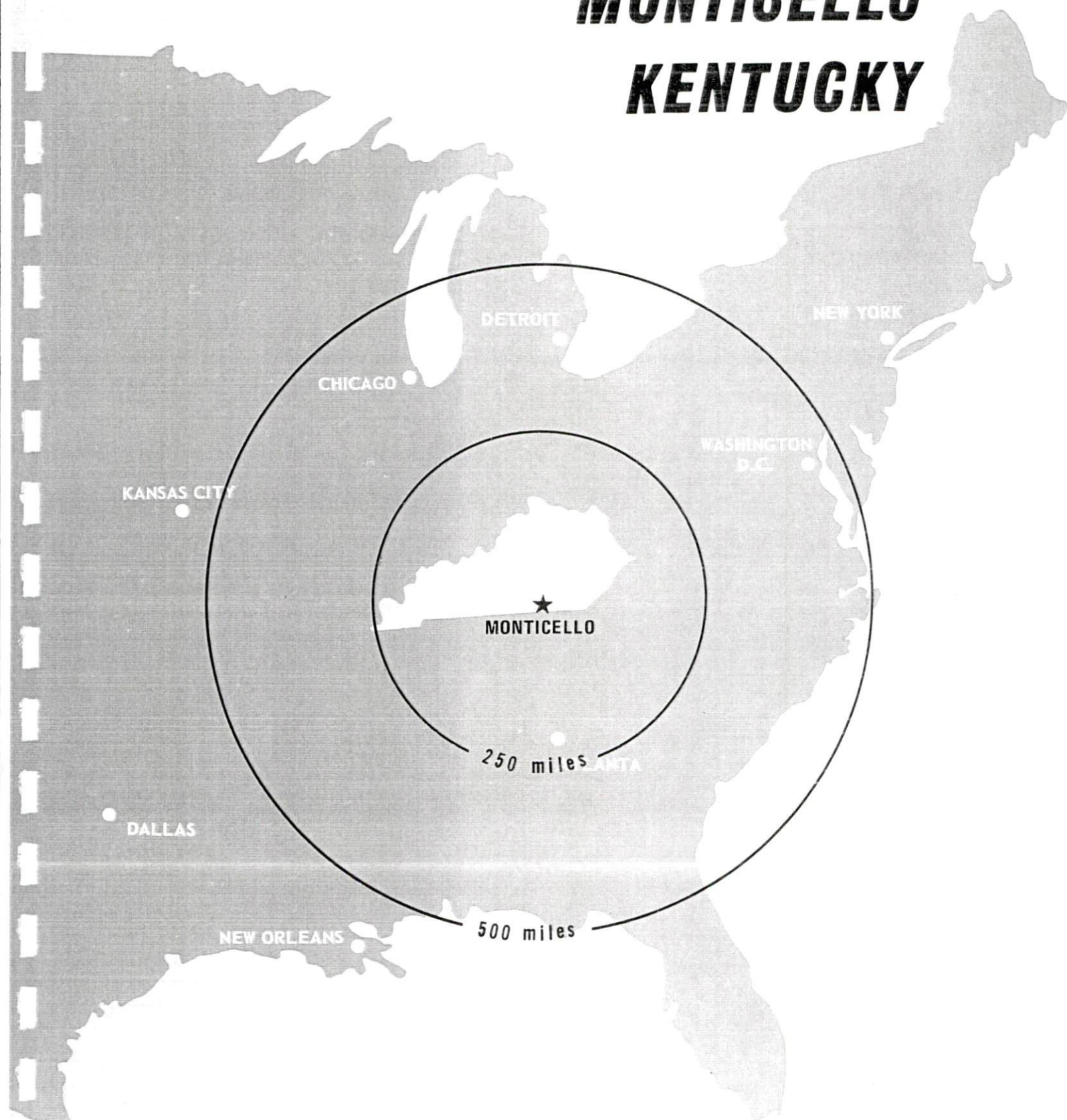
Recommended Citation

Kentucky Library Research Collections, "Industrial Resources: Wayne County - Monticello" (1975). *Wayne County*. Paper 8.
https://digitalcommons.wku.edu/wayne_cty/8

This Report is brought to you for free and open access by TopSCHOLAR®. It has been accepted for inclusion in Wayne County by an authorized administrator of TopSCHOLAR®. For more information, please contact topscholar@wku.edu.

INDUSTRIAL RESOURCES

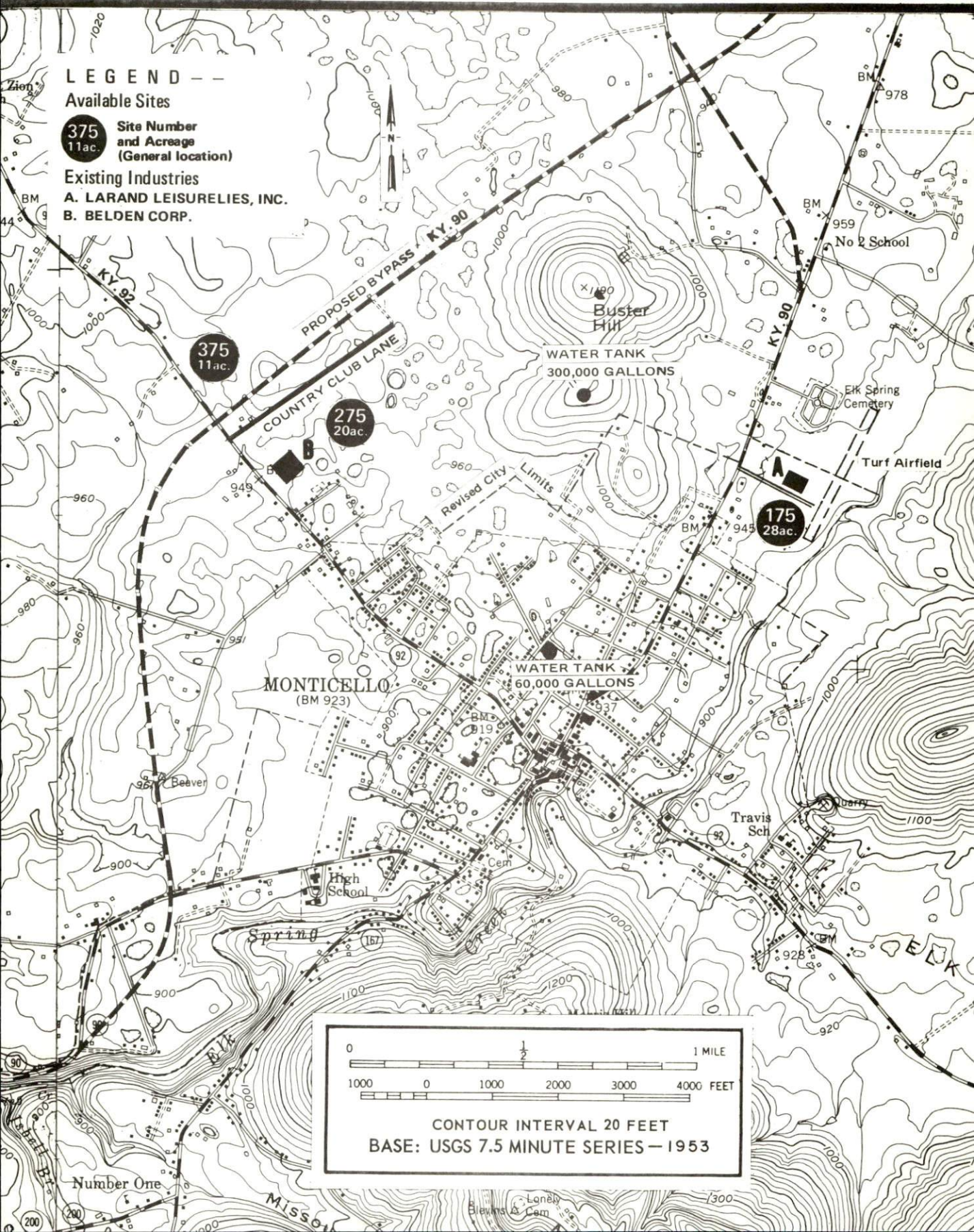
MONTICELLO KENTUCKY



WAYNE COUNTY, KENTUCKY

MONTICELLO, KENTUCKY --- Index to Industrial Sites --- 1975

For detailed data on individual sites, contact Carl Shearer, President, Wayne County Industrial Foundation, Inc., Post Office Box 486, Monticello, Kentucky, or the Industrial Development Division, Kentucky Department of Commerce, Capital Plaza Tower, Frankfort, Kentucky 40601.



INDUSTRIAL RESOURCES
MONTICELLO, KENTUCKY

Prepared by
The Kentucky Department of Commerce
in cooperation with
Wayne County Chamber of Commerce

1975

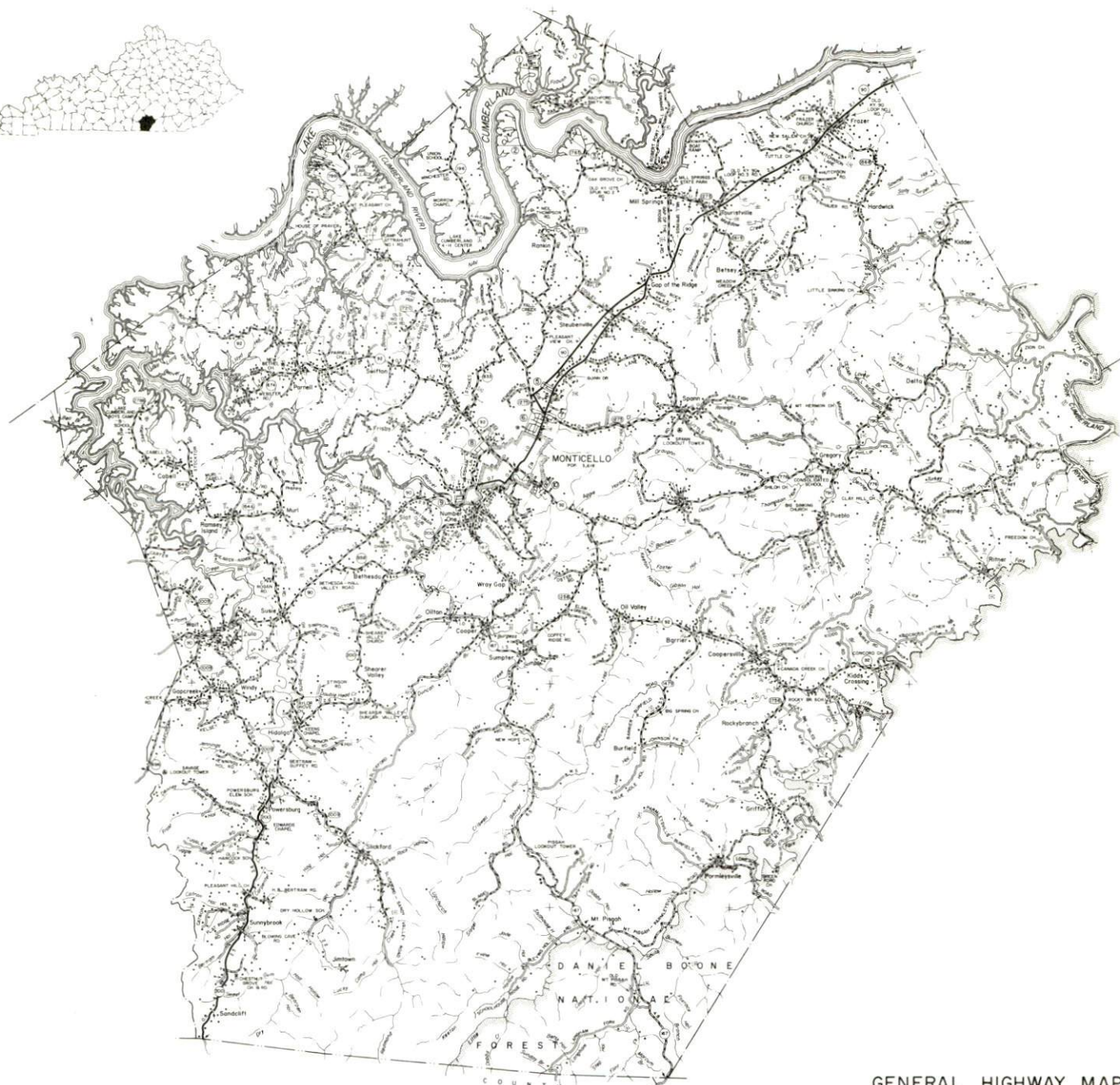
8/20/75-

This copy has been prepared by the Kentucky Department of Commerce,
Division of Research and Planning, and the cost of printing paid from
state funds.

TABLE OF CONTENTS

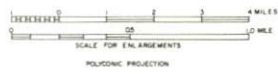
<u>Chapter</u>	<u>Page</u>
INDUSTRIAL SITES	i
MONTICELLO, KENTUCKY - A RESOURCE PROFILE	1
THE LABOR MARKET.	6
Population Trends	6
General Employment Characteristics, 1973	6
Manufacturing Employment Trends by Industry.	7
Monticello Manufacturing Firms, Their Products and Employment	7
Wages.	10
Labor Organizations	11
Estimated Male Labor Supply	11
Estimated Female Labor Supply	11
Per Capita Personal Income.	12
TRANSPORTATION	13
Rail.	13
Truck Service	13
Air	14
Bus	14
Taxi	14
Rental Services.	14
POWER AND FUEL	15
Electricity.	15
Natural Gas	15
Other Fuels	15
WATER AND SEWERAGE	17
Water	17
Sewerage	18
LOCAL GOVERNMENT	19
City.	19
County.	19
Assessed Value of Property, 1975	19
Property Taxes.	19

<u>Chapter</u>	<u>Page</u>
Local Property Tax Rate Per \$100 of Assessed Valuation, 1974	20
Planning and Zoning	20
Safety	20
Police	20
Fire	20
Rescue Service	21
Sanitation	21
EDUCATION	22
Public Schools	22
Vocational Schools	22
Colleges and Universities	23
HEALTH	26
Hospitals	26
Nursing Homes	26
Public Health	26
OTHER LOCAL FACILITIES	28
Communications	28
Library Services	28
Religious Institutions	31
Financial Institutions	31
Hotels and Motels	31
Clubs and Organizations	31
RECREATION	32
Local	32
Area	32
AGRICULTURE-NATURAL RESOURCES-CLIMATE	34
Agriculture	34
Natural Resources	34
Climate	35
HISTORY	36

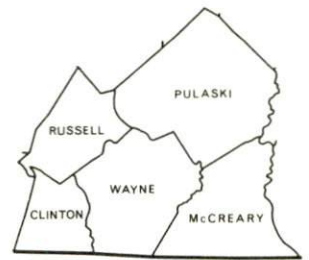


GENERAL HIGHWAY MAP
WAYNE COUNTY
KENTUCKY

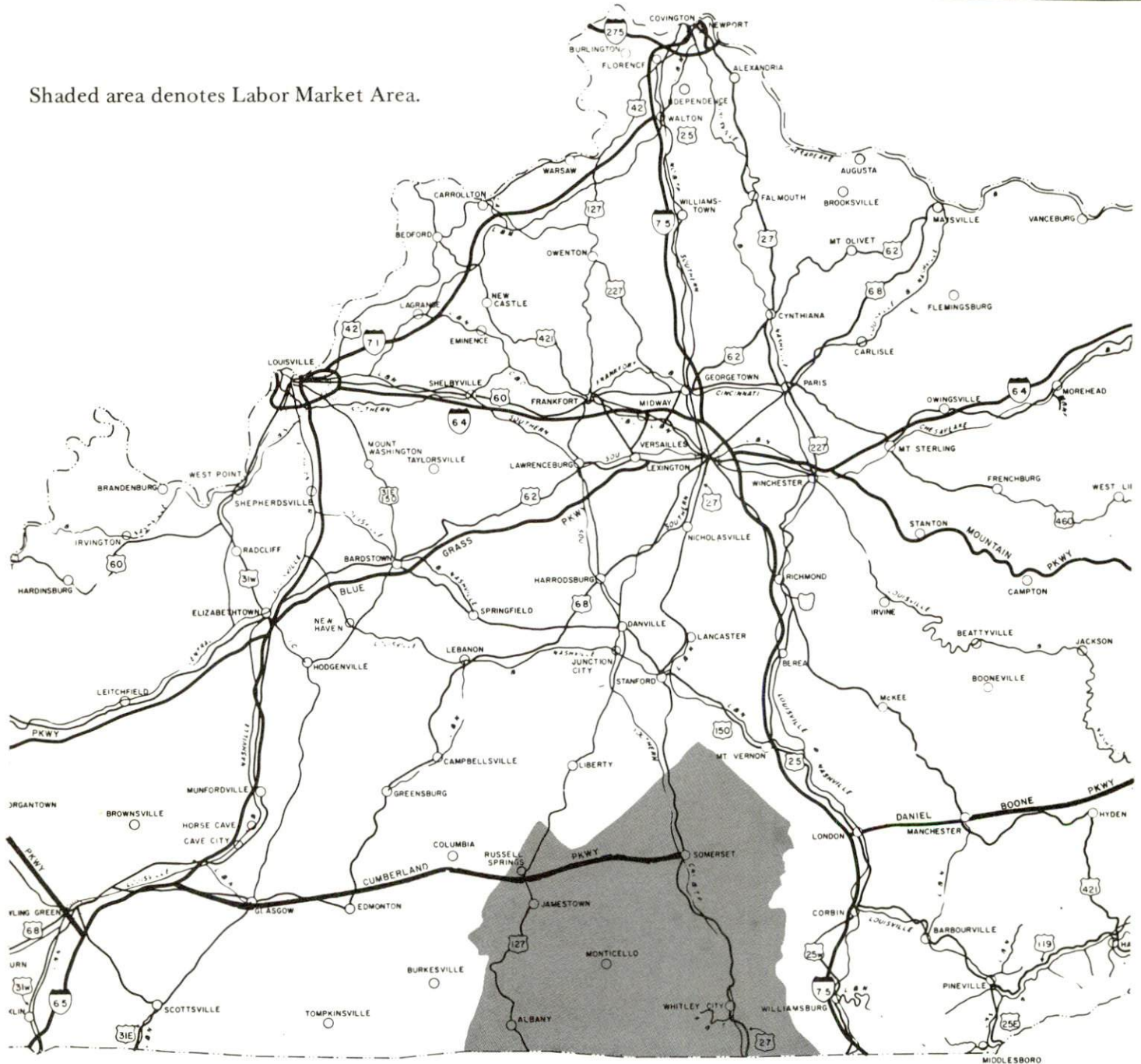
PREPARED BY THE
KENTUCKY DEPARTMENT OF TRANSPORTATION
BUREAU OF HIGHWAYS
DIVISION OF PLANNING
IN COOPERATION WITH THE
U.S. DEPARTMENT OF TRANSPORTATION
FEDERAL HIGHWAY ADMINISTRATION



MONTICELLO LABOR MARKET AREA



Shaded area denotes Labor Market Area.



MONTICELLO, KENTUCKY - A RESOURCE PROFILE

Monticello, a 1974 All Kentucky City and the county seat of Wayne County, is a thriving small community located in south central Kentucky, approximately 113 miles northwest of Knoxville, Tennessee; 150 miles southeast of Louisville, Kentucky; and 188 miles south of Cincinnati, Ohio. The population of Monticello has been increasing steadily over the past two decades, reaching a total of 3,618 inhabitants in 1970.

Wayne County lies on the Kentucky-Tennessee border in the Pennyroyal or Mississippian Plateau Region of Kentucky. Wayne County is bounded on the east by McCreary County, on the north by Russell and Pulaski Counties, and on the west by Clinton County. Wayne County has a total land area of 281,664 acres, 64.4 percent of which is farmland. The population of Wayne County has been decreasing over the past two decades, but is estimated to have grown from 14,268 in 1970 to 15,000 in 1973.

The Economic Framework

Total employment in Wayne County averaged 5,430 in 1973 with agriculture accounting for 1,300 of these jobs, government 570, trade and services 640, and manufacturing 930. Major industrial products are apparel, electronics wire and cable, and lumber and wood products.

Per capita personal income in the county in 1972 was \$1,989, an increase of 120 percent since 1962.

In the Monticello labor market area, which includes Wayne, Russell, Clinton, McCreary, and Pulaski Counties, total employment in 1973 averaged 30,980. Agriculture provided 4,290 jobs, trade and services 5,900, government 4,240, and manufacturing 6,830. Area manufacturing employment has more than doubled since 1964 with sharpest gains in the apparel, non-electrical machinery, and furniture industries.

Despite important industrial gains in recent years the area still has a deficit of 1,473 manufacturing jobs when measured against the national industrial employment-population ratio. This indicates an area where the potential for additional manufacturing growth is excellent.

Resources for Growth

1. Labor supply - There is a current estimated labor supply of 4,850 men and 5,580 women available for industrial jobs in the labor market area. Moreover, the current labor supply would be increased by the number of men and women in the adjoining Tennessee county who are available for industrial jobs. In addition, by 1981 approximately 4,230 young men and 3,935 young women will have become 18 years of age and will be potentially available for work.

2. Transportation - Monticello is served by Kentucky Highways 90, 92, and 200. A 7-mile stretch of Kentucky 90 is now being improved, completing improvements of the road from Monticello to Burnside. Monticello is 29 miles from the Cumberland Parkway, which extends from Somerset to I-65 near Bowling Green. An I-75 interchange is located at Williamsburg, 53 miles from Monticello, and at London, 64 miles distant. The nearest railroad, the Southern Railway System, is located at Burnside, Kentucky, 21 miles northeast. Commercial air service is available at London, Kentucky, approximately 64 miles northeast of Monticello. Small craft service is available at the Monticello Airport, which is currently making major improvements.

3. Energy - Monticello receives electric service from the City of Monticello Electric Plant Board which purchases its power from the Tennessee Valley Authority. Electricity is provided to Wayne County by the South Kentucky RECC. Natural gas is not available, but there are five propane and butane distributors and five distillate fuel oil distributors in the Monticello-Wayne County area.

4. Education - There are two public school systems serving the county: the Monticello Independent School District and the Wayne County School System.

There are two junior colleges, one community college, three senior colleges, and one university within a 75-mile radius of Monticello. Tennessee Technical University is in Cookeville, Tennessee, approximately 75 miles south. Cumberland College is at Williamsburg, 54 miles east of Monticello, and Centre and Berea Colleges are both 74 miles away at Danville and Berea, respectively. Somerset Community College, the nearest college, is located at Somerset, 29 miles northeast. Sue Bennett Junior College is at London, 64 miles northeast, and Lindsey Wilson Junior College is located at Columbia, 71 miles northwest of Monticello. There is an area vocational education center, offering 6 courses, located in Monticello. The nearest state vocational technical school is in Somerset, 29 miles northeast of Monticello.

Community Programs for Improvement

1. Two new shopping centers, containing eight and ten stores, respectively, opened in late 1974. Included in one mall is a "mini mall" that houses several small businesses, such as barber, beauty, and cosmetics shops. There are plans to add a theater, a furniture store, a savings and loan company and branches of the two Monticello banks in the shopping centers. Eight other businesses have recently been established.

2. Four Monticello business establishments expanded, and four others have been remodeled.

3. Four new manufacturers are now in production in Monticello-Gregory Shirt Company, J. P. Hamer Lumber Company, Wayne County News, Incorporated, and Lakeview Printing, Incorporated.

4. Five new churches have been completed or are in the process of being completed.

5. Monticello currently is completing a 114-acre recreation park. They have installed a water and sewer system, roads, primary electricity, a shelter house and living quarters for the supervisor and his family, one baseball and two softball fields, two croquet, two volleyball, three badminton, and three houseshoe courts, and thirty-five picnic tables. Construction has begun on a horseshow ring and two tennis courts.

6. Gene Gray, a local artist, recently acquired 1,200 acres of forested land for the purpose of preserving wildlife. He is maintaining this refuge to teach children the importance of wildlife.

7. New facilities are being installed at Conley Bottom Boat Dock on Lake Cumberland. In addition to a new boat dock, ramp, and restaurant, 100 new campsites and five efficiency cottages will be available. They also plan to build a modern bathhouse and install new playground equipment for the children.

8. Approximately 9 miles of new water mains have been installed. These new mains improved the fire protection for the west side of the city and provided service to a new industrial park, the Conley Bottom Boat Dock, and two rural subdivisions. The water system plans to install approximately 9 miles of water mains for additional fire protection and service to fifteen of Wayne County's farms. Plans also include building an access road to the newly constructed 300,000-gallon water tank.

9. The sewer system has extended service to the new industrial park, the two shopping centers, and a new subdivision near Monticello. The city also intends to purchase new aeration equipment for the sewage plant.

10. The highway department is currently improving a seven-mile stretch of Kentucky 90, completing improvement of the highway from Monticello to Burnside. The highway department intends to install curbs and gutters along North Main Street to the Monticello city limits. Designs have been drawn for a curb and gutter system on Albany Road in Monticello. Construction should be completed by late 1975.

11. Monticello purchased a 750-gpm pumper fire truck and enlarged the building which houses the fire equipment.

12. Monticello is applying for ambulance service.

13. Monticello is currently organizing a planning commission.

14. Land has been acquired for a new airport and engineering plans have been completed. The land has already been graded, and they now have a 4,000-foot grass runway. This runway will be paved and eventually extended to 5,000 feet. Other improvements and services include: an administration building with office space and hangar maintenance service, charter service, flight training, refueling, and lighting.

15. Extensive remodeling of the older section of the Monticello School was completed last year. Improvements included: new windows, window shades, dry wall, lighting, carpeting, and ceilings lowered in the classroom section and library; also, new shelving, storage areas, tables, and chairs in the library; and in addition to a new ceiling, lighting and windows in the gym, a new section was constructed that contains showers, coaches' offices, and a storage area.

The school system plans to construct a natatorium by the fall of 1975, and to initiate a work training program for potential school drop-outs by the spring of 1975.

16. The 5-acre parking lot at the Wayne County High School has recently been paved. A library and multi-purpose room have recently been added to Big Sinking Creek Elementary School. Construction has begun on a new kitchen, cafeteria, and two physical science laboratories for the Wayne County High School. The facilities are expected to be ready for use by August, 1975.

17. The city of Monticello formed a holding company to acquire land for a parking lot and new city facilities. The land now is in the process of being cleared and the parking lot should be completed by late 1975.

Recreation, Entertainment and Livability

Mill Springs Civil War Battle Site is located in Wayne County, approximately 10 miles from Monticello.

The Gene Gray Wildlife Refuge is 1,200 acres of forested land in Wayne County acquired and maintained by the artist, Gene Gray, for the purpose of preserving wildlife.

Conley Bottom Boat Dock on Lake Cumberland is a Wayne County commercial boat dock that is making major improvements. In addition to the new boat dock, ramp, and restaurant, 100 new campsites and five efficiency cottages will be available. They also plan to build a modern bathhouse and install new playground equipment for the children.

The Lake Cumberland-Dale Hollow Reservoir area offers excellent fishing, particularly for bass, as well as boating, and other water sports. Two large commercial boat docks are located near Monticello. Located on Cumberland Lake are two parks: Lake Cumberland State Resort Park and General Burnside State Park. Lake Cumberland State Park at Jamestown, 52 miles away, is a 3,000 acre, resort-type park with excellent accommodations and a wide variety of recreational activities. Lake Cumberland, which averages 90 feet in depth, offers spectacular scenery along its 1,255-mile shoreline. General Burnside State Park is located at Burnside, 21 miles away. This 400-acre park has facilities for camping and swimming, a bathhouse, a beach, a dock, fishing, 18-hole golf course, picnic area, and a playground. Dale Hollow Lake State Park, approximately 35 miles distant, is a new state park, scheduled to fully open in 1975. This 3,497 acre park offers primitive campsites and a marina.

Also in the area is Cumberland Falls State Resort Park, located near Corbin, approximately 60 miles distant. This 1,794-acre, resort-type park is in the Daniel Boone National Forest. The beautiful waterfall, enhanced by its moonbow during the full phase of the moon, is the park's primary attraction. An added attraction to the park is Little Eagle Falls, a small mountain stream that tumbles 125 feet into the Cumberland River. It was once considered sacred by the Indians. Observation points overlook the woodland area and boulder-strewn gorge.

Laurel River Lake is a recently completed project, approximately 60 miles from Monticello. This 5,600-acre lake is yet another beautiful site for the camping and fishing enthusiast to enjoy.

THE LABOR MARKET

POPULATION TRENDS

<u>Area</u>	<u>Population</u>				<u>Percent Change</u>	
	<u>1973*</u>	<u>1970</u>	<u>1960</u>	<u>1950</u>	<u>1960-70</u>	<u>1950-60</u>
Monticello	N. A.	3,618	2,940	2,934	+23.1	+ 0.2
Labor Market						
Area	87,400	80,766	81,528	95,909	- 0.9	-15.0
Wayne County	15,000	14,268	14,700	16,475	- 2.9	-10.8
Clinton County	8,600	8,174	8,886	10,605	- 8.0	-16.2
McCreary County	13,400	12,548	12,463	16,660	+ 0.7	-25.2
Pulaski County	38,500	35,234	34,403	38,452	+ 2.4	-10.5
Russell County	11,900	10,542	11,076	13,717	- 4.8	-19.3

*Provisional Estimates.

Sources: U. S. Department of Commerce, Bureau of the Census, Census of Population, 1970, 1960, 1950. U. S. Bureau of the Census, Current Population Reports, Series P-26, June 1973.

GENERAL EMPLOYMENT CHARACTERISTICS, 1973

<u>Major Employment Group</u>	<u>Employment</u>	
	<u>Wayne County</u>	<u>Labor Market Area</u>
TOTAL	5,430	30,980
Agricultural	1,300	4,290
Nonagricultural	4,130	26,690
Manufacturing	930	6,830
Government	570	4,240
Trade and Services	637	5,903

Source: Kentucky Department for Human Resources, Bureau for Administration and Operations.

MANUFACTURING EMPLOYMENT TRENDS BY INDUSTRY
JUNE 1974 AND 1964

Industry	Wayne County			Labor Market Area		
	1974	1964	% Change	1974	1964	% Change
TOTAL	1,131	661	+ 71.1	7,055	3,380	+ 108.7
Food & Kindred Products	24	33	- 27.3	387	281	+ 37.7
Apparel, Textiles, Leather	580	324	+ 79.0	2,867	1,719	+ 66.8
Lumber, Furniture	399	294	+ 35.7	1,898	886	+ 114.2
Printing & Publishing, Paper	9	3	+200.0	88	34	+ 158.8
Chemicals, Petroleum & Coal, Rubber	0	4	--	432	188	+ 129.8
Stone, Clay & Glass	4	3	+ 33.3	496	256	+ 93.8
Primary Metals	115	0	--	115	0	--
Machinery, Metal Products, Equipment	0	0	0	753	12	+6175.0
Other	0	0	0	19	4	+ 375.0

Source: Kentucky Department for Human Resources, Number of Workers in Manufacturing Industries Covered by Kentucky Unemployment Insurance Law Classified by Industry and County, June, 1974; June, 1964.

MONTICELLO MANUFACTURING FIRMS,
THEIR PRODUCTS AND EMPLOYMENT

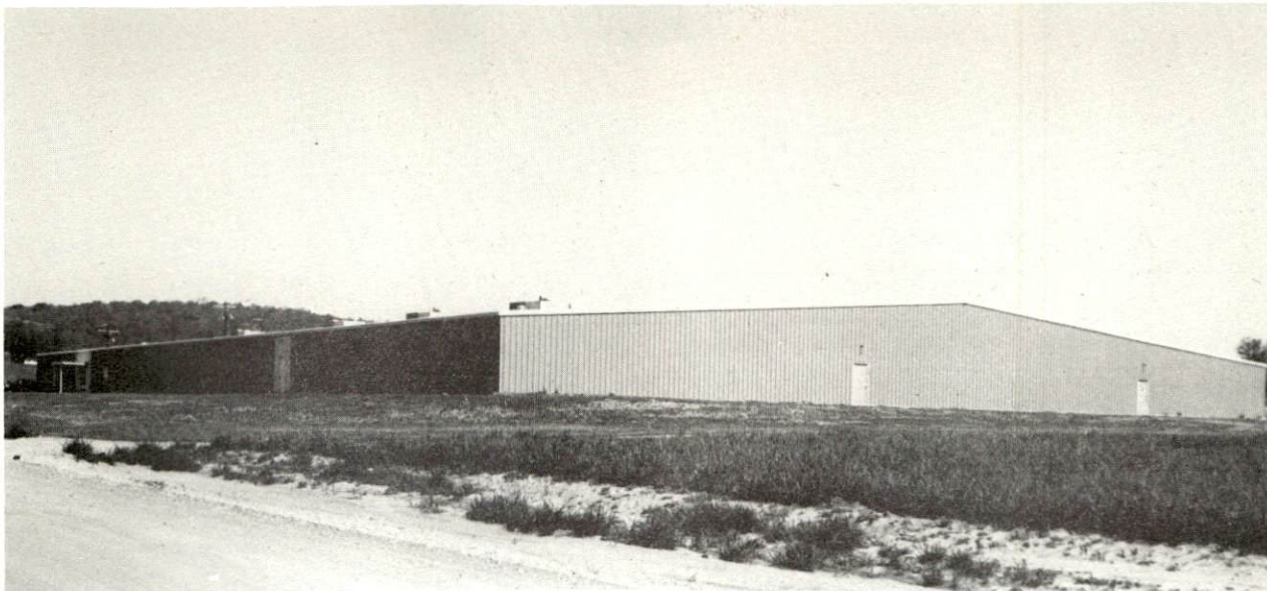
Firm (Establishment date)	Product	Employment			Organized
		Total	Male	Female	
Bassett Products Company (1929)	Crushed limestone, ready mixed concrete, agricultural lime	24	24	0	
Frank Bell (1941)	Lumber	22	20	2	
Dodson Block Company (1956)	Concrete block	4	4	0	
Farmers Supply and Produce Company (1957)	Feed	9	8	1	
Gamble Brothers (1969)	Machined wood parts	161	160	1	*
Gregory Shirt Company (N/A)	Men's shirts, blouses	100	10	90	
J. P. Hamer Lumber Company (N/A)	Lumber	6	6	0	

(Cont'd.)

<u>Firm (Establishment date)</u>	<u>Product</u>	<u>Employment</u>			<u>Organized</u>
		<u>Total</u>	<u>Male</u>	<u>Female</u>	
Huff Lumber Company (1949)	Hickory dimen- sions, dowels	9	8	1	
Lakeview Printing, Inc. (N/A)	Commercial printing	3	2	1	
Larand Leisurelies, Inc. (1969)	Women's and children's sleep- wear	324	24	300	
O. P. Link Handle Company, Inc. (1950)	Hickory handle blanks, hickory barbecue wood and sawdust	17	17	0	
McCutchen & Pyles Lumber Company, Inc. (1960)	Lumber	31	30	1	
Monticello Electronic Wire & Cable Company (1973)	Electronic wire and cable	150	75	75	
Monticello Flooring & Lumber Company (1973)	Wood flooring, wood paneling, molding	54	53	1	
Monticello Machine Shop (1948)	Machine shop, conveyors, sawmill	21	20	1	
Monticello Manufacturing Company, Inc. (1955)	Men's shirts, ladies' blouses, shirts	240	40	200	
Wayne County News, Inc. (N/A)	Newspapers, com- mercial printing	3	1	2	
Wayne County Outlook (1904)	Newspaper, job printing	6	4	2	
Coy Worley (1950)	Lumber, cross- ties	19	19	0	

*See Labor Organizations, page 11.

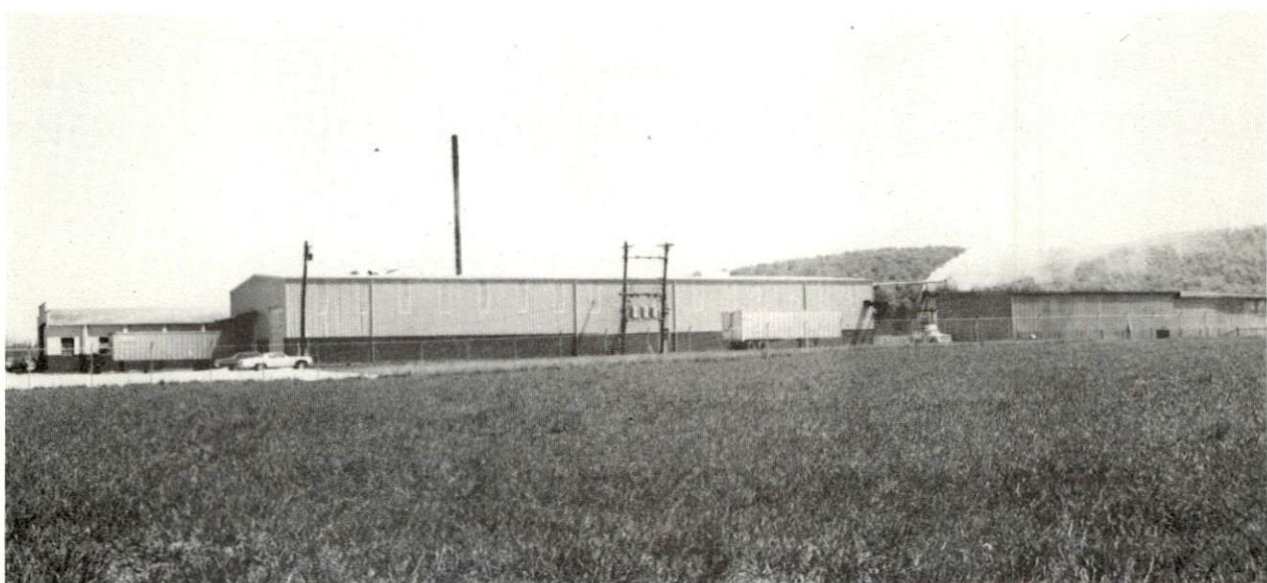
Source: Kentucky Department of Commerce, Division of Research and Planning.



LARAND LEISURELIES, INC.



MONTICELLO MANUFACTURING COMPANY

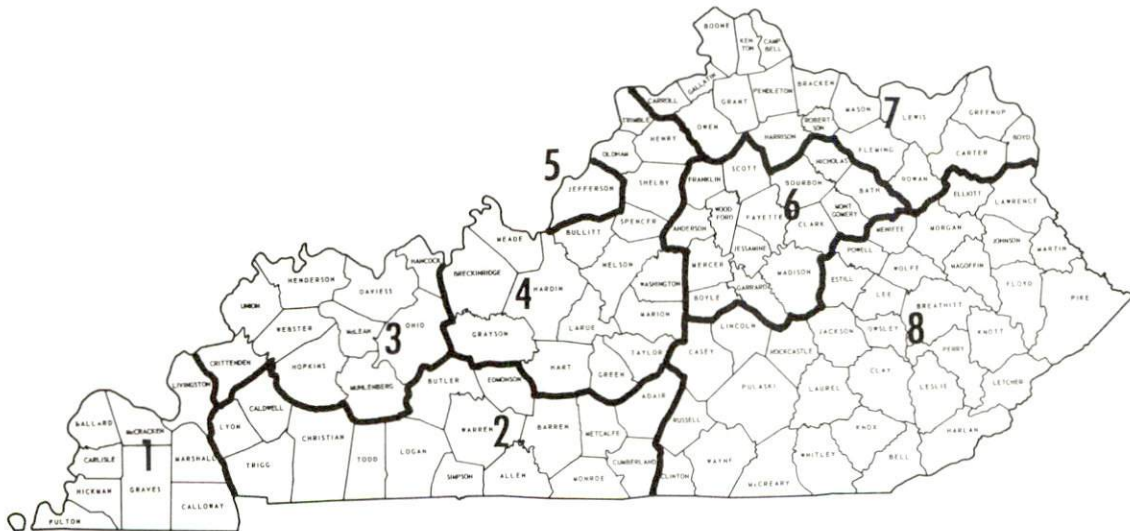


GAMBLE BROS. PLANT

WAGES

Occupational wage rates for specific industries are usually not available to most government agencies, and wage data furnished to state employment agencies by industrial employers is protected from disclosure by federal law. The most reliable up-to-date wage information can be obtained by direct contact with local employers.

Associated Industries of Kentucky, a voluntary organization of Kentucky businesses, regularly collects occupational wage rates and fringe benefits data from participating member firms. Data is compiled for over 130 clearly defined office, production, and service occupations. Tabulations are published for eight regions of Kentucky, as shown on the map below. It should be noted that the data may be weighted by the preponderance of firms in the larger cities and may be somewhat higher than the rates paid in the smaller communities. Data from these tabulations are available, upon request, from the Kentucky Department of Commerce, Frankfort, Kentucky 40601.



Associated Industries of Kentucky Area Wage Surveys

LABOR ORGANIZATIONS

Union

Representing manufacturing workers at:

Laborer's Union

Gamble Brothers

ESTIMATED MALE LABOR SUPPLY MONTICELLO LABOR MARKET AREA

<u>Area</u>	<u>Current</u>			<u>Future</u>	
	<u>Total</u>	<u>Not in Labor Force</u>	<u>Unemployed</u>	<u>Under-employed</u>	<u>Reaching 18 yrs. of age by 1981</u>
Labor Market					
Area	4, 850	2, 210	1, 340	1, 300	4, 228
Wayne	740	260	230	250	756
Clinton	450	120	110	220	423
McCreary	1, 320	900	210	210	775
Pulaski	1, 520	570	540	410	1, 804
Russell	820	360	250	210	470

Sources: Kentucky Department for Human Resources, Kentucky Labor Supply Estimates by County, 1973. Kentucky Department of Commerce, Future Labor Supply by 1981.

ESTIMATED FEMALE LABOR SUPPLY MONTICELLO LABOR MARKET AREA

<u>Area</u>	<u>Current</u>			<u>Future</u>	
	<u>Total</u>	<u>Not in Labor Force</u>	<u>Unemployed</u>	<u>Under-employed</u>	<u>Reaching 18 yrs. of age by 1981</u>
Labor Market					
Area	5, 580	3, 810	650	1, 120	3, 935
Wayne	1, 180	890	140	150	769
Clinton	260	0	90	170	360
McCreary	1, 060	910	60	90	694
Pulaski	2, 330	1, 570	260	500	1, 633
Russell	750	440	100	210	479

Sources: Kentucky Department for Human Resources, Kentucky Labor Supply Estimates by County, 1973. Kentucky Department of Commerce, Future Labor Supply by 1981.

PER CAPITA PERSONAL INCOME

<u>Area</u>	<u>1972</u>	<u>1962</u>	<u>% Change</u>
Wayne County	\$1, 989	\$ 904	+120.0
Labor Market Area			
Range	\$1, 428 - 2, 778	\$664 - 1, 144	N. A.
Kentucky	3, 634	1, 769	105.4
U. S.	4, 549	2, 381	91.1

Sources: Office of Development Services and Business Research, College of Economics, University of Kentucky, Kentucky Personal Income 1929/68. U.S. Department of Commerce, Office of Business Economics, Survey of Current Business, May, 1974, August, 1974.

TRANSPORTATION

Rail

Nearest rail service - Southern Railway System at Burnside, Kentucky,
21 miles away

Services - 1 daily northbound and southbound freight, switching facilities,
siding space for approximately 40 cars

For details on routing, schedules, rates, and services, contact:

District Sales Manager
Southern Railway System
701 South Broadway
Lexington, Kentucky 40508

Truck Service

Company

Home Office

Eldridge Truck Line

Somerset, Kentucky

Manning Motor Express, Incorporated

Glasgow, Kentucky

Monticello-Albany Freight Line,
Incorporated*

Monticello, Kentucky

Other Freight Services

Nearest Shipping Center

United Parcel Service

London, Kentucky, 62 miles
distant

HIGHWAY MILES AND TRUCK TRANSIT TIME IN DAYS FROM MONTICELLO, KENTUCKY, TO SELECTED MARKET CENTERS

City	Delivery		City	Delivery	
	Highway Miles	Time TL		Highway Miles	Time TL
Atlanta, Ga.	307	5	Los Angeles, Calif.	2,291	7
Birmingham, Ala.	367	5	Louisville, Ky.	150	1
Chicago, Ill.	483	4	Nashville, Tenn.	209	3
Cincinnati, Ohio	188	3	New Orleans, La.	722	5
Cleveland, Ohio	440	4	New York, N. Y.	864	6
Detroit, Mich.	454	4	Pittsburgh, Pa.	488	6
Knoxville, Tenn.	113	3	St. Louis, Mo.	448	4

Source: Delivery Time Only - Eldridge Truck Line, Somerset, Kentucky.

*Local terminal.

Air

	<u>Local</u>	<u>Nearest Commercial</u>
	Monticello Airport*	London-Corbin Magee Field Airport
Location:	1 mile northeast of Monticello	London, Kentucky, 64 miles distant
Runways:	1 turf	1 paved
Length:	4,000 feet	6,000 feet
Traffic		
Control:	Wind tee and wind sock	Wind sock
Lighting:		Beacon, runway and obstruction lights
Services:	80 octane gasoline, tie down, A & E repairs, restaurant and motel nearby; 8 a.m. to 5 p.m. - 7 days weekly	Piedmont Airlines, JP-A-50, 80 and 100 octane, taxi, weather, flight training, charter, ambulance service, vending machines
Air Freight Service:		Air freight service on a space available basis

Bus - Greyhound Bus Lines and Somerset and Suburban Carriers, Inc.,
serve Somerset, 29 miles distant.

Taxi - Two companies, 24-hour service

Rental Services - Nearest car rental services are at Somerset, 29 miles
distant.

*Planned improvements include extending the runway to 5,000 feet, constructing an administration building, and providing hangar maintenance service, charter service, flight training, and lighting.

POWER AND FUEL

Electricity

Company serving Monticello - City of Monticello Electric Plant Board

Source of power - Tennessee Valley Authority

Total generating capacity - 23,200,000 KW

For industrial rates contact:

City of Monticello Electric Plant Board

615 Columbia Avenue

Monticello, Kentucky 42633

Company serving Wayne County - South Kentucky RECC

Source of power - East Kentucky Power Cooperative

Total generating capacity - 548,000 KW

For industrial rates contact:

South Kentucky RECC

P. O. Box 910

Somerset, Kentucky 42501

Natural Gas

Monticello does not have natural gas service.

Other Fuels

Propane and Butane

Ashland Oil (bulk plant), South Main Street, Monticello, Kentucky

Suburban Propane, 104 Albany Road, Monticello, Kentucky

Albany Gas & Electric Service, Washington Street, Albany, Kentucky

Pyrofax Gas Corporation, 114 South Main Street, Somerset, Kentucky

Williams Energy Company, 104 South Vine Street, Somerset, Kentucky

Fuel Oils

Distillate fuel oil -

Somerset Oil (bulk plant), South Highway 90, Monticello, Kentucky
Standard Oil (bulk plant), 608 North Main Street, Monticello, Kentucky
Ashland Oil (bulk plant), South Main Street, Monticello, Kentucky
Lewis J. Heber Oil Company, Incorporated, Walnut Street, Burnside,
Kentucky
Wisdom Oil Company, 100 Burkesville Road, Albany, Kentucky

Residual fuel oil - Arrangements must be made with the refinery.

Low sulphur content coal - Available in Wayne County

WATER AND SEWERAGE

Water

Company serving Monticello and parts of Wayne County - Monticello
Water and Sewer Commission

Source - Lake Cumberland

Treatment plant capacity - 1,000,000 gallons per day

Average daily consumption - 750,000 gallons

Peak daily consumption - 800,000 gallons

Type treatment - Coagulation with alum and lime, filtration, chlorination,
fluoridation

Storage facilities - two 300,000 gallon tanks, one 60,000 gallon tank,
two 100,000 gallon clear wells

Size lines - 10, 12, and 16 inches

Average pressure - 90 psi

Average temperature - 55 degrees F.

MONTHLY WATER RATES FOR WHOLESALE AND INDUSTRIAL CONSUMERS

First	700 gallons	\$3.25 (minimum bill)
	701 to 1,500 gallons	4.00 (minimum bill)
	1,501 to 2,500 gallons	4.75 (minimum bill)
Next	7,500 gallons	1.00 per M gallons
Next	20,000 gallons	.55 per M gallons
Over	30,000 gallons	.45 per M gallons

Tap-on charges - \$100 inside the city limits; \$150 outside
the city limits

Surface water sources - Lake Cumberland and South Fork of Cumberland
River

Average discharge - Cumberland River near Rowena (below Cumberland
Lake) 8,890 cfs (34 years USGS)

Expected ground water yield - 5 to 50 gpm in band in northwestern part
of county; 5 gpm or less over remainder of county

Sewerage

Company serving Monticello - Monticello Water and Sewer Commission
Design capacity - 336,000 gallons per day
Average daily flow - 223,000 gallons; Treatment - primary and secondary
Type treatment - Digester, clarifier, drying beds
Treated effluent discharged into - Elk Creek
Size of sanitary mains - 8 and 10 inches
Rates - 50 percent of water rate, maximum \$60*
Tap-on charge - \$100

*Large consumers negotiated.

LOCAL GOVERNMENT

City

Structure - Mayor - 4-year term; 6 councilmen - 2-year terms
Budget 1975 - General Fund \$183,629
 Water and Sewer Fund 250,000
Fees and licenses - Manufacturers: less than 50 employees - \$150 per
year; between 50 and 100 employees - \$250 per year; and more than
100 employees - \$300 per year

County

Structure - County Judge - 4-year term; 7 magistrates - 4-year terms
Budget 1973-74 - General Fund \$94,944; Road Fund \$45,900

Assessed Value of Property, 1975

<u>Classes of Property</u>	<u>Monticello</u>	<u>Wayne County</u>
Real Estate	\$10,930,000	\$52,403,615
Tangibles	3,100,000	9,690,278
Public Service	1,069,000	4,271,057

Property Taxes

Land and buildings are taxed by the state and may be taxed by local jurisdictions. The state rate is \$0.015 per \$100 of assessed valuation.

Tangible personal property owned by manufacturers (automobiles, trucks, finished goods, office furniture, office equipment) is taxed by the state at \$0.15 per \$100 and may be taxed by local jurisdictions.

Manufacturing machinery, raw materials inventories, and goods in process inventories are not subject to local taxation. The state rate is \$0.15 per \$100.

Property stored in public warehouses is not subject to local taxation. The state rate is only \$0.015 per \$100.

All property is assessed at 100 percent of fair cash value.

Local Property Tax Rate Per \$100 of Assessed Valuation, 1974*

<u>Taxing Jurisdiction</u>	<u>Monticello</u>	<u>Wayne County</u>
County	\$.283	\$.283
School	.665	.358
City	.228	

Planning and Zoning

The Monticello-Wayne County Planning Commission is no longer active. Monticello is currently forming a city planning commission.

Safety

<u>Police</u>	<u>Monticello</u>	<u>Wayne County</u>
Total staff	6	5
Radio-patrol cars	2	3
Other equipment	A new radio communications system has just been installed for both city and county use.	

Fire

American Insurance Association Fire Rating	7**
Volunteers	18
Equipment:	
750 gpm pumper	1
500 gpm pumper	1
350 gpm pumper	1
Other	Portable pump and generator

*Kentucky Department of Revenue, Kentucky Property Tax Rates, 1974.

**The Monticello Fire Department will respond to calls from the county.

Rescue Service

Wayne County Rescue Squad:

Number of volunteers - 26

Equipment - Two pickup trucks; three Thundercraft boats, 800 pounds capacity; three aluminum boats; three outboard motors; dragging equipment; two jeeps; portable generator

Personnel training - Training has been provided in cooperation with the Civil Defense and Red Cross organizations. The Rescue Squad has also had training in radiological monitoring.

Sanitation

Monticello

Type service	Municipal
Fee charged:	
residential	\$2 per month
business	\$3 to \$100 per month
Collection frequency:	
residential	Weekly
business	Daily, twice, or three times per week
Disposal method	Sanitary landfill

Wayne County residents are served by private collectors who use the Monticello sanitary landfill.

EDUCATION

Public Schools

	<u>Monticello</u>	<u>Wayne County</u>
Total Enrollment (Fall, 1974)	681	2,876
Elementary	505	1,700
Junior High		410
High School	176	766
Student-Teacher Ratio	18 - 1	23 - 1
Elementary	22 - 1	24 - 1
Junior High		27 - 1
High School	13 - 1	22 - 1
Percent High School Graduates to College	58.8	24.7
Expenditures Per Pupil (1972-73)	\$492.57	\$507.38
Bonded Indebtedness, June 30, 1973	\$253,000	\$1,378,000

Vocational Schools

	<u>Nearest State School</u>	<u>Nearest Area Education Center</u>
Location	Somerset State Vocational- Technical School	Wayne County Area Vocational Education Center
Miles Distant	Somerset, Kentucky 29 miles	Monticello, Kentucky
Curriculum	Data processing Clerical Secretarial Marketing and Distributive Education Health Careers Learning Lab Electronics (Technology) Aircraft Maintenance Technology Appliance Repair Auto Mechanics Drafting Graphic Arts Machine Shop	Clerical Secretarial Health Careers Auto Mechanics Machine Shop Welding

Arrangements can be made to provide training in the specific production skills required by an industrial plant. Instruction may be conducted either in the vocational school or in the industrial plant, depending upon the desired arrangement and the availability of special equipment.

Colleges and Universities

<u>Name</u>	<u>Area - Within 75 miles</u>		<u>Highest Degree Conferred</u>
	<u>Location</u>	<u>Enrollment (Fall, 1974)</u>	
Berea College	Berea	1,411	Baccalaureate
Centre College	Danville	796	Baccalaureate
Cumberland College	Williamsburg	1,777	Baccalaureate
Lindsey Wilson Junior College	Columbia	308	Associate
Somerset Community College	Somerset	661	Associate
Sue Bennett Junior College	London	175	Associate
Tennessee Technical University	Cookeville, Tennessee	7,059*	Professional

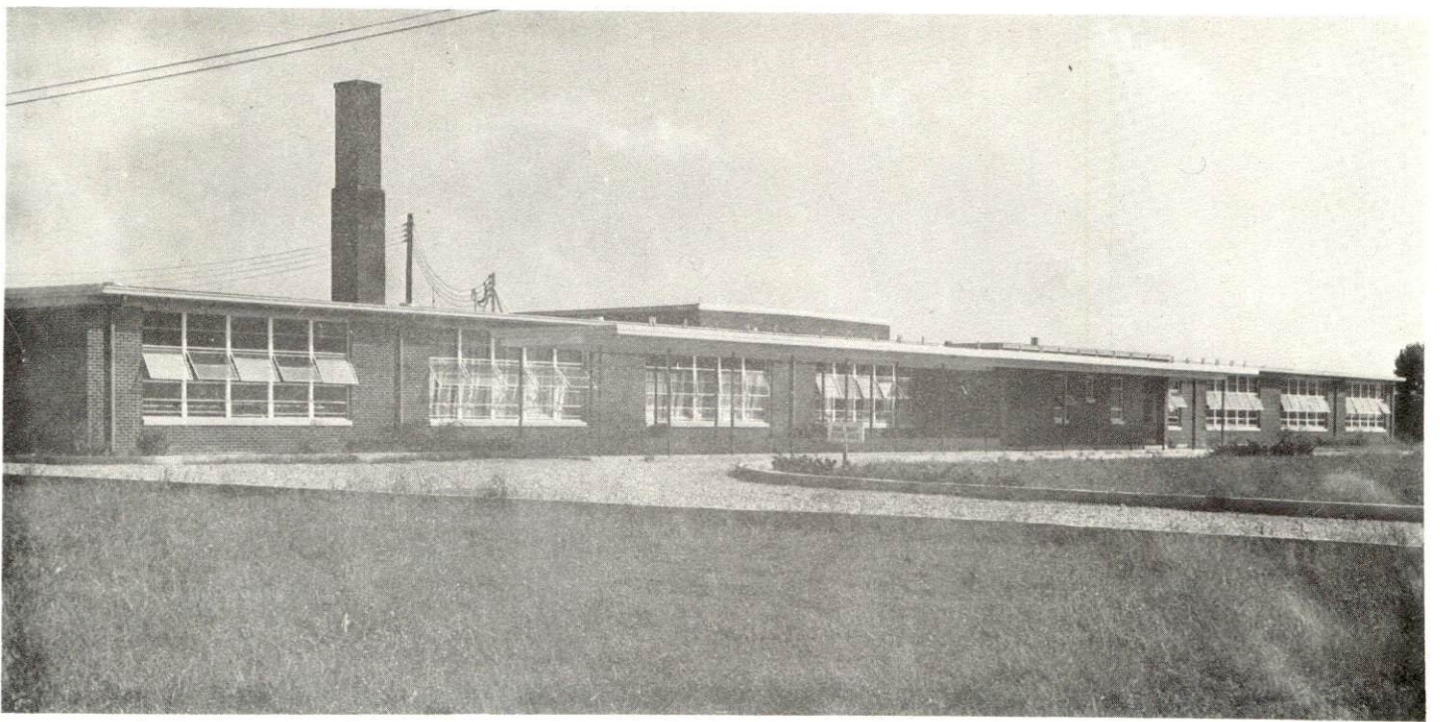
*1973 enrollment.



MONTICELLO CITY SCHOOL



MONTICELLO INDEPENDENT BOARD OF EDUCATION



WAYNE COUNTY
ELEMENTARY SCHOOL



WAYNE COUNTY
HIGH SCHOOL

HEALTH

Hospitals

<u>General Hospital</u>	<u>Location</u>	<u>Beds</u>
Wayne County Hospital	Monticello	40

General hospital facilities - Emergency room, OB section, X-ray, laboratory

Medical staff - 7 general practitioners, 30 personnel

Other

Wayne County Mental Health-Mental Retardation, Monticello
Staff - Mental Health Associate (full time), Area Team Coordinator
(2 1/2 days per week)

Special service - Supervises training of the retarded elementary school children

Lake Cumberland Comprehensive Care Center, Somerset (central headquarters - serving a 10-county area), 29 miles distant

Professional personnel - 2 psychiatrists, chief psychologist, psychologist, mental health educator school consultant, 2 clinical coordinators, social worker supervisor, 4 area team social workers, psychiatric nurse, area team nurse, volunteer coordinator, day care supervisor, alcoholism counselor, 10 mental health associates, childrens' service specialist, day care aide, mental retardation director, mental retardation day care, mental retardation master school teacher

Nursing Homes

	<u>Number</u>	<u>Beds</u>
Personal care homes	1	44

Public Health

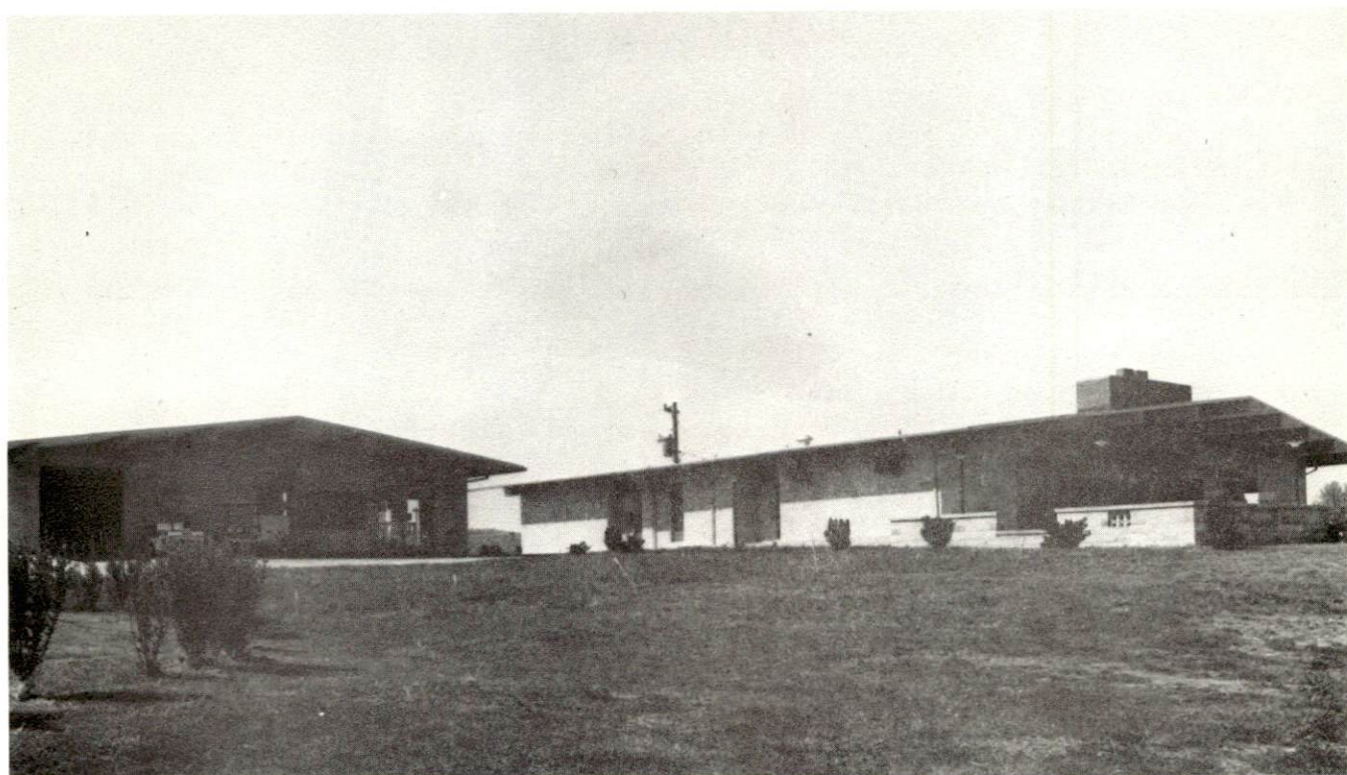
Facility - Wayne County Health Center

Staff - Medical clinician, 2 registered nurses, sanitarian, clerk, health service aide, administrative assistant

Services - Communicable diseases, chronic diseases, maternal and child care, environmental sanitation, nutritional counseling, health education, family planning statistics, screening tests, heart and T.B. clinics, and vital statistics



WAYNE COUNTY HOSPITAL



MONTICELLO COUNTRY CLUB

OTHER LOCAL FACILITIES

Communications

Telephone - General Telephone Company
Services - Standard

Telegraph - Western Union Telegraph Company - Somerset, 29 miles
distant
Services - Standard

Postal - U. S. Post Office
Class - First
Mail received - Once daily
Mail dispatched - Once daily

Newspapers - Wayne County Outlook The Reporter
Weekly and circulation - 4,000 3,000
Other papers received from - Lexington, Louisville, and Somerset,
Kentucky

Radio - WFLW, AM; WKYM, FM
Stations received from - Lexington and Louisville, Kentucky, Nashville
and Knoxville, Tennessee

Television -
Cable service
Reception from - Lexington and Louisville, Kentucky; Nashville and
Knoxville, Tennessee
Kentucky Educational Television - Channel 29 - Somerset transmitter

Library Services

Public library - Wayne County Library
Size collection - 26,031 volumes
Circulation, 1973-74 - 82,728 volumes (library and bookmobile)
Services - Bookmobile, magazines, film-strips, microfilm, films,
phonograph records, framed paintings, audio visual equipment, story
hour for preschool children, summer reading program for youth 10
to 14 years of age, Great Books discussion for adults, Wayne-Monticello
Library Media Club



MONTICELLO BANKING COMPANY



PEOPLES STATE BANK



MONTICELLO MOTEL



ANCHOR MOTEL



EXECUTIVE MOTOR INN

Religious Institutions

Number of churches - 15

Denominations - Baptist
Christian
Church of Christ,
Church of God
Methodist
Nazarene
Catholic
Jehovah's Witnesses

Nearest Synagogues - Lexington, Kentucky, 101 miles distant

Congregations - Adath Israel (reform)
Ohavey Zion (traditional)

Financial Institutions

<u>Banks</u>	<u>Statement as of December 31, 1974</u>	
	<u>Assets</u>	<u>Deposits</u>
Monticello Banking Company	\$16,138,295.45	\$13,861,259.91
Peoples State Bank	11,802,455.73	10,404,528.20

Hotels and Motels

Total number - 3

Units - 114

Clubs and Organizations

Business and Civic - Lions Club, Kiwanis Club, Monticello-Wayne
County Development Board, Jaycees, Wayne County Chamber of
Commerce, PTA, Wayne-Monticello Library Media Club

Fraternal - Masonic Lodge, VFW, American Legion, DAV

Women's - Eastern Star, Business and Professional Women's Club,
Women's Club

Youth - Boy Scouts, Cub Scouts, Little League baseball and football,
FFA, FHA, FBLA, FTA, 4-H Club, Junior Conservation, Demolay,
Girl Scouts, Brownies, Key Club, Y-Teens

Other - Wayne County Sportsman Club

RECREATION

Local

Public Recreation Facilities

Supervised program - Yes

Parks - 2

Playgrounds - 8

Tennis courts - 4

Baseball diamonds - 4

Football field - 1

Private Recreation Facilities

Country club - 1

Golf course (9-hole) - 1

Swimming pools - 2

Movie theater - 1

Other - Immanuel Baptist Church Camp has 5 cabins accommodating 42 people each; staff house with capacity to 16; dining room for 200; swimming pool; softball field; and activities building for basketball, volleyball, and religious services

Tourist Attractions

Lake Cumberland is within 8 miles of Monticello.

Two commercial docks in the county are Beaver Lodge Dock and Conley Bottom Dock.

Mill Springs Civil War Battle Site is approximately 10 miles from Monticello.

Area (Within 60 miles)

Lake Cumberland State Park

General Burnside Island State Park

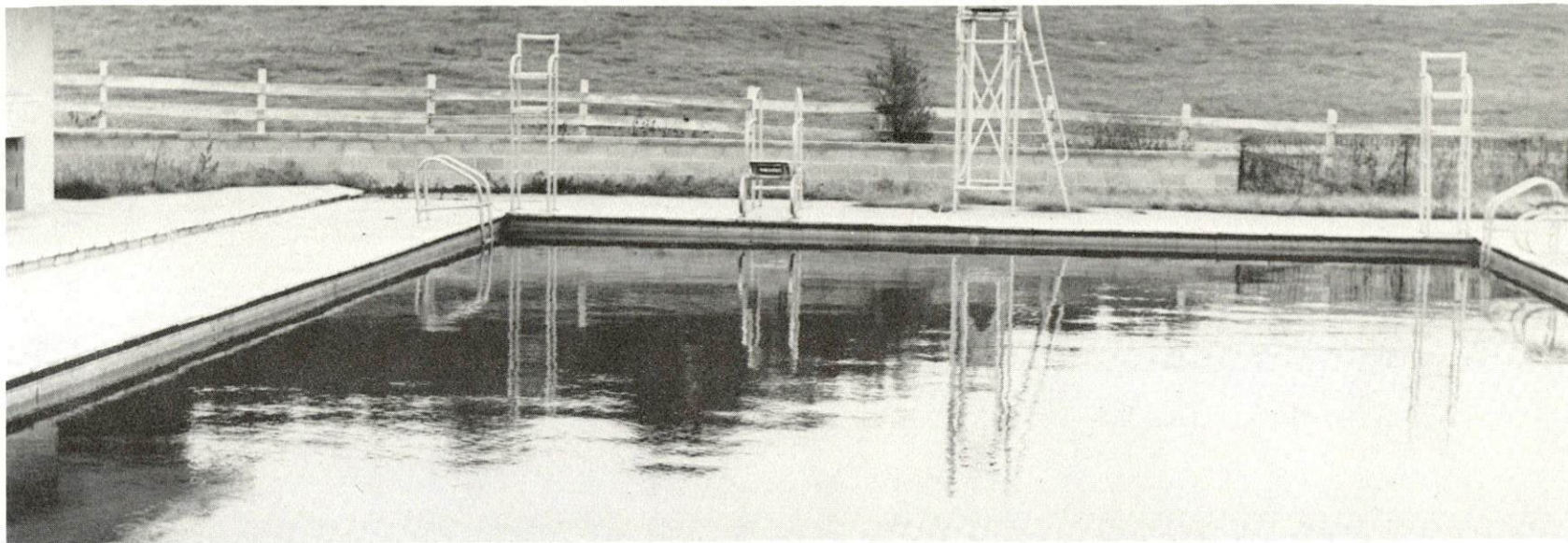
Cumberland Falls State Resort Park

Dale Hollow Reservoir

Mill Springs Civil War Battle Site

Gene Gray Wildlife Refuge

Laurel River Lake



STARDUST SWIMMING POOL



CONLEY BOTTOM FISHING DOCK

AGRICULTURE - NATURAL RESOURCES - CLIMATE

Agriculture*

	<u>Wayne County</u>	<u>Labor Market Area</u>
Total land area (acres)	281,664	1,240,960
Percent of area in farm land	64.4	52.9
Number of farms	1,468	7,140
Average size of farms (acres)	123.5	92.0
1969 value of all farm products	\$ 7,075,859	\$ 27,830,589
Value per farm	4,820	3,898
Total crop sales	2,346,707	10,132,466
Total livestock & livestock products	4,638,048	16,731,850
1972 agricultural production included:		
Burley tobacco (lbs.) (est.)	3,146,000	16,260,000
Corn for grain (bu.)	500,000**	2,522,200**
Cattle and calves (number)	31,000**	127,900**
Hogs and pigs (number)	30,700**	65,100**
Milk production, 1971 (lbs.)	15,660,000	113,950,000

Natural Resources

Principal mineral resources	Limestone, coal, and petroleum
Acres of commercial forest land	177,900
Most abundant tree species	White oak, red oak, hickory, yellow poplar, yellow pine, beech, and hard maple

*U. S. Department of Commerce, Bureau of the Census, Census of Agriculture, 1969. U. S. Department of Agriculture and Kentucky Department of Agriculture, Kentucky Agricultural Statistics, 1972.

**Preliminary figures.

Climate*

Wayne County

Temperature

Annual mean (30-year record)	59.7 degrees
Average annual 1972	59.2 degrees
Record highest, August, 1968 (13-year record)	99.0 degrees
Record lowest, January, 1966 (13-year record)	- 9.0 degrees
Normal heating degree days (30-year record)	3,478
(Heating degree day totals are the sums of negative departures of average daily temperatures from 65 degrees F.)	

Precipitation

Mean annual total (30-year record)	46.18 inches
Mean annual snow and sleet (31-year record)	13.00 inches
Total precipitation 1972	58.03 inches
Mean number days precipitation (.01 inch or more) (31-year record)	128
Average number days thunderstorms (31-year record)	48

Prevailing winds (14-year record)	Northeast
-----------------------------------	-----------

*U. S. Department of Commerce, Environmental Science Services Administration, Climatological Data, 1972. Station of record: Knoxville, Tennessee.

HISTORY

Wayne County, established in 1800 as the forty-third Kentucky county, has a land area of 281,664 acres. Its territory was taken from Cumberland and Pulaski Counties. Later it gave lands to help form Russell, Clinton, and McCreary Counties.

Wayne County was named for General "Mad" Anthony Wayne, a native of Pennsylvania. He formed and commanded a regiment during the Revolutionary War that participated in battles at Quebec, Germantown, and Yorktown. After the Revolutionary War, Wayne continued in the military and defeated the Northwest Indians at Fallen Timbers, which virtually marked the end of Indian presence in Ohio.

Monticello, the county seat, was named for the estate of Thomas Jefferson, although it has a different pronunciation. Monticello Park, erected and dedicated in memory of the Wayne County soldiers who were killed during the Civil War, has beautiful shade trees and is a favorite spot of the townpeople and visitors. A monument in the Town Square is the county's tribute to soldiers, who fought in the two World Wars. The last stagecoach used in Kentucky is housed in the John Burton Collection. Its last run was a round trip between Burnside and Monticello in 1912.

Cumberland Lake gives the county a great amount of water surface since it backs up into the valleys of the smaller streams. Such areas are among the most sought by fishermen. Each year thousands of visitors come to the lake and thousands of dollars are added to the county's economy. The soil is fertile since it has a limestone base. There are large deposits of coal, principally in the eastern half, and oil is abundant. It was from a contemplated salt well that an oil gusher burst in 1817 which not only ruined other salt wells in the vicinity, but also covered the surface of the Cumberland River for several miles downstream. Wayne County has a fairly solid claim of having the first oil well in the country.

In 1810, 10 years after its formation, Wayne County had 5,430 inhabitants. The population grew steadily and reached 17,518 in 1910. Since then the population of the county has been declining slowly, falling to 14,268 in 1970. Monticello has been growing steadily, reaching a population of 3,618 in 1970.

Agriculture provided 1,300 of the county's 5,430 jobs in 1973, with burley tobacco, corn, cattle, milk, and hogs the principle products. Manufacturing grew by over 71 percent between 1964 and 1974, reaching 1,130 in 1974. Larand Leisurelies, Incorporated, manufacturers of women's and children's sleepwear is the largest manufacturing firm, employing over 300 workers.