

1990

Industrial Resources: Bourbon County - Paris

Kentucky Library Research Collections
Western Kentucky University, spcol@wku.edu

Follow this and additional works at: https://digitalcommons.wku.edu/bourbon_cty

 Part of the [Business Administration, Management, and Operations Commons](#), [Growth and Development Commons](#), and the [Infrastructure Commons](#)

Recommended Citation

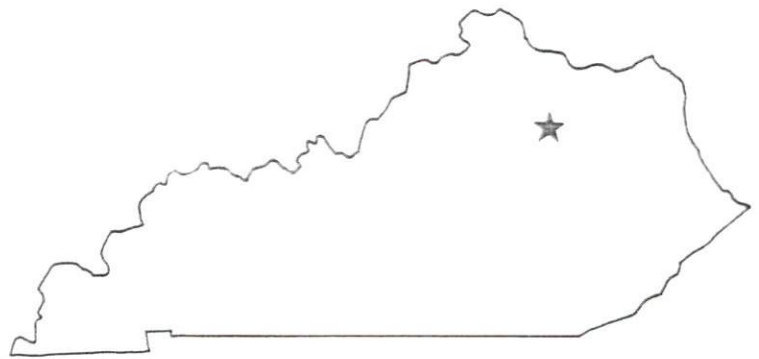
Kentucky Library Research Collections, "Industrial Resources: Bourbon County - Paris" (1990). *Bourbon County*. Paper 6.
https://digitalcommons.wku.edu/bourbon_cty/6

This Report is brought to you for free and open access by TopSCHOLAR®. It has been accepted for inclusion in Bourbon County by an authorized administrator of TopSCHOLAR®. For more information, please contact topscholar@wku.edu.

© 1999
Bourbon Co.

Resources for Economic Development

Paris



KENTUCKY
Open for Business

RESOURCES FOR ECONOMIC DEVELOPMENT

PARIS, KENTUCKY

Prepared by
The Kentucky Cabinet for Economic Development
Division of Research and Planning
in cooperation with
Paris Industrial Development Corporation and
The Paris-Bourbon County Chamber of Commerce

1990

Division Director - Pamela K. Riley; program coordinator - Keith Roberts; research - Jane E. Sullivan; clerical - Wanda Sharp; graphics - Robert Owens, Pat Coleman; cartography - Edwin Scott, Dave Clark. Cost of printing paid from state funds.

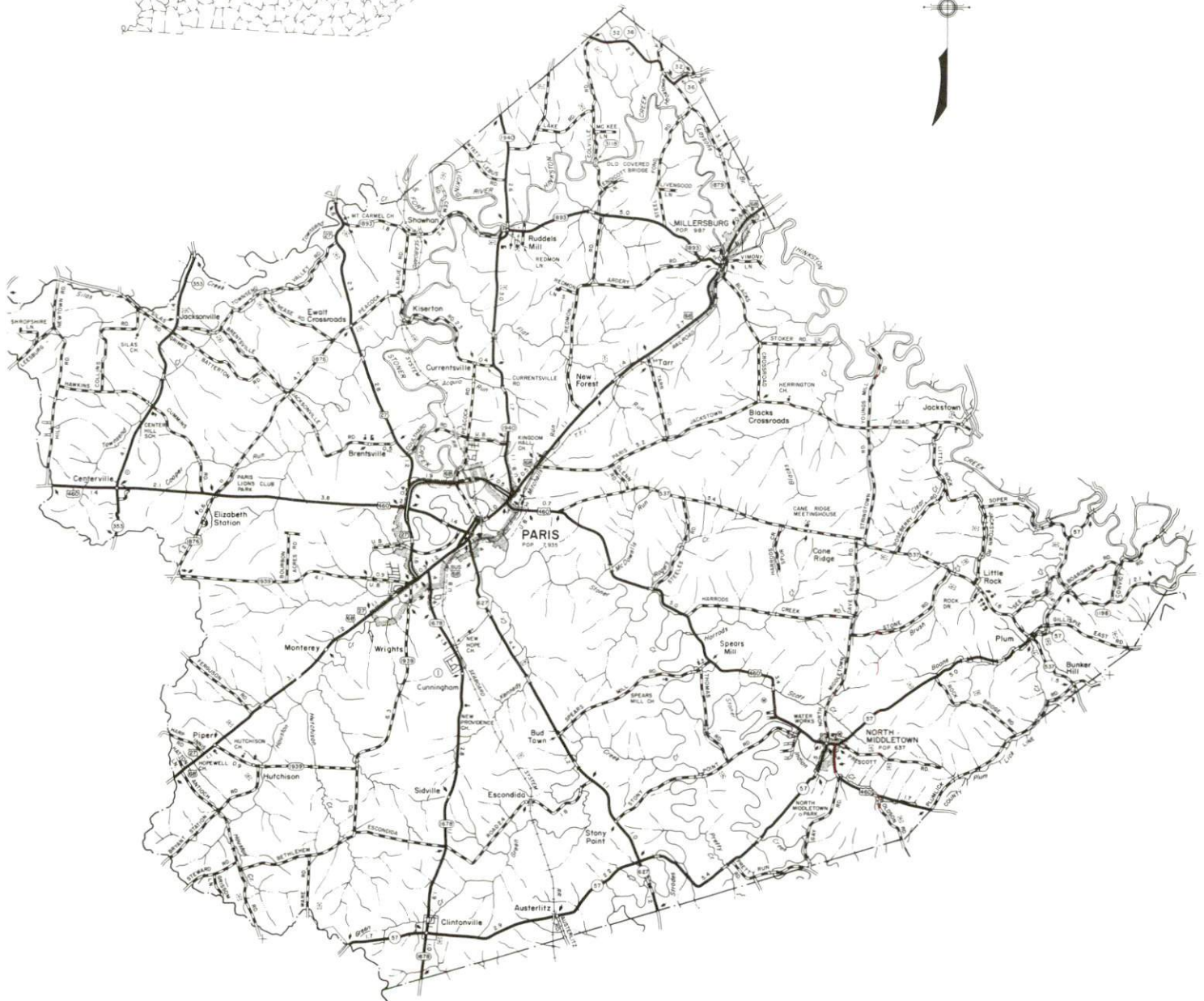
TABLE OF CONTENTS

<u>Chapter</u>	<u>Page</u>
PARIS, KENTUCKY - A RESOURCE PROFILE	1
THE LABOR MARKET STATISTICS.	2
Labor Market Area Map	2
Population.	3
Population Projections	3
Estimated Labor Supply	3
Labor Force Characteristics of Residents, 1988.	4
Selected Components of Nonagricultural Employment, by Place of Work, 1988.	5
Per Capita Personal Income	6
Average Placement Wages	7
Average Weekly Wages of Workers Covered by Unemployment Insurance F.Y. 1987-88 - Bar Chart	8
Average Weekly Wages by Industry, by Place of Work, 1988.	9
EXISTING INDUSTRY	10
Paris Manufacturing Firms, Their Products and Employment	10
Labor Organizations in Manufacturing Firms	10
Selected Industrial Services	11
TRANSPORTATION.	12
Highways	12
Truck Service	12
Selected Market Location Map	13
Rail	14
Air	14
UTILITIES	15
Electricity	15
Natural Gas	15
Public Water Supply	16
Sewerage	16
CLIMATE	17

<u>Chapter</u>	<u>Page</u>
LOCAL GOVERNMENT	18
Structure	18
Planning and Zoning	18
Local Fees and Licenses	18
State and Local Property Taxes	19
Combined State and Local Rates Per \$100 Valuation, 1989	19
EDUCATION	20
Public Schools	20
Nonpublic Schools	20
Area Colleges and Universities	21
Vocational Training	21
OTHER LOCAL FACILITIES	23
Local Medical Personnel	23
Hospitals	23
Other Medical Facilities and Services	23
Banks and Savings & Loan Associations	23
Newspapers	23
Telephone Service	23
RECREATION	24
COMMUNITY IMPROVEMENTS	25

GENERAL HIGHWAY MAP
BOURBON COUNTY
KENTUCKY

PREPARED BY THE
KENTUCKY TRANSPORTATION CABINET
DEPARTMENT OF HIGHWAYS
DIVISION OF PLANNING
IN COOPERATION WITH THE
U. S. DEPARTMENT OF TRANSPORTATION
FEDERAL HIGHWAY ADMINISTRATION



PARIS, KENTUCKY - A RESOURCE PROFILE

Paris, the county seat of Bourbon County, is located in central Kentucky's Blue Grass Region, an area famous for its many beautiful horse farms and its gently-rolling topography. Paris, which had an estimated population of 8,238 in 1988, is located 19 miles northeast of Lexington, Kentucky; 86 miles south of Cincinnati, Ohio; and 190 miles north of Knoxville, Tennessee.

Bourbon County has a land area of 292 square miles and in 1988 had an estimated population of 19,400.

The Economic Framework - The total number of Bourbon County residents employed in 1988 averaged 9,267. Manufacturing firms in the county reported 1,180 employees; wholesale and retail trade provided 1,332 jobs; 584 people were employed in service occupations; state and local government accounted for 706 employees; and contract construction firms provided 279 jobs.

Labor Supply - There is a current estimated labor supply of 32,842 persons available for industrial jobs in the labor market area. In addition, from 1990 through 1994, 23,192 young persons in the area will become 18 years of age and potentially available for industrial jobs.

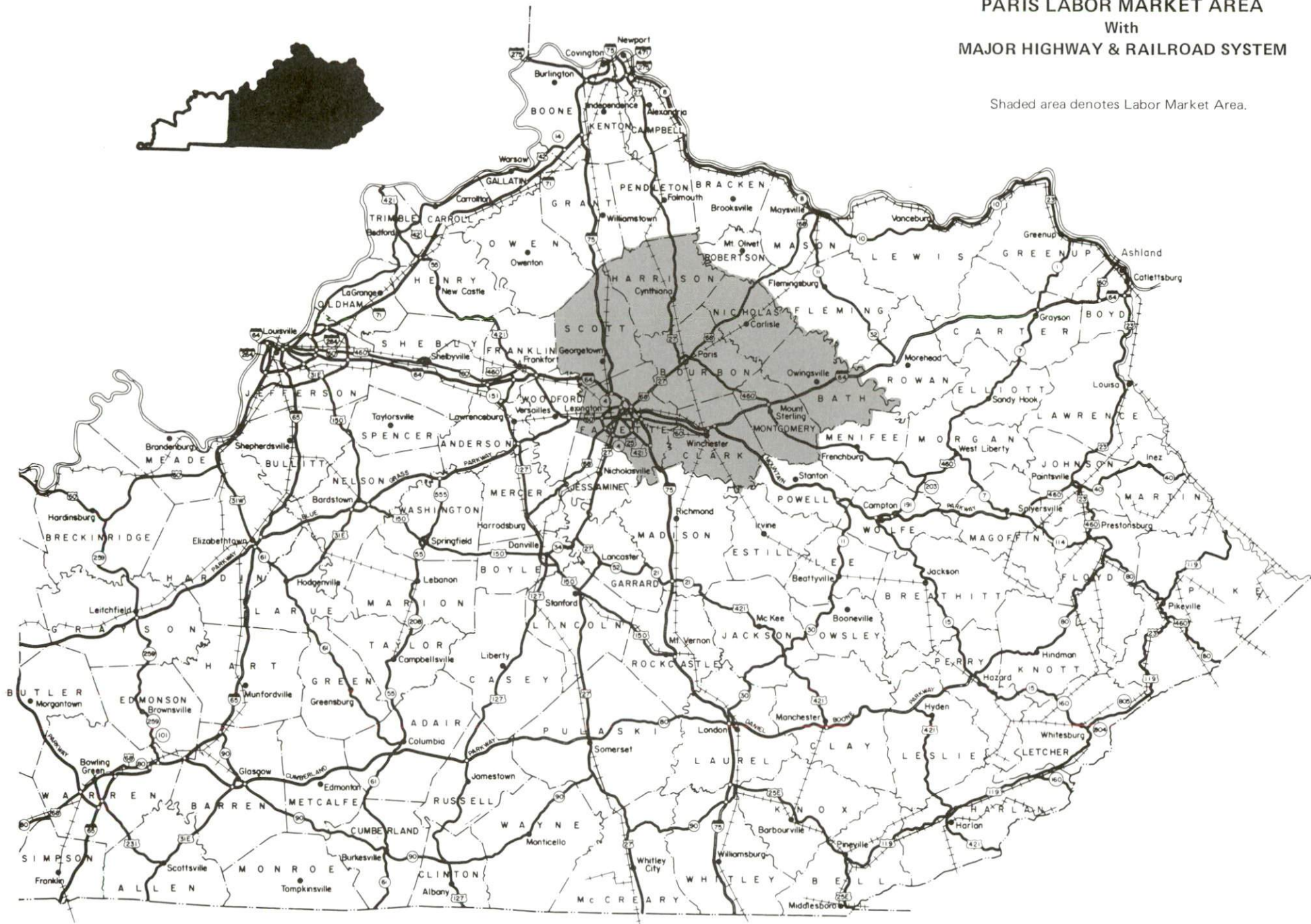
Transportation - Highways serving Paris are U.S. Highways 27, 68, 460, and Kentucky Route 627, all of which are "AAA"-rated trucking highways. Thirty-two trucking firms provide service to Paris. Main line rail service is provided by the Trans-Kentucky Transportation Railroad, Inc., and CSX Transportation. The nearest scheduled commercial airline service is available at Lexington's Bluegrass Airport, 23 miles southwest of Paris. The nearest navigable waterway is the Kentucky river at Frankfort, 36 miles west of Paris, and the Ohio River at Maysville, 48 miles north of Paris.

Power and Fuel - Paris receives electric power from the City of Paris Combined Utilities Company and Kentucky Utilities Company (the two companies interchange electric power). Clark Rural Electric Cooperative Corporation and Harrison Rural Electric Cooperative Corporation provide electric power to Bourbon County. Natural gas service is provided to Paris by Columbia Gas of Kentucky.

Education - Primary and secondary education is provided by the Paris Independent School System in the city of Paris, and by the Bourbon County School System in Bourbon County. Both school systems are accredited by the Southern Association of Colleges and Schools. Three non-public schools also operate in Bourbon County. There are twelve institutions of higher learning located within 60 miles of Paris. Vocational training facilities are available within 19 miles of Paris at Cynthiana and Lexington.

PARIS LABOR MARKET AREA With MAJOR HIGHWAY & RAILROAD SYSTEM

Shaded area denotes Labor Market Area.



LABOR MARKET STATISTICS

The Paris Labor Market Area includes Bourbon County and the adjoining Kentucky counties of Bath, Clark, Fayette, Harrison, Montgomery, Nicholas and Scott.

	POPULATION		
	1988*	1980	1970
Labor Market Area	351,300	326,099	280,102
Paris	8,238	7,935	7,823
Bourbon County	19,400	19,405	18,476

*Population estimates.

Sources: U.S. Department of Commerce, Bureau of the Census, August 1989, November 1989.

	POPULATION PROJECTIONS			
	1995	2000	2010	2020
Labor Market Area	373,062	383,873	400,091	410,368
Bourbon County	20,292	20,634	20,999	21,094

Source: University of Louisville, Urban Studies Center, State Data Center.

	ESTIMATED LABOR SUPPLY				
	Total	Current			Future Becoming 18 years of age 1990 thru 1994
		Unemployed	Employed Part-Time	Not in Labor Force	
Labor Market Area*	32,842	10,712	18,743	3,387	23,192
Bourbon County	1,502	580	718	204	1,428

* Additional workers may be drawn from other nearby counties.

Note: Unemployed - persons unemployed and actively seeking work; Employed Part-Time - persons employed but working only 14 to 26 weeks per year; Not in Labor Force - represents the number of persons who would enter the labor force if suitable employment were available (based on the assumption that persons in Kentucky would like to participate in the labor force in the same proportion that they do nationally).

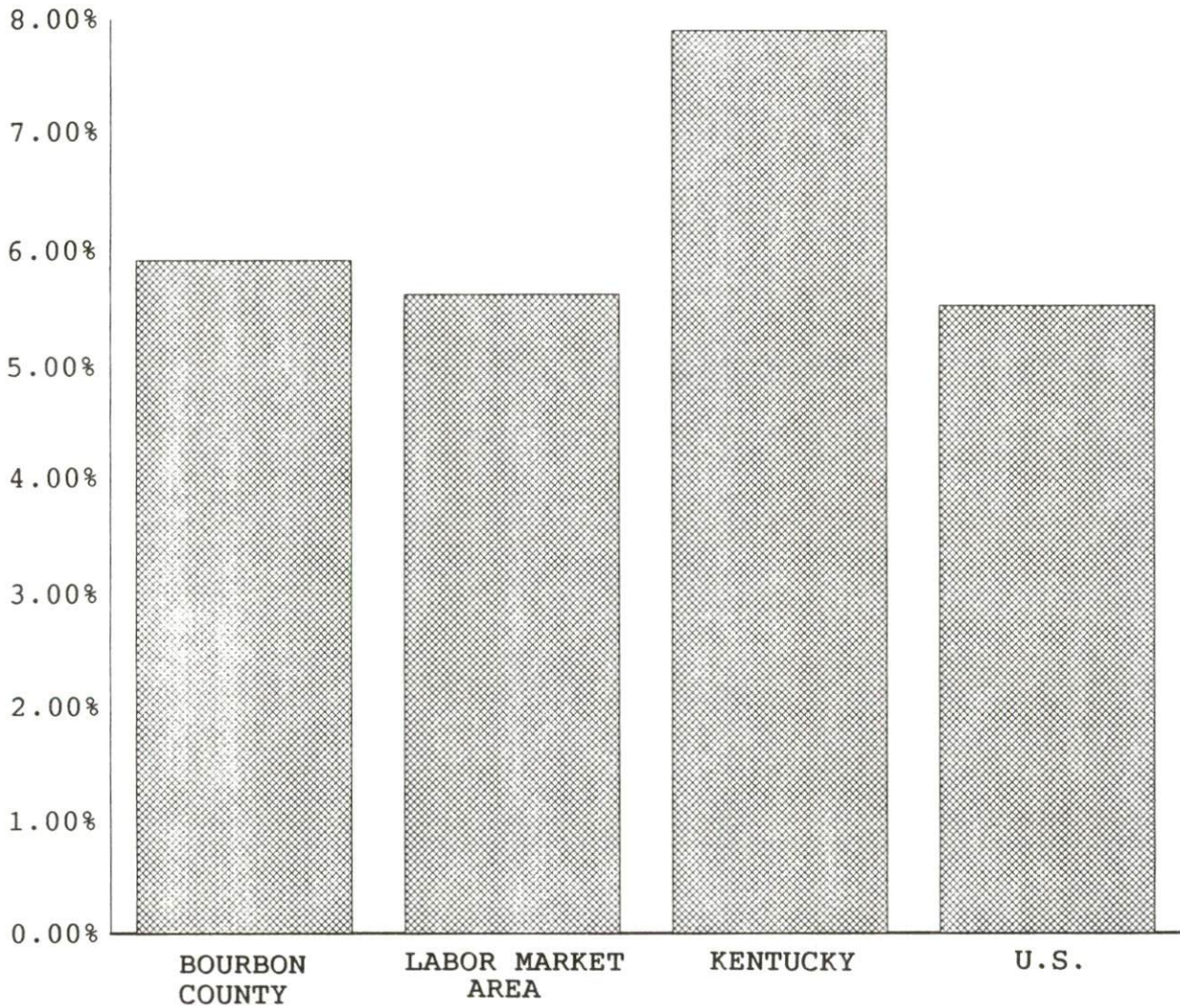
Sources: Kentucky Cabinet for Human Resources, Kentucky Labor Supply Estimates by County, 1988. Kentucky Cabinet for Economic Development, Future Labor Supply Becoming 18 Years of Age, 1990 thru 1994.

LABOR FORCE CHARACTERISTICS OF RESIDENTS, 1988

	Bourbon County	Labor Market Area
Civilian Labor Force	9,847	191,318
Employment	9,267	180,606
Unemployment	580	10,712
Rate of Unemployment (%)	5.9	5.6

Source: Kentucky Cabinet for Human Resources, Kentucky Labor Force Estimates, Annual Averages, 1988.

UNEMPLOYMENT RATES
1988

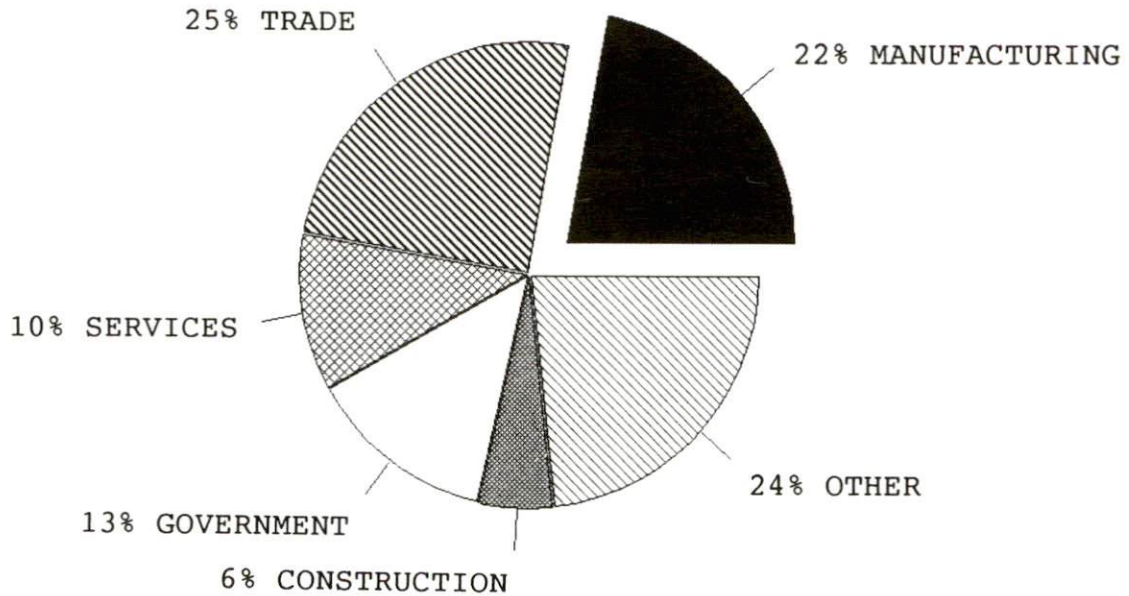


SELECTED COMPONENTS OF NONAGRICULTURAL EMPLOYMENT
BY PLACE OF WORK, 1988

	<u>Bourbon County</u>	<u>Labor Market Area</u>
All Industries (total)	5,324	166,769
Manufacturing	1,180	31,555
Wholesale & Retail Trade	1,332	42,813
Services	584	36,833
State/Local Government	706	24,290
Contract Construction	279	9,401

Note: Excludes domestic workers, railway workers, certain nonprofit corporations, majority of federal government workers, and self-employed workers.
Source: Kentucky Cabinet for Human Resources, Average Monthly Workers Covered by Kentucky Unemployment Insurance Law, 1988.

BOURBON COUNTY

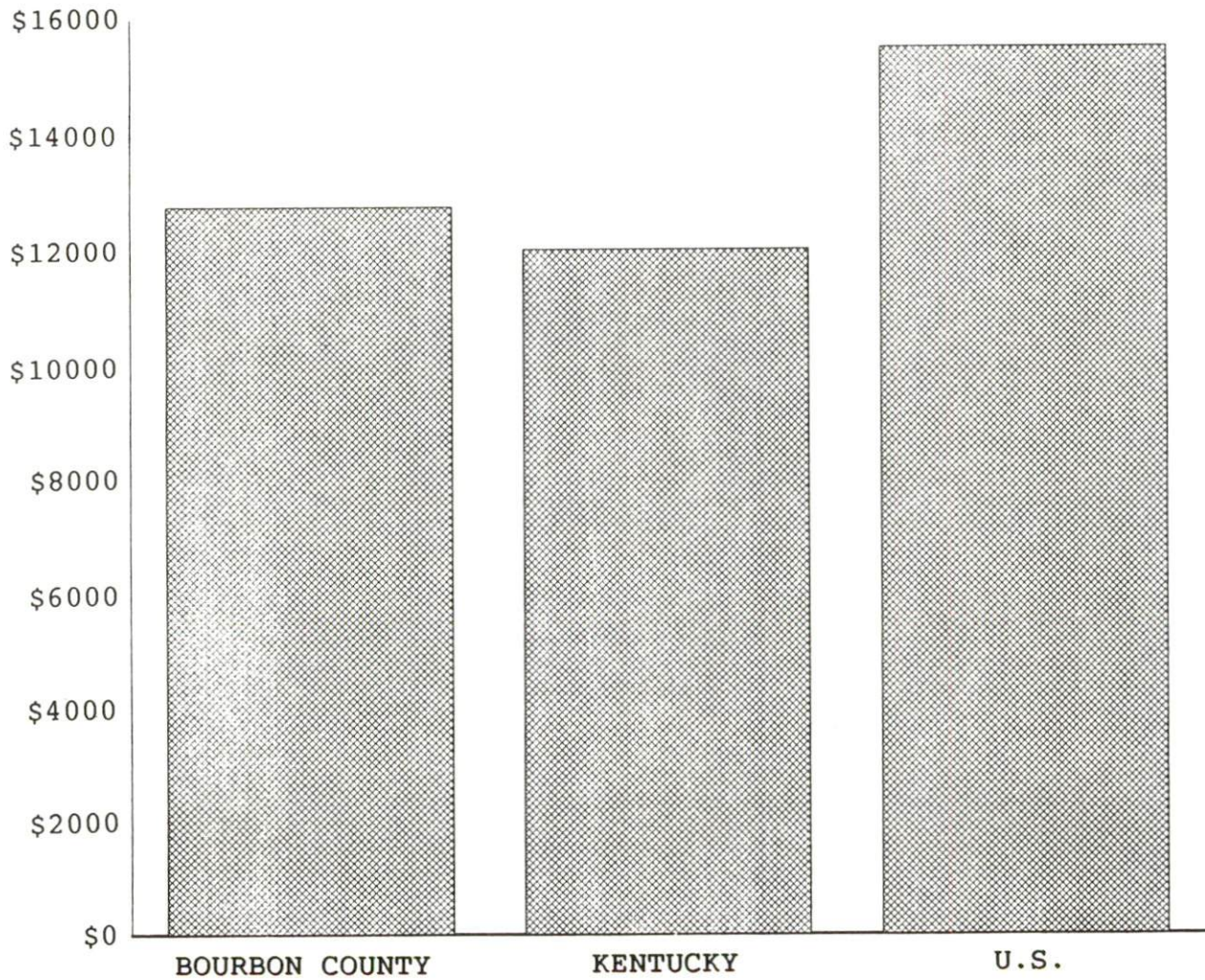


PER CAPITA PERSONAL INCOME

Area	1983	1987	Percent Change
Bourbon County	\$10,137	\$12,733	28.7
Labor Market Area Range	\$6,437 - 12,304	\$8,286 - 15,551	-
Kentucky	\$9,513	\$11,997	26.1
U.S.	\$12,098	\$15,484	28.0

Sources: U.S. Bureau of Economic Analysis, Kentucky Economic Information System, August 1988 and April 1989.

PER CAPITA PERSONAL INCOME
1987



AVERAGE PLACEMENT WAGES

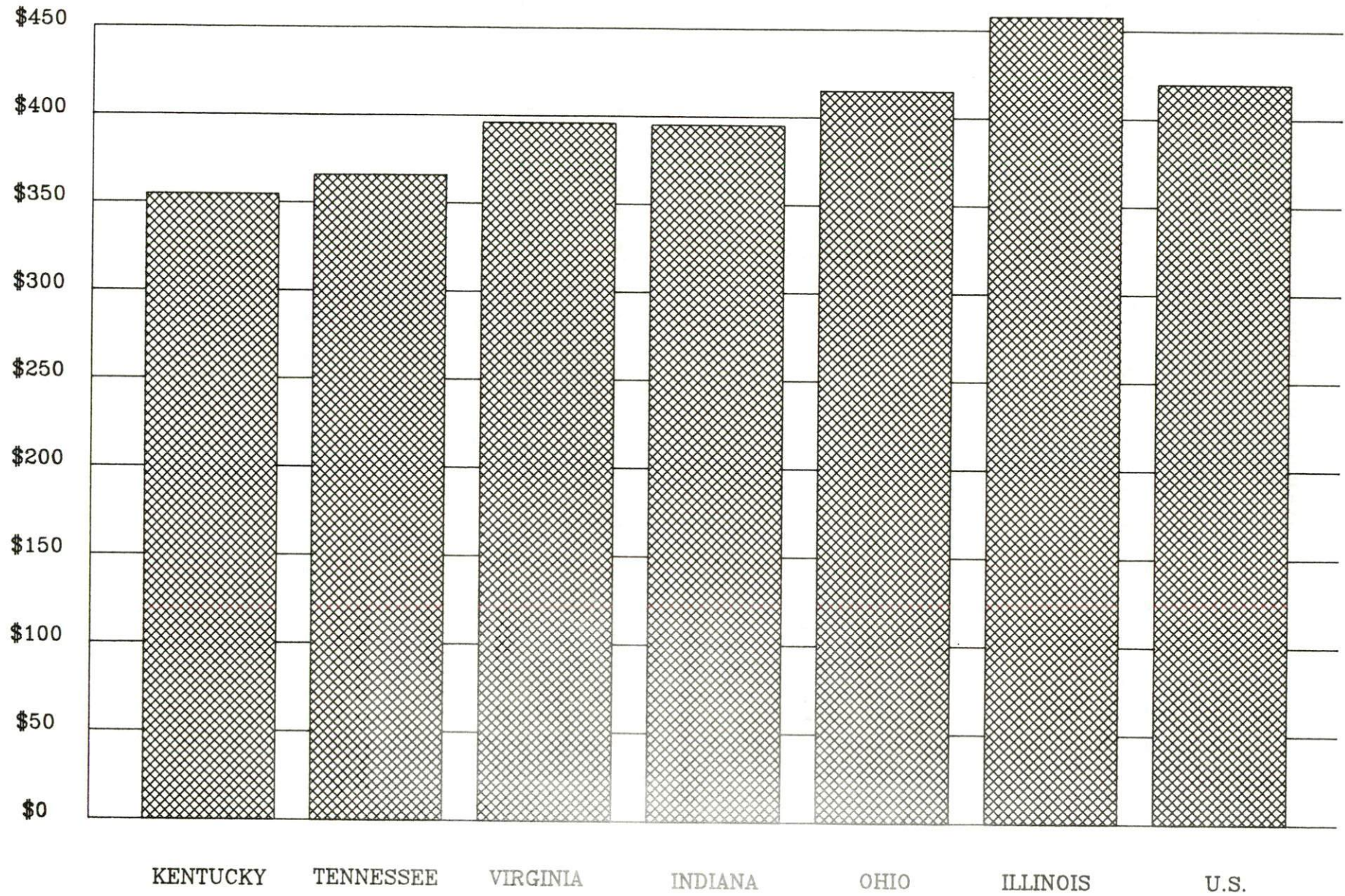
Bourbon County is served by the Georgetown local office of the Kentucky Department for Employment Services. The focus of the following data is on job placements made by the Georgetown local office and may therefore be used as an indicator of the wages which employers in the area pay new employees. During the twelve months which ended on June 30, 1989, the local employment office filled 1,749 job openings in various occupational categories. The average hourly wage for selected occupational categories were:

<u>OCCUPATIONAL CATEGORY</u>	<u>NUMBER OF PLACEMENTS</u>	<u>AVERAGE WAGE(\$)</u>
All Occupations	1,749	5.21
Clerical	194	3.80
Sales	33	3.85
Services (excluding domestic)	223	3.64
Agricultural, Fishery, Forestry, etc.	113	3.43
Processing	83	4.72
Machine Trades	66	6.37
Bench Work	594	4.46
Structural	345	9.08
Motor Freight/ Transportation	21	5.05
Packaging and Materials Handling	40	4.86
Other	0	0.00

The Georgetown local office also serves Harrison, Nicholas, and Scott Counties. The above occupational categories are taken from the Dictionary of Occupational Titles published by the U.S. Department of Labor.

Source: Kentucky Cabinet for Human Resources, Department for Employment Services.

AVERAGE WEEKLY WAGES OF WORKERS COVERED BY
UNEMPLOYMENT INSURANCE F.Y. 1987-88



AVERAGE WEEKLY WAGES BY INDUSTRY
BY PLACE OF WORK, 1988

	<u>Bourbon County</u>	<u>Kentucky (State- Wide)</u>	<u>Tennessee</u>	<u>Virginia</u>
All Industries	\$291.35	\$352.31	\$363.12	\$392.56
Mining & Quarrying	*	603.27	495.85	596.88
Contract Construction	383.44	380.71	394.27	422.27
Manufacturing	362.68	464.92	416.73	452.60
Transportation, Communications & Public Utilities	357.68	468.17	485.13	554.17
Wholesale & Retail Trade	228.91	238.88	N/A	N/A
Finance, Insurance & Real Estate	327.48	401.17	269.27	466.23
Services	201.25	298.98	343.48	391.67
State/Local Government	335.49	377.81	403.21	457.00
	<u>Indiana</u>	<u>Ohio</u>	<u>Illinois</u>	<u>U. S.</u>
All Industries	\$392.63	\$411.08	\$454.10	\$416.33
Mining & Quarrying	635.77	579.73	674.62	660.40
Contract Construction	449.87	465.46	584.10	469.85
Manufacturing	532.06	569.98	555.83	517.62
Transportation, Communications & Public Utilities	502.69	519.17	584.83	542.33
Wholesale & Retail Trade	N/A	N/A	N/A	N/A
Finance, Insurance & Real Estate	406.58	444.33	579.88	532.52
Services	317.98	348.48	402.38	384.31
State/Local Government	395.31	428.10	453.12	442.71

* Not disclosed.

N/A Not Available.

Note: The average weekly wage for each category includes the salaries and wages of all persons working for that type business. For example, the manufacturing category includes both production workers and administrative personnel. Excludes domestic workers, railway workers, certain nonprofit corporations, majority of federal government workers, and self-employed workers.

Source: Kentucky Cabinet for Human Resources, Average Weekly Wages of Workers Covered by Kentucky Unemployment Insurance Law, 1988. U.S. Department of Labor, Bureau of Labor Statistics, Average Annual Pay by State and Industry, August 29, 1989.

EXISTING INDUSTRY

PARIS MANUFACTURING FIRMS, THEIR PRODUCTS AND EMPLOYMENT

<u>Firm</u> <u>(Establishment date)</u>	<u>Product</u>	<u>1989</u> <u>Average Employment</u>
Accutran, Inc. (1984)	Pallets, Household Furniture, Custom Woodworking	45
Apex Enterprises (1973)	Tool & Die	5
Bourbon Graphics (1984)	Commercial Printing	5
Bourbon Packing Company (1945)	Meat Processing	2
Brown & Epperson Lumber of Paris (1971)	Millwork, Trusses, Surveyor Stakes	12
Central Manufacturing Company (1988)	Auto Wheels	120
The Citizens Advertiser, Inc. (1807)	Newspaper Publishing, Job Printing	14
Concrete Materials Corporation (1967)	Concrete Blocks, Concrete Septic Tanks	5
Dimensional Hardwood, Inc., (1984)	Architectural Millwork, Hardwood Dimension & Flooring, Wood Products	28
Faulconer Manufacturing Company, Inc. (1969)	Fiberglass Products, Bank Fixtures, Custom Interiors, Wood Office Cabinets	6
Hinkle Contracting Corporation (1962)	Asphalt	3
I.T.W. Ramset/Redhead (1979)	Fastening Systems, Stud Guns	85
Kentucky Textiles, Inc. (1981)	Knit Sweat Pants, Tops, Mens & Womens Swimwear	750
Lucky Brothers, Inc. (1972)	Machine Shop	2
Mallinckrodt, Inc. (1978)	Inorganic Chemicals, Organic Chemicals	215
Paris Machining Company (1972)	Steering Arms, Axle Components, & Nonelectric Computer Hardware	30
Quillin Leather & Tack (1979)	Tack and Halters	6
Racehorse Veterinary Products (1988)	Veterinary Products	5
Weatherly Consumer Products (1972)	Fertilizer Spikes	50

Sources: Kentucky Cabinet for Economic Development, Division of Research and Planning. Paris Industrial Development Corporation.

LABOR ORGANIZATIONS IN MANUFACTURING FIRMS

There are presently no labor unions representing manufacturing firms in Paris.

SELECTED INDUSTRIAL SERVICES

<u>Types of Services</u>	<u>Location</u>	<u>Mileage from Paris</u>
Custom Data Processing	Lexington	19
Custom Plastics Producers	Georgetown Lexington	18 19
Electric Motor Repair	Lexington	19
Grinding, Precision & Tool	Georgetown Lexington	18 19
Heat Treating Facilities	Georgetown Lexington	18 19
Industrial Equipment & Supplies	Lexington	19
Industrial Gases	Lexington	19
Industrial Waste Removal	Lexington	19
Machine Shops, Tool & Die	Paris	-
Metal Castings	Cynthiana	15
Metal Finishers	Lexington	19
Metal Service Centers	Lexington	19
Millwrights	Lexington	19
Public Warehouse Facilities	Paris	-

Sources: Kentucky Cabinet for Economic Development, Kentucky Directory of Selected Industrial Services, 1987; Division of Research and Planning.

TRANSPORTATION

Highways

Paris is served by U.S. Highways 460, 27, 68, and Kentucky 627. All are "AAA" (80,000 pound gross load limit) trucking highways. Kentucky Highway 1940, a "AA" (62,000 pound gross load limit) highway also serves Paris. Interstate 75 can be accessed near Georgetown, 16 miles west of Paris. Interstate 64 can be accessed near Lexington, 15 miles southwest of Paris.

HIGHWAY MILES FROM PARIS, KENTUCKY, TO SELECTED MARKET CENTERS

City	Highway Miles	City	Highway Miles
Atlanta, GA	383	Los Angeles, CA	2,178
Baltimore, MD	553	Louisville, KY	84
Birmingham, AL	415	Nashville, TN	229
Chicago, IL	362	New Orleans, LA	749
Cincinnati, OH	86	New York, NY	732
Cleveland, OH	333	Pittsburgh, PA	360
Detroit, MI	355	St. Louis, MO	350
Knoxville, TN	190		

Note: Mileage computations are via the best interstate or primary highways, not necessarily the most direct route of travel.

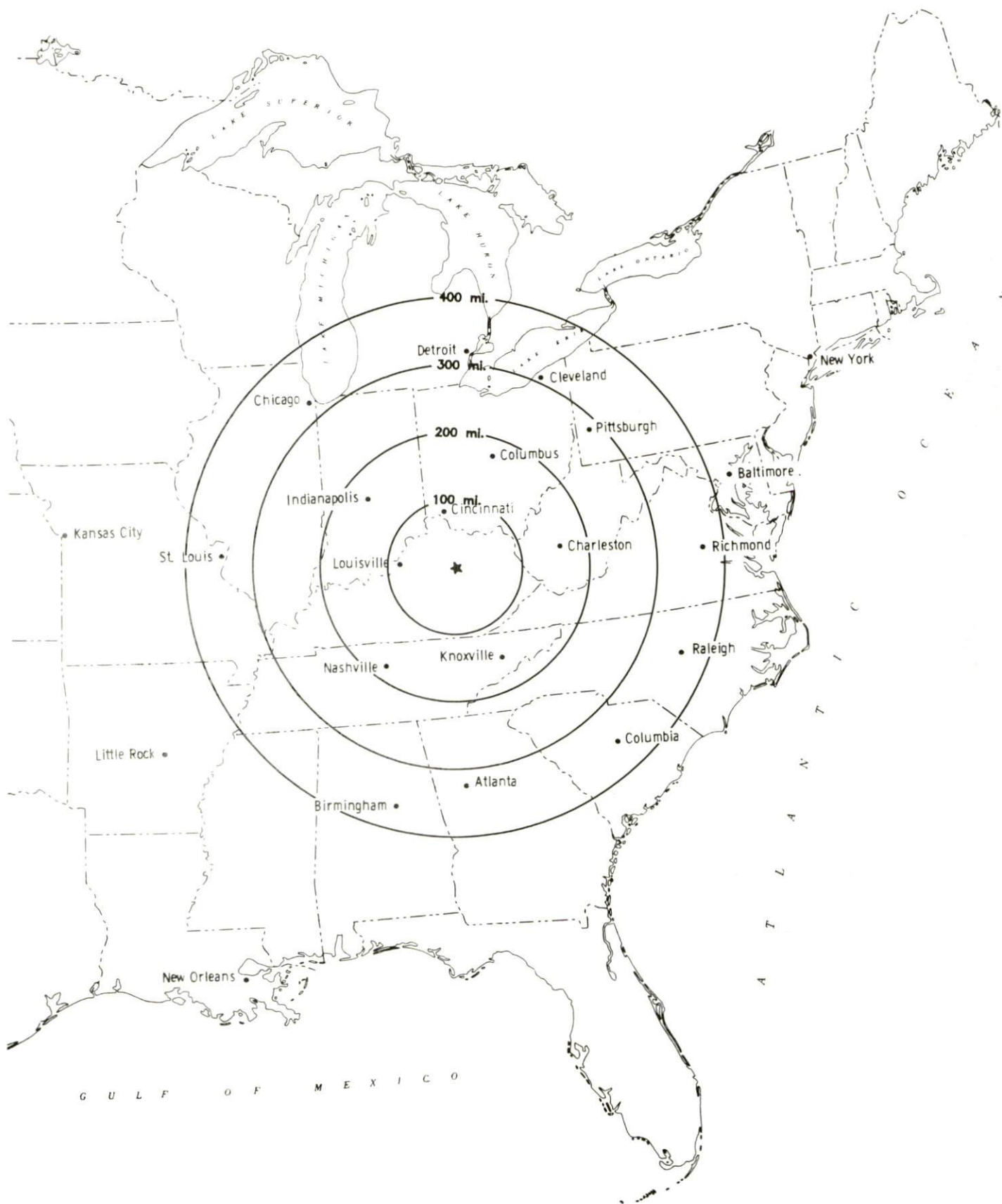
Sources: Rand McNally Deluxe Motor Carriers' Road Atlas, 1989. Official Kentucky Mileage Map, 1980.

Truck Service

Thirty-two firms currently provide intrastate and/or interstate trucking service to Paris.

Source: American Motor Carrier Directory, Spring 1990.

Selected Market Centers



Rail

Main line rail service is provided to Paris by CSX Transportation and by T.T.I. Railroad, a connecting line extending from Paris to Maysville. The nearest piggyback facility is located at Georgetown, 16 miles west of Paris, and is operated by the Southern Railway System.

For details on routing, schedules, rates, and services contact:

Manager
Industrial Development
CSX Transportation
9420 Bunsen Parkway
Suite 212
Louisville, Kentucky 40220
(502) 499-3025

and/or

President
T.T.I. Systems, Inc.
119 East Main Street
Lexington, Kentucky 40507
(606) 253-9200

Air

Local

Location:	Cynthiana-Harrison County Airport 1.5 miles south of Cynthiana; 14 miles north of Paris
Runways:	1 paved
Length:	3,200 feet
Traffic Control:	Wind sock and lighted wind tee
Lighting:	Runway lights - sundown to sunrise, VASI, REIL, RTGBCN
Services:	80 and 100LL fuel; major A & P repairs; hangars, tie-downs; taxi; A and I service, Painting

The Cynthiana-Harrison County Airport constructed six new hangers in 1988. Plans are underway to extend the runway to 4,000 feet. This project should be underway by fall 1990.

Nearest Scheduled Commercial Airline Service

Location:	Bluegrass Airport 4 miles west of Lexington, Kentucky; 23 miles southwest of Paris
Air Service:	Delta, USAir, TWA, United Express, JetStream, Air Kentucky, American Eagle, ComAir
Daily Arrivals & Departures:	116

UTILITIES

Electricity

Company serving parts of Paris - City of Paris Combined Utilities
Source of power - City of Paris Combined Utilities; Kentucky Utilities
For industrial rates contact:

City of Paris Combined Utilities
800 Pleasant Street
Paris, Kentucky 40361-1790
(606) 987-2630

and/or

Industrial Development Department
Kentucky Utilities Company
One Quality Street
Lexington, Kentucky 40507
(606) 255-1461

Company serving parts of Paris and Bourbon County - Kentucky
Utilities Company
Source of power - Kentucky Utilities Company
For industrial rates contact:

Industrial Development Department
Kentucky Utilities Company
One Quality Street
Lexington, Kentucky 40507
(606) 255-1461

Company serving parts of Bourbon County - Clark Rural Electric
Cooperative Corporation and Harrison Rural Electric Cooperative
Corporation
Source of power - East Kentucky Power Cooperative
For industrial rates contact:

Industrial Development Division
East Kentucky Power Cooperative
P.O. Box 707
Winchester, Kentucky 40391
(606) 744-4812

Natural Gas

Company serving Paris - Columbia Gas of Kentucky, Inc.
Source of supply - Columbia Gas Transmission Corporation
For rates and supplies contact:

Columbia Gas of Kentucky, Inc.
429 Main Street
P.O. Box 304
Paris, Kentucky 40361
(606) 987-4450

Public Water Supply

Company serving Paris - City of Paris Combined Utilities
800 Pleasant Street
Paris, Kentucky 40361-1790
(606) 987-3085

Source - Stoner Creek
Treatment plant capacity - 3,000,000 gallons per day
Average daily consumption - 1,200,000 gallons
Peak daily consumption - 2,000,000 gallons
Storage capacity - 2,908,700 gallons
Water pressure - 42 psi to 125 psi

The City of Paris Combined Utilities will implement several capital improvements within the next five years. The utilities company plans to construct a new clearwell, a sludge removal system, a raw water reservoir and to loop several mains in the distribution system.

Sewerage

Company serving Paris - City of Paris Combined Utilities
Wastewater Treatment Plant
6500 By Pass
Paris, Kentucky 40361
(606) 987-6085

Design capacity - 2,200,000 gallons per day
Average daily flow - 1,000,000 gallons
Type of treatment - Secondary
Treated effluent discharged into - Stoner Creek

The City of Paris recently constructed a new wastewater treatment plant. The \$4.3 million plant began operating in June 1989.

CLIMATE

Bourbon County

Temperature

Normal (30-year record)	54.90 degrees
Average annual 1988	54.90 degrees
Record highest, July 1988 (44-year record)	103.00 degrees
Record lowest, January 1963 (44-year record)	-21.00 degrees
Normal heating degree days (30-year record) (Heating degree day totals are the sums of negative departures of average daily temperatures from 65 degrees F.)	4,818

Precipitation

Normal (30-year record)	45.68 inches
Mean annual snowfall (44-year record)	16.20 inches
Total precipitation 1988	38.90 inches
Mean number days precipitation (.01 inch or more) (44-year record)	129.50
Mean number days thunderstorms (44-year record)	45.30

Prevailing winds (through 1963)

South

Relative Humidity (25-year record, except 1 a.m. - 24-year record)

1 a.m.	77 percent
7 a.m.	81 percent
1 p.m.	60 percent
7 p.m.	64 percent

Source: U.S. Department of Commerce, Environmental Science Services Administration, Climatological Data, 1988. Station of record: Lexington, Kentucky.

LOCAL GOVERNMENT

Structure

The city of Paris is served by a mayor, four commissioners, and a city manager. Bourbon County is served by a county judge/executive and seven magistrates.

Planning and Zoning

Joint agency - Paris - Bourbon County Planning and Zoning Commission

Participating cities - Paris, North Middleton, Millersburg

Zoning enforced - All areas

Subdivision regulations enforced - within city limits of participating cities

Local codes enforced - Building and housing (All areas)

Mandatory state codes enforced - Kentucky Plumbing code, National Electric Code, Kentucky Boiler Regulations and Standards, Kentucky Building Code (modeled after BOCA code)

Local Fees and Licenses

The city of Paris levies an occupational license tax of one and one-half percent on wages, and one and one-half percent on net profits of businesses inside the city. Additional regulatory license fees, ranging from \$25 to \$500, are charged to various businesses in Paris.

State and Local Property Taxes

All property in Kentucky, except items exempted by the state constitution, is taxed by the state. Property which also may be taxed by local jurisdictions includes land and buildings, finished goods inventories, automobiles, trucks, office furniture and office equipment. Local taxing jurisdictions in Kentucky include counties, cities, and school districts.

All property in Kentucky is assessed at 100 percent of fair cash value.

COMBINED STATE AND LOCAL RATES PER \$100 VALUATION, 1989

	<u>Paris and Paris Independent School District</u>	<u>Paris and Bourbon County School District</u>	<u>Unincorporated Bourbon County</u>
Land and Buildings	1.0453	0.7593	0.5993
Manufacturing			
Machinery	0.1500	0.1500	0.1500
Pollution Control			
Equipment	0.1500	0.1500	0.1500
Inventories			
Raw Materials	0.0010	0.0010	0.0010
Goods in Process	0.0010	0.0010	0.0010
Finished Goods	0.8560	0.5700	0.4100
Automobiles & Trucks	1.3890	1.0280	0.8580
Other Tangible			
Personal Property	1.3050	1.0190	0.8590
Intangibles (Accounts receivable*, money in hand, stock, notes, bonds)	0.2500	0.2500	0.2500
Goods Stored in Public Warehouses in Transit Status	0.0010	0.0010	0.0010
Private Leaseholds in Industrial Revenue Bond Financed Facilities	0.0150	0.0150	0.0150

* Accounts receivable are taxed at 85 percent of face value, for an effective rate of \$0.2125 per \$100 valuation.

EDUCATION

Public Schools

	<u>Paris Independent</u>	<u>Bourbon County</u>
Total Enrollment (Fall, 1989)	1,054	2,650
Accreditation	Southern Association of Colleges & Schools	Southern Association of Colleges & Schools
Pupil-Teacher Ratio (1988-89)	14.1-1	18.6-1
Percent High School Graduates to College (1988-89)	53.0	58.5
Expenditures Per Pupil (1988-89)	\$2,847.00	\$2,478.89

Nonpublic Schools

<u>School</u>	<u>Enrollment</u>	<u>Grades</u>
Saint Mary's Elementary	50	1-6
Meteer School (Special Education)	33	Preschool thru Adult
Millersburg Military Institute	76	6-12

Area Colleges and Universities

<u>Name</u>	<u>Location (Miles distant)</u>	<u>Enrollment (Fall, 1989)</u>
Georgetown College	Georgetown (18)	1,562
Lexington Community College	Lexington (19)	3,928
Transylvania University	Lexington (19)	1,076
University of Kentucky	Lexington (19)	22,957
Midway College	Midway (29)	524
Kentucky State University	Frankfort (36)	2,190
Asbury College	Wilmore (37)	1,076
Eastern Kentucky University	Richmond (38)	14,268
Maysville Community College	Maysville (48)	1,060
Berea College	Berea (52)	1,550
Centre College	Danville (54)	857
Morehead State University	Morehead (59)	7,962

Vocational Training

Vocational training is available at both the state vocational-technical schools and the area vocational education centers. The state vocational-technical schools are post-secondary institutions. The area vocational education centers are designed to supplement the curriculum of high school students. Both the state vocational-technical schools and the area vocational education centers offer evening courses to enable working adults to upgrade current job skills.

Arrangements can be made to provide training in the specific production skills required by an industrial plant. Instruction may be conducted either in the vocational school or in the industrial plant, depending upon the desired arrangement and the availability of special equipment.

(Continued)

Bluegrass State Skills Corporation

The Bluegrass State Skills Corporation, an independent public corporation created and funded by the Kentucky General Assembly, provides programs of skills training to meet the needs of business and industry from entry level to advanced training, and from upgrading present employees to retraining experienced workers.

The Bluegrass State Skills Corporation is the primary source for skills training assistance for a new or existing company. The Corporation works in partnership with other employment and job training resources and programs, as well as Kentucky's economic development activities, to package a program customized to meet the specific needs of a company.

<u>Vocational School</u>	<u>Location (Miles distant)</u>	<u>Cumulative Enrollment 1988-1989</u>
Harrison County Area Vocational Education Center	Cynthiana (15)	398
Central Kentucky State Vocational- Technical School	Lexington (19)	1,043
Fayette North Area Vocational Center	Lexington (19)	307
Fayette Area Vocational Education Center	Lexington (19)	321

OTHER LOCAL FACILITIES

Local Medical Personnel

Physicians - 14
Dentists - 9

Hospitals

<u>General Hospital</u>	<u>Location</u>	<u>Beds</u>
Bourbon General Hospital	Paris	58

Medical staff - 13 active physicians, 22 courtesy physicians, 25 registered nurses, 9 licensed practical nurses

Other Medical Facilities and Services

Stoner Creek Center
Bourbon County Comprehensive Care Center
Bourbon County Health Department
Paris - Bourbon County Emergency Medical Service

Banks and Savings and Loan

Bourbon Agricultural Bank and Trust
The National Bank and Trust Company of Paris
Blue Grass Federal Savings and Loan Association

Newspapers

The Bourbon County Citizens and Citizens Advertiser
Bourbon Times

Telephone Service

South Central Bell

RECREATION

Local

A number of public recreational facilities are available in Paris. Bourbon Park, a 30-acre county park, contains lighted softball/baseball fields, a track, a tennis court, fairground facilities, pavilion, basketball/volleyball courts (one court can be flooded during winter months for ice skating), exercise stations, picnic areas, and horseshoe pits.

Garrard Park, operated by the city, features nine tennis courts, a lighted softball/baseball field, and a picnic pavilion. The city plans to add a basketball court in the near future. There are three additional limited facility parks located throughout the county and two soccer fields. The City of Paris also sponsors Little league and Babe Ruth league baseball programs.

Private recreational facilities include a county club, with a nine-hole golf course and swimming pool, a commercial nine-hole golf course, a YMCA with an olympic-size swimming pool and fitness center. Paris residents also benefit from a local bowling alley and drive-in theater.

Central Light Alloy Manufacturing Company has constructed tennis courts at its plant which are available to the public.

Area (Within 65 miles)

The Kentucky Horse Park
Blue Licks Battlefield State Park
Waveland State Shrine
Kentucky State Capital
The Daniel Boone National Forest
Kincaid Lake State Park
Pleasant Hill
Boonesborough State Park
White Hall State Shrine

COMMUNITY IMPROVEMENTS

Recent

Paris was recertified as a Kentucky Certified City in 1989 and is distinguished as a silver award winner in recognition of four consecutive years of certification. Re-certification is based on achievement in the following areas: existing industry assistance, small business assistance, educational resources, and community development factors of health care, public safety, arts and culture, recreation, governmental awareness and resources. The Certified Cities Program is sponsored by the Kentucky Chamber of Commerce.

Central Light Alloy will begin operations in November of 1990. The plant will manufacture automotive wheels and employ from 70 to 150 people. Toyota will be among its customers.

Central Manufacturing Company recently completed a \$13.5 million expansion which added 20 jobs to the plant. Other expansions have occurred at Kentucky Textiles and ITW Ramset Redhead. Kentucky Textiles added 25,000 square feet to its facility and 100 new jobs; ITW Ramset Redhead invested \$500,000 in new equipment for its plant.

The Bourbon County Chamber is placing a greater emphasis on tourism. The Chamber recently held a tour for State Tourism Cabinet Officials and other members of local tourism and convention organizations. Paris's newest tourism attraction is a passenger train that runs on the Trans-Kentucky Railroad line.

Bourbon County, in an effort to address environmental concerns, has passed a mandatory trash pickup ordinance which it plans to implement by early 1991. The county also plans to implement mandatory recycling in the near future.

A new \$4.3 million wastewater treatment plant went into operation in June 1989 and the utilities company plans to build a reservoir in the near future. Plans to extend sewer service to additional areas of Paris have also been made.

The Bourbon County School System added six classrooms which were occupied in fall of 1989. The school system has also enhanced its computer assisted instructional programs via an agreement with IBM to accomplish networking of all computers at the high school level. Advanced Placement courses in American History and Biology were also added to the high school curriculum. The school system plans to add eight classrooms to Bourbon Central in 1990. Additions and remodeling at the high school and middle school are also planned.

Bourbon County's fire insurance rating has recently been upgraded from six to five. The police force has been increased, and the city and county have combined emergency ambulance personnel to better provide emergency assistance to all residents of Bourbon County.

(Continued)

Underway

A new 80-unit townhouse development is nearly completed and two additional subdivisions are currently being developed which will increase available housing in the Paris community.

A new shopping center on the Paris Bypass, which will have an anchor store and space for twenty-one additional shops, is currently under construction.

Planned

Bourbon County plans to construct a juvenile detention center. Although the facility is to be utilized by Bourbon County, beds will be rented to surrounding counties.