

1976

Industrial Resources: Boyd County - Ashland & Catlettsburg

Kentucky Library Research Collections
Western Kentucky University, spcol@wku.edu

Follow this and additional works at: https://digitalcommons.wku.edu/boyd_cty

Recommended Citation

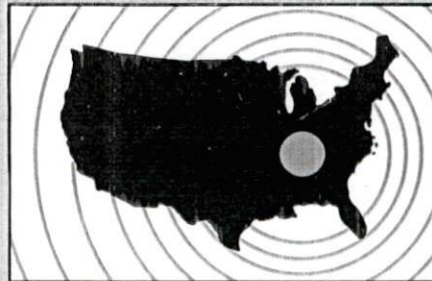
Kentucky Library Research Collections, "Industrial Resources: Boyd County - Ashland & Catlettsburg" (1976). *Boyd County*. Paper 11.
https://digitalcommons.wku.edu/boyd_cty/11

This Report is brought to you for free and open access by TopSCHOLAR®. It has been accepted for inclusion in Boyd County by an authorized administrator of TopSCHOLAR®. For more information, please contact topscholar@wku.edu.

INDUSTRIAL RESOURCES

**ASHLAND
CATLETTSBURG**

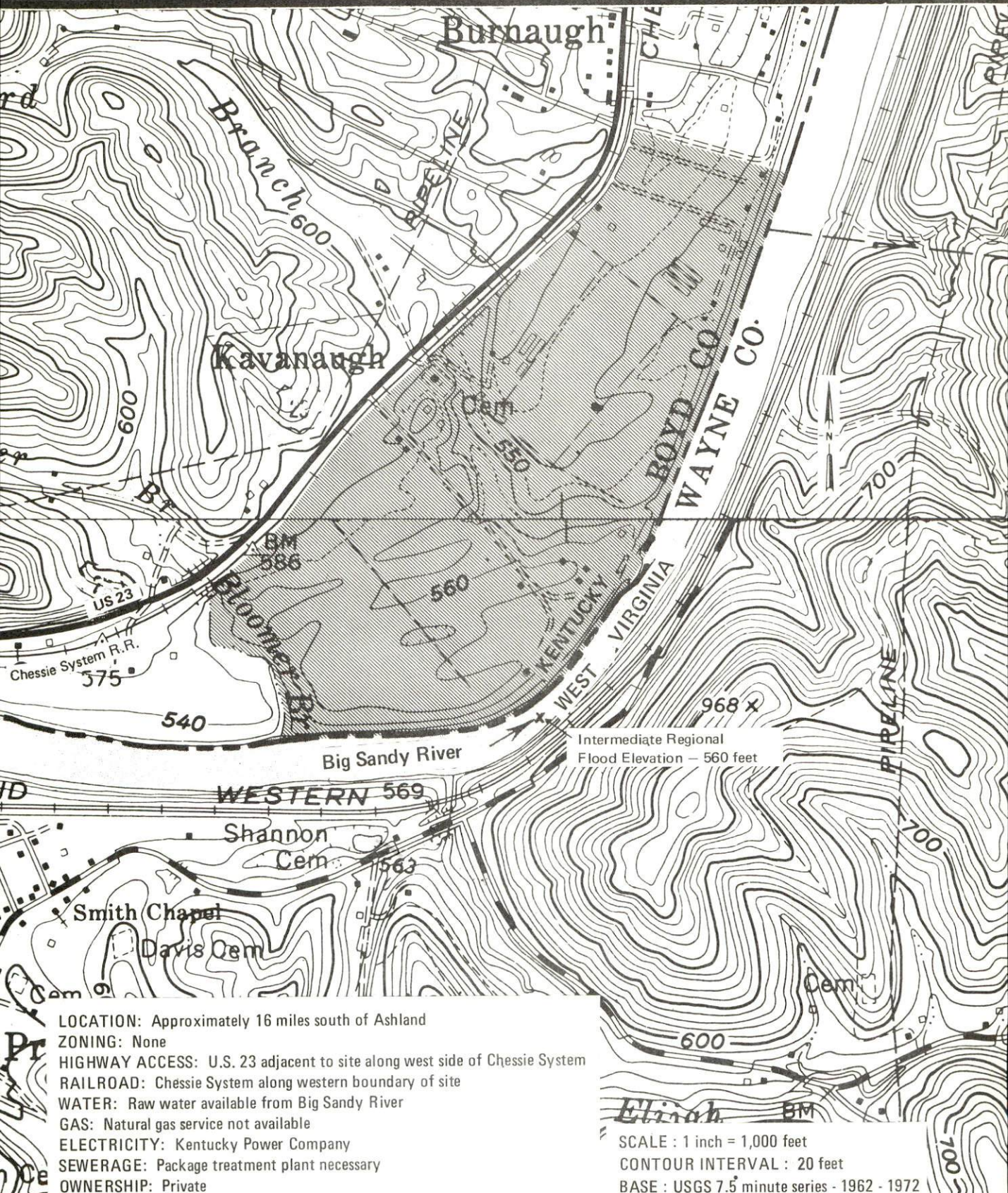
**Kentucky
first**



DEPARTMENT OF COMMERCE

ASHLAND AREA --- Site No. 176 --- 200 Acres
Potential Site

For more information, contact Mr. L. W. Pilstl, Ashland Area Chamber of Commerce, Ashland, Kentucky
or the Kentucky Department of Commerce, Capital Plaza Office Tower, Frankfort, Kentucky.



- LOCATION: Approximately 16 miles south of Ashland
- ZONING: None
- HIGHWAY ACCESS: U.S. 23 adjacent to site along west side of Chessie System
- RAILROAD: Chessie System along western boundary of site
- WATER: Raw water available from Big Sandy River
- GAS: Natural gas service not available
- ELECTRICITY: Kentucky Power Company
- SEWERAGE: Package treatment plant necessary
- OWNERSHIP: Private

SCALE: 1 inch = 1,000 feet
CONTOUR INTERVAL: 20 feet
BASE: USGS 7.5 minute series - 1962 - 1972

INDUSTRIAL RESOURCES
ASHLAND AND CATLETTSBURG, KENTUCKY

Prepared by
The Kentucky Department of Commerce
Division of Research and Planning
in cooperation with
The Ashland Area Chamber of Commerce
and
The Catlettsburg Chamber of Commerce

1976

TABLE OF CONTENTS

<u>Chapter</u>	<u>Page</u>
INDUSTRIAL SITES	i
ASHLAND AND CATLETTSBURG, KENTUCKY - A RESOURCE PROFILE	1
THE LABOR MARKET AREA	3
Population	3
General Employment Characteristics, 1974	3
Manufacturing Employment by Industry	4
Major Ashland and Catlettsburg Manufacturing Firms, Their Products and Employment.	4
Labor Organizations.	6
Estimated Male Labor Supply.	10
Estimated Female Labor Supply	10
Wages	11
Per Capita Personal Income	12
TRANSPORTATION	13
Rail	13
Highways.	13
Truck Service	14
Air	15
Bus	17
Taxi.	17
Rental Services.	17
Water	17
POWER AND FUEL	18
Electricity	18
Natural Gas	18
Other Fuels	19
WATER AND SEWERAGE.	20
Water	20
Sewerage.	22
CLIMATE	23

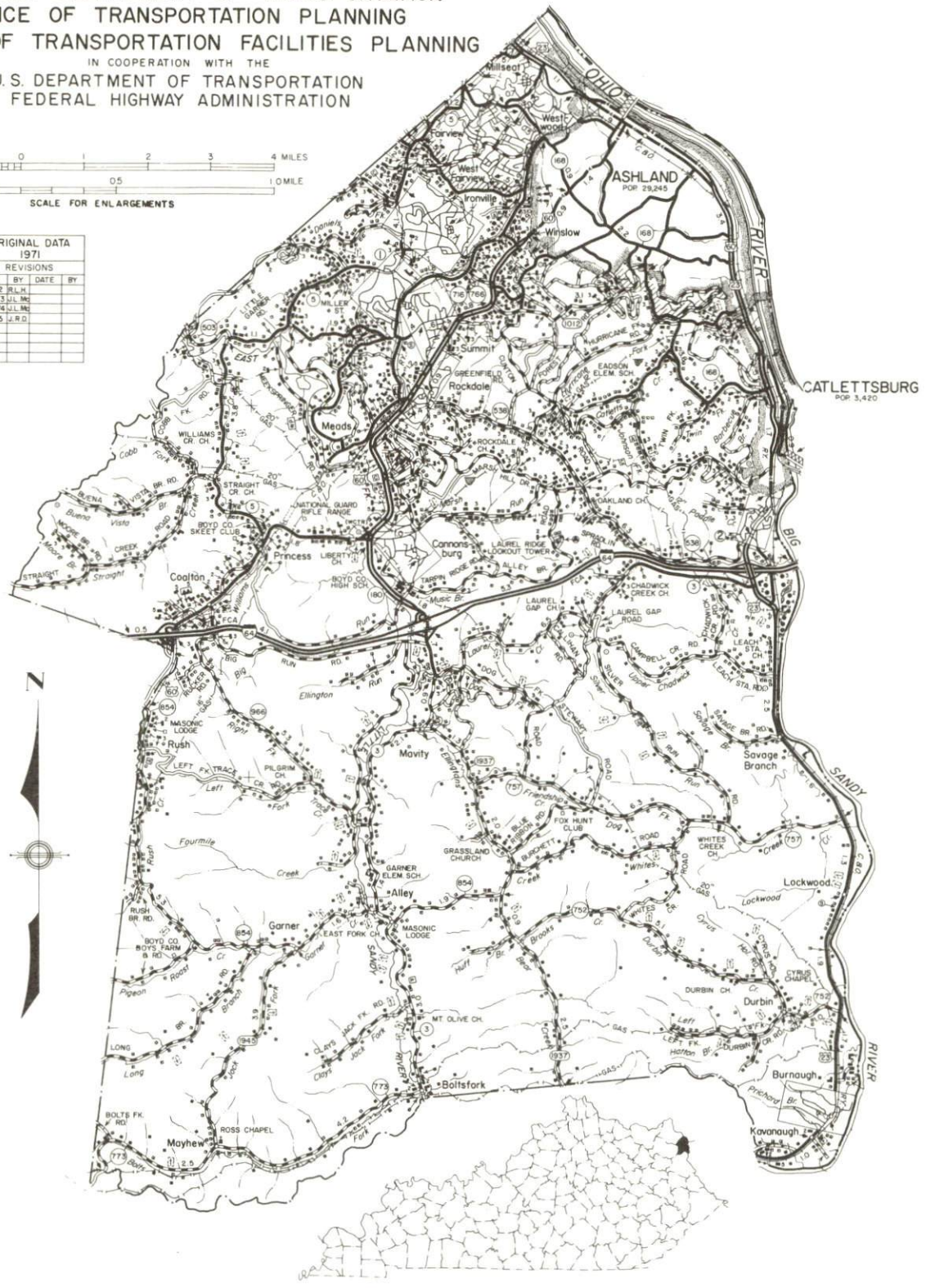
<u>Chapter</u>	<u>Page</u>
LOCAL GOVERNMENT	24
City.	24
County	24
Assessed Value of Property, 1975-76.	24
Property Taxes	25
Local Property Tax Rate Per \$100 of Assessed Valuation, 1975	25
Planning and Zoning	25
Safety.	26
Police	26
Fire	26
Rescue Service	26
Solid Waste	26
EDUCATION	27
Public Schools	27
Nonpublic Schools	27
Vocational Schools	29
Area Colleges and Universities	30
HEALTH.	31
Local Medical Personnel	31
Hospitals	31
Other Medical Facilities	31
Ambulance Service	33
Nursing Homes.	33
Public Health	33
OTHER LOCAL FACILITIES	34
Communications	34
Library Services.	35
Religious Institutions	35
Financial Institutions	36
Hotels and Motels	36
Clubs and Organizations.	37
RECREATION	38
PROGRAMS FOR IMPROVEMENT	39
HISTORY.	42

GENERAL HIGHWAY MAP BOYD COUNTY KENTUCKY

PREPARED BY THE
 KENTUCKY DEPARTMENT OF TRANSPORTATION
 OFFICE OF TRANSPORTATION PLANNING
 DIVISION OF TRANSPORTATION FACILITIES PLANNING
 IN COOPERATION WITH THE
 U.S. DEPARTMENT OF TRANSPORTATION
 FEDERAL HIGHWAY ADMINISTRATION



ORIGINAL DATA 1971			
REVISIONS			
DATE	BY	DATE	BY
1-1-72	B.L.K.		
1-1-73	J.L.M.		
1-1-74	J.L.M.		
1-1-75	J.R.D.		





AERIAL VIEW OF ASHLAND, KENTUCKY

ASHLAND AND CATLETTSBURG, KENTUCKY - A RESOURCE PROFILE

Ashland, a 1975 All Kentucky City, is the largest city in eastern Kentucky and the home of Ashland Community College. In 1973, Ashland had an estimated population of 28,935. It is located 12 miles west of Huntington, West Virginia; 112 miles east of Lexington, Kentucky; 184 miles east of Louisville, Kentucky; and 190 miles southeast of Cincinnati, Ohio.

Catlettsburg, the county seat, has its corporate limits adjacent to those of South Ashland. Catlettsburg had an estimated population of 3,120 in 1973.

Boyd County, with a land area of 159 square miles, is located in northeastern Kentucky along the Ohio River at its junction with the Big Sandy River. Boyd County had a 1975 estimated population of 52,300.

The Economic Framework

The total number of Boyd County residents employed in 1974 averaged 18,530, including 280 in agriculture and 2,100 in government. Manufacturing employers in the county reported 7,210 workers; trade and services firms employed 6,980; mining employed 90. Major industrial products are: iron, steel sheets, steel coils, petroleum products, steel flats, structural angles, mining machinery, mining industrial locomotives, extruded high-nickel alloys, and vacuum induction high-nickel alloys.

Total unemployment in Boyd County averaged 5.3 percent of the labor force in 1974.

Per capita personal income in the county in 1974 was \$4,825, an increase of 37.7 percent since 1970.

The Ashland and Catlettsburg labor market area includes Boyd, the three adjoining Kentucky counties, Cabell and Wayne counties in West Virginia, and Lawrence County in Ohio. The total number of residents in the Kentucky portion of the labor market area employed in 1974 averaged 38,260, including 1,300 in agriculture and 4,600 in government. Manufacturing employers in the Kentucky portion of the labor market area reported 12,220 workers; trade and services firms employed 9,730; mining reported 730.

Resources for Growth

1. Labor Supply - There is a current estimated labor supply of 7,540 men and 8,690 women available for industrial jobs in the Kentucky

portion of the labor market area. In addition, 6,090 young men and 5,800 young women in this area will become 18 years of age before 1982 and potentially available for work. The current labor supply would be supplemented by the number of men and women in the adjoining Ohio and West Virginia counties who are available for industrial jobs.

2. Transportation - The local transportation capability is excellent. Amtrak provides the area with passenger rail service and the Chessie System provides the area with a variety of rail freight services. An interchange of Interstate 64 is located 12 miles from Ashland via U. S. 60 and 8 miles away via U. S. 23. Catlettsburg is only 2 miles from an I-64 interchange. There are fourteen trucking companies serving the area, with one terminal located in Ashland. The Ashland-Boyd County Airport has a 5,600-foot paved runway capable of accommodating light aircraft and small business jets. Tri-State Airport in Huntington, West Virginia, 12 miles from Ashland, offers commercial air service. Barge transportation is available on the Ohio River.

3. Utilities and Fuel - Electricity is furnished to Boyd County by the Kentucky Power Company. Natural gas is provided to Ashland and Catlettsburg by Columbia Gas of Kentucky, Inc., whose source of supply is the Columbia Gas Transmission Company. Three propane distributors and three distillate fuel oil distributors are located in the area. The local raw water supply is more than adequate for continued industrial growth.

4. Education - Three public school systems and one parochial school system operate within Boyd County.

Ashland Community College, a two-year college offering an associate degree, is located in Ashland. Two universities, two university extension campuses, and one technical college are located within 60 miles of Ashland.

The Ashland State Vocational-Technical School at Ashland offers training in thirteen vocational areas. In the fall of 1976 the Boyd County Area Vocational Education Center will open and offer courses in ten vocational areas.

THE LABOR MARKET AREA

POPULATION

<u>Area</u>	<u>1975*</u>	<u>1970</u>	<u>Percent Nonwhite</u>
			<u>1970</u>
Ashland	28,935**	30,386	2.6
Catlettsburg	3,120**	3,420	0.3
Labor Market Area	119,900	116,144	
Boyd County	52,300	52,376	1.7
Carter County	21,700	19,850	0.2
Greenup County	33,800	33,192	0.4
Lawrence County	12,100	10,726	0.3

*Provisional Estimates.

**1973 Population Estimates.

Sources: U. S. Department of Commerce, Bureau of the Census, Census of Population, 1970. U. S. Department of Commerce, Bureau of the Census, Current Population Reports, Series P-25, No. 562, June 1975; Series P-26, No. 75-17, May 1976.

GENERAL EMPLOYMENT CHARACTERISTICS, 1974

<u>Major Employment Group</u>	<u>Employment by Place of Residence of Workers</u>	
	<u>Boyd County</u>	<u>Labor Market Area</u>
Total Employment	18,529	38,262
Agriculture	281	1,300
Government	2,104	4,601
	<u>Employment by Location of Jobs</u>	
	<u>Boyd County</u>	<u>Labor Market Area</u>
Manufacturing	7,214	12,222
Trade and Services	6,979	9,734
Mining	88	729

Sources: Kentucky Department for Human Resources, Bureau for Administration and Operations; Kentucky Department of Mines and Minerals, Annual Report.

MANUFACTURING EMPLOYMENT BY INDUSTRY
SEPTEMBER 1975

<u>Industry</u>	<u>Boyd County</u>	<u>Labor Market Area</u>
TOTAL	6,721	11,241
Food & Kindred Products	221	255
Apparel, Textiles, Leather	183	861
Lumber, Furniture	86	224
Printing & Publishing, Paper	138	165
Chemicals, Petroleum & Coal, Rubber	2,644	2,848
Stone, Clay & Glass	161	549
Primary Metals	2,294*	5,343
Machinery, Metal Products, Equipment	994	996

*The Armco Steel Corporation plant location lies across the Boyd-Greenup County line. Employment is allocated between Boyd and Greenup Counties. Source: Kentucky Department for Human Resources, Number of Workers in Manufacturing Industries Covered by Kentucky Unemployment Insurance Law Classified by Industry and County, September, 1975.

MAJOR ASHLAND AND CATLETTSBURG MANUFACTURING FIRMS,
THEIR PRODUCTS AND EMPLOYMENT*

<u>Firm (Establishment date)</u>	<u>Product</u>	<u>Employment</u>			<u>Organized</u>
		<u>Total</u>	<u>Male</u>	<u>Female</u>	
<u>Ashland</u>					
A. C. Marble, Inc. (1960)	Cultured marble	45	33	12	
Allied Chemical Corp., Semet Solvay Division (1913)	Coke, crude tar, ammonia	541	540	1	**
Armco Steel Corp. (1922)	Iron, steel sheets, coils	4465	4374	91	
Ashland Crafts, Inc. (1951)	Children's dresses, children's sportswear	129	3	126	**
Ashland Publishing Company (1921)	Newspaper	116	94	22	
Betsy Ross Bakeries, Inc. (1944)	Bread	100	89	11	
Castle Showcase Company (1944)	Display showcases, display fixtures, hardware	45	40	5	

(Contd.)

<u>Firm (Establishment date)</u>	<u>Product</u>	<u>Employment</u>			<u>Organized</u>
		<u>Total</u>	<u>Male</u>	<u>Female</u>	
Johnson's Dairy, Inc. (1931)	Milk, cottage cheese, ice cream	67	56	11	
Kentucky Electric Steel Company (1964)	Steel flats, struc- tural angles	425	422	3	**
A. C. Lawrence Leather Company, Inc. (1900)	Sole leather	89	89	0	**
National Mine Service Company (1920)	Mining machinery, mining industrial locomotives	775	685	90	
Pennco, Inc. (1956)	Aluminum windows, glass doors	65	45	20	
Valley Poultry Farms, Inc. (1954)	Egg processing	70	50	20	
<u>Catlettsburg</u>					
Ashland Petroleum Company (1924)	Petroleum prod- ucts, petro- chemicals	1098	1080	18	**
Calgon Corp. (1960)	Activated carbon	181	160	21	
Huntington Alloys, Inc. (1964)	Extruded high- nickel alloys, vacuum in- duction high- nickel alloys	334	324	10	

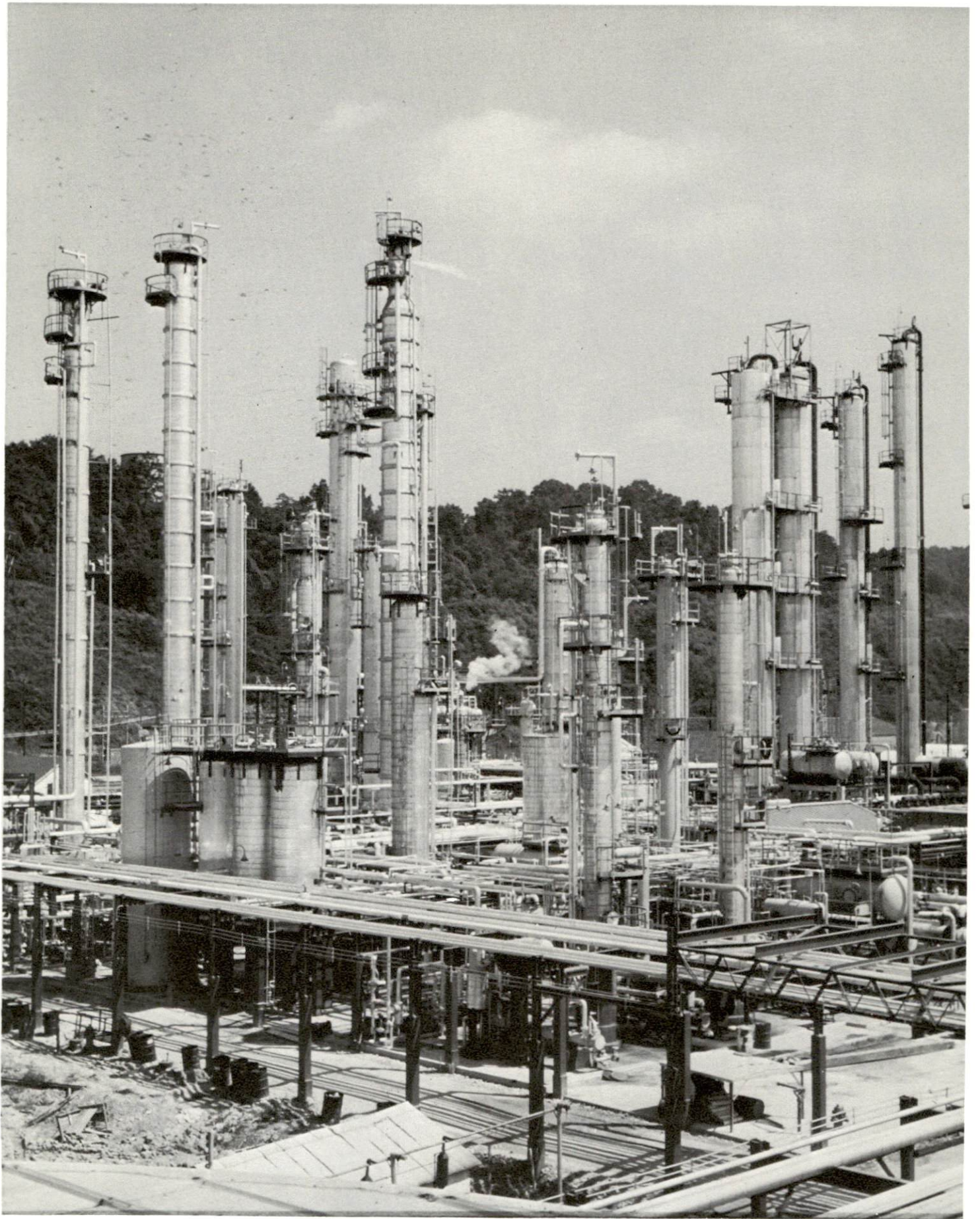
*Employment of 45 or more.

**See Labor Organizations below.

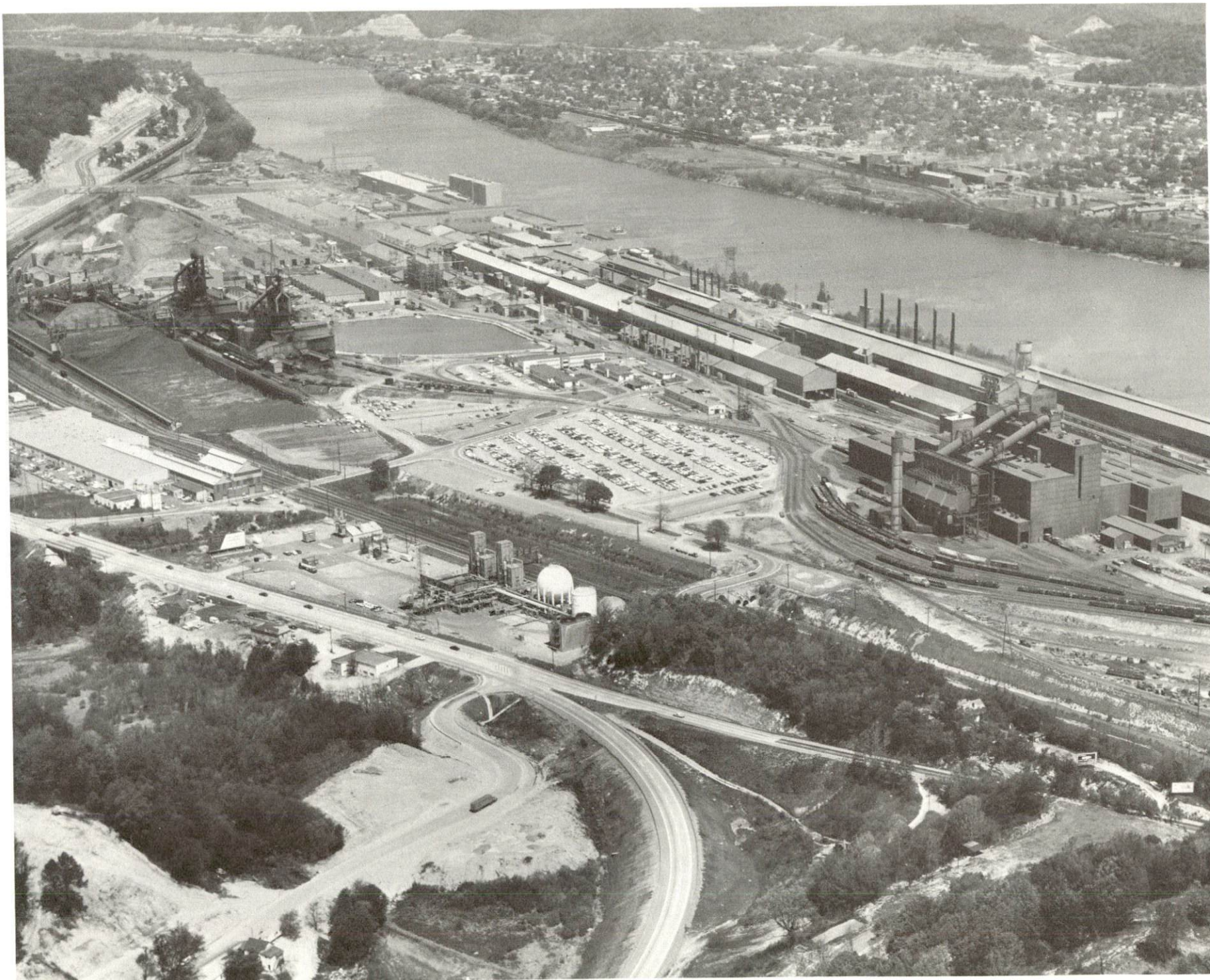
Source: Kentucky Department of Commerce, Division of Research and Planning.

LABOR ORGANIZATIONS

<u>Union</u>	<u>Representing manufacturing workers at:</u>
International Ladies' Garment Worker's Union	Ashland Crafts, Inc.
International Brotherhood of Teamsters, Chauffeurs, Warehousemen and Helpers	Ashland Chemical Company
Leather Workers International Union of America	A. C. Lawrence Leather Company
Oil Workers International Union	Ashland Petroleum Company
United Brick & Clay Workers of America	Cline Brick Company
United Coke & Chemical Workers	Semet Solvay Division, Allied Chemical Company
United Steel Workers of America	Kentucky Electric Steel Company; Armco Steel Corporation



ASHLAND OIL, INCORPORATED



ASHLAND WORKS OF ARMCO STEEL CORPORATION



ASHLAND OIL'S NEW EXECUTIVE HEADQUARTERS.

ESTIMATED MALE LABOR SUPPLY
ASHLAND AND CATLETTSBURG LABOR MARKET AREA

Area	Current			Under- employed	Future
	Total	Not in Labor Force	Unemployed		Reaching 18 yrs. of age before 1982
Labor Market					
Area	7,540	3,870	2,010	1,660	6,093
Boyd	5,190	3,630	850	710	2,613
Carter	690	0	400	290	1,069
Greenup	1,030	0	580	450	1,865
Lawrence	630	240	180	210	546

Sources: Kentucky Department for Human Resources, Kentucky Labor Supply Estimates by County, 1975. Kentucky Department of Commerce, Future Labor Supply before 1982.

ESTIMATED FEMALE LABOR SUPPLY
ASHLAND AND CATLETTSBURG LABOR MARKET AREA

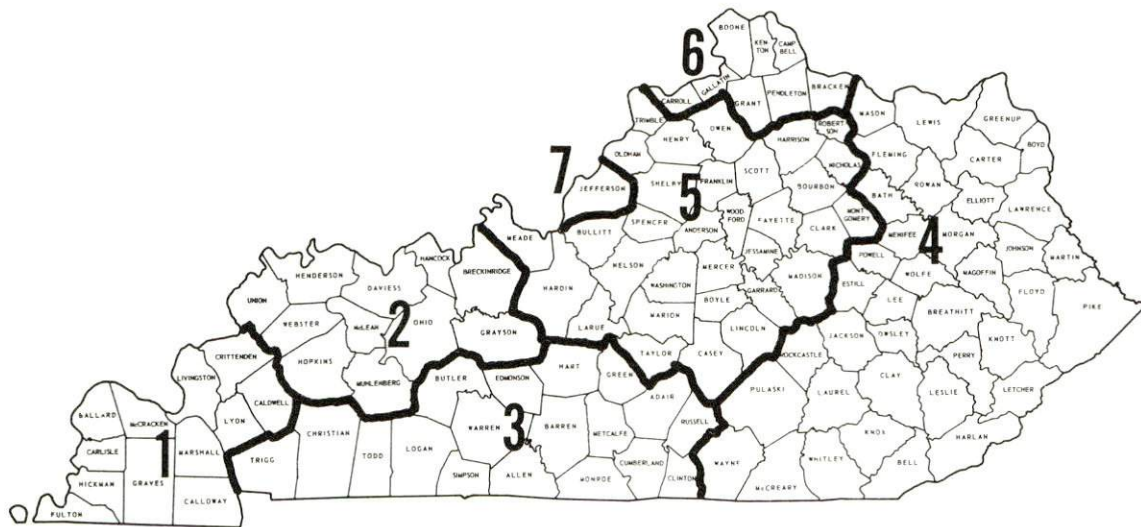
Area	Current			Under- employed	Future
	Total	Not in Labor Force	Unemployed		Reaching 18 yrs. of age before 1982
Labor Market					
Area	8,690	6,620	430	1,640	5,796
Boyd	5,540	4,540	180	820	2,458
Carter	1,520	1,200	90	230	995
Greenup	780	160	120	500	1,803
Lawrence	850	720	40	90	540

Sources: Kentucky Department for Human Resources, Kentucky Labor Supply Estimates by County, 1975. Kentucky Department of Commerce, Future Labor Supply before 1982.

WAGES

Occupational wage rates for specific industries are usually not available to most government agencies, and wage data furnished to state employment agencies by individual industrial employers is protected from disclosure by federal law. The most reliable up-to-date wage information can be obtained by direct contact with local employers.

Associated Industries of Kentucky, a voluntary organization of Kentucky businesses, regularly collects occupational wage rates and fringe benefits data from participating member firms. Data is compiled for over 127 clearly defined office, production, and service occupations. Tabulations are published for seven regions of Kentucky, as shown on the map below. It should be noted that the data may be weighted by the preponderance of firms in the larger cities and may be somewhat higher than the rates paid in the smaller communities. Data from these tabulations are available, upon request, from the Kentucky Department of Commerce, Frankfort, Kentucky 40601.



Associated Industries of Kentucky Area Wage Surveys

PER CAPITA PERSONAL INCOME

<u>Area</u>	<u>1974</u>	<u>1970</u>	<u>Percent Change</u>
Boyd County	\$4,825	\$3,505	37.7
Labor Market Area			
Range	\$2,568 - 4,825	\$1,787 - 3,505	N. A.
Kentucky	4,442	3,112	42.7
U. S.	5,448	3,966	37.4

Sources: U. S. Department of Commerce, Bureau of Economic Analysis, Survey of Current Business, August 1975. U. S. Department of Commerce, Bureau of Economic Analysis, March 1976.

TRANSPORTATION

Rail

Line serving Ashland and Catlettsburg - The Chessie System
Services - 20 eastbound and 20 westbound freights daily, switching facilities, siding space for 12,200 cars in Russell; refrigeration and heating services in Russell; passenger service by Amtrak; the nearest piggyback facilities are located in Huntington, West Virginia, 12 miles from Ashland.

For details on routing, schedules, rates, and services, contact:

Real Estate and Industrial Development
The Chessie System
2 North Charles Street
Baltimore, Maryland 21201
(301) 237-2754

Highways

U. S. Highways 23 and 60 serve the Ashland and Catlettsburg area. U. S. Highway 23 has been widened to four lanes from Ashland to Portsmouth, Ohio. In addition, an interchange of Interstate 64 is located 12 miles from Ashland via U. S. 60 and 8 miles away via U. S. 23. Catlettsburg is only 2 miles from an I-64 interchange.

U. S. Highway 52 is located directly across the Ohio River from Ashland.

Truck Service

<u>Company</u>	<u>Home Office</u>
Associated Transport, Inc.	380 Madison Avenue New York, New York 10017
Bell Lines, Inc. (operated by Smith's Transfer Corp.)	6414 McCorkle Avenue S. E. Charleston, West Virginia 25304
Commercial Motor Freight, Inc.	3400 Refugee Road Columbus, Ohio 43227
Farson Motor Lines, Inc.*	P. O. Box 227 Ashland, Kentucky 41101
Hogan Storage & Transfer Company	721 East Fourth Avenue Williamson, West Virginia 25661
W. J. Maier Storage Company	P. O. Box 1653, 7th Avenue Huntington, West Virginia 25700
McLean Trucking Company	P. O. Box 213 Winston-Salem, North Carolina 27102
Miami Transportation Company	1220 Harrison Avenue Cincinnati, Ohio 45214
O. K. Trucking Company	3000 East Crescentville Cincinnati, Ohio 45241
Point Express, Inc.	P. O. Box 418 Columbus, Ohio 43216
Reinhardt Transfer Company	1410 Tenth Street Portsmouth, Ohio 45662
Smith's Transfer Corporation	P. O. Box 1000 Staunton, Virginia 24401
Suburban Motor Freight, Inc.	1100 King Avenue Columbus, Ohio 43216
Wilson Freight Company	3636 Follett Avenue Cincinnati, Ohio 45223
<u>Other Freight Services</u>	<u>Shipping Center</u>
United Parcel Service	Ashland

*Local terminal.

HIGHWAY MILES AND TRUCK TRANSIT TIME IN DAYS FROM
ASHLAND, KENTUCKY, TO SELECTED MARKET CENTERS

City	Delivery		City	Delivery	
	Highway Miles	Time TL		Highway Miles	Time TL
Atlanta, Ga.	480	Overnight	Louisville, Ky.	184	Overnight
Chicago, Ill.	476	Overnight	Nashville, Tenn.	322	Overnight
Cincinnati, Ohio	190	Overnight	New Orleans, La.	883	2
Cleveland, Ohio	305	Overnight	New York, N. Y.	644	2
Detroit, Mich.	418	Overnight	Pittsburgh, Pa.	275	Overnight
Los Angeles, Calif.	2,292	4	St. Louis, Mo.	447	Overnight

Source: Delivery Time Only - Reinhardt Transfer Company, 1410 Tenth Street, Portsmouth, Ohio 45662.

Air

<u>Local</u>	<u>Nearest Commercial</u>
Ashland-Boyd County Airport	Tri-State Airport (Walker-Long Field)
Location: Worthington, Kentucky, 6 miles northwest of Ashland	Huntington, West Virginia, 12 miles east of Ashland
Runways: 1 paved	2 paved
Length: 5,600 feet	6,500 and 3,000 feet
Traffic	
Control: Wind sock	Tower
Lighting: Sundown to sunrise	Beacon, runway
Services: Gas and oil, A & E service, charter, flight instruction, storage	Allegheny and Piedmont Airlines, major repairs, 80/87 and 100/130 octane, jet fuel, limousine, taxi, car rental, restaurant, weather information, storage, flight instruction, charter
Air Freight	
Service: Chartered air freight service can be arranged	Freight accepted on a space available basis



TRI-STATE AIRPORT, WALKER-LONG FIELD

Bus - Greyhound Bus Lines and Continental Trailways Bus Lines serve both Ashland and Catlettsburg.

Taxi - One company in Ashland and one in Catlettsburg, both offering 24-hour service.

Rental Services - Car, truck, trailer and bus rentals are available in the area.

Water - Due to Ashland's location near the confluence of the Ohio and Big Sandy Rivers, river transportation is an important asset to the entire area. A nine-foot navigation channel is maintained along the Ohio River and on the Big Sandy River to a point south of Catlettsburg. Eleven privately operated water terminals are located on the Kentucky shores in the Ashland area.

POWER AND FUEL

Electricity

Company serving Ashland, Catlettsburg and Boyd County - Kentucky
Power Company

Source of power - Kentucky Power Company

Total generating capacity - 1,065,000 KW

For industrial rates contact:

Kentucky Power Company
340 Fifteenth Street
Ashland, Kentucky 41101
(606) 324-2144

Natural Gas

Company serving Ashland, Catlettsburg and Boyd County - Columbia
Gas of Kentucky, Inc.

Source of supply - Columbia Gas Transmission Company

Size of transmission mains - 10 inches (supplier); 10 inches (distributor)

Distribution mains - 2 to 8 inches

Distribution pressure - 6 ounces

Btu content - 1,050 per cubic foot

Specific gravity - .65

For rates and supplies contact:

Columbia Gas of Kentucky, Inc.
1733 Winchester Avenue
Ashland, Kentucky 41101
(606) 324-7114

Other Fuels

Propane and Butane

Finch Gas & Appliance
4898 Shannon Drive
Ashland, Kentucky 41101

Quall's & Son Appliance
326 Tenth Street
Ashland, Kentucky 41101

Williams Energy Company
Route 2
Catlettsburg, Kentucky 40361

Fuel oils

Distillate fuel oil -

Ashland Oil, Inc.
Ashland Drive
Ashland, Kentucky 41101

Clark Gulf Oil Distributors
101 Wheatley Road
Ashland, Kentucky 41101

Standard Oil Company
215 53rd Street
Ashland, Kentucky 41101

Residual fuel oil - Arrangements must be made with the refinery.

Low sulphur content coal - Available locally.

WATER AND SEWERAGE

Water

Company serving Ashland and Catlettsburg - City of Ashland Utilities
Department*
17th Street
Ashland, Kentucky 41101
(606) 325-8571

Source - Ohio River

Treatment plant capacity - 8,000,000 gpd

Average daily consumption - 5,500,000 gallons

Peak daily consumption - 6,400,000 gallons

Type treatment - Aeration, sedimentation, filtration, coagulation,
chlorination

Storage capacity - 9,000,000 gallons

Size lines - 2 to 30 inches

Average pressure - 110 psi

Average temperature - 17 degrees C.

MONTHLY WATER RATES FOR WHOLESALE AND INDUSTRIAL CONSUMERS

Inside Ashland city limits

0 -	2,000 gallons @ \$0.80 per 1,000 gallons - Minimum \$1.60
2,000 -	10,000 gallons @ \$0.55 per 1,000 gallons
10,000 -	100,000 gallons @ \$0.45 per 1,000 gallons
100,000 -	300,000 gallons @ \$0.40 per 1,000 gallons
300,000 -	700,000 gallons @ \$0.35 per 1,000 gallons
700,000 -	1,000,000 gallons @ \$0.30 per 1,000 gallons
All over	1,000,000 gallons @ \$0.25 per 1,000 gallons

Catlettsburg and outside Ashland city limits

0 -	2,000 gallons @ \$1.20 per 1,000 gallons - Minimum \$2.40
2,000 -	4,000 gallons @ \$0.97 per 1,000 gallons
4,000 -	7,000 gallons @ \$0.68 per 1,000 gallons
All over	7,000 gallons @ \$0.60 per 1,000 gallons

Tap-on charge: \$100 for residential and commercial; actual
cost of installation for large industries

*The City of Ashland Utilities Department recently purchased the Catlettsburg, Kenova and Ceredo Water Company. Use of this filtration plant will be phased out as the Ashland plant capacity is increased to 12,000,000 gpd.

Name of water district - Cannonsburg Water District
 Box 1535
 Ashland, Kentucky 41101
 (606) 928-9808

Area served - Portions of Boyd County
 Date when water district began operating - February 1972
 Source of supply of treated water - City of Ashland Utilities Department
 Average amount of water used in a 24-hour period - 275,000 gallons
 Peak amount of water used in a 24-hour period - 350,000 gallons
 Storage capacity - 525,000 gallons
 Average pressure - 75 psi
 Size lines - 3, 6, 8 and 12 inches
 Rates -

<u>METER SIZE</u>	<u>TAP-ON CHARGE</u>	<u>MINIMUM MONTHLY RATE FOR FIRST 2,000 GALLONS</u>
5/8 - inch	\$150.00	\$ 9.00
1 - inch	170.00	11.00
2 - inch	190.00	14.00
4 - inch	Actual cost	20.00
8 - inch	Actual cost	35.00
10 - inch	Actual cost	50.00

Monthly rates after first 2,000 gallons:

Next	3,000 gallons	\$2.00 per 1,000 gallons
Next	15,000 gallons	1.50 per 1,000 gallons
Next	30,000 gallons	1.20 per 1,000 gallons
Next	50,000 gallons	1.00 per 1,000 gallons
All over	100,000 gallons	.50 per 1,000 gallons

Surface water sources - Ohio and Big Sandy Rivers
 Average discharge - Unlimited
 Expected ground water yield - 500 to 1,000 gpm along the Ohio River;
 50 to 200 gpm in eastern part of county; 5 to 50 gpm in western
 portion of county

Sewerage

Company serving Ashland - City of Ashland Utilities Department
17th Street
Ashland, Kentucky 41101
(606) 325-8571

Design capacity - 6,000,000 gpd
Average daily flow - 4,500,000 gallons
Treatment - Primary*
Type treatment - Sedimentation, clarification, anaerobic sludge
digestion, sludge dewatering, chlorination
Treated effluent discharged into - Ohio River
Size of sanitary mains - 8 to 24 inches
Size of storm mains - 12 to 24 inches
Rates - 125 percent of monthly water bill
Tap-on charge: \$125

Company serving Catlettsburg - Catlettsburg Municipal Sewer System**
City Hall
Catlettsburg, Kentucky 40361
(606) 739-5223

Design capacity - 500,000 gpd
Average daily flow - 250,000 gallons
Treatment - Primary and secondary
Type treatment - Aeration, chlorine, digesters
Treated effluent discharged into - Big Sandy River
Size of sanitary mains - 4, 6 and 12 inches
Size of storm mains - 18 to 48 inches
Rates - 130 percent of monthly water bill
Tap-on charge: \$75

*A 201 Facilities Plan has been submitted to EPA for approval. The plan calls for installation of secondary treatment and expansion of the plant to facilitate growth through the year 2005.

**A 201 Facilities Plan is underway. Extension of lines to approximately 200 additional homes in Catlettsburg is being considered.

CLIMATE

Boyd County

Temperature

Annual mean (30-year record)	54.6 degrees
Average annual 1975	54.8 degrees
Record highest, August, 1918 (87-year record)	106.0 degrees
Record lowest, February, 1899 (87-year record)	-27 degrees
Normal heating degree days (30-year record)	4,817
(Heating degree day totals are the sums of negative departures of average daily temperatures from 65 degrees F.)	

Precipitation

Mean annual total (30-year record)	38.44 inches
Mean annual snowfall (88-year record)	23.70 inches
Total precipitation 1975	45.51 inches
Mean number days precipitation (.01 inch or more) (87-year record)	142
Average number days thunderstorms (76-year record)	44

Relative Humidity (60-year record)

7 a. m.	80 percent (60-year record)
1 p. m.	56 percent (31-year record)
7 p. m.	68 percent (60-year record)

Source: U. S. Department of Commerce, Environmental Science Services Administration, Climatological Data, 1975. Station of record: Parkersburg, West Virginia.

LOCAL GOVERNMENT

City

Ashland

Structure - Mayor - 4-year term; 4 commissioners - 4-year terms;
City Manager

Budget 1977 - General Fund \$3,330,448

Water and Sewer Fund 1,357,300

Fees and licenses - Net profits license fee - \$30 minimum or
 $1\frac{1}{2}$ percent of net profits per year

Catlettsburg

Structure - Mayor - 4-year term; 8 councilmen - 2-year terms

Fees and licenses - Occupational license fee - 1 percent on
wages and net profits

County

Structure - County Judge - 4-year term; 3 commissioners - 4-year
terms

Budget 1975-76 - General Fund \$599,710; Road Fund \$190,550

Assessed Value of Property, 1975-76

<u>Classes of Property</u>	<u>Ashland</u>	<u>Boyd County</u>
Real Estate	\$171,446,900	\$321,430,232
Tangibles	50,776,460	90,246,120

Property Taxes

Land and buildings are taxed by the state and may be taxed by local jurisdictions. The state rate is \$0.015 per \$100 of assessed valuation.

Tangible personal property owned by manufacturers (automobiles, trucks, finished goods, office furniture, office equipment) is taxed by the state at \$0.15 per \$100 and may be taxed by local jurisdictions.

Manufacturing machinery, raw materials inventories, pollution control equipment, and goods in process inventories, are not subject to local taxation. The state rate is \$0.15 per \$100.

Property stored in public warehouses is not subject to local taxation. The state rate is only \$0.015 per \$100.

All property is assessed at 100 percent of fair cash value.

Local Property Tax Rate Per \$100 of Assessed Valuation, 1975*

<u>Taxing Jurisdiction</u>	<u>Ashland</u>	<u>Catlettsburg</u>	<u>Boyd County</u>
County	\$.179	\$.179	\$.179
School	.791	.589	.589
City	.499	.810**	

Special (not county wide): \$.001 (Fire protection)

Planning and Zoning

City agency - Ashland Planning Commission and Ashland Board of Zoning Adjustments

Zoning enforced - City only

Subdivision regulations enforced - City and 5 miles beyond city limits

Local codes enforced - Housing and building

Mandatory state codes enforced - Plumbing, National Fire Protection

Association Code, National Building Code (for major buildings and residential construction containing more than 12 bedrooms per building)

*Kentucky Department of Revenue, Kentucky Property Tax Rates, 1975.

**Public Service Company - \$.594.

Safety

<u>Police</u>	<u>Ashland</u>	<u>Catlettsburg</u>	<u>Boyd County</u>
Total staff	52	9	9
Radio-patrol cars	15	2	5

Fire

American Insurance
Association Fire

Rating	4	7	
Full-time staff	60 (3 stations)		
Volunteers		20	55 (3 stations)

Rescue Service

Boyd County Civil Defense Rescue Unit

Number of volunteers - 15

Equipment - 1 bus converted into first aid station, 2 fire trucks,
1 utility truck, 1 station wagon, 2 porta-powers, 3 generators

Personnel training - EMT, first aid training, civil defense training
and fire training; two are members of National Register for
ambulance service

Solid Waste

	<u>Ashland</u>	<u>Catlettsburg</u>	<u>Boyd County</u>
Type service	Municipal (residential only) and private	Private	Private
Fee charged:			
residential	\$5 per month	\$2.50 per month	\$2.50 per month
business	Contract	Contract	Contract
industrial	Contract	Contract	Contract
Collection frequency:			
residential	Weekly	Weekly	Weekly
business	Contract	Contract	Contract
industrial	Contract	Contract	Contract
Trash pickup	Weekly	On request	On request
Disposal method	Landfill	Landfill	Landfill

EDUCATION

Public Schools

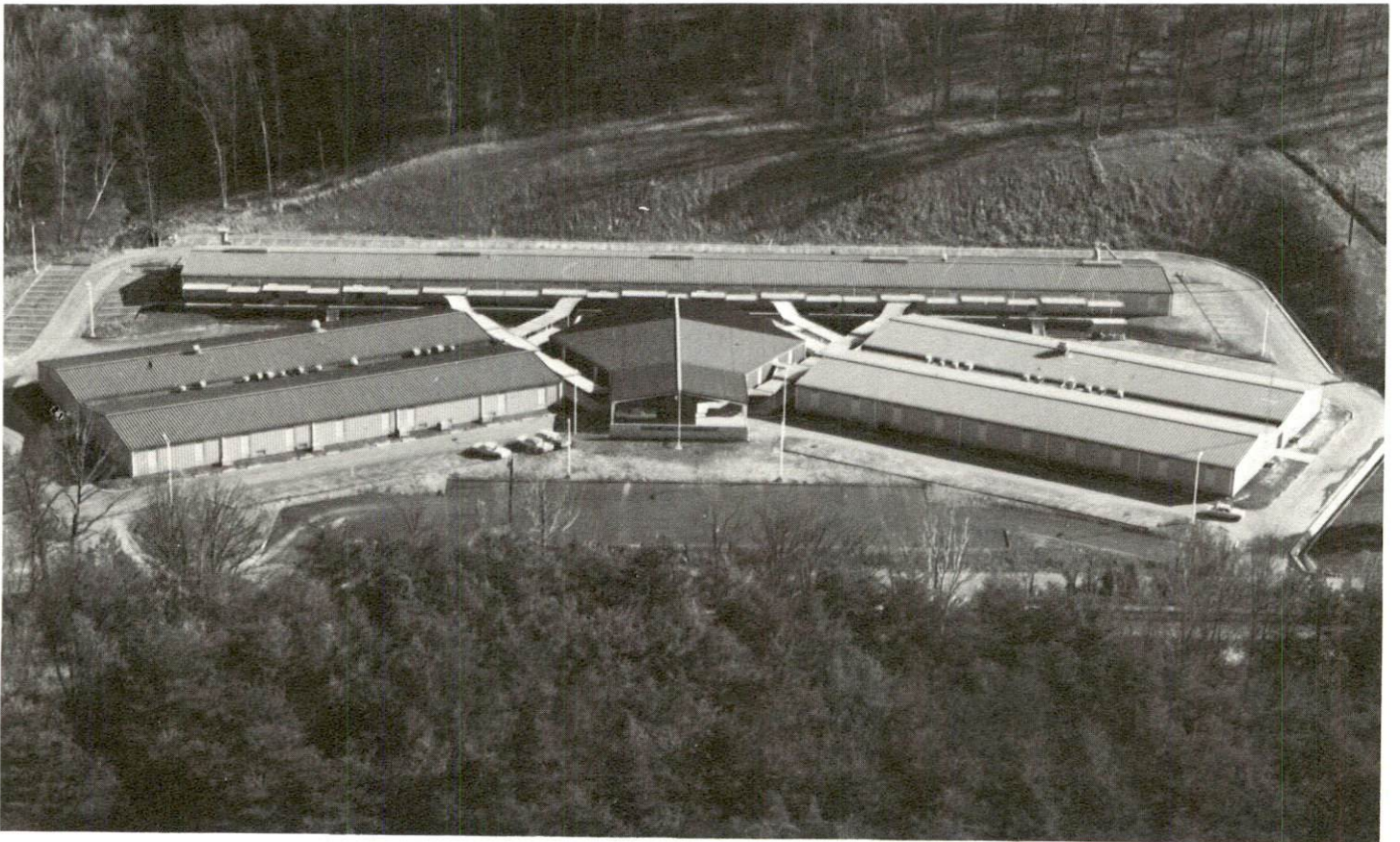
	<u>Ashland Independent</u>	<u>Fairview Independent</u>	<u>Boyd County</u>
Total Enrollment (September, 1975)	5,021	1,032	4,738
Elementary	2,274	553	2,988
Junior High	1,335		400
High School	1,412	479	1,350
Student-Teacher Ratio	20 to 1	27 to 1	24 to 1
Elementary	21 to 1	33 to 1	24 to 1
Junior High	18 to 1		20 to 1
High School	20 to 1	23 to 1	25 to 1
Accreditation	Southern Association of Colleges and Schools		
Percent High School Graduates to College	36.8	44.4	39.1
Expenditures Per Pupil (1974-75)	\$758.78	\$769.71	\$635.71
Bonded Indebtedness, June 30, 1975	\$892,000	\$457,000	\$5,441,000

Nonpublic Schools

Total Enrollment	386
Elementary	286
High School	100
Student-Teacher Ratio	16 to 1
Elementary	20 to 1
High School	11 to 1



PAUL G. BLAZER SENIOR HIGH SCHOOL



ASHLAND STATE VOCATIONAL TECHNICAL SCHOOL

Vocational Schools

	<u>Nearest State School</u>	<u>Nearest Area Education Center</u>
Location	Ashland State Vocational- Technical School	Boyd County Area Vocational Education Center*
Curriculum	Ashland Business and Office Education Cosmetology Practical Nursing Industrial Education Auto Body Repair Auto Mechanics Carpentry Drafting Electronics (Technology) Industrial Electricity Machine Shop Radio and TV Repair Tool and Die Making Welding	Catlettsburg Carpentry Drafting Auto Mechanics Auto Body Repair Air Conditioning and Refrigeration Industrial Electricity Welding Health Occupations Home Economics Office Machine Repair

Arrangements can be made to provide training in the specific production skills required by an industrial plant. Instruction may be conducted either in the vocational school or in the industrial plant, depending upon the desired arrangement and the availability of special equipment.

*The school will open for classes in the fall of 1976.

Area Colleges and Universities

<u>Name</u>	<u>Location (Miles distant)</u>	<u>Enrollment (Fall, 1975)</u>	<u>Highest Degree Conferred</u>
Ashland Community College	Ashland	1,407	Associate
Marshall University	Huntington, West Virginia (12)	10,847	Academic and Professional
Morehead State University	Morehead (59)	7,318	Masters, Ph. D. *
Ohio State University, Portsmouth Campus**	Portsmouth, Ohio (32)	170	Academic and Professional
Ohio University, Ironton Campus	Ironton, Ohio (5)	369	***
Shawnee State Central Technical College**	Portsmouth, Ohio (32)	1,613	Associate

*Cooperative program with the University of Kentucky, Lexington, for a Ph. D. in education only.

**Shawnee State Central Technical College and the Portsmouth Campus of Ohio State University will merge in January, 1977.

***The campus serves as a 2- or 3-year preparatory school for a baccalaureate degree at Ohio University.

HEALTH

Local Medical Personnel

Physicians - 49
Dentists - 27

Hospitals

<u>General Hospital</u>	<u>Location</u>	<u>Beds</u>
King's Daughters' Hospital	Ashland	345
Our Lady of Bellefonte Hospital	Russell, 4 miles distant	123

King's Daughters' Hospital

General hospital facilities - Emergency room, 7 operating rooms, recovery room, dental surgery room, X-ray, laboratory, OB section, pediatrics, intensive care unit, cardiac care unit, 17-bed psychiatric unit

Medical staff - 54 doctors on active staff, 14 doctors on courtesy staff, 14 dentists, 2 pathologists, 117 registered nurses (full time), 15 registered nurses (part time), 50 licensed practical nurses, 13 nurses' assistants, 6 emergency medical technicians, 6 technicians

Our Lady of Bellefonte Hospital

General hospital facilities - X-ray, surgery, outpatient laboratory and X-ray, emergency, EKG, pharmacy, laboratory, recovery rooms, pediatrics, physical therapy

Medical staff - 15 doctors on active staff, 25 doctors on courtesy staff, 30 registered nurses, 16 licensed practical nurses

Other Medical Facilities

The Kentucky Region D Respiratory Disease Control Center offers outpatient services and serves as headquarters for eleven county health centers. Lansdowne Mental Health Center Regional Office offers outpatient services and also offers inpatient services through King's Daughters' Hospital.



OUR LADY OF BELLEFONTE HOSPITAL



KING'S DAUGHTERS' HOSPITAL

Ambulance Service

One ambulance company with 4 ambulances provides 24-hour service to Boyd County.

Nursing Homes

	<u>Number</u>	<u>Beds</u>
Extended care homes	1	89
Personal care homes	5	233

Public Health

Facility - Boyd County Health Department
Staff - 1 medical doctor, 6 registered nurses, 1 sanitarian, 2 community health workers, 2 clerks, 1 dentist (part time)

OTHER LOCAL FACILITIES

Communications

	<u>Ashland</u>	<u>Catlettsburg</u>
Telephone -	General Telephone Company	General Telephone Company
Services -	Direct dial and push botton	Direct dial and push button
Telegraph -	Western Union	Western Union
Services -	Messenger service and telephone	By telephone from Ashland
Postal - U. S. Post Office		
Class -	First	Second
Mail received -	14 times daily	3 times daily
Mail dispatched -	14 times daily	3 times daily
Newspapers -	Ashland Daily Independent	
Daily and circulation -	25,397	
Sunday circulation -	26,386	
Other papers received from -	Lexington and Louisville, Kentucky; Huntington, West Virginia	Huntington and Charleston, West Virginia
Radio -	WCMI-AM, WTCR-AM, WIRO-AM, WAMX-FM	WCAK-FM
Stations received from -	Louisville, Kentucky; Huntington and Charleston, West Virginia	Louisville, Kentucky; Huntington and Charleston, West Virginia
Television -		
Cable service		
Reception from -	Huntington and Charleston, West Virginia	Huntington and Charleston, West Virginia
Kentucky Educational Television -	Ashland transmitter, Channel 25	Ashland transmitter, Channel 25

Library Services

Public library - Ashland Public Library

Size collection - 94,211 volumes

Circulation, 1975 - 140,000

Services - Newspapers, periodicals, magazines, records, films and projector, geneology, Kentucky authors collection, art, U. S. Government Deposit Library

Private library - Ashland Community College Library

Size collection - 25,000 volumes; audio-visual materials collection - 5,000

Circulation, 1975 - 11,232

Services - Newspapers, instructional material, magazines, records, films, filmstrips, slides, microfilm, study desks, copy machine, tapes, periodicals, educational games, reading laboratory, writing laboratory and math laboratory

Religious Institutions

	<u>Ashland</u>	<u>Catlettsburg</u>
Number of churches -	60	14
Denominations	Apostolic	Baptist
	Baptist	Christian
	Catholic	Church of God
	Christian	Methodist
	Christian Science	Nazarene
	Church of God	Pentecostal
	Church of Christ	Presbyterian
	Congregation	
	Episcopal	
	Holiness	
	Jehovah's Witnesses	
	Latter Day Saints	
	Lutheran	
	Methodist	
	Nazarene	
	Pentecostal	
	Presbyterian	
	Seventh Day Adventist	
	Wesleyan	

Nearest Synagogue - Ashland

Congregation - Agudath Achim (reform)

Financial Institutions

<u>Banks</u>	<u>Assets</u>	<u>Deposits</u>	<u>Statement Date</u>
<u>Ashland</u>			
Bank of Ashland	\$28,199,540.54	\$24,573,951.43	4/30/76
Second National Bank	85,376,000.00	76,474,000.00	4/30/76
Third National Bank	62,567,976.00	54,200,581.00	4/30/76

Catlettsburg

Kentucky Farmers Bank	35,477,011.41	27,440,955.46	4/30/76
-----------------------	---------------	---------------	---------

<u>Savings and Loan Associations</u>	<u>Assets</u>	<u>Shared Accounts</u>	<u>Statement Date</u>
--------------------------------------	---------------	------------------------	-----------------------

Ashland

Ashland Federal Savings and Loan Association	\$20,818,719.87	\$18,812,793.67	12/31/75
First Federal Savings and Loan Association	23,636,954.08	20,545,869.65	12/31/75
Home Federal Savings and Loan Association	29,925,525.49	26,133,631.26	12/31/75

Catlettsburg

Catlettsburg Federal Savings and Loan Association	23,127,159.43	21,086,146.75	12/31/75
---	---------------	---------------	----------

Hotels and Motels

Total number - 19

Total units - 425

Clubs and Organizations

Ashland and Catlettsburg Area

Business and Civic - Ashland Area Chamber of Commerce, Catlettsburg Chamber of Commerce, Jaycees, Kiwanis, Lions, Rotary, Optimist, Toastmaster, Dental Society, Medical Society, Ministerial Association, Welcome Wagon, Newcomers Club, Welcome Hostesses, Life Underwriters, Salvation Army, Red Cross, Ashland Civic League, PTA, South Ashland Business Association, Board of Realtors, Bar Association

Fraternal - Masonic Lodge, Elks, Moose Lodge, Shriners, American Legion, Eagles, FOP, IOOF, VFW, Knights of Templar, Knights of Columbus, Art Clubs (3), YMCA

Women's - Woman's Club, DAR, Eastern Star, Jaycettes, Homemakers, Rebekah, Lioness, Business and Professional Women's Club, Altrusa, Garden Club, League of Women Voters, Toastmistress, Elks Auxiliary, DAV, Y-Wives, American Business Women's Association, YWCA, Opti-Mrs., American Legion Auxiliary, American Association of University Women, Daughters of America, Heritage Junior Women, Sorority Council, Medical Auxiliary

Youth - Boy Scouts, Campfire Girls, Girl Scouts, Cub Scouts, Brownies, Babe Ruth League, Little League, Junior League Football, Beta Club, FHA, FTA, FFA, FBLA, 4-H Club

Other - Ashland Performing Arts, Ashland Boat Club, Catlettsburg Boat Club, Creative Arts, Ashland Community Concert Association, Kentucky Chess Association, Democratic Women's Club, Republican Women's Club

RECREATION

Local

Many local recreation facilities are available in the Ashland and Catlettsburg area. There are three parks totaling more than 100 acres, four playgrounds, two bowling alleys, two indoor theaters, three outdoor theaters, four 18-hole golf courses, three 9-hole golf courses, one skating rink, and two private and two public swimming pools. Ashland also has a new \$2.5 million YMCA and a 16-court tennis complex. A \$500,000 addition to the YMCA has been announced. There are organized Little Leagues, Babe Ruth Leagues, Senior Babe Ruth Leagues, men's softball leagues and junior leagues in football and girls' softball. Also available to the residents of the area are two private swim clubs, the Bellefonte Country Club and the Ashland and Catlettsburg Boat Clubs. In addition, Ashland is the home of the Greater Ashland Center for the Performing Arts which brings musical and theatrical programs to the region.

Areas of historic interest include Central Park which contains several prehistoric mounds; the McGuffey School Museum, a replica of the Kentucky mountain log cabin where William Homes McGuffey taught while working on the readers; and the Wee House in the Wood, the museum home of Jean Thomas, the famous Traipsin Woman.

Area (Within 35 miles)

Greenbo Lake State Resort Park, a 3,300-acre resort park, features a primitive iron ore smelter at the site of an early iron works. Eventually blast furnaces and 19th century buildings will be reproduced. Park accommodations include a new 36-room lodge, camping facilities, a dining room, a grocery store, and gift shop. Facilities available include playgrounds, rental of motor boats and paddle boats, a boat dock, slips, a launching ramp, lake-fishing, a picnic shelter, hiking trails, bathhouse, beach, and swimming pool.

Carter Caves State Resort Park, is a 1,000-acre park set in rugged cliffs, mountain streams, caves, and natural bridge formations. Facilities and activities offered by the park include a swimming pool, a lake, a 9-hole golf course, miniature golf, boat rentals, picnic shelters, playgrounds, a 300-seat convention center, hiking, horseback riding, and tours.

Grayson Lake State Park is located on Grayson Reservoir. This 1,500-acre, 20-mile lake is stocked for fishing. Also offered are 150 primitive camping sites, boat dock and ramps, and beach and picnic areas.

PROGRAMS FOR IMPROVEMENT

Industrial

Industrial improvements totaling more than \$200 million have either been completed or are underway at this time in the Ashland and Catlettsburg area. Ashland Oil, Inc., plans a \$125 million expansion and improvement of its refining facilities. Approximately 100 more jobs will be created. Armco Steel Corporation announced in 1974 a multi-million dollar expansion which will increase the production capacity by a total of 1.1 million tons of additional raw steel and the employment by more than 300 additional persons. Semet Solvay Division of Allied Chemical Corporation, Calgon Corporation and Huntington Alloys, Inc., plan to spend a total of \$75 million in expansion of their facilities.

Utilities

The City of Ashland Utilities Department plans to expand the treatment capacity of the filtration plant to 12 million gallons per day. The City of Ashland is phasing out usage of the Catlettsburg, Kenova and Ceredo water plant and will cease operations completely when the Ashland plant is expanded.

A 201 Facilities Plan has been submitted to EPA. The plan recommends installation of secondary treatment facilities at the Ashland plant and expansion of the plant to serve the area through the year 2005.

The Cannonsburg Water District plans to extend lines to serve an additional 150 customers in eastern Boyd County.

Sewer service may be extended to 200 additional homes in Catlettsburg.

Education

The Boyd County School System is constructing a new vocational education center which will offer courses in 10 different areas when it opens in January, 1977. A new junior high school has recently been completed. The Catlettsburg Independent School District has merged with the Boyd County School System.

The Ashland Independent School District has remodeled an old college building and converted it into an adult center and classroom for the handicapped and kindergarten children.

Community Improvements

Ashland

A development study of downtown Ashland has been completed. The city commission plans to review these recommendations and decide which proposals should get priority. A 525-space parking complex and mall is being planned by the city and the Second National Bank. The city also is clearing the railroad right-of-way property between 12th and 15th Streets, which has reverted back to the city.

Ashland Oil, Inc., has moved its central office into a new 13-floor building with a 350-space parking garage.

The Kentucky Power Company has begun construction on a new division headquarters office building.

A city-wide transit system has been established.

The possibility of constructing a new public library is being studied.

A committee has been formed to inspect low-income housing and to aid in the improvement of the housing standard.

A \$500,000 addition to the YMCA has been announced.

Paramount Art Center is spending \$75,000 to remodel its auditorium.

An Olympic-size swimming pool, a kiddie pool and playground equipment will be installed in one city park. Another city swimming pool is being rebuilt.

An amphitheater and library will be constructed at the Jean Thomas Home.

Four new indoor and sixteen outdoor tennis courts have been completed.

Catlettsburg

A new office building has been constructed for the FIVCO Area Development District.

Williams Sheet Metal Company, employing six people, is now producing sheet metal duct.

The interior and exterior of the city building is being renovated.

Kentucky Farmers Bank has completed new facilities.

A study is in progress for the restoration of downtown Catlettsburg to the era of the big rivertown days. Catlettsburg hopes to beautify the business district by building new storefronts and a downtown mall.

A shelter house and observation deck are to be constructed on a site overlooking the Ohio River. In addition, the city plans to convert abandoned lockage into a riverside park.

HISTORY

Boyd County, Kentucky's 107th county, was organized in 1860 from parts of Greenup, Carter, and Lawrence Counties. Boyd County was named after the Honorable Linn Boyd, who was for many years a member of Congress from the First Kentucky District and Speaker of the House of Representatives. The county has a land area of 159 square miles.

Catlettsburg is located at the junction of the Big Sandy and Ohio Rivers. It was named for Sawney Catlett who established a trading post there in 1808 and served traders and trappers for half a century. Catlettsburg remained a trading post until about 1857 when the cutting of big timber along the Big Sandy River inaugurated an era of low but steady growth. It became the county seat when Boyd County was organized, and has continued as such despite the center of industrial growth in Ashland, only five miles distant. The business district is dominated by the courthouse, courthouse square, the waterfront, and the quiet streets which extend back from the river.

In 1815, three settlers, George and Robert Poage and Robert's son, Robert, Jr., secured a title to lands along the Ohio River below Catlett's Station which became known as "Poage's Landing." Later, in 1854, the name of Poage's Landing was changed to Ashland in honor of Henry Clay's home in Lexington. By 1847, a post office had been established at Poage's Landing, and a few years later a plant which made brick from the abundant native clays was constructed.

After the Civil War, the area's slumping industry began to show life again. The wealth of northeastern Kentucky's coal fields caused the Ashland Coal and Iron Company Railroad to channel through Ashland. The Ashland Iron Furnace was started in 1869, with a capacity of 45 tons a day. In 1872, the Norton Iron Works built a blast furnace, rolling mill, and nail and key factory. The furniture factory of H. Hermann came in 1883, the Ashland Hub and Spoke Factory in 1887, and the Ashland Foundry and Machine Shops in 1889.

During World War I, the open hearth steel plant of the Ashland Iron and Mining Company, successor of the Ashland Coal and Iron Company, was built. Following the War, the greatest single event in Ashland's history occurred. The American Rolling Mill Company selected Ashland as the site for its new steel processing plant. In 1920, construction was begun on the Armco plant, where steel sheets were to be produced by the new continuous rolling method - the first operation of its kind in the country.

The Roaring "20's" were indeed roaring for the area. New suburbs and new schools quickly sprang up. In 1924, the area's second largest employer - the Ashland Petroleum Company - was formed.

With the outbreak of the Second World War, the Ashland area took on an added significance because of its steel plant. The area rendered both men and steel for our nation's cause. During the War, in 1942, Armco's Bellefonte Furnace was completed and soon operated at a maximum production rate of 1,000 tons of steel a day - one of the world's largest yields. Clayton-Lambert opened in Ashland to help in the War cause by making steel cartridge cases. Ashland Petroleum Company soon expanded its refineries, and there followed a "war-time" boom.

Being strategically located upon an important river, it is natural that the area should continue in its prominence as a river port.

Steelmaking was, and still is, the big industry with Armco Steel Corporation operating one of the country's largest blast furnaces. For more than a century, the Ashland area has manufactured chemical products. Coal, another of the region's resources, also continues to play an important role.

The total number of Boyd County residents employed in 1974 averaged 18,530, including 280 in agriculture and 2,100 in government. Manufacturing employers in the county reported 7,210 workers; trade and services firms employed 6,980; mining employed 90.

In 1860, the population of Boyd County was 6,044. This grew steadily to 15,701 in 1900, 52,163 in 1960, and 52,376 in 1970. The 1975 estimated population was 52,300.

Production supervisor: Patsy Wallace; research: Terry Patterson;
clerical: Mildred Keefer; graphics: N. C. Montague, Frank Ferrante,
Tony Cecconi; cartography: Site Development Section.