

1985

Industrial Resources: Boyle County - Danville

Kentucky Library Research Collections
Western Kentucky University, spcol@wku.edu

Follow this and additional works at: https://digitalcommons.wku.edu/boyle_cty

 Part of the [Business Administration, Management, and Operations Commons](#), [Growth and Development Commons](#), and the [Infrastructure Commons](#)

Recommended Citation

Kentucky Library Research Collections, "Industrial Resources: Boyle County - Danville" (1985). *Boyle County*. Paper 1.
https://digitalcommons.wku.edu/boyle_cty/1

This Report is brought to you for free and open access by TopSCHOLAR®. It has been accepted for inclusion in Boyle County by an authorized administrator of TopSCHOLAR®. For more information, please contact topscholar@wku.edu.

IR

Boyle County

453

RESOURCES
FOR
ECONOMIC
DEVELOPMENT

DANVILLE

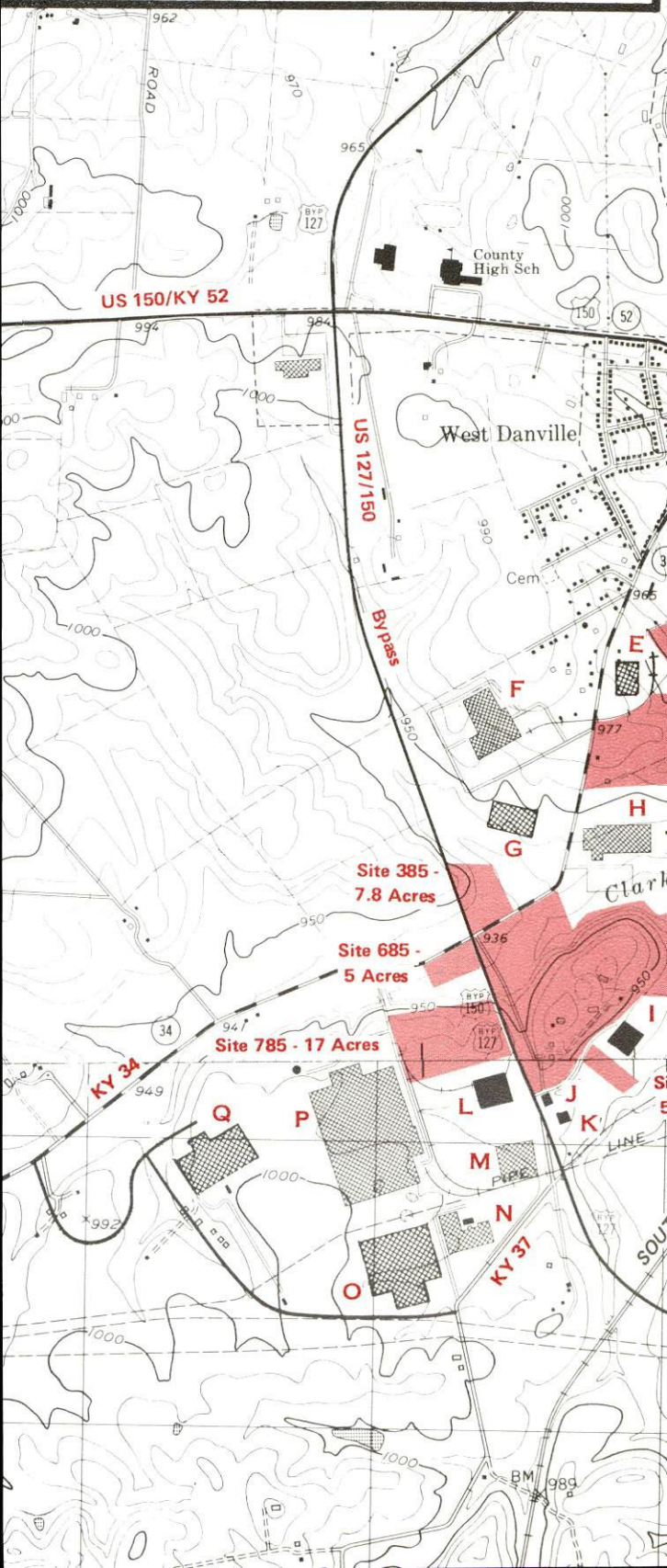
KENTUCKY

The Business Environment is Right

DANVILLE, KENTUCKY

Index to Industrial Sites - 1985

For more information contact the Kentucky Department of Economic Development, Industrial Development & Marketing Division, Capital Plaza Tower, Frankfort, Kentucky 40601 (502-564-7140).





Site 185 - 5 Acres

Site 285 - 20 Acres

Site 485 - 65 Acres

Site 585 - 10 Acres

Existing Industries

- A** Royal Crown Bottling Co.
- B** Sellers Engineering Co.
- C** North American Phillips Lighting Corp.
- D** Greenleaf Plant Foods
- E** Deerfield Plastics Co., Inc.
- F** Whirlpool Corp.
- G** Kay-Bee Toy & Hobby Shops Inc.
- H** Rexnord Inc.
- I** Fred Cain Farm Equipment Co.
- J** Sun Chemical Co.
- K** Servomation of Kentucky
- L** LSI Certified Brakes
- M** ATR Wire & Cable Co., Inc.
- N** Jackson Furniture of Danville
- O** Thom-McAn Distribution Center
- P** American Greetings Corp.
- Q** R. R. Donnelley & Sons Co.
- R** Palm Beach Co.
- S** Genesco Inc.

SCALE: 1 inch = 2000 feet
 CONTOUR INTERVAL: 10-20 feet
 BASE: USGS 7.5 minute series - 1952-1967
 Photorevised 1979

RESOURCES FOR ECONOMIC DEVELOPMENT
DANVILLE, KENTUCKY

Prepared by
The Kentucky Department of Economic Development
Division of Research and Planning
in cooperation with
The Danville-Boyle County Chamber of Commerce

1985

Program manager - Andrew Dennis; research - Bill Morris; clerical -Bobbi Graves; graphics - Frank Ferrante, Tony Cecconi, Robert Owens; cartography - Site Evaluation Branch, Division of Industrial Development and Marketing. Cost of printing paid from state funds.

TABLE OF CONTENTS

<u>Chapter</u>	<u>Page</u>
INDUSTRIAL SITES	i
DANVILLE, KENTUCKY - A RESOURCE PROFILE.....	1
THE LABOR MARKET AREA.....	3
Population	3
Labor Force Characteristics of Residents, 1984	3
Selected Components of Nonagricultural Employment, by Place of Work, 1984	4
Danville Manufacturing Firms, Their Products and Employment.....	4
Labor Organizations in Manufacturing Firms	7
Distribution Centers.....	7
Industrial Services	8
Estimated Male Labor Supply	9
Estimated Female Labor Supply	9
Average Weekly Wages By Industry, by Place of Work, 1984	10
Per Capita Personal Income	12
TRANSPORTATION	13
Rail	13
Highways	13
Truck Service	13
Air	15
Bus	16
Taxi.....	16
Rental Services	16
Water	16
POWER AND FUEL	17
Electricity	17
Natural Gas	17
Other Fuels	18
WATER AND SEWERAGE	19
Public Water Supply	19
Raw Water	20
Sewerage	20
CLIMATE	22

<u>Chapter</u>	<u>Page</u>
LOCAL GOVERNMENT	23
City	23
County	23
Assessed Value of Property	23
Property Taxes	24
Combined State and Local Rates Per \$100 Valuation, 1984	25
Planning and Zoning	25
Safety	26
Police	26
Fire	26
Rescue Service	26
Refuse Collection and Disposal	26
EDUCATION	27
Public Schools	27
Special Schools	27
Area Colleges and Universities	28
Vocational Schools	29
HEALTH.....	31
Local Medical Personnel	31
Hospitals	31
Other Medical Facilities	31
Ambulance Service	31
OTHER LOCAL FACILITIES.....	32
Communications	32
Library Services	32
Religious Institutions	33
Financial Institutions	33
Hotels and Motels	34
Clubs and Organizations	34
RECREATION	35
COMMUNITY IMPROVEMENTS	37

1985 EDITION
GENERAL HIGHWAY MAP
BOYLE COUNTY
KENTUCKY

PREPARED BY THE
KENTUCKY TRANSPORTATION CABINET
DEPARTMENT OF HIGHWAYS
DIVISION OF PLANNING
IN COOPERATION WITH THE
U.S. DEPARTMENT OF TRANSPORTATION
FEDERAL HIGHWAY ADMINISTRATION



DANVILLE, KENTUCKY - A RESOURCE PROFILE

Danville, the county seat of Boyle County, is located in the gently rolling landscape of central Kentucky's Bluegrass Region. Danville is a progressive community with a 1982 estimated population of 12,731 persons. The city has for three consecutive years been chosen as a "Kentucky Certified City" by the Kentucky Chamber of Commerce; this award is based upon achievement in economic and community development. Danville played a key role in Kentucky's early history, serving as the site of the state's first constitutional conventions. Today, its progressive attitude, its strategic central location, and its excellent transportation facilities contribute to the city's growth as a manufacturing and distribution center. Danville is situated only 35 miles southwest of Lexington, Kentucky; 85 miles southeast of Louisville, Kentucky; 154 miles north of Knoxville, Tennessee; and 113 miles south of Cincinnati, Ohio.

Boyle County, with a land area of 182 square miles, had a 1982 estimated population of 24,800 persons.

The Economic Framework

The total number of Boyle County residents employed in 1984 averaged 12,260 with nonagricultural jobs accounting for 11,640 workers. Manufacturing firms in the county reported 3,690 employees; wholesale and retail trade provided 3,240 jobs; 1,560 people were employed in service occupations; and state and local government accounted for 1,260 employees. Manufacturing employment is greatest in electrical machinery; stone, clay, and glass products; and fabricated metal products.

Per capita personal income in Boyle County in 1983 was \$9,424, or \$28 above the Kentucky average. Between 1979 and 1983, per capita income increased by 37 percent.

The Danville labor market area includes Boyle County and the adjoining counties of Casey, Garrard, Lincoln, Marion, Mercer, and Washington. The total number of residents employed in the labor market area in 1984 averaged 46,530, with nonagricultural jobs accounting for 40,650 workers. Manufacturing firms in the area reported 7,810 employees; wholesale and retail trade provided 6,375 jobs; 3,680 people were employed in service occupations; and state and local government accounted for 4,090 employees.

Resources for Growth

1. Labor Supply - There is a current estimated labor supply of 9,140 men and 8,660 women available for industrial jobs in the labor market area. In addition, from 1985 through 1989, 5,170 young men and 5,030 young women in the area will become 18 years of age and potentially available for industrial jobs.

2. Transportation - The Southern Railway System provides rail freight service to Danville, with daily stops and piggyback facilities available. U.S. Highways 127 and 150 are "AAA" rated (80,000-pound gross load limit) highways serving Danville. U.S. 127 provides access to the Blue Grass Parkway, 25 miles north of Danville, and to the Cumberland Parkway, 51 miles south of Danville. Interstate 75 is accessible 38 miles southeast of Danville via U.S. 150 and 38 miles east of Danville via U.S. 150 and Kentucky Route 1295. Twenty-four common carriers serve the city, and four of these maintain local terminals. The nearest scheduled commercial airline service is available at Bluegrass Airport, 43 miles northeast of Danville near Lexington. Chartered air freight service is available by prior arrangement at the Danville-Boyle County Airport, 4 miles south of Danville.

3. Power and Fuel - Kentucky Utilities Company provides electric power to Danville and portions of Boyle County. The major portion of Boyle County is served by Inter-County Rural Electric Cooperative Corporation, whose source of power is East Kentucky Power Cooperative. Western Kentucky Gas Company, whose source of supply is Tennessee Gas Transmission Corporation, provides natural gas service to Danville. Four propane dealers and seven distillate fuel oil dealers are located within 15 miles of the city.

4. Education - Two public school systems serve Danville and Boyle County. The Boyle County School System enrolled 2,530 students in 1985. The Danville Independent School System had an enrollment of 2,014 students and is accredited by the Southern Association of Colleges and Schools. The Kentucky School for the Deaf, the oldest state-supported school in the United States, is also located in Danville.

Centre College, located in Danville, is an independent, four-year college which confers Bachelor of Arts and Bachelor of Science degrees. The Fall 1985 enrollment at Centre College was 804. The Kentucky College of Business, also located in Danville, confers the Associate in Science degree. The college's Fall 1984 enrollment was 418.

In addition, three universities, two senior colleges, a junior college and a community college are located within 36 miles of Danville.

Central Kentucky State Vocational-Technical School is located in Lexington, 35 miles northeast of Danville, and offers instruction in 37 course areas. The Harrodsburg Area Vocational Education Center, 9 miles north of Danville at Harrodsburg, and the Garrard County Area Vocational Education Center at Lancaster, 12 miles east of Danville, each offer training in seven course areas.

THE LABOR MARKET AREA

The Danville Labor Market Area includes Boyle County and the adjoining Kentucky counties of Casey, Garrard, Lincoln, Marion, Mercer and Washington.

POPULATION				
Area	1984*	1980	1970	Percent Nonwhite 1980
Danville	13,001	12,942	11,542	14.9
Labor Market Area	118,227	117,475	104,313	N/A
Boyle County	25,104	25,066	21,861	9.5
Casey County	15,202	14,818	12,930	0.3
Garrard County	11,292	10,853	9,457	5.5
Lincoln County	19,162	19,053	16,663	4.2
Marion County	17,747	17,910	16,714	8.0
Mercer County	19,330	19,011	15,960	4.6
Washington County	10,390	10,764	10,728	10.3

* Population estimates.

Note: The 1980 city counts of population by race are provisional.

Sources: U.S. Department of Commerce, Bureau of the Census, 1980 Census of Population and Housing, March 1981; 1980 Census of Population, Number of Inhabitants. University of Louisville, Urban Studies Center, Population Unit, October 1985; Kentucky Population Research Notes, Issue Number One, May 1985.

LABOR FORCE CHARACTERISTICS OF RESIDENTS, 1984

	Boyle County	Labor Market Area
Civilian Labor Force	13,359	53,663
Employment	12,260	46,528
Agricultural	621	5,880
Nonagricultural	11,639	40,648
Unemployment	1,099	7,135
Rate of Unemployment (%)	8.2	13.3

Source: Kentucky Cabinet for Human Resources, Kentucky Labor Force Estimates, Annual Averages, 1984.

SELECTED COMPONENTS OF NONAGRICULTURAL EMPLOYMENT,
BY PLACE OF WORK, 1984

	Boyle County	Labor Market Area
All Industries (total)	10,843	24,883
Manufacturing	3,688	7,808
Wholesale & Retail Trade	3,239	6,375
Services	1,558	3,680
State/Local Government	1,256	4,086
Contract Construction	293	845

Note: Excludes domestic workers, railway workers, certain nonprofit corporations, majority of federal government workers, and self-employed workers.

Source: Kentucky Cabinet for Human Resources, Average Monthly Workers Covered by Kentucky Unemployment Insurance Law, 1984.

DANVILLE MANUFACTURING FIRMS,
THEIR PRODUCTS AND EMPLOYMENT

Firm (Establishment date)	Product	Employment			Labor Unions
		Total	Male	Female	
Ad-Mart (1984)	Display lettering	80	--	--	
ATR Wire & Cable Company, Inc. (1971)	Steel tire cord and bead wire	706	553	153	
Advocate Communications, Inc., DBA-Advocate-Messenger Company (1865)	Newspaper	55	22	33	
Boyle Block Company (1943)	Concrete block, precast concrete items	15	15	0	
Burkman Industries, Inc. (1979)	Animal feeds	18	16	2	
Fred Cain Farm Equipment Company (1959)	Tractor accessories, field tillers	32	30	2	
Caldwell Stone Company, Inc., (1928)	Agricultural lime, crushed stone	18	17	1	

(Continued)

<u>Firm (Establishment date)</u>	<u>Product</u>	<u>Employment</u>			<u>Labor Unions</u>
		<u>Total</u>	<u>Male</u>	<u>Female</u>	
Concrete Materials Corporation (1948)	Ready-mixed concrete, septic tanks, water troughs, concrete block	7	7	0	
Danville Machine Company (1973)	Screw machine products, custom machine products	4	4	0	
Davis Metal Sales, Inc. (1982)	Steel roofing and siding, steel fabrication	13	9	4	
Deerfield Plastics Company, Inc. (1978)	Polyethylene film	39	36	3	
R. R. Donnelley & Sons Company (1985)	Catalogs, magazines	220	--	--	
The Elements Pottery (1972)	Hand crafted pottery, hand rolled beeswax candles	6	4	2	
Genesco, Inc. (1946)	Ladies' shoes, men's shoes	149	24	125	
Greenleaf Plant Foods (1953)	Fertilizer mixing	7	5	2	
Jackson of Danville (1946)	Upholstered chairs and sofas, tables	146	109	37	
Kapp Uniforms (1972)	Parade equipment, men's and women's band uniforms	13	2	11	

(Continued)

Firm (Establishment date)	Product	Employment			Labor Unions
		Total	Male	Female	
LSI Certified Brakes, Division of Lear Siegler (1969)	Friction brake lining disc pads	350	230	120	Steelworkers*
North American Philips Lighting Corporation (1952)	Glass bulbs, tubing	385	315	70	Flint Glass Workers*
Palm Beach Company (1937)	Men's suits	624	34	590	Clothing & Textile Workers*
Pioneer Vocational/ Industrial Services, Inc. (1969)	Foam packaging, wood pallets, industrial subassemblies	50	25	25	
Rexnord, Inc. (1973)	Unit handling conveyors and systems	450	--	--	
Royal Crown Bottling Company (1938)	Soft drinks	41	38	3	
Sellers Engineering Company (1947)	Boilers, commercial gas-fired water heaters, deaerating equipment	N/A	--	--	
Swiss Ice Company (1971)	Ice	6	5	1	
Whirlpool Corporation (1970)	Trash compactors, ice makers for re- frigerators, vacuum cleaners	971	597	374	

* See Labor Organizations below.

Sources: Kentucky Department of Economic Development, 1985 Kentucky Directory of Manufacturers; Division of Research and Planning.

LABOR ORGANIZATIONS IN MANUFACTURING FIRMS

<u>Union</u>	<u>Representing workers at:</u>
Amalgamated Clothing and Textile Workers Union, AFL-CIO	Palm Beach Company
American Flint Glass Workers Union, AFL-CIO	North American Philips Lighting Corporation
United Steelworkers of America, AFL-CIO	LSI Certified Brakes, Division of Lear Siegler

DISTRIBUTION CENTERS

<u>Firm (Establishment date)</u>	<u>Employment</u>
American Greetings Corporation (1965)	793
Kay-Bee Toy and Hobby Shop, Inc. (1985)	80
Thom McAn Shoe Company, Inc. (1981)	150

Source: Danville-Boyle County Chamber of Commerce.

INDUSTRIAL SERVICES

<u>Types of Services</u>	<u>Location</u>	<u>Mileage from Danville</u>
Custom Plastics Producers	Danville	-
Electric Motor Repair	Lebanon	31
	Lexington	35
	Somerset	45
Grinding, Precision & Tool	Richmond	36
	Georgetown	50
	Winchester	53
Heat Treating Facilities	Lexington	35
	Frankfort	44
Industrial Equipment & Supplies	Springfield	27
	Lexington	35
Industrial Gases	Lexington	35
	Somerset	45
Industrial Waste Removal	Lexington	35
	Frankfort	44
	Somerset	45
Machine Shops, Tool & Die	Danville	-
Metal Finishers	Richmond	36
	Lexington	35
	Georgetown	50
Metal Service Centers	Lexington	35
Millwrights	Nicholasvile	23
	Lexington	35
Public Warehouse Facilities	Danville	-

Sources: Kentucky Department of Economic Development, Kentucky Directory of Selected Industrial Services, 1985; Division of Research and Planning.

ESTIMATED MALE LABOR SUPPLY
DANVILLE LABOR MARKET AREA

Area	Current			Not in Labor Force	Future
	Total Male	Unemployed	Under- employed		Becoming 18 years of age 1985 thru 1989
Labor Market					
Area*	9,136	4,602	2,657	1,877	5,167
Boyle	1,181	629	552	0	1,102
Casey	1,832	1,115	455	262	661
Garrard	1,019	307	282	430	427
Lincoln	2,122	932	370	820	872
Marion	1,233	740	419	74	846
Mercer	907	569	338	0	772
Washington	842	310	241	291	487

ESTIMATED FEMALE LABOR SUPPLY
DANVILLE LABOR MARKET AREA

Area	Current			Not in Labor Force	Future
	Total Female	Unemployed	Under- employed		Becoming 18 years of age 1985 thru 1989
Labor Market					
Area*	8,660	2,533	2,387	3,740	5,026
Boyle	1,071	470	601	0	1,048
Casey	1,438	561	286	591	662
Garrard	1,013	194	195	624	398
Lincoln	1,820	438	362	1,020	791
Marion	1,470	273	264	933	890
Mercer	1,219	329	427	463	788
Washington	629	268	252	109	449

* Additional workers may be drawn from other nearby counties.

Note: Unemployed - persons unemployed and actively seeking work;
Underemployed - persons employed but working only 14 to 26 weeks per year;
Not in Labor Force - represents the number of persons who would enter the labor force if suitable employment were available (based on the assumption that persons in Kentucky would like to participate in the labor force in the same proportion that they do nationally).

Sources: Kentucky Cabinet for Human Resources, Kentucky Labor Supply Estimates by County, 1984. Kentucky Department of Economic Development, Future Labor Supply Becoming 18 Years of Age, 1985 thru 1989.

AVERAGE WEEKLY WAGES BY INDUSTRY,
BY PLACE OF WORK, 1984

	<u>Boyle County</u>	<u>Casey County</u>	<u>Garrard County</u>	<u>Lincoln County</u>
All Industries	\$291.09	\$224.54	\$203.56	\$213.91
Mining & Quarrying	*	*	*	0
Contract Construction	274.75	237.44	223.05	195.53
Manufacturing	371.17	200.48	204.10	212.78
Transportation, Communications & Public Utilities	391.09	435.73	316.97	386.33
Wholesale & Retail Trade	209.85	156.46	147.75	152.54
Finance, Insurance & Real Estate	297.47	284.98	268.25	227.26
Services	242.61	153.61	206.35	185.83
State/Local Government	294.05	276.78	220.13	265.37
Other	223.02	*	138.23	129.78

	<u>Marion County</u>	<u>Mercer County</u>	<u>Washington County</u>
All Industries	\$220.94	\$266.69	\$225.40
Mining & Quarrying	*	0	*
Contract Construction	202.23	299.03	308.61
Manufacturing	251.69	355.50	253.43
Transportation, Communications & Public Utilities	269.53	413.86	180.89
Wholesale & Retail Trade	169.21	167.37	171.31
Finance, Insurance & Real Estate	246.58	282.26	292.15
Services	199.17	169.71	163.56
State/Local Government	257.64	283.73	237.39
Other	199.86	162.17	152.71

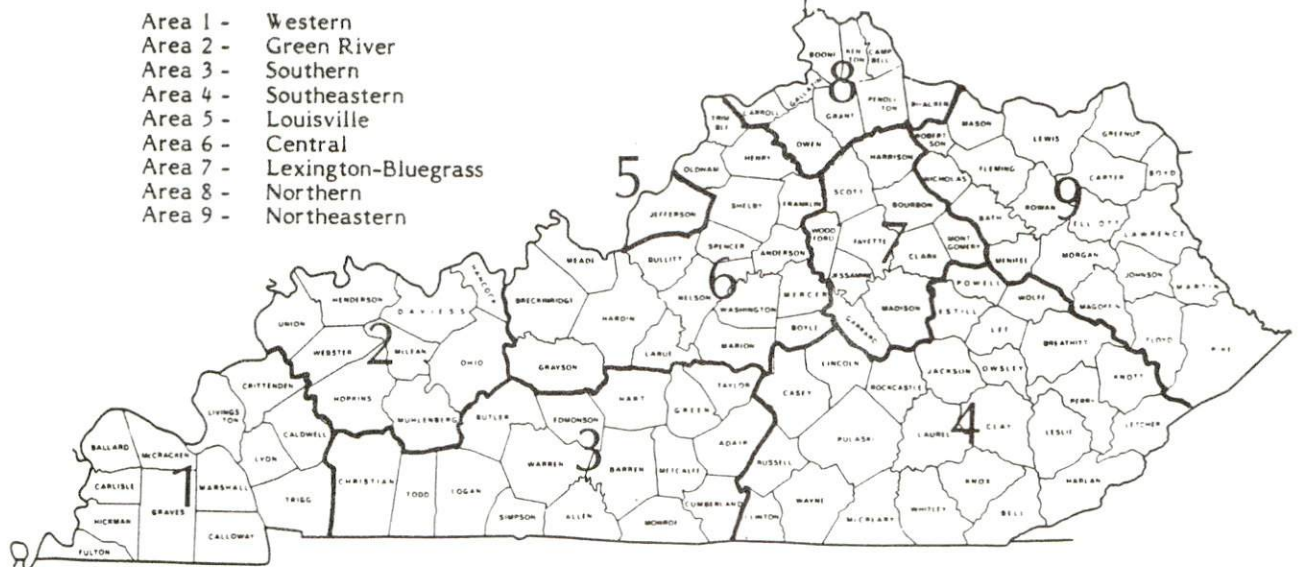
* Not disclosed.

Note: Excludes domestic workers, railway workers, certain nonprofit corporations, majority of federal government workers, and self-employed workers.

Source: Kentucky Cabinet for Human Resources, Average Weekly Wages of Workers Covered by Kentucky Unemployment Insurance Law, 1984.

Occupational wage rates for specific industries are usually not available to most government agencies, and wage data furnished to state employment agencies by individual industrial employers are protected from disclosure by federal law. The most reliable up-to-date wage information can be obtained by direct contact with local employers.

Associated Industries of Kentucky, a voluntary organization of Kentucky businesses, regularly collects occupational wage rates and fringe benefits data from participating member firms. Data are compiled for over 127 clearly defined office, production, and service occupations. Tabulations are published for nine geographical areas of Kentucky, as shown on the map below. It should be noted that the data may be weighted by the preponderance of firms in the larger cities and may be somewhat higher than the rates paid in the smaller communities. Data from these tabulations are available, upon request, from the Kentucky Department of Economic Development, Frankfort, Kentucky 40601.



Associated Industries of Kentucky Area Wage Surveys

PER CAPITA PERSONAL INCOME

<u>Area</u>	<u>1983</u>	<u>1979</u>	<u>Percent Change</u>
Boyle County	\$ 9,424	\$ 6,899	36.6
Labor Market Area Range	\$5,439 - 9,424	\$ 4,116 - 6,899	N/A
Kentucky	9,396	7,124	31.9
U. S.	11,687	8,651	35.1

Sources: U.S. Department of Commerce, Bureau of Economic Analysis; Commerce News, August 28, 1984; May 7, 1985. Kentucky Economic Information System, June 1985.

TRANSPORTATION

Rail

Line serving **Danville** - Southern Railway System

Services - Main line; one northbound freight and one southbound freight make daily stops; nine southbound and nine northbound through freights daily; switch engine; team track space for five cars; siding space for 15 cars; piggyback facilities. Danville is a major rail terminal, all trains stop for cars and crew changes.

For details on routing, schedules, rates, and services, contact:

District Sales Manager
Norfolk Southern Corporation
1402 South 15th Street
Louisville, Kentucky 40210
(502) 636-6023

Highways

U.S. Highways 127 and 150 are "AAA" rated (80,000-pound gross load limit) highways serving Danville. U.S. 127 provides Danville with four-lane access to the Blue Grass Parkway, 25 miles to the north. The Blue Grass Parkway is a four-lane toll road which connects with Interstate 65, 84 miles west of Danville.

U.S. 150 provides direct access to Interstate 75, 38 miles southeast of Danville. Interstate 75 is also accessible 38 miles east of Danville via U.S. 150 and Kentucky Route 1295. U.S. 127 continues south to the multi-lane Cumberland Parkway, 51 miles south of Danville.

Kentucky Routes 33, 34 and 52, all "AA" rated highways (62,000-pound gross load limits), also serve Danville.

Truck Service

<u>Company</u>	<u>Home Office</u>
ABF Freight System, Inc.*	301 South 11th Street Ft. Smith, Arkansas 72901
ANR Freight System, Inc.**	P. O. Box 5070 Denver, Colorado 80217
ARA/Smith's** (T)	P. O. Box 1000 Staunton, Virginia 24401
American Freight System, Inc.**	9393 West 110th Street Overland Park, Kansas 66210
Bailey's Express, Inc.*	Middletown, Connecticut 06457
Bestway Express, Inc.** (T)	Nashville, Tennessee 37210

(Continued)

CompanyHome Office

Buske Lines, Inc.** (Truck load only)

123 West Tyler Street
P. O. Box 349
Litchfield, Illinois 62056
Cleveland, Ohio 44115

CCC Highway, Inc.*
Carolina Freight Carriers Corporation*

P. O. Box 697
Cherryville, North Carolina 28021

Central Transport, Inc.**

34200 Mound Road
Sterling Heights, Michigan 48077

Duff Truck Line, Inc.*

Broadway and Vine Streets
P. O. Box 359
Lima, Ohio 45802

Lawrenceburg Transfer Company, Inc.* (T)

Highway 127
P. O. Box 267
Lawrenceburg, Kentucky 40342

The Maryland Transportation Company**

1111 Frankfurst Avenue
Baltimore, Maryland 21225

McLean Trucking Company**

P.O. Box 213
Winston-Salem, North Carolina 27154

Middlewest Freightways, Inc.*

6810 Prescott Avenue
St. Louis, Missouri 63147

The O.K. Trucking Company*

3000 East Crescentville Road
Cincinnati, Ohio 45241

Overnite Transportation Company*

1000 Semmes Avenue
P. O. Box 1216
Richmond, Virginia 23209

Renner's Express, Inc.**

1350 South West Street
P. O. Box 882
Indianapolis, Indiana 46206

Roadway Express, Inc.*

1077 Gorge Boulevard
Akron, Ohio 44310
Jacksonville, Florida 32203

Ryder/P-I-E Nationwide, Inc.**
J. Fred Smith Trucking Company
(Irregular route common carrier)* (T)

112 Nichols Street
Danville, Kentucky 40422

Suburban Motor Freight, Inc.*

1100 King Avenue
P. O. Box 1739
Columbus, Ohio 43216

United Trucking Service, Inc.*

8505 West Warren
Dearborn, Michigan 48126

Whiteford Truck Lines, Inc.,
DBA Design Freight Systems*

1900 Western Avenue
P. O. Box 7004
South Bend, Indiana 46634

* Interstate and intrastate service.

** Interstate service only.

(T) Local terminal

Sources: American Motor Carrier Directory, Fall 1985; Danville Boyle County Chamber of Commerce.

Other Freight ServicesNearest Office or Shipping Center

Airborne Express	Lexington, 35 miles northeast of Danville
Emery	Lexington, 35 miles northeast of Danville
Federal Express	Lexington, 35 miles northeast of Danville
Purolator Courier Corporation	Lexington, 35 miles northeast of Danville
United Parcel Service	Danville

**HIGHWAY MILES AND TRUCK TRANSIT TIME IN DAYS FROM
DANVILLE, KENTUCKY, TO SELECTED MARKET CENTERS**

City	Highway Miles	Delivery Time TL	City	Highway Miles	Delivery Time TL
Atlanta, Ga.	347	1	Los Angeles, Ca.	2,193	3
Baltimore, Md.	576	2	Louisville, Ky.	85	1
Birmingham, Ala.	391	1	Nashville, Tenn.	195	1
Chicago, Ill.	377	1	New Orleans, La.	712	2
Cincinnati, Ohio	113	1	New York, N. Y.	738	3-4
Cleveland, Ohio	352	1	Pittsburgh, Pa.	378	1
Detroit, Mich.	372	1	St. Louis, Mo.	348	1
Knoxville, Tenn.	154	1			

Note: Mileage computations are via the best interstate or primary highways, not necessarily the most direct route of travel.

Sources: Rand McNally Road Atlas, 1979. Official Kentucky Mileage Map, 1980.
Delivery time - Overnite Transportation Company, 1020 Whipple Court,
Lexington, Kentucky 40574.

AirLocal

Location:	Goodall Field, Danville-Boyle County Airport*
Runways:	4 miles south of Danville
Length:	Two paved
Traffic	4,800 feet and 1,800 feet
Control:	Wind sock, instrument approach, Unicom 122.8
Lighting:	Rotating beacon, sundown to sunrise; VASI, REILS
Services:	100 octane, jet-A; major and minor A & P repairs; charter; hangar; tie-down; flight instruction; aircraft rental
Air Freight Service:	Chartered air freight service must be arranged

(Continued)

* Tentative improvement plans being made for Goodall Field include lengthening the 4,800-foot runway to 5,000 feet, constructing a taxiway parallel to the runway, and constructing an 8,000-square-foot administration building/maintenance hangar.

Nearest Scheduled Commercial Airline Service

Location: Bluegrass Airport
5 miles west of Lexington, Kentucky;
36 miles northeast of Danville

Runways: 2 paved
Length: 7,000 feet; 3,500 feet

Traffic Control: Tower

Lighting: Approach lighting system, beacon, runways and
obstructions lighted, VASI

Services: Delta, Piedmont, United, USAir, Allegheny Commuter,
Comair, Tennessee Airways; fuel - 100LL and
jet-A; hangars, tie-downs; major A & P repairs;
major Avionics repairs; APU, charter, flight
instruction, oxygen, plane rentals, survival
equipment; taxi, limousine, car rentals, courtesy
car, weather information; restaurant, snack bar

Air Freight Service: Air freight terminal

Bus - Southern Greyhound, Inc.

Taxi - Two cab companies with 24-hour, radio-dispatched service

Rental Services - Car, trailer and truck rentals

Water

Danville is located approximately 44 miles south of the Kentucky River at Frankfort, where a six-foot navigation channel is maintained.

POWER AND FUEL

Electricity

Company serving **Danville and portions of Boyle County** - Kentucky Utilities Company

Source of power - Kentucky Utilities Company

Total generating capacity - 3,164,000 KW*

For industrial rates contact:

Industrial Development Department
Kentucky Utilities Company
One Quality Street
Lexington, Kentucky 40507
(606) 255-1461

Company serving **major portion of Boyle County** - Inter-County Rural Electric Cooperative Corporation

Source of power - East Kentucky Power Cooperative

Total generating capacity - 1,309,000 KW**

For industrial rates contact:

Industrial Development Division
East Kentucky Power Cooperative
P.O. Box 707
Winchester, Kentucky 40391
(606) 744-4812

Natural Gas

Company serving **Danville** - Western Kentucky Gas Company

Source of supply - Tennessee Gas Transmission Corporation

Size of transmission mains - 24 inches (supplier); 4 and 6 inches (distributor)

Distribution mains - 2 to 6 inches

Distribution pressure - 25 to 30 psi

Btu content - 1,000 per cubic foot

Specific gravity - 0.6

For rates and supplies contact:

District Manager
Western Kentucky Gas Company
311 West Seventh Street
Owensboro, Kentucky 42301
(502) 685-8067

* Kentucky Utilities Company's total generating capacity will be increased when a new 650,000 KW generation plant is completed in Hancock County in 1993.

** East Kentucky Power Cooperative's total generating capacity will be increased when a new 650,000 KW coal-fired generation plant is completed in southeast Clark County in 1992.

Other Fuels (Within 15 miles)

Propane

Bright's Bottle Gas Company
100 West Factory Street
Box 321
Burgin, Kentucky 40310

Buckeye Gas Products Company
Highway 127
P. O. Box 280
Hustonsville, Kentucky 40437

Jack Campbell Bottle Gas
Route 3
Danville, Kentucky 40422

Southern States Boyle Cooperative,
Inc.
Route 4
Lebanon Road
Danville, Kentucky 40422

Fuel oils

Distillate fuel oil -

Acton-Massey Oil Company
Box 178
Danville, Kentucky 40422

Ashland Petroleum Company
Danville Pike
Route 2
Harrodsburg, Kentucky 40330

Ensslin Enterprises, Inc.
David Road
Danville, Kentucky 40422

Jack & Doug Little Gulf Oil
Products
Highway 150 Bypass
Box 202
Danville, Kentucky 40422

Scheuer Oil Company
Stanford Road
Box 687
Danville, Kentucky 40422

Southern States Boyle Cooperative,
Inc.
Route 4
Lebanon Road
Danville, Kentucky 40422

Texaco, Inc.
1211 Lebanon Road
Box 274
Danville, Kentucky 40422

Residual fuel oil - Arrangements must be made with the refinery.

Low sulphur content coal - Available in Kentucky.

WATER AND SEWERAGE

Public Water Supply

Company serving **Danville** - City of Danville Municipal Water Works
and Sewer Systems*
P.O. Box 670
Danville, Kentucky 40422
(606) 236-4423, Plant; (606) 236-1990, Office

Source - Herrington Lake

Treatment plant capacity - 5,000,000 gallons per day

Average daily consumption - 3,700,000 gallons

Peak daily consumption - 5,100,000 gallons

Type treatment - Coagulation, sedimentation, filtration, chlorination, rapid
mix, flocculation, and fluoridation

Calcium content - 48.0 ppm

Iron content - 0.11 ppm

Hardness - 150.0 ppm as calcium carbonate

Storage capacity - 3,200,000 gallons including clear well

Size lines - 4 to 12 inches

Average pressure - 60 psi to 90 psi

MONTHLY WATER RATES FOR RESIDENTIAL AND COMMERCIAL CONSUMERS

First	300 cubic feet	\$4.05 (minimum)
Next	1,500 cubic feet	1.01 per 100 cubic feet
Next	2,000 cubic feet	.81 per 100 cubic feet
All over	3,800 cubic feet	.79 per 100 cubic feet

Residential and commercial customers outside the city limits are assessed a
60 percent surcharge on the total water bill (including the sewer charge).

MONTHLY WATER RATES FOR INDUSTRIAL CONSUMERS

First	20,000 cubic feet	\$200.00 (minimum)
Next	80,000 cubic feet	.80 per 100 cubic feet
Next	100,000 cubic feet	.62 per 100 cubic feet
Next	300,000 cubic feet	.52 per 100 cubic feet
All over	500,000 cubic feet	.50 per 100 cubic feet

(Continued)

* Danville has received a grant to construct a new 3,000,000-gallon water storage tank. Tentative plans to expand the water plant's treatment capacity to 8,000,000 gallons per day are also being considered.

Tap-on charge:

3/4-inch to 5/8-inch -	\$200 (residential and commercial)
1-inch -	235 (residential and commercial)
2-inch -	325*
3-inch -	400*
4-inch -	500*
6-inch -	600*
8-inch -	750*
Split service -	300 (residential and commercial)
Industrial fee -	300 (applicable only in certain service areas)
Fee for sprinkler system in town -	600

Raw Water

Surface water sources - Salt River, Dix River, Herrington Lake
Average discharge - Dix River near Danville, 469 cfs (41 years, USGS)
Expected ground water yield - 5 to 50 gpm in eastern and north central portions of the county; 5 gpm or less in remainder of the county

Sewerage

Company serving **Danville** - City of Danville Municipal Water Works and Sewer Systems**
P.O. Box 670
Danville, Kentucky 40422
(606) 236-1990, Office; (606) 236-4423, Plant

Design capacity - 2,700,000 gallons per day
Average daily flow - 2,200,000 gallons
Type of treatment - Secondary
Treatment process - Screening, extended aeration, activated sludge, secondary sedimentation, chlorination, sludge drying beds, post aeration
Treated effluent discharged into - Clarks Run Creek
Size of sanitary mains - 8 inches to 36 inches
Monthly rates - Residential and commercial customers are charged 40 percent of monthly water bill. Industrial customers are charged 80 percent of monthly water bill. A surcharge of 60 percent of the monthly sewer bill is assessed to industrial customers outside the city limits. Large industrial plants may arrange special contracts with the city.
Tap-on charge: \$50

* Plus time, material, meter and sales tax.
** Construction of two drying beds is scheduled for completion in 1985.

Industrial Wastewater Discharge Limits

<u>Analysis</u>	<u>Monthly Average*</u>	<u>Maximum Day*</u>
BOD	300	450
COD	450	990
Total Suspended Solids	350	500
Total Chromium	1.0	2.0
Hexavalent Chromium	0.02	0.02
Iron	5.0	7.0
Copper	1.1	1.3
Phenol	0.5	0.5
pH	5.5 - 9.0	5.5 - 9.0
Zinc	1.5	2.0
Total Oil and Grease	50	75
Nickel	0.7	1.0
Lead	0.3	0.6
Boron	1.0	2.0
Cadmium	0.06	0.10
Silver	.10	.20
Total Kjeldahl Nitrogen (TKN)	40.0	60.0
Cyanide	.10	0.15
Liquid or Vapor	150 ^o F(65 ^o C)	150 ^o F(65 ^o C)
Arsenic	0.10	0.10
Mercury	0.01	0.01

* Values in milligrams per liter (mg/l)

CLIMATE

Boyle County

Temperature

Normal (30-year record)	54.90 degrees
Average annual 1984	55.30 degrees
Record highest, August 1983 (40-year record)	103.00 degrees
Record lowest, January 1963 (40-year record)	-21.00 degrees
Normal heating degree days (30-year record) (Heating degree day totals are the sums of negative departures of average daily temperatures from 65 degrees F.)	4,814

Precipitation

Normal (30-year record)	45.68 inches
Mean annual snowfall (29-year record)	16.30 inches
Total precipitation 1984	42.27 inches
Mean number days precipitation (.01 inch or more) (40-year record)	130.80
Mean number days thunderstorms (40-year record)	46.00

Prevailing Winds (through 1963)

South

Relative Humidity

1 a.m.	77 percent (20-year record)
7 a.m.	81 percent (21-year record)
1 p.m.	60 percent (21-year record)
7 p.m.	64 percent (21-year record)

Source: U.S. Department of Commerce, Environmental Science Services Administration, Climatological Data, 1984. Station of record: Lexington, Kentucky.

LOCAL GOVERNMENT

City

Structure - Mayor - 4-year term; 4 commissioners - 2-year terms; city manager

Budget 1985-86 - General Fund \$2,794,488

Water and Sewer Fund 1,855,596

Fees and licenses - Occupational license fees - one percent on wages of individuals and one percent on net profits of businesses with a minimum of \$25; auto sticker - \$5 for each vehicle

County

Structure - County Judge/Executive - 4-year term; 6 magistrates - 4-year terms

Budget 1984-85 - General Fund \$1,033,502; Road Fund \$621,000

Fees and licenses - Occupational license fees - 0.25 of one percent on wages of individuals and 0.25 percent on net profits of businesses

Assessed Value of Property*

<u>Classes of Property</u>	Danville (1985)	Boyle County (1984)
Real Estate	\$196,260,304	\$353,596,932
Tangibles	21,209,453	112,686,272

* Excludes Homestead Exemptions.

Property Taxes

All property in Kentucky is assessed at 100 percent of fair cash value.

Land and buildings are taxed by the state and may be taxed by local jurisdictions. The 1984 state rate is \$0.22 per \$100 of assessed valuation.

Manufacturing machinery, raw materials inventories, pollution control equipment, and goods in the process of manufacture are not subject to local taxation. The state rate is \$0.15 per \$100. (**Note:** Effective January 1, 1986, the state rate for raw materials and goods in process will be reduced to \$0.001 per \$100.)

Other tangible personal property owned by manufacturers (automobiles, trucks, finished goods, office furniture, office equipment) is taxed by the state at \$0.45 per \$100 and may be taxed by local jurisdictions. (**Note:** Effective January 1, 1986, the state rate for finished goods will be reduced to \$0.001 per \$100.)

Intangible personal property located in Kentucky (money in hand, shares of stock, notes, bonds, accounts receivable, and other credits) is taxed by the state at \$0.25 per \$100, and is not subject to local taxation.

Property stored in public warehouses in a transit status is not subject to local taxation. The state rate is only \$0.015 per \$100. (**Note:** Effective January 1, 1986, the state rate will be reduced to \$0.001 per \$100.)

Private leaseholds in industrial facilities owned by cities or counties and financed by industrial revenue bonds are subject to a state tax of \$0.015 per \$100 of value (essentially the lessee's equity, adjusted for appreciation or depreciation). Local taxation is not permitted.

Combined State and Local Rates Per \$100 Valuation, 1984*
(100% assessment)

Kentucky school districts levy property taxes on property located within individual school district boundaries. Two types of school districts are operated in Kentucky: 1) independent school districts which usually operate within a single city and often do not cover the entire city; and 2) common school districts which operate in portions of counties not covered by independent districts and cover the entire county when there is no independent district. School district boundaries are mutually exclusive and do not cross.

	Site Inside City of Danville and within the Danville <u>School District</u>	Site Inside City of Danville and within the Boyle County <u>School District</u>	Site Inside Unincorporated Boyle County
1. Land and buildings	\$1.037	\$0.897	\$0.684
2. Mfg. machinery, raw materials, goods in process, pollution control equipment	0.150	0.150	0.150
3. Automobiles and trucks	1.073	0.952	0.952
4. Finished goods, office equipment, other tangibles	1.283	1.162	0.951
5. Intangibles (accounts receivable, notes, bonds, etc.)	0.250	0.250	0.250
6. Property stored in public warehouses in a transit status	0.015	0.015	0.015
7. Leaseholds in industrial revenue bond financed plants	0.015	0.015	0.015

Planning and Zoning

Joint agency - Danville-Boyle County Planning and Zoning Commission

Participating cities - Danville, Junction City, and Perryville

Zoning enforced - All areas

Subdivision regulations enforced - All areas

State codes enforced - All areas (except for single-family dwellings in the county)

Mandatory state codes enforced - Kentucky Plumbing Code, National Electric Code, Kentucky Boiler Regulations and Standards, Kentucky Building Code (modeled after BOCA code)

* Kentucky Department of Economic Development

Safety

Police	Danville	Boyle County
Total staff	29	7
Radio-patrol cars	9	6
Fire		
Insurance Services Office, Public Protection Classification	4	7/9*
Full-time staff	22	
Volunteers	20	108

The Danville Fire Department operates a trauma unit which responds to emergencies within the city limits.

Rescue Service

Danville-Boyle County Rescue Squad:

Number of volunteers - 27

Equipment -Three ambulances, one crash truck, one boat, Jaws of Life, scuba equipment

Personnel training -Standard and advanced first aid, cardiopulmonary resuscitation, emergency medical technician training (25 members are certified), suba diving, rappelling

Refuse Collection and Disposal

	Danville	Boyle County
Type service	Municipal	Private
Fee charged:		
residential	None	By contract
commercial	None	By contract
industrial	N/A	By contract
Collection frequency:		
residential	Weekly	By contract
commercial	Daily	By contract
industrial	N/A	By contract
Disposal method	Landfill	Landfill

* The Boyle County Fire District includes six fire departments located at Danville, Forkland, Junction City, Mitchellsburg, Parksville and Perryville. The Class 7 rating applies to areas within the district limits, within 5 road miles of a district fire station, and within 1,000 feet of a fire hydrant. The Class 9 rating applies to areas within the district limits and within five road miles of a district fire station, but more than 1,000 feet from a fire hydrant. A Class 10 rating applies in all other unincorporated areas of Boyle County.

EDUCATION

Public Schools

	Danville Independent	Boyle County
Total Enrollment (Fall 1985)	2,014*	2,530
Kindergarten	137	175
Elementary	787	1,096
Middle School	485	445
High School	605	814
Accreditation	Southern Association of Colleges and Schools	
Pupil-Teacher Ratio	20-1	19-1
Percent High School Graduates to College (1983-84)	57.5	50.0
Expenditures Per Pupil (1983-84)	\$ 1,919.15	\$ 1,769.13
Bonded Indebtedness (June 30, 1984)	\$3,000,000	\$2,105,000

Special Schools

Kentucky School for the Deaf

Total Enrollment	349
Elementary	225
High School	124
Pupil-Teacher Ratio	4-1

The Kentucky School for the Deaf is a state-supported institution for the hearing impaired. The school's instructional program offers both elementary and secondary education, as well as vocational training and career preparation programs.

Two nonpublic schools are located in Danville. The Children's Campus Elementary serves 16 students. The Daystar Homebased Elementary serves two students.

* Enrollment of the Danville Independent School System includes nine homebound students.

Area Colleges and Universities

<u>Name</u>	<u>Location (Miles distant)</u>	<u>Enrollment (Fall, 1984)</u>	<u>Highest Degree Conferred</u>
Centre College	Danville	804*	Baccalaureate
Asbury College	Wilmore (24)	1,067	Baccalaureate
St. Catharine College	Springfield (27)	180	Associate
Berea College	Berea (34)	1,554	Baccalaureate
Lexington Community College	Lexington (35)	2,573	Associate
Transylvania University	Lexington (35)	887	Baccalaureate**
University of Kentucky	Lexington (35)	21,237	Doctorate, M.D. D.M.D., J.D.
Eastern Kentucky University	Richmond (36)	12,357	Masters, Specialist***

Centre College

Centre College, founded in 1819, is a small, independently governed, four-year college with a heritage of academic excellence. The college offers majors in 21 programs and confers both Bachelor of Science and Bachelor of Arts degrees. Centre also offers a 3-2 engineering program (3 years at Centre and 2 years at an engineering school) in cooperation with 6 major universities nationwide. Centre College is accredited by the Southern Association of Colleges and Schools and is the country's smallest co-educational college with a chapter of Phi Beta Kappa.

Kentucky College of Business

Kentucky College of Business is accredited as a junior college of business, and the Danville location is one of the school's five campuses in the state. The college offers three degree programs and four diploma programs in secretarial, data processing, and accounting fields. The college confers the Associate in Science degree. The college's Fall 1984 enrollment was 418.

* Fall 1985.

** Courses in a masters degree program are taught on the Transylvania campus by faculty members of Xavier University of Cincinnati. The degree is issued by Xavier University.

*** Joint doctoral degree programs are offered in cooperation with the University of Kentucky, Lexington. The degrees are issued by the University of Kentucky.

Vocational Schools

Both the state vocational-technical schools and the area vocational education centers are operated by the Kentucky Department of Education. The state vocational-technical schools enroll persons full time who are at least 16 years of age and not in school. These students attend classes for six hours each day. The area vocational education centers are designed to accommodate high school students who are at least 15 years of age. These students attend vocational school for three hours each day. The state vocational-technical schools and the area education centers offer evening courses to enable working adults to upgrade current job skills.

Nearest State School

Central Kentucky State Vocational-Technical School
Lexington, Kentucky
35 miles northeast of Danville

Academic Related Subjects	Industrial Education
Language	Air Conditioning
Math	Auto Body Repair
Technical Related Math	Auto Mechanics
Business & Office	Carpentry
Accounting	Drafting (with CAD/CAM)
Clerical	Electronics
Secretarial	Graphic Arts
Consumer & Home Economics	Industrial Electricity
Commercial Foods	Machine Shop
Distributive Education	Masonry
Retail Training-Merchandising/ Food Marketing	Welding
Hotel/Motel-Waiter/Waitress- Housekeeping Services	Learning Resource Center
Health & Personal Services Occupations	GED
Cosmetology	Public Service
Dental Assistant	E.M.T. Training
Nurse's Aide	Fire Training
Practical Nursing	Cardiopulmonary Resuscitation
Surgical Technician	First Aid
Ward Clerk	Industrial Fire Brigade Training
Medications Aide	Apprenticeship
Home Health Care	Electrical
Geriatric	Tool & Die
	Up-Grade Programs

(Continued)

Nearest Area Education Centers

Harrodsburg Area Vocational Education Center
Harrodsburg, Kentucky
9 miles north of Danville

Business and Office
Clerical
Secretarial
Health & Personal Services Occupations
Health Services

Industrial Education
Auto Mechanics
Carpentry
Electricity
Welding

Garrard County Area Vocational Education Center
Lancaster, Kentucky
12 miles east of Danville

Agribusiness
Adult Agriculture
Health & Personal Services Occupations
Health Services
Industrial Education
Auto Mechanics

Carpentry
Drafting
Electricity
Welding
Learning Resource Center

Arrangements can be made to provide training in the specific production skills required by an industrial plant. Instruction may be conducted either in the vocational school or in the industrial plant, depending upon the desired arrangement and the availability of special equipment.

HEALTH

Local Medical Personnel

Physicians - 48
Dentists - 15

Hospitals

<u>General Hospital</u>	<u>Location</u>	<u>Beds</u>
Ephraim McDowell Memorial Hospital*	Danville	177

General hospital facilities - Four operating rooms, one cystoscopy room, recovery room, obstetrical service, X-ray, laboratories, intensive care unit, coronary care unit, pharmacy, emergency service, nuclear medicine services, CT scanning, respiratory therapy, physical therapy, ultrasound facility

Medical staff - 47 physicians on active staff including general surgeons and specialists, 70 registered nurses, 40 licensed practical nurses and graduate licensed practical nurses, 20 nurse's aides, 10 X-ray technicians, 13 laboratory technicians, 3 pharmacists

Other Medical Facilities

Southern Blue Grass Comprehensive Care Center
Boyle County Health Department

Ambulance Service

Name - Danville-Boyle County Rescue Squad
Staff - 27 volunteers
Service - 24-hour service to Danville and northeastern portions of Boyle County
Equipment - Three ambulances, one crash truck, one boat

* A \$6,700,000 construction/renovation project is under way at Ephraim McDowell Memorial Hospital. The project includes relocation of the OB/GYN section, relocation and expansion of the critical care unit, and the addition of a 12-bed psychiatric unit. The total number of hospital beds will be increased from 120 to 177. The expected completion date is July 1986.

OTHER LOCAL FACILITIES

Communications

Telephone-	South Central Bell Telephone Company
Telegraph- Services-	Western Union Counter service available; toll-free number, 1-800-325-6000
Postal- Class- Mail received- Mail dispatched-	U. S. Post Office First Twice daily Twice daily
Newspapers- Daily and circulation-	The Advocate-Messenger (Monday-Friday) - 11,828
Weekly and circulation-	The Kentucky Advocate (Sunday) - 12,421
Other papers received from-	Louisville and Lexington, Kentucky
Radio- Major stations received from-	WHIR-AM, WMGE-FM, WKLO-AM Louisville and Lexington, Kentucky; Cincinnati, Ohio
Television- Airwave reception from -	WDKY - Danville Louisville and Lexington, Kentucky
Cable service Number of cable channels -	 31
Kentucky Educational Television-	Lexington-Richmond transmitter - Channel 46

Library Services

Public library - Danville-Boyle County Public Library
 Size collection - 49,152 volumes
 Circulation, 1984-85 - 156,000
 Services - Bookmobile furnishes all library services to outlying city and county areas with 76 county-wide bookmobile stops, current issues of four newspapers and 120 magazines available, framed prints, genealogy collection plus genealogy on microfilm, filmstrips and records, audiovisual equipment loaned, interlibrary loan, children's story hours, teen room, noon-hour programs for adults, weekly children's movies, community meeting room, services for senior citizens, nursing homes and the handicapped

(Continued)

College library - The Grace Doherty Library, Centre College

Size collection - 130,000 volumes

Special collections - A wide variety of periodicals, government documents, pamphlets, recordings, music scores, microfilm, microcards, and audiovisual materials are available. The library also houses the Centre College archives, containing historic documents pertaining to the college.

Services - More than 650 periodicals and more than a dozen newspapers received regularly; music listening facilities and photo duplication service provided to faculty and students; video transfer services available to faculty; computer connection to the national inter-library network for easy access to a vast collection of scholarly materials

Religious Institutions

Denominations-	AME	Episcopal
	Apostolic	Interdenominational
	Baptist	Jehovah's Witnesses
	Catholic	Lutheran
	Christian	Nazarene
	Church of Christ	Pentecostal
	Church of God	Presbyterian
	Church of Jesus Christ of Latter Day Saints	Salvation Army
	Community Service	United Methodist

Nearest Synagogues- Congregations-	Lexington, 35 miles northeast
	Adath Israel (reform)
	Ohavey Zion (traditional)

Financial Institutions

<u>Banks</u>	<u>Assets</u>	<u>Deposits</u>	<u>Statement Date</u>
Bank of Danville	\$ 52,925,332.00	\$ 44,697,040.00	6/28/85
Citizens National Bank	44,239,000.00	39,580,000.00	6/28/85
Farmers National Bank	79,461,628.00	68,947,964.00	6/30/85
<u>Savings and Loan Associations</u>	<u>Assets</u>	<u>Savings Accounts</u>	<u>Statement Date</u>
Central Kentucky Federal Savings and Loan Association	\$ 35,276,326.62	\$ 32,802,395.77	12/31/84
Great Financial Federal*	1,009,097,572.15	784,068,110.11	12/31/84

* Figures are totals for main office in Louisville, and branch offices in seven Kentucky cities.

Hotels and Motels

Total number - 3
Total rooms - 173

Clubs and Organizations

Al-Anon	Girl Scouts
Alcoholics Anonymous	Heart Fund
Alpha Delta Kappa	Historical Society
Ambassadors	Home Builders Association
American Association of University Women	Industrial Council
American Cancer Society	Jaycees
American Legion	Jaycettes
Bar Association	Junior Achievement
Board of Realtors	Kentucky Club
Boy Scouts	Kiwanis
Boyle Community Association	Knights of Columbus
Boyle County Homemakers	Ladies Domestic Economy Club
Brotherhood	Lions
Business and Professional Women's Club	Masonic Lodge
Busy Sunshine Club	Medical Society
Central Kentucky Wildlife Refuge	Ministerial Association
Centre Circle	Newcomers
Chamber of Commerce	Optimist
Constitution Squares	Pythian Sisters
Danville Business Association	Republican Party
Danville Community Theatre	Retired and Veteran Railroad Club
Daughters of the American Revolution	Retired Teachers
Democratic Women's Club	Right to Life
Demolay	Rotary
Eastern Star	Salvation Army
Ephraim McDowell Memorial Hospital Auxiliary	Shriners
Fair Board	United Way
Garden Clubs	Wilderness Road Amateur Radio Club
	Wilderness Trace Arts League
	Wilderness Trail Riding Club
	Women's Club

RECREATION

Local

Danville and Boyle County offer a wide variety of recreational opportunities. Public recreation facilities include three large parks, five mini-parks, nine playgrounds, two tennis courts, three baseball diamonds, four softball fields, four football fields and four soccer fields. The Danville-Boyle County Recreational Department offers year-round programs for all ages. The city sponsors exercise, karate, indoor soccer, and arts and crafts programs. A supervised playground program is available during the summer months, and sports enthusiasts may participate in leagues for basketball, football, baseball, softball, fast-pitch softball, and soccer. The state YMCA also offers a variety of year-round activities.

Private recreational facilities include a country club, a golf course, two swimming pools, four movie theatres, a bowling facility, a roller-skating rink and a racquetball court.

A community theatre is also active in Danville, and presents several productions each year.

Constitution Square State Shrine in Danville is an authentic reproduction of Kentucky's first courthouse square. The first post office west of the Alleghenies still stands in the square alongside replicas of the jail, courthouse and meeting house. The Governor's Circle Monument features a landscaped ring of plaques, each with a likeness of a Kentucky governor.

The McDowell House is the home in which pioneer surgeon Dr. Ephraim McDowell lived and worked. Now a registered national historic landmark, the house is located adjacent to Constitution Square and is open to the public year-round. The Apothecary Shop next door displays authentic 18th and 19th century pharmaceuticals.

The **Centre College** campus is the site of a variety of intercollegiate sports activities throughout the fall, winter and spring months. The college's track is available for public use. The **Norton Center for the Arts**, also located on the Centre campus, offers a variety of cultural and entertainment activities, including art exhibitions, concerts and theatrical performances by national touring companies to the college and the community-at-large.

Dining and outdoor theatre is available at **Pioneer Playhouse**. An 18th century village has been constructed on the theatre grounds, depicting a typical street scene at the time Kentucky's constitution was adopted.

Perryville Battlefield State Shrine, 13 miles west of Danville near Perryville, is the site of the largest Civil War battle in Kentucky. A museum, a picnic area, and a playground are located on the grounds.

Crawford Springs Park, a small county park two miles from Perryville, offers a nature area, picnic and barbecue equipment, and wildflower and tree identification.

Central Kentucky Wildlife Refuge, a 500-acre, non-profit refuge, is located in western Boyle County. Open seven days per week, it offers hiking trails, and a wildflower walk is scheduled each April.

Area (Within 20 miles)

Many other recreational attractions are available within a 20-mile radius of Danville.

Isaac Shelby State Shrine, 5 miles south of Danville, is the burial site of Kentucky's first governor and one of the Commonwealth's foremost statesmen.

Herrington Lake, 8 miles northeast of Danville, was developed by the Kentucky Utilities Company in 1925. Dix River Dam near Pleasant Hill is located on the 3,600-acre lake. Fishing, boating, and swimming can all be enjoyed on the lake. Camping and fishing facilities are available near Danville and Harrodsburg.

Old Fort Harrod State Park, 9 miles north of Danville, is a 28-acre park in Harrodsburg that features a full-scale reproduction of the original Fort Harrod. The park also contains the log cabin where Abraham Lincoln's parents were wed, the Mansion Museum which houses mementos associated with the great periods of Kentucky history, a pioneer cemetery, and a federal monument dedicated to pioneers. The "Legend of Daniel Boone" and "Lincoln" are two excellent outdoor dramas which are performed at the Old Fort Amphitheater during the summer months.

Many other points of historical interest are located in Harrodsburg, Kentucky's oldest city.

Pleasant Hill, a restored Shaker Village located approximately 12 miles north of Danville, is a National Historic Landmark. Over 20 buildings and grounds have been restored to display unique Shaker skills in furniture making, crafts, and architecture. Dining rooms, lodging, craft shops, and seasonal festivals and plays are offered.

William Whitley House State Shrine, 19 miles southeast of Danville near Stanford, is the first brick house west of the Allegheny Mountains, built 1787-94. Whitley laid out Kentucky's first race track here and started U.S. counterclockwise racing. The facility provides picnic and playground areas in a ten-acre park.

COMMUNITY IMPROVEMENTS

Recent

During 1984 and 1985, Davis Metals, R. R. Donnelley & Sons, and Sun Chemical Corporation announced plans to build new manufacturing facilities at Danville. This represents a total estimated investment of over \$20,000,000. Also during 1984 and 1985, seven other local manufacturing companies announced plans to expand their present operations, representing a total expected investment of approximately \$27,000,000.

The Boyle County School System recently added new classrooms, a kitchen, a multipurpose room and administrative offices at Woodlawn Elementary School, and new home economics and vocational education classrooms at Boyle County Middle School.

Under Way

The city of Danville is constructing two new drying beds at its municipal wastewater plant.

A \$6,700,000 construction/renovation project is under way at Ephraim McDowell Memorial Hospital. The project includes relocation of the OB/GYN section, relocation and expansion of the critical care facilities, and the addition of a 12-bed psychiatric unit. The total number of beds will be increased to 177. The expected completion date is July 1986.

A project to improve and widen South Fourth Street - a major traffic artery from downtown Danville to the Highway 127 Bypass - is scheduled to be completed in 1986.

Planned

Tentative plans call for an expansion of Danville's fresh water treatment plant to a capacity 8,000,000 gallons per day. Danville recently received funding for construction of a new 3,000,000-gallon water storage tank.

Tentative plans for improvements at the Goodall Field airport include lengthening the 4,800-foot runway to 5,000 feet and constructing a parallel taxiway. Construction of an administration building/maintenance hangar is also planned.

Plans are being made to rebuild U.S. Highway 127 North from Danville's bypass to the county line.

DEC 1 9 1995

Kentucky Commerce Cabinet
Department of Economic Development
Capital Plaza Tower
Frankfort, Kentucky 40601
(502) 564-7140