

1990

Industrial Resources: Breckinridge County

Kentucky Library Research Collections
Western Kentucky University, spcol@wku.edu

Follow this and additional works at: https://digitalcommons.wku.edu/breckinridge_cty

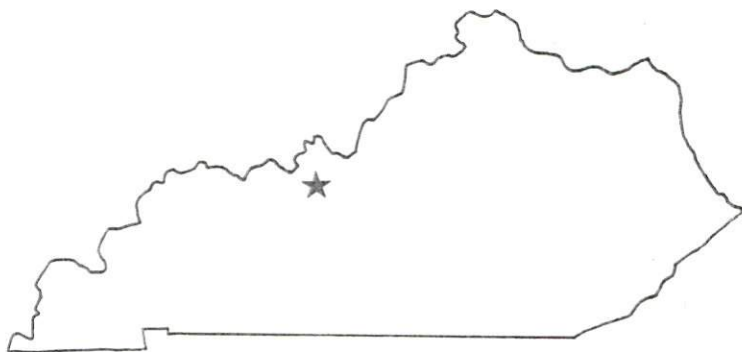
 Part of the [Business Administration, Management, and Operations Commons](#), [Growth and Development Commons](#), and the [Infrastructure Commons](#)

Recommended Citation

Kentucky Library Research Collections, "Industrial Resources: Breckinridge County" (1990). *Breckinridge County*. Paper 4.
https://digitalcommons.wku.edu/breckinridge_cty/4

This Report is brought to you for free and open access by TopSCHOLAR®. It has been accepted for inclusion in Breckinridge County by an authorized administrator of TopSCHOLAR®. For more information, please contact topscholar@wku.edu.

Breckinridge County



KENTUCKY
Open for Business

RESOURCES FOR ECONOMIC DEVELOPMENT
BRECKINRIDGE COUNTY, KENTUCKY

Prepared by
The Kentucky Cabinet for Economic Development
Division of Research and Planning
in cooperation with
The Breckinridge County Industrial and
Economic Development Foundation, Inc.;
The City of Cloverport;
and
The City of Irvington

1990

Division Director - Pamela K. Riley; program manager - Keith Roberts; research - Scott Hourigan; clerical - Wanda Sharp; graphics - Robert Owens, Pat Coleman; cartography - Edwin Scott, Dave Clark. Cost of printing paid from state funds.

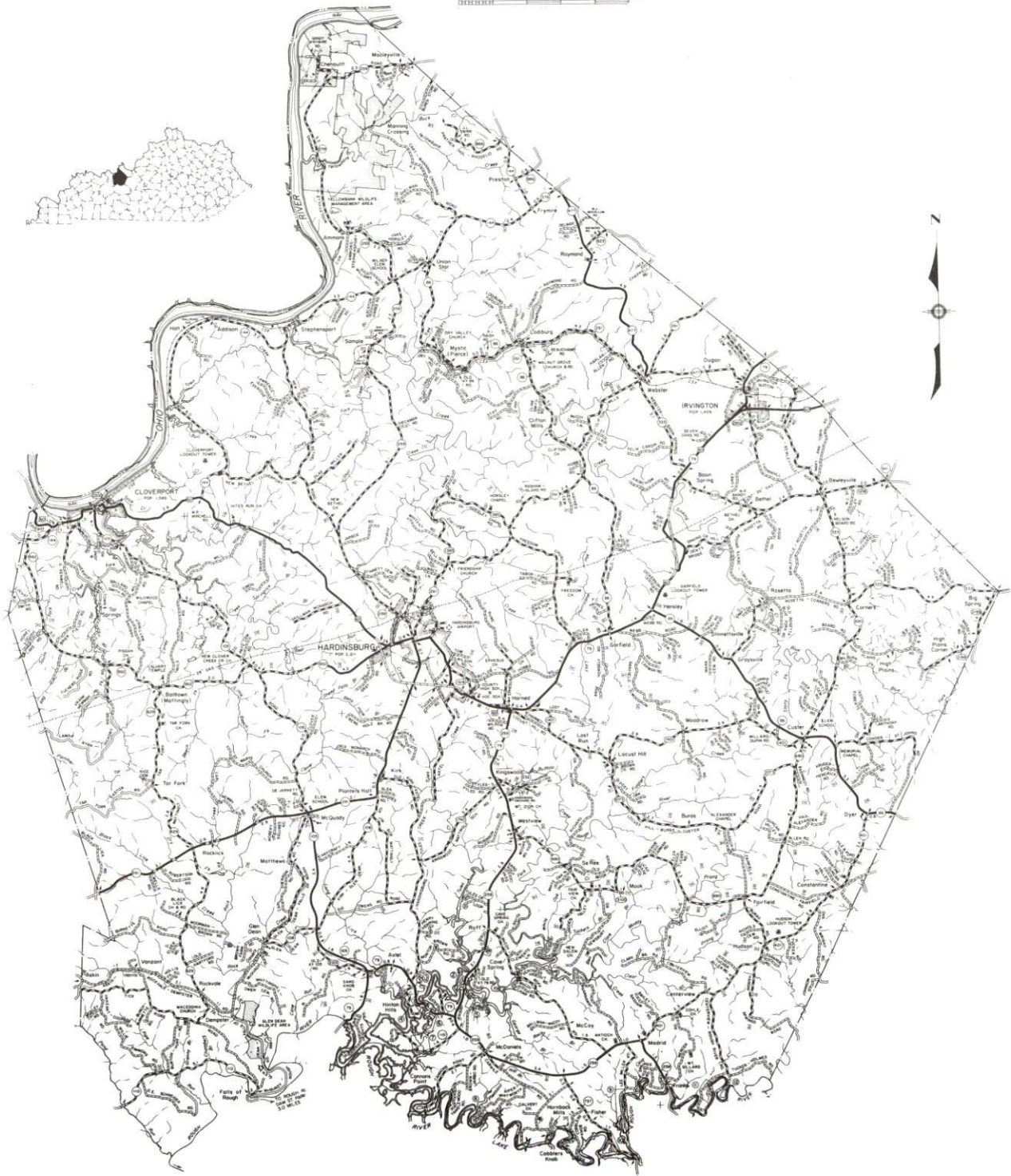
TABLE OF CONTENTS

<u>Chapter</u>	<u>Page</u>
BRECKINRIDGE COUNTY, KENTUCKY - A RESOURCE PROFILE	1
THE LABOR MARKET STATISTICS	2
Labor Market Area Map.....	2
Population	3
Population Projections.....	3
Estimated Labor Supply.....	3
Labor Force Characteristics of Residents, 1989.....	4
Selected Components of Nonagricultural Employment, by Place of Work, 1988	5
Per Capita Personal Income	6
Average Placement Wages	7
Average Weekly Wages of Workers Covered by Unemployment Insurance 1988 - Bar Chart	8
Average Weekly Wages by Industry, by Place of Work, 1988	9
EXISTING INDUSTRY	10
Breckinridge County Manufacturing Firms, Their Products and Employment	10
Labor Organizations in Manufacturing Firms	10
Selected Industrial Services	11
TRANSPORTATION.....	12
Highways	12
Truck Service	12
Selected Market Location Map	13
Rail.....	14
Air	14
Water	14
UTILITIES	15
Electricity.....	15
Natural Gas.....	15
Public Water Supply.....	15
Raw Water.....	16
Sewerage	17
CLIMATE.....	18

<u>Chapter</u>	<u>Page</u>
LOCAL GOVERNMENT	19
Structure	19
Planning and Zoning	19
Local Fees and Licenses	19
State and Local Property Taxes	20
Combined State and Local Rates Per \$100 Valuation, 1989.....	20
EDUCATION	22
Public Schools	22
Nonpublic Schools	22
Area Colleges and Universities.....	22
Vocational Training.....	23
OTHER LOCAL FACILITIES.....	24
Local Medical Personnel	24
Hospitals.....	24
Other Medical Facilities and Services	24
Banks and Savings & Loan Associations.....	24
Newspapers	24
Telephone Service	24
RECREATION	25
COMMUNITY IMPROVEMENTS	26

GENERAL HIGHWAY MAP
BRECKINRIDGE COUNTY
KENTUCKY

PREPARED BY THE
KENTUCKY TRANSPORTATION CABINET
DEPARTMENT OF HIGHWAYS
DIVISION OF PLANNING
IN COOPERATION WITH THE
U.S. DEPARTMENT OF TRANSPORTATION
FEDERAL HIGHWAY ADMINISTRATION



BRECKINRIDGE COUNTY, KENTUCKY - A RESOURCE PROFILE

Breckinridge County is situated in the northwestern section of central Kentucky's Mississippian Plateaus Region, and covers a land area of 565 square miles. The Ohio River, a major commercial waterway, forms the northwestern border of the county.

Breckinridge County, which had a 1988 estimated population of 17,000 persons, contains three principal cities, including Hardinsburg, Cloverport, and Irvington. Hardinsburg, the county seat, had an estimated 1988 population of 2,160 persons. Cloverport, located 12 miles northwest of Hardinsburg, had an estimated 1988 population of 1,390; Irvington is 18 miles northeast of Hardinsburg and had an estimated 1988 population of 1,280 persons.

The Economic Framework - The total number of Breckinridge County residents employed in 1989 averaged 6,630. In 1988, manufacturing firms in the county reported 166 employees; wholesale and retail trade provided 651 jobs; 346 people were employed in service occupations; state and local government accounted for 547 employees; and contract construction firms provided 203 jobs.

Labor Supply - There is a current estimated labor supply of 31,925 persons available for industrial jobs in the labor market area. In addition, from 1990 through 1994, 14,421 young persons in the area will become 18 years of age and potentially available for industrial jobs.

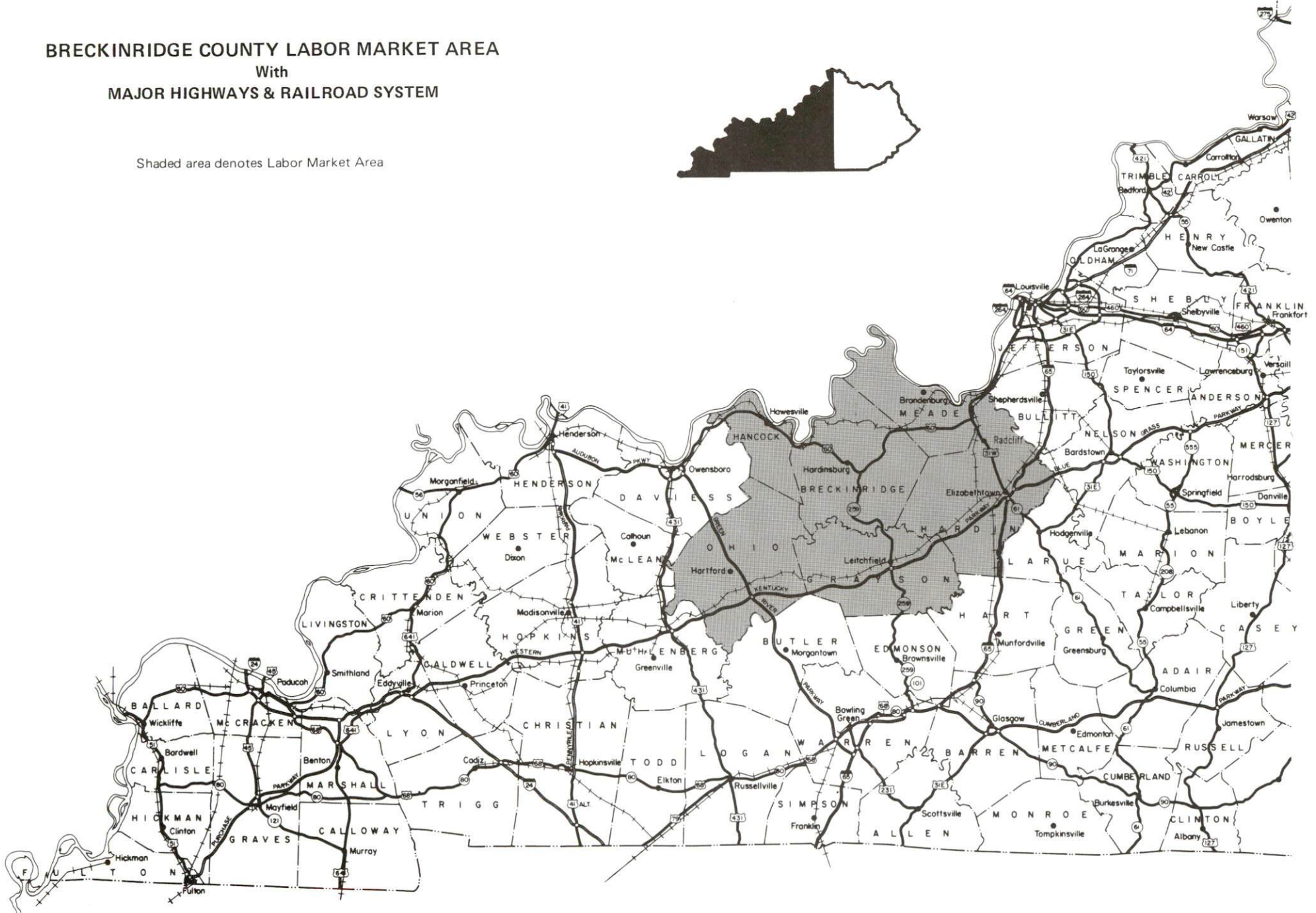
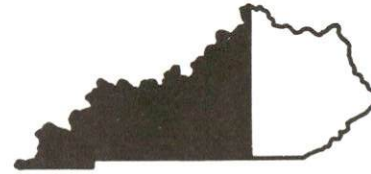
Transportation - CSX Transportation provides main line rail service to Cloverport and Irvington. "AAA"-rated trucking highways serving the area include U.S. 60 and the segment of Kentucky Route 79 from Harned, 4 miles southeast of Hardinsburg, to Irvington. Major parkways and interstate highways accessible within 50 miles of Hardinsburg include the Western Kentucky Parkway, the Green River Parkway, and Interstate Highways 64 and 65. Fourteen common carrier trucking companies are authorized to serve Breckinridge County. The nearest scheduled commercial airline service is available at Louisville's Standiford Field, 65 miles northeast of Hardinsburg. The Breckinridge County Airport has a paved 3,500-foot runway. The northwestern boundary of Breckinridge County is formed by the Ohio River, where a 9-foot navigation channel is maintained. Hardinsburg is located 46 miles east of Owensboro, Kentucky, where a public riverport is maintained.

Power and Fuel - Meade County Rural Electric Cooperative Corporation, whose source of power is Big Rivers Electric Corporation, provides electric power to Breckinridge County. Western Kentucky Gas Company provides natural gas service to Hardinsburg and Cloverport, and Valley Gas, Inc., provides natural gas service to Irvington; source of supply for both companies is Texas Gas Transmission Corporation.

Education - The Cloverport Independent School System provides primary and secondary public education to Cloverport. The Breckinridge County School System serves Hardinsburg and the remainder of the county. Two private schools also operate in Hardinsburg. In addition, there are eight institutions of higher learning within 70 miles of Hardinsburg. Vocational training facilities are available in Elizabethtown, Owensboro, and Harned, Kentucky, all within 50 miles of Hardinsburg.

BRECKINRIDGE COUNTY LABOR MARKET AREA With MAJOR HIGHWAYS & RAILROAD SYSTEM

Shaded area denotes Labor Market Area



LABOR MARKET STATISTICS

The Breckinridge County Labor Market Area includes Breckinridge County and the adjoining Kentucky counties of Grayson, Hancock, Hardin, Meade and Ohio.

	POPULATION		
	1988*	1980	1970
Labor Market Area	179,300	178,987	154,321
Hardinsburg	2,160	2,211	1,547
Cloverport	1,390	1,585	1,388
Irvington	1,280	1,409	1,300
Breckinridge County	17,000	16,861	14,789

* Population estimates.

Sources: U.S. Department of Commerce, Bureau of the Census, August 1989; November 1989.

	POPULATION PROJECTIONS			
	1995	2000	2010	2020
Labor Market Area	205,860	214,686	231,037	244,942
Breckinridge County	17,797	18,073	18,417	18,527

Source: University of Louisville, Urban Studies Center, State Data Center.

	ESTIMATED LABOR SUPPLY				
	Total	Current			Future
		Unemployed	Employed Part-Time	Not in Labor Force	Becoming 18 years of age 1990 thru 1994
Labor Market Area*	31,925	5,860	9,430	16,635	14,421
Breckinridge County	2,873	728	869	1,276	1,287

* Additional workers may be drawn from other nearby counties.

Note: Unemployed - persons unemployed and actively seeking work; Employed Part-Time - persons employed but working only 14 to 26 weeks per year; Not in Labor Force - represents the number of persons who would enter the labor force if suitable employment were available (based on the assumption that persons in Kentucky would like to participate in the labor force in the same proportion that they do nationally).

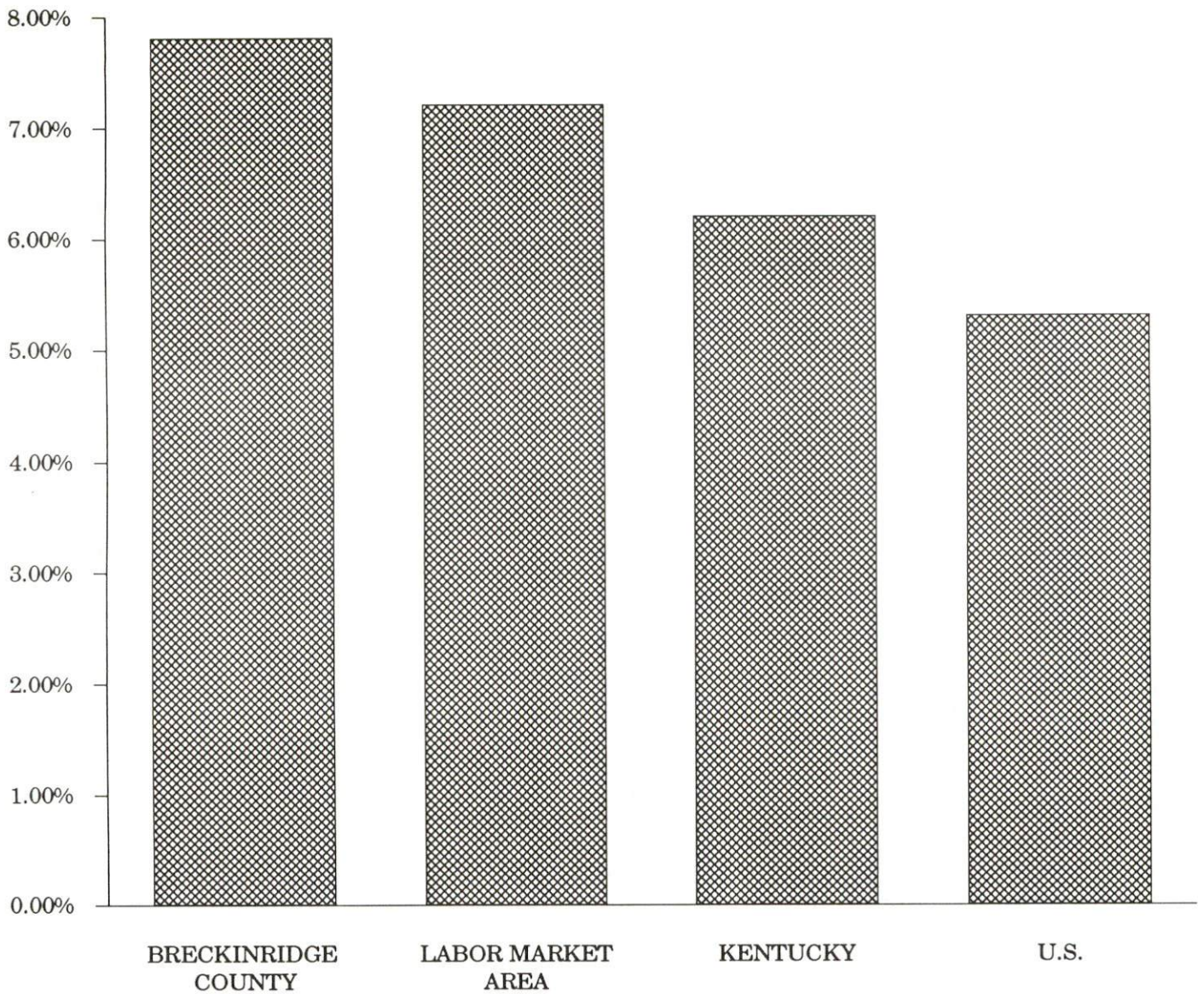
Sources: Kentucky Cabinet for Human Resources, Kentucky Labor Supply Estimates by County, 1988. Kentucky Cabinet for Economic Development, Future Labor Supply Becoming 18 Years of Age, 1990 thru 1994.

LABOR FORCE CHARACTERISTICS OF RESIDENTS, 1989

	<u>Breckinridge County</u>	<u>Labor Market Area</u>
Civilian Labor Force	7,191	68,870
Employment	6,630	63,931
Unemployment	561	4,939
Rate of Unemployment (%)	7.8	7.2

Source: Kentucky Cabinet for Human Resources, Kentucky Labor Force Estimates, Annual Averages, 1989.

**UNEMPLOYMENT RATES
1989**

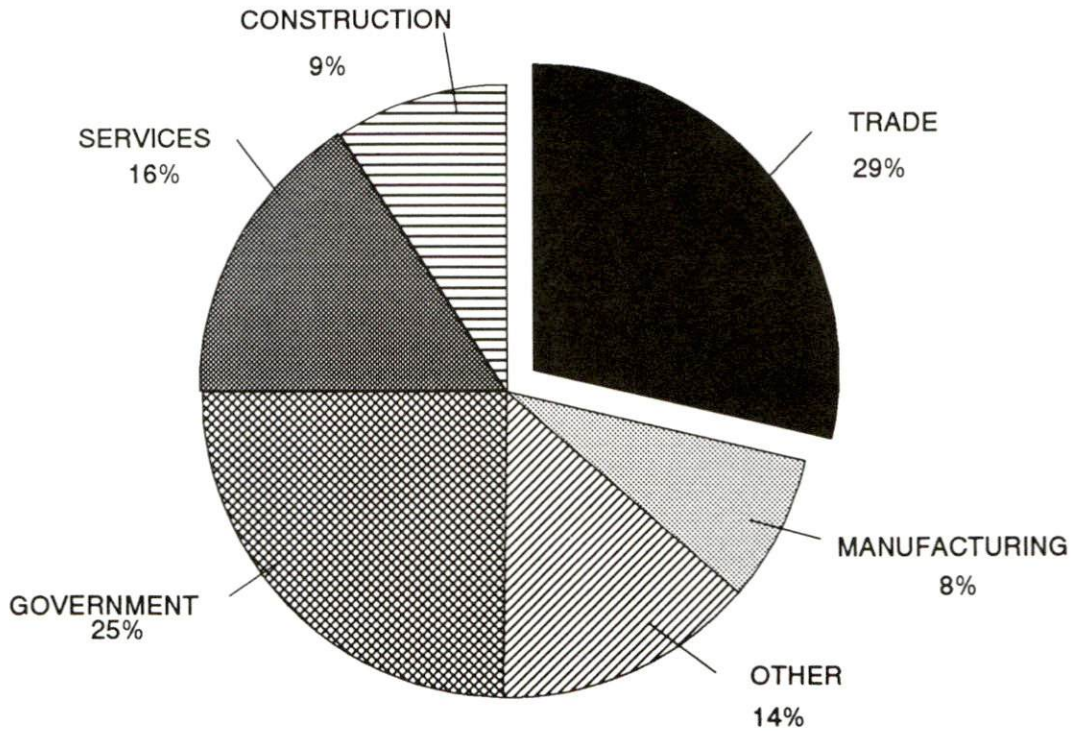


SELECTED COMPONENTS OF NONAGRICULTURAL EMPLOYMENT
BY PLACE OF WORK, 1988

	Breckinridge County	Labor Market Area
All Industries (total)	2,214	41,322
Manufacturing	166	11,109
Wholesale & Retail Trade	651	11,128
Services	346	5,617
State/Local Government	547	7,249
Contract Construction	203	1,878

Note: Excludes domestic workers, railway workers, certain nonprofit corporations, majority of federal government workers, and self-employed workers.
Source: Kentucky Cabinet for Human Resources, Average Monthly Workers Covered by Kentucky Unemployment Insurance Law, 1988.

BRECKINRIDGE COUNTY

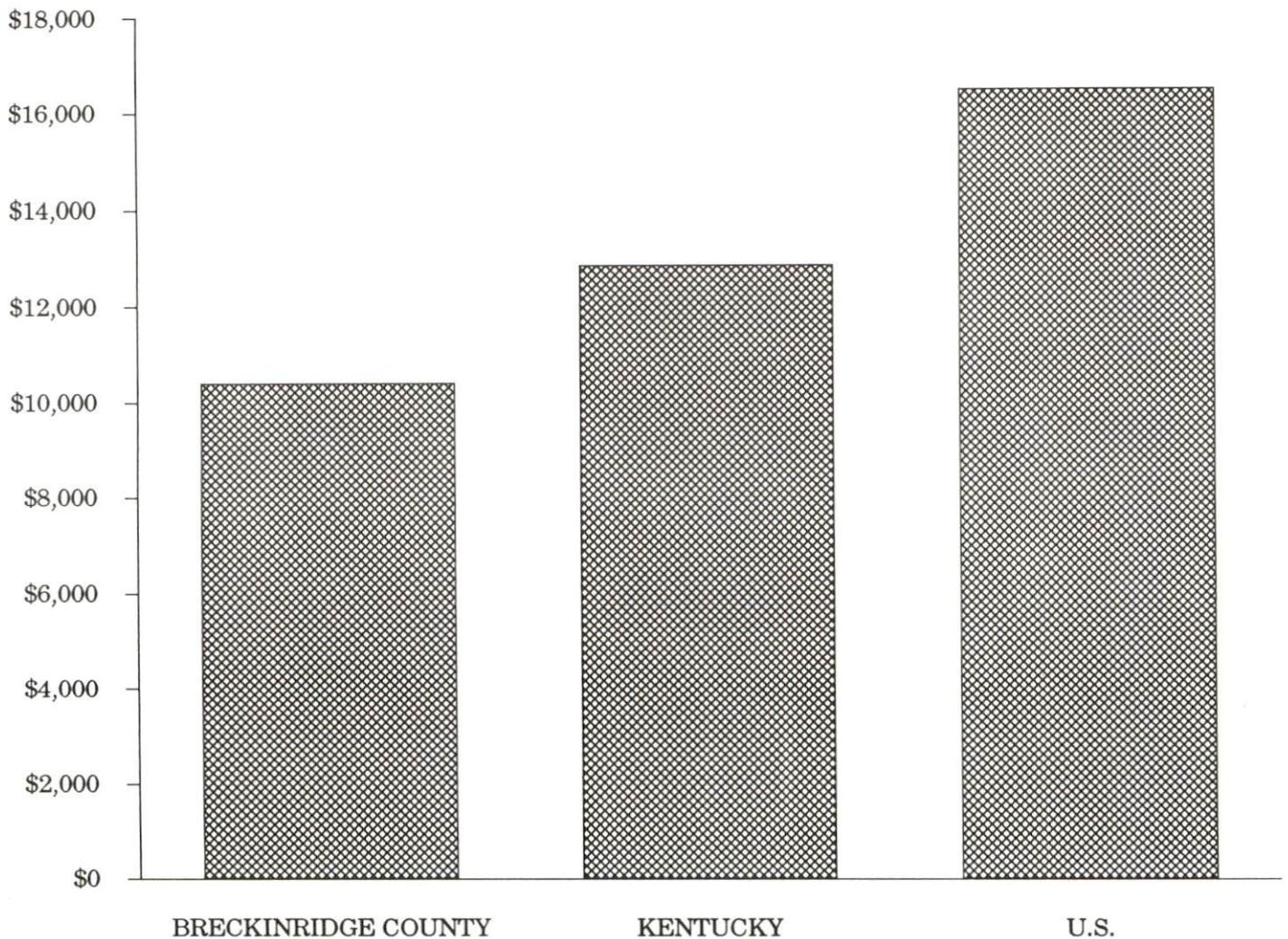


PER CAPITA PERSONAL INCOME

Area	1984	1988	Percent Change
Breckinridge County	\$9,047	\$10,384	14.8
Labor Market Area Range	\$7,881 - \$10,977	\$9,136 - \$13,036	-
Kentucky	\$10,411	\$12,830	23.2
U.S.	\$13,116	\$16,490	25.7

Sources: U.S. Bureau of Economic Analysis, Kentucky Economic Information System, April 1990.

PER CAPITA PERSONAL INCOME
1988



AVERAGE PLACEMENT WAGES

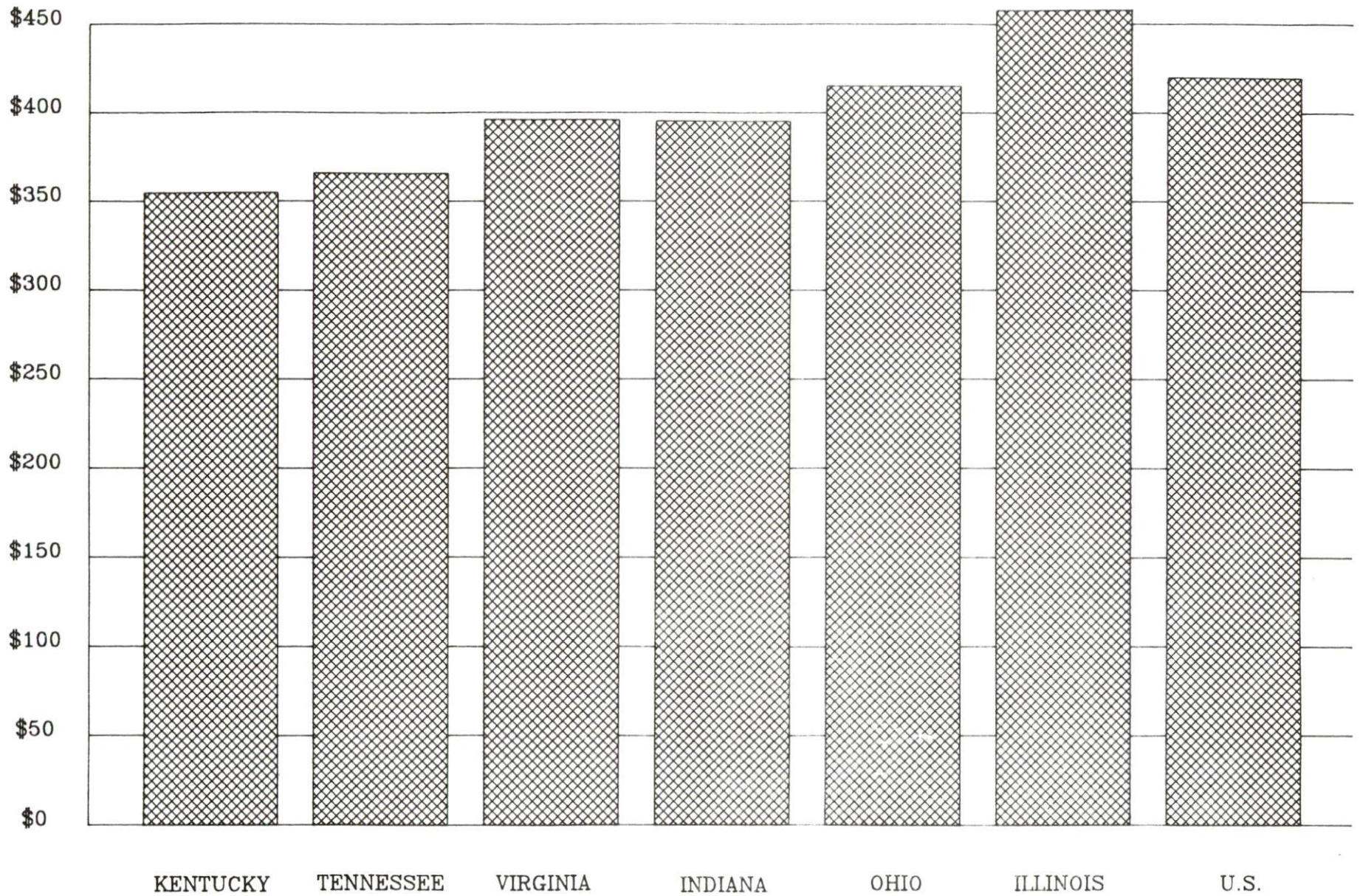
Breckinridge County is served by the Elizabethtown local office of the Kentucky Department for Employment Services. The focus of the following data is on job placements made by the Elizabethtown local office and may therefore be used as an indicator of the wages which employers in the area pay new employees. During the twelve months which ended on June 30, 1989, the local employment office filled 3,040 job openings in various occupational categories. The average hourly wage for selected occupational categories were:

<u>OCCUPATIONAL CATEGORY</u>	<u>NUMBER OF PLACEMENTS</u>	<u>AVERAGE WAGE(\$)</u>
All Occupations	3,040	5.10
Clerical	841	3.77
Sales	145	4.25
Services (excluding domestic)	543	4.44
Agricultural, Fishery, Forestry, etc.	34	3.76
Processing	121	8.32
Machine Trades	302	5.86
Bench Work	344	6.10
Structural	202	6.31
Motor Freight/ Transportation	133	6.82
Packaging and Materials Handling	244	5.16
Other	10	6.46

The Elizabethtown local office also serves Grayson, Hardin, Larue, and Meade Counties. The above occupational categories are taken from the Dictionary of Occupational Titles published by the U.S. Department of Labor.

Source: Kentucky Cabinet for Human Resources, Department for Employment Services.

AVERAGE WEEKLY WAGES OF WORKERS COVERED BY
UNEMPLOYMENT INSURANCE - 1988



AVERAGE WEEKLY WAGES BY INDUSTRY
BY PLACE OF WORK, 1988

	<u>Breckinridge County</u>	<u>Kentucky (State- Wide)</u>	<u>Tennessee</u>	<u>Virginia</u>
All Industries	\$253.01	\$352.31	\$363.12	\$392.56
Mining & Quarrying	292.25	603.27	495.85	596.88
Contract Construction	303.27	380.71	394.27	422.27
Manufacturing	200.77	464.92	416.73	452.60
Transportation, Communications & Public Utilities	386.38	468.17	485.13	554.17
Wholesale & Retail Trade	192.36	238.88	N/A	N/A
Finance, Insurance & Real Estate	297.91	401.17	269.27	466.23
Services	198.93	298.98	343.48	391.67
State/Local Government	319.41	377.81	403.21	457.00
	<u>Indiana</u>	<u>Ohio</u>	<u>Illinois</u>	<u>U. S.</u>
All Industries	\$392.63	\$411.08	\$454.10	\$416.33
Mining & Quarrying	635.77	579.73	674.62	660.40
Contract Construction	449.87	465.46	584.10	469.85
Manufacturing	532.06	569.98	555.83	517.62
Transportation, Communications & Public Utilities	502.69	519.17	584.83	542.33
Wholesale & Retail Trade	N/A	N/A	N/A	N/A
Finance, Insurance & Real Estate	406.58	444.33	579.88	532.52
Services	317.98	348.48	402.38	384.31
State/Local Government	395.31	428.10	453.12	442.71

N/A Not Available.

Note: The average weekly wage for each category includes the salaries and wages of all persons working for that type business. For example, the manufacturing category includes both production workers and administrative personnel. Excludes domestic workers, railway workers, certain nonprofit corporations, majority of federal government workers, and self-employed workers.

Source: Kentucky Cabinet for Human Resources, Average Weekly Wages of Workers Covered by Kentucky Unemployment Insurance Law, 1988. U.S. Department of Labor, Bureau of Labor Statistics, Average Annual Pay by State and Industry, August 29, 1989.

EXISTING INDUSTRY

BRECKINRIDGE COUNTY MANUFACTURING FIRMS, THEIR PRODUCTS AND EMPLOYMENT

<u>Firm</u> <u>(Establishment date)</u>	<u>Product</u>	<u>1989</u> <u>Average Employment</u>
Hardinsburg		
Eleanor Beard, Inc. (1920)	Ladies robes, hand quilted spreads, comforters	40
Breck County Ready Mix Company (1974)	Ready mix concrete, precast products	6
Cloverport Mill, Division of Jasper American Manufacturing (1972)	Lumber	13
The Galante Studio, Inc. (1929)	Fabric and vinyl diaper bags, comforts, bedspreads, pillows	79
Hearld News Publishing Company, Inc. (1917)	Job printing, newspaper	8
Office Products Specialty, Inc. (1988)	Paper bags, notebooks, file folders	19
White Stone Company (1958)	Crushed limestone	15
Irvington		
Community Milling Company (1919)	Feed	1
The Kentucky Stone Company (1936)	Crushed limestone, aglime	19
Westview		
K.B. Niles Lumber (1965)	Rough lumber	1

Sources: Kentucky Cabinet for Economic Development, Division of Research and Planning.

LABOR ORGANIZATIONS IN MANUFACTURING FIRMS

There are currently no labor organizations representing workers in manufacturing firms in Breckinridge County.

SELECTED INDUSTRIAL SERVICES

<u>Types of Services</u>	<u>Location</u>	<u>Mileage from Hardinsburg</u>
Custom Data Processing	Elizabethtown	42
Custom Plastics Producers	Owensboro	46
Electric Motor Repair	Leitchfield	30
Grinding, Precision & Tool	Owensboro	46
Heat Treating Facilities	Louisville	66
Industrial Equipment & Supplies	Owensboro	46
Industrial Gases	Elizabethtown	42
Industrial Waste Removal	Elizabethtown	42
Machine Shops, Tool & Die	Leitchfield	30
Metal Castings	McHenry	45
Metal Finishers	Hartford Elizabethtown	39 42
Metal Service Centers	Owensboro	46
Millwrights	Radcliff Owensboro	44 46
Public Warehouse Facilities	Elizabethtown	42

Sources: Kentucky Cabinet for Economic Development, Kentucky Directory of Selected Industrial Services, 1987; Division of Research and Planning.

TRANSPORTATION

Highways

U.S. Highway 60 connects Hardinsburg, Cloverport and Irvington. U.S. 60, a "AAA"-rated (80,000-pound gross load limit) trucking highway, is the principal route serving Breckinridge County. Other highways serving the county are Kentucky Highways 79, 86, 105, 144, 259 and 261.

The Western Kentucky Parkway is 31 miles south of Hardinsburg via Kentucky 259, or 42 miles southeast of Hardinsburg via U.S. 60 and Kentucky 86. Kentucky Highway 86 and 259 are "AA"-rated (62,000-pound gross load limit) trucking highways between Hardinsburg and the Western Kentucky Parkway.

Interstate 65, a major north-south corridor, is also accessible 43 miles southeast of Hardinsburg via U.S. 60 and Kentucky 86.

Interstate 64 is accessible 50 miles north of Hardinsburg via U.S. 60 and Indiana Route 37, and also 34 miles north of Irvington via Kentucky Route 79 and Indiana Route 135.

The Green River Parkway, another of Kentucky's multi-lane toll roads, is 37 miles southwest of Hardinsburg via "AA"-rated Kentucky 261 and "AAA"-rated Kentucky 69.

Highway improvement projects completed in Breckinridge County include construction of a by-pass around Hardinsburg and the reconstruction and widening of U.S. Highway 60 from the by-pass at Hardinsburg east to Irvington. These projects were finished in 1989, costing \$4,000,000. Construction of a by-pass around Cloverport is currently under way. This project is expected to be completed in 1992, costing \$8,000,000, and will give Cloverport better access to Owensboro and the Interstate Highway System.

HIGHWAY MILES FROM HARDINSBURG, KENTUCKY, TO SELECTED MARKET CENTERS

City	Highway Miles	City	Highway Miles
Atlanta, GA	380	Los Angeles, CA	2,076
Baltimore, MD	665	Louisville, KY	66
Birmingham, AL	329	Nashville, TN	142
Chicago, IL	368	New Orleans, LA	662
Cincinnati, OH	167	New York, NY	826
Cleveland, OH	414	Pittsburgh, PA	454
Detroit, MI	425	St. Louis, MO	248
Knoxville, TN	287		

Note: Mileage computations are via the best interstate or primary highways, not necessarily the most direct route of travel.

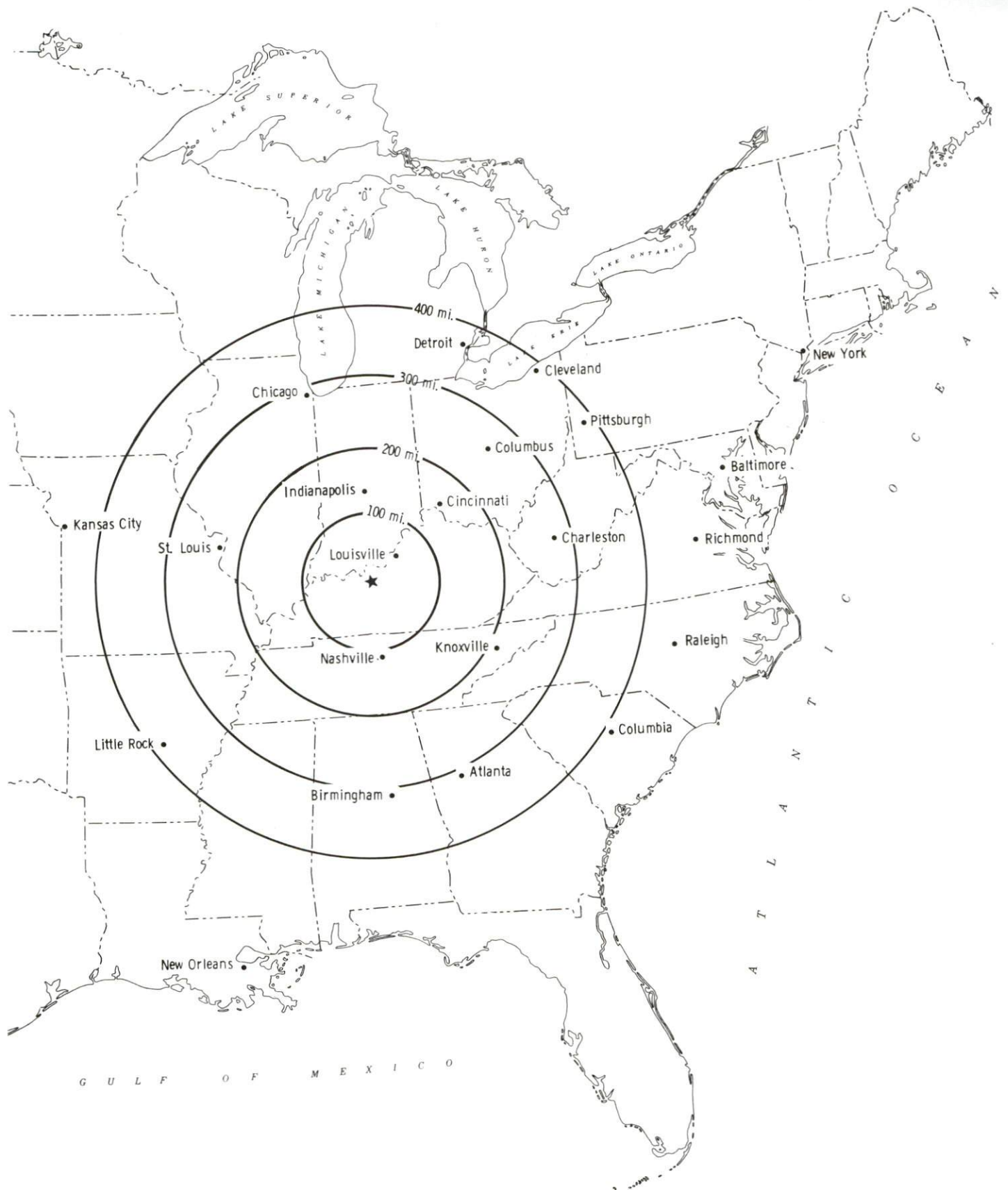
Sources: Rand McNally Deluxe Motor Carriers' Road Atlas, 1989. Official Kentucky Mileage Map, 1980.

Truck Service

There are currently fourteen common carrier trucking companies that provide interstate and/or intrastate service to Breckinridge County.

Source: American Motor Carrier Directory, Fall 1990.

Selected Market Centers



Rail

CSX Transportation provides rail service to Cloverport and Irvington. CSX Transportation also provides the nearest piggyback facilities at Owensboro, 46 miles west of Hardinsburg.

For details on routing, schedules, rates, and services contact:

Manager
Industrial Development
CSX Transportation
9420 Bunsen Parkway
Suite 212
Louisville, Kentucky 40220
(502) 499-3025

Air

Local

Location:	Breckinridge County Airport
Runways:	1 mile east of Hardinsburg
Length:	1 paved
Traffic	3,500 feet
Control:	Wind sock
Lighting:	Sunset to sunrise, rotating beacon
Services:	Tie-downs

Nearest Scheduled Commercial Airline Service*

Location:	Standiford Field
Air Service:	4 miles southeast of center of Louisville, Kentucky; 65 miles northeast of Hardinsburg
Daily Arrivals & Departures:	Air Toronto, Delta, Eastern, Northwest, American, TWA, United, USAir, Midstate, Nashville Eagle, ComAir, JetStream, Simmons Eagle
	192

* Commuter air carrier service is provided by Allegheny Commuter and Northwest Air Link at the Owensboro-Daviess County Airport which is located 3 1/2 miles west-south-west of Owensboro, Kentucky; 49 miles west of Hardinsburg

Water

The Ohio River forms the north-northwestern boundary of Breckinridge County. Hardinsburg is located 46 miles east of Owensboro, Kentucky, where a riverport is maintained. The Owensboro Riverport Authority operates the riverport facility on a 50-acre site at Ohio River Mile 759.

UTILITIES

Electricity

Company serving **Breckinridge County** - Meade County Rural Electric
Cooperative Corporation
Source of power - Big Rivers Electric Corporation
For industrial rates contact:

Meade County Rural Electric
Cooperative Corporation
P.O. Box 367
Brandenburg, Kentucky 40108
(502) 422-2162

Natural Gas

Company serving **Hardinsburg and Cloverport** - Western Kentucky
Gas Company
Source of supply - Texas Gas Transmission Corporation
For rates and supplies contact:

Western Kentucky Gas Company
311 West 7th Street
Owensboro, Kentucky 42301
(502) 685-8067

Company serving **Irvington** - Valley Gas, Inc.
Source of supply - Texas Gas Transmission Corporation
For rates and supplies contact:

Valley Gas, Inc.
P.O. Box 218
Irvington, Kentucky 40146
(502) 547-2455

Public Water Supply

Company serving **Hardinsburg** - City of Hardinsburg
P.O. Box 149
Hardinsburg, Kentucky 40143
(502) 756-2213

Source - Rough River Reservoir
Treatment plant capacity - 1,000,000 gallons per day
Average daily consumption - 583,663 gallons
Peak daily consumption - 846,000 gallons
Storage capacity - 990,000 gallons
Water pressure - 35 psi to 120 psi

A line expansion project of 45 miles in the Axtel and Madrid areas and construction of a 200,000 gallon elevated storage tank was completed in August, 1990, costing \$2,000,000.

A plant expansion in design will increase the treatment plant capacity to 2,000,000 gallons per day. Construction of this \$750,000 project is scheduled to start in the Fall of 1990 and be completed by January, 1991.

Company serving Cloverport - Cloverport Water and Sewer Department
227 West Main Street
Cloverport, Kentucky 40111
(502) 788-6487

Source - 2 Deep Wells; each has a pumping capacity of 300 gpm
Treatment plant capacity - 350,000 gallons per day
Average daily consumption - 125,200 gallons
Peak daily consumption - 283,000 gallons
Storage capacity - 370,000 gallons
Water pressure - 78 psi to 100 psi

The Cloverport Water and Sewer Department has constructed 20 miles of water line to serve western Breckinridge County and eastern Hancock County. The \$1.2 million project was completed in late 1988.

Company serving Irvington - Irvington Water Distribution System
P.O. Box 374
Irvington, Kentucky 40146
(502) 547-6336

Source of Supply of Treated Water - City of Hardinsburg
Average daily consumption - 100,000 gallons
Peak daily consumption - 130,000 gallons
Storage capacity - 200,000 gallons
Water pressure - 50 psi to 72 psi

In joint cooperation with the city of Irvington, the city of Hardinsburg has designed a 12.5-mile water main extension to Irvington and constructed a 200,000-gallon water storage tank. Irvington city officials have entered into an agreement with the Hardinsburg Water Department to purchase treated water from Hardinsburg and then distribute the water to the customers in Irvington. Total cost of the project was \$1,000,000 and was completed in mid-1988.

Raw Water

Surface water sources - Ohio River, Rough River, Rough River Lake, Tules Creek, Hardins Creek, Sinking Creek, Clover Creek and its Beech and Tar Forks
Average discharge - Ohio River at Louisville, Kentucky - 115,800 cfs (57 years, USGS); Rough River near Dundee, Kentucky - 1,072 cfs (46 years USGS, unadjusted)
Expected ground water yield - 500 to 1,000 gpm along the Ohio River; 50 to 200 gpm along a narrow strip from southwest to northeast Breckinridge County; 5 to 50 gpm at eastern and southwestern boundaries of the county; 5 gpm or less in the remainder of the county

Sewerage

Company serving **Hardinsburg** - City of Hardinsburg
P.O. Box 149
Hardinsburg, Kentucky 40143
(502) 756-2213

Design capacity - 732,000 gallons per day
Average daily flow - 414,000 gallons
Type of treatment - Primary and secondary
Treated effluent discharged into - Hardins Creek

The city of Hardinsburg has constructed a new 732,000-gallon-per-day wastewater treatment plant. The \$3,300,000 facility uses an extended aeration treatment process. The project was completed in May, 1987.

Two projects are planned to start construction in the Fall of 1990. One project will extend sewer mains to unsewered parts of Hardinsburg and will cost \$750,000. The other project will repair old lines and replace manhole covers, which will reduce the average daily flow by nearly 200,000 gallons.

Company serving **Cloverport** - Cloverport Water and Sewer Department
227 West Main Street
Cloverport, Kentucky 40111
(502) 788-6487

Design capacity - 200,000 gallons per day
Average daily flow - 146,000 gallons
Type of treatment - Primary and secondary
Treated effluent discharged into - Ohio River

Company serving **Irvington** - Irvington Wastewater System
P.O. Box 374
Irvington, Kentucky 40146
(502) 547-3113

Design capacity - 154,000 gallons per day
Average daily flow - 70,000 gallons
Type of treatment - Primary, secondary, and tertiary
Treated effluent discharged into - Sink holes

Construction of a wastewater treatment facility for the city of Irvington was completed in mid-1988. The \$2,500,000 project has a 154,000-gallon-per-day tertiary treatment plant and a small diameter collection system.

CLIMATE

Breckinridge County

Temperature

Normal (30-year record)	55.70 degrees
Average annual 1988	55.60 degrees
Record highest, July 1954 (48-year record)	105.00 degrees
Record lowest, February 1951 (48-year record)	-23.00 degrees
Normal heating degree days (30-year record) (Heating degree day totals are the sums of negative departures of average daily temperatures from 65 degrees F.)	4,729

Precipitation

Normal (30-year record)	41.55 inches
Mean annual snowfall (48-year record)	13.90 inches
Total precipitation 1988	38.43 inches
Mean number days precipitation (.01 inch or more) (48-year record)	115.20
Mean number days thunderstorms (48-year record)	44.90

Prevailing winds (through 1963)

South-Southwest

Relative Humidity (27-year record)

Midnight	78 percent
6 a.m.	81 percent
Noon	59 percent
6 p.m.	62 percent

Source: U.S. Department of Commerce, Environmental Science Services Administration, Climatological Data, 1988. Station of record: Evansville, Indiana.

LOCAL GOVERNMENT

Structure

In Hardinsburg, Cloverport and Irvington, each city elects a mayor to serve a four-year term and six council members to serve two-year terms.

Breckinridge County is served by a county judge/executive and six magistrates. Each holds a four-year term.

Planning and Zoning

City agency - Hardinsburg Planning and Zoning Commission
Zoning enforced - Within the city of Hardinsburg
Subdivision regulations enforced - Within the city of Hardinsburg
Local codes enforced - Building
Mandatory state codes enforced - Kentucky Plumbing Code, National Electric Code, Kentucky Boiler Regulations and Standards, Kentucky Building Code (modeled after BOCA code)

City agency - Cloverport Planning and Zoning Commission
Zoning enforced - None
Subdivision regulations enforced - None
Local codes enforced - Building
Mandatory state codes enforced - Kentucky Plumbing Code, National Electric Code, Kentucky Boiler Regulations and Standards, Kentucky Building Code (modeled after BOCA code)

City agency - Irvington Planning and Zoning Commission
Zoning enforced - Within the city of Irvington
Subdivision regulations enforced - Within the city of Irvington
Local codes enforced - Building and housing
Mandatory state codes enforced - Kentucky Plumbing Code, National Electric Code, Kentucky Boiler Regulations and Standards, Kentucky Building Code (modeled after BOCA code)

Local Fees and Licenses

The city of Hardinsburg levies license fees on various types of businesses ranging from \$25 to \$100; in addition, a fee of \$13 is charged for automobile stickers. The city of Cloverport also requires several types of businesses to pay a license fee ranging from \$20 to \$30 annually; and \$10 to \$30 fee is charged for automobile stickers. The city of Irvington charges businesses \$15 annually for a license fee; and \$10 annually for both an automobile sticker and unloading license.

State and Local Property Taxes

All property in Kentucky, except items exempted by the state constitution, is taxed by the state. Property which also may be taxed by local jurisdictions includes land and buildings, finished goods inventories, automobiles, trucks, office furniture and office equipment. Local taxing jurisdictions in Kentucky include counties, cities, and school districts.

All property in Kentucky is assessed at 100 percent of fair cash value.

COMBINED STATE AND LOCAL RATES PER \$100 VALUATION, 1989

	<u>City of Hardinsburg</u>	<u>Cloverport/ Cloverport Schools</u>	<u>Cloverport/ Breckinridge County Schools</u>
Land and Buildings	\$0.931	\$1.054	\$0.951
Manufacturing			
Machinery	0.150	0.150	0.150
Pollution Control			
Equipment	0.150	0.150	0.150
Inventories			
Raw Materials	0.001	0.001	0.001
Goods in Process	0.001	0.001	0.001
Finished Goods	0.751	0.889	0.771
Automobiles & Trucks	1.089	1.370	1.139
Other Tangible			
Personal Property	1.200	1.338	1.220
Intangibles (Accounts receivable*, money in hand, stock, notes, bonds)	0.250	0.250	0.250
Goods Stored in Public Warehouses in Transit Status	0.001	0.001	0.001
Private Leaseholds in Industrial Revenue Bond Financed Facilities	0.015	0.015	0.015

(Continued)

COMBINED STATE AND LOCAL RATES PER \$100 VALUATION, 1989

	<u>City of Irvington</u>	<u>Unincorporated Breckinridge County</u>
Land and Buildings	\$0.941	\$0.621
Manufacturing		
Machinery	0.150	0.150
Pollution Control		
Equipment	0.150	0.150
Inventories		
Raw Materials	0.001	0.001
Goods in Process	0.001	0.001
Finished Goods	0.758	0.441
Automobiles & Trucks	1.129	0.809
Other Tangible		
Personal Property	1.207	0.890
Intangibles (Accounts receivable*, money in hand, stock, notes, bonds)	0.250	0.250
Goods Stored in Public Warehouses in Transit Status	0.001	0.001
Private Leaseholds in Industrial Revenue Bond Financed Facilities	0.015	0.015

* Accounts receivable are taxed at 85 percent of face value, for an effective rate of \$0.2125 per \$100 valuation.

EDUCATION

Public Schools

	Cloverport Independent	Breckinridge County
Total Enrollment (Fall, 1989)	313	2,559
Pupil-Teacher Ratio (1988-89)	13.2-1	18.5-1
Percent High School Graduates to College (1988-89)	44.4	46.2
Expenditures Per Pupil (1988-89)	\$2,853.05	\$2,562.37

Nonpublic Schools

<u>School</u>	<u>Enrollment</u>	<u>Grades</u>
St. Romauld Elementary	244	K-8
St. Romauld High School	64	9-12

Area Colleges and Universities

<u>Name</u>	<u>Location (Miles distant)</u>	<u>Enrollment (Fall, 1989)</u>
Elizabethtown Community College	Elizabethtown (42)	3,009
Brescia College	Owensboro (46)	689
Kentucky Wesleyan College	Owensboro (46)	716
Owensboro Community College	Owensboro (46)	2,125
Bellarmino College	Louisville (66)	3,724
Jefferson Community College	Louisville (66)	9,039
Spalding University	Louisville (66)	1,112
University of Louisville	Louisville (66)	23,182

Vocational Training

Vocational training is available at both the state vocational-technical schools and the area vocational education centers. The state vocational-technical schools are post-secondary institutions. The area vocational education centers are designed to supplement the curriculum of high school students. Both the state vocational-technical schools and the area vocational education centers offer evening courses to enable working adults to upgrade current job skills.

Arrangements can be made to provide training in the specific production skills required by an industrial plant. Instruction may be conducted either in the vocational school or in the industrial plant, depending upon the desired arrangement and the availability of special equipment.

Bluegrass State Skills Corporation

The Bluegrass State Skills Corporation, an independent public corporation created and funded by the Kentucky General Assembly, provides programs of skills training to meet the needs of business and industry from entry level to advanced training, and from upgrading present employees to retraining experienced workers.

The Bluegrass State Skills Corporation is the primary source for skills training assistance for a new or existing company. The Corporation works in partnership with other employment and job training resources and programs, as well as Kentucky's economic development activities, to package a program customized to meet the specific needs of a company.

<u>Vocational School</u>	<u>Location (Miles distant)</u>	<u>Cumulative Enrollment 1988-1989</u>
Elizabethtown State Vocational- Technical School	Elizabethtown (42)	802
Daviess County State Vocational- Technical School	Owensboro (46)	471
Owensboro State Vocational-Technical School	Owensboro (46)	411
Breckinridge County Area Vocational Education Center	Harned (4)	368

OTHER LOCAL FACILITIES

Local Medical Personnel

	Hardinsburg	Cloverport	Irvington
Physicians -	4	1	3
Dentists -	2	1	2

Hospitals

<u>General Hospital</u>	<u>Location</u>	<u>Beds</u>
Breckinridge Memorial Hospital	Hardinsburg	45

Medical staff - 6 physicians, 18 registered nurses; 7 licensed practical nurses

Other Medical Facilities and Services

Lincoln Trail District Health Department,
Breckinridge County Health Center
Communicare
Breckinridge Industries
Trent-Dowell Funeral Home Ambulance Service
Hardinsburg Rescue Squad

Banks and Savings and Loan Associations

Breckinridge Bank
The Farmers Bank
First State Bank
First Federal Savings & Loan
Association of Leitchfield

Newspapers

Breckinridge County Herald News (weekly)

Telephone Service

South Central Bell Telephone Company
Brandenburg Telephone Company

RECREATION

Local

A wide variety of recreational facilities and events are available in Breckinridge County. The Breckinridge Community Center at Hardinsburg has a 9-hole golf course, a swimming pool, tennis courts, and game and recreation areas. The Hardinsburg city park features volleyball, and tennis courts, a playground, and a picnic area. Other miscellaneous facilities in Hardinsburg include playgrounds, ball fields, tennis courts, and an FFA camp.

The Breckinridge County Fairgrounds, located near Hardinsburg, features a lighted softball field for adult leagues, in addition to the regular fair facilities. The fair is held the first week in September and offers 6 days of contests, displays, arts and crafts activities, and a parade.

Cloverport has a park situated on the Ohio River featuring boat-launching facilities. The U.S. Army Corps of Engineers has constructed a boat-launching ramp also. Other facilities at Cloverport include picnic areas, tennis courts and ball fields. Annual events in Cloverport include the Sacajawea Festival, held the first weekend in August, which features a parade, food, contests, plays, arts and crafts, music and fireworks. The Cloverport boosters hold a spring picnic with games and contests. During fishing season, Cloverport hosts bass tournaments each weekend.

Facilities in Irvington include the Chuck Carter Memorial Park with tennis courts, a lighted ball park, and a playground; and Irvington Community Park, which features a ball field, a basketball court, a playground, and a picnic area. A privately-owned skating rink and an arcade are also located at Irvington.

The Yellowbank Wildlife Management Area, located at the northern tip of Breckinridge County, is a 4,055-acre area popular for seasonal hunting.

Tadpole Park was constructed in 1990 and has a pavillion, ballfield, picnic shelter, playground, and rest rooms.

Construction of a new baseball complex is under way. The park will have three lighted ball fields, pavillion, playground, basketball courts, picnic shelters and rest rooms.

Noteworthy for its spaciousness, **Rough River Dam State Resort Park** at Falls of Rough is 20 miles south of Hardinsburg. The 637-acre park on Rough River Lake has a 40-room lodge with a dining room, a coffee shop, a gift shop, a meeting room, and a 2,500-foot lighted airstrip. Cottages and camping sites are also available. Recreational facilities include a launching ramp, a dock with open and covered slips, fishing and pleasure boat rentals, a 9-hole, par-3 golf course, a swimming pool, a sand beach with a bathhouse complex, tennis courts, an archery range, hiking and fitness trails, picnic and playground areas, and planned recreation. Cruise boat excursions on Rough River Lake are available on the "Lady of the Lake" in season.

Area (within 70 miles of Hardinsburg)

Nolin River Lake
Ben Hawes State Park
Abraham Lincoln Birthplace National Historic Site
My Old Kentucky Home State Park
Bernheim Forest Arboretum and Nature Center

COMMUNITY IMPROVEMENTS

Recent

Highway improvement projects completed in Breckinridge County include construction of a by-pass around Hardinsburg and the reconstruction and widening of U.S. Highway 60 from the by-pass at Hardinsburg east to Irvington. These projects were finished in 1989, costing \$4,000,000.

A 38-acre industrial park, located near U.S. 60 in Hardinsburg, was developed in 1988. This park provides access to all utilities. A 56-acre industrial park was recently developed on the new Hardinsburg by-pass near the intersection of U.S. 60 and Kentucky 992. This park, with a 20,000-square-foot metal spec building, is near Texas Gas and will be served by all utilities.

The Breckinridge County Development Authority, Inc. became active in 1990 for economic development in the county. This organization works closely with the Breckinridge County Development Corporation to purchase land and development facilities for commercial and industrial use.

The city of Hardinsburg has constructed a new 732,000-gallon-per-day wastewater treatment plant. The \$3,300,000 facility uses an extended aeration treatment process. This project was completed May, 1989.

The city of Hardinsburg completed a water line expansion project of 45 miles in the Axtel and Madrid areas and constructed a 200,000 gallon elevated storage tank in August, 1990, costing \$2,000,000.

Construction of a wastewater treatment facility for the city of Irvington was completed in mid-1988. The \$2,500,000 project includes a 154,000-gallon-per-day tertiary treatment plant and a small diameter collection system.

In joint cooperation with the city of Irvington, the city of Hardinsburg has designed a 12.5-mile water main extension to Irvington and constructed a 200,000-gallon water storage tank. Irvington city officials have entered into an agreement with the Hardinsburg Water Department to purchase treated water from Hardinsburg and then distribute the water to the customers in Irvington. Total cost of the project was \$1,000,000 and completed in mid-1988.

The Cloverport Water and Sewer Department has constructed 20 miles of water line to serve western Breckinridge County and eastern Hancock County. The \$1.2 million project was completed in late 1988.

Tadpole Park was constructed in 1990 and has a pavillion, ballfield, picnic shelter, playground, and rest rooms.

The city of Irvington was awarded a \$750,000 Community Development Block Grant designed for improvements of a neighborhood in the northern portion of Irvington. The project was completed in mid-1989.

Construction of a four-classroom addition to the Breckinridge County School System's elementary schools was completed in Spring 1988.

Under Way

Construction of a by-pass around Cloverport is currently under way. This project is expected to be completed in 1992, costing \$8,000,000, and will give Cloverport better access to Owensboro and the Interstate Highway System.

Future Farmers of America (FFA), with headquarters in Hardinsburg, has a \$1,800,000 expansion under way. This project includes an auditorium and other facilities for the Kentucky FFA program.

Rough River Dam State Resort Park has construction of a \$1,600,000 addition for convention facilities under way.

Construction of a new baseball complex is under way. The park will have three lighted ball fields, pavillion, playground, basketball courts, picnic shelters and rest rooms.

Planned

An access road and entrance to U.S. 60 from the new 56-acre industrial park is planned to be built in the Fall of 1990, costing \$30,000.

The city of Hardinsburg Utilities Division has three projects planned to start construction in the Fall of 1990. One project will extend sewer mains to unsewered parts of Hardinsburg and will cost \$750,000. Another project will repair old sewer lines and replace manhole covers, which will reduce the average daily flow by nearly 200,000 gallons. An expansion in design of the water plant will increase the water treatment plant capacity to 2,000,000 gallons per day. Construction of this \$750,000 project is scheduled to start in the Fall of 1990 and be completed by January, 1991.



KENTUCKY
Open for Business

Cabinet for Economic Development • Capital Plaza Tower
Frankfort, Kentucky 40601 • (502) 564-7140