

1991

## Industrial Resources: Bullitt County

Kentucky Library Research Collections  
Western Kentucky University, [spcol@wku.edu](mailto:spcol@wku.edu)

Follow this and additional works at: [https://digitalcommons.wku.edu/bullitt\\_cty](https://digitalcommons.wku.edu/bullitt_cty)

 Part of the [Business Administration, Management, and Operations Commons](#), [Growth and Development Commons](#), and the [Infrastructure Commons](#)

---

### Recommended Citation

Kentucky Library Research Collections, "Industrial Resources: Bullitt County" (1991). *Bullitt County*. Paper 5.  
[https://digitalcommons.wku.edu/bullitt\\_cty/5](https://digitalcommons.wku.edu/bullitt_cty/5)

This Report is brought to you for free and open access by TopSCHOLAR®. It has been accepted for inclusion in Bullitt County by an authorized administrator of TopSCHOLAR®. For more information, please contact [topscholar@wku.edu](mailto:topscholar@wku.edu).

*Resources for Economic Development*

# Bullitt County



**KENTUCKY**  
*Open for Business*

---

RESOURCES FOR ECONOMIC DEVELOPMENT  
BULLITT COUNTY, KENTUCKY

Prepared by  
The Kentucky Cabinet for Economic Development  
Division of Research and Planning  
in cooperation with  
Bullitt County Chamber of Commerce

1991

Division Director - Pamela K. Riley; program manager - Keith Roberts; research - Jane E. Sullivan; clerical - Wanda Sharp; graphics - Robert Owens, Pat Coleman; cartography - Edwin Scott, Dave Clark. Cost of printing paid from state funds.

## TABLE OF CONTENTS

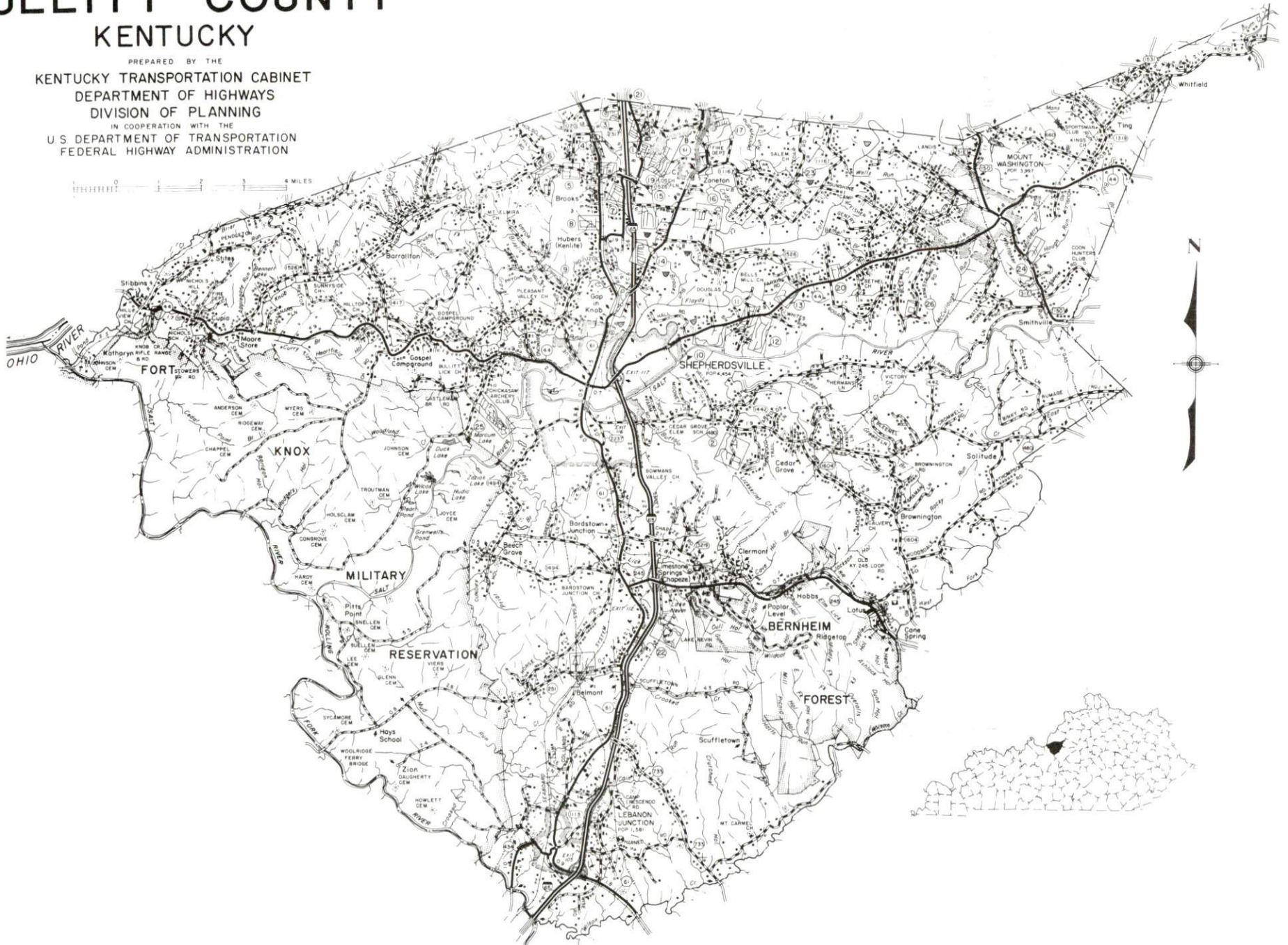
<u>Chapter</u>	<u>Page</u>
BULLITT COUNTY, KENTUCKY - A RESOURCE PROFILE .....	1
THE LABOR MARKET STATISTICS .....	2
Labor Market Area Map .....	2
Population .....	3
Population Projections .....	3
Estimated Labor Supply .....	3
Labor Force Characteristics of Residents, 1989 .....	4
Selected Components of Nonagricultural Employment, by Place of Work, 1989 .....	5
Per Capita Personal Income .....	6
Average Placement Wages .....	7
Average Weekly Wages of Workers Covered by Unemployment Insurance 1988 - Bar Chart .....	8
Average Weekly Wages by Industry, by Place of Work, 1988 .....	9
EXISTING INDUSTRY .....	10
Bullitt County Manufacturing Firms, Their Products and Employment .....	10
Labor Organizations in Manufacturing Firms .....	11
Selected Industrial Services .....	12
TRANSPORTATION .....	13
Highways .....	13
Truck Service .....	13
Selected Market Location Map .....	14
Rail .....	15
Air .....	15
Air Express Service .....	15
Bus .....	15
Water .....	15
UTILITIES .....	16
Electricity .....	16
Natural Gas .....	16
Public Water Supply .....	17
Sewerage .....	18
CLIMATE .....	19

<u>Chapter</u>	<u>Page</u>
LOCAL GOVERNMENT.....	20
Structure .....	20
Planning and Zoning.....	20
Local Fees and Licenses .....	20
State and Local Property Taxes.....	21
Combined State and Local Rates Per \$100 Valuation, 1989 .....	21
EDUCATION .....	23
Public Schools .....	23
Nonpublic Schools.....	23
Area Colleges and Universities .....	23
Vocational Training .....	24
OTHER LOCAL FACILITIES .....	25
Local Medical Personnel .....	25
Hospitals .....	25
Other Medical Facilities and Services.....	25
Banks and Savings & Loan Associations .....	25
Newspapers .....	25
Telephone Service .....	25
RECREATION.....	26
COMMUNITY IMPROVEMENTS .....	27



GENERAL HIGHWAY MAP  
**BULLITT COUNTY**  
KENTUCKY

PREPARED BY THE  
KENTUCKY TRANSPORTATION CABINET  
DEPARTMENT OF HIGHWAYS  
DIVISION OF PLANNING  
IN COOPERATION WITH THE  
U.S. DEPARTMENT OF TRANSPORTATION  
FEDERAL HIGHWAY ADMINISTRATION





## BULLITT COUNTY, KENTUCKY - A RESOURCE PROFILE

Bullitt County is located in north central Kentucky at the junction of the Outer Blue Grass and the Knobs Regions. The county covers a land area of 300 square miles. Bullitt County had a 1988 estimated population of 47,800 persons.

Shepherdsville, the county seat of Bullitt County, is located 20 miles south of Louisville, Kentucky; 121 miles southwest of Cincinnati, Ohio; and 156 miles northeast of Nashville, Tennessee. Shepherdsville had an estimated population of 5,220 persons in 1988. Other cities in Bullitt County include Hillview, located five miles northeast of Shepherdsville, with a 1988 estimated population of 7,110; Lebanon Junction, located 12 miles south of Shepherdsville, with a 1988 estimated population of 2,070; and Mt. Washington, 11 miles east of Shepherdsville, with a 1988 estimated population of 5,290.

**The Economic Framework** - The total number of Bullitt County residents employed in 1989 averaged 21,291. Manufacturing firms in the county reported 1,995 employees; wholesale and retail trade provided 1,982 jobs; 620 people were employed in service occupations; state and local government accounted for 1,395 employees; and contract construction firms provided 366 jobs.

**Labor Supply** - There is a current estimated labor supply of 66,258 persons available for industrial jobs in the labor market area. In addition, from 1990 through 1994, 62,466 young persons in the area will become 18 years of age and potentially available for industrial jobs.

**Transportation** - Bullitt County is served by Interstate 65. Other "AAA"-rated trucking highways serving Bullitt County include U.S. 31E, Kentucky 44, and Kentucky 61. There are 28 trucking companies serving Bullitt County, including one company with a local terminal. CSX Transportation provides main line rail service to Shepherdsville and Lebanon Junction. The nearest scheduled commercial airline service is available at Louisville's Standiford Field, located 15 miles north of Shepherdsville. Public riverport facilities also are located at Louisville.

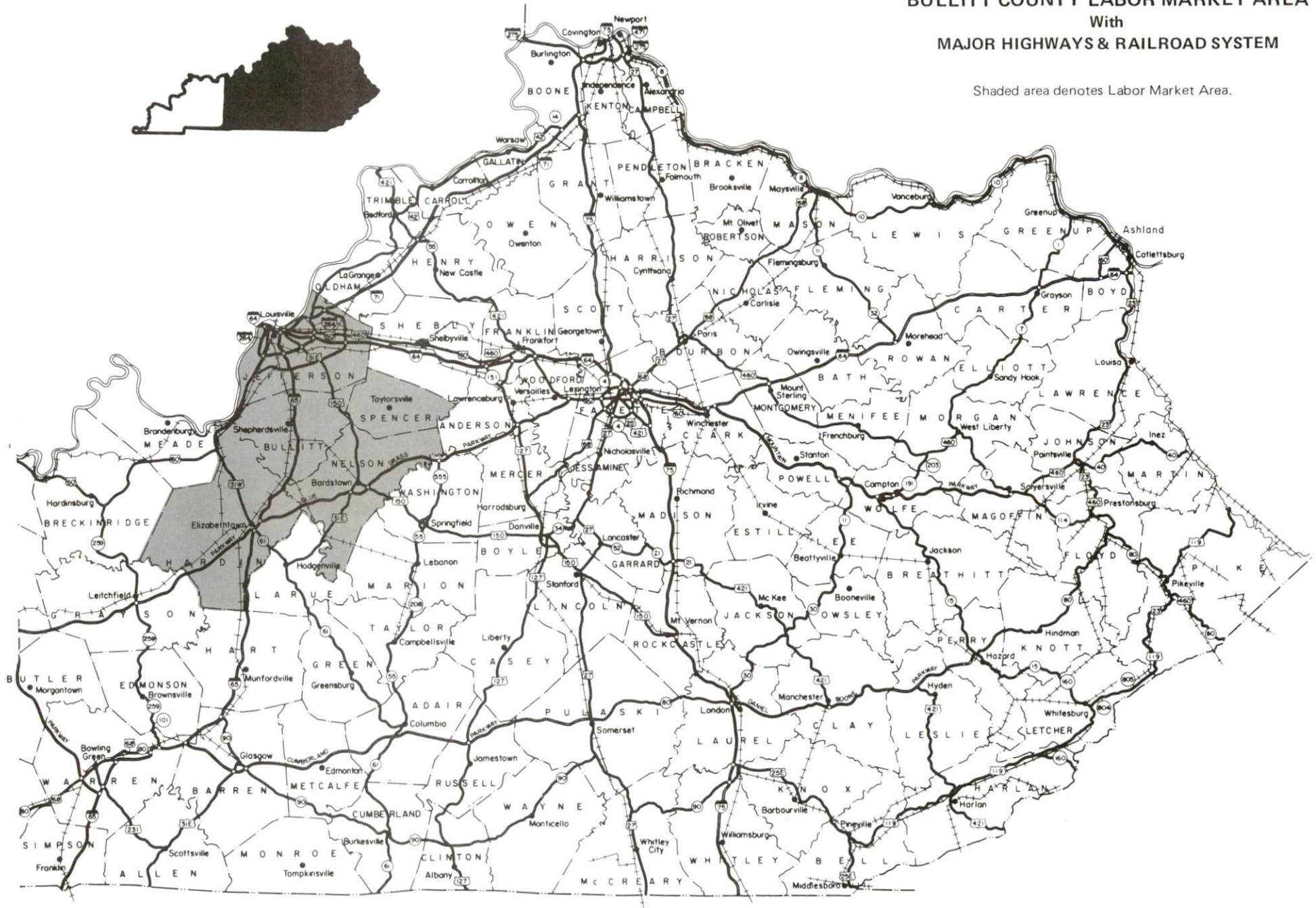
**Power and Fuel** - Louisville Gas and Electric Company provides electric power to Shepherdsville, Mt. Washington, Hillview, and parts of Bullitt County. Kentucky Utilities Company provides electric power to Lebanon Junction, and East Kentucky Power Cooperative serves the remainder of the county through the Salt River Rural Electric Cooperative Corporation. Louisville Gas and Electric company also provides natural gas service to Shepherdsville, Mt. Washington, and Hillview.

**Education** - The Bullitt County Public School System provides primary and secondary education for residents of Bullitt County. Two nonpublic elementary schools also operate in the county. There are seven colleges and universities located within 40 miles of Shepherdsville. The Jefferson State Vocational-Technical School at Louisville, 20 miles north of Shepherdsville, the Elizabethtown State Vocational-Technical School at Elizabethtown, 26 miles southwest of Shepherdsville, and the Bullitt County Area Vocational Education Center at Shepherdsville provide vocational education to Bullitt County.



# BULLITT COUNTY LABOR MARKET AREA With MAJOR HIGHWAYS & RAILROAD SYSTEM

Shaded area denotes Labor Market Area.



## LABOR MARKET STATISTICS

The Bullitt County Labor Market Area includes Bullitt County and the adjoining Kentucky counties of Hardin, Jefferson, Nelson and Spencer.

POPULATION			
	1988*	1980	1970
Labor Market Area	846,200	850,408	828,531
Hillview	7,110	7,124	**
Lebanon Junction	2,070	1,581	1,571
Mt. Washington	5,290	3,997	2,020
Sheperdsville	5,220	4,454	2,769
Bullitt County	47,800	43,346	26,090

\* Population estimates.

\*\* Information not available.

Sources: U.S. Department of Commerce, Bureau of the Census, August 1989; November 1989.

POPULATION PROJECTIONS				
	2000	2010	2020	2030
Labor Market Area	838,920	828,070	805,580	772,010
Bullitt County	55,300	58,580	59,630	58,690

Source: University of Louisville, Urban Studies Center, State Data Center.

ESTIMATED LABOR SUPPLY					
	Current				Future
	Total	Unemployed	Employed Part-Time	Not in Labor Force	Becoming 18 years of age 1990 thru 1994
Labor Market Area*	66,258	25,666	37,995	2,597**	62,466
Bullitt County	5,629	1,153	2,174	2,302	4,335

\* Additional workers may be drawn from other nearby counties.

\*\* Information not available for all counties in the Labor Market Area.

Note: Unemployed - persons unemployed and actively seeking work; Employed Part-Time - persons employed but working only 14 to 26 weeks per year; Not in Labor Force - represents the number of persons who would enter the labor force if suitable employment were available (based on the assumption that persons in Kentucky would like to participate in the labor force in the same proportion that they do nationally).

Sources: Kentucky Cabinet for Human Resources, Kentucky Labor Supply Estimates by County, 1989. Kentucky Cabinet for Economic Development, Future Labor Supply Becoming 18 Years of Age, 1990 thru 1994.

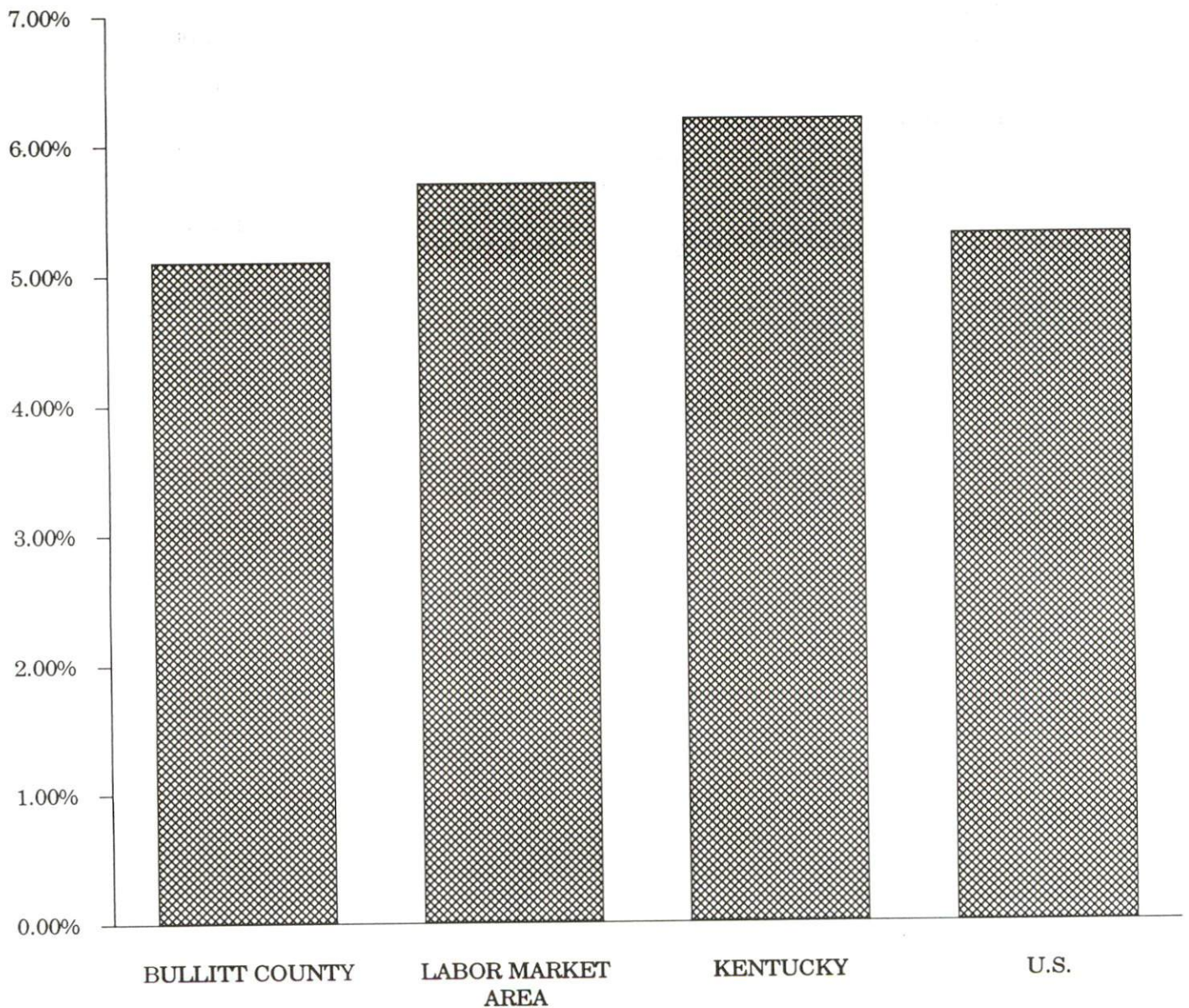


LABOR FORCE CHARACTERISTICS OF RESIDENTS, 1989

	Bullitt County	Labor Market Area
Civilian Labor Force	22,444	446,589
Employment	21,291	420,923
Unemployment	1,153	25,666
Rate of Unemployment (%)	5.1	5.7

Source: Kentucky Cabinet for Human Resources, Kentucky Labor Force Estimates, Annual Averages, 1989.

UNEMPLOYMENT RATES  
1989

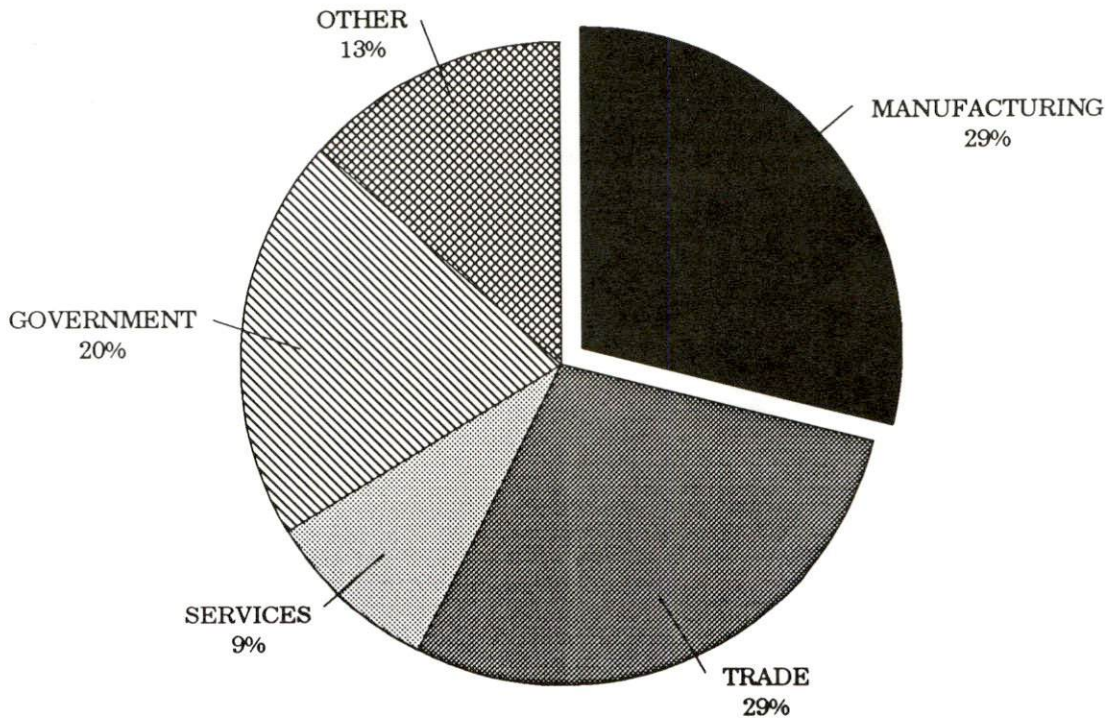


SELECTED COMPONENTS OF NONAGRICULTURAL EMPLOYMENT  
BY PLACE OF WORK, 1989

	Bullitt County	Labor Market Area
All Industries (total)	6,887	394,784
Manufacturing	1,995	79,629
Wholesale & Retail Trade	1,982	105,350
Services	620	99,233
State/Local Government	1,395	38,818
Contract Construction	366	19,415

**Note:** Excludes domestic workers, railway workers, certain nonprofit corporations, majority of federal government workers, and self-employed workers.  
**Source:** Kentucky Cabinet for Human Resources, Average Monthly Workers Covered by Kentucky Unemployment Insurance Law, 1989.

BULLITT COUNTY



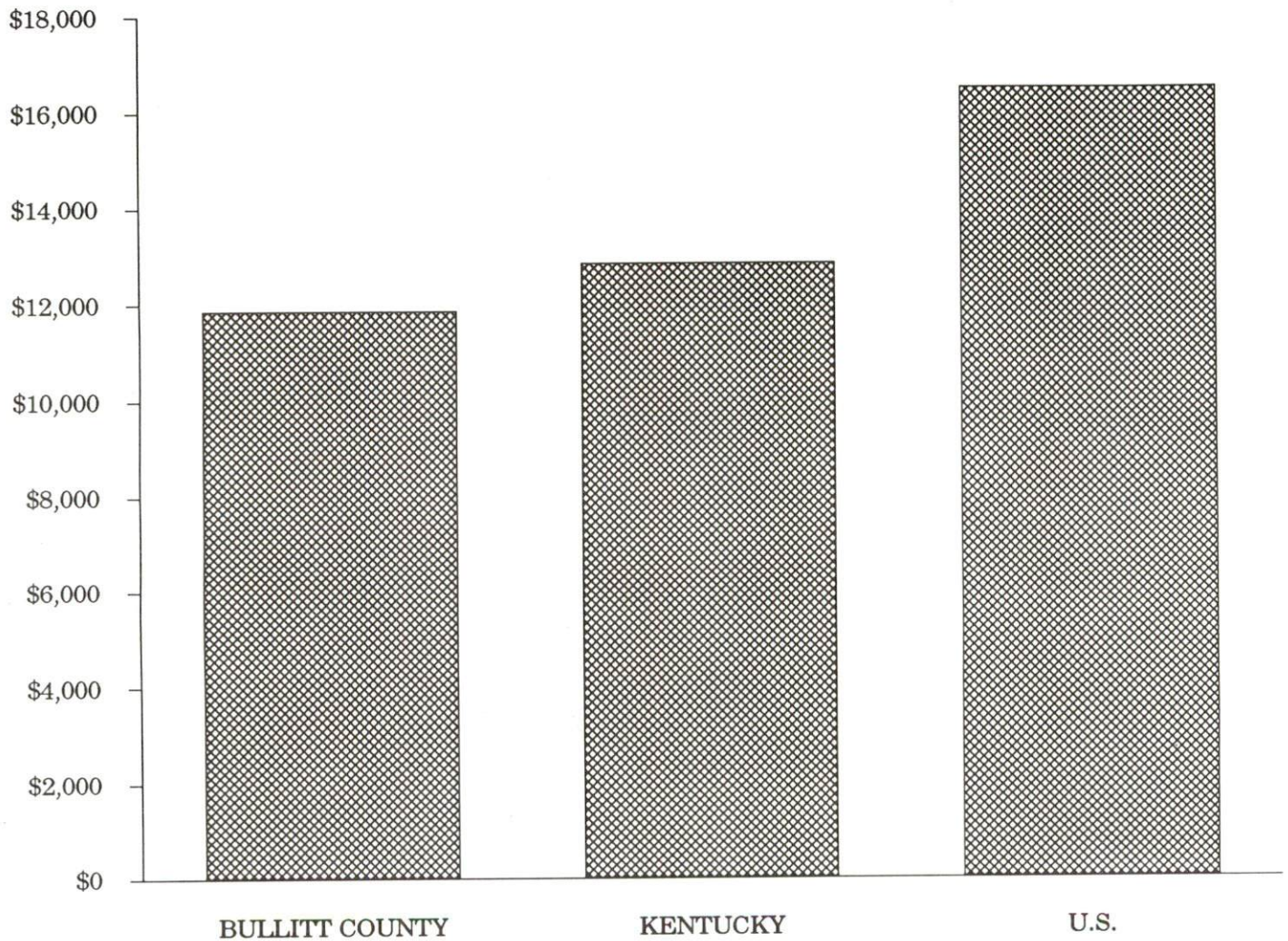


PER CAPITA PERSONAL INCOME

Area	1984	1988	Percent Change
Bullitt County	\$9,202	\$11,840	28.7
Labor Market Area Range	\$9,060 - \$12,983	\$10,638 - \$16,518	-
Kentucky	\$10,411	\$12,830	23.2
U.S.	\$13,116	\$16,490	25.7

Sources: U.S. Bureau of Economic Analysis, Kentucky Economic Information System, April 1990.

PER CAPITA PERSONAL INCOME  
1988



## AVERAGE PLACEMENT WAGES

---

Bullitt County is served by the Louisville local office of the Kentucky Department for Employment Services. The focus of the following data is on job placements made by the Louisville local office and may therefore be used as an indicator of the wages which employers in the area pay new employees. During the twelve months which ended on June 30, 1990, the local employment office filled 15,967 job openings in various occupational categories. The average hourly wage for selected occupational categories were:

<u>OCCUPATIONAL CATEGORY</u>	<u>NUMBER OF PLACEMENTS</u>	<u>AVERAGE WAGE(\$)</u>
All Occupations	15,967	5.24
Clerical	3,716	4.54
Sales	554	4.38
Services (excluding domestic)	1,901	3.85
Agricultural, Fishery, Forestry, etc.	259	4.01
Processing	808	4.97
Machine Trades	913	6.28
Bench Work	800	5.29
Structural	1,131	6.50
Motor Freight/ Transportation	408	4.36
Packaging and Materials Handling	5,079	6.00
Other	113	3.58

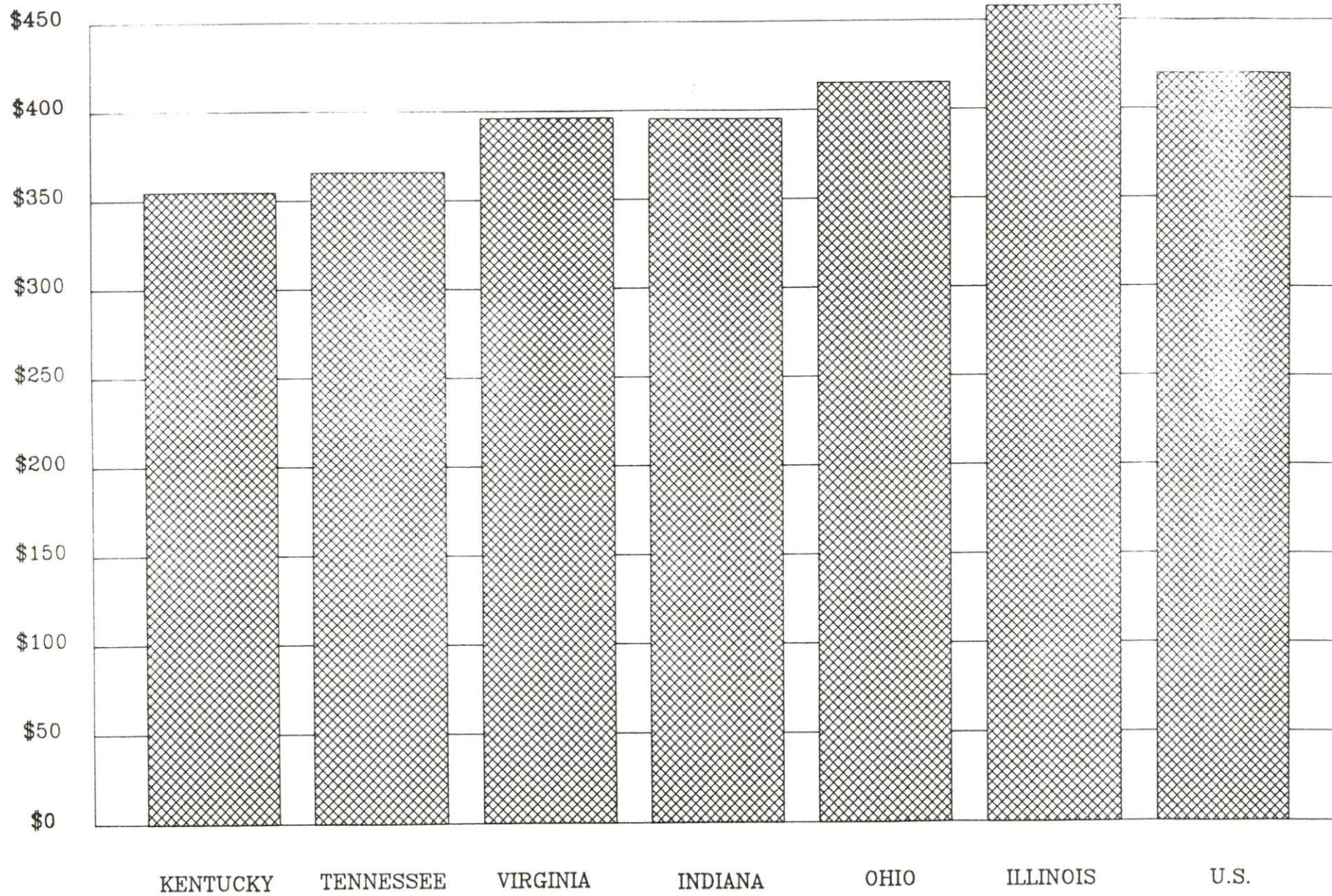
The Louisville local office also serves Henry, Jefferson, Oldham, Shelby, Spencer, and Trimble Counties. The above occupational categories are taken from the Dictionary of Occupational Titles published by the U.S. Department of Labor.

---

Source: Kentucky Cabinet for Human Resources, Department for Employment Services.



AVERAGE WEEKLY WAGES OF WORKERS COVERED BY  
UNEMPLOYMENT INSURANCE - 1988





AVERAGE WEEKLY WAGES BY INDUSTRY  
BY PLACE OF WORK, 1988

	Bullitt County	Kentucky (State- Wide)	Tennessee	Virginia
All Industries	\$308.38	\$352.31	\$363.12	\$392.56
Mining & Quarrying	*	603.27	495.85	596.88
Contract Construction	282.82	380.71	394.27	422.27
Manufacturing	429.10	464.92	416.73	452.60
Transportation, Communications & Public Utilities	382.17	468.17	485.13	554.17
Wholesale & Retail Trade	177.33	238.88	N/A	N/A
Finance, Insurance & Real Estate	277.42	401.17	269.27	466.23
Services	207.13	298.98	343.48	391.67
State/Local Government	334.58	377.81	403.21	457.00
	<u>Indiana</u>	<u>Ohio</u>	<u>Illinois</u>	<u>U. S.</u>
All Industries	\$392.63	\$411.08	\$454.10	\$416.33
Mining & Quarrying	635.77	579.73	674.62	660.40
Contract Construction	449.87	465.46	584.10	469.85
Manufacturing	532.06	569.98	555.83	517.62
Transportation, Communications & Public Utilities	502.69	519.17	584.83	542.33
Wholesale & Retail Trade	N/A	N/A	N/A	N/A
Finance, Insurance & Real Estate	406.58	444.33	579.88	532.52
Services	317.98	348.48	402.38	384.31
State/Local Government	395.31	428.10	453.12	442.71

\* Not disclosed.

N/A Not Available.

Note: The average weekly wage for each category includes the salaries and wages of all persons working for that type business. For example, the manufacturing category includes both production workers and administrative personnel. Excludes domestic workers, railway workers, certain nonprofit corporations, majority of federal government workers, and self-employed workers.

Source: Kentucky Cabinet for Human Resources, Average Weekly Wages of Workers Covered by Kentucky Unemployment Insurance Law, 1988. U.S. Department of Labor, Bureau of Labor Statistics, Average Annual Pay by State and Industry, August 29, 1989.



## EXISTING INDUSTRY

### BULLITT COUNTY MANUFACTURING FIRMS, THEIR PRODUCTS AND EMPLOYMENT

<u>Firm</u> (Establishment date)	<u>Product</u>	<u>1989</u> <u>Average Employment</u>
<b>Brooks</b>		
Best Made Pallet, Inc. (1982)	Pallet stock	10
Kentucky Solite Corporation (1972)	Aggregate for concrete & block	45
Phyl-Lar Cabinet Company (1979)	Kitchen cabinets, counter tops, restaurant fixtures	3
<b>Clermont</b>		
Jim Beam Brands Company (1785)	Dried grains distillers, Cocktails, cordials, vodka	485
Magnum Mold and Tool Corporation (1982)	Plastic injection molds	23
<b>Hillview</b>		
Papes Archery (1990)	Arrows, bow strings	70
<b>Lebanon Junction</b>		
Mac Manufacturing Company (1957)	Automotive barrel stenciler, automatic barrel filling devices, barrel lifts	18
<b>Mt. Washington</b>		
Bullitt Fire Sprinklers, Inc. (1974)	Pipes, pipe fitting and cuplings	15
Harvey Hardware Company (1979)	Door hardware	12
Hercules Coach Company (1988)	Motor homes, entertainers' coaches	35
Hiteco, Inc. (1968)	Ready-Mix concrete	14
Technical Conveyor, Inc. (1987)	Conveyors and machinery, robotics, programable controls	70
Town & Country Auto Supply, Inc. (1972)	Machine shop	6

(Continued)

<u>Firm</u> <u>(Establishment date)</u>	<u>Product</u>	<u>1989</u> <u>Average Employment</u>
<b>Shepherdsville</b>		
Anderson Applied Technology (1964)	Printing press controls	2
Bullitt County Stone Company (1967)	Agricultural lime, crushed stone	30
Interlake, Inc. (1973)	Conveyors	274
Mago Construction Company, Inc. (1967)	Bituminous concrete mixes	3
Monarch Hardware Manufacturing Company (1965)	Door hardware and closures	61
Piccola Manufacturing, Inc. (1957)	Steel and aluminum material handling equipment	20
Publishers Printing Company (1866)	Offset lithographic printing	950
Quality Stone & Ready Mix, Inc. (1960)	Ready mixed concrete	25
Charles H. Reichmult, Inc. (1962)	Rough lumber, ties	11
Standard Publishing Company (1985)	Commercial printing	72

Sources: Kentucky Cabinet for Economic Development, Division of Research and Planning. Bullitt County Chamber of Commerce.

#### LABOR ORGANIZATIONS IN MANUFACTURING FIRMS

<u>Union</u>	<u>Representing workers at:</u>
Distillery, Wine and Allied Workers' International Union, AFL-CIO-CLC	Jim Beam Brands Company
International Union, Allied Industrial Workers of America, AFL-CIO	Interlake, Inc.
International Union of Operating Engineers, AFL-CIO	Bullitt County Stone Company
International Brotherhood of Teamsters, Chauffers, Warehousemen and Helpers of America	Kentucky Solite Corporation

SELECTED INDUSTRIAL SERVICES

<u>Types of Services</u>	<u>Location</u>	<u>Mileage from Shepherdsville</u>
Custom Data Processing	Louisville, Kentucky	20
Custom Plastics Producers	Mt. Washington, Kentucky Louisville, Kentucky	11 20
Electric Motor Repair	Louisville, Kentucky	20
Grinding, Precision & Tool	Clermont, Kentucky Louisville, Kentucky	5 20
Heat Treating Facilities	Louisville, Kentucky	20
Industrial Equipment & Supplies	Louisville, Kentucky	20
Industrial Gases	Louisville, Kentucky	20
Industrial Waste Removal	Louisville, Kentucky	20
Machine Shops, Tool & Die	Louisville, Kentucky	20
Metal Castings	Louisville, Kentucky	20
Metal Finishers	Louisville, Kentucky	20
Metal Service Centers	Louisville, Kentucky	20
Millwrights	Louisville, Kentucky Radcliff, Kentucky	20 25
Public Warehouse Facilities	Louisville, Kentucky	20

Sources: Kentucky Cabinet for Economic Development, Kentucky Directory of Selected Industrial Services, 1987; Division of Research and Planning.

## TRANSPORTATION

### Highways

Interstate 65, a major north-south highway, is routed through central Bullitt County. Interchanges are located at Shepherdsville, Clermont, Lebanon Junction, Kentucky Route 480, and Kentucky 1526. Interstate 65 provides access to I-64 and I-71 at Louisville, 20 miles north of Shepherdsville; and to the Western Kentucky and Bluegrass Parkways near Elizabethtown, 26 miles southwest of Shepherdsville.

Other "AAA"-rated (80,000-pound gross load limit) trucking highways serving Bullitt County include U.S. Highway 31E, serving Mt. Washington; Kentucky Route 44, serving Mt. Washington and Shepherdsville; and Kentucky Route 61, serving Hillview, Shepherdsville and Lebanon Junction.

#### HIGHWAY MILES FROM SHEPHERDSVILLE, KENTUCKY, TO SELECTED MARKET CENTERS

City	Highway Miles	City	Highway Miles
Atlanta, GA	417	Los Angeles, CA	2,106
Baltimore, MD	619	Louisville, KY	20
Birmingham, AL	380	Nashville, TN	156
Chicago, IL	307	New Orleans, LA	673
Cincinnati, OH	121	New York, NY	780
Cleveland, OH	368	Pittsburgh, PA	408
Detroit, MI	379	St. Louis, MO	278
Knoxville, TN	260		

Note: Mileage computations are via the best interstate or primary highways, not necessarily the most direct route of travel.

Sources: Rand McNally Deluxe Motor Carriers' Road Atlas, 1989. Official Kentucky Mileage Map, 1980.

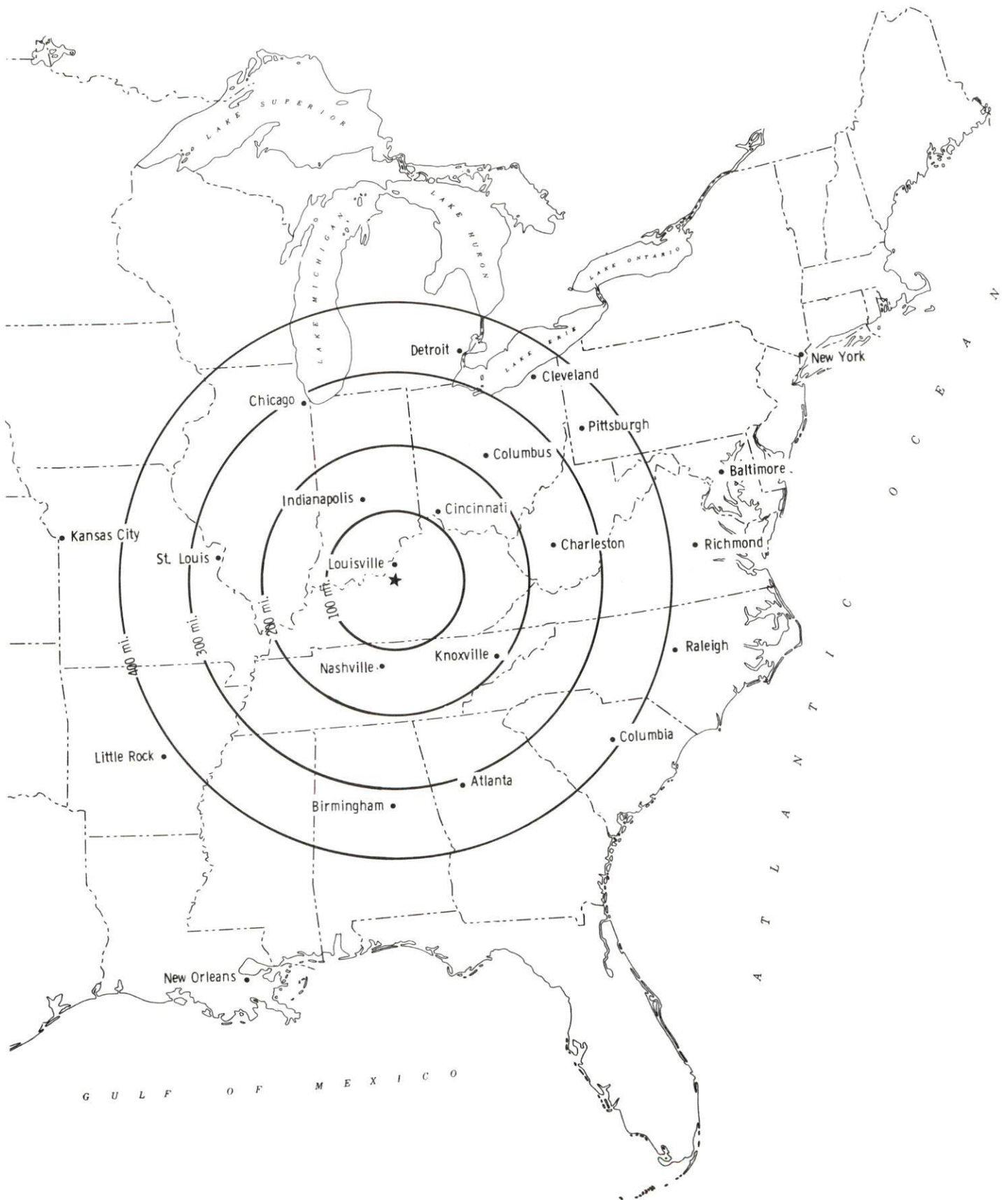
### Truck Service

Twenty-eight trucking companies provide interstate and intrastate service to Bullitt County. One trucking firm maintains a terminal in Bullitt County.

Source: American Motor Carrier Directory, Fall 1990.



# Selected Market Centers



## Rail

CSX Transportation provides main line rail service to Shepherdsville and Lebanon Junction. Mt. Washington is not served directly by rail. The nearest piggyback facilities are located in Louisville, 20 miles north of Shepherdsville.

For details on routing, schedules, rates, and services contact:

Manager  
Industrial Development  
CSX Transportation  
9420 Bunsen Parkway  
Suite 212  
Louisville, Kentucky 40220  
(502) 499-3025

## Air

### Nearest Scheduled Commercial Airline Service

Location: Standiford Field  
4 miles southeast of center of Louisville,  
Kentucky; 16 miles north of Shepherdsville  
Air Service: Air Toronto, Delta, Eastern, Northwest, American,  
Continental, TWA, United, USAir, ComAir,  
JetStream, Simmons Eagle  
Daily Arrivals  
& Departures: 164

### **Air Express Service**

Several major companies offer air express service in Kentucky. These companies provide a quick means of shipping small to medium-size packages expeditiously.

## Bus

The Transit Authority of the River City (TARC), a Louisville intracity bus line, provides morning and evening express service between Louisville and Bullitt County.

## Water

The nearest navigable waterway is the Ohio River, 15 miles west of Shepherdsville, where a nine-foot navigation channel is maintained. The Louisville and Jefferson County Riverport Authority operates a public riverport complex on the Ohio River near Louisville, 20 miles north of Shepherdsville. The port complex offers facilities for cargo transfer and storage, and barge fleets. The Louisville and Jefferson County Riverport Authority has been designated as a Foreign Trade Zone and offers complete U.S. Customs services for exports and imports.

The Port of Louisville, a private riverport facility, also operates at Louisville.

## UTILITIES

### Electricity

Company serving **Shepherdsville, Mt. Washington, and parts of Bullitt County** - Louisville Gas and Electric Company  
Source of power - Louisville Gas and Electric Company  
For industrial rates contact:

Louisville Gas and Electric Company  
P.O. Box 32010  
Louisville, Kentucky 40232  
(502) 566-4246

Company serving **Lebanon Junction** - Kentucky Utilities Company  
Source of power - Kentucky Utilities Company  
For industrial rates contact:

Industrial Development Department  
Kentucky Utilities Company  
One Quality Street  
Lexington, Kentucky 40507  
(606) 255-1461

Company serving **a major portion of Bullitt County** - Salt River Rural Electric Cooperative Corporation  
Source of power - East Kentucky Power Cooperative  
For industrial rates contact:

Industrial Development Division  
East Kentucky Power Cooperative  
P. O. Box 707  
Winchester, Kentucky 40391  
(606) 744-4812

and/or

Salt River Rural Electric  
Cooperative Corporation  
Highway 44E  
Shepherdsville, Kentucky 40165  
(502) 543-3083

### Natural Gas

Company serving **Shepherdsville and Mt. Washington** - Louisville Gas and Electric Company  
Source of supply - Texas Gas Transmission Corporation  
For rates and supplies contact:

Louisville Gas and Electric Company  
P.O. Box 32010  
Louisville, Kentucky 40232  
(502) 566-4488



## Public Water Supply

Company serving Shepherdsville -	Shepherdsville Water Company 1015 Beech Street P.O. Box 400 Shepherdsville, Kentucky 40165 (502) 543-2923
Source -	Louisville Water Company
Average daily consumption -	400,000 gallons
Peak daily consumption -	425,000 gallons
Storage capacity -	325,000 gallons
Water pressure -	40 psi to 60 psi
Company serving Mt. Washington -	Mt. Washington Water & Sewer Company 208 Snapp Street P.O. Box 285 Mt. Washington, Kentucky 40047 (502) 538-4216
Source -	Louisville Water Company
Average daily consumption -	1,000,000 gallons
Peak daily consumption -	1,200,000 gallons
Storage capacity -	500,000 gallons
Water pressure -	38 psi to 62 psi
Company serving Lebanon Junction -	Lebanon Junction Water Works Main Street P.O. Box 69 Lebanon Junction, Kentucky 40150 (502) 833-4311
Source -	Bardstown Municipal Light and Water Company
Average daily consumption -	150,000 gallons
Peak daily consumption -	210,000 gallons
Storage capacity -	336,000 gallons
Water pressure -	45 psi to 140 psi
Name of water district -	Salt River Water District P.O. Box 430 Shepherdsville, Kentucky 40165 (502) 955-9281
Area served -	portions of Shepherdsville and Bullitt County
Source of supply of treated water -	Louisville Water Company
Average daily consumption -	295,257 gallons
Peak daily consumption -	480,000 gallons
Storage capacity -	600,000 gallons
Water pressure -	30 psi to 130 psi



## Sewerage

Company serving Shepherdsville - Shepherdsville Sewer Department  
P.O. Box 400  
Shepherdsville, Kentucky 40165  
(502) 543-2923

Design capacity - 1,000,000 gallons per day  
Average daily flow - 369,000 gallons  
Type of treatment - Secondary  
Treated effluent discharged into - Salt River

Company serving Mt. Washington - Mt. Washington Water and Sewer  
Company  
P.O. Box 285  
Mt. Washington, Kentucky 40047  
(502) 538-4216

Design capacity - 400,000 gallons per day  
Average daily flow - 370,000 gallons  
Type of treatment - Secondary  
Treated effluent discharged into - McCullough Creek

The Mt. Washington Water and Sewer Company completed extensive improvements totaling \$1,217,000, to the sewage treatment plant in mid summer 1990.

Company serving Lebanon Junction - Lebanon Junction Sewerage  
Department  
Main Street  
P.O. Box 61  
Lebanon Junction, Kentucky 40150  
(502) 833-4311 or (502) 957-2193

Design capacity - 185,000 gallons per day  
Average daily flow - 100,000 gallons  
Type of treatment - Secondary  
Treated effluent discharged into - Rolling Fork River

A new sewerage system is currently being constructed in Lebanon Junction. The new facility will serve an industrial site on Kentucky Highway 61-South. The projected cost of the project is \$696,000.

# CLIMATE

## Bullitt County

### Temperature

Normal (29-year record)	56.20 degrees
Average annual 1989	55.90 degrees
Record highest, July 1954 (42-year record)	105.00 degrees
Record lowest, January 1963 (42-year record)	-20.00 degrees
Normal heating degree days (29-year record) (Heating degree day totals are the sums of negative departures of average daily temperatures from 65 degrees F.)	4,525

### Precipitation

Normal (29-year record)	43.56 inches
Mean annual snowfall (42-year record)	16.80 inches
Total precipitation 1989	50.97 inches
Mean number days precipitation (.01 inch or more) (42-year record)	124.00
Mean number days thunderstorms (42-year record)	45.20

### Prevailing winds (through 1963)

South

### Relative Humidity (29-year record)

1 a.m.	76 percent
7 a.m.	81 percent
1 p.m.	59 percent
7 p.m.	61 percent

Source: U.S. Department of Commerce, Environmental Science Services Administration, Climatological Data, 1989. Station of record: Louisville, Kentucky.

## LOCAL GOVERNMENT

### Structure

The cities of Shepherdsville, Lebanon Junction, and Mt. Washington are served by a mayor-city council form of government. Bullitt County is served by a county judge/executive and four magistrates.

### Planning and Zoning

Joint agency - Bullitt County Planning Commission

Participating cities - Hillview, Lebanon Junction, Mt. Washington, and Shepherdsville

Zoning enforced - All areas

Subdivision regulations enforced - All areas

Local codes enforced - Building code within corporate limits of participating cities - Building codes for single family dwellings are enforced in Mt. Washington only

Mandatory state codes enforced - Kentucky Plumbing Code, National Electric Code, Kentucky Boiler Regulations and Standards, Kentucky Building Code (modeled after BOCA code)

### Local Fees and Licenses

Business license fees in Shepherdsville range from \$100 to \$4,000 per year. An unloading license fee of \$100 per year is also levied in Shepherdsville.

In Lebanon Junction, business license fees range from \$10 to \$400 per year (most licenses are \$31.00 per year). Unloading licenses are \$41.00 per year.

Business license fees in Mt. Washington range from \$10 to \$600 per year (most are \$40 per year). Unloading licenses are \$40 per year. Persons living and working in the city are also charged a \$5.00 per year auto sticker fee.



## State and Local Property Taxes

All property in Kentucky, except items exempted by the state constitution, is taxed by the state. Property which also may be taxed by local jurisdictions includes land and buildings, finished goods inventories, automobiles, trucks, office furniture and office equipment. Local taxing jurisdictions in Kentucky include counties, cities, and school districts.

All property in Kentucky is assessed at 100 percent of fair cash value.

### COMBINED STATE AND LOCAL RATES PER \$100 VALUATION, 1989

	City of Hillview	City of Lebanon Junction
Land and Buildings	\$0.8305	\$0.9405
Manufacturing		
Machinery	0.1500	0.1500
Pollution Control		
Equipment	0.1500	0.1500
Inventories		
Raw Materials	0.0010	0.0010
Goods in Process	0.0010	0.0010
Finished Goods	0.6645	0.7745
Automobiles & Trucks	1.1175	1.2275
Other Tangible		
Personal Property	1.1135	1.2235
Intangibles (Accounts receivable*, money in hand, stock, notes, bonds)	0.2500	0.2500
Goods Stored in Public Warehouses in Transit Status	0.0010	0.0010
Private Leaseholds in Industrial Revenue Bond Financed Facilities	0.0150	0.0150

(Continued)

COMBINED STATE AND LOCAL RATES PER \$100 VALUATION, 1989

	City of Mt. Washington	City of Shepherdsville	Unincorporated Bullitt County
Land and Buildings	\$0.8325	\$0.8107	\$0.6005
Manufacturing			
Machinery	0.1500	0.1500	0.1500
Pollution Control			
Equipment	0.1500	0.1500	0.1500
Inventories			
Raw Materials	0.0010	0.0010	0.0010
Goods in Process	0.0010	0.0010	0.0010
Finished Goods	0.6665	0.6647	0.4345
Automobiles & Trucks	1.1205	1.0939	0.8875
Other Tangible			
Personal Property	1.1155	1.0937	0.8835
Intangibles (Accounts receivable*, money in hand, stock, notes, bonds)	0.2500	0.2500	0.2500
Goods Stored in Public Warehouses in Transit Status	0.0010	0.0010	0.0010
Private Leaseholds in Industrial Revenue Bond Financed Facilities	0.0150	0.0150	0.0150

\* Accounts receivable are taxed at 85 percent of face value, for an effective rate of \$0.2125 per \$100 valuation.

## EDUCATION

### Public Schools

	Bullitt County
Total Enrollment (Fall, 1989)	9,820
Pupil-Teacher Ratio (1988-89)	19.8-1
Percent High School Graduates to College (1988-89)	44.7-1
Expenditures Per Pupil (1988-89)	\$2,463.09

### Nonpublic Schools

<u>School</u>	<u>Enrollment</u>	<u>Grades</u>
St. Aloysius Elementary	135	1-8
St. Benedict Elementary	61	1-8

### Area Colleges and Universities

<u>Name</u>	<u>Location (Miles distant)</u>	<u>Enrollment (Fall, 1989)</u>
Bellarmino College	Louisville, Kentucky (20)	3,724
Jefferson Community College	Louisville, Kentucky (20)	9,039
Spalding University	Louisville, Kentucky (20)	1,112
University of Louisville	Louisville, Kentucky (20)	23,182
Indiana University Southeast	New Albany, Indiana (23)	5,452
Elizabethtown Community College	Elizabethtown, Kentucky (26)	3,009
Saint Catharine College	Springfield, Kentucky (40)	242



## Vocational Training

Vocational training is available at both the state vocational-technical schools and the area vocational education centers. The state vocational-technical schools are post-secondary institutions. The area vocational education centers are designed to supplement the curriculum of high school students. Both the state vocational-technical schools and the area vocational education centers offer evening courses to enable working adults to upgrade current job skills.

Arrangements can be made to provide training in the specific production skills required by an industrial plant. Instruction may be conducted either in the vocational school or in the industrial plant, depending upon the desired arrangement and the availability of special equipment.

### Bluegrass State Skills Corporation

The Bluegrass State Skills Corporation, an independent public corporation created and funded by the Kentucky General Assembly, provides programs of skills training to meet the needs of business and industry from entry level to advanced training, and from upgrading present employees to retraining experienced workers.

The Bluegrass State Skills Corporation is the primary source for skills training assistance for a new or existing company. The Corporation works in partnership with other employment and job training resources and programs, as well as Kentucky's economic development activities, to package a program customized to meet the specific needs of a company.

<u>Vocational School</u>	<u>Location (Miles distant)</u>	<u>Cumulative Enrollment 1989-1990</u>
Bullitt County Area Vocational Education Center	Shepherdsville, Kentucky	220
Jefferson State Vocational- Technical School and Manpower Skills Center	Louisville, Kentucky (20)	1,225
Elizabethtown State Vocational-Technical School	Elizabethtown, Kentucky (26)	797

## OTHER LOCAL FACILITIES

### Local Medical Personnel

Physicians - 12  
Dentists - 11

### Hospitals

There are 17 hospitals with facilities for acute care, psychiatric care, rehabilitation, and chemical dependency treatment located in Louisville, 20 miles from Shepherdsville. Also, hospitals are located in nearby Elizabethtown, 26 miles southwest of Shepherdsville, and Bardstown, 23 miles southeast of Shepherdsville.

### Other Medical Facilities and Services

Bullitt County Health Department  
Bullitt County PT Clinic (an outpatient therapy center)  
Seven Counties Service, Inc. (a mental health center)  
Colonial House of Shepherdsville ( nursing home)  
Pleasantview Personal Care Home  
Bullitt County Emergency Medical Service (ambulance service)

### Banks and Savings and Loan Associations

Bullitt County Bank  
The Peoples Bank of Bullitt County  
The Peoples Bank of Mt. Washington  
Bullitt Federal Savings and Loan Association

### Newspapers

Pioneer News (bi-weekly)

### Telephone Service

ALLTEL Kentucky, Inc. (serves Mt. Washington and Shepherdsville)  
South Central Bell Telephone Company ( serves Lebanon Junction and Hillview)

## RECREATION

### Local

Bullitt County features a wide variety of recreational facilities and opportunities for all ages. Several public parks are located in the county. The 10-acre Shepherdsville Recreational Park features three baseball fields, a football field, and a play area. Mt. Washington's public parks include a 25-acre community park with two baseball fields, two tennis courts, and a basketball court; and the Mt. Washington Lions Club Park featuring a playground and picnic area. Lebanon Junction has a three-acre city park with a tennis court, a basketball court, a picnic area, a tot lot, a shelter, and a ball field complex with two ball fields, a concession stand and restrooms. The Bullitt County Recreation Complex includes two softball fields, four baseball fields, a swimming pool, a soccer field, a playground, and a concession stand with restrooms.

Bernheim Forest Arboretum and Nature Center, located seven miles southeast of Shepherdsville, is a privately endowed 10,000-acre forest and wildlife refuge. The area contains over 1,200 labeled varieties of plants, trees and shrubs; ornamental gardens; a nature center; nature trails and waterfowl ponds.

The Jim Beam's American Outpost Museum and Tourist Center offers tours of the James B. Beam Distilling Company, the world's largest bourbon producer. The center is located near Clearmont.

Camp Crescendo, a modern youth camp specializing in the training of high school bands, covers 300 acres near Lebanon Junction and features a junior Olympic pool, a 20-acre lake, and accommodations. The camp is available in off-season months for meeting and retreats.

The KOA Campground, near Shepherdsville, offers a walking tour of pre-historic Indian rock shelters.

Other recreational facilities include a saddle club horse show ring, the North Bullitt Little League Field, Valley View Lake, West Bullitt Recreation Park, 3 golf courses, a campground, a go-cart track, bowling centers, and skating rinks.

Louisville, 20 miles north of Shepherdsville, provides a wide variety of recreational opportunities. The most noted recreational event in Louisville is the Kentucky Derby at Churchill Downs. The "Run for the Roses" is the oldest continuously held horse race in the United States. Other attractions include: Kentucky Center for the Arts, Macauley Theatre, Actors Theatre of Louisville, Louisville Children's Theatre, the Louisville Bach Society, the Louisville Orchestra, the Louisville Ballet, the Kentucky Opera Association, several museums, the Louisville Zoological Gardens, University of Louisville sporting events, rock concerts, and the "Belle of Louisville" sternwheeler.

### Area (Within 50 miles)

My Old Kentucky Home State Park  
E.P. Tom Sawyer State Park  
Abraham Lincoln Birthplace National  
Historic Site  
Lincoln Homestead State Park  
Taylorsville Lake State Park



## COMMUNITY IMPROVEMENTS

### Recent

Papes Archery opened in the South Louisville Industrial Park in 1990. The company, which manufactures bow strings and arrows for target and bowhunting, employs 15.

Major improvements to Interstate 65 in Bullitt County have been completed since 1987. I-65 was widened to six lanes and two exits were converted to interchanges. Improvements were also made to the Shepherdsville interchange.

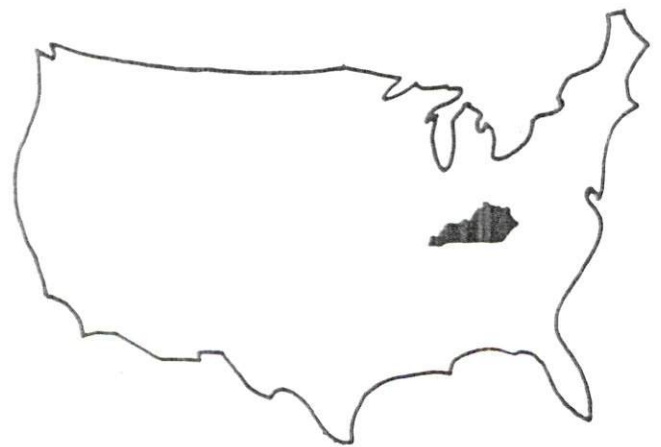
The city of Mt. Washington has recently completed extensive improvements to its sewerage treatment plant. A \$1,217,000 Kentucky Infrastructure Grant funded the project.

The Bullitt County School System plans to construct a new middle school which will be open for the Fall 1992 school year. An elementary school was constructed in 1989.

### Underway

Kentucky Publishers is currently constructing a new plant in Lebanon Junction. The company, which already operates a plant in Shepherdsville, expects to employ 300 people at the new facility within two years. The project represents an \$8 million investment. In addition, the city of Lebanon Junction acquired an \$800,000 Infrastructure Authority Grant and a Community Development Block Grant to construct a 300,000 gallon water tank which will serve the new Kentucky Publishers plant.

A private developer is in the process of developing a 200-acre Industrial Park in Shepherdsville. The property is adjacent to I-65 and already has utilities in place.



**KENTUCKY**  
*Open for Business*