

1977

Industrial Resources: Calloway County - Murray

Kentucky Library Research Collections
Western Kentucky University, spcol@wku.edu

Follow this and additional works at: https://digitalcommons.wku.edu/calloway_cty

 Part of the [Business Administration, Management, and Operations Commons](#), [Growth and Development Commons](#), and the [Infrastructure Commons](#)

Recommended Citation

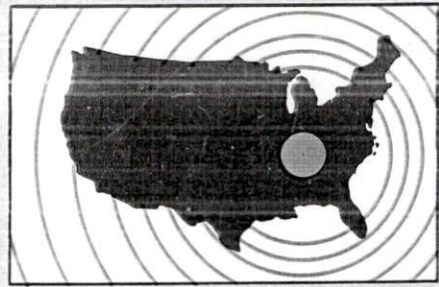
Kentucky Library Research Collections, "Industrial Resources: Calloway County - Murray" (1977). *Calloway County*. Paper 8.
https://digitalcommons.wku.edu/calloway_cty/8

This Report is brought to you for free and open access by TopSCHOLAR®. It has been accepted for inclusion in Calloway County by an authorized administrator of TopSCHOLAR®. For more information, please contact topscholar@wku.edu.

INDUSTRIAL RESOURCES

MURRAY

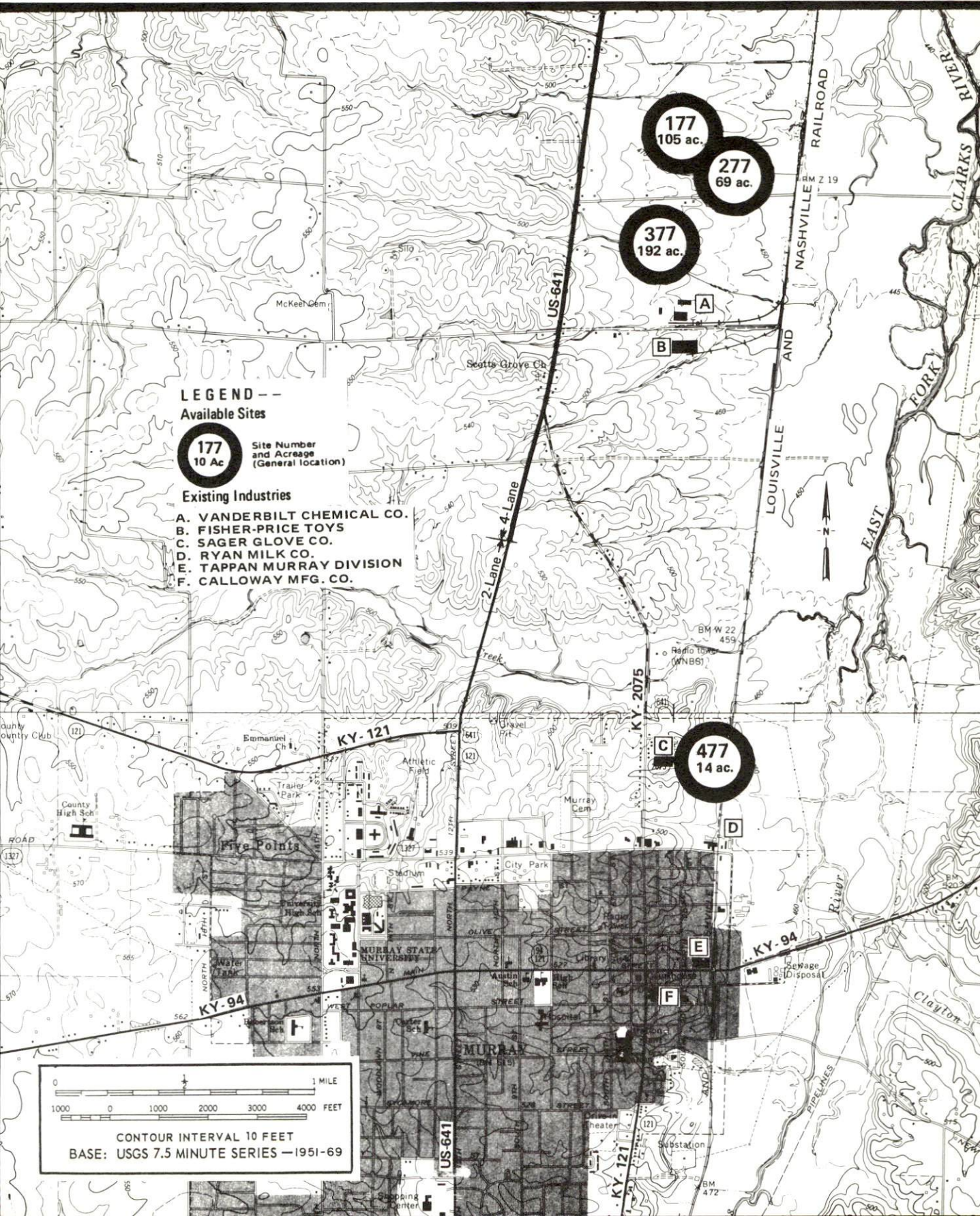
**Kentucky
first**



DEPARTMENT OF COMMERCE

MURRAY, KENTUCKY --- Index to Industrial Sites --- 1977

For detailed data on individual sites, contact Mr. James L. Johnson, Executive Director, Murray Chamber of Commerce, Murray, Kentucky 42071 or the Kentucky Department of Commerce, Capital Plaza Tower, Frankfort, Kentucky 40601



LEGEND --
Available Sites

177
10 Ac
Site Number and Acreage (General location)

Existing Industries

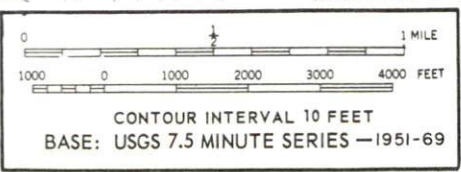
- A. VANDERBILT CHEMICAL CO.
- B. FISHER-PRICE TOYS
- C. SAGER GLOVE CO.
- D. RYAN MILK CO.
- E. TAPPAN MURRAY DIVISION
- F. CALLOWAY MFG. CO.

177
105 ac.

277
69 ac.

377
192 ac.

477
14 ac.



MURRAY, KENTUCKY INDUSTRIAL PARK





KY-2075

SAGER GLOVE PLANT

ACCESS ROAD

13.7 ACRES

LOUISVILLE & NASHVILLE RAILROAD

PARK SERVED BY 8-INCH WATER AND SEWER LINES.

INDUSTRIAL RESOURCES

MURRAY, KENTUCKY

Prepared by
The Kentucky Department of Commerce
Division of Research and Planning
in cooperation with
The Murray Chamber of Commerce

1977

Production supervisor: Patsy Wallace; research: Terry Patterson;
clerical: Barbara Blair; graphics: N. C. Montague, Frank Ferrante,
Tony Cecconi; cartography: Site Development Section. Cost of print-
ing paid from state funds.

TABLE OF CONTENTS

<u>Chapter</u>	<u>Page</u>
INDUSTRIAL SITES	i
MURRAY, KENTUCKY - A RESOURCE PROFILE	1
THE LABOR MARKET AREA	4
Population	4
Labor Force Characteristics of Residents, 1975	4
Nonagricultural Employment by Industry, by Place of Work, 1975	5
Murray Manufacturing Firms, Their Products and Employment	6
Labor Organizations	9
Estimated Male Labor Supply	10
Estimated Female Labor Supply	10
Average Weekly Wages by Industry, by Place of Work, 1975	11
Per Capita Personal Income	13
TRANSPORTATION	14
Rail	14
Highways	14
Truck Service	15
Air	16
Bus	16
Taxi	16
Rental Services	16
Water	16
POWER AND FUEL	17
Electricity	17
Natural Gas	19
Other Fuels	19
WATER AND SEWERAGE	20
Water	20
Sewerage	24

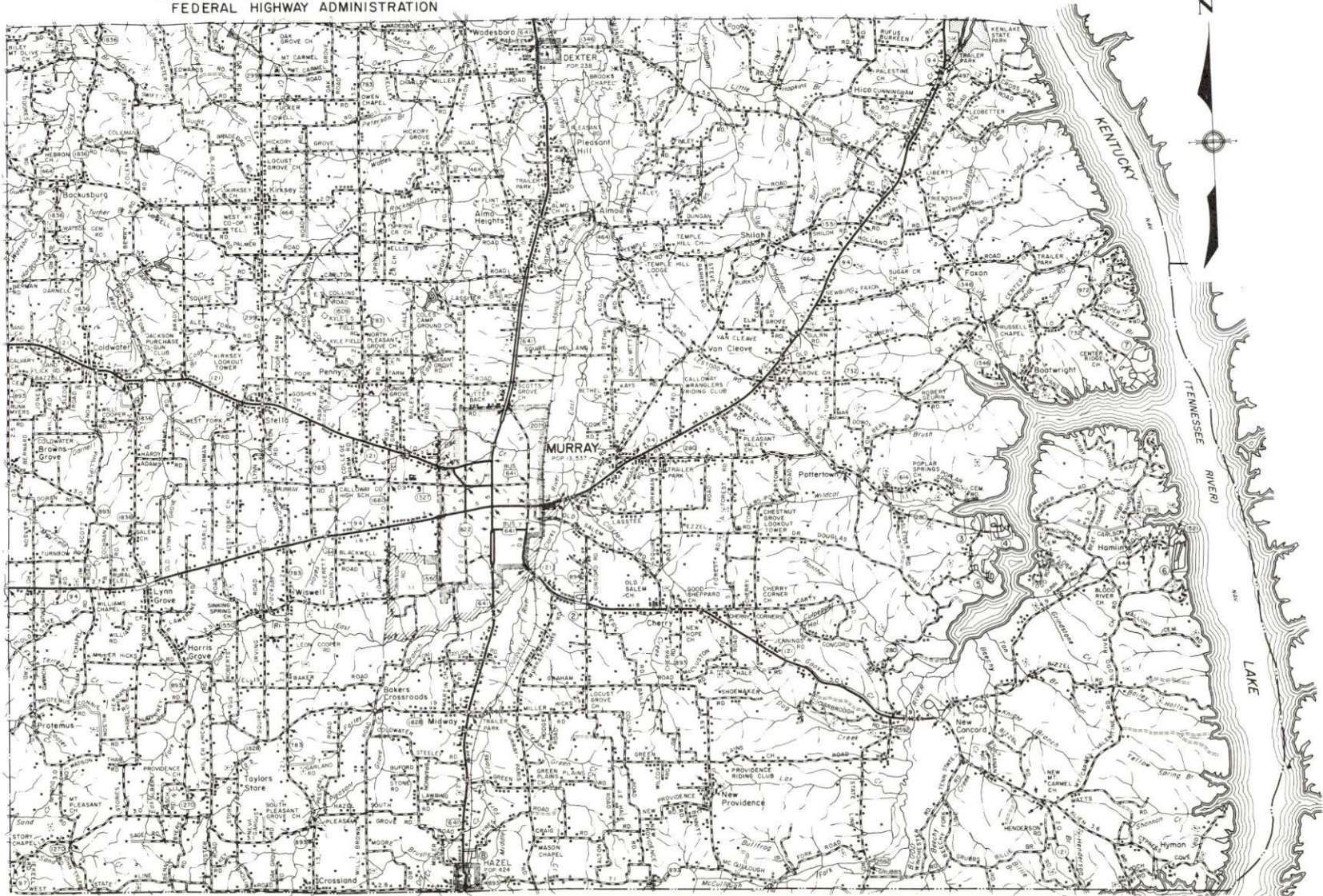
<u>Chapter</u>	<u>Page</u>
CLIMATE	25
LOCAL GOVERNMENT	26
City	26
County	26
Assessed Value of Property, 1976-77	26
Property Taxes	26
Local Property Tax Rate Per \$100 of Assessed Valuation, 1976.	27
Utilities Gross Receipts Tax for Schools	27
Planning and Zoning	28
Safety	28
Police	28
Fire	28
Fire and Rescue Service.	28
Solid Waste	29
EDUCATION	31
Public Schools.	31
Area Colleges and Universities	32
Vocational Schools.	37
HEALTH	38
Local Medical Personnel	38
Hospitals	38
Ambulance Service.	38
Nursing Homes	39
Public Health	39
OTHER LOCAL FACILITIES.	41
Communications	41
Library Services	41
Religious Institutions.	42
Financial Institutions.	42
Hotels and Motels	43
Clubs and Organizations	43
RECREATION	45
COMMUNITY IMPROVEMENTS	47
HISTORY	51

GENERAL HIGHWAY MAP CALLOWAY COUNTY KENTUCKY

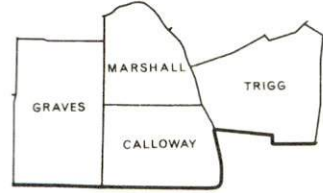
PREPARED BY THE
KENTUCKY DEPARTMENT OF TRANSPORTATION
OFFICE OF TRANSPORTATION PLANNING
DIVISION OF FACILITIES PLANNING
 IN COOPERATION WITH THE
U.S. DEPARTMENT OF TRANSPORTATION
FEDERAL HIGHWAY ADMINISTRATION



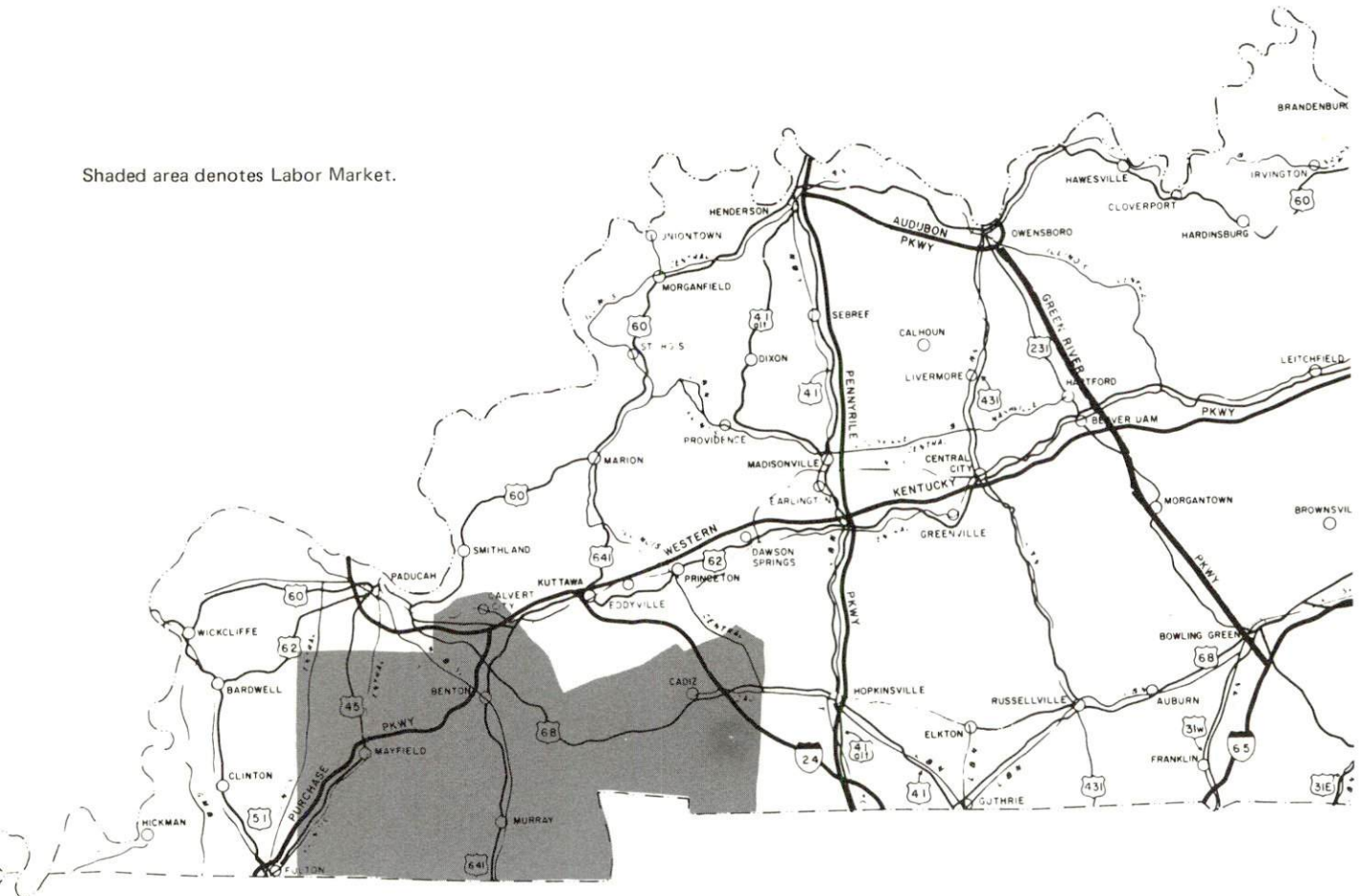
ORIGINAL DATA 1962		
REVISIONS		
DATE	BY	BY
11-70	ML	
11-71	ML	
11-72	ML	
11-73	ML	
11-74	ML	
11-75	ML	
11-76	ML	



MURRAY LABOR MARKET AREA



Shaded area denotes Labor Market.



MURRAY, KENTUCKY - A RESOURCE PROFILE

Murray, county seat of and largest city in Calloway County, is located in the flatlands of the Jackson Purchase Region of western Kentucky. The Purchase is both an historic and a geographic hub of America. Before settlers entered the territory, it was a borderland between northern and southern Indian tribes. In the pre-Civil War era it was a borderland between free and slave states. In Murray and Calloway County visitors discover a pleasing mixture of the best of all four regions, including true southern hospitality which is part of the area's priceless heritage.

Surrounding Murray are the waterways of Kentucky's southwest corner--the Western Waterlands--known for huge lakes and numerous rivers and streams. The proximity to the Western Waterlands has made the community a tourist center, and has proven to be a great asset for industrial growth.

Murray is 45 miles southeast of Paducah, Kentucky; 121 miles southwest of Evansville, Indiana; 123 miles northwest of Nashville, Tennessee; and 213 miles southeast of St. Louis, Missouri. Murray had a 1973 estimated population of 12,876.

Calloway County, which covers a land area of 384 square miles, is bound on the south by the Kentucky-Tennessee state line, on the west by Graves County, on the north by Marshall County, and on the east by Kentucky Lake. In 1975, Calloway County had an estimated population of 29,100.

The Economic Framework

The total number of Calloway County residents employed in 1975 averaged 11,510, with nonagricultural jobs accounting for 10,850 workers. Manufacturing employers in the county reported 910 workers; mining and quarrying 20; construction firms 280; transportation, communications, and public utilities 130; wholesale and retail trade 1,870; finance, insurance, and real estate 210; and employees in the service industries 1,850. Major industrial products are gas and electric ranges and toys.

Total unemployment in Calloway County averaged 7.5 percent of the labor force in 1975.

Per capita personal income in the county in 1974 was \$3,727, an increase of 49.7 percent since 1970.

The Murray labor market area includes Calloway, the three adjoining Kentucky counties, and Henry County in Tennessee. The total number of residents in the Kentucky portion of the labor market area employed in 1975 averaged 34,890, with nonagricultural jobs accounting for 32,350 workers. Manufacturing employers in the area reported 8,180 workers; mining and quarrying 120; construction firms 1,160; transportation, communications, and public utilities 670; wholesale and retail trade 4,840; finance, insurance, and real estate 710; and employees in the service industries 3,690.

Resources for Growth

1. Labor Supply - There is a current estimated labor supply of 5,020 men and 4,990 women available for industrial jobs in the Kentucky portion of the labor market area. In addition, 3,880 young men and 3,630 young women in this area will become 18 years of age before 1982 and potentially available for work. The current labor supply would be supplemented by the number of men and women in the adjoining Tennessee county who are available for industrial jobs.

2. Transportation - The local transportation capability is good. The Louisville and Nashville Railroad provides a variety of services. An interchange of the Purchase Parkway is only 19 miles north of Murray via U.S. Highway 641. Interstate 24, from Chattanooga to points in Illinois and connecting with other interstates to St. Louis and Chicago, is under construction and expected to be completed in 1980. When completed, an interchange will be located only 28 miles north of Murray. Eight truck lines serve Murray. Murray's Kyle Field provides service for light aircraft, and commercial air service is available in Paducah, 45 miles northwest of Murray. The first commercial port of the West Bank of Kentucky Lake, only 12 miles from Murray, opened in October, 1976.

3. Utilities and Fuel - Electricity is supplied to Murray by the Murray Electric System and to Calloway County by West Kentucky RECC. Both companies receive their power from the Tennessee Valley Authority. There are six distillate fuel oil distributors and one propane distributor located in Murray. Natural gas service is provided by the Murray Natural Gas System.

4. Education - Education is an important growth asset for the Murray area. Two public school systems operate in Calloway County. An area vocational education center offering seven courses is located in Murray. The nearest state vocational-technical school is located in Paducah, 45 miles distant, and offers 13 courses.

Murray is also the home of Murray State University, which has an enrollment of more than 7,880 students. The University is a comprehensive coeducational institution offering three associate degrees, ten baccalaureate degrees, seven master's degrees, and two specialists degrees. The academic structure of the University is as follows: College of Business and Public Affairs, College of Creative Expression, College of Environmental Sciences, College of Human Development and Learning, College of Humanistic Studies, and Industry and Technology. In addition, one university extension campus, one senior college, and one community college are located within 50 miles of Murray.

THE LABOR MARKET AREA

POPULATION

Area	1975*	1970	Percent Nonwhite
			1970
Murray	12,876**	13,537	5.5
Labor Market Area	92,700	87,632	N. A.
Calloway County	29,100	27,692	3.2
Graves County	32,300	30,939	4.9
Marshall County	22,300	20,381	0.2
Trigg County	9,000	8,620	18.0

*Provisional Estimates.

**1973 Population Estimates.

Sources: U.S. Department of Commerce, Bureau of the Census, Census of Population, 1970. U.S. Department of Commerce, Bureau of the Census, Current Population Reports, Series P-25, No. 562, June 1975; Series P-26, No. 75-17, May 1976.

LABOR FORCE CHARACTERISTICS OF RESIDENTS, 1975

	<u>Calloway County</u>	<u>Labor Market Area</u>
Civilian Labor Force	12,436	38,620
Employment	11,506	34,886
Agricultural	661	2,541
Nonagricultural	10,845	32,345
Unemployment	930	3,734
Rate of Unemployment (%)	7.5	9.7

Source: Kentucky Department for Human Resources, Kentucky Labor Force Estimates, Annual Averages, 1975.

NONAGRICULTURAL EMPLOYMENT BY INDUSTRY,
BY PLACE OF WORK, 1975

	<u>Calloway County</u>	<u>Labor Market Area</u>
All Industries	5,307	19,505
Mining & Quarrying	20	117
Contract Construction	281	1,159
Manufacturing	907	8,175
Food & Kindred Products	136	208
Tobacco	0	0
Apparel, Textiles & Leather	15	1,458
Lumber & Furniture	7	443
Printing & Publishing, Paper	40	125
Chemicals, Petroleum, Coal & Rubber	59	3,647
Stone, Clay & Glass	24	506
Primary Metals	0	591
Machinery, Metal Products & Equipment	344	816
Other Manufacturing	281	379
Transportation, Communications & Public Utilities	130	670
Wholesale & Retail Trade	1,870	4,835
Finance, Insurance & Real Estate	212	705
Services	1,853	3,685
Other	36	66

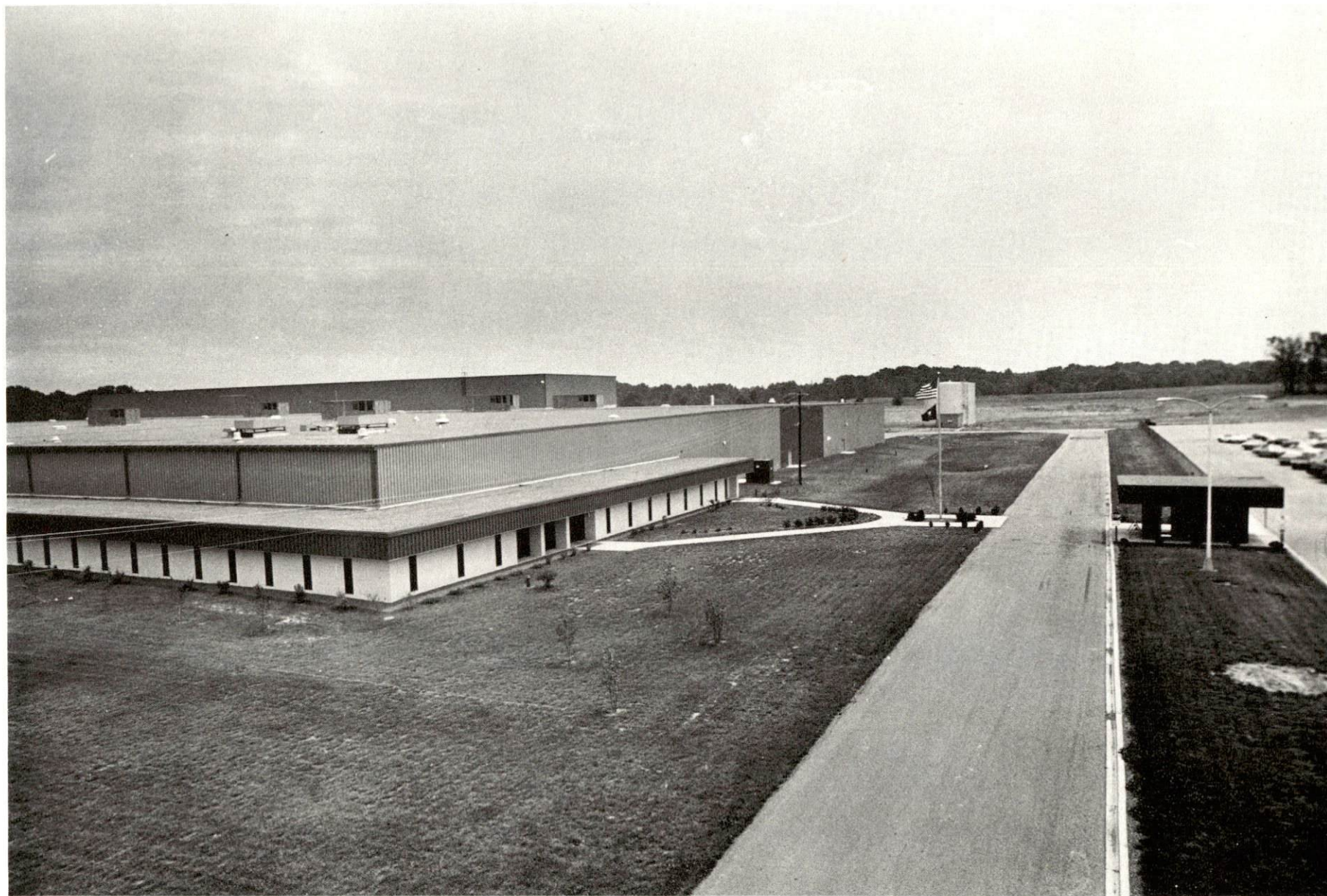
Note: Excludes domestic workers, railway workers; certain nonprofit corporations; majority of federal, state, and local government workers; and self employed workers. Labor market area totals for some employment categories exclude employment that was not disclosed for individual counties. Manufacturing detail may not add to totals because of rounding of base data.

Source: Kentucky Department for Human Resources, Average Monthly Workers Covered by Kentucky Unemployment Insurance Law, 1975.

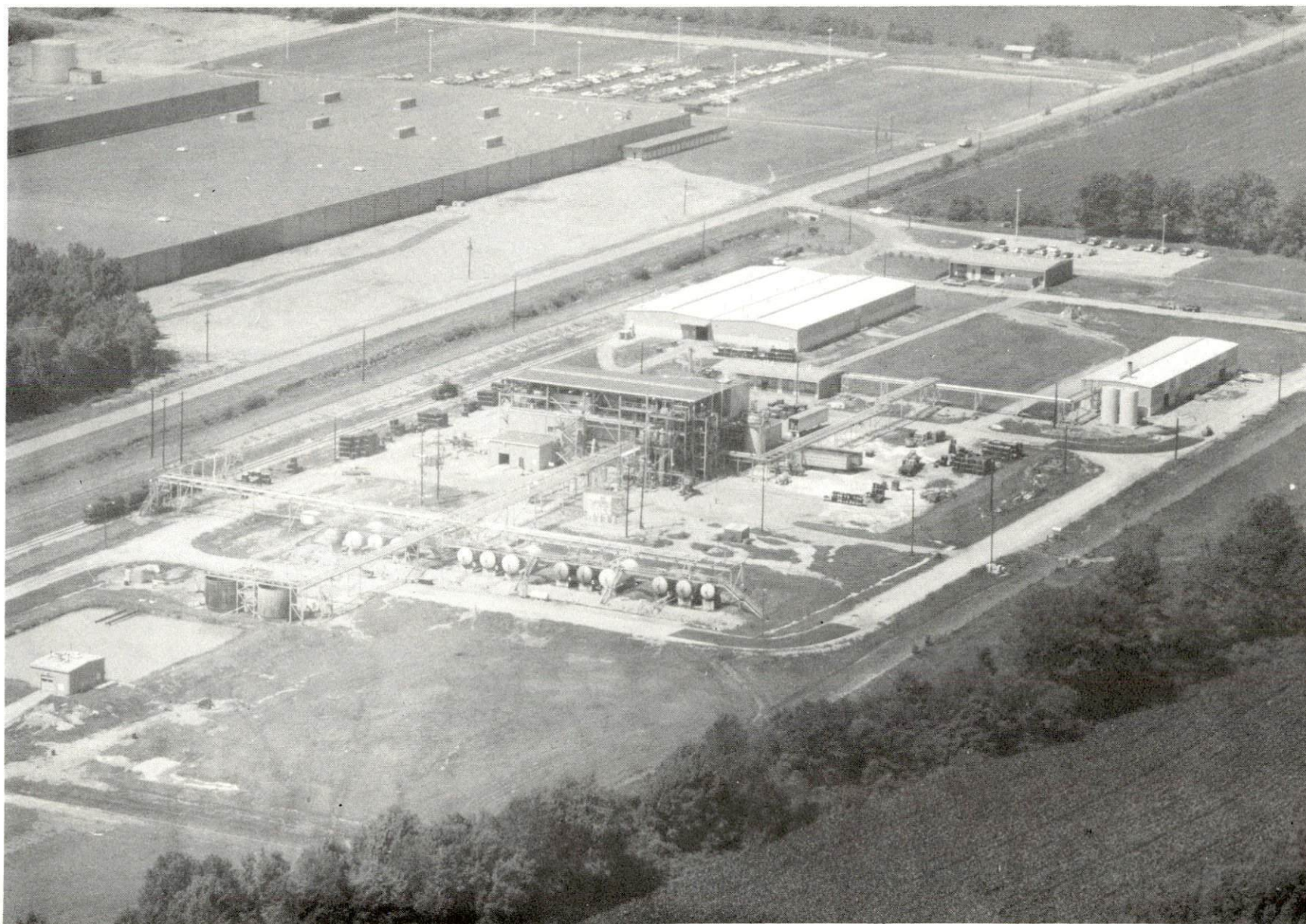
MURRAY MANUFACTURING FIRMS,
THEIR PRODUCTS AND EMPLOYMENT

<u>Firm</u> (Establishment date)	<u>Product</u>	<u>Employment</u>			<u>Organized</u>
		<u>Total</u>	<u>Male</u>	<u>Female</u>	
Calloway Manufacturing Company (1976)	Jeans, walking shorts	80	5	75	
Ellis Popcorn Company, Inc. (1950)	Popcorn	4	3	1	
Fisher Price Toys (1973)	Toys	352	160	192	
Fitts Block & Ready Mix Company, Inc. (1945)	Concrete block, Ready-mixed concrete	17	17	0	
General Silica Products, Inc. of Kentucky (1968)	Resin coated silica sand	12	11	1	
Hutson Chemical Company, Inc. (1938)	Fertilizer	20	17	3	
Ledger & Times Publishing Company, Inc. (1879)	Newspaper	23	12	11	
Murray Coal & Ice Service, Inc. (1924)	Ice	5	5	0	
Murray Fabrics, Inc. (1955)	Knitted tubing	17	3	14	
Murray Machine & Tool Company (1921)	Septic water tanks, machine shop, ornamental ironwork	12	12	0	
Parker Popcorn Company, Inc. (1937)	Popcorn, dent corn	11	10	1	
Redmon Stake Company, (1969)	Wooden stakes	3	1	2	
Ryan Milk Company (1929)	Milk, cream, sour cream	115	100	15	*
Sager Glove Company (1965)	Safety apparel	78	16	62	
Tappan Company, Murray Division (1946)	Gas and electric ranges	580	550	30	*

(Contd.)



FISHER-PRICE TOYS



VANDERBILT CHEMICAL CORPORATION

<u>Firm</u> (Establishment date)	<u>Product</u>	<u>Employment</u>			<u>Organized</u>
		<u>Total</u>	<u>Male</u>	<u>Female</u>	
Vanderbilt Chemical Corporation, Murray Division (1969)	Industrial chemical additives	39	37	2	*
Weaver Popcorn Company (1947)	Popcorn	3	2	1	
Winchester Printing Services, Inc. (1964)	Job printing	10	5	5	
York Spring Company (1970)	Springs	4	4	0	

*See Labor Organizations below.

Source: Kentucky Department of Commerce, Division of Research and Planning.

LABOR ORGANIZATIONS

<u>Union</u>	<u>Representing manufacturing workers at:</u>
Amalgamated Meat Cutters and Butcher Workmen of North America	Ryan Milk Company
United Auto Workers	Tappan Company
Oil, Chemical and Atomic Workers	Vanderbilt Chemical Company

ESTIMATED MALE LABOR SUPPLY
MURRAY LABOR MARKET AREA

Area	Current			Under- employed	Future
	Total	Not in Labor Force	Unemployed		Reaching 18 yrs. of age before 1982
Labor Market					
Area	5,020	1,640	1,350	2,030	3,880
Calloway	1,360	0	310	1,050	1,037
Graves	900	0	400	500	1,441
Marshall	2,460	1,640	500	320	969
Trigg	300	0	140	160	433

Sources: Kentucky Department for Human Resources, Kentucky Labor Supply Estimates by County, 1975. Kentucky Department of Commerce, Future Labor Supply before 1982.

ESTIMATED FEMALE LABOR SUPPLY
MURRAY LABOR MARKET AREA

Area	Current			Under- employed	Future
	Total	Not in Labor Force	Unemployed		Reaching 18 yrs. of age before 1982
Labor Market					
Area	4,990	1,730	1,070	2,190	3,631
Calloway	1,260	0	310	950	974
Graves	1,040	0	420	620	1,357
Marshall	2,400	1,730	220	450	923
Trigg	290	0	120	170	377

Sources: Kentucky Department for Human Resources, Kentucky Labor Supply Estimates by County, 1975. Kentucky Department of Commerce, Future Labor Supply before 1982.

AVERAGE WEEKLY WAGES BY INDUSTRY,
BY PLACE OF WORK, 1975

	<u>Calloway</u> <u>County</u>	<u>Graves</u> <u>County</u>	<u>Marshall</u> <u>County</u>	<u>Trigg</u> <u>County</u>
All Industries	\$142.58	\$152.44	\$212.44	\$119.93
Mining & Quarrying	158.39	155.63	*	0
Contract Construction	153.15	170.18	248.77	155.95
Manufacturing	183.21	172.44	270.16	138.88
Transportation, Communications & Public Utilities	188.75	207.59	172.43	176.17
Wholesale & Retail Trade	106.39	121.62	102.68	84.87
Finance, Insurance & Real Estate	146.63	155.57	156.48	146.25
Services	154.78	110.78	88.44	87.12
Other	80.96	69.24	*	0

Note: Excludes domestic workers, railway workers; certain nonprofit corporations; majority of federal, state, and local government workers; and self employed workers.

*Not disclosed.

Source: Kentucky Department for Human Resources, Average Weekly Wages of Workers Covered By Unemployment Insurance, 1975.

Up-to-date occupational wage rates of the existing industries are maintained by South Kentucky Industrial Development Association, Post Office Box 726, Hopkinsville, Kentucky 42240.

PER CAPITA PERSONAL INCOME

<u>Area</u>	<u>1974</u>	<u>1970</u>	<u>Percent Change</u>
Calloway County	\$3,727	\$2,490	49.7
Labor Market Area			
Range	\$3,727 - 4,521	\$2,490 - 3,022	N.A.
Kentucky	4,442	3,112	42.7
U.S.	5,448	3,966	37.4

Sources: U.S. Department of Commerce, Bureau of Economic Analysis, Survey of Current Business, August 1975. U.S. Department of Commerce, Bureau of Economic Analysis, March 1976.

TRANSPORTATION

Rail

Line serving Murray - Louisville and Nashville Railroad

Services - One northbound and two southbound freight stops Monday through Saturday; switching facilities; team track for 5 cars; siding space for approximately 100 cars; nearest piggyback facilities are at Paris, Tennessee, 33 miles distant

For details on routing, schedules, rates, and services, contact:

Manager of Industrial Development
Louisville and Nashville Railroad
908 West Broadway
Louisville, Kentucky 40203
(502) 587-5000

Highways

U.S. Highway 641 and Kentucky Highways 94, 121 and 280 serve Murray. An interchange of the Purchase Parkway is located 19 miles to the north at Benton. Interstate 24, now under construction, provides a direct interstate link with St. Louis and Chicago. The section of Interstate 24 from Paducah to Cadiz, Kentucky, is scheduled to be completed in 1980. Once this section is completed, an interchange of Interstate 24 will be located 28 miles north of Murray and provide access to the southern interstate networks at Nashville and Chattanooga. Access to these major highways will be greatly improved with the widening of U.S. 641 to four lanes from Murray to Benton. Construction on this project is scheduled to begin in the spring of 1977.

Truck Service

<u>Company</u>	<u>Home Office</u>
Jack Cole-Dixie Highway Company	215 South 11th Street Minneapolis, Minnesota 55403
Cooper-Jarrett, Inc.	23 South Essex Avenue Orange, New Jersey 07051
Harper Truck Service, Inc.	1266 North 8th Street Paducah, Kentucky 42002
McLean Trucking Company	P. O. Box 213 Winston-Salem, North Carolina 21702
Paschall Truck Lines, Inc.*	Route 4 Murray, Kentucky 42071
Lynn G. Robinson Trucking Company*	400 North 4th Street Murray, Kentucky 42071
T. I. M. E. - DC, Inc.	P. O. Box 2550 Lubbock, Texas 79408
United Trucking Service, Inc.	3047 Lonyo Road Detroit, Michigan 48209

Other Freight Services

Shipping Center

United Parcel Service Paducah, 45 miles distant

HIGHWAY MILES AND TRUCK TRANSIT TIME IN DAYS FROM
MURRAY, KENTUCKY, TO SELECTED MARKET CENTERS

City	Delivery		City	Delivery	
	Highway Miles	Time TL		Highway Miles	Time TL
Atlanta, Ga.	365	2	Los Angeles, Calif.	2,058	5
Birmingham, Ala.	319	2	Louisville, Ky.	220	1
Chicago, Ill.	409	2	Nashville, Tenn.	123	1
Cincinnati, Ohio	321	2	New Orleans, La.	661	2
Cleveland, Ohio	568	2	New York, N. Y.	980	3
Detroit, Mich.	580	3	Pittsburgh, Pa.	611	3
Knoxville, Tenn.	300	2	St. Louis, Mo.	213	1

Source: Delivery Time Only - Paschall Truck Lines, Inc., Route 4, Murray, Kentucky 42071.

*Local terminal.

Air

	<u>Local</u>	<u>Nearest Commercial</u>
Location:	Kyle Field 5 miles northwest of Murray	Barkley Field Paducah, 45 miles northwest
Runways:	1 paved	2 paved
Length:	4,000 feet*	6,500 and 4,000 feet
Traffic		
Control:	Wind sock and tee	Tower, ground control, approach control
Lighting:	Beacon, medium intensity runway lights sundown to 12:30 a. m. ; wind tee	Beacon, boundary, obstruction, run- way lights and runway end identi- fication lights; medium intensity approach lighting system
Services:	100 octane, charter, flight instruction, hangar and tie down, minor A & E repairs	Delta and Ozark Airlines, 100 octane and JA-1 fuel; major A & E repairs; storage; taxi; limousine; U-Drive-It; restaurant
Air Freight		
Service:	Chartered air freight service must be arranged	Freight accepted on a space available basis

Bus - Murray-Calloway County Transit Authority**
Brooks Bus Lines, Inc.
Southern Greyhound Bus Lines

Taxi - One company, 18-hour daily service

Rental Services - Car, truck, and trailer rentals

Water

The first commercial port of the West Bank of Kentucky Lake, 12 miles from Murray, opened on October 10, 1976. This large privately owned port, operated by the Hutson Chemical Company, is capable of unloading eight barges simultaneously. The port has been officially designated the Port of Murray-Calloway County, Kentucky, since the city and county plan to take over operations in several years. Construction of two warehouses is planned.

*The airport plans to lengthen the runway to 5,000 feet.

**The Murray-Calloway County Transit Authority has started experimental bus service in the city and will expand service to include the county.

POWER AND FUEL

Electricity

Company serving Murray - Murray Electric System
Source of power - Tennessee Valley Authority
Total generating capacity - 26,723,430 KW
For industrial rates contact:

South Kentucky Industrial Development
Association, Inc.
P.O. Box 726
Hopkinsville, Kentucky 42240
(502) 885-5392

and/or

Murray Electric System
401 Olive Street
Murray, Kentucky 42071
(502) 753-5312

Company serving Calloway County - West Kentucky RECC
Source of power - Tennessee Valley Authority
Total generating capacity - 26,723,430 KW
For industrial rates contact:

South Kentucky Industrial Development
Association, Inc.
P.O. Box 726
Hopkinsville, Kentucky 42240
(502) 885-5392

and/or

West Kentucky RECC
P.O. Box 589
Mayfield, Kentucky 42066
(502) 247-1321



MURRAY ELECTRIC SYSTEM
MURRAY WATER AND SEWER SYSTEM



MURRAY CITY HALL AND NATURAL GAS BUILDING

Natural Gas

Company serving Murray - Murray Natural Gas System
Source of supply - Texas Gas Transmission Corporation
Size of transmission mains - 26 and 30 inches (supplier);
6 inches (distributor)
Distribution mains - 2, 4 and 6 inches
Distribution pressure - 20 to 40 psi
Btu content - 1,005-1,008 per cubic foot; Specific gravity - 0.60
For rates and supplies contact:

Murray Natural Gas System
P.O. Box 466
Murray, Kentucky 42071
(502) 753-5626

Other Fuels

Propane (located in Murray)

Texgas Corporation, Railroad Avenue

Fuel oils (all located in Murray)

Distillate fuel oil -

Gulf Oil Products Distributor, 403 South 2nd Street

J & S Oil Company, 518 South 12th Street

Kentucky Lake Oil Company, New Concord Road

Roberts Oil Company, 506 North 4th Street

Standard Oil Company Agent and Bulk Plant, Railroad Avenue

Texaco Bulk Plant, South 2nd Street

Residual fuel oil - Arrangements must be made with the refinery.

Low sulphur content coal - Available in eastern Kentucky.

WATER AND SEWERAGE

Water

Company serving Murray - Murray Water and Sewer System
P.O. Box 6
Murray, Kentucky 42071
(502) 753-4321

Source - Six wells*

Treatment plant capacity - 5,000,000 gallons per day

Average daily consumption - 2,000,000 gallons

Peak daily consumption - 3,000,000 gallons

Type treatment - Iron removal, chlorination, fluoridation, P.H. adjustment

Storage capacity - 3,450,000 gallons

Size lines - 4, 6, 8, 10, 12 and 16 inches

Average pressure - 50 psi

Average temperature - 59 degrees F.

MONTHLY WATER RATES FOR WHOLESALE AND INDUSTRIAL CONSUMERS

INSIDE CITY:

Minimum Rate		\$2.50
First	2,000 gallons	1.25 per M gallons
Next	2,000 gallons	1.11 per M gallons
Next	2,000 gallons	.95 per M gallons
Next	2,000 gallons	.81 per M gallons
Next	2,000 gallons	.70 per M gallons
Next	50,000 gallons	.56 per M gallons
Next	240,000 gallons	.31 per M gallons
Next	1,700,000 gallons	.25 per M gallons
All over	2,000,000 gallons	.20 per M gallons

(Contd.)

*A new well has been drilled to provide an additional source of water to the city. New iron removal equipment will be installed at the plant.

OUTSIDE CITY:

Minimum Rate \$3.00

First	2,000 gallons	1.50 per M gallons
Next	2,000 gallons	1.36 per M gallons
Next	2,000 gallons	1.20 per M gallons
Next	2,000 gallons	1.11 per M gallons
Next	2,000 gallons	.91 per M gallons
Next	50,000 gallons	.81 per M gallons
Next	240,000 gallons	.35 per M gallons
Next	1,700,000 gallons	.25 per M gallons
All over	2,000,000 gallons	.20 per M gallons

Tap-on charge:

<u>Meter Size</u>	<u>Inside City</u>	<u>Outside City</u>
3/4 -inch	\$ 75.00	\$100.00
1 -inch	90.00	115.00
1 1/2 -inch	120.00	145.00
2 -inch	135.00	160.00

Name of water district - Dexter-Almo Heights Water District*
Dexter, Kentucky 42036
(502) 437-4179

Area served - North Calloway County

Date when water district began operating - 1964

Source of supply of treated water - Murray Water and Sewer System

Average amount of water used in a 24-hour period - 40,000 gallons

Storage capacity - 55,000 gallons (not in use)

Size lines - 4, 6 and 8 inches

Rates -	First	2,000 gallons	\$7.00 Minimum
	Next	3,000 gallons	2.00 per M gallons
	Next	5,000 gallons	1.25 per M gallons
	Next	10,000 gallons	1.00 per M gallons
	Over	20,000 gallons	.75 per M gallons

Tap-on charge: Actual cost of installation

*New mains are being installed to allow for widening of U.S. Highway 641.

Name of water district - Murray # 1 Water District
P.O. Box 384
Murray, Kentucky 42071
(502) 753-6612

Area served - East Calloway County
Date when water district began operating - December, 1964
Source of supply of treated water - Murray Water and Sewer System
Average amount of water used in a 24-hour period - 51,500 gallons
Peak amount of water used in a 24-hour period - 54,200 gallons
Storage capacity - 50,000 gallons
Size lines - 6 and 8 inches

Rates -	First	2,000 gallons	\$4.50 Minimum
	Next	3,000 gallons	1.60 per M gallons
	Next	5,000 gallons	1.25 per M gallons
	Next	10,000 gallons	.95 per M gallons
	Next	30,000 gallons	.75 per M gallons
	Next	50,000 gallons	.65 per M gallons
	All over	100,000 gallons	.55 per M gallons

Tap-on charge: \$250

Name of water district - Murray # 2 Water District
Route 5, Box 216
Murray, Kentucky 42071
(502) 753-5099

Area served - Southeastern Calloway County
Date when water district began operating - January, 1970
Source of supply of treated water - Murray Water and Sewer System
Average amount of water used in a 24-hour period - 18,000 gallons
Size lines - 6 and 8 inches

Rates -	First	1,500 gallons	\$4.00 Minimum
	Next	8,500 gallons	2.00 per M gallons
	Next	40,000 gallons	1.00 per M gallons
	Next	50,000 gallons	.75 per M gallons
	Next	400,000 gallons	.50 per M gallons
	Next	500,000 gallons	.40 per M gallons

Tap-on charge: \$250

Name of water district - Murray # 3 Water District
P. O. Box 643
Murray, Kentucky 42071
(502) 753-6390

Area served - Western portion of Calloway County

Date when water district began operating - November, 1970

Source of supply of treated water - Murray Water and Sewer System

Average amount of water used in a 24-hour period - 25,000 gallons

Storage capacity - 50,000 gallons

Size lines - 6 inches

Rates -	First	1,500 gallons	\$4.50 minimum
	Next	3,500 gallons	2.50 per M gallons
	Next	5,000 gallons	1.00 per M gallons
	Next	10,000 gallons	.85 per M gallons
	Next	30,000 gallons	.70 per M gallons
	Next	50,000 gallons	.55 per M gallons
	All over	100,000 gallons	.40 per M gallons

Tap-on charge:	5/8 & 3/4-inch	\$200.00
	1 -inch	300.00
	2 -inch	500.00

Surface water sources - Kentucky Lake and Clark's River

Expected ground water yield - 5 to 50 gpm along the eastern boundary of the county bordering Kentucky Lake; 500 to 1,000 gpm over remainder of the county

Sewerage

Company serving Murray - Murray Water and Sewer System *
P.O. Box 6
Murray, Kentucky 42071
(502) 753-4321

Design capacity - 2,500,000 gallons per day

Average daily flow - 1,900,000 gallons

Treatment - Primary and secondary

Type treatment - Primary and secondary settling, trickling filter,
digester with vacuum filter process for sludge

Treated effluent discharged into - Clark's River

Size of sanitary mains - 6, 8, 15, 18 and 24 inches

Rates (Based on water usage)

Inside City:

First	2,000 gallons	\$2.50 Minimum
Next	2,000 gallons	.36 per 1,000 gallons
Next	2,000 gallons	.32 per 1,000 gallons
Next	2,000 gallons	.27 per 1,000 gallons
Next	2,000 gallons	.24 per 1,000 gallons
Next	50,000 gallons	.18 per 1,000 gallons
Next	240,000 gallons	.14 per 1,000 gallons
Next	1,700,000 gallons	.12 per 1,000 gallons
All over	2,000,000 gallons	.10 per 1,000 gallons

Outside City:

First	2,000 gallons	\$3.00 Minimum
Next	2,000 gallons	.432 per 1,000 gallons
Next	2,000 gallons	.384 per 1,000 gallons
Next	2,000 gallons	.324 per 1,000 gallons
Next	2,000 gallons	.288 per 1,000 gallons
Next	50,000 gallons	.216 per 1,000 gallons
Next	240,000 gallons	.168 per 1,000 gallons
Next	1,700,000 gallons	.144 per 1,000 gallons
All over	2,000,000 gallons	.120 per 1,000 gallons

Tap-on charge: Inside City - \$100
Outside City - \$200

*A 201 Facilities Study has been completed.

CLIMATE

Calloway County

Temperature

Annual mean (30-year record)	59.4 degrees
Average annual 1975	60.2 degrees
Record highest, July, 1966 (10-year record)	103.0 degrees
Record lowest, January, 1966 (10-year record)	- 6.0 degrees
Normal heating degree days (30-year record)	3,696
(Heating degree day totals are the sums of negative departures of average daily temperatures from 65 degrees F.)	

Precipitation

Mean annual total (30-year record)	46.00 inches
Mean annual snowfall (34-year record)	10.90 inches
Total precipitation 1975	60.58 inches
Mean number days precipitation (.01 inch or more) (34-year record)	119
Average number days thunderstorms (34-year record)	56

Prevailing Winds (22-year record) South

Relative Humidity (10-year record)

Midnight	80 percent
6 a.m.	85 percent
Noon	59 percent
6 p.m.	62 percent

Source: U.S. Department of Commerce, Environmental Science Services Administration, Climatological Data, 1975. Station of record: Nashville, Tennessee.

LOCAL GOVERNMENT

City

Structure - Mayor - 4-year term; 12 councilmen - 2-year terms
Budget 1976 - General Fund \$1,158,900
 Water and Sewer Fund 600,000
 City Gas System 900,000
Fees and licenses - Auto sticker - \$10 annually; occupational license
tax on manufacturers as follows: less than 25 employees \$82.50,
26 to 50 employees \$165.00, 51 to 250 employees \$247.50, 251 to
500 employees \$330.00, over 500 employees \$440.00

County

Structure - County Judge - 4-year term; 4 magistrates - 4-year terms
Budget 1975-76 - General Fund \$466,202; Road Fund \$160,000

Assessed Value of Property, 1976-77

<u>Classes of Property</u>	<u>Murray</u>	<u>Calloway County</u>
Real Estate	\$95,233,940	\$207,429,155
Tangibles	27,659,873	47,178,982

Property Taxes

All property in Kentucky is assessed at 100 percent of fair cash value.

Land and buildings are taxed by the state and may be taxed by local jurisdictions. The state rate is \$0.315 per \$100 of assessed valuation. Beginning January 1, 1977, local school tax rates were reduced by \$0.30 per \$100 valuation and the state rate was increased by \$0.30 per \$100 (from \$0.015), resulting in no net change in the combined state and local rates.

Manufacturing machinery, raw materials inventories, pollution control equipment, and goods in the process of manufacture are not subject to local taxation. The state rate is \$0.15 per \$100.

(Contd.)

Other tangible personal property owned by manufacturers (automobiles, trucks, finished goods, office furniture, office equipment) is taxed by the state at \$0.45 per \$100 and may be taxed by local jurisdictions. Beginning January 1, 1977, local school rates were reduced by \$0.30 per \$100 valuation and the state rate was raised by \$0.30 per \$100 (from \$0.15).

Property stored in public warehouses in a transit status is not subject to local taxation. The state rate is only \$0.015 per \$100.

Intangible personal property located in Kentucky (money in hand, shares of stock, notes, bonds, accounts, and other credits) is taxed by the state at \$0.25 per \$100, and is not subject to local taxation.

Intangible personal property owned by corporations in Kentucky as a result of business transactions performed out-of-state, but having a tax situs in Kentucky (accounts receivable, notes, bonds, credits, non-domestic bank deposits, licensing or royalty agreements, shares of stock of any affiliated company, etc.) is taxed by the state at \$0.015, and is not subject to local taxation.

Local Property Tax Rate Per \$100 of Assessed Valuation, 1976*

<u>Taxing Jurisdiction</u>	<u>Murray</u>	<u>Calloway County</u>
County	\$.227	\$.227
School	.581	.359
City	.400	

Utilities Gross Receipts Tax for Schools

Calloway County levies a 3 percent tax on utilities receipts for schools. This tax is paid by all consumers of utilities as an add-on to the utilities bills. Exempted are receipts from utilities services that are resold and the receipts from the sale of energy or energy producing fuels that exceed 3 percent of the cost of production in manufacturing, processing, mining or refining.

*Calloway County Tax Commissioner.

Planning and Zoning

City agency - Murray Planning Commission
Zoning enforced - City and 5 miles beyond city limits
Subdivision regulations enforced - City and 5 miles beyond city limits
Local codes enforced - Building
Mandatory state codes enforced - Plumbing, National Fire Protection Association Code, National Building Code (for major buildings and residential construction containing more than 12 bedrooms per building)

Safety

<u>Police</u>	<u>Murray</u>	<u>Calloway County</u>
Total staff	26	9
Radio-patrol cars	6	5

Fire

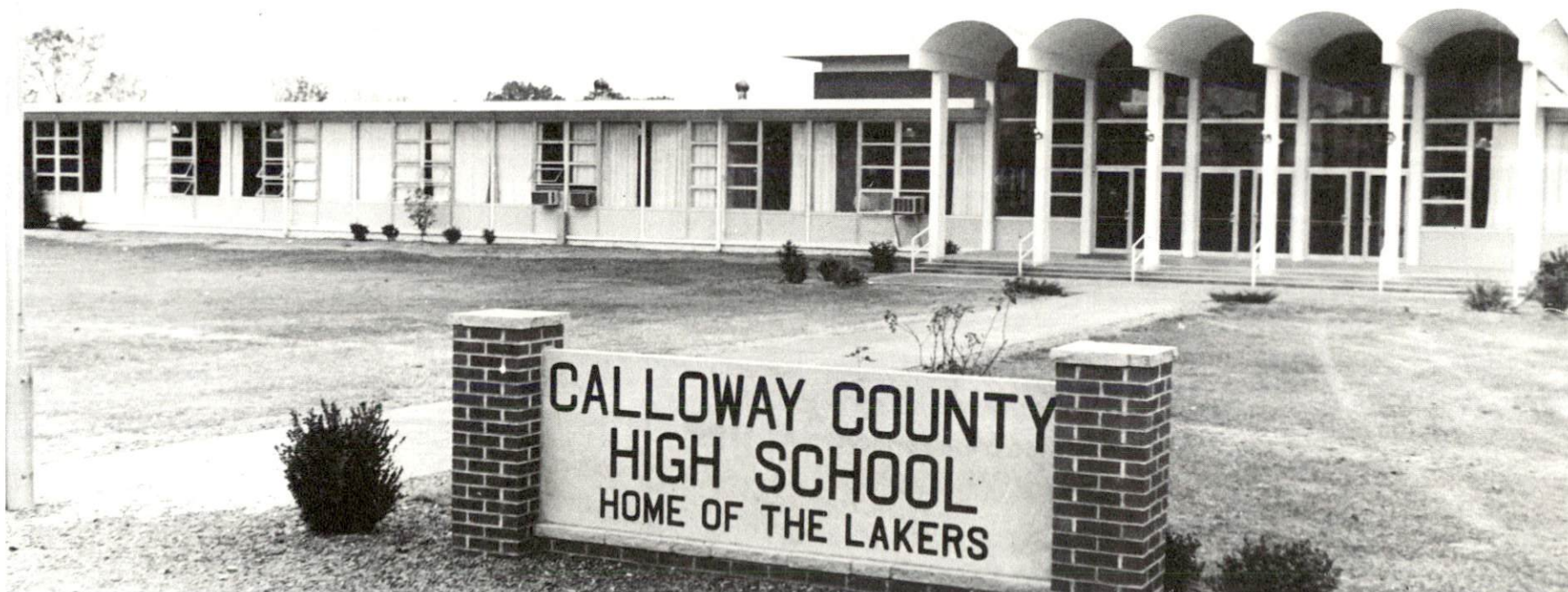
American Insurance Association Fire Rating	5
Full-time staff	32
Volunteers	14

Fire and Rescue Service

Calloway County Fire-Rescue, Inc. :
Number of volunteers - 35
Equipment - One 750-gpm pumper with 1,000 gallon tank, one 1,000-gallon tanker, rescue van, 2 motor boats with dragging equipment, (all vehicles radio-equipped)
Personnel training - First aid, emergency medical training, fire fighting techniques and water rescue training

Solid Waste

	<u>Murray</u>	<u>Calloway County</u>
Type service	Municipal	Each business and residence is responsible for its own garbage disposal
Fee charged:		
residential	\$2.50 per month	
business	\$1.45 per cubic yard (compressed)	
industrial	\$1.45 per cubic yard (compressed)	
Collection frequency:		
residential	Weekly	
business	As needed	
industrial	As needed	
Trash pickup	Annually	
Disposal method	Landfill	The city landfill is available free to everyone with a city auto sticker. Commercial vehicles must pay a charge based on amount of garbage.



CALLOWAY COUNTY HIGH SCHOOL



EAST CALLOWAY ELEMENTARY SCHOOL

EDUCATION

Public Schools

	<u>Murray Independent</u>	<u>Calloway County</u>
Total Enrollment (Fall 1976)	1,943	2,851
Elementary	626	1,929
Middle School	615	
High School	702	922
Student-Teacher Ratio	21-1	23-1
Elementary	22-1	23-1
Middle School	20-1	
High School	21-1	23-1
Accreditation	Southern Association of Colleges and Schools	Southern Association of Colleges and Schools
Percent High School Graduates to College	69.9	29.5
Expenditures Per Pupil (1974-75)	\$687.27	\$572.49
Bonded Indebtedness, June 30, 1975	\$2,768,000	\$2,918,000

Area Colleges and Universities

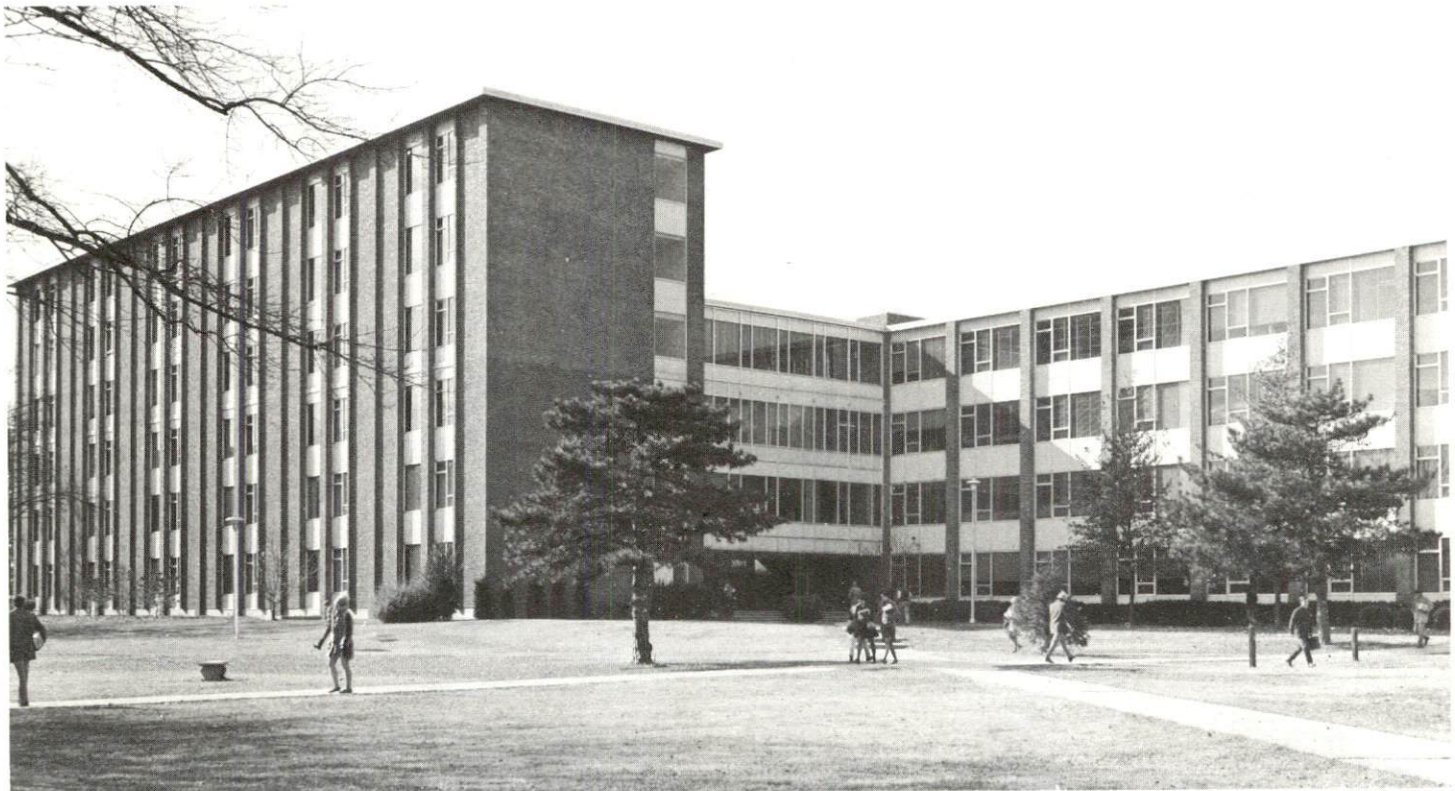
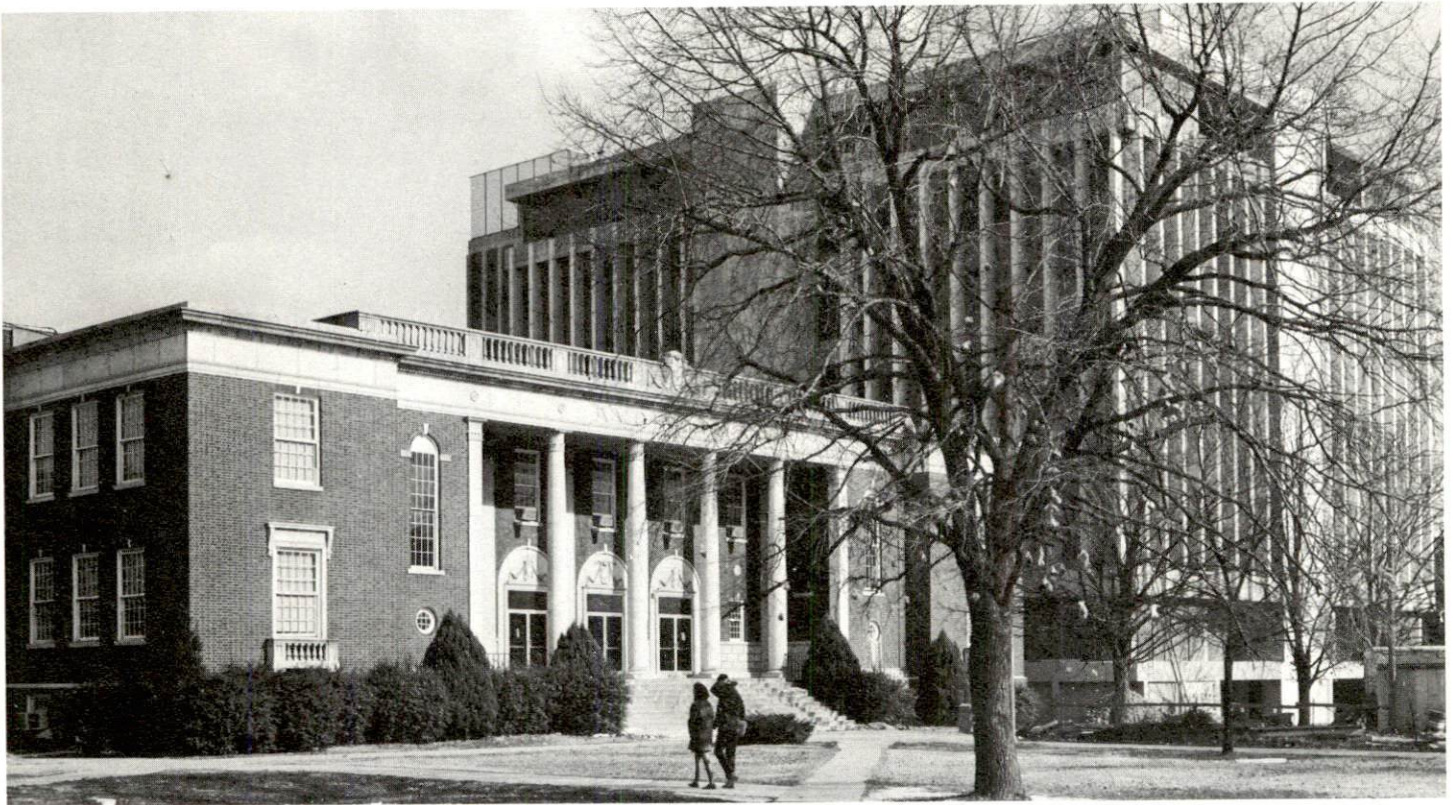
<u>Name</u>	<u>Location (Miles distant)</u>	<u>Enrollment (Fall, 1975)</u>	<u>Highest Degree Conferred</u>
Bethel College	McKenzie, Tennessee (40)	319	Baccalaureate
Murray State University	Murray	7,885	Masters, Ph. D. *
Paducah Community College	Paducah, Kentucky (45)	1,320	Associate
University of Tennessee at Martin	Martin, Tennessee (47)	5,212	Academic and Professional

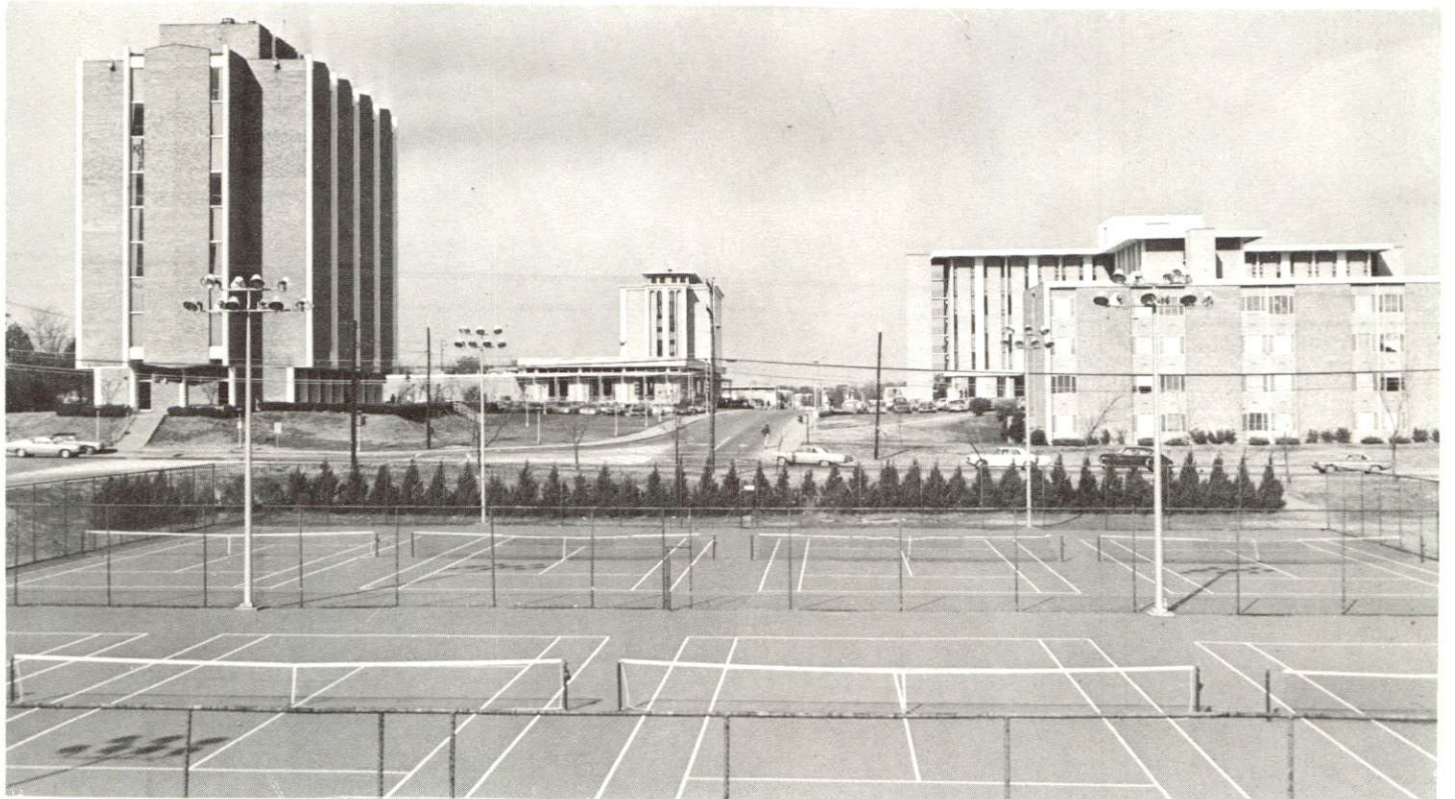
*Cooperative program with the University of Kentucky, Lexington, for a Ph. D. in education only.

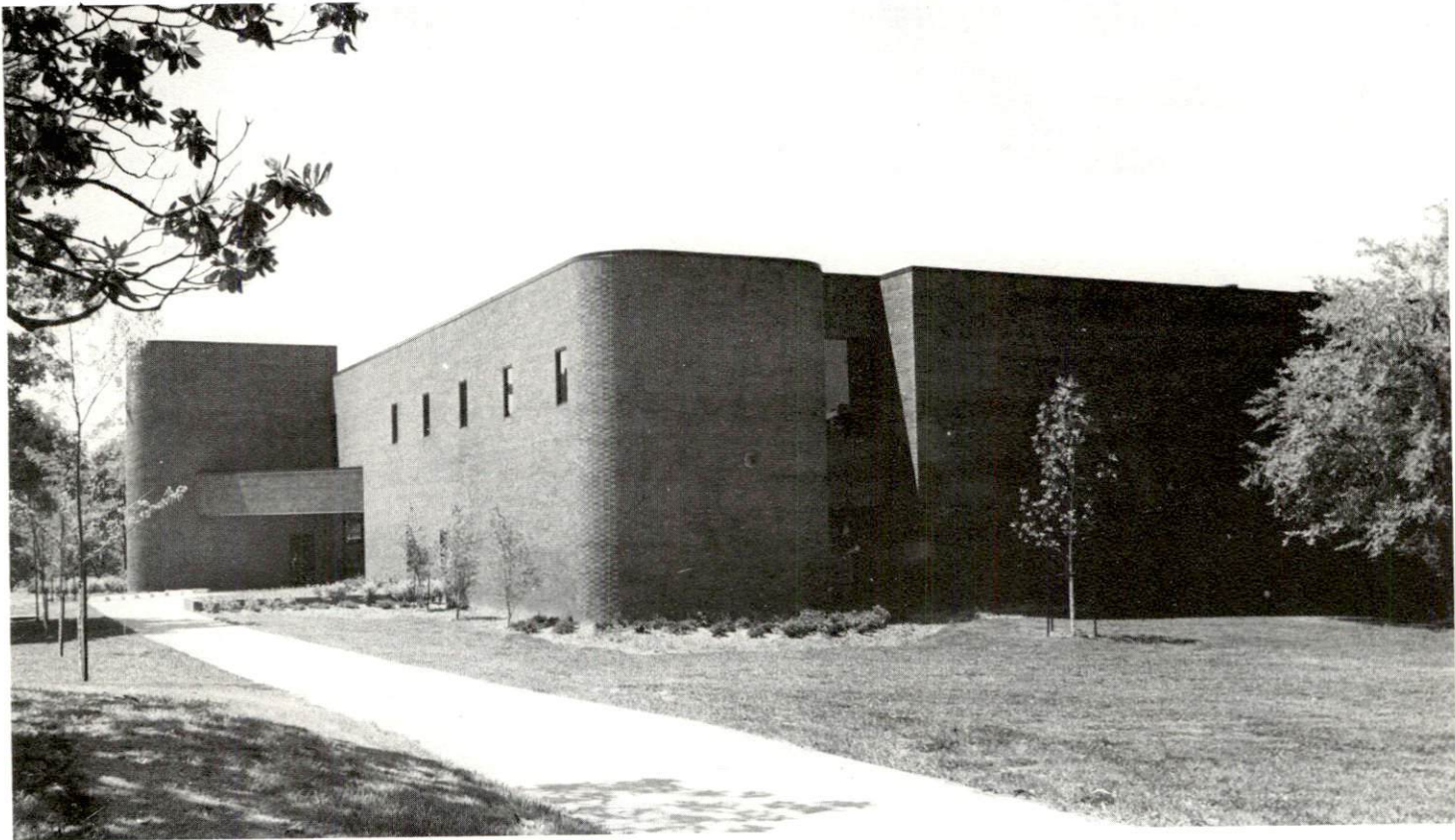


AERIAL VIEW OF MURRAY STATE UNIVERSITY

MURRAY STATE UNIVERSITY







Vocational Schools

	<u>Nearest State School</u>	<u>Nearest Area Education Center</u>
	West Kentucky State Vocational-Technical School	Murray Area Vocational Education Center
Location	Paducah	Murray
Miles Distant	45	
Curriculum	Business and Office Occupations Commercial Foods Barbering Cosmetology Industrial Education Architectural Drafting Appliance Repair Auto Body Repair and Painting Auto Mechanics Carpentry Electronics Industrial Electricity Masonry Tailoring	Agribusiness Business and Office Distributive Education Industrial Education Appliance Repair Auto Body Repair Auto Mechanics Carpentry Comprehensive Employment and Training Act

Arrangements can be made to provide training in the specific production skills required by an industrial plant. Instruction may be conducted either in the vocational school or in the industrial plant, depending upon the desired arrangement and the availability of special equipment.

HEALTH

Local Medical Personnel

Physicians - 27
Dentists - 12

Hospitals

<u>General Hospital</u>	<u>Location</u>	<u>Beds</u>
Calloway County Hospital*	Murray	140 (acute) 27 (convalescent)

General hospital facilities - 3 operating rooms, 6-bed intensive coronary unit, cardiac care linked by computer with Vanderbilt Hospital at Nashville, Tennessee, 24 hours a day for monitoring, diagnostic X-ray department with isotope scanner, pharmacy, laboratory defibrillator, obstetric department, respiratory and physical therapy, and social services department

Medical staff - 24 doctors, 33 registered nurses (full time), 7 registered nurses (part time), 43 licensed practical nurses (full time), 4 licensed practical nurses (part time). Student nurses attending Murray State University practice training at the hospital.

Ambulance Service

Name - Professional Ambulance Service, Inc.
Staff - 6 full-time, 2 part-time, 2 volunteers
Service - 2 fully equipped ambulances, 1 ambulance on standby
Equipment - Emergency medical training, advanced first aid

*Construction has begun on a \$4.5 million addition which will provide space for three surgical suites, laboratory facilities, 38 acute beds, 13 long-term care beds, X-ray and emergency room, physical and respiratory therapy, and additional business offices.

Nursing Homes

	<u>Number</u>	<u>Beds</u>
Extended and intermediate care home	1	32 intermediate care 56 extended care
Personal care home	1	71

Public Health

Facility - Calloway County Health Department

Staff - Full time - Administrator, 2 sanitarians, 3 public health nurses, plumbing inspector, 2 clerks

Part time - Nutritionist, public health nurse, sanitarian, physical therapist, speech and hearing pathologist



CALLOWAY COUNTY PUBLIC LIBRARY



MURRAY-CALLOWAY COUNTY HOSPITAL

OTHER LOCAL FACILITIES

Communications

Telephone - South Central Bell Telephone Company

Services - Standard services, plus touch tone dialing; approximately
13,000-unit Centrex system at Murray State University

Telegraph - Western Union Telegraph Company

Services - Office, message delivery by telephone and messenger

Postal - U.S. Post Office - Main office and contact station at Murray
State University

Class - First

Mail received - 3 times daily

Mail dispatched - 3 times daily

Newspapers -

Daily except Sunday, and circulation - Ledger and Times - 8,900
University News - 14,000

Other papers received from - Louisville and Paducah, Kentucky;
Memphis and Nashville, Tennessee; New York, New York

Radio - WNBS-AM, WAAW-FM, WKMU-FM

Stations received from - All radio networks and independent stations
within a 150-mile radius

Television -

Cable service

Reception from - 11 channels and constant weather scan which includes
Paducah, Kentucky; Jackson and Nashville, Tennessee; Harrisburg,
Illinois; and Cape Girardeau, Missouri

Kentucky Educational Television - Murray transmitter, Channel 21

Library Services

Public library - Calloway County Public Library

Size collection 52,000 volumes; Circulation, 1975-76 - 221,959

Services - Bookmobile serves city and county; shut-in service through
the bookmobile; films; periodicals; paintings; microfilms; story hours
twice weekly; children's programs, adult and junior great books;
discussion groups; book reviews held regularly; special displays;
regularly scheduled programs in music, art displays, and special
programs; Jackson Purchase Regional Library headquarters

Private library - Murray State University Library (open to the public)
 Size collection - 352,686 volumes
 Special collections - Early history of Kentucky and Tennessee;
 genealogy; TVA publications; Jesse Stuart Collection, consisting of
 manuscripts and letters; Kentuckiana and Jackson Purchase collections;
 manuscripts of Nathan B. Stubblefield, Harry Lee Waterfield, Mancil
 Venson, and Edward T. Breathitt; the Gregory Papers, and the
 Everett papers from Obion County, Tennessee

Religious Institutions

Number of churches - 71
 Denominations - Baptist
 Methodist
 Nazarene
 Pentecostal
 Presbyterian
 Christian
 Catholic
 Church of Christ
 Church of Jesus Christ of Latter Day Saints
 Jehovah's Witnesses
 Episcopal
 Lutheran
 Seventh Day Adventist
 Wayman Chapel A.M.E.

Nearest Synagogue - Paducah, 45 miles distant
 Congregation - Temple Israel (reform)

Financial Institutions

<u>Banks</u>	<u>Assets</u>	<u>Deposits</u>	<u>Statement Date</u>
Bank of Murray	\$85,838,711.00	\$73,608,377.00	10/13/76
Peoples Bank of Murray, Kentucky	50,097,708.83	44,120,404.45	6/30/76

<u>Savings and Loan Associations</u>	<u>Assets</u>	<u>Shared Accounts</u>	<u>Statement Date</u>
Murray Branch of Hopkinsville Federal Savings and Loan Association	\$58,353,820.66*	\$53,939,765.15	6/30/76

Hotels and Motels

Total number - 5
Total units - 177

Clubs and Organizations

Business and Civic - Murray Chamber of Commerce, Agricultural Council, American Red Cross, Big "M" Club, Association for Retarded Children, Bar Association, Drug Council, Mental Health Association, Farm Bureau, Medical Association, Civitan Club, Alcoholics Anonymous, Kiwanis, Lions, Jaycees, Optimist, Rotary, Dental Society, Hospital Association, Ministerial Association, Insurance Association, Board of Realtors

Fraternal - American Legion, Disabled Veterans, Fraternal Order of Police, Moose, Masons, Shrine, Professional Firefighters, Thoroughbred Club, VFW, Woodmen of the World, Sons of American Revolution

Women's - American Association of University Women, Associated Women of Farm Bureau, B & PW Club, Genealogical Society, Homemakers Club, DAR, Daughters of the Confederacy, Magazine Club, Jaycettes, Woman's Club, Nature Palette, National Secretaries Association, Quota Club, Rose and Garden Club, Tops Club, Woodmen of the World Sorority, National Organization of Women

Youth - Boy Scouts, Girl Scouts, Cub Scouts, Brownies, 4-H, Baseball Association, FFA, FHA, FBLA, FTA, Beta Club, Little League

Other - Weight Watchers, Senior Citizens Club, Welcome Wagon

*Assets for Murray, Kentucky are in excess of \$10,000,000 for 1976.

EXCELLENT RECREATIONAL FACILITIES



RECREATION

Local

The city of Murray has a year round supervised recreational program. One swimming pool, 12 tennis courts, 2 parks, 8 ball fields, a skating rink, bowling alley and 4 movie theaters are available to the public. In addition, a 100-acre city-county park is nearing completion. An Olympic-size swimming pool, baseball diamonds, shelter houses and picnic areas have been completed. Bicycle and hiking trails will be added.

Murray State University has 8 lighted tennis courts, a lighted baseball-football field, and an indoor swimming pool that are open to the public. The Murray State University Thoroughbreds are perennial challengers for major honors in the seven intercollegiate sports in the Ohio Valley Conference. In addition, several lectures, recitals, concerts, and plays are presented each year on campus and are also open to the public.

Two private country clubs with 18-hole golf courses and a racquet club with a swimming pool, tennis courts and racquetball courts are located in the county.

A new marina is being constructed on the Blood River Embayment of Kentucky Lake, only 8 miles from Murray.

Area (Within 30 miles)

Murray's location in the heart of Kentucky's Land of the Lakes region makes it an excellent recreation area. Adjacent to Murray are Kentucky Lake, the world's largest man-made lake, and Lake Barkley with 1,000 miles of shoreline. Three Kentucky state parks, within minutes of Murray, offer a wide variety of activities including a summer theater program.

Land Between the Lakes National Recreation Area is a 170,000 acre heavily wooded peninsula between Kentucky and Barkley Lakes. It is one of the newest and largest recreation areas in the nation. It features a 5,000-acre Conservation Education Center and one of the finest buffalo herds in the nation.

Kenlake State Resort Park is rapidly developing into a major tennis center. The Governor's Cup Regatta and the Watkins Cup Regatta are features of the park every May and October.

Kentucky Dam Village State Resort Park at Gilbertsville presents the Septemberfest, an annual square and round dance festival. The Kaintuck Territory is a 167-acre 1880 frontier settlement reproduction, where the Music and Crafts Fair is held.

Lake Barkley State Resort Park is a 3,600-acre park, featuring the ultimate in wood-structured lodges and a variety of recreational activities, including an 18-hole golf course and a 152-slip marina.

COMMUNITY IMPROVEMENTS

Industrial and Commercial

1. Sagar Glove Company has moved operations into a new plant that provides room for expansion of the production facilities. The former Sagar plant is being used as a nationwide distribution point for Hawaiian Tropic Sun Tan Lotion.
2. Calloway Manufacturing Company has purchased the property of Standard Textile Company. Employment is now 70 and expected to reach 240.
3. Ryan Milk Company has doubled its capacity and assumed production for one of the nation's largest dairies. About 40 additional employees as well as additional production facilities will be needed.
4. Eighteen new businesses opened in 1976.
5. The two banks have recently completed new facilities, and a branch bank is being constructed.

Transportation

1. The first commercial port of the West Bank of Kentucky Lake, 12 miles from Murray, opened on October 10, 1976. This large privately owned port is capable of unloading eight barges simultaneously. Construction of two warehouses is planned.
2. The widening of U.S. Highway 641 to four lanes from Murray to Benton is scheduled to begin in the spring of 1977. The highway construction will extend to Sycamore Street, approximately one mile within the city limits of Murray, and improve the downtown traffic flow.
3. New hangars have been added at Kyle Field. The airport plans to widen the runway to 100 feet and lengthen it to 5,000 feet.
4. The Murray-Calloway County Transit Authority has purchased two buses and has started experimental bus service in the city. Plans include providing service to the county when a third bus is acquired.

Utilities

1. The Murray Water and Sewer System has added a new well and increased its raw water supply. New iron removal equipment will be installed at the plant.
2. A 201 Facilities Study of the sewage treatment facilities has been completed.
3. Water mains of the Dexter-Almo Heights Water District along U.S. 641 are being relocated to allow for the highway construction.

Education

1. The new \$3.5 million Murray State University Livestock Exposition Center is now in operation. A \$4.5 million special education school for hearing and speech has been constructed on the Murray campus to serve as a diagnostic center for the Purchase region. A new \$7 million heat and air-conditioning center for the campus is under construction. Also, construction of a new student center is underway. The present student center will be converted into a wing for the library.
2. The Calloway County School System completed a new central office building in 1975. Currently a library and cafeteria addition are being built at the high school. The present library is being renovated and converted into classrooms.
3. The Murray Independent School District is now offering a full kindergarten program, a practical arts program at the middle school, and a mini-university for talented elementary students. Six new tennis courts have been added to the recreational facilities at the high school.
4. The Murray-Calloway County Regional Library has just completed construction that doubled the size of the library building.

Health

1. The Murray-Calloway County Hospital has begun construction on a \$4.5 million addition, which will provide space for three surgical suites, laboratory facilities, 38 acute beds, 13 long-term care beds, X-ray and emergency room, physical and respiratory therapy, and additional business offices.

Recreation

1. A 100-acre city-county park is nearing completion. An Olympic-size swimming pool, shelter houses, baseball diamonds and picnic areas have been completed. Bicycle and hiking trails are now being added.
2. Kenlake State Resort Park has just completed renovation of the lodge. Nine new tennis courts have been built, and more are planned to provide facilities for obtaining world class competition.
3. A small marina is under construction on the Blood River Embayment of Kentucky Lake, only 8 miles from Murray.



FIRST COURTHOUSE

First public building in Jackson Purchase area. Built in 1823 for \$100. It was originally erected at Wadesboro, Calloway county seat, 1822-42, where its first session of court was held, Feb. 13, 1823. Remained in use till new one built in 1831. Murray became county seat in 1843 and the log building was moved here then. It has been used as a residence for over a century.

1
2
6
3

HISTORY

Calloway County is located in the western end of Kentucky in that area known as the Jackson Purchase. The county is bordered on the south by the Tennessee state line, and on its eastern side extending the full length, is Kentucky Lake, the world's largest man-made lake. The area is well-drained by both forks of the Clarks River, the Tennessee River and their tributaries. Most of the 384 square miles of territory is level and its soil is fertile. This was the western extent of the barren lands which the Indians had kept cleared of trees in order to hunt buffalo.

The first settlement in Calloway County was made by David Jones in 1812 in the northern part of the county. Wadesboro, near there, became the first county seat and developed into a flourishing town after a land office was established there. After the public lands were sold Wadesboro lost its prominence and the county seat was moved in 1844 to Murray, near the center of the county.

Calloway became Kentucky's seventy-second county in 1822. Taken from Hickman County, it was moved in honor of Colonel Richard Calloway, a Virginian who migrated to Kentucky in 1777 and became one of the first members of the Virginia Assembly from west of the mountains. Calloway was known as a defender of the frontier and was appointed by Governor Patrick Henry to survey the site of Boonesborough.

Murray was named for John L. Murray, a Kentuckian who served in the U.S. Congress. A city with an estimated population of 12,876 in 1973, Murray is the home of Murray State University. The University, founded in 1922 as the Murray Normal School, had a 1975 enrollment of 7,885 students.

In 1830 Calloway County had 5,164 inhabitants. The population grew steadily to 20,147 in 1950 and 20,972 in 1960. There was significant growth during the next decade to 27,692 in 1970 and an estimated 29,100 in 1975.

The total number of Calloway County residents employed in 1975 averaged 11,510, with nonagricultural jobs accounting for 10,850 workers. Manufacturing employers in the county reported 910 workers; mining and quarrying 20; construction firms 280; transportation, communications, and public utilities 130; wholesale and retail trade 1,870; finance, insurance, and real estate 210; and employees in the service industries 1,850. Tappan Company, which employs 580 persons and produces gas and electric ranges, and Fisher Price Toys, which employs 352, are the county's largest manufacturing firms. Murray is one of the largest dark-fired tobacco

markets in the world and processes a large portion of the nation's popcorn. Twenty million tons of high-grade silica sand, used in the glass and foundry industries, is located in southeastern Calloway County.

Kentucky Lake and the adjacent Land Between the Lakes Area offer a vast recreation area, extensive tourist facilities, and make Calloway County the recipient of a large tourist trade.

Kentucky Department of Commerce
Capital Plaza Tower
Frankfort, Kentucky 40601

Industrial Development Division
(502) 564-7140

Community Services Division
(502) 564-4300

Business Development Division
(502) 564-3862

Research and Planning Division
(502) 564-4886

Office of Minority Business Enterprise
(502) 564-4270

Map Sales Office
133 Holmes Street
(502) 564-4715

International Trade & Investment
Promotion Division
(502) 564-2170

Agri-Business Division
(502) 564-6784

Industrial Development Finance Authority
(502) 564-4554