

1990

Industrial Resources: Crittenden County - Marion

Kentucky Library Research Collections
Western Kentucky University, spcol@wku.edu

Follow this and additional works at: https://digitalcommons.wku.edu/crittenden_cty

 Part of the [Business Administration, Management, and Operations Commons](#), [Growth and Development Commons](#), and the [Infrastructure Commons](#)

Recommended Citation

Kentucky Library Research Collections, "Industrial Resources: Crittenden County - Marion" (1990). *Crittenden County*. Paper 5.
https://digitalcommons.wku.edu/crittenden_cty/5

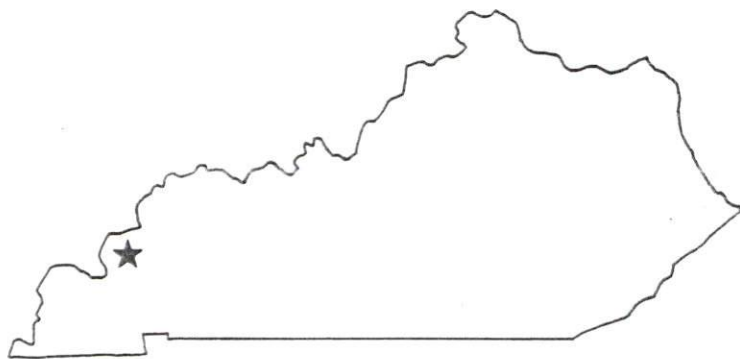
This Report is brought to you for free and open access by TopSCHOLAR®. It has been accepted for inclusion in Crittenden County by an authorized administrator of TopSCHOLAR®. For more information, please contact topscholar@wku.edu.

IR
664

Crittenden

Resources for Economic Development

Marion



KENTUCKY
Open for Business

RESOURCES FOR ECONOMIC DEVELOPMENT
MARION, KENTUCKY

Prepared by
The Kentucky Cabinet for Economic Development
Division of Research and Planning
in cooperation with
Crittenden County Chamber of Commerce

1990

Division Director - Pamela K. Riley; program manager - Keith Roberts; research - Barry K. Holder, Jr.; clerical - Wanda Sharp; graphics - Robert Owens, Pat Coleman; cartography - Edwin Scott, Dave Clark. Cost of printing paid from state funds.

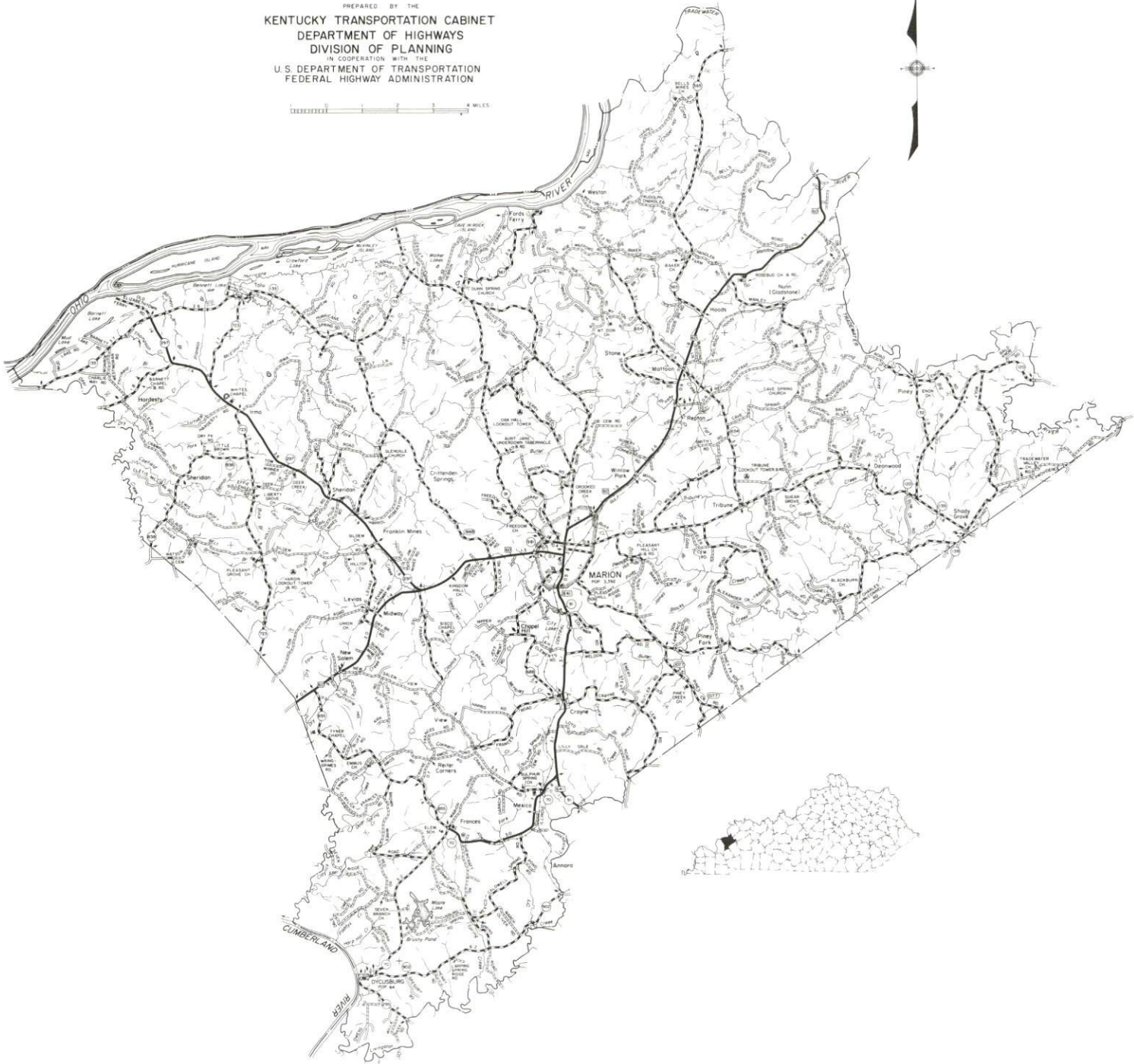
TABLE OF CONTENTS

<u>Chapter</u>	<u>Page</u>
MARION, KENTUCKY - A RESOURCE PROFILE	1
THE LABOR MARKET STATISTICS	2
Labor Market Area Map	2
Population	3
Population Projections	3
Estimated Labor Supply	3
Labor Force Characteristics of Residents, 1989	4
Selected Components of Nonagricultural Employment, by Place of Work, 1989	5
Per Capita Personal Income	6
Average Placement Wages	7
Average Weekly Wages of Workers Covered by Unemployment Insurance 1988 - Bar Chart	8
Average Weekly Wages by Industry, by Place of Work, 1988	9
EXISTING INDUSTRY	10
Marion Manufacturing Firms, Their Products and Employment	10
Recent Industrial Developments	10
Labor Organizations in Manufacturing Firms	10
Selected Industrial Services	11
TRANSPORTATION	12
Highways	12
Truck Service	12
Selected Market Location Map	13
Rail	14
Air	14
Water	15
UTILITIES	16
Electricity	16
Natural Gas	16
Public Water Supply	16
Raw Water	17
Sewerage	17
CLIMATE	18

<u>Chapter</u>	<u>Page</u>
LOCAL GOVERNMENT	19
Structure	19
Planning and Zoning	19
Local Fees and Licenses	19
State and Local Property Taxes	20
Combined State and Local Rates Per \$100 Valuation, 1989	20
EDUCATION	21
Public Schools	21
Nonpublic Schools	21
Area Colleges and Universities	21
Vocational Training	22
OTHER LOCAL FACILITIES	23
Local Medical Personnel	23
Hospitals	23
Other Medical Facilities and Services	23
Banks and Savings & Loan Associations	23
Newspapers	23
Telephone Service	23
RECREATION	24
COMMUNITY IMPROVEMENTS	25

GENERAL HIGHWAY MAP
CRITTENDEN COUNTY
KENTUCKY

PREPARED BY THE
KENTUCKY TRANSPORTATION CABINET
DEPARTMENT OF HIGHWAYS
DIVISION OF PLANNING
IN COOPERATION WITH THE
U. S. DEPARTMENT OF TRANSPORTATION
FEDERAL HIGHWAY ADMINISTRATION



MARION, KENTUCKY - A RESOURCE PROFILE

Marion, the county seat of Crittenden County, is located in the Western Kentucky Fluorspar District of the Mississippi Plateaus area of extreme western Kentucky. Marion is located 63 miles southwest of Evansville, Indiana; 127 miles northwest of Nashville, Tennessee; 174 miles southwest of Louisville, Kentucky; and 212 miles southeast of St. Louis, Missouri. In 1988, Marion had an estimated population of 3,200.

Crittenden County, which covers a land area of 360 square miles, is a well-dissected upland characterized by a variety of irregularly-shaped, sandstone-capped hills and ridges. The Ohio River forms the northwestern boundary of Crittenden County. In 1988, Crittenden County had an estimated population of 8,600.

The Economic Framework - The total number of Crittenden County residents employed in 1989 averaged 3,768. Manufacturing firms in the county reported 650 employees; wholesale and retail trade provided 466 jobs; 495 people were employed in service occupations; state and local government accounted for 322 employees; and contract construction firms provided 49 jobs.

Labor Supply - There is a current estimated labor supply of 10,603 persons available for industrial jobs in the labor market area. In addition, from 1990 through 1994, 4,899 young persons in the area will become 18 years of age and potentially available for industrial jobs.

Transportation - Marion is served by U.S. 60 and 641, both "AAA"-rated trucking highways. Interstate 24 is located 21 miles south of Marion via U.S. 641. Twelve common carrier trucking companies provide interstate and/or intrastate service to Marion. The Tradewater Railway Company provides rail service to Marion. The Marion Airport, 2 miles southwest of Marion, provides a 2,500-foot grass runway and the Sturgis Airport, 19 miles north of Marion, provides three 5,000-foot paved runways. Scheduled commercial airline service is available at the Barkley Regional Airport near Paducah, 51 miles southwest; and at Evansville Dress Regional Airport in Evansville, Indiana, 66 miles northeast of Marion.

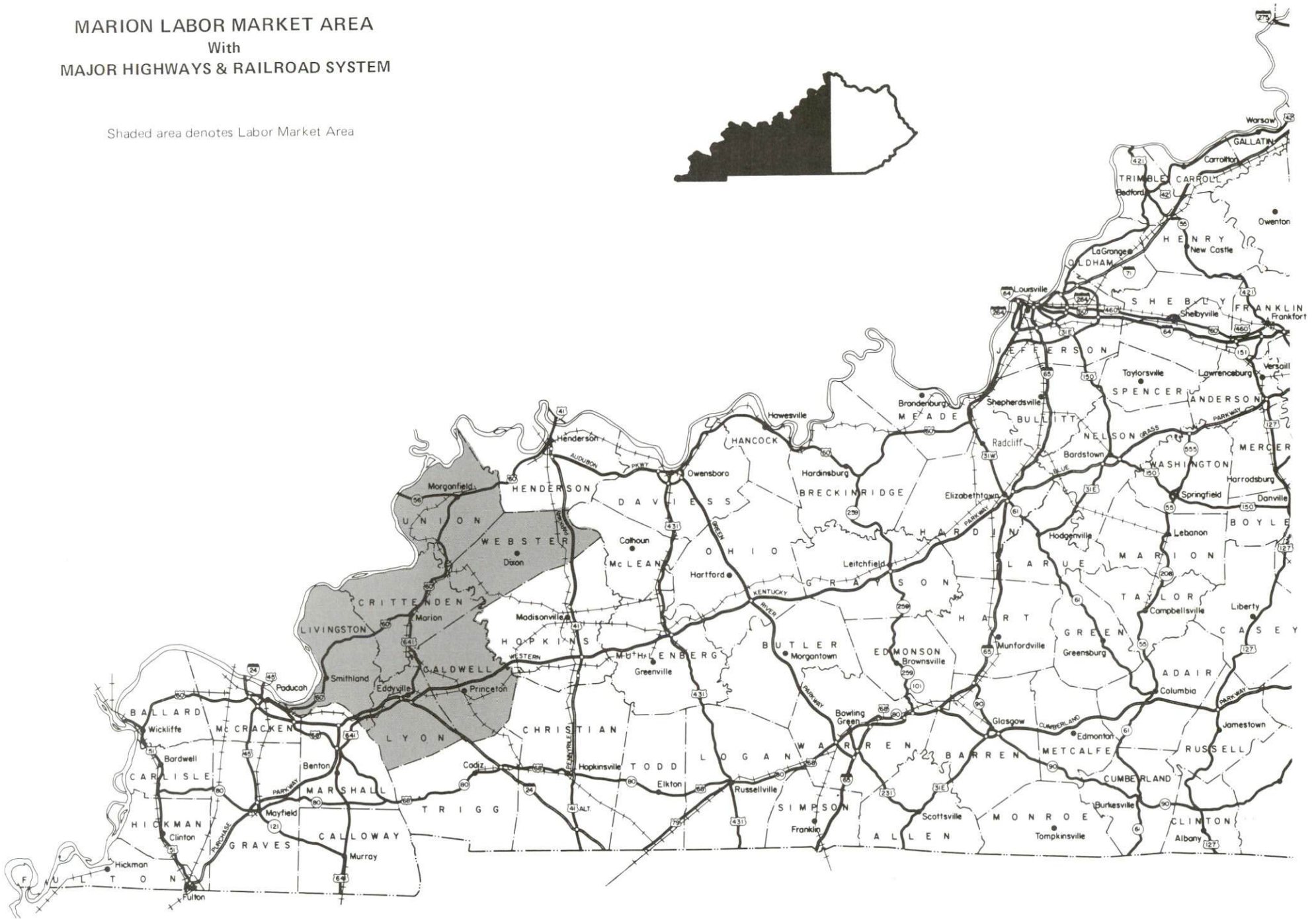
Power and Fuel - Kentucky Utilities Company provides electric power to Marion and parts of Crittenden County. Crittenden County is also served by the Henderson-Union Rural Electric Cooperative Corporation. Western Kentucky Gas Company provides natural gas service to Marion.

Education - Crittenden County School System provides primary and secondary education to Marion and Crittenden County. Three universities and four community colleges are located within 65 miles of Marion. The Madisonville State Vocational-Technical School in Madisonville, 39 miles east of Marion and the Caldwell County Area Vocational Education Center in Princeton, 22 miles southeast of Marion, each provide vocational training facilities.

MARION LABOR MARKET AREA

With
MAJOR HIGHWAYS & RAILROAD SYSTEM

Shaded area denotes Labor Market Area



LABOR MARKET STATISTICS

The Marion Labor Market Area includes Crittenden County and the adjoining Kentucky counties of Caldwell, Livingston, Lyon, Union and Webster.

POPULATION			
	<u>1988*</u>	<u>1980</u>	<u>1970</u>
Labor Market Area	67,900	71,042	63,994
Marion	3,200	3,392	3,008
Crittenden County	8,600	9,207	8,493

* Population estimates.

Sources: U.S. Department of Commerce, Bureau of the Census, August 1989; November 1989.

POPULATION PROJECTIONS				
	<u>2000</u>	<u>2010</u>	<u>2020</u>	<u>2030</u>
Labor Market Area	67,200	66,630	65,350	63,020
Crittenden County	8,380	8,190	7,910	7,500

Source: University of Louisville, Urban Studies Center, State Data Center.

ESTIMATED LABOR SUPPLY					
	<u>Current</u>				<u>Future</u>
	<u>Total</u>	<u>Unemployed</u>	<u>Employed Part-Time</u>	<u>Not in Labor Force</u>	<u>Becoming 18 years of age 1990 thru 1994</u>
Labor Market Area*	10,603	2,090	3,424	5,089	4,899
Crittenden County	1,063	275	354	434	647

* Additional workers may be drawn from other nearby counties.

Note: Unemployed - persons unemployed and actively seeking work; Employed Part-Time - persons employed but working only 14 to 26 weeks per year; Not in Labor Force - represents the number of persons who would enter the labor force if suitable employment were available (based on the assumption that persons in Kentucky would like to participate in the labor force in the same proportion that they do nationally).

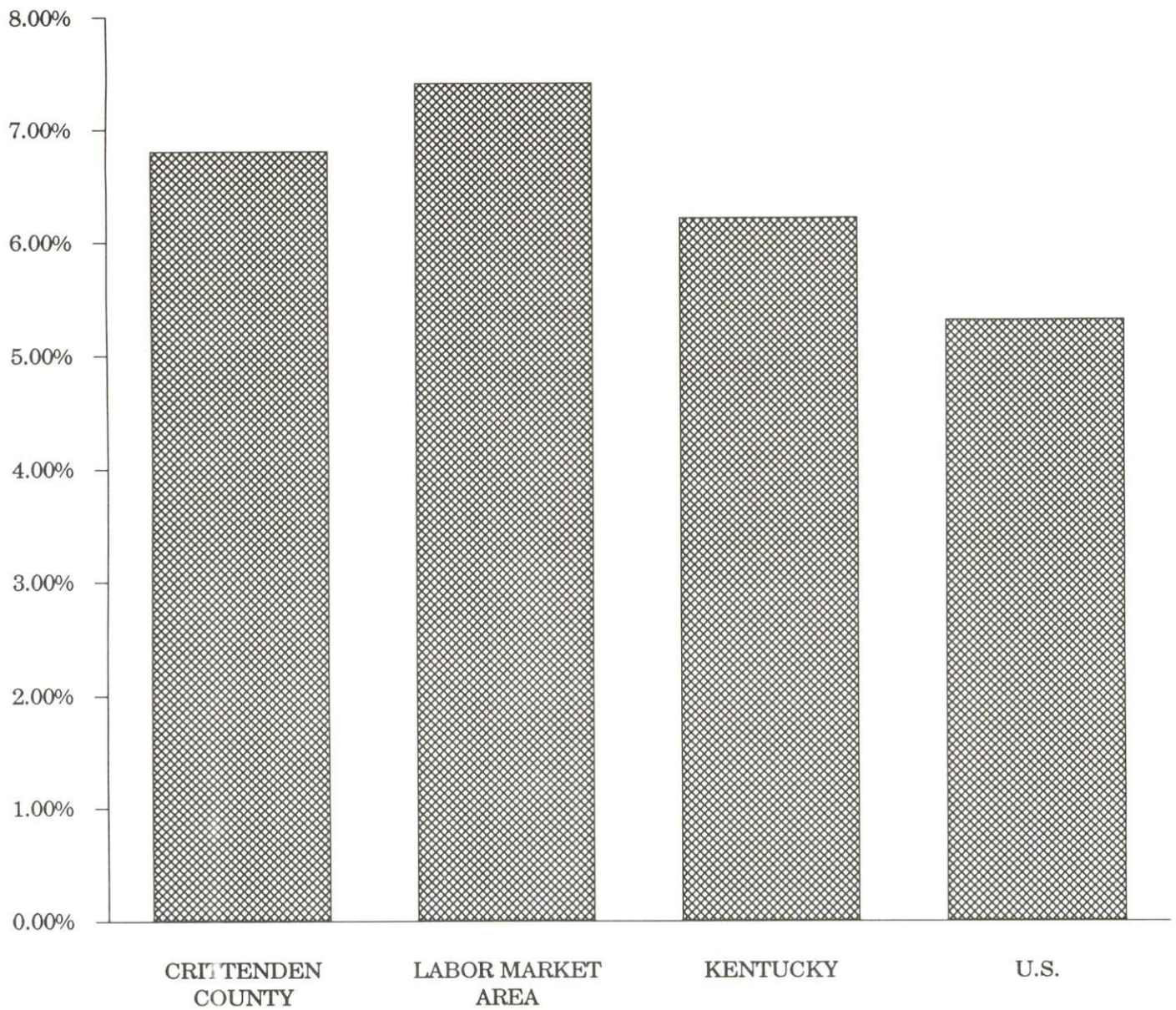
Sources: Kentucky Cabinet for Human Resources, Kentucky Labor Supply Estimates by County, 1989. Kentucky Cabinet for Economic Development, Future Labor Supply Becoming 18 Years of Age, 1990 thru 1994.

LABOR FORCE CHARACTERISTICS OF RESIDENTS, 1989

	Crittenden County	Labor Market Area
Civilian Labor Force	4,043	28,164
Employment	3,768	26,074
Unemployment	275	2,090
Rate of Unemployment (%)	6.8	7.4

Source: Kentucky Cabinet for Human Resources, Kentucky Labor Force Estimates, Annual Averages, 1989.

UNEMPLOYMENT RATES
1989

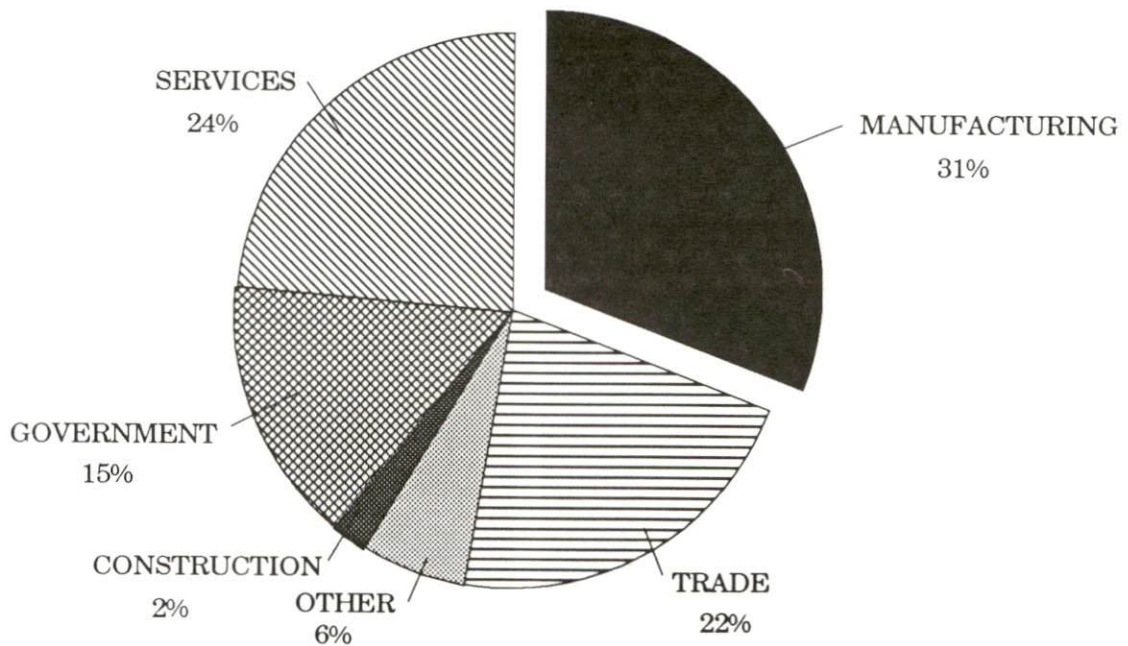


SELECTED COMPONENTS OF NONAGRICULTURAL EMPLOYMENT
BY PLACE OF WORK, 1989

	<u>Crittenden County</u>	<u>Labor Market Area</u>
All Industries (total)	2,106	18,766
Manufacturing	650	3,448
Wholesale & Retail Trade	466	3,701
Services	495	3,043
State/Local Government	322	3,085
Contract Construction	49	555

Note: Excludes domestic workers, railway workers, certain nonprofit corporations, majority of federal government workers, and self-employed workers.
Source: Kentucky Cabinet for Human Resources, Average Monthly Workers Covered by Kentucky Unemployment Insurance Law, 1989.

CRITTENDEN COUNTY

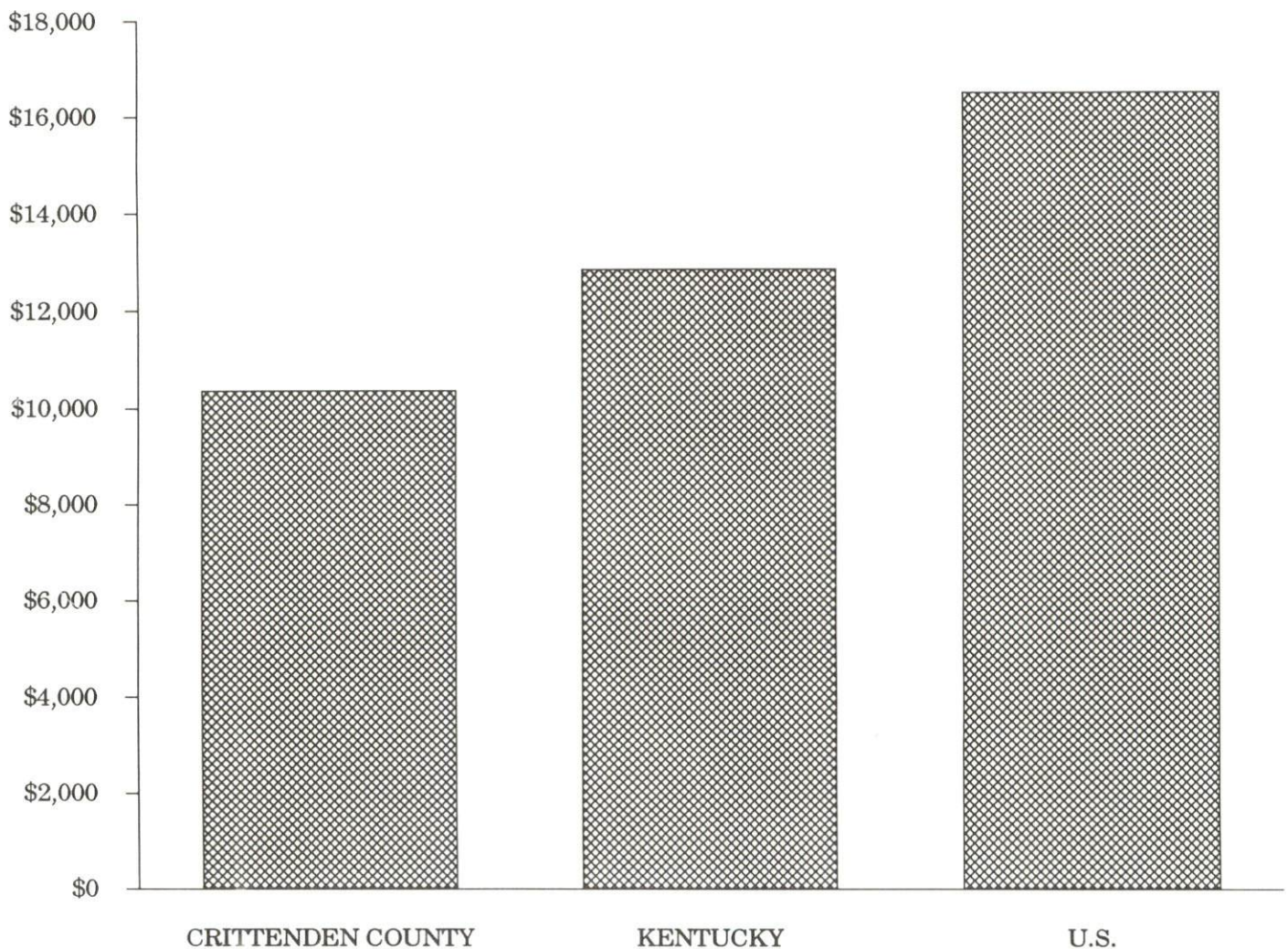


PER CAPITA PERSONAL INCOME

Area	1984	1988	Percent Change
Crittenden County	\$8,791	\$10,345	17.7
Labor Market Area Range	\$8,644 - \$11,219	\$10,345 - \$14,536	-
Kentucky	\$10,411	\$12,830	23.2
U.S.	\$13,116	\$16,490	25.7

Sources: U.S. Bureau of Economic Analysis, Kentucky Economic Information System, April 1990.

PER CAPITA PERSONAL INCOME
1988



AVERAGE PLACEMENT WAGES

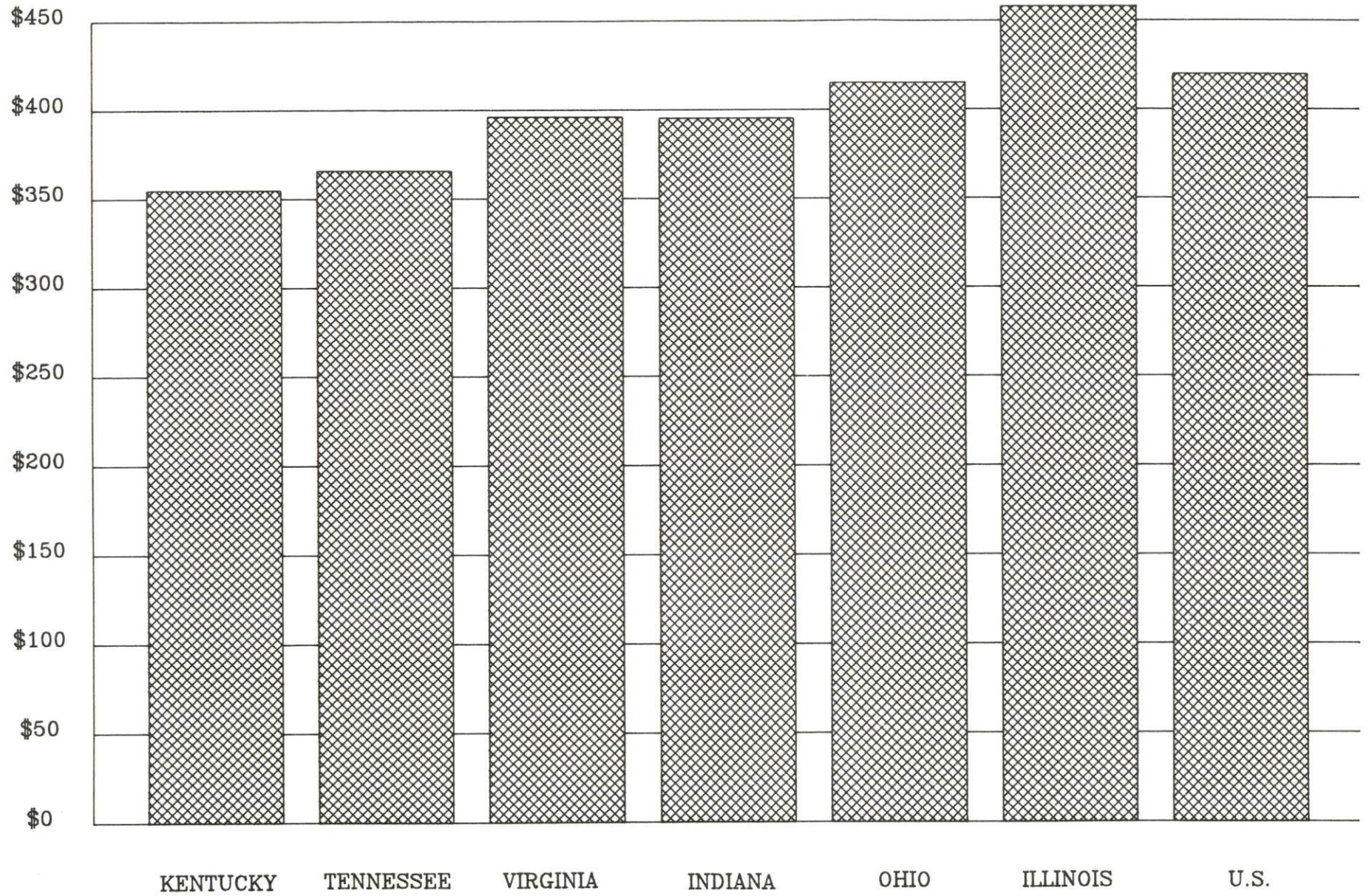
Crittenden County is served by the Madisonville local office of the Kentucky Department for Employment Services. The focus of the following data is on job placements made by the Madisonville local office and may therefore be used as an indicator of the wages which employers in the area pay new employees. During the twelve months which ended on June 30, 1989, the local employment office filled 2,403 job openings in various occupational categories. The average hourly wage for selected occupational categories were:

<u>OCCUPATIONAL CATEGORY</u>	<u>NUMBER OF PLACEMENTS</u>	<u>AVERAGE WAGE(\$)</u>
All Occupations	2,403	4.54
Clerical	498	3.71
Sales	105	3.99
Services (excluding domestic)	409	3.52
Agricultural, Fishery, Forestry, etc.	28	4.10
Processing	212	5.58
Machine Trades	60	5.73
Bench Work	467	3.78
Structural	351	6.49
Motor Freight/ Transportation	63	6.29
Packaging and Materials Handling	125	5.11
Other	15	14.00

The Madisonville local office also serves Hopkins, and Muhlenberg Counties. The above occupational categories are taken from the Dictionary of Occupational Titles published by the U.S. Department of Labor.

Source: Kentucky Cabinet for Human Resources, Department for Employment Services.

AVERAGE WEEKLY WAGES OF WORKERS COVERED BY
UNEMPLOYMENT INSURANCE - 1988



AVERAGE WEEKLY WAGES BY INDUSTRY
BY PLACE OF WORK, 1988

	Crittenden County	Kentucky (State- Wide)	Tennessee	Virginia
All Industries	\$246.78	\$352.31	\$363.12	\$392.56
Mining & Quarrying	*	603.27	495.85	596.88
Contract Construction	197.53	380.71	394.27	422.27
Manufacturing	302.10	464.92	416.73	452.60
Transportation, Communications & Public Utilities	337.93	468.17	485.13	554.17
Wholesale & Retail Trade	178.38	238.88	N/A	N/A
Finance, Insurance & Real Estate	295.09	401.17	269.27	466.23
Services	214.88	298.98	343.48	391.67
State/Local Government	258.98	377.81	403.21	457.00
	<u>Indiana</u>	<u>Ohio</u>	<u>Illinois</u>	<u>U. S.</u>
All Industries	\$392.63	\$411.08	\$454.10	\$416.33
Mining & Quarrying	635.77	579.73	674.62	660.40
Contract Construction	449.87	465.46	584.10	469.85
Manufacturing	532.06	569.98	555.83	517.62
Transportation, Communications & Public Utilities	502.69	519.17	584.83	542.33
Wholesale & Retail Trade	N/A	N/A	N/A	N/A
Finance, Insurance & Real Estate	406.58	444.33	579.88	532.52
Services	317.98	348.48	402.38	384.31
State/Local Government	395.31	428.10	453.12	442.71

* Not disclosed.

N/A Not Available.

Note: The average weekly wage for each category includes the salaries and wages of all persons working for that type business. For example, the manufacturing category includes both production workers and administrative personnel. Excludes domestic workers, railway workers, certain nonprofit corporations, majority of federal government workers, and self-employed workers.

Source: Kentucky Cabinet for Human Resources, Average Weekly Wages of Workers Covered by Kentucky Unemployment Insurance Law, 1988. U.S. Department of Labor, Bureau of Labor Statistics, Average Annual Pay by State and Industry, August 29, 1989.

EXISTING INDUSTRY

MARION MANUFACTURING FIRMS, THEIR PRODUCTS AND EMPLOYMENT

<u>Firm</u> (Establishment date)	<u>Product</u>	<u>1989</u> Average Employment
Cera Tech, Inc. (1987)	Industrial ceramics	25
Crittenden Press, Inc. (1876)	Newspaper, offset printing	9
Kentucky Stone Company (1946)	Agricultural lime, crushed stone, asphalt	53
Marion Machine Works, Inc. (1936)	Precision machine work, steel fabrication & erection	9
Marion Mining Bolts Corporation (1987)	Mine roof bolts and plates	50
Ohio River Concrete Corporation (1973)	Ready-mixed concrete	5
Potter and Brumfield, A Siemens Company (1959)	Electro-magnetic relays	425
Turner and Conyer Lumber Company, Inc. (1958)	Furniture stock, lumber, clay pipe spacers, pallets, boxes	50

Sources: Kentucky Cabinet for Economic Development, Division of Research and Planning; Crittenden County Chamber of Commerce.

RECENT INDUSTRIAL DEVELOPMENTS

Cera Tech, Inc. is in the process of opening two new separate businesses in Marion including Kentucky Technological Products and Marion Abrasives, Inc. Kentucky Technological Products will manufacture liners for kiln ovens and employ 20 persons within one year of operation. Marion Abrasives, Inc. will produce silica carbide ceramics and employ 6 persons. Both firms will initiate operations by late 1990.

LABOR ORGANIZATIONS IN MANUFACTURING FIRMS

<u>Union</u>	<u>Representing workers at:</u>
International Union of Operating Engineers, AFL-CIO	The Kentucky Stone Company
Laborer's International Union of North America, AFL-CIO	The Kentucky Stone Company

SELECTED INDUSTRIAL SERVICES

<u>Types of Services</u>	<u>Location</u>	<u>Mileage from Marion</u>
Custom Data Processing	Paducah, Kentucky	45
Custom Plastics Producers	Kuttawa, Kentucky	22
	Providence, Kentucky	22
Electric Motor Repair	Madisonville, Kentucky	39
Grinding, Precision & Tool	Corydon, Kentucky	45
	Cadiz, Kentucky	46
Heat Treating Facilities	Evansville, Indiana	63
Industrial Equipment & Supplies	Madisonville, Kentucky	39
Industrial Gases	Marion, Kentucky	-
Industrial Waste Removal	Dawson Springs, Kentucky	36
Machine Shops, Tool & Die	Marion, Kentucky	-
Metal Castings	Henderson, Kentucky	54
Metal Finishers	Paducah, Kentucky	45
Metal Service Centers	Hopkinsville, Kentucky	51
Millwrights	Hopkinsville, Kentucky	51
Public Warehouse Facilities	Calvert City, Kentucky	35

Sources: Kentucky Cabinet for Economic Development, Kentucky Directory of Selected Industrial Services, 1987; Division of Research and Planning.

TRANSPORTATION

Highways

Major highways serving Marion include U.S. Highways 60 and 641. Both highways are "AAA"-rated (80,000-pound gross load limit) trucking highways. Other highways serving Marion include Kentucky Routes 91 and 120. Kentucky 91 is "AAA"-rated north of Marion.

Access to Interstate 24 is available 21 miles south of Marion near Eddyville. An interchange of the Western Kentucky Parkway, a multi-lane east-west highway, is also located 21 miles south of Marion.

HIGHWAY MILES FROM MARION, KENTUCKY, TO SELECTED MARKET CENTERS

City	Highway Miles	City	Highway Miles
Atlanta, GA	368	Los Angeles, CA	2,006
Baltimore, MD	773	Louisville, KY	174
Birmingham, AL	314	Nashville, TN	127
Chicago, IL	353	New Orleans, LA	597
Cincinnati, OH	275	New York, NY	934
Cleveland, OH	522	Pittsburgh, PA	562
Detroit, MI	510	St. Louis, MO	212
Knoxville, TN	305		

Note: Mileage computations are via the best interstate or primary highways, not necessarily the most direct route of travel.

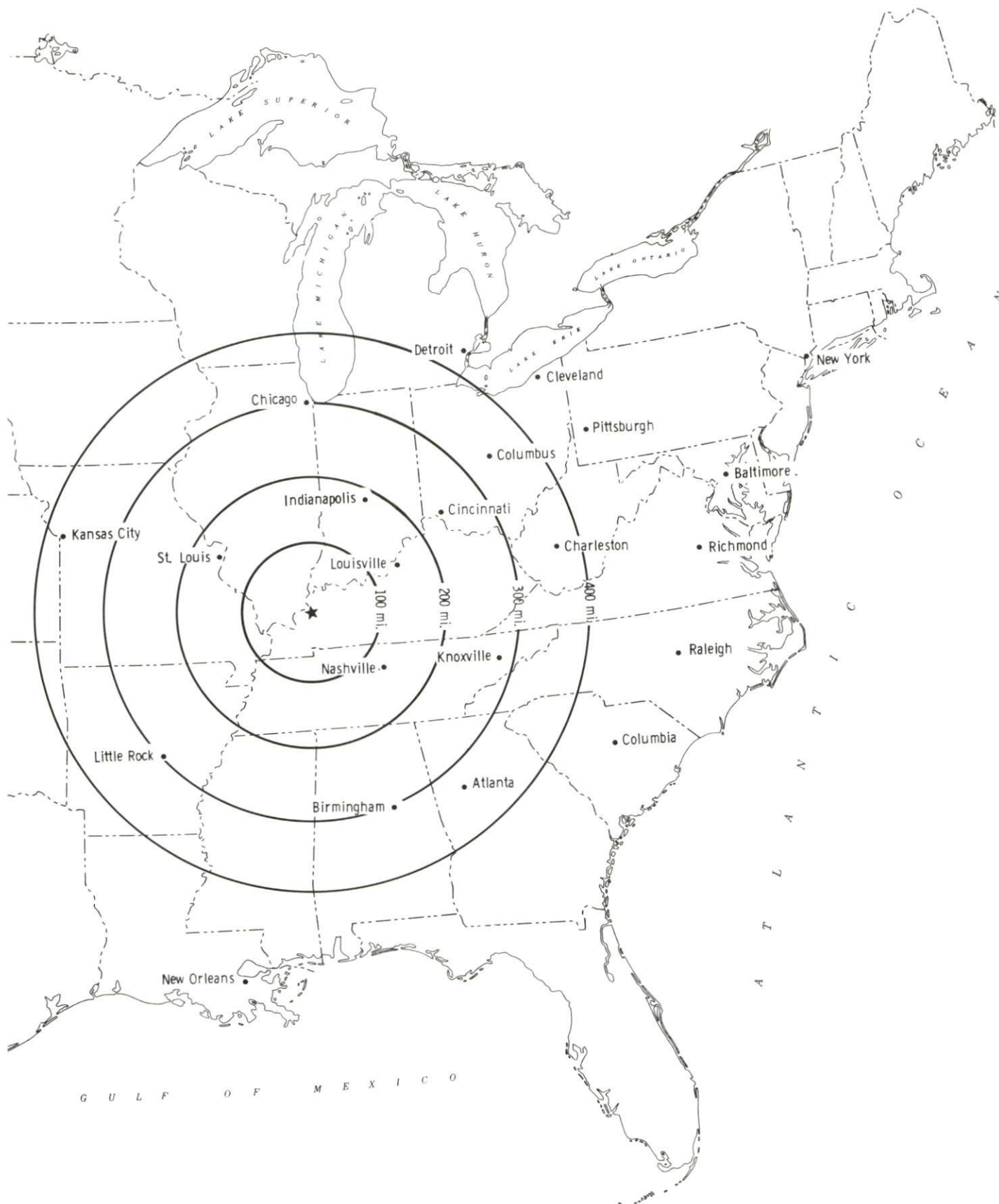
Sources: Rand McNally Deluxe Motor Carriers' Road Atlas, 1989. Official Kentucky Mileage Map, 1980.

Truck Service

Twelve common carrier trucking companies provide interstate and/or intrastate service to Marion.

Source: American Motor Carrier Directory, Fall 1990.

Selected Market Centers



Rail

Paducah and Louisville Railway, Inc. provides main line rail service under contract with the Tradewater Railway Company in Marion. Paducah and Louisville Railway provides piggyback facilities in Paducah, Kentucky, 45 miles southwest of Marion.

For details on routing, schedules, rates, and services contact:

Vice President - Marketing and Sales
Paducah and Louisville Railway
1500 Kentucky Avenue
Paducah, Kentucky 42001
(502) 444-4341

and/or

Tradewater Railway Company
P.O. Box 66
Sturgis, Kentucky 42459
(502) 333-4151

Air

Local

Location:	Marion Airport 2 miles southwest of Marion
Runways:	1 grass
Length:	2,500 feet
Traffic	
Control:	None
Lighting:	None
Services:	None
Location:	Sturgis Airport 1 mile southeast of Sturgis, Kentucky; 19 miles north of Marion
Runways:	3 paved
Length:	5,000 feet each
Traffic	
Control:	Wind sock and tetrahedron
Lighting:	MIRL and VASI 18-36 sunset to sunrise, rotating beacon, tetrahedron
Services:	100LL octane fuel, Jet-A Fuel, flight training, tie-downs, hangars

Nearest Scheduled Commercial Airline Service

Location: Barkley Regional Airport
6 miles west of Paducah, Kentucky;
51 miles south of Marion
Air Service: Northwest, TransWorld, American Eagle
Daily Arrivals
& Departures: 14

Location: Evansville Dress Regional Airport
3 miles north of Evansville, Indiana;
66 miles northeast of Marion
Air Service: American Eagle, ComAir, TransWorld Express,
Northwest Link, USAir, United Express
Daily Arrivals
& Departures: 88

Water

Marion is located approximately 10 miles from the Ohio River which forms the northwestern boundary of Crittenden County. A nine-foot navigation channel is maintained the entire length of the Ohio River.

Three public riverports are located within a 55-mile radius of Marion. The Lyon County Riverport is located on Lake Barkley, 24 miles south of Marion; the Paducah-McCracken County Riverport is located 37 miles southwest of Marion; and the Henderson County Riverport is located approximately 54 miles northeast of Marion.

UTILITIES

Electricity

Company serving Marion and portions of Crittenden County - Kentucky
Utilities Company
Source of power - Kentucky Utilities Company
For industrial rates contact:

Industrial Development Department
Kentucky Utilities Company
One Quality Street
Lexington, Kentucky 40507
(606) 255-1461

Company serving the majority of Crittenden County - Henderson-Union
Rural Electric Cooperative Corporation
Source of power - Big Rivers Electric Corporation
For industrial rates contact:

Henderson-Union RECC
P.O. Drawer 18
Henderson, Kentucky 42420
(502) 826-3991 or (800) 242-7069

Natural Gas

Company serving Marion - Western Kentucky Gas Company
Source of supply - Texas Gas Transmission Corporation
For rates and supplies contact:

Western Kentucky Gas Company
P.O. Box 866
Owensboro, Kentucky 42302
(502) 685-8067

Public Water Supply

Company serving Marion - City of Marion Water and Sewer
Department
108 East Bellville Street
Marion, Kentucky 42064
(502) 965-2266

Source - Two city-owned lakes
Treatment plant capacity - 829,000 gallons per day
Average daily consumption - 450,000 gallons
Peak daily consumption - 630,000 gallons
Storage capacity - 766,000 gallons, including clear well
Water pressure - 40 psi to 115 psi

The City of Marion Water and Sewer Department recently completed a \$38,000 maintenance project for the water treatment system. The project included cleaning and repairing the water intakes from the city lakes and overall improvements to the transfer system.

Raw Water

Surface water sources - Ohio and Tradewater Rivers

Average discharge - Ohio River at Evansville, Indiana - 133,300 cfs
(34 years, USGS, unadjusted); Tradewater River at Olney, Kentucky -
337 cfs (47 years USGS)

Expected ground water yield - 500 to 1,000 gpm along Ohio River; 50 to
200 gpm along Tradewater river, west central and south central
portions of Crittenden County; 5 to 50 gpm in central and western
portions of county; 5 gpm or less along southeastern border of the
county and a small portion on the northwestern border of county

Sewerage

Company serving Marion - City of Marion Water and Sewer Department
108 East Bellville Street
Marion, Kentucky 42064
(502) 965-2266

Design capacity - 660,000 gallons per day
Average daily flow - 460,000 gallons
Type of treatment - Secondary
Treated effluent discharged into - Rush Creek

The City of Marion Water and Sewer Department recently completed an expansion and renovation to its existing wastewater treatment facility. The \$750,000 project increased capacity by 160,000 gallons per day. In addition, the Department plans to provide sewer service to areas presently not served in the Marion vicinity.

CLIMATE

Crittenden County

Temperature

Normal (30-year record)	55.70 degrees
Average annual 1988	55.60 degrees
Record highest, July 1954 (48-year record)	105.00 degrees
Record lowest, February 1951 (48-year record)	-23.00 degrees
Normal heating degree days (30-year record) (Heating degree day totals are the sums of negative departures of average daily temperatures from 65 degrees F.)	4,729

Precipitation

Normal (30-year record)	41.55 inches
Mean annual snowfall (48-year record)	13.90 inches
Total precipitation 1988	38.43 inches
Mean number days precipitation (.01 inch or more) (48-year record)	115.20
Mean number days thunderstorms (48-year record)	44.90

Prevailing winds (through 1963)

South-Southwest

Relative Humidity (27-year record)

Midnight	78 percent
6 a.m.	81 percent
Noon	59 percent
6 p.m.	62 percent

Source: U.S. Department of Commerce, Environmental Science Services Administration, Climatological Data, 1988. Station of record: Evansville, Indiana.

LOCAL GOVERNMENT

Structure

The City of Marion is governed by a mayor, six council members and a city administrator. The mayor is elected to a four-year term while the council members each serve two-year terms. The city administrator serves as a full-time employee. Crittenden County is governed by a county judge/executive and six magistrates. Each county official is elected to a four-year term.

Planning and Zoning

There are no active planning and zoning agencies in Marion or Crittenden County at the present time.

Mandatory state codes enforced - Kentucky Plumbing Code, National Electric Code, Kentucky Boiler Regulations and Standards, Kentucky Building Code (modeled after BOCA code)

Local Fees and Licenses

The City of Marion levies an occupational tax of 0.75 percent on all wages, salaries and commissions earned within the city. A net profits tax of 0.75 percent is levied on businesses within the city. Manufacturers are exempted from the net profits tax, and in lieu, pay a fixed fee based on the number of employees. The annual fee is: \$100 for 1 to 49 employees, \$200 for 50 to 99 employees, and \$300 for 100 or more employees. A municipal insurance premium tax of four percent is also levied by the City of Marion.

State and Local Property Taxes

All property in Kentucky, except items exempted by the state constitution, is taxed by the state. Property which also may be taxed by local jurisdictions includes land and buildings, finished goods inventories, automobiles, trucks, office furniture and office equipment. Local taxing jurisdictions in Kentucky include counties, cities, and school districts.

All property in Kentucky is assessed at 100 percent of fair cash value.

COMBINED STATE AND LOCAL RATES PER \$100 VALUATION, 1989

	<u>Marion</u>	<u>Unincorporated Crittenden County</u>
Land and Buildings	\$0.780	\$0.546
Manufacturing		
Machinery	0.150	0.150
Pollution Control		
Equipment	0.150	0.150
Inventories		
Raw Materials	0.001	0.001
Goods in Process	0.001	0.001
Finished Goods	0.580	0.351
Automobiles & Trucks	1.032	0.803
Other Tangible		
Personal Property	1.029	0.800
Intangibles (Accounts receivable*, money in hand, stock, notes, bonds)	0.250	0.250
Goods Stored in Public Warehouses in Transit		
Status	0.001	0.001
Private Leaseholds in Industrial Revenue Bond Financed Facilities	0.015	0.015

One floodplain district in Crittenden County levies a special tax on property located within its boundaries, not county-wide. The rate is \$0.250 per \$100 valuation.

* Accounts receivable are taxed at 85 percent of face value, for an effective rate of \$0.2125 per \$100 valuation.

EDUCATION

Public Schools

	Crittenden County
Total Enrollment (Fall, 1989)	1,508
Pupil-Teacher Ratio (1988-89)	18-1
Percent High School Graduates to College (1988-89)	53.6
Expenditures Per Pupil (1988-89)	\$2,494.42

Nonpublic Schools

<u>School</u>	<u>Enrollment</u>	<u>Grades</u>
Marion Christian School Elementary	10	K-8

Area Colleges and Universities

<u>Name</u>	<u>Location (Miles distant)</u>	<u>Enrollment (Fall, 1989)</u>
Madisonville Community College*	Madisonville, Kentucky (39)	1,960
Paducah Community College	Paducah, Kentucky (45)	2,544
Hopkinsville Community College	Hopkinsville, Kentucky (51)	1,877
Henderson Community College	Henderson, Kentucky (54)	1,246
Murray State University	Murray, Kentucky (63)	8,013
University of Evansville	Evansville, Indiana (63)	3,290
University of Southern Indiana	Evansville, Indiana (63)	5,713

* Madisonville Community College offers evening courses at Crittenden County High School in Marion, which might be transferrable to a four-year state-supported institution.

Vocational Training

Vocational training is available at both the state vocational-technical schools and the area vocational education centers. The state vocational-technical schools are post-secondary institutions. The area vocational education centers are designed to supplement the curriculum of high school students. Both the state vocational-technical schools and the area vocational education centers offer evening courses to enable working adults to upgrade current job skills.

Arrangements can be made to provide training in the specific production skills required by an industrial plant. Instruction may be conducted either in the vocational school or in the industrial plant, depending upon the desired arrangement and the availability of special equipment.

Bluegrass State Skills Corporation

The Bluegrass State Skills Corporation, an independent public corporation created and funded by the Kentucky General Assembly, provides programs of skills training to meet the needs of business and industry from entry level to advanced training, and from upgrading present employees to retraining experienced workers.

The Bluegrass State Skills Corporation is the primary source for skills training assistance for a new or existing company. The Corporation works in partnership with other employment and job training resources and programs, as well as Kentucky's economic development activities, to package a program customized to meet the specific needs of a company.

<u>Vocational School</u>	<u>Location (Miles distant)</u>	<u>Cumulative Enrollment 1988-1989</u>
Madisonville State Vocational- Technical School	Madisonville, Kentucky (39)	463
Caldwell County Area Vocational Education Center	Princeton, Kentucky (22)	307

OTHER LOCAL FACILITIES

Local Medical Personnel

Physicians - 4
Dentists - 3

Hospitals

<u>General Hospital</u>	<u>Location</u>	<u>Beds</u>
Crittenden County Hospital	Marion	50

Medical staff - 8 physicians, 24 registered nurses, and 8 licensed practical nurses

Outpatient Clinics - Oncology, urology, cardiology, and minor surgery

Crittenden County Hospital recently completed a renovation and expansion project. The \$3.2 million improvement increased the capacity to 50 beds including a six-bed intensive care unit.

Other Medical Facilities and Services

Crittenden County Health Center
Crittenden County Ambulance Service
Home Health Care
Marion Physicians Clinic
Medical Arts Clinic

Banks and Savings and Loan Associations

Farmers Bank and Trust Company
First Federal Savings Bank
The Peoples Bank

Newspapers

Crittenden Press (Weekly)
Early Bird Shoppers' Guide (Weekly)

Telephone Service

South Central Bell Telephone Company

RECREATION

Local

Public recreational facilities at Marion include two parks, two playgrounds, four tennis courts, five baseball/softball diamonds, two football fields, a fairground with an exhibition building, a livestock show barn and a horse show ring.

The Marion/Crittenden Park features four lighted baseball/softball diamonds, three lighted tennis courts, a shuffleboard court, a shelterhouse, restrooms, concession stand, picnic areas with grills and ample parking. Two lighted basketball courts and a six-lane running track were recently added.

The Veterans Memorial Park provides excellent and well-maintained playground equipment and facilities for children age 12 and under.

Of special interest to residents and visitors to Marion is the Bob Wheeler Museum. The privately-owned museum contains the largest collection of hand tools and home utensils in western Kentucky. In addition to memorabilia, a 186-year old loom is on display. In perfect working order, the loom is used in conjunction with the Crittenden County School System to teach students the art of weaving.

Fohs Hall Community Center is a restored school building which now houses the Chamber of Commerce. The center also provides facilities for community activities and contain a civic auditorium. In addition, the development of the Clement Mineral Museum is planned adjacent to Fohs Hall. The \$125,000 project will contain one of the world's largest collections of fluorspar minerals.

Private facilities include a country club with a nine-hole golf course which is undergoing a \$200,000 upgrade, a swimming pool and clubhouse, and a drive-in movie theatre.

Construction of a private resort development overlooking the Ohio River in Crittenden County is planned.

Area (Within 60 miles)

John James Audubon State Park
Kenlake State Resort Park
Kentucky Dam Village State Resort Park
Lake Barkley State Resort Park
The Land Between The Lakes
National Recreation Area
Pennyrile Forest State Resort Park

COMMUNITY IMPROVEMENTS

Recent

Marion re-certified as a Kentucky certified city in 1989 for its' second consecutive year. Re-certification is based on achievement in the following areas: existing industry assistance, small business assistance, educational resources, and community development factors of health care, public safety, arts and culture, recreation, governmental awareness and resources. The Certified Cities Program is sponsored by the Kentucky Chamber of Commerce.

The City of Marion Water and Sewer Department recently completed an expansion and renovation to its existing wastewater treatment facility. The \$750,000 project increased capacity by 160,000 gallons per day.

The City of Marion Water and Sewer Department recently completed a \$38,000 maintenance project for the water treatment system. The project included cleaning and repairing the water intakes from the city lakes and overall improvements to the transfer system.

Crittenden County Hospital recently completed a renovation and expansion project. The \$3.2 million improvement increased the capacity to 50 beds including a six-bed intensive care unit.

Under Way

Cera Tech, Inc. is in the process of opening two new separate businesses in Marion including Kentucky Technological Products and Marion Abrasives, Inc. Kentucky Technological Products will manufacture liners for kiln ovens and employ 20 persons within one year of operation. Marion Abrasives, Inc. will produce silica carbide ceramics and employ 6 persons. Both firms will initiate operations by late 1990.

The Marion Country Club is in the process of a \$200,000 upgrade for its existing nine-hole golf course.

Planned

The City of Marion Water and Sewer Department plans to provide sewer service to areas presently not served in the Marion vicinity.

Development of the Clement Mineral Museum is planned in Marion. The \$125,000 project will contain one of the world's largest collections of fluorspar minerals.

Construction of a private resort development overlooking the Ohio River in Crittenden County is planned.



KENTUCKY
Open for Business